



US009421372B2

(12) **United States Patent**  
**Mashiach et al.**

(10) **Patent No.:** **US 9,421,372 B2**  
(45) **Date of Patent:** **Aug. 23, 2016**

(54) **HEAD PAIN MANAGEMENT DEVICE HAVING AN ANTENNA**

(56) **References Cited**

(71) Applicants: **Adi Mashiach**, Tel Aviv (IL); **Carsten Mueller**, St. Ingbert (DE)

3,796,221 A 3/1974 Hagfors  
3,870,051 A 3/1975 Brindley

(72) Inventors: **Adi Mashiach**, Tel Aviv (IL); **Carsten Mueller**, St. Ingbert (DE)

(Continued)

(\* ) Notice: Subject to any disclaimer, the term of this patent is extended or adjusted under 35 U.S.C. 154(b) by 0 days.

FOREIGN PATENT DOCUMENTS  
DE 10 2009027997 1/2011  
WO WO 2004/003019 A2 1/2004

(Continued)

(21) Appl. No.: **14/522,248**

OTHER PUBLICATIONS

(22) Filed: **Oct. 23, 2014**

International Searching Authority, International Search Report and Written Opinion of the International Searching Authority, International Application No. PCT/IB12/003013, mailed May 31, 2013, 10 pages.

(65) **Prior Publication Data**

US 2015/0202442 A1 Jul. 23, 2015

(Continued)

**Related U.S. Application Data**

(62) Division of application No. 14/042,556, filed on Sep. 30, 2013, now Pat. No. 8,903,493, which is a division of application No. 13/629,725, filed on Sep. 28, 2012, now Pat. No. 8,577,478.

*Primary Examiner* — Christopher D Koharski

*Assistant Examiner* — Michael Carey

(74) *Attorney, Agent, or Firm* — Finnegan, Henderson, Farabow, Garrett & Dunner, LLP

(60) Provisional application No. 61/541,651, filed on Sep. 30, 2011, provisional application No. 61/657,424, filed on Jun. 8, 2012.

(57) **ABSTRACT**

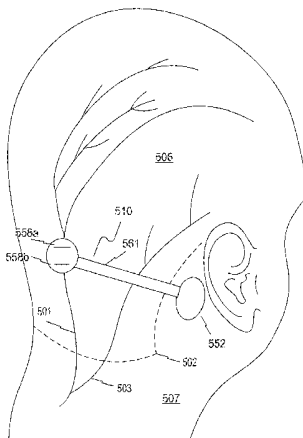
A device may include a primary antenna configured to be located external to a subject and at least one processor in electrical communication with the primary antenna. The at least one processor may be configured to cause transmission of a primary signal from the primary antenna to an implantable device, wherein the implantable device includes at least one pair of modulation electrodes. The at least one processor may be further configured to adjust one or more characteristics of the primary signal to generate a sub-modulation control signal adapted so as not to cause a neuromuscular modulation inducing current at the at least one pair of modulation electrodes when received by the implantable device and to generate a modulation control signal adapted so as to cause a neuromuscular modulation inducing current at the at least one pair of modulation electrodes when received by the implantable device.

(51) **Int. Cl.**  
*A61N 1/08* (2006.01)  
*A61N 1/36* (2006.01)  
(Continued)

(52) **U.S. Cl.**  
CPC ..... *A61N 1/36075* (2013.01); *A61B 5/0031* (2013.01); *A61B 5/11* (2013.01);  
(Continued)

(58) **Field of Classification Search**  
CPC ..... A61N 1/37223; A61N 1/36071; A61N 1/36075; A61N 1/36128; A61N 1/0551; A61N 1/36; A61N 1/36003  
USPC ..... 607/60, 139, 45, 46, 65  
See application file for complete search history.

**11 Claims, 14 Drawing Sheets**



- (51) **Int. Cl.**
- |                   |           |                  |         |                                  |
|-------------------|-----------|------------------|---------|----------------------------------|
| <i>A61N 1/05</i>  | (2006.01) | 6,814,706 B2     | 11/2004 | Barton et al.                    |
| <i>A61N 1/372</i> | (2006.01) | 7,062,330 B1     | 6/2006  | Boveja et al.                    |
| <i>A61N 1/378</i> | (2006.01) | 7,155,278 B2     | 12/2006 | King et al.                      |
| <i>A61N 1/375</i> | (2006.01) | 7,272,443 B2     | 9/2007  | Min et al.                       |
| <i>A61B 5/11</i>  | (2006.01) | 7,277,749 B2     | 10/2007 | Gordon et al.                    |
| <i>A61B 5/113</i> | (2006.01) | 7,295,132 B2     | 11/2007 | Steiner                          |
| <i>A61F 5/56</i>  | (2006.01) | 7,367,935 B2     | 5/2008  | Mechlenburg et al.               |
| <i>A61N 2/00</i>  | (2006.01) | 7,371,220 B1     | 5/2008  | Koh et al.                       |
| <i>A61N 2/02</i>  | (2006.01) | 7,447,551 B2     | 11/2008 | Kuo et al.                       |
| <i>A61B 5/00</i>  | (2006.01) | 7,623,929 B1     | 11/2009 | Griffith                         |
|                   |           | 7,644,714 B2     | 1/2010  | Atkinson et al.                  |
|                   |           | 7,667,511 B2     | 2/2010  | Staszewski et al.                |
|                   |           | 7,680,538 B2     | 3/2010  | Durand et al.                    |
|                   |           | 7,697,990 B2     | 4/2010  | Ujhazy et al.                    |
|                   |           | 7,709,961 B2     | 5/2010  | Greenberg et al.                 |
|                   |           | 7,725,195 B2     | 5/2010  | Lima et al.                      |
|                   |           | 7,729,772 B2     | 6/2010  | Williams et al.                  |
|                   |           | 7,729,781 B2     | 6/2010  | Swoyer et al.                    |
|                   |           | 7,733,218 B2     | 6/2010  | Drago et al.                     |
|                   |           | 7,756,583 B2     | 7/2010  | Demarais et al.                  |
|                   |           | 7,773,695 B2     | 8/2010  | Zhou et al.                      |
|                   |           | 7,809,442 B2     | 10/2010 | Bolea et al.                     |
|                   |           | 7,845,357 B2     | 12/2010 | Buscemi et al.                   |
|                   |           | 7,869,885 B2     | 1/2011  | Begnaud et al.                   |
|                   |           | 8,072,310 B1     | 12/2011 | Everhart                         |
|                   |           | 8,577,478 B2     | 11/2013 | Mashiach et al.                  |
|                   |           | 2001/0018547 A1  | 8/2001  | Mechlenburg et al.               |
|                   |           | 2002/0188333 A1  | 12/2002 | Nowick et al.                    |
|                   |           | 2003/0225403 A1  | 12/2003 | Woloszko et al.                  |
|                   |           | 2004/0049245 A1  | 3/2004  | Gass et al.                      |
|                   |           | 2004/0059392 A1  | 3/2004  | Parramon et al.                  |
|                   |           | 2004/0085792 A1  | 5/2004  | Lin et al.                       |
|                   |           | 2004/0102820 A1  | 5/2004  | Maune et al.                     |
|                   |           | 2004/0153127 A1  | 8/2004  | Gordon et al.                    |
|                   |           | 2004/0172089 A1  | 9/2004  | Whitehurst et al.                |
|                   |           | 2004/0199212 A1  | 10/2004 | Fischell et al.                  |
|                   |           | 2005/0010265 A1  | 1/2005  | Baru Fassio et al.               |
|                   |           | 2005/0043772 A1  | 2/2005  | Stahmann et al.                  |
|                   |           | 2005/0070971 A1  | 3/2005  | Fowler et al.                    |
|                   |           | 2005/0075694 A1  | 4/2005  | Schmeling et al.                 |
|                   |           | 2005/0075695 A1  | 4/2005  | Schommer                         |
|                   |           | 2005/0075700 A1  | 4/2005  | Schommer et al.                  |
|                   |           | 2006/0004423 A1* | 1/2006  | Boveja ..... A61N 1/08<br>607/46 |
- (52) **U.S. Cl.**
- CPC ..... *A61B 5/113* (2013.01); *A61B 5/4818* (2013.01); *A61B 5/682* (2013.01); *A61F 5/566* (2013.01); *A61N 1/05* (2013.01); *A61N 1/0504* (2013.01); *A61N 1/0514* (2013.01); *A61N 1/0526* (2013.01); *A61N 1/0529* (2013.01); *A61N 1/0548* (2013.01); *A61N 1/0551* (2013.01); *A61N 1/0553* (2013.01); *A61N 1/36* (2013.01); *A61N 1/3601* (2013.01); *A61N 1/36003* (2013.01); *A61N 1/3605* (2013.01); *A61N 1/3606* (2013.01); *A61N 1/3611* (2013.01); *A61N 1/36057* (2013.01); *A61N 1/36117* (2013.01); *A61N 1/36125* (2013.01); *A61N 1/36135* (2013.01); *A61N 1/36146* (2013.01); *A61N 1/3727* (2013.01); *A61N 1/3756* (2013.01); *A61N 1/3787* (2013.01); *A61N 1/37211* (2013.01); *A61N 1/37223* (2013.01); *A61N 1/37229* (2013.01); *A61N 1/37235* (2013.01); *A61N 2/006* (2013.01); *A61N 2/02* (2013.01); *A61B 5/4519* (2013.01); *A61B 5/6822* (2013.01); *A61B 5/6833* (2013.01); *A61B 5/6876* (2013.01); *A61B 2562/164* (2013.01)
- (56) **References Cited**
- U.S. PATENT DOCUMENTS
- |              |         |                       |                 |         |                     |
|--------------|---------|-----------------------|-----------------|---------|---------------------|
| 765,983 A    | 8/1988  | Takayanagi et al.     | 2006/0062580 A1 | 3/2006  | Mahbobi             |
| 4,830,008 A  | 5/1989  | Meer                  | 2006/0114104 A1 | 6/2006  | Scaramozzino        |
| 4,837,049 A  | 6/1989  | Byers et al.          | 2006/0145878 A1 | 7/2006  | Lehrman et al.      |
| 5,094,242 A  | 3/1992  | Gleason et al.        | 2006/0149334 A1 | 7/2006  | Tehrani et al.      |
| 5,174,287 A  | 12/1992 | Kallok et al.         | 2006/0180647 A1 | 8/2006  | Hansen              |
| 5,178,156 A  | 1/1993  | Takishima et al.      | 2006/0217779 A1 | 9/2006  | Ransbury et al.     |
| 5,193,539 A  | 3/1993  | Schulman et al.       | 2006/0224211 A1 | 10/2006 | Durand et al.       |
| 5,394,882 A  | 3/1995  | Mawhinney             | 2006/0271110 A1 | 11/2006 | Vernon et al.       |
| 5,485,851 A  | 1/1996  | Erickson              | 2007/0073357 A1 | 3/2007  | Rooney et al.       |
| 5,540,733 A  | 7/1996  | Testerman et al.      | 2007/0112404 A1 | 5/2007  | Mann et al.         |
| 5,591,216 A  | 1/1997  | Testerman et al.      | 2007/0150022 A1 | 6/2007  | Ujhazy et al.       |
| 5,697,076 A  | 12/1997 | Troyk et al.          | 2007/0173893 A1 | 7/2007  | Pitts               |
| 5,895,360 A  | 4/1999  | Christopherson et al. | 2007/0185546 A1 | 8/2007  | Tseng et al.        |
| 5,948,006 A  | 9/1999  | Mann                  | 2007/0221231 A1 | 9/2007  | Macken              |
| 6,024,702 A  | 2/2000  | Iversen               | 2007/0222560 A1 | 9/2007  | Posamentier         |
| 6,026,818 A  | 2/2000  | Blair et al.          | 2007/0233204 A1 | 10/2007 | Lima et al.         |
| 6,038,480 A  | 3/2000  | Hrdlicka et al.       | 2007/0255379 A1 | 11/2007 | Williams et al.     |
| 6,051,017 A  | 4/2000  | Loeb et al.           | 2007/0265606 A1 | 11/2007 | DeBenedictis et al. |
| 6,126,611 A  | 10/2000 | Bourgeois et al.      | 2007/0290859 A1 | 12/2007 | Held et al.         |
| 6,163,725 A  | 12/2000 | Peckham et al.        | 2008/0021506 A1 | 1/2008  | Grocela             |
| 6,185,296 B1 | 2/2001  | Saitoh                | 2008/0027503 A1 | 1/2008  | Marrosu et al.      |
| 6,210,326 B1 | 4/2001  | Ehwald                | 2008/0030363 A1 | 2/2008  | Rezvani et al.      |
| 6,240,316 B1 | 5/2001  | Richmond et al.       | 2008/0041398 A1 | 2/2008  | Hegde et al.        |
| 6,275,737 B1 | 8/2001  | Mann                  | 2008/0081982 A1 | 4/2008  | Simon et al.        |
| 6,345,202 B2 | 2/2002  | Richmond et al.       | 2008/0103407 A1 | 5/2008  | Bolea et al.        |
| 6,572,543 B1 | 6/2003  | Christopherson et al. | 2008/0109046 A1 | 5/2008  | Lima et al.         |
| 6,587,725 B1 | 7/2003  | Durand et al.         | 2008/0109047 A1 | 5/2008  | Pless               |
| 6,587,728 B2 | 7/2003  | Fang et al.           | 2008/0119911 A1 | 5/2008  | Rosero              |
| 6,625,494 B2 | 9/2003  | Fang et al.           | 2008/0132962 A1 | 6/2008  | DiUbaldo et al.     |
| 6,636,767 B1 | 10/2003 | Knudson et al.        | 2008/0140152 A1 | 6/2008  | Imran et al.        |
| 6,643,552 B2 | 11/2003 | Edell et al.          | 2008/0165058 A1 | 7/2008  | Ayachitula et al.   |
| 6,770,022 B2 | 8/2004  | Mechlenburg et al.    | 2008/0243014 A1 | 10/2008 | Moussavi et al.     |
|              |         |                       | 2008/0300654 A1 | 12/2008 | Lambert et al.      |
|              |         |                       | 2008/0319506 A1 | 12/2008 | Caulier             |
|              |         |                       | 2009/0048647 A1 | 2/2009  | Tingey              |

(56)

## References Cited

## U.S. PATENT DOCUMENTS

2009/0062675	A1	3/2009	Weigand et al.
2009/0069648	A1	3/2009	Irazoqui et al.
2009/0078274	A1	3/2009	Bhat et al.
2009/0132018	A1	5/2009	DiUbaldo et al.
2009/0157150	A1	6/2009	Cauler
2009/0173351	A1	7/2009	Sahin et al.
2009/0281595	A1	11/2009	King et al.
2010/0030298	A1	2/2010	Martens et al.
2010/0087896	A1	4/2010	McCreery
2010/0094379	A1	4/2010	Meadows et al.
2010/0114190	A1	5/2010	Bendett et al.
2010/0121413	A1	5/2010	Willerton et al.
2010/0125304	A1	5/2010	Faltys
2010/0131029	A1	5/2010	Durand et al.
2010/0137948	A1	6/2010	Aghassian et al.
2010/0139667	A1	6/2010	Atkinson et al.
2010/0152553	A1	6/2010	Ujhazy et al.
2010/0191136	A1	7/2010	Wolford
2010/0196744	A1	8/2010	Tucholski et al.
2010/0198305	A1	8/2010	Farbarik
2010/0228313	A1	9/2010	Starkebaum et al.
2010/0234924	A1	9/2010	Willis
2010/0241195	A1	9/2010	Meadows et al.
2010/0292527	A1	11/2010	Schneider et al.
2010/0312320	A1	12/2010	Faltys et al.
2010/0331634	A1	12/2010	Muller et al.
2011/0065979	A1	3/2011	Lehrman et al.
2011/0071591	A1	3/2011	Bolea et al.
2011/0093036	A1	4/2011	Mashiach
2011/0112601	A1	5/2011	Meadows et al.
2011/0152966	A1	6/2011	Bolea et al.
2011/0152985	A1	6/2011	Matsuo
2011/0172733	A1	7/2011	Lima et al.
2011/0213438	A1	9/2011	Lima et al.
2011/0230702	A1	9/2011	Honour
2011/0264163	A1	10/2011	Tracey et al.
2011/0301670	A1	12/2011	Gross et al.
2012/0123498	A1	5/2012	Gross

## FOREIGN PATENT DOCUMENTS

WO	WO 2007/098200	8/2007
WO	WO 2007/098202	8/2007
WO	WO 2008/048471	4/2008
WO	WO 2011/077433	6/2011

## OTHER PUBLICATIONS

Youbok Lee, "Antenna Circuit Design for RFID Applications," Microchip Technology Inc., Dec. 5, 2002. pp. 1-50.

Upson, James; King, Frederick; Roberts, Lamar; A constant amplitude transistorized unit for remote brain stimulation, *Electroencephalography and Clinical Neurophysiology*, Jun. 11, 1962.

Brindley, G.S., An implant to empty the bladder or close the urethra, *Journal of Neurology, Neurosurgery, and Psychiatry*, 1977.

Kaplan, Hilton; Loeb, Gerald; Design and Fabrication of an Injection Tool for Neuromuscular Microstimulators, *Annals of Biomedical Engineering*, vol. 37, No. 9., Jun. 24, 2009.

Troyk, Philip; Schwan, Martin; Closed-Loop Class E Transcutaneous Power and Data Link for MicroImplants. *IEEE Transactions on Biomedical Engineering*, vol. 39, No. 6, Jun. 1992.

Mithun, Joe; Rajkumar, Vikram; Shanmugapriya; Apnea Detecting Sensors; Sathyabama Deemed University, 2006.

Babak, Ziaie; Nardin, Mark; Coghlán, Anthony; Najafi, Khalil, A Single-Channel Implantable Microstimulator for Functional Neuromuscular Stimulation, *IEEE Transactions on Biomedical Engineering*, vol. 44, No. 10, Oct. 1997.

Robin, S; Sawan, M.; Harvey, J.F.; Abdel-Gawad, M.; Abdel-Baky, T.M.; Elhili, M.M., A New Implantable Microstimulator Dedicated to Selective Stimulation of the Bladder, 19th International Conference, IEEE/EMBS Oct. 30-Nov. 2, 1997.

Troyk, P.R.; Donaldson N. de N.; Implantable FES Stimulation Systems: What is Needed, 2001 Neuromodulation Society, Neuromodulation, vol. 4, No. 4, 2001.

Loeb, Gerald; Richmond, Frances; Moore, W. Henry; Peck, Raymond, 1st Annual International IEEE-EMBS Special Topic Conference on Microtechnologies in Medicine & Biology, Oct. 2000. Harrison, Reid, Designing Efficient Inductive Power Links for Implantable Devices, University of Utah, 2007.

Mohtashami, Saba, Electrochemical Properties of Flexible Electrodes for Implanted Neuromuscular Excitation Applications, McMaster University, Oct. 1, 2011.

Baker, Michael; Sarpeshkar, Rahul, Feedback Analysis and Design of RF Power Links for Low-Power Bionic Systems, *IEEE Transactions on Biomedical Circuits and Systems*, vol. 1, No. 1, Mar. 2007. Zierhofer, Clemens, HOchmair, Erwin, High-Efficiency Coupling-Insensitive Transcutaneous Power and Data Transmission Via an Inductive Link, *IEEE Transactions on Biomedical Engineering*, vol. 37, No. 3, Jul. 1990.

Tran, W.H., Loeb, G.E., Richmond, F.J.R.; Ahmed, R.; Clark, G.T.; Haberman, P.B., First Subject Evaluated with Simulated BION Treatment in Posterior Genioglossus to Prevent Obstructive Sleep Apnea, Proceedings of the 26th Annual International Conference of the IEEE EMBS, San Francisco, CA, USA, Sep. 2004.

Jow, Uei-Ming; Ghovanloo, Maysam, Design and Optimization of Printed Spiral Coils for Efficient Transcutaneous Inductive Power Transmission, *IEEE Transactions on Biomedical Circuits and Systems*, vol. 1, No. 3, Sep. 2007.

Steiglitz, Thomas, Polymer-based Substrates and Flexible Hybrid Assembly Techniques for Implantable Active Microdevices, Business Briefing: Medical Device Manufacturing & Technology, 2002.

Jarvis, Jonathan; Salmons, Stanley, The Application and Technology of Implantable Neuromuscular Stimulators: an introduction and overview, *Medical Engineering and Physics* 23, 2001.

Manola, Ljubomir; Holsheimer, Jan; Veltink, Peter; Bradley, Kerry; Peterson, David, Theoretical Investigation Into Longitudinal Cathodal Field Steering in Spinal Cord Stimulation, *Neuromodulation: Technology at the Neural Interface*, vol. 10, No. 2, 2007.

Joho, Dominik; Plegemann, Christian; Burgard, Wolfram, Modeling RFID Signal Strength and Tag Detection for Localization and Mapping, Proceedings of the IEEE International Conference on Robotics and Automation, Kobe Japan, May 2009.

Werber, D., Schwentner, A.; Biebl, E.M., Investigation of RF Transmission Properties of Human Tissues, *Advances in Radio Science*, vol. 4, 2006.

Cameron, Tracy; Loeb, Gerald; Peck, Raymond; Schulman, Joseph; Strojnik, Primož; Troyk, Philip, Micromodular Implants to Provide Electrical Stimulation of Paralyzed Muscles and Limbs, *IEEE Transactions on Biomedical Engineering*, vol. 44, No. 9, Sep. 1997.

Mokwa, Wilfried; Schnakenberg, Uwe, Micro-Transponder Systems for Medical, *IEEE Transactions on Instrumentation and Measurement*, vol. 50, No. 6, Dec. 2001.

Grill, Warren; Veraart, Claude; Mortimer, Thomas, Selective Activation of Peripheral Nerve Fascicles: Use of Field Steering Currents, *Annual International Conference of the IEEE Engineering in Medicine and Biology Society*, vol. 13, No. 2, 1991.

Loeb, G.E.; Zamin, C.J.; Schulman, J.H.; Troyk, P.R., Injectible Microstimulator for Functional Electrical Stimulation, *Med and Biol. Eng. & Comput.* 1991.

Young, Darrin, Wireless Powering and Data Telemetry for Biomedical Implants, 31st Annual International Conference of the IEEE EMBS, Minnesota, USA, Sep. 2009.

Han, J.H.; Lim, H.G.; Kim, J.M.; Lee, C.W.; Park, I.Y.; Cho, J.H., Inductively-Coupled Control Unit for Fully Implantable Middle Ear Hearing Devices, Proceedings of the 2005 IEEE Engineering in Medicine and Biology 27th Annual Conference, China, Sep. 2005.

Oliven, A; Kaufman, E.; Kaynan, R.; Golboda, T.; Oliven, R.; Geitini, L.; Odeh, M.; Tov, N.; Schwartz, A.R.; Kimel, E., Effects of Cross-Sectional Area, Compliance and External Pressure on Pharyngeal Collapsibility in Patients With Obstructive Sleep Apnea, *A68 Upper Airway and Respiratory Physiology*, 2010.

Yoo, Paul B.; Durand, Dominique, Effects of Selective Hypoglossal Nerve Stimulation on Canine Upper Airway Mechanics, *Journal of Applied Physiology*, 2005.

Huang, Jingtao; Sahin, Mesut; Durand, Dominique, Dilatation of the oropharynx via selective stimulation of the hypoglossal nerve, *Journal of Neural Engineering*, 2005.

Oliven, A; Tov, N.; Geitini, L.; Steinfeld, U.; Oliven, R.; Schwartz, A.R.; Odeh, M., Effect of Genioglossus Contraction on Pharyngeal Lumen and Airflow in Sleep Apnoea Patients, *European Respiratory Journal*, 2007.

Eastwood, P.R.; Barnes, M.; McEvoy, R.D.; Wheatley, J; Walsh, J.H.; O'Donoghue, F.J.; Catcheside, P.; Tyler, L.; Maddison, K.J.;

(56)

## References Cited

## OTHER PUBLICATIONS

- Rochford, P.D.; Antic, N.; Worsnop C.; Churchward, T.; Eckert, D.J.; Campbell, M.C.; Hee, G.; Palme, C.E.; Robinson, S.H.; Kezirian, E.; Goding, G.; Jordan, A.S.; Smith, P.L.; Schwartz, A.R.; Malhotra, A.; Hillman, D.R., Feasibility of Hypoglossal Nerve Stimulation Therapy to Treat Obstructive Sleep Apnea, *Am. J. Respir Crit Care Med.*, 2010.
- Randerath, Winfried, Electrical Stimulation of the Upper Airways Muscles, Institute for Pneumology at the University Witten/Herdecke, 2006.
- Schwartz, Alan; Eisele, David; Hari, Anil; Testerman, Roy; Erickson, Donald; Smith, Philip, Electrical Stimulation of the Lingual Musculature in Obstructive Sleep Apnea, Johns Hopkins Asthma and Allergy Center, Feb. 1996.
- Kezirian, Eric J.; Boudewyns, An; Eisele, David; Schwartz, Alan; Philip, Smith; Van de Heyning, Paul; De Backer, Wilfried, Electrical Stimulation of the Hypoglossal Nerve in the Treatment of Obstructive Sleep Apnea, *Sleep Medicine Reviews*, 2009.
- Isono, S.; Tanaka, A.; Nishino, T., Effects of Tongue Electrical Stimulation on Pharyngeal Mechanics in Anaesthetized Patients with Obstructive Sleep Apnoea, *Eur Respir J*, 1999.
- Fregosi, Ralph, Influence of Tongue Muscle Contraction and Dynamic Airway Pressure on Velopharyngeal Volume in the Rat, *J. Appl. Physiol.*, Dec. 2007.
- Van de Heyning, Paul; Badr, M. Safwan; Baskin, Jonathan Z.; Bornemann, Michael Cramer; De Backer, Wilfried A.; Dolan, Yaniv; Hohenhorst, Winfried; Knaack, Lennart; Lin, Ho-Sheng; Maurer, Joachim T.; Netzer, Aviram; Odland, Rick M.; Oliven, Arie; Strohl, Kingman P.; Vanderveken, Olivier M.; Verbraecken, Johan; Woodson, B. Tucker, Implanted Upper Airway Stimulation Device for Obstructive Sleep Apnea, *The Laryngoscope*, Jul. 2012.
- Oliven, Ron; Tov, Naveh; Odeh, Majed; Gaitini, Luis; Steinfeld, Uri; Schwartz, Alan; Oliven, Arie, Interacting Effects of Genioglossus Stimulation and Mandibular Advancements in Sleep Apnea, *J. Appl. Physiol.*, 2009.
- Peng, Chih-Wei; Chen, Jia-Jin Jason; Lin, Chou-Ching K.; Poon, Paul Wai-Fung; Liang, Chih-Kuo; Lin, Kang-Ping, High Frequency Block of Selected Axons Using an Implantable Microstimulator, 2004.
- Burnett, Theresa; Mann, Eric; Cornell, Sonia; Ludlow, Christy, Laryngeal Elevation Achieved by Neuromuscular Stimulation at Rest, *J. Appl Physiol.* 94, 2003.
- Hu, Linggang; Xu, Xiaomei; Gong, Yongsheng; Fan, Xiaofang; Wang, Liangxing; Zhang, Jianhua, Percutaneous Biphasic Electrical Stimulation for Treatment of Obstructive Sleep Apnea Syndrome, *IEEE Transactions on Biomedical Engineering*, vol. 55, No. 1, Jan. 2008.
- Dotan, Y.; Goliboda, T.; Netzer, A.; Geitini, L.; Oliven, A., Parameters Affecting the Mechanical Effect of Electrical Stimulation (ES) of the Tongue Muscles in Patients with Obstructive Sleep Apnea (OSA), *Am. J. Respir. Crit Care Med.* 2010.
- Yoo, Paul Byong-Suk, Selective Stimulation and Recording of the Canine Hypoglossal Nerve for the Treatment of Obstructive Sleep Apnea, Case Western Reserve University, May 2004.
- Oliven, Arie, Treating Obstructive Sleep Apnea With Hypoglossal Nerve Stimulation, *Curr. Opin. Pulm. Med.* 2011.
- Goding, George; Eisele, David; Testerman, Roy; Smith, Philip; Roertgen, Karen; Schwartz, Alan, Relief of Upper Airway Obstruction With Hypoglossal Nerve Stimulation in the Canine, *Laryngoscope*, 1998.
- Oliven, Arie; Schnall, Robert; Pillar, Giora; Gavrieli, Noam; Oden, Majed, Sublingual Electrical Stimulation of the Tongue During Wakefulness and Sleep, *Respiration Physiology*, 127, 2001.
- Mwenge, Gimbada; Rombaux, Philippe; Dury, Myriam; Lengele, Benoit; Rodenstein, Daniel, Targeted Hypoglossal Neurostimulation for Obstructive Sleep Apnea, A 1 year pilot study, *ERJ Express*, May 17, 2012.
- Mann, Eric; Burnett, Theresa; Cornell, Sonia; Ludlow, Christy, The Effect of Neuromuscular Stimulation of the Genioglossus on the Hypopharyngeal Airway, *The Laryngoscope*, 2002.
- Oliven, Arie; O'Hearn, Daniel; Boudewyns, An; Odeh, Majed; De Backer, Wilfried; van de Heyning, Paul; Smith, Philip; Eisele, David; Allan, Larry; Schneider, Hartmut; Testerman, Roy; Schwartz, Alan, Upper Airway Response to Electrical Stimulation of the Genioglossus in Obstructive Sleep Apnea, *J. Appl. Physiol.*, vol. 95, 2003.
- Guilleminval, Christian; Powell, Nelson; Bowman, Bruce; Stoohs, Riccardo, The Effect of Electrical Stimulation on Obstructive Sleep Apnea Syndrome, *Chest*, Jan. 1995.
- Eastwood, Peter; Barnes, Maree; Walsh, Jennifer; Maddison, Kathleen; Hee, Geoffrey; Schwartz, Alan; Smith, Philip; Malhotra, Atul; McEvoy, Douglas; Wheatley, John; O'Donoghue, Fergal; Rochford, Peter; Churchward, Tom; Campbell, Matthew; Palme, Carsten; Robinson, Sam; Goding, George; Eckert, Danny; Jordan, Amy; Catcheside, Peter; Tyler, Louise; Antic, Nick; Worsnop, Christopher; Kezirian, Eric; Hillman, David, Treating Obstructive Sleep Apnea with Hypoglossal Nerve Stimulation, *Sleep*, vol. 34, No. 11, 2011.
- Schwartz, Alan; Bennet, Marc; Smith, Philip; De Backer, Wilfried; Hedner, Jan; Boudewyns, An; Van de Heyning, Paul; Ejjnell, Hasse; Hochban, Walter; Knaack, Lennart; Podszus, Thomas; Penzel, Thomas; Peter, J. Hermann; Goding, George; Erickson, Donald; Testerman, Roy; Ottenhoff, Frans; Eisele, David, Therapeutic Electrical Stimulation of the Hypoglossal Nerve in Obstructive Sleep Apnea, *Arch Otolaryngol Head Neck Surg*, vol. 127, Oct. 2001.
- Randerath, Winfried, Galetke, Wolfgang; Domanski, Uinke; Weitkunat, Rolf; Ruhle, Karl-Heinz, Tongue-Muscle Training by Intraoral Electrical Neurostimulation in Patients with Obstructive Sleep Apnea, *Sleep*, vol. 27, No. 2, 2004.
- Loeb, Gerald; Richmond, Frances; Baker, Lucinda, The BION devices: injectable interfaces with peripheral nerves and muscles, *Neurosurgery Focus* 20, 2006.
- Co-Pending U.S. Appl. No. 13/629,686, filed Sep. 28, 2012.
- Co-Pending U.S. Appl. No. 13/629,694, filed Sep. 28, 2012.
- Co-Pending U.S. Appl. No. 13/630,392, filed Sep. 28, 2012.
- Co-Pending U.S. Appl. No. 13/629,762, filed Sep. 28, 2012.
- Co-Pending U.S. Appl. No. 13/629,793, filed Sep. 28, 2012.
- Co-Pending U.S. Appl. No. 13/629,819, filed Sep. 28, 2012.
- Co-Pending U.S. Appl. No. 13/629,690, filed Sep. 28, 2012.
- Co-Pending U.S. Appl. No. 13/629,748, filed Sep. 28, 2012.
- Co-Pending U.S. Appl. No. 13/629,757, filed Sep. 28, 2012.
- Co-Pending U.S. Appl. No. 13/629,712, filed Sep. 28, 2012.
- Co-Pending U.S. Appl. No. 13/629,701, filed Sep. 28, 2012.
- Co-Pending U.S. Appl. No. 13/629,730, filed Sep. 28, 2012.
- Co-Pending U.S. Appl. No. 13/629,741, filed Sep. 28, 2012.
- Co-Pending U.S. Appl. No. 13/629,721, filed Sep. 28, 2012.
- Brindley, G.S., Transmission of electrical stimuli along many independent channels through a fairly small area of intact skin, *Proceedings of the Physiological Society*, Dec. 1964, pp. 44-46.
- Schwartz, Alan R., Therapeutic Stimulation of the Hypoglossal Nerve in Obstructive Sleep Apnea, *Archives of Otolaryngology Head and Neck Surgery*, vol. 127, Oct. 2001, pp. 1216-1223.
- Eastwood, P.R., Treatment of Obstructive Sleep Apnea with Unilateral Hypoglossal Nerve Stimulation, *American Journal of Respiratory Critical Care Medicine*, vol. 181, May 2010, pp. 5393-5394.
- Eisele, David W., Tongue neuromuscular and direct hypoglossal nerve stimulation for obstructive sleep apnea, *Otolaryngologic Clinics of North America*, Jun. 2003, pp. 501-510.
- Robblee, L.S., Studies of the electrochemistry of stimulating electrodes, National Institutes of Health, Contract No. N01-NS-8-2313, Nov. 1991, pp. 6-8.
- Levin, Morris, Nerve Blocks in the Treatment of Headaches, *Neurotherapeutics: The Journal of the American Society for Experimental Neurotherapeutics*, Apr. 2010, pp. 197-203.
- Lundy, Larry, Ear, Nose, and Throat Journal, Cochlear Implant Fixation Using Resorbable Mesh, Jul. 1, 2011, 4 pages.

\* cited by examiner

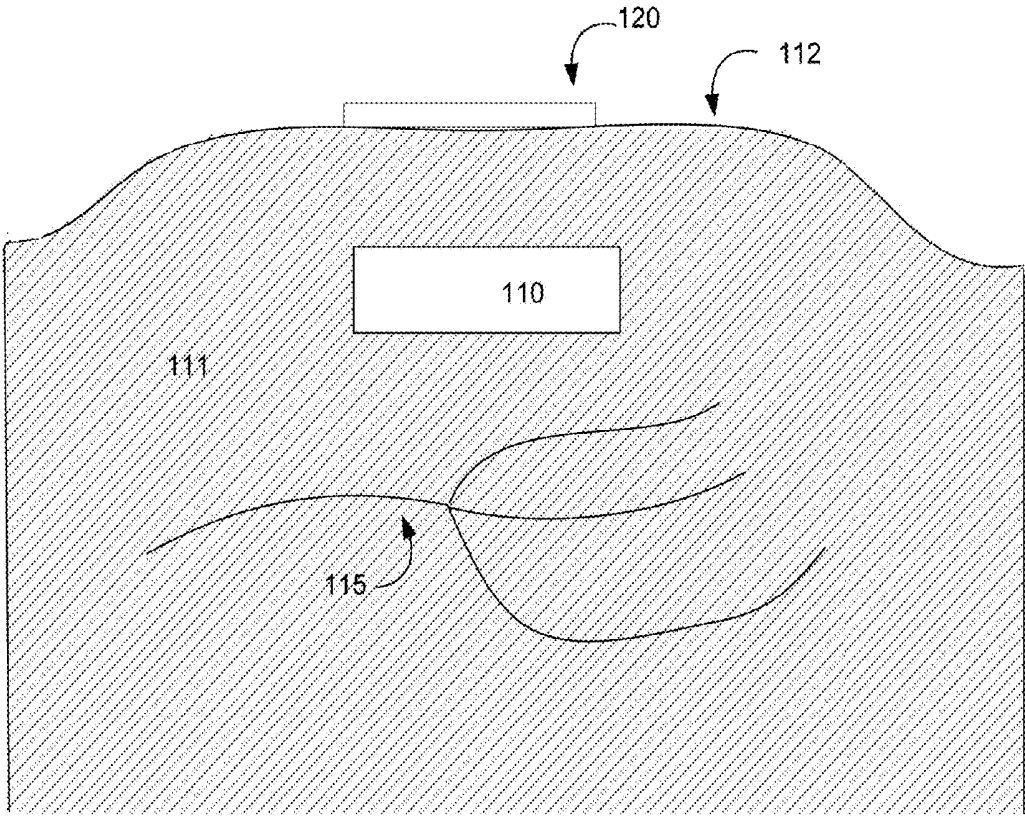


FIG. 1

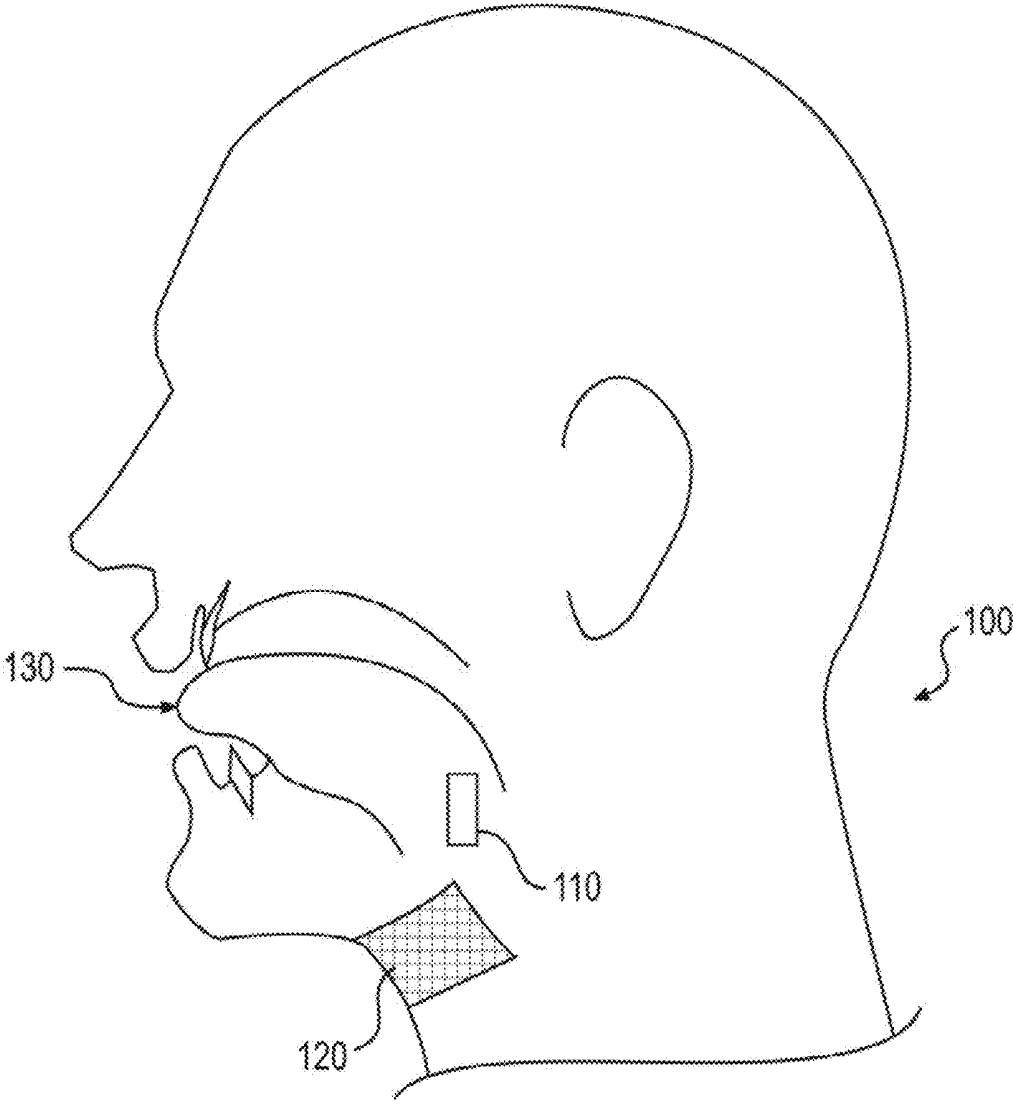


Fig. 2

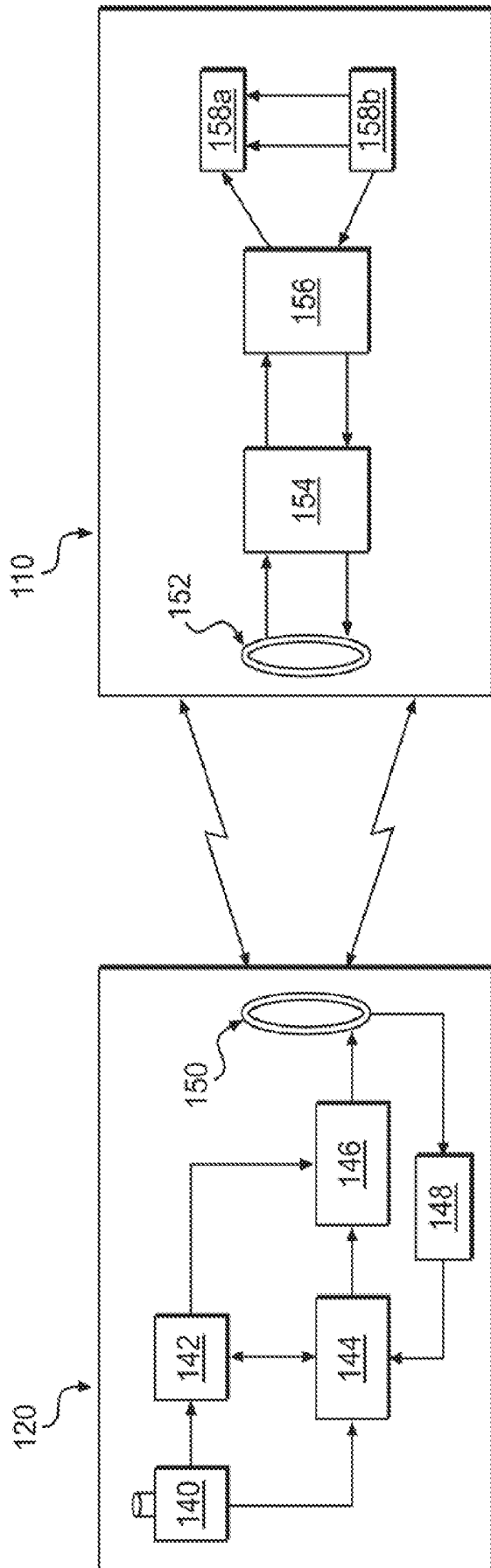


Fig. 3

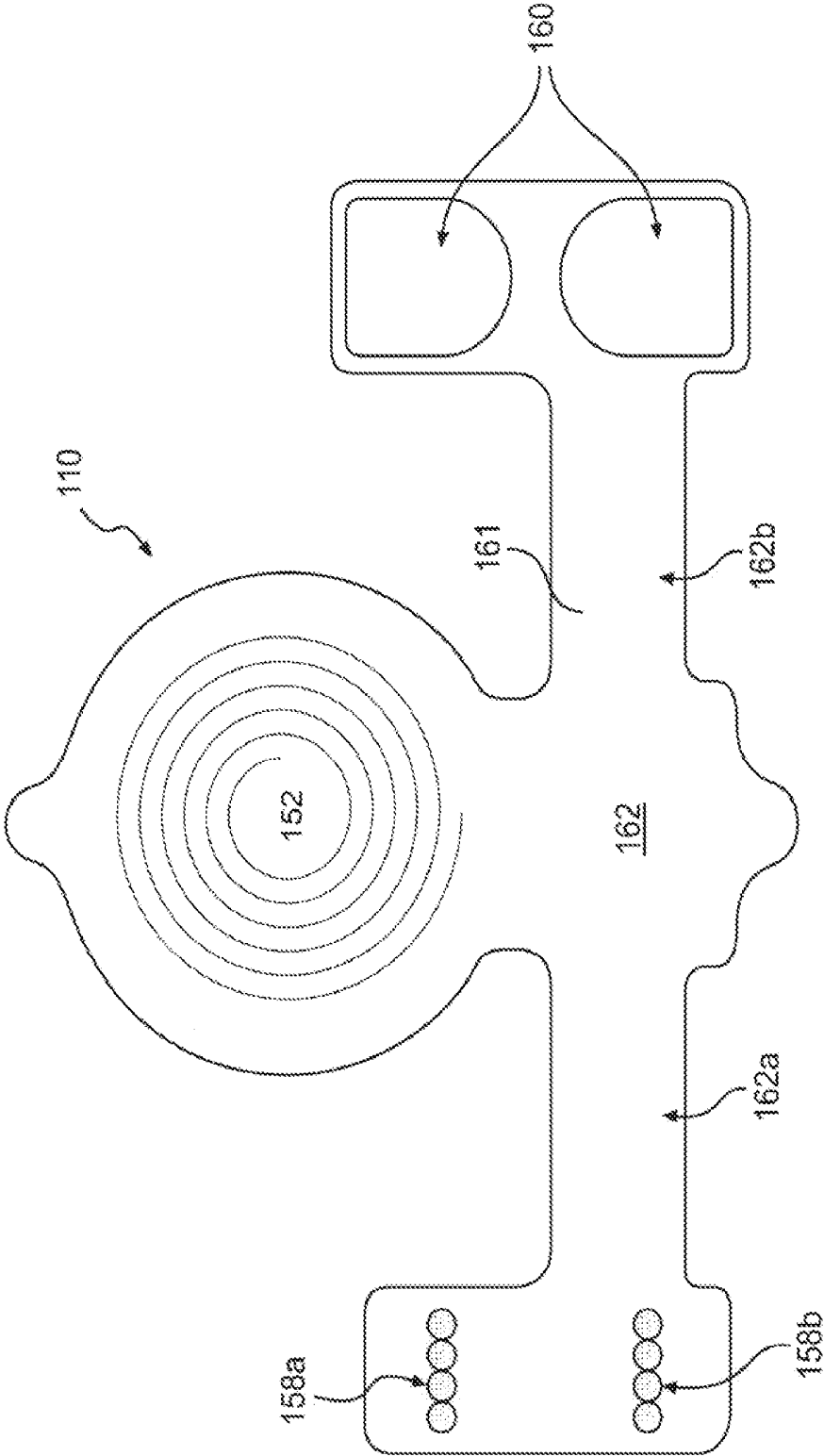


Fig. 4

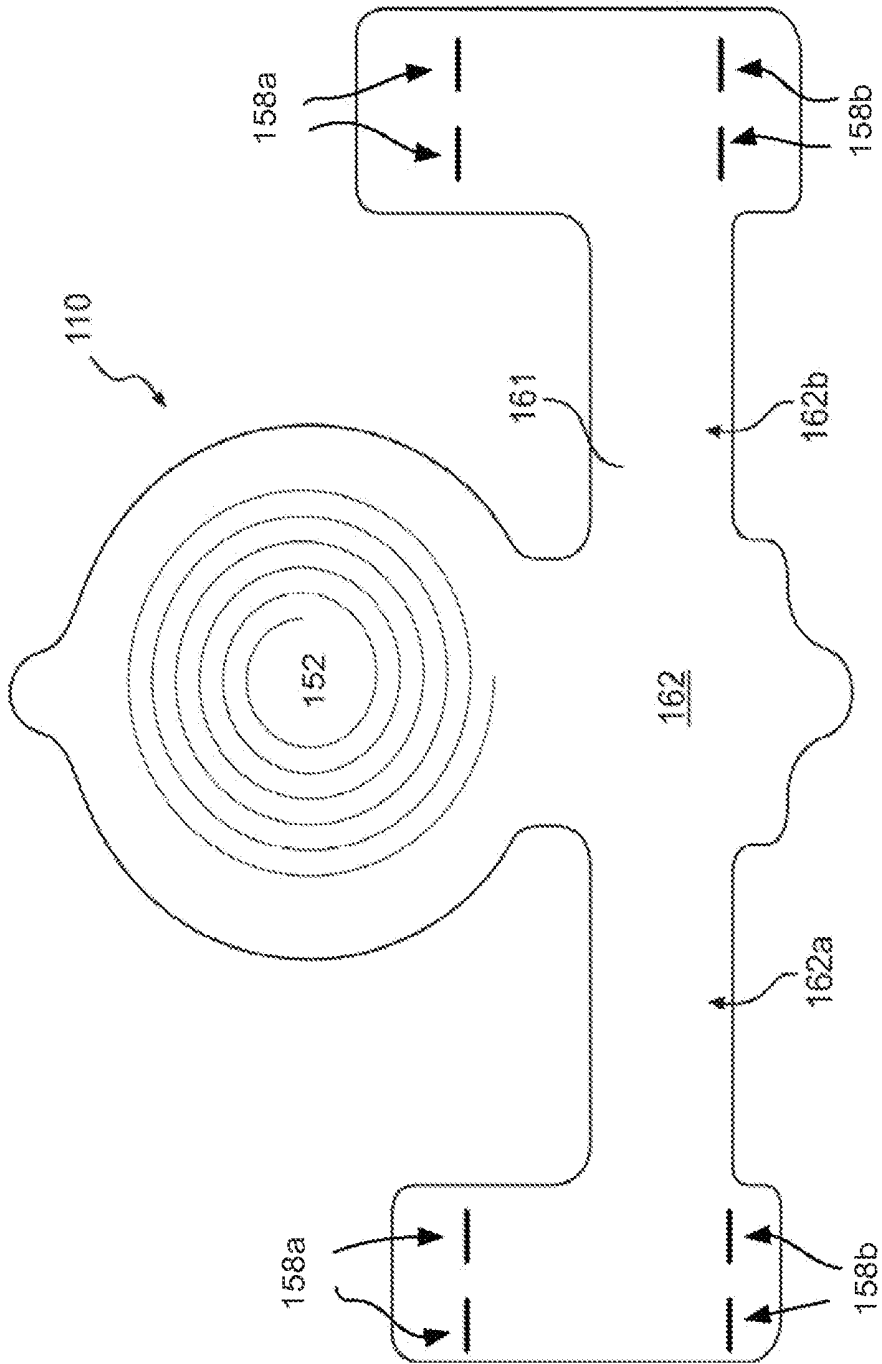


Fig. 5

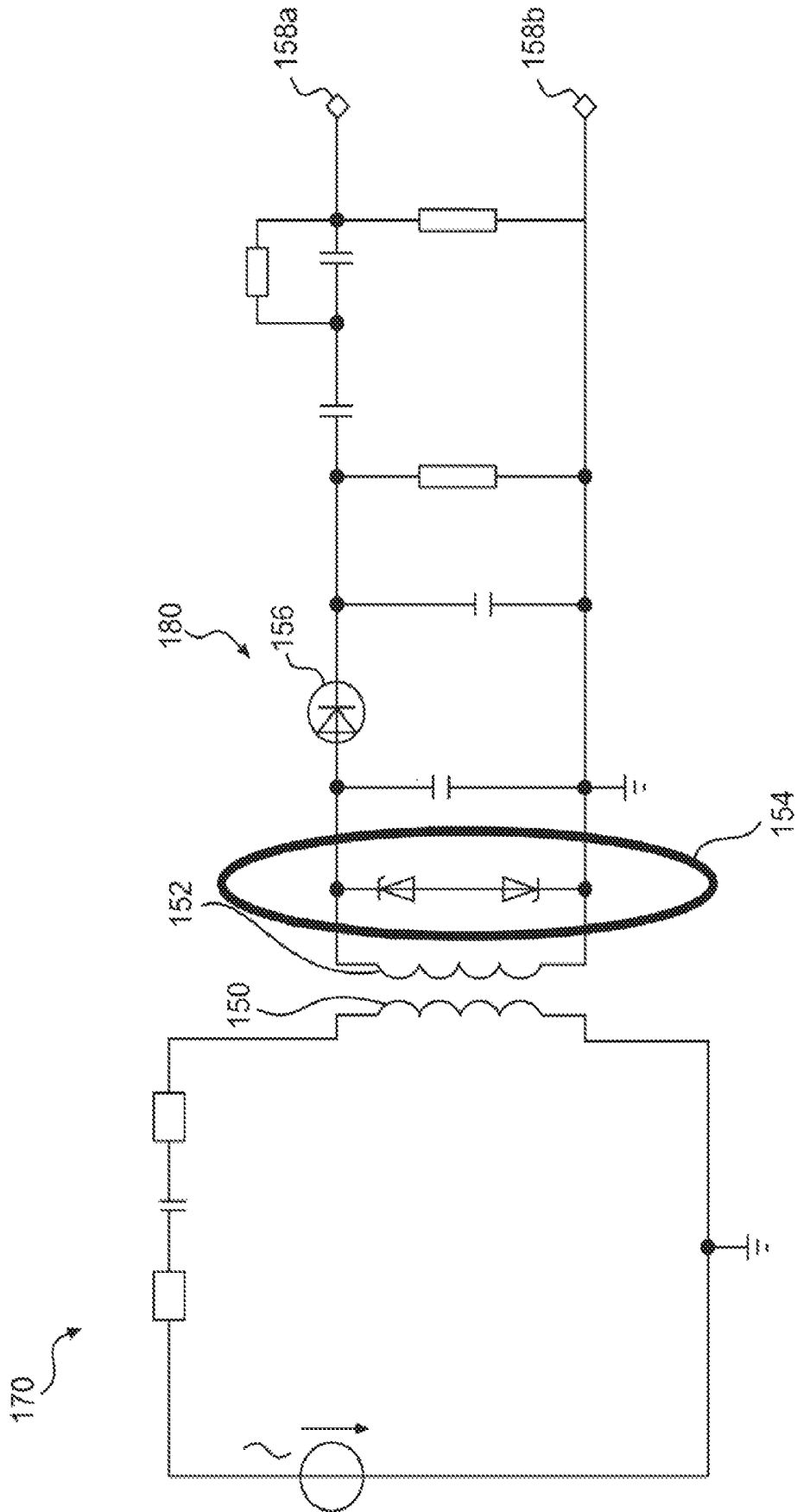


Fig. 6

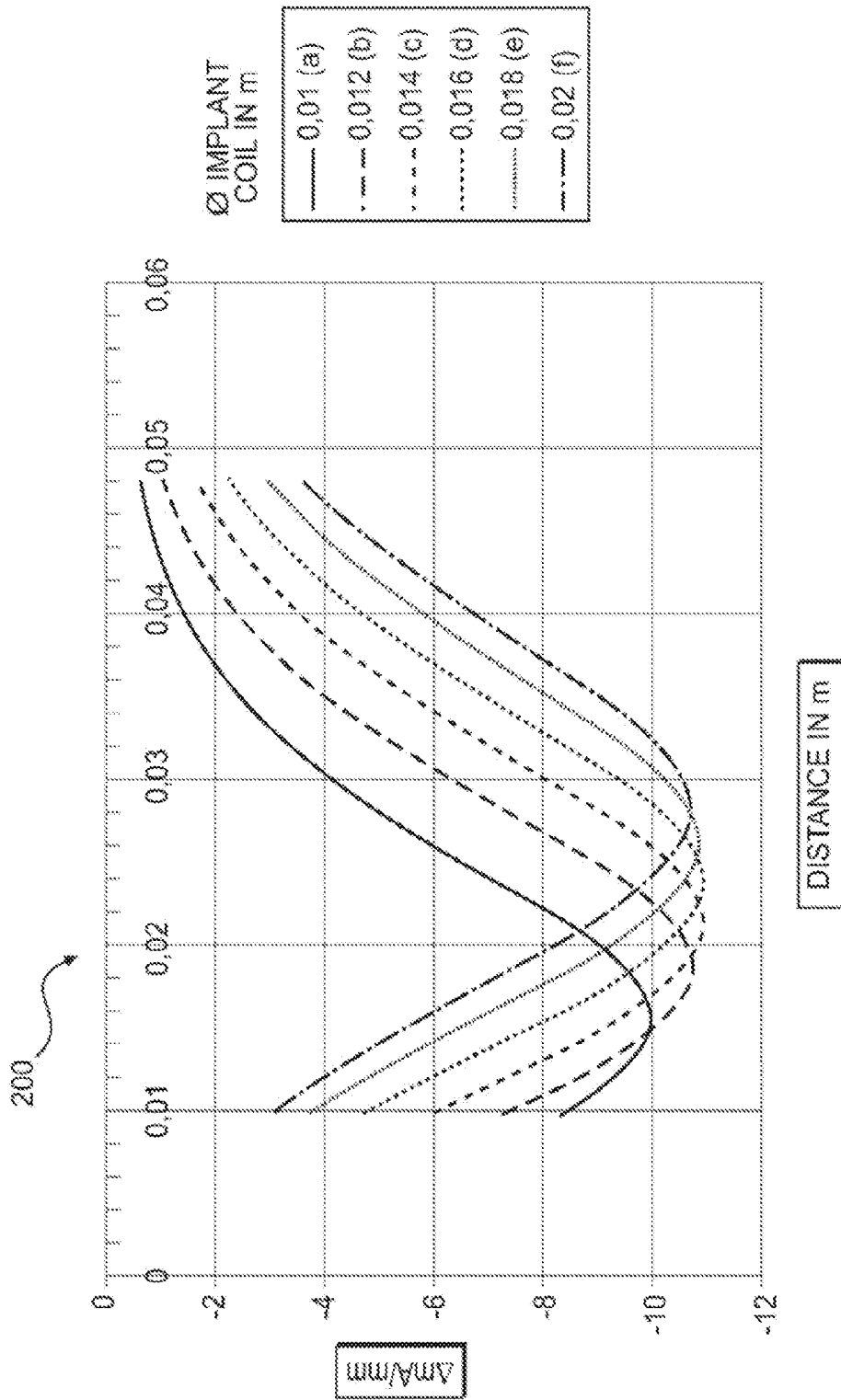


Fig. 7

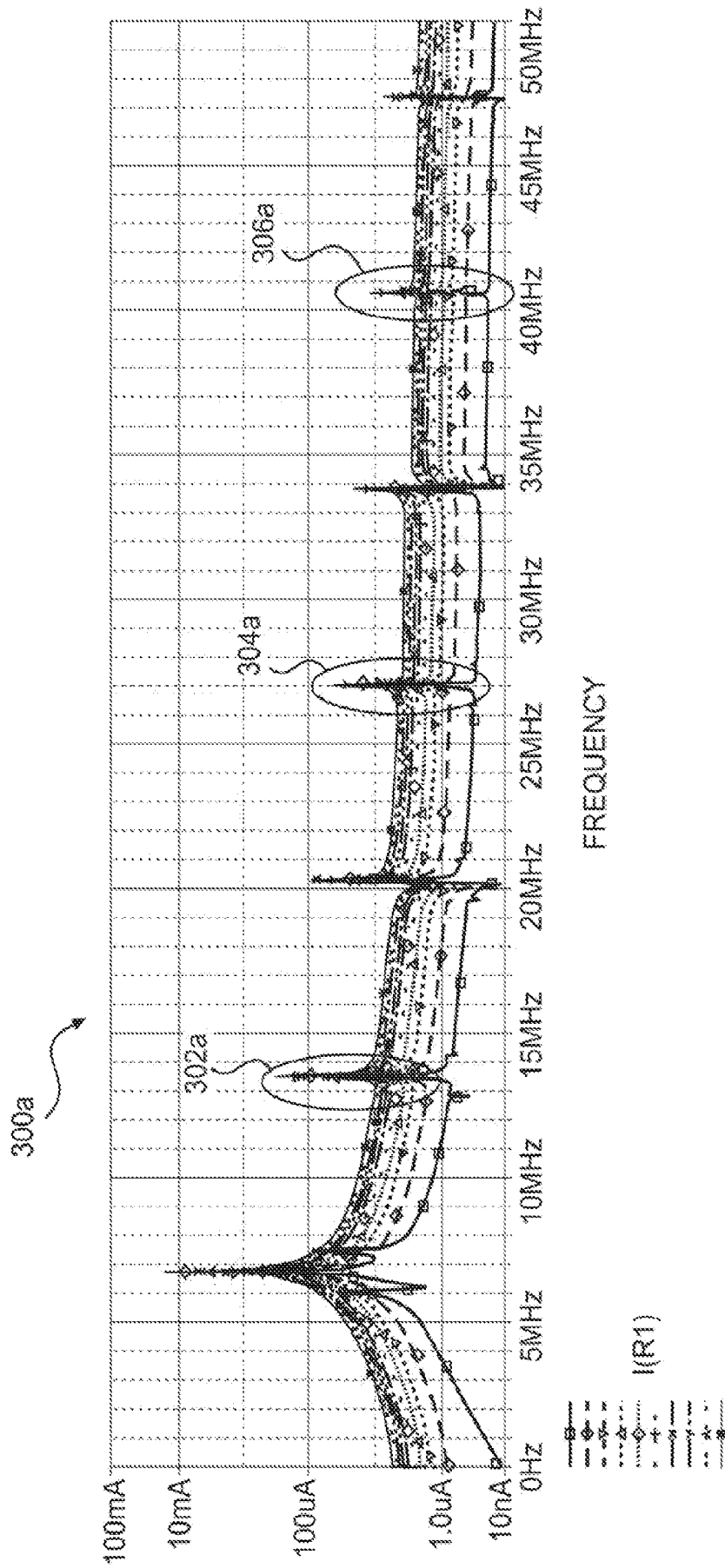


Fig. 8

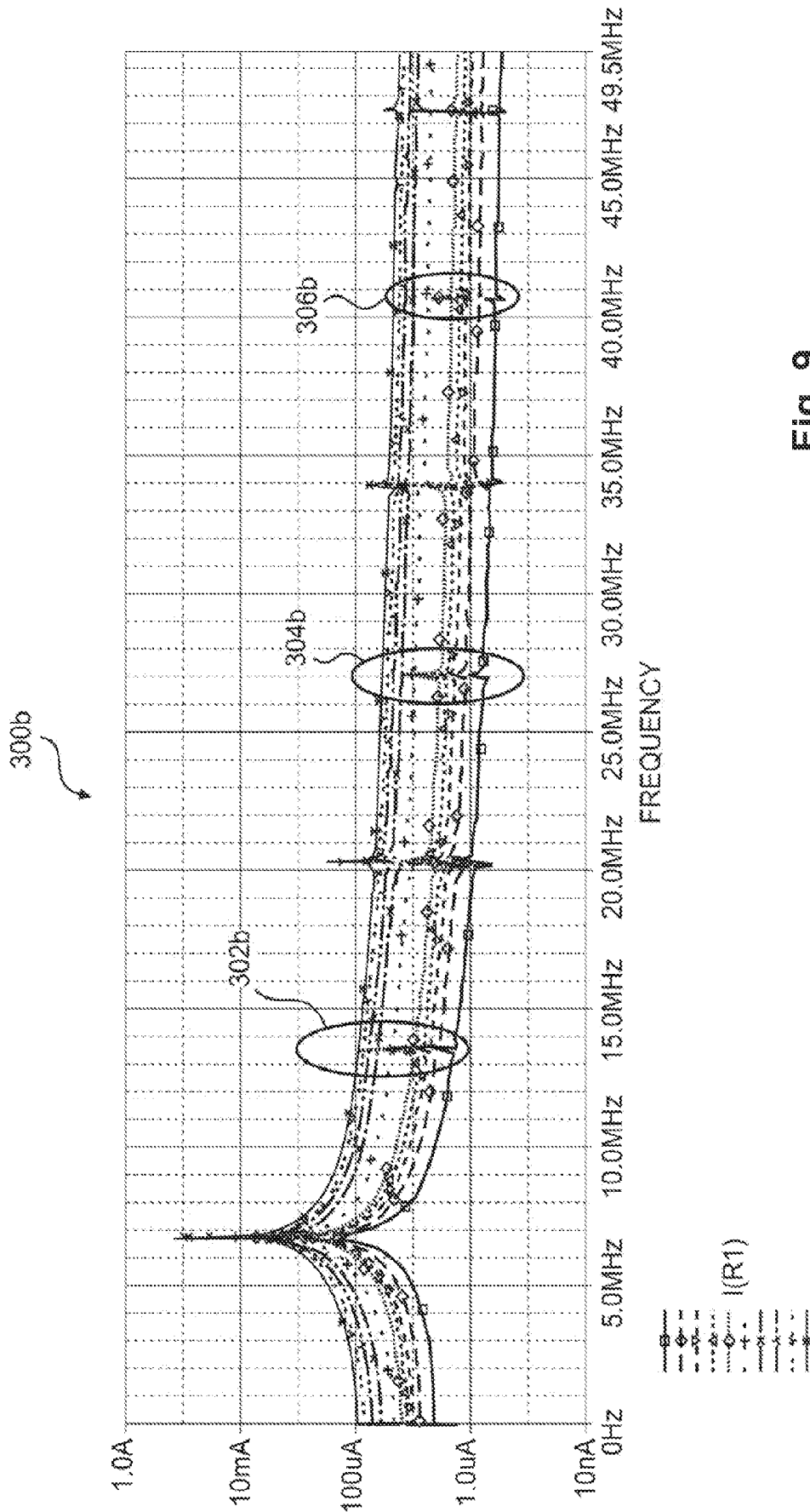


Fig. 9

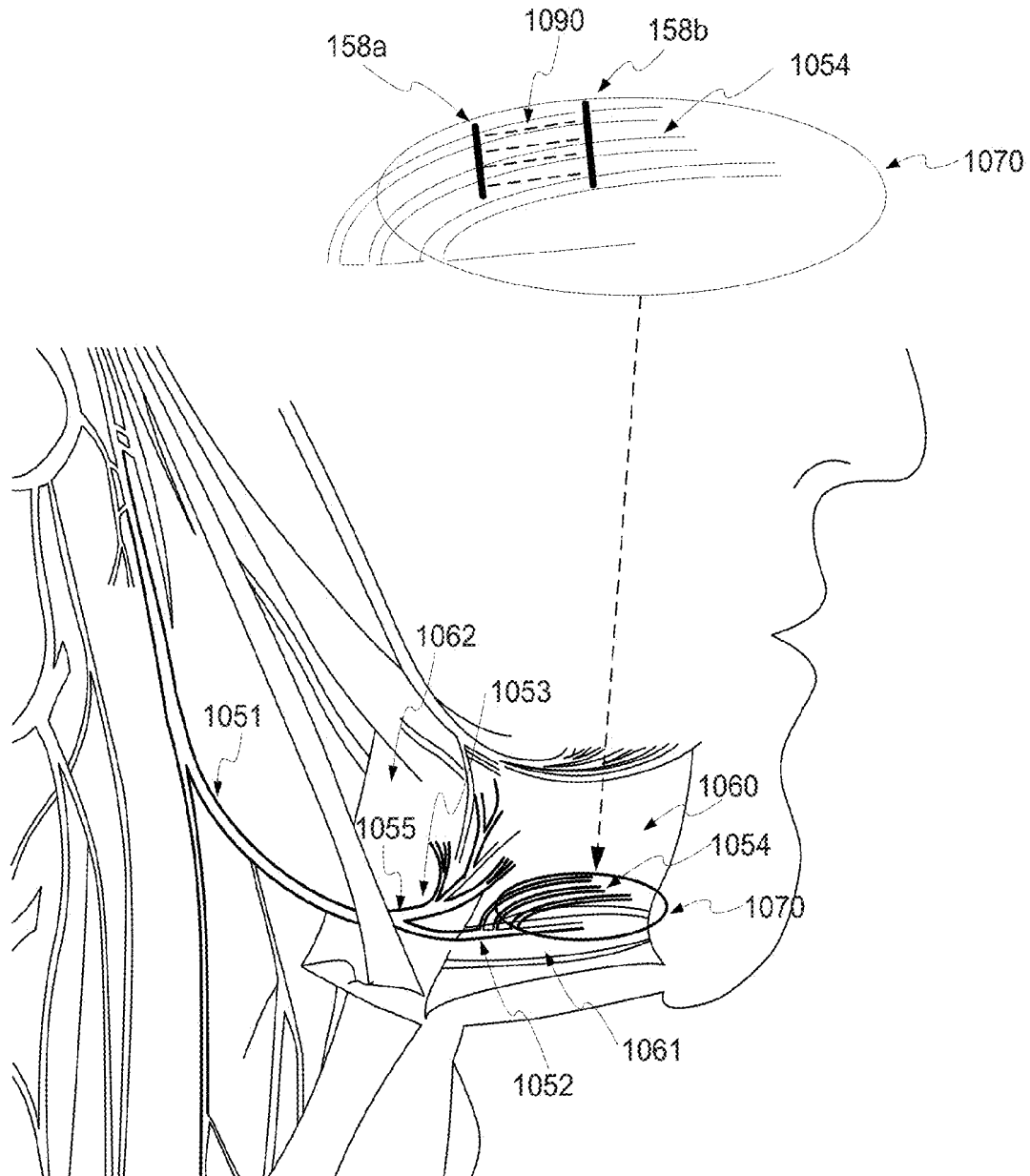


Figure 10

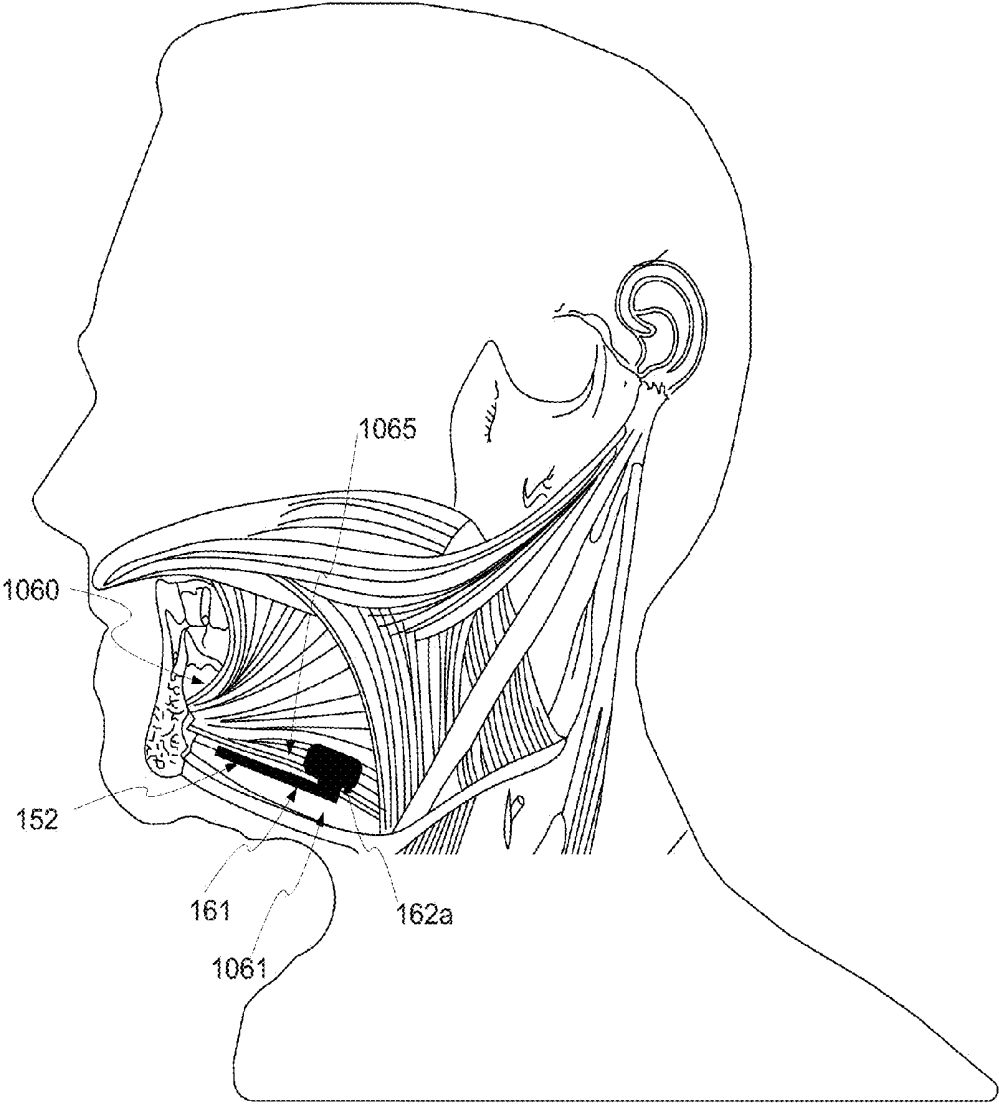


Figure 11

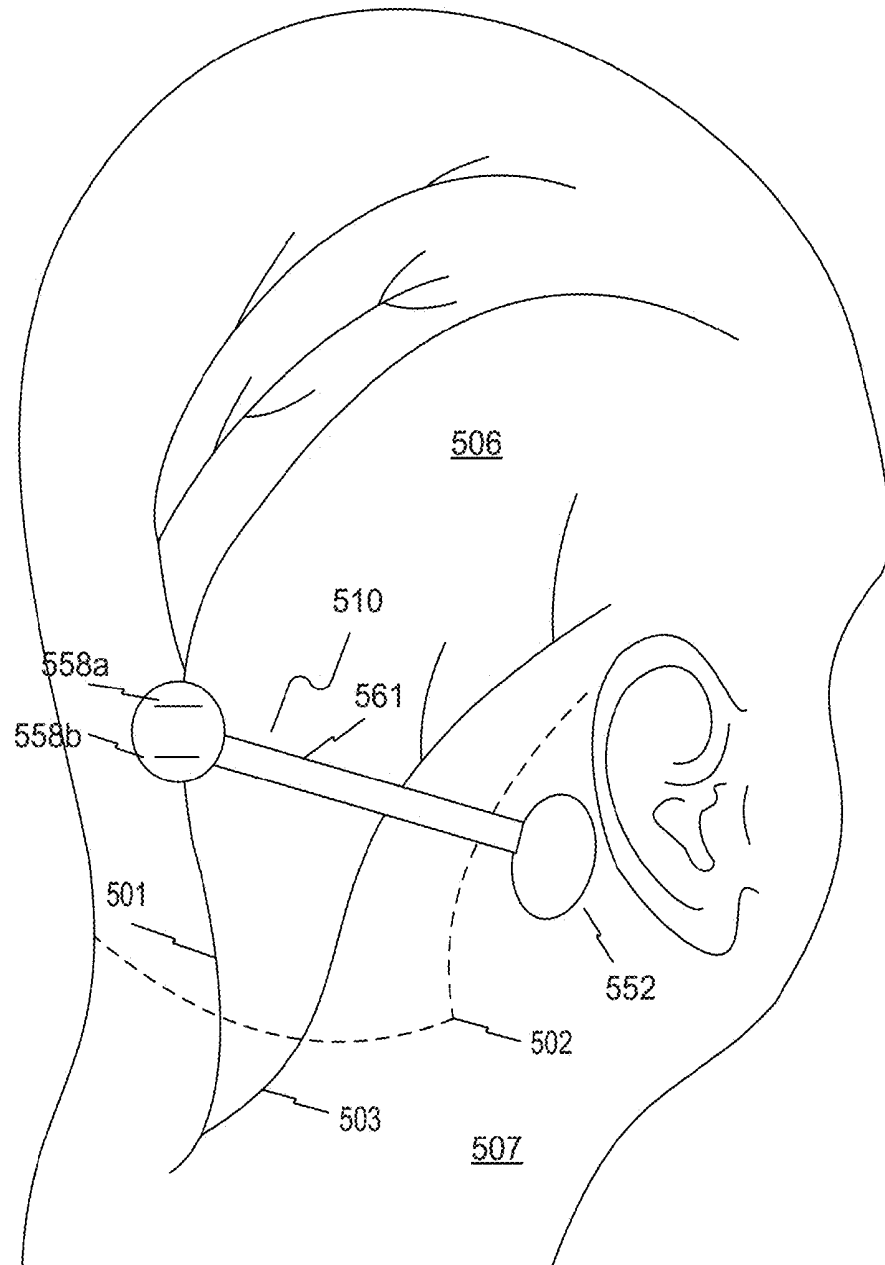


Fig. 12

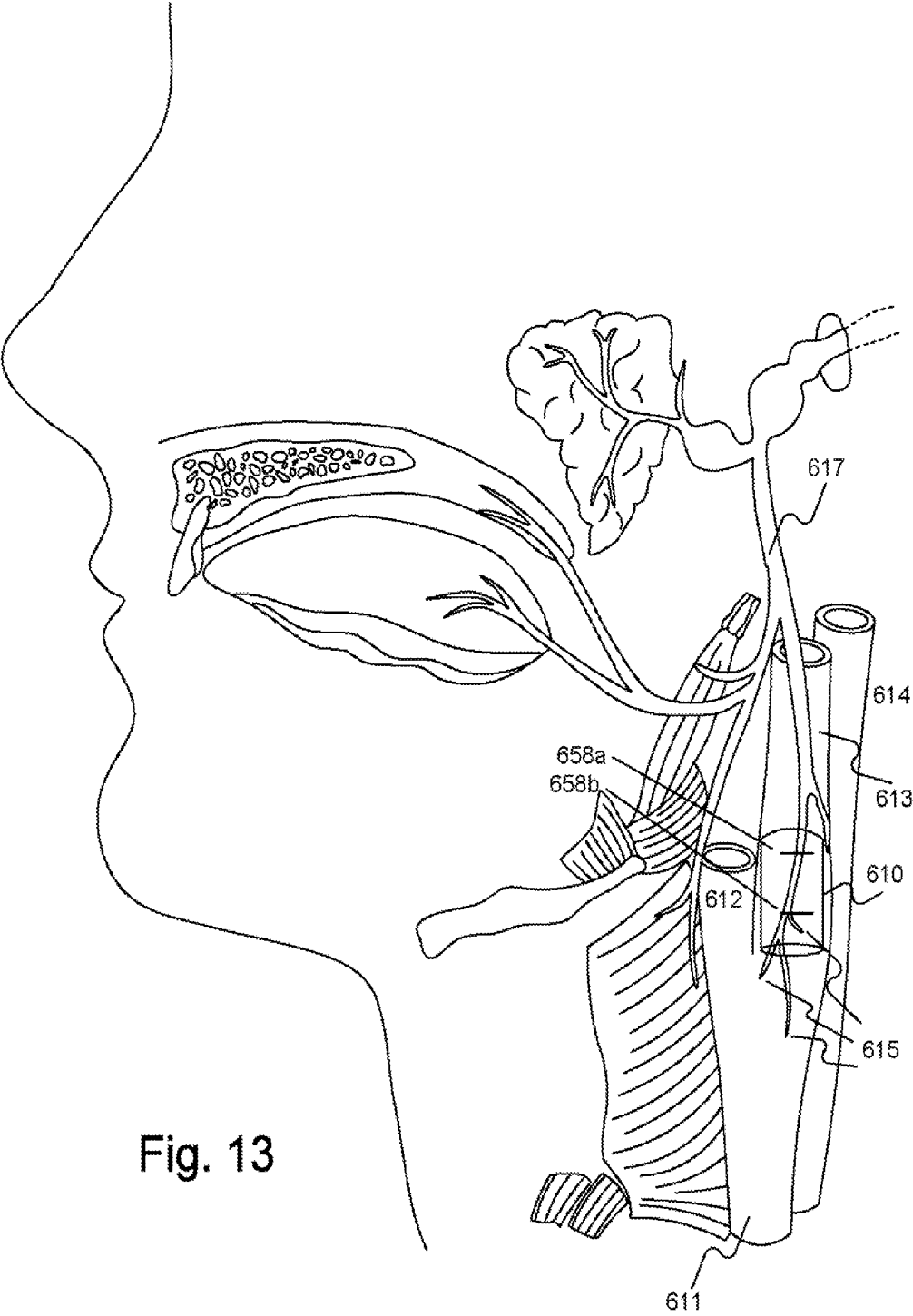
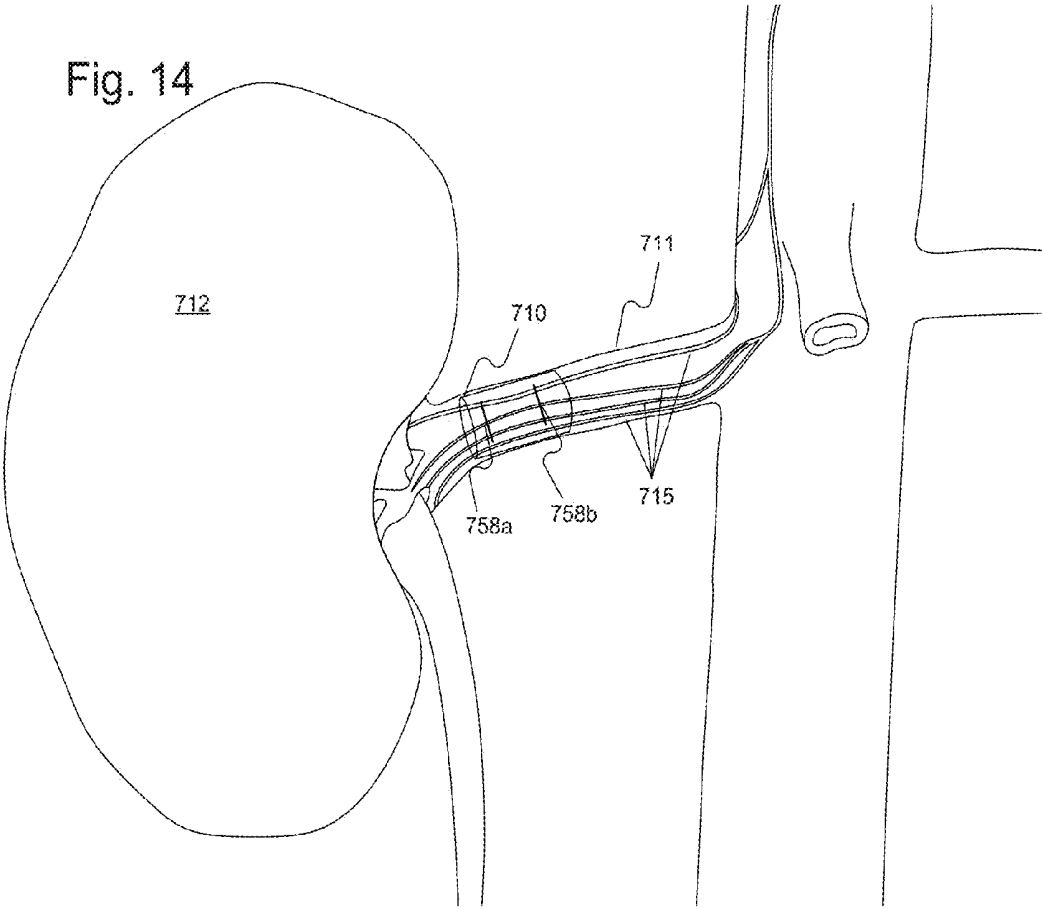


Fig. 13

Fig. 14



## HEAD PAIN MANAGEMENT DEVICE HAVING AN ANTENNA

### RELATED APPLICATIONS

This application is a divisional of application Ser. No. 14/042,556, filed Sep. 30, 2013, now U.S. Pat. No. 8,903,493, which is a divisional of application Ser. No. 13/629,725, filed Sep. 28, 2012, now U.S. Pat. No. 8,577,478, which claims the benefit of priority under 35 U.S.C. §119(e) to U.S. Provisional Application No. 61/541,651, filed Sep. 30, 2011, and also to U.S. Provisional Application No. 61/657,424, filed Jun. 8, 2012, all of which are incorporated herein by reference in their entirety.

### TECHNICAL FIELD

Embodiments of the present disclosure generally relate to devices and methods for modulating a nerve. More particularly, embodiments of the present disclosure relate to devices and methods for modulating a nerve through the delivery of energy via an implantable electrical modulator.

### BACKGROUND

Neural modulation presents the opportunity to treat many physiological conditions and disorders by interacting with the body's own natural neural processes. Neural modulation includes inhibition (e.g. blockage), stimulation, modification, regulation, or therapeutic alteration of activity, electrical or chemical, in the central, peripheral, or autonomic nervous system. By modulating the activity of the nervous system, for example through the stimulation of nerves or the blockage of nerve signals, several different goals may be achieved. Motor neurons may be stimulated at appropriate times to cause muscle contractions. Sensory neurons may be blocked, for instance to relieve pain, or stimulated, for instance to provide a signal to a subject. In other examples, modulation of the autonomic nervous system may be used to adjust various involuntary physiological parameters, such as heart rate and blood pressure. Neural modulation may provide the opportunity to treat several diseases or physiological conditions, a few examples of which are described in detail below.

Among the conditions to which neural modulation may be applied is obstructive sleep apnea (OSA). OSA is a respiratory disorder characterized by recurrent episodes of partial or complete obstruction of the upper airway during sleep. During the sleep of a person without OSA, the pharyngeal muscles relax during sleep and gradually collapse, narrowing the airway. The airway narrowing limits the effectiveness of the sleeper's breathing, causing a rise in CO<sub>2</sub> levels in the blood. The increase in CO<sub>2</sub> results in the pharyngeal muscles contracting to open the airway to restore proper breathing. The largest of the pharyngeal muscles responsible for upper airway dilation is the genioglossus muscle, which is one of several different muscles in the tongue. The genioglossus muscle is responsible for forward tongue movement and the stiffening of the anterior pharyngeal wall. In patients with OSA, the neuromuscular activity of the genioglossus muscle is decreased compared to normal individuals, accounting for insufficient response and contraction to open the airway as compared to a normal individual. This lack of response contributes to a partial or total airway obstruction, which significantly limits the effectiveness of the sleeper's breathing. In OSA patients, there are often several airway obstruction events during the night. Because of the obstruction, there is a gradual decrease of oxygen levels in the blood (hypoxemia).

Hypoxemia leads to night time arousals, which may be registered by EEG, showing that the brain awakes from any stage of sleep to a short arousal. During the arousal, there is a conscious breath or gasp, which resolves the airway obstruction. An increase in sympathetic tone activity rate through the release of hormones such as epinephrine and noradrenaline also often occurs as a response to hypoxemia. As a result of the increase in sympathetic tone, the heart enlarges in an attempt to pump more blood and increase the blood pressure and heart rate, further arousing the patient. After the resolution of the apnea event, as the patient returns to sleep, the airway collapses again, leading to further arousals.

These repeated arousals, combined with repeated hypoxemia, leaves the patient sleep deprived, which leads to daytime somnolence and worsens cognitive function. This cycle can repeat itself up to hundreds of times per night in severe patients. Thus, the repeated fluctuations in and sympathetic tone and episodes of elevated blood pressure during the night evolve to high blood pressure through the entire day. Subsequently, high blood pressure and increased heart rate may cause other diseases.

Efforts for treating OSA include Continuous Positive Airway Pressure (CPAP) treatment, which requires the patient to wear a mask through which air is blown into the nostrils to keep the airway open. Other treatment options include the implantation of rigid inserts in the soft palate to provide structural support, tracheotomies, or tissue ablation.

Another condition to which neural modulation may be applied is the occurrence of migraine headaches. Pain sensation in the head is transmitted to the brain via the occipital nerve, specifically the greater occipital nerve, and the trigeminal nerve. When a subject experiences head pain, such as during a migraine headache, the inhibition of these nerves may serve to decrease or eliminate the sensation of pain.

Neural modulation may also be applied to hypertension. Blood pressure in the body is controlled via multiple feedback mechanisms. For example, baroreceptors in the carotid body in the carotid artery are sensitive to blood pressure changes within the carotid artery. The baroreceptors generate signals that are conducted to the brain via the glossopharyngeal nerve when blood pressure rises, signaling the brain to activate the body's regulation system to lower blood pressure, e.g. through changes to heart rate, and vasodilation/vasoconstriction. Conversely, parasympathetic nerve fibers on and around the renal arteries generate signals that are carried to the kidneys to initiate actions, such as salt retention and the release of angiotensin, which raise blood pressure. Modulating these nerves may provide the ability to exert some external control over blood pressure.

The foregoing are just a few examples of conditions to which neuromodulation may be of benefit, however embodiments of the invention described hereafter are not necessarily limited to treating only the above-described conditions.

### SUMMARY

A device according to some embodiments may include a primary antenna configured to be located external to a subject and at least one processor in electrical communication with the primary antenna. The at least one processor may be configured to cause transmission of a primary signal from the primary antenna to an implantable device implanted in the subject on a genioglossus muscle proximal to a hypoglossal nerve of the subject, wherein the implantable device includes at least one pair of modulation electrodes. The at least one processor may be further configured to adjust one or more characteristics of the primary signal to generate a sub-modu-

lation control signal adapted to cause a current at the at least one pair of modulation electrodes below a neuromuscular modulation threshold of the hypoglossal nerve when received by the implanted device and to generate a modulation control signal adapted to cause a current at the at least one pair of modulation electrodes above a neuromuscular modulation threshold of the hypoglossal nerve when received by the implantable device.

A device according to some embodiments may include a primary antenna configured to be located external to a subject and at least one processor in electrical communication with the primary antenna. The at least one processor may be configured to cause transmission of a primary signal from the primary antenna to an implantable device implanted in a blood vessel of a subject in proximity to at least one of a renal nerve, a baroreceptor, and a glossopharyngeal nerve, wherein the implantable device includes at least one pair of modulation electrodes. The at least one processor may be further configured to adjust one or more characteristics of the primary signal to generate a sub-modulation control signal adapted to cause a current at the at least one pair of modulation electrodes below a neuromuscular modulation threshold of the at least one of a renal nerve, a baroreceptor, and a glossopharyngeal nerve when received by the implantable device and to generate a modulation control signal adapted to cause a current at the at least one pair of modulation electrodes above a neuromuscular modulation threshold at least one of a renal nerve, a baroreceptor, and a glossopharyngeal nerve when received by the implantable device.

A device according to some embodiments may include a primary antenna configured to be located on the skin of a subject on a substantially hairless region of a head of the subject and at least one processor in electrical communication with the primary antenna. The at least one processor may be configured to cause transmission of a primary signal from the primary antenna to an implantable device implanted beneath the skin of the subject, wherein the implantable device includes at least one pair of modulation electrodes located in a vicinity of an occipital nerve beneath the skin of the subject in a substantially hairless region of the head. The at least one processor may be further configured to adjust one or more characteristics of the primary signal to generate a sub-modulation control signal adapted to cause a current at the at least one pair of modulation electrodes below a neuromuscular modulation threshold of the occipital nerve when received by the implantable device and to generate a modulation control signal adapted to cause a current at the at least one pair of modulation electrodes above a neuromuscular modulation threshold of the occipital nerve when received by the implantable device.

A device according to some embodiments may include a primary antenna configured to be located external to a subject and at least one processor in electrical communication with the primary antenna. The at least one processor may be configured to cause transmission of a primary signal from the primary antenna to an implantable device, wherein the implantable device includes at least one pair of modulation electrodes. The at least one processor may be further configured to adjust one or more characteristics of the primary signal to generate a sub-modulation control signal adapted to cause a current at the at least one pair of modulation electrodes below a neuromuscular modulation threshold when received by the implantable device and to generate a modulation control signal adapted to cause a current at the at least one pair of modulation electrodes above a neuromuscular modulation threshold when received by the implantable device.

Some embodiments may include a method of transmitting signals to an implantable device. The method may include determining one or more sub-modulation characteristics of a sub-modulation control signal so as not to cause a neuromuscular modulation inducing current across at least one pair of modulation electrodes in electrical communication with an implantable device when the sub-modulation control signal is received by the implantable device. The method may further include generating the modulation control signal having the one or more modulation characteristics and generating the sub-modulation control signal having the one or more sub-modulation characteristics. The method may further include transmitting, via the primary antenna, the modulation control signal to a secondary antenna associated with the implantable device and transmitting, via the primary antenna, the sub-modulation control signal to a secondary antenna associated with the implantable device.

Additional features of the disclosure will be set forth in part in the description that follows, and in part will be obvious from the description, or may be learned by practice of the disclosed embodiments.

It is to be understood that both the foregoing general description and the following detailed description are exemplary and explanatory only, and are not restrictive of the invention, as claimed.

#### BRIEF DESCRIPTION OF THE DRAWINGS

The accompanying drawings, which are incorporated in and constitute a part of this specification, illustrate several embodiments of the disclosure and, together with the description, serve to explain the principles of the embodiments disclosed herein.

FIG. 1 schematically illustrates an implant unit and external unit, according to an exemplary embodiment of the present disclosure.

FIG. 2 is a partially cross-sectioned side view of a subject with an implant unit and external unit, according to an exemplary embodiment of the present disclosure.

FIG. 3 schematically illustrates a system including an implant unit and an external unit, according to an exemplary embodiment of the present disclosure.

FIG. 4 is a top view of an implant unit, according to an exemplary embodiment of the present disclosure.

FIG. 5 is a top view of an alternate embodiment of an implant unit, according to an exemplary embodiment of the present disclosure.

FIG. 6 illustrates circuitry of an implant unit and an external unit, according to an exemplary embodiment of the present disclosure.

FIG. 7 illustrates a graph of quantities that may be used in determining energy delivery as a function coupling, according to an exemplary disclosed embodiment.

FIG. 8 depicts a graph illustrating non-linear harmonics.

FIG. 9 depicts a graph of quantities that may be used in determining energy delivery as a function coupling, according to an exemplary disclosed embodiment.

FIG. 10 depicts anatomy of the tongue and associated muscles and nerves.

FIG. 11 depicts an exemplary implant location for the treatment of sleep apnea.

FIG. 12 depicts an exemplary implant location for the treatment of head pain.

FIG. 13 depicts an exemplary implant location for the treatment of hypertension.

FIG. 14 depicts an exemplary implant location for the treatment of hypertension.

#### DESCRIPTION OF EXEMPLARY EMBODIMENTS

Reference will now be made in detail to exemplary embodiments of the present disclosure, examples of which are illustrated in the accompanying drawings. Wherever possible, the same reference numbers will be used throughout the drawings to refer to the same or like parts.

Embodiments of the present disclosure relate generally to a device for neuromuscular modulation through the delivery of energy. Neuromuscular modulation may refer to the modulation of nerves, muscles or a combination of both. Muscular modulation may include the stimulation, modification, regulation, or therapeutic alteration of muscular activity, electrical activity. Muscular modulation may be applied directly to a muscle. Nerve modulation, or neural modulation, includes inhibition (e.g. blockage), stimulation, modification, regulation, or therapeutic alteration of activity, electrical or chemical, in the central, peripheral, or autonomic nervous system. Nerve modulation may take the form of nerve stimulation, which may include providing energy to the nerve to create a voltage change sufficient for the nerve to activate, or propagate an electrical signal of its own. Nerve modulation may also take the form of nerve inhibition, which may include providing energy to the nerve sufficient to prevent the nerve from propagating electrical signals. Nerve inhibition may be performed through the constant application of energy, and may also be performed through the application of enough energy to inhibit the function of the nerve for some time after the application. Other forms of neural modulation may modify the function of a nerve, causing a heightened or lessened degree of sensitivity. As referred to herein, modulation of a nerve may include modulation of an entire nerve and/or modulation of a portion of a nerve. For example, modulation of a motor neuron may be performed to affect only those portions of the neuron that are distal of the location to which energy is applied. Some of the exemplary embodiments described herein refer to neural modulation. It will be understood that many of the exemplary techniques, devices, and methods disclosed may also be applied directly to muscles to cause muscular modulation.

In patients with OSA, for example, a primary target response of nerve stimulation may include contraction of a tongue muscle (e.g., the muscle) in order to move the tongue to a position that does not block the patient's airway. In the treatment of migraine headaches, nerve inhibition may be used to reduce or eliminate the sensation of pain. In the treatment of hypertension, neural modulation may be used to increase, decrease, eliminate or otherwise modify nerve signals generated by the body to regulate blood pressure.

While embodiments of the present disclosure may be disclosed for use in patients with specific conditions, the embodiments may be used in conjunction with any patient/portion of a body where nerve modulation may be desired. That is, in addition to use in patients with OSA, migraine headaches, or hypertension, embodiments of the present disclosure may be used in many other areas, including, but not limited to: deep brain stimulation (e.g., treatment of epilepsy, Parkinson's, and depression); cardiac pace-making, stomach muscle stimulation (e.g., treatment of obesity), back pain, incontinence, menstrual pain, and/or any other condition that may be affected by neural modulation.

FIG. 1 illustrates an implant unit and external unit, according to an exemplary embodiment of the present disclosure. An

implant unit 110, may be configured for implantation in a subject, in a location that permits it to modulate a nerve 115. The implant unit 110 may be located in a subject such that intervening tissue 111 exists between the implant unit 110 and the nerve 115. Intervening tissue may include muscle tissue, connective tissue, organ tissue, or any other type of biological tissue. Thus, location of implant unit 110 does not require contact with nerve 115 for effective neuromodulation. The implant unit 110 may also be located directly adjacent to nerve 115, such that no intervening tissue 111 exists.

In treating OSA, implant unit 110 may be located on a genioglossus muscle of a patient. Such a location is suitable for modulation of the hypoglossal nerve, branches of which run inside the genioglossus muscle. Further details regarding implantation locations of an implant unit 110 for treatment of OSA are provided below with respect to FIGS. 10 and 11. Implant unit 110 may also be configured for placement in other locations. For example, migraine treatment may require subcutaneous implantation in the back of the neck, near the hairline of a subject, or behind the ear of a subject, to modulate the greater occipital nerve, lesser occipital nerve, and/or the trigeminal nerve. Further details regarding implantation locations of an implant unit 110 for treatment of head pain, such as migraine headaches, are provided below with respect to FIG. 12. Treating hypertension may require the implantation of a neuromodulation implant intravascularly inside the renal artery or renal vein (to modulate the parasympathetic renal nerves), either unilaterally or bilaterally, inside the carotid artery or jugular vein (to modulate the glossopharyngeal nerve through the carotid baroreceptors). Alternatively or additionally, treating hypertension may require the implantation of a neuromodulation implant subcutaneously, behind the ear or in the neck, for example, to directly modulate the glossopharyngeal nerve. Further details regarding implantation locations of an implant unit 110 for treatment of hypertension are provided below, with respect to FIGS. 13 and 14.

External unit 120 may be configured for location external to a patient, either directly contacting, or close to the skin 112 of the patient. External unit 120 may be configured to be affixed to the patient, for example, by adhering to the skin 112 of the patient, or through a band or other device configured to hold external unit 120 in place. Adherence to the skin of external unit 120 may occur such that it is in the vicinity of the location of implant unit 110.

FIG. 2 illustrates an exemplary embodiment of a neuromodulation system for delivering energy in a patient 100 with OSA. The system may include an external unit 120 that may be configured for location external to the patient. As illustrated in FIG. 2, external unit 120 may be configured to be affixed to the patient 100. FIG. 2 illustrates that in a patient 100 with OSA, the external unit 120 may be configured for placement underneath the patient's chin and/or on the front of patient's neck. The suitability of placement locations may be determined by communication between external unit 120 and implant unit 110, discussed in greater detail below. In alternate embodiments, for the treatment of conditions other than OSA, the external unit may be configured to be affixed anywhere suitable on a patient, such as the back of a patient's neck, i.e. for communication with a migraine treatment implant unit, on the outer portion of a patient's abdomen, i.e. for communication with a stomach modulating implant unit, on a patient's back, i.e. for communication with a renal artery modulating implant unit, and/or on any other suitable external location on a patient's skin, depending on the requirements of a particular application.

External unit 120 may further be configured to be affixed to an alternative location proximate to the patient. For example,

in one embodiment, the external unit may be configured to fixedly or removably adhere to a strap or a band that may be configured to wrap around a part of a patient's body. Alternatively, or in addition, the external unit may be configured to remain in a desired location external to the patient's body without adhering to that location.

The external unit **120** may include a housing. The housing may include any suitable container configured for retaining components. In addition, while the external unit is illustrated schematically in FIG. 2, the housing may be any suitable size and/or shape and may be rigid or flexible. Non-limiting examples of housings for the external unit **100** include one or more of patches, buttons, or other receptacles having varying shapes and dimensions and constructed of any suitable material. In one embodiment, for example, the housing may include a flexible material such that the external unit may be configured to conform to a desired location. For example, as illustrated in FIG. 2, the external unit may include a skin patch, which, in turn, may include a flexible substrate. The material of the flexible substrate may include, but is not limited to, plastic, silicone, woven natural fibers, and other suitable polymers, copolymers, and combinations thereof. Any portion of external unit **120** may be flexible or rigid, depending on the requirements of a particular application.

As previously discussed, in some embodiments external unit **120** may be configured to adhere to a desired location. Accordingly, in some embodiments, at least one side of the housing may include an adhesive material for removable affixation to skin of a subject. The adhesive material may include a biocompatible material and may allow for a patient to adhere the external unit to the desired location and remove the external unit upon completion of use. The adhesive may be configured for single or multiple uses of the external unit. Suitable adhesive materials may include, but are not limited to biocompatible glues, starches, elastomers, thermoplastics, and emulsions. The housing may also be removably affixed to skin of a subject through alternate means, such as straps or bands. Any of the various elements described herein as associated with the external unit may be located on or off the housing, as appropriate. For example, a housing comprising a processor and a primary antenna.

FIG. 3 schematically illustrates a system including external unit **120** and an implant unit **110**. In some embodiments, implant unit **110** may be configured as a unit to be implanted into the body of a patient, and external unit **120** may be configured to send signals to and/or receive signals from implant unit **110**.

As shown in FIG. 3, various components may be included within a housing of external unit **120** or otherwise associated with external unit **120**. As illustrated in FIG. 3, at least one processor **144** may be associated with external unit **120**. For example, the at least one processor **144** may be located within the housing of external unit **120**. In alternative embodiments, the at least one processor may be configured for wired or wireless communication with the external unit from a location external to the housing. The processor **144** may be in electrical communication with primary antenna **150**, described in greater detail below.

The at least one processor may include any electric circuit that may be configured to perform a logic operation on at least one input variable. The at least one processor may therefore include one or more integrated circuits, microchips, microcontrollers, and microprocessors, which may be all or part of a central processing unit (CPU), a digital signal processor (DSP), a field programmable gate array (FPGA), or any other circuit known to those skilled in the art that may be suitable for executing instructions or performing logic operations.

FIG. 3 illustrates that the external unit **120** may further be associated with a power source **140**. The power source may be removably couplable to the external unit at an exterior location relative to external unit. Alternatively, as shown in FIG. 3, power source **140** may be permanently or removably coupled to a location within external unit **120**. The power source may further include any suitable source of power configured to be in electrical communication with the processor. In one embodiment, for example the power source **140** may include a battery.

The power source may be configured to power various components within the external unit. As illustrated in FIG. 3, power source **140** may be configured to provide power to the processor **144**. In addition, the power source **140** may be configured to provide power to a signal source **142**. The signal source **142** may be in communication with the processor **144** and may include any device configured to generate a signal (e.g., a sinusoidal signal, square wave, triangle wave, micro-wave, radio-frequency (RF) signal, or any other type of electromagnetic signal). Signal source **142** may include, but is not limited to, a waveform generator that may be configured to generate alternating current (AC) signals and/or direct current (DC) signals. In one embodiment, for example, signal source **142** may be configured to generate an AC signal for transmission to one or more other components. Signal source **142** may be configured to generate a signal of any suitable frequency. In some embodiments, signal source **142** may be configured to generate a signal having a frequency of from about 6.5 MHz to about 13.6 MHz. In additional embodiments, signal source **142** may be configured to generate a signal having a frequency of from about 7.4 to about 8.8 MHz. In further embodiments, signal source **142** may generate a signal having a frequency as low as 90 kHz or as high as 28 MHz.

Signal source **142** may be configured for direct or indirect electrical communication with an amplifier **146**. The amplifier may include any suitable device configured to amplify one or more signals generated from signal source **142**. Amplifier **146** may include one or more of various types of amplification devices, including, for example, transistor based devices, operational amplifiers, RF amplifiers, power amplifiers, or any other type of device that can increase the gain associated one or more aspects of a signal. The amplifier may further be configured to output the amplified signals to one or more components within external unit **120**.

The external unit may additionally include a primary antenna **150**. The primary antenna may be configured as part of a circuit within external unit **120** and may be coupled either directly or indirectly to various components in external unit **120**. The primary antenna may be configured for location external to a subject. For example, as shown in FIG. 3, primary antenna **150** may be configured for communication with the amplifier **146**.

The primary antenna may include any conductive structure that may be configured to create an electromagnetic field. The primary antenna may further be of any suitable size, shape, and/or configuration. The primary antenna may be flexible to an extent permitting it to generally conform to the contours of a subject's skin. The size, shape, and/or configuration may be determined by the size of the patient, the placement location of the implant unit, the size and/or shape of the implant unit, the amount of energy required to modulate a nerve, a location of a nerve to be modulated, the type of receiving electronics present on the implant unit, etc. The primary antenna may include any suitable antenna known to those skilled in the art that may be configured to send and/or receive signals. Suitable antennas may include, but are not limited to, a long-wire antenna, a patch antenna, a helical antenna, etc. In one

embodiment, for example, as illustrated in FIG. 3, primary antenna **150** may include a coil antenna. Such a coil antenna may be made from any suitable conductive material and may be configured to include any suitable arrangement of conductive coils (e.g., diameter, number of coils, layout of coils, etc.). A coil antenna suitable for use as primary antenna **150** may have a diameter of between about 1 cm and 10 cm, and may be circular or oval shaped. In some embodiments, a coil antenna may have a diameter between 5 cm and 7 cm, and may be oval shaped. A coil antenna suitable for use as primary antenna **150** may have any number of windings, e.g. 4, 8, 12, or more. A coil antenna suitable for use as primary antenna **150** may have a wire diameter between about 0.1 mm and 2 mm. These antenna parameters are exemplary only, and may be adjusted above or below the ranges given to achieve suitable results.

As noted, implant unit **110** may be configured to be implanted in a patient's body (e.g., beneath the patient's skin). FIG. 2 illustrates that the implant unit **110** may be configured to be implanted for modulation of a nerve associated with a muscle of the subject's tongue **130**. Modulating a nerve associated with a muscle of the subject's tongue **130** may include stimulation to cause a muscle contraction. In further embodiments, the implant unit may be configured to be placed in conjunction with any nerve that one may desire to modulate. For example, modulation of the occipital nerve, the greater occipital nerve, and/or the trigeminal nerve may be useful for treating pain sensation in the head, such as that from migraines. Modulation of parasympathetic nerve fibers on and around the renal arteries (i.e. the renal nerves), the vagus nerve, and/or the glossopharyngeal nerve may be useful for treating hypertension. Additionally, any nerve of the peripheral nervous system (both spinal and cranial), including motor neurons, sensory neurons, sympathetic neurons and parasympathetic neurons, may be modulated to achieve a desired effect.

Implant unit **110** may be formed of any materials suitable for implantation into the body of a patient. In some embodiments, implant unit **110** may include a flexible carrier **161** (FIG. 4) including a flexible, biocompatible material. Such materials may include, for example, silicone, polyimides, phenyltrimethoxysilane (PTMS), polymethyl methacrylate (PMMA), Parylene C, polyimide, liquid polyimide, laminated polyimide, black epoxy, polyether ether ketone (PEEK), Liquid Crystal Polymer (LCP), Kapton®, etc. Implant unit **110** may further include circuitry including conductive materials, such as gold, platinum, titanium, or any other biocompatible conductive material or combination of materials. Implant unit **110** and flexible carrier **161** may also be fabricated with a thickness suitable for implantation under a patient's skin. Implant **110** may have thickness of less than about 4 mm or less than about 2 mm.

Other components that may be included in or otherwise associated with the implant unit are illustrated in FIG. 3. For example, implant unit **110** may include a secondary antenna **152** mounted onto or integrated with flexible carrier **161**. Similar to the primary antenna, the secondary antenna may include any suitable antenna known to those skilled in the art that may be configured to send and/or receive signals. The secondary antenna may include any suitable size, shape, and/or configuration. The size, shape and/or configuration may be determined by the size of the patient, the placement location of the implant unit, the amount of energy required to modulate the nerve, etc. Suitable antennas may include, but are not limited to, a long-wire antenna, a patch antenna, a helical antenna, etc. In some embodiments, for example, secondary antenna **152** may include a coil antenna having a circular

shape (see also FIG. 4) or oval shape. Such a coil antenna may be made from any suitable conductive material and may be configured to include any suitable arrangement of conductive coils (e.g., diameter, number of coils, layout of coils, etc.). A coil antenna suitable for use as secondary antenna **152** may have a diameter of between about 5 mm and 30 mm, and may be circular or oval shaped. A coil antenna suitable for use as secondary antenna **152** may have any number of windings, e.g. 4, 15, 20, 30, or 50. A coil antenna suitable for use as secondary antenna **152** may have a wire diameter between about 0.01 mm and 1 mm. These antenna parameters are exemplary only, and may be adjusted above or below the ranges given to achieve suitable results.

Implant unit **110** may additionally include a plurality of field-generating implant electrodes **158a**, **158b**. The electrodes may include any suitable shape and/or orientation on the implant unit so long as the electrodes may be configured to generate an electric field in the body of a patient. Implant electrodes **158a** and **158b** may also include any suitable conductive material (e.g., copper, silver, gold, platinum, iridium, platinum-iridium, platinum-gold, conductive polymers, etc.) or combinations of conductive (and/or noble metals) materials. In some embodiments, for example, the electrodes may include short line electrodes, circular electrodes, and/or circular pairs of electrodes. As shown in FIG. 4, electrodes **158a** and **158b** may be located on an end of a first extension **162a** of an elongate arm **162**. The electrodes, however, may be located on any portion of implant unit **110**. Additionally, implant unit **110** may include electrodes located at a plurality of locations, for example on an end of both a first extension **162a** and a second extension **162b** of elongate arm **162**, as illustrated, for example, in FIG. 5. Implant electrodes may have a thickness between about 200 nanometers and 1 millimeter. Anode and cathode electrode pairs may be spaced apart by about a distance of about 0.2 mm to 25 mm. In additional embodiments, anode and cathode electrode pairs may be spaced apart by a distance of about 1 mm to 10 mm, or between 4 mm and 7 mm. Adjacent anodes or adjacent cathodes may be spaced apart by distances as small as 0.001 mm or less, or as great as 25 mm or more. In some embodiments, adjacent anodes or adjacent cathodes may be spaced apart by a distance between about 0.2 mm and 1 mm.

FIG. 4 provides a schematic representation of an exemplary configuration of implant unit **110**. As illustrated in FIG. 4, in one embodiment, the field-generating electrodes **158a** and **158b** may include two sets of four circular electrodes, provided on flexible carrier **161**, with one set of electrodes providing an anode and the other set of electrodes providing a cathode. Implant unit **110** may include one or more structural elements to facilitate implantation of implant unit **110** into the body of a patient. Such elements may include, for example, elongated arms, suture holes, polymeric surgical mesh, biological glue, spikes of flexible carrier protruding to anchor to the tissue, spikes of additional biocompatible material for the same purpose, etc. that facilitate alignment of implant unit **110** in a desired orientation within a patient's body and provide attachment points for securing implant unit **110** within a body. For example, in some embodiments, implant unit **110** may include an elongate arm **162** having a first extension **162a** and, optionally, a second extension **162b**. Extensions **162a** and **162b** may aid in orienting implant unit **110** with respect to a particular muscle (e.g., the genioglossus muscle), a nerve within a patient's body, or a surface within a body above a nerve. For example, first and second extensions **162a**, **162b** may be configured to enable the implant unit to conform at least partially around soft or hard tissue (e.g., nerve, bone, or muscle, etc.) beneath a patient's skin. Further,

implant unit **110** may also include one or more suture holes **160** located anywhere on flexible carrier **161**. For example, in some embodiments, suture holes **160** may be placed on second extension **162b** of elongate arm **162** and/or on first extension **162a** of elongate arm **162**. Implant unit **110** may be constructed in various shapes. In some embodiments, implant unit may appear substantially as illustrated in FIG. **4**. In other embodiments, implant unit **110** may lack illustrated structures such as second extension **162b**, or may have additional or different structures in different orientations. Additionally, implant unit **110** may be formed with a generally triangular, circular, or rectangular shape, as an alternative to the winged shape shown in FIG. **4**. In some embodiments, the shape of implant unit **110** (e.g., as shown in FIG. **4**) may facilitate orientation of implant unit **110** with respect to a particular nerve to be modulated. Thus, other regular or irregular shapes may be adopted in order to facilitate implantation in differing parts of the body.

As illustrated in FIG. **4**, secondary antenna **152** and electrodes **158a**, **158b** may be mounted on or integrated with flexible carrier **161**. Various circuit components and connecting wires (discussed further below) may be used to connect secondary antenna with implant electrodes **158a** and **158b**. To protect the antenna, electrodes, circuit components, and connecting wires from the environment within a patient's body, implant unit **110** may include a protective coating that encapsulates implant unit **110**. In some embodiments, the protective coating may be made from a flexible material to enable bending along with flexible carrier **161**. The encapsulation material of the protective coating may also resist humidity penetration and protect against corrosion. In some embodiments, the protective coating may include silicone, polyimides, phenyltrimethoxysilane (PTMS), polymethyl methacrylate (PMMA), Parylene C, liquid polyimide, laminated polyimide, polyimide, Kapton, black epoxy, polyether ketone (PEEK), Liquid Crystal Polymer (LCP), or any other suitable biocompatible coating. In some embodiments, the protective coating may include a plurality of layers, including different materials or combinations of materials in different layers.

FIG. **5** is a perspective view of an alternate embodiment of an implant unit **110**, according to an exemplary embodiment of the present disclosure. As illustrated in FIG. **5**, implant unit **110** may include a plurality of electrodes, located, for example, at the ends of first extension **162a** and second extension **162b**. FIG. **5** illustrates an embodiment wherein implant electrodes **158a** and **158b** include short line electrodes.

Returning to FIGS. **2** and **3**, external unit **120** may be configured to communicate with an implantable device, such as implant unit **110**. The at least one processor **144** may be configured to cause transmission of a primary signal from the primary antenna to implant unit **110**, or any other implantable device including at least one pair of modulation electrodes. For example, in some embodiments, a primary signal may be generated on primary antenna **150**, using, e.g., processor **144**, signal source **142**, and amplifier **146**. More specifically, in one embodiment, power source **140** may be configured to provide power to one or both of the processor **144** and the signal source **142**. The processor **144** may be configured to cause signal source **142** to generate a signal (e.g., an RF energy signal). Signal source **142** may be configured to output the generated signal to amplifier **146**, which may amplify the signal generated by signal source **142**. The amount of amplification and, therefore, the amplitude of the signal may be controlled, for example, by processor **144**. The amount of gain or amplification that processor **144** causes amplifier **146** to apply to the signal may depend on a variety of factors, including, but not limited to, the shape, size, and/or configu-

ration of primary antenna **150**, the size of the patient, the location of implant unit **110** in the patient, the shape, size, and/or configuration of secondary antenna **152**, a degree of coupling between primary antenna **150** and secondary antenna **152** (discussed further below), a desired magnitude of electric field to be generated by implant electrodes **158a**, **158b**, etc. Amplifier **146** may output the amplified signal to primary antenna **150**.

At least one processor **144** may also be configured to receive a condition signal from an implantable device such as implant unit **110**. A condition signal may be any type of signal received by the at least one processor, for example via primary antenna **144**, from an implantable device. A condition signal may be indicative of movement of the implantable device, location of the implantable device, a maximum power limit of the implantable device, and/or a minimum efficacy threshold of the implantable device. The condition signal may also be indicative of a degree of coupling between primary antenna **144** and secondary antenna **152**. A condition signal may include a primary coupled signal component present on the primary antenna due to signals within the implant. A condition signal may also include a signal generated by the implantable device itself, for example, by at least one processor associated with the implant. A condition signal may be generated by the implant in response to information generated by the implant, information pertaining to the internal state of the implant, and/or information received by sensors associated with the implant. Various examples of the nature and form of a condition signal are expressed in more detail below.

External unit **120** may communicate a primary signal on primary antenna to the secondary antenna **152** of implant unit **110**. This communication may result from coupling between primary antenna **150** and secondary antenna **152**. Such coupling of the primary antenna and the secondary antenna may include any interaction between the primary antenna and the secondary antenna that causes a signal on the secondary antenna in response to a signal applied to the primary antenna. In some embodiments, coupling between the primary and secondary antennas may include capacitive coupling, inductive coupling, radiofrequency coupling, a measure of harmonic resonance in the implant, etc. and any combinations thereof.

Coupling between primary antenna **150** and secondary antenna **152** may depend on the proximity of the primary antenna relative to the secondary antenna. That is, in some embodiments, an efficiency or degree of coupling between primary antenna **150** and secondary antenna **152** may depend on the proximity of the primary antenna to the secondary antenna. The proximity of the primary and secondary antennas may be expressed in terms of a coaxial offset (e.g., a distance between the primary and secondary antennas when central axes of the primary and secondary antennas are co-aligned), a lateral offset (e.g., a distance between a central axis of the primary antenna and a central axis of the secondary antenna), and/or an angular offset (e.g., an angular difference between the central axes of the primary and secondary antennas). In some embodiments, a theoretical maximum efficiency of coupling may exist between primary antenna **150** and secondary antenna **152** when both the coaxial offset, the lateral offset, and the angular offset are zero. Increasing any of the coaxial offset, the lateral offset, and the angular offset may have the effect of reducing the efficiency or degree of coupling between primary antenna **150** and secondary antenna **152**.

As a result of coupling between primary antenna **150** and secondary antenna **152**, a secondary signal may arise on secondary antenna **152** when the primary signal is present on

the primary antenna **150**. Such coupling may include inductive/magnetic coupling, RF coupling/transmission, capacitive coupling, or any other mechanism where a secondary signal may be generated on secondary antenna **152** in response to a primary signal generated on primary antenna **150**. Coupling may refer to any interaction between the primary and secondary antennas. In addition to the coupling between primary antenna **150** and secondary antenna **152**, circuit components associated with implant unit **110** may also affect the secondary signal on secondary antenna **152**. Thus, the secondary signal on secondary antenna **152** may refer to any and all signals and signal components present on secondary antenna **152** regardless of the source.

While the presence of a primary signal on primary antenna **150** may cause or induce a secondary signal on secondary antenna **152**, the coupling between the two antennas may also lead to a coupled signal or signal components on the primary antenna **150** as a result of the secondary signal present on secondary antenna **152**. A signal on primary antenna **150** induced by a secondary signal on secondary antenna **152** may be referred to as a primary coupled signal component. The primary signal may refer to any and all signals or signal components present on primary antenna **150**, regardless of source, and the primary coupled signal component may refer to any signal or signal component arising on the primary antenna as a result of coupling with signals present on secondary antenna **152**. Thus, in some embodiments, the primary coupled signal component may contribute to the primary signal on primary antenna **150**.

Implant unit **110** may be configured to respond to external unit **120**. For example, in some embodiments, a primary signal generated on primary coil **150** may cause a secondary signal on secondary antenna **152**, which in turn, may cause one or more responses by implant unit **110**. In some embodiments, the response of implant unit **110** may include the generation of an electric field between implant electrodes **158a** and **158b**. For example, at least one processor **144** may be configured to adjust one or more characteristics of the primary signal to generate either or both of a sub-modulation control signal and a modulation control signal when received by the an implantable device. Adjusted characteristics of a modulation control signal may be referred to as modulation characteristics, whereas adjusted characteristics of a sub-modulation control signal may be referred to as sub-modulation characteristics. The secondary signal on secondary antenna **152** caused by the primary signal may include a modulation control signal, adapted to cause the generation of an electric field sufficient to cause a neuromuscular inducing current across the electrodes of implant unit **110**. Additionally, the secondary signal on secondary antenna **152** caused by the primary signal may be a sub-modulation control signal, adapted so as not to cause the generation of an electric field sufficient to cause a neuromuscular inducing current across electrodes of implant unit **110**. The adjusted characteristics are explained in greater detail below.

FIG. 6 illustrates circuitry **170** that may be included in external unit **120** and circuitry **180** that may be included in implant unit **110**. Additionally, different, or fewer circuit components may be included in either or both of circuitry **170** and circuitry **180**. As shown in FIG. 6, secondary antenna **152** may be arranged in electrical communication with implant electrodes **158a**, **158b**. In some embodiments, circuitry connecting secondary antenna **152** with implant electrodes **158a** and **158b** may cause a voltage potential across implant electrodes **158a** and **158b** in the presence of a secondary signal on secondary antenna **152**. This voltage potential may be referred to as a field inducing signal, as this voltage potential

may generate an electric field between implant electrodes **158a** and **158b**. More broadly, the field inducing signal may include any signal (e.g., voltage potential) applied to electrodes associated with the implant unit that may result in an electric field being generated between the electrodes. Such a field inducing signal may cause a current to flow between the electrodes.

The field inducing signal may be generated as a result of conditioning of the secondary signal by circuitry **180**. As shown in FIG. 6, circuitry **170** of external unit **120** may be configured to generate an AC primary signal on primary antenna **150** that may cause an AC secondary signal on secondary antenna **152**. In certain embodiments, however, it may be advantageous (e.g., in order to generate a unidirectional electric field for modulation of a nerve) to provide a DC field inducing signal at implant electrodes **158a** and **158b**. To convert the AC secondary signal on secondary antenna **152** to a DC field inducing signal, circuitry **180** in implant unit **110** may include an AC-DC converter. The AC to DC converter may include any suitable converter known to those skilled in the art. For example, in some embodiments the AC-DC converter may include rectification circuit components including, for example, diode **156** and appropriate capacitors and resistors. In alternative embodiments, implant unit **110** may include an AC-AC converter, or no converter, in order to provide an AC field inducing signal at implant electrodes **158a** and **158b**.

As noted above, the field inducing signal may be configured to generate an electric field between implant electrodes **158a** and **158b**. In some instances, the magnitude and/or duration of the generated electric field resulting from the field inducing signal may cause current flow sufficient to modulate one or more nerves in the vicinity of electrodes **158a** and **158b**. In such cases, the field inducing signal may be referred to as a modulation signal, and the associated primary signal may be referred to as a modulation control signal. In other instances, the magnitude and/or duration of the field inducing signal may generate an electric field that does not result in nerve modulation. In such cases, the field inducing signal may be referred to as a sub-modulation signal, and the associated primary signal may be referred to as a sub-modulation control signal.

Various characteristics of the primary control signal may be adjusted by processor **144** so as to cause differing responses in the implant. For example, characteristics of the primary control signal may be adjusted to cause various types of field inducing signals, both modulation signals and sub-modulation signals, at electrodes **158a** and **158b** of implant unit **110**. Adjusted characteristics may include, for example, voltage, current, frequency, pulse rate, pulse width, and signal duration. For example, in some embodiments, a modulation signal may include a moderate amplitude (defined by voltage or current) and moderate duration, while in other embodiments, a modulation signal may include a higher amplitude and a shorter duration. Various amplitudes and/or durations of field-inducing signals across electrodes **158a**, **158b** may result in modulation signals, and whether a field-inducing signal rises to the level of a modulation signal can depend on many factors (e.g., distance from a particular nerve to be stimulated; whether the nerve is branched; orientation of the induced electric field with respect to the nerve; type of tissue present between the electrodes and the nerve; etc.).

Whether a field inducing signal constitutes a modulation signal (resulting in an electric field that may cause nerve modulation) or a sub-modulation signal (resulting in an electric field not intended to cause nerve modulation) may ultimately be controlled by processor **144** of external unit **120**.

For example, in certain situations, processor **144** may determine that nerve modulation is appropriate. Under these conditions, processor **144** may cause signal source **144** and amplifier **146** to generate a modulation control signal on primary antenna **150** (i.e., a signal having a magnitude and/or duration selected such that a resulting secondary signal on secondary antenna **152** will provide a modulation signal at implant electrodes **158a** and **158b**).

In some embodiments, processor **144** may be configured to adjust the one or more characteristics of the primary signal so as to elicit the condition signal from an implantable device. For example, when transmitted to an implantable device such as implant unit **110**, the primary signal may be adjusted in order to cause a secondary signal in implant unit **110** that, in turn, causes a primary coupled signal component on primary antenna **144**. Such adjustments may, for example, be calculated to cause implant unit **110** to generate a specific type of harmonic resonance, as described further below. In other examples, a primary signal may be adjusted by processor **144** to communicate with a processor associated with an implantable device, and to thereby elicit a condition signal from the processor associated with the implantable device in response.

Processor **144** may be configured to limit an amount of energy transferred from external unit **120** to implant unit **110**. For example, in some embodiments, implant unit **110** may be associated with a threshold energy limit that may take into account multiple factors associated with the patient and/or the implant. For example, in some cases, certain nerves of a patient should receive no more than a predetermined maximum amount of energy to minimize the risk of damaging the nerves and/or surrounding tissue. Additionally, circuitry **180** of implant unit **110** may include components having a maximum operating voltage or power level that may contribute to a practical threshold energy limit of implant unit **110**. For example, components including diodes may be included in implant unit **110** or in external unit **120** to limit power transferred from the external unit **120** to the implant unit **110**. In some embodiments, diode **156** may function to limit the power level received by the patient. Processor **144** may be configured to account for such limitations when setting the magnitude and/or duration of a primary signal to be applied to primary antenna **150**. As described above, this information may be received by processor **144** via a condition signal from the implantable device indicative of a maximum power limit.

In addition to determining an upper limit of power that may be delivered to implant unit **110**, processor **144** may also determine a lower power threshold based, at least in part, on an efficacy of the delivered power. The lower power threshold may be computed based on a minimum amount of power that enables nerve modulation (e.g., signals having power levels above the lower power threshold may constitute modulation signals while signals having power levels below the lower power threshold may constitute sub-modulation signals). As described above, this information may be received by processor **144** via a condition signal from the implantable device indicative of a minimum efficacy threshold.

A lower power threshold may also be measured or provided in alternative ways. For example, appropriate circuitry or sensors in the implant unit **110** may measure a lower power threshold. A lower power threshold may be computed or sensed by an additional external device, and subsequently programmed into processor **144**, or programmed into implant unit **110**. Alternatively, implant unit **110** may be constructed with circuitry **180** specifically chosen to generate signals at the electrodes of at least the lower power threshold. In still another embodiment, an antenna of external unit **120** may be adjusted to accommodate or produce a signal corresponding

to a specific lower power threshold. The lower power threshold may vary from patient to patient, and may take into account multiple factors, such as, for example, modulation characteristics of a particular patient's nerve fibers, a distance between implant unit **110** and external unit **120** after implantation, and the size and configuration of implant unit components (e.g., antenna and implant electrodes), etc.

Processor **144** may also be configured to cause application of sub-modulation control signals to primary antenna **150**. Such sub-modulation control signals may include an amplitude and/or duration that result in a sub-modulation signal at electrodes **158a**, **158b**. While such sub-modulation control signals may not result in nerve modulation, such sub-modulation control signals may enable feedback-based control of the nerve modulation system. That is, in some embodiments, processor **144** may be configured to cause application of a sub-modulation control signal to primary antenna **150**. This signal may induce a secondary signal on secondary antenna **152**, which, in turn, induces a primary coupled signal component on primary antenna **150**.

To analyze the primary coupled signal component induced on primary antenna **150**, external unit **120** may include a feedback circuit **148** (e.g., a signal analyzer or detector, etc.), which may be placed in direct or indirect communication with primary antenna **150** and processor **144**. Sub-modulation control signals may be applied to primary antenna **150** at any desired periodicity. In some embodiments, the sub-modulation control signals may be applied to primary antenna **150** at a rate of one every five seconds (or longer). In other embodiments, the sub-modulation control signals may be applied more frequently (e.g., once every two seconds, once per second, once per millisecond, once per nanosecond, or multiple times per second). Further, it should be noted that feedback may also be received upon application of modulation control signals to primary antenna **150** (i.e., those that result in nerve modulation), as such modulation control signals may also result in generation of a primary coupled signal component on primary antenna **150**.

The primary coupled signal component may be fed to processor **144** by feedback circuit **148** and may be used as a basis for determining a degree of coupling between primary antenna **150** and secondary antenna **152**. The degree of coupling may enable determination of the efficacy of the energy transfer between two antennas. Processor **144** may also use the determined degree of coupling in regulating delivery of power to implant unit **110**.

In some embodiments consistent with the present disclosure, processor **144** may be configured to adjust the one or more characteristics of the primary signal based on the condition signal from the implantable device. For example, as described in greater detail below, a condition signal indicative of coupling between primary antenna **150** and secondary antenna **152** may be used by the processor to determine a suitable response. In other examples, a processor associated with an implantable device may generate and cause the transmission of a condition signal containing information which the at least one processor **144** may use to adjust the characteristics of the primary signal.

Processor **144** may be configured with any suitable logic for determining how to regulate power transfer to implant unit **110** based on the determined degree of coupling. Processor **144** may, for example, utilize a baseline coupling range. Presumably, while the patient is awake, the tongue is not blocking the patient's airway and moves with the patient's breathing in a natural range, where coupling between primary antenna **150** and secondary antenna **152** may be within a baseline coupling range. A baseline coupling range may

encompass a maximum coupling between primary antenna 150 and secondary antenna 152. A baseline coupling range may also encompass a range that does not include a maximum coupling level between primary antenna 150 and secondary antenna 152. Processor 144 may be configured to determine the baseline coupling range based on a command from a user, such as the press of a button on the patch or the press of a button on a suitable remote device. Alternatively or additionally, processor 144 may be configured to automatically determine the baseline coupling range when external unit 120 is placed such that primary antenna 150 and secondary antenna 152 are within range of each other. In such an embodiment, when processor 144 detects any degree of coupling between primary antenna 150 and secondary antenna 152, it may immediately begin tracking a baseline coupling range. Processor 144 may then determine a baseline coupling range when it detects that the only movement between primary antenna 150 and secondary antenna 152 is caused by a patient's natural breathing rhythm (i.e., the patient has secured the external unit to an appropriate location on their body). Additionally, processor 144 may be configured such that it measures coupling between the primary antenna 150 and the secondary antenna 152 for a specified period of time after activation in order to determine a baseline coupling range, such as 1 minute, 5 minutes, 10 minutes, etc.

A condition signal, for example, a primary coupled signal component, may indicate that a degree of coupling has changed from a baseline coupling range, processor 144 may determine that secondary antenna 152 has moved with respect to primary antenna 150 (either in coaxial offset, lateral offset, or angular offset, or any combination). Such movement, for example, may be associated with a movement of the implant unit 110, and the tissue that it is associated with based on its implant location. The condition signal, therefore, may be indicative of movement and/or location of the implantable device. In such situations, processor 144 may determine that modulation of a nerve in the patient's body is appropriate. In some embodiments, a condition signal indicative of a predetermined amount of movement of the implantable device may trigger the transmission of the primary signal. For example, in response to an indication of a change in coupling, processor 144, in some embodiments, may cause application of a modulation control signal to primary antenna 150 in order to generate a modulation signal at implant electrodes 158a, 158b, e.g., to cause modulation of a nerve of the patient.

In an embodiment for the treatment of OSA, movement of an implant unit 110 may be indicative of tongue movement associated with sleep disordered breathing, such as the onset of a sleep apnea event or a sleep apnea precursor. An amount of tongue movement may be indicative of the severity of the sleep disordered breathing. The onset of a sleep apnea event or sleep apnea precursor may require the stimulation of the genioglossus muscle of the patient to relieve or avert the event. Such stimulation may result in contraction of the muscle and movement of the patient's tongue away from the patient's airway.

In embodiments for the treatment of head pain, including migraines, processor 144 may be configured to generate a modulation control signal based on a signal from a user, for example, or a detected level of neural activity in a sensory neuron (e.g. the greater occipital nerve or trigeminal nerve) associated with head pain. A modulation control signal generated by the processor and applied to the primary antenna 150 may generate a modulation signal at implant electrodes 158a, 158b, e.g., to cause inhibition or blocking (i.e. a down

modulation) of a sensory nerve of the patient. Such inhibition or blocking may decrease or eliminate the sensation of pain for the patient.

In embodiments for the treatment of hypertension, processor 144 may be configured to generate a modulation control signal based on, for example, pre-programmed instructions and/or signals from an implant indicative of blood pressure. A modulation control signal generated by the processor and applied to the primary antenna 150 may generate a modulation signal at implant electrodes 158a, 158b, e.g., to cause either inhibition or stimulation of nerve of a patient, depending on the requirements. For example, a neuromodulator placed in a carotid artery or jugular vein (i.e. in the vicinity of a carotid baroreceptor), may receive a modulation control signal tailored to induce a stimulation signal at the electrodes, thereby causing the glossopharyngeal nerve associated with the carotid baroreceptors to fire at an increased rate in order to signal the brain to lower blood pressure. Similar modulation of the glossopharyngeal nerve may be achieved with a neuromodulator implanted in a subcutaneous location in a patient's neck or behind a patient's ear. A neuromodulator placed in a renal artery may receive a modulation control signal tailored to cause an inhibiting or blocking signal (i.e. a down modulation) at the electrodes, thereby inhibiting a signal to raise blood pressure carried from the renal nerves to the kidneys.

Modulation control signals may include stimulation control signals, and sub-modulation control signals may include sub-stimulation control signals. Stimulation control signals may have any amplitude, pulse duration, or frequency combination that results in a stimulation signal at electrodes 158a, 158b. In some embodiments (e.g., at a frequency of between about 6.5-13.6 MHz), stimulation control signals may include a pulse duration of greater than about 50 microseconds and/or an amplitude of approximately 0.5 amps, or between 0.1 amps and 1 amp, or between 0.05 amps and 3 amps. Sub-stimulation control signals may have a pulse duration less than about 500, or less than about 200 nanoseconds and/or an amplitude less than about 1 amp, 0.5 amps, 0.1 amps, 0.05 amps, or 0.01 amps. Of course, these values are meant to provide a general reference only, as various combinations of values higher than or lower than the exemplary guidelines provided may or may not result in nerve stimulation.

In some embodiments, stimulation control signals may include a pulse train, wherein each pulse includes a plurality of sub-pulses. An alternating current signal (e.g., at a frequency of between about 6.5-13.6 MHz) may be used to generate the pulse train, as follows. A sub-pulse may have a duration of between 50-250 microseconds, or a duration of between 1 microsecond and 2 milliseconds, during which an alternating current signal is turned on. For example, a 200 microsecond sub-pulse of a 10 MHz alternating current signal will include approximately 2000 periods. Each pulse may, in turn, have a duration of between 100 and 500 milliseconds, during which sub-pulses occur at a frequency of between 25 and 100 Hz. For example, a 200 millisecond pulse of 50 Hz sub-pulses will include approximately 10 sub-pulses. Finally, in a pulse train, each pulse may be separated from the next by a duration of between 0.2 and 2 seconds. For example, in a pulse train of 200 millisecond pulses, each separated by 1.3 seconds from the next, a new pulse will occur every 1.5 seconds. A pulse train of this embodiment may be utilized, for example, to provide ongoing stimulation during a treatment session. In the context of OSA, a treatment session may be a period of time during which a subject is asleep and in need of treatment to prevent OSA. Such a treatment session may last

anywhere from about three to ten hours. In the context of other conditions to which neural modulators of the present disclosure are applied, a treatment session may be of varying length according to the duration of the treated condition.

Processor **144** may be configured to determine a degree of coupling between primary antenna **150** and secondary antenna **152** by monitoring one or more aspects of the primary coupled signal component received through feedback circuit **148**. In some embodiments, processor **144** may determine a degree of coupling between primary antenna **150** and secondary antenna **152** by monitoring a voltage level associated with the primary coupled signal component, a current level, or any other attribute that may depend on the degree of coupling between primary antenna **150** and secondary antenna **152**. For example, in response to periodic sub-modulation signals applied to primary antenna **150**, processor **144** may determine a baseline voltage level or current level associated with the primary coupled signal component. This baseline voltage level, for example, may be associated with a range of movement of the patient's tongue when a sleep apnea event or its precursor is not occurring, e.g. during normal breathing. As the patient's tongue moves toward a position associated with a sleep apnea event, moves in a manner consistent with a precursor of sleep apnea, or moves in any other manner (e.g., vibration, etc.), the coaxial, lateral, or angular offset between primary antenna **150** and secondary antenna **152** may change. As a result, the degree of coupling between primary antenna **150** and secondary antenna **152** may change, and the voltage level or current level of the primary coupled signal component on primary antenna **150** may also change. Processor **144** may be configured to recognize a sleep apnea event or its precursor when a voltage level, current level, or other electrical characteristic associated with the primary coupled signal component changes by a predetermined amount or reaches a predetermined absolute value. Such a predetermined amount of change in the primary coupled signal component may be associated with a predetermined amount of movement of the implantable device.

FIG. **7** provides a graph that illustrates this principle in more detail. For a two-coil system where one coil receives a radio frequency (RF) drive signal, graph **200** plots a rate of change in induced current in the receiving coil as a function of coaxial distance between the coils. For various coil diameters and initial displacements, graph **200** illustrates the sensitivity of the induced current to further displacement between the coils, moving them either closer together or further apart. It also indicates that, overall, the induced current in the secondary coil will decrease as the secondary coil is moved away from the primary, drive coil, i.e. the rate of change of induced current, in mA/mm, is consistently negative. The sensitivity of the induced current to further displacement between the coils varies with distance. For example, at a separation distance of 10 mm, the rate of change in current as a function of additional displacement in a 14 mm coil is approximately  $-6$  mA/mm. If the displacement of the coils is approximately 22 mm, the rate of change in the induced current in response to additional displacement is approximately  $-11$  mA/mm, which corresponds to a local maximum in the rate of change of the induced current. Increasing the separation distance beyond 22 mm continues to result in a decline in the induced current in the secondary coil, but the rate of change decreases. For example, at a separation distance of about 30 mm, the 14 mm coil experiences a rate of change in the induced current in response to additional displacement of about  $-8$  mA/mm. With this type of information, processor **144** may be able to determine a particular degree of coupling between primary antenna **150** and secondary antenna **152**, at any given time, by

observing the magnitude and/or rate of change in the magnitude of the current associated with the primary coupled signal component on primary antenna **150**.

Processor **144** may be configured to determine a degree of coupling between primary antenna **150** and secondary antenna **152** by monitoring other aspects of the primary coupled signal component. For example, in some embodiments, the non-linear behavior of circuitry **180** in implant unit **110** may be monitored to determine a degree of coupling. For example, the presence, absence, magnitude, reduction and/or onset of harmonic components in the primary coupled signal component on primary antenna **150** may reflect the behavior of circuitry **180** in response to various control signals (either sub-modulation or modulation control signals) and, therefore, may be used to determine a degree of coupling between primary antenna **150** and secondary antenna **152**.

As shown in FIG. **6**, circuitry **180** in implant unit **110** may constitute a non-linear circuit due, for example, to the presence of non-linear circuit components, such as diode **156**. Such non-linear circuit components may induce non-linear voltage responses under certain operation conditions. Non-linear operation conditions may be induced when the voltage potential across diode **156** exceeds the activation threshold for diode **156**. Thus, when implant circuitry **180** is excited at a particular frequency, this circuit may oscillate at multiple frequencies. Spectrum analysis of the secondary signal on secondary antenna **152**, therefore, may reveal one or more oscillations, called harmonics, that appear at certain multiples of the excitation frequency. Through coupling of primary antenna **150** and secondary antenna **152**, any harmonics produced by implant circuitry **180** and appearing on secondary antenna **152** may also appear in the primary coupled signal component present on primary antenna **150**.

In certain embodiments, circuitry **180** may include additional circuit components that alter the characteristics of the harmonics generated in circuitry **180** above a certain transition point. Monitoring how these non-linear harmonics behave above and below the transition point may enable a determination of a degree of coupling between primary antenna **150** and secondary antenna **152**. For example, as shown in FIG. **6**, circuitry **180** may include a harmonics modifier circuit **154**, which may include any electrical components that non-linearly alter the harmonics generated in circuitry **180**. In some embodiments, harmonics modifier circuit **154** may include a pair of Zener diodes. Below a certain voltage level, these Zener diodes remain forward biased such that no current will flow through either diode. Above the breakdown voltage of the Zener diodes, however, these devices become conductive in the reversed biased direction and will allow current to flow through harmonics modifier circuit **154**. Once the Zener diodes become conductive, they begin to affect the oscillatory behavior of circuitry **180**, and, as a result, certain harmonic oscillation frequencies may be affected (e.g., reduced in magnitude).

FIGS. **8** and **9** illustrate this effect. For example, FIG. **8** illustrates a graph **300a** that shows the oscillatory behavior of circuitry **180** at several amplitudes ranging from about 10 nanoamps to about 20 microamps. As shown, the primary excitation frequency occurs at about 6.7 MHz and harmonics appear both at even and odd multiples of the primary excitation frequency. For example, even multiples appear at twice the excitation frequency (peak **302a**), four times the excitation frequency (peak **304a**) and six times the excitation frequency (peak **306a**). As the amplitude of the excitation signal rises between 10 nanoamps and 40 microamps, the amplitude of peaks **302a**, **304a**, and **306a** all increase.

FIG. 9 illustrates the effect on the even harmonic response of circuitry 180 caused by harmonics modifier circuit 154. FIG. 9 illustrates a graph 300b that shows the oscillatory behavior of circuitry 180 at several amplitudes ranging from about 30 microamps to about 100 microamps. As in FIG. 8, FIG. 9 shows a primary excitation frequency at about 6.7 MHz and second, fourth, and sixth order harmonics (peaks 302b, 304b, and 306b, respectively) appearing at even multiples of the excitation frequency. As the amplitude of the excitation signal rises, however, between about 30 microamps to about 100 microamps, the amplitudes of peaks 302b, 304b, and 306b do not continuously increase. Rather, the amplitude of the second order harmonics decreases rapidly above a certain transition level (e.g., about 80 microamps in FIG. 8). This transition level corresponds to the level at which the Zener diodes become conductive in the reverse biased direction and begin to affect the oscillatory behavior of circuitry 180.

Monitoring the level at which this transition occurs may enable a determination of a degree of coupling between primary antenna 150 and secondary antenna 152. For example, in some embodiments, a patient may attach external unit 120 over an area of the skin under which implant unit 110 resides. Processor 144 can proceed to cause a series of sub-modulation control signals to be applied to primary antenna 150, which in turn cause secondary signals on secondary antenna 152. These sub-modulation control signals may progress over a sweep or scan of various signal amplitude levels. By monitoring the resulting primary coupled signal component on primary antenna 150 (generated through coupling with the secondary signal on secondary antenna 152), processor 144 can determine the amplitude of primary signal (whether a sub-modulation control signal or other signal) that results in a secondary signal of sufficient magnitude to activate harmonics modifier circuit 154. That is, processor 144 can monitor the amplitude of the second, fourth, or sixth order harmonics and determine the amplitude of the primary signal at which the amplitude of any of the even harmonics drops. FIGS. 8 and 9 illustrate the principles of detecting coupling through the measurement of non-linear harmonics. These Figures illustrate data based around a 6.7 MHz excitation frequency. These principles, however, are not limited to the 6.7 MHz excitation frequency illustrated, and may be used with a primary signal of any suitable frequency.

In embodiments utilizing non-linear harmonics, the determined amplitude of the primary signal corresponding to the transition level of the Zener diodes (which may be referred to as a primary signal transition amplitude) may establish the baseline range when the patient attaches external unit 120 to the skin. Thus, the initially determined primary signal transition amplitude may be fairly representative of a non-sleep apnea condition and may be used by processor 144 as a baseline in determining a degree of coupling between primary antenna 150 and secondary antenna 152. Optionally, processor 144 may also be configured to monitor the primary signal transition amplitude over a series of scans and select the minimum value as a baseline, as the minimum value may correspond to a condition of maximum coupling between primary antenna 150 and secondary antenna 152 during normal breathing conditions.

As the patient wears external unit 120, processor 144 may periodically scan over a range of primary signal amplitudes to determine a current value of the primary signal transition amplitude. In some embodiments, the range of amplitudes that processor 144 selects for the scan may be based on (e.g., near) the level of the baseline primary signal transition amplitude. If a periodic scan results in determination of a primary

signal transition amplitude different from the baseline primary signal transition amplitude, processor 144 may determine that there has been a change from the baseline initial conditions. For example, in some embodiments, an increase in the primary signal transition amplitude over the baseline value may indicate that there has been a reduction in the degree of coupling between primary antenna 150 and secondary antenna 152 (e.g., because the implant has moved or an internal state of the implant has changed).

In addition to determining whether a change in the degree of coupling has occurred, processor 144 may also be configured to determine a specific degree of coupling based on an observed primary signal transition amplitude. For example, in some embodiments, processor 144 may have access to a lookup table or a memory storing data that correlates various primary signal transition amplitudes with distances (or any other quantity indicative of a degree of coupling) between primary antenna 150 and secondary antenna 152. In other embodiments, processor 144 may be configured to calculate a degree of coupling based on performance characteristics of known circuit components.

By periodically determining a degree of coupling value, processor 144 may be configured to determine, in situ, appropriate parameter values for the modulation control signal that will ultimately result in nerve modulation. For example, by determining the degree of coupling between primary antenna 150 and secondary antenna 152, processor 144 may be configured to select characteristics of the modulation control signal (e.g., amplitude, pulse duration, frequency, etc.) that may provide a modulation signal at electrodes 158a, 158b in proportion to or otherwise related to the determined degree of coupling. In some embodiments, processor 144 may access a lookup table or other data stored in a memory correlating modulation control signal parameter values with degree of coupling. In this way, processor 144 may adjust the applied modulation control signal in response to an observed degree of coupling.

Additionally or alternatively, processor 144 may be configured to determine the degree of coupling between primary antenna 150 and secondary antenna 152 during modulation. The tongue, or other structure on or near which the implant is located, and thus implant unit 110, may move as a result of modulation. Thus, the degree of coupling may change during modulation. Processor 144 may be configured to determine the degree of coupling as it changes during modulation, in order to dynamically adjust characteristics of the modulation control signal according to the changing degree of coupling. This adjustment may permit processor 144 to cause implant unit 110 to provide an appropriate modulation signal at electrodes 158a, 158b throughout a modulation event. For example, processor 144 may alter the primary signal in accordance with the changing degree of coupling in order to maintain a constant modulation signal, or to cause the modulation signal to be reduced in a controlled manner according to patient needs.

More particularly, the response of processor 144 may be correlated to the determined degree of coupling. In situations where processor 144 determines that the degree of coupling between primary antenna 150 and secondary antenna 152 has fallen only slightly below a predetermined coupling threshold (e.g., during snoring or during a small vibration of the tongue or other sleep apnea event precursor), processor 144 may determine that only a small response is necessary. Thus, processor 144 may select modulation control signal parameters that will result in a relatively small response (e.g., a short stimulation of a nerve, small muscle contraction, etc.).

Where, however, processor 144 determines that the degree of coupling has fallen substantially below the predetermined coupling threshold (e.g., where the tongue has moved enough to cause a sleep apnea event), processor 144 may determine that a larger response is required. As a result, processor 144 may select modulation control signal parameters that will result in a larger response. In some embodiments, only enough power may be transmitted to implant unit 110 to cause the desired level of response. In other words, processor 144 may be configured to cause a metered response based on the determined degree of coupling between primary antenna 150 and secondary antenna 152. As the determined degree of coupling decreases, processor 144 may cause transfer of power in increasing amounts. Such an approach may preserve battery life in the external unit 120, may protect circuitry 170 and circuitry 180, may increase effectiveness in addressing the type of detected condition (e.g., sleep apnea, snoring, tongue movement, etc.), and may be more comfortable for the patient.

In some embodiments, processor 144 may employ an iterative process in order to select modulation control signal parameters that result in a desired response level. For example, upon determining that a modulation control signal should be generated, processor 144 may cause generation of an initial modulation control signal based on a set of predetermined parameter values. If feedback from feedback circuit 148 indicates that a nerve has been modulated (e.g., if an increase in a degree of coupling is observed), then processor 144 may return to a monitoring mode by issuing sub-modulation control signals. If, on the other hand, the feedback suggests that the intended nerve modulation did not occur as a result of the intended modulation control signal or that modulation of the nerve occurred but only partially provided the desired result (e.g., movement of the tongue only partially away from the airway), processor 144 may change one or more parameter values associated with the modulation control signal (e.g., the amplitude, pulse duration, etc.).

Where no nerve modulation occurred, processor 144 may increase one or more parameters of the modulation control signal periodically until the feedback indicates that nerve modulation has occurred. Where nerve modulation occurred, but did not produce the desired result, processor 144 may re-evaluate the degree of coupling between primary antenna 150 and secondary antenna 152 and select new parameters for the modulation control signal targeted toward achieving a desired result. For example, where stimulation of a nerve causes the tongue to move only partially away from the patient's airway, additional stimulation may be desired. Because the tongue has moved away from the airway, however, implant unit 110 may be closer to external unit 120 and, therefore, the degree of coupling may have increased. As a result, to move the tongue a remaining distance to a desired location may require transfer to implant unit 110 of a smaller amount of power than what was supplied prior to the last stimulation-induced movement of the tongue. Thus, based on a newly determined degree of coupling, processor 144 can select new parameters for the stimulation control signal aimed at moving the tongue the remaining distance to the desired location.

In one mode of operation, processor 144 may be configured to sweep over a range of parameter values until nerve modulation is achieved. For example, in circumstances where an applied sub-modulation control signal results in feedback indicating that nerve modulation is appropriate, processor 144 may use the last applied sub-modulation control signal as a starting point for generation of the modulation control signal. The amplitude and/or pulse duration (or other param-

eters) associated with the signal applied to primary antenna 150 may be iteratively increased by predetermined amounts and at a predetermined rate until the feedback indicates that nerve modulation has occurred.

Processor 144 may be configured to determine or derive various physiologic data based on the determined degree of coupling between primary antenna 150 and secondary antenna 152. For example, in some embodiments the degree of coupling may indicate a distance between external unit 120 and implant unit 110, which processor 144 may use to determine a position of external unit 120 or a relative position of a patient's tongue. Monitoring the degree of coupling can also provide such physiologic data as whether a patient's tongue is moving or vibrating (e.g., whether the patient is snoring), by how much the tongue is moving or vibrating, the direction of motion of the tongue, the rate of motion of the tongue, etc.

In response to any of these determined physiologic data, processor 144 may regulate delivery of power to implant unit 110 based on the determined physiologic data. For example, processor 144 may select parameters for a particular modulation control signal or series of modulation control signals for addressing a specific condition relating to the determined physiologic data. If the physiologic data indicates that the tongue is vibrating, for example, processor 144 may determine that a sleep apnea event is likely to occur and may issue a response by delivering power to implant unit 110 in an amount selected to address the particular situation. If the tongue is in a position blocking the patient's airway (or partially blocking a patient's airway), but the physiologic data indicates that the tongue is moving away from the airway, processor 144 may opt to not deliver power and wait to determine if the tongue clears on its own. Alternatively, processor 144 may deliver a small amount of power to implant unit 110 (e.g., especially where a determined rate of movement indicates that the tongue is moving slowly away from the patient's airway) to encourage the tongue to continue moving away from the patient's airway or to speed its progression away from the airway. Additionally or alternatively, processor 144 may deliver power to implant unit 110 to initiate a tongue movement, monitor the movement of the tongue, and deliver additional power, for example, a reduced amount of power, if necessary to encourage the tongue to continue moving away from the patient's airway. The scenarios described are exemplary only. Processor 144 may be configured with software and/or logic enabling it to address a variety of different physiologic scenarios with particularity. In each case, processor 144 may be configured to use the physiologic data to determine an amount of power to be delivered to implant unit 110 in order to modulate nerves associated with the tongue with the appropriate amount of energy.

The disclosed embodiments may be used in conjunction with a method for regulating delivery of power to an implant unit. The method may include determining a degree of coupling between primary antenna 150 associated with external unit 120 and secondary antenna 152 associated with implant unit 110, implanted in the body of a patient. Determining the degree of coupling may be accomplished by processor 144 located external to implant unit 110 and that may be associated with external unit 120. Processor 144 may be configured to regulate delivery of power from the external unit to the implant unit based on the determined degree of coupling.

As previously discussed, the degree of coupling determination may enable the processor to further determine a location of the implant unit. The motion of the implant unit may correspond to motion of the body part where the implant unit may be attached. This may be considered physiologic data

received by the processor. The processor may, accordingly, be configured to regulate delivery of power from the power source to the implant unit based on the physiologic data. In alternative embodiments, the degree of coupling determination may enable the processor to determine information pertaining to a condition of the implant unit. Such a condition may include location as well as information pertaining to an internal state of the implant unit. The processor may, according to the condition of the implant unit, be configured to regulate delivery of power from the power source to the implant unit based on the condition data.

In some embodiments, implant unit **110** may include a processor located on the implant. A processor located on implant unit **110** may perform all or some of the processes described with respect to the at least one processor associated with an external unit. For example, a processor associated with implant unit **110** may be configured to receive a control signal prompting the implant controller to turn on and cause a modulation signal to be applied to the implant electrodes for modulating a nerve. Such a processor may also be configured to monitor various sensors associated with the implant unit and to transmit this information back to an external unit. Power for the processor unit may be supplied by an onboard power source or received via transmissions from an external unit.

In other embodiments, implant unit **110** may be self-sufficient, including its own power source and a processor configured to operate the implant unit **110** with no external interaction. For example, with a suitable power source, the processor of implant unit **110** could be configured to monitor conditions in the body of a subject (via one or more sensors or other means), determining when those conditions warrant modulation of a nerve, and generate a signal to the electrodes to modulate a nerve. The power source could be regenerative based on movement or biological function; or the power sources could be periodically rechargeable from an external location, such as, for example, through induction.

In some embodiments, the at least one processor may be associated with the housing of external unit **120** and may be configured to communicate with a circuit implanted in the subject. The at least one processor may also be configured to receive a physiological signal from the subject via the implanted circuit. In response to the received physiological signal, the at least one processor may send a control signal, such as a closed loop control signal, to the implanted circuit. In some embodiments, the control signal may be predetermined to activate neuromuscular tissue within the tongue. Activating neuromuscular tissue may include, for example, causing muscular contractions and initiating a nerve action potential.

The physiological signal received from the implant unit may include any signal or signal component indicative of at least one physiological characteristic associated with the subject. In some embodiments, for example, the physiological characteristic may indicate whether a portion of the subject's body (e.g., the tongue) has moved, a direction of movement, a rate of change of movement, temperature, blood pressure, etc. The physiological signal may include any form of signal suitable for conveying information associated with at least some aspect of the subject. In some embodiments, the physiological signal may include an electromagnetic signal (e.g. microwave, infrared, radio-frequency (RF), etc.) having any desired waveform (e.g. sinusoidal, square wave, triangle wave, etc.). In some embodiments, the physiological signal may include any suitable amplitude or duration for transferring information about the subject.

In some embodiments, the physiological signal may include a primary coupled signal component on primary antenna **150**. This primary coupled signal component may be induced on primary antenna **150** through coupling between primary antenna **150** of external unit **120** and secondary antenna **152** on implant unit **110**.

In some embodiments, the physiological signal may include at least one aspect indicative of a movement of the subject's tongue. For example, movement of the tongue may cause relative motion between primary antenna **150** and secondary antenna **152**, and this relative motion may result in variation of a degree of coupling between primary antenna **150** and secondary antenna **152**. By monitoring the degree of coupling between primary antenna **150** and secondary antenna **152**, for example, by monitoring signals or signal components present on primary antenna **150**, relative motion between primary antenna **150** and secondary antenna **152** and, therefore, movement of the subject's tongue, may be detected.

As noted, in response to a received physiological signal, the at least one processor may cause a response based on the physiological signal. For example, in some embodiments, the at least one processor may be configured to cause the generation of a control signal (e.g. a closed loop control signal) intended to control at least one aspect of implant unit **110**. The control signal may include a modulation control signal applied to primary antenna **150** such that a resulting secondary signal on secondary antenna **152** will provide a modulation signal at implant electrodes **158a** and **158b**.

In some embodiments, the processor may be configured to detect a sleep disordered breathing event based on the physiological signal and send the closed loop control signal in response to the detected sleep disordered breathing event. In some embodiments, the sleep disordered breathing event may be a precursor of sleep apnea, and the control signal may be predetermined to activate neuromuscular tissue within the tongue and may cause movement of the subject's tongue, for example, in a direction away from the posterior pharyngeal wall. The at least one processor may be further configured to determine a severity of the sleep disordered breathing event based on the physiological signal and vary a power level or duration of the control signal based on the determined severity of the sleep disordered breathing event. The severity of the event may be determined, for example, based on a determination of the relative movement between primary antenna **150** and secondary antenna **152** (e.g., an amplitude of movement, a rate of movement, a direction of movement, etc.). In some embodiments, a control signal may be sent if the relative movement exceeds a certain threshold.

A control signal may include any signal having suitable characteristics for causing a desired response in implant unit **110**. For example, a control signal may have any suitable amplitude, duration, pulse width, duty cycle, or waveform (e.g. a sinusoidal signal, square wave, triangle wave, etc.) for causing a desired effect on implant unit **110** (e.g., modulation of nerve tissue in the vicinity of implant unit **110**, etc.). A control signal may be generated and sent (e.g., to implant unit **110**) within any desired response time relative to receipt of a physiological signal. In some embodiments, the response time may be set at 1 second, 500 milliseconds, 200 milliseconds, 100 milliseconds, 50 milliseconds, 20 milliseconds, 5 milliseconds, 1 millisecond, or any other time greater than 0 seconds and less than about 2 seconds. The control signal may be closed loop. As used herein, the term closed loop control signal may refer to any signal at least partially responsive to

another signal, such as a control signal sent in response to a physiological signal. Or it may include any feedback response.

Based on the physiological signal, the processor may determine a quantity of energy to be sent via the closed loop control signal to implant unit 110. The amount of energy to be sent may be determined and/or varied based on any relevant factor including, for example, the time of day, a relevant biological factor of the subject (blood pressure, pulse, level of brain activity, etc.), the severity of the detected event, other characteristics associated with the detected event, or on any combination of factors. As noted, in embodiments where the physiological signal indicates a sleep disordered breathing event, the processor may be configured to determine a severity of the sleep disordered breathing event based on the physiological signal. In such embodiments, the processor may also determine an amount of energy to be provided to implant unit 110 as a response to the detected sleep disordered breathing event and in view of the determined severity of the event. The determined amount of energy may be transferred to implant unit 110 over any suitable time duration and at any suitable power level. In some embodiments, the power level and/or the duration of the control signal may be varied, and such variation may be dependent on the determined severity of the sleep disordered breathing event.

The power level and/or duration of the control signal may also be determined based on other factors. For example, the processor may vary a power level or duration associated with the control signal based on the efficiency of energy transfer between external unit 120 and implant unit 110. The processor may have access to such information through pre-programming, lookup tables, information stored in memory, etc. Additionally or alternatively, the processor may be configured to determine the efficiency of energy transfer, e.g., by monitoring the primary coupled signal component present on primary antenna 150, or by any other suitable method.

The processor may also vary the power level or duration of the control signal based on the efficacy of implant unit 110 (e.g., the implant unit's ability to produce a desired effect in response to the control signal). For example, the processor may determine that a certain implant unit 110 requires a certain amount of energy, a control signal of at least a certain power level and/or signal duration, etc., in order to produce a desired response (e.g., a modulation signal having an amplitude/magnitude of at least a desired level, etc.). Such a determination can be based on feedback received from implant unit 110 or may be determined based on lookup tables, information stored in memory, etc. In some embodiments, the power level or duration of the control signal may be determined based on a known or feedback-determined efficacy threshold (e.g., an upper threshold at or above which a desired response may be achieved) associated with implant unit 110.

In some embodiments, implant unit 110 may be structurally configured to facilitate implantation in a location so as to increase the efficacy of modulation provided. For example, FIGS. 10 and 11 illustrate the anatomy of neck and tongue, and depict implantation locations suitable for neuromodulation treatment of OSA. FIG. 12 illustrates an exemplary implant unit 110 structurally configured for the treatment of head pain. FIGS. 13 and 14 illustrate exemplary implant units 110 structurally configured for the treatment of hypertension.

FIG. 10 depicts an implantation location in the vicinity of a genioglossus muscle 1060 that may be accessed through derma on an underside of a subject's chin. FIG. 10 depicts hypoglossal nerve (i.e. cranial nerve XII). The hypoglossal nerve 1051, through its lateral branch 1053 and medial branch 1052, innervates the muscles of the tongue and other glossal

muscles, including the genioglossus 1060, the hyoglossus, 1062, and the geniohyoid 1061 muscles. The horizontal compartment of the genioglossus 1060 is mainly innervated by the medial terminal fibers 1054 of the medial branch 1052, which diverges from the lateral branch 1053 at terminal bifurcation 1055. The distal portion of medial branch 1052 then variegates into the medial terminal fibers 1054. Contraction of the horizontal compartment of the genioglossus muscle 1060 may serve to open or maintain a subject's airway. Contraction of other glossal muscles may assist in other functions, such as swallowing, articulation, and opening or closing the airway. Because the hypoglossal nerve 1051 innervates several glossal muscles, it may be advantageous, for OSA treatment, to confine modulation of the hypoglossal nerve 1051 to the medial branch 1052 or even the medial terminal fibers 1054 of the hypoglossal nerve 1051. In this way, the genioglossus muscle, most responsible for tongue movement and airway maintenance, may be selectively targeted for contraction inducing neuromodulation. Alternatively, the horizontal compartment of the genioglossus muscle may be selectively targeted. The medial terminal fibers 1054 may, however, be difficult to affect with neuromodulation, as they are located within the fibers of the genioglossus muscle 1061. Embodiments of the present invention facilitate modulation the medial terminal fibers 1054, as discussed further below.

In some embodiments, implant unit 110, including at least one pair of modulation electrodes, e.g. electrodes 158a, 158b, and at least one circuit may be configured for implantation through derma (i.e. skin) on an underside of a subject's chin. When implanted through derma on an underside of a subject's chin, an implant unit 110 may be located proximate to medial terminal fibers 1054 of the medial branch 1052 of a subject's hypoglossal nerve 1051. An exemplary implant location 1070 is depicted in FIG. 10.

In some embodiments, implant unit 110 may be configured such that the electrodes 158a, 158b cause modulation of at least a portion of the subject's hypoglossal nerve through application of an electric field to a section of the hypoglossal nerve 1051 distal of a terminal bifurcation 1055 to lateral and medial branches 1053, 1052 of the hypoglossal nerve 1051. In additional or alternative embodiments, implant unit 110 may be located such that an electric field extending from the modulation electrodes 158a, 158b can modulate one or more of the medial terminal fibers 1054 of the medial branch 1052 of the hypoglossal nerve 1051. Thus, the medial branch 1053 or the medial terminal fibers 1054 may be modulated so as to cause a contraction of the genioglossus muscle 1060, which may be sufficient to either open or maintain a patient's airway. When implant unit 110 is located proximate to the medial terminal fibers 1054, the electric field may be configured so as to cause substantially no modulation of the lateral branch of the subject's hypoglossal nerve 1051. This may have the advantage of providing selective modulation targeting of the genioglossus muscle 1060.

As noted above, it may be difficult to modulate the medial terminal fibers 1054 of the hypoglossal nerve 1051 because of their location within the genioglossus muscle 1060. Implant unit 110 may be configured for location on a surface of the genioglossus muscle 1060. Electrodes 158a, 158b, of implant unit 110 may be configured to generate a parallel electric field 1090, sufficient to cause modulation of the medial terminal branches 1054 even when electrodes 158a, 158b are not in contact with the fibers of the nerve. That is, the anodes and the cathodes of the implant may be configured such that, when energized via a circuit associated with the implant 110 and electrodes 158a, 158b, the electric field 1090 extending between electrodes 158a, 158b may be in the form of a series

of substantially parallel arcs extending through and into the muscle tissue on which the implant is located. A pair of parallel line electrodes or two series of circular electrodes may be suitable configurations for producing the appropriate parallel electric field lines. Thus, when suitably implanted, the electrodes of implant unit 110 may modulate a nerve in a contactless fashion, through the generation of parallel electric field lines.

Furthermore, the efficacy of modulation may be increased by an electrode configuration suitable for generating parallel electric field lines that run partially or substantially parallel to nerve fibers to be modulated. In some embodiments, the current induced by parallel electric field lines may have a greater modulation effect on a nerve fiber if the electric field lines 1090 and the nerve fibers to be modulated are partially or substantially parallel. The inset illustration of FIG. 10 depicts electrodes 158a and 158b generating electric field lines 1090 (shown as dashed lines) substantially parallel to medial terminal fibers 1054.

In order to facilitate the modulation of the medial terminal fibers 1054, implant unit 110 may be designed or configured to ensure the appropriate location of electrodes when implanted. An exemplary implantation is depicted in FIG. 11.

For example, a flexible carrier 161 of the implant may be configured such that at least a portion of a flexible carrier 161 of the implant is located at a position between the genioglossus muscle 1060 and the geniohyoid muscle 1061. Either or both of the extensions 162a and 162b of elongate arm 161 may be configured adapt to a contour of the genioglossus muscle. Either or both of the extensions 162a and 162b of elongate arm 161 may be configured to extend away from the underside of the subject's chin along a contour of the genioglossus muscle 1060. Either or both of extension arms 162a, 162b may be configured to wrap around the genioglossus muscle when an antenna 152 is located between the genioglossus 1060 and geniohyoid muscle 1061. In such a configuration, antenna 152 may be located in a plane substantially parallel with a plane defined by the underside of a subject's chin, as shown in FIG. 11.

Flexible carrier 161 may be configured such that the at least one pair of spaced-apart electrodes can be located in a space between the subject's genioglossus muscle and an adjacent muscle. Flexible carrier 161 may be configured such that at least one pair of modulation electrodes 158a, 158b is configured for implantation adjacent to a horizontal compartment 1065 of the genioglossus muscle 1060. The horizontal compartment 1065 of the genioglossus 1060 is depicted in FIG. 11 and is the portion of the muscle in which the muscle fibers run in a substantially horizontal, rather than vertical, oblique, or transverse direction. At this location, the hypoglossal nerve fibers run between and in parallel to the genioglossus muscle fibers. In such a location, implant unit 110 may be configured such that the modulation electrodes generate an electric field substantially parallel to the direction of the muscle fibers, and thus, the medial terminal fibers 1054 of the hypoglossal nerve in the horizontal compartment.

FIG. 12 depicts an exemplary implant location for the treatment of head pain. As illustrated in FIG. 12, implant unit 510 includes an elongated carrier 561, secondary antenna 552, and modulation electrodes 558a, 558b. Implant unit 510 may also include any elements, such as circuitry, electrical components, materials, and any other features described previously with respect to implant unit 110. Implant 510 may be sized and configured such that it may be implanted with an end having secondary antenna 552 located beneath the skin in a substantially hairless region 507 of a subject. Elongated flexible carrier 561 may extend from this location, across a

hairline 502 of the subject, to a location beneath the skin in a substantially haired region 506 of the subject in a vicinity of an occipital or other nerve that may be modulated to control or reduce head pain, such as a greater occipital nerve 501 or a lesser occipital nerve 503. As used herein, the term "substantially haired region" includes areas of a subject's head located on a side of the hairline where the scalp hair is located on a typical subject. Thus, a bald person may still have a "substantially haired region" on the side of the hairline on which hair typically grows. As used herein, the term "substantially hairless region" includes areas of a subject's head located on a side of the hairline where the scalp hair is not located on a typical subject. A "substantially hairless region," as used herein, is not required to be completely hairless, as almost all skin surfaces have some hair growth. As illustrated in FIG. 12, a substantially haired region 506 is separated from a substantially hairless region 507 by a hairline 502.

As described above, implant 510 may extend across the hairline 502 to a location in the vicinity of an occipital nerve. In FIG. 12, implant 510 extends across the hairline 502 to a location in the vicinity of greater occipital nerve 501. Furthermore, implant 510 may be configured for implantation such that electrodes 558a and 558b are spaced from each other along a longitudinal direction of an occipital nerve, such as the greater occipital nerve 501 shown in FIG. 12. Such a configuration permits electrodes 558a and 558b to facilitate an electrical field that extends in the longitudinal direction of the occipital nerve. In turn, the facilitated electrical field may be utilized to modulate greater occipital nerve 501, for example to block pain signals, as previously described.

The size and configuration of implant 510 illustrated in FIG. 12 may permit secondary antenna 552 to be located beneath the skin in a location where an external unit 520 (not illustrated), may be easily affixed to the skin, due to the lack of hair. External unit 520 may include any elements, such as circuitry, processors, batteries, antennas, electrical components, materials, and any other features described previously with respect to external unit 120. External unit 520 may be configured to communicate with implant 510 via secondary antenna 552 to deliver power and control signals, as described above with respect to external unit 120. Elongated carrier 561 may be flexible, and may permit modulation electrodes 558a and 558b to be located beneath the skin in a location suitable for modulating an occipital or other nerve for controlling head pain.

FIG. 13 depicts an exemplary implant location for the treatment of hypertension. As illustrated in FIG. 13, implant unit 610 may be configured for location or implantation inside a blood vessel. Such a configuration may include, for example, a flexible tubular carrier. Implant unit 610 may also include any elements, such as circuitry, electrical components, materials, and any other features described previously with respect to implant unit 110. Implant unit 610 may include modulation electrodes 658a, 658b configured to facilitate an electric field including field lines extending in the longitudinal direction of the blood vessel. For example, as illustrated in FIG. 13, implant unit 610 may be implanted in a carotid artery 611. Implant unit 610 may be located within carotid artery 611 in a location in the vicinity of carotid baroreceptors 615, at a location near the branching of the internal carotid artery 613 and the external carotid artery 612. As described previously, carotid baroreceptors 615 aid in the regulation of the blood pressure of a subject. Thus, implant unit 610, located within carotid artery 611 in the vicinity of carotid baroreceptors 615 may facilitate an electric field configured to modulate carotid baroreceptors 615, and, thus, affect the blood pressure of a subject. Affecting the blood

pressure of a subject may include reducing, increasing, controlling, regulating, and influencing the blood pressure of a subject. The illustrated location is exemplary only, and implant unit **610** may be configured in alternate ways. For example, implant unit **610** may be configured for implanta- 5 tion in jugular vein **614** of the subject, in a location from which modulation of carotid baroreceptors **615** may be accomplished. Furthermore, implant unit **610** may be configured for implantation in a blood vessel, such as carotid artery **611** or jugular vein **614**, in a location suitable for modulation of glossopharyngeal nerve **617**. As described above, glos- 10 sopharyngeal nerve **617** innervates carotid baroreceptors **615**. Thus, glossopharyngeal nerve **617** may be directly modulated to affect blood pressure of a subject. Glossopharyngeal nerve **617** may also be modulated by an implant unit **610** located 15 sub-cutaneously, in a non-intravascular location.

FIG. **14** depicts another exemplary implant location for the treatment of hypertension. As illustrated in FIG. **14**, implant unit **710** may be configured for location or implantation inside a blood vessel. Such a configuration may include, for 20 example, a flexible tubular carrier. Implant unit **710** may also include any elements, such as circuitry, electrical components, materials, and any other features described previously with respect to implant unit **110**. Implant unit **710** may include modulation electrodes **758a**, **758b** configured to 25 facilitate an electric field including field lines extending in the longitudinal direction of the blood vessel. For example, as illustrated in FIG. **13**, implant unit **710** may be implanted in a renal artery **711**. Implant unit **710** may be located within renal artery **711** in a location in the vicinity of renal nerves **715** 30 surrounding renal artery **711** prior to its entry into kidney **712**. As described previously, renal nerves **715** aid in the regulation of the blood pressure in humans. Thus, implant unit **710**, located within renal artery **711** in the vicinity of renal nerves **715** may facilitate an electric field configured to modulate 35 renal nerves **715**, and, thus, affect the blood pressure of a subject. The illustrated location is exemplary only, and implant unit **710** may be configured in alternate ways suitable for the modulation of renal nerves **715**. Additional embodiments of the present disclosure may include Other embodi- 40 ments of the present disclosure will be apparent to those skilled in the art from consideration of the specification and practice of the present disclosure.

Additional embodiments of the present disclosure may include the following. A method of transmitting signals to an 45 implantable device may comprise determining one or more sub-modulation characteristics of a sub-modulation control signal so as not to cause a neuromuscular modulation inducing current across at least one pair of modulation electrodes in electrical communication with an implantable device when 50 the sub-modulation control signal is received by the implantable device, determining one or more modulation characteristics of a modulation control signal so as to cause a neuromuscular modulation inducing current across at least one pair of modulation electrodes in electrical communication with 55 the implantable device when the modulation control signal is received by the implantable device, generating the modulation control signal having the one or more modulation characteristics, generating the sub-modulation control signal having the one or more sub-modulation characteristics, transmitting, via the primary antenna, the modulation control signal to a secondary antenna associated with the implantable device, and transmitting, via the primary antenna, the sub-modulation control signal to a secondary antenna associated with the implantable device. The method may further com- 60 prise receiving via the primary antenna a condition signal from the implantable device. The condition signal may be

indicative of at least one of movement of the implantable device, a location of the implantable device, a maximum power limit of the implantable device, and a minimum effi- 5 cacy threshold of the device. The one or more modulation characteristics of the modulation control signal and the one or more sub-modulation characteristics of the sub-modulation control signal may include at least one of a voltage, current, frequency, pulse rate, pulse width, and duration. Transmis- 10 sion of at least one of modulation signal and the sub-modulation signal may be triggered by the condition signal indicative of a predetermined amount of movement of the implantable device. Movement of the implantable device may be indicative of an amount of tongue movement associated with sleep disordered breathing and the amount of tongue 15 movement may be indicative of a severity of the sleep disordered breathing. The condition signal may be indicative of a degree of coupling between the primary antenna and a secondary antenna associated with the implantable device, the degree of coupling relating to at least one of a level of radio- 20 frequency coupling, a level of inductive coupling, and a measure of harmonic resonance. The sub-modulation characteristics of the sub-modulation control signal may be determined so as to elicit the condition signal from the implantable device. The method may further comprise adjusting at least 25 one of the one or more modulation characteristics of the modulation control signal and the one or more sub-modulation characteristics of the sub-modulation control signal based on the condition signal.

While this disclosure provides examples of the neuro- 30 modulation devices employed for the treatment of certain conditions, usage of the disclosed neuromodulation devices is not limited to the disclosed examples. The disclosure of uses of embodiments of the invention for neuromodulation are to be considered exemplary only. In its broadest sense, the invention may be used in connection with the treatment of any 35 physiological condition through neuromodulation. Alternative embodiments will become apparent to those skilled in the art to which the present invention pertains without departing from its spirit and scope. Accordingly, the scope of the present invention is defined by the appended claims rather than the foregoing description.

What is claimed is:

1. A head pain management device, comprising:
  - a primary antenna configured to be located on a skin of a subject on a substantially hairless region of a head of the subject,
  - at least one processor connected for electrical communication with the primary antenna, the at least one processor configured to:
    - cause transmission of a primary signal from the primary antenna to an implantable device implanted beneath the skin of the subject, wherein the implantable device includes at least one pair of modulation electrodes located in a vicinity of an occipital nerve beneath the skin of the subject in a substantially haired region of the head,
    - wherein the processor is further configured to adjust one or more characteristics of the primary signal to generate a sub-modulation control signal adapted to cause a current at the at least one pair of modulation electrodes below a neuromuscular modulation threshold of the occipital nerve when received by the implantable device and to generate a modulation control signal adapted to cause a current at the at least one pair of modulation electrodes above the neuromuscular modulation threshold of the occipital nerve when received by the implantable device.

33

2. The device of claim 1, wherein the at least one processor is further configured to receive via the primary antenna, a condition signal from the implantable device in response to the sub-modulation control signal.

3. The device of claim 2, wherein the condition signal is indicative of at least one of a movement of the implantable device, a location of the implantable device, a maximum power limit of the implantable device, and a minimum efficacy threshold of the device.

4. The device of claim 2, wherein the condition signal is indicative of relative movement between the primary antenna and the implantable device.

5. The device of claim 2, wherein the one or more adjusted characteristics of the primary signal include at least one of a voltage, current, frequency, pulse rate, pulse width, and duration.

6. The device of claim 2, wherein transmission of the primary signal is triggered by the condition signal indicative of a predetermined amount of movement of the implantable device.

34

7. The device of claim 2, wherein the condition signal is indicative of a degree of coupling between the primary antenna and a secondary antenna associated with the implantable device, the degree of coupling relating to at least one of a level of radiofrequency coupling, or a level of inductive coupling.

8. The device of claim 1, wherein the primary antenna is flexible to an extent permitting it to generally conform to the contours of the skin of the subject.

9. The device of claim 1, the primary antenna and at least one processor are located on a patch configured to be removably affixed to the skin of the subject.

10. The device of claim 2, wherein the processor is further configured to adjust the one or more characteristics of the primary signal so as to elicit the condition signal from the implantable device.

11. The device of claim 2, wherein the processor is further configured to adjust the one or more characteristics of the primary signal based on the condition signal from the implantable device.

\* \* \* \* \*

专利名称(译)	头部疼痛管理装置具有天线		
公开(公告)号	<a href="#">US9421372</a>	公开(公告)日	2016-08-23
申请号	US14/522248	申请日	2014-10-23
[标]申请(专利权)人(译)	MASHIACH ADI MUELLER CARSTEN		
申请(专利权)人(译)	MASHIACH, ADI MUELLER, CARSTEN		
当前申请(专利权)人(译)	MASHIACH, ADI MUELLER, CARSTEN		
[标]发明人	MASHIACH ADI MUELLER CARSTEN		
发明人	MASHIACH, ADI MUELLER, CARSTEN		
IPC分类号	A61N1/08 A61N2/00 A61N2/02 A61F5/56 A61B5/113 A61B5/11 A61N1/375 A61N1/378 A61N1/372 A61N1/05 A61N1/36 A61B5/00		
CPC分类号	A61N1/0551 A61N1/36 A61N1/36003 A61N1/36075 A61N1/3606 A61N1/36135 A61N1/36146 A61N1/ /3601 A61N1/3611 A61N1/36117 A61N1/37211 A61N1/0504 A61N1/3605 A61N1/0548 A61N1/0526 A61N1/05 A61N1/3787 A61N1/37223 A61N2/006 A61N2/02 A61B5/4818 A61B5/682 A61N1/0514 A61N1/0553 A61N1/36057 A61N1/37229 A61N1/3756 A61B5/0031 A61B5/11 A61B5/113 A61F5/566 A61N1/37235 A61N1/3727 A61N1/0529 A61N1/36139 A61N1/36125 A61B5/4519 A61B5/6822 A61B2562/164 A61B5/6833 A61B5/6876 F04C2270/0421 A61N1/36128 A61N1/37252 A61N1/37264		
助理审查员(译)	CAREY, MICHAEL		
优先权	61/541651 2011-09-30 US 61/657424 2012-06-08 US		
其他公开文献	US20150202442A1		
外部链接	<a href="#">Espacenet</a> <a href="#">USPTO</a>		

摘要(译)

设备可以包括：主天线，被配置为位于对象外部；以及至少一个处理器，与主天线电连通。所述至少一个处理器可以被配置为使得主信号从主天线传输到可植入设备，其中可植入设备包括至少一对调制电极。所述至少一个处理器还可以被配置为调整所述主信号的一个或多个特性以生成子调制控制信号，所述子调制控制信号适于在由所述至少一对调制电极接收时不引起神经肌肉调制感应电流。可植入装置和产生调制控制信号，该调制控制信号适于在由可植入装置接收时在至少一对调制电极处引起神经肌肉调制感应电流。

