



US 20160106367A1

(19) **United States**
(12) **Patent Application Publication**
Jorov et al.

(10) **Pub. No.: US 2016/0106367 A1**
(43) **Pub. Date: Apr. 21, 2016**

(54) **WEARABLE HEALTH SENSOR**

(52) **U.S. Cl.**

(71) Applicant: **SERAPHIM SENSE LTD.**, Tel Aviv (IL)

CPC *A61B 5/6824* (2013.01); *A61B 5/6831* (2013.01); *A61B 5/74* (2013.01); *A61B 5/02438* (2013.01); *A61B 5/02416* (2013.01); *A61B 5/7278* (2013.01); *A61B 5/14551* (2013.01); *A61B 2562/0204* (2013.01); *A61B 2562/0219* (2013.01); *A61B 2560/0214* (2013.01)

(72) Inventors: **Eugene Jorov**, Tel Aviv (IL); **Amir Shlomovich**, Nordiya (IL)

(21) Appl. No.: **14/891,969**

(22) PCT Filed: **Jun. 11, 2014**

(57) **ABSTRACT**

(86) PCT No.: **PCT/IB2014/062133**

§ 371 (c)(1),
(2) Date: **Nov. 18, 2015**

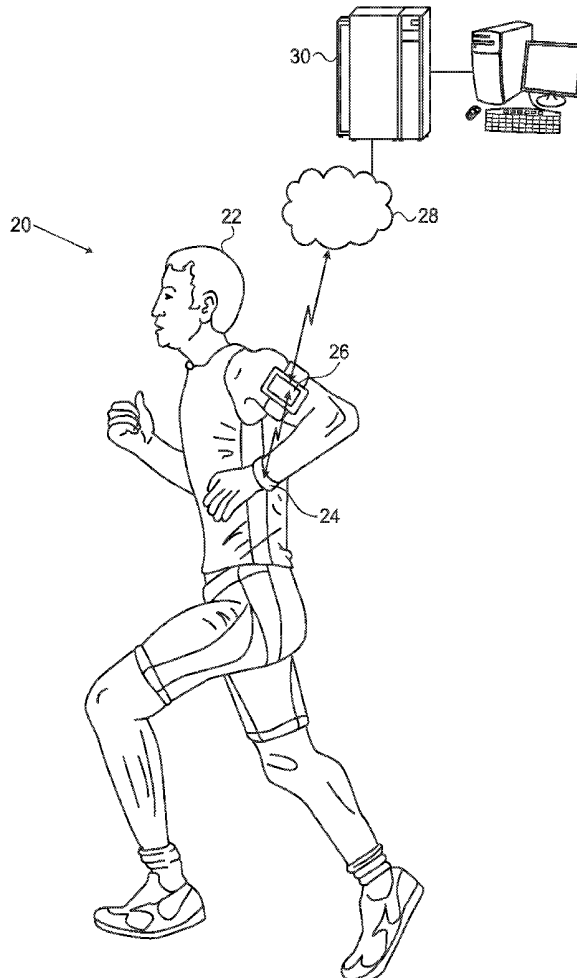
Related U.S. Application Data

(60) Provisional application No. 61/841,440, filed on Jul. 1, 2013.

Publication Classification

(51) **Int. Cl.**
A61B 5/00 (2006.01)
A61B 5/1455 (2006.01)
A61B 5/024 (2006.01)

A monitoring device (24) includes a band (32), configured to fit around an appendage of a human subject (22), and one or more sensors (46, 58, 60, 62) fixed to the band and configured to sense physiological parameters of the human subject. In one embodiment, at least one visible light source (82) is fixed to the band. A controller (64) is fixed to the band and is coupled to receive signals from the sensors and to actuate the at least one visible light source in response to a state of the device. At least one flexible light guide (40) is embedded in an outer surface of the band while extending around at least a part of a circumference of the band when fit around the appendage, and is coupled to receive light from the visible light source and to emit the light from the outer surface in a bright stripe along a length of the light guide.



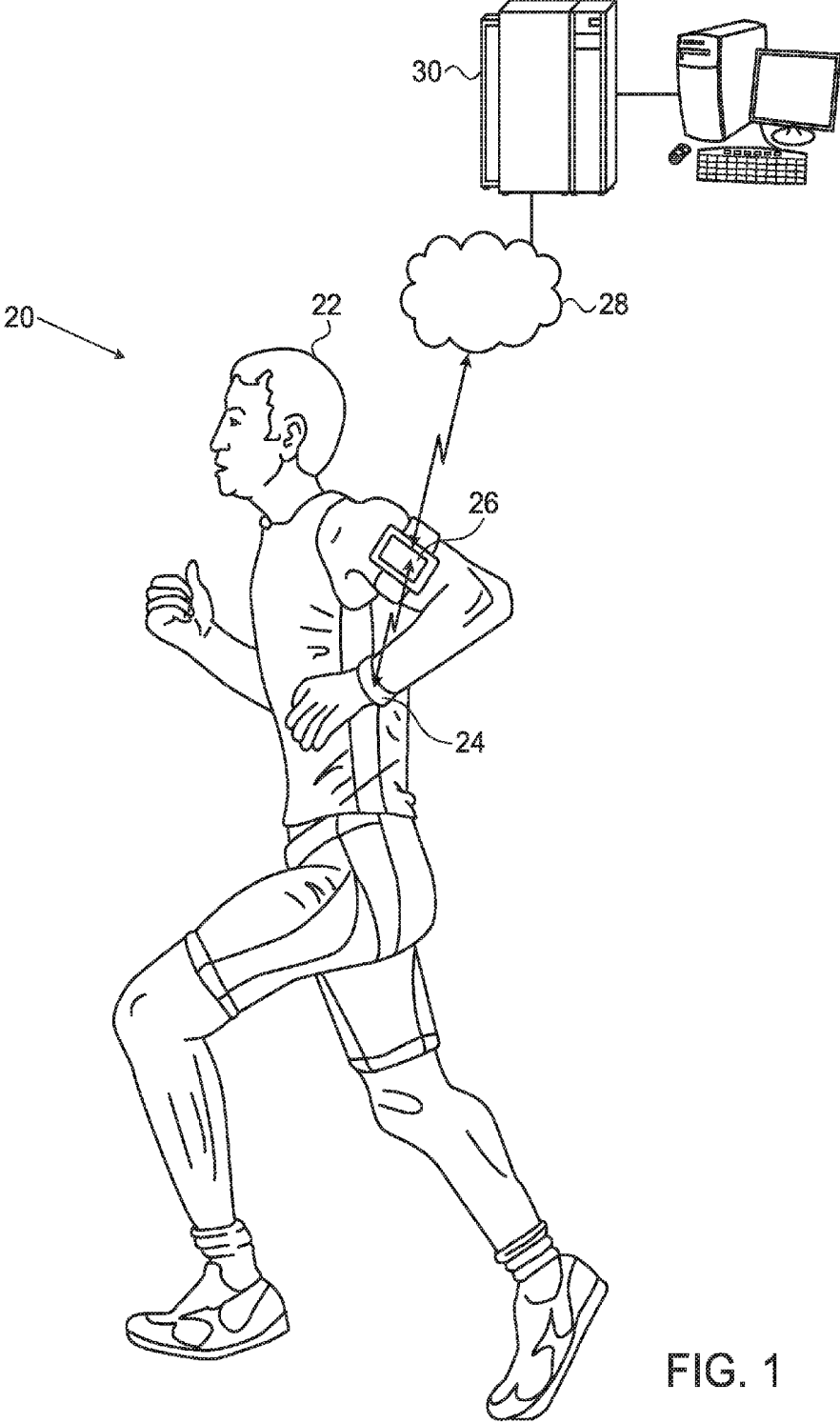


FIG. 1

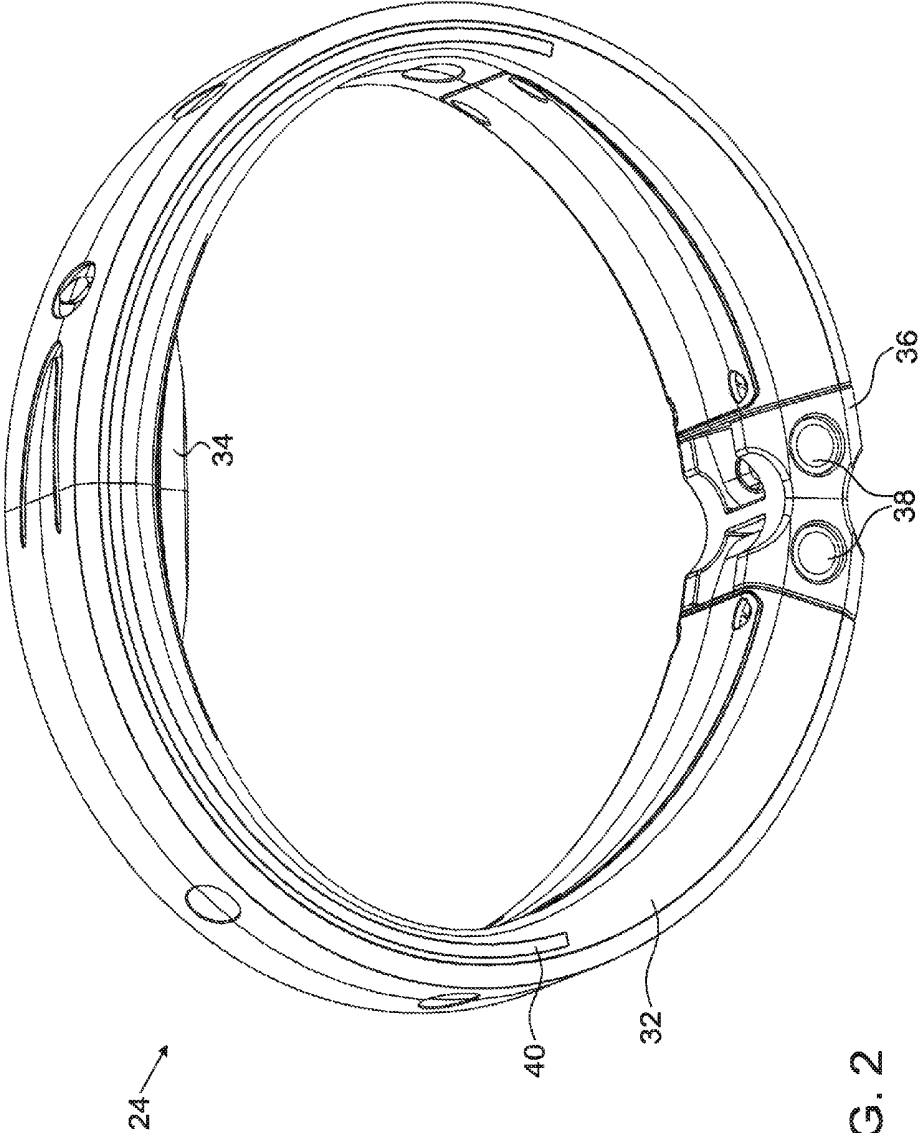


FIG. 2

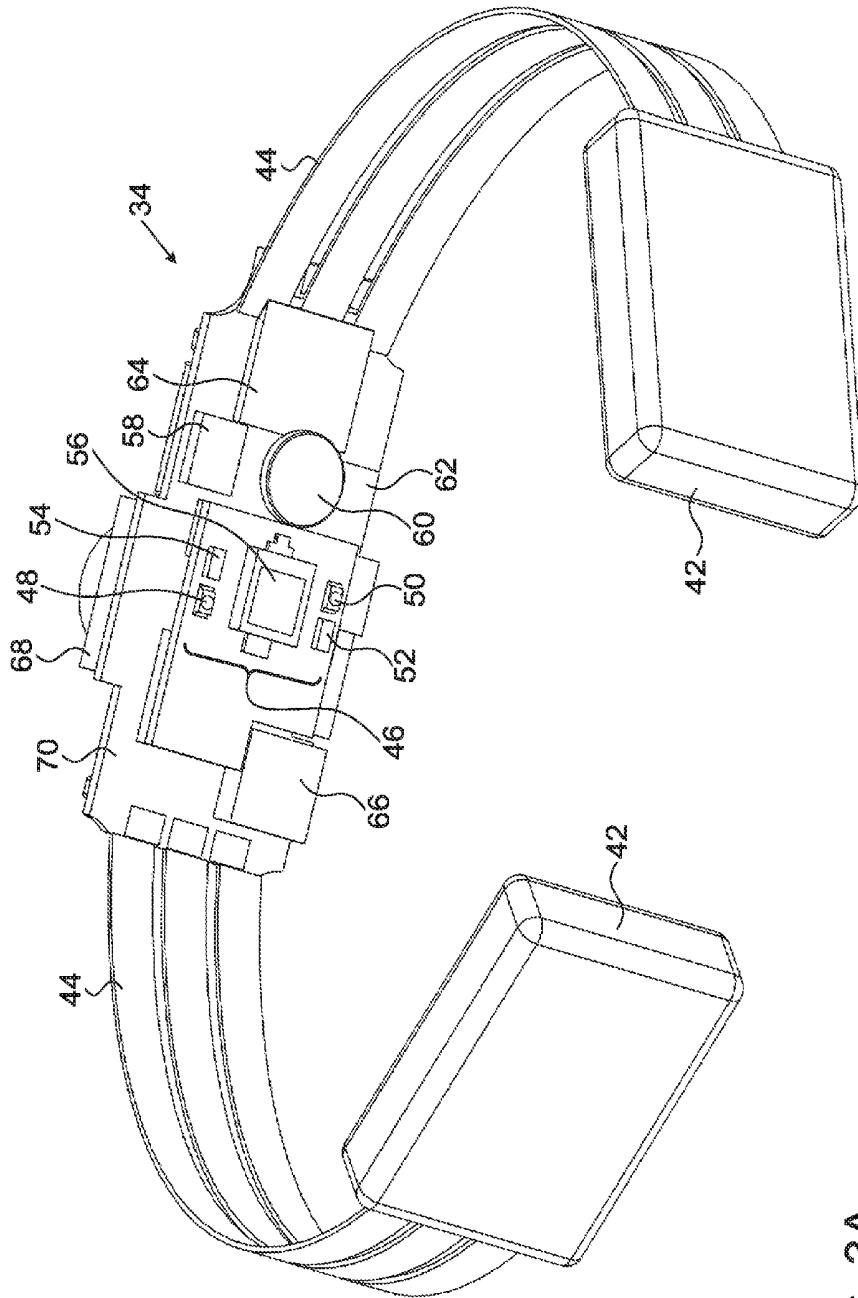


FIG. 3A

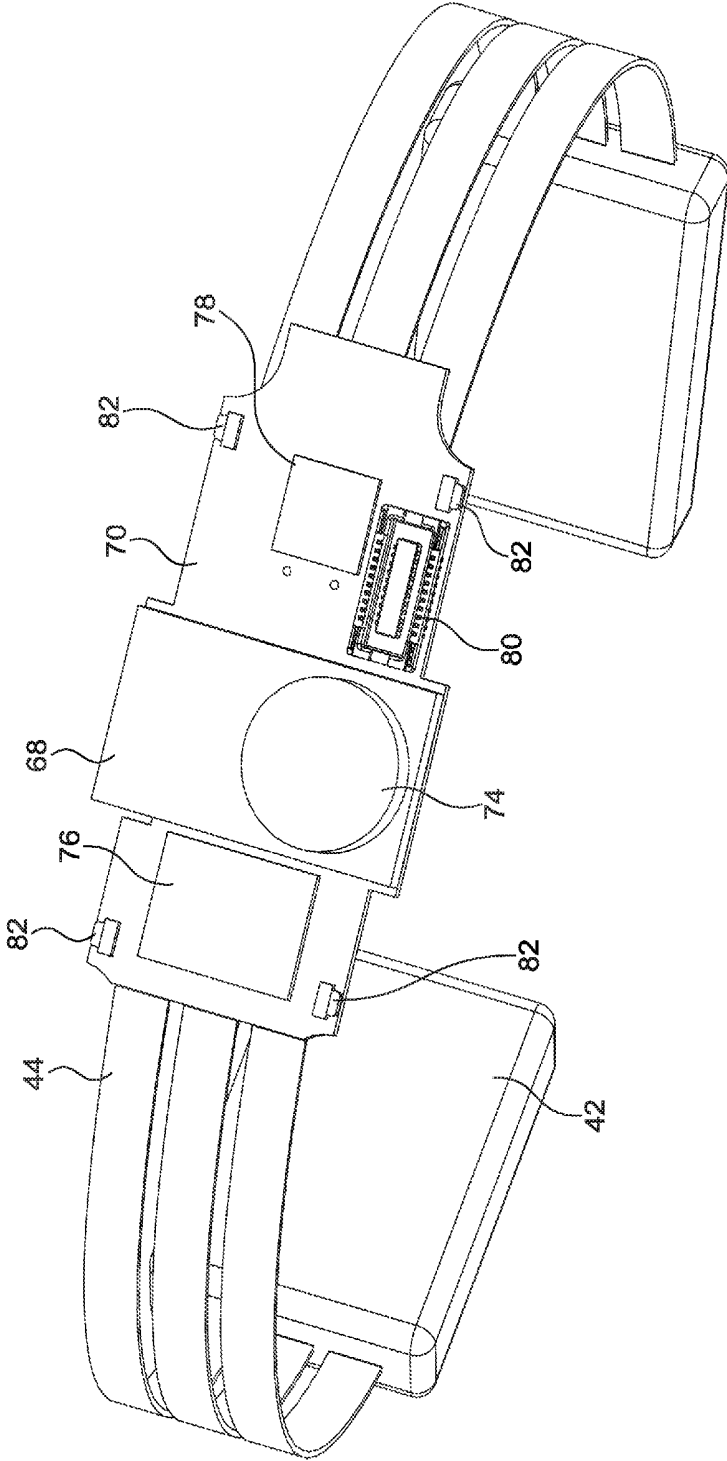
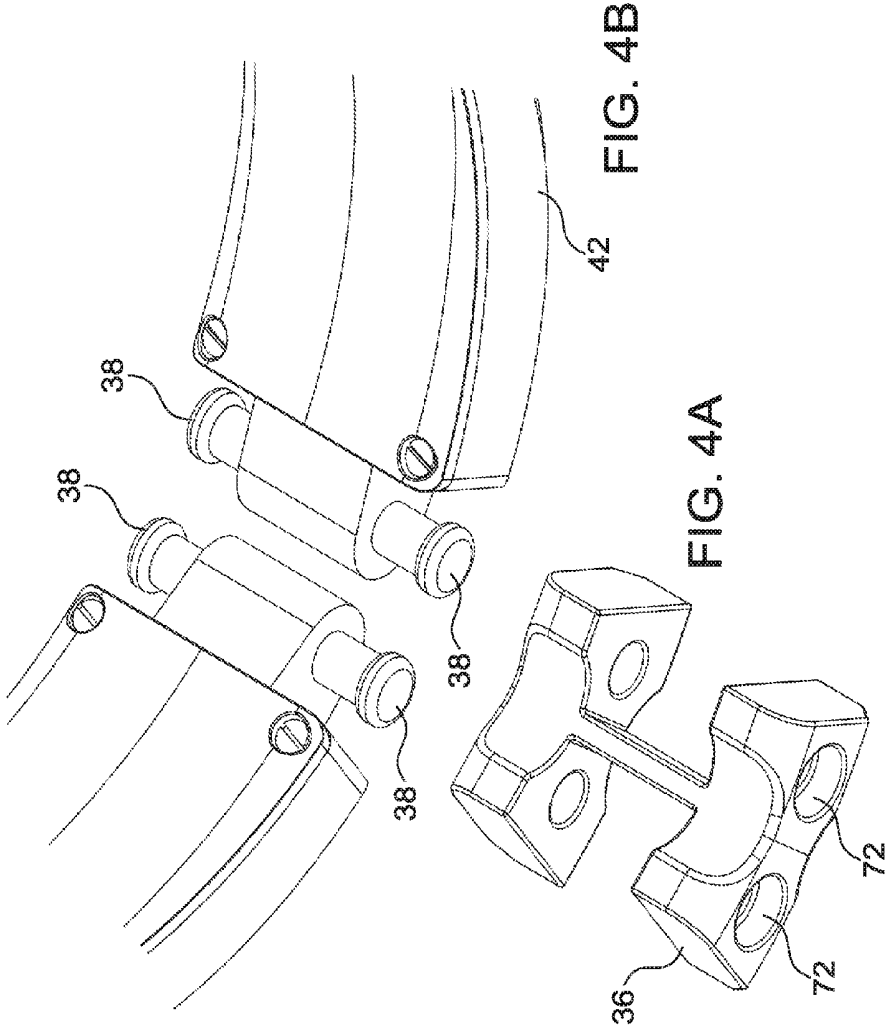


FIG. 3B



WEARABLE HEALTH SENSOR

CROSS-REFERENCE TO RELATED APPLICATION

[0001] This application claims the benefit of U.S. Provisional Patent Application 61/841,440, filed Jul. 1, 2013, which is incorporated herein by reference.

FIELD OF THE INVENTION

[0002] The present invention relates generally to health monitoring, and particularly to wristbands containing integrated sensors.

BACKGROUND

[0003] Wearable electronic monitors have become popular not only for medical use, but also for personal health monitoring, particularly during sports activities. For example, the MIO Alpha is a wristwatch-shaped device that measures heart rate. The device has a wireless Bluetooth® interface for connecting to applications on a computer or smartphone. As another example, the Basis wristwatch monitor includes an optical blood flow sensor, an accelerometer, a perspiration monitor, and a skin temperature sensor.

[0004] Various wristwatch-type monitors have been described in the patent literature. For example, U.S. Patent Application Publication 2012/0226112 describes real-time, noninvasive health and environmental monitors that include a plurality of compact sensors integrated within small, low-profile devices. Physiological and environmental data is collected and wirelessly transmitted into a wireless network, where the data is stored and/or processed. This information is then used to support a variety of methods, such as clinical trials, marketing studies, biofeedback, entertainment, and others.

[0005] As another example, U.S. Pat. Nos. 8,012,097 and 8,579,827 describe a monitoring device for monitoring the vital signs of a user. The device preferably includes a band worn on a user's wrist, arm or ankle, with an optical sensor, an accelerometer and processor. The optical sensor preferably comprises a photodetector and a plurality of light emitting diodes. A sensor signal from the optical sensor is processed with a filtered accelerometer output signal from the accelerometer to create a filtered vital sign signal used to generate a real-time vital sign for a user. The device may include a short-range wireless transmitter, which receives information from the processor and transmits this information in the form of a packet through an antenna. An external laptop computer or hand-held device features a similar antenna coupled to a matched wireless, short-range receiver that receives the packet.

[0006] Yet another example is provided by U.S. Patent Application Publication 2006/0122520, which describes a medical device that measures vital signs (e.g., blood pressure, pulse oximetry, and heart rate) from a patient using at least two optical modules. Each optical module typically features two light sources (red, infrared) and a photodetector. Both optical modules are configured to measure time-dependent signals describing the patient's flowing blood. A processor analyzes the time-dependent signals to determine the patient's vital signs.

[0007] The disclosures of the publications cited above are incorporated herein by reference for purposes of the information that they provide on implementation of vital sign mea-

surement and monitoring, but are not to serve as a basis for claim construction in the present patent application.

SUMMARY

[0008] Embodiments of the present invention that are described hereinbelow provide a wrist-mounted health monitor with enhanced features.

[0009] There is therefore provided, in accordance with an embodiment of the present invention, a monitoring device, which includes a band, configured to fit around an appendage of a human subject, and one or more sensors fixed to the band and configured to sense physiological parameters of the human subject. At least one visible light source is fixed to the band. A controller, which is fixed to the band, is coupled to receive signals from the one or more sensors, and is configured to actuate the at least one visible light source in response to a state of the device. At least one flexible light guide, embedded in an outer surface of the band while extending around at least a part of a circumference of the band when fit around the appendage, is coupled to receive light from the visible light source and to emit the light from the outer surface in a bright stripe along a length of the light guide.

[0010] In a disclosed embodiment, the at least one flexible light guide includes at least first and second light guides, which are respectively embedded in opposing first and second edges of the band, and the at least one visible light source is embedded inside the band.

[0011] In one embodiment, the controller is configured to establish the state of the device in response to the signals from at least one of the sensors and to actuate the at least one visible light source in response to the established state. The controller may be configured to actuate the at least one visible light source in response to a pulse rate of the human subject.

[0012] There is also provided, in accordance with an embodiment of the present invention, a monitoring device, which includes a band, configured to fit around an arm of a human subject, and a sensing module, which is embedded within the band so as to contact a skin surface of the human subject wearing the device. The sensing module includes a light detector; first and second light sources, configured to emit light of a first wavelength, at respective first and second locations alongside the light detector; and third and fourth light sources, configured to emit light of a second wavelength, different from the first wavelength, at respective third and fourth locations alongside the light detector. A controller, which is fixed to the band, is coupled to actuate the first, second, third and fourth light sources in alternation, to receive signals from the light detector in response to the emitted light, and to compare the signals in order to extract vital signs of the subject.

[0013] In some embodiments, the vital signs extracted by the controller include a pulse rate. The sensing module may include an acoustic sensor and an accelerometer, wherein the controller is configured to receive and apply respective outputs of the acoustic sensor and the accelerometer together with the signals from the light detector in extracting the pulse rate.

[0014] Additionally or alternatively, the vital signs extracted by the controller may include a blood oxygen saturation level. In one embodiment, the first and second light sources emit green light, and the third and fourth light sources emit blue light.

[0015] Typically, the first and third light sources are disposed on a first side of the light detector, and the second and

fourth light sources are disposed on a second side of the light detector, opposite the first side.

[0016] There is additionally provided, in accordance with an embodiment of the present invention, a monitoring device, which includes a band, including a flexible dielectric material, which is configured to fit around an appendage of a human subject. A sensing circuit is embedded in a first area the band and configured to sense physiological parameters of the human subject. At least one battery is embedded in at least one second area of the band. At least one resilient, conductive strip, which is pre-formed in a curved shape to fit around the appendage, is embedded in the band, and is connected to the sensing circuit and the at least one battery so as to provide power from the at least one battery to the sensing circuit.

[0017] In a disclosed embodiment, the at least one battery includes first and second batteries, disposed within the band on opposing sides of the sensing circuit, and the at least one resilient, conductive strip includes first and second strips, which respectively connect the first and second batteries to the sensing circuit. Typically, each of the first and second strips extends around more than 90° along a circumference of the band.

[0018] In some embodiments, the device includes a clasp attached to the band for closing the band around the appendage, wherein the clasp includes a conductive pin, which is electrically connected to the at least one battery and is connectable to a power source external to the device in order to charge the at least one battery.

[0019] There is further provided, in accordance with an embodiment of the present invention, a monitoring device, which includes a band, configured to fit around an appendage of a human subject, and a sensing circuit fixed to the band and configured to sense physiological parameters of the human subject. At least one battery is embedded in the band and coupled to provide electrical power to the sensing circuit. A clasp is attached to the band for closing the band around the appendage, and includes at least one conductive pin, which is electrically connected to the at least one battery and is connectable to a power source external to the device in order to charge the at least one battery.

[0020] In a disclosed embodiment, the at least one battery includes first and second batteries, disposed respectively on opposing sides of the clasp, and the clasp includes first and second pairs of conductive pins, which are respectively connected to the first and second batteries. The clasp may include an elastic polymer piece having openings formed therein to fit over and secure both pairs of the conductive pins.

[0021] There is moreover provided, in accordance with an embodiment of the present invention, a monitoring device, which includes a band, configured to fit around an appendage of a human subject and having opposing, first and second ends, and a sensing circuit fixed to the band and configured to sense physiological parameters of the human subject. A clasp, which is attached to the band for closing the band around the appendage, includes first and second pairs of pins, which protrude in a transverse direction from the first and second ends of the band, respectively, and an elastic polymer piece having transverse openings formed therein to fit over and secure both pairs of the pins, thereby closing the band circumferentially around the appendage.

[0022] In a disclosed embodiment, the device includes set of polymer pieces having different, respective lengths in a direction circumferential to the band for fitting appendages of

different sizes, wherein the elastic polymer piece that closes the band is selected from the set.

[0023] There is furthermore provided, in accordance with an embodiment of the present invention, a method for monitoring, which includes providing a monitoring device, which includes a band, configured to fit around an appendage of a human subject and having opposing, first and second ends, with end pieces protruding from the first and second ends of the band, respectively, and which includes a sensing circuit fixed to the band and configured to sense physiological parameters of the human subject. A set of polymer pieces is provided, having openings formed therein to fit over and secure the end pieces of the band and having different, respective lengths in a direction circumferential to the band. One of the polymer pieces is chosen, having a respective length appropriate to a size of the appendage of the human subject. The chosen one of the polymer pieces is fitted over the end pieces in order to close the band.

[0024] In a disclosed embodiment, the end pieces include conductive terminals, which are electrically connected to a battery in the monitoring device, and the method includes coupling the end pieces to a power source in order to charge the battery.

[0025] The present invention will be more fully understood from the following detailed description of the embodiments thereof, taken together with the drawings in which:

BRIEF DESCRIPTION OF THE DRAWINGS

[0026] FIG. 1 is a schematic, pictorial illustration of a health monitoring system, in accordance with an embodiment of the present invention;

[0027] FIG. 2 is a schematic, pictorial illustration of a health monitoring device, in accordance with an embodiment of the present invention;

[0028] FIGS. 3A and 3B are schematic internal views of a health monitoring device, in accordance with an embodiment of the present invention;

[0029] FIG. 4A is a schematic, pictorial illustration of a clasp for health monitoring device, in accordance with an embodiment of the present invention; and

[0030] FIG. 4B is a schematic detail view of a fastening and charging mechanism in a health monitoring device, in accordance with an embodiment of the present invention.

DETAILED DESCRIPTION OF EMBODIMENTS

[0031] FIG. 1 is a schematic, pictorial illustration of a health monitoring system 20, in accordance with an embodiment of the present invention. In the pictured embodiment, a human subject 22 wears a monitoring device 24 in the form of a band around his wrist. Alternatively, the band may be configured to fit around another part of the arm or any other suitable appendage of the subject's body. As described in greater detail hereinbelow, device 24 comprises one or more sensors fixed to the band, which sense physiological parameters of subject 22, such as heart rate, blood oxygen saturation, temperature, and body motion, for example. Subject 22 can wear and use device 24 intermittently, such as during sports activities, or continuously—even twenty-four hours a day, and seven days a week.

[0032] Monitoring device 24 comprises a wireless communication interface, such as a Bluetooth transceiver, which communicates over the air with a computing device 26 in order to transmit physiological data and receive instructions.

In the pictured example, computing device **26** is a mobile device, such as a smartphone or personal digital assistant. Alternatively, in other applications of monitoring device **24**, computing device **26** may comprise a portable or desktop computer or any other such device with suitable computing and communication capabilities.

[0033] Computing device **26** typically runs a program that processes the data transmitted by monitoring device **24** in order to compute, store and display monitoring results. These results may, for example, provide feedback to subject **22** on his performance during or after sports training, or they may be made available to a medical or physical training professional in order to assess the condition of the subject. For this latter purpose particularly (but not only for this purpose), computing device **26** may communicate over a network **28** with a server **30** or other computer, which may store, analyze, extract statistics from, or perform any other desired processing of the data provided by device **24**.

[0034] In some embodiments, monitoring device **24** may have an open application program interface (API), which enables programs running on computing device **26** to control the functions of monitoring device **24** and select the data to receive and process from the monitoring device. This API enables developers to write application programs that use the data provided by monitoring device **24** in different ways, for purposes such as sports training, sleep monitoring, and medical diagnosis and alerts. For this latter purpose particularly, the API may provide access not only to processed data (such as heart rate, blood oxygen level, and motion) that is provided by the processor in monitoring device **24**, but also to the raw output signals of the sensors. The inventors envision that on the basis of the open API, third-party developers will be able to independently develop a range of different applications for computing device **26** that make use of the capabilities of monitoring device **24** and will offer these applications for download to suitable computing devices (such as smart phones, computers, and fitness gear) of users of the monitoring device.

[0035] The figures that follow show details of monitoring device **24**, and specifically illustrate certain novel features of the device. For concreteness and clarity of illustration, the figures show all of these features as elements of the same device (and indeed, this combination of features makes the device particularly useful, comfortable and robust). In alternative embodiments, however, which are not shown in the figures, these features may be implemented individually, independently of one another, or in various sub-combinations. All such implementations are considered to be within the scope of the present invention.

[0036] FIG. 2 is a schematic, pictorial illustration of monitoring device **24**, in accordance with an embodiment of the present invention. Device **24** comprises a band **32**, which fits around the wrist (or another appendage) of subject **22**. Band **32** may comprise any suitable dielectric material, such as a flexible, molded polymer. A capsule **34** fixed inside band **32** contains sensors, which sense physiological parameters of the subject, as described particularly with reference to FIG. 3A. The location of capsule **34** is advantageous in making firm contact with the subject's skin while the subject wears device **24**. Alternatively or additionally, however, sensors may be embedded in or otherwise fixed to band **32** at other locations. A clasp **36** fits over pins **38** to fasten band **32** firmly

around the subject's wrist. Features of these latter elements of device **24** are described further hereinbelow with reference to FIGS. 4A and 4B.

[0037] At least one flexible light guide **40** is embedded in the outer surface of band **32** and extends at least part way around the circumference of the band when fit around the wrist. One or more light sources inside band **32** or capsule **34** (as shown in FIG. 3B) emit visible light, which is coupled into light guide **40** from within band **32** and then emitted from the outer surface of the band in a bright stripe along the length of the light guide. For this purpose, the light guide may comprise any suitable transparent material, typically a plastic material, such as an acrylic or polycarbonate polymer. Although light guide **40** appears in FIG. 2 as a single unit, in practice device **24** may contain two or more light guides, which may be embedded in one or both sides of band **32** (i.e., on the side facing into the page of FIG. 2, in addition to the side that is visible in the figure).

[0038] A controller (shown in FIG. 3A) actuates the light sources in device **24** to feed light to light guide **40** in response to the state of the device. The "state" of the device in this context should be understood broadly to refer to any sort of state associated with the operation of device **24**, including not only the operational status of the circuits in device **24**, but also to state parameters derived from physiological measurements made by the device or from communications with computing device **26**. In other words, the controller may establish the state in response to signals from one or more of the sensors in capsule **34**, and then actuate the visible light source in response to the established state.

[0039] For example, the controller may actuate one or more of the visible light sources in response to the measured pulse rate of subject **22**. The light sources may then cause light guide **40** to flash in synchronization with the pulse rate, and/or possibly to change the intensity or color of the emitted light based on the pulse rate and/or other parameters. Other uses of the light guides in device **24** in communicating information to subject **22** will be apparent to those skilled in the art (and may be controlled by applications running on computing device **26**, using the above-mentioned API), and are considered to be within the scope of the present invention. The use of light guides **40** in communicating with subject **22** is advantageous, by comparison with conventional sorts of indicator lamps, in the high visibility and durability that the light guides provide.

[0040] FIGS. 3A and 3B are schematic internal views of device **24**, in accordance with an embodiment of the present invention. These figures show the internal electronic and structural components of device **24**, without the encapsulation that is normally provided by band **32**. While capsule **34** is located at the center of the band, batteries **42** are embedded in other areas of the band, typically alongside clasp **36**. Although device **24** may be powered by only a single battery, the dual-battery configuration shown in the figures, with the batteries disposed within the band on opposing sides of the sensing circuits in capsule **34**, is advantageous in providing both greater power and a better-balanced mass distribution around band **32**.

[0041] Batteries **42** are connected to the circuits in capsule **34** by one or more resilient, conductive strips **44**, which are pre-formed in a curved shape to fit around the wrist of the subject and are embedded in band **32**. Strips **44** may comprise copper, for example, or any other suitable metal with sufficient flexibility to allow band **32** to fit different wrist shapes. These strips perform the dual functions of providing power

from batteries 42 to the sensing circuits and providing mechanical rigidity to band 32, so that the band will fit stably and comfortably around the subject's wrist while maintaining good contact between the sensors and the subject's skin. For this purpose, each of strips 44 typically extends around 90° or more of a circumference of band 32.

[0042] The pre-formed semi-rigid nature of conductive strips 44 enables precise positioning of the strips inside an injection mold during manufacturing (as opposed to a flexible flat cable, for example). The ability to control exact placement of the electronics and interconnecting parts inside the injection mold, with the support of strips 44, is crucial to the manufacturing process. Uncontrolled placement might lead to internal device elements breaking the outer surface of the wristband and thus result in loss of yield.

[0043] Among the sensors within capsule 34, as illustrated in FIG. 3A, device 24 comprises an optical sensing module 46, which can be used to measure pulse rate and blood oxygen saturation. Module 46 is embedded within band 32 in capsule 34 so as to contact the skin surface of the human subject wearing the device. The module comprises a light detector 56, such as a silicon photodiode, and light sources 48, 50, 52 and 54, which typically comprise light-emitting diodes (LEDs). Light sources 48 and 50 emit light of one selected wavelength, while light sources 52 and 54 emit light of a different wavelength from that of light sources 48 and 50.

[0044] For example, to enable measurement of blood oxygen saturation using methods of pulse oximetry that are known in the art, light sources 48 and 50 may emit red light, while light sources 52 and 54 emit infrared light. A controller 64 actuates light sources 48, 50, 52 and 54 in alternation, receive signals from light detector 56 in response to the emitted light, and compares the signals in order to extract vital signs of the subject, such as the pulse rate and oxygen saturation level. Controller 64 typically comprises a microprocessor with suitable interfaces and software code. The use of redundant pairs of light sources 48/50 and 52/54 in the sort of crisscross placement that is shown in FIG. 3A is useful in enhancing the reliability of measurements even during active motion of the subject and in the presence of sweat and dirt that may come between capsule 34 and the subject's skin.

[0045] Other arrangements of the light sources and choices of wavelengths are also possible. For example, in an alternative embodiment, light sources 48 and 50 may emit green light, while light sources 52 and 54 emit blue light. The inventors have found that this unconventional choice of illumination wavelengths can provide a more accurate reading of blood oxygen saturation under some circumstances. As another alternative, other pairings of the light sources may be used; for example, light sources 48 and 54 may emit one wavelength, while light sources 50 and 52 emit the other.

[0046] For accurate measurement of cardiac function, capsule 34 may also contain an acoustic sensor, such as a microphone 58, which senses acoustical signals due to the pulsatile blood flow in the wrist of subject 22. Processor 64 may combine the acoustical information provided by microphone 58 with the optical measurements made by light sensor 56 in order to provide a more accurate and robust measurement of the heart rate. Details of this technique are described in the above-mentioned provisional patent application. An accelerometer 62, which senses motion of device 24 and hence of the subject's arm or other appendage, can be used to further enhance the robustness of measurement of the pulse rate by enabling motion artifacts to be detected and filtered out.

[0047] In addition, capsule 34 may contain a temperature sensor 60, which is likewise mounted in contact with the subject's skin. The various sensors, including sensing module 46, microphone 58, accelerometer 62 and temperature sensor 60, are typically mounted on a printed circuit board 70, which is embedded in band 32. Other sensing and control components may likewise be mounted on board 70 and operate under the control of controller 64, including, for example:

[0048] A speaker 66, which outputs audible tones and other audio signals.

[0049] A Bluetooth transceiver 68 (typically, though not necessarily, Bluetooth Low Energy) or other short-range radio link.

[0050] A motor 74, which causes capsule 34 to vibrate in order to provide haptic signals to subject 22.

[0051] A memory 76 for data and program code.

[0052] A switch 78, which may be operated by subject 22 to turn device 24 on and off (typically by pressing externally on band 32 in the location of the switch), and possibly to invoke other user-controlled functions, such as hard reset when needed (by pressing and holding the switch for an extended period).

[0053] A radio-frequency identification (RFID) tag.

[0054] Visible light sources 82, such as LEDs. These light sources couple light into light guides 40 when actuated by controller 64 and thus carry out the signaling functions that were described above.

[0055] FIGS. 4A and 4B are schematic, pictorial illustrations showing details of a fastening and charging mechanism in monitoring device 24, in accordance with an embodiment of the present invention. FIG. 4A shows clasp 36, while FIG. 4B shows pins 38 that are used to secure the clasp in order to close band 32 around the wrist. End pieces, in the form of two pairs of pins 38, are connected to the two opposing ends of band 32. Pins 38 in this embodiment protrude in a transverse direction from the ends of the band (i.e., in a direction perpendicular to the circumference of the band). Clasp 36 is made from a piece of elastic polymer, having transverse openings 72 that fit over and secure both pairs of pins 38, thereby closing band 32 circumferentially around the wrist.

[0056] To fit device 24 to different subjects, of different wrist sizes, band 32 may be provided with a set of clasps 36 having different, respective lengths in the circumferential direction. The subject, or else a sales or service person supplying the device, selects one of the clasps from the set that best suits the size of the subject's wrist. The chosen clasp is then fitted over the end pieces in order to close the band. In contrast to watchbands and other sorts of wristbands that are known in the art, no special tools or skills are needed in order to make the length adjustment, and the absence of a buckle (which could otherwise be used for length adjustment) enhances the comfort and reliability of device 24 for the subject wearing it. Although FIGS. 4A and 4B show a particular design of the end pieces and elastic polymer clasp, other designs may similarly be used in this manner to fit different subjects, and are considered to be within the scope of the present invention.

[0057] The design of the clasp end pieces that is shown in FIG. 4B has the additional advantage that pins 38 can be made of a conductive material, such as a suitable metal, and serve as electrical terminals connected to batteries 42. Specifically, when device 24 is removed from the wrist, and clasp 36 is removed from pins 38, the pins are able to plug into a dedicated external power source (not shown in the figures) in

order to charge the batteries 42. In the pictured embodiments, both pairs of pins 38 can be used to charge the respective batteries 42 at each end of band 32. Alternatively, only one pair of pins may be electrically connected, either at the same end or opposite ends of the band. Further alternatively or additionally, each of the pictured pins may actually comprise a pair of terminals (positive and negative), which are separated from one another by built-in insulation.

[0058] Light guide 40 may be used to indicate various charging phases to the user. For example, fast blinking or pulsating light may be used to indicate low battery level. The frequency of the blinking or pulsating light may be decreased as the charging process nears completion. To indicate the battery is full, the light may be turned on constantly.

[0059] It will be appreciated that the embodiments described above are cited by way of example, and that the present invention is not limited to what has been particularly shown and described hereinabove. Rather, the scope of the present invention includes both combinations and subcombinations of the various features described hereinabove, as well as variations and modifications thereof which would occur to persons skilled in the art upon reading the foregoing description and which are not disclosed in the prior art.

1. A monitoring device, comprising:

a band, configured to fit around an appendage of a human subject;

one or more sensors fixed to the band and configured to sense physiological parameters of the human subject;

at least one visible light source fixed to the band;

a controller, which is fixed to the band and is coupled to receive signals from the one or more sensors, and which is configured to actuate the at least one visible light source in response to a state of the device; and

at least one flexible light guide embedded in an outer surface of the band while extending around at least a part of a circumference of the band when fit around the appendage, and coupled to receive light from the visible light source and to emit the light from the outer surface in a bright stripe along a length of the light guide.

2. The device according to claim 1, wherein the at least one flexible light guide comprises at least first and second light guides, which are respectively embedded in opposing first and second edges of the band.

3. The device according to claim 1, wherein the at least one visible light source is embedded inside the band.

4. The device according to claim 1, wherein the controller is configured to establish the state of the device in response to the signals from at least one of the sensors and to actuate the at least one visible light source in response to the established state.

5. The device according to claim 4, wherein the controller is configured to actuate the at least one visible light source in response to a pulse rate of the human subject.

6. A monitoring device, comprising:

a band, configured to fit around an arm of a human subject;

a sensing module, which is embedded within the band so as to contact a skin surface of the human subject wearing the device, and which comprises:

a light detector;

first and second light sources, configured to emit light of a first wavelength, at respective first and second locations alongside the light detector; and

third and fourth light sources, configured to emit light of a second wavelength, different from the first wave-

length, at respective third and fourth locations alongside the light detector; and

a controller, which is fixed to the band and is coupled to actuate the first, second, third and fourth light sources in alternation, to receive signals from the light detector in response to the emitted light, and to compare the signals in order to extract vital signs of the subject.

7. The device according to claim 6, wherein the vital signs extracted by the controller comprise a pulse rate.

8. The device according to claim 7, wherein the sensing module comprises an acoustic sensor and an accelerometer, and wherein the controller is configured to receive and apply respective outputs of the acoustic sensor and the accelerometer together with the signals from the light detector in extracting the pulse rate.

9. The device according to claim 6, wherein the vital signs extracted by the controller comprise a blood oxygen saturation level.

10. The device according to claim 9, wherein the first and second light sources emit green light, and the third and fourth light sources emit blue light.

11. The device according to claim 6, wherein the first and third light sources are disposed on a first side of the light detector, and the second and fourth light sources are disposed on a second side of the light detector, opposite the first side.

12. A monitoring device, comprising:

a band, comprising a flexible dielectric material, which is configured to fit around an appendage of a human subject;

a sensing circuit embedded in a first area the band and configured to sense physiological parameters of the human subject;

at least one battery embedded in at least one second area of the band; and

at least one resilient, conductive strip, which is pre-formed in a curved shape to fit around the appendage and is embedded in the band, and which is connected to the sensing circuit and the at least one battery so as to provide power from the at least one battery to the sensing circuit.

13. The device according to claim 12, wherein the at least one battery comprises first and second batteries, disposed within the band on opposing sides of the sensing circuit, and wherein the at least one resilient, conductive strip comprises first and second strips, which respectively connect the first and second batteries to the sensing circuit.

14. The device according to claim 13, wherein each of the first and second strips extends around more than 90° along a circumference of the band.

15. The device according to claim 13, and comprising a clasp attached to the band for closing the band around the appendage, wherein the clasp comprises a conductive pin, which is electrically connected to the at least one battery and is connectable to a power source external to the device in order to charge the at least one battery.

16. A monitoring device, comprising:

a band, configured to fit around an appendage of a human subject;

a sensing circuit fixed to the band and configured to sense physiological parameters of the human subject;

at least one battery embedded in the band and coupled to provide electrical power to the sensing circuit; and

a clasp, which is attached to the band for closing the band around the appendage, and which comprises at least one

conductive pin, which is electrically connected to the at least one battery and is connectable to a power source external to the device in order to charge the at least one battery.

17. The device according to claim **16**, wherein the at least one battery comprises first and second batteries, disposed respectively on opposing sides of the clasp, and wherein the clasp comprises first and second pairs of conductive pins, which are respectively connected to the first and second batteries.

18. The device according to claim **17**, wherein the clasp comprises an elastic polymer piece having openings formed therein to fit over and secure both pairs of the conductive pins.

19. A monitoring device, comprising:

a band, configured to fit around an appendage of a human subject and having opposing, first and second ends;

a sensing circuit fixed to the band and configured to sense physiological parameters of the human subject; and

a clasp, which is attached to the band for closing the band around the appendage, and which comprises:

first and second pairs of pins, which protrude in a transverse direction from the first and second ends of the band, respectively; and

an elastic polymer piece having transverse openings formed therein to fit over and secure both pairs of the pins, thereby closing the band circumferentially around the appendage.

20. The device according to claim **19**, and comprising a set of polymer pieces having different, respective lengths in a direction circumferential to the band for fitting appendages of different sizes, wherein the elastic polymer piece that closes the band is selected from the set.

21. A method for monitoring, comprising:

providing a monitoring device, which comprises a band, configured to fit around an appendage of a human subject and having opposing, first and second ends, with end pieces protruding from the first and second ends of the band, respectively, and which comprises a sensing circuit fixed to the band and configured to sense physiological parameters of the human subject;

providing a set of polymer pieces having openings formed therein to fit over and secure the end pieces of the band and having different, respective lengths in a direction circumferential to the band;

choosing one of the polymer pieces having a respective length appropriate to a size of the appendage of the human subject; and

fitting the chosen one of the polymer pieces over the end pieces in order to close the band.

22. The method according to claim **21**, wherein the end pieces comprise conductive terminals, which are electrically connected to a battery in the monitoring device, and wherein the method comprises coupling the end pieces to a power source in order to charge the battery.

* * * * *

专利名称(译)	可穿戴健康传感器		
公开(公告)号	US20160106367A1	公开(公告)日	2016-04-21
申请号	US14/891969	申请日	2014-06-11
[标]申请(专利权)人(译)	塞拉芬SENSE		
申请(专利权)人(译)	塞拉芬SENSE LTD.		
当前申请(专利权)人(译)	塞拉芬SENSE LTD.		
[标]发明人	JOROV EUGENE SHLOMOVICH AMIR		
发明人	JOROV, EUGENE SHLOMOVICH, AMIR		
IPC分类号	A61B5/00 A61B5/1455 A61B5/024		
CPC分类号	A61B5/6831 A61B5/74 A61B5/02438 A61B5/02416 A61B5/6824 A61B5/14551 A61B2562/0204 A61B2562/0219 A61B2560/0214 A61B5/7278 A61B5/0004 A61B5/14542 A61B5/14557 A61B5/681		
优先权	61/841440 2013-07-01 US		
外部链接	Espacenet USPTO		

摘要(译)

监测设备 (24) 包括一个带 (32) , 配置为适合人类受试者的附肢 (22) , 一个或更多传感器 (46,58,60,62) 固定到带上并配置成感测人受试者的生理参数。在一个实施例中, 至少一个可见光源 (82) 固定到带上。控制器 (64) 固定到频带并且被耦合以接收来自传感器的信号并响应于设备的状态致动至少一个可见光源。至少一个柔性光导 (40) 嵌入带的外表面中, 同时围绕附件围绕带的圆周的至少一部分延伸, 并且耦合以接收光来自可见光源并沿着光导的长度以明亮的条纹从外表面发射光。

