



US 20200022588A1

(19) **United States**

(12) **Patent Application Publication**
Wariar et al.

(10) **Pub. No.: US 2020/0022588 A1**
(43) **Pub. Date: Jan. 23, 2020**

(54) **METHOD AND APPARATUS FOR
MANAGEMENT OF HEART FAILURE
HOSPITALIZATION**

Publication Classification

(71) Applicant: **Cardiac Pacemakers, Inc.**, St. Paul,
MN (US)
(72) Inventors: **Ramesh Wariar**, Blaine, MN (US);
Jeffrey E. Stahmann, Ramsey, MN
(US); **Julie A. Thompson**, Circle Pines,
MN (US); **Helen L. Reeve-Stoffer**,
Stillwater, MN (US)

(51) **Int. Cl.**
A61B 5/0205 (2006.01)
A61B 5/00 (2006.01)
A61N 1/365 (2006.01)
A61N 1/36 (2006.01)
A61B 5/0215 (2006.01)
A61B 5/053 (2006.01)
A61B 5/145 (2006.01)
G16H 50/30 (2006.01)

(21) Appl. No.: **16/587,908**

(22) Filed: **Sep. 30, 2019**

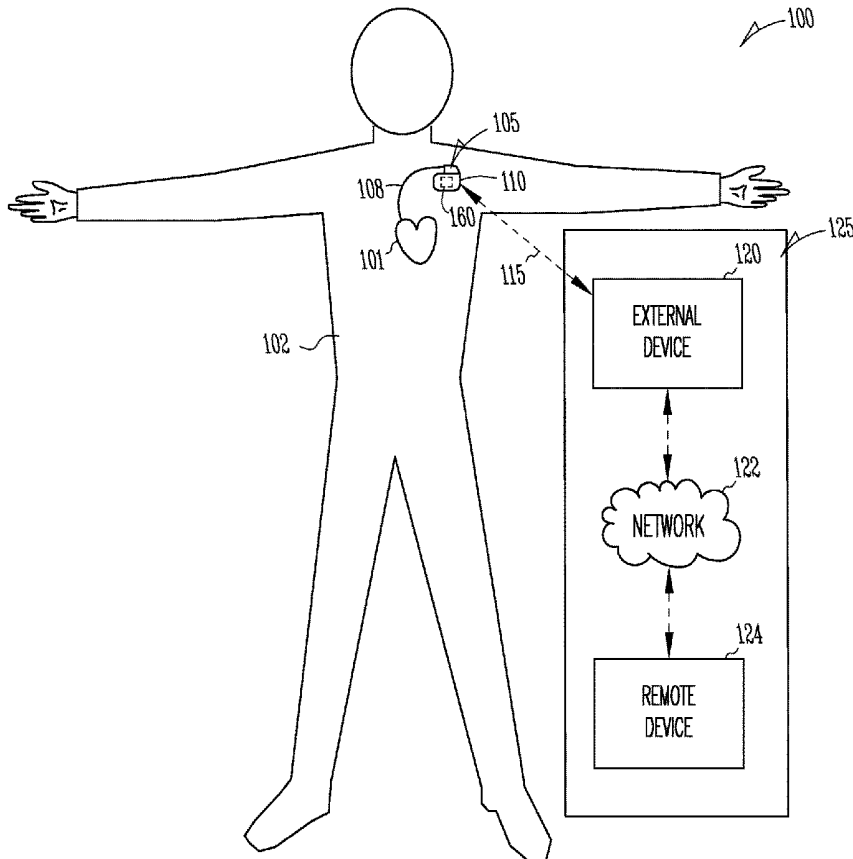
(52) **U.S. Cl.**
CPC *A61B 5/0205* (2013.01); *A61B 5/4836*
(2013.01); *A61B 5/746* (2013.01); *A61N*
1/36585 (2013.01); *A61N 1/36139* (2013.01);
A61B 5/0031 (2013.01); *A61B 5/042*
(2013.01); *A61B 5/053* (2013.01); *A61B 5/145*
(2013.01); *A61B 5/14546* (2013.01); *A61B*
5/4839 (2013.01); *A61B 5/7275* (2013.01);
G16H 50/30 (2018.01); *A61B 5/0215*
(2013.01)

Related U.S. Application Data

(63) Continuation of application No. 15/646,846, filed on Jul. 11, 2017, now Pat. No. 10,441,179, which is a continuation of application No. 14/814,135, filed on Jul. 30, 2015, now Pat. No. 9,730,592, which is a continuation of application No. 14/166,417, filed on Jan. 28, 2014, now Pat. No. 9,138,151, which is a continuation of application No. 13/668,659, filed on Nov. 5, 2012, now Pat. No. 8,708,924, which is a continuation of application No. 13/279,517, filed on Oct. 24, 2011, now Pat. No. 8,303,513, which is a continuation of application No. 11/685,949, filed on Mar. 14, 2007, now Pat. No. 8,052,611.

(57) **ABSTRACT**

A hospitalization management system including a heart failure analyzer that receives diagnostic data including at least sensor data representative of one or more physiological signals sensed from a hospitalized patient using one or more sensors and assesses risk of rehospitalization for the patient using the diagnostic data. The outcome of the risk assessment is used during and following the patient's hospitalization for reducing the risk of rehospitalization.



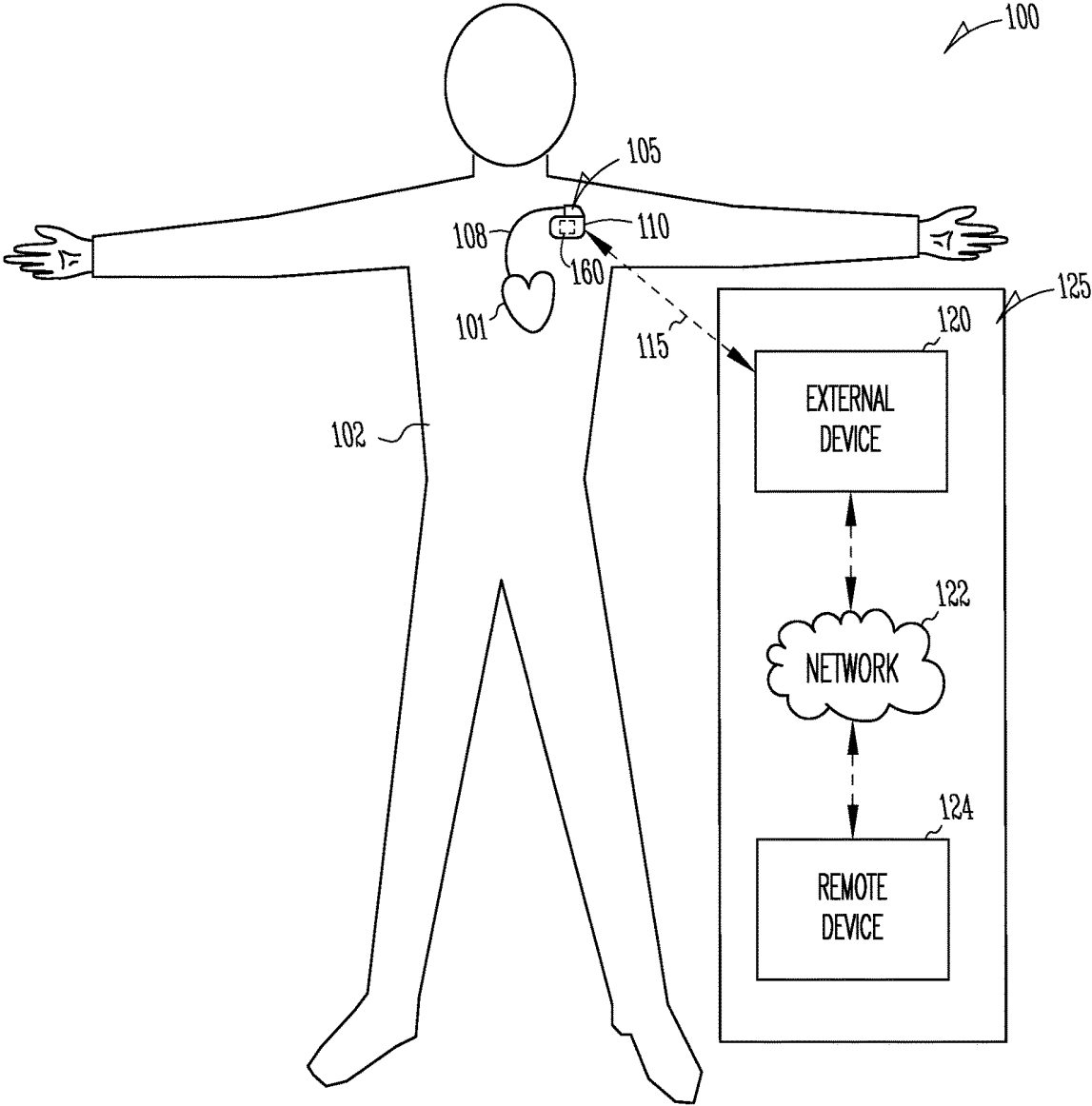


Fig. 1

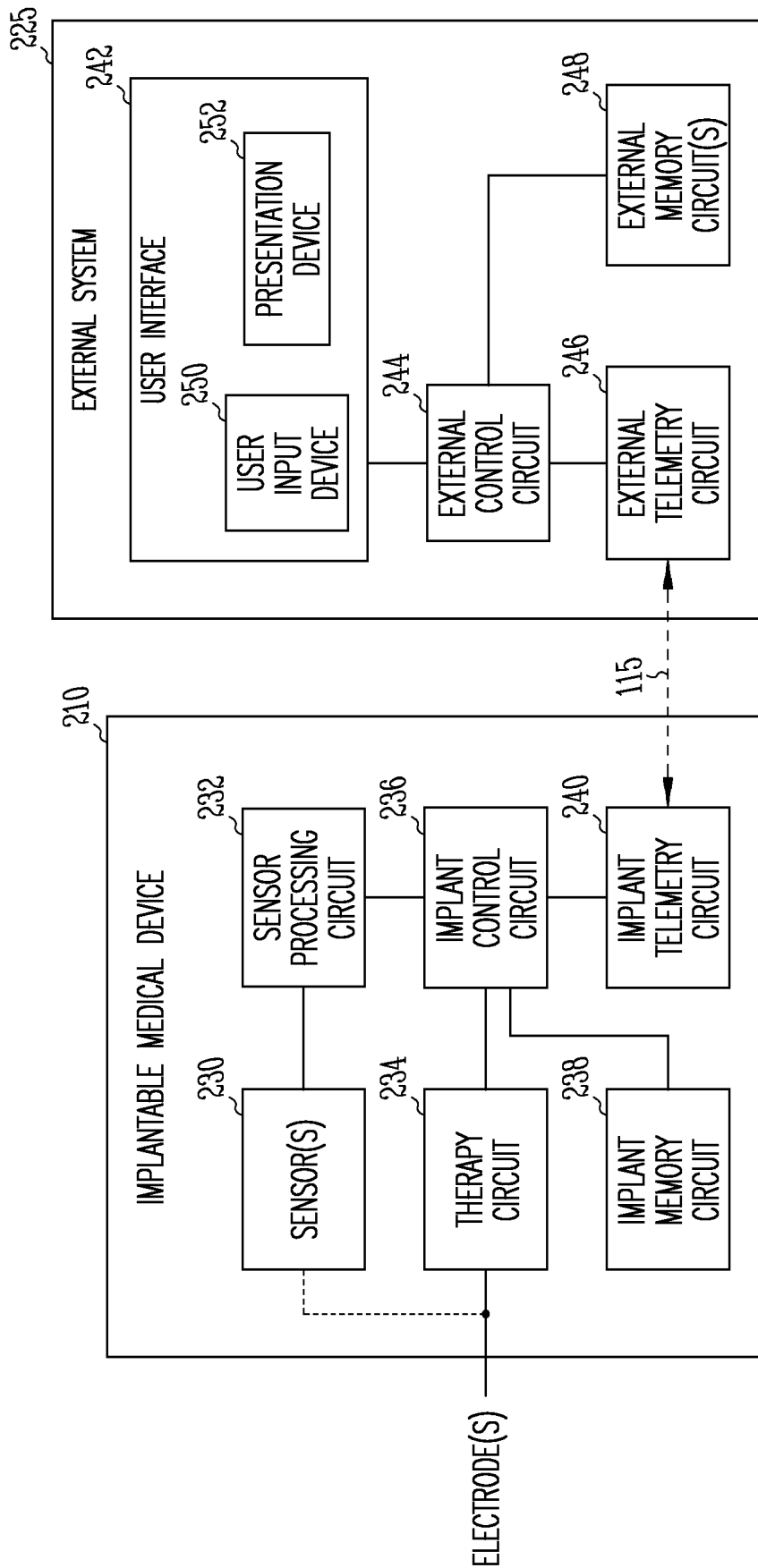


Fig. 2

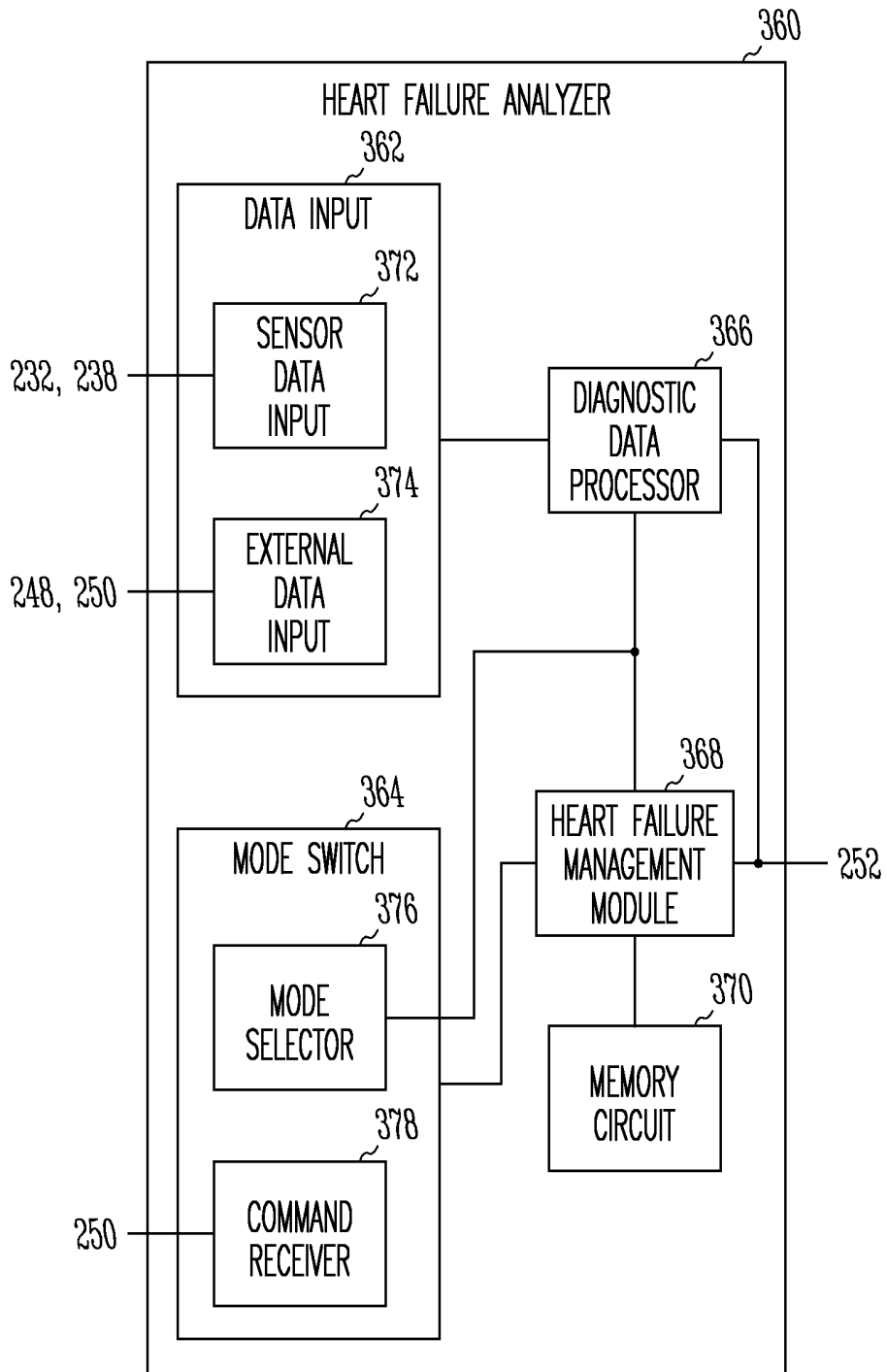


Fig. 3

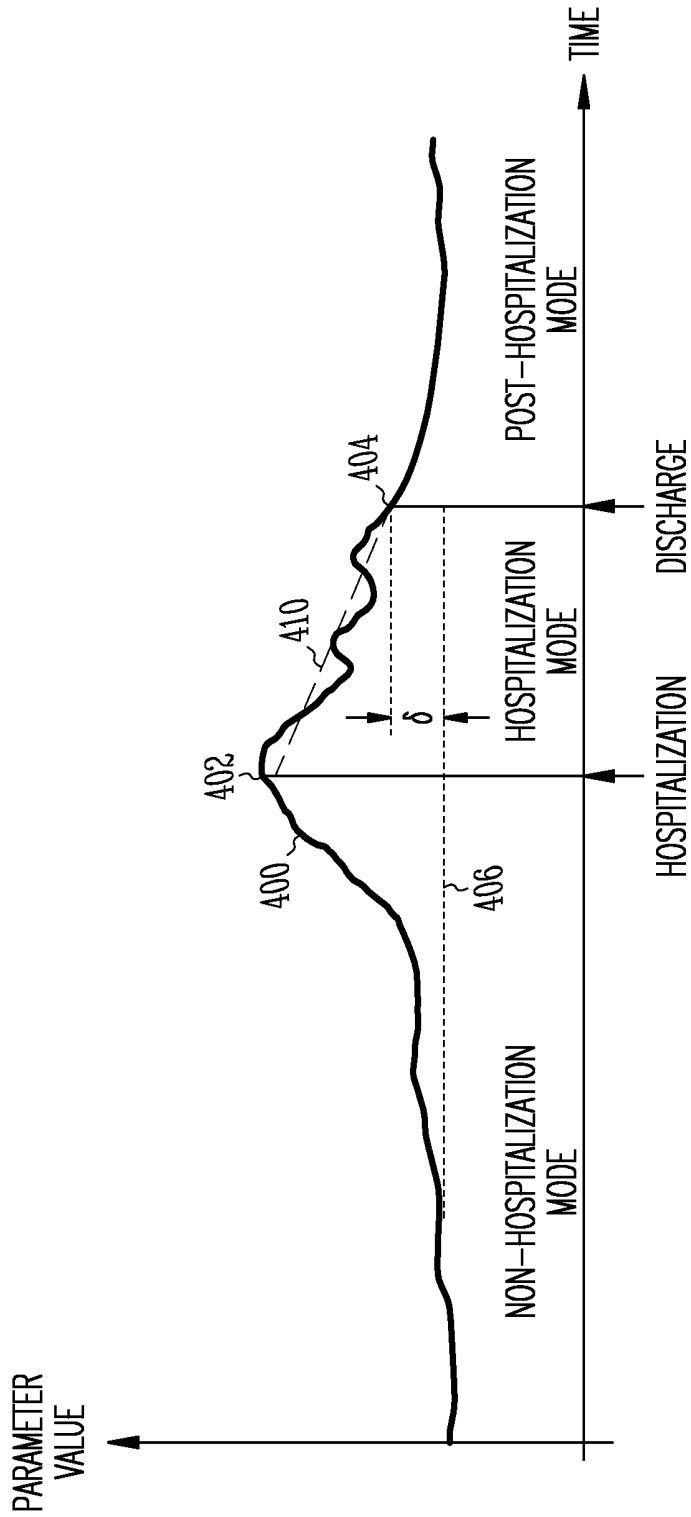


Fig. 4

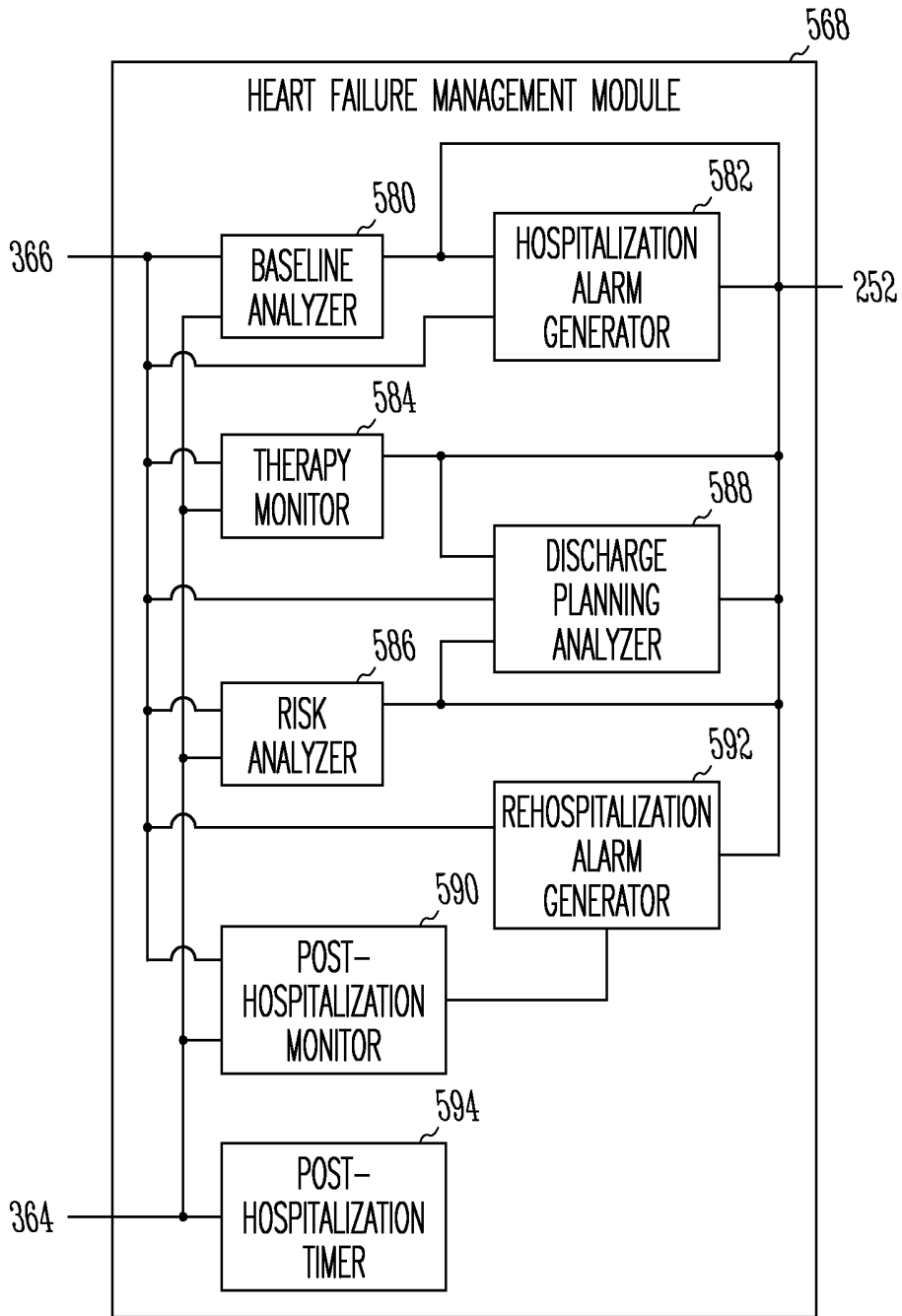


Fig. 5

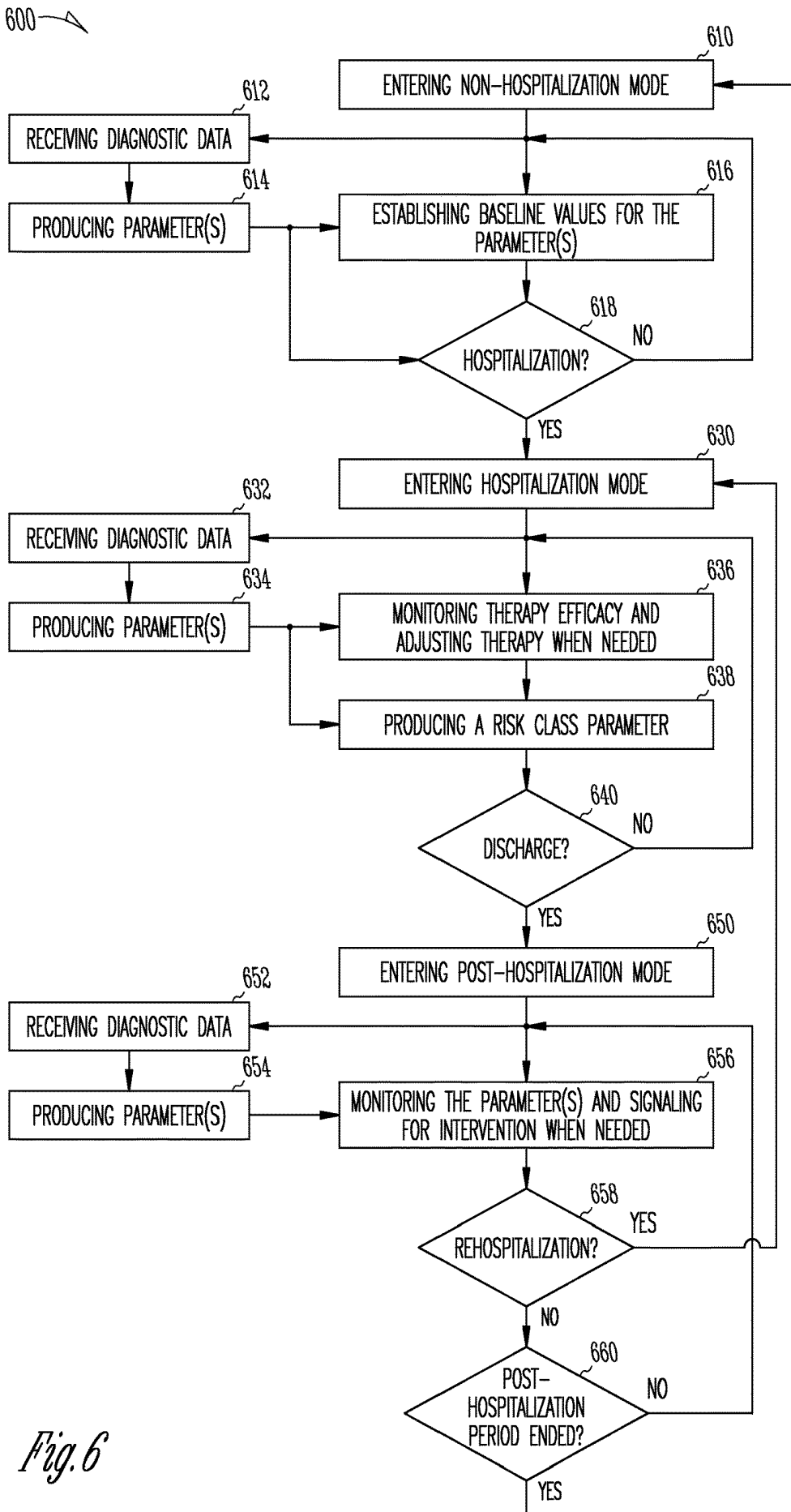


Fig. 6

METHOD AND APPARATUS FOR MANAGEMENT OF HEART FAILURE HOSPITALIZATION

CLAIM OF PRIORITY

[0001] This application is a continuation of and claims the benefit of priority under 35 U.S.C. § 120 to U.S. patent application Ser. No. 15/646,846, filed on Jul. 11, 2017, which is a continuation of and claims the benefit of priority under 35 U.S.C. § 120 to U.S. patent application Ser. No. 14/814,135, filed on Jul. 30, 2015, now issued as U.S. Pat. No. 9,730,592, which is a continuation of and claims the benefit of priority under 35 U.S.C. § 120 to U.S. patent application Ser. No. 14/166,417, filed on Jan. 28, 2014, now issued as U.S. Pat. No. 9,138,151, which is a continuation of and claims the benefit of priority under 35 U.S.C. § 120 to U.S. patent application Ser. No. 13/668,659, filed on Nov. 5, 2012, now issued as U.S. Pat. No. 8,708,924, which is a continuation of and claims the benefit of priority under 35 U.S.C. § 120 to U.S. patent application Ser. No. 13/279,517, filed on Oct. 24, 2011, now issued as U.S. Pat. No. 8,303,513, which is a continuation of and claims the benefit of priority under 35 U.S.C. § 120 to U.S. patent application Ser. No. 11/685,949, filed on Mar. 14, 2007, now issued as U.S. Pat. No. 8,052,611, each of which is hereby incorporated by reference herein in its entirety.

TECHNICAL FIELD

[0002] This document relates generally to medical device systems and particularly to a system providing for management of hospitalization of heart failure patients having implantable devices.

BACKGROUND

[0003] The heart is the center of a person's circulatory system. It includes an electro-mechanical system performing two major pumping functions. The left side of the heart, including the left atrium and left ventricle, draws oxygenated blood from the lungs and pumps it to various organs of the body to provide the organs with oxygen for their metabolic needs. This pumped blood flow is called the cardiac output. The right side of the heart, including the right atrium and right ventricle, draws deoxygenated blood from the organs and pumps it into the lungs where the blood gets oxygenated. The pumping functions are accomplished by contractions of the myocardium (heart muscles). In a normal heart, the sinoatrial node, the heart's natural pacemaker, generates electrical impulses, known as action potentials, that propagate through an electrical conduction system to various regions of the heart to excite myocardial tissues in these regions. Coordinated delays in the propagations of the action potentials in a normal electrical conduction system cause the various regions of the heart to contract in synchrony such that the pumping functions are performed efficiently.

[0004] A blocked or otherwise damaged electrical conduction system causes irregular contractions of the myocardium, a condition generally known as arrhythmia. Arrhythmia reduces the heart's pumping efficiency and hence, diminishes the cardiac output. The diminished cardiac output may also be caused by heart failure where the myocardial muscle is weakened and its contractility is reduced. A heart failure patient usually suffers from both a damaged

electrical conduction system and a deteriorated myocardium. In response to the reduced cardiac output, the body attempts to adapt in a number of ways that lead to various symptoms as the heart failure condition progresses. The body retains salt and water as a result of reduced urinal output. The salt and water are then accumulated in the lung and/or in peripheral tissues. The water retention may also lead to acute pulmonary edema in which fluid leaks into the air sacs of the lung, causing the patient to gasp for breath. This condition can be fatal if not treated immediately. Another symptom of a patient with heart failure is fatigue on exertion. Once diagnosed with chronic heart failure, the patients is typically managed by interventions such as diet restriction and pharmacologic and/or device therapies. Such interventions keep the patient in a clinically stable state unless punctuated by episodes of acute heart failure decompensation. Acute heart failure decompensation is characterized by fluid overload and shortness of breath, and requires immediate treatment in a hospital or an outpatient clinical setting.

[0005] Heart failure has been recognized as a significant public health concern with a huge economic impact. Patients hospitalized with decompensated heart failure reportedly have a high rate of rehospitalization within six months (more than 50% according to some studies), with a significant percentage of them rehospitalized within a month. Hospital readmission is a principal factor responsible for the cost associated with managing heart failure. Premature hospital discharge and insufficient resolution of heart failure worsening are among the factors contributing to the high rate of rehospitalization. Therefore, there is a need to improve management of heart failure hospitalization for reducing the rate of rehospitalization.

SUMMARY

[0006] A hospitalization management system including a heart failure analyzer that receives diagnostic data including at least sensor data representative of one or more physiological signals sensed from a hospitalized patient using one or more sensors and assesses risk of rehospitalization for the patient using the diagnostic data. The outcome of the risk assessment is used during and following the patient's hospitalization for reducing the risk of rehospitalization.

[0007] In one embodiment, a hospitalization management system includes one or more sensors, a sensor processing circuit, and a heart failure analyzer. The one or more sensors sense one or more physiological signals. The sensor processing circuit produces sensor data representative of the sensed one or more physiological signals. The heart failure analyzer includes a data input, a diagnostic data processor, a mode switch, and a risk analyzer. The data input receives diagnostic data indicative of one or more conditions associated with heart failure. The data input includes a sensor data input to receive the sensor data. The diagnostic data processor produces one or more parameters using the diagnostic data. The mode switch switches an operational mode of the heart failure analyzer to a hospitalization mode in response to a mode-change command. The risk analyzer produces a risk class parameter during the hospitalization mode. The risk class parameter classifies a level of risk for rehospitalization within a specified period using the one or more parameters.

[0008] In one embodiment, a method for operating a heart failure analyzer for managing hospitalization of a heart

failure patient is provided. One or more physiological signals are sensed. Sensor data representative of the sensed one or more physiological signals are produced. Diagnostic data indicative of one or more conditions associated with heart failure, including the sensor data, are received. One or more parameters are produced using the diagnostic data. An operational mode of the heart failure analyzer is switched to a hospitalization mode in response to a mode-change command. A risk class parameter is produced using the one or more parameters during the hospitalization mode. The risk class parameter classifies a level of risk for rehospitalization.

[0009] This Summary is an overview of some of the teachings of the present application and not intended to be an exclusive or exhaustive therapy of the present subject matter. Further details about the present subject matter are found in the detailed description and appended claims. Other aspects of the invention will be apparent to persons skilled in the art upon reading and understanding the following detailed description and viewing the drawings that form a part thereof. The scope of the present invention is defined by the appended claims and their legal equivalents.

BRIEF DESCRIPTION OF THE DRAWINGS

[0010] The drawings illustrate generally, by way of example, various embodiments discussed in the present document. The drawings are for illustrative purposes only and may not be to scale.

[0011] FIG. 1 is an illustration of an embodiment of a hospitalization management system and portions of the environment in which the hospitalization management system operates.

[0012] FIG. 2 is a block diagram illustrating an embodiment of portions of a circuit of the hospitalization management system.

[0013] FIG. 3 is a block diagram illustrating an embodiment of a heart failure analyzer of the hospitalization management system.

[0014] FIG. 4 is a graph illustrating an example of a parameter indicative of progression of heart failure.

[0015] FIG. 5 is a block diagram illustrating an embodiment of a heart failure management module of the heart failure analyzer.

[0016] FIG. 6 is a flow chart illustrating a method for managing hospitalization of a heart failure patient.

DETAILED DESCRIPTION

[0017] In the following detailed description, reference is made to the accompanying drawings which form a part hereof, and in which is shown by way of illustration specific embodiments in which the invention may be practiced. These embodiments are described in sufficient detail to enable those skilled in the art to practice the invention, and it is to be understood that the embodiments may be combined, or that other embodiments may be utilized and that structural, logical and electrical changes may be made without departing from the scope of the present invention. The following detailed description provides examples, and the scope of the present invention is defined by the appended claims and their legal equivalents.

[0018] In this document, the terms “a” or “an” are used, as is common in patent documents, to include one or more than one. In this document, the term “or” is used to refer to a nonexclusive or, unless otherwise indicated. Furthermore,

all publications, patents, and patent documents referred to in this document are incorporated by reference herein in their entirety, as though individually incorporated by reference. In the event of inconsistent usages between this documents and those documents so incorporated by reference, the usage in the incorporated reference(s) should be considered supplementary to that of this document; for irreconcilable inconsistencies, the usage in this document controls.

[0019] It should be noted that references to “an”, “one”, or “various” embodiments in this document are not necessarily to the same embodiment, and such references contemplate more than one embodiment.

[0020] This document discusses a hospitalization management system that provides for management of heart failure patient including risk stratification using data acquired by a medical device implanted in the patient. Efforts have been to reduce the rate of hospitalization by, for example, assessing the risk of rehospitalization for a hospitalized patient by analyzing the patient’s medical history and measurements made during hospitalization. Hospital discharge is planned based on the outcome of the risk assessment. Following the discharge, the patient is monitored for need of medical attention when certain symptoms occur. The present system automates such practice to allow them to be performed in a timely and consistent manner while the heart failure patient is in the hospital and following the patient’s discharge from the hospital, thereby reducing the risk of rehospitalization and improving the patient’s quality of life. In various embodiments, the present system analyzes physiological data acquired using one or more sensors implanted in the patient for therapy monitoring, risk stratification, and discharge planning during the hospitalization and for monitoring and intervention after the hospitalization. In one embodiment, the one or more sensors are part of an implantable CRM system implanted in the patient. The implantable CRM system communicates with an external patient management system that allows a physician or other caregiver to monitor, treat, and give instruction to the patient from a remote location.

[0021] In this document, “hospitalization” includes in-patient hospitalization and out-patient and clinical care. “Heart failure hospitalization” includes any hospital or clinical setting providing professional care for a heart failure patient, particularly when acute heart failure decompensation occurs.

[0022] FIG. 1 is an illustration of an embodiment of a hospitalization management system 100 and portions of the environment in which hospitalization management system 100 is used. Hospitalization management system 100 includes an implantable system 105, an external system 125, and a telemetry link 115 providing for bidirectional communication between implantable system 105 and external system 125. Implantable system 105 includes an implantable medical device 110 and a lead system 108. Implantable medical device 110 is implanted within a body 102 and coupled to a heart 101 via lead system 108. Examples of implantable medical device 110 include, but are not limited to, pacemakers, pacemaker/defibrillators, cardiac resynchronization therapy (CRT) devices, cardiac remodeling control therapy (RCT) devices, and cardiac monitors. In one embodiment, lead system 108 includes multiple atrial and ventricular leads each including one or more electrodes for pacing and/or cardioversion/defibrillation. In one embodiment, external system 125 includes a programmer. In

another embodiment, as illustrated in FIG. 1, external system 125 is a patient management system including an external device 120 in proximity of implantable medical device 110, a remote device 124 in a location relatively distant from implantable medical device, and a telecommunication network 122 linking external device 120 and remote device 124. The patient management system allows access to implantable system 105 from a remote location, for purposes such as monitoring patient status and adjusting therapies. In one embodiment, telemetry link 115 is an inductive telemetry link. In another embodiment, telemetry link 115 is a far-field radio-frequency (RF) telemetry link. Telemetry link 115 provides for data transmission from implantable medical device 110 to external system 125. This may include, for example, transmitting real-time physiological data acquired by implantable medical device 110, extracting physiological data acquired by and stored in implantable medical device 110, extracting patient history data such as data indicative of occurrences of arrhythmias, occurrences of decompensation, and therapy deliveries recorded in implantable medical device 110, and extracting data indicating an operational status of implantable medical device 110 (e.g., battery status and lead impedance). Telemetry link 115 also provides for data transmission from external system 125 to implantable medical device 110. This may include, for example, programming implantable medical device 110 to acquire physiological data, programming implantable medical device 110 to perform at least one self-diagnostic test (such as for a device operational status), programming implantable medical device 110 to deliver at least one therapy, and instructing implantable medical device 110 to analyzing data associated with heart failure.

[0023] Hospitalization management system 100 includes a heart failure analyzer 160 providing for hospitalization management of a heart failure patient using at least diagnostic data acquired by implantable system 105. Heart failure analyzer 160 analyzes the diagnostic data for therapy monitoring, risk stratification, and discharge planning during hospitalization of a heart failure patient and for monitoring and intervention after the hospitalization of the patient. In the illustrated embodiment, heart failure analyzer 160 is substantially included in implantable medical device 110. In another embodiment, heart failure analyzer 160 is substantially included in external system 125. In various embodiments, heart failure analyzer 160 is distributed in both implantable system 105 and external system 125. Heart failure analyzer 160 may be implemented using a combination of hardware and software. In various embodiments, each element of heart failure analyzer 160, including its specific embodiments, may be implemented using an application-specific circuit constructed to perform one or more particular functions or a general-purpose circuit programmed to perform such function(s). Such a general-purpose circuit includes, but is not limited to, a microprocessor or a portion thereof, a microcontroller or portions thereof, and a programmable logic circuit or a portion thereof. For example, a “timer” includes, among other things, an electronic circuit timer constructed to perform the only function of tracking time or a portion of a general-purpose circuit driven by a code instructing that portion of the general-purpose circuit to track time.

[0024] FIG. 2 is a block diagram illustrating an embodiment of portions of a circuit of hospitalization management system 100, which includes an implantable medical device

210 and external system 225. Implantable medical device 210 represents an embodiment of implantable medical device 110 and includes one or more sensors 230, a sensor processing circuit 232, a therapy circuit 234, an implant control circuit 236, an implant memory circuit 238, and an implant telemetry circuit 240. Sensor(s) 230 sense one or more physiological signals. Examples of sensor(s) 230 include a sensing circuit that senses one or more electrograms, a heart sound sensor (such as an accelerometer or a microphone) that senses a heart sound signal, an impedance sensor that senses a transthoracic impedance, a pressure sensor that senses a blood pressure, such as a pulmonary artery pressure (PAP) sensor that senses a PAP, and a chemical sensor that senses, for example, a blood potassium level. Sensor processing circuit 232 produces sensor data representative of the sensed one or more physiological signals. Implant memory circuit 238 includes a circular buffer that stores the sensor data. Therapy circuit 234 delivers one or more therapies to body 102. In one embodiment, therapy 234 delivers one or more of an anti-bradycardia pacing therapy, an anti-tachycardia pacing therapy, a defibrillation therapy, a cardiac resynchronization therapy, and a neurostimulation therapy. In various embodiments, therapy circuit 234 includes one or more of a pacing circuit to deliver pacing pulses, a defibrillation circuit to deliver cardioversion/defibrillation pulses, a neurostimulation circuit to deliver neurostimulation, a drug delivery device to deliver one or more drugs, and a biologic therapy device to deliver one or more biologic therapies such as cell therapies and gene therapies. Implant control circuit 236 controls the operation of implantable medical device 210. Implant telemetry circuit 240 receives data from, and transmits data to, external system 225 via telemetry link 115. In one embodiment, implantable medical device 210 includes a hermetically sealed housing containing at least sensor processing circuit 232, therapy circuit 234, implant control circuit 236, implant memory circuit 238, and implant telemetry circuit 240. In various embodiments, sensor(s) 230 are each within the hermetically sealed housing or external to the hermetically sealed housing but communicatively coupled to sensor processing circuit 232 via a wired or wireless communication link.

[0025] External system 225 represents an embodiment of external system 125 and includes a user interface 242, an external control circuit 244, an external telemetry circuit 246, and one or more external memory circuits 248. These components are each included in one or both of external device 120 and remote device 124. User interface 242 allows a user such as a physician or other caregiver to control hospitalization management system 100 and include a user input device 250 and a presentation device 252. User input device 250 receives commands and parameters from the user. Presentation device 252 includes a printer and/or a display screen to present to the user various information including information indicative of operation of hospitalization management system 100 and information acquired and/or stored in various portions of hospitalization management system 100. External control circuit 244 controls the operation of external system 225. External telemetry circuit 246 receives data from, and transmits data to, implantable medical device 210 via telemetry link 115. External memory circuit(s) 248 store data including external data representative of patient information. In one embodiment, the external data include data used in management of heart failure

patients and data transmitted from one or more implantable or external medical devices (other than implantable medical device 210) as well as data received by user input device 250. Examples of such external data include therapy parameters such as drug dosage and pacing parameters, diagnostic test results such as laboratory test results and medical examination results, medical history information such as patient demographics and history of cardiac conditions including heart failure symptoms and recovery information.

[0026] In one embodiment, implant control circuit 236 includes heart failure analyzer 160. In another embodiment, external control circuit 244 includes heart failure analyzer 160. In another embodiment, implant control circuit 236 and external control circuit 244 each include portions of heart failure analyzer 160. Heart failure analyzer 160 receives a mode-change command and controls the operation of implantable medical device 210 and/or external system 225 according to an operational mode selected according to the mode-change command. In one embodiment, the operational mode is selected from a hospitalization mode, a post-hospitalization mode, and a non-hospitalization mode. These operational modes each correspond to a heart failure management algorithm applied to a patient depending on the hospitalization status of that patient.

[0027] FIG. 3 is a block diagram illustrating an embodiment of a heart failure analyzer 360, which represents an embodiment of heart failure analyzer 160. Heart failure analyzer 360 includes a data input 362, a mode switch 364, a diagnostic data processor 366, a heart failure management module 368, and a memory circuit 370.

[0028] Data input 362 receives diagnostic data indicative of one or more conditions associated with heart failure. In the illustrated embodiment, data input 362 includes a sensor data input 372 and an external data input 374. In other embodiments, data input 362 includes one or more of sensor data input 372 and external data input 374, depending on the need of the heart failure management algorithms executed by heart failure analyzer 360. Sensor data input 372 receives sensor data representative of one or more physiological signals sensed by sensor(s) 230 of implantable medical device 210. External data input 374 receives the external data representative of patient information from external system 225.

[0029] Diagnostic data processor 366 produces one or more parameters indicative of one or more conditions associated with heart failure using the diagnostic data received by data input 362. Examples of such one or more parameters include amplitude of third heart sounds (S3) produced using the heart sound signal, thoracic fluid volume produced using the thoracic impedance signal, respiration rate produced using the thoracic impedance signal, heart rate and heart rate variability produced using the one or more electrograms, and parameters indicative of various physiological responses to patient's physical activities. In one embodiment, diagnostic data processor 366 produces a parameter as a function of a plurality of sensed physiological signals and patient information represented by selected sensor data and external data received by data input 362. In one embodiment, diagnostic data processor 366 produces a trend using at least one of the one or more parameters. The trend is indicative of progression of heart failure, including an acute worsening of heart failure. An example of such a trend is illustrated in FIG. 4, which is further discussed below. In one embodiment, diagnostic data processor 366 produces a trend

of the parameter as the function of the plurality of sensed physiological signals and patient information. In one embodiment, the one or more parameters produced by diagnostic data processor 366, including the trend, is presented using presentation device 252.

[0030] Mode switch 364 switches the operational mode of heart failure analyzer 360 to one of a hospitalization mode, a post-hospitalization mode, and a non-hospitalization mode in response to a mode-change command. In the illustrated embodiment, mode switch 364 includes a mode selector 376 and a command receiver 378. In other embodiments, mode switch 364 includes any one or more of mode selector 376 and command receiver 378, depending on how heart failure analyzer 160 determines the hospitalization status of the patient. Mode selector 376 produces the mode-change command automatically using the one or more parameters produced by diagnostic data processor 366. Command receiver 378 receives the mode-change command from external system 225. In one embodiment, the mode-change command is entered by the user through user input device 250.

[0031] Heart failure management module 368 executes a heart failure management algorithm selected from one or more stored heart failure management algorithms according to the operational mode. Memory circuit 370 stores the one or more heart failure management algorithms, including at least a hospitalization algorithm that is to be executed while the patient is hospitalized. In one embodiment, memory circuit 370 stores a post-hospitalization algorithm in addition to the hospitalization algorithm. The post-hospitalization algorithm is to be executed during a post-hospitalization period after the discharge of the patient from the hospital. In another embodiment, memory circuit 370 stores a baseline algorithm in addition to the hospitalization algorithm and the post-hospitalization algorithm. The baseline algorithm is to be executed after the post-hospitalization period and before the patient is hospitalized.

[0032] FIG. 4 is a graph illustrating an example of a parameter 400 indicative of progression of heart failure, including the acute worsening of heart failure. Parameter 400 is for illustrative purpose only and represents the one or more parameters produced by diagnostic data processor 366. As illustrated, the amplitude of parameter 400 indicates the degree of severity of heart failure in a patient. In the illustrated embodiment, the one or more heart failure management algorithms stored in memory circuit 370 include the baseline algorithm, the hospitalization algorithm, and the post-hospitalization algorithm.

[0033] During the non-hospitalization mode, parameter 400 indicates a degree of severity of heart failure that does not require hospitalization. When parameter 400 indicates that the patient is clinically stable (without symptoms indicating a substantially degree of decompensation for 30 days, for example), heart failure management module 368 establishes a baseline value 406 for parameter 400, using the one or more parameters produced using data acquired during the clinically stable period, by executing the baseline algorithm during the non-hospitalization mode. In one embodiment, data input 362 receives data selected according to the requirement of the baseline algorithm, and diagnostic data processor 366 produces parameter 400 using the selected data. In one embodiment, selected one or more physiological signals represented by the received data are smoothed with filters such as finite impulse response, infinite impulse

response, and/or nonlinear filters. In another embodiment, regression analysis or curve fitting are used to estimate baseline value 406.

[0034] At 402, mode switch 364 switches the operational mode of heart failure analyzer 360 to the hospitalization mode from the non-hospitalization mode when parameter 400 exceeds a hospitalization threshold value, or when a user command is received following the patient's admission into a hospital. During the hospitalization mode, heart failure management module 368 analyzes therapy efficacy, produces therapy adjustment signals when necessary, and assesses risk of rehospitalization using parameter 400 by executing the hospitalization algorithm. In one embodiment, the therapy efficacy is analyzed by comparing parameter 400 to its expected value 410 that is determined according to one or more therapies applied to the patient. In various embodiments, the therapy adjustment signals are presented to the physician or other caregiver and/or result in automatic adjustment of therapy delivery. In one embodiment, data input 362 receives data selected according to the requirement of the hospitalization algorithm, and diagnostic data processor 366 produces parameter 400 using the selected data.

[0035] At 404, mode switch 364 switches the operational mode of heart failure analyzer 360 to the post-hospitalization mode from the hospitalization mode when parameter 400 decreases below a discharge threshold value, or when a user command is received after a decision to discharge the patient from the hospital is made. Readiness to discharge is determined by comparing one or more features extracted from parameter 400 during the hospitalization mode to corresponding one or more criteria statistically established using a patient population. Examples of such features include change of value of parameter 400 from baseline value 406, change of value of parameter 400 from its peak value prior to the hospitalization, a derivative of parameter 400, a frequency-domain feature of parameter 400, and a measure of variance of parameter 400. In one embodiment, as illustrated in FIG. 4, the readiness to discharge is indicated when parameter 400 does not exceed baseline value 406 by a predetermined margin 6. During the post-hospitalization mode, heart failure management module 368 monitors cardiac conditions and determines a need for intervention including rehospitalization using parameter 400 by executing the post-hospitalization algorithm. The need for intervention including rehospitalization is determined by comparing one or more features extracted from parameter 400 during the post-hospitalization mode to corresponding one or more criteria statistically established using the patient population. Examples of such features also include change of value of parameter 400 from baseline value 406, change of value of parameter 400 from its peak value prior to the hospitalization, a derivative of parameter 400, a frequency-domain feature of parameter 400, and a measure of variance of parameter 400. In one embodiment, the need for rehospitalization is indicated when parameter 400 exceeds baseline value 406 by a predetermined margin 6, or when a positive slope of parameter 400 exceeds a predetermined threshold, during the post-hospitalization mode. In one embodiment, the predetermined margin or threshold for rehospitalization is lower than that of hospitalization but higher than that required to transition from the hospitalization mode to the post-hospitalization mode. In one embodiment, data input 362 receives data selected according to the require-

ment of the post-hospitalization algorithm, and diagnostic data processor 366 produces parameter 400 using the selected data.

[0036] FIG. 5 is a block diagram illustrating an embodiment of a heart failure management module 568, which represents an embodiment of heart failure management module 368. In the illustrated embodiment, heart failure management module 568 includes a baseline analyzer 580, a hospitalization alarm generator 582, a therapy monitor 584, a risk analyzer 586, a discharge planning analyzer 588, a post-hospitalization monitor 590, a rehospitalization alarm generator 592, and a post-hospitalization timer 594.

[0037] Baseline analyzer 580 is activated during the non-hospitalization mode and produces one or more baseline values of the one or more parameters produced by diagnostic data processor 366 when the patient is clinically stable. Heart failure is generally characterized by clinically stable periods punctuated by episodes of decompensation and hospitalization. The one or more baseline values of the one or more parameters are produced using the sensor data acquired when decompensation has not been detected for a specified period of time, such as 30 days.

[0038] Hospitalization alarm generator 582 produces a hospitalization alarm signal when the one or more parameters indicate a need for hospitalization during the non-hospitalization mode. In various embodiments, the hospitalization alarm signal is produced as a tone audible to the patient and/or transmitted to external system 225 for notifying the patient and/or the physician or other caregiver using presentation device 252. In one embodiment, hospitalization alarm generator 582 produces the hospitalization alarm signal by comparing at least one of the one or more parameters to a corresponding hospitalization threshold value. In another embodiment, hospitalization alarm generator 582 produces the hospitalization alarm signal by comparing a time derivative (slope) of at least one of the one or more parameters to a corresponding hospitalization threshold derivative value. In one embodiment, mode switch 364 switches the operational mode of heart failure analyzer 360 from the non-hospitalization mode to the hospitalization mode in response to the hospitalization alarm signal.

[0039] Therapy monitor 584 is activated during the hospitalization mode and analyzes efficacy of therapy using one or more parameters produced by diagnostic data processor 366 and one or more corresponding expected values of the one or more parameters associated with the one or more therapies applied. The one or more therapies are adjusted if the one or more parameters substantially deviate from the one or more expected values.

[0040] Risk analyzer 586 is activated during the hospitalization mode and produces a risk class parameter. The risk class parameter classifies a level of risk for rehospitalization. In one embodiment, the level of risk for rehospitalization is a probability of rehospitalization within a specified period of time, and risk analyzer 586 calculates this probability using an empirically established mathematical formula using the one or more parameters produced by diagnostic data processor 366. In one embodiment, risk analyzer 586 produces the risk class parameter by comparing at least a risk parameter selected from the one or more parameters produced by diagnostic data processor 366 to one or more risk threshold values associated with the risk parameter. In one embodiment, the risk threshold value is a function of the baseline value of the risk parameter. In another embodiment, risk

analyzer **586** produces the risk class parameter by comparing a time derivative (slope) of at least one of the one or more parameters to one or more risk threshold derivative values associated with the risk parameter.

[0041] Discharge planning analyzer **588** produces a discharge recommendation signal using the risk class parameter during the hospitalization mode. In one embodiment, discharge planning analyzer **588** produces the discharge recommendation signal when the risk class parameter falls below a predetermined or programmed threshold. In one embodiment, mode switch **364** switches the operational mode of heart failure analyzer **360** from the hospitalization mode to the post hospitalization mode in response to the discharge recommendation signal.

[0042] Post-hospitalization monitor **590** is activated during the post-hospitalization mode. Post-hospitalization monitor **590** monitors the one or more parameters produced by diagnostic data processor **366** and produces signals indicative of need for medical intervention using the one or more parameters and predetermined and/or programmed criteria associated with the one or more parameters. The intervention may include adjustments of one or more factors affecting conditions associated with heart failure, such as therapy, diet, and daily activities. The adjustments of therapy include, for example, starting a therapy, stopping a therapy, and adjustment of therapy parameters such as drug dosage and pacing parameters. In one embodiment, the patient is monitored more closely in the post-hospitalization mode than in the non-hospitalization mode because the known elevated risk of hospitalization during the period of time (such as 180 days) following the hospitalization. This requires, for example, monitoring of more parameters representing physiological signals sensed by more sensors and analysis of more features extracted from the one or more parameters.

[0043] Rehospitalization alarm generator **592** produces a rehospitalization alarm signal when the one or more parameters produced by diagnostic data processor **366** indicate a need for rehospitalization during the post-hospitalization mode. In one embodiment, rehospitalization alarm generator **592** produces the rehospitalization alarm signal by comparing at least one of the one or more parameters to a corresponding rehospitalization threshold value. In another embodiment, rehospitalization alarm generator **592** produces the rehospitalization alarm signal by comparing a time derivative of at least one of the one or more parameters to a corresponding rehospitalization threshold derivative value. In one embodiment, mode switch **364** switches the operational mode of heart failure analyzer **360** from the post-hospitalization mode to the hospitalization mode in response to the rehospitalization alarm signal.

[0044] Post-hospitalization timer **594** times a post-hospitalization period that starts with the post-hospitalization mode. In one embodiment, the post-hospitalization period is a predetermined period. In another embodiment, the post-hospitalization period is programmable, such as using user input device **250**. In one embodiment, mode switch **364** switches the operational mode of heart failure analyzer **360** from the post-hospitalization mode to the non-hospitalization mode in response to the expiration of the post-hospitalization period.

[0045] FIG. 6 is a flow chart illustrating a method **600** for managing hospitalization of a heart failure patient using a hospitalization management system such as hospitalization

management system **100**. In the illustrated embodiment, the hospitalization management system has a plurality of operational modes including a non-hospitalization mode, a hospitalization mode, and a post-hospitalization mode, and method **600** is applied to operate this hospitalization management system.

[0046] At **610**, the hospitalization management system enters the non-hospitalization mode. In one embodiment, the hospitalization management system enters each of its operational modes in response to a mode-change command received from a user. In another embodiment, the hospitalization management system enters each of its operational modes in response to a mode-change command produced automatically using patient information including at least a physiological signal sensed from the patient. The hospitalization management system selects a heart failure management algorithm upon entering each of its operational modes and executes that algorithm during the operational mode. During the non-hospitalization mode, the hospitalization management system executes a baseline algorithm.

[0047] At **612**, diagnostic data indicative of one or more conditions associated with heart failure are received. The diagnostic data include sensor data representative of one or more physiological signals sensed by one or more implantable sensors being part of or communicatively coupled to an implantable medical device of the hospitalization management system. In one embodiment, diagnostic data further include external data representative of patient information stored an external system communicatively coupled to the implantable medical device. In one embodiment, the diagnostic data received during each operational mode include input data required to execute the heart failure management algorithm selected for that operational mode.

[0048] At **614**, one or more parameters are produced using the diagnostic data. In one embodiment, the selected heart failure management algorithm determines which one or more parameters are produced during each operational mode.

[0049] At **616**, one or more baseline values for the one or more parameters are established. In one embodiment, a baseline value for each of the one or more parameters is produced using baseline data including sensor data representative of the one or more sensor signals sensed by the one or more implantable sensors within a clinically stable period (when decompensation is not detected) during the non-hospitalization mode.

[0050] At **618**, whether the patient needs hospitalization is determined. In one embodiment, whether the patient needs hospitalization is determined by comparing at least one of the one or more parameters to a corresponding hospitalization threshold value. In another embodiment, whether the patient needs hospitalization is determined by comparing a time derivative (slope) of at least one of the one or more parameters to a corresponding hospitalization threshold derivative value. In one embodiment, in response to each determination that the patient needs hospitalization, a hospitalization alarm signal is produced.

[0051] At **630**, the hospitalization management system enters to hospitalization mode after the determination that the patient needs hospitalization is made at **618**. If the patient does not need hospitalization as determined at **618**, the hospitalization management system remains in the non-hospitalization mode. In one embodiment, the operational mode is switched from the non-hospitalization mode to the

hospitalization mode in response to the determination that the patient needs hospitalization (such as in response to the hospitalization alarm signal). In another embodiment, the operational mode is switched from the non-hospitalization mode to the hospitalization mode in response to the mode-change command entered by a physician or other caregiver upon the patient's admission into a hospital. During the hospitalization mode, the hospitalization management system executes a hospitalization algorithm.

[0052] At 632, the diagnostic data are received according to the requirement for executing the hospitalization algorithm. At 634, the one or more parameters are produced using the diagnostic data according to the hospitalization algorithm. In various embodiments, the diagnostic data received and the one or more parameters produced during different operational modes may be substantially identical or substantially different, depending on the need for patient monitoring and availability of types of data. In one embodiment, a trend indicative of progression of heart failure is produced using at least one of the one or more parameters. The trend indicates acute worsening of heart failure. In one embodiment, the trend is presented to the physician or other caregiver using a display screen and/or a printer. In one embodiment, the trend is the trend of a parameter being a function of the sensor data and the external data.

[0053] At 636, therapy efficacy is monitored, and therapy is adjusted when needed in response to the outcome of the monitoring. The efficacy of therapy administered during the hospitalization mode is analyzed by comparing the one or more parameters to the corresponding expected values of the one or more parameters. The expected values represent the predicted response of the patient to the therapy. In one embodiment, the therapy delivered includes one or more of an anti-bradycardia pacing therapy, an anti-tachycardia pacing therapy, a defibrillation therapy, a cardiac resynchronization therapy, and a neurostimulation therapy.

[0054] At 638, a risk class parameter is produced. The risk class parameter classifies a level of risk for rehospitalization. In one embodiment, the risk class parameter represents the probability of rehospitalization within a specified period. In one embodiment, the risk class parameter is produced by comparing at least one of the one or more parameters to one or more risk threshold values associated with the risk parameter. In another embodiment, the risk class parameter is produced by comparing a time derivative (slope) of at least a risk parameter of the one or more parameters with one or more risk threshold derivative values associated with the risk parameter.

[0055] At 640, whether the patient is ready to be discharged from the hospital is determined using the risk class parameter. In one embodiment, in response to a determination that the patient is ready to be discharged, a discharge recommendation signal is produced and presented to the physician or other caregiver.

[0056] At 650, the hospitalization management system enters a post-hospitalization mode after the determination that the patient is ready to be discharged at 640. If the patient is not ready to be discharged as determined at 640, the hospitalization management system remains in the hospitalization mode. In one embodiment, the operational mode is switched from the hospitalization mode to the post hospitalization mode in response to the determination that the patient is ready to be discharged (such as in response to the discharge recommendation signal). In another embodiment,

the operational mode is switched from the non-hospitalization mode to the hospitalization mode in response to the mode-change command entered by the physician or other caregiver before the patient leaves the hospital. During the post-hospitalization mode, the hospitalization management system executes a post-hospitalization algorithm.

[0057] At 652, the diagnostic data are received according to the requirement for executing the post-hospitalization algorithm. At 654, the one or more parameters are produced using the diagnostic data according to the post-hospitalization algorithm.

[0058] At 656, the one or more parameters are monitored, and a need for intervention is signaled, when needed, in response to the outcome of the monitoring. Signals indicative of need for intervention are produced during the post-hospitalization mode when the one or more parameters indicate such need according to predetermined and/or programmed criteria. Examples of such intervention include adjustments of one or more factors affecting conditions associated with heart failure, such as therapy parameters, diet, and daily activities.

[0059] At 658, whether the patient needs rehospitalization is determined. In one embodiment, whether the patient needs rehospitalization is determined by comparing at least one of the one or more parameters to a corresponding rehospitalization threshold value. In another embodiment, whether the patient needs rehospitalization is determined by comparing a time derivative of at least one of the one or more parameters to a corresponding rehospitalization threshold derivative value. In one embodiment, a rehospitalization alarm signal is produced when the one or more parameters indicate a need for rehospitalization.

[0060] In response to a determination that the patient needs rehospitalization at 658, the patient is to be rehospitalized, and the operational mode of the hospitalization management system reenters the hospitalization mode at 630. In one embodiment, the operational mode is switched from the post-hospitalization mode to the hospitalization mode in response to the rehospitalization alarm signal. In another embodiment, the operational mode is switched from the non-hospitalization mode to the hospitalization mode in response to the mode-change command entered by the physician or other caregiver upon the patient's readmission into the hospital.

[0061] A post-hospitalization period is started when the hospitalization management system enters the post-hospitalization mode and is timed during the post-hospitalization mode. At 660, if the post-hospitalization period has expired, the operational mode is switched from the post-hospitalization mode to the non-hospitalization mode.

[0062] It is to be understood that the above detailed description is intended to be illustrative, and not restrictive. Other embodiments will be apparent to those of skill in the art upon reading and understanding the above description. The scope of the invention should, therefore, be determined with reference to the appended claims, along with the full scope of equivalents to which such claims are entitled.

1. A method for operating a heart failure analyzer for managing hospitalization of a patient, the method comprising:

receiving diagnostic data indicative of one or more conditions of the patient during a hospitalization using the heart failure analyzer, the diagnostic data including sensor data produced using one or more physiological

signals sensed from the patient during the hospitalization, the one or more conditions associated with a heart failure status of the patient;

producing one or more parameters using the heart failure analyzer, the one or more parameters indicative of the heart failure status of the patient during the hospitalization using the diagnostic data; and

producing a hospital discharge recommendation signal using the heart failure analyzer based on the one or more parameters.

2. The method of claim 1, wherein producing the hospital discharge recommendation signal comprises:

extracting one or more features from the one or more parameters; and

comparing the one or more features to corresponding one or more criteria.

3. The method of claim 2, further comprising statistically establishing the one or more criteria using a patient population.

4. The method of claim 2, wherein extracting the one or more features comprises extracting a change of value of a parameter of the one or more parameters from at least one of a baseline value of the parameter or a peak value of the parameter measured prior to the hospitalization.

5. The method of claim 2, wherein extracting the one or more features comprises extracting a derivative of a parameter of the one or more parameters.

6. The method of claim 2, wherein extracting the one or more features comprises extracting a frequency-domain feature of a parameter of the one or more parameters.

7. The method of claim 2, wherein extracting the one or more features comprises extracting a measure of variance of a parameter of the one or more parameters.

8. The method of claim 1, further comprising producing a trend indicative of progression of heart failure using at least one parameter of the one or more parameters.

9. The method of claim 1, wherein producing the one or more parameters comprises producing one or more heart failure decompensation indicating parameters, and producing the hospital discharge recommendation signal comprises:

producing a risk class parameter during the hospitalization of the patient using the one or more heart failure decompensation indicating parameters; and

producing the discharge recommendation signal during the hospitalization of the patient using the risk class parameter.

10. The method of claim 1, further comprising sensing the one or more physiological signals using one or more sensors, and wherein producing the one or more parameters comprises producing one or more parameters associated with one or more of third heart sounds (S3), thoracic fluid volume, respiration, heart rate variability, and physical activities.

11. The method of claim 10, wherein sensing the one or more physiological signals using one or more sensors comprises sensing a heart sound signal indicative S3 using a heart sound sensor, and wherein producing the one or more parameters comprises producing an S3 amplitude.

12. The method of claim 1, wherein producing the one or more parameters comprises producing the one or more parameters using the diagnostic data including the sensor data and data associated with one of more of therapies, diagnostic test results including laboratory test results and

medical examination results, and medical history information including patient demographics and history of cardiac conditions.

13. A system for managing hospitalization of a patient, comprising:

a heart failure analyzer configured to receive diagnostic data indicative of one or more conditions of the patient during a hospitalization, to produce one or more parameters indicative of the heart failure status of the patient during the hospitalization using the diagnostic data, and to produce a hospital discharge recommendation signal using the one or more parameters indicative of the heart failure status of the patient during the hospitalization, the diagnostic data including sensor data produced using one or more physiological signals sensed from the patient during the hospitalization, the one or more conditions associated with a heart failure status of the patient.

14. The system of claim 13, wherein the heart failure analyzer is configured to extract one or more features from the one or more parameters, to compare the one or more features to corresponding one or more criteria, and to produce the hospital discharge recommendation signal based on an outcome of the comparison.

15. The system of claim 14, wherein extracting the one or more features comprises extracting one or more of a change of value of a parameter of the one or more parameters from a baseline value of the parameter, a change of value of a parameter of the one or more parameters from a peak value of the parameter measured prior to the hospitalization, a derivative of a parameter of the one or more parameters, a frequency-domain feature of a parameter of the one or more parameters, and a measure of variance of a parameter of the one or more parameters.

16. The system of claim 13, further comprising one or more sensors configured to sense the one or more physiological signals and a sensor processing circuit configured to produce the sensor data, wherein the one or more sensors comprises at least one of a heart sound sensor configured to sense a heart sound signal indicative of third heart sound (S3) or an impedance sensor configured to sense a thoracic impedance.

17. The system of claim 16, wherein the heart failure analyzer is configured to produce a trend indicative of progression of heart failure using at least one parameter of the one or more parameters.

18. The system of claim 13, wherein the heart failure analyzer is configured to produce one or more heart failure decompensation indicating parameters of the one or more parameters using the diagnostic data, to produce a risk class parameter using the one or more heart failure decompensation indicating parameters, and to produce the discharge recommendation signal using the risk class parameter during the hospitalization of the patient.

19. The system of claim 18, further comprising an implantable medical device configured to apply a therapy to the patient, and wherein the heart failure analyzer circuit is configured to analyze efficacy of the applied therapy using the one or more parameters and expected values of the one or more parameters associated with the applied therapy.

20. The system of claim 18, wherein the heart failure analyzer circuit is configured to receive the patient's medical history information and to produce the one or more parameters using the diagnostic data including the sensor data and the medical history information.

* * * * *

专利名称(译)	心力衰竭住院管理的方法和设备		
公开(公告)号	US20200022588A1	公开(公告)日	2020-01-23
申请号	US16/587908	申请日	2019-09-30
[标]申请(专利权)人(译)	心脏起搏器股份公司		
申请(专利权)人(译)	心脏起搏器, INC.		
当前申请(专利权)人(译)	心脏起搏器, INC.		
[标]发明人	WARIAR RAMESH STAHMANN JEFFREY E THOMPSON JULIE A REEVE STOFFER HELEN L		
发明人	WARIAR, RAMESH STAHMANN, JEFFREY E. THOMPSON, JULIE A. REEVE-STOFFER, HELEN L.		
IPC分类号	A61B5/0205 A61B5/00 A61N1/365 A61N1/36 A61B5/0215 A61B5/053 A61B5/145 G16H50/30		
CPC分类号	A61B5/0205 A61B5/042 A61N1/36585 A61B5/4839 A61B5/7275 A61N1/36139 A61B5/4836 A61B7/00 A61B5/14546 A61B5/145 G16H50/30 A61B5/746 A61B5/053 A61B5/7239 A61B5/0215 A61B5/0031 G06F19/00		
外部链接	Espacenet USPTO		

摘要(译)

一种包括心力衰竭分析器的住院管理系统, 其使用一个或多个传感器接收诊断数据, 该诊断数据至少包括代表从住院患者感测到的一个或多个生理信号的传感器数据, 并使用该诊断数据评估患者再次住院的风险。风险评估的结果可在患者住院期间和之后使用, 以减少再次住院的风险。

