



US 20170367607A1

(19) **United States**

(12) **Patent Application Publication**
AGARWAL et al.

(10) **Pub. No.: US 2017/0367607 A1**
(43) **Pub. Date: Dec. 28, 2017**

(54) **NOVEL SYSTEM AND METHOD TO
DIAGNOSE AND PREDICT DIFFERENT
SYSTEMIC DISORDERS AND MENTAL
STATES**

(71) Applicants: **PUNEET AGARWAL**, New Delhi
(IN); **SIDDHARTH PANWAR**, New
Delhi (IN)

(72) Inventors: **PUNEET AGARWAL**, NEW DELHI
(IN); **SIDDHARTH PANWAR**, NEW
DELHI (IN); **SHIV DUTT JOSHI**,
NEW DELHI (IN); **ANUBHA GUPTA**,
NEW DELHI (IN)

(21) Appl. No.: **15/544,005**

(22) PCT Filed: **Jan. 18, 2016**

(86) PCT No.: **PCT/IB2016/050228**

§ 371 (c)(1),

(2) Date: **Jul. 16, 2017**

(30) **Foreign Application Priority Data**

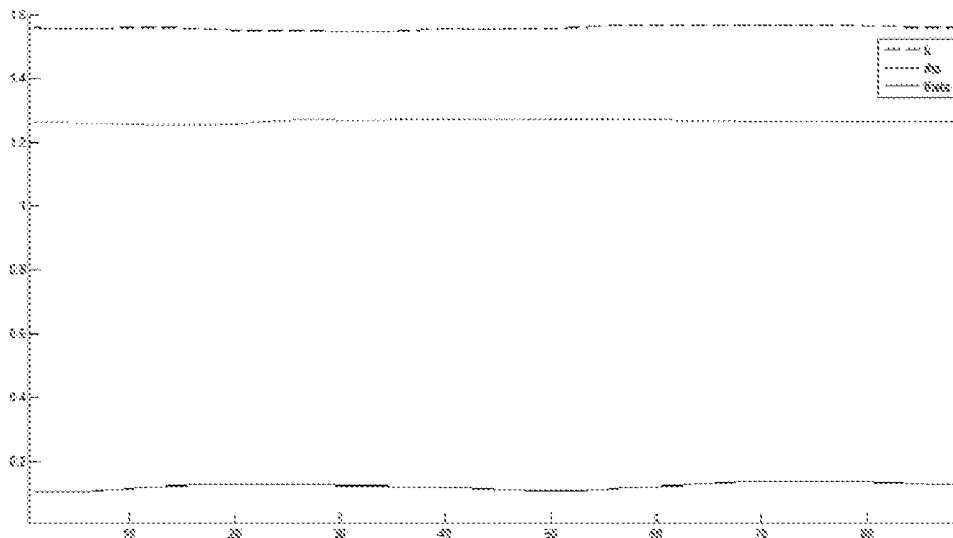
Jan. 16, 2015 (IN) 2008/DEL/2014

Publication Classification

(51) **Int. Cl.**
A61B 5/0476 (2006.01)
A61B 5/16 (2006.01)
G06K 9/00 (2006.01)
A61B 5/00 (2006.01)
(52) **U.S. Cl.**
CPC *A61B 5/0476* (2013.01); *G06K 9/00496*
(2013.01); *A61B 5/165* (2013.01); *A61B*
5/7239 (2013.01); *A61B 5/7257* (2013.01)

(57) **ABSTRACT**

The present invention relates a novel system and method to diagnose and predict systemic disorders including brain disorders and mental states in early stage and more accurately. More particularly, this invention relates to a novel method of EEG recording and processing through which multiple output data streams are taken together from a system like brain and the structure of their correlation matrix is studied through its eigenvector, eigendirection and eigen-spaces and other signal processing techniques including compression sensing, wavelet transform, fast fourier transform etc.



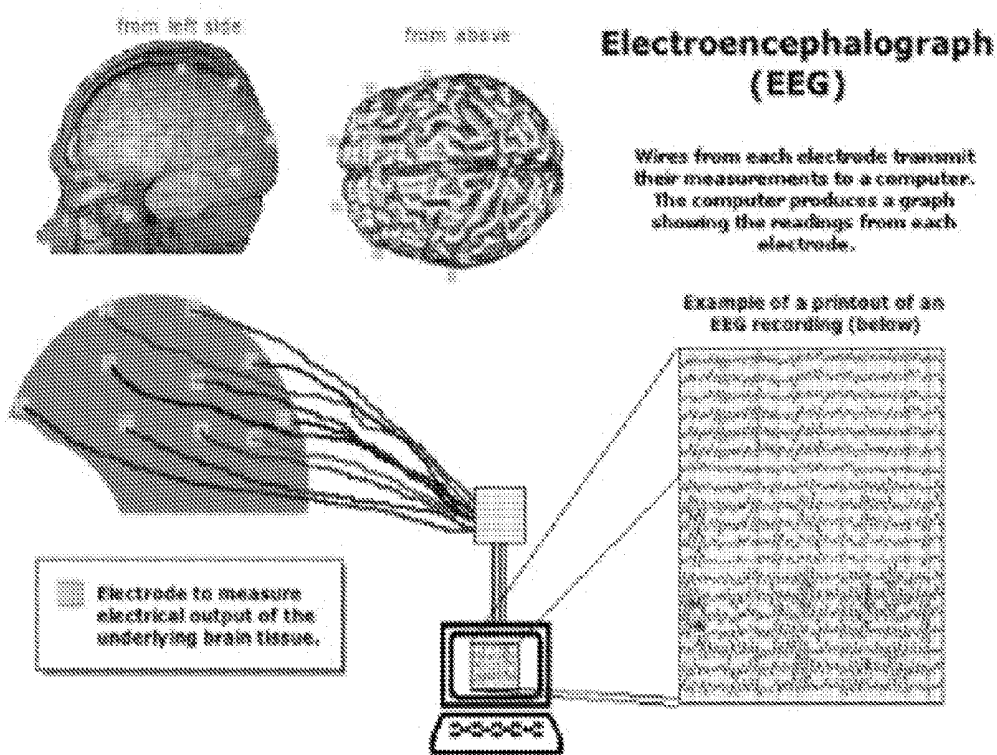


FIG. 1

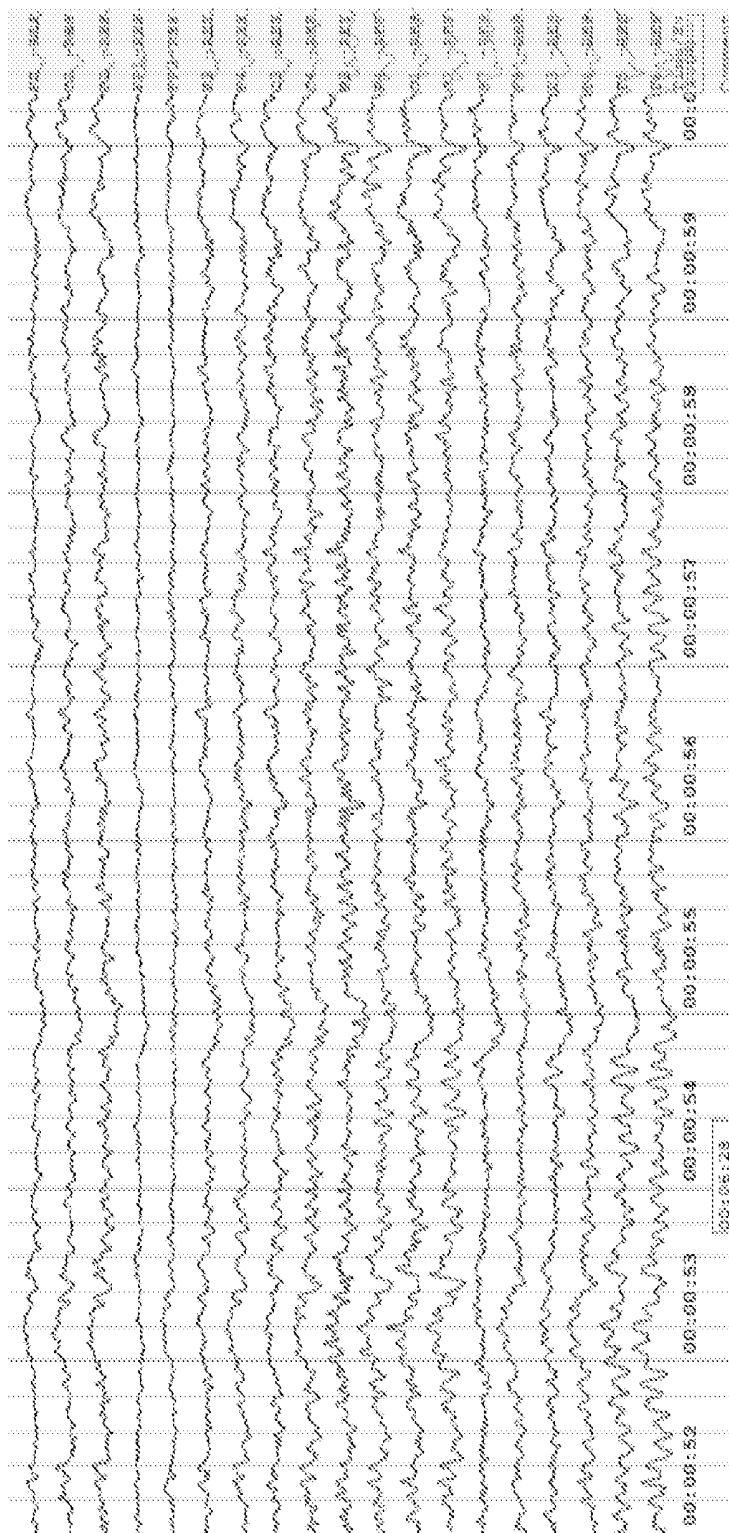


FIG. 2

	WZ-REF	CZ-REF	PZ-REF	FZ-REF	F3-REF	F4-REF	G3-REF	H3-REF	I3-REF	J3-REF	K3-REF	L3-REF	M3-REF	N3-REF	O3-REF	P3-REF	Q3-REF	R3-REF	S3-REF	
1																				
2																				
3	10	17	23	27	4	22	-7	7	22	85	10	-29	23	19	9	12	-7	-13	13	
4	-4	5	-54	26	-9	15	-10	5	-23	-165	0	-68	-21	3	-17	-1	-8	-23	3	
5	-17	-9	-64	26	-20	11	15	42	44	-163	-15	-55	-15	-17	13	-11	-3	-20	-13	
6	-30	-26	-44	23	-28	7	51	93	137	-54	-38	8	-23	-43	52	-21	1	-2	-33	
7	-51	-47	-27	19	-34	-5	87	100	163	93	-65	63	-92	-73	75	-36	-10	4	-55	
8	-76	-73	-31	15	-41	-24	79	55	107	69	-87	30	-38	-102	39	-51	-31	5	-75	
9	-96	-98	-64	11	-47	-43	52	-9	20	47	-102	-29	-94	-123	-17	-64	-52	-28	-83	
10	-108	-113	-58	8	-51	-56	21	-63	-60	9	-105	-75	-44	-131	-76	-71	-60	-45	-95	
11	-116	-120	-76	7	-55	-63	-12	-99	-121	-60	-104	-122	-28	-138	-112	-74	-75	-59	-98	
12	-118	-119	-88	8	-59	-64	-33	-103	-141	-109	-103	-140	-33	-113	-127	-73	-76	-54	-95	
13	-114	-110	-80	12	-59	-59	-30	-73	-108	-99	-94	-113	-24	-101	-107	-64	-67	-53	-88	
14	-104	-94	-55	18	-55	-52	-12	-29	-53	-33	-85	-56	-16	-79	-67	-46	-52	-28	-78	
15	-91	-77	-51	26	-51	-41	5	-6	-25	28	-75	-13	-7	-56	-40	-28	-39	-4	-64	
16	-85	-65	-24	33	-49	-37	3	-15	-38	32	-61	-14	1	-40	-42	-13	-31	5	-50	
17	-77	-56	-32	38	-50	-30	-1	-31	-56	-1	-47	-35	3	-34	-53	-3	-28	5	-40	
18	-72	-49	-38	41	-52	-22	7	-30	-51	-11	-40	-30	-3	-32	-51	1	-27	9	-35	
19	-65	-38	-36	39	-55	-19	19	-18	-31	14	-44	-26	-15	-30	-41	-2	-27	13	-38	
20	-72	-49	-35	34	-57	-20	21	-12	-26	39	-55	-14	-28	-29	-40	-5	-30	12	-43	
21	-76	-49	-41	30	-57	-23	10	-15	-42	35	-65	-15	-38	-27	-47	-4	-34	6	-47	
22	-77	-46	-47	28	-57	-25	6	-16	-55	20	-70	-20	-41	-20	-51	0	-34	3	-45	
23	-72	-42	-43	25	-53	-24	2	-6	-39	27	-70	-12	-35	-12	-44	9	-27	8	-42	

FIG. 3

	1	2	3	4	5	6	7	8	9	
1	1013.035	772.4686	1010.943	1306.416	1069.249	1126.309	994.4431	962.749	983.8137	Cz
2	772.4686	936.7475	958.2692	1371.434	905.3931	1029.344	750.9833	836.0429	786.7128	Fp2
3	1010.943	958.2692	1322.706	1629.754	1301.435	1363.969	1142.621	1096.675	1115.698	F4
4	1306.416	1371.434	1629.754	2368.216	1694.967	1831.514	1461.635	1495.445	1403.401	F8
5	1069.249	905.3931	1301.435	1694.967	1685.329	1566.096	1451.442	1331.021	1412.942	C4
6	1126.309	1029.344	1363.969	1831.514	1566.096	1734.303	1450.451	1422.764	1381.981	T4
7	994.4431	750.9833	1142.621	1461.635	1451.442	1450.451	1612.988	1361.478	1497.77	P4
8	962.749	836.0429	1096.675	1495.445	1331.021	1422.764	1361.478	1559.591	1265.041	T6
9	983.8137	786.7128	1115.698	1403.401	1412.942	1381.981	1497.77	1265.041	1617.376	O2
	Cz	Fp2	F4	F8	C4	T4	P4	T6	O2	

FIG. 4

Eigenvalues	48.3642	103.167	104.5527	112.3539	197.1855	243.7309	347.9723	971.8516	11708.99
Eigenvectors	0.01475 -0.8556 0.11541 0.40395 -0.1918 0.03561 -0.4457 0.12022 0.36529	0.34436 -0.0602 -0.33268 0.13464 0.15183 0.13026 0.57119 -0.1839 -0.5424	0.01142 -0.1828 0.09674 0.38605 0.13717 -0.7728 0.37139 0.5948 -0.2085	0.05254 0.15512 -0.1834 -0.1556 0.56518 -0.3825 -0.5556 0.14099 0.14813	-0.763 0.31826 0.2133 0.32701 -0.1206 -0.1826 0.07116 -0.5277 0.36103	-0.4915 -0.356 0.04027 0.085 0.68349 0.31046 -0.0385 -0.2176 -0.4155	0.15757 -0.0249 0.23271 -0.0875 0.2301 -0.1164 0.05316 0.2945 0.37254	-0.1071 -0.4182 -0.2457 -0.4954 0.12061 -0.0318 0.65342 0.1122 0.45229	0.28489 0.21908 0.31472 0.41995 0.28276 0.37251 0.33894 0.31686 0.33501

FIG. 5

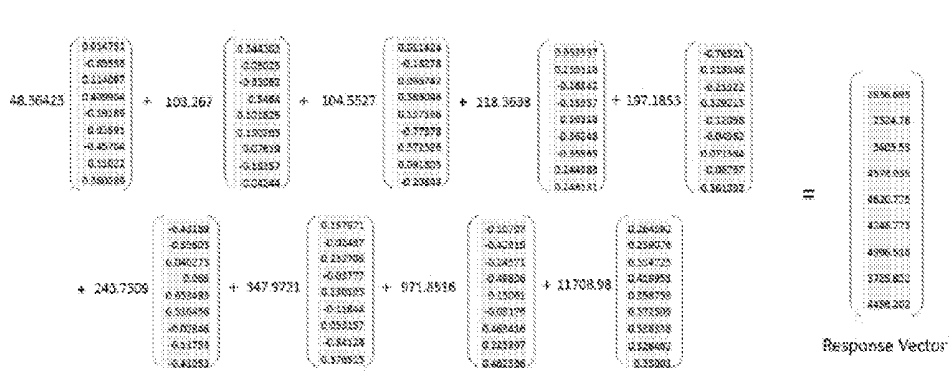


FIG. 6

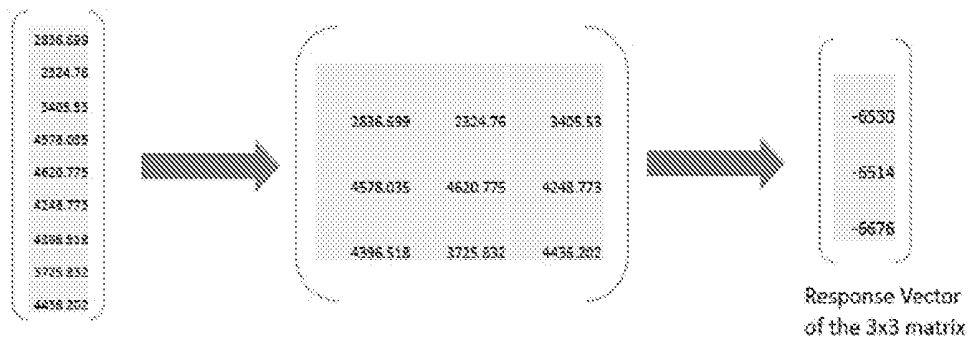


FIG. 7

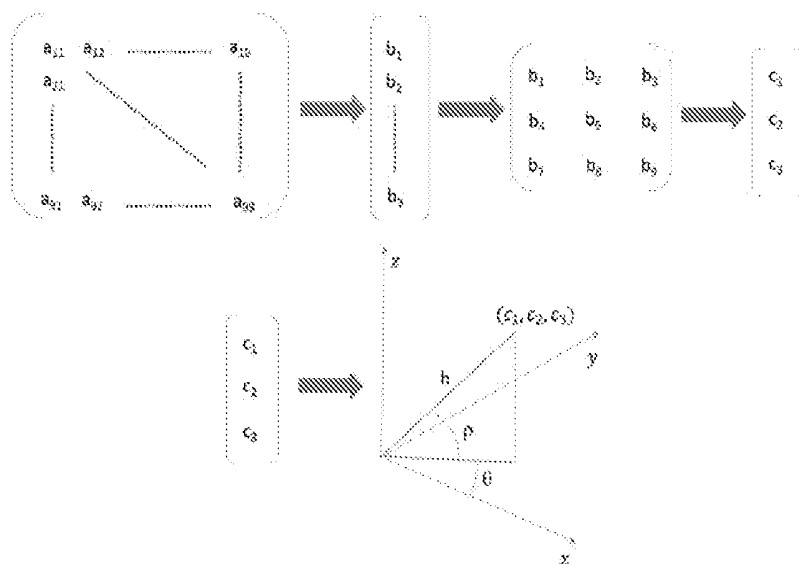


FIG. 8

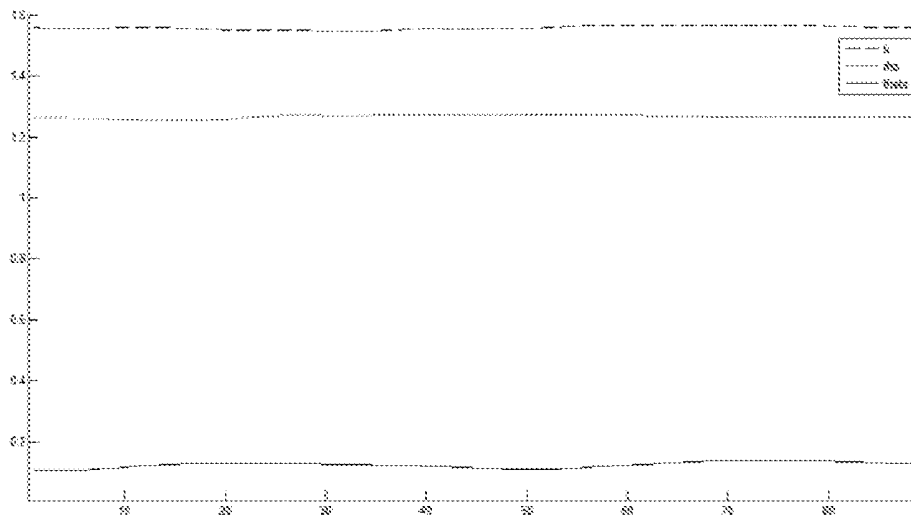


FIG. 9

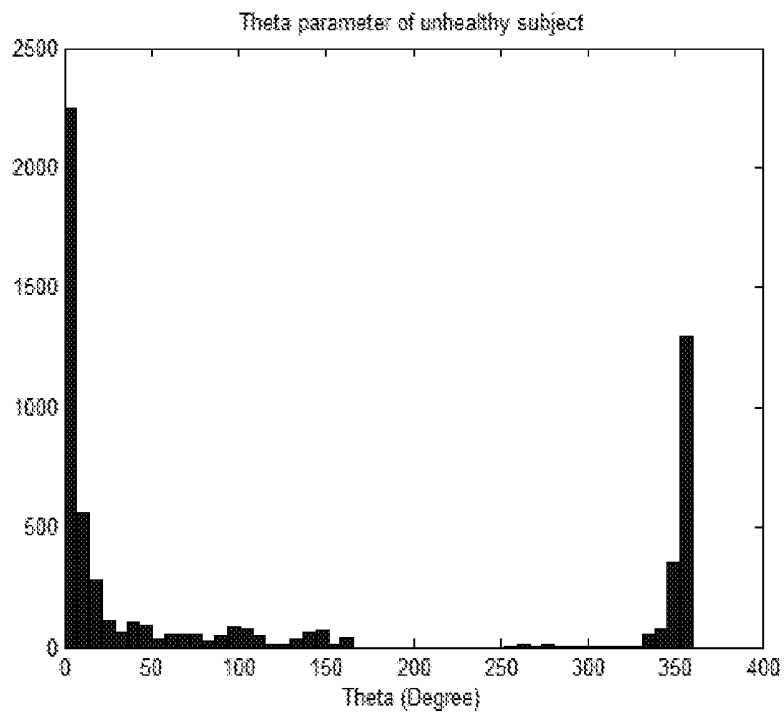


FIG. 10

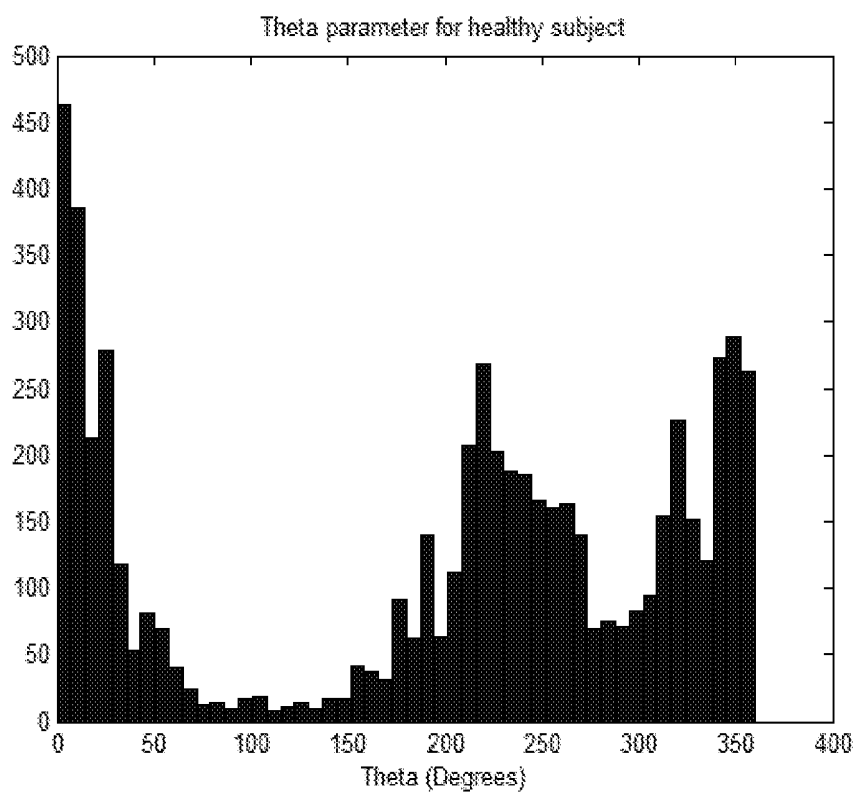


FIG. 11

**NOVEL SYSTEM AND METHOD TO
DIAGNOSE AND PREDICT DIFFERENT
SYSTEMIC DISORDERS AND MENTAL
STATES**

FIELD OF THE INVENTION

[0001] The present invention relates a novel system and method to diagnose and predict systemic disorders including brain disorders and mental states in early stage and more accurately. More particularly, this invention relates to a novel method of EEG recording and processing through which multiple output data streams are taken together from a system like brain and the structure of their correlation matrix is studied through its eigenvector, eigendirection and eigenspaces and other signal processing techniques including compression sensing, wavelet transform, fast fourier transform etc.

BACKGROUND OF THE INVENTION

[0002] Neuromonitoring is a subfield of clinical patient monitoring focused on measuring various aspects of brain function and on changes therein caused by neurological diseases, accidents, and drugs commonly used to induce and maintain anesthesia in an operation room or sedation in patients under critical or intensive care.

[0003] Electroencephalography (EEG) is a well-established method for assessing brain activity. When measurement electrodes are attached on the skin of the skull surface, the weak biopotential signals generated in brain cortex may be recorded and analyzed. The EEG has been in wide use for decades in basic research of the neural systems of the brain as well as in the clinical diagnosis of various central nervous system diseases and disorders. EEG measures voltage fluctuations resulting from ionic current flows within the neurons of the brain. In clinical contexts, EEG refers to the recording of the brain's spontaneous electrical activity over a short period of time, usually 20-40 minutes, as recorded from multiple electrodes placed on the scalp. Diagnostic applications generally focus on the spectral content of EEG, that is, the type of neural oscillations that can be observed in EEG signals.

[0004] The importance of accurate, timely diagnosis of brain abnormality is crucial in many clinical settings including the emergency room (ER) or intensive care unit (ICU), in Out-Patient Department (OPD). However, most mental and neurological states are evaluated mainly through interviews and subjective exams based on the subjects' temporary performance at that time. There is no objective quantitative test for evaluating baseline brain function. Imaging technologies such as standard magnetic resonance imaging (MRI) show only structure within the brain without providing an indication of dynamic brain function. EEG is the most effective method for evaluating brain function like ECG for the heart, but interpretation requires interpretation of multichannel graphs based on visual analysis by highly trained experts.

[0005] Currently the EEG is used to diagnose neurological disease like epilepsy, seizures, encephalopathy, comatosed condition, brain dead state, encephalitis (brain fever). It is very useful tool in comatosed or unconscious patient to know the reason of unconsciousness. But it is not very sensitive and specific for the different diseases most of the time. The sensitivity varies from 30% to 60% in patients of

epilepsy. EEG is often normal in patients having recent seizures even on the same day of the test. EEG is not specific or sensitive in patients of stroke, dementia, Parkinson's disease or encephalopathy.

[0006] The present invention overcomes the above shortcomings by providing a novel methodology which will be helping in diagnosing the different disorders including neurological and also systemic diseases more accurately and comprehensibly. It will also diagnose certain neurological disorders, which are not diagnosed with current EEG techniques and predict them even before symptoms.

OBJECT OF THE INVENTION

[0007] The main object of the present invention is to provide a novel system and method to diagnose and predict different diseases specially brain disorders and mental states in early stage and more accurately.

[0008] Yet another object of this invention is to provide a novel system and method to predict the systemic disorders even before symptoms.

[0009] Yet another object of this invention is to provide a novel system and method to predict the neurological disorders even before symptoms.

[0010] Yet another object of this invention is to provide a novel method of EEG recording and processing.

[0011] Yet another object of this invention is to diagnose and predict different brain disorders and study mental states by recording EEG in a novel manner.

[0012] Yet another object is to determine the basic principle of neuronal functioning as a system operating on different signals whether linear system or non-linear system.

[0013] Yet another object of this invention is to analyze the EEG recording using eigenvalues, eigenvectors, eigendirections and eigenspaces and other signal processing techniques like Fast Fourier transform, compression sensing, wavelet transform etc.

[0014] Yet another object of this invention is to use the Spinal EEG and suboccipital lead as additive source of EEG signals and to evaluate spinal EEG in diagnosing the diseases and to know the primary source of EEG signals.

[0015] Yet another object of this invention is to create and use 4 dimensional EEG images to predict the different disease in early stage.

[0016] Still another object of this invention is to record EEG non invasively from the surface of the brain bypassing the skull bone for diagnosing specific brain disorders by using advanced signal processing techniques and to know skull transfer factor.

[0017] Yet another object is to determine the basic principle of neuronal functioning and understand the generation and evaluation of thought process.

SUMMARY OF THE INVENTION

[0018] Accordingly, the present invention relates a novel system and method to diagnose and predict systemic disorders including brain disorders and mental states in early stage and more accurately. More particularly, this invention relates to a novel method of EEG recording and processing through which multiple output data streams are taken together from a system like brain and the structure of their correlation matrix is studied through its eigenvector, eigen-

direction and eigenspaces and other signal processing techniques including fast fourier transform, compression sensing, wavelet transform etc.

[0019] In a preferred embodiment of the present invention eigenvectors/eigenvalues, properties of inner product spaces and 4D visualization of EEG signal's statistical, temporal and spectral properties is proposed to diagnose various systemic disorders in any subject. The proposed system analyses the EEG signals and giving values for three parameters each for left and right side of the brain, namely, ρ , θ , and h , which represent the underlying mathematical structure of the signals appearing on the scalp. The three parameters are then plotted with time to give the novel 4 dimensional visualization of the entire EEG activity of the brain.

[0020] The values of ρ , and θ , of EEG signals for one hour are also plotted which are unique for the individual and are helpful in predicting/diagnosing different disorders/diseases. The EEG analysis reflects different chemical, molecular and channel abnormalities in different diseases.

[0021] In another preferred embodiment of the present invention, a diagnostic kit for EEG based diagnosis of systemic and neurological disorders is proposed. The kit comprises a means for data input, a processing unit, and an output device. Characterized in that, the processing unit provides 4 dimensional visualization of brain activity resulting into projection of possibilities of systemic and neurological disorders.

[0022] In another preferred embodiment of the present invention EEG signals were also analyzed from patient of hemispherectomy and compared from one hemisphere having normal skull bone from other hemisphere having no bone. It reflects skull transfer function, which may be useful in making EEG signal interpretation more accurate.

[0023] In another preferred embodiment of the present invention EEG signals from spine (Spinal EEG) and suboccipital area were analyzed using advanced signal processing techniques in normal and different diseases as well as near to brain dead patients. It showed promising and interesting results showing which may be helpful in knowing primary source or master point of EEG signals as well as predicting different diseases.

BRIEF DESCRIPTION OF DRAWINGS

[0024] A complete understanding of the device and system of the present invention may be obtained by reference to the following drawings:

[0025] FIG. 1 shows a general overview of procedure of recording EEG signals.

[0026] FIG. 2 depicts a sample of EEG signals recorded from a healthy subject.

[0027] FIG. 3 shows the raw data of the signals represented in FIG. 2 that are used as input for the algorithm.

[0028] FIG. 4 shows 9x9 covariance matrix of the data obtained in FIG. 3.

[0029] FIG. 5 shows the 9 eigenvectors, with corresponding eigenvalues of the matrix in FIG. 4.

[0030] FIG. 6 shows the computation of the response vector of the covariance matrix in FIG. 4 from its eigenvectors and eigenvalues.

[0031] FIG. 7 depicts populated 3x3 matrix of rearrangement of values obtained in FIG. 6.

[0032] FIG. 8 shows process of taking a covariance matrix and reducing it to 3-dimensional spherical coordinates depicted in FIG. 7.

[0033] FIG. 9 shows the 4 D visualization for the left group of a subject.

[0034] FIG. 10 shows the distribution of the θ parameter of an unhealthy subject who is suffering from epilepsy.

[0035] FIG. 11 shows the distribution of the same parameter of a healthy subject with no mental disorder.

DETAILED DESCRIPTION OF THE INVENTION

[0036] The present invention relates to a novel system and method to diagnose and predict different brain disorders and mental states. More particularly, this invention relates to a novel method of EEG recording and processing through which multiple output data streams are taken together from a system like brain and the structure of their correlation matrix is studied through its eigenvalues, eigenvector, eigendirection and eigenspaces and other signal processing techniques like compression sensing, wavelet transform etc.

[0037] The present invention involves creating a correlation matrix from EEG signals obtained in a fixed duration of time from the various locations of the scalp. The dynamics of the eigenvector together with the eigenvectors is studied to characterize brain function. People suffering from brain disorders have a greater rigidity in the dynamic behavior of their eigenvectors and that allows in diagnosing such different behavior more accurately and comprehensibly.

[0038] In one aspect, the present invention is a novel EEG product which is composed of unique method of EEG recording and processing. The EEG product involves EEG recording by using spinal EEG and different scalp EEG electrodes. The EEG analysis is done by a unique process in which output data streams are taken together from a system like brain and the structure of their correlation matrix is studied through its eigenvector, eigenvalues, eigendirection and eigenspaces and other signal processing techniques like compression sensing, wavelet transform etc.

[0039] These EEG data are analyzed by other signal processing techniques like wavelet transform, compression sensing. Further, analysis of the skull bone transfer factor is done by analyzing EEG data taken from hemispherectomy patients in which one half of the skull bone has been removed. This method effectively characterizes the transfer function of scalp bone data with high accuracy. EEG is also recorded using different photic signals from two sources and then analyzed to determine the basic principle of neuronal functioning as a system operating on different signals whether linear system or non-linear system.

[0040] Yet another aim is to determine the basic principle of neuronal functioning as a system operating on different signals whether linear system or non-linear system.

[0041] This method also useful in predicting certain neurological disorders and different systemic disease, which are not diagnosed with the current EEG techniques.

[0042] In another aspect, the methodology of recording and processing EEG signals from multiple output data streams, comprising of the following steps:

[0043] i. Performing EEG of patient scalp including suboccipital as well as spinal electrodes. The EEG is done in normal patients, patients of epilepsy, dementia, deep coma, severe head injury, stroke, Parkinson's disease;

[0044] ii. EEG is analysed with different signal processing techniques like eigenvalues, eigenvectors, eigendirections, wavelet transform, fast fourier, compression sensing technologies;

[0045] iii. functional modeling and 4 D functional imaging of brain is done by using said techniques; and

[0046] iv. Skull bone transfer factor is analysed using these data.

[0047] This brain model is validated in different neurological disorders for predicting as well as diagnosing the diseases in early stages so that prevention and proper treatment can be done more effectively.

[0048] Thus, the proposed system and method is capable of early detection of brain disorders, mental states and different diseases of body. The system and method provides for diagnosis of epilepsy for patients not having classical diagnostic markers in EEG. It further measures the severity of the neurological disease/disorder as well as monitors the progression of a neurological disorder. The system and method helps source localization (focal) of epileptic activity and other brain disorders/abnormalities and seizure prediction to be used in advanced warning systems for epilepsy patients. The system and method uses eigenvectors/eigenvalues, properties of inner product spaces and 4D visualization EEG signal's statistical, temporal and spectral properties to diagnose patients.

[0049] In another preferred embodiment of the present invention, a diagnostic kit based on the inventive concept of the present invention is proposed. The kit comprises at least a means for data input, a processing unit to process the data, and at least one output device to present the processed data as the result or diagnosis. The diagnostic kit is capable of early detection of brain disorders, mental states and different diseases of body. The kit provides for diagnosis of epilepsy for patients not having classical diagnostic markers in EEG. It further measures the severity of the neurological disease/disorder as well as monitors the progression of a neurological disorder. The kit helps source localization (focal) of epileptic activity and other brain disorders/abnormalities and seizure prediction to be used in advanced warning systems for epilepsy patients. The kit uses eigenvectors/eigenvalues, properties of inner product spaces and 4D visualization EEG signal's statistical, temporal and spectral properties to diagnose patients.

[0050] According to an embodiment of the invention proposed through this specification, the diagnostic kit for early detection of human disorders comprises:

[0051] a. a means for sensing brainwaves of a user;

[0052] b. a means for recording pattern of the brainwaves of the user;

[0053] c. a means for processing the pattern recorded in step b., the means capable of performing an analysis of the brainwave pattern resulting into a four dimensional visualization; and

[0054] d. a means for representing four dimensional visualization of the entire EEG activity of the user's brain obtained in step c.;

characterized in that the analysis of brainwave pattern is done by giving values for three parameters each for left and right side of the brain, namely, ρ , θ , and h , and plotting them with time to give the four dimensional visualization of brain activity.

[0055] In an alternate embodiment of the present invention, a method of EEG based diagnosis for early detection of human disorders is suggested, the method comprising the steps of:

[0056] a. recording EEG signal data to obtain a brain-wave pattern;

[0057] b. optionally grouping the signals obtained in step a. into at least two groups;

[0058] c. breaking the signal data into frames;

[0059] d. creating covariance matrix of each frame obtained in step c.;

[0060] e. computing eigenvectors and eigenvalues;

[0061] f. computing response vector covariance matrix from its eigenvectors and eigenvalues;

[0062] g. reducing the covariance matrix to three dimensional spherical coordinate parameters;

[0063] h. plotting the three dimensional parameters as a function of time to obtain four dimensional visualization of the EEG signals of step a.; and

[0064] i. observing distribution pattern of the parameters for deviation;

wherein any deviation in distribution pattern is indicator of abnormality.

[0065] Further, the signal data comprises at least 100 samples of each signal per second, and each group comprises plurality of signals. The frame comprises data consisting of at least 100 samples, of all the signals in each group taken separately. In a preferred mode, covariance matrix is a symmetric matrix constructed with the signals obtained and at least 100 samples for each signal. An eigenvector of a matrix is a vector which when multiplied by that matrix results in a scaled version of the original vector itself and the eigenvectors and eigenvalues are computed by equation $Ax_i = \lambda_i x_i$, where x_i is one of the eigenvectors of A and λ_i is its corresponding eigenvalue and wherein a $n \times n$ symmetric matrix gives n eigenvectors with corresponding n eigenvalues, n being any arbitrary integer. The three spherical coordinates comprises an angle a vector makes with the z-axis represented by ρ , an angle a vector makes with the x-axis represented by θ , and the length of the vector represented by h .

[0066] The present invention will now be described more fully hereinafter with reference to the accompanying drawings in which a preferred embodiment of the invention is shown. This invention may, however, be embodied in many different forms and should not be construed as being limited to the embodiment set forth herein. Rather, the embodiment is provided so that this disclosure will be thorough, and will fully convey the scope of the invention to those skilled in the art.

[0067] The present invention provides an EEG based method to study and monitor functional aspects of the human brain in real time. Current technology is severely limited in being able to provide a decisive measure for every individual's neurological health by recording the functional behavior of the brain.

[0068] As shown in FIG. 1, EEG signals appear on the entire area of the scalp of every person, from where they are recorded using multiple sensors. The proposed invention looks for a mathematical structure within the various signals recorded from different locations on the scalp and classifies individuals as healthy and unhealthy. This system gives a quantitative assessment of a person's neurological health,

which is something no EEG based system is known to provide. The concept is explained in the following steps:

- [0069] 1. A set of sensors are placed on the scalp of a subject and signals emerging from the brain are recorded via an EEG device.
- [0070] 2. The system begins to analyse the EEG signals and starts giving values for three parameters each for left and right side of the brain, namely, ρ , θ , and h , which represent the underlying mathematical structure of the signals appearing on the scalp.
- [0071] 3. The three parameters are plotted with time to give the novel 4 dimensional visualization of the entire EEG activity of the brain.
- [0072] 4. The distribution of these three parameters is used to determine the systemic as well as mental health of a subject.
- [0073] The following minimum components are required for the foregoing steps to be completed.

- [0074] 1. EEG Scanner—Electroencephalography scanner is used to monitor and record brain activity. EEG measures the brain activity of various neurons and then reports them back to the system for further interpretation.
- [0075] 2. Algorithm based processing unit—This is a system that analyses the mathematical structure of the signals being received from a subject's scalp and, in real-time, produces parameters that allow a medical practitioner to classify a subject as either healthy or unhealthy. It also gives a quantitative assessment of the degree of health or disorder of the individual. The 3 parameters can be computed for any localized area on the scalp or the entire scalp itself.

EXAMPLE 1

Sampling of EEG data of Subjects

[0076] The internationally recognized 10-20 system is used to place the sensors on the scalp and record the EEG signals. FIG. 2 shows a sample of the EEG signals recorded from a healthy subject. The name of each signal recorded is mentioned along with it on the extreme right of FIG. 2. First three signals, namely, Fz, Cz, Pz, lie along the line running at the centre of the scalp from the front to the back of the head. The signals ending with an odd number, for example, C3, lie on the left side of the scalp and those ending with an even number, for example, P4, lie on right side of the scalp.

[0077] In this example, once the signals are recorded, they are separated into two groups, namely, left and right. The left group has all the signals that are obtained from the left side of the scalp, along with the signal Cz, and the right group has all the signals obtained from the right side of the scalp along with signal Cz. Therefore, each side has 9 signals each, listed as follows:

[0078] Left : Fp1, F7, F3, T3, C3, T5, P3, O1, Cz

[0079] Right: Fp2, F4, F8, C4, T4, P4, T6, O2, Cz

[0080] It does not matter in which order the signals are placed within the group. Once the left group and right groups have been created, the algorithm works independently of the order in which signals are put in each group. In general, groups can be formed with any number of signals in them. Data is recorded on an EEG machine that records 256 samples of each signal per second. FIG. 3 shows the raw data of the signals represented in FIG. 2 that are used as input for the algorithm. This entire data is then broken into

'frames' that are the size of 1 second each for both the left and the right group. In other words, 1 second worth of data, i.e. 256 samples, of all the 9 signals in each group is taken separately and called a frame. The process that follows now describes just one frame taken from one of the groups, but applies identically to all the frames of both groups.

EXAMPLE 2

Constructing Covariance Matrix of Sample EEG data of Subjects

[0081] A covariance matrix is constructed with the 9 signals and 256 samples for each signal. FIG. 4 shows this covariance matrix. It is a symmetric 9×9 matrix that is populated with the covariance values of each signal with every other signal, computed using the 256 samples we have for all 9 signals. One can obtain the covariance between any two EEG signals by going to the row and column, with their respective names written next to each row and column of the matrix, and reading off that value from the matrix. For example, the covariance between F4 and C4 is 1301.435, and its location is at the 5th column-3rd row and also, since the matrix is symmetric, 3rd column-5th row.

[0082] With covariance matrix constructed we then proceed to compute its eigenvectors and eigenvalues. An eigenvector of a matrix is a vector which when multiplied by that matrix results in a scaled version of the original vector itself, i.e., $Ax_i = \lambda_i x_i$, where x_i is one of the eigenvectors of A and λ_i is its corresponding eigenvalue. A 9×9 symmetric matrix gives 9 eigenvectors with corresponding 9 eigenvalues. FIG. 5 show the 9 eigenvectors, with corresponding eigenvalues written on top, of the matrix in FIG. 4.

EXAMPLE 3

Identifying Response Vector

[0083] With all 9 eigenvectors and eigenvalues obtained, we first multiply each eigenvalue with its eigenvector and then add all the eigenvectors together, i.e., $\sum_i (\lambda_i v_i)$, to give what we call the response vector Λ of the covariance matrix. The eigenvectors corresponding to higher eigenvalues represent the slow changing aspect of the brain like unique brain signature of individual person, different chronic diseases and the eigenvectors with small eigenvalues represent the fast changing aspects of the brain like thought process, different diseases including mental diseases. If one needs to focus on one specific activity of the brain then individual eigenvectors are used instead of the response vectors, which represent the overall activity. FIG. 6 shows the computation of the response vector of the covariance matrix in FIG. 4 from its eigenvectors and eigenvalues. The response vector is of the same size as the eigenvectors, i.e., 9×1 and its elements can be rearranged to populate a 3×3 matrix, as shown in FIG. 7. Using the process outlined above, we now compute the 3×1 response vector of this 3×3 matrix. Then a transformation from Cartesian coordinate system to Spherical coordinate system is performed for this 3×1 response vector. The 3×1 response vector shown in FIG. 7 is $(-6530, 6514, -6676)$ in Cartesian coordinates. When transformed to spherical coordinates the vector becomes $(-35.9, -135.1, 11385)$. The first two coordinates, ρ and θ , are the angles this vector makes with the z and the x-axis respectively and the last coordinate is the length of the vector and is represented

by h. This entire process of taking a covariance matrix and reducing it to 3-dimensional spherical coordinates is schematically depicted in FIG. 8.

[0084] EXAMPLE 4

4D Visualization of EEG

[0085] The above process is carried out for all the frames of 1 second duration, and three parameters for each frame are computed. These three parameters for each frame are plotted as a function of time to give the 4 dimensional visualization of the EEG. FIG. 9 shows the 4 D visualization for the left group of a subject. The distribution of these parameters is used to diagnose unhealthy brains. FIG. 10 shows the distribution of the θ parameter of an unhealthy subject who is suffering from epilepsy and FIG. 11 shows the distribution of the same parameter of a healthy subject with no mental disorder. While looking at this figure it must be remembered that the θ parameter has a range from 0-360° and the distribution wraps around the end points of the range. One can clearly see that the distribution of the parameter of the unhealthy subject is Gaussian/Normal with mean around 0°, while the distribution for the healthy subject is much more widely distributed. These parameters were assessed in many healthy and unhealthy brains having diseases like epilepsy with but giving normal EEG, early Parkinson's disease and early dementia. These parameters were clearly different in different subjects suggesting the 4D EEG is helpful in diagnosing different diseases even in their early stages when EEG is showing normal findings.

[0086] The values of ρ and θ for EEG data taken for one hour were also plotted that showed elongated bell shaped curve (Normal distribution). It was different for various diseases and healthy brains suggesting correlation between chemical components of brain and different diseases like low dopamine in Parkinson's disease and low acetylcholine in Alzheimer and dementia.

We claim:

1. An EEG based diagnosis system for early detection of human disorders comprising:

- a. a means for sensing brainwaves of a user;
- b. a means for recording pattern of the brainwaves of the user;
- c. a means for processing the pattern recorded in step b., the means capable of performing an analysis of the brainwave pattern resulting into a four dimensional visualization; and
- d. a means for representing four dimensional visualization of the entire EEG activity of the user's brain obtained in step c.;

characterized in that the analysis of brainwave pattern is done by giving values for three parameters each for left and right side of the brain, namely, ρ , θ , and h , and plotting them with time to give the four dimensional visualization of brain activity.

2. The EEG based system as claimed in claim 1, wherein said means for sensing and recording brainwave pattern comprises an Electroencephalograph (EEG).

3. The EEG based system as claimed in claim 1, wherein the means for sensing and recording brainwave pattern includes spinal EEG and different scalp EEG electrodes.

4. The EEG based system as claimed in claim 1, wherein said means for processing pattern comprises a programmed processing unit.

5. The EEG based system as claimed in claim 1, wherein said brainwaves comprise EEG signals.

6. The EEG based system as claimed in claim 1, wherein said analysis further includes statistical, temporal and spectral property assessment of the EEG signals through four dimensional visualisation of eigenvectors/eigenvalues, and properties of inner product spaces plotted with time.

7. The EEG based system as claimed in claim 1, wherein multiple output data resulting from recorded EEG patterns are taken together and the structure of their correlation and higher-order statistics matrices are analysed through its eigenvalues, eigenvector, eigendirection and eigenspaces and other signal processing techniques like fast Fourier transform compression sensing, wavelet transform to obtain said four dimensional activity.

8. The EEG based system as claimed in claim 1, wherein the analysis further includes the step of creating a correlation matrix from EEG signals obtained in a fixed duration of time from the various locations of the scalp.

9. The EEG based system as claimed in claim 1, wherein the means for representing four dimensional visualization of the entire EEG activity of the user's brain is an output device selected from the group comprising a printer, a visual output screen, an audio-visual output device or a combination thereof.

10. The EEG based system as claimed in claim 1, wherein the human disorders include systemic as well as neurological disorders.

11. The EEG based system as claimed in claim 1, wherein the diagnosis of human disorders is on the basis of molecular, chemical and channel disturbances in the body as well as in the brain.

12. A method of EEG based diagnosis for early detection of human disorders comprising the steps of:

- a. recording EEG signal data to obtain a brainwave pattern;
- b. optionally grouping the signals obtained in step a. into at least two groups;
- c. breaking the signal data into frames;
- d. creating covariance matrix of each frame obtained in step c.;
- e. computing eigenvectors and eigenvalues;
- f. computing response vector covariance matrix from its eigenvectors and eigenvalues;
- g. reducing the covariance matrix to three dimensional spherical coordinate parameters;
- h. plotting the three dimensional parameters as a function of time to obtain four dimensional visualization of the EEG signals of step a.; and
- i. observing distribution pattern of the parameters for deviation;

wherein any deviation in distribution pattern is indicator of abnormality.

13. The method of EEG based diagnosis as claimed in claim 12, wherein the signal data comprises at least 100 or more samples of each signal per second.

14. The method of EEG based diagnosis as claimed in claim 12, wherein each group comprises plurality of signals.

15. The method of EEG based diagnosis as claimed in claim 12, wherein a frame comprises data consisting of at least 100 samples or more, of all the signals in each group taken separately.

16. The method of EEG based diagnosis as claimed in claim 12, wherein covariance matrix is a symmetric matrix constructed with the signals obtained and at least 100 samples for each signal.

17. The method of EEG based diagnosis as claimed in claim 12, wherein an eigenvector of a matrix is a vector which when multiplied by that matrix results in a scaled version of the original vector itself and the eigenvectors and eigenvalues are computed by equation $Ax_i = \lambda_i x_i$, where x_i is one of the eigenvectors of A and λ_i is its corresponding eigenvalue and wherein an $n \times n$ symmetric matrix gives n eigenvectors with corresponding n eigenvalues, n being any arbitrary integer.

18. The method of EEG based diagnosis as claimed in claim 12, wherein the three spherical coordinates comprises an angle a vector makes with the z-axis represented by ρ , an angle a vector makes with the x-axis represented by θ , and the length of the vector represented by h.

19. The method of EEG based diagnosis as claimed in claim 12, wherein the human disorders include systemic as well as neurological disorders.

20. The method of EEG based diagnosis as claimed in claim 12, wherein the diagnosis of human disorders is on the basis of molecular, chemical and channel disturbances in the body as well as in the brain.

21. An EEG based diagnostic kit for early detection of human disorders comprising:

- a. a means for sensing brainwaves of a user;
- b. a means for recording pattern of the brainwaves of the user;

- c. a means for processing the pattern recorded in step b., the means capable of performing an analysis of the brainwave pattern resulting into a four dimensional visualization; and

- d. a means for representing four dimensional visualization of the entire EEG activity of the user's brain obtained in step c.;

wherein:

the means for sensing and recording brainwave pattern includes spinal EEG and different scalp EEG electrodes;

said means for processing pattern comprises a programmed processing unit;

said analysis includes statistical, temporal and spectral property assessment of the EEG signals through four dimensional visualization of eigenvectors/eigenvalues, and properties of inner product spaces plotted with time;

the means for representing four dimensional visualization of the entire EEG activity of the user's brain is an output device selected from the group comprising a printer, a visual output screen, an audio-visual output device or a combination thereof; and

characterized in that the analysis of brainwave pattern is done by giving values for three parameters each for left and right side of the brain, namely, ρ , θ , and h, and plotting them with time to give the four dimensional visualization of brain activity.

* * * * *

专利名称(译)	诊断和预测不同系统性疾病和精神状态的新系统和方法		
公开(公告)号	US20170367607A1	公开(公告)日	2017-12-28
申请号	US15/544005	申请日	2016-01-18
[标]申请(专利权)人(译)	AGARWAL普尼特 潘瓦尔Siddharth		
申请(专利权)人(译)	阿加瓦尔普尼特		
当前申请(专利权)人(译)	阿加瓦尔普尼特		
[标]发明人	AGARWAL PUNEET PANWAR SIDDHARTH JOSHI SHIV DUTT GUPTA ANUBHA		
发明人	AGARWAL, PUNEET PANWAR, SIDDHARTH JOSHI, SHIV DUTT GUPTA, ANUBHA		
IPC分类号	A61B5/0476 A61B5/16 G06K9/00 A61B5/00		
CPC分类号	A61B5/0476 A61B5/165 A61B5/7239 A61B5/7257 G06K9/00496		
优先权	2008DEL2014 2015-01-16 IN		
外部链接	Espacenet USPTO		

摘要(译)

本发明涉及一种新的系统和方法，用于在早期阶段更准确地诊断和预测包括脑部疾病和精神状态在内的全身性疾病。更具体地说，本发明涉及一种新的脑电图记录和处理方法，通过该方法，多个输出数据流从像大脑这样的系统一起被采集，并且通过其特征向量，本征方向和本征空间以及其他信号处理技术研究它们的相关矩阵的结构。包括压缩感知，小波变换，快速傅里叶变换等。

