



US009808640B2

(12) **United States Patent**
Zhang

(10) **Patent No.:** **US 9,808,640 B2**
(45) **Date of Patent:** **Nov. 7, 2017**

(54) **METHOD AND APPARATUS FOR DISCRIMINATING TACHYCARDIA EVENTS IN A MEDICAL DEVICE USING TWO SENSING VECTORS**

4,556,063 A 12/1985 Thompson et al.
(Continued)

FOREIGN PATENT DOCUMENTS

(71) Applicant: **Medtronic, Inc.**, Minneapolis, MN (US)

AU 2010201351 4/2010
EP 1615693 1/2006
(Continued)

(72) Inventor: **Xusheng Zhang**, Shoreview, MN (US)

OTHER PUBLICATIONS

(73) Assignee: **Medtronic, Inc.**, Minneapolis, MN (US)

(PCT/US2015/023351) PCT Notification of Transmittal of the International Search Report and the Written Opinion of the International Searching Authority.

(*) Notice: Subject to any disclaimer, the term of this patent is extended or adjusted under 35 U.S.C. 154(b) by 109 days.

(Continued)

(21) Appl. No.: **14/250,040**

Primary Examiner — Michael Carey
Assistant Examiner — Natasha Patel

(22) Filed: **Apr. 10, 2014**

(65) **Prior Publication Data**

(57) **ABSTRACT**

US 2015/0290468 A1 Oct. 15, 2015

(51) **Int. Cl.**
A61B 5/04 (2006.01)
A61N 1/39 (2006.01)
(Continued)

(52) **U.S. Cl.**
CPC **A61N 1/3987** (2013.01); **A61B 5/046** (2013.01); **A61B 5/04011** (2013.01);
(Continued)

(58) **Field of Classification Search**
CPC .. A61N 1/3956; A61N 1/0534; A61N 1/0529; A61N 1/36017; A61N 1/36082; A61B 5/0468
See application file for complete search history.

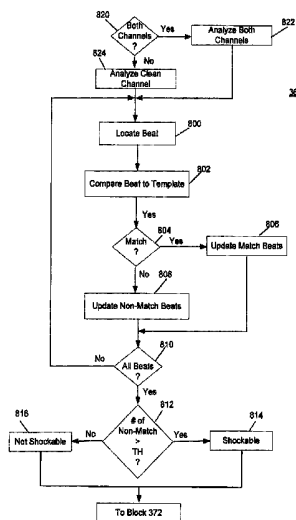
A method and medical device for detecting a cardiac event that includes sensing cardiac signals from a plurality of electrodes forming a first sensing vector sensing a first interval of the cardiac signal during a predetermined time period and a second sensing vector simultaneously sensing a second interval of the cardiac signal during the predetermined time period, identifying each of the first interval and the second interval as being one of shockable and not shockable in response to first processing of the first interval and the second interval and in response to second processing of one or both of the first interval and the second interval, the second processing being different from the first processing, and determining whether to deliver therapy for the cardiac event in response to identifying each of the first interval and the second interval as being one of shockable and not shockable in response to both the first processing and the second processing of the first interval and the second interval.

(56) **References Cited**

U.S. PATENT DOCUMENTS

4,374,382 A 2/1983 Markowitz

35 Claims, 13 Drawing Sheets



(51)	Int. Cl.		7,239,925 B2	7/2007	Bardy et al.
	<i>A61B 5/00</i>	(2006.01)	7,248,921 B2	7/2007	Palreddy et al.
	<i>A61B 5/042</i>	(2006.01)	7,251,757 B2	7/2007	Ouellette et al.
	<i>A61B 5/0452</i>	(2006.01)	7,274,962 B2	9/2007	Bardy et al.
	<i>A61B 5/046</i>	(2006.01)	7,299,092 B2	11/2007	Bardy et al.
	<i>A61B 5/0464</i>	(2006.01)	7,299,097 B2	11/2007	Bardy et al.
(52)	U.S. Cl.		7,317,942 B2	1/2008	Brown
	CPC	<i>A61B 5/0422</i> (2013.01); <i>A61B 5/0464</i>	7,330,757 B2	2/2008	Ostroff et al.
		(2013.01); <i>A61B 5/04525</i> (2013.01); <i>A61B</i>	7,376,458 B2	5/2008	Palreddy et al.
		<i>5/7207</i> (2013.01)	7,379,772 B2	5/2008	Bardy et al.
			7,392,082 B2	6/2008	Sharma
			7,392,085 B2	6/2008	Warren et al.
(56)	References Cited		7,406,350 B2	7/2008	Erlinger et al.
	U.S. PATENT DOCUMENTS		7,444,182 B2	10/2008	Ostroff et al.
			7,477,935 B2	1/2009	Palreddy et al.
			7,583,579 B2	9/2009	Ueki
			7,623,909 B2	11/2009	Sanghera et al.
			7,623,913 B2	11/2009	Phillips
			7,627,367 B2	12/2009	Warren et al.
			7,657,322 B2	2/2010	Bardy et al.
			7,728,579 B2	6/2010	Mueller
			7,734,333 B2	6/2010	Ghanem et al.
			7,734,336 B2	6/2010	Ghanem et al.
			7,742,812 B2	6/2010	Ghanem et al.
			7,761,142 B2	7/2010	Ghanem et al.
			7,761,150 B2	7/2010	Ghanem et al.
			7,769,452 B2	8/2010	Ghanem et al.
			7,774,049 B2	8/2010	Ghanem et al.
			7,774,616 B2	8/2010	Dale et al.
			7,783,340 B2	8/2010	Sanghera et al.
			7,894,894 B2	2/2011	Stadler et al.
			7,904,153 B2	3/2011	Greenhut et al.
			7,907,993 B2	3/2011	Ghanem et al.
			7,930,024 B2	4/2011	Ousdigian
			7,937,135 B2	5/2011	Ghanem et al.
			7,941,214 B2	5/2011	Kleckner et al.
			7,953,489 B2	5/2011	Warren et al.
			7,991,459 B2	8/2011	Palreddy et al.
			7,991,471 B2	8/2011	Ghanem et al.
			7,996,082 B2	8/2011	Palreddy et al.
			8,014,851 B2	9/2011	Ostroff et al.
			8,027,720 B2	9/2011	Bardy et al.
			8,027,791 B2	9/2011	Soykan
			8,050,754 B2	11/2011	Ostroff et al.
			8,068,901 B2	11/2011	Ghanem et al.
			8,073,532 B2	12/2011	Palreddy et al.
			8,095,206 B2	1/2012	Ghanem et al.
			8,116,867 B2	2/2012	Ostroff
			8,160,684 B2	4/2012	Ghanem et al.
			8,160,686 B2	4/2012	Allavatam et al.
			8,160,687 B2	4/2012	Warren et al.
			8,160,697 B2	4/2012	Warren et al.
			8,170,663 B2	5/2012	DeGroot et al.
			8,185,198 B2	5/2012	Palreddy et al.
			8,200,341 B2	6/2012	Sanghera et al.
			8,229,563 B2	7/2012	Warren et al.
			8,249,702 B2	8/2012	Warren et al.
			8,265,737 B2	9/2012	Warren et al.
			8,265,749 B2	9/2012	Allavatam et al.
			8,285,375 B2	10/2012	Bardy et al.
			8,306,618 B2	11/2012	Ghanem et al.
			8,332,022 B2	12/2012	Brown et al.
			8,346,357 B2	1/2013	Palreddy et al.
			8,364,251 B2	1/2013	Phillips
			8,435,185 B2	5/2013	Ghanem et al.
			8,437,838 B2	5/2013	Warren et al.
			8,457,737 B2	6/2013	Bardy et al.
			8,478,389 B1 *	7/2013	Brockway A61B 5/7203 600/509
			8,483,813 B2	7/2013	Zhang et al.
			8,483,843 B2	7/2013	Sanghera et al.
			8,494,630 B2	7/2013	Palreddy et al.
			8,548,573 B2	10/2013	Keefe
			8,565,878 B2	10/2013	Allavatam et al.
			8,588,895 B2	11/2013	Sanghera et al.
			8,588,896 B2	11/2013	Allavatam
			8,594,775 B2	11/2013	Ghosh et al.
			8,594,786 B2	11/2013	Ousdigian
			8,600,489 B2	12/2013	Warren et al.

(56)

References Cited

U.S. PATENT DOCUMENTS

8,611,996 B2 12/2013 Donofrio et al.
 8,626,280 B2 1/2014 Allavatam et al.
 8,626,285 B2 1/2014 Palreddy et al.
 8,700,152 B2 4/2014 Palreddy et al.
 8,712,523 B2 4/2014 Sanghera
 8,744,555 B2 6/2014 Allavatam et al.
 8,750,989 B2 6/2014 Bardy et al.
 8,781,567 B2 7/2014 Phillips et al.
 8,781,602 B2 7/2014 Sanghera et al.
 8,788,023 B2 7/2014 Sanghera et al.
 8,825,157 B2 9/2014 Warren et al.
 8,983,586 B2 3/2015 Zhang
 2002/0058878 A1 5/2002 Kohler et al.
 2002/0165459 A1 11/2002 Starobin et al.
 2003/0083587 A1 5/2003 Ferek-Petric
 2003/0097153 A1 5/2003 Bardy et al.
 2003/0120312 A1 6/2003 Cammilli et al.
 2004/0021523 A1 2/2004 Sadowy et al.
 2004/0030256 A1 2/2004 Lin
 2004/0049120 A1 3/2004 Cao et al.
 2004/0059237 A1 3/2004 Narayan et al.
 2004/0088018 A1 5/2004 Sawchuk et al.
 2004/0093037 A1* 5/2004 Henry A61N 1/3956
 607/14
 2004/0111121 A1 6/2004 Brown et al.
 2004/0220635 A1 11/2004 Burnes
 2004/0254613 A1 12/2004 Ostroff et al.
 2005/0038478 A1 2/2005 Klepfer et al.
 2006/0025822 A1 2/2006 Zhang
 2006/0042809 A1 3/2006 Neufeld et al.
 2006/0074331 A1 4/2006 Kim et al.
 2006/0217621 A1 9/2006 Kim et al.
 2007/0232948 A1 10/2007 Stadler et al.
 2007/0233196 A1* 10/2007 Stadler et al. 607/4
 2007/0233198 A1 10/2007 Ghanem et al.
 2007/0239220 A1 10/2007 Greenhut et al.
 2007/0270704 A1 11/2007 Ghanem et al.
 2007/0276445 A1 11/2007 Sanghera et al.
 2007/0276452 A1 11/2007 Sanghera et al.
 2008/0103535 A1 5/2008 Ostroff et al.
 2008/0132965 A1 6/2008 Ostroff et al.
 2008/0269813 A1 10/2008 Greenhut et al.
 2008/0275516 A1 11/2008 Ghanem et al.
 2008/0275521 A1 11/2008 Warren et al.
 2008/0288009 A1 11/2008 Kim et al.
 2009/0005828 A1 1/2009 Levine
 2009/0054938 A1 2/2009 Ostroff et al.
 2010/0004713 A1* 1/2010 Warren A61B 5/04525
 607/17
 2010/0023083 A1 1/2010 Eisinger et al.
 2010/0114196 A1 5/2010 Burnes et al.
 2010/0331904 A1 12/2010 Warren et al.
 2011/0270102 A1 11/2011 Zhang et al.
 2011/0270103 A1 11/2011 Zhang et al.
 2011/0270107 A1 11/2011 Zhang et al.
 2011/0270110 A1 11/2011 Zhang et al.
 2011/0307024 A1 12/2011 Ostroff et al.
 2011/0319953 A1 12/2011 Reed et al.
 2012/0029335 A1 2/2012 Sudam et al.
 2012/0095520 A1 4/2012 Zhang et al.
 2012/0316612 A1 12/2012 Warren et al.
 2013/0030481 A1* 1/2013 Ghosh et al. 607/14
 2013/0109985 A1* 5/2013 Gillberg A61B 5/7203
 600/509

2013/0197381 A1 8/2013 Charlton et al.
 2013/0261471 A1 10/2013 Saha et al.
 2014/0046396 A1 2/2014 Warren et al.
 2014/0275917 A1 9/2014 Allavatam et al.
 2014/0296932 A1 10/2014 Sanghera et al.
 2015/0133954 A1 5/2015 Seifert et al.

FOREIGN PATENT DOCUMENTS

EP 1631350 3/2006
 EP 1631352 3/2006
 EP 1659934 5/2006
 EP 1774906 4/2007
 EP 1803485 7/2007
 EP 1803486 7/2007
 EP 1827220 9/2007
 EP 1827598 9/2007
 EP 2025363 2/2009
 EP 2029224 3/2009
 EP 2029225 3/2009
 EP 2029226 3/2009
 EP 2077889 7/2009
 EP 2114244 11/2009
 EP 2166938 A1 3/2010
 EP 2268357 1/2011
 EP 2268358 1/2011
 EP 2313153 4/2011
 EP 2446925 5/2012
 EP 2446926 5/2012
 EP 2455132 5/2012
 EP 2459275 6/2012
 WO WO 98/05254 A1 2/1998
 WO 2004093974 A2 11/2004
 WO WO 2004/105871 A1 12/2004
 WO 0047278 10/2007
 WO 2011136916 11/2011
 WO 2012075119 A1 6/2012

OTHER PUBLICATIONS

(PCT/US2015/023341) PCT Notification of Transmittal of the International Search Report and the Written Opinion of the International Searching Authority.
 (PCT/US2015/023335) PCT Notification of Transmittal of the International Search Report and the Written Opinion of the International Searching Authority.
 (PCT/US2015/025152) PCT Notification of Transmittal of the International Search Report and the Written Opinion of the International Searching Authority, dated Jun. 18, 2015, 9 pages.
 (PCT/US2015/026277) PCT Notification of Transmittal of the International Search Report and the Written Opinion of the International Searching Authority, dated Jun. 26, 2015, 11 pages.
 (PCT/US2015/026743) PCT Notification of Transmittal of the International Search Report and the Written Opinion of the International Searching Authority, dated Jul. 29, 2015, 10 pages.
 (PCT/US2015/026745) PCT Notification of Transmittal of the International Search Report and the Written Opinion of the International Searching Authority, dated Aug. 6, 2015, 8 pages.
 (PCT/US2015/026954) PCT Notification of Transmittal of the International Search Report and the Written Opinion of the International Searching Authority, dated Jul. 29, 2015, 11 pages.
 (PCT/US2015/032809) PCT Notification of Transmittal of the International Search Report and the Written Opinion of the International Searching Authority, dated Aug. 6, 2015, 11 pages.

* cited by examiner

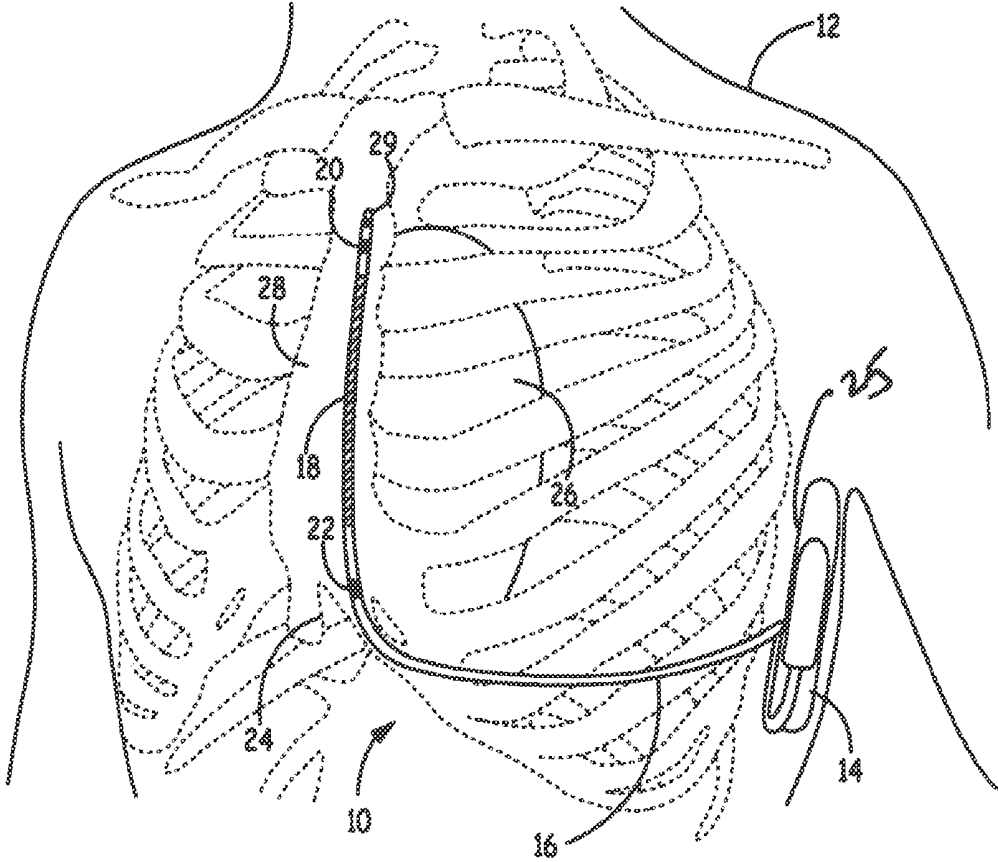


FIG. 1

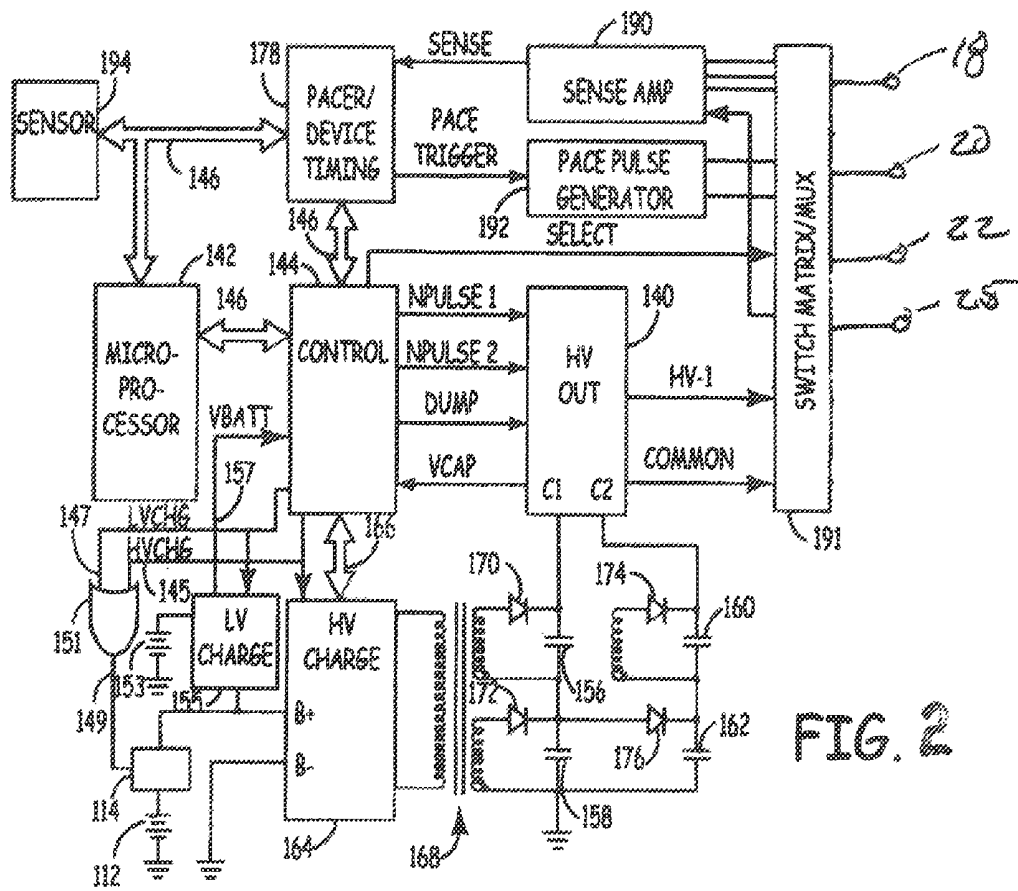


FIG. 2

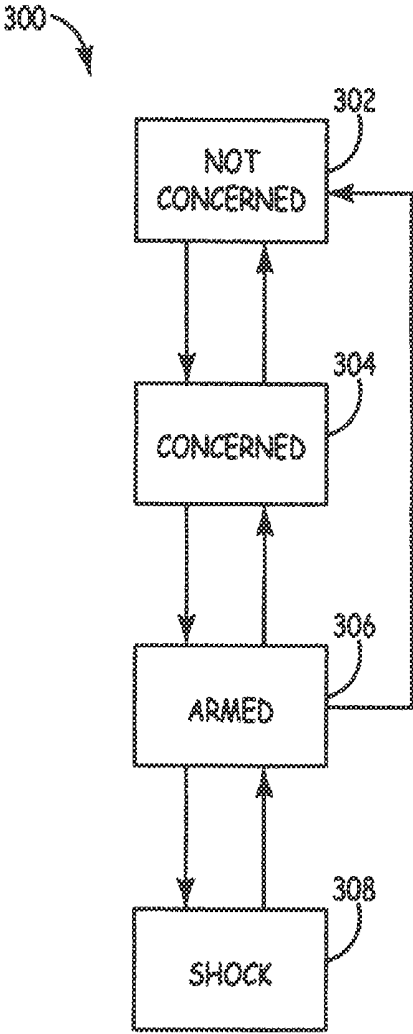


FIG. 3

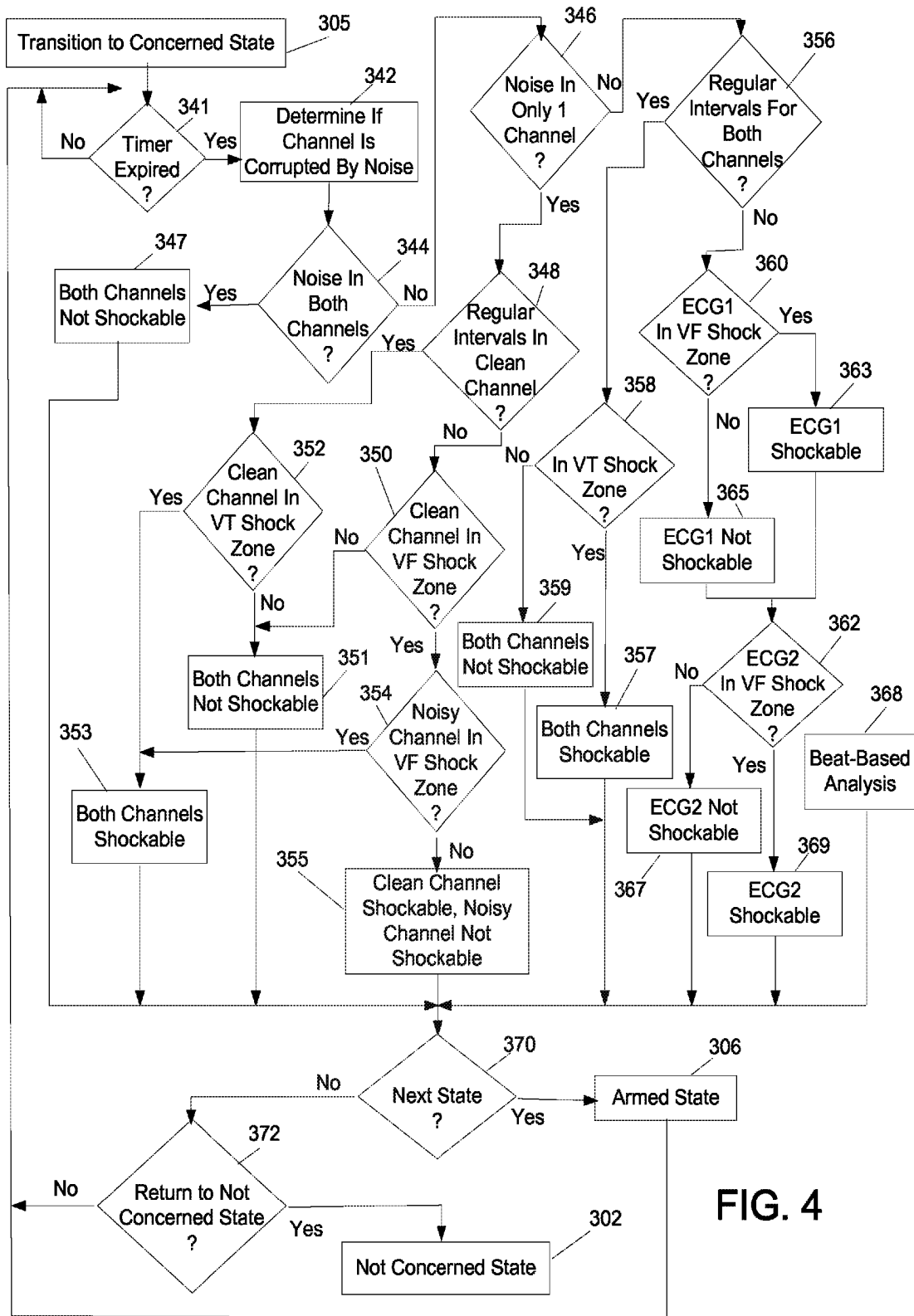


FIG. 4

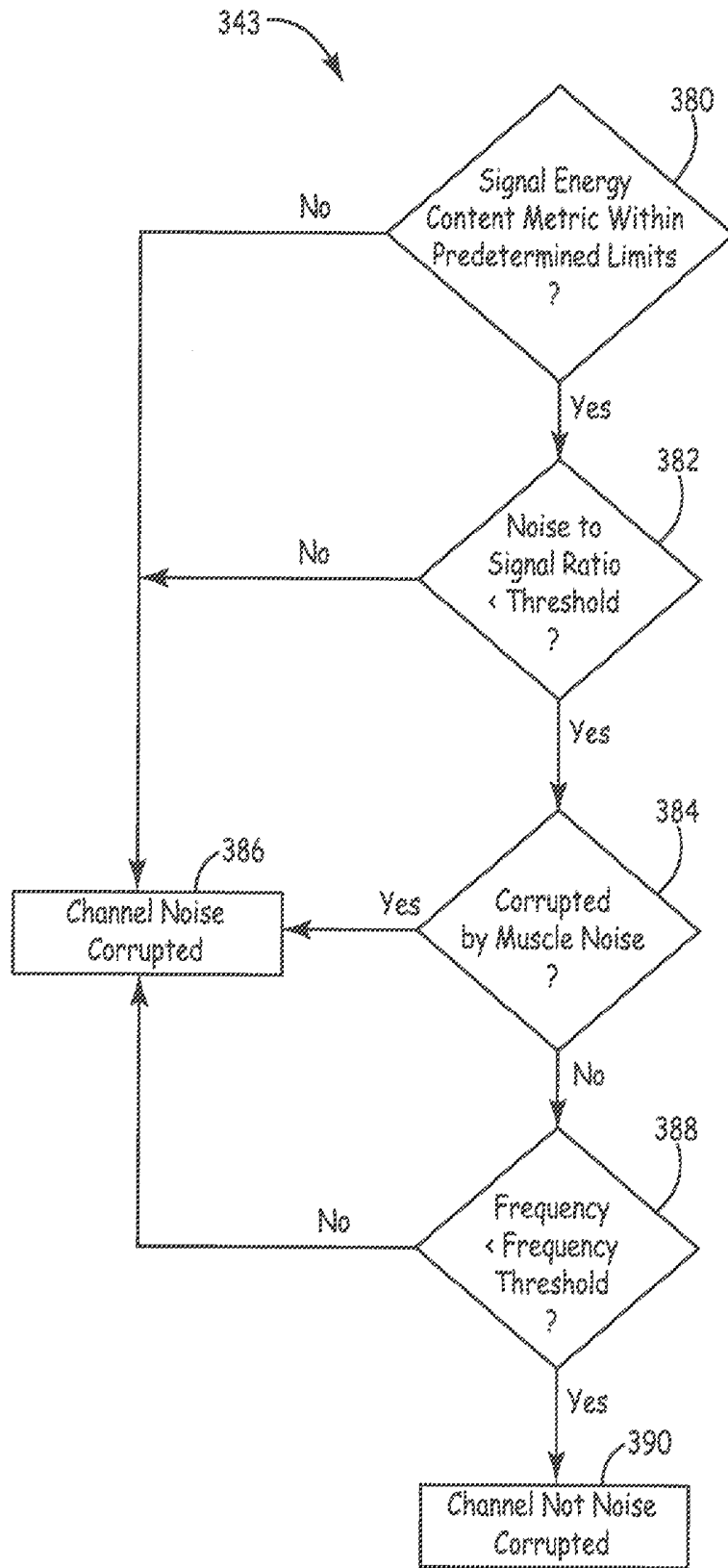


FIG. 5

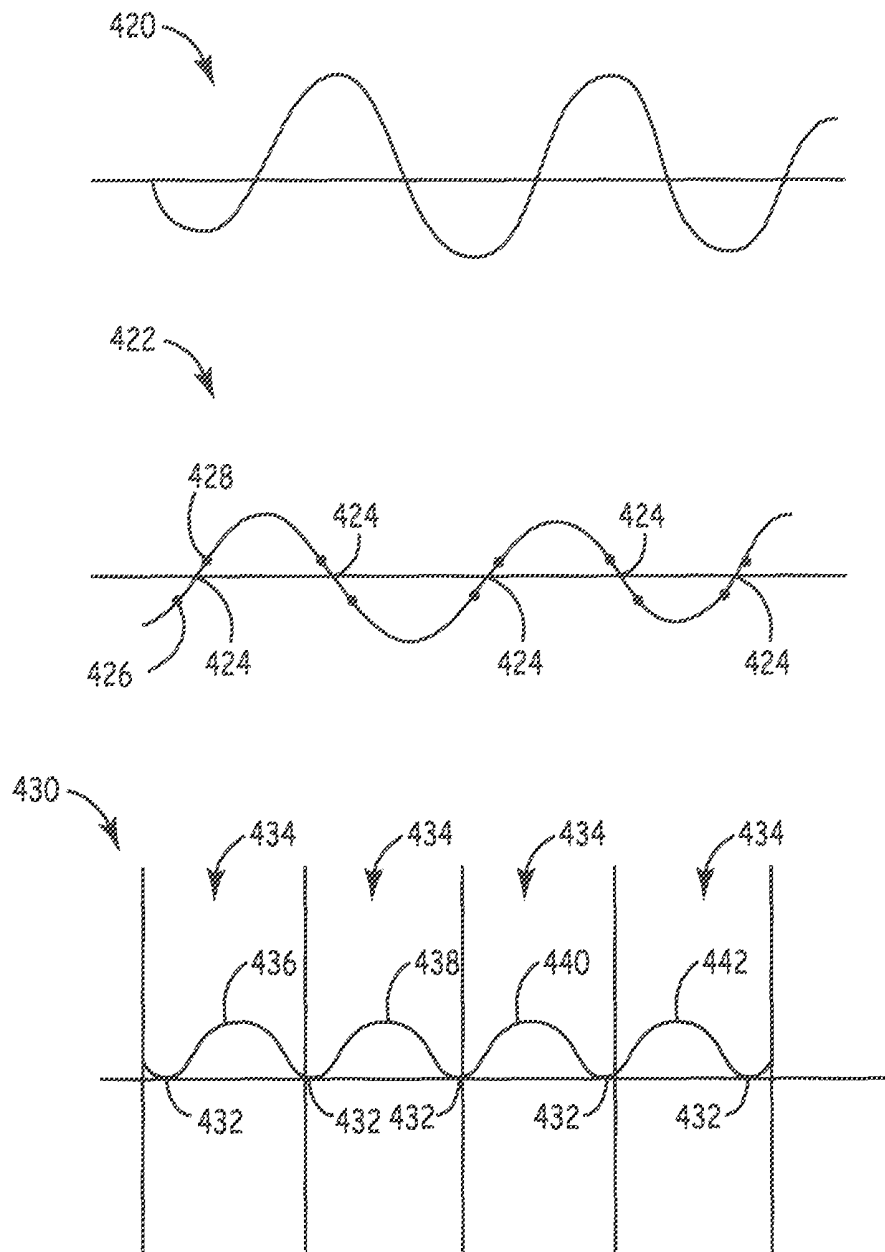


FIG. 6A

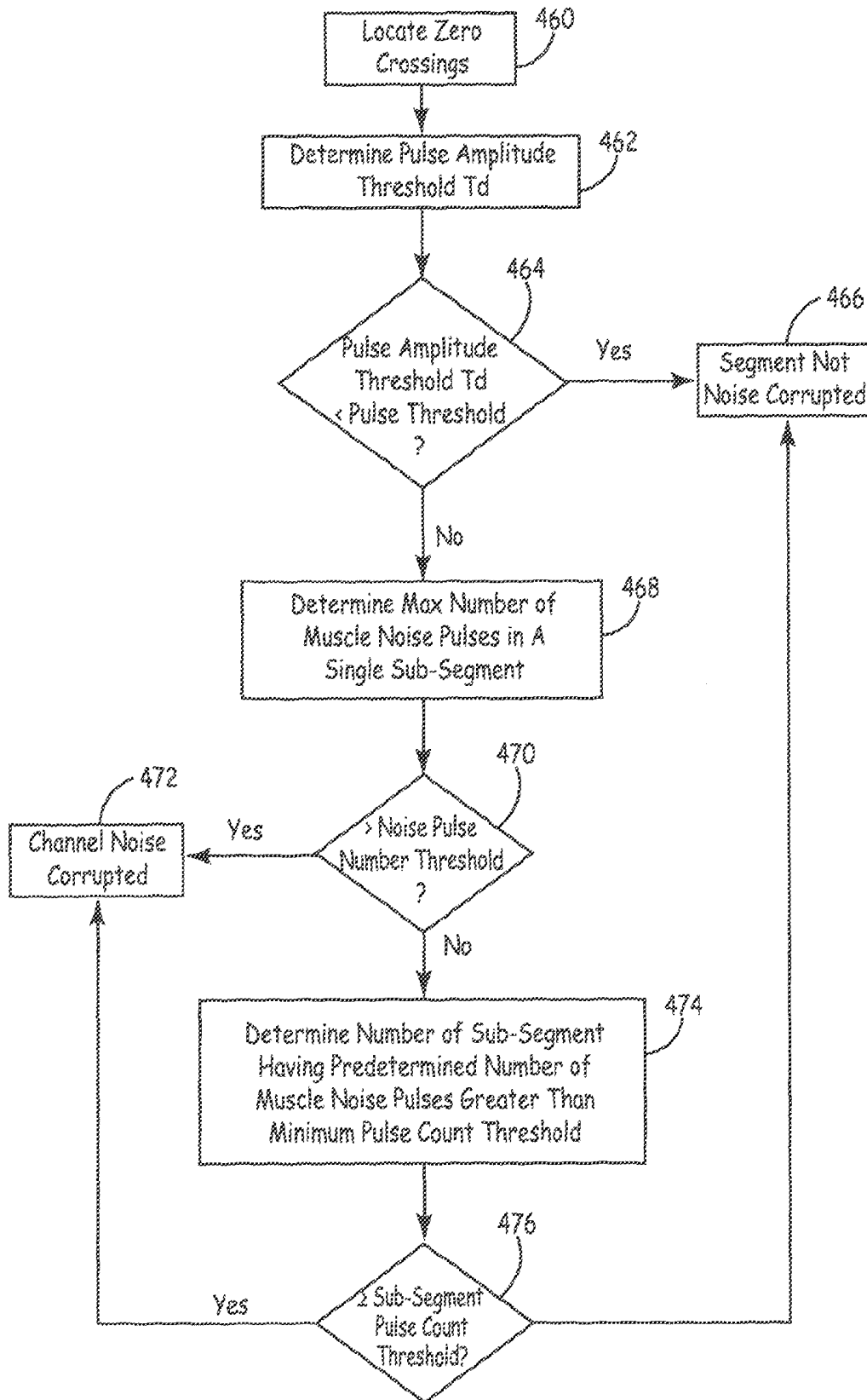


FIG. 6B

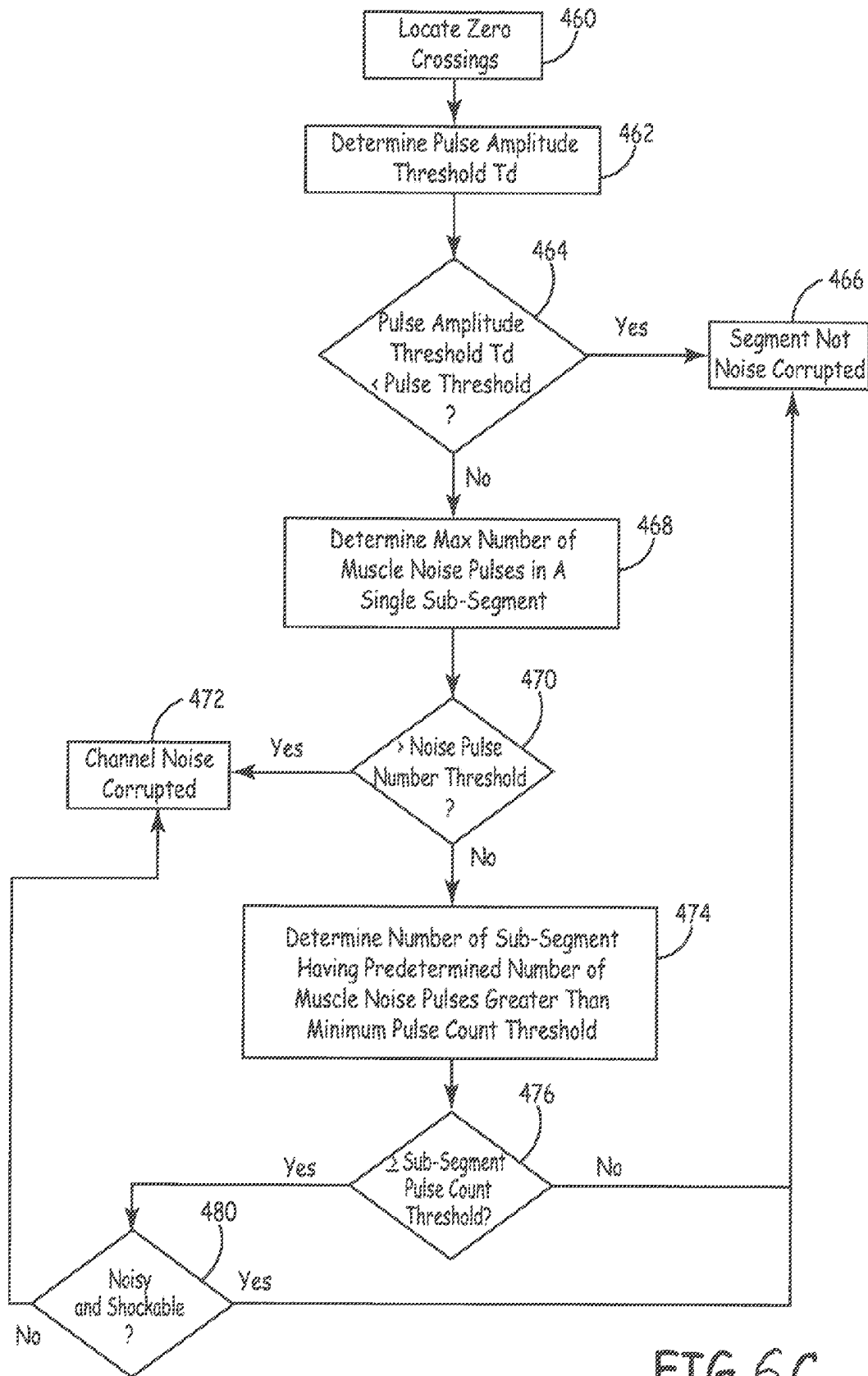


FIG. 6C

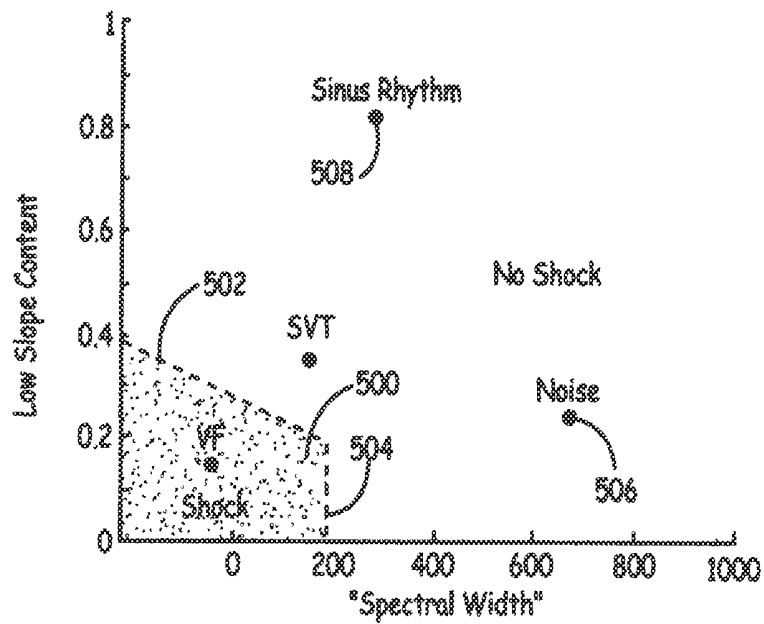


FIG. 7

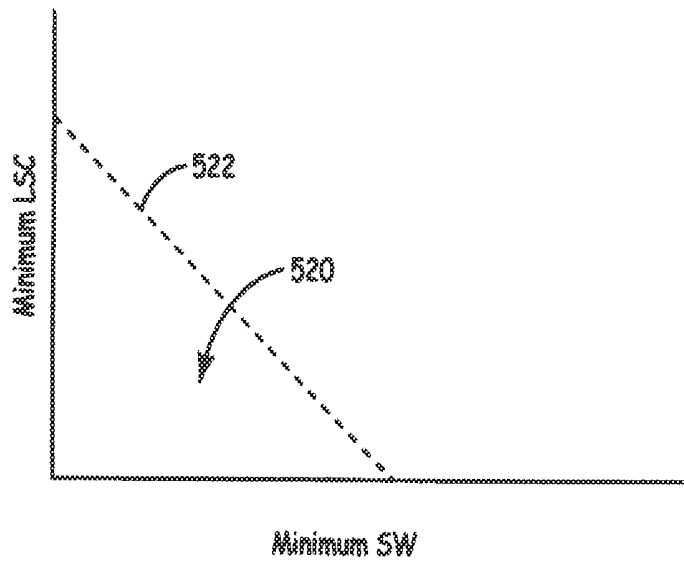


FIG. 8A

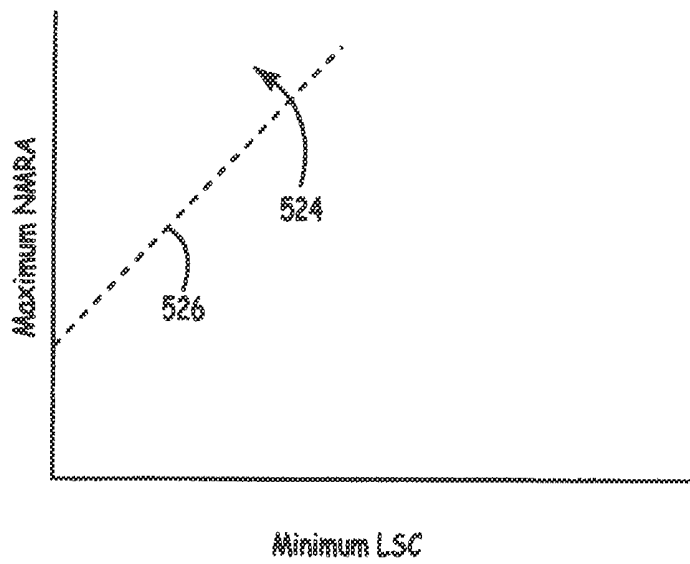


FIG. 8B

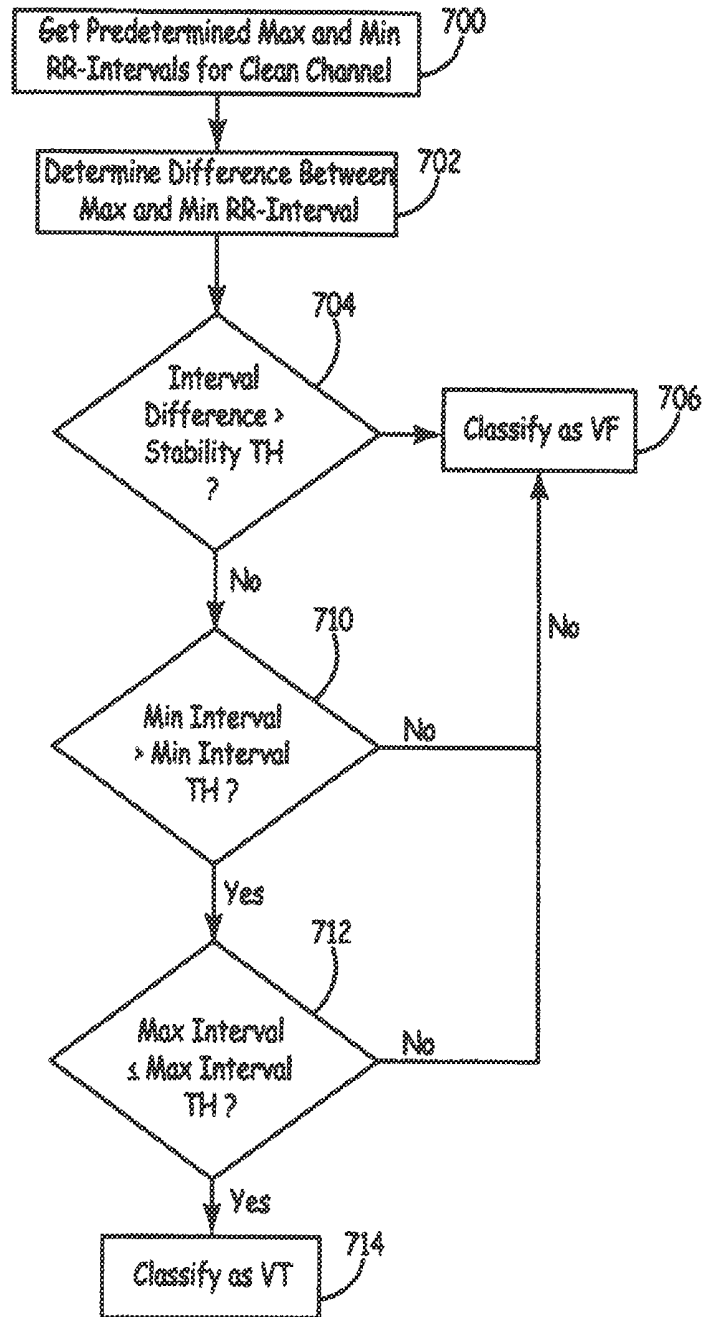


FIG. 9

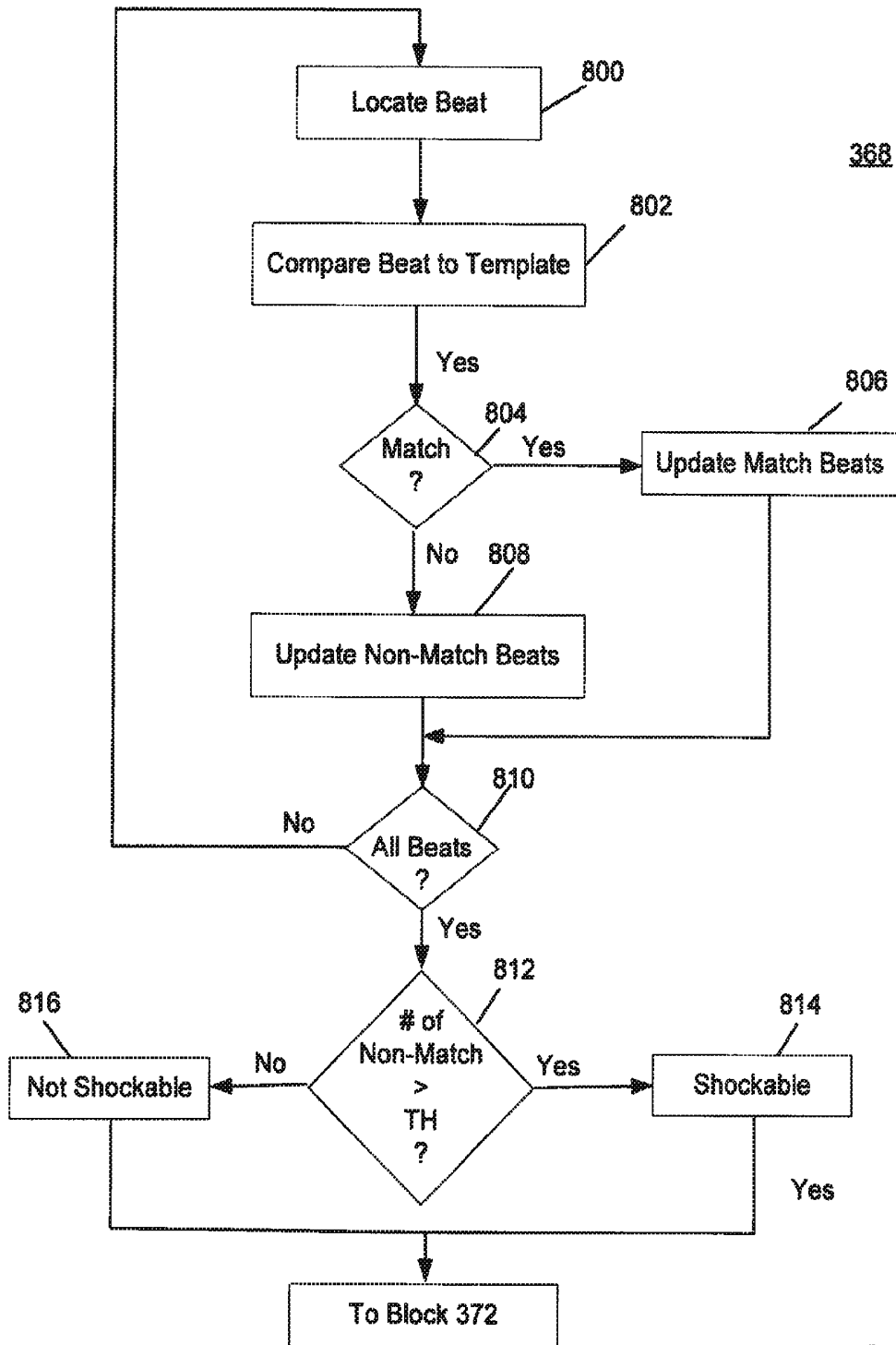


FIG. 10

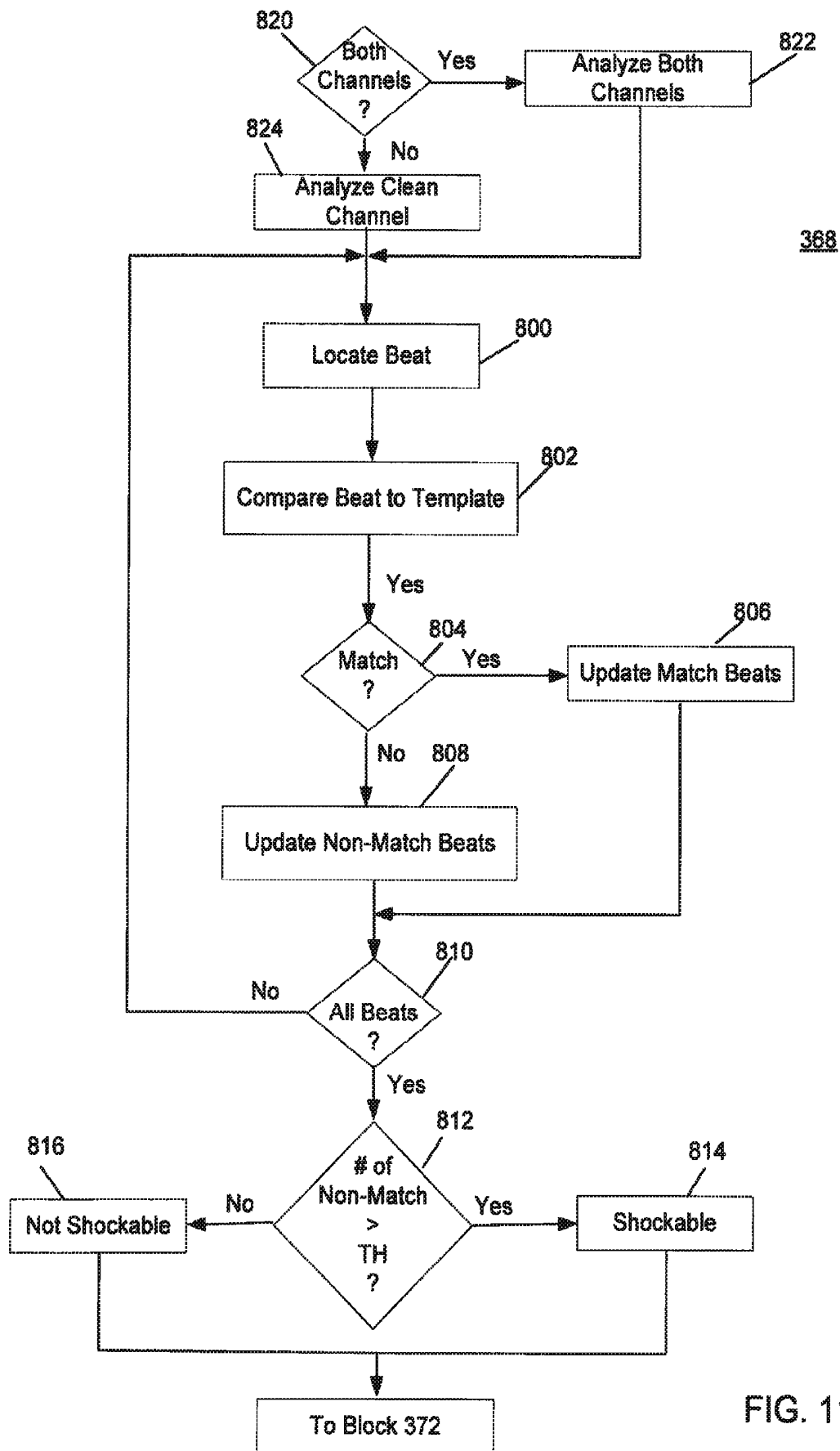


FIG. 11

**METHOD AND APPARATUS FOR
DISCRIMINATING TACHYCARDIA EVENTS
IN A MEDICAL DEVICE USING TWO
SENSING VECTORS**

TECHNICAL FIELD

The disclosure relates generally to implantable medical devices and, in particular, to an apparatus and method for discriminating arrhythmias and delivering a therapy in a medical device.

BACKGROUND

Implantable medical devices are available for treating cardiac tachyarrhythmias by delivering anti-tachycardia pacing therapies and electrical shock therapies for cardioverting or defibrillating the heart. Such a device, commonly known as an implantable cardioverter defibrillator or "ICD", senses electrical activity from the heart, determines a patient's heart rate, and classifies the rate according to a number of heart rate zones in order to detect episodes of ventricular tachycardia or fibrillation. Typically a number of rate zones are defined according to programmable detection interval ranges for detecting slow ventricular tachycardia, fast ventricular tachycardia and ventricular fibrillation. Intervals between sensed R-waves, corresponding to the depolarization of the ventricles, are measured. Sensed R-R intervals falling into defined detection interval ranges are counted to provide a count of ventricular tachycardia (VT) or ventricular fibrillation (VF) intervals, for example. A programmable number of intervals to detect (NID) defines the number of tachycardia intervals occurring consecutively or out of a given number of preceding event intervals that are required to detect VT or VF.

Tachyarrhythmia detection may begin with detecting a fast ventricular rate, referred to as rate- or interval-based detection. Once VT or VF is detected based on rate, the morphology of the sensed depolarization signals, e.g. wave shape, amplitude or other features, may be used in discriminating heart rhythms to improve the sensitivity and specificity of tachyarrhythmia detection methods.

A primary goal of a tachycardia detection algorithm is to rapidly respond to a potentially malignant rhythm with a therapy that will terminate the arrhythmia with high certainty. Another goal, however, is to avoid excessive use of ICD battery charge, which shortens the life of the ICD, e.g. due to delivering unnecessary therapies or therapies at a higher voltage than needed to terminate a detected tachyarrhythmia. Minimizing the patient's exposure to painful shock therapies is also an important consideration. Accordingly, a need remains for ICDs that perform tachycardia discrimination with high specificity and control therapy delivery to successfully terminate a detected VT requiring therapy while conserving battery charge and limiting patient exposure to delivered shock therapy by withholding therapy delivery whenever possible in situations where the therapy may not be required.

BRIEF DESCRIPTION OF THE DRAWINGS

FIG. 1 is a conceptual diagram of a patient implanted with an example extravascular cardiac defibrillation system.

FIG. 2 is an exemplary schematic diagram of electronic circuitry within a hermetically sealed housing of a subcutaneous device according to an embodiment of the present invention.

FIG. 3 is a state diagram of detection of arrhythmias in a medical device according to an embodiment of the present invention.

FIG. 4 is a flowchart of a method for detecting arrhythmias in a subcutaneous device according to an embodiment of the present disclosure.

FIG. 5 is a flowchart of a method of determining noise according to an embodiment of the present disclosure.

FIG. 6A is a graphical representation of a determination of whether a signal is corrupted by muscle noise according to an embodiment of the present invention.

FIG. 6B is a flowchart of a method of determining whether a signal is corrupted by muscle noise according to an embodiment of the present invention.

FIG. 6C is a flowchart of a method of determining whether a signal is corrupted by muscle noise according to an embodiment of the present invention.

FIG. 7 is a graphical representation of a VF shock zone according to an embodiment of the present invention.

FIGS. 8A and 8B are graphical representations of the determination of whether an event is within a shock zone according to an embodiment of the present invention.

FIG. 9 is a flowchart of a method for discriminating cardiac events according to an embodiment of the disclosure.

FIG. 10 is a flowchart of a beat-based analysis during detection of arrhythmias in a medical device according to an embodiment of the present disclosure.

FIG. 11 is a flowchart of a beat-based analysis during detection of arrhythmias in a medical device according to an embodiment of the present disclosure.

DETAILED DESCRIPTION

FIG. 1 is a conceptual diagram of a patient 12 implanted with an example extravascular cardiac defibrillation system 10. In the example illustrated in FIG. 1, extravascular cardiac defibrillation system 10 is an implanted subcutaneous ICD system. However, the techniques of this disclosure may also be utilized with other extravascular implanted cardiac defibrillation systems, such as a cardiac defibrillation system having a lead implanted at least partially in a substernal or submuscular location. Additionally, the techniques of this disclosure may also be utilized with other implantable systems, such as implantable pacing systems, implantable neurostimulation systems, drug delivery systems or other systems in which leads, catheters or other components are implanted at extravascular locations within patient 12. This disclosure, however, is described in the context of an implantable extravascular cardiac defibrillation system for purposes of illustration.

Extravascular cardiac defibrillation system 10 includes an implantable cardioverter defibrillator (ICD) 14 connected to at least one implantable cardiac defibrillation lead 16. ICD 14 of FIG. 1 is implanted subcutaneously on the left side of patient 12. Defibrillation lead 16, which is connected to ICD 14, extends medially from ICD 14 toward sternum 28 and xiphoid process 24 of patient 12. At a location near xiphoid process 24, defibrillation lead 16 bends or turns and extends subcutaneously superior, substantially parallel to sternum 28. In the example illustrated in FIG. 1, defibrillation lead 16 is implanted such that lead 16 is offset laterally to the left side of the body of sternum 28 (i.e., towards the left side of patient 12).

Defibrillation lead 16 is placed along sternum 28 such that a therapy vector between defibrillation electrode 18 and a second electrode (such as a housing or can 25 of ICD 14 or

an electrode placed on a second lead) is substantially across the ventricle of heart 26. The therapy vector may, in one example, be viewed as a line that extends from a point on the defibrillation electrode 18 to a point on the housing or can 25 of ICD 14. In another example, defibrillation lead 16 may be placed along sternum 28 such that a therapy vector between defibrillation electrode 18 and the housing or can 25 of ICD 14 (or other electrode) is substantially across an atrium of heart 26. In this case, extravascular ICD system 10 may be used to provide atrial therapies, such as therapies to treat atrial fibrillation.

The embodiment illustrated in FIG. 1 is an example configuration of an extravascular ICD system 10 and should not be considered limiting of the techniques described herein. For example, although illustrated as being offset laterally from the midline of sternum 28 in the example of FIG. 1, defibrillation lead 16 may be implanted such that lead 16 is offset to the right of sternum 28 or more centrally located over sternum 28. Additionally, defibrillation lead 16 may be implanted such that it is not substantially parallel to sternum 28, but instead offset from sternum 28 at an angle (e.g., angled lateral from sternum 28 at either the proximal or distal end). As another example, the distal end of defibrillation lead 16 may be positioned near the second or third rib of patient 12. However, the distal end of defibrillation lead 16 may be positioned further superior or inferior depending on the location of ICD 14, location of electrodes 18, 20, and 22, or other factors.

Although ICD 14 is illustrated as being implanted near a midaxillary line of patient 12, ICD 14 may also be implanted at other subcutaneous locations on patient 12, such as further posterior on the torso toward the posterior axillary line, further anterior on the torso toward the anterior axillary line, in a pectoral region, or at other locations of patient 12. In instances in which ICD 14 is implanted pectorally, lead 16 would follow a different path, e.g., across the upper chest area and inferior along sternum 28. When the ICD 14 is implanted in the pectoral region, the extravascular ICD system may include a second lead including a defibrillation electrode that extends along the left side of the patient such that the defibrillation electrode of the second lead is located along the left side of the patient to function as an anode or cathode of the therapy vector of such an ICD system.

ICD 14 includes a housing or can 25 that forms a hermetic seal that protects components within ICD 14. The housing 25 of ICD 14 may be formed of a conductive material, such as titanium or other biocompatible conductive material or a combination of conductive and non-conductive materials. In some instances, the housing 25 of ICD 14 functions as an electrode (referred to as a housing electrode or can electrode) that is used in combination with one of electrodes 18, 20, or 22 to deliver a therapy to heart 26 or to sense electrical activity of heart 26. ICD 14 may also include a connector assembly (sometimes referred to as a connector block or header) that includes electrical feedthroughs through which electrical connections are made between conductors within defibrillation lead 16 and electronic components included within the housing. Housing may enclose one or more components, including processors, memories, transmitters, receivers, sensors, sensing circuitry, therapy circuitry and other appropriate components (often referred to herein as modules).

Defibrillation lead 16 includes a lead body having a proximal end that includes a connector configured to connect to ICD 14 and a distal end that includes one or more electrodes 18, 20, and 22. The lead body of defibrillation lead 16 may be formed from a non-conductive material,

including silicone, polyurethane, fluoropolymers, mixtures thereof, and other appropriate materials, and shaped to form one or more lumens within which the one or more conductors extend. However, the techniques are not limited to such constructions. Although defibrillation lead 16 is illustrated as including three electrodes 18, 20 and 22, defibrillation lead 16 may include more or fewer electrodes.

Defibrillation lead 16 includes one or more elongated electrical conductors (not illustrated) that extend within the lead body from the connector on the proximal end of defibrillation lead 16 to electrodes 18, 20 and 22. In other words, each of the one or more elongated electrical conductors contained within the lead body of defibrillation lead 16 may engage with respective ones of electrodes 18, 20 and 22. When the connector at the proximal end of defibrillation lead 16 is connected to ICD 14, the respective conductors may electrically couple to circuitry, such as a therapy module or a sensing module, of ICD 14 via connections in connector assembly, including associated feedthroughs. The electrical conductors transmit therapy from a therapy module within ICD 14 to one or more of electrodes 18, 20 and 22 and transmit sensed electrical signals from one or more of electrodes 18, 20 and 22 to the sensing module within ICD 14.

ICD 14 may sense electrical activity of heart 26 via one or more sensing vectors that include combinations of electrodes 20 and 22 and the housing or can 25 of ICD 14. For example, ICD 14 may obtain electrical signals sensed using a sensing vector between electrodes 20 and 22, obtain electrical signals sensed using a sensing vector between electrode 20 and the conductive housing or can 25 of ICD 14, obtain electrical signals sensed using a sensing vector between electrode 22 and the conductive housing or can 25 of ICD 14, or a combination thereof. In some instances, ICD 14 may sense cardiac electrical signals using a sensing vector that includes defibrillation electrode 18, such as a sensing vector between defibrillation electrode 18 and one of electrodes 20 or 22, or a sensing vector between defibrillation electrode 18 and the housing or can 25 of ICD 14.

ICD 14 may analyze the sensed electrical signals to detect tachycardia, such as ventricular tachycardia or ventricular fibrillation, and in response to detecting tachycardia may generate and deliver an electrical therapy to heart 26. For example, ICD 14 may deliver one or more defibrillation shocks via a therapy vector that includes defibrillation electrode 18 of defibrillation lead 16 and the housing or can 25. Defibrillation electrode 18 may, for example, be an elongated coil electrode or other type of electrode. In some instances, ICD 14 may deliver one or more pacing therapies prior to or after delivery of the defibrillation shock, such as anti-tachycardia pacing (ATP) or post shock pacing. In these instances, ICD 14 may generate and deliver pacing pulses via therapy vectors that include one or both of electrodes 20 and 22 and/or the housing or can 25. Electrodes 20 and 22 may comprise ring electrodes, hemispherical electrodes, coil electrodes, helix electrodes, segmented electrodes, directional electrodes, or other types of electrodes, or combination thereof. Electrodes 20 and 22 may be the same type of electrodes or different types of electrodes, although in the example of FIG. 1 both electrodes 20 and 22 are illustrated as ring electrodes.

Defibrillation lead 16 may also include an attachment feature 29 at or toward the distal end of lead 16. The attachment feature 29 may be a loop, link, or other attachment feature. For example, attachment feature 29 may be a loop formed by a suture. As another example, attachment feature 29 may be a loop, link, ring of metal, coated metal

or a polymer. The attachment feature **29** may be formed into any of a number of shapes with uniform or varying thickness and varying dimensions. Attachment feature **29** may be integral to the lead or may be added by the user prior to implantation. Attachment feature **29** may be useful to aid in implantation of lead **16** and/or for securing lead **16** to a desired implant location. In some instances, defibrillation lead **16** may include a fixation mechanism in addition to or instead of the attachment feature. Although defibrillation lead **16** is illustrated with an attachment feature **29**, in other examples lead **16** may not include an attachment feature **29**.

Lead **16** may also include a connector at the proximal end of lead **16**, such as a DF4 connector, bifurcated connector (e.g., DF-1/IS-1 connector), or other type of connector. The connector at the proximal end of lead **16** may include a terminal pin that couples to a port within the connector assembly of ICD **14**. In some instances, lead **16** may include an attachment feature at the proximal end of lead **16** that may be coupled to an implant tool to aid in implantation of lead **16**. The attachment feature at the proximal end of the lead may separate from the connector and may be either integral to the lead or added by the user prior to implantation.

Defibrillation lead **16** may also include a suture sleeve or other fixation mechanism (not shown) located proximal to electrode **22** that is configured to fixate lead **16** near the xiphoid process or lower sternum location. The fixation mechanism (e.g., suture sleeve or other mechanism) may be integral to the lead or may be added by the user prior to implantation.

The example illustrated in FIG. 1 is exemplary in nature and should not be considered limiting of the techniques described in this disclosure. For instance, extravascular cardiac defibrillation system **10** may include more than one lead. In one example, extravascular cardiac defibrillation system **10** may include a pacing lead in addition to defibrillation lead **16**.

In the example illustrated in FIG. 1, defibrillation lead **16** is implanted subcutaneously, e.g., between the skin and the ribs or sternum. In other instances, defibrillation lead **16** (and/or the optional pacing lead) may be implanted at other extravascular locations. In one example, defibrillation lead **16** may be implanted at least partially in a substernal location. In such a configuration, at least a portion of defibrillation lead **16** may be placed under or below the sternum in the mediastinum and, more particularly, in the anterior mediastinum. The anterior mediastinum is bounded laterally by pleurae, posteriorly by pericardium, and anteriorly by sternum **28**. Defibrillation lead **16** may be at least partially implanted in other extra-pericardial locations, i.e., locations in the region around, but not in direct contact with, the outer surface of heart **26**. These other extra-pericardial locations may include in the mediastinum but offset from sternum **28**, in the superior mediastinum, in the middle mediastinum, in the posterior mediastinum, in the sub-xiphoid or inferior xiphoid area, near the apex of the heart, or other location not in direct contact with heart **26** and not subcutaneous. In still further instances, the lead may be implanted at a pericardial or epicardial location outside of the heart **26**.

FIG. 2 is an exemplary schematic diagram of electronic circuitry within a hermetically sealed housing of a subcutaneous device according to an embodiment of the present invention. As illustrated in FIG. 2, subcutaneous device **14** includes a low voltage battery **153** coupled to a power supply (not shown) that supplies power to the circuitry of the subcutaneous device **14** and the pacing output capacitors to

supply pacing energy in a manner well known in the art. The low voltage battery **153** may be formed of one or two conventional LiCF_x , LiMnO_2 or LiI_2 cells, for example. The subcutaneous device **14** also includes a high voltage battery **112** that may be formed of one or two conventional LiSVO or LiMnO_2 cells. Although two both low voltage battery and a high voltage battery are shown in FIG. 2, according to an embodiment of the present invention, the device **14** could utilize a single battery for both high and low voltage uses.

Further referring to FIG. 2, subcutaneous device **14** functions are controlled by means of software, firmware and hardware that cooperatively monitor the ECG signal, determine when a cardioversion-defibrillation shock or pacing is necessary, and deliver prescribed cardioversion-defibrillation and pacing therapies. The subcutaneous device **14** may incorporate circuitry set forth in commonly assigned U.S. Pat. No. 5,163,427 "Apparatus for Delivering Single and Multiple Cardioversion and Defibrillation Pulses" to Keimel and U.S. Pat. No. 5,188,105 "Apparatus and Method for Treating a Tachyarrhythmia" to Keimel for selectively delivering single phase, simultaneous biphasic and sequential biphasic cardioversion-defibrillation shocks typically employing ICD IPG housing electrodes **28** coupled to the COMMON output **123** of high voltage output circuit **140** and cardioversion-defibrillation electrode **24** disposed posteriorly and subcutaneously and coupled to the HVI output **113** of the high voltage output circuit **140**.

The cardioversion-defibrillation shock energy and capacitor charge voltages can be intermediate to those supplied by ICDs having at least one cardioversion-defibrillation electrode in contact with the heart and most AEDs having cardioversion-defibrillation electrodes in contact with the skin. The typical maximum voltage necessary for ICDs using most biphasic waveforms is approximately 750 Volts with an associated maximum energy of approximately 40 Joules. The typical maximum voltage necessary for AEDs is approximately 2000-5000 Volts with an associated maximum energy of approximately 200-360 Joules depending upon the model and waveform used. The subcutaneous device **14** of the present invention uses maximum voltages in the range of about 300 to approximately 1000 Volts and is associated with energies of approximately 25 to 150 joules or more. The total high voltage capacitance could range from about 50 to about 300 microfarads. Such cardioversion-defibrillation shocks are only delivered when a malignant tachyarrhythmia, e.g., ventricular fibrillation is detected through processing of the far field cardiac ECG employing the detection algorithms as described herein below.

In FIG. 2, sense amp **190** in conjunction with pacer/device timing circuit **178** processes the far field ECG sense signal that is developed across a particular ECG sense vector defined by a selected pair of the subcutaneous electrodes **18**, **20**, **22** and the can or housing **25** of the device **14**, or, optionally, a virtual signal (i.e., a mathematical combination of two vectors) if selected. The selection of the sensing electrode pair is made through the switch matrix/MUX **191** in a manner to provide the most reliable sensing of the ECG signal of interest, which would be the R wave for patients who are believed to be at risk of ventricular fibrillation leading to sudden death. The far field ECG signals are passed through the switch matrix/MUX **191** to the input of the sense amplifier **190** that, in conjunction with pacer/device timing circuit **178**, evaluates the sensed EGM. Bradycardia, or asystole, is typically determined by an escape interval timer within the pacer timing circuit **178** and/or the control circuit **144**. Pace Trigger signals are applied to the pacing pulse generator **192** generating pacing stimulation

when the interval between successive R-waves exceeds the escape interval. Bradycardia pacing is often temporarily provided to maintain cardiac output after delivery of a cardioversion-defibrillation shock that may cause the heart to slowly beat as it recovers back to normal function. Sensing subcutaneous far field signals in the presence of noise may be aided by the use of appropriate denial and extensible accommodation periods as described in U.S. Pat. No. 6,236,882 "Noise Rejection for Monitoring ECGs" to Lee, et al and incorporated herein by reference in its entirety.

Detection of a malignant tachyarrhythmia is determined in the Control circuit **144** as a function of the intervals between R-wave sense event signals that are output from the pacer/device timing **178** and sense amplifier circuit **190** to the timing and control circuit **144**. It should be noted that the present invention utilizes not only interval based signal analysis method but also supplemental sensors and morphology processing method and apparatus as described herein below.

Supplemental sensors such as tissue color, tissue oxygenation, respiration, patient activity and the like may be used to contribute to the decision to apply or withhold a defibrillation therapy as described generally in U.S. Pat. No. 5,464,434 "Medical Interventional Device Responsive to Sudden Hemodynamic Change" to Alt and incorporated herein by reference in its entirety. Sensor processing block **194** provides sensor data to microprocessor **142** via data bus **146**. Specifically, patient activity and/or posture may be determined by the apparatus and method as described in U.S. Pat. No. 5,593,431 "Medical Service Employing Multiple DC Accelerometers for Patient Activity and Posture Sensing and Method" to Sheldon and incorporated herein by reference in its entirety. Patient respiration may be determined by the apparatus and method as described in U.S. Pat. No. 4,567,892 "Implantable Cardiac Pacemaker" to Plicchi, et al and incorporated herein by reference in its entirety. Patient tissue oxygenation or tissue color may be determined by the sensor apparatus and method as described in U.S. Pat. No. 5,176,137 to Erickson, et al and incorporated herein by reference in its entirety. The oxygen sensor of the '137 patent may be located in the subcutaneous device pocket or, alternatively, located on the lead **18** to enable the sensing of contacting or near-contacting tissue oxygenation or color.

Certain steps in the performance of the detection algorithm criteria are cooperatively performed in microcomputer **142**, including microprocessor, RAM and ROM, associated circuitry, and stored detection criteria that may be programmed into RAM via a telemetry interface (not shown) conventional in the art. Data and commands are exchanged between microcomputer **142** and timing and control circuit **144**, pacer timing/amplifier circuit **178**, and high voltage output circuit **140** via a bi-directional data/control bus **146**. The pacer timing/amplifier circuit **178** and the control circuit **144** are clocked at a slow clock rate. The microcomputer **142** is normally asleep, but is awakened and operated by a fast clock by interrupts developed by each R-wave sense event, on receipt of a downlink telemetry programming instruction or upon delivery of cardiac pacing pulses to perform any necessary mathematical calculations, to perform tachycardia and fibrillation detection procedures, and to update the time intervals monitored and controlled by the timers in pacer/device timing circuitry **178**.

When a malignant tachycardia is detected, high voltage capacitors **156**, **158**, **160**, and **162** are charged to a pre-programmed voltage level by a high-voltage charging circuit **164**. It is generally considered inefficient to maintain a

constant charge on the high voltage output capacitors **156**, **158**, **160**, **162**. Instead, charging is initiated when control circuit **144** issues a high voltage charge command HVCHG delivered on line **145** to high voltage charge circuit **164** and charging is controlled by means of bi-directional control/data bus **166** and a feedback signal VCAP from the HV output circuit **140**. High voltage output capacitors **156**, **158**, **160** and **162** may be of film, aluminum electrolytic or wet tantalum construction.

The negative terminal of high voltage battery **112** is directly coupled to system ground. Switch circuit **114** is normally open so that the positive terminal of high voltage battery **112** is disconnected from the positive power input of the high voltage charge circuit **164**. The high voltage charge command HVCHG is also conducted via conductor **149** to the control input of switch circuit **114**, and switch circuit **114** closes in response to connect positive high voltage battery voltage EXT B+ to the positive power input of high voltage charge circuit **164**. Switch circuit **114** may be, for example, a field effect transistor (FET) with its source-to-drain path interrupting the EXT B+ conductor **118** and its gate receiving the HVCHG signal on conductor **145**. High voltage charge circuit **164** is thereby rendered ready to begin charging the high voltage output capacitors **156**, **158**, **160**, and **162** with charging current from high voltage battery **112**.

High voltage output capacitors **156**, **158**, **160**, and **162** may be charged to very high voltages, e.g., 300-1000V, to be discharged through the body and heart between the electrode pair of subcutaneous cardioversion-defibrillation electrodes **113** and **123**. The details of the voltage charging circuitry are also not deemed to be critical with regard to practicing the present invention; one high voltage charging circuit believed to be suitable for the purposes of the present invention is disclosed. High voltage capacitors **156**, **158**, **160** and **162** may be charged, for example, by high voltage charge circuit **164** and a high frequency, high-voltage transformer **168** as described in detail in commonly assigned U.S. Pat. No. 4,548,209 "Energy Converter for Implantable Cardioverter" to Wielders, et al. Proper charging polarities are maintained by diodes **170**, **172**, **174** and **176** interconnecting the output windings of high-voltage transformer **168** and the capacitors **156**, **158**, **160**, and **162**. As noted above, the state of capacitor charge is monitored by circuitry within the high voltage output circuit **140** that provides a VCAP, feedback signal indicative of the voltage to the timing and control circuit **144**. Timing and control circuit **144** terminates the high voltage charge command HVCHG when the VCAP signal matches the programmed capacitor output voltage, i.e., the cardioversion-defibrillation peak shock voltage.

Control circuit **144** then develops first and second control signals NPULSE **1** and NPULSE **2**, respectively, that are applied to the high voltage output circuit **140** for triggering the delivery of cardioverting or defibrillating shocks. In particular, the NPULSE **1** signal triggers discharge of the first capacitor bank, comprising capacitors **156** and **158**. The NPULSE **2** signal triggers discharge of the first capacitor bank and a second capacitor bank, comprising capacitors **160** and **162**. It is possible to select between a plurality of output pulse regimes simply by modifying the number and time order of assertion of the NPULSE **1** and NPULSE **2** signals. The NPULSE **1** signals and NPULSE **2** signals may be provided sequentially, simultaneously or individually. In this way, control circuitry **144** serves to control operation of the high voltage output stage **140**, which delivers high energy cardioversion-defibrillation shocks between the pair

of the cardioversion-defibrillation electrodes **18** and **25** coupled to the HV-1 and COMMON output as shown in FIG. 2.

Thus, subcutaneous device **14** monitors the patient's cardiac status and initiates the delivery of a cardioversion-defibrillation shock through the cardioversion-defibrillation electrodes **18** and **25** in response to detection of a tachyarrhythmia requiring cardioversion-defibrillation. The high HVCHG signal causes the high voltage battery **112** to be connected through the switch circuit **114** with the high voltage charge circuit **164** and the charging of output capacitors **156**, **158**, **160**, and **162** to commence. Charging continues until the programmed charge voltage is reflected by the VCAP signal, at which point control and timing circuit **144** sets the HVCHG signal low terminating charging and opening switch circuit **114**. The subcutaneous device **14** can be programmed to attempt to deliver cardioversion shocks to the heart in the manners described above in timed synchrony with a detected R-wave or can be programmed or fabricated to deliver defibrillation shocks to the heart in the manners described above without attempting to synchronize the delivery to a detected R-wave. Episode data related to the detection of the tachyarrhythmia and delivery of the cardioversion-defibrillation shock can be stored in RAM for uplink telemetry transmission to an external programmer as is well known in the art to facilitate in diagnosis of the patient's cardiac state. A patient receiving the device **14** on a prophylactic basis would be instructed to report each such episode to the attending physician for further evaluation of the patient's condition and assessment for the need for implantation of a more sophisticated ICD.

Subcutaneous device **14** desirably includes telemetry circuit (not shown in FIG. 2), so that it is capable of being programmed by means of external programmer **20** via a 2-way telemetry link (not shown). Uplink telemetry allows device status and diagnostic/event data to be sent to external programmer **20** for review by the patient's physician. Downlink telemetry allows the external programmer via physician control to allow the programming of device function and the optimization of the detection and therapy for a specific patient. Programmers and telemetry systems suitable for use in the practice of the present invention have been well known for many years. Known programmers typically communicate with an implanted device via a bi-directional radio-frequency telemetry link, so that the programmer can transmit control commands and operational parameter values to be received by the implanted device, so that the implanted device can communicate diagnostic and operational data to the programmer. Programmers believed to be suitable for the purposes of practicing the present invention include the Models 9790 and CareLink® programmers, commercially available from Medtronic, Inc., Minneapolis, Minn.

Various telemetry systems for providing the necessary communications channels between an external programming unit and an implanted device have been developed and are well known in the art. Telemetry systems believed to be suitable for the purposes of practicing the present invention are disclosed, for example, in the following U.S. Patents: U.S. Pat. No. 5,127,404 to Wyborny et al. entitled "Telemetry Format for Implanted Medical Device"; U.S. Pat. No. 4,374,382 to Markowitz entitled "Marker Channel Telemetry System for a Medical Device"; and U.S. Pat. No. 4,556,063 to Thompson et al. entitled "Telemetry System for a Medical Device". The Wyborny et al. '404, Markowitz '382, and Thompson et al. '063 patents are commonly

assigned to the assignee of the present invention, and are each hereby incorporated by reference herein in their respective entireties.

According to an embodiment of the present invention, in order to automatically select the preferred ECG vector set, it is necessary to have an index of merit upon which to rate the quality of the signal. "Quality" is defined as the signal's ability to provide accurate heart rate estimation and accurate morphological waveform separation between the patient's usual sinus rhythm and the patient's ventricular tachyarrhythmia.

Appropriate indices may include R-wave amplitude, R-wave peak amplitude to waveform amplitude between R-waves (i.e., signal to noise ratio), low slope content, relative high versus low frequency power, mean frequency estimation, probability density function, or some combination of these metrics.

Automatic vector selection might be done at implantation or periodically (daily, weekly, monthly) or both. At implant, automatic vector selection may be initiated as part of an automatic device turn-on procedure that performs such activities as measure lead impedances and battery voltages. The device turn-on procedure may be initiated by the implanting physician (e.g., by pressing a programmer button) or, alternatively, may be initiated automatically upon automatic detection of device/lead implantation. The turn-on procedure may also use the automatic vector selection criteria to determine if ECG vector quality is adequate for the current patient and for the device and lead position, prior to suturing the subcutaneous device **14** device in place and closing the incision. Such an ECG quality indicator would allow the implanting physician to maneuver the device to a new location or orientation to improve the quality of the ECG signals as required. The preferred ECG vector or vectors may also be selected at implant as part of the device turn-on procedure. The preferred vectors might be those vectors with the indices that maximize rate estimation and detection accuracy. There may also be an a priori set of vectors that are preferred by the physician, and as long as those vectors exceed some minimum threshold, or are only slightly worse than some other more desirable vectors, the a priori preferred vectors are chosen. Certain vectors may be considered nearly identical such that they are not tested unless the a priori selected vector index falls below some predetermined threshold.

Depending upon metric power consumption and power requirements of the device, the ECG signal quality metric may be measured on the range of vectors (or alternatively, a subset) as often as desired. Data may be gathered, for example, on a minute, hourly, daily, weekly or monthly basis. More frequent measurements (e.g., every minute) may be averaged over time and used to select vectors based upon susceptibility of vectors to occasional noise, motion noise, or EMI, for example.

Alternatively, the subcutaneous device **14** may have an indicator/sensor of patient activity (piezo-resistive, accelerometer, impedance, or the like) and delay automatic vector measurement during periods of moderate or high patient activity to periods of minimal to no activity. One representative scenario may include testing/evaluating ECG vectors once daily or weekly while the patient has been determined to be asleep (using an internal clock (e.g., 2:00 am) or, alternatively, infer sleep by determining the patient's position (via a 2- or 3-axis accelerometer) and a lack of activity).

If infrequent automatic, periodic measurements are made, it may also be desirable to measure noise (e.g., muscle,

motion, EMI, etc.) in the signal and postpone the vector selection measurement when the noise has subsided.

Subcutaneous device **14** may optionally have an indicator of the patient's posture (via a 2- or 3-axis accelerometer). This sensor may be used to ensure that the differences in ECG quality are not simply a result of changing posture/position. The sensor may be used to gather data in a number of postures so that ECG quality may be averaged over these postures or, alternatively, selected for a preferred posture.

In the preferred embodiment, vector quality metric calculations would occur a number of times over approximately 1 minute, once per day, for each vector. These values would be averaged for each vector over the course of one week. Averaging may consist of a moving average or recursive average depending on time weighting and memory considerations. In this example, the preferred vector(s) would be selected once per week.

FIG. 3 is a state diagram of detection of arrhythmias in a medical device according to an embodiment of the present invention. As illustrated in FIG. 3, during normal operation, the device **14** is in a not concerned state **302**, during which R-wave intervals are being evaluated to identify periods of rapid rates and/or the presence of asystole. Upon detection of short R-wave intervals simultaneously in two separate ECG sensing vectors, indicative of an event that, if confirmed, may require the delivery of therapy, the device **14** transitions from the not concerned state **302** to a concerned state **304**. In the concerned state **304** the device **14** evaluates a predetermined window of ECG signals to determine the likelihood that the signal is corrupted with noise and to discriminate rhythms requiring shock therapy from those that do not require shock therapy, using a combination of R-wave intervals and ECG signal morphology information.

If a rhythm requiring shock therapy continues to be detected while in the concerned state **304**, the device **14** transitions from the concerned state **304** to an armed state **306**. If a rhythm requiring shock therapy is no longer detected while the device is in the concerned state **304** and the R-wave intervals are determined to no longer be short, the device **14** returns to the not concerned state **302**. However, if a rhythm requiring shock therapy is no longer detected while the device is in the concerned state **304**, but the R-wave intervals continue to be detected as being short, processing continues in the concerned state **304**.

In the armed state **306**, the device **14** charges the high voltage shocking capacitors and continues to monitor R-wave intervals and ECG signal morphology for spontaneous termination. If spontaneous termination of the rhythm requiring shock therapy occurs, the device **14** returns to the not concerned state **302**. If the rhythm requiring shock therapy is still determined to be occurring once the charging of the capacitors is completed, the device **14** transitions from the armed state **306** to a shock state **308**. In the shock state **308**, the device **14** delivers a shock and returns to the armed state **306** to evaluate the success of the therapy delivered.

The transitioning between the not concerned state **302**, the concerned state **304**, the armed state **306** and the shock state **308** may be performed as described in detail in U.S. Pat. No. 7,894,894 to Stadler et al., incorporated herein by reference in its entirety.

FIG. 4 is a flowchart of a method for detecting arrhythmias in a subcutaneous device according to an embodiment of the present disclosure. As illustrated in FIG. 4, device **14** continuously evaluates the two channels ECG1 and ECG2 associated with two predetermined electrode vectors to determine when sensed events occur. For example, the electrode vectors for the two channels ECG1 and ECG2 may

include a first vector (ECG1) selected between electrode **20** positioned on lead **16** and the housing or can **25** of ICD **14**, while the other electrode vector (ECG **2**) is a vertical electrode vector between electrode **20** and electrode **22** positioned along the lead **16**. However, the two sensing channels may in any combination of possible vectors, including those formed by the electrodes shown in FIG. 2, or other additional electrodes (not shown) that may be included along the lead or positioned along the housing of ICD **14**.

According to an embodiment of the present application, for example, the device **14** determines whether to transition from the not concerned state **302** to the concerned state **304** by determining a heart rate estimate in response to the sensing of R-waves, as described in U.S. Pat. No. 7,894,894 to Stadler et al., incorporated herein by reference in its entirety.

Upon transition from the not concerned state to the concerned state, Block **305**, a most recent window of ECG data from both channels ECG1 and ECG2 are utilized, such as three seconds, for example, so that processing is triggered in the concerned state **304** by a three-second timeout, rather than by the sensing of an R-wave, which is utilized when in the not concerned state **302**. It is understood that while the processing is described as being triggered over a three second period, other times periods for the processing time utilized when in the concerned state **304** may be chosen, but should preferably be within a range of 0.5 to 10 seconds. As a result, although sensing of individual R-waves continues to occur in both channels ECG1 and ECG2 when in the concerned state **304**, and the buffer of 12 R-R intervals continues to be updated, the opportunities for changing from the concerned state **304** to another state and the estimates of heart rate only occur once the three-second timer expires. Upon initial entry to the concerned state **304**, it is advantageous to process the most recent three-seconds of ECG data, i.e., ECG data for the three seconds leading up to the transition to the concerned state **304**. This requires a continuous circular buffering of the most recent three seconds of ECG data even while in the not concerned state **302**.

While in the concerned state **304**, the present invention determines how sinusoidal and how noisy the signals are in order to determine the likelihood that a ventricular fibrillation (VF) or fast ventricular tachycardia (VT) event is taking place, since the more sinusoidal and low noise the signal is, the more likely a VT/VF event is taking place. As illustrated in FIG. 4, once the device transitions from the not concerned state **302** to the concerned state **304**, Block **305**, a buffer for each of the two channels ECG 1 and ECG2 for storing classifications of 3-second segments of data as "shockable" or "non-shockable" is cleared. Processing of signals of the two channels ECG1 and ECG2 while in the concerned state **304** is then triggered by the three second time period, rather than by the sensing of an R-wave utilized during the not concerned state **302**.

Once the three second time interval has expired, YES in Block **341**, morphology characteristics of the signal during the three second time interval for each channel are utilized to determine whether the signals are likely corrupted by noise artifacts and to characterize the morphology of the signal as "shockable" or "not shockable". For example, using the signals associated with the three second time interval, a determination is made for each channel ECG1 and ECG 2 as to whether the channel is likely corrupted by noise, Block **342**, and a determination is then made as to whether both channels ECG1 and ECG2 are corrupted by noise, Block **344**.

FIG. 5 is a flowchart of a method of determining noise according to an embodiment of the present disclosure. As illustrated in FIG. 5, the determination as to whether the signal associated with each of the channels ECG1 and ECG2 is likely corrupted by noise, Block 342 of FIG. 4, includes multiple sequential noise tests that are performed on each channel ECG and ECG2. During a first noise test, for example, a determination is made as to whether a metric of signal energy content of the signal for the channel is within predetermined limits, Block 380. For example, the amplitude of each sample associated with the three second window is determined, resulting in N sample amplitudes, from which a mean rectified amplitude is calculated as the ratio of the sum of the rectified sample amplitudes to the total number of sample amplitudes N for the segment. If the sampling rate is 256 samples per second, for example, the total number of sample amplitudes N for the three-second segment would be N=768 samples.

Once the mean rectified amplitude is calculated, a determination is made as to whether the mean rectified amplitude is between an upper average amplitude limit and a lower average amplitude limit, the lower average amplitude limit being associated with asystole episodes without artifact and the upper average amplitude limit being associated with a value greater than what would be associated with ventricular tachycardia and ventricular fibrillation events. According to an embodiment of the present invention, the upper average amplitude limit is set as 1.5 mV, and the lower average amplitude limit is set as 0.013 mV. While the metric of signal energy content is described above as the mean rectified amplitude, it is understood that other signal of energy contents could be utilized.

If the determined mean rectified amplitude is not between the upper average amplitude limit and the lower average amplitude limit, the three second segment for that channel is identified as being likely corrupted with noise, Block 386, and no further noise tests are initiated for that channel's segment.

If the determined mean rectified amplitude is located between the upper average amplitude limit and the lower average amplitude limit, a noise to signal ratio is calculated and a determination is made as to whether the noise to signal ratio is less than a predetermined noise to signal threshold, Block 382. For example, the amplitude of each sample associated with the three second window is determined, resulting in N raw sample amplitudes. The raw signal is lowpass filtered, resulting in L lowpass sample amplitudes. The raw mean rectified amplitude is determined as the average of the absolute values of the raw sample amplitudes. The lowpass mean rectified amplitude is determined as the average of the absolute values of the lowpass sample amplitudes. Next, a highpass mean rectified amplitude is then calculated as the difference between the raw mean rectified amplitude and the lowpass mean rectified amplitude. The noise to signal ratio is then determined as the ratio of the highpass mean rectified amplitude to the lowpass mean rectified amplitude. If the noise to signal ratio is greater than a predetermined threshold, such as 0.0703, for example, the three second segment for that channel is identified as being likely corrupted with noise, Block 386, and no further noise tests are initiated for the segment.

If the noise to signal ratio is less than or equal to the predetermined threshold, a determination is made as to whether the signal is corrupted by muscle noise, Block 384. According to an embodiment of the present invention, the determination as to whether the signal is corrupted by muscle noise is made by determining whether the signal

includes a predetermined number of signal inflections indicative of the likelihood of the signal being corrupted by muscle noise, using a muscle noise pulse count that is calculated to quantify the number of signal inflections in the three second interval for each channel ECG1 and ECG2. The presence of a significant number of inflections is likely indicative of muscle noise.

FIG. 6A is a graphical representation of a determination of whether a signal is corrupted by muscle noise according to an embodiment of the present invention. FIG. 6B is a flowchart of a method of determining whether a signal is corrupted by muscle noise according to an embodiment of the present invention. For example, as illustrated in FIGS. 6A and 6B, in order to determine a muscle noise count for the three second interval, the raw signal 420 is applied to a first order derivative filter to obtain a derivative signal 422, and all of the zero-crossings 424 in the derivative signal 422 are located, Block 460. A data pair corresponding to the data points immediately prior to and subsequent to the zero crossings 424, points 426 and 428 respectively, for each crossing is obtained. The value of the data point in each data pair with smaller absolute value is zeroed in order to allow a clear demarcation of each pulse when a rectified signal 430 is derived from the derivative signal 422 with zeroed zero-crossing points 432.

A pulse amplitude threshold Td, for determining whether the identified inflection is of a significant amplitude to be identified as being associated with muscle noise, is determined, Block 462, by dividing the rectified signal from the three second segment into equal sub-segments 434, estimating a local maximum amplitude 436-442 for each of the sub-segments 434, and determining whether the local amplitudes 436-442 are less than a portion of the maximum amplitude, which is maximum amplitude 440 in the example of FIG. 6A, for the whole three second segment. If the local maximum amplitude is less than the portion of the maximum amplitude for the whole three second segment, the local maximum amplitude is replaced by the maximum for the whole three second segment for the sub-segment corresponding to that local maximum amplitude.

It is understood that while only two or less zero-crossing points are shown as being located within the sub-segments in the illustration of FIG. 6A for the sake of simplicity, in fact each of the sub-segments 434, which have a length of approximately 750 milliseconds, will contain many inflections, such as every 25 milliseconds, for example.

According to an embodiment of the present invention, the three second segment is divided into four sub-segments and the local maximum amplitudes are replaced by the maximum amplitude for the whole segment if the local maximum amplitude is less than one fifth of the maximum amplitude for the whole segment. Once the determination of whether to replace the local maximum amplitudes for each of the sub-segments with the maximum amplitude for the whole segment is completed, the pulse amplitude threshold Td for the segment is set equal to a predetermined fraction of the mean of the local maximum amplitudes for each of the sub-segments. According to an embodiment of the present invention, the pulse amplitude threshold Td for the three second segment is set equal to one sixth of the mean of the local maximum amplitudes 436-440.

Once the pulse amplitude threshold Td has been determined, the inflections associated with the signal for the three second segment is classified as being of significant level to be likely indicative of noise by determining whether the pulse amplitude threshold Td is less than a pulse threshold, Block 464. According to an embodiment of the present

invention, the pulse threshold is set as 1 microvolt. If the pulse amplitude threshold T_d is less than the pulse threshold, the signal strength is too small for a determination of muscle noise, and therefore the signal is determined to be not likely corrupted by noise and therefore the channel is determined to be not noise corrupted, Block 466.

If the pulse amplitude threshold T_d is greater than or equal to the pulse threshold, the three second segment is divided into twelve sub-segments of 250 ms window length, the number of muscle noise pulses in each sub-segment is counted, and both the sub-segment having the maximum number of muscle noise pulses and the number of sub-segments having 6 or more muscle noise pulses that are greater than a predetermined minimum threshold is determined. Muscle noise is determined to be present in the signal if either the maximum number of muscle noise pulses in a single sub-segment is greater than a noise pulse number threshold or the number of sub-segments of the twelve sub-segments having 6 or more muscle noise pulses greater than the minimum threshold is greater than or equal to a sub-segment pulse count threshold. According to an embodiment of the present invention, the noise pulse number threshold is set equal to eight and the sub-segment pulse count threshold is set equal to three.

For example, if the pulse amplitude threshold T_d is greater than or equal to the pulse threshold, No in Block 464, the maximum number of muscle noise counts in a single sub-segment is determined, Block 468. If the maximum number of muscle noise counts is greater than the noise pulse number threshold, Yes in Block 470, the channel is determined to be noise corrupted, Block 472. If the maximum number of muscle noise counts for the channel is less than or equal to the noise pulse number threshold, No in Block 470, the number of sub-segments of the twelve sub-segments having 6 or more muscle noise pulses greater than the minimum threshold is determined, Block 474, and if the number is greater than or equal to a sub-segment pulse count threshold, Yes in Block 476, the channel is determined to be noise corrupted, Block 472. If the number is less than the sub-segment pulse count threshold, No in Block 476, the channel is determined not to be noise corrupted, Block 466.

FIG. 6C is a flowchart of a method of determining whether a signal is corrupted by muscle noise according to an embodiment of the present invention. Since muscle noise can be present during an episode of ventricular tachycardia, the width of the overall signal pulse waveform is determined in order to distinguish between signals that are determined likely to be purely noise related and signals that are both shockable events and determined to include noise. Therefore, as illustrated in FIG. 6C, according to an embodiment of the present invention, once muscle noise is determined to be present as a result of the muscle noise pulse count being satisfied, No in Block 470 and Yes in Block 476, a determination is made as to whether the signal is both noise corrupted and shockable, Block 480.

According to an embodiment of the present invention, the determination in Block 480 as to whether the signal is both noisy and shockable is made, for example, by dividing the rectified signal, having 768 data points, into four sub-segments and determining a maximum amplitude for each of the four sub-segments by determining whether a maximum amplitude for the sub-segment is less than a portion of the maximum amplitude for the entire rectified signal in the three second segment. For example, a determination is made for each sub-segment as to whether the maximum amplitude for the sub-segment is less than one fourth of the maximum amplitude for the entire rectified signal. If less than a portion

of the maximum amplitude for the entire rectified signal in the three second segment, the maximum amplitude for the sub-segment is set equal to the maximum amplitude for the entire rectified signal.

A mean rectified amplitude for each of the sub-segments is determined by dividing the sum of the rectified amplitudes for the sub-segment by the number of samples in the sub-segment, i.e., $768 \div 4$. Then the normalized mean rectified amplitude for each sub-segment is determined by dividing the mean rectified amplitude for each of the sub-segments by the peak amplitude for the sub-segment. The normalized mean rectified amplitude for the three second segment is then determined as the sum of the normalized mean rectified amplitudes for each sub-segment divided by the number of sub-segments, i.e., four.

Therefore, once muscle noise is suspected as a result of the determination of the muscle noise pulse count, the determination of Block 480 based on whether the normalized mean rectified amplitude for the three second segment is greater than a predetermined threshold for identifying signals that, despite being indicative of a likelihood of being associated with noise, nevertheless are associated with a shockable event. For example, according to an embodiment of the present invention, a determination is made as to whether the normalized mean rectified amplitude for the three second segment is greater than 18 microvolts. If the normalized mean rectified amplitude for the three second segment is less than or equal to the predetermined threshold, the channel is likely corrupted by muscle noise and not shockable, No in Block 480, and is therefore identified as being corrupted by noise, Block 472. If the normalized mean rectified amplitude for the three second segment is greater than the predetermined threshold, the channel is determined to be likely corrupted by muscle noise and shockable, Yes in Block 480, and is therefore identified as not to be likely corrupted by muscle noise, Block 478.

Returning to FIG. 5, when the signal is determined to be not likely corrupted by muscle noise, a determination is made as to whether the mean frequency of the signal associated with the channel is less than a predetermined mean frequency threshold, Block 388, such as 11 Hz for example. The mean frequency of the signal during the 3 second segment for each channel ECG 1 and ECG2 is generated, for example, by calculating the ratio of the mean absolute amplitude of the first derivative of the 3 second segment to the mean absolute amplitude of the 3 second segment, multiplied by a constant scaling factor. If the mean frequency is determined to be greater than or equal to the predetermined mean frequency threshold, No in Block 388, the three second segment for that channel is identified as being likely corrupted with noise, Block 386. If the mean frequency is determined to be less than the predetermined mean frequency threshold, Yes in Block 388, the three second segment for that channel is identified as being not noise corrupted, Block 390.

According to an embodiment of the present invention, since the mean spectral frequency tends to be low for true ventricular fibrillation events, moderate for organized rhythms such as sinus rhythm and supraventricular tachycardia, for example, and high during asystole and noise, the determination in Block 388 includes determining whether the mean frequency is less than a predetermined upper mean frequency threshold, such as 11 Hz (i.e., mean period T of approximately 91 milliseconds) for example, and whether the mean frequency is less than a predetermined lower mean frequency, such as 3 Hz for example. If the mean frequency is below a second, lower threshold, such as 3 Hz, for

example, the signal is also rejected as noise and no further noise tests are initiated. This comparison of the mean frequency to a second lower threshold is intended to identify instances of oversensing, resulting in appropriate transition to the concerned state. If the mean frequency of the signal is less than 3 Hz, it is generally not possible for the heart rate to be greater than 180 beats per minute. In practice, it may be advantageous to set the lower frequency threshold equal to the programmed VT/VF detection rate, which is typically approximately 3 Hz.

Therefore, in the determination of Block 388, if the mean frequency is determined to be either greater than or equal to the predetermined upper mean frequency threshold or less than the lower threshold, the three second segment for that channel is identified as being likely corrupted with noise, Block 386. If the mean frequency is determined to be both less than the predetermined upper mean frequency threshold and greater than the lower threshold, the three second segment for that channel is identified as not being noise corrupted, Block 390.

Returning to FIG. 4, once the determination as to whether the channels ECG1 and ECG2 are corrupted by noise is made, Block 342, a determination is made as to whether both channels are determined to be noise corrupted, Block 344. If the signal associated with both channels ECG1 and ECG2 is determined to likely be corrupted by noise, both channels are classified as being not shockable, Block 347, and therefore a buffer for each channel ECG1 and ECG 2 containing the last three classifications of the channel is updated accordingly and the process is repeated for the next three-second windows. If both channels ECG1 and ECG2 are not determined to be likely corrupted by noise, No in Block 344, the device distinguishes between either one of the channels being not corrupted by noise or both channels being not corrupted by noise by determining whether noise was determined to be likely in only one of the two channels ECG1 and ECG2, Block 346.

If noise was likely in only one of the two channels, a determination is made whether the signal for the channel not corrupted by noise, i.e., the clean channel, is more likely associated with a VT event or with a VF event by determining, for example, whether the signal for that channel includes R-R intervals that are regular and the channel can be therefore classified as being relatively stable, Block 348. If the R-R intervals are determined not to be relatively stable, NO in Block 348, the signal for that channel is identified as likely being associated with VF, which is then verified by determining whether the signal is in a VF shock zone, Block 350, described below. If R-R intervals for that channel are determined to be stable, YES in Block 348, the signal is identified as likely being associated with VT, which is then verified by determining whether the signal is in a VT shock zone, Block 352, described below.

If noise was not likely for both of the channels, No in Block 346, i.e., both channels are determined to be clean channels, a determination is made whether the signal for both channels is more likely associated with a VT event or with a VF event by determining whether the signal for both channels includes R-R intervals that are regular and can be therefore classified as being relatively stable, Block 356. The determination in Block 356 of whether the R-R intervals are determined to be relatively stable may be made using the method described in U.S. Pat. No. 7,894,894 to Stadler et al., incorporated herein by reference in its entirety. If the R-R intervals are determined not to be relatively stable, NO in Block 356, the signal for both channels is identified as likely being associated with VF, which is then verified by deter-

mining whether the signal for each channel is in a VF shock zone, Block 360, described below. If R-R intervals for both channels are determined to be stable, YES in Block 356, the signal is identified as likely being associated with VT, which is then verified by determining, based on both channels, whether the signal is in a VT shock zone, Block 358.

FIG. 7 is a graphical representation of a VF shock zone according to an embodiment of the present invention. As illustrated in FIG. 7, a VF shock zone 500 is defined for each channel ECG1 and ECG2 based on the relationship between the calculated low slope content and the spectral width associated with the channel. For example, the shock zone is defined by a first boundary 502 associated with the low slope content set for by the equation:

$$\text{Low slope content} = -0.0013 \times \text{spectral width} + 0.415 \quad \text{Equation 1}$$

and a second boundary 504 associated with the spectral width set forth by the equation:

$$\text{spectral width} = 200 \quad \text{Equation 2}$$

The low slope content metric is calculated as the ratio of the number of data points with low slope to the total number of samples in the 3-second segment. For example, according to an embodiment of the present invention, the difference between successive ECG samples is determined as an approximation of the first derivative (i.e., the slope) of the ECG signal. In particular, the raw signal for each channel is applied to a first order derivative filter to obtain a derivative signal for the three-second segment. The derivative signal is then rectified, divided into four equal sub-segments, and the largest absolute slope is estimated for each of the four sub-segments.

A determination is made as to whether the largest absolute slopes are less than a portion of the overall largest absolute slope for the whole three-second segment, such as one-fifth of the overall absolute slope, for example. If the largest absolute slope is less than the portion of the overall slope, then the slope value for that sub-segment is set equal to the overall largest absolute slope. If the largest absolute slope is not less than the portion of the overall slope, then the slope value for that sub-segment is set equal to the determined largest absolute slope for the sub-segment.

Once the slope value for each of the sub-segments has been determined and updated by being set equal to the largest slope for the three second segment, if necessary, the average of the four slopes is calculated and divided by a predetermined factor, such as 16 for example, to obtain a low slope threshold. The low slope content is then obtained by determining the number of sample points in the three-second segment having an absolute slope less than or equal to the low slope threshold.

According to an embodiment of the present invention, if, during the determination of the low slope threshold, the low slope threshold is a fraction, rather than a whole number, a correction is made to the low slope content to add a corresponding fraction of the samples. For example, if the threshold is determined to be 4.5, then the low slope content is the number of sample points having an absolute slope less than or equal to 4 plus one half of the number of sample points with slope equal to 5.

The spectral width metric, which corresponds to an estimate of the spectral width of the signal for the three-second segment associated with each channel ECG1 and ECG2, is defined, for example, as the difference between the mean frequency and the fundamental frequency of the signal. According to an embodiment of the present invention, the spectral width metric is calculated by determining the dif-

ference between the most recent estimate of the RR-cycle length and the mean spectral period of the signal for that channel. As is known in the art, the mean spectral period is the inverse of the mean spectral frequency.

As can be seen in FIG. 7, since noise 506 tends to have a relatively higher spectral width, and normal sinus rhythm 508 tends to have a relatively higher low slope content relative to VF, both noise 506 and normal sinus rhythm 508 would be located outside the VF shock zone 500.

A determination is made for each channel ECG1 and ECG2 as to whether the low slope content for that channel is less than both the first boundary 502 and the spectral width is less than the second boundary 504, i.e., the low slope content is less than $-0.0013 \times \text{spectral width} + 0.415$, and the spectral width is less than 200. For example, once the event is determined to be associated with VF, i.e., the intervals for both channels are determined to be irregular, No in Block 356, a determination is made that channel ECG1 is in the VF shock zone, Yes in Block 360, if, for channel ECG1, both the low slope content is less than the first boundary 502 and the spectral width is less than the second boundary 504. The three second segment for that channel ECG1 is then determined to be shockable, Block 363 and the associated buffer for that channel is updated accordingly. If either the low slope content for the channel is not less than the first boundary 502 or the spectral width is not less than the second boundary, the channel ECG1 is determined not to be in the VF shock zone, No in Block 360, the three second segment for that channel ECG1 is then determined to be not shockable, Block 365, and the associated buffer is updated accordingly.

Similarly, a determination is made that channel ECG2 is in the VF shock zone, Yes in Block 362, if, for channel ECG2, both the low slope content is less than the first boundary 502 and the spectral width is less than the second boundary 504. The three second segment for that channel ECG2 is then determined to be shockable, Block 369 and the associated buffer for that channel is updated accordingly. If either the low slope content for the channel is not less than the first boundary 502 or the spectral width is not less than the second boundary, the channel ECG2 is determined not to be in the VF shock zone, No in Block 362, the three second segment for that channel ECG2 is then determined to be not shockable, Block 367, and the associated buffer is updated accordingly.

FIGS. 8A and 8B are graphical representations of the determination of whether an event is within a shock zone according to an embodiment of the present invention. During the determination of whether the event is within the VT shock zone, Block 358 of FIG. 4, the low slope content and the spectral width is determined for each channel ECG1 and ECG2, as described above in reference to determining the VF shock zone. A determination is made as to which channel of the two signal channels ECG1 and ECG2 contains the minimum low slope content and which channel of the two signal channels ECG 1 and ECG2 contains the minimum spectral width. A first VT shock zone 520 is defined based on the relationship between the low slope content associated with the channel determined to have the minimum low slope content and the spectral width associated with the channel determined to have the minimum spectral width. For example, according to an embodiment of the present invention, the first VT shock zone 520 is defined by a boundary 522 associated with the minimum low slope content and the minimum spectral width set forth by the equation:

$$\text{LSC} = -0.004 \times \text{SW} + 0.93$$

Equation 3

A second VT shock zone 524 is defined based on the relationship between the low slope content associated with the channel determined to have the minimum low slope content and the normalized mean rectified amplitude associated with the channel determined to have the maximum normalized mean rectified amplitude. In order to determine the normalized mean rectified amplitudes for the two channels ECG1 and ECG2 utilized during the VT shock zone test, the amplitude of each sample associated with the three second window is determined, resulting in N sample amplitudes, from which a mean rectified amplitude is calculated as the ratio of the sum of the rectified sample amplitudes to the total number of sample amplitudes N for the segment. If the sampling rate is 256 samples per second, for example, the total number of sample amplitudes N for the three-second segment would be $N = 768$ samples.

According to an embodiment of the present invention, for example, the second VT shock zone 524 is defined by a second boundary 526 associated with the relationship between the minimum low slope count and the maximum normalized mean rectified amplitude set forth by the equation:

$$\text{NMRA} = 68 \times \text{LSC} + 8.16$$

Equation 4

If both the minimum low slope count is less than the first boundary 522, i.e., $-0.004 \times \text{minimum spectral width} + 0.93$, and the maximum normalized mean rectified amplitude is greater than the second boundary 526, i.e., $68 \times \text{minimum low slope count} + 8.16$, the event is determined to be in the VT shock zone, YES in Block 358, and both channels ECG1 and ECG2 are determined to be shockable, Block 357, and the associated buffers are updated accordingly. If either the minimum low slope count is not less than the first boundary 522 or the maximum normalized mean rectified amplitude is not greater than the second boundary 526, the event is determined to be outside the VT shock zone, NO in Block 358, and both channels ECG1 and ECG2 are determined to be not shockable, Block 359.

As described, during both the VF shock zone test, Blocks 360 and 362, and the VT shock zone test, Block 358, the test results for each channel ECG1 and ECG2 as being classified as shockable or not shockable are stored in a rolling buffer containing the most recent eight such designations, for example, for each of the two channels ECG1 and ECG2 that is utilized in the determination of Block 356, as described below.

If only one of the two channels ECG1 and ECG2 is determined to be corrupted by noise, Yes in Block 346, a determination is made whether the signal for the channel not corrupted by noise, i.e., the "clean channel", is more likely associated with a VT event or with a VF event by determining whether the signal for the clean channel includes R-R intervals that are regular and can be therefore classified as being relatively stable, Block 348. If the R-R intervals are determined not to be relatively stable, NO in Block 348, the signal for the clean channel is identified as likely being associated with VF, which is then verified by determining whether the signal for the clean channel is in a VF shock zone, Block 350, described below. If R-R intervals for the clean channel are determined to be stable, YES in Block 348, the signal is identified as likely being associated with VT, which is then verified by determining whether the signal for the clean channel is in a VT shock zone, Block 352.

According to an embodiment of the present invention, in order to determine whether the signal for the clean channel includes R-R intervals that are regular and the clean channel can be therefore classified as being either relatively stable,

Yes in Block 348, or relatively unstable, No in Block 348, the device discriminates VT events from VF events in Block 348 by determining whether the relative level of variation in the RR-intervals associated with the clean channel is regular. FIG. 9 is a flowchart of a method for discriminating cardiac events according to an embodiment of the disclosure. For example, as illustrated in FIG. 9, predetermined maximum and minimum intervals for the clean channel are identified from the updated buffer of 12 RR-intervals, Block 342 of FIG. 4. According to an embodiment of the present invention, the largest RR-interval and the sixth largest RR-interval of the twelve RR-intervals are utilized as the maximum interval and the minimum interval, respectively.

The difference between the maximum RR-interval and the minimum RR-interval of the 12 RR-intervals is calculated to generate an interval difference associated with the clean channel, 702. A determination is then made as to whether the interval difference is greater than a predetermined stability threshold, Block 704, such as 110 milliseconds, for example.

If the interval difference is greater than the stability threshold, the event is classified as an unstable event, Block 706, and therefore the clean channel is determined not to include regular intervals, No in Block 348, and a determination is made as to whether the signal associated with the clean channel is within a predetermined VF shock zone, Block 350 of FIG. 4, described below. If the interval difference is less than or equal to the stability threshold, No in Block 704, the device determines whether the minimum RR interval is greater than a minimum interval threshold, Block 710, such as 200 milliseconds, for example.

If the minimum interval is less than or equal to the minimum interval threshold, No in Block 710, the event is classified as an unstable event, Block 706, and therefore the clean channel is determined not to include regular intervals, No in Block 348, and a determination is made as to whether the signal associated with the clean channel is within a predetermined VF shock zone, Block 350 of FIG. 4, described below. If the minimum interval is greater than the minimum interval threshold, Yes in Block 710, the device determines whether the maximum interval is less than or equal to a maximum interval threshold, Block 712, such as 333 milliseconds for example. If the maximum interval is greater than the maximum interval threshold, the event is classified as an unstable event, Block 706, and therefore the clean channel is determined not to include regular intervals, No in Block 348, and a determination is made as to whether the signal associated with the clean channel is within a predetermined VF shock zone, Block 350 of FIG. 4, described below. If the maximum interval is less than or equal to the maximum interval threshold, the event is classified as a stable event, Block 714, and therefore the clean channel is determined to include regular intervals, Yes in Block 348, and a determination is made as to whether the signal associated with the clean channel is within a predetermined VT shock zone, Block 352 of FIG. 4, described below.

Returning to FIG. 4, the determination of whether the clean channel is within the VF shock zone, Block 350, is made based upon a low slope content metric and a spectral width metric, similar to the VF shock zone determination described above in reference to Blocks 360 and 362, both of which are determined for the clean channel using the method described above. Once the low slope content metric and a spectral width metric are determined for the clean channel, the determination of whether the clean channel is in the VF shock zone is made using Equations 1 and 2, so that if either the low slope content for the clean channel is not less than

the first boundary 502 or the spectral width is not less than the second boundary 504, the clean channel is determined not to be in the VF zone, No in Block 350 and both channels are classified as not shockable, Block 351, and the associated buffers are updated accordingly.

If the low slope content for the clean channel is less than the first boundary 502 and the spectral width is less than the second boundary 504, the clean channel is determined to be in the VF zone, Yes in Block 350. A determination is then made as to whether the channel determined to be corrupted by noise, i.e., the "noisy channel", is within the VF shock zone, Block 354. If either the low slope content for the noisy channel is not less than the first boundary 502 or the spectral width is not less than the second boundary 504, the noisy channel is determined not to be in the VF zone, No in Block 354, the clean channel is classified as shockable and the noisy channel is classified as not shockable, Block 355, and the associated buffers are updated accordingly.

If the low slope content for the noisy channel is less than the first boundary 502 and the spectral width is less than the second boundary 504, the noisy channel is determined to be in the VF zone, Yes in Block 354, both the clean channel and the noisy channel are classified as being shockable, Block 353, and the associated buffers are updated accordingly.

Similar to the VT shock zone determination described above in reference to Block 358, during the determination as to whether the clean channel is within the VT shock zone in Block 352, the low slope content and the spectral width is determined for the clean channel as described above in reference to determining the VF shock zone. The first VT shock zone 520 is defined based on the relationship between the low slope content and the spectral width associated with the clean channel according to Equation 3, for example, and the second VT shock zone 524 is defined based on the relationship between the low slope count and the normalized mean rectified amplitude associated with the clean channel. The normalized mean rectified amplitudes for the clean channel is the same as described above in reference to the noise detection tests of Block 344. For example, according to an embodiment of the present invention, the second VT shock zone 524 is defined by a second boundary 526 associated with the relationship between the low slope count and the normalized mean rectified amplitude of the clean channel using Equation 4.

If both the low slope count is less than the first boundary 522, i.e., $-0.004 \times \text{spectral width of clean channel} + 0.93$, and the normalized mean rectified amplitude is greater than the second boundary 526, i.e., $68 \times \text{low slope count of clean channel} + 8.16$, the clean channel is determined to be in the VT shock zone, Yes in Block 352, both channels are classified as being shockable, Block 353, and the associated buffers are updated accordingly.

If either the low slope count is not less than the first boundary 522 or the maximum normalized mean rectified amplitude is not greater than the second boundary 526, the clean channel is determined to be outside the VT shock zone, No in Block 352, both channels are classified as being not shockable, Block 351, and the associated buffers are updated accordingly.

According to an embodiment of the present disclosure, in addition to the classification of the sensing channels ECG1 and ECG2 as being shockable or not shockable using a gross morphology analysis, as described in FIG. 4, for example, the device also performs a beat-based analysis of the beats within each of the three-second windows, Block 368, so that the decision on state transitions (e.g. as to whether to transition from the concerned operating state 304 to the

armed operating state **306** in Block **370**, or from the armed state **306** to the shock state **308**) is made based on the results of both an analysis of the gross morphology of the signal in the three-second window or windows for each sensing channel ECG1 and ECG2, and an analysis of the morphology of individual beats or R-waves in the three-second window or windows for each sensing channel ECG1 and ECG2, as described below. For a three-second segment to be classified as shockable, both the gross morphology and beat-based analysis have to classify the same three-second segment as shockable.

For example, according to an embodiment of the present invention, in order to determine whether to transition from the concerned operating state **304** to the armed operating state **306**, the device determines whether a predetermined number, such as two out of three for example, of three-second segments for both channels ECG1 and ECG2 have been classified as being shockable during the gross morphology analysis, Blocks **353**, **357**, **363** and **369**, and determines whether those three-second segments for both channels have also been classified as being shockable during the beat-based analysis, Block **368**. If the predetermined number of three-second segments in both channels ECG1 and ECG2 have been classified as shockable during both the gross morphology analysis and the beat-based analysis, the device transitions from the concerned state **304** to the armed state **306**, Yes in Block **370**. When the device determines to transition from the concerned state **304** to the armed state **306**, Yes in Block **370**, processing continues to be triggered by a three-second time out as is utilized during the concerned state **304**, described above.

If the predetermined number of three-second segments in both channels ECG1 and ECG2 have not been classified as shockable during both the gross morphology analysis and the beat-based analysis, the device does not transition from the concerned state **304** to the armed state **306**, No in Block **370**, and a determination as to whether to transition back to the not concerned state **302** is made, Block **372**. The determination as to whether to transition from the concerned state **304** back to the not concerned state **302** is made, for example, by determining whether a heart rate estimate is less than a heart rate threshold level in both of the two channels ECG1 and ECG2, using the method for determining a heart rate estimate as described in U.S. Pat. No. 7,894,894 to Stadler et al., incorporated herein by reference in its entirety. If it is determined that the device should not transition to the not concerned state **302**, i.e., either of the two heart rate estimates are greater than the heart rate threshold, No in Block **372**, the process continues using the signal generated during a next three-second window, Block **341**.

As described above, the determination of whether the sensing channels ECG1 and ECG2 are shockable or not shockable, Blocks **353**, **355**, **357**, and **363-369**, is performed by analyzing the gross morphology of a sensed waveform occurring within the three-second windows. The ECG signal is segmented into n-second intervals, i.e., 3 second intervals, that are used for determining gross morphology features of the three-second waveform. In particular, the gross morphology features are determined across an n-second time interval without relying on R-wave sensing and are therefore features making up the whole waveform signal that can be determined from the ECG signal independent of individual cardiac signals of the cardiac cycle, i.e., individual beats or R-waves contained within the three-second window that are within the entire three-second window. A single waveform in the n-second window begins at the start of the window,

extends through entire window, ending at the end of the three-second window so that a single morphology determination is made for the single waveform included within the single three-second window.

On the other hand, multiple cardiac cycles, i.e., R-wave signals, are included within the three-second window, and therefore the n-second window may start and end at any time point relative to each of the individual R-wave signals irrespective of where an individual R-wave signal starts and ends, so that multiple individual beat-based determinations are made for the multiple beat waveforms included within the single three-second window.

Morphology features computed for the single waveform extending across the n-second time period are referred to as "gross" morphology features because the features are characteristics of the single signal, extending from the start to the end of the window, that is extracted, independent of cardiac cycle timing, from a time segment that includes multiple individual cardiac cycles. In contrast, morphology features extracted from the ECG signal during a cardiac cycle are referred to as "beat-based" features. Beat-based features are determined from an ECG signal segment over a time interval of one cardiac cycle of multiple cardiac cycles contained within a single three-second window. Beat-based features may be averaged or determined from multiple cardiac cycles but are representative of a single feature of the ECG signal during a cardiac cycle. Determination of a beat feature is dependent on identifying the timing of a cardiac cycle, or at least a sensed event such as an R-wave, as opposed to determining gross features independent of the cardiac cycle over a time segment that is typically longer than one cardiac cycle.

FIG. **10** is a flowchart of a beat-based analysis during detection of arrhythmias in a medical device according to an embodiment of the present disclosure. Therefore, as described above, in addition to performing the morphology analysis of the whole waveform within the three-second windows associated with each sensing channel ECG1 and ECG2, the device performs a beat-based analysis of the signal sensed simultaneously within both channels ECG1 and ECG2, Block **368**. In particular, as illustrated in FIG. **10**, for each three-second sensing window associated with the respective sensing channels ECG1 and ECG2, the device locates a beat, i.e., R-wave, Block **800**, and compares the individual beat to a predetermined beat template, Block **802**, such as a normal sinus rhythm template, for example. Based upon the comparison of the beat to the template, the device determines whether the beat is either a match beat or a non-match beat by determining the extent to which the beat matches the template, Block **804**. For example, in order to identify the beat as either a match beat or a non-match beat, the device determines in Block **804** whether the beat matches the sinus rhythm template within a predetermined percentage, such as 60 percent, for example. If the beat matches the template by the predetermined percentage or greater, Yes in Block **804**, the beat is identified as a match beat and the number of match beats for the three-second window is updated, Block **806**. If the beat matches the template by less than the predetermined percentage, No in Block **804**, the beat is identified as a non-match beat and the number of non-match beats for the three-second window is updated, Block **808**.

Once the beat is identified as likely being either a match beat or a non-match beat, the device determines whether the match/non-match determination has been made for all of the beats in the three-second window, Block **810**. If the determination has not been made for all of the beats in the

three-second window, No in Block 810, the process is repeated with another beat located within the three-second window. Once the determination has been made for all of the beats in the three-second window, Yes in Block 810, a determination is made as to whether the number of non-match beats in the three-second window is greater than a non-match threshold, Block 812. According to an embodiment of the disclosure, the non-match threshold is set as a predetermined percentage, such as 75 percent for example, so that if the number of individual beats in the three-second window that are identified as being non-match beats is greater than 75 percent of the number of all of the beats in the window, Yes in Block 812, the three-second window is identified as being shockable based on beat-based analysis, Block 814. On the other hand, if the number of individual beats in the three-second window that are identified as being non-match beats is not greater than 75 percent of the number of all of the beats in the window, No in Block 812, the three-second window is identified as being not shockable based on beat based analysis, Block 814. The beat-based analysis determination of the three-second windows as being shockable 814 or not shockable, Block 816 is then used in combination with the waveform morphology analysis of both of the three-second windows being shockable, Blocks 353, 357, 363 and 369 or both not shockable, Blocks 351, 355, 359, 365 and 367 to determine whether to transition to the next state, Block 370, as described above.

As can be seen in FIG. 4, the way in which both channels ECG1 and ECG2 could have been determined to be shockable can vary. First, if noise was not determined to be occurring in either channel, No in Block 346, but both channels are determined to have regular intervals, Yes in Block 356, and both channels are determined to be in the VT shock zone, Yes in Block 358, both of the sensing channels ECG1 and ECG2 are determined to be shockable, Block 359. Second, if noise was not determined to be occurring in either channel, No in Block 346, but both channels are not determined to have regular intervals, No in Block 356, and both channels are determined to be in the VF shock zone, Yes in Blocks 360 and 362, both of the sensing channels ECG1 and ECG2 are determined to be shockable.

However, if noise was determined to be occurring in one channel, Yes in Block 346, but the clean channel was determined to have regular intervals, Yes in Block 348, and to be in the VT shock zone, Yes in Block 352, both of the sensing channels ECG1 and ECG2 are determined to be shockable, Block 353. Finally, if noise was determined to be occurring in one channel, Yes in Block 346, the clean channel was determined not to have regular intervals, No in Block 348, and both the clean and the noisy channel are determined to be in the VF shock zone, Yes in Blocks 350 and 354, both of the sensing channels ECG1 and ECG2 are determined to be shockable, Block 353.

In this way, both channels may be determined to be shockable based on a determination that both channels are either in the VF shock zone, Blocks 363 and 369, or Block 353 via Blocks 350 and 354, based on a determination that both channels are in the VT shock zone, Block 357, or based on a determination that only one channel, i.e., the clean channel, is within the VT shock zone, Block 353 via Block 352.

FIG. 11 is a flowchart of a beat-based analysis during detection of arrhythmias in a medical device according to an embodiment of the present disclosure. Therefore, according to an embodiment of the present disclosure, the device may initially identify how the three-second windows were determined to be shockable during the gross morphology analysis,

i.e., by using both channels or only one channel, and based on this determination, determine which channels that are to be utilized in the beat morphology analysis.

Therefore, as illustrated in FIGS. 4 and 11, according to one embodiment, the device determines whether both channels were used in the identification of both channels being shockable, Block 820, so that if both channels were utilized, Yes in Block 820, the beat-based analysis, Block 368, is performed for both channels, Block 822, as described above in FIG. 10.

If both channels were not utilized, No in Block 820, the beat-based analysis, Block 368, is performed for only one channel, i.e., the clean channel, Block 824. In particular, the device locates a beat, i.e., R-wave, in only the clean channel, Block 800, and compares the individual beat to a predetermined beat template, Block 802, such as a normal sinus rhythm template, for example. Based upon the comparison of the beat to the template, the device determines whether the beat is either a match beat or a non-match beat by determining the extent to which the beat matches the template, Block 804. For example, in order to identify the beat as either a match beat or a non-match beat, the device determines in Block 804 whether the beat matches the sinus rhythm template within a predetermined percentage, such as 60 percent, for example. If the beat matches the template by the predetermined percentage or greater, Yes in Block 804, the beat is identified as a match beat and the number of match beats for the three-second window is updated, Block 806. If the beat matches the template by less than the predetermined percentage, No in Block 804, the beat is identified as a non-match beat and the number of non-match beats for the three-second window is updated, Block 808.

Once the beat is identified as likely being either a match beat or a non-match beat, the device determines whether the match/non-match determination has been made for all of the beats in the three-second window of only the clean channel, Block 810. If the determination has not been made for all of the beats in the three-second window for the clean channel, No in Block 810, the process is repeated with another beat located within the three-second window of the clean channel. Once the determination has been made for all of the beats in the three-second window of the clean channel, Yes in Block 810, a determination is made as to whether the number of non-match beats in the three-second window is greater than a non-match threshold, Block 812. According to an embodiment of the disclosure, the non-match threshold is set as a predetermined percentage, such as 75 percent for example, so that if the number of individual beats in the three-second window that are identified as being non-match beats is greater than 75 percent of the number of all of the beats in the window, Yes in Block 812, the three-second window of the clean channel is identified as being shockable based on the beat-based analysis, Block 814. On the other hand, if the number of individual beats in the three-second window that are identified as being non-match beats is not greater than 75 percent of all of the number of the beats in the window, No in Block 812, the three-second window of the clean channel is identified as being not shockable based on the beat-based analysis, Block 814.

The decision as to whether to transition from the concerned operating state 304 to the armed operating state 306 in Block 370 is made based on the results of both an analysis of the morphology of the signal in the three-second window or windows for each sensing channel ECG1 and ECG2, and an analysis of morphology of individual beats or R-waves in the three-second window or windows for each sensing channel ECG1 and ECG2, as described above. In the

instance where the beat-based analysis was performed for only one channel, i.e., the clean channel, Block 824, the determination of whether to transition to the next state, Block 370, would be satisfied if both the predetermined number of three-second segments in both channels ECG1 and ECG2 have been classified as shockable during the gross morphology analysis, and the beat-based analysis, Block 368, is satisfied for only the clean channel, and therefore the device transitions from the concerned state 304 to the armed state 306, Yes in Block 370. If the predetermined number of three-second segments in both channels ECG1 and ECG2 have not been classified as shockable during both the gross morphology analysis and the beat-based analysis of only the clean channel, the device does not transition from the concerned state 304 to the armed state 306, No in Block 370, and a determination as to whether to transition back to the not concerned state 302 is made, Block 372, as described above.

Thus, a method and apparatus for discriminating a cardiac event have been presented in the foregoing description with reference to specific embodiments. It is appreciated that various modifications to the referenced embodiments may be made without departing from the scope of the disclosure as set forth in the following claims.

I claim:

1. A method of detecting a cardiac event in a medical device, comprising:

sensing cardiac signals from a plurality of electrodes, the plurality of electrodes forming a first sensing vector sensing a first interval of the cardiac signal during a predetermined time period and a second sensing vector simultaneously sensing a second interval of the cardiac signal during the predetermined time period;

identifying each of the first interval and the second interval as being one of shockable or not shockable in response to a first processing of the first interval and the second interval;

identifying each of the first interval and the second interval as being one of shockable or not shockable in response to a second processing of the first interval and the second interval, the second processing being different from the first processing and comprising a beat-based analysis identifying individual beats within the first interval and the second interval;

determining whether to deliver therapy for the cardiac event in response to identifying each of the first interval and the second interval as being one of shockable or not shockable in response to both the first processing of the first interval and the second interval and the second processing of the first interval and the second interval; and

delivering therapy to treat the cardiac event based on identifying each of the first interval and the second interval as being shockable in response to both the first processing and the second processing.

2. The method of claim 1, wherein sensing cardiac signals includes the first sensing vector sensing a plurality of first intervals during the predetermined time period, the plurality of first intervals including the first interval, and the second sensing vector sensing a plurality of second intervals during the predetermined time period, the plurality of second intervals including the second interval, and wherein determining whether to deliver therapy for the cardiac event comprises:

determining whether a predetermined number of the plurality of first intervals and the plurality of second intervals are identified as shockable in response to the first processing; and

determining whether a predetermined number of the plurality of first intervals and the plurality of second intervals are identified as shockable in response to the second processing.

3. The method of claim 1, wherein the first processing comprises a gross morphology analysis of the first interval and the second interval.

4. The method of claim 1, wherein the first processing comprises:

determining whether both the first interval and the second interval are corrupted by noise;

determining whether both the first interval and the second interval are within one of a VF shock zone and a VT shock zone; and

determining, in response to one of the first interval and the second interval not being corrupted by noise and the other of the first interval and the second interval being corrupted by noise, whether the one of the first interval and the second interval determined not to be corrupted by noise is within the VT shock zone.

5. The method of claim 4, wherein the second processing comprises:

comparing each of the identified beats with a beat template and determining a number of the identified beats that are match beats and a number of the identified beats that are non-match beats;

determining whether the number of non-match beats is greater than a non-match threshold; and

identifying the first interval as shockable in response to the number of non-match beats being greater than the non-match threshold.

6. The method of claim 1, wherein the second processing comprises:

comparing each of the identified beats with a beat template and determining a number of the identified beats that are match beats and a number of the identified beats that are non-match beats;

determining whether the number of non-match beats is greater than a non-match threshold; and

identifying the first interval as shockable in response to the number of non-match beats being greater than the non-match threshold.

7. The method of claim 1, further comprising:

determining, during the first processing, whether the first interval and the second interval are corrupted by noise;

determining, in response to only one of the first interval and the second interval not being corrupted by noise, whether the one of the first interval and the second interval not corrupted by noise is shockable; and

identifying the cardiac event as one of shockable or not shockable in response to the second processing of only the one of the first interval and the second interval not corrupted by noise.

8. The method of claim 7, wherein sensing cardiac signals includes the first sensing vector sensing a plurality of first intervals during the predetermined time period, the plurality of first intervals including the first interval, and the second sensing vector sensing a plurality of second intervals during the predetermined time period, the plurality of second intervals including the second interval, and wherein determining whether to deliver therapy for the cardiac event comprises:

determining whether a predetermined number of both of the first intervals and the second intervals are identified as shockable in response to the first processing; and

determining, in response to neither of the first interval and the second interval being corrupted by noise, whether the predetermined number of both of the first intervals

and the second intervals are identified as shockable in response to the second processing; and
determining, in response to only one of the first interval and the second interval not being corrupted by noise, whether the predetermined number of one of the first intervals and the second intervals that include the one of the first interval and the second interval not corrupted by noise are identified as shockable in response to the second processing.

9. The method of claim 8, wherein the first processing comprises a gross morphology analysis of the first interval and the second interval.

10. The method of claim 1, further comprising:
determining, during the first processing, whether the first interval and the second interval are corrupted by noise; determining, in response to only one of the first interval and the second interval not being corrupted by noise, whether the one of the first interval and the second interval is a regular interval;
identifying the cardiac event as one of shockable or not shockable in response to the second processing of only the one of the first interval and the second interval and the one of the first interval and the second interval being a regular interval; and
identifying the cardiac event as not shockable in response to one of the first interval and the second interval not being a regular interval.

11. The method of claim 3, further comprising:
identifying both the first interval and the second interval as being one of shockable or not shockable in response to the second processing in response to both the first interval and the second interval being identified as shockable in response to the first processing.

12. The method of claim 1, further comprising transitioning to a new cardiac event detection state based on the identification of each of the first interval and the second interval as being one of shockable or not shockable in response to both the first processing of the first interval and the second interval and the second processing of the first interval and the second interval.

13. A medical device for detecting a cardiac event, comprising:
a plurality of electrodes sensing cardiac signals, the plurality of electrodes forming a first sensing vector sensing a first interval of the cardiac signal during a predetermined time period and a second sensing vector simultaneously sensing a second interval of the cardiac signal during the predetermined time period;
a processor configured to
identify each of the first interval and the second interval as being one of shockable or not shockable in response to a first processing of the first interval and the second interval,
identify each of the first interval and the second interval as being one of shockable or not shockable in response to a second processing of the first interval and the second interval, the second processing being different from the first processing and comprising a beat-based analysis identifying individual beats within the first interval and the second interval, and
determine whether to deliver therapy for the cardiac event in response to identifying each of the first interval and the second interval as being one of shockable or not shockable in response to both the first processing of the first interval and the second interval and the second processing of the first interval; and

a therapy module configured to deliver therapy to treat the cardiac event based on identifying each of the first interval and the second interval as being shockable in response to both the first processing and the second processing.

14. The medical device of claim 13, wherein sensing cardiac signals includes the first sensing vector sensing a plurality of first intervals during the predetermined time period, the plurality of first intervals including the first interval, and the second sensing vector sensing a plurality of second intervals during the predetermined time period, the plurality of second intervals including the second interval, and wherein determining whether to deliver therapy for the cardiac event comprises:
determining whether a predetermined number of first intervals and the second intervals are identified as shockable in response to the first processing; and
determining whether a predetermined number of first intervals and second intervals are identified as shockable in response to the second processing.

15. The medical device of claim 13, wherein the first processing comprises a gross morphology analysis of the first interval.

16. The medical device of claim 13, wherein the first processing comprises:
determining whether both the first interval and the second interval are corrupted by noise;
determining whether both the first interval and the second interval are within one of a VF shock zone and a VT shock zone; and
determining, in response to one of the first interval and the second interval not being corrupted by noise and the other of the first interval and the second interval being corrupted by noise, whether the one of the first interval and the second interval determined not to be corrupted by noise is within the VT shock zone.

17. The medical device of claim 16, wherein the second processing comprises:
comparing each of the identified beats with a beat template and determining a number of the identified beats that are match beats and a number of the identified beats that are non-match beats;
determining whether the number of non-match beats greater than a non-match threshold; and
identifying the first interval as shockable in response to the number of non-match beats being greater than the non-match threshold.

18. The medical device of claim 13, wherein the second processing comprises:
comparing each of the identified beats with a beat template and determining a number of the identified beats that are match beats and a number of the identified beats that are non-match beats;
determining whether the number of non-match beats is greater than a non-match threshold; and
identifying the first interval as shockable in response to the number of non-match beats being greater than the non-match threshold.

19. The medical device of claim 13, wherein the processor is further configured to determine, during the first processing, whether the first interval and the second interval are corrupted by noise, determine, in response to only one of the first interval and the second interval being not corrupted by noise, whether the one of the first interval and the second interval not corrupted by noise is shockable, and identify the cardiac event as one of shockable or not shockable in

response to second processing of only the one of the first interval and the second interval not corrupted by noise.

20. The medical device of claim 19, wherein sensing cardiac signals includes the first sensing vector sensing a plurality of first intervals during the predetermined time period, the plurality of first intervals including the first interval, and the second sensing vector sensing a plurality of second intervals during the predetermined time period, the plurality of second intervals including the second interval, and wherein determining whether to deliver therapy for the cardiac event comprises:

determining whether a predetermined number of both of the first intervals and the second intervals are identified as shockable in response to the first processing; and determining, in response to neither of the first interval and the second interval being corrupted by noise, whether the predetermined number of both of the first intervals and the second intervals are identified as shockable in response to the second processing; and

determining, in response to only one of the first interval and the second interval not being corrupted by noise, whether the predetermined number of one of the first intervals and the second intervals that include the one of the first interval and the second interval not corrupted by noise are identified as shockable in response to the second processing.

21. The medical device of claim 20, wherein the first processing comprises a gross morphology analysis of the first interval.

22. The medical device of claim 13, wherein the processor is further configured to determine, during the first processing, whether the first interval and the second interval are corrupted by noise, determine, in response to only one of the first interval and the second interval not being corrupted by noise, whether the one of the first interval and the second interval is a regular interval, identify the cardiac event as one of shockable or not shockable in response to the second processing of only the one of the first interval and the second interval and the one of the first interval and the second interval being a regular interval, and identify the cardiac event as not shockable in response to one of the first interval and the second interval not being a regular interval.

23. The medical device of claim 15, wherein the processor is configured to

identify both the first interval and the second interval as being one of shockable or not shockable in response to the second processing in response to both the first interval and the second interval being identified as shockable in response to the first processing.

24. The medical device of claim 13, wherein the processing is configured to transition to a new cardiac event detection state based on the identification of each of the first interval and the second interval as being one of shockable or not shockable in response to both the first processing of the first interval and the second interval and the second processing of the first interval and the second interval.

25. A non-transitory, computer-readable storage medium storing instructions for causing a processor included in a medical device to perform a method for determining a cardiac event, the method comprising:

sensing cardiac signals from a plurality of electrodes, the plurality of electrodes forming a first sensing vector sensing a first interval of the cardiac signal during a predetermined time window and a second sensing vector simultaneously sensing a second interval of the cardiac signal during the predetermined time window;

identifying each of the first interval and the second interval as being one of shockable or not shockable in response to a first processing of the first interval and the second interval;

identifying each of the first interval and the second interval as being one of shockable or not shockable in response to a second processing of the first interval and the second interval, the second processing being different from the first processing and comprising a beat-based analysis identifying individual beats within the first interval;

determining whether to deliver therapy for the cardiac event in response to identifying each of the first interval and the second interval as being one of shockable or not shockable in response to both the first processing of the first interval and the second interval and the second processing of the first interval; and

delivering therapy to treat the cardiac event based on identifying each of the first interval and the second interval as being shockable in response to both the first processing and the second processing.

26. The non-transitory, computer-readable storage medium of claim 25, wherein the method further comprises: identifying both the first interval and the second interval as being one of shockable or not shockable in response to the second processing in response to both the first interval and the second interval being identified as shockable in response to the first processing.

27. A method comprising:

sensing cardiac signals from a plurality of electrodes, the plurality of electrodes forming a first sensing vector sensing a first set of cardiac signals during a time window and a second sensing vector simultaneously sensing a second set of cardiac signals during the time window;

performing a first processing of the first set of cardiac signals and the second set of cardiac signals to identify each of the first set of cardiac signals and the second set of cardiac signals as being shockable or not shockable; and

performing a second processing of the first set of cardiac signals and the second set of cardiac signals to identify each of the first set of cardiac signals and the second set of cardiac signals as being shockable or not shockable, wherein the second processing is different than the first processing and comprises a beat-based analysis identifying individual beats within the first interval; determining, based on the first processing and the second processing, whether to deliver cardiac therapy; and delivering therapy to treat the cardiac event based on the identifications of the first and second sets of cardiac signals being shockable.

28. The method of claim 27, wherein the first processing comprises a gross morphology analysis of the first set of cardiac signals and the second set of cardiac signals.

29. The method of claim 28, wherein the second processing comprises:

comparing each of the identified beats with a beat template to identify non-match beats;

determining that the identified beats include a number of non-match beats, the number of non-match beats being greater than a non-match threshold;

responsive to determining that the number of non-match beats is greater than the non-match threshold, identifying the first set of cardiac signals as shockable.

33

30. The method of claim 27, wherein the second processing comprises:

comparing each of the identified beats with a beat template to identify non-match beats;

determining that the identified beats include a number of non-match beats, the number of non-match beats being greater than a non-match threshold; and

responsive to determining that the number of non-match beats is greater than the non-match threshold, identifying the first set of cardiac signals as shockable.

31. The method of claim 27,

wherein performing the first processing includes identifying the first set of cardiac signals as shockable and identifying the second set of cardiac signals as shockable,

wherein performing the second processing includes identifying the first set of cardiac signals as shockable, and

wherein the method further comprises:

performing a second processing of the second set of cardiac signals and identifying the second set of cardiac signals as shockable.

34

32. The method of claim 27,

wherein performing the first processing includes identifying the first set of cardiac signals as both not corrupted by noise and shockable and identifying the second set of cardiac signals as corrupted by noise, wherein performing the second processing includes identifying the first set of cardiac signals as shockable.

33. The method of claim 27,

wherein performing the first processing includes identifying the first set of cardiac signals as both not corrupted by noise and characterized by regular intervals and identifying the second set of cardiac signals as corrupted by noise,

wherein performing the second processing includes identifying the first set of cardiac signals as shockable.

34. The method of claim 27, wherein determining whether to deliver cardiac therapy includes transitioning to an armed state based on identifications of the first and second sets of cardiac signals as being shockable.

35. The method of claim 27, wherein determining whether to deliver cardiac therapy includes transitioning to a not concerned state based on identifications of the first and second sets of cardiac signals as being not shockable.

* * * * *

专利名称(译)	使用两个传感矢量区分医疗设备中的心动过速事件的方法和设备		
公开(公告)号	US9808640	公开(公告)日	2017-11-07
申请号	US14/250040	申请日	2014-04-10
[标]申请(专利权)人(译)	美敦力公司		
申请(专利权)人(译)	美敦力公司, INC.		
当前申请(专利权)人(译)	美敦力公司, INC.		
[标]发明人	ZHANG XUSHENG		
发明人	ZHANG, XUSHENG		
IPC分类号	A61B5/04 A61B5/042 A61B5/0452 A61B5/00 A61N1/39 A61B5/046 A61B5/0464		
CPC分类号	A61N1/3987 A61B5/046 A61B5/04011 A61B5/7207 A61B5/0464 A61B5/04525 A61B5/0422		
审查员(译)	CAREY, MICHAEL		
其他公开文献	US20150290468A1		
外部链接	Espacenet USPTO		

摘要(译)

一种用于检测心脏事件的方法和医疗设备，包括：感测来自多个电极的心脏信号，形成在预定时间段期间感测心脏信号的第一间隔的第一感测矢量；以及第二感测矢量，同时感测第二间隔的心脏事件。在预定时间段期间的心脏信号，响应于第一间隔和第二间隔的第一处理并且响应于对第一间隔和第二间隔中的一个或两个的第二处理，将第一间隔和第二间隔中的每一个识别为可电击且不可电击之一。第一间隔和第二间隔，第二处理与第一处理不同，并且响应于将第一间隔和第二间隔中的每一个识别为可电击且不可电击中的一个，确定是否递送针对心脏事件的治疗。响应第一个间隔的第一个处理和第二个处理第二个间隔。

