



US009414760B2

(12) **United States Patent**
Kieval

(10) **Patent No.:** **US 9,414,760 B2**
(45) **Date of Patent:** **Aug. 16, 2016**

(54) **METHOD FOR MONITORING
PHYSIOLOGICAL CYCLES OF A PATIENT
TO OPTIMIZE PATIENT THERAPY**

(58) **Field of Classification Search**
CPC . A61N 1/365; A61N 1/36521; A61B 5/0452;
A61B 5/04011; A61B 5/0402; A61B 5/04028
See application file for complete search history.

(71) Applicant: **CVRx, Inc.**, Minneapolis, MN (US)

(72) Inventor: **Robert S. Kieval**, Medina, MN (US)

(73) Assignee: **CVRx, Inc.**, Minneapolis, MN (US)

(*) Notice: Subject to any disclaimer, the term of this patent is extended or adjusted under 35 U.S.C. 154(b) by 0 days.

(56) **References Cited**

U.S. PATENT DOCUMENTS

5,313,953 A 5/1994 Yomtov et al.
6,522,926 B1 2/2003 Kieval et al.

(Continued)

OTHER PUBLICATIONS

The Effect of Time of Electrical Stimulation of the Barotid Sinus on The Amount of Reduction in Arterial Pressure; Pflugers Arch; 33:39-44; 1972; Warzel et al.

(Continued)

(21) Appl. No.: **14/151,995**

(22) Filed: **Jan. 10, 2014**

(65) **Prior Publication Data**

US 2014/0128708 A1 May 8, 2014

Related U.S. Application Data

(60) Division of application No. 13/538,571, filed on Jun. 29, 2012, now abandoned, which is a continuation of application No. 12/347,813, filed on Dec. 31, 2008, now Pat. No. 8,214,050.

(60) Provisional application No. 61/018,195, filed on Dec. 31, 2007.

(51) **Int. Cl.**

A61B 5/0402 (2006.01)
A61B 5/042 (2006.01)
A61B 5/053 (2006.01)
A61B 5/00 (2006.01)
A61N 1/36 (2006.01)

(Continued)

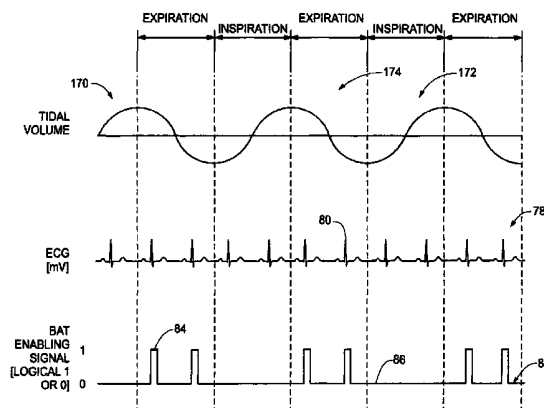
(52) **U.S. Cl.**

CPC **A61B 5/042** (2013.01); **A61B 5/0402** (2013.01); **A61B 5/053** (2013.01); **A61B 5/4035** (2013.01); **A61N 1/36114** (2013.01); **A61N 1/36585** (2013.01); **A61N 1/368** (2013.01); **A61N 1/36117** (2013.01); **A61N 1/372** (2013.01)

(57) **ABSTRACT**

Physiological parameters of a patient can be used to monitor patient status and/or in conjunction with patient therapy. Physiological cycles may be monitored by implanting a monitoring system into the patient, the system including an implantable pulse generator operably connected to a lead implanted on a carotid sinus of the patient, measuring at least one signal indicative of a physiological parameter of the patient along at least two vectors selected from: a first vector defined between a first electrode of the lead and a second electrode of the lead, a second vector defined between the first electrode of the lead and an electrode integrated into an implantable pulse generator, and a third vector defined between the second electrode of the lead and the electrode integrated into the implantable pulse generator, and providing an output indicative of the at least one signal indicative of the physiological parameter.

14 Claims, 11 Drawing Sheets



| | | | |
|------|--|-------------------------------------|---|
| (51) | Int. Cl. <i>A61N 1/365</i> <i>A61N 1/368</i> <i>A61N 1/372</i> | (2006.01) (2006.01) (2006.01) | 2005/0251212 A1 11/2005 Kieval et al. 2006/0004417 A1 1/2006 Rossing et al. 2006/0074453 A1* 4/2006 Kieval A61N 1/36114 607/9 2006/0095081 A1* 5/2006 Zhou et al. 607/2 2006/0293712 A1 12/2006 Kieval et al. 2012/0271137 A1 10/2012 Kieval |
|------|--|-------------------------------------|---|

(56) **References Cited**

U.S. PATENT DOCUMENTS

| | | |
|-----------------|---------|----------------|
| 6,985,774 B2 | 1/2006 | Kieval et al. |
| 7,139,610 B2 | 11/2006 | Ferek-Petric |
| 7,158,832 B2 | 1/2007 | Kieval et al. |
| 7,480,532 B2 | 1/2009 | Kieval et al. |
| 7,499,747 B2 | 3/2009 | Kieval et al. |
| 7,623,926 B2 | 11/2009 | Rossing et al. |
| 7,840,271 B2 | 11/2010 | Kieval et al. |
| 7,873,413 B2 | 1/2011 | McCabe et al. |
| 7,907,998 B2 | 3/2011 | Arad (Abboud) |
| 8,214,050 B2 | 7/2012 | Kieval |
| 2005/0154418 A1 | 7/2005 | Kieval et al. |

OTHER PUBLICATIONS

J.G. Design of Cardiac Pacemakers; pp. 171-172; IEEE Press, 1995; Webster.
Application and File History of U.S. Appl. No. 12/347,813; Inventor: Robert S. Kieval; Filed: Dec. 31, 2008; Method for Monitoring Physiological Cycles of a Patient to Optimize Patient Therapy.
Application and File History of U.S. Appl. No. 13/538,571; Inventor: Robert S. Kieval; Filed: Jun. 29, 2012; Method for Monitoring Physiological Cycles of a Patient to Optimize Patient Therapy.

* cited by examiner

Fig. 1

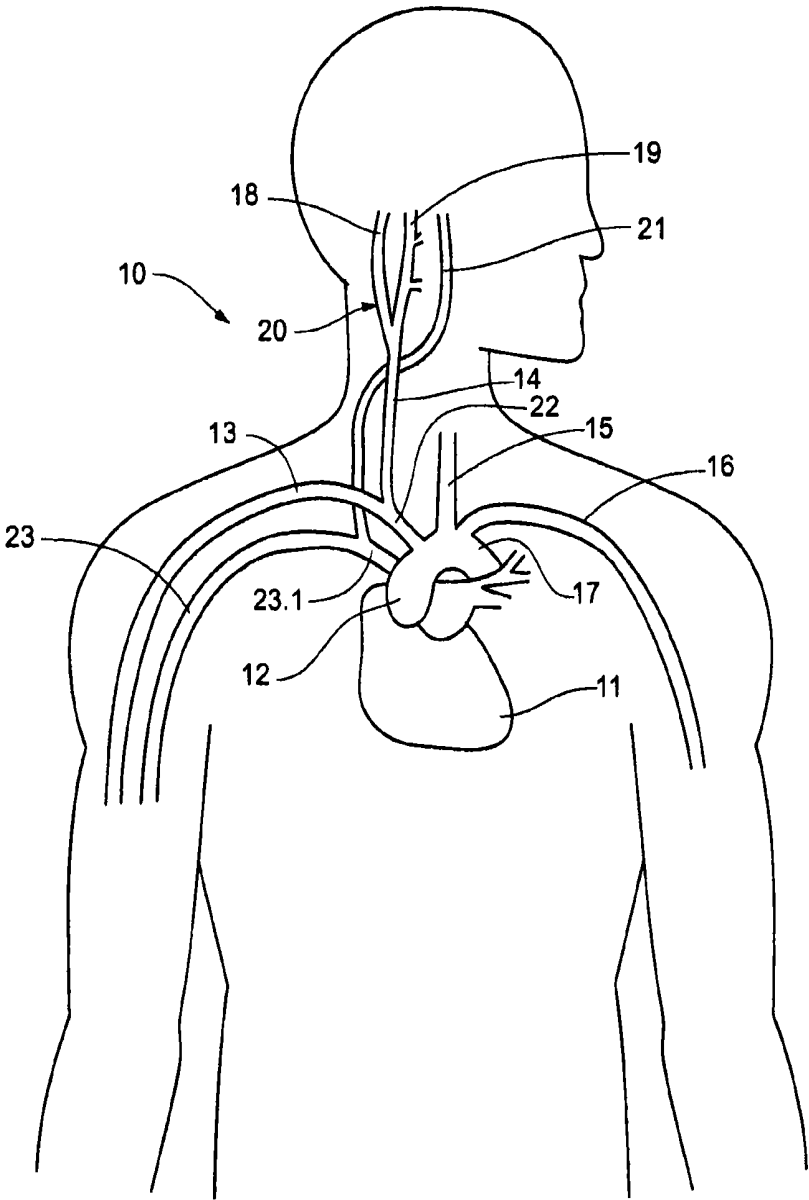


Fig. 2

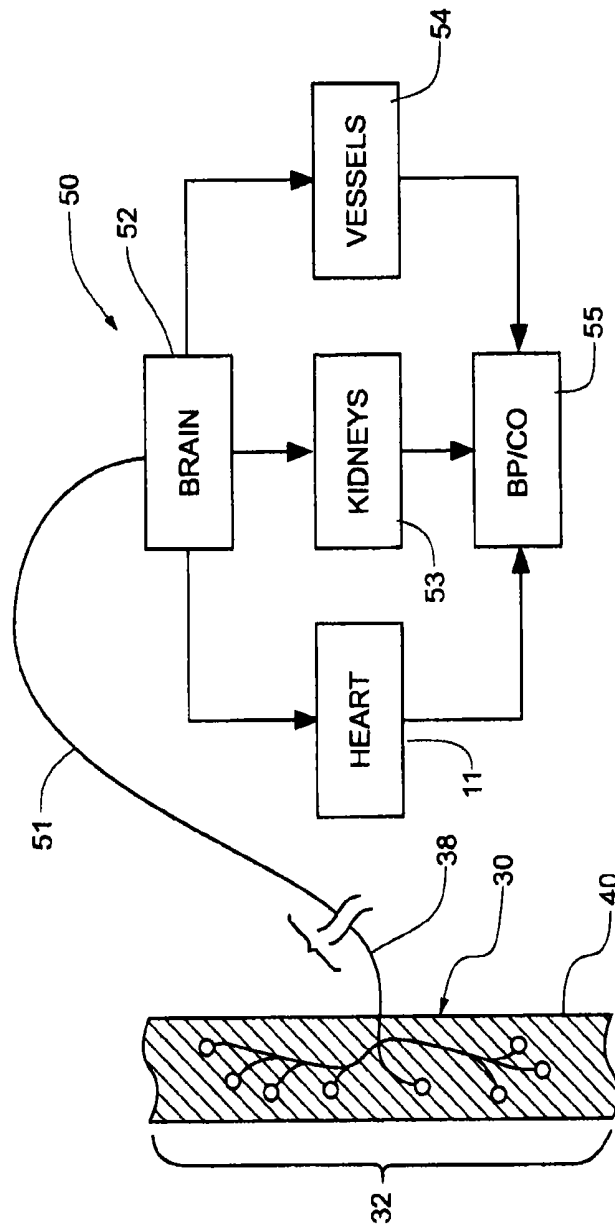


Fig. 3

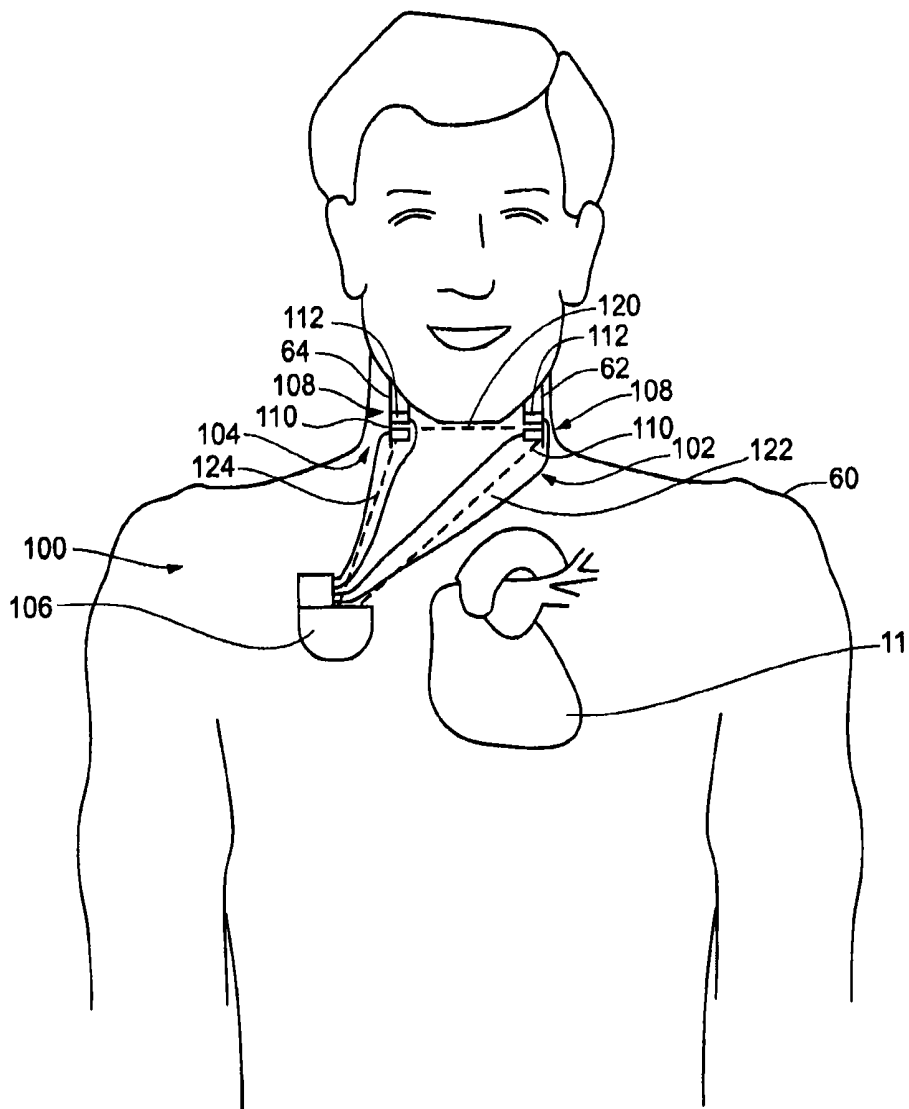
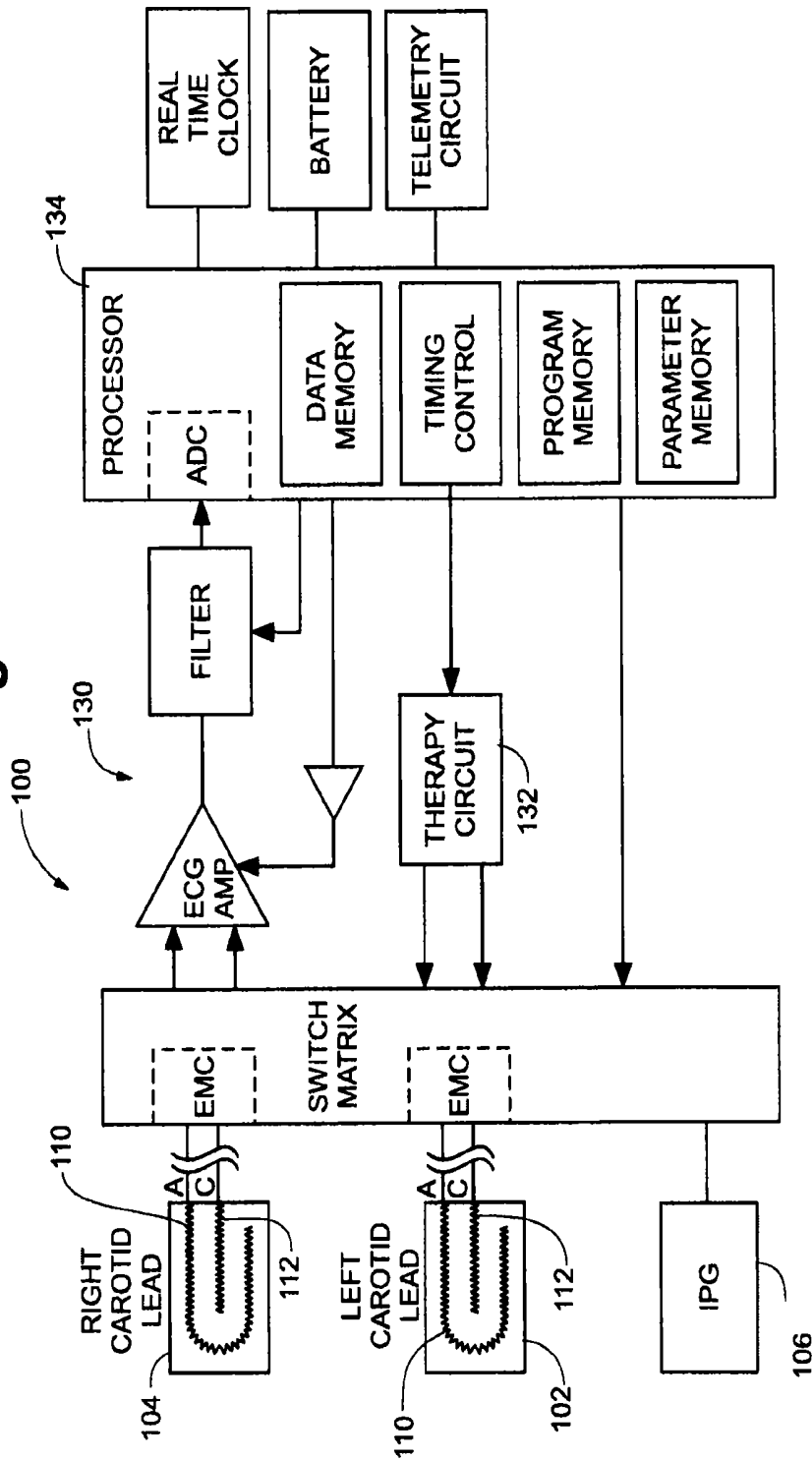


Fig. 4



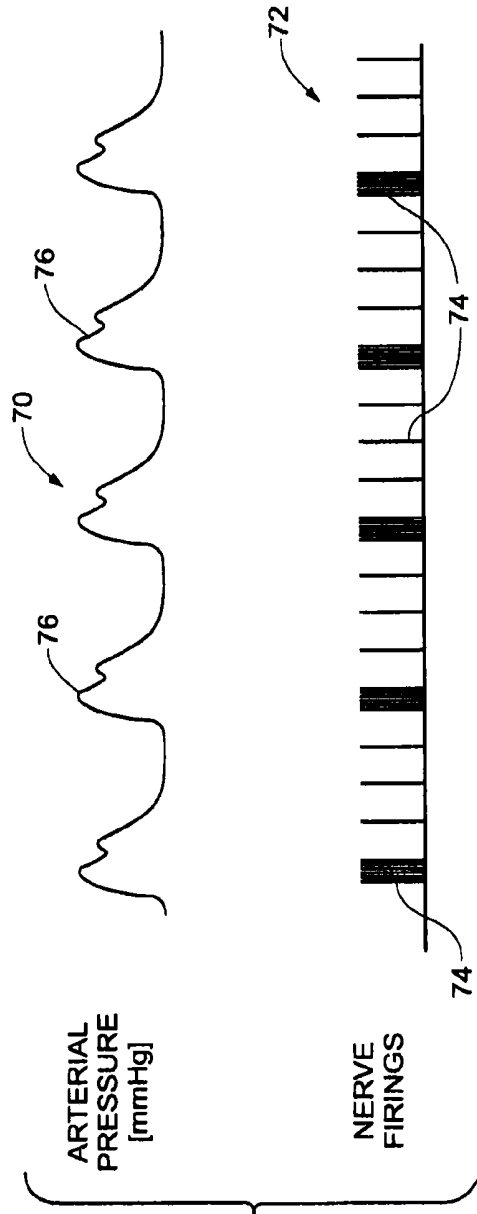


Fig. 5

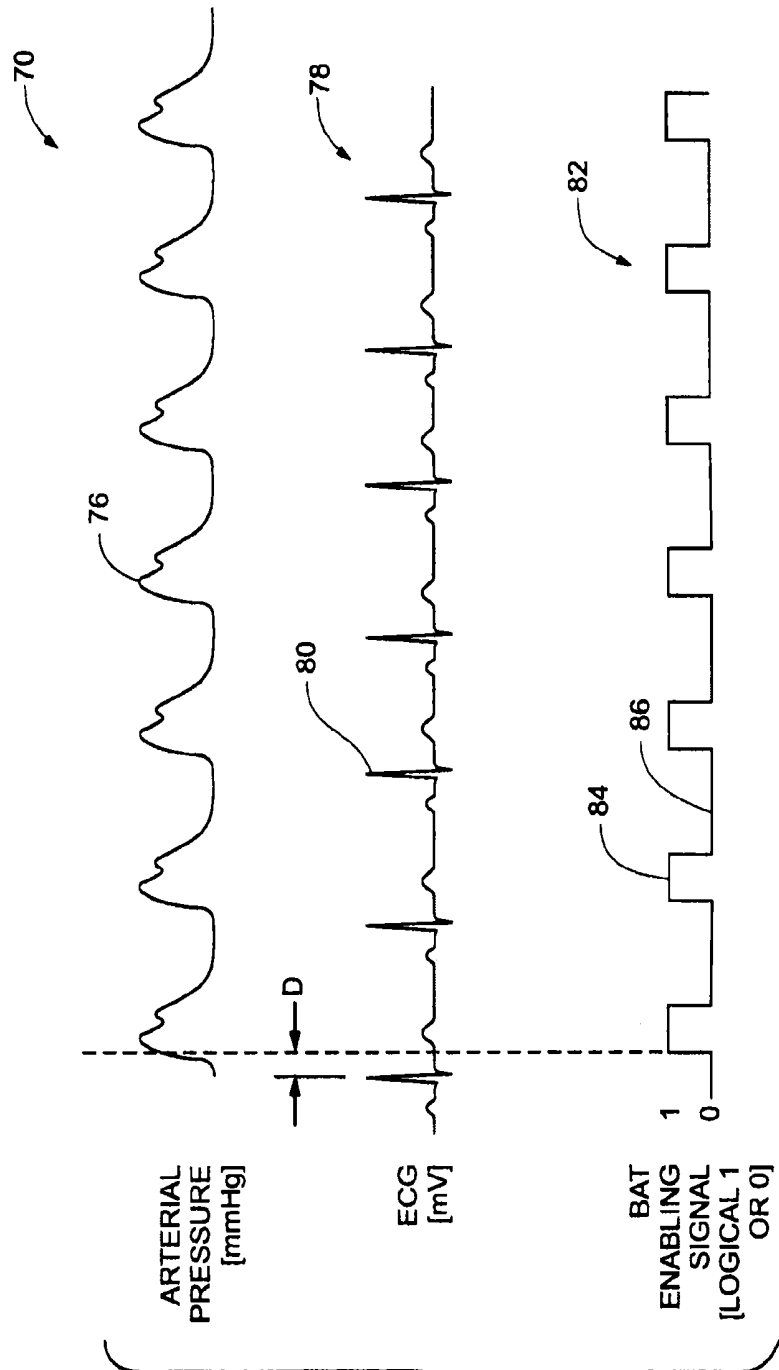


Fig. 6

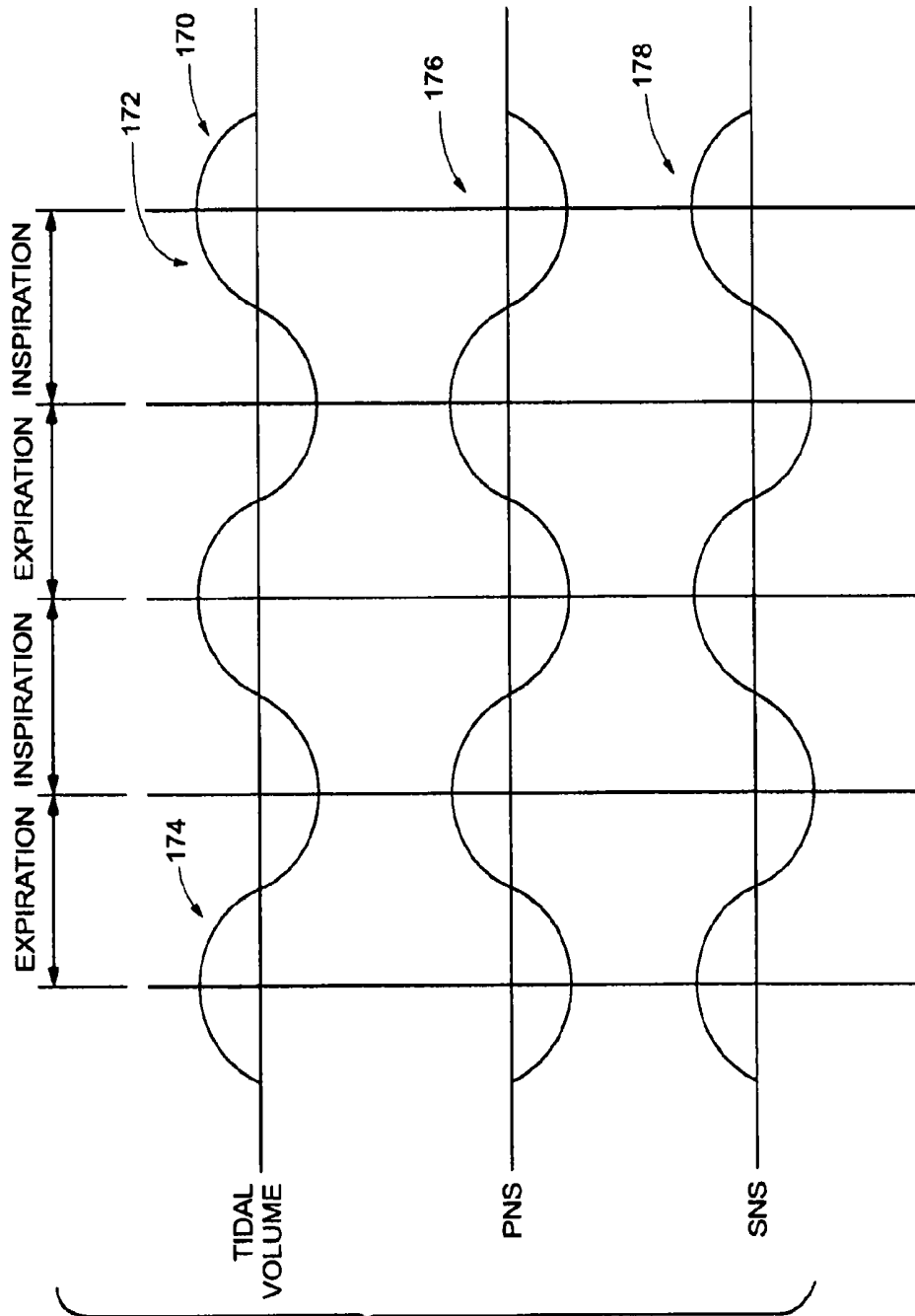


Fig. 7

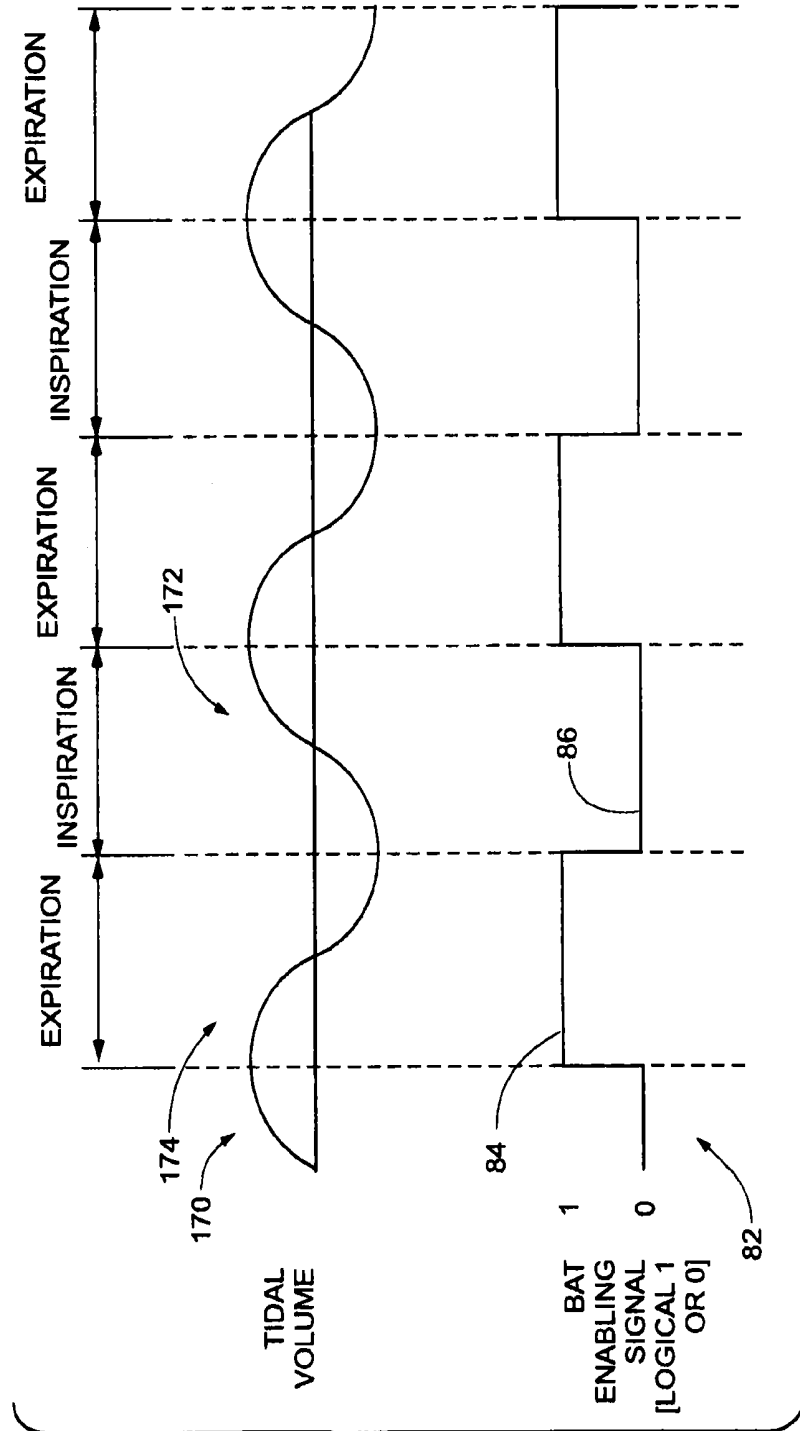
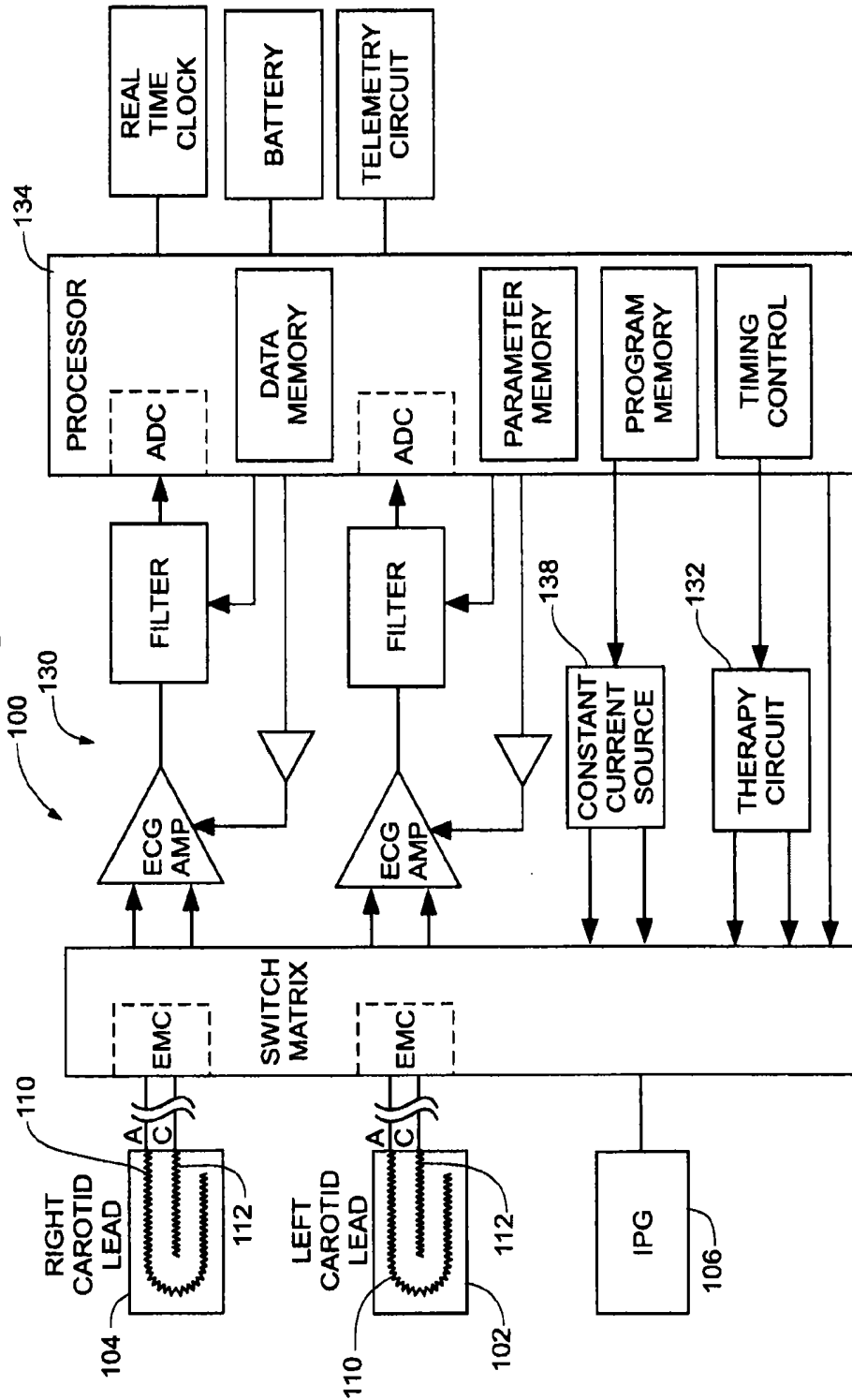


Fig. 8

Fig. 9



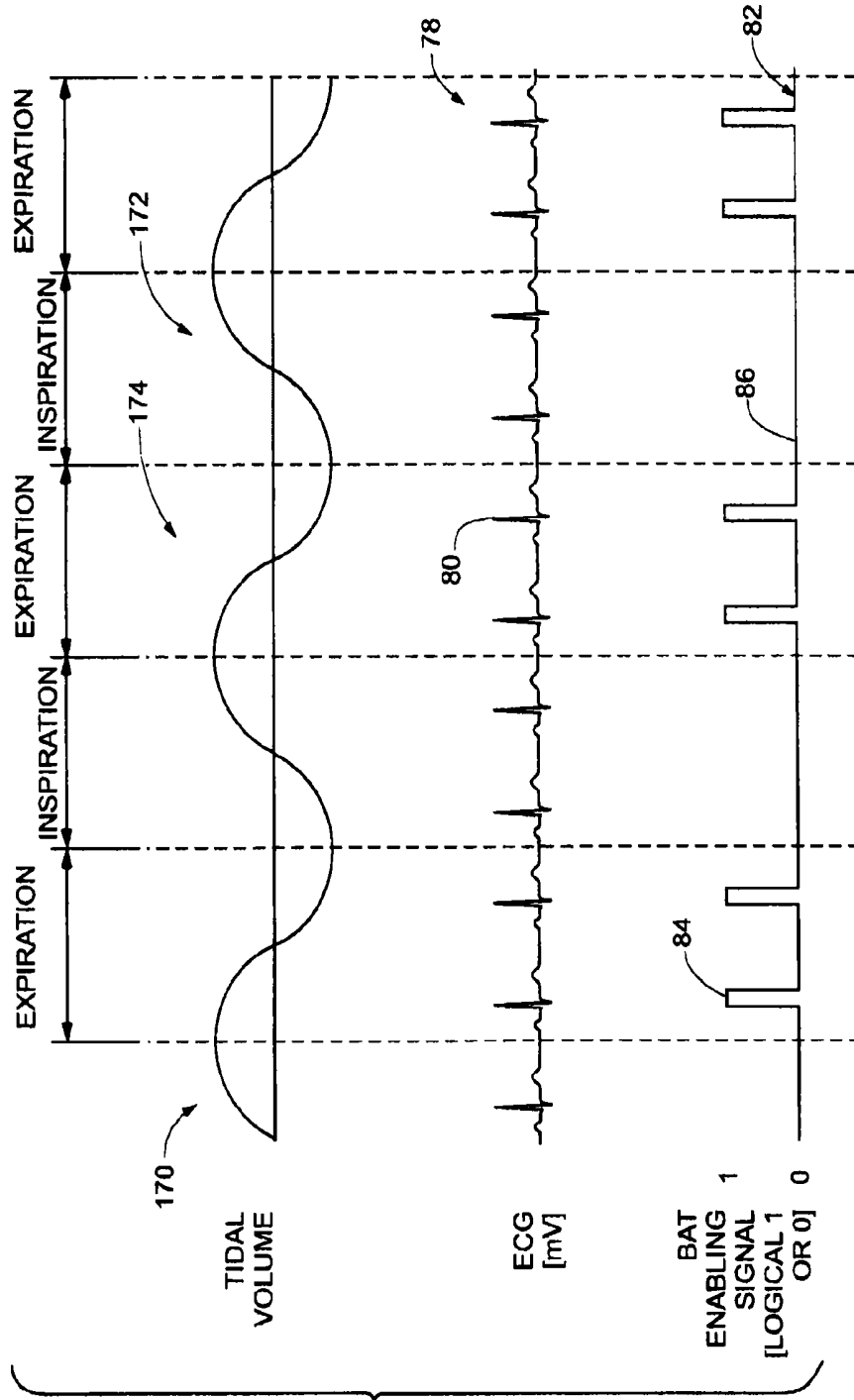
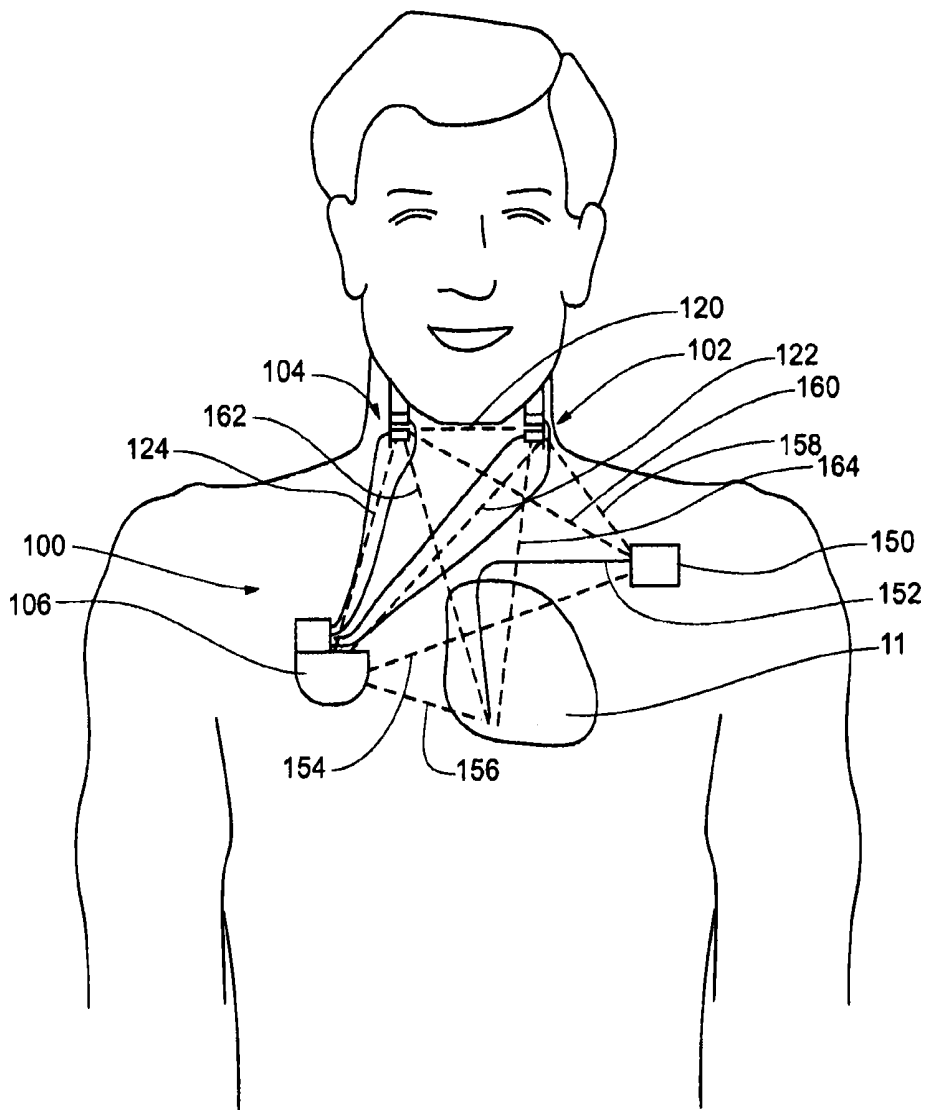


Fig. 10

Fig. 11



**METHOD FOR MONITORING
PHYSIOLOGICAL CYCLES OF A PATIENT
TO OPTIMIZE PATIENT THERAPY**

RELATED APPLICATIONS

This application is a divisional of U.S. patent application Ser. No. 13/538,571, filed Jun. 29, 2012, which is a continuation of U.S. patent application Ser. No. 12/347,813, filed Dec. 31, 2008 and now issued as U.S. Pat. No. 8,214,050, which claims the benefit of Provisional Patent Application No. 61/018,195, filed Dec. 31, 2007, the disclosures of which are hereby incorporated by reference.

FIELD OF THE INVENTION

The present invention relates generally to methods for monitoring physiological activity of a patient with an implantable device. More particularly, the present invention relates to detection of physiological parameters of a patient along at least three vectors, which can then be used to optimize patient therapy.

BACKGROUND OF THE INVENTION

Electrocardiograms (ECG or EKG) are commonly used to monitor and diagnose heart conditions. An ECG is a recording made by an electrocardiograph of electric waves generated during activity in the heart. To measure an ECG, electrodes, or electrical contacts, are placed on the skin. With each heart beat, an electrical impulse or wave travels through the heart, which in turn, causes the heart muscles to pump blood from the heart to the rest of the body. The ECG records the voltage difference between pairs of electrodes and displays the rhythm of the heart and weaknesses that may be present in different parts of the heart.

In electrocardiography, a "lead" refers to a pair of electrodes that form an imaginary line in a patient along which electrical signals are measured. Three external leads, known as limb leads, form the three legs of what is known in the art as Einthoven's triangle. Einthoven's triangle defines an imaginary equilateral triangle having the heart at its center. Lead I is defined by a vector extending from a negative electrode on the right arm to a positive electrode on the left arm. Lead II is defined by a vector extending from the negative electrode on the right arm to a positive electrode on the left leg. Lead III is defined by a vector extending from a negative electrode on the left arm to the positive electrode on the left leg.

Current implantable cardiac rhythm management devices typically detect cardiac electrical activity between electrodes in or around the heart and the pulse generator, or between two electrodes on the pulse generator. The Reveal® Plus by Medtronic is a subcutaneously implantable loop recorder that can measure and record ECG data. U.S. Pat. No. 5,313,953 by Yomtov et al. discloses an implantable cardiac monitor with a subcutaneous lead proximate the heart, which is designed to process ECG signals. Additionally, prior art pacemaker and defibrillator manufacturers use associated cardiac leads connected to a sense amplifier in implantable pulse generators to facilitate ECG inputs.

Prior art implantable therapy devices such as pacemakers, defibrillators, and other devices have also been used to monitor thoracic impedance to detect respiration-related conditions, such as "lung water" and minute ventilation. This has been accomplished with the use of typically a single electrode implanted within the thoracic cavity, and an implantable

pulse generator. While these implantable transthoracic methods of monitoring respiration were sometimes sufficient for diagnostic purposes, their single vector measurement approach leaves room for improvement for monitoring respiration for the purpose of timing the delivery of a therapy.

Significantly, however, cardiac electrical activity occurs over multiple electrical planes and vectors. Typically, approaches used by the prior art to monitor cardiac electrical activity lack complete information because they only detect electrical activity along one vector, such as between an electrode on a cardiac lead and the pulse generator. Furthermore, the prior art does not permit monitoring multiple ECG leads with an implantable medical device and integrating multiple-lead ECG information by an implantable medical device.

Thus, there remains a need in the art to be able to monitor cardiac electrical activity with an implantable medical device that can detect the ECG along at least three vectors, providing more complete information about heart function than existing devices and permitting discrimination of pathological events that cannot be detected with single-vector devices. Additionally, there exists a need in the art for a method for measuring ECGs and analyzing cardiac output that is also capable of detecting a patient's rate of respiration.

SUMMARY OF THE INVENTION

Improved methods for obtaining physiological parameters of a patient in accordance with various embodiments of the present invention can be used to monitor patient status and/or in conjunction with patient therapy. Physiological parameters can be monitored with an implantable device including a first lead and a second lead. In one embodiment, the first lead is implanted on the left carotid sinus and the second lead is implanted on the right carotid sinus. Physiological parameters can be measured along at least three distinct vectors defined by a first lead electrode and a second lead electrode, the first lead electrode and an electrode located on the device body, and the second lead and the electrode. Measurement across at least three vectors provides a more complete and accurate reading of patient physiological parameters than measurement across a single vector. An output indicative of the physiological parameter can then be provided. Therapy, such as baroreflex therapy, can optionally be optimized based on the physiological measurements.

In one embodiment, physiological parameters of a patient are monitored with an implantable monitoring system. Monitoring system can include a monitoring device operably connected to a first lead and a second lead. At least one physiological parameter of the patient can be measured by system along at least three distinct vectors. The first vector can be defined by an electrode on the first lead and an electrode on the second lead, the second vector by the electrode on the first lead and an electrode integrated into the monitoring device and the third vector by the electrode on the second lead and the electrode of the monitoring device. An output indicative of the physiological parameter can be provided to the care giver. In one embodiment, the measured parameter is voltage and the output is an ECG of the voltage. In another embodiment, the parameter is impedance and the output represents the patient's respiration. In a further embodiment, an output of the patient's respiration can be provided based on voltage measurements.

In another embodiment, baroreflex therapy can be optimized based on measurements of physiological parameters of a patient. A baroreflex device having an implantable pulse generator operably coupled to a first lead and a second lead can be implanted into the patient. The device can be used to

measure at least one physiological parameter of the patient across at least three distinct vectors. The first vector can be defined by the first lead and the second lead, the second vector by the first lead and an electrode integrated into the monitoring device and the third vector by the second lead and the monitoring device. One or more baroreflex therapy pulses can be delivered through the first lead and second lead based on timing determined from the physiological parameter. In one embodiment, the physiological parameter is a voltage reported as an ECG reading, and the therapy pulses are configured to be delivered after a predetermined delay following an R-wave in the ECG. In another embodiment, the physiological parameter is impedance, which is used to determine the patient's respiration cycle, and therapy pulses are delivered during an expiration phase of the patient's respiration. In a further embodiment, both the patient's ECG and respiration are determined and therapy pulses are delivered after a predetermined delay following an R-wave that occurs during an expiration phase of the patient's respiration.

In one embodiment, a method of monitoring physiological cycles of a patient is provided. The method comprises implanting a monitoring system into the patient, the system including an implantable pulse generator operably connected to a lead, wherein the lead is implanted on a carotid sinus of the patient. The method further comprises measuring at least one signal indicative of a physiological parameter of the patient along at least two vectors selected from the group consisting of the following: a first vector defined between a first electrode of the lead and a second electrode of the lead, a second vector defined between the first electrode of the lead and an electrode integrated into an implantable pulse generator, and a third vector defined between the second electrode of the lead and the electrode integrated into the implantable pulse generator. The method further comprises providing an output indicative of the at least one signal indicative of the physiological parameter.

In another embodiment, a method comprises causing a monitoring system to be manufactured and made available to a user, the monitoring system including an implantable pulse generator operably connected to a lead, and providing instructions to the user, the instructions recorded on a tangible medium. The instructions comprise implanting the monitoring system into the patient such that the lead is implanted on a carotid sinus of the patient, measuring at least one signal indicative of a physiological parameter of the patient along at least two vectors selected from the group consisting of the following: a first vector defined between a first electrode of the lead and a second electrode of the lead, a second vector defined between the first electrode of the lead and an electrode integrated into an implantable pulse generator, and a third vector defined between the second electrode of the lead and the electrode integrated into the implantable pulse generator, and providing an output indicative of the at least one signal indicative of the physiological parameter.

It should be understood that the intention is not to limit the present invention to any particular embodiments described. On the contrary, the intention is to cover all modifications, equivalents, and alternatives falling within the spirit and scope of the present invention as defined by the appended claims.

BRIEF DESCRIPTION OF THE DRAWINGS

This invention may be more completely understood in consideration of the following detailed description of various embodiments of the invention in connection with the accompanying drawings, in which:

FIG. 1 is a schematic illustration of the upper torso of a human body showing the major arteries and veins and associated anatomy.

FIG. 2 is a cross-sectional schematic illustration of the autonomic nervous system.

FIG. 3 is a simplified schematic view of a baroreflex therapy device according to an embodiment of the present invention implanted in a patient.

FIG. 4 is a schematic diagram of a baroreflex modulation therapy system according to an embodiment of the present invention.

FIG. 5 is a graph illustrating a relationship between arterial blood pressure and autonomic nervous system activity.

FIG. 6 is a graph illustrating a method of baroreflex modulation therapy according to an embodiment of the present invention.

FIG. 7 is a graph illustrating a relationship between respiration, parasympathetic nervous system activity and sympathetic nervous system activity.

FIG. 8 is a graph illustrating a method of baroreflex modulation therapy according to an embodiment of the present invention.

FIG. 9 is a schematic diagram of a baroreflex modulation therapy system according to an embodiment of the present invention.

FIG. 10 is a graph illustrating a method of baroreflex modulation therapy according to an embodiment of the present invention.

FIG. 11 is a simplified schematic view of a baroreflex therapy device according to an embodiment of the present invention implanted in a patient.

While the invention is amenable to various modifications and alternative forms, specifics thereof have been shown by way of example in the drawings and will be described in detail. It should be understood, however, that the intention is not to limit the invention to the particular embodiments described. On the contrary, the intention is to cover all modifications, equivalents, and alternatives falling within the spirit and scope of the invention.

DETAILED DESCRIPTION OF THE DRAWINGS

The following detailed description should be read with reference to the drawings in which similar elements in different drawings are numbered the same. The drawings, which are not necessarily to scale, depict illustrative embodiments and are not intended to limit the scope of the invention.

To better understand the present invention, it may be useful to explain some of the basic vascular anatomy associated with the cardiovascular system. Refer to FIG. 1 which is a schematic illustration of the upper torso of a human body 10 showing some of the major arteries and veins of the cardiovascular system. The left ventricle of the heart 11 pumps oxygenated blood up into the aortic arch 12. The right subclavian artery 13, the right common carotid artery 14, the left common carotid artery 15, and the left subclavian artery 15 branch off the aortic arch 12 proximal of the descending thoracic aorta 17. Although relatively short, a distinct vascular segment referred to as the brachiocephalic artery 22 connects the right subclavian artery 13 and the right common carotid artery 14 to the aortic arch 12. The right carotid artery 14 bifurcates into the right external carotid artery 18 and the right internal carotid artery 19 at the right carotid sinus 20. Although not shown for purposes of clarity only, the left carotid artery 15 similarly bifurcates into the left external carotid artery and the left internal carotid artery at the left carotid sinus.

From the aortic arch **12**, oxygenated blood flows into the carotid arteries **18/19** and the subclavian arteries **13/16**. From the carotid arteries **18/19**, oxygenated blood circulates through the head and cerebral vasculature and oxygen depleted blood returns to the heart **11** by way of the jugular veins, of which only the right internal jugular vein **21** is shown for sake of clarity. From the subclavian arteries **13/16**, oxygenated blood circulates through the upper peripheral vasculature and oxygen depleted blood returns to the heart by way of the subclavian veins, of which only the right subclavian vein **23** is shown, also for sake of clarity. Deoxygenated blood from the upper torso and head eventually return to the heart **11** through the superior vena cava **23.1**, shown diagrammatically only. The heart **11** pumps the oxygen-depleted blood through the pulmonary system where it is re-oxygenated. The re-oxygenated blood returns to the heart **11** which pumps the re-oxygenated blood into the aortic arch as described above, and the cycle repeats.

Within the walls of many veins, the pulmonary vasculature and the chambers of the heart, as in the walls of the carotid sinus, aorta and other arterial structures, there are baroreceptors. Baroreceptors are a type of stretch receptor used by the body to sense blood pressure and blood volume. An increase in blood pressure or volume causes the vascular wall to stretch, and a decrease in blood pressure or volume causes the vascular wall to return to its original size. In many vessels, such a cycle is repeated with each beat of the heart. In others, in particular, some of the body's veins, the pressure and volume change more slowly. Because baroreceptors are located within the vascular wall, they are able to sense deformation of the adjacent tissue, which is indicative of a change in blood pressure or volume.

Refer now to FIG. 2, which shows a schematic illustration of the autonomic nervous system of a patient, including baroreceptors **30** disposed in a generic vascular wall **40** and a schematic flow chart of the baroreflex system **50**. Baroreceptors **30** are profusely distributed within the arterial walls **40** of the blood vessels and major arteries discussed previously, and are presently believed by the inventors to form an arbor **32** as is characteristic of the analogous receptors in the arterial system as described in commonly owned U.S. Pat. No. 6,522,926 to Kieval et al, which is incorporated herein by reference. A baroreceptor arbor **32** would comprise a plurality of baroreceptors **30**, each of which transmits baroreceptor signals to the brain **52** via nerve **38**. The baroreceptors **30** may be so profusely distributed and arborized within the vascular wall **40** that discrete baroreceptor arbors **32** are not readily discernable. To this end, those skilled in the art will appreciate that the baroreceptors **30** shown in FIG. 2 are primarily schematic for purposes of illustration and discussion. In other regions, the baroreceptors may be so sparsely distributed that activation over a relatively greater length of the vein would be required than would be with an artery where the receptors might be more concentrated.

Baroreceptor signals in the arterial vasculature are used to activate a number of body systems which collectively may be referred to as the baroreflex system **50**. For the purposes of the present invention, it will be assumed that the "receptors" in the venous and cardiopulmonary vasculature and heart chambers function analogously to the baroreceptors in the arterial vasculature, but such assumption is not intended to limit the present invention in any way. In particular, the methods described herein will function and achieve at least some of the stated therapeutic objectives regardless of the precise and actual mechanism responsible for the result. Moreover, the present invention may activate baroreceptors, mechanoreceptors, pressoreceptors, or any other venous heart, or cardiop-

ulmonary receptors which affect the blood pressure, nervous system activity, and neurohormonal activity in a manner analogous to baroreceptors in the arterial vasculature. For convenience, all such venous receptors will be referred to collectively herein as "baroreceptors." Thus for discussion purposes, it will be assumed that baroreceptors **30** are connected to the brain **52** via the nervous system **51**. Thus, the brain **52** is able to detect changes in blood pressure which are indicative of cardiac output and/or blood volume. If cardiac output and/or blood volume are insufficient to meet demand (i.e., the heart **11** is unable to pump sufficient blood), the baroreflex system **50** activates a number of body systems, including the heart **11**, kidneys **53**, vessels **54**, and other organs/tissues. Such activation of the baroreflex system **50** generally corresponds to an increase in neurohormonal activity. Specifically, the baroreflex system **50** initiates a neurohormonal sequence that signals the heart **11** to increase heart rate and increase contraction force in order to increase cardiac output, signals the kidneys **53** to increase blood volume by retaining sodium and water, and signals the vessels **54** to constrict to elevate blood pressure. The cardiac, renal and vascular responses increase blood pressure and cardiac output **55**, and thus increase the workload of the heart **11**. In a patient with heart failure, this further accelerates myocardial damage and exacerbates the heart failure state.

The autonomic nervous system includes a sympathetic component and a parasympathetic component. The body uses these two systems to regulate blood pressure. The parasympathetic nervous system has a complementary relationship with the sympathetic nervous system. Stimulation of the parasympathetic nervous system generally causes a decrease in blood pressure, whereas stimulation of the sympathetic nervous system generally causes blood pressure to increase.

Baroreflex modulation therapy systems are used to treat patients with resistant hypertension by activating or modulating baroreceptors or other tissues capable of creating a change in the baroreflex system. Examples of such systems include The RHEOS System by CVRx, and the devices, systems, and methods described in U.S. Pat. Nos. 6,522,926, 6,985,774, 7,158,832, 7,480,532, and 7,840,271 and Published U.S. Patent Application Nos. 2006/0004417, 2006/0074453 and 2006/0293712, all of which are hereby incorporated by reference and are commonly assigned to the assignee of the present application.

In one embodiment of the present invention depicted in FIG. 3, a baroreflex modulation therapy system **100** comprises two leads **102, 104**, each including an electrode assembly **108**, and an implantable pulse generator (IPG) **106**. Rather than being located within the thoracic cavity of a patient **60**, the leads **102, 104** are implanted outside the chest cavity, such as on or near the carotid sinus. IPG can be implanted on either side of the patient's chest. Each electrode assembly **108** can include an anode **110** and a cathode **112**. In one embodiment, one lead **102** is located on the left carotid sinus **62** or left carotid artery and the other lead **104** is located on the right carotid sinus **64** or right carotid artery. In other embodiments, leads **102, 104**, can be implanted in other areas of the body, such as, for example, the pulmonary artery.

Baroreflex modulation therapy system **100** is capable of collecting ECG information from the patient by measuring electrical potential or voltage differences between the various elements of the system **100**. The system can monitor electrical signals and measure potential differences sensed between the two leads **102, 104** as well as between either of the leads **102, 104** and an electrode integrated with the IPG **106**, such as

on the housing or header portion of IPG 106. For each lead 102, 104, either the anode 110 or cathode wire 112 can be used.

The lead 102—lead 104 vector 120 replicates Lead I of Einthoven's Triangle. The right lead 104—IPG 106 vector 122 replicates Lead II, and the left lead 102—IPG 106 replicates Lead III. With this arrangement, system can detect ECG information along at least three vectors. Because a single vector is not likely to provide a complete picture of the electrical activity in the heart, measuring across multiple vectors, by measuring potential differences between various elements, is advantageous. FIG. 4 depicts a block diagram further illustrating baroreflex modulation therapy system 100. System 100 can include ECG measuring circuitry 130 configured to obtain ECG measurements through a combination of leads 102, 104 and IPG 106. System 100 can also include a therapy circuit 132 for delivering therapeutic pulses through leads 102, 104. A processor 134 can control the application of ECG measuring circuitry 130 and therapy circuit 134. The configuration of anode 110 and cathode 112 are for illustrative purposes and should not be considered limiting.

ECG information obtained by baroreflex therapy system 100 can be used to provide diagnostic information to the physician regarding the cardiac rhythm status and/or to guide the timing and delivery of therapy by system 100. In one embodiment, the baroreflex modulation therapy system is capable of recording, storing, and/or transmitting cardiac ECG information for future access by caregivers or the patient. As described herein, delivery of therapy pulses by baroreflex modulation therapy system can be more effective and use less energy if delivered at times when the body is experiencing increased baroreflex signaling. These times of increased baroreflex modulation can be determined from the ECG information. In other embodiments, other implantable devices, such as, for example, pacemakers and implantable defibrillators, can be configured as described above to obtain patient physiological parameters along at least three vectors. Such information can then be used diagnostically and/or to optimize therapy provided by the devices.

Referring to FIG. 5, an arterial blood pressure waveform 70 and a symbolic plot of autonomic nervous system activity 72 illustrate the relationship between arterial blood pressure and autonomic nervous system activity. The vertical lines 74 in the plot of autonomic nervous system activity represent the firing of baroreceptors that affect the parasympathetic and sympathetic components of the autonomic nervous system. As can be seen in the Figure, the firing of baroreceptors increases when a wave of increasing arterial pressure passes. Each pulse of increased pressure 76 in FIG. 5 generally follows a corresponding contraction of the heart.

FIG. 6 depicts a diagram illustrating the operation of a baroreflex modulation therapy system according to one embodiment of the present invention. The diagram depicts a waveform 70 of a patient's arterial blood pressure and a waveform 78 of an ECG reading from the patient.

ECG reading can be obtained by measuring across at least three vectors utilizing a pair of leads and an IPG as described above. ECG waveform 78 includes a series of generally triangular-shaped R-waves 80. Each R-wave 80 is associated with the electrical activation of the ventricles associated with a single heart beat. By comparing the arterial pressure waveform 70 and the ECG waveform 78, it can be seen that each pulse of increased blood pressure 76 follows a corresponding contraction of the patient's heart, after a short delay. Each pulse of increased blood pressure 76 is expected to cause increased baroreflex activation in the patient. The diagram also depicts a baroreflex modulation therapy system control

signal 82. The control signal 82 indicates when baroreflex modulation therapy is enabled 84 and where it is disabled 86.

In one embodiment, as shown in FIG. 6, there can be a time delay between the peak of each R-wave 80 and the delivery of a baroreflex therapy pulse 84. The magnitude of the time delay may be pre-selected to correspond with a selected phase of the cardiac cycle. Delivering the therapy pulses slightly after the detection of an R-wave during the systolic phase of the cardiac cycle causes the therapy to be delivered as a relatively high level of pressure passes through the patient's arterial system, and, accordingly, as the body is experiencing increased baroreflex modulation. Delivery of therapy pulses during this time therefore complements the natural autonomic nervous activity of the body. Timing delivery of therapy in this manner can allow baroreflex modulation therapy to achieve the same level of therapeutic effect with less energy. This can extend the battery life and may enable the use of smaller baroreflex modulation therapy devices than would otherwise be necessary. In one embodiment, baroreflex modulation therapy device can auto-adjust therapy in response to the sensed physiological information.

Baroreflex modulation therapy can also take advantage of a relationship between respiration and autonomic nervous system activity. The efficacy of baroreflex modulation therapy may be influenced by when therapy is delivered relative to the respiratory cycle. Changes in respiration during and resulting from baroreflex modulation therapy may also provide important clinical information, including the rate of respiration, the depth of respiration, and the phases of respiration (inspiration versus expiration) using a combination of extra-thoracic electrodes and the implantable pulse generator.

FIG. 7 depicts a graph illustrating a relationship between respiration, sympathetic nervous system activity and parasympathetic nervous system activity. Respiration is represented by a tidal volume waveform 170 covering a number of respiratory cycles, each including an inspiration phase 172 and an expiration phase 174. As can be seen in the Figures, parasympathetic nervous system activity 176 is generally elevated during the expiratory phase of the respiratory cycle, while sympathetic nervous activity 178 tends to peak during the inspiratory phase. Thus, in one embodiment shown in FIG. 8, baroreflex therapy pulses 184 can be delivered during the expiration phase in order to complement the natural parasympathetic nervous system activity of the body. This can allow the baroreflex modulation therapy device to achieve the same level of therapeutic effect while using less energy.

In one embodiment, a baroreflex therapy system 100 configured to delivery therapy in accordance with the respiration cycle of a patient can have respiration monitoring circuitry 136 as shown in FIG. 9. Respiratory monitoring circuitry 136 can be used with leads 102, 104 and IPG 106 to monitor, for example, impedance changes in the body of the patient that are indicative of respiratory activity. Impedance patterns change during respiration as air enters and leaves the thoracic cavity (lungs) during inspiration and expiration. In one embodiment, leads 102, 104 are implanted into the left carotid sinus and right carotid sinus, respectively. Respiratory monitoring circuitry 136 may work in cooperation with a constant current source 138 to monitor impedance across at least three vectors using leads 102, 104 and IPG 106. Alternatively, system can have only ECG measuring circuitry 130 and no distinct respiration monitoring circuitry 136. In such an embodiment, a patient's respiration cycle can be determined from the ECG measurements, as is known in the art.

Referring now to FIG. 10, baroreflex modulation therapy can be provided to take advantage of both the relationship between respiration and autonomic nervous system activity

and the relationship between cardiac activity and autonomic nervous system activity. In the embodiment depicted in FIG. 10, therapeutic pulses 84 are delivered during the expiration phase 174 of respiration and shortly after the R-wave 80 during the systolic phase of each cardiac cycle. This provides therapeutic pulses in concert with both the cardiac and respiratory cycles, as described above. This can provide an even further reduction in the energy needed to provide effective therapy.

In another embodiment, the effectiveness of a given therapy may be evaluated by monitoring one or more physiologic parameters of a patient based on an impedance measurement taken across at least three vectors. The delivered therapy may comprise a cardiac rhythm management (CRM) therapy. In such an embodiment, an implantable pulse generator is provided, having at least two leads. A first lead is implanted and configured to deliver a CRM therapy. A second lead is coupled to a monitoring device according to one aspect of the present invention, the monitoring device having one or more electrodes and configured to measure impedance. The monitoring device may be disposed intravascularly, extravascularly, or transvascularly, depending on the desired application. The measured vascular impedance is used to provide one or more patient parameters, upon which the CRM therapy may be adjusted or modified. Other delivered therapies may include neural stimulation and/or modulation therapies, renal therapies, drug delivery therapies, left ventricular assist devices, heart wraps, other mechanical therapies, thermal therapies, or any other therapy having a measurement component in addition to a therapy component.

In another embodiment depicted in FIG. 11, additional measurement vectors can be utilized for patient that has another implantable device, such as a pacemaker 150 having a lead 152 inserted into the heart 11, in addition to a baroreflex device having an IPG 106 and first 102 and second 104 leads. Thus in addition to measurement vectors 120, 122 and 124 between the IPG 106 and its two leads 102, 104, there can be at least six additional measurement vectors, including two vectors 154, 156 between the IPG 106 and the pacemaker 150 and the IPG 106 and the lead 152 and four vectors 158, 160, 162, and 164 between each lead 102, 104 and the pacemaker 150 and each lead 102, 104 and the pacemaker lead 152. This can allow for even more precise readings of patient physical parameters.

In a related embodiment, IPG 106 may be configured to provide not only baroreflex therapy, but also CRM therapy such as pacing. IPG 106 therefore includes not only first lead 102 and second lead 104, but also one or more cardiac leads 152. In such an embodiment, additional measurement vectors exist between IPG 106 and cardiac lead 152, lead 102 and cardiac lead 152, and lead 104 and cardiac lead 152.

In one embodiment, instructions for implanting the system in accordance with the various embodiments described herein in the form of printed or electronically, optically or magnetically stored information to be displayed, for example, are provided as part of a kit or assemblage of items prior to surgical implantation of the system. In another embodiment, instructions for implanting the system 10 in accordance with the various embodiments described herein are provided, for example, by a manufacturer or supplier of system, separately from providing the system, such as by way of information that is accessible using the Internet or by way of seminars, lectures, training sessions or the like.

The embodiments above are intended to be illustrative and not limiting. Additional embodiments are within the claims. In addition, although the present invention has been described with reference to particular embodiments, those skilled in the

art will recognize that changes can be made in form and detail without departing from the spirit and scope of the invention. Any incorporation by reference of documents above is limited such that no subject matter is incorporated that is contrary to the explicit disclosure herein.

For purposes of interpreting the claims for the present invention, it is expressly intended that the provisions of Section 112, sixth paragraph of 35 U.S.C. are not to be invoked unless the specific terms “means for” or “step for” are recited in a claim.

The invention claimed is:

1. A method of operating a baroreflex modulation system implanted in a patient, the baroreflex modulation system including an implantable pulse generator operably coupled to a lead having at least one electrode and being implanted on or in a carotid sinus of the patient, the method comprising:

measuring at least one signal indicative of a physiological parameter of the patient along at least two vectors, the at least one signal comprising voltage, the at least two vectors selected from the group consisting of the following: a first vector defined between a first electrode of the lead and a second electrode of the lead, a second vector defined between the first electrode of the lead and an electrode integrated into implantable pulse generator, and a third vector defined between the second electrode of the lead and the electrode integrated into the implantable pulse generator;

delivering a baroreflex modulation therapy from the implantable pulse generator to the lead based at least in part on the physiological parameter;

generating an electrocardiogram based on the voltage; and delivering the baroreflex modulation therapy from the implantable pulse generator to the lead based at least in part on the electrocardiogram,

wherein the baroreflex modulation therapy comprises a plurality of therapy pulses, further comprising:

determining a respiration cycle of the patient based on the electrocardiogram; and

delivering the baroreflex modulation therapy from the implantable pulse generator to the lead during an expiration phase of the respiration cycle of the patient.

2. The method of claim 1, further comprising measuring at least one signal indicative of a physiological parameter of the patient along at least three vectors.

3. The method of claim 2, wherein the three vectors are selected from the group consisting of the following: a first vector defined between a first electrode of the lead and a second electrode of the lead, a second vector defined between the first electrode of the lead and an electrode integrated into an implantable pulse generator, and a third vector defined between the second electrode of the lead and the electrode integrated into the implantable pulse generator.

4. The method of claim 1, wherein the baroreflex modulation therapy comprises a plurality of therapy pulses configured to be delivered after a predetermined delay following an R-wave in the electrocardiogram.

5. A method comprising:

causing a baroreflex modulation system to be manufactured and made available to a user, the baroreflex modulation system including an implantable pulse generator operably connected to a lead having at least one electrode; and

providing instructions recorded on a tangible medium to the user, the instructions:

implanting the baroreflex modulation system into the patient such that the lead is implanted on or in a carotid sinus of the patient;

11

causing the baroreflex modulation system to measure at least one signal indicative of a physiological parameter of the patient along at least two vectors, wherein the at least one signal comprises voltage, the at least two vectors selected from the group consisting of the following: a first vector defined between a first electrode of the lead and a second electrode of the lead, a second vector defined between the first electrode of the lead and an electrode integrated into the implantable pulse generator, and a third vector defined between the second electrode of the lead and the electrode integrated into the implantable pulse generator; causing the baroreflex modulation system to deliver a baroreflex modulation therapy from the implantable pulse generator to the lead based at least in part on the physiological parameter;

causing the baroreflex modulation system to generate an electrocardiogram based on the voltage; and causing the baroreflex modulation system to deliver the baroreflex modulation therapy from the implantable pulse generator to the lead based at least in part on the electrocardiogram,

wherein the baroreflex modulation therapy comprises a plurality of therapy pulses, further comprising:

- determining a respiration cycle of the patient based on the electrocardiogram; and
- causing the baroreflex modulation system to deliver the baroreflex modulation therapy from the implantable pulse generator to the lead during an expiration phase of the respiration cycle of the patient.

6. The method of claim 5, wherein the electrode integrated into the implantable pulse generator comprises at least a portion of a housing of the implantable pulse generator.

7. The method of claim 5, wherein the electrode integrated into the implantable pulse generator comprises an electrode on a header of the implantable pulse generator.

8. The method of claim 5, further comprising measuring at least one signal indicative of a physiological parameter of the patient along at least three vectors.

9. The method of claim 8, wherein the three vectors are selected from the group consisting of the following: a first vector defined between a first electrode of the lead and a second electrode of the lead, a second vector defined between the first electrode of the lead and an electrode integrated into an implantable pulse generator, and a third vector defined between the second electrode of the lead and the electrode integrated into the implantable pulse generator.

10. The method of claim 5, wherein the baroreflex modulation therapy comprises a plurality of therapy pulses config-

12

ured to be delivered after a predetermined delay following an R-wave in the electrocardiogram.

11. An implantable baroreflex modulation system, comprising:

- a lead having at least one electrode, the lead configured to be implanted on or in a carotid sinus of a patient; and an implantable pulse generator coupleable to the lead and programmed to:
 - measure at least one signal indicative of a physiological parameter of the patient along at least two vectors, the at least one signal comprising voltage, the at least two vectors selected from the group consisting of the following: a first vector defined between a first electrode of the lead and a second electrode of the lead, a second vector defined between the first electrode of the lead and an electrode integrated into an implantable pulse generator, and a third vector defined between the second electrode of the lead and the electrode integrated into the implantable pulse generator;
 - deliver a baroreflex modulation therapy based at least in part on the physiological parameter;
 - generate an electrocardiogram based on the voltage; and deliver the baroreflex modulation therapy from the implantable pulse generator to the lead based at least in part on the electrocardiogram,
- wherein the baroreflex modulation therapy comprises a plurality of therapy pulses, the implantable pulse generator further programmed to:
 - determine a respiration cycle of the patient based on the electrocardiogram; and
 - deliver the baroreflex modulation therapy from the implantable pulse generator to the lead during an expiration phase of the respiration cycle of the patient.

12. The implantable baroreflex modulation system of claim 11, wherein the baroreflex modulation therapy comprises a plurality of therapy pulses configured to be delivered after a predetermined delay following an R-wave in the electrocardiogram.

13. The implantable baroreflex modulation system of claim 11, wherein the electrode integrated into the implantable pulse generator comprises at least a portion of a housing of the implantable pulse generator.

14. The implantable baroreflex modulation system of claim 11, wherein the electrode integrated into the implantable pulse generator comprises an electrode on a header of the implantable pulse generator.

* * * * *

| | | | |
|---------------|---|---------|------------|
| 专利名称(译) | 用于监测患者的生理周期以优化患者治疗的方法 | | |
| 公开(公告)号 | US9414760 | 公开(公告)日 | 2016-08-16 |
| 申请号 | US14/151995 | 申请日 | 2014-01-10 |
| 申请(专利权)人(译) | CVRX INC. | | |
| 当前申请(专利权)人(译) | CVRX INC. | | |
| [标]发明人 | KIEVAL ROBERT S | | |
| 发明人 | KIEVAL, ROBERT S. | | |
| IPC分类号 | A61B5/0402 A61B5/053 A61B5/00 A61N1/36 A61N1/365 A61B5/042 A61N1/372 A61N1/368 | | |
| CPC分类号 | A61B5/0402 A61B5/053 A61B5/4035 A61N1/36114 A61N1/36585 A61B5/042 A61N1/36117 A61N1/368 A61N1/372 | | |
| 代理机构(译) | 华达THUENTE彼得森P.A. | | |
| 优先权 | 12/347813 2012-07-03 US 61/018195 2007-12-31 US | | |
| 其他公开文献 | US20140128708A1 | | |
| 外部链接 | Espacenet USPTO | | |

摘要(译)

患者的生理参数可用于监测患者状态和/或与患者治疗相结合。可以通过将监测系统植入患者体内来监测生理周期，该系统包括可植入脉冲发生器，其可操作地连接到植入患者颈动脉窦上的引线，测量指示患者生理参数的至少一个信号。至少两个矢量选自：在引线的第一电极和引线的第二电极之间限定的第一矢量，在引线的第二电极和集成到可植入脉冲发生器中的电极之间限定的第二矢量，以及第三矢量在引线的第二电极和集成到可植入脉冲发生器中的电极之间限定，并提供指示指示生理参数的至少一个信号的输出。

