



US 20160324434A1

(19) **United States**

(12) **Patent Application Publication**
Briggs et al.

(10) **Pub. No.: US 2016/0324434 A1**
(43) **Pub. Date: Nov. 10, 2016**

(54) **SYSTEM AND METHOD OF IDENTIFYING SOURCES FOR BIOLOGICAL RHYTHMS**

A61B 5/00 (2006.01)

A61B 5/04 (2006.01)

A61B 5/0452 (2006.01)

A61B 5/042 (2006.01)

(71) Applicants: **THE REGENTS OF THE UNIVERSITY OF CALIFORNIA**, Oakland, CA (US); **Topera, Inc.**, Menlo Park, CA (US)

(52) **U.S. Cl.**
CPC *A61B 5/0468* (2013.01); *A61B 5/0452* (2013.01); *A61B 5/0422* (2013.01); *A61B 5/042* (2013.01); *A61B 5/7257* (2013.01); *A61B 5/04012* (2013.01); *A61B 5/044* (2013.01)

(72) Inventors: **Carey Robert Briggs**, La Jolla, CA (US); **Sanjiv M. Narayan**, La Jolla, CA (US)

(21) Appl. No.: **15/194,357**

(22) Filed: **Jun. 27, 2016**

(57) **ABSTRACT**

Related U.S. Application Data

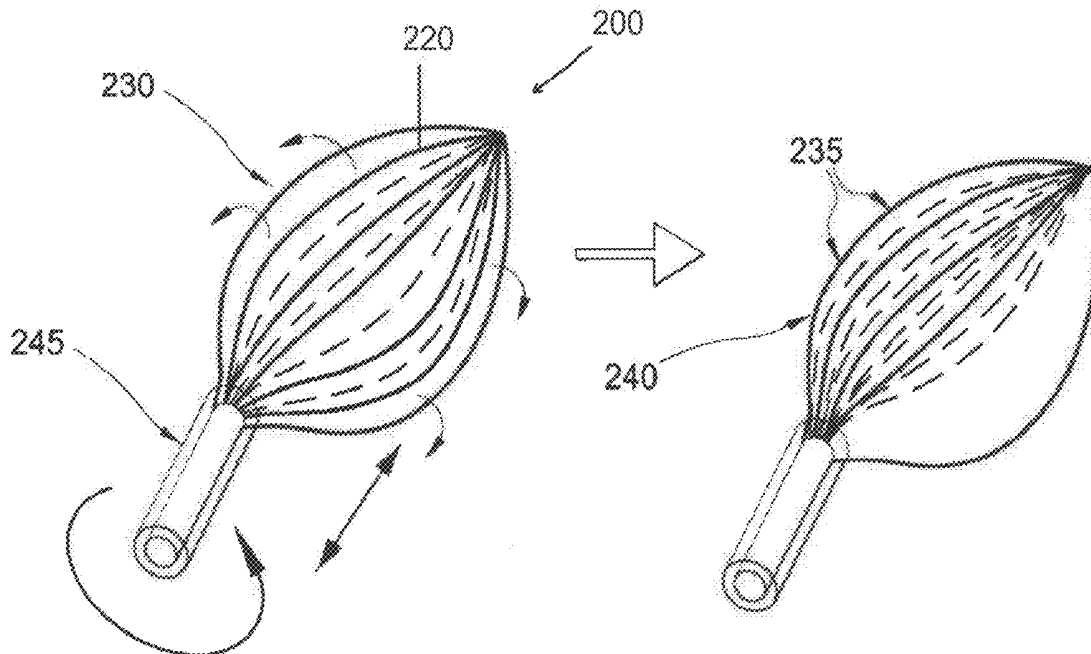
(63) Continuation of application No. 13/470,705, filed on May 14, 2012, now Pat. No. 9,392,948.

(60) Provisional application No. 61/569,132, filed on Dec. 9, 2011.

Publication Classification

(51) **Int. Cl.**
A61B 5/0468 (2006.01)
A61B 5/044 (2006.01)

In a system and method of determining regularity associated with a rhythm disorder of a heart, a derivative of a first cardiac signal at a plurality of first time points is processed against a derivative of a second cardiac signal at a plurality of second time points to define a plurality of coordinate pairs of the first cardiac signal against the second cardiac signal. Thereafter, an index of regularity that exceeds a threshold is determined. The index of regularity indicates an approximate congruence of the plurality of coordinate pairs among the first cardiac signal and the second cardiac signal.



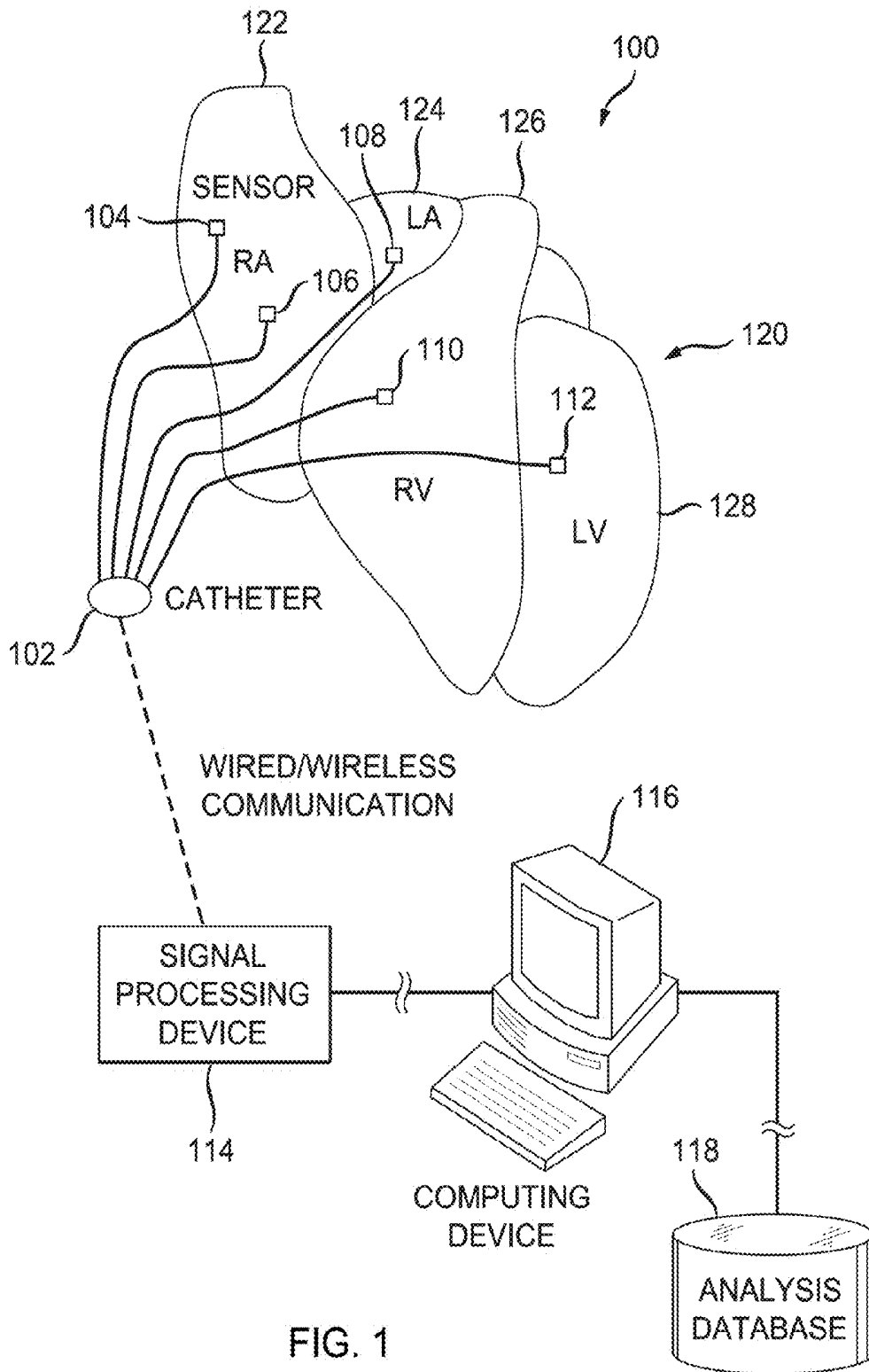


FIG. 1

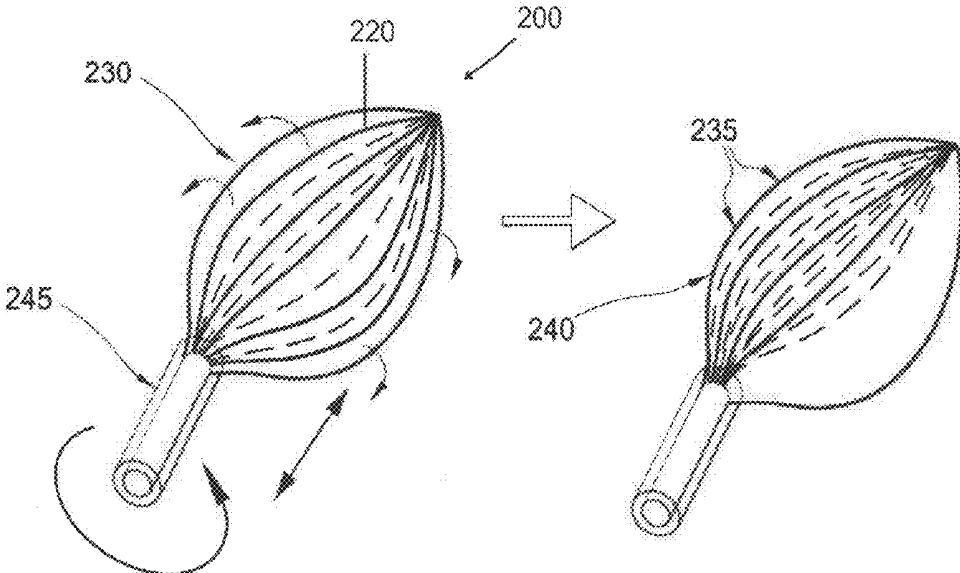


FIG. 2

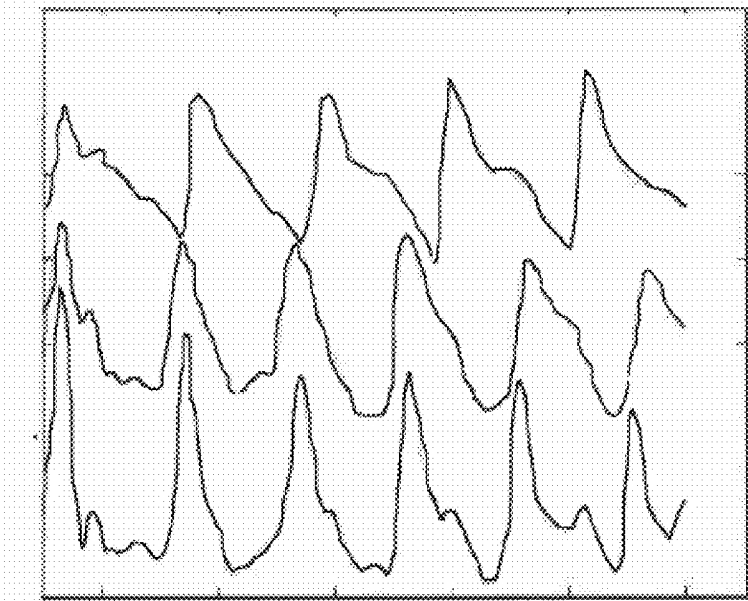


FIG. 3A

5.0 5.1 5.2 5.3 5.4 5.5 5.6 5.7 5.8 5.9 6.0 6.1

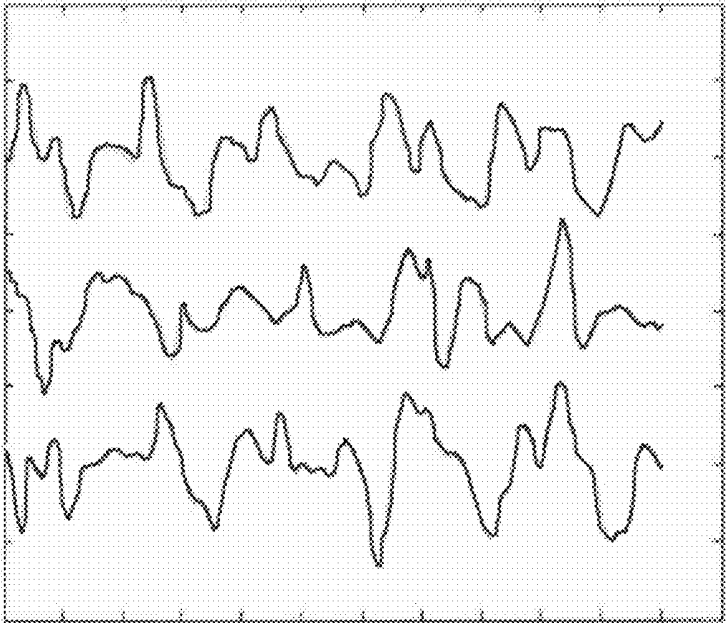
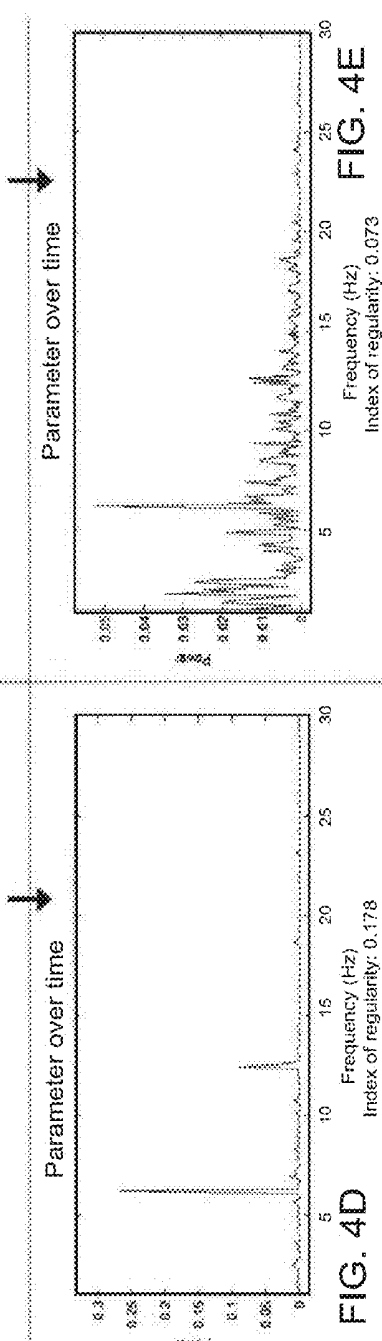
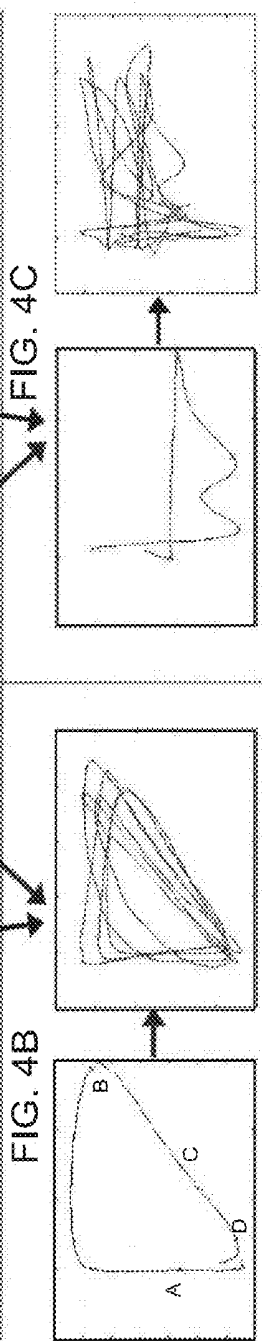
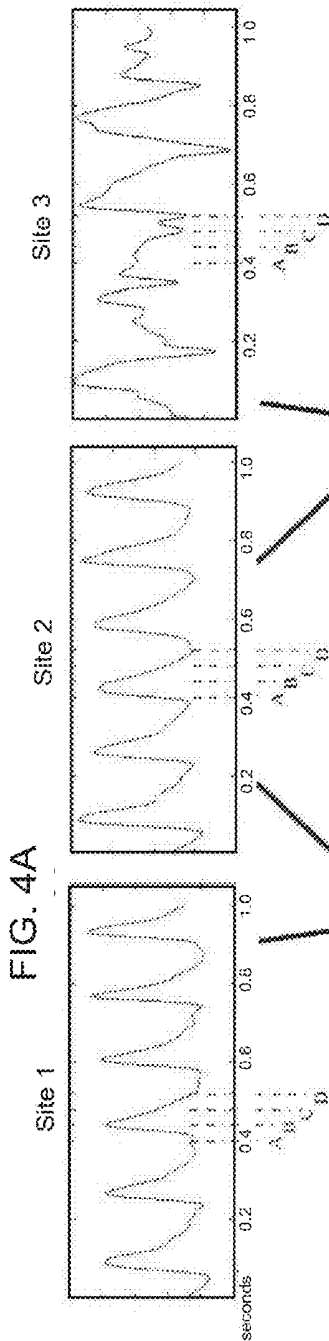


FIG. 3B

5.0 5.1 5.2 5.3 5.4 5.5 5.6 5.7 5.8 5.9 6.0 6.1



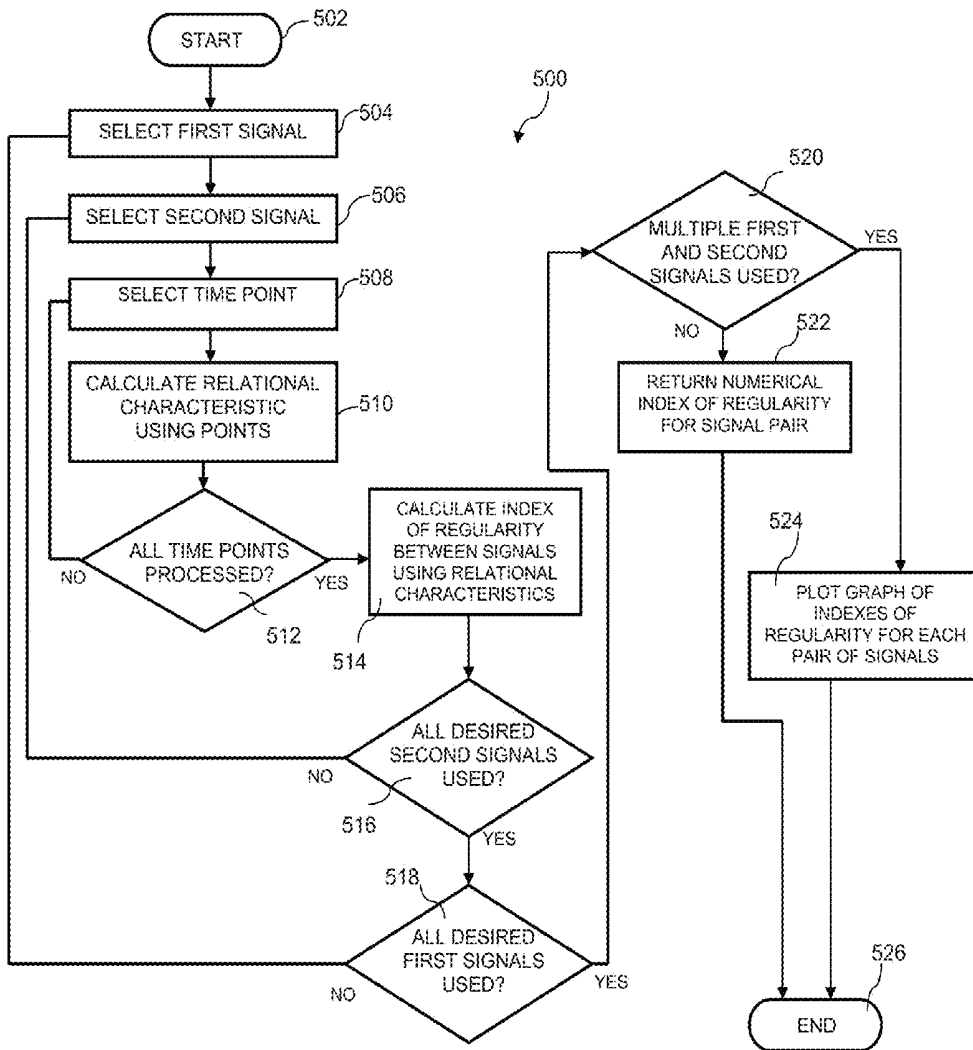


FIG. 5

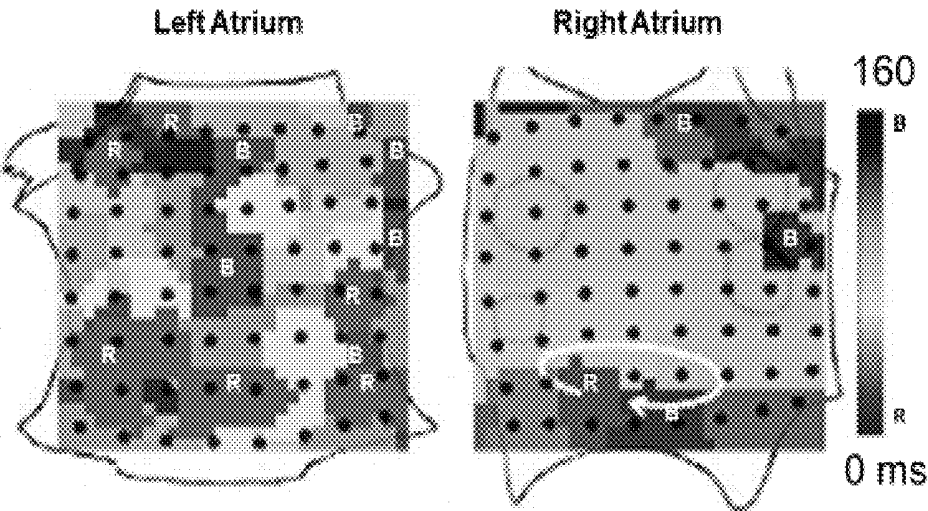


FIG. 6A

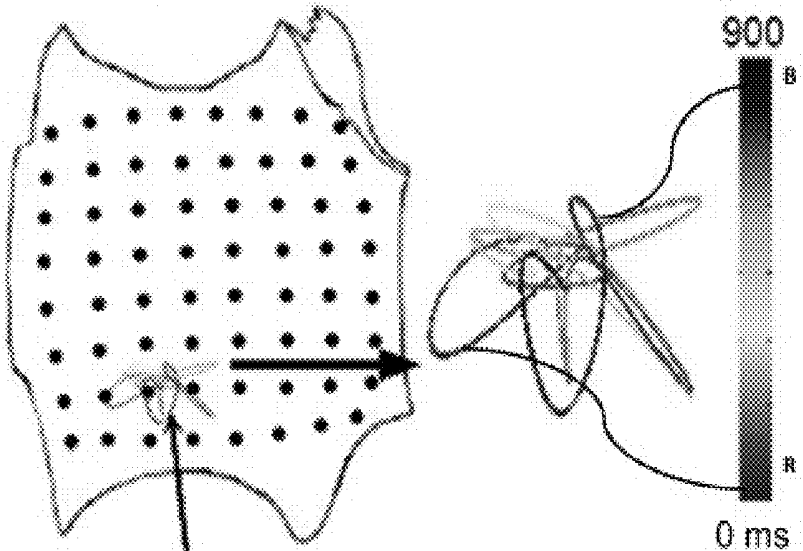


FIG. 6B

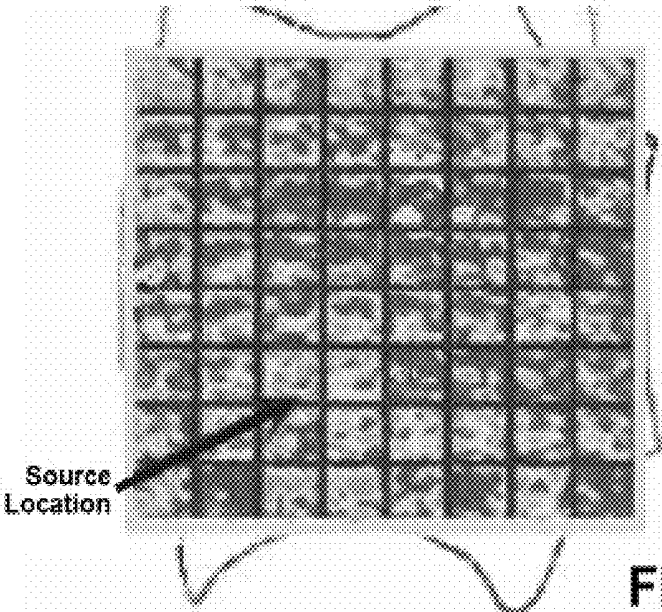


FIG. 6C

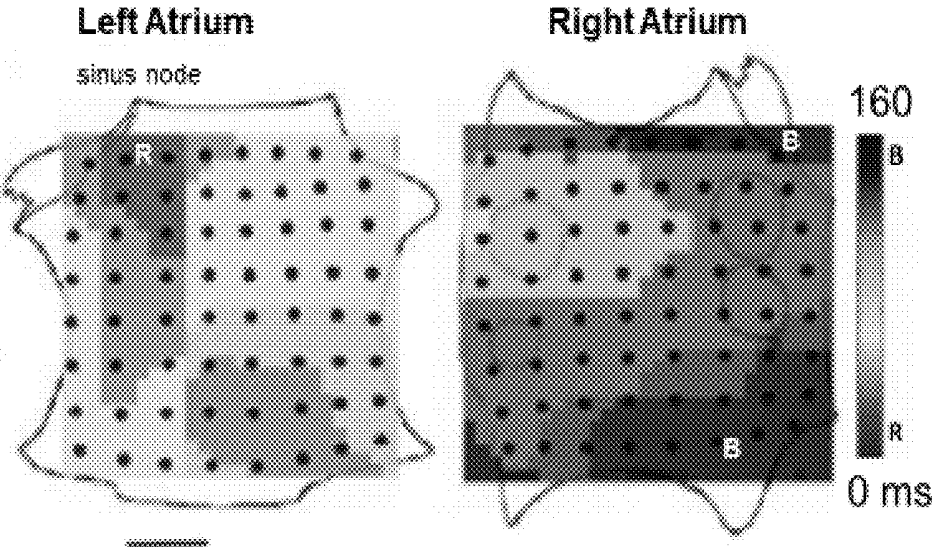


FIG. 6D

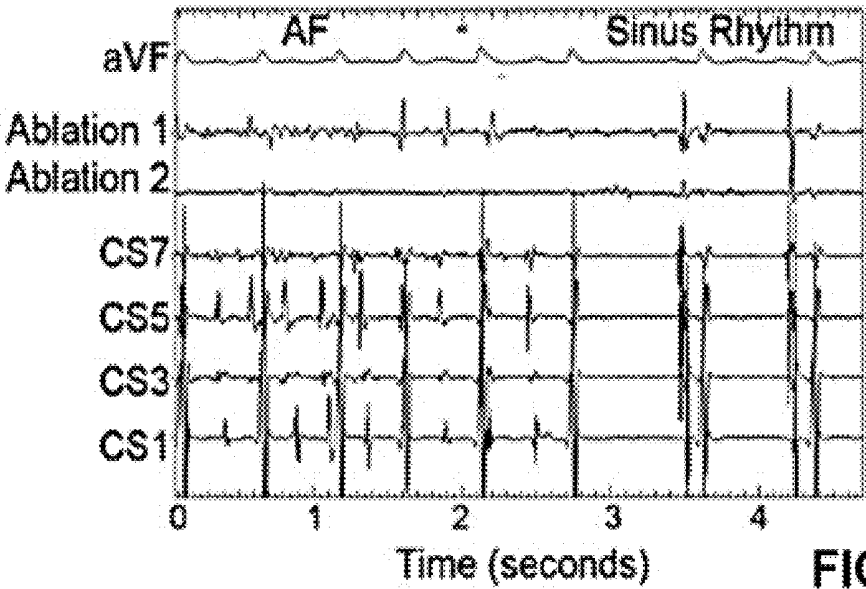


FIG. 6E

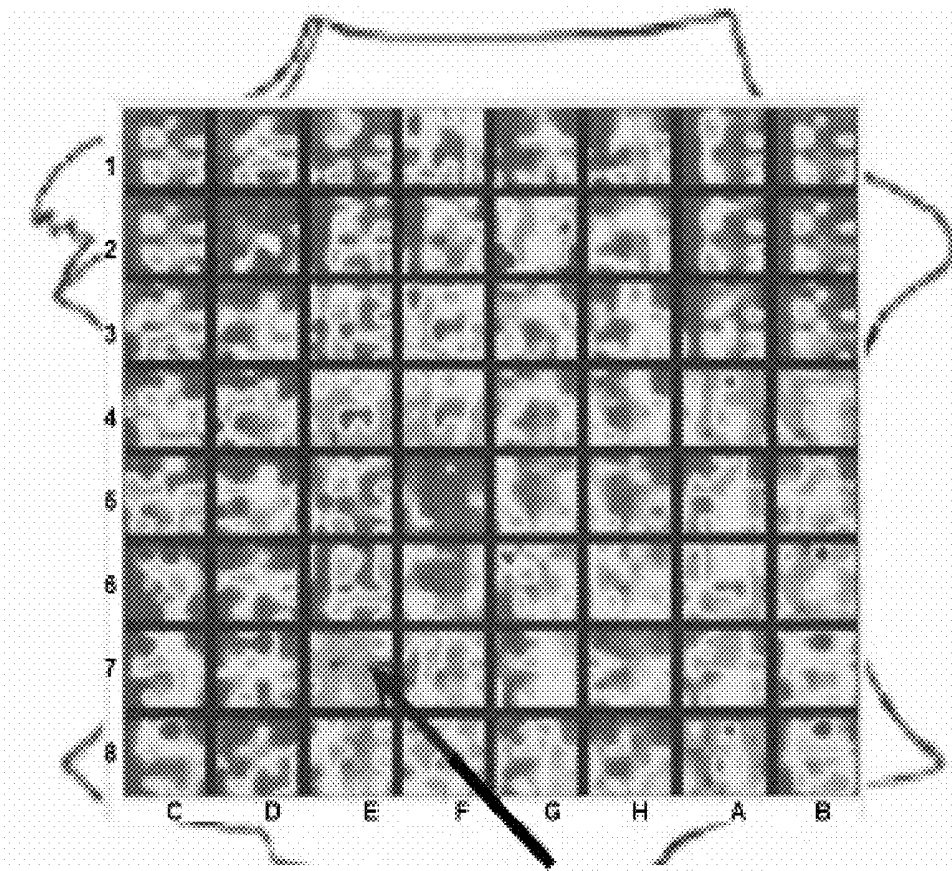


FIG. 7

Successful site
of ablation

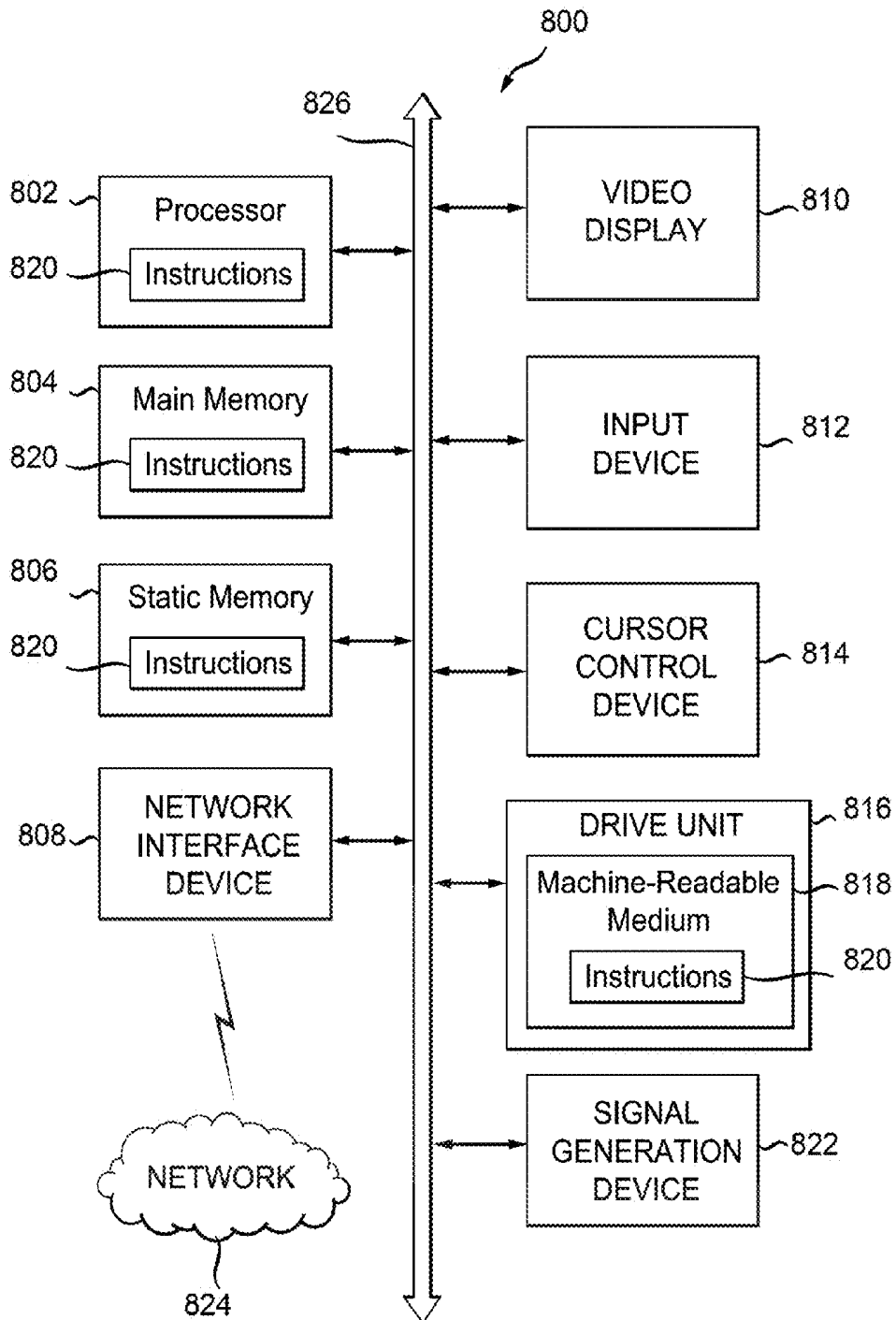


FIG. 8

SYSTEM AND METHOD OF IDENTIFYING SOURCES FOR BIOLOGICAL RHYTHMS

RELATED APPLICATIONS

[0001] This application is a continuation of U.S. application Ser. No. 13/470,705, filed May 14, 2012, which claims priority to U.S. Provisional Application No. 61/569,132 filed Dec. 9, 2011, each of which is incorporated herein by reference in its entirety.

GOVERNMENT RIGHTS

[0002] This invention was made with government support under Grants HL83359 and HL103800 awarded by the National Institutes of Health (NIH). The government has certain rights in the invention.

BACKGROUND

[0003] 1. Field

[0004] The present application relates generally to biological rhythm disorders. More specifically, the present application is directed to a system and method of identifying one or more sources of a biological rhythm disorder, such as a heart rhythm disorder.

[0005] 2. Related Art

[0006] Heart rhythm disorders are common and represent significant causes of morbidity and death throughout the world. Malfunction of the electrical system in the heart represents a proximate cause of heart rhythm disorders. Heart rhythm disorders exist in many forms, of which the most complex and difficult to treat are atrial fibrillation (AF), ventricular tachycardia (VT) and ventricular fibrillation (VF). Other rhythm disorders are more simple to treat, but may also be clinically significant including atrial tachycardia (AT), supraventricular tachycardia (SVT), atrial flutter (AFL), premature atrial complexes/beats (SVE) and premature ventricular complexes/beats (PVC). While under normal conditions the sinus node keeps the heart in sinus rhythm, under certain conditions rapid activation of the normal sinus node can cause inappropriate sinus tachycardia or sinus node reentry, both of which also represent heart rhythm disorders.

[0007] Treatment of heart rhythm disorders—particularly complex rhythm disorders of AF, VF and VT—can be very difficult. Pharmacologic therapy for complex rhythm disorder is not optimal. Ablation has been used increasingly in connection with heart rhythm disorders by maneuvering a sensor/probe to the heart through the blood vessels, or directly at surgery, and delivering energy to a location of the heart to mitigate and in some cases to eliminate the heart rhythm disorder. However, in complex rhythm disorders ablation is often difficult and ineffectual because tools that identify and locate a cause (source) of the heart rhythm disorder are poor and hinder attempts to deliver energy to a correct region of the heart to eliminate the disorder.

[0008] Certain systems and methods are known for treating simple heart rhythm disorders. In a simple heart rhythm disorder (e.g., atrial tachycardia), the source of the disorder can be identified by tracing activation back to the earliest location, which can be ablated to mitigate and in some cases to eliminate the disorder. Even in simple heart rhythm disorders, ablating the cause of a heart rhythm disorder is challenging and experienced practitioners often require

hours to ablate simple rhythm disorders with consistent beat-to-beat activation patterns, such as atrial tachycardia.

[0009] There are few, if any, known systems and methods that have been successful with respect to identifying the sources or causes for complex rhythm disorders such as AF, VF or polymorphic VT. In a complex rhythm disorder, an earliest location of activation onsets cannot be identified because activation onset patterns change from beat to beat.

[0010] Diagnosing and treating heart rhythm disorders generally involves the introduction of a catheter having a plurality of sensors/probes into the heart through blood vessels of a patient. The sensors detect electric activity of the heart at sensor locations in the heart. The electric activity is generally processed into electrogram signals that represent the activation of the heart at the sensor locations.

[0011] In a simple heart rhythm disorder, the signal at each sensor location is generally consistent from beat to beat, enabling identification of the earliest activation. However, in a complex rhythm disorder, the signal at each sensor location from beat to beat may transition between one, several, and multiple deflections of various shapes. For instance, when a signal for a sensor location in AF includes 5, 7, 11 or more deflections, it is difficult if not impossible to identify which deflections in the signal are local to the sensor location in the heart (i.e., local activation onset) versus a nearby sensor location in the heart (i.e., far-field activation onset) or simply noise from another part of the patient's heart, other anatomic structures or external electronic systems. The foregoing deflections make it difficult if not impossible to identify activation onset times of the beats in a signal at a sensor location.

[0012] There are no known systems and methods that have been able to identify the source (or sources) for a heart rhythm disorder independently of identifying and assigning activation onset times to signals of successive beats. Given the difficulties in identifying the activation onset times, this has significantly limited diagnosis of the source (or sources) of heart rhythm disorders, especially for complex rhythm disorders, and has limited treatment attempts at their elimination.

BRIEF SUMMARY

[0013] The present invention is applicable to identifying sources of various rhythms, including normal and disordered heart rhythms, as well as other biological rhythms and rhythm disorders, such as neurological seizures, esophageal spasms, bladder instability, irritable bowel syndrome, and other biological disorders for which biological signals can be recorded to permit determination, diagnosis, and/or treatment of the cause (or source) of the disorders. The invention does not rely on or calculate the onset of activation in signals at any sensor locations, and thus it is particularly useful in complex rhythm disorders which provide complex activation patterns and complex varying beat signals. It is especially useful in identifying the cause(s) of the disorders of heart rhythm such that they can be treated with expediency.

[0014] Complex heart rhythm disorders typically result in an array of activation patterns that are extremely difficult to decipher, so that the ability to determine accurate activation of a heart beat has previously not been possible. Among the advantages of the present invention is the ability to identify a source of a complex rhythm disorder from regularity in signals at sensor locations relative to signals at adjacent sensor locations, independently of the assignment of specific

activation onset times (identifying beats) in signals at these sensor locations. In this way, the invention enables a determination of a source (or sources) of the heart rhythm disorder for treatment. Another advantage is that the present invention provides a method and system which can be carried out rapidly while a sensing device—such as a catheter having sensors thereon—is used in or near the patient and is followed by treatment of cardiac tissue to ameliorate the disorder and in many cases to cure the disorder. Treatment may thus occur immediately, since the invention will provide the location(s) of the source of the heart rhythm disorder.

[0015] Prior methods and systems suffered from the inability to determine the source of rhythm disorders and consequently provided no means of targeting the source for meaningful and curative treatment. Additionally, prior methods and systems required numerous and complex steps of treatment and yet still failed to provide a means of determining the source(s) of heart rhythm disorders. In contrast, the present invention provides a relatively few number of steps to determine the source(s) for a heart rhythm disorder, including complex rhythm disorders of atrial and ventricular fibrillation.

[0016] In accordance with an embodiment, a system to measure regularity associated with a heart rhythm is disclosed. The system includes at least one computing device. The at least one computing device is configured to process a derivative of a first cardiac signal at a plurality of first time points against a derivative of a second cardiac signal at a plurality of second time points to define a plurality of coordinate pairs of the first cardiac signal against the second cardiac signal. The at least one computing device is further configured to determine an index of regularity that exceeds a threshold, the index of regularity indicating an approximate congruence of the plurality of coordinate pairs among the first cardiac signal and the second cardiac signal.

[0017] The at least one computing device is further configured to iteratively select pairs of cardiac signals from a plurality of cardiac signals, each pair having a first cardiac signal and different second cardiac signal. The at least one computing device is also configured to perform the processing and determining for each pair of the iteratively selected pairs of cardiac signals. The at least one computing device is further configured to construct a matrix of indexes of regularity for the iteratively selected pairs of cardiac signals, and to determine one or more sources of the rhythm disorder using the matrix of indexes of regularity.

[0018] In order to determine the one or more sources of the rhythm disorder, the at least one computing device is configured to identify from the matrix one or more regions of the heart associated with high indexes of regularity as compared to indexes of regularity at adjacent regions of the heart.

[0019] In accordance with another embodiment, a method of measuring regularity associated with a rhythm disorder of a heart. The method includes processing by a computing device a derivative of a first cardiac signal at a plurality of first time points against a derivative of a second cardiac signal at a plurality of second time points to define a plurality of coordinate pairs of the first cardiac signal against the second cardiac signal. The method further includes determining by the computing device an index of regularity that exceeds a threshold, the index of regularity indicating an

approximate congruence of the plurality of coordinate pairs among the first cardiac signal and the second cardiac signal.

[0020] The method further comprises iteratively selecting pairs of cardiac signals from a plurality of cardiac signals, each pair having a first cardiac signal and different second cardiac signal. The method also includes performing the processing and determining for each pair of the iteratively selected pairs of cardiac signals. The method further includes constructing a matrix of indexes of regularity for the iteratively selected pairs of cardiac signals, and determining one or more sources of the rhythm disorder using the matrix of indexes of regularity.

[0021] In order to determine the one or more sources of the rhythm disorder, the method further includes identifying from the matrix one or more regions of the heart associated with high indexes of regularity as compared to indexes of regularity at adjacent regions of the heart.

[0022] In accordance with a further embodiment, a method of treating a cardiac rhythm disorder is provided. The method includes iteratively selecting pairs of cardiac signals from a plurality of cardiac signals, each pair having a first cardiac signal and different second cardiac signal. The method further includes processing a derivative of the first cardiac signal at a plurality of first time points against a derivative of the different second cardiac signal at a plurality of second time points to define a plurality of coordinate pairs of the first cardiac signal against the different second cardiac signal for each selected pair. Thereafter, the method includes determining an index of regularity that exceeds a threshold for each selected pair, the index of regularity indicating an approximate congruence of the plurality of coordinate pairs between the first cardiac signal and the different second cardiac signal.

[0023] The method further includes constructing a matrix of indexes of regularity for the selected pairs and determining one or more sources of the cardiac rhythm disorder using the matrix of indexes. The method also includes treating cardiac tissue at the one or more sources to suppress or eliminate the cardiac rhythm disorder. In order to treat the cardiac tissue, the method includes delivering one or more of ablation, electrical energy, mechanical energy, drugs, cells, genes and biological agents to the cardiac tissue at the one or more sources.

BRIEF DESCRIPTION OF THE DRAWINGS

[0024] The patent or application file contains at least one drawing executed in color. Copies of this patent or patent application publication with color drawing(s) will be provided by the Office upon request and payment of the necessary fee.

[0025] Some embodiments are illustrated by way of example and not limitation in the figures of the accompanying drawings in which:

[0026] FIG. 1 illustrates an example system to identify a source (or sources) of a heart rhythm disorder;

[0027] FIG. 2 illustrates an example catheter that can be used to identify the source of a heart rhythm disorder in FIG. 1;

[0028] FIGS. 3A-B illustrate an example simple electrogram signal of a heart rhythm disorder and a complex electrogram signal of a heart rhythm disorder from sensors positioned at sensor locations in a heart illustrated in FIG. 1;

[0029] FIG. 4A-4E illustrate an example method of identifying a source of a heart rhythm disorder based on periodic

repeating activity of signals at adjacent or distant sensor locations (spatial phase lock) in the heart illustrated in FIG. 1;

[0030] FIG. 5 is a flowchart that illustrates an example method of determining periodic repeating activity (spatial phase lock) to identify a source of a heart rhythm disorder;

[0031] FIG. 6A-6E illustrate example migration of a source (locus) of a heart rhythm disorder and the use of spatial phase lock to identify such a source of heart rhythm disorder;

[0032] FIG. 7 illustrates an example map of indexes of periodic repeating activity (regularity) to identify a source of heart rhythm disorder; and

[0033] FIG. 8 is a block diagram of an illustrative embodiment of a general computer system.

DETAILED DESCRIPTION

[0034] A system and method for identifying the sources of heart rhythm disorders are disclosed herein. In the following description, for the purposes of explanation, numerous specific details are set forth in order to provide a thorough understanding of example embodiments. It will be evident, however, to one skilled in the art, that an example embodiment may be practiced without all of the disclosed specific details.

[0035] FIG. 1 illustrates an example system 100 to identify a source (or sources) of a heart rhythm disorder. Specifically, the example system 100 is configured to detect cardiac information (signals) collected/detected from a patient's heart in connection with a heart rhythm disorder. The system 100 is further configured to process the signals in order to determine a region (or multiple regions) of tissue in the patient's heart associated with a specific degree of regularity that exceeds a threshold and differs than a degree of regularity of a plurality of adjacent regions of tissue in the patient's heart. The region (or multiple regions) thus determined indicates a source(s) of the heart rhythm disorder. The heart 120 includes a right atrium 122, left atrium 124, right ventricle 126 and left ventricle 128.

[0036] The example system 100 includes a catheter 102, signal processing device 114, computing device 116 and analysis database 118.

[0037] The catheter 102 is configured to detect cardiac activation information in the heart and to transmit the detected cardiac activation information to the signal processing device 114, via a wireless connection, wired connection, or a combination of both wired and wireless connections. The catheter includes a plurality of probes/sensors 104-112, which can be inserted into the heart through the patient's blood vessels.

[0038] In some embodiments, one or more of the sensors 104-112 may not be inserted into the patient's heart. For example, some sensors may detect cardiac activation via the patient's surface (e.g., electrocardiogram—ECG) or remotely without contact with the patient (e.g., magnetocardiogram). As another example, some sensors may also derive cardiac activation information from cardiac motion of a non-electrical sensing device (e.g., echocardiogram). In various embodiments, these sensors can be used separately or in different combinations, and further these separate or different combinations can also be used in combination with sensors inserted into the patient's heart.

[0039] The sensors 104-112, which are positioned at sensor locations in the heart under consideration, can detect

cardiac activation information at the sensor locations and can further deliver energy to ablate the heart at the sensor locations. It is noted that the sensors 104-112 can also detect cardiac activation information from overlapping regions of the heart (e.g., right atrium 122 and left atrium 124).

[0040] The signal processing device 114 is configured to process (e.g., clarify and amplify) the cardiac activation information detected by the sensors 104-112 at the sensor locations into electrogram signals and to provide the processed signals to the computing device 116 for analysis in accordance with methods disclosed herein. In processing the cardiac activation information from the sensors 104-112, the signal processing device 114 can subtract cardiac activation information from overlapping regions of the heart 120 to provide processed signals to the computing device 116 for analysis. While in some embodiments, the signal processing device 114 is configured to provide unipolar signals, in other embodiments, the signal processing device 114 can provide bipolar signals.

[0041] The computing device 116 is configured to receive detected/processed signals from the signal processing device 114 and further configured to analyze the signals in accordance with methods disclosed herein to determine regularity in adjacent regions of the patient's heart, such that it is possible to generate a map(s) (representation(s)) of regularity that can be used to locate a source(s) of the heart rhythm disorder and to eliminate the source(s).

[0042] The analysis database 118 is configured to support or aid in the analysis of the signals by the computing device 116. In some embodiments, the analysis database 118 can store the map of regularity associated with or generated on the basis of signals at a plurality of adjacent sensor locations over a period of time, as will be described in greater detail herein. The analysis database 118 can also provide storage of intermediate data associated with the map of regularity.

[0043] FIG. 2 illustrates an example catheter 200 to detect electrical signals via a plurality of sensors 240 at sensor locations in the heart 120 under consideration. Catheter 200 can be similar to or different than catheter 102 and sensors 240 can be similar to or different than sensors 104-112 in FIG. 1.

[0044] The catheter 200 includes multiple splines (or meridians) 220 each of which can include multiple sensors (or probes) 240. By rotating along a shaft axis 245, the splines or meridians 220 may be spaced or separated more widely spatially as depicted at 230 or spaced more closely spatially as depicted at 235.

[0045] Different spatial arrangements of the sensors 240 (via spatial separation of the splines 220) can have the effect of spatially extending the area of the heart 120 under consideration. The sensors 240 positioned in a spatial arrangement at sensor locations of the heart 120 under consideration can detect cardiac electrical signals at the sensor locations and can further deliver energy to ablate (or other treatment to treat) the heart at the sensor locations.

[0046] Different catheters with various spatial arrangements of the sensors 240 can be used, such as spiral, radial spokes or other spatial arrangements.

[0047] FIG. 3A illustrates an example of simple electrocardiogram signals of a heart rhythm disorder from sensors positioned at sensor locations in the heart 120.

[0048] In this example, the signals generally show identifiable activation onsets (e.g., for heart beats). The heart beats can be characterized by an activation onset with a

sharp inflection point and high slope representing depolarization, followed by a period of gentle, low-deviation slope representing repolarization, typically lasting between about 100 ms and 250 ms.

[0049] The regularity or phase relationship between the simple signals in FIG. 3(A) is generally easily identifiable.

[0050] FIG. 3B illustrates an example of complex electrocardiogram signals of a heart rhythm disorder from sensors positioned at sensor locations in the heart 120. As an example, the heart rhythm disorder can be a complex rhythm disorder AF, VF and polymorphic VT, or another heart rhythm disorder.

[0051] The signals in FIG. 3B do not generally show identifiable activation onsets (e.g., for heart beats). The signals include multiple deflections of short duration caused by the heart rhythm disorder that makes the discernment of activation onsets (depolarization) prohibitively difficult. Similarly, regularity or phase relationship between complex signals in FIG. 3B is not easily discerned.

[0052] FIGS. 4A-4E illustrate an example method of identifying a source of a heart rhythm disorder based on periodic repeating activity (regularity) of signals at adjacent (or distant) sensor locations (e.g., spatial phase lock) in the heart 120 illustrated in FIG. 1.

[0053] FIG. 4A illustrates three (3) example signals (e.g., ECG signals) obtained from three adjacent sensor locations (sites 1, 2 and 3) in the heart 120 of FIG. 1, such as via electrodes in the catheter 102, 200. It is noted that multiple signals can be considered from the catheter 102, 200, e.g., 64, 128, or another number of signals. Each of the signals is a voltage time series. The three signals have varying amplitudes (e.g., voltage) along the signals as detected by the sensors of the catheter 102, 200. Four example time points ("A", "B", "C" and "D") are illustrated in the signals for clarity and brevity in describing the processing of the signals in accordance with the example method as described below. However, it is to be noted that there is a multiplicity of time points along each of the example signals that can be processed in accordance with the example methods disclosed herein.

[0054] In accordance with the example method, a derivative of each signal is determined at the plurality of time points. The derivative can be a zero order derivative or a higher-order derivative (e.g., a first-order derivative or second-order derivative). For example, a derivative of the first (analysis) cardiac signal is determined at a plurality of first time points (e.g., A, B, C and D). As another example, a derivative of the second (reference) cardiac signal is determined at a plurality of second time points (e.g., A, B, C and D). Similarly, a derivative of the third cardiac signal is determined at a plurality of third time points (e.g., A, B, C and D). In some embodiments, the pluralities of time points in the different signals are contemporaneous. It is again noted that the signals include a multiplicity of time points that can be processed in accordance with the example methods as described herein.

[0055] In FIG. 4B, the derivative of the first (analysis) cardiac signal at the plurality of first time points is processed against the derivative of the second (reference) cardiac signal at the plurality of second time points to define a plurality of coordinate pairs of the first cardiac signal against the second cardiac signal. These coordinate pairs can be maintained in memory and/or saved to database 118. In some embodiments, the plurality of coordinate pairs asso-

ciated with processing of the first cardiac signal against the second cardiac signal can be plotted and connected to generate a plurality of loops. For example, the coordinate pairs associated with example time points A-D can be plotted and connected to generate a first loop, as shown in left panel of FIG. 4B.

[0056] Further with reference to FIG. 4B, the plotting and connecting can be repeated for a plurality of first and second time points to generate multiple loops as shown in right panel of FIG. 4B. In this example, a single loop is shown in the left panel of FIG. 4B, based on time points A-D for illustrative purposes. The single loop can represent a single cycle of a heart rhythm, while multiple loops can represent multiple cycles of the heart rhythm. As illustrated, a high degree of regularity (or phase relationship) is observed among the loops shown in the right panel of FIG. 4B. It is noted that the same processing can be repeated for the first (analysis) cardiac signal against different second (reference) cardiac signals, i.e., others of the adjacent 64 or 128 signals.

[0057] In FIG. 4C, the derivative of the second (analysis) cardiac signal at the plurality of first time points is processed against the derivative of the third (reference) cardiac signal at the plurality of third time points to define a plurality of coordinate pairs of the second cardiac signal against the third cardiac signal. These coordinate pairs can be maintained in memory and/or saved to database 118. In some embodiments, the plurality of coordinate pairs associated with processing of the second cardiac signal against the third cardiac signal can be plotted and connected to generate a plurality of loops. It is noted that the same processing can be repeated for the second (analysis) cardiac signal against different third (reference) cardiac signals, i.e., others of the adjacent 64 or 128 signals.

[0058] Further with reference to FIG. 4C, the plotting and connecting can be repeated for a plurality of second and third time points to generate multiple loops as shown in right panel of FIG. 4C. In this example, a single loop is shown in left panel of FIG. 4C based on time points A-D for illustrative purposes. The single loop can represent a single cycle of a heart rhythm, while multiple loops can represent multiple cycles of the heart rhythm. As illustrated, a low degree of regularity (or phase relationship) is observed amongst the loops in the right panel of FIG. 4C.

[0059] In FIG. 4D, an index of regularity is determined with respect to the first cardiac signal (analysis signal) against the second (reference) cardiac signal. The index of regularity indicates an approximate congruence (e.g., mathematical congruence) of the plurality of coordinate pairs between the first cardiac signal and the second cardiac signal. The index of regularity can be determined in one of a time domain, frequency domain and spatial domain. A further determination can be made as to whether the index of regularity of FIG. 4D, exceeds a threshold. In some embodiments, the threshold can be defined to indicate an upper percentile (e.g., top 5th percentile) of all indexes of regularity of the first (analysis) cardiac signal against second (reference) cardiac signals, i.e., the adjacent eight (8) signals, repeated for signals from 64 or 128 sensor locations. A different percentile may be used, e.g., 10th percentile, or another percentile number.

[0060] With reference to the frequency domain, a frequency analysis (e.g., Fourier analysis) can be performed using a selected parameter associated with the plurality of coordinate pairs (or loops) to generate a frequency spectrum,

as shown in FIG. 4D. The selected parameter can be amplitude (e.g., voltage), angle, vector, area and derivative. Thereafter, at least one peak is determined in the frequency spectrum of FIG. 4D. In some embodiments, the at least one peak can include a fundamental frequency. In other embodiments, the at least one peak can include the fundamental frequency and also one or more harmonics of the fundamental frequency. In still other embodiments, the at least one peak can include only one or more of the harmonics of the fundamental frequency, i.e., the fundamental frequency can be excluded.

[0061] In performing the frequency analysis, a sum of the area of the at least one peak in the frequency spectrum in FIG. 4D is calculated. A result (i.e., index of regularity) is calculated by dividing the sum of the area of the at least one peak by a total area of the frequency spectrum within a predefined frequency range, such as between about 4 Hz and about 12 Hz. In some embodiments, other frequency ranges can be defined. Thereafter, it can be determined whether the result (index of regularity) exceeds the threshold, such as an upper percentile (e.g., top 5th percentile) of all indexes of regularity of the first (analysis) cardiac signal against second (reference) cardiac signals, i.e., the adjacent eight (8) signals, repeated for signals from 64 or 128 sensor locations. For example, the index of regularity for the loops of FIG. 4B as shown in FIG. 4D is 0.178, indicating a high degree of regularity (or phase relationship) of the first cardiac signal against the second cardiac signal. In frequency analysis, the index of regularity will be in a range between about 0.0 and about 1.0.

[0062] In FIG. 4E, an index of regularity is determined with respect to the second (analysis) cardiac signal against the third (reference) cardiac signal. The index of regularity indicates an approximate congruence (e.g., mathematical congruence) of the plurality of coordinate pairs between the second cardiac signal and the third cardiac signal. As described previously, the index of regularity can be determined in one of a time domain, frequency domain and spatial domain. A further determination can be made as to whether the index of regularity of FIG. 4E exceeds a threshold. In some embodiments, the threshold can be defined to indicate an upper percentile (e.g., top 5th percentile) of all indexes of regularity of the second (analysis) cardiac signal against third (reference) cardiac signals, i.e., the adjacent eight (8) signals, repeated for signals from 64 or 128 sensor locations. Similarly, a different percentile can be used, e.g., 10th percentile, or another percentile number.

[0063] Moreover, a frequency analysis (e.g., Fourier analysis) can be performed using a selected parameter associated with the plurality of coordinate pairs (or loops) to generate a frequency spectrum, as shown in FIG. 4E. The selected parameter can be amplitude (e.g., voltage), angle, vector, area and derivative. Thereafter, at least one peak can be determined in the frequency spectrum of FIG. 4E. In some embodiments, the at least one peak can include a fundamental frequency. In other embodiments, the at least one peak can include the fundamental frequency and also one or more harmonics of the fundamental frequency. In still other embodiments, the at least one peak can include only one or more of the harmonics of the fundamental frequency, i.e., the fundamental frequency can be excluded.

[0064] In performing the frequency analysis, a sum of the area of the at least one peak in the frequency spectrum of FIG. 4E is calculated. A result (i.e., index of regularity) is

calculated by dividing the sum of the area of the at least one peak by a total area of the frequency spectrum within a predefined frequency range, such as between about 4 Hz and about 12 Hz. In some embodiments, other frequency ranges can be defined. Thereafter, it can be determined whether the result (index of regularity) exceeds the threshold, i.e., an upper percentile (e.g., top 5th percentile) of all indexes of regularity of the first (analysis) cardiac signal against second (reference) cardiac signals, i.e., the adjacent eight (8) signals, repeated for signals from 64 or 128 sensor locations. For example, the index of regularity for the loops of FIG. 4C as shown in FIG. 4E is 0.073, indicating a low degree of regularity (or phase relationship) of the second cardiac signal against the third cardiac signal.

[0065] The congruence (regularity or phase relationship) of the signals can be quantified over time by using a selected parameter(s) or characteristic(s) (e.g., angles, vectors, amplitudes, areas, derivatives, and/or other characteristic(s)) and quantifying regularity associated with the selected parameter(s) using a FFT (Fourier transform) in excess of a threshold. FIG. 4B shows the congruence (regularity or phase relationship) between the first cardiac signal and the second cardiac signal. In FIG. 4D, the discrete peaks of the FFT reflect regularity in excess of the threshold. FIG. 4C shows the lack of congruence (regularity or phase relationship) between the second cardiac signal and the third cardiac signal. In FIG. 4E, the FFT does not show discrete peaks in excess of the threshold, reflecting significant variability between the second cardiac signal and the third cardiac signal.

[0066] FIG. 5 is a flowchart that illustrates an example method 500 of determining periodic repeating activity (spatial phase lock) to identify a source of a heart rhythm disorder. The method starts at operation 502. At operations 504, 506, a pair of cardiac signals is selected from a plurality of cardiac signals. Specifically, at operation 504 a first (analysis) signal is selected from the plurality of signals and at operation 506 a second (reference) signal is selected from the plurality of signals. As described herein, there can be 64, 128, or another number of signals. The signals can be ECG signals processed via signal processing device 114 of FIG. 1.

[0067] At operation 508, a time point is selected with reference to the processing of the first cardiac signal with respect to the second cardiac signal. At operation 510, a relational characteristic(s) is calculated using the time point. This characteristic(s) can be stored, such as in database 118. The characteristic(s) can identify the relationship between the time points. For example, a derivative of each signal can be determined at the selected time point. Specifically, a derivative of the first cardiac signal can be processed against a derivative of the second cardiac signal at the selected time point to define a coordinate pair of the first cardiac signal against the second cardiac signal.

[0068] At operation 512, a determination is made as to whether all time points have been processed. If it is determined that all time points have not been processed, the method continues to perform operations 508-512 until all time points have been processed. If it is determined that all time points have been processed, the method 500 continues at operation 514.

[0069] At operation 514, an index of regularity is computed between the selected signals using the relational characteristic(s). At operation 516, it is determined whether

all desired second (reference) signals have been used in relation to the selected first (analysis) signal. If it is determined that all desired second signals have not been used, the method 500 continues at operations 506-516 until all desired second signals have been used in relation to the first selected signal. In some embodiments, the coordinate pairs associated with processing of the first (analysis) cardiac signal against all the second (reference) cardiac signals at the plurality of time points can be plotted and connected to generate a plurality of loops, as shown in example right panel of FIG. 4B.

[0070] If it is determined that all desired second signals have been processed, the method 500 continues at operation 518 where it is determined whether all desired first (analysis) signals have been used. If it is determined that all desired first signals have not been used, the method 500 continues at operations 504-516 until all desired first signals have been used.

[0071] At operation 520, it is determined whether multiple first and multiple second signals were used. If it is determined that multiple signals were not used, then at operation 522 an index of regularity can be returned for the selected first and second signals. However, if it is determined that multiple first signals and multiple second signals were used, then at operation 524 a graph (map) of indexes of regularity can be generated for each pair of first and second signals. (See the map in FIG. 7). In some embodiments, the indexes of regularity can be maintained in memory and/or stored in database 118. A determination can be made to identify (or indicate) one or more indexes of regularity that exceed a threshold. As described previously, the threshold can be defined to indicate an upper percentile (e.g., top 5th percentile) of all indexes of regularity of the first (analysis) cardiac signal against second (reference) cardiac signals, i.e., of the adjacent 64 or 128 signals. Similarly, a different percentile can be used, e.g., 10th percentile, or another percentile number. Those indexes of regularity for signals exceeding the threshold (e.g., within the top 5th percentile), which surround adjacent indexes of regularity for signals not exceeding the threshold, can be used to indicate the source of the cardiac rhythm disorder. The method ends at operation 526.

[0072] FIGS. 6A-6E illustrate example migration of a source (locus) of a heart rhythm disorder and the use of indexes of regularity (e.g., spatial phase lock) to identify such a source of heart rhythm disorder in a patient. Specifically, FIGS. 6A-6E show AF termination by ablation of the source for human atrial fibrillation identified by the indexes of regularity (e.g., spatial phase lock). In FIG. 6A, left atrial rotational source during AF is visualized using contours of activation time (e.g., isochrones), where the activation times for a 160 ms period of time are color-coded from red ("R") at about 0 ms to blue ("B") at about 160 ms. FIG. 6B shows the locus of migration of the source shown in FIG. 6A for a 900 ms time period. In FIG. 6C, indexes of regularity (e.g., spatial phase lock) illustrate a region of low regularity (cool colors, indicated by the arrow) relative to and surrounded by adjacent regions of high regularity (warmer colors). This region is a source of the cardiac rhythm disorder and agrees precisely with the rotational source in FIG. 6A. As shown on patient specific geometry in FIG. 6C, the source for AF is in the low left atrium. In FIG. 6D, electrode signals are shown during AF with termination to sinus rhythm by <1 minute after ablation at the region of high regularity around the region of low regularity (i.e., rotational source in FIG. 6A)

(ECG lead aVF, and electrodes at ablation catheter, coronary sinus). In FIG. 6E, an isochronal map of the sinus rhythm is shown for the referenced patient. This patient remains free of AF on implanted cardiac monitor. (Scale Bar 1 cm).

[0073] FIG. 7 illustrates an example map of indexes of regularity to identify a source of heart rhythm disorder.

[0074] The map of indexes of regularity for each signal processed can be generated as a grid of sub-maps, with each sub-map showing the index of regularity using a different first (analysis) signal and every second (reference) signal processed against the first signal. Thereafter, a map can be generated as a combination of sub-maps. The map arranges each signal in an approximate spatial relationship with the other signals. A color is assigned to a pixel at each sensor location representing a value of the index of regularity for the signal pair (e.g., higher values coded in red, lower values in blue). Each first (analysis) signal's sub-map can then be placed into the larger map that represents that first signal's spatial location with the other processed first (analysis) signals, creating an 8x8 map as shown in FIG. 7.

[0075] As shown in FIG. 7, a region of high regularity (warm colors) that surrounds an adjacent region of low regularity (cool colors) can be determined. The black arrow points to a site of successful ablation on or within the region of high regularity. Similarly, a region of low regularity that is surrounded by a region of high regularity can also be determined for ablation to eliminate the source of the cardiac rhythm disorder.

[0076] FIG. 8 is a block diagram of an illustrative embodiment of a general computer system 800. The computer system 800 can be the signal processing device 114 and the computing device 116 of FIG. 1. The computer system 800 can include a set of instructions that can be executed to cause the computer system 800 to perform any one or more of the methods or computer based functions disclosed herein. The computer system 800, or any portion thereof, may operate as a standalone device or may be connected, e.g., using a network or other connection, to other computer systems or peripheral devices. For example, the computer system 800 may be operatively connected to signal processing device 114 and analysis database 118.

[0077] In operation as described in FIGS. 1-7, the identification of source(s) of heart rhythm disorders as described herein can be used to identify patients in whom therapy can be effective and to assist in guiding such therapy, which can include delivery of one or more of ablation, electrical energy, mechanical energy, drugs, cells, genes and biological agents to at least a portion of the identified source(s) of the heart.

[0078] The computer system 800 may also be implemented as or incorporated into various devices, such as a personal computer (PC), a tablet PC, a personal digital assistant (PDA), a mobile device, a palmtop computer, a laptop computer, a desktop computer, a communications device, a control system, a web appliance, or any other machine capable of executing a set of instructions (sequentially or otherwise) that specify actions to be taken by that machine. Further, while a single computer system 800 is illustrated, the term "system" shall also be taken to include any collection of systems or sub-systems that individually or jointly execute a set, or multiple sets, of instructions to perform one or more computer functions.

[0079] As illustrated in FIG. 8, the computer system 800 may include a processor 802, e.g., a central processing unit

(CPU), a graphics-processing unit (GPU), or both. Moreover, the computer system **800** may include a main memory **804** and a static memory **806** that can communicate with each other via a bus **826**. As shown, the computer system **800** may further include a video display unit **810**, such as a liquid crystal display (LCD), an organic light emitting diode (OLED), a flat panel display, a solid state display, or a cathode ray tube (CRT). Additionally, the computer system **800** may include an input device **812**, such as a keyboard, and a cursor control device **814**, such as a mouse. The computer system **800** can also include a disk drive unit **816**, a signal generation device **822**, such as a speaker or remote control, and a network interface device **808**.

[0080] In a particular embodiment, as depicted in FIG. **8**, the disk drive unit **816** may include a computer-readable medium **818** in which one or more sets of instructions **820**, e.g., software, can be embedded. Further, the instructions **820** may embody one or more of the methods or logic as described herein. In a particular embodiment, the instructions **820** may reside completely, or at least partially, within the main memory **804**, the static memory **806**, and/or within the processor **802** during execution by the computer system **800**. The main memory **804** and the processor **802** also may include computer-readable media.

[0081] In an alternative embodiment, dedicated hardware implementations, such as application specific integrated circuits, programmable logic arrays and other hardware devices, can be constructed to implement one or more of the methods described herein. Applications that may include the apparatus and systems of various embodiments can broadly include a variety of electronic and computer systems. One or more embodiments described herein may implement functions using two or more specific interconnected hardware modules or devices with related control and data signals that can be communicated between and through the modules, or as portions of an application-specific integrated circuit. Accordingly, the present system encompasses software, firmware, and hardware implementations.

[0082] In accordance with various embodiments, the methods described herein may be implemented by software programs tangibly embodied in a processor-readable medium and may be executed by a processor. Further, in an exemplary, non-limited embodiment, implementations can include distributed processing, component/object distributed processing, and parallel processing. Alternatively, virtual computer system processing can be constructed to implement one or more of the methods or functionality as described herein.

[0083] It is also contemplated that a computer-readable medium includes instructions **820** or receives and executes instructions **820** responsive to a propagated signal, so that a device connected to a network **824** can communicate voice, video or data over the network **824**. Further, the instructions **820** may be transmitted or received over the network **824** via the network interface device **808**.

[0084] While the computer-readable medium is shown to be a single medium, the term "computer-readable medium" includes a single medium or multiple media, such as a centralized or distributed database, and/or associated caches and servers that store one or more sets of instructions. The term "computer-readable medium" shall also include any medium that is capable of storing, encoding or carrying a set of instructions for execution by a processor or that cause a

computer system to perform any one or more of the methods or operations disclosed herein.

[0085] In a particular non-limiting, example embodiment, the computer-readable medium can include a solid-state memory, such as a memory card or other package, which houses one or more non-volatile read-only memories. Further, the computer-readable medium can be a random access memory or other volatile re-writable memory. Additionally, the computer-readable medium can include a magneto-optical or optical medium, such as a disk or tapes or other storage device to capture carrier wave signals, such as a signal communicated over a transmission medium. A digital file attachment to an e-mail or other self-contained information archive or set of archives may be considered a distribution medium that is equivalent to a tangible storage medium. Accordingly, any one or more of a computer-readable medium or a distribution medium and other equivalents and successor media, in which data or instructions may be stored, are included herein.

[0086] In accordance with various embodiments, the methods described herein may be implemented as one or more software programs running on a computer processor. Dedicated hardware implementations including, but not limited to, application specific integrated circuits, programmable logic arrays, and other hardware devices can likewise be constructed to implement the methods described herein. Furthermore, alternative software implementations including, but not limited to, distributed processing or component/object distributed processing, parallel processing, or virtual machine processing can also be constructed to implement the methods described herein.

[0087] It should also be noted that software that implements the disclosed methods may optionally be stored on a tangible storage medium, such as: a magnetic medium, such as a disk or tape; a magneto-optical or optical medium, such as a disk; or a solid state medium, such as a memory card or other package that houses one or more read-only (non-volatile) memories, random access memories, or other re-writable (volatile) memories. The software may also utilize a signal containing computer instructions. A digital file attachment to e-mail or other self-contained information archive or set of archives is considered a distribution medium equivalent to a tangible storage medium. Accordingly, a tangible storage medium or distribution medium as listed herein, and other equivalents and successor media, in which the software implementations herein may be stored, are included herein.

[0088] Thus, a system and method to reconstruct cardiac activation information have been described. Although specific example embodiments have been described, it will be evident that various modifications and changes may be made to these embodiments without departing from the broader scope of the invention. Accordingly, the specification and drawings are to be regarded in an illustrative rather than a restrictive sense. The accompanying drawings that form a part hereof, show by way of illustration, and not of limitation, specific embodiments in which the subject matter may be practiced. The embodiments illustrated are described in sufficient detail to enable those skilled in the art to practice the teachings disclosed herein. Other embodiments may be utilized and derived therefrom, such that structural and logical substitutions and changes may be made without departing from the scope of this disclosure. This Detailed Description, therefore, is not to be taken in a limiting sense,

and the scope of various embodiments is defined only by the appended claims, along with the full range of equivalents to which such claims are entitled.

[0089] Such embodiments of the inventive subject matter may be referred to herein, individually and/or collectively, by the term “invention” merely for convenience and without intending to voluntarily limit the scope of this application to any single invention or inventive concept if more than one is in fact disclosed. Thus, although specific embodiments have been illustrated and described herein, it should be appreciated that any arrangement calculated to achieve the same purpose may be substituted for the specific embodiments shown. This disclosure is intended to cover any and all adaptations or variations of various embodiments. Combinations of any of the above-described embodiments, and other embodiments not specifically described herein, may be used and are fully contemplated herein.

[0090] The Abstract is provided to comply with 37 C.F.R. §1.72(b) and will allow the reader to quickly ascertain the nature and gist of the technical disclosure. It is submitted with the understanding that it will not be used to interpret or limit the scope or meaning of the claims.

[0091] In the foregoing description of the embodiments, various features are grouped together in a single embodiment for the purpose of streamlining the disclosure. This method of disclosure is not to be interpreted as reflecting that the claimed embodiments have more features than are expressly recited in each claim. Rather, as the following claims reflect, inventive subject matter lies in less than all features of a single disclosed embodiment. Thus the following claims are hereby incorporated into the Description of the Embodiments, with each claim standing on its own as a separate example embodiment.

1. A method of determining regularity associated with a source of a cardiac rhythm disorder, the method comprising:

processing by a computing device a derivative of a first cardiac signal associated with a first location at a plurality of first time points against a derivative of a second cardiac signal associated with a second location at a plurality of second time points to define a plurality of coordinate pairs of the first cardiac signal against the second cardiac signal, wherein the derivative of the first signal is one of zero order and a higher order derivative and the derivative of the second signal is one of zero order derivative and a higher order derivative; and

determining by the computing device an index of regularity that exceeds a threshold, the index of regularity indicating an approximate congruence of the plurality of coordinate pairs among the first cardiac signal and the second cardiac signal, the index of regularity determining the source of the cardiac rhythm disorder.

2. The method of claim 1, wherein the approximate congruence indicates recurrence of at least a portion of the plurality of coordinate pairs within a defined confidence interval.

3. The method of claim 1, wherein the first cardiac signal and the second cardiac signal represent a first voltage time series and a second voltage time series, respectively.

4. The method of claim 1, wherein the derivative of the first signal and the derivative of the second signal are in one of time and space.

5. The method of claim 1, wherein the method further comprises:

plotting the plurality of coordinate pairs; and
connecting the plurality of coordinate pairs to generate a plurality of loops.

6. The method of claim 5, wherein the index of regularity indicates the approximate congruence among the plurality of loops.

7. The method of claim 1, wherein the derivative of the first signal and the derivative of the second signal are one of a first order and a higher order derivative.

8. The method of claim 1, wherein the derivative of the first signal and the derivative of the second signal are a zero order derivative.

9. The method of claim 1, wherein the first cardiac signal and the second cardiac signal are from different regions of the heart.

10. The method of claim 1, wherein the plurality of first time points is contemporaneous with the plurality of second time points.

11. The method of claim 1, wherein the plurality of first time points and the plurality of second time points are associated with at least one beat of the rhythm disorder.

12. The method of claim 1, wherein the index of regularity is determined in one of a time domain, frequency domain and spatial domain.

13. The method of claim 1, wherein the method further comprises:

performing a frequency analysis using a selected parameter associated with the plurality of coordinate pairs to generate a frequency spectrum; and

determining at least one peak in the frequency spectrum.

14. The method of claim 13, wherein the at least one peak includes a fundamental frequency.

15. The method of claim 14, wherein the at least one peak further includes one or more harmonics of the fundamental frequency.

16. The method of claim 13, wherein the at least one peak includes one or more harmonics of a fundamental frequency.

17. The method of claim 13, wherein the selected parameter is one of amplitude, angle, vector, area and derivative.

18. The method of claim 13, wherein the frequency analysis is a Fourier analysis.

19. The method of claim 13, further comprising:

calculating a sum of the area of the at least one peak in the frequency spectrum;

calculating a result from dividing the sum of the area of the at least one peak by a total area of the frequency spectrum within a predefined frequency range; and
determining whether the result exceeds the threshold.

20. The method of claim 1, wherein the method further comprises iteratively selecting the first cardiac signal and the second cardiac signal from a plurality of cardiac signals.

21. The method of claim 1, wherein the method further comprises:

iteratively selecting pairs of cardiac signals from a plurality of cardiac signals, each pair

having a first cardiac signal and different second cardiac signal;

performing the processing and determining for each pair of the iteratively selected pairs of cardiac signals;
constructing a matrix of indexes of regularity for the iteratively selected pairs of cardiac signals; and

determining one or more sources of the rhythm disorder using the matrix of indexes of regularity.

22. The method of claim **21**, wherein determining the one or more sources comprises:

identifying from the matrix one or more regions of the heart associated with higher indexes of regularity as compared to indexes of regularity at adjacent regions of the heart.

23. A system to determine regularity associated with a source of a cardiac rhythm disorder, the system comprising at least one computing device configured to:

process a derivative of a first cardiac signal associated with a first location at a plurality of first time points against a derivative of a second cardiac signal associated with a second location at a plurality of second time points to define a plurality of coordinate pairs of the first cardiac signal against the second cardiac signal, wherein the derivative of the first signal is one of a zero order derivative and a higher order derivative and the derivative of the second signal is one of zero order derivative and a higher order derivative; and

determine an index of regularity that exceeds a threshold, the index of regularity indicating an approximate congruence of the plurality of coordinate pairs among the first cardiac signal and the second cardiac signal, the index of regularity determining the source of the cardiac rhythm disorder.

24. The system of claim **23**, wherein the at least one computing device is further configured to:

iteratively select pairs of cardiac signals from a plurality of cardiac signals, each pair

having a first cardiac signal and different second cardiac signal;

perform the processing and determining for each pair of the iteratively selected pairs of cardiac signals;

construct a matrix of indexes of regularity for the iteratively selected pairs of cardiac signals; and

determine one or more sources of the rhythm disorder using the matrix of indexes of regularity.

25. The system of claim **24**, wherein the at least one computing device is further configured to:

identify from the matrix one or more regions of the heart associated with higher indexes of regularity as compared to indexes of regularity at adjacent regions of the heart.

26. The system of claim **23**, further comprising a display device configured to display the index of regularity.

27. The system of claim **23**, further comprising a computer storage medium comprising instructions, which when executed by the at least one computing device, cause the at least one computing device to process and determine.

28. The system of claim **23**, wherein the at least one computing device is further configured to iteratively select the first cardiac signal and the second cardiac signal from a plurality of cardiac signals.

29. The system of claim **28**, further comprising a catheter that includes a plurality of sensors configured to detect the plurality of cardiac signals.

30. A method of determining one or more sources associated with a cardiac rhythm disorder, the method comprising:

iteratively selecting pairs of cardiac signals from a plurality of cardiac signals, each pair

having a first cardiac signal and different second cardiac signal;

processing a derivative of the first cardiac signal at a plurality of first time points against a derivative of the different second cardiac signal at a plurality of second time points to define a plurality of coordinate pairs;

determining an index of regularity that exceeds a threshold for each selected pair;

constructing a matrix of indexes of regularity as determined for the selected pairs; and

determining one or more sources of the cardiac rhythm disorder using the matrix of indexes.

31. The method of claim **30**, wherein treating includes delivering one or more of ablation, electrical energy, mechanical energy, drugs, cells, genes and biological agents to the cardiac tissue at the one or more sources.

* * * * *

专利名称(译)	识别生物节律来源的系统和方法		
公开(公告)号	US20160324434A1	公开(公告)日	2016-11-10
申请号	US15/194357	申请日	2016-06-27
[标]申请(专利权)人(译)	加利福尼亚大学董事会 托佩拉公司		
申请(专利权)人(译)	加利福尼亚大学董事会 TOPERA INC.		
当前申请(专利权)人(译)	加利福尼亚大学董事会		
[标]发明人	BRIGGS CAREY ROBERT NARAYAN SANJIV M		
发明人	BRIGGS, CAREY ROBERT NARAYAN, SANJIV M.		
IPC分类号	A61B5/0468 A61B5/044 A61B5/00 A61B5/04 A61B5/0452 A61B5/042		
CPC分类号	A61B5/0468 A61B5/0452 A61B5/0422 A61B5/044 A61B5/7257 A61B5/04012 A61B5/042 A61B5/002 A61B5/02405 A61B5/04011 A61B5/04525 A61B5/046 A61B5/0464 A61B5/7239 A61B5/7246 A61B5 /7425 A61B5/743 A61B8/02		
优先权	61/569132 2011-12-09 US		
其他公开文献	US10058262		
外部链接	Espacenet USPTO		

摘要(译)

在确定与心脏节律紊乱相关的规律性的系统和方法中，在多个第一时间点处的第一心脏信号的导数相对于在多个第二时间点的第二心脏信号的导数被处理，以便定义所述第一心脏信号与所述第二心脏信号的多个坐标对。此后，确定超过阈值的规律性的指标。规则性指数表示第一心脏信号和第二心脏信号中的多个坐标对的近似一致性。

