



US 20130345540A1

(19) **United States**  
(12) **Patent Application Publication**  
**Salazar et al.**

(10) **Pub. No.: US 2013/0345540 A1**  
(43) **Pub. Date: Dec. 26, 2013**

(54) **PORTABLE SYSTEM AND METHOD FOR MONITORING OF A HEART AND OTHER BODY FUNCTIONS**

*A61B 5/0402* (2006.01)  
*A61B 5/0408* (2006.01)  
*A61B 5/00* (2006.01)

(71) Applicants: **Alfred Salazar**, Mission, TX (US);  
**Hilary F. Almeida**, McAllen, TX (US);  
**Peter L. Dy**, McAllen, TX (US);  
**Alexandria Salazar**, Tulsa, OK (US)

(52) **U.S. Cl.**  
CPC ..... *A61B 5/0404* (2013.01); *A61B 5/04085*  
(2013.01); *A61B 5/04012* (2013.01); *A61B*  
*5/6898* (2013.01); *A61B 5/044* (2013.01);  
*A61B 5/7405* (2013.01); *A61B 5/04028*  
(2013.01); *A61B 5/0432* (2013.01); *A61B*  
*5/0006* (2013.01); *A61B 5/749* (2013.01)  
USPC ..... **600/393**

(72) Inventors: **Alfred Salazar**, Mission, TX (US);  
**Hilary F. Almeida**, McAllen, TX (US);  
**Peter L. Dy**, McAllen, TX (US);  
**Alexandria Salazar**, Tulsa, OK (US)

(57) **ABSTRACT**

(21) Appl. No.: **13/920,137**

Portable systems and methods for obtaining an electrocardiogram reading include a portable device having first and second electrodes with differing impedances. Computer instructions instruct a processor of the portable device to output instructional information relating to placement of the electrodes, receive confirmation of the positioning, and calculating lead values using readings from the first electrode, the second electrode, or combinations thereof, such that multiple bipolar and precordial leads can be measured. Augmented leads can be extrapolated using a known geometric relationship and the bipolar lead measurements. An electrocardiogram reading can be calculated from the lead measurements, then output, stored, transmitted, or combinations thereof. An alert response can be generated if the electrocardiogram reading deviates from selected threshold parameters.

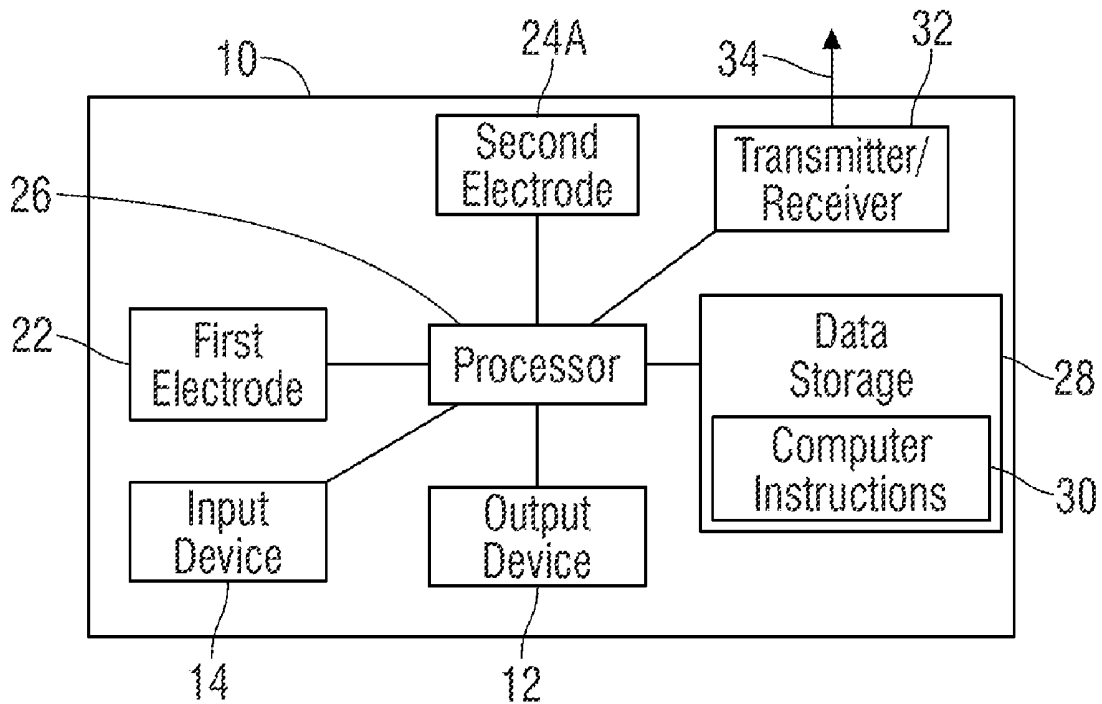
(22) Filed: **Jun. 18, 2013**

**Related U.S. Application Data**

(63) Continuation-in-part of application No. 12/320,151, filed on Jan. 20, 2009, now Pat. No. 8,467,860.

**Publication Classification**

(51) **Int. Cl.**  
*A61B 5/0404* (2006.01)  
*A61B 5/04* (2006.01)  
*A61B 5/0432* (2006.01)  
*A61B 5/044* (2006.01)



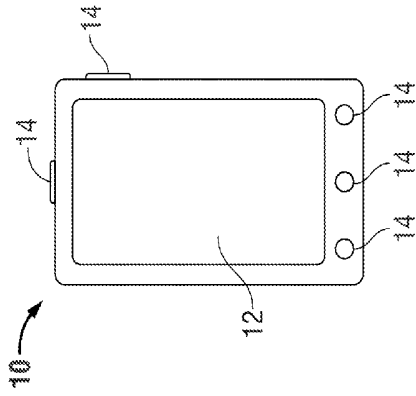


FIG. 1B

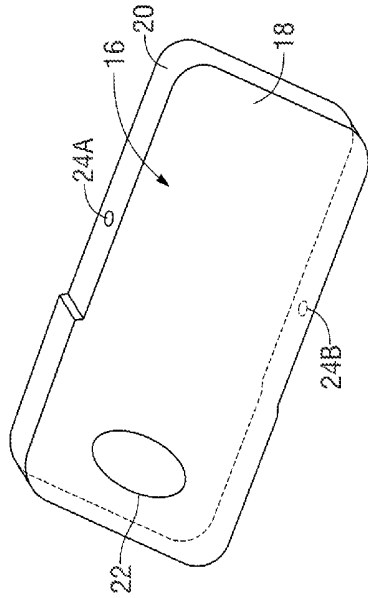


FIG. 1A

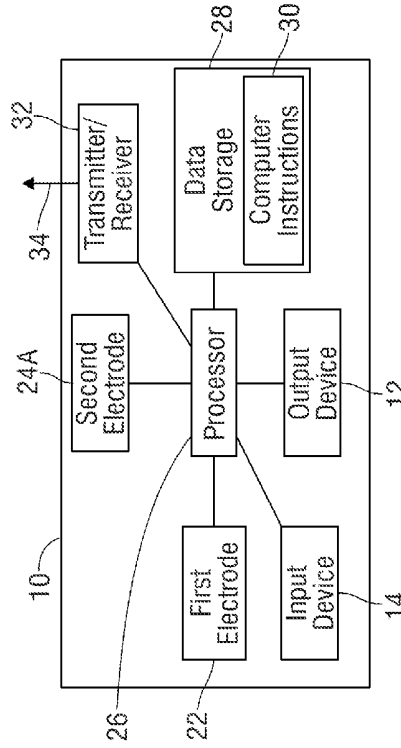


FIG. 2

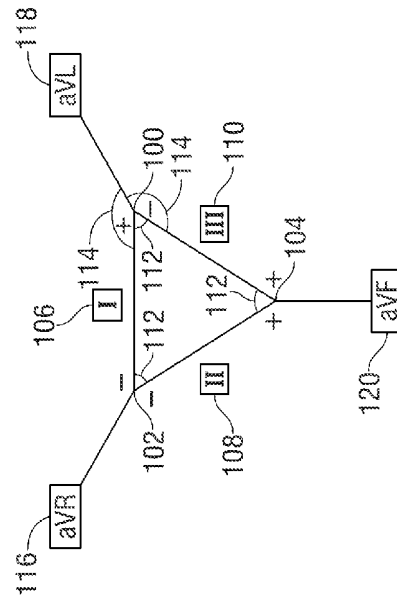
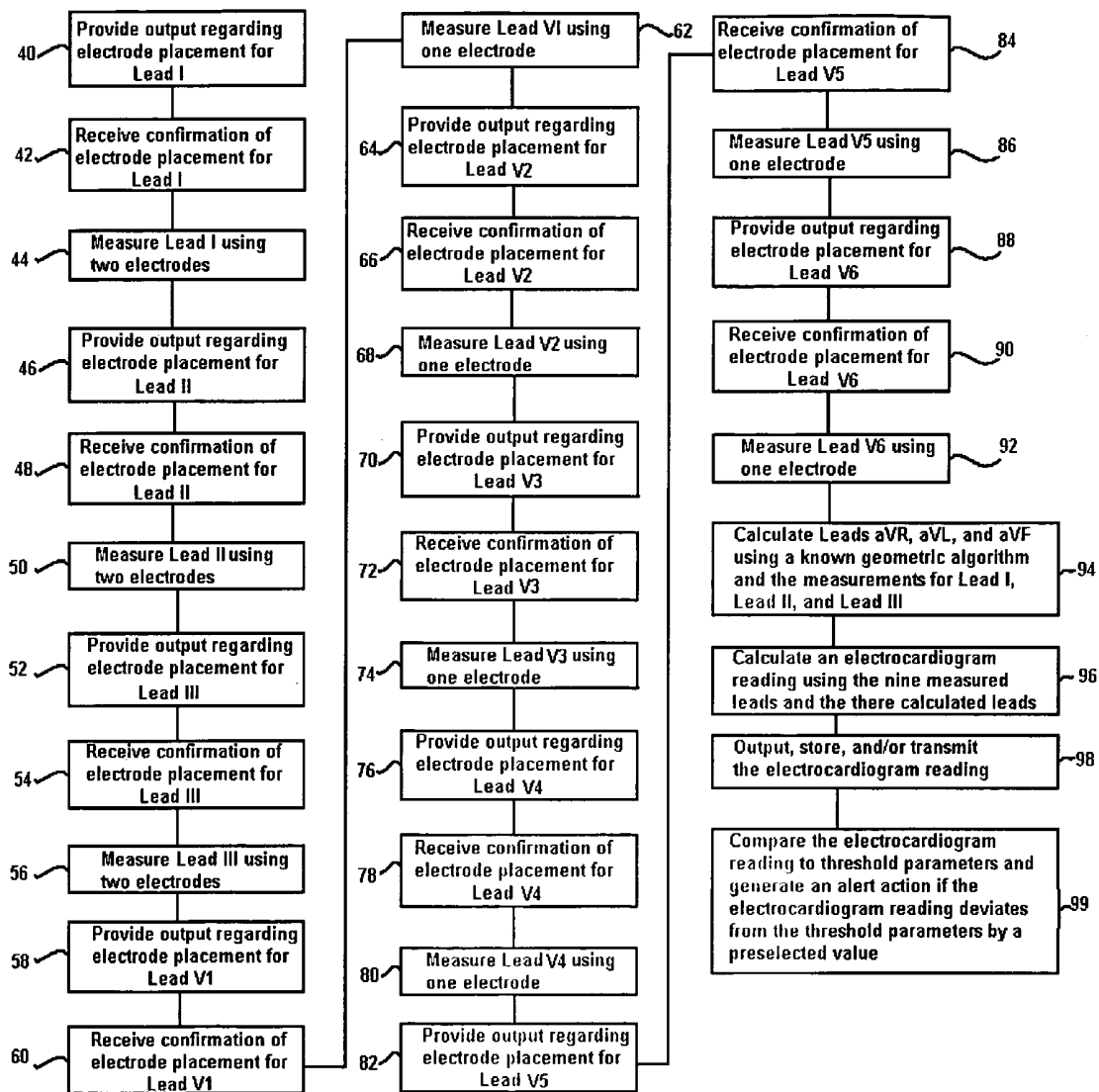


FIG. 4

Figure 3



## PORTABLE SYSTEM AND METHOD FOR MONITORING OF A HEART AND OTHER BODY FUNCTIONS

### CROSS-REFERENCE TO RELATED APPLICATIONS

[0001] The present application is a continuation-in-part application that claims priority to the co-pending U.S. application for patent having the Ser. No. 12/320,151, filed Jan. 20, 2009, which is incorporated by reference in its entirety herein.

### FIELD

[0002] The present embodiments relate, generally, to portable systems and methods for monitoring of a user's heart activity, usable for medical evaluation, health awareness, emergency response, and/or other related purposes. Specific embodiments can include devices, methods, and systems for adapting a pre-existing portable device, such as a cellular telephone or portable computer, to acquire twelve lead electrocardiograms and/or other usable data from an individual for storage and/or transmission, e.g., for immediate or future response and/or evaluation.

### BACKGROUND

[0003] Conventional medical equipment for obtaining a complete, twelve-lead electrocardiogram reading from an individual is typically restricted to use in a hospital or other medical setting. Such equipment is normally bulky and requires use of at least nine wired electrodes, placed at precise locations on the individual's body, that communicate with a central processing machine, to obtain measurements used to construct the electrocardiogram. Such equipment has not been suitable for continuous monitoring of an individual, or discrete instances of monitoring an individual in a non-medical setting, as the equipment is not readily portable, and precise placement of electrodes (e.g., by trained medical personnel) is necessary to ensure the accuracy of the readings obtained.

[0004] Attempts have been made to create portable means for obtaining electrocardiogram readings, specifically useful for monitoring individuals with potential heart conditions outside of a medical facility. However, these portable devices are typically limited to two or three sensors, which measure heart rate, rhythm, and similar conditions, then construct an electrocardiogram waveform using artificial algorithmic modeling processes. Electrocardiograms obtained in this manner are not as accurate nor as complete as a twelve-lead electrocardiogram.

[0005] As such, a twelve-lead electrocardiogram is specifically intended for use as a diagnostic measurement, which can detect subtle conditions, among other uses. Electrocardiograms obtained using a reduced number of sensors and readings, and numerous mathematical extrapolations, do not obtain QRS-ST-T waveforms with complete accuracy and are typically useful only for determining cardiac rate and rhythm, and possibly the immediate presence of highly obvious symptoms, such as an emergent cardiac event that is currently occurring.

[0006] A need exists for a portable heart monitoring system usable to monitor the heart activity of a user in a continuous manner or through discrete instances, to obtain a complete, twelve-lead electrocardiogram reading, using existing por-

table devices commonly available to most users, such as cellular telephones or portable computers. Portable devices can conveniently be used to store, analyze, and/or transmit readings (e.g., for analysis by remote medical personnel).

[0007] A need also exists for a portable heart monitoring system that can be used to obtain an accurate, twelve-lead electrocardiogram reading by a user of the system (e.g., non-medical personnel), or by a third party in the presence of the user (e.g., if a user is physically or medically unable to make use of the system). A portable system able to continuously or discretely obtain a complete and accurate, twelve-lead electrocardiogram reading would be of significant benefit to individuals having suspected and/or potential heart conditions, which require that the individual be monitored over a lengthy period of time to diagnose the presence or absence of such conditions.

[0008] A further need exists for a portable heart monitoring system usable to continuously or periodically monitor a mobile user, such as during athletic events and other instances of physical activity, that can be accessible at any time to obtain the measured data in a variety of output formats.

[0009] A need also exists for a portable heart monitoring system that can coordinate data between a centralized database, medical facilities, physicians, insurance providers, and/or other similar individuals and organizations for streamlining the diagnosis, care, and treatment of an individual.

[0010] Additionally, a need exists for a portable heart monitoring system usable to detect a heart attack or similar emergency condition that exceeds a predetermined safe threshold, and automatically and wirelessly contacting appropriate medical, insurance, and/or emergency response personnel for responding to the user at a specific location.

[0011] A further need exists for a portable heart monitoring system able to make electrocardiogram technology widely available for screening of a larger segment of the population (e.g., school-aged children) for potentially serious cardiac abnormalities, independent of the logistical and economic barriers that currently make widespread electrocardiogram screening economically unfeasible.

[0012] Embodiments usable within the scope of the present disclosure meet these needs.

### SUMMARY

[0013] Embodiments usable within the scope of the present disclosure relate, generally, to systems and methods usable to monitor heart activity of a user. Such systems can include a portable device having a processor, data storage, a transmitter, an input device, and an output device. For example, a cellular telephone, a portable computer, or a similar portable device could be used in one or more embodiments. A cellular telephone, by way of example, includes a processor, data storage (integral (e.g., built-in), removable (e.g., an SD card or similar media), and/or remote (e.g., network-based and/or "cloud" storage), one or more types of transmitters (cellular, wifi, Bluetooth, etc.), one or more types of input devices (touchscreen, keyboard, buttons, microphone, etc.), and one or more types of output devices (speakers, lights, display screen, etc.)

[0014] A first electrode can be positioned on a first portion of the portable device, while a second electrode is positioned on a second portion of the device, each electrode being usable to individually or simultaneously contact a user and receive signals therefrom. In an embodiment, a first electrode could

be positioned on the back surface of a cellular telephone or similar device, while a second electrode is positioned on a side or front surface thereof, such that neither electrode interferes with the display, input, and/or output devices of the portable device, while both electrodes can comfortably contact different portions of a user's body. While embodiments can include electrodes that are integral with and/or otherwise built into a portable device, other embodiments can include a case, cover, attachment, or other type of separate device having electrodes associated therewith, such that engagement of the case, cover, and/or attachment with the portable device enables transmission of information between the electrodes and the portable device.

**[0015]** The first and second electrodes can each be configured with a respective impedance, such as through a difference in size (e.g., the second electrode could be smaller than the first), introduction of a resistance in series with respect to the lesser electrode, or other means, such that when desired, the second electrode can selectively be caused to act as an indifferent electrode. For example, when measuring a bipolar lead, it is typically desirable to measure the difference across two electrodes that contact respective portions of a user's body; however when measuring a precordial lead, it is normally desired to measure the reading obtained using a single electrode, while one or more other electrode(s) function as an indifferent electrode.

**[0016]** Computer instructions (e.g., software) in the data storage and/or otherwise accessible by the processor are usable to receive readings from the first and second electrodes, and calculate a lead value using the reading from one or both electrodes. As described above, calculation of a bipolar lead typically involves measuring the difference across two electrodes, while calculation of a precordial lead involves measuring a reading from a single electrode.

**[0017]** To facilitate proper positioning of the electrodes, computer instructions can further cause the processor to provide instructional information relating to the placement of the electrodes using the output device. By way of example, speakers on a cellular telephone, portable computer, or similar portable device can be used to provide audible instructions. Alternatively or additionally, a display screen can be used to provide visual instruction (e.g., a picture or video showing proper positioning of the electrodes.) In further embodiments, signals received from the electrodes can be compared with expected threshold values to determine proper positioning thereof, and/or tactile/positional sensors of the portable device could be used for such a purpose. The computer instructions can further enable receipt of confirmation from the input device to indicate that the portable device has been positioned. In an embodiment, the electrodes and/or similar detection components can have the ability to acquire readings from a plurality of locations on a user when placed at a single position, such that a plurality of bipolar and precordial leads can be acquired after positioning the portable device a single time.

**[0018]** One or more extrapolated leads can be calculated using the measured lead values. For example, augmented leads can be determined using measured bipolar leads and a known geometric algorithm/relationship. Alternatively, augmented leads can be calculated directly (e.g., using a first electrode as a positive electrode and one or more other electrodes as a negative electrode). The measured bipolar, precordial, and extrapolated leads can be used to calculate an electrocardiogram for storage (e.g., within the data storage of the

portable device or remote therefrom) and/or transmission (e.g., to a medical facility or remote storage for immediate or future analysis). In an embodiment, the electrocardiogram can be output by the portable device. Measured parameters can be compared with standard and/or preselected values, such that deviation from standard values that exceeds a threshold can trigger an alert action. Alert actions can include visible, audible, and/or tactile indicia provided by the portable device, automatic transmission of data to remote facilities (e.g., medical facilities), automatic contact of emergency personnel, and/or other similar actions. The threshold parameters can be general, or specific to a user, depending on any known or suspected heart conditions or other medical conditions of the user. Customized threshold parameters specific to a patient can be provided and/or set by a physician, a technician, or another medical provider, technologist, and/or technician.

**[0019]** Embodiments usable within the scope of the present disclosure can thereby incorporate use of a portable processor, which eliminates the need for bulky and expensive medical monitoring and processing equipment, while simultaneously providing the user with the conventional telephone, e-mail, web browsing, Global Positioning System, text messaging, and music storage and playback capabilities of a typical portable (smart) telephone or computer. The built-in capabilities of such a portable device can also be used to locate a user (e.g., during an emergent situation), transmit and receive data, alerts, and other communications (e.g., via phone, e-mail, text message, etc.), and the like, which can streamline an emergency response, medical treatment, and/or insurance processing, while also facilitating the storage, processing, transmission, and maintenance of electrocardiogram-related data.

#### BRIEF DESCRIPTION OF THE DRAWINGS

**[0020]** In the detailed description of the embodiments presented below, reference is made to the accompanying drawings, in which:

**[0021]** FIG. 1A depicts a rear view of an embodiment of a portable device usable within the scope of the present disclosure.

**[0022]** FIG. 1B depicts a front view of the portable device of FIG. 1A.

**[0023]** FIG. 2 depicts a diagram illustrating an embodiment of a configuration of components within the portable device of FIG. 1A.

**[0024]** FIG. 3 depicts an embodiment of a method usable within the scope of the present disclosure.

**[0025]** FIG. 4 depicts a geometric relationship between bipolar and augmented leads of an electrocardiogram.

**[0026]** The present embodiments are detailed below with reference to the listed Figures.

#### DETAILED DESCRIPTION OF THE EMBODIMENTS

**[0027]** Before explaining the present embodiments in detail, it is to be understood that the embodiments are not limited to the particular descriptions and that the embodiments can be practiced or carried out in various ways.

**[0028]** An electrocardiogram is a measurement of a heart's electrical signal, depicted using P-QRS-T waveforms (which can be used to determine P-R and Q-T intervals and ST segments), obtained by measuring the detected signal of the

heart from a variety of angles. Conventional medical equipment used to obtain an electrocardiogram reading requires at least nine electrodes or similar sensors to be attached to a patient's limbs, and precisely positioned at six locations on a user's chest.

**[0029]** A complete electrocardiogram is formed by calculating twelve lead values. Three bipolar leads (Leads I, II, and III) are measured by calculating the difference in signal across two sensors, using both a positive and negative electrode. Lead I is typically determined through the difference in the readings obtained by electrodes on a patient's left arm and right arm. Lead II is typically determined through the difference in readings obtained by electrodes on the patient's left leg and left arm. Lead III is typically determined through the difference in the readings obtained by electrodes on the patient's left leg and right arm.

**[0030]** Three augmented voltage leads (Leads aVR, aVL, and aVF—which are abbreviations for augmented voltage right arm, left arm, and foot) are unipolar leads measured using a single electrode on a patient's limb as a positive electrode, and a ground electrode, termed the central terminal of Wilson, created using two other electrodes. The aVR lead is determined by using an electrode on the patient's right arm as a positive electrode, and those on the patient's left arm and left leg as negative electrodes. The aVL lead is determined by using an electrode on the patient's left arm as a positive electrode, and those on the patient's right arm and left leg as negative electrodes. The aVF lead is determined by using an electrode on the patient's left leg as a positive electrode, and those on the patient's right and left arms as negative electrodes. Because a known geometric relationship between the bipolar and augmented leads exists, it is possible to mathematically calculate the augmented lead values using the measured bipolar lead values, and/or to calculate the bipolar lead values using the measured augmented lead values.

**[0031]** Six precordial leads (termed V1 through V6) are positive unipolar leads, measured using single electrodes placed on a patient's chest. A first electrode is positioned to the right of the sternum, over the fourth intercostal space; a second electrode is positioned horizontally even with the first electrode, to the left of the user's sternum, over the fourth intercostal space; a third electrode is positioned below and to the right of the second electrode, over the fifth intercostal space; a fourth electrode is positioned at the midpoint between the second and third electrodes; a fifth electrode is positioned horizontally even with the third electrode, at the left anterior axillary line; and a sixth electrode is positioned horizontally even with the third and fifth electrodes, at the left midaxillary line underneath the patient's left arm. Each electrode obtains one of leads V1 through V6. Leads V1 and V2 observe the right side of the heart, facing the user's back. Leads V3 and V4 observe the interventricular septum, facing the user's back. Leads V5 and V6 observe the left side of the heart, facing the user's back.

**[0032]** As such, the act of obtaining an electrocardiogram reading requires an abundance of equipment, which must be precisely positioned and utilized by trained medical personnel. While simpler alternatives have been attempted, the absence of precisely-positioned equipment by trained personnel requires numerous mathematical models and extrapolations to be used to calculate probable values for leads that are not measured, hindering the accuracy and utility of the data. Embodiments usable within the scope of the present disclosure relate to systems and methods that can be capable of

acquiring an accurate electrocardiogram reading while reducing the equipment and training necessary to do so.

**[0033]** Referring now to FIGS. 1A and 1B, an embodiment of an exemplary device usable with embodiments of the present systems and methods is depicted. Specifically, FIG. 1B depicts a front view of the device, while FIG. 1A depicts a rear view thereof. The embodied device is illustrated as a cellular telephone (10); however, it should be understood that embodiments usable within the scope of the present disclosure can be used with any generally portable device (e.g., a handheld or portable computer, a laptop, or other similar devices) having a processor, integral, removable, and/or remote data storage, and some manner of integral, removable, and/or remote input and output devices. The illustrated cellular telephone (10) can include any manner of "smart" phone, and is shown having a touch screen (12), which can function both as an output device (e.g., a display), and an input device, and a plurality of buttons (14), shown including physical and/or capacitive buttons on the front surface of the phone (10), and buttons on the side and top surfaces thereof (e.g., volume controls, power buttons, etc.). Other type of phones, computers and/or similar devices, having keyboards, switches, and/or other types of input devices can also be used without departing from the scope of the present disclosure. The depicted telephone (10) can also include a microphone and speakers (not visible in FIGS. 1A and 1B), usable as input and/or output devices (e.g., through use of speech recognition and/or delivery software, text-to-speech/speech-to-text programs, or other similar means).

**[0034]** The depicted cellular telephone (10) is further shown having a case and/or cover (16) secured over the rear and side surfaces thereof. The depicted case and/or cover (16) includes a first electrode (22) on the rear surface (18) thereof, and is also shown having two locations along the side surface (20) suitable for placement of a second electrode (24A, 24B). The first electrode (22) is shown being larger in size than either second electrode (24A, 24B), such that when used concurrently, the first and second electrodes will have a difference in impedance that selectively enables one of the electrodes to act as an indifferent electrode. In an embodiment, a difference in impedance between the first and second electrodes could be generated through other means, such as use of electrical resistance and/or other internal components. It should be understood that while FIG. 1A depicts a single first electrode (22), and two possible locations for second electrodes (24A, 24B), embodiments usable within the scope of the present disclosure can include only a single second electrode, more than two second electrodes, and/or more than one first electrode without departing from the scope of the present disclosure. Additionally, while FIG. 1A depicts a case and/or cover (16) able to be engaged with a cellular telephone (10) in a manner that the electrodes (22, 24A, 24B) can communicate with the processor and/or other internal components of the telephone (10) (e.g., through engagement with USB, micro-USB, SD and/or other ports of the telephone (10), or comparable features in other types of devices), it should be understood that in various embodiments, the electrodes (22, 24A, 24B) could be integral with the telephone (10) (e.g., built-in), or separately engagable with the telephone (10) in the absence of a case or cover. Further, while FIG. 1A depicts a first electrode (22) on a back surface (18) of the telephone (10), and one or more second electrodes (24A, 24B) on a side surface (20) thereof to facilitate contacting the first and second electrodes with respective parts of a user's body, this

configuration and placement is merely exemplary, and any number of electrodes could be placed at any location on a portable device, as desired, without departing from the scope of the present disclosure.

**[0035]** Referring now to FIG. 2, a diagram illustrating an exemplary configuration of components within the portable telephone (10) is depicted. The diagram shows a processor (26) in communication with the first and second electrodes (22, 24A), and the output and input devices (12, 14), described previously. It should be understood that while FIG. 2 labels the input device with the reference numeral 14, representative of the buttons depicted in FIG. 1B, the touch screen shown in FIG. 1B could function as both an input device or an output device. Similarly, as described above, the portable telephone (10) could include a microphone (not shown) usable as an input device and speakers (not shown) usable as an output device.

**[0036]** The processor (26) is further shown in communication with data storage (28) containing computer instructions (30) usable to instruct the processor (26) to perform various functions describe above and below (e.g., receive data from the electrodes, store and retrieve data from the data storage, perform measurements, comparisons, analyses, communicate with the input and output devices, transmit and receive data using an associated transmitter, etc.) While FIG. 2 depicts the data storage (28) as fixed storage integrated within the portable telephone (10), it should be understood that embodiments usable within the scope of the present disclosure could include removable data storage (e.g., SD cards, etc.) and/or remote data storage (e.g., network-based and/or "cloud" storage). A transmitter/receiver (32) is also shown in communication with the processor (26), and is usable to send signals (34) to remote storage, remote facilities for analysis, etc., and to receive signals (e.g., alerts and information from remote facilities, output from remote processing of data, etc.)

**[0037]** The depicted portable device can be used to obtain an electrocardiogram reading through the following method, described below and illustrated in FIG. 3:

**[0038]** After initiating a program (e.g., an application or similar routine) to cause the processor (26) of the portable telephone (10) to begin a series of steps to obtain an electrocardiogram reading, in Step 40, the output device (12) can be used to provide instructions to a user regarding placement of the electrodes (22, 24A). For example, using audio instructions provided through speakers of the telephone (10) and/or a video illustration provided on the display screen (12), a user can be instructed to place the first electrode (22) into contact with the left arm and the second electrode (24A) into contact with the right arm. Typically, the portable telephone (10) can be gripped such that the user's right thumb contacts the second electrode (24A), while the user's left thumb can be placed on the first electrode (22). In Step 42, the user can use the input device (14) (e.g., a button, or the touch screen (12), or a vocal confirmation using a microphone (not shown) of the portable telephone (10)) to confirm that the electrodes (22, 24A) have been properly positioned. After receiving confirmation from the user, in Step 44, the difference between electrodes (22, 24A) can be measured to obtain Lead I of an electrocardiogram reading. If the reading obtained from the electrodes (22, 24A) indicates that the electrodes (22, 24A) are not properly positioned, Steps 40 and 42 can be repeated.

**[0039]** In a similar manner, in Step 46, the output device (12) can be used to provide instructions to a user regarding placement of the electrodes (22, 24A) suitable to acquire a

second bipolar lead. For example, using audio and/or video instructions, a user can be instructed to move the portable telephone (10) such that the first electrode (22) contacts the user's left leg (e.g., the thigh thereof), while the right arm (e.g., the thumb thereof) remains in contact with the second electrode (24A). In Step 48, confirmation from the user that the electrodes have been positioned can be provided using the input device (14). In Step 50, the difference between electrodes (22, 24A) can be measured to obtain Lead II of the electrocardiogram reading.

**[0040]** In Step 52, the output device (12) can be used to provide instructions to a user regarding placement of the electrodes (22, 24A) suitable to acquire a third bipolar lead. For example, using audio and/or video instructions, a user can be instructed to move the portable telephone (10) such that the first electrode (22) contacts the user's right leg (e.g., the thigh thereof), while the left arm (e.g., the thumb thereof) is placed in contact with the second electrode (24A). In Step 54, confirmation from the user that the electrodes have been positioned can be provided using the input device (14). In Step 56, the difference between electrodes (22, 24A) can be measured to obtain Lead III of the electrocardiogram reading.

**[0041]** In Step 58, the output device (12) can be used to provide instructions to a user regarding placement of the first electrode (22) suitable to acquire a first precordial lead. For example, using audio and/or video instructions, a user can be instructed to move the portable telephone (10) such that the first electrode (22) contacts the appropriate location along the precordium for measuring Lead V1. In Step 60, confirmation from the user that the first electrode (22) has been positioned can be provided using the input device (14). In Step 62, the reading from the first electrode (22) can be measured to obtain Lead V1 of the electrocardiogram reading. During this measurement, the difference in impedance between the first and second electrodes can cause the second electrode (22A) to act as an indifferent electrode.

**[0042]** In Steps 64, 70, 76, 82, and 88 the output device (12) can be used to provide instructions to a user regarding placement of the first electrode (22) suitable to acquire the remaining five precordial leads (Leads V2 through V6). For example, using audio and/or video instructions, a user can be instructed to move the portable telephone (10) such that the first electrode (22) contacts the appropriate location along the precordium for measuring Leads V2 through V6, respectively. In Steps 66, 72, 78, 84, and 90 confirmation from the user that the first electrode (22) has been positioned can be provided using the input device (14). In Steps 68, 74, 80, 86, and 92, the reading from the first electrode (22) can be measured to obtain Leads V2 through V6, respectively of the electrocardiogram reading. During these measurements, the difference in impedance between the first and second electrodes can cause the second electrode (22A) to act as an indifferent electrode.

**[0043]** In an embodiment, the measurement of leads V1 through V6 can include recording heart sounds of the user, e.g., using the microphone and/or other input devices of the portable telephone (10), and/or using the first electrode (22) and/or other electrodes (e.g., the second electrode (22A) and/or other additional electrodes engaged with the portable device), through placement thereof into contact with the user's chest and/or in close proximity thereto, such that heart sounds can be detected and recorded. Detected heart sounds can be stored on the portable device, transmitted for analysis and/or storage, etc. Incorporation of heart sounds can provide additional information beyond what could normally be dis-

covered through an electrocardiogram reading alone, such as the detection of pericardial friction, a systolic ejection murmur, aortic stenosis, or similar conditions that can be detected through analysis of heart sounds, especially when analyzed concurrently with an electrocardiogram reading.

**[0044]** In Step 94, the processor (26) can be used to calculate a plurality of extrapolated leads (e.g., the augmented leads aVR, aVL, and aVF) using a known geometric relationship between the bipolar leads (Leads I, II, and III) and the augmented leads. For example, FIG. 4 depicts the geometric relationship between the bipolar leads—Lead I (106), Lead II (108), and Lead III (110)—and the augmented leads—Lead aVR (116), Lead aVL (118), and Lead aVF (120). Reference point (100) represents an electrode placed in contact with a user's left arm, reference point (102) represents an electrode placed in contact with a user's right arm, and reference point (104) represents an electrode placed in contact with a user's leg.

**[0045]** To acquire a reading for Lead I (106), electrode (100) is used as a positive electrode, while electrode (102) is used as a negative electrode. To acquire a reading for Lead II (108), electrode (104) is used as a positive electrode, while electrode (102) is used as a negative electrode. To acquire a reading for Lead III (110), electrode (104) is used as a positive electrode, while electrode (100) is used as a negative electrode. The positioning of the electrodes (100, 102, 104) and acquisition of the bipolar leads (106, 108, 110) defines an equilateral triangle having internal angles (112) of approximately sixty degrees. Thus, each of the augmented leads (116, 118, 120), which could normally be measured using one electrode as a positive electrode while the other two electrodes are negative electrodes, can also be calculated mathematically, since the exterior angles (114) defined between the augmented leads and the bipolar leads are known to have a measurement of 150 degrees. Therefore, in Step 94, a known algorithm can be applied by the processor (26) to compute three augmented lead values (aVR, aVL, and aVF) using the three bipolar lead values (I, II, and III).

**[0046]** In Step 96, each of the measured bipolar leads, precordial leads, and augmented leads can be used to form an electrocardiogram reading. In Step 98, the electrocardiogram reading can be output (e.g., using the display screen), stored in the data storage of the portable device, transmit to a remote location (e.g., a medical facility for immediate or future analysis), or any combinations thereof. Optionally, in Step 99, the measured electrocardiogram reading can be compared with one or more threshold parameters to determine whether any deviations or factors exist that would cause an alert to be generated. Alert actions can include visible, audible, and/or tactile indicators provided by the portable device and/or at a remote location, an immediate analysis of the electrocardiogram reading by remote medical personnel, the automatic contact of emergency response personnel (e.g., using location features of the portable device, such as GPS or cellular signals, to direct the emergency personnel to the user), the automatic contact of family members and/or medical personnel, and/or other similar appropriate responses.

**[0047]** While FIG. 3 illustrates one exemplary method by which a portable device can be used to acquire an electrocardiogram reading, it should be understood that technological capabilities of the portable device, the electrodes, the software, the transmitter/receiver, and/or other features described herein can enable other embodied methods to be practiced. For example, in an embodiment, electrodes that are able to

obtain measurements without directly contacting a user can be used. In such embodiments, an electrode could be placed in a single location proximate to a user's chest, such that the electrode could acquire information sufficient to determine multiple precordial leads, and in an embodiment, all six precordial leads (Leads V1 through V6). As such, all of Steps 58 through 92, shown in FIG. 3, could be performed using only three steps: providing output regarding positioning of the first electrode; receiving input confirming positioning thereof; and measuring each of leads V1 through V6 using the first electrode. In a similar manner, an electrode could be placed in a single location such that the electrode could acquire information sufficient to determine multiple precordial and/or bipolar leads. In other embodiments, an electrode could acquire multiple leads in a single step, e.g., as it is moved across a user's chest. In such embodiments, it may be unnecessary to provide instruction to a user and receive user confirmation before recording each lead measurement, as in an embodiment, a user could position the portable device once and provide a confirmation that the device has been positioned, then the device could acquire multiple leads.

**[0048]** Embodiments usable within the scope of the present disclosure can thereby incorporate use of a portable device that is usable to obtain a twelve-lead electrocardiogram reading, thereby eliminating the need for bulky and expensive medical monitoring and processing equipment by taking advantage of the processing, transmitting, storage, and input/output capabilities of an existing cellular telephone, portable computer, or similar device. Embodiments can further enable a method that can be performed easily by a single individual, to obtain an electrocardiogram for that individual, or by a third party in the event that an individual is incapacitated or otherwise unable to properly position the portable device. Embodiments can also incorporate use of sensors that may not require contact with a user's body, and/or that can acquire multiple lead values from a single position, thereby increasing the ease and efficiency of the process.

**[0049]** While these embodiments have been described with emphasis on the embodiments, it should be understood that within the scope of the appended claims, the embodiments might be practiced other than as specifically described herein.

What is claimed is:

1. A portable system for monitoring heart activity of a user, the system comprising:
  - a portable device comprising a processor, data storage, a transmitter, an input device, and an output device;
  - a first electrode positioned on a first portion of the device, wherein the first electrode comprises a first impedance;
  - a second electrode positioned on a second portion of the device, wherein the second electrode comprises a second impedance configured to cause the second electrode to selectively perform as an indifferent electrode;
  - computer instructions for instructing the processor to receive a reading from the first electrode, receive a reading from the second electrode, calculate a lead value using the reading from the first electrode, the reading from the second electrode, or combinations thereof, and store the lead value;
  - computer instructions for providing instructional information relating to positioning of the first electrode and the second electrode using the output device and receiving confirmation of the positioning of the first electrode and the second electrode from the input device;

computer instructions for calculating at least one extrapolated lead using a plurality of stored lead values;

computer instructions for calculating an electrocardiogram using the plurality of stored lead values and said at least one extrapolated lead for storage, transmission, or combinations thereof, transmitting the plurality of stored lead values and said at least one extrapolated lead for calculation of the electrocardiogram, or combinations thereof; and

computer instructions for outputting the electrocardiogram, information relating to the electrocardiogram, or combinations thereof using the output device.

2. The system of claim 1, wherein the portable device comprises a cellular telephone.

3. The system of claim 2, further comprising a case secured over the cellular telephone, wherein the case comprises a front side, a back side, and a side surface, and wherein the first electrode is positioned on the back side and the second electrode is positioned on the side surface or the front side.

4. The system of claim 1, wherein a difference between the first impedance and the second impedance is configured to cause the second electrode to act as an indifferent electrode when the first electrode is placed in contact with a precordial site on a user.

5. The system of claim 4, wherein the second electrode is smaller than the first electrode, thereby creating the difference between the first impedance and the second impedance.

6. The system of claim 4, wherein the second electrode comprises a resistance greater than that of the first electrode, thereby creating the difference between the first impedance and the second impedance.

7. The system of claim 1, wherein the computer instructions for instructing the processor to calculate a lead value using the reading from the first electrode, the reading from the second electrode, or combinations thereof instruct the processor to calculate a first bipolar lead, a second bipolar lead, and a third bipolar lead by measuring a difference between the reading from the first electrode and the reading from the second electrode to form the plurality of stored lead values.

8. The system of claim 7, wherein the computer instructions for instructing the processor to calculate a lead value using the reading from the first electrode, the reading from the second electrode, or combinations thereof further instruct the processor to calculate a first precordial lead, a second precordial lead, a third precordial lead, a fourth precordial lead, a fifth precordial lead, and a sixth precordial lead, using the reading from the first electrode while the second electrode functions as an indifferent electrode.

9. The system of claim 7, wherein the computer instructions for calculating at least one extrapolated lead using a plurality of stored lead values; instruct the processor to calculate a first augmented lead, a second augmented lead, and a third augmented lead using a known geometric algorithm, the first bipolar lead, the second bipolar lead, and the third bipolar lead.

10. The system of claim 8, wherein the output device comprises a speaker and a display screen, and wherein the computer instructions for providing instructional information using the output device instruct the processor to output audio instruction regarding placement of the first electrode and the second electrode using the speaker and a visual illustration regarding placement of the first electrode and the second electrode using the display screen.

11. A method for monitoring heart activity of a user, the method comprising the steps of:

providing a portable device comprising a processor, data storage, a transmitter, an input device, an output device, a first electrode positioned on a first portion of the device, and a second electrode positioned on a second portion of the device, wherein the first electrode comprises a first impedance, and wherein the second electrode comprises a second impedance configured to cause the second electrode to selectively perform as an indifferent electrode;

using the output device to provide instruction regarding a first position of the first electrode and the second electrode configured to acquire a first bipolar lead;

receiving a first confirmation from the input device;

calculating the first bipolar lead using information obtained from the first electrode and the second electrode;

using the output device to provide instruction regarding a second position of the first electrode and the second electrode configured to acquire a second bipolar lead;

receiving a second confirmation from the input device;

calculating the second bipolar lead using information obtained from the first electrode and the second electrode;

using the output device to provide instruction regarding a third position of the first electrode and the second electrode configured to acquire a third bipolar lead;

receiving a third confirmation from the input device;

calculating the third bipolar lead using information obtained from the first electrode and the second electrode;

using the output device to provide instruction regarding a plurality of additional positions of the first electrode configured to acquire a plurality of precordial leads;

receiving a plurality of respective confirmations from the input device;

calculating the plurality of precordial leads using information obtained from the first electrode while the second electrode functions as an indifferent electrode;

calculating a plurality of augmented leads using a known geometric algorithm, the first bipolar lead, the second bipolar lead, and the third bipolar lead;

calculating an electrocardiogram using the first bipolar lead, the second bipolar lead, the third bipolar lead, the plurality of precordial leads, and the plurality of augmented leads; and

transmitting the electrocardiogram, storing the electrocardiogram, outputting the electrocardiogram, or combinations thereof.

12. The method of claim 11, wherein the output device comprises a speaker and a display screen, and wherein the steps of using the output device to provide instruction comprise outputting audio instruction regarding placement of the first electrode and the second electrode using the speaker and a visual illustration regarding placement of the first electrode and the second electrode using the display screen.

13. The method of claim 11, wherein the input device comprises a button, a keyboard, a touchscreen, or combinations thereof, and wherein the steps of receiving confirmations comprise receiving a signal from the button, the keyboard, the touchscreen, or combinations thereof indicating that the input device has been actuated.

**14.** The method of claim **11**, wherein the input device comprises a microphone, and wherein the steps of receiving confirmations comprise using the microphone to receive an audible signal.

**15.** The method of claim **11**, wherein the steps of using the output device to using the output device to provide instruction regarding the plurality of additional positions, receiving the plurality of respective confirmations, and calculating the plurality of precordial leads comprises:

using the output device to provide instruction regarding a fourth position of the first electrode to acquire a first precordial lead;

receiving a fourth confirmation from the input device;

calculating the first precordial lead using information obtained from the first electrode;

using the output device to provide instruction regarding a fifth position of the first electrode to acquire a second precordial lead;

receiving a fifth confirmation from the input device;

calculating the second precordial lead using information obtained from the first electrode;

using the output device to provide instruction regarding a sixth position of the first electrode to acquire a third precordial lead;

receiving a sixth confirmation from the input device;

calculating the third precordial lead using information obtained from the first electrode;

using the output device to provide instruction regarding a seventh position of the first electrode to acquire a fourth precordial lead;

receiving a seventh confirmation from the input device;

calculating the fourth precordial lead using information obtained from the first electrode;

using the output device to provide instruction regarding a eighth position of the first electrode to acquire a fifth precordial lead;

receiving a eighth confirmation from the input device;

calculating the fifth precordial lead using information obtained from the first electrode;

using the output device to provide instruction regarding a ninth position of the first electrode to acquire a sixth precordial lead;

receiving a ninth confirmation from the input device; and

calculating the sixth precordial lead using information obtained from the first electrode.

**16.** A method for monitoring heart activity of a user, the method comprising the steps of:

providing a portable device comprising a processor, data storage, a transmitter, an input device, an output device,

a first electrode positioned on a first portion of the device, and a second electrode positioned on a second portion of the device, wherein the first electrode comprises a first impedance, wherein the second electrode comprises a second impedance configured to cause the second electrode to selectively perform as an indifferent electrode, and wherein the first electrode, the second electrode, or combinations thereof is configured to acquire signals from a plurality of locations within a distance of the first electrode, the second electrode, or combinations thereof;

using the output device to provide instruction regarding a position of the first electrode and the second electrode configured to acquire a plurality of bipolar leads and a plurality of precordial leads;

receiving a confirmation from the input device;

calculating the plurality of bipolar leads using information obtained from the first electrode and the second electrode;

calculating the plurality of precordial leads using information obtained from the first electrode;

calculating a plurality of augmented leads using a known geometric algorithm and the plurality of bipolar leads;

calculating an electrocardiogram using the plurality of bipolar leads, the plurality of precordial leads, and the plurality of augmented leads; and

transmitting the electrocardiogram, storing the electrocardiogram, outputting the electrocardiogram, or combinations thereof.

**17.** The method of claim **16**, wherein the output device comprises a speaker and a display screen, and wherein the step of using the output device to provide instruction comprises outputting audio instruction regarding placement of the first electrode and the second electrode using the speaker and a visual illustration regarding placement of the first electrode and the second electrode using the display screen.

**18.** The method of claim **16**, wherein the input device comprises a button, a keyboard, a touchscreen, or combinations thereof, and wherein the step of receiving confirmation comprises receiving a signal from the button, the keyboard, the touchscreen, or combinations thereof indicating that the input device has been actuated.

**19.** The method of claim **16**, wherein the input device comprises a microphone, and wherein the step of receiving confirmation comprises using the microphone to receive an audible signal.

\* \* \* \* \*

专利名称(译)	用于监测心脏和其他身体功能的便携式系统和方法		
公开(公告)号	<a href="#">US20130345540A1</a>	公开(公告)日	2013-12-26
申请号	US13/920137	申请日	2013-06-18
[标]申请(专利权)人(译)	SALAZAR ALFRED 阿尔梅达HILARY F DY PETER大号 SALAZAR亚历山大		
申请(专利权)人(译)	拉萨尔, ALFRED 阿尔梅达HILARY F. DY, PETER L. 拉萨尔, 亚历山大		
当前申请(专利权)人(译)	艾尔弗雷德萨拉查		
[标]发明人	SALAZAR ALFRED ALMEIDA HILARY F DY PETER L SALAZAR ALEXANDRIA		
发明人	SALAZAR, ALFRED ALMEIDA, HILARY F. DY, PETER L. SALAZAR, ALEXANDRIA		
IPC分类号	A61B5/0404 A61B5/04 A61B5/0432 A61B5/044 A61B5/0402 A61B5/0408 A61B5/00		
CPC分类号	A61B5/0404 A61B5/04085 A61B5/04012 A61B5/6898 A61B5/044 A61B5/7405 A61B5/04028 A61B5/0432 A61B5/0006 A61B5/749 A61B5/6804		
其他公开文献	US9144388		
外部链接	<a href="#">Espacenet</a> <a href="#">USPTO</a>		

摘要(译)

用于获得心电图读数的便携式系统和方法包括具有不同阻抗的第一和第二电极的便携式装置。计算机指令指示便携式设备的处理器输出与电极的放置有关的指令信息，接收定位的确认，以及使用来自第一电极，第二电极或其组合的读数计算引线值，使得多个双极和可以测量心前导联。可以使用已知的几何关系和双极引线测量来外推增强引线。可以从导联测量计算心电图读数，然后输出，存储，传输或其组合。如果心电图读数偏离所选阈值参数，则可以生成警报响应。

