



US009744366B2

(12) **United States Patent**  
**Sanghera et al.**

(10) **Patent No.:** **US 9,744,366 B2**  
(45) **Date of Patent:** **\*Aug. 29, 2017**

(54) **SENSING VECTOR SELECTION IN A CARDIAC STIMULUS DEVICE WITH POSTURAL ASSESSMENT**

(58) **Field of Classification Search**  
USPC ..... 600/508-509  
See application file for complete search history.

(71) Applicant: **CAMERON HEALTH INC.**, St. Paul, MN (US)

(56) **References Cited**

(72) Inventors: **Rick Sanghera**, San Clemente, CA (US); **Venugopal Allavatam**, Maple Grove, MN (US)

U.S. PATENT DOCUMENTS

3,653,387 A 4/1972 Ceier  
3,710,374 A 1/1973 Kelly  
(Continued)

(73) Assignee: **CAMERON HEALTH, INC.**, St. Paul, MN (US)

FOREIGN PATENT DOCUMENTS

(\* ) Notice: Subject to any disclaimer, the term of this patent is extended or adjusted under 35 U.S.C. 154(b) by 0 days.

AU 2008213812 A1 8/2008  
AU 2008252063 A1 1/2009  
(Continued)

This patent is subject to a terminal disclaimer.

OTHER PUBLICATIONS

(21) Appl. No.: **15/150,771**

“Programming Guide Neurostimulators for Chronic Pain”, Medtronic, 2013.

(22) Filed: **May 10, 2016**

(Continued)

(65) **Prior Publication Data**

US 2016/0250488 A1 Sep. 1, 2016

*Primary Examiner* — Nicole F Johnson

(74) *Attorney, Agent, or Firm* — Seager, Tuft & Wickhem LLP

**Related U.S. Application Data**

(60) Continuation of application No. 14/812,029, filed on Jul. 29, 2015, now Pat. No. 9,357,969, which is a (Continued)

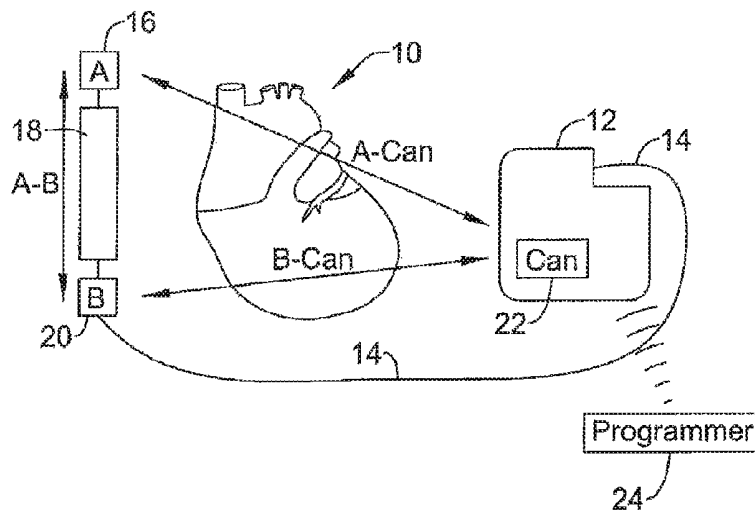
(57) **ABSTRACT**

Methods, implantable medical devices and systems configured to perform analysis of captured signals from implanted electrodes to identify cardiac arrhythmias. In an illustrative embodiment, signals captured from two or more sensing vectors are analyzed, where the signals are captured with a patient in at least first and second body positions. Analysis is performed to identify primary or default sensing vectors and/or templates for event detection.

(51) **Int. Cl.**  
**A61B 5/02** (2006.01)  
**A61B 5/04** (2006.01)  
(Continued)

(52) **U.S. Cl.**  
CPC ..... **A61N 1/37247** (2013.01); **A61B 5/042** (2013.01); **A61B 5/04011** (2013.01);  
(Continued)

**20 Claims, 14 Drawing Sheets**



**Related U.S. Application Data**

continuation of application No. 14/601,315, filed on Jan. 21, 2015, now Pat. No. 9,119,596, which is a continuation of application No. 14/307,756, filed on Jun. 18, 2014, now Pat. No. 8,965,530, which is a continuation of application No. 13/919,147, filed on Jun. 17, 2013, now Pat. No. 8,781,602, which is a continuation of application No. 13/491,529, filed on Jun. 7, 2012, now Pat. No. 8,483,843, which is a division of application No. 11/672,353, filed on Feb. 7, 2007, now Pat. No. 8,200,341.

(51) **Int. Cl.**

*A61N 1/372* (2006.01)  
*A61B 5/042* (2006.01)  
*A61B 5/11* (2006.01)  
*A61N 1/37* (2006.01)  
*A61N 1/39* (2006.01)  
*A61N 1/368* (2006.01)  
*A61B 5/00* (2006.01)  
*A61N 1/365* (2006.01)

(52) **U.S. Cl.**

CPC ..... *A61B 5/1116* (2013.01); *A61B 5/7221* (2013.01); *A61N 1/368* (2013.01); *A61N 1/37* (2013.01); *A61N 1/3702* (2013.01); *A61N 1/3704* (2013.01); *A61N 1/3925* (2013.01); *A61N 1/3956* (2013.01); *A61N 1/36535* (2013.01)

(56)

**References Cited**

U.S. PATENT DOCUMENTS

3,911,925 A 10/1975 Tillery, Jr.  
 4,030,509 A 6/1977 Heilman et al.  
 4,157,720 A 6/1979 Greatbatch  
 4,164,946 A 8/1979 Langer  
 4,184,493 A 1/1980 Langer et al.  
 4,191,942 A 3/1980 Long  
 4,210,149 A 7/1980 Heilman et al.  
 RE30,387 E 8/1980 Denniston, III et al.  
 4,223,678 A 9/1980 Langer et al.  
 4,248,237 A 2/1981 Kenny  
 4,254,775 A 3/1981 Langer  
 4,291,707 A 9/1981 Heilman et al.  
 4,300,567 A 11/1981 Kolenik et al.  
 4,314,095 A 2/1982 Moore et al.  
 4,375,817 A 3/1983 Engle et al.  
 4,402,322 A 9/1983 Duggan  
 4,407,288 A 10/1983 Langer et al.  
 4,424,818 A 1/1984 Doring et al.  
 4,450,527 A 5/1984 Sramek  
 4,548,209 A 10/1985 Wielders et al.  
 4,550,502 A 11/1985 Grayzel  
 4,567,900 A 2/1986 Moore  
 4,589,420 A 5/1986 Adams et al.  
 4,595,009 A 6/1986 Leinders  
 4,602,637 A 7/1986 Elmqvist et al.  
 4,603,705 A 8/1986 Speicher et al.  
 4,693,253 A 9/1987 Adams  
 4,727,877 A 3/1988 Kallok  
 4,750,494 A 6/1988 King  
 4,765,341 A 8/1988 Mower et al.  
 4,768,512 A 9/1988 Imran  
 4,779,617 A 10/1988 Whigham  
 4,800,883 A 1/1989 Winstrom  
 4,830,005 A 5/1989 Woskow  
 4,944,300 A 7/1990 Saksena  
 4,960,126 A 10/1990 Conlon et al.  
 5,044,374 A 9/1991 Lindemans et al.  
 5,105,810 A 4/1992 Collins et al.  
 5,105,826 A 4/1992 Smits et al.

5,109,842 A 5/1992 Adinolfi  
 5,129,392 A 7/1992 Bardy et al.  
 5,133,353 A 7/1992 Hauser  
 5,137,025 A 8/1992 Turner, II  
 5,144,946 A 9/1992 Weinberg et al.  
 5,184,616 A 2/1993 Weiss  
 5,191,901 A 3/1993 Dahl et al.  
 5,203,348 A 4/1993 Dahl et al.  
 5,215,081 A 6/1993 Ostroff  
 5,230,337 A 7/1993 Dahl et al.  
 5,255,692 A 10/1993 Neubauer et al.  
 5,261,400 A 11/1993 Bardy  
 5,271,411 A 12/1993 Ripley et al.  
 5,291,895 A 3/1994 McIntyre  
 5,299,119 A 3/1994 Kraf et al.  
 5,300,106 A 4/1994 Dahl et al.  
 5,313,953 A 5/1994 Yomtov et al.  
 5,331,966 A 7/1994 Bennett et al.  
 5,342,407 A 8/1994 Dahl et al.  
 5,366,496 A 11/1994 Dahl et al.  
 5,370,667 A 12/1994 Alt  
 5,376,103 A 12/1994 Anderson et al.  
 5,376,104 A 12/1994 Sakai et al.  
 5,385,574 A 1/1995 Hauser et al.  
 5,391,200 A 2/1995 KenKnight et al.  
 5,405,363 A 4/1995 Kroll et al.  
 5,411,031 A 5/1995 Yomtov  
 5,411,539 A 5/1995 Neisz  
 5,411,547 A 5/1995 Causey, III  
 5,413,591 A 5/1995 Knoll  
 5,423,326 A 6/1995 Wang et al.  
 5,431,693 A 7/1995 Schroepfel  
 5,439,485 A 8/1995 Mar et al.  
 5,441,185 A 8/1995 Dragos  
 5,441,518 A 8/1995 Adams et al.  
 5,447,521 A 9/1995 Anderson et al.  
 5,464,431 A 11/1995 Adams et al.  
 5,476,503 A 12/1995 Yang  
 5,501,702 A 3/1996 Plicchi et al.  
 5,509,923 A 4/1996 Middleman et al.  
 5,509,928 A 4/1996 Acken  
 5,531,765 A 7/1996 Pless  
 5,531,766 A 7/1996 Kroll et al.  
 5,534,019 A 7/1996 Paspas  
 5,534,022 A 7/1996 Hoffmann et al.  
 5,540,727 A 7/1996 Tockman et al.  
 5,558,098 A 9/1996 Fain  
 5,597,956 A 1/1997 Ito et al.  
 5,601,607 A 2/1997 Adams  
 5,603,732 A 2/1997 Dahl et al.  
 5,607,455 A 3/1997 Armstrong  
 5,618,287 A 4/1997 Fogarty et al.  
 5,620,477 A 4/1997 Pless et al.  
 5,643,328 A 7/1997 Cooke et al.  
 5,645,586 A 7/1997 Meltzer  
 5,658,317 A 8/1997 Haefner et al.  
 5,658,319 A 8/1997 Kroll  
 5,658,321 A 8/1997 Fayram et al.  
 5,674,260 A 10/1997 Weinberg  
 5,690,648 A 11/1997 Fogarty et al.  
 5,690,683 A 11/1997 Haefner et al.  
 5,697,953 A 12/1997 Kroll et al.  
 5,713,926 A 2/1998 Hauser et al.  
 5,755,738 A 5/1998 Kim et al.  
 5,766,226 A 6/1998 Pedersen  
 5,776,169 A 7/1998 Schroepfel  
 5,814,090 A 9/1998 Latterell et al.  
 5,827,326 A 10/1998 Kroll et al.  
 5,836,976 A 11/1998 Min et al.  
 5,843,132 A 12/1998 Ilvento  
 5,895,414 A 4/1999 Sanchez-Zambrano  
 5,904,705 A 5/1999 Kroll et al.  
 5,919,211 A 7/1999 Adams  
 5,919,222 A 7/1999 Hjelle et al.  
 5,925,069 A 7/1999 Graves et al.  
 5,935,154 A 8/1999 Westlund  
 5,941,904 A 8/1999 Johnston et al.  
 5,957,956 A 9/1999 Kroll et al.  
 5,987,352 A 11/1999 Klein et al.

(56)

## References Cited

## U.S. PATENT DOCUMENTS

5,999,853	A	12/1999	Stoop et al.	6,993,379	B1	1/2006	Kroll et al.
6,014,586	A	1/2000	Weinberg et al.	6,996,434	B2	2/2006	Marcovecchio et al.
6,016,442	A	1/2000	Hsu et al.	7,016,730	B2	3/2006	Ternes
6,026,325	A	2/2000	Weinberg et al.	7,020,523	B1	3/2006	Lu et al.
6,029,086	A	2/2000	Kim et al.	7,027,858	B2	4/2006	Cao et al.
6,044,297	A	3/2000	Sheldon et al.	7,027,862	B2	4/2006	Dahl et al.
6,058,328	A	5/2000	Levine et al.	7,031,764	B2	4/2006	Schwartz et al.
6,093,173	A	7/2000	Balceta et al.	7,039,459	B2	5/2006	Bardy et al.
6,095,987	A	8/2000	Shmulewitz et al.	7,039,463	B2	5/2006	Marcovecchio
6,115,628	A	9/2000	Stadler et al.	7,039,465	B2	5/2006	Bardy et al.
H0001905	H	10/2000	Hill	7,043,299	B2	5/2006	Erlinger et al.
6,128,531	A	10/2000	Campbell-Smith	7,062,329	B2	6/2006	Ostroff
6,144,866	A	11/2000	Miesel et al.	7,065,407	B2	6/2006	Bardy et al.
6,144,879	A	11/2000	Gray	7,065,410	B2	6/2006	Bardy et al.
6,148,230	A	11/2000	Kenknight	7,069,080	B2	6/2006	Bardy et al.
6,185,450	B1	2/2001	Seguine et al.	7,076,294	B2	7/2006	Bardy et al.
6,190,324	B1	2/2001	Kieval et al.	7,076,296	B2	7/2006	Rissmann et al.
6,236,882	B1	5/2001	Lee et al.	7,090,682	B2	8/2006	Sanders et al.
6,266,554	B1	7/2001	Hsu et al.	7,092,754	B2	8/2006	Bardy et al.
6,266,567	B1	7/2001	Ishikawa et al.	7,120,495	B2	10/2006	Bardy et al.
6,278,894	B1	8/2001	Salo et al.	7,120,496	B2	10/2006	Bardy et al.
6,280,462	B1	8/2001	Hauser et al.	7,130,689	B1	10/2006	Turcott
6,308,095	B1	10/2001	Hsu et al.	7,146,212	B2	12/2006	Bardy et al.
6,334,071	B1	12/2001	Lu	7,149,575	B2	12/2006	Ostroff et al.
6,345,198	B1	2/2002	Mouchawar et al.	7,167,747	B2	1/2007	Gunderson et al.
6,377,844	B1	4/2002	Graen	7,181,274	B2	2/2007	Rissmann et al.
6,381,493	B1	4/2002	Stadler et al.	7,181,281	B1	2/2007	Kroll
6,411,844	B1	6/2002	Kroll et al.	7,266,409	B2	9/2007	Gunderson
6,490,486	B1	12/2002	Bradley	7,330,760	B2	2/2008	Heruth et al.
6,493,579	B1	12/2002	Gilkerson et al.	7,366,569	B2	4/2008	Belalcazar
6,493,584	B1	12/2002	Lu	7,376,458	B2	5/2008	Palreddy et al.
6,496,715	B1	12/2002	Lee et al.	7,392,085	B2	6/2008	Warren et al.
6,516,225	B1	2/2003	Florio	7,395,113	B2	7/2008	Heruth et al.
6,539,257	B1	3/2003	Kenknight	7,412,287	B2	8/2008	Yonce et al.
6,567,691	B1	5/2003	Stadler	7,447,545	B2	11/2008	Heruth et al.
6,574,505	B1	6/2003	Warren	7,491,181	B2	2/2009	Heruth et al.
6,587,720	B2	7/2003	Hsu et al.	7,627,367	B2	12/2009	Warren et al.
6,625,490	B1	9/2003	McClure et al.	7,655,014	B2	2/2010	Ko et al.
6,636,762	B2	10/2003	Begemann	7,783,340	B2	8/2010	Sanghera et al.
6,647,292	B1	11/2003	Bardy et al.	7,792,583	B2	9/2010	Miesel et al.
6,658,292	B2	12/2003	Kroll et al.	7,805,196	B2	9/2010	Miesel et al.
6,658,293	B2	12/2003	Vonk	7,908,013	B2	3/2011	Miesel et al.
6,684,100	B1	1/2004	Sweeney et al.	7,957,797	B2	6/2011	Bourget et al.
6,687,540	B2	2/2004	Marcovecchio	7,957,809	B2	6/2011	Bourget et al.
6,699,200	B2	3/2004	Cao et al.	8,135,473	B2	3/2012	Miesel et al.
6,708,062	B2	3/2004	Ericksen et al.	8,150,531	B2	4/2012	Skelton
6,721,597	B1	4/2004	Bardy et al.	8,155,749	B2	4/2012	Lee et al.
6,728,572	B2	4/2004	Hsu et al.	8,190,253	B2	5/2012	Heruth et al.
6,728,575	B2	4/2004	Hedberg	8,200,340	B2	6/2012	Skelton et al.
6,731,978	B2	5/2004	Olson et al.	8,200,341	B2	6/2012	Sanghera et al.
6,738,667	B2	5/2004	Deno et al.	8,209,028	B2	6/2012	Skelton et al.
6,745,076	B2	6/2004	Wohlgemuth et al.	8,219,206	B2	7/2012	Skelton et al.
6,751,502	B2	6/2004	Daum et al.	8,231,555	B2	7/2012	Skelton et al.
6,754,528	B2	6/2004	Bardy et al.	8,231,556	B2	7/2012	Skelton et al.
6,760,615	B2	7/2004	Ferek-Petric	8,249,718	B2	8/2012	Skelton et al.
6,766,190	B2	7/2004	Ferek-Petric	8,280,517	B2	10/2012	Skelton et al.
6,778,860	B2	8/2004	Ostroff et al.	8,290,596	B2	10/2012	Wei et al.
6,788,974	B2	9/2004	Bardy et al.	8,315,710	B2	11/2012	Skelton et al.
6,810,284	B1	10/2004	Bradley	8,323,218	B2	12/2012	Davis et al.
6,834,204	B2	12/2004	Ostroff et al.	8,326,420	B2	12/2012	Skelton et al.
6,856,835	B2	2/2005	Bardy et al.	8,332,041	B2	12/2012	Skelton et al.
6,865,417	B2	3/2005	Rissmann et al.	8,388,555	B2	3/2013	Panken et al.
6,866,044	B2	3/2005	Bardy et al.	8,396,554	B2	3/2013	Miesel et al.
6,892,092	B2	5/2005	Palreddy et al.	8,396,565	B2	3/2013	Singhal et al.
6,909,916	B2	6/2005	Spinelli et al.	8,483,843	B2	7/2013	Sanghera et al.
6,927,721	B2	8/2005	Ostroff	8,504,150	B2	8/2013	Skelton
6,937,907	B2	8/2005	Bardy et al.	8,515,549	B2	8/2013	Panken et al.
6,950,705	B2	9/2005	Bardy et al.	8,718,793	B2	5/2014	O'Connor
6,952,608	B2	10/2005	Ostroff	8,751,007	B2	6/2014	Goetz et al.
6,952,610	B2	10/2005	Ostroff et al.	8,788,023	B2	7/2014	Sanghera et al.
6,954,670	B2	10/2005	Ostroff	2001/0027330	A1	10/2001	Sullivan et al.
6,959,212	B2	10/2005	Hsu et al.	2001/0034487	A1	10/2001	Cao et al.
6,975,904	B1	12/2005	Sloman	2002/0035377	A1	3/2002	Bardy et al.
6,980,856	B2	12/2005	Sullivan et al.	2002/0035378	A1	3/2002	Bardy et al.
6,988,003	B2	1/2006	Bardy et al.	2002/0035379	A1	3/2002	Bardy et al.
				2002/0035381	A1	3/2002	Bardy et al.
				2002/0095184	A1	7/2002	Bardy et al.
				2002/0107544	A1	8/2002	Ostroff et al.
				2002/0107545	A1	8/2002	Rissmann et al.

(56)

## References Cited

## U.S. PATENT DOCUMENTS

2002/0165587 A1 11/2002 Zhang et al.  
 2002/0169484 A1 11/2002 Mathis et al.  
 2003/0083710 A1 5/2003 Ternes et al.  
 2003/0088277 A1 5/2003 Ostroff  
 2003/0144700 A1 7/2003 Brown et al.  
 2003/0191500 A1 10/2003 Stokes et al.  
 2003/0204215 A1 10/2003 Gunderson et al.  
 2004/0088018 A1 5/2004 Sawchuk  
 2004/0215240 A1 10/2004 Lovett et al.  
 2004/0230229 A1 11/2004 Lovett et al.  
 2004/0230243 A1 11/2004 Haefner et al.  
 2004/0230249 A1 11/2004 Haefner  
 2004/0236379 A1 11/2004 Bardy et al.  
 2004/0254611 A1 12/2004 Palreddy et al.  
 2004/0254613 A1 12/2004 Ostroff et al.  
 2005/0004615 A1 1/2005 Sanders  
 2005/0049644 A1 3/2005 Warren et al.  
 2005/0060001 A1 3/2005 Singhal et al.  
 2005/0192505 A1 9/2005 Ostroff et al.  
 2005/0192507 A1 9/2005 Warren et al.  
 2005/0203581 A1 9/2005 Spinelli et al.  
 2005/0245976 A1 11/2005 Wang  
 2006/0036288 A1 2/2006 Bocek et al.  
 2006/0052830 A1 3/2006 Spinelli et al.  
 2006/0079796 A1 4/2006 Marcovecchio et al.  
 2006/0085038 A1 4/2006 Linder et al.  
 2006/0116595 A1 6/2006 Palreddy et al.  
 2006/0116730 A1 6/2006 Gunderson  
 2006/0122676 A1 6/2006 Ko et al.  
 2006/0161205 A1 7/2006 Mitrani et al.  
 2006/0167502 A1 7/2006 Haefner  
 2006/0173498 A1 8/2006 Banville et al.  
 2006/0235476 A1 10/2006 Gunderson et al.  
 2006/0241512 A1 10/2006 Kwok et al.  
 2006/0247739 A1 11/2006 Wahlstrand et al.  
 2007/0069540 A1 3/2007 Tande et al.  
 2007/0069544 A1 3/2007 Sturt et al.  
 2007/0123947 A1 5/2007 Wenger et al.  
 2007/0232944 A1 10/2007 Ghanem et al.  
 2007/0232945 A1 10/2007 Kleckner et al.  
 2007/0232948 A1 10/2007 Stadler et al.  
 2007/0233196 A1 10/2007 Stadler et al.  
 2007/0233198 A1 10/2007 Ghanem et al.  
 2007/0239044 A1 10/2007 Ghanem et al.  
 2007/0239045 A1 10/2007 Ghanem et al.  
 2007/0239046 A1 10/2007 Ghanem et al.  
 2007/0239047 A1 10/2007 Ghanem et al.  
 2007/0239048 A1 10/2007 Ghanem et al.  
 2007/0239049 A1 10/2007 Ghanem et al.  
 2007/0239050 A1 10/2007 Ghanem et al.  
 2007/0239051 A1 10/2007 Ghanem et al.  
 2007/0239220 A1\* 10/2007 Greenhut ..... A61B 5/0452  
 607/32  
 2007/0270704 A1 11/2007 Ghanem et al.  
 2007/0276445 A1 11/2007 Sanghera et al.  
 2007/0276447 A1 11/2007 Sanghera et al.  
 2007/0276452 A1 11/2007 Sanghera et al.  
 2008/0046056 A1 2/2008 O'Connor  
 2008/0053197 A1 3/2008 McGinty et al.  
 2008/0172100 A1 7/2008 Sanghera et al.  
 2008/0188901 A1 8/2008 Sanghera et al.  
 2008/0243025 A1 10/2008 Holmstrom et al.  
 2008/0269813 A1 10/2008 Greenhut et al.  
 2008/0275521 A1 11/2008 Warren et al.  
 2009/0093731 A1 4/2009 Palreddy et al.  
 2012/0245651 A1 9/2012 Sanghera et al.  
 2013/0274822 A1 10/2013 Sanghera et al.

## FOREIGN PATENT DOCUMENTS

CA 2652959 A1 12/2007  
 DE 29801807 U1 6/1998  
 EP 0095727 A1 12/1983  
 EP 0316616 A2 5/1989

EP 0316616 A3 6/1989  
 EP 0347353 A1 12/1989  
 EP 0517494 A2 12/1992  
 EP 0518599 A2 12/1992  
 EP 0517494 A3 3/1993  
 EP 0536873 A1 4/1993  
 EP 0586858 A1 3/1994  
 EP 0627237 A1 12/1994  
 EP 0641573 A2 3/1995  
 EP 0677301 A1 10/1995  
 EP 0641573 A3 6/1997  
 EP 0518599 B1 9/1997  
 EP 0813889 A2 12/1997  
 EP 0917887 A1 5/1999  
 EP 0923130 A1 6/1999  
 EP 1000634 A1 5/2000  
 EP 1745741 A1 1/2007  
 EP 2029224 A1 3/2009  
 EP 2029225 A1 3/2009  
 EP 2114244 A1 11/2009  
 WO 9319809 A1 10/1993  
 WO 9729802 A2 8/1997  
 WO 9825349 A1 6/1998  
 WO 9903534 A1 1/1999  
 WO 9937362 A1 7/1999  
 WO 9948554 A1 9/1999  
 WO 9953991 A1 10/1999  
 WO 0041766 A1 7/2000  
 WO 0050120 A1 8/2000  
 WO 0143649 A1 6/2001  
 WO 0156166 A2 8/2001  
 WO 0222208 A2 3/2002  
 WO 0224275 A2 3/2002  
 WO 0224275 A3 5/2002  
 WO 0222208 A3 6/2002  
 WO 02068046 A1 9/2002  
 WO 03018121 A2 3/2003  
 WO 03020367 A1 3/2003  
 WO 03065613 A1 8/2003  
 WO 2004091720 A2 10/2004  
 WO 2004105871 A1 12/2004  
 WO 2004108212 A2 12/2004  
 WO 2007089959 A1 8/2007  
 WO 2007140207 A1 12/2007  
 WO 2007140209 A2 12/2007  
 WO 2007140214 A1 12/2007  
 WO 2007140209 A3 4/2008

## OTHER PUBLICATIONS

All Non-Patent Literature documents and foreign patent documents have been previously uploaded in parent U.S. Appl. No. 14/307,756, filed Jun. 18, 2014 or U.S. Appl. No. 14/601,315, filed Jan. 21, 2015.  
 Bardy et al., "Multicenter Experience with a Pectoral Unipolar Implantable Cardioverter-Defibrillator", Journal of the American College of Cardiology, 28(2): 400-410, Aug. 1996.  
 Burri et al., "Utility of the Surface ECG Before VDD Pacemaker Implantation", International Journal of Cardiology, 117(2):211-213, Apr. 25, 2007.  
 Cao et al., "Implantable Medical Device with Multi-Vector Sensing Electrodes", U.S. Appl. No. 60/186,235, filed Mar. 1, 2000, 4 pgs.  
 Chrysostomakis et al., "Implantable Loop Recorder Undersensing Mimicking Complete Heart Block", EP Europace, 4(2): 211-213, Apr. 2002.  
 Chrysostomakis et al., "Sensing Issues Related to the Clinical Use of Implantable Loop Recorders", EP Europace, 5(2): 143-148, Apr. 2003.  
 Friedman et al., "Implantable Defibrillators in Children: From Whence to Shock", Journal of Cardiovascular Electrophysiology, 12(3): 361-362, Mar. 2001.  
 Ge et al., "Cardiac Arrhythmia Classification Using Autoregressive Modeling", Biomedical Engineering Online, [Online]. Retrieved from the Internet: <<http://www.biomedical-engineering-online.com>>, 12 pgs., Nov. 13, 2002.

(56)

**References Cited**

## OTHER PUBLICATIONS

Gradaus et al., "Nonthoracotomy Implantable Cardioverter Defibrillator Placement in Children: Use of Subcutaneous Array Leads and Abdominally Placed Implantable Cardioverter Defibrillators in Children", *Journal of Cardiovascular Electrophysiology*, 12(3): 356-360, Mar. 2001.

Gunderson, "Identification of Oversensing in a Medical Device", U.S. Appl. No. 60/632,000, filed Dec. 1, 2004, 30 pgs.

Higgins et al., "The First Year Experience with the Dual Camber ICD", *Pacing and Clinical Electrophysiology [PACE]*, 23(1): pp. 18-25, Jan. 2000.

Mirowski et al., "Automatic Detection and Defibrillation of Lethal Arrhythmias—A New Concept", *Journal of the American Medical Association [JAMA]*, 213(4): 615-616, Jul. 27, 1970.

Olson et al., "Onset and Stability for Ventricular Tachyarrhythmia Detection in an Implantable Pacer-Cardioverter-Defibrillator", *IEEE*, pp. 167-170, 1987.

Schuder, "Completely Implanted Defibrillator", *Journal of the American Medical Association [JAMA]*, 214(6): 1123, Nov. 9, 1970.

Schuder et al., "Experimental Ventricular Defibrillation with an Automatic and Completely Implanted System", *Trans. Am. Soc. Artif. Int. Organs*, vol. 16, pp. 207-212, 1970.

Schuder et al., "Standby Implanted Defibrillators", *Arch Intern. Med*, vol. 127, p. 317, Feb. 1971.

Schuder, "The Role of an Engineering Oriented Medical Research Group in Developing Improved Methods and Devices for Achieving

Ventricular Defibrillation: The University of Missouri Experience", *Pacing and Clinical Electrophysiology [PACE]*, 16(1): 95-124, Jan. 1993.

Schuder et al., "Transthoracic Ventricular Defibrillation in the Dog with Truncated and Untruncated Exponential Stimuli", *IEEE Transactions on Biomedical Engineering*, BME-18(6): 410-415, Nov. 1971.

Schwake et al., "Komplikationen mit Sonden bei 340 Patienten mit einem implantierbaren Kardioverter/Defibrillator", *Z Kardiol*, 88(8): 559-565, 1999.

Stadler et al., "Method and Apparatus for Detecting Arrhythmias in a Subcutaneous Device", U.S. Appl. No. 60/786,981, filed Mar. 29, 2006, 71 pgs.

Throne et al., "A Comparison of Four New Time-Domain Techniques for Discriminating Monomorphic Ventricular Tachycardia from Sinus Rhythm Using Ventricular Waveform Morphology", *IEEE Transactions on Biomedical Engineering*, 38(6): 561-570, Jun. 1991.

Tietze et al., "Halbleiter-Schaltungstechnik", copyright Springer-Verlag (Berlin, Germany), pp. 784-786, 1991.

Valenzuela et al., "Outcomes of Rapid Defibrillation by Security Offices after Cardiac Arrest in Casinos", *The New England Journal of Medicine*, 343(17): 1206-1209, Oct. 26, 2000.

Walters et al., "Analog to Digital Conversion Techniques in Implantable Devices", *Annual International Conference of the IEEE Engineering in Medicine and Biology Society*, 13(4): 1674-1676, 1991.

\* cited by examiner

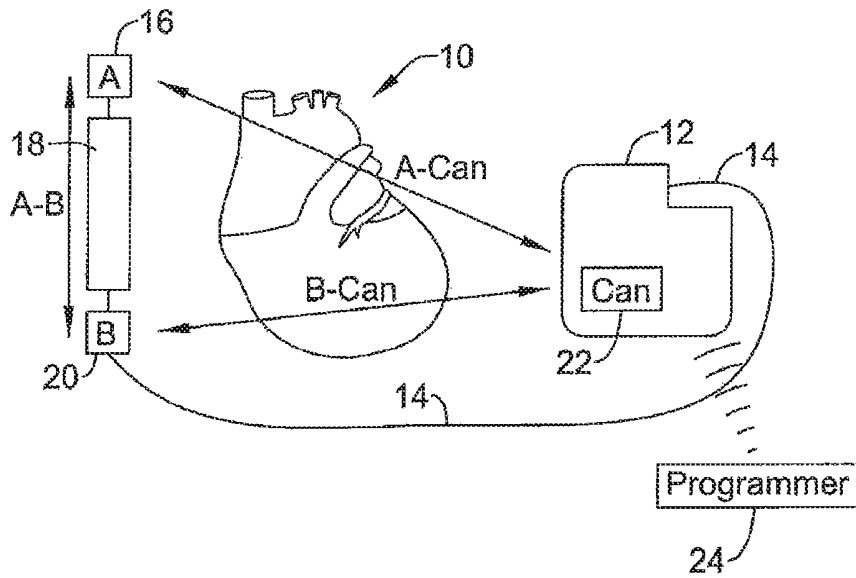


FIG. 1A

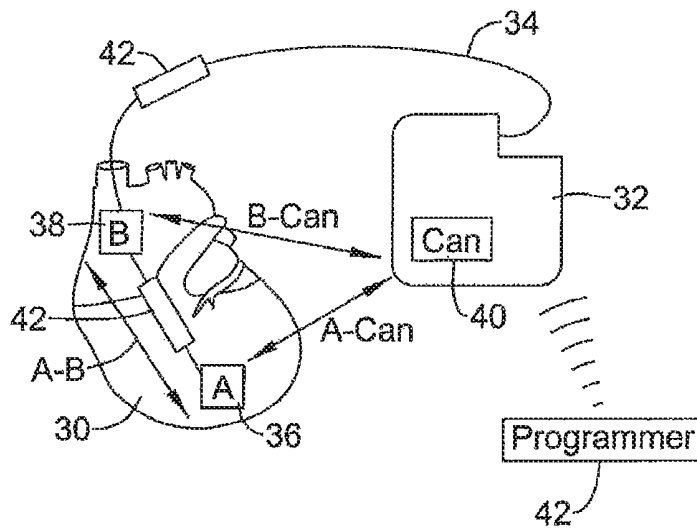


FIG. 1B

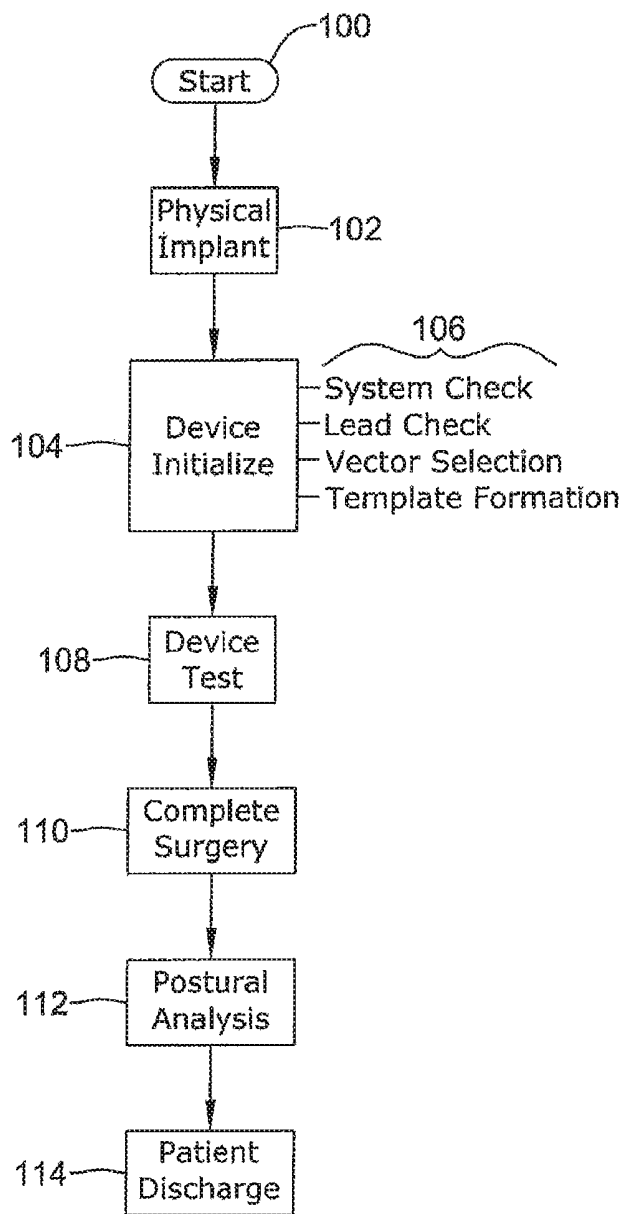


FIG. 2

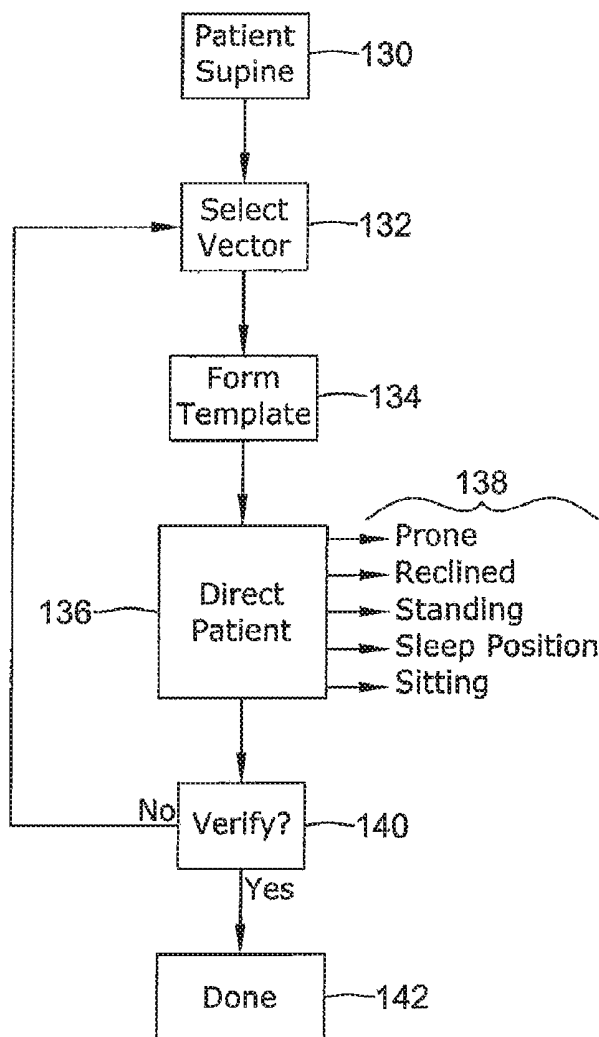


FIG. 3

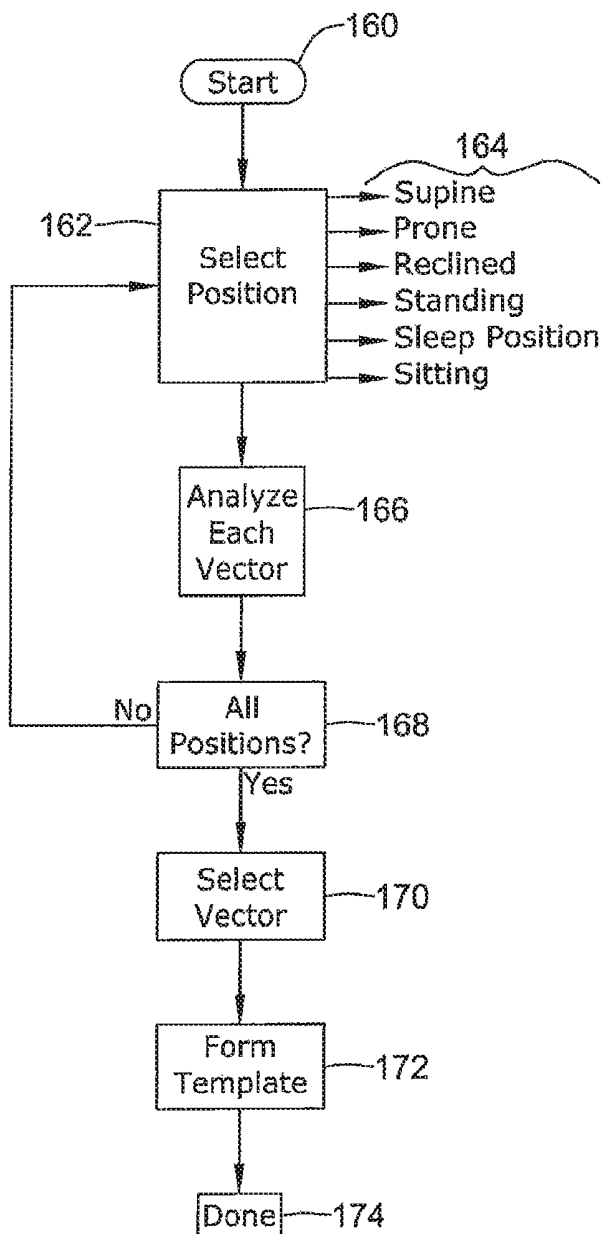


FIG. 4

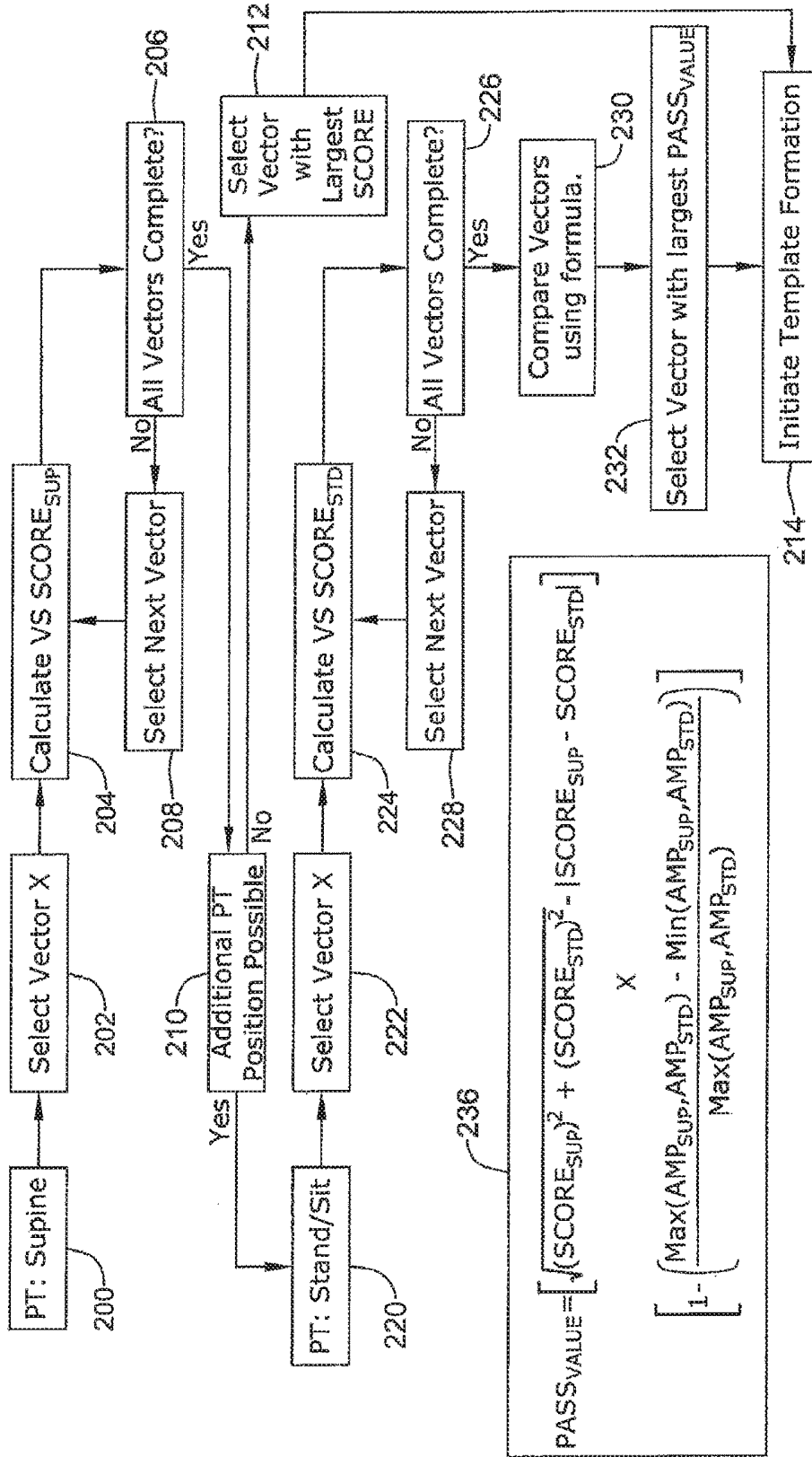


FIG. 5

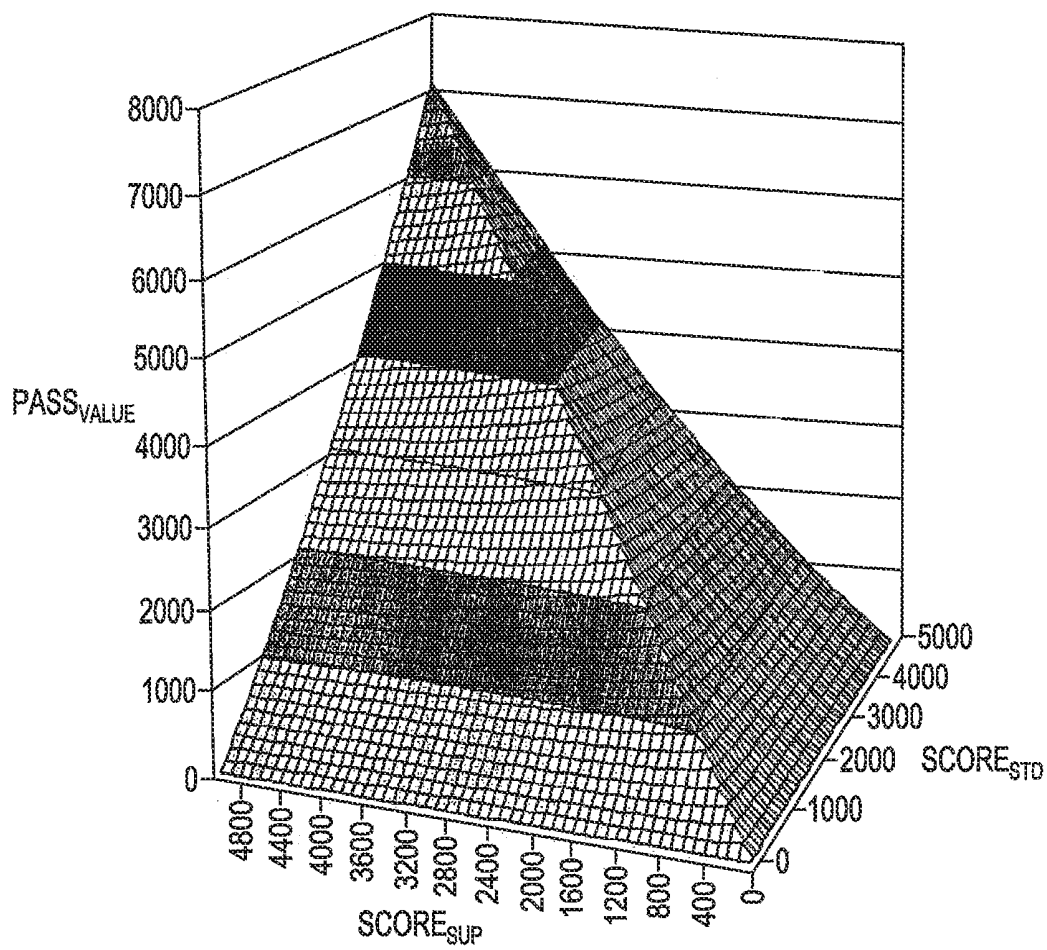


FIG. 6A

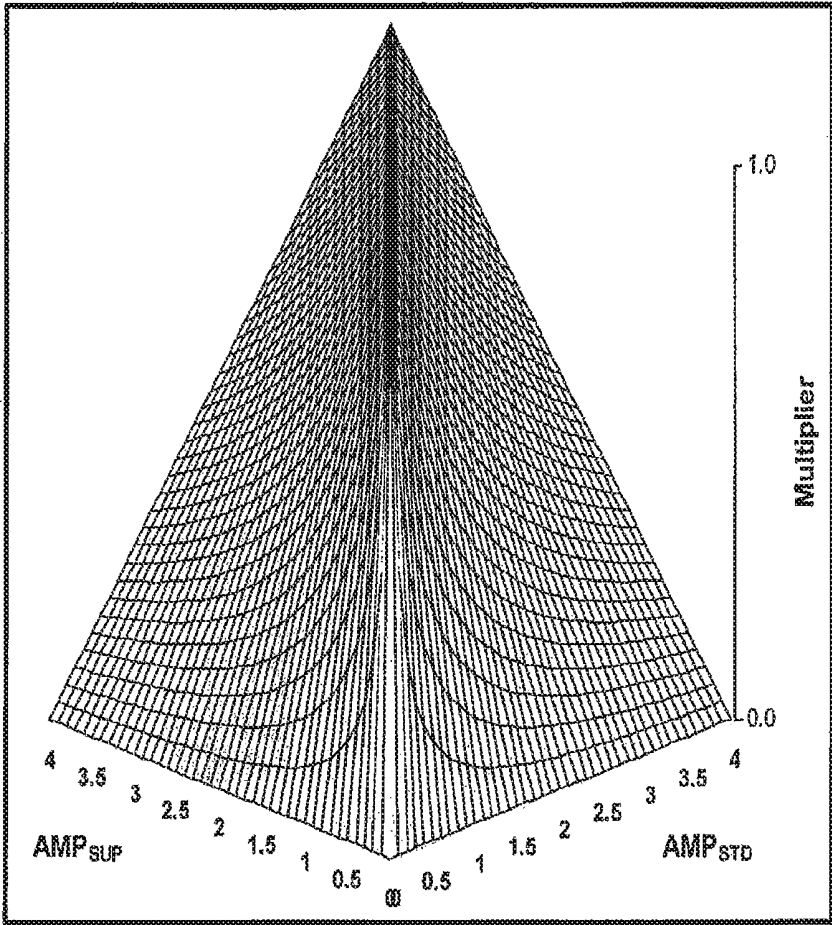


FIG. 6B

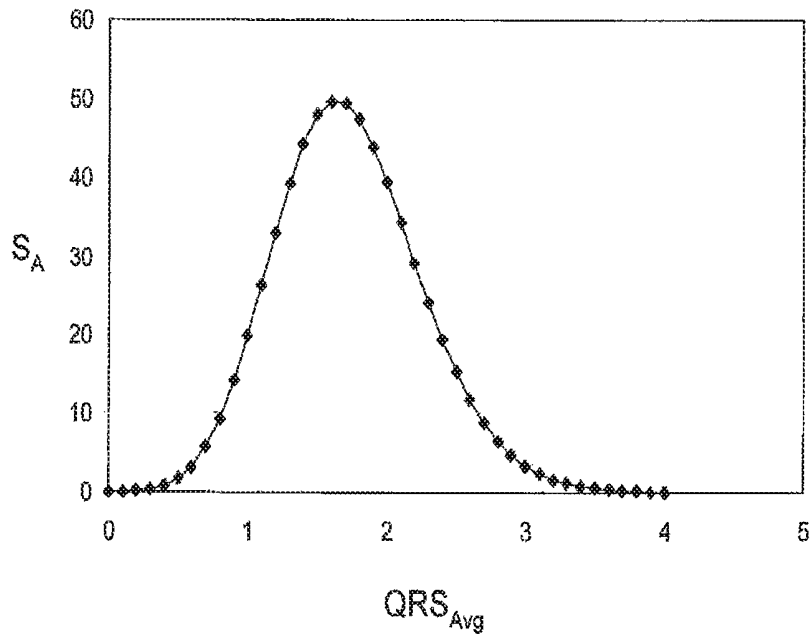


FIG. 7A

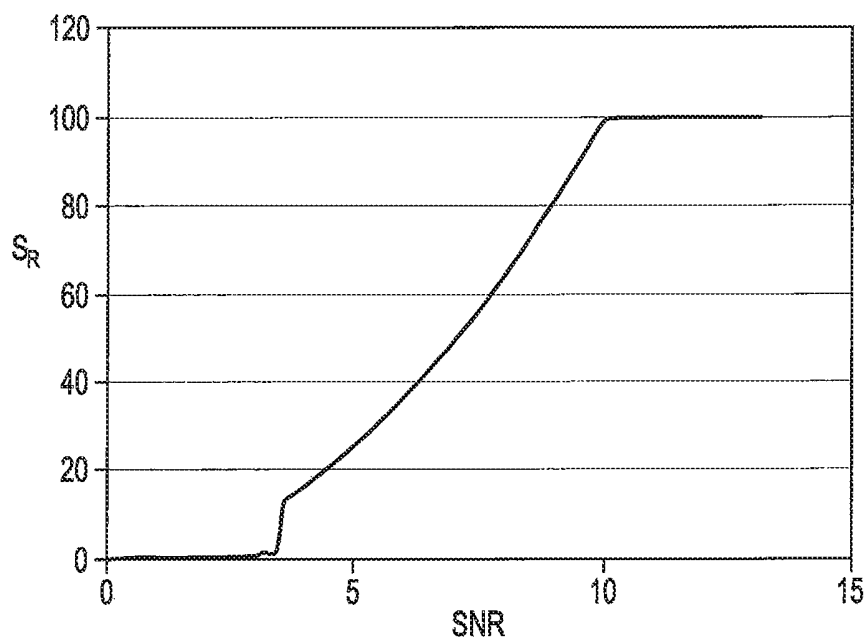


FIG. 7B

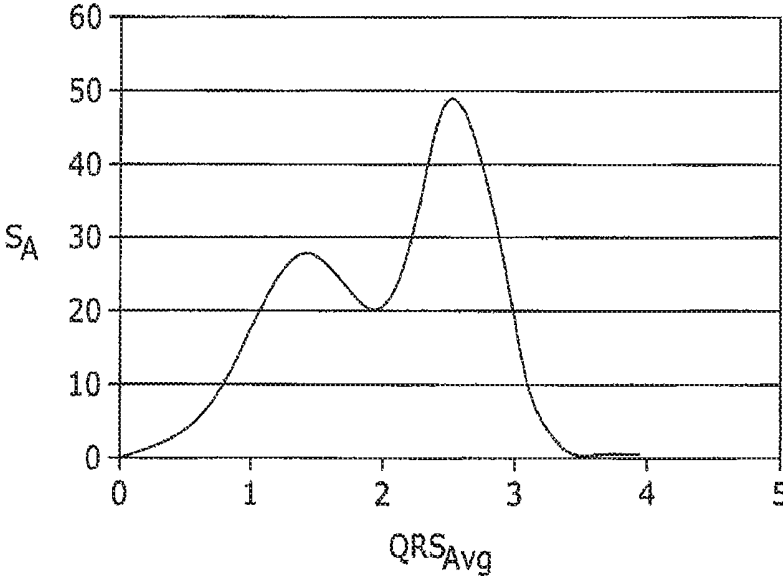
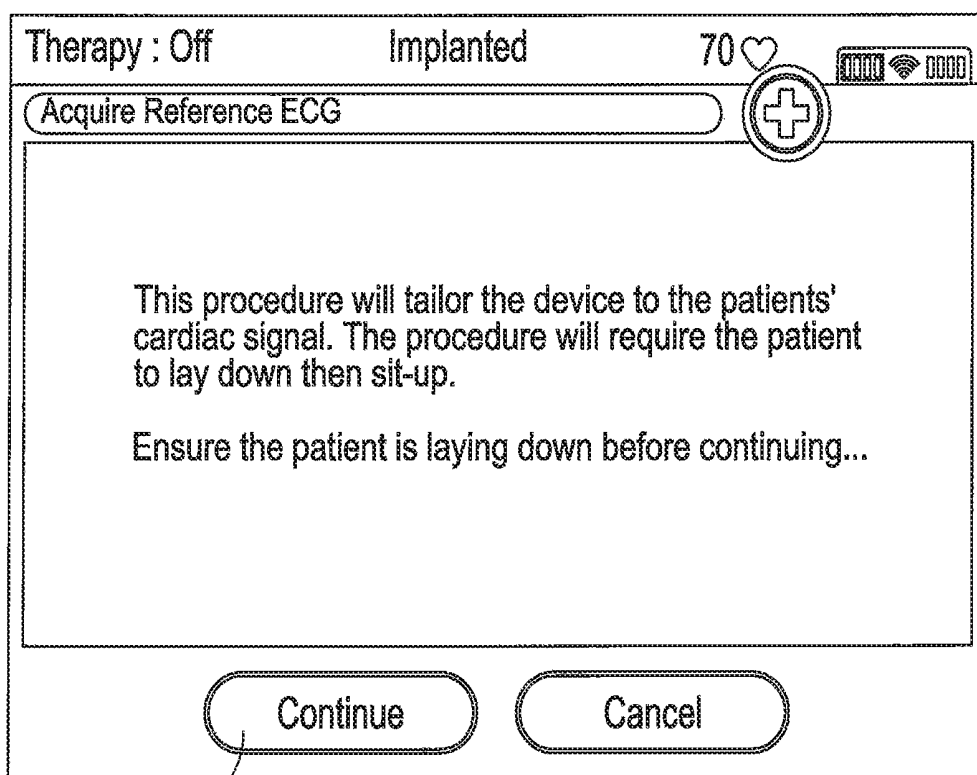
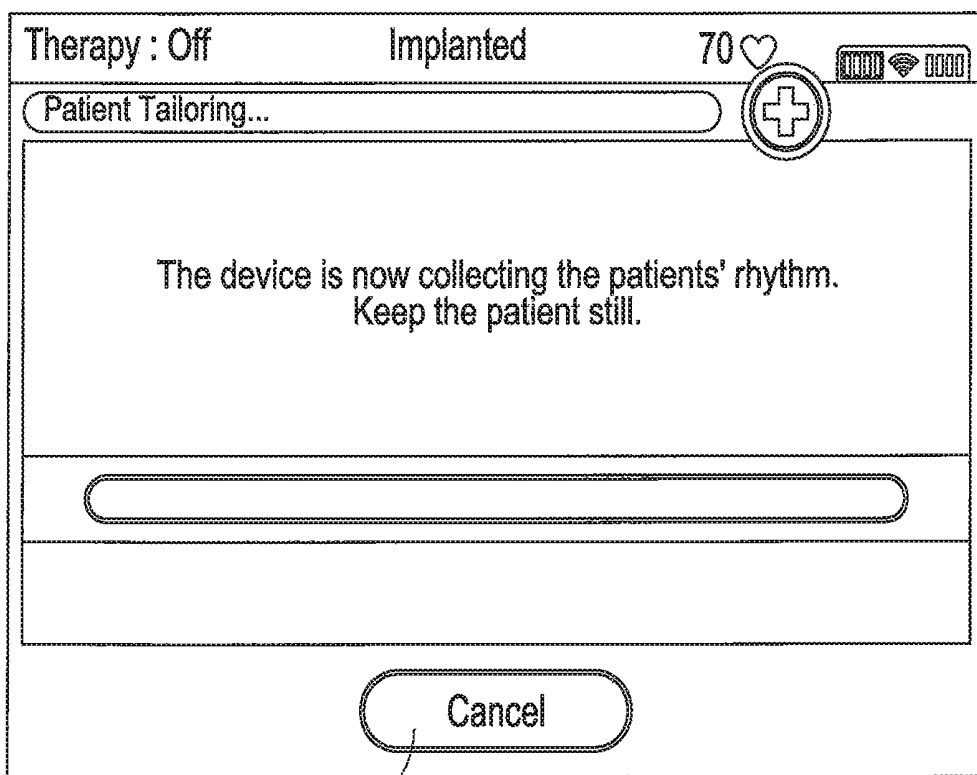


FIG. 7C



300

FIG. 8A



302

*FIG. 8B*

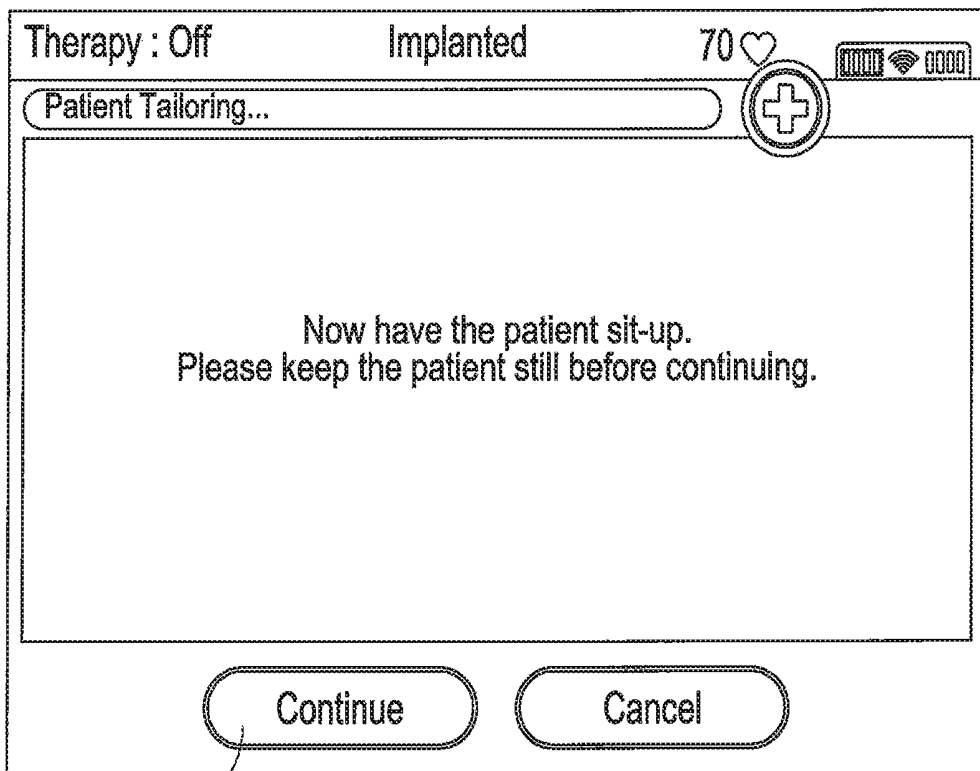
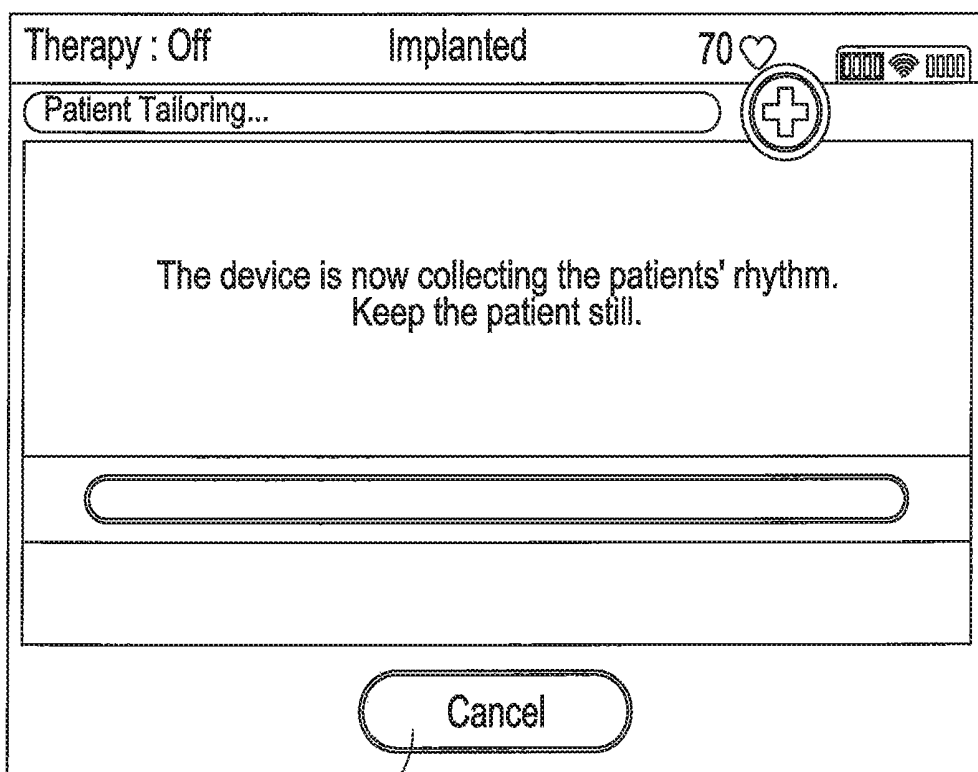


FIG. 8C



306

*FIG. 8D*

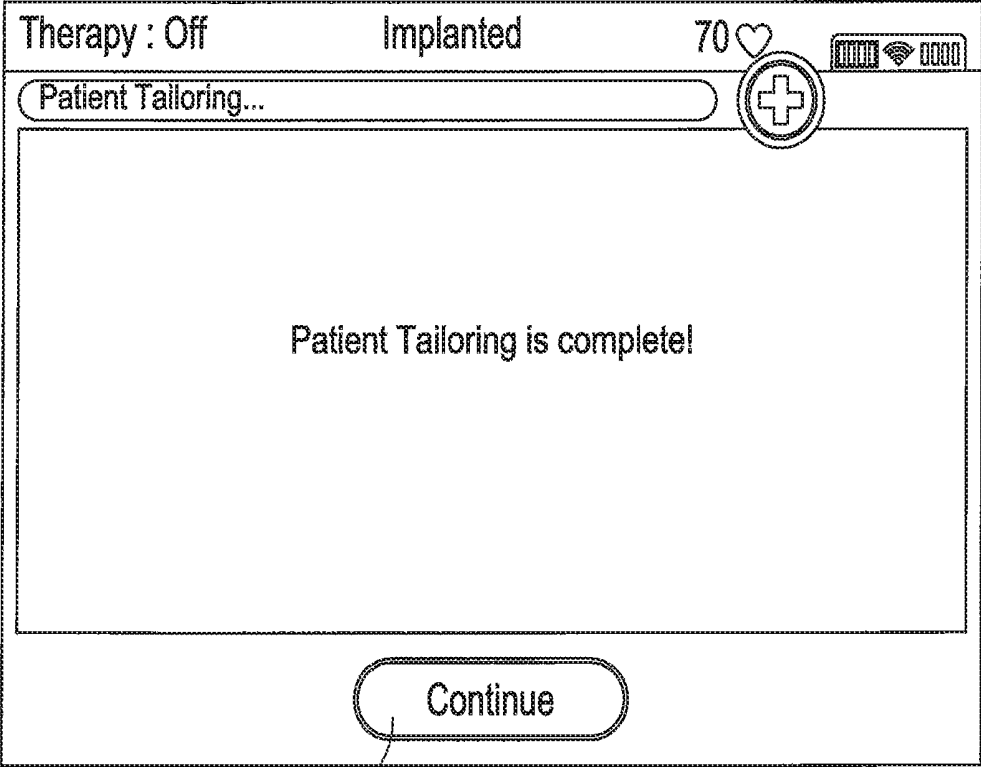


FIG. 8E

## SENSING VECTOR SELECTION IN A CARDIAC STIMULUS DEVICE WITH POSTURAL ASSESSMENT

### CROSS-REFERENCE TO RELATED APPLICATIONS

This application is a continuation of U.S. patent application Ser. No. 14/812,029, filed Jul. 29, 2015, now U.S. Pat. No. 9,357,969, which is a continuation of U.S. patent application Ser. No. 14/601,315, filed Jan. 21, 2015, now U.S. Pat. No. 9,119,596, which is a continuation of U.S. patent application Ser. No. 14/307,756, filed Jun. 18, 2014, now U.S. Pat. No. 8,965,530, which is a continuation of U.S. patent application Ser. No. 13/919,147, filed Jun. 17, 2013, now U.S. Pat. No. 8,781,602, which is a continuation of U.S. patent application Ser. No. 13/491,529, filed Jun. 7, 2012, now U.S. Pat. No. 8,483,843, which is a divisional of U.S. patent application Ser. No. 11/672,353, filed Feb. 7, 2007, now U.S. Pat. No. 8,200,341 and titled SENSING VECTOR SELECTION IN A CARDIAC STIMULUS DEVICE WITH POSTURAL ASSESSMENT, the disclosures of which are incorporated herein by reference.

This application is related to U.S. patent application Ser. No. 11/623,472, filed Jan. 16, 2007 and titled SYSTEMS AND METHODS FOR SENSING VECTOR SELECTION IN AN IMPLANTABLE MEDICAL DEVICE USING A POLYNOMIAL APPROACH, now U.S. Pat. No. 7,783,340, the disclosure of which is incorporated herein by reference. This application is also related to U.S. patent application Ser. No. 11/441,522, filed May 26, 2006, published as US Patent Application Publication Number 2007-0276445 and titled SYSTEMS AND METHODS FOR SENSING VECTOR SELECTION IN AN IMPLANTABLE MEDICAL DEVICE, the disclosure of which is incorporated herein by reference.

### FIELD

The present invention relates to the field of implantable medical devices. More particularly, the present invention relates to implantable devices that monitor and/or stimulate the heart.

### BACKGROUND

Implantable cardiac monitoring and/or stimulus devices can provide various benefits to patients who receive them. Such devices are adapted to monitor cardiac activity of a patient while implanted and, if so equipped, to provide stimulus when necessary to assure adequate cardiac function. New and different methods are desired for configuring and performing cardiac signal assessment in such devices.

### SUMMARY

The present invention, in an illustrative embodiment, includes an implantable medical device that includes sensing electrodes and circuitry that allow the device, when implanted in a patient, to sense electrical activity emanating from the patient's heart along a plurality of sensing vectors. In the illustrative embodiment, the implantable medical device is configured to select a primary or default sensing vector by observing cardiac signal characteristics along one or more of the plurality of sensing vectors. In an illustrative

embodiment, observation of the cardiac signal characteristics includes initialization in terms of the body position or posture of the patient.

In another illustrative embodiment, a device as described above is included as a part of a system including an external programmer, wherein the programmer and implanted device are configured to communicate with one another. In this embodiment, the system is configured such that the patient may be directed to perform certain acts and/or assume selected postures/poses/body positions via the programmer, allowing the implanted device to observe the effects of changes of posture by the patient on captured cardiac signal. The implanted device (or the programmer, depending upon the particular configuration) may then select a primary or default sensing vector.

Another illustrative embodiment includes a method of selecting a vector for use in sensing cardiac events. In the illustrative method, sensing characteristics along several vectors may be considered with the patient in various body positions (for example, standing, sitting, and/or lying down). Using the captured sensing characteristics, a default or primary sensing vector may be selected. In an illustrative example, the method includes directing the patient to assume a set of postures/poses/body positions.

In addition to selecting a primary or default sensing vector, in some embodiments, a secondary vector is selected for various uses.

### BRIEF DESCRIPTION OF THE DRAWINGS

FIGS. 1A-1B illustrate subcutaneous and transvenous cardiac stimulators;

FIG. 2 is a block diagram illustrating steps in an illustrative implant procedure;

FIGS. 3-5 show illustrative methods of postural assessment in an implanted medical device;

FIGS. 6A-6B are graphs of variable relationships in an illustrative method of analyzing sensing vectors during postural assessment;

FIGS. 7A-7C are graphs of variable relationships in illustrative signal analysis methods; and

FIGS. 8A-8E are graphical representations of display outputs of a programmer during an illustrative method of postural assessment.

### DETAILED DESCRIPTION

The following detailed description should be read with reference to the drawings. The drawings, which are not necessarily to scale, depict illustrative embodiments and are not intended to limit the scope of the invention.

The present invention is related to U.S. patent application Ser. No. 11/441,522, filed May 26, 2006 and entitled SYSTEMS AND METHODS FOR SENSING VECTOR SELECTION IN AN IMPLANTABLE MEDICAL DEVICE, published as US Patent Application Publication Number 2007-0276445, the disclosure of which is incorporated herein by reference. In particular, the '522 Application shows illustrative methods of analyzing cardiac signals captured along a given sensing vector. The methods shown therein are illustrative of analytical methods and "scoring" that may also be performed in association with the present invention.

FIGS. 1A-1B, respectively, show subcutaneous and transvenous implanted cardiac stimulus systems relative to the heart. Referring to FIG. 1A, the patient's heart 10 is shown in relation to an implanted, subcutaneous cardiac stimulus

system including a canister **12**. A lead **14** is secured to the canister **12** and includes sensing electrode A **16**, coil electrode **18**, and sensing electrode B **20**. A can electrode **22** is shown on the canister **12**. Several vectors for sensing are therefore available including A-can, B-can, and A-B. It should be noted that the use of the coil electrode **18** as a sensing electrode is also possible. Illustrative subcutaneous systems are shown in U.S. Pat. Nos. 6,647,292 and 6,721,597, and the disclosures of these patents are incorporated herein by reference. Some embodiments include a unitary system having two or more electrodes on a housing as set forth in the '292 patent, rather than that which is shown in FIG. 1A. A unitary system including an additional lead may also be used. It should be understood that for any vector discussed herein, either of the two available polarities for each vector is possible and may be analyzed and/or selected, if desired.

Referring now to FIG. 1B, a transvenous system is shown relative to a patient's heart **30**. The transvenous cardiac stimulus system includes a canister **32** connected to a lead **34**. The lead **34** enters the patient's heart and includes electrodes A **36** and B **38**. The illustrative example also includes coil electrodes **42**, shown both internal and external to the heart **30**. The coil electrodes **42** may be used for sensing or stimulus delivery. In the illustrative example, electrode A **36** is located generally in the patient's ventricle, and electrode B **38** is located generally in the patient's atrium. The lead **34** may be anchored into the patient's myocardium. Again, a can electrode **40** is shown on the canister **32**. With the transvenous system, plural sensing vectors may be defined as well.

In both FIGS. 1A and 1B, one or more sensing electrodes may also be used for stimulus delivery. Some embodiments of the present invention may be used in combination systems that may include sensing vectors defined between two subcutaneous electrodes, a subcutaneous electrode and a transvenous electrode, or two transvenous electrodes. For example, the present invention may be embodied in a hybrid system having electrodes for each of several transvenous, epicardial, and/or subcutaneous locations.

In the configurations of FIGS. 1A and 1B, there are multiple sensing vectors available. Detection of cardiac function along one of these sensing vectors allows the implanted cardiac stimulus system to determine whether treatment is indicated due to the detection and identification of a malignant condition such as, for example, a ventricular tachycardia. An implanting physician may perform vector selection by determining which of the captured vectors is best, for example by visual inspection of a graphical representation of captured signals. However, this requires an assessment of cardiac function along several vectors and may increase the time needed to perform implantation, and also increases the risk of human error. Further, the selection of a vector may require advanced or specialized training, as selection of a suitable vector among those available is not necessarily intuitive.

Robust sensing vector selection methods are desirable, as well as devices adapted to perform such methods. The present invention, in illustrative embodiments, provides such methods and uses various criteria for doing so. Some embodiments include implantable devices and programmers for implantable devices that are adapted to perform such methods.

The systems shown in FIGS. 1A-1B may include operational circuitry and power sources housed within the respective canisters. The power sources may be, for example, batteries or banks of batteries. The operational circuitry may

be configured to include such controllers, microcontrollers, logic devices, memory, and the like, as selected, needed, or desired for performing the illustrative methods set forth herein. The operational circuitry may (although not necessarily) further include a charging sub-circuit and a power storage sub-circuit (for example, a bank of capacitors) for building up a stored voltage for cardiac stimulus taking the form of cardioversion and/or defibrillation. The operational circuitry may also be adapted to provide a pacing output. Each of cardioversion/defibrillation and pacing sub-circuitry and capacities may be incorporated into a single device. The methods discussed below may be embodied in hardware within the operational circuitry and/or as instruction sets for operating the operational circuitry and/or in the form of machine-readable media (optical, electrical, magnetic, etc.) embodying such instructions and instruction sets.

Each of the devices **12**, **32** may further include such components as would be appropriate for communication (such as RF communication or inductive telemetry) with an external device such as a programmer. To this end, programmers **24** (FIG. 1A) and **42** (FIG. 1B) are also shown. For example, during an implantation procedure, once the implantable device **12**, **32** and leads (if included) are placed, the programmer **24**, **42** may be used to activate and/or direct and/or observe diagnostic or operational tests. After implantation, the programmer **24**, **42** may be used to non-invasively determine the status and history of the implanted device. The programmer **24**, **42** and the implanted device **12**, **32** may be adapted for wireless communication allowing interrogation of the implanted device in any suitable manner for an implanted device system. The programmers **24**, **42** in combination with the implanted devices **12**, **32** may also allow announcement of statistics, errors, history and potential problem(s) to the user or physician.

FIG. 2 is a block diagram illustrating steps in an illustrative implant procedure. From a start block **100**, the first step is the physical implantation itself **102**, which may include various surgical preparations as are known in the art, incision of the patient, and emplacement of a system, for example, a transvenous or subcutaneous system as shown above in FIGS. 1A-1B. Methods for physically implanting a transvenous device are well known. A subcutaneous device may be implanted, for example, as set forth in copending U.S. patent application Ser. No. 11/006,291, filed Dec. 6, 2004 and titled APPARATUS AND METHOD FOR SUBCUTANEOUS ELECTRODE INSERTION, now U.S. Pat. No. 7,655,014; and/or copending U.S. patent application Ser. No. 11/497,203, filed Aug. 1, 2006, published as US Patent Application Publication Number 2008-0046056 and titled ELECTRODE INSERTION TOOLS, LEAD ASSEMBLIES, KITS AND METHODS FOR PLACEMENT OF CARDIAC DEVICE ELECTRODES, the disclosures of which are incorporated herein by reference.

With the system in place in the patient, the device is initialized, as indicated at **104**. This may include various functions as indicated at **106**, such as power-up of the device, system check, lead connection, detection and impedance checks. Initialization **104** may also include vector selection steps and template formation steps, allowing an initial set-up of the device while the patient is in the operating room. Illustrative methods of template formation are discussed in copending U.S. patent application Ser. No. 10/999,853, filed Nov. 29, 2004 and entitled METHOD FOR DEFINING SIGNAL TEMPLATES IN IMPLANTABLE CARDIAC DEVICES, now U.S. Pat. No. 7,376,458, the disclosure of which is incorporated herein by reference. Illustrative methods of vector selection are discussed in

compending U.S. patent application Ser. No. 11/441,522, filed May 26, 2006, published as US Patent Application Publication Number 2007-0276445 and titled SYSTEMS AND METHODS FOR SENSING VECTOR SELECTION IN AN IMPLANTABLE MEDICAL DEVICE; compending U.S. patent application Ser. No. 10/901,258, filed Jul. 27, 2004 and entitled MULTIPLE ELECTRODE VECTORS FOR IMPLANTABLE CARDIAC TREATMENT DEVICES, now U.S. Pat. No. 7,392,085; and U.S. Pat. No. 6,988,003 entitled OPTIONAL USE OF A LEAD FOR A UNITARY SUBCUTANEOUS IMPLANTABLE CARDIOVERTER-DEFIBRILLATOR, the disclosures of which are incorporated herein by reference. The inclusion of each of functions **106** may vary depending upon the particular device.

After device initialization at **104**, the device is tested as indicated at **108**. For an implantable cardioverter defibrillator (ICD), for example, fibrillation may be induced in the patient in order to determine whether the ICD accurately senses the fibrillation and successfully delivers therapy that returns the patient to normal cardiac rhythm. If testing is unsuccessful, or if the device does not initialize, the system may be explanted. If, instead, the initialization at **104** is completed successfully and the system passes device testing at **108**, then the surgical portion of the implantation is completed, as shown at **110**, with appropriate methods including closing incisions made during implantation, etc.

In the illustrative method, postural analysis **112** follows completion of the surgical portion of the implantation method. During postural analysis **112**, after the patient has had the device inserted and activated, and, possibly, after the patient has had time to recuperate somewhat, the operation of the implanted device is observed and may be modified. In particular, the patient may be asked to assume a series of positions, for example, sitting down and then standing up, while the implanted device gathers data to determine which of its available sensing vectors is best suited to permanent operation. In one illustrative example, the patient is led through a series of body positions such that the device may determine a single sensing vector for use as a primary or default sensing vector all the time, such that changes in sensing operation do not have to occur whenever the patient changes posture or body position.

In another illustrative example, an optimal or best vector is determined for each of the several body positions, and body position is monitored during operation such that the implanted device may select the optimal vector for a patient's current body position. Body position may be monitored, for example, by the provision of physical sensors that detect body position by reference to gravity, to movements, or the like. Transthoracic impedance can be used to provide a measure of patient body position, for example. An activity sensor may be used to infer whether the patient is standing versus lying down. Alternatively, body position may be monitored by observation of captured electric signals. For example, during postural analysis **112**, the system may be configured to identify signal markers to differentiate cardiac signals captured while the patient is in each of several body positions and, thereafter, to identify the patient's body position by observation of the patient's cardiac signals.

Once postural analysis **112** is complete, the patient may then be discharged **114**, as the implantation procedure and process is then complete. Following discharge **114**, the patient may be requested to return for further diagnostics, for example, initialization may be updated (such as functions **106**) and the postural analysis **112** may be later repeated. This may be done, for example, as the patient's physiology

changes due to reaction to the implantation itself, with changes in patient medication, and/or as the patient ages.

FIGS. **3-5** show illustrative methods of postural assessment in an implanted medical device. FIG. **3** illustrates a confirmation approach to postural assessment, in which a vector is identified on the basis of its characteristics while the patient is in a given body position, and the identified vector is then checked to confirm that it is usable regardless of the body position of the patient. The method begins at block **130**, with the patient in a given body position, in this instance, supine. In other embodiments, the patient may begin in a different body position, such as prone, reclined, standing, or in whatever position the patient prefers to sleep in, for example.

With the patient in the given position, a vector is selected, as shown at **132**. A vector may be selected at **132**, for example, on the basis of the signal-to-noise ratio (SNR) of cardiac signals captured along that vector. Other metrics for selecting a vector at **132** may include signal amplitude, noise amplitude, etc. In an illustrative embodiment, a combination of SNR and signal amplitude are taken into consideration. For example, a formula using both SNR and amplitude may be used. Some illustrative examples of such analysis are shown in compending U.S. patent application Ser. No. 11/441,522, filed May 26, 2006, published as US Patent Application Publication Number 2007-0276445 and titled SYSTEMS AND METHODS FOR SENSING VECTOR SELECTION IN AN IMPLANTABLE MEDICAL DEVICE.

In another illustrative embodiment, a default vector is assumed, rather than selected on the basis of any metric. For example, if a particular system and implantation has a vector that works for most patients, then that vector may be selected first to start analysis. In another example, there may be a preferred vector, such as where there are two sensing-only electrodes and one or more sensing/shocking electrodes. Due to possible physical changes at the electrode/tissue interface for the sensing/shocking electrodes when stimulus is delivered, the vector between the two sensing-only electrodes may be "preferred". Thus, in starting the method, the "preferred" vector may be selected at step **132**.

With the vector selected at **132**, a template for analysis of cardiac signals may optionally be formed, as shown at **134**. This optional step of the method of FIG. **3** may include capturing a set of signals with the selected vector, identifying likely cardiac events in the set of signals, and forming windows of captured signals around fiducial points likely to correspond to cardiac events.

An illustrative example of template formation may be as follows. First, the signal captured along the selected vector may be compared to a threshold and, when the threshold is exceeded, a cardiac event is assumed to be likely. A peak value in a set of samples following the threshold crossing (for example, the next 40 sequential samples, captured at 256 Hz) is identified as a fiducial point, and a window of samples around the fiducial point is calculated. This initial capture is presumed to be a cardiac event. Several additional "events" are subsequently captured in association with later threshold crossings, with the fiducial point and/or window being selected in a manner corresponding to that of the original identified "event".

The captured events are then compared to one another, for example, using correlation waveform analysis, or alternatively, another metric such as QRS width, which may be identified as a duration in which the signal remains above a minimum threshold. If the set of events is sufficiently similar, then a template is formed by selecting a representative event or by averaging a set of events. In some

embodiments, the template may be dynamically updated by averaging in later-captured events. Additional examples of template formation may also be found in copending U.S. patent application Ser. No. 10/999,853, filed Nov. 29, 2004 and entitled METHOD FOR DEFINING SIGNAL TEMPLATES IN IMPLANTABLE CARDIAC DEVICES, now U.S. Pat. No. 7,376,458. In some embodiments, template formation may fail where similarity among sets of captured events does not occur. For example, a time-out may be used, and, if after a period of time (60-180 seconds, for example), a template cannot be formed using similarity analysis, the vector under consideration may be identified as poorly suited to detection.

Next, the patient is directed to change body positions, as indicated at 136. One or more additional positions beyond the original position may be used. For example, if the patient is supine, as indicated at 130, the patient may be asked to move to a prone position, to sit up, and/or to stand. The positions listed at 138 are merely illustrative, and no set number of such positions is necessary. In an illustrative embodiment, it is determined what positions the patient tends to rest in, for example, reclined, and/or the patient's sleep position, such as on the patient's side, in order that the posture assessment considers those positions the patient is in the most. For each position the patient is asked to assume, the implanted device analyzes the selected vector to determine whether the selected vector will function adequately for cardiac event detection and analysis. In an illustrative example, if the selected vector fails to function adequately in any position, the method skips any remaining body positions and advances to step 140. Otherwise, the selected vector is analyzed at each of at least two positions.

In an illustrative example, the selected vector is analyzed in each of the positions by considering one or more of SNR, signal amplitude, and/or noise amplitude. For example, the SNR and signal amplitude may be considered by the use of a formula, as further explained below.

The method then goes to step 140, where it is determined whether the selected vector has been verified or confirmed as a "good" sensing vector. If so, the method ends at 142. If the selected vector is not verified or confirmed, the method returns to step 132 and selects a different vector, with the patient being asked to again assume the first body position upon return to step 132 and, thereafter, to move through additional body positions as directed at step 136. In this method, a vector is first selected and then tested as the patient changes body positions.

FIG. 4 illustrates a deterministic approach, as contrasted to the confirmation approach of FIG. 3. In FIG. 4, for example, the patient assumes a given body position and holds that position until data is gathered for each of the available vectors. The method of FIG. 4 begins with start block 160. The patient is asked to select a body position, as indicated at 162. Illustrative positions are listed at 164; in an example, the patient is asked to lay supine and is later asked to sit and/or stand. Each vector is then analyzed while the patient remains in the selected body position, as shown at 166. After data is captured for each vector during step 166, it is determined if all positions have been tested, as indicated at 168. If not, the method returns to step 162, where a different body position is selected and the patient is asked to assume a different body position. Once each desired body position is tested, the method exits the loop from 168, and a vector is selected as indicated at 170. Once a vector is identified on the basis of the data captured in the loop of 162-166-168, the method may perform template formation as indicated at 172. In some embodiments, if template

formation 172 fails, the method may return to step 170 and select a different vector. The method then ends, as indicated at 174.

In an alternative embodiment, first and second vectors are identified, with the second vector being a back-up vector for use either because the first, primary or default vector becomes unavailable or, alternatively, for use if the first vector provides ambiguous indications of whether the patient is experiencing an arrhythmia.

In some embodiments, a single vector is identified for use while the patient is in any body position. In other embodiments, several templates may be formed for the patient. For example, analysis of data captured while the patient is in a supine position may indicate a different "best" vector than that captured while the patient is an upright position. Two templates could then be formed, without regard for whether the first and second templates are formed using the same vector, where each template includes information for its sensing vector configuration.

Illustratively, the first template could use sensing vector A-Can (see FIG. 1A) and could be defined at the time of postural assessment while the patient is supine, and the second template could use vector A-B (see FIG. 1A) and could be defined at the time of postural assessment while the patient is sitting upright. Then, during analysis, the primary template at any given time could be whichever indicates ordinary cardiac function. If neither template indicates ordinary cardiac function, it may be presumed that an arrhythmia is occurring, and a stimulus may be delivered. This may be performed as part of a Boolean approach to finding arrhythmic activity:

IF Analysis (A) fails

AND IF Analysis (B) fails

THEN Event indicates Malignant Rhythm

This tiered analysis may prevent misdiagnosis of the cardiac rhythm due to a change of the patient's body position.

In another illustrative example, the primary and secondary templates may be "switched" one for the other in response to an output from a body position sensor. For example, if the primary template is associated with a first body position and the secondary template is associated with a second body position, an output of a body position sensor may be monitored, and the templates switched depending upon the body position indicated by the body position sensor.

Additionally, switching between the templates may be achieved without needing the use of a dedicated position sensor. In an illustrative example, only the Analysis (A) is performed in a morphology-based analysis system until a first threshold of abnormality is met. For example, if an X out of Y counter is used, the Analysis (A) may be used by itself until a first X out of Y threshold is met. In an illustrative example, if 18/24 events is the threshold for a determination that a malignant cardiac rhythm is occurring, then an 8/24 threshold may be used to activate Analysis (B). If 2-3 events occur before Analysis (B) begins functioning, then a smooth transition may occur if the patient has changed positions since, by the time the 18/24 counter fills for Analysis (A), 8 or more events will have been detected using Analysis (B). In an illustrative example, if 4/8 of the events using Analysis (B) are found to meet template comparison parameters, the system may switch to Analysis (B), using a different template and/or vector than Analysis (A) for primary analysis. In some illustrative embodiments that use both primary and secondary templates, stimulus delivery (or preparation for stimulus delivery) may be

delayed until it is determined that the analysis with each template indicates a malignant cardiac rhythm.

The method of FIG. 4 calls for more data to be gathered than the method of FIG. 3, regardless of whether one vector is superior or not. Therefore, this method may be slower in some instances than that of FIG. 3. However, with the method of FIG. 3, the patient may be asked to perform and repeat several movements during postural assessment. If a device is implanted in a patient who is relatively weak, for example, due to advanced congestive heart failure, repeated movements may be undesirable. Illustrative examples may be configured to perform either method. In another illustrative example, the devices (the implanted medical device and/or the programmer) in the system are equipped to perform either method, with the programmer allowing a physician to select one method or the other.

FIG. 5 illustrates a detailed method for an illustrative embodiment. As indicated at 200, the method begins with the patient (PT) supine. Step 200 may be a directive given from the programmer to a physician to have the patient assume a supine position, or it may be given directly to the patient from the programmer itself. With this position verified (for example, the programmer may request an input indicating that the patient is in the requested position), a first vector is selected, as indicated at 202.

A VS SCORE<sub>SUP</sub> is then calculated, as indicated at 204. The VS SCORE<sub>SUP</sub> may be a "score" calculated to indicate the quality of the sensing vector. As discussed above, this may include consideration of signal amplitude, SNR, etc. Calculation of a SCORE may make use of a formula, a look-up table, or any suitable method for placing a metric on the quality of a sensing vector. Illustrative methods are shown in copending U.S. patent application Ser. No. 11/441,522, filed May 26, 2006, published as US Patent Application Publication Number 2007-0276445 and entitled SYSTEMS AND METHODS FOR SENSING VECTOR SELECTION IN AN IMPLANTABLE MEDICAL DEVICE.

After the score is calculated at 204, it is determined whether all vectors have been analyzed, as indicated at 206. If not, a different vector is selected, as shown at 208, and the method calculates another VS SCORE<sub>SUP</sub> at 204. If all the vectors have been considered at step 206, the method continues to block 210.

At block 210, the programmer or the implantable device, depending on the system configuration, determines whether additional patient positions are possible. If not, the method continues to step 212, where the vector having the largest SCORE from the initial analysis is selected for use in analysis, and template formation is initiated, as indicated at 214. This opt-out step 210 may be provided to accommodate a patient who is not capable of changing body positions due to physical limitations or to accommodate use during implant procedures.

If, at step 210, one or more additional patient positions are possible, the method continues to step 220. At step 220, the programmer requests that the patient adopt a different position, for example, standing or sitting. The method then performs similar steps to those performed with the first body position. A vector is selected at 222, a score, VS SCORE<sub>STD</sub>, is calculated at 224, and it is determined whether each vector has been considered at 226. If not, as indicated at 228, the method returns to 224 with a different vector selected. Once all vectors are completed, the vectors are compared, as indicated at 230. In an illustrative embodiment, the formula shown at 236 is used to calculate a PASS<sub>value</sub> for each vector.

Formula 236 includes two major terms. FIGS. 6A-6B are graphs of variable relationships in an illustrative method of

analyzing sensing vectors during postural assessment, with FIG. 6A illustrating the first term:

$$\sqrt{(\text{SCORE}_{SUP})^2 + (\text{SCORE}_{STD})^2} - |\text{SCORE}_{SUP} - \text{SCORE}_{STD}|$$

The result of this first term increases with the amplitude of each SCORE, and is greatest when the amplitudes of the SCOREs are similar.

FIG. 6B illustrates relationships for the second term:

$$1 - \left( \frac{\text{Max}(\text{AMP}_{SUP}, \text{AMP}_{STD}) - \text{Min}(\text{AMP}_{SUP}, \text{AMP}_{STD})}{\text{Max}(\text{AMP}_{SUP}, \text{AMP}_{STD})} \right)$$

When the signal amplitudes are closest to one another, the value of this term approaches 1, while it approaches zero if the maximum signal amplitude of the sensing vector when the patient is in one body position is significantly different from the maximum signal amplitude of the sensing vector when the patient is in the other body position.

In short, illustrative formula 236 takes into account the size and similarities of the SCOREs, i.e., whether the vector quality is high and the strength of the signal along a given vector is high in the first term, and whether the vector provides relatively consistent output, particularly in terms of signal amplitude, without regard for the body position of the patient. One reason for the inclusion of the second term is that, in the illustrative embodiment, the event detection system of the implantable device includes an amplifying input having two dynamic ranges, one which is larger and one which is smaller. With such a system, it may be better, in some embodiments, to select a vector that captures signal that makes relatively full use of one of the dynamic ranges in each of the patient body positions.

For example, given dynamic ranges of 0-2.0 mV and 0-4.0 mV, analysis may be easier and more reliable with a first vector in which peak voltages are 0.75 mV for both body positions, rather than a second vector in which peak voltages are 0.75 mV for one body position and 2.5 mV for a second body position, as the latter vector would call for lower amplification to accommodate the second body position but would use the dynamic range poorly when the patient is in the first body position. For example, FIG. 7C illustrates a SCORE calculation in which the amplitude affects the output SCORE in a manner having first and second peaks, with a trough therebetween. While having both terms account for dynamic range is part of some illustrative embodiments, other illustrative embodiments may instead use the formula of FIG. 7A for score calculation, as further explained below.

The illustrative formula 236 presumes a SCORE value is generated in some manner. Some illustrative embodiments use the following approach:

$$\text{SCORE} = S_A \times S_R$$

Where, for example, S<sub>A</sub> and S<sub>R</sub> may be calculated using one of several approaches. In one such embodiment, the following formula is used:

$$S_A = \text{GAIN} * \frac{\exp(N1 * [\ln(N2 * \text{QRS}_{Avg} - N3)])^2}{D1 * \text{QRS}_{Avg} - D2}$$

Where:

$$\begin{aligned} \text{GAIN} &= 64.0 & N1 &= -34.7222 \\ N2 &= 0.2326 & N3 &= -0.6047 \\ D1 &= 0.3008 & D2 &= -0.7821 \end{aligned}$$

It should be noted that the limits for  $QRS_{Avg}$ , in this illustrative embodiment, are  $0 < QRS_{Avg} < 4.0$ . A graph illustrating the relationship between  $S_A$  and  $QRS_{Avg}$  is shown in FIG. 7A.

The illustrative Scoring method further includes calculating a value  $S_R$  as:

$$S_R = C_R * (SNR)^2$$

Where: if  $SNR \leq 3.5$ ,  $C_R = 0.1$ ;  
if  $3.5 < SNR \leq 10$ ,  $C_R = 1$ ; and  
if  $SNR > 10$ ,  $S_R = 100$

A graph illustrating the relationship between  $S_R$  and the SNR is shown in FIG. 7B.

In another embodiment,  $S_A$  and  $S_R$  may be calculated from the following look-up table:

LOOKUP TABLE			
$S_A$	$QRS_{Avg}$ (mV)	$S_R$	SNR
0.5	$\leq 0.5$	0.5	$\leq 3$
5	0.5-0.65	1	3-3.5
10	0.65-0.8	25	3.5-4
18	0.8-1.0	50	4-5
30	1.0-1.7	75	5-7.5
20	1.7-2.0	100	$> 7.5$
40	2.0-3.0		
15	3.0-3.5		
0.5	3.5-4.0		

It can be seen that the output scores using the lookup table would include a trough in the range of  $1.7 \text{ mV} < QRS_{Avg} < 2.0 \text{ mV}$ , in accordance with an embodiment adapted for multiple dynamic ranges.

In yet another embodiment,  $S_A$  and  $S_R$  are calculated using another polynomial formula, for example:

$$S_R = C_R * (SNR)^2$$

where: if  $SNR \leq 3.5$ ,  $C_R = 0.1$ ;  
if  $3.5 < SNR \leq 10$ ,  $C_R = 1$ ; and  
if  $SNR > 10$ ,  $S_R = 100$

It can be seen that  $S_R$  is calculated the same here as in the first calculation method shown above, and a graph showing the relationship is shown in FIG. 7B. In this illustrative example,  $S_A$  may be calculated using the following:

$$S_A = \{C_1 * (QRS_{Avg})^6 + C_2 * (QRS_{Avg})^5 + C_3 * (QRS_{Avg})^4 + C_4 * (QRS_{Avg})^3 + C_5 * (QRS_{Avg})^2 + C_6 * (QRS_{Avg}) + C_7\}$$

where, if  $QRS_{Avg} \leq 2.0$ ,

$$C_1 = 22.5718 \quad C_2 = -105.9666 \quad C_3 = 160.2345 \\ C_4 = -88.9262 \quad C_5 = 29.6019 \quad C_6 = -1.2859 \\ C_7 = 0.0087$$

and, if  $QRS_{Avg} > 2.0$ ,

$$C_1 = 56.5544 \quad C_2 = -1069.9959 \quad C_3 = 8310.0056 \\ C_4 = -33849.9682 \quad C_5 = 76139.7271 \quad C_6 = -89551.3405 \\ C_7 = 43035.7880$$

A graph illustrating the relationship between  $S_A$  and  $QRS_{Avg}$  is shown in FIG. 7C. Both the lookup table and this third method using a 6<sup>th</sup> order polynomial take into account a system having first and second dynamic ranges by providing a dip in the SCOREs corresponding to input signals that would border between the two dynamic ranges.

These methods of calculating SCOREs are merely illustrative, and those of skill in the art will understand that the values and calculations involved will vary depending upon the positioning of the system, the electronics and electrodes used, power level(s), and, potentially, other variables.

It is sufficient for the present invention that an analysis of a sensing vector is performed with the patient in two or more

body positions, if two positions are possible, and that this analysis provides a result that indicates whether or not the vector is useful/usable. For some embodiments, the analysis may further provide results for several vectors such that the vectors may be compared to one another. For example, in the method of FIG. 3, a Boolean output of Yes/No may be a result of vector analysis such that, if a vector is initially selected and is functional, a Yes output results. For the method embodiments of FIGS. 4-5, however, an output of vector analysis that allows comparative analysis is illustrated, as it allows the vectors to be compared to one another at the end of analysis. In alternative embodiments, a method as in FIGS. 4-5 returns Boolean results, with the available vectors prioritized such that the highest priority vector returning a functional result (Yes output, for example) is selected.

Referring again to FIG. 5, after comparison of the vectors at 230, the vector with the largest  $PASS_{value}$  is selected as the default or primary sensing vector, as indicated at 232. Template formation may then be initiated, as indicated at 214, and the device may move on to ordinary function. If desired, a secondary sensing vector may also be identified in step 232. A secondary sensing vector may be used, for example, for any of the reasons set forth above, including to resolve ambiguities, to provide a Boolean check of cardiac function, or to provide a second vector to use when the patient changes body position.

In a more general embodiment making use of similar relationships, the first formula could be of the form:

$$\sqrt{\sum_{i=1}^{i=n} (SCORE_n)^2} - [ \text{Max}(SCORE_1 \dots SCORE_n) - \text{Min}(SCORE_1 \dots SCORE_n) ]$$

where n is the number of body positions tested, and SCORE is the score for the vector while the patient is in the i<sup>th</sup> body position. The amplitude factor may be analogous to the above amplitude factor. An additional factor which may be included takes the form:

$$\frac{\text{Min}(SCORE_1 \dots SCORE_n)}{\text{Max}(SCORE_1 \dots SCORE_n)}$$

This term would further emphasize a minimum score value, for example, when using three body positions in the postural assessment, if a very low score is achieved in any of the positions, the vector under consideration may be poorly suited to detection regardless of high SCOREs in the other positions, and this factor would reduce the output PASS value.

FIGS. 8A-8E are graphical representations of display outputs of a programmer during an illustrative method of postural assessment. In the illustrative embodiment, the programmer includes a touch screen; in other embodiments, the programmer may include buttons, a keypad or other controls, and may take any suitable form.

FIG. 8A shows a first screen shot. The programmer indicates to the physician that the postural assessment procedure is to start. The physician is asked to ensure that the patient is laying down (a first body position) and then to touch the "continue" icon 300 on the screen. Across the top of the programmer screen, status is indicated for the implanted device. In particular, during these steps, therapy

for the device may (optionally) be turned off. The device status as “implanted” is indicated, as is the patient’s heart rate. In some embodiments, the programmer may refuse to perform postural assessment if the patient’s heart rate is not in a predetermined range, for example, between 50 and 120 bpm.

After the physician presses the “continue” icon 300 from the screen shot of FIG. 8A, the next screen that is seen is that of FIG. 8B, in which the programmer indicates that the device is collecting the patient’s rhythm. The physician is requested to keep the patient still. A cancel icon 302 is provided in case the physician determines that the procedure should stop, for example, if the patient feels uncomfortable or ill, displays a physical abnormality (rising heart rate, for example), or if the patient moves. If desired, a status bar may be provided to indicate the progress of the sensing vector analysis to the physician.

Once data is captured for the first patient body position, the next screen shot is that of FIG. 8C. The physician is asked to have the patient sit up (a second body position). With the patient sitting up, the physician is asked to keep the patient still and depress the continue icon 304. The programmer then displays the screen shot of FIG. 8D, which is quite similar to that of FIG. 8B and again includes an optional cancel button 306 and may include a status bar.

As shown in FIG. 8E, once data capture is complete for the second body position, patient tailoring in the illustrative embodiment is complete. The physician (or other operator) may go on to perform other tasks by touching the “continue” icon 310. In other embodiments, additional data capture may ensue, if desired.

In some embodiments, the data capture for the patient may include options for physician input. For example, during data capture, it is possible for an artifact (such as a T-wave) to interfere with detection of R-waves. In some instances, the physician’s input may be needed or requested to resolve any questions relating to event classification. Some examples are discussed in copending U.S. patent application Ser. No. 11/441,522, filed May 26, 2006 published as US Patent Application Publication Number 2007-0276445 and entitled SYSTEMS AND METHODS FOR SENSING VECTOR SELECTION IN AN IMPLANTABLE MEDICAL DEVICE. In one illustrative embodiment, any such questions are delayed until all data has been captured, allowing the physician to concentrate on the programmer to answer such questions, rather than having the patient remain in a predetermined position while such issues are resolved. In another illustrative embodiment, such questions are asked as they arise.

In some embodiments, the above methods may be revisited later, after implantation, by the patient on his or her own. For example, as home-monitoring systems become available for patients with implanted cardiac monitoring and/or stimulus devices, a home monitoring system may be used to communicate with the implanted device, allowing later re-selection of sensing vectors in light of postural assessment. The home monitoring system, in an illustrative example, may include a graphical user interface allowing the user to indicate readiness for postural assessment, after which the home monitoring system may provide graphical output indicating what to do, physically, for the patient to complete home-monitoring self-assessment of postural effects on cardiac signals. Thus, a home monitoring system having functionality allowing it to provide patient directions in support of postural assessment may also be a “programmer” in the methods and systems discussed herein.

Yet another illustrative embodiment may include a device as shown in either of FIGS. 1A-1B which includes a sensor or sensing system for determining patient body position. For example, the sensor may be a gravity sensor or accelerometer-type sensor. The sensor may also be used to measure transthoracic impedance as a surrogate for patient body position. In one embodiment, the system need not determine an actual position using the position sensor, but instead may identify position sensor output ranges that correlate to the usefulness of particular vectors and/or templates. For example, when a patient moves from sitting to standing, a position sensor output may indicate a change of position. When the position changes as indicated by the position sensor, the system may determine for itself whether the primary sensing vector should be changed by observing various template analyses. To this end, from the implanted medical device system perspective, knowledge of the position is not needed, but instead, identification of the best template from several that are available is sufficient.

During operation, another illustrative implanted medical device may periodically (at intervals) or occasionally (in response to a condition or request) perform postural assessment without requesting movement by the patient. For example, if the position sensor output is “X”, vector selection may be performed. If the position sensor later provides a different output, “Y”, vector selection may again be performed, as is may be presumed that the patient is in a different body position. This process may be repeated several times, with templates and vectors identified for various position sensor outputs. After the selection process, if the position sensor output returns to “X”, then a vector and/or template associated with position sensor output “X” may be selected. Within this approach, a single vector may have multiple templates, each corresponding to a position sensor output.

Those skilled in the art will recognize that the present invention may be manifested in a variety of forms other than the specific embodiments described and contemplated herein. Accordingly, departures in form and detail may be made without departing from the scope and spirit of the present invention as described in the appended claims.

What is claimed is:

1. A programmer for use with an implantable medical device, the implantable medical device including therapy circuitry for providing electrical therapy output using one or more electrodes disposed on a lead configured for attachment thereto, implant communications circuitry for communicating with the programmer, and operational circuitry for controlling operation of the therapy circuitry and implant communications circuitry, the programmer comprising:

a user interface touchscreen for providing instructions and information to and receiving inputs from a user thereof; and

programmer communication circuitry for communicating with the implantable medical device; wherein the programmer is configured to perform the following method:

present a plurality of posture states via the touchscreen to a user;

receive an input from a user indicating that a patient having the implantable medical device has assumed a first posture of the plurality of posture states;

upon receiving an input from the user indicating that the first posture has been assumed by the patient, direct, via the programmer communication circuitry, the implantable medical device to capture data for the first posture;

15

receive an indication from the implantable medical device that data capture is complete for the selected posture state; and

provide an indication to the user on the touchscreen in response to receiving an indication from the implantable medical device that data capture is complete for the selected posture state.

2. The programmer of claim 1 wherein the programmer is further configured to:

receive an input from the user indicating that the patient has assumed a second posture of the plurality of posture states;

upon receiving the input from the user indicating that the second posture of the plurality of posture states has been assumed by the patient, directing, via the programmer communication circuitry, the implantable medical device to capture data for the second posture; receive an indication from the implantable medical device that data capture is complete for the selected second posture state; and

provide an indication to the user on the touchscreen in response to receiving an indication from the implantable medical device that data capture is complete for the selected second posture state.

3. The programmer of claim 1 wherein programmer is further configured to direct the implantable medical device to store a first sensing parameter related to the first posture.

4. The programmer of claim 3 wherein the first sensing parameter is related to a sensing vector for use in sensing patient condition information.

5. The programmer of claim 4 wherein the first sensing parameter defines which of a plurality of cardiac signal sensing vectors the implantable device is to use for sensing patient condition information.

6. The programmer of claim 1 wherein the implantable medical device comprises an accelerometer and the programmer is configured to also direct the implantable medical device to set a first sensing parameter related to an output of the accelerometer using data captured for at least the selected posture state.

7. The programmer of claim 6 wherein the first sensing parameter defines which of several cardiac signal sensing vectors available to the implantable medical device to use in response to the accelerometer signal.

8. The programmer of claim 1 wherein the plurality of posture states include at least standing and lying down.

9. A medical device system comprising:

an implantable medical device comprising therapy circuitry for providing electrical therapy output, a sensor for determining patient body position, and communication circuitry for communicating with an external device; and

a programmer for use with the implantable medical device, the programmer comprising:

a user interface touchscreen for providing instructions and information to and receiving inputs from a user thereof; and

programmer communication circuitry for communicating with the implantable medical device;

wherein the programmer is configured to perform the following method:

present a plurality of posture states via the touchscreen to a user;

receive an input from a user indicating that a patient having the implantable medical device has assumed a first posture of the plurality of posture states;

16

upon receiving an input from the user indicating that the first posture has been assumed by the patient, direct, via the programmer communication circuitry, the implantable medical device to capture data for the first posture;

receive an indication from the implantable medical device that data capture is complete for the selected posture state; and

provide an indication to the user on the touchscreen in response to receiving an indication from the implantable medical device that data capture is complete for the selected posture state.

10. The medical device system of claim 9, wherein the programmer is further configured to:

receive an input from the user indicating that the patient has assumed a second posture of the plurality of posture states;

upon receiving the input from the user indicating that the second posture of the plurality of posture states has been assumed by the patient, direct, via the programmer communication circuitry, the implantable medical device to capture data for the second posture;

receive an indication from the implantable medical device that data capture is complete for the selected second posture state; and

provide an indication to the user on the touchscreen in response to receiving an indication from the implantable medical device that data capture is complete for the selected second posture state.

11. The medical device system of claim 9, wherein the programmer is further configured to direct the implantable medical device to store a first sensing parameter related to the first posture.

12. The medical device system of claim 11, wherein the first sensing parameter is related to a sensing vector for use in sensing patient condition information.

13. The medical device system of claim 12, wherein the first sensing parameter defines which of a plurality of cardiac signal sensing vectors the implantable device is to use for sensing patient condition information.

14. The medical device system of claim 9, wherein the implantable medical device comprises an accelerometer and the programmer is configured to also direct the implantable medical device to set a first sensing parameter related to an output of the accelerometer using data captured for at least the selected posture state.

15. The medical device system of claim 14, wherein the first sensing parameter defines which of several cardiac signal sensing vectors available to the implantable medical device to use in response to the accelerometer signal.

16. The medical device system of claim 9, wherein the plurality of posture states include at least standing and lying down.

17. A method of operation by a programmer for use with an implantable medical device, the implantable medical device including therapy circuitry for providing electrical therapy output using one or more electrodes disposed on a lead configured for attachment thereto, implant communications circuitry for communicating with the programmer, and operational circuitry for controlling operation of the therapy circuitry and implant communications circuitry, the programmer comprising:

a user interface touchscreen for providing instructions and information to and receiving inputs from a user thereof; and

programmer communication circuitry for communicating with the implantable medical device;

17

wherein the method comprises:  
the programmer presenting a plurality of posture states via  
the touchscreen to a user;  
the programmer receiving an input from a user indicating  
that a patient having the implantable medical device 5  
has assumed a first posture of the plurality of posture  
states;  
upon receiving an input from the user indicating that the  
first posture has been assumed by the patient, the  
programmer directing, via the programmer communi- 10  
cation circuitry, the implantable medical device to  
capture data for the first posture;  
the programmer receiving an indication from the implant-  
able medical device that data capture is complete for  
the selected posture state; and 15  
the programmer providing an indication to the user that  
data capture is complete for the selected posture state  
via the touchscreen and in response to receiving an  
indication from the implantable medical device that 20  
data capture is complete for the selected posture state.  
**18.** The method of claim **17** further comprising:  
the programmer receiving an input from the user indicat-  
ing that the patient has assumed a second posture of the  
plurality of posture states;

18

upon receiving the input from the user indicating that the  
second posture of the plurality of posture states has  
been assumed by the patient, the programmer directing,  
via the programmer communication circuitry, the  
implantable medical device to capture data for the  
second posture;  
the programmer receiving an indication from the implant-  
able medical device that data capture is complete for  
the selected second posture state; and  
the programmer providing an indication to the user that  
data capture is complete for the selected second posture  
state, on the touchscreen and in response to receiving  
an indication from the implantable medical device that  
data capture is complete for the selected second posture  
state.  
**19.** The method of claim **17** further comprising the  
programmer directing the implantable medical device to  
store a first sensing parameter related to the first posture.  
**20.** The method of claim **17** wherein the implantable  
medical device comprises an accelerometer, and the method  
further comprises the programmer directing the implantable  
medical device to set a first sensing parameter related to an  
output of the accelerometer using data captured for at least  
the selected posture state.

\* \* \* \* \*

专利名称(译)	通过姿势评估在心脏刺激设备中感知矢量选择		
公开(公告)号	<a href="#">US9744366</a>	公开(公告)日	2017-08-29
申请号	US15/150771	申请日	2016-05-10
[标]申请(专利权)人(译)	卡梅伦保健公司		
申请(专利权)人(译)	Cameron Health公司INC		
当前申请(专利权)人(译)	CAMERON HEALTH, INC.		
[标]发明人	SANGHERA RICK ALLAVATAM VENUGOPAL		
发明人	SANGHERA, RICK ALLAVATAM, VENUGOPAL		
IPC分类号	A61B5/02 A61N1/37 A61B5/042 A61N1/372 A61B5/04 A61B5/11 A61B5/00 A61N1/368 A61N1/39 A61N1/365		
CPC分类号	A61N1/37247 A61B5/042 A61B5/04011 A61B5/1116 A61B5/7221 A61N1/368 A61N1/37 A61N1/3702 A61N1/3704 A61N1/3925 A61N1/3956 A61N1/36535		
优先权	14/307756 2015-02-24 US 13/919147 2014-07-15 US 13/491529 2013-07-09 US 11/672353 2012-06-12 US		
其他公开文献	US20160250488A1		
外部链接	<a href="#">Espacenet</a> <a href="#">USPTO</a>		

摘要(译)

方法，可植入医疗设备和系统，被配置为对来自植入电极的捕获信号进行分析以识别心律失常。在说明性实施例中，分析从两个或更多个感测矢量捕获的信号，其中利用患者在至少第一和第二身体位置捕获信号。执行分析以识别用于事件检测的主要或默认感测向量和/或模板。

