



US009550064B2

(12) **United States Patent**
Mashiach

(10) **Patent No.:** **US 9,550,064 B2**
(45) **Date of Patent:** **Jan. 24, 2017**

(54) **APPARATUS AND METHODS FOR
FEEDBACK-BASED NERVE MODULATION**

(71) Applicant: **Adi Mashiach**, Tel Aviv (IL)

(72) Inventor: **Adi Mashiach**, Tel Aviv (IL)

(*) Notice: Subject to any disclaimer, the term of this patent is extended or adjusted under 35 U.S.C. 154(b) by 0 days.

(21) Appl. No.: **14/992,817**

(22) Filed: **Jan. 11, 2016**

(65) **Prior Publication Data**

US 2016/0121122 A1 May 5, 2016

Related U.S. Application Data

(60) Continuation of application No. 14/451,362, filed on Aug. 4, 2014, now Pat. No. 9,248,290, which is a (Continued)

(51) **Int. Cl.**

A61N 1/36 (2006.01)

A61N 1/05 (2006.01)

(Continued)

(52) **U.S. Cl.**

CPC **A61N 1/36075** (2013.01); **A61B 5/0031** (2013.01); **A61B 5/11** (2013.01); **A61B 5/113** (2013.01); **A61B 5/4818** (2013.01); **A61B 5/682** (2013.01); **A61F 5/566** (2013.01); **A61N 1/05** (2013.01); **A61N 1/0504** (2013.01); **A61N 1/0514** (2013.01); **A61N 1/0526** (2013.01); **A61N 1/0529** (2013.01); **A61N 1/0548** (2013.01); **A61N 1/0551** (2013.01); **A61N 1/0553** (2013.01); **A61N 1/36** (2013.01);

(Continued)

(58) **Field of Classification Search**

None

See application file for complete search history.

(56) **References Cited**

U.S. PATENT DOCUMENTS

3,796,221 A 3/1974 Hagfors

3,870,051 A 3/1975 Brindley

(Continued)

FOREIGN PATENT DOCUMENTS

DE 10 2009027997 1/2011

WO WO 2007/098200 8/2007

(Continued)

OTHER PUBLICATIONS

Brindley, G.S., Transmission of electrical stimuli along many independent channels through a fairly small area of intact skin, Proceedings of the Physiological Society, Dec. 1964, pp. 44-46.

(Continued)

Primary Examiner — Brian T Gedeon

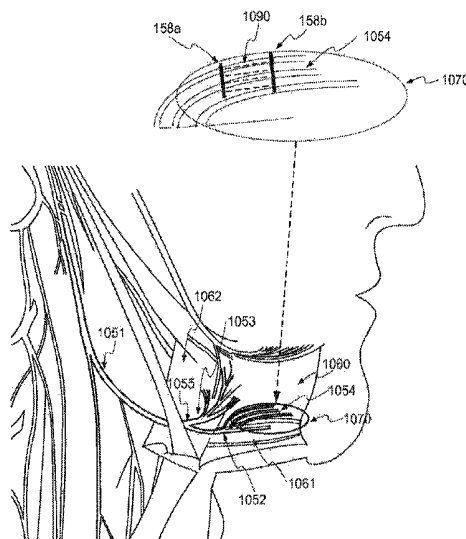
Assistant Examiner — Ankit D Tejani

(74) *Attorney, Agent, or Firm* — Finnegan, Henderson, Farabow, Garrett & Dunner, LLP

(57) **ABSTRACT**

A device according to some embodiments may include a housing configured for location external to a body of a subject. The device may also include at least one processor associated with the housing and configured to communicate with a circuit implanted in the subject within proximity to a tongue of the subject, wherein the circuit is in electrical communication with at least one electrode, receive a physiological signal from the subject via the circuit, and send a control signal to the implanted circuit in response to the physiological signal, wherein the control signal is predetermined to activate neuromuscular tissue within the tongue.

20 Claims, 14 Drawing Sheets



Related U.S. Application Data

division of application No. 14/041,520, filed on Sep. 30, 2013, now Pat. No. 8,812,113, which is a division of application No. 13/629,686, filed on Sep. 28, 2012, now Pat. No. 8,577,464, and a continuation-in-part of application No. 12/642,866, filed on Dec. 21, 2009, now Pat. No. 8,585,617, and a continuation-in-part of application No. 12/581,907, filed on Oct. 20, 2009.

(60) Provisional application No. 61/541,651, filed on Sep. 30, 2011, provisional application No. 61/657,424, filed on Jun. 8, 2012.

(51) **Int. Cl.**

- A61N 1/372* (2006.01)
- A61N 1/378* (2006.01)
- A61N 1/375* (2006.01)
- A61B 5/11* (2006.01)
- A61B 5/113* (2006.01)
- A61F 5/56* (2006.01)
- A61N 2/00* (2006.01)
- A61N 2/02* (2006.01)
- A61B 5/00* (2006.01)

(52) **U.S. Cl.**

- CPC *A61N 1/3601* (2013.01); *A61N 1/36003* (2013.01); *A61N 1/3605* (2013.01); *A61N 1/3606* (2013.01); *A61N 1/3611* (2013.01); *A61N 1/36057* (2013.01); *A61N 1/36117* (2013.01); *A61N 1/36125* (2013.01); *A61N 1/36135* (2013.01); *A61N 1/36139* (2013.01); *A61N 1/36146* (2013.01); *A61N 1/3727* (2013.01); *A61N 1/3756* (2013.01); *A61N 1/3787* (2013.01); *A61N 1/37211* (2013.01); *A61N 1/37223* (2013.01); *A61N 1/37229* (2013.01); *A61N 1/37235* (2013.01); *A61N 2/006* (2013.01); *A61N 2/02* (2013.01); *A61B 5/4519* (2013.01); *A61B 5/6822* (2013.01); *A61B 5/6833* (2013.01); *A61B 5/6876* (2013.01); *A61B 2562/164* (2013.01); *F04C 2270/0421* (2013.01)

6,572,543	B1	6/2003	Christopherson et al.
6,587,725	B1	7/2003	Durand et al.
6,587,728	B2	7/2003	Fang et al.
6,625,494	B2	9/2003	Fang et al.
6,636,767	B1	10/2003	Knudson et al.
6,643,552	B2	11/2003	Eddel et al.
6,770,022	B2	8/2004	Mechlenburg et al.
6,814,706	B2	11/2004	Barton et al.
7,062,330	B1	6/2006	Boveja et al.
7,155,278	B2	12/2006	King et al.
7,272,443	B2	9/2007	Min et al.
7,277,749	B2	10/2007	Gordon et al.
7,295,132	B2	11/2007	Steiner
7,367,935	B2	5/2008	Mechlenburg et al.
7,371,220	B1	5/2008	Koh et al.
7,374,540	B2	5/2008	Schnall
7,447,551	B2	11/2008	Kuo et al.
7,623,929	B1	11/2009	Griffith
7,644,714	B2	1/2010	Atkinson et al.
7,667,511	B2	2/2010	Staszewski et al.
7,680,538	B2	3/2010	Durant et al.
7,697,990	B2	4/2010	Ujhazy et al.
7,709,961	B2	5/2010	Greenberg et al.
7,725,195	B2	5/2010	Lima et al.
7,729,772	B2	6/2010	Williams et al.
7,729,781	B2	6/2010	Swoyer et al.
7,733,218	B2	6/2010	Drago et al.
7,756,583	B2	7/2010	Demarais et al.
7,773,695	B2	8/2010	Zhou et al.
7,809,442	B2	10/2010	Bolea et al.
7,845,357	B2	12/2010	Buscemi et al.
7,869,885	B2	1/2011	Begnaud et al.
8,072,310	B1	12/2011	Everhart
2001/0018547	A1	8/2001	Mechlenburg et al.
2002/0188333	A1	12/2002	Nowick et al.
2003/0225403	A1	12/2003	Woloszko et al.
2004/0049245	A1	3/2004	Gass et al.
2004/0059392	A1	3/2004	Parramon et al.
2004/0085792	A1	5/2004	Lin et al.
2004/0102820	A1	5/2004	Moune et al.
2004/0153127	A1	8/2004	Gordon et al.
2004/0172089	A1	9/2004	Whitehurst et al.
2004/0199212	A1	10/2004	Fischell et al.
2005/0010265	A1	1/2005	Baru Fassio et al.
2005/0043772	A1	2/2005	Stahmann et al.
2005/0070971	A1	3/2005	Fowler et al.
2005/0075694	A1	4/2005	Schmeling et al.
2005/0075695	A1	4/2005	Schommer
2005/0075700	A1	4/2005	Schommer
2005/0187584	A1	8/2005	Denker
2006/0062580	A1	3/2006	Mahbobi
2006/0114104	A1	6/2006	Scaramozzino
2006/0145878	A1	7/2006	Lehrman et al.
2006/0180647	A1	8/2006	Hansen
2006/0217779	A1	9/2006	Ransbury et al.
2006/0224211	A1	10/2006	Durand et al.
2006/0271110	A1	11/2006	Vernon et al.
2007/0073357	A1	3/2007	Rooney et al.
2007/0112404	A1	5/2007	Mann et al.
2007/0150022	A1	6/2007	Ujhazy et al.
2007/0173893	A1	7/2007	Pitts
2007/0173899	A1	7/2007	Levin et al.
2007/0185546	A1	8/2007	Tseng et al.
2007/0221231	A1	9/2007	Macken
2007/0222560	A1	9/2007	Posamentier
2007/0232936	A1	10/2007	Mann et al.
2007/0233204	A1	10/2007	Lima et al.
2007/0255379	A1	11/2007	Williams et al.
2007/0265606	A1	11/2007	DeBenedictis et al.
2007/0290859	A1	12/2007	Held et al.
2008/0021506	A1	1/2008	Grocera
2008/0027503	A1	1/2008	Marrosu et al.
2008/0030363	A1	2/2008	Rezvani et al.
2008/0041398	A1	2/2008	Hegde et al.
2008/0064946	A1	3/2008	Greenberg et al.
2008/0081982	A1	4/2008	Simon et al.
2008/0103407	A1	5/2008	Bolea et al.
2008/0109046	A1	5/2008	Lima et al.
2008/0109047	A1	5/2008	Pless

(56)

References Cited

U.S. PATENT DOCUMENTS

4,765,983	A	8/1988	Takayanagi et al.
4,830,008	A	5/1989	Meer
4,837,049	A	6/1989	Byers et al.
5,094,242	A	3/1992	Gleason et al.
5,174,287	A	12/1992	Kallok et al.
5,178,156	A	1/1993	Takishima et al.
5,193,539	A	3/1993	Schulman et al.
5,485,851	A	1/1996	Erickson
5,540,733	A	7/1996	Testerman et al.
5,591,216	A	1/1997	Testerman et al.
5,697,076	A	12/1997	Troyk et al.
5,895,360	A	4/1999	Christopherson et al.
5,948,006	A	9/1999	Mann
6,024,702	A	2/2000	Iversen
6,026,818	A	2/2000	Blair et al.
6,038,480	A	3/2000	Hrdlicka et al.
6,051,017	A	4/2000	Loeb et al.
6,073,048	A	6/2000	Lieval et al.
6,126,611	A	10/2000	Bourgeois et al.
6,163,725	A	12/2000	Peckham et al.
6,185,296	B1	2/2001	Saitoh
6,210,326	B1	4/2001	Ehwald
6,240,316	B1	5/2001	Richmond et al.
6,275,737	B1	8/2001	Mann
6,345,202	B2	2/2002	Richmond et al.

(56)

References Cited

U.S. PATENT DOCUMENTS

2008/0119911 A1 5/2008 Rosero
 2008/0132962 A1 6/2008 DiUbaldo et al.
 2008/0140152 A1 6/2008 Imran et al.
 2008/0147141 A1 6/2008 Testerman et al.
 2008/0165058 A1 7/2008 Ayachitula et al.
 2008/0243014 A1 10/2008 Moussavi et al.
 2008/0300654 A1 12/2008 Lambert et al.
 2008/0319506 A1 12/2008 Caulier
 2009/0014012 A1 1/2009 Sanders
 2009/0048647 A1 2/2009 Tingey
 2009/0062675 A1 3/2009 Weigand et al.
 2009/0069648 A1 3/2009 Irazoqui et al.
 2009/0078274 A1 3/2009 Bhat et al.
 2009/0132018 A1 5/2009 DiUbaldo et al.
 2009/0157150 A1 6/2009 Caulier
 2009/0173351 A1 7/2009 Sahin et al.
 2009/0173352 A1 7/2009 Bhat et al.
 2009/0281595 A1 11/2009 King et al.
 2010/0030298 A1 2/2010 Martens et al.
 2010/0087896 A1 4/2010 McCreery
 2010/0094379 A1 4/2010 Meadows et al.
 2010/0114190 A1 5/2010 Bendett et al.
 2010/0121413 A1 5/2010 Willerton et al.
 2010/0125304 A1 5/2010 Faltys
 2010/0131029 A1 5/2010 Durand et al.
 2010/0137948 A1 6/2010 Aghassian et al.
 2010/0139667 A1 6/2010 Atkinson et al.
 2010/0152553 A1 6/2010 Ujhazy et al.
 2010/0191136 A1 7/2010 Wolford
 2010/0196744 A1 8/2010 Tucholski et al.
 2010/0198305 A1 8/2010 Farbarik
 2010/0228313 A1 9/2010 Starkebaum et al.
 2010/0234924 A1 9/2010 Willis
 2010/0241195 A1 9/2010 Meadows et al.
 2010/0292527 A1 11/2010 Schneider et al.
 2010/0312320 A1 12/2010 Faltys et al.
 2010/0331634 A1 12/2010 Muller et al.
 2011/0065979 A1 3/2011 Lehrman et al.
 2011/0071591 A1 3/2011 Bolea et al.
 2011/0093036 A1 4/2011 Mashlach
 2011/0112601 A1 5/2011 Meadows et al.
 2011/0152965 A1 6/2011 Mashlach et al.
 2011/0152966 A1 6/2011 Bolea et al.
 2011/0172733 A1 7/2011 Lima et al.
 2011/0213438 A1 9/2011 Lima et al.
 2011/0230702 A1 9/2011 Honour
 2011/0264163 A1 10/2011 Tracey et al.
 2011/0301670 A1 12/2011 Gross et al.
 2012/0123498 A1 5/2012 Gross

FOREIGN PATENT DOCUMENTS

WO WO 2007/098202 8/2007
 WO WO 2008/048471 4/2008
 WO WO 2011/077433 6/2011

OTHER PUBLICATIONS

Tran, W.H., Loeb, G.W., Richmond, F.J.R.; Ahmed, R.; Clark, G.T.; Haberman, P.B., First Subject Evaluated with Stimulated BION Treatment in Posterior Genioglossus to Prevent Obstructive Sleep Apnea, Proceedings of the 26th Annual International Conference of IEEE EMBS, Sep. 2004, pp. 4287-4289.

Schwartz, Alan R., Therapeutic Stimulation of the Hypoglossal Nerve in Obstructive Sleep Apnea, Archives of Otolaryngology Head and Neck Surgery, vol. 127, Oct. 2001, pp. 1216-1223.

Eastwood, P.R.; Walsh, J.H.; Maddison, K.J.; Baker, V.A.; Tesfayesus, W.; Hillman, D.R.; Treatment of Obstructive Sleep Apnea with Unilateral Hypoglossal Nerve Stimulation, American Journal of Respiratory Critical Care Medicine, vol. 181, May 2010, pp. 5393-5394.

Eisele, David W., Tongue neuromuscular and direct hypoglossal

nerve stimulation for obstructive sleep apnea, Otolaryngologic Clinics of North America, Jun. 2003, pp. 501-510.

Robblee, L.S., Studies of the electrochemistry of stimulating electrodes, National Institutes of Health, Contract No. N01-NS-8-2313, Nov. 1991, pp. 6-8.

Levin, Morris, Nerve Blocks in the treatment of Headaches, Neurotherapeutics: The Journal of the American Society for Experimental NeuroTherapeutics, Apr. 2010, pp. 197-203.

Lundy, Larry, Ear, Nose and Throat Journal, Cochlear Implant Fixation Using Resorbable Mesh, Jul. 1, 2011, 4 pages.

International Search Authority, International Search Report and Written Opinion of the International Searching Authority, International Application No. PCT/IB12/02370, mailed May 23, 2013, 12 pages.

Upton, James; King, Frederick; Roberts, Lamar; A constant amplitude transistorized unit for remote brain stimulation, Electroencephalography and Clinical Neurophysiology, Jun. 11, 1962.

Brindley, G.S., An implant to empty the bladder of close to the urethra, Journal of Neurology, Neurosurgery, and Psychiatry, 1977. Kaplan, Hilton; Loeb, Gerald; Design and Fabrication of an Injection Tool for Neuromuscular Microstimulators, Annals of Biomedical Engineering, vol. 37, No. 9, Jun. 24, 2009.

Troyk, Philip; Schwan, Martin; Closed-Loop Class E Transcutaneous Power and Data Link for Microimplants. IEEE Transactions on Biomedical Engineering, vol. 39, No. 6, Jun. 1992.

Mithun, Joe; Rajkumar, Vikram; Shanmugapriya; Apnea Detecting Sensors; Sathyabama Deemed University, 2006.

Babak, Ziaie; Nardin, Mark; Coghlan, Anthony; Najafi, Khalil, A Single-Channel Implantable Microstimulator for Functional Neuromuscular Stimulation, IEEE Transactions on Biomedical Engineering, vol. 44, No. 10, Oct. 1997.

Robin, S.; Sawan, M.; Harvey, J.F.; Abdel-Gawad, M.; Abdel-Baky, T.M.; Elhili, M.M., A New Implantable Microstimulator Dedicated to Selective Stimulation of the Bladder, 19th International Conference, IEEE/EMBS Oct. 30-Nov. 2, 1997.

Troyk, P.R.; Donaldson N. DE N.; Implantable FES Stimulation Systems: What is Needed, 2001 Neuromodulations Society, Neuromodulation, vol. 4, No. 4, 2001.

Loeb, Gerald; Richmond, Frances; Moore, W. Henry; Peck, Raymond, 1st Annual International IEEE-EMBS Special Topic Conference on Microtechnologies in Medicine & Biology, Oct. 2000.

Harrison, Reid, Designing Efficient Inductive Power Links for Implantable Devices, University of Utah, 2007.

Mohtashami, Saba, Electrochemical Properties of Flexible Electrodes for Implanted Neuromuscular Excitation Applications, McMaster University, Oct. 1, 2011.

Baker, Michael; Sarpeshkar, Rahul, Feedback Analysis and Design of RF Power Links for Low-Power Bionic Systems, IEEE Transactions on Biomedical Circuits and Systems, vol. 1, No. 1, Mar. 2007.

Zierhofer, Clemens, Hochmair, Erwin, High-Efficiency Coupling-Insensitive Transcutaneous Power and Data Transmission Via an Inductive Link, IEEE Transactions on Biomedical Engineering, vol. 37, No. 3, Jul. 1990.

Jow, Uei-Ming; Ghovanloo, Maysam, Design and Optimization of Printed Spiral Coils for Efficient Transcutaneous Inductive Power Transmission, IEEE Transactions on Biomedical Circuits and Systems, vol. 1, No. 3, Sep. 2007.

Steiglitz, Thomas, Polymer-based Substrates and Flexible Hybrid Assembly Techniques for Implantable Active Microdevices, Business Briefing: Medical Device Manufacturing & Technology, 2002. Jarvis, Jonathan; Salmons, Stanley, The Application and Technology of Implantable Neuromuscular Stimulators: An introduction and overview, Medical Engineering and Physics 23, 2001.

Manola, Ljubomir; Holsheimer, Jan; Veltink, Peter; Bradley, Kerry; Peterson, David, Theoretical Investigation Into Longitudinal Cathodal Field Steering in Spinal Cord Stimulation, Neuromodulation: Technology at the Neural Interface, vol. No. 2, 2007.

Joho, Dominik; Plagemann, Christian; Burgard, Wolfram, Modeling RFID Signal Strength and Tag Detection for Localization and Mapping, Proceedings of the IEEE International Conference on Robotics and Automation, Kobe Japan, May 2009.

(56)

References Cited

OTHER PUBLICATIONS

- Werber, D.; Schwenter, A.; Biebl, E.M., Investigation of RF Transmission Properties of human Tissues, *Advances in Radio Science*, vol. 4, 2006.
- Cameron, Tracy; Loeb, Gerald; Peck, Raymond; Schulman, Joseph; Strojnik, Primož; Troyk, Philip, Micromodular Implants to Provide Electrical Stimulation of Paralyzed Muscles and Limbs, *IEEE Transactions on Biomedical Engineering*, vol. 44, No. 9, Sep. 1997.
- Mokwa, Wilfried; Schnakenberg, Uwe, Micro-Transponder Systems for Medical, *IEEE Transactions on Instrumentation and Measurement*, vol. 50, No. 6, Dec. 2001.
- Grill, Warren; Veraart, Claude; Mortimer, Thomas, Selective Activation of Peripheral Nerve Fascicles: Use of Field Steering Currents, *Annual International Conference of the IEEE Engineering in Medicine and Biology Society*, vol. 13, No. 2, 1991.
- Loeb, G.E.; Zamin, C.J.; Schulman, J.H.; Troyk, P.R., Injectable Microstimulator for Functional Electrical Stimulation, *Med. and Biol. Eng. & Comput.* 1991.
- Young, Darrin, Wireless Powering and Data Telemetry for Biomedical Implants, *31st Annual International Conference of the IEEE EMBS*, Minnesota, USA, Sep. 2009.
- Han, J.H.; Lim, H.G.; Kim, J.M.; Lee, C.W.; Park, I.Y.; Cho, J.H., Inductively-Coupled Control Unit for Fully Implantable Middle Ear Blearing Devices, *Proceedings of the 2005 IEEE Engineering in Medicine and Biology 27th Annual Conference*, China, Sep. 2005.
- Oliven, A.; Kaufman, E.; Kaynan, R.; Golboda, T.; Oliven, R.; Geitini, L.; Odeh, M.; Tov, N.; Schwartz, A.R.; Kimel, E., Effects of Cross-Sectional Area, Compliance and External Pressure on Pharyngeal Collapsibility in Patients With Obstructive Sleep Apnea, *A68 Upper Airway and Respiratory Physiology*, 2010.
- Yoo, Paul B.; Durnad, Dominique, Effects of Selective Hypoglossal Nerve Stimulation on Canine Upper Airway Mechanics, *Journal of Applied Physiology*, 2005.
- Huang, Jingtao; Sahin, Mesut; Durand, Dominique, Dilatation of oropharynx via selective stimulation of the hypoglossal nerve, *Journal of Neural Engineering*, 2005.
- Oliven, A.; Tov, N.; Geitini, L.; Steinfeld, U.; Oliven, R.; Schwartz, A.R.; Odeh, M., Effect of Genioglossus Contraction on Pharyngeal Lumen and Airflow in Sleep Apnoea Patients, *European Respiratory Journal*, 2007.
- Davis, Ross; Cosendai, Gregoire; Arcos, Isabel; Kushner, Douglas; Mishler, Delta; Decker, Christopher; Ripley, Anne-Marie; Maceri, Dennis; Sanderson, Donna; Zilberman, Yitzhak; Schulman, Joseph, Development of the BION Microstimulator for Treatment in Obstructive Sleep Apnea, *Alfred Mann Foundation*.
- Eastwood, P.R.; Barnes, M.; McEvoy, R.D.; Wheatley, J.; Walsh, J.H.; O'Donoghue, F.J.; Catchside, P.; Tyler, L.; Maddison, K.J.; Rochford, P.D.; Antic, N.; Worsnop C.; Churchward, T.; Eckert, D.J.; Campbell, M.C.; Hee, G.; Palme, C.E.; Robinson, S.H.; Kezirian, E.; Goding, G.; Jordan, A.S.; Smith, P.L.; Schwartz, A.R.; Malhorta, A.; Hillman, D.R., Feasibility of Hypoglossal Nerve Stimulation Therapy to Treat Obstructive Sleep Apnea, *Am. J. Respir Crit Care Med*, 2010
- Randerath, Winfried, Electrical Stimulation of the Upper Airways Muscles, *Institute for Pheumology at the University Witten/Herdecke*, 2006.
- Schwartz, Alan; Eisele, David; Hari, Anil; Testerman, Roy; Erickson, Donald; Smith, Philip, Electrical Stimulation of the Lungual Musculature in Obstructive Sleep Apnea, *Johns Hopkins Asthma and Allergy Center*, Feb. 1996.
- Kezirian, Eric J.; Boudewyns, An; Eisele, David; Schwartz, Alan; Philip, Smith; Van De Heyning, Paul; De Backer, Wilfried, Electrical Stimulation of the Hypoglossal Nerve in the Treatment of Obstructive Sleep Apnea, *Sleep Medicine Reviews*, 2009.
- Isono, S.; Tanaka, A.; Nishino, T., Effects of Tongue Electrical Stimulation on Pharyngeal Mechanics in Anaesthetized Patients with Obstructive Sleep Apnoea, *Eur. Respir. J.*, 1999.
- Fregosi, Ralph, Influence of Tongue Muscle Contraction and Dynamic Airway apressure on Velopharyngeal Volume in the Rat, *J. Appl. Physiol.*, Dec. 2007.
- Van De Heyning, Paul; Badr, M. Safwan; Baskin, Jonathan Z.; Bornemann, Michael Cramer; De Backer, Wilfried A.; Dotan, Yaniv; Hohenhorst, Winfried; Knaack, Lennart; Lin, Ho-Sheng; Maurer, Joachim T.; Netzer, Aviram; Odland, Rick M.; Oliven, Arie; Strohl, Kingman P.; Vanderveken, Olivier M.; Verbraecken, Johan; Woodson, B. Tucker, Implanted Upper Airway Stimulation Device for Obstructive Sleep Apnea, *The Laryngoscope*, Jul. 2012.
- Oliven, Ron; Tov, Naveh; Odeh, Majed; Gaitini, Luis; Steinfeld, Uri; Schwartz, Alan; Oliven, Arie, Interacting Effects of Genioglossus Stimulation and Mandibular Advancements in Sleep Apnea, *J. Appl. Physiol.*, 2009.
- Peng, Chih-Wei; Chen, Jia-Jin Jason; Lin, Chou-Ching K.; Poon, Paul Wai-Fung; Liang, Chih-Kuo; Lin, Kang-Ping, High Frequency Block of Selected Axons Using an Implantable Microstimulator, 2004.
- Burnett, Theresa; Mann, Eric; Cornell, Sonia; Ludlow, Christy, Laryngeal Elevation Achieved by Neuromuscular Stimulation at Rest, *J. Appl. Physiol.*, 94, 2003.
- Hu, Linggang; Xu, Xiaomei; Gong, Yongsheng; Fan, Xiaofang; Wang, Liangxing; Zhang, Jianhua, Percutaneous Biphasic Electrical Stimulation for Treatment of Obstructive Sleep Apnea Syndrome, *IEEE Transactions on Biomedical Engineering*, vol. 55, No. 1, Jan. 2008.
- Dotan, Y.; Goliboda, T.; Netzer, A.; Geitini, L.; Oliven, A., Parameters Affecting the Mechanical Effect of Electrical Stimulation (ES) of the Tongue Muscles in Patients with Obstructive Sleep Apnea (OSA), *Am. J. Respir. Crit Care Med*, 2010.
- Yoo, Paul Byong-Suk, Selective Stimulation and Recording of the Canine Hypoglossal Nerve for the Treatment of Obstructive Sleep Apnea, *Case Western Reserve University*, May 2004.
- Oliven, Arie, Treating Obstructive Sleep Apnea With Hypoglossal Nerve Stimulation, *Curr. Opin. Pulm. Med.* 2011.
- Goding, George; Eisele, David; Testerman, Roy; Smith, Philip; Roertgen, Karen; Schwartz, Alan, Relief of Upper Airway Obstruction With Hypoglossal Nerve Stimulation in the Canine, *Laryngoscope*, 1998.
- Oliven, Arie; Schnall, Robert; Pillar, Giora; Gavriely, Noam; Oden, Majed, Sublingual Electrical Stimulation of the Tongue During Wakefulness and Sleep, *Respiration Physiology*, 127, 2001.
- Mwenge, Gimbadu; Rombaux, Philippe; Dury, Myriam; Lengele, Benoit; Rodenstein, Daniel, Targeted Hypoglossal Neurostimulation for Obstructive Sleep Apnea. A 1 year pilot Study, *ERJ Express*, May 17, 2012.
- Mann, Eric; Burnett, Theresa; Cornell, Sonia; Ludlow, Christy, The Effect of Neuromuscular Stimulation of the Genioglossus on the Hypopharyngeal Airway, *The Laryngoscope*, 2002.
- Oliven, Ariel; O'Hearn, Daniel; Boudewyns, An; Odeh, Majed; De Backer, Wilfried; Van De Heyning, Paul; Smith, Philip; Eisele, David; Allan, Larry; Schneider, Hartmut; Testerman, Roy; Schwartz, Alan, Upper Airway Response to Electrical Stimulation of the Genioglossus in Obstructive Sleep Apnea, *J. Appl. Physiol.*, vol. 95, 2003.
- Guilleminault, Christian; Powell, Nelson; Bowman, Bruce; Stoohs, Riccardo, The Effect of Electrical Stimulation on Obstructive Sleep Apnea Syndrome, *Chest*, Jan. 1995.
- Eastwood, Peter; Barnes, Maree; Walsh, Jennifer; Maddison, Kathleen; Hee, Geoffrey; Schwartz, Alan; Smith, Philip; Malhotra, Atul; McEvoy, Douglas; Wheatley, John; O'Donoghue, Fergal; Rochford, Peter; Churchward, Tom; Campbell, Matthew; Palme, Carsten; Robinson, Sam; Goding, George; Eckert, Danny; Jordan, Amy; Catchside, Peter, Tyler, Louise; Antic, Nick; Worsnop, Christopher; Kezirian, Eric; Hillman, David, Treating Obstructive Sleep Apnea with Hypoglossal Nerve Stimulation, *Sleep*, vol. 34, No. 11, 2011.
- Schwartz, Alan; Bennet, Marc; Amith, Philip; De Backer, Wilfried; Hedner, Jan; Boudewyns, An; Van De Heyning, Paul; Ejjnell, Hasse; Hochban, Walter; Knaack, Lennart; Podszus, Thomas; Penzel, Thomas; Peter, J. Hermann; Goding, George; Erickson, Donald; Testerman, Roy; Ottenhoff, Frans; Eisele, David, Therapeutic Electrical Stimulation of the Hypoglossal Nerve in Obstructive Sleep Apnea, *Arch Otolaryngol Head Neck Surg*, vol. 127, Oct. 2001.
- Randerath, Winfried; Galetke, Wolfgang; Domanski, Uinke; Weitkunat, Rolf; Ruhle, Karl-Heinz, Tongue-Muscle Training by

(56)

References Cited

OTHER PUBLICATIONS

Intraoral Electrical Neutostimulation in Patients with Obstructive Sleep Apnea, *Sleep*, vol. 27, No. 2, 2004.

Loeb, Gerald; Richmond, Frances; Baker, Lucinda, The BION devices; injectable interfaces with peripheral nerves and muscles, *Neurosurgery Focus* 20, 2005.

U.S. Appl. No. 13/629,694, filed Sep. 28, 2012.

U.S. Appl. No. 13/630,392, filed Sep. 28, 2012.

U.S. Appl. No. 13/629,762, filed Sep. 28, 2012.

U.S. Appl. No. 13/629,793, filed Sep. 28, 2012.

U.S. Appl. No. 13/629,819, filed Sep. 28, 2012.

U.S. Appl. No. 13/629,690, filed Sep. 28, 2012.

U.S. Appl. No. 13/629,748, filed Sep. 28, 2012.

U.S. Appl. No. 13/629,757, filed Sep. 28, 2012.

U.S. Appl. No. 13/629,712, filed Sep. 28, 2012.

U.S. Appl. No. 13/629,701, filed Sep. 28, 2012.

U.S. Appl. No. 13/629,725, filed Sep. 28, 2012.

U.S. Appl. No. 13/629,730, filed Sep. 28, 2012.

U.S. Appl. No. 13/629,741, filed Sep. 28, 2012.

U.S. Appl. No. 13/629,721, filed Sep. 28, 2012.

Youbok Lee, "Antenna Circuit Design RFID Applications," *Microchip Technology Inc.*, Dec. 5, 2002, pp. 1-50.

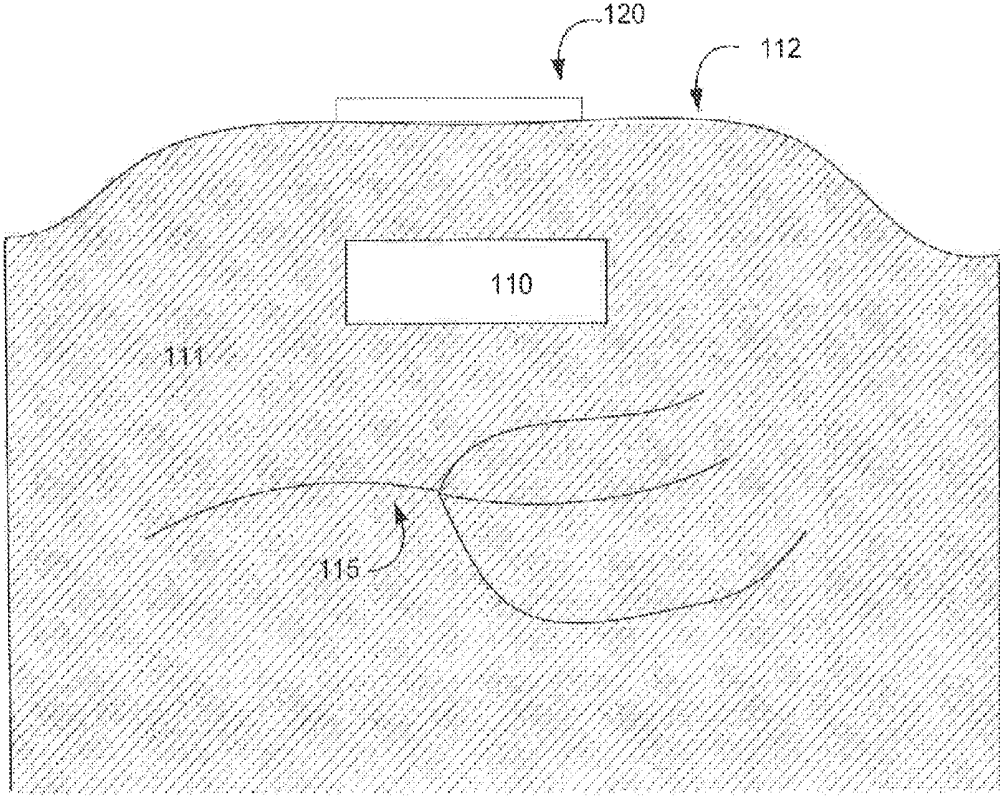


FIG. 1

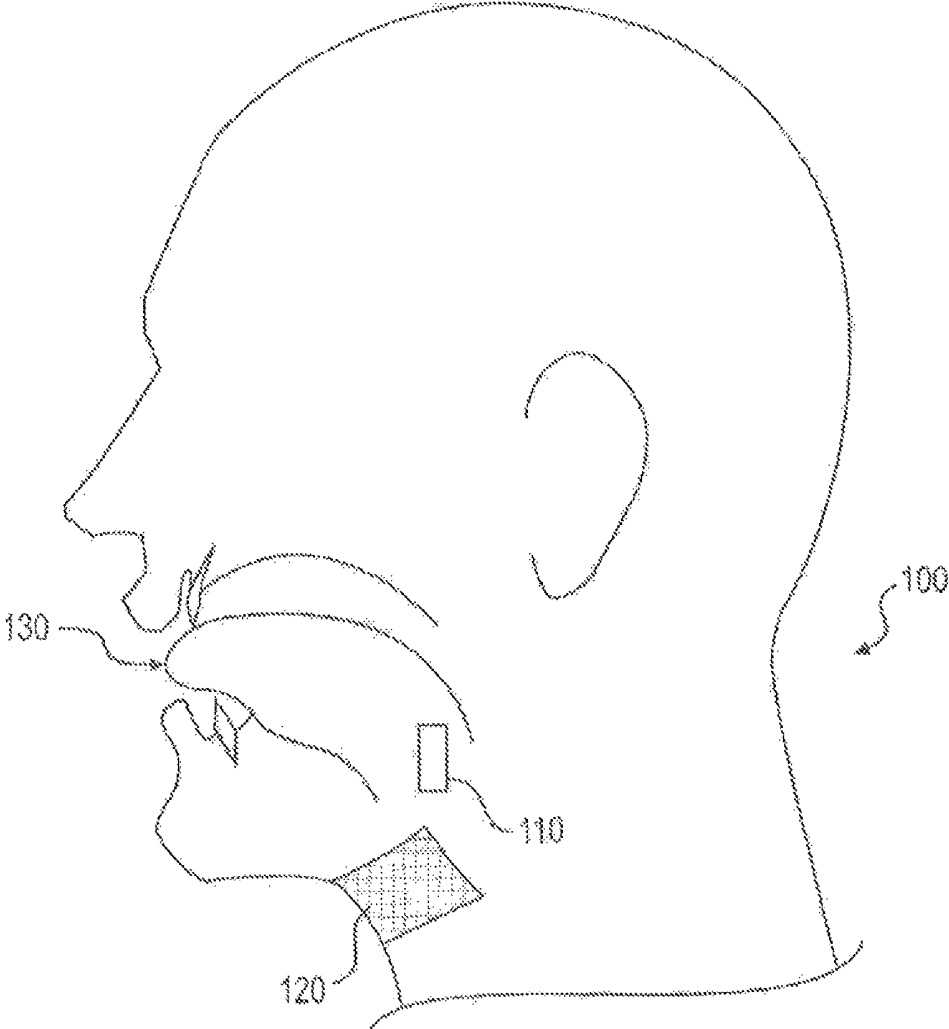


Fig. 2

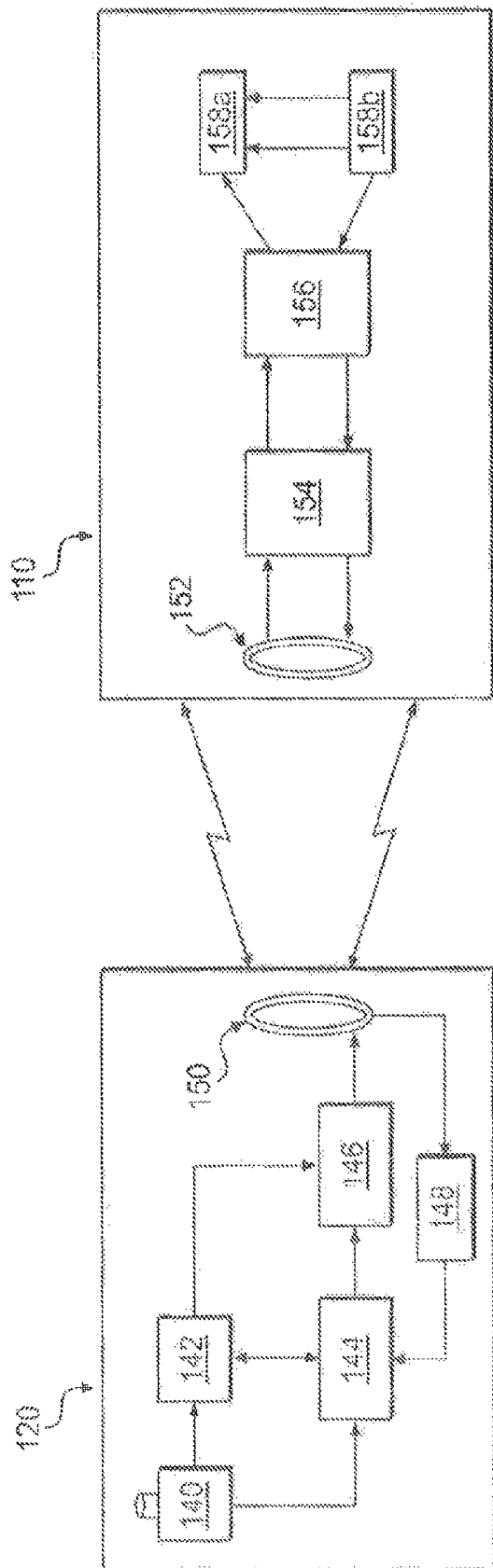


Fig. 3

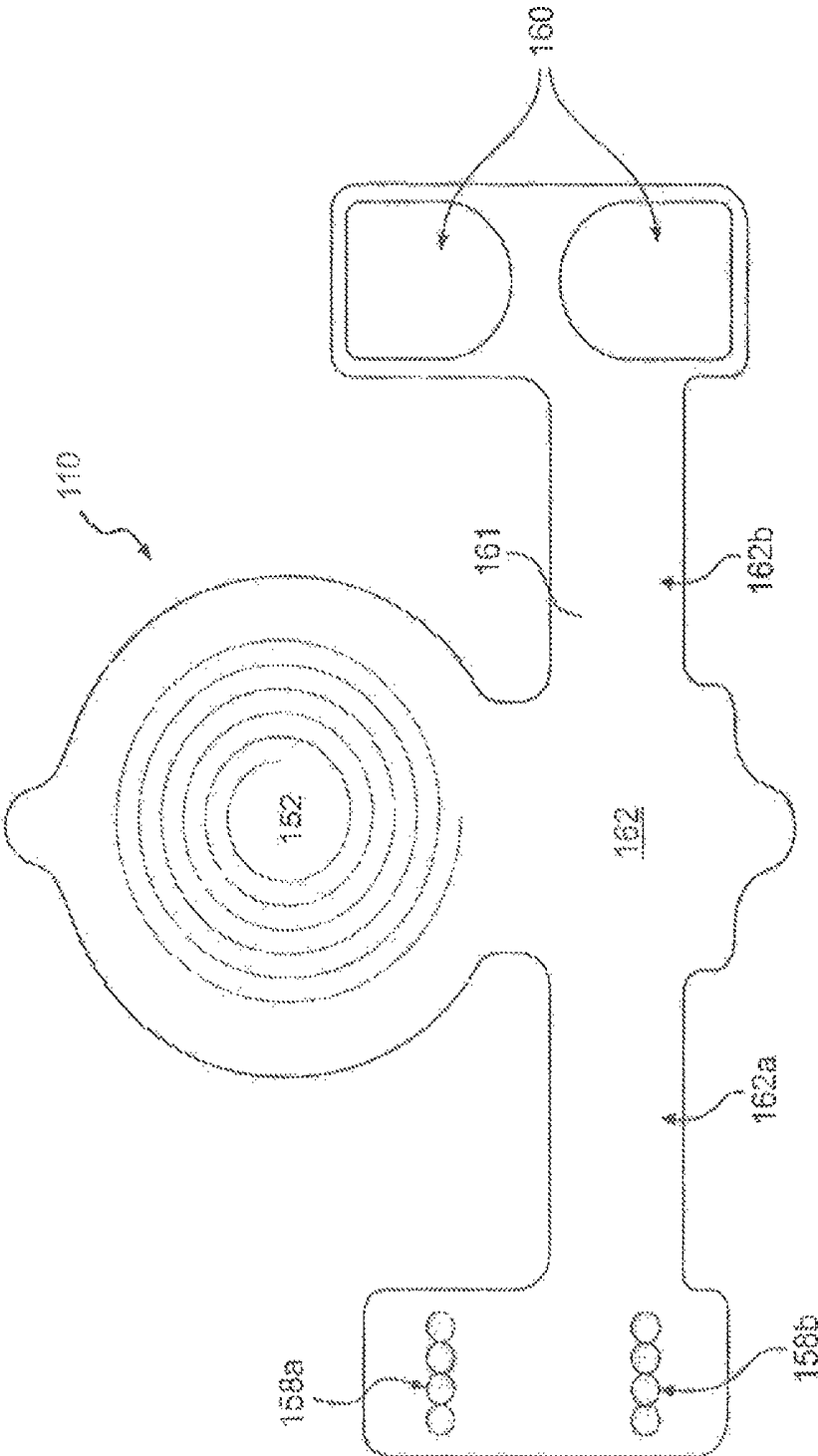


Fig. 4

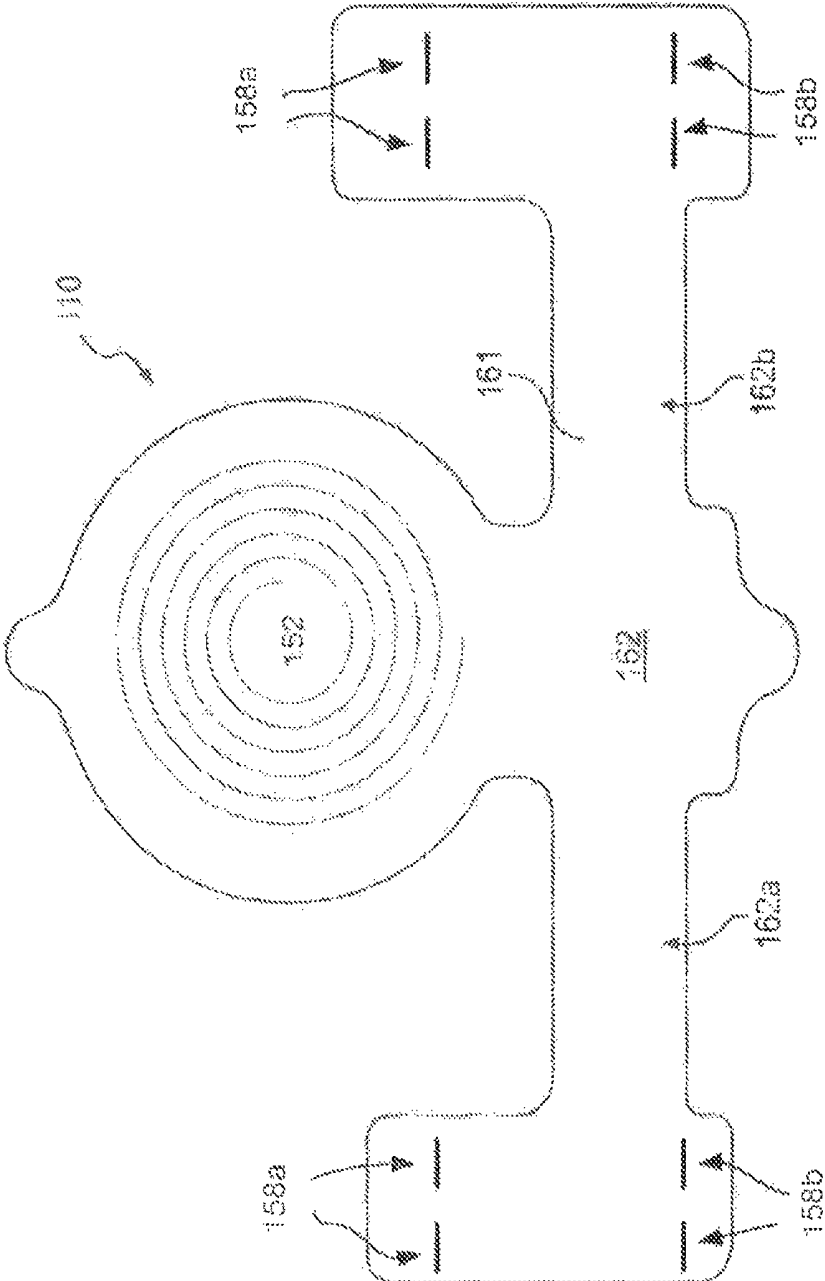


Fig. 5

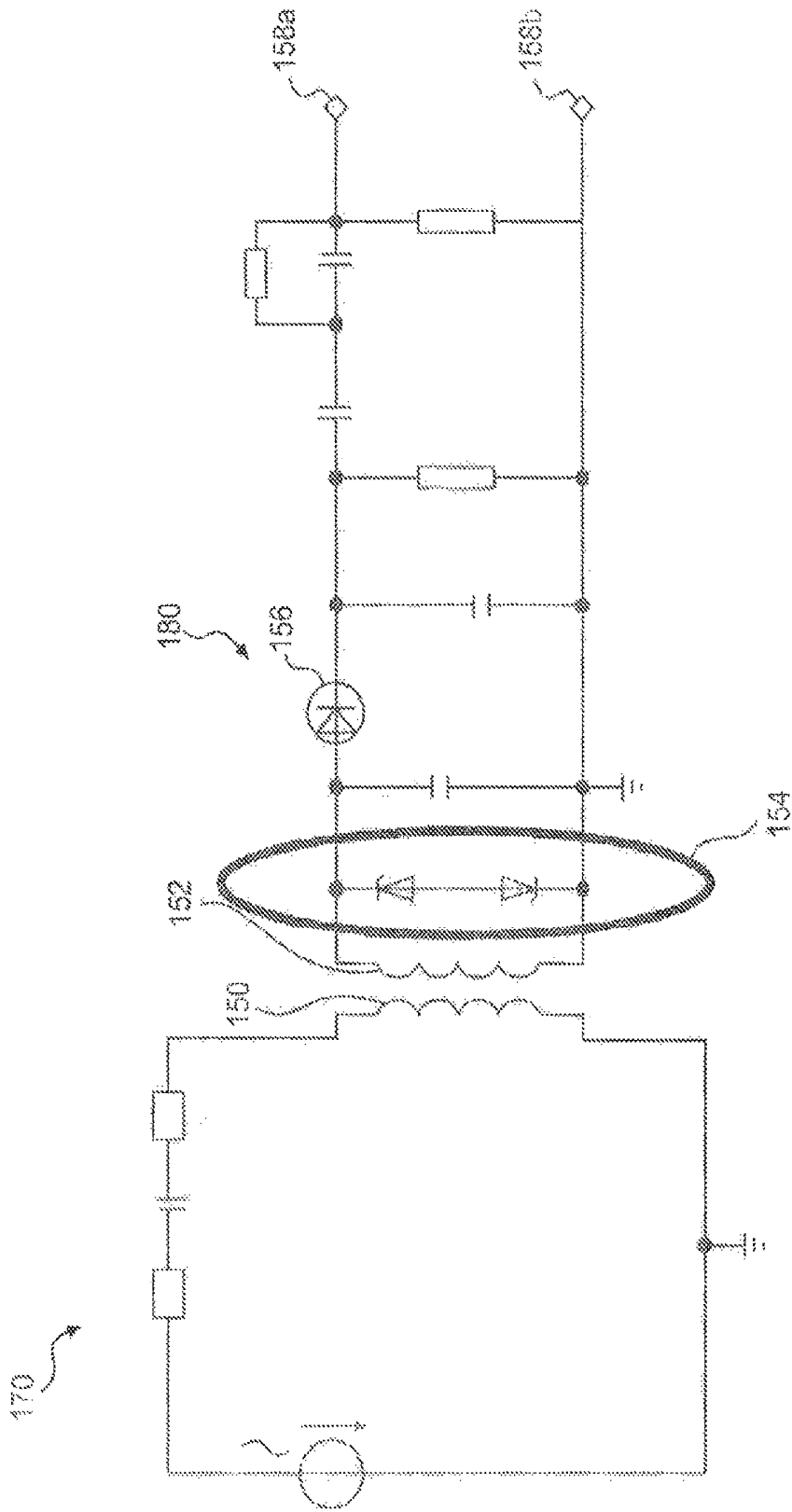


Fig. 6

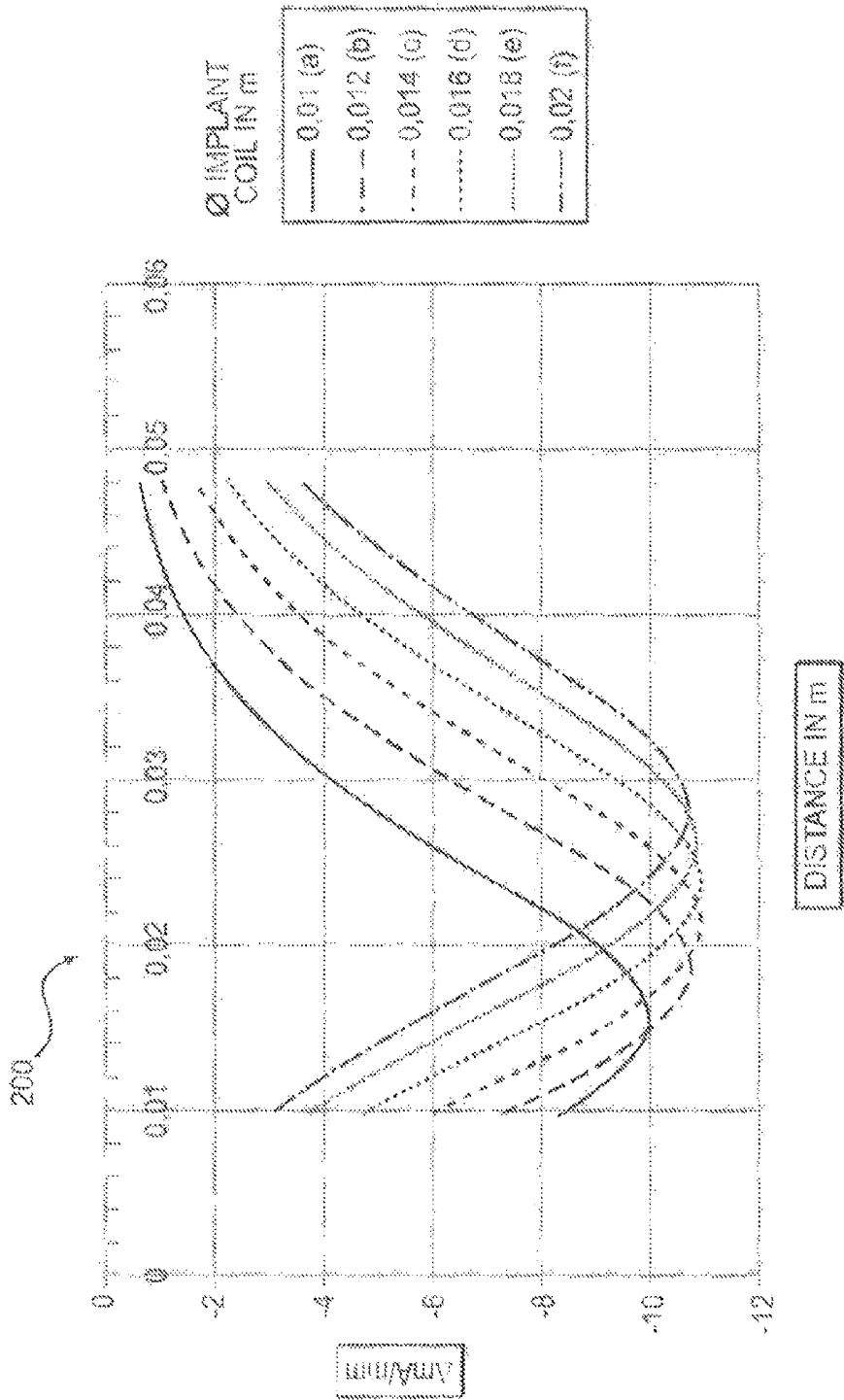


Fig. 7

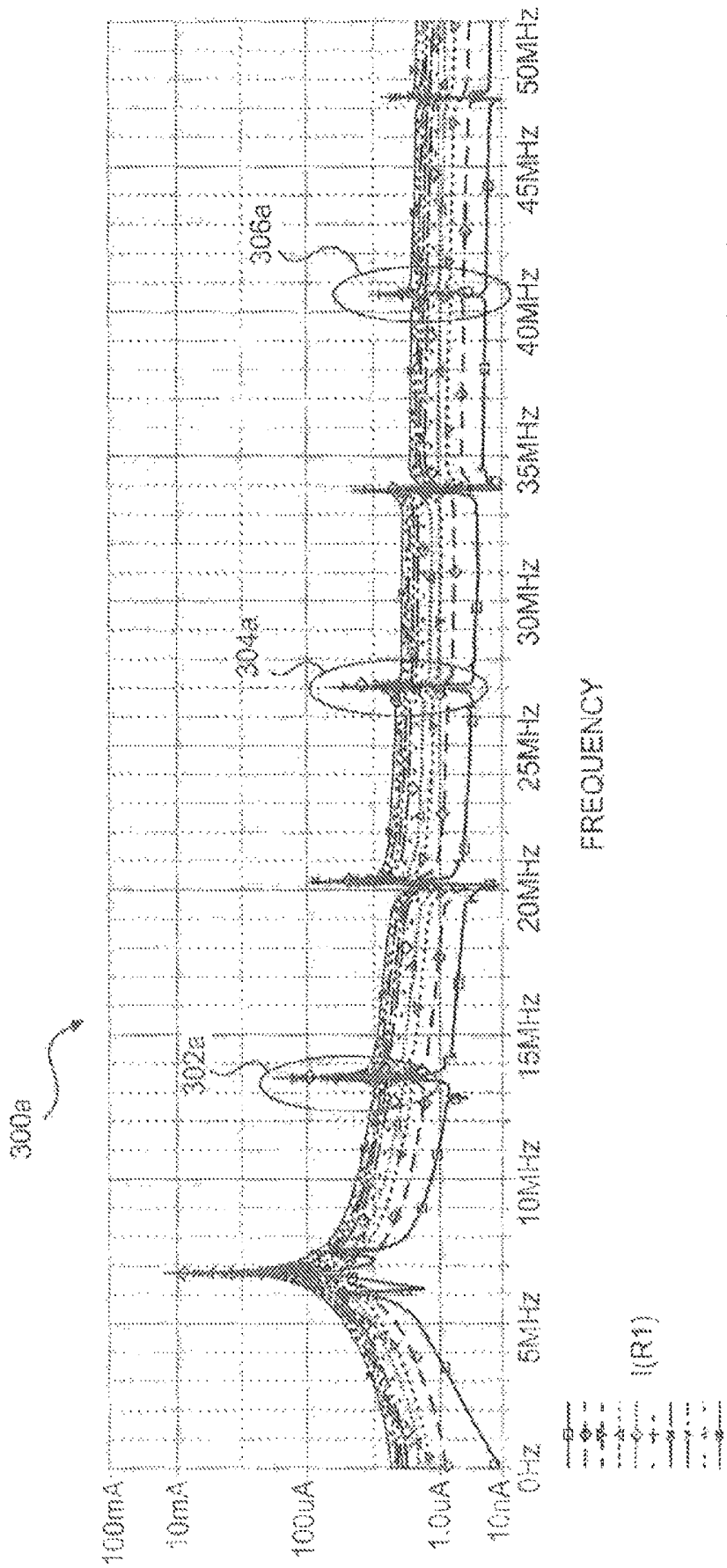


Fig. 8

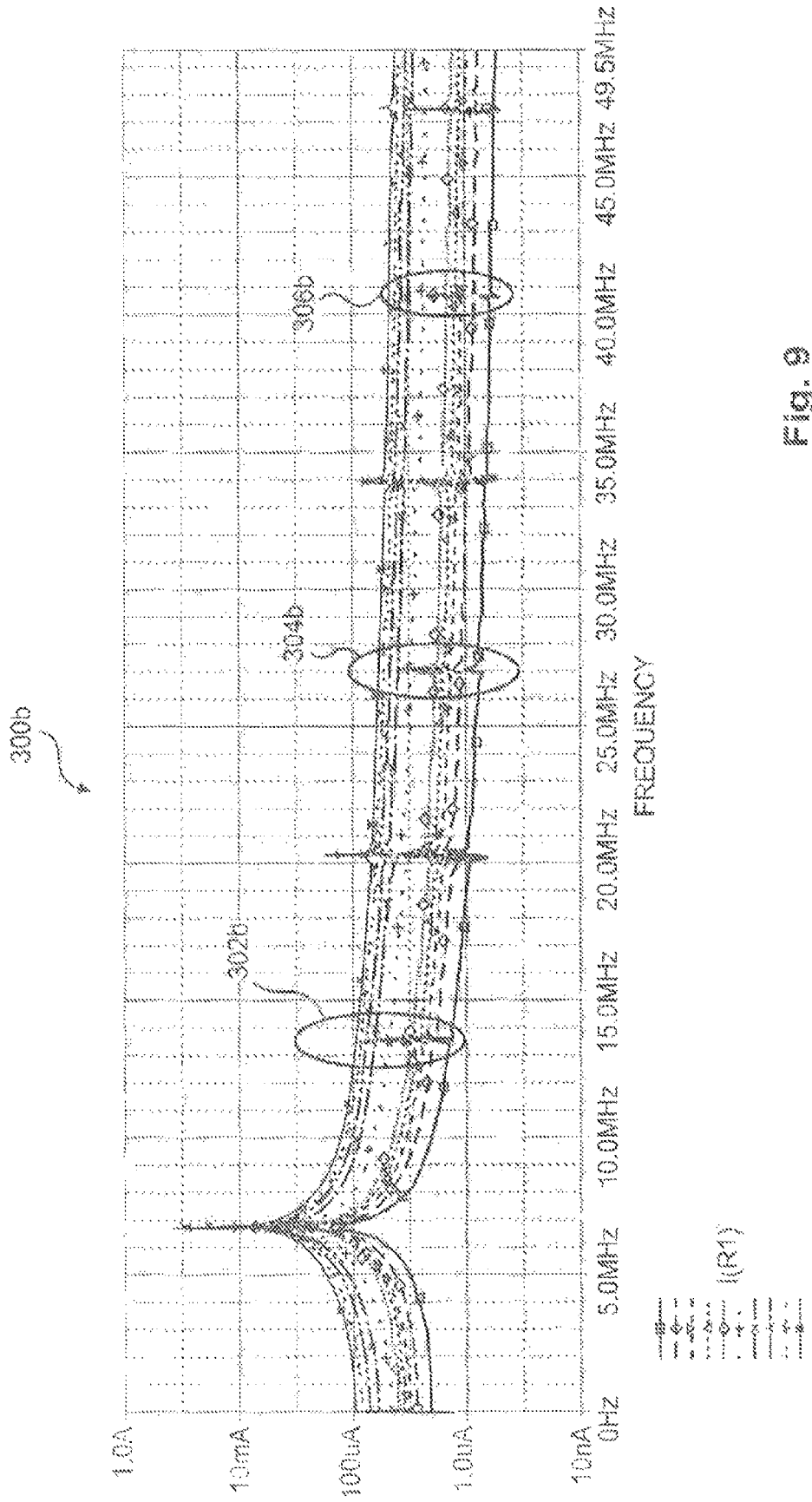


Fig. 9

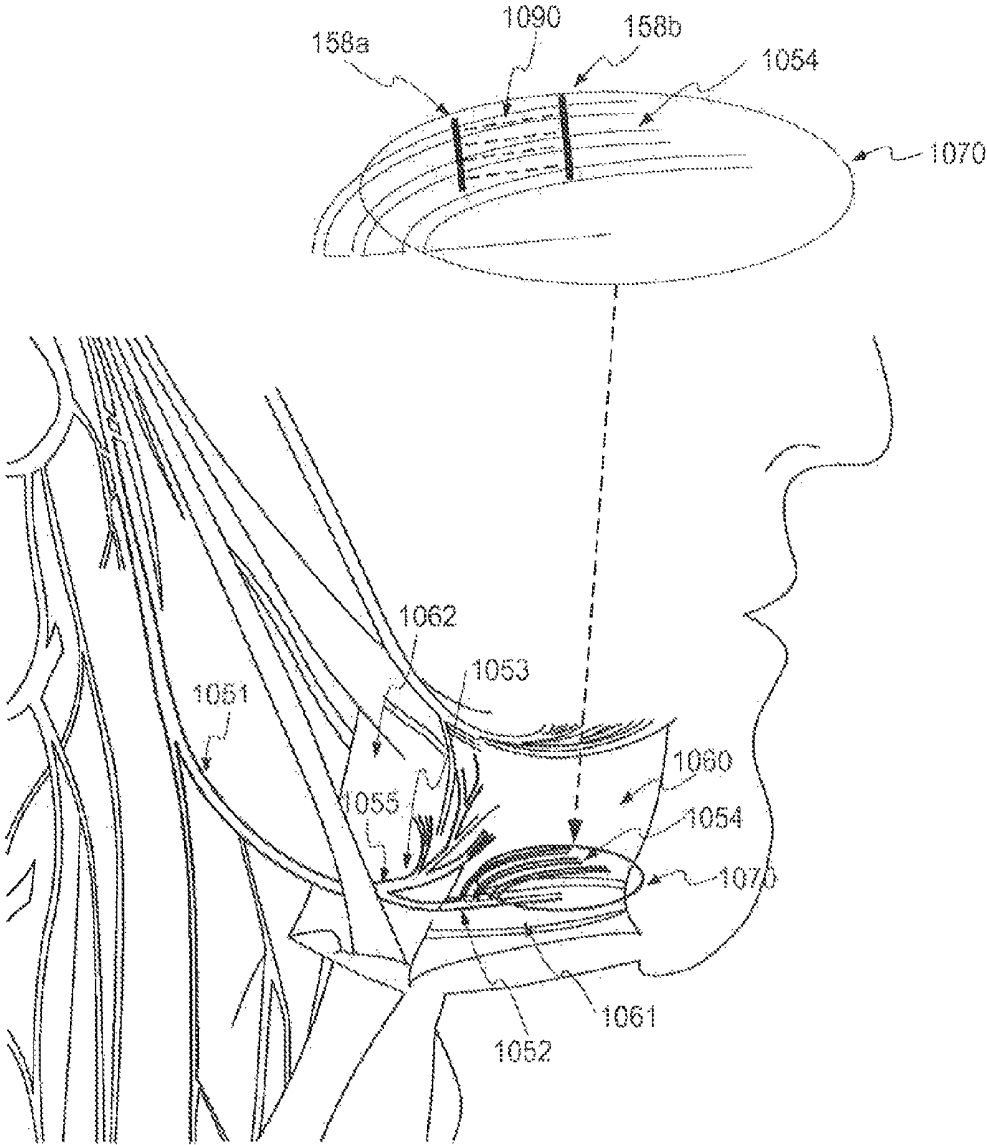


Figure 10

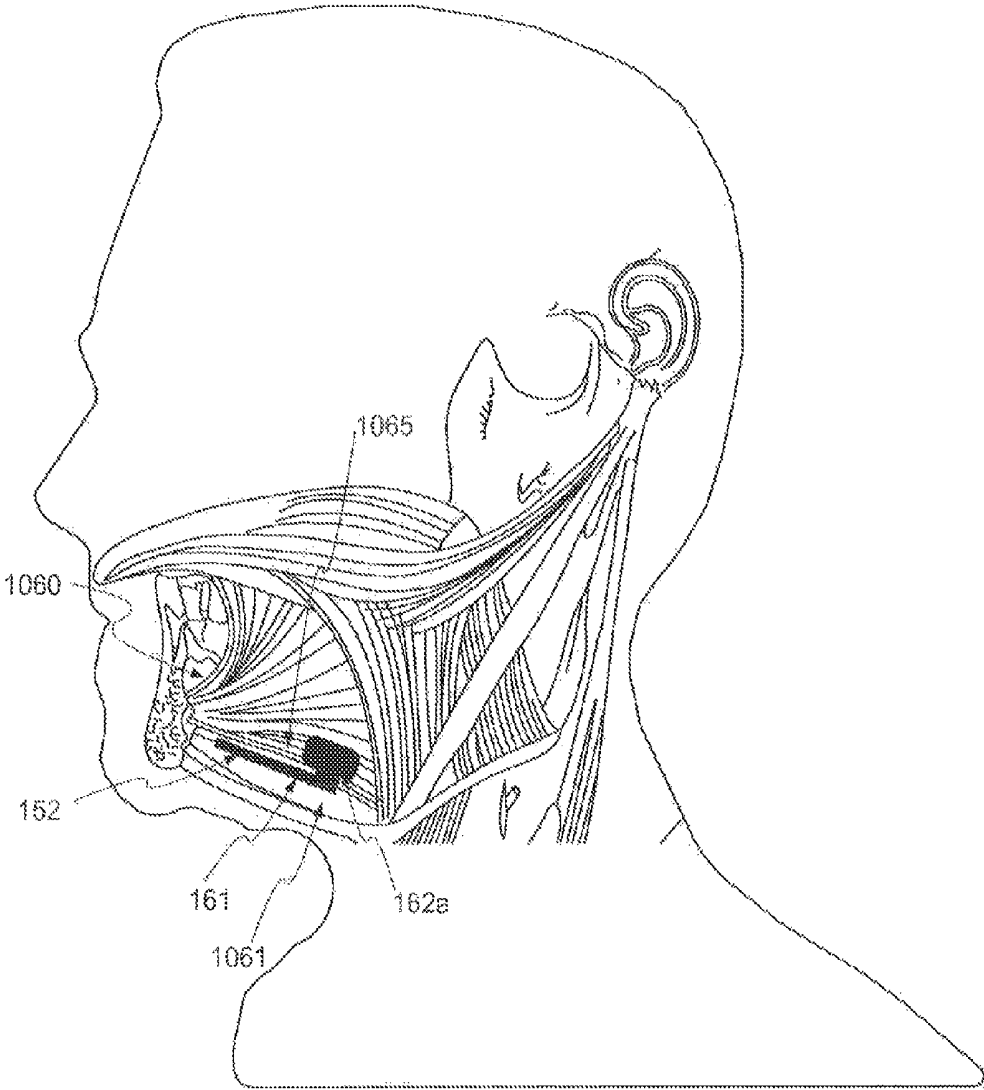


Figure 11

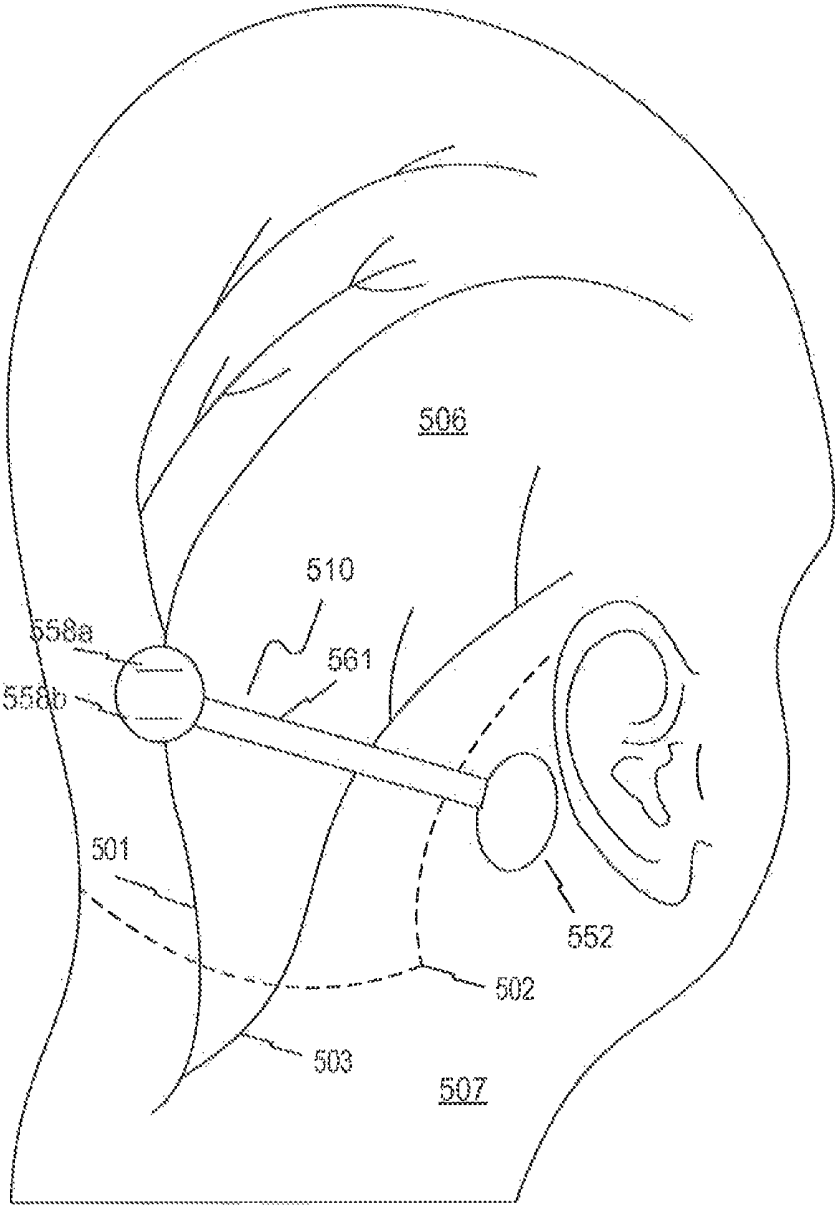


Fig. 12

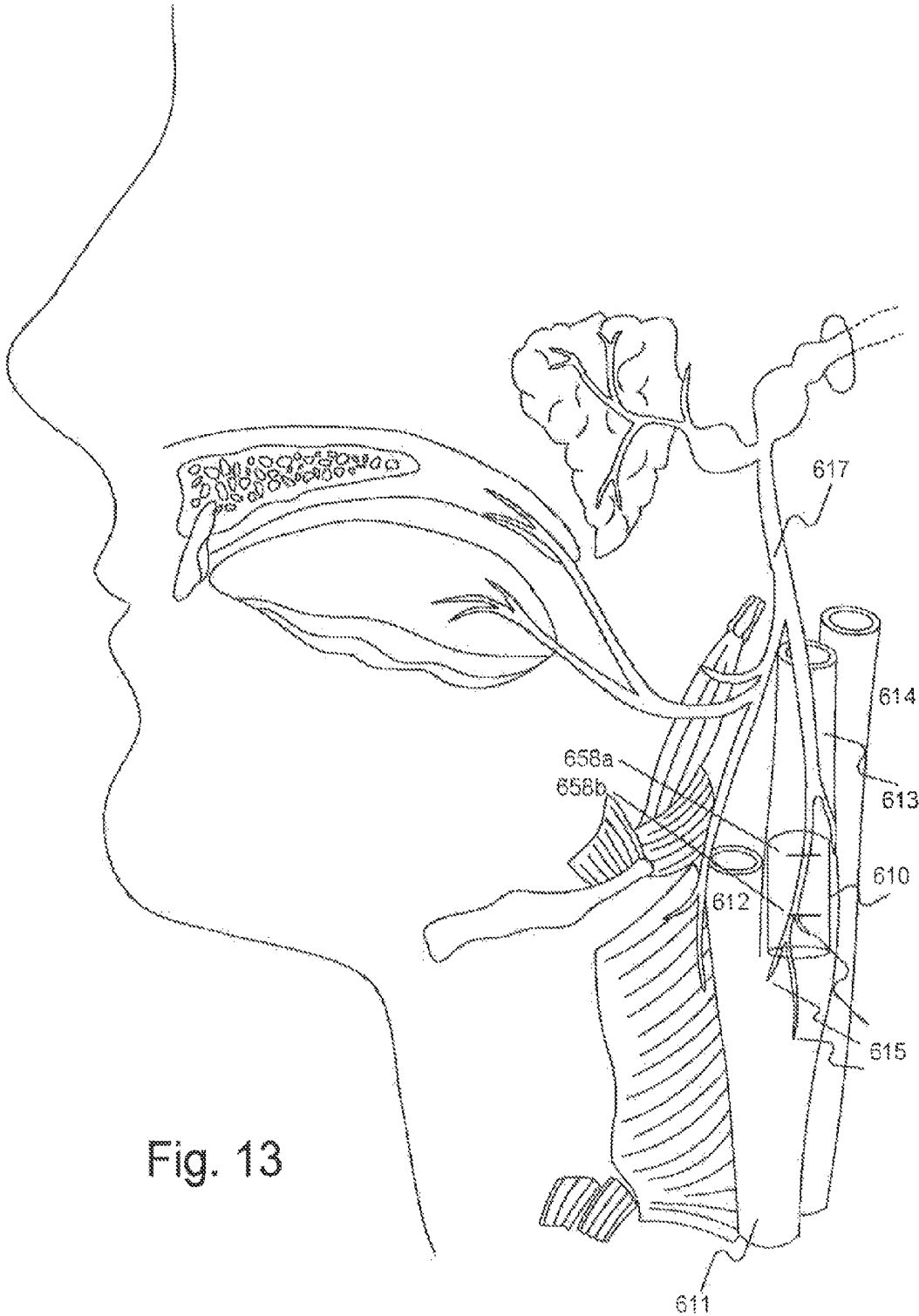
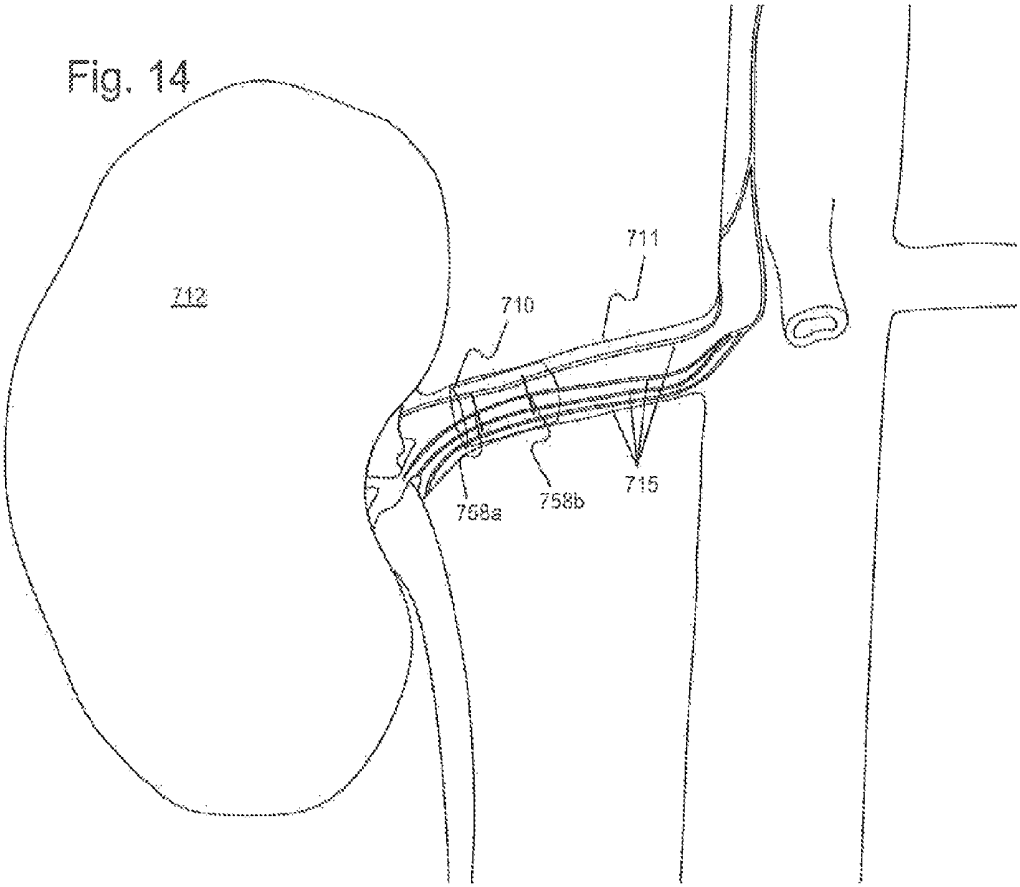


Fig. 13

Fig. 14



APPARATUS AND METHODS FOR FEEDBACK-BASED NERVE MODULATION

RELATED APPLICATIONS

This application is a continuation of application Ser. No. 14/451,362, filed Aug. 4, 2014, which is a divisional of application Ser. No. 14/041,520, filed Sep. 30, 2013 (now U.S. Pat. No. 8,812,113), which is a divisional of application Ser. No. 13/629,686, filed Sep. 28, 2012 (now U.S. Pat. No. 8,577,464), which is a continuation-in-part of both application Ser. No. 12/642,866, filed Dec. 21, 2009 (now U.S. Pat. No. 8,585,617), and of application Ser. No. 12/581,907, filed Oct. 20, 2009, and claims the benefit of priority under 35 U.S.C. §119(e) to U.S. Provisional Application No. 61/541,651, filed Sep. 30, 2011, and also to U.S. Provisional Application No. 61/657,424, filed Jun. 8, 2012, all of which are incorporated herein by reference in their entirety.

TECHNICAL FIELD

Embodiments of the present disclosure generally relate to devices and methods for modulating a nerve. More particularly, embodiments of the present disclosure relate to devices and methods for modulating a nerve through the delivery of 25 an electrical current via an implantable electrical modulator.

BACKGROUND

Neural modulation presents the opportunity to treat many physiological conditions and disorders by interacting with the body's own natural neural processes. Neural modulation includes inhibition (e.g. blockage), stimulation, modification, regulation, or therapeutic alteration of activity, electrical or chemical, in the central, peripheral, or autonomic nervous system. By modulating the activity of the nervous system, for example through the stimulation of nerves or the blockage of nerve signals, several different goals may be achieved. Motor neurons may be stimulated at appropriate times to cause muscle contractions. Sensory neurons may be blocked, for instance to relieve pain, or stimulated, for instance to provide a signal to a subject. In other examples, modulation of the autonomic nervous system may be used to adjust various involuntary physiological parameters, such as heart rate and blood pressure. Neural modulation may provide the opportunity to treat several diseases or physiological conditions, a few examples of which are described in detail below.

Among the conditions to which neural modulation may be applied is obstructive sleep apnea (OSA). OSA is a respiratory disorder characterized by recurrent episodes of partial or complete obstruction of the upper airway during sleep. During the sleep of a person without OSA, the pharyngeal muscles relax during sleep and gradually collapse, narrowing the airway. The airway narrowing limits the effectiveness of the sleeper's breathing, causing a rise in CO₂ levels in the blood. The increase in CO₂ results in the pharyngeal muscles contracting to open the airway to restore proper breathing. The largest of the pharyngeal muscles responsible for upper airway dilation is the genioglossus muscle, which is one of several different muscles in the tongue. The genioglossus muscle is responsible for forward tongue movement and the stiffening of the anterior pharyngeal wall. In patients with OSA, the neuromuscular activity of the genioglossus muscle is decreased compared to normal individuals, accounting for insufficient response and contraction to open the airway as compared to a normal individual. This

lack of response contributes to a partial or total airway obstruction, which significantly limits the effectiveness of the sleeper's breathing. In OSA patients, there are often several airway obstruction events during the night. Because of the obstruction, there is a gradual decrease of oxygen levels in the blood (hypoxemia). Hypoxemia leads to night time arousals, which may be registered by EEG, showing that the brain awakes from any stage of sleep to a short arousal. During the arousal, there is a conscious breath or gasp, which resolves the airway obstruction. An increase in sympathetic tone activity rate through the release of hormones such as epinephrine and noradrenaline also often occurs as a response to hypoxemia. As a result of the increase in sympathetic tone, the heart enlarges in an attempt to pump more blood and increase the blood pressure and heart rate, further arousing the patient. After the resolution of the apnea event, as the patient returns to sleep, the airway collapses again, leading to further arousals.

These repeated arousals, combined with repeated hypoxemia, leaves the patient sleep deprived, which leads to daytime somnolence and worsens cognitive function. This cycle can repeat itself up to hundreds of times per night in severe patients. Thus, the repeated fluctuations in and sympathetic tone and episodes of elevated blood pressure during the night evolve to high blood pressure through the entire day. Subsequently, high blood pressure and increased heart rate may cause other diseases.

Efforts for treating OSA include Continuous Positive Airway Pressure (CPAP) treatment, which requires the patient to wear a mask through which air is blown into the nostrils to keep the airway open. Other treatment options include the implantation of rigid inserts in the soft palate to provide structural support, tracheotomies, or tissue ablation.

Another condition to which neural modulation may be applied is the occurrence of migraine headaches. Pain sensation in the head is transmitted to the brain via the occipital nerve, specifically the greater occipital nerve, and the trigeminal nerve. When a subject experiences head pain, such as during a migraine headache, the inhibition of these nerves may serve to decrease or eliminate the sensation of pain.

Neural modulation may also be applied to hypertension. Blood pressure in the body is controlled via multiple feedback mechanisms. For example, baroreceptors in the carotid body in the carotid artery are sensitive to blood pressure changes within the carotid artery. The baroreceptors generate signals that are conducted to the brain via the glossopharyngeal nerve when blood pressure rises, signaling the brain to activate the body's regulation system to lower blood pressure, e.g. through changes to heart rate, and vasodilation/vasoconstriction. Conversely, parasympathetic nerve fibers on and around the renal arteries generate signals that are carried to the kidneys to initiate actions, such as salt retention and the release of angiotensin, which raise blood pressure. Modulating these nerves may provide the ability to exert some external control over blood pressure.

The foregoing are just a few examples of conditions to which neuromodulation may be of benefit, however embodiments of the invention described hereafter are not necessarily limited to treating only the above-described conditions.

SUMMARY

A device according to some embodiments may include a housing configured for location external to a body of a subject. The device may also include at least one processor associated with the housing and configured to communicate

with a circuit implanted in the subject within proximity to a tongue of the subject, wherein the circuit is in electrical communication with at least one electrode, receive a physiological signal from the subject via the circuit, and send a control signal to the implanted circuit in response to the physiological signal, wherein the control signal is predetermined to activate neuromuscular tissue within the tongue.

Some embodiments may include a method of activating neuromuscular tissue within an implanted circuit. The method may include communicating with the implanted circuit, which is implanted within a proximity of a tongue of a subject, wherein the implanted circuit is in electrical communication with at least one electrode, receiving a physiological signal from the subject via the implanted circuit, sending a control signal to the implanted circuit in response to the physiological signal, and activating neuromuscular tissue within the tongue of the subject via the control signal.

A device according to some embodiments may include a housing configured for location external to a body of a subject. The device may also include at least one processor associated with the housing and configured to communicate with a circuit implanted in a blood vessel of the subject within proximity to at least one of a renal nerve, a baroreceptor, and a glossopharyngeal nerve, wherein the circuit is in electrical communication with at least one electrode, receive a physiological signal from the subject, and send a control signal to the implanted circuit in response to the physiological signal, wherein the control signal is predetermined to modulate nerve tissue to affect blood pressure.

A device according to some embodiments may include a housing configured for location external to a body of a subject. The device may also include at least one processor associated with the housing and configured to communicate with a circuit implanted in the subject within proximity to at least one nerve to be modulated, wherein the circuit is in electrical communication with at least one electrode, receive a physiological signal from the subject, and send a control signal to the implanted circuit in response to the physiological signal, wherein the control signal is predetermined to modulate the at least one nerve to be modulated.

Additional features of the disclosure will be set forth in part in the description that follows, and in part will be obvious from the description, or may be learned by practice of the disclosed embodiments.

It is to be understood that both the foregoing general description and the following detailed description are exemplary and explanatory only, and are not restrictive of the invention, as claimed.

BRIEF DESCRIPTION OF THE DRAWINGS

The accompanying drawings, which are incorporated in and constitute a part of this specification, illustrate several embodiments of the disclosure and, together with the description, serve to explain the principles of the embodiments disclosed herein.

FIG. 1 schematically illustrates an implant unit and external unit, according to an exemplary embodiment of the present disclosure.

FIG. 2 is a partially cross-sectioned side view of a subject with an implant unit and external unit, according to an exemplary embodiment of the present disclosure.

FIG. 3 schematically illustrates a system including an implant unit and an external unit, according to an exemplary embodiment of the present disclosure.

FIG. 4 is a top view of an implant unit, according to an exemplary embodiment of the present disclosure.

FIG. 5 is a top view of an alternate embodiment of an implant unit, according to an exemplary embodiment of the present disclosure.

FIG. 6 illustrates circuitry of an implant unit and an external unit, according to an exemplary embodiment of the present disclosure.

FIG. 7 illustrates a graph of quantities that may be used in determining energy delivery as a function coupling, according to an exemplary disclosed embodiment.

FIG. 8 depicts a graph illustrating non-linear harmonics.

FIG. 9 depicts a graph of quantities that may be used in determining energy delivery as a function coupling, according to an exemplary disclosed embodiment.

FIG. 10 depicts anatomy of the tongue and associated muscles and nerves.

FIG. 11 depicts an exemplary implant location for the treatment of sleep apnea.

FIG. 12 depicts an exemplary implant location for the treatment of head pain.

FIG. 13 depicts an exemplary implant location for the treatment of hypertension.

FIG. 14 depicts an exemplary implant location for the treatment of hypertension.

DESCRIPTION OF EXEMPLARY EMBODIMENTS

Reference will now be made in detail to exemplary embodiments of the present disclosure, examples of which are illustrated in the accompanying drawings. Wherever possible, the same reference numbers will be used throughout the drawings to refer to the same or like parts.

Embodiments of the present disclosure relate generally to a device for modulating a nerve through the delivery of energy. Nerve modulation, or neural modulation, includes inhibition (e.g. blockage), stimulation, modification, regulation, or therapeutic alteration of activity, electrical or chemical, in the central, peripheral, or autonomic nervous system. Nerve modulation may take the form of nerve stimulation, which may include providing energy to the nerve to create a voltage change sufficient for the nerve to activate, or propagate an electrical signal of its own. Nerve modulation may also take the form of nerve inhibition, which may include providing energy to the nerve sufficient to prevent the nerve from propagating electrical signals. Nerve inhibition may be performed through the constant application of energy, and may also be performed through the application of enough energy to inhibit the function of the nerve for some time after the application. Other forms of neural modulation may modify the function of a nerve, causing a heightened or lessened degree of sensitivity. As referred to herein, modulation of a nerve may include modulation of an entire nerve and/or modulation of a portion of a nerve. For example, modulation of a motor neuron may be performed to affect only those portions of the neuron that are distal of the location to which energy is applied.

In patients with OSA, for example, a primary target response of nerve stimulation may include contraction of a tongue muscle (e.g., the genioglossus muscle) in order to move the tongue to a position that does not block the patients airway, e.g. away from the pharyngeal wall. In the treatment of migraine headaches, nerve inhibition may be used to reduce or eliminate the sensation of pain. In the treatment of hypertension, neural modulation may be used to increase,

decrease, eliminate or otherwise modify nerve signals generated by the body to regulate blood pressure.

While embodiments of the present disclosure may be disclosed for use in patients with specific conditions, the embodiments may be used in conjunction with any patient/portion of a body where nerve modulation may be desired. That is, in addition to use in patients with OSA, migraine headaches, or hypertension, embodiments of the present disclosure may be used in many other areas, including, but not limited to: deep brain stimulation (e.g., treatment of epilepsy, Parkinson's, and depression); cardiac pace-making, stomach muscle stimulation (e.g., treatment of obesity), back pain, incontinence, menstrual pain, and/or any other condition that may be affected by neural modulation.

FIG. 1 illustrates an implant unit and external unit, according to an exemplary embodiment of the present disclosure. An implant unit **110**, may be configured for implantation in a subject, in a location that permits it to modulate a nerve **115**. The implant unit **110** may be located in a subject such that intervening tissue **111** exists between the implant unit **110** and the nerve **115**. Intervening tissue may include muscle tissue, connective tissue, organ tissue, or any other type of biological tissue. Thus, location of implant unit **110** does not require contact with nerve **115** for effective neuromodulation. The implant unit **110** may also be located directly adjacent to nerve **115**, such that no intervening tissue **111** exists.

In treating OSA, implant unit **110** may be located on a genioglossus muscle of a patient. Such a location is suitable for modulation of the hypoglossal nerve, branches of which run inside the genioglossus muscle. Further details regarding implantation locations of an implant unit **110** for treatment of OSA are provided below with respect to FIGS. **10** and **11**. Implant unit **110** may also be configured for placement in other locations. For example, migraine treatment may require subcutaneous implantation in the back of the neck, near the hairline of a subject, or behind the ear of a subject, to modulate the greater occipital nerve, lesser occipital nerve, and/or the trigeminal nerve. Further details regarding implantation locations of an implant unit **110** for treatment of head pain, such as migraine headaches, are provided below with respect to FIG. **12**. Treating hypertension may require the implantation of a neuromodulation implant intravascularly inside the renal artery or renal vein (to modulate the parasympathetic renal nerves), either unilaterally or bilaterally, inside the carotid artery or jugular vein (to modulate the glossopharyngeal nerve through the carotid baroreceptors). Alternatively or additionally, treating hypertension may require the implantation of a neuromodulation implant subcutaneously, behind the ear or in the neck, for example, to directly modulate the glossopharyngeal nerve. Further details regarding implantation locations of an implant unit **110** for treatment of hypertension are provided below, with respect to FIGS. **13** and **14**.

External unit **120** may be configured for location external to a patient, either directly contacting, or close to the skin **112** of the patient. External unit **120** may be configured to be affixed to the patient, for example, by adhering to the skin **112** of the patient, or through a band or other device configured to hold external unit **120** in place. Adherence to the skin of external unit **120** may occur such that it is in the vicinity of the location of implant unit **110**.

FIG. 2 illustrates an exemplary embodiment of a neuromodulation system for delivering energy in a patient **100** with OSA. The system may include an external unit **120** that may be configured for location external to the patient. As illustrated in FIG. 2, external unit **120** may be configured to

be affixed to the patient **100**. FIG. 2 illustrates that in a patient **100** with OSA, the external unit **120** may be configured for placement underneath the patient's chin and/or on the front of patient's neck. The suitability of placement locations may be determined by communication between external unit **120** and implant unit **110**, discussed in greater detail below. In alternate embodiments, for the treatment of conditions other than OSA, the external unit may be configured to be affixed anywhere suitable on a patient, such as the back of a patient's neck, e.g. for communication with a migraine treatment implant unit, on the outer portion of a patient's abdomen, e.g. for communication with a stomach modulating implant unit, on a patient's back, e.g. for communication with a renal artery modulating implant unit, and/or on any other suitable external location on a patient's skin, depending on the requirements of a particular application.

External unit **120** may further be configured to be affixed to an alternative location proximate to the patient. For example, in one embodiment, the external unit may be configured to fixedly or removably adhere to a strap or a band that may be configured to wrap around a part of a patient's body. Alternatively, or in addition, the external unit may be configured to remain in a desired location external to the patient's body without adhering to that location.

The external unit **120** may include a housing. The housing may include any suitable container configured for retaining components. In addition, while the external unit is illustrated schematically in FIG. 2, the housing may be any suitable size and/or shape and may be rigid or flexible. Non-limiting examples of housings for the external unit **100** include one or more of patches, buttons, or other receptacles having varying shapes and dimensions and constructed of any suitable material. In one embodiment, for example, the housing may include a flexible material such that the external unit may be configured to conform to a desired location. For example, as illustrated in FIG. 2, the external unit may include a skin patch, which, in turn, may include a flexible substrate. The material of the flexible substrate may include, but is not limited to, plastic, silicone, woven natural fibers, and other suitable polymers, copolymers, and combinations thereof. Any portion of external unit **120** may be flexible or rigid, depending on the requirements of a particular application.

As previously discussed, in some embodiments external unit **120** may be configured to adhere to a desired location. Accordingly, in some embodiments, at least one side of the housing may include an adhesive material. The adhesive material may include a biocompatible material and may allow for a patient to adhere the external unit to the desired location and remove the external unit upon completion of use. The adhesive may be configured for single or multiple uses of the external unit. Suitable adhesive materials may include, but are not limited to biocompatible glues, starches, elastomers, thermoplastics, and emulsions.

FIG. 3 schematically illustrates a system including external unit **120** and an implant unit **110**. In some embodiments, implant unit **110** may be configured as a unit to be implanted into the body of a patient, and external unit **120** may be configured to send signals to and/or receive signals from implant unit **110**.

As shown in FIG. 3, various components may be included within a housing of external unit **120** or otherwise associated with external unit **120**. As illustrated in FIG. 3, at least one processor **144** may be associated with external unit **120**. For example, the at least one processor **144** may be located within the housing of external unit **120**. In alternative

embodiments, the at least one processor may be configured for wired or wireless communication with the external unit from a location external to the housing.

The at least one processor may include any electric circuit that may be configured to perform a logic operation on at least one input variable. The at least one processor may therefore include one or more integrated circuits, microchips, microcontrollers, and microprocessors, which may be all or part of a central processing unit (CPU), a digital signal processor (DSP), a field programmable gate array (FPGA), or any other circuit known to those skilled in the art that may be suitable for executing instructions or performing logic operations.

FIG. 3 illustrates that the external unit 120 may further be associated with a power source 140. The power source may be removably couplable to the external unit at an exterior location relative to external unit. Alternatively, as shown in FIG. 3, power source 140 may be permanently or removably coupled to a location within external unit 120. The power source may further include any suitable source of power configured to be in electrical communication with the processor. In one embodiment, for example the power source 140 may include a battery.

The power source may be configured to power various components within the external unit. As illustrated in FIG. 3, power source 140 may be configured to provide power to the processor 144. In addition, the power source 140 may be configured to provide power to a signal source 142. The signal source 142 may be in communication with the processor 144 and may include any device configured to generate a signal (e.g., a sinusoidal signal, square wave, triangle wave, microwave, radio-frequency (RF) signal, or any other type of electromagnetic signal). Signal source 142 may include, but is not limited to, a waveform generator that may be configured to generate alternating current (AC) signals and/or direct current (DC) signals. In one embodiment, for example, signal source 142 may be configured to generate an AC signal for transmission to one or more other components. Signal source 142 may be configured to generate a signal of any suitable frequency. In some embodiments, signal source 142 may be configured to generate a signal having a frequency of from about 6.5 MHz to about 13.6 MHz. In additional embodiments, signal source 142 may be configured to generate a signal having a frequency of from about 7.4 to about 8.8 MHz. In further embodiments, signal source 142 may generate a signal having a frequency as low as 90 kHz or as high as 28 MHz.

Signal source 142 may be configured for direct or indirect electrical communication with an amplifier 146. The amplifier may include any suitable device configured to amplify one or more signals generated from signal source 142. Amplifier 146 may include one or more of various types of amplification devices, including, for example, transistor based devices, operational amplifiers, RF amplifiers, power amplifiers, or any other type of device that can increase the gain associated one or more aspects of a signal. The amplifier may further be configured to output the amplified signals to one or more components within external unit 120.

The external unit may additionally include a primary antenna 150. The primary antenna may be configured as part of a circuit within external unit 120 and may be coupled either directly or indirectly to various components in external unit 120. For example, as shown in FIG. 3, primary antenna 150 may be configured for communication with the amplifier 146.

The primary antenna may include any conductive structure that may be configured to create an electromagnetic

field. The primary antenna may further be of any suitable size, shape, and/or configuration. The size, shape, and/or configuration may be determined by the size of the patient, the placement location of the implant unit, the size and/or shape of the implant unit, the amount of energy required to modulate a nerve, a location of a nerve to be modulated, the type of receiving electronics present on the implant unit, etc. The primary antenna may include any suitable antenna known to those skilled in the art that may be configured to send and/or receive signals. Suitable antennas may include, but are not limited to, a long-wire antenna, a patch antenna, a helical antenna, etc. In one embodiment, for example, as illustrated in FIG. 3, primary antenna 150 may include a coil antenna. Such a coil antenna may be made from any suitable conductive material and may be configured to include any suitable arrangement of conductive coils (e.g., diameter, number of coils, layout of coils, etc.). A coil antenna suitable for use as primary antenna 150 may have a diameter of between about 1 cm and 10 cm, and may be circular or oval shaped. In some embodiments, a coil antenna may have a diameter between 5 cm and 7 cm, and may be oval shaped. A coil antenna suitable for use as primary antenna 150 may have any number of windings, e.g. 4, 8, 12, or more. A coil antenna suitable for use as primary antenna 150 may have a wire diameter between about 0.1 mm and 2 mm. These antenna parameters are exemplary only, and may be adjusted above or below the ranges given to achieve suitable results.

As noted, implant unit 110 may be configured to be implanted in a patient's body (e.g., beneath the patient's skin). FIG. 2 illustrates that the implant unit 110 may be configured to be implanted for modulation of a nerve associated with a muscle of the subject's tongue 130. Modulating a nerve associated with a muscle of the subject's tongue 130 may include stimulation to cause a muscle contraction. In further embodiments, the implant unit may be configured to be placed in conjunction with any nerve that one may desire to modulate. For example, modulation of the occipital nerve, the greater occipital nerve, and/or the trigeminal nerve may be useful for treating pain sensation in the head, such as that from migraines. Modulation of parasympathetic nerve fibers on and around the renal arteries (i.e. the renal nerves), the vagus nerve, and/or the glossopharyngeal nerve may be useful for treating hypertension. Additionally, any nerve of the peripheral nervous system (both spinal and cranial), including motor neurons, sensory neurons, sympathetic neurons and parasympathetic neurons, may be modulated to achieve a desired effect.

Implant unit 110 may be formed of any materials suitable for implantation into the body of a patient. In some embodiments, implant unit 110 may include a flexible carrier 161 (FIG. 4) including a flexible, biocompatible material. Such materials may include, for example, silicone, polyimides, phenyltrimethoxysilane (PTMS), polymethyl methacrylate (PMMA), Parylene C, polyimide, liquid polyimide, laminated polyimide, black epoxy, polyether ether ketone (PEEK), Liquid Crystal Polymer (LCP), Kapton, etc. Implant unit 110 may further include circuitry including conductive materials, such as gold, platinum, titanium, or any other biocompatible conductive material or combination of materials. Implant unit 110 and flexible carrier 161 may also be fabricated with a thickness suitable for implantation under a patient's skin. Implant 110 may have thickness of less than about 4 mm or less than about 2 mm.

Other components that may be included in or otherwise associated with the implant unit are illustrated in FIG. 3. For example, implant unit 110 may include a secondary antenna 152 mounted onto or integrated with flexible carrier 161.

Similar to the primary antenna, the secondary antenna may include any suitable antenna known to those skilled in the art that may be configured to send and/or receive signals. The secondary antenna may include any suitable size, shape, and/or configuration. The size, shape and/or configuration may be determined by the size of the patient, the placement location of the implant unit, the amount of energy required to modulate the nerve, etc. Suitable antennas may include, but are not limited to, a long-wire antenna, a patch antenna, a helical antenna, etc. In some embodiments, for example, secondary antenna 152 may include a coil antenna having a circular shape (see also FIG. 4) or oval shape. Such a coil antenna may be made from any suitable conductive material and may be configured to include any suitable arrangement of conductive coils (e.g., diameter, number of coils, layout of coils, etc.). A coil antenna suitable for use as secondary antenna 152 may have a diameter of between about 5 mm and 30 mm, and may be circular or oval shaped. A coil antenna suitable for use as secondary antenna 152 may have any number of windings, e.g. 4, 15, 20, 30, or 50. A coil antenna suitable for use as secondary antenna 152 may have a wire diameter between about 0.01 mm and 1 mm. These antenna parameters are exemplary only, and may be adjusted above or below the ranges given to achieve suitable results.

Implant unit 110 may additionally include a plurality of field-generating implant electrodes 158a, 158b. The electrodes may include any suitable shape and/or orientation on the implant unit so long as the electrodes may be configured to generate an electric field in the body of a patient. Implant electrodes 158a and 158b may also include any suitable conductive material (e.g., copper, silver, gold, platinum, iridium, platinum-iridium, platinum-gold, conductive polymers, etc.) or combinations of conductive (and/or noble metals) materials. In some embodiments, for example, the electrodes may include short line electrodes, circular electrodes, and/or circular pairs of electrodes. As shown in FIG. 4, electrodes 158a and 158b may be located on an end of a first extension 162a of an elongate arm 162. The electrodes, however, may be located on any portion of implant unit 110. Additionally, implant unit 110 may include electrodes located at a plurality of locations, for example on an end of both a first extension 162a and a second extension 162b of elongate arm 162, as illustrated, for example, in FIG. 5. Implant electrodes may have a thickness between about 200 nanometers and 1 millimeter. Anode and cathode electrode pairs may be spaced apart by about a distance of about 0.2 mm to 25 mm. In additional embodiments, anode and cathode electrode pairs may be spaced apart by a distance of about 1 mm to 10 mm, or between 4 mm and 7 mm. Adjacent anodes or adjacent cathodes may be spaced apart by distances as small as 0.001 mm or less, or as great as 25 mm or more. In some embodiments, adjacent anodes or adjacent cathodes may be spaced apart by a distance between about 0.2 mm and 1 mm.

FIG. 4 provides a schematic representation of an exemplary configuration of implant unit 110. As illustrated in FIG. 4, in one embodiment, the field-generating electrodes 158a and 158b may include two sets of four circular electrodes, provided on flexible carrier 161, with one set of electrodes providing an anode and the other set of electrodes providing a cathode. Implant unit 110 may include one or more structural elements to facilitate implantation of implant unit 110 into the body of a patient. Such elements may include, for example, elongated arms, suture holes, polymeric surgical mesh, biological glue, spikes of flexible carrier protruding to anchor to the tissue, spikes of additional biocompatible material for the same purpose, etc. that facili-

tate alignment of implant unit 110 in a desired orientation within a patient's body and provide attachment points for securing implant unit 110 within a body. For example, in some embodiments, implant unit 110 may include an elongate arm 162 having a first extension 162a and, optionally, a second extension 162b. Extensions 162a and 162b may aid in orienting implant unit 110 with respect to a particular muscle (e.g., the genioglossus muscle), a nerve within a patient's body, or a surface within a body above a nerve. For example, first and second extensions 162a, 162b may be configured to enable the implant unit to conform at least partially around soft or hard tissue (e.g., nerve, bone, or muscle, etc.) beneath a patient's skin. Further, implant unit 110 may also include one or more suture holes 160 located anywhere on flexible carrier 161. For example, in some embodiments, suture holes 160 may be placed on second extension 162b of elongate arm 162 and/or on first extension 162a of elongate arm 162. Implant unit 110 may be constructed in various shapes. In some embodiments, implant unit may appear substantially as illustrated in FIG. 4. In other embodiments, implant unit 110 may lack illustrated structures such as second extension 162b, or may have additional or different structures in different orientations. Additionally, implant unit 110 may be formed with a generally triangular, circular, or rectangular shape, as an alternative to the winged shape shown in FIG. 4. In some embodiments, the shape of implant unit 110 (e.g., as shown in FIG. 4) may facilitate orientation of implant unit 110 with respect to a particular nerve to be modulated. Thus, other regular or irregular shapes may be adopted in order to facilitate implantation in differing parts of the body.

As illustrated in FIG. 4, secondary antenna 152 and electrodes 158a, 158b may be mounted on or integrated with flexible carrier 161. Various circuit components and connecting wires (discussed further below) may be used to connect secondary antenna with implant electrodes 158a and 158b. To protect the antenna, electrodes, circuit components, and connecting wires from the environment within a patient's body, implant unit 110 may include a protective coating that encapsulates implant unit 110. In some embodiments, the protective coating may be made from a flexible material to enable bending along with flexible carrier 161. The encapsulation material of the protective coating may also resist humidity penetration and protect against corrosion. In some embodiments, the protective coating may include silicone, polyimides, phenyltrimethoxysilane (PTMS), polymethyl methacrylate (PMMA), Parylene C, liquid polyimide, laminated polyimide, polyimide, Kapton, black epoxy, polyether ketone (PEEK), Liquid Crystal Polymer (LCP), or any other suitable biocompatible coating. In some embodiments, the protective coating may include a plurality of layers, including different materials or combinations of materials in different layers.

FIG. 5 is a perspective view of an alternate embodiment of an implant unit 110. according to an exemplary embodiment of the present disclosure. As illustrated in FIG. 5, implant unit 110 may include a plurality of electrodes, located, for example, at the ends of first extension 162a and second extension 162b. FIG. 5 illustrates an embodiment wherein implant electrodes 158a and 158b include short line electrodes.

Returning to FIGS. 2 and 3, external unit 120 may be configured to communicate with implant unit 110. For example, in some embodiments, a primary signal may be generated on primary antenna 150, using, e.g., processor 144, signal source 142, and amplifier 146. More specifically, in one embodiment, power source 140 may be configured to

provide power to one or both of the processor **144** and the signal source **142**. The processor **144** may be configured to cause signal source **142** to generate a signal (e.g., an RF energy signal). Signal source **142** may be configured to output the generated signal to amplifier **146**, which may amplify the signal generated by signal source **142**. The amount of amplification and, therefore, the amplitude of the signal may be controlled, for example, by processor **144**. The amount of gain or amplification that processor **144** causes amplifier **146** to apply to the signal may depend on a variety of factors, including, but not limited to, the shape, size, and/or configuration of primary antenna **150**, the size of the patient, the location of implant unit **110** in the patient, the shape, size, and/or configuration of secondary antenna **152**, a degree of coupling between primary antenna **150** and secondary antenna **152** (discussed further below), a desired magnitude of electric field to be generated by implant electrodes **158a**, **158b**, etc. Amplifier **146** may output the amplified signal to primary antenna **150**.

External unit **120** may communicate a primary signal on primary antenna to the secondary antenna **152** of implant unit **110**. This communication may result from coupling between primary antenna **150** and secondary antenna **152**. Such coupling of the primary antenna and the secondary antenna may include any interaction between the primary antenna and the secondary antenna that causes a signal on the secondary antenna in response to a signal applied to the primary antenna. In some embodiments, coupling between the primary and secondary antennas may include capacitive coupling, inductive coupling, radiofrequency coupling, etc., and any combinations thereof.

Coupling between primary antenna **150** and secondary antenna **152** may depend on the proximity of the primary antenna relative to the secondary antenna. That is, in some embodiments, an efficiency or degree of coupling between primary antenna **150** and secondary antenna **152** may depend on the proximity of the primary antenna to the secondary antenna. The proximity of the primary and secondary antennas may be expressed in terms of a coaxial offset (e.g., a distance between the primary and secondary antennas when central axes of the primary and secondary antennas are co-aligned), a lateral offset (e.g., a distance across a central axis of the primary antenna and a central axis of the secondary antenna), and/or an angular offset (e.g., an angular difference between the central axes of the primary and secondary antennas). In some embodiments, a theoretical maximum efficiency of coupling may exist between primary antenna **150** and secondary antenna **152** when both the coaxial offset, the lateral offset, and the angular offset are zero. Increasing any of the coaxial offset, the lateral offset, and the angular offset may have the effect of reducing the efficiency or degree of coupling between primary antenna **150** and secondary antenna **152**.

As a result of coupling between primary antenna **150** and secondary antenna **152**, a secondary signal may arise on secondary antenna **152** when the primary signal is present on the primary antenna **150**. Such coupling may include inductive/magnetic coupling, RF coupling/transmission, capacitive coupling, or any other mechanism where a secondary signal may be generated on secondary antenna **152** in response to a primary signal generated on primary antenna **150**. Coupling may refer to any interaction between the primary and secondary antennas. In addition to the coupling between primary antenna **150** and secondary antenna **152**, circuit components associated with implant unit **110** may also affect the secondary signal on secondary antenna **152**. Thus, the secondary signal on secondary antenna **152** may

refer to any and all signals and signal components present on secondary antenna **152** regardless of the source.

While the presence of a primary signal on primary antenna **150** may cause or induce a secondary signal on secondary antenna **152**, the coupling between the two antennas may also lead to a coupled signal or signal components on the primary antenna **150** as a result of the secondary signal present on secondary antenna **152**. A signal on primary antenna **150** induced by a secondary signal on secondary antenna **152** may be referred to as a primary coupled signal component. The primary signal may refer to any and all signals or signal components present on primary antenna **150**, regardless of source, and the primary coupled signal component may refer to any signal or signal component arising on the primary antenna as a result of coupling with signals present on secondary antenna **152**. Thus, in some embodiments, the primary coupled signal component may contribute to the primary signal on primary antenna **150**.

Implant unit **110** may be configured to respond to external unit **120**. For example, in some embodiments, a primary signal generated on primary coil **150** may cause a secondary signal on secondary antenna **152**, which in turn, may cause one or more responses by implant unit **110**. In some embodiments, the response of implant unit **110** may include the generation of an electric field between implant electrodes **158a** and **158b**.

FIG. 6 illustrates circuitry **170** that may be included in external unit **120** and circuitry **180** that may be included in implant unit **110**. Additional, different, or fewer circuit components may be included in either or both of circuitry **170** and circuitry **180**. As shown in FIG. 6, secondary antenna **152** may be arranged in electrical communication with implant electrodes **158a**, **158b**. In some embodiments, circuitry connecting secondary antenna **152** with implant electrodes **158a** and **158b** may cause a voltage potential across implant electrodes **158a** and **158b** in the presence of a secondary signal on secondary antenna **152**. This voltage potential may be referred to as a field inducing signal, as this voltage potential may generate an electric field between implant electrodes **158a** and **158b**. More broadly, the field inducing signal may include any signal (e.g., voltage potential) applied to electrodes associated with the implant unit that may result in an electric field being generated between the electrodes.

The field inducing signal may be generated as a result of conditioning of the secondary signal by circuitry **180**. As shown in FIG. 6, circuitry **170** of external unit **120** may be configured to generate an AC primary signal on primary antenna **150** that may cause an AC secondary signal on secondary antenna **152**. In certain embodiments, however, it may be advantageous (e.g., in order to generate a unidirectional electric field for modulation of a nerve) to provide a DC field inducing signal at implant electrodes **158a** and **158b**. To convert the AC secondary signal on secondary antenna **152** to a DC field inducing signal, circuitry **180** in implant unit **110** may include an AC-DC converter. The AC to DC converter may include any suitable converter known to those skilled in the art. For example, in some embodiments the AC-DC converter may include rectification circuit components including, for example, diode **156** and appropriate capacitors and resistors. In alternative embodiments, implant unit **110** may include an AC-AC converter, or no converter, in order to provide an AC field inducing signal at implant electrodes **158a** and **158b**.

As noted above, the field inducing signal may be configured to generate an electric field between implant electrodes **158a** and **158b**. In some instances, the magnitude and/or

duration of the generated electric field resulting from the field inducing signal may be sufficient to modulate one or more nerves in the vicinity of electrodes **158a** and **158b**. In such cases, the field inducing signal may be referred to as a modulation signal. In other instances, the magnitude and/or duration of the field inducing signal may generate an electric field that does not result in nerve modulation. In such cases, the field inducing signal may be referred to as a sub-modulation signal.

Various types of field inducing signals may constitute modulation signals. For example, in some embodiments, a modulation signal may include a moderate amplitude and moderate duration, while in other embodiments, a modulation signal may include a higher amplitude and a shorter duration. Various amplitudes and/or durations of field-inducing signals across electrodes **158a**, **158b** may result in modulation signals, and whether a field-inducing signal rises to the level of a modulation signal can depend on many factors (e.g., distance from a particular nerve to be stimulated; whether the nerve is branched; orientation of the induced electric field with respect to the nerve; type of tissue present between the electrodes and the nerve; etc.).

Whether a field inducing signal constitutes a modulation signal (resulting in an electric field that may cause nerve modulation) or a sub-modulation signal (resulting in an electric field not intended to cause nerve modulation) may ultimately be controlled by processor **144** of external unit **120**. For example, in certain situations, processor **144** may determine that nerve modulation is appropriate. Under these conditions, processor **144** may cause signal source **144** and amplifier **146** to generate a modulation control signal on primary antenna **150** (i.e., a signal having a magnitude and/or duration selected such that a resulting secondary signal on secondary antenna **152** will provide a modulation signal at implant electrodes **158a** and **158b**).

Processor **144** may be configured to limit an amount of energy transferred from external unit **120** to implant unit **110**. For example, in some embodiments, implant unit **110** may be associated with a threshold energy limit that may take into account multiple factors associated with the patient and/or the implant. For example, in some cases, certain nerves of a patient should receive no more than a predetermined maximum amount of energy to minimize the risk of damaging the nerves and/or surrounding tissue. Additionally, circuitry **180** of implant unit **110** may include components having a maximum operating voltage or power level that may contribute to a practical threshold energy limit of implant unit **110**. For example, components including diodes may be included in implant unit **110** or in external unit **120** to limit power transferred from the external unit **120** to the implant unit **110**. In some embodiments, diode **156** may function to limit the power level received by the patient. Processor **144** may be configured to account for such limitations when setting the magnitude and/or duration of a primary signal to be applied to primary antenna **150**.

In addition to determining an upper limit of power that may be delivered to implant unit **110**, processor **144** may also determine a lower power threshold based, at least in part, on an efficacy of the delivered power. The lower power threshold may be computed based on a minimum amount of power that enables nerve modulation (e.g., signals having power levels above the lower power threshold may constitute modulation signals while signals having power levels below the lower power threshold may constitute sub-modulation signals). Thus, the power level associated with the

control signal may be varied based on the efficiency of the energy transfer and the efficacy threshold associated with the implant circuit.

A lower power threshold may also be measured or provided in alternative ways. For example, appropriate circuitry or sensors in the implant unit **110** may measure a lower power threshold. A lower power threshold may be computed or sensed by an additional external device, and subsequently programmed into processor **144**, or programmed into implant unit **110**. Alternatively, implant unit **110** may be constructed with circuitry **180** specifically chosen to generate signals at the electrodes of at least the lower power threshold. In still another embodiment, an antenna of external unit **120** may be adjusted to accommodate or produce a signal corresponding to a specific lower power threshold. The lower power threshold may vary from patient to patient, and may take into account multiple factors, such as, for example, modulation characteristics of a particular patient's nerve fibers, a distance between implant unit **110** and external unit **120** after implantation, and the size and configuration of implant unit components (e.g., antenna and implant electrodes), etc.

Processor **144** may also be configured to cause application of sub-modulation control signals to primary antenna **150**. Such sub-modulation control signals may include an amplitude and/or duration that result in a sub-modulation signal at electrodes **158a**, **158b**. While such sub-modulation control signals may not result in nerve modulation, such sub-modulation control signals may enable feedback-based control of the nerve modulation system. That is, in some embodiments, processor **144** may be configured to cause application of a sub-modulation control signal to primary antenna **150**. This signal may induce a secondary signal on secondary antenna **152**, which, in turn, induces a primary coupled signal component on primary antenna **150**.

To analyze the primary coupled signal component induced on primary antenna **150**, external unit **120** may include a feedback circuit **148** (e.g., a signal analyzer or detector, etc.), which may be placed in direct or indirect communication with primary antenna **150** and processor **144**. Sub-modulation control signals may be applied to primary antenna **150** at any desired periodicity. In some embodiments, the sub-modulation control signals may be applied to primary antenna **150** at a rate of one every five seconds (or longer). In other embodiments, the sub-modulation control signals may be applied more frequently (e.g., once every two seconds, once per second, once per millisecond, once per nanosecond, or multiple times per second). Further, it should be noted that feedback may also be received upon application of modulation control signals to primary antenna **150** (i.e., those that result in nerve modulation), as such modulation control signals may also result in generation of a primary coupled signal component on primary antenna **150**.

The primary coupled signal component may be fed to processor **144** by feedback circuit **148** and may be used as a basis for determining a degree of coupling between primary antenna **150** and secondary antenna **152**. The degree of coupling may enable determination of the efficacy of the energy transfer between two antennas. Processor **144** may also use the determined degree of coupling in regulating delivery of power to implant unit **110**.

Processor **144** may be configured with any suitable logic for determining how to regulate power transfer to implant unit **110** based on the determined degree of coupling. Processor **144** may, for example, utilize a baseline coupling range. Presumably, while the patient is awake, the tongue is

not blocking the patient's airway and moves with the patient's breathing in a natural range, where coupling between primary antenna 150 and secondary antenna 152 may be within a baseline coupling range. A baseline coupling range may encompass a maximum coupling between primary antenna 150 and secondary antenna 152. A baseline coupling range may also encompass a range that does not include a maximum coupling level between primary antenna 150 and secondary antenna 152. Processor 144 may be configured to determine the baseline coupling range based on a command from a user, such as the press of a button on the patch or the press of a button on a suitable remote device. Alternatively or additionally, processor 144 may be configured to automatically determine the baseline coupling range when external unit 120 is placed such that primary antenna 150 and secondary antenna 152 are within range of each other. In such an embodiment, when processor 144 detects any degree of coupling between primary antenna 150 and secondary antenna 152, it may immediately begin tracking a baseline coupling range. Processor 144 may then determine a baseline coupling range when it detects that the only movement between primary antenna 150 and secondary antenna 152 is caused by a patient's natural breathing rhythm (i.e., the patient has secured the external unit to an appropriate location on their body). Additionally, processor 144 may be configured such that it measures coupling between the primary antenna 150 and the secondary antenna 152 for a specified period of time after activation in order to determine a baseline coupling range, such as 1 minute, 5 minutes, 10 minutes, etc.

Where the primary coupled signal component indicates that a degree of coupling has changed from a baseline coupling range, processor 144 may determine that secondary antenna 152 has moved with respect to primary antenna 150 (either in coaxial offset, lateral offset, or angular offset, or any combination). Such movement, for example, may be associated with a movement of the implant unit 110, and the tissue that it is associated with based on its implant location. Thus, in such situations, processor 144 may determine that modulation of a nerve in the patient's body is appropriate. More particularly, in response to an indication of a change in coupling, processor 144, in some embodiments, may cause application of a modulation control signal to primary antenna 150 in order to generate a modulation signal at implant electrodes 158a, 158b, e.g., to cause modulation of a nerve of the patient.

In an embodiment for the treatment of OSA, movement of an implant unit 110 may be associated with movement of the tongue, which may indicate the onset of a sleep apnea event or a sleep apnea precursor. The onset of a sleep apnea event of sleep apnea precursor may require the stimulation of the genioglossus muscle of the patient to relieve or avert the event. Such stimulation may result in contraction of the muscle and movement of the patient's tongue away from the patient's airway.

In embodiments for the treatment of head pain, including migraines, processor 144 may be configured to generate a modulation control signal based on a signal from a user, for example, or a detected level of neural activity in a sensory neuron (e.g. the greater occipital nerve or trigeminal nerve) associated with head pain. A modulation control signal generated by the processor and applied to the primary antenna 150 may generate a modulation signal at implant electrodes 158a, 158b, e.g., to cause inhibition or blocking (i.e. a down modulation) of a sensory nerve of the patient. Such inhibition or blocking may decrease or eliminate the sensation of pain for the patient.

In embodiments for the treatment of hypertension, processor 144 may be configured to generate a modulation control signal based on, for example, pre-programmed instructions and/or signals from an implant indicative of blood pressure. A modulation control signal generated by the processor and applied to the primary antenna 150 may generate a modulation signal at implant electrodes 158a, 158b, e.g., to cause either inhibition or stimulation of nerve of a patient, depending on the requirements. For example, a neuromodulator placed in a carotid artery or jugular vein (i.e. in the vicinity of a carotid baroreceptor), may receive a modulation control signal tailored to induce a stimulation signal at the electrodes, thereby causing the glossopharyngeal nerve associated with the carotid baroreceptors to fire at an increased rate in order to signal the brain to lower blood pressure. Similar modulation of the glossopharyngeal nerve may be achieved with a neuromodulator implanted in a subcutaneous location in a patient's neck or behind a patient's ear. A neuromodulator placed in a renal artery may receive a modulation control signal tailored to cause an inhibiting or blocking signal (i.e. a down modulation) at the electrodes, thereby inhibiting a signal to raise blood pressure carried from the renal nerves to the kidneys.

Modulation control signals may include stimulation control signals, and sub-modulation control signals may include sub-stimulation control signals. Stimulation control signals may have any amplitude, pulse duration, or frequency combination that results in a stimulation signal at electrodes 158a, 158b. In some embodiments (e.g., at a frequency of between about 6.5-13.6 MHz), stimulation control signals may include a pulse duration of greater than about 50 microseconds and/or an amplitude of approximately 0.5 amps, or between 0.1 amps and 1 amp, or between 0.05 amps and 3 amps. Sub-stimulation control signals may have a pulse duration less than about 500, or less than about 200 nanoseconds and/or an amplitude less than about 1 amp, 0.5 amps, 0.1 amps, 0.05 amps, or 0.01 amps. Of course, these values are meant to provide a general reference only, as various combinations of values higher than or lower than the exemplary guidelines provided may or may not result in nerve stimulation.

In some embodiments, stimulation control signals may include a pulse train, wherein each pulse includes a plurality of sub-pulses. An alternating current signal (e.g., at a frequency of between about 6.5-13.6 MHz) may be used to generate the pulse train, as follows. A sub-pulse may have a duration of between 50-250 microseconds, or a duration of between 1 microsecond and 2 milliseconds, during which an alternating current signal is turned on. For example, a 200 microsecond sub-pulse of a 10 MHz alternating current signal will include approximately 2000 periods. Each pulse may, in turn, have a duration of between 100 and 500 milliseconds, during which sub-pulses occur at a frequency of between 25 and 100 Hz. For example, a 200 millisecond pulse of 50 Hz sub-pulses will include approximately 10 sub-pulses. Finally, in a pulse train, each pulse may be separated from the next by a duration of between 0.2 and 2 seconds. For example, in a pulse train of 200 millisecond pulses, each separated by 1.3 seconds from the next, a new pulse will occur every 1.5 seconds. A pulse train of this embodiment may be utilized, for example, to provide ongoing stimulation during a treatment session. In the context of OSA, a treatment session may be a period of time during which a subject is asleep and in need of treatment to prevent OSA. Such a treatment session may last anywhere from about three to ten hours. In the context of other conditions to which neural modulators of the present disclosure are

applied, a treatment session may be of varying length according to the duration of the treated condition.

Processor 144 may be configured to determine a degree of coupling between primary antenna 150 and secondary antenna 152 by monitoring one or more aspects of the primary coupled signal component received through feedback circuit 148. In some embodiments, processor 144 may determine a degree of coupling between primary antenna 150 and secondary antenna 152 by monitoring a voltage level associated with the primary coupled signal component, a current level, or any other attribute that may depend on the degree of coupling between primary antenna 150 and secondary antenna 152. For example, in response to periodic sub-modulation signals applied to primary antenna 150, processor 144 may determine a baseline voltage level or current level associated with the primary coupled signal component. This baseline voltage level, for example, may be associated with a range of movement of the patient's tongue when a sleep apnea event or its precursor is not occurring, e.g. during normal breathing. As the patient's tongue moves toward a position associated with a sleep apnea event, moves in a manner consistent with a precursor of sleep apnea, or moves in any other manner (e.g., vibration, etc.), the coaxial, lateral, or angular offset between primary antenna 150 and secondary antenna 152 may change. As a result, the degree of coupling between primary antenna 150 and secondary antenna 152 may change, and the voltage level or current level of the primary coupled signal component on primary antenna 150 may also change. Processor 144 may be configured to recognize a sleep apnea event or its precursor when a voltage level, current level, or other electrical characteristic associated with the primary coupled signal component changes by a predetermined amount or reaches a predetermined absolute value.

FIG. 7 provides a graph that illustrates this principle in more detail. For a two-coil system where one coil receives a radio frequency (RF) drive signal, graph 200 plots a rate of change in induced current in the receiving coil as a function of coaxial distance between the coils. For various coil diameters and initial displacements, graph 200 illustrates the sensitivity of the induced current to further displacement between the coils, moving them either closer together or further apart. It also indicates that, overall, the induced current in the secondary coil will decrease as the secondary coil is moved away from the primary, drive coil, i.e. the rate of change of induced current, in mA/mm, is consistently negative. The sensitivity of the induced current to further displacement between the coils varies with distance. For example, at a separation distance of 10 mm, the rate of change in current as a function of additional displacement in a 14 mm coil is approximately -6 mA/mm. If the displacement of the coils is approximately 22 mm, the rate of change in the induced current in response to additional displacement is approximately -11 mA/mm, which corresponds to a local maximum in the rate of change of the induced current. Increasing the separation distance beyond 22 mm continues to result in a decline in the induced current in the secondary coil, but the rate of change decreases. For example, at a separation distance of about 30 mm, the 14 mm coil experiences a rate of change in the induced current in response to additional displacement of about -8 mA/mm. With this type of information, processor 144 may be able to determine a particular degree of coupling between primary antenna 150 and secondary antenna 152, at any given time, by observing the magnitude and/or rate of change in the magnitude of the current associated with the primary coupled signal component on primary antenna 150.

Processor 144 may be configured to determine a degree of coupling between primary antenna 150 and secondary antenna 152 by monitoring other aspects of the primary coupled signal component. For example, in some embodiments, the non-linear behavior of circuitry 180 in implant unit 110 may be monitored to determine a degree of coupling. For example, the presence, absence, magnitude, reduction and/or onset of harmonic components in the primary coupled signal component on primary antenna 150 may reflect the behavior of circuitry 180 in response to various control signals (either sub-modulation or modulation control signals) and, therefore, may be used to determine a degree of coupling between primary antenna 150 and secondary antenna 152.

As shown in FIG. 6, circuitry 180 in implant unit 110 may constitute a non-linear circuit due, for example, to the presence of non-linear circuit components, such as diode 156. Such non-linear circuit components may induce non-linear voltage responses under certain operation conditions. Non-linear operation conditions may be induced when the voltage potential across diode 156 exceeds the activation threshold for diode 156. Thus, when implant circuitry 180 is excited at a particular frequency, this circuit may oscillate at multiple frequencies. Spectrum analysis of the secondary signal on secondary antenna 152, therefore, may reveal one or more oscillations, called harmonics, that appear at certain multiples of the excitation frequency. Through coupling of primary antenna 150 and secondary antenna 152, any harmonics produced by implant circuitry 180 and appearing on secondary antenna 152 may also appear in the primary coupled signal component present on primary antenna 150.

In certain embodiments, circuitry 180 may include additional circuit components that alter the characteristics of the harmonics generated in circuitry 180 above a certain transition point. Monitoring how these non-linear harmonics behave above and below the transition point may enable a determination of a degree of coupling between primary antenna 150 and secondary antenna 152. For example, as shown in FIG. 6, circuitry 180 may include a harmonics modifier circuit 154, which may include any electrical components that non-linearly alter the harmonics generated in circuitry 180. In some embodiments, harmonics modifier circuit 154 may include a pair of Zener diodes. Below a certain voltage level, these Zener diodes remain forward biased such that no current will flow through either diode. Above the breakdown voltage of the Zener diodes, however, these devices become conductive in the reversed biased direction and will allow current to flow through harmonics modifier circuit 154. Once the Zener diodes become conductive, they begin to affect the oscillatory behavior of circuitry 180, and, as a result, certain harmonic oscillation frequencies may be affected (e.g., reduced in magnitude).

FIGS. 8 and 9 illustrate this effect. For example, FIG. 8 illustrates a graph 300a that shows the oscillatory behavior of circuitry 180 at several amplitudes ranging from about 10 nanoamps to about 20 microamps. As shown, the primary excitation frequency occurs at about 6.7 MHz and harmonics appear both at even and odd multiples of the primary excitation frequency. For example, even multiples appear at twice the excitation frequency (peak 302a), four times the excitation frequency (peak 304a) and six times the excitation frequency (peak 306a). As the amplitude of the excitation signal rises between 10 nanoamps and 40 microamps, the amplitude of peaks 302a, 304a, and 306a all increase.

FIG. 9 illustrates the effect on the even harmonic response of circuitry 180 caused by harmonics modifier circuit 154. FIG. 9 illustrates a graph 300b that shows the oscillatory

behavior of circuitry **180** at several amplitudes ranging from about 30 microamps to about 100 microamps. As in FIG. **8**, FIG. **9** shows a primary excitation frequency at about 6.7 MHz and second, fourth, and sixth order harmonics (peaks **302b**, **304b**, and **306b**, respectively) appearing at even multiples of the excitation frequency. As the amplitude of the excitation signal rises, however, between about 30 microamps to about 100 microamps, the amplitudes of peaks **302b**, **304b**, and **306b** do not continuously increase. Rather, the amplitude of the second order harmonics decreases rapidly above a certain transition level (e.g., about 80 microamps in FIG. **8**). This transition level corresponds to the level at which the Zener diodes become conductive in the reverse biased direction and begin to affect the oscillatory behavior of circuitry **180**.

Monitoring the level at which this transition occurs may enable a determination of a degree of coupling between primary antenna **150** and secondary antenna **152**. For example, in some embodiments, a patient may attach external unit **120** over an area of the skin under which implant unit **110** resides. Processor **144** can proceed to cause a series of sub-modulation control signals to be applied to primary antenna **150**, which in turn cause secondary signals on secondary antenna **152**. These sub-modulation control signals may progress over a sweep or scan of various signal amplitude levels. By monitoring the resulting primary coupled signal component on primary antenna **150** (generated through coupling with the secondary signal on secondary antenna **152**), processor **144** can determine the amplitude of primary signal (whether a sub-modulation control signal or other signal) that results in a secondary signal of sufficient magnitude to activate harmonics modifier circuit **154**. That is, processor **144** can monitor the amplitude of the second, fourth, or sixth order harmonics and determine the amplitude of the primary signal at which the amplitude of any of the even harmonics drops. FIGS. **8** and **9** illustrate the principles of detecting coupling through the measurement of non-linear harmonics. These Figures illustrate data based around a 6.7 MHz excitation frequency. These principles, however, are not limited to the 6.7 MHz excitation frequency illustrated, and may be used with a primary signal of any suitable frequency.

In embodiments utilizing non-linear harmonics, the determined amplitude of the primary signal corresponding to the transition level of the Zener diodes (which may be referred to as a primary signal transition amplitude) may establish the baseline coupling range when the patient attaches external unit **120** to the skin. Thus, the initially determined primary signal transition amplitude may be fairly representative of a non-sleep apnea condition and may be used by processor **144** as a baseline in determining a degree of coupling between primary antenna **150** and secondary antenna **152**. Optionally, processor **144** may also be configured to monitor the primary signal transition amplitude over a series of scans and select the minimum value as a baseline, as the minimum value may correspond to a condition of maximum coupling between primary antenna **150** and secondary antenna **152** during normal breathing conditions.

As the patient wears external unit **120**, processor **144** may periodically scan over a range of primary signal amplitudes to determine a current value of the primary signal transition amplitude. In some embodiments, the range of amplitudes that processor **144** selects for the scan may be based on (e.g., near) the level of the baseline primary signal transition amplitude. If a periodic scan results in determination of a primary signal transition amplitude different from the baseline primary signal transition amplitude, processor **144** may

determine that there has been a change from the baseline initial conditions. For example, in some embodiments, an increase in the primary signal transition amplitude over the baseline value may indicate that there has been a reduction in the degree of coupling between primary antenna **150** and secondary antenna **152** (e.g., because the implant has moved or an internal state of the implant has changed).

In addition to determining whether a change in the degree of coupling has occurred, processor **144** may also be configured to determine a specific degree of coupling based on an observed primary signal transition amplitude. For example, in some embodiments, processor **144** may have access to a lookup table or a memory storing data that correlates various primary signal transition amplitudes with distances (or any other quantity indicative of a degree of coupling which may, for example, be indicative of movement of the tongue) between primary antenna **150** and secondary antenna **152**. In other embodiments, processor **144** may be configured to calculate a degree of coupling based on performance characteristics of known circuit components.

By periodically determining a degree of coupling value, processor **144** may be configured to determine, in situ, appropriate parameter values for the modulation control signal that will ultimately result in nerve modulation. For example, by determining the degree of coupling between primary antenna **150** and secondary antenna **152**, processor **144** may be configured to select characteristics of the modulation control signal (e.g., amplitude, pulse duration, frequency, etc.) that may provide a modulation signal at electrodes **158a**, **158b** in proportion to or otherwise related to the determined degree of coupling. In some embodiments, processor **144** may access a lookup table or other data stored in a memory correlating modulation control signal parameter values with degree of coupling. In this way, processor **144** may adjust the applied modulation control signal in response to an observed degree of coupling.

Additionally or alternatively, processor **144** may be configured to determine the degree of coupling between primary antenna **150** and secondary antenna **152** during modulation. The tongue, or other structure on or near which the implant is located, and thus implant unit **110**, may move as a result of modulation. Thus, the degree of coupling may change during modulation. Processor **144** may be configured to determine the degree of coupling as it changes during modulation, in order to dynamically adjust characteristics of the modulation control signal according to the changing degree of coupling. This adjustment may permit processor **144** to cause implant unit **110** to provide an appropriate modulation signal at electrodes **158a**, **158b** throughout a modulation event. For example, processor **144** may alter the primary signal in accordance with the changing degree of coupling in order to maintain a constant modulation signal, or to cause the modulation signal to be reduced in a controlled manner according to patient needs.

More particularly, the response of processor **144** may be correlated to the determined degree of coupling. In situations where processor **144** determines that the degree of coupling between primary antenna **150** and secondary antenna has fallen only slightly below a predetermined coupling threshold (e.g., during snoring or during a small vibration of the tongue or other sleep apnea event precursor), processor **144** may determine that only a small response is necessary. Thus, processor **144** may select modulation control signal parameters that will result in a relatively small response (e.g., a short stimulation of a nerve, small muscle contraction, etc.). Where, however, processor **144** deter-

mines that the degree of coupling has fallen substantially below the predetermined coupling threshold (e.g., where the tongue has moved enough to cause a sleep apnea event), processor 144 may determine that a larger response is required. As a result, processor 144 may select modulation control signal parameters that will result in a larger response. In some embodiments, only enough power may be transmitted to implant unit 110 to cause the desired level of response. In other words, processor 144 may be configured to cause a metered response based on the determined degree of coupling between primary antenna 150 and secondary antenna 152. As the determined degree of coupling decreases, processor 144 may cause transfer of power in increasing amounts. Such an approach may preserve battery life in the external unit 120, may protect circuitry 170 and circuitry 180, may increase effectiveness in addressing the type of detected condition (e.g., sleep apnea, snoring, tongue movement, etc.), and may be more comfortable for the patient.

In some embodiments, processor 144 may employ an iterative process in order to select modulation control signal parameters that result in a desired response level. For example, upon determining that a modulation control signal should be generated, processor 144 may cause generation of an initial modulation control signal based on a set of predetermined parameter values. If feedback from feedback circuit 148 indicates that a nerve has been modulated (e.g., if an increase in a degree of coupling is observed), then processor 144 may return to a monitoring mode by issuing sub-modulation control signals. If, on the other hand, the feedback suggests that the intended nerve modulation did not occur as a result of the intended modulation control signal or that modulation of the nerve occurred but only partially provided the desired result (e.g., movement of the tongue only partially away from the airway), processor 144 may change one or more parameter values associated with the modulation control signal (e.g., the amplitude, pulse duration, etc.).

Where no nerve modulation occurred, processor 144 may increase one or more parameters of the modulation control signal periodically until the feedback indicates that nerve modulation has occurred. Where nerve modulation occurred, but did not produce the desired result, processor 144 may re-evaluate the degree of coupling between primary antenna 150 and secondary antenna 152 and select new parameters for the modulation control signal targeted toward achieving a desired result. For example, where stimulation of a nerve causes the tongue to move only partially away from the patient's airway, additional stimulation may be desired. Because the tongue has moved away from the airway, however, implant unit 110 may be closer to external unit 120 and, therefore, the degree of coupling may have increased. As a result, to move the tongue a remaining distance to a desired location may require transfer to implant unit 110 of a smaller amount of power than what was supplied prior to the last stimulation-induced movement of the tongue. Thus, based on a newly determined degree of coupling, processor 144 can select new parameters for the stimulation control signal aimed at moving the tongue the remaining distance to the desired location.

In one mode of operation, processor 144 may be configured to sweep over a range of parameter values until nerve modulation is achieved. For example, in circumstances where an applied sub-modulation control signal results in feedback indicating that nerve modulation is appropriate, processor 144 may use the last applied sub-modulation control signal as a starting point for generation of the

modulation control signal. The amplitude and/or pulse duration (or other parameters) associated with the signal applied to primary antenna 150 may be iteratively increased by predetermined amounts and at a predetermined rate until the feedback indicates that nerve modulation has occurred.

Processor 144 may be configured to determine or derive various physiologic data based on the determined degree of coupling between primary antenna 150 and secondary antenna 152. For example, in some embodiments the degree of coupling may indicate a distance between external unit 120 and implant unit 110, which processor 144 may use to determine a position of external unit 120 or a relative position of a patient's tongue. Monitoring the degree of coupling can also provide such physiologic data as whether a patient's tongue is moving or vibrating (e.g., whether the patient is snoring), by how much the tongue is moving or vibrating, the direction of motion of the tongue, the rate of motion of the tongue, etc.

In response to any of these determined physiologic data, processor 144 may regulate delivery of power to implant unit 110 based on the determined physiologic data. For example, processor 144 may select parameters for a particular modulation control signal or series of modulation control signals for addressing a specific condition relating to the determined physiologic data. If the physiologic data indicates that the tongue is vibrating, for example, processor 144 may determine that a sleep apnea event is likely to occur and may issue a response by delivering power to implant unit 110 in an amount selected to address the particular situation. If the tongue is in a position blocking the patient's airway (or partially blocking a patient's airway), but the physiologic data indicates that the tongue is moving away from the airway, processor 144 may opt to not deliver power and wait to determine if the tongue clears on its own. Alternatively, processor 144 may deliver a small amount of power to implant unit 110 (e.g., especially where a determined rate of movement indicates that the tongue is moving slowly away from the patient's airway) to encourage the tongue to continue moving away from the patient's airway or to speed its progression away from the airway. Additionally or alternatively, processor 144 may deliver power to implant unit 110 to initiate a tongue movement, monitor the movement of the tongue, and deliver additional power, for example, a reduced amount of power, if necessary to encourage the tongue to continue moving away from the patient's airway. The scenarios described are exemplary only. Processor 144 may be configured with software and/or logic enabling it to address a variety of different physiologic scenarios with particularity. In each case, processor 144 may be configured to use the physiologic data to determine an amount of power to be delivered to implant unit 110 in order to modulate nerves associated with the tongue with the appropriate amount of energy.

The disclosed embodiments may be used in conjunction with a method for regulating delivery of power to an implant unit. The method may include determining a degree of coupling between primary antenna 150 associated with external unit 120 and secondary antenna 152 associated with implant unit 110, implanted in the body of a patient. Determining the degree of coupling may be accomplished by processor 144 located external to implant unit 110 and that may be associated with external unit 120. Processor 144 may be configured to regulate delivery of power from the external unit to the implant unit based on the determined degree of coupling.

As previously discussed, the degree of coupling determination may enable the processor to further determine a

location of the implant unit. The motion of the implant unit may correspond to motion of the body part where the implant unit may be attached. This may be considered physiologic data received by the processor. The processor may, accordingly, be configured to regulate delivery of power from the power source to the implant unit based on the physiologic data. In alternative embodiments, the degree of coupling determination may enable the processor to determine information pertaining to a condition of the implant unit. Such a condition may include location as well as information pertaining to an internal state of the implant unit. The processor may, according to the condition of the implant unit, be configured to regulate delivery of power from the power source to the implant unit based on the condition data.

In some embodiments, implant unit **110** may include a processor located on the implant. A processor located on implant unit **110** may perform all or some of the processes described with respect to the at least one processor associated with an external unit. For example, a processor associated with implant unit **110** may be configured to receive a control signal prompting the implant controller to turn on and cause a modulation signal to be applied to the implant electrodes for modulating a nerve. Such a processor may also be configured to monitor various sensors associated with the implant unit and to transmit this information back to and external unit. Power for the processor unit may be supplied by an onboard power source or received via transmissions from an external unit.

In other embodiments, implant unit **110** may be self-sufficient, including its own power source and a processor configured to operate the implant unit **110** with no external interaction. For example, with a suitable power source, the processor of implant unit **110** could be configured to monitor conditions in the body of a subject (via one or more sensors or other means), determining when those conditions warrant modulation of a nerve, and generate a signal to the electrodes to modulate a nerve. The power source could be regenerative based on movement or biological function; or the power sources could be periodically rechargeable from an external location, such as, for example, through induction.

In some embodiments, the at least one processor may be associated with the housing of external unit **120** and may be configured to communicate with a circuit implanted in the subject. The at least one processor may also be configured to receive a physiological signal from the subject via the implanted circuit. In response to the received physiological signal, the at least one processor may send a control signal, such as a closed loop control signal, to the implanted circuit. In some embodiments, the control signal may be predetermined to activate neuromuscular tissue within the tongue. Activating neuromuscular tissue may include, for example, causing muscular contractions and initiating a nerve action potential.

The physiological signal received from the implant unit may include any signal or signal component indicative of at least one physiological characteristic associated with the subject. In some embodiments, for example, the physiological characteristic may indicate whether a portion of the subject's body (e.g., the tongue) has moved, a direction of movement, a rate of change of movement, temperature, blood pressure, etc. The physiological signal may include any form of signal suitable for conveying information associated with at least some aspect of the subject. In some embodiments, the physiological signal may include an electromagnetic signal (e.g. microwave, infrared, radio-fre-

quency (RF), etc.) having any desired waveform (e.g. sinusoidal, square wave, triangle wave, etc.). In some embodiments, the physiological signal may include any suitable amplitude or duration for transferring information about the subject.

In some embodiments, the physiological signal may include a primary coupled signal component on primary antenna **150**. This primary coupled signal component may be induced on primary antenna **150** through coupling between primary antenna **150** of external unit **120** and secondary antenna **152** on implant unit **110**.

In some embodiments, the physiological signal may include at least one aspect indicative of a movement of the subject's tongue. For example, movement of the tongue may cause relative motion between primary antenna **150** and secondary antenna **152**, and this relative motion may result in variation of a degree of coupling between primary antenna **150** and secondary antenna **152**. By monitoring the degree of coupling between primary antenna **150** and secondary antenna **152**, for example, by monitoring signals or signal components present on primary antenna **150**, relative motion between primary antenna **150** and secondary antenna **152** and, therefore, movement of the subject's tongue, may be detected.

As noted, in response to a received physiological signal, the at least one processor may cause a response based on the physiological signal. For example, in some embodiments, the at least one processor may be configured to cause the generation of a control signal (e.g. a closed loop control signal) intended to control at least one aspect of implant unit **110**. The control signal may include a modulation control signal applied to primary antenna **150** such that a resulting secondary signal on secondary antenna **152** will provide a modulation signal at implant electrodes **158a** and **158b**.

In some embodiments, the processor may be configured to detect a sleep disordered breathing event based on the physiological signal and send the closed loop control signal in response to the detected sleep disordered breathing event. In some embodiments, the sleep disordered breathing event may be a precursor of sleep apnea, and the control signal may be predetermined to activate neuromuscular tissue within the tongue and may cause movement of the subject's tongue, for example, in a direction away from the posterior pharyngeal wall. The at least one processor may be further configured to determine a severity of the sleep disordered breathing event based on the physiological signal and vary a power level or duration of the control signal based on the determined severity of the sleep disordered breathing event. The severity of the event may be determined, for example, based on a determination of the relative movement between primary antenna **150** and secondary antenna **152** (e.g., an amplitude of movement, a rate of movement, a direction of movement, etc.). In some embodiments, a control signal may be sent if the relative movement exceeds a certain threshold.

A control signal may include any signal having suitable characteristics for causing a desired response in implant unit **110**. For example, a control signal may have any suitable amplitude, duration, pulse width, duty cycle, or waveform (e.g. a sinusoidal signal, square wave, triangle wave, etc.) for causing a desired effect on implant unit **110** (e.g., modulation of nerve tissue in the vicinity of implant unit **110**, etc.). A control signal may be generated and sent (e.g., to implant unit **110**) within any desired response time relative to receipt of a physiological signal. In some embodiments, the response time may be set at 1 second, 500 milliseconds, 200 milliseconds, 100 milliseconds, 50 milli-

seconds, 20 milliseconds, 5 milliseconds, 1 millisecond, or any other time greater than 0 seconds and less than about 2 seconds. The control signal may be closed loop. As used herein, the term closed loop control signal may refer to any signal at least partially responsive to another signal, such as a control signal sent in response to a physiological signal. Or it may include any feedback response.

Based on the physiological signal, the processor may determine a quantity of energy to be sent via the closed loop control signal to implant unit **110**. The amount of energy to be sent may be determined and/or varied based on any relevant factor including, for example, the time of day, a relevant biological factor of the subject (blood pressure, pulse, level of brain activity, etc.), the severity of the detected event, other characteristics associated with the detected event, or any combination of factors. As noted, in embodiments where the physiological signal indicates a sleep disordered breathing event, the processor may be configured to determine a severity of the sleep disordered breathing event based on the physiological signal. In such embodiments, the processor may also determine an amount of energy to be provided to implant unit **110** as a response to the detected sleep disordered breathing event and in view of the determined severity of the event. The determined amount of energy may be transferred to implant unit **110** over any suitable time duration and at any suitable power level. In some embodiments, the power level and/or the duration of the control signal may be varied, and such variation may be dependent on the determined severity of the sleep disordered breathing event.

The power level and/or duration of the control signal may also be determined based on other factors. For example, the processor may vary a power level or duration associated with the control signal based on the efficiency of energy transfer between external unit **120** and implant unit **110**. The processor may have access to such information through pre-programming, lookup tables, information stored in memory, etc. Additionally or alternatively, the processor may be configured to determine the efficiency of energy transfer, e.g., by monitoring the primary coupled signal component present on primary antenna **150**, or by any other suitable method.

The processor may also vary the power level or duration of the control signal based on the efficacy of implant unit **110** (e.g., the implant unit's ability to produce a desired effect in response to the control signal). For example, the processor may determine that a certain implant unit **110** requires a certain amount of energy, a control signal of at least a certain power level and/or signal duration, etc., in order to produce a desired response (e.g., a modulation signal having an amplitude/magnitude of at least a desired level, etc.). Such a determination can be based on feedback received from implant unit **110** or may be determined based on lookup tables, information stored in memory, etc. In some embodiments, the power level or duration of the control signal may be determined based on a known or feedback-determined efficacy threshold (e.g., an upper threshold at or above which a desired response may be achieved) associated with implant unit **110**.

In some embodiments, implant unit **110** may be structurally configured to facilitate implantation in a location so as to increase the efficacy of modulation provided. For example, FIGS. **10** and **11** illustrate the anatomy of neck and tongue, and depict implantation locations suitable for neuromodulation treatment of OSA. FIG. **12** illustrates an exemplary implant unit **110** structurally configured for the

treatment of head pain. FIGS. **13** and **14** illustrate exemplary implant units **110** structurally configured for the treatment of hypertension.

FIG. **10** depicts an implantation location in the vicinity of a genioglossus muscle **1060** that may be accessed through derma on an underside of a subject's chin. FIG. **10** depicts hypoglossal nerve (i.e. cranial nerve XII). The hypoglossal nerve **1051**, through its lateral branch **1053** and medial branch **1052**, innervates the muscles of the tongue and other glossal muscles, including the genioglossus **1060**, the hypoglossus, **1062**, and the geniohyoid **1061** muscles. The horizontal compartment of the genioglossus **1060** is mainly innervated by the medial terminal fibers **1054** of the medial branch **1052**, which diverges from the lateral branch **1053** at terminal bifurcation **1055**. The distal portion of medial branch **1052** then variegates into the medial terminal fibers **1054**. Contraction of the horizontal compartment of the genioglossus muscle **1060** may serve to open or maintain a subject's airway. Contraction of other glossal muscles may assist in other functions, such as swallowing, articulation, and opening or closing the airway. Because the hypoglossal nerve **1051** innervates several glossal muscles, it may be advantageous, for OSA treatment, to confine modulation of the hypoglossal nerve **1051** to the medial branch **1052** or even the medial terminal fibers **1054** of the hypoglossal nerve **1051**. In this way, the genioglossus muscle, most responsible for tongue movement and airway maintenance, may be selectively targeted for contraction inducing neuromodulation. Alternatively, the horizontal compartment of the genioglossus muscle may be selectively targeted. The medial terminal fibers **1054** may, however, be difficult to affect with neuromodulation, as they are located within the fibers of the genioglossus muscle **1061**. Embodiments of the present invention facilitate modulation the medial terminal fibers **1054**, as discussed further below.

In some embodiments, implant unit **110**, including at least one pair of modulation electrodes, e.g. electrodes **158a**, **158b**, and at least one circuit may be configured for implantation through derma (i.e. skin) on an underside of a subject's chin. When implanted through derma on an underside of a subject's chin, an implant unit **110** may be located proximate to medial terminal fibers **1054** of the medial branch **1052** of a subject's hypoglossal nerve **1051**. An exemplary implant location **1070** is depicted in FIG. **10**.

In some embodiments, implant unit **110** may be configured such that the electrodes **158a**, **158b** cause modulation of at least a portion of the subject's hypoglossal nerve through application of an electric field to a section of the hypoglossal nerve **1051** distal of a terminal bifurcation **1055** to lateral and medial branches **1053**, **1052** of the hypoglossal nerve **1051**. In additional or alternative embodiments, implant unit **110** may be located such that an electric field extending from the modulation electrodes **158a**, **158b** can modulate one or more of the medial terminal fibers **1054** of the medial branch **1052** of the hypoglossal nerve **1051**. Thus, the medial branch **1053** or the medial terminal fibers **1054** may be modulated so as to cause a contraction of the genioglossus muscle **1060**, which may be sufficient to either open or maintain a patient's airway. When implant unit **110** is located proximate to the medial terminal fibers **1054**, the electric field may be configured so as to cause substantially no modulation of the lateral branch of the subject's hypoglossal nerve **1051**. This may have the advantage of providing selective modulation targeting of the genioglossus muscle **1060**.

As noted above, it may be difficult to modulate the medial terminal fibers **1054** of the hypoglossal nerve **1051** because

of their location within the genioglossus muscle **1060**. Implant unit **110** may be configured for location on a surface of the genioglossus muscle **1060**. Electrodes **158a**, **158b**, of implant unit **110** may be configured to generate a parallel electric field **1090**, sufficient to cause modulation of the medial terminal branches **1054** even when electrodes **158a**, **158b** are not in contact with the fibers of the nerve. That is, the anodes and the cathodes of the implant may be configured such that, when energized via a circuit associated with the implant **110** and electrodes **158a**, **158b**, the electric field **1090** extending between electrodes **158a**, **158b** may be in the form of a series of substantially parallel arcs extending through and into the muscle tissue on which the implant is located. A pair of parallel line electrodes or two series of circular electrodes may be suitable configurations for producing the appropriate parallel electric field lines. Thus, when suitably implanted, the electrodes of implant unit **110** may modulate a nerve in a contactless fashion, through the generation of parallel electric field lines.

Furthermore, the efficacy of modulation may be increased by an electrode configuration suitable for generating parallel electric field lines that run partially or substantially parallel to nerve fibers to be modulated. In some embodiments, the current induced by parallel electric field lines may have a greater modulation effect on a nerve fiber if the electric field lines **1090** and the nerve fibers to be modulated are partially or substantially parallel. The inset illustration of FIG. **10** depicts electrodes **158a** and **158b** generating electric field lines **1090** (shown as dashed lines) substantially parallel to medial terminal fibers **1054**.

In order to facilitate the modulation of the medial terminal fibers **1054**, implant unit **110** may be designed or configured to ensure the appropriate location of electrodes when implanted. An exemplary implantation is depicted in FIG. **11**.

For example, a flexible carrier **161** of the implant may be configured such that at least a portion of a flexible carrier **161** of the implant is located at a position between the genioglossus muscle **1060** and the geniohyoid muscle **1061**. Either or both of the extensions **162a** and **162b** of elongate arm **161** may be configured adapt to a contour of the genioglossus muscle. Either or both of the extensions **162a** and **162b** of elongate arm **161** may be configured to extend away from the underside of the subject's chin along a contour of the genioglossus muscle **1060**. Either or both of extension arms **162a**, **162b** may be configured to wrap around the genioglossus muscle when an antenna **152** is located between the genioglossus **1060** and geniohyoid muscle **1061**. In such a configuration, antenna **152** may be located in a plane substantially parallel with a plane defined by the underside of a subject's chin, as shown in FIG. **11**.

Flexible carrier **161** may be configured such that the at least one pair of spaced-apart electrodes can be located in a space between the subject's genioglossus muscle and an adjacent muscle. Flexible carrier **161** may be configured such that at least one pair of modulation electrodes **158a**, **158b** is configured for implantation adjacent to a horizontal compartment **1065** of the genioglossus muscle **1060**. The horizontal compartment **1065** of the genioglossus muscle **1060** is depicted in FIG. **11** and is the portion of the muscle in which the muscle fibers run in a substantially horizontal, rather than vertical, oblique, or transverse direction. At this location, the hypoglossal nerve fibers run between and in parallel to the genioglossus muscle fibers. In such a location, implant unit **110** may be configured such that the modulation electrodes generate an electric field substantially parallel to the

direction of the muscle fibers, and thus, the medial terminal fibers **1054** of the hypoglossal nerve in the horizontal compartment.

FIG. **12** depicts an exemplary implant location for the treatment of head pain. As illustrated in FIG. **12**, implant unit **510** includes an elongated carrier **561**, secondary antenna **552**, and modulation electrodes **558a**, **558b**. Implant unit **510** may also include any elements, such as circuitry, electrical components, materials, and any other features described previously with respect to implant unit **110**. Implant **510** may be sized and configured such that it may be implanted with an end having secondary antenna **552** located beneath the skin in a substantially hairless region **507** of a subject. Elongated flexible carrier **561** may extend from this location, across a hairline **502** of the subject, to a location beneath the skin in a substantially haired region **506** of the subject in a vicinity of an occipital or other nerve that may be modulated to control or reduce head pain, such as a greater occipital nerve **501** or a lesser occipital nerve **503**. As used herein, the term "substantially haired region" includes areas of a subject's head located on a side of the hairline where the scalp hair is located on a typical subject. Thus, a bald person may still have a "substantially haired region" on the side of the hairline on which hair typically grows. As used herein, the term "substantially hairless region" includes areas of a subject's head located on a side of the hairline where the scalp hair is not located on a typical subject. A "substantially hairless region," as used herein, is not required to be completely hairless, as almost all skin surfaces have some hair growth. As illustrated in FIG. **12**, a substantially haired region **506** is separated from a substantially hairless region **507** by a hairline **502**.

As described above, implant **510** may extend across the hairline **502** to a location in the vicinity of an occipital nerve. In FIG. **12**, implant **510** extends across the hairline **502** to a location in the vicinity of greater occipital nerve **501**. Furthermore, implant **510** may be configured for implantation such that electrodes **558a** and **558b** are spaced from each other along a longitudinal direction of an occipital nerve, such as the greater occipital nerve **501** shown in FIG. **12**. Such a configuration permits electrodes **558a** and **558b** to facilitate an electrical field that extends in the longitudinal direction of the occipital nerve. In turn, the facilitated electrical field may be utilized to modulate greater occipital nerve **501**, for example to block pain signals, as previously described.

The size and configuration of implant **510** illustrated in FIG. **12** may permit secondary antenna **552** to be located beneath the skin in a location where an external unit **520** (not illustrated), may be easily affixed to the skin, due to the lack of hair. External unit **520** may include any elements, such as circuitry, processors, batteries, antennas, electrical components, materials, and any other features described previously with respect to external unit **120**. External unit **520** may be configured to communicate with implant **510** via secondary antenna **552** to deliver power and control signals, as described above with respect to external unit **120**. Elongated carrier **561** may be flexible, and may permit modulation electrodes **558a** and **558b** to be located beneath the skin in a location suitable for modulating an occipital or other nerve for controlling head pain.

FIG. **13** depicts an exemplary implant location for the treatment of hypertension. As illustrated in FIG. **13**, implant unit **610** may be configured for location or implantation inside a blood vessel. Such a configuration may include, for example, a flexible tubular carrier. Implant unit **610** may also include any elements, such as circuitry, electrical com-

ponents, materials, and any other features described previously with respect to implant unit 110. Implant unit 610 may include modulation electrodes 658a, 658b configured to facilitate an electric field including field lines extending in the longitudinal direction of the blood vessel. For example, as illustrated in FIG. 13, implant unit 610 may be implanted in a carotid artery 611. Implant unit 610 may be located within carotid artery 611 in a location in the vicinity of carotid baroreceptors 615, at a location near the branching of the internal carotid artery 613 and the external carotid artery 612. As described previously, carotid baroreceptors 615 aid in the regulation of the blood pressure of a subject. Thus, implant unit 610, located within carotid artery 611 in the vicinity of carotid baroreceptors 615 may facilitate an electric field configured to modulate carotid baroreceptors 615, and, thus, affect the blood pressure of a subject. Affecting the blood pressure of a subject may include reducing, increasing, controlling, regulating, and influencing the blood pressure of a subject. The illustrated location is exemplary only, and implant unit 610 may be configured in alternate ways. For example, implant unit 610 may be configured for implantation in jugular vein 614 of the subject, in a location from which modulation of carotid baroreceptors 615 may be accomplished. Furthermore, implant unit 610 may be configured for implantation in a blood vessel, such as carotid artery 611 or jugular vein 614, in a location suitable for modulation of glossopharyngeal nerve 617. As described above, glossopharyngeal nerve 617 innervates carotid baroreceptors 615. Thus, glossopharyngeal nerve 617 may be directly modulated to affect blood pressure of a subject. Glossopharyngeal nerve 617 may also be modulated by an implant unit 610 located in a sub-cutaneously, in a non-intravascular location.

FIG. 14 depicts another exemplary implant location for the treatment of hypertension. As illustrated in FIG. 14, implant unit 710 may be configured for location or implantation inside a blood vessel. Such a configuration may include, for example, a flexible tubular carrier. Implant unit 710 may also include any elements, such as circuitry, electrical components, materials, and any other features described previously with respect to implant unit 110. Implant unit 710 may include modulation electrodes 758a, 758b configured to facilitate an electric field including field lines extending in the longitudinal direction of the blood vessel. For example, as illustrated in FIG. 13, implant unit 710 may be implanted in a renal artery 711. Implant unit 710 may be located within renal artery 711 in a location in the vicinity of renal nerves 715 surrounding renal artery 711 prior to its entry into kidney 712. As described previously, renal nerves 715 aid in the regulation of the blood pressure in humans. Thus, implant unit 710, located within renal artery 711 in the vicinity of renal nerves 715 may facilitate an electric field configured to modulate renal nerves 715, and, thus, affect the blood pressure of a subject. The illustrated location is exemplary only, and implant unit 710 may be configured in alternate ways suitable for the modulation of renal nerves 715.

Additional embodiments of the present disclosure may include the following. A method of activating neuromuscular tissue with an implanted circuit, comprising: communicating with the implanted circuit, which is implanted within a proximity of a tongue of a subject, wherein the implanted circuit is in electrical communication with at least one electrode; receiving a physiological signal from the subject via the implanted circuit; sending a control signal to the implanted circuit in response to the physiological signal; and activating neuromuscular tissue within the tongue of the

subject via the control signal. The control signal may be sent within a response time chosen from among the group comprising 1 second, 500 milliseconds, 200 milliseconds, 100 milliseconds, 50 milliseconds, 20 milliseconds, 5 milliseconds, and 1 millisecond. The physiological signal may be received by a unit located external to the body of the subject, and the control signal is sent from the unit. The physiological signal may include at least one aspect indicative of a movement of the tongue. The movement of the tongue may be detected via a relative motion between an antenna located external to the body of the subject and an antenna associated with the implanted circuit. The method of claim may, further comprise determining, based on the physiologic signal, a quantity of energy to be sent to the implanted circuit via the control signal. The method may further comprise detecting a sleep disordered breathing event based on the physiological signal; and generating the control signal to be sent based on the detected sleep disordered breathing event. Generating the control signal to be sent may include determining a power level for the control signal based on a determined severity of the sleep disordered breathing event. Generating the control signal to be sent may include determining a time duration for the control signal based on a determined severity of the sleep disordered breathing event. The sleep disordered breathing event may be a precursor of sleep apnea. Activating neuromuscular tissue within the tongue may cause the subject's tongue to move in a direction away from a posterior pharyngeal wall of the subject. The physiological signal may be indicative of an efficiency of energy transfer between the housing and the circuit, and generating the control signal to be sent may include determining a power level based on the efficiency of energy transfer and an upper threshold associated with the implant circuit. The physiological signal may be indicative of an efficiency of energy transfer between the housing and the circuit, and generating the control signal to be sent may include determining a power level based on the efficiency of energy transfer and an efficacy threshold associated with the implant circuit.

Other embodiments of the present disclosure will be apparent to those skilled in the art from consideration of the specification and practice of the present disclosure.

While this disclosure provides examples of the neuromodulation devices employed for the treatment of certain conditions, usage of the disclosed neuromodulation devices is not limited to the disclosed examples. The disclosure of uses of embodiments of the invention for neuromodulation are to be considered exemplary only. In its broadest sense, the invention may be used in connection with the treatment of any physiological condition through neuromodulation. Alternative embodiments will become apparent to those skilled in the art to which the present invention pertains without departing from its spirit and scope. Accordingly, the scope of the present invention is defined by the appended claims rather than the foregoing description.

What is claimed is:

1. A hypertension therapy device, comprising:
 - a first antenna configured to communicate with a second antenna implanted in a body of a subject within proximity to at least one of a renal nerve, a baroreceptor, and a glossopharyngeal nerve;
 - a feedback circuit configured to communicate with the first antenna;
 - at least one processor configured to:
 - apply a sub-modulation control signal to the first antenna, the sub-modulation control signal inducing

31

a secondary signal at the second antenna, the secondary signal in turn inducing a coupled signal at the first antenna;

receive, from the feedback circuit, the coupled signal generated at the first antenna;

determine a degree of coupling between the first antenna and the second antenna based on the coupled signal received from the feedback circuit; and

adjust a control signal sent to a circuit associated with the second antenna based on the degree of coupling, the control signal being configured to modulate the at least one of the renal nerve, the baroreceptor, and the glossopharyngeal nerve.

2. The hypertension therapy device of claim 1, wherein the at least one processor is configured to generate and send the control signal to the circuit within a response time between 1 millisecond and 10 minutes.

3. The hypertension therapy device of claim 1, wherein the first antenna is located external to the subject and is configured to send the control signal to the circuit implanted in the body of the subject from outside of the subject.

4. The hypertension therapy device of claim 1, wherein at least one processor is configured to receive a physiological signal from the circuit through the second antenna and the first antenna, the physiological signal including at least one aspect indicative of blood pressure of the subject.

5. The hypertension therapy device of claim 4, wherein blood pressure is detected via a blood pressure sensor.

6. The hypertension therapy device of claim 4, wherein the at least one processor is further configured to:

receive a signal, indicative of the blood pressure, from a sensor remote from the circuit implanted in the body of the subject.

7. The hypertension therapy device of claim 4, wherein the at least one processor is further configured to determine a degree of the blood pressure based on the physiological signal and vary a power level associated with the control signal based on the determined degree of the blood pressure.

8. The hypertension therapy device of claim 4, wherein the at least one processor is further configured to determine a degree of the blood pressure based on the physiological signal and vary a duration of the control signal based on the determined degree of the blood pressure.

9. The hypertension therapy device of claim 1, wherein the control signal is configured to perform at least one function chosen from the group consisting of stimulating the baroreceptor, down modulating the renal nerve, and stimulating the glossopharyngeal nerve.

10. The hypertension therapy device of claim 1, wherein the at least one processor is further configured to send the control signal to the circuit implanted in the body of the subject to modulate nerve tissue to affect blood pressure.

11. A method for treating hypertension, comprising:

applying a sub-modulation control signal to a first antenna configured to communicate with a second antenna implanted in a body of a subject within proximity to at

32

least one of a renal nerve, a baroreceptor, and a glossopharyngeal nerve, the sub-modulation control signal inducing a secondary signal at the second antenna, the secondary signal in turn inducing a coupled signal at the first antenna;

receiving, from a feedback circuit configured to communicate with the first antenna, the coupled signal generated at the first antenna;

determining a degree of coupling between the first antenna and the second antenna based on the coupled signal received from the feedback circuit; and

adjusting a control signal sent to a circuit associated with the second antenna based on the degree of coupling, the control signal being configured to modulate the at least one of the renal nerve, the baroreceptor, and the glossopharyngeal nerve.

12. The method of claim 11, further comprising: generating and sending the control signal to the circuit within a response time between 1 millisecond and 10 minutes.

13. The method of claim 11, further comprising: sending, through the first antenna located external to the subject, the control signal to the circuit implanted in the body of the subject from outside of the subject.

14. The method of claim 11, further comprising: receiving a physiological signal from the circuit through the second antenna and the first antenna, the physiological signal including at least one aspect indicative of blood pressure of the subject.

15. The method of claim 14, further comprising: detecting the blood pressure via a blood pressure sensor.

16. The method of claim 14, further comprising: receiving a signal, indicative of the blood pressure, from a sensor remote from the circuit implanted in the body of the subject.

17. The method of claim 14, further comprising: determining a degree of the blood pressure based on the physiological signal; and

varying a power level associated with the control signal based on the determined degree of the blood pressure.

18. The method of claim 14, further comprising: determining a degree of the blood pressure based on the physiological signal; and

varying a duration of the control signal based on the determined degree of the blood pressure.

19. The method of claim 11, wherein the control signal is configured to perform at least one function chosen from the group consisting of stimulating the baroreceptor, down modulating the renal nerve, and stimulating the glossopharyngeal nerve.

20. The method of claim 11, further comprising: sending the control signal to the circuit implanted in the body of the subject to modulate nerve tissue to affect blood pressure.

* * * * *

专利名称(译)	用于基于反馈的神经调制的装置和方法		
公开(公告)号	US9550064	公开(公告)日	2017-01-24
申请号	US14/992817	申请日	2016-01-11
[标]申请(专利权)人(译)	MASHIACH ADI		
申请(专利权)人(译)	MASHIACH , ADI		
当前申请(专利权)人(译)	MASHIACH , ADI		
[标]发明人	MASHIACH ADI		
发明人	MASHIACH, ADI		
IPC分类号	A61N1/36 A61N1/05 A61N1/372 A61N1/378 A61N1/375 A61B5/11 A61B5/113 A61F5/56 A61N2/00 A61N2/02 A61B5/00		
CPC分类号	A61N1/36075 A61B5/0031 A61B5/11 A61B5/113 A61B5/4818 A61B5/682 A61F5/566 A61N1/05 A61N1/0504 A61N1/0514 A61N1/0526 A61N1/0529 A61N1/0548 A61N1/0551 A61N1/0553 A61N1/36 A61N1/3601 A61N1/36003 A61N1/3605 A61N1/3606 A61N1/3611 A61N1/36057 A61N1/36117 A61N1/36125 A61N1/36135 A61N1/36139 A61N1/36146 A61N1/3727 A61N1/3756 A61N1/3787 A61N1/37211 A61N1/37223 A61N1/37229 A61N1/37235 A61N2/006 A61N2/02 A61B5/4519 A61B5/6822 A61B5/6833 A61B5/6876 A61B2562/164 F04C2270/0421 A61N1/36128 A61N1/37252 A61N1/37264		
优先权	14/041520 2014-08-19 US 13/629686 2013-11-05 US 12/642866 2013-11-19 US 61/541651 2011-09-30 US 61/657424 2012-06-08 US		
其他公开文献	US20160121122A1		
外部链接	Espacenet USPTO		

摘要(译)

根据一些实施例的装置可以包括被配置为位于对象的身体外部的壳体。所述装置还可包括与所述外壳相关联且经配置以与植入所述受试者中的在所述受试者的舌头附近的电路通信的至少一个处理器，其中所述电路与至少一个电极电连通，接收生理信号并且响应于所述生理信号向所述植入电路发送控制信号，其中所述控制信号被预定以激活所述舌头内的神经肌肉组织。

