



US009357969B2

(12) **United States Patent**
Sanghera et al.

(10) **Patent No.:** **US 9,357,969 B2**
(45) **Date of Patent:** ***Jun. 7, 2016**

(54) **SENSING VECTOR SELECTION IN A
CARDIAC STIMULUS DEVICE WITH
POSTURAL ASSESSMENT**

A61N 1/37 (2013.01); *A61N 1/3702* (2013.01);
A61N 1/37247 (2013.01); *A61N 1/3925*
(2013.01);

(Continued)

(71) Applicant: **CAMERON HEALTH, INC.**, St. Paul,
MN (US)

(58) **Field of Classification Search**
USPC 600/508-509, 522
See application file for complete search history.

(72) Inventors: **Rick Sanghera**, San Clemente, CA
(US); **Venugopal Allavatam**, Maple
Grove, MN (US)

(56) **References Cited**

(73) Assignee: **CAMERON HEALTH, INC.**, St. Paul,
MN (US)

U.S. PATENT DOCUMENTS

(*) Notice: Subject to any disclaimer, the term of this
patent is extended or adjusted under 35
U.S.C. 154(b) by 0 days.

3,653,387 A 4/1972 Ceier
3,710,374 A 1/1973 Kelly

(Continued)

This patent is subject to a terminal dis-
claimer.

FOREIGN PATENT DOCUMENTS

AU 2008213812 A1 8/2008
AU 2008252063 A1 1/2009

(Continued)

(21) Appl. No.: **14/812,029**

OTHER PUBLICATIONS

(22) Filed: **Jul. 29, 2015**

All Non-Patent Literature documents and foreign patent documents
have been previously uploaded in parent U.S. Appl. No. 14/307,756,
filed Jun. 18, 2014 or U.S. Appl. No. 14/601,315, filed Jan. 21, 2015.

(Continued)

(65) **Prior Publication Data**
US 2015/0328470 A1 Nov. 19, 2015

Related U.S. Application Data

(60) Continuation of application No. 14/601,315, filed on
Jan. 21, 2015, now Pat. No. 9,119,596, which is a
continuation of application No. 14/307,756, filed on
Jun. 18, 2014, now Pat. No. 8,965,530, which is a

Primary Examiner — Nicole F Lavert
(74) *Attorney, Agent, or Firm* — Seager, Tufte & Wickhem
LLP

(Continued)

(57) **ABSTRACT**

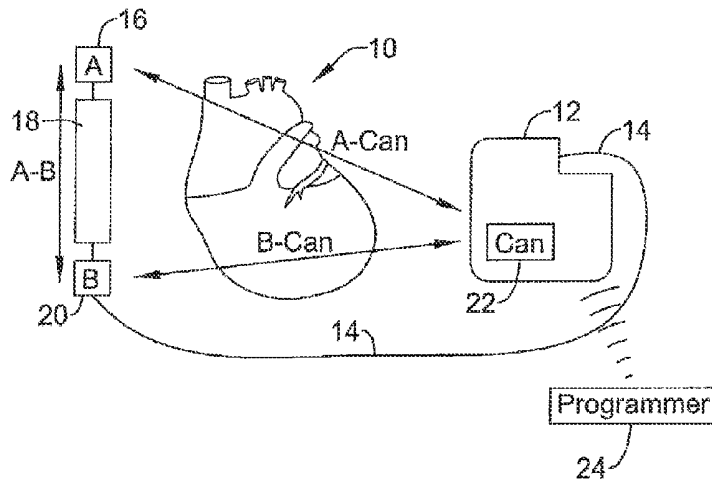
(51) **Int. Cl.**
A61B 5/02 (2006.01)
A61B 5/04 (2006.01)

(Continued)

Methods, implantable medical devices and systems config-
ured to perform analysis of captured signals from implanted
electrodes to identify cardiac arrhythmias. In an illustrative
embodiment, signals captured from two or more sensing vec-
tors are analyzed, where the signals are captured with a
patient in at least first and second body positions. Analysis is
performed to identify primary or default sensing vectors and/
or templates for event detection.

(52) **U.S. Cl.**
CPC *A61B 5/7221* (2013.01); *A61B 5/042*
(2013.01); *A61B 5/04011* (2013.01); *A61B*
5/1116 (2013.01); *A61N 1/368* (2013.01);

20 Claims, 14 Drawing Sheets



Related U.S. Application Data

continuation of application No. 13/919,147, filed on Jun. 17, 2013, now Pat. No. 8,781,602, which is a continuation of application No. 13/491,529, filed on Jun. 7, 2012, now Pat. No. 8,483,843, which is a division of application No. 11/672,353, filed on Feb. 7, 2007, now Pat. No. 8,200,341.

(51) **Int. Cl.**

A61B 5/00 (2006.01)
A61B 5/042 (2006.01)
A61B 5/11 (2006.01)
A61N 1/37 (2006.01)
A61N 1/372 (2006.01)
A61N 1/39 (2006.01)
A61N 1/368 (2006.01)
A61N 1/365 (2006.01)

(52) **U.S. Cl.**

CPC *A61N 1/3956* (2013.01); *A61N 1/36535* (2013.01)

(56)

References Cited

U.S. PATENT DOCUMENTS

3,911,925 A	10/1975	Tillery, Jr.	5,255,692 A	10/1993	Neubauer et al.
4,030,509 A	6/1977	Heilman et al.	5,261,400 A	11/1993	Bardy
4,157,720 A	6/1979	Greatbatch	5,271,411 A	12/1993	Ripley et al.
4,164,946 A	8/1979	Langer	5,291,895 A	3/1994	McIntyre
4,184,493 A	1/1980	Langer et al.	5,299,119 A	3/1994	Kraf et al.
4,191,942 A	3/1980	Long	5,300,106 A	4/1994	Dahl et al.
4,210,149 A	7/1980	Heilman et al.	5,313,953 A	5/1994	Yomtov et al.
RE30,387 E	8/1980	Denniston, III et al.	5,331,966 A	7/1994	Bennet et al.
4,223,678 A	9/1980	Langer et al.	5,342,407 A	8/1994	Dahl et al.
4,248,237 A	2/1981	Kenny	5,366,496 A	11/1994	Dahl et al.
4,254,775 A	3/1981	Langer	5,370,667 A	12/1994	Alt
4,291,707 A	9/1981	Heilman et al.	5,376,103 A	12/1994	Anderson et al.
4,300,567 A	11/1981	Kolenik et al.	5,376,104 A	12/1994	Sakai et al.
4,314,095 A	2/1982	Moore et al.	5,385,574 A	1/1995	Hauser et al.
4,375,817 A	3/1983	Engle et al.	5,391,200 A	2/1995	KenKnight et al.
4,402,322 A	9/1983	Duggan	5,405,363 A	4/1995	Kroll et al.
4,407,288 A	10/1983	Langer et al.	5,411,031 A	5/1995	Yomtov
4,424,818 A	1/1984	Doring et al.	5,411,539 A	5/1995	Neisz
4,450,527 A	5/1984	Sramek	5,411,547 A	5/1995	Causey, III
4,548,209 A	10/1985	Wielders et al.	5,413,591 A	5/1995	Knoll
4,550,502 A	11/1985	Grayzel	5,423,326 A	6/1995	Wang et al.
4,567,900 A	2/1986	Moore	5,431,693 A	7/1995	Schroepfel
4,589,420 A	5/1986	Adams et al.	5,439,485 A	8/1995	Mar et al.
4,595,009 A	6/1986	Leinders	5,441,185 A	8/1995	Dragos
4,602,637 A	7/1986	Elmqvist et al.	5,441,518 A	8/1995	Adams et al.
4,603,705 A	8/1986	Speicher et al.	5,447,521 A	9/1995	Anderson et al.
4,693,253 A	9/1987	Adams	5,464,431 A	11/1995	Adams et al.
4,727,877 A	3/1988	Kallok	5,476,503 A	12/1995	Yang
4,750,494 A	6/1988	King	5,501,702 A	3/1996	Plicchi et al.
4,765,341 A	8/1988	Mower et al.	5,509,923 A	4/1996	Middleman et al.
4,768,512 A	9/1988	Imran	5,509,928 A	4/1996	Acken
4,779,617 A	10/1988	Whigham	5,531,765 A	7/1996	Pless
4,800,883 A	1/1989	Winstrom	5,531,766 A	7/1996	Kroll et al.
4,830,005 A	5/1989	Woskow	5,534,019 A	7/1996	Paspa
4,944,300 A	7/1990	Saksena	5,534,022 A	7/1996	Hoffmann et al.
4,960,126 A	10/1990	Conlon et al.	5,540,727 A	7/1996	Tockman et al.
5,044,374 A	9/1991	Lindemans et al.	5,558,098 A	9/1996	Fain
5,105,810 A	4/1992	Collins et al.	5,597,956 A	1/1997	Ito et al.
5,105,826 A	4/1992	Smits et al.	5,601,607 A	2/1997	Adams
5,109,842 A	5/1992	Adinolfi	5,603,732 A	2/1997	Dahl et al.
5,129,392 A	7/1992	Bardy et al.	5,607,455 A	3/1997	Armstrong
5,133,353 A	7/1992	Hauser	5,618,287 A	4/1997	Fogarty et al.
5,137,025 A	8/1992	Turner, II	5,620,477 A	4/1997	Pless et al.
5,144,946 A	9/1992	Weinberg et al.	5,643,328 A	7/1997	Cooke et al.
5,184,616 A	2/1993	Weiss	5,645,586 A	7/1997	Meltzer
5,191,901 A	3/1993	Dahl et al.	5,658,317 A	8/1997	Haefner et al.
5,203,348 A	4/1993	Dahl et al.	5,658,319 A	8/1997	Kroll
5,215,081 A	6/1993	Ostroff	5,658,321 A	8/1997	Fayram et al.
5,230,337 A	7/1993	Dahl et al.	5,674,260 A	10/1997	Weinberg
			5,690,648 A	11/1997	Fogarty et al.
			5,690,683 A	11/1997	Haefner et al.
			5,697,953 A	12/1997	Kroll et al.
			5,713,926 A	2/1998	Hauser et al.
			5,755,738 A	5/1998	Kim et al.
			5,766,226 A	6/1998	Pedersen
			5,776,169 A	7/1998	Schroepfel
			5,814,090 A	9/1998	Latterell et al.
			5,827,326 A	10/1998	Kroll et al.
			5,836,976 A	11/1998	Min et al.
			5,843,132 A	12/1998	Ilvento
			5,895,414 A	4/1999	Sanchez-Zambrano
			5,904,705 A	5/1999	Kroll et al.
			5,919,211 A	7/1999	Adams
			5,919,222 A	7/1999	Hjelle et al.
			5,925,069 A	7/1999	Graves et al.
			5,935,154 A	8/1999	Westlund
			5,941,904 A	8/1999	Johnston et al.
			5,957,956 A	9/1999	Kroll et al.
			5,987,352 A	11/1999	Klein et al.
			5,999,853 A	12/1999	Stoop et al.
			6,014,586 A	1/2000	Weinberg et al.
			6,016,442 A	1/2000	Hsu et al.
			6,026,325 A	2/2000	Weinberg et al.
			6,029,086 A	2/2000	Kim et al.
			6,044,297 A	3/2000	Sheldon et al.
			6,058,328 A	5/2000	Levine et al.
			6,093,173 A	7/2000	Balceta et al.
			6,095,987 A	8/2000	Shmulewitz et al.
			6,115,628 A	9/2000	Stadler et al.

(56)

References Cited

U.S. PATENT DOCUMENTS

H1905 H	10/2000	Hill	7,043,299 B2	5/2006	Erlinger et al.
6,128,531 A	10/2000	Campbell-Smith	7,062,329 B2	6/2006	Ostroff
6,144,866 A	11/2000	Miesel et al.	7,065,407 B2	6/2006	Bardy et al.
6,144,879 A	11/2000	Gray	7,065,410 B2	6/2006	Bardy et al.
6,148,230 A	11/2000	Kenknight	7,069,080 B2	6/2006	Bardy et al.
6,185,450 B1	2/2001	Seguine et al.	7,076,294 B2	7/2006	Bardy et al.
6,190,324 B1	2/2001	Kieval et al.	7,076,296 B2	7/2006	Rissmann et al.
6,236,882 B1	5/2001	Lee et al.	7,090,682 B2	8/2006	Sanders et al.
6,266,554 B1	7/2001	Hsu et al.	7,092,754 B2	8/2006	Bardy et al.
6,266,567 B1	7/2001	Ishikawa et al.	7,120,495 B2	10/2006	Bardy et al.
6,278,894 B1	8/2001	Salo et al.	7,120,496 B2	10/2006	Bardy et al.
6,280,462 B1	8/2001	Hauser et al.	7,130,689 B1	10/2006	Turcott
6,308,095 B1	10/2001	Hsu et al.	7,146,212 B2	12/2006	Bardy et al.
6,334,071 B1	12/2001	Lu	7,149,575 B2	12/2006	Ostroff et al.
6,345,198 B1	2/2002	Mouchawar et al.	7,167,747 B2	1/2007	Gunderson et al.
6,377,844 B1	4/2002	Graen	7,181,274 B2	2/2007	Rissmann et al.
6,381,493 B1	4/2002	Stadler et al.	7,181,281 B1	2/2007	Kroll
6,411,844 B1	6/2002	Kroll et al.	7,266,409 B2	9/2007	Gunderson
6,490,486 B1	12/2002	Bradley	7,366,569 B2	4/2008	Belalcazar
6,493,579 B1	12/2002	Gilkerson et al.	7,412,287 B2	8/2008	Yonce et al.
6,493,584 B1	12/2002	Lu	7,627,367 B2	12/2009	Warren et al.
6,496,715 B1	12/2002	Lee et al.	7,783,340 B2	8/2010	Sanghera et al.
6,516,225 B1	2/2003	Florio	8,135,473 B2	3/2012	Miesel et al.
6,539,257 B1	3/2003	Kenknight	8,150,531 B2	4/2012	Skelton
6,567,691 B1	5/2003	Stadler	8,155,749 B2	4/2012	Lee et al.
6,574,505 B1	6/2003	Warren	8,200,340 B2	6/2012	Skelton et al.
6,587,720 B2	7/2003	Hsu et al.	8,200,341 B2	6/2012	Sanghera et al.
6,625,490 B1	9/2003	McClure et al.	8,249,718 B2	8/2012	Skelton et al.
6,636,762 B2	10/2003	Begemann	8,315,710 B2	11/2012	Skelton et al.
6,647,292 B1	11/2003	Bardy et al.	8,326,420 B2	12/2012	Skelton et al.
6,658,292 B2	12/2003	Kroll et al.	8,483,843 B2	7/2013	Sanghera et al.
6,658,293 B2	12/2003	Vonk	8,504,150 B2	8/2013	Skelton
6,684,100 B1	1/2004	Sweeney et al.	8,515,549 B2	8/2013	Panken et al.
6,687,540 B2	2/2004	Marcovecchio	8,718,793 B2	5/2014	O'Connor
6,699,200 B2	3/2004	Cao et al.	8,751,007 B2	6/2014	Goetz et al.
6,708,062 B2	3/2004	Ericksen et al.	8,788,023 B2	7/2014	Sanghera et al.
6,721,597 B1	4/2004	Bardy et al.	2001/0027330 A1	10/2001	Sullivan et al.
6,728,572 B2	4/2004	Hsu et al.	2001/0034487 A1	10/2001	Cao et al.
6,728,575 B2	4/2004	Hedberg	2002/0035377 A1	3/2002	Bardy et al.
6,731,978 B2	5/2004	Olson et al.	2002/0035378 A1	3/2002	Bardy et al.
6,738,667 B2	5/2004	Deno et al.	2002/0035379 A1	3/2002	Bardy et al.
6,745,076 B2	6/2004	Wohlgemuth et al.	2002/0035381 A1	3/2002	Bardy et al.
6,751,502 B2	6/2004	Daum et al.	2002/0095184 A1	7/2002	Bardy et al.
6,754,528 B2	6/2004	Bardy et al.	2002/0107544 A1	8/2002	Ostroff et al.
6,760,615 B2	7/2004	Ferek-Petric	2002/0107545 A1	8/2002	Rissmann et al.
6,766,190 B2	7/2004	Ferek-Petric	2002/0165587 A1	11/2002	Zhang et al.
6,778,860 B2	8/2004	Ostroff et al.	2002/0169484 A1	11/2002	Mathis et al.
6,788,974 B2	9/2004	Bardy et al.	2003/0083710 A1	5/2003	Ternes et al.
6,810,284 B1	10/2004	Bradley	2003/0088277 A1	5/2003	Ostroff
6,834,204 B2	12/2004	Ostroff et al.	2003/0144700 A1	7/2003	Brown et al.
6,856,835 B2	2/2005	Bardy et al.	2003/0191500 A1	10/2003	Stokes et al.
6,865,417 B2	3/2005	Rissmann et al.	2003/0204215 A1	10/2003	Gunderson et al.
6,866,044 B2	3/2005	Bardy et al.	2004/0088018 A1	5/2004	Sawchuk
6,892,092 B2	5/2005	Palreddy et al.	2004/0215240 A1	10/2004	Lovett et al.
6,909,916 B2	6/2005	Spinelli et al.	2004/0230229 A1	11/2004	Lovett et al.
6,927,721 B2	8/2005	Ostroff	2004/0230243 A1	11/2004	Haefner et al.
6,937,907 B2	8/2005	Bardy et al.	2004/0230249 A1	11/2004	Haefner
6,950,705 B2	9/2005	Bardy et al.	2004/0236379 A1	11/2004	Bardy et al.
6,952,608 B2	10/2005	Ostroff	2004/0254611 A1	12/2004	Palreddy et al.
6,952,610 B2	10/2005	Ostroff et al.	2004/0254613 A1	12/2004	Ostroff et al.
6,954,670 B2	10/2005	Ostroff	2005/0004615 A1	1/2005	Sanders
6,959,212 B2	10/2005	Hsu et al.	2005/0049644 A1	3/2005	Warren et al.
6,975,904 B1	12/2005	Sloman	2005/0192505 A1	9/2005	Ostroff et al.
6,980,856 B2	12/2005	Sullivan et al.	2005/0192507 A1	9/2005	Warren et al.
6,988,003 B2	1/2006	Bardy et al.	2005/0203581 A1	9/2005	Spinelli et al.
6,993,379 B1	1/2006	Kroll et al.	2005/0245976 A1	11/2005	Wang
6,996,434 B2	2/2006	Marcovecchio et al.	2006/0036288 A1	2/2006	Bocek et al.
7,016,730 B2	3/2006	Ternes	2006/0052830 A1	3/2006	Spinelli et al.
7,020,523 B1	3/2006	Lu et al.	2006/0079796 A1	4/2006	Marcovecchio et al.
7,027,858 B2	4/2006	Cao et al.	2006/0085038 A1	4/2006	Linder et al.
7,027,862 B2	4/2006	Dahl et al.	2006/0116595 A1	6/2006	Palreddy et al.
7,031,764 B2	4/2006	Schwartz et al.	2006/0116730 A1	6/2006	Gunderson
7,039,459 B2	5/2006	Bardy et al.	2006/0122676 A1	6/2006	Ko et al.
7,039,463 B2	5/2006	Marcovecchio	2006/0161205 A1	7/2006	Mitrani et al.
7,039,465 B2	5/2006	Bardy et al.	2006/0167502 A1	7/2006	Haefner
			2006/0173498 A1	8/2006	Banville et al.
			2006/0235476 A1	10/2006	Gunderson et al.
			2006/0241512 A1	10/2006	Kwok et al.
			2006/0247739 A1	11/2006	Wahlstrand et al.

(56)

References Cited

U.S. PATENT DOCUMENTS

2007/0069540	A1	3/2007	Tande et al.
2007/0069544	A1	3/2007	Comiskey et al.
2007/0123947	A1	5/2007	Wenger et al.
2007/0232944	A1	10/2007	Ghanem et al.
2007/0232945	A1	10/2007	Kleckner et al.
2007/0232948	A1	10/2007	Stadler et al.
2007/0233196	A1	10/2007	Stadler et al.
2007/0233198	A1	10/2007	Ghanem et al.
2007/0239044	A1	10/2007	Ghanem et al.
2007/0239045	A1	10/2007	Ghanem et al.
2007/0239046	A1	10/2007	Ghanem et al.
2007/0239047	A1	10/2007	Ghanem et al.
2007/0239048	A1	10/2007	Ghanem et al.
2007/0239049	A1	10/2007	Ghanem et al.
2007/0239050	A1	10/2007	Ghanem et al.
2007/0239051	A1	10/2007	Ghanem et al.
2007/0239220	A1*	10/2007	Greenhut A61B 5/0452 607/32
2007/0270704	A1	11/2007	Ghanem et al.
2007/0276445	A1	11/2007	Sanghera et al.
2007/0276447	A1	11/2007	Sanghera et al.
2007/0276452	A1	11/2007	Sanghera et al.
2008/0046056	A1	2/2008	O'Connor
2008/0053197	A1	3/2008	McGinty et al.
2008/0172100	A1	7/2008	Sanghera et al.
2008/0188901	A1	8/2008	Sanghera et al.
2008/0243025	A1	10/2008	Holmstrom et al.
2008/0269813	A1	10/2008	Greenhut et al.
2008/0275521	A1	11/2008	Warren et al.
2009/0093731	A1	4/2009	Palreddy et al.
2012/0245651	A1	9/2012	Sanghera et al.
2013/0274822	A1	10/2013	Sanghera et al.

FOREIGN PATENT DOCUMENTS

CA	2652959	A1	12/2007
DE	29801807	U1	6/1998
EP	0095727	A1	12/1983
EP	0316616	A2	5/1989
EP	0316616	A3	6/1989
EP	0347353	A1	12/1989
EP	0517494	A2	12/1992
EP	0518599	A2	12/1992
EP	0517494	A3	3/1993
EP	0536873	A1	4/1993
EP	0586858	A1	3/1994
EP	0627237	A1	12/1994
EP	0641573	A2	3/1995
EP	0677301	A1	10/1995
EP	0641573	A3	6/1997
EP	0518599	B1	9/1997
EP	0813889	A2	12/1997
EP	0917887	A1	5/1999
EP	0923130	A1	6/1999
EP	1000634	A1	5/2000
EP	1745741	A1	1/2007
EP	2029224	A1	3/2009
EP	2029225	A1	3/2009
EP	2114244	A1	11/2009
WO	9319809	A1	10/1993
WO	9729802	A2	8/1997
WO	9825349	A1	6/1998
WO	9903534	A1	1/1999
WO	9937362	A1	7/1999
WO	9948554	A1	9/1999
WO	9953991	A1	10/1999
WO	0041766	A1	7/2000
WO	0050120	A1	8/2000
WO	0143649	A1	6/2001
WO	0156166	A2	8/2001
WO	0222208	A2	3/2002
WO	0224275	A2	3/2002
WO	0224275	A3	5/2002
WO	0222208	A3	6/2002

WO	02068046	A1	9/2002
WO	03018121	A2	3/2003
WO	03020367	A1	3/2003
WO	03065613	A1	8/2003
WO	2004091720	A2	10/2004
WO	2004105871	A1	12/2004
WO	2004108212	A2	12/2004
WO	2007089959	A1	8/2007
WO	2007140207	A1	12/2007
WO	2007140209	A2	12/2007
WO	2007140214	A1	12/2007
WO	2007140209	A3	4/2008

OTHER PUBLICATIONS

Bardy et al., "Multicenter Experience with a Pectoral Unipolar Implantable Cardioverter-Defibrillator", *Journal of the American College of Cardiology*, 28(2): 400-410, Aug. 1996.

Burri et al., "Utility of the Surface ECG Before VDD Pacemaker Implantation", *International Journal of Cardiology*, 117(2):211-213, Apr. 25, 2007.

Cao et al., "Implantable Medical Device with Multi-Vector Sensing Electrodes", U.S. Appl. No. 60/186,235, filed Mar. 1, 2000, 4 pgs.
Chrysostomakis et al., "Implantable Loop Recorder Undersensing Mimicking Complete Heart Block", *EP Europace*, 4(2): 211-213, Apr. 2002.

Chrysostomakis et al., "Sensing Issues Related to the Clinical Use of Implantable Loop Recorders", *EP Europace*, 5(2): 143-148, Apr. 2003.

Friedman et al., "Implantable Defibrillators in Children: From Whence to Shock", *Journal of Cardiovascular Electrophysiology*, 12(3): 361-362, Mar. 2001.

Ge et al., "Cardiac Arrhythmia Classification Using Autoregressive Modeling", *Biomedical Engineering Online*, [Online]. Retrieved from the Internet: <<http://www.biomedical-engineering-online.com>>, 12 pgs., Nov. 13, 2002.

Gradaus et al., "Nonthoracotomy Implantable Cardioverter Defibrillator Placement in Children: Use of Subcutaneous Array Leads and Abdominally Placed Implantable Cardioverter Defibrillators in Children", *Journal of Cardiovascular Electrophysiology*, 12(3): 356-360, Mar. 2001.

Gunderson, "Identification of Oversensing in a Medical Device", U.S. Appl. No. 60/632,000, filed Dec. 1, 2004, 30 pgs.

Higgins et al., "The First Year Experience with the Dual Chamber ICD", *Pacing and Clinical Electrophysiology [PACE]*, 23(1): Jan. 18-25, 2000.

Mirowski et al., "Automatic Detection and Defibrillation of Lethal Arrhythmias—A New Concept", *Journal of the American Medical Association [JAMA]*, 213(4): 615-616, Jul. 27, 1970.

Olson et al., "Onset and Stability for Ventricular Tachyarrhythmia Detection in an Implantable Pacer-Cardioverter-Defibrillator", *IEEE*, pp. 167-170, 1987.

Schuder, "Completely Implanted Defibrillator", *Journal of the American Medical Association [JAMA]*, 214(6): 1123, Nov. 9, 1970.

Schuder et al., "Experimental Ventricular Defibrillation with an Automatic and Completely Implanted System", *Trans. Am. Soc. Artif. Int. Organs*, vol. 16, pp. 207-212, 1970.

Schuder et al., "Standby Implanted Defibrillators", *Arch Intern. Med.*, vol. 127, p. 317, Feb. 1971.

Schuder, "The Role of an Engineering Oriented Medical Research Group in Developing Improved Methods and Devices for Achieving Ventricular Defibrillation: The University of Missouri Experience", *Pacing and Clinical Electrophysiology [PACE]*, 16(1): 95-124, Jan. 1993.

Schuder et al., "Transthoracic Ventricular Defibrillation in the Dog with Truncated and Untruncated Exponential Stimuli", *IEEE Transactions on Biomedical Engineering*, BME-18(6): 410-415, Nov. 1971.

Schwake et al., "Komplikationen mit Sonden bei 340 Patienten mit einem implantierbaren Kardioverter/Defibrillator", *Z Kardiol*, 88(8): 559-565, 1999.

(56)

References Cited

OTHER PUBLICATIONS

Stadler et al., "Method and Apparatus for Detecting Arrhythmias in a Subcutaneous Device", U.S. Appl. No. 60/786,981, filed Mar. 29, 2006, 71 pgs.

Throne et al., "A Comparison of Four New Time-Domain Techniques for Discriminating Monomorphic Ventricular Tachycardia from Sinus Rhythm Using Ventricular Waveform Morphology", IEEE Transactions on Biomedical Engineering, 38(6): 561-570, Jun. 1991.

Tietze et al., "Halbleiter-Schaltungstechnik", copyright Springer-Verlag (Berlin, Germany), pp. 784-786, 1991.

Valenzuela et al., "Outcomes of Rapid Defibrillation by Security Offices after Cardiac Arrest in Casinos", The New England Journal of Medicine, 343(17): 1206-1209, Oct. 26, 2000.

Walters et al., "Analog to Digital Conversion Techniques in Implantable Devices", Annual International Conference of the IEEE Engineering in Medicine and Biology Society, 13(4): 1674-1676, 1991.

"Programming Guide Neurostimulators for Chronic Pain", Medtronic, 2013.

All Non-Patent Literature documents and foreign patent documents have been previously uploaded in parent U.S. Appl. No. 14/601,315, filed Jan. 21, 2015.

* cited by examiner

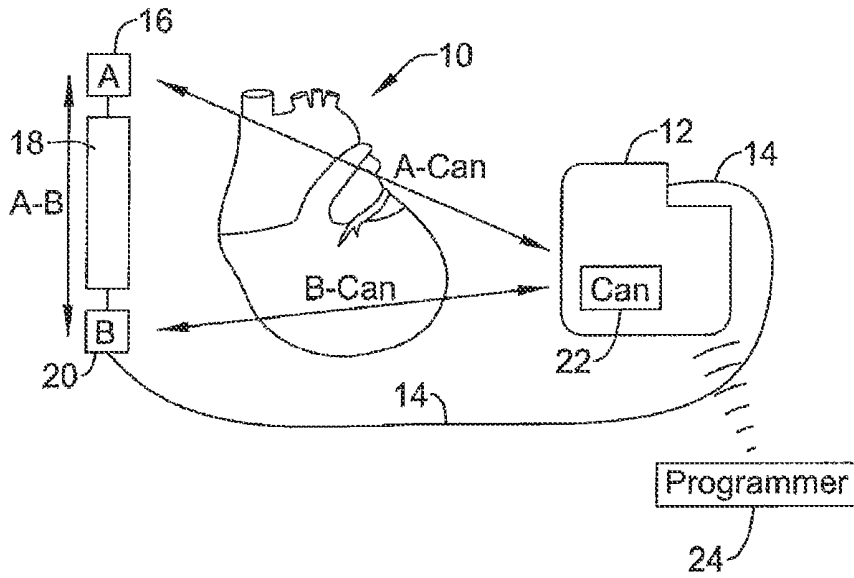


FIG. 1A

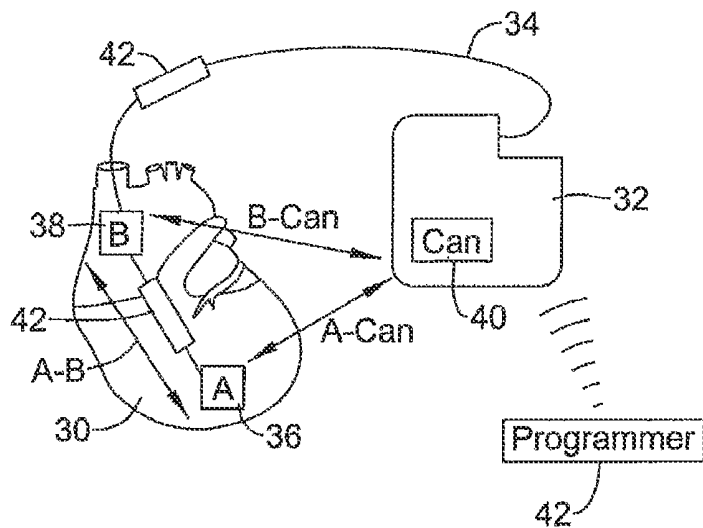


FIG. 1B

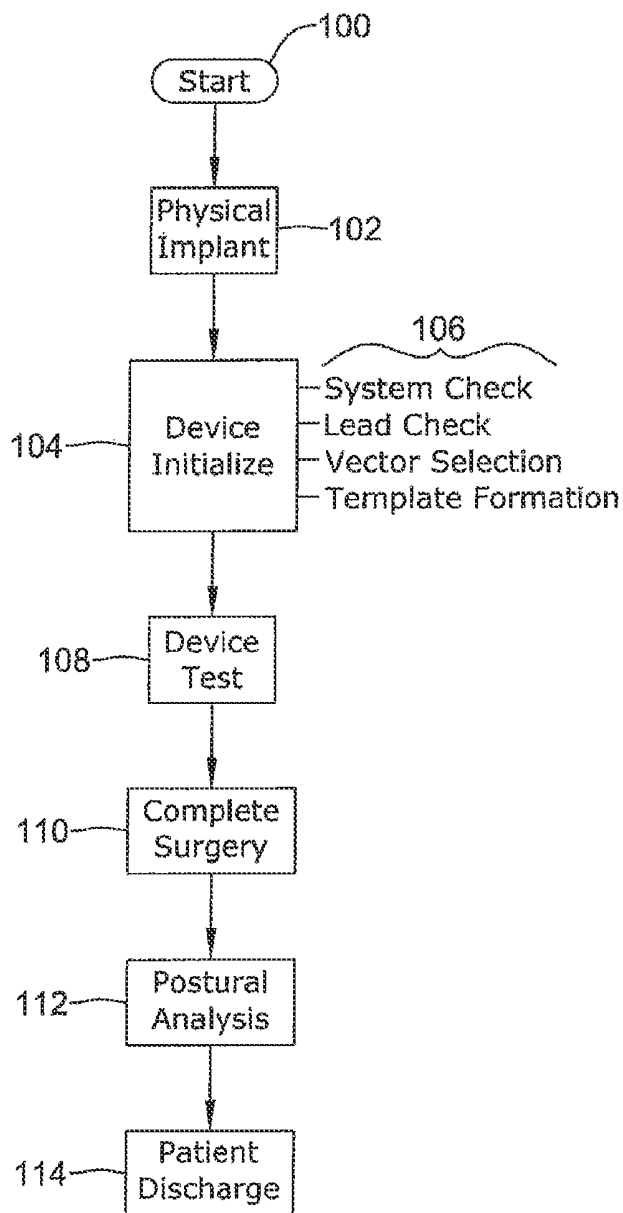


FIG. 2

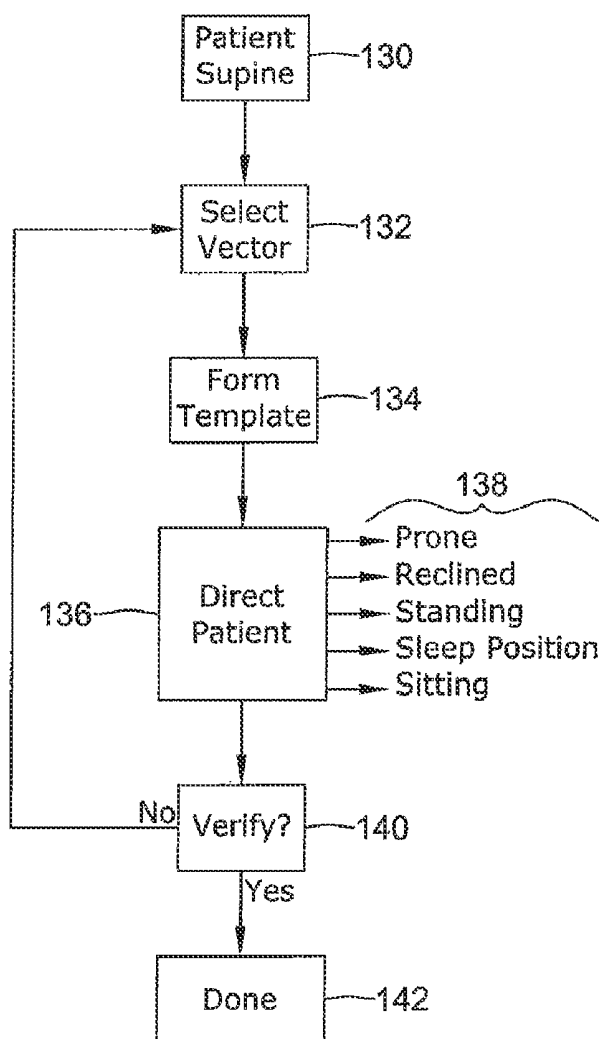


FIG. 3

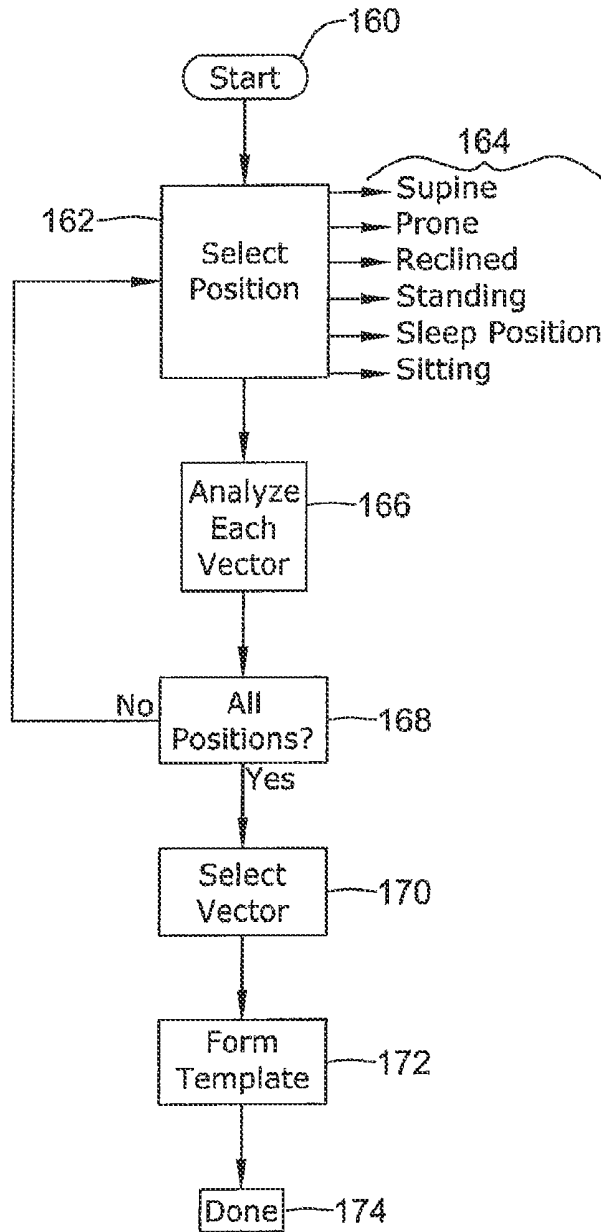


FIG. 4

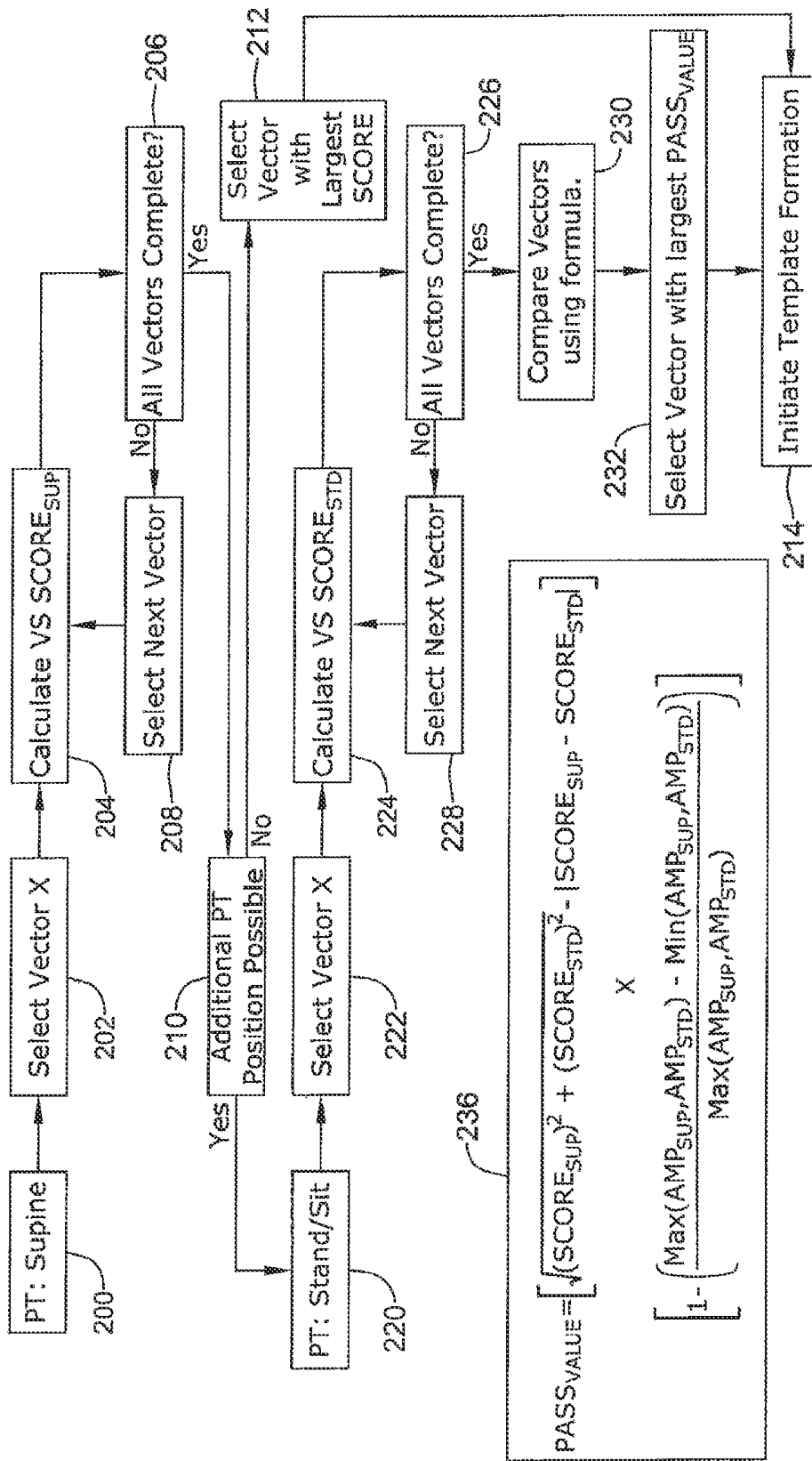


FIG. 5

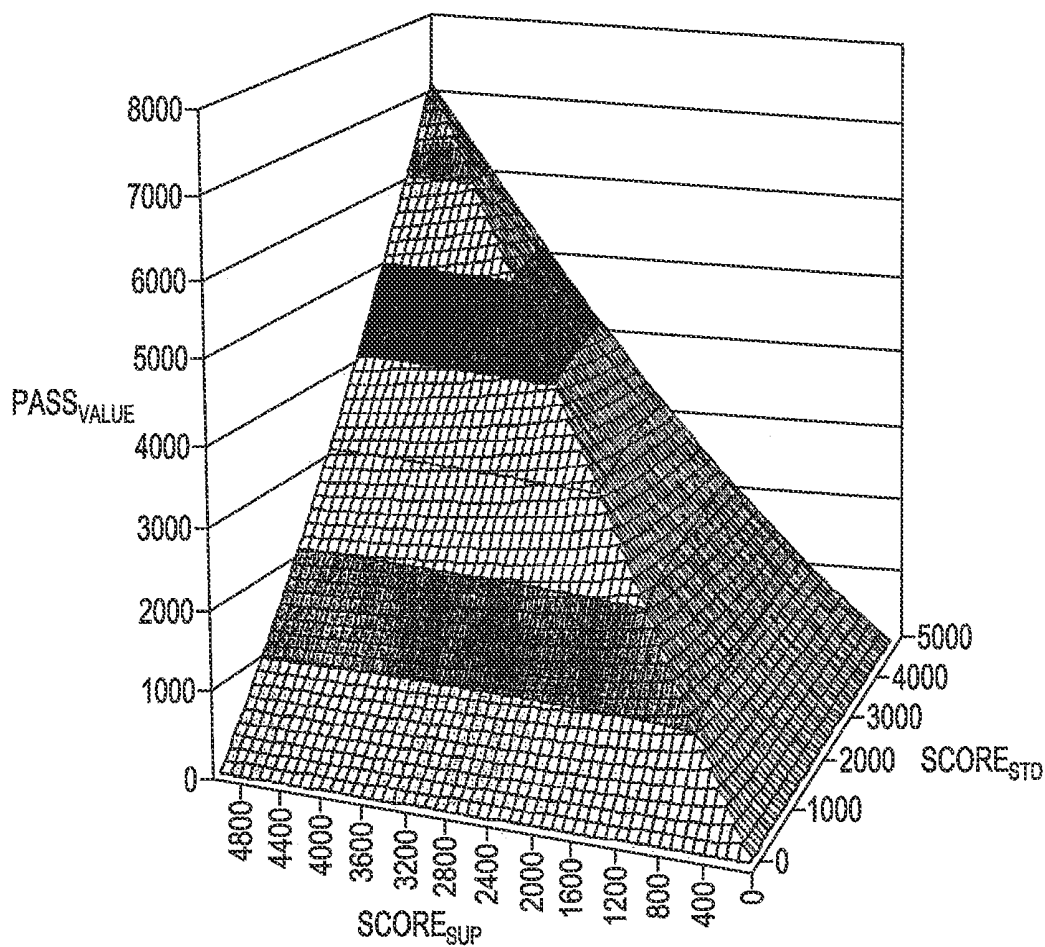


FIG. 6A

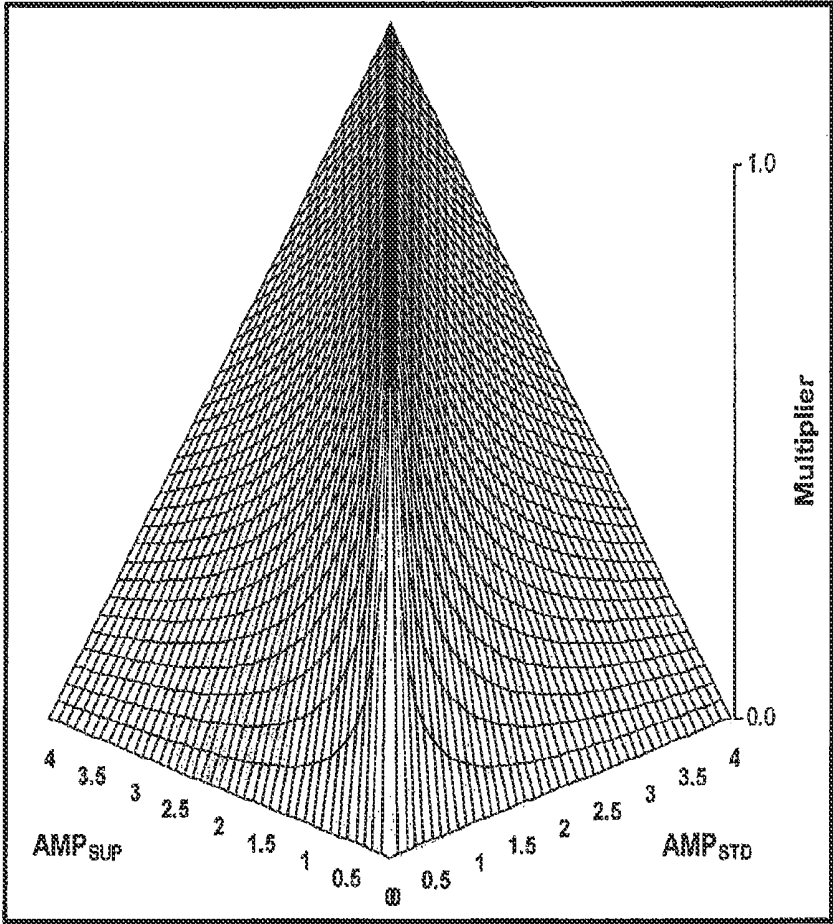


FIG. 6B

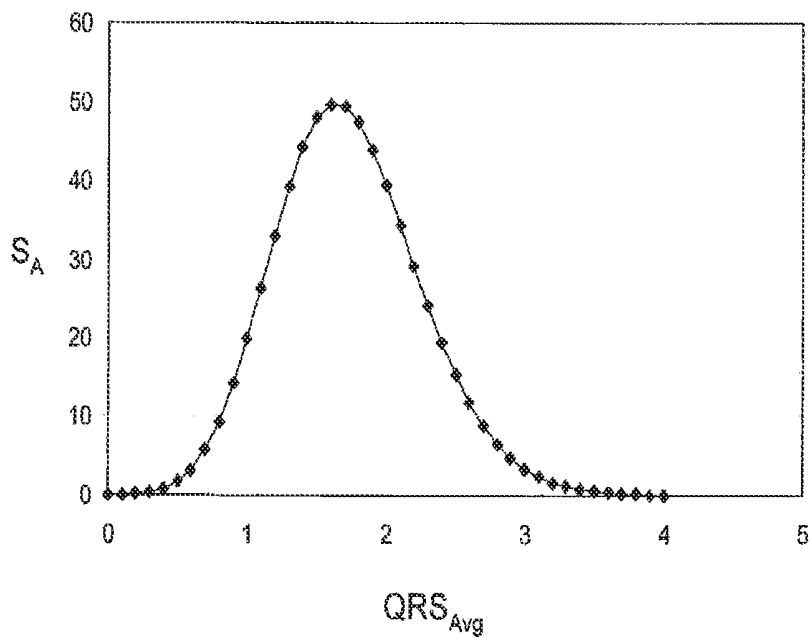


FIG. 7A

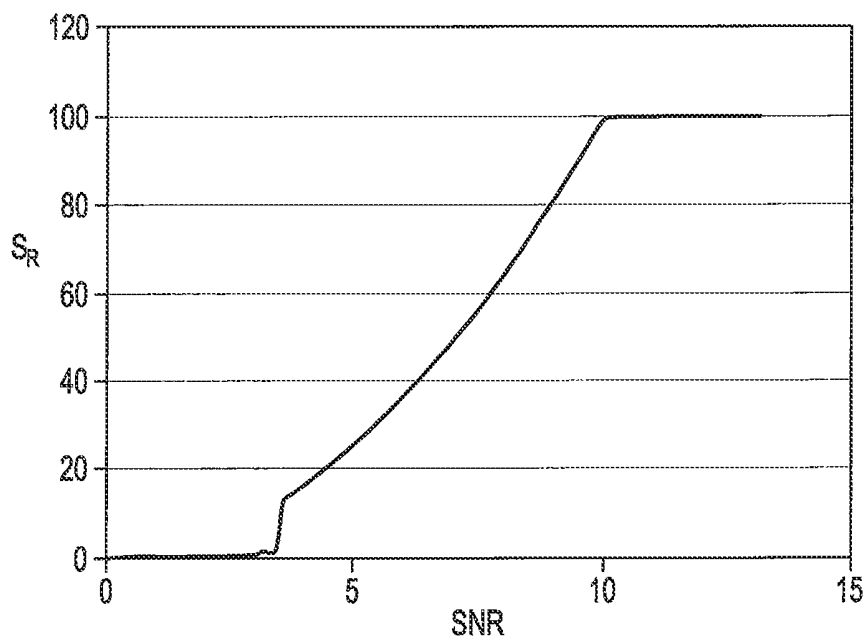


FIG. 7B

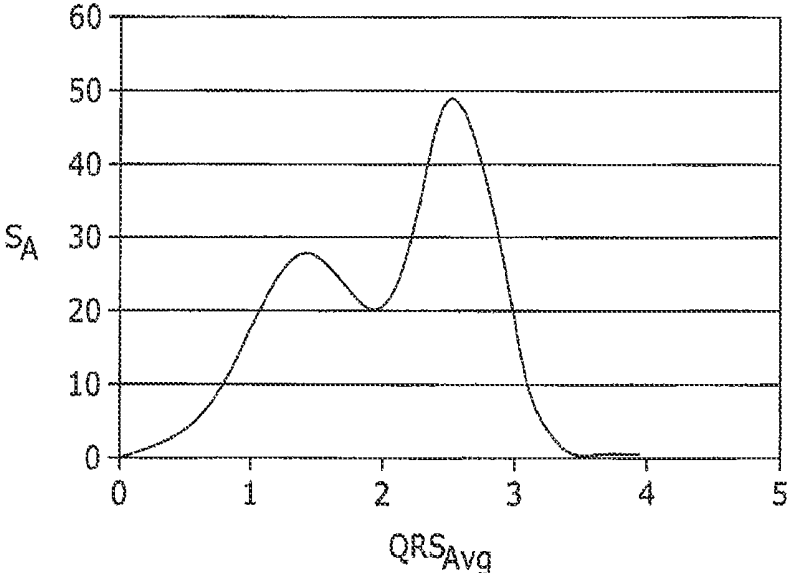


FIG. 7C

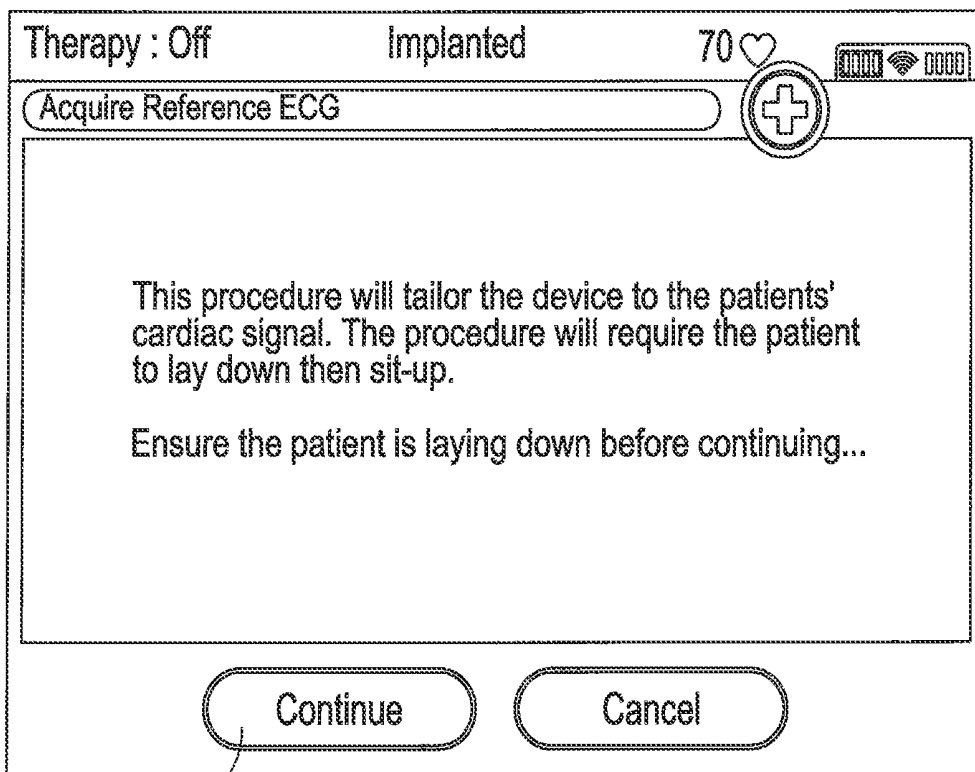
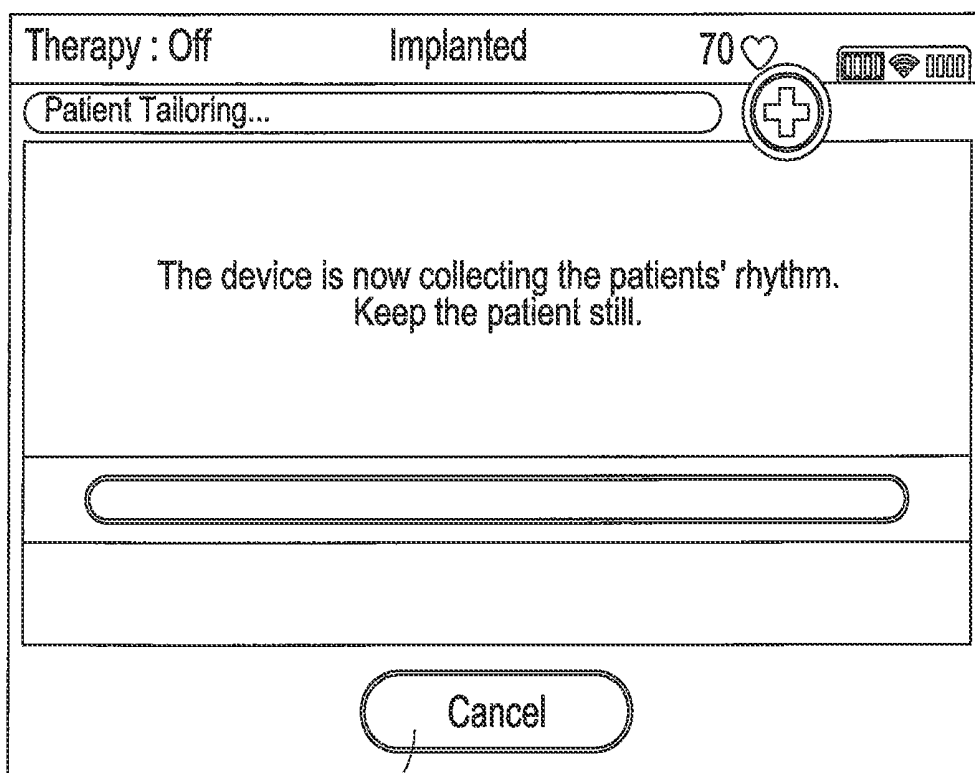


FIG. 8A



302

FIG. 8B

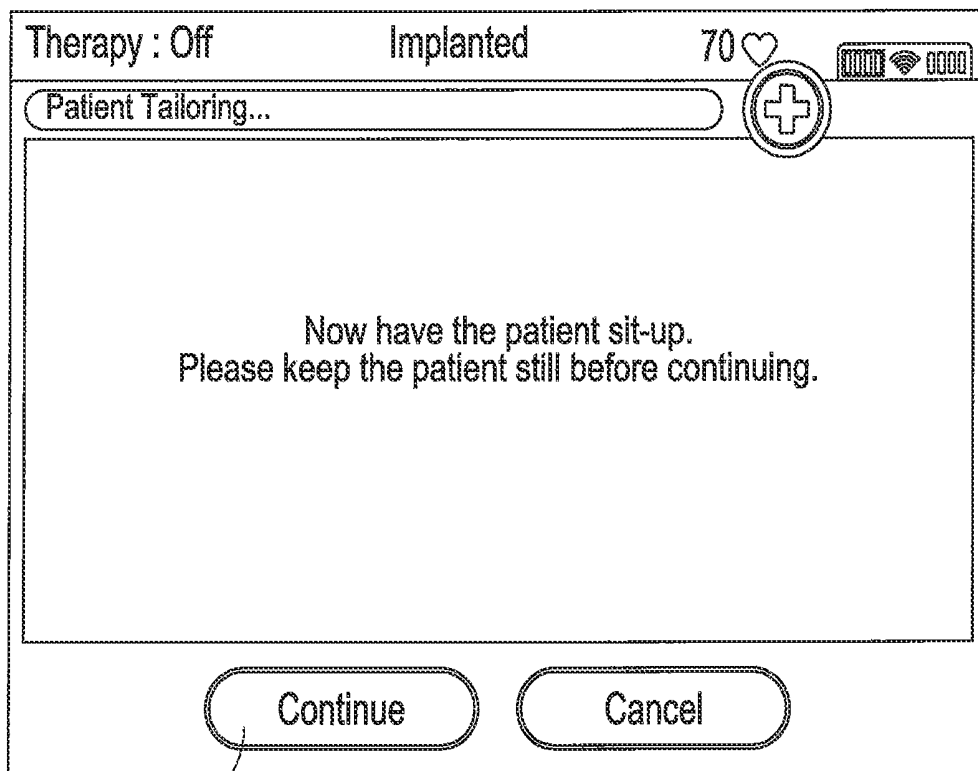
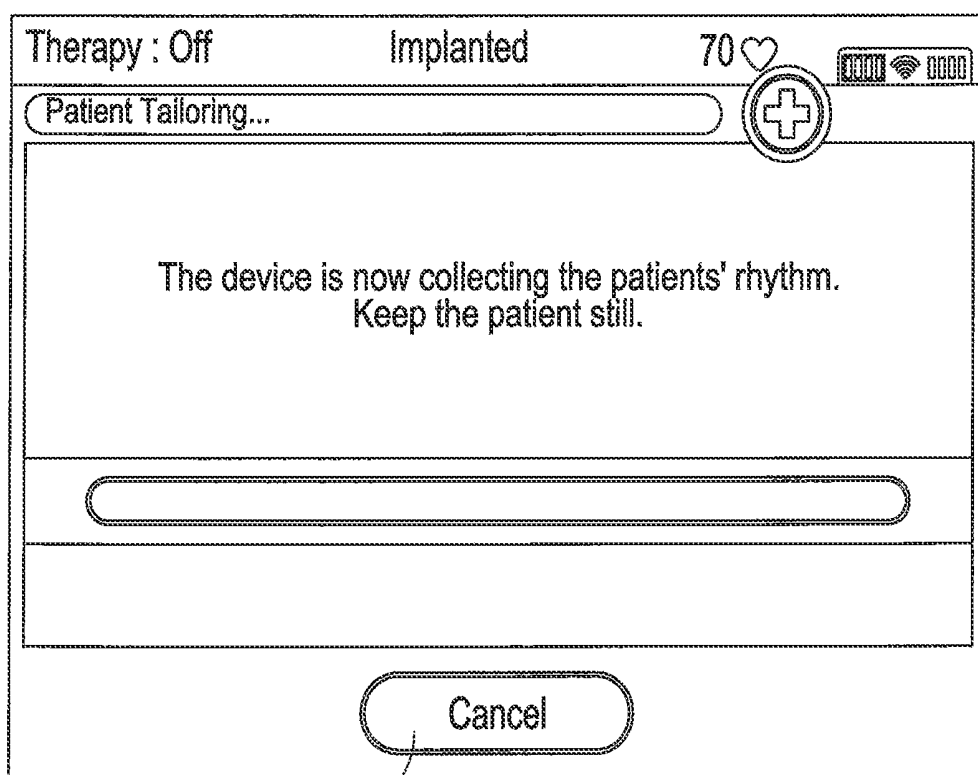


FIG. 8C



306

FIG. 8D

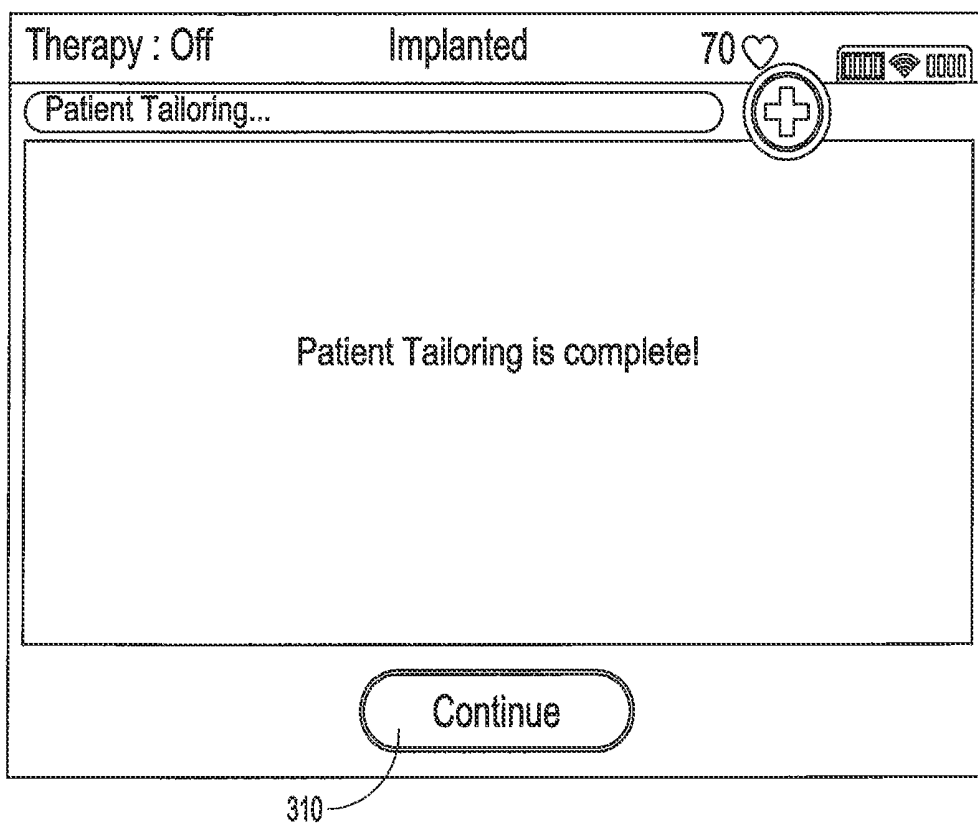


FIG. 8E

SENSING VECTOR SELECTION IN A CARDIAC STIMULUS DEVICE WITH POSTURAL ASSESSMENT

CROSS-REFERENCE TO RELATED APPLICATIONS

This application is a continuation of U.S. patent application Ser. No. 14/601,315, filed Jan. 21, 2015, now U.S. Pat. No. 9,119,596, which is a continuation of U.S. patent application Ser. No. 14/307,756, filed Jun. 18, 2014, now U.S. Pat. No. 8,965,530, which is a continuation of U.S. patent application Ser. No. 13/919,147, filed Jun. 17, 2013, now U.S. Pat. No. 8,781,602, which is a continuation of U.S. patent application Ser. No. 13/491,529, filed Jun. 7, 2012, now U.S. Pat. No. 8,483,843, which is a divisional of U.S. patent application Ser. No. 11/672,353, filed Feb. 7, 2007, now U.S. Pat. No. 8,200,341 and titled SENSING VECTOR SELECTION IN A CARDIAC STIMULUS DEVICE WITH POSTURAL ASSESSMENT, the disclosures of which are incorporated herein by reference.

This application is related to U.S. patent application Ser. No. 11/623,472, filed Jan. 16, 2007 and titled SYSTEMS AND METHODS FOR SENSING VECTOR SELECTION IN AN IMPLANTABLE MEDICAL DEVICE USING A POLYNOMIAL APPROACH, now U.S. Pat. No. 7,783,340, the disclosure of which is incorporated herein by reference. This application is also related to U.S. patent application Ser. No. 11/441,522, filed May 26, 2006, published as US Patent Application Publication Number 2007-0276445 and titled SYSTEMS AND METHODS FOR SENSING VECTOR SELECTION IN AN IMPLANTABLE MEDICAL DEVICE, now U.S. Pat. No. 8,788,023, the disclosure of which is incorporated herein by reference.

FIELD

The present invention relates to the field of implantable medical devices. More particularly, the present invention relates to implantable devices that monitor and/or stimulate the heart.

BACKGROUND

Implantable cardiac monitoring and/or stimulus devices can provide various benefits to patients who receive them. Such devices are adapted to monitor cardiac activity of a patient while implanted and, if so equipped, to provide stimulus when necessary to assure adequate cardiac function. New and different methods are desired for configuring and performing cardiac signal assessment in such devices.

SUMMARY

The present invention, in an illustrative embodiment, includes an implantable medical device that includes sensing electrodes and circuitry that allow the device, when implanted in a patient, to sense electrical activity emanating from the patient's heart along a plurality of sensing vectors. In the illustrative embodiment, the implantable medical device is configured to select a primary or default sensing vector by observing cardiac signal characteristics along one or more of the plurality of sensing vectors. In an illustrative embodiment, observation of the cardiac signal characteristics includes initialization in terms of the body position or posture of the patient.

In another illustrative embodiment, a device as described above is included as a part of a system including an external programmer, wherein the programmer and implanted device are configured to communicate with one another. In this embodiment, the system is configured such that the patient may be directed to perform certain acts and/or assume selected postures/poses/body positions via the programmer, allowing the implanted device to observe the effects of changes of posture by the patient on captured cardiac signal. The implanted device (or the programmer, depending upon the particular configuration) may then select a primary or default sensing vector.

Another illustrative embodiment includes a method of selecting a vector for use in sensing cardiac events. In the illustrative method, sensing characteristics along several vectors may be considered with the patient in various body positions (for example, standing, sitting, and/or lying down). Using the captured sensing characteristics, a default or primary sensing vector may be selected. In an illustrative example, the method includes directing the patient to assume a set of postures/poses/body positions.

In addition to selecting a primary or default sensing vector, in some embodiments, a secondary vector is selected for various uses.

BRIEF DESCRIPTION OF THE DRAWINGS

FIGS. 1A-1B illustrate subcutaneous and transvenous cardiac stimulators;

FIG. 2 is a block diagram illustrating steps in an illustrative implant procedure;

FIGS. 3-5 show illustrative methods of postural assessment in an implanted medical device;

FIGS. 6A-6B are graphs of variable relationships in an illustrative method of analyzing sensing vectors during postural assessment;

FIGS. 7A-7C are graphs of variable relationships in illustrative signal analysis methods; and

FIGS. 8A-8E are graphical representations of display outputs of a programmer during an illustrative method of postural assessment.

DETAILED DESCRIPTION

The following detailed description should be read with reference to the drawings. The drawings, which are not necessarily to scale, depict illustrative embodiments and are not intended to limit the scope of the invention.

The present invention is related to U.S. patent application Ser. No. 11/441,522, filed May 26, 2006 and entitled SYSTEMS AND METHODS FOR SENSING VECTOR SELECTION IN AN IMPLANTABLE MEDICAL DEVICE, published as US Patent Application Publication Number 2007-0276445, now U.S. Pat. No. 8,788,023, the disclosure of which is incorporated herein by reference. In particular, the '522 Application shows illustrative methods of analyzing cardiac signals captured along a given sensing vector. The methods shown therein are illustrative of analytical methods and "scoring" that may also be performed in association with the present invention.

FIGS. 1A-1B, respectively, show subcutaneous and transvenous implanted cardiac stimulus systems relative to the heart. Referring to FIG. 1A, the patient's heart 10 is shown in relation to an implanted, subcutaneous cardiac stimulus system including a canister 12. A lead 14 is secured to the canister 12 and includes sensing electrode A 16, coil electrode 18, and sensing electrode B 20. A can electrode 22 is shown

on the canister **12**. Several vectors for sensing are therefore available including A-can, B-can, and A-B. It should be noted that the use of the coil electrode **18** as a sensing electrode is also possible. Illustrative subcutaneous systems are shown in U.S. Pat. Nos. 6,647,292 and 6,721,597, and the disclosures of these patents are incorporated herein by reference. Some embodiments include a unitary system having two or more electrodes on a housing as set forth in the '292 patent, rather than that which is shown in FIG. 1A. A unitary system including an additional lead may also be used. It should be understood that for any vector discussed herein, either of the two available polarities for each vector is possible and may be analyzed and/or selected, if desired.

Referring now to FIG. 1B, a transvenous system is shown relative to a patient's heart **30**. The transvenous cardiac stimulus system includes a canister **32** connected to a lead **34**. The lead **34** enters the patient's heart and includes electrodes A **36** and B **38**. The illustrative example also includes coil electrodes **42**, shown both internal and external to the heart **30**. The coil electrodes **42** may be used for sensing or stimulus delivery. In the illustrative example, electrode A **36** is located generally in the patient's ventricle, and electrode B **38** is located generally in the patient's atrium. The lead **34** may be anchored into the patient's myocardium. Again, a can electrode **40** is shown on the canister **32**. With the transvenous system, plural sensing vectors may be defined as well.

In both FIGS. 1A and 1B, one or more sensing electrodes may also be used for stimulus delivery. Some embodiments of the present invention may be used in combination systems that may include sensing vectors defined between two subcutaneous electrodes, a subcutaneous electrode and a transvenous electrode, or two transvenous electrodes. For example, the present invention may be embodied in a hybrid system having electrodes for each of several transvenous, epicardial, and/or subcutaneous locations.

In the configurations of FIGS. 1A and 1B, there are multiple sensing vectors available. Detection of cardiac function along one of these sensing vectors allows the implanted cardiac stimulus system to determine whether treatment is indicated due to the detection and identification of a malignant condition such as, for example, a ventricular tachycardia. An implanting physician may perform vector selection by determining which of the captured vectors is best, for example by visual inspection of a graphical representation of captured signals. However, this requires an assessment of cardiac function along several vectors and may increase the time needed to perform implantation, and also increases the risk of human error. Further, the selection of a vector may require advanced or specialized training, as selection of a suitable vector among those available is not necessarily intuitive.

Robust sensing vector selection methods are desirable, as well as devices adapted to perform such methods. The present invention, in illustrative embodiments, provides such methods and uses various criteria for doing so. Some embodiments include implantable devices and programmers for implantable devices that are adapted to perform such methods.

The systems shown in FIGS. 1A-1B may include operational circuitry and power sources housed within the respective canisters. The power sources may be, for example, batteries or banks of batteries. The operational circuitry may be configured to include such controllers, microcontrollers, logic devices, memory, and the like, as selected, needed, or desired for performing the illustrative methods set forth herein. The operational circuitry may (although not necessarily) further include a charging sub-circuit and a power storage sub-circuit (for example, a bank of capacitors) for building up a stored voltage for cardiac stimulus taking the form of car-

dioversion and/or defibrillation. The operational circuitry may also be adapted to provide a pacing output. Each of cardioversion/defibrillation and pacing sub-circuitry and capacities may be incorporated into a single device. The methods discussed below may be embodied in hardware within the operational circuitry and/or as instruction sets for operating the operational circuitry and/or in the form of machine-readable media (optical, electrical, magnetic, etc.) embodying such instructions and instruction sets.

Each of the devices **12**, **32** may further include such components as would be appropriate for communication (such as RF communication or inductive telemetry) with an external device such as a programmer. To this end, programmers **24** (FIG. 1A) and **42** (FIG. 1B) are also shown. For example, during an implantation procedure, once the implantable device **12**, **32** and leads (if included) are placed, the programmer **24**, **42** may be used to activate and/or direct and/or observe diagnostic or operational tests. After implantation, the programmer **24**, **42** may be used to non-invasively determine the status and history of the implanted device. The programmer **24**, **42** and the implanted device **12**, **32** may be adapted for wireless communication allowing interrogation of the implanted device in any suitable manner for an implanted device system. The programmers **24**, **42** in combination with the implanted devices **12**, **32** may also allow announcement of statistics, errors, history and potential problem(s) to the user or physician.

FIG. 2 is a block diagram illustrating steps in an illustrative implant procedure. From a start block **100**, the first step is the physical implantation itself **102**, which may include various surgical preparations as are known in the art, incision of the patient, and emplacement of a system, for example, a transvenous or subcutaneous system as shown above in FIGS. 1A-1B. Methods for physically implanting a transvenous device are well known. A subcutaneous device may be implanted, for example, as set forth in copending U.S. patent application Ser. No. 11/006,291, filed Dec. 6, 2004 and titled APPARATUS AND METHOD FOR SUBCUTANEOUS ELECTRODE INSERTION, now U.S. Pat. No. 7,655,014; and/or copending U.S. patent application Ser. No. 11/497,203, filed Aug. 1, 2006, published as US Patent Application Publication Number 2008-0046056 and titled ELECTRODE INSERTION TOOLS, LEAD ASSEMBLIES, KITS AND METHODS FOR PLACEMENT OF CARDIAC DEVICE ELECTRODES, now U.S. Pat. No. 8,718,793, the disclosures of which are incorporated herein by reference.

With the system in place in the patient, the device is initialized, as indicated at **104**. This may include various functions as indicated at **106**, such as power-up of the device, system check, lead connection, detection and impedance checks. Initialization **104** may also include vector selection steps and template formation steps, allowing an initial set-up of the device while the patient is in the operating room. Illustrative methods of template formation are discussed in copending U.S. patent application Ser. No. 10/999,853, filed Nov. 29, 2004 and entitled METHOD FOR DEFINING SIGNAL TEMPLATES IN IMPLANTABLE CARDIAC DEVICES, now U.S. Pat. No. 7,376,458, the disclosure of which is incorporated herein by reference. Illustrative methods of vector selection are discussed in copending U.S. patent application Ser. No. 11/441,522, filed May 26, 2006, published as US Patent Application Publication Number 2007-0276445 and titled SYSTEMS AND METHODS FOR SENSING VECTOR SELECTION IN AN IMPLANTABLE MEDICAL DEVICE, now U.S. Pat. No. 8,788,023; copending U.S. patent application Ser. No. 10/901,258, filed Jul. 27, 2004 and entitled MULTIPLE ELECTRODE VECTORS

FOR IMPLANTABLE CARDIAC TREATMENT DEVICES, now U.S. Pat. No. 7,392,085; and U.S. Pat. No. 6,988,003 entitled OPTIONAL USE OF A LEAD FOR A UNITARY SUBCUTANEOUS IMPLANTABLE CARDIOVERTER-DEFIBRILLATOR, the disclosures of which are incorporated herein by reference. The inclusion of each of functions 106 may vary depending upon the particular device.

After device initialization at 104, the device is tested as indicated at 108. For an implantable cardioverter defibrillator (ICD), for example, fibrillation may be induced in the patient in order to determine whether the ICD accurately senses the fibrillation and successfully delivers therapy that returns the patient to normal cardiac rhythm. If testing is unsuccessful, or if the device does not initialize, the system may be explanted. If, instead, the initialization at 104 is completed successfully and the system passes device testing at 108, then the surgical portion of the implantation is completed, as shown at 110, with appropriate methods including closing incisions made during implantation, etc.

In the illustrative method, postural analysis 112 follows completion of the surgical portion of the implantation method. During postural analysis 112, after the patient has had the device inserted and activated, and, possibly, after the patient has had time to recuperate somewhat, the operation of the implanted device is observed and may be modified. In particular, the patient may be asked to assume a series of positions, for example, sitting down and then standing up, while the implanted device gathers data to determine which of its available sensing vectors is best suited to permanent operation. In one illustrative example, the patient is led through a series of body positions such that the device may determine a single sensing vector for use as a primary or default sensing vector all the time, such that changes in sensing operation do not have to occur whenever the patient changes posture or body position.

In another illustrative example, an optimal or best vector is determined for each of the several body positions, and body position is monitored during operation such that the implanted device may select the optimal vector for a patient's current body position. Body position may be monitored, for example, by the provision of physical sensors that detect body position by reference to gravity, to movements, or the like. Transthoracic impedance can be used to provide a measure of patient body position, for example. An activity sensor may be used to infer whether the patient is standing versus lying down. Alternatively, body position may be monitored by observation of captured electric signals. For example, during postural analysis 112, the system may be configured to identify signal markers to differentiate cardiac signals captured while the patient is in each of several body positions and, thereafter, to identify the patient's body position by observation of the patient's cardiac signals.

Once postural analysis 112 is complete, the patient may then be discharged 114, as the implantation procedure and process is then complete. Following discharge 114, the patient may be requested to return for further diagnostics, for example, initialization may be updated (such as functions 106) and the postural analysis 112 may be later repeated. This may be done, for example, as the patient's physiology changes due to reaction to the implantation itself, with changes in patient medication, and/or as the patient ages.

FIGS. 3-5 show illustrative methods of postural assessment in an implanted medical device. FIG. 3 illustrates a confirmation approach to postural assessment, in which a vector is identified on the basis of its characteristics while the patient is in a given body position, and the identified vector is then checked to confirm that it is usable regardless of the body

position of the patient. The method begins at block 130, with the patient in a given body position, in this instance, supine. In other embodiments, the patient may begin in a different body position, such as prone, reclined, standing, or in whatever position the patient prefers to sleep in, for example.

With the patient in the given position, a vector is selected, as shown at 132. A vector may be selected at 132, for example, on the basis of the signal-to-noise ratio (SNR) of cardiac signals captured along that vector. Other metrics for selecting a vector at 132 may include signal amplitude, noise amplitude, etc. In an illustrative embodiment, a combination of SNR and signal amplitude are taken into consideration. For example, a formula using both SNR and amplitude may be used. Some illustrative examples of such analysis are shown in copending U.S. patent application Ser. No. 11/441,522, filed May 26, 2006, published as US Patent Application Publication Number 2007-0276445 and titled SYSTEMS AND METHODS FOR SENSING VECTOR SELECTION IN AN IMPLANTABLE MEDICAL DEVICE, now U.S. Pat. No. 8,788,023.

In another illustrative embodiment, a default vector is assumed, rather than selected on the basis of any metric. For example, if a particular system and implantation has a vector that works for most patients, then that vector may be selected first to start analysis. In another example, there may be a preferred vector, such as where there are two sensing-only electrodes and one or more sensing/shocking electrodes. Due to possible physical changes at the electrode/tissue interface for the sensing/shocking electrodes when stimulus is delivered, the vector between the two sensing-only electrodes may be "preferred". Thus, in starting the method, the "preferred" vector may be selected at step 132.

With the vector selected at 132, a template for analysis of cardiac signals may optionally be formed, as shown at 134. This optional step of the method of FIG. 3 may include capturing a set of signals with the selected vector, identifying likely cardiac events in the set of signals, and forming windows of captured signals around fiducial points likely to correspond to cardiac events.

An illustrative example of template formation may be as follows. First, the signal captured along the selected vector may be compared to a threshold and, when the threshold is exceeded, a cardiac event is assumed to be likely. A peak value in a set of samples following the threshold crossing (for example, the next 40 sequential samples, captured at 256 Hz) is identified as a fiducial point, and a window of samples around the fiducial point is calculated. This initial capture is presumed to be a cardiac event. Several additional "events" are subsequently captured in association with later threshold crossings, with the fiducial point and/or window being selected in a manner corresponding to that of the original identified "event".

The captured events are then compared to one another, for example, using correlation waveform analysis, or alternatively, another metric such as QRS width, which may be identified as a duration in which the signal remains above a minimum threshold. If the set of events is sufficiently similar, then a template is formed by selecting a representative event or by averaging a set of events. In some embodiments, the template may be dynamically updated by averaging in later-captured events. Additional examples of template formation may also be found in copending U.S. patent application Ser. No. 10/999,853, filed Nov. 29, 2004 and entitled METHOD FOR DEFINING SIGNAL TEMPLATES IN IMPLANTABLE CARDIAC DEVICES, now U.S. Pat. No. 7,376,458. In some embodiments, template formation may fail where similarity among sets of captured events does not occur. For

example, a time-out may be used, and, if after a period of time (60-180 seconds, for example), a template cannot be formed using similarity analysis, the vector under consideration may be identified as poorly suited to detection.

Next, the patient is directed to change body positions, as indicated at 136. One or more additional positions beyond the original position may be used. For example, if the patient is supine, as indicated at 130, the patient may be asked to move to a prone position, to sit up, and/or to stand. The positions listed at 138 are merely illustrative, and no set number of such positions is necessary. In an illustrative embodiment, it is determined what positions the patient tends to rest in, for example, reclined, and/or the patient's sleep position, such as on the patient's side, in order that the posture assessment considers those positions the patient is in the most. For each position the patient is asked to assume, the implanted device analyzes the selected vector to determine whether the selected vector will function adequately for cardiac event detection and analysis. In an illustrative example, if the selected vector fails to function adequately in any position, the method skips any remaining body positions and advances to step 140. Otherwise, the selected vector is analyzed at each of at least two positions.

In an illustrative example, the selected vector is analyzed in each of the positions by considering one or more of SNR, signal amplitude, and/or noise amplitude. For example, the SNR and signal amplitude may be considered by the use of a formula, as further explained below.

The method then goes to step 140, where it is determined whether the selected vector has been verified or confirmed as a "good" sensing vector. If so, the method ends at 142. If the selected vector is not verified or confirmed, the method returns to step 132 and selects a different vector, with the patient being asked to again assume the first body position upon return to step 132 and, thereafter, to move through additional body positions as directed at step 136. In this method, a vector is first selected and then tested as the patient changes body positions.

FIG. 4 illustrates a deterministic approach, as contrasted to the confirmation approach of FIG. 3. In FIG. 4, for example, the patient assumes a given body position and holds that position until data is gathered for each of the available vectors. The method of FIG. 4 begins with start block 160. The patient is asked to select a body position, as indicated at 162. Illustrative positions are listed at 164; in an example, the patient is asked to lay supine and is later asked to sit and/or stand. Each vector is then analyzed while the patient remains in the selected body position, as shown at 166. After data is captured for each vector during step 166, it is determined if all positions have been tested, as indicated at 168. If not, the method returns to step 162, where a different body position is selected and the patient is asked to assume a different body position. Once each desired body position is tested, the method exits the loop from 168, and a vector is selected as indicated at 170. Once a vector is identified on the basis of the data captured in the loop of 162-166-168, the method may perform template formation as indicated at 172. In some embodiments, if template formation 172 fails, the method may return to step 170 and select a different vector. The method then ends, as indicated at 174.

In an alternative embodiment, first and second vectors are identified, with the second vector being a back-up vector for use either because the first, primary or default vector becomes unavailable or, alternatively, for use if the first vector provides ambiguous indications of whether the patient is experiencing an arrhythmia.

In some embodiments, a single vector is identified for use while the patient is in any body position. In other embodiments, several templates may be formed for the patient. For example, analysis of data captured while the patient is in a supine position may indicate a different "best" vector than that captured while the patient is an upright position. Two templates could then be formed, without regard for whether the first and second templates are formed using the same vector, where each template includes information for its sensing vector configuration.

Illustratively, the first template could use sensing vector A-Can (see FIG. 1A) and could be defined at the time of postural assessment while the patient is supine, and the second template could use vector A-B (see FIG. 1A) and could be defined at the time of postural assessment while the patient is sitting upright. Then, during analysis, the primary template at any given time could be whichever indicates ordinary cardiac function. If neither template indicates ordinary cardiac function, it may be presumed that an arrhythmia is occurring, and a stimulus may be delivered. This may be performed as part of a Boolean approach to finding arrhythmic activity:

IF Analysis (A) fails

AND IF Analysis (B) fails

THEN Event indicates Malignant Rhythm

This tiered analysis may prevent misdiagnosis of the cardiac rhythm due to a change of the patient's body position.

In another illustrative example, the primary and secondary templates may be "switched" one for the other in response to an output from a body position sensor. For example, if the primary template is associated with a first body position and the secondary template is associated with a second body position, an output of a body position sensor may be monitored, and the templates switched depending upon the body position indicated by the body position sensor.

Additionally, switching between the templates may be achieved without needing the use of a dedicated position sensor. In an illustrative example, only the Analysis (A) is performed in a morphology-based analysis system until a first threshold of abnormality is met. For example, if an X out of Y counter is used, the Analysis (A) may be used by itself until a first X out of Y threshold is met. In an illustrative example, if $\frac{18}{24}$ events is the threshold for a determination that a malignant cardiac rhythm is occurring, then an $\frac{8}{24}$ threshold may be used to activate Analysis (B). If 2-3 events occur before Analysis (B) begins functioning, then a smooth transition may occur if the patient has changed positions since, by the time the $\frac{18}{24}$ counter fills for Analysis (A), 8 or more events will have been detected using Analysis (B). In an illustrative example, if $\frac{4}{8}$ of the events using Analysis (B) are found to meet template comparison parameters, the system may switch to Analysis (B), using a different template and/or vector than Analysis (A) for primary analysis. In some illustrative embodiments that use both primary and secondary templates, stimulus delivery (or preparation for stimulus delivery) may be delayed until it is determined that the analysis with each template indicates a malignant cardiac rhythm.

The method of FIG. 4 calls for more data to be gathered than the method of FIG. 3, regardless of whether one vector is superior or not. Therefore, this method may be slower in some instances than that of FIG. 3. However, with the method of FIG. 3, the patient may be asked to perform and repeat several movements during postural assessment. If a device is implanted in a patient who is relatively weak, for example, due to advanced congestive heart failure, repeated movements may be undesirable. Illustrative examples may be configured to perform either method. In another illustrative example, the devices (the implanted medical device and/or

the programmer) in the system are equipped to perform either method, with the programmer allowing a physician to select one method or the other.

FIG. 5 illustrates a detailed method for an illustrative embodiment. As indicated at 200, the method begins with the patient (PT) supine. Step 200 may be a directive given from the programmer to a physician to have the patient assume a supine position, or it may be given directly to the patient from the programmer itself. With this position verified (for example, the programmer may request an input indicating that the patient is in the requested position), a first vector is selected, as indicated at 202.

A VS SCORE_{SUP} is then calculated, as indicated at 204. The VS SCORE_{SUP} may be a "score" calculated to indicate the quality of the sensing vector. As discussed above, this may include consideration of signal amplitude, SNR, etc. Calculation of a SCORE may make use of a formula, a look-up table, or any suitable method for placing a metric on the quality of a sensing vector. Illustrative methods are shown in copending U.S. patent application Ser. No. 11/441,522, filed May 26, 2006, published as US Patent Application Publication Number 2007-0276445 and entitled SYSTEMS AND METHODS FOR SENSING VECTOR SELECTION IN AN IMPLANTABLE MEDICAL DEVICE, now U.S. Pat. No. 8,788,023.

After the score is calculated at 204, it is determined whether all vectors have been analyzed, as indicated at 206. If not, a different vector is selected, as shown at 208, and the method calculates another VS SCORE_{sup} at 204. If all the vectors have been considered at step 206, the method continues to block 210.

At block 210, the programmer or the implantable device, depending on the system configuration, determines whether additional patient positions are possible. If not, the method continues to step 212, where the vector having the largest SCORE from the initial analysis is selected for use in analysis, and template formation is initiated, as indicated at 214. This opt-out step 210 may be provided to accommodate a patient who is not capable of changing body positions due to physical limitations or to accommodate use during implant procedures.

If, at step 210, one or more additional patient positions are possible, the method continues to step 220. At step 220, the programmer requests that the patient adopt a different position, for example, standing or sitting. The method then performs similar steps to those performed with the first body position. A vector is selected at 222, a score, VS SCORE_{STD}, is calculated at 224, and it is determined whether each vector has been considered at 226. If not, as indicated at 228, the method returns to 224 with a different vector selected. Once all vectors are completed, the vectors are compared, as indicated at 230. In an illustrative embodiment, the formula shown at 236 is used to calculate a PASS_{value} for each vector.

Formula 236 includes two major terms. FIGS. 6A-6B are graphs of variable relationships in an illustrative method of analyzing sensing vectors during postural assessment, with FIG. 6A illustrating the first term:

$$\sqrt{(\text{SCORE}_{SUP})^2 + (\text{SCORE}_{STD})^2} - |\text{SCORE}_{SUP} - \text{SCORE}_{STD}|$$

The result of this first term increases with the amplitude of each SCORE, and is greatest when the amplitudes of the SCOREs are similar.

FIG. 6B illustrates relationships for the second term:

$$1 - \left(\frac{\text{Max}(\text{AMP}_{SUP}, \text{AMP}_{STD}) - \text{Min}(\text{AMP}_{SUP}, \text{AMP}_{STD})}{\text{Max}(\text{AMP}_{SUP}, \text{AMP}_{STD})} \right)$$

When the signal amplitudes are closest to one another, the value of this term approaches 1, while it approaches zero if the maximum signal amplitude of the sensing vector when the patient is in one body position is significantly different from the maximum signal amplitude of the sensing vector when the patient is in the other body position.

In short, illustrative formula 236 takes into account the size and similarities of the SCOREs, i.e., whether the vector quality is high and the strength of the signal along a given vector is high in the first term, and whether the vector provides relatively consistent output, particularly in terms of signal amplitude, without regard for the body position of the patient. One reason for the inclusion of the second term is that, in the illustrative embodiment, the event detection system of the implantable device includes an amplifying input having two dynamic ranges, one which is larger and one which is smaller. With such a system, it may be better, in some embodiments, to select a vector that captures signal that makes relatively full use of one of the dynamic ranges in each of the patient body positions.

For example, given dynamic ranges of 0-2.0 mV and 0-4.0 mV, analysis may be easier and more reliable with a first vector in which peak voltages are 0.75 mV for both body positions, rather than a second vector in which peak voltages are 0.75 mV for one body position and 2.5 mV for a second body position, as the latter vector would call for lower amplification to accommodate the second body position but would use the dynamic range poorly when the patient is in the first body position. For example, FIG. 7C illustrates a SCORE calculation in which the amplitude affects the output SCORE in a manner having first and second peaks, with a trough therebetween. While having both terms account for dynamic range is part of some illustrative embodiments, other illustrative embodiments may instead use the formula of FIG. 7A for score calculation, as further explained below.

The illustrative formula 236 presumes a SCORE value is generated in some manner. Some illustrative embodiments use the following approach:

$$\text{SCORE} = S_A \times S_R$$

Where, for example, S_A and S_R may be calculated using one of several approaches. In one such embodiment, the following formula is used:

$$S_A = \text{GAIN} * \frac{\exp(N1 * [\ln(N2 * \text{QRS}_{Avg} - N3)])^2}{D1 * \text{QRS}_{Avg} - D2}$$

Where: GAIN=64.0 N1=-34.7222
N2=0.2326 N3=-0.6047
D1=0.3008 D2=-0.7821

It should be noted that the limits for QRS_{Avg} in this illustrative embodiment, are 0 < QRS_{Avg} < 4.0. A graph illustrating the relationship between S_A and QRS_{Avg} is shown in FIG. 7A.

The illustrative Scoring method further includes calculating a value S_R as:

$$S_R = C_R * (\text{SNR})^2$$

Where: if SNR ≤ 3.5, C_R = 0.1;
if 3.5 < SNR ≤ 10, C_R = 1; and
if SNR > 10, S_R = 100

A graph illustrating the relationship between S_R and the SNR is shown in FIG. 7B.

In another embodiment, S_A and S_R may be calculated from the following look-up table:

LOOKUP TABLE

S_A	QRS _{Avg} (mV)	S_R	SNR
0.5	≤0.5	0.5	≤3
5	0.5-0.65	1	3-3.5
10	0.65-0.8	25	3.5-4
18	0.8-1.0	50	4-5
30	1.0-1.7	75	5-7.5
20	1.7-2.0	100	>7.5
40	2.0-3.0		
15	3.0-3.5		
0.5	3.5-4.0		

It can be seen that the output scores using the lookup table would include a trough in the range of 1.7 mV < QRS_{Avg} < 2.0 mV, in accordance with an embodiment adapted for multiple dynamic ranges.

In yet another embodiment, S_A and S_R are calculated using another polynomial formula, for example:

$$S_R = C_R * (SNR)^2$$

where: if SNR ≤ 3.5, $C_R = 0.1$
 if 3.5 < SNR ≤ 10, $C_R = 1$; and
 if SNR > 10, $S_R = 100$

It can be seen that S_R is calculated the same here as in the first calculation method shown above, and a graph showing the relationship is shown in FIG. 7B. In this illustrative example, S_A may be calculated using the following:

$$S_A = \{C_1 * (QRS_{Avg})^6 + C_2 * (QRS_{Avg})^5 + C_3 * (QRS_{Avg})^4 + C_4 * (QRS_{Avg})^3 + C_5 * (QRS_{Avg})^2 + C_6 * (QRS_{Avg}) + C_7\}$$

where, if QRS_{Avg} ≤ 2.0,

$$C_1 = 22.5718 \quad C_2 = -105.9666 \quad C_3 = 160.2345 \\ C_4 = -88.9262 \quad C_5 = 29.6019 \quad C_6 = -1.2859 \\ C_7 = 0.0087$$

and, if QRS_{Avg} > 2.0,

$$C_1 = 56.5544 \quad C_2 = -1069.9959 \quad C_3 = 8310.0056 \\ C_4 = -33849.9682 \quad C_5 = 76139.7271 \quad C_6 = -89551.3405 \\ C_7 = 43035.7880$$

A graph illustrating the relationship between S_A and QRS_{AVG} is shown in FIG. 7C. Both the lookup table and this third method using a 6th order polynomial take into account a system having first and second dynamic ranges by providing a dip in the SCOREs corresponding to input signals that would border between the two dynamic ranges.

These methods of calculating SCOREs are merely illustrative, and those of skill in the art will understand that the values and calculations involved will vary depending upon the positioning of the system, the electronics and electrodes used, power level(s), and, potentially, other variables.

It is sufficient for the present invention that an analysis of a sensing vector is performed with the patient in two or more body positions, if two positions are possible, and that this analysis provides a result that indicates whether or not the vector is useful/usable. For some embodiments, the analysis may further provide results for several vectors such that the vectors may be compared to one another. For example, in the method of FIG. 3, a Boolean output of Yes/No may be a result of vector analysis such that, if a vector is initially selected and is functional, a Yes output results. For the method embodiments of FIGS. 4-5, however, an output of vector analysis that allows comparative analysis is illustrated, as it allows the vectors to be compared to one another at the end of analysis. In alternative embodiments, a method as in FIGS. 4-5 returns Boolean results, with the available vectors prioritized such

that the highest priority vector returning a functional result (Yes output, for example) is selected.

Referring again to FIG. 5, after comparison of the vectors at 230, the vector with the largest PASS_{value} is selected as the default or primary sensing vector, as indicated at 232. Template formation may then be initiated, as indicated at 214, and the device may move on to ordinary function. If desired, a secondary sensing vector may also be identified in step 232. A secondary sensing vector may be used, for example, for any of the reasons set forth above, including to resolve ambiguities, to provide a Boolean check of cardiac function, or to provide a second vector to use when the patient changes body position.

In a more general embodiment making use of similar relationships, the first formula could be of the form:

$$\sqrt{\sum_{i=1}^{i=n} (SCORE_n)^2} - [\text{Max}(SCORE_1 \dots SCORE_n) - \text{Min}(SCORE_1 \dots SCORE_n)]$$

where n is the number of body positions tested, and SCORE is the score for the vector while the patient is in the ith body position. The amplitude factor may be analogous to the above amplitude factor. An additional factor which may be included takes the form:

$$\frac{\text{Min}(SCORE_1 \dots SCORE_n)}{\text{Max}(SCORE_1 \dots SCORE_n)}$$

This term would further emphasize a minimum score value, for example, when using three body positions in the postural assessment, if a very low score is achieved in any of the positions, the vector under consideration may be poorly suited to detection regardless of high SCOREs in the other positions, and this factor would reduce the output PASS value.

FIGS. 8A-8E are graphical representations of display outputs of a programmer during an illustrative method of postural assessment. In the illustrative embodiment, the programmer includes a touch screen; in other embodiments, the programmer may include buttons, a keypad or other controls, and may take any suitable form.

FIG. 8A shows a first screen shot. The programmer indicates to the physician that the postural assessment procedure is to start. The physician is asked to ensure that the patient is laying down (a first body position) and then to touch the "continue" icon 300 on the screen. Across the top of the programmer screen, status is indicated for the implanted device. In particular, during these steps, therapy for the device may (optionally) be turned off. The device status as "implanted" is indicated, as is the patient's heart rate. In some embodiments, the programmer may refuse to perform postural assessment if the patient's heart rate is not in a predetermined range, for example, between 50 and 120 bpm.

After the physician presses the "continue" icon 300 from the screen shot of FIG. 8A, the next screen that is seen is that of FIG. 8B, in which the programmer indicates that the device is collecting the patient's rhythm. The physician is requested to keep the patient still. A cancel icon 302 is provided in case the physician determines that the procedure should stop, for example, if the patient feels uncomfortable or ill, displays a physical abnormality (rising heart rate, for example), or if the

patient moves. If desired, a status bar may be provided to indicate the progress of the sensing vector analysis to the physician.

Once data is captured for the first patient body position, the next screen shot is that of FIG. 8C. The physician is asked to have the patient sit up (a second body position). With the patient sitting up, the physician is asked to keep the patient still and depress the continue icon 304. The programmer then displays the screen shot of FIG. 8D, which is quite similar to that of FIG. 8B and again includes an optional cancel button 306 and may include a status bar.

As shown in FIG. 8E, once data capture is complete for the second body position, patient tailoring in the illustrative embodiment is complete. The physician (or other operator) may go on to perform other tasks by touching the "continue" icon 310. In other embodiments, additional data capture may ensue, if desired.

In some embodiments, the data capture for the patient may include options for physician input. For example, during data capture, it is possible for an artifact (such as a T-wave) to interfere with detection of R-waves. In some instances, the physician's input may be needed or requested to resolve any questions relating to event classification. Some examples are discussed in copending U.S. patent application Ser. No. 11/441,522, filed May 26, 2006 published as US Patent Application Publication Number 2007-0276445 and entitled SYSTEMS AND METHODS FOR SENSING VECTOR SELECTION IN AN IMPLANTABLE MEDICAL DEVICE, now U.S. Pat. No. 8,788,023. In one illustrative embodiment, any such questions are delayed until all data has been captured, allowing the physician to concentrate on the programmer to answer such questions, rather than having the patient remain in a predetermined position while such issues are resolved. In another illustrative embodiment, such questions are asked as they arise.

In some embodiments, the above methods may be revisited later, after implantation, by the patient on his or her own. For example, as home-monitoring systems become available for patients with implanted cardiac monitoring and/or stimulus devices, a home monitoring system may be used to communicate with the implanted device, allowing later re-selection of sensing vectors in light of postural assessment. The home monitoring system, in an illustrative example, may include a graphical user interface allowing the user to indicate readiness for postural assessment, after which the home monitoring system may provide graphical output indicating what to do, physically, for the patient to complete home-monitoring self-assessment of postural effects on cardiac signals. Thus, a home monitoring system having functionality allowing it to provide patient directions in support of postural assessment may also be a "programmer" in the methods and systems discussed herein.

Yet another illustrative embodiment may include a device as shown in either of FIGS. 1A-1B which includes a sensor or sensing system for determining patient body position. For example, the sensor may be a gravity sensor or accelerometer-type sensor. The sensor may also be used to measure trans-thoracic impedance as a surrogate for patient body position. In one embodiment, the system need not determine an actual position using the position sensor, but instead may identify position sensor output ranges that correlate to the usefulness of particular vectors and/or templates. For example, when a patient moves from sitting to standing, a position sensor output may indicate a change of position. When the position changes as indicated by the position sensor, the system may determine for itself whether the primary sensing vector should be changed by observing various template analyses.

To this end, from the implanted medical device system perspective, knowledge of the position is not needed, but instead, identification of the best template from several that are available is sufficient.

During operation, another illustrative implanted medical device may periodically (at intervals) or occasionally (in response to a condition or request) perform postural assessment without requesting movement by the patient. For example, if the position sensor output is "X", vector selection may be performed. If the position sensor later provides a different output, "Y", vector selection may again be performed, as is may be presumed that the patient is in a different body position. This process may be repeated several times, with templates and vectors identified for various position sensor outputs. After the selection process, if the position sensor output returns to "X", then a vector and/or template associated with position sensor output "X" may be selected. Within this approach, a single vector may have multiple templates, each corresponding to a position sensor output.

Those skilled in the art will recognize that the present invention may be manifested in a variety of forms other than the specific embodiments described and contemplated herein. Accordingly, departures in form and detail may be made without departing from the scope and spirit of the present invention as described in the appended claims.

What is claimed is:

1. A programmer for use with an implantable medical device, the implantable medical device including therapy circuitry for providing electrical therapy output using one or more electrodes disposed on a lead configured for attachment thereto, implant communications circuitry for communicating with the programmer, and operational circuitry for controlling at least the therapy circuitry and communications circuitry, the programmer including a user interface screen for providing instructions and information to a user thereof, an input for taking an input from a user thereof, and programmer communication circuitry for communicating with the implantable medical device, the programmer configured to perform the following method:

present a plurality of posture states via the user interface screen and obtain an input from a user indicating that a patient having the implantable medical device has assumed a first posture of the plurality of posture states; upon receiving an input from the user indicating that the first posture has been assumed by the patient, directing, via the programmer communication circuitry, the implantable medical device to capture information for the first posture; and

directing the implantable medical device to store a first sensing parameter using at least the captured information for the first posture.

2. The programmer of claim 1 wherein the programmer is further configured to:

obtain an input from the user indicating that the patient has assumed a second posture of the plurality of posture states; and

upon receiving an input from the user indicating that the second posture of the plurality of posture states has been assumed by the patient, directing, via the programmer communication circuitry, the implantable medical device to capture information for the second posture; wherein the step of directing the implantable medical device to store a first sensing parameter includes using the captured information for the second posture.

3. The programmer of claim 1 wherein the step of directing the implantable medical device to store a first sensing param-

15

eter includes receiving and analyzing the captured information for at least the first posture from the implantable medical device.

4. The programmer of claim 1 wherein the step of directing the implantable medical device to store a first sensing parameter includes indicating to the implantable medical device that postural analysis is complete and the implantable medical device may calculate and store the first parameter.

5. The programmer of claim 1 wherein the first sensing parameter is related to a sensing vector for use in sensing patient condition information.

6. The programmer of claim 1 wherein the first sensing parameter defines which of a plurality of cardiac signal sensing vectors the implantable device is to use for sensing patient condition information.

7. The programmer of claim 1 wherein the implantable medical device comprises a position sensor including an accelerometer and the first sensing parameter is used to define one or more output ranges of the accelerometer.

8. The programmer of claim 7 wherein the first sensing parameter defines which of several cardiac signal sensing vectors available to the implantable medical device to use in response to the accelerometer signal.

9. The programmer of claim 1 wherein the plurality of posture states include at least standing and lying down.

10. A medical device system comprising:

an implantable lead having a plurality of electrodes and a connector;

an implantable medical device comprising therapy circuitry for providing electrical therapy output, implant communications circuitry for communicating with the programmer, operational circuitry for controlling at least the therapy circuitry and communications circuitry, and a port for receiving the connector of the lead;

a programmer for use with the implantable medical device, the programmer including a user interface screen for providing instructions and information to a user thereof, an input for taking an input from a user thereof, and programmer communication circuitry for communicating with the implantable medical device;

wherein the programmer and the implantable medical device are configured for cooperative operation as follows:

the programmer is configured to present a plurality of posture states via the user interface screen to a user and obtain an input from the user indicating that a patient having the implantable medical device has assumed a first posture of the plurality of posture states;

the programmer is configured to direct, via the programmer communication circuitry issuing a first communication, the implantable medical device to capture information for the first posture, upon the programmer receiving an input from the user indicating that the first posture has been assumed by the patient;

the implantable medical device is configured to receive the first communication and capture information for the first posture; and

the implantable medical device is configured to store a first sensing parameter using the captured information for the first posture.

11. The system of claim 10 wherein the programmer is further configured to:

obtain an input from the user indicating that the patient has assumed a second posture of the plurality of posture states; and

direct, via the programmer communication circuitry, the implantable medical device to capture information for

16

the second posture upon receiving the input from the user indicating that the second posture of the plurality of posture states has been assumed by the patient;

and further wherein the first sensing parameter is determined using both the captured information for the first posture, and the captured information for the second posture.

12. The system of claim 10 wherein the programmer is configured to receive and analyze the captured information for at least the first posture from the implantable medical device, determine the first sensing parameter, and communicate the first sensing parameter to the implantable medical device.

13. The system of claim 10 wherein the implantable medical device is configured to analyze the captured information for at least the first posture and determine the first sensing parameter therefrom.

14. The system of claim 10 wherein the first sensing parameter is related to a sensing vector for use in sensing patient condition information.

15. The system of claim 14 wherein the first sensing parameter defines which of a plurality of cardiac signal sensing vectors the implantable device is to use for sensing patient condition information.

16. The system of claim 10 wherein the implantable medical device comprises a position sensor having an accelerometer and the first sensing parameter is used to define one or more output ranges of the accelerometer.

17. The system of claim 16 wherein the first sensing parameter defines which of several cardiac signal sensing vectors available to the implantable medical device to use in response to the accelerometer signal.

18. The system of claim 10 wherein the plurality of posture states include at least standing and lying down.

19. A method of operation in an implantable medical device system, the system comprising:

an implantable lead having a plurality of electrodes and a connector;

an implantable medical device comprising therapy circuitry for providing electrical therapy output, implant communications circuitry for communicating with the programmer, operational circuitry for controlling the therapy circuitry, and implant communications circuitry, and a port for receiving the connector of the lead;

a programmer for use with the implantable medical device, the programmer including a user interface screen for providing instructions and information to a user thereof, an input for taking an input from a user thereof, and programmer communication circuitry for communicating with the implantable medical device;

the method comprising:

the programmer presenting at least one posture state via the user interface screen to a user;

the programmer obtaining an input from the user indicating that a patient having the implantable medical device has assumed a first posture of the plurality of posture states;

the programmer directing, via a first communication from the programmer communication circuitry, the implantable medical device to capture information for the first posture upon receiving an input from the user indicating that the first posture has been assumed by the patient; the implantable medical device capturing information for the first posture upon receiving the first communication from the programmer; and

the implantable medical device storing a first sensing parameter determined by analysis of at least the captured information for the first posture.

17

20. The method of claim 19 wherein the implantable medical device includes a position sensor which comprises an accelerometer and the first sensing parameter is used to define one or more output ranges of the accelerometer.

* * * * *

5

18

专利名称(译)	通过姿势评估在心脏刺激设备中感知矢量选择		
公开(公告)号	US9357969	公开(公告)日	2016-06-07
申请号	US14/812029	申请日	2015-07-29
[标]申请(专利权)人(译)	卡梅伦保健公司		
申请(专利权)人(译)	CAMERON HEALTH, INC.		
当前申请(专利权)人(译)	CAMERON HEALTH, INC.		
[标]发明人	SANGHERA RICK ALLAVATAM VENUGOPAL		
发明人	SANGHERA, RICK ALLAVATAM, VENUGOPAL		
IPC分类号	A61B5/02 A61N1/372 A61N1/39 A61N1/37 A61B5/11 A61B5/042 A61B5/00 A61N1/368 A61B5/04 A61N1/365		
CPC分类号	A61B5/7221 A61B5/042 A61B5/04011 A61B5/1116 A61N1/368 A61N1/37 A61N1/3702 A61N1/37247 A61N1/3925 A61N1/3956 A61N1/36535 A61N1/3704		
优先权	14/307756 2015-02-24 US 13/919147 2014-07-15 US 13/491529 2013-07-09 US 11/672353 2012-06-12 US		
其他公开文献	US20150328470A1		
外部链接	Espacenet USPTO		

摘要(译)

方法，可植入医疗设备和系统，被配置为对来自植入电极的捕获信号进行分析以识别心律失常。在说明性实施例中，分析从两个或更多个感测向量捕获的信号，其中在至少第一和第二身体位置中与患者一起捕获信号。执行分析以识别用于事件检测的主要或默认感测向量和/或模板。

