



(19) **United States**

(12) **Patent Application Publication**
EOM et al.

(10) **Pub. No.: US 2019/0246979 A1**

(43) **Pub. Date: Aug. 15, 2019**

(54) **MOBILE HEALTHCARE DEVICE AND METHOD OF OPERATING THE SAME**

Publication Classification

(71) Applicant: **SAMSUNG ELECTRONICS CO., LTD.**, Suwon-si (KR)

(51) **Int. Cl.**
A61B 5/00 (2006.01)
G16H 40/63 (2006.01)
A61B 5/053 (2006.01)

(72) Inventors: **Kunsun EOM**, Seoul (KR); **Kak NAMKOONG**, Seoul (KR); **Yeolho LEE**, Anyang-si (KR); **Myounghoon JUNG**, Bucheon-si (KR); **Seongho CHO**, Gwacheon-si (KR)

(52) **U.S. Cl.**
CPC *A61B 5/681* (2013.01); *A61B 5/0402* (2013.01); *A61B 5/742* (2013.01); *A61B 5/0537* (2013.01); *A61B 5/7425* (2013.01); *A61B 5/053* (2013.01); *A61B 5/744* (2013.01); *A61B 5/7435* (2013.01); *A61B 5/684* (2013.01); *A61B 5/6831* (2013.01); *A61B 5/6898* (2013.01); *A61B 5/683* (2013.01); *A61B 5/6843* (2013.01); *A61B 5/743* (2013.01); *A61B 5/4869* (2013.01); *G16H 40/63* (2018.01)

(73) Assignee: **SAMSUNG ELECTRONICS CO., LTD.**, Suwon-si (KR)

(21) Appl. No.: **16/395,477**

(22) Filed: **Apr. 26, 2019**

Related U.S. Application Data

(63) Continuation of application No. 15/799,356, filed on Oct. 31, 2017, now Pat. No. 10,292,653, which is a continuation of application No. 14/698,976, filed on Apr. 29, 2015, now Pat. No. 10,321,874.

Foreign Application Priority Data

Oct. 23, 2014 (KR) 10-2014-0144288

(57) **ABSTRACT**

A mobile healthcare device and method of operating the same are provided. The method includes setting a mode of the mobile healthcare device to a measurement mode, displaying a screen for guiding a user to maintain a predetermined position during the measurement mode, and, in response to a predetermined amount of time passing from a time at which the screen begins to be displayed, obtaining state information of the user based on bio information of the user, the bio information being received from a sensor.

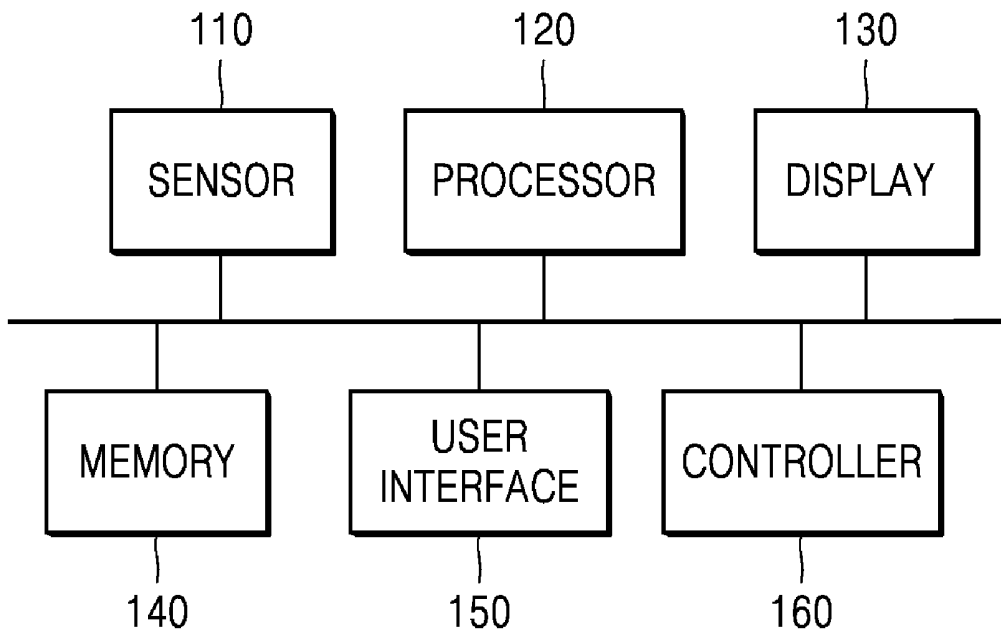


FIG. 1

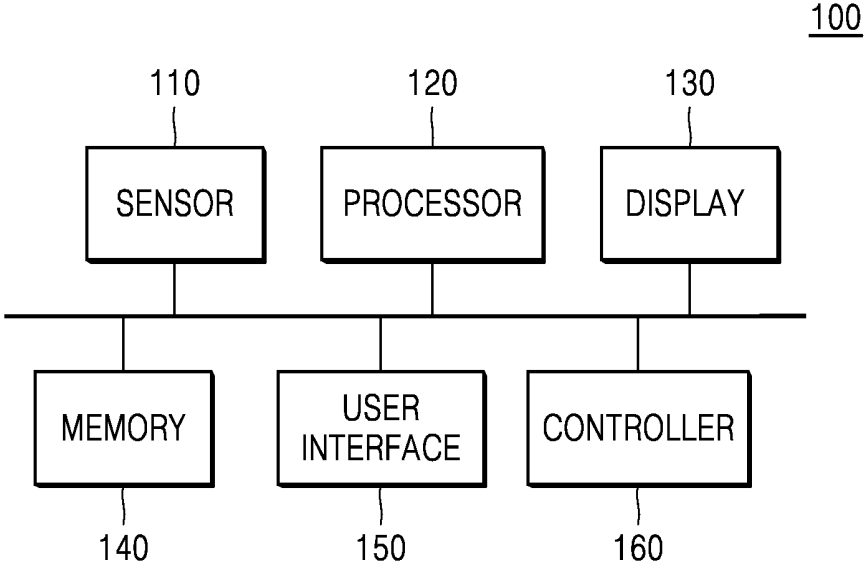


FIG. 2A

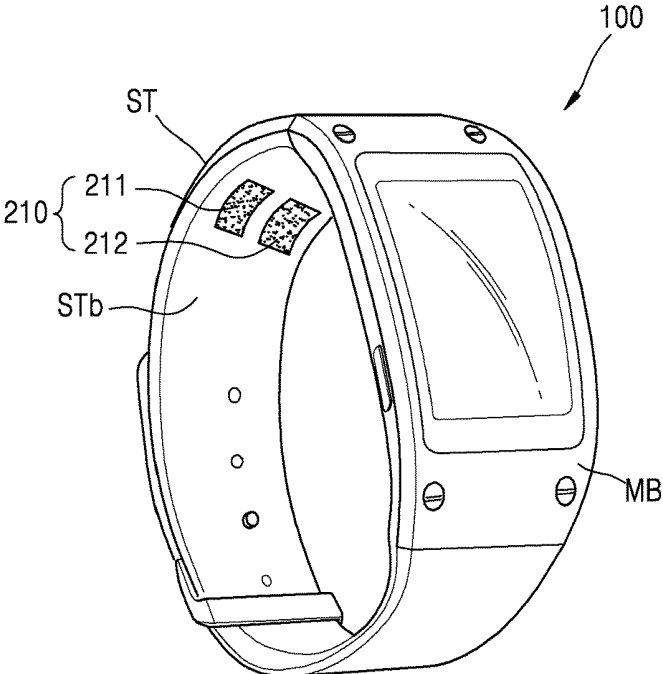


FIG. 2B

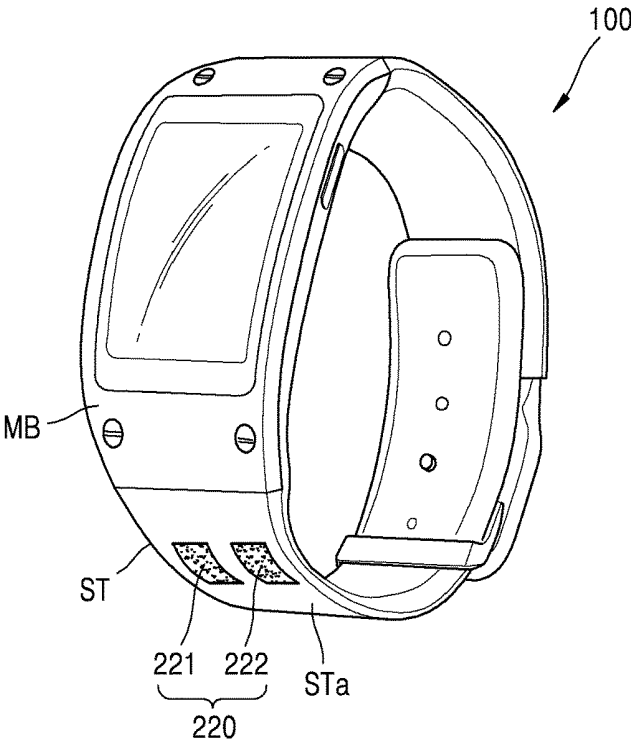


FIG. 3

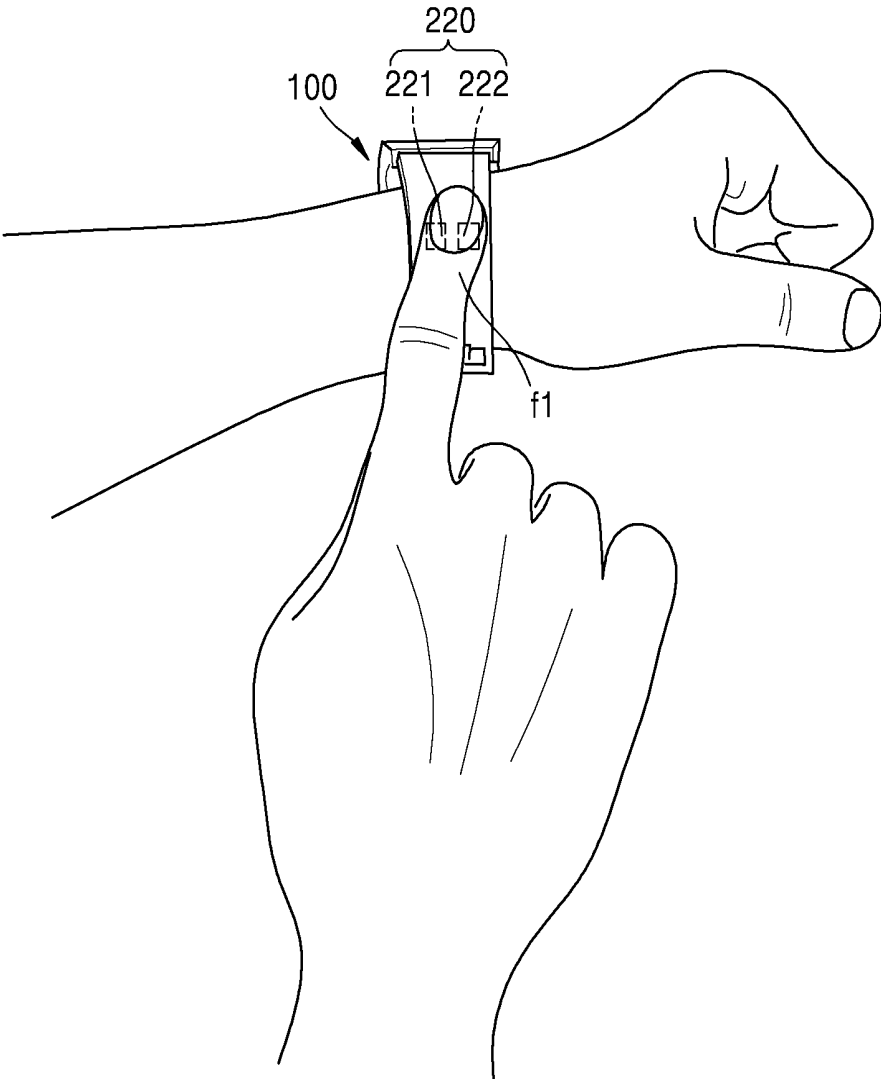


FIG. 4

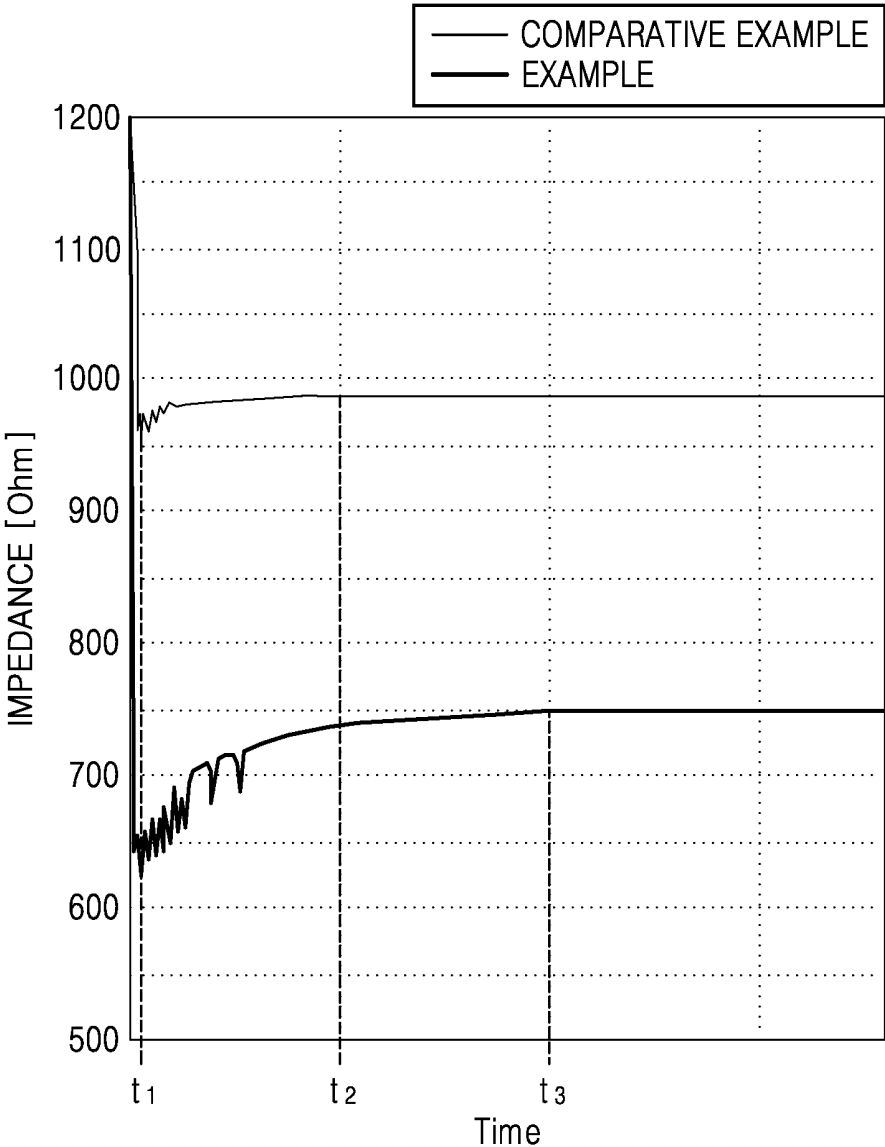


FIG. 5

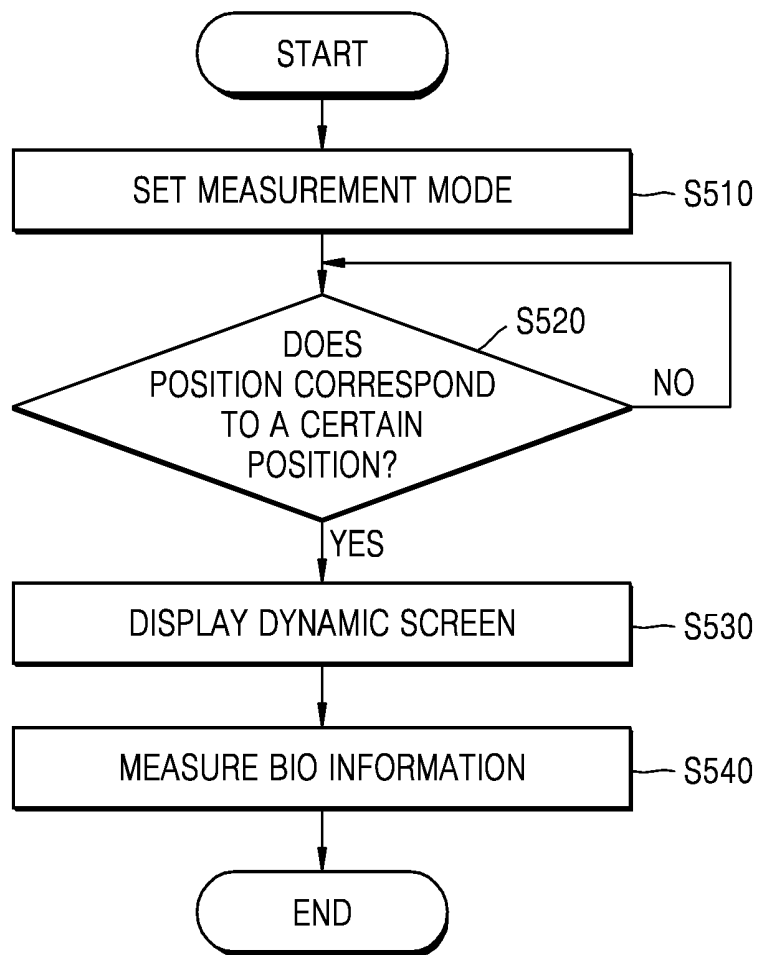


FIG. 6

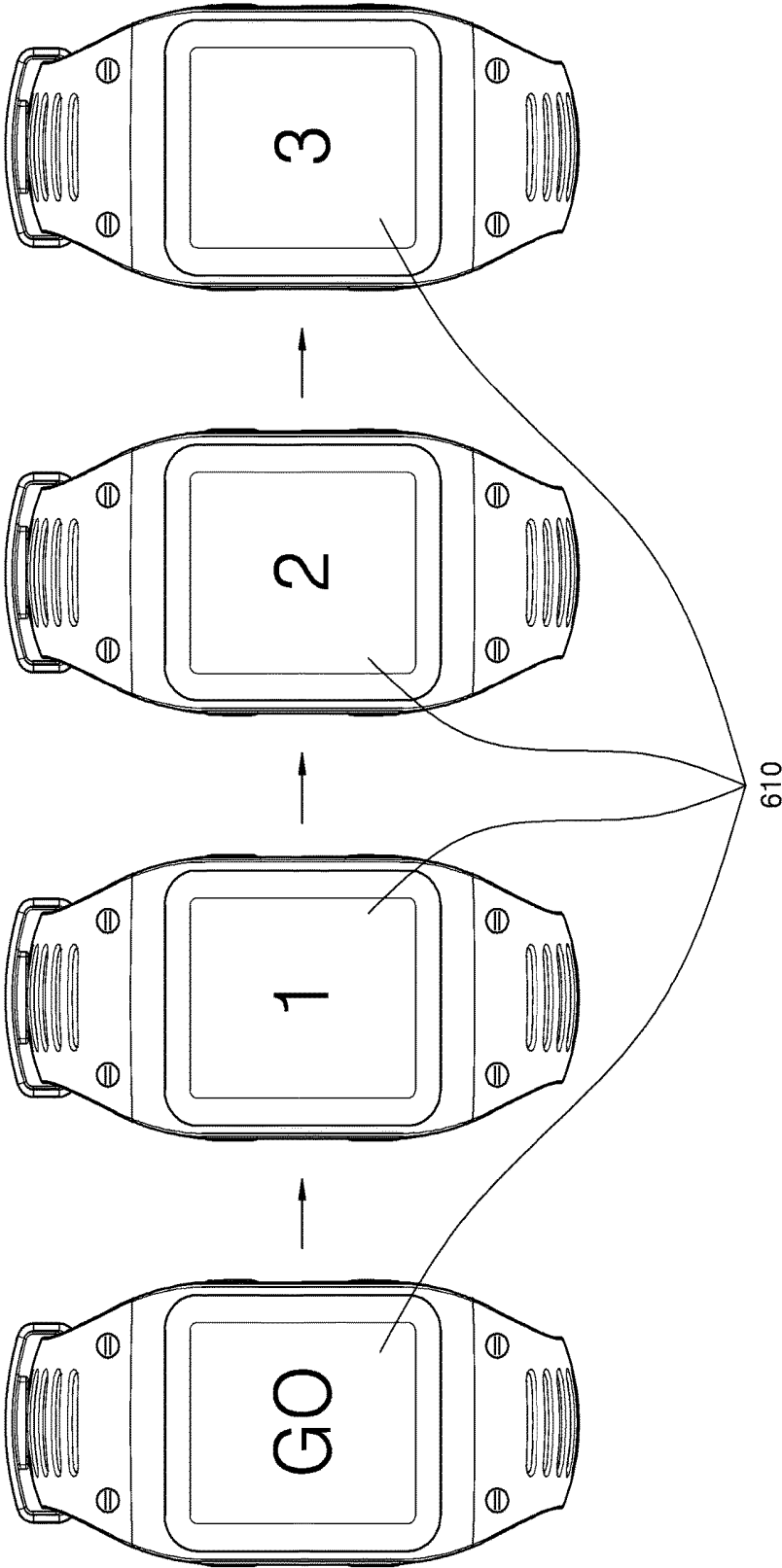


FIG. 7

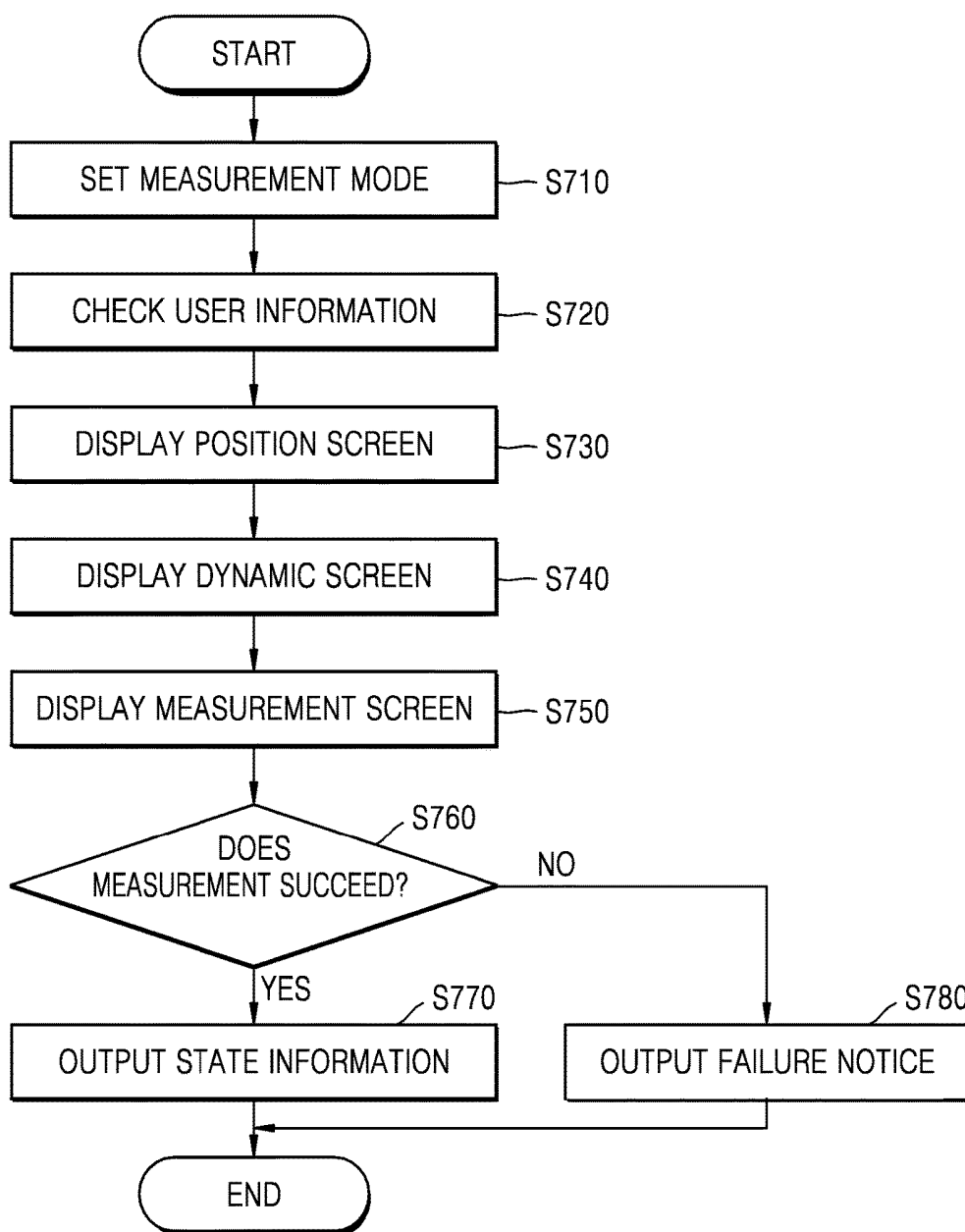


FIG. 8A

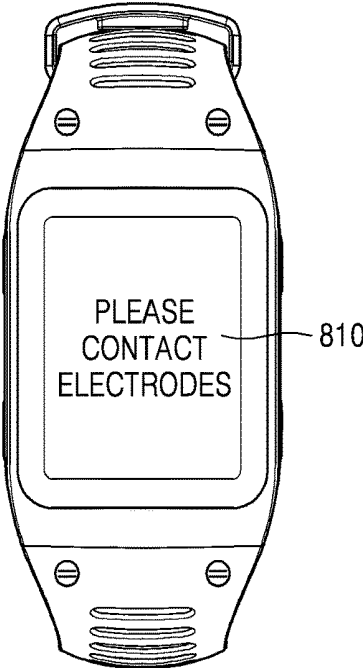


FIG. 8B

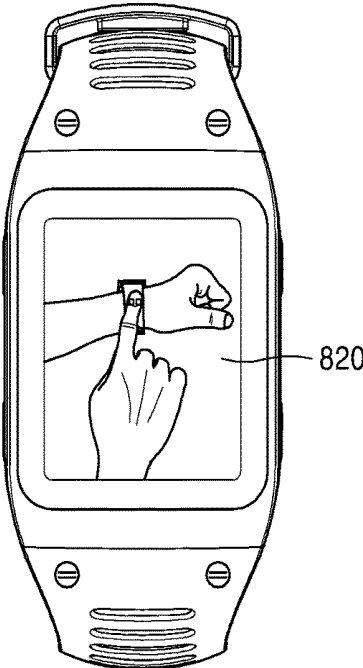


FIG. 9

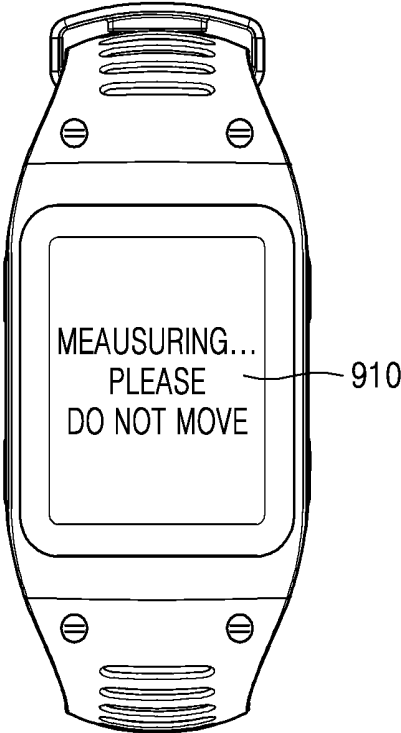


FIG. 10

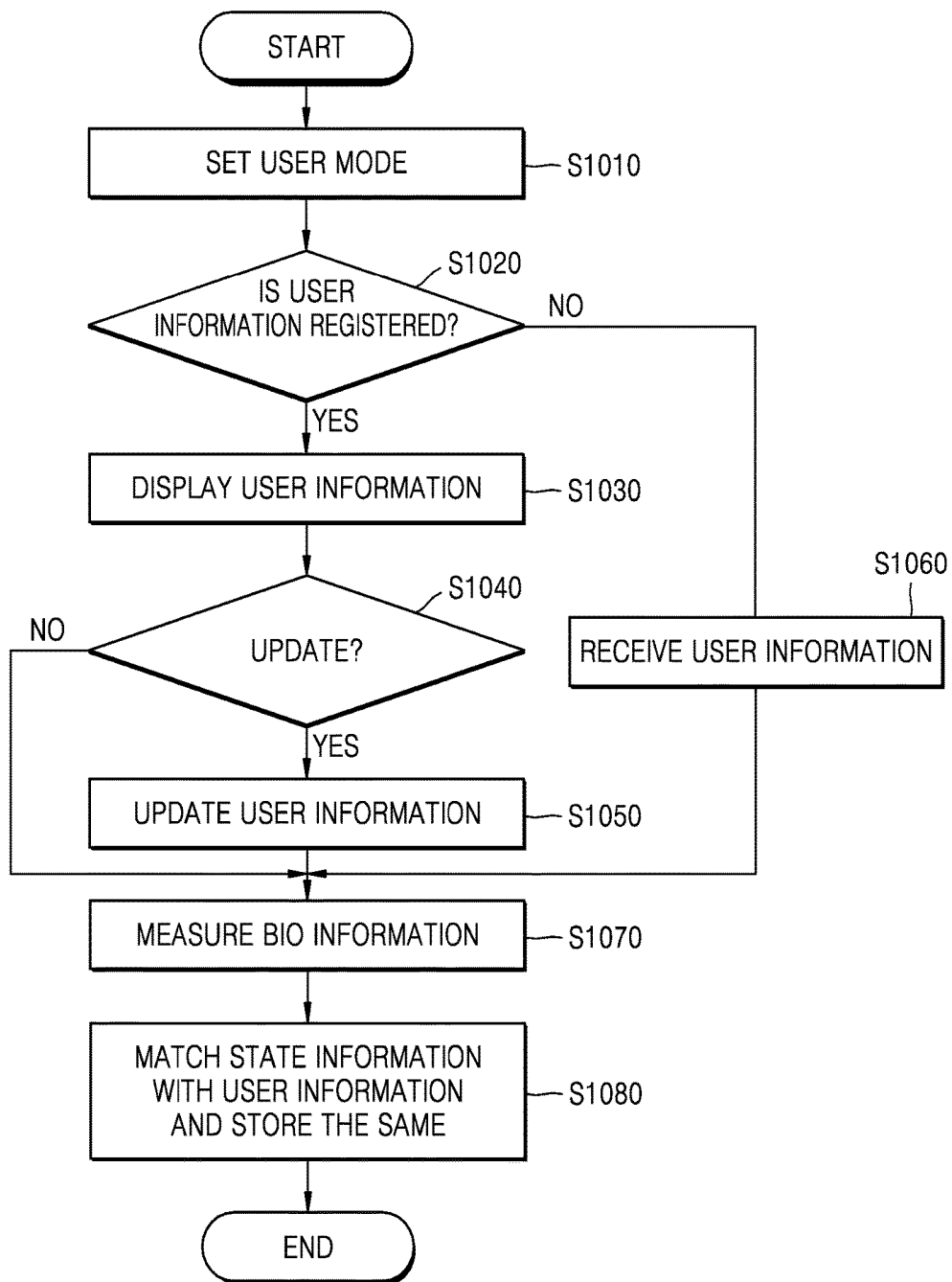
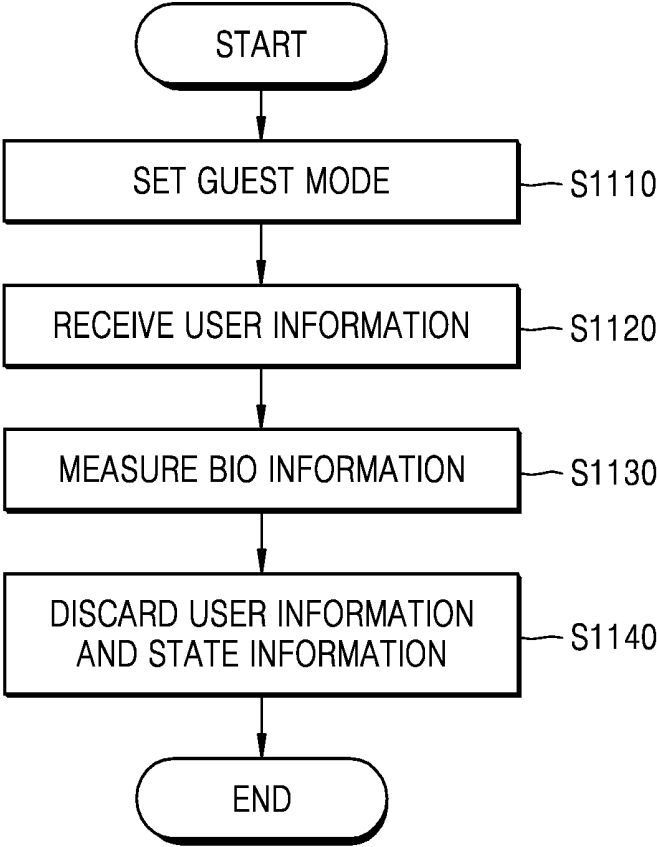


FIG. 11



MOBILE HEALTHCARE DEVICE AND METHOD OF OPERATING THE SAME

CROSS REFERENCE TO RELATED APPLICATIONS

[0001] This is a continuation application of U.S. patent application Ser. No. 15/799,356, filed Oct. 31, 2017, in the U.S. Patent and Trademark Office, which is a continuation application of U.S. patent application Ser. No. 14/698,976 filed on Apr. 29, 2015, in the U.S. Patent and Trademark Office, which claims priority from Korean Patent Application No. 10-2014-0144288, filed on Oct. 23, 2014, in the Korean Intellectual Property Office, the disclosures of which are incorporated herein in their entireties by reference.

BACKGROUND

1. Field

[0002] Apparatuses and methods consistent with exemplary embodiments relate to a healthcare device configured to measure bio information and a method of operating the same.

2. Description of the Related Art

[0003] With the developments in medical science and the increase in life expectancy of people, interest in health care and medical devices has rapidly increased. Accordingly, an amount of various medical devices for use in hospitals, inspection agencies, medical offices, and the like, has grown. For example, medium-sized medical devices such as those installed in government agencies, small-sized medical devices, personal mobile healthcare devices, and the like, have been proposed.

[0004] Because the size of the healthcare devices has been reduced, it is easier for a user to carry or wear them. However, user's bio information can typically only be properly acquired using such devices when the user maintains a certain position according to types of bio information to be acquired.

SUMMARY

[0005] One or more exemplary embodiments provide a mobile healthcare device configured to display a dynamic screen to inform a user to maintain a certain posture when bio information is acquired, and a method of operating the mobile healthcare device.

[0006] According to an aspect of an exemplary embodiment, there is provided a method of operating a mobile healthcare device, the method including setting a mode of the mobile healthcare device to a measurement mode; displaying a screen for guiding a user to maintain a predetermined position during the measurement mode, and, in response to a predetermined amount of time passing from a time at which the screen begins to be displayed, obtaining state information of the user based on bio information of the user, the bio information being received from a sensor.

[0007] The predetermined position of the user may indicate a contact state of the sensor at a predetermined area of the user.

[0008] The screen may be displayed in response to a position of the user being the predetermined position.

[0009] The position of the user may be determined using an impedance output from the sensor.

[0010] The predetermined amount of time may range from about two seconds to about ten seconds.

[0011] The obtaining may be performed after the displaying is terminated.

[0012] The obtaining may be performed during the displaying.

[0013] The screen may display numbers that change according to time.

[0014] The numbers may sequentially and continuously change in an ascending order or descending order.

[0015] The method may further include storing user information including at least one of a height, a gender, and a weight of the user.

[0016] The method may further include matching the state information with the user information and storing the state information and the user information, in response to the measurement mode being a user mode.

[0017] The method may further include discarding the state information and the user information in response to the measurement mode being a guest mode.

[0018] The state information and the user information may be discarded in response to the measurement mode being terminated.

[0019] The bio information may include a body impedance, and the state information may include a bio composition of the user.

[0020] The body composition may include at least one of body fat, a skeletal muscle mass, a muscle mass, a degree of obesity, a muscle strength, an edema value, a body composition ratio, and an amount of intra-abdominal fat.

[0021] According to an aspect of another exemplary embodiment, there is provided a mobile healthcare device including a sensor configured to detect bio information of a user; a display configured to display a screen for guiding the user to maintain a predetermined position, and a processor configured to obtain state information of the user based on the bio information received from the sensor in response to a predetermined amount of time passing from a time at which the screen begins to be displayed.

[0022] The predetermined position of the user may indicate a contact state of the sensor at a predetermined area of the user.

[0023] The screen may be displayed in response to a position of the user being the predetermined position.

[0024] The screen may display numbers that change according to time.

[0025] The bio information may include a body impedance of the user, and the state information may include a body composition of the user.

BRIEF DESCRIPTION OF THE DRAWINGS

[0026] The above and/or other aspects will become apparent and more readily appreciated from the following description of exemplary embodiments, taken in conjunction with the accompanying drawings, in which:

[0027] FIG. 1 is a block diagram of a mobile healthcare device according to an exemplary embodiment;

[0028] FIGS. 2A and 2B are perspective views of a mobile healthcare device for measuring body impedance, according to exemplary embodiments;

[0029] FIG. 3 shows an example of a position for measuring body impedance using the mobile healthcare device, according to an exemplary embodiment;

[0030] FIG. 4 is a graph showing an impedance change caused by a user contact, according to an exemplary embodiment;

[0031] FIG. 5 is a flowchart of a method of operating the mobile healthcare device that is configured to display a dynamic screen, according to an exemplary embodiment;

[0032] FIG. 6 is a reference view of a dynamic screen, according to an exemplary embodiment;

[0033] FIG. 7 is a flowchart of a method of operating the mobile health-care device that is configured to display a dynamic screen, according to another exemplary embodiment;

[0034] FIGS. 8A and 8B are reference views of guidance screens according to exemplary embodiments;

[0035] FIG. 9 is a reference view of a measurement screen according to an exemplary embodiment;

[0036] FIG. 10 is a flowchart of a method of managing user information and state information in a user mode, according to an exemplary embodiment; and

[0037] FIG. 11 is a flowchart of a method of managing user information and state information in a guest mode, according to an exemplary embodiment.

DETAILED DESCRIPTION

[0038] The terms used in this specification may be general terms that are widely used in the art in consideration of the functions regarding the inventive concept, but the terms may vary according to the intention of those of ordinary skill in the art, precedents, new technology in the art, and the like. Also, specified terms may be selected by the applicant, and the detailed meaning thereof will be described in the detailed description of the inventive concept. Thus, the terms used in the specification may be understood not as simple names but based on the meaning of the terms and the overall description of the invention.

[0039] Throughout the specification, when a region is referred to as being connected to another region, the region may be directly connected to the other region or one or more intervening layers may exist therebetween. Also, when a portion includes an element, another element may be further included, rather than excluding the existence of the other element, unless otherwise described. Also, terms such as “. . . unit”, “. . . module”, and the like, may be units for processing at least one function or operation and may be implemented as hardware, software, or a combination of hardware and software.

[0040] In the present specification, it is understood that terms such as “including”, “having”, and “comprising” are intended to indicate the existence of the features, numbers, steps, actions, components, parts, or combinations thereof disclosed in the specification, and they are not intended to preclude the possibility that one or more other features, numbers, steps, actions, components, parts, or combinations thereof may exist or may be added.

[0041] The inventive concept is more fully described herein with reference to the accompanying drawings, in which exemplary embodiments of the invention are shown. The invention may, however, be embodied in many different forms and should not be construed as being limited to the embodiments set forth herein. Rather, these exemplary embodiments are provided so that this disclosure will be thorough and complete, and will fully convey the concept of the invention to those skilled in the art.

[0042] According to various embodiments, a mobile healthcare device or apparatus may refer to a portable type or a wearable type. For example, the mobile healthcare device may be of a watch type, a bracelet type, a ring type, a hair band type, and the like, and may have communication and data processing functions. In one or more exemplary embodiments of the inventive concept, the mobile healthcare device is a watch-type device or a wristband-type device, but is not limited thereto.

[0043] Also, the mobile healthcare device may have a housing or a plurality of housings. For example, in the case of the mobile healthcare device having a plurality of housings, a plurality of components may be respectively connected to the plurality of housings in a wired or wireless manner. For example, the components may be arranged into a first device which includes a sensor disposed on a wrist, etc. of the user and which detects bio information, and a second device which processes the detected bio information. The mobile healthcare device may be included in another device, for example, a mobile terminal, which performs other functions. The mobile terminal may include a mobile phone, a tablet, a computer, an appliance, a game console, and the like.

[0044] FIG. 1 is a block diagram of a mobile healthcare device 100, according to an embodiment. As shown in FIG. 1, the mobile health-care device 100 includes a sensor 110 which detects bio information of a user, a processor 120 which obtains state information based on the bio information received from the sensor 110, a display 130 which displays the obtained state information, a memory 140 which stores a program, and the like, which may be used by the mobile healthcare device 100, a user interface 150 which receives a user command, and the like, and a controller 160 which controls components in the mobile health care device 100.

[0045] The user is a target from whose bio information is to be detected. The user may be a person or an animal or some portions of a person or an animal. The bio information represents distinctive signals generated by the user, for example, signals obtained from an electrocardiogram (ECG), a ballistocardiogram (BCG), a photoplethysmograph (PPG), an electromyogram, or movements of a certain part (for example, the heart, muscle, etc.) of the user, or may be information representing the blood sugar level, cholesterol, body impedance, and the like. The state information may indicate a health state of the user and is obtained using the bio information. For example, the state information may be the maximum blood pressure, minimum blood pressure, and the like, and may be obtained using the bio information such as the ECG, PPG, and the like. In addition, the state information indicating body composition may be obtained using bio information indicating the body impedance.

[0046] The sensor 110 may detect the bio information of the user. The sensor 110 may be disposed on, for example, on the wrist, chest, and/or ankle of the user. The sensor 110 may detect the bio information through a non-invasive method. For example, the sensor 110 may include a plurality of electrodes in which at least some of the electrodes may contact the user while the user wears the mobile healthcare device 100. Thus, the sensor 110 may detect the bio information by detecting electrical signals that vary with a change of the bio information, for example, a change of the body impedance. As another example, the sensor 110 may

detect the bio information using reflected signals by irradiating light on the user or by using magnetic signals, pressure, or the like.

[0047] The processor 120 may obtain state information using the bio information. The processor 120 may convert the state information into images, texts, audio, and the like. The processor 120 may be a single micro processor module or a combination of two or more micro processor modules, however, the processor 120 is not limited thereto. Hereinafter, measuring the bio information may refer to the sensor 110 that detects the bio information, and the processor 120 that uses the detected bio information in order to obtain the state information.

[0048] The processor 120 may use various methods for obtaining the state information according to the types of the bio information. For example, when the bio information is the body impedance, the processor 120 may use the bio impedance and obtain the body composition of the user. The body composition may include body fat, characteristics of skin (for example, moisture of the body), muscle strength, an edema value, skeletal muscle mass, muscle mass, a degree of obesity, a body composition ratio, an amount of intra-abdominal fat, and the like, of the user. As another example, the processor 120 may obtain the body composition using the body impedance as well as user information. The user information may refer to an age, weight, height, gender, etc. of the user.

[0049] As another example, when the bio information is ECG signals according to a heart's activity, the processor 120 may obtain the state information from the bio information, which is in a wave form, and blood pressure of the user may be analyzed using the wave form of the bio information. The wave form of the bio information may be a function according to time. When the wave form of the bio information is obtained, the processor 120 may amplify the ECG signals and may filter the amplified ECG signals using a FirBandpass filter. Here, peaks may be detected from the filtered ECG signals, and the wave form of the bio information may be obtained by adaptively filtering the detected peaks.

[0050] The display 130 may output the bio information after the ECG signals or other user information has been processed. The display 130 may display a user interface (UI), a graphic UI (GUI), and the like, for displaying the state information, a use protocol of the mobile healthcare device 100, and the like. The display 130 may include at least one of a liquid crystal display (LCD), a thin film transistor-liquid crystal display, an organic light-emitting diode (OLED), a flexible display, and a three-dimensional (3D) display. In some examples there may be two or more displays 130 according to the type of the mobile health care device 100.

[0051] The display 130 and a touch pad for receiving a user input may have an interlayer structure and may form a touch screen. In this example, the display 130 may be used as an input device and an output device.

[0052] The memory 140 may store data generated while the mobile healthcare device 100 operates. For example, the memory 140 may be a storage medium such as a hard disk drive (HDD), read only memory (ROM), random access memory (RAM), flash memory, a memory card, and the like.

[0053] The user interface 150 may receive an input for manipulating the mobile health-care device 100 from the user and may output bio information processed by the user

interface 150. For example, the user interface 150 may include a button, a key pad, a switch, a dial, a touch interface, a camera, for manipulating the mobile healthcare device 100. The user interface 150 may include the display 130 for displaying an image and may be implemented as a touch screen.

[0054] The controller 160 may control overall operations of the mobile healthcare device 100. For example, the controller 160 may control the sensor 110 to detect the bio information. Also, the controller 160 may determine whether the detected bio information is normal or abnormal and may provide the user with a determination result through the display 130.

[0055] In an example in which the controller 160 requires the user or the user otherwise attempts to maintain a certain position in order to measure the bio information, the controller 160 may control the display 130 to display a guidance screen or dynamic screen to assist the user in maintaining the certain or predetermined position.

[0056] For example, when the mobile healthcare device 100 is a device for measuring the body impedance, the sensor 110 may include one or more electrodes to provide electrical signals to the user and receive the electrical signals from the user. When the body impedance is measured, the one or more electrodes may contact the user.

[0057] FIGS. 2A and 2B show perspective views of the mobile health-care device 100 when the body impedance is measured according to exemplary embodiments, and FIG. 3 shows an example of a position for measuring the body impedance using the mobile healthcare device 100, according to an exemplary embodiment. Referring to FIGS. 2A and 2B, the mobile healthcare device 100 includes a main body (MB) and straps ST that form a watch or other wearable device. There are two straps ST at both sides of the main body MB, and the user may wear the mobile health care device 100 after the straps ST are connected to each other. The processor 120, the display 130, the memory 140, the user interface 150, and the controller 160 from among components of the mobile health care device 100 shown in FIG. 1 may be arranged in the main body MB. The main body MB may further include a watch module so that the mobile healthcare device 100 may also be used as a watch.

[0058] Some of the components of the sensor 110 may be arranged in the straps ST. For example, when the sensor 110 is used to detect the body impedance of a user wearing the device 100, the sensor 110 may include one or more input electrodes which apply a current to the user and one or more output electrodes which detect a voltage from the user. In this example, one or more input electrodes and output electrodes may be exposed to the outside and may contact the user.

[0059] As shown in FIGS. 2A and 2B, a first electrode module 210, which includes a first input electrode 211 and a first output electrode 212, is arranged on an inner surface STb which may be included in any one of the straps ST of the mobile health care device 100, and a second electrode module 220, which includes a second input electrode 221 and a second output electrode 222, may be arranged on an outer surface STa which may be included in any one of the straps ST.

[0060] In this example, the first electrode module 210 is exposed through an inner surface of the device and it is configured to contact an outer surface of the user. Also, the

second electrode module **220** is exposed through an outer surface of the device, and is configured to be touched by a user.

[0061] As shown in FIGS. 2A and 2B, directions in which the first input electrode **211** and the first output electrode **212** are arranged on the inner surface of the STb and in which the second input electrode **221** and the second output electrode **222** are arranged on the outer surface of the STa may be perpendicular to a lengthwise direction of the straps ST, however, the exemplary embodiments are not limited thereto.

[0062] The first input electrode **211**, the first output electrode **212**, the second input electrode **221**, and the second output electrode **222** are arranged on one of the straps ST. According to an exemplary embodiment, because both of the second input electrode **221** and the second output electrode **222**, which are used to contact a body part of the user while the body impedance is measured, are arranged on one of the straps ST, user convenience may be improved.

[0063] Also, in some examples the first input electrode **211** and the first output electrode **212** respectively face the second input electrode **221** and the second output electrode **222**. However, this example is merely one example and it is unnecessary for the first input electrode **211**, the first output electrode **212**, the second input electrode **221**, and the second output electrode **222** to exactly face each other, respectively. Although it is described that the first electrode module **210** and the second electrode module **220** are arranged on one of the straps ST, the exemplary embodiments are not limited thereto. As another example, the first electrode module **210** may be arranged on one of the straps ST and the second electrode module **220** may be arranged on the other of the straps ST. As another example, at least one of the first electrode module **210** and the second electrode module **220** may be arranged on the main body MB. Also, the mobile healthcare device **100** may include one main body MB and one strap ST.

[0064] When a target user whose body impedance is to be measured wears the mobile healthcare device **100**, the first electrode module **210** may contact the wrist of the user. Also, the second electrode module **220** may contact other body parts of the user on which the mobile healthcare device **100** is not disposed. For example, the second electrode module **220** may contact fingers, side surfaces of hands, palms, the other wrist, and the like. The second input electrode **221** and the second output electrode **222** may contact different fingers or may simultaneously contact a single finger to measure the body impedance. In the example shown in FIG. 3, the user wears the mobile healthcare device **100** on a left wrist and touches the second electrode module **220** with the right index finger **f1**.

[0065] When the size of the electrodes which detect the bio information is reduced, a contact resistance may occur when a body part of the user touches the electrodes. The contact resistance may change into noise while the body impedance is being measured. Accordingly, the mobile healthcare device **100** may obtain the state information using the body impedance after the contact resistance is removed.

[0066] The noise generated by the contact resistance is usually an exponential function. Accordingly, it may take a time varying with the resistance components of a contact interface to be multiplied by the capacitance components of the contact interface until the detection values are stabilized. When the size of the electrodes is decreased, a contact area

is also decreased, and the resistance components are greatly increased. As a result, it may take a long time until the detection values are stabilized. Also, due to movements which occur while the small electrodes are in contact with a body part, a noise other than the contact resistance may be added to data during the first few seconds.

[0067] FIG. 4 is a graph showing an impedance change caused by a user contact. Here, an area of an electrode in a comparative example is $1 \times 1 \text{ cm}^2$, and an area of an electrode in the example is $0.5 \times 0.4 \text{ cm}^2$. When the user wears the mobile healthcare device **100**, the first electrode module **210** contacts the skin of the user. The second electrode module **220** may be contacted by another body part of the user at a point **t1**. As shown in FIG. 4, an impedance according to the comparative example and example greatly changes at the point **t1** when the second electrode module **220** is contacted by the body part of the user.

[0068] In the comparative example, the impedance is stabilized at a point **t2**. However, because the sizes of electrodes according to the example are small, a contact resistance is generated at a time when the electrodes contact a body part of the user, and an impedance phase lag occurs due to the generated contact resistance. Therefore, in the example, the impedance is stabilized at a point **t3** after more time has passed. The impedance phase lag may differ according to sizes of the electrodes, a contact area with the user, and the like, and may range from about 2 to about 10 seconds. The impedance phase lag may increase in proportion to a decrease of the area of the electrodes.

[0069] In an example in which an electrode module comes in contact with the user and the contact with the electrodes is terminated at a time that is within the impedance phase lag, the mobile healthcare device **100** may not detect the body impedance of the user. Accordingly, the mobile healthcare device **100** may provide a dynamic screen to guide the user to maintain a contact state.

[0070] FIG. 5 is a flowchart of a method of operating the mobile healthcare device **100** when a dynamic screen is displayed, according to an exemplary embodiment, and FIG. 6 is a reference view of a dynamic screen, according to an exemplary embodiment. Referring to FIG. 5, the controller **160** may set a mode of the mobile healthcare device **100** to a measurement mode in operation **S510**. In some examples, the mobile healthcare device **100** may be set to a plurality of modes. For example, the mobile healthcare device **100** may include a clock mode in which time information is provided, a communication mode in which communication with an external device is available, a measurement mode in which the state information is obtained by detecting the bio information, and the like. When the user inputs a command for selecting the measurement mode among the plurality of modes, the controller **160** may set the mode to the measurement mode. If the mobile healthcare device **100** can operate in one mode only, the measurement mode may be set by a command for turning on the mobile healthcare device **100**.

[0071] The controller **160** may determine whether a position of the user corresponds to a certain or predetermined position in operation **S520**. For example, the controller **160** may detect a position of the user based on a result received from the sensor **110** which detects the bio information. When the sensor **110** measures an impedance, the impedance output by the sensor **110** may differ according to whether the first electrode module **210** and the second electrode module **220** are in contact with the user.

[0072] When both of the first electrode module **210** and the second electrode module **220** are in contact with the user, the impedance output by the sensor **110** may dramatically change because noise may be generated due to a size of an area in which the sensor **110** contacts the user. For example, the controller **160** receives the impedance from the sensor **110**, and if a value of the impedance with respect to a variation ratio of the impedance is greater than a reference value, the controller **160** may determine that the first electrode module **210** and the second electrode module **220** are in contact with the user. That is, the controller **160** may determine that the user is in a certain position or a body part is in a certain position.

[0073] If it is determined that the user is in a certain position (operation **S520**—YES), the controller **160** may display the dynamic screen on the display **130**, in operation **S530**. In this example, the dynamic screen may be a screen for guiding the user to maintain the certain position. The dynamic screen may display an image that is changed entirely according to time, but may display an image including objects in which some of the objects are changed according to time.

[0074] For example, the dynamic screen may be a screen on which numbers change according to time. The numbers may change in an ascending order or a descending order according to time. FIG. **6** shows a dynamic screen **610** on which numbers change in the ascending order according to time. As another example, the dynamic screen may include an advertisement image. As another example, the dynamic screen may be a combination of an advertisement image and numbers which change according to time. Accordingly, a sense of dullness which may be caused when the user is in a certain position may be decreased by providing the dynamic screen.

[0075] The mobile healthcare device **100** may measure the bio information in operation **S540**. For example, the processor **120** may obtain the state information using the bio information received from the sensor **110**. Although the sensor **110** may continue to detect the bio information in the measurement mode, the processor **120** may obtain the state information using the bio information which is detected after a certain or predetermined amount of time passes from a point in time at which the dynamic screen begins to be displayed. Also, the processor **120** may use the bio information which is detected after a display of the dynamic screen is stopped. As a non-limiting example, when the dynamic screen is displayed for ten seconds, the processor **120** may use the bio information which is detected after ten seconds from a time at which the dynamic screen is stopped being displayed. As another example, the processor **120** may use the bio information which is detected while the dynamic screen is being displayed. For example, the processor **120** may use the bio information which is detected after five seconds from the time when the dynamic screen begins to be displayed even though the dynamic screen continues to be displayed.

[0076] Because the state information is obtained using the bio information which is detected after a certain amount of time passes from the point at which the dynamic screen is stopped being displayed, the number of signal processing operations performed to remove noise may be reduced.

[0077] The sensor which detects the bio information has been described as an example of a sensor which detects a position of the user. However, the exemplary embodiments

are not limited thereto, and other sensors for detecting a position of a user may be used.

[0078] If however, the user position is not in a certain position (operation **S520**—NO), then operation **S520** repeats. For example, the repeating may be performed a threshold number of times, until the mobile healthcare device **100** is turned off, and the like.

[0079] The mobile healthcare device **100** may measure the bio information by referring to the user information. FIG. **7** is a flowchart of a method of operating the mobile healthcare device **100** when a dynamic screen is displayed, according to another exemplary embodiment, FIGS. **8A** and **8B** are reference views of guidance screens according to exemplary embodiments, and FIG. **9** is a reference view of a measurement screen according to an exemplary embodiment. Referring to FIG. **7**, the controller **160** may set the measurement mode according to a user command in operation **S710**.

[0080] The controller **160** may check the user information in operation **S720**. For example, the user information may be registered in the memory **140**, may be input according to a user command, and the like. As another example, the user information may be uploaded after the mobile healthcare device **100** is synchronized with an external device (for example, a mobile terminal).

[0081] The controller **160** may display a position screen **810** on the display **130** in operation **S730**. The position screen **810** is a guidance screen for guiding the user to take a certain position. As shown in FIG. **8A**, the controller **160** may display the position screen **810** as a text, or as shown in FIG. **8B**, the controller **160** may display a position screen **820** as an image of a posture to be performed.

[0082] The controller **160** may display a dynamic screen in operation **S740**. For example, the controller **160** may display the dynamic screen after a certain amount of time passes from a point in time at which the position screen is displayed. For example, the dynamic screen may be displayed after 10 seconds from the time when the position screen is displayed. The controller **160** may also display the dynamic screen for a certain time. For example, the controller **160** may display the dynamic screen for 10 seconds, but the exemplary embodiments are not limited thereto. As described with reference to FIG. **5**, the controller **160** may display the dynamic screen while the user is in a certain position and while the position screen is being displayed.

[0083] Also, the controller **160** may finish displaying the dynamic screen after a certain amount of time passes and may display a measurement screen in operation **S750**. For example, the processor **120** may display a measurement screen **910** as shown in FIG. **9**. When the processor **120** obtains the state information using the bio information, the controller **160** may provide the user with an operation state of the mobile healthcare device **100** by displaying the measurement screen on the display **130** with the measurement screen indicating that the bio information is being measured. The processor **120** may measure the bio information while the dynamic screen is being displayed. In this example, the measurement screen may not be displayed.

[0084] If the measurement succeeds (operation **S760**—YES), the controller **160** may output the state information in operation **S770**. The controller **160** may determine that the measurement succeeds when the processor **120** obtains the state information. Then, the controller **160** may control the processor **120** to display the obtained state information on the display **130**. For example, the state information may be

displayed as a graph according to time when the state information is being output. Also, the controller 160 may determine whether the state information is normal or abnormal by referring to the user information and may output a determination result.

[0085] If the measurement fails (operation S760—NO), the controller 160 may output a failure notice which indicates that the measurement has failed in operation S780. If the processor 120 does not obtain the state information, the controller 160 may determine that the measurement has failed. For example, the controller 160 may terminate the measurement mode after the failure notice is output or may display a screen for starting the measurement again. For example, the controller 160 may display the position screen, the dynamic screen, or the like, and the mobile healthcare device 100 may perform an operation for measuring the bio information again.

[0086] A plurality of users may use the mobile healthcare device 100. Alternatively, a guest may temporarily use the mobile healthcare device 100. A method of managing the obtained state information may vary according to types of the user information. For example, the measurement mode of the mobile healthcare device 100 may include a user mode in which the user information matches the state information and the user information and the state information are automatically stored, and a guest mode in which the user information and the state information are automatically discarded if there is no command for storing the user information and the state information.

[0087] FIG. 10 is a flowchart of a method of managing the user information and the state information in the user mode, according to an exemplary embodiment.

[0088] Referring to FIG. 10, based on a user command, the controller 160 may set the measurement mode of the mobile healthcare device 100 to the user mode in operation S1010. In the measurement mode, for example, the controller 160 may display a list including a user mode and a guest mode. The user may input a command for selecting the user mode, and then the controller 160 may set the measurement mode to the user mode.

[0089] In operation S1020, the controller 160 may determine whether the user information is registered in the memory.

[0090] If it is determined that the user information is registered (operation S1020—YES), the controller 160 may display the registered user information in operation S1030. If there are a plurality of users, the controller 160 may display a user list (for example, a user 1, a user 2, etc.). If a user command for selecting any one of the users is received, user information with regard to the selected user may be displayed. However, if there is only one user, the controller 160 may display user information with regard to the single user without displaying a user list. For example, the user information may include a height, a weight, an age, a gender, a name, contact information, and the like, of the user. If the user information includes multiple pieces of information, the multiple pieces of information may be displayed on a single screen, each piece may be sequentially displayed on a single screen, and the like.

[0091] If a user command for updating one of the displayed pieces of information is received (operation S1040—YES), the controller 160 may update the user information in

operation S1050. If a user command for updating a piece of information is not received (operation S1040—NO), operation S1050 is skipped.

[0092] Returning again to S1020, if it is determined that no user information is registered (operation S1020—NO), the controller 160 may receive the user information in operation S1060. For this purpose, the controller 160 may display a list of items for user information on the display 130 in order to guide the user to record the user information in each of the items. Accordingly, the user may input the user information as guided by the controller 160, and the controller 160 may receive the user information. The user information may be checked through the above operations.

[0093] The mobile healthcare device 100 may determine the bio information in operation S1070. An example of an operation of measuring the bio information has been described with reference to FIGS. 5 and 7. That is, after the dynamic screen for guiding the user to maintain a certain position is displayed, the state information may be obtained using the bio information received from the sensor 110. Then, the obtained state information may be output.

[0094] The controller 160 matches the state information with the user information and may store the state information and the user information in operation S1080. In some examples, a history of the state information of the user may be obtained by matching and storing the state information and the user information.

[0095] FIG. 11 is a flowchart of a method of managing the user information and the state information in a guest mode, according to an exemplary embodiment.

[0096] Referring to FIG. 11, in operation S1110, the controller 160 may set the measurement mode to the guest mode according to a user command. For example, the controller 160 may display a measurement mode list in the measurement mode. For example, the measurement mode list may include a user mode and a guest mode. The user may input a command for selecting the guest mode, and the controller 160 may set the measurement mode to the guest mode.

[0097] The controller 160 may receive the user information in operation S1120. For example, the controller 160 may display items of the user information on the display 130 and may guide the user to record the user information in each item of the user information. The user inputs the user information as guided by the controller 160, and the controller 160 may receive the user information.

[0098] The mobile healthcare device 100 may measure the bio information in operation S1130. An example of a method of measuring the bio information has been described above.

[0099] The controller 160 may discard the state information and the user information in operation S1140. The controller 160 may discard the state information and the user information instead of storing the same if the mode of the mobile healthcare device 100 is changed. For example, when the measurement mode is terminated, the controller 160 may discard the state information and the user information. As another example, when a user command for changing the measurement mode to the user mode or for measuring state information for a new guest is input, the state information and the user information may be discarded. Personal information of the user may be protected by discarding the state information and the user information which are measured in the guest mode.

[0100] Although the body impedance, which corresponds to the bio information and requests the user to maintain a

certain position, has been described, the exemplary embodiments are not limited thereto. When a PPG is read, the PPG may differ according to a difference between a height of the heart and that of the sensor **110**. The mobile healthcare device **100** may provide a dynamic screen so that the sensor **110** may be placed at the same height with the heart. As another example, the dynamic screen may be provided to prevent a generation of motion artifacts. The dynamic screen for preventing the generation of motion artifacts may be displayed for a threshold amount of time such as 2 seconds to 5 seconds.

[0101] With the developments in medical science and the extension of life expectancy, interest in healthcare and medical devices has increased. Accordingly, various medical devices for use in hospitals and inspection agencies, and medium-sized medical devices installed in governmental agencies have been proposed.

[0102] In some examples, noise may be easily added to initial data acquired from a body because of a small contact area of a watch-type body fat analyzer. According to one or more exemplary embodiments, a page count operation is performed before a body fat measurement such that enough time for stabilizing a position of a user can be secured.

[0103] It should be understood that the exemplary embodiments described herein should be considered in a descriptive sense only and not for purposes of limitation. Descriptions of features or aspects within each exemplary embodiment should also typically be considered as available for other similar features or aspects in other exemplary embodiments.

[0104] While one or more exemplary embodiments have been described with reference to the figures, it should be understood by those of ordinary skill in the art that various changes in form and details may be made therein without departing from the spirit and scope as defined by the following claims.

1-19. (canceled)

20. A watch-type mobile device wearable on a wrist of a user, the watch-type mobile device comprising:

- a display configured to display a user interface;
- a sensor comprising a first electrode module and a second electrode module external to the display, the sensor being configured to detect bio information of the user, using the first electrode module and the second electrode module, the first electrode module being configured to contact the wrist of the user when the user wears the watch-type mobile device, the second electrode module being configured to be contacted by a finger of a hand of the user; and

a processor configured to:

- control the display to display a guidance screen comprising first information to guide the user to contact the second electrode module;
- based on a contact between the user and the second electrode module while the guidance screen is displayed, control the display to change the guidance screen to a dynamic screen comprising second information changing according to time; and
- control the display to change the dynamic screen to a new screen comprising state information of the user, the state information being obtained based on the bio information detected while the dynamic screen is displayed.

21. The watch-type mobile device of claim **20**, wherein the state information indicates a health state of the user.

22. The watch-type mobile device of claim **20**, the dynamic screen is configured to guide the user to maintain a posture to prevent generation of motion artifacts.

23. The watch-type mobile device of claim **20**, wherein the bio information comprises any one or any combination of a body impedance, an electrocardiogram (ECG) signal, and an electromyogram signal of the user.

24. The watch-type mobile device of claim **20**, wherein the new screen indicates whether the state information is normal or abnormal.

25. The watch-type mobile device of claim **20**, further comprising a main body and at least one of strap, wherein the first electrode module comprises two electrodes disposed on a first surface of the main body, and the second electrode module is exposed through a second surface different from the first surface of the main body.

26. The watch-type mobile device of claim **20**, the second electrode module is further configured to be wholly covered by the finger of the user.

27. The watch-type mobile device of claim **20**, the second information comprises numbers changing according to time.

28. The watch-type mobile device of claim **27**, the numbers sequentially change in an ascending order or a descending order.

29. The watch-type mobile device of claim **20**, the second information comprises an image changing according to time.

30. The watch-type mobile device of claim **20**, the first information comprises either one or both of a text indicating to the user to contact the second electrode module and an image indicating a posture to be performed by the user.

31. The watch-type mobile device of claim **20**, the processor is further configured to, based on a predetermined amount of time passing from a point in time at which the dynamic screen begins to be displayed, control the display to change the dynamic screen to the new screen.

32. The watch-type mobile device of claim **20**, wherein the dynamic screen is configured to guide the user to maintain the contact with the second electrode module.

33. The watch-type mobile device of claim **20**, further comprising a memory,

wherein the processor is further configured to:

- based on a current mode of the watch-type mobile device being a user mode, store the state information in the memory; and
- based on the current mode being a guest mode, discard the state information.

34. A watch-type mobile device wearable on a wrist of a user, the watch-type mobile device comprising:

- a plurality of electrodes configured to receive an input from the user;
- a display configured to display a guidance screen for guiding the user to contact at least one of the plurality of electrodes, the plurality of electrodes being external to the display; and
- a processor configured to:

- based on the input being received at the plurality of electrodes while the guidance screen is displayed, control the display to change the guidance screen to a dynamic screen for guiding the user to maintain the contact with the plurality of electrodes, the dynamic screen comprising an image that is changed according to time; and

- control the display to change the dynamic screen to a new screen indicating state information of the user,

the state information being obtained based on bio information that is obtained while the dynamic screen is displayed.

35. The watch-type mobile device of claim **34**, wherein at least one electrode among the plurality of electrodes is configured to contact the wrist of the user when the user wears the watch-type mobile device.

36. The watch-type mobile device of claim **34**, the dynamic screen is configured to guide the user to maintain a posture to prevent generation of motion artifacts.

37. The watch-type mobile device of claim **34**, wherein the bio information comprises any one or any combination of a body impedance, an electrocardiogram (ECG), and an electromyogram of the user.

38. The watch-type mobile device of claim **34**, wherein the state information comprises any one or any combination of body fat, a skeletal muscle mass, a muscle mass, a degree of obesity, a muscle strength, an edema value, a body composition ratio, an amount of intra-abdominal fat, and a blood pressure.

39. The watch-type mobile device of claim **34**, wherein a first electrode among the plurality of electrodes is exposed through a first surface of the watch-type mobile device, and is configured to contact the wrist of the user, and

a second electrode among the plurality of electrodes is exposed through a second surface of the watch-type

mobile device, and is configured to be touched by a finger of the user, the second surface being different from the first surface.

40. The watch-type mobile device of claim **39**, wherein the first surface faces the wrist of the user when the user wears the watch-type mobile device.

41. The watch-type mobile device of claim **34**, wherein an area of at least one electrode of the plurality of electrodes is less than or equal to 0.2 cm².

42. A wearable device comprising:

a display configured to display a user interface;

a sensor comprising a first electrode module and a second electrode module external to the display, the sensor being configured to detect bio information of a user, using the first electrode module and the second electrode module; and

a processor configured to:

control the display to display first information to guide the user to contact the second electrode module;

based on a contact between the user and the second electrode module while the first information is displayed, control the display to display second information changing according to time; and

control the display to display state information of the user, the state information being obtained based on the bio information detected while the second information is displayed.

* * * * *

专利名称(译)	移动医疗设备及其操作方法		
公开(公告)号	US20190246979A1	公开(公告)日	2019-08-15
申请号	US16/395477	申请日	2019-04-26
[标]申请(专利权)人(译)	三星电子株式会社		
申请(专利权)人(译)	SAMSUNG ELECTRONICS CO. , LTD.		
当前申请(专利权)人(译)	SAMSUNG ELECTRONICS CO. , LTD.		
[标]发明人	EOM KUNSUN NAMKOONG KAK LEE YEOLHO JUNG MYOUNGHOON CHO SEONGHO		
发明人	EOM, KUNSUN NAMKOONG, KAK LEE, YEOLHO JUNG, MYOUNGHOON CHO, SEONGHO		
IPC分类号	A61B5/00 G16H40/63 A61B5/053		
CPC分类号	A61B5/681 G16H40/63 A61B5/742 A61B5/0537 A61B5/7425 A61B5/053 A61B5/744 A61B5/7435 A61B5/684 A61B5/6831 A61B5/6898 A61B5/683 A61B5/6843 A61B5/743 A61B5/4869 A61B5/0402 A61B5/4872 G06F19/3418 G16H40/67		
优先权	1020140144288 2014-10-23 KR		
外部链接	Espacenet USPTO		

摘要(译)

提供了一种移动医疗保健设备及其操作方法。该方法包括将移动医疗设备的模式设置为测量模式，在测量模式期间显示用于引导用户维持预定位置的屏幕，并且响应于从测量模式的时间过去的预定时间量。开始显示屏幕，基于用户的生物信息获得用户的状态信息，从传感器接收生物信息。

