



US 20170215773A1

(19) **United States**

(12) **Patent Application Publication**
Heikenfeld et al.

(10) **Pub. No.: US 2017/0215773 A1**

(43) **Pub. Date: Aug. 3, 2017**

(54) **SWEAT SENSING DEVICE
COMMUNICATION SECURITY AND
COMPLIANCE**

A61B 5/00 (2006.01)

A61B 5/0205 (2006.01)

(52) **U.S. Cl.**

CPC *A61B 5/14521* (2013.01); *A61B 5/4266*
(2013.01); *A61B 5/112* (2013.01); *A61B*
5/0205 (2013.01); *A61B 5/14551* (2013.01);
A61B 5/4845 (2013.01); *A61B 5/6843*
(2013.01); *A61B 5/6802* (2013.01); *A61B*
5/14546 (2013.01); *A61B 5/0022* (2013.01);
A61B 5/746 (2013.01); *A61B 5/7275*
(2013.01); *H04L 67/18* (2013.01); *G06N 5/04*
(2013.01); *A61B 2562/0219* (2013.01); *A61B*
5/024 (2013.01)

(71) Applicant: **Eccrine Systems, Inc.**, Cincinnati, OH
(US)

(72) Inventors: **Jason Heikenfeld**, Cincinnati, OH
(US); **Robert Beech**, Cincinnati, OH
(US); **Gavi Begtrup**, Cincinnati, OH
(US); **Jeff Amfahr**, Middletown, OH
(US)

(21) Appl. No.: **15/487,465**

(22) Filed: **Apr. 14, 2017**

Related U.S. Application Data

(63) Continuation of application No. 15/362,229, filed on
Nov. 28, 2016, which is a continuation of application
No. PCT/US15/55756, filed on Oct. 15, 2015.

(60) Provisional application No. 62/064,009, filed on Oct.
15, 2014.

Publication Classification

(51) **Int. Cl.**

A61B 5/145 (2006.01)

A61B 5/11 (2006.01)

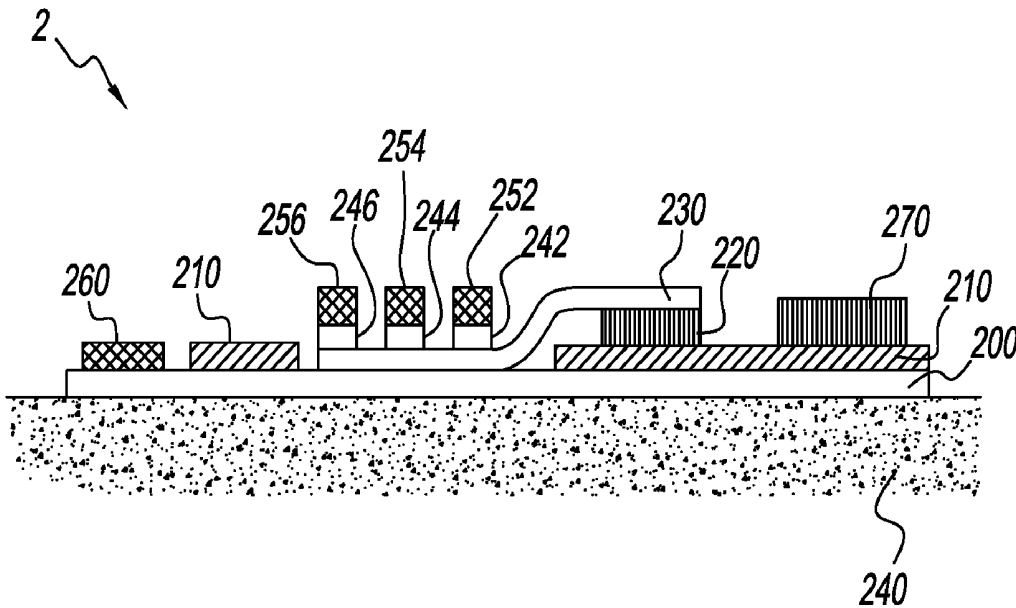
G06N 5/04 (2006.01)

A61B 5/1455 (2006.01)

H04L 29/08 (2006.01)

(57) **ABSTRACT**

The invention addresses confounding difficulties involving continuous sweat analyte measurement. Specifically, the present invention provides: at least one component capable of monitoring whether a sweat sensing device is in sufficient contact with a wearer's skin to allow proper device operation; at least one component capable of monitoring whether the device is operating on a wearer's skin; at least one means of determining whether the device wearer is a target individual within a probability range; at least one component capable of generating and communicating alert messages to the device user(s) related to: wearer safety, wearer physiological condition, compliance with a requirement to wear a device, device operation; compliance with a behavior requirement, or other purposes that may be derived from sweat sensor data; and the ability to utilize aggregated sweat sensor data that may be correlated with information external to the device to enhance the predictive capabilities of the device.



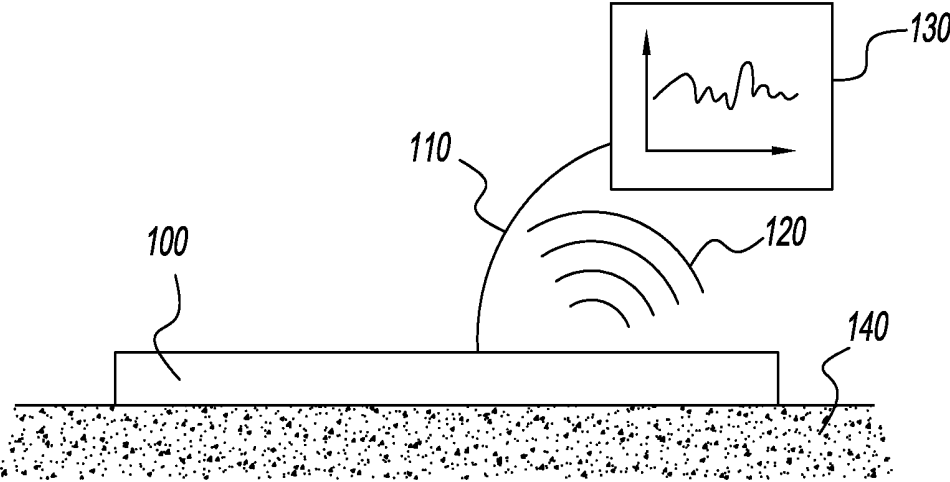


FIG. 1

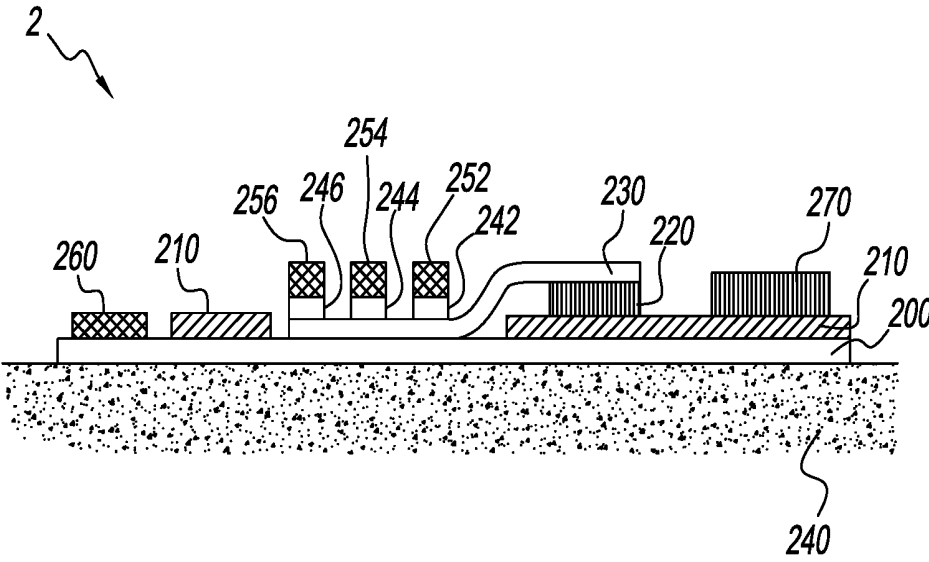


FIG. 2

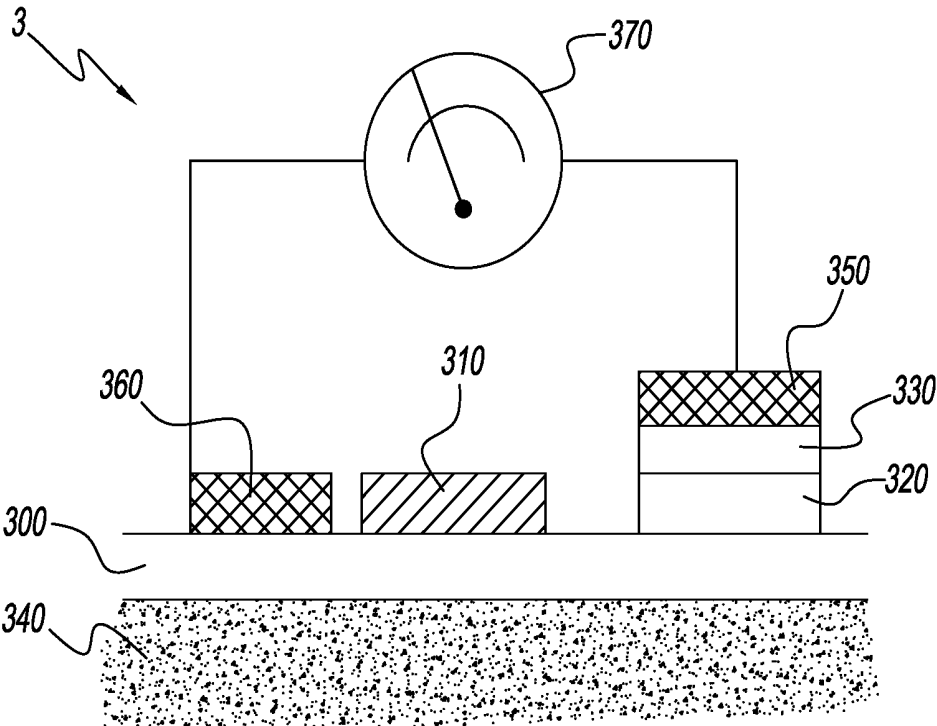


FIG. 3

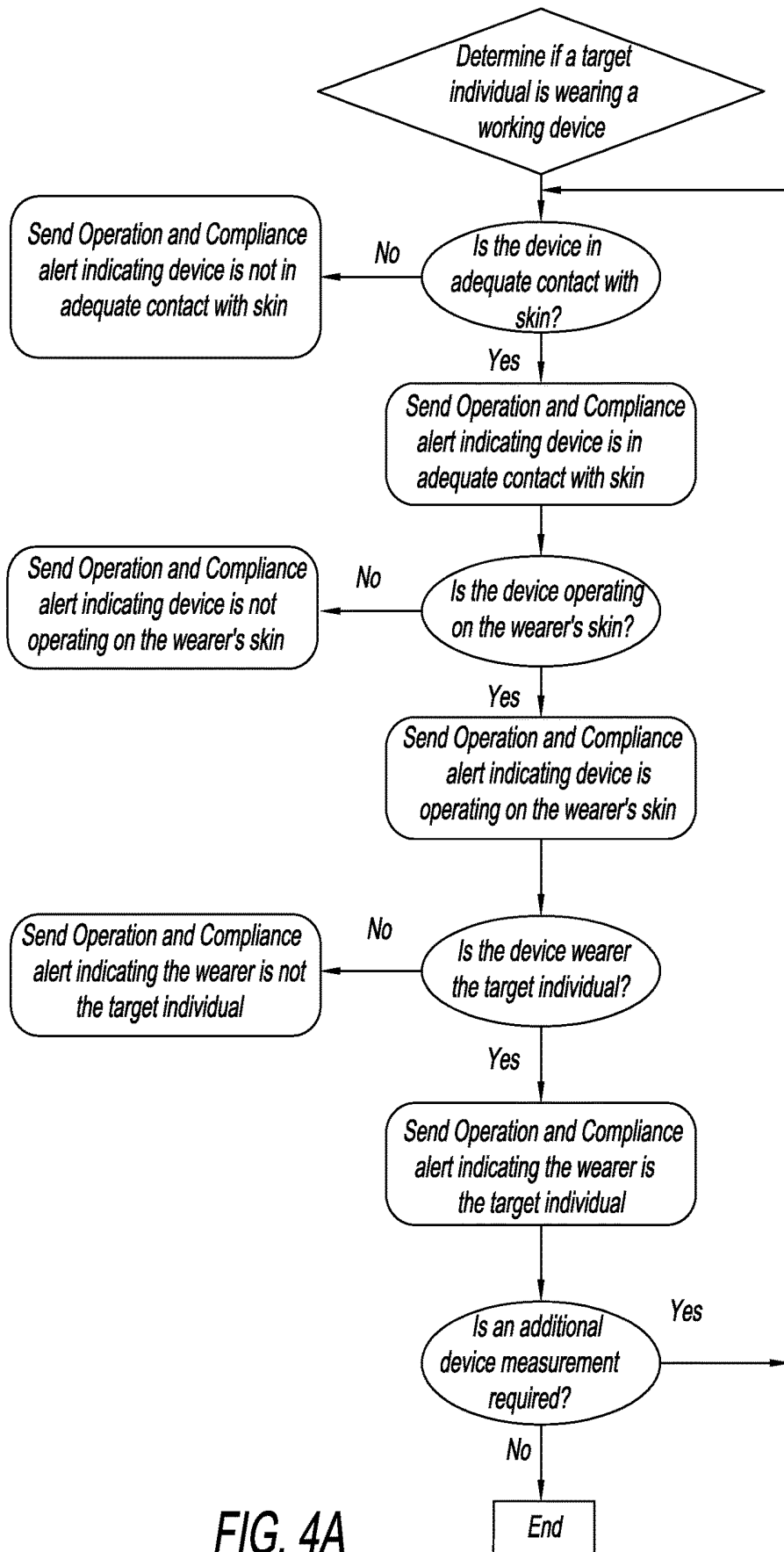


FIG. 4A

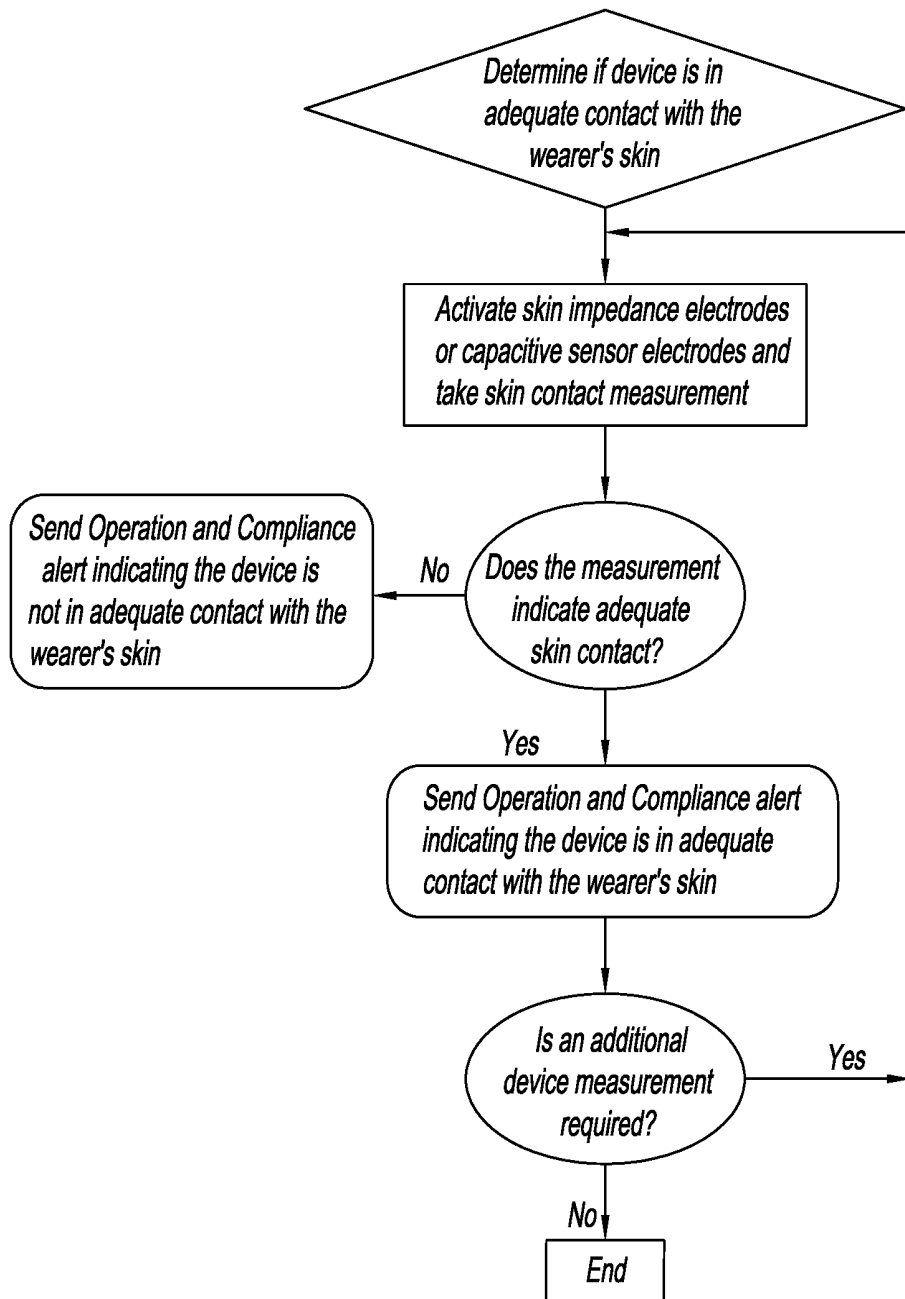


FIG. 4B

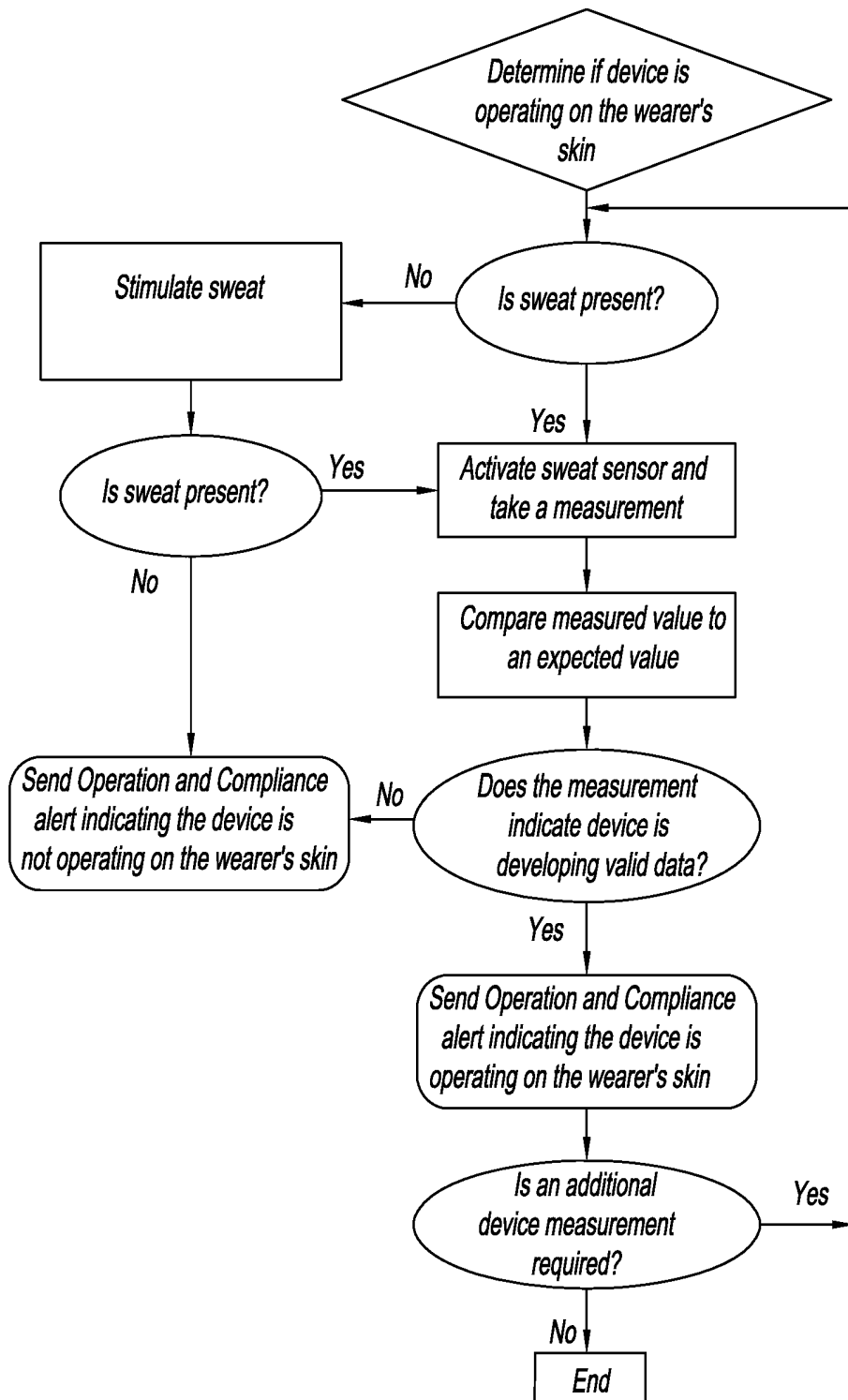


FIG. 4C

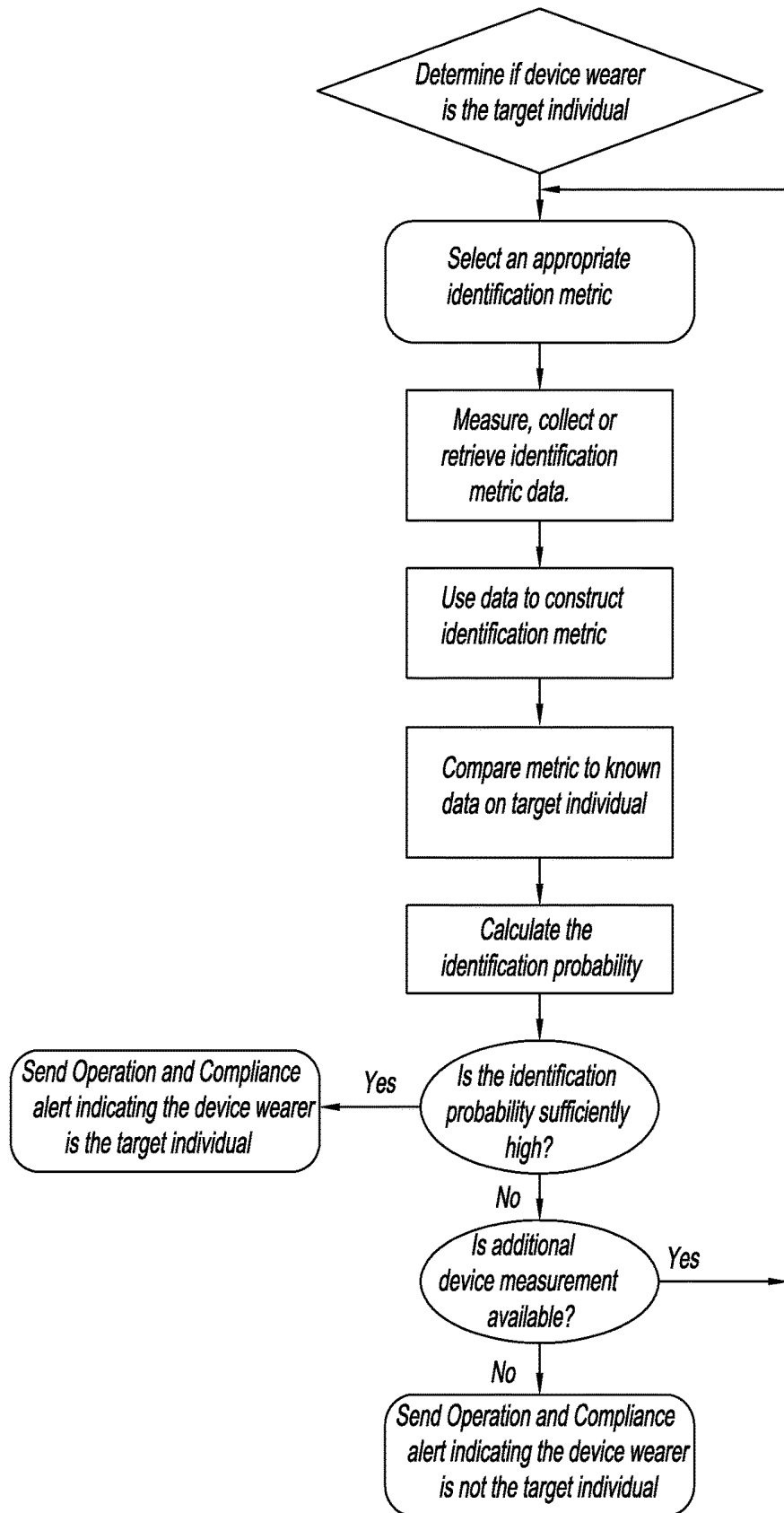


FIG. 4D

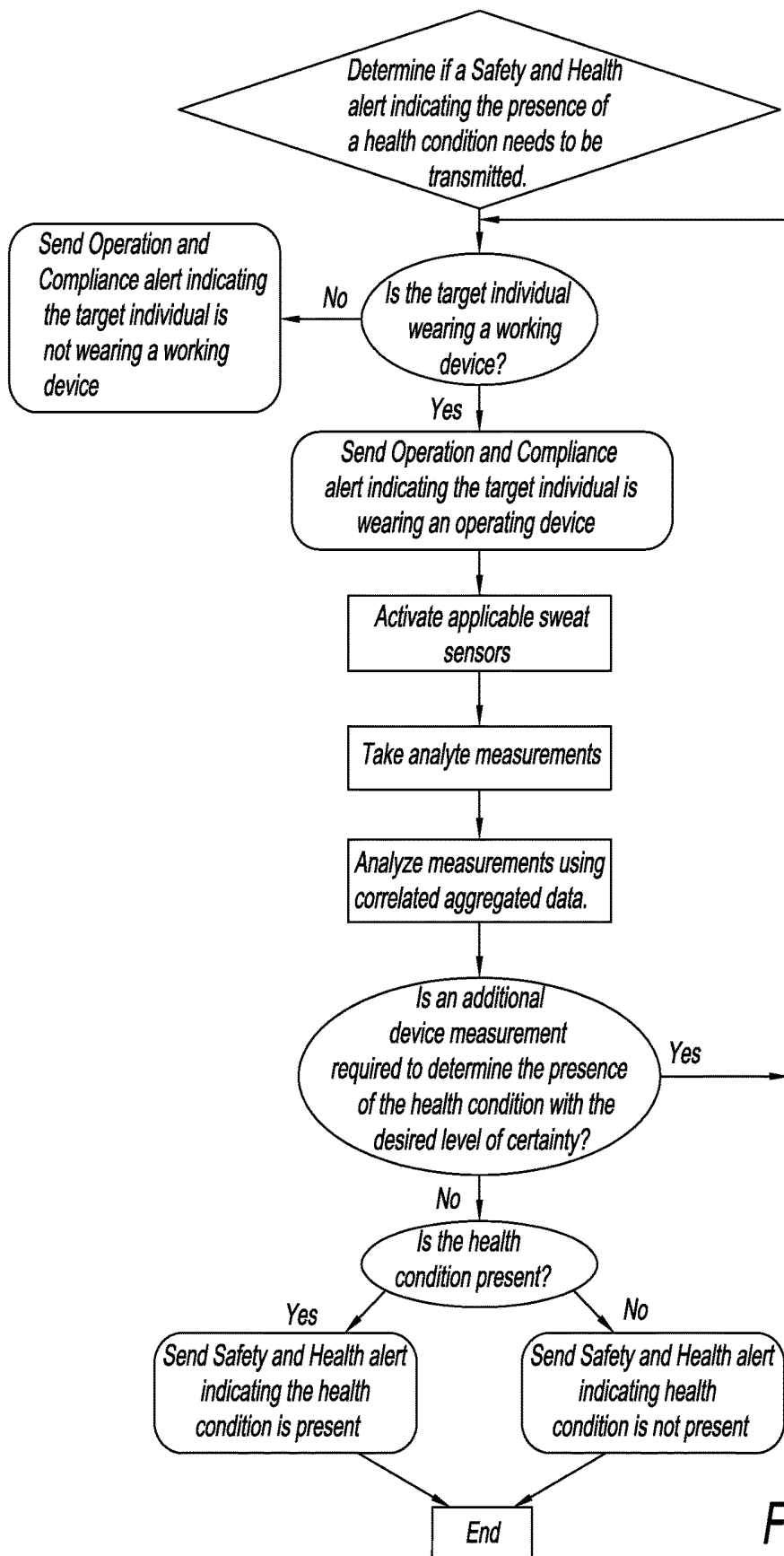


FIG. 5

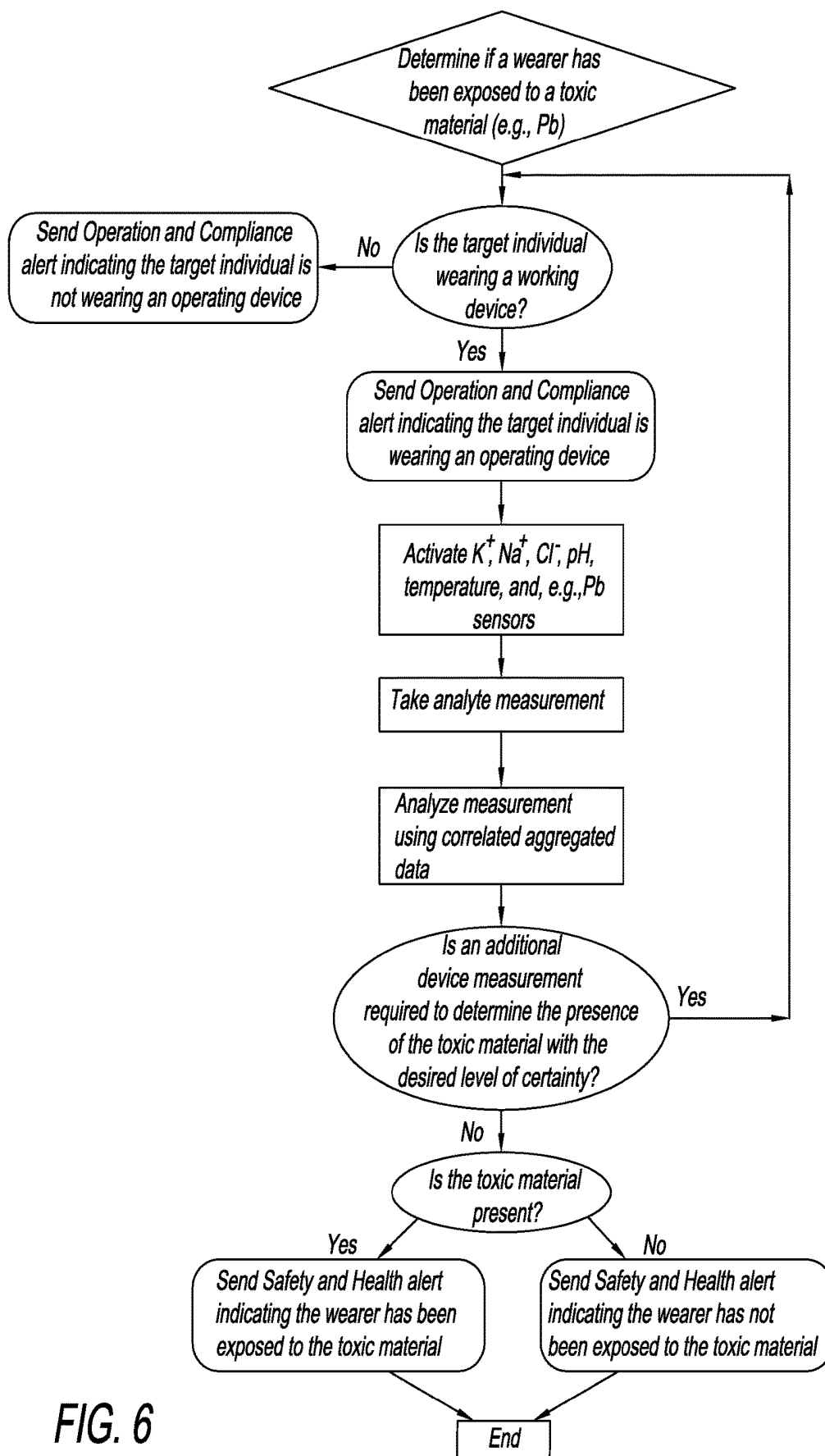


FIG. 6

**SWEAT SENSING DEVICE
COMMUNICATION SECURITY AND
COMPLIANCE**

CROSS-REFERENCE TO RELATED
APPLICATIONS

[0001] The present application relates to U.S. Provisional Application No. 62/064,009, filed Oct. 15, 2014, and has specification that builds on PCT/US13/35092, the disclosures of which are hereby incorporated herein by reference in their entirety.

STATEMENT REGARDING FEDERALLY
SPONSORED RESEARCH OR DEVELOPMENT

[0002] No federal funds were utilized for this invention.

BACKGROUND OF THE INVENTION

[0003] Sweat sensing technologies have enormous potential for applications ranging from athletics to neonatology, to pharmacological monitoring, to personal digital health, to name a few applications. Sweat contains many of the same biomarkers, chemicals, or solutes that are carried in blood and can provide significant information enabling one to diagnose illness, health status, exposure to toxins, performance, and other physiological attributes even in advance of any physical sign. Furthermore, sweat itself, the action of sweating, and other parameters, attributes, solutes, or features on, near, or beneath the skin can be measured to further reveal physiological information.

[0004] If sweat has such significant potential as a sensing paradigm, then why has it not emerged beyond decades-old usage in infant chloride assays for Cystic Fibrosis or in illicit drug monitoring patches? In decades of sweat sensing literature, the majority of practitioners in the art use the crude, slow, and inconvenient process of sweat stimulation, collection of a sample, transport of the sample to a lab, and then analysis of the sample by a bench-top machine and a trained expert. This process is so labor intensive, complicated, and costly that in most cases, one would just as well implement a blood draw since it is the gold standard for most forms of high performance biomarker sensing. Hence, sweat sensing has not emerged into its fullest opportunity and capability for biosensing, especially for continuous or repeated biosensing or monitoring. Furthermore, attempts at using sweat to sense “holy grails” such as glucose have not yet succeeded to produce viable commercial products, reducing the publicly perceived capability and opportunity space for sweat sensing.

[0005] Of all the other physiological fluids used for biological monitoring (e.g., blood, urine, saliva, tears), sweat has arguably the least predictable sampling rate in the absence of technology. However, with proper application of technology, sweat can be made to outperform other non-invasive or less invasive biofluids in predictable sampling.

[0006] For example, it is difficult to control saliva or tear rate without negative consequences for the user (e.g., dry eyes, tears, dry mouth, or excessive saliva while talking). Urine is also a difficult fluid for physiological monitoring, because it is inconvenient to take multiple urine samples, it is not always possible to take a urine sample when needed, and control of biomarker dilution in urine imposes further significant inconveniences on the user or test subject.

[0007] Many of the drawbacks and limitations stated above can be resolved by creating novel and advanced interplays of chemicals, materials, sensors, electronics, microfluidics, algorithms, computing, software, systems, and other features or designs, in a manner that affordably, effectively, conveniently, intelligently, or reliably brings sweat sensing technology into intimate proximity with sweat as it is generated. With such an invention, sweat sensing could become a compelling new paradigm as a biosensing platform.

[0008] In particular, sweat sensors hold tremendous promise for use in workplace safety, athletic, military, and health care settings. For workplace safety and military applications, a sweat sensing device worn on the job and connected to a computer network via a reader device, such as a smart phone or other portable or stationary device, could relay crucial data about physiological conditions, or the presence of prohibited substances in the bloodstream. In health care settings, sweat sensors may continuously monitor the health of individuals, for example, patients who are restricted to bed rest or participating in a clinical trial, and communicate to a reader device or computer network, which would then compare collected data to threshold readings and alert caregivers if the individual is in need of intervention.

[0009] For these applications to be effective, however, it is crucial that a targeted individual is wearing the proper sweat sensor device, and that the device is operational. Sweat sensor devices may be deployed in various internal configurations, with devices configured for detecting a specific analyte or a group of analytes, depending on the application. If a device is placed on a different individual than the target individual, the collected information will be inapplicable to the target individual. Or, if a target individual is wearing the incorrect device for a particular application, the desired information may not be collected. Likewise, a device that has inadequate contact with the skin, or that is otherwise inoperable due to electronic or other malfunction, will not effectively collect sweat and detect the targeted analytes.

SUMMARY OF THE INVENTION

[0010] The present invention is premised on the realization that sweat can be effectively stimulated and analyzed in a single, continuous, or repeated manner inside the same device. The present invention addresses the confounding difficulties involving such analysis by assuring that a sweat sensing device is adequately secured to a wearer's skin, is operational, and that the wearer is a target individual. Specifically, the present invention provides: at least one component capable of monitoring whether a sweat sensing device is in adequate contact with a wearer's skin to allow proper operation of the sweat sensing device; at least one component capable of monitoring whether a sweat sensing device is operating on the wearer's skin; at least one means of determining whether a device is being worn by a target individual within a probability range; at least one component capable of generating and communicating alert messages to the sweat device user(s) related to: wearer safety, wearer physiological condition, compliance with a requirement to wear a device, device operation; compliance with a behavior requirement, or other purposes that may be derived from the use of sweat sensor data; and the ability to utilize aggregated sweat sensor data that may be correlated with information external to the sweat sensing device to enhance the predictive and alert capabilities of the sweat sensing device.

BRIEF DESCRIPTION OF THE DRAWINGS

[0011] The objects and advantages of the present invention will be further appreciated in light of the following detailed descriptions and drawings in which:

[0012] FIG. 1 is a generic representation of the present invention including a mechanism for stimulating and analyzing sweat sensor data on a singular, continuous or repeated basis.

[0013] FIG. 2 is an example embodiment of at least a portion of a device of the present invention including a mechanism for generating sweat sensor data that may be used to develop and communicate alert messages.

[0014] FIG. 3 is an example embodiment of at least a portion of a device of the present invention including a mechanism for determining adequate skin contact between the device and a wearer.

[0015] FIG. 4A is an example chart representing a method by which the present invention may determine whether a target individual is wearing a working device, and issue an appropriate operation and compliance alert.

[0016] FIG. 4B is an example chart representing a subset of the method depicted in FIG. 4A by which the present invention may determine if a device is in adequate contact with a wearer's skin.

[0017] FIG. 4C is an example chart representing a subset of the method depicted in FIG. 4A by which the present invention may determine whether a device is operating on a wearer's skin.

[0018] FIG. 4D is an example chart representing a subset of the method depicted in FIG. 4A by which the present invention may determine if the device wearer is a target individual.

[0019] FIG. 5 is an example chart representing a method by which the present invention may determine if the wearer is experiencing a health condition, and issue an appropriate alert.

[0020] FIG. 6 is an example chart representing a method by which the present invention may determine if a wearer has been exposed to a toxic material.

DEFINITIONS

[0021] Sweat sensor data means all of the information collected by sweat sensing device sensor(s) and communicated via the device to a user or a data aggregation location.

[0022] Correlated aggregated data means sweat sensor data that has been collected in a data aggregation location and correlated with outside information such as time, temperature, weather, location, user profile, other sweat sensor data, other wearables data, or any other relevant data.

[0023] Analyte data signature means a known set of analyte levels, ratios, or concentration trends that is correlated with a specific individual within a probability range.

[0024] Identification metrics means the various identification-related readings that may be used by a sweat sensing device to indicate within a certain probability that a target individual is wearing the device. These metrics include, without limitation, sweat analyte data metrics, proxy identification metrics, communication/location metrics, or other metrics.

[0025] Identification profile means a profile composed of two or more identification metrics and associated with an individual for use in calculating an identification probability estimate.

[0026] Identification probability estimate means the calculated probability that a person wearing a sweat sensing device is a target individual based on a comparison of identification metrics with known data about the target individual.

[0027] Compliance metric means a skin contact measurement, device operation measurement, or an identification metric.

[0028] Operation and compliance reading means the sweat sensor data collected on at least one compliance metric.

[0029] Operation and compliance alert means a message generated by the sweat sensing device and relayed to a user when an operation and compliance reading indicates a device skin contact status, an operational status, or a wearer identification status.

[0030] Safety and health reading means a measurement of at least one sweat analyte that indicates the concentration, or concentration trend, of the analyte in a wearer's sweat.

[0031] Safety and health alert means an alert generated by the sweat sensing device and relayed to a user and/or a wearer, when a safety and health reading indicates that some intervention is recommended.

[0032] Safety profile means a known set of sweat analyte levels, ratios, or concentration trends that indicates with a certain probability that a wearer needs intervention, such as from a health condition.

[0033] Behavioral profile means a known set of sweat analyte levels, ratios, or concentration trends that indicates with a certain probability that a wearer is in compliance with a behavioral program, such as a drug regimen.

DETAILED DESCRIPTION OF THE INVENTION

[0034] The detailed description of the present invention will be primarily be, but not entirely be, limited to sub-components, subsystems, sub methods, of wearable sensing devices, including devices dedicated to sweat sensing. Therefore, although not described in detail here, other essential features which are readily interpreted from or incorporated along with the present invention shall be included as part of the present invention. The specification for the present invention provides examples to portray inventive steps, but which will not necessarily cover all possible embodiments commonly known to those skilled in the art. For example, the described invention will not necessarily include all obvious features needed for operation, examples being a battery or power source which is required to power electronics, or for example, a wax paper backing that is removed prior to applying an adhesive patch, or for example, a particular antenna design that allows wireless communication with a particular external computing and information display device.

[0035] With reference to FIG. 1, a sweat sensing device 100 is placed on or near skin 140 (shown), or in an alternate embodiment is simply fluidically connected to skin or regions near skin through microfluidics or other suitable techniques (not shown). A complete enablement of such a device is described by Rose and Heikenfeld in the article in press for publication in the journal IEEE Transactions on Biomedical Engineering, titled "Adhesive RFID Sensor Patch for Monitoring of Sweat Electrolytes". The present invention applies at least to any type of sweat sensing device that stimulates and/or measures sweat, its solutes, solutes that transfer into sweat from skin, a property of or things on

the surface of skin, or properties or things beneath the skin, or measures something about the surrounding environment including humidity, temperature, motion, or other external factors to be measured. The present invention applies to sweat sensing devices which can take on forms that include patches, bands, straps, portions of clothing, wearables, or any suitable mechanism that reliably brings sweat stimulating, sweat collecting, and/or sweat sensing technology into intimate proximity with sweat as it is generated. Some embodiments of the present invention utilize adhesives to hold the device near the skin, but devices could also be held by other mechanisms that hold the device secure against the skin, such as a strap or embedding the device in a helmet or other headgear. Certain embodiments of the present invention show sensors as simple individual elements. It is understood that many sensors such as potentiometric, amperometric, impedimetric, and others, require two or more electrodes, reference electrodes, or additional supporting technology or features which are not captured in the description herein. Sensors are preferably electrical in nature, but may also include optical, chemical, mechanical, or other known biosensing mechanisms. Sensors can be in duplicate, triplicate, or more, to provide improved data and readings. Sensors may be referred to by what the sensor is measuring, for example: a sweat sensor; an impedance sensor; a sweat volume sensor; a sweat generation rate sensor; or a solute generation rate sensor. The present invention includes all direct or indirect mechanisms of sweat stimulation, including but not limited to sweat stimulation by heat, pressure, electricity, iontophoresis or diffusion of chemical sweat stimulants, orally or injected drugs that stimulate sweat, stimuli external to the body, cognitive activity, or physical activity, or other sweat responses to external stimuli. Certain embodiments of the present invention show sub-components of sweat sensing devices that would require additional obvious sub-components for various applications (such as a battery, or a counter electrode for iontophoresis). These additional sub-components are not critical to the inventive step of the present invention, and for purpose of brevity and focus on inventive aspects, are not explicitly shown in the diagrams or described in the embodiments of the present invention.

[0036] With further reference to FIG. 1, the arrangement and description of the device is an example embodiment only, and other obvious configurations and applications are included within spirit of the present invention. The device **100** is in wired communication **110** or wireless communication **120** with an AC or battery-powered reader device **130**, and placed on skin **140**. In one embodiment of the present invention, the reader device **130** would be a smart phone, or other portable electronic device. In another embodiment, the reader device is a companion transceiver placed at bedside, mounted in a commercial or military vehicle, or widely distributed in locations that are supplied with electrical power. In another embodiment, the reader device is a portable electronic device or companion transceiver capable of secure two-way communication with the sensor and secure two-way communication with a computer network, such as a local area network or the Internet via a wireless router and/or a cellular data network. In alternate embodiments the device **100** and device **130** can be combined (not shown).

[0037] The device may include RFID, or may include wireless protocol such as Bluetooth, or the device may use

alternate communication or power strategies to communicate with a reader device in proximity to the device. The sensor can include a thin layer battery and provide its own power source, and thus not rely on RFID. Both RFID and Bluetooth can be used in conjunction, where RFID can charge the battery when provided the proper near field communications. The device may also include means of signal amplification to improve signal quality communicated to the reader device, and to improve transmission distance to the reader device. Other biomarker sensing methods and sweat transport methods may be included, so long as they provide the same capability of continuous or semi-continuous monitoring of sweat biomarkers.

[0038] The sweat sensing device disclosed herein also includes computing and data storage capability sufficient to operate the device, which incorporates the ability to conduct communication among device components, to perform data aggregation, and to execute algorithms capable of analyzing data and generating alert messages. This computing capability may be fully or partially located on the device, on the reader device, or on a connected computer network.

[0039] The sweat sensing device may also include data aggregation and monitoring capability. Such data aggregation may include collecting all of the sweat sensor data generated by sweat sensing devices. The aggregated data may be de-identified from individual wearers, or may remain associated with an individual wearer. Such data may also be correlated with outside information, such as the time, date, weather conditions, activity performed by the individual, the individual's mental and physical performance during the data collection, the proximity to significant health events experienced by the individual, the individual's age or sex, the individual's health history, data from other wearable devices, such as those measuring galvanic skin response, pulse oximetry, heart rate, etc., or other relevant information. The data collected may be made accessible via secure website portal to allow sweat device users to perform safety, compliance and/or care monitoring of target individuals. In an alternative embodiment, the data may be made accessible via application programming interface ("API"), which would allow sweat sensor data to be integrated with a user's existing safety, compliance and care monitoring systems, such as an employer's on-shift monitoring system. The sweat sensor data monitored by the user may include real-time data, trend data, or may also include aggregated sweat sensor data drawn from the device database and correlated to a particular user, a user profile (such as age, sex or fitness level), weather condition, activity, combined analyte profile, or other relevant metric. Trend data, such as a target individual's hydration level over time, may be used to predict future performance, or the likelihood of an impending physiological event. Such predictive capability can be enhanced by using correlated aggregated data, which would allow the user to compare an individual's historical analyte and external data profiles to a real-time situation as it progresses, or even to compare thousands of similar analyte and external data profiles from other individuals to the real-time situation. Sweat sensor data may also be used to identify wearers that are in need of additional monitoring or instruction, such as to maintain the proper hydration levels, or to adhere to a drug regimen. Sweat sensor data may be used to supply information for incentive systems by tracking an individual wearer's performance on various metrics. For example, an athletic coach may track a player's efforts to

maintain proper hydration or electrolyte levels, or an employer may track positive safety results over one or more incentive cycles. Incentive system information could then be relayed to supervisory management and tied to financial incentives for the target individual. The disclosed uses of aggregated data are for illustration purposes only, and do not limit other potential sources or applications available for such data, which are within the spirit of the present invention.

[0040] FIG. 2 is an example embodiment of at least a portion of a device of the present invention capable of ensuring device security and compliance through the use of various means. As shown in FIG. 2, a sweat sensing device 2 positioned on skin 240 by an adhesive layer 200 bonded to fluid impermeable substrate 210. Substrate 210 holds electronics 270, one or more sensors 220 (one shown), a microfluidic component 230, coupled to one or more sweat pads 242, 244, 246. Each pad has a source of chemical sweat stimulant, such as pilocarpine, and independently controlled iontophoresis electrode(s) 252, 254, 256. There is also one or more counter electrode(s) 260. The sweat sensor 220 can be a gate-exposed SiCMOS chip having three or more identical chem-FETs per biomarker. Sub-micron SiCMOS allow for MHz impedance spectroscopy. Sensors are separated spatially into subgroups of identical sensors, or large sensor arrays can be formed using techniques such as photo-initiated chemical patterning. Arrays of biomarker-specific sensors allow for continuous monitoring of multiple physiological conditions. Thus, in operation, the electronics 270 would activate one or more electrodes 252, 254, 256. This will cause the skin to generate sweat, which will be transferred through the microfluidic structures 230, directed to the sensor 220.

[0041] In addition to sweat generation, the electrodes 252, 254, 256, with counter electrode 260 may also be used to measure skin and/or body impedance in order to determine whether the device is in adequate contact with the skin. In other embodiments, the device 2 may be configured with two or more skin facing electrodes dedicated to determining skin and/or body impedance (not shown), as are known to those skilled in the art of electrophysiology. Similarly, in other embodiments, at least one capacitive sensor electrode (not shown), also as known in the art of electrophysiology, may be placed on selected locations on the skin-facing side of the device, and would convey information about the distance between the sensor and the skin. The skin proximity readings generated by the capacitive sensor(s) would therefore indicate whether the device is in adequate contact with a wearer's skin.

[0042] FIG. 3 is applicable to any of the devices of FIGS. 1-2. If electrode/pad contact to the skin is or becomes inadequate, this can be detected as an increase in impedance and the sweat sensing device can send an alert message to the user. The sweat sensing device 3 affixed to skin 340 by adhesive 300 senses impedance of the contact of the electrode 350 (with chemical stimulant source 330 and microfluidic component 320) with the skin 340 or the contact of counter electrode 360 with the skin 340 where "contact" refers to direct contact or indirect contact but which has adequate and/or uniform electrical conduction with the skin. Measurement of electrical impedance includes obvious related measures such as voltage or current, which also give a measure of impedance. If the impedance exceeds a preset limit by circuit 370, the device sends an alert to the user.

[0043] With reference to FIGS. 4A to 4D, the sweat sensing device described above may generate operation and compliance alerts to inform the device user whether a sweat sensing device (1) is in adequate contact with a wearer's skin, (2) is operating on the wearer's skin, or (3) the wearer is a target individual. Alerts may be communicated to the user via email, SMS messaging, pager, automated phone call, or callbacks to other systems. The device may conduct continuous or periodic operation and compliance readings to determine if the device is in contact with the skin, or to determine if the device is functioning on the skin of the target individual. If the sweat sensing device determines that the device is not adequately contacting the skin, the device could relay a signal to user directly or via computer network. Likewise, if the sweat sensor data, or other data, did not match a profile indicating operation on the skin, the device could relay that information. The sweat sensing device user would accordingly receive an alert message that a device is no longer operative. The device may also conduct identification readings using any of the herein disclosed means to determine the identification probability estimate for the target individual. If the sweat sensing device determined that the identification probability estimate were below a certain threshold, it could generate an operation and compliance alert that the target individual is not wearing the device.

[0044] Various means may be used to determine the appropriate time to initiate operation and compliance readings. These may be conducted continuously whenever a device is detected to be in use by the device, or if the device determines that a target individual should be wearing a device at a particular time. For example, the reader device may employ an API to communicate with an employer's on-shift system to determine if a target employee is on the job, and therefore ought to be wearing a device. In another example, a trucking company's sweat sensing device could determine through changing location data sensed by a companion transceiver that a target employee was operating a tractor-trailer, triggering the initiation of operation and compliance readings. The sweat sensing device could also integrate other data to determine whether to issue an operation and compliance alert, such as the current weather, the time of day, or the day of the week.

[0045] With reference to FIG. 4B, the sweat sensing device uses onboard impedance or capacitive sensors to determine if the device is in adequate contact with the wearer's skin to allow proper device function. Inadequate contact can indicate that the device has been removed by the user, or has become detached from the skin for other reasons. Additionally, inadequate skin contact can cause undesirable effects upon the skin or with the function of the device. If the device is not in adequate contact with the wearer's skin, the device will send a negative operation and compliance alert. If the device measurements indicate that the device is adequately secured to skin, an operation and compliance alert conveying that information may be sent, and the sweat sensing device will proceed to verify the other operation and compliance elements. The device may be programmed to record and track the time(s) at which a sweat sensor is in contact with the skin, as well as the time(s) at which the sweat sensor is no longer in skin contact. The device can also be programmed to sense skin contact continuously, or periodically, for example, on a daily or hourly basis.

[0046] With reference to FIG. 4C, once the device confirms it has adequate contact with a wearer's skin, it may

assess whether the device is operating on the wearer's skin. When the device begins operation, it will be able to determine if the device is actually generating sweat data. For example, the device could determine whether sweat is present by taking a measurement of galvanic skin response or by measuring sweat generation rate. Additionally, sweat analyte measurements can be used to distinguish genuine sweat data from counterfeit data. Sweat analytes change in predictable ways to increases or decreases in sweat rate. For example, when sweat rate increases, Na^+ and Cl^- concentrations in sweat typically increase, while K^+ concentrations stay relatively constant with sweat rate. These trending measurements would be difficult to reproduce artificially, for example, if a wearer were trying to avoid compliance by introducing other fluids to the sweat sensing device. In some embodiments, the device may also determine if the device has been placed on a body location that is appropriate for the particular device application sought by the device user. Eccrine sweat pore distribution varies throughout the body, as does the readiness with which body locations begin sweating in response to stimulus, as is discussed in further detail in Z. Sonner, et al., "The microfluidics of the eccrine sweat gland, including biomarker partitioning, transport, and biosensing implications," *Biomicrofluidics* 9, 031301 (2015); doi: 10.1063/1.4921039. Therefore, sweat rates and volumes as detected by a sweat sensing device may be used to determine if a device has been applied to the correct area of the body.

[0047] With reference to FIG. 4D, in an example embodiment, the device may also determine whether a device wearer is likely a target individual from whom the device user desires to collect sweat data. The sweat sensing device would take readings on a selected identification metric, and would then compare that measurement to an identification signature used for the target individual. Based on this comparison, the device would calculate an identification probability estimate characterizing the probability that the wearer is the target individual. If the desired certainty about the wearer's identity has not been reached, and the device has another identification metric available, the device will measure another identification metric and calculate a new identification probability estimate. The process would continue until either the device has exhausted all of its available identification metrics, or the wearer has been positively or negatively identified as the target individual with sufficient certainty for the application. The device would then send an operation and compliance alert indicating whether or not the wearer is the target individual.

[0048] A unique identification signature for a target individual may be developed by using a sweat sensing device to generate readings for at least one of the identification metrics discussed herein. A device user would collect sufficient data on the identification metric to build a robust signature characteristic of the individual, such as a characteristic sweat RNA content. For the development of the identification signature, it will be particularly important to ensure that the target individual is actually wearing the sweat sensing device and that the collected data is accurate. For example, the device(s) used to develop the identification signature may be applied under supervision, and the target individual may need to wear the device under controlled physical conditions optimized for accurate reading, such as a climate-controlled room, or while performing set physical or mental tasks. The sweat sensing device may calculate an

identification signature at the time of first use of a sweat sensor, or over multiple sweat sensor uses. The user may also develop the identification signature by some combination of the above methods. In alternative embodiments, the sweat sensing device may not develop a unique identification signature for a target individual, but instead would use an identification signature composed of relevant known general characteristics of the target individual, such as age, fitness level, or sex.

[0049] When the sweat sensing device has more than one identification metric available, the device will combine the identification probability estimates for each metric to calculate a new combined identification probability estimate. The device will use an algorithm to perform a weighted aggregation of the separate identification probability estimates, thereby increasing the overall probability of identification. The use of multiple identification metrics, therefore, will greatly increase the device's ability to determine if a wearer is a target individual, even where each identification metric alone is of limited value for distinguishing among individuals. The higher identification probability estimate will correlate with increased certainty that a target individual is, or is not, wearing the device and correspondingly reduce the incidence of false warnings generated by the device.

[0050] Designing an algorithm capable of performing an aggregation of separate identification probability estimates is known by persons skilled in the art of statistical analysis and computer programming. The probability that a given event may occur is calculated by dividing the number of desired outcomes by the number of possible outcomes in a given population. For example, assume the target individual is a male with a low basal cortisol level (less than 11 nMol/L). The probability that the wearer will be male out of the general U.S. population with a female-to-male ratio of 1.07 is $P(\text{male})=48.3\%$. The probability that the wearer will have low cortisol given that (hypothetically) 1 of 25 individuals in a population typically has a basal cortisol level under 11 nMol/L is $P(\text{low cortisol})=4\%$. The combined probability that two independent events would occur randomly, is calculated by multiplying the probabilities. If two identification metrics taken on the wearer indicate that the wearer is a male with low basal cortisol, the probability that a random member of the population would have both identification metrics is $0.483 \cdot 0.04=1.9\%$. Therefore, the identification probability estimate that the wearer is the target individual is 98.0%.

[0051] For further refinement of the method, each probability estimate may then be weighted appropriately considering each estimate's reliability within the context of the sweat sensing device's capabilities and operation. For example, an analyte trend reading calculated with a limited number of data points would be weighed less than a similar reading calculated from many data points. Similarly, a BMI measurement by body impedance sensors may suffer inaccuracies due to the number of sensors used, the wearer's level of dehydration, or the time proximity of the measurement to food consumption or strenuous exercise by the wearer. As a component of an identification probability estimate, therefore, a BMI measurement would be weighed less than other more reliable metrics. Weighted aggregation of the separate identification probability estimates, then, is a dynamic process, considering, for example, the hydration level of the wearer, sweat rate at the time of measurement,

the functionality of sensors, number of operating sensors, number of readings taken, and other relevant factors.

[0052] Several identification metrics are available for use with a sweat sensing device, including metrics derived from sweat analytes, metrics derived from other characteristics of the wearer, and metrics derived from data originating outside the wearer's body, such as device communication characteristics or location.

[0053] Perhaps the most reliable of these metrics are ones derived from the sweat sensing device's sweat analyte measurements. Accordingly, the device may be configured to create an analyte data signature based on individual differences in analyte concentrations and ratios that emerge in sweat. This analyte data signature may comprise all or part of the target individual's identification signature. The concentrations of different sweat analytes, whether commonly or rarely found in sweat, or the comparative ratios of such analytes, may be a strong indicator of identity. In the simplest case, a sweat sensing device may detect sweat concentrations or ratios of sex hormones, such as estradiol or testosterone, to determine a wearer's sex. In other embodiments, a wearer's resting concentration of Na^+ (common) or chromium (less common); a wearer's ratio of common electrolytes, such as the resting ratio of K^+ to Na^+ ; or a wearer's trend profile of K^+ to Na^+ when stress sweating or when sweating due to physical exertion, may prove to be effective identifiers of the individual. In other embodiments, apocrine sweat sex-specific pheromones may be used to identify a wearer.

[0054] In another embodiment of the invention, the sweat sensing device may be configured to create an analyte signature based on biological oligomers, such as nucleotides, that are excreted in eccrine sweat. DNA fragments, RNA fragments, micro RNA, peptides, and similar oligomers emerge in eccrine sweat, and perform various extracellular signaling functions. In particular, micro RNA appears to play a significant role in exosomic endocrine modulation and mediation of tissue crosstalk, facilitating immune response, among other functions. The concentrations of micro RNA, and/or other biological oligomers in sweat, or the comparative ratios of such oligomers, or the ratios of such oligomers to other analytes, may be a strong indicator of identity.

[0055] In an alternative embodiment, a target individual could be administered a tracer compound that can be used to determine if a device wearer is a target individual, for example by incorporating expected tracer-related sweat molecule concentrations into the individual's analyte data profile. After being administered, the tracer molecule or its metabolite(s) are excreted in sweat and detected by the sweat sensing device. The tracer compound may be a substance that is easily detectable in sweat, with known and predictable metabolizing qualities. The tracer compound may be selected with a half-life that is appropriate to the length of time the sweat sensor is to be worn by the user, or the tracer compound may be administered at regular intervals suitable for the duration of sweat sensor use. The sweat sensing device detects the tracer compound in the sweat and compares the detected levels to the expected levels based on the administered dose and/or the half-life. By confirming that the tracer molecule is detected at the expected concentrations in the sweat, the sweat sensing device will be able to calculate a higher identification probability estimate.

[0056] Several other techniques that do not rely on sweat analyte data may also prove useful for identifying a user with a sweat sensing device. For example, in another embodiment of the invention, the sweat sensing device may be configured to combine sweat sensing device measurements with data from other wearable sensors currently known in the art, such as an accelerometer, gait analysis sensor, heart rate monitor, sensors measuring electrodermal activity, such as galvanic skin response, pulse oximetry, and others. For example, a sweat sensing device may take analyte measurements of Na^+ , Cl^- and K^+ concentrations as they emerge in a wearer's sweat. The device then uses the trending ratio of Cl^- to K^+ and corrects for sweat rate by using the Na^+ concentration trend. The device then compares these analyte values to the analyte signature assigned to a target individual. The device determines that the measured values correspond to the analyte signature, giving a (hypothetical) 70% probability that the wearer is the target individual. The device then accounts for measurements from a gait analysis device, which determines that the wearer's gait matches that of the target individual with a (hypothetical) probability of 70%. The sweat sensing device then calculates a weighted average of the two probabilities to calculate a combined probability estimate of 91% that the wearer is the target individual.

[0057] In other embodiments, a sweat sensing device may use impedance electrodes to calculate the body mass index (BMI) or body composition of a device wearer. BMI readings vary from individual to individual depending on their sex, age and fitness level, among other factors. In some cases, the composition or thickness of layers of fat under skin could be measured by impedance, since the resistance to electricity varies between adipose, muscular and skeletal tissue. A body composition reading could be used to determine whether a child, a middle-aged adult, or an older adult was likely wearing a device, or if a male or female, or someone who is generally fit, or someone who is overweight is wearing it. A sweat sensing device or other means may be used to develop a BMI signature that comprises all or part of a target individual's identification signature. The individual may also be periodically reassessed to ensure the BMI signature is accurate. A device may then accomplish a BMI measurement on a wearer, and compare the measurement to the BMI signature on file for a target individual to determine the identification probability estimate for the wearer.

[0058] Similarly, in other embodiments, the sweat sensing device may be configured to calculate the skin age or skin pigmentation of the individual wearing the device using skin impedance readings. An optical sensor could also be used to detect skin pigmentation, using hardware in some cases similar to that used for pulse oximetry. Skin impedance readings vary predictably according to an individual's age with the amount of scarring of tissue over time, with hydration, with increase in skin roughness, change in the level of function of eccrine sweat glands, or other known factors. Likewise, the ratio of pigment molecules to other molecules contained in the skin varies from individual to individual. As in the case of BMI, a skin type signature may be developed to contribute to a target individual's identification signature.

[0059] In another embodiment of the present invention, a sweat response signature may be developed for a target individual based on their typical sweat response to a stimu-

lus. The target individual's sweat response signature would be compared to the sweat response metric generated while the wearer performed a test designed to elicit an electro-physical response, such as a math test or having the wearer count backwards from 100. Sweat response is largely influenced by sweat gland density at the anatomical location of the device's application. In addition, individual sweat rate can change based on the individual's sweat threshold, which may be influenced by physical activity levels or climate. These variations can influence the time it takes to evoke a physiological response to stimulus, as well as the volumetric rate of the response. A target individual may be given multiple tests of this nature to develop a more accurate sweat response signature value, or the individual may be periodically reassessed to update the signature. As with other methods disclosed herein, a target individual's sweat response signature may comprise all or part of the individual's identification signature.

[0060] In other embodiments of the present invention, the sweat sensor device may use data originating outside the target individual's body, such as computer network connectivity, or Global Positioning System location data, to create an identification signature. For example, the sweat sensor may be in wireless communication with a reader device, such as a smart phone or other portable electronic device, or a companion transceiver. The reader device is programmed to operate the sweat sensor and to detect the RFID, or other firmware signature of the sweat sensor. The sweat sensor's RFID device or other firmware, is programmed with a unique identification code that indicates the sensor is part of a certain group, or lot, of sensors. The particular lot of sensors may, for example, all serve a particular purpose, or may have been distributed to a specific individual. The sweat sensor, when communicating data to the reader device, would transmit the identification code along with the sensor data. The reader device could then determine if the sweat sensor is part of the correct lot of sensors for the particular individual or application.

[0061] Similarly, the sweat sensor may be in wireless communication with a reader device through a wireless protocol such as Bluetooth or other communication strategy. The reader device can determine the signal strength of the sweat sensor, and thereby determine approximate distance from the reader device to the sweat sensor as it is being worn by an individual. The reader device may be associated with an individual or group of individuals. By calculating the approximate distance from the reader device to the target individual, it can be determined if a sweat sensor is being worn in proximity to a device that is associated with a particular individual, thereby increasing the probability that the wearer is the target individual.

[0062] In another embodiment, the reader device could determine its approximate location via GPS application, network access location, or other means. When the reader device is in wireless communication with the sweat sensor, it could determine the approximate location of the sweat sensor as an individual is wearing it. By calculating the individual's approximate location, and comparing the calculated location with the target's individual's known approximate location, the sweat sensing device can ensure the device is being worn by the target individual.

[0063] In another embodiment of the present invention, a trained professional could apply the sweat sensing device to the target individual and the device would then be activated.

If the device were subsequently removed from the target individual, the sweat sensing device could detect the change in impedance indicating device removal.

[0064] With reference to FIG. 5, the sweat sensing device could also generate safety and health alerts to warn the device user or the wearer that analyte concentrations, analyte ratios, or trend data for such measurements indicate the need for intervention. As with the operation and compliance alerts, these messages could be communicated in various formats. The device may conduct continuous or periodic safety and health readings to determine if the wearer's detected analytes indicate the need for intervention. Once the device detects a predetermined analyte threshold or trend, the device would generate a safety and health alert, which would be relayed to the device user or to the wearer. Depending on the application, the sweat sensing device user may set threshold or trend criteria for the target individual's hydration level, blood alcohol content, blood sugar levels, level of physiological stress, or other measures within the capability of the sweat sensor device in use. The sweat sensing device could also integrate other aggregated sweat sensor and external data, such as the current weather, the time of day, the individual's previous day exertion level, the number of continuous days the individual was on the job, the individual's historical analyte profiles, and etc., to determine whether to issue a safety and health alert. For example, the sweat sensing device may have access to aggregated data on thousands of individuals of similar age that experienced an analyte profile similar to the wearer under similar environmental conditions. The device could use the aggregated data to predict how long the wearer may have until intervention is required and issue an appropriate alert. The device may also report data to safety, compliance or care managers to identify a wearer that is in need of additional instruction or monitoring as to obtaining optimal physical and mental performance, hydration maintenance, adherence to a drug regimen, or other appropriate applications.

[0065] In another embodiment of the present invention, the sweat sensing device could be configured for use in clinical trials to provide improved safety monitoring without the need for blood draws, and to ensure compliance with drug regimens. The devices may be customized for use with a specific drug, or may be for general application to clinical trials.

[0066] To monitor safety, the sweat sensor devices may be internally configured to monitor a suite of analytes useful in such trials for safety purposes, such as Na^+ , Cl^- , K^+ , Ca^{+2} , cortisol, glucose, and ammonium, to name a few. Alternatively, the sensor may be configured to monitor specific analytes indicative of side effects identified during earlier clinical studies or animal trials. In addition, the sensor could be configured to monitor the health of specific organs during treatment through sweat detection of metabolic, renal or other similar commonly used blood test panels. The device may also monitor for specific analytes associated with the side-effects or safety implications of a particular drug. For example, drug safety could be monitored by developing an analyte safety profile. The safety profile would consist of analytes that, when analyzed together, indicate with high probability that a test subject needs intervention. A safety profile for a particular drug may be predicted using correlated aggregated sweat sensor data, or it may need to be developed by the device as it is being used during a clinical

trial. A safety profile developed for a drug during its clinical trials could then be used to monitor safety post-approval.

[0067] To monitor compliance with a drug regimen, the sensor device may be internally configured to detect metabolites or other analytes that are associated with the trial drug, or with a tracer compound having metabolic properties similar to the trial drug. For example, compliance could be monitored by developing a behavioral profile. The behavioral profile would consist of analytes that, when taken together, indicate with high probability that a test subject is, or is not, following a drug regimen. The analytes in the profile may be metabolites of the drug itself, a tracer compound, or they might be other analytes that are indirectly affected by the drug. When a drug is taken, the concentration of various analytes in the bloodstream may change in reaction to the drug. The device could monitor the concentrations of these analytes, the ratio of these analytes to each other, and could develop trend data showing changes in their relative concentrations. The behavioral profile would then be a known set of analyte levels, ratios, or concentration trends that is unique to compliance with a particular drug regimen. A behavioral profile for a particular drug may be predicted using correlated aggregated sweat sensor data, or it may need to be developed by the device as it is being used during a clinical trial. A behavioral profile developed for a drug during its clinical trials could then be used to monitor compliance post-approval.

[0068] If the analytes monitored for safety purposes indicated the need for intervention, the device could generate and communicate a safety and health alert. Similarly, if detected analyte readings differed significantly from the drug's behavioral profile, the device would determine that the target individual had not taken a required dose, and could generate and communicate a safety and health alert.

[0069] With reference to FIG. 6, in another embodiment of the present invention, the sweat sensing device could be configured to enhance workplace safety by providing continuous or near-continuous monitoring for the presence of workplace-related toxins in a wearer's bloodstream. Sweat has been identified as a preferential means of monitoring for the presence of toxic metals, metalloids, petrochemicals and other substances, since bioaccumulation levels of such toxins may be underrepresented in blood and urine. The devices may therefore be internally configured to detect toxins that are widely encountered in workplace settings, or may be customized to detect toxins that are unique to a particular workplace. As with safety monitoring in other contexts, for workplace safety a device may be configured to monitor for specific analytes associated with exposure to a particular toxin, or group of toxins. For example, workplace safety could be monitored by developing an analyte safety profile for the workplace. The safety profile would consist of analytes that, when taken together, indicate with high probability that an employee needs intervention from exposure to toxins. A safety profile for a particular workplace may be developed using correlated aggregated sweat sensor data, or it may need to be developed by the device as it is being used. Further, an individual's toxin exposure data may be stored and monitored over time, and factored into future safety and health alerts for that individual.

[0070] The following examples are provided to help illustrate the present invention, and are not comprehensive or limiting in any manner. These examples serve to illustrate that although the specification herein does not list all pos-

sible device features or arrangements or methods for all possible applications, the invention is broad and may incorporate other useful methods or aspects of materials, devices, or other embodiments that are readily understood and obvious for the broad applications of the present invention.

Example 1

[0071] A sweat sensor device is used by an employee in a mining operation. When the employee arrives at work for his shift, he applies a sweat sensor device that is coded with a unique identifier assigned to him. After the employee clocks in, the employer's on-shift system determines that he is on the job and the device takes an operation and compliance reading. The device communicates to the device user that the employee's device is in good skin contact. Then the device initiates sweat measurements, and determines that the device is operating on the employee's skin because Na^+ and K^+ concentration trends are as expected for the measured sweat rate. The device also calculates an identification probability estimate by comparing the identification metrics to an identification signature on file for the employee, and determines that the correct person is wearing the device. Four hours into the employee's shift, the device generates a safety and health alert based on the employee's hydration level and trend data. The employee receives the alert via companion transceiver located in his work area, and the supervisor receives an email at his workstation. The employee stops work to rehydrate, and the supervisor schedules the employee for safety training because this was the third instance of serious dehydration the employee experienced in the past month.

Example 2

[0072] A professional cyclist is participating in a multi-stage race, and is wearing a sweat sensor device during a 100 mile climbing stage. The device communicates via Bluetooth to a companion transceiver, which in turn communicates via cellular network with the team chase car. During the latter portion of the stage, the sweat sensing device initiates an operation and compliance reading, and determines the device is in good contact with the cyclist's skin. Then the device takes a reading on a group of selected analytes to measure fatigue, hydration level, and inflammation. The device compares the readings to predetermined thresholds representing optimal performance, then creates trend data by comparing the readings to the cyclist's prior readings during that stage. The device then compares the cyclist's current analyte profile and trend data with the cyclist's historical analyte profiles and trend data for similar stages of past races. The sweat device data is then used to generate a safety and health alert to the chase car. The cyclist's chase team then recommends an optimal pace, water and nutrient intake to the cyclist to optimize performance.

Example 3

[0073] A group of soldiers in a hot climate is attempting to secure a dangerous area in order to protect a group of civilians, and they are using sweat monitoring devices to measure their physical and mental stresses through sweat electrolytes, cortisol and cytokine biomarker measurements. Each soldier carries a companion transceiver integrated into their equipment. The companion transceiver communicates with the device, and communicates via secure datalink to the

patrol leader and the unit commander. The soldiers have been on patrol for several hours, and sweat readings for two of the soldiers are trending toward dehydration and high stress. The device issues a safety and health alert for dehydration and high stress levels for the two affected soldiers and communicates the alert to the unit commander, the patrol leader and the two soldiers. The commander instructs the sweat devices to increase the sampling rate for the two distressed soldiers. The soldiers increase their water consumption. The patrol leader factors the condition of the two soldiers into her decision about whether extend the mission duration.

Example 4

[0074] A transplant patient is taking an antirejection medication (immunosuppressant) and his attending physician is utilizing the sweat sensing device to monitor the drug levels in the patient's body through the drug metabolites excreted in sweat. The patient is to wear the device 24 hours a day, replacing it only as needed. The sweat sensing device takes periodic readings of the drug metabolites and other relevant analytes in the patient's sweat. The sweat device compares the patient's analyte readings to a standard analyte profile based on aggregated data collected on other individuals who have taken the drug. The device also constructs a profile of the analyte levels of other individuals that share relevant characteristics with the patient and develops a more customized behavioral signature for the patient. The device also builds an individual behavioral signature for the patient over several days of collecting sweat sensor data. The device then compares the detected analyte levels and ratios to one or more of the behavioral signatures developed for the patient. Several days into the treatment regimen, the sweat sensor performs a reading that detects analyte ratios and trend data that significantly differ from the patient's behavioral signature. The device generates a safety and health alert that the patient has missed a dose of medication and communicates the alert to the patient and the patient's attending physician.

Example 5

[0075] A cruise ship captain is about to embark with his ship carrying 900 passengers. According to company protocol, captains are required to wear a sweat sensor device while on duty to monitor performance. Unfortunately, the captain spent the previous evening at a bar, and consumed too much alcohol to legally operate the ship. Instead of wearing his device, he instructs his first officer to wear one of his assigned devices and he retires to quarters. The device communicates via Bluetooth with various companion transceivers located throughout the ship, and the transceivers in turn communicate with the cruise ship dispatch center. Upon application by the first officer, the device initiates an operation and compliance reading and then compares the reading with the identification signature on file for the captain. While the device ID is positively associated with the captain, several other identification metrics analyzed by the device diverge from the captain's identification signature, and the identification probability estimate is below the acceptable threshold. The device issues an operation and compliance alert that the wearer is not the captain and communicates it to the cruise ship dispatch center.

Example 6

[0076] To determine if a sweat sensing device wearer is a target cancer patient, the device measures the wearer's sweat

testosterone concentration, which is an identification metric for sex. The device detects testosterone concentrations that correlate with the wearer being male. In this context, male and female individuals are evenly distributed, so the corresponding identification probability estimate is 50%. The sweat sensing device then measures a second identification metric, which is resting sweat concentration of Na⁺. The measured Na⁺ concentration corresponds to the target patient's resting rate with a 75% probability. The device then weighs the two measurements, taking into account the testosterone sensor's inherent accuracy of +/-5% of actual sweat concentration, and the daily variability of testosterone for the target individual's age, as well as the Na⁺ measurement's stronger accuracy rating derived from the Na⁺ sensor's inherent accuracy of +/-2% of actual sweat concentration, its stability over time, and the consistency of the concentration value over 10 different samples at comparable sweat rates. The device then combines the two probability estimates to calculate a combined identification probability estimate of 85% that the wearer is the target patient, which is above the desired probability threshold. The device then sends an operation and compliance message indicating that the wearer is the target patient.

[0077] This has been a description of the present invention along with a preferred method of practicing the present invention, however the invention itself should only be defined by the appended claims.

1. A method of monitoring whether a sweat sensing device contacts a wearer's skin adequately to allow the device to operate, comprising:

- using the sweat sensing device to take at least one skin contact reading;
- comparing the at least one reading to a threshold value indicating adequate contact with skin; and
- generating an alert message communicating whether skin contact is adequate for operation.

2. The method of claim 1 in which the at least one skin contact reading is chosen from the following: a skin impedance sensor measurement; and a capacitive sensor measurement.

3. (canceled)

4. A method of determining whether a sweat sensing device is operating on a wearer's skin, comprising:

- taking at least one measurement of at least one sweat analyte; and
- using the at least one measurement to determine if the device is operating on the skin.

5. A method of determining whether a sweat sensing device wearer is a target individual, comprising:

- measuring at least one of the following metrics on the device wearer: sweat analyte data; body composition, skin type, positive correlation of device identification number, communication strength between sweat sensing device and a computer network, sweat sensing device location, reader device location, the wearer's electro-physical response, and concentration of a tracer molecule administered to the individual;

- comparing the at least one metric with known information about the target individual to calculate an identification probability estimate; and
- determining if the estimate adequately correlates the wearer with the target individual.

6. The method of claim 5 where the identification probability estimate is calculated using data from at least one of

the following sensors: accelerometer, gait analysis sensor, heart rate monitor, galvanic skin response, and pulse oximetry.

7. The method of claim 5 where the identification probability estimate is a combined probability of at least two independent identification probability estimates.

8. The method of claim 5 where an identification metric is the application of the sweat sensing device onto the target individual under supervision of a device user.

9. The method of claim 5 where the identification probability estimate is calculated using aggregated sweat sensor data that is correlated with relevant data external to the sweat sensor device.

10. A method of using data to improve the capabilities of a sweat sensing device, comprising:

obtaining and recording sensor readings from the device; gathering information from sources external to the device; correlating the sensor readings with the external information; and

comparing the correlated readings to previously-aggregated sensor data.

11. A method of determining whether a sweat sensing device should send a safety and health alert message, comprising:

using the device to take at least one reading;

calculating a threshold value indicating a message should be sent, where the threshold value is calculated using data from at least one of the following sensors: ion-selective electrode sensor; sweat analyte sensor; skin impedance sensor; skin capacitance sensor; accelerometer; gait analysis sensor; heart rate monitor; galvanic skin response sensor; and pulse oximetry sensor; comparing the at least one reading to the threshold value; and

generating an alert message if said at least one reading indicates an alert message should be sent.

12. (canceled)

13. The method of claim 11 where the threshold value is calculated using aggregated sweat sensor data correlated with relevant data external to the sweat sensor device.

14. A method of monitoring a clinical trial participant with a sweat sensing device, comprising:

configuring the device to take at least one measurement of a sweat analyte relevant to the participant's safety;

configuring the device to take at least one measurement of a sweat analyte relevant to the participant's compliance with at least one drug regimen;

calculating a safety profile for the wearer;

calculating at least one drug regimen compliance profile;

comparing said at least one safety measurement to said safety profile;

comparing said at least one compliance measurement to the at least one compliance profile; and

generating an alert message if said at least one safety measurement or said at least one compliance measurement indicates a message should be sent.

15. The method of claim 14 where the participant is administered a tracer compound.

16. The method claim of 14 where the profile values are calculated using aggregated sweat sensor data correlated with relevant data external to the sweat sensor device.

17. A method of monitoring a wearer's exposure to at least one toxin with a sweat sensing device, comprising:

configuring the device to take at least one measurement of a sweat analyte associated with at least one toxin;

calculating a toxin safety profile for the wearer;

comparing the at least one analyte measurement to the safety profile; and

generating an alert message if the at least one measurement indicates exposure to the at least one toxin.

18. The method claim of 17 where the safety profile is calculated using the wearer's history of toxin exposure.

19. The method claim of 17 where the profile values are calculated using aggregated sweat sensor data correlated with relevant data external to the sweat sensor device.

20. A sweat sensing device capable of determining whether the device is in adequate contact with, and operating on, the skin of a wearer, comprising:

a sweat sensor to provide at least one measurement of sweat;

computation, communication, and data storage means; and

a skin contact detector.

21. The device of claim 20 where the skin contact detector is one of the following: a plurality of electrical impedance sensing electrodes; and a plurality of capacitive sensor electrodes.

22. (canceled)

23. The device of claim 20 where the at least one sensor measurement is reported to a computer network.

24. The device of claim 23 where the communication strength between the sweat sensing device and the network can be determined and reported.

25. The device of claim 23 where the location of the device can be determined using at least one of the following means: network access location; or global positioning satellite.

26. The device of claim 20 where the communication means is a separate device.

27. The device of claim 20 where the device is assigned an identification code.

28. The device of claim 20 where the device generates and reports an alert message communicating whether the device is in adequate contact with the wearer's skin.

29. The device of claim 20 where the device generates and reports an alert message communicating whether the device is operating on the wearer's skin.

30. The device of claim 20 where the device generates and reports an alert message communicating whether a device wearer is the target individual.

31. The device of claim 20 where the device generates and reports an alert message communicating whether the at least one sensor measurement indicates that the wearer has a health condition.

32. The device of claim 20 where the device uses aggregated sweat sensor data correlated with relevant data external to the sweat sensor device to enhance the device's ability to predict future health or performance conditions of the wearer.

33. (canceled)

34. The device of claim 20 where the at least one sensor measurement is used with aggregated sweat sensor data that is correlated with relevant data external to the sweat sensor device to construct a data set correlated with the individual within a probability range.

35. The device of claim 34 where the external information is comprised of data from at least one of the following

sensors: accelerometer, gait analysis sensor, heart rate monitor, galvanic skin response, and pulse oximetry.

36. The device of claim **34** where the data set is comprised of at least one of the following metrics: a first sweat analyte concentration; a ratio between the first analyte concentration and a second sweat analyte concentration; a ratio among a plurality of sweat analyte concentrations; a sweat analyte concentration trend; and a sweat analyte ratio trend.

37. The device of claim **34** where the data set is comprised of data from at least one of the following sensors: accelerometer, gait analysis sensor, heart rate monitor, galvanic skin response, and pulse oximetry.

38. The device of claim **34** where the data set is comprised of at least one of the following metrics: body composition; skin type; and electro-physical response to a given stimulus.

39. The device of claim **36** where the sweat analyte is at least one of the following: electrolyte; nucleotide; RNA; micro RNA; DNA; hormone; steroid; oligomer; and protein.

40. The device of claim **20** where the sweat measurement is of at least one of the following analytes: electrolyte; nucleotide; RNA; micro RNA; DNA; hormone; steroid; oligomer; and protein.

* * * * *

专利名称(译)	Sweat传感设备通信安全性和合规性		
公开(公告)号	US20170215773A1	公开(公告)日	2017-08-03
申请号	US15/487465	申请日	2017-04-14
申请(专利权)人(译)	小汗腺系统公司.		
当前申请(专利权)人(译)	小汗腺系统公司.		
[标]发明人	HEIKENFELD JASON BEECH ROBERT BEGTRUP GAVI AMFAHR JEFF		
发明人	HEIKENFELD, JASON BEECH, ROBERT BEGTRUP, GAVI AMFAHR, JEFF		
IPC分类号	A61B5/145 A61B5/11 G06N5/04 A61B5/1455 H04L29/08 A61B5/00 A61B5/0205		
CPC分类号	A61B5/14521 A61B2562/0214 A61B5/112 A61B5/0205 A61B5/14551 A61B5/4845 A61B5/6843 A61B5/6802 A61B5/14546 A61B5/0022 A61B5/746 A61B5/7275 H04L67/18 G06N5/04 A61B2562/0219 A61B5/024 A61B5/0533 A61B2562/08 A61B5/4266 A61B5/0002 A61B5/0531 A61B5/117 A61B5/14517 A61B5/1477 A61B5/4833 A61B5/6833 A61B5/742 A61B5/7475 A61B2560/0252 A61B2562/125 A61B2562/164 B05D1/30 B05D3/007 B32B37/12 B32B2535/00 G06F19/00 G06K9/00892 G06K2009/00939 G16H40/67 G16H50/20 H04Q9/00 H04Q2209/40 Y02A90/26 Y10T29/49155		
优先权	62/064009 2014-10-15 US		
外部链接	Espacenet USPTO		

摘要(译)

本发明解决了涉及连续汗液分析物测量的混杂困难。具体地，本发明提供：至少一个能够监测出汗感测装置是否与穿着者的皮肤充分接触以允许适当的装置操作的部件；至少一个能够监测该装置是否在佩戴者皮肤上操作的部件；至少一种确定装置佩戴者是否是概率范围内的目标个体的装置；至少一个能够生成警报消息并将警报消息传递给与以下设备用户有关的组件：佩戴者安全，佩戴者生理状况，遵守佩戴设备的要求，设备操作；符合行为要求，或可能源自汗液传感器数据的其他目的；以及利用聚集的汗液传感器数据的能力，该数据可以与设备外部的信息相关联，以增强设备的预测能力。

