



US 20140002267A1

(19) **United States**
(12) **Patent Application Publication**
Riley et al.

(10) **Pub. No.: US 2014/0002267 A1**
(43) **Pub. Date: Jan. 2, 2014**

(54) **SENSOR CONTROL FOR APPARATUSES FOR SUPPORTING AND MONITORING A PERSON**

Publication Classification

(71) Applicants: **Carl W. Riley**, Milan, IN (US); **Timothy J. Receveur**, Guilford, IN (US); **David L. Ribble**, Indianapolis, IN (US)

(51) **Int. Cl.**
A61B 5/00 (2006.01)
(52) **U.S. Cl.**
CPC *A61B 5/6892* (2013.01)
USPC *340/573.4*

(72) Inventors: **Carl W. Riley**, Milan, IN (US); **Timothy J. Receveur**, Guilford, IN (US); **David L. Ribble**, Indianapolis, IN (US)

(57) **ABSTRACT**

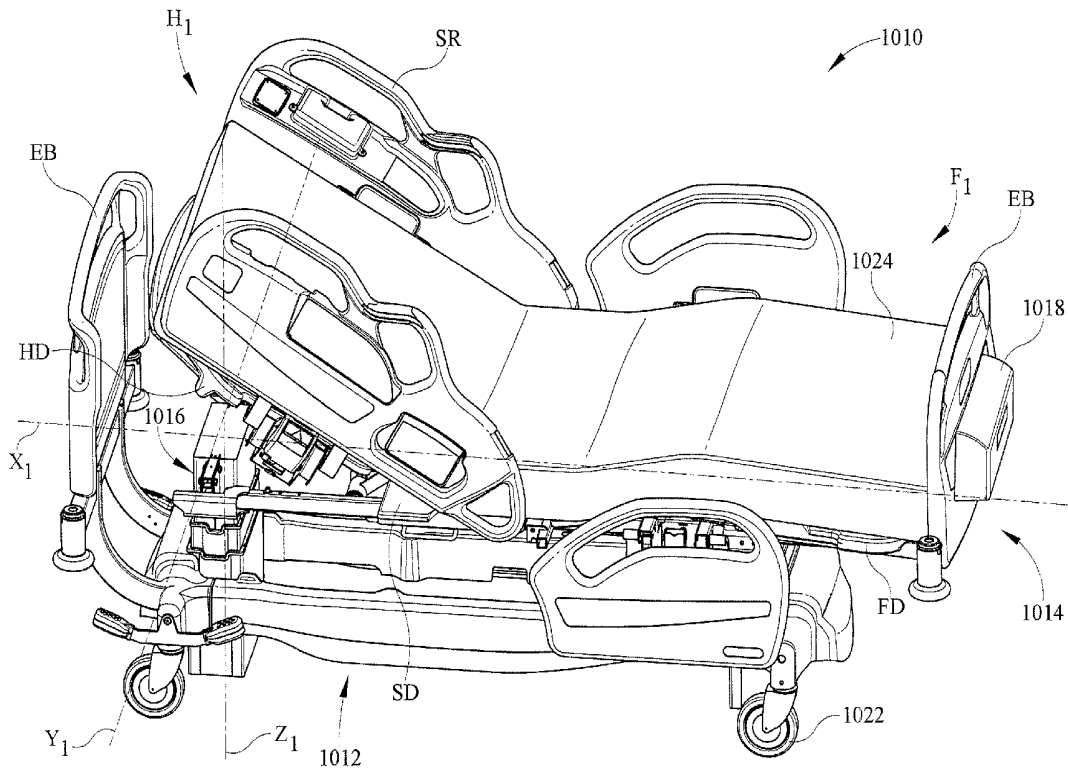
A person support apparatus includes a frame and a support surface cooperating with the frame to support a person. The person support apparatus also has a sensor coupled to one of the frame and the support surface. The sensor detects at least one characteristic associated with the person. A controller is coupled to the sensor. In response to at least one of a condition of the frame, a condition of the support surface, a position of the person, or a condition of the person, the controller operates to control the sensor by at least one of changing a gain of the sensor and changing a manner in which a signal from the sensor is filtered. In some instances, the controller turns the sensor off.

(21) Appl. No.: **14/014,875**

(22) Filed: **Aug. 30, 2013**

Related U.S. Application Data

(63) Continuation of application No. 12/881,252, filed on Sep. 14, 2010, now Pat. No. 8,525,679.



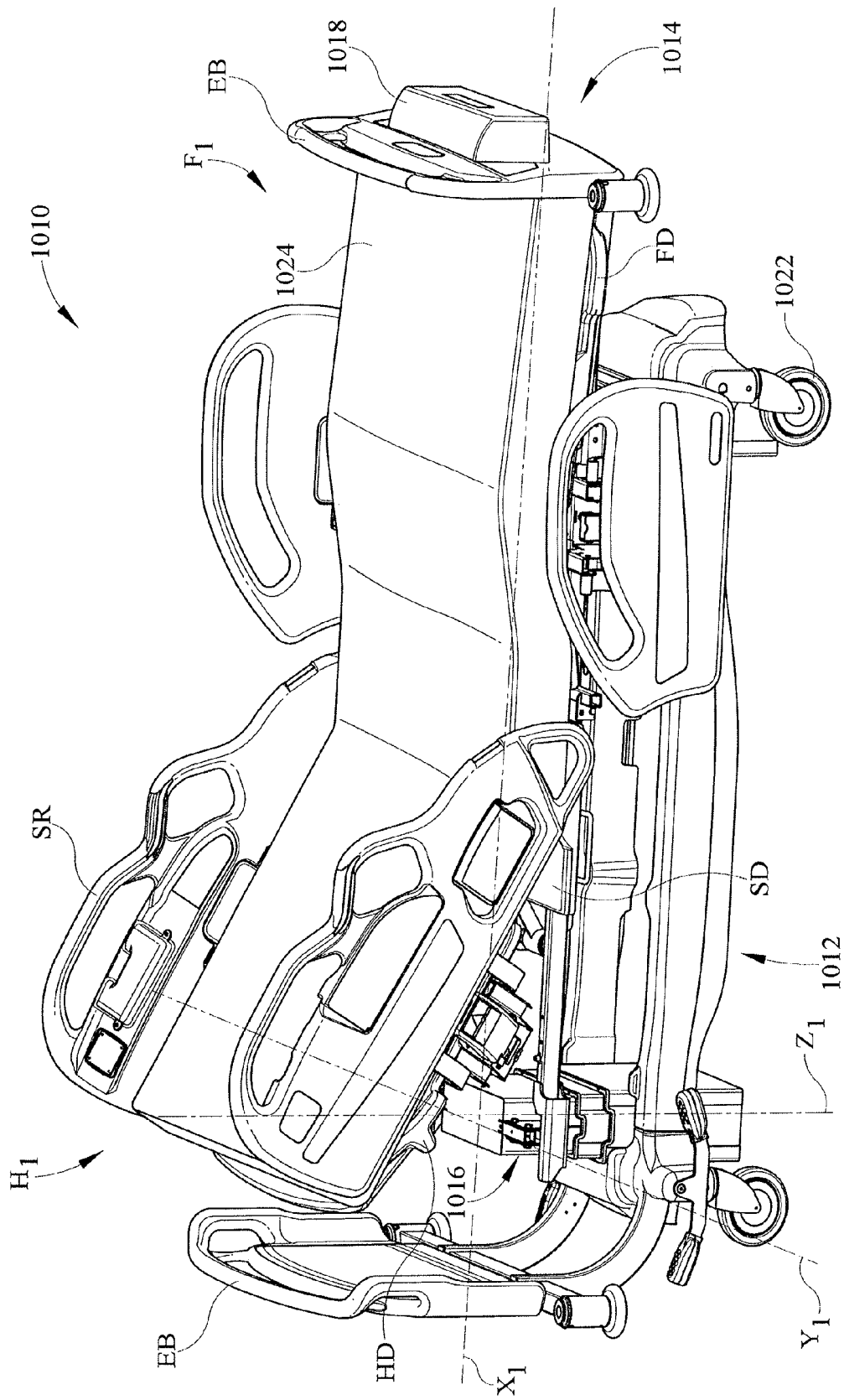


FIG. 1

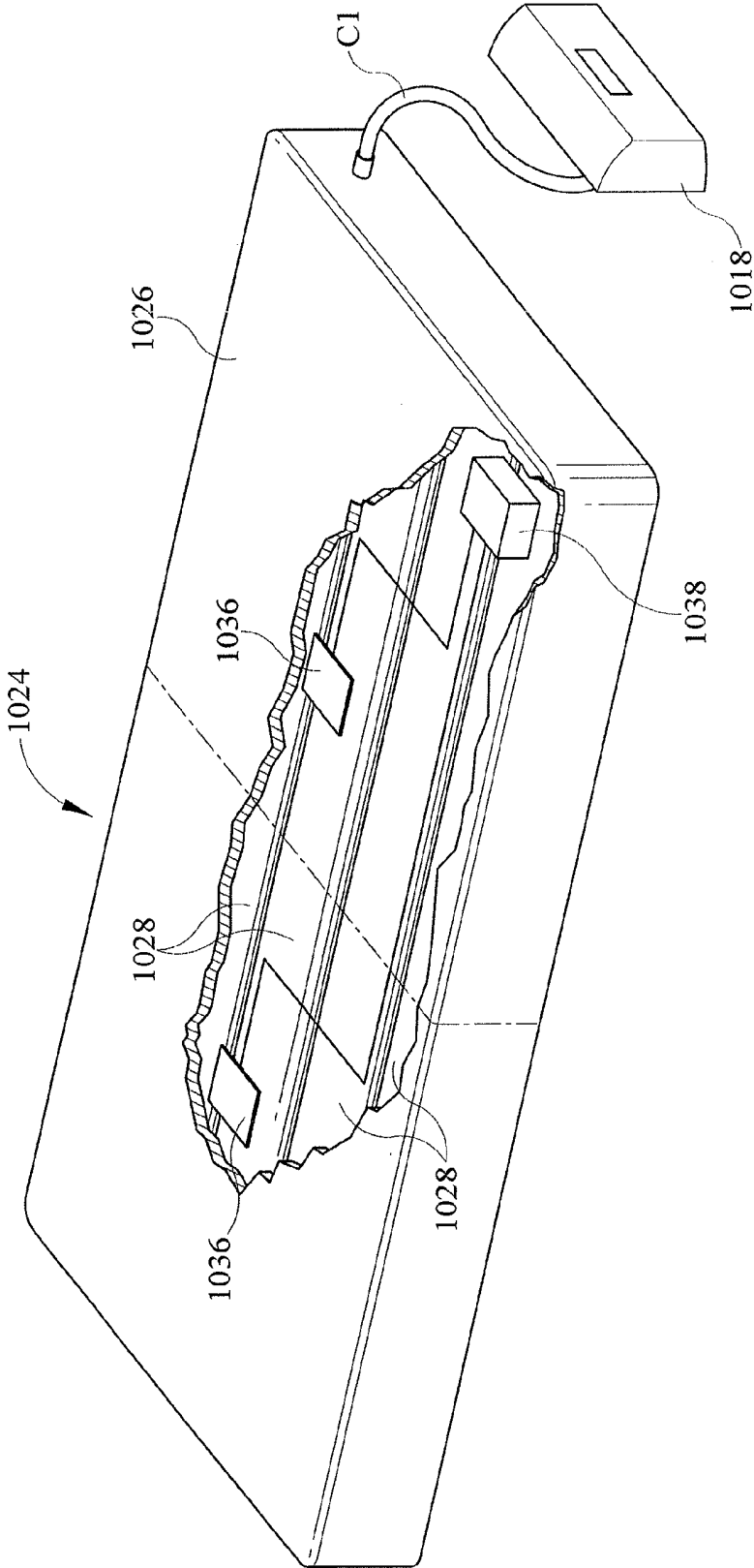


FIG. 2

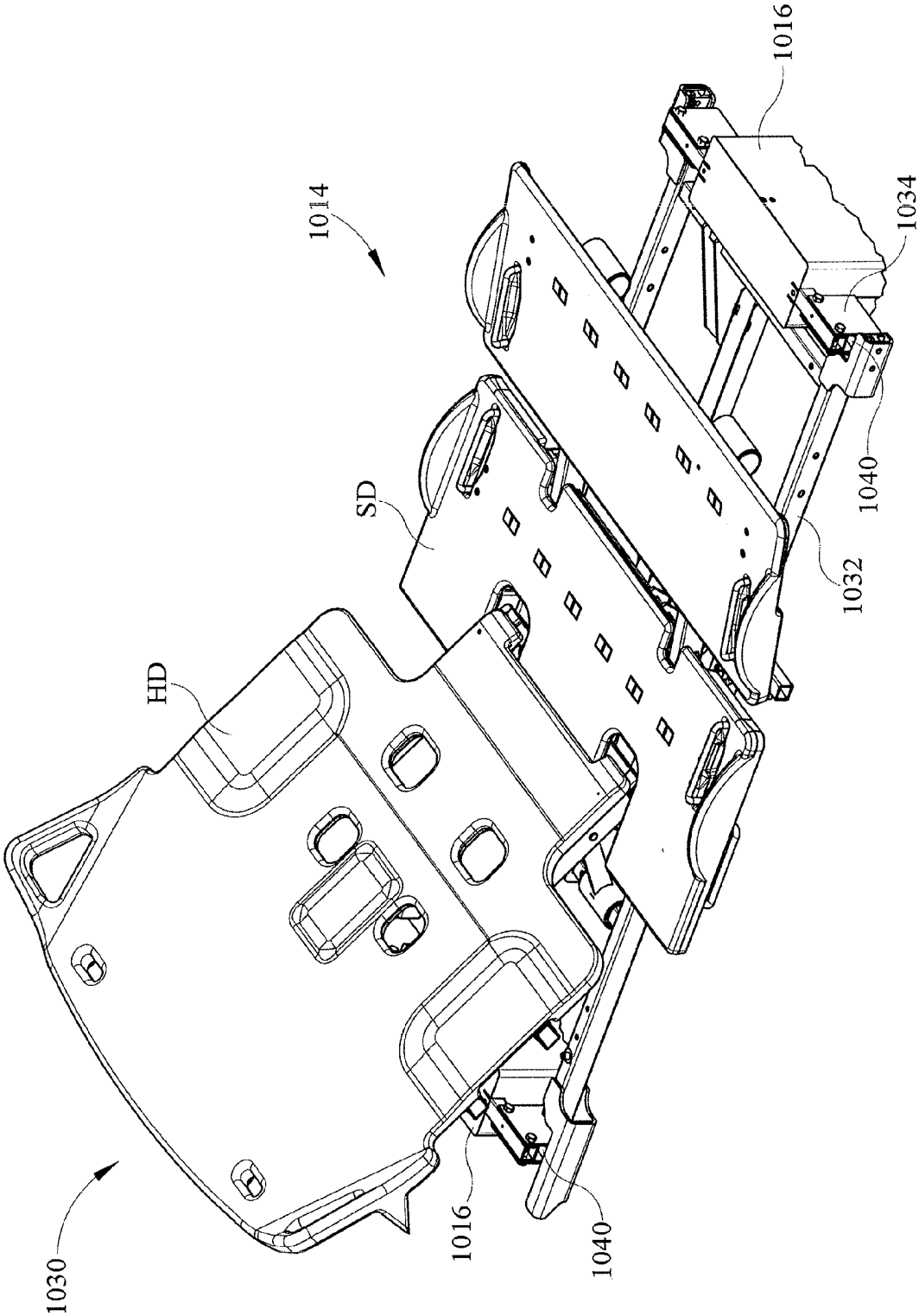


FIG. 3

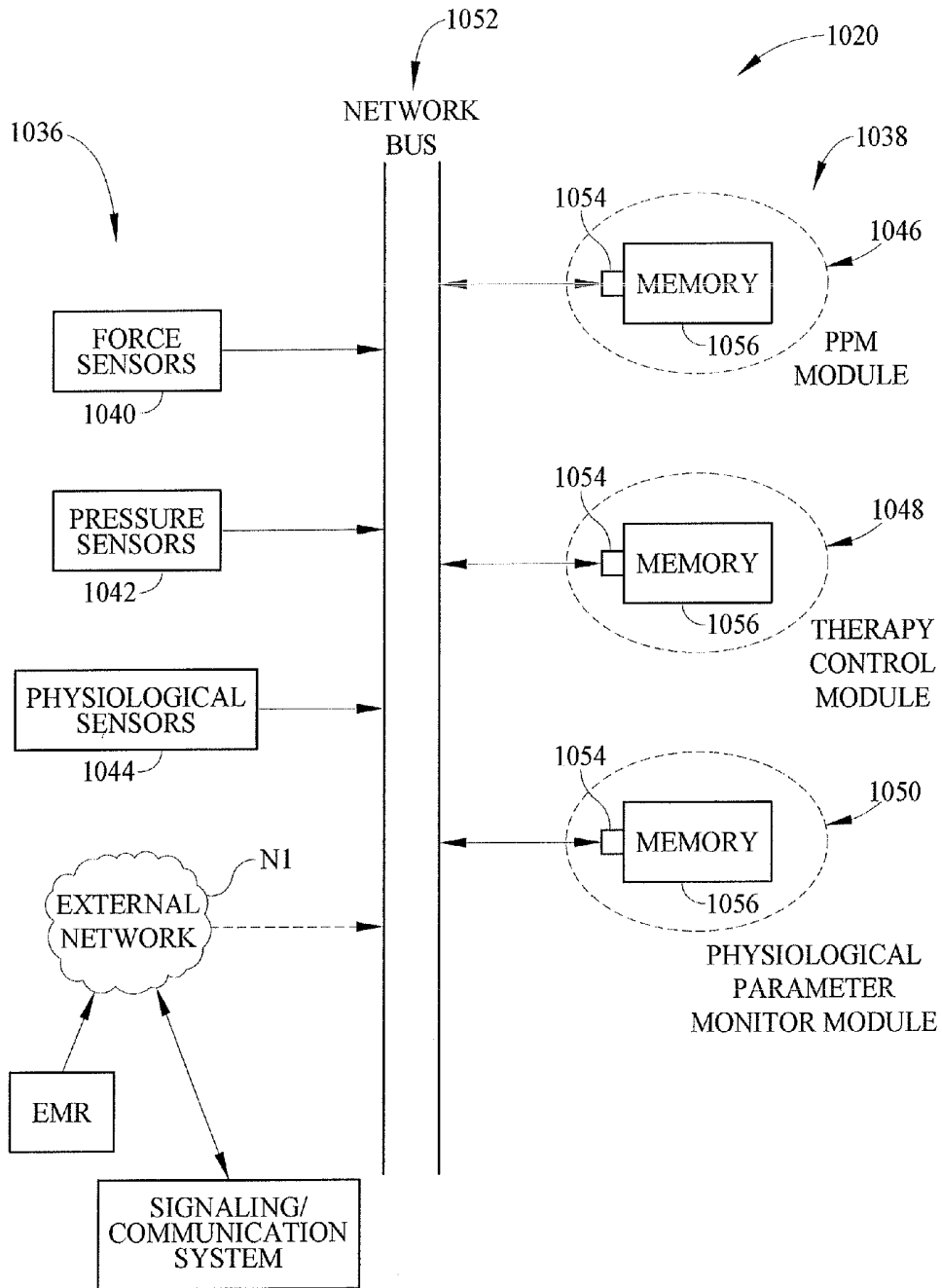


FIG. 4

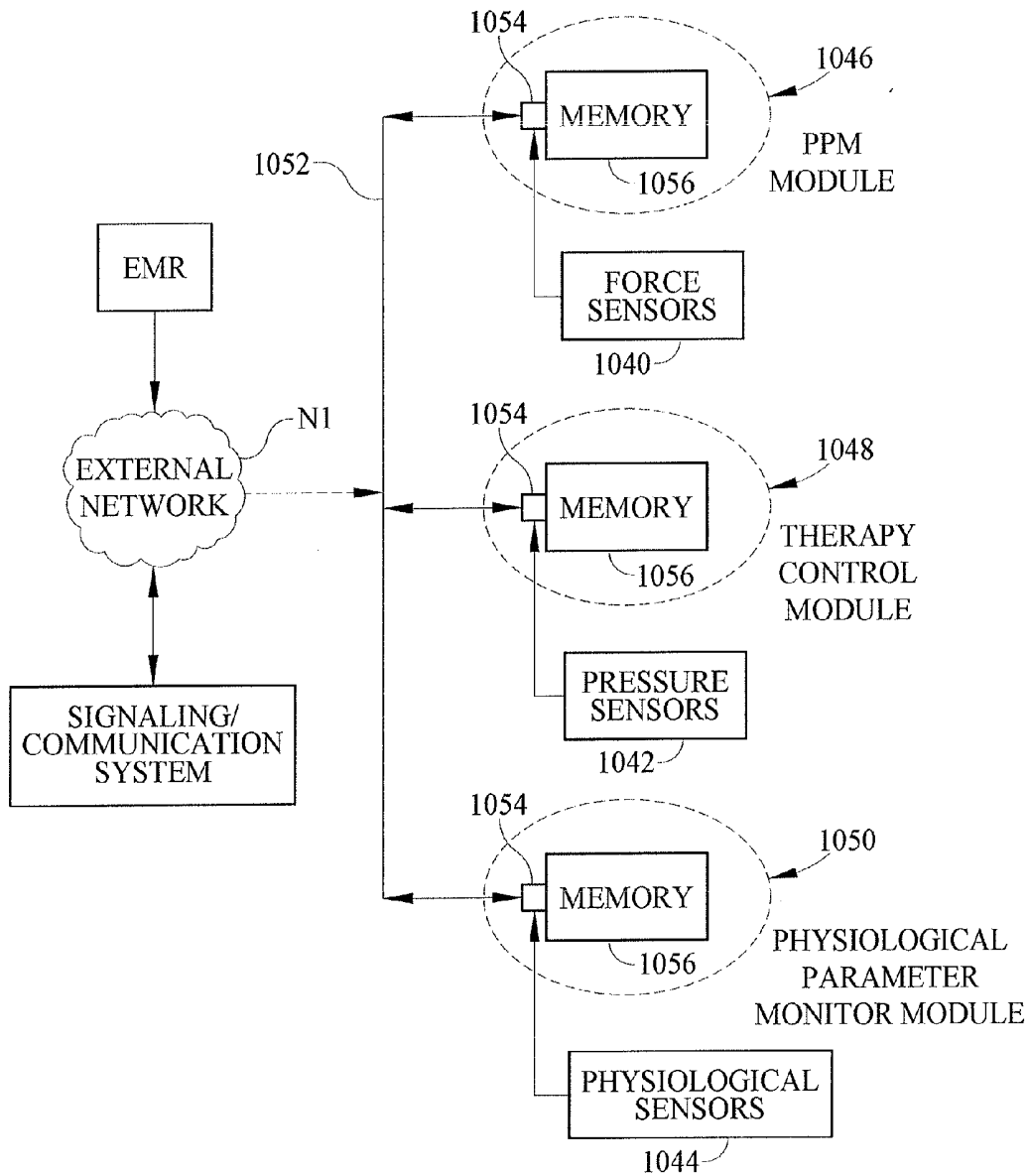


FIG. 5

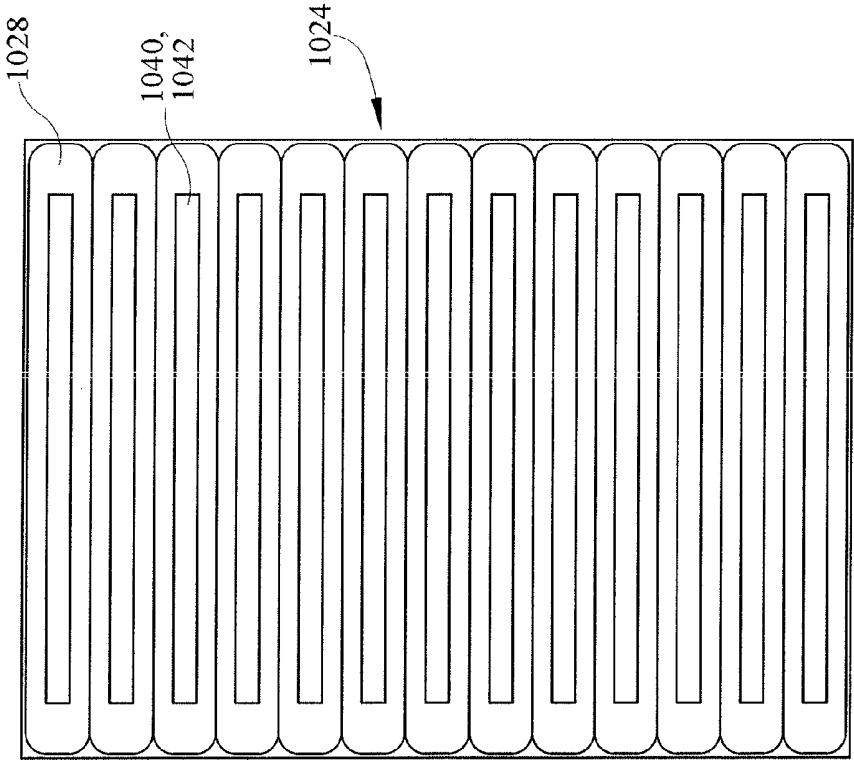


FIG. 7

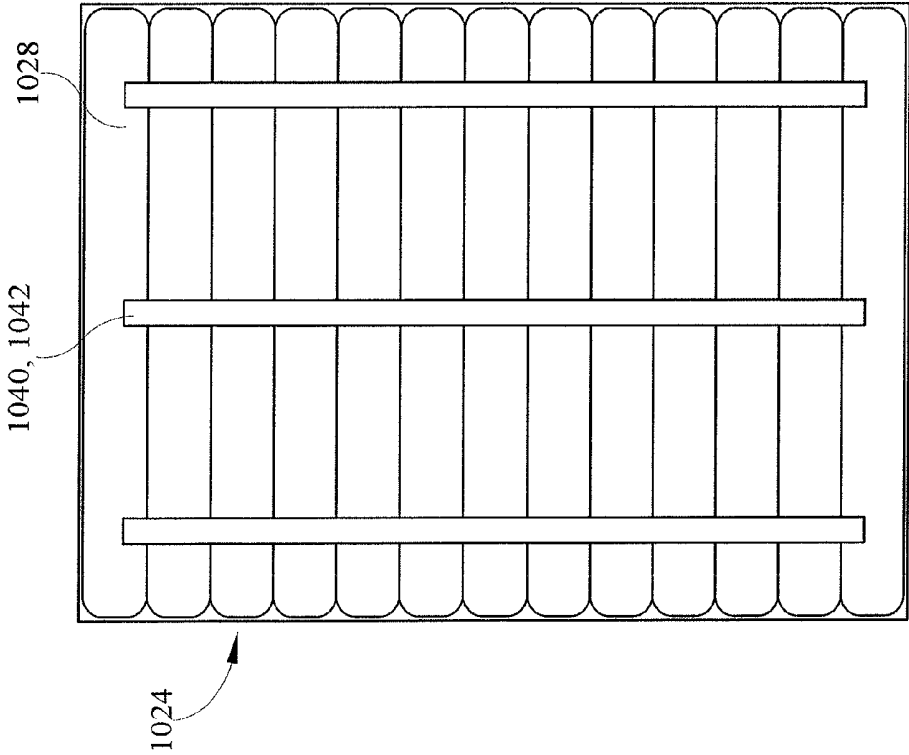


FIG. 6

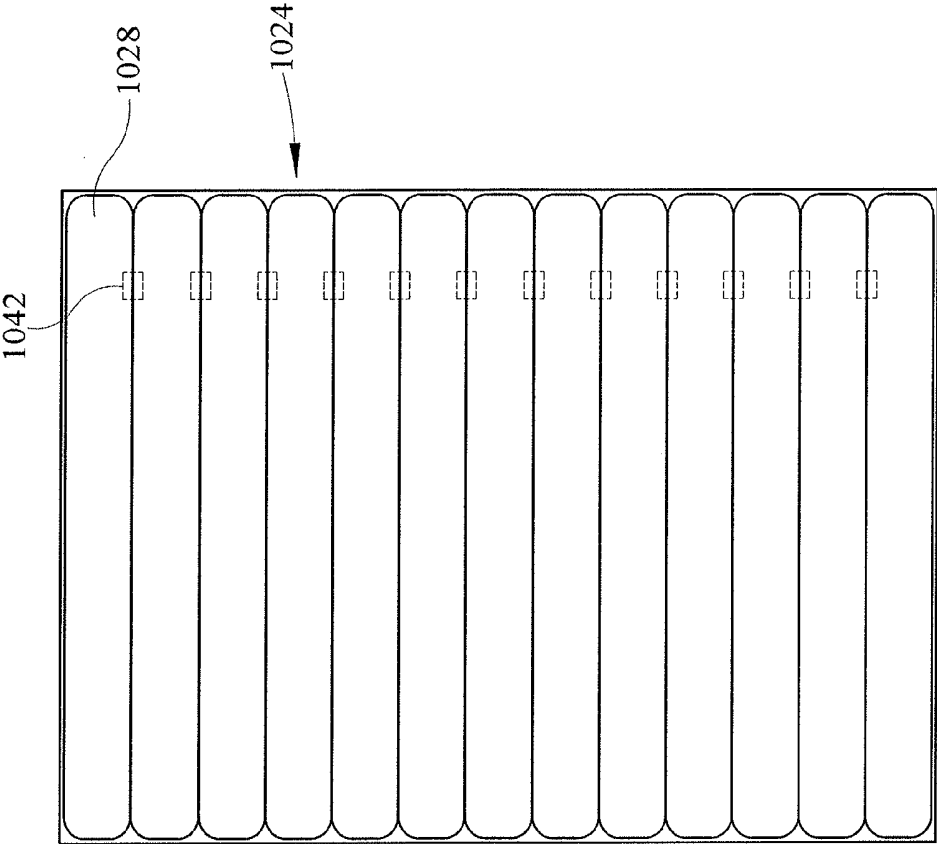


FIG. 8

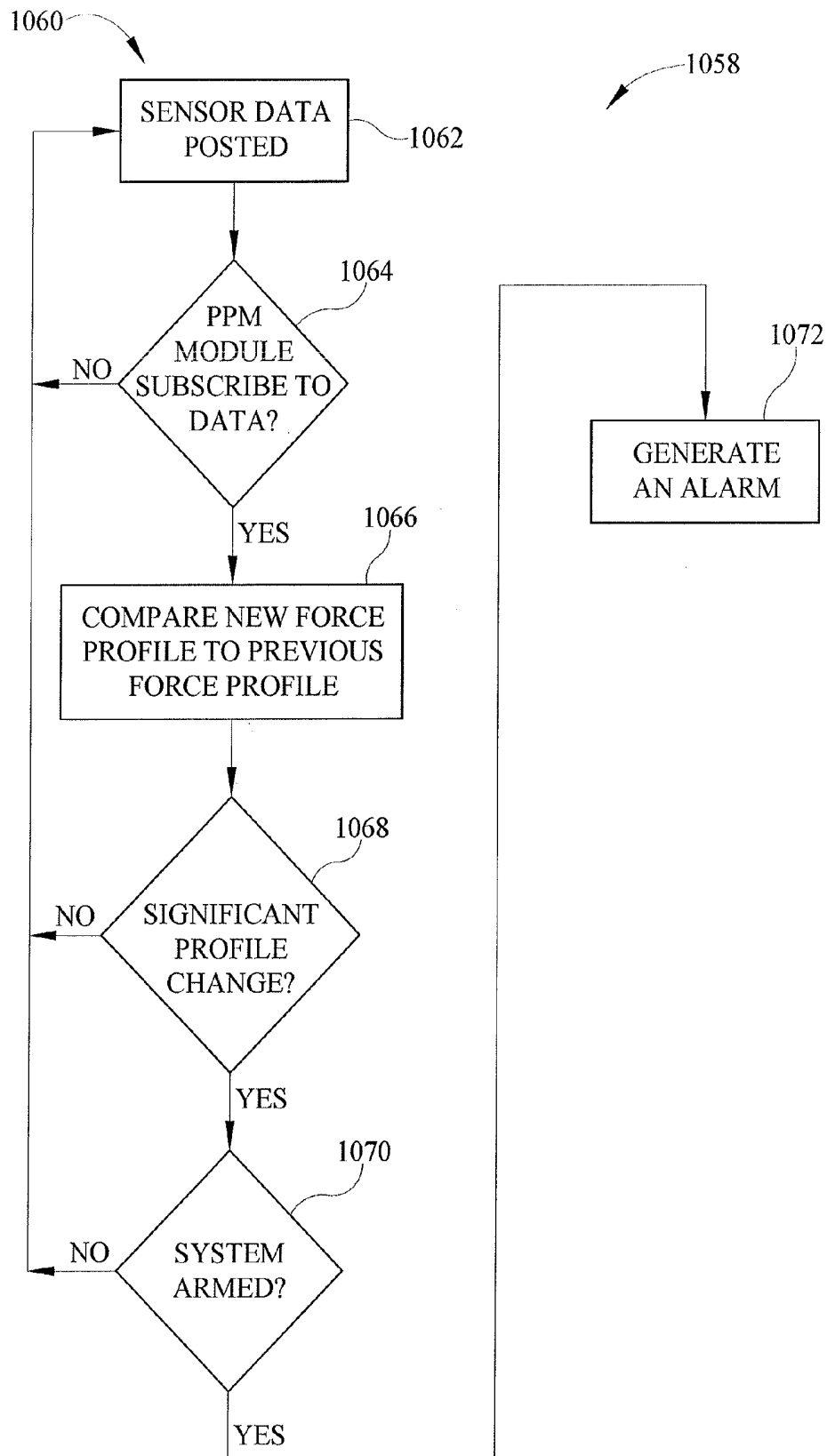


FIG. 9

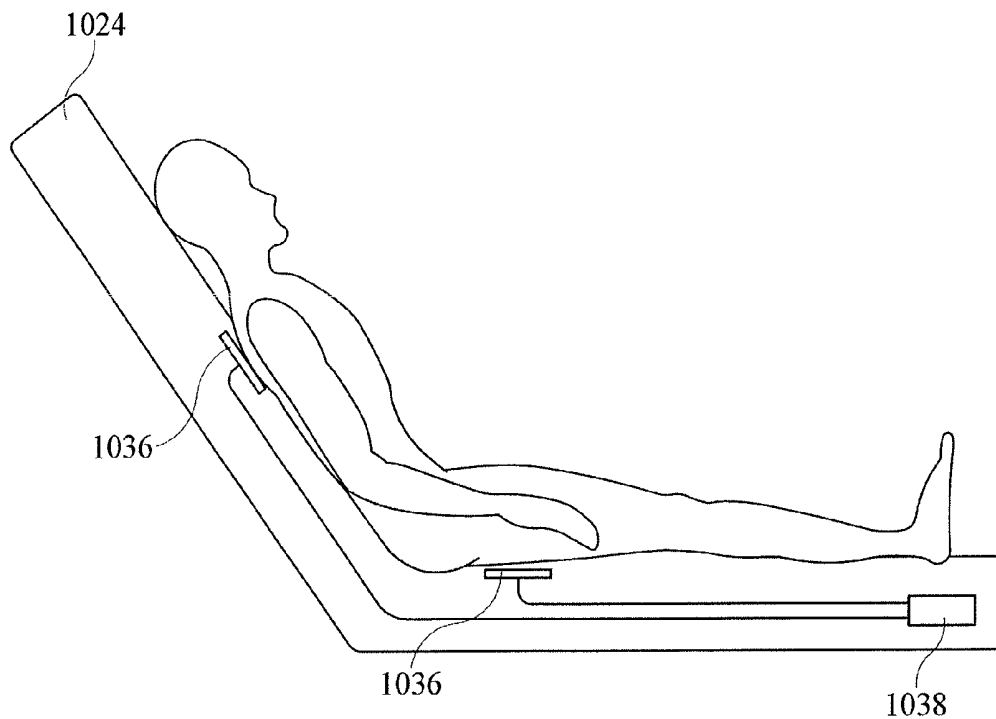


FIG. 10

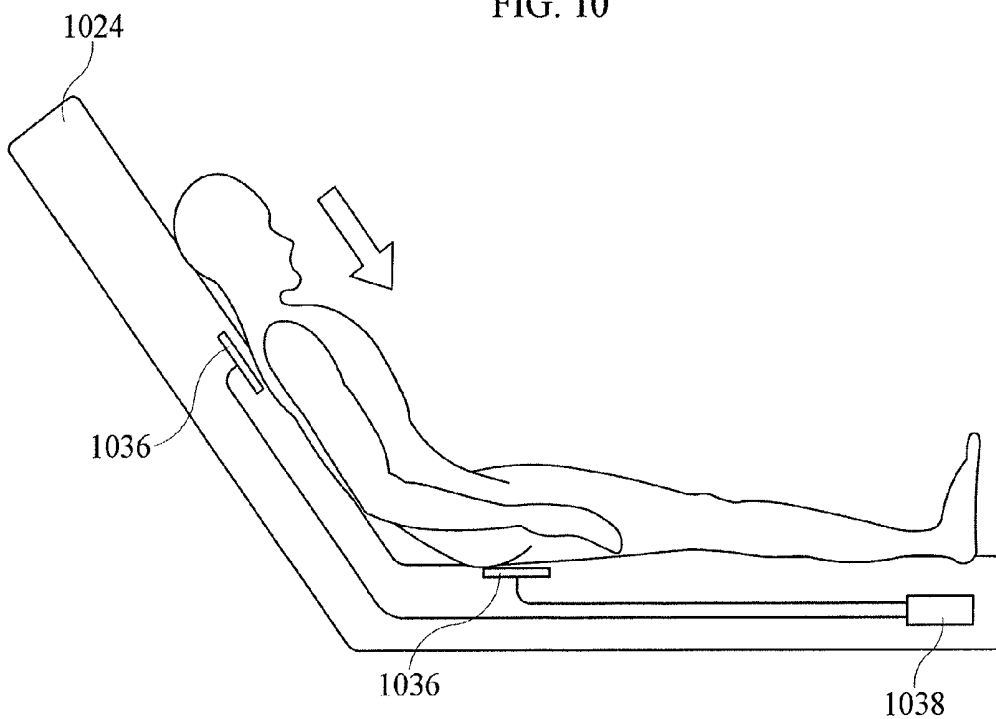


FIG. 11

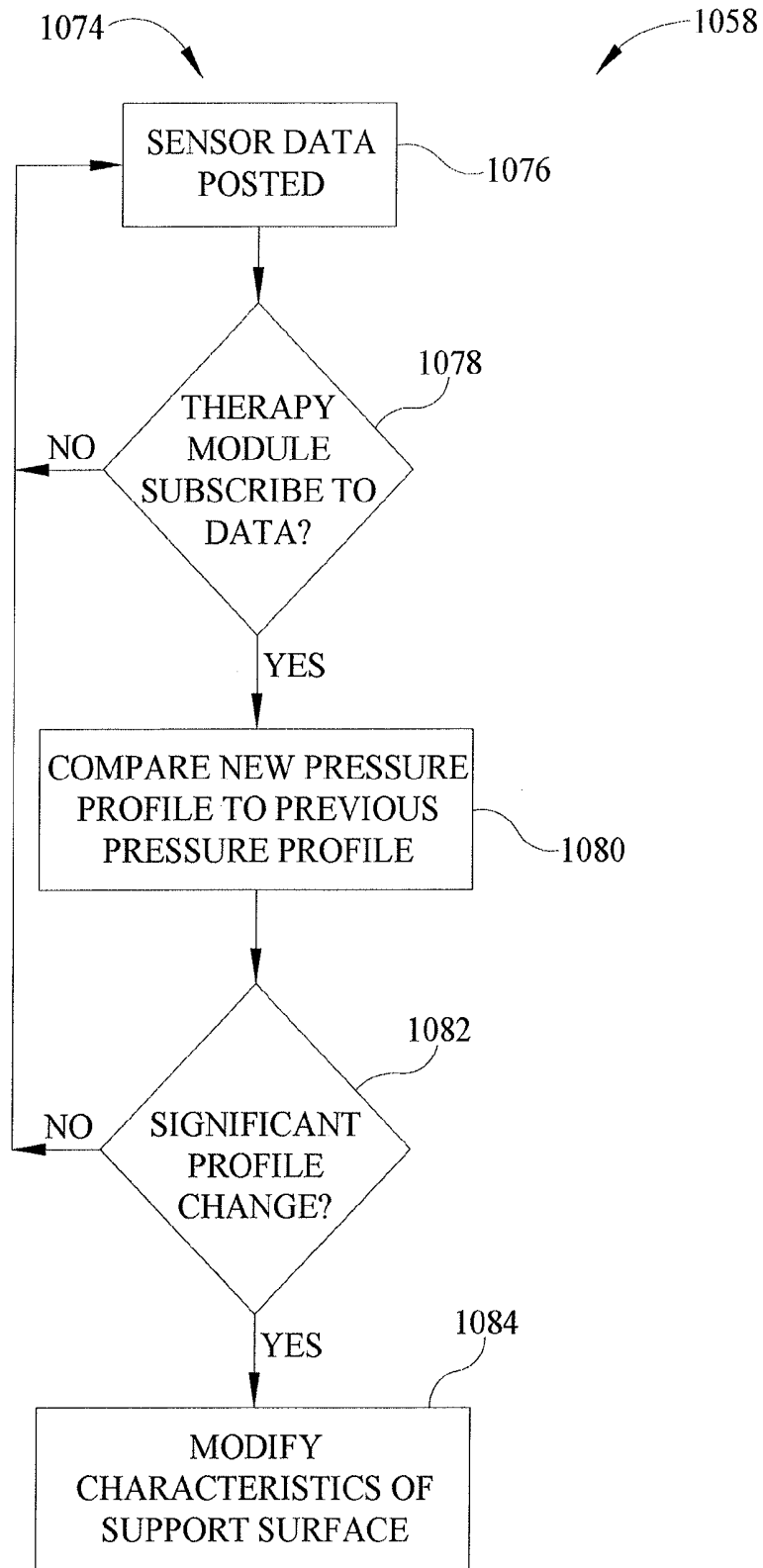


FIG. 12

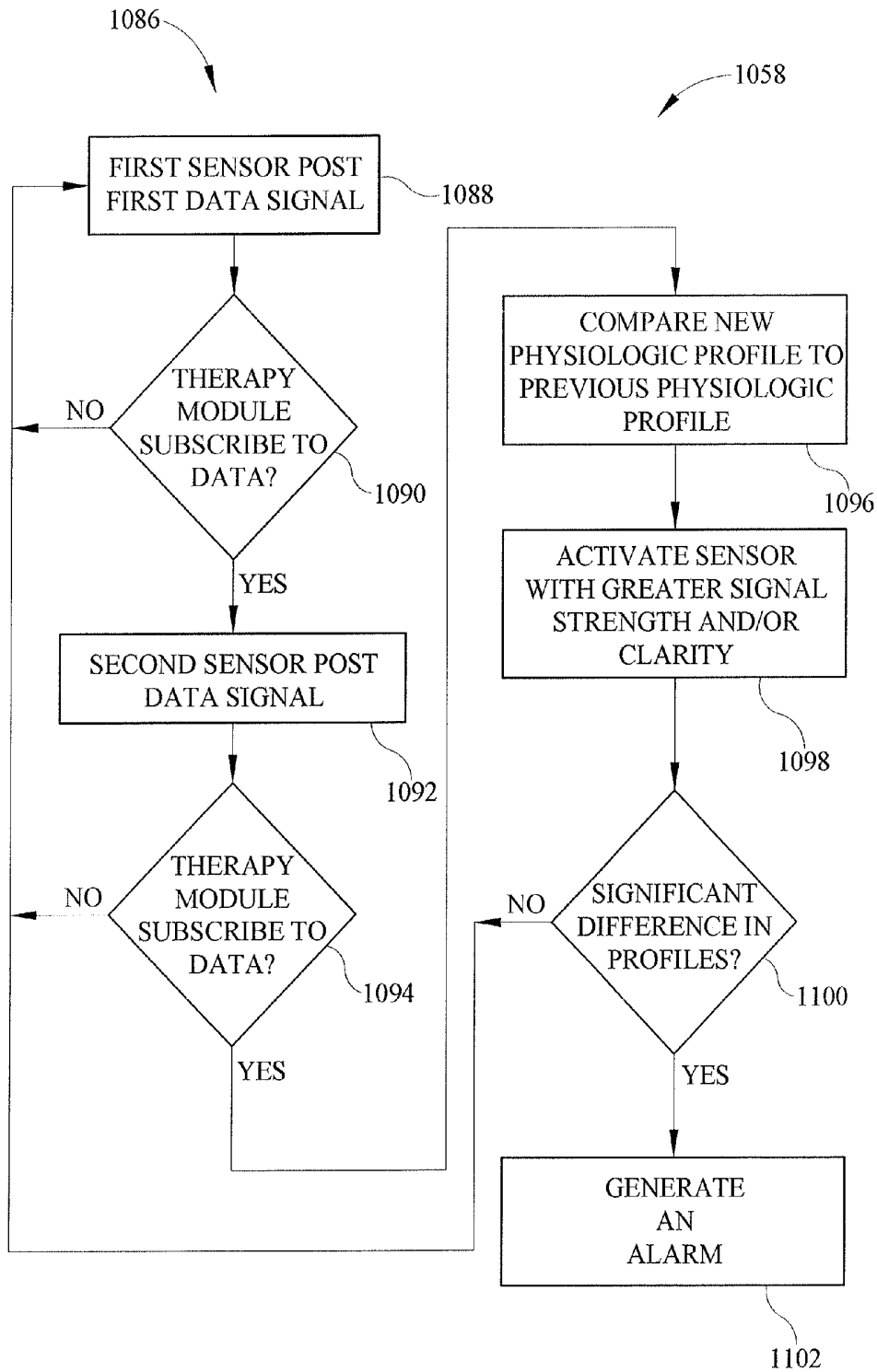


FIG. 13

SENSOR CONTROL FOR APPARATUSES FOR SUPPORTING AND MONITORING A PERSON**CROSS-REFERENCE TO RELATED APPLICATIONS**

[0001] This application is a continuation of U.S. application Ser. No. 12/881,252, filed Sep. 14, 2010, to be issued as U.S. Pat. No. 8,525,679, on Sep. 3, 2013, which claims the benefit, under 35 U.S.C. §119(e), of U.S. Provisional Application Nos. 61/243,714; 61/243,741; 61/243,806; and 61/243,825; each of which was filed Sep. 18, 2009 and each of which is hereby incorporated by reference herein.

[0002] The present application relates to U.S. application Ser. No. 12/881,285, filed Sep. 14, 2010, and titled "Apparatuses for Supporting and Monitoring a Condition of a Person".

BACKGROUND

[0003] This disclosure relates to person support apparatuses such as hospital beds. More particularly, the present disclosure relates to person support apparatuses having sensors that sense one or more conditions of the person or of the apparatus.

[0004] Person support apparatuses include beds, chairs, stretchers, seats, mattresses, therapy surfaces, furniture, and the like, or other apparatuses that support a person. Hospital beds and stretchers, hospital mattresses, and wheelchairs are examples of such apparatuses that support persons. Consumer beds, chairs, and furniture are also examples of such person support apparatuses, as are seats for vehicles, businesses, and venues.

[0005] Vital signs monitors monitor one or more physiological parameters of a person, such as body temperature, pulse rate, heart rate, blood pressure, and respiratory rate, as well as other body signs, such as end-tidal CO₂, SpO₂ (saturation of oxygen in arterial blood flow), and other indicators of the person's physiological state. Position and movement detection systems monitor the position and/or movement of a person to determine if they are attempting to exit the support apparatus.

[0006] While various person support apparatuses have been developed, there is still room for development. Thus, a need persists for further contributions in this area of technology.

SUMMARY

[0007] The present disclosure includes one or more of the features recited in the appended claims and/or the following features which, alone or in any combination, may comprise patentable subject matter.

[0008] A person support apparatus may include a frame and a support surface cooperating with the frame to support a person. The person support apparatus may also have a sensor coupled to one of the frame and the support surface, the sensor detecting at least one characteristic associated with the person. A controller may be coupled to the sensor. In response to at least one of a condition of the frame, a condition of the support surface, a position of the person, or a condition of the person, the controller may operate to control the sensor by at least one of changing a gain of the sensor and changing a manner in which a signal from the sensor is filtered.

[0009] The controller may also be operable to turn the sensor on and off. The sensor may include a plurality of sensors and the controller may operate to control each of the

plurality of sensors by at least one of changing a gain of each of the plurality of sensors and changing a manner in which signals from each of the plurality of sensors is filtered. The controller may operate to turn off some of the plurality of sensors and to turn on others of the plurality of sensors. The determination by the controller as to which sensors may be turned off and which sensors may be turned on may be based on a position of the person relative to the support surface or relative to the frame. Alternatively or additionally, the determination by the controller as to which sensors may be turned off and which sensors may be turned on may be based on movement of a first portion of the frame relative to a second portion of the frame.

[0010] The controller may be operable to implement via software at least one of a high pass filter, a low pass filter, and a band pass filter and/or the controller may be operable to selectively switch the sensor between being coupled to a high pass filter, a low pass filter, and a band pass filter. The controller may be operable to filter out noise associated with at least one of a first electric component associated with the support surface and a second electric component associated with the frame. The controller may be operable to filter out noise associated with separate medical equipment in a person's room based on information received from an electronic medical record (EMR) system.

[0011] The sensor may comprise a force sensing load cell coupled to the frame or a pressure sensing strip coupled to the support surface or both. The support surface may comprise a mattress that may have inflatable bladders and the sensor may include a pressure sensor that measures pressure in at least one of the bladders. The sensor may sense at least one of the person's weight, heart rate, respiration rate, and temperature. The at least one characteristic associated with the person and sensed by the sensor may include at least one of a force profile, a pressure in a bladder, and a physiological characteristic.

[0012] The controller may adjust the gain of the sensor as a function of a difference between a first position of the person relative to one of the frame and the support surface and a second position of the person relative to one of the frame and the support surface. The controller may be operable to prevent a user from accessing predetermined functions of the person support apparatus based on at least one of signal strength and clarity of a signal from the sensor.

[0013] The sensor may include a plurality of sensors and the controller may control the gain of each of the plurality of sensors such that signal strength of an output signal of each of the plurality of sensors may be substantially equal. The sensor may include a first sensor and a second sensor and the controller may operate to amplify a signal from the first sensor when signal strength of the signal from the first sensor is less than that of the second sensor. Alternatively or additionally, a signal from the first sensor may be filtered when signal clarity of the signal from the first sensor is less than that of the second sensor.

[0014] According to the present disclosure a system may be configured to select between a first sensor and a second sensor based on at least one of the position of a person on a person support surface, the pressure in support surface fluid bladders, a difference between the signal strength and/or clarity of the first sensor and a signal strength and/or clarity of a second sensor, and person support apparatus status information. Also according to the present disclosure, a system may be configured to amplify and/or filter a signal from a first sensor as a function of at least one of a difference between the signal

strength and/or clarity of the first sensor and a signal strength and/or clarity of a second sensor, the position of a person on a person support surface, the pressure in support surface fluid bladders, a comparison between a first sensor and second sensor, and person support apparatus status information.

[0015] Additional features alone or in combination with any other feature(s), including those listed above and those listed in the claims and those described in detail below, may comprise patentable subject matter. Others will become apparent to those skilled in the art upon consideration of the following detailed description of illustrative embodiments exemplifying the best mode of carrying out the invention as presently perceived.

BRIEF DESCRIPTION OF THE DRAWINGS

[0016] Referring now to the illustrative examples in the drawings, wherein like numerals represent the same or similar elements throughout:

[0017] FIG. 1 is a perspective view of an embodiment of a person support apparatus according to one illustrative embodiment;

[0018] FIG. 2 is perspective view of the person support surface of FIG. 1 according to one illustrative embodiment partially cut away to reveal sensors integrated therein;

[0019] FIG. 3 is a perspective view of the upper frame according to one illustrative embodiment of the person support apparatus of FIG. 1;

[0020] FIG. 4 is a diagrammatic view of a control system for the person support apparatus of FIG. 1 according to one illustrative embodiment;

[0021] FIG. 5 is a diagrammatic view of a control system for the person support apparatus of FIG. 1 according to another illustrative embodiment;

[0022] FIG. 6 is a top view of the fluid bladders within the person support surface of FIG. 2 with pressure sensors coupled across the bladders according to one illustrative embodiment;

[0023] FIG. 7 is a top view of the fluid bladders within the person support surface of FIG. 2 with pressure sensors coupled along the bladders according to another illustrative embodiment;

[0024] FIG. 8 is a top view of the fluid bladders within the person support surface of FIG. 2 with pressure sensors integrated in the bladders according to yet another illustrative embodiment;

[0025] FIG. 9 is a flowchart for a procedure that can be executed by the control system of FIGS. 4 and/or 5 according to one illustrative embodiment;

[0026] FIG. 10 is a partial diagrammatic view of a person in a first position with respect to the person support surface of FIG. 1 according to one illustrative embodiment;

[0027] FIG. 11 is a partial diagrammatic view of a person in a second position with respect to the person support surface of FIG. 1;

[0028] FIG. 12 is a flowchart for a procedure that can be executed by the control system of FIGS. 4 and/or 5 according to one illustrative embodiment; and

[0029] FIG. 13 is a flowchart for a procedure that can be executed by the control system of FIGS. 4 and/or 5 according to one illustrative embodiment.

DETAILED DESCRIPTION

[0030] While the present disclosure can take many different forms, for the purpose of promoting an understanding of the principles of the disclosure, reference will now be made to the embodiments illustrated in the drawings, and specific language will be used to describe the same. No limitation of the scope of the disclosure is thereby intended. Various alterations, further modifications of the described embodiments, and any further applications of the principles of the disclosure, as described herein, are contemplated.

[0031] One illustrative embodiment of the present disclosure includes a system configured to select between a first sensor and a second sensor based on at least one of the position of a person on a person support surface, the pressure in support surface fluid bladders, a difference between the signal strength and/or clarity of the first sensor and a signal strength and/or clarity of a second sensor, and person support apparatus status information. Another illustrative embodiment includes a system configured to amplify and/or filter a signal from a first sensor as a function of at least one of a difference between the signal strength and/or clarity of the first sensor and a signal strength and/or clarity of a second sensor, the position of a person on a person support surface, the pressure in support surface fluid bladders, a comparison between a first sensor and second sensor, and person support apparatus status information.

[0032] A person support apparatus 1010 according to an illustrative embodiment of the current disclosure is shown in FIG. 1. The person support apparatus 10 includes a head section H1, where the head and a portion of the torso of a person (not shown) can be positioned, and a foot section F1, where the feet of a person (not shown) can be positioned. The person support apparatus 1010 includes a lower frame 1012 or base 1012, an upper frame 1014, a plurality of supports 1016, a fluid supply 1018, and a control system 1020. In some embodiments, the person support apparatus 1010 includes only one support 1016. The lower frame 1012 includes at least one lower frame section that is supported by casters 1022 as shown in FIG. 1.

[0033] The person support apparatus 1010 supports a person support surface 1024 or mattress 1024 on the upper frame 1014 as shown in FIG. 1, 2, & 6-8. The person support surface 1024 is configured to support a person (not shown) in multiple articulated positions. The person support surface 1024 includes a back portion B1 and a main portion M1. The person support surface 1024 includes a cover 1026 or ticking 1026 that envelopes one or more support sections and/or layers having foam and/or fluid bladders 1028. The person support surface 1024 is configured to deliver therapy to the person, such as, for example, through sequential inflation/deflation of the fluid bladders 1028, rapid changes in pressure of the fluid in the fluid bladders 1028, and/or passing fluid through the person support surface 1024. For example, one or more portions of the surface 1024 provides alternating pressure therapy, continuous lateral rotation therapy, low air loss therapy, boost assistance, percussion/vibration therapy, and/or other therapies. In some contemplated embodiments, the person support surface 1024 includes a coverlet (not shown) that overlies another person support surface 1024 and that is configured to deliver therapy to a person supported thereon.

[0034] The supports 1016 are coupled with the upper frame 1014 and the lower frame 1012 and define a vertical axis Z1 that extends through the lower frame 1012 and the upper frame 1014 substantially perpendicular when the lower frame

1012 and the upper frame **1014** are parallel one another as shown in FIG. 1. In the illustrative example, the supports **1016** are lift mechanisms **1016** with a lift driver (not shown) that causes the lift mechanisms **1016** to expand and/or contract to raise and/or lower the upper frame **1014** with respect to the lower frame **1012**. In some embodiments, the supports **1016** include at least one of telescoping towers, scissor lifts, rotational lifts, hydraulic lifts or actuators, pneumatic lifts or actuators, linear actuators, electronic actuators, chain lifts, or other lift mechanisms. In some embodiments, the supports **1016** comprise at least one fixed column (not shown). According to some embodiments, the supports **1016** move the upper frame **1014** to a Trendelenburg/reverse Trendelenburg position and/or rotate the upper frame **1014** from side to side with respect to the lower frame **1012**.

[0035] The upper frame **1014** defines a longitudinal axis **X1** that extends at least the length of the person support apparatus **1010** through the head end **H1** and the foot end **F1** along the lateral center of the upper frame **1014**, and a lateral axis **Y1** that is perpendicular to the longitudinal axis **X1** and extends at least the width of the person support apparatus **1010** through the longitudinal center of the upper frame **1014** as shown in FIGS. 1 and 3. The upper frame **1014** includes a deck **1030**, an intermediate frame **1032**, and an upper frame base **1034** coupled to the supports **1016** which support the deck **1030** and the intermediate frame **1032**. In some embodiments, the upper frame **1014** also includes a footboard **FB**, a head board **HB**, and/or siderails **SR** supported by the intermediate frame **1032**. In some embodiments, the upper frame **1014** only includes a deck **1030**. The deck **1030** has multiple sections, such as, a head deck section **HD**, a seat deck section **SD**, and a foot deck section **FD**, that are pivotably coupled to one another and/or the deck **1030** and articulate about the lateral axis **Y1**.

[0036] The fluid supply **1018** couples to the person support surface **1024** through a conduit **C1** and is configured to supply fluid to the fluid bladders **1028** of the person surface **1024** as shown in FIG. 3. In some embodiments, the fluid supply **1018** also supplies fluid to the coverlet (not shown). In some embodiments, the fluid supply **1018** supplies gas to the person support surface **1024**. The fluid supply **1018** includes a fluid source (not shown) such as an air blower (not shown) or an air compressor (not shown). The fluid supply **1018** includes a user interface (not shown) and/or a controller (not shown) that controls the operation of the fluid source in response to an input from a user or control system, such as, control system **1020**.

[0037] The control system **1020** includes a plurality of sensors **1036** and control modules **1038** as shown in FIGS. 5 and 6. In some embodiments, the control system **1020** is configured to control various functions of the person support apparatus **1010** including, but not limited to, for example, articulating the deck **1030** with respect to the intermediate frame **1032**, administering therapy to a person supported on the person support apparatus **1010**, alerting caregivers when a person is exiting the person support apparatus **1010**, alerting caregivers when a person is out of a desired position relative to the person support surface **1024**, output information processed by the control system **1020** to a display (not shown), etc. The control system **1020** is coupled to the upper frame **1014** in some instances. In other instances, the control system **1020** is coupled to the lower frame **1012**, supports **1016**, a siderail, and/or elsewhere on the person support apparatus **1010**. In further embodiments, the control system **1020** is

incorporated within or coupled to the person support surface **1024**. In some embodiments, the control modules **1038** are integrated into a graphical user interface (not shown). In other embodiments, the control system **1020** is integrated into an external network (not shown), such as, a hospital network, in communication with the person support apparatus **1010**.

[0038] The sensors **1036** are operatively coupled to the control modules **1038** and are configured to sense various parameters, including, but not limited to, for example, a person's physiological information, a position of a person on the person support apparatus **1010** and/or person support surface **1024**, a pressure of the fluid inside the bladders **1028** in the person support surface **1024**, or other various parameters. In some embodiments, the sensors **1036** comprise force sensors **1040** that are coupled to the upper frame **1014** and that are configured to measure force on the upper frame **1014** as shown in FIGS. 5 and 6. In some embodiments, the sensors **1036** are force sensors **1040** that are configured to measure force on the upper frame **1014** and that are positioned between the intermediate frame **1032** and the upper frame base **1034** so as to couple the intermediate frame **1032** and deck **1030** to the upper frame base **1034**.

[0039] In some contemplated embodiments, the sensors **1036** are force sensors **1040** that are integrated into the person support surface **1024** and that are configured to measure changes in force on the person support surface **1024** as shown in FIG. 2. In some embodiments, the force sensors **1040** are coupled to the supports **1016** and/or the lower frame **1012**. In further embodiments, the sensors **1036** are integrated into the casters **1022** and/or are engaged by the casters **1022**. It is within the scope of this disclosure for the sensors **1036** to be integrated into the ticking **1026** such as being between the layers of the ticking **1026**. In some embodiments, the force sensors **1040** are load cells **1040** that are coupled proximate the corners of the intermediate frame **1032**. In some embodiments, the force sensors **1040** are piezoelectric sensors and/or elongated sensor strips or arrays. In other embodiments, the force sensors **1040** are other types of force sensors **1040** and are positioned in other locations on the upper frame **1014** and/or within the person support surface **1024**.

[0040] In some embodiments, the sensors **1036** are pressure sensors **1042** that are integrated into the person support surface **1024** and that are configured to measure the pressure in/among the fluid bladders **1028** in the person support surface **1024** as shown in FIGS. 6-8. In some embodiments, the pressure sensors **1042** are coupled between the bladders **1028** such that they allow communication between adjacent bladders **1028**. In some embodiments, the pressure sensors are situated within the bladders **1028** and measure the pressure within the bladder **1026**.

[0041] In some embodiments according to this disclosure, the sensors **1036** are physiological sensors **1044** that are integrated into the person support surface **1024** and that are configured to measure one or more physiological parameters of a person supported on the person support surface **1024** as shown in FIG. 2. For example, one or more of the force sensors **1040** and one or more of the pressure sensors **1042** sense different physiological parameters in some embodiments. In some embodiments, the physiological sensors **1044** are used to sense the heart rate and/or respiration rate of a person supported on the person support surface **1024**. Alternatively or additionally, one or more of the physiological sensors **1044** sense the temperature of the person. It also contemplated by this disclosure for the physiological sensors

1044 to be configured to sense the movement and/or weight of the person on the person support surface **1024**. In some embodiments, one or more of the physiological sensors **1044** are configured to sense the relative humidity of a tissue on the person support surface **1024**. In some embodiments, the physiological sensors **1044** are pressure-strip sensors disposed on the fluid bladders **1028** along an axis parallel with the lateral axis Y1 and/or along an axis parallel with the longitudinal axis X1.

[**0042**] The control modules **1038** are each configured to perform different operations in the illustrative example. However, in some embodiments, a single control module **1038** is configured to perform the multiple different operations. In some embodiments, a single control module **1038** is configured to perform operations independently or in conjunction with at least one other control module **1038**. In some embodiments, a first control module **1038**, such as, a person position monitor module **1046** (PPM), is configured to detect the position of a person on the person support apparatus **1010**. In some such embodiments, a second control module **1038**, such as a therapy control module **1048**, is configured to sense and/or modify the pressure within the fluid bladders **1028**. In further such embodiments, a third control module **1038**, such as a physiological parameter monitor module **1050**, is configured to detect a person's physiological information.

[**0043**] In some embodiments, the control modules **1038** are operatively coupled together through a network **1052** as shown in FIGS. **4** and **5**. The network **1052** facilitates communication between the various modules and/or equipment connected to the network **1052**. In some embodiments, the network **1052** is a CAN network on a person-support apparatus **1010**. Alternatively or additionally, the network **1052** comprises a hospital network (not shown). In some embodiments, the network **1052** includes other types of networks or communication protocols that facilitate communication between two or more devices. It is contemplated by this disclosure that the modules **1038** can be configured to connect to the network **1052** wirelessly, if desired. In some embodiments, the control modules **1038** negotiate with the network **1052** to be a network node. In some embodiments, the control modules **1038** are located at or on any node on the network **1052** and/or distributed across multiple nodes on the network **1052**.

[**0044**] The control modules **1038** are implemented using software and/or hardware. In some embodiments, the control modules **1038** are implemented in software and are configured to perform one or more operations as shown in FIGS. **4** and **5**. In some embodiments, the modules **1038** are configured to communicate via a memory mailbox where information from one module is sent to the memory address of a recipient module. In other embodiments, the software modules are configured to push information to a memory location, such as, a stack, that the control modules **1038** monitor or periodically check for information that the software modules subscribe to.

[**0045**] In some embodiments, the control modules **1038** are implemented using hardware. In some such embodiments, the control modules **1038** include a controller **1054** or processor **1054** and memory **1056** as shown in FIGS. **4** and **5**. The controller **1054** is provided as a single component or a collection of operatively coupled components; and is comprised of digital circuitry, analog circuitry, or a hybrid combination of both of these types. When of a multicomponent form, controller **1054** has one or more components remotely

located relative to the others in some instances. The controller **1054** includes, for example, multiple processing units arranged to operate independently, in a pipeline processing arrangement, in a parallel processing arrangement, and/or such different arrangement as would occur to those skilled in the art. In some embodiments, processor **1054** is a programmable microprocessing device of a solid-state, integrated circuit type that includes one or more processing units and memory. It is within the scope of this disclosure for the controller **1054** to include one or more signal conditioners, modulators, demodulators, Arithmetic Logic Units (ALUs), Central Processing Units (CPUs), limiters, oscillators, control clocks, amplifiers, signal conditioners, filters, format converters, communication ports, clamps, delay devices, memory devices, and/or different circuitry or functional components as would occur to those skilled in the art to perform the desired communications. In some embodiments, the controller **1054** includes a computer network interface to communicate among various system components and/or components not included in the depicted system, as desired. The listed examples are not intended to be an exhaustive list of structures that are within the scope of controller **1054**, but are instead only a non-exhaustive list of such structures which can have substantial differences in the manner in which they are implemented and/or operate.

[**0046**] The controller **1054** is operatively coupled with the sensors **1036** and receives information from the sensors **1036**. In some embodiments, one or more of the sensors **1036** are operatively coupled to the network **1052** and the controller **1054** receives the information from the sensors **1036** and outputs from other modules **1038** via the network **1052**. In some embodiments, one or more of the sensors **1036** are configured to produce an analog data signal and are connected directly to the controller **1054**. Alternatively or additionally, one or more of the sensors **1036** are configured to produce a digital data signal, e.g., a serial digital data signal, that is transmitted to the network **1052**, e.g., a Serial Peripheral Interface (SPI) network **1052**, to communicate with the controller **1054**. The signals are stored in the memory **1056**, which is operatively coupled with the controller **1054**. In some embodiments, the memory **1056** is integrated into the controller **1054**.

[**0047**] The controller **1054** is configured to execute operating logic **1058** that defines various control, management, and/or regulation functions as shown in FIGS. **9**, **12** and **13**. In some embodiments, the software implemented modules include operating logic **1058**. The operating logic **1058** is in the form of software, firmware, and/or dedicated hardware, such as, a series of programmed instructions, code, electronic files, or commands using general purpose or special purpose programming languages or programs executed on one or more general purpose or special purpose computers, processors, other control circuitry, or networks; a hardwired state machine; and/or a different form as would occur to those skilled in the art.

[**0048**] In some embodiments, one of the control modules **1038** is a patient position monitoring (PPM) module **1046**. The memory **1056** of the controller **1054** includes operating logic **1058** with a number of software algorithms and other data that is executed by the controller **1054** to monitor patient movement relative to a reference load cell **1040** distribution, impending exit from the person support surface **1024** and/or exit therefrom. In some embodiments, the operating logic **1058** for managing such functions is in accordance with FIG.

5 in the form of a combined flowchart and/or state machine. The operating logic **1058** is executed periodically by the controller **1054**, e.g., once every **200** ms, to monitor patient movement relative to a reference load cell **1040** distribution, impending exit from the mattress **1024** and/or exit from the mattress **1024**. Referring to FIG. **5**, the operating logic **1058** begins with the controller **1054** determining whether the person position monitor module **1046** is armed, i.e., whether one of the patient monitoring modes was active, before the last power down of the person position monitor module **1046**.

[0049] The patient monitoring modes includes a patient movement (PM) mode wherein the person position monitor module **1046** is operable to monitor movement of a patient on the mattress **1024** by monitoring weight distribution among two or three of the four load cells **1040** relative to a predefined set of PM load cell threshold data, a patient exit (PE) mode wherein the person position monitor module **1046** is operable to monitor impending exit from the mattress **1024** by monitoring weight distribution of the four load cells **1040** relative to a predefined set of PE load cell threshold data, and a patient out-of-bed (OOB) mode wherein the person position monitor module **1046** is operable to monitor exit of the patient from the mattress **1024** by monitoring the patient weight distributed over the four load cells **1040** relative to an armed patient weight, wherein the armed weight corresponds to the patient weight distributed over the four load cells **1040** when the patient monitoring mode was armed as will be described in greater detail hereinafter. In any case, if the controller **1054** determines that the person position monitor module **1046** was not armed before the last system power down, execution of the operating logic **1058** causes the controller **1054** to execute a state machine preparation routine. If the controller **1054** instead determines that the person position monitor module **1046** was armed before the last system power down, execution of the operating logic **1058** advances to an Arming From Power Up Transition State of the state machine where the patient weight is processed to determine whether it is contained within a defined armed range prior to advancing to the PM Active State of the state machine to resume operation of the patient monitoring mode that was active at the last system power down. One example of such a system can be found in U.S. Pat. No. 7,253,366 to Bhai, issued on Aug. 7, 2007.

[0050] In some embodiments, the controller **1054** detects the ingress/egress of a person to/from the person-support apparatus **1010** by determining the center of gravity of the weight thereon. One example of such a system can be found in U.S. Pat. No. 5,276,432 to Travis, issued on Jan. 4, 1994. In still another illustrative embodiment, the controller **1054** treats the upper frame **1014** as though it were disposed within a horizontal plane, extracts from the weight value measured by each load cell **1040** a portion which represents the weight of a patient, uses the extracted portions to calculate the location within the plane of a center of gravity of the patient, determines whether the location of the center of gravity is inside or outside a predetermined region which is a portion of the plane, and initiates an alarm when it is found that the center of gravity is located outside the predetermined region. One example of such a system can be found in U.S. Pat. No. 5,276,432.

[0051] In some embodiments, the controller **1054** of the PPM module **1046** includes operating logic **1058** in the form of procedure **1060**, for example, as shown in the flowchart of FIG. **9**. Procedure **1060** includes operations/conditionals shown in blocks **1062**, **1064**, **1066**, **1068**, **1070**, and **1072**.

Procedure **1060** evaluates changes in the force profile (FP) for the surface **1024** as a function of the difference between the last sensed force values (LSFV) and the newly sensed force values (NSFV) as represented by the following equation:

$$\Delta FP \begin{bmatrix} A & B \\ C & D \end{bmatrix} = LSFV \begin{bmatrix} A_L & B_L \\ C_L & D_L \end{bmatrix} - NSFV \begin{bmatrix} A_N & B_N \\ C_N & D_N \end{bmatrix}$$

[0052] Procedure **1060** begins with the operation of block **1062** where, in some embodiments, the force sensors **1040** post an electronic data signal representing at least one of an event and an amount of force on the network **1052**. In some embodiments, the force sensors **1040** post data signals continuously and/or over at predetermined intervals. Alternatively or additionally, the force sensors **1040** post data signals in response to a query from a PPM module **1046**. In some embodiments, the data signals include information that identifies what operations and/or control modules **1038** the data can be utilized by. It should also be appreciated that posting can mean sending data out on a network. In some embodiments, the sensors **1036** are operatively coupled directly to specific control modules **1038**, for example, the force sensors **1040** being operatively coupled to the PPM module **1046**, the pressure sensors **1042** being operatively coupled to a therapy control module **1048**, and the physiological sensors **1044** being operatively coupled to a physiological parameter monitor module **1050**.

[0053] In the conditional of block **1064**, the PPM module **1046** examines the data signal posted by the force sensors **1040** on the network **1052** and determines whether or not the PPM module **1046** performs any operations that utilize the data as an input, i.e., whether or not the PPM module **1046** subscribes to the data signal. Other control modules **1038**, such as, the therapy control module **1048** and/or the physiological parameter monitor module **1050**, also subscribe to the force sensor **1040** data signal and receives the data as an input, while control modules **1038** that do not subscribe to the data disregard the data and wait for data signals to be posted that they do subscribe to.

[0054] In the operation of block **1066**, the controller **1054** of the PPM module **1046** inputs the data into the control logic **1058** that utilizes the data as an input. In the PPM control logic **1058**, the controller **1054** stores the posted data in the memory **1056** and compares previously posted data and newly input data to determine changes in the force profile of a person on the surface **1024**, i.e., determine if and where a person has moved with respect to the surface **1024**.

[0055] In the conditional of block **1068**, the controller **1054** determines if changes in the force profile are greater than a predetermined threshold. Changes in the force profile can potentially signify that the person is positioned higher on the surface **1024**, i.e., more toward the head end H1 of the person support apparatus **1010**, than desired; or that the person is positioned lower on the surface **1024**, i.e., more toward the foot end F1 of the person support apparatus **1010**, than desired. See FIGS. **10** and **11**. In some embodiments, changes in the force profile is used to determine whether the person has moved to a side of the surface **1024** and/or how much they have moved with respect to the surface **1024**. Such a determination is helpful in predicting whether the person is going to exit the person support apparatus **1010**, adjusting the sensitivity of the sensors **1036** to compensate for movement,

when a person is beginning to wake up, and/or whether continued therapy in the new/current position is desirable, or various other situations.

[0056] In the conditional of block 1070, if the controller 1054 determined in the conditional of block 1068 that the change in the force profile exceeded the predetermined threshold, the controller 1054 proceeds to determine whether or not the PPM system is armed, i.e., whether or not the PPM module 1046 is set to monitor the position of the person on the person support apparatus 1010. In some embodiments, a caregiver and/or the person on the person support apparatus 1010 activates and deactivates the PPM system locally through a caregiver interface on the person support apparatus 1010 or remotely. If the PPM system is armed, then the controller 1054 generates an alert signal in the operation of block 1072 to alert a caregiver that the person on the person support apparatus 1010 is about to exit the person support apparatus 1010. In some embodiments, the controller 1054 also communicates the amount the person has moved with respect to the person support apparatus 1010. The controller 1054 communicates the alert signal wirelessly or over a hospital network or an adverse condition alert system, such as, the Navicare® system sold by Hill-Rom Company, Inc., a caregiver station, a mobile paging device, a cellular phone, a pendant, over an intercom, or through other caregiver notification methods and devices. If the PPM system is not armed, then the controller 1054 returns to the operation of block 1062. In some embodiments, the controller 1054 generates signals representative of an event, e.g., the person has moved toward the head section H1, and/or an amount that the person has moved with respect to the person support apparatus 1010 and post the signals back on the network 1052 before returning to operation 1062 since other control modules 1038 can subscribe to the output of the PPM module 1046. In some embodiments, the controller 1054 prevents a user from accessing specific features on a user interface (not shown) based on the movement/positioning of the person on the person support surface 1024.

[0057] In some embodiments, one of the control modules 1038 is a therapy control module 1048. The therapy control module 1048 is operatively coupled to the pressure sensors 1042 and the fluid supply 1018. In some embodiments, the therapy control module 1048 controls various therapies that are administered to the person, such as, lateral rotation, percussion vibration, low air loss, or other therapies. The therapy control module 1048 includes operating logic 1058 in the form of procedure 1074, for example, as shown in the flow-chart of FIG. 12. Procedure 1074 includes the operations/conditionals of blocks 1076, 1078, 1080, 1082, and 1084. Procedure 1074 evaluates changes in the pressure profile (PP) for the surface 1024 as a function of the difference between the last sensed pressure values (LSPV) and the newly sensed pressure values (NSPV) as represented by the following equation:

$$\Delta PP[P] = LSPV[P_L] - NSPV[P_N]$$

[0058] Procedure 1074 begins with the operation of block 1076 where, in some embodiments, the pressure sensors 1042 post an electronic data signal representing at least one of an event and an amount on the network 1052. In the conditional of block 1078, the therapy control module 1048 examines the data signal posted by the pressure sensors 1042 on the network 1052 and determines whether or not the therapy control

module 1048 performs any operations that utilize the data as an input, i.e., whether or not the therapy control module 1048 subscribes to the data signal.

[0059] In the operation of block 1080, the controller 1054 of the therapy control module 1048 inputs the data into the control logic that utilizes the data as an input. In some embodiments, the controller 1054 of the therapy control module 1048 inputs the data into the therapy control logic 1058. In the therapy control logic 1058, the controller 1054 stores the posted data in the memory 1056 and compares previously posted data and newly input data to determine changes in the pressure profile of a person on the surface 1024, i.e., determine if, where, and by how much a person has moved with respect to the surface 1024.

[0060] In the conditional of block 1082, the controller 1054 determines if changes in the force profile are greater than a predetermined threshold. Changes in the pressure profile can potentially signify that the person is positioned higher on the surface 1024, i.e., more toward the head end H1 of the person support apparatus 1010, than desired; or that the person is positioned lower on the surface 1024, i.e., more toward the foot end F1 of the person support apparatus 1010, than desired. In some embodiments, changes in the pressure profile is used to determine whether the person has moved toward a side of the surface 1024 and/or how much they have moved with respect to the surface 1024. Such a determination is helpful in predicting whether the person is going to exit the person support apparatus 1010 and/or whether therapy in the current position or a new position is desirable.

[0061] In the operation of block 1084, if the controller 1054 determined in the conditional of block 1082 that the change in the force profile exceeded the predetermined threshold, the controller 1054 cooperates with the fluid supply 1018 to modify various characteristics of the support surface 1024. In some embodiments, the controller 1054 cooperates with the fluid supply 1018 to adjust the pressure of the fluid within the fluid bladders 1028 as a function of the movement. In some embodiments, the pressure in the fluid bladders 1028 is changed to maintain a comfort level of a person by reducing the pressure in some bladders 1028 and increasing the pressure in other bladders 1028 to compensate for the movement of the person. In some embodiments, the controller 1054 cooperates with the fluid supply 1018 to adjust a therapy, such as, continuous lateral rotation, percussion vibration, or other therapies, as a function of the movement. In some embodiments, the therapy is stopped completely or at least until the person moves back to within a predetermined range of the previous position. In some embodiments, the controller 1054 generates signals representative of an event, e.g., the pressure profile has changed, which can potentially signify movement of the person with respect to the surface 1024, and/or an amount that the pressure has increased, or an amount the pressure profile has changed and post the signals back on the network 1052 before returning to operation 1076, since other control modules 1038 subscribe to the output of therapy control module 1048 in some instances.

[0062] In some embodiments, one or more of the control modules 1038 are a physiological parameter monitor module 1050. The physiological parameter monitor module 1050 is operatively coupled with the physiological sensors 1044. The physiological parameter monitor module 1050 includes operating logic 1058 in the form of procedure 1086. In some embodiments, procedure 1086 evaluates changes in the physiological sensor signal strength and/or clarity (PS) for

the surface **1024** to determine whether a first physiological sensor **1044** would provide a more desirable signal and should be used instead of a second physiological sensor **1044**. Thus, according to this disclosure, one or more of some sensors **1044** are turned on and one or more of others are turned off depending upon which sensors have or are expected to have the best quality data signals. Information from the PPM system of the person support apparatus, for example, may be used to determine that the sensors **1044** on the left half of the apparatus should be turned on and the sensors on the right half **1044** should be turned off based on the position of the patient being more toward the left half of the apparatus, or vice versa. Other subsets of the sensors may be turned on and off in other scenarios such as, for example, turning on sensors in a seat section if the PPM system indicates that the patient is likely sitting up while turning off sensors in zones or sections of the person support apparatus that are no longer supporting a person.

[0063] In some embodiments, procedure **1086** evaluates the changes in the PS as a function of the difference between a first physiological sensor signal strength and/or clarity (FPS) and a second physiological sensor signal strength and/or clarity (SPS) as represented by the following equation:

$$\Delta PS[S] = FPS[S_L] - SPS[S_N]$$

[0064] In other embodiments, procedure **1086** subscribes to data on the network **1052** and uses the data to determine what sensor **1036** or sensor array **1036**, i.e., physiological sensor **1044** or sensor array **1044**, should be activated or turned on to obtain the most desirable physiological signal. In some embodiments, procedure **1086** subscribes to output signals from the PPM module **1046** regarding the position of the person with respect to the surface **1024** and causes the physiological parameter monitor module **1050** to activate and/or receive input signals from different sensors **1036** as a function of the position of the person. In some embodiments, procedure **1086** subscribes to data on the network **1052** corresponding to the angle of articulation of the head deck section HD and causes the physiological parameter monitor module **1050** to activate and/or receive input signals from different sensors **1036** as a function of the angle of articulation of the head deck section HD. For example, depending upon the angle of articulation of the head deck section HD, the physiological parameter monitor module **1050** activates and/or receives input signals from a first sensor when the angle of articulation of the head deck section HD is less than a first angle and activates and/or receives input signals from a second sensor when the angle of articulation of the head deck section HD is greater than or equal to a second angle. In some embodiments, the angle is about 30°.

[0065] According to this disclosure, procedure **1086** includes the operations/conditionals of blocks **1088**, **1090**, **1092**, **1094**, **1096**, and **1098** as shown in the flowchart of FIG. 13. Procedure **1086** begins with operation **1088** where, in some embodiments, a first physiological sensor **1044** posts an electronic data signal representing at least one of an event and an amount on the network **1052**. In the conditional of block **1090**, the controller **1054** examines the data signal posted by a first physiological sensor **1044** and determines whether or not the physiological parameter monitor module **1050** performs any operations that utilize the data as an input, i.e., whether or not the physiological parameter monitor module

1050 subscribes to the data signal. If the controller determines that the module **1050** subscribes to the data, the first signal is stored in the memory **1056**.

[0066] In the operation of block **1092**, the controller **1054** deactivates the first physiological sensor **1044** and activates a second physiological sensor **1044**. In some instances, the first physiological sensor **1044** and the second physiological sensor **1044** can both be active. Deactivating or turning off a sensor within the scope of this disclosure includes at least one of receiving information from the sensor but not using it, blocking and/or breaking communication with the sensor, and/or cutting power to the sensor. The second physiological sensor **1044** posts an electronic data signal representing at least one of an event and an amount on the network **1052** in some instances.

[0067] In the conditional of block **1094**, the controller **1054** examines the data signal posted by a second physiological sensor **1044** and determines whether or not the physiological parameter monitor module **1050** subscribes to the data signal. If the controller **1054** determines that the module **1050** subscribes to the data, the first signal is stored in the memory **1056**. In the conditional of block **1096**, the controller **1054** compares the first sensed signal with the second sensed signal.

[0068] In the operation of block **1098**, if the controller **1054** determines that the signal from the first physiological sensor **1044** has a higher signal strength, i.e., amplitude, and/or clarity than the signal generated by the second physiological sensor **1044**, the controller deactivates the second physiological sensor **1044** and re-activate the first physiological sensor **1044**. In some instances, both physiological sensors **1044** are simultaneously active. If the controller **1054** determines that the signal from the first physiological sensor **1044** has a lower signal strength and/or clarity than the signal generated by the second physiological sensor **1044**, the controller **1054** continues to receive signals from the second physiological sensor **1044** in some embodiments. In some embodiments, if the controller **1054** determines that the signal from the first physiological sensor **1044** has a lower signal strength and/or clarity than the signal generated by the second physiological sensor **1044**, the controller **1054** amplifies and/or filters the signal generated by the first physiological sensor **1044** to increase the signal strength and/or clarity of the first physiological sensor **1044**.

[0069] In the conditional of block **1100**, the controller determines if the difference between the first physiological sensor signal strength and/or clarity and the second physiological sensor signal strength and/or clarity is greater than a predetermined threshold. If the difference is greater than the predetermined threshold, then the controller **1054** generates an alert signal in operation **1102** to alert a caregiver. In some embodiments, the controller **1054** also communicates the value of the physiological sensor **1044** and posts back the value on the network **1052**. In some embodiments, the controller **1054** communicates the alert signal wirelessly or over a hospital network or an adverse condition alert system, such as, the Navicare® system sold by Hill-Rom Company, Inc., a caregiver station, a mobile paging device, a cellular phone, a pendant, over an intercom, or through other caregiver notification methods and devices. If the difference between the first physiological sensor signal strength and/or clarity and the second physiological sensor signal strength and/or clarity is not significant, then the controller **1054** returns to the operation of block **1088**.

[0070] In some embodiments, the controller 1054 generates signals representative of the difference between the first physiological sensor signal strength and/or clarity and the second physiological sensor signal strength and/or clarity and posts the signals back on the network 1052 before returning to the operation of block 1088 because other control modules 1038 subscribe to the output of the physiological parameter monitor module 1050 in some instances. In some embodiments, the controller 1054 prevents a user from accessing specific features on a user interface (not shown) based on the first physiological sensor signal strength and/or clarity and the second physiological sensor signal strength and/or clarity of the person on the person support surface 1024.

[0071] As mentioned above, the sensitivity of a signal from a sensor, such as sensors 1040, 1042, 1044, is adjusted to improve its signal strength and/or clarity. One way of accomplishing this is to change the gain of the sensor 1040, 1042, 1044. One gain change technique is to use switches, such as transistors or micro-switches to selectively open circuit or close circuit various parallel resistors in a feedback loop of a respective operational amplifier circuit to which signals from sensors 1040, 1042, 1044 are input. Thus, the operational amplifier circuit in such embodiments is considered to be part of the sensor. Use of transistors or micro-switches that are selectively activated or deactivated to couple the signals from sensors 1040, 1042, 1044 to one or more filters, such as a high pass filter, a low pass filter and/or a band pass filter is also contemplated by this disclosure. Digital signal processors that are programmable to implement one or more high pass filters, low pass filters, and/or band pass filters are also within the scope of this disclosure.

[0072] According to this disclosure, sensors that are included in person support apparatus 1010 and that have gain change and filtering capabilities associated therewith include moisture sensors, acoustic sensors, flow rate sensors, temperature sensors, force sensors, and pressure sensors, just to name a few. The frequency or frequencies that are filtered out from the signals of sensors 1040, 1042, 1044 include, for example, those associated with a motor that moves one portion of apparatus 1010 relative to another portion (e.g., deck articulation motors, such as linear actuators, or lift system motors), those associated with components of a pneumatic system of apparatus 1010 (e.g., blowers or compressors used to inflate mattress 1024), those associated with room ventilation equipment or fans, those associated with mechanical noise (e.g., bearing noise during deck articulation), and those associated with separate medical equipment such as patient ventilators, IV pumps, passive motion machines, and the like.

[0073] In some embodiments, control system 1020 of apparatus 1010 receives information from a remote computer, such a computer associated with an electronic medical records (EMR) system to determine what types of separate medical equipment is being used with a particular person. Based on that information, system 1020 determines the appropriate frequency or frequencies to filter out from the signals from one or more of sensors 1040, 1042, 1044. A look-up table, for example, is provided in memory of control system 1020 with a list of "noise" frequencies associated with various types of medical equipment that are commonly used with persons to be supported on apparatus 1010. Alternatively or additionally, system 1020 performs its own analysis of signals from sensors 1040, 1042, 1044 before and after a particular component or piece of equipment starts operating or running and then determines the frequency or frequencies

of the noise introduced into the signal as a result of the operation of the component or equipment. Thereafter, the appropriate frequency or frequencies is/are filtered out of the signals from sensors 1040, 1042, 1044. Alternatively or additionally, system 1020 adjusts the threshold criteria for sending alerts to caregivers depending upon whether particular components or pieces of equipment are being used.

[0074] In some embodiments, the control system 1020 is configured to change its operational characteristics based on the status of the person-support apparatus 1010 and/or the status of devices (not shown) coupled to the person-support apparatus 1010 and/or coupled to the person supported on the person-support apparatus 1010. In one example, the controller 1054 receives an input indicative that the angle of the head section of the deck has changed. In this example, the controller 1054 is configured to stop receiving input signals from a sensor coupled to the head section and start receiving signals from a sensor in the seat section, apply various filters, such as, band-pass, low-pass, and/or high-pass filters, to the input signal to eliminate undesired noise, or increases/decreases the gain of the sensor as a function of the angle of the head section. In some instances, the sensor coupled to the head section is deactivated and the sensor in the seat section is activated. In some embodiments, the controller looks up a device in a look-up table and/or compares the signal prior to a change in status of the signal with the signal after the change in status to determine what noise the change in status might have introduced into the signal to determine the appropriate filter(s) to apply.

[0075] In another example, the controller 1054 receives an input indicative that continuous lateral rotation therapy is being administered by the person support apparatus 1010. Continuous lateral rotation therapy is used to rotate an occupant side to side to help reduce the risk of developing pressure ulcers. In some embodiments, continuous lateral rotation is implemented through the inflation and/or deflation of fluid bladders in the mattress and/or by rotating the upper frame about the longitudinal axis X1. In this example, the controller 1054 is configured to stop receiving input signals from a sensor coupled to one of the lateral sides of the person-support apparatus and start receiving signals from a sensor coupled to the other of the lateral sides of the person-support apparatus, apply various filters, such as, band-pass, low-pass, and/or high-pass filters, to the input signal to eliminate undesired noise, and/or increase/decrease the gain of the sensor as a function of the lateral rotation. Thus, the sensor coupled to or adjacent one of the lateral sides is deactivated and the sensor coupled to or adjacent the other of the lateral sides is activated. According to this disclosure, the activation/deactivation, filtering, and/or gain increase/decrease is applied to individual sensors in an array of sensors where more than one sensor is communicating signals to the controller.

[0076] In another example, the controller 1054 receives an input indicative of the status of a device coupled to the person-support apparatus and/or the person on the person-support apparatus. The information that another device is coupled to the person and/or person-support apparatus is sometimes available from the EMR or is sometimes input by a caregiver. In some instances, the device is in electronic communication, such as wireless or wired communication, with the person support apparatus 1010. In this example, the controller 1054 is configured to apply various filters, such as, band-pass, low-pass, and/or high-pass filters, to the input signal to eliminate undesired noise and/or change the gain of the sensors as

a function of the device. As mentioned above, the controller looks up the needed information concerning the device in a look-up table and/or compares the signal prior to change in status with the signal after the change in status to determine what noise the change in status might have introduced to the signal to determine the appropriate filter(s) to apply. The controller 1054 also adjusts the parameters for any alarms that have been activated on the person-support apparatus, such as, PPM. In some embodiments, the controller 1054 modifies the operation of a single sensor or individual sensors in an array of sensors.

[0077] Any theory, mechanism of operation, proof, or finding stated herein is meant to further enhance understanding of principles of the present disclosure and is not intended to make the present disclosure in any way dependent upon such theory, mechanism of operation, illustrative embodiment, proof, or finding. It should be understood that while the use of the word preferable, preferably or preferred in the description above indicates that the feature so described can be more desirable, it nonetheless can not be necessary and embodiments lacking the same can be contemplated as within the scope of the disclosure, that scope being defined by the claims that follow.

[0078] In reading the claims it is intended that when words such as “a,” “an,” “at least one,” “at least a portion” are used there is no intention to limit the claim to only one item unless specifically stated to the contrary in the claim. When the language “at least a portion” and/or “a portion” is used the item can include a portion and/or the entire item unless specifically stated to the contrary.

[0079] While embodiments of the disclosure have been illustrated and described in detail in the drawings and foregoing description, the same are to be considered as illustrative and not restrictive in character, it being understood that only the selected embodiments have been shown and described and that all changes, modifications and equivalents that come within the spirit of the disclosure as defined herein or by any of the following claims are desired to be protected.

1.-20. (canceled)

21. A method comprising:

generating a first signal corresponding to a first characteristic of a person support apparatus or a person supported thereon;

generating a second signal corresponding to a second characteristic of the person support apparatus or the person supported thereon;

comparing the first signal with the second signal to determine if the signal strength or the clarity of the first signal is greater than that of the second signal; and

adjusting a sensitivity of at least one sensor as a function of a difference in the signal strength or clarity between the first signal and the second signal.

22. The method of claim 21, wherein the first characteristic or the second characteristic is of the person support apparatus and the person support apparatus comprises a person support surface.

23. The method of claim 21, wherein the first characteristic or the second characteristic is of the person support apparatus and the person support apparatus comprises a frame of a bed.

24. The method of claim 1, further comprising sensing a first force profile of a person on the person support apparatus with the at least one sensor; sensing a second force profile of the person on the person support apparatus with the at least one sensor; comparing the first force profile with the second

force profile to determine if the person has moved with respect to the person support apparatus; and adjusting the sensitivity of the sensor as a function of the movement.

25. The method of claim 21, wherein the first characteristic or the second characteristic comprises a physiological characteristic of a person on the person support surface.

26. The method of claim 21, further comprising detecting a person sliding along the person support apparatus by: sensing an initial position of the person with the at least one sensor; sensing a second position of the person with the at least one sensor; determining if the difference between the initial position and the second position is greater than a predetermined threshold; and posting at least one of an event and an amount of movement on a network.

27. The method of claim 21, further comprising sensing an initial position of the person with respect to the person support apparatus with the at least one sensor; sensing a second position of the person with respect to the person support apparatus with the at least one sensor; comparing the initial position with the second position to determine at least one of an amount and a direction of movement with respect to the person support apparatus; and controlling at least one function of the person support apparatus as a function of the movement.

28. The method of claim 21, further comprising sensing an initial position of a person supported on a person support apparatus with respect to the person support apparatus with a first sensor of the at least one sensor; sensing a second position of the person with respect to the person support apparatus with the first sensor; determining if the difference between the initial position and the second position is greater than a predetermined threshold; deactivating the first sensor; activating a second sensor of the at least one sensor; and sensing a third position of the person with respect to the support apparatus with the second sensor.

29. The method of claim 21, further comprising sensing an initial position of a person supported on a person support apparatus with respect to the person support apparatus with a first sensor of the at least one sensor and generating an initial position signal; storing the initial position signal in a memory location; deactivating the first sensor; activating a second sensor of the at least one sensor; sensing a subsequent position of the person with respect to the person support apparatus with the second sensor and generating a subsequent position signal; comparing the initial position signal with the subsequent position signal to determine if the initial position signal is stronger or clearer than the subsequent position signal; and activating one of the first sensor and the second sensor based on which of the initial position signal and the subsequent position signal are stronger or clearer.

30. The method of claim 21, further comprising sensing an initial characteristic of a person supported on a person support apparatus with respect to the person support apparatus with a first sensor of the at least one sensor and generating an initial characteristic signal; storing the initial characteristic signal in a memory location; deactivating the first sensor; activating a second sensor of the at least one sensor; sensing a subsequent characteristic of the person with respect to the person support apparatus with the second sensor and generating a subsequent characteristic signal; comparing the initial characteristic signal with the subsequent characteristic signal to determine if the initial characteristic signal is stronger or clearer than the subsequent characteristic signal; and activating one of the first sensor and the second sensor based

which of the initial characteristic signal and the subsequent characteristic signal are stronger or clearer.

31. The method of claim **21**, further comprising predicting when a person supported on a person support apparatus is going to exit the person support apparatus by sensing a change in position of the person on the person support apparatus and sensing a heart rate or a respiration rate of the person; determining if the change in position and the heart rate or the respiration rate of the person exceeds a predetermined threshold; and posting a person status signal to a network.

32. The method of claim **21**, wherein the first characteristic or the second characteristic is of the person and includes the person's weight, heart rate, respiration rate, or temperature.

33. The method of claim **21**, further comprising preventing a user from accessing predetermined functions of the person support apparatus based on at least one of the signal strength and clarity of the first signal or the second signal.

34. The method of claim **21**, wherein an output of a first sensor of the at least one sensor is amplified in response to a signal strength of the first sensor being less than a signal strength of a second sensor of the at least one sensor.

35. The method of claim **21**, wherein an output of a first sensor of the at least one sensor is filtered in response to a signal clarity of the first sensor being less than a signal clarity of a second sensor of the at least one sensor.

36. The method of claim **21**, wherein the first characteristic or the second characteristic includes a force profile, a pressure in a bladder of a person support surface, or a physiological characteristic of the person.

37. The method of claim **21**, wherein adjusting the sensitivity of at least one sensor comprises deactivating the at least one sensor.

38. The method of claim **21**, wherein generating the first signal comprises sensing the first characteristic with a first sensor of the at least one sensor.

39. The method of claim **38**, wherein generating the second signal comprises sensing the second characteristic with a second sensor of the at least one sensor.

40. The method of claim **39**, wherein the first sensor or the second sensor comprises a force sensor, a pressure sensor or a physiological sensor.

* * * * *

专利名称(译)	用于支持和监视人的装置的传感器控制		
公开(公告)号	US20140002267A1	公开(公告)日	2014-01-02
申请号	US14/014875	申请日	2013-08-30
[标]申请(专利权)人(译)	RILEY CARL W RECEVEUR TIMOTHY J 里布尔DAVID大号		
申请(专利权)人(译)	RILEY, CARL W. RECEVEUR, 蒂莫西J. 里布尔, DAVID L.		
当前申请(专利权)人(译)	RILEY, CARL W. RECEVEUR, 蒂莫西J. 里布尔, DAVID L.		
[标]发明人	RILEY CARL W RECEVEUR TIMOTHY J RIBBLE DAVID L		
发明人	RILEY, CARL W. RECEVEUR, TIMOTHY J. RIBBLE, DAVID L.		
IPC分类号	A61B5/00		
CPC分类号	A61B5/02055 A61B5/1113 A61B5/1117 A61B5/1126 A61B5/6887 A61B5/6892 G08B21/02 A61B5/024 A61B5/1115 A61G7/005		
其他公开文献	US9013315		
外部链接	Espacenet USPTO		

摘要(译)

一种人支撑装置包括框架和与框架配合以支撑人的支撑表面。人支撑装置还具有耦合到框架和支撑表面中的一个的传感器。传感器检测与人相关的至少一个特征。控制器耦合到传感器。响应于框架的状况，支撑表面的状况，人的位置或人的状况中的至少一个，控制器操作以通过改变增益的至少一个来控制传感器。传感器并改变过滤传感器信号的方式。在某些情况下，控制器关闭传感器。

