



US010070814B2

(12) **United States Patent**
Hyodo et al.

(10) **Patent No.:** **US 10,070,814 B2**
(45) **Date of Patent:** **Sep. 11, 2018**

- (54) **MAGNETIC STIMULATION APPARATUS**
- (71) Applicant: **NIHON KOHDEN CORPORATION**,
Tokyo (JP)
- (72) Inventors: **Akira Hyodo**, Tokyo (JP); **Takashi Kanno**, Tokyo (JP)
- (73) Assignee: **NIHON KOHDEN CORPORATION**,
Tokyo (JP)
- (*) Notice: Subject to any disclaimer, the term of this patent is extended or adjusted under 35 U.S.C. 154(b) by 252 days.

USPC 600/9-15
See application file for complete search history.

(56) **References Cited**

U.S. PATENT DOCUMENTS

5,496,258	A	3/1996	Anninos et al.
7,601,115	B2	10/2009	Riehl
2004/0019370	A1	1/2004	Gliner et al.
2005/0261542	A1	11/2005	Riehl
2006/0271108	A1	11/2006	Libbus et al.

(Continued)

FOREIGN PATENT DOCUMENTS

JP	2008-500100	A	1/2008
JP	2008-541850	A	11/2008

(Continued)

OTHER PUBLICATIONS

European Search Report for EP 16 15 5451 dated Jun. 30, 2016.
Japanese Office action issued in Patent Application No. JP-2015-026822 dated Jun. 5, 2018.

- (21) Appl. No.: **15/042,864**
- (22) Filed: **Feb. 12, 2016**
- (65) **Prior Publication Data**
US 2016/0235360 A1 Aug. 18, 2016
- (30) **Foreign Application Priority Data**
Feb. 13, 2015 (JP) 2015-026822

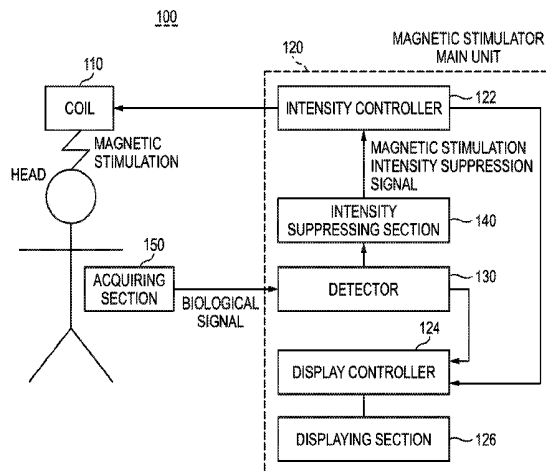
Primary Examiner — John Lacyk
(74) *Attorney, Agent, or Firm* — Pearne & Gordon LLP

(57) **ABSTRACT**

A magnetic stimulator includes a coil which applies magnetic stimulation to a head of a living body, an intensity controller which controls an intensity of the magnetic stimulation applied by the coil, an acquiring section which acquires a biological signal from the living body, a detector which detects an adverse event of the living body from the biological signal acquired by the acquiring section, and an intensity suppressing section which, when an adverse event of the living body is detected by the detector, suppresses the intensity of the magnetic stimulation that is controlled by the intensity controller.

- (51) **Int. Cl.**
A61N 1/00 (2006.01)
A61B 5/00 (2006.01)
A61N 2/00 (2006.01)
A61N 2/02 (2006.01)
A61B 5/0408 (2006.01)
A61B 5/0452 (2006.01)
A61B 5/0492 (2006.01)
A61B 5/1455 (2006.01)
- (52) **U.S. Cl.**
CPC *A61B 5/4836* (2013.01); *A61B 5/0408* (2013.01); *A61B 5/0452* (2013.01); *A61B 5/0492* (2013.01); *A61B 5/14551* (2013.01); *A61B 5/742* (2013.01); *A61N 2/006* (2013.01); *A61N 2/02* (2013.01)
- (58) **Field of Classification Search**
CPC A61B 5/4836; A61N 2/00; A61N 2/004; A61N 2/02

16 Claims, 8 Drawing Sheets



(56)

References Cited

U.S. PATENT DOCUMENTS

2009/0228079 A1 9/2009 Libbus et al.
 2012/0041519 A1 2/2012 Libbus et al.
 2012/0083700 A1 4/2012 Osorio
 2012/0083701 A1 4/2012 Osorio
 2012/0116183 A1 5/2012 Osorio
 2012/0226108 A1 9/2012 Osorio
 2012/0226168 A1 9/2012 Osorio
 2012/0271372 A1 10/2012 Osorio
 2012/0310050 A1 12/2012 Osorio
 2013/0096363 A1 4/2013 Schneider et al.
 2013/0096441 A1 4/2013 Osorio
 2013/0150927 A1 6/2013 Libbus et al.
 2013/0218233 A1 8/2013 Warschewske et al.
 2013/0225992 A1 8/2013 Osorio
 2013/0253353 A1 9/2013 Kawamura
 2014/0243613 A1 8/2014 Osorio
 2014/0276184 A1 9/2014 Neuvonen
 2014/0371612 A1 12/2014 Kawamura
 2015/0005592 A1 1/2015 Osorio

2015/0073237 A1 3/2015 Osorio
 2015/0080670 A1 3/2015 Osorio
 2015/0112410 A1 4/2015 Libbus et al.
 2015/0196246 A1 7/2015 Osorio
 2016/0038754 A1 2/2016 Adjouadi et al.
 2016/0058359 A1 3/2016 Osorio
 2016/0135727 A1 5/2016 Osorio
 2017/0035368 A1 2/2017 Osorio
 2017/0079573 A1 3/2017 Osorio
 2017/0150916 A1 6/2017 Osorio
 2018/0049704 A1 2/2018 Osorio
 2018/0116580 A1 5/2018 Osorio

FOREIGN PATENT DOCUMENTS

JP 5053080 B2 10/2012
 JP 2013-529983 A 7/2013
 JP 2013-198562 A 10/2013
 JP 2013-538656 A 10/2013
 WO 92/03185 A1 3/1992
 WO 2011/123548 A2 10/2011
 WO 2014/145847 A1 9/2014

FIG. 1

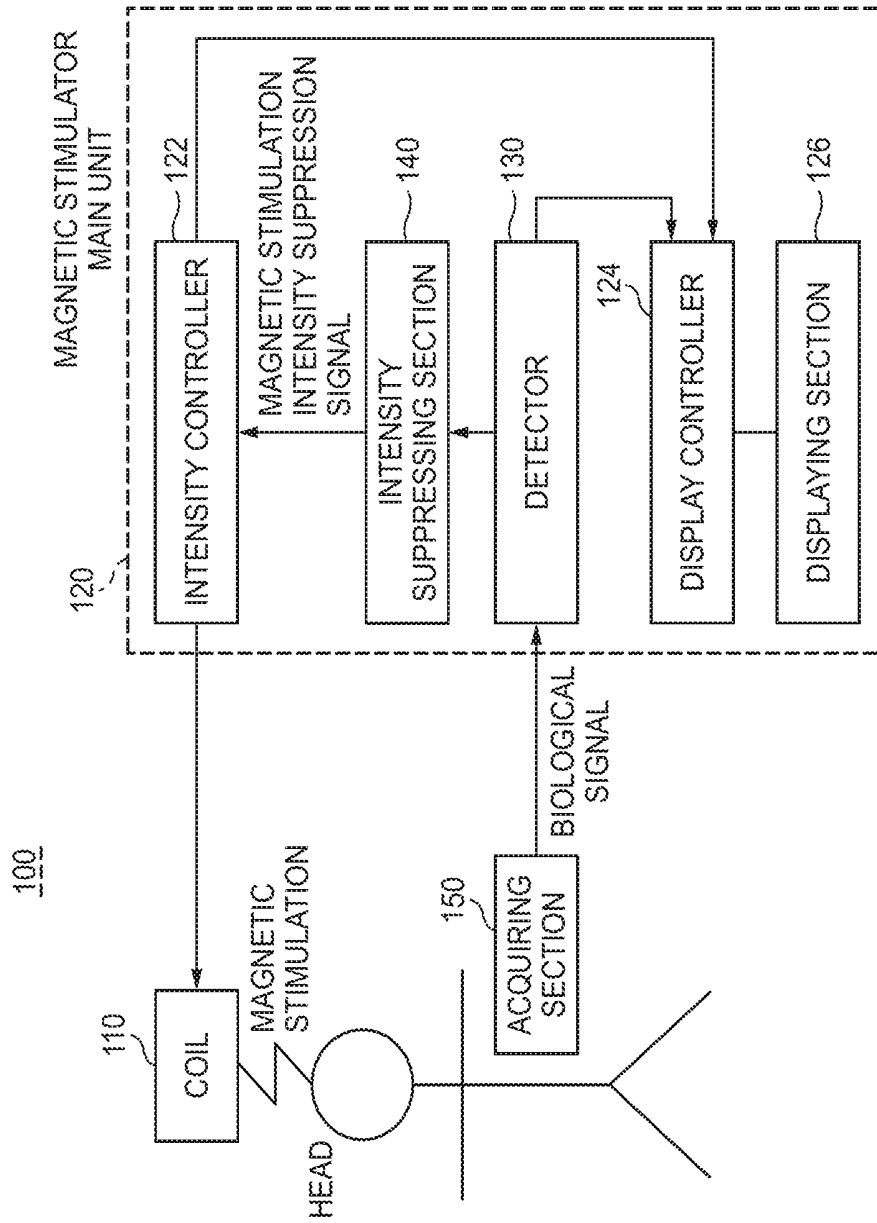


FIG. 2

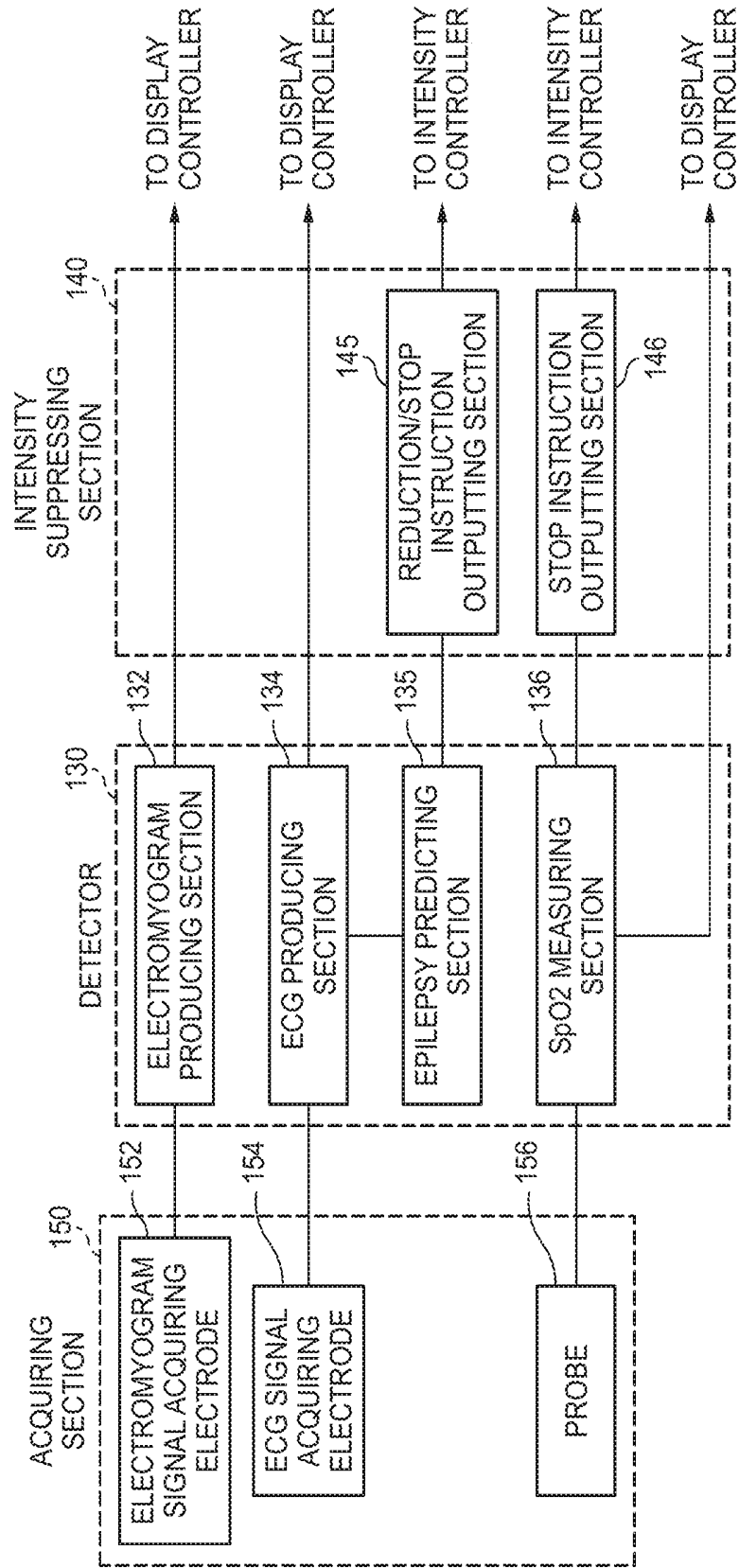


FIG. 3

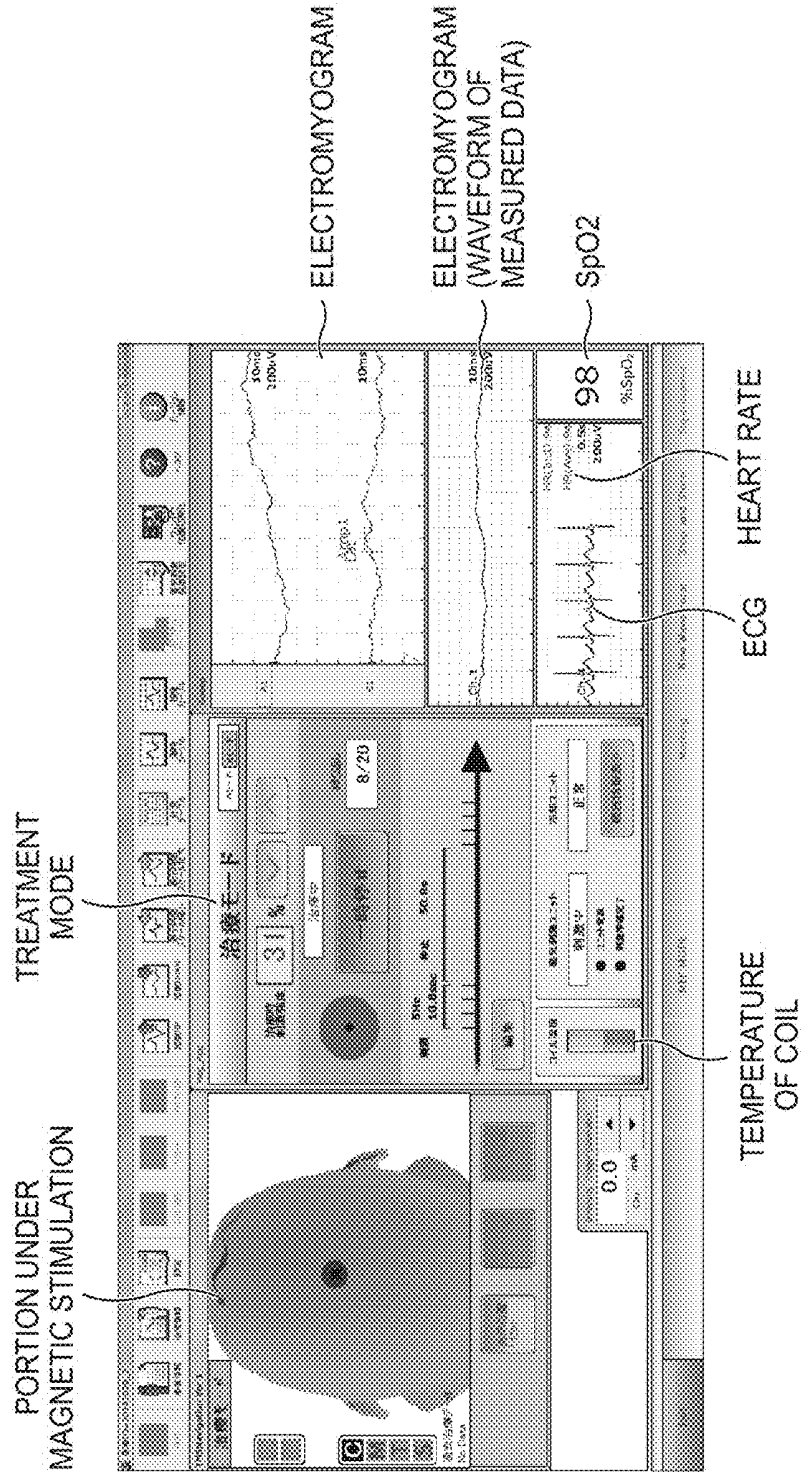


FIG. 4

HEART RATE SpO2

Measure x

Time	HR (Inst)	HR (Ave)	SpO2	PR
2014/10/29 16:08:33	95	94	97	94
2014/10/29 16:08:34	94	94	97	94
2014/10/29 16:08:35	95	94	97	94
2014/10/29 16:08:36	94	94	97	94
2014/10/29 16:08:37	94	94	96	94
2014/10/29 16:08:38	93	94	96	94
2014/10/29 16:08:39	93	94	96	94
2014/10/29 16:08:40	93	94	96	94
2014/10/29 16:08:41	93	94	96	94
2014/10/29 16:08:42	93	93	96	94
2014/10/29 16:08:43	94	93	96	94
2014/10/29 16:08:44	94	93	96	94
2014/10/29 16:08:45	—	—	96	94
2014/10/29 16:08:46	95	93	96	94
2014/10/29 16:08:47	94	93	96	94
2014/10/29 16:08:48	94	94	96	94
2014/10/29 16:08:49	94	94	96	94
2014/10/29 16:08:50	95	94	96	94
2014/10/29 16:08:51	95	94	96	94
2014/10/29 16:08:52	96	95	96	94
2014/10/29 16:08:53	95	95	96	94
2014/10/29 16:08:54	95	95	96	94

FIG. 5

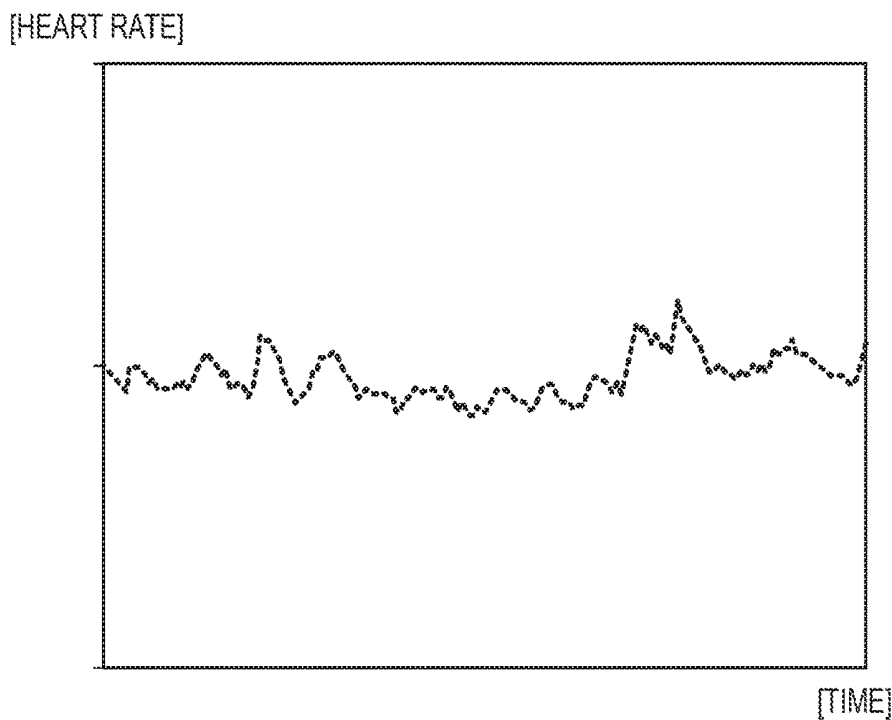


FIG. 6

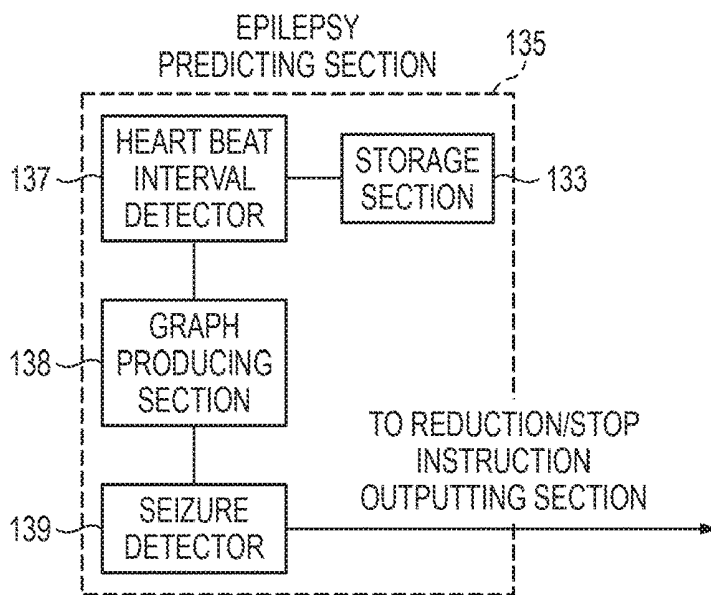


FIG. 7

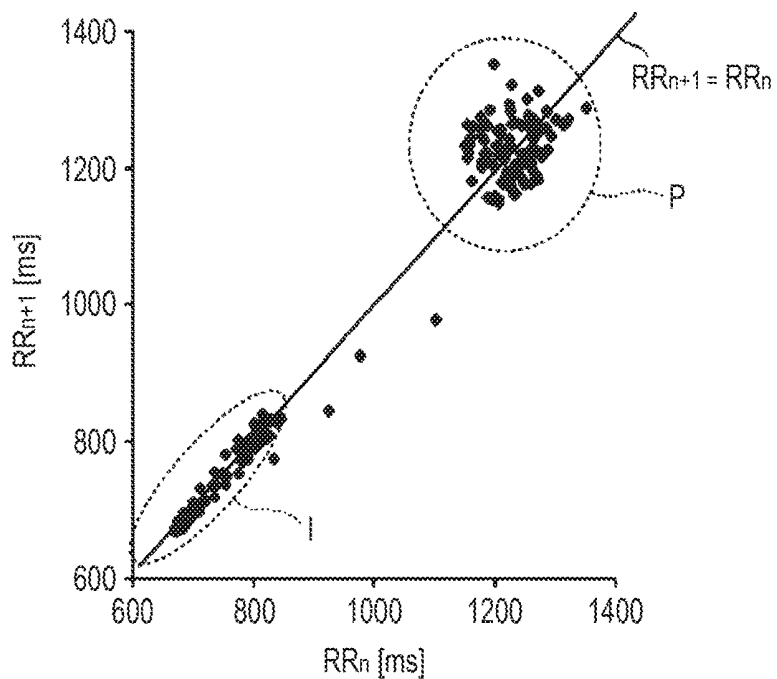


FIG. 8

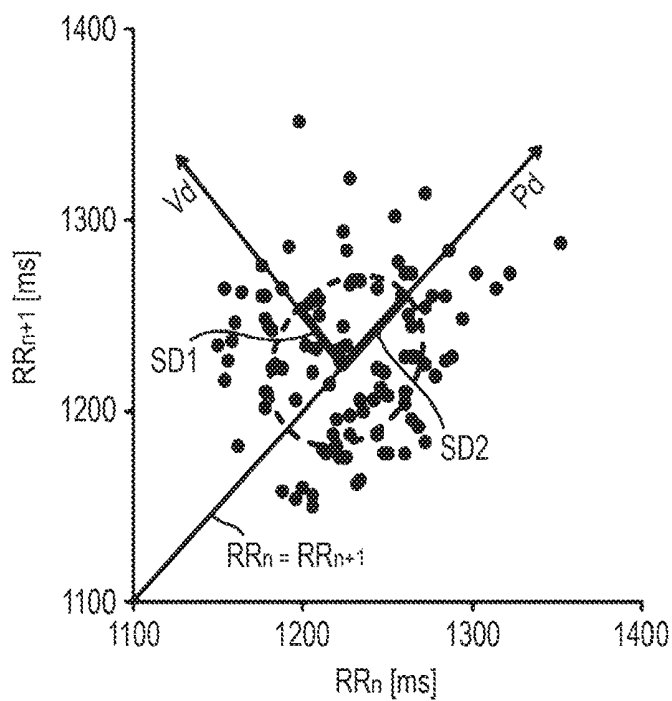


FIG. 9

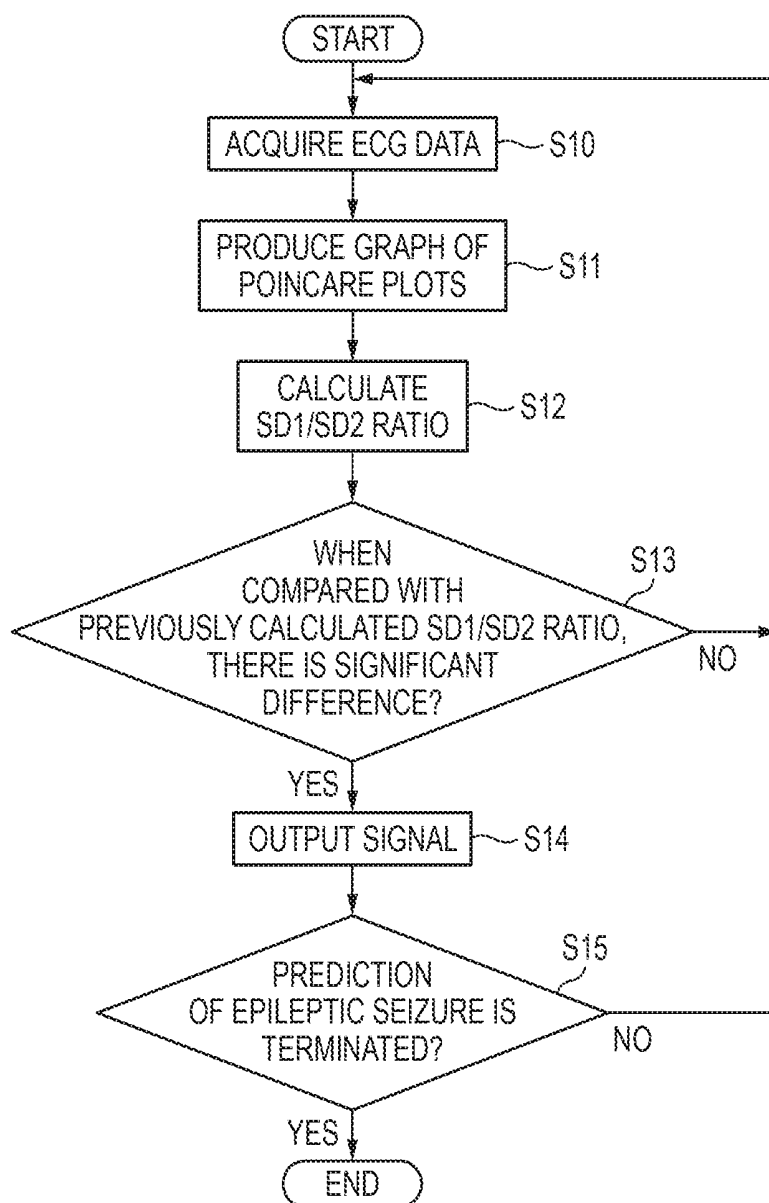
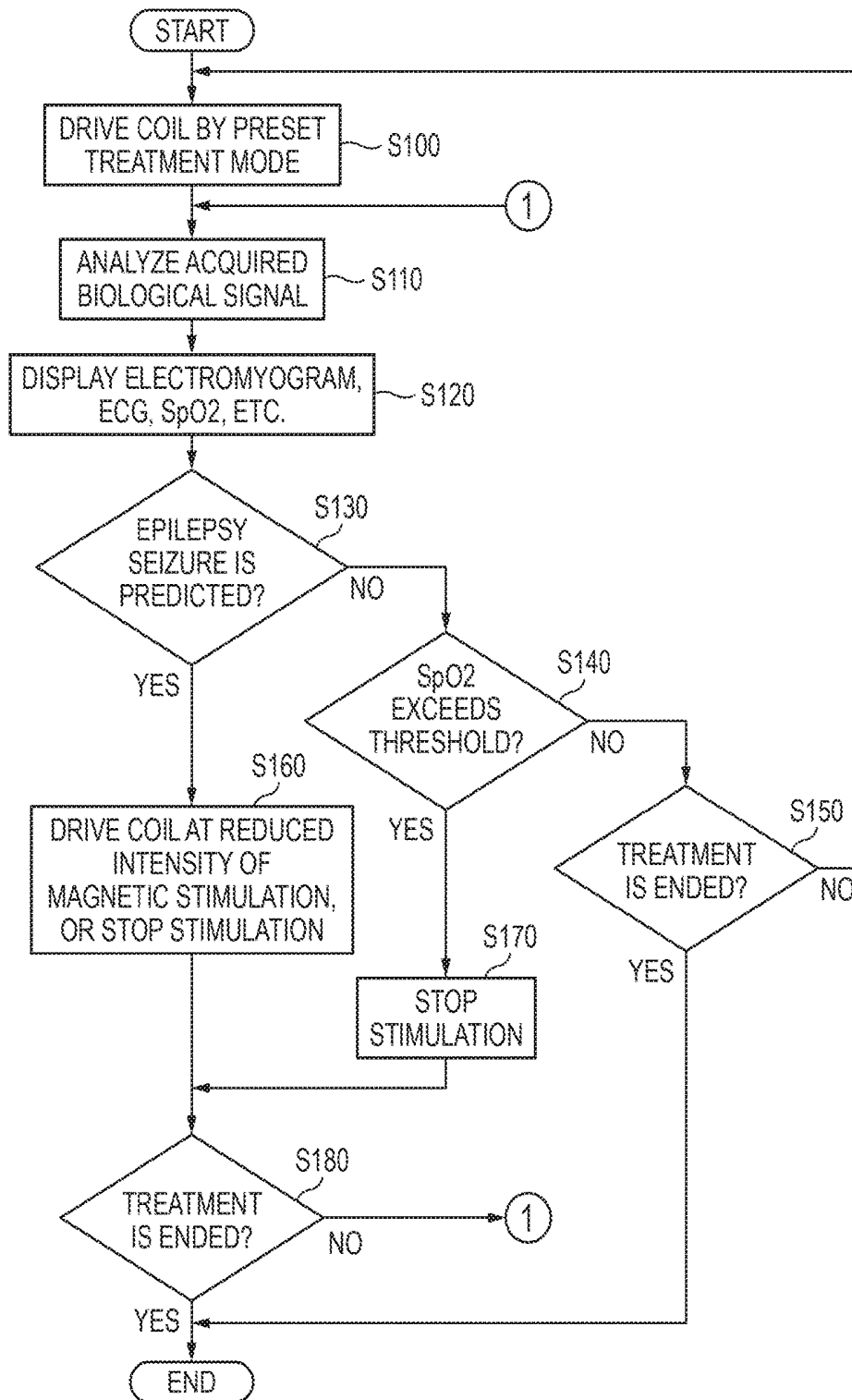


FIG. 10



MAGNETIC STIMULATION APPARATUS

CROSS REFERENCE TO RELATED APPLICATION

This application is based on Japanese Patent Applications No. 2015-026822 filed on Feb. 13, 2015, the contents of which are incorporated herein by reference.

BACKGROUND

The presently disclosed subject matter relates to a magnetic stimulator which can noninvasively treat a neurological disease such as Parkinson disease and depression.

A neurological disease such as Parkinson disease or depression is treated by one of psychoanalysis therapy, pharmacologic therapy, and therapy in which the brain is directly stimulated. It is argued that, among such treatment methods, the therapy in which the brain is directly stimulated is particularly effective for treatment of a part of neurological diseases.

As a therapy in which the brain is directly stimulated, recently, a magnetic stimulation therapy which applies magnetic stimulation to a specific area of the brain of the patient is beginning to be used. The magnetic stimulation therapy is a treatment method in which an electric field is induced in the skull to stimulate a nerve. Tissues can be stimulated without dissipating the magnetic energy, and the brain can be stimulated more correctly and more surely (see Japanese Patent No. 5,053,080).

In the magnetic stimulation therapy, however, it is known that, in the case where treatment in which magnetic stimulation is applied at a high frequency of 1 Hz or higher is performed, there is a possibility that an epilepsy seizure occurs as a side effect depending on the patient.

The presently disclosed subject matter provides a magnetic stimulator in which, when an adverse event such as an epilepsy seizure is observed during treatment with a magnetic stimulation therapy, the treatment can be promptly suppressed, and a neurological disease can be noninvasively treated.

SUMMARY

A magnetic stimulator includes a coil which applies magnetic stimulation to a head of a living body, an intensity controller which controls an intensity of the magnetic stimulation applied by the coil, an acquiring section which acquires a biological signal from the living body, a detector which detects an adverse event of the living body from the biological signal acquired by the acquiring section, and an intensity suppressing section which, when an adverse event of the living body is detected by the detector, suppresses the intensity of the magnetic stimulation that is controlled by the intensity controller.

BRIEF DESCRIPTION OF DRAWINGS

FIG. 1 illustrates a block diagram of a magnetic stimulator of an embodiment.

FIG. 2 illustrates a block diagram of an acquiring section, detector, and intensity suppressing section shown in FIG. 1.

FIG. 3 is a view illustrating an example of a display performed by a displaying section shown in FIG. 1.

FIG. 4 is a table illustrating values of a heart rate and SpO₂ which are displayed on the displaying section shown in FIG. 1.

FIG. 5 is a graph illustrating heart beat variability which is displayed on the displaying section shown in FIG. 1.

FIG. 6 illustrates a block diagram of an epilepsy predicting section shown in FIG. 2.

FIG. 7 is a view illustrating a graph in which Poincare plots are generated before and after an occurrence of an epilepsy seizure.

FIG. 8 is a view illustrating parameters which are used in the case where a seizure detector shown in FIG. 6 predicts an epilepsy seizure.

FIG. 9 illustrates an operation flowchart of the epilepsy predicting section of FIG. 6.

FIG. 10 illustrates an operation flowchart of the magnetic stimulator of the embodiment.

DETAILED DESCRIPTION OF EMBODIMENTS

Hereinafter, an embodiment of the magnetic stimulator of the presently disclosed subject matter will be described with reference to the drawings. The magnetic stimulator of the presently disclosed subject matter is effective for treatment of neurological diseases, particularly Parkinson disease.

FIG. 1 is a block diagram of the magnetic stimulator of the embodiment. As shown in FIG. 1, the magnetic stimulator **100** of the embodiment can include a coil **110**, a magnetic stimulator main unit **120**, and an acquiring section **150**.

The coil **110** applies magnetic stimulation to the head of a living body (patient). The magnetic stimulation must be correctly applied to a specific area of the head of the patient. Therefore, the coil **110** is fixed to an arm which is not shown, so that the coil **110** can be accurately positioned by the arm. The coil **110** may have any shape such as a circular shape, a figure of eight shape, or a conical shape. Depending on the employed shape, the shape of a magnetic field applied to the head is different. Therefore, the shape of the coil to be employed is selected in accordance with, for example, the kind of the neurological disease. A large current of several thousands of amperes is flown through the coil **110**, and therefore a cooling device for cooling the coil **110** is attached to the periphery of the coil **110**.

The acquiring section **150** acquires biological signals from the living body. Specifically, the acquiring section **150** acquires, as biological signals, an electrocardiogram (ECG) signal (for producing electrocardiogram (ECG) data) of the patient, the transmittances (for measuring the arterial oxygen saturation (hereinafter, referred to as SpO₂)) of blood flowing through the fingertip of the patient with respect to red and infrared light beams, and a myoelectric signal (for producing electromyogram data) of the living body.

Although not illustrated, the magnetic stimulator main unit **120** can include a chair unit on which the patient undergoes treatment sits, a control panel which accommodates electric components for supplying the large current to the coil **110**, and a console which outputs various instructions to the control panel, and on which information transmitted from the control panel is displayed. The console may be configured by a personal computer (PC) which is usually used. By using the biological signals acquired by the acquiring section **150**, the magnetic stimulator main unit **120** controls the intensity of the magnetic stimulation which is applied to the living body by the coil **110**.

As shown in FIG. 1, the magnetic stimulator main unit **120** can include an intensity controller **122**, a display controller **124**, a displaying section **126**, a detector **130**, and an intensity suppressing section **140**.

The intensity controller **122** controls the intensity of the magnetic stimulation which is applied by the coil **110**. The

intensity controller **122** changes the level of the current to be supplied to the coil **110**, and the interval and time period of the current supply, thereby adjusting the intensity of the magnetic stimulation. The intensity controller **122** drives the coil **110** in a treatment mode in which the stimulation frequency (the number of stimulations per second, for example, five times (5 Hz)), the stimulation intensity (the percentage with respect to the motor threshold (the minimum intensity which can elicit muscle activity), for example, 32%), the duration time (the number of stimulation applications, for example, 50 times (10.0 sec.)), and the like are determined.

Preferably, the treatment mode is stored for each of the kinds of neurological diseases and patients, because treatment for a patient can be performed correctly and rapidly. The treatment mode is supplied to the display controller **124** which will be described later, and can be checked on the displaying section **126** which will be described later. The treatment mode is displayed in terms of the stimulation frequency, the stimulation intensity, the duration time, and the like.

The detector **130** detects or predicts an adverse event of the living body from the biological signals acquired by the acquiring section **150**. In the case where the acquired biological signals include an ECG signal, the detector **130** produces ECG data by using the acquired ECG signal. The detector **130** detects or predicts an adverse event of the living body by using the produced ECG data. In the case where the acquired biological signals include the transmittances, the detector **130** measures the SpO₂ by using the acquired transmittance. The detector **130** detects an adverse event of the living body by using the measured SpO₂. In the case where the acquired biological signals include a myoelectric signal, the detector **130** produces electromyogram data by using the acquired myoelectric signal. Here, an adverse event means a symptom which impedes the continuation of the treatment, such as occurrence of an epilepsy seizure, occurrence of arrhythmia, or decrease of the SpO₂.

The ECG data, the SpO₂, or the electromyogram data are supplied to the display controller **124** which will be described later, and can be checked on the displaying section **126** which will be described later. The ECG data are displayed as an ECG on the displaying section **126**, and the electromyogram data are displayed as an electromyogram on the displaying section **126**. The SpO₂ is displayed as a numerical value on the displaying section **126**. The condition of the patient under treatment is clearly known from the ECG and the SpO₂. From the electromyogram, the operator can know whether the coil **110** is located at a position appropriate for treatment of the patient or not, and whether a spontaneous activity exists in the body of the patient or not.

When the detector **130** detects an adverse event of the living body, the intensity suppressing section **140** suppresses the intensity of the magnetic stimulation which is controlled by the intensity controller **122**. When the detector **130** detects an adverse event, the intensity suppressing section **140** outputs a magnetic stimulation intensity suppression signal to the intensity controller **122**. Upon reception of the magnetic stimulation intensity suppression signal, the intensity controller **122** suppresses the intensity of the magnetic stimulation. That is, the intensity controller **122** reduces the level of the current to be supplied to the coil **110**, and the time period of the current supply, thereby reducing the intensity of the magnetic stimulation, or interrupts the current output to the coil **110** to stop the magnetic stimulation.

The display controller **124** causes at least one of the ECG data produced by the detector **130**, the SpO₂ measured by

the detector, and the electromyogram data produced by the detector, to be displayed on the displaying section **126**. Moreover, the display controller **124** causes the above-described treatment mode which is output from the intensity controller **122**, to be displayed on the displaying section **126**.

The displaying section **126** displays the ECG data, SpO₂, electromyogram data, and treatment mode, and the like which have been described above. FIG. 3 illustrates an example of the display on the displaying section **126**. The contents of the display will be described later.

The magnetic stimulator **100** of the embodiment approximately operates in the following manner. When treatment is started, the intensity controller **122** supplies a current in a predetermined treatment mode to the coil **110**. This causes magnetic stimulation to be applied to the head of the patient. For example, a neurological disease such as Parkinson disease is treated by the magnetic stimulation.

During the treatment, the acquiring section **150** acquires biological signals (the ECG signal, the transmittances, and the electromyogram signal) of the patient, and the detector **130** detects an adverse event of the patient from the biological signals. If the detector **130** detects an adverse event such as "arrhythmia such as ventricular fibrillation or ventricular tachycardia," or predicts an adverse event such as "the patient will possibly have an epilepsy seizure," the intensity suppressing section **140** supplies the magnetic stimulation intensity suppression signal to the intensity controller **122** to suppress the intensity of the magnetic stimulation which is controlled by the intensity controller **122**.

In treatment of a neurological disease such as Parkinson disease, an epilepsy seizure is recognized as a significant side effect. Therefore, the magnetic stimulator **100** of the embodiment is configured so as to be able to predict occurrence of a significant side effect such as an epilepsy seizure, and, when the occurrence is predicted, temporarily suppress the treatment. According to the configuration, the patient can safely receive the treatment.

The displaying section **126** displays the ECG data, the SpO₂, the electromyogram data, the treatment mode, and the like. These data are displayed because, when the operator sees the display, the operator is enabled to easily know the situation of the treatment, and the condition of the patient under the treatment, and can supplementarily watch the security of the patient. The display on the displaying section **126** is performed in the manner shown in FIG. 3. The display manner will be described in detail later.

FIG. 2 is a block diagram of the acquiring section **150**, detector **130**, and intensity suppressing section **140** which are shown in FIG. 1.

The acquiring section **150** can include electromyogram signal acquiring electrodes **152**, ECG signal acquiring electrodes **154**, and a probe **156**.

The electromyogram signal acquiring electrodes **152** acquire the electromyogram signal of the living body. In order to correctly detect a muscle potential change appearing on the body surface, i.e., the muscle action potential, the electromyogram signal acquiring electrodes **152** are attached to the target muscle of the patient, respectively. The attachment of the electromyogram signal acquiring electrodes **152** is conducted because, when the motor evoked potential (MEP) is observed, it is possible to check whether the magnetic stimulation applied by the coil **110** gives magnetic stimulation to a portion which governs the body motion, and which is called the motor area of the brain or not. When magnetic stimulation is given with sufficient

intensity to the motor area, the MEP is observed in the electromyogram shown on the displaying section 126 (see FIGS. 1 and 3).

The ECG signal acquiring electrodes 154 acquire the ECG signal of the living body. In order to obtain a 1-channel ECG, the ECG signal acquiring electrodes 154 are attached to, for example, the front arms, respectively. The attachment of the ECG signal acquiring electrodes 154 is conducted in order to predict an adverse event such as detection of arrhythmia or occurrence of an epilepsy seizure from the ECG data.

The probe 156 acquires the transmittances of blood flowing through the fingertip of the patient with respect to red and infrared light beams. In order to measure the arterial oxygen saturation (SpO₂), the probe 156 is attached to the fingertip of the patient in a manner similar to the attachment of a clip. The attachment of the probe 156 is conducted in order to know an adverse event such as an abnormal decrease of the SpO₂.

The detector 130 can include an electromyogram producing section 132, an ECG producing section 134, an epilepsy predicting section 135, and an SpO₂ measuring section 136.

The electromyogram producing section 132 produces electromyogram data by using the electromyogram signal acquired by the electromyogram signal acquiring electrodes 152. The electromyogram data produced by the electromyogram producing section 132 are supplied to the display controller 124 (see FIG. 1). The display controller 124 causes the electromyogram data to be displayed on the displaying section 126 in the manner shown in FIG. 3 (see FIGS. 1 and 3).

The ECG producing section 134 produces ECG data by using the ECG signal acquired by the ECG signal acquiring electrodes 154. The produced ECG data are supplied to the epilepsy predicting section 135 which will be described later, so as to be used in prediction of an epilepsy seizure.

The ECG data produced by the ECG producing section 134 are supplied also to the display controller 124 (see FIG. 1). The display controller 124 causes the ECG data to be displayed on the displaying section 126 (see FIGS. 1 and 3). The ECG producing section 134 obtains not only waveform data but also the heart rate.

The epilepsy predicting section 135 predicts an epilepsy seizure by using the ECG data produced by the ECG producing section 134. When the epilepsy predicting section 135 predicts an epilepsy seizure, the section outputs a signal to a reduction/stop instruction outputting section 145 which will be described later. The technique for predicting an epilepsy seizure will be described in detail later.

The SpO₂ measuring section 136 measures the SpO₂ by using the transmittances of blood flowing through the fingertip of the patient with respect to red and infrared light beams. The transmittances are acquired by the probe 156. The SpO₂ measuring section 136 supplies the measured SpO₂ to a stop instruction outputting section 146. The SpO₂ measuring section 136 further supplies the measured SpO₂ value to the display controller 124, and the display controller 124 causes the SpO₂ to be displayed on the displaying section 126 (see FIGS. 1 and 3).

The intensity suppressing section 140 can include the reduction/stop instruction outputting section 145 and the stop instruction outputting section 146.

The reduction/stop instruction outputting section 145 receives the signal which is output when the epilepsy predicting section 135 predicts an occurrence of an epilepsy seizure, and outputs reduction instructions or stop instructions as magnetic stimulation intensity suppressing instruc-

tions to the intensity controller 122, in order to reduce the intensity of the magnetic stimulation controlled by the intensity controller 122 (see FIG. 1), or stop the magnetic stimulation controlled by the intensity controller 122.

When the SpO₂ measured by the SpO₂ measuring section 136 becomes equal to or smaller than a preset threshold, the stop instruction outputting section 146 outputs the stop instructions to the intensity controller 122 in order to stop the magnetic stimulation controlled by the intensity controller 122.

FIG. 3 illustrates an example of a display performed by the displaying section 126 shown in FIG. 1.

In FIG. 3, the bright part of the head of the patient which is displayed in the left side is a portion to which the magnetic stimulation is applied by the coil 110. The upper middle part of FIG. 3 illustrates the treatment mode which is performed by the intensity controller 122 (see FIG. 1). In the figure, a mode where the stimulation intensity is 31%, the stimulation frequency is 5 Hz, and the duration time is 10 sec. is displayed. In FIG. 3, a bar graph like display is shown in the lower middle part. The display shows the temperature of the coil 110. It is seen that the temperature of the coil 110 is not exceed the certain value.

In FIG. 3, the two waveforms (MEPs) in the upper right side and denoted respectively as ELECTROMYOGRAM and ELECTROMYOGRAM (WAVEFORM OF MEASURED DATA) are electromyograms which are produced by the electromyogram producing section 132 based on the electromyogram data. When viewing the electromyograms, in the case where the waveforms are flat and do not largely fluctuate, it is seen that the magnetic stimulation applied by the coil 110 is not given to the motor area of the brain. Therefore, the electromyograms are used for determining whether the treatment portion is adequate or not. The electromyogram (waveform of measured data) shows the waveform of the electromyogram data themselves. Also the electromyogram (waveform of measured data) is displayed in order to enable the checking of whether a spontaneous activity exists in the body of the patient or not, to be performed.

In FIG. 3, the waveform in the lower right side and denoted as ECG is an ECG which is produced by the ECG producing section 134 based on the ECG data. Also the obtained heart rate is displayed on the right side of the ECG. Also the ECG and the heart rate are important indexes indicating the condition of the patient under treatment. When viewing the value of the SpO₂ or the manner of variation of the heart rate, the operator can know the condition of the patient.

In FIG. 3, the numerical value 98 is the value of the SpO₂ measured by the SpO₂ measuring section 136. Also the value of the SpO₂ is an important index indicating the condition of the patient under treatment. When viewing the transition of and manner of variation of the value of the SpO₂, the operator can know the condition of the patient.

The display controller 124 (see FIG. 1) may control the displaying section 126 so as to display not only the contents shown in FIG. 3, but also the values of the heart rate and SpO₂ which are changed at every moment, as a numerical table of the heart rate and the SpO₂ as shown in FIG. 4 (on the same screen as FIG. 3 or on another screen). Alternatively, the display controller 124 may control the displaying section 126 so as to display a graph such as shown in FIG. 5 in which the heart rate variability is graphically indicated (on the same screen as FIG. 3 or on another screen).

When the ECG, the heart rate, the SpO₂, the electromyograms, and the like can be simultaneously displayed on the

displaying section 126 as described above, it is possible to observe the condition of the autonomic nervous system from these displayed contents. From these displayed contents, the operator may possibly predict an adverse event such as an epilepsy seizure. When the condition of the patient is clinically known from these displayed contents, it is possible to warn of the condition of the patient, by using these displays.

FIG. 6 is a block diagram of the epilepsy predicting section 135 shown in FIG. 2. The epilepsy predicting section 135 can include a storage section 133, a heart beat interval detector 137, a graph producing section 138, and a seizure detector 139.

The storage section 133 stores the ECG data produced by the ECG producing section 134 (see FIG. 2). The stored ECG data are used in detection of the heart beat interval RR by the heart beat interval detector 137.

The heart beat interval detector 137 detects the heart beat interval RR by using the ECG data. The heart beat interval RR is detected by once storing the ECG data in the storage section 133, calculating peaks of adjacent R waves in the stored ECG data, and obtaining the interval between the R waves.

The graph producing section 138 produces a Poincare plotted graph based on the heart beat interval RR which is continuously detected for each heart beat by the heart beat interval detector 137. Namely, the graph producing section 138 produces Poincare plots by sequentially plotting heart beat intervals in a two-dimensional orthogonal graph while the heart beat interval RR_n at an arbitrary timing in consecutive heart beats is set as a lateral coordinate, and the next heart beat interval RR_{n+1} is set as a vertical coordinate.

Poincare plots are plots in which, in consecutive heart beats, heart beat intervals are sequentially plotted in a two-dimensional orthogonal graph while the heart beat interval RR_n at an arbitrary timing is set as the abscissa, and the next heart beat interval RR_{n+1} is set as the ordinate. The heart beat interval RR means the time difference between the peak of the R wave at an arbitrary timing in an ECG, and that of the next R wave. The suffix n of the heart beat interval RR_n means the order of the heart beat interval RR, and the heart beat interval RR_{n+1} indicates the next heart beat interval subsequent to the heart beat interval RR_n .

The seizure detector 139 detects an epilepsy seizure based on the graph of Poincare plots produced by the graph producing section 138. The method of detecting an epilepsy seizure by the seizure detector 139 will be described later. When an epilepsy seizure is detected, the seizure detector 139 outputs a signal to the reduction/stop instruction outputting section 145 (see FIG. 2).

FIG. 7 is a view showing a graph in which Poincare plots are generated before and after an occurrence of an epilepsy seizure. In the graph shown in FIG. 7, the abscissa indicates the heart beat interval RR_n which is obtained from the ECG, and the ordinate indicates the next heart beat interval RR_{n+1} which is obtained from the ECG, and which is temporally adjacent to the heart beat interval RR_n .

The Poincare plots enclosed by the broken line P in FIG. 7 are Poincare plots before the occurrence of an epilepsy seizure, and those enclosed by the broken line I are Poincare plots after the occurrence of the epilepsy seizure.

As seen from the graph of FIG. 7, when an epilepsy seizure is detected, the heart beat interval RR is rapidly shortened, and the fluctuation which is the width of distribution of Poincare plots in the direction vertical to the straight line $RR_{n+1}=RR_n$ is decreased. Namely, when an epilepsy seizure is not detected, Poincare plots form a loose

cluster in the upper right side of the graph of FIG. 7, and, when an epilepsy seizure is detected, the Poincare plots rapidly move to the lower left side to converge into the vicinity of the straight line $RR_{n+1}=RR_n$. In FIG. 7, the straight line $RR_{n+1}=RR_n$ is shown in the graph, but the straight line may not be shown in the graph.

In the embodiment, an epilepsy seizure is predicted based on two phenomena caused by detection of an epilepsy seizure, i.e., a phenomenon in which the heart beat interval RR is shortened, and that in which the fluctuation of Poincare plots is decreased. When an epilepsy seizure is predicted by using the two characteristic phenomena, an epilepsy seizure can be detected without erroneous detection and highly sensitively.

FIG. 8 is a view illustrating parameters which are used in the case where the seizure detector 139 predicts an epilepsy seizure. In the graph shown in FIG. 8, similarly with FIG. 7, the abscissa indicates the heart beat interval RR_n which is obtained from the ECG, and the ordinate indicates the next heart beat interval RR_{n+1} which is obtained from the ECG, and which is temporally adjacent to the heart beat interval RR_n .

The dots shown in FIG. 8 are Poincare plots, and the straight line $RR_{n+1}=RR_n$ is also shown. The arrow Vd shown in FIG. 8 indicates the direction vertical to the straight line $RR_{n+1}=RR_n$, and SD1 which is indicated by the thick line on the arrow Vd indicates the standard deviation of the distribution of Poincare plots in the direction of the arrow Vd. The arrow Pd shown in FIG. 8 indicates the direction parallel to the straight line $RR_{n+1}=RR_n$, and SD2 which is indicated by the thick line on the arrow Pd indicates the standard deviation of the distribution of Poincare plots in the direction of the arrow Pd.

The seizure detector 139 detects an epilepsy seizure based on the standard deviation SD1 (hereinafter, referred to simply as "SD1 value") of the distribution of Poincare plots in the direction Vd vertical to the straight line $RR_{n+1}=RR_n$, and the standard deviation SD2 (hereinafter, referred to simply as "SD2 value") of the distribution of Poincare plots in the direction Pd parallel to the straight line $RR_{n+1}=RR_n$. Specifically, the seizure detector 139 detects an epilepsy seizure based on a change of a value (hereinafter, referred to merely as "SD1/SD2 ratio") which is obtained by dividing the SD1 value by the SD2 value. The seizure detector 139 compares the presently calculated SD1/SD2 ratio with the previously calculated SD1/SD2 ratio, and, if it is determined that there is a significant difference, can detect an epilepsy seizure.

When an epilepsy seizure is detected based on a change of the SD1/SD2 ratio as described above, the rate of erroneous detection of an epilepsy seizure can be further lowered, and the detection sensitivity can be more improved.

Preferably, a threshold for detecting an epilepsy seizure from a change of the SD1/SD2 ratio is set for each subject. This can further improve the sensitivity of detection of an epilepsy seizure.

An adequate weight may be applied to the SD1 value or SD2 value which provides the SD1/SD2 ratio.

Alternatively, the seizure detector 139 may detect an epilepsy seizure based on a situation where the SD1 value is equal to or smaller than a preset threshold, and the SD2 value is equal to or larger than a preset threshold. Namely, individual thresholds may be set for the SD1 value and the SD2 value, respectively, and, when the both values exceed the thresholds, an epilepsy seizure may be detected.

Alternatively, an epilepsy seizure may be detected based on a change of a value which is obtained by dividing the SD2 value by the SD1 value.

FIG. 9 is an operation flowchart of the epilepsy predicting section 135 of FIG. 6.

The heart beat interval detector 137 receives ECG data from the ECG producing section 134 (step S10). The received ECG data are temporarily stored in the storage section 133.

The heart beat interval detector 137 detects the heart beat interval RR by using the ECG data stored in the storage section 133, and the graph producing section 138 produces a graph of Poincare plots by using the detected heart beat interval RR (step S11).

The seizure detector 139 calculates the SD1/SD2 ratio based on the Poincare plots produced by the graph producing section 138 (step S12). The seizure detector 139 compares the previously calculated SD1/SD2 ratio with the presently calculated SD1/SD2 ratio, and determines whether there is a significant difference or not (step S13).

If, in the comparison between the previously calculated SD1/SD2 ratio and the presently calculated SD1/SD2 ratio, it is determined that there is no significant difference (step S13: NO), steps S10 to S13 are repeated.

If it is determined that there is a significant difference in the comparison between the previously calculated SD1/SD2 ratio and the presently calculated SD1/SD2 ratio, the seizure detector 139 outputs a signal toward the reduction/stop instruction outputting section 145 (see FIG. 2) (step S14).

The processes of steps S10 to S15 are repeated until instructions for terminating the prediction of an epilepsy seizure are issued (step S15: NO). If the instructions for terminating the prediction of an epilepsy seizure are issued (step S15: YES), the processes of steps S10 to S15 are ended.

In the magnetic stimulator 100 of the embodiment, the treatment safety is largely affected by the accuracy of prediction of an epilepsy seizure. Therefore, the accuracy of prediction of an epilepsy seizure was checked in the following example.

Example

An example of the embodiment will be described.
[Conditions and Method]

(a) Subjects: 19 persons (15 males) of ages 19 to 67.

(b) With respect to 19 epilepsy seizures of refractory temporal lobe epilepsy, the heart beat interval RR was measured by using ECG s generated by an electrocardiograph having a sampling frequency of 200 Hz or 500 Hz. Poincare plots were generated, and the SD1/SD2 ratios were calculated.

(c) It was considered whether differences of averages of SD1 value, SD2 value, and the SD1/SD2 ratio before and after a seizure are significant or not.

The p-value shown in Table 1 below indicates the probability that, in the case where a null hypothesis that there is no difference in SD1 value, SD2 value, and the SD1/SD2 ratio before and after an occurrence of an epilepsy seizure is generated, measured data are incidentally consistent with the null hypothesis.

[Results]

Table 1 below shows the SD1 value, SD2 value, and SD1/SD2 ratio which were measured in the example, and the p-value.

TABLE 1

	Before epilepsy seizure	After epilepsy seizure	p-value
SD1 value [ms]	33.3 ± 30.2	11.0 ± 4.3	0.004
SD2 value [ms]	74.4 ± 49.0	117.1 ± 50.6	0.012
SD1/SD2 ratio	0.46 ± 0.27	0.11 ± 0.06	<0.001

As shown in Table 1, it has been proven that the difference between the SD1/SD2 ratios before and after an occurrence of an epilepsy seizure is significant, and an epilepsy seizure can be sufficiently detected based on a change of the SD1/SD2 ratio.

In the above, the functions of the components of the magnetic stimulator 100 of the embodiment have been described in detail. Next, the operation of the whole magnetic stimulator 100 of the embodiment will be described.

FIG. 10 is an operation flowchart of the magnetic stimulator 100 of the embodiment.

Before the start of treatment by the magnetic stimulation therapy, the operator accurately sets the position of the coil 110 (see FIG. 1) to that adequate for treatment of the symptom of the patient. From the display (the portion under magnetic stimulation) of the displaying section 126, it is possible to check whether the position of the coil 110 is adequate or not.

When the treatment is started, the intensity controlling section 122 drives the coil 110 by the preset treatment mode. This causes an electric field to be induced in the skull of the patient by the coil 110 (step S100).

The detector 130 analyzes the biological signals acquired by the acquiring section 150. Specifically, the electromyogram producing section 132 (see FIG. 2) processes the myoelectric signal acquired from the electromyogram signal acquiring electrodes 152, the ECG producing section 134 processes the ECG signal acquired from the ECG signal acquiring electrodes 154, and the SpO2 measuring section 136 measures the SpO2 from the transmittances acquired from the probe 156 (step S110).

The display controller 124 causes the electromyogram data produced by the electromyogram producing section 132, the ECG data produced by the ECG producing section 134, the SpO2 measured by the SpO2 measuring section 136, and the like to be displayed on the displaying section 126 (step S120).

The detector 130 determines whether an epilepsy seizure is predicted by the epilepsy predicting section 135 or not (step S130).

If an epilepsy seizure is not predicted (step S130: NO), the detector 130 then determines whether the SpO2 exceeds the threshold or not (step S140).

If the SpO2 does not exceed the threshold (step S140: NO), the magnetic stimulator main unit 120 determines whether the treatment is ended or not (step S150).

If an epilepsy seizure is not predicted by the epilepsy predicting section 135 (step S130: NO), and the SpO2 does not exceed the threshold (step S140: NO), the processes of steps S100 to S150 are repeated until the treatment is ended.

If an epilepsy seizure is not predicted by the epilepsy predicting section 135 (step S130: NO), the SpO2 does not exceed the threshold (step S140: NO), and the treatment is ended (step S150: YES), the magnetic stimulator main unit 120 terminates the treatment.

By contrast, if an epilepsy seizure is predicted by the epilepsy predicting section 135 (step S130: YES), the reduction/stop instruction outputting section 145 outputs the mag-

netic stimulation intensity suppression signal (reduction instructions or stop instructions) to the intensity controller **122**. The intensity controller **122** drives the coil **110** at the reduced intensity of magnetic stimulation, or stops the current supply to the coil **110** (step **S160**).

If an epilepsy seizure is not predicted by the epilepsy predicting section **135** (step **S130**: NO), but the SpO₂ exceeds the threshold (step **S140**: YES), the stop instruction outputting section **146** outputs the magnetic stimulation intensity suppression signal (stop instructions) to the intensity controller **122**. The intensity controller **122** stops the current supply to the coil **110** (step **S170**).

The magnetic stimulator main unit **120** determines whether the treatment is ended or not (step **S180**). If the treatment is not ended (step **S180**: NO), the processes of steps **S110** to **S180** are performed. If the treatment is ended (step **S180**: YES), the magnetic stimulator main unit **120** terminates the treatment.

The magnetic stimulator **100** of the embodiment achieves the following effects.

In the embodiment, when an adverse event such as occurrence of an epilepsy seizure, occurrence of arrhythmia, or reduction of the SpO₂ is predicted or detected, the intensity of the magnetic treatment is reduced or the magnetic treatment is stopped. Therefore, safe treatment can be performed on the patient.

In the embodiment, the position of the coil **110** with respect to the head of the patient, and electromyograms can be displayed on the displaying section **126**. When viewing the waveforms of the electromyograms, therefore, the operator can easily know whether the coil **110** is located at a position appropriate for treatment of the patient or not, and whether a spontaneous activity exists in the body of the patient or not.

In the embodiment, the electromyograms, the ECG, the SpO₂, the treatment mode, and the like can be simultaneously displayed on the displaying section **126**. When viewing these displays, the operator can monitor the condition of the patient under treatment. Therefore, safer treatment can be performed.

In the embodiment, when an adverse event such as an epilepsy seizure is observed during treatment of a neurological disease such as Parkinson disease or depression, the treatment can be promptly suppressed, and the neurological disease can be safely treated.

Although, in the embodiment, treatment of Parkinson disease has been exemplarily described, the magnetic stimulator of the embodiment may be effective in treatment of not only Parkinson disease but also other diseases such as major depressive disorder, epilepsy, schizophrenia, Tourette syndrome, amyotrophic lateral sclerosis (ALS), multiple sclerosis (MS), Alzheimer disease, attention deficit/hyperactivity disorder, obesity, bipolar disorder/mania, anxiety disorders (panic disorder with and without agoraphobia, social phobia also known as social anxiety disorder, acute stress disorder, generalized anxiety disorder), post-traumatic stress disorder (one of anxiety disorders in DSM), obsessive compulsive disorder (one of anxiety disorders in DSM), aching pain (migraine, trigeminal neuralgia) (also chronic pain disorders such as neuropathic pain, e.g., pain due to diabetic neuropathy, post-herpetic neuralgia, e.g., fibromyalgia, and regional myofascial pain syndromes), rehabilitation following stroke (neuro plasticity induction), tinnitus, stimulation of implanted neurons to facilitate integration, substance-related disorders (dependence, abuse, and withdrawal diagnoses for alcohol, cocaine, amphetamine, caffeine, nicotine, and cannabis), spinal cord injury and regen-

eration/rehabilitation, head injury, sleep deprivation reversal, primary sleep disorders (primary insomnia, primary hypersomnia, circadian rhythm sleep disorder), cognitive enhancements, dementias, premenstrual dysphoric disorder (PMS), drug delivery systems (changing the cell membrane permeability to a drug), induction of protein synthesis (induction of transcription and translation), stuttering, aphasia, dysphagia, essential tremor, and eating disorders (bulimia, anorexia, binge eating).

What is claimed is:

1. A magnetic stimulator comprising:

a coil which applies magnetic stimulation to a head of a living body;

an intensity controller which controls an intensity of the magnetic stimulation applied by the coil;

an acquiring section which acquires a biological signal from the living body;

a detector which detects an adverse event of the living body from the biological signal acquired by the acquiring section; and

an intensity suppressing section which, when an adverse event of the living body is detected by the detector, suppresses the intensity of the magnetic stimulation that is controlled by the intensity controller, wherein:

the acquiring section includes electrocardiogram signal acquiring electrodes which acquire an electrocardiogram signal of the living body,

the detector includes:

an electrocardiogram producing section which produces electrocardiogram data by using the electrocardiogram signal acquired by the electrocardiogram signal acquiring electrodes; and

an epilepsy predicting section which predicts an epilepsy seizure by using the electrocardiogram data produced by the electrocardiogram producing section,

the intensity suppressing section includes a reduction/stop instruction outputting section which, when the epilepsy predicting section predicts an epilepsy seizure, outputs a magnetic stimulation intensity suppression signal to the intensity controller, the magnetic stimulation intensity suppression signal being configured to cause the intensity controller to reduce the intensity of the magnetic stimulation controlled by the intensity controller, or to stop the magnetic stimulation controlled by the intensity controller,

the acquiring section includes a probe which acquires transmittances of blood of the living body with respect to red and infrared light beams,

the detector includes an arterial oxygen saturation (SpO₂) measuring section which measures an SpO₂ by using the transmittances acquired by the probe,

the intensity suppressing section includes a stop instruction outputting section which, when the SpO₂ measured by the SpO₂ measuring section is equal to or less than a preset threshold, outputs stop instructions as magnetic stimulation intensity suppressing instructions to the intensity controller, the magnetic stimulation intensity suppressing instructions being configured to cause the intensity controller to stop the magnetic stimulation controlled by the intensity controller, and the detector is configured to determine whether the SpO₂ exceeds the preset threshold or not, when the epilepsy seizure is not predicted by the epilepsy predicting section.

2. The magnetic stimulator according to claim 1, wherein the epilepsy predicting section includes a storage section

which stores the electrocardiogram data produced by the electrocardiogram producing section,

a heart beat interval detector which detects heart beat intervals of consecutive heart beats by using the electrocardiogram data stored in the storage section,

a graph producing section which produces Poincare plots by sequentially plotting the beat intervals of consecutive heart beats detected by the heart beat interval detector, in a two-dimensional orthogonal graph while a heart beat interval at an arbitrary timing is set as a lateral coordinate, and a next heart beat interval is set as a vertical coordinate, and

a seizure detecting section which detects an epilepsy seizure by, in a graph of Poincare plots produced by the graph producing section, using a change of a distribution of a group of the plotted values in a direction vertical to a straight line passing an origin and a point where the lateral and vertical coordinates are equal to each other, and a change of a distribution in a direction parallel to the straight line.

3. The magnetic stimulator according to claim 2, wherein the seizure detecting section predicts an epilepsy seizure based on a change of an SD1/SD2 ratio which is a ratio of a standard deviation SD2 in the parallel direction to a standard deviation SD1 in the vertical direction.

4. The magnetic stimulator according to claim 2, wherein the seizure detecting section predicts an epilepsy seizure when an SD1/SD2 ratio which is a ratio of a standard deviation SD2 in the parallel direction to a standard deviation SD1 in the vertical direction is equal to or smaller than a preset threshold.

5. The magnetic stimulator according to claim 1, wherein the acquiring section includes electrocardiogram signal acquiring electrodes which acquire an electrocardiogram signal of the living body,

the detector includes an electrocardiogram producing section which produces electrocardiogram data by using the electrocardiogram signal acquired by the electrocardiogram signal acquiring electrodes, and detects arrhythmia by using the electrocardiogram data produced by the electrocardiogram producing section, and

the intensity suppressing section includes a reduction/stop instruction outputting section which, when the detector detects arrhythmia, outputs magnetic stimulation intensity suppressing instructions to the intensity controller, the magnetic stimulation intensity suppressing instructions being configured to cause the intensity controller to reduce the intensity of the magnetic stimulation controlled by the intensity controller, or to stop the magnetic stimulation controlled by the intensity controller.

6. The magnetic stimulator according to claim 1, wherein the acquiring section further includes electromyogram signal acquiring electrodes which acquire an electromyogram signal of the living body, and

the detector further includes an electromyogram producing section which produces electromyogram data by using the electromyogram signal acquired by the electromyogram signal acquiring electrodes.

7. The magnetic stimulator according to claim 2, wherein the acquiring section further includes electromyogram signal acquiring electrodes which acquire an electromyogram signal of the living body, and

the detector further includes an electromyogram producing section which produces electromyogram data by

using the electromyogram signal acquired by the electromyogram signal acquiring electrodes.

8. The magnetic stimulator according to claim 3, wherein the acquiring section further includes electromyogram signal acquiring electrodes which acquire an electromyogram signal of the living body, and

the detector further includes an electromyogram producing section which produces electromyogram data by using the electromyogram signal acquired by the electromyogram signal acquiring electrodes.

9. The magnetic stimulator according to claim 4, wherein the acquiring section further includes electromyogram signal acquiring electrodes which acquire an electromyogram signal of the living body, and

the detector further includes an electromyogram producing section which produces electromyogram data by using the electromyogram signal acquired by the electromyogram signal acquiring electrodes.

10. The magnetic stimulator according to claim 5, wherein the acquiring section further includes electromyogram signal acquiring electrodes which acquire an electromyogram signal of the living body, and

the detector further includes an electromyogram producing section which produces electromyogram data by using the electromyogram signal acquired by the electromyogram signal acquiring electrodes.

11. The magnetic stimulator according to claim 6, wherein the magnetic stimulator further includes a display controller which causes at least one of the electrocardiogram data produced by the detector, the SpO2 measured by the detector, and the electromyogram data produced by the detector, to be displayed on a displaying section.

12. The magnetic stimulator according to claim 7, wherein the magnetic stimulator further includes a display controller which causes at least one of the electrocardiogram data produced by the detector, the SpO2 measured by the detector, and the electromyogram data produced by the detector, to be displayed on a displaying section.

13. The magnetic stimulator according to claim 8, wherein the magnetic stimulator further includes a display controller which causes at least one of the electrocardiogram data produced by the detector, the SpO2 measured by the detector, and the electromyogram data produced by the detector, to be displayed on a displaying section.

14. The magnetic stimulator according to claim 9, wherein the magnetic stimulator further includes a display controller which causes at least one of the electrocardiogram data produced by the detector, the SpO2 measured by the detector, and the electromyogram data produced by the detector, to be displayed on a displaying section.

15. The magnetic stimulator according to claim 10, wherein the magnetic stimulator further includes a display controller which causes at least one of the electrocardiogram data produced by the detector, the SpO2 measured by the detector, and the electromyogram data produced by the detector, to be displayed on a displaying section.

16. A magnetic stimulation method comprising:
 applying magnetic stimulation to a head of a living body;
 controlling an intensity of the magnetic stimulation;
 acquiring a biological signal from the living body;
 detecting an adverse event of the living body from the acquired biological signal;
 suppressing the intensity of the magnetic stimulation when the adverse event of the living body is detected;
 acquiring an electrocardiogram signal of the living body;
 producing electrocardiogram data by using the acquired electrocardiogram signal;

predicting an epilepsy seizure by using the produced
electrocardiogram data;
reducing the intensity of the magnetic stimulation, or
stopping the magnetic stimulation, when the epilepsy
seizure is predicted; 5
acquiring transmittances of blood of the living body with
respect to red and infrared light beams;
measuring an arterial oxygen saturation (SpO2) by using
the acquired transmittances;
stopping the magnetic stimulation when the measured 10
SpO2 is equal to or less than a preset threshold; and
determining whether the SpO2 exceeds the preset thresh-
old or not, when the epilepsy seizure is not predicted.

* * * * *

专利名称(译)	磁刺激设备		
公开(公告)号	US10070814	公开(公告)日	2018-09-11
申请号	US15/042864	申请日	2016-02-12
[标]申请(专利权)人(译)	日本光电工业株式会社		
申请(专利权)人(译)	日本光电公司		
当前申请(专利权)人(译)	日本光电公司		
[标]发明人	HYODO AKIRA KANNO TAKASHI		
发明人	HYODO, AKIRA KANNO, TAKASHI		
IPC分类号	A61N1/00 A61B5/1455 A61B5/0492 A61B5/0452 A61B5/0408 A61N2/00 A61B5/00 A61N2/02		
CPC分类号	A61B5/4836 A61B5/0408 A61B5/0452 A61N2/02 A61B5/14551 A61B5/742 A61N2/006 A61B5/0492		
优先权	2015026822 2015-02-13 JP		
其他公开文献	US20160235360A1		
外部链接	Espacenet		

摘要(译)

磁刺激器包括：线圈，其将磁刺激施加到生物体的头部；强度控制器，其控制由线圈施加的磁刺激的强度；获取部分，其从生物体获取生物信号；检测器，从获取部分获取的生物信号中检测活体的不利事件，以及当检测器检测到活体的不良事件时，抑制由下文所控制的磁刺激的强度的强度抑制部分。强度控制器。

