



US 20190298185A1

(19) **United States**

(12) **Patent Application Publication**
Kiani

(10) **Pub. No.: US 2019/0298185 A1**

(43) **Pub. Date: Oct. 3, 2019**

(54) **PATIENT MONITOR FOR MONITORING
MICROCIRCULATION**

Publication Classification

(71) Applicant: **Masimo Corporation**, Irvine, CA (US)

(72) Inventor: **Massi Joe E. Kiani**, Laguna Niguel,
CA (US)

(51) **Int. Cl.**
A61B 5/026 (2006.01)
A61B 5/00 (2006.01)
A61B 5/1455 (2006.01)

(52) **U.S. Cl.**
CPC *A61B 5/0261* (2013.01); *A61B 5/14551*
(2013.01); *A61B 5/7271* (2013.01)

(21) Appl. No.: **16/377,916**

(22) Filed: **Apr. 8, 2019**

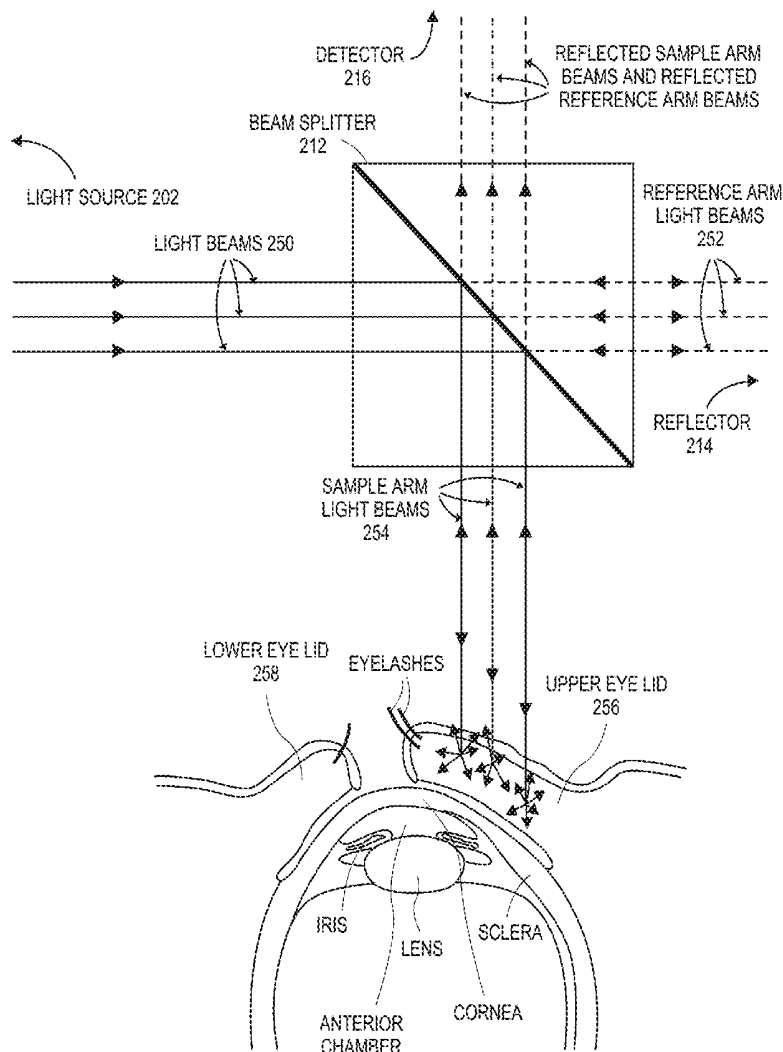
(57) **ABSTRACT**

A patient monitor capable of measuring microcirculation at a tissue site includes a light source, a beam splitter, a photodetector and a patient monitor. Light emitted from the light source is split into a reference arm and a sample arm. The light in the sample arm is directed at a tissue site, such as an eyelid. The reflected light from the tissue site is interfered with the light from the reference arm. The photodetector measures the interference of the light from both the sample arm and the reference arm. The patient monitor uses the measurements from the photodetector to calculate the oxygen saturation at the tissue site and monitor the microcirculation at the tissue site.

Related U.S. Application Data

(63) Continuation of application No. 15/797,839, filed on Oct. 30, 2017, now Pat. No. 10,271,749, which is a continuation of application No. 14/746,446, filed on Jun. 22, 2015, now Pat. No. 9,801,556, which is a continuation of application No. 13/369,773, filed on Feb. 9, 2012, now Pat. No. 9,066,666.

(60) Provisional application No. 61/446,969, filed on Feb. 25, 2011.



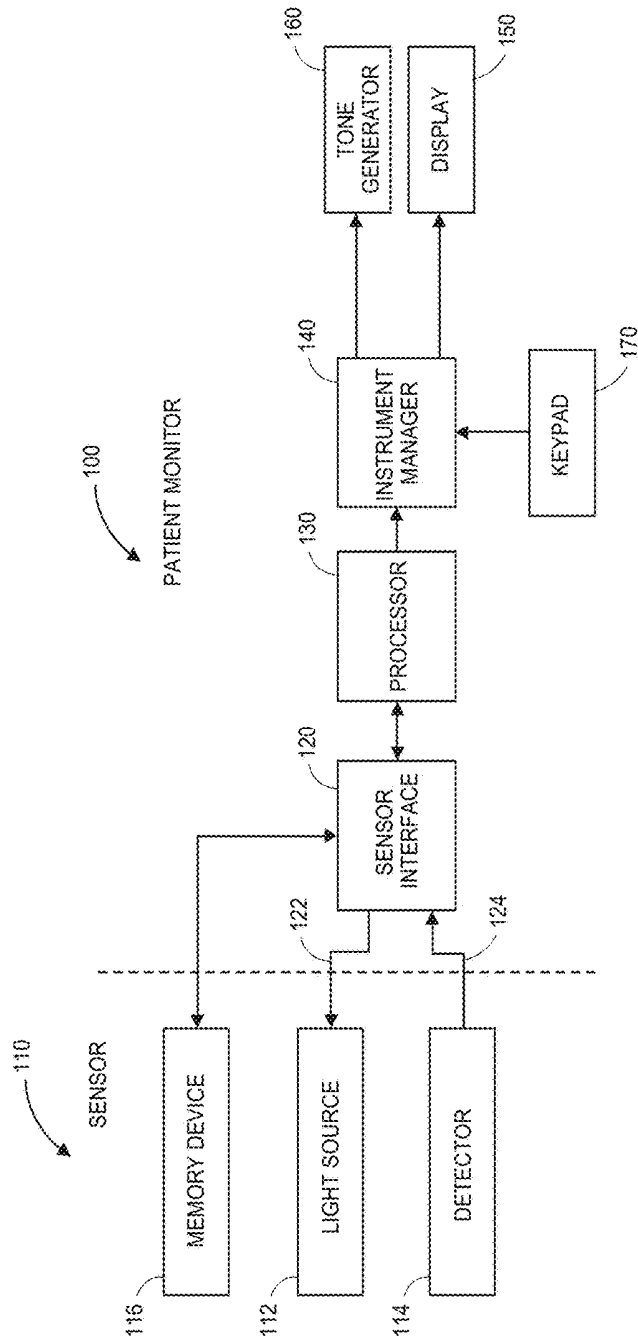


FIG. 1

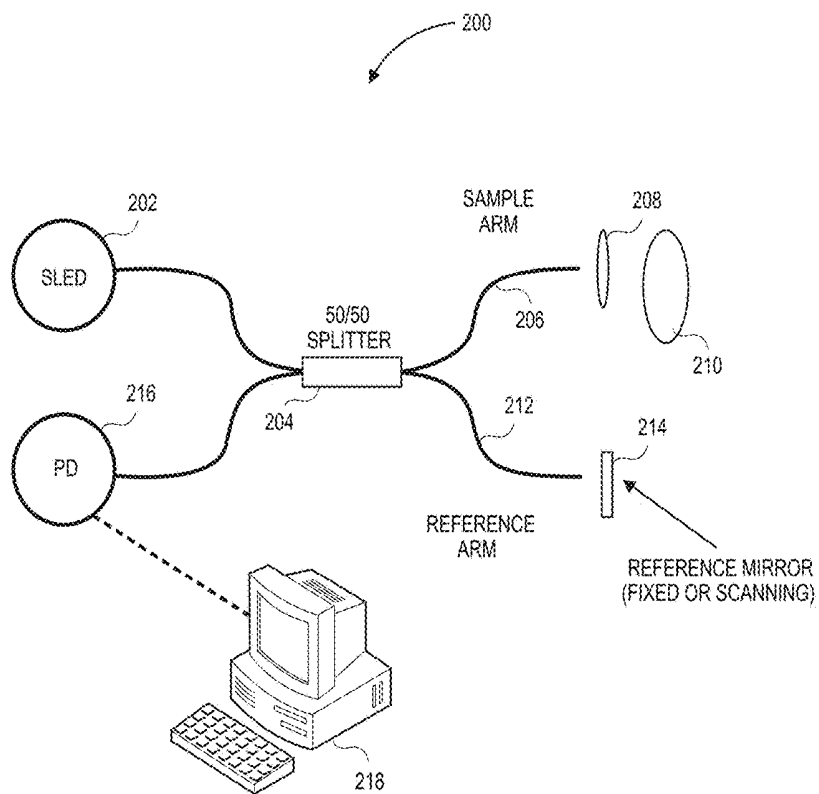


FIG. 2A

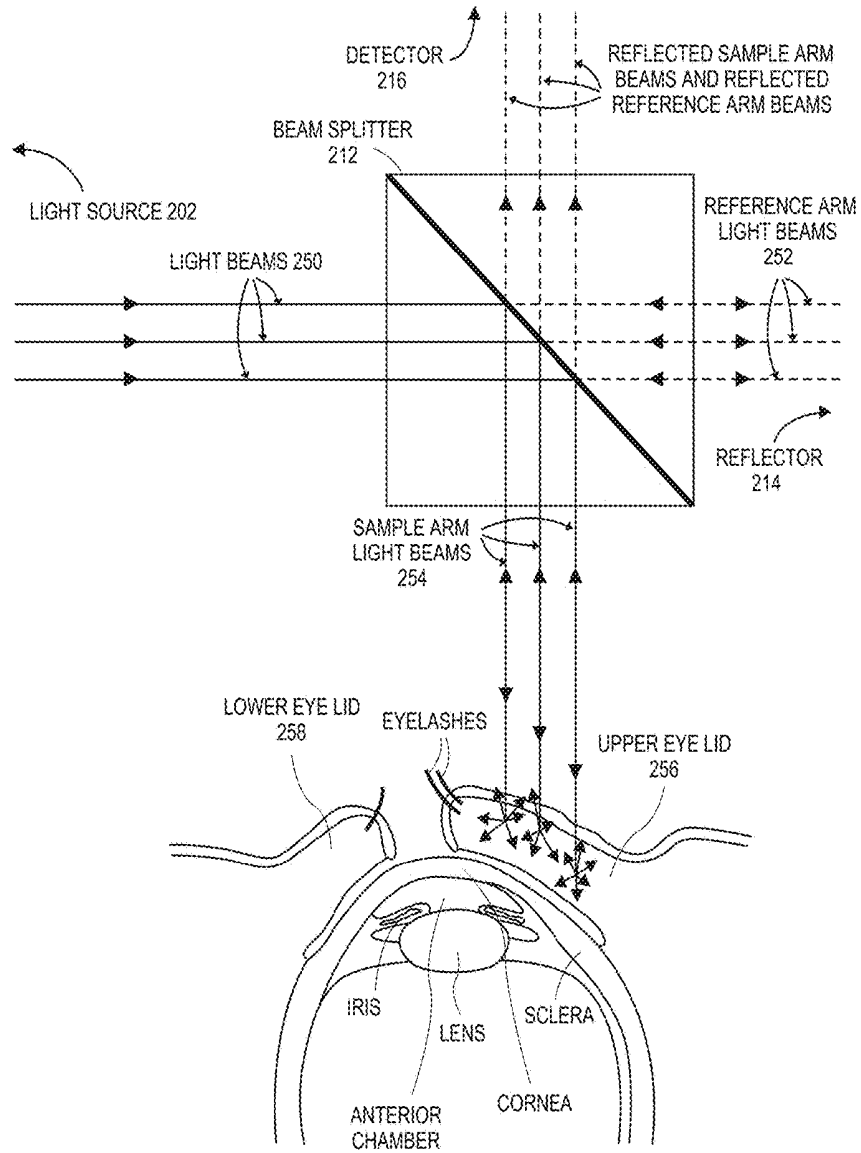


FIG. 2B

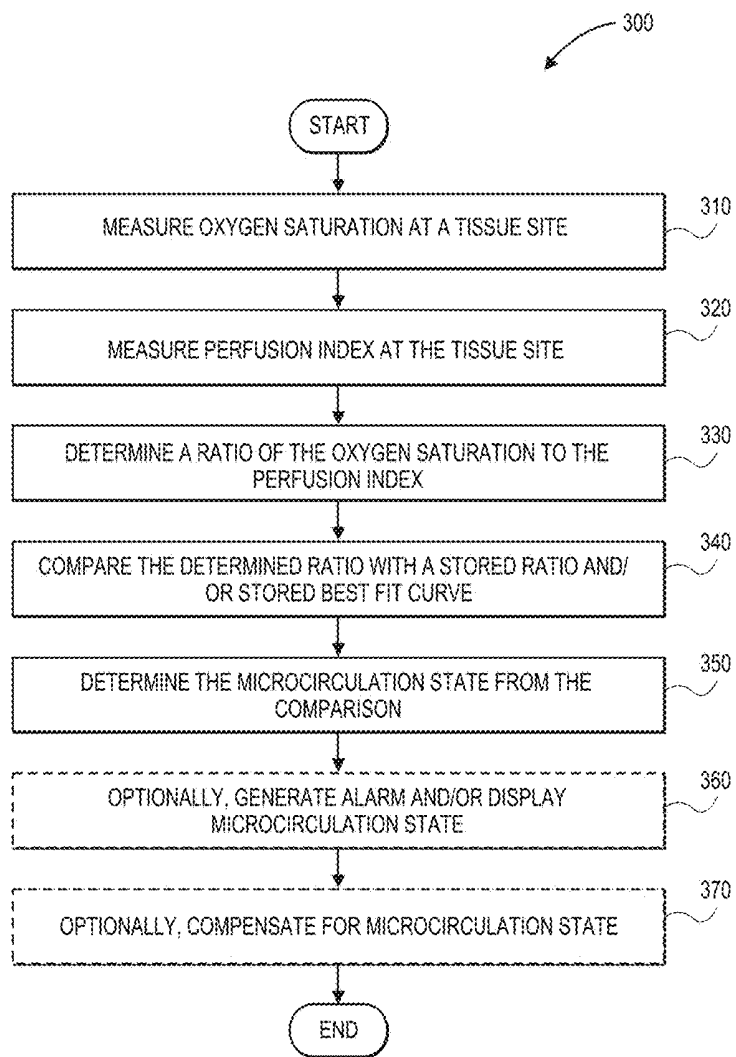


FIG. 3

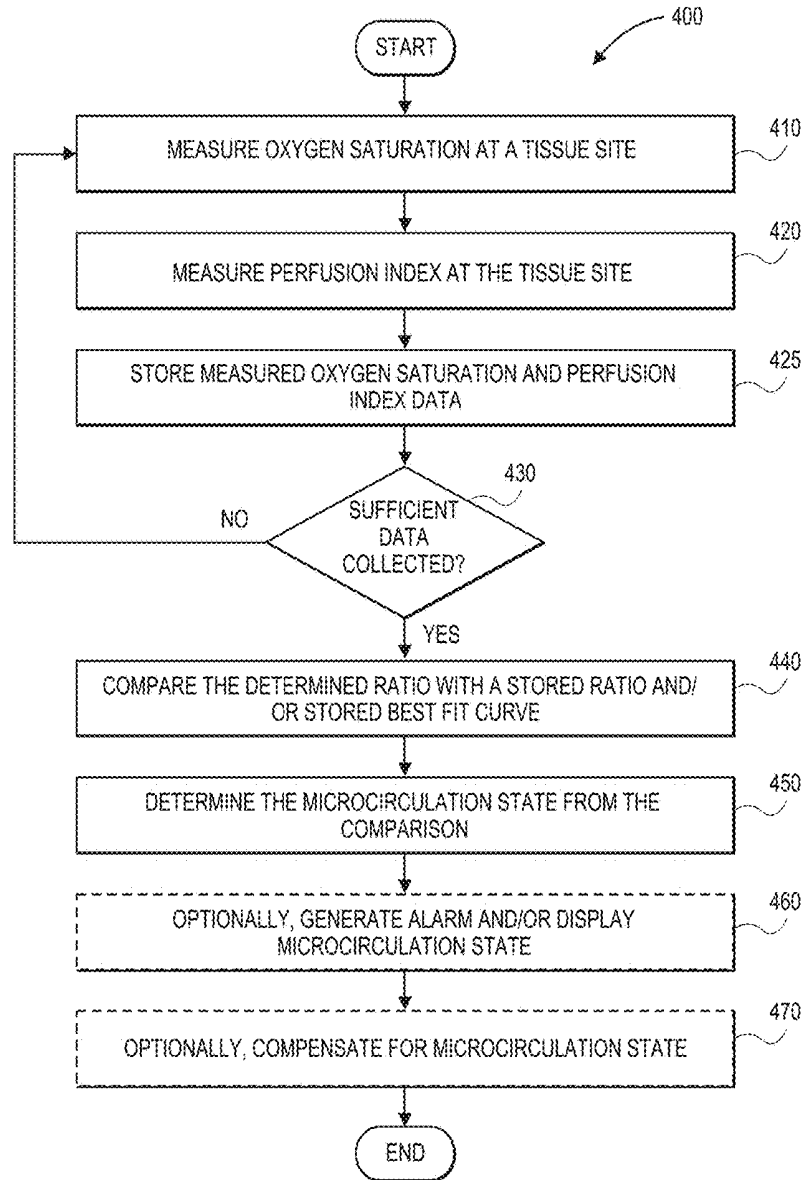


FIG. 4

PATIENT MONITOR FOR MONITORING MICROCIRCULATION

CROSS-REFERENCE TO RELATED APPLICATIONS

[0001] This application is a continuation of U.S. patent application Ser. No. 15/797,839, filed Oct. 30, 2017, entitled "Patient Monitor For Monitoring Microcirculation," which is a continuation of U.S. patent application Ser. No. 14/746,446, filed Jun. 22, 2015, entitled "Patient Monitor For Monitoring Microcirculation," which is a continuation of U.S. patent application Ser. No. 13/369,773, filed Feb. 9, 2012, entitled "Patient Monitor For Monitoring Microcirculation," which claims the benefit of U.S. Provisional Patent Application No. 61/446,969, filed Feb. 25, 2011, entitled "Patient Monitor for Monitoring Microcirculation," each of which is hereby incorporated herein by reference in its entirety.

FIELD

[0002] The present disclosure relates to medical sensors and specifically to a medical sensor and/or monitor for determining the circulation state in blood vessels.

BACKGROUND OF THE DISCLOSURE

[0003] Patient monitoring of various physiological parameters of a patient is important to a wide range of medical applications. Oximetry is one of the techniques that has developed to accomplish the monitoring of some of these physiological characteristics. It was developed to study and to measure, among other things, the oxygen status of blood. Pulse oximetry—a noninvasive, widely accepted form of oximetry—relies on a sensor attached externally to a patient to output signals indicative of various physiological parameters, such as a patient's constituents and/or analytes, including for example a percent value for arterial oxygen saturation, carbon monoxide saturation, methemoglobin saturation, fractional saturations, total hematocrit, bilirubins, perfusion quality, or the like. A pulse oximetry system generally includes a patient monitor, a communications medium such as a cable, and/or a physiological sensor having light emitters and a detector, such as one or more LEDs and a photodetector. The sensor is attached to a tissue site, such as a finger, toe, ear lobe, nose, hand, foot, or other site having pulsatile blood flow which can be penetrated by light from the emitters. The detector is responsive to the emitted light after attenuation by pulsatile blood flowing in the tissue site. The detector outputs a detector signal to the monitor over the communication medium, which processes the signal to provide a numerical readout of physiological parameters such as oxygen saturation (SpO₂) and/or pulse rate. The detector signal can also be used by the monitor to create an image on a display screen of the tissue being monitored.

[0004] High fidelity pulse oximeters capable of reading through motion induced noise are disclosed in U.S. Pat. Nos. 7,096,054, 6,813,511, 6,792,300, 6,770,028, 6,658,276, 6,157,850, 6,002,952, 5,769,785, and 5,758,644, which are assigned to Masimo Corporation of Irvine, Calif. ("Masimo Corp.") and are incorporated by reference herein. Advanced physiological monitoring systems can incorporate pulse oximetry in addition to advanced features for the calculation and display of other blood parameters, such as carboxyhe-

moglobin (HbCO), methemoglobin (HbMet), total hemoglobin (Hbt), total Hematocrit (Hct), oxygen concentrations, glucose concentrations, blood pressure, electrocardiogram data, temperature, and/or respiratory rate as a few examples. Typically, the physiological monitoring system provides a numerical readout of and/or waveform of the measured parameter. Advanced physiological monitors and multiple wavelength optical sensors capable of measuring parameters in addition to SpO₂, such as HbCO, HbMet and/or Hbt are described in at least U.S. Pat. No. 7,764,982, and U.S. application Ser. No. 11/366,208, filed Mar. 1, 2006, titled Noninvasive Multi-Parameter Patient Monitor, assigned to Masimo Laboratories, Inc. and incorporated by reference herein. Further, noninvasive blood parameter monitors and optical sensors including Rainbow™ adhesive and reusable sensors and RAD-57™ and Radical-7™ monitors capable of measuring SpO₂, pulse rate, perfusion index (PI), signal quality (SiQ), pulse variability index (PVI), HbCO and/or HbMet, among other parameters, are also commercially available from Masimo Corp.

[0005] During blood circulation, arteries carry blood away from the heart in high volume and under high pressure. Arteries branch off into smaller blood vessels, called arterioles. Arterioles are well innervated, surrounded by smooth muscle cells, and are about 10-100 μm in diameter. Arterioles carry the blood to the capillaries, which are the smallest blood vessels, which are not innervated, have no smooth muscle, and are about 5-8 μm in diameter. Blood flows out of the capillaries into the venules, which have little smooth muscle and are about 10-200 μm in diameter. The blood flows from venules into the veins, which carry blood back to the heart. Arterioles, venules, and/or capillaries may also be referred to as microvessels.

[0006] Microcirculation generally refers to the vascular network lying between the arterioles and the venules, including the capillaries, as well as the flow of blood through this network. These small vessels can be found in the vasculature which are embedded within organs and are responsible for the distribution of blood within tissues as opposed to larger vessels in the macrocirculation which transport blood to and from the organs. One of the functions of microcirculation is to deliver oxygen and other nutrients to tissue. Sometimes, microcirculation in these small vessels can become blocked, interfering with the delivery of oxygen to the tissue.

SUMMARY

[0007] As placement of a physiological monitoring sensor is typically at a sensor site located at an extremity of the body, the state of microcirculation, such as whether vessels are blocked or open, can have a significant effect on the readings at the sensor site. It is therefore desirable to provide a patient monitor and/or physiological monitoring sensor capable of distinguishing the microcirculation state of blood vessels. In some embodiments, the patient monitor and/or sensor provide a warning and/or compensates a measurement based on the microcirculation state. In some embodiments, a microcirculation determination process implementable by the patient monitor and/or sensor is used to determine the state of microcirculation of the patient.

BRIEF DESCRIPTION OF THE DRAWINGS

[0008] Throughout the drawings, reference numbers may be re-used to indicate correspondence between referenced

elements. The drawings are provided to illustrate embodiments of the disclosure described herein and not to limit the scope thereof.

[0009] FIG. 1 illustrates a block diagram of a patient monitor, such as a pulse oximeter, and associated sensor;

[0010] FIG. 2A is a schematic block diagram of a microcirculation monitoring device

[0011] FIG. 2B is a block illustrating an eyelid being monitored by a microcirculation monitoring device.

[0012] FIG. 3 illustrates a flow diagram for a process for determining the state of microcirculation usable by a pulse oximeter; and

[0013] FIG. 4 illustrates a flow diagram for a process for determining the state of microcirculation wherein multiple data points are collected.

DETAILED DESCRIPTION

[0014] FIG. 1 illustrates a block diagram of a patient monitor 100, such as a microcirculation monitoring device, and associated non-invasive sensor 110. Generally, in the case of a microcirculation monitoring device, the sensor 110 has a light source 112 and a photodiode detector 114. In one embodiment, the light source 112 includes two LED emitters, generally one at a red wavelength and one at an infrared wavelength. In another embodiment, the light source 112 includes one light emitter that emits light at multiple wavelengths and a collimator and spectral filter. The sensor 110 can be attached to a patient in a number of different locations including a finger, an ear, an arm, a leg, a toe, a cheek, a lip, a tongue, a forehead, or an eyelid.

[0015] Typically, non-invasive sensors are attached to a finger, ear, forehead or cheek or other extremity. However, these locations can have a number of drawbacks. For example, signals measured at the ear can be very weak compared to other sites. In addition, cold temperatures can lead to poor perfusion at the ear. In some instances, the signal may be so weak that a non-invasive measurement is not feasible.

[0016] A non-invasive sensor placed at the finger can also have a number of disadvantages. Similar, to the ear, cold temperatures, or a cold patient, may result in poor perfusion at the finger. In addition, a patient experiencing shock may experience poor perfusion in the finger, as blood is directed away from the extremities and to the body's core during shock. Patient movement can also make it difficult to obtain accurate non-invasive readings at the finger.

[0017] Despite the disadvantages of measuring at fingers and ears, measuring oxygen saturation and monitoring microcirculation at the eyelid has a number of advantages. For example, similar to other parts of the head, the eyelids are generally well perfused. In addition, lower temperatures are less likely to effect perfusion in the eyelid than in the ear or finger. Furthermore, there is less likely to be patient movement at the eyelid than at a finger, resulting in more accurate readings. In addition, placement of a sensor on the head during surgery can decrease the probability of a cable obstructing access to the patient. The thickness of the eyelid (approximately 1 mm) can also be of benefit when using Optical Coherence Tomography (OCT) devices.

[0018] For an eyelid, the sensor 110 is configured so that the light source 112 projects light into the microvessels of the eyelid. The light source 112 is activated by drive signals 122 from the patient monitor 100. The light entering the tissue is either absorbed, reflected, or refracted. After being

reflected, some of the light returns in a direction that is substantially opposite from the direction it entered. The detector 114 is positioned in such a way so as to detect the reflected light as it emerges from the eyelid tissues. The detector 114 generates a signal 124, which is relayed by a cable or other means to the patient monitor 100.

[0019] In one embodiment, the patient monitor 100 can include a pulse oximeter to determine oxygen saturation (SpO₂) by computing the differential absorption by arterial blood of the two wavelengths emitted by the LED emitters of the light source 112. Additional information regarding the use of a pulse oximeter can be found in U.S. application Ser. No. 13/101,093, entitled "Patient Monitor for Determining Microcirculation State," filed May 4, 2011, and U.S. Pat. No. 7,356,365, issued Apr. 8, 2008, entitled "Method and Apparatus for Tissue Oximetry," both of which are hereby incorporated by reference in their entirety. The patient monitor can further include a sensor interface 120, one or more processors 130, such as a microcirculation processor, an instrument manager 140, a display 150, an audible indicator (tone generator) 160, and a keypad 170. The sensor interface 120 provides a light source drive current 122 which drives the light source 112. The sensor interface 120 also has input circuitry for amplification and filtering of the signal 124 generated by the photodiode detector 114, which corresponds to the light detected from the tissue after having been reflected and/or refracted by the eyelid. The microcirculation processor 130 calculates microcirculation states of the microvessels in the eyelid tissue, as will be described in greater detail below, and can also calculate the oxygen saturation, as described in greater detail in U.S. application Ser. No. 13/101,093 and U.S. Pat. No. 7,356,365, previously incorporated by reference in their entirety. The instrument manager 140 provides hardware and software interfaces for managing the display 150, audible indicator 160, and keypad 170. The display 150 shows the computed oxygen saturation status, as described above, as well as the microcirculation status. The display 150 can also show an image of the microvessel. Similarly, other patient parameters including HbCO, HbMet, Hbt, Hct, oxygen concentrations, glucose concentrations, pulse rate, PI, SiQ, and/or PVI can be computed, as described in greater detail in U.S. application Ser. No. 13/101,093 and U.S. Pat. No. 7,356,365. The audible indicator 160 provides the pulse beep as well as alarms indicating desaturation and microcirculation events. The keypad 170 provides a user interface for such things as alarm thresholds, alarm enablement, and/or display options.

[0020] Computation of SpO₂ relies on the differential light absorption of oxygenated hemoglobin, HbO₂, and deoxygenated hemoglobin, Hb, to determine their respective concentrations in the arterial blood. Specifically, pulse oximetry measurements are made at red (R) and infrared (IR) wavelengths chosen such that deoxygenated hemoglobin absorbs more red light than oxygenated hemoglobin, and, conversely, oxygenated hemoglobin absorbs more infrared light than deoxygenated hemoglobin, for example 660 nm (R) and 905 nm (IR).

[0021] To distinguish between tissue absorption at the two wavelengths, in some embodiments, the red and infrared emitters of the light source 112 are provided drive current 122 so that only one is emitting light at a given time. For example, the emitters can be cycled on and off alternately, in sequence, with each only active for a quarter cycle and with a quarter cycle separating the active times.

[0022] This allows for separation of red and infrared signals and removal of ambient light levels by downstream signal processing. Because only a single detector **114** is used, it responds to both the red and infrared emitted light and generates a time-division-multiplexed (“modulated”) output signal **124**. This modulated signal **124** is coupled to the input of the sensor interface **120**.

[0023] In addition to the differential absorption of hemoglobin derivatives, pulse oximetry relies on the pulsatile nature of arterial blood to differentiate hemoglobin absorption from absorption of other constituents in the surrounding tissues. Light absorption between systole and diastole varies due to the blood volume change from the inflow and outflow of arterial blood at a peripheral tissue site. This tissue site might also comprise skin, muscle, bone, venous blood, fat, pigment, and/or the like, each of which absorbs light. It is assumed that the background absorption due to these surrounding tissues is invariant and can be ignored. Thus, blood oxygen saturation measurements are based upon a ratio of the time-varying or AC portion of the detected red and infrared signals with respect to the time-invariant or DC portion: $R/IR = (Red_{AC}/Red_{DC}) / (IR_{AC}/IR_{DC})$.

[0024] The desired SpO₂ measurement is then computed from this ratio. The relationship between R/IR and SpO₂ can be determined by statistical regression of experimental measurements obtained from human volunteers and calibrated measurements of oxygen saturation. In a pulse oximeter device, this empirical relationship can be stored as a “calibration curve” in a read-only memory (ROM) look-up table so that SpO₂ can be directly read-out of the memory in response to input R/IR measurements.

[0025] The patient monitor **100** can also measure perfusion index, PI, which is a numerical value that indicates the strength of the IR signal returned from a monitoring site and provides a relative assessment of the pulse strength at the monitoring site. The perfusion index can be defined as follows: $PI = (IR_{max} - IR_{min}) / IR_{DC}$, where IR_{max} is the maximum value, IR_{min} is the minimum value, and IR_{DC} is the average value of the invariant portion. As the light absorption characteristic of blood is typically “flatter” or less sensitive to oxygen saturation around the infrared wavelength, the infrared signal from a sensor is influenced primarily by the amount of the blood at the monitoring site, not by the level of oxygenation in the blood. Accordingly, the perfusion index, which is a numerical value that indicates the strength of the IR signal returned from a monitoring site, provides a relative assessment of the pulse strength at the monitoring site. PI values generally range from 0.02% (very weak pulse strength) to 20% (very strong pulse strength). In some embodiments, PI can be measured using other wavelengths. For example, red, near red, near IR, as well as other wavelengths can be used.

[0026] In an embodiment, the sensor **110** also includes a memory device **116**. The memory **116** can include any one or more of a wide variety of memory devices known to an artisan from the disclosure herein, including erasable programmable read-only memory (EPROM), electrically erasable programmable read-only memory (EEPROM), flash memory, other non-volatile memory, a combination of the same, or the like. The memory **116** can include a read-only device such as read-only memory (ROM), a read and write device such as random-access memory (RAM), combinations of the same, or the like. The remainder of the present disclosure will refer to such combination as simply EPROM

for ease of disclosure; however, an artisan will recognize from the disclosure herein that the memory can include the ROM, the RAM, single wire memory, other types of memory, combinations of the same, or the like.

[0027] The memory device can advantageously store some or all of a wide variety data and information, including, for example, information on the type or operation of the sensor, type of patient or body tissue, buyer or manufacturer information, sensor characteristics including the number of wavelengths capable of being emitted, emitter specifications, emitter drive requirements, demodulation data, calculation mode data, calibration data, software such as scripts, executable code, or the like, sensor electronic elements, sensor life data indicating whether some or all sensor components have expired and should be replaced, encryption information, monitor or algorithm upgrade instructions or data, or the like. In an embodiment, the memory device can also include oxygen saturation to perfusion index and R/IR ratio to perfusion index ratios and/or data.

[0028] In certain situations, pulse oximetry sensors may produce anomalous readings, such as when a patient suffers from cyanosis. In a patient suffering from cyanosis, blood cells are uncharacteristically low on oxygen, leading to oxygen deficiency and giving the patient’s skin a bluish-hue. One potential cause is that the patient’s body produces too much hemoglobin, making the blood “thicker” or slower flowing, making microvessels more prone to blockage. Thus, a “blocked” microcirculation state can indicate cyanosis.

[0029] A “blocked” microcirculation state can also indicate other medical conditions, such as sepsis, systemic inflammatory response syndrome (SIRS), or septicemia. Sepsis is a potentially deadly medical condition that is characterized by a whole-body inflammatory state (called SIRS) and the presence of a known or suspected infection. The body may develop this inflammatory response by the immune system to microbes in the blood, urine, lungs, skin, or other tissue. Septicemia is a related medical term referring to the presence of pathogenic organisms in the bloodstream, which can lead to sepsis. Sepsis can also be referred to as blood poisoning. During sepsis or SIRS, inflammation in the body can cause constriction in blood vessels, leading to low blood pressure or insufficient blood flow.

[0030] During a “blocked” microcirculation state, blood cells can get blocked in the microvessels, such as the arterioles and capillaries. Blood cells can clump together or otherwise catch against the wall of blood vessels, creating a blockage that prevents blood cells, including red blood cells carrying hemoglobin, from passing through the blockage. However, plasma, which is composed of mostly water and in which the blood cells are suspended, is generally able to flow through passages in the blockage. In some situations, some blood vessels at the monitoring site may continue to have normal flow while some vessels are blocked. Thus, a “blocked” microcirculation state can indicate that some microvessels in an area are blocked and not necessarily all vessels in the area are blocked.

[0031] With the blockage preventing most or all the red blood cells from passing a blood vessel, at most only a limited amount of hemoglobin passes through a blocked blood vessel. In some situations, the blood vessel may only be partially blocked, where some hemoglobin passes through but less than when the blood vessel is unblocked. Normally, blood is made up of about 40-50% of red blood

cells, of which about 95% is hemoglobin. Plasma, which is about 95% water, normally constitutes about 55% of the blood's volume.

[0032] Accordingly, a pulse oximeter sensor placed on a tissue site experiencing blockage in microcirculation vessels may detect mostly plasma passing through with no or only a small percentage of red blood cells, at least at part of the monitoring site. The resulting change in the normal composition of blood can cause anomalous readings in the patient monitor. As plasma has generally different absorption characteristics for red and infrared wavelengths than normal blood, pulse oximetry readings may become skewed. Red_{AC} and/or IR_{AC} can be affected, causing measured R/IR ratio to change. For example, if Red_{AC} rises or IR_{AC} drops, the R/IR ratio increases. Alternatively, if Red_{AC} drops or IR_{AC} rises, the R/IR ratio decreases. Thus, the value of R/IR can change due to a change in the light absorption of blood even if the underlying oxygen saturation of the blood remains the same.

[0033] However, by comparing oxygen saturation and PI for normal microcirculation to the oxygen saturation and PI for blocked microcirculation, such as by calculating and comparing ratios, the monitor can determine the existence of an abnormal situation. Typically, SpO₂ is mostly independent of PI, with SpO₂ varying minimally as PI increases. However, SpO₂ varying by more than normal as PI increases can indicate an anomalous microcirculation state, such as a blockage. In one embodiment, by analyzing the measured ratios, the patient monitor 100 can determine the microcirculation state, such as whether a blocked vessel exists in the microvessels. Alternatively, multiple measurements of movement through the microvessels, such as the capillaries, can be used to determine the microcirculation state. For example, detected movement that is slower than normal can indicate blockage.

[0034] FIG. 2A is a schematic block diagram of a microcirculation monitoring device 200, which is described in greater detail in U.S. Pat. No. 7,356,365, previously incorporated by reference. The monitoring device 200 includes a light source 202, beam splitter 204, sample arm 206, imaging optics 208 in close proximity to the tissue 210, a reference arm 212, a reflector 214, a photodetector 216 and a patient monitor 218.

[0035] As described in greater detail in U.S. Pat. No. 7,356,365, the light source 202 can emit light having an approximately equal wavelength, a spectrum of wavelengths, or a few different wavelengths, e.g., two. The wavelengths can be selected based on the absorption spectrum of oxygenated hemoglobin and deoxygenated hemoglobin. For example, peak absorption for a oxygenated hemoglobin is approximately 940 nm and peak absorption for a deoxygenated hemoglobin is approximately 660 nm. Thus, wavelengths of 660 nm and 940 nm can be used. The light from the light source 202 is split by a beam splitter 204 between a sample arm 206 and a reference arm 212. Reflected signals from arms 206 and 212 interfere and are presented to photodetector 216 for measurement. Preferably, the end of the sample arm 206 can contain imaging optics 208 to tailor the spot size according to the tissue being measured. The imaging optics 208 can provide high coupling efficiency between the optical system and the tissue.

[0036] The tissue volume with which the light interacts (referred to as the interaction volume) is determined by the spot size of the imaging optics (surface area) and the

coherence length of the light (depth). Reference arm 212 of the interferometer determines the phase shift applied to the reference beam which in turn determines which reflected light from the sample will constructively interfere with the shifted reference beam. Thus, the reference arm 212 determines the depth within the interaction volume from which scattered light is measured. The sample arm 206 can have either a fixed or scanning reflector 214 (such as a mirror). This can allow for a fixed sensor depth, adjustable sensor depth, or scan of multiple depths within the tissue.

[0037] The photodetector 216 measures the interference of the light from both the sample arm 206 and the reference arm 212. The patient monitor 218 uses the measured constructively interfered light at the different wavelengths to provide a measurement of the oxygen saturation, PI, and to monitor the microcirculation.

[0038] Microcirculation measurements can also be calculated by obtaining multiple images of the tissue site and analyzing the movement of blood cells between the images.

[0039] FIG. 2B illustrates a block drawing of an eyelid being monitored by a microcirculation monitoring device 200. As illustrated, light beams 250 from a light source 202 (FIG. 2A) are split using the beam splitter 204 into reference arm light beams 252 and sample arm light beams 254. After the light beams 250 are split, the reference arm light beams 252 travel down the reference arm 212 (FIG. 2A) to interact with the reflector 214 (FIG. 2A), and the sample arm light beams 254 travel down the sample arm 206 (FIG. 2A) to interact with the tissue from the upper eyelid 256. Although illustrated as interacting with the upper eyelid 256, it is to be understood that the lower eyelid 258 can also be used.

[0040] The upper eyelid 256 either absorbs, reflects and/or refracts the sample arm light beams 254. Some of the sample arm light beams 254 are reflected back to the beam splitter 212. The beam splitter 212 directs at least some of the reflected sample arm light beams 254 to the detector 216 (FIG. 2A).

[0041] The light beams traveling down the reference arm 212 (FIG. 2A) interact with a reflector 214 (FIG. 2A) and are reflected back to the beam splitter 212. Similar to the reflected sample arm light beams 254, the reflected reference arm light beams 256 are also directed to the detector 216 by the beam splitter 212. As discussed above, a patient monitor 200 (FIG. 2A) uses the detected signals obtained from the interference of the reflected sample arm light beams 254 and the reflected reference arm light beams 252 to calculate oxygen saturation, perfusion index and other physiological parameters. The patient monitor 200 (FIG. 2A) can also use the signals obtained from the detector 216 to monitor microcirculation in the eyelid. The microcirculation states can be monitored by comparing ratios of oxygen saturation and PI, as described in greater detail below, or comparing images obtained of the microvessels, as described above. If the microcirculation falls below a predetermined threshold, an alarm can be activated.

[0042] Although not illustrated in FIG. 2B, imaging optics 208 can also be used to focus the sample arm light beams 254 prior to interacting with the eyelids. Furthermore, the end of the sample arm 206 and imaging optics 208 can be placed in close proximity to the eyelid. In an embodiment, when a patient is unconscious, such as during a surgery, the end of the sample arm 206 and imaging optics 208 can be secured to the patient using an adhesive. The adhesive can attach to the patient's face, such as the cheek, forehead, ear

or nose. Alternatively, the end of the sample arm **206** and imaging optics **208** can be fixedly attached to a pair of glasses or other device configured to cover a patient's eyes. The glasses or other device can be placed on the patient such that the sample arm light beams **254** interact with the eyelid tissue. The glasses or other placement device can be specially configured to ensure that the proper distance between the eyelid and the sample arm **206** and imaging optics **208** is achieved. The reference arm **212** and reflector **214** are configured and appropriate wavelength and polarization selected such that the appropriate depth of the eyelid tissue is measured.

[0043] Alternative designs can be used to monitor the microcirculation in an eyelid. For example, multiple images of a microvessel can be used to monitor the microcirculation. The images can be obtained using Optical Coherence Tomography (OCT), as is well known in the art. One method of obtaining images of microvessels is described in greater detail in U.S. application Ser. No. 11/524,866, entitled "Microcirculation Imaging." For example, a light source can output a beam of light having a broad spectrum of wavelengths. The beam of light can be collimated and pass through a spectral filter, and a beam splitter can split the light such that a beam of light having approximately one wavelength is directed towards microvessels of the eyelid. The light can be either polarized or non-polarized. A polarizer located on one edge of the beam splitter can polarize the light linearly, elliptically, or circularly, as desired. The wavelength and polarization of the light can be selected based on the desired measurement depth. The wavelength and polarization of the light can be altered using the spectral filter and/or polarizer. In one embodiment, the wavelength can be between 420 and 810 nm. In another embodiment, the wavelength can be in the light green spectrum (525-575 nm). The reflected light from the eyelid can be collected using a converging lens and a photodetector. A processor can use the signals from the photodetector to render an image of the eyelid tissue, or microvessels. Multiple images of the microvessels can be used to calculate the velocity of the microcirculation and detect blockage. For example, the distance traveled by the blood cells between measurements can be compared with the time between measurements to calculate velocity. If the velocity is below a certain threshold an alarm can be activated.

[0044] Other OCT methods can also be used to obtain images of the microvessels of the eyelid or other tissue. For example, multiple light emitters emitting different wavelengths of light can be used to obtain an image. Multiple images of the eyelid tissue can then be used by a patient monitor to calculate the velocity of the blood passing through the tissue, thereby monitoring the microcirculation of the eyelid.

[0045] FIG. 3 illustrates a flow diagram for a process **300** for determining the state of microcirculation usable by a pulse oximeter. Microcirculation state can be determined by comparison with microcirculation data stored on a patient monitor, such as the patient monitor **100** of FIG. 1. The process **300** can be implemented by embodiments of the sensor **110** and/or patient monitor **100** of FIG. 1 or other suitable device.

[0046] While in conventional pulse oximetry, measurements are generally taken pulse-by-pulse and averaged over pulses, microcirculation measurements can be measured using only a single pulse or a portion of a single pulse. This

can be done, for example, at the minimum and/or maximum blood flow of a pulse. Microcirculation measurements can also be determined over multiple pulses. In some embodiments, microcirculation measurements are taken during a portion of the normal measurement time used by a physiological sensor to take a measurement of a parameter, thereby allowing detection of aberrant parameter measurements using the microcirculation measurements. For example, while a pulse oximeter is measuring SpO₂ over several pulses, microcirculation measurements can be taken per pulse and a warning given if an irregular microcirculation state is detected, thereby notifying a user of a possible aberration in the current SpO₂ reading.

[0047] At block **310**, oxygen saturation is measured at a tissue monitoring site. In one embodiment, oxygen saturation is determined using a pulse oximeter sensor.

[0048] At block **320**, perfusion index or pulse strength is measured. In one embodiment, the perfusion index is determined using the same sensor used to measure oxygen saturation so that readings are taken at the same monitoring site.

[0049] At block **330**, a ratio of oxygen saturation to perfusion index is determined. Oxygen saturation can be a SpO₂ value based on the measured R/IR ratio looked-up against a calibration curve. Alternatively, the ratio can be perfusion index to oxygen saturation. In other embodiments, the measured R/IR ratio can be used directly instead of SpO₂.

[0050] In some embodiments, multiple readings of perfusion index and oxygen saturation can be taken and averaged together before determining the ratio in order to account for outliers. The multiple readings can be filtered before averaging. For example, readings can first be filtered based on closeness of PI values before the readings are averaged together.

[0051] At block **340**, the determined ratio in block **330** is compared to stored microcirculation data. The stored data can be data sets for microcirculation states. In some embodiments, a ratio, a curve, a line, table, data points, or formula can be stored that corresponds to a data set. The measured perfusion index and oxygen saturation can then be compared to the stored data. In some embodiments, multiple readings are taken and a best fit line or curve is generated and compared to a stored best fit line or curve. In some embodiments, readings are collected at various PI values in order to generate a trend line.

[0052] At block **350**, the microcirculation state is determined from comparison of the stored microcirculation data. For example, if the determined ratio is similar to a stored ratio corresponding to a data set for unblocked microcirculation, the microcirculation state is determined to be unblocked. Other data sets for other microcirculation states, such as blocked and/or partially blocked can also be stored. Where multiple data sets are stored, the state can be determined by selecting the state corresponding to the stored ratio closest to the measured ratio.

[0053] At block **360**, the monitor can optionally generate an alarm and/or display the microcirculation state. For example, an alarm signal and/or icon can be generated by the monitor to indicate that the readings may be anomalous, such as when a blocked or partially blocked microcirculation state is detected. The alarm can be a visual indicator (e.g., icon, message or image) and/or an audio indicator. In an embodiment, the alarm can indicate the detection of cyano-

sis, sepsis, SIRS or other medical condition based at least partly on the determined microcirculation state. In some embodiments, no action is taken, such as when readings are determined to be normal or non-threatening.

[0054] At block 370, the monitor can optionally compensate for the microcirculation state in order to improve accuracy of the readings. After the microcirculation state returns to normal, the compensation process can be ended.

[0055] In one embodiment, an offset can be added to the measured parameter value, such as SpO₂. The offset can be calculated based on data sets for microcirculation state. Different microcirculation states can have different offsets. For example, if a “blocked” microcirculation state produces high readings for low PI values, a negative offset can be used. However, if a “blocked” state produces a low value for high PI values, then a positive offset can be used. In one embodiment, a varying offset can be used depending on the value of PI.

[0056] In one embodiment, a different wavelength emitter can be used to compensate for a microcirculation state. For example, rather than using a regular infrared emitter, typically 905 nm, an emitter with a different infrared wavelength, such as 970 nm can be used. In one embodiment, the different wavelength is selected such that the wavelength is at a “flat” section of the light absorption curve for plasma, that is, where the light absorption is not much affected by changes in oxygen saturation, as described in greater detail in U.S. application Ser. No. 13/101,093. In one embodiment, the selected wavelength with regards to plasma mimics the properties of the regular wavelength with regards to normal flowing blood. In some embodiments, a different wavelength red emitter can be used instead of the regular red wavelength emitter.

[0057] In some embodiments, the pulse oximeter sensor used to measure oxygen saturation and PI can be provided with an additional emitter at a different wavelength than the existing emitters. When a certain microcirculation state is detected, such as a “blocked” state, the additional emitter can be used. For example, a pulse oximetry sensor can be equipped with LED's capable of emitting at 660 nm, 905 nm, and at 970 nm wavelengths. Under normal operation, the 660 nm and 905 nm emitters are active. However, upon detecting a blocked microcirculation state, the 905 nm emitter can be deactivated and the 970 nm emitter activated in its place. In some embodiments, a variable wavelength emitter can be used rather than separate emitters. In some embodiments, the additional emitter can be a red wavelength emitter.

[0058] FIG. 4 illustrates a flow diagram for a process 400 for determining the state of microcirculation wherein multiple data points are collected. The process 400 can be implemented by embodiments of the sensor 110 and/or patient monitor 100 of FIG. 1 or other suitable device.

[0059] At block 410 and block 420, oxygen saturation and perfusion index are measured. At block 425, measured values are stored in memory. Each paired measurement forms a data point.

[0060] At block 430, the number of stored data points is checked to determine if sufficient data has been collected to determine the microcirculation state. Data can be sufficient if a set number of data points have been collected, a set amount of time has passed, and/or a spectrum of data points have been collected, such as for differing values of PI.

[0061] At block 440, the stored measured data is compared with stored microcirculation data. Typically, the microcirculation data is pre-stored on the pulse oximeter before use, as opposed to collected during use. A comparison can involve generating a curve or line from the measured data, calculating a rate of change for the stored data, generating a trend line for the measured data or the like and comparing with the stored microcirculation data.

[0062] At block 450, the microcirculation state is determined from comparison of the stored microcirculation data. For example, if the measured data is similar to microcirculation data corresponding to a data set for unblocked microcirculation, the microcirculation state is determined to be unblocked. Other data sets for other microcirculation states, such as for blocked and/or partially blocked can also be stored. Where multiple data sets are stored, the state can be determined by selecting the state corresponding to the stored ratio closest to the measured ratio.

[0063] Blocks 460 and 470 are similar to steps 360 and 370 described in FIG. 3.

[0064] As will be apparent from the above description, the R/IR ratio corresponds to oxygen saturation or SpO₂ and can be used in place of oxygen saturation or SpO₂ for the above comparisons, and vice versa.

[0065] While the above systems and methods have been described in terms of oxygen saturation and PI, other physiological parameters can be measured in place of or in addition to oxygen saturation and/or perfusion index and used to determine microcirculation state. For example, perfusion index is an indication of amplitude and/or signal strength and other parameters or measurements indicating amplitude and/or signal strength can be used. In some embodiments, one or more different sensors can be used in place of or in addition to a pulse oximeter sensor.

[0066] In another embodiment, the microcirculation state can be calculated without calculating oxygen saturation. For example, using OCT, as described above, multiple measurements of the movement of blood within the microvessels can be taken. The multiple measurements can then be compared to determine the velocity of the blood traveling through the microvessels. For example, the distance traveled by the blood between measurements can be compared with the time between measurements to calculate velocity. In one embodiment, images of the microvessels are used to measure the movement of blood in the microvessels.

[0067] Conditional language used herein, such as, among others, “can,” “could,” “might,” “may,” “e.g.,” and the like, unless specifically stated otherwise, or otherwise understood within the context as used, is generally intended to convey that certain embodiments include, while other embodiments do not include, certain features, elements and/or states. Thus, such conditional language is not generally intended to imply that features, elements and/or states are in any way required for one or more embodiments or that one or more embodiments necessarily include logic for deciding, with or without author input or prompting, whether these features, elements and/or states are included or are to be performed in any particular embodiment. The terms “comprising,” “including,” “having,” and the like are synonymous and are used inclusively, in an open-ended fashion, and do not exclude additional elements, features, acts, operations, and so forth. Also, the term “or” is used in its inclusive sense (and not in its exclusive sense) so that when used, for

example, to connect a list of elements, the term “or” means one, some, or all of the elements in the list.

[0068] Various systems and processes for determining microcirculation events have been disclosed in detail in connection with various embodiments. These embodiments are disclosed by way of examples only and are not to limit the scope of the claims that follow. Indeed, the novel methods and systems described herein can be embodied in a variety of other forms; furthermore, various omissions, substitutions and changes in the form of the methods and systems described herein can be made without departing from the spirit of the inventions disclosed herein. The claims and their equivalents are intended to cover such forms or modifications as would fall within the scope and spirit of certain of the inventions disclosed herein. One of ordinary skill in the art will appreciate the many variations, modifications and combinations. For example, the various embodiments of the microcirculation determination process can be used with oxygen saturation sensors and with both disposable and reusable sensors. In some embodiments, the determination process can be applied to other blood vessels to detect a blockage, even in vessels not involved in microcirculation.

[0069] Furthermore, in certain embodiments, the systems and methods described herein can advantageously be implemented using computer software, hardware, firmware, or any combination of software, hardware, and firmware. In one embodiment, the system includes a number of software modules that comprise computer executable code for performing the functions described herein. In certain embodiments, the computer-executable code is executed on one or more general purpose computers or processors. However, a skilled artisan will appreciate, in light of this disclosure, that any module that can be implemented using software can also be implemented using a different combination of hardware, software or firmware. For example, such a module can be implemented completely in hardware using a combination of integrated circuits. Alternatively or additionally, such a module can be implemented completely or partially using specialized computers or processors designed to perform the particular functions described herein rather than by general purpose computers or processors.

[0070] Moreover, certain embodiments of the invention are described with reference to methods, apparatus (systems) and computer program products that can be implemented by computer program instructions. These computer program instructions can be provided to a processor of a general purpose computer, special purpose computer, or other programmable data processing apparatus to produce a machine, such that the instructions, which execute via the processor of the computer or other programmable data processing apparatus, create means for implementing the acts specified herein to transform data from a first state to a second state.

[0071] Each of the processes, methods, and algorithms described in the preceding sections may be embodied in, and fully or partially automated by, code modules executed by one or more computers or computer processors. The code modules may be stored on any type of non-transitory computer-readable medium or computer storage device, such as hard drives, solid state memory, optical disc, and/or the like. The processes and algorithms may be implemented partially or wholly in application-specific circuitry. The results of the disclosed processes and process steps may be stored, per-

sistently or otherwise, in any type of non-transitory computer storage such as, e.g., volatile or non-volatile storage.

[0072] The various features and processes described above may be used independently of one another, or may be combined in various ways. All possible combinations and subcombinations are intended to fall within the scope of this disclosure. In addition, certain method or process blocks may be omitted in some implementations. The methods and processes described herein are also not limited to any particular sequence, and the blocks or states relating thereto can be performed in other sequences that are appropriate. For example, described blocks or states may be performed in an order other than that specifically disclosed, or multiple blocks or states may be combined in a single block or state. The example blocks or states may be performed in serial, in parallel, or in some other manner. Blocks or states may be added to or removed from the disclosed example embodiments. The example systems and components described herein may be configured differently than described. For example, elements may be added to, removed from, or rearranged compared to the disclosed example embodiments.

[0073] While certain example embodiments have been described, these embodiments have been presented by way of example only, and are not intended to limit the scope of the inventions disclosed herein. Thus, nothing in the foregoing description is intended to imply that any particular feature, characteristic, step, module, or block is necessary or indispensable. Indeed, the novel methods and systems described herein may be embodied in a variety of other forms; furthermore, various omissions, substitutions and changes in the form of the methods and systems described herein may be made without departing from the spirit of the inventions disclosed herein. The accompanying claims and their equivalents are intended to cover such forms or modifications as would fall within the scope and spirit of certain of the inventions disclosed herein.

1-15. (canceled)

16. A method non-invasively determining a microcirculation state of an eyelid, the method comprising:

receiving a signal corresponding to light detected by a non-invasive sensor after the light interacts with tissue of an eyelid;

determining, based at least in part on the signal, a first physiological parameter associated with the tissue of the eyelid, wherein the first physiological parameter corresponds to a measure of at least one of perfusion or oxygen saturation,

determining, based at least in part on the signal, a second physiological parameter associated with the tissue of the eyelid;

determining a relationship between the first physiological parameter and the second physiological parameter;

identifying a microcirculation state of the eyelid based at least in part on a comparison of the determined relationship with one or more stored data sets, wherein the stored data sets indicate microcirculation states associated with different relationships between first physiological parameters and second physiological parameters.

17. The method of claim 16, wherein identifying the microcirculation state comprises determining one microcirculation state that is associated with a relationship that is most similar to the determined relationship.

18. The method of claim 16, wherein the identified microcirculation state is indicative of a medical condition.

19. The method of claim 18, wherein the medical is at least one of cyanosis, sepsis, systemic inflammatory response syndrome (SIRS), or septicemia.

20. The method of claim 16, wherein the identified microcirculation state indicates that at least one microvessel of the eyelid is blocked.

21. The method of claim 16, wherein the identified microcirculation state indicates that at least one microvessel of the eyelid is at least partially blocked.

22. The method of claim 16, wherein the identified microcirculation state indicates that microvessels of the eyelid are not blocked.

23. The method of claim 16, wherein the first physiological parameter comprises an indication of at least one of a perfusion index or an oxygen saturation.

24. The method of claim 16, wherein the second physiological parameter changes as a perfusion index associated with the eyelid changes.

25. The method of claim 16, wherein the second physiological parameter changes as an oxygen saturation associated with the eyelid changes.

26. The method of claim 16, wherein said determining the first physiological is further based at least in part on a signal strength of the signal.

27. The method of claim 16, wherein the light is of at least a first wavelength and a second wavelength, wherein the second parameter corresponds to a ratio of the detected light at the first wavelength and the second wavelength.

28. A patient monitor, comprising:

a sensor interface configured to receive a signal corresponding to light that is detected by a non-invasive sensor after the light interacts with tissue of an eyelid; and

one or more processors in communication with the sensor interface and configured to:

determine, based at least in part on the signal, a first physiological parameter associated with the tissue of

the eyelid, wherein the first physiological parameter corresponds to a measure of at least one of perfusion or oxygen saturation,

determine, based at least in part on the signal, a second physiological parameter associated with the tissue of the eyelid,

determine a relationship between the first physiological parameter and the second physiological parameter,

identify a microcirculation state of the eyelid based at least in part on a comparison of the determined relationship with one or more stored data sets, wherein the stored data sets indicate microcirculation states associated with different relationships between first physiological parameters and second physiological parameters.

29. The patient monitor of claim 28, wherein to identify the microcirculation state, the one or more processor are configured to determine one microcirculation state that is associated with a relationship that is most similar to the determined relationship.

30. The patient monitor of claim 28, wherein the identified microcirculation state is indicative of a medical condition.

31. The patient monitor of claim 30, wherein the medical is at least one of cyanosis, sepsis, systemic inflammatory response syndrome (SIRS), or septicemia.

32. The patient monitor of claim 28, wherein the identified microcirculation state indicates that at least one microvessel of the eyelid is blocked.

33. The patient monitor of claim 28, wherein the identified microcirculation state indicates that at least one microvessel of the eyelid is at least partially blocked.

34. The patient monitor of claim 28, wherein the first physiological parameter comprises an indication of at least one of a perfusion index or an oxygen saturation.

35. The patient monitor of claim 28, wherein the light is of at least a first wavelength and a second wavelength, wherein the second parameter corresponds to a ratio of the detected light at the first wavelength and the second wavelength.

* * * * *

专利名称(译)	病人监护仪，用于监测微循环		
公开(公告)号	US20190298185A1	公开(公告)日	2019-10-03
申请号	US16/377916	申请日	2019-04-08
[标]申请(专利权)人(译)	梅西莫股份有限公司		
申请(专利权)人(译)	Masimo公司		
当前申请(专利权)人(译)	Masimo公司		
[标]发明人	KIANI MASSI JOE E		
发明人	KIANI, MASSI JOE E.		
IPC分类号	A61B5/026 A61B5/00 A61B5/1455		
CPC分类号	A61B5/7271 A61B5/0261 A61B5/14551		
优先权	61/446969 2011-02-25 US		
外部链接	Espacenet USPTO		

摘要(译)

能够测量组织部位的微循环的患者监护仪包括光源，分束器，光电探测器和患者监护仪。从光源发出的光被分成参考臂和样品臂。样品臂中的光直接对准组织部位，例如眼睑。来自组织部位的反射光与来自参考臂的光发生干涉。光电探测器测量来自样品臂和参考臂的光的干涉。患者监护仪使用来自光电探测器的测量值来计算组织部位的氧饱和度，并监视组织部位的微循环。

