

US010050700B2

(12) **United States Patent**
Ludwig et al.

(10) **Patent No.:** **US 10,050,700 B2**
(45) **Date of Patent:** **Aug. 14, 2018**

(54) **COMMUNICATIONS IN A MEDICAL DEVICE SYSTEM WITH TEMPORAL OPTIMIZATION**

(58) **Field of Classification Search**
USPC 455/41.1; 607/30-32, 59-60
See application file for complete search history.

(71) Applicant: **CARDIAC PACEMAKERS, INC.**, St. Paul, MN (US)

(56) **References Cited**

(72) Inventors: **Jacob M. Ludwig**, Isanti, MN (US); **Michael J. Kane**, Roseville, MN (US); **Brendan E. Koop**, Ham Lake, MN (US); **William J. Linder**, Golden Valley, MN (US); **Keith R. Maile**, New Brighton, MN (US); **Jeffrey E. Stahmann**, Ramsey, MN (US)

U.S. PATENT DOCUMENTS

3,835,864 A 9/1974 Razor et al.
3,943,936 A 3/1976 Razor et al.
(Continued)

(73) Assignee: **Cardiac Pacemakers, Inc.**, St. Paul, MN (US)

FOREIGN PATENT DOCUMENTS

AU 2008279789 B2 10/2011
AU 2008329620 B2 5/2014
(Continued)

(*) Notice: Subject to any disclaimer, the term of this patent is extended or adjusted under 35 U.S.C. 154(b) by 254 days.

OTHER PUBLICATIONS

US 8,886,318, 11/2014, Jacobson et al. (withdrawn)
(Continued)

(21) Appl. No.: **15/058,412**

(22) Filed: **Mar. 2, 2016**

(65) **Prior Publication Data**

US 2016/0277097 A1 Sep. 22, 2016

Primary Examiner — Nay A Maung
Assistant Examiner — Erica Fleming-Hall
(74) *Attorney, Agent, or Firm* — Seager, Tufte & Wickhem LLP

Related U.S. Application Data

(60) Provisional application No. 62/134,752, filed on Mar. 18, 2015.

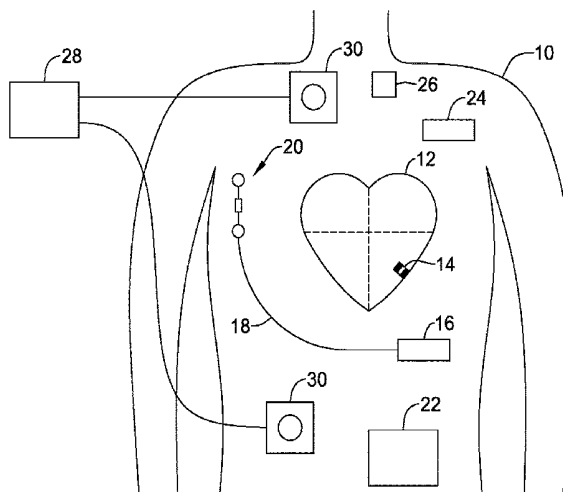
(51) **Int. Cl.**
H04B 7/24 (2006.01)
H04L 1/12 (2006.01)
(Continued)

(57) **ABSTRACT**

Systems and methods for managing communication strategies between implanted medical devices. Methods include temporal optimization relative to one or more identified conditions in the body. A selected characteristic, such as a signal representative or linked to a biological function, is assessed to determine its likely impact on communication capabilities, and one or more communication strategies may be developed to optimize intra-body communication.

(52) **U.S. Cl.**
CPC **H04B 7/24** (2013.01); **A61B 5/0028** (2013.01); **A61N 1/362** (2013.01);
(Continued)

19 Claims, 10 Drawing Sheets



(51)	Int. Cl.		5,342,408 A	8/1994	Decoriolis et al.	
	<i>A61N 1/362</i>	(2006.01)	5,372,606 A	12/1994	Lang et al.	
	<i>A61N 1/372</i>	(2006.01)	5,376,106 A	12/1994	Stahmann et al.	
	<i>A61B 5/00</i>	(2006.01)	5,383,915 A	1/1995	Adams	
	<i>H04B 13/00</i>	(2006.01)	5,388,578 A	2/1995	Yomtov et al.	
			5,404,877 A *	4/1995	Nolan	A61B 5/0006 600/484
(52)	U.S. Cl.					
	CPC	<i>A61N 1/37217</i> (2013.01); <i>A61N 1/37288</i> (2013.01); <i>H04B 13/005</i> (2013.01); <i>H04L</i> <i>1/12</i> (2013.01); <i>A61B 2560/0209</i> (2013.01); <i>A61N 1/37252</i> (2013.01)	5,405,367 A	4/1995	Schulman et al.	
			5,411,031 A	5/1995	Yomtov	
			5,411,525 A	5/1995	Swanson et al.	
			5,411,535 A	5/1995	Fujii et al.	
			5,456,691 A	10/1995	Snell	
			5,466,246 A	11/1995	Silvian	
			5,468,254 A	11/1995	Hahn et al.	
			5,522,866 A	6/1996	Fernald	
			5,540,727 A	7/1996	Tockman et al.	
			5,545,186 A *	8/1996	Olson	A61B 5/042 607/14
(56)	References Cited					
	U.S. PATENT DOCUMENTS					
	4,142,530 A	3/1979	Wittkampf	5,545,202 A	8/1996	Dahl et al.
	4,151,513 A	4/1979	Menken et al.	5,591,214 A	1/1997	Lu
	4,157,720 A	6/1979	Greatbatch	5,620,466 A	4/1997	Haefner et al.
	RE30,366 E	8/1980	Rasor et al.	5,634,938 A	6/1997	Swanson et al.
	4,250,884 A	2/1981	Hartlaub et al.	5,662,688 A	9/1997	Haefner et al.
	4,256,115 A	3/1981	Bilitch	5,674,259 A	10/1997	Gray
	4,263,919 A	4/1981	Levin	5,683,426 A	11/1997	Greenhut et al.
	4,310,000 A	1/1982	Lindemans	5,683,432 A	11/1997	Goedeke et al.
	4,312,354 A	1/1982	Walters	5,720,770 A	2/1998	Nappholz et al.
	4,323,081 A	4/1982	Wiebusch	5,728,154 A	3/1998	Crossett et al.
	4,357,946 A	11/1982	Dutcher et al.	5,741,314 A	4/1998	Daly et al.
	4,365,639 A	12/1982	Goldreyer	5,741,315 A	4/1998	Lee et al.
	4,440,173 A	4/1984	Hudziak et al.	5,752,976 A	5/1998	Duffin et al.
	4,476,868 A	10/1984	Thompson	5,752,977 A	5/1998	Grevious et al.
	4,522,208 A	6/1985	Buffet	5,755,736 A	5/1998	Gillberg et al.
	4,556,063 A	12/1985	Thompson et al.	5,759,199 A	6/1998	Snell et al.
	4,562,841 A	1/1986	Brockway et al.	5,774,501 A	6/1998	Halpern et al.
	4,593,702 A	6/1986	Kepski et al.	5,792,202 A	8/1998	Rueter
	4,593,955 A	6/1986	Leiber	5,792,203 A	8/1998	Schroepel
	4,630,611 A	12/1986	King	5,792,205 A	8/1998	Alt et al.
	4,635,639 A	1/1987	Hakala et al.	5,792,208 A	8/1998	Gray
	4,674,508 A	6/1987	DeCote	5,814,089 A	9/1998	Stokes et al.
	4,712,554 A	12/1987	Garson	5,827,216 A	10/1998	Igo et al.
	4,729,376 A	3/1988	DeCote	5,836,985 A	11/1998	Goyal et al.
	4,754,753 A	7/1988	King	5,836,987 A	11/1998	Baumann et al.
	4,759,366 A	7/1988	Callaghan	5,842,977 A	12/1998	Lesho et al.
	4,787,389 A	11/1988	Tarjan	5,855,593 A	1/1999	Olson et al.
	4,793,353 A	12/1988	Borkan	5,873,894 A	2/1999	Vandegriff et al.
	4,819,662 A	4/1989	Heil et al.	5,891,184 A	4/1999	Lee et al.
	4,858,610 A	8/1989	Callaghan et al.	5,897,586 A	4/1999	Molina
	4,886,064 A	12/1989	Strandberg	5,899,876 A	5/1999	Flower
	4,928,688 A	5/1990	Mower	5,899,928 A	5/1999	Sholder et al.
	4,967,746 A	11/1990	Vandegriff	5,919,214 A	7/1999	Ciciarelli et al.
	4,987,897 A	1/1991	Funke	5,935,078 A	8/1999	Feierbach
	4,989,602 A	2/1991	Sholder et al.	5,941,906 A	8/1999	Barreras et al.
	5,012,806 A	5/1991	De Bellis	5,954,757 A	9/1999	Gray
	5,036,849 A	8/1991	Hauck et al.	5,978,713 A	11/1999	Prutchi et al.
	5,058,581 A	10/1991	Silvian	5,991,660 A	11/1999	Goyal
	5,078,134 A	1/1992	Heilman et al.	5,999,848 A	12/1999	Gord et al.
	5,109,845 A	5/1992	Yuuchi et al.	5,999,857 A	12/1999	Weijand et al.
	5,113,859 A	5/1992	Funke	6,026,320 A	2/2000	Carlson et al.
	5,117,824 A	6/1992	Keimel et al.	6,044,298 A	3/2000	Salo et al.
	5,127,401 A	7/1992	Grevious et al.	6,044,300 A	3/2000	Gray
	5,133,353 A	7/1992	Hauser	6,055,454 A	4/2000	Heemels
	5,144,950 A	9/1992	Stoop et al.	6,073,050 A	6/2000	Griffith
	5,170,784 A	12/1992	Ramon et al.	6,076,016 A	6/2000	Feierbach
	5,179,945 A	1/1993	Van Hofwegen et al.	6,080,187 A	6/2000	Alt et al.
	5,193,539 A	3/1993	Schulman et al.	6,083,248 A	7/2000	Thompson
	5,193,540 A	3/1993	Schulman et al.	6,106,551 A	8/2000	Crossett et al.
	5,241,961 A	9/1993	Henry	6,115,636 A	9/2000	Ryan
	5,243,977 A	9/1993	Trabucco et al.	6,141,581 A	10/2000	Olson et al.
	5,269,326 A	12/1993	Verrier	6,141,588 A	10/2000	Cox et al.
	5,284,136 A	2/1994	Hauck et al.	6,141,592 A	10/2000	Pauly
	5,300,107 A	4/1994	Stokes et al.	6,144,879 A	11/2000	Gray
	5,301,677 A	4/1994	Hsung	6,162,195 A	12/2000	Igo et al.
	5,312,439 A	5/1994	Loeb	6,164,284 A	12/2000	Schulman et al.
	5,313,953 A	5/1994	Yomtov et al.	6,167,310 A	12/2000	Grevious
	5,314,459 A	5/1994	Swanson et al.	6,208,894 B1	3/2001	Schulman et al.
	5,318,597 A	6/1994	Hauck et al.	6,211,799 B1	4/2001	Post et al.
	5,324,316 A	6/1994	Schulman et al.	6,221,011 B1	4/2001	Bardy
	5,331,966 A	7/1994	Bennett et al.	6,240,316 B1	5/2001	Richmond et al.
	5,334,222 A	8/1994	Salo et al.			

(56)

References Cited

U.S. PATENT DOCUMENTS

6,240,317 B1	5/2001	Villaseca et al.	6,763,269 B2	7/2004	Cox	
6,256,534 B1	7/2001	Dahl	6,778,860 B2	8/2004	Ostroff et al.	
6,259,947 B1	7/2001	Olson et al.	6,788,971 B1 *	9/2004	Sloman	A61N 1/3712 607/28
6,266,558 B1	7/2001	Gozani et al.				
6,266,567 B1	7/2001	Ishikawa et al.	6,788,974 B2	9/2004	Bardy et al.	
6,270,457 B1	8/2001	Bardy	6,804,558 B2	10/2004	Haller et al.	
6,272,377 B1	8/2001	Sweeney et al.	6,847,844 B2	1/2005	Sun et al.	
6,277,072 B1	8/2001	Bardy	6,871,095 B2	3/2005	Stahmann et al.	
6,280,380 B1	8/2001	Bardy	6,878,112 B2	4/2005	Linberg et al.	
6,285,907 B1	9/2001	Kramer et al.	6,885,889 B2	4/2005	Chinchoy	
6,292,698 B1	9/2001	Duffin et al.	6,892,094 B2	5/2005	Ousdigian et al.	
6,295,473 B1	9/2001	Rosar	6,897,788 B2	5/2005	Khair et al.	
6,298,271 B1	10/2001	Weijand	6,904,315 B2	6/2005	Panken et al.	
6,312,378 B1	11/2001	Bardy	6,922,592 B2	7/2005	Thompson et al.	
6,315,721 B2	11/2001	Schulman et al.	6,931,282 B2	8/2005	Esler	
6,336,903 B1	1/2002	Bardy	6,934,585 B1 *	8/2005	Schloss	A61N 1/3622 607/9
6,345,202 B2	2/2002	Richmond et al.	6,957,107 B2	10/2005	Rogers et al.	
6,351,667 B1	2/2002	Godie	6,978,176 B2	12/2005	Lattouf	
6,351,669 B1	2/2002	Hartley et al.	6,985,773 B2	1/2006	Von Arx et al.	
6,353,759 B1	3/2002	Hartley et al.	7,003,350 B2	2/2006	Denker et al.	
6,358,203 B2	3/2002	Bardy	7,006,864 B2	2/2006	Echt et al.	
6,361,780 B1	3/2002	Ley et al.	7,013,178 B2	3/2006	Reinke et al.	
6,368,284 B1	4/2002	Bardy	7,027,871 B2	4/2006	Burnes et al.	
6,371,922 B1	4/2002	Baumann et al.	7,050,849 B2	5/2006	Echt et al.	
6,398,728 B1	6/2002	Bardy	7,060,031 B2	6/2006	Webb et al.	
6,400,982 B2	6/2002	Sweeney et al.	7,063,693 B2	6/2006	Guenst	
6,400,990 B1	6/2002	Silvian	7,082,336 B2	7/2006	Ransbury et al.	
6,409,674 B1	6/2002	Brockway et al.	7,085,606 B2	8/2006	Flach et al.	
6,411,848 B2	6/2002	Kramer et al.	7,110,824 B2	9/2006	Amundson et al.	
6,424,865 B1	7/2002	Ding	7,120,504 B2	10/2006	Osyпка	
6,434,429 B1	8/2002	Kraus et al.	7,139,613 B2	11/2006	Reinke et al.	
6,438,410 B2	8/2002	Hsu et al.	7,142,912 B2	11/2006	Wagner et al.	
6,438,417 B1	8/2002	Rockwell et al.	7,146,225 B2	12/2006	Guenst et al.	
6,438,421 B1	8/2002	Stahmann et al.	7,146,226 B2	12/2006	Lau et al.	
6,440,066 B1	8/2002	Bardy	7,149,581 B2	12/2006	Goedeke	
6,441,747 B1 *	8/2002	Khair	7,149,588 B2	12/2006	Lau et al.	
		A61B 5/0006	7,158,839 B2	1/2007	Lau	
		128/903	7,162,307 B2	1/2007	Patrias	
6,442,426 B1	8/2002	Kroll	7,164,952 B2	1/2007	Lau et al.	
6,442,432 B2	8/2002	Lee	7,177,700 B1	2/2007	Cox	
6,443,891 B1 *	9/2002	Grevious	7,181,505 B2	2/2007	Haller et al.	
		A61B 5/0002	7,184,830 B2	2/2007	Echt et al.	
		128/903	7,186,214 B2	3/2007	Ness	
6,445,953 B1 *	9/2002	Bulkes	7,191,015 B2	3/2007	Lamson et al.	
		A61N 1/37211	7,200,437 B1	4/2007	Nabutovsky et al.	
		607/126	7,200,439 B2	4/2007	Zdeblick et al.	
6,453,200 B1	9/2002	Koslar	7,206,423 B1	4/2007	Feng et al.	
6,459,929 B1	10/2002	Hopper et al.	7,209,790 B2	4/2007	Thompson et al.	
6,470,215 B1	10/2002	Kraus et al.	7,212,871 B1	5/2007	Morgan	
6,471,645 B1	10/2002	Warkentin et al.	7,226,440 B2	6/2007	Gelfand et al.	
6,480,745 B2	11/2002	Nelson et al.	7,228,183 B2	6/2007	Sun et al.	
6,487,443 B2	11/2002	Olson et al.	7,236,821 B2	6/2007	Cates et al.	
6,490,487 B1	12/2002	Kraus et al.	7,236,829 B1	6/2007	Farazi et al.	
6,507,755 B1	1/2003	Gozani et al.	7,254,448 B2	8/2007	Almendinger et al.	
6,507,759 B1	1/2003	Prutchi et al.	7,260,436 B2	8/2007	Kilgore et al.	
6,512,940 B1	1/2003	Brabec et al.	7,270,669 B1	9/2007	Sra	
6,522,915 B1	2/2003	Ceballos et al.	7,272,448 B1	9/2007	Morgan et al.	
6,526,311 B2	2/2003	Begemann	7,277,755 B1	10/2007	Falkenberg et al.	
6,542,775 B2	4/2003	Ding et al.	7,280,872 B1	10/2007	Mosesov et al.	
6,553,258 B2	4/2003	Stahmann et al.	7,288,096 B2	10/2007	Chin	
6,561,975 B1	5/2003	Pool et al.	7,289,847 B1	10/2007	Gill et al.	
6,564,807 B1	5/2003	Schulman et al.	7,289,852 B2	10/2007	Helfinstine et al.	
6,574,506 B2	6/2003	Kramer et al.	7,289,853 B1	10/2007	Campbell et al.	
6,584,352 B2	6/2003	Combs et al.	7,289,855 B2	10/2007	Nghiem et al.	
6,597,948 B1	7/2003	Rockwell et al.	7,302,294 B2	11/2007	Kamath et al.	
6,597,951 B2	7/2003	Kramer et al.	7,305,266 B1	12/2007	Kroll	
6,622,046 B2	9/2003	Fralely et al.	7,310,556 B2	12/2007	Bulkes	
6,628,985 B2	9/2003	Sweeney et al.	7,319,905 B1	1/2008	Morgan et al.	
6,647,292 B1	11/2003	Bardy et al.	7,333,853 B2	2/2008	Mazar et al.	
6,666,844 B1	12/2003	Igo et al.	7,336,994 B2	2/2008	Hettrick et al.	
6,689,117 B2	2/2004	Sweeney et al.	7,347,819 B2	3/2008	Lebel et al.	
6,690,959 B2	2/2004	Thompson	7,366,572 B2	4/2008	Heruth et al.	
6,704,602 B2	3/2004	Berg et al.	7,373,207 B2	5/2008	Lattouf	
6,718,212 B2	4/2004	Parry et al.	7,384,403 B2	6/2008	Sherman	
6,721,597 B1	4/2004	Bardy et al.	7,386,342 B1	6/2008	Falkenberg et al.	
6,738,670 B1	5/2004	Almendinger et al.	7,392,090 B2	6/2008	Sweeney et al.	
6,749,566 B2	6/2004	Russ	7,406,105 B2	7/2008	DelMain et al.	
6,758,810 B2	7/2004	Lebel et al.	7,406,349 B2	7/2008	Seeberger et al.	

(56)

References Cited

U.S. PATENT DOCUMENTS

7,410,497 B2	8/2008	Hastings et al.	7,894,915 B1	2/2011	Chitre et al.
7,425,200 B2	9/2008	Brockway et al.	7,899,537 B1	3/2011	Kroll et al.
7,433,739 B1	10/2008	Salys et al.	7,899,541 B2	3/2011	Cowan et al.
7,496,409 B2	2/2009	Greenhut et al.	7,899,542 B2	3/2011	Cowan et al.
7,496,410 B2	2/2009	Heil	7,899,554 B2	3/2011	Williams et al.
7,502,652 B2	3/2009	Gaunt et al.	7,901,360 B1	3/2011	Yang et al.
7,512,448 B2	3/2009	Malick et al.	7,904,170 B2	3/2011	Harding
7,515,969 B2	4/2009	Tockman et al.	7,907,993 B2	3/2011	Ghanem et al.
7,526,342 B2	4/2009	Chin et al.	7,920,928 B1	4/2011	Yang et al.
7,529,589 B2	5/2009	Williams et al.	7,925,343 B1	4/2011	Min et al.
7,532,933 B2	5/2009	Hastings et al.	7,930,040 B1	4/2011	Kelsch et al.
7,536,222 B2	5/2009	Bardy et al.	7,937,135 B2	5/2011	Ghanem et al.
7,539,541 B2	5/2009	Quiles et al.	7,937,148 B2	5/2011	Jacobson
7,544,197 B2	6/2009	Kelsch et al.	7,937,161 B2	5/2011	Hastings et al.
7,558,631 B2	7/2009	Cowan et al.	7,941,214 B2	5/2011	Kleckner et al.
7,565,195 B1	7/2009	Kroll et al.	7,945,333 B2	5/2011	Jacobson
7,584,002 B2	9/2009	Burnes et al.	7,946,997 B2	5/2011	Hübinette
7,590,455 B2	9/2009	Heruth et al.	7,949,404 B2	5/2011	Hill
7,606,621 B2	10/2009	Brisken et al.	7,949,405 B2	5/2011	Feher
7,610,088 B2	10/2009	Chinchoy	7,953,493 B2	5/2011	Fowler et al.
7,610,092 B2	10/2009	Cowan et al.	7,962,202 B2	6/2011	Bhunia
7,610,099 B2	10/2009	Almendinger et al.	7,974,702 B1	7/2011	Fain et al.
7,610,104 B2	10/2009	Kaplan et al.	7,979,136 B2	7/2011	Young et al.
7,616,991 B2	11/2009	Mann et al.	7,983,753 B2	7/2011	Severin
7,617,001 B2	11/2009	Penner et al.	3,010,209 A1	8/2011	Jacobson
7,617,007 B2	11/2009	Williams et al.	7,991,467 B2	8/2011	Markowitz et al.
7,630,767 B1	12/2009	Poore et al.	7,991,471 B2	8/2011	Ghanem et al.
7,634,313 B1	12/2009	Kroll et al.	7,996,087 B2	8/2011	Cowan et al.
7,637,867 B2	12/2009	Zdeblick	8,000,791 B2	8/2011	Sunagawa et al.
7,640,060 B2	12/2009	Zdeblick	8,000,807 B2	8/2011	Morris et al.
7,647,109 B2	1/2010	Hastings et al.	8,001,975 B2	8/2011	DiSilvestro et al.
7,650,186 B2	1/2010	Hastings et al.	8,002,700 B2	8/2011	Ferek-Petric et al.
7,657,311 B2	2/2010	Bardy et al.	8,019,419 B1	9/2011	Panescu et al.
7,668,596 B2	2/2010	Von Arx et al.	8,019,434 B2	9/2011	Quiles et al.
7,691,047 B2	4/2010	Ferrari	8,027,727 B2 *	9/2011	Freeberg A61N 1/37211 128/903
7,702,392 B2	4/2010	Echt et al.	8,027,729 B2	9/2011	Sunagawa et al.
7,713,194 B2	5/2010	Zdeblick	8,032,219 B2	10/2011	Neumann et al.
7,713,195 B2	5/2010	Zdeblick	8,036,743 B2	10/2011	Savage et al.
7,729,783 B2	6/2010	Michels et al.	8,046,079 B2	10/2011	Bange et al.
7,734,333 B2	6/2010	Ghanem et al.	8,046,080 B2 *	10/2011	Von Arx A61N 1/08 607/60
7,734,343 B2	6/2010	Ransbury et al.	8,050,297 B2	11/2011	Delmain et al.
7,738,958 B2	6/2010	Zdeblick et al.	8,050,759 B2	11/2011	Stegemann et al.
7,738,964 B2	6/2010	Von Arx et al.	8,050,774 B2	11/2011	Kveen et al.
7,742,812 B2	6/2010	Ghanem et al.	8,055,345 B2	11/2011	Li et al.
7,742,816 B2	6/2010	Masoud et al.	8,055,350 B2	11/2011	Roberts
7,742,822 B2	6/2010	Masoud et al.	8,060,212 B1	11/2011	Rios et al.
7,743,151 B2	6/2010	Vallapureddy et al.	8,065,018 B2	11/2011	Haubrich et al.
7,747,335 B2	6/2010	Williams	8,073,542 B2	12/2011	Doerr
7,751,881 B2	7/2010	Cowan et al.	8,078,278 B2	12/2011	Penner
7,758,521 B2	7/2010	Morris et al.	8,078,283 B2	12/2011	Cowan et al.
7,761,150 B2	7/2010	Ghanem et al.	8,095,123 B2	1/2012	Gray
7,761,164 B2	7/2010	Verhoef et al.	8,102,789 B2	1/2012	Rosar et al.
7,765,001 B2	7/2010	Echt et al.	8,103,359 B2	1/2012	Reddy
7,769,452 B2	8/2010	Ghanem et al.	8,103,361 B2	1/2012	Moser
7,792,588 B2	9/2010	Harding	8,112,148 B2	2/2012	Giftakis et al.
7,797,059 B1	9/2010	Bornzin et al.	8,114,021 B2	2/2012	Robertson et al.
7,801,596 B2	9/2010	Fischell et al.	8,121,680 B2	2/2012	Falkenberg et al.
7,809,438 B2	10/2010	Echt et al.	8,123,684 B2	2/2012	Zdeblick
7,840,281 B2	11/2010	Kveen et al.	8,126,545 B2	2/2012	Flach et al.
7,844,348 B2	11/2010	Swoyer et al.	8,131,334 B2	3/2012	Lu et al.
7,846,088 B2	12/2010	Ness	8,140,161 B2	3/2012	Willerton et al.
7,848,815 B2	12/2010	Brisken et al.	8,150,521 B2	4/2012	Crowley et al.
7,848,823 B2	12/2010	Drasler et al.	8,160,672 B2	4/2012	Kim et al.
7,860,455 B2	12/2010	Fukumoto et al.	8,160,702 B2	4/2012	Mann et al.
7,871,433 B2	1/2011	Lattouf	8,160,704 B2	4/2012	Freeberg
7,877,136 B1	1/2011	Moffitt et al.	8,165,694 B2	4/2012	Carbanaru et al.
7,877,142 B2	1/2011	Moaddeb et al.	8,175,715 B1	5/2012	Cox
7,881,798 B2	2/2011	Miesel et al.	8,180,451 B2	5/2012	Hickman et al.
7,881,810 B1	2/2011	Chitre et al.	8,185,213 B2	5/2012	Kveen et al.
7,890,173 B2	2/2011	Brisken et al.	8,187,161 B2	5/2012	Li et al.
7,890,181 B2	2/2011	Denzene et al.	8,204,595 B2	6/2012	Pianca et al.
7,890,192 B1	2/2011	Kelsch et al.	8,204,605 B2	6/2012	Hastings et al.
7,894,894 B2	2/2011	Stadler et al.	8,209,014 B2	6/2012	Doerr
7,894,907 B2	2/2011	Cowan et al.	8,214,043 B2	7/2012	Matos
7,894,910 B2	2/2011	Cowan et al.	8,224,244 B2	7/2012	Kim et al.
			8,233,985 B2	7/2012	Bulkes et al.
			8,265,748 B2	9/2012	Liu et al.

(56)

References Cited

U.S. PATENT DOCUMENTS

8,265,757 B2	9/2012	Mass et al.	8,700,181 B2	4/2014	Bornzin et al.
8,280,521 B2	10/2012	Haubrich et al.	8,705,599 B2	4/2014	dal Molin et al.
8,285,387 B2	10/2012	Utsi et al.	8,718,773 B2	5/2014	Willis et al.
8,290,589 B2*	10/2012	Bange A61N 1/37223	8,738,147 B2	5/2014	Hastings et al.
			8,744,572 B1	6/2014	Greenhut et al.
			8,747,314 B2	6/2014	Stahmann et al.
			8,755,884 B2	6/2014	Demmer et al.
			8,758,365 B2	6/2014	Bonner et al.
			8,774,572 B2	7/2014	Hamamoto
			8,781,605 B2	7/2014	Bornzin et al.
8,290,598 B2	10/2012	Boon et al.	8,788,035 B2	7/2014	Jacobson
8,290,600 B2	10/2012	Hastings et al.	8,788,053 B2	7/2014	Jacobson
8,295,939 B2	10/2012	Jacobson	8,798,740 B2	8/2014	Samade et al.
8,301,254 B2	10/2012	Mosesov et al.	8,798,745 B2	8/2014	Jacobson
8,315,701 B2	11/2012	Cowan et al.	8,798,762 B2	8/2014	Fain et al.
8,315,708 B2	11/2012	Berthelsdorf et al.	8,798,770 B2	8/2014	Reddy
8,321,021 B2	11/2012	Kisker et al.	8,805,505 B1	8/2014	Roberts
8,321,036 B2	11/2012	Brockway et al.	8,805,528 B2	8/2014	Corndorf
8,332,036 B2	12/2012	Hastings et al.	8,812,109 B2	8/2014	Blomqvist et al.
8,335,563 B2	12/2012	Stessman	8,818,504 B2	8/2014	Bodner et al.
8,335,568 B2	12/2012	Heruth et al.	8,831,747 B1	9/2014	Min et al.
8,340,750 B2	12/2012	Prakash et al.	8,855,789 B2	10/2014	Jacobson
8,340,780 B2	12/2012	Hastings et al.	8,868,186 B2	10/2014	Kroll
8,352,025 B2	1/2013	Jacobson	8,886,339 B2	11/2014	Faltys et al.
8,352,028 B2	1/2013	Wenger	8,903,500 B2	12/2014	Smith et al.
8,352,038 B2	1/2013	Mao et al.	8,903,513 B2	12/2014	Ollivier
8,359,098 B2	1/2013	Lund et al.	8,914,131 B2	12/2014	Bornzin et al.
8,364,276 B2	1/2013	Willis	8,923,795 B2	12/2014	Makdissi et al.
8,369,959 B2	2/2013	Meskens	8,923,963 B2	12/2014	Bonner et al.
8,369,962 B2	2/2013	Abrahamson	8,938,300 B2	1/2015	Rosero
8,380,320 B2	2/2013	Spital	8,942,806 B2	1/2015	Sheldon et al.
8,386,051 B2	2/2013	Rys	8,954,030 B1*	2/2015	Buchheit A61N 1/3925
8,391,981 B2	3/2013	Mosesov			455/404.1
8,391,990 B2	3/2013	Smith et al.	8,958,892 B2	2/2015	Khairkahan et al.
8,406,874 B2	3/2013	Liu et al.	8,977,358 B2	3/2015	Ewert et al.
8,406,886 B2	3/2013	Gaunt et al.	8,989,873 B2	3/2015	Locsin
8,412,352 B2	4/2013	Griswold et al.	8,996,109 B2	3/2015	Karst et al.
8,417,340 B2	4/2013	Goossen	9,002,467 B2*	4/2015	Smith A61N 1/372
8,417,341 B2	4/2013	Freeberg			607/32
8,423,149 B2	4/2013	Hennig	9,008,776 B2	4/2015	Cowan et al.
8,428,722 B2	4/2013	Verhoef et al.	9,008,777 B2	4/2015	Dianaty et al.
8,433,402 B2	4/2013	Ruben et al.	9,014,818 B2	4/2015	Deterre et al.
8,433,409 B2	4/2013	Johnson et al.	9,017,341 B2	4/2015	Bornzin et al.
8,433,420 B2	4/2013	Bange et al.	9,020,611 B2	4/2015	Khairkahan et al.
8,447,412 B2	5/2013	Dal Molin et al.	9,037,262 B2	5/2015	Regnier et al.
8,452,413 B2	5/2013	Young et al.	9,042,984 B2	5/2015	Demmer et al.
8,457,740 B2	6/2013	Osche	9,072,911 B2	7/2015	Hastings et al.
8,457,742 B2	6/2013	Jacobson	9,072,913 B2	7/2015	Jacobson
8,457,761 B2	6/2013	Wariar	9,155,882 B2	10/2015	Grubac et al.
8,478,407 B2	7/2013	Demmer et al.	9,168,372 B2	10/2015	Fain
8,478,408 B2	7/2013	Hastings et al.	9,168,380 B1	10/2015	Greenhut et al.
8,478,431 B2	7/2013	Griswold et al.	9,168,383 B2*	10/2015	Jacobson A61N 1/368
8,504,156 B2	8/2013	Bonner et al.	9,180,285 B2	11/2015	Moore et al.
8,509,910 B2	8/2013	Sowder et al.	9,192,774 B2	11/2015	Jacobson
8,515,559 B2	8/2013	Roberts et al.	9,205,225 B2	12/2015	Khairkahan et al.
8,527,068 B2	9/2013	Ostroff	9,216,285 B1	12/2015	Boling et al.
8,532,790 B2	9/2013	Griswold	9,216,293 B2	12/2015	Berthiaume et al.
8,541,131 B2	9/2013	Lund et al.	9,216,298 B2	12/2015	Jacobson
8,543,205 B2	9/2013	Ostroff	9,227,077 B2	1/2016	Jacobson
8,547,248 B2	10/2013	Zdeblick et al.	9,238,144 B2*	1/2016	Greene A61N 1/37252
8,548,605 B2	10/2013	Ollivier	9,238,145 B2	1/2016	Wenzel et al.
8,554,333 B2	10/2013	Wu et al.	9,242,102 B2	1/2016	Khairkahan et al.
8,565,882 B2	10/2013	Matos	9,242,113 B2	1/2016	Smith et al.
8,565,897 B2	10/2013	Regnier et al.	9,248,300 B2	2/2016	Rys et al.
8,571,678 B2	10/2013	Wang	9,265,436 B2	2/2016	Min et al.
8,577,327 B2	11/2013	Makdissi et al.	9,265,962 B2	2/2016	Dianaty et al.
8,588,926 B2	11/2013	Moore et al.	9,278,218 B2	3/2016	Karst et al.
8,612,002 B2	12/2013	Faltys et al.	9,278,229 B1	3/2016	Reinke et al.
8,615,310 B2	12/2013	Khairkahan et al.	9,283,381 B2	3/2016	Grubac et al.
8,626,294 B2	1/2014	Sheldon et al.	9,283,382 B2	3/2016	Berthiaume et al.
8,634,908 B2	1/2014	Cowan	9,289,612 B1	3/2016	Sambelashvili et al.
8,634,912 B2	1/2014	Bornzin et al.	9,302,115 B2	4/2016	Molin et al.
8,634,919 B1	1/2014	Hou et al.	9,333,364 B2	5/2016	Echt et al.
8,639,335 B2	1/2014	Peichel et al.	9,370,663 B2	6/2016	Moulder
8,644,934 B2	2/2014	Hastings et al.	9,375,580 B2	6/2016	Bonner et al.
8,649,859 B2	2/2014	Smith et al.	9,375,581 B2	6/2016	Baru et al.
8,670,842 B1	3/2014	Bornzin et al.	9,656,091 B2*	5/2017	Huelskamp A61B 5/0452
8,676,319 B2	3/2014	Knoll	9,724,522 B2*	8/2017	Stahmann A61N 1/37288
8,676,335 B2	3/2014	Katoozi et al.	9,853,743 B2*	12/2017	Schmidt H04B 13/005
8,700,173 B2	4/2014	Edlund			

(56)

References Cited

U.S. PATENT DOCUMENTS

2002/0032470 A1	3/2002	Linberg	2006/0064149 A1	3/2006	Belacazar et al.
2002/0035376 A1	3/2002	Bardy et al.	2006/0085039 A1	4/2006	Hastings et al.
2002/0035377 A1	3/2002	Bardy et al.	2006/0085041 A1	4/2006	Hastings et al.
2002/0035378 A1	3/2002	Bardy et al.	2006/0085042 A1	4/2006	Hastings et al.
2002/0035380 A1	3/2002	Rissmann et al.	2006/0095078 A1	5/2006	Tronnes
2002/0035381 A1	3/2002	Bardy et al.	2006/0106442 A1	5/2006	Richardson et al.
2002/0042629 A1	4/2002	Bardy et al.	2006/0116746 A1	6/2006	Chin
2002/0042630 A1	4/2002	Bardy et al.	2006/0135999 A1	6/2006	Bodner et al.
2002/0042634 A1	4/2002	Bardy et al.	2006/0136004 A1	6/2006	Cowan et al.
2002/0049475 A1	4/2002	Bardy et al.	2006/0161061 A1	7/2006	Echt et al.
2002/0052636 A1	5/2002	Bardy et al.	2006/0200002 A1	9/2006	Guenst
2002/0068958 A1	6/2002	Bardy et al.	2006/0206151 A1	9/2006	Lu
2002/0072773 A1	6/2002	Bardy et al.	2006/0212079 A1	9/2006	Routh et al.
2002/0082665 A1	6/2002	Haller et al.	2006/0241701 A1*	10/2006	Markowitz A61N 1/025 607/5
2002/0091414 A1	7/2002	Bardy et al.	2006/0241705 A1	10/2006	Neumann et al.
2002/0095196 A1	7/2002	Linberg	2006/0247672 A1	11/2006	Vidlund et al.
2002/0099423 A1	7/2002	Berg et al.	2006/0259088 A1	11/2006	Pastore et al.
2002/0103510 A1	8/2002	Bardy et al.	2006/0265018 A1	11/2006	Smith et al.
2002/0107545 A1	8/2002	Rissmann et al.	2007/0004979 A1	1/2007	Wojciechowicz et al.
2002/0107546 A1	8/2002	Ostroff et al.	2007/0027508 A1	2/2007	Cowan
2002/0107547 A1	8/2002	Erlinger et al.	2007/0049992 A1	3/2007	Freeberg
2002/0107548 A1	8/2002	Bardy et al.	2007/0078490 A1	4/2007	Cowan et al.
2002/0107549 A1	8/2002	Bardy et al.	2007/0088394 A1	4/2007	Jacobson
2002/0107559 A1	8/2002	Sanders et al.	2007/0088396 A1	4/2007	Jacobson
2002/0120299 A1	8/2002	Ostroff et al.	2007/0088397 A1	4/2007	Jacobson
2002/0173830 A1	11/2002	Starkweather et al.	2007/0088398 A1	4/2007	Jacobson
2002/0193846 A1	12/2002	Pool et al.	2007/0088405 A1	4/2007	Jacobson
2003/0009203 A1	1/2003	Lebel et al.	2007/0135882 A1	6/2007	Drasler et al.
2003/0028082 A1	2/2003	Thompson	2007/0135883 A1	6/2007	Drasler et al.
2003/0041866 A1	3/2003	Linberg et al.	2007/0150037 A1	6/2007	Hastings et al.
2003/0088278 A1	5/2003	Bardy et al.	2007/0150038 A1	6/2007	Hastings et al.
2003/0097153 A1	5/2003	Bardy et al.	2007/0156190 A1	7/2007	Cinbis
2003/0114908 A1	6/2003	Flach	2007/0219525 A1	9/2007	Gelfand et al.
2003/0144701 A1	7/2003	Mehra et al.	2007/0219590 A1	9/2007	Hastings et al.
2003/0187460 A1	10/2003	Chin et al.	2007/0225545 A1	9/2007	Ferrari
2003/0187461 A1	10/2003	Chin	2007/0233206 A1	10/2007	Frikart et al.
2004/0024435 A1	2/2004	Leckrone et al.	2007/0239244 A1	10/2007	Morgan et al.
2004/0087938 A1	5/2004	Leckrone et al.	2007/0255330 A1*	11/2007	Lee A61N 1/37288 607/32
2004/0088035 A1	5/2004	Guenst et al.	2007/0255376 A1	11/2007	Michels et al.
2004/0102830 A1	5/2004	Williams	2007/0276444 A1	11/2007	Gelbart et al.
2004/0127959 A1*	7/2004	Amundson A61N 1/37252 607/60	2007/0293900 A1	12/2007	Sheldon et al.
2004/0147969 A1	7/2004	Mann et al.	2007/0293904 A1	12/2007	Gelbart et al.
2004/0147973 A1	7/2004	Hauser	2008/0004663 A1	1/2008	Jorgenson
2004/0167558 A1	8/2004	Igo et al.	2008/0021505 A1	1/2008	Hastings et al.
2004/0167587 A1	8/2004	Thompson	2008/0021519 A1	1/2008	De Geest et al.
2004/0172071 A1	9/2004	Bardy et al.	2008/0021532 A1	1/2008	Kveen et al.
2004/0172077 A1	9/2004	Chinchoy	2008/0065185 A1	3/2008	Worley
2004/0172104 A1	9/2004	Berg et al.	2008/0071318 A1	3/2008	Brooke et al.
2004/0176817 A1	9/2004	Wahlstrand et al.	2008/0109054 A1	5/2008	Hastings et al.
2004/0176818 A1	9/2004	Wahlstrand et al.	2008/0119911 A1	5/2008	Rosero
2004/0176830 A1	9/2004	Fang	2008/0130670 A1	6/2008	Kim et al.
2004/0186529 A1	9/2004	Bardy et al.	2008/0154322 A1	6/2008	Jackson et al.
2004/0204673 A1	10/2004	Flaherty	2008/0177194 A1*	7/2008	Zhang A61N 1/365 600/513
2004/0210292 A1	10/2004	Bardy et al.	2008/0228234 A1	9/2008	Stancer
2004/0210293 A1	10/2004	Bardy et al.	2008/0234771 A1	9/2008	Chinchoy et al.
2004/0210294 A1	10/2004	Bardy et al.	2008/0243217 A1	10/2008	Wildon
2004/0215308 A1	10/2004	Bardy et al.	2008/0269814 A1	10/2008	Rosero
2004/0220626 A1	11/2004	Wagner	2008/0269825 A1	10/2008	Chinchoy et al.
2004/0220639 A1	11/2004	Mulligan et al.	2008/0275518 A1	11/2008	Ghanem et al.
2004/0249431 A1	12/2004	Ransbury et al.	2008/0275519 A1	11/2008	Ghanem et al.
2004/0267303 A1	12/2004	Guenst	2008/0288039 A1	11/2008	Reddy
2005/0061320 A1	3/2005	Lee et al.	2008/0294208 A1	11/2008	Willis et al.
2005/0070962 A1	3/2005	Echt et al.	2008/0294210 A1	11/2008	Rosero
2005/0102003 A1	5/2005	Grabek et al.	2008/0306359 A1	12/2008	Zdeblick et al.
2005/0149138 A1	7/2005	Min et al.	2009/0018599 A1	1/2009	Hastings et al.
2005/0165466 A1	7/2005	Morris et al.	2009/0024180 A1	1/2009	Kisker et al.
2005/0182465 A1	8/2005	Ness	2009/0036941 A1	2/2009	Corbucci
2005/0203410 A1	9/2005	Jenkins	2009/0048646 A1	2/2009	Katoozi et al.
2005/0283208 A1	12/2005	Von Arx et al.	2009/0062895 A1	3/2009	Stahmann et al.
2006/0040707 A1*	2/2006	Kish H04B 7/061 455/562.1	2009/0082827 A1	3/2009	Kveen et al.
2006/0052829 A1	3/2006	Sun et al.	2009/0082828 A1	3/2009	Ostroff
2006/0052830 A1	3/2006	Spinelli et al.	2009/0088813 A1	4/2009	Brockway et al.
2006/0064135 A1	3/2006	Brockway	2009/0131907 A1	5/2009	Chin et al.
			2009/0135886 A1	5/2009	Robertson et al.
			2009/0143835 A1	6/2009	Pastore et al.
			2009/0171408 A1	7/2009	Solem

(56)		References Cited				
		U.S. PATENT DOCUMENTS				
2009/0171414	A1	7/2009	Kelly et al.	2012/0093245	A1 4/2012	Makdissi et al.
2009/0204170	A1	8/2009	Hastings et al.	2012/0095521	A1 4/2012	Hintz
2009/0210024	A1	8/2009	M	2012/0095539	A1 4/2012	Khairkhahan et al.
2009/0216292	A1	8/2009	Pless et al.	2012/0101540	A1 4/2012	O'Brien et al.
2009/0234407	A1	9/2009	Hastings et al.	2012/0101553	A1 4/2012	Reddy
2009/0234411	A1	9/2009	Sambelashvili et al.	2012/0109148	A1 5/2012	Bonner et al.
2009/0275998	A1	11/2009	Burnes et al.	2012/0109149	A1 5/2012	Bonner et al.
2009/0275999	A1	11/2009	Burnes et al.	2012/0109236	A1 5/2012	Jacobson et al.
2009/0299447	A1	12/2009	Jensen et al.	2012/0109259	A1 5/2012	Bond et al.
2010/0013668	A1	1/2010	Kantervik	2012/0109260	A1* 5/2012	Stancer A61N 1/3718 607/60
2010/0016911	A1	1/2010	Willis et al.	2012/0116489	A1 5/2012	Khairkhahan et al.
2010/0023085	A1	1/2010	Wu et al.	2012/0150251	A1 6/2012	Giftakis et al.
2010/0030061	A1	2/2010	Canfield et al.	2012/0158111	A1 6/2012	Khairkhahan et al.
2010/0030327	A1	2/2010	Chatel	2012/0165827	A1 6/2012	Khairkhahan et al.
2010/0042108	A1	2/2010	Hibino	2012/0172690	A1 7/2012	Anderson et al.
2010/0056871	A1	3/2010	Govari et al.	2012/0172891	A1 7/2012	Lee
2010/0063375	A1	3/2010	Kassab et al.	2012/0172892	A1 7/2012	Grubac et al.
2010/0063562	A1	3/2010	Cowan et al.	2012/0172942	A1* 7/2012	Berg A61N 1/3925 607/5
2010/0094367	A1	4/2010	Sen	2012/0197350	A1 8/2012	Roberts et al.
2010/0114209	A1	5/2010	Krause et al.	2012/0197373	A1 8/2012	Khairkhahan et al.
2010/0125281	A1	5/2010	Jacobson et al.	2012/0215285	A1 8/2012	Tahmasian et al.
2010/0168761	A1	7/2010	Kassab et al.	2012/0232565	A1 9/2012	Kveen et al.
2010/0168819	A1*	7/2010	Freeberg A61N 1/37252 607/60	2012/0277600	A1* 11/2012	Greenhut A61B 5/02108 600/485
2010/0198288	A1	8/2010	Ostroff	2012/0277606	A1 11/2012	Ellingson et al.
2010/0198304	A1	8/2010	Wang	2012/0283795	A1* 11/2012	Stancer A61N 1/3688 607/11
2010/0217367	A1	8/2010	Belson	2012/0283807	A1 11/2012	Deterre et al.
2010/0228308	A1	9/2010	Cowan et al.	2012/0290025	A1 11/2012	Keimel
2010/0234924	A1	9/2010	Willis	2012/0296381	A1 11/2012	Matos
2010/0241185	A1	9/2010	Mahapatra et al.	2012/0303082	A1 11/2012	Dong et al.
2010/0249729	A1	9/2010	Morris et al.	2012/0316613	A1 12/2012	Keefe et al.
2010/0286744	A1	11/2010	Echt et al.	2013/0012151	A1 1/2013	Hankins
2010/0312309	A1	12/2010	Harding	2013/0023975	A1 1/2013	Locsin
2011/0022113	A1	1/2011	Zdebllick et al.	2013/0035748	A1 2/2013	Bonner et al.
2011/0071586	A1	3/2011	Jacobson	2013/0041422	A1 2/2013	Jacobson
2011/0077708	A1	3/2011	Ostroff	2013/0053908	A1 2/2013	Smith et al.
2011/0112600	A1	5/2011	Cowan et al.	2013/0053915	A1 2/2013	Holmstrom et al.
2011/0118588	A1	5/2011	Komblau et al.	2013/0053921	A1 2/2013	Bonner et al.
2011/0118810	A1	5/2011	Cowan et al.	2013/0066169	A1 3/2013	Rys et al.
2011/0137187	A1	6/2011	Yang et al.	2013/0072770	A1 3/2013	Rao et al.
2011/0144720	A1	6/2011	Cowan et al.	2013/0079798	A1 3/2013	Tran et al.
2011/0152970	A1	6/2011	Jollota et al.	2013/0079861	A1 3/2013	Reinert et al.
2011/0160565	A1	6/2011	Stubbs et al.	2013/0085350	A1 4/2013	Schugt et al.
2011/0160801	A1	6/2011	Markowitz et al.	2013/0085403	A1 4/2013	Gunderson et al.
2011/0160806	A1	6/2011	Lyden et al.	2013/0085550	A1 4/2013	Polefko et al.
2011/0166620	A1	7/2011	Cowan et al.	2013/0096649	A1* 4/2013	Martin G06F 19/322 607/60
2011/0166621	A1	7/2011	Cowan et al.	2013/0103047	A1 4/2013	Steingisser et al.
2011/0184491	A1*	7/2011	Kivi A61N 1/37276 607/60	2013/0103109	A1 4/2013	Jacobson
2011/0190835	A1*	8/2011	Brockway A61N 1/39 607/6	2013/0110008	A1* 5/2013	Bourget A61B 5/11 600/595
2011/0208260	A1	8/2011	Jacobson	2013/0110127	A1 5/2013	Bornzin et al.
2011/0218587	A1	9/2011	Jacobson	2013/0110192	A1 5/2013	Tran et al.
2011/0230734	A1*	9/2011	Fain A61N 1/37211 600/302	2013/0110219	A1 5/2013	Bornzin et al.
2011/0237967	A1	9/2011	Moore et al.	2013/0116529	A1 5/2013	Min et al.
2011/0245890	A1	10/2011	Brisben et al.	2013/0116738	A1 5/2013	Samade et al.
2011/0251660	A1	10/2011	Griswold	2013/0116740	A1 5/2013	Bornzin et al.
2011/0251662	A1	10/2011	Griswold et al.	2013/0116741	A1 5/2013	Bornzin et al.
2011/0270099	A1	11/2011	Ruben et al.	2013/0123872	A1 5/2013	Bornzin et al.
2011/0270339	A1	11/2011	Murray, III et al.	2013/0123875	A1 5/2013	Varady et al.
2011/0270340	A1	11/2011	Pellegrini et al.	2013/0131591	A1 5/2013	Berthiaume et al.
2011/0276102	A1	11/2011	Cohen	2013/0131693	A1 5/2013	Berthiaume et al.
2011/0282423	A1	11/2011	Jacobson	2013/0138006	A1 5/2013	Bornzin et al.
2011/0313493	A1*	12/2011	Keenan A61B 5/0031 607/60	2013/0150695	A1 6/2013	Biela et al.
2012/0004527	A1	1/2012	Thompson et al.	2013/0196703	A1 8/2013	Masoud et al.
2012/0029323	A1	2/2012	Zhao	2013/0197609	A1 8/2013	Moore et al.
2012/0041508	A1	2/2012	Rouso et al.	2013/0231710	A1 9/2013	Jacobson
2012/0059433	A1	3/2012	Cowan et al.	2013/0234861	A1* 9/2013	Abrahamson A61N 1/37223 340/870.02
2012/0059436	A1*	3/2012	Fontaine A61N 1/37 607/60	2013/0238072	A1 9/2013	Deterre et al.
2012/0078322	A1	3/2012	Dal Molin et al.	2013/0238073	A1 9/2013	Makdissi et al.
2012/0089198	A1	4/2012	Ostroff	2013/0253342	A1 9/2013	Griswold et al.
				2013/0253343	A1 9/2013	Waldhauser et al.
				2013/0253344	A1 9/2013	Griswold et al.
				2013/0253345	A1 9/2013	Griswold et al.
				2013/0253346	A1 9/2013	Griswold et al.

(56)

References Cited

FOREIGN PATENT DOCUMENTS

WO 2013080038 A2 6/2013
WO 2013098644 A3 8/2013
WO 2013184787 A1 12/2013

OTHER PUBLICATIONS

Hachisuka et al., "Development and Performance Analysis of an Intra-Body Communication Device," The 12th International Conference on Solid State Sensors, Actuators and Microsystems, vol. 4A1.3, pp. 1722-1725, 2003.

Seyedi et al., "A Survey on Intra-body Communications for Body Area Network Application," IEEE Transactions on Biomedical Engineering, vol. 60(8): 2067-2079, 2013.

Wegmüller, "Intra-Body Communication for Biomedical Sensor Networks," Diss. ETH, No. 17323, 1-173, 2007.

Spickler et al., "Totally Self-Contained Intracardiac Pacemaker," Journal of Electrocardiology, vol. 3(3&4): 324-331, 1970.

"Instructions for Use System 1, Leadless Cardiac Pacemaker (LCP) and Delivery Catheter," Nanostim Leadless Pacemakers, pp. 1-28, 2013.

* cited by examiner

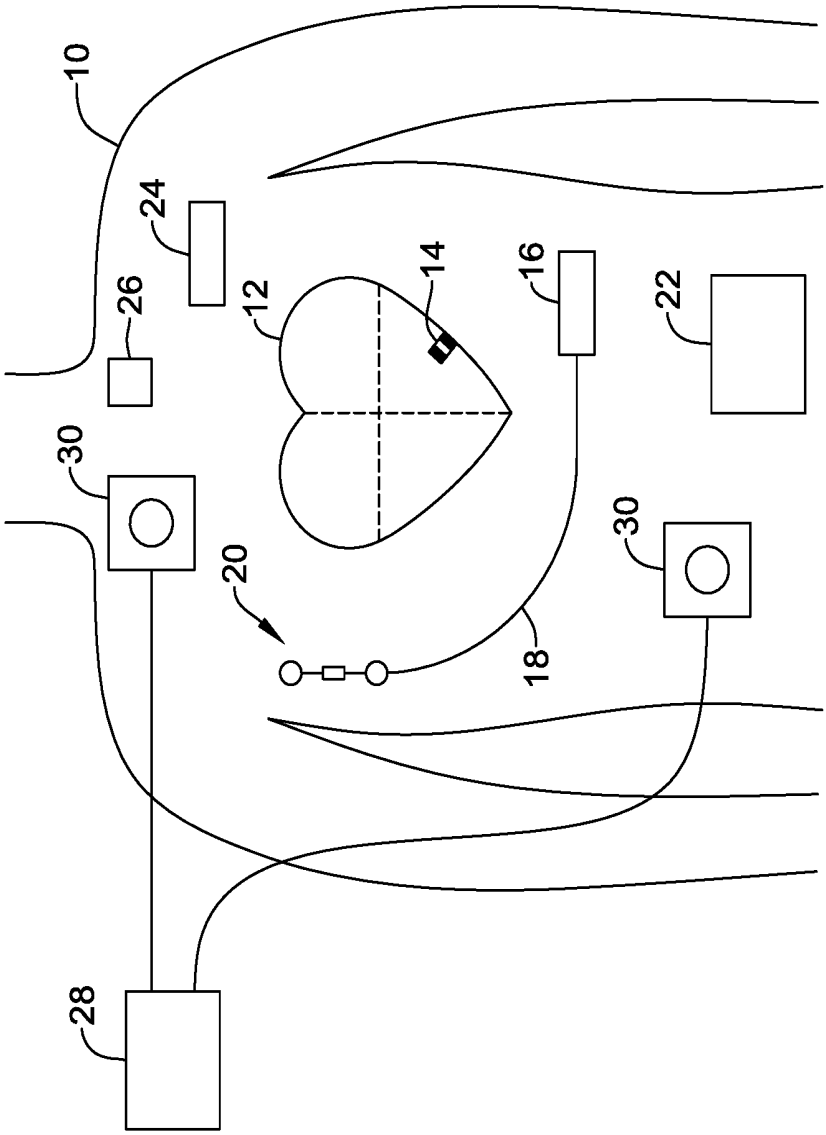


FIG. 1

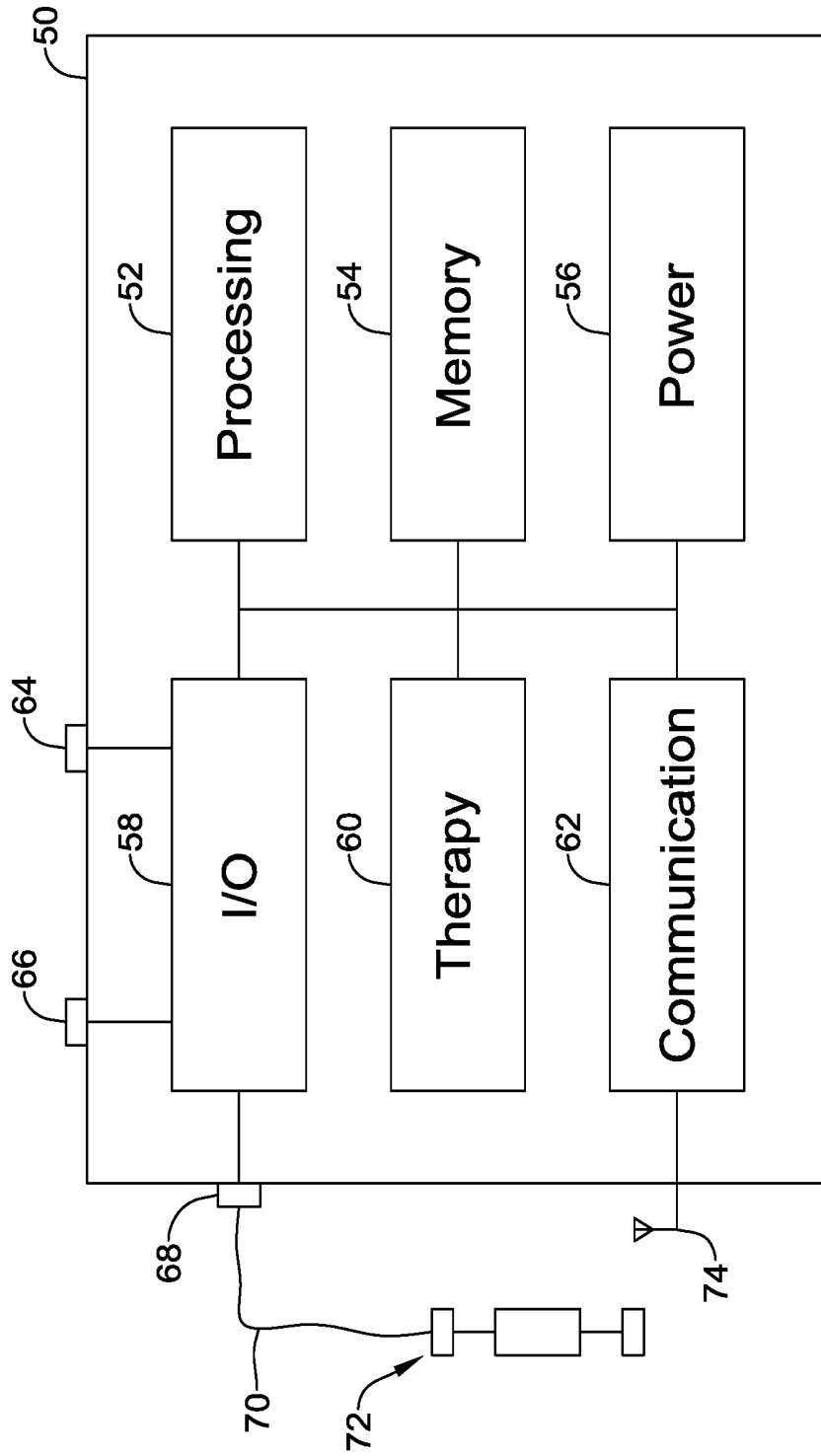


FIG. 2

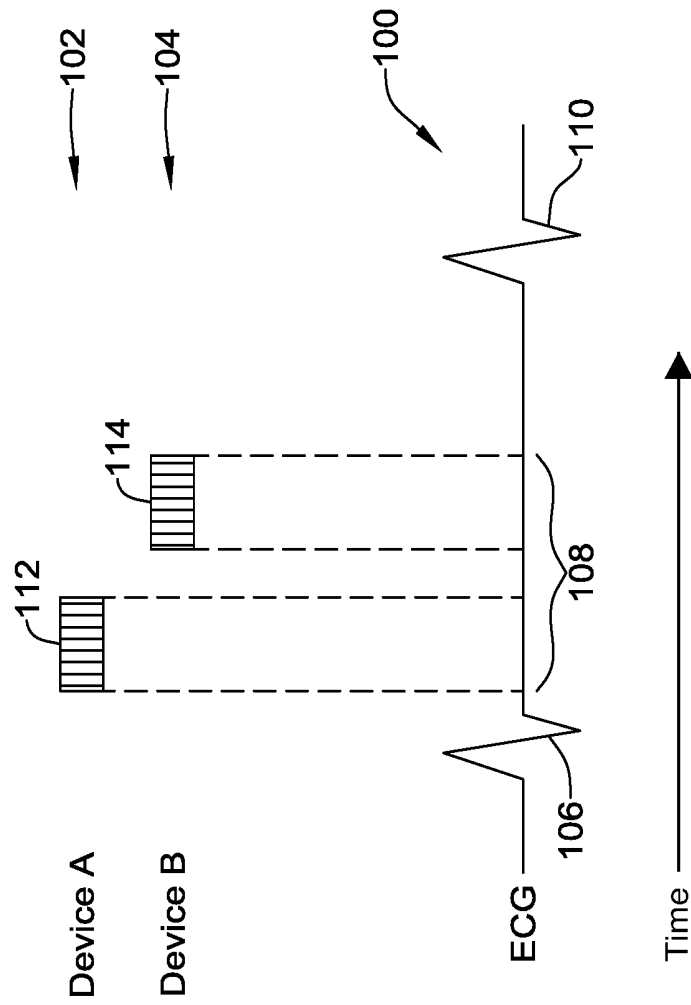


FIG. 3

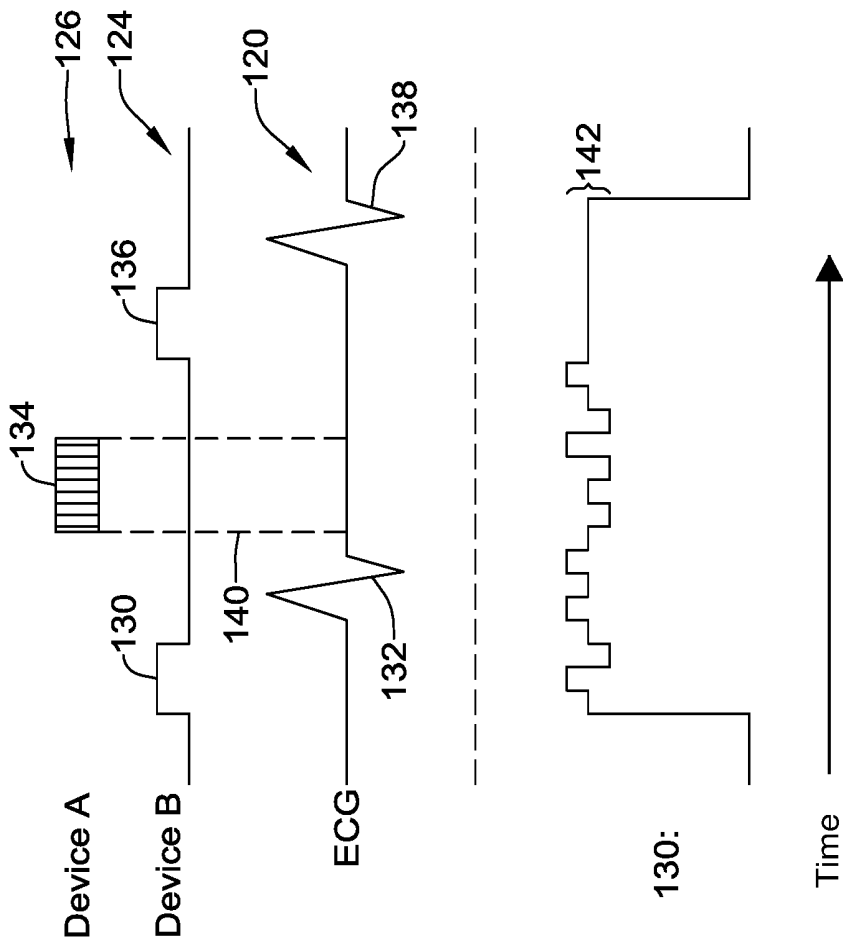


FIG. 4

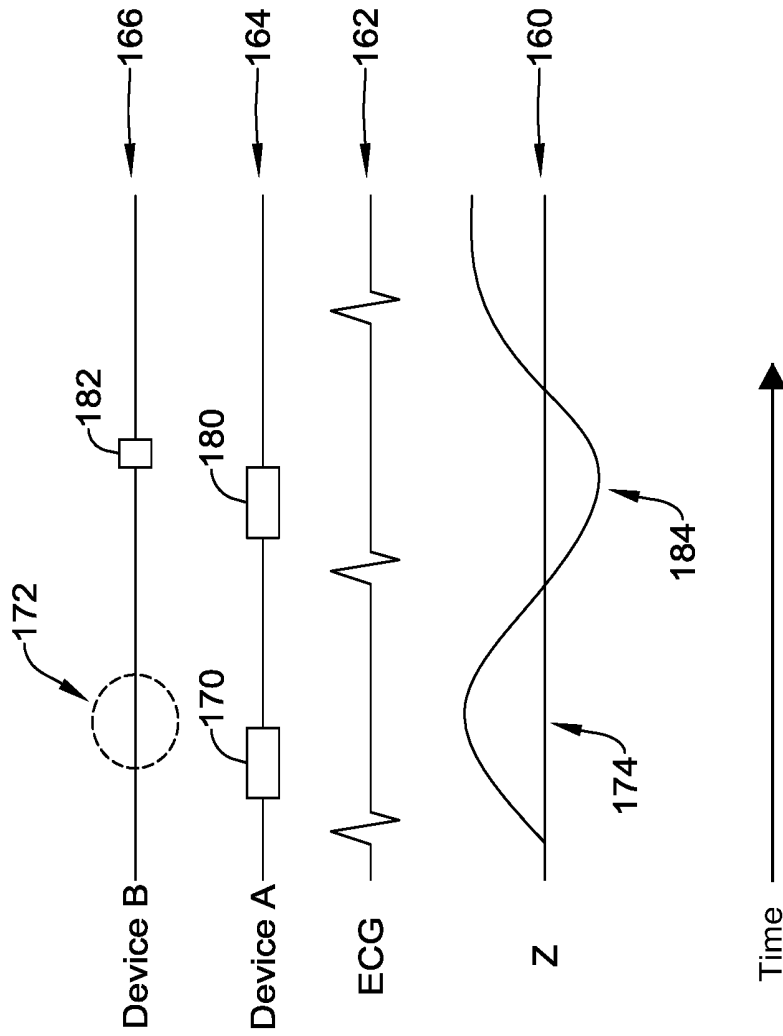


FIG. 5

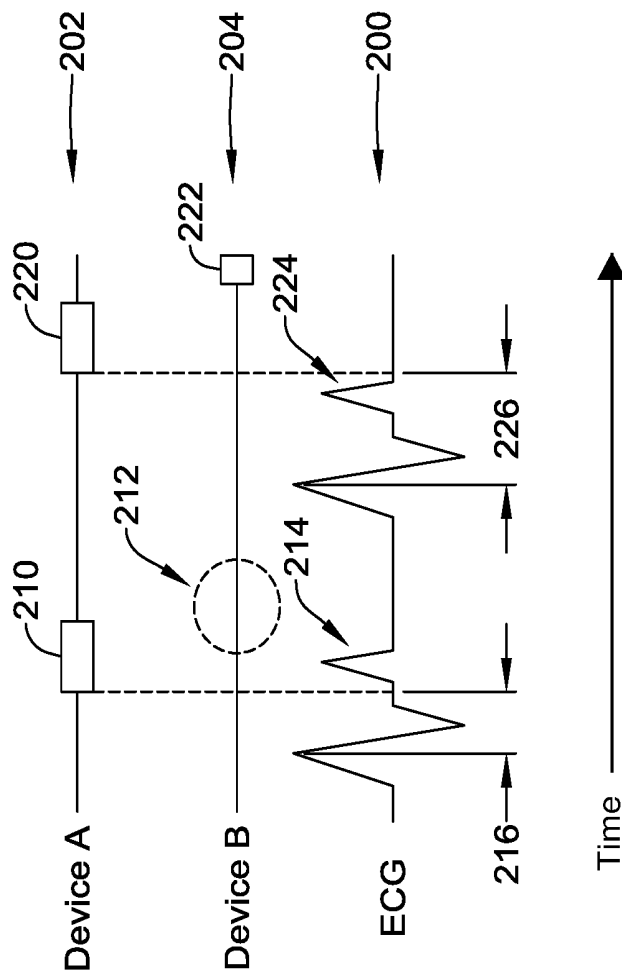


FIG. 6

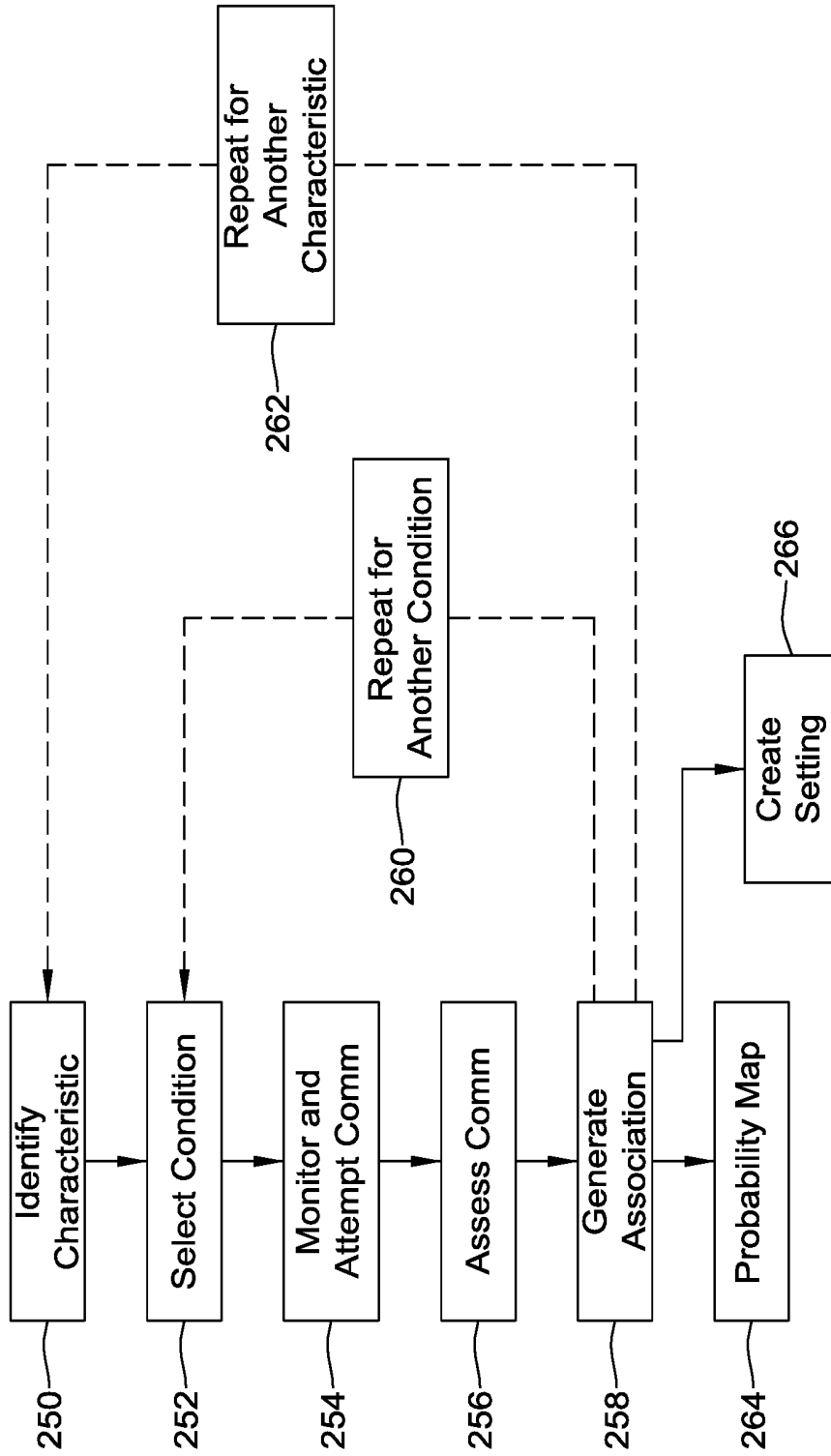


FIG. 7

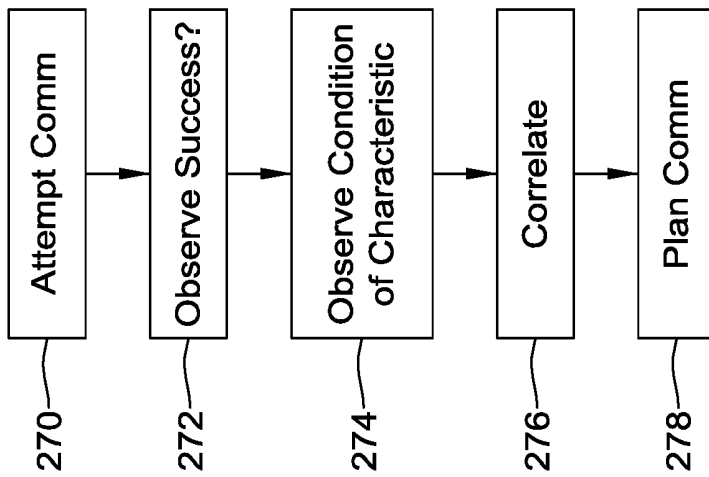


FIG. 8

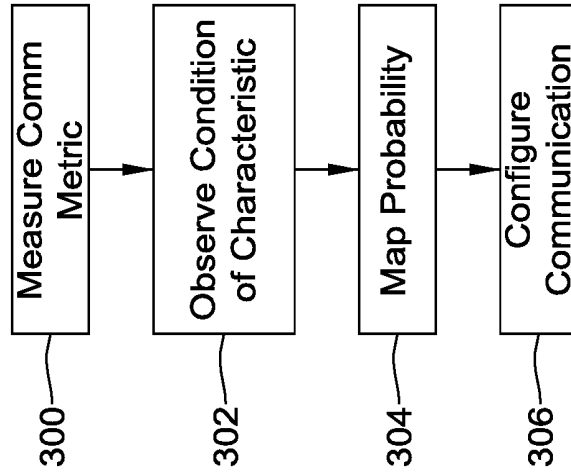


FIG. 9

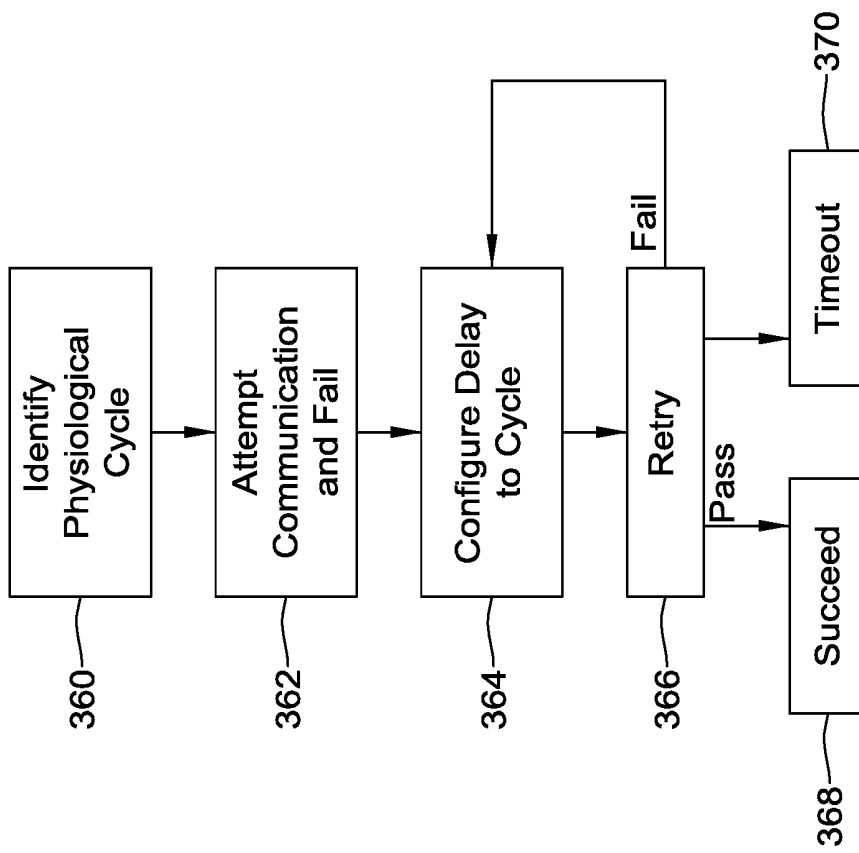


FIG. 10

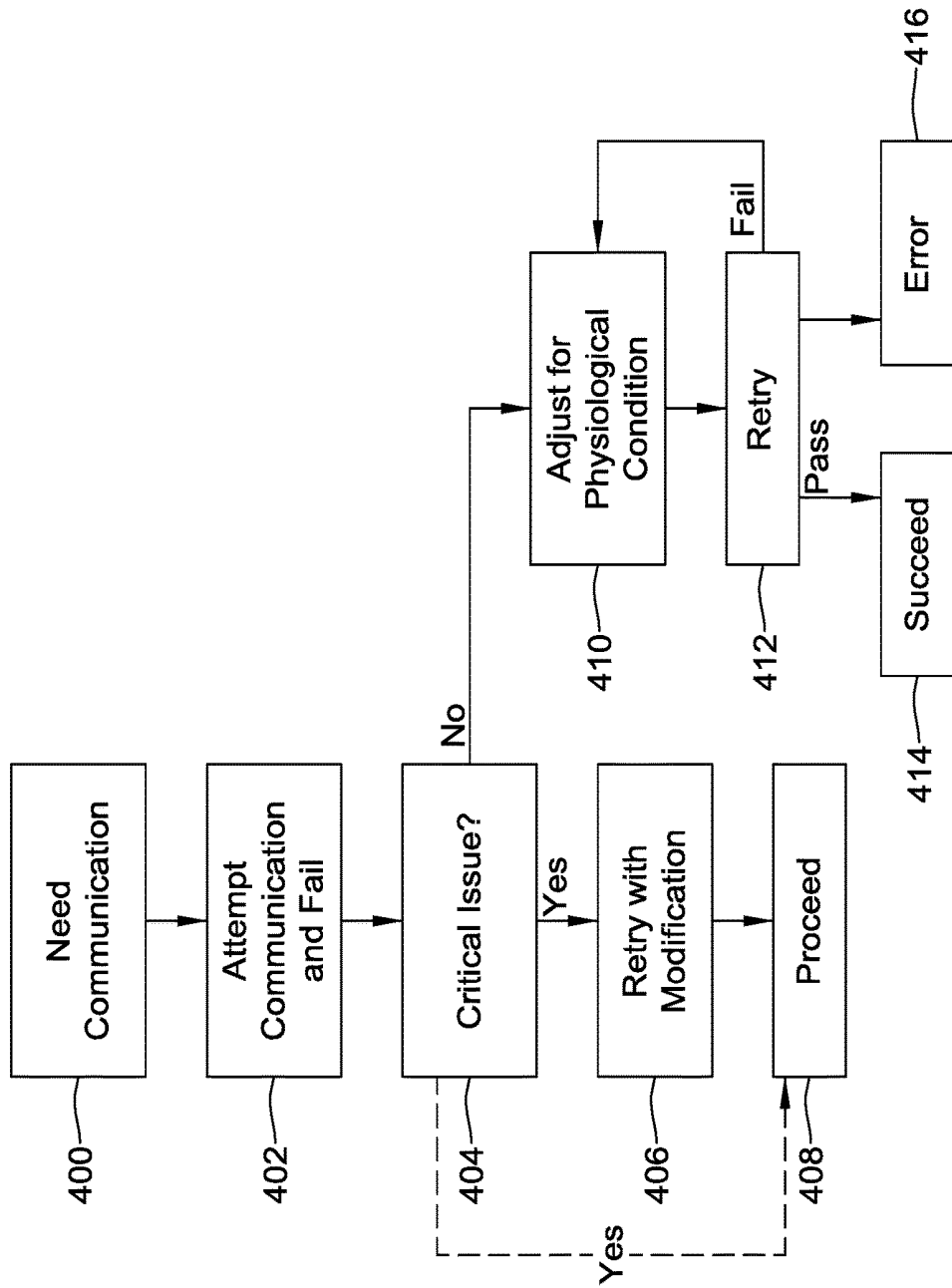


FIG. 11

COMMUNICATIONS IN A MEDICAL DEVICE SYSTEM WITH TEMPORAL OPTIMIZATION

CROSS REFERENCE TO RELATED APPLICATIONS

The present application claims the benefit of and priority to U.S. Provisional Patent Application No. 62/134,752, filed Mar. 18, 2015, titled COMMUNICATIONS IN A MEDICAL DEVICE SYSTEM WITH TEMPORAL OPTIMIZATION, the disclosure of which is incorporated herein by reference.

TECHNICAL FIELD

The present disclosure generally relates to medical devices, and more particularly to communications between medical devices in a multi-device system.

BACKGROUND

Various active implantable devices are available or in development for treating and/or diagnosing numerous ailments. Some examples include cardiac assist devices, pacemakers, defibrillators, cardiac monitors, neurostimulation and neuromodulation systems, drug and medication pumps, and others. A patient may have multiple implanted devices and may benefit in some circumstances by enabling such devices to communicate with one another. Because these implantable devices are often reliant on battery power, communication between devices should be designed for efficiency and to limit power consumption.

SUMMARY

The present disclosure relates generally to systems and methods for managing communication strategies with temporal optimization relative to one or more identified conditions in the body.

A first example is a first medical device comprising: means for communicating with a second implantable medical device; means for identifying a first characteristic having a possible impact on communication success; means for selecting a first condition of the first characteristic on which to trigger an attempt at communication; means for determining that the first condition of the first characteristic is present and attempting communication with the second implantable medical device; means for assessing whether the attempted communication was successful; and means for associating the first condition and first characteristic with a reduced likelihood of communication success if the attempted communication was not successful.

A second example takes the form of the first medical device of the first example wherein the means for communicating is configured for communication by conducted communication. A third example takes the form of a first medical device as in either of the first two examples wherein the first medical device is configured as an implantable medical device. A fourth example takes the form of a first medical device of any of the first three example, further comprising means for associating the first condition and first characteristic with an improved likelihood of communication success if the attempted communication was successful.

A fifth example takes the form of a first medical device of any of the first four examples further comprising optimization means for selecting multiple conditions of the first

characteristic and repeatedly operating the means for determining, means for assessing and means for associating for each of multiple conditions of the first characteristic to determine whether the first characteristic can be used to determine a likelihood of communication success.

A sixth example takes the form of a first medical device of any of the first to fifth examples further comprising means for identifying a second characteristic, wherein the means for determining, means for assessing and means for assessing are operable to test at least a first condition of the second characteristic to determine whether the second characteristic can be used to determine a likelihood of communication success.

A seventh example takes the form of a first medical device of any of the first to sixth examples wherein the first characteristic is a detected status of a cardiac cycle, and the first condition is the occurrence of one of a cardiac R-wave or a cardiac T-wave. An eighth example takes the form of a first medical device of any of the first to sixth examples wherein the first characteristic is a detected status of a cardiac cycle, and the first condition is the occurrence of a pacing pulse. A ninth example takes the form of a first medical device of any of the first to sixth examples wherein the first characteristic is a detected status of a respiration cycle, and the first condition is the occurrence of one of an exhale or an inhale. A tenth example takes the form of a first medical device of any of the first to sixth examples wherein the first characteristic is a detected transthoracic impedance, and the first condition is the occurrence of one of a maximum impedance or a minimum impedance. An eleventh example takes the form of a first medical device of any of the first to sixth examples wherein the first characteristic is a cyclic biological phenomenon and the first condition is the occurrence of a recurring event in the cyclic biological phenomenon.

A twelfth example takes the form of an implantable medical device system comprising a first medical device as of any of the first to eleventh examples and a second implantable medical device configured for communication with the first medical device, wherein the first medical device is an intracardiac pacing device, and the second implantable medical device is a subcutaneous defibrillator.

A thirteenth example takes the form of an implantable medical device system comprising a first medical device as in any of the first to eleventh examples, and a second implantable medical device configured for communication with the first medical device, wherein the first medical device is a subcutaneous defibrillator, and the second implantable medical device is an intracardiac pacing device.

A fourteenth example is a first medical device comprising means for communicating with a second medical device; means for determining a first condition of a first characteristic is present; and means for modifying communication with the second implantable medical device based on the determination; wherein at least one of the first and second medical devices is implantable. A fifteenth example takes the form of a first medical device as in the fourteenth example wherein the first characteristic is a cyclic biological phenomenon and the first condition is the occurrence of a recurring event in the cyclic biological phenomenon.

A sixteenth example is a first medical device comprising a communication module for communicating with a second implantable medical device and a controller operatively coupled to the communication module for at least one of receiving or transmitting messages, the controller configured to optimize communication by: identifying a first characteristic having a possible impact on communication success;

selecting a first condition of the first characteristic on which to trigger an attempt at communication; determining that the first condition of the first characteristic is present and attempting communication with the second implantable medical device; assessing whether the attempted communication was successful; and if the attempted communication was not successful, associating the first condition and first characteristic with a reduced likelihood of communication success.

A seventeenth example takes the form of the first medical device of the sixteenth example wherein the communication module is configured for communication by conducted communication. An eighteenth example takes the form of the first medical device of either the sixteenth or seventeenth examples wherein the first medical device is configured as an implantable medical device. A nineteenth example takes the form of the first medical device of any of the sixteenth to eighteenth examples, wherein the controller is further configured to associate the first condition and first characteristic with an improved likelihood of communication success if the attempted communication was successful. A twentieth example takes the form of the first medical device of any of the sixteenth to nineteenth examples, wherein the controller is configured to further optimize communication by selecting multiple conditions of the first characteristic and repeating the determining and assessing steps for each of multiple conditions of the first characteristic to determine whether the first characteristic can be used to determine a likelihood of communication success. A twenty-first example takes the form of the first medical device of any of the sixteenth to twentieth examples, wherein the controller is configured to identify a second characteristic and test at least a first condition of the second characteristic to determine whether the second characteristic can be used to determine a likelihood of communication success.

A twenty-second example takes the form of the first medical device of any of the sixteenth to twenty-first examples wherein the first characteristic is a detected status of a cardiac cycle, and the first condition is the occurrence of one of a cardiac R-wave or a cardiac T-wave. A twenty-third example takes the form of the first medical device of any of the sixteenth to twenty-first examples wherein the first characteristic is a detected status of a cardiac cycle, and the first condition is the occurrence of a pacing pulse. A twenty-fourth example takes the form of the first medical device of any of the sixteenth to twenty-first examples wherein the first characteristic is a detected status of a respiration cycle, and the first condition is the occurrence of one of an exhale or an inhale. A twenty-fifth example takes the form of the first medical device of any of the sixteenth to twenty-first examples wherein the first characteristic is a detected a transthoracic impedance, and the first condition is the occurrence of one of a maximum impedance or a minimum impedance. A twenty-sixth example takes the form of the first medical device of any of the sixteenth to twenty-first examples wherein the first characteristic is a cyclic biological phenomenon and the first condition is the occurrence of a recurring event in the cyclic biological phenomenon.

A twenty-seventh example takes the form of an implantable medical device system comprising a first medical device as in any of the sixteenth to twenty-sixth examples and a second implantable medical device configured for communication with the first medical device, wherein the first medical device is an intracardiac pacing device, and the second implantable medical device is a subcutaneous defibrillator. A twenty-eighth example takes the form of an

implantable medical device system comprising a first medical device as in any of the sixteenth to twenty-sixth examples, and a second implantable medical device configured for communication with the first medical device, wherein the first medical device is a subcutaneous defibrillator, and the second implantable medical device is an intracardiac pacing device.

A twenty-ninth example is a first medical device comprising a communication module for communicating with a second medical device and a controller operatively coupled to the communication module messages, the controller configured to optimize communication by: determining a first condition of a first characteristic is present; and modifying communication with the second implantable medical device based on the determination; wherein at least one of the first and second medical devices is implantable.

A thirtieth example takes the form of the first medical device of the twenty-ninth example wherein the first characteristic is a cyclic biological phenomenon and the first condition is the occurrence of a recurring event in the cyclic biological phenomenon. A thirty-first example takes the form of the first medical device of the thirtieth example wherein the cyclic biological phenomenon is one of a respiration cycle or a cardiac cycle.

A thirty-second example is a method of communication with an implantable medical device comprising: identifying a characteristic having a possible impact on communication success; selecting a condition of the characteristic on which to trigger an attempt at communication; attempting communication based on the condition of the characteristic occurring; and assessing whether the communication was likely successful.

A thirty-third example takes the form of a method as in the thirty-second example, further comprising: if the communication was successful, associating the characteristic and condition with an improved likelihood of communication success; or if the communication was not successful, associating the characteristic and condition with a reduced likelihood of communication success.

A thirty-fourth example takes the form of a method as in either of the thirty-second or thirty-third examples wherein the characteristic is a cyclic biological phenomenon and the condition is the occurrence of a recurring event in the cyclic biological phenomenon. A thirty-fifth example takes the form of a method as in the thirty-fourth example wherein the cyclic biological phenomenon is one of a respiration cycle or a cardiac cycle.

The above summary is not intended to describe each embodiment or every implementation of the present disclosure. Advantages and attainments, together with a more complete understanding of the disclosure, will become apparent and appreciated by referring to the following description and claims taken in conjunction with the accompanying drawings.

BRIEF DESCRIPTION OF THE DRAWINGS

The disclosure may be more completely understood in consideration of the following description of various illustrative embodiments in connection with the accompanying drawings, in which:

FIG. 1 illustrates a patient having a plurality of implantable medical devices;

FIG. 2 illustrates a block diagram of an implantable medical device;

FIGS. 3-6 are schematic diagrams illustrating communications pulses relative to biological signals;

FIGS. 7-11 are flow diagrams of a several illustrative methods that may be implemented by a medical device or medical device system.

While the disclosure is amenable to various modifications and alternative forms, specifics thereof have been shown by way of example in the drawings and will be described in detail. It should be understood, however, that the intention is not to limit aspects of the disclosure to the particular illustrative embodiments described. On the contrary, the intention is to cover all modifications, equivalents, and alternatives falling within the spirit and scope of the disclosure.

DESCRIPTION

The following description should be read with reference to the drawings in which similar elements in different drawings are numbered the same. The description and the drawings, which are not necessarily to scale, depict illustrative embodiments and are not intended to limit the scope of the disclosure.

FIG. 1 illustrates a patient having a plurality of implantable medical devices. A patient, 10 is shown having a leadless cardiac pacemaker (LCP) 14 implanted inside the heart 12. A subcutaneous implantable defibrillator (SICD) 16 having a left axillary canister and lead 18 extending to electrodes 20 is also shown. The patient may also have an insulin pump 22, a pain pump 24 for delivering pain medication to the shoulder, and/or a nerve stimulator 26 having a lead (not shown) extending to the neck or head.

Other devices could be substituted for those shown in FIG. 1, and the positions shown for each device are not intended to be limiting. Some additional or alternative examples include other pacemakers or defibrillators such as those with transvenous, intracardiac, epicardial, or subcutaneous leads and/or electrodes, a cardiac monitor, left ventricular assist device, spinal cord stimulator, vagus nerve stimulator, gastric electric stimulator, sacral nerve stimulator, and/or any other implantable medical device.

In some embodiments an implanted device may be in communication with one or more extracorporeal devices. The extracorporeal device(s) may be affixed to the patient in a wearable configuration. The extracorporeal device(s) may provide a therapy, for example a nerve stimulation therapy, muscle simulation therapy and/or respiration therapy (e.g. continuation positive airway pressure therapy). Additionally or alternatively the extracorporeal device may provide a diagnostic function, for example a cardiac monitoring function or/and a respiratory monitoring function. Additionally or alternatively the extracorporeal device may serve as a communication link between an implanted device and a device not in physical contact with the patient (i.e. remote from the body). In some embodiments one or more parts/elements of a device or system may be implanted and other portions may be extracorporeal (e.g. a drug pump or a continuous glucose monitor).

These various systems may be interrogated by an external device or a "programmer" 28, which may optionally use one or more skin electrodes 30 to assist with communication to an implanted device. Skin electrodes 30 may be used for conducted communication with an implantable device. Conducted communication is communication via electrical signals which propagate via patient tissue and are generated by more or less ordinary electrodes. By using the existing electrodes, conducted communication does not rely on an antenna and an oscillator/resonant circuit having a tuned center frequency common to both transmitter and receiver.

For other communication approaches such as RF or inductive communication, the programmer 28 may instead use a programming wand or may have an antenna integral with the programmer 28 housing for communication. Though not shown in detail, the programmer 28 may include any suitable user interface, including a screen, buttons, keyboard, touchscreen, speakers, and various other features widely known in the art.

It is unlikely a single patient 10 would have all of the different systems implanted as shown in FIG. 1. For purposes of the present invention, it is assumed that a patient may have at least two implantable systems simultaneously, and it may be beneficial to facilitate communication between the at least two implantable systems. The mode for communication between two implanted systems may be conducted communication, though other approaches (optical, acoustic, inductive or RF, for example) could be used instead.

FIG. 2 illustrates a block diagram of an implantable medical device. The illustration indicates various functional blocks within a device 50, including a processing block 52, memory 54, power supply 56, input/output circuitry 58, therapy circuitry 60, and communication circuitry 62. The I/O circuitry 58 can be coupled to one or more electrodes 64, 66 on the device 50 housing, and may also couple to a header 68 for attachment to one or more leads 70 having additional electrodes 72. The communication circuitry 62 may be coupled to an antenna 74 for radio communication (such as Medradio, ISM, or other RF) and/or may couple via the I/O circuitry 58 to a combination of electrodes 64, 66, 72, for conducted communication.

The processing block 52 will generally control operations in the device 50 and may include a microprocessor or microcontroller and/or other circuitry and logic suitable to its purpose. Processing block 52 may include dedicated circuits or logic for device functions such as converting analog signals to digital data, processing digital signals, detecting events in a biological signal, etc. The memory block may include RAM, ROM, flash and/or other memory circuits for storing device parameters, programming code, and data related to the use, status, and history of the device 50. The power supply 56 typically includes one to several batteries, which may or may not be rechargeable depending on the device 50. For rechargeable systems there would additionally be charging circuitry for the battery (not shown).

The I/O circuitry 58 may include various switches or multiplexers for selecting inputs and outputs for use. I/O circuitry 58 may also include filtering circuitry and amplifiers for pre-processing input signals. In some applications the I/O circuitry will include an H-Bridge to facilitate high power outputs, though other circuit designs may also be used. Therapy block 60 may include capacitors and charging circuits, modulators, and frequency generators for providing electrical outputs. For devices such as insulin and drug pumps the therapy circuit 60 may include a pump or pump actuator coupled to a delivery system for outputting therapeutic material, rather than using the I/O circuitry 58 as would be typical for systems that generate an electrical therapy output.

Communications circuitry 62 may include a frequency generator/oscillator and mixer for creating output signals to transmit via the antenna 74. Some devices 50 may include a separate ASIC for the communications circuitry 62, for example. For devices using an inductive communication output, an inductive coil may be included. Devices may also use optical or acoustic communication approaches, and

suitable circuits, transducers, generators and receivers may be included for these modes of communication as well or instead of those discussed above.

As those skilled in the art will understand, additional circuits may be provided beyond those shown in FIG. 2. For example, some devices **50** may include a Reed switch or other magnetically reactive element to facilitate magnet wakeup or reset of the device by a user. Some systems may omit one or more blocks, for example, an implantable cardiac monitor can omit therapy block **60**, and an LCP may exclude the header **68** for coupling to lead **70**.

In several embodiments, the present invention is directed toward the management and optimization of conducted communication between two implanted medical devices. For example, an LCP may communicate with an SICD. The LCP may, for example, provide a detected heartbeat rate to the SICD in order to assist the SICD in making a therapy determination. In another example, the SICD may request status from the LCP or may direct the LCP to deliver pacing pulses.

Other combinations of systems may use conducted communication between devices for various reasons. For example, if a patient has both a drug pump and a spinal cord stimulator, the drug pump may communicate to the spinal cord stimulator that it is in need of servicing, such that both systems may use their internal annunciating mechanisms to alert the patient that the drug pump requires service. As integrated systems develop, it may become possible to develop simplified devices that omit, for example, standard telemetry or annunciator circuits, and instead use conducted communication to another device that includes full telemetry and annunciator circuits. If telemetry and/or annunciator circuits are omitted in one or more devices, the devices may become smaller and power consumption may be reduced. Thus conducted communication optimization may facilitate development of smaller and/or longer lasting devices in addition to facilitating inter-device coordination for therapy purposes.

FIGS. 3-6 are schematic diagrams illustrating communications packets relative to biological signals. Conducted communication taking place within the body is subject to interference from various biological functions. Respiration and the cardiac cycle are two particular cyclic biological functions of interest, though any other biological function, cyclic or not, may also be addressed using the methods and devices herein.

FIG. 3 illustrates an ECG signal at **100**, and communications by Device A at **102** and Device B at **104**. The ECG shows a QRS complex (a heartbeat) at **106** followed by an interval **108**, and another beat at **110**. In this illustration, Device A sends a data packet **112** during the interval **108** between beats **106**, **110**, and Device B responds with a packet at **114** during the same interval **108**. In another embodiment, Device B may respond after the subsequent beat at **110**.

The phrase "data packet" is used for convenience and should be understood as generically including any type of message sent from one device to another. No particular message/frame structure, type of data, size or other meaning should be implied.

In FIG. 3, the data packets are shown as being sent independent of therapy output by either Device A or Device B. FIG. 4 shows a scheme in which Device B is configured to embed communications in a therapy output. The ECG is shown at **120**, and the therapy output of Device B is shown at **124**, while the communications from Device A are shown

at **126**. The therapy output **124** includes pacing pulses **130** and **136**, which trigger beats **132** and **138** respectively on the ECG **120**.

A detail view of pacing pulse **130** is shown below, and it is seen at **142** that the shape of the pacing pulse **130** includes amplitude modulation embedding a data packet. Other approaches to embedding information in a pacing pulse can be used; the illustration is simplified in FIG. 4 since the present invention is not limited to embedding data in a therapy output nor is it limited to communicating via therapy output-encoded data. Preferably, the embedded data **142** does not affect the effectiveness of therapy of the pacing pulse **130**.

Device A is designed to recognize the data **142** embedded in the pacing pulse **130**. In this example, Device A responds with a data packet after some delay such that data packet **134** follows the end of the QRS complex of beat **132**. In an alternative, Device A could send data packet **134** and Device B would respond with a message embedded in pacing pulse **136**.

The signals for conducted communication are generally intended to have amplitudes that will not cause cardiac or skeletal muscle contraction, with the exception of the case in which the conducted communication is embedded in a stimulus signal, such as pacing pulse **130** with data **132**. The patient should not be aware of the conducted communication signal.

In FIG. 4, the amplitude, duration and/or frequency content of the data packet **134** would be selected to avoid stimulating muscle (skeletal or cardiac). Delivery of the data packet **134** during the QRS complex **132** could cause Device B to miss the signal or interpret it as part of the QRS complex **132**. Therefore, as indicated at **140**, the data packet **134** is preferably delivered after the conclusion of the QRS complex for beat **132**, and preferably ends before delivery of the next pacing pulse **136**.

One approach to delivering data packet **134** would be to call for a fixed delay after the conclusion of the pacing pulse **130**, such as a 300 millisecond delay allowing for the (typically wide) paced QRS complex for beat **132** to be finished. Another approach would be to sense the ECG **120** for termination of the QRS. Each approach has limitations, however. A fixed period may not account for other portions of the ECG, such as the T-wave and/or S-T segment, which can vary in amplitude between patients and even within a patient based on the patient's posture, activity level, etc. Detecting the end of the QRS can be highly dependent on the location of the electrodes used to sense the ECG **120**. Moreover, it may be more effective if both Device A and Device B know when the data packet **134** is expected. Thus a temporal optimization may be highly useful to enhance communication reliability.

As used in the present disclosure, the ECG represents the electrical state of the patient's heart, and is a "characteristic" of the patient. The occurrence of a QRS complex, or other event, in the ECG represents a "condition" of the ECG characteristic. Other characteristics and conditions of characteristics are discussed below.

FIG. 5 illustrates another characteristic and an illustrative example of its use. Here, a transthoracic impedance is shown at **160**, an ECG is shown at **162**, and the communication packets for Device A and Device B are shown at **164** and **166**, respectively. The transthoracic impedance **160** may vary with patient movement, such as respiration. In this sequence, the beats of the ECG are avoided by Device A when it sends out data packets **170** and **180**. However, Device B fails to respond at **172** to data packet **170**.

Reviewing the transthoracic impedance suggests that a high transthoracic impedance at **174** may have negatively affected communication of data packet **170**. This may be treated as a “high condition” of the “characteristic” of transthoracic impedance.

As a result, in this embodiment, the method includes delivering the next packet **180**, both outside of the QRS complex of ECG **162**, but also at a point where the transthoracic impedance **160** is low as shown at **184**. This time, the data packet **180** is received by device B, generating an acknowledgement or other responsive output at **182**. Analysis of the observed characteristic (impedance), suggests that the condition of low transthoracic impedance at **184** may have positively impacted the success of data packet **180**. The illustrative system may record one or both of the success and failure as indicating a likely connection between transthoracic impedance and communication success. Reviewing FIG. **5** alongside FIG. **4** shows that a temporal optimization may take into account multiple characteristics.

The QRS complex is not the only condition which may arise within the ECG characteristic; the T-wave and P-wave, for example, or S-T segment elevation, are also potential conditions that may impact communication success. In FIG. **6**, the ECG is represented at **200**, and communications activity of Devices A and B is shown at **202** and **204** respectively.

Device A attempts communication at **210**, but the communication fails to be observed by Device B, which does not reply at **212** as expected. Closer review of the ECG **200** indicates that the QRS complex is followed by a prominent T-wave shown at **214**. Either of Device A or Device B may assess the ECG and the failed communication attempt and identify a likely relationship, and make an adjustment to the timing of a later communication attempt.

In an alternative example, Device A may not identify whether there is a prominent T-wave; it simply knows that the communication attempt at **210** was not acknowledged. Therefore Device A can adjust the delay after the R-wave detection, shown at **216**, by increasing or decreasing the delay. Here, Device A adjusts such that the next attempt in which data packet **220** is sent occurs with a greater delay **226**. This time, the T-wave **224** is missed, and the data packet **220** is received and acknowledged by Device B at **222**. As illustrated by FIGS. **4-6**, not only are there multiple characteristics to be potentially aware of, but also multiple conditions within the characteristics.

For purposes herein, the ECG, transthoracic impedance, and status of the respiration cycle are three possible characteristics. Another characteristic may include posture, which may be determined by use of an accelerometer or through analysis of some other signal such as skeletal muscle activity, the shape or amplitude of a respiration signal, or ECG morphology from one or more sensing vectors. If the patient is exercising, there may be a detectable cycle associated with motion artifacts generated with the patient’s stride. For example, at each foot-strike if the patient is running, a monitored biological electrical signal or a monitored accelerometer output, for example, may demonstrate a motion artifact. Testing communication success relative to the detected motion artifact may be useful in determining whether and how communication success can be ensured when the artifact is identified. In some examples, the QRS and cardiac signal may actually not be of significant importance to communication success, and other factors may be deemed more likely to create marginal or poor communication, such as those non-ECG items just noted.

It should be noted in this context that an implantable medical device communication system may have multiple reasons for communicating. Some communication is not urgent, as for example, a periodic device status check communication. Other communication is urgent, as for example, a request that a device deliver therapy or prepare to have therapy delivered by a second device. A specific example would be the combination of an LCP and SICD, where the SICD may non-urgently request battery status from the LCP periodically (i.e. weekly), and may on occasion urgently request that the LCP provide a beat rate measurement confirmation prior to the SICD delivering a high power defibrillation shock to the patient, where the LCP rate measurement confirmation would be used to prevent inappropriate shocks due to malsensing.

For another example, an SICD used in combination with a spinal cord stimulator (SCS) may use an urgent communication to allow the SICD to warn the SCS that a high energy defibrillation shock, which could overwhelm the SCS sensing circuitry inputs, is about to be delivered so that the SCS can suspend sensing or isolate its sensing circuitry during the shock. Temporal optimization may be performed using the non-urgent communication requests, to give greater confidence that an urgent request will be received successfully.

FIGS. **7-11** are flow diagrams of a several illustrative methods that may be implemented by a medical device or medical device system. Starting with FIG. **7**, the illustrative method begins with identifying a characteristic at **250**, then selecting a condition at **252** to assess for its potential impact on communication. Next, the condition and characteristic are monitored and an attempt at communication is made, as shown at **254**. The communication effort is then assessed at **256**. The assessment at **256** may be a simple pass/fail assessment, or may include a more complex analysis such as review of the signal-to-noise ratio, signal strength, frame or bit error rate, presence or lack of acknowledgement/handshake, presence or lack of an intended response (therapy or other), measurement of link availability or speed, or other feature of the communication attempt, for example as discussed in commonly assigned U.S. Provisional Patent Application 62/134,726, filed Mar. 18, 2015 and titled COMMUNICATIONS IN A MEDICAL DEVICE SYSTEM WITH LINK QUALITY ASSESSMENT the disclosure of which is incorporated herein by reference.

While several examples rely on electrical signals (myopotential or neuropotential, for example) and potential interference with conducted communication, other combinations are possible. For example, an acoustic communication system may consider heart sounds or respiratory sounds, rather than myopotentials.

Using the assessment at **256**, an association can be generated at **258**. Steps **252**, **254** and **256** may be repeated for other conditions, as indicated at **260**, of the same characteristic. In an additional loop indicated at **262**, other characteristics may also be assessed. If desired, further combinations of characteristics and conditions may be concatenated for testing as well. Optionally, a probability map may be generated, as indicated at **264**. Such a map may include possible communication pathways (such as links and configurations of devices) and sets of probabilities of success given particular parameters, for example. A probability map may be used by an individual device or system to plot out communication strategies, or it may be exported for diagnostic and system design purposes. In addition, as indicated at **266**, settings for the system under test may also

be generated, including, for example, if-then type rules for planning communication timing relative to identified conditions and characteristics.

For example, the ECG may be identified as a characteristic at **250**, and a condition in which the ECG is above a threshold amplitude may be identified, with testing performed at **254** by attempting to communicate a data packet with the ECG at certain amplitude levels, using a looping approach indicated by block **260**. Attempts may be made, for example, with the ECG showing an R-wave as one condition, a T-wave as another condition, and being near baseline during the interval between a T-wave and a subsequent P-wave as yet another condition. The attempts are assessed at **256**, and an association is constructed at **258**. A probability map can be generated at **264**. The system can be appropriately set at **266** to provide temporal optimization such that communication attempts occur at times within the ECG cycle selected to maximize the chance of success. As part of the setting step at **266**, or the mapping at **264**, data may be communicated to other implanted devices regarding the settings to be applied.

If desired and available, variations on the communication signal may also be applied, for example, if variable output signal amplitude or data rate are available, different communication variations may also be applied to assess their effect on communication success. For example, a system may determine whether reducing the data rate or increasing signal amplitude can affect the likelihood of communication success. The same characteristic and condition can be repeatedly tested with different configurations of the communication signal.

The illustration of FIG. 7 takes a prospective, forward looking approach in which communication ability is assessed under selected conditions. FIG. 8 shows an alternative approach in which, given a particular communication attempt, a backward looking review can be undertaken to troubleshoot failures. In FIG. 8, communication is attempted by sending a data packet from one device to another, as shown at **270**. The success, or failure, of the attempt is observed at **272**, and then a physiological characteristic and its condition at the time of the communication attempt is observed as noted at **274**. A correlation is determined, as shown at **276**, and subsequent communication can be planned accordingly by, for example, increasing or reducing a delay relative to an observable phenomenon. The correlation stored at **276** can be tested and retested over time to determine whether it accurately reflects real world conditions.

As an example, with a patient who exercises, there may be a cyclic motion artifact in a detected biological signal associated with the patient's stride, or swim stroke, or other repetitive motion. An attempt at communication is made at **270** and fails at **272**. It is then determined at **274** how the failed communication attempt related, in time, to the motion artifact. The motion artifact may be determined by sensing the communication channel or by observing a separately sensed channel. A correlation is presumed at **276** and stored for later reference, and plans are made at **278** to ensure that a subsequent attempt at communication will occur with a different temporal relationship to the motion artifact (if such an artifact is observed). The plan at **278** may then be communicated throughout the system, if desired.

FIG. 9 provides another example. A communication metric, such as amplitude or signal-to-noise ratio, is measured for a given data packet or communication attempt at **300**. A potentially related physiological condition is also observed, as shown at **302**. A probability of success given the com-

munication metric is generated at **304**. The communication strategy is then configured at **306**, using the condition of the physiological characteristic observed at **302**.

As an example, the respiratory cycle of a patient may be observed by tracking transthoracic impedance over time. A communication attempt may be made and characteristics observed in relation to the communication attempt would be measured in block **300**. The status of the respiration cycle is observed using block **302**, and mapping of the probability of communication success based on the point in the respiration cycle at which communication is attempted can be generated at **304**. Then communication attempts for future use can be configured in block **306**.

If, for example, the phase of respiration at which the transthoracic impedance is at a minimum shows better communication metrics than the point of maximum transthoracic impedance, then the map of probability at **304** would be used to configure communications to occur while minimum transthoracic impedance is occurring. On the other hand, the probability mapping at **304** may determine from the observed communication metrics that the respiration cycle is not likely to impact communication success or failure. If that is the case, then a different characteristic and condition may instead be assessed, and the system would record data indicating that a configuration based on respiration cycle may not be helpful.

FIG. 10 shows another example. A physiological cycle is identified at **360**. Communication is attempted and fails at **362**. (Steps **360** and **362** may be reversed with the physiological cycle identified in response to or after failure). A delay relative to an event within the observed cycle is then configured at **364**, and a retry scheduled at **366**. If the retry fails, the method returns to **364** and configures a different delay relative to the cycle. Multiple retries may be attempted. A retry limit may be enforced, for example, with no more than 3-10 retries (or more or fewer, as desired). Eventually the system either retries to success at **368**, or reaches a timeout **370** in which case an alert may be set relative to communication difficulty.

FIG. 11 shows another example in which different treatment is given to critical and non-critical issues. Here, beginning with a need for communication at **400**, an attempt is made at **402** and fails. It is then determined whether a critical or urgent issue has arisen at **404**. For some urgent issues, the method may execute one or more retries at **406** and then proceed regardless of success, or the retry may be bypassed entirely as indicated by the dashed line.

For example, if an SICD is attempting to cause an LCP to deliver antitachycardia pacing (ATP) because the SICD is about to prepare for defibrillation therapy, no retries may be called if the retry interrupts therapy preparation, as the patient may be suffering a life-threatening situation. On the other hand, if the SICD can attempt to call for ATP without interrupting therapy preparations (which may take several seconds as capacitors are charged to therapy levels), one or several retries **406** may be attempted during therapy preparation.

If a non-critical issue is occurring at **404**, then an adjustment is made for a physiological condition at **410** and a number of retries may be attempted in a loop between **410** and **412**. Upon success, the parameters **414** of a successful communication attempt would be stored for later use. If the number of retries is limited at **412** and the maximum retry limit is reached, then the system may set an error flag or announce an error condition **416**.

A first non-limiting example takes the form of a first medical device comprising: means for communicating with

a second implantable medical device; means for identifying a first characteristic having a possible impact on communication success; means for selecting a first condition of the first characteristic on which to trigger an attempt at communication; means for determining that the first condition of the first characteristic is present and attempting communication with the second implantable medical device; means for assessing whether the attempted communication was successful; and means for associating the first condition and first characteristic with a reduced likelihood of communication success if the attempted communication was not successful.

In this first non-limiting example, the means for communicating may take the form of, for example, the communication subsystem 62 in FIG. 2, optionally including the antenna 74 or, alternatively, for a conducted communication system, the I/O subsystem 58 of FIG. 2 and one or more of electrodes 64, 66 or 72. The means for identifying a first characteristic condition may include an instruction set or sets for performing a step or steps as described in association with block 250 of FIG. 7, which may be stored in memory 54 of FIG. 2 or which can be performed by a processing circuitry 52, or such means may include dedicated circuitry, for example, of the processing circuitry 52.

Further in the first non-limiting example, the means for selecting a first condition of the first characteristic on which to trigger an attempt at communication may include an instruction set stored in memory 54 for operation by processing circuitry 52 of FIG. 2, instructions embedded in processing circuitry 52 of FIG. 2, or dedicated circuitry of the processing circuitry 52 of FIG. 2, which are configured to perform a step as described in association with block 252 of FIG. 7. Also in the first non-limiting example, the means for determining that the first condition of the first characteristic is present and attempting communication with the second implantable medical device may include an instruction set stored in memory 54 for operation by processing circuitry 52 of FIG. 2, instructions embedded in processing circuitry 52 of FIG. 2, or dedicated circuitry of the processing circuitry 52 of FIG. 2, which are configured to perform a step as described in association with block 255 of FIG. 7, in which the processing circuitry is further configured to direct and/or make use of the communications circuitry 62 and antenna 74 and/or the I/O circuitry 58 and one or more of electrodes 64, 66 or 72.

In the first non-limiting example, the noted means for assessing whether the attempted communication was successful may include an instruction set stored in memory 54 for operation by processing circuitry 52 of FIG. 2, instructions embedded in processing circuitry 52 of FIG. 2, or dedicated circuitry of the processing circuitry 52 of FIG. 2, which are configured to perform a step as described in association with block 256 of FIG. 7. Finally in the first non-limiting example, the means for associating the first condition and first characteristic with a reduced likelihood of communication success if the attempted communication was not successful may include an instruction set stored in memory 54 for operation by processing circuitry 52 of FIG. 2, instructions embedded in processing circuitry 52 of FIG. 2, or dedicated circuitry of the processing circuitry 52 of FIG. 2, which are configured to perform a step as described in association with block 258 of FIG. 7, which is configured for operation in the event the attempted communication is not successful.

An extension of this first non-limiting example may further comprise a means for associating the first condition and first characteristic with an improved likelihood of com-

munication success if the attempted communication was successful, which may include an instruction set stored in memory 54 for operation by processing circuitry 52 of FIG. 2, instructions embedded in processing circuitry 52 of FIG. 2, or dedicated circuitry of the processing circuitry 52 of FIG. 2, which are configured to perform a step as described in association with block 258 of FIG. 7, which is configured for operation in the event the attempted communication is not successful.

Another extension of this first non-limiting example further comprises optimization means for selecting multiple conditions of the first characteristic and repeatedly operating the means for determining, means for assessing and means for associating for each of multiple conditions of the first characteristic to determine whether the first characteristic can be used to determine a likelihood of communication success, wherein the optimization means may include an instruction set stored in memory 54 for operation by processing circuitry 52 of FIG. 2, instructions embedded in processing circuitry 52 of FIG. 2, or dedicated circuitry of the processing circuitry 52 of FIG. 2, which are configured to perform a step as described in association with block 260 of FIG. 7.

Still another extension of this first non-limiting example further comprises a means for identifying a second characteristic, wherein the means for determining, means for assessing and means for assessing are operable to test at least a first condition of the second characteristic to determine whether the second characteristic can be used to determine a likelihood of communication success, wherein the means for identifying a second characteristic may include an instruction set stored in memory 54 for operation by processing circuitry 52 of FIG. 2, instructions embedded in processing circuitry 52 of FIG. 2, or dedicated circuitry of the processing circuitry 52 of FIG. 2, which are configured to perform a step as described in association with block 262 of FIG. 7.

A second non-limiting example takes the form of a first medical device comprising means for communicating with a second medical device; means for determining a first condition of a first characteristic is present; and means for modifying communication with the second implantable medical device based on the determination; wherein at least one of the first and second medical devices is implantable.

In this second non-limiting example, the means for communicating may take the form of, for example, the communication subsystem 62 in FIG. 2, optionally including the antenna 74 or, alternatively, for a conducted communication system, the I/O subsystem 58 of FIG. 2 and one or more of electrodes 64, 66 or 72.

Also in this second non-limiting example, the means for determining a first condition of a first characteristic is present may include an instruction set stored in memory 54 for operation by processing circuitry 52 of FIG. 2, instructions embedded in processing circuitry 52 of FIG. 2, or dedicated circuitry of the processing circuitry 52 of FIG. 2, which are configured to obtain information regarding one or more of the state of the patient's ECG, the patient's measurable impedance, a biological cycle, or other measurable element such as the output of an accelerometer to determine a condition of a first characteristic.

Finally in the second non-limiting example, the means for modifying may include an instruction set stored in memory 54 for operation by processing circuitry 52 of FIG. 2, instructions embedded in processing circuitry 52 of FIG. 2, or dedicated circuitry of the processing circuitry 52 of FIG. 2, which are configured to adjust one or more parameters of

a communication subsystem 62 in FIG. 2, optionally including the antenna 74 or, alternatively, for a conducted communication system, the I/O subsystem of FIG. 2.

Those skilled in the art will recognize that the present disclosure may be manifested in a variety of forms other than the specific examples described and contemplated herein. For instance, as described herein, various examples include one or more modules described as performing various functions. However, other examples may include additional modules that split the described functions up over more modules than that described herein. Additionally, other examples may consolidate the described functions into fewer modules. Accordingly, departure in form and detail may be made without departing from the scope and spirit of the present disclosure as described in the appended claims.

What is claimed is:

1. A first medical device comprising a communication module for communicating with a second implantable medical device and a controller operatively coupled to the communication module for at least one of receiving or transmitting messages, the controller configured to optimize communication by:

- identifying a first characteristic having a possible impact on communication success;
- selecting a first condition of the first characteristic on which to trigger an attempt at communication;
- determining that the first condition of the first characteristic is present and attempting communication with the second implantable medical device;
- assessing whether the attempted communication was successful; and
- if the attempted communication was not successful, associating the first condition and first characteristic with a reduced likelihood of communication success;
- wherein the first characteristic is a status of a cyclic biological phenomenon and the first condition is the occurrence of a recurring event in the cyclic biological phenomenon.

2. The first medical device of claim 1 wherein the communication module is configured for communication by conducted communication.

3. The first medical device of claim 1 wherein the first medical device is configured as an implantable medical device.

4. The first medical device of claim 1, wherein the controller is further configured to associate the first condition and first characteristic with an improved likelihood of communication success if the attempted communication was successful.

5. The first medical device of claim 1, wherein the controller is configured to further optimize communication by selecting multiple conditions of the first characteristic and repeating the determining and assessing steps for each of multiple conditions of the first characteristic to determine whether the first characteristic can be used to determine a likelihood of communication success.

6. The first medical device of claim 1, wherein the controller is configured to identify a second characteristic and test at least a first condition of the second characteristic to determine whether the second characteristic can be used to determine a likelihood of communication success.

7. The first medical device of claim 1, wherein the cyclic biological phenomenon is a cardiac cycle, and the first condition is the occurrence of one of a cardiac R-wave or a cardiac T-wave.

8. The first medical device of claim 1, wherein the cyclic biological phenomenon is a cardiac cycle, and the first condition is the occurrence of a pacing pulse.

9. The first medical device of claim 1, wherein the cyclic biological phenomenon is a respiration cycle, and the first condition is the occurrence of one of an exhale or an inhale.

10. The first medical device of claim 1, wherein the cyclic biological phenomenon is a transthoracic impedance, and the first condition is the occurrence of one of a maximum impedance or a minimum impedance.

11. An implantable medical device system comprising a first medical device as recited in claim 1 and a second implantable medical device configured for communication with the first medical device, wherein the first medical device is an intracardiac pacing device, and the second implantable medical device is a subcutaneous defibrillator.

12. An implantable medical device system comprising a first medical device as recited in claim 1, and a second implantable medical device configured for communication with the first medical device, wherein the first medical device is a subcutaneous defibrillator, and the second implantable medical device is an intracardiac pacing device.

13. A method of communication with an implantable medical device comprising:

- identifying a characteristic having a possible impact on communication success;
- selecting a condition of the characteristic on which to trigger an attempt at communication;
- attempting communication based on the condition of the characteristic occurring;
- assessing whether the communication was likely successful and:
 - if the communication was successful, associating the characteristic and condition with an improved likelihood of communication success; or
 - if the communication was not successful, associating the characteristic and condition with a reduced likelihood of communication success; and
- configuring the implantable medical device to monitor the characteristic for occurrence of the condition and avoid communication in response thereto if the characteristic and condition are associated with a reduced likelihood of communication success;
- wherein the characteristic is a cyclic biological phenomenon and the condition is the occurrence of a recurring event in the cyclic biological phenomenon.

14. The method of claim 13 further comprising configuring the implantable medical device to monitor the characteristic for occurrence of the condition and communicate in response thereto if the characteristic and condition are associated with an improved likelihood of communication success.

15. The method of claim 13, wherein the cyclic biological phenomenon is one of a respiration cycle or a cardiac cycle.

16. The method of claim 13 wherein the cyclic biological phenomenon is a cardiac cycle and the first condition is the occurrence of one of a cardiac R-wave or a cardiac T-wave.

17. The method of claim 13 wherein the cyclic biological phenomenon is a cardiac cycle and the first condition is the occurrence of a pacing pulse.

18. The method of claim 13 wherein the cyclic biological phenomenon is a respiration cycle and the first condition is the occurrence of one of an exhale or an inhale.

19. The method of claim 13 wherein the cyclic biological phenomenon is a transthoracic impedance, and the first condition is the occurrence of one of a maximum impedance or a minimum impedance.

专利名称(译)	具有时间优化的医疗设备系统中的通信		
公开(公告)号	US10050700	公开(公告)日	2018-08-14
申请号	US15/058412	申请日	2016-03-02
[标]申请(专利权)人(译)	心脏起搏器股份公司		
申请(专利权)人(译)	心脏起搏器, INC.		
当前申请(专利权)人(译)	心脏起搏器, INC.		
[标]发明人	LUDWIG JACOB M KANE MICHAEL J KOOP BRENDAN E LINDER WILLIAM J MAILE KEITH R STAHMANN JEFFREY E		
发明人	LUDWIG, JACOB M. KANE, MICHAEL J. KOOP, BRENDAN E. LINDER, WILLIAM J. MAILE, KEITH R. STAHMANN, JEFFREY E.		
IPC分类号	H04B7/24 H04L1/12 A61N1/362 H04B13/00 A61N1/372 A61B5/00		
CPC分类号	H04B7/24 A61B5/0028 A61N1/362 A61N1/37217 H04B13/005 H04L1/12 A61N1/37288 A61N1/37252 A61B2560/0209 A61N1/3629		
优先权	62/134752 2015-03-18 US		
其他公开文献	US20160277097A1		
外部链接	Espacenet		

摘要(译)

用于管理植入式医疗设备之间的通信策略的系统和方法。方法包括相对于身体中的一种或多种识别的病症的时间优化。评估所选择的特征,例如代表或链接到生物功能的信号,以确定其可能对通信能力的影响,并且可以开发一种或多种通信策略以优化体内通信。

