



US 20160302697A1

(19) **United States**

(12) **Patent Application Publication**
JOHNSON

(10) **Pub. No.: US 2016/0302697 A1**
(43) **Pub. Date: Oct. 20, 2016**

(54) **SYSTEMS AND METHODS OF DETERMINING LOCATION USING A MEDICAL DEVICE**

(71) Applicant: **ZOLL Medical Corporation**,
Chelmsford, MA (US)

(72) Inventor: **Guy Robert JOHNSON**, Gloucester,
MA (US)

(21) Appl. No.: **15/189,715**

(22) Filed: **Jun. 22, 2016**

Related U.S. Application Data

(63) Continuation of application No. 14/308,368, filed on Jun. 18, 2014, now Pat. No. 9,383,451.

(60) Provisional application No. 61/836,979, filed on Jun. 19, 2013.

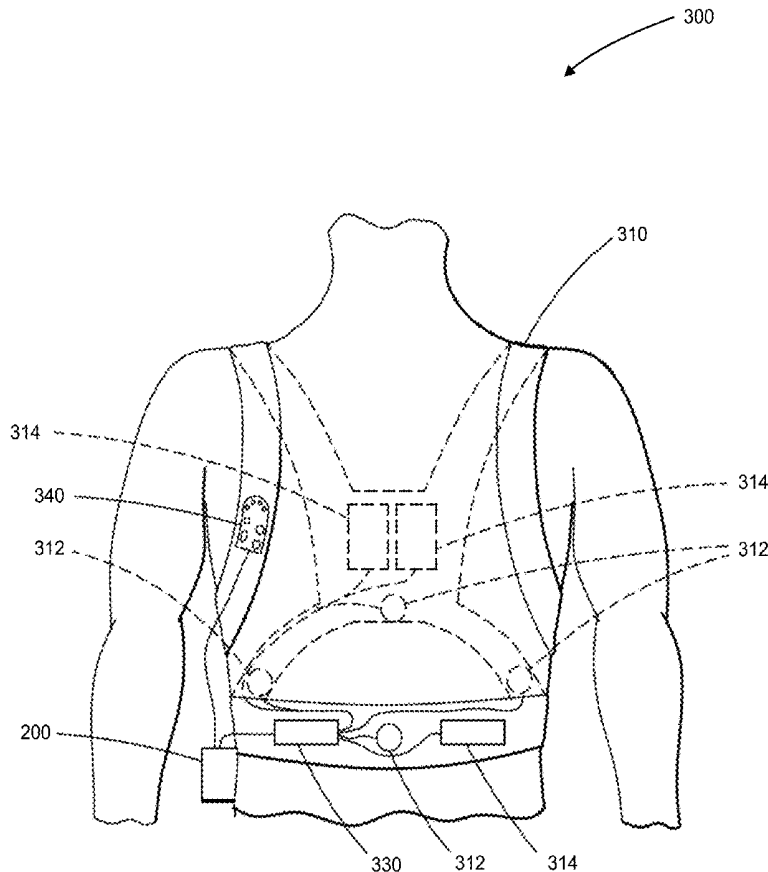
Publication Classification

(51) **Int. Cl.**
A61B 5/11 (2006.01)
A61B 5/0408 (2006.01)
A61B 5/00 (2006.01)
A61B 5/0452 (2006.01)
G01S 19/14 (2006.01)
G01C 21/20 (2006.01)

(52) **U.S. Cl.**
CPC *A61B 5/1112* (2013.01); *G01S 19/14* (2013.01); *G01C 21/206* (2013.01); *A61B 5/0006* (2013.01); *A61B 5/0452* (2013.01); *A61B 5/1118* (2013.01); *A61B 5/7405* (2013.01); *A61B 5/746* (2013.01); *A61B 5/4836* (2013.01); *A61B 5/6804* (2013.01); *A61B 5/04085* (2013.01); *A61B 5/747* (2013.01); *A61B 2562/0219* (2013.01)

(57) **ABSTRACT**

A medical device capable of determining its location is provided. The medical device comprises a memory, one or more antennas, one or more processors coupled with the memory and the one or more antennas, a location manager component executable by the one or more processors. The location manager component is configured to receive first location information from a first location information source and second location information from a second location information source, to rank the first location information source and the second location information source according to a hierarchy of location information sources, the hierarchy of location information sources specifying that the first location information source is of higher rank than the second location information source, determine an approximate location of the medical device based on the first location information, and improve the accuracy of the approximate location based on the second location information.



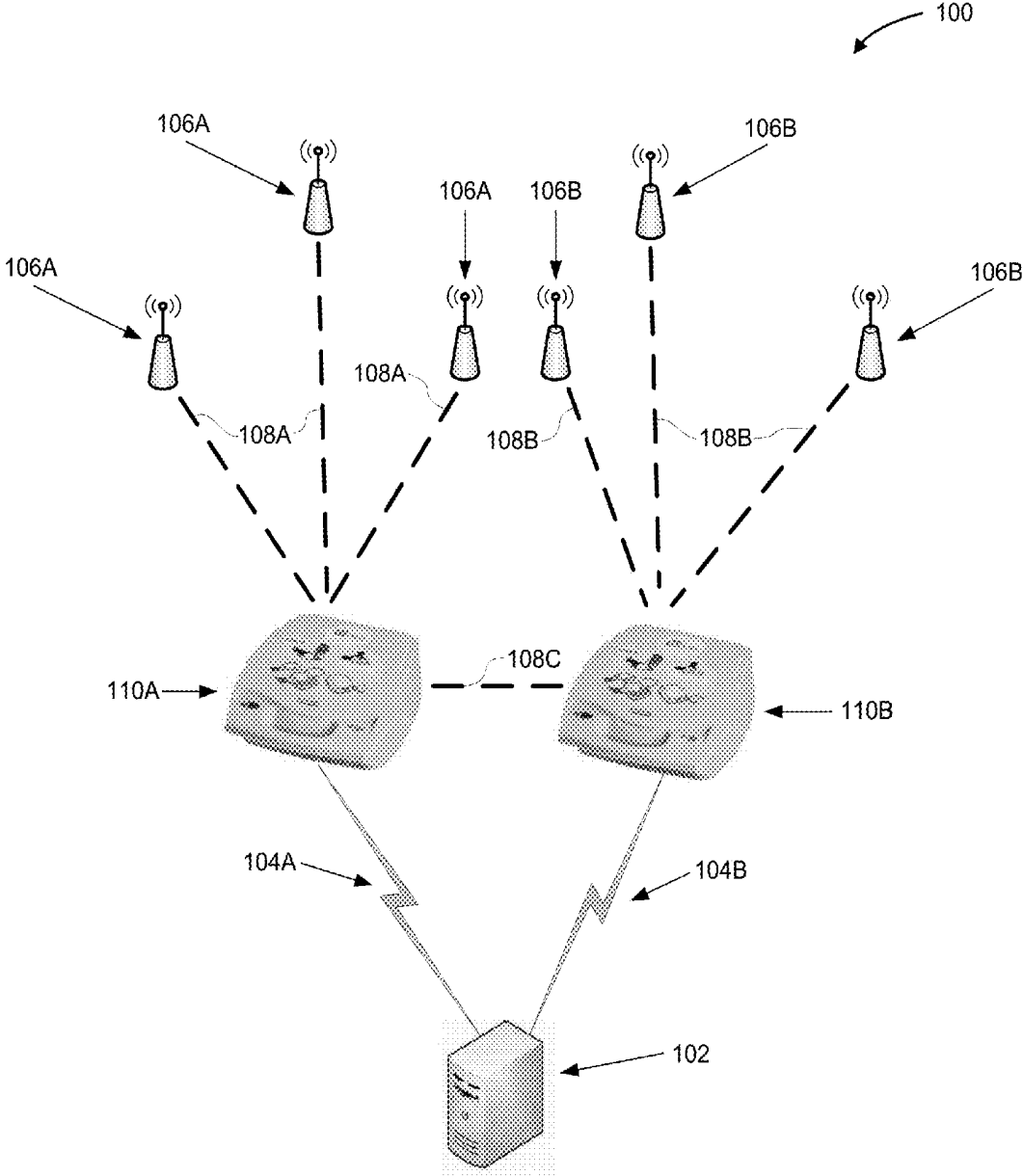


FIG. 1

200
Medical Device
Controller

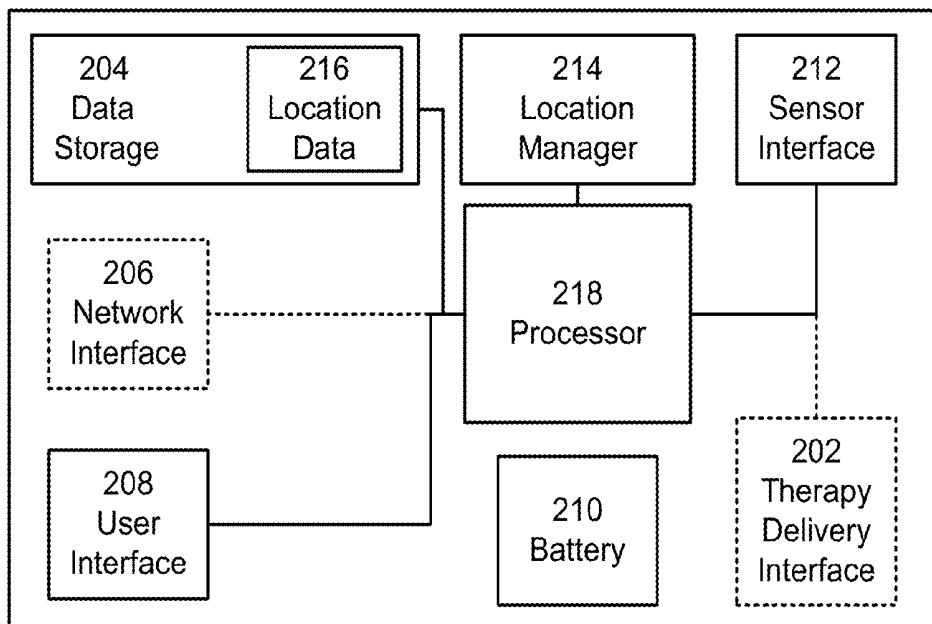


FIG. 2

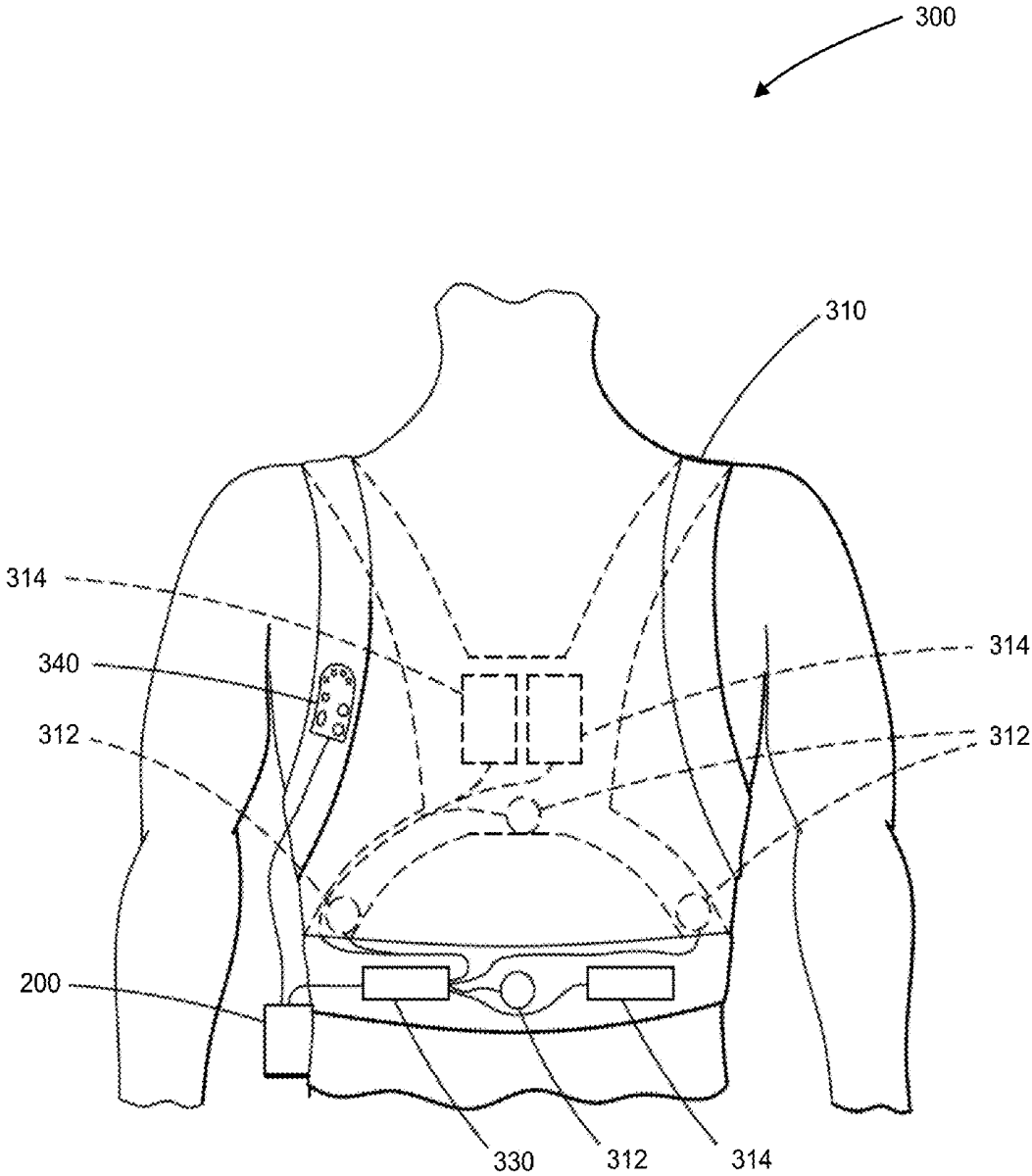


FIG. 3

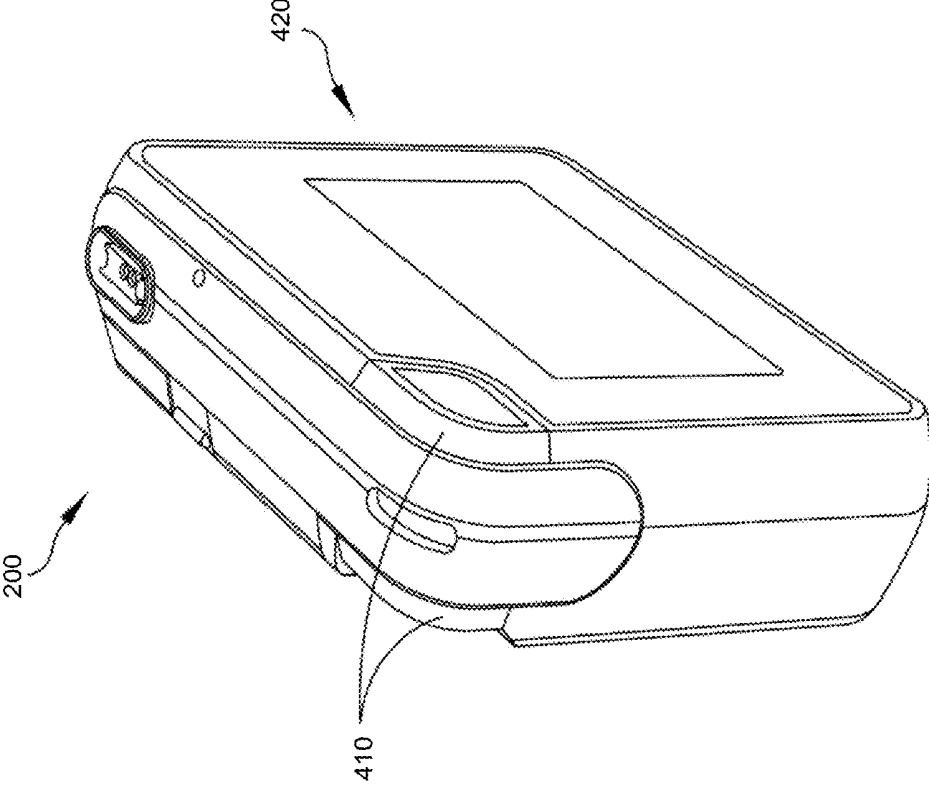


FIG. 4B

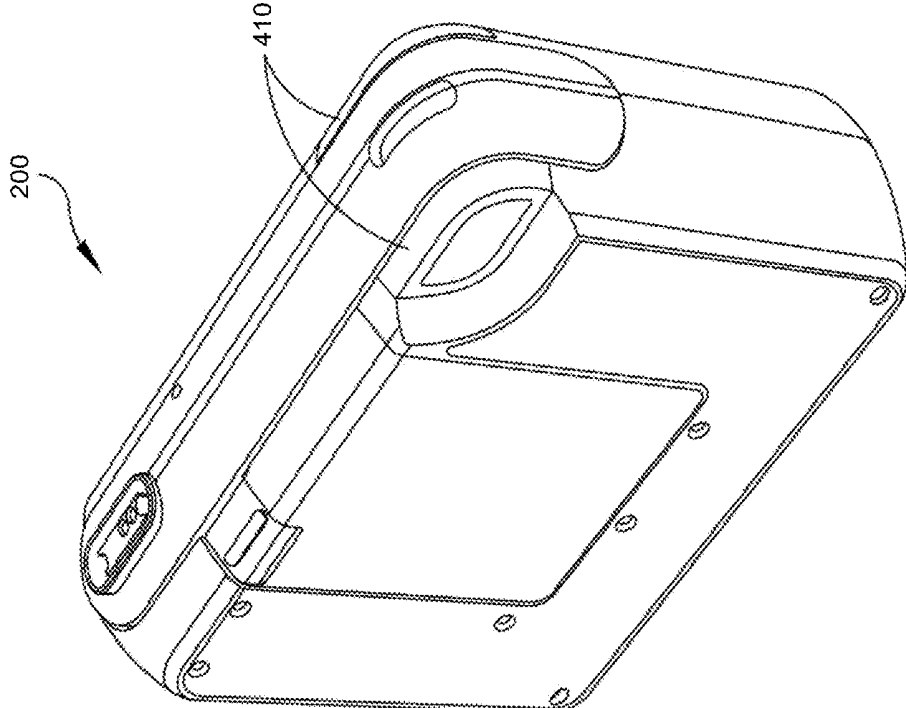


FIG. 4A

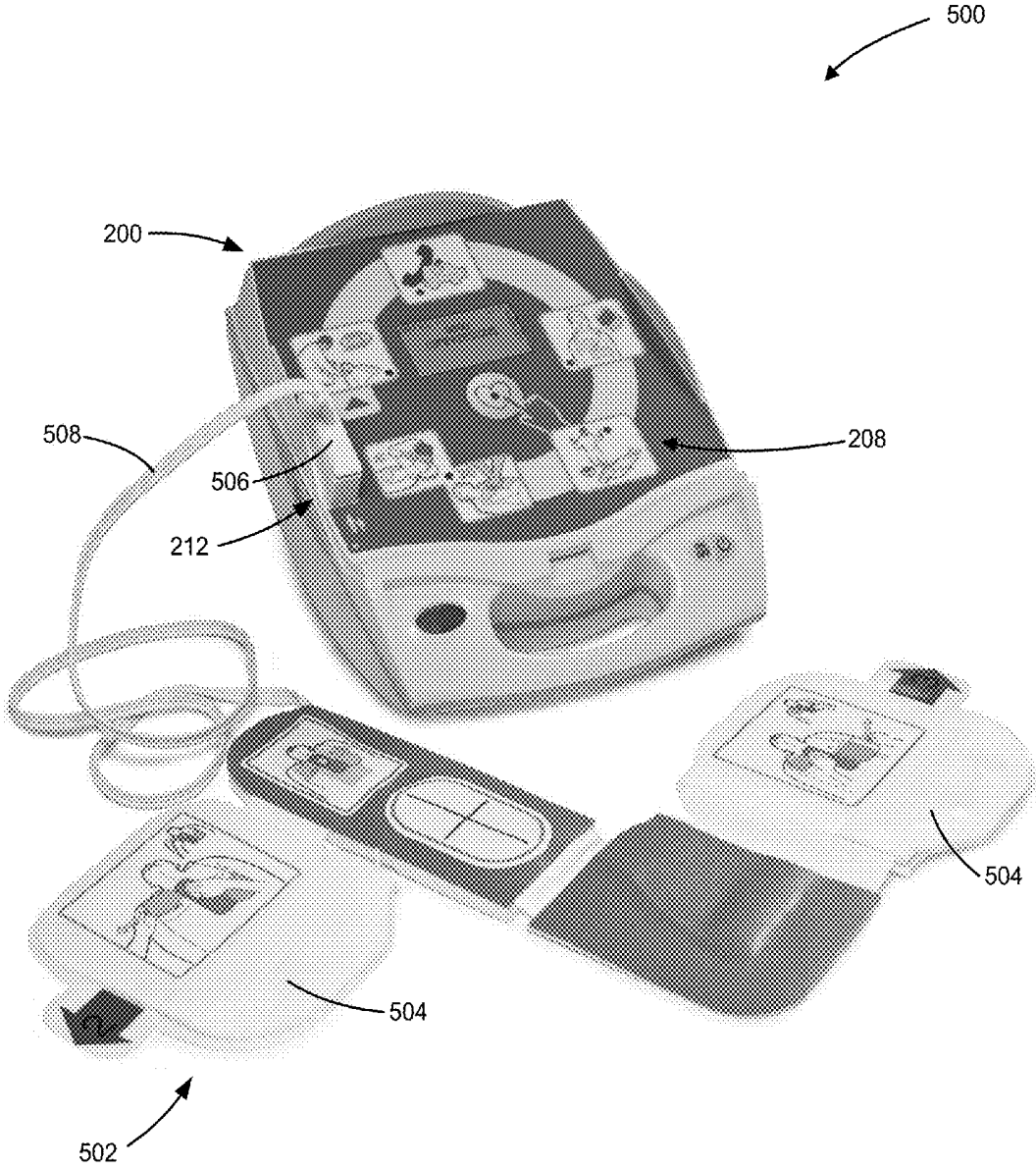


FIG. 5

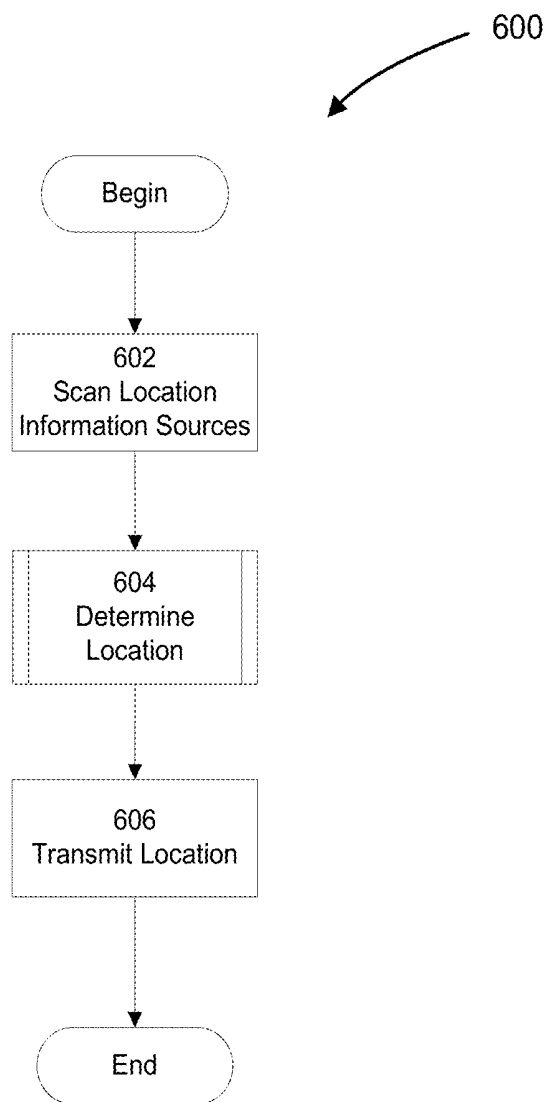


FIG. 6

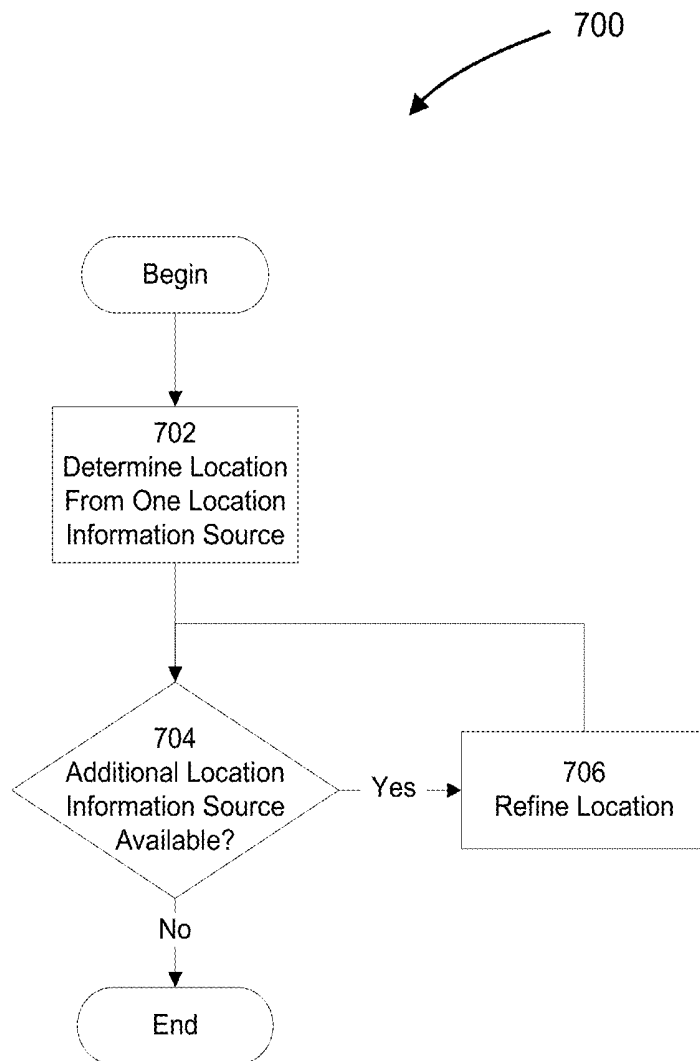


FIG. 7



802 – First Level: Global Positioning System Information Sources
804 – Second Level: Wireless Local Area Network Access Point Information Sources
806 – Third Level: Other Medical Device Information Sources
808 – Fourth Level: Bluetooth Transmitter Information Sources
810 – Fifth Level: Radio-Frequency Identification Information Sources

FIG. 8

**SYSTEMS AND METHODS OF
DETERMINING LOCATION USING A
MEDICAL DEVICE**

CROSS REFERENCE TO RELATED
APPLICATIONS

[0001] This application is a continuation of prior application Ser. No. 14/308,368 titled "SYSTEMS AND METHODS OF DETERMINING LOCATION USING A MEDICAL DEVICE," filed Jun. 18, 2014, which claims benefit of U.S. Provisional Application Ser. No. 61/836,979 titled "SYSTEMS AND METHODS OF DETERMINING LOCATION USING A MEDICAL DEVICE," filed Jun. 19, 2013, each of which is incorporated herein by reference.

BACKGROUND

[0002] 1. Technical Field

[0003] Aspects of the present invention relate to medical devices, and more particularly to apparatus and processes of determining location for medical devices.

[0004] 2. Discussion

[0005] Medical devices monitor patients and/or administer therapy to patients. Some medical devices have a small physical footprint, are lightweight, and are therefore portable by patients, rescuers, or other medical personnel. These portable medical devices are prescribed in both in-patient and out-patient settings. Thus portable medical devices may be used in a wide variety of indoor and outdoor environments.

SUMMARY

[0006] Aspects and embodiments of the present invention provide for processes and apparatus for determining the location of one or more medical devices. For instance, in accordance with one embodiment, a medical device is configured to accurately determine its location. In making this determination, the medical device executes a robust process that consistently and accurately determines the location of the medical device regardless of whether the device is located indoors, where global positioning system (GPS) signals are weak, or outdoors. For example, in some embodiments, the medical device is configured to scan for a plurality of location information sources. The medical device then combines the location information from all of the available location information sources to accurately determine the location of the medical device. By referencing a plurality of location information sources, the medical device increases the reliability of the location determination process because the system is not entirely dependent upon a single source of location information, such as a GPS signal reception. Also, in some embodiments, the medical device is configured to transmit the location of the medical device to a remote system operated by a medical dispatcher or other medical personnel in the area to assist the medical personnel in locating and providing medical care to the patient.

[0007] According to one aspect, a medical device capable of determining its location is provided. The medical device comprises a memory, one or more antennas, one or more processors coupled with the memory and the one or more antennas, a location manager component executable by the one or more processors. The location manager component is configured to receive first location information from a first location information source and second location information

from a second location information source, to rank the first location information source and the second location information source according to a hierarchy of location information sources, the hierarchy of location information sources specifying that the first location information source is of higher rank than the second location information source, determine an approximate location of the medical device based on the first location information, and improve, responsive to the receipt of the first location information and the second location information, the accuracy of the approximate location based on the second location information.

[0008] According to one embodiment, the location manager component is further configured to receive the first location information from at least one of a global positioning system, a wireless local area network access point, another medical device, a Bluetooth device, and a radio-frequency identification device. According to one embodiment, the location manager component is further configured to rank the global positioning system higher than other available location information sources.

[0009] According to one embodiment, the location manager component is further configured to transmit the approximate location of the medical device. According to one embodiment, the medical device is a first medical device and the location manager component is further configured to transmit the approximate location of the first medical device to a second medical device. According to one embodiment, the location manager component is further configured to transmit the approximate location of the first medical device to a remote system via the second medical device.

[0010] According to one embodiment, the location manager component is further configured to receive the first location information from a wireless local area network access point, and the location manager component is further configured to determine the approximate location of the medical device by querying a database of wireless local area network access point locations to determine a location of the wireless local area network access point. According to one embodiment, the location manager component is further configured to determine the approximate location of the medical device by determining a distance between the medical device and the wireless local area network access point at least in part by measuring a signal strength received from the wireless local area network access point. According to one embodiment, the database of wireless local area network access point locations is stored in the memory of the medical device and location manager component is further configured to query the database stored in the memory of the medical device.

[0011] According to one embodiment, the medical device is a first medical device, the first location information source is a second medical device, and wherein the location manager component is further configured to determine the approximate location of the medical device by determining an approximate location of the second medical device.

[0012] According to one aspect, a method of determining location using a medical device, the medical device including one or more processors coupled with a memory and one or more antennas, is provided. The method comprises receiving first location information from a first location information source, receiving second location information from a second location information source, ranking the first location information source and the second location information source according to a hierarchy of location informa-

tion sources, the hierarchy of location information sources specifying that the first location information source is of higher rank than the second location information source, determining an approximate location of the medical device based on the first location information, and improving, responsive to receiving the first location information and the second location information, the accuracy of the approximate location based on the second location information.

[0013] According to one embodiment, receiving the first location information from the first location information source includes receiving the first location information from at least one of a global positioning system, a wireless local area network access point, another medical device, a Bluetooth device, and a radio-frequency identification device. According to one embodiment, ranking the first location information source and the second location information source according to a hierarchy of location information sources includes ranking the global positioning system higher than other available location information sources.

[0014] According to one embodiment, the method further comprises transmitting the approximate location of the medical device. According to one embodiment, the medical device is a first medical device and transmitting the approximate location of the medical device includes transmitting the approximate location of the first medical device to a second medical device. According to one embodiment, the method further comprises transmitting the approximate location of the first medical device to a remote system via the second medical device.

[0015] According to one embodiment, receiving the first location information from the first location information source includes receiving the first location information from a wireless local area network access point and wherein determining the approximate location of the medical device includes querying a database of wireless local area network access point locations to determine a location of the wireless local area network access point. According to one embodiment, determining the approximate location of the medical device further includes determining a distance between the medical device and the wireless local area network access point at least in part by measuring a signal strength received from the wireless local area network access point. According to one embodiment, the database of wireless local area network access point locations is stored in the memory of the medical device and querying the database includes querying the database stored in the memory of the medical device.

[0016] According to one embodiment, the medical device is a first medical device, the first location information source is a second medical device, and wherein determining the approximate location of the medical device includes communicating with the second medical device to determine an approximate location of the second medical device.

[0017] According to one aspect, a non-transitory computer readable medium storing executable instructions configured to instruct at least one controller to perform a method of determining location using a medical device. The non-transitory computer readable medium storing executable instructions to instruct the at least one controller to rank the first location information source and the second location information source according to a hierarchy of location information sources, the hierarchy of location information sources specifying that the first location information source is of higher rank than the second location information source, to determine an approximate location of the medical

device based on the first location information, and to improve, responsive to the receipt of the first location information and the second location information, the accuracy of the approximate location based on the second location information.

[0018] Still other aspects, embodiments, and advantages of these exemplary aspects and embodiments, are discussed in detail below. Moreover, it is to be understood that both the foregoing information and the following detailed description are merely illustrative examples of various aspects, and are intended to provide an overview or framework for understanding the nature and character of the claimed subject matter. Any embodiment disclosed herein may be combined with any other embodiment. References to “an embodiment,” “an example,” “some embodiments,” “some examples,” “an alternate embodiment,” “various embodiments,” “one embodiment,” “at least one embodiment,” “this and other embodiments” or the like are not necessarily mutually exclusive and are intended to indicate that a particular feature, structure, or characteristic described in connection with the embodiment may be included in at least one embodiment. The appearances of such terms herein are not necessarily all referring to the same embodiment.

[0019] Furthermore, in the event of inconsistent usages of terms between this document and documents incorporated herein by reference, the term usage in the incorporated references is supplementary to that of this document; for irreconcilable inconsistencies, the term usage in this document controls. In addition, the accompanying drawings are included to provide illustration and a further understanding of the various aspects and examples, and are incorporated in and constitute a part of this specification. The drawings, together with the remainder of the specification, serve to explain principles and operations of the described and claimed aspects and examples.

BRIEF DESCRIPTION OF DRAWINGS

[0020] The accompanying drawings are not intended to be drawn to scale. In the drawings, components that are identical or nearly identical may be represented by a like numeral. For purposes of clarity, not every component is labeled in every drawing. In the drawings:

[0021] FIG. 1 is an illustration of one example of a medical device location system;

[0022] FIG. 2 is a functional schematic of one example of a medical device controller;

[0023] FIG. 3 is an illustration of one example of an ambulatory medical device;

[0024] FIGS. 4A-B are illustrations of one example of a medical device controller for an ambulatory medical device;

[0025] FIG. 5 is an illustration of one example of an external medical device;

[0026] FIG. 6 is a flowchart of an example process for determining and transmitting the location of the medical device;

[0027] FIG. 7 is a flowchart of an example process for determining the location of a medical device; and

[0028] FIG. 8 is an illustration of one example hierarchy of location information sources.

DETAILED DESCRIPTION

[0029] Some embodiments disclosed herein generally relate to determining an indoor or outdoor location of a

medical device. Location determination indoors is a challenging problem because of building infrastructure. Reinforced concrete, for example, highly attenuates and reflects electromagnetic waves, such as GPS signals emitted by satellites. Accordingly, in some embodiments, the medical device is capable of accessing a plurality of location information sources including, but not limited to, GPS information sources, Wireless Local Area Networks (WLAN) access point information sources, Bluetooth information sources, radio-frequency identification (RFID) sources, and location information available from other medical devices. Embodiments may use any combination of these location information sources to form an accurate determination of the location of the medical device. In addition, the location of the medical device may be transmitted to medical personnel. For example, the medical device may transmit the building address and floor where a patient is located to a medical dispatcher.

[0030] The examples of the methods and apparatuses discussed herein are not limited in application to the details of construction and the arrangement of components set forth in the following description or illustrated in the accompanying drawings. The methods and apparatuses are capable of implementation in other examples and of being practiced or of being carried out in various ways. Examples of specific implementations are provided herein for illustrative purposes only and are not intended to be limiting. In particular, acts, elements and features discussed in connection with any one or more examples are not intended to be excluded from a similar role in any other examples.

[0031] Also, the phraseology and terminology used herein is for the purpose of description and should not be regarded as limiting. Any references to examples or elements or acts of the systems and methods herein referred to in the singular may also embrace examples including a plurality of these elements, and any references in plural to any example or element or act herein may also embrace examples including only a single element. References in the singular or plural form are not intended to limit the presently disclosed systems or methods, their components, acts, or elements. The use herein of “including,” “comprising,” “having,” “containing,” “involving,” and variations thereof is meant to encompass the items listed thereafter and equivalents thereof as well as additional items. References to “or” may be construed as inclusive so that any terms described using “or” may indicate any of a single, more than one, and all of the described terms.

Medical Device Location System

[0032] Various embodiments of the present invention include location systems that automatically determine locations of medical devices, such as the medical devices described herein. These location systems utilize a plurality of location information sources to determine locations of medical devices. One embodiment of a location system in accordance with the present invention is illustrated in FIG. 1. The medical device location system **100** includes a central server **102**, medical devices **110A-B**, communication links **104A-B**, location information sources **106A-B**, and location information links **108A-C**. As depicted in FIG. 1, the medical device can include a plurality of automatic external defibrillator (AED) devices.

[0033] The medical devices **110A-B** scan for location information sources **106** with signal strengths above a

threshold. The location information sources **106** may include, but are not limited to, GPS information sources, WLAN access point information sources, location information sources available from other medical devices, Bluetooth information sources, and RFID information sources. The medical device **110A-B** may include corresponding docking stations. Example docking stations for AEDs are disclosed in co-pending U.S. patent application Ser. No. 14/227,197, titled “SYSTEM AND METHOD FOR WIRELESS AED DOCKING,” filed Mar. 27, 2014, which is hereby incorporated herein by reference herein in its entirety. The medical device docking stations may provide power to the medical device (e.g., through inductive power transfer) and/or communicate (e.g., through a Universal Serial Bus connection) with the medical device. Any combination of the processes described herein may be performed on the medical device or a corresponding medical device docking station.

[0034] In one embodiment, the medical device **110A** detects GPS, WLAN access point, and Bluetooth location information sources represented by the three location information sources **106A** and their corresponding location information links **108A**. The received GPS signal may be used to compute, to a predefined precision and probability, initial location information for the medical device. For instance, the medical device may calculate a 50 meter radius circle within which the medical device has a 99% chance of being located.

[0035] The medical device **110A** may then proceed to utilize additional location information sources **106A** to increase the accuracy of the location information (e.g., to reduce the size of the 50 meter radius circle). In some embodiments, the medical device **110A** is configured to increase the accuracy of the location information by determining whether the location information sources **106A** with which it can communicate are associated with predefined locations.

[0036] In the example illustrated in FIG. 1, the medical device **110A** queries a coordinate database in the central server **102** via the communication link **104A**. The coordinate database stores coordinates of (or other location information associated with) WLAN access points, Bluetooth sources, and RFID tags. The central server **102** returns coordinates (or other relevant location information) associated with the Bluetooth source and the WLAN access point. Other relevant location information may include, but is not limited to, the signal power emitted by the source. The medical device then analyzes the signal strengths received from the WLAN access point and the Bluetooth source to determine the distance between the medical device and the sources. For example, the distance between the source location and the medical device may be calculated using a free-space path loss (FSPL) calculation that models signal power reduction in free-space over straight line distances. It is appreciated that the signal strength analysis may be performed by the central server **102** due to the power hungry nature of the calculation. Accordingly, in one embodiment, the medical device **110A** transmits the received signal strength of the WLAN access point and Bluetooth source to the central server **102**. The central server **102** then returns the calculated result (e.g., the location of the medical device) back to the medical device **110A** or transmits the result directly to a remote system (e.g., a medical dispatching system). In addition, some or all of the calculations associated with determining the medical device location may be performed

by the central server **102** to reduce the required processing capability and power consumption of the medical device. For example, in one embodiment, medical device **110A** transmits all of the information associated with the available location information sources to the central server **102**. The central server **102** then calculates the location of the medical device and returns simply the final computed location to the medical device. In some embodiments, the central server **102** may also transmit the final computed location to a computer system external to the medical device location system **100**.

[0037] The information gathered from the WLAN access point and Bluetooth location information sources may then be used by the medical device **110A** to estimate its location within the initial location information (e.g., 50 meter radius circle) computed based upon the GPS location information. It is appreciated that RFID location information sources may be analyzed in a fashion similar to that of Bluetooth and WLAN access point location information sources. The medical device **110A** may include an RFID reader and may utilize the coordinate database in the central server **102** containing information regarding the location of the RFID tag or tags detected in the area. For example, where the medical device is an AED, the AED may detect an RFID tag in the docking station of the AED.

[0038] In other embodiments, some or all of the functionality of the central server **102** is performed locally by the medical devices. For example, the medical devices may include or have access to a local copy of the database of WLAN access points, Bluetooth sources, and RFID tags. The local copy of the database could also be a subset based upon knowledge of the general area where the medical device is deployed. For example, the medical device may be deployed in an ambulance that serves a specific metropolitan area. The medical device may have a local copy of the database of WLAN access points, Bluetooth sources, and RFID tags only in the specific metropolitan area.

[0039] The medical device **110A** of FIG. 1 also has a location information connection **108C** to another medical device **110B**. The location information connection **108C** between the medical devices **110A-B** allows medical device **110A** to access information sources within the range of medical device **110B** and vice versa. It is appreciated that any of the location information links **108A-C** may carry data in addition to location information. For example, the medical device **110A** may lose its connection **104A** to the central server **102**. The medical device **110A** may route the data through medical device **110B** via location information link **108C** and utilize the connection **104B** between medical device **110B** and the central server **102**.

[0040] It is appreciated that more than two medical devices **110A-B** may be interconnected as shown in FIG. 1. Any number of medical devices may be interconnected to form a rudimentary Ad Hoc network. The Ad Hoc network enables any medical device to communicate with any other medical device in the network in addition to gaining the location information and communication links of any other medical device in the network. In one embodiment, one medical device among a plurality of devices in the Ad Hoc network has an internet connection. In this embodiment, all of the medical devices in the Ad Hoc network have internet connectivity because data may be routed through the one medical device with the internet connection. In addition, the medical devices may have access to any locally stored

information on any other medical device in the Ad Hoc network. For example, one medical device may have a local copy of the database of WLAN access points, Bluetooth sources, and RFID tags. The other medical devices in the Ad Hoc network may access the copy of the database of WLAN access points, Bluetooth sources, and RFID tags on the one medical device rather than accessing the central server **102**.

[0041] The medical devices **110A-B** may also utilize location information from mobile devices (e.g., cellular phones and tablets). For example, individuals within range of the medical device may have an application on their mobile device that enables the medical device to communicate with the mobile device (e.g., via Bluetooth) and query the phone for location information. The location information provided by the phone may be based on GPS, cellular triangulation or WLAN access point data, or any combination thereof. In addition, the medical devices may route data to the central server **102** via the internet connection of the mobile device. The locating determination system described with regard to FIG. 1 may be performed by a medical device controller integrated with or communicatively coupled with the medical device.

Medical Device Controller

[0042] FIG. 2 illustrates a medical device controller **200** that is configured to monitor a patient and the patient's environment for events of interest and to determine the location of the medical device. The medical device controller **200** may, for example, be configured for use in a wearable defibrillator or an Automated External Defibrillator (AED). As shown in FIG. 2, the medical device controller **200** includes a processor **218**, a sensor interface **212**, a location manager **214**, a therapy delivery interface **202**, data storage **204**, a communication network interface **206**, a user interface **208**, and a battery **210**. The data storage **204** includes location data **216**. Further, in this illustrated example, the battery **210** is a rechargeable 3 cell 2200 mAh lithium ion battery pack that provides electrical power to the other device components with a minimum 24 hour runtime between charges. It is appreciated that the battery capacity, runtime, and type (e.g., lithium ion, nickel-cadmium, or nickel-metal hydride) may be changed to best fit the specific application of the medical device controller **200**.

[0043] According to the embodiment illustrated in FIG. 2, the processor **218** is coupled to the sensor interface **212**, the therapy delivery interface **202**, the data storage **204**, the network interface **206**, and the user interface **208**. The processor **218** performs a series of instructions that result in manipulated data which are stored in and retrieved from the data storage **204**. According to a variety of embodiments, the processor **218** is a commercially available processor such as a processor manufactured by Texas Instruments, Intel, AMD, Sun, IBM, Motorola, Freescale, and ARM Holdings. However, the processor **218** may be any type of processor, multiprocessor or controller, whether commercially available or specially manufactured. For instance, according to one embodiment, the processor **218** may include a power conserving processor arrangement such as described in co-pending U.S. patent application Ser. No. 12/833,096, titled "SYSTEM AND METHOD FOR CONSERVING POWER IN A MEDICAL DEVICE," filed Jul. 9, 2010 (hereinafter the "'096 application"), which is hereby incorporated herein by reference herein in its entirety. In another embodiment, the processor **218** is an Intel® PXA270.

[0044] In addition, in several embodiments the processor 218 is configured to execute a conventional real-time operating system (RTOS), such as RTLinux. In these embodiments, the RTOS may provide platform services to application software, such as some embodiments of the location manager 214 which is discussed further below. These platform services may include inter-process and network communication, file system management and standard database manipulation. One or more of many operating systems may be used, and embodiments are not limited to any particular operating system or operating system characteristic. For instance, in some embodiments, the processor 218 may be configured to execute a non-real time operating system, such as BSD or GNU/Linux.

[0045] In some embodiments, the location manager 214 is configured to determine the location of the medical device. Particular examples of the processes performed by the location manager 214 are discussed further below with reference to FIGS. 6-7 and within the Location Determination Processes section.

[0046] The location manager 214 may be implemented using hardware or a combination of hardware and software. For instance, in one embodiment, the location manager 214 is implemented as a software component that is stored within the data storage 212 and executed by the processor 218. In this embodiment, the instructions included in the location manager 214 program the processor 218 to determine the location of the medical device. In other embodiments, location manager 214 may be an application-specific integrated circuit (ASIC) that is coupled to the processor 218 and tailored to determine the location of the medical device. Thus, embodiments of the location manager 214 are not limited to a particular hardware or software implementation.

[0047] In some embodiments, the components disclosed herein, such as the location manager 214, may read parameters that affect the functions performed by the components. These parameters may be physically stored in any form of suitable memory including volatile memory, such as RAM, or nonvolatile memory, such as a flash memory or magnetic hard drive. In addition, the parameters may be logically stored in a propriety data structure, such as a database or file defined by a user mode application, or in a commonly shared data structure, such as an application registry that is defined by an operating system. In addition, some embodiments provide for both system and user interfaces, as may be implemented using the user interface 208, that allow external entities to modify the parameters and thereby configure the behavior of the components.

[0048] The data storage 204 includes a computer readable and writeable nonvolatile data storage medium configured to store non-transitory instructions and data. In addition, the data storage 204 includes processor memory that stores data during operation of the processor 218. In some embodiments, the processor memory includes a relatively high performance, volatile, random access memory such as dynamic random access memory (DRAM), static memory (SRAM) or synchronous DRAM. However, the processor memory may include any device for storing data, such as a non-volatile memory, with sufficient throughput and storage capacity to support the functions described herein. According to several embodiments, the processor 218 causes data to be read from the nonvolatile data storage medium into the processor memory prior to processing the data. In these embodiments, the processor 218 copies the data from the

processor memory to the non-volatile storage medium after processing is complete. A variety of components may manage data movement between the non-volatile storage medium and the processor memory and embodiments are not limited to particular data management components. Further, embodiments are not limited to a particular memory, memory system or data storage system.

[0049] The instructions stored on the data storage 204 may include executable programs or other code that can be executed by the processor 218. The instructions may be persistently stored as encoded signals, and the instructions may cause the processor 218 to perform the functions described herein. The data storage 204 also may include information that is recorded, on or in, the medium, and this information may be processed by the processor 218 during execution of instructions. The medium may, for example, be optical disk, magnetic disk or flash memory, among others, and may be permanently affixed to, or removable from, the medical device controller 200.

[0050] In some embodiments, the location data 216 includes data used by the location manager 214 to determine the location of the medical device. More particularly, according to the illustrated embodiment, the location data 216 includes information that identifies the plurality of location information sources and any information associated with the plurality of location information sources. For example, the location data may include the GPS coordinates associated with a specific location information source (e.g., an RFID tag, a Bluetooth source, or a WLAN access point).

[0051] As illustrated in FIG. 2, the location manager 214 and the location data 216 are separate components. However, in other embodiments, the location manager 214 and the location data 216 may be combined into a single component or re-organized so that a portion of the data included in the location manager 214, such as executable code that causes the processor 218 to determine the location of the medical device, resides in the location data 216, or vice versa. Such variations in these and the other components illustrated in FIG. 2 are intended to be within the scope of the embodiments disclosed herein.

[0052] The location data 216 may be stored in any logical construction capable of storing information on a computer readable medium including, among other structures, flat files, indexed files, hierarchical databases, relational databases or object oriented databases. These data structures may be specifically configured to conserve storage space or increase data exchange performance. In addition, various embodiments organize the location data 216 into particularized and, in some cases, unique structures to perform the functions disclosed herein. In these embodiments, the data structures are sized and arranged to store values for particular types of data, such as integers, floating point numbers, character strings, arrays, linked lists, and the like.

[0053] As shown in FIG. 2, the medical device controller 200 includes several system interface components 202, 206, and 212. Each of these system interface components is configured to exchange, i.e. send or receive, data with one or more specialized devices that may be located within the housing of the medical device controller 200 or elsewhere. The components used by the interfaces 202, 206, and 212 may include hardware components, software components or a combination of both. Within each interface, these components physically and logically couple the medical device controller 200 to the specialized devices. This physical and

logical coupling enables the medical device controller **200** to both communicate with and, in some instances, power or control the operation of the specialized devices. These specialized devices may include physiological sensors, therapy delivery devices, and computer networking devices.

[0054] According to various embodiments, the hardware and software components of the interfaces **202**, **206** and **212** implement a variety of coupling and communication techniques. In some embodiments, the interfaces **202**, **206**, and **212** use leads, cables or other wired connectors as conduits to exchange data between the medical device controller **200** and specialized devices. In other embodiments, the interfaces **202**, **206**, and **212** communicate with specialized devices using wireless technologies such as radio frequency or infrared technology. The software components included in the interfaces **202**, **206**, and **212** enable the processor **218** to communicate with specialized devices. These software components may include elements such as objects, executable code, and populated data structures. Together, these software components provide software interfaces through which the processor **218** can exchange information with specialized devices. Moreover, in at least some embodiments where one or more specialized devices communicate using analog signals, the interfaces **202**, **206**, and **212** further include components configured to convert analog information into digital information, and vice versa, to enable the processor **218** to communicate with specialized devices.

[0055] As discussed above, the system interface components **202**, **206**, and **212** shown in the embodiment of FIG. 2 support different types of specialized devices. For instance, the components of the sensor interface **212** couple the processor **218** to one or more physiological sensors such as a body temperature sensors, respiration monitors, and electrocardiogram (ECG) sensing electrodes, one or more environmental sensors such as atmospheric thermometers, airflow sensors, video sensors, audio sensors, accelerometers, GPS locators, and hygrometers. In these embodiments, the sensors may include sensors with a relatively low sampling rate, such as wireless sensors.

[0056] The components of the therapy delivery interface **202** couple one or more therapy delivery devices, such as capacitors, defibrillator electrodes, pacing electrodes, or mechanical chest compression devices, to the processor **218**. It is appreciated that the functionality of the therapy delivery interface **202** may be incorporated into the sensor interface **212** to form a single interface coupled to the processor **218**. In addition, the components of the network interface **206** couple the processor **218** to a computer network via a networking device, such as a bridge, router or hub. According to a variety of embodiments, the network interface **206** supports a variety of standards and protocols, examples of which include USB (via, for example, a dongle to a computer), TCP/IP, Ethernet, Wireless Ethernet, Bluetooth, Zig-Bee, M-Bus, CAN-bus, IP, IPV6, UDP, DTN, HTTP, FTP, SNMP, CDMA, NMEA and GSM. It is appreciated that the network interface **206** of medical device controller **200** may enable communication between other medical device controllers within a certain range.

[0057] To ensure data transfer is secure, in some embodiments, the medical device controller **200** can transmit data via the network interface **206** using a variety of security measures including, for example, TLS, SSL or VPN. In other embodiments, the network interface **206** includes both a physical interface configured for wireless communication

and a physical interface configured for wired communication. According to various embodiments, the network interface **206** enables communication between the medical device controller **200** and a variety of personal electronic devices including computer enabled glasses and earpieces.

[0058] In one embodiment, the network interface **206** is also capable of transmitting and/or receiving information to assist in medical device location determination. This may be accomplished through one or more antennas integrated with or coupled to the network interface **206**, and consequently coupled to the processor **218**. For example, the one or more antennas may receive GPS signals from satellites. The GPS signals may be used to determine the location of the medical device with a given level of accuracy and/or used to determine the current time. In other embodiments, an RFID reader is integrated or coupled to the network interface **206**, and subsequently coupled to the processor **218**. The RFID reader may be used at least in part to determine the location of the medical device. For example, the medical device may have access to a coordinate database that includes RFID tag locations and determine its location at least in part by detecting an RFID tag with a known location within a given range of the medical device. The database may be stored locally in the memory of the medical device controller or in a central server. It is appreciated that the systems described above with regard to connecting to various networks (e.g., wireless Ethernet or Bluetooth) may be used as probes to find known reference points within a given range. For example, the medical device controller **200** may detect a WLAN access point or a Bluetooth source with known positions stored in a database accessible by the medical device controller **200**. The medical device controller **200** may be able to determine its location at least in part by determining the distance between the medical device controller and the known location of the WLAN access point or Bluetooth source. This may be accomplished at least in part by analyzing the signal strength of the WLAN access point and Bluetooth source.

[0059] It is appreciated that the medical device location computation may be performed in a collaborative fashion with the central server to minimize the computations performed by the medical device controller. For example, the medical device may transmit the detected sources and their respective signal strengths. The central server may then compute the location of the medical device by analyzing the signal strengths and coordinates associated with the sources. The computed medical device location may then transmit to the medical device or a remote system (e.g., a remote system operated by medical personnel).

[0060] In another embodiment, the medical device controller combines a plurality of information sources to determine the location of the medical device with the highest level of accuracy possible. The medical device location computation may be performed consistent with a hierarchy of location information sources. For example, the highest ranked available location information source may be used to determine the medical device location with a given level of accuracy. Additional location information sources are then used to improve the level of accuracy of the medical device location.

[0061] Thus, the various system interfaces incorporated in the medical device controller **200** allow the device to interoperate with a wide variety of devices in various contexts. For instance, some embodiments of the medical

device controller **200** are configured to perform a process of sending critical events and data to a centralized server via the network interface **206**. An illustration of a process in accord with these embodiments is disclosed in U.S. Pat. No. 6,681,003, titled "DATA COLLECTION AND SYSTEM MANAGEMENT FOR PATIENT-WORN MEDICAL DEVICES," and issued on Jan. 20, 2004, which is hereby incorporated herein by reference in its entirety.

[0062] As illustrated in FIG. 2, the therapy delivery interface **202** and the network interface **206** are optional and may not be included in every embodiment. For instance, a heart rate monitor may employ the medical device controller **200** to issue alarms but may not include a therapy delivery interface **202** to treat cardiac abnormalities. Similarly, an ambulatory defibrillator may include the medical device controller **200** to provide alarm functionality but may not include a network interface **206** where, for example, the ambulatory defibrillator is designed to rely on the user interface **208** to announce alarms.

[0063] The user interface **208** shown in FIG. 2 includes a combination of hardware and software components that allow the medical device controller **200** to communicate with an external entity, such as a patient or other user. These components may be configured to receive information from actions such as physical movement, verbal intonation or thought processes. In addition, the components of the user interface **208** can provide information to external entities. Examples of the components that may be employed within the user interface **208** include keyboards, mouse devices, trackballs, microphones, electrodes, touch screens, printing devices, display screens, and speakers. In some embodiments, the electrodes include an illuminating element, such as an LED. In other embodiments, the printing devices include printers capable of rendering visual or tactile (Braille) output.

[0064] The medical device controller **200** has a variety of potential applications and is well suited to devices that notify external entities of a variety of events, some of which may require a predetermined response from the external entity. Predetermined responses may include any response that is appropriate given the event being reported. Predetermined responses may include acknowledgment of the alarm, entry of information indicating that the alarm is being addressed and rectification of the event or condition that triggered the alarm. Examples of devices to which the medical device controller **200** is well suited include critical care medical devices, such as a wearable ambulatory external defibrillator, an AED, or a mechanical chest compression device, such as the Autopulse® system from ZOLL Medical Corporation of Chelmsford, Mass.

Example Ambulatory Medical Device

[0065] In one embodiment, the medical device is a wearable defibrillator that includes a garment (e.g., a vest or belt) that is worn by the patient. The wearable defibrillator monitors the patient's ECG with sensing electrodes, detects life-threatening arrhythmias, and delivers a cardioverting or defibrillating shock through the therapy pads if treatment is necessary. FIG. 3 illustrates a wearable defibrillator, such as a LifeVest® wearable cardioverter defibrillator available from ZOLL Medical Corporation of Chelmsford, Mass. As shown, the wearable defibrillator **300** includes a harness **310** having a pair of shoulder straps and a belt that is worn about the torso of a patient. The wearable defibrillator **300** includes

a plurality of ECG sensing electrodes **312** that are attached to the harness **310** at various positions about the patient's body and electrically coupled to the sensor interface **212** of the medical device controller **200** via a connection pod **330**. The plurality of ECG sensing electrodes **312**, which may be dry-sensing capacitance electrodes, are coupled to the medical device controller **200** to monitor the cardiac function of the patient and generally include a front/back pair of ECG sensing electrodes and a side/side pair of ECG sensing electrodes. Additional ECG sensing electrodes may be provided, and the plurality of ECG sensing electrodes **312** may be disposed at varying locations about the patient's body.

[0066] The wearable defibrillator **300** also includes a plurality of therapy electrodes **314** that are electrically coupled to the medical device controller **200** via the connection pod **330** and which are configured to deliver one or more therapeutic defibrillating shocks to the body of the patient, if it is determined that such treatment is warranted. The connection pod **330** electrically couples the plurality of ECG sensing electrodes **312** and the plurality of therapy electrodes **314** to the therapy delivery interface **202** of the medical device controller **200**, and may include electronic circuitry. The connection pod **330** may also include other electronic circuitry, such as a motion sensor or accelerometer through which patient activity may be monitored.

[0067] As shown in FIG. 3, the wearable defibrillator **300** also includes a user interface pod **340** that is electrically coupled to, or integrated in with, the user interface **208** of the medical device controller **200**. The user interface pod **340** can be attached to the patient's clothing or to the harness **310**, for example, via a clip (not shown) that is attached to a portion of the interface pod **340**. Alternatively, the user interface pod **340** may simply be held in a person's hand. In some embodiments, the user interface pod **340** may communicate wirelessly with the user interface **208** of the medical device controller **200**, for example, using a Bluetooth®, Wireless USB, ZigBee, Wireless Ethernet, GSM, or other type of communication interface.

[0068] The user interface pod **340** includes a number of buttons by which the patient, or a bystander can communicate with the medical device controller **200**, and a speaker by which the medical device controller **200** may communicate with the patient or the bystander. For example, where the medical device controller **200** determines that the patient is experiencing cardiac arrhythmia, the medical device controller **200** may issue an audible alarm via a speaker on the medical device controller **200** or the user interface pod **340** alerting the patient and any bystanders to the patient's medical condition. The medical device controller **200** may also instruct the patient to press and hold one or more buttons on the user interface **208** of the medical device controller **200** or on the user interface pod **340** to indicate that the patient is conscious, thereby instructing the medical device controller **200** to withhold the delivery of one or more therapeutic defibrillating shocks. If the patient does not respond, the device may presume that the patient is unconscious, and proceed with the treatment sequence, culminating in the delivery of one or more defibrillating shocks to the body of the patient.

[0069] In another embodiment, the functionality of the user interface pod **340** is integrated into the housing of the ambulatory medical device controller **200**. FIGS. 4A-B illustrates such an example of the ambulatory medical device controller **200**. The ambulatory medical device con-

troller 200 includes two response buttons 410 on opposing sides of the housing of the ambulatory medical device controller 200. As shown in FIGS. 4A-B, the response buttons 410 are recessed to reduce the likelihood of accidental activation (e.g., a patient falling on the response button). The ambulatory medical device controller 200 also includes, in this embodiment, a display screen 420 and a speaker to enable the communication of audible and visual stimuli to the patient. It is appreciated that the response buttons 410 do not have to be placed on opposing sides of the housing as illustrated in FIGS. 4A-B. The response buttons, for example, may be located adjacent to each other in the housing the ambulatory medical device controller. The adjacent placement of the response buttons may make it easier for individuals with smaller hands or less dexterity to engage the response buttons.

[0070] Another example of a medical device is the ambulatory external defibrillator described in FIG. 3 of the '096 application. In at least one embodiment, the ambulatory defibrillator 300 illustrated in FIG. 3 of the '096 application may employ the medical device controller 200, as disclosed in the present application, as a substitute for the portable treatment controller 200 described in the '096 application. In such an embodiment, the ECG Electrodes and Therapy Pads illustrated in FIG. 3 of the '096 application may be logically and physically coupled to the medical device controller 200 via the sensor interface 212 and the therapy delivery interface 202, respectively. While some of the embodiments disclosed herein are directed to medical device controllers in wearable ambulatory medical devices, the medical device controller 200 is well suited for other medical devices including other types of AEDs.

Example Automated Medical Device

[0071] In one embodiment, the medical device is an AED. AEDs are small portable defibrillators that are capable of monitoring cardiac rhythms, determining when a defibrillating shock is necessary, and administering the defibrillating shock either automatically, or under the control of a trained rescuer (e.g., an EMT or other medically training personnel). The AED, in addition, may be configured to provide counseling to an operator as to how to perform cardiopulmonary resuscitation (CPR). FIG. 5 illustrates an AED, such as an automated external defibrillator available from ZOLL Medical Corporation of Chelmsford, Mass. As shown, the AED 500 includes a medical device controller 200 and an electrode assembly 502.

[0072] The electrode assembly 502 includes one or more sensing electrodes 504 (e.g., ECG sensors), one or more therapy electrodes 504 (e.g., defibrillation pads), a connector 506, wiring 508 electrically coupling the connector 506 to the one or more sensing electrodes 504 and one or more therapy electrodes 504. As shown in FIG. 5, the connector is configured to couple the electrode assembly 502 to the medical device controller 200 and, more specifically, the one or more sensing electrodes to the sensor interface 212 and the one or more therapy electrodes to the therapy delivery interface 202.

[0073] The medical device controller 200 of the AED 500 is configured to detect the cardiac rhythm of the patient and provide defibrillating shocks to the patient as appropriate. This process is similar to the process described with regard to medical device controller 200 of the ambulatory medical device 300. The user interface 208 of the AED 500 may

include a variety of components configured to communicate with the operator including, but not limited to, a display screen, a speaker, and one or more buttons. In this embodiment, the AED 500 includes a display screen to display notifications to an operator. The notifications may provide instructions to the operator regarding the proper administration of CPR to the patient. The notifications on the display may be accompanied by audible alerts from the speaker to further assist the operator in administering CPR to the patient.

[0074] According to various embodiments, the AED 500 and the wearable defibrillator 300 utilize the network interface 206 of the medical device controller 200 to determine location information and transmit the location information to the appropriate medical personnel. While some of the embodiments disclosed herein are directed to medical devices for cardiac monitoring and treatment, other embodiments are directed to other types of medical devices that compute their location through a variety of processes executed by the medical device controller 200.

Medical Device Location Determination Processes

[0075] Various embodiments implement and enable processes through which a medical device determines and transmits its location. FIG. 6 illustrates one such process 600 that includes acts of scanning location information sources 602, determining the location of the medical device 604, and transmitting the location of the medical device 606.

[0076] In act 602, the medical device scans for location information sources. The location information sources may include GPS, WLAN access points, Bluetooth sources, RFID sources, and other medical devices. In one embodiment, the act 602 includes the act of determining a signal strength for each location information source and determining whether the signal strength is above a threshold. Where the signal strength is above the threshold, the location information source is used by the medical device as an available location information source in act 604. Otherwise, the signal strength is deemed to be too poor and the location information source is not used by the medical device in act 604. For example, the medical device may determine that the signal strength of GPS signals from satellites is too weak. In this example, GPS location information is not used in the determination of the medical device location.

[0077] In act 604, the medical device determines location information. Actions performed by the medical device controller during execution of act 604 are described further below with reference to FIG. 7.

[0078] In act 606, the medical device may transmit the location determined in act 604. For example, the medical device may transmit the location of the medical device to a system operated by a medical dispatcher to dispatch medical personnel.

[0079] It is appreciated that process 600, which detects and transmits the location of the medical device, may demand substantial power. Accordingly, in some embodiments, process 600 is only executed when a critical patient event is detected. For example, the medical device may execute process 600 when a health disorder associated with the patient is detected (e.g., ventricular fibrillation or ventricular tachycardia) that necessitates immediate medical attention.

[0080] As discussed above with regard to act 604 in FIG. 6, various embodiments implement processes for determin-

ing the location of a medical device. FIG. 7 illustrates one such process 700 that implements the act 604 and that includes acts of determining device location area from a location information source 702, determining whether additional location information sources are available 704, and refining the location 706.

[0081] In act 702, the medical device determines a location of the medical device with a given level of accuracy based upon a single location source. The single location source is selected consistent with a hierarchy of location information sources. The highest ranked available location information source in the hierarchy is selected. An example hierarchy 800 is illustrated with regard to FIG. 8 and the Example Hierarchy of Location Information Sources section of this specification.

[0082] In act 704, the medical device determines whether any additional location information sources are available. If the medical device determines that any additional location information sources are available, the medical device determines which available location information source is the next highest ranked in the hierarchy of location information sources and proceeds to act 706. Otherwise, the medical device terminates process 700.

[0083] In act 706, the medical device applies the location information gathered from the additional available location information source to improve the accuracy of the location of the medical device. After improving the accuracy of the medical device location, the medical device proceeds to act 704 to check to see if any additional location information sources are available. For example, an approximate location of the medical device may have been computed based upon GPS location information in act 702. The approximate location based upon the GPS location information being a circle of a given radius (e.g., 50 meters). The medical device then determines that two WLAN access point location information sources are available in act 704. In act 706, in this embodiment, the medical device communicates with a coordinate database in a central server that contains the coordinates of the WLAN access point location information sources. The medical device determines the distance between itself and each of the WLAN access points. The medical device then determines the approximate location that meets all of the constraints (e.g., circle of a given radius computed from the GPS location information, and the distances between the known WLAN access points), thus improving the level of accuracy of the approximate medical device location. Accordingly, the area within which the medical device is likely to be located has reduced.

[0084] It is appreciated that a subset of the acts or all of the acts of process 700 for determining location information may be performed by the central server. For example, medical device may transmit the available location information sources to the central server. The central server then performs process 700 and determines the location of the medical device. The location of the medical device may be transmitted to the medical device, transmitted directly to a remote system operated by medical personnel as shown in act 604 with reference to FIG. 6, or both.

[0085] In one embodiment, the medical device has a configurable accuracy parameter that specifies a threshold level of accuracy after which the medical device does not search for further location information sources. In this embodiment, within the act 704, the medical device evaluates the location information to determine whether the

accuracy parameter has been met. If so, the medical device terminates the refinement process 700. Otherwise, the medical device continues execution of the act 704 (i.e., determines whether additional location information sources are available). For instance, in an example where the accuracy parameter specifies an accuracy of five meters and the medical device determines location information accurate to within five meters from information gathered from the first two levels of the hierarchy (e.g., GPS and WLAN access point location information sources), the medical device terminates the refinement process 700 without searching for additional information sources in the hierarchy.

[0086] Each of the processes disclosed herein depicts one particular sequence of acts in a particular example. The acts included in each of these processes may be performed by, or using, a medical device specially configured as discussed herein. Some acts are optional and, as such, may be omitted in accord with one or more examples. Additionally, the order of acts can be altered, or other acts can be added, without departing from the scope of the systems and methods discussed herein. In addition, as discussed above, in at least one example, the acts are performed on a particular, specially configured machine, namely a medical device configured according to the examples disclosed herein.

Example Hierarchy of Location Information Sources

[0087] Various embodiments implement and enable various location information hierarchies through which a medical device determines its location. FIG. 8 illustrates an example hierarchy of location information sources 800 employed by the medical device controller including a first level 802 with GPS information sources, a second level 804 with WLAN access point information sources, a third level 806 with other medical device information sources, a fourth level 808 with Bluetooth information sources, and a fifth level 810 with RFID information sources.

[0088] The hierarchy of location information sources 800 illustrates one hierarchy with which the medical device may determine its location. The first level 802 (e.g., GPS location information sources) is the highest ranked location information source. Embodiments configured to reference the hierarchy 800 determine location information for a medical device based on GPS information sources in act 702 of FIG. 7 if GPS sources are available. Otherwise, these embodiments proceed to the lower levels (e.g., the second level 804 through the fifth level 810) of the hierarchy to determine the location information. For example, the medical device may proceed to find location information sources consistent with the second level of the hierarchy (e.g., WLAN access point location information sources) if no GPS location information sources are available. Once location information for the medical device has been computed with the highest ranked available location information source, any information sources available with a lower ranking in the hierarchy than the information source used in act 702 are used to further improve the accuracy of the medical device location. It is appreciated that the medical device may stop moving down the hierarchy to improve the accuracy of the location once it has reached a threshold level of accuracy.

[0089] Having thus described several aspects of at least one embodiment of this invention, it is to be appreciated various alterations, modifications, and improvements will readily occur to those skilled in the art. Such alterations, modifications, and improvements are intended to be part of

this disclosure, and are intended to be within the scope of the invention. Accordingly, the foregoing description and drawings are by way of example only.

What is claimed is:

1. A wearable medical device comprising:
 - a memory;
 - one or more sensing electrodes disposed about the torso of a patient and configured to sense an electrocardiogram signal (ECG) of the patient;
 - one or more processors operatively coupled with the memory and the one or more sensing electrodes, the one or more processors configured to analyze the sensed ECG signals of the patient and detect one or more predetermined cardiac arrhythmias based at least in part on the sensed ECG signals;
 - a location manager component configured to be executed by the one or more processors and configured to:
 - receive location information from one or more location information sources based on at least one of a global positioning system, a wireless location area network access point, a separate medical device different from the wearable medical device, a Bluetooth enabled device, and a radio-frequency identification device;
 - calculate, responsive to receipt of the location information from the one or more location information sources, a location of the wearable medical device; and
 - a network interface configured to communicate data to a remote system concerning at least one of the ECG signal of the patient and the calculated location of the wearable medical device.
2. The wearable medical device of claim 1, wherein the data communicated to the remote system concerning the ECG signal of the patient comprises data concerning the one or more predetermined arrhythmias.
3. The wearable medical device of claim 1, further comprising a motion sensor or an accelerometer, wherein the one or more processors are further configured to monitor patient activity detected by the motion sensor or accelerometer.
4. The wearable medical device of claim 1, further comprising a speaker,
 - wherein the one or more processors are further configured to issue an audible alarm via the speaker when the one or more predetermined cardiac arrhythmias are detected.
5. The wearable medical device of claim 1, further comprising one or more therapy electrodes operatively coupled with the one or more processors and configured to deliver one or more therapeutic shocks to the patient.
6. The wearable medical device of claim 5, wherein the one or more processors are configured to cause the one or more therapy electrodes to deliver the one or more therapeutic shocks to the patient when the one or more predetermined cardiac arrhythmias are detected.
7. The wearable medical device of claim 1, wherein the location manager component is configured to receive location information from one or more location information sources by being configured to:
 - receive first location information from a first location information source using a first location technology; and
 - receive second location information from a second location information source using a second location technology,

wherein the first location technology is different from the second location technology.

8. The wearable medical device of claim 7, wherein the location manager component is configured to calculate the location of the wearable medical device by being configured to:
 - determine an approximate location of the wearable medical device based on the first location information; and
 - improve the accuracy of the approximate location based on the second location information by reducing an area containing the approximate location.

9. The wearable medical device of claim 1, wherein the received location information is received from a wireless location area network access point, and the location manager component is configured to calculate the location of the wearable medical device by being configured to compare the received location information with a database of access point locations.

10. The wearable medical device of claim 9, wherein the location manager component is further configured to calculate the location of the wearable medical device by being configured to measure a signal strength received from the wireless location area network access point.

11. The wearable medical device of claim 1, wherein the network interface is further configured to wirelessly communicate with another medical device data descriptive of the calculated location of the wearable medical device.

12. A wearable medical device comprising:
 - a garment configured to be worn about a torso of the patient;
 - one or more sensing electrode disposed in the garment and configured to sense an electrocardiogram signal (ECG) of the patient;
 - one or more therapy electrodes disposed in the garment and configured to deliver one or more therapeutic shocks to the patient;
 - one or more processors operatively coupled with the one or more sensing electrodes and the one or more therapy electrodes, the one or more processors configured to:
 - analyze the sensed ECG signals of the patient and detect one or more predetermined cardiac arrhythmias based at least in part on the sensed ECG signals;
 - cause the wearable medical device to deliver the one or more therapeutic shocks to the patient based on the detected one or more predetermined cardiac arrhythmias; and
 - a location manager component configured to be executed by the one or more processors and configured to:
 - communicate location information with one or more location information sources based on at least one of a global positioning system, a wireless location area network access point, a separate medical device different from the wearable medical device, a Bluetooth enabled device, and a radio-frequency identification device for determining a location of the wearable medical device.

13. The wearable medical device of claim 12, further comprising a user interface having at least one button and a speaker, wherein the one or more processors are further configured to
 - instruct the patient, via the speaker, to press and hold the at least one button to indicate that the patient is conscious;

withhold delivery of the one or more therapeutic shocks as long as the at least one button is being held down; and

deliver the one or more therapeutic shocks based on the detected one or more predetermined cardiac arrhythmias when the at least one button is not being held down.

14. The wearable medical device of claim **12**, further comprising a motion sensor or an accelerometer, wherein the one or more processors are further configured to monitor patient activity detected by the motion sensor or accelerometer.

15. The wearable medical device of claim **12**, further comprising a speaker,

wherein the one or more processors are further configured to issue an audible alarm via the speaker when the one or more predetermined cardiac arrhythmias are detected.

16. The wearable medical device of claim **12**, wherein the location manager component is configured to communicate location information with one or more location information sources by being configured to receive the location information from the one or more location information sources.

17. The wearable medical device of claim **12**, wherein the location manager component is configured to communicate location information with one or more location information sources by being configured to:

receive first location information from a first location information source using a first location technology; and

receive second location information from a second location information source using a second location technology, wherein the first location technology is different from the second location technology.

18. The wearable medical device of claim **17**, wherein the location manager component is further configured to: determine an approximate location of the wearable medical device based on the first location information; and improve the accuracy of the approximate location based on the second location information by reducing an area containing the approximate location.

19. The wearable medical device of claim **12**, wherein the location manager component is configured to communicate location information with one or more location information sources by being configured to receive information from a wireless location area network access point; and calculate a location of the wearable medical device by being configured to compare the received information with a database of access point locations.

20. The wearable medical device of claim **19**, wherein the location manager component is configured to calculate the location by being configured to measure a signal strength received from the wireless location area network access point.

21. The wearable medical device of claim **12**, further comprising a network interface configured to communicate data to a remote system concerning at least one of the ECG signal of the patient and the calculated location of the wearable medical device.

* * * * *

专利名称(译)	使用医疗设备确定位置的系统和方法		
公开(公告)号	US20160302697A1	公开(公告)日	2016-10-20
申请号	US15/189715	申请日	2016-06-22
[标]申请(专利权)人(译)	卓尔医学产品公司		
申请(专利权)人(译)	ZOLL医疗公司		
当前申请(专利权)人(译)	ZOLL医疗公司		
[标]发明人	JOHNSON GUY ROBERT		
发明人	JOHNSON, GUY ROBERT		
IPC分类号	A61B5/11 A61B5/0408 A61B5/00 A61B5/0452 G01S19/14 G01C21/20		
CPC分类号	A61B5/1112 G01S19/14 G01C21/206 A61B5/0006 A61B5/0452 A61B5/1118 A61B2562/0219 A61B5/746 A61B5/4836 A61B5/6804 A61B5/04085 A61B5/747 A61B5/7405		
优先权	61/836979 2013-06-19 US		
其他公开文献	US10271771		
外部链接	Espacenet USPTO		

摘要(译)

提供了一种能够确定其位置的医疗装置。医疗装置包括存储器，一个或多个天线，与存储器和一个或多个天线耦合的一个或多个处理器，可由一个或多个处理器执行的位置管理器组件。位置管理器组件被配置为从第一位置信息源接收第一位置信息，并从第二位置信息源接收第二位置信息，以根据位置信息源的层级对第一位置信息源和第二位置信息源进行排序，指定所述第一位置信息源具有比所述第二位置信息源高的位置信息源的层级，基于所述第一位置信息确定所述医疗装置的近似位置，以及基于所述第一位置信息源提高所述近似位置的准确性，第二位置信息。

