



US010123720B2

(12) **United States Patent**  
**Parker et al.**

(10) **Patent No.:** **US 10,123,720 B2**  
(45) **Date of Patent:** **Nov. 13, 2018**

(54) **RETROSPECTIVELY CORRELATED TURBO SPIN ECHO IMAGING**

5/7285 (2013.01); *G01R 33/5617* (2013.01);  
*G01R 33/5673* (2013.01); *G01R 33/56325*  
(2013.01)

(71) Applicant: **University of Utah Research Foundation**, Salt Lake City, UT (US)

(58) **Field of Classification Search**  
None  
See application file for complete search history.

(72) Inventors: **Dennis L. Parker**, Centerville, UT (US); **Jason K. Mendes**, Draper, UT (US); **Jordan Hulet**, South Jordan, UT (US)

(56) **References Cited**

U.S. PATENT DOCUMENTS

(73) Assignee: **University of Utah Research Foundation**, Salt Lake City, UT (US)

4,855,910 A \* 8/1989 Bohning ..... A61B 5/055  
324/309

(\* ) Notice: Subject to any disclaimer, the term of this patent is extended or adjusted under 35 U.S.C. 154(b) by 546 days.

5,133,357 A 7/1992 Dumoulin et al.  
5,320,099 A 6/1994 Roberts et al.  
5,329,925 A 7/1994 NessAiver  
5,348,011 A 9/1994 NessAiver  
5,417,214 A 5/1995 Roberts et al.  
5,447,155 A 9/1995 NessAiver  
5,521,502 A 5/1996 Siegel, Jr. et al.

(Continued)

(21) Appl. No.: **14/199,075**

(22) Filed: **Mar. 6, 2014**

OTHER PUBLICATIONS

(65) **Prior Publication Data**

Web page [http://www.revisemri.com/questions/pulse\\_sequences/tse](http://www.revisemri.com/questions/pulse_sequences/tse), "Turbo Spin Echo", printed on Mar. 20, 2013.

US 2015/0011867 A1 Jan. 8, 2015

(Continued)

**Related U.S. Application Data**

*Primary Examiner* — Jonathan Cwern

(62) Division of application No. 12/895,533, filed on Sep. 30, 2010, now Pat. No. 8,738,113.

(57) **ABSTRACT**

(51) **Int. Cl.**

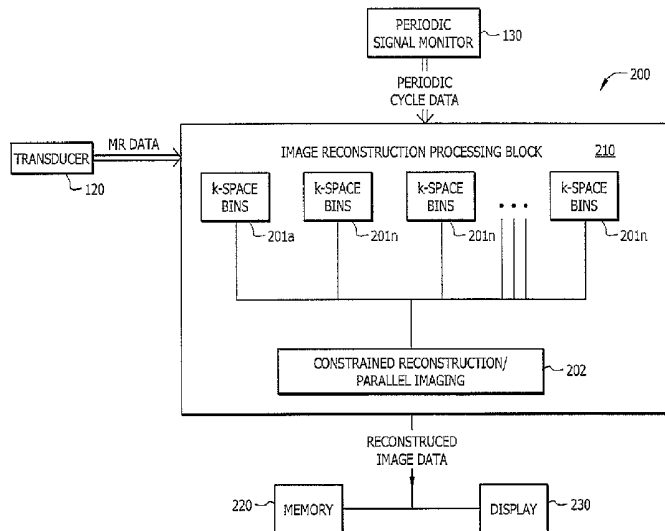
*A61B 5/055* (2006.01)  
*A61B 5/024* (2006.01)  
*G01R 33/561* (2006.01)  
*G01R 33/567* (2006.01)  
*A61B 5/00* (2006.01)  
*G01R 33/563* (2006.01)

Systems and methods which generate a sequence of images using turbo spin echo magnetic resonance imaging which are retrospectively correlated with periodic motion occurring within a subject being imaged are described. In one embodiment, k-space measurements (or the measurements from which images are formed) are captured during, and correlated with, different phases in a cardiac cycle of the subject. With this sequence, the images that are produced are able to show, and/or compensate for, motion correlated with the cardiac cycle of the subject.

(52) **U.S. Cl.**

CPC ..... *A61B 5/055* (2013.01); *A61B 5/024* (2013.01); *A61B 5/7207* (2013.01); *A61B*

**11 Claims, 9 Drawing Sheets**



(56)

References Cited

U.S. PATENT DOCUMENTS

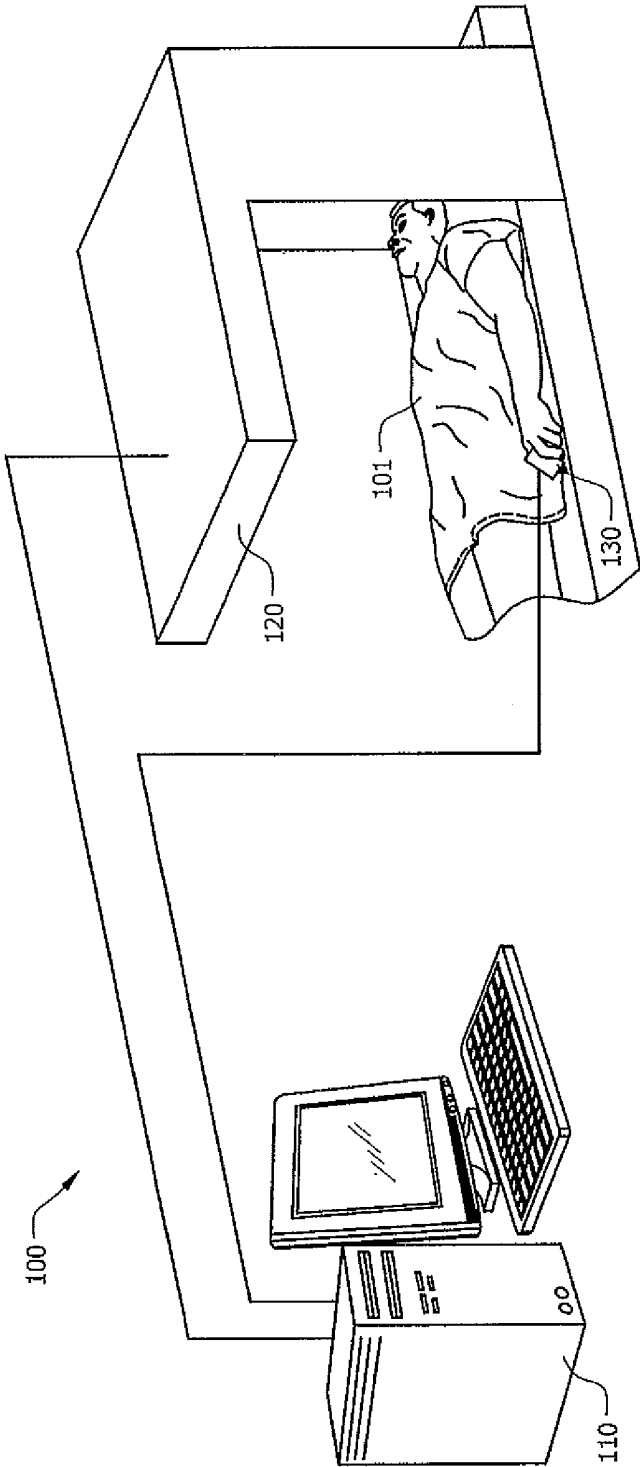
5,694,935 A 12/1997 Damadian  
 5,713,358 A 2/1998 Mistretta et al.  
 5,830,143 A 11/1998 Mistretta et al.  
 5,865,747 A 2/1999 Steckner  
 5,873,825 A 2/1999 Mistretta et al.  
 5,881,728 A 3/1999 Mistretta et al.  
 6,076,004 A 6/2000 Kanayama et al.  
 6,240,310 B1 5/2001 Bundy et al.  
 6,288,541 B1\* 9/2001 Dumoulin ..... G01R 33/56308  
 324/306  
 6,377,832 B1 4/2002 Bergman et al.  
 6,408,201 B1 6/2002 Foo et al.  
 6,408,202 B1 6/2002 Lima et al.  
 6,434,412 B1 8/2002 Simonetti et al.  
 6,492,811 B1 12/2002 Foxall  
 6,516,210 B1\* 2/2003 Foxall ..... G01R 33/5676  
 324/307  
 6,693,768 B1 2/2004 Crue et al.  
 6,781,375 B2 8/2004 Miyazaki et al.  
 6,794,867 B1 9/2004 Block et al.  
 6,801,800 B2 10/2004 Miyazaki et al.  
 7,199,582 B2 4/2007 Keegan et al.

7,209,777 B2 4/2007 Saranathan et al.  
 7,253,620 B1 8/2007 Derbyshire et al.  
 7,372,266 B2 5/2008 Markl et al.  
 8,099,148 B2\* 1/2012 Madore ..... G01R 33/5611  
 324/307  
 2002/0095085 A1 7/2002 Saranathan et al.  
 2003/0050554 A1\* 3/2003 Schaffer ..... G01R 33/5676  
 600/410  
 2004/0073105 A1\* 4/2004 Hamilton ..... A61B 5/055  
 600/410  
 2005/0245812 A1 11/2005 Kim et al.  
 2006/0013458 A1 1/2006 Debbins et al.  
 2006/0125476 A1 6/2006 Markl et al.  
 2008/0298661 A1\* 12/2008 Huang ..... G01R 33/5611  
 382/131  
 2011/0074416 A1\* 3/2011 Yamashita ..... A61B 5/055  
 324/309

OTHER PUBLICATIONS

Anderson, et al., "Gaussian binning: a new kernel-based method for processing NMR spectroscopic data for metabolomics", *Metabolomics*, 4:261-272, Aug. 20, 2008.

\* cited by examiner



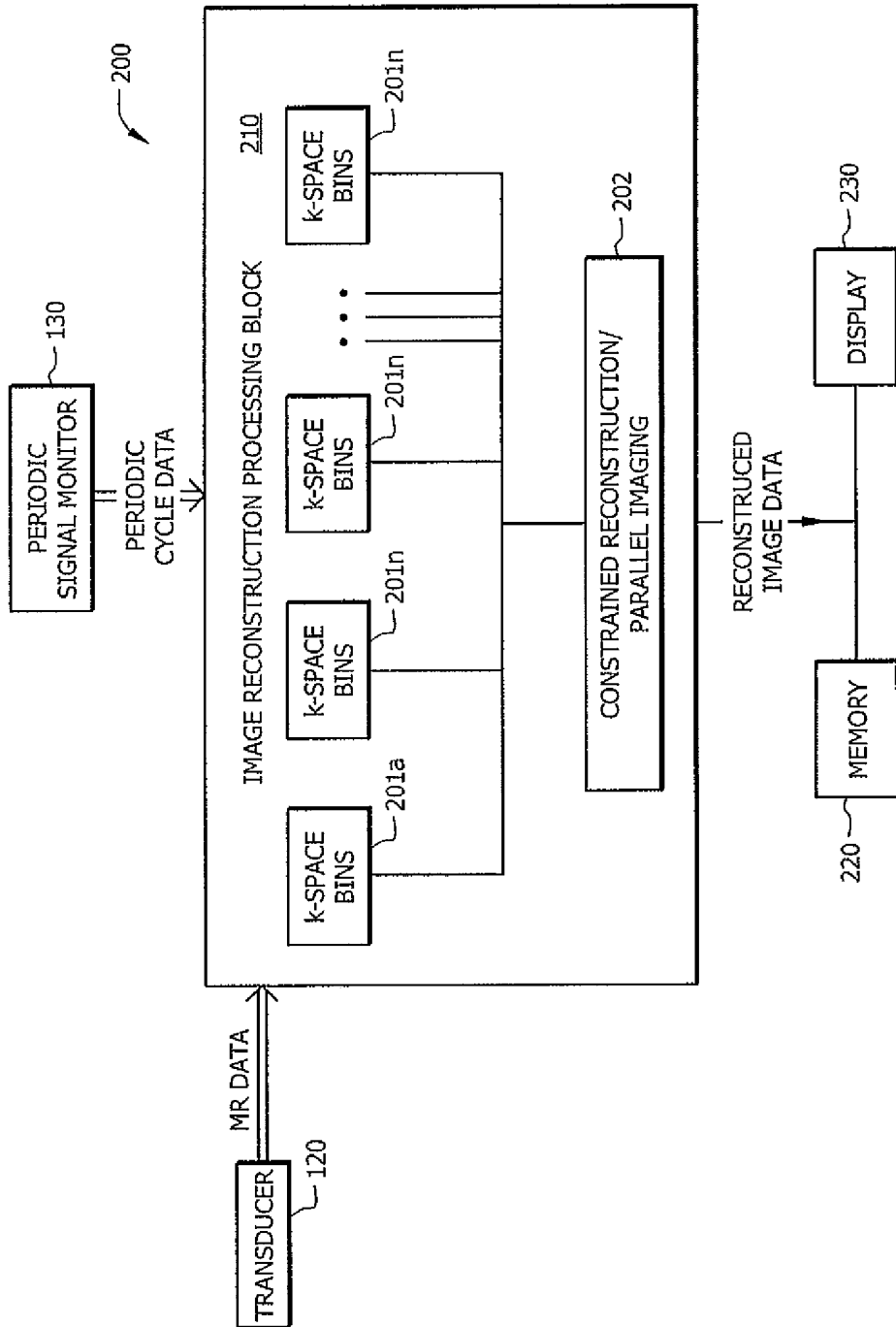


FIG. 2

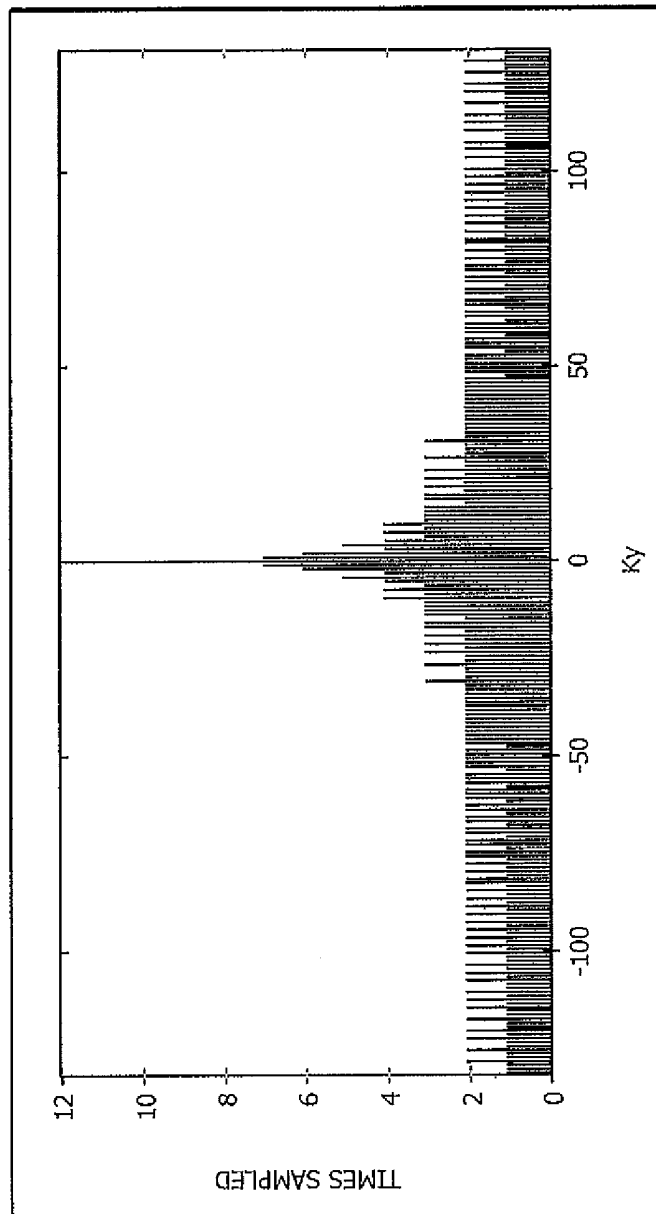
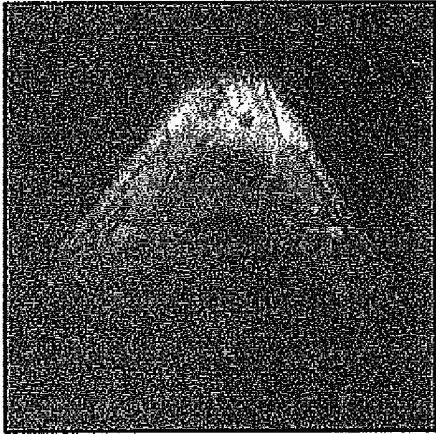
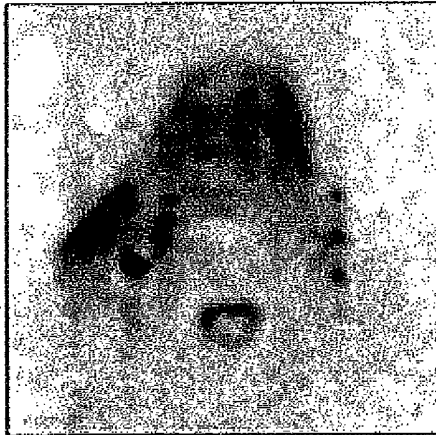


FIG. 3



*FIG. 4A*



*FIG. 4B*

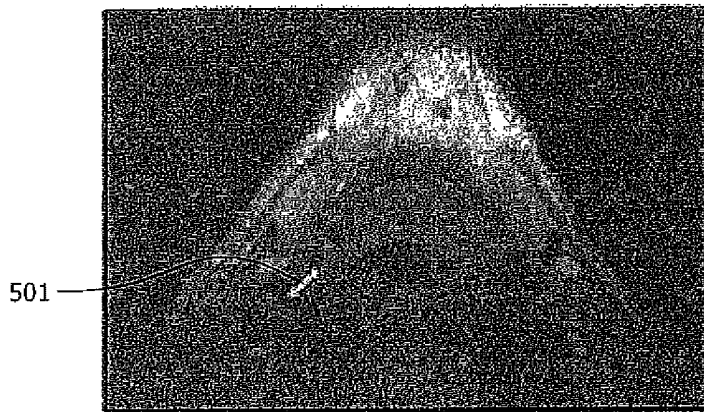


FIG. 5A

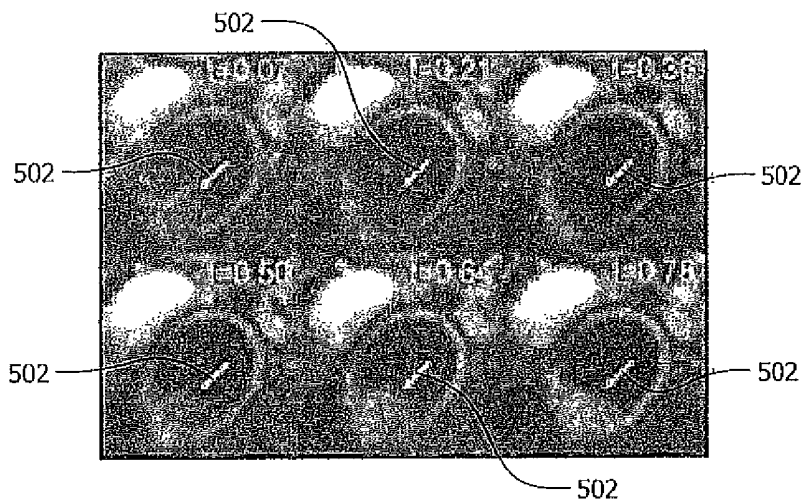


FIG. 5B

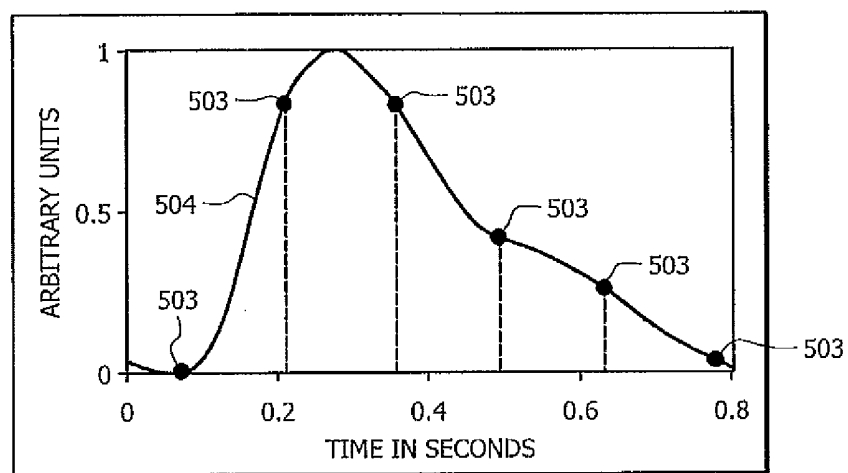


FIG. 5C

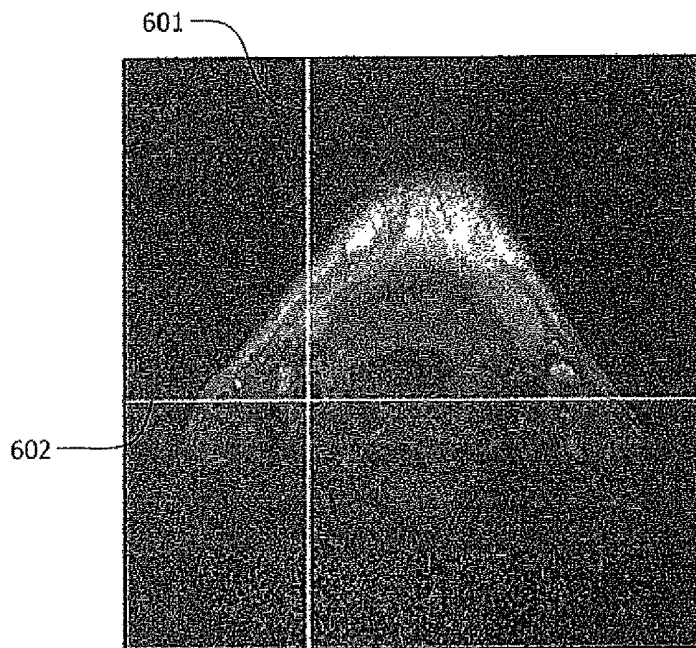


FIG. 6A

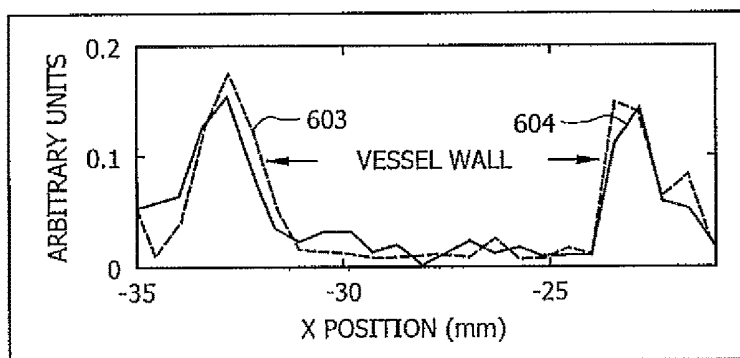


FIG. 6B

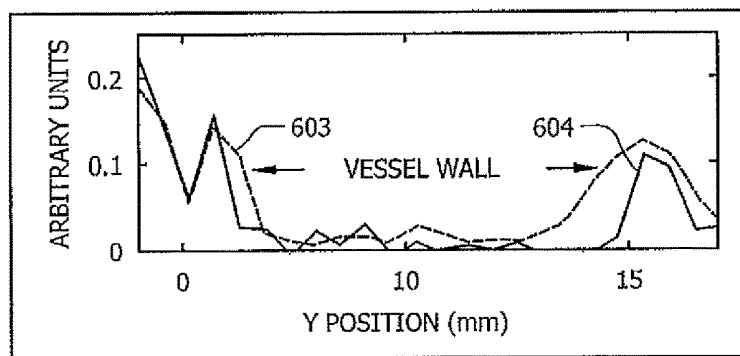


FIG. 6C

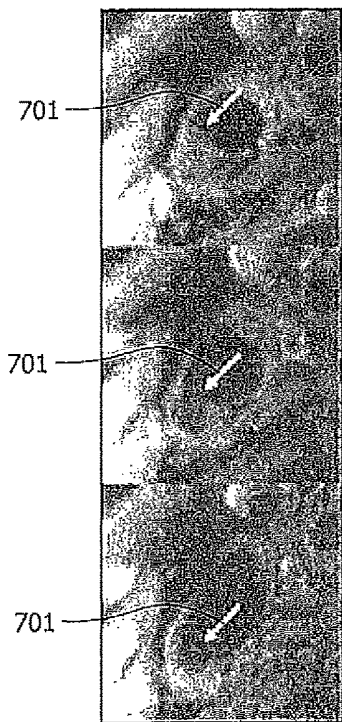


FIG. 7A

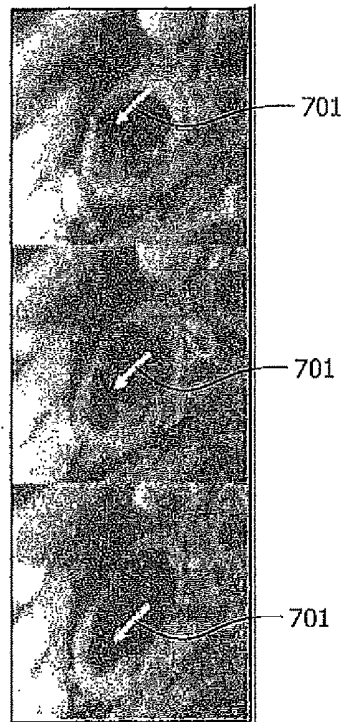


FIG. 7B

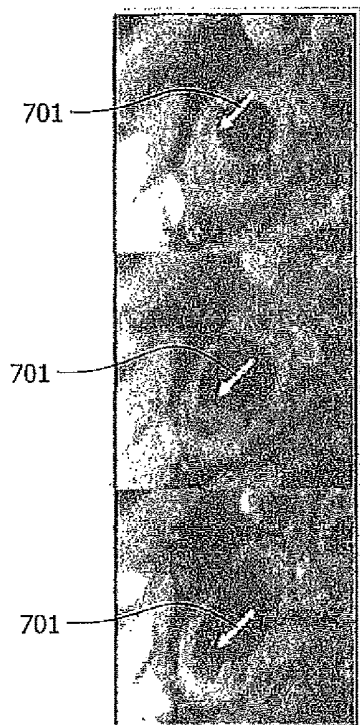


FIG. 7C

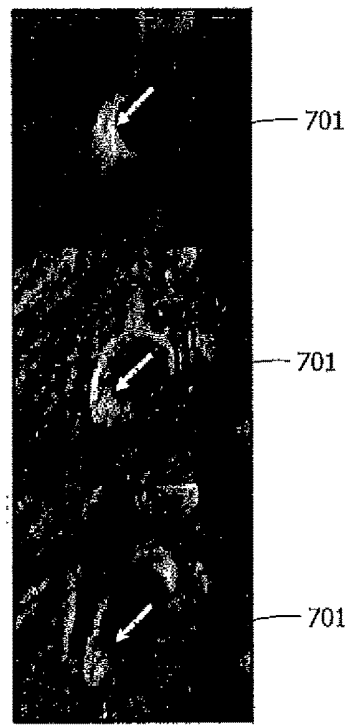


FIG. 7D

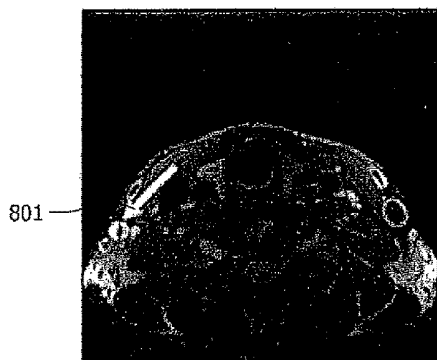


FIG. 8A

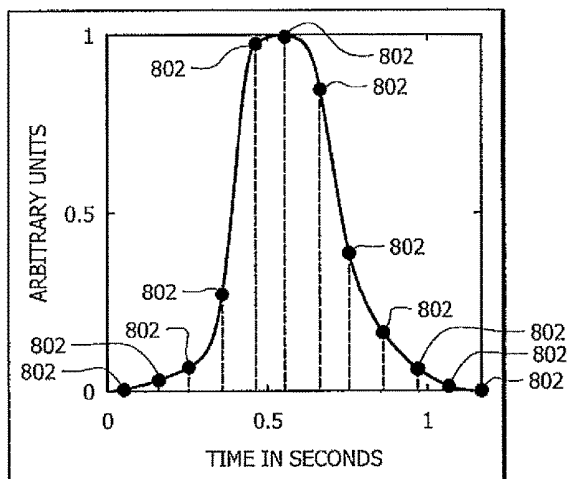


FIG. 8B

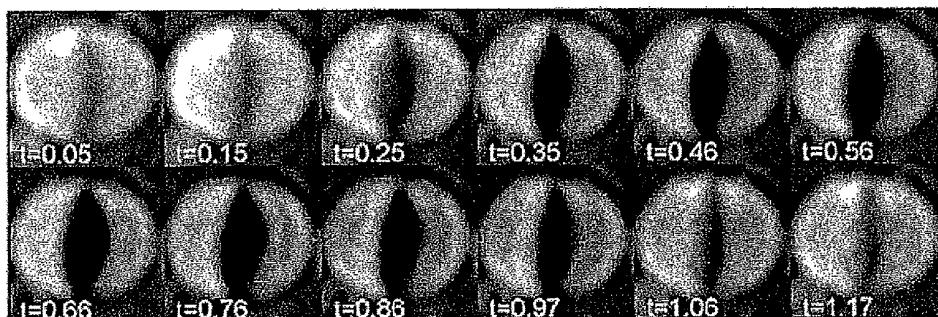
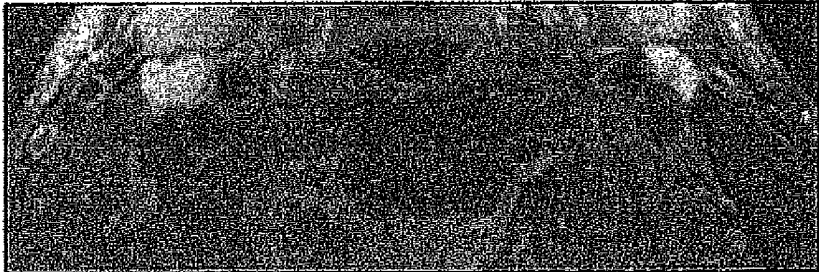
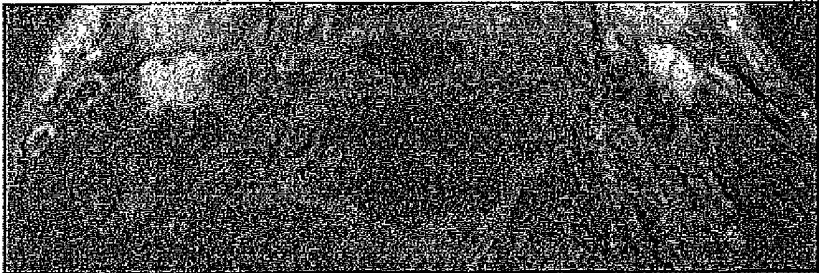


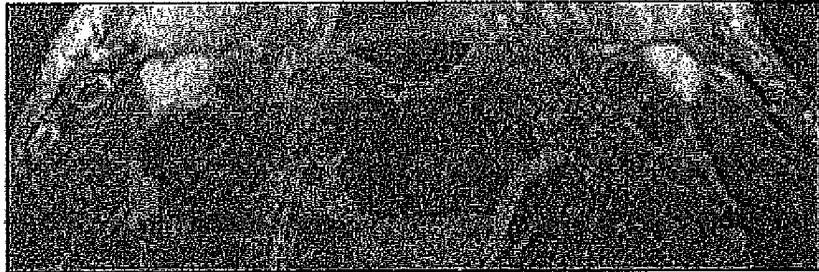
FIG. 8C



*FIG. 9A*



*FIG. 9B*



*FIG. 9C*

## RETROSPECTIVELY CORRELATED TURBO SPIN ECHO IMAGING

This application is a divisional application of U.S. patent application Ser. No. 12/895,533 filed Sep. 30, 2010, which is hereby incorporated by reference in its entirety.

### GOVERNMENT INTERESTS

This invention was made with government support under Grants HL048223 and HL057990, awarded by the National Institutes of Health. The government has certain rights in the invention.

### TECHNICAL FIELD

The disclosure relates generally to magnetic resonance imaging and, more particularly, to reconstructing images with motion correlation data to analyze internal motion of a subject.

### BACKGROUND OF THE INVENTION

There is evidence that carotid artery imaging techniques can be used to detect disease and classify subjects that will benefit from interventions. Because Magnetic Resonance Imaging (MRI) can acquire images with a variety of different tissue contrasts, it presents an advance over x-ray techniques in the ability to discriminate between different types of soft tissue and the potential to discriminate between important atherosclerotic plaque components. Turbo spin echo (TSE) MRI pulse sequences, with efficient acquisition of T1, T2 and proton density weighted images have become very useful in the evaluation of cervical carotid artery disease. Current high-resolution three-dimensional (3D) TSE techniques could also be valuable in carotid MRI. However, motion artifacts that arise due to the relatively long data-acquisition time of current TSE pulse sequence methods result in an unacceptably high fraction of non-interpretable images. As a result, TSE techniques result in obvious blurring or ghosting artifacts that greatly reduce the quality of the images.

Methods can be implemented to reduce artifacts caused by poor acquisition time. For example, applying parallel imaging techniques may be used to reduce acquisition time and thereby reduce the likelihood of motion artifacts. Parallel imaging techniques can also be used to compensate for artifacts due to swallowing and other neck muscle movements. Reduced field of view sequences with more efficient double inversion blood suppression have also shown reduced susceptibility to these types of motion artifacts. Single shot sequences such as Half Fourier Acquisition Single shot Turbo spin Echo (HASTE) can also be used to reduce acquisition time and hence the susceptibility to certain motion artifacts. Navigators and dedicated motion detection RF coils have been shown to be successful in detecting and rejecting data corrupted by swallowing. Additionally, using average specific phase encoding ordering or comparing adjacent sets of k-space data lines are alternative methods for detecting data corrupted by patient motion.

Other MRI scanning methods, such as Gradient Echo (GRE) methods, are used for faster imaging to reduce more complex motion artifacts, such as ones that are caused by the movements of the cardiac cycle. These may include synchronizing data acquisition with the heart cycle to insure controlled capture across all data points. GRE-based pulse sequences can have a very short Repetition Time (TR) (<30

ms) and can therefore be efficiently designed as cine sequences to obtain complete image measurements at multiple cardiac phases in the same acquisition. Pulse sequences such as cine-GRE or cine-Phase-Contrast (PC) have been used to show carotid artery motion and cyclic blood flow. However, gradient echo techniques are limited in their ability to create acceptable images of soft tissue due to the above noted short TR time and typically worse signal-to-noise ratio performance.

TSE techniques, on the other hand, generate detailed images of soft tissue. However, the same methods to compensate for motion artifacts that are caused by the movements of the cardiac cycle are not used with TSE techniques. This is in part because of the relatively long TR required by TSE techniques (>500 ms). Acquisitions synchronized with the heart cycle which use TSE techniques typically only obtain one image at a single cardiac phase. Accordingly, synchronized acquisitions using TSE techniques are generally only used to reduce the effect of cardiac motion by acquiring data at a point during a specific time period of the cardiac cycle, e.g., a point during the diastole period. Further, synchronization lengthens the acquisition time due to the need to acquire multiple scans at each specific point in the cardiac cycle. This additional time results in increased susceptibility to swallowing and respiratory motion artifacts. Because of this, synchronized acquisitions are rarely used in a TSE environment. This problem can be improved somewhat by limiting gating to just the central portion of k-space, however, the effect of a variable TR on the resulting image is still unacceptable.

### BRIEF SUMMARY OF THE INVENTION

Embodiments described herein introduce systems and methods which generate a sequence of images using turbo spin echo magnetic resonance imaging which are retrospectively correlated with periodic motion occurring within a subject being imaged. In one embodiment, k-space measurements (or the measurements from which images are formed) are captured during, and correlated with, different phases in a cardiac cycle of the subject. With this sequence, the images that are produced are able to show, and/or compensate for, motion correlated with the cardiac cycle of the subject.

In one embodiment, a method is provided which converts a conventional multislice, single image per slice, TSE acquisition into a multislice, retrospectively heart cycle correlated image sequence per slice, TSE acquisition (such correlated TSE acquisitions are referred to herein as a cineTSE). Because the cineTSE images are correlated with a subject's heart cycle, embodiments are able to reduce artifacts caused by pulsatile motion. Embodiments may utilize the cineTSE sequence to generate a full sequence of heart cycle correlated images throughout the cardiac cycle at each slice location in the same amount of acquisition time that is conventionally used by standard (or gated) TSE sequences to produce a single image at each slice location.

Embodiments of the described cineTSE sequence may be implemented using the same acquisition time of a standard two average TSE sequence. As a result, embodiments may avoid non-constant TR effects which are typically associated with gated sequences, such as ghosting in high contrast tissue areas. Additionally, in some embodiments the TSE acquisition may be obtained asynchronously with the cardiac cycle which will result in the images not suffering from problems caused by non-constant TR periods.

In some embodiments, additional processing methods may be applied to a captured sequence of measurements from which the images are formed to complete image reconstruction. One method may utilize information from multiple receiver Radio Frequency (RF) coils of the MRI device to implement parallel imaging methods. Another method may include a constrained reconstruction method where an a priori constraint is applied which assumes an object is not going to change very rapidly from one image bin to the next image bin.

The foregoing has outlined rather broadly the features and technical advantages of the present invention in order that the detailed description of the invention that follows may be better understood. Additional features and advantages of the invention will be described hereinafter which form the subject of the claims of the invention. It should be appreciated by those skilled in the art that the conception and specific embodiment disclosed may be readily utilized as a basis for modifying or designing other structures for carrying out the same purposes of the present invention. It should also be realized by those skilled in the art that such equivalent constructions do not depart from the spirit and scope of the invention as set forth in the appended claims. The novel features which are believed to be characteristic of the invention, both as to its organization and method of operation, together with further objects and advantages will be better understood from the following description when considered in connection with the accompanying figures. It is to be expressly understood, however, that each of the figures is provided for the purpose of illustration and description only and is not intended as a definition of the limits of the present invention.

#### BRIEF DESCRIPTION OF THE DRAWINGS

For a more complete understanding of the present invention, reference is now made to the following descriptions taken in conjunction with the accompanying drawings, in which:

FIG. 1 illustrates an imaging system in accordance with an embodiment of the present application;

FIG. 2 illustrates an image reconstruction framework in accordance with an embodiment of the present application;

FIG. 3 shows a typical sampling density resulting from the cineTSE sequence utilized with embodiments of the present application;

FIGS. 4A-B illustrate a TSE data set with a corresponding spatially varying temporal constraint in accordance with an embodiment of the present application;

FIGS. 5A-C illustrate results from flow artifact identification methods using a T2 weighted cineTSE reconstruction in accordance with an embodiment of the present application;

FIGS. 6A-C illustrate the improvement of vessel wall depiction using a T2 weighted cineTSE in accordance with an embodiment of the present application;

FIGS. 7A-D illustrate T1 weighted cineTSE images from a patient with an ulceration of plaque in their carotid artery in accordance with an embodiment of the present application;

FIGS. 8A-C illustrate the motion of a valve in a facial vein captured with a T2 weighted cineTSE reconstruction in accordance with an embodiment of the present application; and

FIGS. 9A-C illustrate example results from an embodiment to reduce a swallowing artifact.

#### DETAILED DESCRIPTION OF THE INVENTION

In portions of the following description, embodiments are illustrated in terms of imaging a human subject and monitoring cardiac cycle movements. However, it is noted that the inventive aspects discussed herein may be used when imaging any type of subjects while monitoring any form of periodic movement therein. The specific examples are utilized for descriptive purposes only and are not intended to be limiting. Alterations and further modifications of the inventive features illustrated herein, and additional applications of the principles of the inventions as illustrated herein, which would occur to one skilled in the relevant art and having possession of this disclosure, are to be considered within the scope of the invention.

Directing attention to FIG. 1, an imaging system adapted according to an embodiment of the present invention is shown as imaging system 100. Imaging system 100 comprises processor based system 110 operatively coupled to transducer 120 and periodic signal monitor 130, for use in collecting imaging data with respect to subject 101. Subject 101 may comprise a patient for which imaging of a portion of the patient's body is desired. Such imaging as provided by imaging system 100 may comprise reconstruction of images of internal body structure (e.g., organs, cavities, bones, etc.) using, for example, TSE MRI techniques.

Periodic signal monitor 130 may be a cardiac cycle monitor and implemented using any method which can provide timing information of the cardiac cycle. Periodic signal monitor 130 is shown as a finger-connected pulse oximeter. Such a pulse oximeter functions to measure pulsation of the blood in the finger and the pulsation is closely synchronized with the beating of the heart. However, there is a small time delay between the compression of the heart and the actual pulse of the blood in the finger which may be accounted for, if desired. For example, one method of accounting for this delay may include adjusting the periodic signal phase when correlating a cardiac cycle with acquired images. It is noted that other methods of cardiac monitoring may be used. For example, a pressure sensor which reads a pressure pulse may be placed on the neck of a subject, ECG leads may be placed on a subject, etc. Periodic signal monitor 130 may also be sensors calibrated to measure other types of periodic motions such as breathing periods, and the like.

Processor based system 110 of embodiments comprises a processor (e.g., central processing unit (CPU), application specific integrated circuit (ASIC), etc.), memory (e.g., random access memory (RAM), read only memory (ROM), disk memory, optical memory, etc.), and appropriate input/output (I/O) apparatus (e.g., display, pointing device, keyboard, printer, speaker, microphone, etc.) operable under control of an instruction set (e.g., software, firmware, etc.) defining operation as described herein. Such operation may provide image reconstruction corresponding to the configuration of transducer 120 and periodic signal monitor 130.

Imaging system 100 of the embodiment is adapted to utilize cineTSE acquisition techniques described herein to reconstruct images. An image reconstruction framework providing cineTSE acquisition techniques as may be utilized by imaging system 100 is shown in FIG. 2 as image reconstruction framework 200. Image reconstruction frame-

work **200** may be implemented, at least in part, as instructions operable upon the processor of processor based system **110** of imaging system **100**.

Image reconstruction framework **200** of the illustrated embodiment may receive raw Magnetic Resonance (MR) data from transducer **120** corresponding to a TSE sequence, and cardiac cycle data from periodic signal monitor **130**. This information is provided to image reconstruction processing module **210**. In some embodiments, the turbo spin sequence may be a conventional sequence designed primarily for generating a simple static image. The sequence is correlated by processing module **210** with a simultaneous time measurement of a pressure pulse received from periodic signal monitor **130**. The received MR data is then sorted into k-space bins **211a-n** based upon their relative time in the cardiac cycle.

In some embodiments, the periodic signal received from periodic signal monitor **130** will be a sinusoidal wave. In these embodiments, bins **211a-n** may be configured to represent time divisions of a single reference wave period of the sinusoid. MR data received from transducer **120** may be received across multiple periods of a periodic signal. Embodiments track where in the multiple periodic cycles the MR data is captured, and correlates the MR data with the time divisions of bins **211a-n** that correspond to the location in the particular periodic cycle.

With the data in bins **211a-n**, images are reconstructed that may depict and/or compensate for motion within the subject being imaged. In some embodiments, the data in bins **211a-n** may create a sequence of non-reconstructed image data such as in the event that there is not enough data to reconstruct a complete image. This can occur due to the fact that, in some embodiments, the cardiac cycle is asynchronous with the image scanner, which will cause it to yield random image samples that may not contain complete information representing motion throughout the cardiac cycle.

When incomplete information is obtained, additional processing methods may be undertaken to complete image reconstruction at processing block **202**. One additional method utilizes information from multiple RF coils in transducer **120**, to implement parallel imaging methods. In parallel MR imaging, a reduced data set in the phase encoding direction(s) of k-space is acquired to shorten acquisition time, combining the signal of several coil arrays on a transducer. The spatial information related to the phased array coil elements is utilized for filling in missing information corresponding to empty bins.

Another method may be a constrained reconstruction method where an a priori constraint is applied that assumes that the object is not going to change very rapidly from one image bin to the next image bin. With the assumption that the changes in a given image will be relatively small with respect to a previous image, an iterative algorithm may be utilized that uses the data measured, along with these constraints, and converges on the set of images that satisfy the constraints and satisfy the measured data. Any method, such as discussed above, which is able to compensate for missing information in one or more of bins **211a-n** may be utilized separately, or in combination in order to yield a sequence of images which accounts for the motion caused by the heart that is occurring asynchronously with the image acquisition.

Reconstructed image data is produced by image reconstruction processing block **210**. This data may be stored to memory block **220**. Memory block **220** may be included as part of processor based system **110**, or may be located on an

external memory device. Alternatively, the reconstructed image data may be output to a display device, such as display device **230**.

In one embodiment, information about a subject's cardiac cycle is recorded during the MRI scan utilizing a pulse oximeter. The acquired k-space data lines are sorted into  $N_t$  temporal bins, which may correspond to bins **211a-n**, according to the time elapsed from a reference time point such as the last systolic trigger. The result is  $N_t$  undersampled data bins, each representing a different phase of the cardiac cycle. The undersampled images are reconstructed by simultaneously considering information encoded by the coil sensitivities as well as applying a temporal constraint. This is accomplished according to embodiments by minimizing the following objective function:

$$G = \|W(k_x, k_y, t) \cdot \mathcal{F}_{xy}^{-1}[s_n(x, y) \cdot m(x, y, t)] - d_n(k_x, k_y, t)\|_2^2 + \lambda \int \|\nabla_t[m(x, y, t)]\|_2^2 \quad [1]$$

where  $t$  is the time (bin) in the cardiac cycle,  $W(k_x, k_y, t)$  is a weight function specifying which lines in k-space have been acquired in each bin,  $\mathcal{F}_{xy}^{-1}(\cdot)$  is the 2D Fourier transform along the spatial coordinates,  $s_n(x, y)$  is the coil sensitivity of the  $n^{th}$  coil,  $d_n(k_x, k_y, t)$  is the actual data acquired from the  $n^{th}$  coil in the bin,  $\lambda(x, y)$  specifies the level of temporal constraint and  $\nabla_t(\cdot)$  is a temporal gradient. Since  $m(x, y, t)$  is periodic in time, the following definition of  $\nabla_t(\cdot)$  has been found to be optimal compared to methods that estimate the temporal gradient using only a few surrounding points in time.

$$\nabla_t[m(x, y, t)] = \mathcal{F}_t^{-1}\left\{\mathcal{F}_t[m(x, y, t)] \cdot \frac{2\pi if}{N_t}\right\} \quad [2]$$

Equation [1] is minimized using the following gradient term:

$$\nabla_m G = -2\lambda^2 \nabla_t^2(m) + 2 \sum_n s_n^* \cdot \mathcal{F}_{xy}^{-1}[W \cdot \mathcal{F}_{xy}(s_n m) - d_n] \quad [3]$$

The images are then reconstructed using a non-linear conjugate gradient descent algorithm in conjunction with the objective function in Equation [1] and the gradient term in Equation [3].

The following description of FIGS. 3-9C describes example implementations and results of embodiments of the present invention. The specific methods used in this example are described for illustrative purposes only to facilitate one of ordinary skill in the art in understanding the concepts described herein, and are not intended to limit the scope of the concepts. All data sets were obtained on a Siemens TIM Trio 3T MRI scanner with a modified Turbo Spin Echo (TSE) sequence. The modified sequence is different from a standard TSE sequence in that the MRI scanner also acquires and store the periodic motion information, e.g. from the pulse oximeter and that the density of line sampling in k-space may be changed according to FIG. 3.

In this cineTSE technique, the cardiac cycle is divided into a number of bins and each echo in each TSE echotrain is assigned to a bin based upon its time in the cardiac cycle. As discussed above, the received echo signals may originate across multiple periodic cycles. In these embodiments, the echoes are assigned based on their representative time of a reference period. Because readout of an echotrain can require over 100 ms (sometimes as much as 200 ms), it is not uncommon for the echoes in an echotrain to be assigned to

two or more bins. To help ensure that each temporal data bin contains a sufficient number of lines near the center of k-space (where most of the image energy is found), the TSE sequence was modified to more frequently sample (slightly oversample) the center of k-space. To prevent an increase in scan time, this is accomplished at the cost of missing varying lines near the edge of k-space in each average. Every line of k-space is sampled at least once during the entire acquisition. FIG. 3 shows a typical sampling density resulting from the modified TSE sequence used in this study. In this case, 528 lines were sampled from a k-space spanning 264 lines. This corresponds to the same number of lines that would have been sampled with two full averages and a uniform sampling density.

Data used to generate images and plots in FIGS. 4A-6C and 8A-9C was acquired with a T2 weighted TSE sequence with a four channel neck coil, two averages, a resolution of 0.6 mm×0.6 mm×2 mm, twelve echoes per train and a TR/TE of 2.5 s/61 ms. The data used in FIGS. 7A-D was acquired with a T1 weighted TSE sequence with a sixteen channel neck coil, two averages, a resolution of 0.5 mm×0.5 mm×2 mm, twelve echoes per train and a TR/TE of 650 ms/8 ms.

In this particular study, a goal was to reconstruct the magnitude images. It was deemed sufficient to estimate the coil sensitivities as:

$$s_n(x, y) = \frac{m_n(x, y)}{\sqrt{\varepsilon + \sum_n m_n(x, y)m_n^*(x, y)}} \quad [4]$$

where  $\varepsilon$  is a small constant and  $m_n(x, y)$  is the image estimate from the  $n^{\text{th}}$  coil. In cases where phase information from the final images is desired, a more specific measure of the coil sensitivities may be implemented.

When correlating data to the cardiac cycle, some embodiments may constrain pixels varying with frequencies unrelated to the heart rate more strongly than those varying at frequencies near the heart rate. This was accomplished using the spatially varying temporal constraint of:

$$\lambda(x, y) = \sum_f \mathcal{F}_t[m(x, y, t)] \cdot \alpha(f) \quad [5]$$

where  $\alpha(f)$  is a bandpass filter selecting the frequency components occurring near the patient's average heart rate. In this study,  $\lambda(x, y)$  is scaled to a range of zero (where pixels vary near the patient's heart rate) to  $\sim 0.1$  (where the pixel variations seem uncorrelated to the cardiac cycle). The acquired data,  $d_n(k_x, k_y, t)$ , is scaled so that our final image,  $m(x, y, t)$ , has a magnitude range of approximately 0~1.0. In addition, the temporal map may be constrained to be smooth by convolving the result of Equation [5] with a Gaussian (FWHM of  $\sim 8$  pixels). A representative image slice and the corresponding temporal constraint are shown in FIGS. 4A and 4B. In FIG. 4, the standard TSE image shown in FIG. 4A along with  $\lambda(x, y)$  (see Equation [6]) shown in FIG. 4B. The temporal constraint map of FIG. 4B is at a maximum in areas where pixel fluctuations have little correlation to the cardiac cycle and at a minimum in areas where the fluctuations correlate highly with the cardiac cycle. It is noted that this method of determining the spatial constraint can lead to blood pulsation artifacts being allowed. This is seen in the

pulsatile artifact of the left carotid of FIG. 4B where the left carotid is replicated equally spaced vertically. Other methods may be utilized which force the constraint to be zero only at the true carotid and set the others to  $\sim 0.1$  to obtain a more true reconstruction.

Since missing data lines are calculated using coil sensitivities and a temporal constraint, there may be a practical limit on the number of temporal bins into which the data should be sorted. Too few data bins might not allow enough temporal resolution to observe important events in the cardiac cycle. Too many bins and the data becomes too heavily temporally constrained and imposes a computational burden on the iterative reconstruction. In these experiments, it has been observed that sorting data into more than twelve temporal data bins, when two data averages have been acquired, does not yield significant improvements to the results. Therefore, unless specified, for purposes of this discussion all data is sorted into twelve temporal data bins. However, it is noted that the inventive concepts herein are not limited to any number of data bins.

Additionally, the cineTSE sequence may acquire data independent of the cardiac cycle and as a result some of the acquired data lines may occur on or near the boundary of the data bins. This data may reasonably be sorted into more than one temporal data bin. Such an effect can be taken into account by allowing our data bins to overlap slightly. In some cases, an overlap of 50% is utilized to help ensure each data bin contains an adequate amount of data but not too much to blur results in the temporal direction.

Finally, during the sorting process it is possible at times to sample a particular line of data in a given data bin multiple times. One way to include this effect is to allow  $W(k_x, k_y)$  to assume values other than 0 or 1. Alternatively, we can average any line that is sampled more than once and keep the original definition of  $W(k_x, k_y)$ . It has been found that the averaging method yields similar results to the first but is less computationally demanding. As a result, any data line that is sampled multiple times in a particular bin is averaged.

FIGS. 5A-C illustrate methods for flow artifact identification using a T2 weighted cineTSE reconstruction (four channel receive coil and two data averages). The standard TSE image, FIG. 5A, exhibits a flow artifact in the carotid artery, just below the bifurcation indicated by arrow 501, that is observed with this patient when the data is reconstructed in the standard way. It is noted that the arrows in FIGS. 5A-B, 7A-D and 8A are used to assist in indicating the relevant area of the figure, and are not part of the image. FIG. 5B shows six (of twelve total) images obtained from a cineTSE reconstruction. The six images are selected with equal spacing in the cardiac cycle at the times shown on the average pressure pulse in FIG. 5C. The flow artifact is seen to come and go throughout the cardiac cycle and can easily be identified in the cineTSE images at arrow 502. The time of each of the six images of FIG. 5B relative to the systolic trigger correspond to the time points 503 on the average pressure pulse wave form of FIG. 5C.

FIGS. 6A-C illustrates the improvement of vessel wall depiction using a T2 weighted cineTSE. Profiles through a carotid artery are observed in two orthogonal directions 601 and 602 of FIG. 6A. FIGS. 6B and 6C illustrate the profiles along the vertical (phase encode) 601 and horizontal (frequency encode) 602 directions, respectively. The dashed lines 603 in FIGS. 6B and 6C are the profiles measured when a standard TSE sequence (two averages) is used, while the solid lines 604 is the result obtained using a systolic image from the same data obtained using the cineTSE reconstruc-

tion. The discrepancy in vessel wall thickness is especially evident in the phase encode direction (FIG. 6C).

FIGS. 7A-D illustrate T1 weighted cineTSE images from a patient with an ulceration of plaque in their carotid artery. Each column contains images from the same three consecutive slices. FIG. 7A contains the standard TSE images (two averages), FIGS. 7B and 7C show images reconstructed in the systolic and diastolic phases, respectively, with FIG. 7D showing the signal difference between the two cardiac phases. Arrows 701 on each slice indicate areas where flow artifact might obscure the true nature of the plaque.

FIGS. 8A-C illustrate the motion of a valve 801 in a facial vein captured with a T2 weighted cineTSE reconstruction. FIG. 8A shows the standard TSE image with the average pressure waveform shown in FIG. 8B. Twelve cineTSE images of the valve indicated by arrow 801 at different times in the cardiac cycle are illustrated in FIG. 8C. The time of each image within the cardiac cycle is indicated by points 802 in FIG. 8B. Each of these times is taken with respect to the systolic trigger of the cardiac cycle. Where a typical TSE gated sequence returns images at one or two time points, it is noted that the cineTSE sequence delivers a whole set of images without an increase in scan time.

While the cineTSE technique is designed to eliminate cardiac related motion artifacts, other motion, such as swallowing, may still create artifacts. FIG. 9A illustrates an example where two averages in a standard TSE image can help to reduce a swallowing artifact. However, this method may eliminate some or all temporal cardiac information received since only a single time frame is reconstructed. When the corrupted data is sorted into multiple temporal bins (FIG. 9B), the swallowing artifact returns. The corrupted lines can be detected using data from adjacent data lines or from the same set of lines acquired in different averages. These lines can then be removed prior to the cineTSE reconstruction to reduce artifacts due to motion unrelated to the cardiac cycle (FIG. 9C).

Although ECG gating can reduce artifacts due to cardiac induced pulsations, gating is rarely used because it also lengthens the acquisition time, resulting in increased susceptibility to swallowing and respiratory motion artifacts. Many TSE protocols acquire two or more data averages to increase image signal to noise ratio and to help reduce the amount of motion artifact. One of the advantages of the cineTSE sequence is that it may be implemented with the same acquisition time of a standard two average TSE sequence. Examples shown in the present disclosure utilize the equivalent of two data averages. While a degree of temporal information could be obtained from just a single average of data, it is noted that in many cases at least two averages are used to yield consistent and accurate temporal information.

Another advantage of the cineTSE sequence is the ability to resolve certain flow artifacts and to discriminate between image signal from recirculating blood and tissue. This is evident in FIGS. 5A-C and 7A-D where residual blood signal may be misinterpreted for tissue wall. In the middle slice of FIGS. 7A-D, the systolic and diastolic images clearly show the ulceration, whereas the conventional image shows a lighter signal in the ulceration that might be interpreted as loose necrotic core. Additionally, it has been shown that in standard sequences pulsatile motion of vessels on the order of 1 mm peak to peak can occur, causing blurring of wall morphology. With a cineTSE sequence, it is possible to scroll through a dozen images at different time frames in the cardiac cycle and select the image(s) with least residual blood signal to best depict the vessel wall and

plaque morphology. For example, FIG. 6A shows how using a systolic cineTSE image where fast moving blood gives no signal can be expected to more accurately depict vessel wall thickness compared to a standard TSE sequence.

T1 weighted images provide image contrast that is complementary to that of T2 weighted images and can therefore help discriminate plaque components. However, T1 weighted images have a short TE such that the signal from moving blood is not eliminated completely by the spin echo sequence. To eliminate the signal from moving blood, T1 weighted sequences may employ double inversion to eliminate the signal from flowing blood. However, double inversion techniques are very time-inefficient and require substantially longer acquisition times. Since cineTSE is able to distinguish flow artifacts, T1 weighted imaging may be performed without double inversion or other flow suppression techniques (FIGS. 7A-D). If it can be shown that blood signal can be detected and eliminated from analysis of T1 weighted images, then the cineTSE technique will substantially decrease the scan time typically required for standard T1 weighted TSE sequences. In this case, substantially more information will be obtained in less time.

In many cases, flow artifacts can be identified by selecting one or two images from the array of cineTSE images. However, since cineTSE produces images at several time points in the cardiac cycle, it is also well suited for applications that measure dynamic variables. FIG. 8 shows how cineTSE can capture the dynamic nature of a valve. Because motion of the carotid wall can be more clearly seen with cineTSE than with cine GRE sequences, it is likely that cineTSE coupled with systolic and diastolic pressures will provide a mechanism for measuring arterial wall compliance. Motion of the cerebrospinal fluid in the cervical spinal cord is also evident.

An additional advantage of a cineTSE sequence is that the data acquisition may be almost identical to a standard TSE sequence. As a result, many of the motion correction techniques (for non-cardiac related motion) developed for standard TSE sequences can be easily applied to the cineTSE sequence. Because many k-space lines have multiple averages, this data can be used to help detect corrupted data. Additionally, data from adjacent data lines can also be used to detect corruption from patient motion. Since under-sampled data is already being obtained, it is not a significant problem if a few lines of data need to be discarded due to non-cardiac related motion corruption. As with many sequences, significant amounts of non-cardiac related motion may pose a problem. In FIG. 9, even though 20% of the data was discarded due to corruption, the cineTSE sequence produced images relatively free of cardiac motion artifact.

While this study focused on cineTSE of the neck, the sequence may be easily applied to other regions of the body, including the heart, where motion synchronized to the cardiac cycle is observed. Further, this technique could easily be adapted to other sequences, such as where a constant TR value and/or continuous scanning is required. Embodiments may also be adapted to perform with high resolution 3D sequences.

Although the present invention and its advantages have been described in detail, it should be understood that various changes, substitutions and alterations can be made herein without departing from the spirit and scope of the invention as defined by the appended claims. Moreover, the scope of the present application is not intended to be limited to the particular embodiments of the process, machine, manufacture, composition of matter, means, methods and steps

described in the specification. As one of ordinary skill in the art will readily appreciate from the disclosure of the present invention, processes, machines, manufacture, compositions of matter, means, methods, or steps, presently existing or later to be developed that perform substantially the same function or achieve substantially the same result as the corresponding embodiments described herein may be utilized according to the present invention. Accordingly, the appended claims are intended to include within their scope such processes, machines, manufacture, compositions of matter, means, methods, or steps.

What is claimed is:

- 1. A method for processing images using a turbo spin echo (TSE) imaging device, the method comprising:
  - receiving motion data corresponding to periodic motion within a subject over a plurality of periodic motion cycles;
  - capturing raw magnetic resonance data over the plurality of periodic motion cycles using the TSE imaging device;
  - reconstructing the raw magnetic resonance data into a sequence of individual images correlated with the motion data using a spatially varying temporal constraint that constrains pixels in each individual image varying with frequencies unrelated to frequency of the periodic motion cycles more strongly than pixels in each individual image varying at frequencies near the frequency of the periodic motion cycles.
- 2. The method of claim 1, wherein the sequence of individual images are reconstructed utilizing parallel imaging techniques.
- 3. The method of claim 1, wherein the raw magnetic resonance data is captured asynchronously with respect to the plurality of periodic motion cycles.
- 4. A computer program product comprising a computer memory having instructions encoded thereon that, when executed, cause a processor to:
  - receive an input signal comprising a multi-slice, single image per slice turbo spin echo (TSE) imaging signal;
  - receive monitoring data corresponding to a cardiac signal of a subject being imaged;
  - correlate the input signal with the monitoring data;
  - determine a heart rate based on the cardiac signal;
  - convert the input signal into a multislice, retrospectively cardiac cycle correlated image sequence per slice, wherein a spatially varying temporal constraint is used to constrain pixels in the image sequence varying with

- frequencies unrelated to the heart rate more strongly than pixels in the image sequence varying at frequencies near the heart rate.
  - 5. The computer program product of claim 4, wherein the processor is further caused to:
    - sort a plurality of received images into respective temporal bins corresponding to a cardiac cycle associated with the subject.
  - 6. The computer program product of claim 5, wherein the respective temporal bins comprise less than twelve total temporal bins.
  - 7. The computer program product of claim 5, wherein the processor is further caused to:
    - average multiple values included in a first temporal bin of the respective temporal bins.
- 8. A system for processing images, the system comprising:
  - a TSE imaging device configured to capture raw magnetic resonance data representative of a subject; and
  - a processor configured to:
    - receive motion data corresponding to periodic motion within the subject over a plurality of periodic motion cycles,
    - receive a plurality of input raw magnetic resonance data captured by the TSE imaging device over the plurality of periodic motion cycles,
    - reconstruct the raw magnetic resonance data into a sequence of individual images correlated with the motion data using a spatially varying temporal constraint that constrains pixels in each individual image varying with frequencies unrelated to frequency of the periodic motion cycles more strongly than pixels in each individual image varying at frequencies near the frequency of the periodic motion cycles.
- 9. The system of claim 8, wherein the processor is further configured to:
  - reconstruct the sequence of individual images utilizing parallel imaging techniques.
- 10. The system of claim 8, wherein the TSE imaging device is configured to capture the raw magnetic resonance data asynchronously with respect to the single periodic motion cycle.
- 11. The system of the claim 8, wherein the processor is further configured to:
  - sort the individual images into a plurality of temporal bins, each temporal bin corresponding to a time division of the single periodic motion cycle.

\* \* \* \* \*

专利名称(译)	回顾性地关联涡轮自旋回波成像		
公开(公告)号	<a href="#">US10123720</a>	公开(公告)日	2018-11-13
申请号	US14/199075	申请日	2014-03-06
[标]申请(专利权)人(译)	犹他大学研究基金会		
申请(专利权)人(译)	UTAH研究基金会大学		
当前申请(专利权)人(译)	UTAH研究基金会大学		
[标]发明人	PARKER DENNIS L MENDES JASON K HULET JORDAN		
发明人	PARKER, DENNIS L. MENDES, JASON K. HULET, JORDAN		
IPC分类号	A61B5/055 A61B5/00 G01R33/561 G01R33/567 A61B5/024 G01R33/563		
CPC分类号	A61B5/055 A61B5/024 A61B5/7207 G01R33/5617 G01R33/5673 A61B5/7285 G01R33/56325		
其他公开文献	US20150011867A1		
外部链接	<a href="#">Espacenet</a>		

摘要(译)

描述了使用涡轮自旋回波磁共振成像产生图像序列的系统和方法，所述涡轮自旋回波磁共振成像与在被成像的对象内发生的周期性运动追溯相关。在一个实施例中，在对象的心动周期中的不同阶段期间捕获k空间测量（或形成图像的测量）。利用该序列，所产生的图像能够显示和/或补偿与受试者的心动周期相关的运动。

