



US008923971B2

(12) **United States Patent**
Haefner et al.

(10) **Patent No.:** **US 8,923,971 B2**
(45) **Date of Patent:** ***Dec. 30, 2014**

(54) **METHOD AND APPARATUS FOR NEURAL STIMULATION WITH RESPIRATORY FEEDBACK**

(2013.01); *A61B 5/4818* (2013.01); *A61N 1/36114* (2013.01)

USPC **607/42**; 600/529

(71) Applicant: **Cardiac Pacemakers, Inc.**, St. Paul, MN (US)

(58) **Field of Classification Search**

USPC 607/2, 42; 600/529
See application file for complete search history.

(72) Inventors: **Paul A. Haefner**, Circle Pines, MN (US); **Kristofer J. James**, Eagan, MN (US); **Kent Lee**, Shoreview, MN (US); **Imad Libbus**, St. Paul, MN (US); **Anthony V. Caparso**, San Jose, CA (US); **Jonathan Kwok**, Holmdel, NJ (US); **Yachuan Pu**, Laguna Niguel, CA (US)

(56) **References Cited**

U.S. PATENT DOCUMENTS

4,506,666 A 3/1985 Durkan
4,694,839 A 9/1987 Timme

(Continued)

FOREIGN PATENT DOCUMENTS

AU 2007290623 B2 9/2011
AU 2007290571 B2 3/2012

(Continued)

OTHER PUBLICATIONS

“U.S. Appl. No. 11/468,595, Final Office Action mailed Jul. 21, 2011”, 5 pgs.
(Continued)

Primary Examiner — Joseph Dietrich

(74) *Attorney, Agent, or Firm* — Schwegman Lundberg & Woessner, P.A.

(57) **ABSTRACT**

A neural stimulation system controls the delivery of neural stimulation using a respiratory signal as a therapy feedback input. The respiratory signal is used to increase the effectiveness of the neural stimulation, such as vagal nerve stimulation, while decreasing potentially adverse side effects in respiratory functions. In one embodiment, the neural stimulation system synchronizes the delivery of the neural stimulation pulses to the respiratory cycles using a respiratory fiducial point in the respiratory signal and a delay interval. In another embodiment, the neural stimulation system detects a respiratory disorder and, in response, adjusts the delivery of the neural stimulation pulses and/or delivers a respiratory therapy treating the detected respiratory disorder.

20 Claims, 15 Drawing Sheets

(73) Assignee: **Cardiac Pacemakers, Inc.**, St. Paul, MN (US)

(*) Notice: Subject to any disclaimer, the term of this patent is extended or adjusted under 35 U.S.C. 154(b) by 0 days.

This patent is subject to a terminal disclaimer.

(21) Appl. No.: **14/041,967**

(22) Filed: **Sep. 30, 2013**

(65) **Prior Publication Data**

US 2014/0025141 A1 Jan. 23, 2014

Related U.S. Application Data

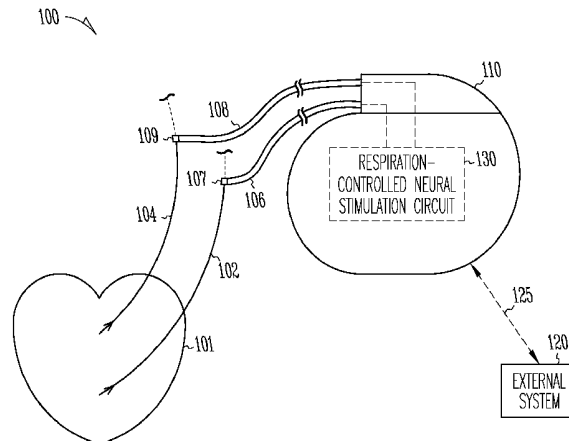
(60) Continuation of application No. 13/363,198, filed on Jan. 31, 2012, now Pat. No. 8,554,323, which is a division of application No. 11/468,595, filed on Aug. 30, 2006, now Pat. No. 8,121,692.

(51) **Int. Cl.**

A61N 1/365 (2006.01)
A61N 1/36 (2006.01)
A61B 5/08 (2006.01)
A61B 5/00 (2006.01)

(52) **U.S. Cl.**

CPC *A61N 1/36053* (2013.01); *A61N 1/3601* (2013.01); *A61B 5/08* (2013.01); *A61B 5/4035*



(56)

References Cited

FOREIGN PATENT DOCUMENTS

U.S. PATENT DOCUMENTS

4,960,129 A 10/1990 dePaola et al.
 5,178,156 A 1/1993 Takishima et al.
 5,330,507 A 7/1994 Schwartz
 5,335,657 A 8/1994 Terry, Jr. et al.
 5,591,216 A 1/1997 Testerman et al.
 5,954,668 A 9/1999 Uber, III et al.
 6,021,352 A 2/2000 Christopherson et al.
 6,141,590 A 10/2000 Renirie et al.
 6,240,316 B1 5/2001 Richmond et al.
 6,251,126 B1 6/2001 Ottenhoff et al.
 6,345,202 B2 2/2002 Richmond et al.
 6,442,420 B1 8/2002 Julu et al.
 6,477,418 B2 11/2002 Picchi et al.
 6,574,507 B1 6/2003 Bonnet
 6,587,725 B1 7/2003 Durand et al.
 6,928,324 B2 8/2005 Park et al.
 7,025,730 B2 4/2006 Cho et al.
 7,277,761 B2 10/2007 Shelchuk
 8,050,765 B2 11/2011 Lee et al.
 8,121,692 B2 2/2012 Haefner et al.
 8,483,834 B2 7/2013 Lee et al.
 2001/0010010 A1 7/2001 Richmond et al.
 2002/0107553 A1 8/2002 Hill et al.
 2003/0153953 A1 8/2003 Park et al.
 2003/0195571 A1 10/2003 Burnes et al.
 2003/0199945 A1 10/2003 Ciulla
 2003/0216789 A1 11/2003 Deem et al.
 2004/0111040 A1 6/2004 Ni et al.
 2004/0138719 A1 7/2004 Cho et al.
 2004/0172075 A1 9/2004 Shafer et al.
 2004/0176695 A1 9/2004 Poezevara
 2004/0186523 A1 9/2004 Florio
 2004/0193003 A1 9/2004 Mechlenburg et al.
 2004/0199210 A1 10/2004 Shelchuk
 2004/0210261 A1 10/2004 King et al.
 2004/0249416 A1 12/2004 Yun et al.
 2004/0260356 A1 12/2004 Kara et al.
 2005/0027207 A1 2/2005 Westbrook et al.
 2005/0039745 A1 2/2005 Stahmann et al.
 2005/0043644 A1 2/2005 Stahmann et al.
 2005/0061315 A1 3/2005 Lee et al.
 2005/0061320 A1 3/2005 Lee et al.
 2005/0065566 A1 3/2005 Hartley et al.
 2005/0065575 A1 3/2005 Dobak
 2005/0085865 A1 4/2005 Tehrani
 2005/0085866 A1 4/2005 Tehrani
 2005/0085877 A1 4/2005 Kratz
 2005/0085879 A1 4/2005 Ahn et al.
 2005/0119711 A1 6/2005 Cho et al.
 2005/0137645 A1 6/2005 Voipio et al.
 2005/0143785 A1 6/2005 Libbus
 2005/0148897 A1 7/2005 Cho et al.
 2005/0149127 A1 7/2005 Libbus
 2005/0209643 A1 9/2005 Heruth et al.
 2005/0222066 A1 10/2005 Richards et al.
 2005/0222503 A1 10/2005 Dunlop et al.
 2005/0288729 A1 12/2005 Libbus et al.
 2006/0030897 A1 2/2006 Gilmer et al.
 2006/0036294 A1 2/2006 Tehrani
 2006/0039866 A1 2/2006 Rao et al.
 2006/0058852 A1 3/2006 Koh et al.
 2006/0064137 A1 3/2006 Stone
 2006/0079802 A1 4/2006 Jensen et al.
 2006/0095088 A1 5/2006 De Ridder
 2006/0100668 A1 5/2006 Ben-David et al.
 2006/0111755 A1 5/2006 Stone et al.
 2006/0116737 A1 6/2006 Libbus
 2006/0212081 A1 9/2006 Suga et al.
 2006/0271108 A1 11/2006 Libbus et al.
 2006/0282131 A1 12/2006 Caparso et al.
 2006/0287691 A1 12/2006 Drew
 2008/0058873 A1 3/2008 Lee et al.
 2008/0058892 A1 3/2008 Haefner et al.
 2012/0046709 A1 2/2012 Lee et al.
 2012/0130446 A1 5/2012 Haefner et al.

AU 2012200589 B2 3/2013
 JP 58165823 A 9/1983
 JP 6511164 A 12/1994
 JP 2001505085 A 4/2001
 JP 2005143829 A 6/2005
 JP 20060116737 A 8/2006
 WO WO-9222348 A1 12/1992
 WO WO-9301862 A1 2/1993
 WO WO-9514116 A1 5/1995
 WO WO-2006055436 A1 5/2005
 WO WO-2005102450 A1 11/2005
 WO WO-2006002338 A2 1/2006
 WO WO-2006050526 A1 5/2006
 WO WO-2006127366 A1 11/2006
 WO WO-2008027297 A2 3/2008
 WO WO-2008027297 A3 3/2008
 WO WO-2008027339 A2 3/2008
 WO WO-2008027339 A3 3/2008

OTHER PUBLICATIONS

"U.S. Appl. No. 11/468,595, Final Office Action mailed Aug. 7, 2009", 9 pgs.
 "U.S. Appl. No. 11/468,595, Non Final Office Action mailed Feb. 4, 2011", 10 pgs.
 "U.S. Appl. No. 11/468,595, Non-Final Office Action mailed Feb. 5, 2009", 7 pgs.
 "U.S. Appl. No. 11/468,595, Non-Final Office Action mailed Aug. 2, 2010", 10 pgs.
 "U.S. Appl. No. 11/468,595, Non-Final Office Action mailed Dec. 28, 2009", 11 pgs.
 "U.S. Appl. No. 11/468,595, Notice of Allowance mailed Oct. 14, 2011", 6 pgs.
 "U.S. Appl. No. 11/468,595, Response filed Jan. 26, 2009 to Restriction Requirement mailed Jan. 7, 2009", 8 pgs.
 "U.S. Appl. No. 11/468,595, Response filed Apr. 26, 2010 to Non Final Office Action mailed Dec. 28, 2009", 12 pgs.
 "U.S. Appl. No. 11/468,595, Response filed May 3, 2011 to Non Final Office Action mailed Feb. 4, 2011", 16 pgs.
 "U.S. Appl. No. 11/468,595, Response filed May 5, 2009 to Non Final Office Action mailed Feb. 5, 2009", 10 pgs.
 "U.S. Appl. No. 11/468,595, Response filed Sep. 15, 2011 to Final Office Action mailed Jul. 21, 2011", 9 pgs.
 "U.S. Appl. No. 11/468,595, Response filed Nov. 2, 2010 to Non Final Office Action mailed Aug. 2, 2010", 13 pgs.
 "U.S. Appl. No. 11/468,595, Response filed Nov. 20, 2009 to Final Office Action mailed Aug. 7, 2009", 11 pgs.
 "U.S. Appl. No. 11/468,595, Restriction Requirement mailed Jan. 7, 2009", 7 pgs.
 "U.S. Appl. No. 11/468,603, Advisory Action mailed Jan. 12, 2010", 3 pgs.
 "U.S. Appl. No. 11/468,603, Final Office Action mailed Oct. 19, 2009", 14 pgs.
 "U.S. Appl. No. 11/468,603, Non-Final Office Action mailed Feb. 24, 2009", 11 pgs.
 "U.S. Appl. No. 11/468,603, Non-Final Office Action mailed Sep. 2, 2010", 13 pgs.
 "U.S. Appl. No. 11/468,603, Notice of Allowance mailed Apr. 14, 2011", 5 pgs.
 "U.S. Appl. No. 11/468,603, Notice of Allowance mailed Jul. 27, 2011", 5 pgs.
 "U.S. Appl. No. 11/468,603, Response filed Jan. 26, 2011 to Non Final Office Action mailed Sep. 2, 2010", 12 pgs.
 "U.S. Appl. No. 11/468,603, Response filed Feb. 18, 2010 to Advisory Action mailed Jan. 12, 2010", 14 pgs.
 "U.S. Appl. No. 11/468,603, Response filed Jun. 24, 2009 to Non Final Office Action mailed Feb. 24, 2009", 14 pgs.
 "U.S. Appl. No. 11/468,603, Response filed Dec. 14, 2009 to Final Office Action mailed Oct. 19, 2009", 14 pgs.
 "U.S. Appl. No. 13/285,457, Response filed Feb. 19, 2013 to Final Office Action mailed Jan. 3, 2013", 6 pgs.

(56)

References Cited

OTHER PUBLICATIONS

- "U.S. Appl. No. 13/285,457, Response filed Sep. 29, 2012 to Non Final Office Action mailed Jun. 1, 2012", 13 pgs.
- "U.S. Appl. No. 13/285,457, Final Office Action mailed Jan. 3, 2013", 6 pgs.
- "U.S. Appl. No. 13/285,457, Non Final Office Action mailed Jun. 1, 2012", 12 pgs.
- "U.S. Appl. No. 13/285,457, Notice of Allowance mailed Mar. 7, 2013", 5 pgs.
- "U.S. Appl. No. 13/363,198, Examiner Interview Summary mailed Jul. 25, 2012", 3 pgs.
- "U.S. Appl. No. 13/363,198, Non Final Office Action mailed Apr. 4, 2012", 7 pgs.
- "U.S. Appl. No. 13/363,198, Notice of Allowance mailed Jun. 10, 2013", 6 pgs.
- "U.S. Appl. No. 13/363,198, Response filed Jul. 25, 2012 to Non Final Office Action mailed Apr. 4, 2012", 10 pgs.
- "Australian Application Serial No. 2007290571, First Examiner Report mailed Nov. 16, 2010", 4 Pgs.
- "Australian Application Serial No. 2007290571, Response filed Sep. 22, 2011 to Office Action mailed Nov. 16, 2010", 20 pgs.
- "Australian Application Serial No. 2007290623, First Examiner Report mailed Aug. 13, 2010", 4 pgs.
- "Australian Application Serial No. 2007290623, Response filed May 18, 2011 to First Examiner Report mailed Aug. 13, 2010", 22.
- "Australian Divisional Application No. 2012200589, Non Final Office Action dated Jul. 31, 2012", 4.
- "International Application Serial No. PCT/US2007/018697, International Search Report mailed Mar. 14, 2008", 5 pgs.
- "International Application Serial No. PCT/US2007/018697, Written Opinion mailed Mar. 14, 2008", 10 pgs.
- "International Application Serial No. PCT/US2007/018846, International Search Report mailed May 27, 2008", 5 pgs.
- "International Application Serial No. PCT/US2007/018846, Written Opinion mailed May 27, 2008", 9 pgs.
- "Japanese Application Serial No. 2009-526651, Amended Claims filed Aug. 18, 2010", (w/English Translation of Amended Claims), 11 pgs.
- "Japanese Application Serial No. 2009-526651, Office Action mailed Jul. 4, 2012", With English Translation, 7 pgs.
- "Japanese Application Serial No. 2009-526651, Response filed Oct. 3, 2012 to Office Action mailed Jul. 4, 2012", (w/ English Translation of Amended Claims), 7 pgs.
- "Japanese Application Serial No. 2009-526671, Office Action mailed Jul. 4, 2012", With English Translation, 15 pgs.
- "Japanese Application Serial No. 2009-526671, Office Action mailed Jul. 20, 2012", 15 pgs.
- "Japanese Application Serial No. 2009-526671, Response filed Oct. 3, 2012 to Office Action mailed Jul. 4, 2012", (w/ English Translation of Amended Claims), 9 pgs.
- Holmes, M. D., et al., "Sleep apnea and excessive daytime somnolence induced by vagal nerve stimulation", *Neurology*, 6(8), (Oct. 28, 2003), 1126-9.
- Kaneko, Y., et al., "Cardiovascular effects of continuous positive airway pressure in patients with heart failure and obstructive sleep apnea.", *N Engl J Med.*, 348(13), (Mar. 27, 2003), 1233-41.
- Lee, Kent, et al., "Method and Apparatus for Controlling Neural Stimulation During Disordered Breathing", U.S. Appl. No. 11/468,603, filed Aug. 30, 2006, 48 pgs.
- Libbus, Imad, et al., "Neural Stimulator to Treat Sleep Disordered Breathing", U.S. Appl. No. 11/320,500, filed Dec. 28, 2005, 48 pgs.
- Libbus, Imad, et al., "System for Abating Neural Stimulation Side Effects", U.S. Appl. No. 11/467,264, filed Aug. 25, 2006, 53 pgs.
- Malow, B. A, et al., "Effects of vagus nerve stimulation on respiration during sleep: a pilot study", *Neurology*, 55(10), (Nov. 28, 2000), 1450-4.
- Malow, BA, et al., "Effects of vagus nerve stimulation on respiration during sleep", A pilot study. *Neurology* 55, (2000), 1450-1454.
- Marzec, M., et al., "Effects of vagus nerve stimulation on sleep-related breathing in epilepsy patients", *Epilepsia*, 44(7), (Jul. 2003), 930-935.
- Oldenburg, O., et al., "Central but obstructive sleep apnea can be influenced by cardiac resynchronisation therapy", *Heart Rhythm*, 2, Abstract, (2005), S98.
- Shalaby, A., et al., "Automated detection of sleep apnea using a pacemaker impedance sensor", *PACE*, 26, Abstract, (2003), 101.
- Stahmann, Jeffrey E, "Method and Apparatus for Pulmonary Artery Pressure Signal Isolation", U.S. Appl. No. 11/249,624, filed Oct. 13, 2005, 59 pgs.
- Zhang, Yi, et al., "Rapid Shallow Breathing Detection for Use in Congestive Heart Failure Status Determination", U.S. Appl. No. 11/229,316, filed Sep. 16, 2006, 55 pgs.

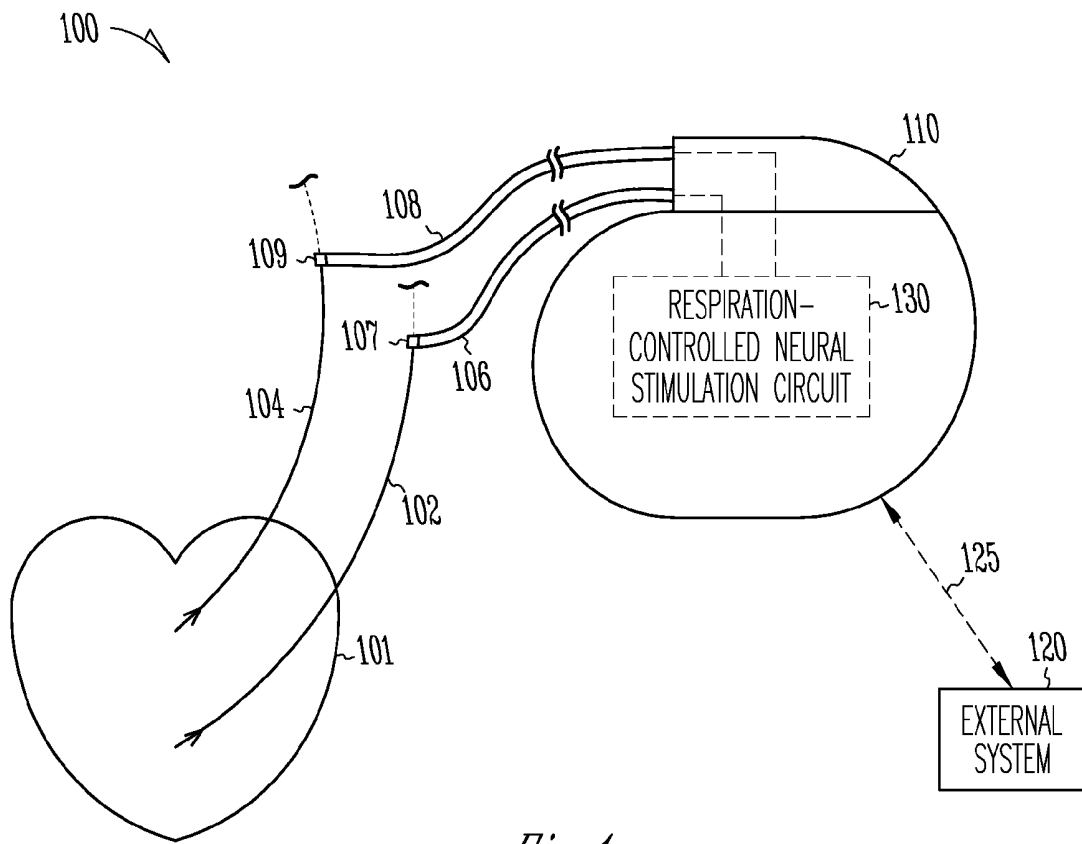


Fig. 1

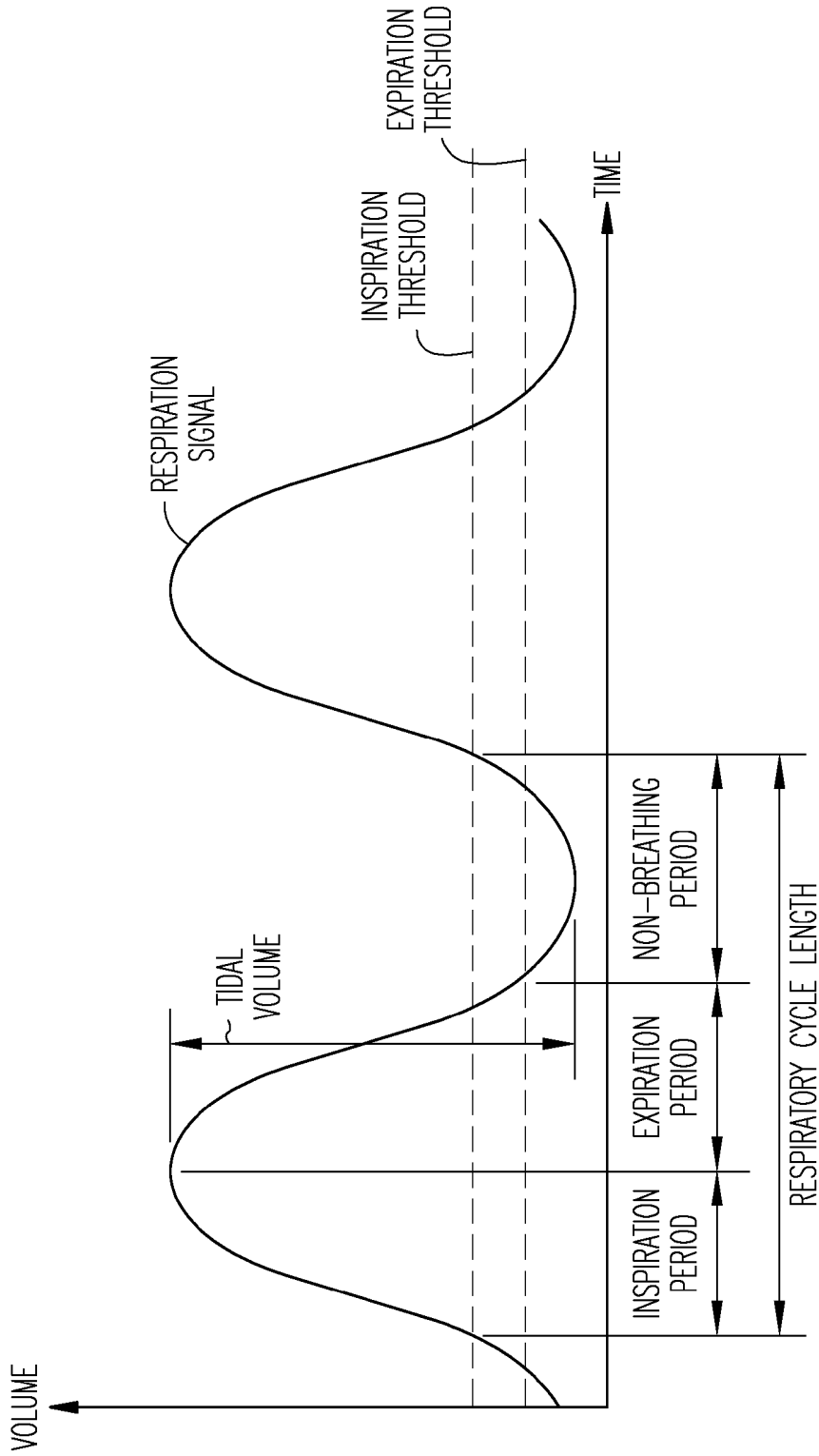


Fig. 2

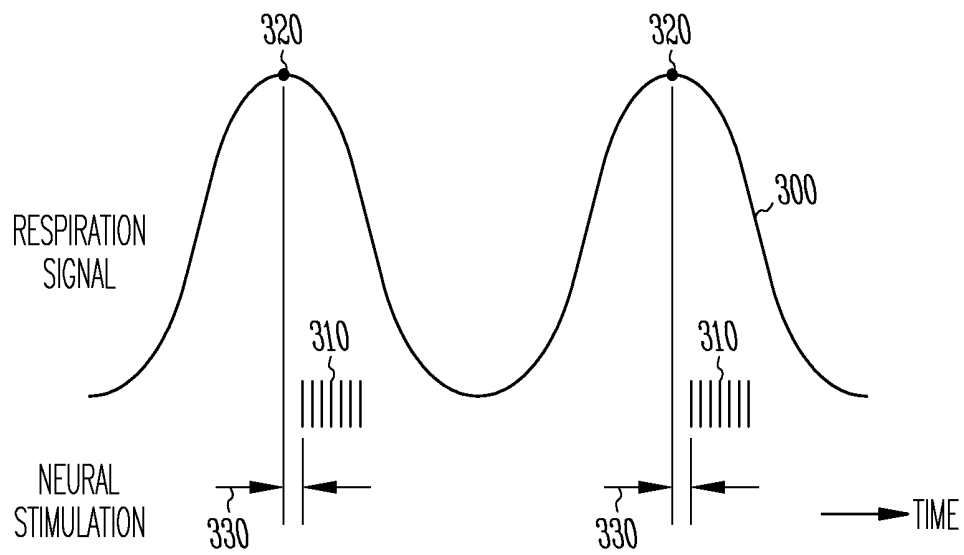


Fig. 3

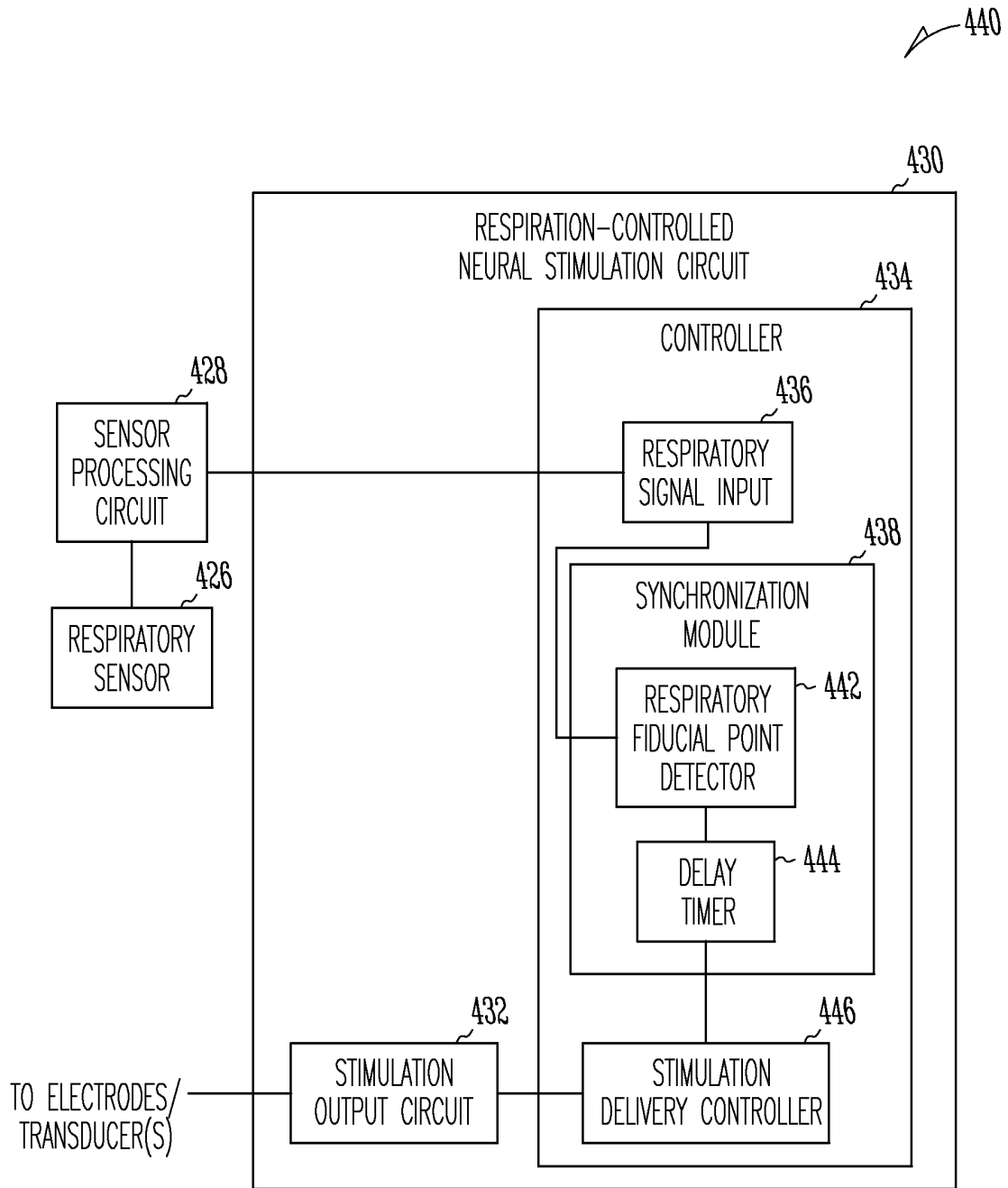


Fig. 4

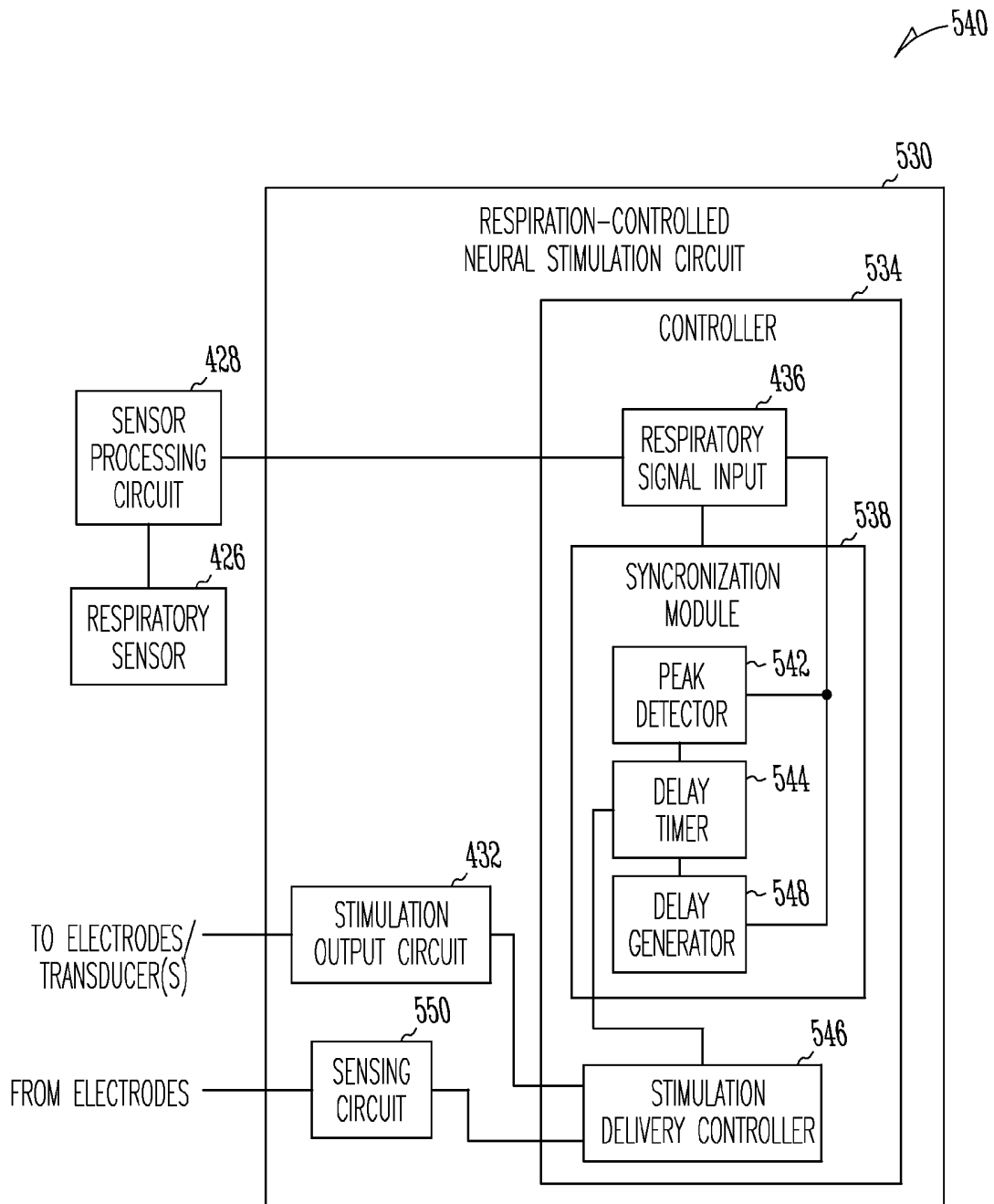


Fig. 5

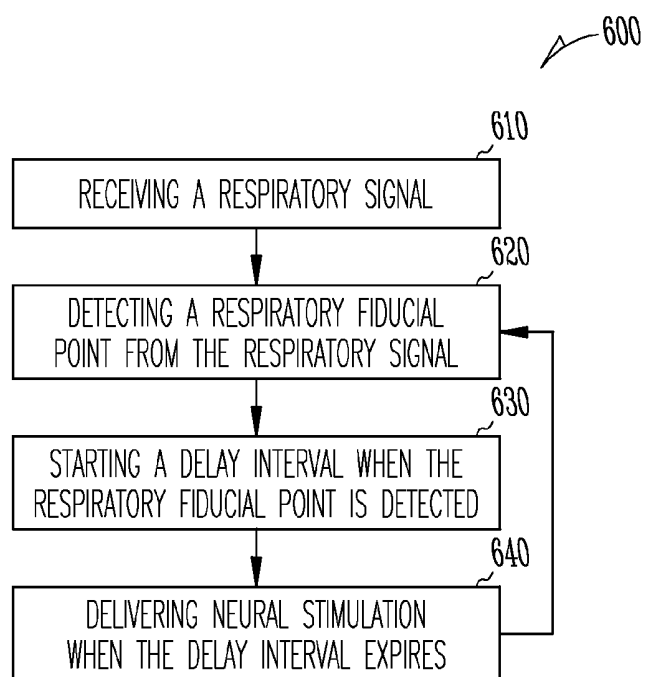


Fig. 6

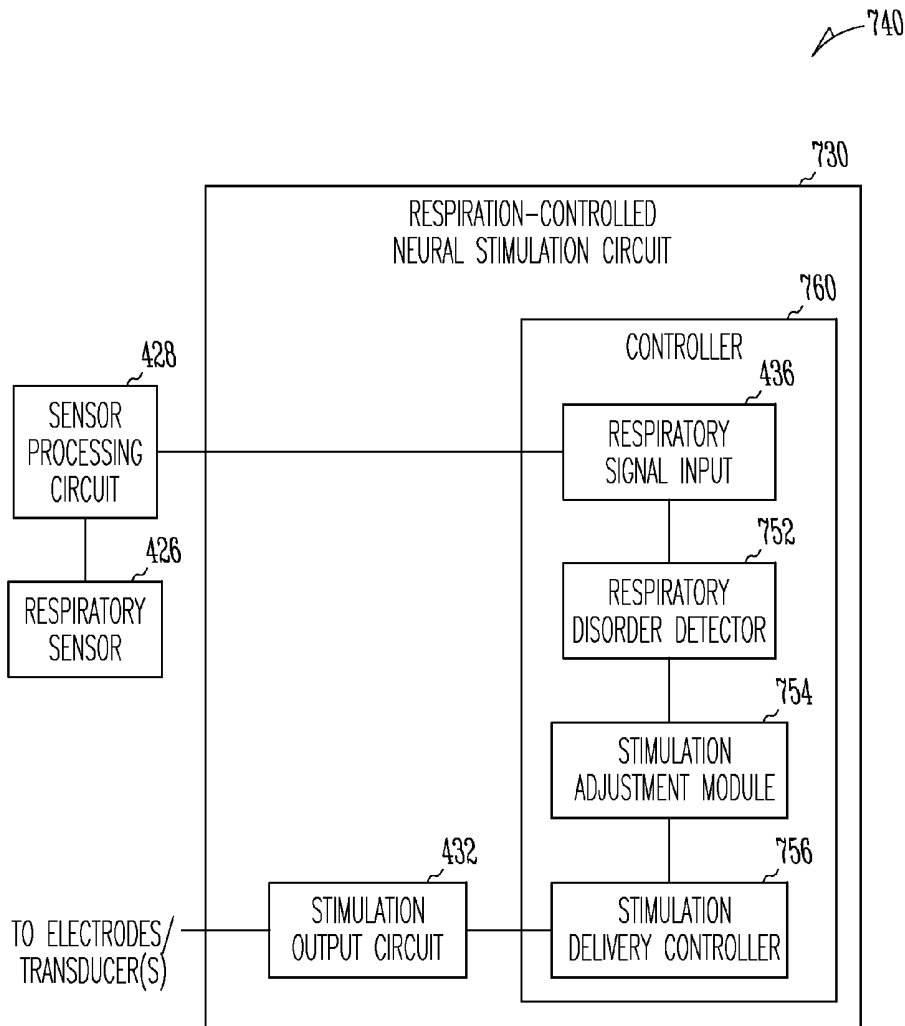


Fig. 7

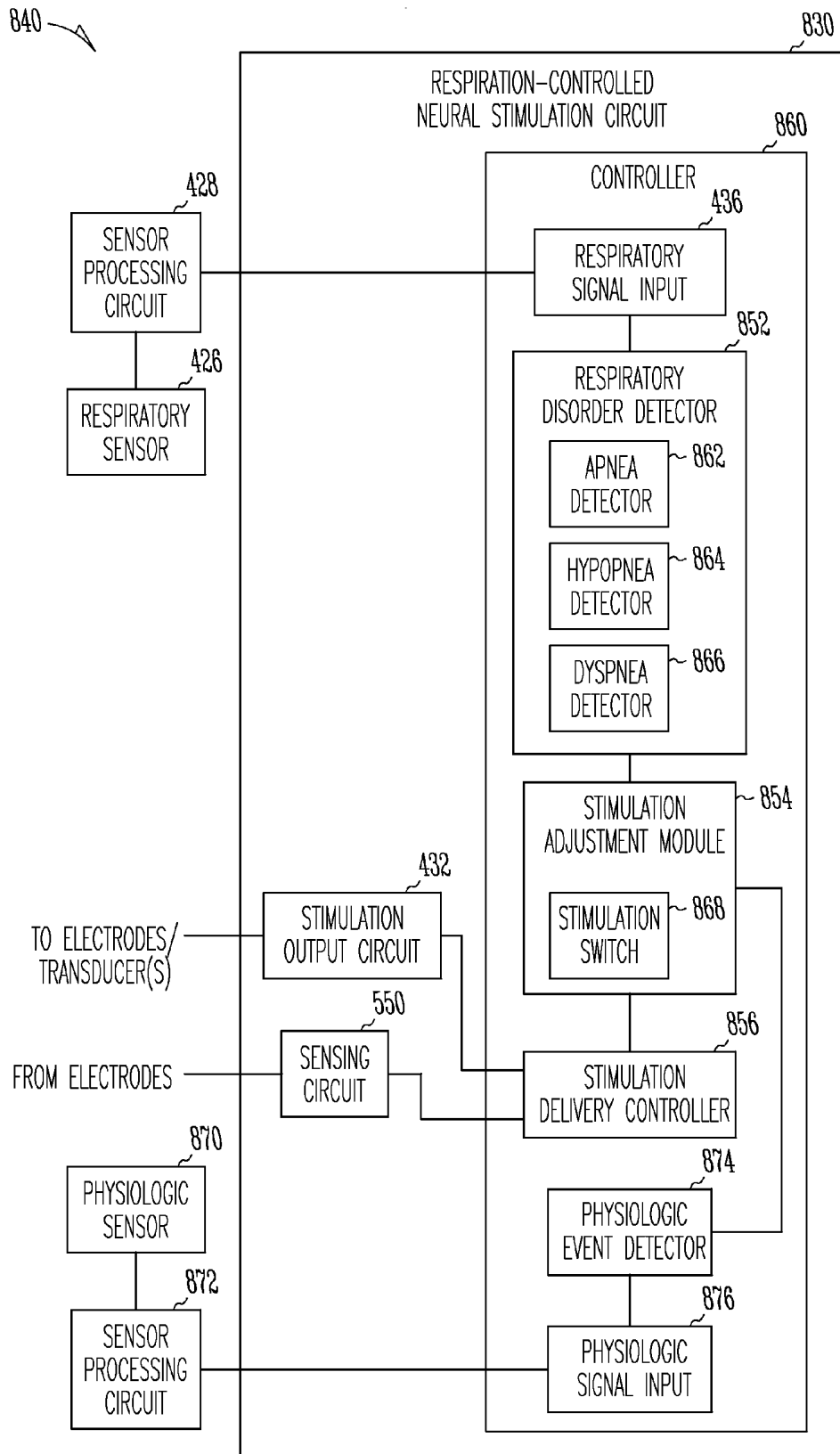


Fig. 8

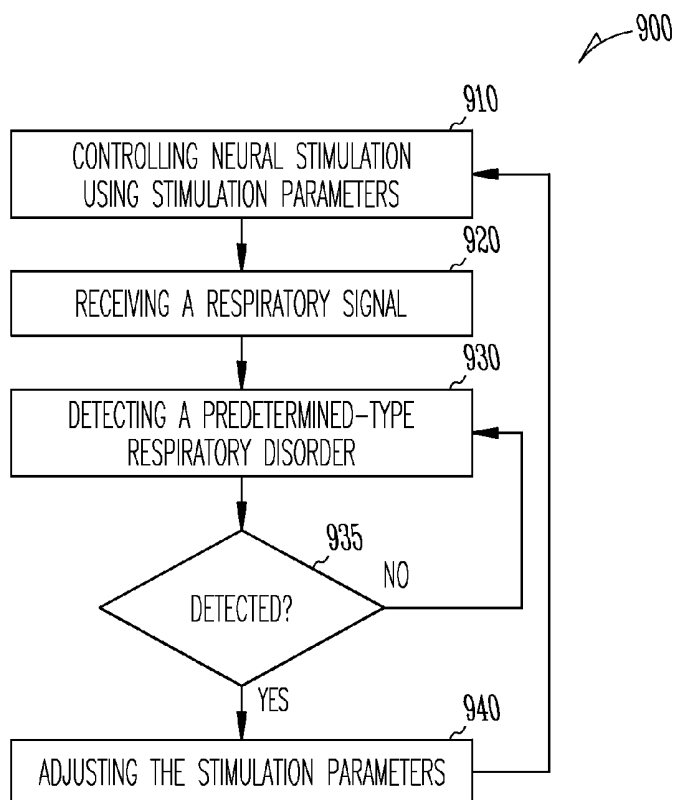


Fig. 9

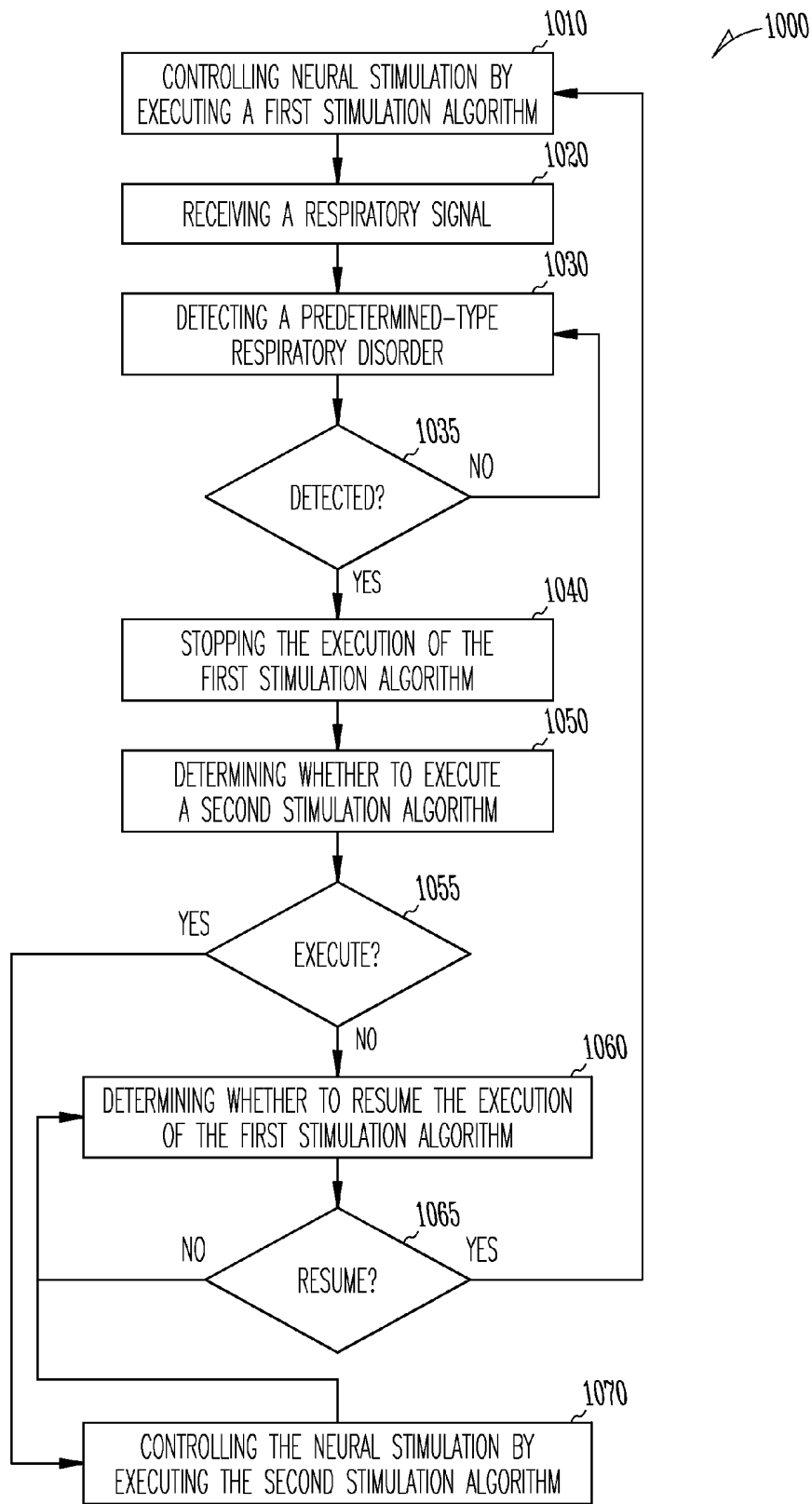


Fig. 10

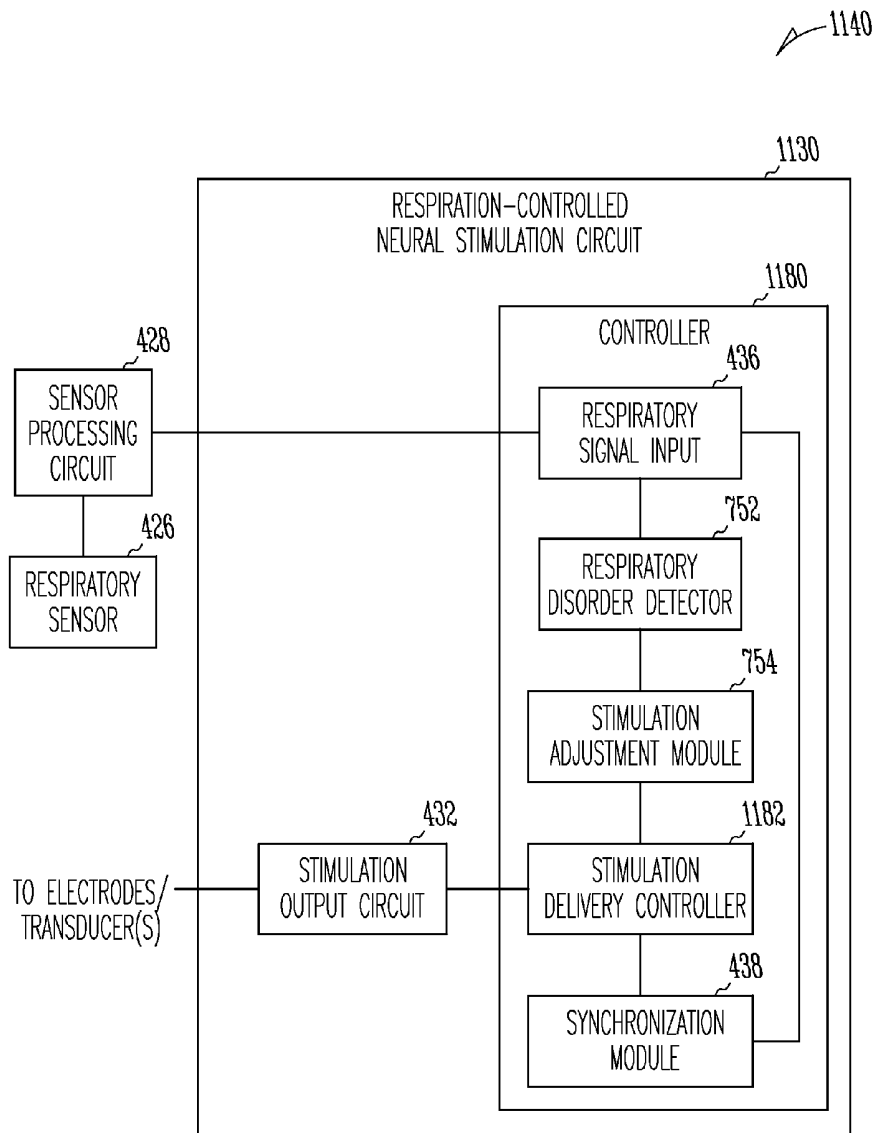


Fig. 11

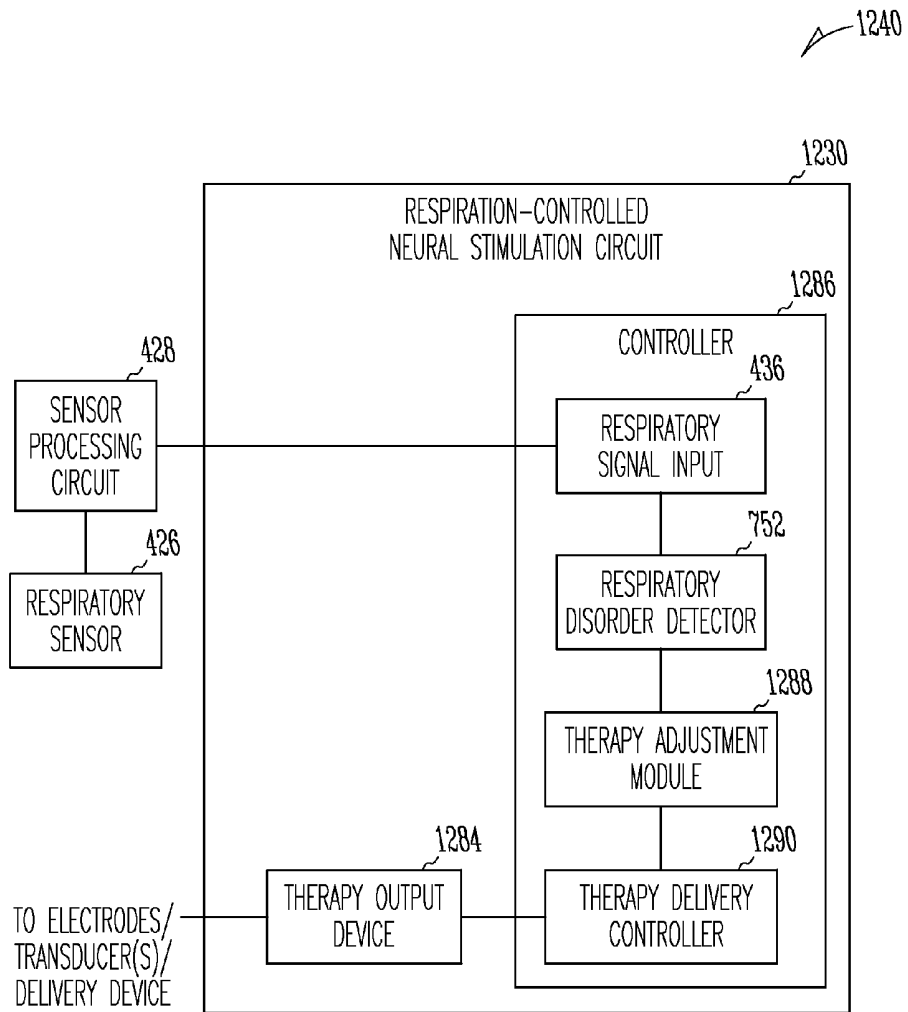


Fig. 12

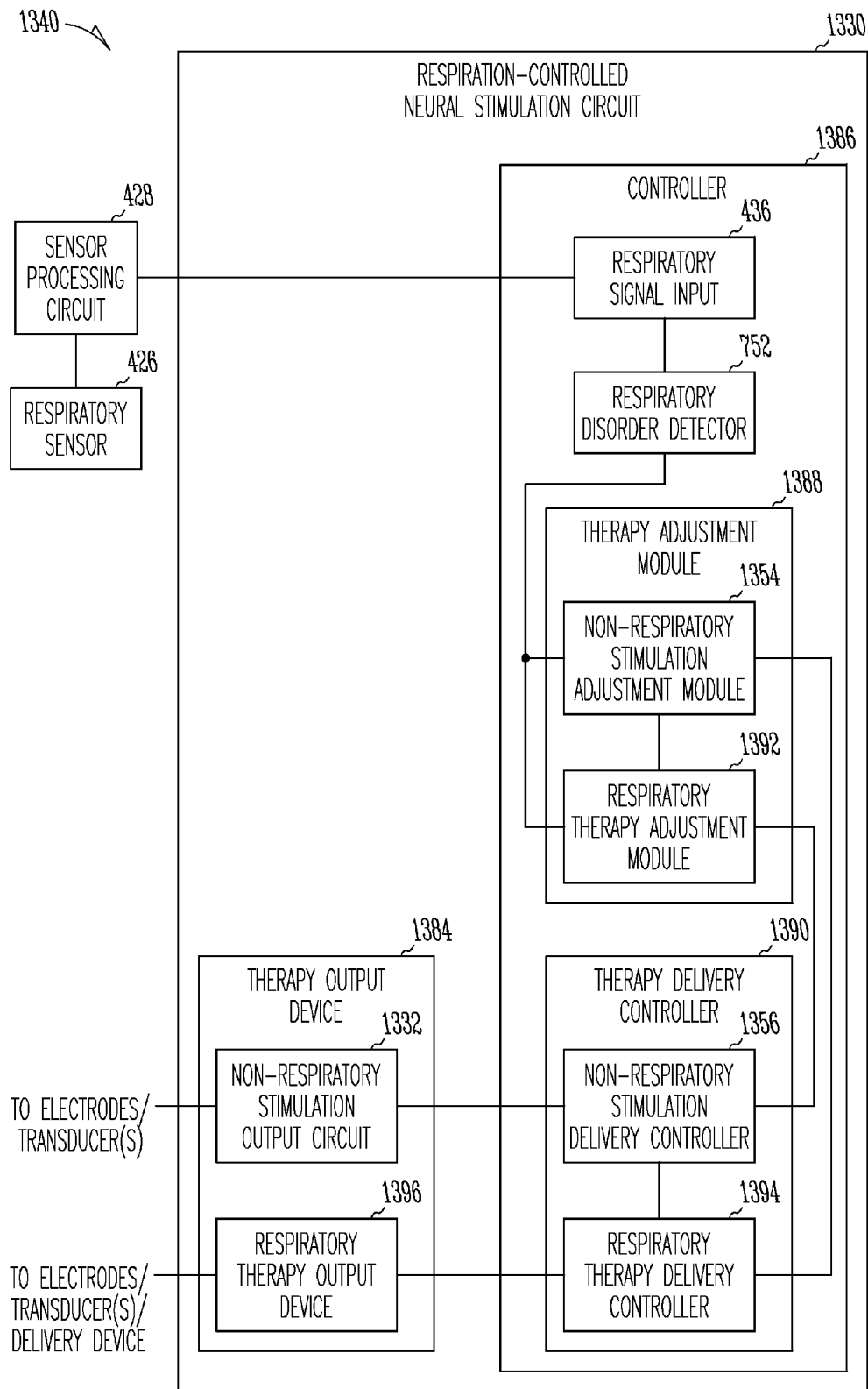


Fig. 13

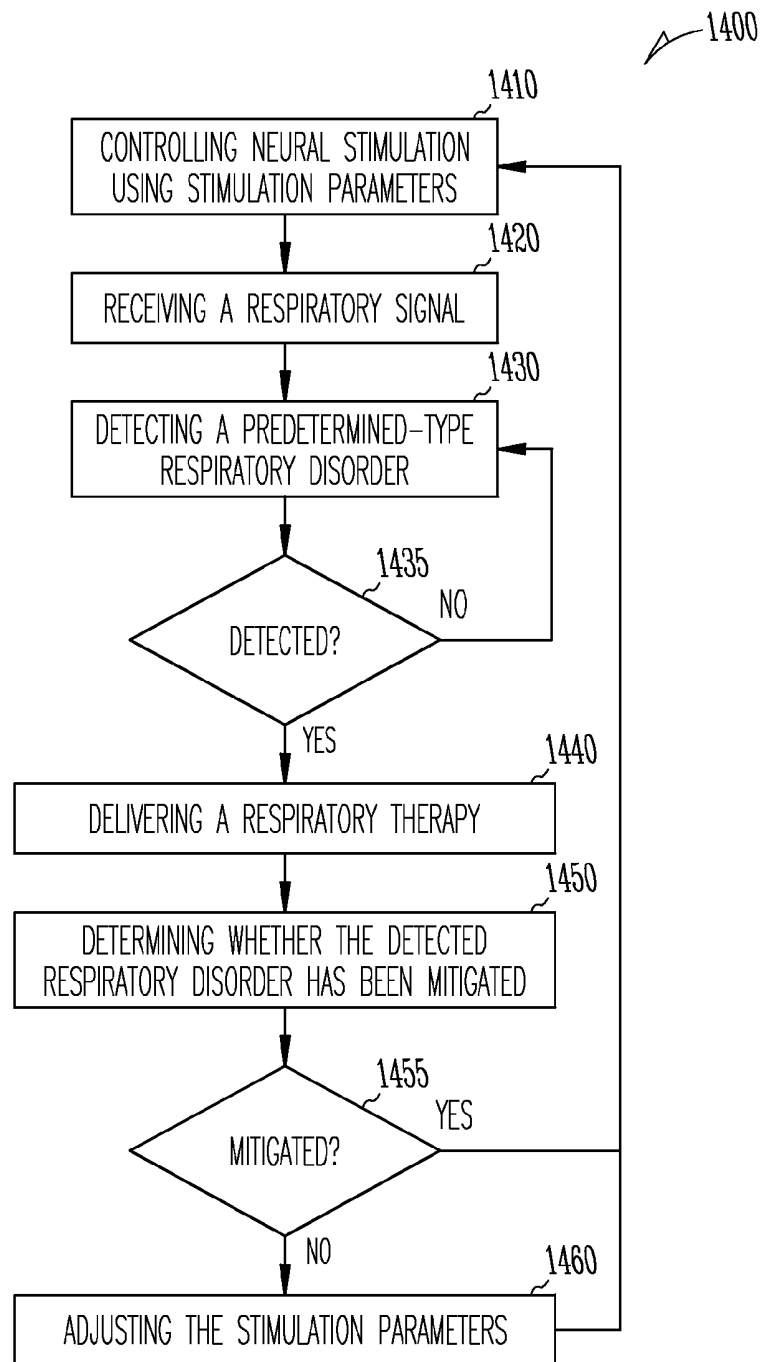


Fig. 14

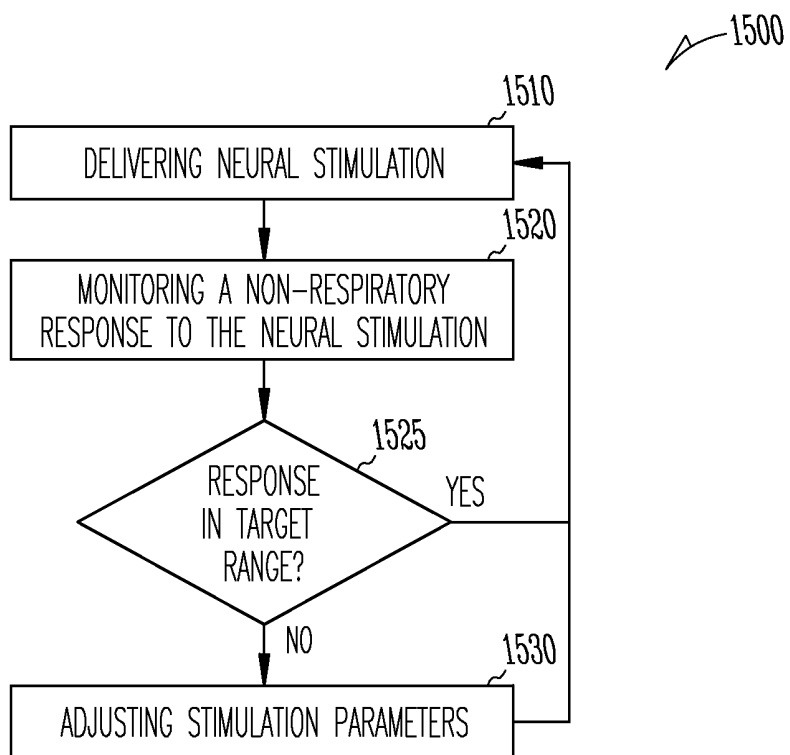


Fig. 15

METHOD AND APPARATUS FOR NEURAL STIMULATION WITH RESPIRATORY FEEDBACK

CLAIM OF PRIORITY

This application is a continuation of and claims the benefit of priority under 35 U.S.C. §120 to U.S. patent application Ser. No. 13/363,198, entitled "METHOD AND APPARATUS FOR NEURAL STIMULATION WITH RESPIRATORY FEEDBACK," filed on Jan. 31, 2012, now issued as U.S. Pat. No. 8,554,323, which is a divisional of and claims the benefit of priority under 35 U.S.C. §120 to U.S. patent application Ser. No. 11/468,595, entitled "METHOD AND APPARATUS FOR NEURAL STIMULATION WITH RESPIRATORY FEEDBACK," filed on Aug. 30, 2006, now issued as U.S. Pat. No. 8,121,692, each of which is incorporated by reference herein in its entirety.

CROSS-REFERENCE TO RELATED APPLICATIONS

This application is related to, commonly assigned U.S. patent application Ser. No. 11/467,264, entitled "SYSTEM FOR ABATING NEURAL STIMULATION SIDE EFFECTS," filed on Aug. 25, 2006, published as US 20080051839, now U.S. Pat. No. 8,103,341, and U.S. patent application Ser. No. 11/468,603, entitled "METHOD AND APPARATUS FOR CONTROLLING NEURAL STIMULATION DURING DISORDERED BREATHING" filed on Aug. 30, 2006, published as US 20080058873, now U.S. Pat. No. 8,050,765, which are hereby incorporated by reference in their entirety.

TECHNICAL FIELD

This document relates generally to neural stimulation and particularly to a system for controlling neural stimulation using a respiratory signal.

BACKGROUND

Electrical stimulation of the autonomic nervous system has been applied to modulate various physiologic functions. One example is the modulation of cardiac functions and hemodynamic performance using neural stimulation. The myocardium is innervated with sympathetic and parasympathetic nerves. Activities in these nerves, including artificially applied electrical stimuli, modulate the heart rate and contractility (strength of the myocardial contractions). Electrical stimulation applied to the parasympathetic nerves, such as the cardiac branch of the vagus nerve, is known to decrease the heart rate and the contractility, lengthen the systolic phase of a cardiac cycle, and shorten the diastolic phase of the cardiac cycle. Electrical stimulation applied to the sympathetic nerves is known to have essentially the opposite effects.

The ability of the electrical stimulation of the autonomic nerves in modulating the heart rate and contractility is utilized to treat abnormal cardiac conditions, such as to improve hemodynamic performance for heart failure patients and to control myocardial remodeling and prevent arrhythmias following myocardial infarction. However, the autonomic nervous system regulates functions of many organs of the body. Neural stimulation pulses delivered to the autonomic nervous system to treat a cardiac disorder may unintentionally modulate various other physiologic functions. Therefore, there is a

need to prevent or control unintended, potentially adverse effects when neural stimulation is applied to the autonomic nervous system.

SUMMARY

A neural stimulation system controls the delivery of neural stimulation using a respiratory signal as a therapy feedback input. The respiratory signal is used to increase the effectiveness of the neural stimulation, such as vagal nerve stimulation, while decreasing potentially adverse side effects in respiratory functions.

In one embodiment, a neural stimulation system includes a stimulation output circuit, a stimulation delivery controller, a respiratory signal input, a respiratory disorder detector, and a stimulation switch. The stimulation output circuit delivers a neural stimulation therapy. The stimulation delivery controller controls the delivery of the neural stimulation therapy by executing one or more stimulation algorithms. The respiratory signal input receives a respiratory signal indicative of respiratory cycles. The respiratory disorder detector detects a respiratory disorder using the respiratory signal. The stimulation switch stops executing a stimulation algorithm in response to the detection of the respiratory disorder.

In one embodiment, a method for neural stimulation is provided. The delivery of neural stimulation is controlled by executing one or more stimulation algorithms. A respiratory signal indicative of respiratory cycles is received. A respiratory disorder is detected using the respiratory signal. The execution of a stimulation algorithm is stopped in response to the detection of the respiratory disorder.

In one embodiment, a neural stimulation system includes a stimulation output circuit, a respiratory signal input, and a synchronization module. The stimulation output circuit delivers neural stimulation pulses. The respiratory signal input receives a respiratory signal indicative of respiratory cycles and respiratory parameters. The synchronization module includes a peak detector and a delay timer. The peak detector detects peaks of the respiratory signal. The delay timer times a delay interval starting with each of the detected peaks of the respiratory signal. The stimulation delivery controller causes the stimulation output circuit to deliver a burst of the neural stimulation pulses when the delay interval expires.

In one embodiment, a method for neural stimulation is provided. A respiratory signal is received. Peaks of the respiratory signal are received. Delay intervals are started with selected peaks of the detected peaks. A burst of neural stimulation pulses is delivered when each of the delay intervals expires.

This Summary is an overview of some of the teachings of the present application and not intended to be an exclusive or exhaustive treatment of the present subject matter. Further details about the present subject matter are found in the detailed description and appended claims. Other aspects of the invention will be apparent to persons skilled in the art upon reading and understanding the following detailed description and viewing the drawings that form a part thereof. The scope of the present invention is defined by the appended claims and their legal equivalents.

BRIEF DESCRIPTION OF THE DRAWINGS

The drawings illustrate generally, by way of example, various embodiments discussed in the present document. The drawings are for illustrative purposes only and may not be to scale.

FIG. 1 is an illustration of an embodiment of a neural stimulation system and portions of an environment in which the neural stimulation system is used.

FIG. 2 is an illustration of a respiratory signal indicative of respiratory cycles and respiratory parameters.

FIG. 3 is an illustration of a delivery of neural stimulation pulses synchronized to respiratory cycles.

FIG. 4 is a block diagram illustrating an embodiment of a respiratory cycle-synchronized neural stimulation system.

FIG. 5 is a block diagram illustrating a specific embodiment of the respiratory cycle-synchronized neural stimulation system of FIG. 4.

FIG. 6 is a flow chart illustrating an embodiment of a method for synchronizing neural stimulation to respiratory cycles.

FIG. 7 is a block diagram illustrating an embodiment of a respiratory disorder-responsive neural stimulation system.

FIG. 8 is a block diagram illustrating a specific embodiment of the respiratory disorder-responsive neural stimulation system of FIG. 7.

FIG. 9 is a flow chart illustrating an embodiment of a method for adjusting neural stimulation in response to a respiratory disorder.

FIG. 10 is a flow chart illustrating a specific embodiment of the method for adjusting neural stimulation in response to a respiratory disorder.

FIG. 11 is a block diagram illustrating an embodiment of a respiratory cycle-synchronized respiratory disorder-responsive neural stimulation system.

FIG. 12 is a block diagram illustrating an embodiment of another respiratory disorder-responsive neural stimulation system.

FIG. 13 is a block diagram illustrating a specific embodiment of the respiratory disorder-responsive neural stimulation system of FIG. 12.

FIG. 14 is a flow chart illustrating an embodiment of a method for responding to a respiratory disorder during neural stimulation.

FIG. 15 is a flow chart illustrating an embodiment of a method for controlling a neural stimulation treating a non-respiratory disorder.

DETAILED DESCRIPTION

In the following detailed description, reference is made to the accompanying drawings which form a part hereof, and in which is shown by way of illustration specific embodiments in which the invention may be practiced. These embodiments are described in sufficient detail to enable those skilled in the art to practice the invention, and it is to be understood that the embodiments may be combined, or that other embodiments may be utilized and that structural, logical and electrical changes may be made without departing from the spirit and scope of the present invention. References to “an”, “one”, or “various” embodiments in this disclosure are not necessarily to the same embodiment, and such references contemplate more than one embodiment. The following detailed description provides examples, and the scope of the present invention is defined by the appended claims and their legal equivalents.

The relationship between a respiratory rate and a respiratory cycle length (also known as breathing interval), as used in this document, is the relationship between a frequency and its corresponding period. If a respiratory rate is given in breaths per minute, its corresponding respiratory cycle length in seconds is calculated by dividing 60 by the respiratory rate (where 60 is the number of seconds in a minute). Any process, such as a comparison, using a respiratory rate is to be modified

accordingly when a respiratory cycle length is used instead. For example, if a low respiratory rate is detected when the respiratory rate falls below a threshold rate, an equivalent process is to detect the low respiratory rate when the respiratory cycle length exceeds a corresponding threshold interval. The appended claims should be construed to cover such variations.

This document discusses a neural stimulation system that synchronizes delivery of neural stimulation to respiratory cycles and/or adjusts delivery of neural stimulation in response to detection of a respiratory disorder (disordered breathing) such as apnea, hypopnea, or dyspnea. In one embodiment, the neural stimulation system delivers neural stimulation to autonomic nerves such as the vagus nerve of the parasympathetic nervous system. The stimulation of the vagus nerve is referred to as vagal nerve stimulation or vagal nerve modulation. Vagal nerve stimulation may be applied to treat heart diseases, hypertension, inflammatory disease, epilepsy, diabetes, depression, and other ailments. However, vagal nerve stimulation may also cause undesirable effects in respiration such as reduced respiratory rate and reduced tidal volume, and worsen the condition of a patient who already suffers from a respiratory disorder. Therefore, respiratory disorders such as apnea, hypopnea, and dyspnea have been contraindication for vagal nerve stimulation. In one embodiment, the neural stimulation system senses a respiratory signal indicative of respiratory cycles and synchronizes the delivery of neural stimulation to the respiratory cycles. This provides an inherent negative feedback that reduces the intensity of neural stimulation when the respiratory rate decreases. In another embodiment, the neural stimulation system detects respiratory disorders such as apnea, hypopnea, and dyspnea. If such a respiratory disorder is detected, the delivery of neural stimulation is adjusted to reduce the intensity of stimulation, suspend the stimulation, or apply a respiratory therapy using neural stimulation or other means to treat the detected respiratory disorder. In other embodiments, the neural stimulation system also delivers neural stimulation to the sympathetic system.

While vagal nerve stimulation is discussed as a specific example of neural stimulation, the present subject matter is applicable to any neural stimulation that affects respiration. While delivery of “neural stimulation pulses” to the nervous system is discussed as a specific example of neural stimulation, the present subject matter is applicable to stimulation of the nervous system using various energy forms and various signal morphologies. In one embodiment, the neural stimulation includes delivery of electrical pulses to the nervous system to artificially elicit action potentials in the nervous system. In other embodiments, the neural stimulation includes delivery of any form of energy that is capable of eliciting or modulating neural activities in the nervous system, such as electrical, mechanical, thermal, optical, chemical, and biological energies.

FIG. 1 is an illustration of an embodiment of a neural stimulation system 100 and portions of an environment in which system 100 is used. System 100 includes implantable medical device 110 that delivers neural stimulation pulses through leads 106 and 108, an external system 120, and a telemetry link 125 providing for communication between implantable medical device 110 and external system 120. For illustrative purposes only, FIG. 1 shows that lead 106 includes an electrode 107 coupled to a nerve 102 of the sympathetic nervous system, and lead 108 includes an electrode 109 coupled a nerve 104 of the parasympathetic nervous system. Nerves 102 and 104 innervate a heart 101. In various embodiments, implantable medical device 110 provides neural

stimulation to any one or more nerves through one or more leads for modulating one or more functions of the circulatory system including heart **101**. Such leads include implantable neural leads each including at least one electrode for sensing neural activities and/or delivering neural stimulation pulses. One example of such an electrode includes a cuff electrode for placement around the vagus nerve.

Implantable medical device **110** delivers the neural stimulation pulses and includes a respiration-controlled neural stimulation circuit **130**. Respiration-controlled neural stimulation circuit **130** controls the delivery of neural stimulation pulses using indications of respiratory cycles and functions extracted from a respiratory signal. In one embodiment, respiration-controlled neural stimulation circuit **130** detects a predetermined type respiratory fiducial point from each respiratory cycle and synchronizes the delivery of neural stimulation pulses to that respiratory fiducial point. In another embodiment, respiration-controlled neural stimulation circuit **130** detects predetermined type respiratory disorders and suspends or adjusts the delivery of neural stimulation pulses upon detection of a respiratory disorder. In one embodiment, implantable medical device **110** is capable of monitoring physiologic signals and/or delivering therapies in addition to the neural stimulation. Examples of such additional therapies include cardiac pacing therapy, cardioversion/defibrillation therapy, cardiac resynchronization therapy, cardiac remodeling control therapy, drug therapy, cell therapy, and gene therapy. In various embodiments, implantable medical device **110** delivers the neural stimulation in coordination with one or more such additional therapies.

External system **120** provides for control of and communication with implantable medical device **110** by a physician or other caregiver. In one embodiment, external system **120** includes a programmer. In another embodiment, external system **120** is a patient management system including an external device communicating with implantable medical device **110** via telemetry link **125**, a remote device in a remote location, and a telecommunication network linking the external device and the remote device. The patient management system allows access to implantable medical device **110** from the remote location, for purposes such as monitoring patient status and adjusting therapies. In one embodiment, telemetry link **125** is an inductive telemetry link. In an alternative embodiment, telemetry link **125** is a far-field radio-frequency (RF) telemetry link. Telemetry link **125** provides for data transmission from implantable medical device **110** to external system **120**. This includes, for example, transmitting real-time physiologic data acquired by implantable medical device **110**, extracting physiologic data acquired by and stored in implantable medical device **110**, extracting patient history data such as occurrences of arrhythmias and therapy deliveries recorded in implantable medical device **110**, and/or extracting data indicating an operational status of implantable medical device **110** (e.g., battery status and lead impedance). Telemetry link **125** also provides for data transmission from external system **120** to implantable medical device **110**. This includes, for example, programming implantable medical device **110** to acquire physiologic data, programming implantable medical device **110** to perform at least one self-diagnostic test (such as for a device operational status), programming implantable medical device **110** to deliver one or more therapies and/or to adjust the delivery of one or more therapies, and/or transmitting externally acquired physiologic and/or other patient data for used by implantable medical device **110** to control the one or more therapies.

FIG. 2 is an illustration of a respiratory signal indicative of respiratory cycles and respiratory parameters including res-

piratory cycle length, inspiration period, expiration period, non-breathing period, and tidal volume. The inspiration period starts at the onset of the inspiration phase of a respiratory cycle, when the amplitude of the respiratory signal rises above an inspiration threshold, and ends at the onset of the expiration phase of the respiratory cycle, when the amplitude of the respiratory cycle peaks. The expiration period starts at the onset of the expiration phase and ends when the amplitude of the respiratory signal falls below an expiration threshold. The non-breathing period is the time interval between the end of the expiration phase and the beginning of the next inspiration phase. The tidal volume is the peak-to-peak amplitude of the respiratory signal.

The respiratory signal is a physiologic signal indicative of respiratory activities. In various embodiments, the respiratory signal includes any physiology signal that is modulated by respiration. In one embodiment, the respiratory signal is a transthoracic impedance signal sensed by an implantable impedance sensor. In another embodiment, the respiratory signal is extracted from a blood pressure signal that is sensed by an implantable pressure sensor and includes a respiratory component. In another embodiment, the respiratory signal is sensed by an external sensor that senses a signal indicative of chest movement or lung volume.

FIG. 3 is an illustration of a delivery of neural stimulation pulses synchronized to respiratory cycles. In the illustrated embodiment, peaks **320** of a respiratory signal **300** are detected as the respiratory fiducial points. A delay interval **330** starts upon the detection of each of peaks **320**. A burst of neural stimulation pulses **310** is delivered to a nerve such as the vagus nerve when delay interval **330** expires. In various other embodiments, onset points of the inspiration phases, ending points of the expiration phases, or other threshold-crossing points are detected as the respiratory fiducial points.

FIG. 4 is a block diagram illustrating an embodiment of a respiratory cycle-synchronized neural stimulation system **440**. System **440** includes a respiratory sensor **426**, a sensor processing circuit **428**, and respiration-controlled neural stimulation circuit **430**.

Respiratory sensor **426** senses a physiologic signal indicative of the respiratory cycles and the respiratory parameters. In one embodiment, respiratory sensor **426** includes an implantable sensor incorporated into implantable medical device **110**. In a specific embodiment, respiratory sensor **426** is an impedance sensor that senses a transthoracic impedance signal indicative of respiration. In another embodiment, respiratory sensor **426** includes an implantable sensor or a portion thereof. The implantable sensor is communicatively coupled to the implantable medical device via one or more leads or via telemetry. In a specific embodiment, respiratory sensor **426** is an implantable pulmonary artery pressure (PAP) sensor or a portion thereof. The implantable PAP sensor communicates with implantable medical device **100** via RF or ultrasonic telemetry. An example of the implantable PAP sensor is discussed in U.S. patent application Ser. No. 11/249,624, entitled "METHOD AND APPARATUS FOR PULMONARY ARTERY PRESSURE SIGNAL ISOLATION", filed on Oct. 13, 2005, now issued as U.S. Pat. No. 7,566,308, assigned to Cardiac Pacemakers, Inc., which is incorporated by reference herein in its entirety. In another embodiment, respiratory sensor **426** includes an external sensor that senses the expansion and contraction of the chest or a portion thereof. The external sensor communicates with implantable medical device **100** via RF or ultrasonic telemetry.

Sensor processing circuit **428** produces the respiratory signal using the physiologic signal. The respiratory signal is indicative of respiratory cycles and respiratory parameters

including one or more of respiratory cycle length, inspiration period, expiration period, non-breathing period, tidal volume, and minute ventilation. In one embodiment, sensor processing circuit 428 removes unwanted components of the physiologic signal to isolate the respiratory components of the physiologic signal. One example includes isolating the respiratory components of a PAP signal, which is discussed in U.S. patent application Ser. No. 11/249,624, now issued as U.S. Pat. No. 7,566,308. In one embodiment, sensor processing circuit 428 extracts one or more of the respiratory parameters. In one embodiment, sensor processing circuit 428 and respiration-controlled neural stimulation circuit 430 are both housed in implantable medical device 110. In another embodiment, sensor processing circuit 428 is part of an implantable or external sensor that includes respiratory sensor 426.

Respiration-controlled neural stimulation circuit 430 is a specific embodiment of respiration-controlled neural stimulation circuit 130 and includes a stimulation output circuit 432 and a controller 434. Stimulation output circuit 432 delivers neural stimulation pulses via electrodes such as electrodes 107 and 109. Controller 434 includes a respiratory signal input 436, a synchronization module 438, and a stimulation delivery controller 446. Respiratory signal input 436 receives the respiratory signal indicative of respiratory cycles and respiratory parameters. Synchronization module 438 synchronizes the delivery of the neural stimulation pulses to the respiratory cycles and includes a respiratory fiducial point detector 442 and a delay timer 444. Respiratory fiducial point detector 442 detects predetermined-type respiratory fiducial points in the respiratory signal. Delay timer 444 times a delay interval starting with each of the detected respiratory fiducial points. Stimulation delivery controller 446 causes stimulation output circuit 432 to deliver a burst of the neural stimulation pulses when the delay interval expires.

FIG. 5 is a block diagram illustrating an embodiment of a respiratory cycle-synchronized neural stimulation system 540, which is a specific embodiment of respiratory cycle-synchronized neural stimulation system 440. System 540 includes respiratory sensor 426, sensor processing circuit 428, and a respiration-controlled neural stimulation circuit 530.

Respiration-controlled neural stimulation circuit 530 is a specific embodiment of respiration-controlled neural stimulation circuit 430 and includes stimulation output circuit 432, a sensing circuit 550, and a controller 534. Sensing circuit 550 senses one or more neural signals using electrodes such as electrodes 107 and 109. Controller 534 includes respiratory signal input 436, a synchronization module 538, and a stimulation delivery controller 546. Synchronization module 538 synchronizes the delivery of the neural stimulation pulses to the respiratory cycles. Such synchronization between respiratory cycles and neural stimulation provides a negative feedback to mitigate undesirable effects such as abnormally long respiratory cycle lengths caused by the neural stimulation. In one embodiment, the synchronization between respiratory cycles and neural stimulation allows the neural stimulation to mimic the natural heart rate modulation by the respiration where the heart rate increases during the inspiration phase and decreases during the expiration phase. In a further embodiment, in addition to synchronizing neural stimulation to respiratory cycles, synchronization module 538 also synchronizes the neural stimulation to cardiac cycles and/or circadian cycles. Synchronization module 538 includes a peak detector 542, a delay timer 544, and a delay generator 548. Peak detector 542 is a specific embodiment of respiratory fiducial point detector 442 and detects high or low peaks of

the respiratory signal. In one embodiment, peak detector 542 detects high peaks illustrated in FIG. 3 as peaks 320. Delay timer 544 times the delay interval that starts with the detected peaks. In one embodiment, the delay interval is programmable between approximately 0 and 5 seconds. In another embodiment, delay generator 548 adjusts the delay interval using the respiratory signal. In a specific embodiment, delay generator 548 calculates the delay interval as a function of the respiratory cycle length. Stimulation delivery controller 546 is a specific embodiment of stimulation delivery controller 446 and controls the delivery of the neural stimulation pulses by executing a stimulation algorithm including a set of stimulation parameters. In various embodiments, the stimulation parameters include pulse amplitude, pulse width, stimulation frequency or inter-pulse interval, number of pulses per burst, and stimulation sites. Stimulation delivery controller 546 causes stimulation output circuit 432 to deliver a burst of the neural stimulation pulses when the delay interval expires.

FIG. 6 is a flow chart illustrating an embodiment of a method 600 for synchronizing neural stimulation to respiratory cycles. In one embodiment, method 600 is performed by respiration-controlled neural stimulation circuit 430 or 530.

A respiratory signal is received at 610. The respiratory signal is indicative of respiratory cycles and respiratory parameters. Examples of the respiratory parameters include the respiratory cycle length, the inspiration period, the expiration period, the non-breathing interval, the tidal volume, and the minute ventilation. In various embodiments, the respiratory signal is, or is derived from, a physiologic signal indicative of the respiratory cycles and the respiratory parameters. Examples of the physiologic signal include a transthoracic impedance signal and blood pressure signals such as a PAP signal.

A respiratory fiducial point is detected from the respiratory signal at 620. Examples of the respiratory fiducial point include high or low peaks of the respiratory signal and threshold-crossing points in the respiratory signal.

A delay interval is started at 630, when the respiratory fiducial point is detected. In one embodiment, the delay interval is programmable between approximately 0 and 5 seconds. In another embodiment, the delay interval is adjusted using the respiratory signal. In a specific embodiment, the delay interval is calculated as a function of the respiratory cycle length and/or one or more other respiratory parameters extracted from the respiratory signal.

A burst of neural stimulation pulses is delivered when the delay interval expires at 640. In various embodiments, the delivery of the neural stimulation pulses is controlled by executing a stimulation algorithm including a set of stimulation parameters such as one or more of pulse amplitude, pulse width, stimulation frequency or inter-pulse interval, number of pulses per burst, and stimulation sites.

FIG. 7 is a block diagram illustrating an embodiment of a respiratory disorder-responsive neural stimulation system 740. System 740 includes respiratory sensor 426, sensor processing circuit 428, and a respiration-controlled neural stimulation circuit 730.

Respiration-controlled neural stimulation circuit 730 is a specific embodiment of respiration-controlled neural stimulation circuit 130 and includes stimulation output circuit 432 and a controller 760. Controller 760 includes respiratory signal input 436, a respiratory disorder detector 752, a stimulation adjustment module 754, and a stimulation delivery controller 756. Respiratory disorder detector 752 detects predetermined-type respiratory disorders using the respiratory signal received by respiratory signal input 436. Stimulation adjustment module 754 adjusts the delivery of the neural

stimulation pulses in response to the detection of each of the respiratory disorders. In one embodiment, stimulation adjustment module **754** stops the execution of a stimulation algorithm in response to the detection of a respiratory disorder. Stimulation delivery controller **756** controls the delivery of the neural stimulation pulses by executing one or more stimulation algorithms.

FIG. **8** is a block diagram illustrating an embodiment of a respiratory disorder-responsive neural stimulation system **840**, which is a specific embodiment of respiratory disorder-responsive neural stimulation system **740**. System **840** includes respiratory sensor **426**, sensor processing circuit **428**, a physiologic sensor **870**, another sensor processing circuit **872**, and a respiration-controlled neural stimulation circuit **830**.

Physiologic sensor **870** senses one or more physiologic signals in addition to the physiologic signal sensed by respiratory sensor **426** and the one or more neural signals sensed by sensing circuit **550**. In various embodiments, physiologic sensor **870** senses one or more of cardiac signals, signals indicative of heart sounds, cardiac and/or transthoracic impedance signals, and signals indicative of blood oxygen level. Sensor processing circuit **872** processes the one or more physiologic signals sensed by physiologic sensor **870** for use by respiration-controlled neural stimulation circuit **830** in controlling the neural stimulation. In various embodiments, physiologic sensor **870** or portions of physiologic sensor **870** are included in implantable medical device **110** or communicatively coupled to implantable medical device **110** via one or more leads or telemetry. In various embodiments, sensor processing circuit **872** or portions sensor processing circuit **872** are included in implantable medical device **110** or communicatively coupled to implantable medical device **110** via one or more leads or telemetry.

Respiration-controlled neural stimulation circuit **830** is a specific embodiment of respiration-controlled neural stimulation circuit **130** and includes stimulation output circuit **432**, sensing circuit **550**, and a controller **860**. Controller **860** is a specific embodiment of controller **760** and includes respiratory signal input **436**, a respiratory disorder detector **852**, a physiologic signal input **876**, a physiologic event detector **874**, a stimulation adjustment module **854**, and a stimulation delivery controller **856**.

Respiratory disorder detector **852** detects one or more respiratory disorders using the respiratory signal. In the illustrated embodiment, respiratory disorder detector **852** includes an apnea detector **862**, a hypopnea detector **864**, and a dyspnea detector **866**. In various other embodiments, respiratory disorder detector **852** includes any one or more of apnea detector **862**, hypopnea detector **864**, and dyspnea detector **866**. In various embodiments, respiratory disorder detector **852** also detects abnormal values of one or more respiratory parameters, such as a low respiratory rate when the respiratory rate is below a threshold rate, a low tidal volume when the tidal volume is below a detection threshold volume, and a low minute ventilation when the minute ventilation is below a detection threshold value.

Apnea is characterized by abnormally long non-breathing periods. Apnea detector **862** detects apnea by comparing the non-breathing period to a detection threshold period. Apnea is detected when the non-breathing period exceeds the detection threshold period. Hypopnea is characterized by abnormally shallow breathing, i.e., low tidal volume. Hypopnea detector **864** detects hypopnea by comparing the tidal volume to a detection threshold volume. Hypopnea is detected when the tidal volume is below the detection threshold volume. In one embodiment, the tidal volume is an average tidal volume over

a predetermined time interval or a predetermined number of respiratory cycles. Dyspnea is characterized by rapid shallow breathing, i.e., high respiratory rate-to-tidal volume ratio. Dyspnea detector **866** detects dyspnea by comparing the ratio of the respiratory rate to the tidal volume to a detection threshold ratio. Dyspnea is detected when the ratio exceeds the threshold ratio. In various embodiments, the threshold period, the detection threshold volume, and/or the threshold ratio are empirically established. An example of apnea and hypopnea detection using a respiratory signal such as a transthoracic impedance signal is discussed in U.S. patent application Ser. No. 10/309,770, entitled "DETECTION OF DISORDERED BREATHING," filed on Dec. 4, 2002, now issued as U.S. Pat. No. 7,252,640, assigned to Cardiac Pacemakers, Inc., which is incorporated by reference herein in its entirety. An example of dyspnea detection using a respiratory signal such as a transthoracic impedance signal is discussed in U.S. patent application Ser. No. 11/229,316, entitled "RAPID SHALLOW BREATHING DETECTION FOR USE IN CONGESTIVE HEART FAILURE STATUS DETERMINATION," filed on Sep. 16, 2005, now issued as U.S. Pat. No. 7,775,983, assigned to Cardiac Pacemakers, Inc., which is incorporated by reference herein in its entirety.

Physiologic signal input **876** receives the one or more physiologic signals sensed by physiologic sensor **870** and processed by sensor processing circuit **872**. Physiologic event detector **874** detects one or more physiologic events from the one or more physiologic signals. In various embodiments, physiologic event detector **874** detects one or more of changes in cardiac signal morphology, changes in heart sound waveform morphology, changes in impedance signal morphology, and changes in blood oxygen saturation.

Stimulation adjustment module **854** adjusts the delivery of the neural stimulation pulses in response to at least the detection of a respiratory disorder by respiratory disorder detector **852**. In one embodiment, stimulation adjustment module **854** adjusts the delivery of the neural stimulation pulses in response to the detection of a respiratory disorder by respiratory disorder detector **852** and the detection of a physiologic event by physiologic event detector **874**. Stimulation delivery controller **856** controls the delivery of the neural stimulation pulses by executing one or more stimulation algorithms. Stimulation adjustment module **854** includes a stimulation switch **868**. Stimulation switch **868** stops executing a first stimulation algorithm in response to the detection of a respiratory disorder such as apnea, hypopnea, or dyspnea. For example, the first stimulation algorithm is executed to treat a cardiac condition by vagal nerve stimulation. If apnea, hypopnea, or dyspnea is detected, the vagal nerve stimulation is to be stopped to avoid the worsening of the condition due to the vagal nerve stimulation designed for treating the cardiac condition. In one embodiment, stimulation switch **868** resumes the execution of the first stimulation algorithm after a predetermined suspension period. In another embodiment, stimulation switch **868** resumes the execution of the first stimulation algorithm when the respiratory disorder is no longer detected. In another embodiment, stimulation switch **868** resumes the execution of the first stimulation algorithm after a predetermined suspension period. In another embodiment, stimulation switch **868** resumes the execution of the first stimulation algorithm in response to a stimulation command issued by a user such as a physician using external system **120**. In one embodiment, in addition to stopping the execution of the first stimulation algorithm, stimulation switch **868** starts executing a second stimulation algorithm in response to the detection of the respiratory disorder. In a specific embodiment, the second stimulation algorithm pro-

vides lower stimulation intensity when compared to the first stimulation algorithm. Switching from the first stimulation algorithm to the second stimulation algorithm lowers the stimulation pulse amplitude, shortens stimulation pulse width, lowers the stimulation frequency, reduces the number of pulses per burst, and/or changes stimulation sites. In another specific embodiment, the first stimulation algorithm is used to treat a non-respiratory disorder such as a cardiac disorder, and the second stimulation algorithm is used to treat the detected respiratory disorder, such as apnea, hypopnea, and dyspnea. Switching from the first stimulation algorithm to the second stimulation algorithm switches the treatment for the non-respiratory disorder to the treatment for the respiratory disorder. In another specific embodiment, the first stimulation algorithm is used to treat the non-respiratory disorder, and the second stimulation algorithm is used to treat the detected respiratory disorder in addition to treating the non-respiratory disorder. Switching from the first stimulation algorithm to the second stimulation algorithm switches the treatment for the non-respiratory disorder to the treatment for both the respiratory disorder and the non-respiratory disorder.

In one embodiment, the “respiratory disorder” discussed in this document refers to a respiratory disorder associated with sleep (i.e., sleep disordered breathing, such as sleep apnea, sleep hypopnea, or sleep dyspnea). The one or more physiologic signals indicate whether a patient is sleeping. For example, physiologic sensor **870** includes an activity sensor, a posture sensor, and/or one or more other sensors that senses a signal being a factor indicating sleeping. Physiologic event detector **874** detects sleeping based on the one or more physiologic signals and produces a sleeping signal indicating whether the patient is sleeping. In one embodiment, physiologic event detector **874** detects sleeping based on the one or more physiologic signals and the time of the day. Respiratory disorder detector **852** detects such one or more respiratory disorders when the sleeping signal is present. Stimulation adjustment module **854** adjusts the delivery of the neural stimulation pulses in response to at least one respiratory disorder detected during sleep. In other embodiments, the “respiratory disorder” discussed in this document includes a respiratory disorder that occurs while the patient is awake or sleep.

In one embodiment, the “respiratory disorder” discussed in this document refers to a respiratory disorder induced by neural stimulation. A patient may have one or more respiratory disorders that are unrelated to the vagal nerve stimulation. The respiratory disorder induced by neural stimulation includes a respiratory disorder that is caused or worsened by the vagal nerve stimulation. In one embodiment, the one or more physiologic signals sensed by physiologic sensor **870** indicate whether a respiratory disorder is induced by the vagal nerve stimulation. For example, because speech may interfere with the detection of the one or more respiratory disorders, physiologic sensor **870** includes an accelerometer or microphone to detect a signal indicative of speech. Physiologic event detector **874** detects speech using the signal and produces a speech signal indicating whether the patient is talking. Respiratory disorder detector **852** detects one or more respiratory disorders when the speech signal is not present. In another example, respiratory disorder detector **852** detects the one or more respiratory disorders using the respiratory signal sensed during the vagal nerve stimulation and stored baseline respiratory parameters. The baseline respiratory parameters are produced from the respiratory signal sensed while the vagal nerve stimulation is not delivered. Respiratory disorder detector **852** uses the baseline respiratory parameters to isolate the effect of the vagal nerve stimulation in the respiratory

signal for the detection of the one or more respiratory disorders. In various embodiments, respiratory disorder detector **852** detects one or more respiratory disorders induced by vagal nerve stimulation using the respiratory signal and other signals such as a signal indicative of whether the vagal nerve stimulation is being delivered, a signal indicative of time of the day, and one or more physiologic signals allowing for determination of whether a respiratory disorder is caused or worsened by the vagal nerve stimulation. Stimulation adjustment module **854** adjusts the delivery of the neural stimulation pulses in response to at least one respiratory disorder induced by the delivery of the neural stimulation pulses.

FIG. **9** is a flow chart illustrating an embodiment of a method **900** for adjusting neural stimulation in response to a respiratory disorder. In one embodiment, method **900** is performed by respiration-controlled neural stimulation circuit **730** or **830**.

The neural stimulation is controlled by using a plurality of stimulation parameters at **910**. The neural stimulation is delivered to treat a non-respiratory disorder. In one embodiment, neural stimulation is delivered to treat a cardiac condition, such as to treat heart failure or to control cardiac remodeling.

A respiratory signal is received at **920**. The respiratory signal is indicative of respiratory cycles and respiratory parameters. Examples of the respiratory parameters include the respiratory cycle length, the inspiration period, the expiration period, the non-breathing period, the tidal volume, and the minute ventilation. In various embodiments, the respiratory signal is, or is derived from, a physiologic signal indicative of the respiratory cycles and the respiratory parameters. Examples of the physiologic signal include a transthoracic impedance signal and blood pressure signals such as a PAP signal.

A respiratory disorder is being detected at **930**. Examples of the respiratory disorder include abnormal respiratory parameter values such as low respiratory rate, low tidal volume, and low minute ventilation, apnea, hypopnea, and dyspnea. Apnea is detected when the non-breathing period exceeds a detection threshold period. Hypopnea is detected when the tidal volume is below a detection threshold volume. Dyspnea is detected when the ratio of the respiratory rate to the tidal volume exceeds a detection threshold ratio.

If the respiratory disorder is detected at **935**, the neural stimulation is adjusted by adjusting one or more of the stimulation parameters at **940**. The neural stimulation is adjusted to terminate or mitigate the detected respiratory disorder. In one embodiment, the neural stimulation is adjusted to decrease the intensity of the stimulation. In another embodiment, the neural stimulation is suspended for a predetermined period of time or until the respiratory disorder is no longer detected. In another embodiment, the neural stimulation is adjusted to treat the detected respiratory disorder.

FIG. **10** is a flow chart illustrating an embodiment of a method **1000** for adjusting neural stimulation in response to the detection of a respiratory disorder. Method **1000** is a specific embodiment of method **900**. In one embodiment, method **1000** is performed by respiration-controlled neural stimulation circuit **730** or **830**.

The neural stimulation is controlled by executing a first stimulation algorithm at **1010**. In one embodiment, the first stimulation algorithm is designed to treat a cardiac condition, such as heart failure.

A respiratory signal is received at **1020**. The respiratory signal is indicative of respiratory cycles and respiratory parameters. Examples of the respiratory parameters include the respiratory cycle length, the inspiration period, the expi-

ration period, the non-breathing period, the tidal volume, and the minute ventilation. In various embodiments, the respiratory signal is, or is derived from, a physiologic signal indicative of the respiratory cycles and the respiratory parameters. Examples of the physiologic signal include a transthoracic impedance signal and blood pressure signals such as a PAP signal.

A respiratory disorder is being detected at 1030. Examples of the respiratory disorder include abnormal respiratory parameter values such as low respiratory rate, low tidal volume, and low minute ventilation, apnea, hypopnea, and dyspnea. Apnea is detected when the non-breathing period exceeds a detection threshold period. Hypopnea is detected when the tidal volume is below a detection threshold volume. Dyspnea is detected when the ratio of the respiratory rate to the tidal volume exceeds a detection threshold ratio.

If the respiratory disorder is detected at 1035, the execution of the first stimulation algorithm is stopped at 1040. Whether to execute a second stimulation algorithm is determined at 1050. If the second stimulation algorithm is determined to be executed at 1055, the neural stimulation is controlled by executing the second stimulation algorithm at 1070. In one embodiment, the second stimulation algorithm is selected to lower the stimulation intensity provided by the first stimulation algorithm. In another embodiment, the second stimulation algorithm is selected to treat the detected respiratory disorder, such as apnea, hypopnea, or dyspnea.

If the second stimulation algorithm is determined not to be executed at 1055, whether to resume the execution of the first stimulation algorithm is determined at 1060. During or after the execution of the second stimulation algorithm, whether to resume the execution of the first stimulation algorithm is also determined at 1060. If the execution of the first stimulation algorithm is resumed at 1065, the neural stimulation is again controlled by executing a first stimulation algorithm at 1010. In one embodiment, the execution the first stimulation algorithm is to be resumed after a predetermined suspension period. In another embodiment, the execution the first stimulation algorithm is to be resumed when the respiratory disorder is no longer detected. In another embodiment, the execution the first stimulation algorithm is to be resumed in response to a stimulation command issued by a user such as a physician.

In one embodiment, in addition to the response to the detection of the respiratory disorder, the delivery of the neural stimulation pulses is adjusted in response to the detection of a physiologic event. Examples of such a physiologic event include changes in cardiac signal morphology, changes in heart sound waveform morphology, changes in impedance signal morphology, and changes in blood oxygen saturation.

FIG. 11 is a block diagram illustrating an embodiment of a respiratory cycle-synchronized respiratory disorder-responsive neural stimulation system 1140. System 1140 represents a combination of systems 440 or 540 and systems 740 or 840. In the illustrated embodiment, system 1140 includes respiratory sensor 426, sensor processing circuit 428, and a respiration-controlled neural stimulation circuit 1130. In various specific embodiments, system 1140 may include any combination of components of systems 440, 540, 740, and 840 as discussed above.

Respiration-controlled neural stimulation circuit 1130 is a specific embodiment of respiration-controlled neural stimulation circuit 130 and includes stimulation output circuit 432 and a controller 1180. Controller 1180 includes respiratory signal input 436, respiratory disorder detector 752, stimulation adjustment module 754, synchronization module 438, and stimulation delivery controller 1182. Stimulation deliv-

ery controller 1182 controls the delivery of the neural stimulation pulses from stimulation output circuit 432 by synchronizing the delivery to the respiratory cycles, as controlled by synchronization module 438, and by responding to the detection of each respiratory disorder, as controlled by stimulation adjustment module 754.

FIG. 12 is a block diagram illustrating an embodiment of a respiratory disorder-responsive neural stimulation system 1240. System 1240 includes respiratory sensor 426, sensor processing circuit 428, and a respiration-controlled neural stimulation circuit 1230.

Respiration-controlled neural stimulation circuit 1230 is another specific embodiment of respiration-controlled neural stimulation circuit 130 and includes a therapy output device 1284 and a controller 1286. Therapy output device 1284 delivers one or more therapies including a neural stimulation therapy treating a non-respiratory disorder. Controller 1286 includes respiratory signal input 436, respiratory disorder detector 752, a therapy adjustment module 1288, and a therapy delivery controller 1290. Therapy adjustment module 1288 adjusts delivery of the one or more therapies in response to the detection of a respiratory disorder by respiratory disorder detector 752. Therapy delivery controller 1290 controls the delivery of the one or more therapies using parameters set and adjusted by therapy adjustment module 1288.

In one embodiment, system 1240 provides for one or more neural stimulation therapies that include at least one neural stimulation therapy treating a non-respiratory disorder. When the respiratory disorder is detected, system 1240 starts a neural stimulation therapy treating the detected respiratory disorder and/or adjusts the neural stimulation therapy treating the non-respiratory disorder. When a respiratory disorder such as apnea is detected, the neural stimulation therapy is suspended or adjusted for a lower intensity, or a separate neural stimulation therapy is delivered to treat the detected respiratory disorder. In another embodiment, system 1240 provides the neural stimulation therapy treating the non-respiratory disorder and another therapy treating the detected respiratory disorder. When the respiratory disorder is detected, system 1240 starts the other therapy treating the detected respiratory disorder and/or adjusts the neural stimulation therapy treating the non-respiratory disorder.

FIG. 13 is a block diagram illustrating an embodiment of a respiratory disorder-responsive neural stimulation system 1340, which is a specific embodiment of respiratory disorder-responsive neural stimulation system 1240. System 1340 includes respiratory sensor 426, sensor processing circuit 428, and a respiration-controlled neural stimulation circuit 1330.

Respiration-controlled neural stimulation circuit 1330 is a specific embodiment of respiration-controlled neural stimulation circuit 1230 and includes a therapy output device 1384 and a controller 1386. Therapy output device 1384 includes a non-respiratory stimulation output circuit 1332 and a respiratory therapy output device 1396. Non-respiratory stimulation output circuit 1332 delivers the neural stimulation therapy through electrodes or transducer(s) to treat a non-respiratory disorder, such as a cardiac disorder. Respiratory therapy output device 1396 delivers a respiratory therapy that treats the detected respiratory disorder. In one embodiment, respiratory therapy output device 1396 delivers another neural stimulation therapy through electrodes or transducer(s) to treat the respiratory disorder, such as by stimulating different nerves or nerve branches. Examples of treating respiratory disorders using neural stimulation are discussed in U.S. patent application Ser. No. 11/151,122, entitled "SYSTEM FOR NEURAL CONTROL OF RESPIRATION," filed on

Jun. 13, 2005, published as US 20060282131, now issued as U.S. Pat. No. 8,036,750, and U.S. patent application Ser. No. 11/320,500, entitled "NEURAL STIMULATOR TO TREAT SLEEP DISORDERED BREATHING," filed on Dec. 28, 2005, now issued as U.S. Pat. No. 7,672,728, both assigned to Cardiac Pacemakers, Inc., which are incorporated by reference herein in their entirety. In another embodiment, respiratory therapy output device **1396** delivers a therapy treating the respiratory disorder that is other than a neural stimulation therapy. Examples of such therapies treating the respiratory disorder include cardiac pacing therapies and an external pressure therapy. An example of treating respiratory disorders using cardiac pacing is discussed in U.S. patent application Ser. No. 10/798,794, entitled "RATE REGULARIZATION OF CARDIAC PACING FOR DISORDERED BREATHING THERAPY," filed on Mar. 11, 2004, now issued as U.S. Pat. No. 7,336,996, assigned to Cardiac Pacemakers, Inc., which is incorporated by reference herein in its entirety. An example of treating respiratory disorders using an external pressure therapy, delivered by a continuous positive airway pressure (CPAP) device controlled by an implantable medical device, is discussed in U.S. patent application Ser. No. 10/930,979, entitled "coordinated use of respiratory and cardiac therapies for sleep disordered breathing," filed on Aug. 31, 2004, now issued as U.S. Pat. No. 7,591,265, assigned to Cardiac Pacemakers, Inc., which is incorporated by reference herein in its entirety.

Controller **1386** includes respiratory signal input **436**, respiratory disorder detector **752**, a therapy adjustment module **1388**, and a therapy delivery controller **1390**. Therapy adjustment module **1388** includes a non-respiratory stimulation adjustment module **1354** and a respiratory therapy adjustment module **1392** to provide for a coordinated response to each detection of the respiratory disorder by respiratory disorder detector **752**. In one embodiment, in response to the detection of the respiratory disorder, respiratory therapy adjustment module **1392** starts the delivery of the respiratory therapy that treats the detected respiratory disorder. If the respiratory disorder is terminated or mitigated to a tolerable degree in response to the delivery of the respiratory therapy, non-respiratory stimulation adjustment module **1354** does not adjust the neural stimulation therapy treating the non-respiratory disorder. If the respiratory disorder is not terminated or mitigated to the tolerable degree in response to the delivery of the respiratory therapy, non-respiratory stimulation adjustment module **1354** stops the delivery, or reduces the intensity, of the stimulation therapy treating the non-respiratory disorder. In another embodiment, in response to the detection of the respiratory disorder, respiratory therapy adjustment module **1392** starts the delivery of the respiratory therapy that treats the detected respiratory disorder, and non-respiratory stimulation adjustment module **1354** stops the delivery, or reduces the intensity, of the stimulation therapy treating the non-respiratory disorder. Non-respiratory stimulation adjustment module **1354** resumes the normal delivery of the stimulation therapy treating the non-respiratory disorder after a predetermined time interval or when the respiratory disorder is no longer detected by respiratory disorder detector **752**, such as by restoring stimulation parameters to those used prior to the detection of the respiratory disorder. Therapy delivery controller **1390** includes a non-respiratory stimulation delivery controller **1356** and a respiratory therapy delivery controller **1394**. Non-respiratory stimulation delivery controller **1356** controls the delivery of the stimulation therapy treating the non-respiratory disorder using stimulation parameters set and adjusted by non-respiratory stimulation adjustment module **1354**. Respiratory therapy delivery

controller **1394** controls the delivery of the respiratory therapy treating the detected respiratory disorder using therapy (neural or cardiac stimulation, or other types of therapy) parameters set and adjusted by respiratory therapy adjustment module **1392**.

In one embodiment, system **1340** allows for a neural stimulation therapy to be applied to a patient who is otherwise contraindicated for that neural stimulation therapy. For example, vagal nerve stimulation is known to improve hemodynamic performance and/or controlling ventricular remodeling in heart failure patients. However, a substantial percentage of heart failure patients also suffer apnea, and the vagal nerve stimulation may worsen that abnormal respiratory condition. System **1340** potentially allows application of vagal nerve stimulation to these heart failure patients while monitoring or treating the apnea, thereby removing apnea as a contraindication for vagal nerve stimulation. In this embodiment, respiratory disorder detector **752** includes at least apnea detector **862**. In a specific embodiment, in addition to responding to the detection of apnea, non-respiratory stimulation adjustment module **1354** provides feedback control of the vagal nerve stimulation improving hemodynamics and/or controlling ventricular remodeling using a non-respiratory physiological parameter as an input. The feedback control functions to maintain the non-respiratory physiological parameter within a target range. For example, non-respiratory stimulation adjustment module **1354** receives cardiac parameters such as the patient's heart rate or heart rate variability and adjusts the intensity of the vagal nerve stimulation to maintain the heart rate or heart rate variability within a target range.

FIG. **14** is a flow chart illustrating an embodiment of a method **1400** for adjusting neural stimulation in response to the detection of a respiratory disorder. The neural stimulation is a therapy for treating a non-respiratory disorder, such as heart failure. In one embodiment, method **1400** is performed by respiration-controlled neural stimulation circuit **1230** or **1330**.

The neural stimulation is controlled by using stimulation parameters at **1410**. In one embodiment, the stimulation parameters are selected for treating a cardiac condition, such as to improve hemodynamic performance or control ventricular remodeling in a heart failure patient. A specific embodiment of step **1410** is discussed below, with reference to FIG. **15**.

A respiratory signal is received at **1420**. The respiratory signal is indicative of respiratory cycles and respiratory parameters. Examples of the respiratory parameters include the respiratory cycle length, the inspiration period, the expiration period, the non-breathing period, the tidal volume, and the minute ventilation. In various embodiments, the respiratory signal is, or is derived from, a physiologic signal indicative of the respiratory cycles and the respiratory parameters. Examples of the physiologic signal include a transthoracic impedance signal and blood pressure signals such as a PAP signal.

A respiratory disorder is being detected at **1430**. Examples of the respiratory disorder include abnormal respiratory parameter values such as low respiratory rate, low tidal volume, and low minute ventilation, apnea, hypopnea, and dyspnea. In one embodiment, apnea is detected while the neural stimulation is applied to the heart failure patient.

If the respiratory disorder is detected at **1435**, a respiratory therapy is delivered at **1440**, to treat the detected respiratory disorder. In one embodiment, the respiratory therapy includes another neural stimulation therapy which uses stimulation parameters selected to treat the detected respiratory disorder.

In another embodiment, the respiratory therapy includes one or more therapies other than neural stimulation.

Whether the detected respiratory disorder is mitigated is determined at **1450** by comparing a respiratory parameter to a mitigation threshold. The detected respiratory disorder is considered “mitigated” when its degree is reduced to a tolerable degree at which the detected respiratory disorder is considered not to be harmful to the patient. In various embodiments, the respiratory disorder is detected by comparing the respiratory parameter to a detection threshold, and whether the detected respiratory disorder is mitigated is determined by comparing the respiratory parameter to the mitigation threshold. In one embodiment, the detection threshold and the mitigation threshold are equal. In another embodiment, the detection threshold and the mitigation threshold are substantially different. For example, apnea is detected when the non-breathing period exceeds a detection threshold period, and is determined to be mitigated when the non-breathing period falls below a mitigation threshold period. Hypopnea is detected when the tidal volume is below a detection threshold volume, and is determined to be mitigated when the tidal volume rises above a mitigation threshold volume. Dyspnea is detected when the ratio of the respiratory rate to the tidal volume exceeds a detection threshold ratio, and is determined to be mitigated when that ratio falls below a mitigation threshold ratio.

If it is determined that the detected respiratory disorder has been mitigated at **1455**, the neural stimulation is continued to be controlled at **1410** without adjusting the stimulation parameters selected to treat the non-respiratory disorder. If it is determined that the detected respiratory disorder has not been mitigated at **1455**, the stimulation parameters are adjusted at **1460** for lowering the intensity, or stopping the delivery, of the neural stimulation for treating the non-respiratory disorder.

FIG. **15** is a flow chart illustrating an embodiment of a method **1500** for controlling the neural stimulation treating the non-respiratory disorder. Method **1500** represents a specific embodiment of step **1410** of method **1400**. In one embodiment, method **1500** is performed by non-respiratory stimulation adjustment module **1354**.

Method **1500** provides for feedback control of the neural stimulation treating the non-respiratory disorder. The neural stimulation is delivered at **1510**, using the stimulation parameters selected to treat the non-respiratory disorder. A non-respiratory response to the neural stimulation is monitored at **1520**. If the non-respiratory response is within a target range at **1525**, the neural stimulation is continued to be delivered at **1510**, without adjusting the stimulation parameters. If the non-respiratory response is not within a target range at **1525**, the stimulation parameters are adjusted at **1530**, and the neural stimulation is continued to be delivered at **1510** using the adjusted stimulation parameters. In one embodiment, the non-respiratory response is measured by a non-respiratory physiological parameter. For example, for a neural stimulation therapy treating a cardiac disorder, method **1500** is applied to maintain one or more of cardiac parameters such as heart rate, heart rate variability, and blood pressure each within its target range.

With step **1410** performed using method **1500**, method **1400** allows the neural stimulation to be adjusted for both treatment of the non-respiratory disorder while limiting potential harm associated with an adverse side effect of the neural stimulation. For example, for a heart failure patient, method **1400** allows the neural stimulation to be adjusted for maintaining a parameter such as heart rate, heart rate vari-

ability, or blood pressure within its predetermined target range without causing or worsening a sustained apnea.

It is to be understood that the above detailed description is intended to be illustrative, and not restrictive. Other embodiments will be apparent to those of skill in the art upon reading and understanding the above description. The scope of the invention should, therefore, be determined with reference to the appended claims, along with the full scope of equivalents to which such claims are entitled.

What is claimed is:

1. A neural stimulation system, comprising:

a stimulation output circuit configured to deliver neural stimulation pulses;

a respiratory signal input configured to receive a respiratory signal indicative of respiratory cycles and respiratory parameters;

a synchronization module coupled to the stimulation output circuit and the respiratory signal input, the synchronization module configured to synchronize the delivery of the neural stimulation pulses to the respiratory cycles and including:

a respiratory fiducial point detector coupled to the respiratory signal input, the respiratory fiducial point detector configured to detect respiratory fiducial points in the respiratory signal; and

a delay timer coupled to the respiratory fiducial point detector, the delay timer configured to time a delay interval starting with each of the detected respiratory fiducial points; and

a stimulation delivery controller coupled to the delay timer and the stimulation output circuit, the stimulation delivery controller configured to cause the stimulation output circuit to deliver a burst of the neural stimulation pulses when the delay interval expires.

2. The system of claim 1, wherein the respiratory fiducial point detector is configured to detect onset points of inspiration phases in the respiratory signal as the respiratory fiducial points.

3. The system of claim 1, wherein the respiratory fiducial point detector is configured to detect ending points of expiration phases in the respiratory signal as the respiratory fiducial points.

4. The system of claim 1, wherein the respiratory fiducial point detector is configured to detect threshold-crossing points in the respiratory signal as the respiratory fiducial points.

5. The system of claim 1, wherein the synchronization module is further configured to synchronize the delivery of the neural stimulation pulses to cardiac cycles.

6. The system of claim 1, wherein the synchronization module is further configured to synchronize the delivery of the neural stimulation pulses to circadian cycles.

7. The system of claim 1, further comprising:

a respiratory disorder detector coupled to the respiratory signal input, the respiratory disorder detector configured to detect a respiratory disorder using the respiratory signal; and

a stimulation switch coupled to the respiratory disorder detector and the stimulation delivery controller, the stimulation switch configured to adjust the delivery of the neural stimulation pulses in response to the detection of the respiratory disorder.

8. The system of claim 7, wherein the synchronization module comprises a delay generator configured to adjust the delay interval using the respiratory signal.

9. The system of claim 1, comprising an implantable medical device including the stimulation output circuit, the respi-

19

ratory signal input, the synchronization module, and the stimulation delivery controller.

10. The system of claim 9, comprising:

an implantable respiratory sensor configured to sense a physiologic signal; and

a sensor processing circuit configured to produce the respiratory signal using the physiologic signal.

11. A method for neural stimulation, the method comprising:

receiving a respiratory signal indicative of respiratory parameters;

detecting respiratory fiducial points in the respiratory signal;

starting delay intervals with selected points of the detected respiratory fiducial points; and

delivering a burst of neural stimulation pulses of the neural stimulation when each of the delay intervals expires.

12. The method of claim 11, wherein detecting respiratory fiducial points in the respiratory signal comprises detecting high peaks of the respiratory signal as the respiratory fiducial points.

13. The method of claim 11, wherein detecting respiratory fiducial points in the respiratory signal comprises detecting low peaks of the respiratory signal as the respiratory fiducial points.

14. The method of claim 11, wherein detecting respiratory fiducial points in the respiratory signal comprises detecting

20

onset points of inspiration phases in the respiratory signal as the respiratory fiducial points.

15. The method of claim 11, wherein detecting respiratory fiducial points in the respiratory signal comprises detecting ending points of expiration phases in the respiratory signal as the respiratory fiducial points.

16. The method of claim 11, wherein detecting respiratory fiducial points in the respiratory signal comprises detecting threshold-crossing points in the respiratory signal as the respiratory fiducial points.

17. The method of claim 11, further comprising synchronizing the delivery of the burst of neural stimulation pulses to cardiac cycles.

18. The method of claim 11, further comprising synchronizing the delivery of the burst of neural stimulation pulses to circadian cycles.

19. The method of claim 11, further comprising:

detecting a respiratory disorder using the respiratory signal; and

adjusting the delivery of the burst of neural stimulation pulses in response to the detection of the respiratory disorder.

20. The method of claim 19, further comprising adjusting the delay interval using the respiratory signal.

* * * * *

专利名称(译)	用于具有呼吸反馈的神经刺激的方法和装置		
公开(公告)号	US8923971	公开(公告)日	2014-12-30
申请号	US14/041967	申请日	2013-09-30
[标]申请(专利权)人(译)	心脏起搏器股份公司		
申请(专利权)人(译)	心脏起搏器, INC.		
当前申请(专利权)人(译)	心脏起搏器, INC.		
[标]发明人	HAEFNER PAUL A JAMES KRISTOFER J LEE KENT LIBBUS IMAD CAPARSO ANTHONY V KWOK JONATHAN PU YACHUAN		
发明人	HAEFNER, PAUL A. JAMES, KRISTOFER J. LEE, KENT LIBBUS, IMAD CAPARSO, ANTHONY V. KWOK, JONATHAN PU, YACHUAN		
IPC分类号	A61N1/36 A61B5/08 A61N1/365 A61B5/00		
CPC分类号	A61B5/4035 A61N1/3601 A61N1/36114 A61B5/08 A61B5/4818 A61N1/36053		
代理机构(译)	SCHWEGMAN和Lundberg & 沃斯纳, P.A.		
审查员(译)	DIETRICH, JOSEPH		
其他公开文献	US20140025141A1		
外部链接	Espacenet USPTO		

摘要(译)

神经刺激系统使用呼吸信号作为治疗反馈输入来控制神经刺激的递送。呼吸信号用于增加神经刺激的有效性, 例如迷走神经刺激, 同时减少呼吸功能中的潜在不良副作用。在一个实施例中, 神经刺激系统使用呼吸信号中的呼吸基准点和延迟间隔使神经刺激脉冲的输送与呼吸循环同步。在另一个实施例中, 神经刺激系统检测呼吸病症, 并且作为响应, 调节神经刺激脉冲的递送和/或递送治疗检测到的呼吸病症的呼吸疗法。

