



US 20190329054A1

(19) **United States**

(12) **Patent Application Publication**
Breske et al.

(10) **Pub. No.: US 2019/0329054 A1**
(43) **Pub. Date: Oct. 31, 2019**

(54) **MULTI-SENSORY ALARM FOR A WEARABLE CARDIAC DEFIBRILLATOR**

Publication Classification

(71) Applicant: **West Affum Holdings Corp.**, Grand Cayman (KY)

(51) **Int. Cl.**
A61N 1/39 (2006.01)
A61B 5/00 (2006.01)

(72) Inventors: **Pamela F. Breske**, Newcastle, WA (US); **Zoie R. Engman**, Kirkland, WA (US); **Judy R. Edworthy**, London (GB); **Amanda K. Hall**, Seattle, WA (US)

(52) **U.S. Cl.**
CPC *A61N 1/3904* (2017.08); *A61B 5/746* (2013.01); *A61N 1/3993* (2013.01); *A61N 1/3925* (2013.01); *A61N 1/3918* (2013.01); *A61B 5/7203* (2013.01); *A61B 5/6823* (2013.01); *A61B 5/4836* (2013.01)

(21) Appl. No.: **16/394,979**

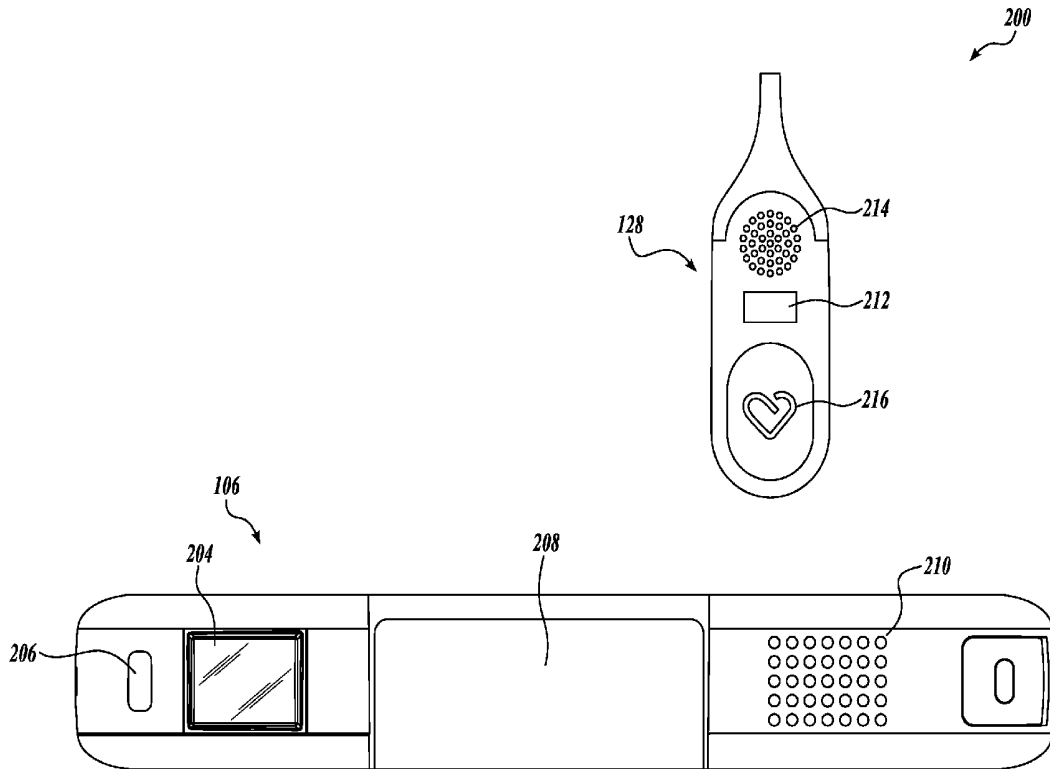
(57) **ABSTRACT**

(22) Filed: **Apr. 25, 2019**

In one embodiment, a wearable cardioverter defibrillator (WCD) is described. The WCD includes a support structure that may be worn by a patient. A processor is coupled to the support structure. The wearable cardioverter defibrillator also includes a discharge circuit configured to discharge a stored electrical charge through a body of the patient, the discharge circuit in communication with the processor. The processor may be configured to detect an event occurring at the WCD and determine a severity of the event occurring at the WCD. The processor may activate a multi-sensory alarm based at least in part on the determined event severity.

Related U.S. Application Data

(60) Provisional application No. 62/662,899, filed on Apr. 26, 2018.



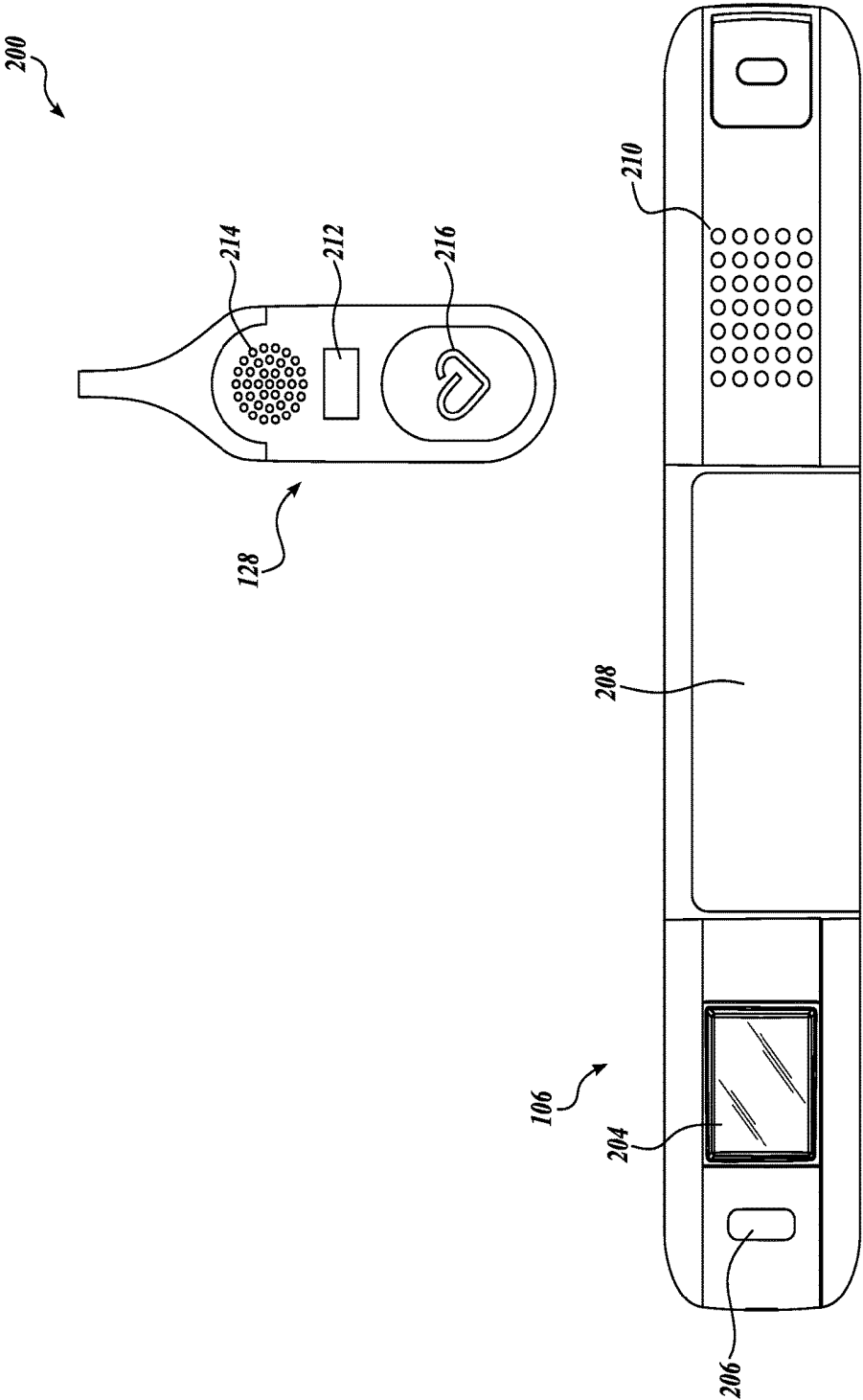


FIG. 2

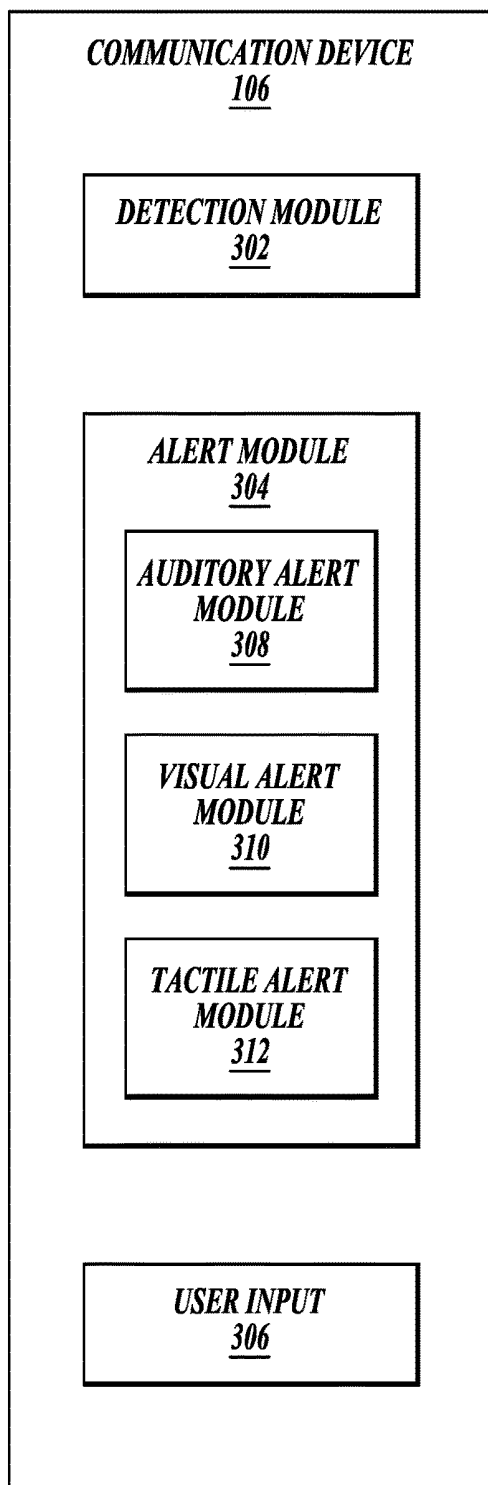


FIG. 3

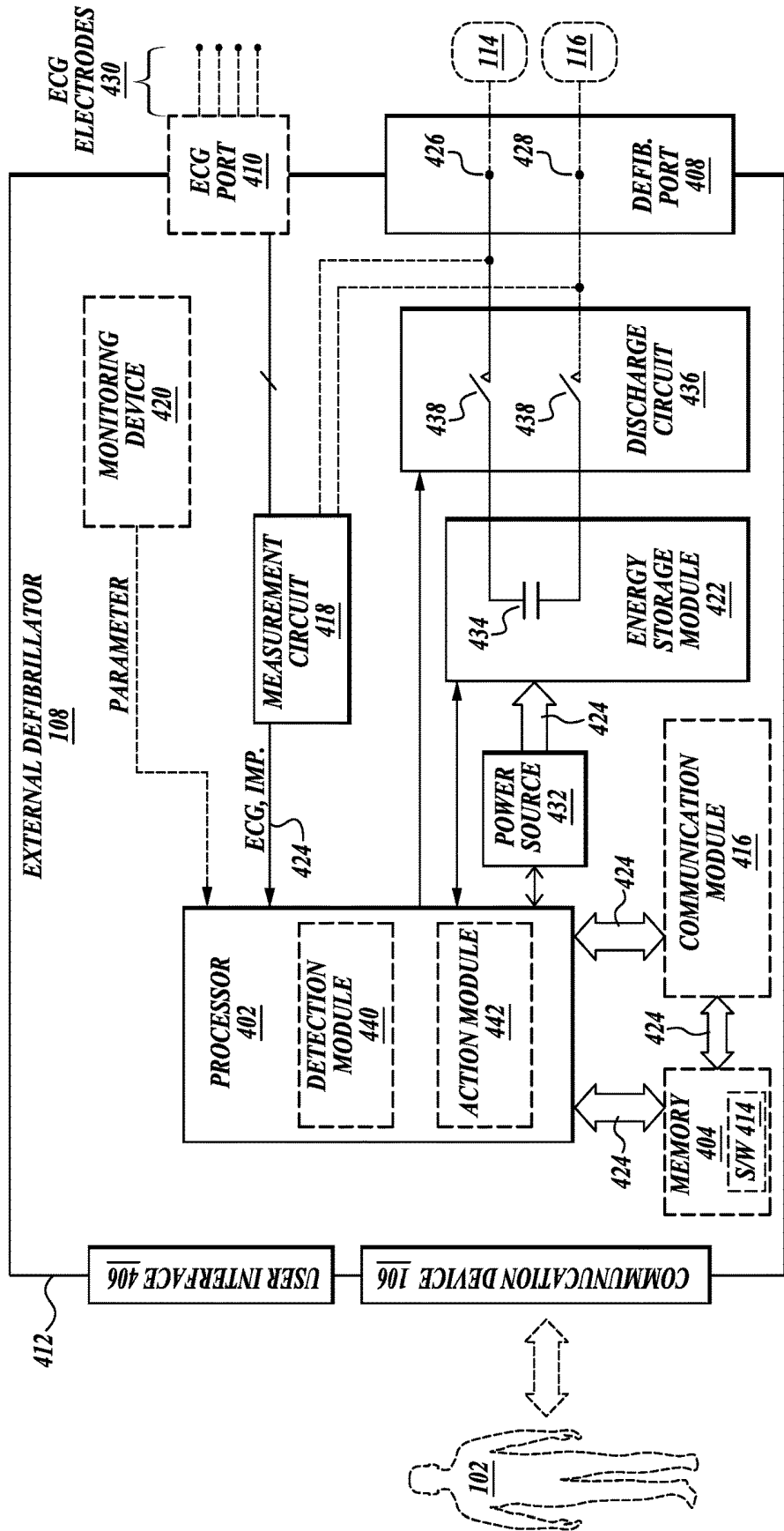


FIG. 4

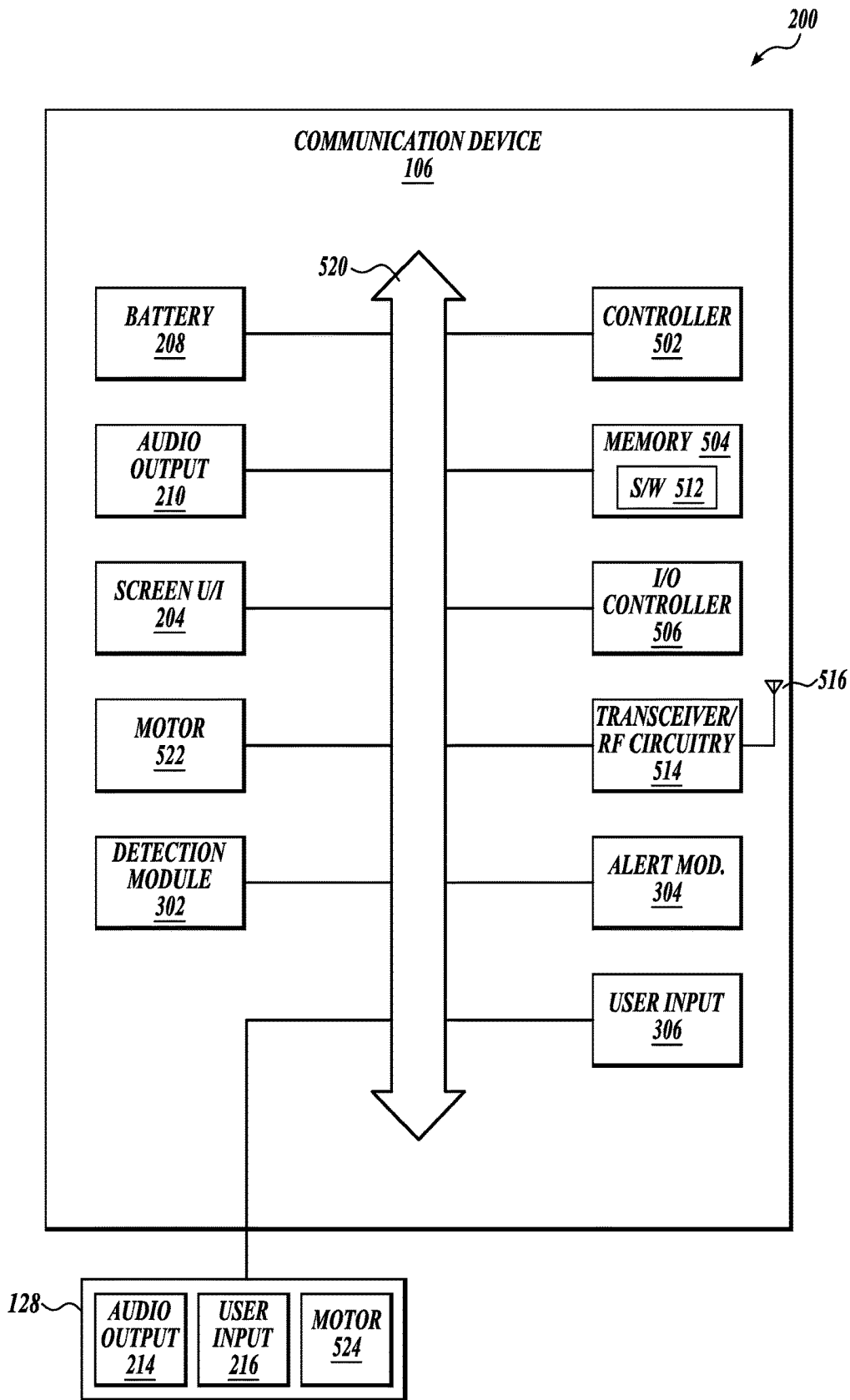


FIG. 5

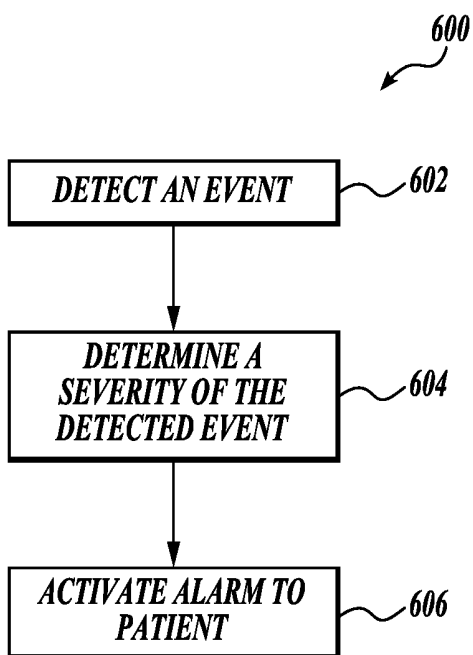


FIG. 6

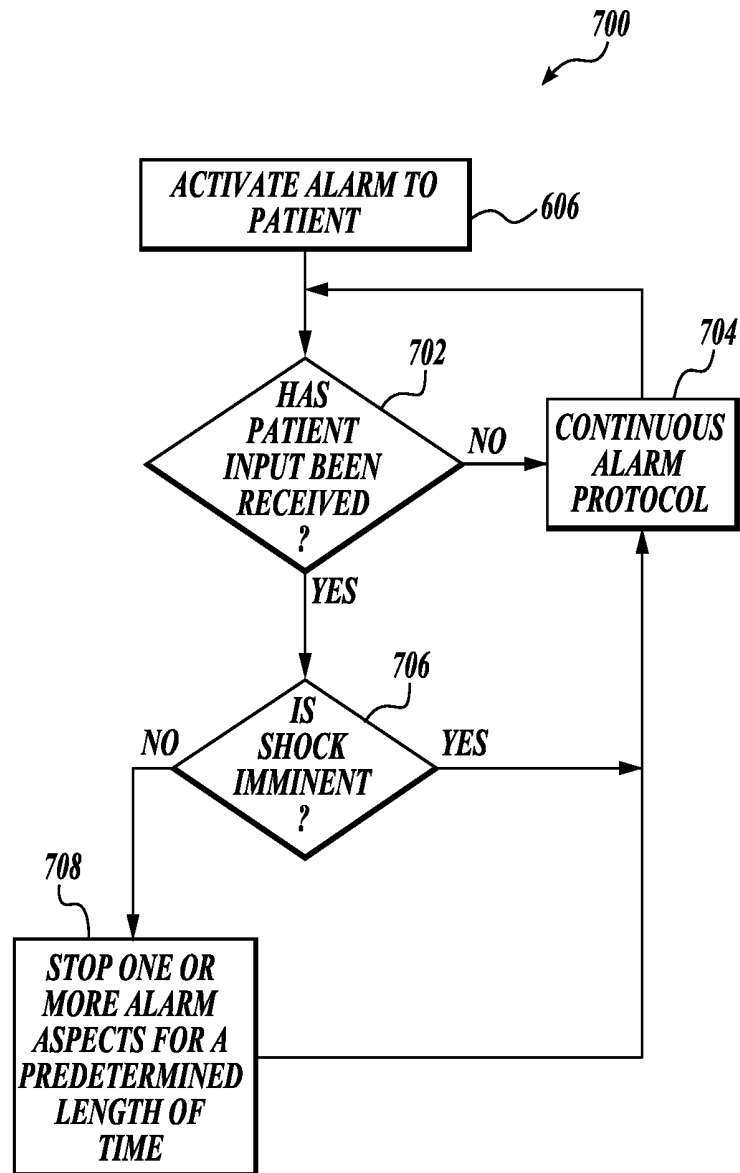


FIG. 7

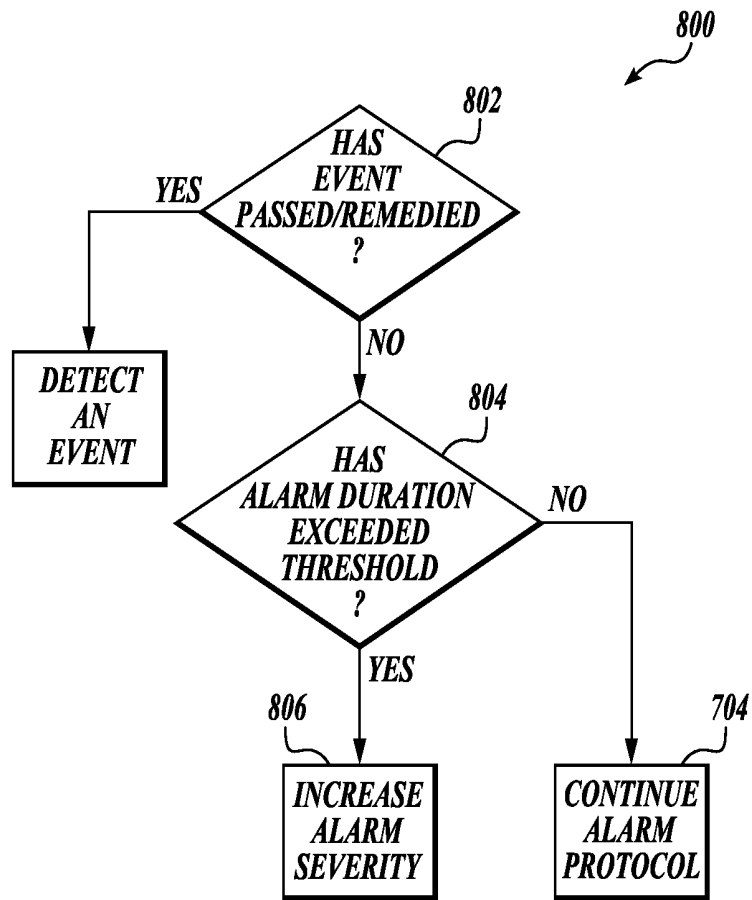


FIG. 8

MULTI-SENSORY ALARM FOR A WEARABLE CARDIAC DEFIBRILLATOR

CROSS-REFERENCE TO RELATED APPLICATION

[0001] This application claims the benefit of U.S. Provisional Application No. 62/662899 filed Apr. 26, 2018, the disclosure of which is hereby incorporated by reference herein in its entirety for all purposes.

BACKGROUND

[0002] Heart arrhythmias may reduce blood flow to various parts of the body. In some instances, arrhythmias results in a Sudden Cardiac Arrest (SCA) where a person's heart suddenly and unexpectedly stops beating. If this occurs, blood may stop flowing to the brain and other vital organs. SCA can lead to death very quickly, within minutes, unless action is taken quickly.

[0003] Some people have an increased risk of SCA. This includes people who have had a heart attack, a prior SCA episode, among other risk factors. Frequently, these people are recommended for an Implantable Cardioverter Defibrillator ("ICD"). The ICD is a small electronic device connected to the heart that continuously monitors the person's electrocardiogram ("ECG"). If or when the ICD detects certain types of heart arrhythmias or abnormalities, then the ICD delivers an electric pulse or shock to the heart.

[0004] A patient may have a period of time between being recommended for an ICD and actually receiving one. In the interim timeframe, a patient may be suited with a wearable cardioverter defibrillator ("WCD") system. A WCD system is worn by the patient and includes, among other components, a defibrillator and one or more external electrodes. When a patient wears a WCD system, the WCD may monitor several patient parameters, including the patient's ECG. If a potentially life threatening arrhythmia is detected, the defibrillator may be activated and primed to deliver an appropriate electric shock through the patient's body which also shocks the heart.

[0005] When a patient is given a WCD, the WCD may issue alarms to the patient for specific detected events. The alarm provides the patient with an opportunity to override the electric shock in case the WCD has misdiagnosed a shockable rhythm, which may occur for various reasons. However, a single alarm may go unnoticed. The alarm may not be loud enough to gain the patient's attention or a vibration alarm may go undetected by the patient.

SUMMARY

[0006] This summary is provided to introduce a selection of concepts in a simplified form that are further described below in the Detailed Description. This summary is not intended to identify key features of the claimed subject matter, nor is it intended to be used as an aid in determining the scope of the claimed subject matter.

[0007] In one embodiment, a wearable cardioverter defibrillator (WCD) is described. The WCD includes a support structure that may be worn by a patient. A processor is coupled to the support structure. The wearable cardioverter defibrillator also includes a discharge circuit configured to discharge a stored electrical charge through a body of the patient, the discharge circuit in communication with the processor. The processor may be configured to detect an

event occurring at the WCD and determine a severity of the event occurring at the WCD. The processor may activate a multi-sensory alarm based at least in part on the determined event severity.

[0008] In some embodiments, the multi-sensory alarm may be a combination of at least two of a visual alarm, audible alarm, and haptic alarm. A patient alert button may be coupled to the support structure. In some embodiments, the patient alert button may include an audible output and a patient input button. The WCD may also include a communication device coupled to the support structure wherein the communication device includes an alarm module and a monitor, light, haptic motor, and audible output in communication with the alarm module. In some embodiments, the multi-sensory alarm includes of a visual alarm, a haptic alarm, and an audible alarm. In some embodiments, the processor is further configured to synchronize the visual alarm, haptic alarm, and audible alarm to harmonize the alarm output. In some embodiments, the audible alert includes a combination of a voice alert and a tone. In some instances, the visual alarm includes at least one of a blinking light, a written message, or an image. In some embodiments, the audible alarm varies in at least one of a pitch, tone, or timbre based at least in part on the severity of the multi-sensory alarm.

[0009] In one embodiment, a WCD system is described. The WCD may include a support structure for wearing by a patient. The WCD also may include a defibrillator housing coupled to the support structure and a discharge circuit in communication with the defibrillator housing. The discharge circuit may be configured to discharge a stored electrical charge through a body of the patient. The WCD may also include a processor within the defibrillator housing, the processor in communication with the discharge circuit. At least one communication device may be in communication with the processor. The communication device may include a visual output, an audible output, and a haptic output. The processor may be configured to detect an event occurring at the WCD and determine a severity of the event occurring at the WCD. The processor may activate a multi-sensory alarm at the communication device based at least in part on the determined event severity.

[0010] In a further embodiment, a WCD system may include a support structure for wearing by a patient. The WCD may include one or more electrodes for delivering a charge to the patient while the patient is wearing the support structure. A discharge circuit may be coupled to the electrodes, the discharge circuit configured to store an electrical charge. The WCD may include a processor for activating the discharge circuit, the processor in communication with the discharge circuit. At least one physiological sensor module may be in communication with the processor. The at least one physiological sensor module may be configured to monitor a physiological parameter of the patient while the patient wears the support structure and to transmit a first signal that communicates the physiological parameter. The WCD system may include at least one motion sensor module in communication with the processor, the at least one motion sensor module configured to monitor a motion parameter of the patient while the patient wears the support structure and to transmit a second signal that communicates the motion parameter.

DESCRIPTION OF THE DRAWINGS

[0011] The foregoing aspects and many of the attendant advantages of this disclosure will become more readily appreciated as the same become better understood by reference to the following detailed description, when taken in conjunction with the accompanying drawings, wherein:

[0012] FIG. 1 is a diagram of a sample WCD system in accordance with the present disclosure;

[0013] FIG. 2 is a diagram of an example communication system shown in FIG. 1;

[0014] FIG. 3 is diagram of an example of a communication system in accordance with one example of present disclosure;

[0015] FIG. 4 is a block diagram of an example defibrillator in accordance with one example of the present disclosure;

[0016] FIG. 5 is a block diagram of an example communication system in accordance with one example of the present disclosure;

[0017] FIG. 6 is a flow diagram illustrating an example of a method for alerting a patient in accordance with the present disclosure;

[0018] FIG. 7 is a flow diagram illustrating another example of a method for alerting a patient in accordance with the present disclosure; and

[0019] FIG. 8 is a flow diagram illustrating another example of a method for alerting a patient in accordance with the present disclosure.

DETAILED DESCRIPTION

[0020] The detailed description set forth below in connection with the appended drawings, where like numerals reference like elements, are intended as a description of various embodiments of the present disclosure and are not intended to represent the only embodiments. Each embodiment described in this disclosure is provided merely as an example or illustration and should not be construed as precluding other embodiments. The illustrative examples provided herein are not intended to be exhaustive or to limit the disclosure to the precise forms disclosed.

[0021] In the following description, specific details are set forth to provide a thorough understanding of exemplary embodiments of the present disclosure. It will be apparent to one skilled in the art, however, that the embodiments disclosed herein may be practiced without embodying all of the specific details. In some instances, well-known process steps have not been described in detail in order not to unnecessarily obscure various aspects of the present disclosure. Further, it will be appreciated that embodiments of the present disclosure may employ any combination of features described herein.

[0022] Wearable Cardioverter Defibrillators (WCDs) are worn by patients at risk for sudden cardiac arrest. When a patient wears a WCD, it may need to alert the patient throughout its use. However, the patient may not be alerted without some sort of alert mechanism. For example, the patient may not check the status of the WCD system during regular intervals and may require an alert to gain their attention. This is especially true when the status of the WCD is critical or there is an impending shock. However, some alerts may not be commanding enough for the situation while other alerts may be too commanding. Therefore, the

present disclosure relates to a system and method for gaining the attention of the patient in manners relating to the severity of the situation.

[0023] FIG. 1 illustrates a system 100 with a patient 102 wearing an example of a WCD system 104 according to embodiments described herein. The WCD system may include one or more communication devices 106, a support structure 110, an external defibrillator 108 connected to defibrillation electrodes 114, 116, among other components.

[0024] The support structure 110 may be worn by the patient 102. The support structure 110 may include a vest, shirt, series of straps, or other system enabling the patient 102 to carry at least a portion of the WCD system 104 on the patient's body. In some embodiments, the support structure 110 may comprise a single component. For example, the support structure 110 may comprise a vest or shirt that properly locates the WCD system 104 on a torso 112 of the patient 102. The single component of the support structure 110 may additionally carry or couple to all of the various components of the WCD system 104.

[0025] In other embodiments, the support structure 110 may comprise multiple components. For example, the support structure 110 may include a first component resting on a patient's shoulders. The first component may properly locate a series of defibrillation electrodes 114, 116 on the torso 112 of the patient 102. A second component may rest more towards a patient's hips, whereby the second component may be positioned such that the patient's hips support the heavier components of the WCD system 104. In some embodiments, the heavier components of the WCD system 104 may be carried via a shoulder strap, or may be kept close to the patient 102 such as in a cart, bag, stroller, wheel chair, or other vehicle.

[0026] The external defibrillator 108 may be coupled to the support structure 110 or may be carried remotely from the patient 102. The external defibrillator 108 may be triggered to deliver an electric shock to the patient 102 when patient 102 wears WCD system 104. For example, if certain thresholds are exceeded or met, the external defibrillator 108 may be engaged and deliver a shock to the patient 102.

[0027] The WCD system 104 may defibrillate the patient 102 by delivering an electrical charge to the patient 102 through a series of electrodes 114, 116 positioned on the torso 112. The electrodes 114, 116 may be electrically coupled to the external defibrillator 108 via a series of electrode leads 118. The defibrillator 108 may administer an electric shock to the body of the patient 102 when the defibrillation electrodes 114, 116 are in good electrical contact with the torso 112 of patient 102. In some embodiments, devices (not shown) proximate the electrodes 114, 116 may emit a conductive fluid to encourage electrical contact between the patient 102 and the electrodes 114, 116. The electric shock may be a defibrillation shock, which may go through a heart 122 of the patient 102 in an attempt to restart the heart 122. The brief, strong electric pulse may work to restart the heart 122 which may save the patient's life.

[0028] In some embodiments, the WCD system 104 may also include either an external or internal monitoring device or some combination thereof. FIG. 1 displays an external monitoring device 124 which may also be known as an outside monitoring device. The monitoring device 124 may monitor at least one local parameter. Local parameters may include physical state of the patient 102 such as ECG,

movement, heartrate, pulse, temperature, and the like. Local parameters may also include a parameter of the WCD **104**, environmental parameters, or the like. The monitoring device **124** may be physically coupled to the support structure **110** or may be proximate the support structure **110**. In either location, the monitoring device **124** is communicatively coupled with other components of the WCD **104**.

[0029] In some embodiments, a communication device **106** may enable the patient to interact with, and garnish data from, the WCD system **104**. The communication devices **106** may enable a patient or third party to view patient data, dismiss a shock if the patient is still conscious, turn off an alarm, and otherwise engage with the WCD system **104**. In some embodiments, the communication device **106** may be a separable part of an external defibrillator **108**. For example, the communication device **106** may be a separate device coupled to the external defibrillator **108**. In this embodiment, the communication device **106** may be wired, or wirelessly linked to the external defibrillator **108** and may be removable from the defibrillator **108**. In other embodiments, the communication device **106** may form an inseparable assembly and share internal components with the external defibrillator **108**. In some embodiments, the WCD system **104** may include more than one communication device. For example, the defibrillator **108** may include components able to communicate to the patient and the WCD system **104** may include a separate communication device **106** remote from the defibrillator **108**.

[0030] In some embodiments, the communication device **106** may be communicatively coupled to an alert button **128**. The alert button **128** may be removably coupled to the support structure **110**. The patient **102** may couple the alert button **128** to the support structure **110** or may couple the alert button **128** to an article of clothing. The alert button **128** may be wiredly or wirelessly connected to the communication device **106**.

[0031] In some embodiments, the communication device **106** or the defibrillator **108** may connect with one or more external devices **124**. For example, as shown in FIG. 1, the communication device **106** or the defibrillator **108** may connect to various external devices **120** such as a the cloud, a remote desktop, a laptop, a mobile device, or other external device using a network such as the Internet, local area networks, wide area networks, virtual private networks (VPN), other communication networks or channels, or any combination thereof.

[0032] FIG. 2 is an example of a communication system **200** according to embodiments described herein. The communication system **200** may include a communication device **106** and an alert button **128**. The communication device **106** may be a part of the defibrillator **108** or may be a separate device. The alert button **128** may be wired or wirelessly connected to the communication device **106**.

[0033] The communication device **106** may include a screen **204**, a visual indicator **206**, a battery **208**, and an audio output **210**. The screen **204** may include any variation of a screen to display text and images to a patient and/or user. For example, the screen may be an LED display, plasma display panel (PDP), liquid crystal display (LCD), organic light emitting diode display (OLED), e-paper, and the like. The screen may be monochromatic, that is, the screen may display in black, white, and grayscale, or the screen may be a color screen. The screen may display text, images, scrolling text, alerts, or some combination thereof.

The screen may additionally be touch sensitive, allowing the user to interact directly with the communication device **106** by touching the screen **204**. In other embodiments, the communication device **106** may include one or more input buttons (not shown).

[0034] The visual indicator **206** may include a single light source as shown or may include a number of light sources. The visual indicator **206** may use color and/or lighting patterns to communicate various alerts or conditions of the WCD system **104** to the patient or third party. The visual indicator **206** may include one or more multi-color LEDs which may be capable of emitting two or more different colors, or combinations of those colors. For example, the visual indicator **206** may comprise a red/green/blue (RGB) LED. The RGB LED may emit a red, blue, or green color. However, the RGB may also emit purple by engaging both the red and blue color. Other types of multi-color LEDs may also be used. When multiple visual indicators **206** are present, each visual indicator **206** may comprise either a single color LED or a multi-color LED.

[0035] The lighting pattern of the visual indicator **206** may comprise a multitude of patterns. In some embodiments, the patterns may be simplistic for patient understanding. For example, a low level alert or status may include a slow-blinking light pattern. A more urgent alert may be a medium-duration blinking light. Likewise, a fast-blinking alert may be an emergency or pressing situation. In some embodiments, the lighting pattern may follow a Morse code. This may enable a third party to recognize codes such as an SOS Morse code lighting pattern and determine the patient is in trouble. In some embodiments, the lighting pattern may change between various patterns. For example, if a shockable event is detected, the visual indicator **206** may emit a fast-blinking pattern. After a shock is delivered, the visual indicator **206** may change to an SOS lighting pattern to indicate the patient may need help.

[0036] The audio output **210** may include a speaker. The output of the audio output **210** may be loud enough to be heard over nominal background noise. For example, the audio output **210** may have a decibel output in the range of 35-90 dB(SPL). The output of the audio output **210** may be 1-8 watts. These ranges may be further narrowed. For example, if a patient has a hearing aid or reduced hearing capacity, the audio output **210** may be in a louder range such as 50-100 dB(SPL). In some embodiments, the audio output **210** might have an adjustable volume range. This may enable the patient to adjust the volume of the communication device **106** depending upon the patient's environment. In some embodiments, the communication device **106** may include a microphone (not shown). The microphone may detect ambient noise and automatically adjust the audio output **210** volume. This will help ensure the volume of the audio output **210** is at a preferred level for the particular patient and the particular setting. In some embodiments, the volume of the audio output **210** may increase as the alarm duration continues. For example, if a patient does not provide feedback to the communication device, the audio output **210** volume may increase to either gain the attention of the user or potentially alert bystanders or other third parties.

[0037] The alert button **128** may include a visual output **212**, an audio output **214** and a user input **216**. The visual output **212** may be similar to the visual output **206** of the communication device **106**. Likewise, the audio output **214**

may be similar to the audio output **210** of the communication device **106**. The output of the audio output **214** may be loud enough to be heard over nominal background noise. For example, the audio output **214** may have a decibel output in the range of 35-90 dB(SPL). The output of the audio output **214** may be 1-8 watts. These ranges may be further narrowed. For example, if a patient has a hearing aid or reduced hearing capacity, the audio output **214** may be in a louder range such as 50-100 dB(SPL). In some embodiments, the audio output **214** might have an adjustable volume range. This may enable the patient to adjust the volume of the alert button **128** depending upon the patient's environment. In some embodiments, the alert button **128** may include a microphone (not shown). The microphone may detect ambient noise and automatically adjust the audio output **214** volume. This may ensure the volume of the audio output **214** is at a preferred level for the particular patient and the particular setting. In some embodiments, the audio output **214** of the alert button **128** may be coupled to the audio output **210**. As the volume of audio output **210** is adjusted, either manually or automatically, the volume of the audio output **214** may be similarly adjusted. In some embodiments, the volume of the audio output **214** may increase as the alarm duration continues similar to the audio output **210**.

[0038] FIG. 3 is a block diagram illustrating functional components of one example of a communication device **106**. The communication device **106** may be an example of the communication device **106** described with reference to FIGS. 1 and 2. In this example, the communication device **106** has detection module **302**, an alert module **304**, and a user input module **306**. The alert module **304** may further include an auditory alert module **308**, visual alert module **310**, and a tactile alert module **312**.

[0039] The detection module **302** may detect one or more conditions of the WCD system **104** or the patient **102**. For example, the detection module **302** may be a logic device or algorithm to determine if any or a variety thresholds are exceeded which may require action of the defibrillator **108**. The detection module **302** may receive and interpret signals from an ECG port, a defibrillation port, and the like. The detection module **302** may process the information to ensure the patient is still conscious and healthy. The detection module **302** may additionally determine if the sensors, electrodes, and other system components are properly functioning. If any parameter indicates the patient **102** may be experiencing distress or a component of the WCD system **104** is malfunctioning, the detection module **340** may activate the alert module **304**. In some embodiments, the detection module **302** may synchronize with another detection module proximate the defibrillator. In still further embodiments, the communication device **106** may be a part of the defibrillator **108** and utilize the same detection module **302**.

[0040] The alert module **304** may receive an input from the detection module **302** and determine an alert threshold. The alert threshold may vary depending on the WCD mode, WCD state, and user-input responses. The alert module **304** may activate a multi-sensory alarm. The multi-sensory alarm may consist of a visual, auditory, and tactile alert. The alert module **304** may determine when and what sequence to provide visual, auditory, and tactile feedback. The alert module **304** may initially provide discreet feedback to the user and await a response, if no response is received, the alert module **304** may escalate the alert as necessary.

[0041] The auditory alert module **308** may provide a variety of audible alerts to the user. The audible alerts may include audio tones and voice messages. In some embodiments, the audio tones may comprise a short duration of harmonically rich tones. The tones may direct the patient's attention to the WCD system **104** where further messages may be displayed. A variety of different tones may be used to impart varying levels of alarm urgency. For example, the auditory alert module **308** may play the same series of tones but in varying pitches to denote varying levels of alarm urgency. The auditory alert module **308** may additionally change the tempo of the tones depending on the varying levels of alarm urgency. In still further embodiments, the actual tone might completely change depending on the alarm urgency. Each event may have a distinct alarm tone or each level of alarm may have a distinct alarm tone. In further embodiments, the auditory alert module **308** may change tempo and pitch of an alarm tone. In some embodiments, the patient may personalize the tones.

[0042] In some embodiments, the auditory alert module **308** may also change the volume of the audible alert. The alert may escalate in volume, pitch, tone, and/or timbre to gradually alert the patient. A gradual alarm approach may reduce patient anxiety and fear and allow the patient to calmly respond to the alarm. The duration of escalation may change depending on the urgency of the alert. A lower urgency alarm may have a slower rate of change whereas a high urgency alarm may have a much shorter duration but still gradually increase in pitch, tone, and/or volume.

[0043] The auditory alert module **308** may also provide voice messages. The voice messages may comprise informative messages to the patient, or potentially bystanders. The messages may include system alerts or patient health alerts. For example, if the patient is experiencing a cardiac event, the audible alert may announce the event in a loud tone to alert persons near the patient. This may enable the persons to take action such as CPR, or other first aid measures. The audible alert may additionally request further action such as a bystander to call an ambulance or other first responder. If the WCD system itself is experiencing malady, the audible alert may be communicating such to the patient. This could include low battery alerts, poor connectivity, and the like. The voice messages and tones may layer over each other, for example, be played at the same time, or may alternate.

[0044] The auditory alert module **308** may utilize either the audio output **210** or the audio output **214** or both.

[0045] The visual alert module **310** may provide visual feedback to the user. This may be viewed as either a blinking light on the visual indicator **206** or may be an image or text displayed on the screen **204**. The blinking light on the visual indicator **206** may mimic the auditory alert module **308**. For example, the light may synchronize the tone being played by the auditory alert module **308**. However, if the base tone remains the same throughout alarm urgency but changes in pitch and volume, the visual indicator **206** may not synchronize as the light cannot connote pitch and volume changes. Instead, the visual indicator may have a blinking light alert system where the frequency of the blinking changes with the urgency of the alarm. In still further embodiments, the blinking light alert may change to known communication mediums such as Morse code using an SOS blinking light pattern if an urgent, life threatening situation may arise.

[0046] The image or text may provide more detailed information to the patient. For example, if the battery is lower, a blinking no battery image may appear on the screen. Similarly, if an electrode is not connected properly, an electrode symbol may appear on the screen. If a shockable event is detected, a shock symbol may appear on the screen. In some embodiments, images and text may alternate to provide more complete information to the user. In still further embodiments, both image and text may appear on the screen.

[0047] The tactile alert module 312 may provide haptic feedback to the patient. The haptic feedback may present as vibrational patterns or waveforms emitting from the communication device 106, the alert button 128, or both. The haptic feedback may mimic the auditory alert module 308. For example, the haptic feedback might mimic the sound the auditory alert module 308 produces. The increase in pitch and tone may be translated to vibrational outputs. For example, the vibrations can match the length and intensity of a pitch and tone and gradually increase in strength as the alarm duration continues. In some embodiments, the tactile alert module 312 may output varying types of haptic response. For example, lower priority level alarms may result in short vibrational patterns. These short vibrational patterns may direct the patient's attention to lower priority events. High priority events such as high priority physiological conditions may result in escalating vibrations. The escalating vibrational pattern may have a longer time duration and begin gently but increase in intensity to quickly direct the patient's attention to the WCD system. As a high priority alarm continues without response, the time duration may shorten to eventually becoming a high vibrational pulse.

[0048] The user input module 306 may determine if user feedback is provided. For example, the patient may have a button (e.g. user input 216) proximate the alert button (e.g. alert button 128). When the alert module 304 triggers an alert, the patient may silence the alert via the user input device. The patient may be in a meeting, a public place, or some other location where the user does not wish for the alert to be heard.

[0049] The alert module 304 may receive an indication from the user input module 306 that the patient silenced an alarm. The alert module 304 then may take one of several actions. If the alert is a low urgency alert, the alert module 304 may snooze the alarm for a predetermined length of time. The predetermined length of time may vary depending upon the need for patient action. If the alert module 304 triggers a medium level alert, the alert module 304 may quiet the auditory alert module 308 preventing any sound output to the patient. However, the visual alert module 310 and the tactile alert module 312 may continue to alert the user as necessary. The auditory alert module 308 may activate again after a predetermined length of time.

[0050] If the alarm urgency is high, such as an indication of a cardiac event or an impending shock to the patient (or both), the alert module 304 may continue to operate modules 308, 310, 312 despite user input detected by the user input module 306. This may alert the patient or a bystander to an emergency situation requiring immediate attention. If the patient is conscious and does not require medical attention, the patient may need to provide input to the WCD system 104 to prevent the defibrillator 108 from emitting a shock. If the patient is not conscious, the alert module 304 may alert

bystanders to the severity of the situation and either provide direction to the bystanders of potential action to be taken or, in some instances, enable bystanders to contact medical support or emergency support as needed.

[0051] FIG. 4 is a diagram displaying various components of an example external defibrillator 108. The external defibrillator 108 may be an example of the defibrillator 108 described with reference to FIG. 1. The components shown in FIG. 4 may be contained within a single unit or may be separated amongst two or more units in communication with each other. The defibrillator 108 may include a communication device 106, processor 402, memory 404, defibrillation port 408, and ECG port 410, among other components. In some embodiments, the components are contained within a housing 412 or casing. The housing 412 may comprise a hard shell around the components or may comprise a softer shell for increased patient comfort.

[0052] The communication device 106, processor 402, memory 404 (including software/firmware code (SW) 414), defibrillation port 408, ECG port 410, communication module 416, measurement circuit 418, monitoring device 420, and energy storage module 422 may communicate, directly or indirectly, with one another via one or more buses 424. The one or more buses 424 may allow data communication between the elements and/or modules of the defibrillator 108.

[0053] The memory 404 may include random access memory (RAM), read only memory (ROM), flash RAM, and/or other types. The memory 404 may store computer-readable, computer-executable software/firmware code 414 including instructions that, when executed, cause the processor 402 to perform various functions (e.g., determine shock criteria, determine consciousness of patient, track patient parameters, etc.). In some embodiments, the processor 402 may include an intelligent hardware device, e.g., a central processing unit (CPU), a microcontroller, an application-specific integrated circuit (ASIC), etc.

[0054] In some embodiments, the memory 404 can contain, among other things, the Basic Input-Output system (BIOS) which may control basic hardware and/or software operations such interactions and workings of the various components of the defibrillator 108, and in some embodiments, components external to the defibrillator 108. For example, the memory 404 may contain various modules to implement the workings of the defibrillator 108 and other aspects of the present disclosure.

[0055] In some embodiments, the defibrillator 108 may include a communication device 106. The communication device 106 may enable the patient to view one or metrics concerning the defibrillator 108. In some embodiments, the communication device 106 may include the components described with reference to FIG. 2. In some embodiments, the communication device 106 may be a part of the defibrillator 108 and share one or more internal components of the defibrillator. In other embodiments, as shown later in FIG. 5, the communication device 106 may be a removable component or separate component. In further embodiments, the defibrillator may include a separate user interface 406. The user interface 406 may be in addition to the communication device 106. The user interface 406 may display an ECG of the patient, a status of the defibrillator 108, a status of a charge (e.g. a battery charge or an energy storage module), and the like.

[0056] In some embodiments, the defibrillator **108** may include a defibrillation port **408**. The defibrillation port **408** may comprise a socket, opening, or electrical connection in the housing **412**. In some instances, the defibrillation port **408** may include two or more nodes **426**, **428**. The two or more nodes **426**, **428** may accept two or more defibrillation electrodes (e.g. defibrillation electrodes **114**, **116**, FIG. 1). The nodes **426**, **428** may provide an electrical connection between the defibrillation electrodes **114**, **116** and the defibrillator **108**. The defibrillation electrodes **114**, **116** may plug into the two or more nodes **426**, **428** via one or more leads (e.g. leads **118**), or, in some instances, the defibrillation electrodes **114**, **116** may be hardwired to the nodes **426**, **428**. Once an electrical connection is established between the defibrillation port **408** and the electrodes **114**, **116**, the defibrillator **108** may be able to deliver an electric shock to the patient **102**.

[0057] In some embodiments, the defibrillator **108** may include an ECG port **410** in the housing **412**. The ECG port **410** may accept one or more ECG electrodes **430** or ECG leads. In some instances, the ECG electrodes **430** sense a patient's ECG signal. For example, the ECG electrodes **430** may record electrical activity generated by heart muscle depolarization. The ECG electrodes **430** may utilize 4-leads to 12-leads or multichannel ECG, or the like. The ECG electrodes **430** may connect with the patient's skin.

[0058] In some embodiments, the defibrillator **108** may include a measurement circuit **418**. The measurement circuit **418** may be in communication with the ECG port **410**. For example, the measurement circuit **418** may receive physiological signals from ECG port **410**. The measurement circuit **418** may additionally or alternatively receive physiological signals via the defibrillation port **408** when defibrillation electrodes **114**, **116** are attached to the patient **102**. The measurement circuit **418** may determine a patient's ECG signal from a difference in voltage between the defibrillation electrodes **114**, **116**.

[0059] In some embodiments, the measurement circuit **418** may monitor the electrical connection between the defibrillation electrodes **114**, **116** and the skin of the patient **102**. For example, the measurement circuit **418** can detect impedance between electrodes **114**, **116**. The impedance may indicate the effective resistance of an electric circuit. An impedance calculation may determine when the electrodes **114**, **116** have a good electrical connection with the patient's body.

[0060] In some embodiments, the defibrillator **108** may include an internal monitoring device **420** within the housing **412**. The monitoring device **420** may monitor at least one local parameter. Local parameters may include physical state of the patient such as ECG, movement, heartrate, pulse, temperature, and the like. Local parameters may also include a parameter of the WCD system (e.g. WCD **104**, FIG. 1), defibrillator **108**, environmental parameters, or the like.

[0061] In some embodiments, the WCD system **104** may include an internal monitoring device **420** and an external monitoring device (e.g. external monitoring device **124**). If both monitoring devices **124**, **420** are present, the monitoring devices **124**, **420** may work together to parse out specific parameters depending on position, location, and other factors. For example, the external monitoring device **124** may monitor environmental parameters while the internal monitoring device **420** may monitor patient and system parameters.

[0062] In some embodiments, the defibrillator **108** may include a power source **432**. The power source **432** may comprise a battery or battery pack, which may be rechargeable. In some instances, the power source **432** may comprise a series of different batteries to ensure the defibrillator **108** has power. For example, the power source **432** may include a series of rechargeable batteries as a prime power source and a series of non-rechargeable batteries as a secondary source. If the patient **102** is proximate an AC power source, such as when sitting down, sleeping, or the like, the power source **432** may include an AC override wherein the power source **432** draws power from the AC source.

[0063] In some embodiments, the defibrillator **108** may include an energy storage module **422**. The energy storage module **422** may store electrical energy in preparation or anticipation of providing a sudden discharge of electrical energy to the patient. In some embodiments, the energy storage module **422** may have its own power source and/or battery pack. In other embodiments, the energy storage module **422** may pull power from the power source **432**. In still further embodiments, the energy storage module **422** may include one or more capacitors **434**. The one or more capacitors **434** may store an electrical charge, which may be administered to the patient. The processor **402** may be communicatively coupled to the energy storage module **422** to trigger the amount and timing of electrical energy to provide to the defibrillation port **408** and, subsequently, the patient.

[0064] In some embodiments, the defibrillator **108** may include a discharge circuit **436**. The discharge circuit **436** may control the energy stored in the energy storage module **422**. For example, the discharge circuit **436** may either electrical couple or decouple the energy storage module **422** to the defibrillation port **408**. The discharge circuit **436** may be communicatively coupled to the processor **402** to control when the energy storage module **422** and the defibrillation port **408** should or should not be coupled to either administer or prevent a charge from emitting from the defibrillator **108**. In some embodiments, the discharge circuit **436** may include one or more switches **438**. The one or more switches **438** may include an H-bridge.

[0065] In some embodiments, the defibrillator **108** may include a communication module **416**. The communication module **416** may establish one or more communication links with either local hardware and/or software to the WCD system **104** and defibrillator **108** or to remote hardware separate from the WCD system. In some embodiments, the communication module **416** may include one or more antennas, processors, and the like. The communication module **416** may communicate wirelessly via radio frequency, electromagnetics, local area networks (LAN), wide area networks (WAN), virtual private networks (VPN), RFID, Bluetooth, cellular networks, and the like. The communication module **416** may facilitate communication of data and commands such as patient data, episode information, therapy attempted, CPR performance, system data, environmental data, and so on.

[0066] In some embodiments, the processor **402** may execute one or more modules. For example, the processor **402** may execute a detection module **440** and/or an action module **442**. The detection module **440** may be a logic device or algorithm to determine if any or a variety of thresholds are exceeded which may require action of the defibrillator **108**. For example, the detection module **440** may

receive and interpret all of the signals from the ECG port 410, the defibrillation port 408, the monitoring device 420, an external monitoring device, and the like. The detection module 440 may process the information to ensure the patient is still conscious and healthy. The detection module 440 may communicate with the communication device 106 or be a part of the communication device 106. For example, the detection module 440 may be the same as detection module 302 or may communicate with the detection module 302. If any parameter indicates the patient 102 may be experiencing distress or indicating a cardiac episode, the detection module 440 may activate the action module 442. Similarly, either detection module 440, or detection module 302 may trigger the alert module 304.

[0067] The action module 442 may receive data from the detection module 440 and perform a series of actions. For example, an episode may merely be a loss of batter power at the power source 432 or the energy storage module 422, or one or more electrodes (e.g., ECG electrodes, defibrillation electrodes) may have lost connection. In such instances, the action module 442 may trigger an alert to the patient or to an outside source of the present situation. This may include activating the alert module 304 of the communication device 106 if the alert module 304 has not already been activated. If an episode is a health risk, such as a cardiac event, the action module 442 may begin a series of steps. This may include issuing a warning to the patient, issuing a warning to a third party, priming the energy storage module 422 for defibrillation, releasing one or more conductive fluids proximate defibrillation electrodes 114, 116, and the like.

[0068] FIG. 5 is a diagram displaying various components of an example communication system 200 for use with a WCD system 104. The communication system 200 may include a communication device 106 and an alert button 128. The communication device 106 and alert button 128 may be an example of the communication device 106 and alert button 128 described with reference to FIGS. 1 and 2. The communication system 200 may be coupled to the defibrillator 108 or may include separate components communicatively coupled to the defibrillator 108. In some embodiments, the communication device 106 may include a controller 502, memory 504, I/O controller 506, and the like.

[0069] The controller 502, memory, 504 (including software/firmware code (SW) 512), input/output controller module 506, a transceiver module 514, and one or more antennas 516 may communicate, directly or indirectly, with one another via one or more buses 520. The transceiver module 514 may communicate bi-directionally, via the one or more antennas 516, wired links, and/or wireless links, with the defibrillator 108 or remote devices 126 as described previously. The transceiver module 514 may include a modem which may modulate packets and provide the modulated packets to the one or more antennas 516 for transmission, and to demodulate packets received from the one or more antenna 516. While a single antenna 516 is shown, the communication device may include several antennas 516 which may concurrently transmit and/or receive multiple wired and/or wireless transmissions. In some embodiments, the communication device 106 may provide a connection using wireless techniques, including digital cellular connection, Cellular Digital Packet Data (CDPD) connection, digital satellite data connection, and/or another connection.

[0070] The controller 502 may control one or more operations of the communication device 106. The controller 502 may include one or more processors, implemented as a Central Processing Unit (CPU), a digital signal processor, a microprocessor, a microcontroller, an application-specific integrated circuit (ASIC), a programmable logic device (PLD), or other implementation. In some embodiments, the controller 502 may include a single chip combined with memory controller and a peripherals interface.

[0071] The memory 504 may be a non-transitory computer-readable storage medium. In some embodiments, the memory 504 may include both persistent/non-volatile and non-persistent/volatile memory components. The memory 504 may include volatile memory, non-volatile memory (NVM), for example RAM, ROM, EEPROM, flash memory, or some combination thereof. The memory 504 may store computer-readable, computer executable software/firmware code 512 that, when executed, may cause the controller 502 to perform various functions as described herein.

[0072] In some embodiments, the memory 504 can contain, among other things, the Basic Input-Output system (BIOS) which may control basic hardware and/or software operations such interactions and workings of the various components of the communication device 106, and in some embodiments, components external to the communication device 106. For example, the memory 504 may contain various modules to implement the workings of the communication system 200 and other aspects of the present disclosure.

[0073] The communication device 106 may also include components for bi-directional voice and data communications including components for transmitting communications and components for receiving communications. For example, the communication device 106 may communicate bi-directionally with the defibrillator 108, the WCD system 104, and/or external devices 124. The bi-directional communication may be direct or indirect.

[0074] The input output controller (I/O controller) 506 may coordinate communication with the patient. For example, the I/O controller 506 may receive inputs from the user and also may generate outputs to the user. The I/O controller 506 may interface with the audio output 210, visual indicator 206, screen 204, and a motor 522 of the communication device 106. The I/O controller 506 may also interface with the audio output 210, user input 216, and motor 524. The I/O controller 506 may coordinate with the alert module 304 to activate various user outputs to provide an alarm or to communicate with the patient. The I/O controller 506 may also coordinate with the user input 216 to receive patient feedback via the user input 216.

[0075] The audio outputs 210, 214 may each include a speaker. The output of the audio outputs 210, 214 may be loud enough to be heard over nominal background noise. The visual indicator 206 may include one or more light sources. The visual indicator 206 may indicate an alarm presence and severity using colors and patterns with optical communication. The screen 204 may include any variation of a screen to display text and images to a patient and/or user.

[0076] The motors 522, 524 may be one of a flat coin vibrating vibration motor, DC vibration motor, haptic actuator, eccentric rotating mass (ERM) vibration motor, cylindrical vibration motor, q-coin vibration motors, PCB vibration motor, pancake vibration motor, linear resonant actuator

(LRA), piezo actuator, and the like. The motor 522 of the communication device 106 and the motor 524 of the alert button 128 need not be the same in size or programming. The motor selected for each case may be best suited for the size of the device requiring vibration and the output necessary given the size of the device. For example, the motor 524 coupled to the alert button 128 may be smaller than the motor 522 for the communication device 106 because the alert button 128 is smaller. In other embodiments, the motors 522, 524 may be the same. In either situation, the motors 522, 524 may be programmed alike or differently. For example, the force of the vibration at the communication device 106 may be different than the force at the alert button 128. While the overall output may appear similar to the patient, the input may be different to achieve that result.

[0077] The detection module 302, alert module 304, and user input module 306 may perform similar functions as the detection module 302, alert module 304, and user input module 306 described with reference to FIG. 2.

[0078] In some embodiments, the communication device 106 may include a battery 208. The battery 208 may be a single battery or battery pack, which may be rechargeable. In some instances, the battery 208 may comprise a series of different batteries to ensure the communication device 106 has power. For example, the battery 208 may include a series of rechargeable batteries as a prime power source and a series of non-rechargeable batteries as a secondary source. If the patient 102 is proximate an AC power source, such as when sitting down, sleeping, or the like, the battery 208 may include an AC override wherein the battery 208 draws power from the AC source.

[0079] FIG. 6 is a flow chart illustrating an example of a method 600 for WCD systems, in accordance with various aspects of the present disclosure. For clarity, the method 600 is described below with reference to aspects of one or more of the systems described herein.

[0080] At block 602, the method 600 may include detecting an event. The event may be any type of event or disruption at the WCD systems. The event may be one that requires patient intervention, such as adjusting a sensor, electrode, or other component of the WCD system. The event may require charging the system or the defibrillator. The event may also be more serious such as detection of a cardiac event, irregular heartbeat, arrhythmia, or the like.

[0081] At block 604, the method 600 may include determining a severity of the detected event. The severity may be measured on a predetermined basis. For example, potential failure modes of the WCD system 104 may be preprogrammed into a severity event chart. This may include potential consequences if the event is not remedied and a duration that remedy needs to occur. For example, a low battery may not be immediately severe but as a time duration of low battery power lengthens, the severity of charging the unit becomes higher. Likewise, limited ECG sensor contact may not be an emergency but may need remediation to garnish accurate ECG readings. A first detection of limited contact may be a lower or medium level alert. A continued detection may increase the severity level of the alert.

[0082] At block 606, the method 600 may include activating an alarm to a patient. The severity and amount of alarm components may vary based on the severity level of the detected event. For example, the alarm may include one of an audible alarm, visual alarm, tactile alarm, or a combination thereof. The alarm itself may be a collective com-

ination of the audible, visual, and tactile alarm distributed to the patient. The alarm may begin with one of the three types of alarms and then slowly increase the perceptibility of the alarm.

[0083] In some embodiments, the visual alarm may activate first for a predetermined period of time. The visual alarm may include a blinking light and a visual message to the patient. After the predetermined time period, the tactile alarm may combine with the visual alarm to increase the perceptibility of the alarm. Again, after a predetermined time period, if the patient does not respond to the alarm, the alarm may add an audible component. The three alarm components may continue to increase in severity until the patient acknowledges the alarm. The severity may include a volume of the alarm, a brightness of the light, an increase in vibrational energy, or a combination thereof.

[0084] The predetermined time period between activating various alarm components and increasing the perceptibility of the components may vary based on the severity of the event. For example, in a low-level priority event, the predetermined time period may be longer than for a high priority event. The low-level priority event may have a predetermined time period ranging from thirty seconds to several minutes. The duration of the predetermined time period may be personalized to the user. In a high priority event, the duration of the predetermined time period may be negligible. For example, each component of the alarm may activate at once and a severity of the alarm components may increase quickly. Medium priority events may vary somewhere in between the low-level priority events and the high-priority events.

[0085] In still further embodiments, emergency situations may have more urgent alarm protocols. Emergency situations may arise when a cardiac event is detected, an impending shock is being prepared, a high alert alarm has gone unanswered or other situations that may occur. The emergency alarms may be a higher discernibility than the rest of the alarms. A high discernibility may be a higher volume, higher tactile strength, brighter visual aids. A high discernibility may also comprise a completely separate alarm which may indicate to the user or to bystanders that a distinct emergency event is occurring. The emergency alarm may provide commands or announcements to surrounding bystanders to aid in the safety of the patient. For example, if a shock is impending, the alarm may announce the shock and ask bystanders to clear the patient. The alarm may provide additional information dependent upon the situation.

[0086] Thus, the method 600 may provide for alerting a patient. It should be noted that the method 600 is just one implementation and that the operations of the method 600 may be rearranged or otherwise modified such that other implementations are possible.

[0087] FIG. 7 is a flow chart illustrating an example of another method 700 for WCD systems, in accordance with various aspects of the present disclosure. For clarity, the method 700 is described below with reference to aspects of one or more of the systems described herein.

[0088] At block 606, the method 700 may include activating an alarm to the patient.

[0089] At block 702, the method 700 may include determining if patient input is received. The patient input may include a patient snoozing or deactivating an alarm. For example, if a patient does not wish for a noise to be heard, the patient may silence the alarm. If patient input has not

been received, at block **704** the method **700** may include continuing alarm protocol. In various embodiments, the alarm protocol depends upon the alarm severity.

[0090] At block **706**, if the patient has snoozed the alarm, the method **700** may include determining if a shock is eminent. If a shock is eminent, but the patient has snoozed the alarm, the method **700**, at block **704**, may continue the alarm protocol. For example, the patient may be conscious and experiencing a false positive shock criterion. If the patient has snoozed the alarm, the patient may not be aware that a shock is imminent and may experience the shock. However if the alarm protocol is continued, the patient may be alerted to a more pressing alarm situation, if the patient is conscious. Similarly, if the alarm snooze button has been activated either accidentally or by a third party, the alarm protocol may alert the patient, or the bystander that the alarm severity is high.

[0091] If a shock is not eminent, at block **708**, the method **700** may cease one or more of the alarm components for a predetermined length of time. The predetermined length of time may depend upon event severity. Similarly, if the event severity increases, the predetermined length of time may be truncated. Once the predetermined amount of time has passed, at block **704**, the method **700** may continue alarm protocols.

[0092] Thus, the method **700** may provide for alerting a patient. It should be noted that the method **700** is just one implementation and that the operations of the method **700** may be rearranged or otherwise modified such that other implementations are possible.

[0093] FIG. **8** is a flow chart illustrating an example of a method **800** for WCD systems, in accordance with various aspects of the present disclosure. For clarity, the method **800** is described below with reference to aspects of one or more of the systems described herein.

[0094] At block **802**, the method **800** may include determining if an event has passed or been remedied. If the event has been remedied, or has passed, the method **800** may, at block **602**, continue detecting or searching for an event.

[0095] If the event has not passed or not been remedied, at block **804**, the method **800** may determine if a duration of the alarm has exceeded a threshold. The threshold may be a predetermined amount of time or may be a predetermined number of times the alarm has been snoozed. The threshold may vary depending on event severity. For example, a more severe event may have a shorter time threshold than a lower priority event.

[0096] If the threshold has been exceeded, at block **806**, the method **800** may increase an alarm severity. This may include increasing the perceptibility of the alarm. This may mean increasing the volume of the sound, pitch, or tone of the audible alarm. In some embodiments, the method **800** may change the actual sound itself to a more urgent note. The haptic alarm may increase in strength. The visual alarm may become brighter.

[0097] However, if the threshold has not been exceeded, at block **704**, the method **800** may continue alarm protocols. The alarm protocols may be ordinary protocols to follow given the severity of the alarm.

[0098] Thus, the method **800** may provide for alerting a patient. It should be noted that the method **800** is just one implementation and that the operations of the method **800** may be rearranged or otherwise modified such that other implementations are possible.

[0099] This document may include references to directions, such as “forward,” “rearward,” “front,” “rear,” “upward,” “downward,” “top,” “bottom,” “right hand,” “left hand,” “lateral,” “medial,” “in,” “out,” “extended,” etc. These references, and other similar references, are only to assist in helping describe and to understand the particular embodiments and are not intended to limit the present disclosure to these directions or locations.

[0100] The present document may also reference quantities and numbers. Unless specifically stated, such quantities and numbers are not to be considered restrictive, but exemplary of the possible quantities or numbers associated with the present application. Also in this regard, the present application may use the term “plurality” to reference a quantity or number. The terms “about,” “approximately,” “near,” etc., mean plus or minus 5% of the stated value. For the purposes of the present disclosure, the phrase “at least one of A, B, and C,” for example, means (A), (B), (C), (A and B), (A and C), (B and C), or (A, B, and C), including all further possible permutations when greater than three elements are listed.

[0101] The principles, representative embodiments, and modes of operation of the present disclosure have been described in the foregoing description. However, aspects of the present disclosure, which are intended to be protected, are not to be construed as limited to the particular embodiments disclosed. Further, the embodiments described herein are to be regarded as illustrative rather than restrictive. It will be appreciated that variations and changes may be made by others, and equivalents employed, without departing from the spirit of the present disclosure. Accordingly, it is expressly intended that all such variations, changes, and equivalents fall within the spirit and scope of the present disclosure as claimed.

[0102] While illustrative embodiments have been illustrated and described, it will be appreciated that various changes can be made therein without departing from the spirit and scope of the disclosure.

We claim:

1. A wearable cardioverter defibrillator (WCD), comprising:
 - a support structure that may be worn by a patient;
 - a processor coupled to the support structure;
 - a discharge circuit configured to discharge a stored electrical charge through a body of the patient, the discharge circuit in communication with the processor; and
 - a multi-sensory alarm;
 the processor configured to:
 - detect an event occurring at the WCD,
 - determine a severity of the event occurring at the WCD, and
 - activate the multi-sensory alarm based at least in part on the determined event severity.
2. The WCD of claim 1, wherein the multi-sensory alarm is a combination of at least two of a visual alarm, audible alarm, and haptic alarm.
3. The WCD of claim 1, further including:
 - a patient alert button coupled to the support structure, the patient alert button comprising an audible output and a patient input button.
4. The WCD of claim 1, further comprising:
 - a communication device coupled to the support structure, the communication device includes:

- an alarm module; and
a monitor, light, haptic motor, and audible output in communication with the alarm module.
5. The WCD of claim 1, wherein the multi-sensory alarm consists of a visual alarm, a haptic alarm, and an audible alarm.
6. The WCD of claim 5, wherein the processor is further configured to:
synchronize the visual alarm, haptic alarm, and audible alarm to harmonize the alarm output.
7. The WCD of claim 5, wherein the audible alert comprises a combination of a voice alert and a tone.
8. The WCD of claim 5, wherein the visual alarm includes at least one of a blinking light, a written message, or an image.
9. The WCD of claim 5, wherein the audible alarm varies in at least one of a pitch, tone, or timbre based at least in part on the severity of the multi-sensory alarm.
10. A wearable cardioverter defibrillator (WCD) system, comprising:
a support structure for wearing by a patient;
a defibrillator housing coupled to the support structure;
a discharge circuit in communication with the defibrillator housing, the discharge circuit configured to discharge a stored electrical charge through a body of the patient,
a processor within the defibrillator housing, the processor in communication with the discharge circuit; and
at least one communication device in communication with the processor, the communication device including a visual output, an audible output, and a haptic output;
the processor configured to:
detect an event occurring at the WCD,
determine a severity of the event occurring at the WCD,
and
activate a multi-sensory alarm at the communication device based at least in part on the determined event severity.
11. The WCD of claim 10, wherein the multi-sensory alarm is a combination of at least two of a visual alarm, audible alarm, and haptic alarm.
12. The WCD of claim 10, further including:
a patient alert button coupled to the support structure and in communication with the communication device, the patient alert button comprising an audible output and a patient input button.
13. The WCD of claim 12, wherein the processor is further configured to:
activate the multi-sensory alarm at the patient alert button, wherein the alarm at the patient alert button synchronizes with the alarm at the communication device.
14. The WCD of claim 10, wherein the multi-sensory alarm consists of a visual alarm, a haptic alarm, and an audible alarm.
15. The WCD of claim 14, wherein the processor is further configured to:
synchronize the visual alarm, haptic alarm, and audible alarm to harmonize the alarm output at the communication device.
16. The WCD of claim 14, wherein the audible alert comprises a combination of a voice alert and a tone.
17. The WCD of claim 14, wherein the visual alarm includes at least one of a blinking light, a written message, or an image.
18. The WCD of claim 14, wherein the audible alarm varies in at least one of a pitch, tone, or timbre based at least in part on the severity of the alarm.
19. The WCD of claim 10, wherein the visual output of the communication device includes an illumination output and a display device.
20. A wearable cardioverter defibrillator system, comprising:
a support structure for wearing by a patient;
one or more electrodes for delivering a charge to the patient, while the patient is wearing the support structure;
a discharge circuit coupled to the electrodes, the discharge circuit configured to store an electrical charge;
a processor for activating the discharge circuit, the processor in communication with the discharge circuit;
an alert button in communication with the processor, the alert button comprising an audio output and a user input; and
a multi-sensory alarm, the multi-sensory alarm comprising at least two of a visual alarm, an audible, and a haptic alarm.

* * * * *

专利名称(译)	穿戴式心脏除颤器的多传感器警报		
公开(公告)号	US20190329054A1	公开(公告)日	2019-10-31
申请号	US16/394979	申请日	2019-04-25
申请(专利权)人(译)	WEST HOLDINGS AFFUM CORP.		
当前申请(专利权)人(译)	WEST HOLDINGS AFFUM CORP.		
[标]发明人	ENGMAN ZOIE R HALL AMANDA K		
发明人	BRESKE, PAMELA F. ENGMAN, ZOIE R. EDWORTHY, JUDY R. HALL, AMANDA K.		
IPC分类号	A61N1/39 A61B5/00		
CPC分类号	A61N1/3904 A61N1/3918 A61B5/4836 A61B5/7203 A61N1/3993 A61B5/746 A61N1/3925 A61B5/6823 A61B5/046 A61B5/7282 A61B5/7405 A61B5/742 A61B5/7455		
优先权	62/662899 2018-04-26 US		
外部链接	Espacenet USPTO		

摘要(译)

在一个实施例中，描述了一种可穿戴的心脏复律除颤器（WCD）。WCD包括患者可以佩戴的支撑结构。处理器耦合到支撑结构。可穿戴式心脏复律除颤器还包括放电电路，该放电电路被配置为通过患者的身体放电所存储的电荷，该放电电路与处理器连通。处理器可以被配置为检测在WCD处发生的事件并确定在WCD处发生的事件的严重性。处理器可以至少部分地基于所确定的事件严重性来激活多传感器警报。

