



US 20190029530A1

(19) **United States**

(12) **Patent Application Publication**
Romesburg

(10) **Pub. No.: US 2019/0029530 A1**

(43) **Pub. Date: Jan. 31, 2019**

(54) **REDUCTION OF PHYSIOLOGICAL METRIC ERROR DUE TO INERTIAL CADENCE**

Publication Classification

(71) Applicant: **Valencell, Inc.**, Chapel Hill, NC (US)

(51) **Int. Cl.**
A61B 5/024 (2006.01)
A61B 5/00 (2006.01)
A61B 5/11 (2006.01)

(72) Inventor: **Eric Douglas Romesburg**, Chapel Hill, NC (US)

(52) **U.S. Cl.**
CPC *A61B 5/024* (2013.01); *A61B 5/6817* (2013.01); *A61B 5/112* (2013.01); *A61B 2562/0219* (2013.01); *A63B 2220/17* (2013.01); *A63B 2230/04* (2013.01); *A61B 5/721* (2013.01)

(21) Appl. No.: **16/146,362**

(22) Filed: **Sep. 28, 2018**

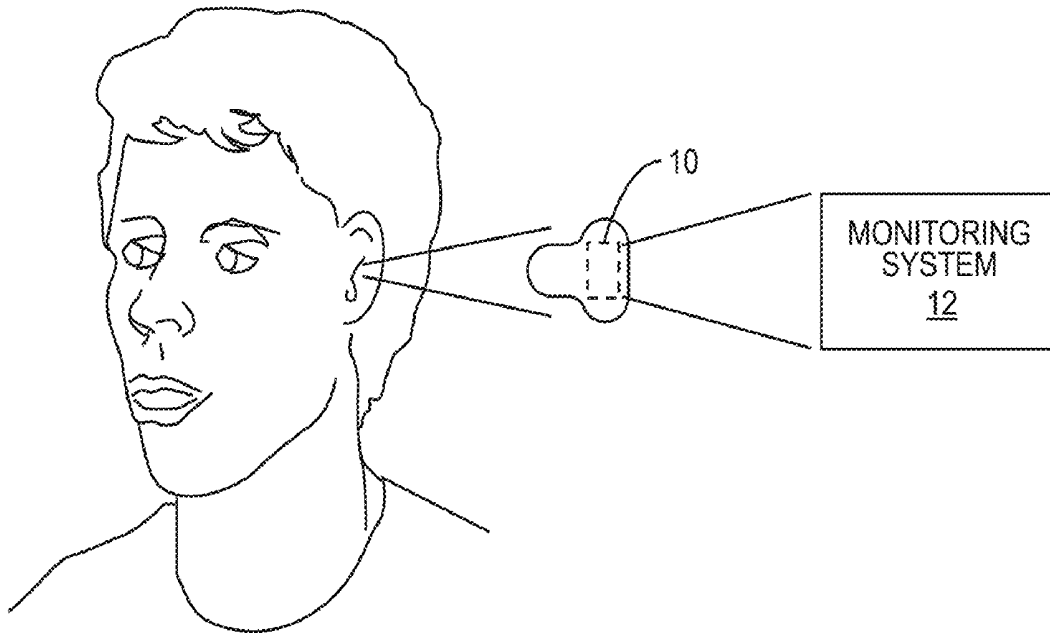
Related U.S. Application Data

(63) Continuation of application No. 14/370,689, filed on Jul. 3, 2014, filed as application No. PCT/US2012/071594 on Dec. 24, 2012.

(60) Provisional application No. 61/586,884, filed on Jan. 16, 2012.

(57) **ABSTRACT**

The heart rate monitor disclosed herein removes a step rate component from a measured heart rate by using one or more filtering techniques when the step rate is close to the heart rate. In general, a difference between the step rate and the heart rate is determined, and the step rate is filtered from the heart rate based on a function of the difference.



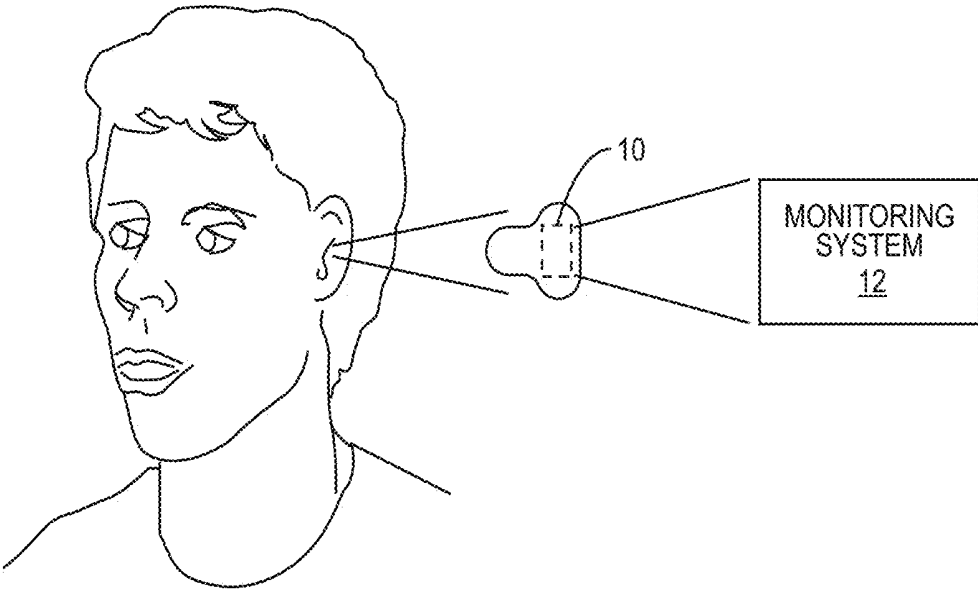


FIG. 1

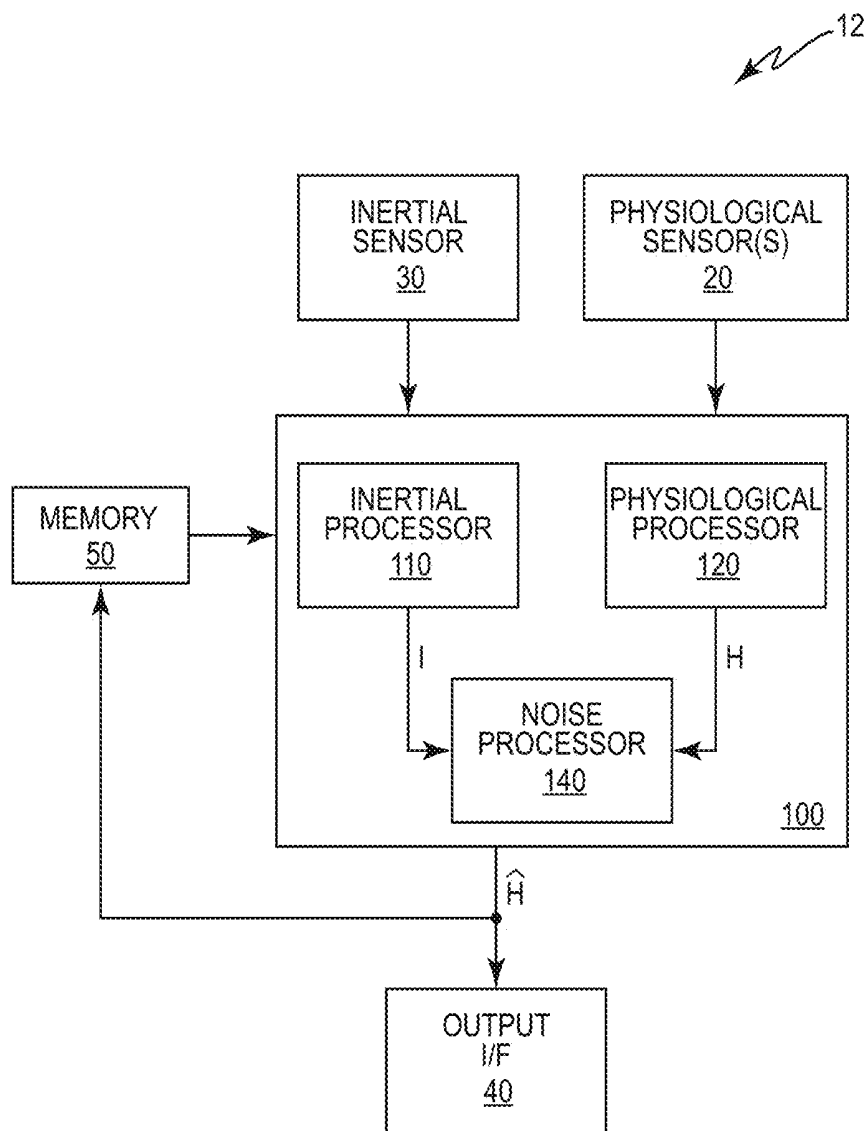


FIG. 2

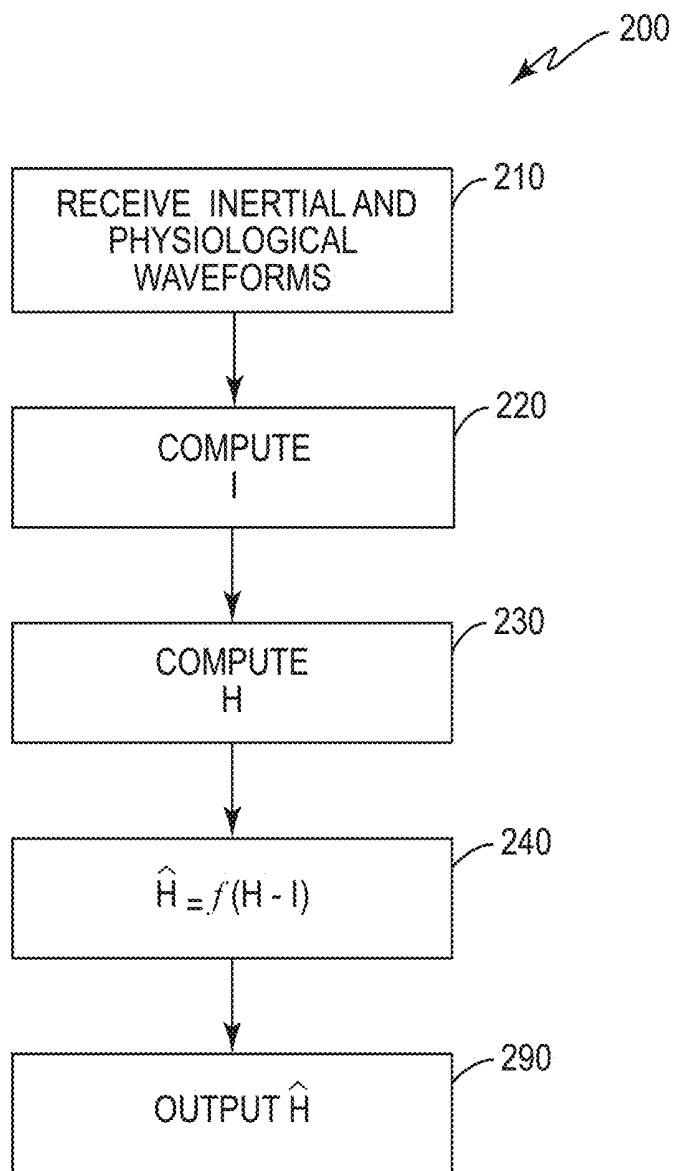


FIG. 3

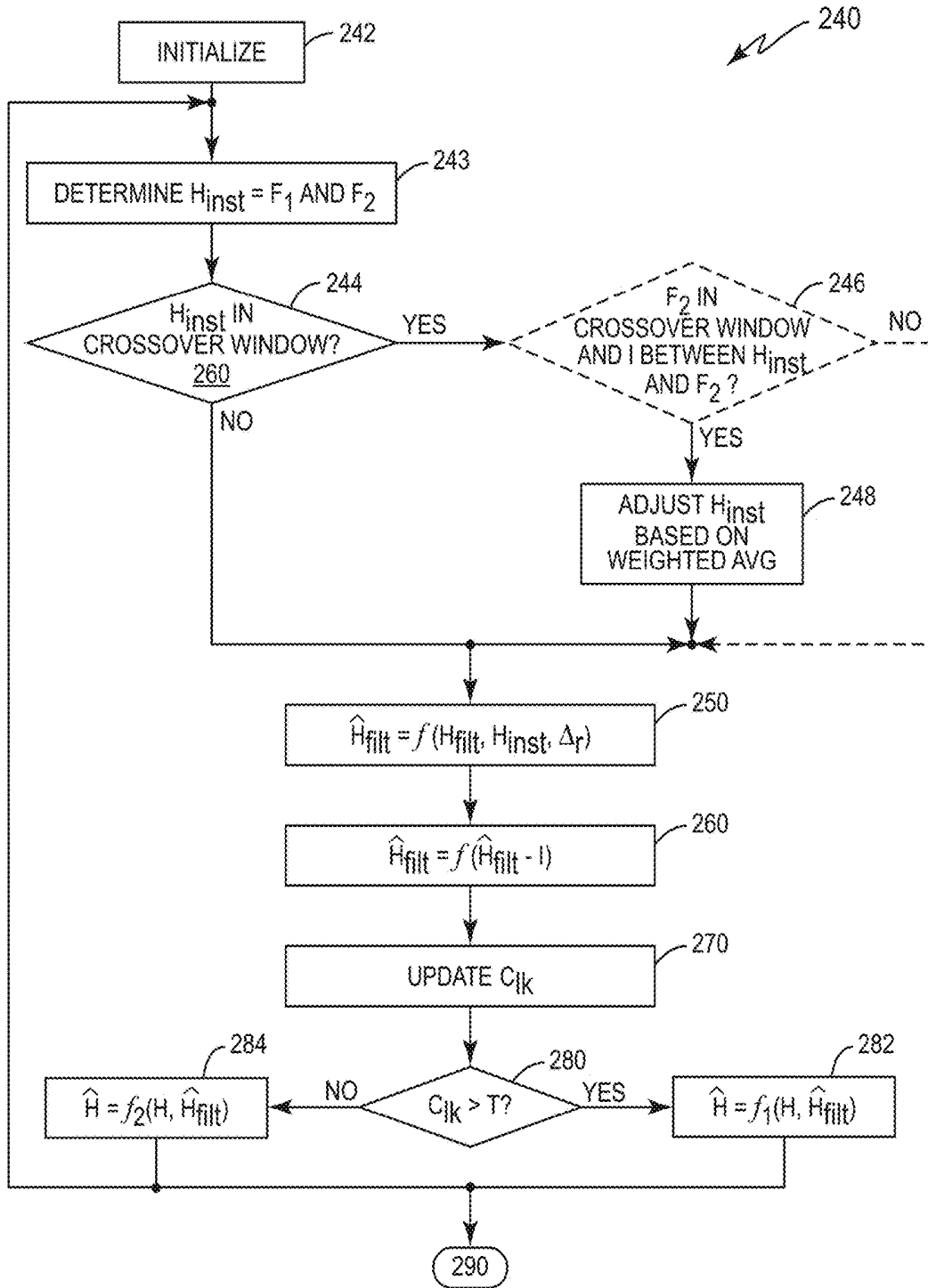


FIG. 4

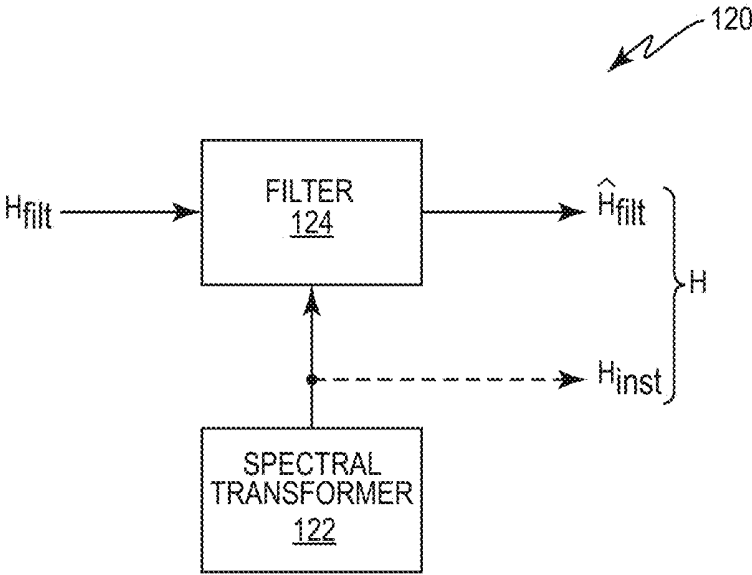


FIG. 5

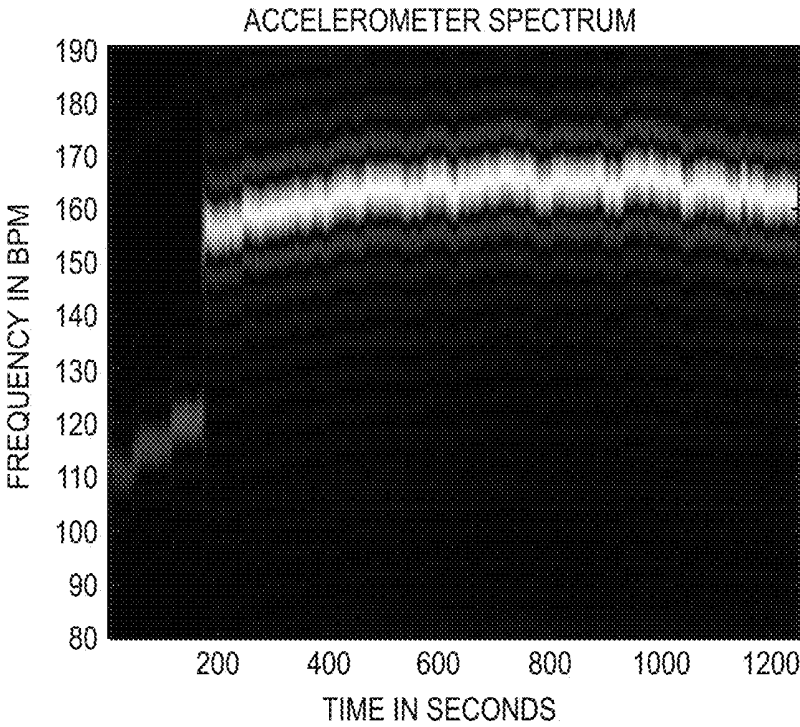


FIG. 6A

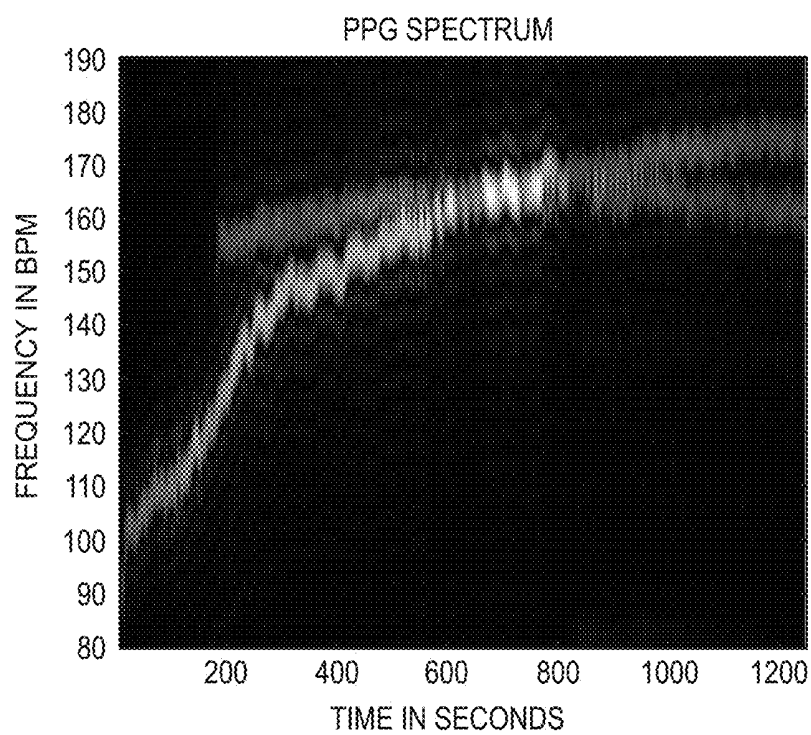


FIG. 6B

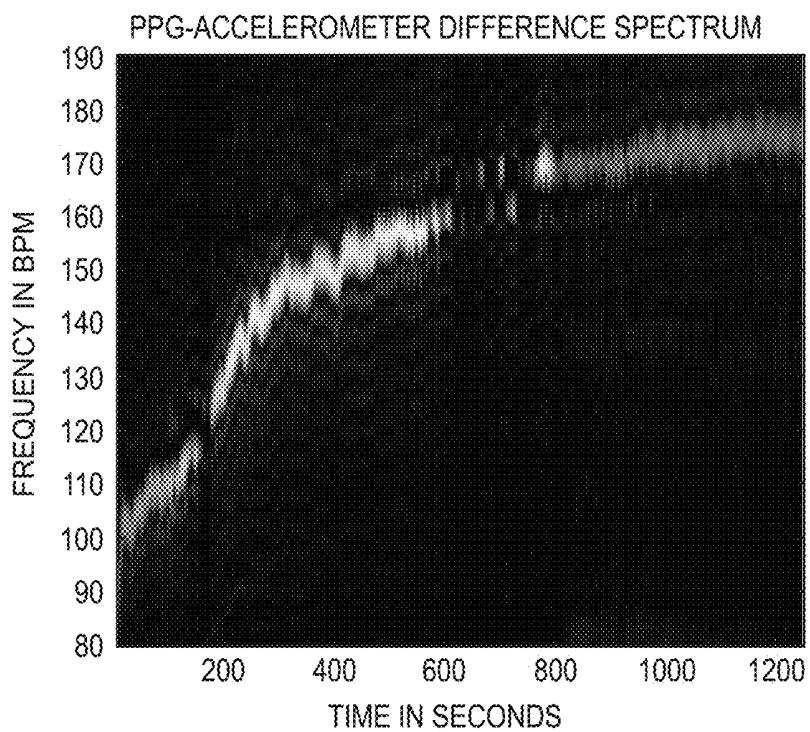


FIG. 6C

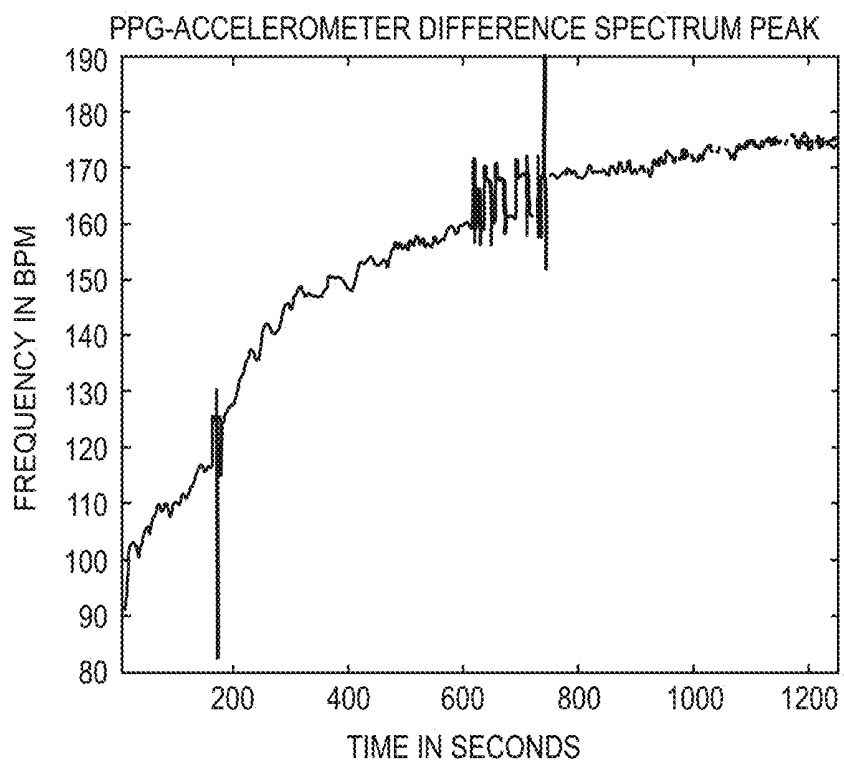


FIG. 6D

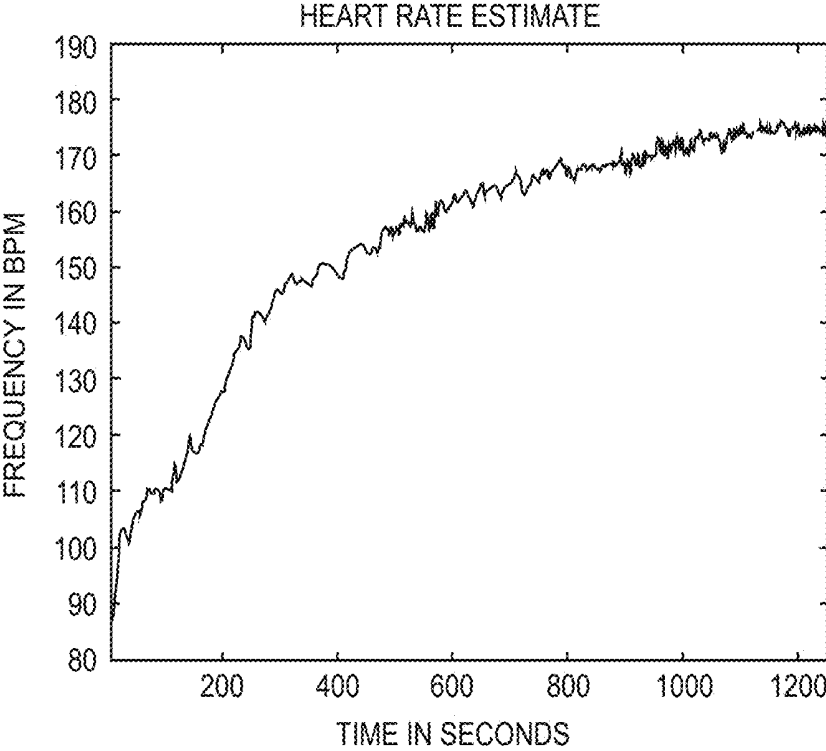


FIG. 7

REDUCTION OF PHYSIOLOGICAL METRIC ERROR DUE TO INERTIAL CADENCE

RELATED APPLICATIONS

[0001] This application is a Continuation Application of pending U.S. application Ser. No. 14/370,689, filed 3 Jul. 2014, which National Phase of International Application PCT/US2012/071594 filed 24 Dec. 2012, which in turn claims benefit of U.S. Provisional Application No. 61/586,884, filed 16 Jan. 2012. The disclosures of each of these references are incorporated in their entireties by reference herein.

BACKGROUND

[0002] Personal health monitors provide users with the ability to monitor their overall health and fitness by enabling the user to monitor heart rate or other physiological information during exercise, athletic training, rest, daily life activities, physical therapy, etc. Such devices are becoming increasingly popular as they become smaller and more portable.

[0003] A heart rate monitor represents one example of a personal health monitor. A common type of heart rate monitor uses a chest strap that includes surface electrodes to detect muscle action potentials from the heart. Because such surface electrodes provide a relatively noise free signal, the information produced by monitors that use surface electrodes is relatively accurate. However, most users find chest strap monitors uncomfortable and inconvenient.

[0004] Another type of monitor uses photoplethysmograph (PPG) sensors disposed in an ear bud. The ear provides an ideal location for a monitor because it is a relatively immobile platform that does not obstruct a person's movement or vision. PPG sensors proximate the ear may have, e.g., access to the inner ear canal and tympanic membrane (for measuring core body temperature), muscle tissue (for monitoring muscle tension), the pinna and earlobe (for monitoring blood gas levels), the region behind the ear (for measuring skin temperature and galvanic skin response), and the internal carotid artery (for measuring cardiopulmonary functioning). The ear is also at or near the point of the body's exposure to environmental breathable toxins of interest (volatile organic compounds, pollution, etc.), noise pollution experienced by the ear, lighting conditions for the eye, etc. Further, as the ear canal is naturally designed for transmitting acoustical energy, the ear provides a good location for monitoring internal sounds, such as the heartbeat, breathing rate, mouth motion, etc.

[0005] PPG sensors measure the relative blood flow using an infrared or other light source that projects light that is ultimately transmitted through or reflected off tissue, and is subsequently detected by a photodetector and quantified. For example, higher blood flow rates result in less light being absorbed, which ultimately increases the intensity of the light that reaches the photodetector. By processing the signal output by the photodetector, a monitor using PPG sensors may measure the blood volume pulse (the phasic change in blood volume with each heartbeat), the heart rate, heart rate variability, and other physiological information.

[0006] PPG sensors are generally small and may be packaged such that they do not encounter the comfort and/or convenience issues associated with other conventional health monitors. However, PPG sensors are also highly

sensitive to noise, and thus are more prone to accuracy problems. For example, a motion component of a user, e.g., a step rate of a jogger, is often as strong as or stronger than a heart rate component, which may corrupt a heart rate measurement. U.S. Pat. No. 7,144,375, which discloses using an accelerometer as a motion reference for identifying the potential step rate component(s) of a PPG sensor output, provides one possible solution to this problem. When the step rate is close to the heart rate, the '375 patent teaches spectrally transforming the step rate and heart rate waveforms, e.g., over a window of samples, respectively provided by the step rate and heart rate sensors to create a step rate spectrum and a heart rate spectrum. If the spectral transform operation uses a 6 s window, the average latency incurred for the transform operation is 3 s. After performing the spectral transform, the '375 patent spectrally subtracts the heart rate and step rate spectrums. The '375 patent further keeps a history of the top ten peaks from the output of the spectral subtraction to perform various statistical analyses in order to achieve the desired accuracy before making a decision regarding whether there is a cross-over between the heart rate and the step rate, and before making a decision regarding which spectral peak corresponds to the heart rate. Thus, the post-transform operations implemented by the '375 patent incur an additional processing latency, e.g., of ten seconds, which is undesirable. Thus, there remains a need for alternative solutions that provide an accurate heart rate with less latency when the step rate is close to the heart rate.

SUMMARY

[0007] The solution disclosed herein removes a step rate component from a measured heart rate by using one or more filtering techniques when the step rate is close to the heart rate. In general, a difference between the step rate and the heart rate is determined, and the step rate is filtered from the heart rate based on a function of the difference.

[0008] In one exemplary embodiment a step rate processor computes a step rate of a user based on a waveform provided by a step rate sensor, and a heart rate processor computes a first heart rate of the user based on a waveform provided by a heart rate sensor. A noise processor then computes a difference between the step rate and the heart rate, computes a second heart rate of the user as a function of the difference, and outputs the second heart rate. For example, the noise processor may filter the heart rate as a function of the difference.

[0009] More broadly, an exemplary physiological monitor comprises an inertial sensor, an inertial processor, a physiological sensor, a physiological processor, and a noise processor. The inertial processor computes an inertial cadence of a user based on an inertial waveform provided by the inertial sensor. The physiological processor computes a first physiological metric of the user based on a physiological waveform provided by the physiological sensor. The noise processor computes a difference between the inertial cadence and the first physiological metric, computes a second physiological metric as a function of the difference, and outputs the second physiological metric.

[0010] An exemplary method reduces noise in data output by a physiological monitor. To that end, the method includes computing an inertial cadence of a user based on an inertial waveform provided by an inertial sensor in the physiological monitor, and computing a first physiological metric of the

user based on a physiological waveform provided by a physiological sensor in the physiological monitor. Subsequently, the method computes a difference between the inertial cadence and the first physiological metric, computes a second physiological metric as a function of the difference, and outputs the second physiological metric.

[0011] Because the solution disclosed herein processes only the current spectrally transformed data, e.g., the current step rate and heart rate spectrums, the present invention essentially eliminates the post-transform latency incurred by the '375 patent. Thus, the solution disclosed herein provides sufficient accuracy without the undesirable latency associated with the prior art.

BRIEF DESCRIPTION OF THE DRAWINGS

[0012] FIG. 1 shows an exemplary heart rate monitor disposed in an ear bud.

[0013] FIG. 2 shows a block diagram of an exemplary physiological monitoring system disposed in a housing.

[0014] FIG. 3 shows an exemplary process for removing an inertial cadence from a physiological metric.

[0015] FIG. 4 shows another exemplary process for removing the inertial cadence from the physiological metric.

[0016] FIG. 5 shows an exemplary block diagram for the physiological processor of FIG. 2.

[0017] FIGS. 6A-6D show exemplary results of simulated step rate and heart rate spectrums, and the resulting difference spectrums and estimated heart rates.

[0018] FIG. 7 show an exemplary result of a simulation used to estimate a heart rate according to the solution disclosed herein.

DETAILED DESCRIPTION

[0019] The techniques disclosed herein improve the accuracy of the results achieved when processing data, e.g., heart rate data, provided by a physiological sensor. FIG. 1 shows an exemplary monitoring system 12 disposed in an ear bud 10. The ear bud 10 may comprise a wireless or wired ear bud that communicatively couples to a remote device, e.g., a music player, a smart phone, a personal data assistant, etc. The monitoring system 12 monitors the heart rate and/or other physiological metrics, and outputs such physiological information to the user and/or to other processing functions. While the monitoring system 12 disclosed herein is presented as being part of an ear bud 10, it will be appreciated that monitoring system 12 may be disposed into any device that secures to the body of a user, e.g., a device that secures to an ear, finger, toe, limb, wrist, nose, etc. In some embodiments, the device may comprise a patch, e.g., a bandage, designed to attach the system 12 to any desired location on the user's body.

[0020] FIG. 2 shows a block diagram of an exemplary monitoring system 12 according to one exemplary embodiment. System 12 comprises a processor 100 coupled to one or more physiological sensors 20 and one or more inertial sensors 30, an output interface 40, and memory 50. Physiological sensor(s) 20 produce a physiological waveform responsive to the physiological state of the user, Inertial sensor(s) 30 produce an inertial waveform responsive to the movement of the user. An exemplary inertial sensor includes, but is not limited to, an accelerometer, an optical emitter/detector pair, an optical detector, a CCD camera, a piezoelectric sensor, a thermal sensor, or any type of sensor

capable of capturing motion information, Exemplary optical emitters comprise one or more light emitting diodes, laser diodes, organic light-emitting diodes, miniature light emitters, electromagnetic emitters, etc. It will be appreciated that the sensors disclosed herein are not limited to optical wavelengths of the electromagnetic spectrum. In some embodiments, emitters and/or detectors configured for shorter or longer wavelengths may be used to accommodate shorter or longer wavelengths in the electromagnetic spectrum. The optical detector may comprise a photodetector, an electromagnetic detector, a photodiode, etc. Processor 100 processes the physiological and inertial waveforms using the technique(s) disclosed herein, along with information stored in memory 50, to remove an inertial cadence from a heart rate and; or one or more physiological metrics. Output interface 40 outputs the determined physiological metric(s). It will be appreciated that output interface may comprise a transceiver for transmitting the data output by the processor 100 to a remote device. Alternatively or additionally, the output interface may provide the output data to a user interface, e.g., a display, a database, another processor, and/or a processing function.

[0021] While the physiological sensors 20 may comprise any known physiological sensor, the physiological sensor(s) 20 in exemplary embodiments comprise photoplethysmograph (PPG) sensors that generate an electrical physiological waveform responsive to detected light intensity. PPG sensors comprise light intensity sensors that generally rely on optical coupling of light into the blood vessels. As used herein, the term "optical coupling" refers to the interaction or communication between excitation light entering a region and the region itself. For example, one form of optical coupling may be the interaction between excitation light generated from within a light-guiding ear bud 10 and the blood vessels of the ear. Light guiding ear buds are described in co-pending U.S. Patent Application Publication No. 2010/0217102, which is incorporated herein by reference in its entirety. In one embodiment, the interaction between the excitation light and the blood vessels may involve excitation light entering the ear region and scattering from a blood vessel in the ear such that the intensity of the scattered light is proportional to blood flow within the blood vessel. Another form of optical coupling may result from the interaction between the excitation light generated by an optical emitter within the ear bud 10 and the light-guiding region of the ear bud 10.

[0022] Processor 100 comprises an inertial processor 110, physiological processor 120, and noise processor 140. Inertial processor 110 determines an inertial cadence I, e.g., a step rate, from the inertial waveform using any known means. The determined inertial cadence may include the true inertial cadence as well as one or more harmonics of the true inertial cadence, e.g., the $\frac{1}{2}x$, $\frac{3}{2}x$, and $2x$ harmonics of the true inertial cadence. For example, the inertial processor may spectrally transform the inertial waveform to generate an inertial spectrum, and set the inertial cadence to the frequency of the largest peak of the inertial spectrum. It will be appreciated that other methods may alternatively be used to determine the inertial cadence. Physiological processor 120 determines one or more physiological metrics H, e.g., a heart rate, from the physiological waveform, as discussed further herein. The determined physiological metric may also refer to a physiological assessment computed from one or more physiological metrics. Noise processor 140 filters

the determined metric(s) to remove the inertial cadence, and therefore, to produce a revised physiological metric \hat{H} having an improved accuracy.

[0023] For simplicity, the following describes the processor **100** in terms of a noise processor **140** that determines a heart rate by removing a step rate by using one or more filtering techniques when the step rate determined by the inertial processor **110** is close to the heart rate determined by the physiological processor **120**. In general, a difference between the step rate and the heart rate is determined, and the step rate is filtered from the heart rate based on a function of the difference. It should be noted, however, that the physiological processor **120**, and thus processor **100**, may alternatively or additionally determine other physiological metrics, e.g., a respiration rate, a heart rate variability (HRV), a pulse pressure, a systolic blood pressure, a diastolic blood pressure, a step rate, an oxygen uptake (VO₂), a maximal oxygen uptake (VO₂ max), calories burned, trauma, cardiac output and/or blood analyte levels including percentage of hemoglobin binding sites occupied by oxygen (SPO₂), percentage of methemoglobins, a percentage of carbonyl hemoglobin, and/or a glucose level. Alternatively or additionally, processor **100** may determine and filter one or more physiological assessments, e.g., a ventilatory threshold, lactate threshold, cardiopulmonary status, neurological status, aerobic capacity (VO₂ max), and; or overall health or fitness. Further, it will be appreciated that the processor **100** may additionally or alternatively remove other inertial cadences, e.g., rhythmic head movements, body movements (e.g., arm movements, weight lifting, etc.), etc., from the heart rate.

[0024] FIG. 3 shows an exemplary method **200** that may be implemented by processor **100** to compute an output heart rate. After processor **100** receives the inertial and physiological waveforms from the sensor(s) **20** and **30** (block **210**), the inertial processor **110** determines a step rate I (block **220**), and the physiological processor **120** determines a first estimate H of the heart rate (block **230**). The noise processor **140** computes a revised estimate \hat{H} of the heart rate as a function of the difference between the step rate and the heart rate (block **240**), and subsequently outputs the revised heart rate estimate \hat{H} to output interface **40** (block **290**). It will be appreciated that processor **100** may also store the revised heart rate estimate \hat{H} in memory **50**, e.g., so that it may be used in subsequent calculations.

[0025] FIG. 4 shows an exemplary method **240** for computing the revised heart rate \hat{H} as a function of the difference between the step rate and the first heart rate. The exemplary method **240** of FIG. 4 includes multiple levels, where a first level includes block **242**, a second level includes blocks **244** to **248**, a third level includes block **250**, a fourth level includes block **260**, a fifth level includes block **270**, and a sixth level includes blocks **280** to **284**. It will be appreciated, however, that some exemplary embodiments may implement one or more of these levels, as described further herein, and/or that the present invention does not require each level to be implemented in the order shown in FIG. 4.

[0026] The first level (blocks **242** and **243**) comprises an initialization level, where the heart rate processor **120** and/or noise processor **140** initializes and/or determines one or more variables useful for determining the output heart rate based on pre-determined values, values stored in memory, and measured information (blocks **242** and **243**), e.g., an instantaneous heart rate H_{inst} , a filtered heart rate H_{fil} , a lock

count C_{ik} , a second (or output) heart rate H , etc. For example, to determine H_{inst} , heart rate processor **120** comprises a spectral transformer **122** (FIG. 5) that spectrally transforms the physiological waveform output by the heart rate sensor(s) **20** to generate a physiological spectrum. For example, the spectral transformer **122** may transform the heart rate waveform over a window of samples, e.g., 6 s. It will be appreciated that such a transform operation incurs a latency half the length of the window, e.g., 3 s. The heart rate processor **120** initializes the first heart rate by identifying the frequency F_1 of the spectral peak of the physiological spectrum having the largest amplitude as an initial instantaneous heart rate H_{inst} , where the initial instantaneous heart rate corresponds to the first heart rate (block **243**). The heart rate processor **1120** may further identify the frequency F_2 of the spectral peak of the physiological spectrum having the next largest amplitude. Alternatively or additionally, a filtered heart rate may be initialized, e.g., by retrieving a previously determined filtered heart rate from memory **50** or by setting H_{fil} to an empirically determined value, e.g., 83. Further, C_{ik} may be initialized by setting it equal to zero, where C_{ik} represents, e.g., the number of successive frames where the difference between the heart rate and the step rate satisfies a predetermined threshold. Noise processor **140** may also determine an initial second (or output) heart rate H , where the second heart rate represents the heart rate ultimately output by the noise processor **140**. In some cases, the processor **140** may set the initial H to an empirically determined value, e.g., 83. Alternatively or additionally, the noise processor **140** may initialize H to the \hat{H} value from a previous frame after the first iteration through the process **240**.

[0027] The second level (blocks **244** to **248**) determines an instantaneous heart rate as a function of a difference between an initial instantaneous heart rate and the step rate, and particularly addresses the scenario when the results of spectral subtraction wipe out the primary spectral peak typically used to determine the instantaneous heart rate. More particularly, the second level determines whether the step rate I provided by inertial processor **110** is close to the initial instantaneous heart rate H_{inst} by determining whether the initial instantaneous heart rate is within a crossover window (block **244**), and adjusts the instantaneous heart rate based on that determination. For example, noise processor **140** may determine whether the initial H_{inst} is within the crossover window by determining whether the difference between the step rate I and the initial H_{inst} is less than or equal to a threshold T_w , e.g., $T_w=8$. In one embodiment, noise processor **140** adjusts the initial H_{inst} only when the initial H_{inst} is within the crossover window, where the adjustment is based on a weighted average of the frequencies of two or more of the spectral peaks provided by the spectral transformer **122** (block **248**). For example, noise processor **140** may compute a weight w according to:

$$w = \frac{M_1}{M_1 + M_2}, \quad (1)$$

where M_1 represents the magnitude of the largest spectral peak of the physiological spectrum and M_2 represents the magnitude of a second spectral peak of the physiological spectrum, e.g., the next largest spectral peak. The noise processor **140** then adjusts the instantaneous heart rate by

computing a weighted average of the frequencies of the two spectral peaks, e.g., according to:

$$H_{inst} = wF_1 + (1-w)F_2, \quad (2)$$

where F_1 represents the frequency of the largest spectral peak (and corresponds to the initial instantaneous heart rate), and F_2 represents the frequency of the second spectral peak.

[0028] In some embodiments, the second level may also optionally determine whether the frequency F_2 of the second spectral peak of the physiological spectrum is also in the crossover window and whether the step rate I is between the initial H_{inst} and F_2 (block **246**) when the condition of block **244** is satisfied. For example, the noise processor **140** may determine whether F_2 is within the crossover window by determining whether the difference between F_2 and I is less than or equal to a threshold, e.g., 8. Further, the noise processor **140** may determine whether I is between F_2 and the initial H_{inst} by determining whether $\text{sign}(H_{inst}-I) \neq \text{sign}(F_2-I)$. In any event, for this example, noise processor **140** executes the operation of block **248** only when the conditions of blocks **244** and **246** are both satisfied.

[0029] The third level (block **250**) filters the instantaneous heart rate using rate limits. More particularly, the third level computes a revised filtered heart rate \hat{H}_{filt} as a function of a current filtered heart rate H_{filt} , the instantaneous heart rate H_{inst} output by the second level, and a rate limit Δ_r . For this embodiment, the heart rate processor **120** may further include a filter **124**, as shown in FIG. 5. In general, after comparing H_{inst} to H_{filt} , which may be retrieved from memory **50** or provided by initialization block **242**, filter **124** computes the revised filtered heart rate estimate \hat{H}_{filt} as a function of H_{filt} , H_{inst} , and the rate limit Δ , based on the comparison, where Δ_r may also be retrieved from memory **50**. In one exemplary embodiment, when $H_{inst} \geq H_{filt}$, filter **124** computes the revised filter estimate \hat{H}_{filt} according to:

$$\hat{H}_{filt} = H_{filt} + \min(\Delta_{r+}, H_{inst} - H_{filt}) \quad (3)$$

where Δ_{r+} represents an increasing rate limit. However, when $H_{inst} < H_{filt}$, filter **124** computes the revised filter estimate \hat{H}_{filt} according to:

$$\hat{H}_{filt} = H_{filt} + \max(\Delta_{r-}, H_{inst} - H_{filt}) \quad (4)$$

where Δ_{r-} represents a decreasing rate limit. As used herein, the rate limit represents a limit to the rate of change for the heart rate. For example, the rate limit may represent the rate of change in beats per minute (BPM) that the heart rate may experience in a 1 second frame period. Such a rate limit may be determined based on empirical evidence, and is generally predetermined. It will be appreciated that the rate limit may be expressed as the rate of change experienced for any length frame period, where for example, the rate limit in BPM/s is multiplied by the length of the frame period (in seconds). Additional details for the implementation of block **250** may be found in U.S. Provisional Application Ser. No. 61/586,874 filed concurrently herewith and titled "Physiological Metric Estimation Rise and Fall Limiting," which is incorporated by reference herein in its entirety.

[0030] In the fourth level (block **260**), the noise processor **140** biases the filtered heart rate toward the step rate to minimize wandering due to blindness during a crossover. To that end, the noise processor **140** further adjusts the revised filter estimate \hat{H}_{filt} as a function of the difference between the step rate and H_{filt} . For example, the noise processor **140** may determine whether the revised filter estimate \hat{H}_{filt} output by block **250** is within a crossover window by comparing the

difference between \hat{H}_{filt} and I to a threshold, e.g., $\text{abs}(I - \hat{H}_{filt}) \leq 8$. If \hat{H}_{filt} is within the crossover window, noise processor **140** may further adjust \hat{H}_{filt} as a function of the difference between \hat{H}_{filt} and I . For example, the noise processor **140** may further adjust \hat{H}_{filt} according to:

$$\hat{H}_{filt} = \hat{H}_{filt} + 0.5 \text{sign}(I - \hat{H}_{filt}). \quad (5)$$

[0031] In the fifth level (block **270**), the noise processor **140** counts the number of successive frames where the heart rate is within a crossover window. To that end, the noise processor updates a lock count C_{lk} as a function of the difference between I and \hat{H}_{filt} output by block **260**, where C_{lk} represents, e.g., the number of successive frames where the difference between \hat{H}_{filt} and I satisfy a threshold requirement. For example, when C_{lk} is compared to 0 for equality (e.g., $C_{lk} = 0$), and when $\text{abs}(H_{filt} - I) < 6$, noise processor **140** may set $C_{lk} = 1$. However, when $C_{lk} > 0$, and when $\text{abs}(H_{filt} - I) > 6$, noise processor **140** may set $C_{lk} = 0$, and when $C_{lk} > 0$, and when $\text{abs}(H_{filt} - I) \leq 6$, noise processor **140** may increment C_{lk} , e.g., set $C_{lk} = C_{lk} + 1$.

[0032] In the sixth level (blocks **280** to **284**), the noise processor **140** filters the oscillations of the instantaneous heart rate that occur during a crossover sustained for a number of successive frames. For example, the \hat{H}_{filt} output by block **260** is further filtered responsive to a comparison between the lock count and a threshold T_c to generate the second (or output) heart rate \hat{H} to be output to the output interface **40**. For example, if $C_{lk} > T_c$, the output heart rate \hat{H} may be determined as a first function of a previously determined (or initialized) output heart rate H and \hat{H}_{filt} , e.g., according to $f_1(H, \hat{H}_{filt})$ (block **282**). In one exemplary embodiment, the first function may comprise:

$$\hat{H} = f_1(H, \hat{H}_{filt}) = H + (H_{filt} - H)/4, \quad (6)$$

where H represents an initialized second heart rate from block **242**, or a previously determined second (or output) heart rate that may, e.g., be retrieved from memory **50**. If, however, $C_{lk} \leq T_c$, the output heart rate \hat{H} may be determined as a second function of the previously determined (or initialized) output heart rate H and \hat{H}_{filt} , e.g., according to $f_2(H, \hat{H}_{filt})$ (block **284**). In one exemplary embodiment, the second function may comprise:

$$H = f_2(H, \hat{H}_{filt}) = H + (H_{filt} - H)/2. \quad (7)$$

[0033] It will be appreciated that not all of the six levels of FIG. 4 are required to determine \hat{H} output to the output interface **40**. For example, exemplary embodiments may compute the output heart rate using:

[0034] the second and third levels, where the output heart rate comprises the filtered heart rate \hat{H}_{filt} output by filter **124** of FIG. 5 and block **250** of FIG. 4.

[0035] the third and fourth levels, where the output heart rate comprises the filtered heart rate \hat{H}_{filt} output by block **260** of FIG. 4, and the input heart rates comprise e.g., an initial instantaneous heart rate H_{inst} from block **242** of Figure and an initial filtered heart rate H_{filt} obtained from block **242** of FIG. 4 or previously determined and retrieved from memory **50**.

[0036] the fourth level, where the output heart rate comprises the filtered heart rate \hat{H}_{filt} output by block **260** of FIG. 4, and the input heart rate comprises, e.g., an initial filtered heart rate H_{filt} obtained from block **242** of FIG. 4 or previously determined and retrieved from memory **50**.

- [0037] the third, fourth, fifth, and sixth levels, where the output heart rate comprises \hat{H} as output by one of blocks 282 and 284 of FIG. 4, and the input heart rates comprise an initial instantaneous heart rate H_{inst} from block 242 of Figure and an initial filtered heart rate H_{fit} obtained from block 242 of FIG. 4 or previously determined and retrieved from memory 50.
- [0038] the fourth, fifth, and sixth levels, where the output heart rate comprises \hat{H} as output by one of blocks 282 and 284 of FIG. 4, and the input heart rate comprises an initial filtered heart rate obtained from block 242 of FIG. 4 or previously determined and retrieved from memory 50.
- [0039] the fifth and sixth levels, where the output heart rate comprises \hat{H} as output by one of blocks 282 and 284 of FIG. 4, and the input heart rates comprise an initial second heart rate H obtained from block 242 of FIG. 4 and an initial filtered heart rate obtained from block 242 of FIG. 4 or previously determined and retrieved from memory 50.
- [0040] the sixth level, where the output heart rate comprises \hat{H} as output by one of blocks 282 and 284 of FIG. 4, and the input heart rates comprise an initial second heart rate H obtained from block 242 of FIG. 4 and an initial filtered heart rate obtained from block 242 of FIG. 4 or previously determined and retrieved from memory 50. In this case, the decision diamond 280 not only considers how the lock count compares to the threshold, but it also considers whether the filtered heart rate is within a crossover window, e.g., by determining whether the difference between \hat{H}_{fit} and I is less than or equal to a threshold T_w .
- [0041] the third, fifth, and sixth levels, where the output heart rate comprises \hat{H} as output by one of blocks 282 and 284 of FIG. 4, and the input heart rates comprise an initial instantaneous heart rate H_{inst} from block 242 of Figure and an initial filtered heart rate H_{fit} obtained from block 242 of FIG. 4 or previously determined and retrieved from memory 50.
- [0042] It will be appreciated that other combinations not explicitly disclosed herein may also be used to generate the output heart rate.
- [0043] FIGS. 6A-6D and 7 further illustrate both the impact of a step rate on a measured heart rate, and how the solution disclosed herein addresses this problem. First, FIGS. 6A-6D simulate the problems that occur when the step rate and the heart rate are close together. In particular, FIG. 6A shows a step rate spectrum generated responsive to an accelerometer waveform, while FIG. 6B shows a heart rate spectrum generated responsive to a waveform output by a PPG sensor, and thus includes both step rate and heart rate elements. FIG. 6C shows the spectrum produced when the accelerometer spectrum of FIG. 6A is simply subtracted from the heart rate spectrum of FIG. 6B. As shown in FIG. 6C, when the step rate is close to the heart rate, e.g., between 600 and 800 s, the heart rate is attenuated. Thus, while simple spectral subtraction removes the step rate component, it also corrupts the heart rate measurements subsequently obtained from the heart rate spectrum. In particular, FIG. 6D shows how the peak frequency of the difference spectrum of FIG. 6C has large oscillating errors in the crossover window.
- [0044] FIG. 7 shows the simulation results when the heart rate is estimated using the techniques disclosed herein, e.g., the techniques of FIG. 4. As shown in FIG. 7, the errors around the crossover regions have nearly disappeared, which results in a more accurate heart rate estimate.
- [0045] The solution disclosed herein provides an accurate heart rate estimate, as shown for example by the simulated results of FIG. 7, without incurring the latency problems associated with the known prior art solution. In particular, because the solution disclosed herein does not require multiple spectrums or statistics to be buffered in a look-ahead fashion in order to detect the initial crossover, which leads to an undesirable latency, the solution disclosed herein avoids the latency problems associated with the prior art without sacrificing accuracy.
- [0046] While the present invention is described in terms of PPG sensors, it will be appreciated that sensors 20 may comprise any sensor able to generate a physiological waveform, e.g., an electroencephalogram (EEG) waveform, and electrocardiogram (ECG) waveform, a radio frequency (RF) waveform, an electro-optical physiological waveform, and electro-photoacoustic waveform including a photacoustic waveform, an electro-mechanical physiological waveform, and/or an electro-nuclear physiological waveform.
- [0047] The present invention may, of course, be carried out in other ways than those specifically set forth herein without departing from essential characteristics of the invention. The present embodiments are to be considered in all respects as illustrative and not restrictive, and all changes coming within the meaning and equivalency range of the appended claims are intended to be embraced therein.
- What is claimed is:
1. A heart rate monitor for sensing a heart rate of a user, the heart rate monitor comprising:
 - a photoplethysmograph (PPG) sensor configured to:
 - sense light scattered from a body of the user; and
 - provide PPG information responsive to the sensed light;
 - a step rate sensor configured to:
 - sense motion from the user; and
 - provide motion information responsive to the sensed motion;
 - at least one processor circuit configured to:
 - determine a step rate of a user from the motion information provided by the step rate sensor;
 - determine an initial instantaneous heart rate from the PPG information provided by the PPG sensor and the motion information provided by the step rate sensor;
 - compute a difference between the initial instantaneous heart rate and the step rate;
 - determine a second instantaneous heart rate as a function of the difference; and
 - output a revised heart rate as a function of the second instantaneous heart rate and a rate limit.
 2. The heart rate monitor of claim 1 wherein the at least one processor circuit determines the second instantaneous heart rate by:
 - comparing the initial instantaneous heart rate to a current filtered heart rate;
 - revising the initial instantaneous heart rate based on the comparison between the initial instantaneous heart rate and the current filtered heart rate by computing a revised filtered heart rate as a function of the current filtered heart rate and the rate limit, and based on the comparison between the initial instantaneous heart rate and the current filtered heart rate;

- if the revised filtered heart rate is within a crossover window relative to the step rate, determining the second instantaneous heart rate as a function of a difference between the revised filtered heart rate and the step rate; and
- else; setting the second instantaneous heart rate equal to revised filtered heart rate.
3. The heart rate monitor of claim 2 wherein the at least one processor circuit:
- is further configured to update a lock count based on whether the second heart rate is within a crossover window relative to the step rate; and
 - determines the second instantaneous heart rate as a function of the difference between the step rate and the initial instantaneous heart rate by:
 - selecting a filter responsive to a comparison between the lock count and a threshold; and
 - determining the second instantaneous heart rate as a function of the selected filter.
4. The heart rate monitor of claim 1 wherein the at least one processor circuit determines the initial instantaneous heart rate by determining the initial instantaneous heart rate using a combination of two or more dominant signals in said PPG information provided by the PPG sensor when the initial instantaneous heart rate is within a crossover window relative to the step rate.
5. The heart rate monitor of claim 1 wherein the at least one processor circuit determines the initial instantaneous heart rate by determining the initial instantaneous heart rate using a combination of two or more dominant signals in said PPG information output by the PPG sensor when at least one of the two or more dominant signals is within a crossover window relative to the step rate.
6. The heart rate monitor of claim 1 wherein the at least one processor circuit determines the second instantaneous heart rate as a function of the difference between the step rate and the initial instantaneous heart rate by:
- if the initial instantaneous heart rate is within a crossover window relative to the step rate, determining the second instantaneous heart rate as a function of the difference between the initial instantaneous heart rate and the step rate; and
 - else, setting the second instantaneous heart rate equal to the initial instantaneous heart rate.
7. The heart rate monitor of claim 1 wherein the at least one processor circuit determines the second instantaneous heart rate as a function of the difference between the step rate and the initial instantaneous heart rate by:
- selecting a filter responsive to a comparison between the difference and a threshold; and
 - determining the second instantaneous heart rate as a function of the selected filter.
8. A method of sensing a heart rate of a user comprising:
- sensing light scattered from a body of the user using a photoplethysmograph (PPG) sensor to determine PPG information;
 - sensing motion information from the user using a step rate sensor;
 - determining a step rate of a user from the motion information provided by the step rate sensor;
 - determining an initial instantaneous heart rate from the PPG information provided by the PPG sensor and the motion information provided by the step rate sensor;
 - computing a difference between the initial instantaneous heart rate and the step rate;
 - determining a second instantaneous heart rate as a function of the difference;
 - and
 - outputting a revised heart rate as a function of the second instantaneous heart rate and a rate limit.
9. The method of claim 8 wherein determining the second instantaneous heart rate comprises:
- comparing the initial instantaneous heart rate to a current filtered heart rate;
 - revising the initial instantaneous heart rate based on the comparison between the initial instantaneous heart rate and the current filtered heart rate by computing a revised filtered heart rate as a function of the current filtered heart rate and the rate limit, and based on the comparison between the initial instantaneous heart rate and the current filtered heart rate;
- if the revised filtered heart rate is within a crossover window relative to the step rate, determining the second instantaneous heart rate as a function of a difference between the revised filtered heart rate and the step rate; and
- else, setting the second instantaneous heart rate equal to revised filtered heart rate.
10. The method of claim 9:
- further comprising updating a lock count based on whether the second heart rate is within a crossover window relative to the step rate;
 - wherein determining the second instantaneous heart rate as a function of the difference between the step rate and the initial instantaneous heart rate comprises;
 - selecting a filter responsive to a comparison between the lock count and a threshold; and
 - determining the second instantaneous heart rate as a function of the selected filter.
11. The method of claim 8 wherein determining the initial instantaneous heart rate comprises determining the initial instantaneous heart rate using a combination of two or more dominant signals in said PPG information provided by the PPG sensor when the initial instantaneous heart rate is within a crossover window relative to the step rate.
12. The method of claim 8 wherein determining the initial instantaneous heart rate comprises determining the initial instantaneous heart rate using a combination of two or more dominant signals in said PPG information output by the PPG sensor when at least one of the two or more dominant signals is within a crossover window relative to the step rate.
13. The method of claim 8 wherein determining the second instantaneous heart rate as a function of the difference between the step rate and the initial instantaneous heart rate comprises:
- if the initial instantaneous heart rate is within a crossover window relative to the step rate, determining the second instantaneous heart rate as a function of the difference between the initial instantaneous heart rate and the step rate; and
 - else, setting the second instantaneous heart rate equal to the initial instantaneous heart rate.
14. The method of claim 8 wherein determining the second instantaneous heart rate as a function of the difference between the step rate and the initial instantaneous heart rate comprises:

selecting a filter responsive to a comparison between the difference and a threshold; and
determining the second instantaneous heart rate as a function of the selected filter.

* * * * *

专利名称(译)	减少由于惯性因素导致的生理度量误差		
公开(公告)号	US20190029530A1	公开(公告)日	2019-01-31
申请号	US16/146362	申请日	2018-09-28
[标]申请(专利权)人(译)	瓦倫賽爾公司		
申请(专利权)人(译)	VALENCELL INC.		
当前申请(专利权)人(译)	VALENCELL INC.		
[标]发明人	ROMESBURG ERIC DOUGLAS		
发明人	ROMESBURG, ERIC DOUGLAS		
IPC分类号	A61B5/024 A61B5/00 A61B5/11		
CPC分类号	A61B5/6817 A61B5/024 A61B5/112 A61B5/721 A63B2220/17 A63B2230/04 A61B2562/0219 A61B5/0205 A61B5/021 A61B5/02405 A61B5/0816 A61B5/14542 A61B5/7207 A61B5/725 A61B2562/02		
优先权	14/370689 2014-07-03 US PCT/US2012/071594 2012-12-24 WO 61/586884 2012-01-16 US		
其他公开文献	US10542896		
外部链接	Espacenet USPTO		

摘要(译)

当步进速率接近心率时，本文公开的心率监测器通过使用一种或多种过滤技术从测量的心率中去除步进速率分量。通常，确定步进速率和心率之间的差异，并且基于差异的函数从心率过滤步进速率。

