



US 20170100060A1

(19) **United States**

(12) **Patent Application Publication**
BANET et al.

(10) **Pub. No.: US 2017/0100060 A1**
(43) **Pub. Date: Apr. 13, 2017**

(54) **BODY-WORN MONITOR FOR MEASURING RESPIRATORY RATE**

(71) Applicant: **SOTERA WIRELESS, INC.**, San Diego, CA (US)

(72) Inventors: **Matt BANET**, San Diego, CA (US); **Marshal DHILLON**, San Diego, CA (US); **Devin McCOMBIE**, San Diego, CA (US)

(21) Appl. No.: **15/156,138**

(22) Filed: **May 16, 2016**

Related U.S. Application Data

(63) Continuation of application No. 12/762,952, filed on Apr. 19, 2010, now Pat. No. 9,339,209.

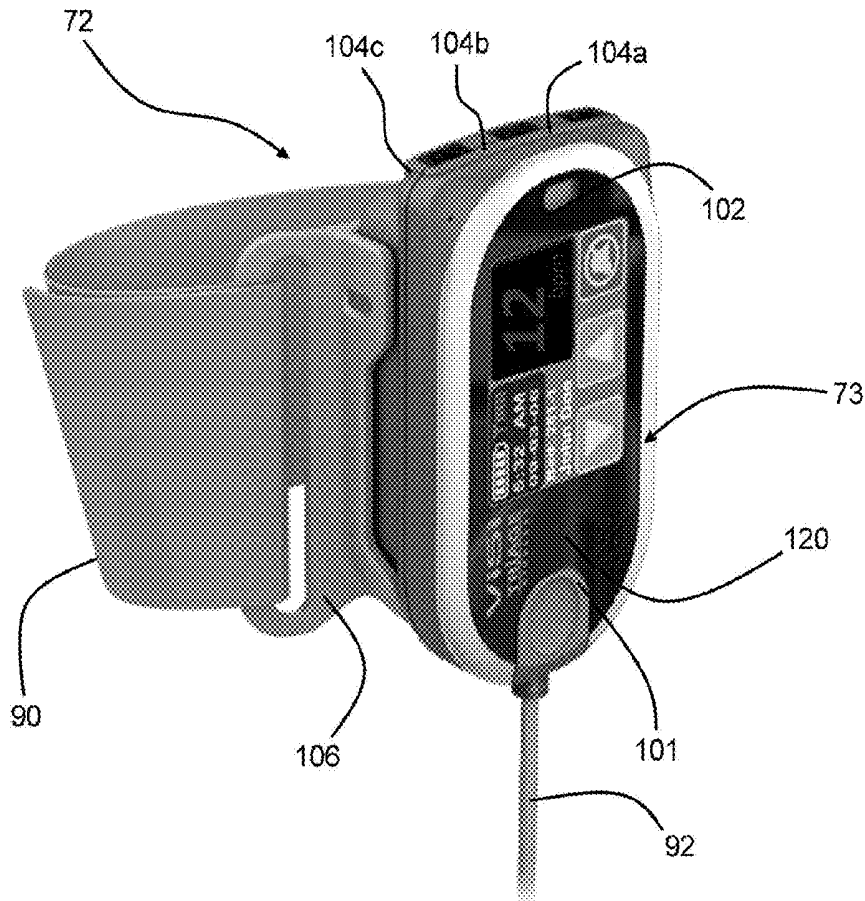
Publication Classification

(51) **Int. Cl.**
A61B 5/08 (2006.01)
A61B 5/0205 (2006.01)
A61B 5/113 (2006.01)
A61B 5/00 (2006.01)
A61B 5/0402 (2006.01)

(52) **U.S. Cl.**
CPC *A61B 5/0816* (2013.01); *A61B 5/0002* (2013.01); *A61B 5/0402* (2013.01); *A61B 5/0809* (2013.01); *A61B 5/113* (2013.01); *A61B 5/7239* (2013.01); *A61B 5/7257* (2013.01); *A61B 5/0008* (2013.01); *A61B 5/0205* (2013.01); *A61B 2562/0219* (2013.01)

(57) **ABSTRACT**

The invention provides a system for measuring respiratory rate (RR) from a patient. The system includes an impedance pneumography (IP) sensor, connected to at least two electrodes, and a processing system that receives and processes signals from the electrodes to measure an IP signal. A motion sensor (e.g. an accelerometer) measures at least one motion signal (e.g. an ACC waveform) describing movement of a portion of the patient's body to which it is attached. The processing system receives the IP and motion signals, and processes them to determine, respectfully, frequency-domain IP and motion spectra. Both spectra are then collectively processed to remove motion components from the IP spectrum and determine RR. For example, during the processing, an algorithm determines motion frequency components from the frequency-domain motion spectrum, and then using a digital filter removes these, or parameters calculated therefrom, from the IP spectrum.



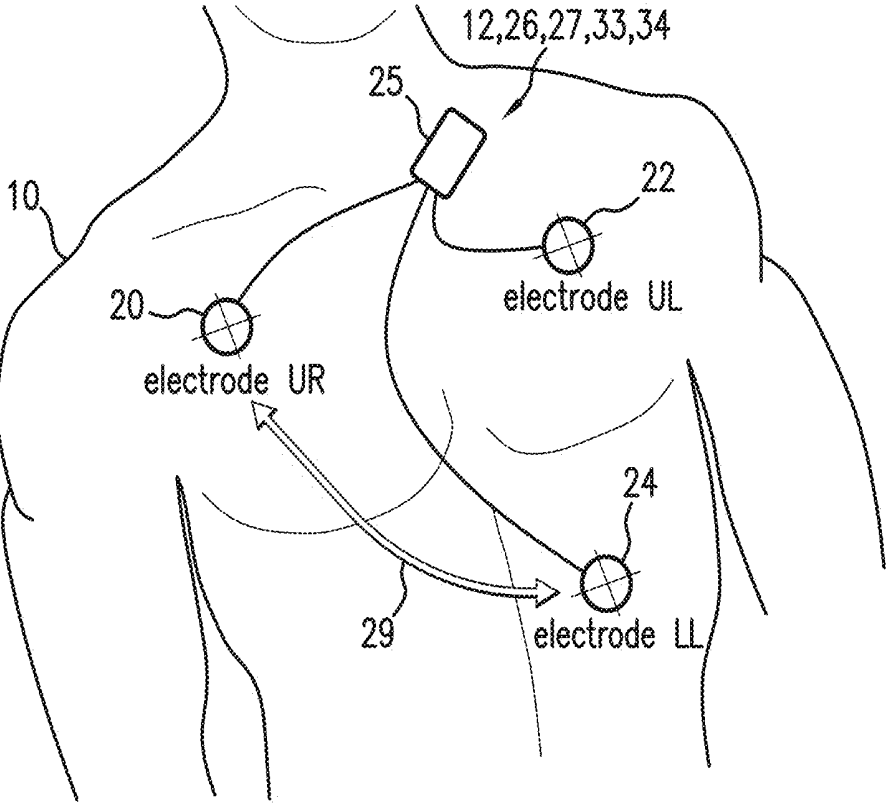


FIG. 1

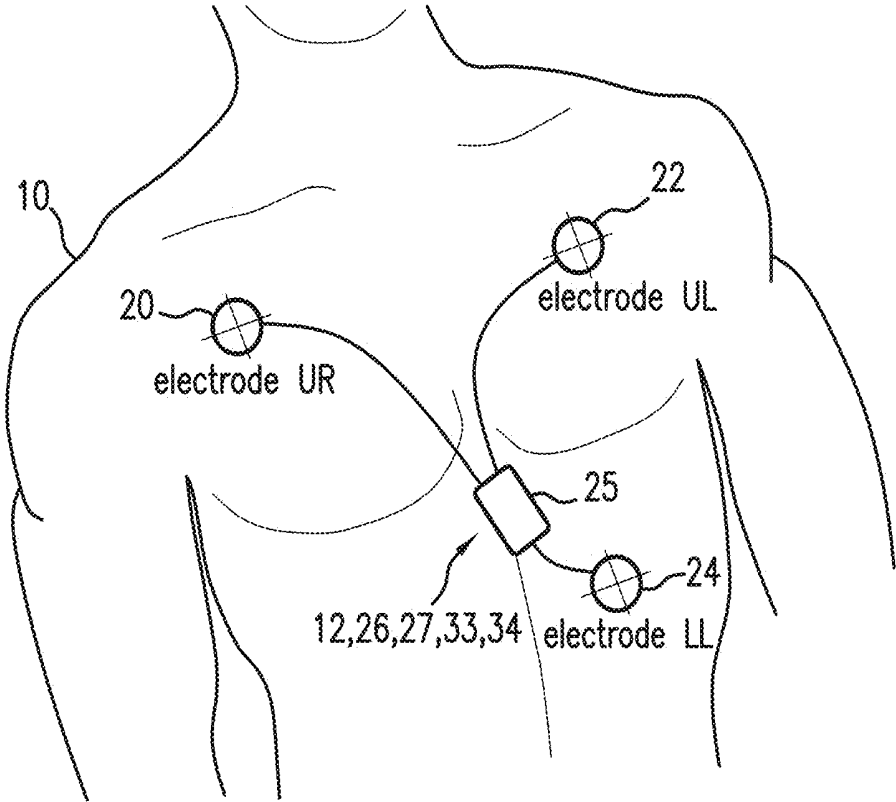


FIG.2

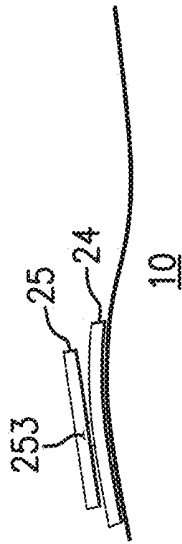


FIG. 3B

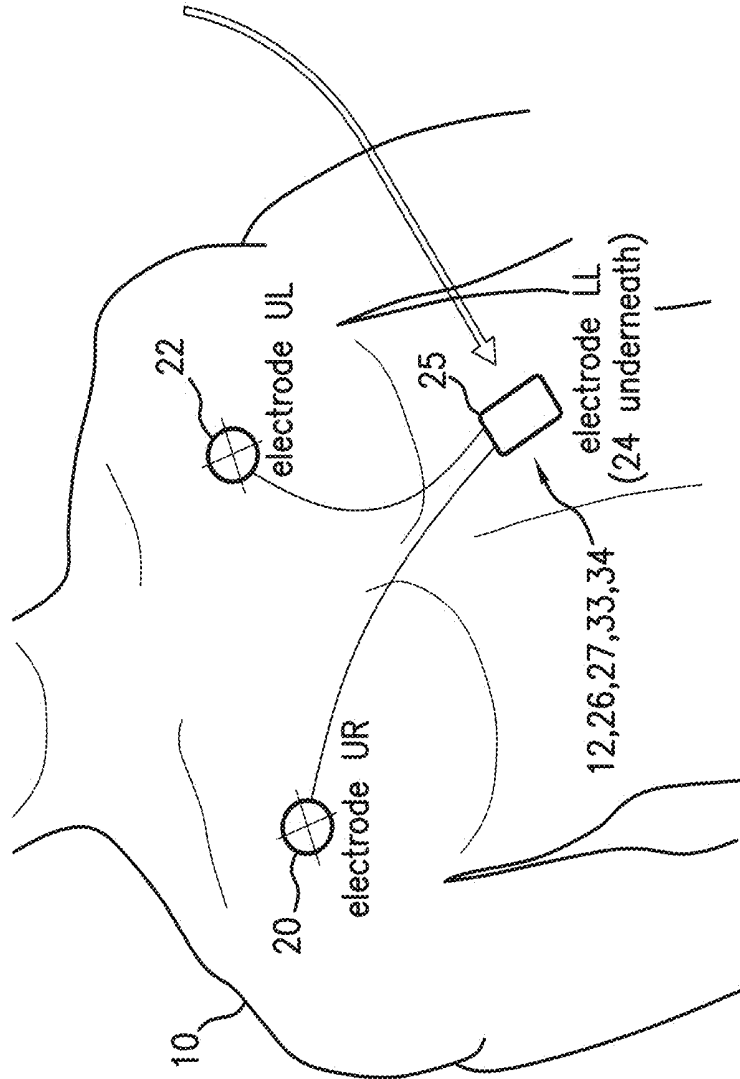


FIG. 3A

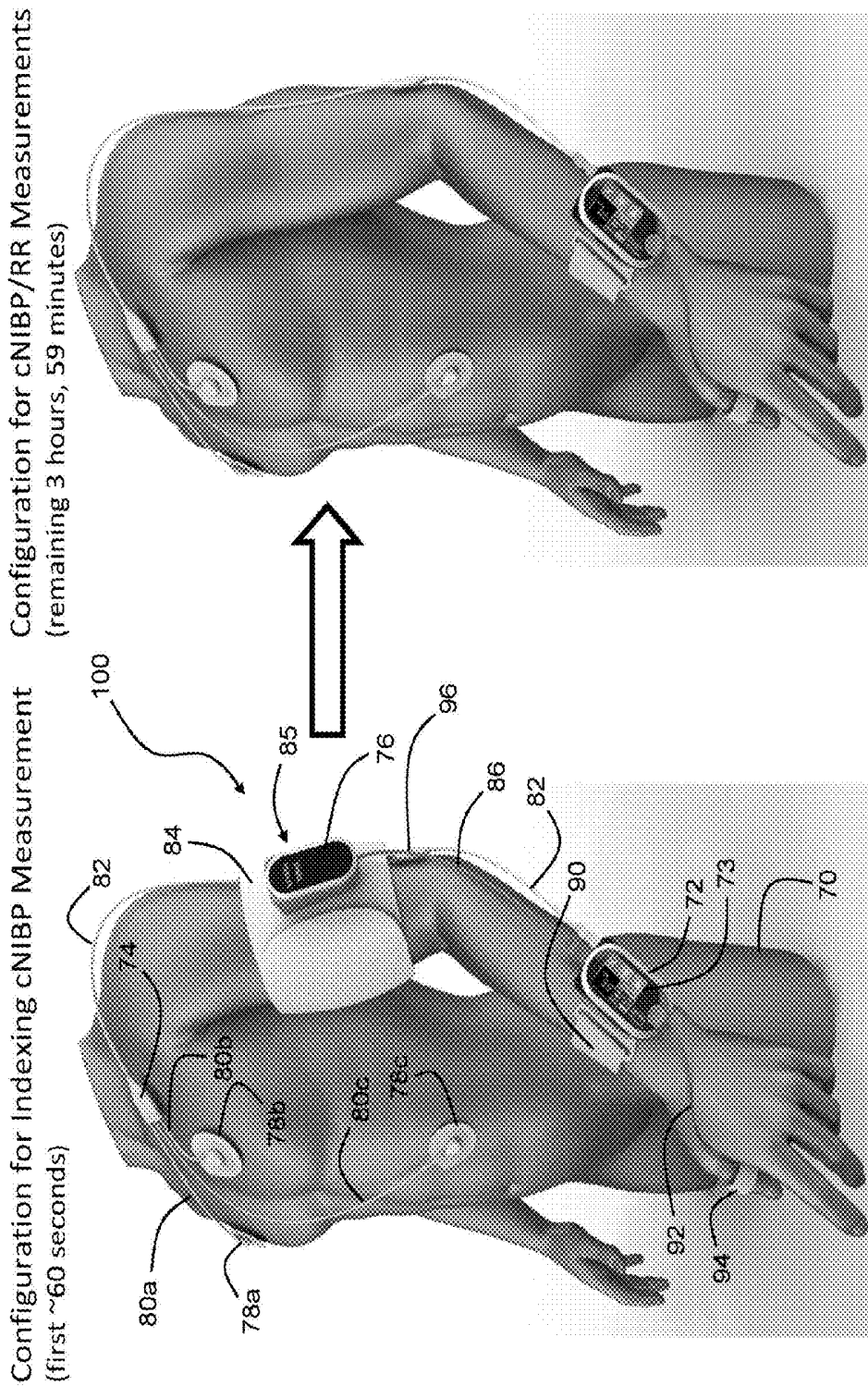


FIG. 4B

FIG. 4A

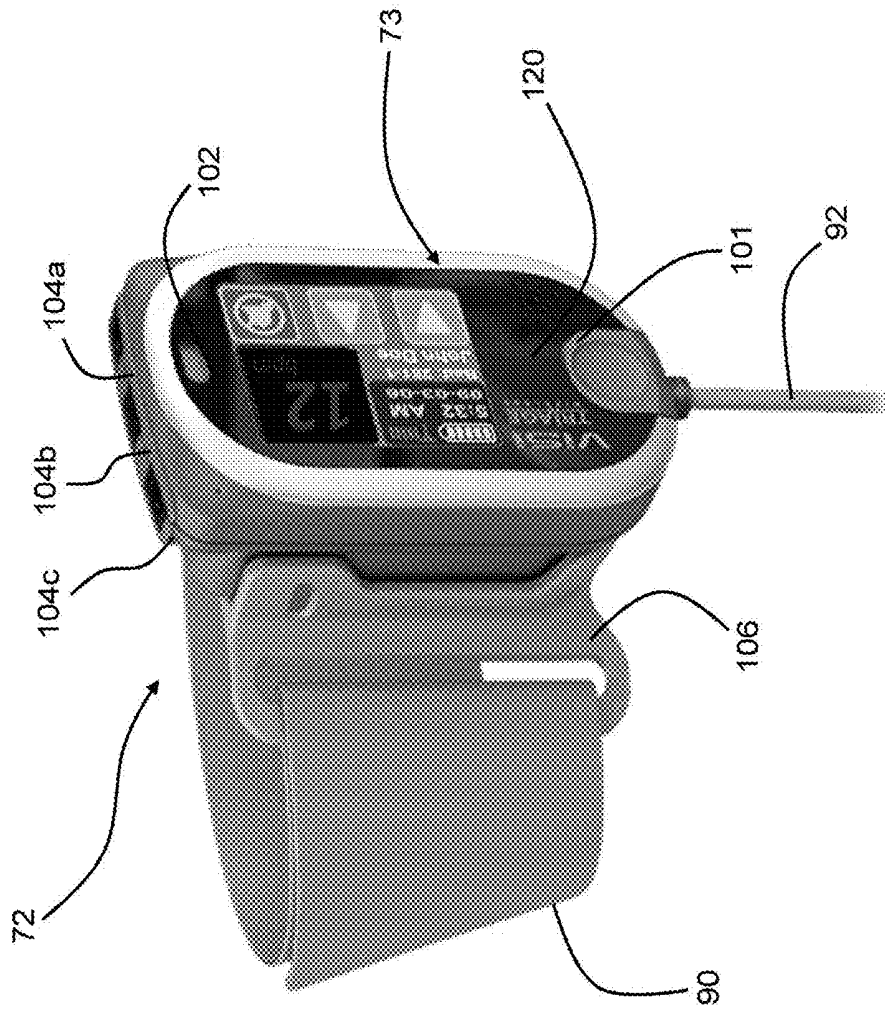


FIG. 5

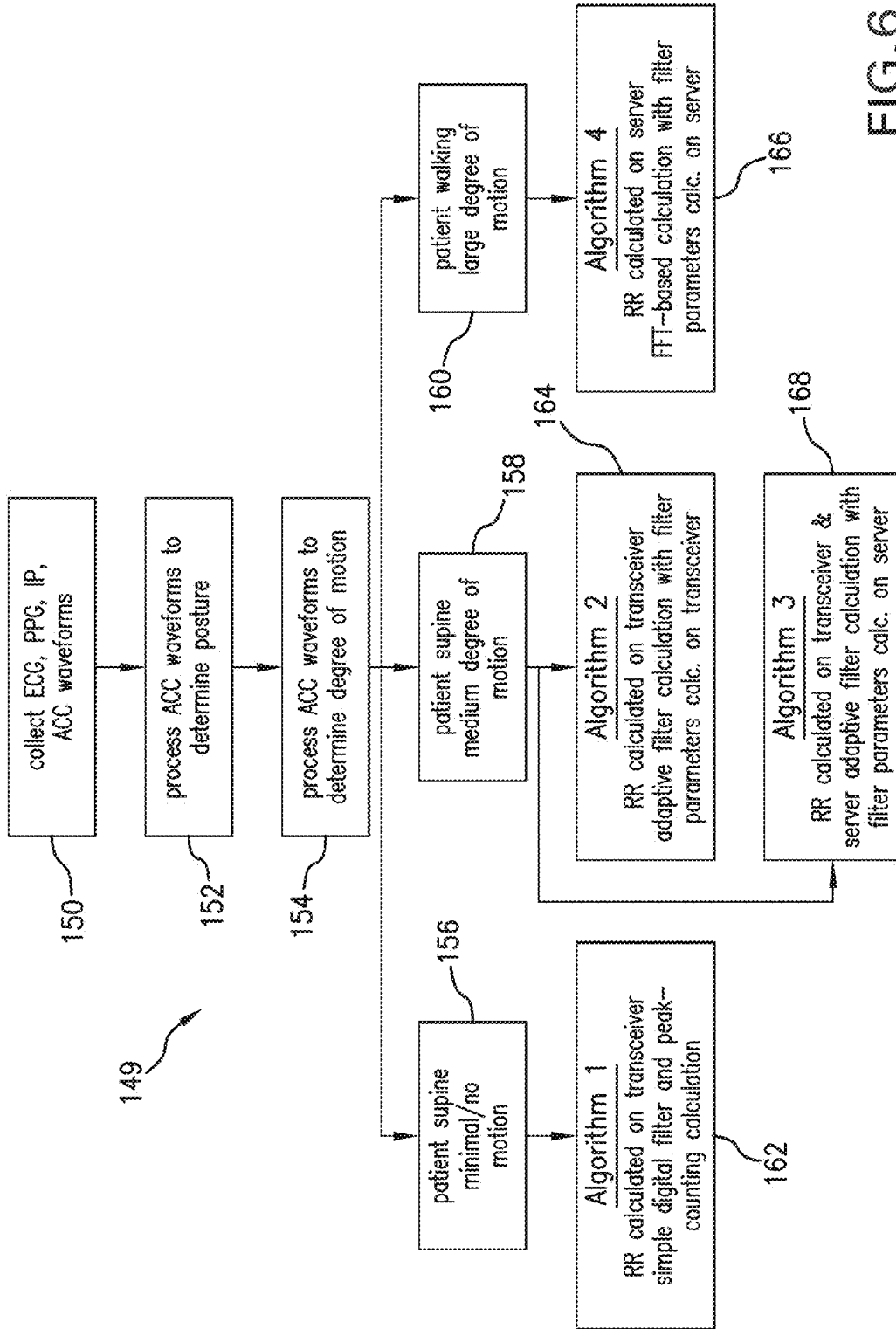


FIG. 6

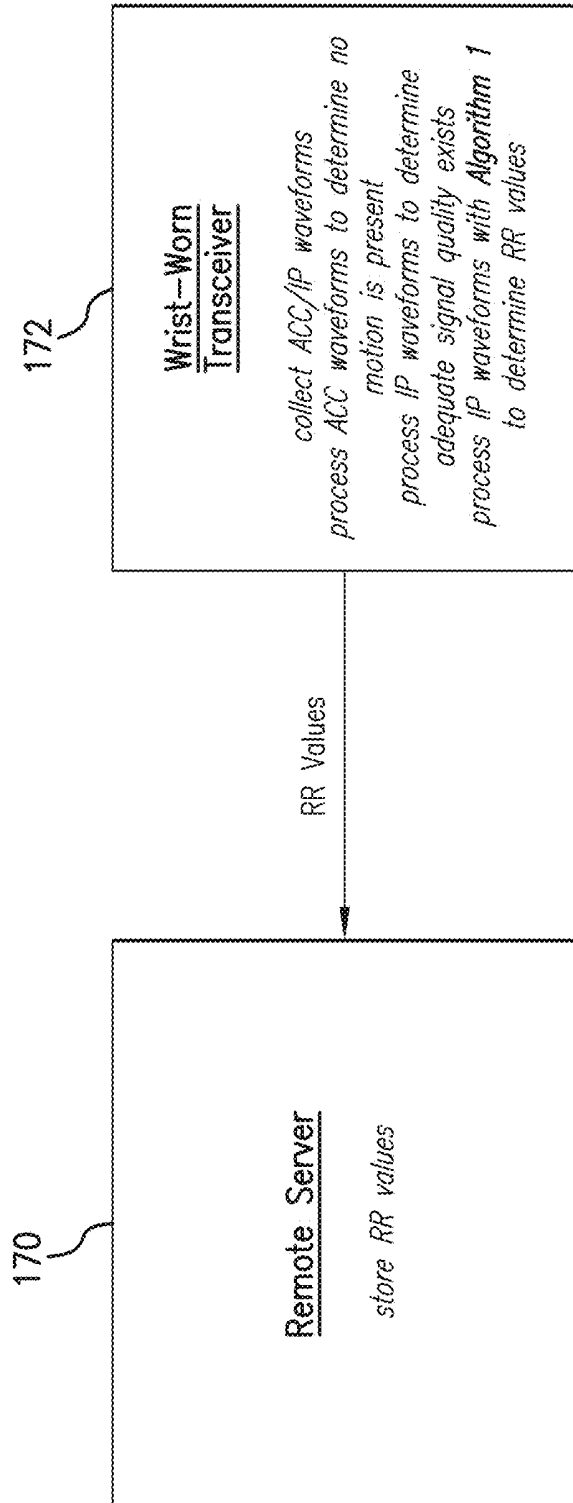


FIG. 7

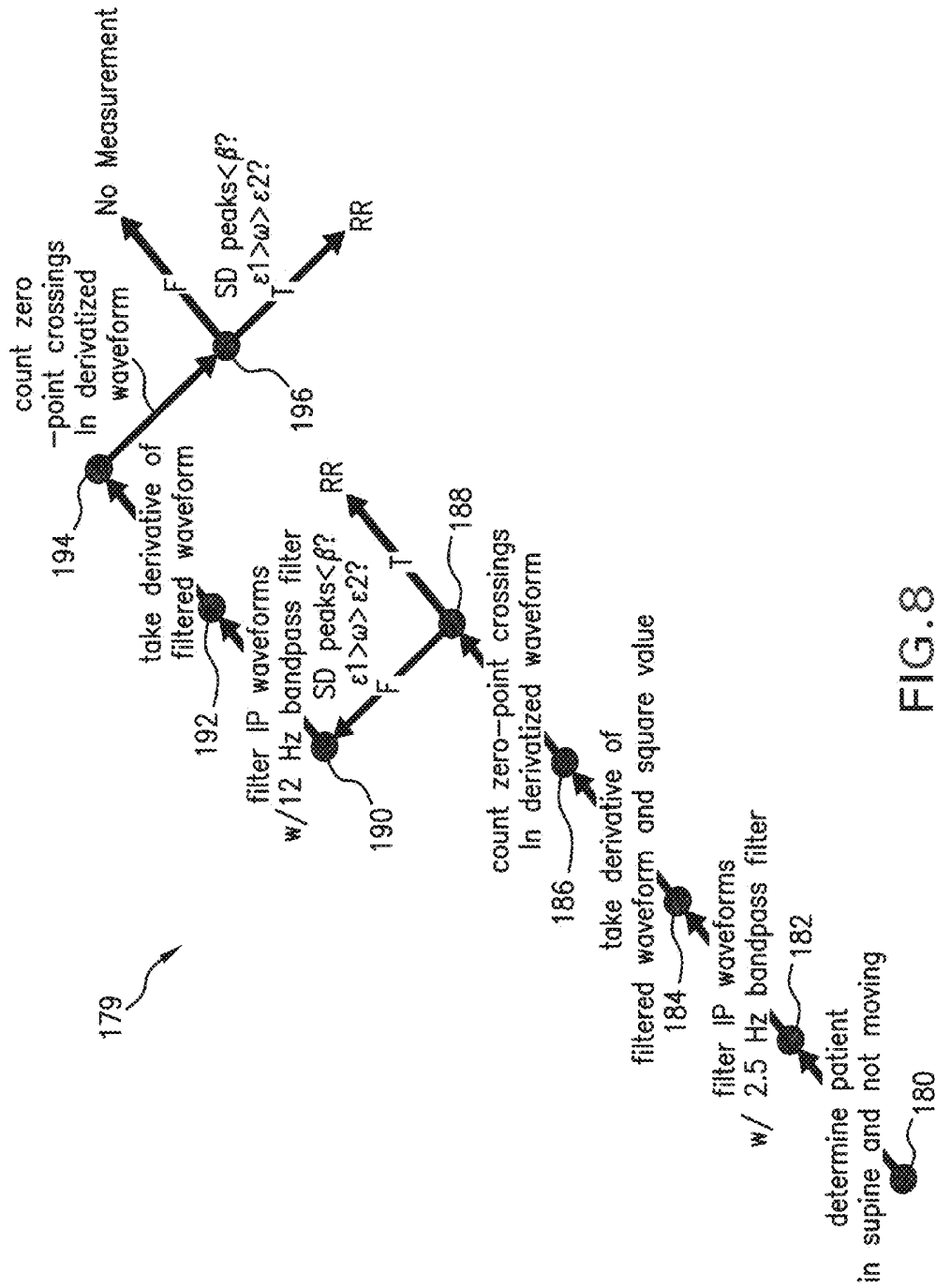


FIG. 8

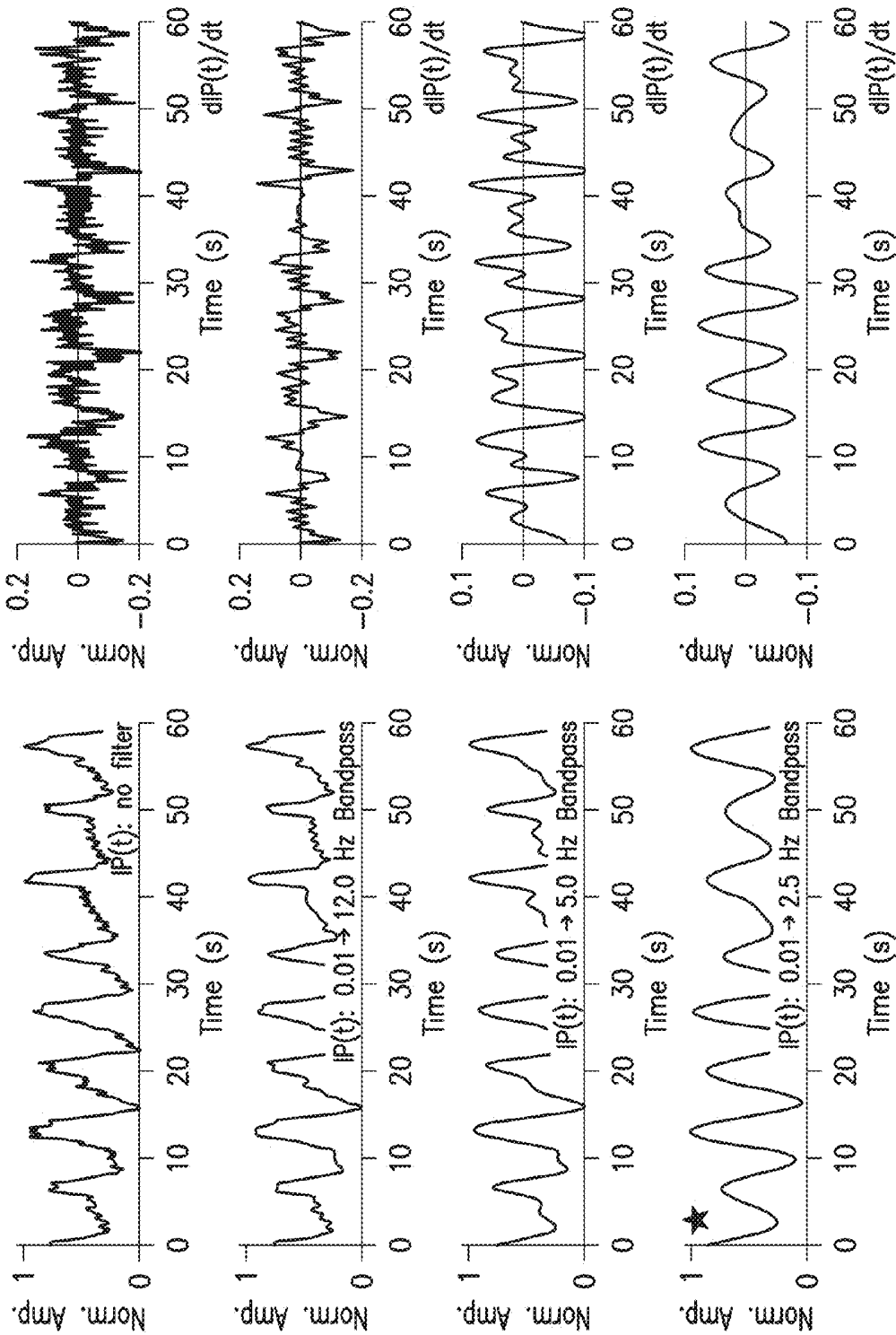
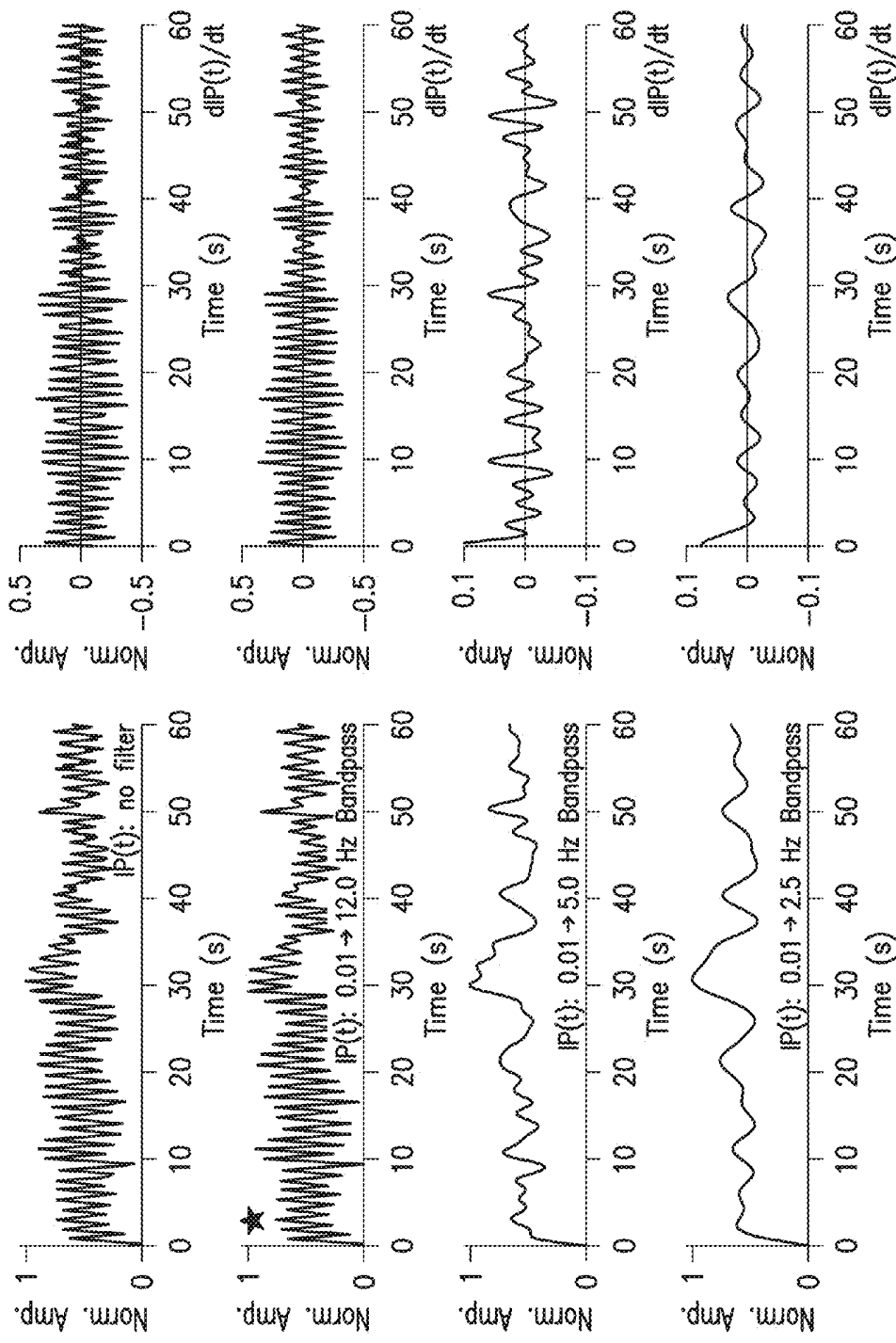


FIG. 9

\star IDEAL FILTER FOR LOW-FREQUENCY BREATHING



★ IDEAL FILTER FOR HIGH-FREQUENCY BREATHING

FIG.10

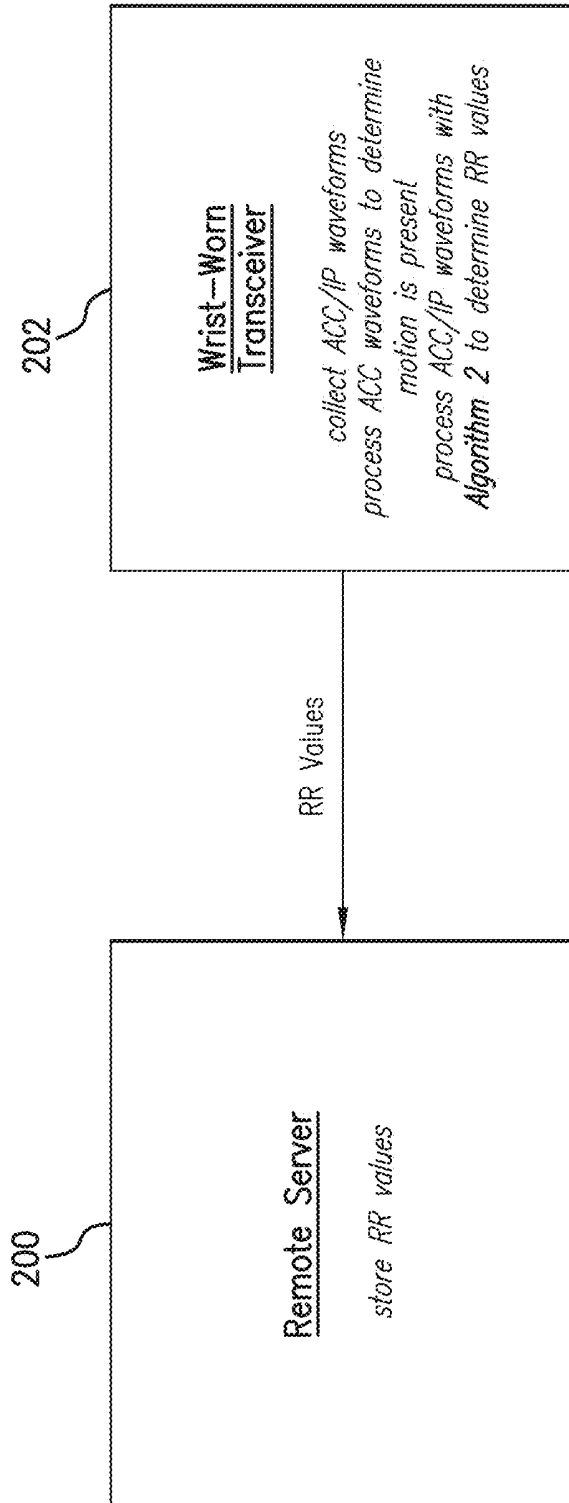


FIG. 11

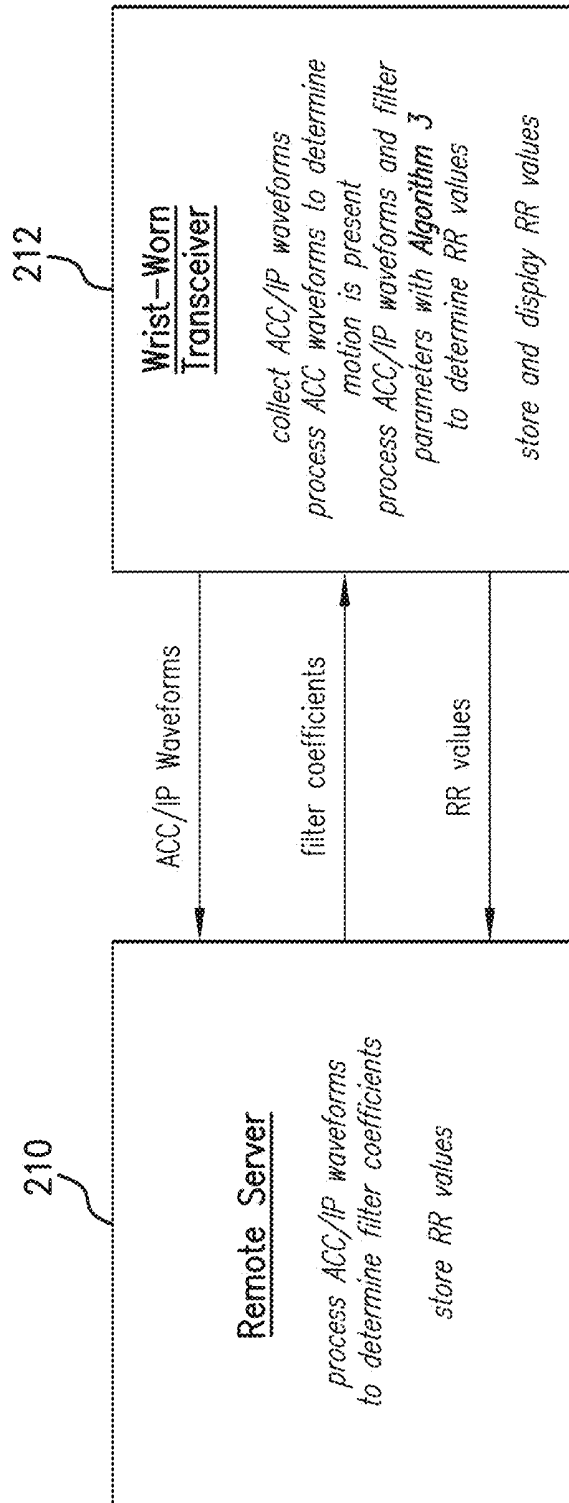


FIG.12



FIG. 13

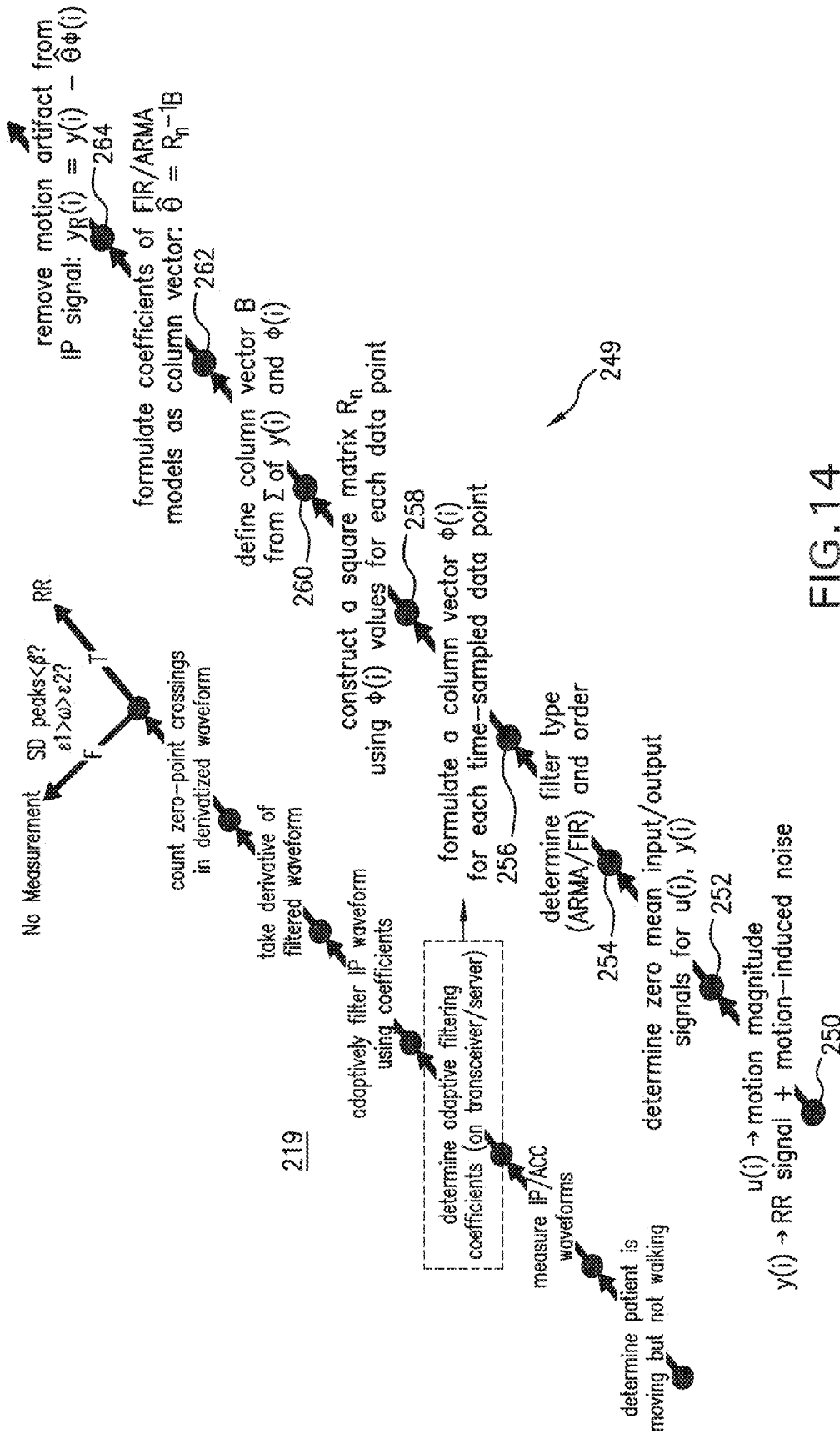


FIG.14

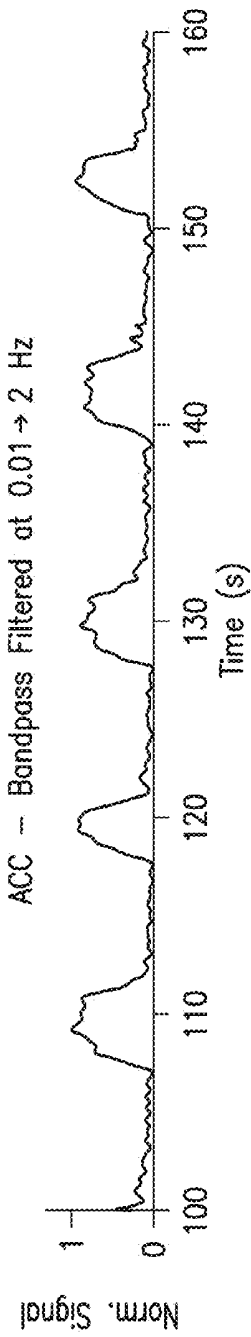


FIG.15A

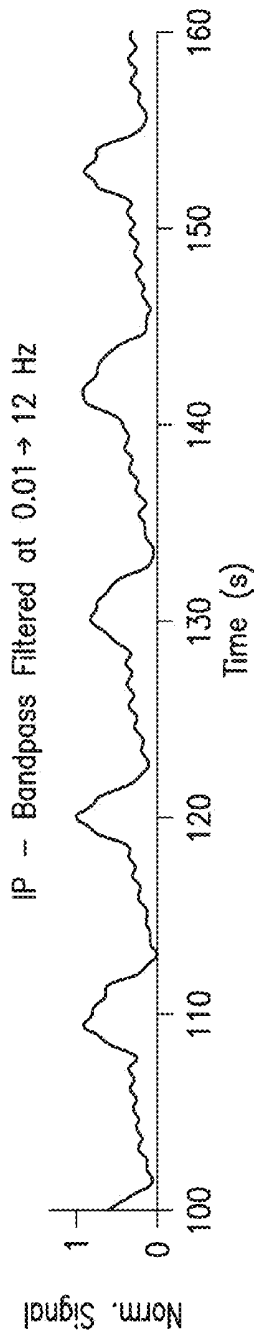


FIG.15B

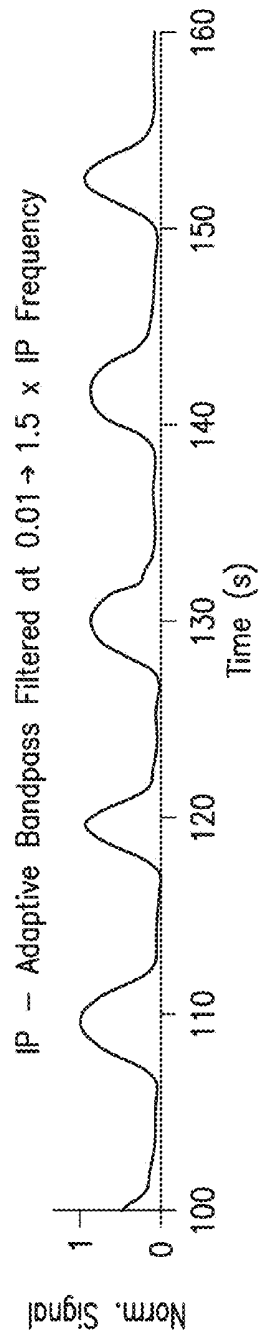
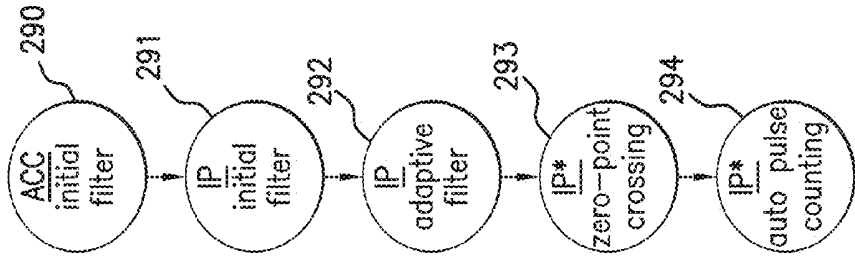


FIG.15C



5 breaths/min.
FIG. 15F

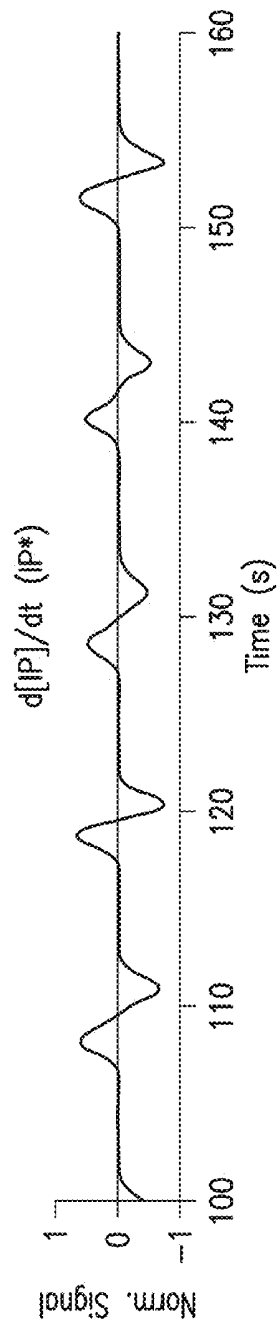


FIG. 15D

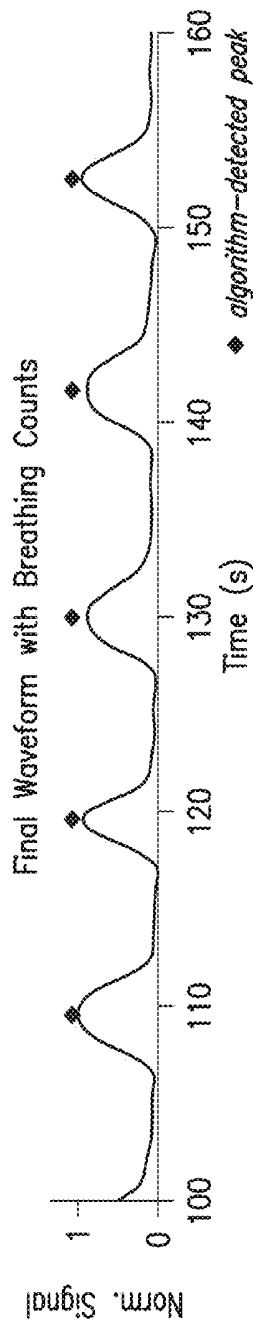


FIG. 15E

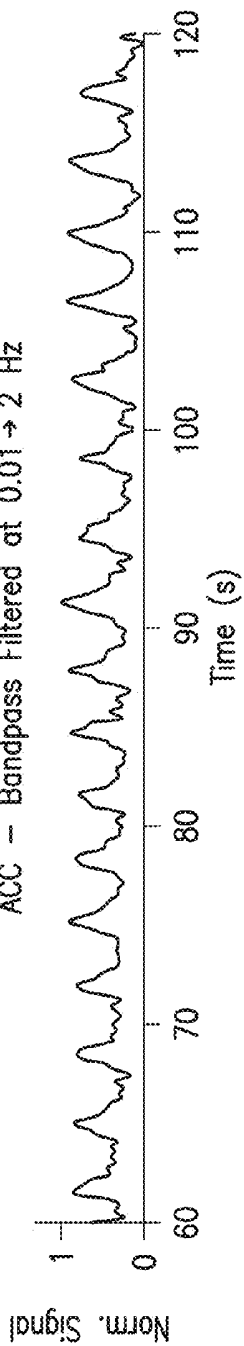


FIG. 16A

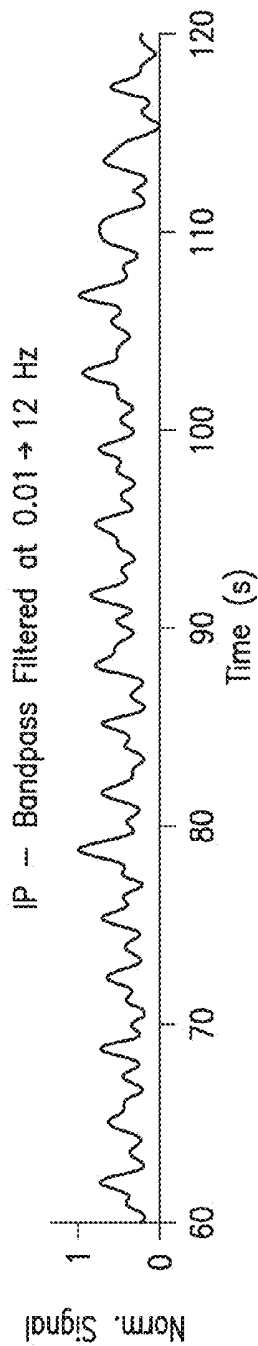


FIG. 16B

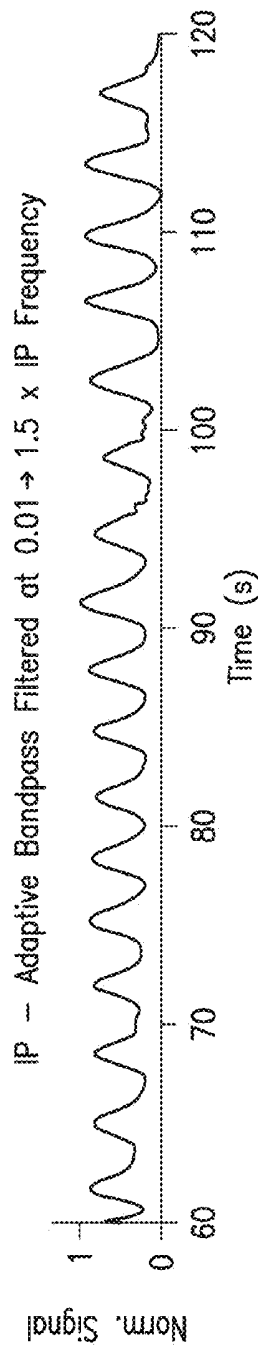


FIG. 16C

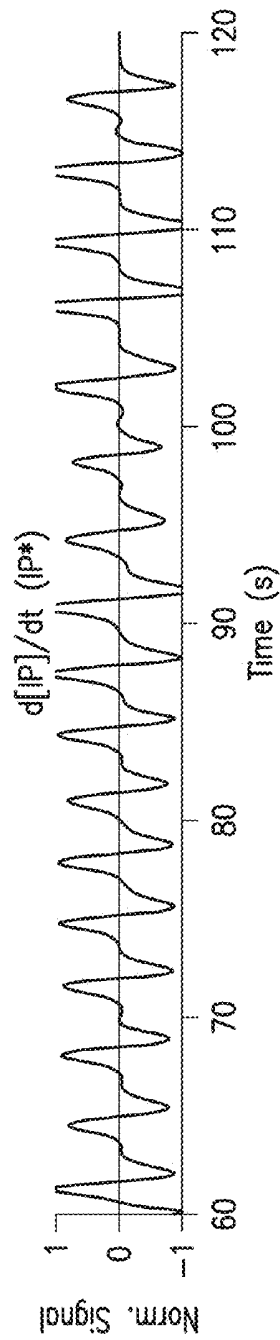


FIG. 16D

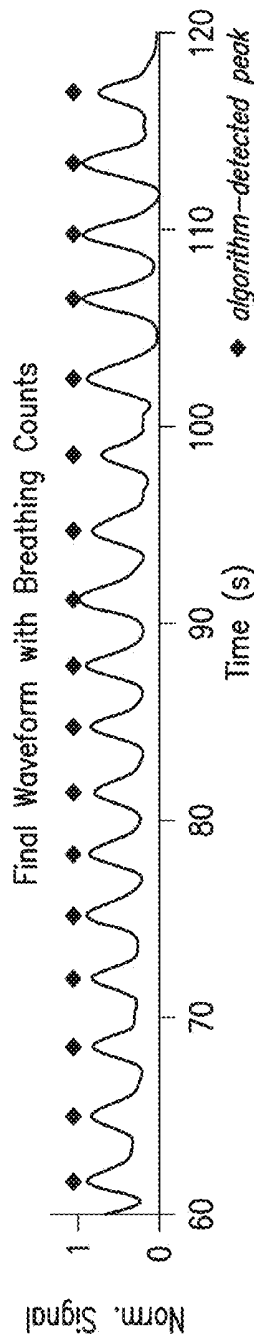
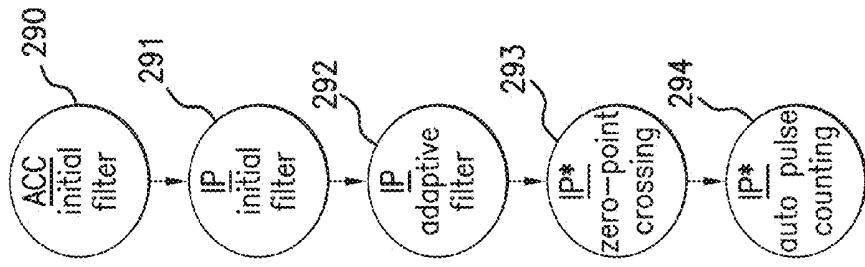


FIG. 16E



17 breaths/min.

FIG. 16F

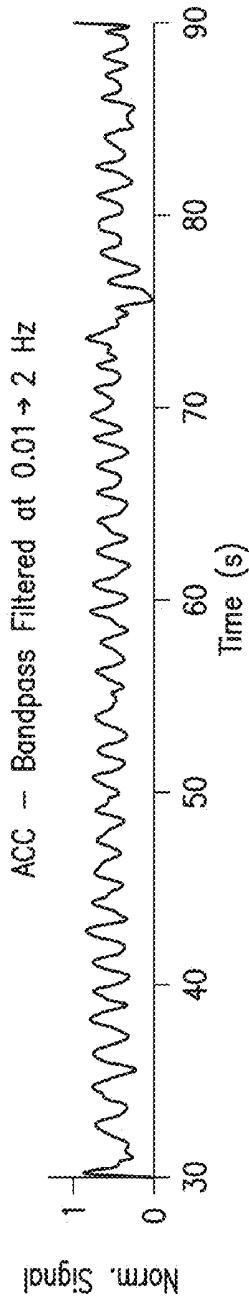


FIG.17A

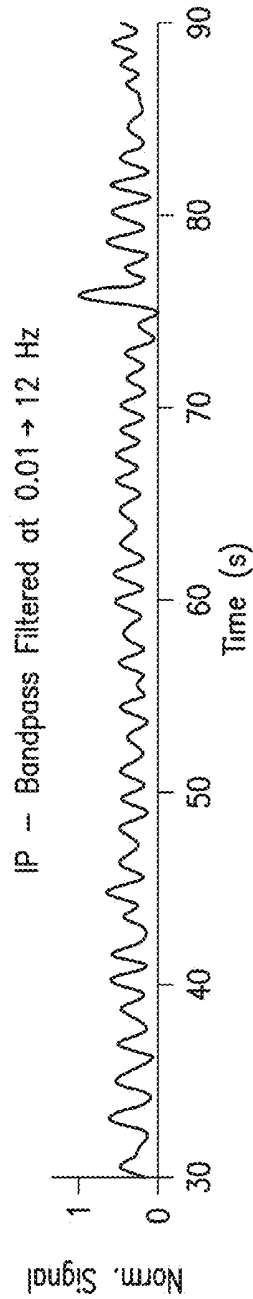


FIG.17B

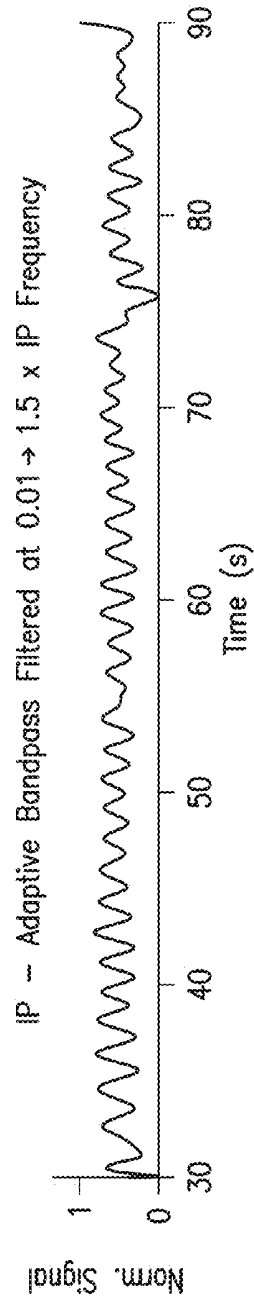


FIG.17C

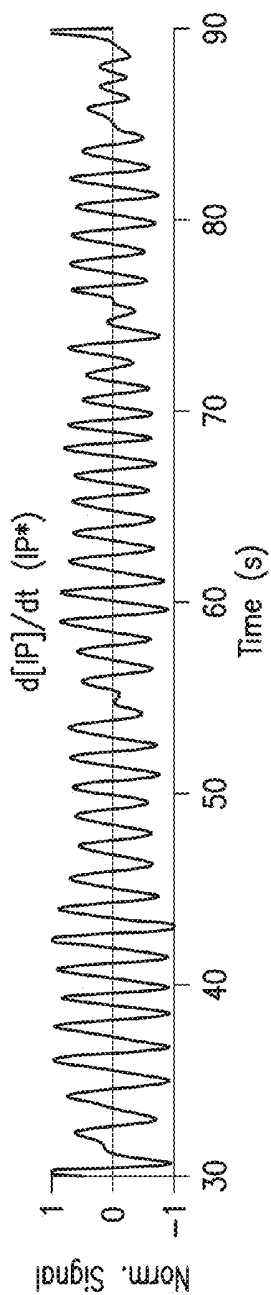


FIG. 17D

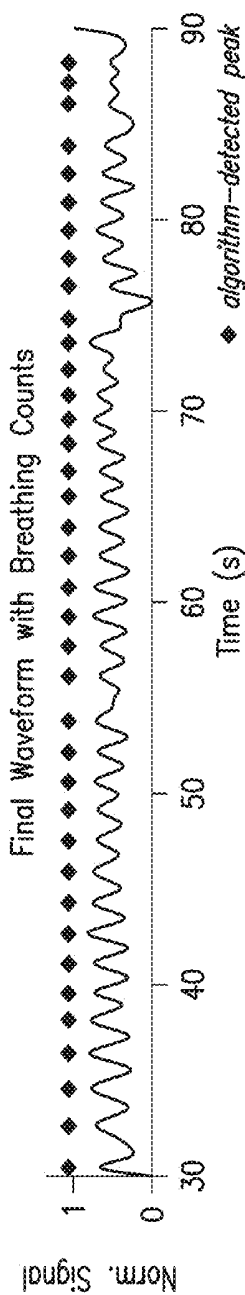
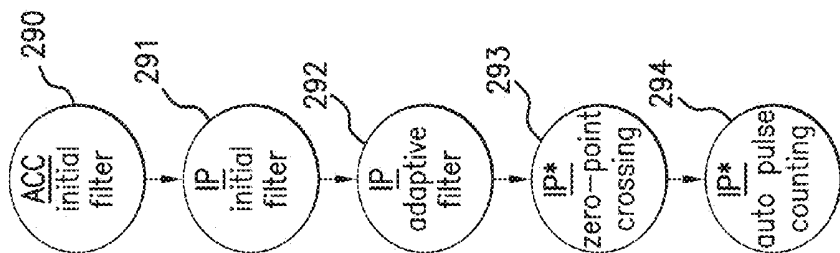


FIG. 17E



38 breaths/min.

FIG. 17F

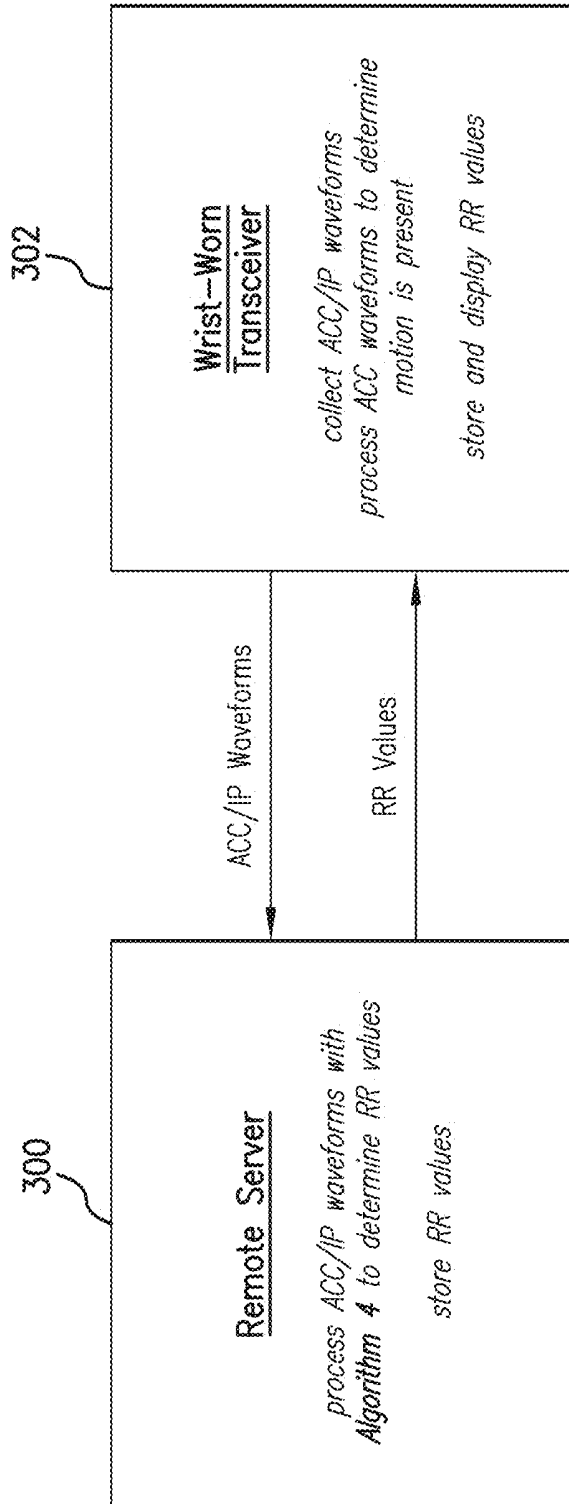


FIG. 18

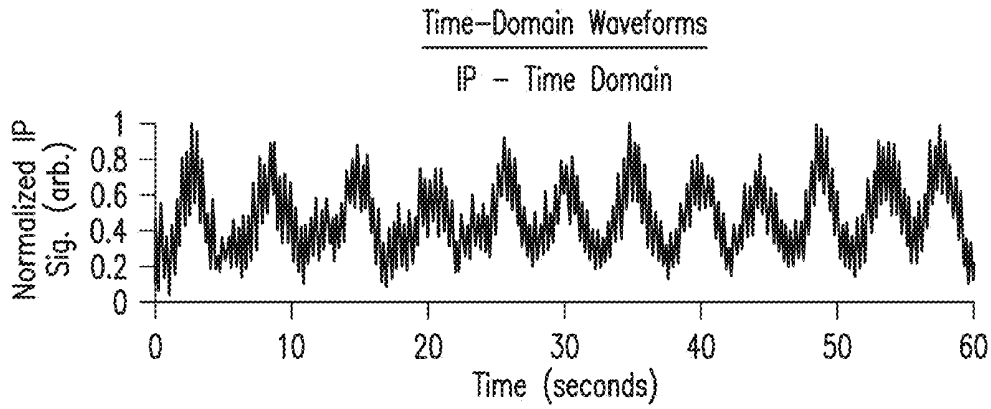


FIG.20A

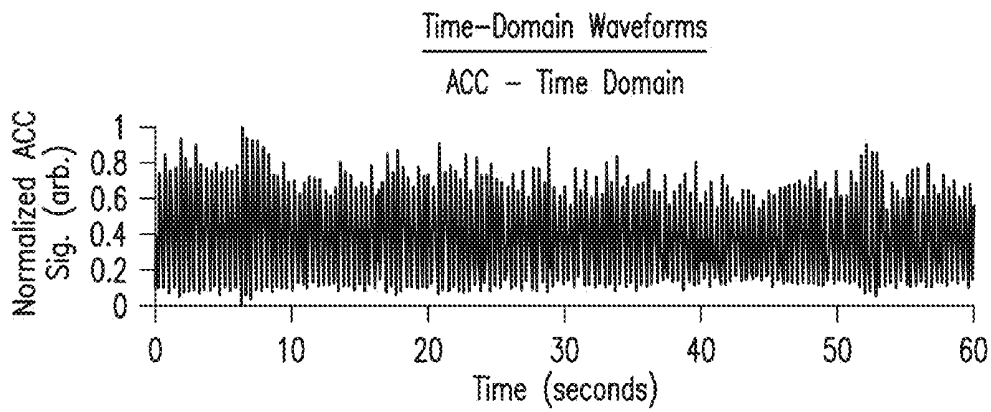


FIG.20B

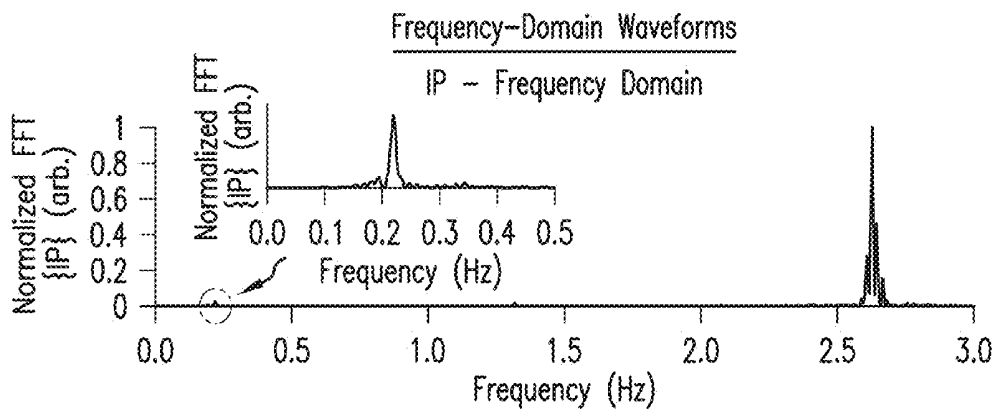


FIG.20C

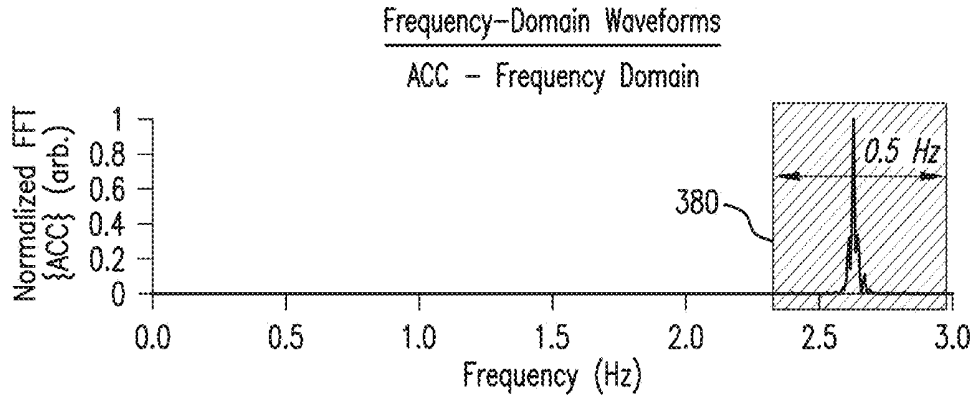


FIG.20D

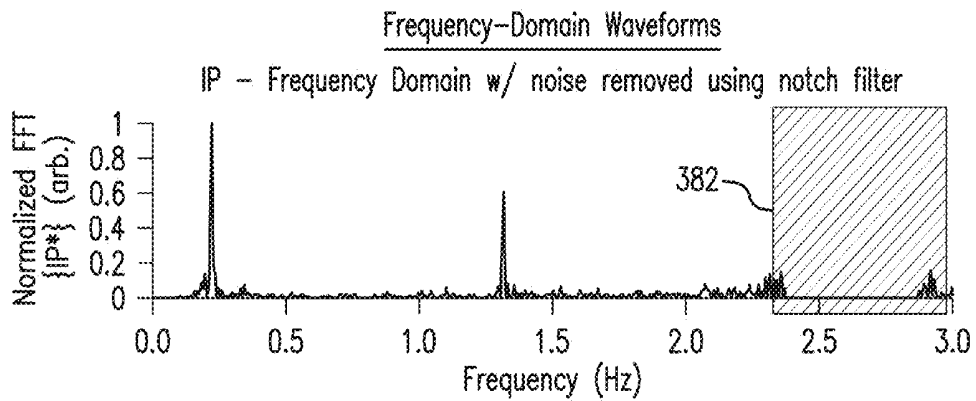


FIG.20E

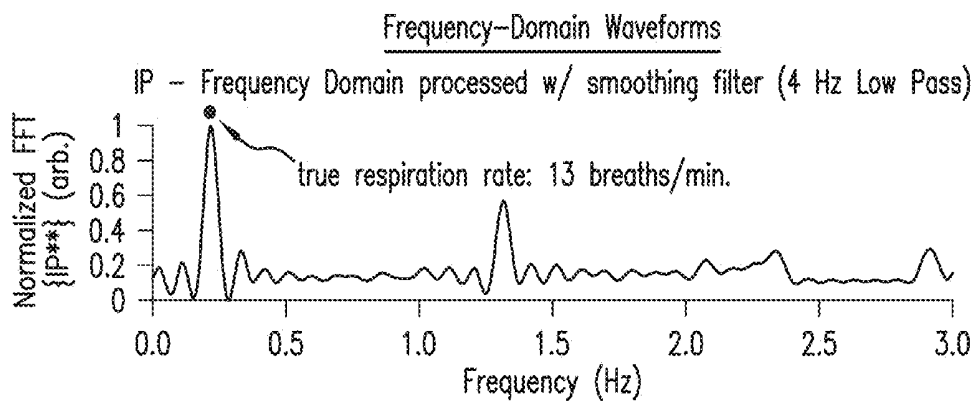


FIG.20F

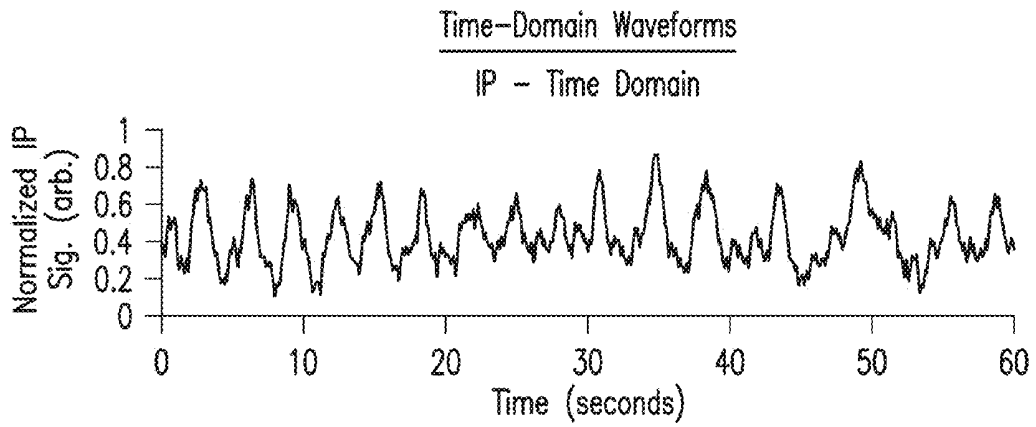


FIG.21A

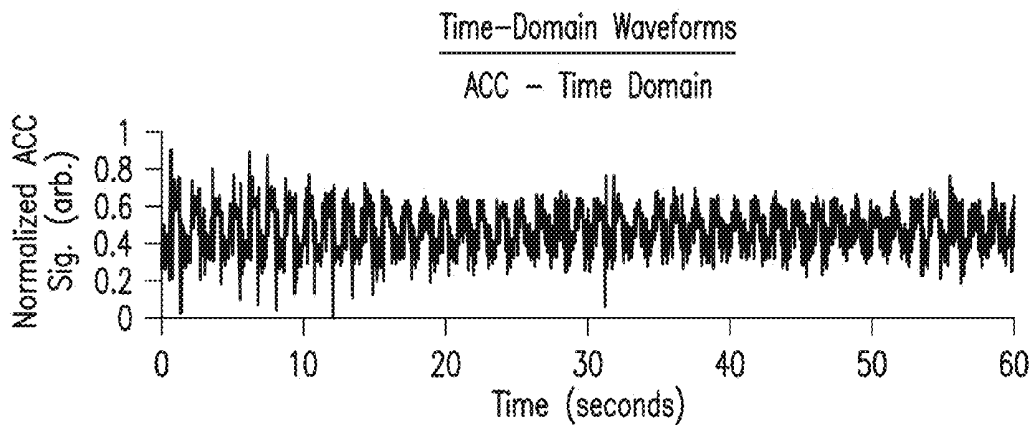


FIG.21B

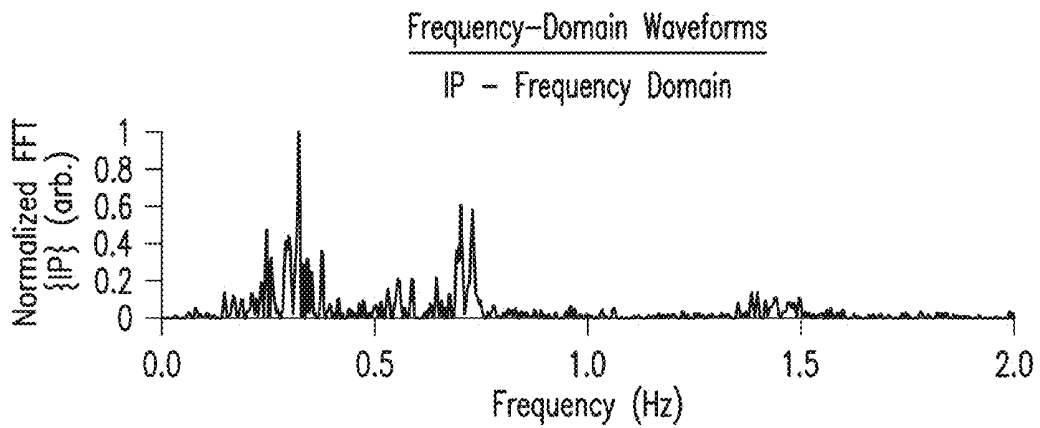


FIG.21C

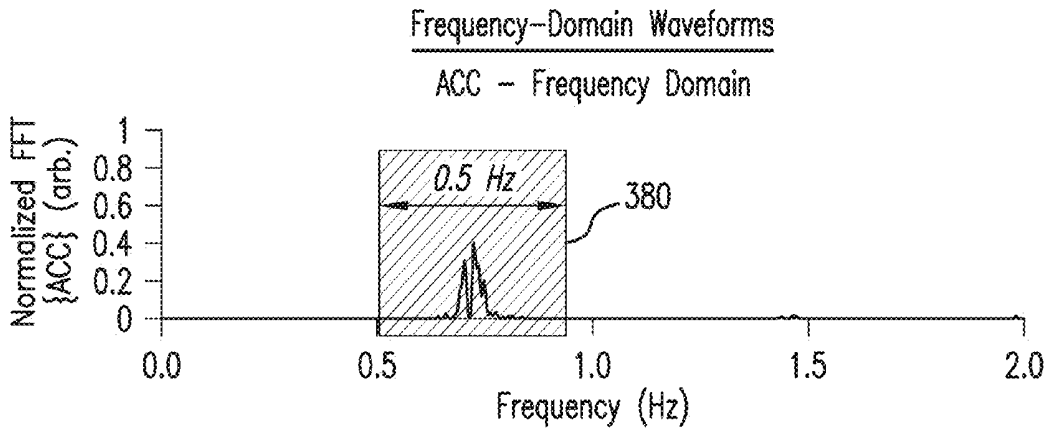


FIG.21D

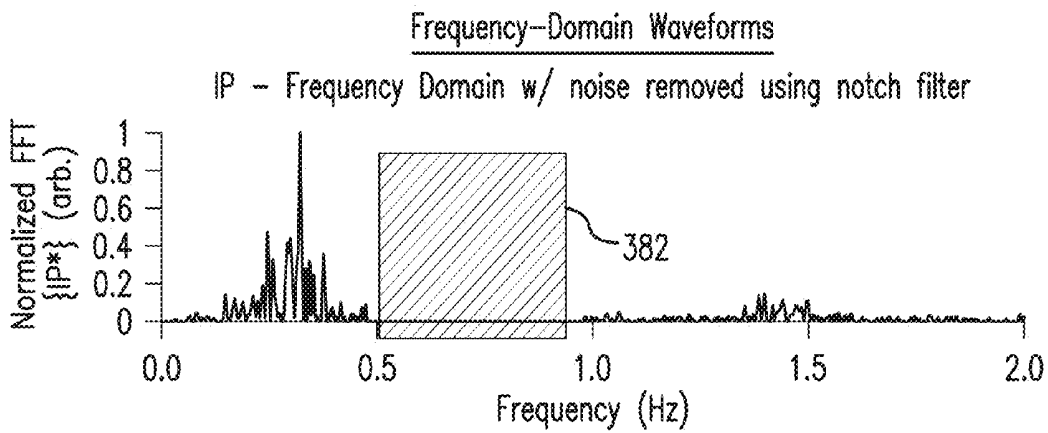


FIG.21E

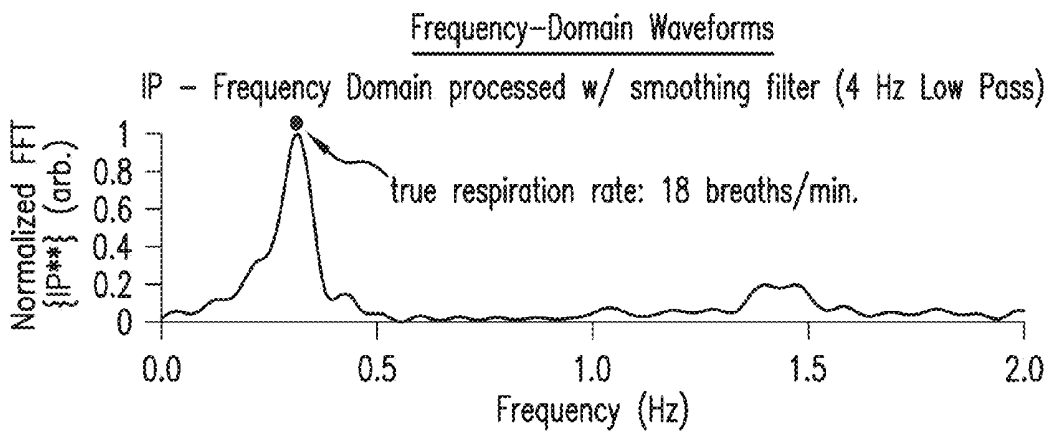


FIG.21F

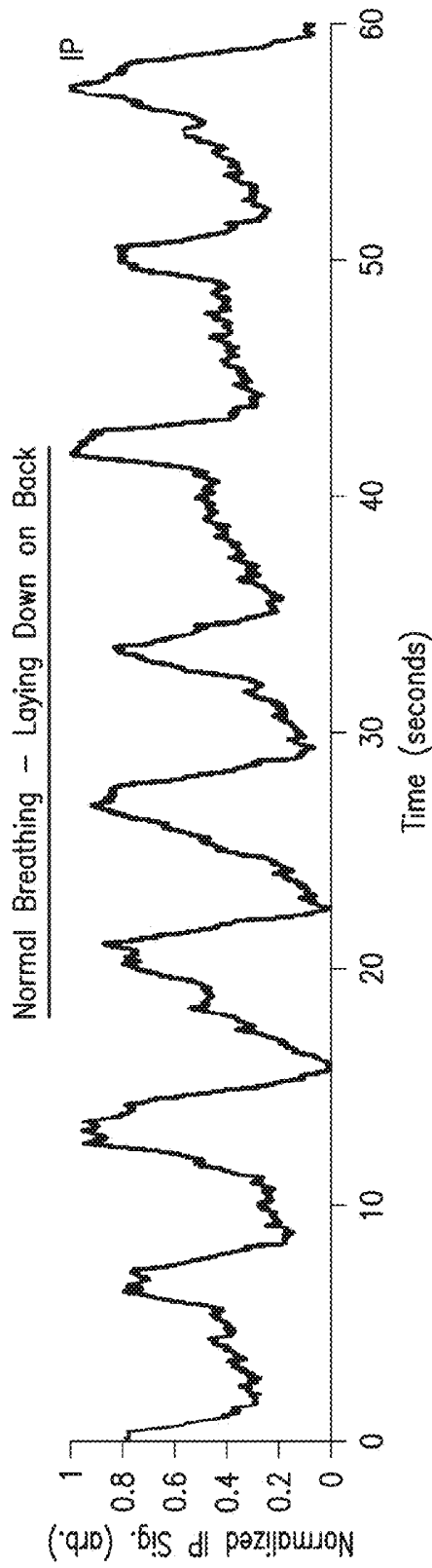


FIG.22A

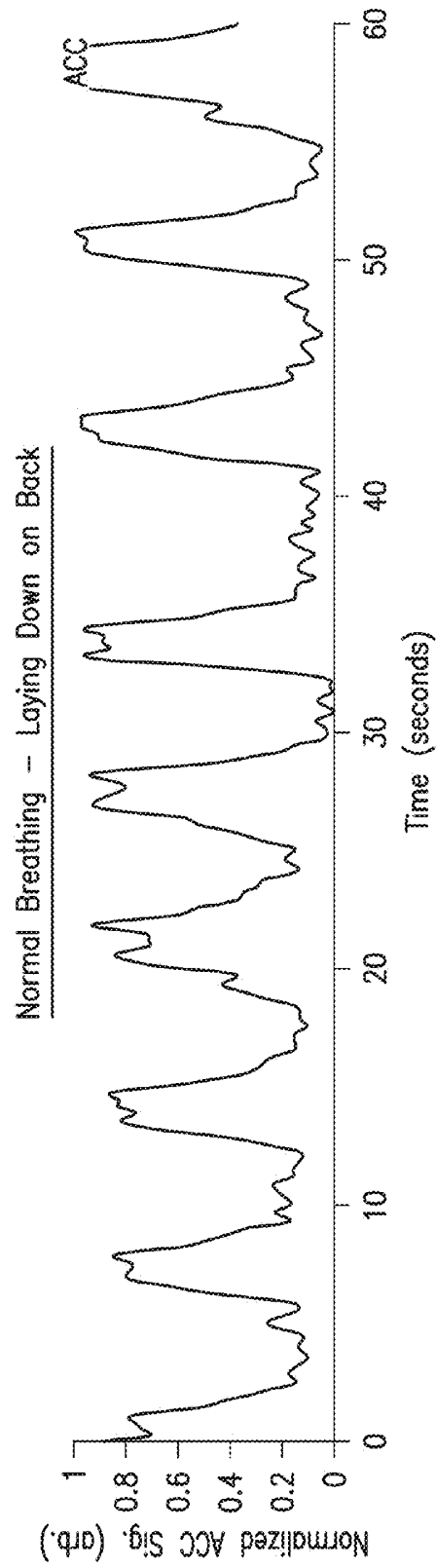


FIG.22B

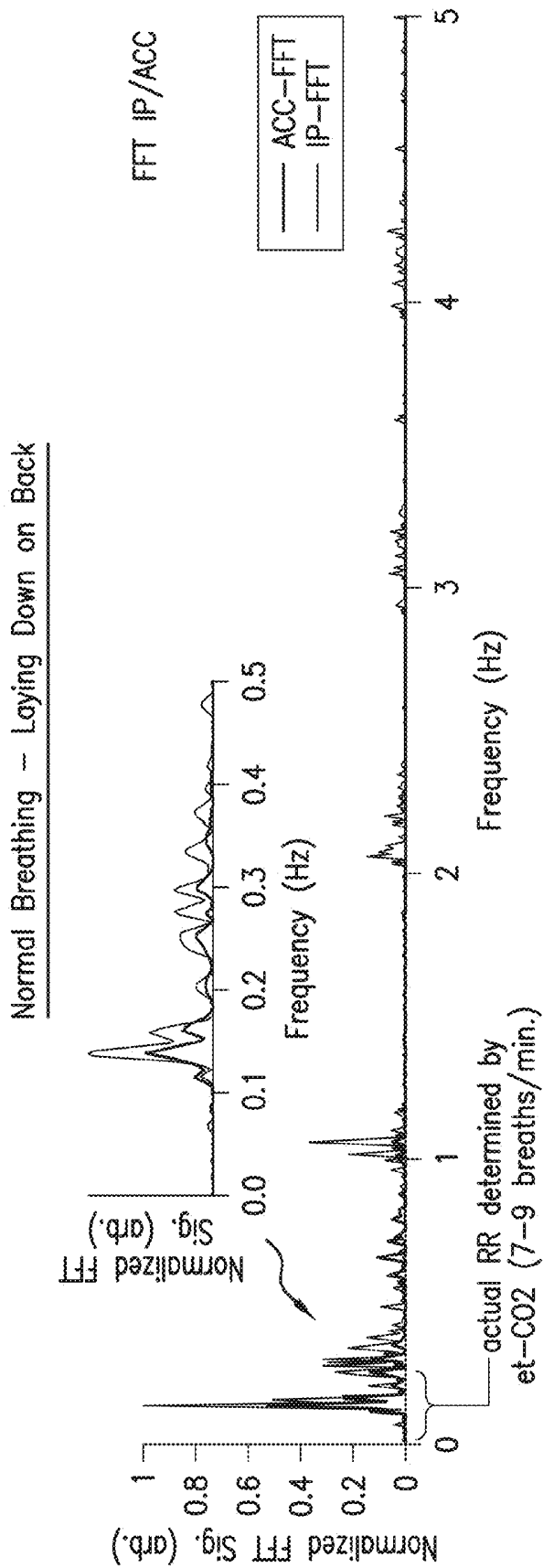


FIG. 22C

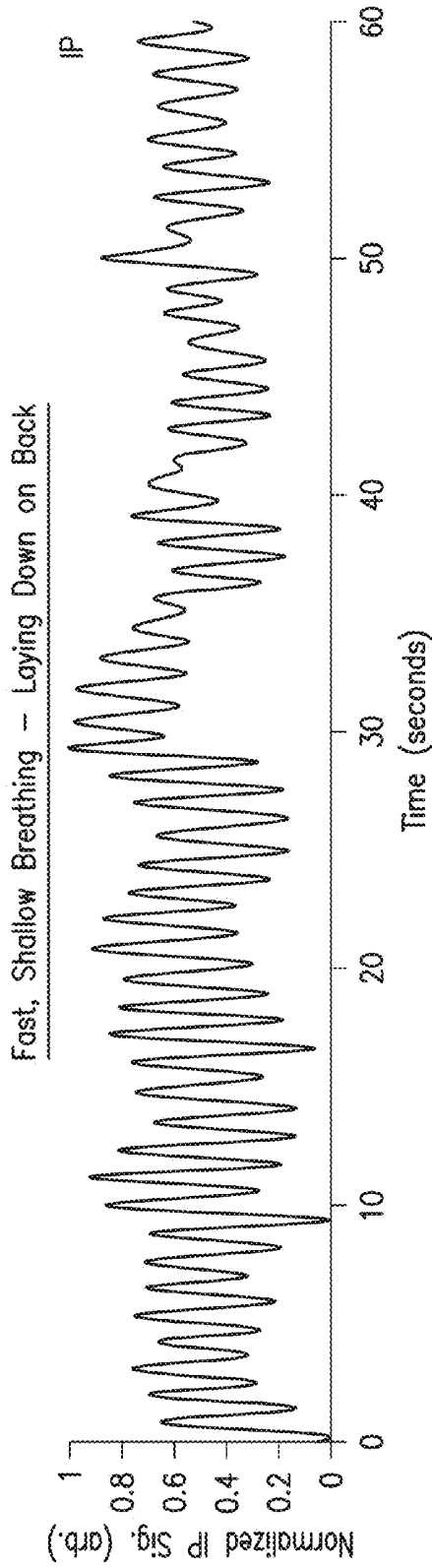


FIG. 23A

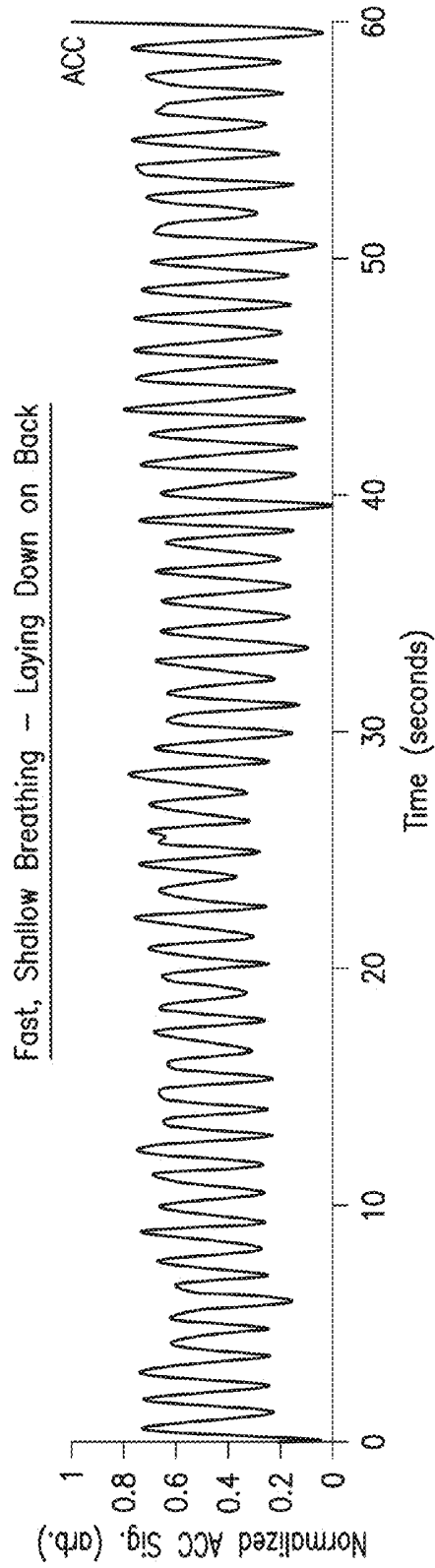


FIG. 23B

Fast, Shallow Breathing – Laying Down on Back

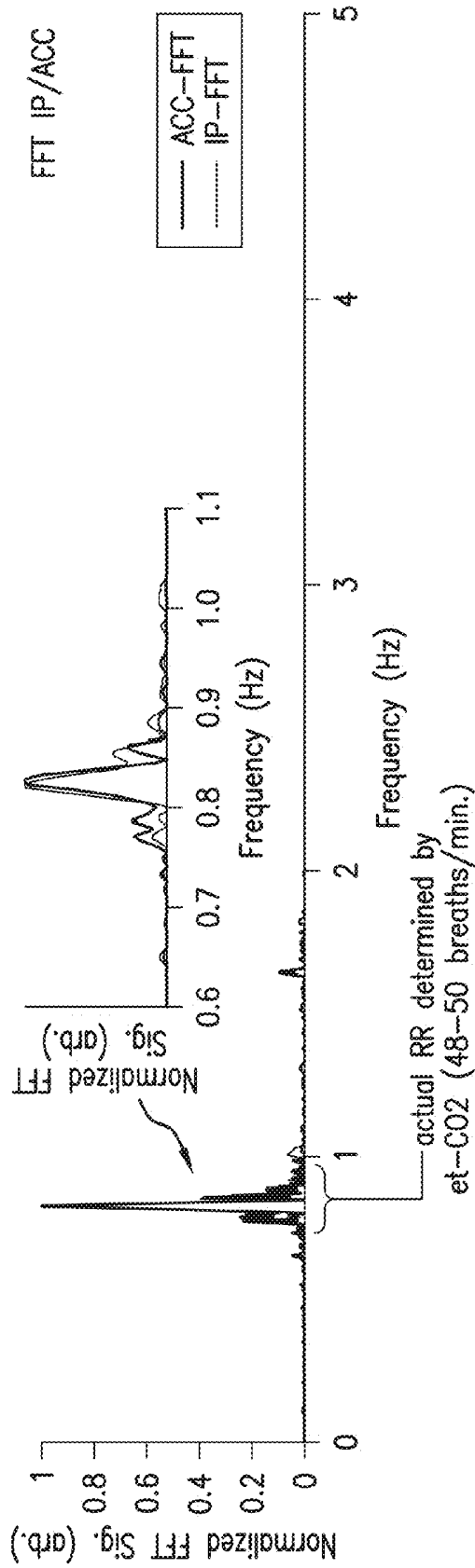


FIG. 23C

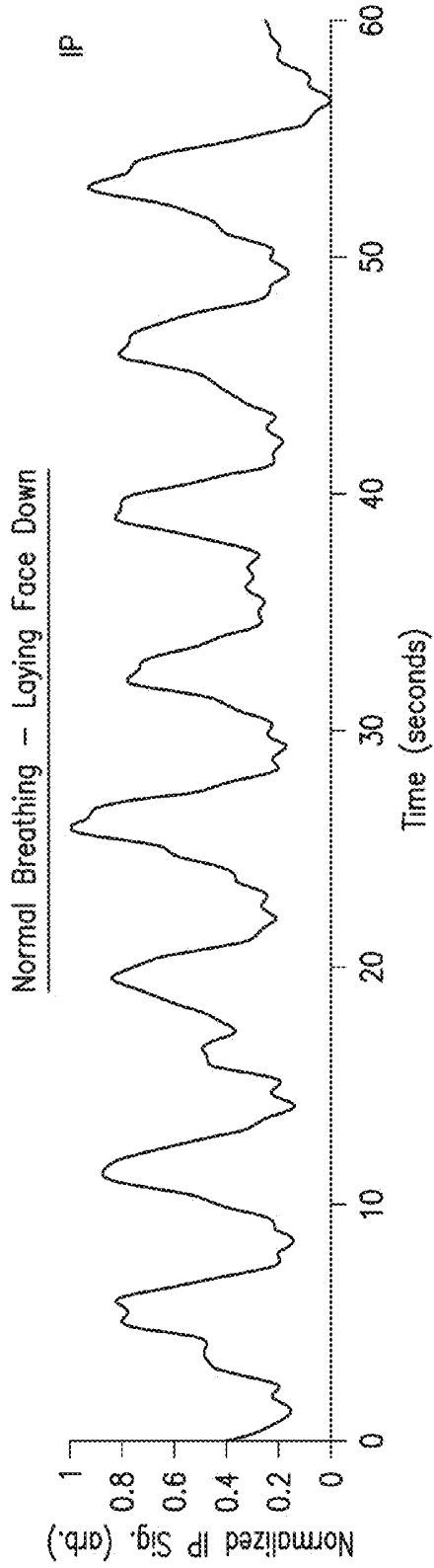


FIG. 24A

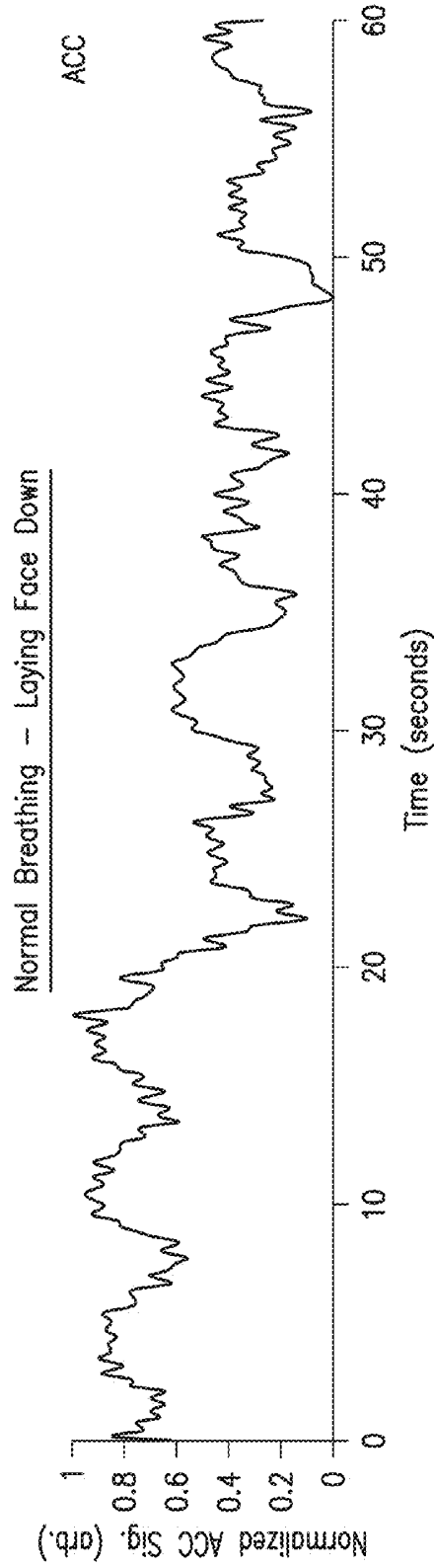


FIG. 24B

Normal Breathing - Laying Face Down

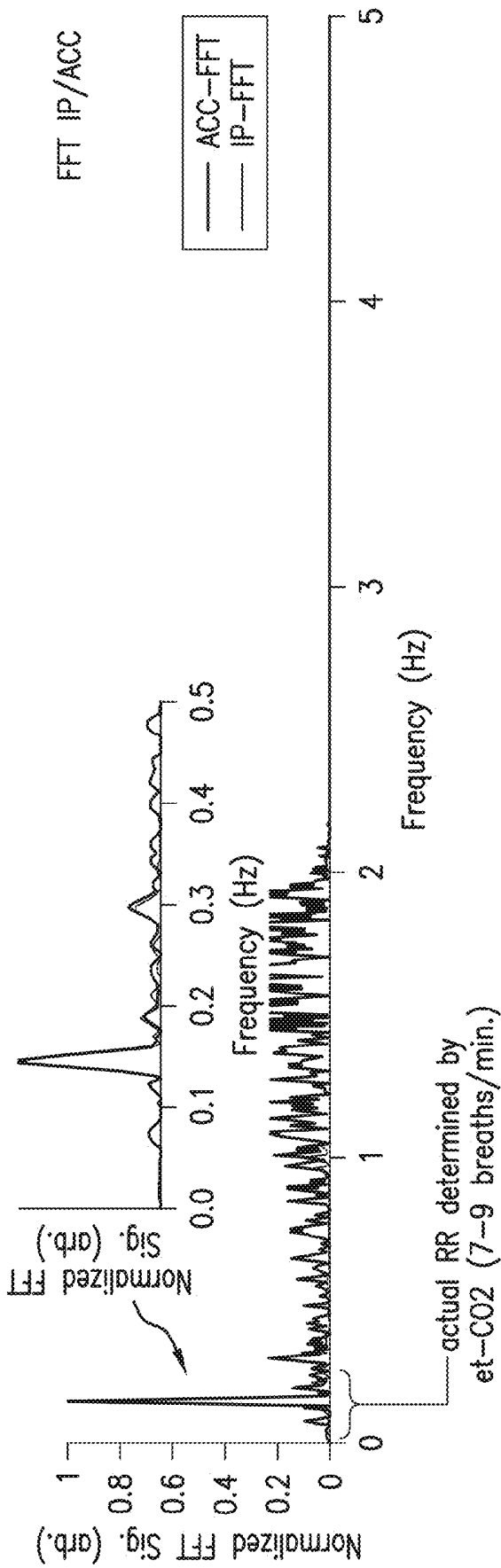


FIG.24C

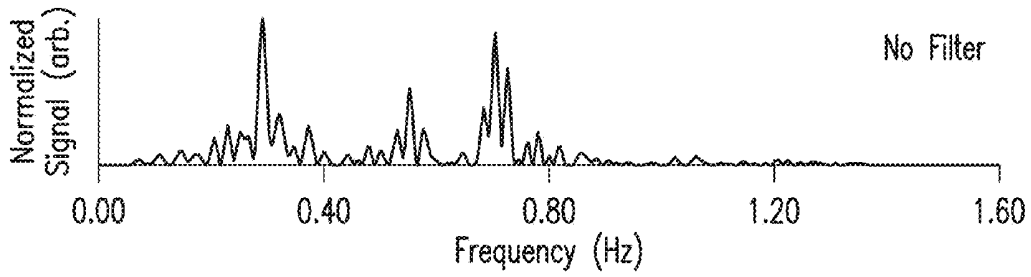


FIG. 25A

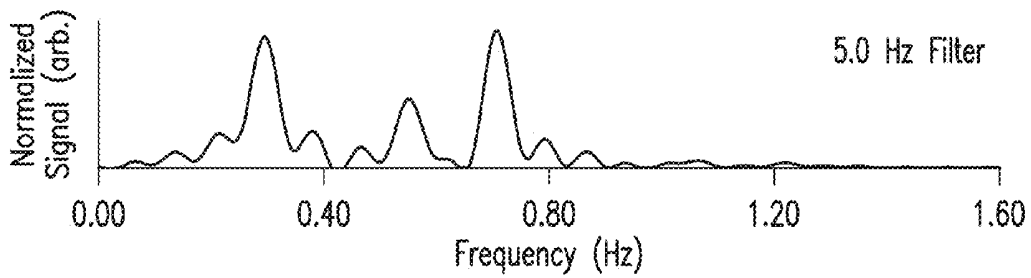


FIG. 25B

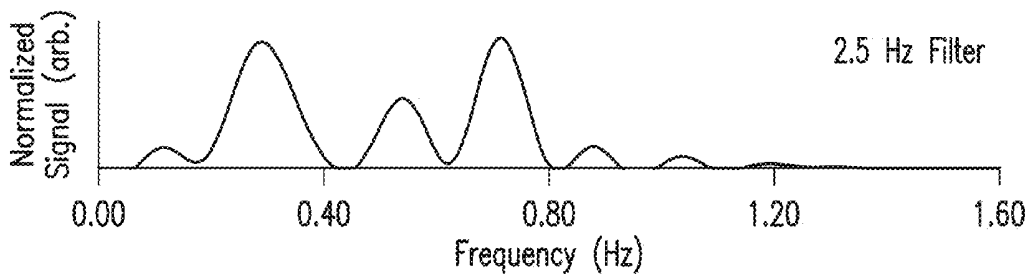


FIG. 25C

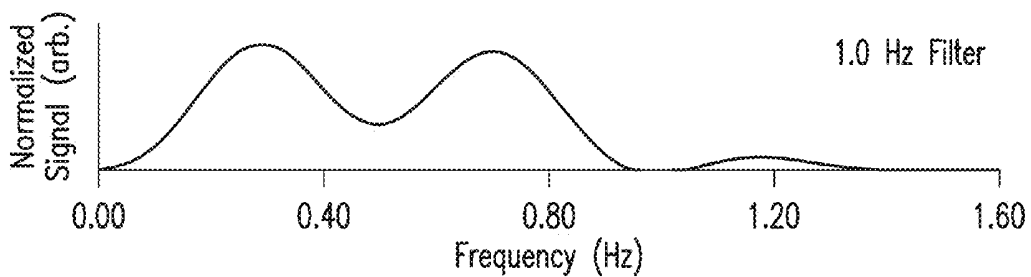


FIG. 25D

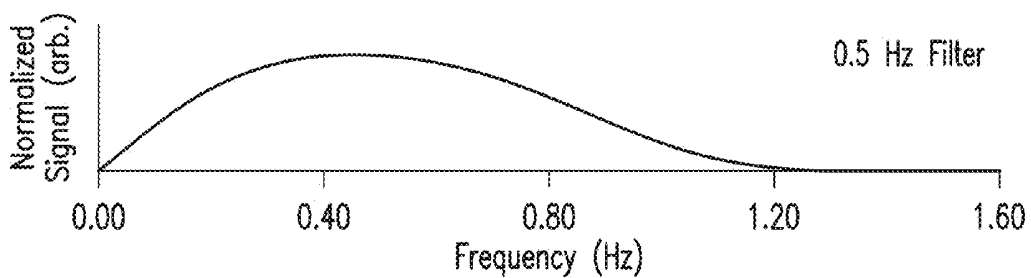
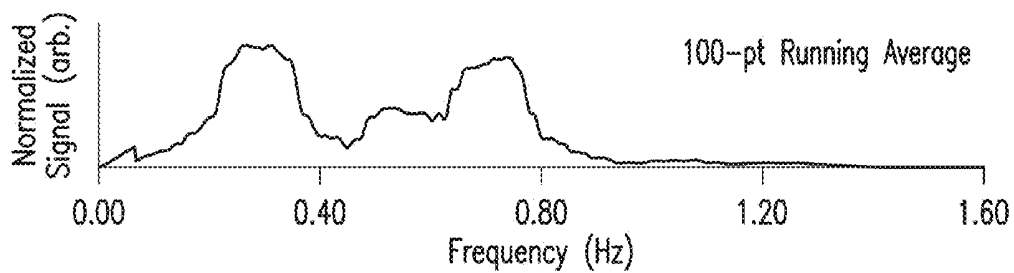
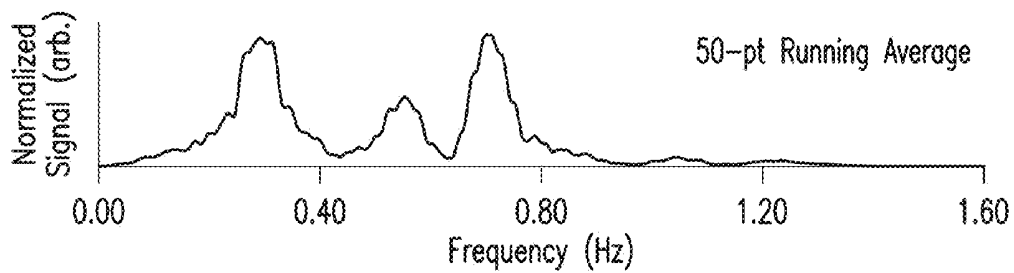
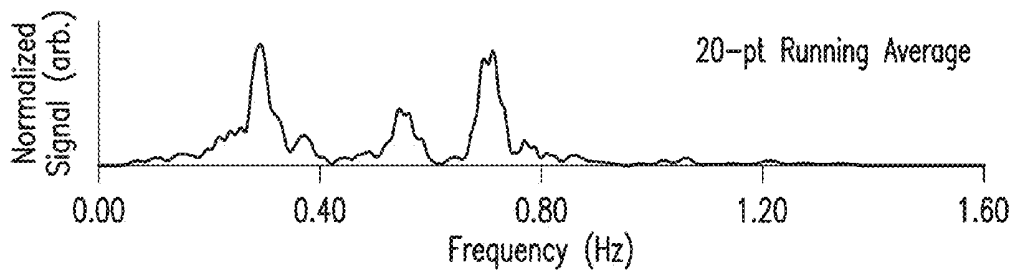
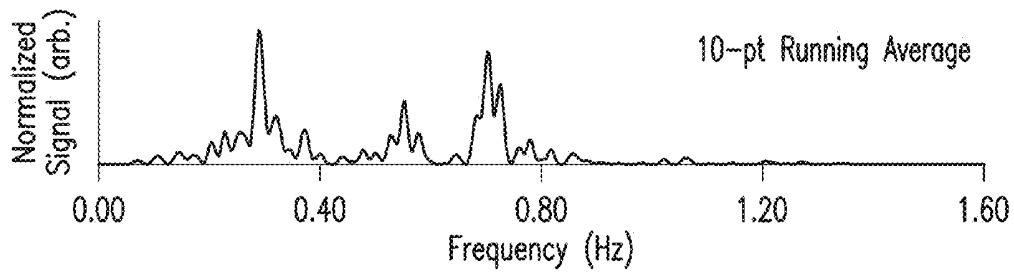
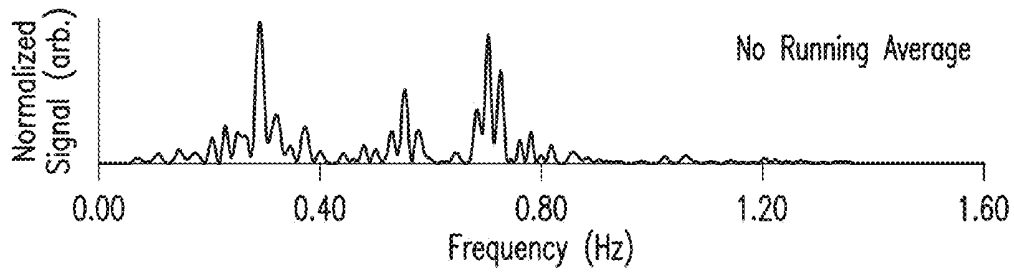
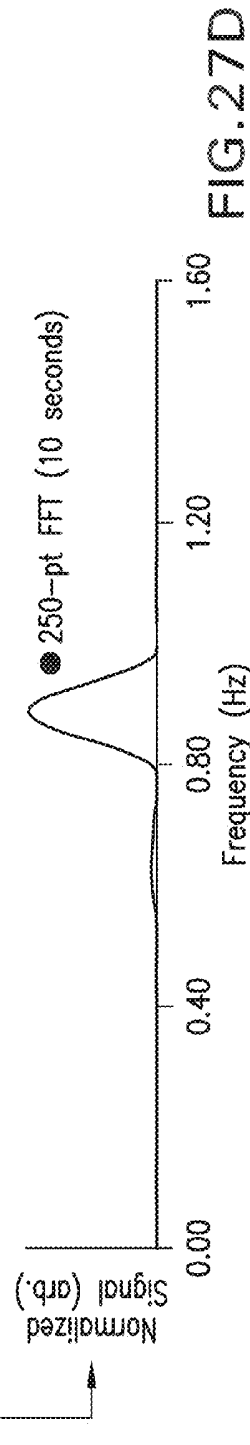
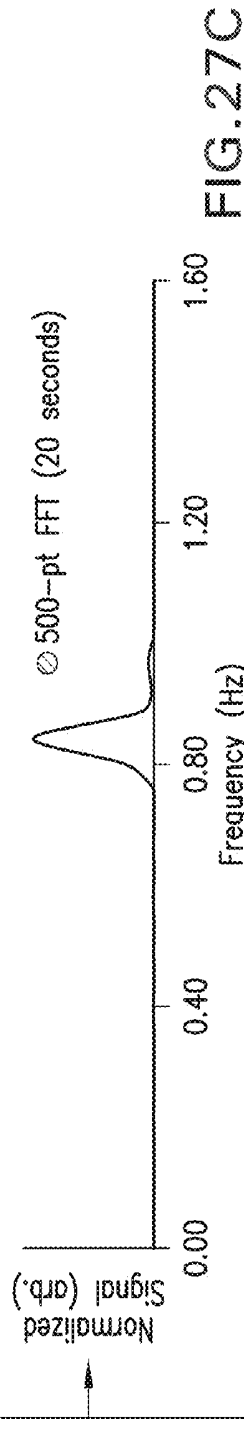
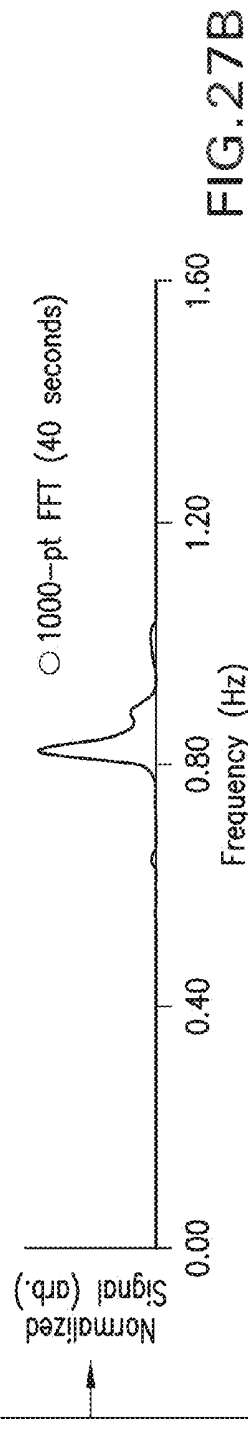
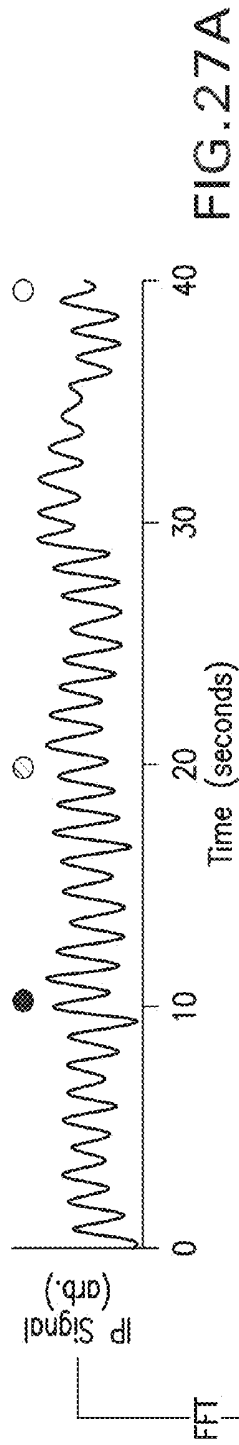
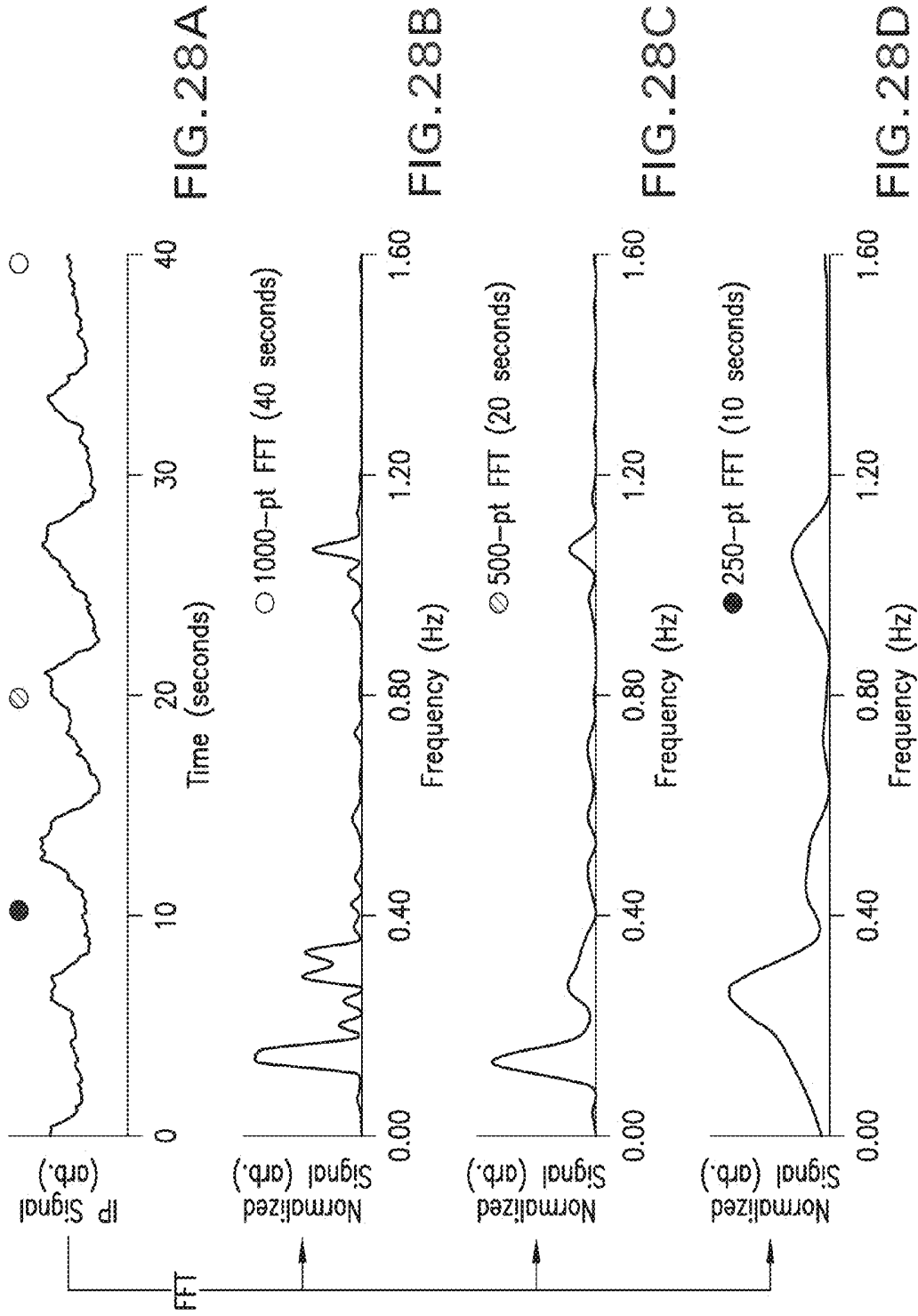


FIG. 25E







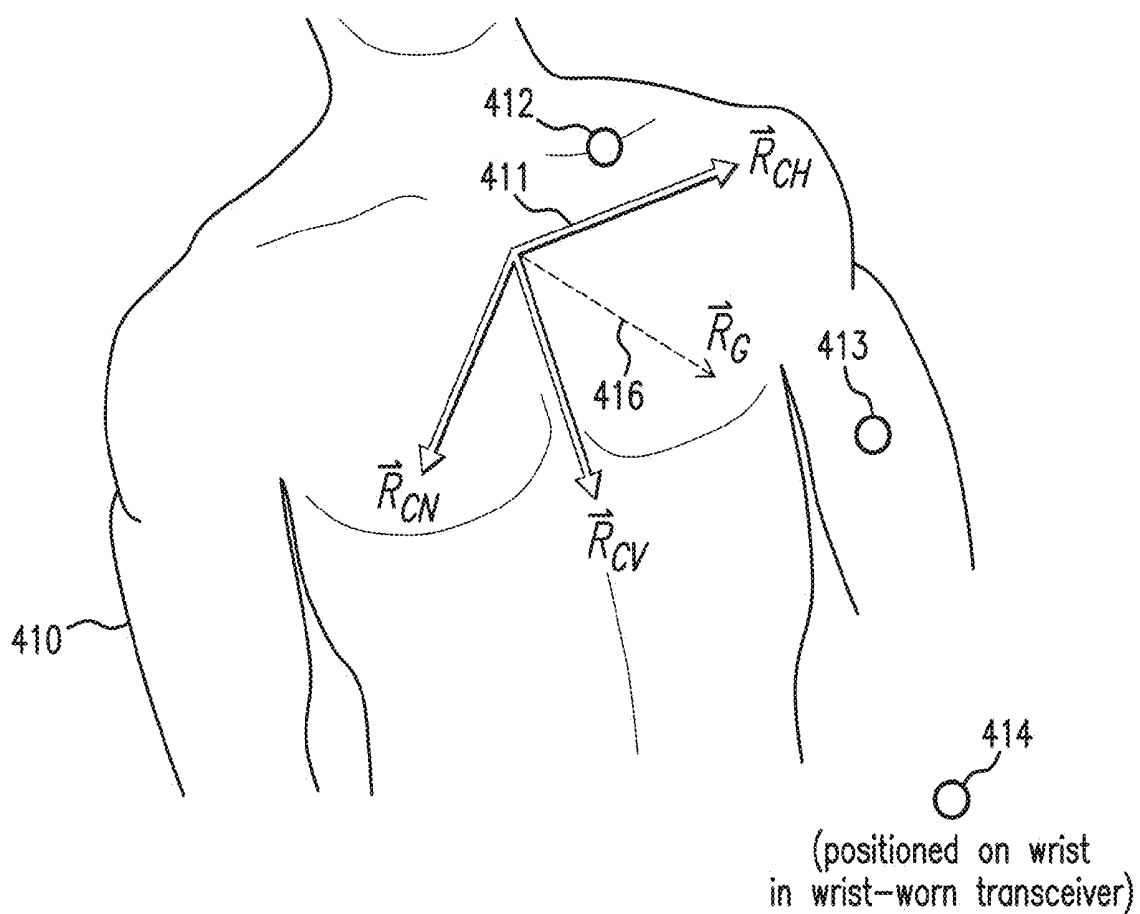
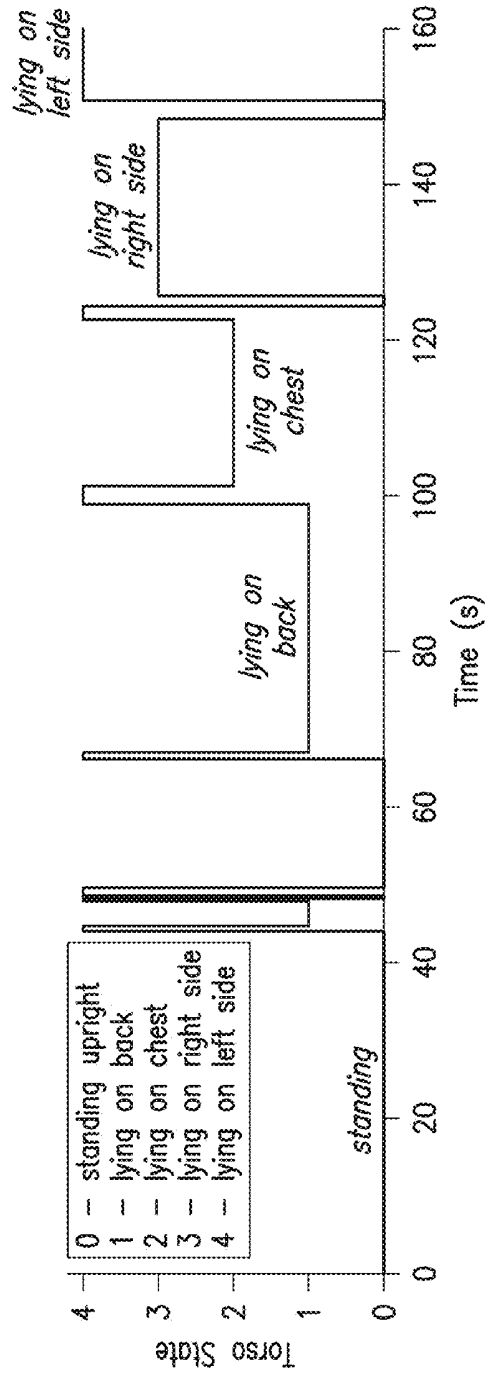
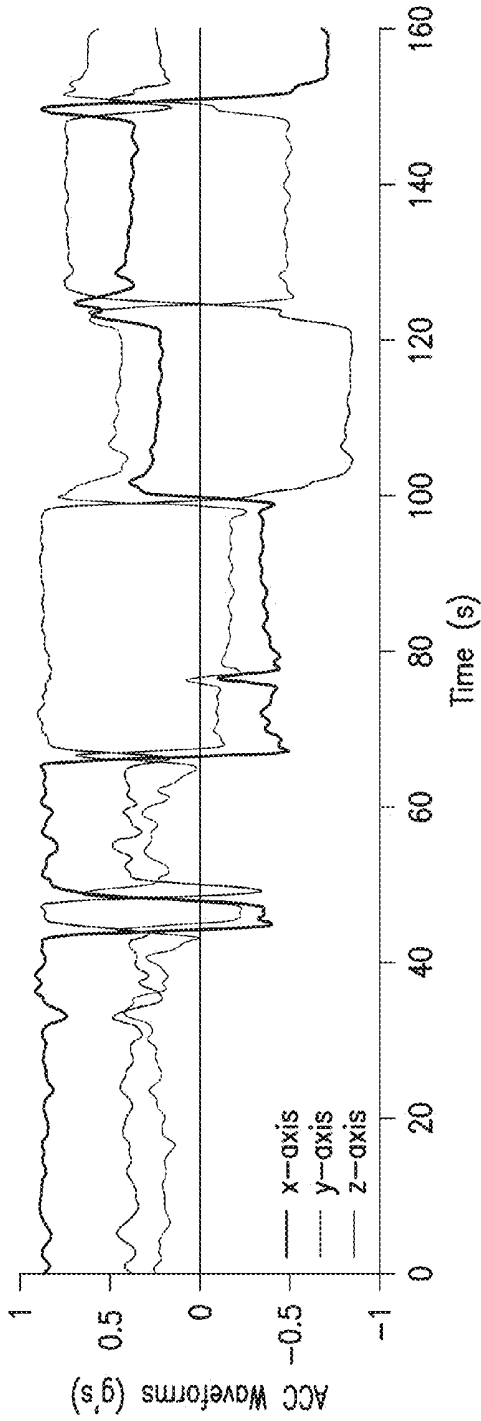


FIG.29



BODY-WORN MONITOR FOR MEASURING RESPIRATORY RATE

CROSS-REFERENCE TO RELATED APPLICATIONS

[0001] This application is a continuation of U.S. patent application Ser. No. 12/762,952, filed Apr. 19, 2010, now U.S. Pat. No. 9,339,209, issued May 17, 2016, which is incorporated herein by reference, including all tables and figures.

BACKGROUND OF THE INVENTION

[0002] Field of the Invention

[0003] The present invention relates to medical devices for monitoring vital signs, e.g., respiratory rate (RR).

[0004] Description of the Related Art

[0005] RR is a vital sign typically measured in hospitals using either an indirect, electrode-based technique called 'impedance pneumography' (IP), a direct optical technique called 'end-tidal CO₂' (et-CO₂), or simply through manual counting of breaths by a medical professional. IP is typically performed in lower-acuity areas of the hospital, and uses the same electrodes which measure an electrocardiogram (ECG) and corresponding heart rate (HR). These electrodes are typically deployed in a conventional 'Einthoven's triangle' configuration on the patient's torso. During IP, one of the electrodes supplies a low-amperage (~4 mA) current that is typically modulated at a high frequency (~50-100 kHz). Current passes through the patient's thoracic cavity, which is characterized by a variable, time-dependent capacitance that varies with each breath. A second electrode detects current which is modulated by the changing capacitance. Ultimately this yields an analog signal that is processed with a series of amplifiers and filters to detect the time-dependent capacitance change and, with subsequent analysis, the patient's RR.

[0006] In et-CO₂, a device called a capnometer features a small plastic tube that inserts in the patient's mouth. With each breath the tube collects expelled CO₂. A beam of infrared radiation emitted from an integrated light source passes through the CO₂ and is absorbed in a time-dependent manner that varies with the breathing rate. A photodetector and series of processing electronics analyze the transmitted signal to determine RR. et-CO₂ systems are typically used in high-acuity areas of the hospital, such as the intensive care unit (ICU), where patients often need ventilators to assist them in breathing.

[0007] In yet another technique, RR can be measured from the envelope of a time-dependent optical waveform called a photoplethysmogram (PPG) that is measured from the patient's index finger during a conventional measurement of the patient's oxygen saturation (SpO₂). Breathing changes the oxygen content in the patient's blood and, subsequently, its optical absorption properties. Such changes cause a slight, low-frequency variation in the PPG that can be detected with a pulse oximeter's optical system, which typically operates at both red and infrared wavelengths.

[0008] Not surprisingly, RR is an important predictor of a decompensating patient. For example, a study in 1993 concluded that a RR greater than 27 breaths/minute was the most important predictor of cardiac arrests in hospital wards (Fieselmann et al., 'RR predicts cardiopulmonary arrest for internal medicine patients', *J Gen Intern Med* 1993; 8:

354-360). Subbe et al. found that, in unstable patients, relative changes in RR were much greater than changes in heart rate or systolic blood pressure; RR was therefore likely to be a better means of discriminating between stable patients and patients at risk (Subbe et al., 'Effect of introducing the Modified Early Warning score on clinical outcomes, cardio-pulmonary arrests and intensive care utilization in acute medical admissions', *Anaesthesia* 2003; 58: 797-802). Goldhill et al. reported that 21% of ward patients with a RR of 25-29 breaths/minute assessed by a critical care outreach service died in hospital (Goldhill et al., 'A physiologically-based early warning score for ward patients: the association between score and outcome', *Anaesthesia* 2005; 60: 547-553). Those with a higher RR had even higher mortality rates. In another study, just over half of all patients suffering a serious adverse event on the general wards (e.g. a cardiac arrest or ICU admission) had a RR greater than 24 breaths/minute. These patients could have been identified as high risk up to 24 hours before the event with a specificity of over 95% (Cretikos et al., 'The Objective Medical Emergency Team Activation Criteria: a case-control study', *Resuscitation* 2007; 73: 62-72). Medical references such as these clearly indicate that an accurate, easy-to-use device for measuring RR is an important component for patient monitoring within the hospital.

[0009] Despite its importance and the large number of available monitoring techniques, RR is notoriously difficult to measure, particularly when a patient is moving. During periods of motion, non-invasive techniques based on IP and PPG signals are usually overwhelmed by artifacts, and thus completely ineffective. This makes it difficult or impossible to measure RR from an ambulatory patient. Measurements based on et-CO₂ are typically less susceptible to motion, but require a plastic tube inserted in the patient's mouth, which is uncomfortable and typically impractical for ambulatory patients.

SUMMARY OF THE INVENTION

[0010] This invention provides a technique for measuring RR using multiple input signals, including IP and accelerometer waveforms (ACC). After being measured with a body-worn system, an algorithm collectively analyzes these waveforms to determine RR from an ambulatory patient using combinations of simple peak counting, Fourier Transforms (FFT) and adaptive filtering. The patient's degree of motion determines which of these algorithms is implemented: simple peak counting is preferably used when the patient is undergoing no motion, while the FFT-based algorithm is used when motion is extreme. Adaptive filtering is typically used during periods of moderate motion. The algorithms are typically performed using a microprocessor, computer code and memory located in a wrist-worn transceiver, a sensor module located directly on the patient's chest, or on a remote server located, e.g., in a hospital. Calculations may be performed in a distributed manner, meaning portions of them can be performed with a first microprocessor (e.g., the server in the hospital), resulting in parameters that are then sent to a second microprocessor (e.g., in the wrist-worn transceiver) for final processing. Such a distributed model can reduce the computational burden on microprocessors within the body-worn monitor, thereby conserving power and extending battery life.

[0011] The accelerometer is typically mounted on the patient's torso (most typically the chest or belly), and

measures small, breathing-induced movements to generate the time-dependent ACC waveform. The ACC waveform is also highly sensitive to the patient's motion and position, and thus the ACC waveform can be processed to determine parameters such as degree of motion, posture, and activity level. With the FFT-based algorithms, time-domain ACC and IP waveforms are mathematically transformed to the frequency domain and processed to generate a power spectrum. Further processing of this signal yields frequency components corresponding to both respiratory events and motion. The ACC waveform yields well-defined frequency components that are highly sensitive to motion. These signals can be collectively processed and used to filter out motion artifacts from the transformed IP waveform. The resulting power spectrum is then further processed with a smoothing function, yielding a set of frequency-domain peaks from which RR can be accurately calculated.

[0012] The multi-component algorithm also processes both IP and ACC waveforms to determine parameters for an adaptive filtering calculation. Once the parameters are determined, this filter is typically implemented with a finite impulse response (FIR) function. Ultimately this yields a customized filtering function which then processes the IP waveform to generate a relatively noise-free waveform with well-defined pulses corresponding to RR. Each pulse can then be further processed and counted to determine an accurate RR value, even during periods of motion.

[0013] The body-worn monitor measures IP and ACC waveforms as described above, along with PPG and ECG waveforms, using a series of sensors integrated into a comfortable, low-profile system that communicates wirelessly with a remote computer in the hospital. The body-worn monitor typically features three accelerometers, each configured to measure a unique signal along its x, y, and z axes, to yield a total of nine ACC waveforms. Typically the accelerometers are embedded in the monitor's cabling or processing unit, and are deployed on the patient's torso, upper arm, and lower arm. Each ACC waveform can be additionally processed to determine the patient's posture, degree of motion, and activity level. These parameters serve as valuable information that can ultimately reduce occurrences of 'false positive' alarms/alerts in the hospital. For example, if processing of additional ACC waveforms indicates a patient is walking, then their RR rate, which may be affected by walking-induced artifacts, can be ignored by an alarm/alert engine associated with the body-worn monitor. The assumption in this case is that a walking patient is likely relatively healthy, regardless of their RR value. Perhaps more importantly, with a conventional monitoring device a walking patient may yield a noisy IP signal that is then processed to determine an artificially high RR, which then triggers a false alarm. Such a situation can be avoided with an independent measurement of motion, such as that described herein. Other heuristic rules based on analysis of ACC waveforms may also be deployed according to this invention.

[0014] Sensors attached to the wrist and bicep each measure signals that are collectively analyzed to estimate the patient's arm height; this can be used to improve accuracy of a continuous blood pressure measurement (cNIBP), as described below, that measures systolic (SYS), diastolic (DIA), and mean (MAP) arterial blood pressures. And the sensor attached to the patient's chest measures signals that are analyzed to determine posture and activity level, which

can affect measurements for RR, SpO₂, cNIBP, and other vital signs. Algorithms for processing information from the accelerometers for these purposes are described in detail in the following patent applications, the contents of which are fully incorporated herein by reference: BODY-WORN MONITOR FEATURING ALARM SYSTEM THAT PROCESSES A PATIENT'S MOTION AND VITAL SIGNS (U.S. Ser. No. 12/469,182; filed May 20, 2009) and BODY-WORN VITAL SIGN MONITOR WITH SYSTEM FOR DETECTING AND ANALYZING MOTION (U.S. Ser. No. 12/469,094; filed May 20, 2009). As described therein, knowledge of a patient's motion, activity level, and posture can greatly enhance the accuracy of alarms/alerts generated by the body-worn monitor.

[0015] The body-worn monitor features systems for continuously monitoring patients in a hospital environment, and as the patient transfers from different areas in the hospital, and ultimately to the home. Both SpO₂ and cNIBP rely on accurate measurement of PPG and ACC waveforms, along with an ECG, from patients that are both moving and at rest. cNIBP is typically measured with the 'Composite Technique', which is described in detail in the co-pending patent applications entitled: VITAL SIGN MONITOR FOR MEASURING BLOOD PRESSURE USING OPTICAL, ELECTRICAL, AND PRESSURE WAVEFORMS (U.S. Ser. No. 12/138,194; filed Jun. 12, 2008) and BODY-WORN SYSTEM FOR MEASURING CONTINUOUS, NON-INVASIVE BLOOD PRESSURE (cNIBP) (U.S. Ser. No. 12/650,354; filed Nov. 15, 2009), the contents of which are fully incorporated herein by reference.

[0016] As described in these applications, the Composite Technique (or, alternatively, the 'Hybrid Technique', as referred to therein) typically uses a single PPG waveform from the SpO₂ measurement (typically generated with infrared radiation), along with the ECG waveform, to calculate a parameter called 'pulse transit time' (PTT) which strongly correlates to blood pressure. Specifically, the ECG waveform features a sharply peaked QRS complex that indicates depolarization of the heart's left ventricle, and, informally, provides a time-dependent marker of a heart beat. PTT is the time separating the peak of the QRS complex and the onset, or 'foot', of the PPG waveforms. The QRS complex, along with the foot of each pulse in the PPG, can be used to more accurately extract AC signals using a mathematical technique described in detail below. In other embodiments both the red and infrared PPG waveforms are collectively processed to enhance the accuracy of the cNIBP measurement.

[0017] The electrical system for measuring IP and ACC waveforms is featured in a sensor module that connects to an end of a cable that terminates in the wrist-worn transceiver, and is mounted directly on the patient's chest. The sensor module measures high-fidelity digital waveforms which pass through the cable to a small-scale, low-power circuit mounted on a circuit board that fits within the transceiver. There, an algorithm processes the two waveforms using the multi-component algorithm to determine RR. The transceiver additionally includes a touchpanel display, barcode reader, and wireless systems for ancillary applications described, for example, in the above-referenced applications, the contents of which have been previously incorporated herein by reference.

[0018] In one aspect, the invention features a system for measuring RR from a patient. The system includes an IP sensor, connected to at least two electrodes, and a processing

system that receives and processes signals from the electrodes to measure an IP signal. The electrodes can connect to the IP sensor through either wired or wireless means. A motion sensor (e.g. an accelerometer) measures at least one motion signal (e.g. an ACC waveform) describing movement of a portion of the patient's body to which it is attached. The processing system receives the IP and motion signals, and processes them to determine, respectfully, frequency-domain IP and motion spectra. Both spectra are then collectively processed to remove motion components from the IP spectrum and determine RR. For example, during the processing, an algorithm determines motion frequency components from the frequency-domain motion spectrum, and then using a digital filter removes these, or parameters calculated therefrom, from the IP spectrum.

[0019] In embodiments, a single sensor module, adapted to be worn on the patient's torso, encloses both the IP sensor and the motion sensor. The sensor module typically includes at least one analog-to-digital converter configured to digitize the IP signal; this component may be integrated directly into a single-chip circuit (e.g. an application-specific integrated circuit, or ASIC), or in a circuit consisting of a collection of discrete components (e.g. individual resistors and capacitors). The sensor module can also include at least one analog-to-digital converter configured to digitize the motion signal. Similarly, this component can be integrated directly into the accelerometer circuitry. Digitizing the IP and motion signals before transmitting them to the processing system has several advantages, as described in detail below.

[0020] In other embodiments, the sensor module includes a temperature sensor for measuring the patient's skin temperature, and an ECG circuit (corresponding to a three, five, or twelve-lead ECG) for measuring an ECG waveform. In embodiments, the sensor module simply rests on the patient's chest during a measurement, or can be connected with a small piece of medical tape. Alternatively, the housing features a connector that connects directly to an ECG electrode worn on the patient's torso.

[0021] The processing system is typically worn on the patient's wrist. Alternatively, this system can be within the sensor module, or within a remote computer server (located, e.g., in a hospital's IT system). Typically a wireless transceiver (e.g. a transceiver based on 802.11 or 802.15.4 transmission protocols) is included in the system, typically within the processing module. Such a transceiver, for example, can wirelessly transmit IP and ACC waveforms to a remote processing system for further analysis. In this case, the processing system is further configured to wirelessly transmit a RR value back to a second processor worn on the patient's body, where it can then be displayed (using, e.g., a conventional display).

[0022] Accelerometers used within the system typically generate a unique ACC waveform corresponding to each axis of a coordinate system. In embodiments the system can include three accelerometers, each worn on a different portion of the patient's body. Waveforms generated by the accelerometers can then be processed as described in detail below to determine the patient's posture.

[0023] In another aspect, the invention features an algorithm, typically implemented using compiled computer code, a computer memory, and a microprocessor, that processes IP and ACC waveforms by calculating their power spectra by way of a Fourier transform (e.g. a fast Fourier transform, or FFT). The algorithm then determines motion

components from the frequency-dependent ACC spectrum, and using a digital filter removes these, or components calculated therefrom, from the frequency-dependent IP spectrum. This yields a processed, frequency-dependent IP spectrum which can then be analyzed as described in detail below to estimate RR, even when large amounts of motion-induced noise are evident on the IP signal.

[0024] In embodiments, power spectra for both the IP and ACC waveforms are calculated from a complex FFT that includes both real and imaginary components. In other embodiments, alternative mathematical transforms, such as a Laplace transform, can be used in place of the FFT.

[0025] To determine a digital filter from the ACC power spectrum, the algorithm typically includes a method for first finding a peak corresponding to one or more frequencies related to the patient's motion. A bandpass filter, characterized by a passband which filters out these (and related) frequencies, is then generated and used to process the IP spectrum. Alternatively, these frequencies can simply be divided or subtracted from the IP spectrum. In all cases, this yields a processed IP spectrum which is then further analyzed to determine a frequency corresponding to RR. Analysis can include smoothing, averaging, or related methodologies used to extract a single frequency, corresponding to RR, from a collection of frequencies. In embodiments, the algorithm can also include a component that generates an alarm if the patient's RR is greater than a first pre-determined threshold, or less than a second pre-determined threshold. The alarm can be generated by considering both the patient's RR and posture.

[0026] In another aspect, the invention features a multi-component algorithm for determining RR. The multi-component algorithm first determines a motion parameter from the ACC waveform. The motion parameter indicates the patient's degree of motion, activity level, or posture. Based on the motion parameter, the multi-component algorithm then selects one of the following algorithms to process one or both of the ACC and IP waveforms to determine RR: i) a first algorithm featuring counting breathing-induced pulses in the IP waveform; and ii) a second algorithm featuring collectively processing both the ACC and IP waveform to determine a digital adaptive filter, and then processing one of these waveforms with the adaptive filter to determine RR; and iii) a third algorithm featuring mathematically transforming both the ACC and IP waveforms into frequency-domain spectra, and then collectively processing the spectra to determine RR. Typically the first, second, and third algorithms are deployed, respectively, when the motion parameter indicates the patient's motion is non-existent, minimal, or large. For example, the first algorithm is typically deployed when the patient is resting; the second algorithm deployed when the patient is moving about somewhat; and the third algorithm deployed when the patient is standing up, and possibly walking or even running.

[0027] In another aspect, the multi-component algorithm is deployed on one or more microprocessors associated with the system. For example, to conserve battery life of the body-worn monitor, numerically intensive calculations (such as the FFT or those used to generate the digital filter) can be performed on a remote server; intermediate or final parameters associated with these calculations can then be wirelessly transmitted back to the body-worn monitor for further processing or display. In another embodiment, portions of the multi-component algorithm can be carried out by

microprocessors located in both the wrist-worn transceiver and chest-worn sensor module. The microprocessors can communicate through serial or wireless interfaces. This latter approach will have little impact on battery life, but can reduce processing time by simultaneously performing different portions of the calculation.

[0028] In another aspect, the invention provides a method for measuring RR from a patient using an algorithm based on a digital adaptive filter. In this approach, the body-worn monitor measures both IP and ACC waveforms as described above. The waveforms are then collectively processed to determine a set of coefficients associated with the adaptive filter. Once calculated, the coefficients are stored in a computer memory. At a later point in time, the monitor measures a second set of IP and ACC waveforms, and analyzes these to determine a motion parameter. When the motion parameter exceeds a pre-determined threshold, the algorithm processes the set of coefficients and the latest IP waveform to determine a processed IP waveform, and then analyzes this to determine RR.

[0029] In embodiments, the digital adaptive filter is calculated from an impulse response function, which in turn is calculated from either a FIR function or an autoregressive moving average model. The order of the adaptive filter calculated from the impulse response function is typically between 20 and 30, while the order of the filter calculated from the autoregressive moving average model is typically between 1 and 5. A specific mathematic approach for calculating the digital adaptive filter is described below with reference to Eqs. 1-16. As described above, the coefficients can be calculated using a microprocessor located on the wrist-worn transceiver, sensor module, or a remote server.

[0030] In yet another aspect, the invention provides a system for measuring RR featuring a sensor module configured to be worn on the patient's torso. The sensor module includes sensors for measuring both IP and ACC waveforms, and a serial transceiver configured to transmit the digital signals through a cable to a wrist-worn processing system. This system features a connector that receives the cable, and a processor that receives digital signals from the cable and collectively processes them with a multi-component algorithm to determine RR. In embodiments, the sensor module digitally filters the IP and ACC waveforms before they pass through the cable. The cable can also include one or more embedded accelerometers, and is configured to attach to the patient's arm.

[0031] In all embodiments, the wrist-worn transceiver can include a display configured to render the patient's RR and other vital signs, along with a touchpanel interface. A wireless transceiver within the wrist-worn transceiver can transmit information to a remote computer using conventional protocols such as 802.11, 802.15.4, and cellular (e.g. CDMA or GSM). The remote computer, for example, can be connected to a hospital network. It can also be a portable computer, such as a tablet computer, personal digital assistant, or cellular phone.

[0032] Many advantages are associated with this invention. In general, it provides an accurate measurement of RR, along with an independent measurement of a patient's posture, activity level, and motion. These parameters can be collectively analyzed to monitor a hospitalized patient and improve true positive alarms while reducing the occurrence of false positive alarms. Additionally, the measurement of RR is performed with a body-worn monitor that is comfort-

able, lightweight, and low-profile, making it particularly well suited for ambulatory patients. Such a monitor could continuously monitor a patient as, for example, they transition from the emergency department to the ICU, and ultimately to the home after hospitalization.

[0033] Still other embodiments are found in the following detailed description of the invention and in the claims.

BRIEF DESCRIPTION OF THE DRAWINGS

[0034] FIG. 1 shows a schematic view of a patient wearing a sensor module on their chest that connects to three electrodes arranged in an Einthoven's triangle configuration and measures both ACC and IP waveforms;

[0035] FIG. 2 shows a schematic view of a patient wearing a sensor module on their belly that connects to three electrodes arranged in an Einthoven's triangle configuration and measures both ACC and IP waveforms;

[0036] FIG. 3A is a schematic view of a patient wearing an alternate embodiment of the invention featuring a sensor module for measuring IP and ACC waveforms that connects directly through an electrode to the patient's belly;

[0037] FIG. 3B is a schematic, cross-sectional view of the sensor module of FIG. 3A connected to the patient's belly with the electrode;

[0038] FIGS. 4A and 4B show, respectively, a three-dimensional image of the body-worn monitor of the invention attached to a patient during and after an initial indexing measurement. FIG. 4A shows the system used during the indexing portion of the Composite Technique, and includes a pneumatic, cuff-based system **85**. FIG. 4B shows the system used for subsequent RR and cNIBP measurements;

[0039] FIG. 5 shows a three-dimensional image of the wrist-worn transceiver used with the body-worn monitor from FIGS. 4A and 4B;

[0040] FIG. 6 shows a schematic view of a multi-component algorithm used to collectively process ACC and IP waveforms to measure RR according to the invention;

[0041] FIG. 7 shows a schematic drawing of Algorithm 1 used in the multi-component algorithm of FIG. 6;

[0042] FIG. 8 shows a schematic drawing of computation steps used in Algorithm 1 to calculate RR;

[0043] FIG. 9 shows a series of time-dependent IP waveforms (left-hand side) and their corresponding mathematical derivatives (right-hand side) measured from a slowly breathing patient and processed with digital filters featuring gradually decreasing passbands;

[0044] FIG. 10 shows a series of time-dependent IP waveforms (left-hand side) and their corresponding mathematical derivatives (right-hand side) measured from a rapidly breathing patient and processed with digital filters featuring gradually decreasing passbands;

[0045] FIG. 11 shows a schematic drawing of Algorithm 2 used in the multi-component algorithm of FIG. 6 to calculate RR;

[0046] FIG. 12 shows a schematic drawing of Algorithm 3 used in the multi-component algorithm of FIG. 6 to calculate RR;

[0047] FIG. 13 shows a schematic drawing of computation steps used in Algorithms 2 and 3 to calculate RR;

[0048] FIG. 14 shows a schematic drawing of a flow chart of computation steps used to calculate coefficients for adaptive filtering which are used in Algorithms 2 and 3 to calculate RR;

[0049] FIG. 15A shows a graph of an ACC waveform filtered initially with a 0.01→2 Hz bandpass filter. FIG. 15B shows a graph of an IP waveform filtered initially with a 0.01→12 Hz bandpass filter. FIG. 15C shows a graph of an IP waveform adaptively filtered with a bandpass filter ranging from 0.01 Hz to 1.5 times the breathing rate calculated from the ACC waveform in FIG. 15A. FIG. 15D shows a graph of a first derivative of the filtered IP waveform in FIG. 15C. FIG. 15E shows a graph of the adaptively filtered IP waveform in FIG. 15C along with markers indicating slow, deep breaths as determined from the algorithm shown by the flow chart in FIG. 14. FIG. 15F is a flow chart showing the algorithmic steps used to process the waveforms shown in FIG. 15A-E;

[0050] FIG. 16A shows a graph of an ACC waveform filtered initially with a 0.01→2 Hz bandpass filter. FIG. 16B shows a graph of an IP waveform filtered initially with a 0.01→12 Hz bandpass filter. FIG. 16C shows a graph of an IP waveform adaptively filtered with a bandpass filter ranging from 0.01 Hz to 1.5 times the breathing rate calculated from the ACC waveform in FIG. 16A. FIG. 16D shows a graph of a first derivative of the filtered IP waveform in FIG. 16C. FIG. 16E shows a graph of the adaptively filtered IP waveform in FIG. 16C along with markers indicating fast, deep breaths as determined from the algorithm shown by the flow chart in FIG. 14. FIG. 16F is a flow chart showing the algorithmic steps used to process the waveforms shown in FIG. 16A-E.

[0051] FIG. 17A shows a graph of an ACC waveform filtered initially with a 0.01→2 Hz bandpass filter. FIG. 17B shows a graph of an IP waveform filtered initially with a 0.01→12 Hz bandpass filter. FIG. 17C shows a graph of an IP waveform adaptively filtered with a bandpass filter ranging from 0.01 Hz to 1.5 times the breathing rate calculated from the ACC waveform in FIG. 17A. FIG. 17D shows a graph of a first derivative of the filtered IP waveform in FIG. 17C. FIG. 17E shows a graph of the adaptively filtered IP waveform in FIG. 17C along with markers indicating very fast, deep breaths as determined from the algorithm shown by the flow chart in FIG. 14. FIG. 17F is a flow chart showing the algorithmic steps used to process the waveforms shown in FIG. 17A-E.

[0052] FIG. 18 shows a schematic drawing of Algorithm 4 used in the multi-component algorithm of FIG. 6 to calculate RR;

[0053] FIG. 19 shows a schematic drawing of computation steps used in Algorithm 4 to calculate RR;

[0054] FIG. 20A shows a time-domain IP waveform measured from a running patient. FIG. 20B shows a time-domain ACC waveform simultaneously measured from the same patient. FIG. 20C shows a frequency-domain power spectrum of the IP waveform of FIG. 20A. FIG. 20D shows a frequency-domain power spectrum of the ACC waveform of FIG. 20B. FIG. 20E shows the frequency-domain power spectrum of the IP waveform of FIG. 20C processed with a notch filter. FIG. 20F shows the frequency-domain power spectrum of the IP waveform of FIG. 20E processed with a smoothing filter.

[0055] FIG. 21A shows a time-domain IP waveform measured from a walking patient. FIG. 21B shows a time-domain ACC waveform simultaneously measured from the same patient. FIG. 21C shows a frequency-domain power spectrum of the IP waveform of FIG. 21A. FIG. 21D shows a frequency-domain power spectrum of the ACC waveform

of FIG. 21B. FIG. 21E shows the frequency-domain power spectrum of the IP waveform of FIG. 21C processed with a notch filter. FIG. 21F shows the frequency-domain power spectrum of the IP waveform of FIG. 21E processed with a smoothing filter.

[0056] FIG. 22A shows a time-domain IP waveform measured from a stationary patient laying down on their back and breathing normally. FIG. 22B shows a time-domain ACC waveform measured simultaneously from the same patient. FIG. 22C shows a frequency-domain power spectra of both the time-domain IP waveform of FIG. 22A and ACC waveform of FIG. 22B.

[0057] FIG. 23A shows a time-domain IP waveform measured from a stationary patient laying down on their back and breathing rapidly. FIG. 23B shows a time-domain ACC waveform measured simultaneously from the same patient. FIG. 23C shows frequency-domain power spectra of both the time-domain IP waveform of FIG. 23A and ACC waveform of FIG. 23B.

[0058] FIG. 24A shows a time-domain IP waveform measured from a stationary patient laying face down and breathing normally. FIG. 24B shows a time-domain ACC waveform measured simultaneously from the same patient. FIG. 24C shows and frequency-domain power spectra of both the time-domain IP waveform of FIG. 24A and ACC waveform of FIG. 24B.

[0059] FIG. 25A shows a frequency-domain power spectrum of an IP waveform processed with no smoothing filter. FIG. 25B shows a frequency-domain power spectrum of an IP waveform processed with a 5.0 Hz smoothing filter. FIG. 25C shows a frequency-domain power spectrum of an IP waveform processed with a 2.5 Hz smoothing filter. FIG. 25D shows a frequency-domain power spectrum of an IP waveform processed with a 1.0 Hz smoothing filter. FIG. 25E shows a frequency-domain power spectrum of an IP waveform processed with a 0.5 Hz smoothing filter.

[0060] FIG. 26A shows a frequency-domain power spectrum of an IP waveform processed with no running average. FIG. 26B shows a frequency-domain power spectrum of an IP waveform processed with a 10-point running average. FIG. 26C shows a frequency-domain power spectrum of an IP waveform processed with a 20-point running average. FIG. 26D shows a frequency-domain power spectrum of an IP waveform processed with a 50-point running average. FIG. 26E shows a frequency-domain power spectrum of an IP waveform processed with a 100-point running average.

[0061] FIG. 27A shows a time-domain IP waveform measured from a rapidly breathing stationary patient. FIG. 27B shows a frequency-domain power spectra calculated from the time-domain IP waveform of FIG. 27A using a 1000-point FFT. FIG. 27C shows a frequency-domain power spectra calculated from the time-domain IP waveform of FIG. 27A using a 500-point FFT. FIG. 27D shows a frequency-domain power spectra calculated from the time-domain IP waveform of FIG. 27A using a 250-point FFT.

[0062] FIG. 28A shows a time-domain IP waveform measured from a slowly breathing stationary patient. FIG. 28B shows frequency-domain power spectra calculated from the time-domain IP waveform of FIG. 28A using a 1000-point FFT. FIG. 28C shows frequency-domain power spectra calculated from the time-domain IP waveform of FIG. 28A using a 500-point FFT. FIG. 28D shows frequency-domain power spectra calculated from the time-domain IP waveform of FIG. 28A using and a 250-point FFT.

[0063] FIG. 29 shows a schematic view of the patient of FIG. 1 and a coordinate axis used with an algorithm and ACC waveforms to determine the patient's posture;

[0064] FIG. 30A shows a graph of time-dependent ACC waveforms measured from a patient's chest during different postures; and

[0065] FIG. 30B shows a graph of time-dependent postures determined by processing the ACC waveforms of FIG. 30A with an algorithm and coordinate axis shown in FIG. 29.

DETAILED DESCRIPTION OF THE INVENTION

[0066] Sensor Configuration

[0067] Referring to FIGS. 1 and 2, a sensor module 25 featuring an IP circuit 27 and accelerometer 12 is mounted on the chest of a patient 10 to simultaneously measure IP and ACC waveforms. A multi-component algorithm, featuring specific algorithms based on simple peak counting, FFT analysis, and adaptive filters processes these waveforms to accurately measure RR even when the patient 10 is moving. During a measurement, both the IP 27 and an ECG circuit 26 within the sensor module connect to a trio of electrodes 20, 22, 24 typically positioned on the patient's torso in an Einthoven's triangle configuration. Each electrode 20, 22, 24 measures a unique analog signal that passes through a shielded cable to the ECG circuit 26. This component typically includes a differential amplifier and a series of analog filters with passbands that pass the high and low-frequency components that contribute to the ECG waveform, but filter out components associated with electrical and mechanical noise. To determine RR, the IP circuit 27 generates a low-amperage current (typically 1-4 mA) that is modulated at a high frequency (typically 50-100 kHz). The current typically passes through electrode LL ('lower left') 24, which is located on the lower left-hand side of the patient's torso. It then propagates through the patient's chest, as indicated by the arrow 29, where a respiration-induced capacitance change modulates it according to the RR. Electrode UR ('upper right') 20 detects the resultant analog signal, which is then processed with a separate differential amplifier and series of analog filters within the IP circuit to determine an analog IP waveform featuring a low-frequency series of pulses corresponding to RR. Typically the analog filters in the IP circuit 27 are chosen to filter out high-frequency components that contribute to the ECG QRS complex.

[0068] The accelerometer 12 mounted within the sensor module 25 measures ACC waveforms that are modulated by the patient's general motion and posture, along with small respiratory-induced motions of the patient's torso. The accelerometer 12 simultaneously measures acceleration (e.g. motion) along x, y, and z axes of a local coordinate system, such as that shown in FIG. 29. As shown in this figure, and described in more detail below, the accelerometer 12 is preferably aligned so the z axis points into the patient's torso. Within the accelerometer 12 is an internal analog-to-digital converter that generates a digital ACC waveform corresponding to each axis.

[0069] Also within the sensor module 25 is a microprocessor 33 and analog-to-digital converter (not shown in the figure) that digitize the IP and ACC waveforms, and sends them through a serial protocol (e.g. the control area network, or CAN protocol) to the wrist-worn transceiver for further

processing. There, IP and ACC waveforms are processed with the multi-component algorithm to determine the patient's RR. Alternatively, the algorithms can be performed in part with a remote server, or with the microprocessor 33 mounted within the sensor module. Additional properties such as the patient's posture, degree of motion, and activity level are determined from these same digital ACC waveforms. The axis within the accelerometer's coordinate system that is aligned along the patient's torso (and thus orthogonal to their respiration-induced torso movement) is typically more sensitive to events not related to respiration, e.g. walking and falling.

[0070] In a preferred embodiment, digital accelerometers manufactured by Analog Devices (e.g. the ADXL345 component) are used in the configuration shown in FIG. 1. These sensors detect acceleration over a range of +/-2 g (or, alternatively, up to +/-8 g) with a small-scale, low-power circuit.

[0071] Many patients are classified as 'belly breathers', meaning during respiration their belly undergoes larger movements than their chest. A relative minority of patients are 'chest breathers', indicating that it is the chest that undergoes the larger movements. For this reason it is preferred that RR is determined using an ACC waveform detected along the z-axis with an accelerometer positioned on the patient's belly. In alternate configurations, a separate accelerometer mounted on the chest can be used in its place or to augment data collected with the belly-mounted sensor. Typically, ACC waveforms along multiple axes (e.g. the x and y-axes) are also modulated by breathing patterns, and can thus be used to estimate RR. In still other configurations multiple signals from one or more accelerometers are collectively processed to determine a single 'effective' ACC waveform representing, e.g., an average of multiple ACC waveforms. This waveform is then processed as described herein to determine the patient's RR.

[0072] In other embodiments, the sensor module 25 includes a temperature sensor 34, such as a conventional thermocouple, that measures the skin temperature of the patient's chest. This temperature is typically a few degrees lower than conventional core temperature, usually measured with a thermometer inserted in the patient's throat or rectum. Despite this discrepancy, skin temperature measured with the temperature sensor 34 can be monitored continuously and can therefore be used along with RR and other vital signs to predict patient decompensation.

[0073] In a preferred embodiment, both the ECG and IP waveforms are generated with a single ASIC, or alternatively with a circuit composed of a series of discrete elements which are known in the art. The ASIC has an advantage in that it is a single chip and is included in a circuit that typically contains fewer electrical components, is relatively small, and is typically very power efficient. In either embodiment, the ECG circuit typically includes an internal analog-to-digital converter that digitizes both waveforms before transmission to the wrist-worn transceiver for further processing.

[0074] Transmission of digital IP, ECG, and ACC waveforms, along with processed RR values, has several advantages over transmission of analog waveforms. First, a single transmission line in the monitor's cabling can transmit multiple digital waveforms, each generated by different sensors. This includes multiple ECG waveforms (corresponding, e.g., to vectors associated with three, five, and

twelve-lead ECG systems) from the ECG circuit 26, the IP waveform from the IP circuit 27, and ACC waveforms associated with the x, y, and z axes of accelerometers 10, 12 attached to the patient's chest. Limiting the transmission line to a single cable reduces the number of wires attached to the patient, thereby decreasing the weight and cable-related clutter of the body-worn monitor. Second, cable motion induced by an ambulatory patient can change the electrical properties (e.g. electrical impedance) of its internal wires. This, in turn, can add noise to an analog signal and ultimately the vital sign calculated from it. A digital signal, in contrast, is relatively immune to such motion-induced artifacts. More sophisticated ECG circuits can plug into the wrist-worn transceiver to replace the three-lead system shown in FIGS. 1 and 2. These ECG circuits, for example, can include, e.g., five and twelve leads.

[0075] Digital data streams are typically transmitted to the wrist-worn transceiver using a serial protocol, such as the CAN protocol, USB protocol, or RS-232 protocol. CAN is the preferred protocol for the body-worn monitor described in FIGS. 4A, 4B.

[0076] Multi-Component Algorithm for Determining RR

[0077] FIG. 6 shows an overview of a multi-component algorithm 149, implemented with the body-worn monitor shown in FIGS. 4A, 4B, and 5 and an accompanying server, which determines a patient's RR according to the invention. The algorithm features the following components for determining RR from a hospitalized patient undergoing different levels of motion:

[0078] Algorithm 1—simple peak-counting calculation implemented on the wrist-worn transceiver; used when patient motion is minimal or non-existent

[0079] Algorithm 2—adaptive filtering calculation with filtering parameters calculated on the wrist-worn transceiver; used when some patient motion is evident

[0080] Algorithm 3—adaptive filtering calculation with filtering parameters calculated on the server and then transmitted to the wrist-worn transceiver; used when some patient motion is evident

[0081] Algorithm 4—FFT-based calculation with active noise cancellation, performed on the server with processed data transmitted to the wrist-worn transceiver; used when large amounts of patient motion is evident

[0082] Each of these algorithms, along with both respiratory and motion data to support them, are described in more detail below.

[0083] Algorithms 1-4—Simultaneous Determination of Motion and Respiratory Signals

[0084] Referring again to FIG. 6, before Algorithms 1-4 are implemented, the body-worn monitor collects ECG, PPG, IP, and ACC waveforms (step 150) from the patient, as described above with references to FIGS. 1-5. A patient's degree of motion (step 152) and their posture (step 154) are determined by processing the ACC waveforms using algorithms described in detail in the following pending patent applications, the contents of which have been previously incorporated herein by reference: BODY-WORN MONITOR FEATURING ALARM SYSTEM THAT PROCESSES A PATIENT'S MOTION AND VITAL SIGNS (U.S. Ser. No. 12/469,182; filed May 20, 2009) and BODY-WORN VITAL SIGN MONITOR WITH SYSTEM FOR DETECTING AND ANALYZING MOTION (U.S. Ser. No. 12/469,094; filed May 20, 2009). FIGS. 29 and 30, below,

further indicate how processing of ACC waveforms yields both posture, degree of motion, and activity level.

[0085] The multi-component algorithm 149 processes these motion-related properties to determine which of the four above-described algorithms to implement. The selected algorithm then simultaneously processes ECG and ACC waveforms to determine RR. As described above, motion can significantly complicate determination of RR, as these two signals often occur at similar frequencies (typically 0.1-2 Hz), and feature signal components (e.g. 'pulses' due to breathing and walking) that look similar and themselves are composed of common frequency components. In addition to RR, the body-worn monitor calculates cNIBP using the ECG and PPG waveforms, and SpO2 from PPG waveforms generated simultaneously with both red and infrared light sources, as described above. HR is calculated from the ECG waveform using methods known in the art.

[0086] Both high-level and detailed aspects of Algorithms 1-4 are described below.

[0087] Algorithm 1—Peak Counting

[0088] Algorithm 1 (step 162) is implemented after determining that the patient is supine and undergoing minimal or no motion (step 156). Here, it is assumed that the IP waveform used to determine RR is not significantly corrupted by motion, and thus RR can be calculated with relatively simple means. Put another way, in this case there is minimal coupling between the ACC and IP waveforms; collective processing of these waveforms to remove motion-related artifacts, as is done with Algorithms 2-4, is therefore not required. Algorithm 1 typically yields a highly accurate RR, and because of its simplicity requires relatively few computational cycles. This in turn reduces power consumption and prolongs battery lifetime on the wrist-worn transceiver.

[0089] FIG. 7 shows a high-level diagram describing Algorithm 1. In this case, all calculations are performed with a microprocessor on the wrist-worn transceiver 172 to yield final values for RR. Once determined, a wireless system on the transceiver sends these values to a remote server 170 for further processing, display, storage, and incorporation into a hospital's medical records system. The wrist-worn transceiver 172 additionally displays RR values on the transceiver's touchpanel display so that they can be viewed at the patient's bedside. FIG. 8 shows the specific details of this calculation. It begins by confirming that the patient is supine and not moving (step 180), which as described above is accomplished by processing ACC signals generated by the three 3-axis accelerometers integrated in the body-worn monitor. The IP waveform is then digitally filtered with a 2.5 Hz digital bandpass filter to remove extraneous noise (typically from electrical and mechanical sources) that complicates processing of the waveform. In typical applications, the digital filter features a second-order infinite impulse response (IIR). In order to remove any phase distortion, the IIR filter is executed in both the forward and reverse directions. The reverse filtering step doubles the effective order of the filter, and cancels out any phase distortion introduced by the forward filtering operation. The reverse filtering step is implemented by executing the standard IIR difference equation, performing a time-reversal on the outputted data, and then executing the same IIR difference equation. While effective in removing phase distortion, such additional steps require an extra difference computation which cannot be performed in real-time on a stream of data.

This, in turn, increases power consumption in the wrist-worn transceiver, and thus shortens battery life.

[0090] FIG. 9 shows how filtering raw IP waveforms with different passbands ultimately affects the signal-to-noise ratio of these signals and their corresponding derivatives. Ultimately, it is these derivatives that are processed to determine RR.

[0091] Referring again to FIG. 8, the digitally filtered IP waveform is then derivatized and squared using Algorithm 1 (step 184), yielding a signal similar to that shown in the right-hand side of FIG. 9. Taking a derivative removes any low-frequency baseline components from the IP waveform, and additionally generates a clear, well-defined zero-point crossing corresponding to each peak in the IP signal. Each peak corresponds to each respiration event. The derivative used for this calculation is typically a 5-point derivative, meaning that data point IPP_{x+5} is subtracted from data point IPP_x to calculate the derivative. When the IP waveform is sampled at 50 Hz, which is preferred, this means data points separated by 0.1 seconds are used for the derivative. Such a method for taking a derivative is preferred over that using directly sequential data points, i.e. a derivative where data point IPP_{x+1} is subtracted from data point IPP_x (i.e. the data points are separated by 0.02 seconds for data collection rates of 50 Hz). A 5-point derivative typically yields a relatively strong signal featuring a high signal-to-noise ratio and minimal phase distortion. Additionally, as shown in FIG. 9, the passband of the digital filter has a significant impact on the derivatized signal, and features an optimal value that is closely coupled to the actual value of RR. For example, for the signals shown in FIG. 9 (corresponding to roughly 8 breaths/minute), the ideal high-frequency cutoff for the passband is near 2.5 Hz, as indicated in the figure with a star. This yields a signal where the respiratory-induced peaks can be easily processed by counting the zero-point crossing with a counting algorithm (step 186). Once determined, this initial guess at RR, along with the derivatized signal used to determine it, is compared to a series of pre-determined metrics to estimate the accuracy of the determination (step 188). In particular, the number of peaks determined during a pre-determined time period (e.g. 20 seconds) is then compared over three consecutive periods. The standard deviation (SD in FIG. 8) of the counts within these periods is then calculated using standard means, and then compared to a pre-determined value (β) to ensure that the RR is relatively constant during the measurement period. A low standard deviation, for example, would indicate that the RR is relatively constant for the three consecutive 20-second periods, which in turn indicates that the measurement is likely accurate. In contrast, a high standard deviation indicates that the RR is either changing rapidly or characterized by a waveform having a low signal-to-noise ratio, which in turn indicates that the measurement is likely inaccurate. In typical cases, β has a value between 0-2 breaths/minute. The actual value of RR (w in FIG. 8) is then compared to pre-determined threshold values ($\epsilon 1$ and $\epsilon 2$) to estimate if it is realistic. For example, $\epsilon 1$ represents an upper level of RR, and is typically 60 breaths/minute. At this level a patient may be hyperventilating. $\epsilon 2$ represents a lower level of RR, and is typically about 5 breaths/minute. Below this and a patient may be undergoing respiratory failure.

[0092] If the RR value calculated during steps 180-186 meets the criteria defined in step 188, it is considered to be valid, or 'true' (T in FIG. 8), and is reported by the

body-worn monitor. In contrast, if the RR value fails the criteria defined in step 188, it is assumed to be 'false' (F in FIG. 8), and further processing is performed. In particular, the raw IP waveform is processed again with a digital bandpass filter characterized by a different passband (step 190) which is typically 12 Hz. The second filter may yield a waveform featuring high-frequency components that are removed by the first filter. After this filtering step the calculations originally performed during steps 184, 186, 188 are repeated. FIG. 10 indicates the merits of processing the raw IP waveform with a digital filter having an increase passband. In this case, the patient is undergoing a high RR (roughly 60 breaths/minute), with each sharp pulse in the IP waveform composed of a large and far-ranging collection of frequency components. Thus, filtering this waveform with the 2.5 Hz digital filter described in step 182 and shown in the lower portion of FIG. 10 yields a filtered IP waveform wherein the breathing-induced pulses are depleted. Taking the derivative of this signal yields the waveform shown in the lower right-hand portion of FIG. 10. The waveform lacks the information to properly determine RR. In contrast, as indicated in FIG. 10 by a star, digitally filtering the raw IP waveform with a 12 Hz passband yields a relatively noise-free signal from which a derivatized waveform can be determined as described above (step 192). From this waveform, zero-point crossings, each corresponding to an individual breath, can be easily counted as used to estimate a value of RR (step 194). This value is then compared to the same pre-determined values (β , $\epsilon 1$, $\epsilon 2$) used during step 188 to estimate the validity of the calculated RR (step 196). If determined to be accurate, this value is reported by the body-worn monitor as described above; if not, the algorithm determines that an accurate measurement cannot be made, a series of dashes (e.g. '---') are rendered by the monitor, and the process is repeated.

[0093] Algorithms 2 and 3—Adaptive Filtering

[0094] Both Algorithms 2 and 3 describe methods for determining RR from ACC and IP waveforms using a technique called 'adaptive filtering'. The general premise of adaptive filtering, as used in this application, is that motion-induced frequency components in the ACC waveform are determined and then filtered from the simultaneously measured IP waveform. This yields a clean, relatively uncorrupted waveform from which RR can be accurately determined. In Algorithm 2, the coefficients for adaptive filtering are determined from the ACC waveform by processing performed on the wrist-worn transceiver. This may be computationally 'expensive', and thus increase power consumption, but has the added benefit that all calculations can be done in the absence of a remote server. In Algorithm 3, both IP and ACC waveforms are transmitted to the remote server following a measurement, and the coefficients for adaptive filtering are calculated on this platform. Afterwards, they are sent back to the wrist-worn transceiver, where the calculation is completed. Alternatively, the waveforms are fully processed on the remote server with adaptive filtering, and values of RR are transmitted back to the wrist-worn transceiver. In both cases, once received, the values of RR are displayed and available for any follow-on alarming/alerting applications.

[0095] FIG. 11 provides a high-level overview of Algorithm 2, which features a wrist-worn transceiver 202 that collects ACC and IP waveforms, processes the IP waveforms to determine that motion is present, and then collectively

processes the ACC and IP waveforms with an adaptive filter algorithm to determine RR. Once calculated, this parameter is wirelessly transmitted to a remote server **200** for storage and further processing. During Algorithm 3, shown schematically in FIG. 12, the wrist-worn transceiver **212** collects ACC and IP waveforms, and wirelessly transmits these to the remote server **210** for processing. The remote server determines adaptive filter parameters as described in detail below, and then wirelessly transmits these back to the transceiver **212**, which uses them to digitally filter the IP waveform to determine RR in the presence of motion. Once determined, the value of RR is transmitted from the transceiver **212** to the server **210** for storage and follow-on analysis.

[0096] According to Algorithm 3, the coefficients determined by the remote server **210** can be continuously used by the wrist-worn transceiver **212** for an extended, follow-on period to adaptively filter IP waveforms. This further increases computational efficiency and reduces power consumption on the transceiver. Typically the follow-on period is several minutes, and preferably the motion during this period is similar in type and magnitude to that used when the coefficients were originally calculated. This ensures that motion can be adequately filtered out from the IP waveform. If the type or magnitude of the patient's motion changes, both IP and ACC waveforms are retransmitted from the transceiver **212** to the remote server **210**, and the process illustrated in FIG. 12 is repeated.

[0097] FIG. 13 describes a general algorithm for adaptive filtering which can be used for both Algorithm 2 and/or 3. Both algorithms rely on a 'batch process' technique, which is designed for a linear deterministic system, and uses the ACC waveforms measured from the chest-worn accelerometer (component **12** in FIG. 1) as a reference signal. In alternate embodiments, this approach can be replaced with more sophisticated models, such as those involving recursive methods or non-linear deterministic systems. As described above, both Algorithms 2 and 3 begin with a determination that the patient is moving (e.g. moving their arms or legs), but not walking (step **220**). The body-worn monitor then measures ACC and IP waveforms (step **222**), and then the adaptive filter coefficients are determined (step **224**) on either the wrist-worn transceiver (Algorithm 2) or the remote server (Algorithm 3). Once determined, the coefficients are used to adaptively filter the IP waveform to remove any motion-induced noise (step **226**), resulting in a relatively noise-free waveform that is uncorrupted by motion and other noise (e.g. that from electrical and mechanical sources). At this point the waveform is processed in a manner similar to that described with reference to Algorithm 1. Specifically, the waveform is derivatized and squared (step **228**) to remove any low-frequency baseline components and generate a zero-point crossing for each respiratory-induced pulse. The algorithm then counts the zero-point crossings (step **230**) to determine an initial RR, which is then compared to the pre-determined values (β , $\epsilon 1$, $\epsilon 2$) described above to estimate if this rate is valid.

[0098] FIG. 14 highlights an algorithm **249** for determining the adaptive filtering coefficients, and for performing an adaptive digital filter. Prior to implementing the algorithm, IP and ACC waveforms from the x, y, and z-axes are collected at a frequency of 50 Hz for a period ranging from about 2-3 minutes, resulting in N samples as defined below.

During this period it is assumed that the patient is undergoing moderate motion, and that the IP waveform contains a motion artifact.

[0099] The noise reference $u[i]$ is defined as the vector length of the chest acceleration, as determined with the accelerometer mounted on the patient's chest, which combines all three axes into a single parameter as given in Eq. 1 below (step **250**).

$$u[i] = \sqrt{(\text{acc}_{Cx}[i])^2 + (\text{acc}_{Cy}[i])^2 + (\text{acc}_{Cz}[i])^2} \quad (1)$$

[0100] The measured output $y[i]$ is the IP waveform, which contains signals due to both respiration and motion. Note that for this calculation the two waveforms should be sampled at the same rate. If the IP waveform is sampled at a higher frequency than that used for the ACC waveform (e.g. 50 Hz), then this waveform must be converted into a 50 Hz waveform using conventional mathematical techniques, such as decimation or a numerical 'mapping' operation.

[0101] At this point zero mean input and output signals for $u[i]$ and $y[i]$ are constructed by subtracting the ensemble signal mean from each signal. This operation, shown below in Eqs. 2 and 3, effectively removes any DC offset (step **252**).

$$u[i] = u[i] - \left(\frac{1}{N}\right) \sum_{k=1}^N u[k] \quad (2)$$

$$y[i] = y[i] - \left(\frac{1}{N}\right) \sum_{k=1}^N y[k] \quad (3)$$

[0102] A mathematical model used to define the impulse response function of the adaptive filter must be chosen, with the two primary options being filters based on FIR (finite impulse response) or ARMA (autoregressive moving average) models. Both models are indicated below in Eqs. 4 and 5, but only one should be chosen and implemented during the algorithm (step **254**):

FIR Model

$$H[z] = b_0 + b_1 z^{-1} + \dots + b_L z^{-L} \quad (4)$$

ARMA Model

$$H[z] = \frac{b_0 + b_1 z^{-1} + \dots + b_m z^{-m}}{1 + a_1 z^{-1} + \dots + a_n z^{-p}} \quad (5)$$

At this point the order of the filter is determined. For the FIR model, the order is L; for the ARMA model, the order is m and p. In a preferred embodiment, the orders for L, m, and p are, respectively, 25, 2, and 2; these values may vary depending on the degree of motion and the computational capabilities on the wrist-worn transceiver. A column vector $\phi[i]$ is then formulated for each time-sampled data point for both the FIR and ARMA models, as described in Eqs. 6 and 7 below (step **256**). In these equations the superscript T represents the matrix transpose.

[0103] FIR Model

$$\phi[i] = [u[i] \ u[i-1] \ u[i-2] \ u[i-3] \ \dots \ u[i-25]]^T \quad (6)$$

[0104] ARMA Model

$$\phi[i]=[u[i] \ u[i-1] \ u[i-2]-y[i-1]-y[i-2]]^T \quad (7)$$

The square matrix R_N is then constructed using the column vectors defined above, as shown in Eqs. 8 and 9 (step **258**):

FIR Model

$$R_N = \sum_{i=L+1}^N \varphi[i]\varphi^T[i] \quad (8)$$

ARMA Model

$$R_N = \sum_{i=p+1}^N \varphi[i]\varphi^T[i] \quad (9)$$

[0105] The column vector B is then defined from the measured output, $y[i]$ and column vector, $\phi[i]$, as defined below in Eqs. 10 and 11 (step **260**):

FIR Model

$$B = \sum_{i=L+1}^N y[i]\varphi[i] \quad (10)$$

ARMA Model

$$B = \sum_{i=p+1}^N y[i]\varphi[i] \quad (11)$$

[0106] At this point the coefficients of the FIR and ARMA models can be written as a column vector, θ , as given below in Eqs. 12 and 13:

[0107] FIR Model

$$\theta=[b_0 \ b_1 \ b_2 \ \dots \ b_L]^T \quad (12)$$

[0108] ARMA Model

$$\theta=[b_0 \ b_1 \ b_2 \ a_1 \ a_2]^T \quad (13)$$

The square matrix and two column vectors obey the relationship given below in Eq. 14 for the adaptive filtering process.

$$\vec{R}_N \theta = B \quad (14)$$

The adaptive filtering coefficients for each model can be identified from the data using the expression below in Eq. 15, where the accented column vector $\hat{\theta}$ represents the identified coefficients (step **262**):

$$\hat{\theta} = \vec{R}_N^{-1} B \quad (15)$$

[0109] Once identified, the filter coefficients can be collectively processed with the IP waveform and used to remove any motion artifacts, leaving only the respiratory component of the signal $y_R[i]$, as shown below in Eq. 16 (step **264**):

$$y_R[i] = y[i] - \hat{\theta}\phi[i] \quad (16)$$

[0110] As described above, determination of the filter coefficients can be done on either the wrist-worn transceiver (Algorithm 2) or on the remote server (Algorithm 3). Once determined, the coefficients can be used to recover RR in real-time using the algorithm described above. Preferably the filter coefficients are updated when analysis of the ACC

waveform indicates that the patient's motion has changed. Such a change can be represented by a change in the magnitude of the motion, a change in posture, or a change in activity state. Alternatively, the filter coefficients can be updated on a periodic basis, e.g. every 5 minutes.

[0111] There may be a time difference or delay between motion signals in the ACC waveform, and motion artifacts in the IP waveform. Such a delay, for example, may be due to real phenomena (e.g. a physiological effect) or an artifact associated with the electrical systems that measure the respective waveforms (e.g. a phase delay associated with an amplifier or analog filter that processes these waveforms). In any event, the algorithm should compensate for the delay before performing calculations shown in Eqs. 1-16, above. Such compensation can be performed using a simple time-domain analysis of ACC and IP signals influenced by a well-defined motion (e.g. a step). Alternatively, the compensation can be done during manufacturing using a one-time calibration procedure.

[0112] FIGS. 15, 16, and 17 illustrate how the above-described adaptive filtering algorithm can be applied to both ACC and IP waveforms. In each of the figures, the graphs show the ACC waveform filtered with an initial, non-adaptive filter (**15A**, **16A**, **17A**; 0.01→2 Hz bandpass), and the IP waveform filtered under similar conditions with a slightly larger bandpass filter (**15B**, **16B**, **17B**; 0.01→12 Hz bandpass). Typically the IP waveform is filtered with the larger bandpass so that high-frequency components composing the rising and falling edges of pulses within these waveforms are preserved.

[0113] Once filtered, the IP waveform is processed as described above to determine an initial RR. This value may include artifacts due to motion, electrical, and mechanical noise that erroneously increases or decreases the initial RR value. But typically such errors have little impact on the final RR value that results from the adaptive filter. The middle graph (FIGS. 15C, 16C, and 17C) in each figure show the IP waveform processed with the adaptive filter. In all cases this waveform features an improved signal-to-noise ratio compared to data shown in the top graph (**15A**, **16A**, **17A**), which is processed with a non-adaptive (and relatively wide) filter. Typically the narrow bandpass on the adaptive filter removes many high-frequency components that contribute the sharp rising and falling edges of pulses in the ACC waveforms. This slightly distorts the waveforms by rounding the pulses, giving the filtered waveform a shape that resembles a conventional sinusoid. Such distortion, however, has basically no effect on the absolute number of pulses in each waveform which are counted to determine RR.

[0114] The adaptively filtered IP waveform is then derivatized and graphed in FIGS. 15D, 16D, and 17D. This waveform is then processed with the above-mentioned signal processing techniques, e.g. squaring the derivative and filtering out lobes that fall beneath pre-determined threshold values, to yield an algorithm-determined 'count', indicated in FIGS. 15E, 16E, and 17E as a series of black triangles. The count is plotted along with the adaptively filtered IP waveforms from FIGS. 15C, 16C, and 17C. Exact overlap between each pulse in the waveform and the corresponding count indicates the algorithm is working properly. Data from each of the figures correspond to varying respiratory behavior (5, 17, and 38 breaths/minute in, respectively, FIGS. 15, 16, and 17), and indicate that this technique is effective over a wide range of breathing frequencies. The right-hand side

of the figures (FIGS. 15F, 16F, and 17F) show a series of steps 290-294 that indicate the analysis required to generate the corresponding graphs in the figure.

[0115] Algorithm 4—Power Spectra Analysis

[0116] FIG. 18 shows a high-level overview of Algorithm 4, which is typically used to remove motion-related artifacts having relatively large magnitudes, such as those associated with running and walking, from the IP waveform. Algorithm 4 deconstructs both time-domain ACC and IP waveforms into their frequency-domain components, and then collectively processes these components to remove artifacts due to motion. Typically this algorithm involves collecting the two waveforms on the wrist-worn transceiver 302, and then processing them with the algorithms described above to determine if motion is present. If it is, the waveforms are wirelessly transmitted to the remote server, where they are processed with the algorithm described below to determine and then collectively process their frequency spectra to remove the affects of motion. RR is determined on the server, where it is stored, further processed, and finally sent to the wrist-worn transceiver 302 for purposed related to display and alarming.

[0117] FIG. 19 shows the computational details of Algorithm 4. The algorithm begins by determining if the patient is walking or running (step 320). This is done by processing ACC waveforms according to the techniques described in the above-described patent application, the contents of which are incorporated herein by reference. Once the patient's walking or running state is identified, the ACC and IP waveforms (represented in Eq. 17 by $a(t)$) are wirelessly transmitted to the remote server, which then determines their frequency-domain power spectra $A(\omega)$, as defined by Eq. 17 (step 322):

$$A(\omega) = \left[\frac{1}{\sqrt{2\pi}} \int_{-\infty}^{\infty} a(t)e^{-i\omega t} dt \right]^2 \quad (17)$$

$A(\omega)$ shown above in Eq. 17 represents a power spectra determined from a continuous Fourier Transform. For discrete waveforms featuring an array of discrete values a_n , like the ones measured with the body-worn monitor, $A(\omega)$ can be rewritten as:

$$A(\omega) = \left[\frac{1}{\sqrt{2\pi}} \sum_{n=-\infty}^{n=+\infty} a_n e^{-i\omega t} dt \right]^2 \quad (18)$$

or alternatively as:

$$A(\omega) = \frac{F(\omega)F^*(\omega)}{2\pi} \quad (19)$$

Where $F(\omega)$ is the discrete Fourier Transform and $F^*(\omega)$ is its complex conjugate. Power spectra determined this way for both IP and ACC waveforms are shown, for example, in FIGS. 20C, 20D, 21C, and 21D.

[0118] The power spectra of the ACC waveform is then processed to determine a collection of frequencies corresponding to the patient's motion, which as described above corresponds to walking or running for this particular algo-

rithm (step 324). Typically these motions are characterized by a collection of frequencies that are peaked between 0.5 and 2.0 Hz. Once the peak frequency is identified, a notch filter having a top-hat profile and a bandwidth of 0.5 Hz is constructed to surround it. Typically the primary walking frequency is positioned at the center of the notch filter, which extends 0.25 Hz on both the positive and negative ends. The notch filter is then used to process the power spectra of the IP waveform by only passing components outside of the notch (step 326). The resulting spectra of the IP waveform will now lack the frequency components related to motion. To simplify determination of the central respiratory signal, the IP waveform is then processed with a smoothing filter typically having a bandwidth of 4 Hz (step 328). Alternatively the spectrum can be processed with a rolling average. Both techniques smooth out discrete frequency components, creating a continuous set of peaks which can then be analyzed with conventional peak-finding algorithms (step 330). Examples of peak-finding algorithms include those that find the maximum frequency of each peak in the spectrum.

[0119] The frequency of the dominant peak in the filtered IP spectrum corresponds to RR. Once determined, this value and the spectrum it is extracted from can be compared to a series of pre-determined metrics to estimate the accuracy of the resulting RR (step 332). For example, the power (i.e. magnitude or density) of the peak can be compared to the metric ϵ_1 to determine if it is above a noise floor and corresponds to a level describing an actual RR. Additionally, the RR is compared to the ϵ_1 and ϵ_2 metrics described above to determine if the rate is within the boundaries (typically 5-60 breaths/minute) of human respiration. If so, RR is stored, further processed, and sent to the wrist-worn transceiver for display and further processing. If not, a state of 'no measurement' (indicated by dashes '---') is recorded, and the process is then repeated.

[0120] FIGS. 20 and 21 show how Algorithm 4 can effectively determine RR for a patient that is running (FIG. 20) and walking (FIG. 21). Time-domain IP and ACC waveforms for the patient, collected by the body-worn monitor, are shown respectively in FIGS. 20A and 20B. In the IP waveform, the slowly varying pulses occurring approximately every 5 seconds correspond to individual breaths, while the sharp peaks in both the ACC and IP waveforms that occur roughly twice each second corresponds to running steps. In this case, motion artifacts from the running motion clearly couple into the IP waveform.

[0121] FIGS. 20C and 20D show, respectively, frequency-domain power spectra of both the IP and ACC waveforms. Clearly shown in the power spectra of the IP waveform is a dominant peak near 2.7 Hz corresponding to motion artifacts from the patient's running. A much weaker peak is also evident near 0.2 Hz. The power spectra corresponding to the ACC waveform features only a peak near 2.7 Hz that includes nearly the exact same frequency components as the corresponding peak in the IP waveform. As shown in FIG. 20D, a top-hat shaped notch filter centered at 2.7 Hz with a bandwidth of 0.5 Hz, indicated by the gray area 380, is then applied to the IP waveform. This yields the filtered waveform, shown in FIG. 20E, that lacks the high-frequency peak associated with the motion artifacts, as shown by the gray area 382. The relatively low-frequency peak near 0.2 Hz is now dominant. Further processing of this spectrum with a 4 Hz smoothing function eliminates most of the jagged edges

present in FIG. 20E, yielding the continuous power spectrum shown in FIG. 20F. Processing this spectrum with a simple peak-finding algorithm yields the patient's actual RR, which corresponds to about 13 breaths/minute.

[0122] FIG. 21 shows a case where the RR and the motion artifact, in this case caused by walking, are relatively close in frequency. Here, the time-domain IP waveform shown in FIG. 21A lacks a strong, periodic respiratory signal, and is strongly corrupted by the walking-induced signals in the ACC waveform, shown in FIG. 21B. Each pulse in the ACC waveform corresponds to a unique step. The corresponding power spectra, shown in FIGS. 21C and 21D, show frequency components corresponding to both the motion artifact (near 0.75 Hz) and the respiratory signal (near 0.25 Hz). Because the respiratory signal lacks a clear, well-defined breathing pattern, the corresponding power spectrum features a range of frequencies between 0.2 and 0.5 Hz.

[0123] Application of the 0.5 Hz bandwidth notch filter, shown by the gray area 380 in FIG. 21D, removes motion artifacts from the IP waveform, leaving only a range of frequencies between 0.2 and 0.5 Hz. This portion of the spectrum features a large number of sharp peaks which are difficult to isolate with conventional peak-finding algorithms. However application of the 4 Hz smoothing function, as indicated by FIG. 21D, reduces this collection of frequencies to a single, broad peak shown in FIG. 21E that corresponds to the patient breathing at about 18 breaths/minute.

[0124] As shown in FIGS. 22-24, when the patient is stationary, ACC waveforms measured from the patient's chest (or, alternatively, belly) are sensitive to RR. This is because slight, breathing-induced motions of the patient's torso can be detected by the accelerometer. These figures show the time-domain IP waveforms (FIGS. 22A, 23A, 24A) and ACC waveforms (FIGS. 22B, 23B, 24B), both of which show pulses, lined up exactly in time, that correspond to individual breaths. The frequency-domain power spectrum (FIGS. 22C, 23C, 24C) show how the frequency components of these time-domain waveform are roughly equivalent, indicating both waveforms are sensitive to RR. This equivalency holds for normal breathing when the patient is on their back (FIG. 22); fast, shallow breathing when the patient is on their back (FIG. 23); and normal breathing when the patient is lying face down (FIG. 24). In all these cases both the ACC and IP waveforms can be processed collectively or independently to estimate RR. For collective processing, RRs may be determined from both waveforms, and then averaged together to generate a single value. Or a value may be determined from each waveform, and then subjected to a series of metrics (like those described above using α , β , $\epsilon 1$, $\epsilon 2$) to determine if one or both of the calculated RRs is valid. Processing of the waveforms may involve simple pulse-counting algorithms that analyze time-domain waveforms, like the ones shown in FIGS. 22A, 22B, 23A, 23B, 24A, 24B, or more sophisticated spectral-analysis algorithms that analyze frequency-domain waveforms, like the ones shown in FIGS. 22C, 23C, 24C.

[0125] FIGS. 25 and 26 show how a filtering algorithm (FIG. 25) and rolling average (FIG. 26), when applied to a conventional power spectrum, facilitates determination of RR. The power spectrum in FIG. 25A (shown in the figure's top portion) is unprocessed, and features a collection of peaks positioned in three groupings near 0.3, 0.6, and 0.7 Hz. As described above, a low-pass smoothing filter based

on a FIR function smooths out these sharply varying features, resulting in a continuous spectrum that is relatively easy to analyze to determine a single frequency corresponding to RR. In this case, the smoothing filter is processing the power spectrum as if it were a time-domain waveform. FIG. 25B, for example, shows the spectrum after processing with a 5 Hz low-pass filter. Here, the individual peaks are mostly smoothed out, resulting in three primary peaks related to RR. Note that these peaks are not necessarily artifacts, and instead are due to physiological variations in the patient's breathing pattern. Progressively decreasing the filter cutoff removes more and more of the features that result in sharply varying peaks in the frequency spectrum. Ultimately when a 0.5 Hz filter is used, this results in a single, broad peak that lacks the definition to accurately determine RR. As described with reference to FIGS. 20F and 21F, the ideal smoothing filter has a cutoff of about 4 Hz.

[0126] FIG. 26 shows an alternate embodiment of the invention wherein a rolling average is used in place of the smoothing filter described above with reference to FIG. 25. Here, the rolling average is gradually increased from 0 points (FIG. 26A, at the top of the page) to 100 points. When the average is increased above about 20 points the features in the frequency spectrum begin to blend together to form a well-defined peak that can be easily analyzed using the peak-finding algorithm referenced above.

[0127] Referring to FIGS. 27 and 28, the number of time-domain samples used to calculate an associated Fourier Transform and power spectrum will have a significant influence on the resolution of the power spectrum. In general, increasing the number of time-domain samples will increase resolution in the power spectrum. According to this invention, the frequency-domain resolution can be arbitrarily increased by adding constant values to the time-domain ACC and IP waveform. In this technique, typically called 'zero padding', the constant values are typically 0, or alternatively a constant value.

[0128] Both FIGS. 27 and 28 show a time-domain IP waveform (FIGS. 27A and 28A, shown at the top of the page) along with associated power spectra calculated, respectively, using 1000 points (FIGS. 27B, 28B), 500 points (FIG. 27C, 28C), and 250 points (FIG. 27D, 28D). The IP waveform for this figure was sampled at 25 Hz, and thus the time-domain markers that correspond to the above-mentioned points are indicated by a light gray circle (1000 points), a dark gray circle (500 points), and a black circle (250 points). As shown in FIGS. 27B, 28B, 27C, 28C, power spectra determined with both 1000-point and 500-point Fourier Transforms feature roughly the same frequency profile, with, as expected, the 1000-point spectra showing relatively greater resolution. Power spectra calculated from the 250-point Fourier Transform show one or more very broad peaks, and, importantly, undergo a frequency shift which trends toward higher frequencies for the dominant peak. Such a frequency shift will result in an erroneous value for the eventual RR. For this reason, it is preferred that the Fourier Transform calculation use a minimum of 500 points, which corresponds to 10 seconds of data sampled at 50 Hz for the time-domain ACC and IP waveforms. The ideal number of points for this calculation is about 750, which at 50 Hz can be achieved in 15 seconds. Additionally, the frequency-domain data shown in FIGS. 27 and 28 was calculated with substantially fewer time-domain samples than that used for all previous figures (e.g. FIGS. 20, 21;

Fourier Transforms for these figures were calculated with approximately 5000 points). This results in a relatively low-resolution power spectrum that may not need the additional 4 Hz smoothing filter, indicated above with reference to FIGS. 20F and 21F. Here, the smoothing filter is essentially artificially applied due to the relatively low resolution of the power spectra.

[0129] Processing ACC Waveforms to Determine Posture

[0130] In addition to activity level, as described above and indicated in FIGS. 21-24, a patient's posture can influence how the above-described system generates alarms/alerts from RR, cNIBP, and other vital signs. For example, the alarms/alerts related to both RR and cNIBP may vary depending on whether the patient is lying down or standing up. FIG. 29 indicates how the body-worn monitor can determine motion-related parameters (e.g. degree of motion, posture, and activity level) from a patient 410 using time-dependent ACC waveforms continuously generated from the three accelerometers 412, 413, 414 worn, respectively, on the patient's chest, bicep, and wrist. The height of the patient's arm can affect the cNIBP measurement, as blood pressure can vary significantly due to hydrostatic forces induced by changes in arm height. Moreover, this phenomenon can be detected and exploited to calibrate the cNIBP measurement, as described in detail in the above-referenced patent applications, the contents of which have been previously incorporated by reference. As described in these documents, arm height can be determined using DC signals from the accelerometers 413, 414 disposed, respectively, on the patient's bicep and wrist. Posture, in contrast, can be exclusively determined by the accelerometer 412 worn on the patient's chest. An algorithm operating on the wrist-worn transceiver extracts DC values from waveforms measured from this accelerometer and processes them with an algorithm described below to determine posture.

[0131] Specifically, torso posture is determined for a patient 410 using angles determined between the measured gravitational vector and the axes of a torso coordinate space 411. The axes of this space 411 are defined in a three-dimensional Euclidean space where \vec{R}_{CV} is the vertical axis, \vec{R}_{CH} is the horizontal axis, and \vec{R}_{CN} is the normal axis. These axes must be identified relative to a 'chest accelerometer coordinate space' before the patient's posture can be determined.

[0132] The first step in determining a patient's posture is to identify alignment of \vec{R}_{CV} in the chest accelerometer coordinate space. This can be determined in either of two approaches. In the first approach, \vec{R}_{CV} is assumed based on a typical alignment of the body-worn monitor relative to the patient. During a manufacturing process, these parameters are then preprogrammed into firmware operating on the wrist-worn transceiver. In this procedure it is assumed that accelerometers within the body-worn monitor are applied to each patient with essentially the same configuration. In the second approach, \vec{R}_{CV} is identified on a patient-specific basis. Here, an algorithm operating on the wrist-worn transceiver prompts the patient (using, e.g., video instruction operating on the wrist-worn transceiver, or audio instructions transmitted through a speaker) to assume a known position with respect to gravity (e.g., standing upright with arms pointed straight down). The algorithm then calculates \vec{R}_{CV} from DC values corresponding to the x, y, and z axes

of the chest accelerometer while the patient is in this position. This case, however, still requires knowledge of which arm (left or right) the monitor is worn on, as the chest accelerometer coordinate space can be rotated by 180 degrees depending on this orientation. A medical professional applying the monitor can enter this information using the GUI, described above. This potential for dual-arm attachment requires a set of two pre-determined vertical and normal vectors which are interchangeable depending on the monitor's location. Instead of manually entering this information, the arm on which the monitor is worn can be easily determined following attachment using measured values from the chest accelerometer values, with the assumption that \vec{R}_{CV} is not orthogonal to the gravity vector.

[0133] The second step in the procedure is to identify the alignment of \vec{R}_{CN} in the chest accelerometer coordinate space. The monitor determines this vector in the same way it determines \vec{R}_{CV} using one of two approaches. In the first approach the monitor assumes a typical alignment of the chest-worn accelerometer on the patient. In the second approach, the alignment is identified by prompting the patient to assume a known position with respect to gravity. The monitor then calculates \vec{R}_{CN} from the DC values of the time-dependent ACC waveform.

[0134] The third step in the procedure is to identify the alignment of \vec{R}_{CH} in the chest accelerometer coordinate space. This vector is typically determined from the vector cross product of \vec{R}_{CV} and \vec{R}_{CN} , or it can be assumed based on the typical alignment of the accelerometer on the patient, as described above.

[0135] A patient's posture is determined using the coordinate system described above and in FIG. 29, along with a gravitational vector \vec{R}_G that extends normal from the patient's chest. The angle between \vec{R}_{CV} and \vec{R}_G is given by Eq. 20:

$$\theta_{VG}[n] = \arccos\left(\frac{\vec{R}_G[n] \cdot \vec{R}_{CV}}{\|\vec{R}_G[n]\| \|\vec{R}_{CV}\|}\right) \quad (20)$$

where the dot product of the two vectors is defined as:

$$\vec{R}_G[n] \cdot \vec{R}_{CV} = (r_{Cx}[n] \times r_{CVx}) + (r_{Cy}[n] \times r_{CVy}) + (r_{Cz}[n] \times r_{CVz}) \quad (21)$$

The definition of the norms of \vec{R}_G and \vec{R}_{CV} are given by Eqs. 22 and 23:

$$\|\vec{R}_G[n]\| = \sqrt{(r_{Cx}[n])^2 + (r_{Cy}[n])^2 + (r_{Cz}[n])^2} \quad (22)$$

$$\|\vec{R}_{CV}\| = \sqrt{(r_{CVx})^2 + (r_{CVy})^2 + (r_{CVz})^2} \quad (23)$$

[0136] As indicated in Eq. 24, the monitor compares the vertical angle θ_{VG} to a threshold angle to determine whether the patient is vertical (i.e. standing upright) or lying down:

$$\text{if } \theta_{VG} \leq 45^\circ \text{ then Torso State}=0, \text{ the patient is upright} \quad (24)$$

If the condition in Eq. 24 is met the patient is assumed to be upright, and their torso state, which is a numerical value equated to the patient's posture, is equal to 0. The patient is assumed to be lying down if the condition in equation (5) is

not met, i.e. $\theta_{VG} > 45$ degrees. Their lying position is then determined from angles separating the two remaining vectors, as defined below.

[0137] The angle θ_{NG} between \vec{R}_{CN} and \vec{R}_G determines if the patient is lying in the supine position (chest up), prone position (chest down), or on their side. Based on either an assumed orientation or a patient-specific calibration procedure, as described above, the alignment of \vec{R}_{CN} is given by Eq. 25, where i, j, k represent the unit vectors of the x, y, and z axes of the chest accelerometer coordinate space respectively:

$$\vec{R}_{CN} = r_{CNi}\hat{i} + r_{CNj}\hat{j} + r_{CNk}\hat{k} \quad (25)$$

The angle between \vec{R}_{CN} and \vec{R}_G determined from DC values extracted from the chest ACC waveform is given by Eq. 26:

$$\theta_{NG}[n] = \arccos\left(\frac{\vec{R}_G[n] \cdot \vec{R}_{CN}}{\|\vec{R}_G[n]\| \|\vec{R}_{CN}\|}\right) \quad (26)$$

The body-worn monitor determines the normal angle θ_{NG} and then compares it to a set of predetermined threshold angles to determine which position in which the patient is lying, as shown in Eq. 27:

$$\begin{aligned} \text{if } \theta_{NG} \leq 35^\circ \text{ then Torso State}=1, \text{ the patient is supine} \\ \text{if } \theta_{NG} \geq 135^\circ \text{ then Torso State}=2, \text{ the patient is prone} \end{aligned} \quad (27)$$

If the conditions in Eq. 27 are not met then the patient is assumed to be lying on their side. Whether they are lying on their right or left side is determined from the angle calculated between the horizontal torso vector and measured gravitational vectors, as described above.

[0138] The alignment of \vec{R}_{CH} is determined using either an assumed orientation, or from the vector cross-product of \vec{R}_{CV} and \vec{R}_{CN} as given by Eq. 28, where i, j, k represent the unit vectors of the x, y, and z axes of the accelerometer coordinate space respectively. Note that the orientation of the calculated vector is dependent on the order of the vectors in the operation. The order below defines the horizontal axis as positive towards the right side of the patient's body.

$$\vec{R}_{CH} = r_{CVi}\hat{i} + r_{CVj}\hat{j} + r_{CVk}\hat{k} = \vec{R}_{CV} \times \vec{R}_{CN} \quad (28)$$

The angle θ_{HG} between \vec{R}_{CH} and \vec{R}_G is determined using Eq. 29:

$$\theta_{HG}[n] = \arccos\left(\frac{\vec{R}_G[n] \cdot \vec{R}_{CH}}{\|\vec{R}_G[n]\| \|\vec{R}_{CH}\|}\right) \quad (29)$$

The monitor compares this angle to a set of predetermined threshold angles to determine if the patient is lying on their right or left side, as given by Eq. 30:

$$\begin{aligned} \text{if } \theta_{HG} \geq 90^\circ \text{ then Torso State}=3, \text{ the patient is on} \\ \text{their right side} \\ \text{if } \theta_{HG} < 90^\circ \text{ then Torso State}=4, \text{ the patient is on} \\ \text{their left side} \end{aligned} \quad (30)$$

Table 1 describes each of the above-described postures, along with a corresponding numerical torso state used to render, e.g., a particular icon on a remote computer:

TABLE 1

postures and their corresponding torso states	
Posture	Torso State
standing upright	0
supine: lying on back	1
prone: lying on chest	2
lying on right side	3
lying on left side	4
undetermined posture	5

[0139] FIGS. 30A and 30B show, respectively, graphs of time-dependent ACC waveforms measured along the x, y, and z-axes (FIG. 30A), and the torso states (i.e. postures; FIG. 30B) determined from these waveforms for a moving patient, as described above. As the patient moves, the DC values of the ACC waveforms measured by the chest accelerometer vary accordingly, as shown in FIG. 30A. The body-worn monitor processes these values as described

above to continually determine \vec{R}_G and the various quantized torso states for the patient, as shown in FIG. 30B. The torso states yield the patient's posture as defined in Table 1. For this study the patient rapidly alternated between standing, lying on their back, chest, right side, and left side within a time period of about 160 seconds. As described above, different alarm/alert conditions (e.g. threshold values) for vital signs can be assigned to each of these postures, or the specific posture itself may result in an alarm/alert. Additionally, the time-dependent properties of the graph can be analyzed (e.g. changes in the torso states can be counted) to determine, for example, how often the patient moves in their hospital bed. This number can then be equated to various metrics, such as a 'bed sore index' indicating a patient that is so stationary in their bed that lesions may result. Such a state could then be used to trigger an alarm/alert to the supervising medical professional.

[0140] Hardware for Measuring RR

[0141] FIGS. 4A and 4B show how the body-worn monitor 100 described above attaches to a patient 70 to measure RR, cNIBP, and other vital signs. These figures show two configurations of the system: FIG. 4A shows the system used during the indexing portion of the Composite Technique, and includes a pneumatic, cuff-based system 85, while FIG. 4B shows the system used for subsequent RR and cNIBP measurements. The indexing measurement typically takes about 60 seconds, and is typically performed once every 4 hours. Once the indexing measurement is complete the cuff-based system 85 is typically removed from the patient. The remainder of the time the monitor 100 performs the RR, HR, SpO2 and cNIBP measurements.

[0142] The body-worn monitor 100 features a wrist-worn transceiver 72, described in more detail in FIG. 5, featuring a touch panel interface 73 that displays RR and other vital signs. A wrist strap 90 affixes the transceiver 72 to the patient's wrist like a conventional wristwatch. A flexible cable 92 connects the transceiver 72 to an optical sensor 94 that wraps around the base of the patient's thumb. During a measurement, the optical sensor 94 generates a time-dependent PPG waveform which is processed along with an ECG to measure cNIBP, SpO2, and, in some applications, RR. To

determine ACC waveforms the body-worn monitor **100** features three separate accelerometers located at different portions on the patient's arm and chest. The first accelerometer is surface-mounted on a circuit board in the wrist-worn transceiver **72** and measures signals associated with movement of the patient's wrist. As described above, this motion can also be indicative of that originating from the patient's fingers, which will affect the SpO₂ measurement. The second accelerometer is included in a small bulkhead portion **96** included along the span of the cable **82**. During a measurement, a small piece of disposable tape, similar in size to a conventional bandaid, affixes the bulkhead portion **96** to the patient's arm. In this way the bulkhead portion **96** serves two purposes: 1) it measures a time-dependent ACC waveform from the mid-portion of the patient's arm, thereby allowing their posture and arm height to be determined as described in detail above; and 2) it secures the cable **82** to the patient's arm to increase comfort and performance of the body-worn monitor **100**, particularly when the patient is ambulatory. The third accelerometer is mounted in the sensor module **74** that connects through cables **80a-c** to ECG electrodes **78a-c**. As described in detail above, this accelerometer, which can also be mounted closer to the patient's belly, measures respiration-induced motion of the patient's chest and belly. These signals are then digitized, transmitted through the cable **82** to the wrist-worn transceiver **72**, where they are processed with an algorithm as described above to determine RR.

[0143] The cuff-based module **85** features a pneumatic system **76** that includes a pump, valve, pressure fittings, pressure sensor, manifold, analog-to-digital converter, microcontroller, and rechargeable Li-ion battery. During an indexing measurement, the pneumatic system **76** inflates a disposable cuff **84** and performs two measurements according to the Composite Technique: 1) it performs an inflation-based measurement of oscillometry to determine values for SYS, DIA, and MAP; and 2) it determines a patient-specific relationship between PTT and MAP. These measurements are described in detail in the above-referenced patent applications entitled: 'VITAL SIGN MONITOR FOR MEASURING BLOOD PRESSURE USING OPTICAL, ELECTRICAL, AND PRESSURE WAVEFORMS' (U.S. Ser. No. 12/138,194; filed Jun. 12, 2008) and 'BODY-WORN SYSTEM FOR MEASURING CONTINUOUS NON-INVASIVE BLOOD PRESSURE (cNIBP)' (U.S. Ser. No. 12/650,354; filed Nov. 15, 2009), the contents of which have been previously incorporated herein by reference.

[0144] The cuff **84** within the cuff-based pneumatic system **85** is typically disposable and features an internal, airtight bladder that wraps around the patient's bicep to deliver a uniform pressure field. During the indexing measurement, pressure values are digitized by the internal analog-to-digital converter, and sent through a cable **86** according to a CAN protocol, along with SYS, DIA, and MAP blood pressures, to the wrist-worn transceiver **72** for processing as described above. Once the cuff-based measurement is complete, the cuff-based module **85** is removed from the patient's arm and the cable **86** is disconnected from the wrist-worn transceiver **72**. cNIBP is then determined using PTT, as described in detail above.

[0145] To determine an ECG, the body-worn monitor **100** features a small-scale, three-lead ECG circuit integrated directly into the sensor module **74** that terminates an ECG cable **82**. The ECG circuit features an integrated circuit that

collects electrical signals from three chest-worn ECG electrodes **78a-c** connected through cables **80a-c**. As described above, the ECG electrodes **78a-c** are typically disposed in a conventional Einthoven's Triangle configuration, which is a triangle-like orientation of the electrodes **78a-c** on the patient's chest that features three unique ECG vectors. From these electrical signals the ECG circuit determines up to three ECG waveforms, which are digitized using an analog-to-digital converter mounted proximal to the ECG circuit, and sent through the cable **82** to the wrist-worn transceiver **72** according to the CAN protocol. There, the ECG and PPG waveforms are processed to determine the patient's blood pressure. Heart rate and RR are determined directly from the ECG waveform using known algorithms, such as those described above. More sophisticated ECG circuits (e.g. five and twelve-lead systems) can plug into the wrist-worn transceiver to replace the three-lead system shown in FIGS. 4A and 4B.

[0146] FIG. 5 shows a close-up view of the wrist-worn transceiver **72**. As described above, it attaches to the patient's wrist using a flexible strap **90** which threads through two D-ring openings in a plastic housing **106**. The transceiver **72** features a touchpanel display **120** that renders a GUI **73** which is altered depending on the viewer (typically the patient or a medical professional). Specifically, the transceiver **72** includes a small-scale infrared barcode scanner **102** that, during use, can scan a barcode worn on a badge of a medical professional. The barcode indicates to the transceiver's software that, for example, a nurse or doctor is viewing the user interface. In response, the GUI **73** displays vital sign data and other medical diagnostic information appropriate for medical professionals. Using this GUI **73**, the nurse or doctor, for example, can view the vital sign information, set alarm parameters, and enter information about the patient (e.g. their demographic information, medication, or medical condition). The nurse can press a button on the GUI **73** indicating that these operations are complete. At this point, the display **120** renders an interface that is more appropriate to the patient, such as time of day and battery power.

[0147] The transceiver **72** features three CAN connectors **104a-c** on the side of its upper portion, each which supports the CAN protocol and wiring schematics, and relays digitized data to the internal CPU. Digital signals that pass through the CAN connectors include a header that indicates the specific signal (e.g. ECG, ACC, or pressure waveform from the cuff-based module) and the sensor from which the signal originated. This allows the CPU to easily interpret signals that arrive through the CAN connectors **104a-c**, such as those described above corresponding to RR, and means that these connectors are not associated with a specific cable. Any cable connecting to the transceiver can be plugged into any connector **104a-c**. As shown in FIG. 4A, the first connector **104a** receives the cable **82** that transports a digitized ECG waveform determined from the ECG circuit and electrodes, and digitized ACC waveforms measured by accelerometers in the sensor module **74** and the bulkhead portion **96** associated with the ECG cable **82**.

[0148] The second CAN connector **104b** shown in FIG. 5 receives the cable **86** that connects to the pneumatic cuff-based system **85** used for the pressure-dependent indexing measurement (shown in FIG. 4A). This connector **104b** receives a time-dependent pressure waveform delivered by the pneumatic system **85** to the patient's arm, along with

values for SYS, DIA, and MAP values determined during the indexing measurement. The cable **86** unplugs from the connector **104b** once the indexing measurement is complete, and is plugged back in after approximately four hours for another indexing measurement.

[0149] The final CAN connector **104c** can be used for an ancillary device, e.g. a glucometer, infusion pump, body-worn insulin pump, ventilator, or et-CO₂ measurement system. As described above, digital information generated by these systems will include a header that indicates their origin so that the CPU can process them accordingly.

[0150] The transceiver includes a speaker **101** that allows a medical professional to communicate with the patient using a voice over Internet protocol (VOIP). For example, using the speaker **101** the medical professional could query the patient from a central nursing station or mobile phone connected to a wireless, Internet-based network within the hospital. Or the medical professional could wear a separate transceiver similar to the shown in FIG. 5, and use this as a communication device. In this application, the transceiver **72** worn by the patient functions much like a conventional cellular telephone or 'walkie talkie': it can be used for voice communications with the medical professional and can additionally relay information describing the patient's vital signs and motion. The speaker can also enunciate pre-programmed messages to the patient, such as those used to calibrate the chest-worn accelerometers for a posture calculation, as described above.

Other Embodiments of the Invention

[0151] RR can also be calculated using a combination of ACC, ECG, PPG, IP, and other signals using algorithms that differ from those described above. For example, these signals can be processed with an averaging algorithm, such as one using a weighted average, to determine a single waveform that can then be processed to determine RR. Some of these measurement techniques are described, for example, in the following patient application, the contents of which are incorporated herein by reference: 'BODY-WORN MONITOR FOR MEASURING RESPIRATION RATE' (U.S. Ser. No. 12/559,419; filed Sep. 14, 2009). Or the ACC waveform can be used alone, without being integrated in an adaptive filtering algorithm, to determine RR without relying on IP. In this case the ACC waveform is filtered with a simple bandpass filter, e.g. a finite impulse response filter, with a set passband (e.g. 0.01→5 Hz). Similarly, multiple ACC waveforms, such as those measured along axes (e.g. the x or y-axes) orthogonal to the vector normal to the patient's chest (i.e. the z-axis), can be processed with or without adaptive filtering to determine RR. In this case the waveforms may be averaged together with a weighted average to generate a single waveform, which is then filtered, derivatized, and signal processed as described above to determine RR. Similarly, envelopes associated with the ECG and PPG waveforms can be processed in a similar manner to determine RR. In still other embodiments, other sensors, such as detectors for ultra wide-band radar or acoustic microphones, can detect signals indicative of RR and used with ACC or IP waveforms and the adaptive filtering approach described above to determine RR. Here, the alternative sensors are typically used to replace measurement of the IP waveform, although they can also be used to replace measurement of the ACC waveform. An acoustic sensor suitable for this application is described, for example, in the following

co-pending patent application, the contents of which are incorporated herein by reference: DEVICE FOR DETERMINING RESPIRATORY RATE AND OTHER VITAL SIGNS (U.S. Ser. No. 12/171,886; filed Jul. 12, 2008).

[0152] In addition to those methods described above, the body-worn monitor can use a number of additional methods to calculate blood pressure and other properties from the optical and electrical waveforms. These are described in the following co-pending patent applications, the contents of which are incorporated herein by reference: 1) CUFFLESS BLOOD-PRESSURE MONITOR AND ACCOMPANYING WIRELESS, INTERNET-BASED SYSTEM (U.S. Ser. No. 10/709,015; filed Apr. 7, 2004); 2) CUFFLESS SYSTEM FOR MEASURING BLOOD PRESSURE (U.S. Ser. No. 10/709,014; filed Apr. 7, 2004); 3) CUFFLESS BLOOD PRESSURE MONITOR AND ACCOMPANYING WEB SERVICES INTERFACE (U.S. Ser. No. 10/810,237; filed Mar. 26, 2004); 4) CUFFLESS BLOOD PRESSURE MONITOR AND ACCOMPANYING WIRELESS MOBILE DEVICE (U.S. Ser. No. 10/967,511; filed Oct. 18, 2004); 5) BLOOD PRESSURE MONITORING DEVICE FEATURING A CALIBRATION-BASED ANALYSIS (U.S. Ser. No. 10/967,610; filed Oct. 18, 2004); 6) PERSONAL COMPUTER-BASED VITAL SIGN MONITOR (U.S. Ser. No. 10/906,342; filed Feb. 15, 2005); 7) PATCH SENSOR FOR MEASURING BLOOD PRESSURE WITHOUT A CUFF (U.S. Ser. No. 10/906,315; filed Feb. 14, 2005); 8) PATCH SENSOR FOR MEASURING VITAL SIGNS (U.S. Ser. No. 11/160,957; filed Jul. 18, 2005); 9) WIRELESS, INTERNET-BASED SYSTEM FOR MEASURING VITAL SIGNS FROM A PLURALITY OF PATIENTS IN A HOSPITAL OR MEDICAL CLINIC (U.S. Ser. No. 11/162,719; filed Sep. 9, 2005); 10) HAND-HELD MONITOR FOR MEASURING VITAL SIGNS (U.S. Ser. No. 11/162,742; filed Sep. 21, 2005); 11) CHEST STRAP FOR MEASURING VITAL SIGNS (U.S. Ser. No. 11/306,243; filed Dec. 20, 2005); 12) SYSTEM FOR MEASURING VITAL SIGNS USING AN OPTICAL MODULE FEATURING A GREEN LIGHT SOURCE (U.S. Ser. No. 11/307,375; filed Feb. 3, 2006); 13) BILATERAL DEVICE, SYSTEM AND METHOD FOR MONITORING VITAL SIGNS (U.S. Ser. No. 11/420,281; filed May 25, 2006); 14) SYSTEM FOR MEASURING VITAL SIGNS USING BILATERAL PULSE TRANSIT TIME (U.S. Ser. No. 11/420,652; filed May 26, 2006); 15) BLOOD PRESSURE MONITOR (U.S. Ser. No. 11/530,076; filed Sep. 8, 2006); 16) TWO-PART PATCH SENSOR FOR MONITORING VITAL SIGNS (U.S. Ser. No. 11/558,538; filed Nov. 10, 2006); and, 17) MONITOR FOR MEASURING VITAL SIGNS AND RENDERING VIDEO IMAGES (U.S. Ser. No. 11/682,177; filed Mar. 5, 2007).

[0153] Other embodiments are also within the scope of the invention. For example, other measurement techniques, such as conventional oscillometry measured during deflation, can be used to determine SYS for the above-described algorithms. Additionally, processing units and probes for measuring pulse oximetry similar to those described above can be modified and worn on other portions of the patient's body. For example, optical sensors with finger-ring configurations can be worn on fingers other than the thumb. Or they can be modified to attach to other conventional sites for measuring SpO₂, such as the ear, forehead, and bridge of the nose. In these embodiments the processing unit can be worn in places other than the wrist, such as around the neck (and

supported, e.g., by a lanyard) or on the patient's waist (supported, e.g., by a clip that attaches to the patient's belt). In still other embodiments the probe and processing unit are integrated into a single unit.

[0154] In other embodiments, a set of body-worn monitors can continuously monitor a group of patients, wherein each patient in the group wears a body-worn monitor similar to those described herein. Additionally, each body-worn monitor can be augmented with a location sensor. The location sensor includes a wireless component and a location-processing component that receives a signal from the wireless component and processes it to determine a physical location of the patient. A processing component (similar to that described above) determines from the time-dependent waveforms at least one vital sign, one motion parameter, and an alarm parameter calculated from the combination of this information. A wireless transceiver transmits the vital sign, motion parameter, location of the patient, and alarm parameter through a wireless system. A remote computer system featuring a display and an interface to the wireless system receives the information and displays it on a user interface for each patient in the group.

[0155] In embodiments, the interface rendered on the display at the central nursing station features a field that displays a map corresponding to an area with multiple sections. Each section corresponds to the location of the patient and includes, e.g., the patient's vital signs, motion parameter, and alarm parameter. For example, the field can display a map corresponding to an area of a hospital (e.g. a hospital bay or emergency room), with each section corresponding to a specific bed, chair, or general location in the area. Typically the display renders graphical icons corresponding to the motion and alarm parameters for each patient in the group. In other embodiments, the body-worn monitor includes a graphical display that renders these parameters directly on the patient.

[0156] Typically the location sensor and the wireless transceiver operate on a common wireless system, e.g. a wireless system based on 802.11 (i.e. 'WiFi'), 802.15.4 (i.e. 'Bluetooth'), or cellular (e.g. CDMA, GSM) protocols. In this case a location is determined by processing the wireless signal with one or more algorithms known in the art. These include, for example, triangulating signals received from at least three different base stations, or simply estimating a location based on signal strength and proximity to a particular base station. In still other embodiments the location sensor includes a conventional global positioning system (GPS) that processes signals from orbiting satellites to determine patient's position.

[0157] The body-worn monitor can include a first voice interface, and the remote computer can include a second voice interface that integrates with the first voice interface. The location sensor, wireless transceiver, and first and second voice interfaces can all operate on a common wireless system, such as one of the above-described systems based on 802.11 or cellular protocols. The remote computer, for example, can be a monitor that is essentially identical to the monitor worn by the patient, and can be carried or worn by a medical professional. In this case the monitor associated with the medical professional features a GUI wherein the user can select to display information (e.g. vital signs, location, and alarms) corresponding to a particular patient.

This monitor can also include a voice interface so the medical professional can communicate directly with the patient.

[0158] In other embodiments, the electrodes connect to the ECG circuit using a wireless interface. Here, each electrode includes a small, battery-powered microprocessor, radio, and analog-to-digital converter. The analog-to-digital converter converts an analog signal measured by the electrode into a digital signal. The radio then sends the digital signal to the ECG circuit, which processes signals from multiple electrodes using a differential amplifier to determine both ECG and IP waveforms as described above.

[0159] FIGS. 3A, 3B show yet another alternate embodiment of the invention wherein a sensor module 25 attaches to the belly of a patient 10 using an electrode 24 normally attached to the lower left-hand portion of the patient's torso. Specifically, the sensor module 25 includes a connector 253 featuring an opening that receives the metal snap or rivet present on most disposable ECG electrodes. Connecting the connector 253 to the electrode's rivet holds the sensor module 25 in place. This configuration reduces the number of cables in the body-worn monitor, and additionally secures an accelerometer 12 to the patient's belly. This is typically the part of their torso that undergoes the greatest motion during respiration, and thus generates ACC waveforms with the highest possible signal-to-noise ratio. Also contained within the sensor module 25 are the ECG circuit 26, the IP circuit 27, microprocessor 33, and a temperature sensor 34.

[0160] To measure IP and ECG waveforms, the sensor module 25 connects through cables to electrodes 20, 22 attached, respectively, to the upper right-hand and left-hand portions of the patient's torso. This system measures RR using the peak counting, adaptive filtering, and FFT-based approaches described above, and has the additional advantage of measuring a relatively large ACC signals indicating respiration-induced motions of the patient's belly. As described above, these signals are typically generated by the z-axis of the accelerometer 12, which is normal to the patient's torso. ACC signals along the x and y-axes can be additionally processed to determine the patient's posture and activity level, as described above. Once RR and these motion-related properties are measured, a transceiver in the sensor module (not shown in the figure) transmits them in the form of a digital data stream through a cable to the wrist-worn transceiver for further processing.

[0161] Still other embodiments are within the scope of the following claims.

What is claimed is:

1. A system for monitoring a patient, comprising:
 - a combined impedance pneumography/ECG/motion sensor comprising a housing configured to be worn on the chest of the patient, the housing enclosing (i) at least three electrodes configured to be positioned on the patient's torso in a triangle configuration; (ii) an impedance pneumography circuit in electrical communication with one of the at least three electrodes and configured to inject a low amperage, high frequency current into the patient, and with another of the at least three electrodes and configured to measure changes in capacitance of the patient's thoracic cavity and to generate an analog time-dependent impedance pneumography waveform, (iii) an ECG circuit in electrical communication with the at least three electrodes and configured to generate at least three analog time-de-

pendent ECG waveforms, (iv) an analog-to-digital converter configured to convert the analog time-dependent impedance pneumography waveform into a digital time-dependent impedance pneumography waveform and the at least three analog time-dependent ECG waveforms into at least three digital time-dependent ECG waveforms, (v) an accelerometer measuring motion along at least three axes and generate therefrom at least three time-dependent digital motion waveforms corresponding to the at least three axes, wherein the accelerometer is positioned within the housing such that one of the at least three axes points into the patient's torso, and (vi) a transceiver configured to transmit the time-dependent digital impedance pneumography waveform, the at least three time-dependent digital ECG waveforms, and the at least three time-dependent digital motion waveforms along a common data path via a CAN protocol, wherein each waveform is transmitted with header data indicating the sensor from which the waveform originates;

a processing system comprising a microprocessor, a transceiver operably connected to the microprocessor and the common data path, wherein the transceiver is configured to receive via the CAN protocol and relay to the microprocessor the time-dependent digital impedance pneumography waveform, the at least three time-

dependent digital ECG waveforms, and the at least three time-dependent digital motion waveforms.

2. A system according to claim 1, wherein the impedance pneumography circuit and the ECG circuit are formed as a single integrated circuit.

3. A system according to claim 1, wherein the processing system is configured to collectively process the time-dependent digital impedance pneumography waveform and the at least three time-dependent digital motion waveforms to determine a time-dependent respiration rate for the patient.

4. A system according to claim 3, wherein the processing system further comprises a display configured to visually display the time-dependent respiration rate.

5. A system according to claim 4, wherein the processing system is configured to process the at least three time-dependent digital motion waveforms and to determine a time-dependent posture state for the patient selected from the group consisting of standing upright, supine, prone, lying on the patient's right side, lying on the patient's left side, or in and undetermined posture.

6. A system according to claim 5, wherein the display is configured to visually display an icon indicating the time-dependent posture state.

7. A system according to claim 1, wherein the housing further comprises a temperature sensor configured to continuously measure a temperature for the patient.

* * * * *

专利名称(译)	用于测量呼吸频率的体戴式监视器		
公开(公告)号	US20170100060A1	公开(公告)日	2017-04-13
申请号	US15/156138	申请日	2016-05-16
[标]申请(专利权)人(译)	索泰拉无线公司		
申请(专利权)人(译)	SOTERA WIRELESS, INC.		
当前申请(专利权)人(译)	SOTERA WIRELESS, INC.		
[标]发明人	BANET MATT DHILLON MARSHAL MCCOMBIE DEVIN		
发明人	BANET, MATT DHILLON, MARSHAL MCCOMBIE, DEVIN		
IPC分类号	A61B5/08 A61B5/0205 A61B5/113 A61B5/00 A61B5/0402		
CPC分类号	A61B5/0816 A61B5/0002 A61B5/0402 A61B5/0809 A61B2562/0219 A61B5/7239 A61B5/7257 A61B5/0008 A61B5/0205 A61B5/113 A61B5/14551		
其他公开文献	US10390731		
外部链接	Espacenet USPTO		

摘要(译)

本发明提供了一种用于测量患者的呼吸率 (RR) 的系统。该系统包括连接到至少两个电极的阻抗呼吸描记 (IP) 传感器, 以及接收和处理来自电极的信号以测量IP信号的处理系统。运动传感器 (例如, 加速度计) 测量至少一个运动信号 (例如ACC波形), 该运动信号描述与其连接的患者身体的一部分的运动。处理系统接收IP和运动信号, 并处理它们以分别确定频域IP和运动频谱。然后共同处理两个光谱以从IP频谱中移除运动分量并确定RR。例如, 在处理期间, 算法从频域运动频谱确定运动频率分量, 然后使用数字滤波器从IP频谱中去除这些或从其计算的参数。

