



US 20130267818A1

(19) **United States**

(12) **Patent Application Publication**

David et al.

(10) **Pub. No.: US 2013/0267818 A1**

(43) **Pub. Date: Oct. 10, 2013**

(54) **PHYSIOLOGICAL MEASURING SYSTEM
COMPRISING A GARMENT IN THE FORM
OF A SLEEVE OR GLOVE AND SENSING
APPARATUS INCORPORATED IN THE
GARMENT**

Publication Classification

(51) **Int. Cl.**
A61B 5/00 (2006.01)
A61B 7/04 (2006.01)
A61B 5/145 (2006.01)
A61B 5/11 (2006.01)
A61B 5/0408 (2006.01)
A61B 5/021 (2006.01)

(52) **U.S. Cl.**
 CPC *A61B 5/6804* (2013.01); *A61B 5/04085*
 (2013.01); *A61B 5/021* (2013.01); *A61B*
5/14542 (2013.01); *A61B 5/11* (2013.01);
A61B 7/04 (2013.01)
 USPC **600/382**

(71) Applicant: **Commwell Research and Development Ltd., Kfar Saba (IL)**

(72) Inventors: **Daniel David, Rananna (IL); Irving Levy, Rishon Lezion (IL)**

(21) Appl. No.: **13/892,010**

(22) Filed: **May 10, 2013**

Related U.S. Application Data

(60) Continuation of application No. 12/898,430, filed on Oct. 5, 2010, now Pat. No. 8,442,615, which is a continuation-in-part of application No. 11/742,904, filed on May 1, 2007, now abandoned, which is a division of application No. 10/899,484, filed on Jul. 26, 2004, now abandoned, which is a continuation-in-part of application No. 10/324,303, filed on Dec. 20, 2002, now Pat. No. 6,842,722, which is a continuation of application No. 10/117,250, filed on Apr. 5, 2002, now Pat. No. 6,516,289, which is a continuation of application No. 09/359,340, filed on Jul. 21, 1999, now abandoned.

(57) **ABSTRACT**

A measuring system for measuring electrocardiogram signals comprises a diagnostic garment with ECG electrodes that may assume the form of a sleeve or glove. A disposable version of the glove can be inflated. By using an inflatable glove, the contour of the body is automatically matched by the contour of the glove. Samples from the ECG electrodes positioned on a diagnostic garment are compensated so that the samples better approximate samples from EEG electrodes that are positioned at classical locations. Also, samples from ECG electrodes are compensated to reduce signal noise resulting from positioning the ECG electrodes on the diagnostic garment.

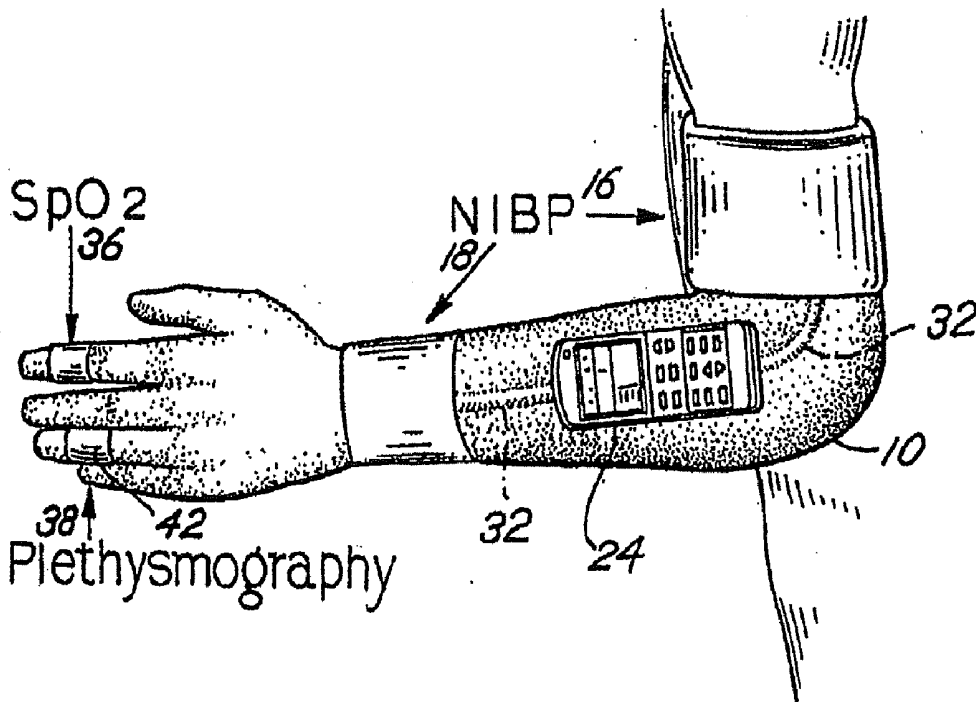


FIG. 1

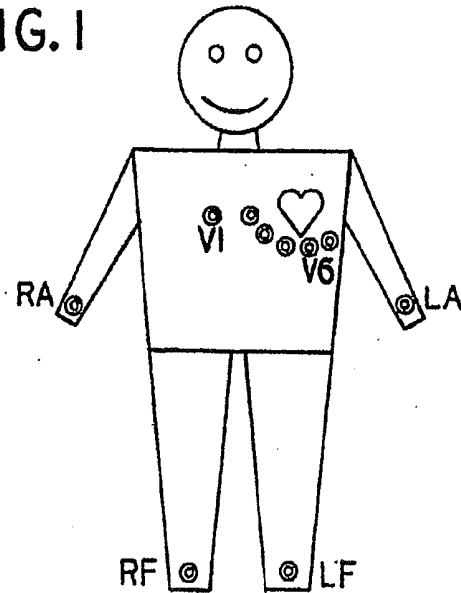


FIG. 2

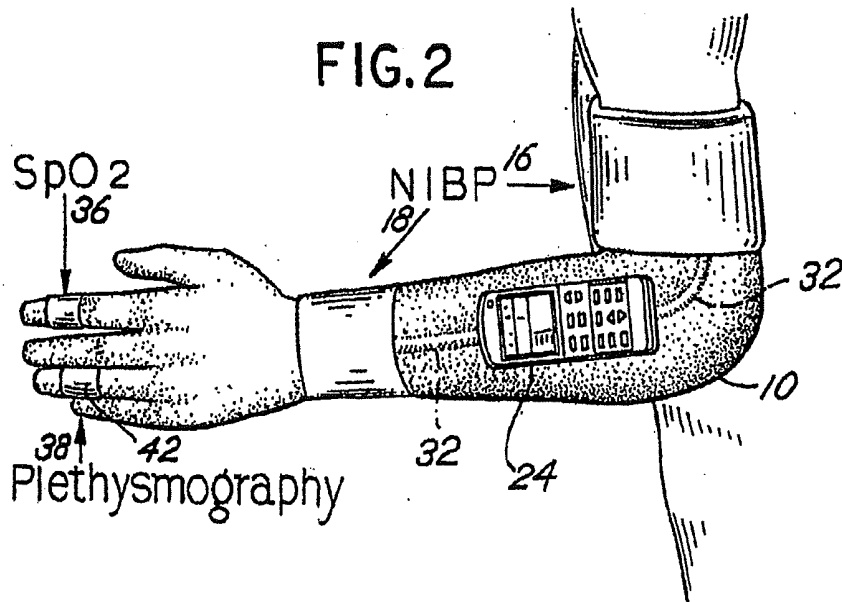


FIG.3

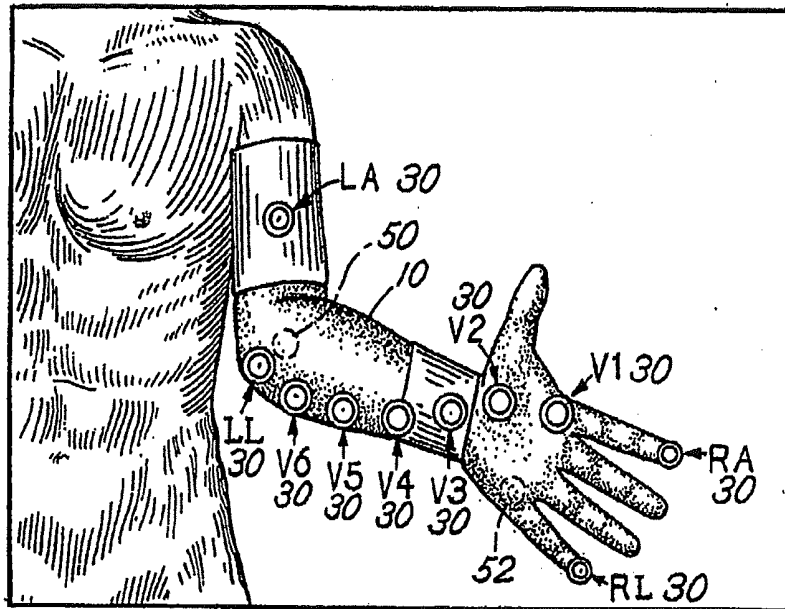


FIG.4

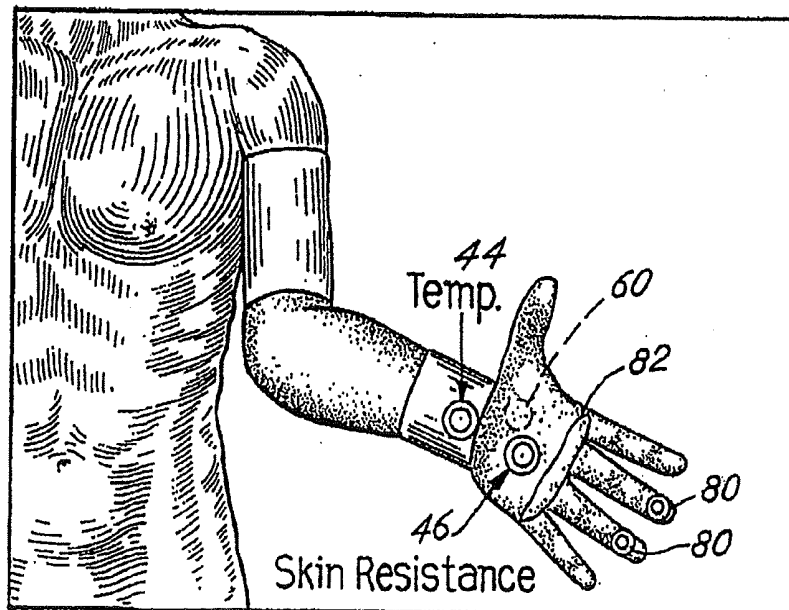


FIG.5

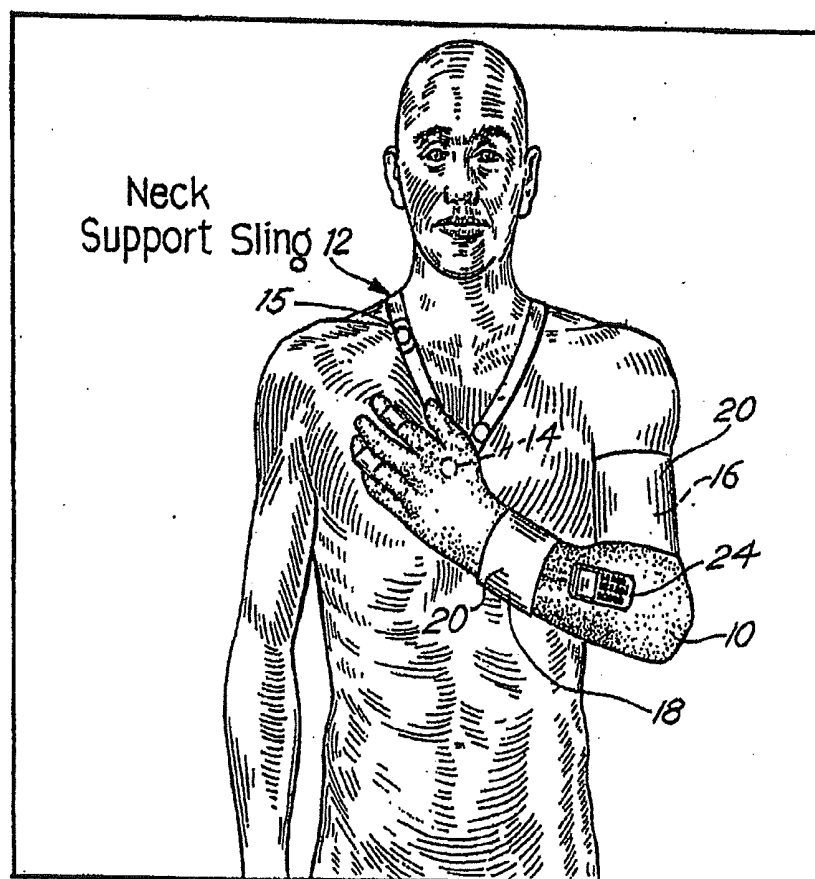


FIG. 6

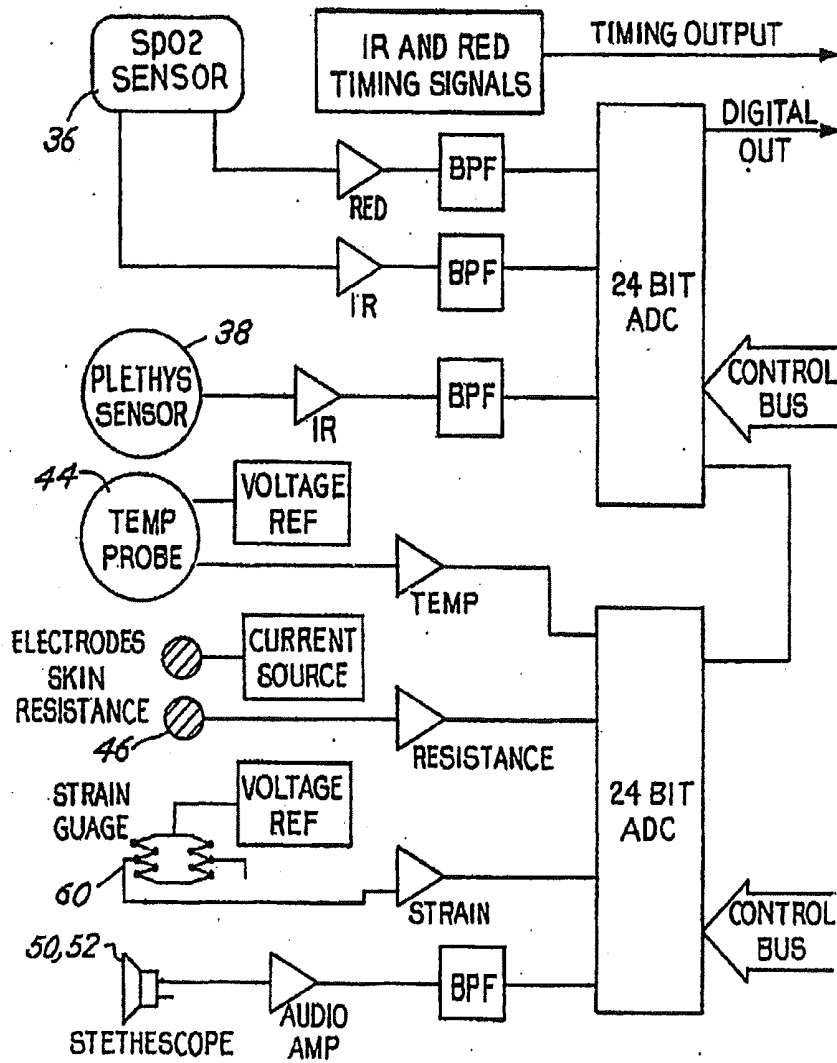


FIG. 7

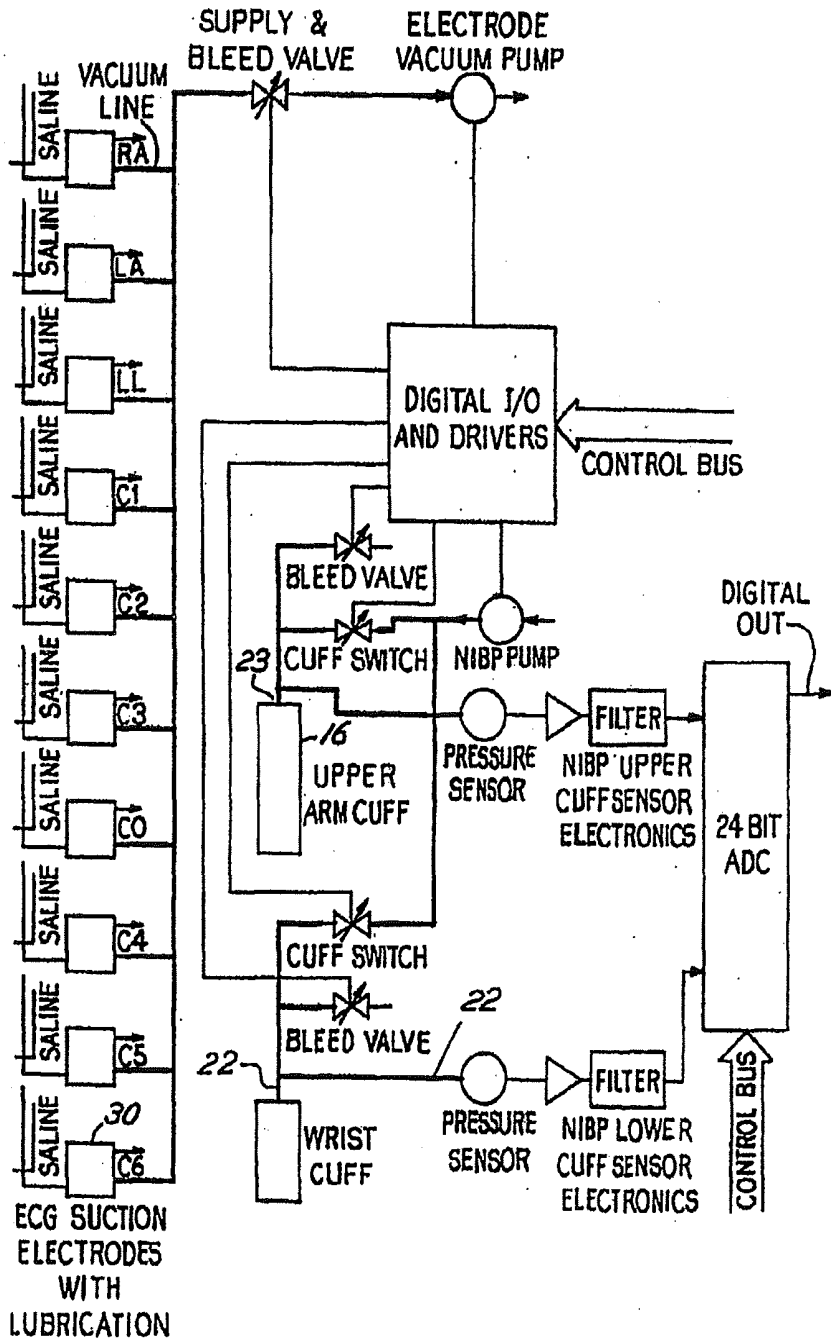
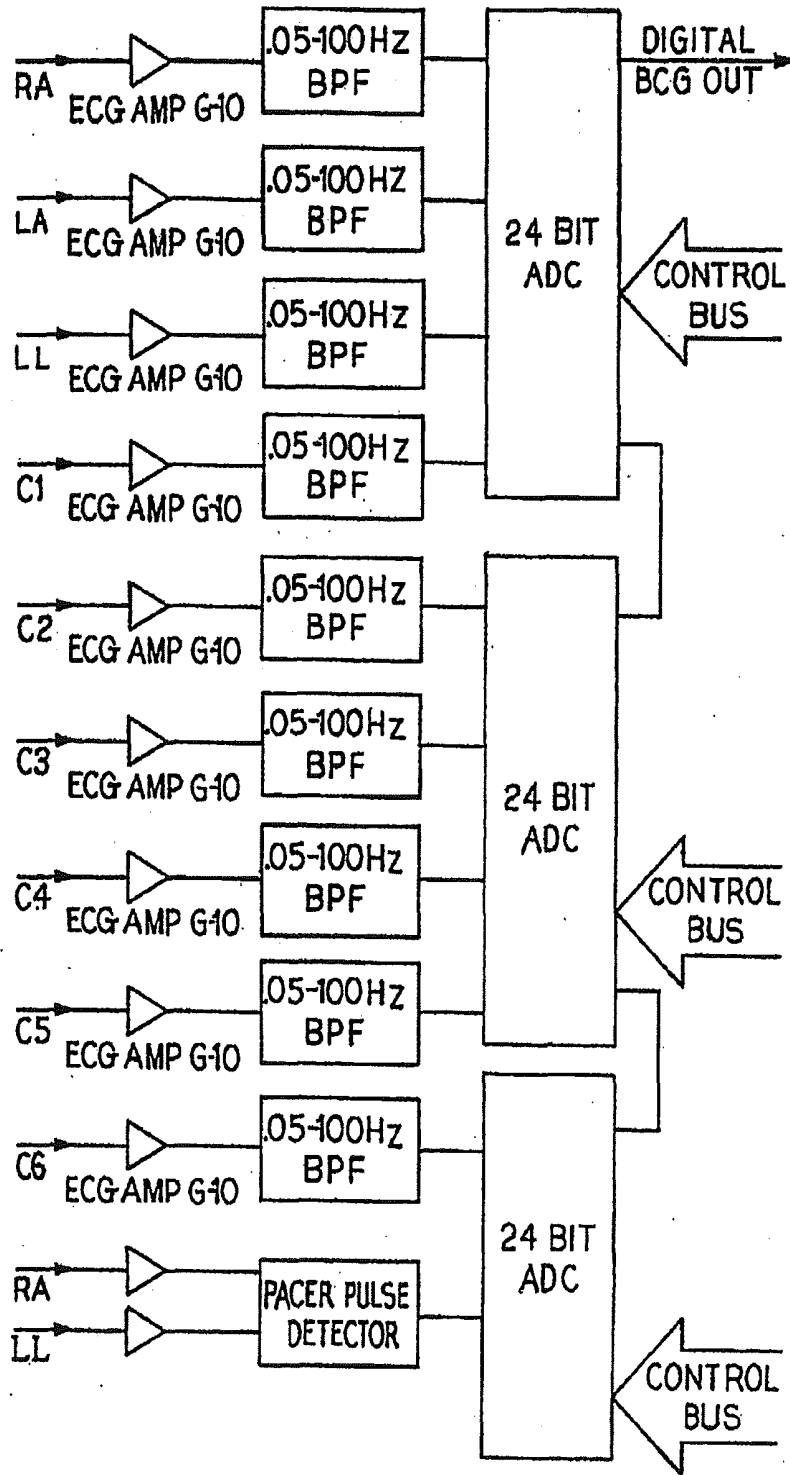
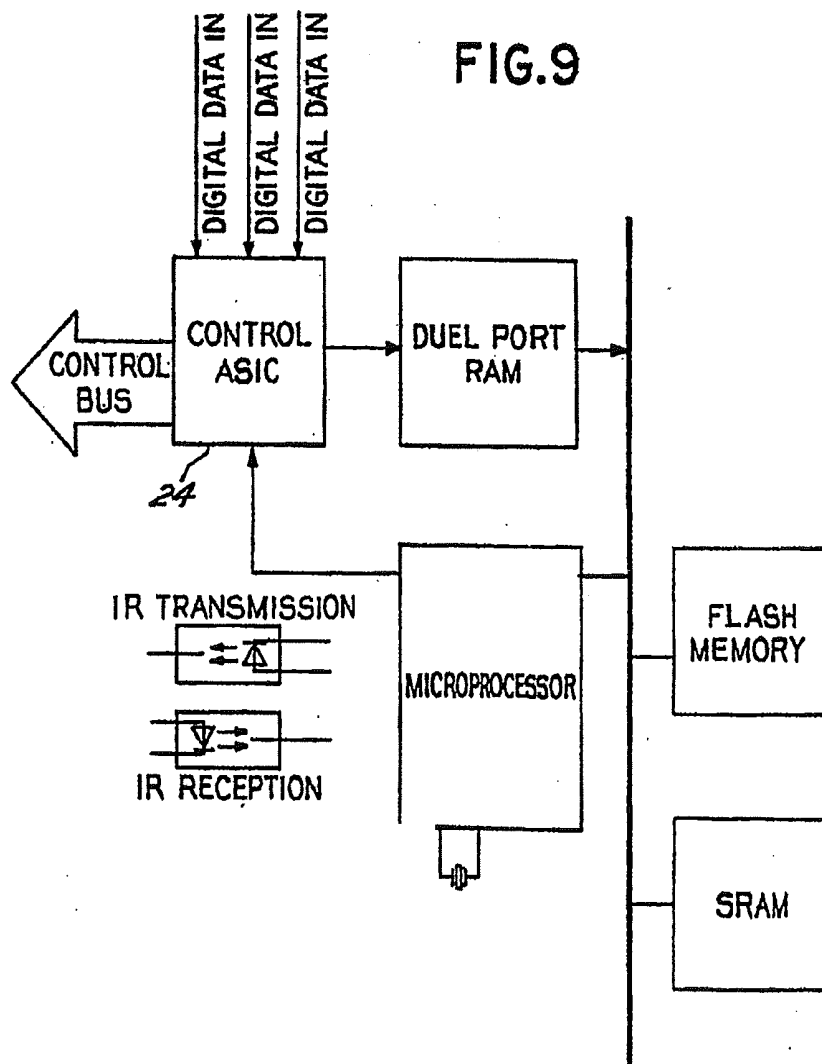
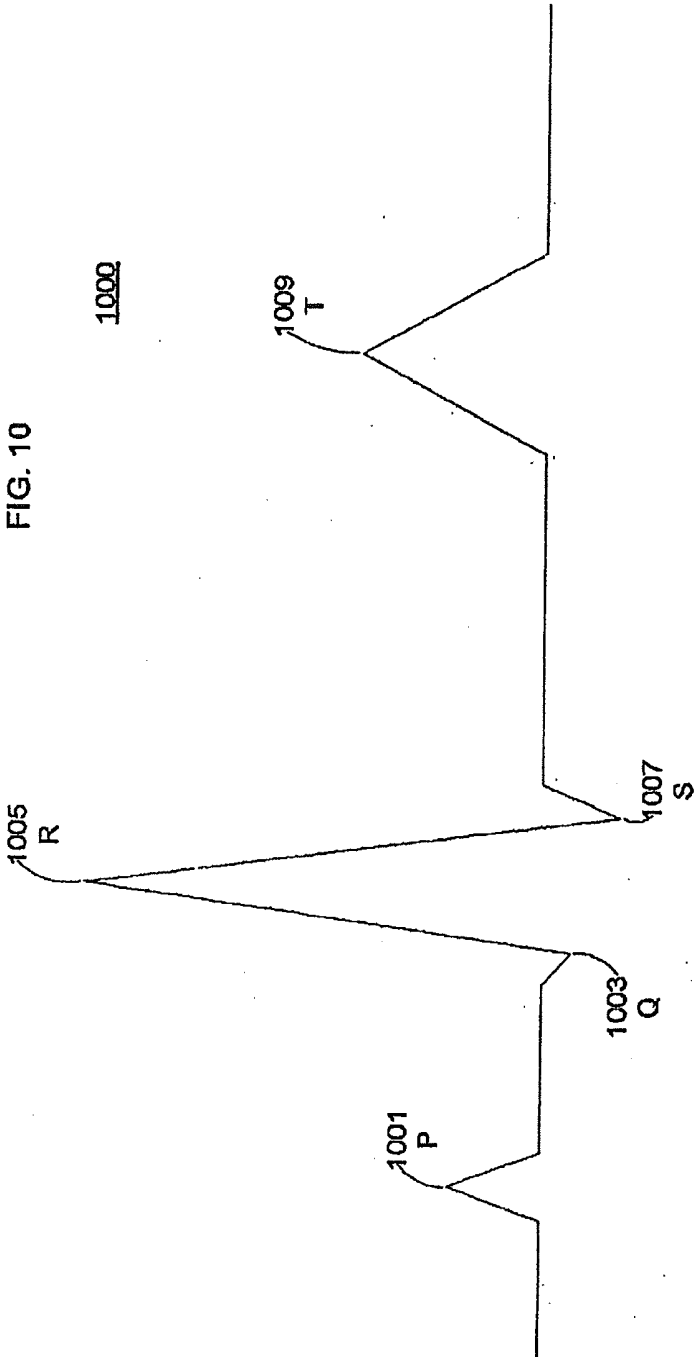


FIG.8







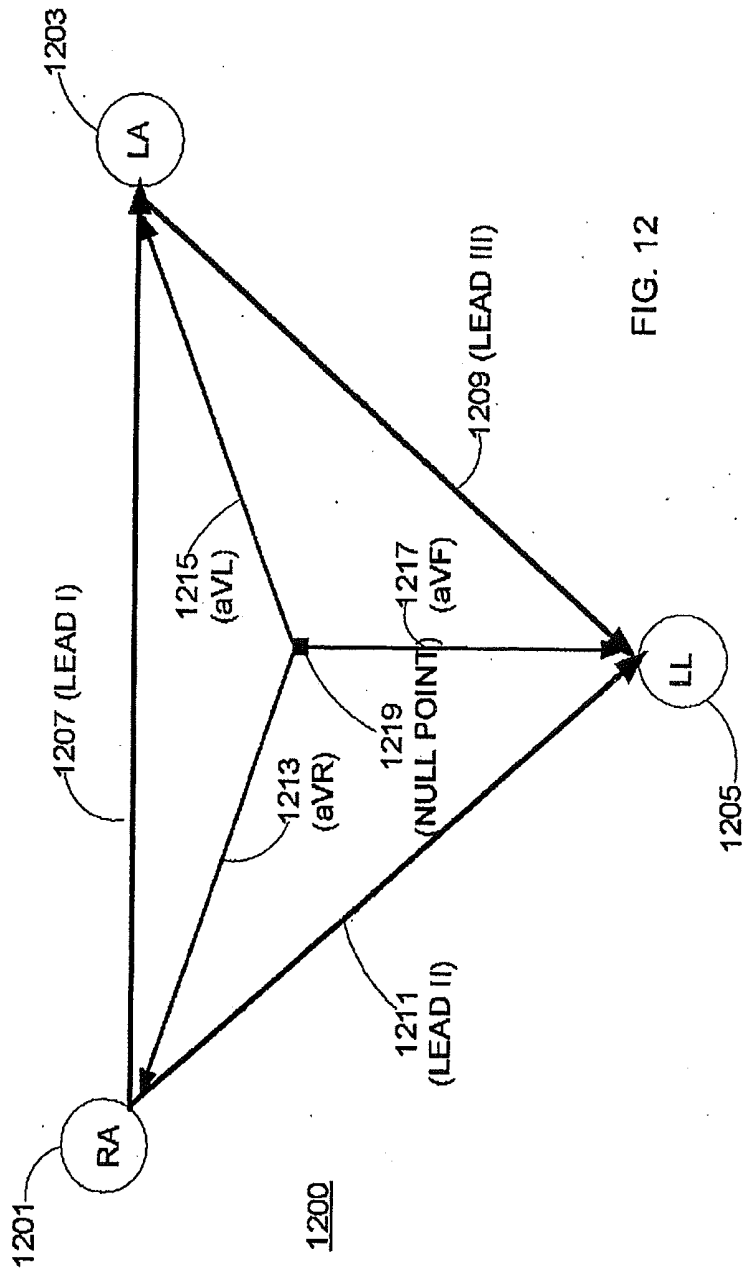


FIG. 12

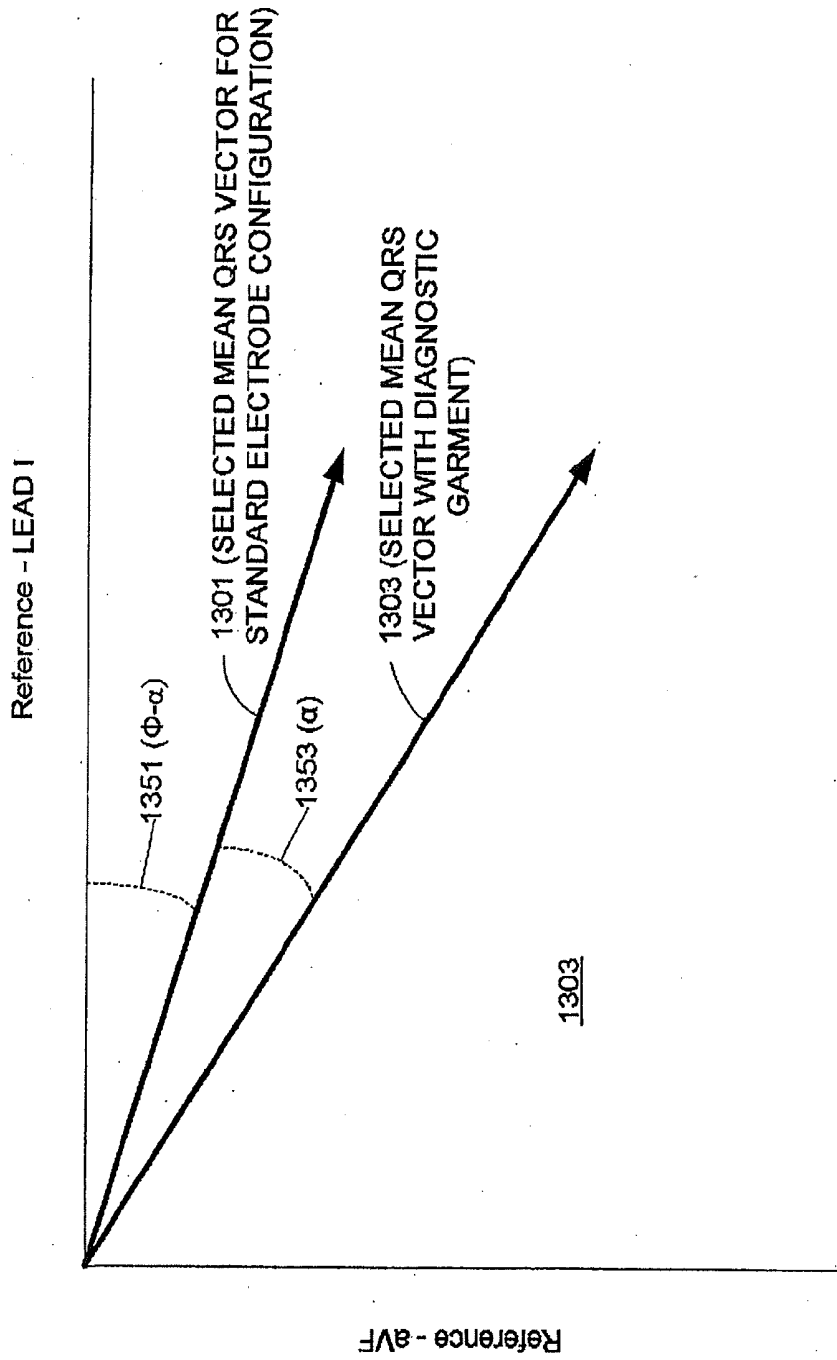


FIG. 13

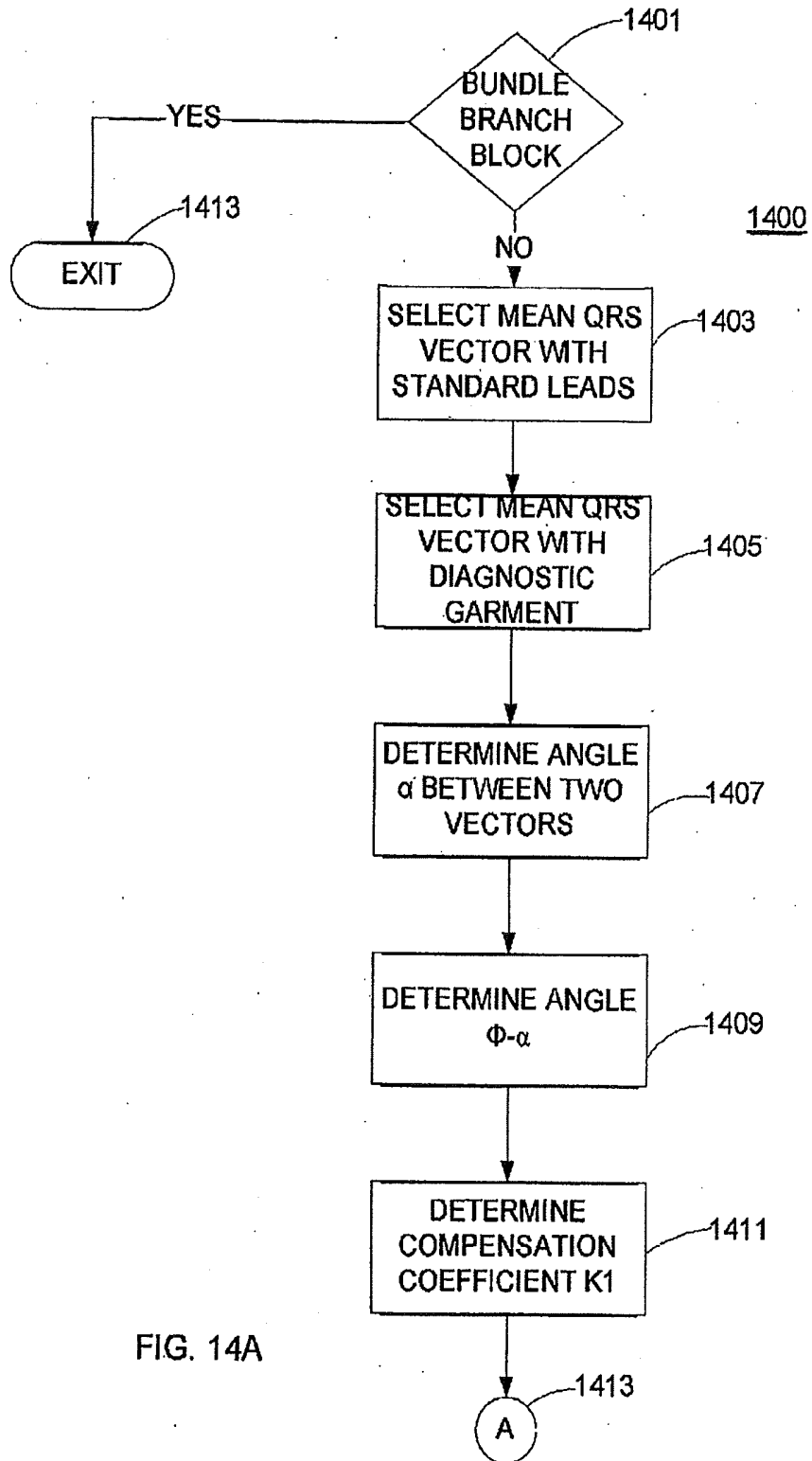


FIG. 14A

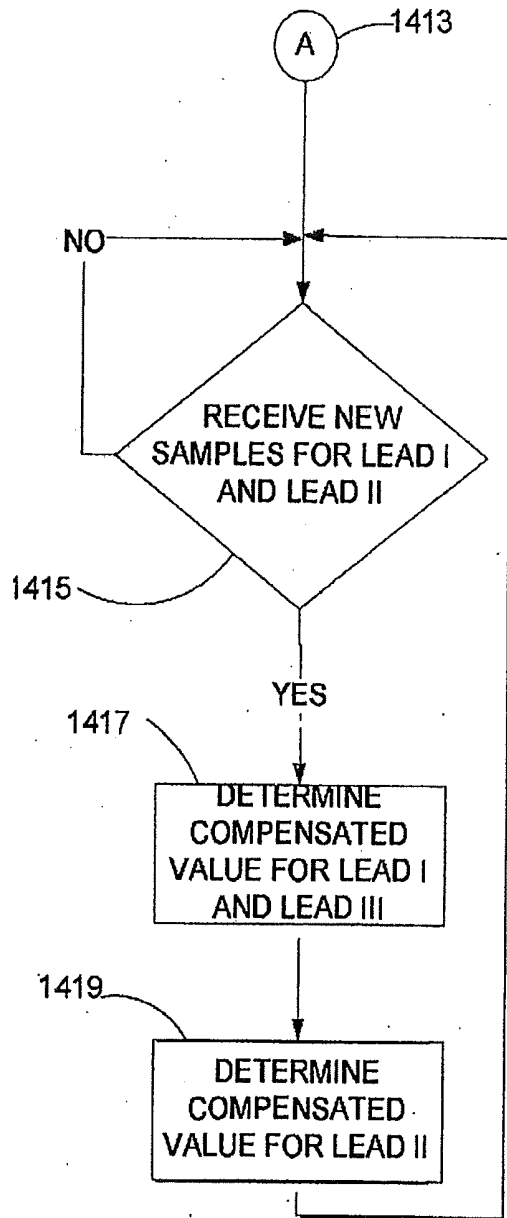


Fig. 14B

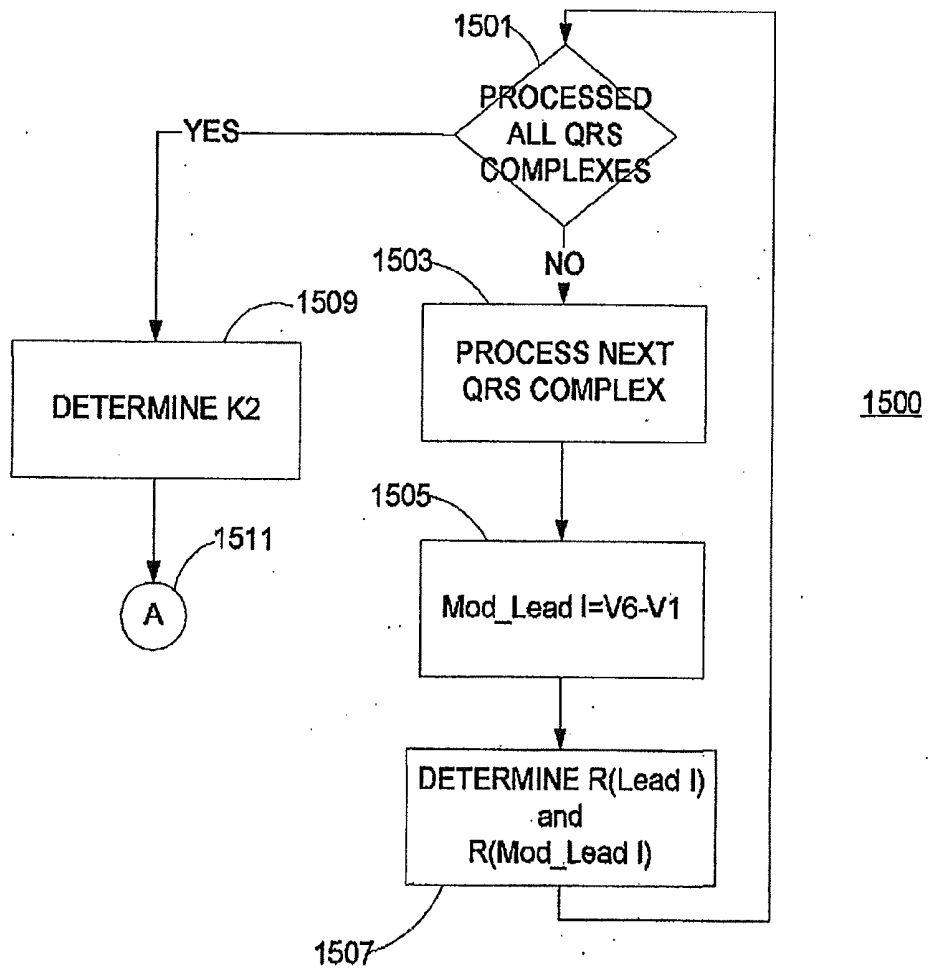


FIG. 15A

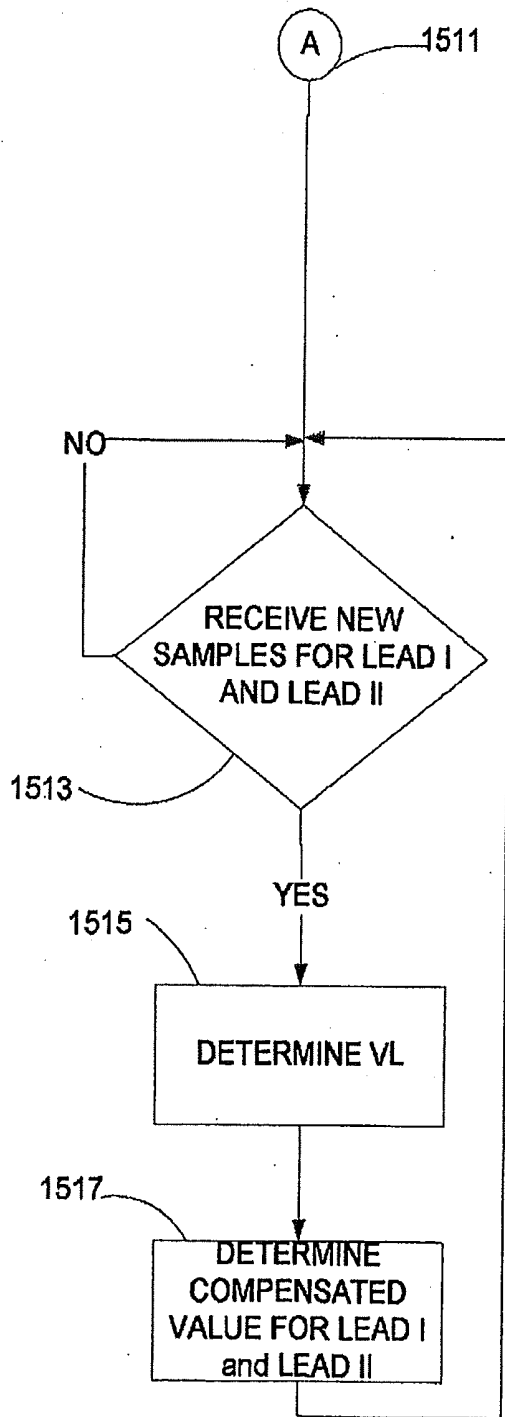


Fig. 15B

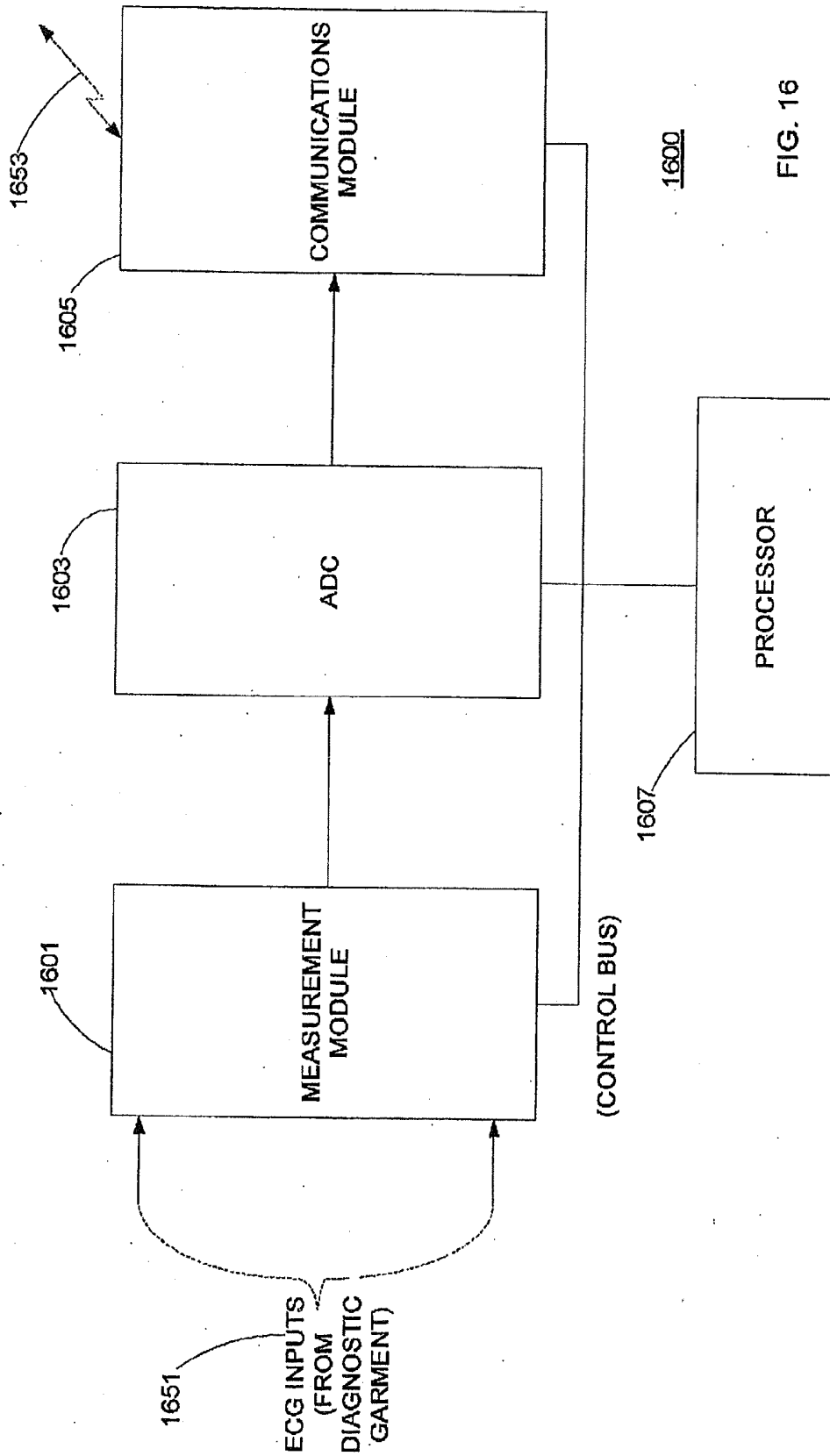


FIG. 16

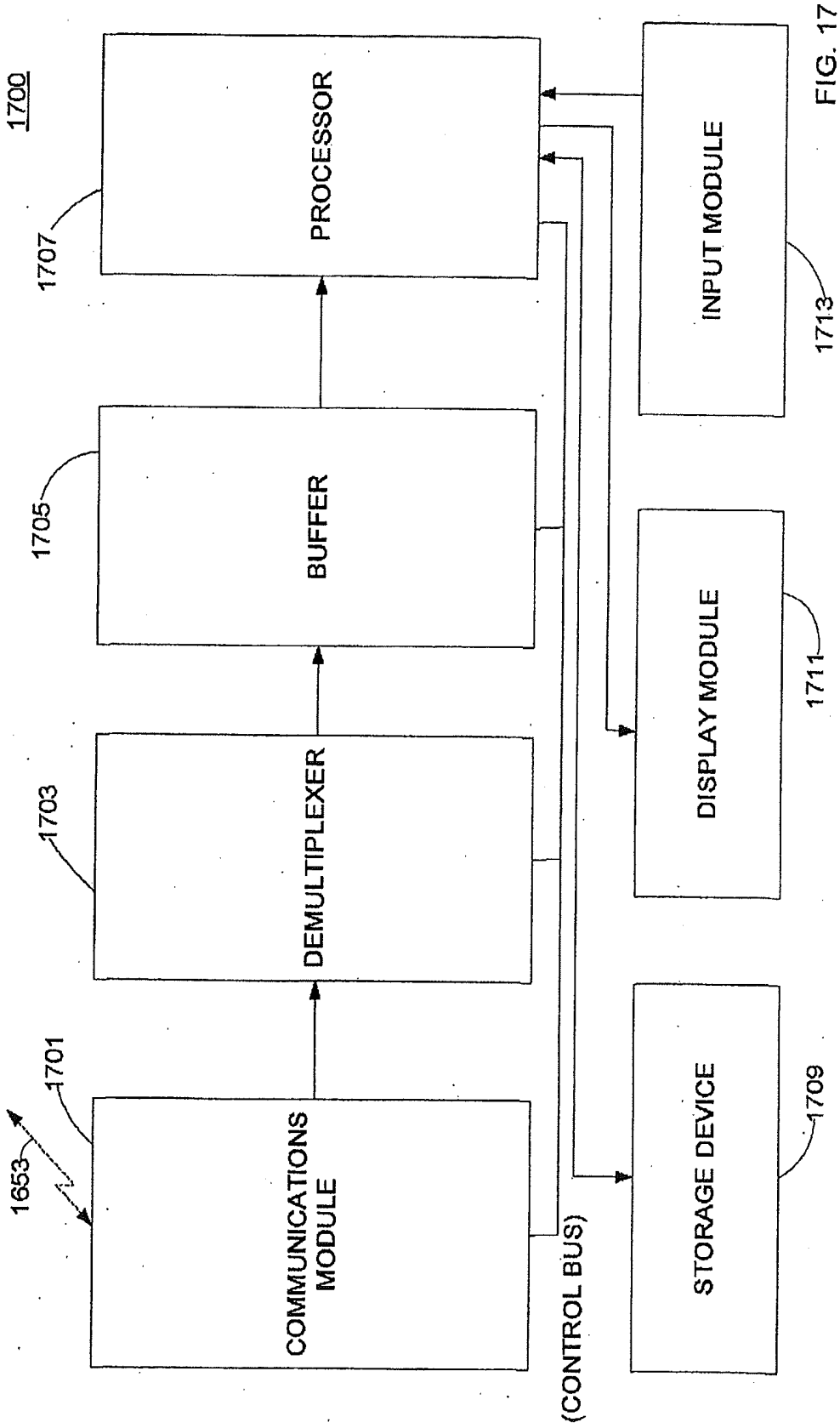


FIG. 17

FIG. 18

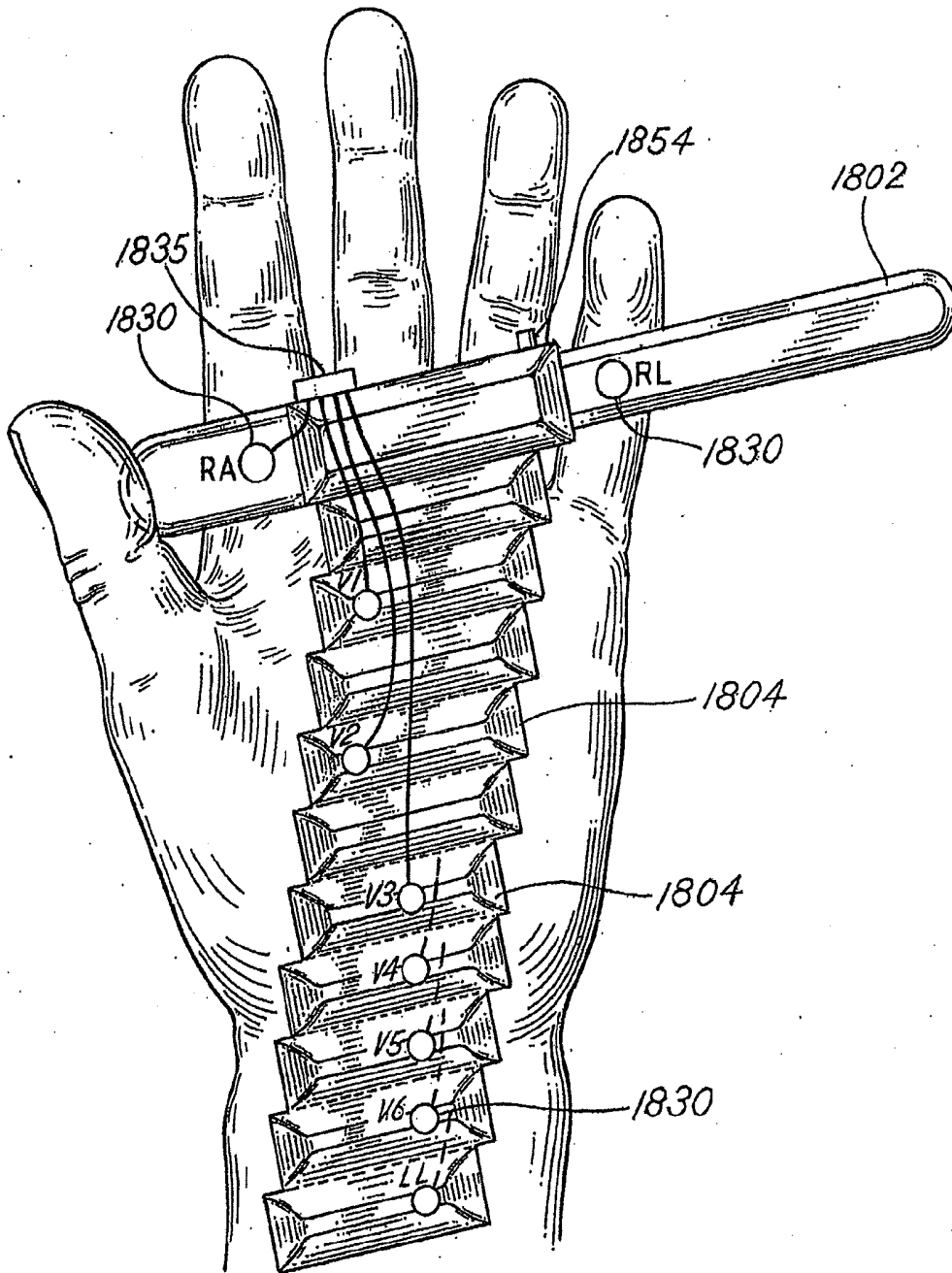


FIG.20

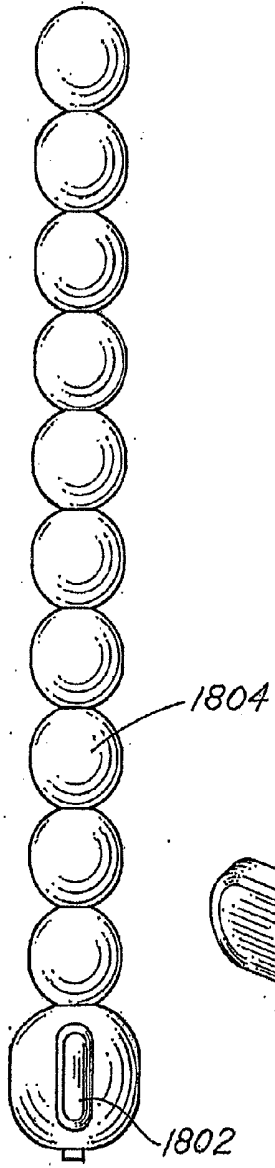
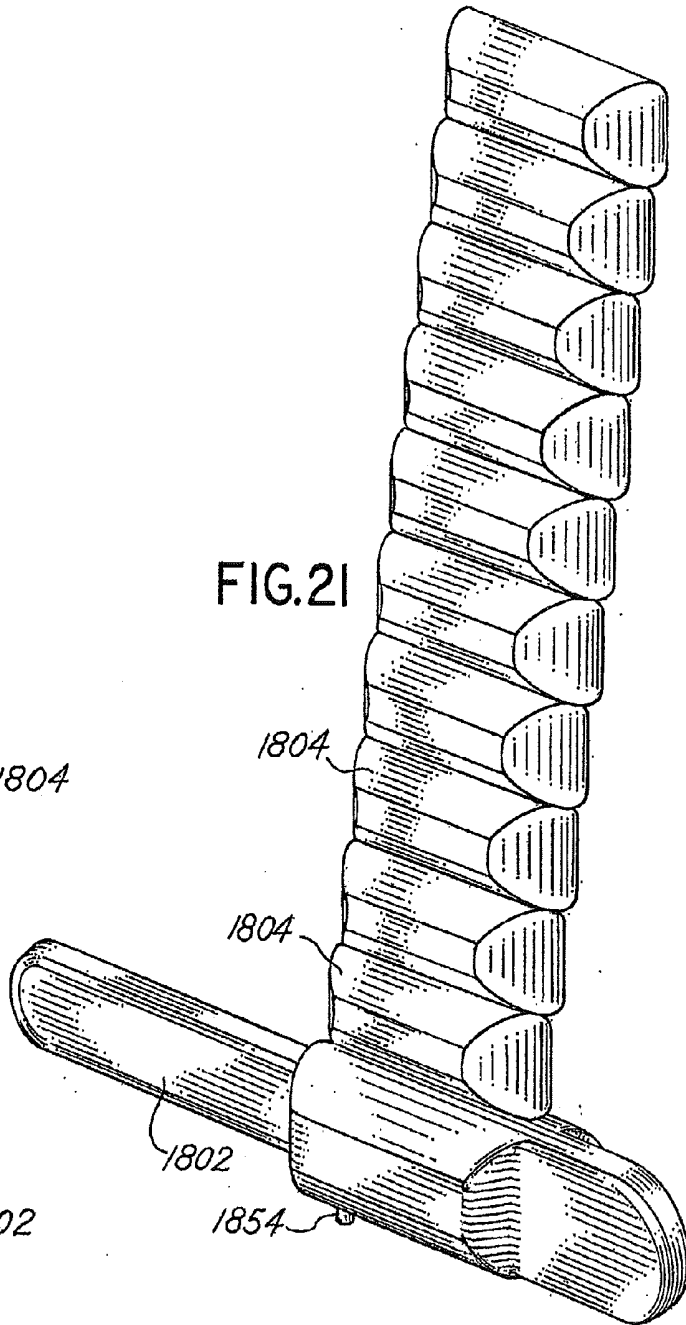


FIG.21



**PHYSIOLOGICAL MEASURING SYSTEM
COMPRISING A GARMENT IN THE FORM
OF A SLEEVE OR GLOVE AND SENSING
APPARATUS INCORPORATED IN THE
GARMENT**

**CROSS REFERENCE TO RELATED
APPLICATIONS**

[0001] This is a continuation of utility application Ser. No. 12/898,430 (now U.S. Pat. No. 8,442,615), filed Oct. 5, 2010 (issues on May 14, 2013) entitled “Physiological Measuring System Comprising a Garment in the Form of a Sleeve or Glove and Sensing Apparatus Incorporated in the Garment” which is a continuation-in-part of co-pending application Ser. No. 11/742,904 (now abandoned), filed May 1, 2007 entitled “Physiological Measuring System Comprising a Garment in the Form of a Sleeve or Glove and Sensing Apparatus Incorporated in the Garment” which is a divisional of co-pending application Ser. No. 10/899,484 (now abandoned), filed Jul. 26, 2004 entitled “Physiological Measuring System Comprising a Garment in the Form of a Sleeve or Glove and Sensing Apparatus Incorporated in the Garment”, which is a continuation-in-part of co-pending application Ser. No. 10/324,303, filed on Dec. 20, 2002 entitled “Physiological Measuring System Comprising a Garment in the Form of a Sleeve or Glove and Sensing Apparatus Incorporated in the Garment” and granted as U.S. Pat. No. 6,842,722 on Jan. 11, 2005. Application Ser. No. 10/324,303 is a continuation application of application Ser. No. 10/117,250 filed Apr. 5, 2002 entitled “Physiological Measuring System Comprising a Garment and Sensing Apparatus Incorporated in the Garment” and granted as U.S. Pat. No. 6,516,289 on Feb. 4, 2003. Application Ser. No. 10/117,250 is a continuation of application Ser. No. 09/359,340 (expressly abandoned), filed Jul. 21, 1999 entitled “Physiological Measuring System Comprising a Garment in the Form of a Sleeve or Glove and Sensing Apparatus Incorporated in the Garment”. Application Ser. Nos. 11/742,904; 10/899,484; 10/324,303; 10/117,250, and 09/359,340 are incorporated herewith by reference and for which priority is claimed.

BACKGROUND OF THE INVENTION

[0002] The field of the invention is in the design of devices for the acquisition, storage and transmission of multiple physiological parameters from human subjects to be monitored in hospitals, clinics, doctor’s offices as well as in remote locations (home environment, work place, recreational activity, etc.) or unnatural environments (under-water, outer space, etc.).

[0003] The conventional acquisition of a human electrocardiogram (ECG) requires the recording of the time dependent fluctuations in the cardiac electrical activation from 12 different angles on the human torso (6 in the frontal plane and 6 in the horizontal plane) the so-called 12 lead ECG. Classically, this procedure involves the placement on the human body of at least 10 electrodes at various predefined anatomical locations.

[0004] Deviation from the predefined, worldwide, conventional localization of these electrodes may result in the acquisition of false data, possibly leading to misinterpretation and misdiagnosis. Even in the hospital or clinic environment, the correct and stable placement of the ECG electrodes, specifically the “chest leads” or “V leads” is often problematic,

unless one applies six adhesive electrodes on the patient’s chest. This is an impractical method in many circumstances due mainly to financial and patient inconvenience considerations. This problem is amplified in the attempts to record a full diagnostic 12 lead ECG in a remote location since the correct positioning of the electrodes by the examinee himself or by available laymen bystanders (family members, friends, etc.) is usually difficult and unreliable and therefore impractical.

[0005] To overcome this problem and to allow for the accurate acquisition of a 12 lead ECG in the ambulatory environment, various devices were conceived. Such devices include various forms of vests, girdles, adhesive and non-adhesive patches and other devices with incorporated electrodes allowing for the placement of the ECG electrodes on the patient’s chest. However, most of these devices are cumbersome to use and have therefore not been universally accepted. Moreover, these devices do not lend themselves to the integration of other sensors and instrumentation for the simultaneous acquisition of other important physiological data (blood pressure, SpO₂, etc.), such data being very useful for the purpose of ambulatory telemedical follow-up of patients in their own environment (home, workplace, recreational activity, etc.).

SUMMARY OF THE INVENTION

[0006] The invention proposes to integrate a multitude of sensors and measuring devices in a diagnostic garment in the form of a glove or sleeve for repeated continuous and simultaneous assessment of various physiological data such as ECG, noninvasive blood pressure (NIBP), blood oxygen saturation (SpO₂), skin resistance, motion analysis, an electronic stethoscope, etc. An important advantage of the glove or sleeve is that it provides accurate, repeatable and conventional placement or localization of the ECG electrodes (specifically for the recording of the chest or V leads) by positioning the left arm of patient in a natural and very comfortable manner on the chest. Moreover, the glove or sleeve provides a means for simultaneous recording, storage and transmission of a multitude of other physiological data without the need for difficult manipulations. Furthermore, the incorporation of various measuring tools or instruments into one device, i.e. glove or sleeve, allows for the reciprocal calibration and easy acquisition of important, integrated, physiological data, a feature presently almost unavailable in the ambulatory environment (e.g. beat to beat NIBP changes, integration of: heart rate, blood pressure, skin resistance and other parameters for the assessment of autonomic balance, etc.).

[0007] With one aspect of the invention, samples from the ECG electrodes positioned on a diagnostic garment (e.g., a glove or sleeve) are compensated so that the samples better approximate samples from EEG electrodes that are positioned at classical locations. With an embodiment of the invention, a first mean QRS vector is selected from a first plurality of mean QRS vectors associated with standard electrodes and second mean QRS vector is selected from a second plurality of mean QRS vectors associated with the diagnostic garment.

[0008] With another aspect of the invention, samples from ECG electrodes are compensated to reduce signal noise that may result by positioning the ECG electrodes on the diagnostic garment.

[0009] With another aspect of the invention, a disposable version of the glove can be inflated. By using an inflatable glove, the contour of the body is automatically matched by the

contour of the glove. The matching contours will allow for a close fit between the electrodes and the skin.

[0010] A further aspect of the invention relates to the inflatable glove which is capable of assuming the contour of the body and which is also disposable. The contoured glove incorporates electrodes and thereby may enable appropriate positioning of ECG electrodes.

[0011] Another aspect of the invention is the design of the inflatable glove which may be incorporated with a sling or a similar device such as a sleeve or holder will be separable from and capable of appropriately positioning and holding the inflatable glove.

[0012] These and other objects, advantages, features and aspects of the invention will be set forth in the detailed description which follows.

BRIEF DESCRIPTION OF THE DRAWING

[0013] In the detailed description which follows, reference will be made to the drawing comprised of the following figures:

[0014] FIG. 1 depicts the classic locations for the placement of ECG electrodes on a human body for recording of a conventional 12-lead electrocardiogram.

[0015] FIG. 2 depicts the central unit that includes all of the control functions for the various devices incorporated in the glove or sleeve device of the invention as well as on-line storage, analog to digital conversion and transmission capabilities of all acquired data; two blood-pressure cuffs (wrist and arm); and SpO₂ and plethysmographic sensors (fingers).

[0016] FIG. 3 depicts the ventral aspect of the glove or sleeve device illustrating the suggested location of the various ECG electrodes to permit easy placement of the ECG electrodes at predefined locations on a patient's body for recording a diagnostic 12 Lead ECG. Furthermore, two small microphones are depicted on the ventral side of the glove to be connected with the electronic stethoscope located in the central control unit.

[0017] FIG. 4 depicts the ventral aspect of the glove or sleeve device depicting mainly the suggested location of other possible sensors for the determination of other physiological data such as temperature, skin resistance, etc.

[0018] FIG. 5 depicts the advised positioning of the patient's left arm with the glove or sleeve device on the patient's chest to ensure proper localization of the 12 lead ECG electrodes for accurate and reproducible 12 lead ECG recordings, as well as the proper positioning of an electronic stethoscope. This arm position, aided by a neck sling which may also contain an additional ECG electrode, is natural and comfortable and therefore allows for prolonged, stable and continuous monitoring of all desired physiological parameters.

[0019] FIG. 6 is a schematic circuit diagram of sensor inputs for the system.

[0020] FIG. 7 is a schematic mechanical system diagram of the ECG inputs and blood pressure inputs.

[0021] FIG. 8 is a schematic circuit diagram of the input circuitry for the ECG measurements.

[0022] FIG. 9 is a schematic circuit diagram for the overall system.

[0023] FIG. 10 shows a simplified representation of an exemplary ECG waveform that is obtained from an ECG lead in accordance with an embodiment of the invention.

[0024] FIG. 11 shows an ECG waveform and an associated vector representation in accordance with an embodiment of the invention.

[0025] FIG. 12 shows an Einthoven's triangle representing ECG leads in accordance with an embodiment of the invention.

[0026] FIG. 13 shows a vector diagram for determining compensation parameters in accordance with an embodiment of the invention.

[0027] FIG. 14A shows a flow diagram for compensating for the positioning of ECG electrodes on a diagnostic garment in accordance with an embodiment of the invention.

[0028] FIG. 14B shows a continuation of the flow diagram shown in FIG. 14A.

[0029] FIG. 15A shows a flow diagram for compensating for signal noise resulting from the positioning of ECG electrodes on a diagnostic garment in accordance with an embodiment of the invention.

[0030] FIG. 15B shows a continuation of the flow diagram shown in FIG. 15A.

[0031] FIG. 16 shows apparatus for obtaining, transforming, and communicating ECG measurements from electrodes that are positioned on a diagnostic garment in accordance with an embodiment of the invention.

[0032] FIG. 17 shows apparatus of a remote surveillance center for receiving and processing ECG measurements in accordance with an embodiment of the invention.

[0033] FIG. 18 is a plan view of an inflatable sensor carrying device or glove or sleeve designed to be placed upon the left hand and forearm of an individual with appropriate electrodes positioned in accord with the teachings of the invention.

[0034] FIG. 19 is a plan view of the inflatable glove of FIG. 18 as viewed from the opposite side thereof.

[0035] FIG. 20 is a side view of the glove of FIGS. 18 and 19.

[0036] FIG. 21 is an opposite side perspective view of the glove of FIG. 18.

DESCRIPTION OF THE PREFERRED EMBODIMENTS

[0037] As depicted in FIGS. 2-5, the garment of the invention is preferably in the form of a glove or sleeve or combined glove and sleeve 10 and is fabricated from flexible material such as a nylon fabric that can fit snugly, without causing discomfort, on a human hand, forearm and arm. The glove or sleeve 10 is sized to fit or conform to patient arm size and shape. A neck sling 12 is attached to the glove or sleeve 10. The neck sling 12 is also adaptable and adjustable to the individual patient to ensure accurate positioning or elevation of the left arm on the chest of the patient for the proper placement of the ECG electrodes. Moreover, the neck sling 12 may include an additional ECG electrode 14 (FIG. 5).

[0038] Two blood-pressure cuffs 16, 18 are incorporated in the glove or sleeve 10. One cuff 16 is positioned on the arm in the conventional blood-pressure measuring location, the second cuff 18 is placed on the forearm. Special restraining straps 20 mounted on the outside of the glove are wrapped around the blood-pressure cuffs 16, 18 to allow proper restraint during cuff inflation. The blood-pressure cuffs 16, 18 are connected by a flexible tube 22, 23 to a central control unit or device 24 for inflation, deflation, and measurement of blood pressure by conventional methodology and used in the automatic determination of NIBP.

[0039] At least ten ECG electrodes **30** are attached to the glove or sleeve **10** as depicted in FIG. 3. All of the ECG electrodes **30** except the LA electrode face the patient's chest whereas the LA electrode **30** is in contact with the skin of the left upper arm. The RA electrode **30** or its equivalent is placed either on the index finger of the glove **10** in the neck sling **12**, or in another suitable position. All of the electrodes **30** are wire connected to the ECG recording device located in the central control unit **24** retained in the sleeve **10**.

[0040] The ECG electrodes **30** included the following features:

[0041] (a) An automatic electrolyte solution application device. In the course of the recording of a conventional ECG, it is the routine to manually apply an electrolyte solution or cream to the contact surface between the skin and the recording electrodes to cause a reduction of skin resistance and to improve the conduction of the electrical current between the skin and the recording electrode. In the described glove or sleeve **10**, each electrode **30** includes means for automatic injection of an electrolyte solution into each electrode **30** prior to the acquisition of the ECG. This is achieved by connection of each electrode to an electrolyte reservoir by means of connecting tubes **32**. Prior to the acquisition of the ECG recording, the electrolyte solution will be automatically sprayed into the electrodes **30** by pressure provided by a pump located in the central control unit **24**.

[0042] (b) A suction device for better electrode-skin contact: The ECG electrodes **30** will be configured as suction electrodes **30** and will be connected via suction tubes **34** to a pump located in the central control unit **24**. Once the glove or sleeve **10** is placed on the chest in the proper position, an external signal will activate the pump to create the needed negative pressure and suction to maintain the proper electrode-skin contact. Following the termination of the ECG recording, the negative pressure will be abolished allowing detachment of the electrodes from the patient's chest. The same or separate pumps may be utilized to effect electrolyte application and the creation of electrode suction.

[0043] A conventional IR SpO₂ measuring device **36** is incorporated in the glove or sleeve **10** and placed on one of the glove finger tips **38** to fit the patient's finger. Blood SpO₂ is determined using the conventional methods applied for this measurement and the results will be stored in the central control unit **24**.

[0044] A conventional finger Plethysmographic-measuring device **38** is incorporated in one of the glove fingertips **40** to fit on the patient's finger. An external restraining device **42** ensures continuous snug contact with the finger to provide continuous beat to beat changes in finger blood volume variation. The finger plethysmograph is wire connected to the central control unit **24**. The signal is periodically calibrated using the conventional cuff blood pressure measurements thereby allowing for continuous beat to beat blood pressure monitoring.

[0045] A thermistor **44** is incorporated in the glove or sleeve **10** and located on the ventral surface of the arm in direct contact with the skin to allow the determination of skin temperature. The thermistor **44** is wire connected to the central control unit **24**.

[0046] A conventional sensor **46** for the determination of skin resistance is incorporated in the glove or sleeve **10** and wire connected to the central control unit **24**.

[0047] Two special microphones **50, 52** are attached to the ventral aspect of the glove or sleeve **10**, one located over the base of the left lung and the second on one of the fingers for the simultaneous auscultation of both lungs. Furthermore, the finger microphones **50, 52** can also be moved to enable auscultation of the heart and other organs. The microphones **50, 52** will be connected to the central control unit **24** for recording and transmission of the auscultatory findings.

[0048] Motion and force assessment devices **60, 80, 82** are incorporated in the glove or sleeve **10** mainly for the early detection of neurological and neuromuscular dysfunction. Sensors **60** assess passive and active functions such as:

[0049] (a) Force of muscular contraction (e.g., handgrip, arm flexion and extension, etc.)

[0050] (b) Passive pathological arm and finger motion (Parkinsonian tremor, flapping tremor, etc.).

[0051] (c) Assessment of active finger, hand or arm motion (rapid hand pronation and supination, rapid finger motion, etc.).

[0052] The glove or sleeve **10** is equipped with a central control unit **24** attached to the dorsal aspect of the glove or sleeve **10** (FIG. 2). The general function of this unit **24** is the collection, transformation, storage and transmission of all of the physiological data collected from the various devices incorporated in the glove **10**. Moreover, the central control unit **24** includes mechanical and other devices such as pumps, injectors, etc., needed for the proper functioning of the incorporated devices as described herein.

[0053] Specifically, the central control unit **24** includes the appropriate measuring element for each sensor. The measured data is digitized, stored and upon demand, made available for transmission by RF or IR or any other form of wireless telemetric transmission to a remote surveillance center. Conversely, the central control unit **24** has the ability to receive signals from a remote surveillance center for the activation or deactivation and other control functions of the various measuring devices incorporated in the glove **10**.

[0054] In review, the glove **10** provides an unobtrusive stable platform for self-application of numerous physiological sensors using a glove and/or sleeve **10** and an optional neck support sling **12** to perform various simultaneous non-invasive or invasive health-care related measurements for use in the home, workplace, recreational, clinic or hospital environment. The invention has the advantage over other methods of sensor applications in that no prior knowledge of proper sensor placement is required and that proper placement of the sensors on the patient is assured. The sensor position is stable and reproducible. The invention improves the repeatability of measurements by insuring that the placement and distances between the various sensors remain constant. Moreover, the interplay between the various sensors can result in the combination of data acquisition integration and analysis adding major sophistication and improvement as compared to the individual use of each measuring devices.

[0055] In further review, the glove/sleeve **10** together with the optional neck support sling **12** contains one or more of the following measuring elements:

[0056] (a) An optical emitter and detector **36** attached to the index finger of the glove **10** for the purpose of measuring the level of oxygen saturation in the blood, and peripheral pulse (FIG. 2).

[0057] (b) A finger plethysmograph device **38** for continuous, beat to beat, noninvasive arterial blood pressure measurement (calibrated by the mean of the arterial

- blood pressure determinations derived from both the wrist and arm NIBP devices) (FIG. 2).
- [0058] (c) Inflatable cuff and pressure cuffs or sensor **16**, **18** located in various locations on the arm and hand to measure brachial radial or finger blood pressure for periodic (automatic or manual) noninvasive blood pressure measurements (NIBP). These NIBP measuring devices are also used to calibrating the optical system used to measure continuous, beat to beat arterial blood pressure as above mentioned (FIG. 2).
- [0059] (d) A central control unit **24** for the acquisition and transmission of the various bio-signals derived from the glove sensors. This central control unit **24** which can be activated locally by the patient or remotely by a monitoring center allows for automatic or manual activation of any or all of the sensors. The central control unit **24** provides amongst other: the initial and repeated sensor calibration procedures, activation of a built-in miniature pump for the creation of positive and negative pressures, the reception of commands from the remote control center, analog to digital conversion of measured data and their transmission to the control center as well as any other needed control functions (FIG. 2).
- [0060] (e) A set of electrodes **30** (V1, V2, RA, RL) placed on the palmar aspect of the glove **10** and/or the neck support sling **12** for the purpose of simultaneous recording of a twelve-lead electrocardiogram (FIG. 3).
- [0061] (f) A method for automatic administration of an electric conductor solution/cream to the electrodes **30** to reduce skin resistance and improve ECG relating quality.
- [0062] (g) A method of producing and maintaining a sufficient negative pressure (suction) inside the ECG electrodes **30** to insure proper contact between the ECG electrode and the skin (FIG. 3).
- [0063] (h) A method of insuring proper contact between the ECG electrodes **30** and the skin by the application of an air cushion or a gel cushion around areas of the glove that are in contact with the skin. The cushion is used to provide a body contour fit (FIG. 3).
- [0064] (i) A method such as a buckle connection **15** to adjust the sling **12** to ensure that the arm is held at the proper level for accurate placement of the ECG electrodes **30** on the patients body.
- [0065] (j) A temperature sensor **40** placed in appropriate areas of the glove/sleeve **10** for the purpose of measuring body temperature (FIG. 4).
- [0066] (k) An electrode or set of electrodes **46** placed in the palm area of the glove for the purpose of measuring skin resistance (FIG. 4).
- [0067] (l) An electronic stethoscope for the auscultation of lungs, heart and other organs.
- [0068] (m) Built-in measuring devices **80** in FIG. 4 in the glove fingers for the accurate assessment of tremor and other normal or neurological forms of finger motions.
- [0069] (n) Built in measuring devices **80** in the glove **10** for the determination of EMG.
- [0070] (o) Built-in measuring devices **80** in the glove **10** for the determination of nerve conduction.
- [0071] (p) Built-in measuring device **82** for the determination of muscle force (hand grip, extension, flexion, etc.).
- [0072] (q) Built-in device **82** for the assessment of rapid/accurate voluntary hand movement.
- [0073] (r) The advised positioning of the patient's left arm on the chest to ensure proper localization of the 12 lead ECG electrodes of the glove for accurate and reproducible 12 lead ECG recording is shown in FIG. 5. This arm position, aided by the adjustable neck support sling **12**, is natural and comfortable and therefore allows for prolonged, stable and continuous monitoring of all available parameters (FIG. 5).
- [0074] FIGS. 6, 7, 8 and 9 are schematic drawings depicting the basic elements described above. FIG. 6 depicts the various sensors including the SpO2 sensor **36**, the plethysmography sensor **38**, the temperature sensor **44**, skin resistance probes **46**, strain gauges **48**, and stethoscope sensors **50**, **52**. As depicted in FIG. 6, each of the inputs is amplified and, if necessary, filtered prior to being converted to a 24 bit analog to digital converter. The output of the analog to digital converter goes via a control ASIC depicted in FIG. 9 to a dual port ram also in FIG. 9 where it is processed and transmitted by a microprocessor and an infrared communications to a stationary unit.
- [0075] FIG. 7 depicts the various mechanical elements and connections for the ECG electrodes and the blood pressure mechanical and electronic portion of the system. Each ECG electrode comprises a container that holds a saline solution or another lubricant. This solution is drawn into the electrode via a vacuum system. A bleed valve closes the system and then releases the vacuum. The release of the vacuum will then release the lubricant or solution. Digital input output drivers control the vacuum pump and the bleed valve in response to signals that are provided from the ASIC control lines. In the embodiment disclosed, there are two blood pressure cuffs, one associated with the wrist and one with the upper arm. A blood pressure pump (NIBP pump) pumps each cuff. A pressure sensor then measures the pressure in each cuff. The values from the pressure sensor are amplified, filtered and converted to digital values in the 24-bit analog to digital converter. The output of the analog to digital converter also passes through the control ASIC in FIG. 9 to the dual port random access memory unit where it is processed and transmitted by the microprocessor and IR communications, for example, to a stationary unit.
- [0076] FIG. 8 depicts the ECG analog input circuitry. Each electrode input is separately amplified and band passed filtered prior to conversion by a 24-bit analog to digital converter. The analog to digital converter signal passes through the control ASIC in FIG. 9 to the dual port RAM where it is processed and transmitted again by the microprocessor and IR communications to a stationary unit.
- [0077] FIG. 9 depicts the digital circuitry in the system. The circuitry includes the ASIC which has logic for the timing signals and for transmitting or passing the digitized analog signals from the various analog to digital converters to the dual port RAM which sits on the microprocessor. The microprocessor runs the software provided from the flash memory, collects data samples, performs basic analysis, controls the various valves and pumps and sends data to the central data collector via IR communication. The described circuitry is but one way to accomplish the goals and objectives of the use of the glove and/or sleeve of the invention.

Electrode Compensation

[0078] Embodiments of the invention enhance a vector representation of the ECG waveforms. As will be discussed, methods and apparatuses provide for adjusting a vector rep-

resentation of ECG signals to compensate for positioning ECG electrodes on a diagnostic garment (e.g., the glove/sleeve as discussed above) rather than classically positioning the electrodes on a patient's limbs as with standard ECG electrodes. Also, an embodiment of the invention compensates for additional signal noise that may be imposed on the EEG signals resulting from the positioning of the EEG electrodes on the diagnostic garment.

[0079] Cardiac activity generates a measurable amount of electric current. The current is recorded through an electrocardiograph and displayed as an EEG waveform, the shape of which is governed by both the magnitude and direction of the current flow. The EEG waveforms may be displayed as vectors whose trajectories also depict the magnitude and direction of the heart's impulses as will be discussed with FIG. 11. The average of these vectors for a particular heart cycle is called the mean QRS vector and is displayed on a vector image as a solid arrow whose length is the average magnitude and whose angle is the average direction.

[0080] FIG. 10 shows a simplified representation 1000 of an exemplary ECG waveform that is obtained from an ECG lead in accordance with an embodiment of the invention. In normal sinus rhythm, each P wave 1001 is followed by a QRS complex (comprising Q wave 1003, R wave 1005, and S wave 1007). The QRS complex represents the time it takes for depolarization of the ventricles. Activation of the anterioseptal region of the ventricular myocardium corresponds to the negative Q wave 1003. However, Q wave 1003 is not always present. Activation of the rest of the ventricular muscle from the endocardial surface corresponds to the remainder of the QRS complex. The R wave 1005 is a point when half of the ventricular myocardium has been depolarized. Activation of the posterobasal portion of the ventricles give an RS line. The normal QRS duration is approximately from 0.04 seconds to 0.12 seconds measured from the initial deflection of the QRS complex from the isoelectric line to the end of the QRS complex. The QRS complex precedes ventricular contraction.

[0081] FIG. 11 shows an ECG waveform and an associated vector representation in accordance with an embodiment of the invention. FIG. 11 shows QRS complex 1101 being represented as vectors 1003 (in relation to Einthoven's triangle 1107 as will be discussed) whose trajectories also depict the magnitude and direction of the heart's impulses. The average of these vectors for a particular heart cycle is called mean QRS vector 1105 and is displayed on the vector image as a solid arrow whose length is the average magnitude and whose angle is the average direction. QRS complex 1109 corresponds to a subsequent heart cycle that can be presented by another set of vectors.

[0082] Experimental studies involving hundreds of patients compare 12-lead ECG recordings with both standard electrodes and with electrodes positioned on a diagnostic garment. The diagnostic garment may assume a garment that fits on a portion of a patient's body and may assume a form of a glove/sleeve as shown in FIGS. 2 and 3. An exemplary embodiment of the invention utilizes PhysioGlove™, which is a glove/sleeve that fits over a patient's left arm and left hand.

[0083] The standard "12 lead ECG" utilizes the three standard limb bipolar leads (lead I, lead II, and lead III), three augmented limb leads, and six precordial unipolar leads. The augmented leads are the same as the standard leads, except that the augmented leads are compared to a hypothetical null

value that corresponds to a central point over the heart where no fluctuations in potential can be measured. The null point is actually mathematically determined using the electrical potentials generated by the other 2 leads. The lead on the left arm is known as an aVL lead, the lead on the right arm as an aVR lead, and the lead on the left leg as an aVF lead. Precordial leads are leads fanning across the chest. Precordial leads (V1, V2, V3, V4, V5, and V6) give more specific information about electrical conduction in the heart than the limb leads.

[0084] Comparing the locations of EEG electrodes 30 on diagnostic garment 10 shown in FIG. 3 and the classic positioning of ECG electrodes as shown in FIG. 1, one observes that the locations of the corresponding EEG electrodes are different. In order to better approximate the signals from the classic positioning of ECG electrodes, the ECG signals from the EEG electrodes on diagnostic garment 10 may be compensated as will be discussed. In particular, experimental studies indicate variations in the EEG waveform are caused by positioning the LL electrode on diagnostic garment 10 rather than on the left leg.

[0085] FIG. 12 shows an Einthoven's triangle 1200 representing (modeling) ECG leads 1207, 1209, and 1211 in accordance with an embodiment of the invention. Lead I 1207 represents the electrical potential between LA (left leg) electrode 1203 and RA (right arm) electrode 1201. Lead II 1209 represents the electrical potential between LL (left leg) electrode 1205 and LA electrode 1203. Lead III 1211 represents the electrical potential between LL electrode 1205 and RA electrode 1201. (RA electrode 1201, LA electrode 1203, and LL electrode 1205 correspond to RA, LA, and LL electrodes 30 shown in FIG. 3.) From Einthoven's triangle 1200, one can determine one lead from the other two leads by the following relationships:

$$\text{Lead I} = \text{Lead II} - \text{Lead III} \quad (\text{EQ. 1A})$$

$$\text{Lead II} = \text{Lead I} + \text{Lead III} \quad (\text{EQ. 1B})$$

$$\text{Lead III} = \text{Lead II} - \text{Lead I} \quad (\text{EQ. 1C})$$

[0086] Null point 1219 is a hypothetical "null" value that exists at a central point over the heart where no fluctuations in potential can be measured. The "null point" is actually mathematically determined using the electrical potentials generated by leads 1207, 1209, and 1211. Augmented leads aVR 1213 (corresponding to the right arm), aVL 1215 (corresponding to the left arm), and aVF 1217 (corresponding to the left leg) are measured with respect to null point 1219. Augmented leads 1213, 1215, and 1217 can be expressed in terms of standard leads 1207, 1209, and 1211. For example, aVF can be expressed as:

$$aVF = 0.5 * \text{Lead I} + \text{Lead III} \quad (\text{EQ. 1D})$$

[0087] Experimental results suggest that the mean QRS vector representing the QRS complex obtained from the patients using the diagnostic garment varies when compared with the mean QRS vector obtained from patients using standard electrodes. Experimental results also suggest that when these differences are compensated for, one can obtain an ECG waveform analogous to the one obtained using the standard electrode configuration.

[0088] FIG. 13 shows a vector diagram 1303 for determining compensation parameters in accordance with an embodiment of the invention. Analyzing a plurality of QRS complexes, vector 1301 is the selected mean QRS vector with standard electrodes (corresponding to the ECG electrodes

shown in FIG. 1) and vector **1303** is the selected mean QRS vector with electrodes positioned on the diagnostic garment (e.g., glove/sleeve **10** as shown in FIG. 2). The selection of mean QRS vectors will be discussed. Angle **1351** ($\phi-\alpha$) and angle **1353** (α) are used to determine a compensation factor as will be discussed.

[0089] An analysis of the mean vector of the QRS complex is made from any two of the three standard leads. In the embodiment, leads I and III are used. However, other embodiments of the invention can use lead II and lead III or lead I and lead II. The compensation process is a two-stage procedure with each stage involving a series of steps:

[0090] Stage I—Determine Compensation Parameters:

[0091] Select an ECG time interval with several QRS complexes.

[0092] Find the average vector angle for these QRS complexes. Each QRS complex is associated with a mean QRS vector (e.g., vector **1105** as shown in FIG. 11). A first plurality of mean QRS vectors is associated with the standard electrode configuration (as shown in FIG. 1) and a second plurality of mean QRS vectors is associated with the garment electrode configuration (as shown in FIG. 3).

[0093] Select the QRS complex with the angle closest to the average. A first selected mean QRS vector is selected that is closest to the average of the first plurality of mean QRS vectors and a second mean QRS vector is selected that is closest to the average of the second plurality of mean QRS vectors.

[0094] Find the compensation coefficient (k_1), where

$$k_1 = \cos \phi / \cos(\phi - \alpha) \quad (\text{EQ. 2})$$

[0095] This coefficient will be used in Stage II for performing the compensation. The angles ϕ and $\phi - \alpha$ correspond to the angles shown in FIG. 13.

[0096] Stage II—Apply the Compensating Algorithm:

[0097] The glove is a DSP device transmitting N samples per second to the receiver where N is the sample rate.

[0098] Each sample contains Lead I and Lead III voltages.

[0099] The other limb leads are combinations of these two leads.

[0100] During Stage 2, the limb lead values are compensated using the following matrix formula:

$$\begin{pmatrix} \text{LeadI}_{\text{New}} \\ \text{LeadIII}_{\text{New}} \end{pmatrix} = kA^{-1}BA \begin{pmatrix} \text{LeadI} \\ \text{LeadIII} \end{pmatrix} \text{ where} \quad (\text{EQ. 3})$$

$$\begin{pmatrix} \text{LeadI} \\ \text{LeadIII} \end{pmatrix} \text{ and } \begin{pmatrix} \text{LeadI}_{\text{New}} \\ \text{LeadIII}_{\text{New}} \end{pmatrix}$$

are the columns of lead voltages before and after the compensation, respectively. The compensation associated with Equation 3 uses the following matrix values:

$$A = \begin{pmatrix} 1 & 0 \\ 0.5 & 1 \end{pmatrix} \quad (\text{EQ. 4})$$

$$B = \begin{pmatrix} \cos \alpha & -\sin \alpha \\ \sin \alpha & \cos \alpha \end{pmatrix} \quad (\text{EQ. 5})$$

$$k_1 = \cos \phi / \cos(\phi - \alpha) \quad (\text{EQ. 6})$$

Matrix A has an inverse

$$A^{-1} = \begin{pmatrix} 1 & 0 \\ -0.5 & 1 \end{pmatrix}$$

THE compensation coefficient k_1 is defined in Equation 2. The determined compensation is applied to every ECG sample provided by the diagnostic garment. The compensated waveforms/reports are hence obtained.

[0101] While the exemplary embodiment selects one of the mean QRS vectors closest to an average of a plurality of mean QRS vectors, another embodiment can select a resulting mean QRS vector with another criterion. Also, another embodiment may determine a resulting mean QRS vector that corresponds to an average of the plurality of mean QRS vectors even though the resulting mean QRS vector does not correspond to actual measurement data.

[0102] The electrical signal from the heart's natural pace maker starts in what is called the SA (sinoatrial) node located in the right atrium travels through the right atrium to the ventricles (i.e. the lower chambers of the heart). The electrical signals cross a junction called the AV (atrialventricular) node going from the atrium to the ventricles. From the AV node the electrical signal travels through a path called the bundle of His that splits into two paths one on the left lower chamber and one on the right lower chamber. Each path is called a bundle branch. The electrical signals from the bundle branches causes the ventricles to contract. Normally both ventricles contract simultaneously. If one of the bundle branches is damaged then the blockage blocks or slows the electrical signal on one of the paths. The blockage of the electrical signal is called a bundle branch block. A left bundle branch block (LBBB) blocks the signal on the left side while a right bundle branch block (RBBB) blocks the signal on the right side. Patients that have a bundle branch block do not require compensation as described above. Thus, a separate algorithm may be used to detect those patients so that their ECG waveforms are not compensated.

[0103] ECG waveform noise reduction is performed in two stages, in which the signal noise results from positioning the ECG electrodes on the diagnostic garment.

[0104] Stage I—Determine the Parameter for the Compensation Filter

[0105] Select an ECG time interval with several QRS complexes.

[0106] Calculate Mod_Lead I= $V_6 - V_1$ values. Electrodes V_6 and V_1 are positioned on the diagnostic garment as shown in FIG. 3.

[0107] Define the AVG (R(Lead I)) and AVG (R(Mod_Lead I)) for the selected time interval. R is a parameter representing the height of the QRS complex peak over the isoelectric line. R is a parameter representing the height of the QRS complex peak over the isoelectric line. In the embodiment, R corresponds to the height of the R wave **1005** as shown in FIG. 10.

[0108] Determine the compensation coefficient k_2 , where

$$k_2 = \text{AVG}(R(\text{Lead I})) / \text{AVG}(R(\text{Mod_Lead I})) \quad (\text{EQ. 7})$$

[0109] The compensation coefficient k_2 will be used in Stage II for performing the compensation.

[0110] Stage II—Apply the Compensating Algorithm

[0111] The glove transmits Lead I, Lead III, and V1 to V6 voltages. Lead potential VL, which is a voltage between the LL electrode and the center of Einthoven's triangle, is given by.

$$VL=LL-(LL+LA+RA)/3 \quad (\text{EQ. 8})$$

[0112] VL voltage may also be obtained from the combination of the existing leads:

$$VL=(\text{Lead I}+2*\text{Lead III})/3 \quad (\text{EQ. 9})$$

[0113] The compensated values for Lead I and Lead III are determined by:

$$\text{Lead I}_{New}=k2*(V6-V1) \quad (\text{EQ. 10})$$

$$\text{Lead III}_{New}=-k2*(V6-V1)/2+3/2*(VL) \quad (\text{EQ. 11})$$

[0114] where Lead I_{New} and Lead III_{New} are values after compensation, VL is the previously defined voltage, and k2 is the compensation coefficient.

[0115] FIG. 14A shows a flow diagram 1400 for compensating for the positioning of ECG electrodes on a diagnostic garment in accordance with an embodiment of the invention. If step 1401 determines that a patient is diagnosed with a bundle branch block (as previously discussed), then compensation of the ECG inputs is circumvented through step 1413. If not, step 1403 selects a first mean QRS vector that is closest to a first plurality of mean QRS vectors, each corresponding to a QRS complex with a standard electrode configuration. Step 1405 selects a second mean QRS vector that is closest to a second plurality of mean QRS vectors, each corresponding to a QRS complex with a garment electrode configuration. In step 1407, an angle α between the two selected mean QRS vectors is determined as shown in FIG. 13. In step 1409, an angle $\phi-\alpha$ between the first selected mean QRS vector and a reference axis corresponding to Lead I is determined. In step 1411, a compensation coefficient k1 (as given by EQ. 2) is determined. Procedure 1400 continues to step 1413 in order to process subsequent samples.

[0116] FIG. 14B shows a continuation of flow diagram 1400, in which the compensation coefficient k1 is used to compensate subsequent ECG samples obtained from the electrodes positioned on the diagnostic garment. (ECG samples are acquired every 1/N seconds, i.e., N samples per second. A sample comprises ECG measurements from a plurality of ECG electrodes as shown in FIG. 3.) Step 1415 determines if a new sample is available for Lead I (corresponding to LA 1203 minus RA 1201 as shown in FIG. 12) and for Lead III (corresponding to LL 1205 minus LA 1203 as shown in FIG. 12). If so the voltages for Lead I and Lead III are compensated using Equations 3-6 in step 1417. In Step 1419, the voltage for Lead II is determined using EQ. 1B. Steps 1415-1419 are repeated for each subsequent ECG sample.

[0117] FIG. 15A shows a flow diagram 1500 for compensating for signal noise resulting from the positioning of ECG electrodes on a diagnostic garment in accordance with an embodiment of the invention. Process 1500 determines compensation coefficient k2 in order to reduce signal noise induced by positioning ECG electrodes on the diagnostic garment, e.g., glove/sleeve 10.

[0118] Step 1501 determines if all QRS complexes have been processed. If so, step 1509 determines compensation coefficient k2 using Equation 7. If not, step 1503 processes the next QRS complex.

[0119] In step 1505, a modified Lead I value is determined. With step 1507 the height of the R wave 1005 (as shown in FIG. 10) is determined for both Lead I and the modified Lead I (Mod_Lead I). Process 1500 is repeated until all QRS complexes are processed. In step 1511, once compensation coefficient k2 is determined, process 1500 continues to process subsequent ECG samples as shown in FIG. 15B.

[0120] FIG. 15B shows a continuation of flow diagram 1500. If step 1513 determines that a new ECG sample is available for processing, lead potential VL is calculated with Equation 9 using Lead I and Lead III potentials in step 1515. In step 1517, compensated lead values are determined using Equations 10 and 11. Even though Equations 10 and 11 compensate for two of the three leads, the third lead can be compensated in accordance with Equations 1A-1C. Steps 1513-1517 are repeated for subsequent ECG samples.

[0121] With another embodiment of the invention, the methods shown in FIGS. 14A, 14B, 15A, and 15B can be combined so that both compensation for electrode positioning and signal noise can be performed on EEG signals received from a diagnostic garment.

[0122] The embodiments shown in FIGS. 14A, 14B, 15A, and 15B exemplify compensating ECG samples from ECG electrodes that are positioned on a diagnostic garment. However, other embodiments of the invention support other algorithms to compensate for the ECG electrodes being positioned differently from the classical locations as shown in FIG. 1. Other embodiments of the invention may position ECG electrodes at different non-classical locations and correspondingly compensate for shifts in ECG electrode positioning.

[0123] FIG. 16 shows an apparatus 1600 for obtaining, transforming, and communicating ECG measurements from electrodes that are positioned on a diagnostic garment in accordance with an embodiment of the invention. Measurement module 1601 obtains ECG inputs (samples) 1651 from ECG electrodes positioned on the diagnostic garment. In the embodiment, measurement module 1601 includes a buffer to appropriately interface to the voltage levels of the ECG electrodes and a multiplexer to interface with a plurality of ECG electrodes. Because ECG inputs typically have analog characteristics, analog to digital converter (ADC) 1603 converts analog ECG inputs into a digital format in order to process the ECG samples.

[0124] Processor 1607 may compensate the ECG samples (in accordance with processes 1400 and 1500) or may transmit the uncompensated ECG samples to a remote apparatus (e.g., apparatus 1700) over communications channel 1653 through communications module 1605. The embodiment supports different types of communications channels including wireline channels (e.g., telephone, cable and Internet channels) and wireless channels (e.g., cellular radio channels, point-to-point radio channels, and infrared point-to-point channels).

[0125] FIG. 17 shows an apparatus 1700 of a remote surveillance center for receiving and processing ECG measurements in accordance with an embodiment of the invention. In the embodiment apparatus 1700 receives uncompensated samples over communications channel 1653 through communications module 1701. However, with another embodiment of the invention, apparatus 1600 may compensate ECG samples and send the compensated samples to apparatus 1700.

[0126] Apparatus 1700 receives ECG samples, in which each ECG sample comprises ECG measurements from ECG electrodes positioned on a diagnostic garment. Demultiplexer 1703 separates the ECG measurements and passes them to processor 1707 through buffer 1705. Processor 1707 processes the ECG samples. If the ECG samples are uncompensated, processor 1707 compensates the ECG samples in accordance with Equations 2-11.

[0127] The processed ECG samples may be stored in storage device 1709 for later retrieval or may be displayed on display module 1711 for a clinician to view. The clinician configures apparatus 1700 through input module 1713 for processing, storing, and displaying processed ECG samples.

[0128] As can be appreciated by one skilled in the art, a computer system with an associated computer-readable medium containing instructions for controlling the computer system can be utilized to implement the exemplary embodiments that are disclosed herein. The computer system may include at least one computer such as a microprocessor, digital signal processor, and associated peripheral electronic circuitry.

Disposable Diagnostic Garment Option

[0129] An embodiment of the invention provides a disposable version of the glove by making the glove out of a plastic material that can be inflated. By using an inflatable glove, the contour of the body (e.g., chest and torso) is automatically matched by the contour of the glove. The matching contours will allow for a close fit between the electrodes and the skin.

[0130] The inflation of the glove may be done automatically upon opening a package containing the glove by use of a one-way valve. The lower pressure within the glove will cause it to take in enough air to inflate the glove.

[0131] The electrode may be painted or printed on the plastic of the glove allowing for a low cost method of producing the glove.

[0132] The glove may be either two dimensional (i.e. a single seam) or three dimensional (i.e. multiple seams). The two dimensional reduces cost while the three dimensional version allows more flexibility in adapting the glove to the contour of the body.

[0133] FIGS. 18-21 illustrate a version of an inflatable glove. The inflatable glove is in the form of a hollow rod 1802 having affixed thereto a preformed series of hollow, molded, elongate, flexible pillow members 1804. The pillow members 1804 are separated one from the other by a seam such as seam 1806 but connected by a gas flow passage. ECG electrodes such as electrodes 1830 are provided on the various inflated pillow members 1804. Electrodes 1830 are also positioned on opposite ends of the carrier rod or stick 1802. As shown in FIG. 18, the separate electrodes 1830 may include leads or lead wires 1832 connected thereto. The electrodes 1830 are spaced by virtue of their positioning on the discrete pillow members 1804 to accommodate a desired physical positioning or spacing such as would be accomplished by the sleeve and glove depicted in FIG. 3.

[0134] A valve 1834 is provided in hollow rod or tube member to effect inflation of the pillow members 1804 of the glove. The opposite side of the glove including the rod 1802 as well as the pillow members 1804, may include an appropriate adhesive for maintaining placement of the inflatable glove on the hand of an individual such as illustrated in phantom in FIG. 18.

[0135] The uninflated pillow member 1804 of the glove of the type depicted in FIG. 18 may then be folded over the rod when it is originally packaged and upon unpackaging and inflation will assume the configuration such as shown in FIGS. 18-21. The glove may then be placed upon the hand and lower arm of an individual. The glove is typically placed upon the left hand and lower arm or forearm in the manner depicted for example with respect to the glove and sleeve of FIGS. 3, 4 and 5. The pillow members 1804 may then be inflated by inserting air or a non-toxic gas through the valve mechanism 1834 into the rod 1802 and connected pillow members 1804.

[0136] The device is manufacturable in various sizes. Thus the number of pillow members or elements 1804, the length of the rod 1802, the size of the pillow elements 1804 and other dimensional characteristics of the disclosed glove may be altered in order to accommodate persons having different physiology. Additionally, the glove may be disposed following use. Further, the electrodes 1830 may be affixed to the various pillow segments 1804 by deposition of a conductive material on the inflatable plastic which is utilized to make the pillow. Likewise the leads 1832 may also be affixed by such deposition techniques and connected to a socket assembly 1835 mounted on the rod 1802. Socket assembly 1835 may then receive a plug (not shown) which connects to a central control unit 24.

[0137] Alternative aspects and features of the embodiment of FIGS. 18-21 include the capability of folding the uninflated pillow members around the rod or stick 1802. Thus the assembly can then be conveniently packaged in a small box or sealed package for subsequent removal and inflation. The pillow members 1804 may be formed of heat sealed sheets of plastic material with an air flow channel provided between the pillow member 1804. The conductive electrodes and leads may be printed on the surface of the preinflated pillow members 1804 are affixed or molded into the material forming the pillow members 1804. The pillow members 1804 may have distinct sizes and shapes. The pillow members 1804 may also be sectioned so that only discrete portions thereof inflate. The rod 1802 is typically hollow but generally rigid to facilitate manual gripping and proper positioning.

[0138] While the invention has been described with respect to specific examples including multiple modes of carrying out the invention, those skilled in the art will appreciate that there are numerous variations and permutations of the above described systems and techniques that fall within the spirit and scope of the invention as set forth in the appended claims.

What is claimed is:

1. A disposable diagnostic garment for obtaining human electrocardiogram (ECG) input readings comprising, in combination:

a garment comprising a flexible and inflatable material in a form substantially matching an arm and hand contour body portion of a patient, the inflated material of said garment having an inside palm side and a connected left arm portion side, said garment further including a support sling for maintaining said garment positioned on a patient; and

at least one electrode that is affixed the inside palm side of the garment material, wherein the at least one electrode is arranged on the garment material to position the at least one electrode against the palm of the patient and provide a corresponding ECG signal when the garment material is inflated and when the left arm is supported by said sling with the left elbow substantially against the

body of a patient and the left forearm directed substantially toward the right shoulder, and wherein the at least one electrode comprises a V_1 or a V_2 electrode

2. The disposable diagnostic garment of claim 1, wherein the garment material comprises a hand portion for a left hand of the patient, and wherein the at least one electrode comprises one or more of RA, RL, V_1 , and V_2 electrodes.

3. The disposable diagnostic garment of claim 1, wherein the at least one electrode is affixed to the garment material by depositing a conductive material on the garment covering.

4. The disposable diagnostic garment of claim 1, wherein the garment material comprises a plastic material.

5. The disposable diagnostic garment of claim 1, further comprising:

an inflation means for inflating the disposable diagnostic garment.

6. The disposable diagnostic garment of claim 1, further comprising:

a one-way valve for inflating the disposable diagnostic garment.

7. The garment of claim 6 wherein said garment covering is comprised of at least two inflatable pillow members for inflation by a gas.

8. The garment of claim 8 wherein said pillow members are interconnected.

9. The garment of claim 8 wherein an electrode is mounted on separate pillow members.

10. The garment of claim 6 further including an adhesive on at least a portion of said garment covering for maintaining said glove on a body portion.

* * * * *

专利名称(译)	包括袖子或手套形式的服装的生理测量系统和装在服装中的传感装置		
公开(公告)号	US20130267818A1	公开(公告)日	2013-10-10
申请号	US13/892010	申请日	2013-05-10
[标]申请(专利权)人(译)	COMMWELL RES & DEV		
申请(专利权)人(译)	COMMWELL研究与发展有限公司.		
当前申请(专利权)人(译)	COMMWELL研究与发展有限公司.		
[标]发明人	DAVID DANIEL LEVY IRVING		
发明人	DAVID, DANIEL LEVY, IRVING		
IPC分类号	A61B5/00 A61B7/04 A61B5/145 A61B5/11 A61B5/0408 A61B5/021		
CPC分类号	A61B5/0002 A61B5/6804 A61B5/0008 A61B5/0017 A61B5/02055 A61B5/021 A61B5/02241 A61B5/02416 A61B5/04011 A61B5/04082 A61B5/04085 A61B5/04087 A61B5/0452 A61B5/0488 A61B5/0531 A61B5/11 A61B5/1101 A61B5/1455 A61B5/14551 A61B5/225 A61B5/442 A61B5/6806 A61B5/6822 A61B5/6824 A61B5/6825 A61B5/6826 A61B5/6838 A61B5/6843 A61B7/04 A61B2562/168 A61B5/14542 A61B5/0006 A61B5/4041		
其他公开文献	US8712497		
外部链接	Espacenet USPTO		

摘要(译)

用于测量心电图信号的测量系统包括具有ECG电极的诊断服装，所述ECG电极可呈现套管或手套的形式。一次性形式的手套可以充气。通过使用可充气手套，身体的轮廓通过手套的轮廓自动匹配。来自位于诊断服装上的ECG电极的样本被补偿，使得样本更好地接近来自位于经典位置的EEG电极的样本。此外，来自ECG电极的样本被补偿以减少由于将ECG电极定位在诊断服装上而导致的信号噪声。

