



US 20190328338A1

(19) **United States**

(12) **Patent Application Publication**
Hu et al.

(10) **Pub. No.: US 2019/0328338 A1**
(43) **Pub. Date: Oct. 31, 2019**

(54) **METHOD AND APPARATUS FOR
PREDICTING A NEED FOR A BLOOD
TRANSFUSION**

G16H 20/40 (2006.01)

A61B 5/024 (2006.01)

A61B 5/02 (2006.01)

(71) Applicant: **The University of Maryland,
Baltimore, Baltimore, MD (US)**

(52) **U.S. Cl.**

CPC *A61B 5/7275* (2013.01); *G16H 50/20*

(2018.01); *A61B 5/742* (2013.01); *A61B*

5/0205 (2013.01); *A61B 5/14551* (2013.01);

A61B 5/4836 (2013.01); *A61B 5/02416*

(2013.01); *A61B 5/02042* (2013.01); *G16H*

20/40 (2018.01)

(72) Inventors: **Fu-Ming Hu**, Ellicott City, MD (US);
Colin Mackenzie, Pasadena, MD (US);
Shiming Yang, Halethroe, MD (US);
Hegang Chen, Ellicott City, MD (US)

(21) Appl. No.: **16/288,207**

(22) Filed: **Feb. 28, 2019**

Related U.S. Application Data

(63) Continuation of application No. 14/911,421, filed on
Feb. 10, 2016, now Pat. No. 10,258,292, filed as
application No. PCT/US14/50790 on Aug. 12, 2014.

Publication Classification

(51) **Int. Cl.**

A61B 5/00 (2006.01)

G16H 50/20 (2006.01)

A61B 5/0205 (2006.01)

(57)

ABSTRACT

A method is provided for predicting that a patient will require a blood transfusion during a treatment. The method includes obtaining, on a processor, first data that indicates values for one or more parameters of a characteristic of a continuous photoplethysmographic (PPG) waveform collected during the treatment. The method further includes applying, on the processor, coefficients to the values for the one or more parameters. The method further includes determining, on the processor, second data that indicates a prediction that the patient will require the blood transfusion during the treatment based on applying the coefficients to the values for the one or more parameters. An apparatus is also provided for predicting that the patient will require the blood transfusion during the treatment.

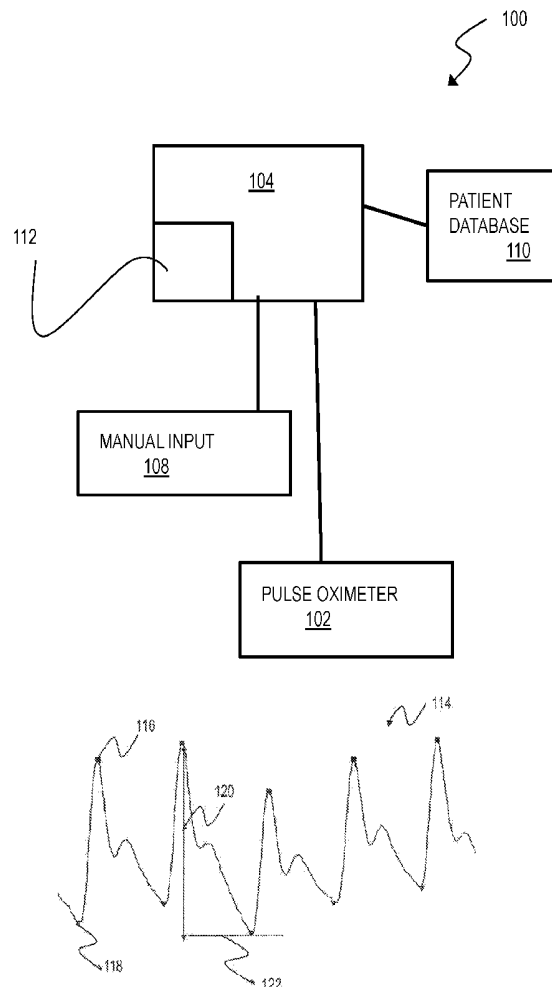
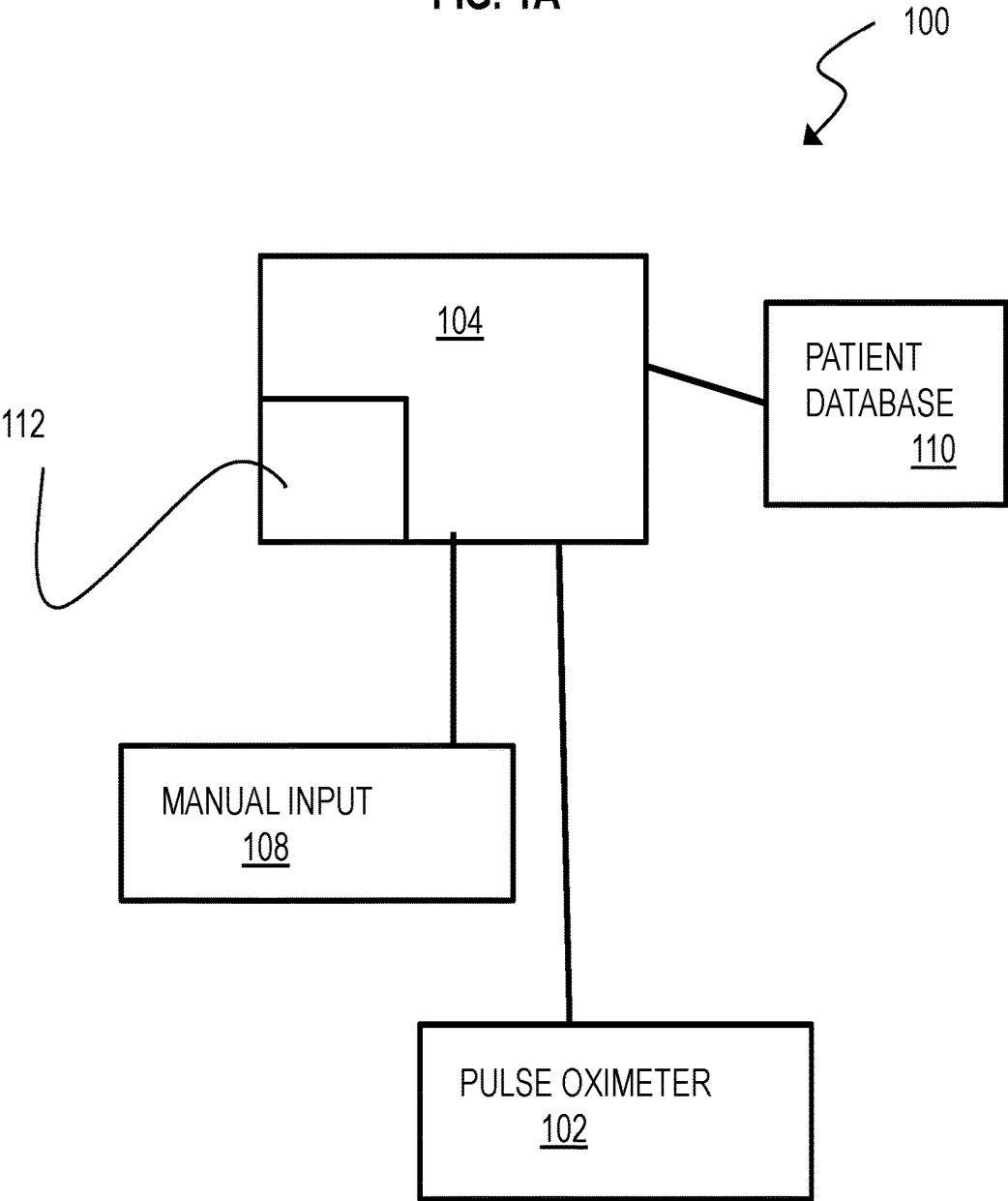


FIG. 1A



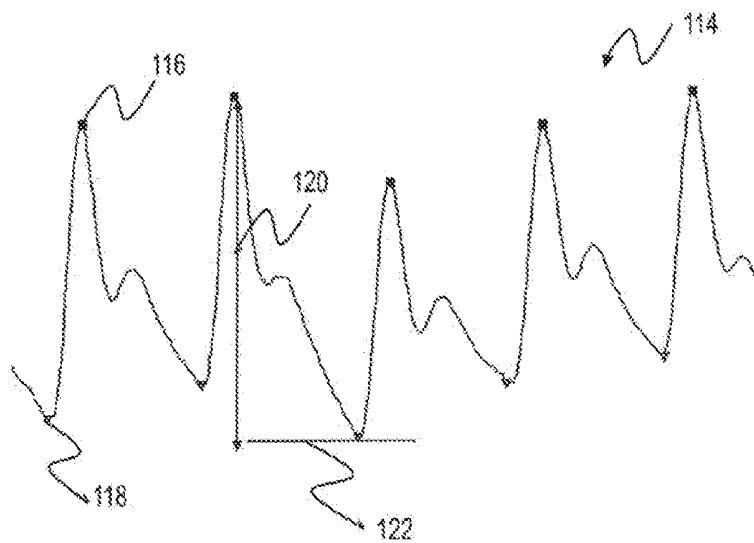


FIG. 1B

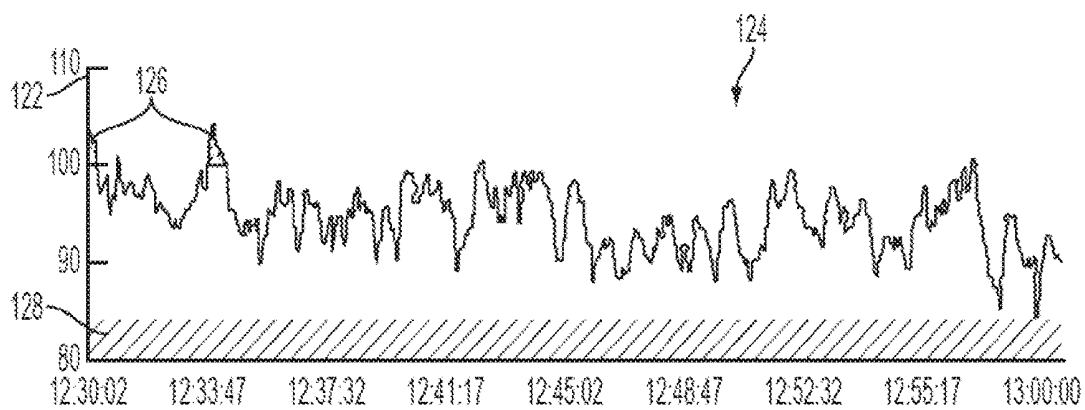


FIG. 1C

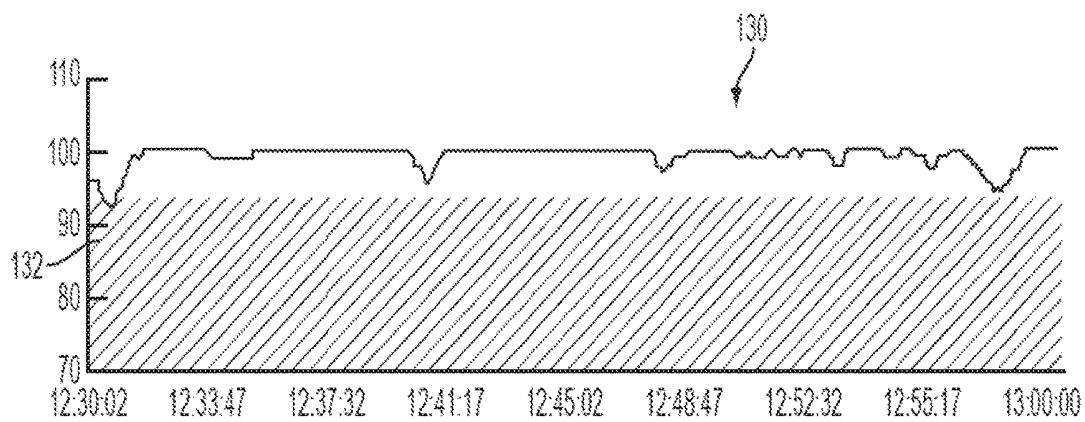


FIG. 1D

FIG. 2

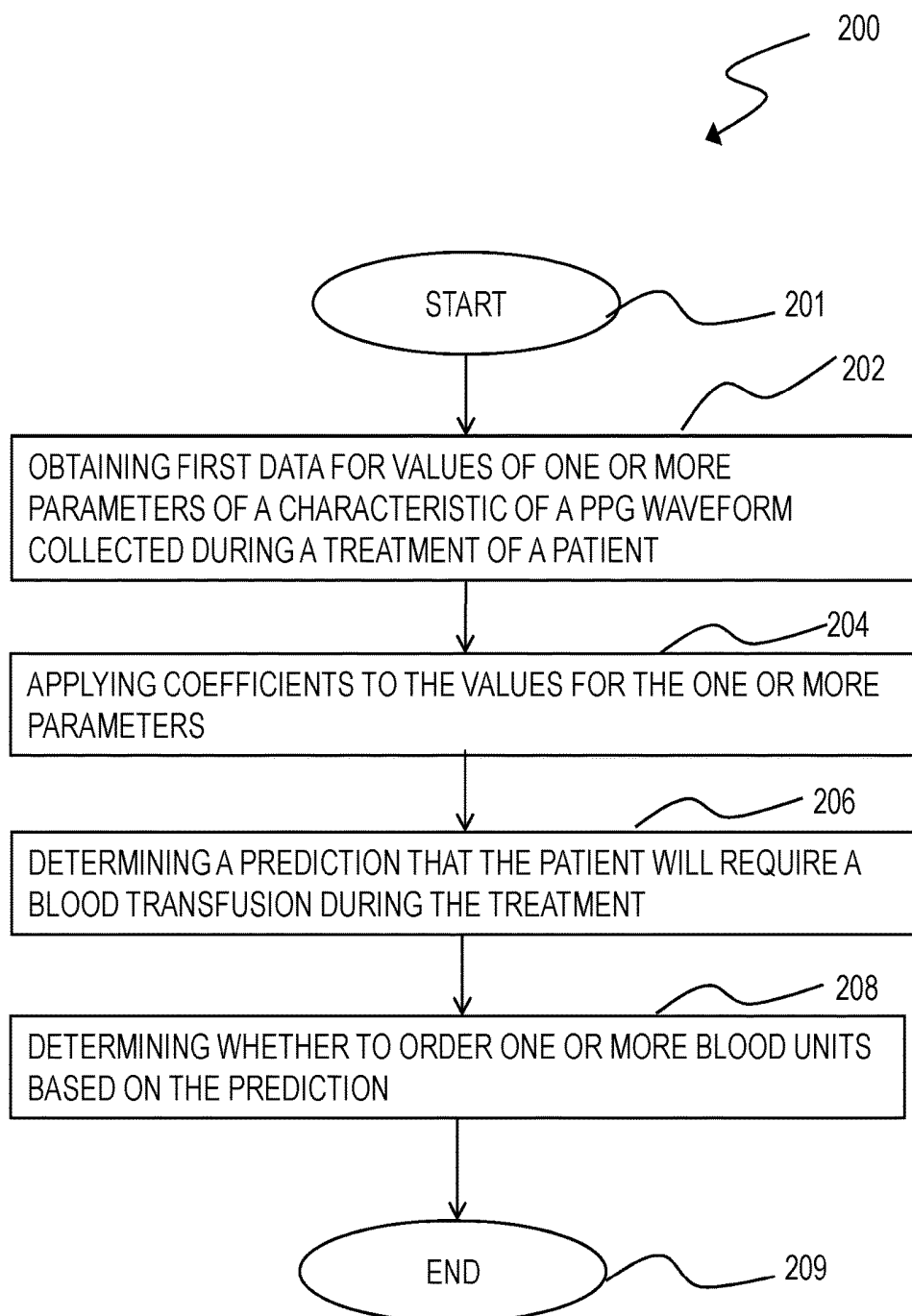


FIG. 3A

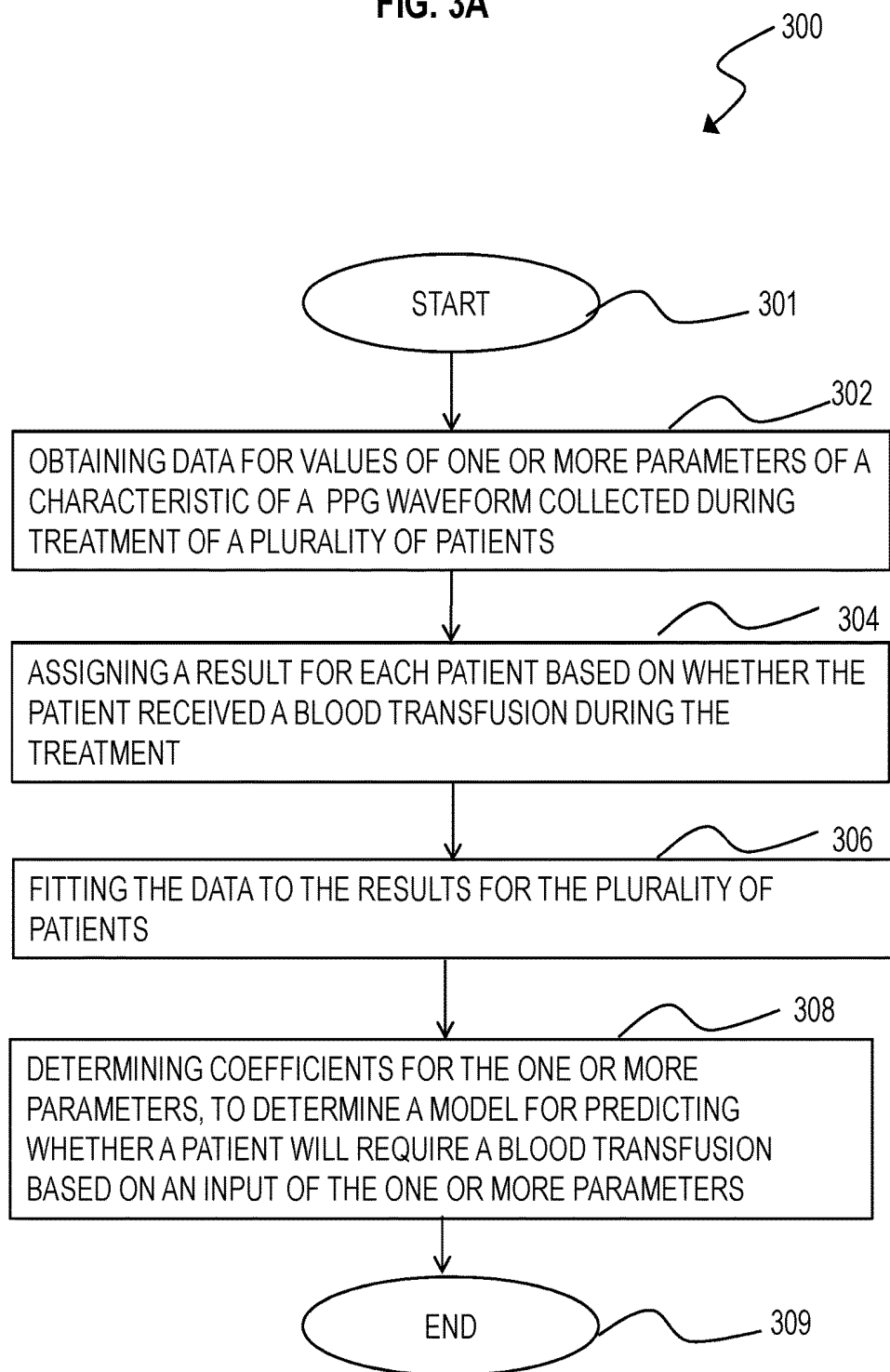


FIG. 3B

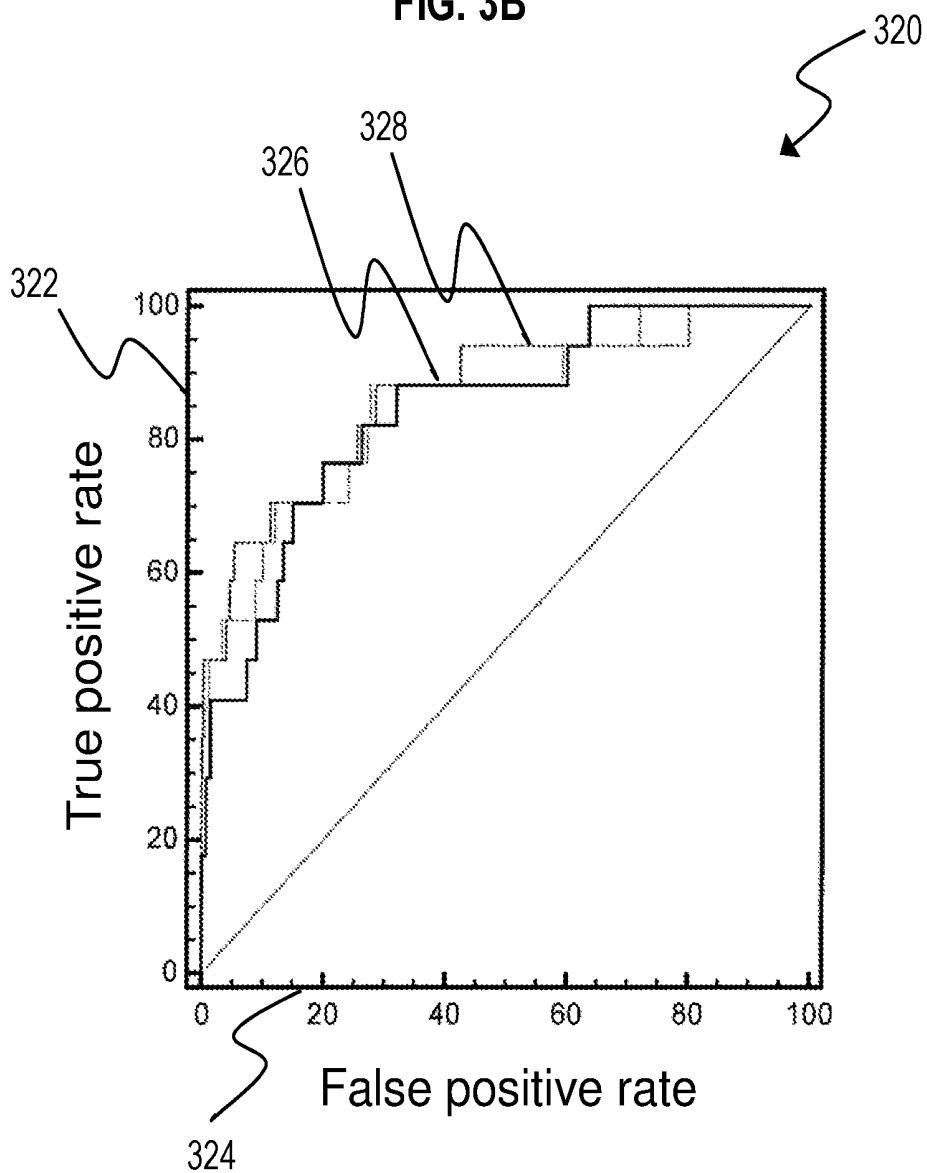


FIG. 4

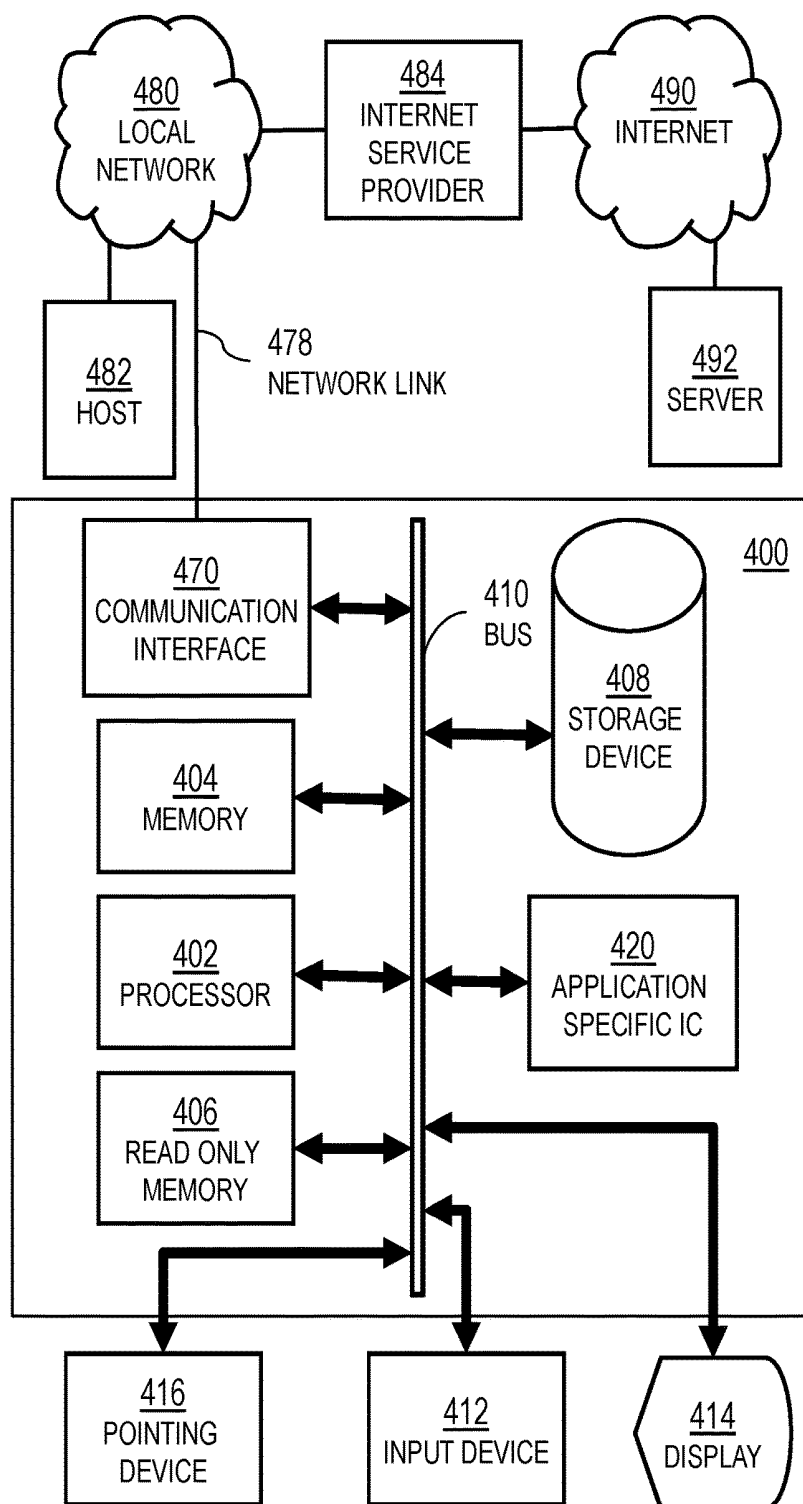
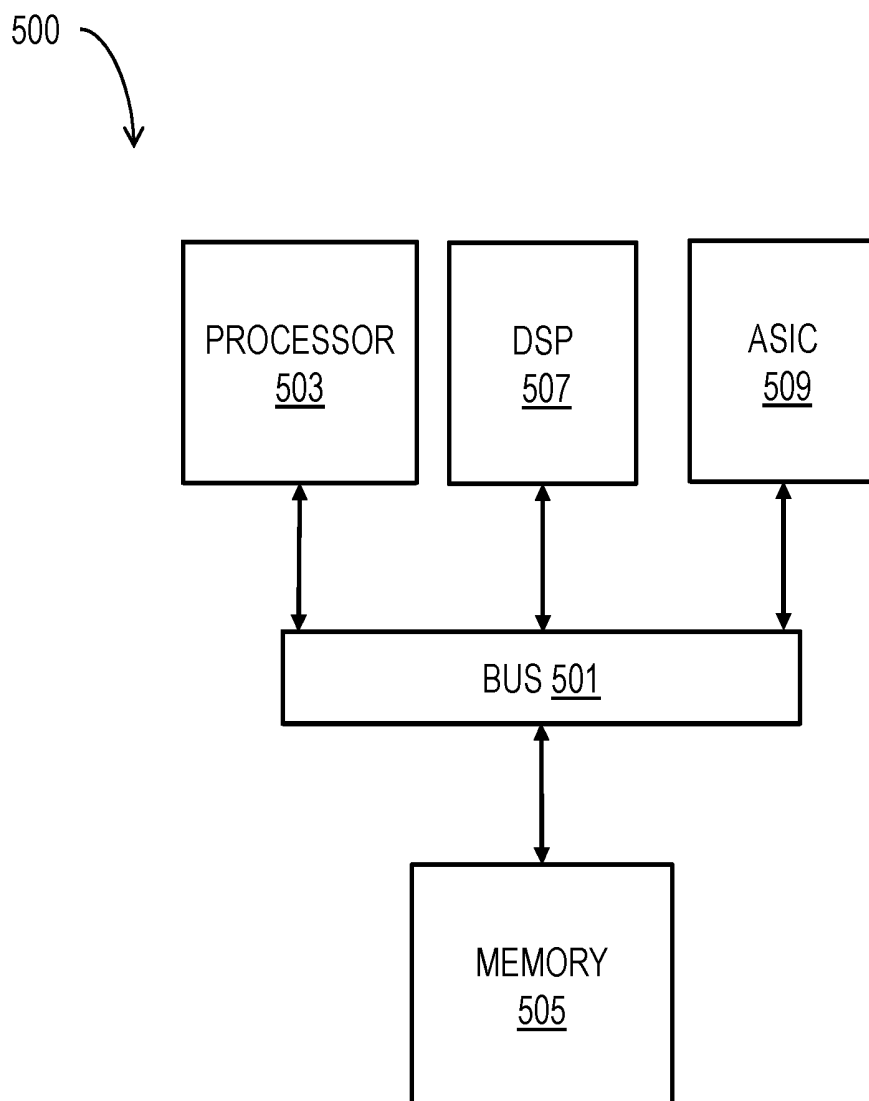


FIG. 5



METHOD AND APPARATUS FOR PREDICTING A NEED FOR A BLOOD TRANSFUSION

CROSS-REFERENCE TO RELATED APPLICATIONS

[0001] This application is a continuation of U.S. patent application Ser. No. 14/911,421 filed Feb. 10, 2016, which is a 371 National Stage Application of PCT Application No. PCT/US14/50790 filed Aug. 12, 2014, claims benefit of Provisional Application No. 61/864,832 filed Aug. 12, 2013, the entire contents of which are hereby incorporated by reference as it fully set forth herein, under 35 U.S.C. § 119(e).

STATEMENT OF GOVERNMENTAL INTEREST

[0002] This invention was made with government support under Contract No. FA8650-11-2-6D01 awarded by the United States Air Force. The government has certain rights in the invention.

BACKGROUND OF THE INVENTION

[0003] When a patient suffers a trauma-related injury, they may experience massive blood loss. After admission to a medical facility, the patient may require a blood transfusion. However, a conventional method for determination of whether the patient requires the blood transfusion may not be made until after a substantial amount of time and a substantial amount of blood loss after admission. Thus, it would be desirable to have a method for determining whether the patient requires the blood transfusion at an early stage of the treatment process. Various conventional methods have been proposed, for determining whether the patient requires the blood transfusion during the treatment process.

SUMMARY OF THE INVENTION

[0004] The conventional methods for determining whether a patient requires a blood transfusion are deficient in the timing and accuracy of the need for the transfusion. Therefore, a method and apparatus are provided for enhanced prediction of the need for a blood transfusion.

[0005] In a first set of embodiments, a method is provided for predicting that a patient will require a blood transfusion during a treatment. The method includes obtaining, on a processor, first data that indicates values for one or more parameters of a characteristic of a continuous photoplethysmographic (PPG) waveform collected during the treatment. The method further includes applying, on the processor, coefficients to the values for the one or more parameters. The method further includes determining, on the processor, second data that indicates a prediction that the patient will require the blood transfusion during the treatment based on applying the coefficients to the values for the one or more parameters.

[0006] In some embodiments of the first set, the method further includes determining, on the processor, whether to order one or more blood units based on the prediction. In some embodiments of the first set, the first data is collected over a fixed time interval, the characteristic of the PPG waveform is one or more of a heart rate and an oxygen saturation, and the parameters are one or more of a percentage of the fixed time interval that the heart rate is below a threshold heart rate, a percentage of the fixed time interval

that the oxygen saturation is below a threshold saturation rate, a first percentile of the oxygen saturation and a second percentile of the oxygen saturation rate over the fixed time interval, where the second percentile is greater than the first percentile. In some embodiments of the first set, the first data is collected over a fixed time interval and the parameter is a percentile of an amplitude of the PPG waveform collected over the fixed time interval.

[0007] In a second set of embodiments, a method is provided for determining a model for predicting whether a patient will require a blood transfusion. The method includes obtaining, on a processor, data that indicates values for one or more parameters of a characteristic of a PPG waveform during treatment of a plurality of patients. The method also includes assigning, on the processor, a result for each patient based on whether the patient received a blood transfusion during the treatment. The method also includes fitting, on the processor, the data to the results for the plurality of patients. The method also includes determining, on the processor, coefficients for the one or more parameters, to determine the model for predicting whether a patient will require a blood transfusion based on an input of the one or more parameters.

[0008] In a third set of embodiments, an apparatus is provided for predicting that a patient will require a blood transfusion during a treatment. The apparatus includes a pulse oximeter configured to measure first data that indicates values for one or more parameters of a characteristic of a PPG waveform collected during a treatment of a patient. The apparatus further includes a processor connected to the pulse oximeter and configured to receive the first data of the one or more parameters. The apparatus further includes a memory including a sequence of instructions. The memory and the sequence of instructions are configured to, with the processor, cause the apparatus to apply coefficients to the values for the one or more parameters, and determine second data that indicates a prediction that the patient will require the blood transfusion during the treatment based on applying the coefficients to the values for the one or more parameters.

[0009] In a fourth set of embodiments, a computer-readable medium is provided carrying one or more sequences of instructions, where execution of the one or more sequences of instructions by a processor causes the processor to perform the steps of applying coefficients to values for one or more parameters of a characteristic of a PPG waveform collected during a treatment of a patient and determining a prediction that the patient will require a blood transfusion during the treatment based on applying the coefficients to the values for the one or more parameters.

[0010] Still other aspects, features, and advantages of the invention are readily apparent from the following detailed description, simply by illustrating a number of particular embodiments and implementations, including the best mode contemplated for carrying out the invention. The invention is also capable of other and different embodiments, and its several details can be modified in various obvious respects, all without departing from the spirit and scope of the invention. Accordingly, the drawings and description are to be regarded as illustrative in nature, and not as restrictive.

BRIEF DESCRIPTION OF THE DRAWINGS

[0011] The present invention is illustrated by way of example, and not by way of limitation, in the figures of the accompanying drawings and in which like reference numerals refer to similar elements and in which:

[0012] FIG. 1A is a block diagram that illustrates an example of an apparatus for predicting that a patient will require a blood transfusion during a treatment, according to one embodiment;

[0013] FIG. 1B illustrates an example of a PPG waveform amplitude and period, according to one embodiment;

[0014] FIG. 1C illustrates an example of a PPG heart rate waveform, according to one embodiment;

[0015] FIG. 1D illustrates an example of a PPG oxygen saturation waveform, according to one embodiment;

[0016] FIG. 2 is a flow diagram that illustrates an example of a method for predicting that a patient will require a blood transfusion during a treatment, according to one embodiment;

[0017] FIG. 3A is a flow diagram that illustrates an example of a method for determining a model for predicting whether a patient will require a blood transfusion, according to one embodiment;

[0018] FIG. 3B illustrates an example of a receiver operating characteristic (ROC) curve, according to one embodiment;

[0019] FIG. 4 is a block diagram that illustrates a computer system upon which an embodiment of the invention may be implemented; and

[0020] FIG. 5 is a block diagram that illustrates a chip set upon which an embodiment of the invention may be implemented.

DETAILED DESCRIPTION

[0021] A method and apparatus are described for predicting that a patient will require a blood transfusion during a treatment. For purposes of the following description, a blood transfusion is defined as an instance in which a patient requires at least one unit of packed red blood cells (pRBC). One unit of pRBC has a volume of approximately 450 ml. pRBC are red blood cells that have been collected, processed, and stored in bags as blood product units available for blood transfusion purposes. The red blood cells are mixed with an anticoagulant and storage solution which provides nutrients and aims to preserve the viability and functionality of the cells, which are stored at refrigerated temperatures. Additionally, a method and apparatus are described for predicting that a patient will require a massive blood transfusion. For purposes of the following description, a massive blood transfusion is defined as an instance in which a patient requires at least five units of pRBC. In the following description, for the purposes of explanation, numerous specific details are set forth in order to provide a thorough understanding of the present invention. It will be apparent, however, to one skilled in the art that the present invention may be practiced without these specific details. In other instances, well-known structures and devices are shown in block diagram form in order to avoid unnecessarily obscuring the present invention.

[0022] Some embodiments of the invention are described below in the context of the treatment of patients at a medical facility including an emergency treatment vehicle. However, the invention is not limited to this context. In other embodiments, such as post-injury health care monitoring, detecting unexpected internal bleeding, and ruling out patients with internal bleeding in the field, the invention may be utilized.

1. Overview

[0023] When a patient suffers trauma, the first responders attend to the patient and begin treatment, often in the field or in an emergency response vehicle. This treatment often includes attaching vital signs monitors, such as a blood pressure sensor to measure blood pressure and a PPG sensor to measure oxygen saturation of the blood. According to various embodiments the data from one or more of these sensors are used to determine blood loss, even due to hidden internal bleeding, and thus the probability of the need for a transfusion, including need for a massive transfusion. In particular embodiments, the details of the PPG signal are exploited new ways to make an enhanced prediction of the need for blood transfusion.

[0024] A blood-oxygen monitor, such as a pulse oximeter, measures a percentage of a patient's blood that is loaded with oxygen. More specifically, the pulse oximeter measures what percentage of hemoglobin (the protein in blood that carries oxygen) is loaded with oxygen. Acceptable ranges for patients without pulmonary pathology are from 95 to 99 percent. Pulse oximetry is a particularly convenient non-invasive measurement method. Typically, the pulse oximeter includes a processor and a pair of small light-emitting diodes (LEDs) facing a photodiode through a translucent part of the patient's body, usually a fingertip or an earlobe. One LED emits red light, with wavelength of about 660 nm, and the other LED emits infrared radiation, with a wavelength of about 940 nm. Absorption of light at these wavelengths differs significantly between blood loaded with oxygen and blood lacking oxygen. The changing absorption at each wavelength is measured during a pressure pulse of a cardiac cycle, allowing determination of the absorbances due to the pulsing arterial blood alone, excluding venous blood, skin, bone, muscle, fat and nail polish. The ratio of the red light measurement to the infrared light measurement is then calculated (which represents the ratio of oxygenated hemoglobin to deoxygenated hemoglobin), and this ratio is then converted to a percentage of SpO₂ by the processor via a lookup table. The pulse oximeter also uses the absorption data at each wavelength to determine a variation in blood volume in the skin caused by the pressure pulse during each cardiac cycle. The pulse oximeter generates the PPG waveform based on the variation in the blood volume over time and determines the pulse or heart rate (HR) of the patient based on the time gap between the peaks in the amplitude of the PPG waveform.

[0025] FIG. 1A is a block diagram that illustrates an example of a system 100 for predicting whether a patient will require a blood transfusion during a treatment, according to one embodiment. As illustrated in FIG. 1A, a system 100 includes a pulse oximeter 102 configured to measure first data that indicates values for one or more parameters of a characteristic of a continuous photoplethysmographic (PPG) waveform collected during a treatment of a patient. Although the pulse oximeter 102 is depicted in FIG. 1A, any device may be used that is capable of measuring first data that indicates values for one or more parameters of the characteristic of the continuous PPG waveform, as appreciated by one skilled in the art.

[0026] As further illustrated in FIG. 1A, the system 100 includes a data processing system 104 connected to the pulse oximeter 102, to receive the first data of the one or more parameters of the PPG waveform. The data processing system 104 includes a process 112 to predict whether the

patient will require blood transfusion during the treatment. In some embodiments, the data processing system 104 is a computer system as described below with reference to FIG. 4 or a chip set described below with reference to FIG. 5. The process 112 is configured to cause the system 100 to apply coefficients to the values of the one or more parameters of the PPG waveform and to determine second data that indicates a prediction that the patient will require the blood transfusion during the treatment based on applying the coefficients to the values of the one or more parameters. In one embodiment, the process 112 causes the system 100 to order one or more blood units, based on the prediction. However, the process 112 and the sequence of instructions need not be configured to cause the system 100 to order one or more blood units. The hardware used to form the data processing system 104 of the system 100 is described in more detail below in the Hardware Overview section.

[0027] In addition to the first data values of the one or more parameters of the characteristic of the PPG waveform, the data processing system 104 may receive third data that indicates values for one or more secondary parameters of a characteristic of the patient, such as an age and a gender of the patient, for example. FIG. 1A illustrates that the system 100 may include a manual input 108 such as a keyboard or a touchscreen, for example, to manually enter the age and/or gender of the patient whose first data is sent to the data processing system 104 from the pulse oximeter 102. Alternatively, FIG. 1A illustrates the system 100 may include a patient database 110 connected to the data processing system 104 such that the data processing system 104 may automatically retrieve the age and/or gender of the patient whose first data is sent to the data processing system 104 from the pulse oximeter 102. In one embodiment, the sequence of instructions of the process 112 may be configured to, with the data processing system 104, further cause the system 100 to apply coefficients to the values of the one or more secondary parameters of the patient and to further determine the second data that indicates the prediction that the patient will require the blood transfusion during the treatment based on applying the coefficients to the values of the one or more secondary parameters. However, the process 112 may be configured to, with the data processing system 104, cause the system 100 to determine the prediction based on merely applying the coefficients to the values of the first data of the one or more parameters of the characteristic of the PPG waveform.

[0028] FIG. 2 is a flow diagram that illustrates an example of a method 200 for predicting that a patient will require a blood transfusion during a treatment, according to one embodiment. Although the flow diagram of FIG. 2, and subsequent flow diagram FIG. 3A, is each depicted as integral steps in a particular order for purposes of illustration, in other embodiments one or more steps, or portions thereof, are performed in a different order, or overlapping in time, in series or in parallel, or are deleted, or one or more other steps are added, or the method is changed in some combination of ways.

[0029] After starting at block 201, in step 202, first data is obtained, on the data processing system 104, that indicates values for one or more parameters of a characteristic of a PPG waveform collected during the treatment of the patient. In step 204, coefficients are applied, on the data processing system 104, to the values for the one or more parameters. In step 206, a prediction is determined, on the data processing system 104, that the patient will require a blood transfusion

during the treatment. In step 208, a determination is made, on the data processing system 104, on whether to order one or more blood units, based on the prediction, before the method ends at block 209.

[0030] In one embodiment, the first data values of the one or more parameters are collected over a fixed time interval and the characteristic of the PPG waveform is one or more of a heart rate (HR) and an oxygen saturation (SpO_2). FIG. 1B illustrates an example of a PPG waveform 114 including a peak 116, a valley 118 and an amplitude 120 that is measured between consecutive peaks and valleys 116, 118. Additionally, FIG. 1B illustrates that the heart rate 122 is measured based on the time between the peaks 116. As further illustrated in FIG. 1B, the amplitude 120 and heart rate 122 of the PPG waveform 114 varies with time. Thus, over the fixed time interval, a histogram of the amplitude 120 can be made to describe the variability of the amplitude 120 during the fixed time interval. Additionally, over the fixed time interval, a histogram of the heart rate 122 can be made to describe the variability of the heart rate 122 during the fixed time interval.

[0031] In another embodiment, the parameters include one or more of a percentage of the fixed time interval that the heart rate is below a threshold heart rate (“% time for $\text{HR} < \text{threshold}$ ”), a percentage of the fixed time interval that the oxygen saturation is below a threshold saturation rate (“% time for $\text{SpO}_2 < \text{threshold}$ ”), a first percentile of the oxygen saturation over the fixed time interval (“first percentile SpO_2 ”) and a second percentile of the oxygen saturation over the fixed time interval that is greater than the first percentile (“second percentile SpO_2 ”). In another embodiment, the parameter includes a percentile of an amplitude of the PPG waveform collected over the fixed time interval (“percentile PPG”).

[0032] In one embodiment, as illustrated in FIG. 1B, the pulse oximeter 102 generates the PPG waveform 114; and illustrated in FIG. 1C a heart rate waveform 124 and in FIG. 1D, an oxygen saturation waveform 130. The heart rate waveform 124 depicts the heart rate 122 (distance between the peaks 116 of the PPG waveform 114) versus time, and the oxygen saturation waveform 130 depicts the percentage of SpO_2 in the blood versus time. In the embodiment, the parameter includes one or more of an area 128 of the heart rate waveform 124 below a low threshold heart rate or an area 126 above a high threshold heart rate and an area 132 of the oxygen saturation waveform 130 below a threshold oxygen saturation rate. In the example embodiment of FIG. 1B, the area 128 is based on a low threshold heart rate of about 72 beats per minute, the area 126 is based on a high threshold heart rate of about 100 beats per minute and the area 132 is based on a threshold oxygen saturation rate of about 92%. However, the areas 126, 128, 132 may be based on any threshold rate of the heart rate and oxygen saturation.

[0033] In one embodiment, the prediction is based on a time range after the collection of the first data during which the patient will require the blood transfusion. The one or more parameters of the characteristic of the PPG waveform and the coefficients for the one or more parameters that are used to determine the prediction are based on the time range.

[0034] FIG. 3A a block diagram that illustrates an example of a method 300 for determining a model for predicting whether a patient will require a blood transfusion, according to one embodiment.

[0035] After starting at block 301, in step 302, data is obtained, on the data processing system 104, that indicates values for one or more parameters of a characteristic of a continuous PPG waveform during treatment of a plurality of patients. In step 304, a result is assigned, on the data processing system 104, for each patient based on whether the patient received a blood transfusion during the treatment. In step 306, the data is fitted, on the data processing system 104, to the results for the plurality of patients. In step 308, the coefficients are determined, on the data processing system 104, for the one or more parameters, to determine a model for predicting whether a patient will require a blood transfusion based on an input of the one or more parameters, before the method ends at block 309.

[0036] In one embodiment, in step 304, the result is assigned for each patient during a plurality of time ranges of the treatment based on whether each patient received a blood transfusion during each of the time ranges. For example, the result is 1 if a patient receives a transfusion and zero if not. In some embodiments, the result is the number of units of blood the patient received. In the embodiment, in step 306, the data is fitted to each respective result for the plurality of patients during the plurality of time ranges. In the embodiment, in step 308, the coefficients are determined for the one or more parameters for each of the plurality of time ranges,

to determine a model for predicting whether a patient will require a blood transfusion during each of the plurality of time ranges based on an input of one or more parameters.

2. Example Embodiments

[0037] According to an example embodiment, the first data values of the one or more parameters are collected over one or more fixed time intervals, such as 15 minutes, 30 minutes and/or 60 minutes, for example. According to another example embodiment, the parameters include one or more of a percentage of the fixed time interval that the heart rate is below a threshold heart rate of about 60 beats per minute, a percentage of the fixed time interval that the oxygen saturation is below a threshold saturation rate of about 95%, a first percentile of about 25 percentile of the oxygen saturation over the fixed time interval and/or a second percentile of about 50 percentile of the oxygen saturation over the fixed time interval.

[0038] In an example embodiment, a plurality of predictions are determined, based on whether the patient will require a blood transfusion during each of a plurality of time ranges after the collection of the first data, such as within 3 hours, within 6 hours, within 12 hours and within 24 hours after the collection of the first data.

TABLE 1

Parameter	up to 3 hours (range)	up to 3 hours	up to 6 hours (range)	up to 6 hours	up to 12 hours (range)	up to 12 hours	up to 24 hours (range)	up to 24 hours
1 Age	-0.018-0.014	-0.002	-0.022-0.01	-0.004	-0.02-0.012	-0.002	-0.01-0.02	0.005
2 Sex	0.436-1.964	1.151	0.55-2.25	1.337	0.18-1.45	0.784	0.31-1.59	0.918
3 PreH-HR	-0.044-0.008	-0.026	-0.0-0.012	-0.03	-0.04-0.008	-0.023	-0.044-0.02	-0.03
4 10 percentile PPG	-0.005-0.001	-0.003	-0.01-0.004	-0.008	-0.005-0.002	-0.003		
5 20 percentile PPG							-0.03-0.008	-0.018
6 30 percentile PPG							0.006-0.03	0.017
7 40 percentile PPG			0.002-0.011	0.007				
8 50 percentile PPG								
9 60 percentile PPG								
10 70 percentile PPG								
11 80 percentile PPG								
12 90 percentile PPG			-0.006-0.0003	-0.003			-0.004-0.0002	-0.002
13 25 percentile PPG								
14 75 percentile PPG								
15 25-75 percentile PPG								
16 % time for SPO2 <98%								
17 Dose for SPO2 <98%								
18 % time for SPO2 <95%	0.052-3.450	1.806	-0.63-3.10	1.30			0.41-3.82	2.154
19 Dose for SPO2 <95%	0.059-0.367	0.211			0.041-0.265	0.147	0.07-0.40	0.233
20 % time for SPO2 <92%								
21 Dose for SPO2 <92%								
22 % time for SPO2 <90%								
23 Dose for SPO2 <90%								
24 % time for SPO2 <86%			2.45-9.45	5.801				
25 Dose for SPO2 <86%								
26 25 percentile SPO2	0.329-2.677	1.492	0.41-2.94	1.65	-0.11-1.72	0.814		
27 50 percentile SPO2	0.038-2.114	1.085	0.005-2.19	1.105	-0.05-1.81	0.89		
28 75 percentile SPO2								
29 mean SPO2								
30 % time for HR >120								
31 Dose for HR >120								
32 % time for HR >110	-0.094-0.01	-0.04	-0.11-0.001	-0.05				
33 Dose for HR >110								
34 % time for HR >100								
35 Dose for HR >100							0.008-0.34	0.176
36 % time for HR <72								
37 Dose for HR <72	0.045-0.421	0.232	0.036-0.417	0.225				
38 % time for HR <60	0.844-4.973	2.86	0.849-5.182	2.96	0.41-2.80	1.608	1.11-3.31	2.224
39 Dose for HR <60								
40 25 percentile HR								
41 50 percentile HR								

TABLE 1-continued

Parameter	up to 3 hours (range)	up to 3 hours	up to 6 hours (range)	up to 6 hours	up to 12 hours (range)	up to 12 hours	up to 24 hours (range)	up to 24 hours
42 75 percentile HR								
43 mean HR								
44 Intercept	-43.4-4.95	-24.14	-41.91--2.72	-22.22	-1.94-1.77	-0.085	-34.2-0.143	-17.05
45 Thresholds Range	0.5-1.0	0.5	0.5-1.0	0.5	0.5-1.0	0.5	0.5-1.0	0.5

[0039] Table 1 provides a list of one or more parameters that are used to determine the prediction, and a 95% confidence interval range of the coefficients for the parameters for each time range, to determine the prediction for each time range. Additionally, Table 1 also provides a list of the recommended coefficient values within the coefficient interval ranges, for each parameter. Blank entries in Table 1 represent zero value coefficients, and thus parameters that are not deemed useful in the model. The coefficient ranges of the parameters listed in Table 1 are based on the first data collection over a fixed time interval of about 15 minutes. Table 2 is also provided, which lists the range of coefficient values and the recommended coefficient values for each parameter, based on the first data being collection over a

fixed time interval of about 30 minutes. Similarly, Table 3 is also provided, which lists the range of coefficient values and the recommended coefficient values for each parameter, based on the first data being collection over a fixed time interval of about 60 minutes. The parameters listed in Tables 1-3 are discussed here. The age and gender parameters of the patient were previously discussed and may be manually or automatically input into the data processing system 104. In an example embodiment, the gender parameter may be input numerically as 0 for female and 1 for male. The pre-hospital heart rate ("PreH-HR") parameter is a measure of the patient's heart rate prior to the arrival at the hospital or medical facility and is performed prior to the measurement of the patient's heart rate with the pulse oximeter 102.

TABLE 2

Parameter	up to 3 hours (range)	up to 3 hours	up to 6 hours (range)	up to 6 hours	up to 12 hours (range)	up to 12 hours	up to 24 hours (range)	up to 24 hours
1 Age	-0.024-0.014	-0.004	-0.018-0.018	-4.8E-06	-0.017-0.014	-0.0014	-0.009-0.021	0.006
2 Sex	0.217-2.034	1.057	0.434-2.09	1.204	0.273-1.618	0.910	0.289-1.611	0.917
3 PreH-HR	-0.04--0.005	-0.025	-0.04--0.006	-0.023	-0.043--0.013	-0.028	-0.042--0.011	-0.027
4 10 percentile PPG	-0.006--0.002	-0.004	-0.009--0.0035	-0.0065	-0.005--0.0013	-0.003	-0.0044--0.001	-0.0027
5 20 percentile PPG								
6 30 percentile PPG								
7 40 percentile PPG								
8 50 percentile PPG								
9 60 percentile PPG								
10 70 percentile PPG								
11 80 percentile PPG								
12 90 percentile PPG			-0.014--0.002	-0.008				
13 25 percentile PPG								
14 75 percentile PPG								
15 25-75 percentile PPG								
16 % time for SPO2 <98%								
17 Dose for SPO2 <98%								
18 % time for SPO2 <95%							-0.736-3.143	1.285
19 Dose for SPO2 <95%								
20 % time for SPO2 <92%								
21 Dose for SPO2 <92%								
22 % time for SPO2 <90%								
23 Dose for SPO2 <90%			-0.674-0.103	-0.272				
24 % time for SPO2 <86%	3.819-14.01	8.79	6.016-23.175	14.34	4.57-13.09	8.71	3.846-12.615	8.04
25 Dose for SPO2 <86%								
26 25 percentile SPO2			0.684-4.17	2.382				
27 50 percentile SPO2							0.650-3.317	1.965
28 75 percentile SPO2			-0.395-7.158	3.435				
29 mean SPO2	-15.34-2.05	-6.63			-10.97-1.111	-4.98		
30 % time for HR >120								
31 Dose for HR >120								
32 % time for HR >110	0.007-1.029	0.516			0.034-0.70	0.371		
33 Dose for HR >110								
34 % time for HR >100								
35 Dose for HR >100								
36 % time for HR <72			-1.694--0.15	-0.853				
37 Dose for HR <72	0.186-0.698	0.427	0.147-0.591	0.362	0.136-0.538	0.330	0.112-0.551	0.333
38 % time for HR <60			0.241-3.788	2.03				
39 Dose for HR <60	-1.07--0.025	-0.547			-0.727--0.242	-0.381	-0.148-0.14	-0.062
40 25 percentile HR	-0.08-0.002	-0.04	-0.088-0.006	-0.041				
41 50 percentile HR								

TABLE 2-continued

Parameter	up to 3 hours (range)	up to 3 hours	up to 6 hours (range)	up to 6 hours	up to 12 hours (range)	up to 12 hours	up to 24 hours (range)	up to 24 hours
42 75 percentile HR	-0.008-0.057	0.025					0.029-0.0823	0.055
43 mean HR								
44 Intercept	-69.86--17.38	-42.08	-56.65--10.68	-32.94	-53.60--12.97	-32.61	-61.13--16.04	-38.69
45 Thresholds Range	0.5-1.0	0.5	0.5-1.0	0.5	0.5-1.0	0.5	0.5-1.0	0.5

TABLE 3

Parameter	up to 3 hours (range)	up to 3 hours	up to 6 hours (range)	up to 6 hours	up to 12 hours (range)	up to 12 hours	up to 24 hours (range)	up to 24 hours
1 Age	-0.022-0.014	-0.004	-0.023-0.011	-0.0057	-0.019-0.011	-0.004	-0.011-0.018	0.0033
2 Sex	0.323-2.073	1.134	0.402-1.950	1.126	0.231-1.552	0.860	0.289-1.611	0.917
3 PreH-HR	-0.044--0.008	-0.026	-0.041--0.008	-0.0245	-0.039--0.009	-0.024	-0.042--0.011	-0.027
4 10 percentile PPG	-0.007-0.0026	-0.0047	-0.007--0.003	-0.0049	-0.006--0.0025	-0.004	-0.0044--0.001	-0.0027
5 20 percentile PPG								
6 30 percentile PPG								
7 40 percentile PPG								
8 50 percentile PPG								
9 60 percentile PPG								
10 70 percentile PPG								
11 80 percentile PPG								
12 90 percentile PPG								
13 25 percentile PPG								
14 75 percentile PPG								
15 25-75 percentile PPG								
16 % time for SPO2 <98%								
17 Dose for SPO2 <98%								
18 % time for SPO2 <95%							-0.736-3.143	1.285
19 Dose for SPO2 <95%								
20 % time for SPO2 <92%								
21 Dose for SPO2 <92%			-1.07--0.080	-0.550				
22 % time for SPO2 <90%								
23 Dose for SPO2 <90%					-0.936--0.259	-0.461		
24 % time for SPO2 <86%	7.618-27.77	17.26	11.16-35.25	22.70	9.094-29.37	18.93	3.846-12.615	8.04
25 Dose for SPO2 <86%								
26 25 percentile SPO2								
27 50 percentile SPO2							0.650-3.317	1.965
28 75 percentile SPO2								
29 mean SPO2	1.274-3.80	2.55						
30 % time for HR >120			-0.278-0.042	-0.120	-0.265-0.034	-0.116		
31 Dose for HR >120	-0.033-0.570	0.259						
32 % time for HR >110			0.025-0.280	0.153	0.025-0.260	0.143		
33 Dose for HR >110								
34 % time for HR >100								
35 Dose for HR >100			0.114-0.460	0.281	0.107-0.426	0.262		
36 % time for HR <72								
37 Dose for HR <72	0.088-0.655	0.373					0.112-0.551	0.333
38 % time for HR <60								
39 Dose for HR <60							-0.148-0.14	-0.062
40 25 percentile HR								
41 50 percentile HR								
42 75 percentile HR							0.029-0.0823	0.055
43 mean HR								
44 Intercept	-99.40--29.89	-62.66	-45.23--10.69	-27.44	-41.91--9.83	-25.40	-61.13--16.04	-38.69
45 Thresholds Range	0.5-1.0	0.5	0.5-1.0	0.5	0.5-1.0	0.5	0.5-1.0	0.5

[0040] Additional parameters include one or more percentiles of an amplitude of the PPG waveform (“percentile PPG”) over the fixed time interval. The amplitude percentiles may be determined by the data processing system 104 based on the received first data or determined by the pulse oximeter 102 and subsequently transmitted to the data processing system 104. The percentiles of the amplitude of the PPG waveform may be one or more of 10 percentile, 20 percentile, 30 percentile, 40 percentile, 50 percentile, 60 percentile, 70 percentile, 80 percentile, 90 percentile, 25 percentile, 75 percentile and a difference between the 25 and 75 percentile.

[0041] Additional parameters include a percentage of the fixed time interval that the oxygen saturation is below a threshold saturation rate, such as about 98%, 95%, 92%, 90% and 86% (“% time for SpO2”).

[0042] Additional parameters include an area of the oxygen saturation waveform below the threshold saturation rates (“Dose for SpO2”). Additional parameters include a 25 percentile, a 50 percentile, a 75 percentile and a mean of the oxygen saturation level during the fixed time interval. For example, the 25 percentile of the oxygen saturation level may be that, during 25% of the fixed time interval, the oxygen saturation was at a level of 98% or higher.

[0043] Additional parameters include a percentage of the fixed time interval that the heart rate is below a low threshold heart rate, such as about 60 beats per minute or 72 beats per minute, or above a high threshold heart rate, such as about 100 beats per minute, 110 beats per minute or 120 beats per minute (“% time for HR”). Additional parameters include an area of the heart rate waveform below the low threshold heart rate or above the high threshold heart rate (“Dose for HR”). Additional parameters include a 25 percentile, a 50 percentile, a 75 percentile and a mean of the heart rate level during the fixed time interval. For example, the 25 percentile of the heart rate level may be that, during 25% of the fixed time interval, the heart rate was at a level of 100 beats per minute or higher.

[0044] The coefficient ranges listed in Table 1 encompass all coefficient values and coefficient ranges that are within the listed ranges in Table 1. The parameters that may be used to determine the prediction are not limited to those parameters listed in Table 1 and include any parameter that is derived from a characteristic of the PPG waveform or an identifying characteristic of the patient. Additionally, the ranges of the coefficients for the parameters listed in Table 1 are not limited to the specific numerical ranges listed in Table 1.

[0045] Table 1 lists a range for an intercept that is used to form the equation for determining the prediction for each time range. The formula for the prediction (P) for each time range is based on the following equation:

$$P = C_1 * V_1 + C_2 * V_2 + \dots + I$$

[0046] Where V_1 is the first value of a first parameter, V_2 is the second value of a second parameter, and C_1 and C_2 are the respective first and second coefficients for the first and second parameters, based on Table 1. Additionally, I is the intercept for the specific time range within which the prediction P is being made, based on Table 1. Although the prediction (P) formula above merely lists two values for two parameters and two coefficients, less or more than two parameters and two coefficients may be used to determine the prediction.

[0047] As shown in Table 1, for the time range of up to 3 hours after the collection of the first data, the coefficient range for the percentage of the fixed time interval that the heart rate is below the threshold heart rate of about 60 beats per minute is in a range from about 0.84 to about 4.93. Additionally, the coefficient range for the percentage of the fixed time interval that the oxygen saturation is below the threshold saturation rate of about 95% is in a range from about 0.05 to about 3.45. Additionally, the coefficient range for the 25 percentile of the oxygen saturation is in a range from about 0.33 to about 2.68 and the coefficient for the 50 percentile of the oxygen saturation is in a range from about 0.04 to about 2.11. In an example embodiment, the above parameters with the largest magnitude coefficients may be used to determine the prediction for the time range of up to 3 hours after the collection of the first data. However, fewer or more than the above listed parameters may be used to determine the prediction.

[0048] As shown in Table 1, for the time range of up to 6 hours after the collection of the first data, the coefficient range for the percentage of the fixed time interval that the heart rate is below the threshold heart rate of about 60 beats per minute is in a range from about 0.85 to about 5.18. Additionally, the coefficient range for the percentage of the fixed time interval that the oxygen saturation is below the threshold saturation rate of about 86% is in a range from about 2.45 to about 9.45. Additionally, the coefficient range for the 25 percentile of the oxygen saturation is in a range from about 0.41 to about 2.93 and the coefficient for the 50 percentile of the oxygen saturation is in a range from about 0.01 to about 2.20. In an example embodiment, the above parameters with the largest magnitude coefficients may be used to determine the prediction of whether the patient will require the blood transfusion within 6 hours after the collection of the first data. However, fewer or more than the above listed parameters may be used to determine the prediction.

[0049] As shown in Table 1, for the time range of up to 12 hours after the collection of the first data, the coefficient range for the percentage of the fixed time interval that the heart rate is below the threshold heart rate of about 60 beats per minute is in a range from about 0.41 to about 2.80. Additionally, the coefficient range for the percentage of the fixed time interval that the oxygen saturation is below the threshold saturation rate of about 95% is in a range from about 0.04 to about 0.26. Additionally, the coefficient range for the 25 percentile of the oxygen saturation is in a range from about -0.11 to about 1.72 and the coefficient for the 50 percentile of the oxygen saturation is in a range from about -0.05 to about 1.81. In an example embodiment, the above parameters with the largest magnitude coefficients may be used to determine the prediction of whether the patient will require the blood transfusion within 12 hours after the collection of the first data. However, less or more than the above listed parameters may be used to determine the prediction.

[0050] As shown in Table 1, for the time range of up to 24 hours after the collection of the first data, the coefficient range for the percentage of the fixed time interval that the heart rate is below the threshold heart rate of about 60 beats per minute is in a range from about 1.11 to about 3.31. Additionally, the coefficient range for the percentage of the fixed time interval that the oxygen saturation is below the threshold saturation rate of about 95% is in a range from

about 0.41 to about 3.82. In an example embodiment, the above parameters with the largest magnitude coefficients may be used to determine the prediction of whether the patient will require the blood transfusion within 24 hours after the collection of the first data. However, less or more than the above listed parameters may be used to determine the prediction.

[0051] Additionally, as shown in Table 1, for the prediction determination within each time range, a threshold range for the prediction is about 0.5-1.0. Thus, if the calculated prediction (P) is above 0.5, the patient is likely in need of a transfusion within the time range. If the calculated prediction is between 0.2 and 0.5, then further investigation, such as further collection of the first data, may be necessary. If the calculated prediction is below 0.2, then the patient is likely not in need of a transfusion within the time range after the collection of the first data. In an example embodiment, the data processing system 104 may include a display to output the prediction and/or may transmit a signal to a remote location such as a blood bank at a proximate location to the hospital, for example, to order one or more blood units, based on the prediction in excess of 0.5, for example.

[0052] In an example embodiment, a plurality of additional predictions are determined, based on whether the patient will require a first massive blood transfusion (MT1) of at least 5 units of pRBC within 4 hours after the collection of the first data; whether the patient will require a second massive blood transfusion (MT2) of at least 10 units of pRBC within 6 hours after the collection of the first data; and whether the patient will require a third massive blood transfusion (MT3) of at least 10 units of pRBC within 24

hours after the collection of the first data. The MT1, MT2 and MT3 predictions are determined in a similar manner as the method for determining the prediction P with the data processing system 104, by applying one or more secondary coefficients for the MT1, MT2 and MT3 predictions to the values for the one or more parameters of the first data. The secondary coefficients for the MT1, MT2 and MT3 predictions are determined in a similar manner as the method for determining the coefficients for the prediction P of whether the patient will require a blood transfusion of one or more blood units.

[0053] Table 4 provides a list of one or more parameters that are used to determine the MT1, MT2 and MT3 predictions, and a 95% confidence interval range of secondary coefficients for the parameters for each MT1, MT2 and MT3 prediction. Additionally, Table 4 also provides a list of the recommended secondary coefficient values within the coefficient interval ranges, for each parameter. Blank entries in Table 4 represent zero value secondary coefficients, and thus parameters that are not deemed useful in the model. The secondary coefficient ranges of the parameters listed in Table 4 are based on the first data collection over a fixed time interval of about 15 minutes. Table 5 is also provided, which lists the range of secondary coefficient values and the recommended secondary coefficient values for each parameter, based on the first data being collection over a fixed time interval of about 30 minutes. Similarly, Table 6 is also provided, which lists the range of secondary coefficient values and the recommended secondary coefficient values for each parameter, based on the first data being collection over a fixed time interval of about 60 minutes.

TABLE 4

Parameter	MT1 (range)	MT1	MT2 (range)	MT2	MT3 (range)	MT3
1 Age	-0.034-0.02	-0.006	-0.032-0.032	0.001	-0.036-0.034	-0.00001
2 Sex	0.035-2.56	1.17	-0.784-2.07	0.495	-0.522-2.471	0.804
3 PreH-HR			0.005-0.58	0.032	0.005-0.057	0.0307
4 10 percentile PPG					-0.015-0.0025	-0.006
5 20 percentile PPG	-0.007--0.001	-0.004	-0.035--0.004	-0.02		
6 30 percentile PPG			-0.0015-0.027	0.013		
7 40 percentile PPG					-0.037-0.009	-0.0154
8 50 percentile PPG					-0.004-0.033	0.0161
9 60 percentile PPG						
10 70 percentile PPG						
11 80 percentile PPG						
12 90 percentile PPG						
13 25 percentile PPG						
14 75 percentile PPG						
15 25-75 percentile PPG						
16 % time for SPO2 <98%						
17 Dose for SPO2 <98%						
18 % time for SPO2 <95%						
19 Dose for SPO2 <95%						
20 % time for SPO2 <92%						
21 Dose for SPO2 <92%	-1.96--0.142	-0.88				
22 % time for SPO2 <90%						
23 Dose for SPO2 <90%						
24 % time for SPO2 <86%	13.76--48.75	28.62			1.894--11.48	7.042
25 Dose for SPO2 <86%						
26 25 percentile SPO2						
27 50 percentile SPO2	0.513-4.56	2.54				
28 75 percentile SPO2			-0.207-5.382	2.893	1.17-6.094	3.762
29 mean SPO2						
30 % time for HR >120						
31 Dose for HR >120						
32 % time for HR >110						
33 Dose for HR >110						
34 % time for HR >100						
35 Dose for HR >100						

TABLE 4-continued

Parameter	MT1 (range)	MT1	MT2 (range)	MT2	MT3 (range)	MT3
36 % time for HR <72						
37 Dose for HR <72	0.341-1.221	0.731			-0.0068-0.5462	0.2697
38 % time for HR <60						
39 Dose for HR <60						
40 25 percentile HR	0.064-0.272	0.142				
41 50 percentile HR	-0.22--0.03	-0.10				
42 75 percentile HR						
43 mean HR						
44 Intercept	-130.1--39.55	79.69	-10.46--2.25	6.127	-63.43--6.181	-34.56
45 Thresholds Range	0.5-1.0	0.5	0.5-1.0	0.5	0.5-1.0	0.5

TABLE 5

Parameter	MT1 (range)	MT1	MT2 (range)	MT2	MT3 (range)	MT3
1 Age	-0.040-0.015	-0.011	-0.035-0.030	-0.0014	-0.026-0.0344	0.0051
2 Sex	-0.155-2.349	0.982	-0.915-2.081	0.438	-0.665-2.241	0.633
3 PreH-HR			0.0009-0.0053	0.0262	0.002-0.051	0.026
4 10 percentile PPG						
5 20 percentile PPG						
6 30 percentile PPG						
7 40 percentile PPG						
8 50 percentile PPG						
9 60 percentile PPG			0.0013-0.011	0.0063	0.0017-0.011	0.0064
10 70 percentile PPG						
11 80 percentile PPG						
12 90 percentile PPG	-0.0084--0.0031	-0.0057				
13 25 percentile PPG			-0.0199--0.0073	-0.013	-0.018--0.0069	-0.012
14 75 percentile PPG						
15 25-75 percentile PPG	0.0047-0.0137	0.009				
16 % time for SPO2 <98%						
17 Dose for SPO2 <98%	-1.10--0.096	-0.525				
18 % time for SPO2 <95%						
19 Dose for SPO2 <95%						
20 % time for SPO2 <92%						
21 Dose for SPO2 <92%						
22 % time for SPO2 <90%						
23 Dose for SPO2 <90%						
24 % time for SPO2 <86%	13.07-45.279	27.434				
25 Dose for SPO2 <86%						
26 25 percentile SPO2						
27 50 percentile SPO2	-0.258-2.837	1.355				
28 75 percentile SPO2					-0.0943-5.470	3.032
29 mean SPO2						
30 % time for HR >120			0.017-0.127	0.0735	0.0216-0.125	0.0753
31 Dose for HR >120						
32 % time for HR >110	0.0295-0.109	0.069				
33 Dose for HR >110						
34 % time for HR >100			-0.0782-0.231	0.106		
35 Dose for HR >100						
36 % time for HR <72						
37 Dose for HR <72	0.274-1.064	0.641				
38 % time for HR <60						
39 Dose for HR <60						
40 25 percentile HR						
41 50 percentile HR						
42 75 percentile HR						
43 mean HR						
44 Intercept	-108.86--28.92	-66.10	-10.15--1.54	-5.60	-10.65--2.383	-6.272
45 Thresholds Range	0.5-1.0	0.5	0.5-1.0	0.5	0.5-1.0	0.5

TABLE 6

Parameter	MT1 (range)	MT1	MT2 (range)	MT2	MT3 (range)	MT3
1 Age	-0.039--0.013	-0.012	-0.023--0.045	0.012	-0.039--0.0264	-0.005
2 Sex	-0.495--1.803	0.573	-0.927--2.243	0.528	-0.759--2.205	0.580
3 PreH-HR						
4 10 percentile PPG						
5 20 percentile PPG	-0.056--0.0011	-0.029				

TABLE 6-continued

Parameter	MT1 (range)	MT1	MT2 (range)	MT2	MT3 (range)	MT3
6 30 percentile PPG			-0.0217--0.0039	-0.013	-0.016--0.0021	-0.0093
7 40 percentile PPG						
8 50 percentile PPG			-0.0011--0.0148	0.0073	-0.0018--0.011	0.0048
9 60 percentile PPG						
10 70 percentile PPG						
11 80 percentile PPG						
12 90 percentile PPG						
13 25 percentile PPG	-0.0046--0.0469	0.0217				
14 75 percentile PPG						
15 25-75 percentile PPG						
16 % time for SPO2 <98%						
17 Dose for SPO2 <98%						
18 % time for SPO2 <95%			-59.214--7.71	-29.07		
19 Dose for SPO2 <95%	-1.382--0.146	-0.754				
20 % time for SPO2 <92%			22.26--146.45	83.05		
21 Dose for SPO2 <92%					-1.321--0.0002	-0.654
22 % time for SPO2 <90%			-183.31--9.063	-97.87		
23 Dose for SPO2 <90%						
24 % time for SPO2 <86%	17.981--56.242	36.429	15.314--127.45	68.18	16.317--55.133	34.752
25 Dose for SPO2 <86%						
26 25 percentile SPO2						
27 50 percentile SPO2	-0.426--2.741	1.235				
28 75 percentile SPO2						
29 mean SPO2						
30 % time for HR >120						
31 Dose for HR >120						
32 % time for HR >110	0.047--0.131	0.088	0.0428--0.1532	0.0957	0.053--0.150	0.1003
33 Dose for HR >110						
34 % time for HR >100					-0.077--0.199	0.0864
35 Dose for HR >100	0.324--0.943	0.611			0.356--1.137	0.702
36 % time for HR <72						
37 Dose for HR <72			0.9334--5.01	2.396		
38 % time for HR <60						
39 Dose for HR <60						
40 25 percentile HR						
41 50 percentile HR						
42 75 percentile HR						
43 mean HR						
44 Intercept	-96.27--33.90	-62.87	-504.37--95.98	-242.82	-117.34--38.62	-73.65
45 Thresholds Range	0.5-1.0	0.5	0.5-1.0	0.5	0.5-1.0	0.5

[0054] According to an example embodiment, the data processing system 104 obtained data for values of one or more parameters of a characteristic of the continuous PPG waveform during treatment of a plurality of patients. In an example embodiment, a shock index (SI) of at least 0.60 was used to qualify trauma patients for a study. The SI is defined as a ratio of the heart rate (in beats per minute) to the systolic blood pressure (in millimeters of mercury). In an example embodiment, the study was conducted in which 556 trauma patients were enrolled, 37 of those patients received a transfusion within 24 hours, and the data for the parameters listed in Table 1 was obtained for all of the patients over a 24 hour period of treatment. The pulse oximeter 102 was used to measure PPG waveform data including heart rate, oxygen saturation and PPG amplitude data over the fixed time periods, such as 15 minutes, 30 minutes and 60 minutes, for example. The data processing system 104 received the data from the pulse oximeter 102, including the parameters listed in Table 1.

[0055] The data processing system 104 assigned a respective result for each patient based on whether the patient received a blood transfusion within the time ranges of 3 hours, 6 hours, 12 hours and 24 hours after the commencement of the collection of the PPG waveform data. In an example embodiment, the processor 204 assigned the result a value of 1.0 if a patient did receive a transfusion in a time

range of treatment and assigned the result a value of 0 if the patient did not receive a transfusion during the time range of treatment. In an example embodiment, for each time range, the data processing system 104 fitted the data for the values of the one or more parameters to the results for the patients, using a software package such as MatLab® 3.13 R2011B; MathWorks, Natick, Mass. Based on the fitting of the data for the values of the one or more parameters to the results for the patients, the data processing system 104 determined the coefficients (see Table 1) for the one or more parameters, for each time range, to determine a model for predicting whether a patient will require a blood transfusion within each time range, based on an input of the one or more parameters.

[0056] To measure the performance of the prediction model, a true positive rate (TPR) is calculated, based on a ratio of the number of patients who needed a transfusion and whose prediction (P) value exceeded the threshold to the total number of patients whose prediction (P) value exceeded the threshold. Additionally, a false positive rate (FPR) is calculated, which is based on a ratio of the number of patients who did not need a transfusion and had a prediction value (P) that exceeded the transfusion threshold to the total number of patients whose prediction (P) value exceeded the transfusion threshold. The TPR and the FPR varies, based on the numerical threshold. FIG. 3B illustrates

an example of a receiver operating characteristic (ROC) curve **320**, which plots the TPR **322** versus the FPR **324**, for a range of transfusion thresholds. As appreciated by one skilled in the art, an area under the ROC curve (AUROC) provides a measure of the performance of the prediction model, where the larger the area (up to 1), the better the performance of the model at predicting whether a patient needs a transfusion. In an example embodiment, the AUROC for the models for predicting whether the patient will require the blood transfusion within 3 hours, 6 hours, 12 hours and 24 hours of the data collection is in a range of 0.80-0.84, in excess of conventional prediction methods based on conventional vital sign (VS) data collection of parameters other than the parameters listed in Table 1. As illustrated in FIG. 3B, a first ROC curve **326** is based on the first data collection over the fixed time interval of 15 minutes and the second ROC curve **328** is based on the first data collection over the fixed time interval of 30 minutes. In an example embodiment, the performance of the prediction model of whether the patient will require the blood transfusion within each time range based on the fixed time interval of 15 minutes of data (AUROC 0.80-0.83) was unexpectedly insignificant to the performance of the prediction model of whether the patient will require the blood transfusion within each time range based on a longer fixed time interval of 30 minutes (AUROC 0.81-0.85) or 60 minutes (0.82-0.85) of data collection.

[0057] In an example embodiment, for each of the plurality of patients, continuous vital sign (VS) data is collected from each patient via Bedmaster® software (Excel Medical Electronics, Jupiter Fla., USA) from networked patient monitors (GE-Marquette Solar 7000/8000, GE® Healthcare) using two VS data collection servers. In an example embodiment, electrocardiogram (ECG) and PPG waveforms were collected at 240 Hz. Heart rate (HR) values (from PPG) and oxygen saturation (SpO₂) values were obtained every five seconds (0.2 Hz) from the pulse oximeter **102**. The collected data was compressed and transferred to the data processing system **104**, such as through an intranet of the hospital facility, for example. In an example embodiment, VS data streaming rate after compression averaged 12 MB/hour for waveforms and 76 Kb/hour for VS data. One hour of continuous VS data and PPG waveform data was collected for analysis, beginning at the time of arrival of the patient at the trauma unit of the hospital. In an example embodiment, blood use was tracked by direct observation of resuscitation and by cross-validation with blood bank records tracking individual blood product unit types and time of release from the blood bank.

[0058] In an example embodiment, the data processing system **104** may be configured to filter the collected first data based on a PPG signal quality index (PPG-SQI). The SQI is used to identify segments of the PPG waveform when there was agreement between a pulse oximeter monitor pulse rate reading (PR₁) and an automated PPG measurement of peak-to-peak distance (PR₂).

$$\text{If } \frac{PR_1 - PR_2}{0.5 * (PR_1 + PR_2)} > 5\%,$$

then the segment of the PPG waveform is excluded from the first data set by the data processing system **104**.

3. Hardware Overview

[0059] FIG. 4 is a block diagram that illustrates a computer system **400** upon which an embodiment of the invention may be implemented. Computer system **400** includes a communication mechanism such as a bus **410** for passing information between other internal and external components of the computer system **400**. Information is represented as physical signals of a measurable phenomenon, typically electric voltages, but including, in other embodiments, such phenomena as magnetic, electromagnetic, pressure, chemical, molecular atomic and quantum interactions. For example, north and south magnetic fields, or a zero and non-zero electric voltage, represent two states (0, 1) of a binary digit (bit). Other phenomena can represent digits of a higher base. A superposition of multiple simultaneous quantum states before measurement represents a quantum bit (qubit). A sequence of one or more digits constitutes digital data that is used to represent a number or code for a character. In some embodiments, information called analog data is represented by a near continuum of measurable values within a particular range. Computer system **400**, or a portion thereof, constitutes a means for performing one or more steps of one or more methods described herein.

[0060] A sequence of binary digits constitutes digital data that is used to represent a number or code for a character. A bus **410** includes many parallel conductors of information so that information is transferred quickly among devices coupled to the bus **410**. One or more processors **402** for processing information are coupled with the bus **410**. A processor **402** performs a set of operations on information. The set of operations include bringing information in from the bus **410** and placing information on the bus **410**. The set of operations also typically include comparing two or more units of information, shifting positions of units of information, and combining two or more units of information, such as by addition or multiplication. A sequence of operations to be executed by the processor **402** constitutes computer instructions.

[0061] Computer system **400** also includes a memory **404** coupled to bus **410**. The memory **404**, such as a random access memory (RAM) or other dynamic storage device, stores information including computer instructions. Dynamic memory allows information stored therein to be changed by the computer system **400**. RAM allows a unit of information stored at a location called a memory address to be stored and retrieved independently of information at neighboring addresses. The memory **404** is also used by the processor **402** to store temporary values during execution of computer instructions. The computer system **400** also includes a read only memory (ROM) **406** or other static storage device coupled to the bus **410** for storing static information, including instructions, that is not changed by the computer system **400**. Also coupled to bus **410** is a non-volatile (persistent) storage device **408**, such as a magnetic disk or optical disk, for storing information, including instructions, that persists even when the computer system **400** is turned off or otherwise loses power.

[0062] Information, including instructions, is provided to the bus **410** for use by the processor from an external input device **412**, such as a keyboard containing alphanumeric keys operated by a human user, or a sensor. A sensor detects conditions in its vicinity and transforms those detections into signals compatible with the signals used to represent information in computer system **400**. Other external devices

coupled to bus 410, used primarily for interacting with humans, include a display device 414, such as a cathode ray tube (CRT) or a liquid crystal display (LCD), for presenting images, and a pointing device 416, such as a mouse or a trackball or cursor direction keys, for controlling a position of a small cursor image presented on the display 414 and issuing commands associated with graphical elements presented on the display 414.

[0063] In the illustrated embodiment, special purpose hardware, such as an application specific integrated circuit (IC) 420, is coupled to bus 410. The special purpose hardware is configured to perform operations not performed by processor 402 quickly enough for special purposes. Examples of application specific ICs include graphics accelerator cards for generating images for display 414, cryptographic boards for encrypting and decrypting messages sent over a network, speech recognition, and interfaces to special external devices, such as robotic arms and medical scanning equipment that repeatedly perform some complex sequence of operations that are more efficiently implemented in hardware.

[0064] Computer system 400 also includes one or more instances of a communications interface 470 coupled to bus 410. Communication interface 470 provides a two-way communication coupling to a variety of external devices that operate with their own processors, such as printers, scanners and external disks. In general the coupling is with a network link 478 that is connected to a local network 480 to which a variety of external devices with their own processors are connected. For example, communication interface 470 may be a parallel port or a serial port or a universal serial bus (USB) port on a personal computer. In some embodiments, communications interface 470 is an integrated services digital network (ISDN) card or a digital subscriber line (DSL) card or a telephone modem that provides an information communication connection to a corresponding type of telephone line. In some embodiments, a communication interface 470 is a cable modem that converts signals on bus 410 into signals for a communication connection over a coaxial cable or into optical signals for a communication connection over a fiber optic cable. As another example, communications interface 470 may be a local area network (LAN) card to provide a data communication connection to a compatible LAN, such as Ethernet. Wireless links may also be implemented. Carrier waves, such as acoustic waves and electromagnetic waves, including radio, optical and infrared waves travel through space without wires or cables. Signals include man-made variations in amplitude, frequency, phase, polarization or other physical properties of carrier waves. For wireless links, the communications interface 470 sends and receives electrical, acoustic or electromagnetic signals, including infrared and optical signals that carry information streams, such as digital data.

[0065] The term computer-readable medium is used herein to refer to any medium that participates in providing information to processor 402, including instructions for execution. Such a medium may take many forms, including, but not limited to, non-volatile media, volatile media and transmission media. Non-volatile media include, for example, optical or magnetic disks, such as storage device 408. Volatile media include, for example, dynamic memory 404. Transmission media include, for example, coaxial cables, copper wire, fiber optic cables, and waves that travel through space without wires or cables, such as acoustic waves and

electromagnetic waves, including radio, optical and infrared waves. The term computer-readable storage medium is used herein to refer to any medium that participates in providing information to processor 402, except for transmission media.

[0066] Common forms of computer-readable media include, for example, a floppy disk, a flexible disk, a hard disk, a magnetic tape, or any other magnetic medium, a compact disk ROM (CD-ROM), a digital video disk (DVD) or any other optical medium, punch cards, paper tape, or any other physical medium with patterns of holes, a RAM, a programmable ROM (PROM), an erasable PROM (EPROM), a FLASH-EPROM, or any other memory chip or cartridge, a carrier wave, or any other medium from which a computer can read. The term non-transitory computer-readable storage medium is used herein to refer to any medium that participates in providing information to processor 402, except for carrier waves and other signals.

[0067] Logic encoded in one or more tangible media includes one or both of processor instructions on a computer-readable storage media and special purpose hardware, such as ASIC 420.

[0068] Network link 478 typically provides information communication through one or more networks to other devices that use or process the information. For example, network link 478 may provide a connection through local network 480 to a host computer 482 or to equipment 484 operated by an Internet Service Provider (ISP). ISP equipment 484 in turn provides data communication services through the public, world-wide packet-switching communication network of networks now commonly referred to as the Internet 490. A computer called a server 492 connected to the Internet provides a service in response to information received over the Internet. For example, server 492 provides information representing video data for presentation at display 414.

[0069] The invention is related to the use of computer system 400 for implementing the techniques described herein. According to one embodiment of the invention, those techniques are performed by computer system 400 in response to processor 402 executing one or more sequences of one or more instructions contained in memory 404. Such instructions, also called software and program code, may be read into memory 404 from another computer-readable medium such as storage device 408. Execution of the sequences of instructions contained in memory 404 causes processor 402 to perform the method steps described herein. In alternative embodiments, hardware, such as application specific integrated circuit 420, may be used in place of or in combination with software to implement the invention. Thus, embodiments of the invention are not limited to any specific combination of hardware and software.

[0070] The signals transmitted over network link 478 and other networks through communications interface 470, carry information to and from computer system 400. Computer system 400 can send and receive information, including program code, through the networks 480, 490 among others, through network link 478 and communications interface 470. In an example using the Internet 490, a server 492 transmits program code for a particular application, requested by a message sent from computer 400, through Internet 490, ISP equipment 484, local network 480 and communications interface 470. The received code may be executed by processor 402 as it is received, or may be stored in storage device 408 or other non-volatile storage for later

execution, or both. In this manner, computer system 400 may obtain application program code in the form of a signal on a carrier wave.

[0071] Various forms of computer readable media may be involved in carrying one or more sequence of instructions or data or both to processor 402 for execution. For example, instructions and data may initially be carried on a magnetic disk of a remote computer such as host 482. The remote computer loads the instructions and data into its dynamic memory and sends the instructions and data over a telephone line using a modem. A modem local to the computer system 400 receives the instructions and data on a telephone line and uses an infra-red transmitter to convert the instructions and data to a signal on an infra-red carrier wave serving as the network link 478. An infrared detector serving as communications interface 470 receives the instructions and data carried in the infrared signal and places information representing the instructions and data onto bus 410. Bus 410 carries the information to memory 404 from which processor 402 retrieves and executes the instructions using some of the data sent with the instructions. The instructions and data received in memory 404 may optionally be stored on storage device 408, either before or after execution by the processor 402.

[0072] FIG. 5 illustrates a chip set 500 upon which an embodiment of the invention may be implemented. Chip set 500 is programmed to perform one or more steps of a method described herein and includes, for instance, the processor and memory components described with respect to FIG. 4 incorporated in one or more physical packages (e.g., chips). By way of example, a physical package includes an arrangement of one or more materials, components, and/or wires on a structural assembly (e.g., a baseboard) to provide one or more characteristics such as physical strength, conservation of size, and/or limitation of electrical interaction. It is contemplated that in certain embodiments the chip set can be implemented in a single chip. Chip set 500, or a portion thereof, constitutes a means for performing one or more steps of a method described herein.

[0073] In one embodiment, the chip set 500 includes a communication mechanism such as a bus 501 for passing information among the components of the chip set 500. A processor 503 has connectivity to the bus 501 to execute instructions and process information stored in, for example, a memory 505. The processor 503 may include one or more processing cores with each core configured to perform independently. A multi-core processor enables multiprocessing within a single physical package. Examples of a multi-core processor include two, four, eight, or greater numbers of processing cores. Alternatively or in addition, the processor 503 may include one or more microprocessors configured in tandem via the bus 501 to enable independent execution of instructions, pipelining, and multithreading. The processor 503 may also be accompanied with one or more specialized components to perform certain processing functions and tasks such as one or more digital signal processors (DSP) 507, or one or more application-specific integrated circuits (ASIC) 509. A DSP 507 typically is configured to process real-world signals (e.g., sound) in real time independently of the processor 503. Similarly, an ASIC 509 can be configured to performed specialized functions not easily performed by a general purposed processor. Other specialized components to aid in performing the inventive

functions described herein include one or more field programmable gate arrays (FPGA) (not shown), one or more controllers (not shown), or one or more other special-purpose computer chips.

[0074] The processor 503 and accompanying components have connectivity to the memory 505 via the bus 501. The memory 505 includes both dynamic memory (e.g., RAM, magnetic disk, writable optical disk, etc.) and static memory (e.g., ROM, CD-ROM, etc.) for storing executable instructions that when executed perform one or more steps of a method described herein. The memory 505 also stores the data associated with or generated by the execution of one or more steps of the methods described herein.

4. Extensions, Modifications and Alternatives

[0075] In the foregoing specification, the invention has been described with reference to specific embodiments thereof. It will, however, be evident that various modifications and changes may be made thereto without departing from the broader spirit and scope of the invention. The specification and drawings are, accordingly, to be regarded in an illustrative rather than a restrictive sense. Throughout this specification and the claims, unless the context requires otherwise, the word “comprise” and its variations, such as “comprises” and “comprising,” will be understood to imply the inclusion of a stated item, element or step or group of items, elements or steps but not the exclusion of any other item, element or step or group of items, elements or steps. Furthermore, the indefinite article “a” or “an” is meant to indicate one or more of the item, element or step modified by the article.

What is claimed is:

1. A method comprising:
 - obtaining, on a processor, first data that indicates values for one or more parameters of a characteristic of a continuous photoplethysmographic (PPG) waveform collected during a treatment of a patient;
 - applying, on the processor, coefficients to the values for the one or more parameters; and
 - determining, on the processor, second data that indicates a prediction that the patient will require a blood transfusion during the treatment based on applying the coefficients to the values for the one or more parameters.
2. The method of claim 1, further comprising determining, on the processor, whether to order one or more blood units based on the prediction.
3. The method of claim 1, wherein the first data is collected over a fixed time interval, wherein the characteristic of the PPG waveform includes one or more of a heart rate and an oxygen saturation;
 - and wherein the parameters include one or more of a percentage of the fixed time interval that the heart rate is below a threshold heart rate, a percentage of the fixed time interval that the oxygen saturation is below a threshold saturation rate, a first percentile of the oxygen saturation and a second percentile of the oxygen saturation rate over the fixed time interval, wherein the second percentile is greater than the first percentile.
4. The method of claim 3, wherein the threshold heart rate is about 60 beats per minute, the threshold saturation rate is about 95%, the first percentile of the oxygen saturation is about 25 percentile and the second percentile of the oxygen saturation is about 50 percentile.

5. The method of claim 3, wherein the prediction is based on a time range of up to 3 hours after the collection of the first data, wherein the threshold heart rate is about 60 beats per minute, the threshold saturation rate is about 95%, the first percentile is about 25 percentile and the second percentile is about 50 percentile;

and wherein the coefficient for the percentage of the fixed time interval that the heart rate is below the threshold heart rate is in a range from about 0.84 to about 4.93, the coefficient for the percentage of the fixed time interval that the oxygen saturation is below the threshold saturation rate is in a range from about 0.05 to about 3.45, the coefficient for the first percentile is in a range from about 0.33 to about 2.68 and the coefficient for the second percentile is in a range from about 0.04 to about 2.11.

6. The method of claim 3, wherein the prediction is based on a time range of up to 6 hours after the collection of the first data, wherein the threshold heart rate is about 60 beats per minute, the threshold saturation rate is about 86%, the first percentile is about 25 percentile and the second percentile is about 50 percentile;

and wherein the coefficient for the percentage of the fixed time interval that the heart rate is below the threshold heart rate is in a range from about 0.85 to about 5.18, the coefficient for the percentage of the fixed time interval that the oxygen saturation is below the threshold saturation rate is in a range from about 2.45 to about 9.45, the coefficient for the first percentile is in a range from about 0.41 to about 2.93 and the coefficient for the second percentile is in a range from about 0.01 to about 2.20.

7. The method of claim 3, wherein the prediction is based on a time range of up to 12 hours after the collection of the first data, wherein the threshold heart rate is about 60 beats per minute, the threshold saturation rate is about 95%, the first percentile is about 25 percentile and the second percentile is about 50 percentile;

and wherein the coefficient for the percentage of the fixed time interval that the heart rate is below the threshold heart rate is in a range from about 0.41 to about 2.80, the coefficient for the percentage of the fixed time interval that the oxygen saturation is below the threshold saturation rate is in a range from about 0.04 to about 0.26, the coefficient for the first percentile is in a range from about -0.11 to about 1.72 and the coefficient for the second percentile is in a range from about -0.05 to about 1.81.

8. The method of claim 3, wherein the prediction is based on a time range of up to 24 hours after the collection of the first data, wherein the threshold heart rate is about 60 beats per minute and the threshold saturation rate is about 95%;

and wherein the coefficient for the percentage of the fixed time interval that the heart rate is below the threshold heart rate is in a range from about 1.11 to about 3.31 and the coefficient for the percentage of the fixed time interval that the oxygen saturation is below the threshold saturation rate is in a range from about 0.41 to about 3.82.

9. The method of claim 1, wherein the first data is collected over a fixed time interval and wherein the parameter is a percentile of an amplitude of the PPG waveform collected over the fixed time interval.

10. The method of claim 9, wherein the parameter is one or more of a 10 percentile, 20 percentile, 25 percentile, 30 percentile, 40 percentile, 50 percentile, 60 percentile, 70 percentile, 75 percentile, 80 percentile, and 90 percentile of the amplitude of the PPG waveform collected over the fixed time interval.

11. The method of claim 1, wherein the PPG waveform includes a heart rate waveform and an oxygen saturation waveform, and wherein the parameter includes one or more of an area of the heart rate waveform below a low threshold heart rate or above a high threshold heart rate and an area of the oxygen saturation waveform below a threshold oxygen saturation rate.

12. The method of claim 11, wherein the low threshold heart rate is one of about 60 beats per minute or about 72 beats per minute, the high threshold heart rate is one of about 100 beats per minute, about 110 beats per minute and about 120 beats per minute, and the threshold oxygen saturation rate is one or more of about 98%, 95%, 92%, 90% and 86%.

13. The method of claim 1 further comprising obtaining, on the processor, third data that indicates values for one or more secondary parameters of a characteristic of the patient; wherein applying the coefficients to the one or more parameters further includes applying coefficients to the values for the one or more secondary parameters; and wherein the secondary parameters include one or more of an age and a gender of the patient.

14. The method of claim 1, further comprising determining, on the processor, values for the coefficients of the one or more parameters including:

obtaining, on the processor, preliminary data for the one or more parameters of the characteristic of the PPG waveform during treatment of a plurality of patients;

assigning, on the processor, a result for each patient based on whether the patient received a blood transfusion during the treatment;

fitting, on the processor, the preliminary data to the results for the plurality of patients; and

determining, on the processor, the coefficients for the one or more parameters, to determine a model for predicting whether a patient will require a blood transfusion based on the first data.

15. The method of claim 1, further comprising:

applying, on the processor, secondary coefficients to the values of the one or more parameters; and

determining, on the processor, fourth data that indicates a prediction that the patient will require a massive blood transfusion of at least five blood units during the treatment based on applying the secondary coefficients to the values for the one or more parameters.

16. A method comprising:

obtaining, on a processor, data that indicates values for one or more parameters of a characteristic of a continuous photoplethysmographic (PPG) waveform during treatment of a plurality of patients;

assigning, on the processor, a result for each patient based on whether the patient received a blood transfusion during the treatment;

fitting, on the processor, the data to the results for the plurality of patients; and

determining, on the processor, coefficients for the one or more parameters, to determine a model for predicting whether a patient will require a blood transfusion based on an input of the one or more parameters.

17. The method of claim **16**, wherein a result is assigned to each patient during a plurality of time ranges of the treatment based on whether each patient received a blood transfusion during each of the plurality of time ranges; wherein the data is fit to each respective result for the plurality of patients during the plurality of time ranges; wherein the coefficients for the one or more parameters are obtained for each of the plurality of time ranges, to determine a model for predicting whether a patient will require a blood transfusion during each of the plurality of time ranges based on an input of the one or more parameters.

18. An apparatus comprising:
a pulse oximeter configured to measure first data that indicates values for one or more parameters of a characteristic of a continuous photoplethysmographic (PPG) waveform collected during a treatment of a patient; and
at least one processor connected to the pulse oximeter to receive the first data of the one or more parameters;
at least one memory including one or more sequence of instructions;
the at least one memory and the one or more sequence of instructions configured to, with the at least one processor, cause the apparatus to perform at least the following;

apply coefficients to the values for the one or more parameters, and

determine second data that indicates a prediction that the patient will require a blood transfusion during the treatment based on applying the coefficients to the values for the one or more parameters.

19. The apparatus of claim **18** wherein the at least one memory and the one or more sequence of instructions are further configured to, with the at least one processor, cause the apparatus to order one or more blood units, based on the prediction.

20. A computer-readable medium carrying one or more sequences of instructions, wherein execution of the one or more sequences of instructions by one or more processors causes the one or more processors to perform the steps of:

applying coefficients to values for one or more parameters of a characteristic of a continuous photoplethysmographic (PPG) waveform collected during a treatment of a patient; and

determining a prediction that the patient will require a blood transfusion during the treatment based on applying the coefficients to the values for the one or more parameters.

* * * * *

专利名称(译)	预测输血需求的方法和装置		
公开(公告)号	US20190328338A1	公开(公告)日	2019-10-31
申请号	US16/288207	申请日	2019-02-28
[标]申请(专利权)人(译)	马里兰大学巴尔的摩分校		
申请(专利权)人(译)	马里兰州巴尔的摩大学		
当前申请(专利权)人(译)	马里兰州巴尔的摩大学		
[标]发明人	HU FU MING MACKENZIE COLIN YANG SHIMING CHEN HEGANG		
发明人	HU, FU-MING MACKENZIE, COLIN YANG, SHIMING CHEN, HEGANG		
IPC分类号	A61B5/00 G16H50/20 A61B5/0205 G16H20/40 A61B5/024 A61B5/02		
CPC分类号	A61B5/7275 A61B5/4836 G16H50/20 A61B5/742 G16H20/40 A61B5/02416 A61B5/02042 A61B5/0205 A61B5/14551 G16H20/00 G16H40/63 G16H50/50		
优先权	14/911421 2016-02-10 US PCT/US2014/050790 2014-08-12 WO		
外部链接	Espacenet USPTO		

摘要(译)

提供了一种用于预测患者在治疗期间需要输血的方法。该方法包括在处理器上获得第一数据，该第一数据指示在治疗期间收集的连续光体积描记术 (PPG) 波形的特征的一个或多个参数的值。该方法还包括在处理器上将系数应用于一个或多个参数的值。该方法还包括基于将系数应用于一个或多个参数的值，在处理器上确定第二数据，该第二数据指示患者在治疗期间将需要输血的预测。还提供了一种用于预测患者在治疗期间将需要输血的设备。

