



(19) **United States**

(12) **Patent Application Publication**

**Al-Ali et al.**

(10) **Pub. No.: US 2018/0247353 A1**

(43) **Pub. Date: Aug. 30, 2018**

(54) **MANAGING DYNAMIC LICENSES FOR PHYSIOLOGICAL PARAMETERS IN A PATIENT MONITORING ENVIRONMENT**

*A61B 5/1455* (2006.01)  
*A61B 5/145* (2006.01)  
*A61B 5/024* (2006.01)  
*A61B 5/00* (2006.01)

(71) Applicant: **Masimo Corporation**, Irvine, CA (US)

(52) **U.S. Cl.**  
CPC ..... *G06Q 30/0601* (2013.01); *G06F 8/65* (2013.01); *A61B 5/14551* (2013.01); *A61B 5/0245* (2013.01); *A61B 5/02416* (2013.01); *A61B 5/746* (2013.01); *G06Q 2220/18* (2013.01); *A61B 5/14546* (2013.01)

(72) Inventors: **Yaser Ammar Al-Ali**, San Juan Capistrano, CA (US); **Ammar Al-Ali**, San Juan Capistrano, CA (US); **Philip B. Trinh**, Irvine, CA (US); **Bilal Muhsin**, San Clemente, CA (US); **Ronald Keith Rumbaugh, II**, Mission Viejo, CA (US)

(57) **ABSTRACT**

A dynamic licensing system permits facility administrators to quickly enable a patient monitoring device to monitor a previously unmonitored physiological parameter when the caregiver determines that a new physiological parameter should be monitored. The administrator selects through a dynamic licensing module the patient monitoring device and instructs the dynamic licensing system to enable monitoring of the new physiological parameter. The administrator defines how long the patient monitoring device is to be monitoring the new parameter. The administrator may also select locations in the hospital, and some or all patient monitoring devices at that location are upgraded to monitor the new parameter. The dynamic licensing system creates a licensing agreement to monitor the new parameter for the monitoring duration and/or in the monitoring location.

(21) Appl. No.: **15/903,845**

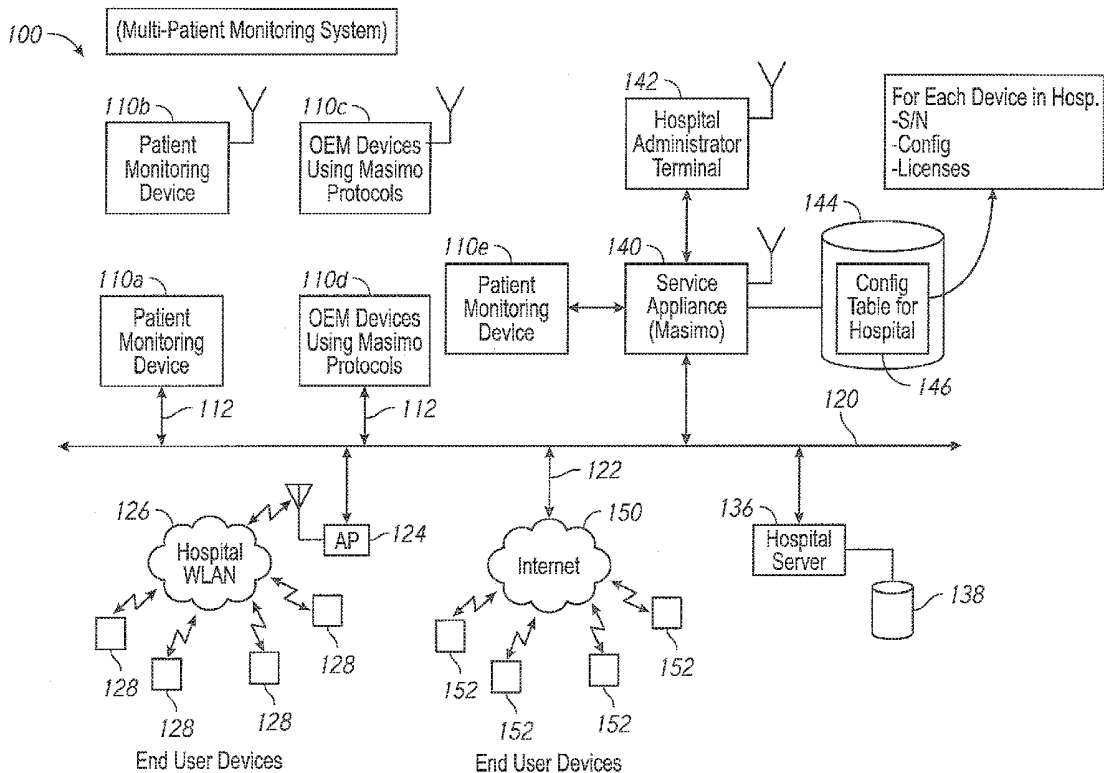
(22) Filed: **Feb. 23, 2018**

**Related U.S. Application Data**

(60) Provisional application No. 62/463,461, filed on Feb. 24, 2017, provisional application No. 62/560,008, filed on Sep. 18, 2017, provisional application No. 62/463,490, filed on Feb. 24, 2017.

**Publication Classification**

(51) **Int. Cl.**  
*G06Q 30/06* (2006.01)  
*G06F 8/65* (2006.01)



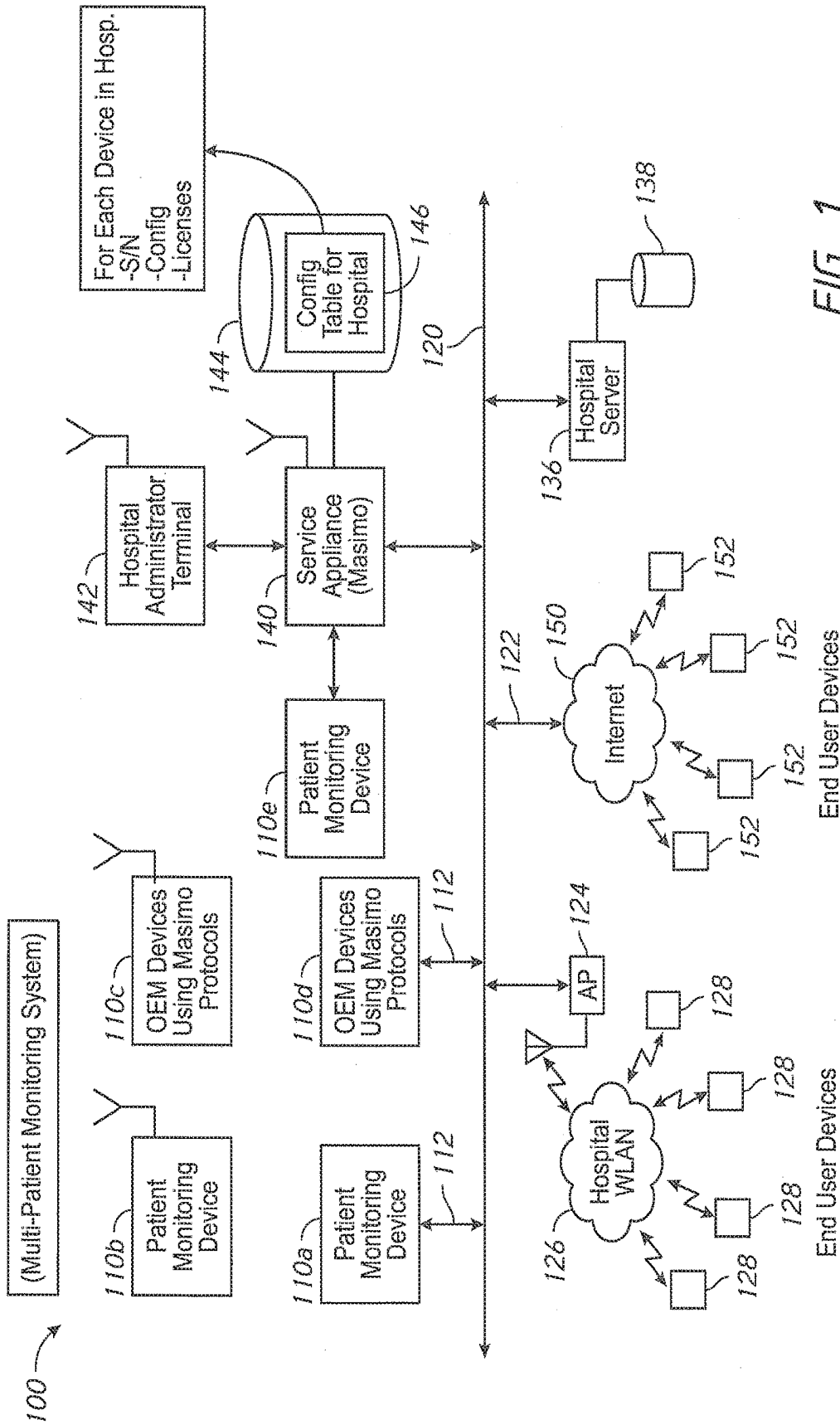


FIG. 1

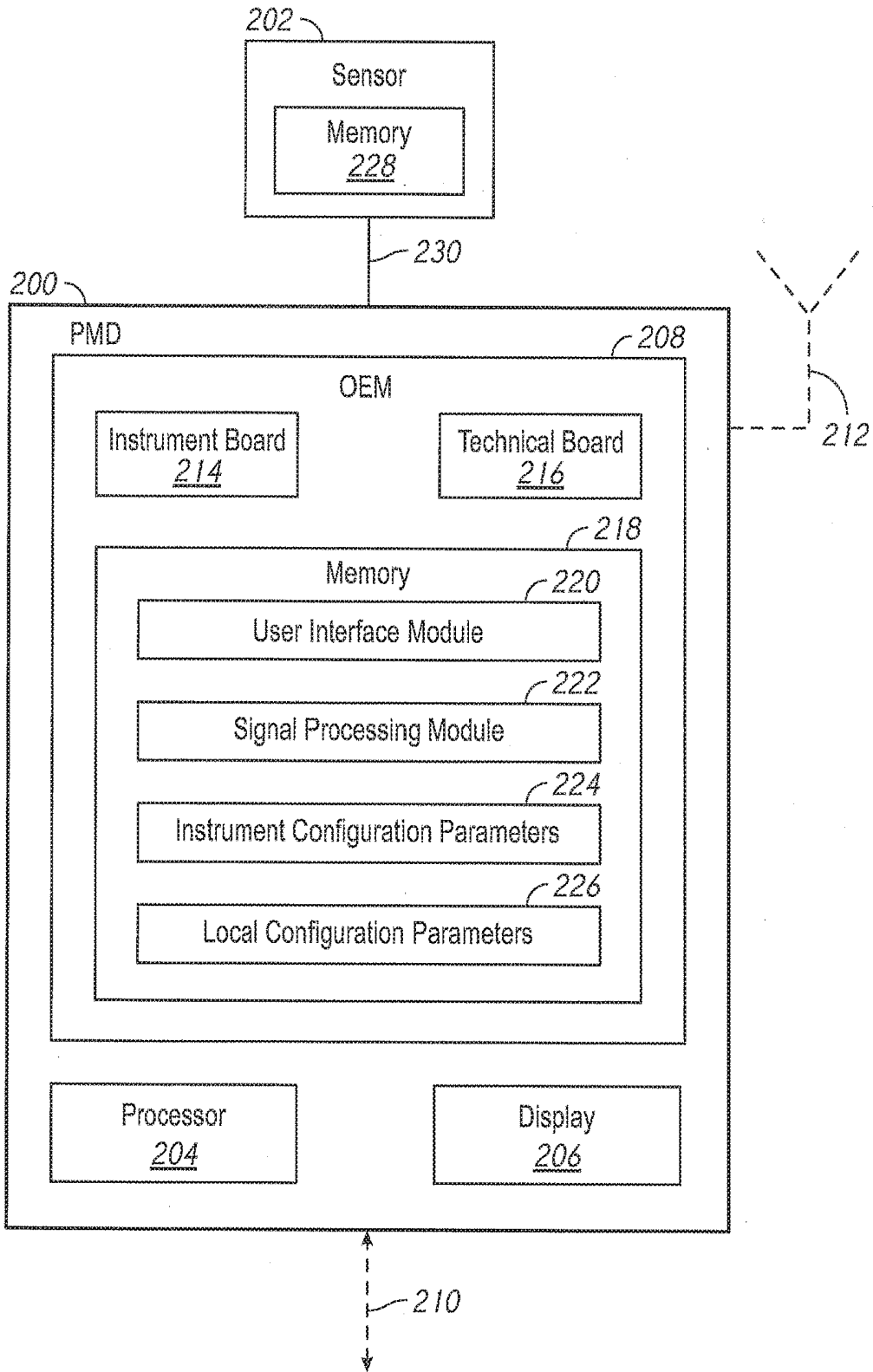


FIG. 2A

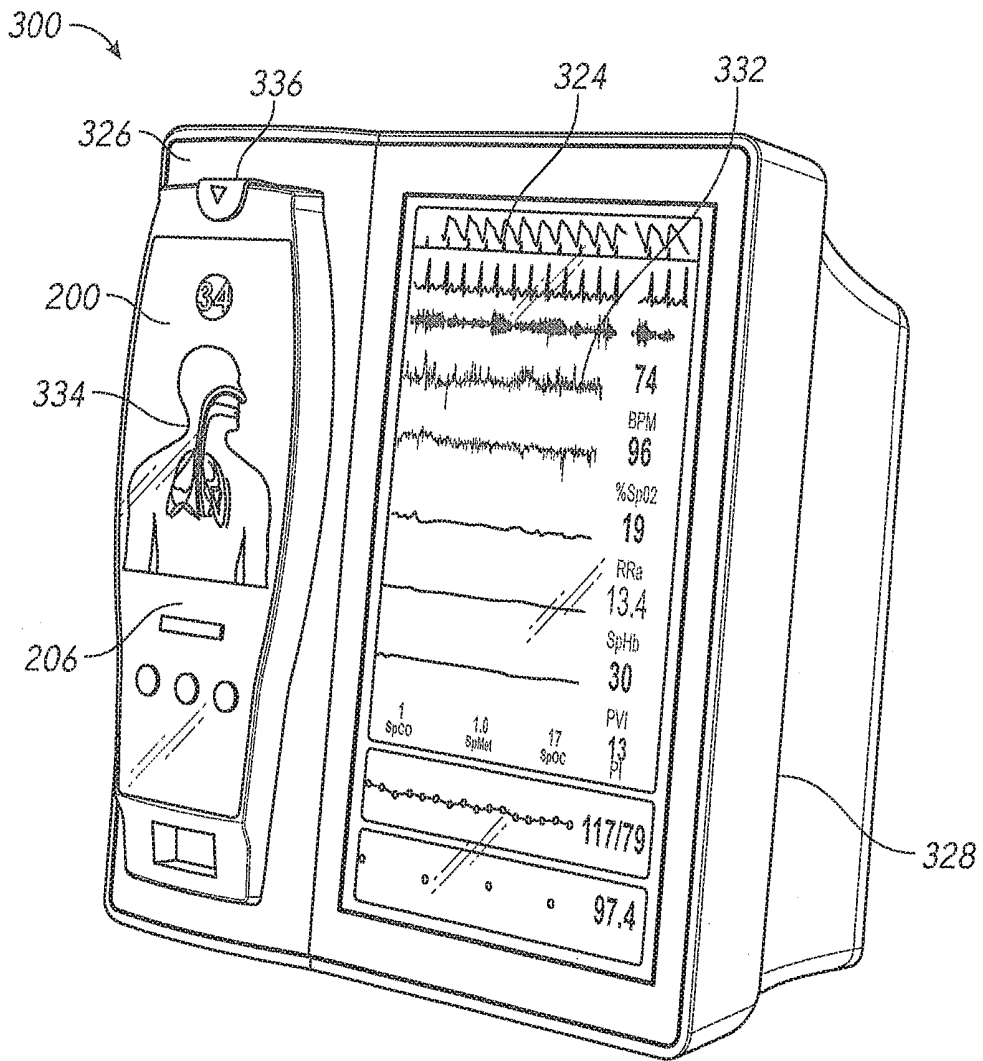


FIG. 2B

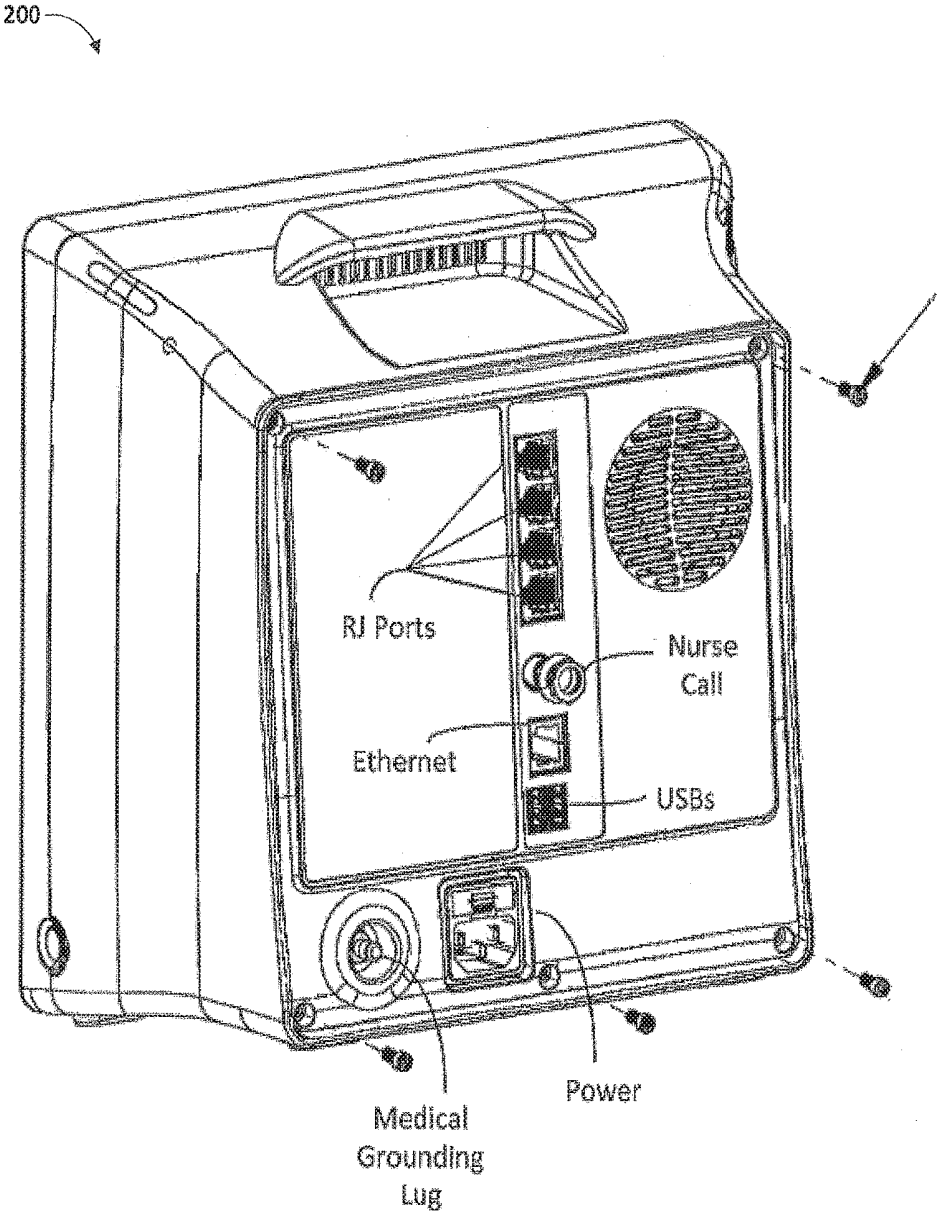


FIG. 2C

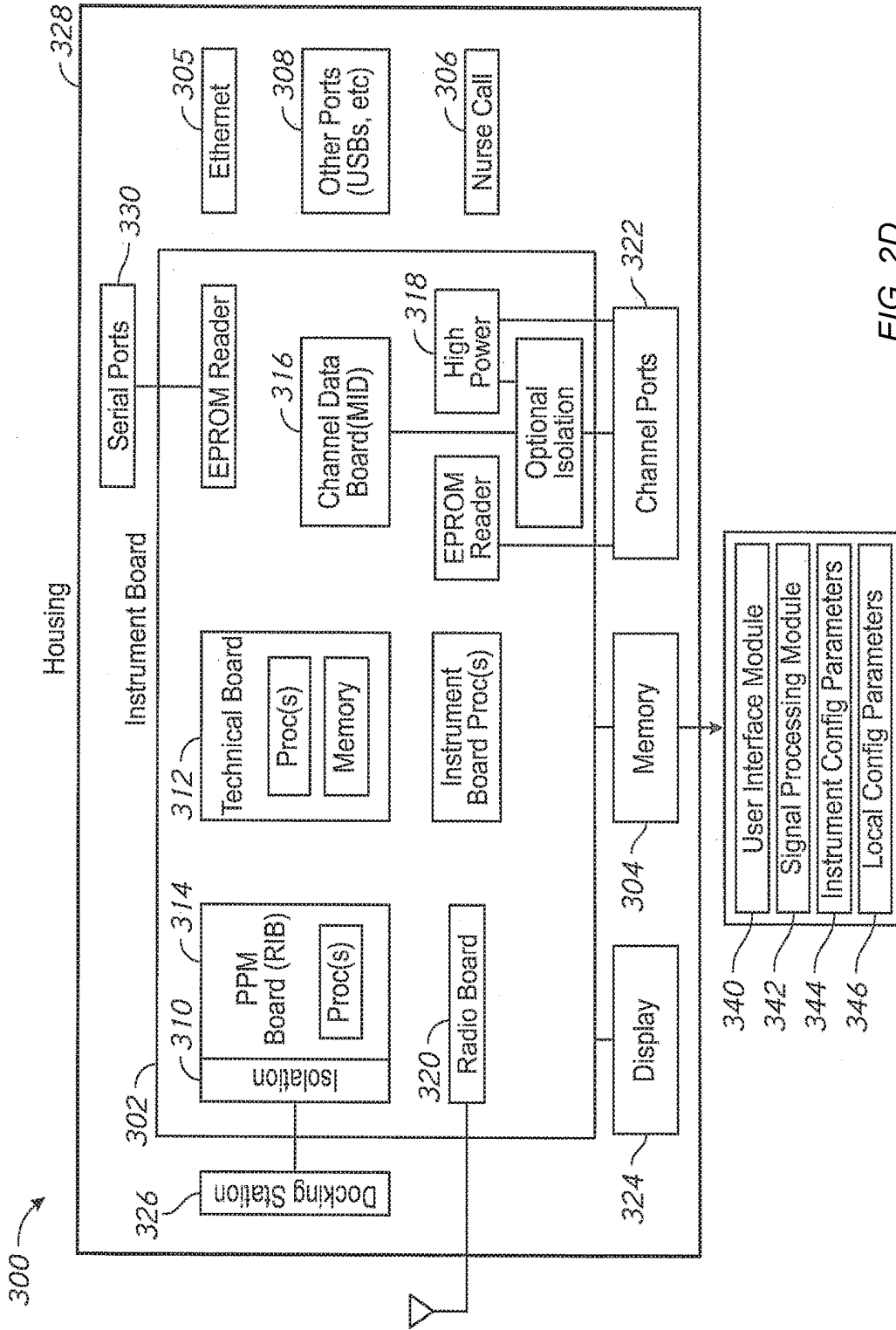
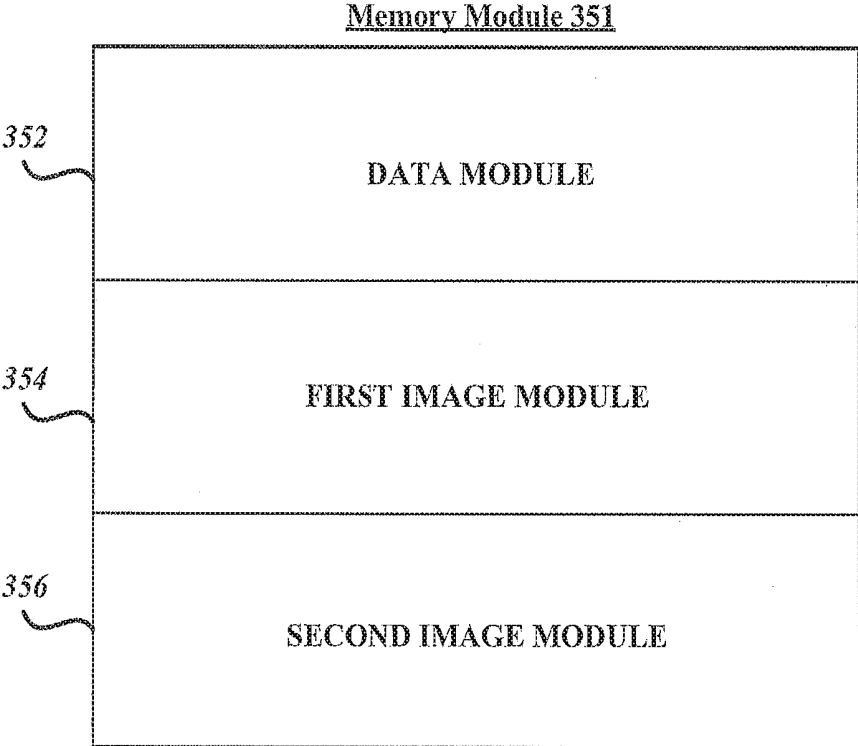


FIG. 2D



**FIG. 3A**

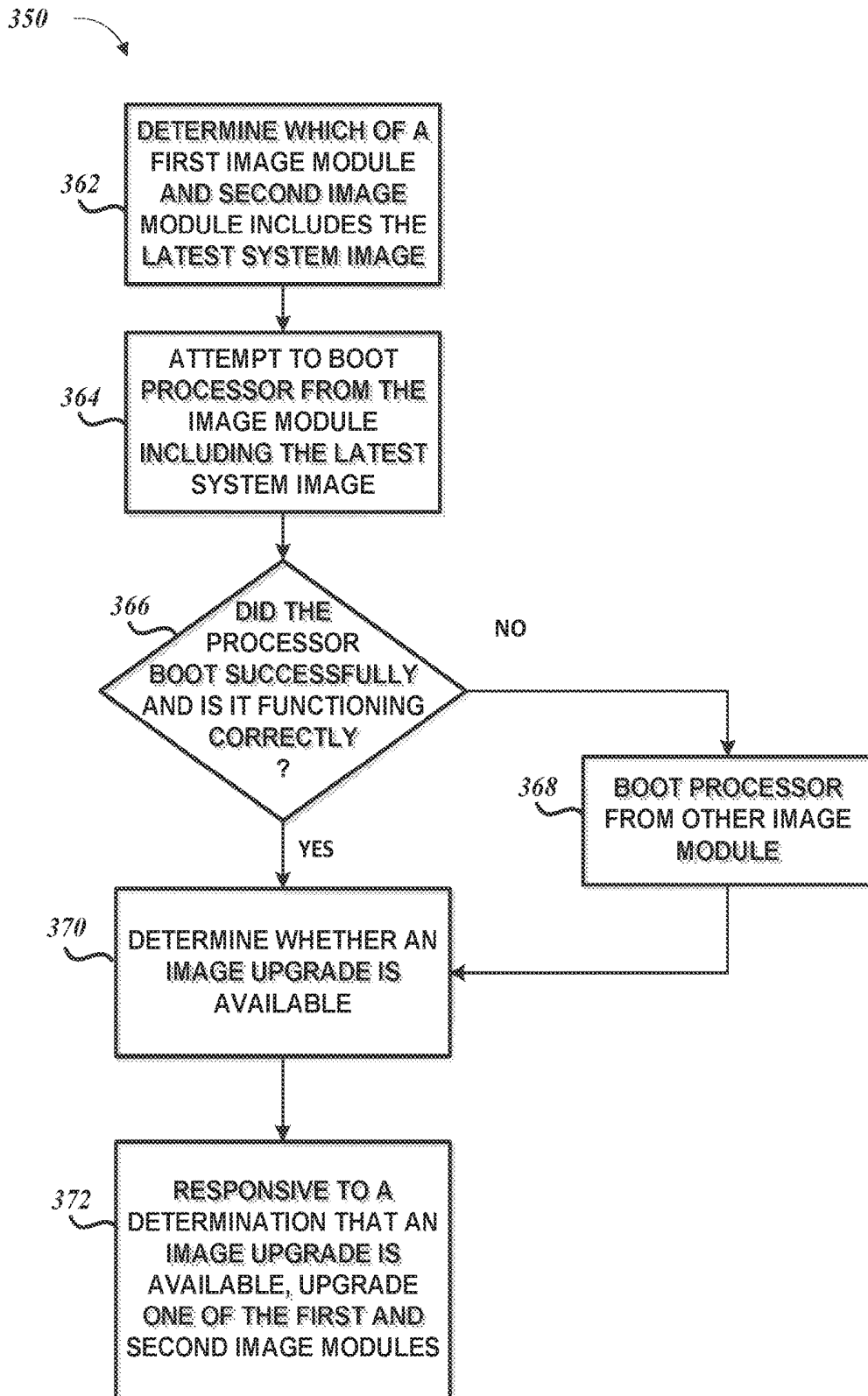


FIG. 3B

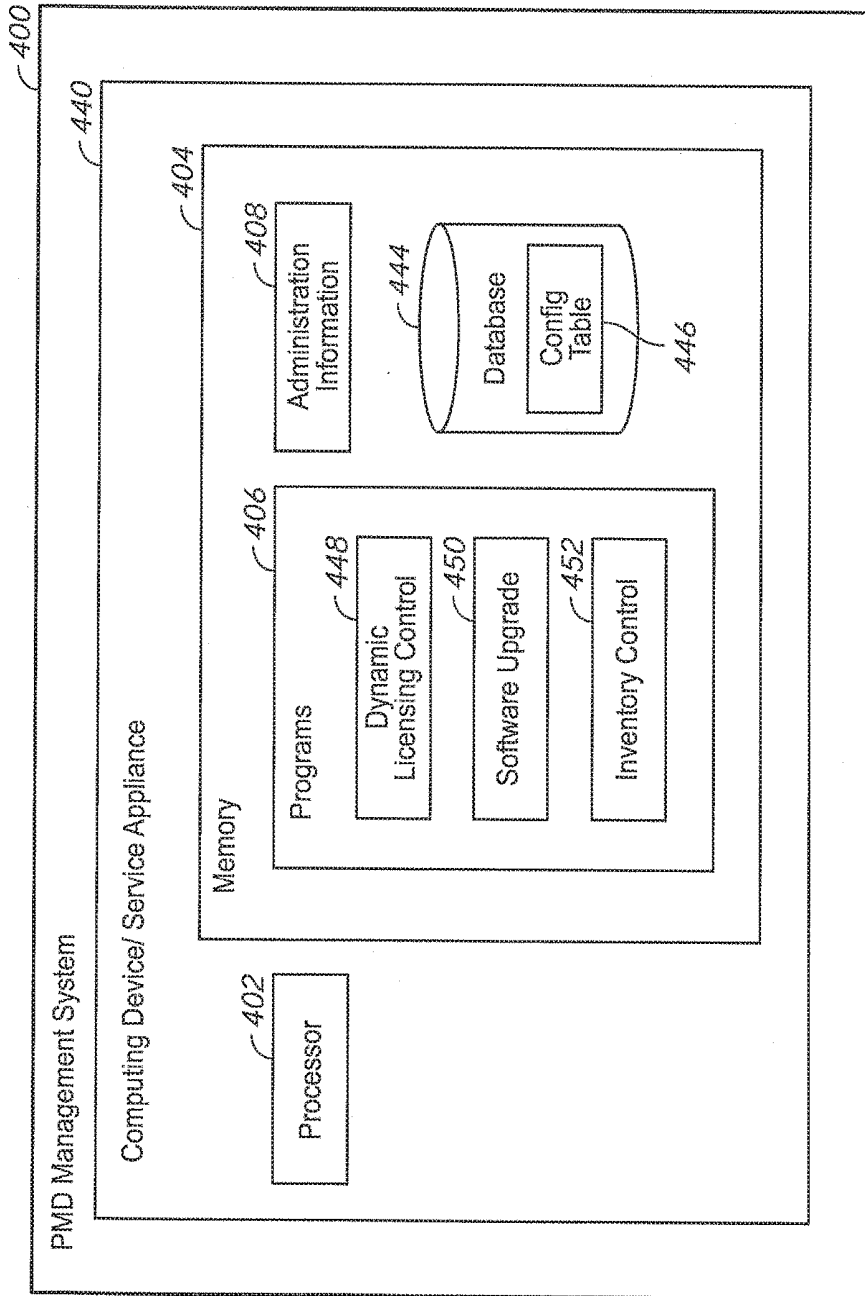


FIG. 4

500

DATABASE FIELDS FOR HOSPITAL CONFIGURATION TABLE

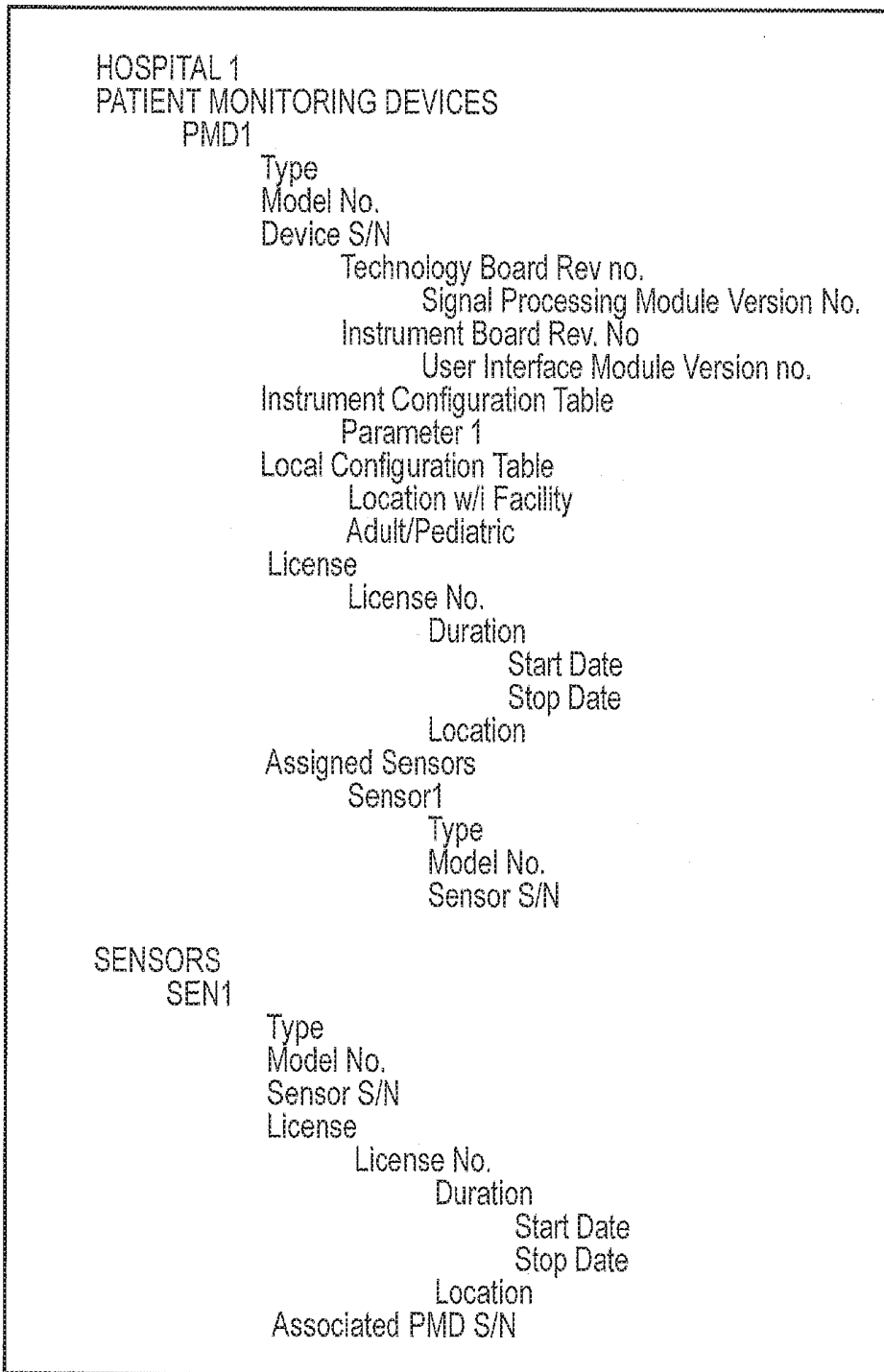


FIG. 5

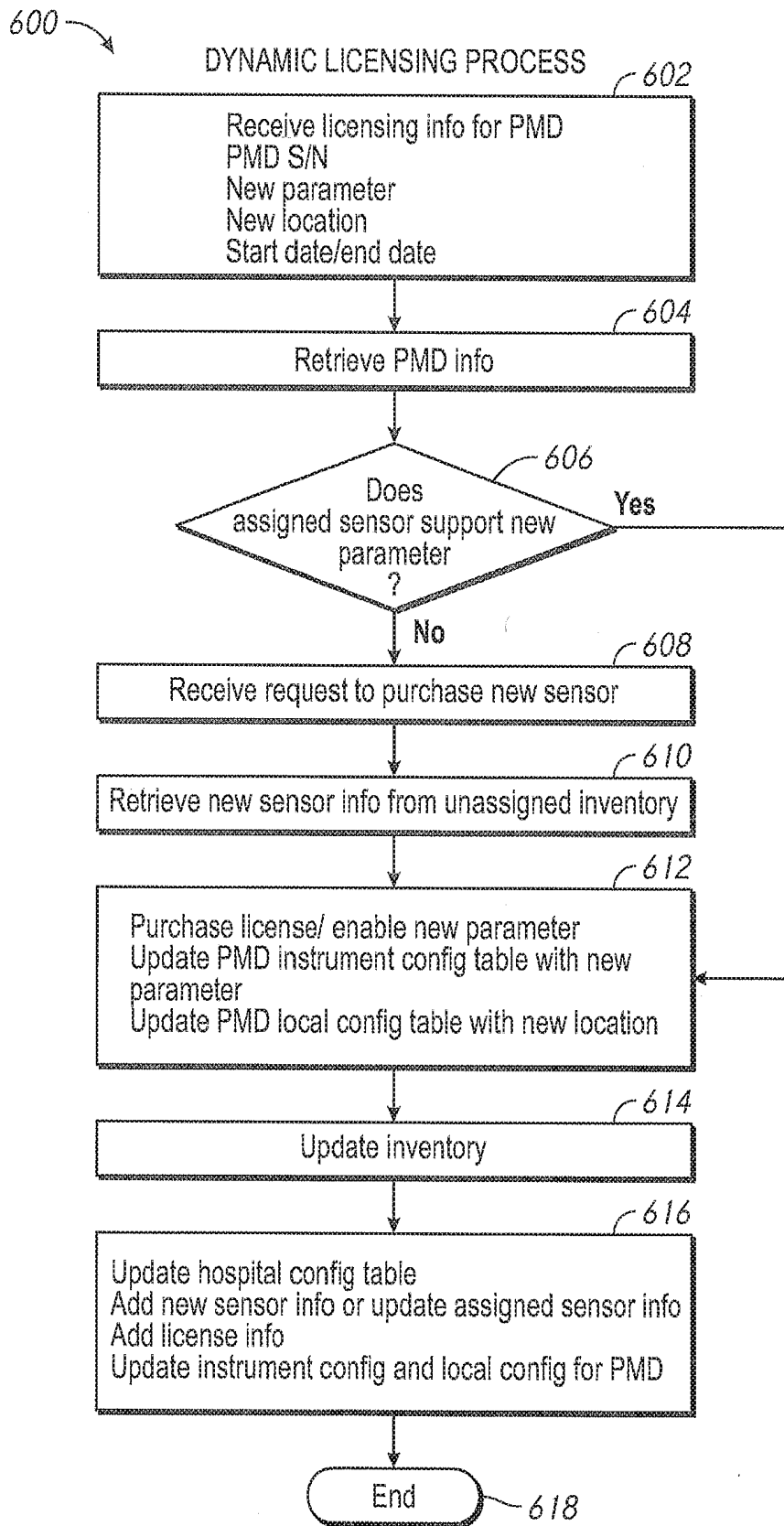


FIG. 6

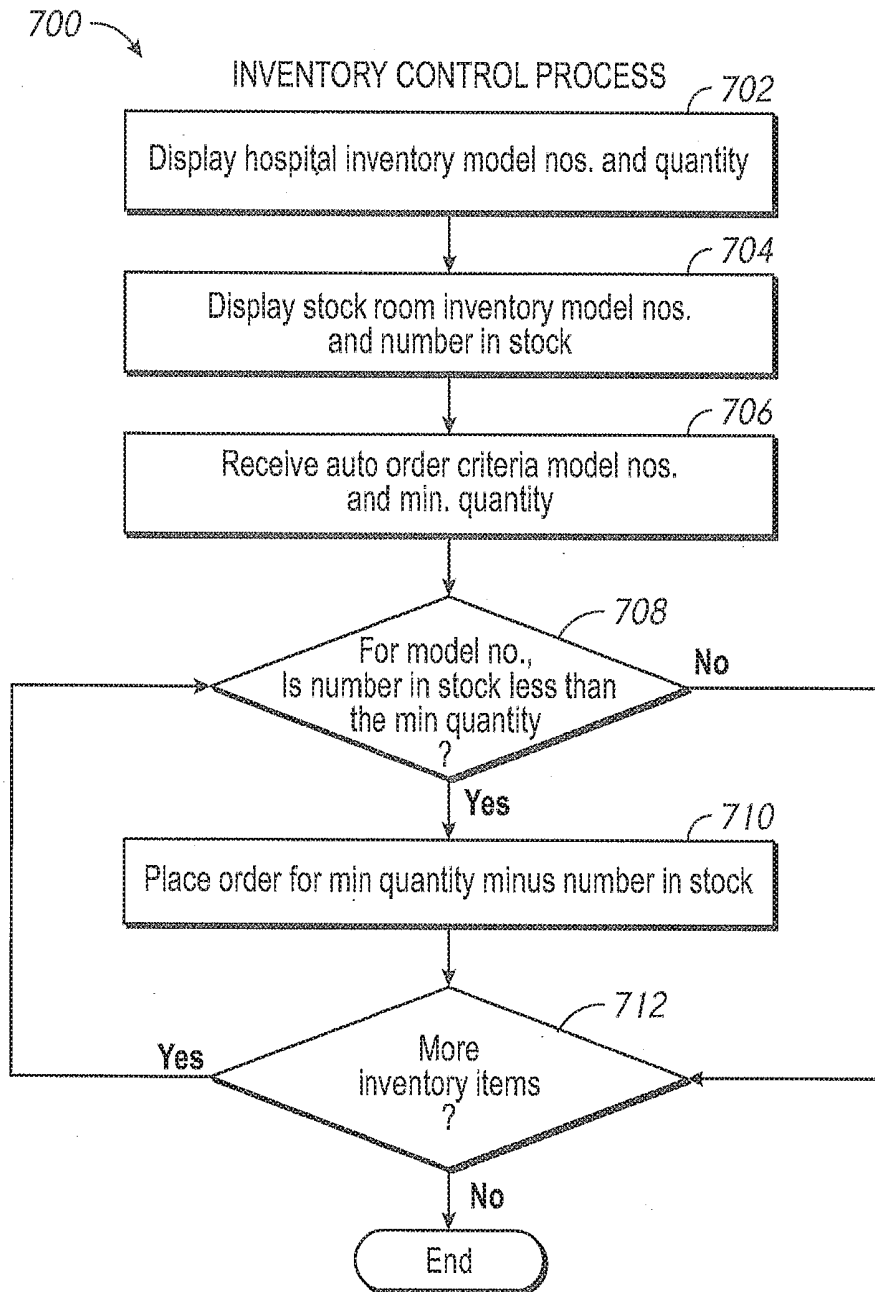


FIG. 7

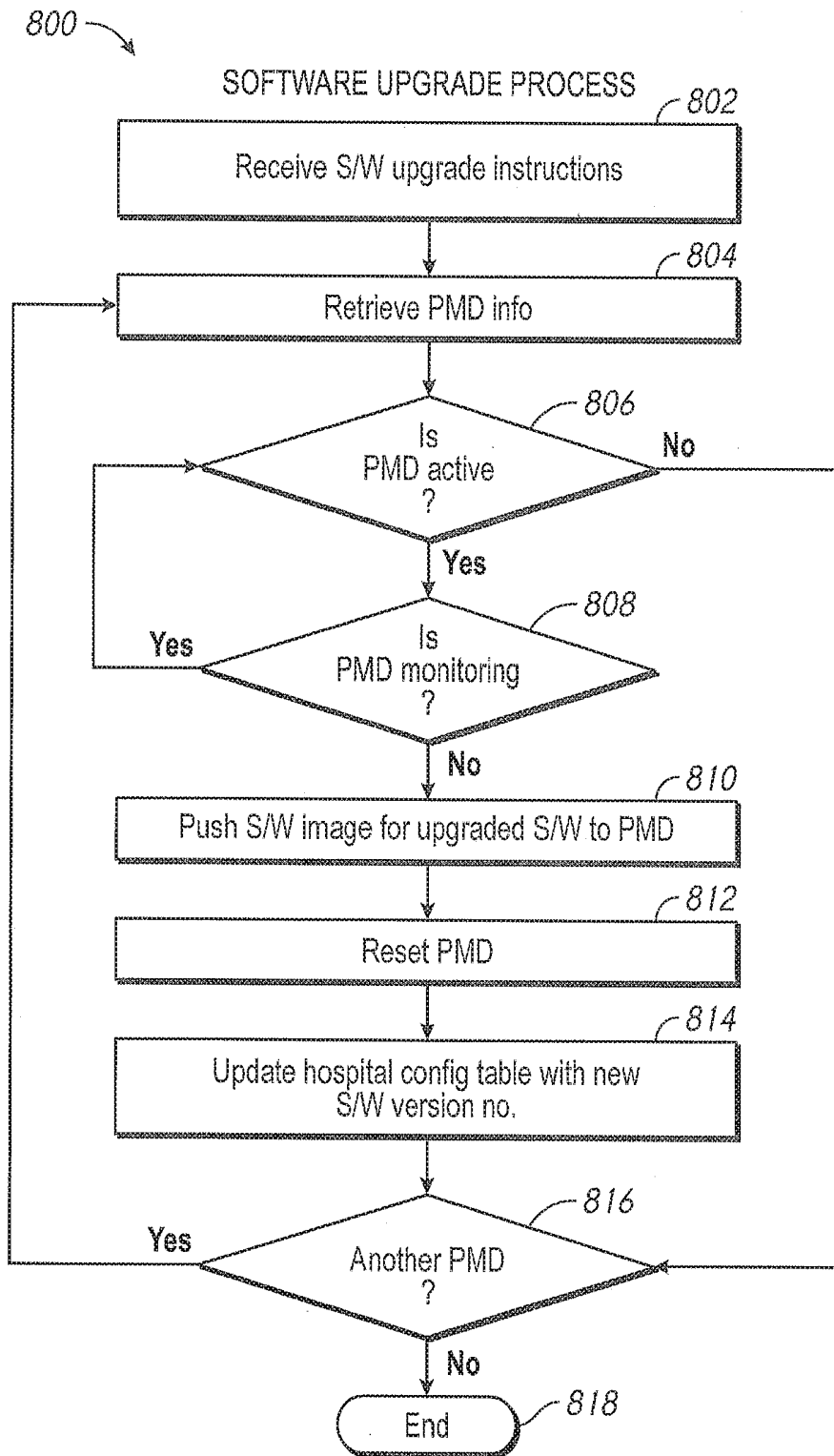


FIG. 8A

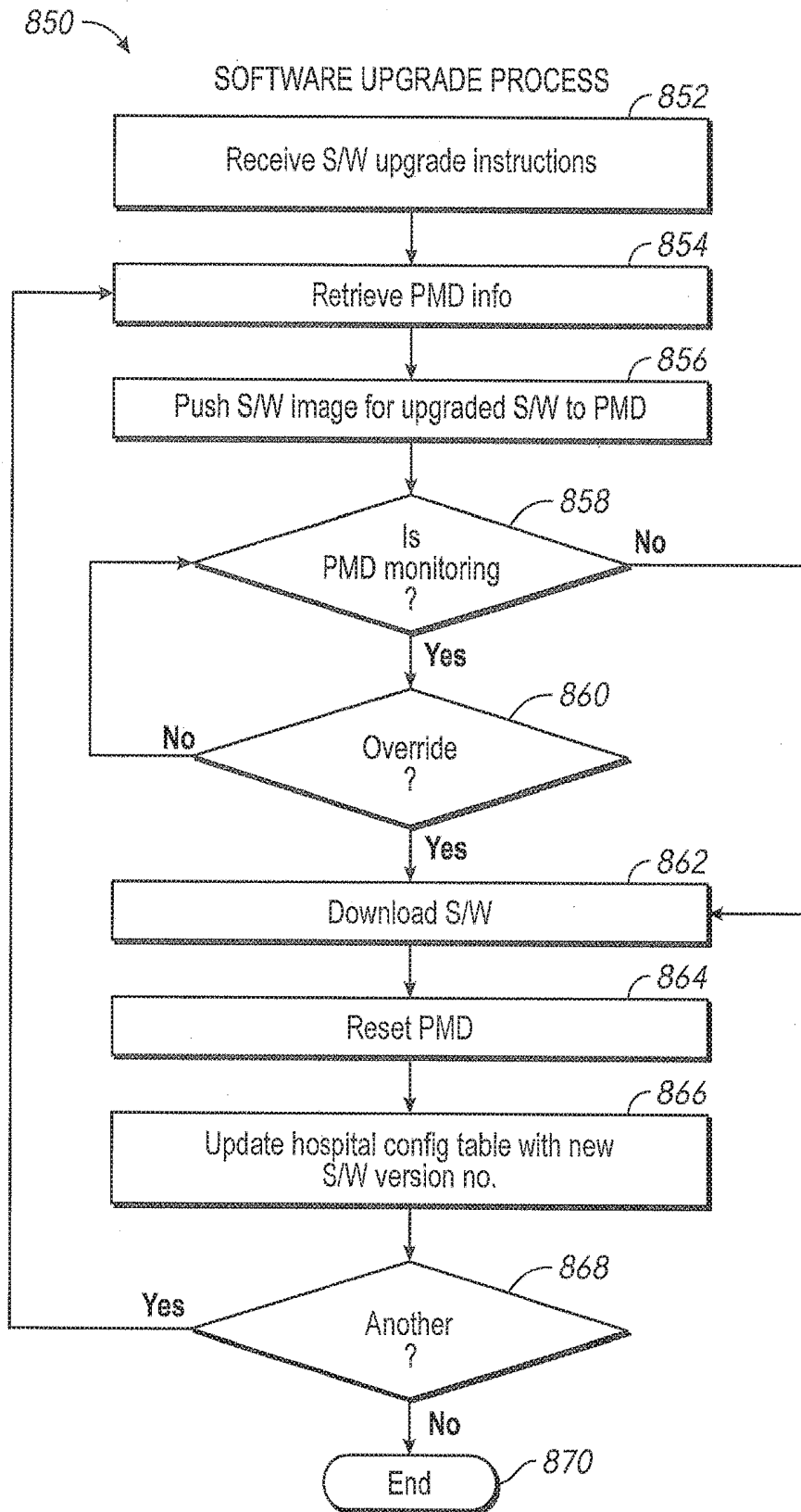


FIG. 8B

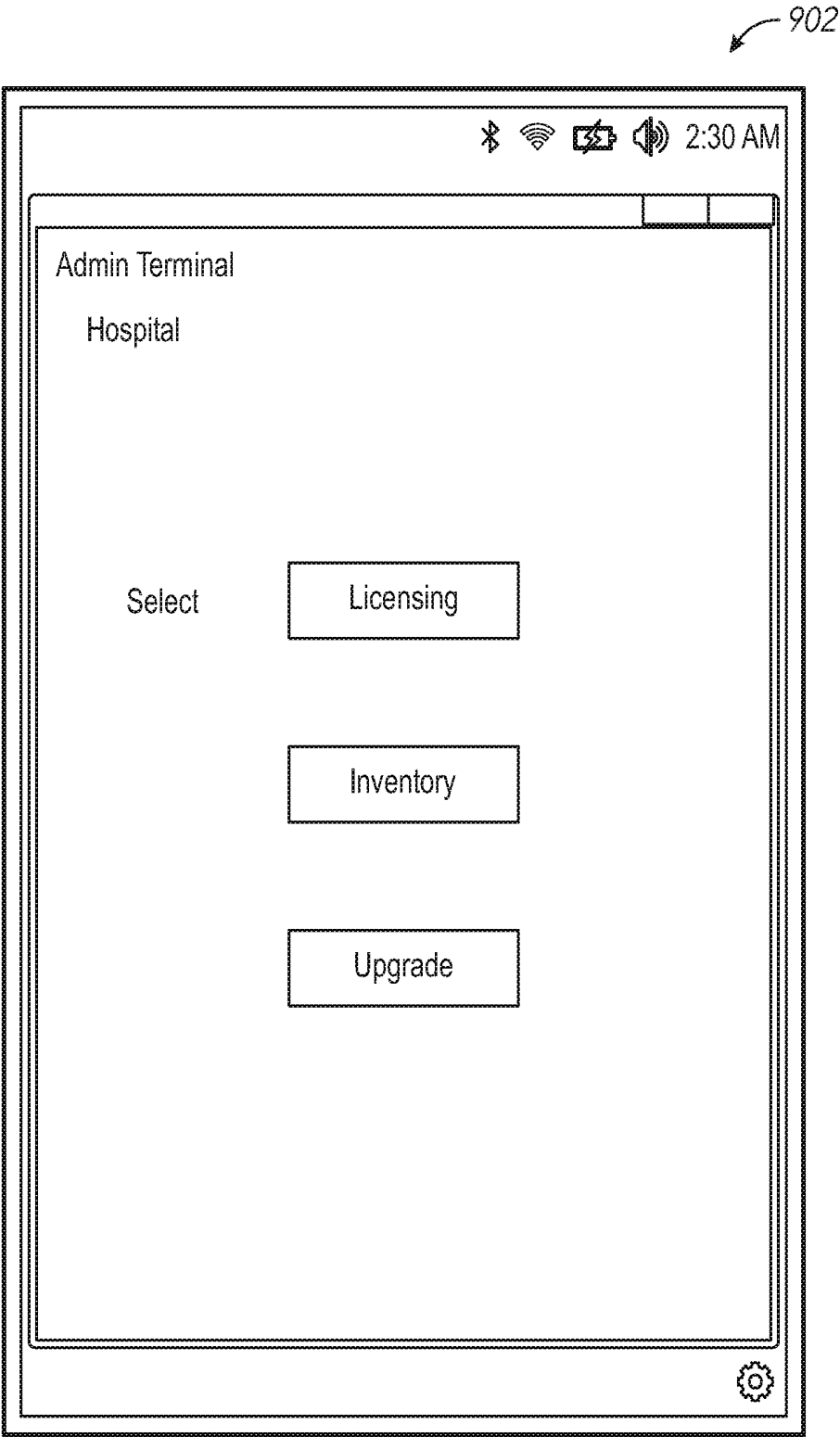


FIG. 9A

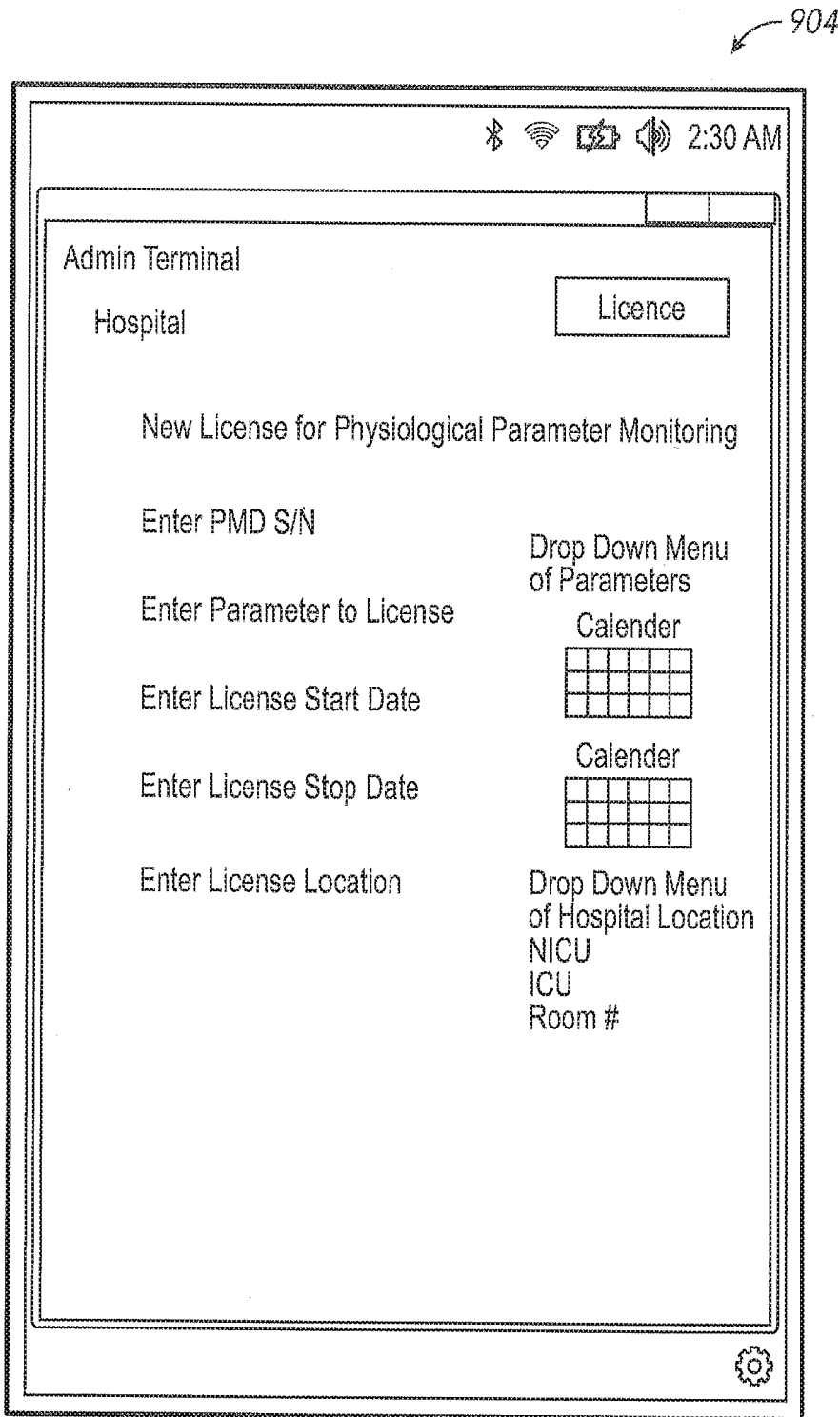


FIG. 9B

906

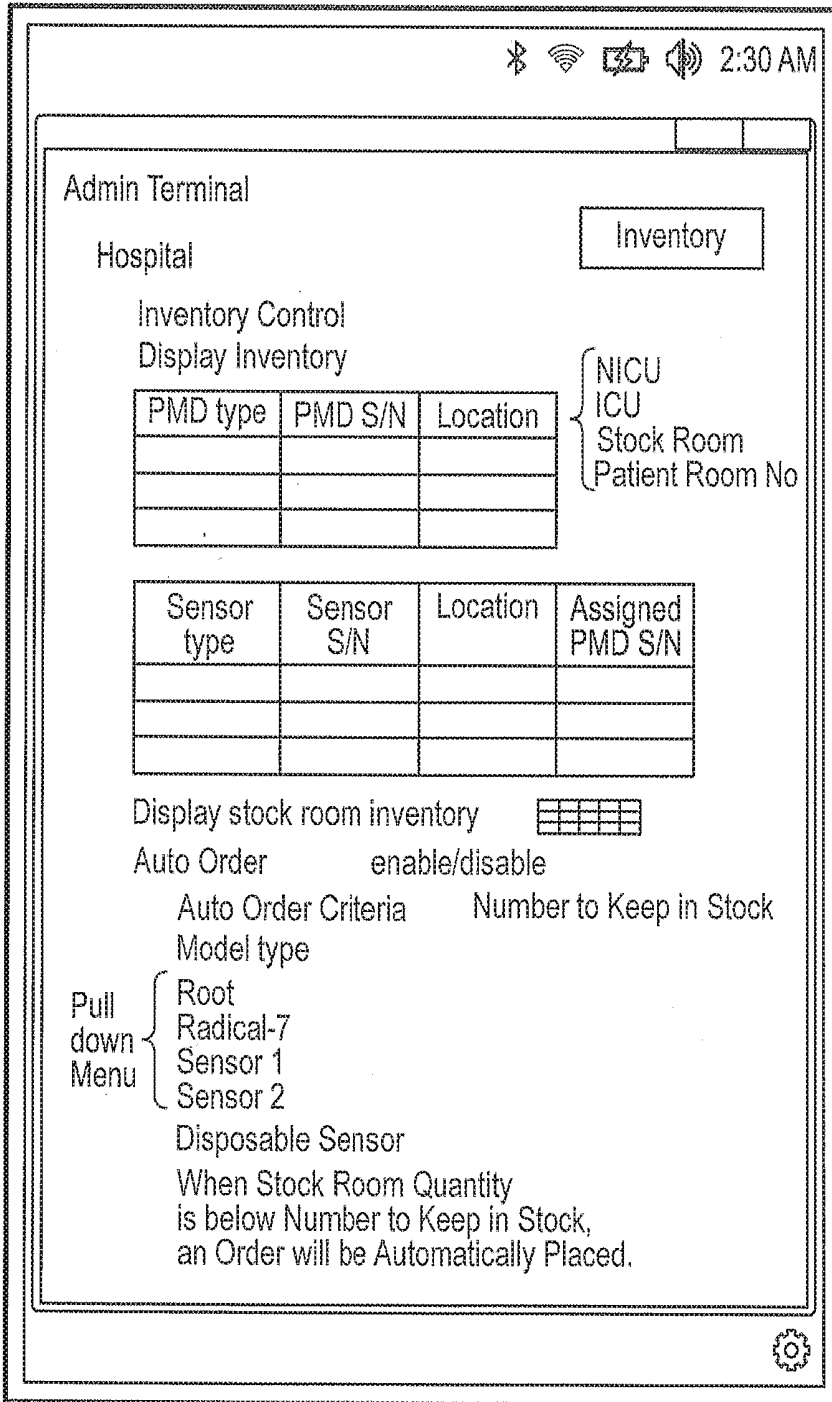


FIG. 9C

908

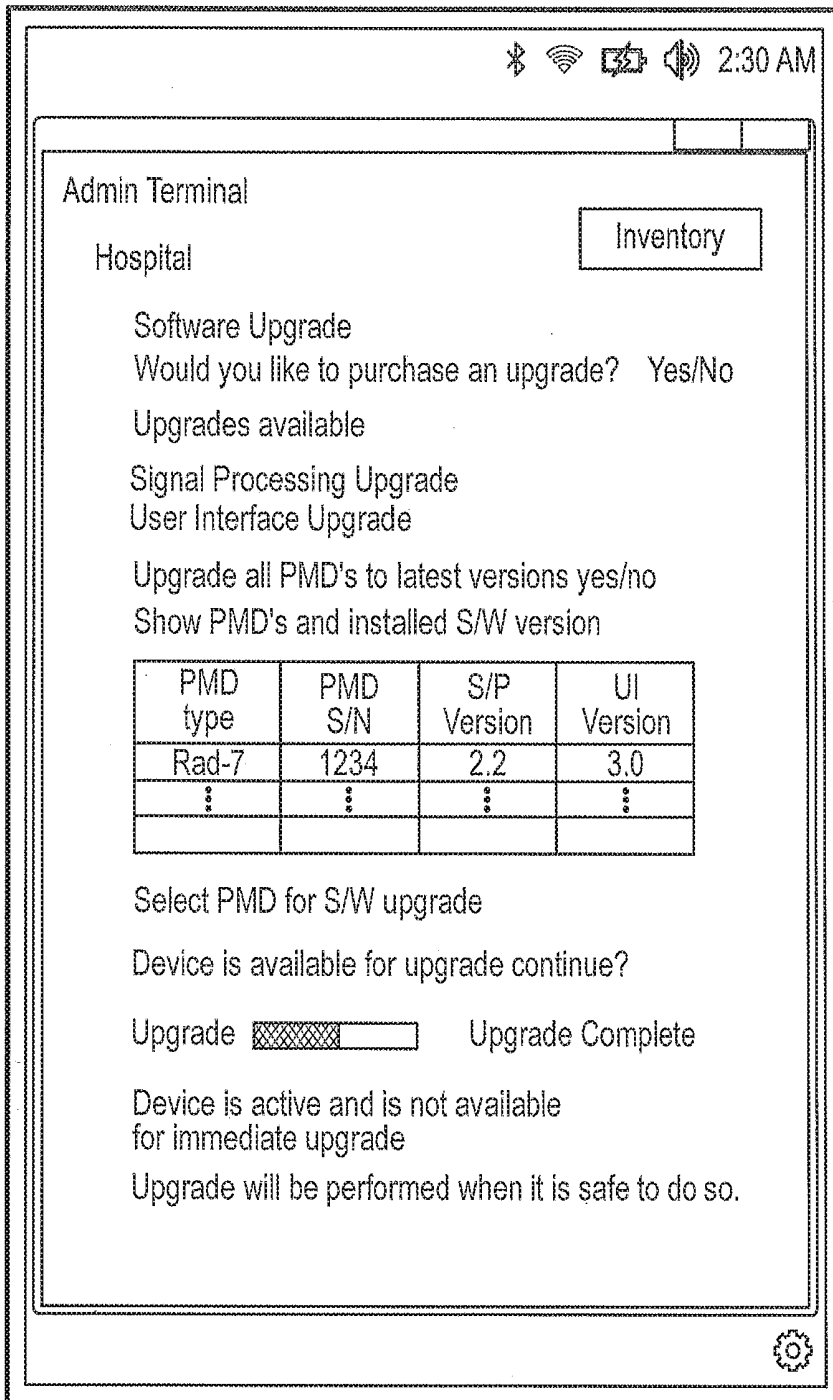


FIG. 9D

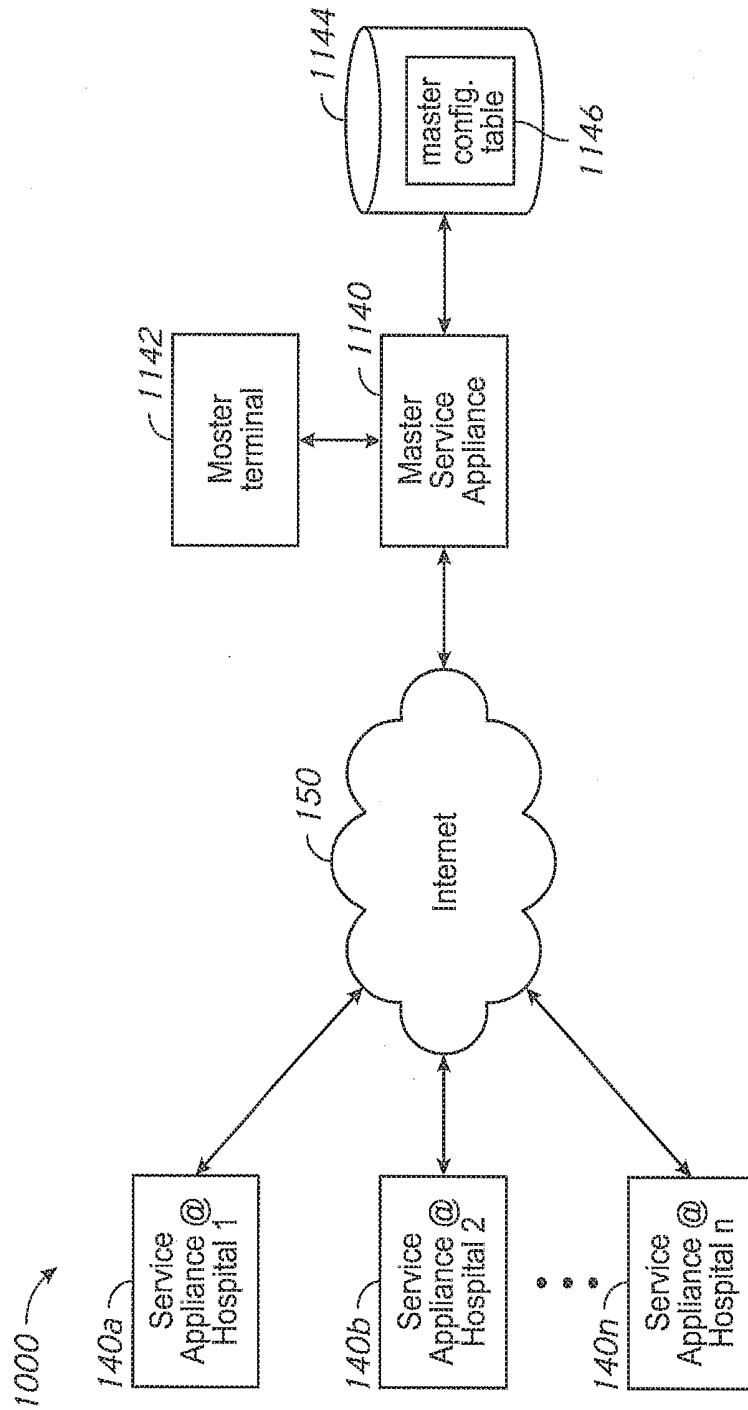


FIG. 10

1100

DATABASE FIELDS FOR MASTER CONFIGURATION TABLE

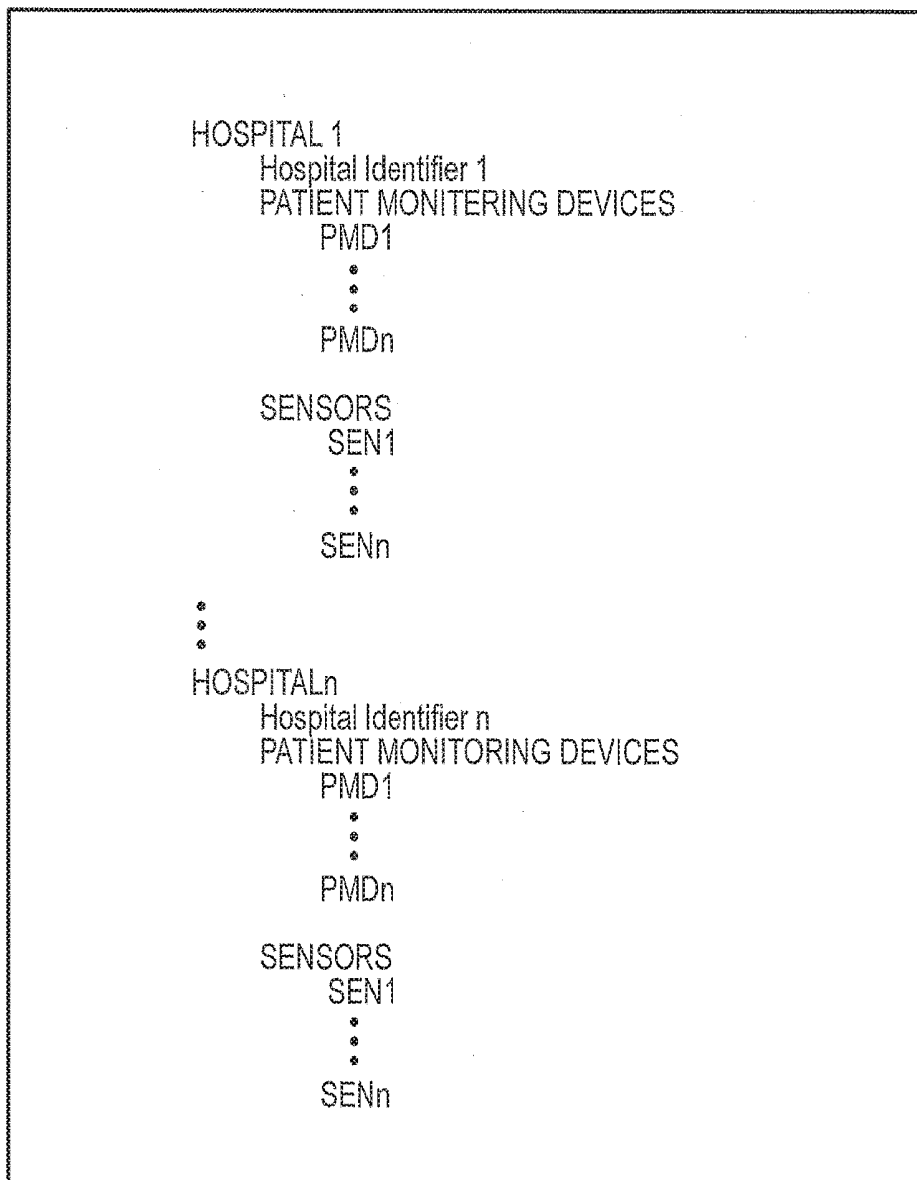


FIG. 11

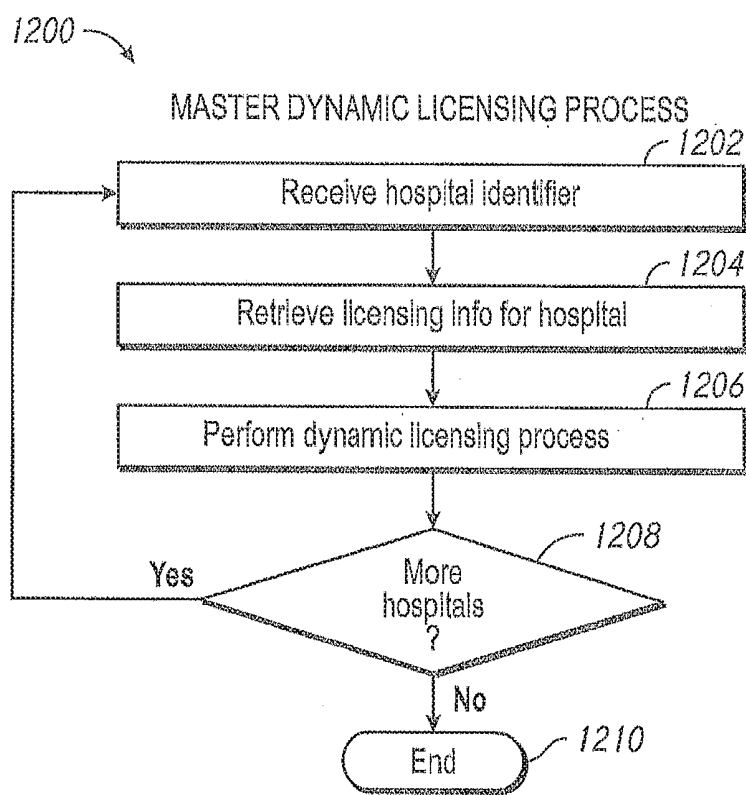


FIG. 12

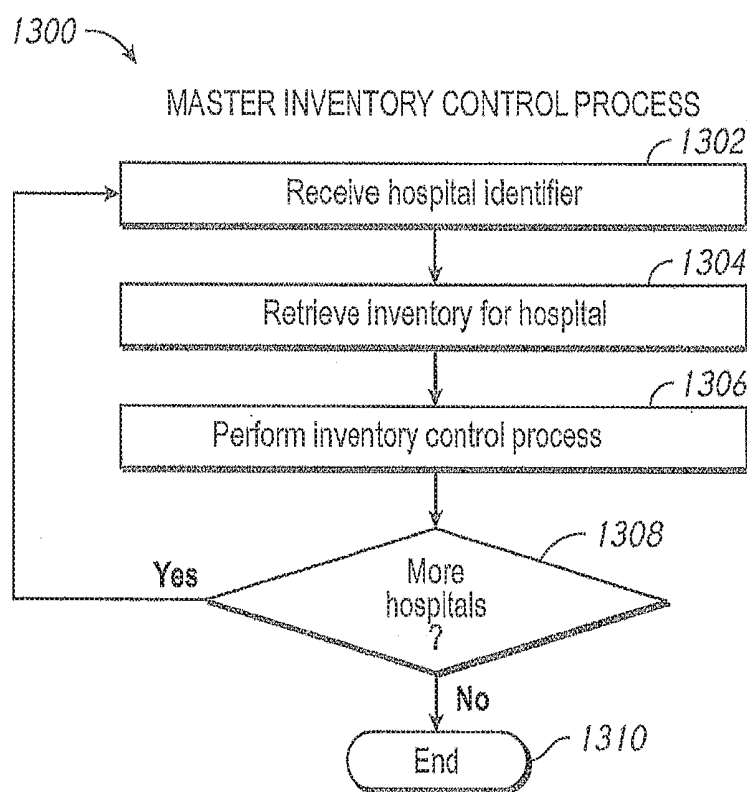


FIG. 13

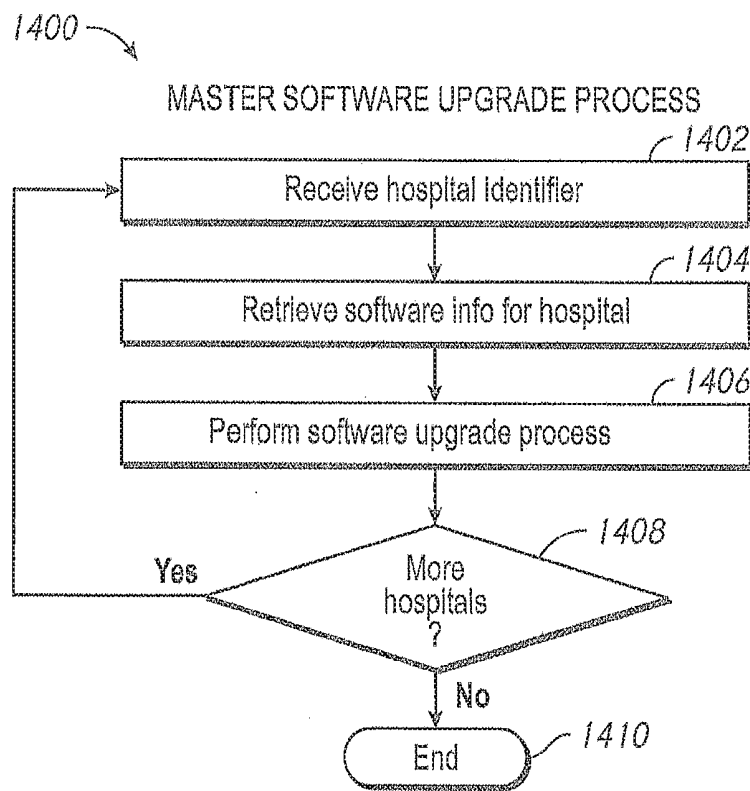


FIG. 14

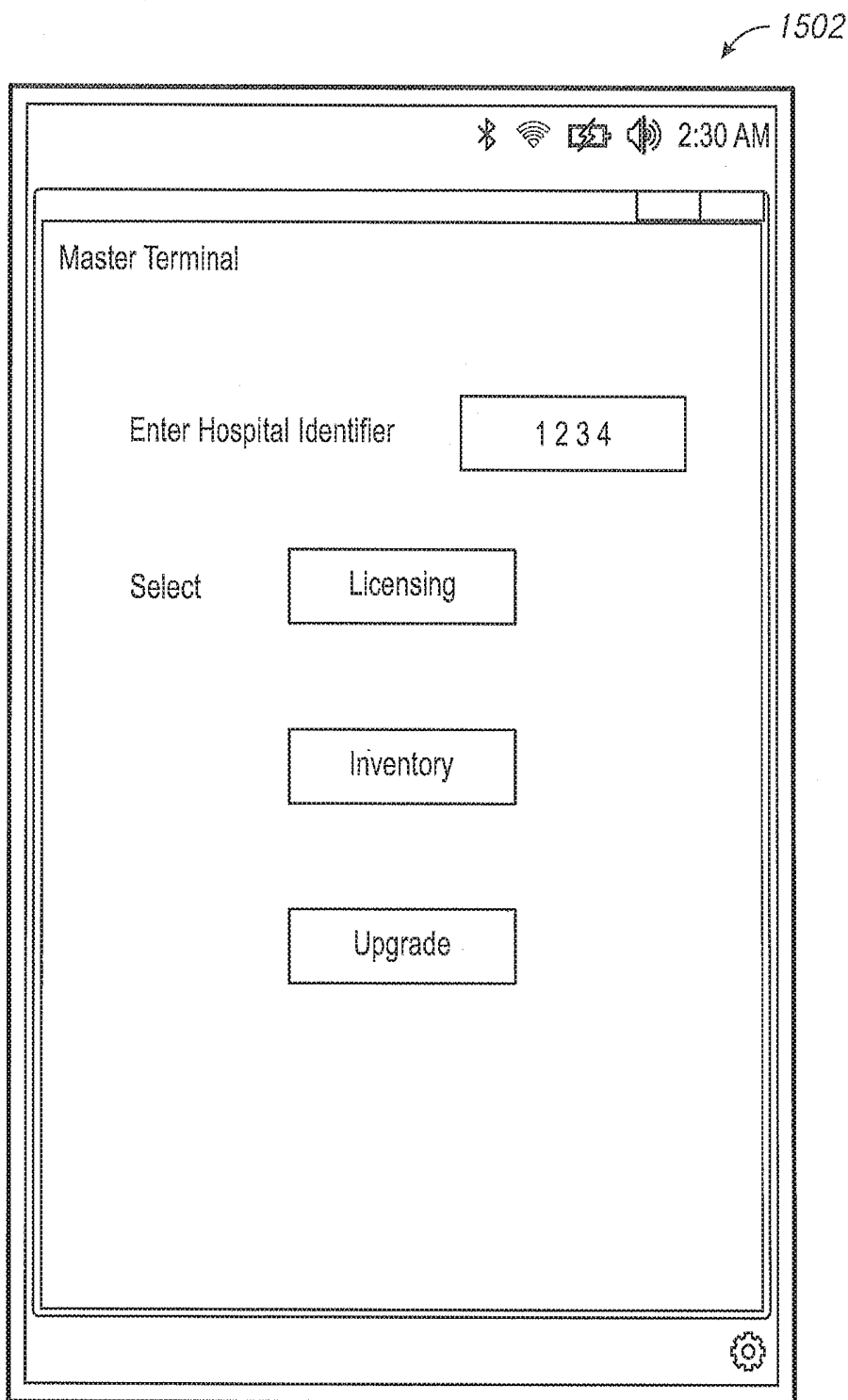


FIG. 15

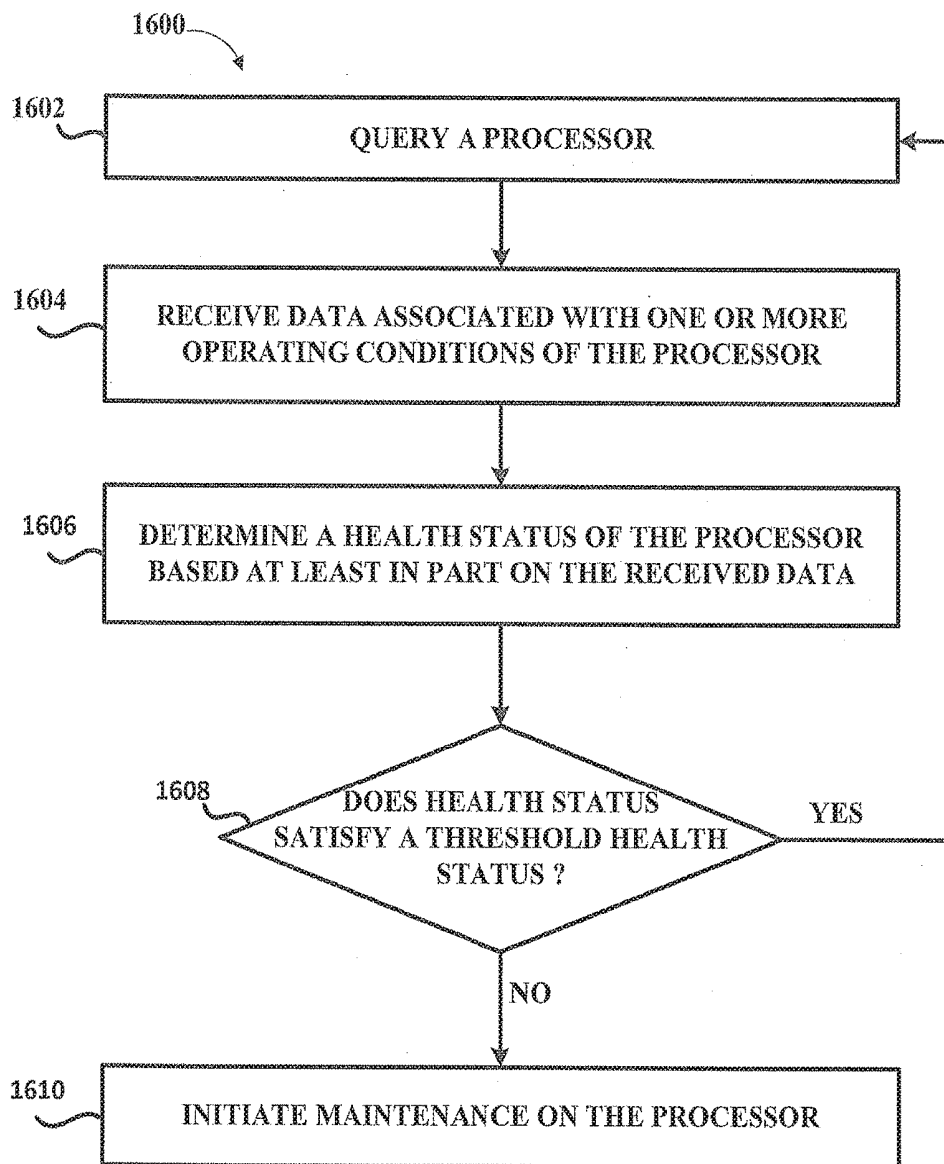


FIG. 16

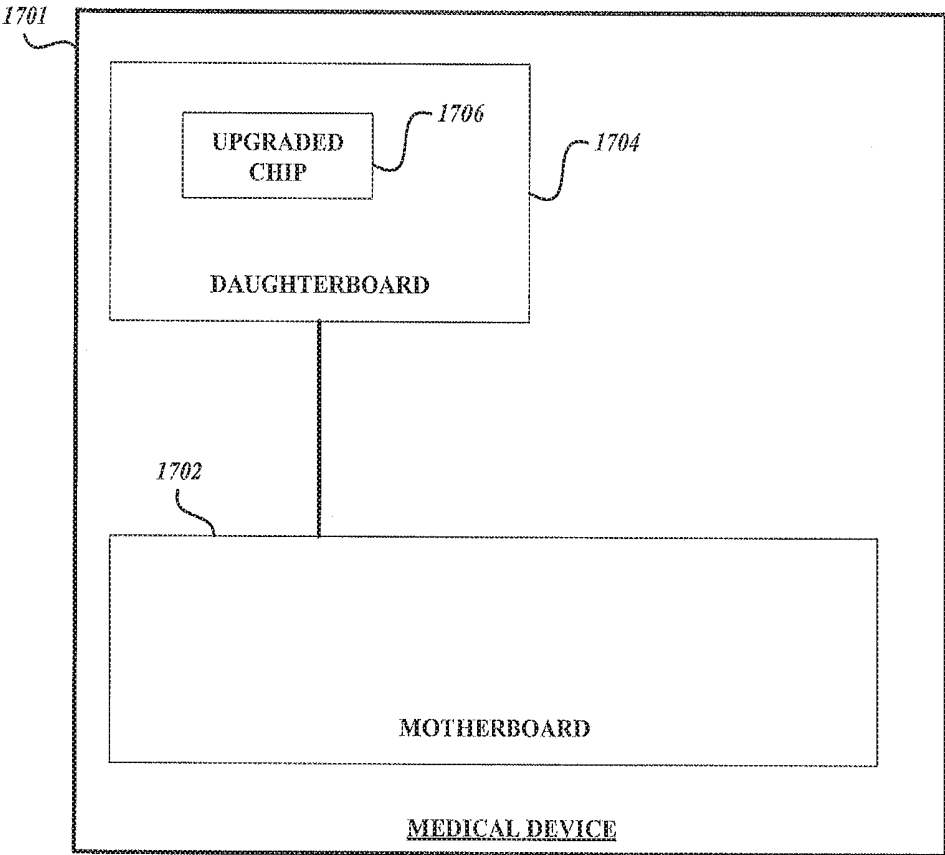
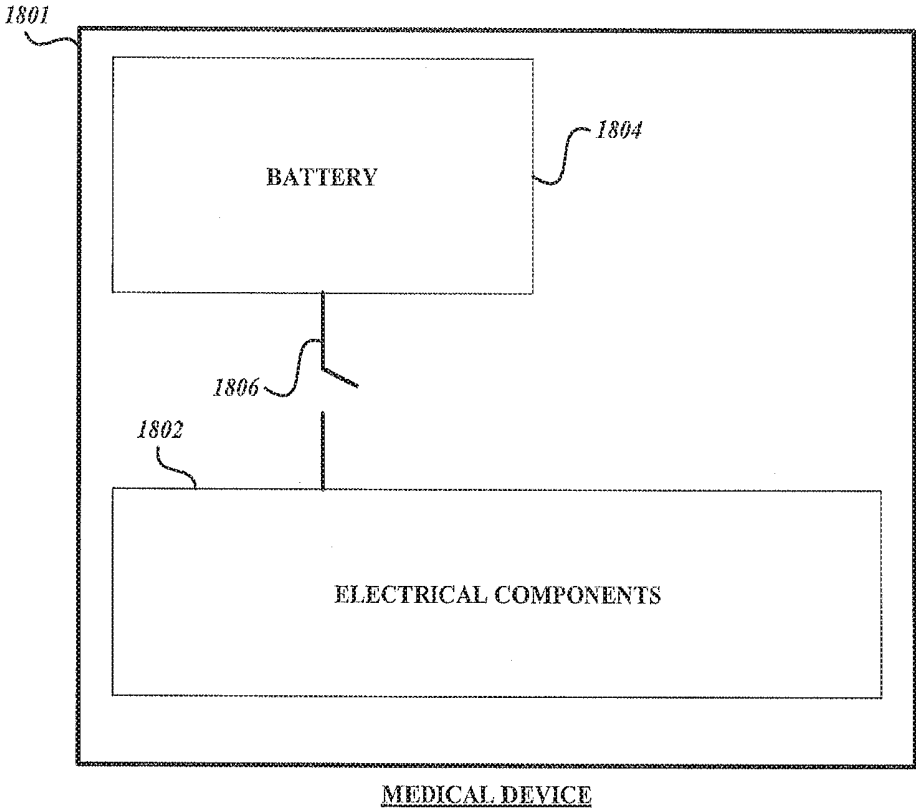


FIG. 17



**FIG. 18**

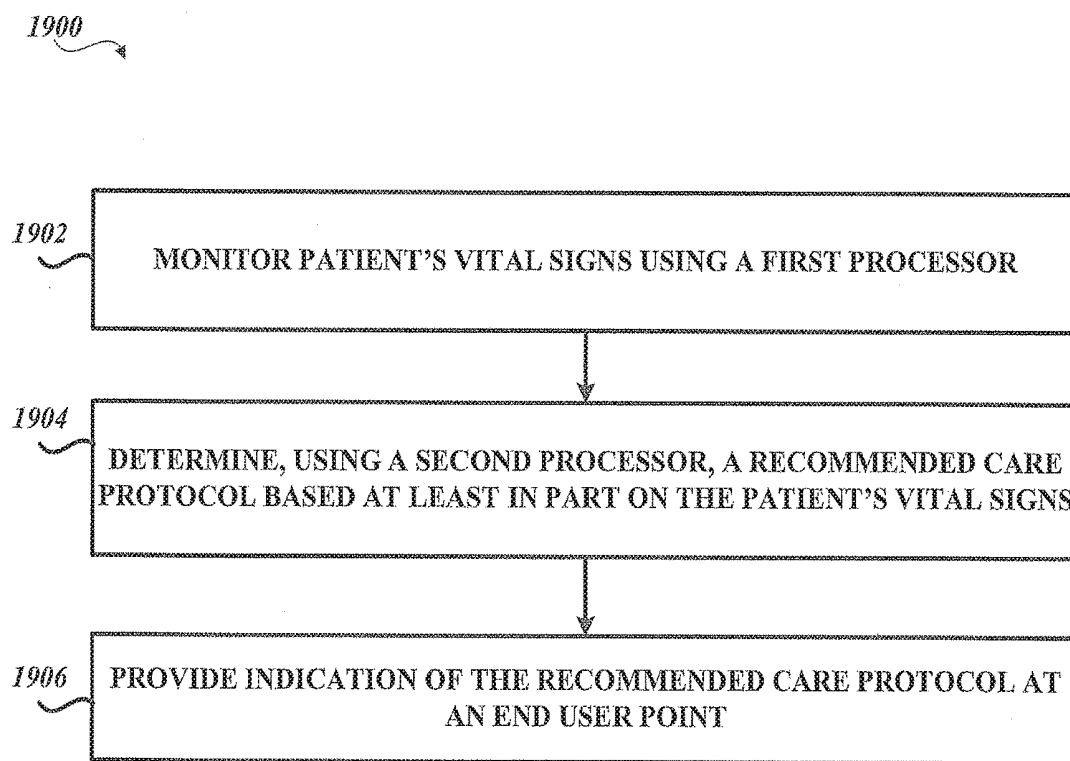


FIG. 19

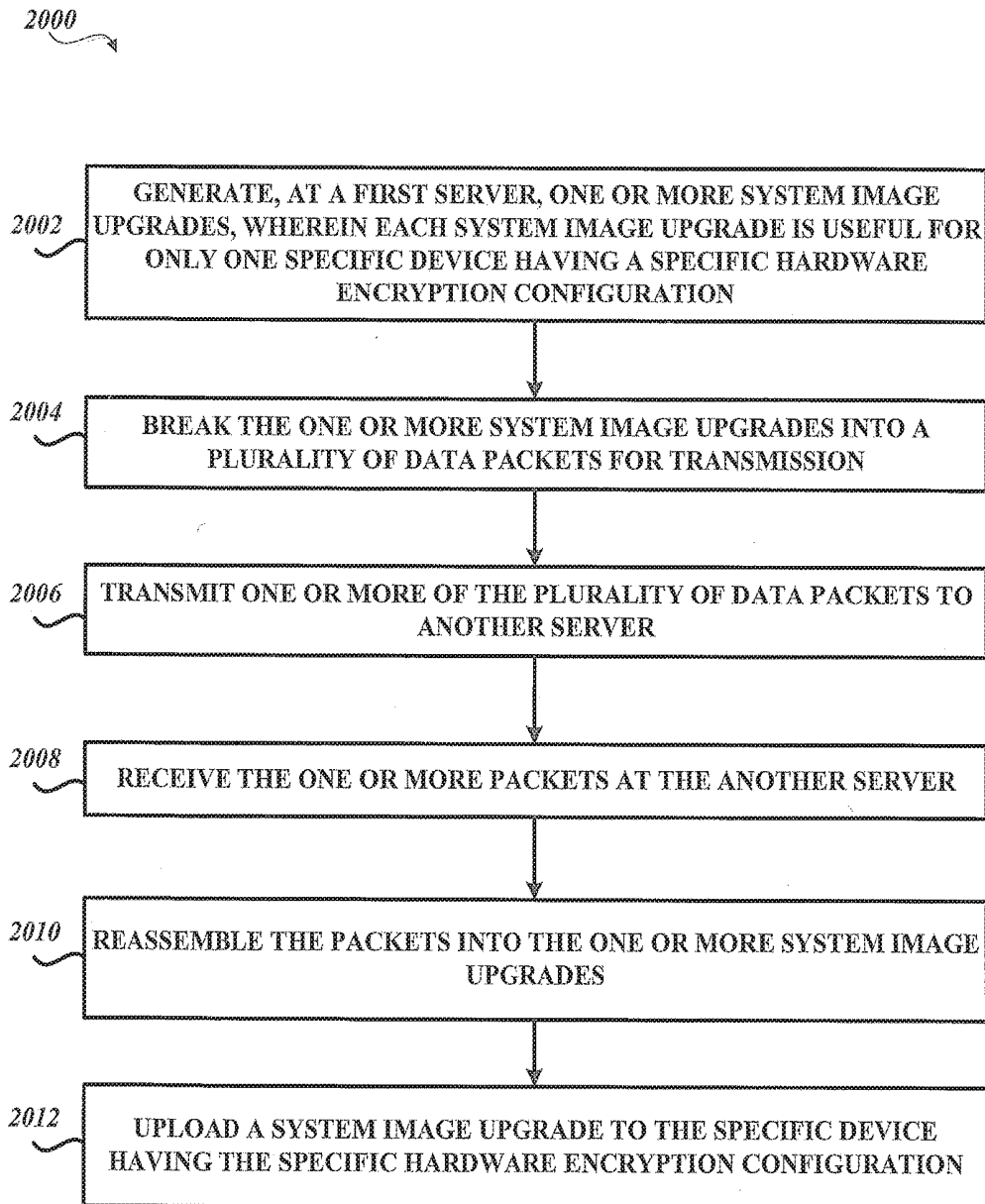


FIG. 20

## MANAGING DYNAMIC LICENSES FOR PHYSIOLOGICAL PARAMETERS IN A PATIENT MONITORING ENVIRONMENT

### RELATED APPLICATIONS

[0001] The present disclosure is related to U.S. Provisional Application No. 62/463,461, titled “MANAGING DYNAMIC LICENSES FOR PHYSIOLOGICAL PARAMETERS IN A PATIENT MONITORING ENVIRONMENT”, filed on Feb. 24, 2017 and to U.S. Provisional Application No. 62/560,008, titled “MANAGING DYNAMIC LICENSES FOR PHYSIOLOGICAL PARAMETERS IN A PATIENT MONITORING ENVIRONMENT”, filed on Sep. 18, 2017, the entireties of which are incorporated herein by reference. The present disclosure is related to U.S. Provisional Application No. 62/463,490, titled “MEDICAL MONITORING HUB”, filed Feb. 24, 2107, the entirety of which is incorporated herein by reference. U.S. Pat. No. 9,436,645, titled “MEDICAL MONITORING HUB”, describes various example embodiments and features related to apparatuses, systems, and methods of patient monitoring and specifically relating to a patient monitoring device and medical data communication hub, the entirety of which is incorporated herein by reference.

### INCORPORATION BY REFERENCE TO ANY PRIORITY APPLICATIONS

[0002] Any and all applications for which a foreign or domestic priority claim is identified in the Application Data Sheet as filed with the present application are hereby incorporated by reference under 37 CFR 1.57.

### BACKGROUND

[0003] The present disclosure relates to a digital database processor with database schema for dynamically managing configurations of patient monitoring devices in a patient monitoring environment.

[0004] Hospitals, nursing homes, and other patient care facilities typically include patient monitoring devices that are assigned to a patient. Patient monitoring devices generally include sensors, processing equipment, software, and displays for obtaining and analyzing the patient’s physiological parameters. Medical personnel use the patient’s physiological parameters to monitor a patient during various clinical situations to determine whether to change the level of medical care given to the patient. The patient monitoring devices travel with the patient as the patient moves throughout the facility.

[0005] Patient monitoring devices are configurable to meet a variety of patient needs and caregiver or care requirements. For example, a patient monitoring device can be configured for a particular area of the facility as well as for monitoring and analyzing one or more of a variety of physiological parameters. Software upgrades may be available to provide enhanced analytics. In addition, patient information entry often occurs at each device.

[0006] Further, various manufacturers produce multi-monitor devices or devices that modularly expand to increase the variety of monitoring or treatment endeavors a particular system can accomplish. However, as medical device technology expands, such multi-monitor devices begin to be obsolete the moment they are installed.

### SUMMARY

[0007] In order to effectively and efficiently utilize the patient monitoring devices, facility administrators need to be aware of their location and configuration in order to timely reconfigure the devices. Thus, while the flexibility of the patient monitoring devices has increased, the ability of facility administrators to timely control their usage remains challenging.

[0008] One aspect of the present disclosure comprises a dynamic licensing system that permits facility administrators to quickly enable a patient monitoring device to monitor a previously unmonitored physiological parameter. In some embodiments, the patient monitoring device has the capability to monitor a plurality of physiological parameters, but only specific physiological parameters, as defined in a configuration table residing in the device, are enabled. In other embodiments, the patient monitoring device may monitor a given set of parameters, and from time to time need to be upgraded to more recent software implementations. For those monitors where the configuration table defines a set of enabled parameters, a caregiver or administrator, even during the course of patient treatment, may determine that a new physiological parameter should be monitored. The speed at which the new physiological parameter can be enabled may be critical to patient care. To affect the change, the hospital administrator accesses a dynamic licensing module through an administrator’s terminal in communication with one or more networks operably communicating with the one or more patient monitoring devices. In an embodiment, the communication may include wired, wireless, or combination communication over a hospital communication backbone, the Internet, other private or public networks or through a direct link wired or wireless communication protocol. An artisan will recognize from the disclosure herein a wide variety of commercially available mechanisms to allow a geographically local or remote administrator’s terminal to communicate with a group of patient monitoring devices.

[0009] In an embodiment, the administrator selects the patient monitoring device assigned to the patient and instructs the dynamic licensing system to enable monitoring of the new physiological parameter. In an embodiment, the administrator defines how long the patient monitoring device is to be monitoring the new parameter. In another embodiment, the administrator defines the location in the hospital where the patient monitoring device is to monitor the new parameter. In an embodiment, the dynamic licensing system creates a licensing agreement to monitor the new parameter for the monitoring duration and/or in the monitoring location.

[0010] One aspect of the present disclosure is directed to an inventory control system that permits facility administrators to auto-order patient monitoring devices and sensors when the inventory becomes depleted. The administrator accesses an inventory control module through the administrator’s terminal. The administrator sets the minimum inventory criteria for each model of the patient monitoring devices and sensors kept in the hospital’s inventory. In an embodiment, the inventory control system updates the quantity of stock when patient monitoring devices and sensors are assigned to a patient. The inventory control system compares the number of devices and sensors in stock with the minimum quantity to keep in stock, as defined by the administrator. Further, the inventory control system auto-

matically orders additional patient monitoring devices and sensors when the stock quantities fall below the minimum specified quantity. The inventory control system also updates the inventory data when new devices and sensors are placed in the inventory. In other embodiments, the inventory control system determines orders should be placed for a monitoring device or a device accessory, including, for example, cables, connectors, sensors, securing tapes or attachment mechanisms, memory devices, or the like, and when such determination is made, the system sends a message to the administrator alerting him or her to the need for the order or requesting authorization from the administrator for the order. In still other embodiments, the inventory control system communicates the need for an order into a workflow system used by a facility or group of facilities, the workflow system often seeking one or more authorizations to create, manage and/or fill the order.

**[0011]** Another aspect of the present disclosure includes an automatic software version control system. In an embodiment, the patient monitoring devices comprise technology boards that utilize signal processing software to monitor the patient's physiological parameters. The patient monitoring devices further comprise instrument boards that utilize interface software to display the monitored physiological parameters and run the user interface.

**[0012]** Software programs are constantly being enhanced to provide additional capabilities. One way to update the patient monitoring devices with a new version of software appropriate for a specific model and version of a specific board is to manually upload the new version from a data storage device, such as a flash drive. However, this method can be prone to errors. An incorrect version or an incompatible version of the software can be inadvertently uploaded. For example, a certain technology board may include hardware capable of determining only a subset of parameters. Were an update to occur with software designed for parameters beyond the board's capabilities, such upgraded software could cause unwanted failures or oddities in performance. Further, it is time consuming and labor intensive to individually update the patient monitoring devices.

**[0013]** In an embodiment, the administrator accesses a software version control module through the administrator's terminal and the administrator instructs the software version control system to upgrade, in some embodiments, automatically upgrade, the patient monitoring devices in the hospital's active inventory. In an embodiment, the active inventory comprises the patient monitoring devices in communication with the hospital's communication backbone and/or other network. The software version control system determines whether the patient monitoring device is currently monitoring a patient's physiological parameters. In one embodiment, if the device is busy monitoring physiological parameters, the software version control system waits until the device is available to ensure that patient safety is not compromised.

**[0014]** When the patient monitoring device is available, the software version control system automatically verifies versions of the signal processing module and the user interface module residing on the patient monitoring device and pushes over any more recent compatible software images, for example, an image of the latest compatible software version for each module. In an embodiment, the software image is pushed via the hospital's communication

backbone. In another embodiment, the software image is pushed via the Internet. In other embodiments, the administrator may advantageously monitor alerts that inform him or her which devices have more recent versions of software available from the device manufacturer. When such a more recent version is available, the administrator may select to have an image pushed to that device.

**[0015]** In another embodiment, administrators have an override option. The software version control system checks whether the override option is selected, and if the patient monitoring device is monitoring a patient's physiological parameters and the override option is selected, the software version control system pushes an image of the software upload onto the patient monitoring device.

**[0016]** After the software upload is complete, and at an appropriate time, such as a time of non-monitoring, the software version control system resets the patient monitoring device. In an embodiment, the software version control system cycles power on the patient monitoring device. The software version control system further updates the hospital inventory database with the updated software versions, as well as updating the configuration table residing in the patient monitoring device with the revised software versions.

**[0017]** According to some aspects, a patient monitoring device can include a processor having a memory module including a plurality of memory partitions. The plurality of memory partitions can include a data module, and first image module and a second image module. When a system image upgrade is available, the first module or the second module can be upgraded to include the system image upgrade.

**[0018]** According to some aspects, a processor of a patient monitoring device is capable of booting from the first image module or the second image module. The processor determines which of the image modules include the latest system image and attempts to boot from the image module determined to include the latest system image. If the fails to boot from the image module determined to include the latest system image, the processor boots from the other image module. The processor determines whether an image upgrade is available. Responsive to a determination that an image upgrade is available, the processor upgrades the image module which was not used to successfully boot or did not allow the processor to function correctly.

**[0019]** According to some aspects, a patient monitoring device includes a first processor and a second processor which are separate and distinct from each other. The first processor is configured to query the second processor and receive data associated and/or correlated with one or more operating conditions of the second processor. The first processor is further configured to determine a health status of the second processor based at least in part on the data associated and/or correlated with the one or more operating conditions of the second processor. Based at least in part on a determination that the health status of the second processor does not satisfy a first threshold health status, the first processor is configured to initiate maintenance on the second processor. The second processor is configured to query the first processor and receive data associated and/or correlated with one or more operating conditions of the first processor. The second processor is further configured to determine a health status of the first processor based at least in part on the data associated and/or correlated with the one or more

operating conditions of the first processor. Based at least in part on a determination that the health status of the first processor does not satisfy a first threshold health status, the second processor is configured to initiate maintenance on the first processor.

**[0020]** The patient monitoring device of the preceding paragraph may also include a first processor and second processor having different capabilities. The first processor has higher capabilities than the second processor.

**[0021]** According to some aspects, a patient monitoring device can include a processor having a motherboard and a daughterboard. The motherboard can include a main processor. The daughterboard is configured connect to the motherboard and configured to receive an accessory upgrade. Upon receipt of an accessory upgrade by the daughterboard, the patient monitoring device can receive a safety certification after the daughterboard is certified.

**[0022]** According to some aspects, a patient monitoring device can include a battery which maintains a longer life because it is not fully charged. The patient monitoring device is configured to enter a shipping mode. The shipping mode disconnects the battery from the patient monitor, thereby ensuring that the battery is not discharged into patient monitor electronics.

**[0023]** According to some aspects, a patient monitoring device includes a first processor and a second processor. The first processor is configured to monitor at least one of health status, one or more vital signs, or one or more physiological parameters of a patient. The second processor is configured to determine a recommended care protocol based at least in part on the monitored health status, one or more vital signs, or one or more physiological parameters of the patient. The second processor is further configured to provide an indication of the determined recommended care protocol at an end user point.

**[0024]** According to some aspects, a system includes a first server and a second server. The first server is configured to generate one or more system image upgrades. Each of the one or more system image upgrades is useful for only one specific device having a specific hardware encryption configuration. The first server is further configured to break the one or more system image upgrades into a plurality of data packets for transmission and transmit one or more of the plurality of data packets to the second server. The second server is configured to receive the one or more data packets and reassemble the data packets into the one or more system image upgrades. The second server is further configured to upload a system image upgrade to the specific device having the specific hardware encryption configuration.

**[0025]** According to some aspects, system that executes database schema to manage dynamic licenses for physiological parameters in a patient monitoring environment is disclosed. The system comprises a first patient monitoring system comprising a first physiological sensor configured to sense light after it has passed through tissue of a first patient and generate a first signal indicative of one or more first physiological parameters of the first patient in response to the sensed light associated with the first patient, and a first patient monitoring device in communication with the first physiological sensor and configured to receive the first signal and determine one or more measurements of the one or more first physiological parameters of the first patient from the received first signal; a second patient monitoring system comprising a second physiological sensor configured

to sense light after it has passed through tissue of a second patient and generate a second signal indicative of one or more second physiological parameters of the second patient in response to the sensed light associated with the second patient, and a second patient monitoring device in communication with the second physiological sensor and configured to receive the second signal and determine one or more measurements of the one or more physiological parameters of the second patient from the received second signal; and a service appliance comprising an administrator terminal, memory storing a configuration table, and one or more hardware processors, the service appliance in communication with the first and second patient monitoring devices over at least one of a wired communication backbone and a wireless network, the one or more hardware processors configured to: receive licensing information for the first patient monitoring device, wherein the licensing information comprises an indication of at least a licensed physiological parameter, an indication of one or more unlicensed physiological parameters that the first patient monitoring device is disabled from monitoring, and a licensing duration; retrieve device information associated and/or correlated with the first patient monitoring device from the configuration table, the device information comprising an address of the first patient monitoring device; transmit a message addressed to the first patient monitoring device, the message comprising instructions to enable at least one of the one or more unlicensed physiological parameters to permit the first patient monitoring device to monitor the at least one enabled physiological parameter; and generate a license to indicate that the first patient monitoring device is configured to monitor the at least one enabled physiological parameter for the licensing duration, the license comprising a license number; and update the device information of the first patient monitoring device in the configuration table with an indication of the at least one enabled physiological parameter and the license number.

**[0026]** In an embodiment, the at least a licensed physiological parameter comprises at least one of oxygen saturation (SpO<sub>2</sub>), hemoglobin (Hb), oxyhemoglobin (HbO<sub>2</sub>), total hemoglobin, carboxyhemoglobin, methemoglobin, perfusion index (Pi), and pulse rate (PR). In another embodiment, the one or more unlicensed physiological parameters comprise at least one of blood pressure, temperature, electrocardiogram (ECG), motion data, accelerometer data, respiration, continuous blood pressure, pleth variability index, oxygen content, oxygen reserve index, acoustic respiration rate (RRa), and respiration rate from the pleth.

**[0027]** In an embodiment, 4 the licensing information further comprises a location in the patient monitoring environment where the first patient monitoring device is permitted to monitor the at least one enabled physiological parameter and the one or more hardware processors are further configured to update the device information of the first patient monitoring device in the configuration table with the location. In another embodiment, the one or more hardware processors are further configured to adjust, in response to the licensing information, a quantity of available licenses for the at least one enabled physiological parameter in an inventory database. In another embodiment, the one or more hardware processors are further configured to automatically order additional licenses for the at least one enabled physiological parameter when the quantity of available licenses for the at

least one enabled physiological parameter in the inventory database falls below a minimum quantity.

**[0028]** In an embodiment, the first patient monitoring device includes a device processor and device memory including a first image module and a second image module, the first patient monitoring device configured to determine which of the first image module and the second image module is the latest image module. In another embodiment, the first patient monitoring device is further configured to boot the device processor from the latest image module of the first and second image modules and boot the device processor from the other of the first and second image modules when the latest image module causes the first patient monitoring device to operate incorrectly. In another embodiment, the one or more hardware processors further configured to access a software upgrade database to determine whether an image upgrade is available for the first patient monitoring device, and upgrade one of the first and second image modules with the available image upgrade.

**[0029]** According to some aspects, a method to manage dynamic licenses for physiological parameters in a patient monitoring environment that includes one or more patient monitoring devices, each patient monitoring device in communication with at least one of a communication backbone and the Internet, each patient monitoring device being addressable is disclosed. The method comprises, as implemented by one or more computing devices configured with specific executable instructions, receiving licensing information for a patient monitoring device, wherein the licensing information comprises an indication of a physiological parameter that the patient monitoring device is disabled from monitoring and a licensing duration; retrieving device information associated and/or correlated with the patient monitoring device from a configuration table, the device information comprising an address of the patient monitoring device; transmitting a message addressed to the patient monitoring device, the message comprising instructions to enable the physiological parameter to permit the patient monitoring device to calculate values for the physiological parameter; generating a license to indicate that the patient monitoring device is configured to monitor the physiological parameter for the licensing duration, the license comprising a license number; and updating the device information in the configuration table for the patient monitoring device with an indication of the enabled parameter and the license number.

**[0030]** In an embodiment, the method further comprises updating a quantity of available patient monitoring devices in an inventory database in response to the licensing information, and automatically ordering additional patient monitoring devices when a quantity of available patient monitoring devices in the inventory database falls below a minimum quantity. In another embodiment, the method further comprises receiving software upgrade instructions for the patient monitoring device, pushing an upgraded version of modules residing on the patient monitoring device to memory on the patient monitoring device, and determining that an override is enabled, and after determining that the override is enabled, downloading the upgraded version of the modules into the patient monitoring device.

**[0031]** According to some aspects, a digital processing system that executes database schema to manage dynamic licenses for physiological parameters in a patient monitoring environment is disclosed. The system comprises at least one patient monitoring device; and a server in a first computing

device comprising computer hardware configured to: receive licensing information for the at least one patient monitoring device, wherein the licensing information comprises an indication of a physiological parameter that the at least one patient monitoring device is disabled from monitoring and a licensing duration; retrieve device information associated and/or correlated with the at least one patient monitoring device from a configuration table, the device information comprising an address of the at least one patient monitoring device; transmit a message addressed to the at least one patient monitoring device, the message comprising instructions to enable the physiological parameter to permit the at least one patient monitoring device to calculate values for the physiological parameter; generate a license to indicate that the at least one patient monitoring device is configured to monitor the physiological parameter for the licensing duration, the license comprising a license number; and update the device information in the configuration table for the at least one patient monitoring device with an indication of the enabled parameter and the license number.

**[0032]** In an embodiment, the computer hardware is further configured to adjust an inventory database that comprises quantities of available patient monitoring devices and available licenses in response to the licensing information and the computer hardware is further configured to automatically generate a purchase order for additional patient monitoring devices when the adjusted quantity available patient monitoring devices is less than a minimum quantity. In another embodiment, the computer hardware is further configured to automatically verify versions of modules residing on the at least one patient monitoring device and update the device information of the at least one patient monitoring device in the configuration table with the verified versions of the modules residing on the at least one patient monitoring device, automatically push updated images of the modules to the at least one patient monitoring device, and automatically reset the at least one patient monitoring device after pushing the updated images of the modules when the at least one patient monitoring device is at a time of non-monitoring and update the configuration table with a version of the updated images of the modules residing on the at least one patient monitoring device.

**[0033]** According to some aspects, a digital processing system that executes database schema to manage inventory for patient monitoring devices that monitor physiological parameters in a patient monitoring environment and for licenses to monitor the physiological parameters associated and/or correlated with the patient monitoring devices is disclosed. The system comprises at least one patient monitoring device; and a server in a first computing device comprising computer hardware configured to: receive licensing information for the at least one patient monitoring device, wherein the licensing information comprises an indication of at least one physiological parameter that the at least one patient monitoring device is licensed to monitor and a licensing duration; adjust in an inventory control database a quantity of licenses associated and/or correlated with the at least one physiological parameter based at least in part on the licensing information; receive auto-order criteria; and automatically generate a purchase order to order licenses associated and/or correlated with the at least one physiological parameter based at least in part on the auto-order criteria and the adjusted inventory control database.

**[0034]** In an embodiment, the computer hardware is further configured to adjust in the inventory control database a quantity of patient monitoring devices and the quantity of licenses associated and/or correlated with the at least one physiological parameter at an expiration of the licensing duration, to automatically generate a purchase order to order patient monitoring devices when the adjusted quantity of patient monitoring devices falls below a minimum quantity of patient monitoring devices, to receive software upgrade instructions for the at least one patient monitoring device and push an upgraded image module to the at least one patient monitoring device in response to the software upgrade instructions, and to update a configuration table with a version of the upgraded image model.

**[0035]** According to some aspects, a digital processing system that executes database schema to manage software upgrades for patient monitoring devices that monitor physiological parameters in a patient monitoring environment is disclosed. The system comprises at least one patient monitoring device; and a server in a first computing device comprising computer hardware configured to: receive software upgrade instructions for the at least one patient monitoring device; retrieve device information associated and/or correlated with the at least one patient monitoring device from a configuration table, the device information comprising an address of the at least one patient monitoring device; and push, using the address, an upgraded image module to the at least one patient monitoring device for storage in memory within the at least one patient monitoring device.

**[0036]** In an embodiment, the computer hardware is further configured to determine whether the at least one patient monitoring device is actively monitoring, determine whether an override is enabled, download the upgraded image module in the at least one patient monitoring device during active monitoring when the override is enabled, and download the upgraded image module in the at least one patient monitoring device at a period of non-monitoring when the override is disabled. In another embodiment, the computer hardware is further configured to update the device information for the at least one patient monitoring device in the configuration table with a version of the upgraded image module.

**[0037]** In an embodiment, the computer hardware is further configured to reset the at least one patient monitoring device to cause a processor in the at least one patient monitoring device to reboot using the upgraded image module. In another embodiment, memory in the at least one patient monitoring device is configured to store the upgraded image module and a previous version of an image module, and the at least one patient monitoring device is configured to reboot the processor using the previous version of the image module when the reboot of the processor using the upgraded image module causes the at least one patient monitoring device to operate incorrectly.

**[0038]** According to some aspects, a patient monitoring system is disclosed. The patient monitoring system comprises a physiological sensor configured to sense light after it has passed through tissue of a patient and generate a signal indicative of one or more physiological parameters of the patient in response to the sensed light associated with the patient; and a patient monitoring device in communication with the physiological sensor and configured to receive the signal and determine one or more measurements of the one or more physiological parameters of the patient from the received signal. The patient monitoring device comprises a

processor including a processing circuit and memory including a first image module and a second image module, where the processing circuit is configured to determine which of the first image module and the second image module includes a latest system image; boot the processor with the one of the first and second image module that includes the latest system image; and reboot the processor with the other of the first and second image module when a failure occurs due to booting the processor with the latest system image.

**[0039]** In an embodiment, the processing circuit is further configured to upgrade one of the first and second image modules in response to availability of an upgraded image module, to upgrade the other of the first and second image modules with the upgraded image when the boot of the processor with the latest system image is successful, and to upgrade the one of the first and second image module that includes the latest system image when boot of the processor with the latest system image is unsuccessful.

**[0040]** Aspects disclosed herein advantageously provide software-based non-abstract improvements for physiological parameter monitoring of patients in a patient monitoring environment. Embodiments disclosed herein advantageously provide a new type of physiological parameter license that allows an administrator or other patient care personnel, through the service appliance, to tailor physiological parameter licenses for specific patients in real time or near real time when monitoring is critical to the patients' health. Embodiments disclosed herein advantageously provide a new type of physiological parameter monitoring inventory that automatically generates purchase orders, through the service appliance, for physiological parameter monitoring devices in real time or near real time when maintaining physiological parameter monitoring inventory is critical to the patients' health. Embodiments disclosed herein advantageously provide a new type of software upgrade process that allows an administrator or other patient care personnel, through the service appliance, to upgrade physiological parameter monitoring software for specific patients or throughout the patient monitoring environment in real time or near real time when monitoring is critical to the patients' health.

**[0041]** Aspects disclosed herein advantageously solve specific problems in computer system monitoring of physiological parameters for patients in a patient monitoring environment. Embodiments disclosed herein advantageously provide specific solutions to create in real time or near real time physiological parameter licenses in a patient monitoring environment where timeliness of physiological parameter monitoring may be critical to patient health. Embodiments disclosed herein advantageously provide specific solutions to automatically generate purchase orders or update patient monitoring inventory in a patient monitoring environment where availability of patient monitoring inventory may be critical to patient health. Embodiments disclosed herein advantageously provide specific solutions to provide in real time or near real time software upgrades to patient monitoring device that monitor physiological parameters in a patient monitoring environment where enhancing or correcting physiological parameter monitoring may be critical to patient health.

**[0042]** Aspects disclosed herein comprise an ordered combination that is not conventional to advantageously provide real time or near real time generation of physiological parameter licenses for patient care in a patient monitoring

environment. Embodiments disclosed herein advantageously provide physiological parameter licensing information that is converted into physiological parameter monitoring instructions for patient monitoring devices that are deployed at multiple locations within a patient monitoring network. Embodiments disclosed herein advantageously provide physiological parameter software upgrade information that is converted into software upgrade instructions for patient monitoring devices that are deployed at multiple locations within a patient monitoring network. Embodiments disclosed herein advantageously provide inventory information that is converted into purchase orders for patient monitoring devices that are deployed at multiple locations within a patient monitoring network.

**[0043]** Aspects disclosed herein advantageously provide a distributed architecture for monitoring of physiological parameters in a patient monitoring environment. Embodiments disclosed herein describe a system comprising a hospital communication backbone that provides communication paths between distributed patient monitoring devices of the system and a service appliance of the system. Advantageously, the system correlates physiological parameter licensing information and/or inventory information and/or software upgrade information with a configuration table for each patient monitoring device of the distributed system. The configuration table comprising the correlated information advantageously provides a central point to quickly enable physiological parameter monitoring, order physiological parameter monitoring inventory, and/or upgrade physiological monitoring software that may be critical to patient care.

**[0044]** For purposes of summarizing the disclosure, certain aspects, advantages and novel features are discussed herein. It is to be understood that not necessarily all such aspects, advantages or features will be embodied in any particular embodiment of the invention, and an artisan would recognize from the disclosure herein a myriad of combinations of such aspects, advantages or features.

#### BRIEF DESCRIPTION OF THE DRAWINGS

**[0045]** Various embodiments will be described hereinafter with reference to the accompanying drawings. The drawings and the associated descriptions are provided to illustrate embodiments of the present disclosure and do not limit the scope of the claims. In the drawings, similar elements have similar reference numerals.

**[0046]** FIG. 1 is an exemplary block diagram showing a system to dynamically control a patient monitoring environment, according to certain embodiments.

**[0047]** FIG. 2A is an exemplary block diagram of a patient monitoring device, according to certain embodiments.

**[0048]** FIG. 2B is a perspective view of another patient monitoring device including a hub and the exemplary patient monitoring device of FIG. 2, according to certain embodiments.

**[0049]** FIG. 2C illustrates a perspective view of the back side of the hub of FIG. 2B, according to certain embodiments.

**[0050]** FIG. 2D illustrates a simplified exemplary hardware block diagram of the hub of FIG. 2B, according to certain embodiments.

**[0051]** FIG. 3A is a diagram illustrative of an embodiment of a memory module of a processor of a patient monitor, according to certain embodiments.

**[0052]** FIG. 3B is a flow diagram illustrative of an embodiment of a routine implemented by a processor having the memory module 351 of FIG. 3A, according to certain embodiments.

**[0053]** FIG. 4 is an exemplary block diagram of patient monitoring device management system, according to certain embodiments.

**[0054]** FIG. 5 is an exemplary database structure used to dynamically manage patient monitoring devices and sensors in a patient monitoring environment, according to certain embodiments.

**[0055]** FIG. 6 is an exemplary flowchart showing a process for managing dynamic licenses for physiological parameters in a patient monitoring environment, according to certain embodiments.

**[0056]** FIG. 7 is an exemplary flowchart showing an inventory control and auto-order process for patient monitoring equipment in a patient monitoring environment, according to certain embodiments.

**[0057]** FIG. 8A is an exemplary flowchart showing a software version control process for patient monitoring equipment in a patient monitoring environment, according to certain embodiments.

**[0058]** FIG. 8B is an exemplary flowchart showing another software version control process for patient monitoring equipment in a patient monitoring environment, according to certain embodiments.

**[0059]** FIGS. 9A-9D are exemplary screen shots illustrating the processes of FIGS. 6, 7, 8A and 8B, according to certain embodiments.

**[0060]** FIG. 10 is an exemplary block diagram showing a system to dynamically control multiple patient monitoring environments, according to certain embodiments.

**[0061]** FIG. 11 is an exemplary database structure used to dynamically manage patient monitoring devices and sensors in multiple patient monitoring environments, according to certain embodiments.

**[0062]** FIG. 12 is an exemplary flowchart showing a process for managing dynamic licenses for physiological parameters in multiple patient monitoring environments, according to certain embodiments.

**[0063]** FIG. 13 is an exemplary flowchart showing an inventory control and auto-order process for patient monitoring equipment in multiple patient monitoring environments, according to certain embodiments.

**[0064]** FIG. 14 is an exemplary flowchart showing a software version control process for patient monitoring equipment in multiple patient monitoring environments, according to certain embodiments.

**[0065]** FIG. 15 is an exemplary screen shot illustrating access to the processes of FIGS. 12-14 from a master terminal, according to certain embodiments.

**[0066]** FIG. 16 is a flow diagram illustrative of an embodiment of a routine implemented by one or more processors of a patient monitoring system to ensure the processors in the system are running properly, according to certain embodiments.

**[0067]** FIG. 17 is a diagram illustrative of an embodiment of a patient monitor, according to certain embodiments.

**[0068]** FIG. 18 is a diagram illustrative of an embodiment of a patient monitor, according to certain embodiments.

**[0069]** FIG. 19 is a flow diagram illustrative of an embodiment of a routine for providing a recommended care protocol, according to certain embodiments.

[0070] FIG. 20 is a flow diagram illustrative of an embodiment of a routine for securely upgrading a system image of a device by utilizing hardware based encryption, according to certain embodiments.

[0071] While the foregoing “Brief Description of the Drawings” references generally various embodiments of the disclosure, an artisan will recognize from the disclosure herein that such embodiments are not mutually exclusive. Rather, the artisan would recognize a myriad of combinations of some or all of such embodiments.

#### DETAILED DESCRIPTION

[0072] FIG. 1 illustrates an embodiment of a system 100 to dynamically control a patient monitoring environment. The patient monitoring environment is typically found in a hospital or other patient care facility. Throughout this disclosure, the terms hospital, patient care facility, and facility are used interchangeably. The system 100 includes an open network architecture using off-the-shelf hardware and communication protocols. This architecture in various implementations is a shared, or open, network that includes a network bus 120 (e.g., an Ethernet backbone), and a hospital network 126, such as a WLAN. Data can be sent over the shared network through an access point 124 or other wireless or wired transmitter. In addition, the shared network may further include a connection 122 to the Internet 150. Other networks or combinations of networks, public or private, wired or wireless, cellular or other, are recognizable to an artisan from the disclosure herein, and could be accessed in manners familiar to an artisan to provide the communications between devices and other computing systems disclosed herein.

[0073] The system 100 further includes patient monitoring devices 110 and end user devices 128, 152. The patient monitoring devices 110 are associated and/or correlated with one or more sensors and monitor physiological parameters of patients. In certain embodiments, each patient monitoring device 110 is used by one medical patient. The patient monitoring devices 110 form a network of patient monitoring devices 110, each of which can communicate with the end user devices 128, 152 over the shared network. Sensors associated and/or correlated with the patient monitoring devices 110 measure physiological signals and the patient monitoring devices process the signals and calculate the patient's physiological parameters based at least in part on the processed signals from the sensors.

[0074] In certain embodiments, the patient monitoring devices 110a, 110d send data over the shared network through the access point 124 or other wireless or wired transmitter. Alternatively, the patient monitoring devices 110b, 110c may communicate physiological information directly to end users over the Internet 150. End users such as carrying notifier devices, e.g., end user devices 128, 152 connected to the hospital WLAN 126 or the Internet 150, may receive real-time viewing of physiological patient parameters and waveforms on demand or in the event of an alarm or alert.

[0075] In some implementations, a server 136 may be included in the system 100. The server 136 in these implementations is generally a computing device such as a blade server or the like. In certain embodiments, the server 136 is an appliance server, which at times could be housed in a data

closet. In some embodiments, the server 136 is a server located at a central nurses' station, such as a workstation server.

[0076] The server 136 receives data packages comprising physiological monitoring data from a plurality of patient monitoring devices 110 and stores the physiological monitoring data in a storage device 138. In certain embodiments, this storage device 138 archives long-term patient data. This patient data may be maintained even after the patient is discharged. In storing patient data, the server 136 may act as an interface between the shared network and an external electronic medical record (EMR) system. The access and storage of patient data may advantageously comply with all governmental and industry standards for patient data, including, for example, HIPPA requirements or the like.

[0077] The system 100 further comprises a service appliance 140 that includes a server, a terminal 142, and a storage device 144. The service appliance 140 is in wired or wireless communication with the network bus 120, the Internet 150, the terminal 142, and the storage device 144. In an embodiment, the patient monitoring devices 110e communicate directly with the service appliance 140.

[0078] In an embodiment, the server 136 comprises the service appliance 140. In another embodiment, the storage device 138 comprises the storage device 144.

[0079] In an embodiment, the service appliance 140 comprises a dynamic licensing control system that is configured to enable patient monitoring devices 110 to monitor previously unmonitored physiological parameters. The service appliance 140 may also advantageously include an inventory control system configured to auto-order or create requests for orders of patient monitoring devices 110 and peripheral accessories including sensors when certain ones, some, or all of the inventory becomes depleted or reaches predetermined minimal levels. Accessories may include cables, bandages, attachment mechanisms, and the like. The service appliance 140 may also include a software version control system that is configured to at least upgrade software associated and/or correlated with the patient monitoring devices 110 in the active inventory.

[0080] The storage device 144 comprises a configuration table 146 for the hospital. The hospital configuration table 146 includes information relating to the patient monitoring devices 110 and the sensors for the hospital. This information is accessed by some or all of the licensing control system, the inventory control system, and the software version control system.

[0081] In an embodiment, the terminal 142 comprises an administrator's terminal and is used by the facility administrator to manage the patient monitoring devices 110 and sensors. In an embodiment, the administrator's terminal comprises user interface hardware, such as, but not limited to a keyboard, a mouse, and a monitor, that permit the administrator to interface with at least the dynamic licensing control system, the inventory control system, and the software version control system.

[0082] FIG. 2A is an exemplary block diagram of a patient monitoring device. In an embodiment, the patient monitoring device comprises an exemplary docked portable patient monitor 200, which may be referred to herein as the patient monitoring device 200. The patient monitoring device 200 may advantageously comprise an oximeter, co-oximeter, respiratory monitor, depth of sedation monitor, noninvasive blood pressure monitor, vital signs monitor or the like, such

as those commercially available from Masimo Corporation of Irvine, Calif., and/or disclosed in U.S. Patent Publication Nos. 2002/0140675, 2010/0274099, 2011/0213273, 2012/0226117, 2010/0030040; U.S. patent application Ser. Nos. 61/242,792, 61/387457, 61/645,570, 13/554,908 and U.S. Pat. Nos. 6,157,850, 6,334,065, and the like.

**[0083]** The patient monitoring device **200** comprises a first processor **204**, a display, **206**, and an OEM board **208**. The patient monitoring device **200** further comprises one or more cables **210** and an antenna **212** for wired and wireless communication, respectively.

**[0084]** The OEM board **208** comprises an instrument board **214**, a core or technical board **216**, and memory **218**. In an embodiment, the memory **218** comprises a user interface module **220**, a signal processing module **222**, instrument configuration parameters **224**, and local configuration parameters **226**.

**[0085]** The patient monitoring device **200** may communicate with a variety of noninvasive and/or minimally invasive sensors **202** such as optical sensors with light emission and detection circuitry, acoustic sensors, devices that measure blood parameters from a finger prick, cuffs, ventilators, ECG sensors, pulse oximeters, and the like.

**[0086]** One or more of the sensors **202** are attached to a medical patient. The sensors **202** obtain physiological information from a medical patient and transmit this information to the technical board **216** through cables **230** or through a wireless connection (not shown). In certain embodiments, the physiological information includes one or more physiological parameters or values and waveforms corresponding to the physiological parameters.

**[0087]** The technical board **216** receives physiological information from the sensors **202**. The technical board **216** of certain embodiments includes a circuit having a second processor, which may be the same as the first processor **204**, and input ports for receiving the physiological information. The technical board **216** accesses the signal processing module **222** to process the physiological information in the second processor. In addition, the technical board **216** contains one or more output ports, such as serial ports. For example, an RS232, RS423, or autobaud RS232 (serial interface standard) port or a universal serial bus (USB) port may be included in the technical board **216**.

**[0088]** The technical board **216** and the signal processing module **222** comprise a sensor processing system for the patient monitoring device **200**. In certain embodiments, the sensor processing system generates waveforms from signals received from the sensors **202**. The sensor processing system may also analyze single or multiparameter trends to provide early warning alerts to clinicians prior to an alarm event. In addition, the sensor processing system in certain embodiments generates alarms in response to physiological parameters exceeding certain safe thresholds.

**[0089]** Example alerts include no communication with the patient monitoring device **200**, alarm silenced on the patient monitoring device **200**, instrument low battery (patient monitoring device **200**), and transmitter low battery. Example physiological parameters include SpO<sub>2</sub> levels, high and low SpO<sub>2</sub>, high and low PR, HbCO level, HbMET level, pulse rate, perfusion index (PI), signal quality, HbCO, HbMET, and desat index. Additional example alarms include SpO<sub>2</sub> alarms, high and low SpO<sub>2</sub> alarms, high and low PR, HbCO alarms, HbMET alarms, pulse rate alarms, no sensor alarms, sensor off patient alarms, sensor error, low

perfusion index alarm, low signal quality alarm, HbCO alarm, HbMET alarm, PI trend alarm, and desat index alarm.

**[0090]** The instrument board **214** receives the waveforms, alerts, alarms, and the like from the technical board **216**. The instrument board **214** of certain embodiments includes a circuit having a third processor, which may be the same as the first processor **204**, and input ports for receiving the waveforms, alerts, and alarms from the technical board **216** and output ports for interfacing with the display **206**, a speaker or other device capable of producing an audible indication. The instrument board **214** accesses the user interface module **220** to process the waveforms, alerts, and alarms to provide indications of the waveforms, alerts, alarms or other data associated and/or correlated with the physiological parameters monitored by the sensors **202**. In an embodiment, the indications are displayed on the display **206**. In other embodiments, the alerts and alarms are audible. In other embodiments, the indications, alerts, and alarms are communicated to the end user devices **128**, **152** through the hospital backbone **120**, the hospital WLAN **126**, and/or the Internet **150**.

**[0091]** Additionally, the instrument board **214** and/or the technical board **216** may advantageously include one or more processors and controllers, busses, all manner of communication connectivity and electronics, memory, memory readers including EPROM readers, and other electronics recognizable to an artisan from the disclosure herein. Each board comprises substrates for positioning and support, interconnect for communications, electronic components including controllers, logic devices, hardware/software combinations and the like to accomplish the tasks designated above and others.

**[0092]** An artisan will recognize from the disclosure herein that the instrument board **214** and/or the technical board **216** may comprise a large number of electronic components organized in a large number of ways.

**[0093]** Because of the versatility needed to process many different physiological parameters, the technical board **216** further comprises a revision number or other indication of the circuit design and capabilities of a specific technical board **216**.

**[0094]** Likewise, because of the versatility needed to display the processed physiological parameters for use by many different end users, the instrument board **214** further comprises a revision number or other indication of the circuit design and capabilities of the specific instrument board.

**[0095]** Software is also subject to upgrading to increase its capabilities. The signal processing module **222** further comprises a version number or other indication of the code found in the specific signal processing module **222**. Likewise, the user interface module **220** further comprises a version number or other indication of the code found on the specific user interface module **220**.

**[0096]** In an embodiment, some or all of the serial numbers, the model numbers, and the revision numbers of the technical board **216** and the instrument board **214** that comprise the specific patient monitoring device **200** are stored in the instrument configuration parameters **224**. Further, the version numbers of the signal processing module **222** and the user interface module **220** are stored in the instrument configuration parameters **224**. In an embodiment, the instrument configuration parameters **224** further comprise indications of the physiological parameters that are

enabled, and indications of the physiological parameters that are capable of being enabled for the patient monitoring device 200.

[0097] In some embodiments, the location of the patient monitoring device 200 affects the sensitivity at which a physiological parameter is monitored. For example, a physiological parameter may be monitored with greater sensitivity when the patient monitoring device 200 is located in the neonatal intensive care unit (NICU), OR or surgical ICU than when it is located in an adult patient's room. In an embodiment, the location of the patient monitoring device 200 may affect the availability of the device for another patient. For example, a patient monitoring device 200 located in the hospital discharge area may be available for another patient, whereas one located in a patient's room may not be available anytime soon.

[0098] In an embodiment, the local configuration parameters 226 comprise a location of the patient monitoring device 200 within the facility, an indication of whether the device is configured for adult or pediatric monitoring, and the like.

[0099] In an embodiment, the sensor 202 comprises memory 228. In an embodiment, the memory 228 comprises information associated and/or correlated with the sensor 202, such as, but not limited to a sensor type, a sensor model number, a sensor revision number, a sensor serial number, and the like.

[0100] In an embodiment, the patient monitoring device 200 comprises a Radical-7® Rainbow SET Pulse Oximeter by Masimo Corporation, Irvine, Calif. In an embodiment, the OEM board 208 is produced by Masimo Corporation, Irvine, Calif. and used by others to produce patient monitoring devices 110c, 110d.

[0101] FIG. 2B illustrates a perspective view of another exemplary patient monitoring device, such as a medical monitoring hub with the exemplary docked portable patient monitoring device 200, the combination of which may also be referred to herein as a patient monitoring device or patient monitoring system 300. The hub includes a display 324, and a docking station 326, which in an embodiment is configured to mechanically and electrically mate with the portable patient monitoring device 200, each housed in a movable, mountable and portable housing 328. The housing 328 includes a generally upright inclined shape configured to rest on a horizontal flat surface, although the housing 328 can be affixed in a wide variety of positions and mountings and comprise a wide variety of shapes and sizes.

[0102] In an embodiment, the display 324 may present a wide variety of measurement and/or treatment data in numerical, graphical, waveform, or other display indicia 332. In an embodiment, the display 324 occupies much of a front face of the housing 328; although an artisan will appreciate the display 324 may comprise a tablet or tabletop horizontal configuration, a laptop-like configuration or the like. Other embodiments may include communicating display information and data to a table computer, smartphone, television, or any display system recognizable to an artisan. The upright inclined configuration of FIG. 2B presents display information to a caregiver in an easily viewable manner. The patient monitoring device 300 may display information for a variety of physiological parameters, such as but not limited to oxygen saturation (SpO<sub>2</sub>), hemoglobin (Hb), oxyhemoglobin (HbO<sub>2</sub>), total hemoglobin, carboxyhemoglobin, methemoglobin, perfusion index (Pi), pulse

rate (PR) of blood pressure, temperature, electrocardiogram (ECG), motion data, accelerometer data, respiration, continuous blood pressure, pleth variability index, oxygen content, oxygen reserve index, acoustic respiration rate (RRa), and respiration rate from the pleth.

[0103] FIG. 2C illustrates a perspective view of a back side of the patient monitoring device 300 of FIG. 2B, showing an exemplary serial data inputs. In an embodiment, the inputs include such as RJ 45 ports. As is understood in the art, these ports include a data ports similar to those found on computers, network routers, switches and hubs. In an embodiment, a plurality of these ports are used to associate and/or correlate data from various devices with the specific patient identified in the patient monitoring device 300. FIG. 2C also shows a speaker, the nurse call connector, the Ethernet connector, the USBs, a power connector and a medical grounding lug.

[0104] FIG. 2D illustrates a simplified exemplary hardware block diagram of the patient monitoring device 300. As shown in FIG. 2D, the housing 328 of the patient monitoring device 300 positions and/or encompasses an instrument board 302, a core or technical board 312, the display 324, memory 304, and the various communication connections, including serial ports 330, channel ports 322, Ethernet ports 305, nurse call port 306, other communication ports 308 including standard USB, or the like, and a docking station interface 310. The instrument board 302 comprises one or more substrates including communication interconnects, wiring, ports and the like to enable the communications and functions described herein, including inter-board communications. The technical board 312 includes the main parameter, signal, and other processor(s) and memory. A portable monitor board ("RIB") 314 includes patient electrical isolation for the monitor 200 and one or more processors. A channel board ("MID") 316 controls the communication with the channel ports 322 including optional patient electrical isolation and power supply 318, and a radio board 320 includes components configured for wireless communications.

[0105] Additionally, the instrument board 302 and/or the technical board 312 may advantageously include one or more processors and controllers, busses, all manner of communication connectivity and electronics, memory, memory readers including EPROM readers, and other electronics recognizable to an artisan from the disclosure herein. Each board comprises substrates for positioning and support, interconnect for communications, electronic components including controllers, logic devices, hardware/software combinations and the like to accomplish the tasks designated above and others.

[0106] An artisan will recognize from the disclosure herein that the instrument board 302 and or the technical board 312 may comprise a large number of electronic components organized in a large number of ways.

[0107] Because of the versatility needed to process many different physiological parameters, the technical board 312 further comprises a revision number or other indication of the circuit design and capabilities of a specific technical board 312.

[0108] Likewise, because of the versatility needed to display the processed physiological parameters for use by many different end users, the instrument board 302 further comprises a revision number or other indication of the circuit design and capabilities of the specific instrument board 302.

[0109] In an embodiment, the memory 304 comprises a user interface module 340, a signal processing module 342, instrument configuration parameters 344, and local configuration parameters 346.

[0110] The instrument board 302 accesses the user interface module 340 to process the waveforms, alerts, and alarms to provide indications of the waveforms, alerts, alarms or other data associated and/or correlated with the physiological parameters for the patient monitoring device 300. The technical board 312 accesses the signal processing module 342 to process the physiological information for the patient monitoring device 300.

[0111] Software for the patient monitoring device 300 is also subject to upgrading to increase its capabilities. The signal processing module 342 further comprises a version number or other indication of the code found in the specific signal processing module 342. Likewise, the user interface module 340 further comprises a version number or other indication of the code found on the specific user interface module 340.

[0112] In an embodiment, some or all of the serial numbers, the model numbers, and the revision numbers of the technical board 312 and the instrument board 302 that comprise the specific patient medical monitoring hub 300 are stored in the instrument configuration parameters 344. Further, the version numbers of the signal processing module 342 and the user interface module 340 are stored in the instrument configuration parameters 344. In an embodiment, the instrument configuration parameters 344 further comprise indications of the physiological parameters that are enabled, and indications of the physiological parameters that are capable of being enabled for the patient monitoring device 300.

[0113] In an embodiment, the local configuration parameters 346 comprise a location of the patient monitoring device 300 within the facility, an indication of whether the device is configured for adult or pediatric monitoring, and the like.

[0114] In an embodiment, the patient monitoring device 300 comprises a Root® Patient Monitoring and Connectivity Platform by Masimo Corporation, Irvine, Calif. that includes the Radical-7® also by Masimo Corporation, Irvine, Calif.

## Memory

[0115] FIG. 3A is a diagram illustrative of an embodiment of a memory module of a processor of a patient monitor. As illustrated, the memory module 351 is divided into a plurality of memory partitions. Each of the memory partitions can include one or more memory modules. For example, a partition can include a data module 352 or an image module 354, 356.

[0116] The image module can include a system image from which the processor can boot. In embodiments where the memory module 351 includes multiple image modules, the processor is capable of booting from more than one memory module partition. For example, as illustrated in FIG. 3A, the memory module 351 includes a first image module 354 and a second image module 356, and the processor may boot from either image module. While, in some instances, the first and second image module 354, 356 include the same image, generally these image modules

include different images. Thus, in some embodiments, it can be advantageous for the processor to boot from a specific image module.

[0117] In a non-limiting example, the first image module 354 can include an old system image and the second image module 356 can include a new system image, such as a recent software upgrade. In some embodiments, it can be advantageous to boot from the second image module 356 because, for example, it includes an upgrade which may fix bugs or improve overall usability. However, in some embodiments, such as when the newest image upgrade is unproven or contains bugs, it can be advantageous to retain and boot from the first image module 354 which includes a system image which has been proven to work.

[0118] In some embodiments, the first image module 354 includes an original system image, such as the system image written by a manufacturer. In embodiments such as these, if the processor detects an error in an upgraded system image, it can boot from the original system image. However, due to memory constraints and because the original system image generally includes out of date features, it can be advantageous to re-write an image module including the original system image with an upgraded system image. For example, as described in more detailed with respect to FIG. 3B, it can be advantageous for the memory module 351 to include at least two image modules.

[0119] FIG. 3B is a flow diagram illustrative of an embodiment of a routine 350 implemented by a processor having the memory module 351 of FIG. 3A. However, it should be understood that a similar routine be implemented on a processor having a memory module with more than two image modules.

[0120] At step 362, a processor determines which of the first and second image modules 354, 356 includes the latest system image. In some embodiments, the processor makes this determination based at least in part on a time stamp, a version number, or any other system image identifier. In some embodiments, the processor can make this determination based on which image module was most recently upgraded. In other embodiments, the patient monitoring system keeps track of which image module includes the latest system upgrade and the processor can access this information.

[0121] At step 364, the processor attempts to boot up from the image module including the latest system image. As described in more detail below with respect to step 372, the image module including the latest system image may be untested by this particular processor and may have bugs or download errors which prevent the processor from booting or operating properly. Accordingly, in some embodiments, the processor will not be able to boot from the image module including the latest system image or may determine that there is an operation error after boot up.

[0122] At step 366, the patient monitoring system, the processor, and/or another processor determines whether the processor successfully booted from the image module including the latest system image. In addition, even if the boot was successful, the functionality of the processor can be monitored to determine whether the processor is functioning correctly. In some embodiments, the functionality of the processor is monitored by another processor, such as a supervisor processor (described in further detail with respect to FIG. 4). In other embodiments, the processor can perform a self-check to determine whether it has full functionality. In

some embodiments, the current attempt to boot from the image module including the latest system image is the first time the processor has attempted to boot from this system image. That is because the image module may have been upgraded the last time the processor was booted up. Accordingly, it can be important to test the current system image because a new upgrade may be available (see step 370) it is important to determine which image module, the first image module 354 or the second image module 356, should be upgraded with the available system upgrade. Further, if it is determined that a previous boot or operation of a new image contained an error or failed, the system can re-download the new image version and rewrite the image that contained the error.

[0123] At step 368, the processor either did not successfully boot from the image module including the latest system image or the processor was not functioning properly. Accordingly, the processor boot from another image module. In this example, because there memory module includes two image modules, the processor boots from the image module not used in step 364. However, it should be understood that the memory module can include more than two image modules.

[0124] At step 368, the processor knows it can boot from a current image module because it is an older image module and has been used and tested on a previous occasion. Therefore, in some embodiments, booting from this image module is more reliable than booting from a different image module. In some embodiments, the functionality of the processor is not tested at this step. However, in other embodiments, the functionality of the processor is tested. For example, in some embodiments, the functionality of the processor is monitored by another processor, such as the supervisor processor of FIG. 4.

[0125] At step 370, the processor, the patient monitoring system, and/or another processor determines whether an image upgrade exists and/or is available. In some embodiments, a processor of the patient monitoring system keeps track of which system images resides on the image modules and can compare that information to available image upgrades. In some embodiments, an image upgrade can be obtained wirelessly (such as downloaded from the internet) from a wired connection (such as an Ethernet connection, MOC-3 or a MOC-9 port), or from a removable memory via a USB port or other data port.

[0126] At step 372, responsive to a determination that an image upgrade is available, the processor upgrades one of the image modules. For instance, if the processor attempted and failed to boot from the image module including the latest system image, then the processor may write the image upgrade over the system image of that image module. Likewise, if the processor failed to function properly while after booting from a particular image module, then the processor can write the image upgrade over the system image of that image module. However, if the processor was able to boot and correctly function from the image module including the latest system image, then the processor can write the image upgrade over the system image of the image module having the older system image.

[0127] Accordingly, although the memory module 351 includes only two image modules 354, 356, the processor can always retain the ability to boot from a functioning system image, despite not having the original system image.

As such, the image module having the older system image can act as a reliable backup system.

#### Patient Monitoring Device (PMD) Management System

[0128] FIG. 4 is an exemplary block diagram of a patient monitoring device (PMD) management system 400. The PMD management system 400 is a computer-implemented management system that manages licenses, and updates software, and controls inventory for the patient monitoring environment.

[0129] The PMD management system 400 comprises a computing device or service appliance 440 that comprises a processor 402 and memory 404. The processor 402 can comprise controller circuitry, processor circuitry, processors, general-purpose single-chip or multi-chip microprocessors, digital signal processors, embedded microprocessors, micro-controllers, program logic, other substrate configurations representing data and instructions, and the like. In an embodiment, the service appliance 440 comprises a server.

[0130] In an embodiment, the PMD management system 400 comprises a digital processing system 400 that executes database schema to manage the patient monitoring devices 110, 200, 300 and sensors 202 in the patient environment, where the digital processing system 400 comprises a digital data processor and a server. In another embodiment, the PMD management system 400 comprises a digital database processor 400 that manages the patient monitoring devices 110, 200, 300 and sensors 202 in the patient environment.

[0131] The memory 404 comprises programs 406 such as a dynamic licensing control module 448 that is configured to enable patient monitoring devices to monitor previously unmonitored physiological parameters, an inventory control module 452 that is configured to order or generate alerts to order patient monitoring devices and accessories when the inventory becomes depleted, a software version control module 450 that is configured to at least upgrade the software residing on the patient monitoring devices in the active inventory, and the like. The memory 404 further comprises hospital administrator's information 408 associated with the hospital, and one or more databases 444. In an embodiment, the hospital administrator's information 408 comprises default information available on drop-down menus that make it easier for the hospital administrator to interact with the dynamic licensing control module 448, the inventory control module 452, and the software version control module 450.

[0132] In another embodiment, the hospital administrator's information 408 further comprises an administration section that comprises default values for different types of licenses, minimum inventory quantities, types of patient monitoring devices, types of sensors and the like. In an embodiment, the default values are pre-defined values.

[0133] The database 444 further comprises a configuration table 446 for the hospital. The hospital configuration table 446 includes information relating to the patient monitoring devices 110, 200, 300 and the sensors 202 for the hospital. This information is accessed by the dynamic licensing control module 448, the inventory control module 450, and the software version control module 452.

[0134] The memory 404 can comprise one or more logical and/or physical data storage systems for storing data 408, 446 and applications 448, 450, 452 used by the computing device 402. Each of the functional components of the PMD

management system **400** may be implemented in program code executed by one or more general or special purpose computers.

[0135] In the context of the present disclosure, actions indicated as being taken by the PMD management system **400** are preferably performed by or through, as applicable, the service appliance **440** and its associated software components. In an embodiment, the service appliance **440** is in wired or wireless communication with the network bus **120**, the Internet **150**, and the terminal **142**.

[0136] FIG. **5** is an exemplary database **500** used to dynamically manage patient monitoring devices **110**, **200**, **300** and sensors **202** in a patient monitoring environment. In an embodiment, the hospital configuration table **446** comprises the database **500**.

[0137] In an embodiment, the database **500** comprises device information for each patient monitoring device **110**, **200**, **300** associated with the hospital. Examples of device information are, but not limited to, one or more of a device type, a device model number, a device serial number, a revision number of the technology board **216**, **312** associated and/or correlated with the device, a revision number of the instrument board **214**, **302** associated and/or correlated with the device, a version number of the signal processing module **222**, **342** associated and/or correlated with the device, and a version number of the user interface module **220**, **340** associated and/or correlated with the device.

[0138] In an embodiment, the device information comprises an override indication that indicates whether any of the processes, such as, for example, one or more of the dynamic licensing process **448**, the inventory control process **450**, and the software upgrade process **452** can continue when the patient monitoring device is active or actively monitoring a patient.

[0139] Further examples of device information are, but not limited to, an instrument configuration table comprising one or more instrument configuration parameters 1-n, and a local configuration table comprising one or more local configuration parameters 1-n associated and/or correlated with the device. In an embodiment, the local configuration parameters comprise a location within the facility and an indication of adult or pediatric.

[0140] In an embodiment, the device information further comprises license information associated and/or correlated with the device, such as, but not limited to a device license identifier or number, a duration of the device license that may include a start date and a stop date, and a location within the hospital or facility to which the device license pertains.

[0141] In another embodiment, the device information further comprises information associated and/or correlated with the sensors **202** assigned to the device, such as but not limited to one or more of a sensor type, a sensor model number, and a sensor serial number.

[0142] In an embodiment, the database **500** further comprises sensor information for each sensor **202** associated and/or correlated with the hospital. Examples of sensor information are, but not limited to, one or more of a sensor type, a sensor model number, and a sensor serial number. In an embodiment, the sensor information further comprises license information associated and/or correlated with the sensor, such as, but not limited to a sensor license identifier or number, a duration of the sensor license that may include a start date and a stop date, and a location within the hospital

or facility to which the sensor license pertains. In another embodiment, the sensor information further comprises information pertaining to the patient monitoring devices **110**, **200**, **300** associated and/or correlated with the sensor, such as the serial number of the associated patient monitoring device.

[0143] FIG. **6** is a flowchart showing an exemplary process **600** for managing dynamic licenses for physiological parameters in a patient monitoring environment. In an embodiment, the licenses can be one or more of fixed licenses, floating licenses, licenses that can be purchased on the spot, licenses for a certain monitoring parameter, licenses for a fixed duration of time, pay-as-you-go licenses, proprietary licenses, term licenses, and the like.

[0144] In an embodiment, the dynamic licensing process **600** can tailor a license for the specific needs of the patient, care giver, and/or hospital administrator.

[0145] At step **602**, the dynamic licensing process **600** receives licensing information for a selected patient monitoring device **110**, **200**, **300**. For example, the received licensing information comprises one or more of the serial number of the patient monitoring device subject to the license, a new physiological parameter to be monitored, a location within the hospital to which the license pertains, a license duration, a start date, a stop date, type of license, such as a floating license, a pay-as-you-go license, a pay-as-you-go license, a proprietary license, a term license, and the like.

[0146] At step **604**, the dynamic licensing process **600** retrieves the information associated and/or correlated with the selected patient monitoring device from the database **500**. In an embodiment, the dynamic licensing process **600** provides access control for the patient monitoring device information.

[0147] At step **606**, the dynamic licensing process **600** determines whether the assigned sensors associated with the selected patient monitoring device support the new parameter to be monitored.

[0148] If the new parameter is supported by the assigned sensor, the dynamic licensing process **600** moves to step **612**. If the new parameter is not supported by the assigned sensor, the dynamic licensing process **600** moves to step **608**, where the dynamic licensing process **600** notifies the administrator that the assigned sensor does not support the new parameter and receives the request to purchase a new sensor that supports the new parameter in response to the administrator notification.

[0149] At step **610**, the dynamic licensing process **600** retrieves the sensor information associated and/or correlated with the new sensor. In an embodiment, the new sensor is from the stock inventory.

[0150] At step **612**, the dynamic licensing process **600** causes the license to be purchased. In an embodiment, the dynamic licensing process **600** causes the license to be purchased by enabling the new parameter for the selected device. In an embodiment, enabling the new parameter comprises updating the instrument configuration table **224**, **344** of the selected patient monitoring device to include the new parameter and updating the local configuration table **226**, **346** of the selected patient monitoring device with the license location. In an embodiment, the dynamic licensing process **600** creates an electronic licensing agreement to monitor the new parameter for the monitoring duration and/or in the monitoring location. In an embodiment, the

licensing agreement and the amount of the licensing fee are automatically sent to the responsible party associated with the patient.

[0151] At step 614, the dynamic licensing process 600 updates the hospital inventory for any sensors 202 removed from the inventory to fulfill the licensing requirements. In an embodiment, updating the inventory comprises performing an embodiment of the inventory control process 452.

[0152] At step 616, the dynamic licensing process 600 updates the hospital configuration table 146, 446 with the sensor information associated and/or correlated with the sensor assigned to monitor the new parameter, adds or revises the device and sensor licensing information, and updates the instrument configuration table and the local configuration table for the selected patient monitoring device in the database 500. The dynamic licensing process 600 ends at step 618.

[0153] In another embodiment, the patient monitoring device (PMD) management system 400 further manages billing for licenses, patient monitoring devices 110, 200, 300, and sensors 202 in the patient monitoring environment. For example, the dynamic licensing process 600 is configured to monitor pay-as-you go licenses and send information such as license start date, license stop date, and license duration to a billing program. In another example, the dynamic licensing process 600 keeps track of the pay-for use licenses and sends information such as the number of uses of a sensor and/or a patient monitoring device and/or license to a billing program. In another embodiment, the dynamic licensing process 600 generates the billing statements.

[0154] FIG. 7 is a flowchart showing an exemplary inventory control and auto-order process 700 for the hard and soft inventory associated and/or correlated with the patient monitoring devices in a patient monitoring environment. Examples of the hard inventory include, but are not limited to patient monitoring devices 110, 200, 300, sensors 202, instrument boards 214, 302, and technical boards 216, 312. Examples of the soft inventory include but are not limited to software, such as software versions, software upgrades, and uploadable software, licenses, floating licenses, fixed licenses, and licenses available for on-the-spot purchasing.

[0155] For example, a floating license is a license that is available in limited numbers that is shared among a larger number of users over time. It is re-usable and can be held in a license pool, such as an inventory license pool. The inventory can include license pools having a floating quantity of licenses available and the floating quantity of available licenses can be decremented when a floating license is taken and incremented when a floating license is returned to inventory. A fixed license is assigned to one entity. In an embodiment, once a fixed license is used, the license count is decreased and it cannot be reassigned. The inventory can include fixed licenses having a fixed number of licenses available which is decremented when a license is taken.

[0156] At step 702, the inventory control process 700 displays the hospital inventory, including the model numbers and quantity for the hospital's patient monitoring devices 110, 200, 300 and the hospital's sensors 202. In an embodiment, the hospital inventory includes licenses in the hospital for the patient monitoring devices 110, 200, 300 and sensors 202. In an embodiment, the administrator's terminal 142 displays the hospital inventory.

[0157] At step 704, the inventory control process 700 further displays the hospital's stock room inventory, includ-

ing the model numbers and quantity for the hospital's patient monitoring devices 110, 200, 300 and the hospital's sensors 202 that are stored in the stock room, or in other words, that are not assigned to be monitoring physiological parameters of a patient. In an embodiment, the hospital's stock room inventory includes licenses for the patient monitoring devices 110, 200, 300 and sensors 202 that are available for licensing. In an embodiment, the administrator's terminal 142 displays the stock room inventory.

[0158] At step 706, the process 700 receives auto-order criteria. In an embodiment, the hospital administrator enters the auto-order criteria on the administrator's terminal 142. In an embodiment, the auto-order criteria comprises model numbers of patient monitoring devices 110, 200, 300 and sensors 202 and a minimum quantity of these patient monitoring devices 110, 200, 300 and sensors 202 to have available in the stock room. In an embodiment, the auto-order criteria comprise minimum quantities of licenses for the sensors 202 and the patient monitoring devices 110, 200, 300 that are to be kept in the inventory.

[0159] At step 708, the inventory control process 700 determines whether the number in stock of a first model number is less than the minimum quantity of the first model number. When the number in the stock inventory is greater than the minimum quantity of the first model number, the inventory control process 700 moves to step 712.

[0160] When the number in the stock inventory is less than the minimum quantity, the inventory control process 700 moves to step 710, where the inventory control process 700 automatically places an order for a quantity of the first model number. In an embodiment, the inventory control process 700 orders the minimum quantity less the number in the stock inventory.

[0161] At step 712, the inventory control process 700 determines whether there are more inventory items. When there are more inventory items, the inventory control process 700 moves to step 708 and repeats steps 708-712 for the next inventory item. When there are no more inventory items, the inventory control process 700 ends at step 714.

[0162] In an embodiment, the inventory control process 700 further comprises adjusting the inventory numbers when an inventory item, such as a patient monitoring device 110, 200, 300, a sensor 202, or a license, for example, is returned or pushed back to the inventory. For example, once a sensor 202 is decommissioned, the sensor hardware can be returned to the inventory, the license for the sensor can be pushed back into the inventory, and the quantities stored in inventory can be adjusted upwards, accordingly.

[0163] FIG. 8A is a flowchart showing an exemplary software version control process 800 for patient monitoring devices in a patient monitoring environment. At step 802, the software version control process 800 receives software upgrade instructions. In an embodiment, the software upgrade instructions comprise the software version numbers for device model numbers. In an embodiment, the software version numbers are associated and/or correlated with revised software for one or more of the sensor 202, the user interface module 220, 340 and the signal processing module 222, 342.

[0164] At step 804, the software version control process 800 retrieves the device information for a first patient monitoring device. In an embodiment, the process 800 accesses the database 500 for the device information.

[0165] At step 806, the software version control process 800 determines whether the first patient monitoring device is active. In an embodiment, the patient monitoring device needs to be in communication with one or more of the hospital backbone 120, the Internet 150, and the service appliance 140, 440 to receive a software upgrade.

[0166] When the device is inactive, the software version control process 800 moves to step 816, where the process 800 determines whether there is another device.

[0167] When the device is active, the software version control process 800 moves to step 808, where the software version control process 800 determines whether the device is monitoring.

[0168] When the device is monitoring, the software version control process 800 loops between steps 806 and 808 until the device is no longer monitoring to assure that there is no interruption in the patient's monitoring.

[0169] At step 810, the software version control process 800 pushes the software image for the upgraded software to the patient monitoring device 110, 200, 300. At step 812, the software version control process 800 resets the patient monitoring device 110, 200, 300, and at step 814, the software version control process 800 updates the hospital configuration table 146/database 500 with the new software version numbers for the updated patient monitoring device 110, 200, 300.

[0170] At step 816, the software version control process 800 determines whether there are more patient monitoring devices 110, 200, 300 to upgrade. When there are additional devices, the software version control process 800 moves to step 804, where steps 804-816 are repeated for the next device. When there are no more devices to upgrade, the software version control process 800 ends at step 818.

[0171] FIG. 8B is a flowchart showing an exemplary software version control process 850 for patient monitoring equipment in a patient monitoring environment. At step 852, the software version control process 850 receives software upgrade instructions. In an embodiment, the software upgrade instructions comprise the software version numbers for device model numbers. In an embodiment, the software version numbers are associated and/or correlated with revised software for one or more of the sensor 202, the user interface module 220, 340 and the signal processing module 222, 342.

[0172] At step 854, the software version control process 850 retrieves the device information for a patient monitoring device or sensor. In an embodiment, the process 850 accesses the database 500 for the device information.

[0173] At step 856, the software version control process 850 pushes the software image for the upgraded software to the sensor 202 or patient monitoring device 110, 200, 300.

[0174] At step 858, the software version control process 850 determines whether the sensor 202 or the patient monitoring device 110, 200, 300 is active. In an embodiment, the patient monitoring device is in communication with one or more of the hospital backbone 120, the Internet 150, and the service appliance 140, 440 in order to receive a software upgrade.

[0175] When sensor 202 or the patient monitoring device 110, 200, 300 is not actively monitoring a patient, the software version control process 850 moves to step 862. When the sensor or patient monitoring device 110, 200, 300 is actively monitoring, the software version control process 850 moves to step 860 to determine whether override has

been selected. In an embodiment, the software version control process 850 checks the device information retrieved in step 854. In an embodiment, the override indication is determined by the hospital administrator. In another embodiment, the override is approved before the software version control process 850 begins.

[0176] When override is not enabled, the software version control process 850 moves to step 858 and loops between steps 858 and 860 until the sensor 202 or patient monitoring device 110, 200, 300 is available to receive the software upgrade. When the override is enabled, the software version control process 850 moves to step 862.

[0177] At step 862, the software version control process 850 downloads the software image into the sensor 202 or patient monitoring device 110, 200, 300.

[0178] At step 864, the process 850 resets the sensor 202 or the patient monitoring device 110, 200, 300 to permit the sensor 202 or the patient monitoring device 110, 200, 300 to run the downloaded software, and at step 866, the software version control process 850 updates the hospital configuration table 146/database 500 with the new software version numbers for the updated sensor 202 or the patient monitoring device 110, 200, 300.

[0179] At step 868, the software version control process 850 determines whether there are more sensors 202 or patient monitoring devices 110, 200, 300 to upgrade.

[0180] In an embodiment, multiple devices can be upgraded in parallel. For example, the hospital can be divided into domains and all of the patient monitoring devices 110, 200, 300 in the selected domain can be software upgraded at the same time, at approximately the same time, or in parallel. Examples of domains within a hospital are floors of the hospital, units of the hospital such as the intensive care unit (ICU) and the neonatal unit, and the like.

[0181] In an embodiment, the sensors 202 and/or patient monitoring devices 110, 200, 300 in more than one domain can be software upgraded in parallel. In another embodiment, all of the patient monitoring devices in the hospital can be software upgraded in parallel. In further embodiments, more than one domain across more than one hospital can be software upgraded in parallel. In a further embodiment, all of the patient monitoring devices in multiple hospitals can be software upgraded in parallel.

[0182] Providing software upgrades to multiple patient monitoring devices in parallel or approximately simultaneously advantageously saves considerable time, effort, and expenses. For example, performing the software upgrade for the patient monitoring devices in one hospital manually took three people three days whereas one person at the hospital administrator terminal upgraded the hospital's patient monitoring device in 10 minutes using an embodiment of the software upgrade process 800, 850 described herein.

[0183] When there are additional sensors 202, patient monitoring devices 110, 200, 300, or additional groups of sensors/patient monitoring devices, the software version control process 850 moves to step 854 where steps 854-868 are repeated. When there are no more devices to upgrade, the software version control process 850 ends at step 870.

[0184] FIGS. 9A-9D are exemplary screen shots illustrating the processes of FIGS. 6-8. In an embodiment, the screen shots are displayed in the administrator's terminal 142.

[0185] FIG. 9A is an exemplary selections screen 902 showing the licensing, inventory, and upgrade selections available to the administrator.

[0186] FIG. 9B is an exemplary license request screen 904 showing licensing parameters.

[0187] FIG. 9C is an exemplary inventory control and auto-order screen 906 displaying the hospital inventory and the stock room inventory. The inventory control and auto-order screen 906 further permits the administrator to enter the auto-order criteria for automatic ordering of patient monitoring devices 110, 200, 300 and sensors 202.

[0188] FIG. 9D is an exemplary software upgrade screen 908 displaying the board revision numbers and the software version numbers for the patient monitoring devices 110, 200, 300 in the hospital's inventory. The software upgrade screen 908 further permits the administrator to select patient monitoring devices 110, 200, 300 and sensors 202 for software upgrades.

[0189] FIG. 10 is an exemplary block diagram showing a system 1000 to manage multiple patient monitoring environments, according to certain embodiments of the disclosure. The system 1000 comprises a master service appliance 1140 in communication with a plurality of hospital service appliances 140a, 140b, . . . , 140n via the Internet 150. Service appliance 140a is associated with the patient monitoring system of a first hospital and accesses the configuration table for the first hospital. Similarly, service appliance 140b is associated with the patient monitoring system of a second hospital and accesses the configuration table for the second hospital. And service appliance 140n is associated with the patient monitoring system of an n<sup>th</sup> hospital and accesses the configuration table for the n<sup>th</sup> hospital. In an embodiment, the master service appliance 1140 comprises a server.

[0190] The service appliance 1140 comprises a master licensing control system that is configured to monitor and interact with the dynamic licensing control processes 448 of the plurality of hospital service appliances 140a-140n. The service appliance 1140 further comprises a master inventory control system that is configured to monitor and interact with the inventory control and auto-order processes 450 of the plurality of hospital service appliances 140a-140n. The service appliance 1140 further comprises a master software version control system that is configured to monitor and interact with the software upgrade processes 450 of the plurality of hospital service appliances 140a-140n.

[0191] The system 1000 further comprises a master terminal 1142 and a storage device 1144. The service appliance 1140 is in wired or wireless communication with the Internet 150, the master terminal 1142, and the storage device 1144.

[0192] The storage device 1144 comprises a master configuration table 1146 for the plurality of hospitals. The master configuration table 1146 includes information relating to the patient monitoring devices 110, 200, 300 and the sensors 202 for each hospital of the plurality of hospitals. This information is accessed by the master licensing control system, the master inventory control system, and the master software version control system.

[0193] In an embodiment, the master terminal 1142 comprises user interface hardware, such as, but not limited to a keyboard, a mouse, and a monitor, that permit the user to interface with at least the master licensing control system, the master inventory control system, and the master software version control system.

[0194] FIG. 11 is an exemplary database structure 1100 used to dynamically manage patient monitoring devices 110, 200, 300 and sensors 202 in multiple patient monitoring

environments. In an embodiment, the master configuration table 1446 comprises the database 1100. In an embodiment, the database 1100 comprises device information, as described above with respect to FIG. 5, for each patient monitoring device 110, 200, 300 associated with each hospital 1-n. The database 1100 further comprises a hospital identifier associated and/or correlated with the device information for the identified hospital. In an embodiment, the hospital identifier comprises one or more of the hospital name, hospital address, hospital location, an alpha numeric identifier, a identifying number, a PIN, or other unique information to identify the hospital.

[0195] FIG. 12 is a flowchart showing an exemplary master dynamic licensing process 1200 to manage dynamic licenses for physiological parameters for patient monitoring devices 110, 200, 300 and sensors 202 in multiple patient monitoring environments. At step 1202, the master dynamic licensing process 1200 receives a hospital identifier identifying the patient monitoring environment. At step 1204, the master dynamic licensing process 1200 retrieves licensing information associated and/or correlated with the identified hospital. At step 1206, the master dynamic licensing process 1200 performs a dynamic licensing process. In an embodiment, at step 1206, the master dynamic licensing process 1200 performs the dynamic licensing process 600 for a first hospital. At step 1208, the master dynamic licensing process 1200 determines if there are more hospitals or patient monitoring environments in which to manage dynamic licenses for physiological parameters for patient monitoring devices 110, 200, 300 and sensors 202. If there are additional hospitals or patient monitoring environments, the master dynamic licensing process 1200 returns to step 1202 and repeat steps 1204-1208. Otherwise, the master dynamic licensing process 1200 moves to end step 1210.

[0196] In another embodiment, the master dynamic licensing process 1200 is configured to monitor licenses for the sensors 202 patient monitoring devices 110, 200, 300 in at least a portion of the multiple patient monitoring environments and send information such as license start date, license stop date, and license duration to a billing program. In another example, the master dynamic licensing process 1200 keeps track of the pay-for use licenses and sends information such as the number of uses of a sensor and/or a patient monitoring device and/or license to a billing program. In another embodiment, the master dynamic licensing process 1200 generates the billing statements.

[0197] FIG. 13 is a flowchart showing an exemplary master inventory control and auto-order process 1300 to control inventory and auto-order for patient monitoring devices 110, 200, 300 and sensors 202 in multiple patient monitoring environments. At step 1302, the master inventory control process 1300 receives a hospital identifier identifying the patient monitoring environment. At step 1304, the master inventory control process 1300 retrieves inventory information associated and/or correlated with the identified hospital. At step 1306, the master inventory control process 1300 performs an inventory control process. In an embodiment, at step 1306, the master inventory control process 1300 performs the inventory control process 700. At step 1308, the master inventory control process 1300 determines if there are more hospitals or patient monitoring environments in which to control inventory for patient monitoring devices 110, 200, 300 and sensors 202. If there are additional hospitals or patient monitoring environments,

the master inventory control process 1300 returns to step 1302 and repeat steps 1304-1308. Otherwise, the master inventory control process 1300 moves to end step 1310.

[0198] FIG. 14 is a flowchart showing an exemplary master software version control process 1400 to upgrade software for patient monitoring devices 110, 200, 300 and sensors 202 in multiple patient monitoring environments. At step 1402, the master software version control process 1400 receives a hospital identifier identifying the patient monitoring environment. At step 1404, the master software version control process 1400 retrieves software information for the patient monitoring devices 110, 200, 300 and sensors 202 associated with the identified hospital. At step 1406, the master software version control process 1400 performs a software upgrade process. In an embodiment, at step 1406, the master software version control process 1400 performs the software upgrade process 800, 850. At step 1408, the master software version control process 1400 determines if there are more hospitals or patient monitoring environments in which to upgrade software for patient monitoring devices 110, 200, 300 and sensors 202. If there are additional hospitals or patient monitoring environments, the master software version control process 1400 returns to step 1402 and repeat steps 1404-1408. Otherwise, the master software version control process 1400 moves to end step 1410.

[0199] FIG. 15 is an exemplary screen shot illustrating access to the processes 1200, 1300, 1400 of FIGS. 12-14 from the master terminal 1142. In an embodiment, the user or administrator enters the hospital identifier and selects "licensing" to begin the master dynamic licensing process 1200, selects "inventory" to begin the master inventory control process 1300, or selects "upgrade" to begin the master software upgrade process 1400.

#### Dual Processors

[0200] FIG. 16 is a flow diagram illustrative of an embodiment of a routine implemented by one or more processors of a patient monitoring system to ensure the processors in the system are running properly. In some embodiments, the routine 1600 is implemented by at least two processors, where each respective processor ensures the other processor is running properly. Accordingly, in some embodiments, the patient monitoring system includes multiple processors which perform checks and maintenance on each other to ensure that at least one processor of the patient monitoring system is running properly. It will be understood that the various steps described herein with reference to FIG. 16 can be implemented in a variety of orders. For example, the patient monitoring system can implement some steps concurrently or change the order, as desired. Furthermore, it will be understood that fewer, more, or different steps can be used as part of the routine 1600. In addition, it will be understood that multiple processors of the patient monitoring system may be implementing the routine simultaneously or at overlapping or non-overlapping periods.

[0201] At step 1602, a first processor queries a second processor. The first and second processors can be separate and distinct from each other. In some embodiments, the query is a request for the second processor to send the first processor data which the first processor can use to determine whether the second processor is running properly. For instance, the query may include a request for the second processor to send the first processor a specific piece of information. In examples such as these, the first processor

can determine whether the second processor is running correctly based at least in part on whether the first processor receives the correct information it requested via the query.

[0202] In response to receiving the query from the first processor, the second processor can generate a data signal indicative of one or more operating conditions of the second processor. For instance, the operating conditions of the second processor can include processor speed, percent of capacity usage of the processor, processor temperature, error logs, health status, etc. As one non-limiting example, the second processor may continuously or periodically determine an estimation of its own health status. Upon receipt of the query from the first processor, the second processor can transmit a signal indicative of the determined health status.

[0203] In some embodiments, the first processor does not query the second processor for information. Instead, the first processor can itself monitor certain aspects of the second processor. For instance, the first processor can monitor the temperatures and voltages of the second processor.

[0204] At step 1604, the first processor receives the data signal sent from the second processor. As mentioned above, the data signal can be indicative of one or more operative conditions of the second processor. For instance, the data signal can be associated and/or correlated with at least one of processor speed, processor temperature, voltages, error logs, or health status of the second processor.

[0205] At step 1606, the first processor determines a health status of the second processor. For instance, the first processor can determine the one or more operating conditions, and based on the one or more operating conditions, the first processor can determine a health status of the second processor. In some embodiments, the health status can be a percentage, such as on the scale of 0 to 100 percent. In other embodiments, the health status can have a binary range, such as 0 or 1, or can be one of a plurality of ranked categories such as "Great," "Good," "Ok," "Bad."

[0206] The determination of the health status can be based on whether the one or more operating parameters fall within a specific range or threshold. For example, a processor temperature at or below 60 degrees Celsius can be indicative of health status of 90%, 1, or Good. Likewise, a processor temperature at or above 100 degrees Celsius can be indicative of health status of 10%, 0, or Bad. As another example, the health status can be based on a percentage of capacity of the processor. If processor usage is around 100%, it can be indicative of the processor doing more work than it has the capacity for. Thus, if the processor is running at near 100%, it could indicate that the processor is not running properly or is performing too many tasks. Accordingly, a high percentage of capacity usage (e.g., above 90%) can be indicative of a low health status (e.g., 20%, 0, or Bad). It should be understood that the health status of the second processor can be determined based on an individual operating condition or a compilation of operating conditions. For instance, the health status can be based on a weighted aggregation of operating parameters.

[0207] At step 1608, the first processor determines whether the health status satisfies a threshold health status. As mentioned above, the threshold health status can be a specific percentage (e.g., 75%, 80%, 85%, and 90%). Alternatively, the health status can satisfy a binary threshold (e.g., 1 or 0) or the threshold health status can be satisfied if the health status is one of plurality of categories (e.g., "Great" or "Good"). In some embodiments, the first processor may

not determine a health status of the second processor. Instead, for instance, the first processor may monitor temperatures and voltages of the second processor. If any of the temperatures or voltages are above a threshold, the first processor can initiate maintenance on the second processor (step 1610).

[0208] If the first processor determines that the second processor is healthy and running properly, the first processor can return to step 402 and restart the routine 1600. In some embodiments, the first processor continuously implements routine 1600. In other embodiments, the first processor periodically implements routine 1600 (e.g., every 30 sec, 1 min, 5 min, 30 min, 1 hr.).

[0209] At step 1610, if the health status does not satisfy the threshold health status, the first processor can initiate maintenance on the second processor. For instance, the first processor can perform some action which may adjust the health status of the second processor such that it satisfies the threshold health status. In some embodiments, the first processor restarts the second processor. In other embodiments, the first processor places the second processor in a “safe mode” or safe state.

[0210] As mentioned above, one or more additional processors can implement routine 1600. For instance, in some embodiments the second processor can implement the routine 1600 such that it is monitoring the first processor. Accordingly, the first and second processor would each be performing checks on the other. Alternatively, the second process can implement routine 1600 such that it is monitoring a third processor, which is separate and distinct from the first and second processors. In examples such as these, the third processor can implement routine 1600 such that it is monitoring the first processor. Accordingly, a circular monitoring process ensures, such that the first processor is monitoring the second processor, the second processor is monitoring the third processor, and the third processor is monitoring the first processor. It should be noted that any number of processors can be utilized in this manner. In addition, in some instances it may be advantageous for multiple processors to monitor the same processor. For example, in some embodiments, the second and third processor both monitor the first processor.

[0211] In some embodiments, each of the processors can have different functions and/or capabilities. For instance, the first processor can have higher capabilities than the second processor. As another example, the first processor can be an Application Processor System-on-Chip and the second processor can be a Supervisor microcontroller. In examples such as these, functionality of the patient monitoring device can be divided between the multiple processors. For instance, the Supervisor microcontroller can, among other things, control the boot up of the Application Processor as well as monitor the temperatures and voltages of the Application Processor. In addition, the Supervisor processor can also monitor “watchdog” messages from the Application Processor and can place the Application Processor in a safe state if communication fails. Similarly, Applications Processor software can monitor the Supervisor Processor. The Applications Processor can utilize extra capacity of the Supervisor Processor during operation. In addition, the Supervisor Processor can take over application operation from the Applications Processor at least temporarily while the Applications Processor reboots or is restored to health. In

a situation when the Supervisor Processor takes over, it can operate a limited version of the application software or it can operate a full version.

Upgrading with Daughterboard

[0212] FIG. 17 is a diagram illustrative of an embodiment of a patient monitor. An important aspect of all medical device development includes obtaining medical device safety certifications. That is, evidencing that the safety certification has been performed in accordance with the appropriate safety standard. These certifications are extremely important in protecting the health and safety of patients, but come at the cost of delaying many completely safe medical devices and thereby delaying patients from receiving the best and most helpful patient care. Even if a medical device has received all of the required safety certifications, a minor hardware upgrade can necessitate re-certification. Accordingly, especially in fields which are constantly evolving, receiving these certifications can be a constant, time-intensive, expensive, tedious, process. For example, a wireless chipset is a constantly upgraded piece of hardware designed to allow a device to communicate with another wireless-enabled device. Wireless chipsets can be found in many medical devices and therefore pose a constant safety-re-certification problem. Conventionally, a wireless chip set is soldered or otherwise connected to a motherboard. Consequently, the entire motherboard needs re-certification.

[0213] Accordingly, it is an aspect of the present disclosure to speed up the safety certification process by reducing what portions of the medical device need to be recertified. In some embodiments, the present physiological monitoring system advantageously simplifies the certification process by utilizing a daughterboard 1704 to upgrade the accessory of the medical device 1701. For purposes of this disclosure, a daughterboard 1704 can be a circuit board that plugs into, wireless communicates, solders onto, or otherwise connects to and extends the circuitry of the main processor board (e.g., motherboard 1702). By utilizing one or more daughterboards 1704 in addition to the motherboard 1702, the certification process can be simplified because, in some instances, only the daughterboard 1704 needs to be certified. Thus, the implementation of a daughterboard 1704 provides flexibility for interfacing with future devices without necessitating a complete re-certification of the motherboard 1702 of the medical device 1701.

Battery

[0214] FIG. 18 is a diagram illustrative of an embodiment of a patient monitor. Battery management has become a key focus. Longer lasting and more reliable batteries not only provide increased convenience, but can also aid in providing better health care, for instance when the batteries are utilized in patient monitors. Batteries, such as Lithium-ion batteries, can offer extremely high energy density, making them ideal for use in portable device. The high energy density enables a small battery to provide a useful amount of power. However, batteries can be treacherous when fully charged, and if something causes the battery to fail in a way that releases this power quickly, the results can be personal injury or destruction of nearby electronics.

[0215] Accordingly, it is an object of the present disclosure to reduce the likelihood of a battery 1804 of a medical device 1801 discharging into and ruining electrical components 1802 of the medical device 1801. In particular, it is an

object of the present disclosure to reduce the odds of a battery discharging into electrical components **1802** during shipping. Accordingly, in some embodiments, the battery **1804** can be disconnected from the medical device **1801** during shipping. This can reduce the likelihood of the battery **604** discharging into the electronics **1802** of the medical device **1801**. In some embodiments, the battery **1804** may be physically separated from the medical device **1801**. In alternative embodiments, the medical device **1801** may be set to a SHIPPING MODE which can electronically disconnect (for example, via a switch **1806**) the battery **1804** from the medical device **1801**. The medical device **1801** can be automatically or manually switched from the SHIPPING MODE to a USE MODE, which can re-connect the battery **1804** to the medical device **1801**. In some embodiments, the medical device **1801** can switch to USE MODE automatically once the medical device **1801** is turned on.

[0216] In addition, overcharging or leaving a battery at full charge is a variable that can shorten the life of a battery. For instance, fully charging a battery can, for example, cause it to overheat which can result in a shorter lifespan. In some embodiments, a battery of a physiological monitoring device may have a life of approximately 350-500 charges. However, by not fully charging the battery, the battery can maintain a longer battery life. In addition, a battery can have a four hour battery life. By continuously preventing the battery from reaching full charge, the battery life (in hours) can be generally maintained throughout the entire life of the battery (in charges). Accordingly, it is an object of the present disclosure to provide a battery which is not fully charged, for example, during shipment of the physiological monitoring device.

#### Recommended Care

[0217] Hospitals can be very stressful environments for the patients as well as the doctors and nurses. The nurses and doctors can be understaffed and overworked and can easily get caught up in a situation when some patients are checked on left often then they should be. While hospitals generally have systems in place which require or suggest a standard of care, for instance requiring a nurse to check on a patient every four hours, some patients require a much more frequent observation. Accordingly, it is an object of the present disclosure to provide a recommended care protocol (e.g., frequency of observations) based at least in part on the patient's current health status.

[0218] FIG. 19 is a flow diagram illustrative of an embodiment of a routine **1200** for providing a recommended care protocol. It will be understood that the various steps described herein with reference to FIG. 19 can be implemented in a variety of orders. For example, the patient monitoring system can implement some steps concurrently or change the order, as desired. Furthermore, it will be understood that fewer, more, or different steps can be used as part of the routine **1900**.

[0219] At step **1902**, the patient monitoring device monitors a patient's health status using a first processor. For instance, the first processor can monitor the patient's vital signs or other physiological parameters. In some embodiments, the first processor is an application processor or a supervisor processor, such as described with respect to FIG. 16.

[0220] At step **1904**, a second processor determines a recommended care protocol based at least in part on the

health status monitored by the first processor. In some embodiments, the first and second processors are the same processor. For instance, the second processor can be a separate application layer running on the first processor that does not affect the functions of the first processor. In some embodiments, the first and second processors are separate and distinct processors. For instance, it is important that the first processor accurately monitor the health status of the patient. Thus, the second processor can be separate and distinct from the first processor so that the first processor does not get bogged down determining a recommended care protocol.

[0221] The second processor can determine the recommended care protocol in a variety of ways. For instance, the second processor can receive the health status, vital signs, or physiological parameters from the first processor and use a predefined library to determine a recommended care protocol. For instance, the first processor determines that the blood pressure is very high (e.g., 160/100), then the second processor can use the library to look up a recommended care protocol for a very high blood pressure. In some instances, the recommended care protocol can suggest that a nurse visit a particular patient every 15, 30, or 45 min or every 1, 2, 3, 4, or 5+ hours. At step **1906**, an indication of the recommended care protocol is provided at an end user point. For instance, the indication can be provided on a patient monitoring system, such as a Masimo ROOT® device, or at a nurses' station.

#### Hardware Encryption

[0222] Because medical device technology is constantly advancing, medical device providers, such as Masimo Corporation, are constantly developing new upgrades for their devices and systems. Thus, securely upgrading the medical device has become an item of concern. Providers want to provide upgrades to their devices but they want to limit unauthorized access to data and use of their equipment.

[0223] Software encryption programs can be used to protect devices within an organization, and these solutions can be cost effective as well as easy to use, upgrade and update. Software encryption can protect data at rest, in transit, and stored on different devices. Software-based encryption often includes additional security features that complement encryption, which cannot come directly from the hardware.

[0224] The protection granted by these solutions, however, is as strong as the level of security of the operating system of the device. A security flaw in the OS can easily compromise the security provided by the encryption code. Encryption software can also be complicated to configure for advanced use and, potentially, could be turned off by users. Performance degradation is a notable problem with this type of encryption.

[0225] Accordingly, it is an object of the present disclosure to provide a method of securely upgrading a system image of a device that uses hardware based encryption. Hardware-based encryption can use a device's on-board security to perform encryption and decryption. It can be self-contained and does not require the help of any additional software. Therefore, in some embodiments, it is free from the possibility of contamination, malicious code infection, or vulnerability.

[0226] Hardware encryption is tied to a particular device and one solution cannot be applied to the entire system and all its parts. Therefore, hardware-based encryption offers

stronger resilience against attacks. In general, malicious hackers cannot apply brute-force attacks to a hardware-encrypted system as the crypto module can shut down the system and possibly compromise data after a certain number of password-cracking attempts.

[0227] FIG. 20 is a flow diagram illustrative of an embodiment of a routine 2000 for securely upgrading a system image of a device by utilizing hardware based encryption. It will be understood that the various steps described herein with reference to FIG. 20 can be implemented in a variety of orders. For example, the patient monitoring system can implement some steps concurrently or change the order, as desired. Furthermore, it will be understood that fewer, more, or different steps can be used as part of the routine 2000.

[0228] At step 2002, one or more system image upgrades are generated, for instance, at a first server. As described above, because each device is encrypted at the hardware level, a particular system image upgrade is useful for only one specific device having a particular hardware encryption configuration. Accordingly, in some embodiments, a different system image must be generated for each particular device. However, in some embodiments, more than one device can use the same system image upgrade.

[0229] At step 2004, the first server breaks the one or more system image upgrades into a plurality of data packets for transmission to the second server. In some embodiments, the system image upgrades can be further secured by encrypting the data packets. By separating the image into a plurality of data packets, no single or even small group of packets is usable to determine the image. Moreover, groups of packets are not usually transferred to the end destination of the exact same internet hops. Thus, it is further unlikely that a malicious hacker would be able to obtain all of the packets to reassemble the image. Moreover, the packets can be encrypted or scrambled such that only the end server is capable of reassembling the packets. At step 2006, the first server transmits one or more of the plurality of data packets to a second server, for instance a hospital server.

[0230] At step 2008, the second server receives the one or more data packets from the first server. At step 2010, the second server reassembles the packets to generate the one or more system image upgrades. In some embodiments, the second server must decrypt the packets before generating the one or more system image upgrades.

[0231] At step 2012, the second sever uploads a system image upgrade to a specific device having the required specific hardware configuration. In some embodiments, to provide further security, a system image upgrade cannot be installed a second time, even on the device with the correct hardware configuration. Instead, a new system image upgrade must be generated (step 2002). Advantageously, even if one or more of the system image upgrades are intercepted by a hacker, those upgrades only work on devices with specific hardware configurations. Thus, even if the upgrade were intended for a patient monitoring device of model A, the stolen system image upgrade would not be able to provide an upgrade to another monitoring device of model A because the another device does not have the specific hardware encryption configuration.

[0232] Because each device is encrypted at a hardware level, it can be costly to manufacture each of the devices. However, in some instances, the added security outweighs the additional costs.

## Terminology

[0233] The embodiments disclosed herein are presented by way of examples only and not to limit the scope of the claims that follow. One of ordinary skill in the art will appreciate from the disclosure herein that many variations and modifications can be realized without departing from the scope of the present disclosure.

[0234] The term “and/or” herein has its broadest least limiting meaning which is the disclosure includes A alone, B alone, both A and B together, or A or B alternatively, but does not require both A and B or require one of A or one of B. As used herein, the phrase “at least one of A, B, and C” should be construed to mean a logical A or B or C, using a non-exclusive logical or.

[0235] The description herein is merely illustrative in nature and is in no way intended to limit the disclosure, its application, or uses. For purposes of clarity, the same reference numbers will be used in the drawings to identify similar elements. It should be understood that steps within a method may be executed in different order without altering the principles of the present disclosure.

[0236] As used herein, the term module may refer to, be part of, or include an Application Specific Integrated Circuit (ASIC); an electronic circuit; a combinational logic circuit; a field programmable gate array (FPGA); a processor (shared, dedicated, or group) that executes code; other suitable components that provide the described functionality; or a combination of some or all of the above, such as in a system-on-chip. The term module may include memory (shared, dedicated, or group) that stores code executed by the processor.

[0237] The term code, as used above, may include software, firmware, and/or microcode, and may refer to programs, routines, functions, classes, and/or objects. The term shared, as used above, means that some or all code from multiple modules may be executed using a single (shared) processor. In addition, some or all code from multiple modules may be stored by a single (shared) memory. The term group, as used above, means that some or all code from a single module may be executed using a group of processors. In addition, some or all code from a single module may be stored using a group of memories.

[0238] The apparatuses and methods described herein may be implemented by one or more computer programs executed by one or more processors. The computer programs include processor-executable instructions that are stored on a non-transitory tangible computer readable medium. The computer programs may also include stored data. Non-limiting examples of the non-transitory tangible computer readable medium are nonvolatile memory, magnetic storage, and optical storage. Although the foregoing invention has been described in terms of certain preferred embodiments, other embodiments will be apparent to those of ordinary skill in the art from the disclosure herein. Additionally, other combinations, omissions, substitutions and modifications will be apparent to the skilled artisan in view of the disclosure herein. Accordingly, the present invention is not intended to be limited by the reaction of the preferred embodiments, but is to be defined by reference to claims.

[0239] Additionally, all publications, patents, and patent applications mentioned in this specification are herein incorporated by reference to the same extent as if each individual

publication, patent, or patent application was specifically and individually indicated to be incorporated by reference.

1. In a caregiver environment having a plurality of patient monitoring devices, each patient monitoring device configured to monitor one or more physiological parameters of one or more patients, at least some of the patient monitoring devices include hardware and software configured to monitor multiple physiological parameters or a subset thereof depending upon whether a caregiver facility has properly activated any one or more such physiological parameters on a given patient monitoring device, a system that activates the monitoring of one or more physiological parameters through dynamic licensing, the system comprising:

a first patient monitoring system comprising a first physiological sensor configured to sense light after it has passed through tissue of a first patient and generate a first signal indicative of one or more first physiological parameters of the first patient in response to the sensed light associated with the first patient, and a first patient monitoring device in communication with the first physiological sensor and configured to receive the first signal and, when appropriately activated, determine one or more corresponding measurements of the one or more first physiological parameters of the first patient from the received first signal;

a second patient monitoring system comprising a second physiological sensor configured to sense light after it has passed through tissue of a second patient and generate a second signal indicative of one or more second physiological parameters of the second patient in response to the sensed light associated with the second patient, and a second patient monitoring device in communication with the second physiological sensor and configured to receive the second signal and, when appropriately activated, determine one or more corresponding measurements of the one or more physiological parameters of the second patient from the received second signal; and

a service appliance comprising an administrator terminal, memory storing a configuration table, and one or more hardware processors, the service appliance in communication with the first and second patient monitoring devices the one or more hardware processors of the service appliance configured to:

receive licensing information for the first patient monitoring device, wherein the licensing information comprises an indication of at least an activated physiological parameter, an indication of one or more unactivated physiological parameters, and a licensing duration;

retrieve device information associated with the first patient monitoring device from the configuration table of the service appliance, the device information comprising an address of the first patient monitoring device;

transmit to the first patient monitoring device, updated licensing information comprising new activation of at least one of the one or more unactivated physiological parameters; and

generate a license to indicate that the first patient monitoring device is configured to monitor the new activated at least one physiological parameter for the licensing duration, the license comprising a license number; and

update the device information of the first patient monitoring device in the configuration table of the service appliance with an indication of the new activated at least one physiological parameter and the license number.

2. The system of claim 1 wherein the at least an activated physiological parameter comprises at least one of oxygen saturation (SpO<sub>2</sub>), hemoglobin (Hb), oxyhemoglobin (HbO<sub>2</sub>), total hemoglobin, carboxyhemoglobin, methemoglobin, perfusion index (Pi), and pulse rate (PR).

3. The system of claim 1 wherein the one or more unactivated physiological parameters comprise at least one of blood pressure, temperature, electrocardiogram (ECG), motion data, accelerometer data, respiration, continuous blood pressure, pleth variability index, oxygen content, oxygen reserve index, acoustic respiration rate (RRa), and respiration rate from the pleth.

4. The system of claim 1 wherein the licensing information further comprises a location in the caregiver environment where the first patient monitoring device is permitted to monitor the new activated at least one physiological parameter and the one or more hardware processors are further configured to update the device information of the first patient monitoring device in the configuration table with the location.

5. The system of claim 1 wherein the one or more hardware processors are further configured to adjust, in response to the licensing information, a quantity of available licenses for the new activated at least one physiological parameter in an inventory database.

6. The system of claim 5 wherein the one or more hardware processors are further configured to automatically order additional licenses for the new activated at least one physiological parameter when the quantity of available licenses for the new activated at least one physiological parameter in the inventory database falls below a minimum quantity.

7. The system of claim 1 wherein the first patient monitoring device includes a device processor and device memory including a first image module and a second image module, the first patient monitoring device configured to determine which of the first image module and the second image module is the latest image module.

8. The system of claim 7 wherein the first patient monitoring device is further configured to boot the device processor from the latest image module of the first and second image modules and after the boot from the latest image module, boot the device processor from the other of the first and second image modules when the latest image module causes the first patient monitoring device to operate incorrectly.

9. The system of claim 8 wherein the one or more hardware processors are further configured to access a software upgrade database to determine whether an image upgrade is available for the first patient monitoring device, and upgrade one of the first and second image modules with the available image upgrade.

10. In a caregiver environment having a plurality of patient monitoring devices, each patient monitoring device configured to monitor one or more physiological parameters of one or more patients, at least some of the patient monitoring devices include hardware and software configured to monitor multiple physiological parameters or a subset thereof depending upon whether a caregiver facility has

properly activated any one or more such physiological parameters on a given patient monitoring device, a method to activate the monitoring of one or more physiological parameters through dynamic licensing, the method comprising:

- as implemented by one or more computing devices configured with specific executable instructions,
- receiving licensing information for a patient monitoring device, wherein the licensing information comprises an indication of at least an activated physiological parameter, an indication of one or more unactivated physiological parameters, and a licensing duration;
- retrieving device information associated with the patient monitoring device from a configuration table, the device information comprising an address of the patient monitoring device;
- transmitting to the patient monitoring device, updated licensing information comprising new activation of at least one of the one or more unactivated physiological parameter;
- generating a license to indicate that the patient monitoring device is configured to monitor the new activated at least one physiological parameter for the licensing duration, the license comprising a license number; and
- updating the device information for the patient monitoring device in the configuration table with an indication of the new activated at least one parameter and the license number.

**11.** The method of claim **10** further comprising updating a quantity of available patient monitoring devices in an inventory database in response to the licensing information.

**12.** The method of claim **11** further comprising automatically ordering additional patient monitoring devices when a quantity of available patient monitoring devices in the inventory database falls below a minimum quantity.

**13.** The method of claim **10** further comprising receiving software upgrade instructions for the patient monitoring device, and pushing an upgraded version of modules residing on the patient monitoring device to memory on the patient monitoring device.

**14.** The method of claim **13** further comprising determining that an override is enabled, and after determining that the override is enabled, downloading the upgraded version of the modules into the patient monitoring device.

**15.** In a caregiver environment having a plurality of patient monitoring devices, each patient monitoring device configured to monitor one or more physiological parameters of one or more patients, at least some of the patient monitoring devices include hardware and software configured to monitor multiple physiological parameters or a subset thereof depending upon whether a caregiver facility has properly activated any one or more such physiological parameters on a given patient monitoring device, Aa licensing digital processing system that activates monitoring of one or more physiological parameters through dynamic licensing, the licensing digital processing system comprising:

- at least one patient monitoring device; and
- a server in a first computing device comprising computer hardware configured to:
  - receive licensing information for the at least one patient monitoring device, wherein the licensing information comprises an indication of at least one or more unactivated physiological parameters and a licensing duration;
  - retrieve device information associated with the at least one patient monitoring device from a configuration table of the server, the device information comprising an address of the at least one patient monitoring device;
  - transmit to the at least one patient monitoring device, updated licensing information comprising new activation of at least one of the one or more unactivated physiological parameters;
  - generate a license to indicate that the at least one patient monitoring device is configured to monitor the new activated at least one physiological parameter for the licensing duration, the license comprising a license number; and
  - update the device information for the at least one patient monitoring device in the configuration table of the server with an indication of the new activated at least one physiological parameter and the license number.

**16.** The licensing digital processing system of claim **15** wherein the computer hardware is further configured to adjust an inventory database that comprises quantities of available patient monitoring devices and available licenses in response to the licensing information.

**17.** The licensing digital processing system of claim **16** wherein the computer hardware is further configured to automatically generate a purchase order for additional patient monitoring devices when an adjusted quantity of available patient monitoring devices is less than a minimum quantity.

**18.** The licensing digital processing system of claim **15** wherein the computer hardware is further configured to automatically verify versions of modules residing on the at least one patient monitoring device and update the device information of the at least one patient monitoring device in the configuration table with the verified versions of the modules residing on the at least one patient monitoring device.

**19.** The licensing digital processing system of claim **18** wherein the computer hardware is further configured to automatically push updated images of the modules to the at least one patient monitoring device.

**20.** The licensing digital processing system of claim **19** wherein the computer hardware is further configured to automatically reset the at least one patient monitoring device after pushing the updated images of the modules when the at least one patient monitoring device is at a time of non-monitoring and update the configuration table with a version of the updated images of the modules residing on the at least one patient monitoring device.

\* \* \* \* \*

专利名称(译)	在患者监测环境中管理生理参数的动态许可		
公开(公告)号	<a href="#">US20180247353A1</a>	公开(公告)日	2018-08-30
申请号	US15/903845	申请日	2018-02-23
[标]申请(专利权)人(译)	梅西莫股份有限公司		
申请(专利权)人(译)	Masimo公司		
当前申请(专利权)人(译)	Masimo公司		
[标]发明人	AL ALI YASER AMMAR AL ALI AMMAR TRINH PHILIP B MUHSIN BILAL RUMBAUGH II RONALD KEITH		
发明人	AL-ALI, YASER AMMAR AL-ALI, AMMAR TRINH, PHILIP B. MUHSIN, BILAL RUMBAUGH, II, RONALD KEITH		
IPC分类号	G06Q30/06 G06F8/65 A61B5/1455 A61B5/145 A61B5/024 A61B5/00		
CPC分类号	G06Q30/0601 G06F8/65 A61B5/14551 A61B5/14546 A61B5/02416 A61B5/746 G06Q2220/18 A61B5/0245 A61B5/021 A61B5/01 A61B5/0816 G06F21/105 G16H40/40 G16H40/67 G16H50/30		
优先权	62/560008 2017-09-18 US 62/463461 2017-02-24 US 62/463490 2017-02-24 US		
外部链接	<a href="#">Espacenet</a> <a href="#">USPTO</a>		

摘要(译)

动态许可系统允许设施管理员在护理人员确定应该监视新的生理参数时快速启用患者监测设备以监测先前未监测的生理参数。管理员通过动态许可模块选择患者监测设备并指示动态许可系统能够监测新的生理参数。管理员定义患者监测设备监测新参数的时间。管理员还可以选择医院中的位置，并且升级该位置处的一些或所有患者监测设备以监控新参数。动态许可系统创建许可协议以监视监视持续时间和/或监视位置的新参数。

