



US009044204B2

(12) **United States Patent**
Riley et al.

(10) **Patent No.:** **US 9,044,204 B2**
(45) **Date of Patent:** **Jun. 2, 2015**

(54) **APPARATUSES FOR SUPPORTING AND MONITORING A CONDITION OF A PERSON**

(71) Applicant: **Hill-Rom Services, Inc.**, Batesville, IN (US)

(72) Inventors: **Carl W. Riley**, Milan, IN (US); **Timothy J. Receveur**, Guilford, IN (US); **David L. Ribble**, Indianapolis, IN (US)

(73) Assignee: **Hill-Rom Services, Inc.**, Batesville, IN (US)

(*) Notice: Subject to any disclaimer, the term of this patent is extended or adjusted under 35 U.S.C. 154(b) by 0 days.

(21) Appl. No.: **14/011,833**

(22) Filed: **Aug. 28, 2013**

(65) **Prior Publication Data**
US 2013/0342351 A1 Dec. 26, 2013

Related U.S. Application Data

- (63) Continuation of application No. 12/881,285, filed on Sep. 14, 2010, now Pat. No. 8,525,680.
- (60) Provisional application No. 61/243,714, filed on Sep. 18, 2009, provisional application No. 61/243,741, filed on Sep. 18, 2009, provisional application No. 61/243,806, filed on Sep. 18, 2009, provisional application No. 61/243,825, filed on Sep. 18, 2009.

(51) **Int. Cl.**
A61B 5/08 (2006.01)
A61B 5/00 (2006.01)
A61B 5/0205 (2006.01)
A61B 5/11 (2006.01)

(52) **U.S. Cl.**
CPC **A61B 5/6892** (2013.01); **A61B 5/02055** (2013.01); **A61B 5/1113** (2013.01); **A61B 5/1117** (2013.01); **A61B 5/1126** (2013.01); **A61B 5/6887** (2013.01)

(58) **Field of Classification Search**
CPC A61B 5/6892
USPC 340/539.12, 573.1, 573.7, 626, 666, 340/667, 668, 506, 540; 705/2, 3; 600/300, 600/301, 529, 534, 595, 574, 587
See application file for complete search history.

(56) **References Cited**

U.S. PATENT DOCUMENTS

2,194,809 A 3/1940 Powell, Jr.
3,325,799 A 6/1967 Farris

(Continued)

FOREIGN PATENT DOCUMENTS

EP 2 417 908 A1 2/2012
JP 06315424 A2 11/1994

(Continued)

OTHER PUBLICATIONS

C. P. Subbe, et al., "Validation of a modified Early Warning Score in medical admissions", *Q J Med* 2001: 94: 521-526.

(Continued)

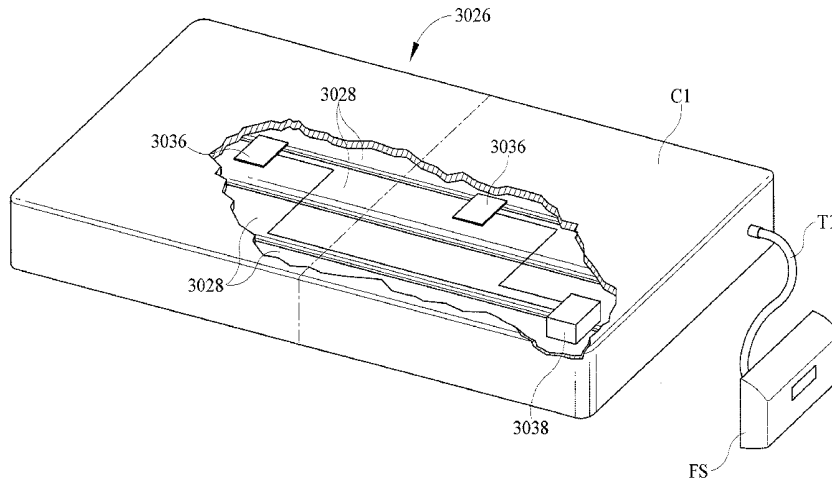
Primary Examiner — Van Trieu

(74) *Attorney, Agent, or Firm* — Barnes & Thornburg LLP

(57) **ABSTRACT**

A person monitoring system is operable to predict the onset of an adverse condition of a person. The system receives first information corresponding to a feature of a person support apparatus and second information corresponding to a physiological characteristic of the person. The system calculates a condition score as a function of the first and second information. In some instances, the system alerts a caregiver if the condition score exceeds a predetermined threshold. Alternatively or additionally, the person monitoring system alerts a caregiver when a person supported on a person support apparatus is regaining consciousness by monitoring one or more of a change in position, a heart rate, and a respiration rate. A person monitoring system that monitors a person's quality of sleep and presents information concerning the quality of sleep to one or more interested parties is also disclosed.

16 Claims, 8 Drawing Sheets



(56)

References Cited

U.S. PATENT DOCUMENTS

3,631,438 A 12/1971 Lewin
 3,644,950 A 2/1972 Lindsay, Jr.
 3,727,606 A 4/1973 Sielaff
 3,836,900 A 9/1974 Mansfield
 3,996,928 A 12/1976 Marx
 4,146,885 A 3/1979 Lawson, Jr.
 4,195,287 A 3/1980 McCoy et al.
 4,245,651 A 1/1981 Frost
 4,422,458 A 12/1983 Kravath
 4,481,686 A 11/1984 Lacoste
 4,483,029 A 11/1984 Paul
 4,485,505 A 12/1984 Paul
 4,525,885 A 7/1985 Hunt et al.
 4,559,656 A 12/1985 Foster
 4,564,965 A 1/1986 Goodwin
 4,595,023 A 6/1986 Bonnet
 4,602,643 A 7/1986 Dietz
 4,637,083 A 1/1987 Goodwin
 4,657,026 A 4/1987 Tagg
 4,677,857 A 7/1987 Feldmann
 4,681,098 A 7/1987 Lee
 4,694,520 A 9/1987 Paul et al.
 4,757,825 A 7/1988 Diamond
 4,799,276 A 1/1989 Kadish
 4,838,309 A 6/1989 Goodwin
 4,889,131 A 12/1989 Salem et al.
 4,934,468 A 6/1990 Koerber, Sr. et al.
 4,935,968 A 6/1990 Hunt et al.
 4,942,635 A 7/1990 Hargest et al.
 4,949,412 A 8/1990 Goode
 4,949,414 A 8/1990 Thomas et al.
 4,967,195 A 10/1990 Shipley
 4,971,065 A 11/1990 Pearce
 5,010,772 A 4/1991 Bourland et al.
 5,052,067 A 10/1991 Thomas et al.
 5,057,819 A 10/1991 Valenti
 5,060,174 A 10/1991 Gross
 5,101,828 A 4/1992 Welkowitz et al.
 5,117,518 A 6/1992 Schild
 5,170,364 A 12/1992 Gross et al.
 5,182,826 A 2/1993 Thomas et al.
 5,184,112 A 2/1993 Gusakov
 5,276,432 A 1/1994 Travis
 5,283,735 A 2/1994 Gross et al.
 5,448,996 A * 9/1995 Bellin et al. 600/574
 5,539,942 A 7/1996 Melou
 5,561,412 A 10/1996 Novak et al.
 5,664,270 A 9/1997 Bell et al.
 5,738,102 A 4/1998 Lemelson
 5,794,288 A 8/1998 Soltani et al.
 5,815,864 A 10/1998 Sloop
 5,817,146 A 10/1998 Augustine
 5,829,081 A 11/1998 Pearce
 5,873,137 A 2/1999 Yavets-Chen
 5,934,280 A 8/1999 Viard et al.
 5,964,720 A 10/1999 Pelz
 5,970,789 A 10/1999 Meyer et al.
 6,009,580 A 1/2000 Caminade et al.
 6,011,477 A 1/2000 Teodorescu et al.
 6,034,526 A 3/2000 Montant et al.
 6,067,019 A 5/2000 Scott
 6,067,466 A 5/2000 Selker et al.
 6,079,068 A 6/2000 Viard
 6,094,762 A 8/2000 Viard et al.
 6,208,250 B1 3/2001 Dixon et al.
 6,212,718 B1 4/2001 Stolpmann et al.
 6,493,568 B1 12/2002 Bell et al.
 6,560,804 B2 5/2003 Wise et al.
 6,721,980 B1 4/2004 Price et al.
 6,739,006 B2 5/2004 Borders et al.
 6,984,207 B1 1/2006 Sullivan et al.
 7,031,857 B2 4/2006 Tarassenko et al.
 7,048,697 B1 * 5/2006 Mitsuru 600/587
 7,077,810 B2 7/2006 Lange et al.
 7,127,948 B2 10/2006 Tavares et al.

7,183,930 B2 2/2007 Basir et al.
 7,242,306 B2 7/2007 Wildman et al.
 7,242,308 B2 7/2007 Ulrich et al.
 7,245,956 B2 7/2007 Matthews et al.
 7,248,933 B2 7/2007 Wildman
 7,253,366 B2 8/2007 Bhai
 7,289,844 B2 10/2007 Mischynski et al.
 7,296,312 B2 11/2007 Menkedick et al.
 7,304,580 B2 12/2007 Sullivan et al.
 7,306,564 B2 12/2007 Nakatani et al.
 7,314,451 B2 1/2008 Halperin et al.
 7,315,535 B2 1/2008 Schuman
 7,319,386 B2 1/2008 Collins, Jr. et al.
 7,330,127 B2 2/2008 Price et al.
 7,443,303 B2 10/2008 Spear et al.
 7,472,956 B2 1/2009 Makhous et al.
 7,515,059 B2 4/2009 Price et al.
 7,629,890 B2 12/2009 Sullivan et al.
 7,837,651 B2 * 11/2010 Bishop et al. 604/122
 7,970,631 B2 * 6/2011 Bruggeman et al. 705/3
 7,973,666 B2 7/2011 Petrosenko et al.
 8,525,680 B2 9/2013 Riley et al.
 2001/0004778 A1 6/2001 Heimbrock et al.
 2003/0144829 A1 7/2003 Geatz et al.
 2004/0111045 A1 6/2004 Sullivan et al.
 2005/0027416 A1 2/2005 Basir et al.
 2005/0124864 A1 6/2005 Mack et al.
 2005/0165284 A1 7/2005 Gefen
 2005/0168341 A1 8/2005 Reeder et al.
 2005/0190062 A1 9/2005 Sullivan et al.
 2005/0190068 A1 9/2005 Gentry et al.
 2005/0273940 A1 12/2005 Petrosenko
 2006/0101581 A1 5/2006 Blanchard et al.
 2006/0169282 A1 8/2006 Izumi et al.
 2006/0179952 A1 8/2006 Tavares et al.
 2006/0241510 A1 * 10/2006 Halperin et al. 600/534
 2007/0118054 A1 5/2007 Pinhas et al.
 2007/0210917 A1 9/2007 Collins, Jr. et al.
 2007/0247316 A1 10/2007 Wildman et al.
 2008/0060138 A1 3/2008 Price et al.
 2008/0094207 A1 4/2008 Collins, Jr. et al.
 2008/0095156 A1 4/2008 Schuman
 2008/0114260 A1 5/2008 Lange et al.
 2008/0146892 A1 6/2008 LeBoeuf et al.
 2008/0269625 A1 10/2008 Halperin et al.
 2008/0275349 A1 11/2008 Halperin et al.
 2008/0281170 A1 11/2008 Eshelman et al.
 2009/0054735 A1 2/2009 Higgins et al.
 2009/0062623 A1 3/2009 Cohen
 2009/0069642 A1 3/2009 Gao et al.
 2009/0088606 A1 4/2009 Chuddihy et al.
 2009/0093686 A1 4/2009 Hu et al.
 2009/0163774 A1 6/2009 Thatha et al.
 2009/0216556 A1 8/2009 Martin et al.
 2009/0326339 A1 12/2009 Horvitz
 2010/0099954 A1 4/2010 Dickinson et al.
 2010/0170043 A1 7/2010 Young et al.
 2010/0174198 A1 7/2010 Young et al.
 2011/0010014 A1 1/2011 Oexman et al.
 2011/0163885 A1 7/2011 Poulos et al.
 2011/0265026 A1 * 10/2011 Tarassenko et al. 715/771
 2012/0174322 A1 7/2012 Skinner et al.

FOREIGN PATENT DOCUMENTS

WO WO 2008/096307 A1 8/2008
 WO WO 2009/095877 A2 8/2009

OTHER PUBLICATIONS

Marilyn Hravnak et al., "Defining the Incidence of Cardiorespiratory Instability in Patients in Step-down Units Using an Electronic Integrated Monitoring System", *Arch Intern Med*, vol. 168 (No. 12), Jun. 23, 2008, 1300-1308.
 L. Tarassenko, et al., "Integrated monitoring and analysis for early warning of patient deterioration", *British Journal of Anaesthesia*, May 17, 2006, (5 pages).

US 9,044,204 B2

Page 3

Sufi et al., "A mobile phone based intelligent scoring approach for assessment of critical illness". Technology and Applications in Biomedicine, 2008. ITAB 2008. International Conference on IEEE, Piscataway, NJ USA, May 30, 2008, pp. 290-293. XP031289425.

European search report from EP 10 17 6765 dated Feb. 16, 2011, 11 pages.

* cited by examiner

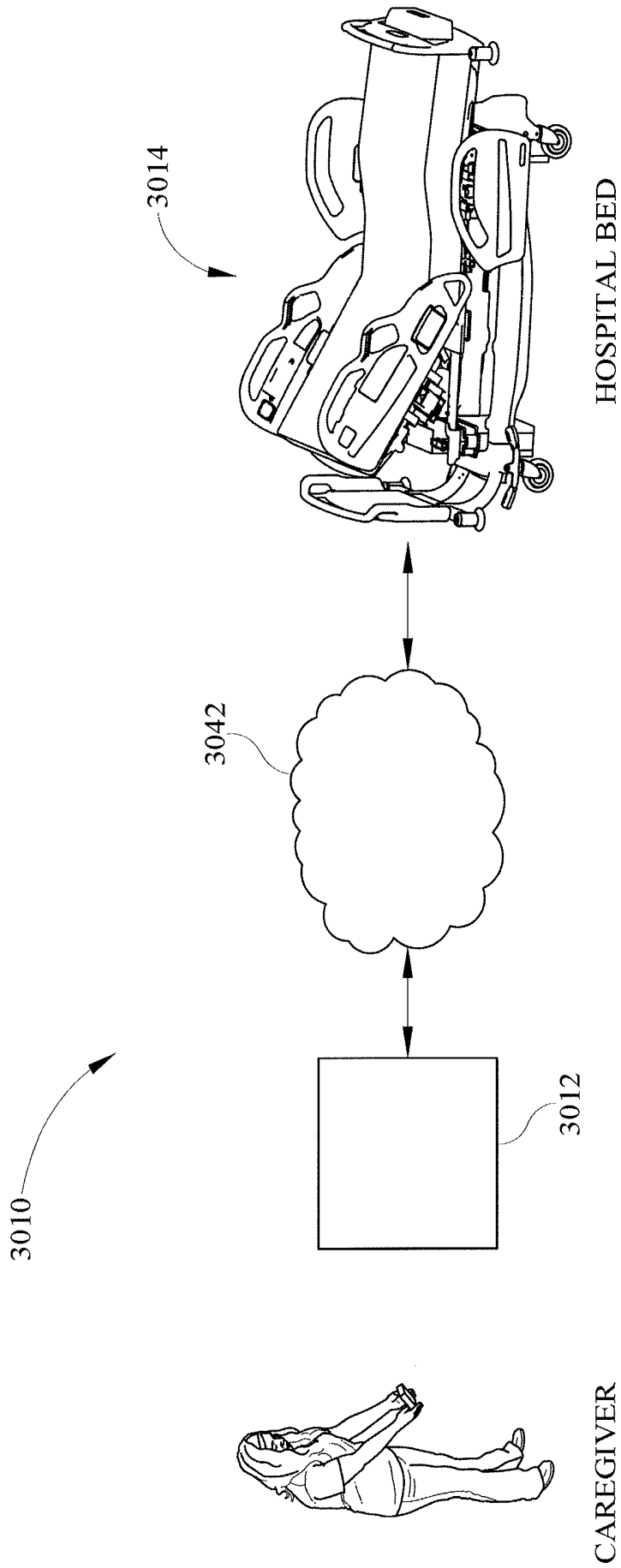


FIG. 1

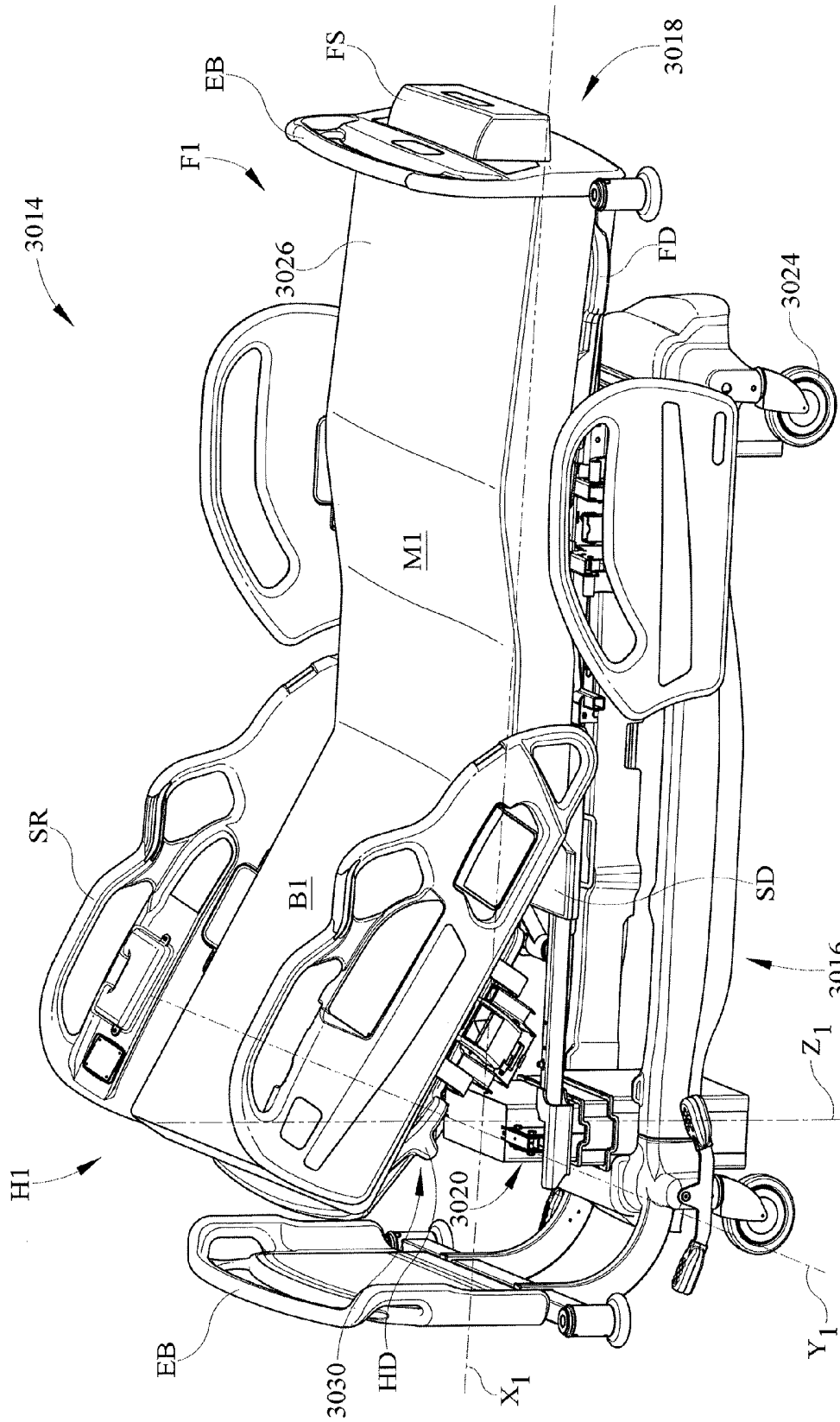


FIG. 2

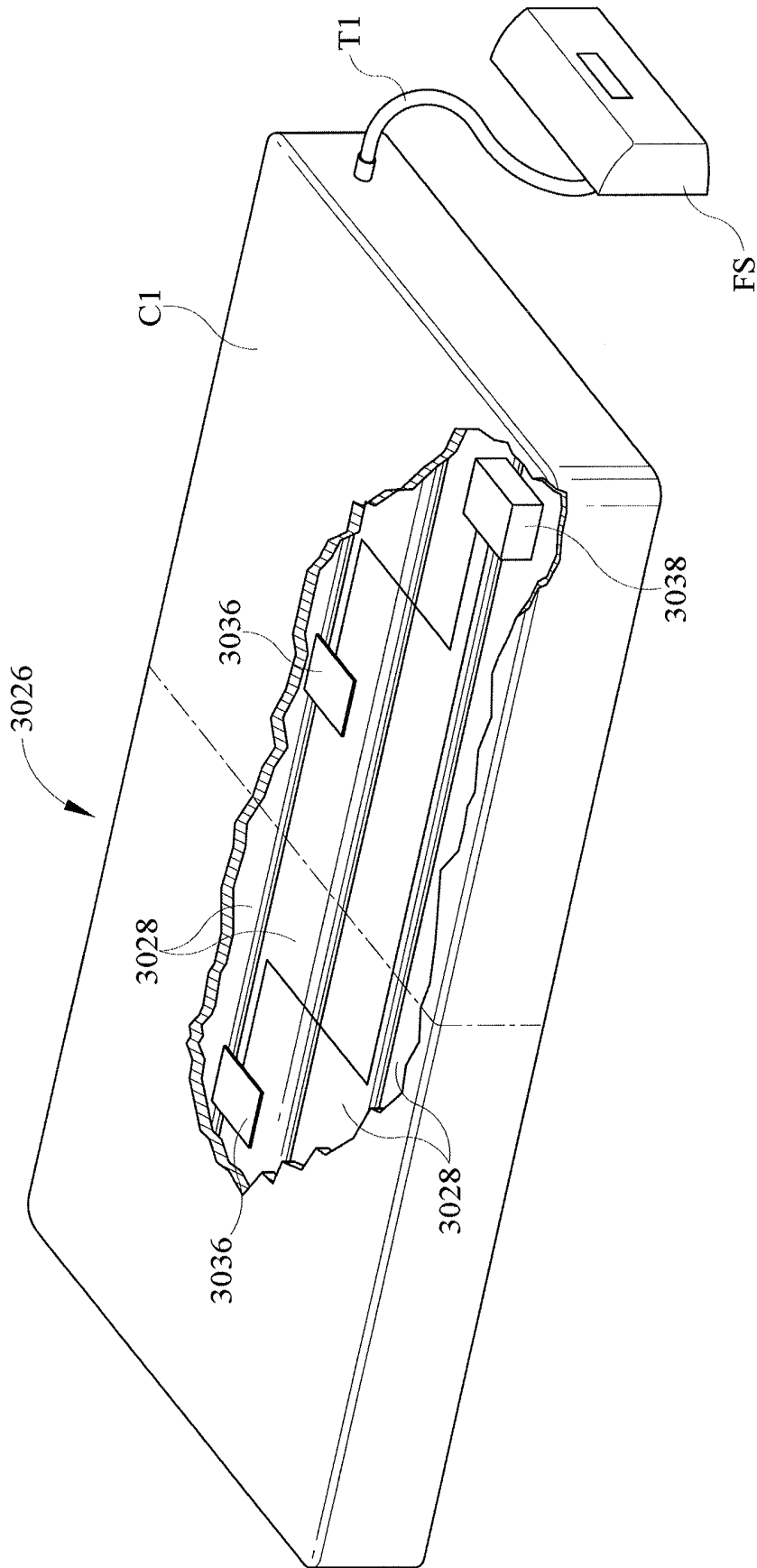


FIG. 3

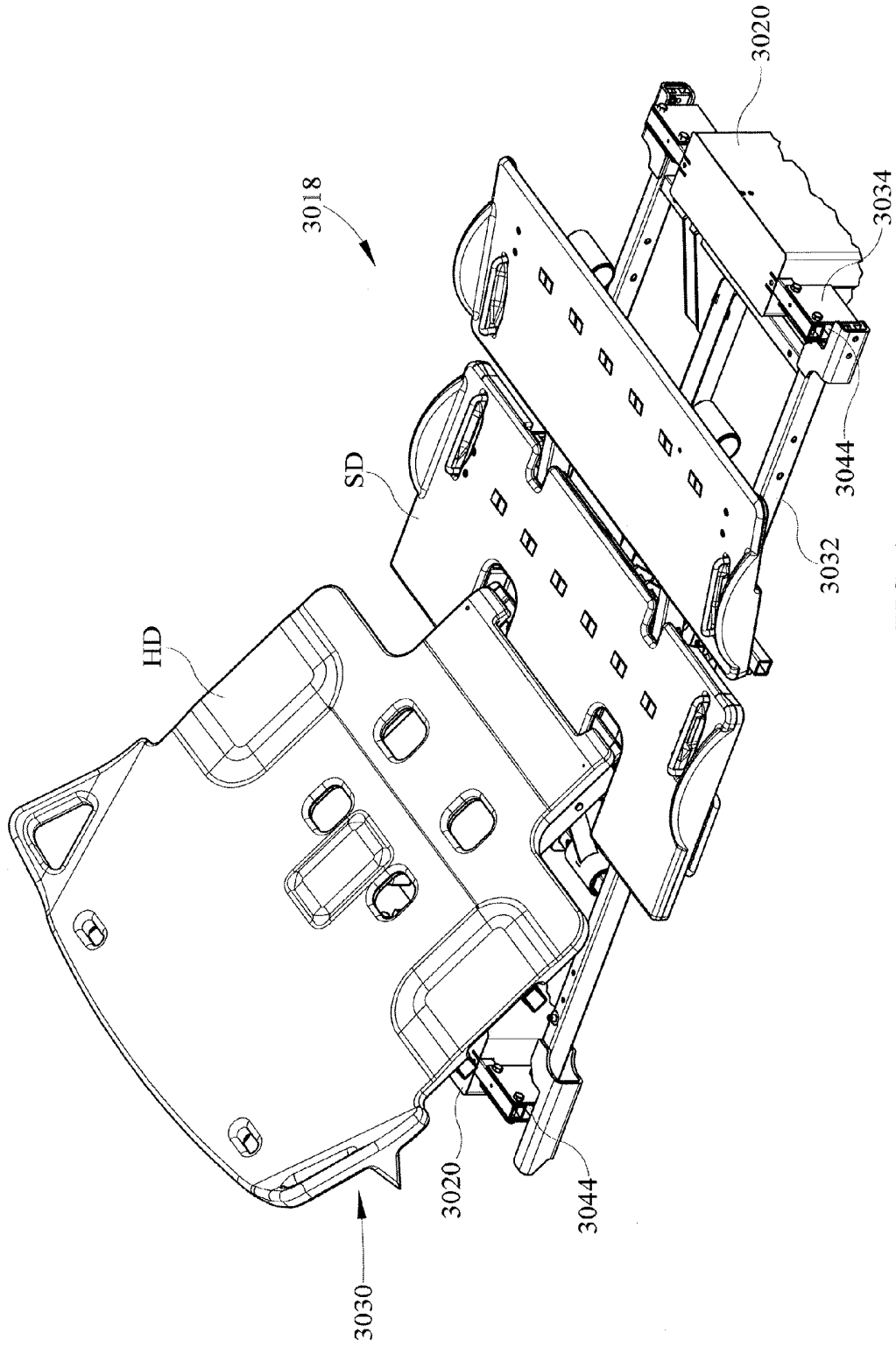


FIG. 4

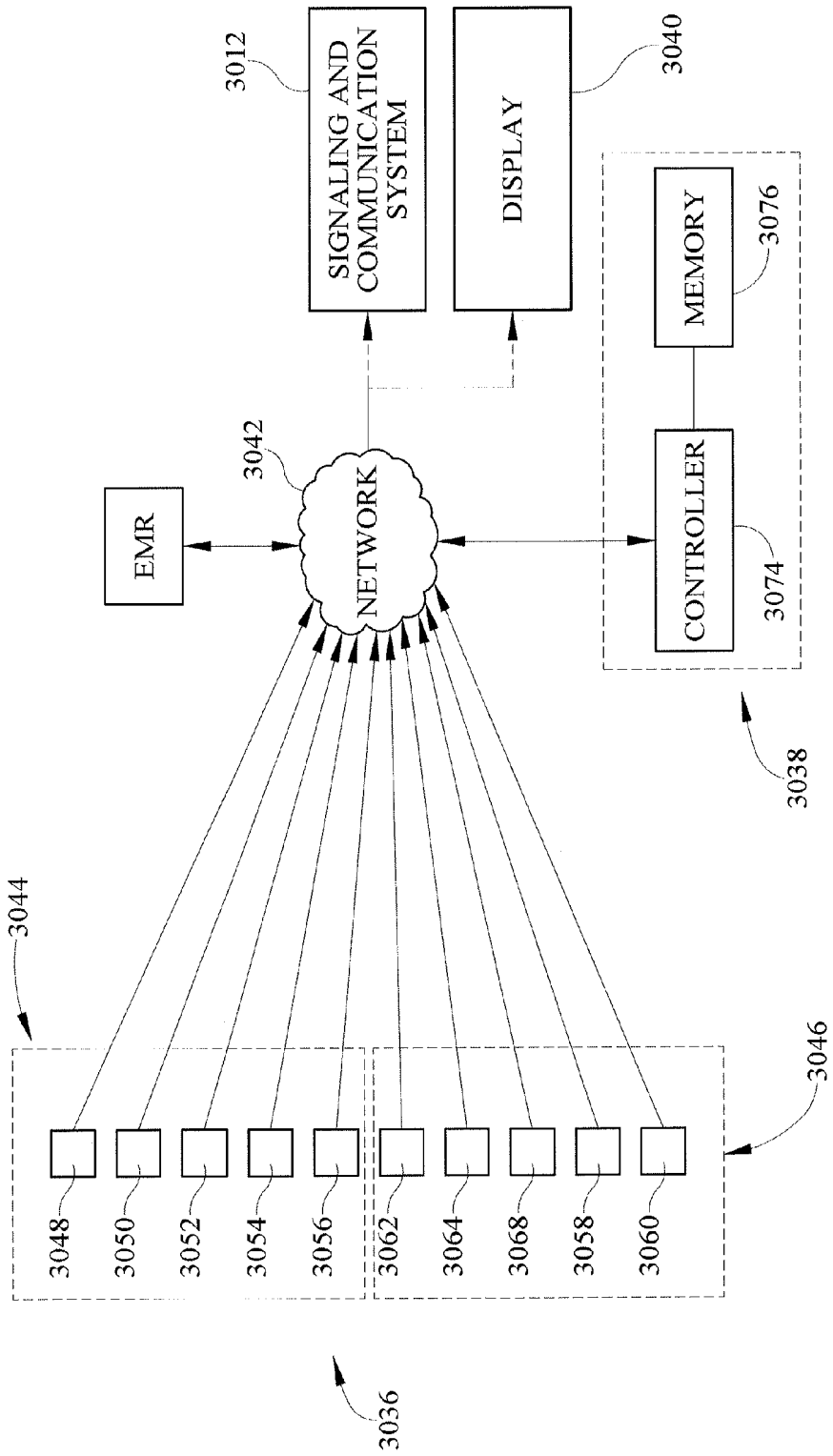


FIG. 5

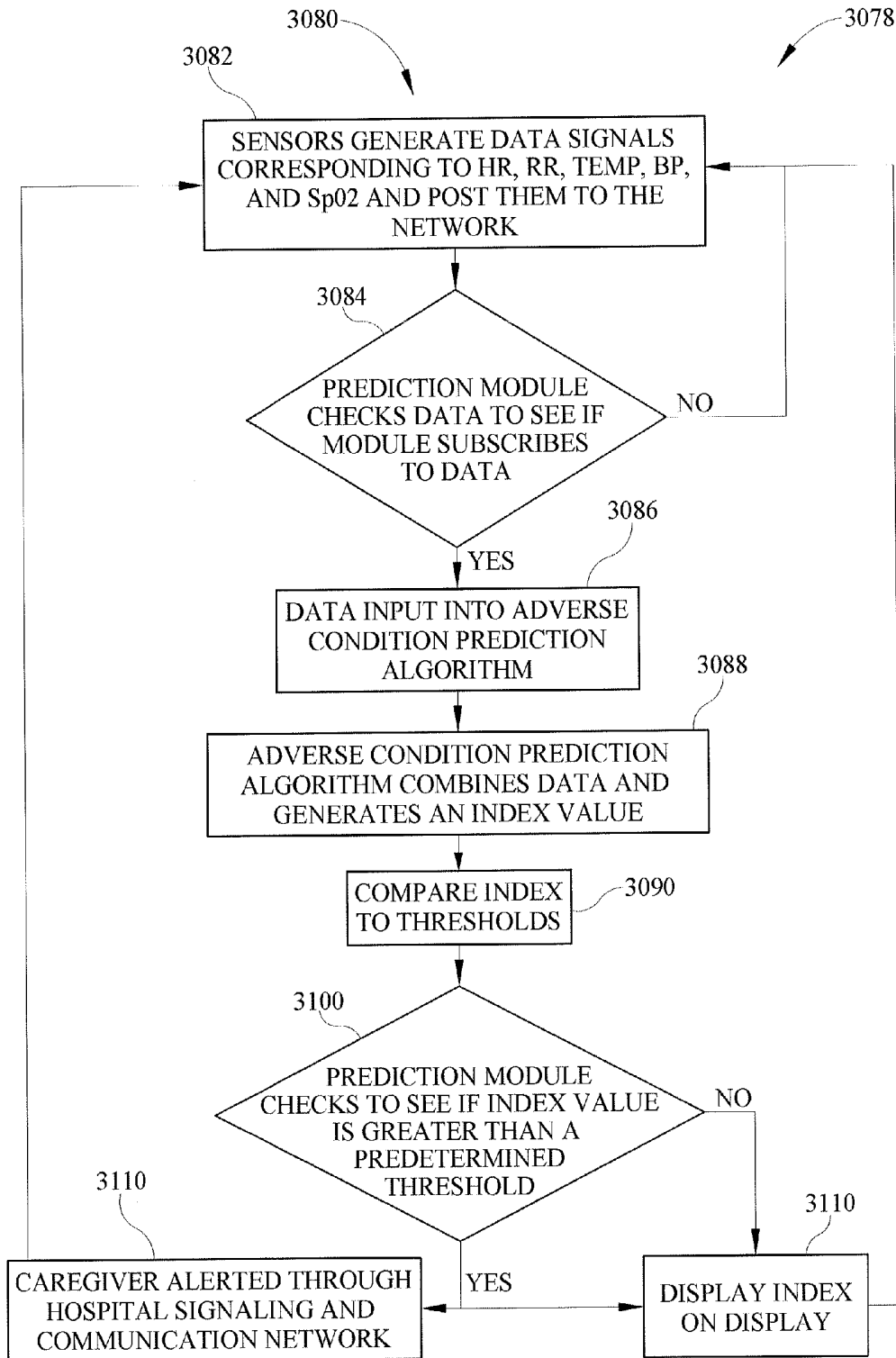


FIG. 6

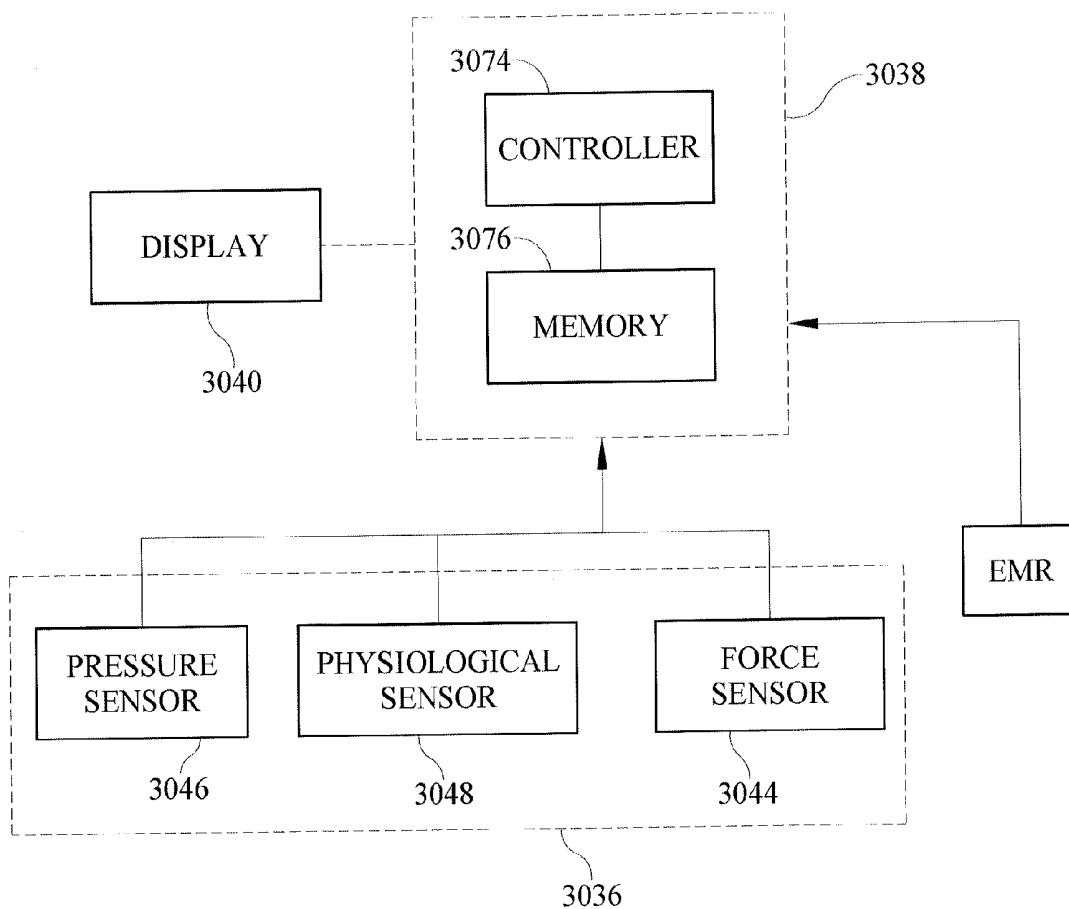


FIG. 7

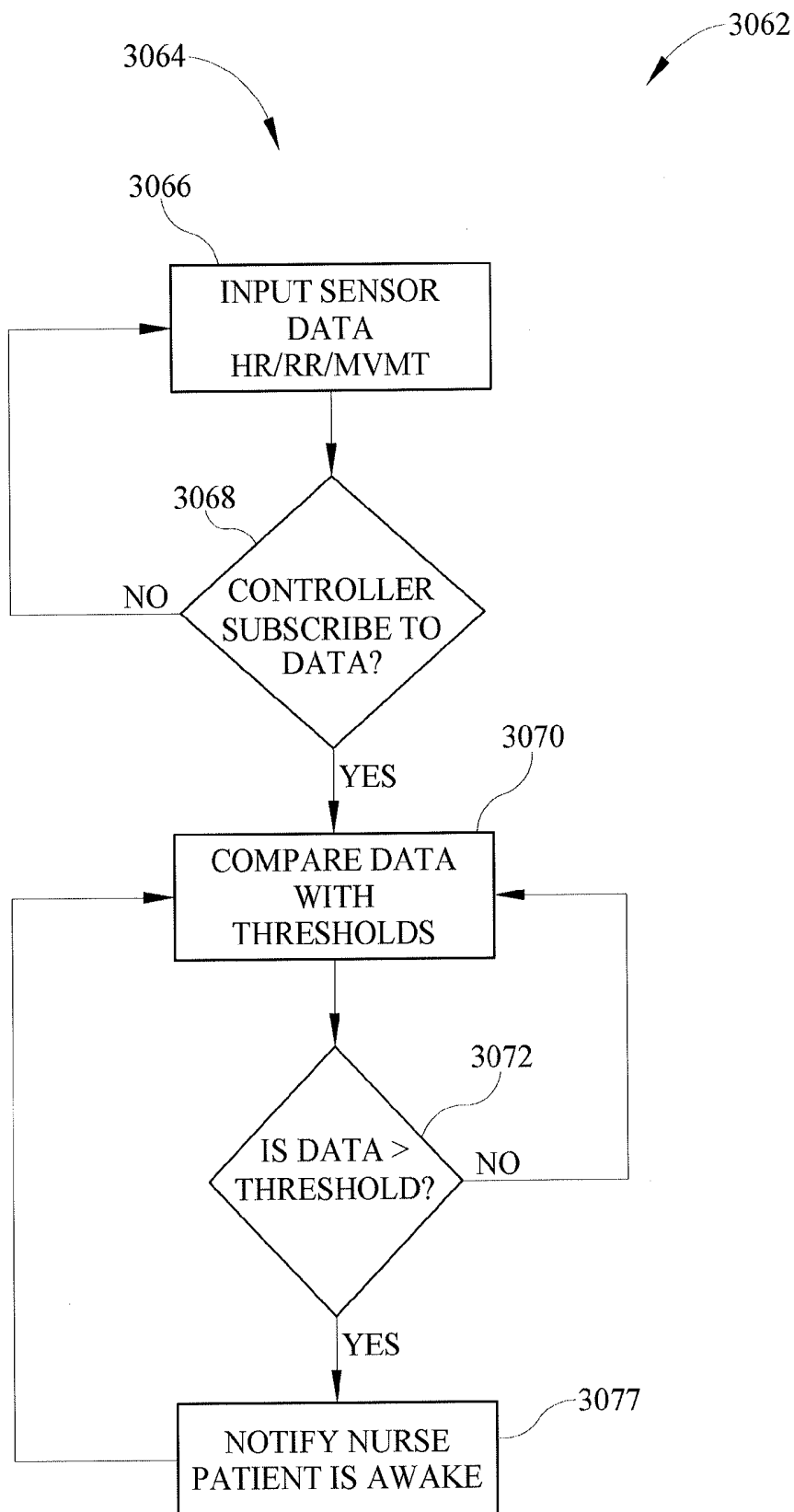


FIG. 8

APPARATUSES FOR SUPPORTING AND MONITORING A CONDITION OF A PERSON

CROSS-REFERENCE TO RELATED APPLICATIONS

The present application is a continuation of U.S. application Ser. No. 12/881,285, filed Sep. 14, 2010, now U.S. Pat. No. 8,525,680, which claims the benefit, under 35 U.S.C. §119(e), of U.S. Provisional Application Nos. 61/243,714; 61/243,741; 61/243,806; and 61/243,825; each of which was filed Sep. 18, 2009 and each of which is hereby incorporated by reference herein.

The present application relates to U.S. application Ser. No. 12/881,252, filed Sep. 14, 2010 and titled "Sensor Control for Apparatuses for Supporting and Monitoring a Person," now published as U.S. Patent Application Publication No. 2011/0068928 A1.

BACKGROUND

This disclosure relates to person support apparatuses. More particularly, but not exclusively, the present disclosure relates to person support apparatuses that incorporate or are used with vital signs monitoring devices and movement detection systems.

Person support apparatuses can include beds, chairs, stretchers, seats, mattresses, therapy surfaces, furniture, and the like, or other apparatuses that support a person. Hospital beds and stretchers, hospital mattresses, and wheelchairs are examples of such apparatuses that support persons. Consumer beds, chairs, and furniture are also examples of such person support apparatuses, as are seats for vehicles, businesses, and venues.

Vital signs monitors monitor one or more physiological parameters of a person, such as body temperature, pulse rate, heart rate, blood pressure, and respiratory rate, as well as other body signs, such as end-tidal CO₂, SpO₂ (saturation of oxygen in arterial blood flow, sometimes referred to as pulse oximetry), and other indicators of the person's physiological state. Movement and/or position detection systems monitor the movement of a person to determine if they are attempting to exit the support apparatus. Movement and/or position detection systems are sometimes included as part of a hospital bed.

While various systems have been developed, there is still a need for further contributions and improvements in these areas of technology, particularly with regard to predicting the onset of an adverse condition prior to the occurrence of the condition.

SUMMARY

The present disclosure includes one or more of the features recited in the appended claims and/or the following features which, alone or in any combination, may comprise patentable subject matter.

A person monitor system may include a person support apparatus configured to support a person. The person support apparatus may have at least one first sensor sensing first information corresponding to a feature of the person support apparatus. The system may have a second sensor sensing second information corresponding to a physiological characteristic of the person. A controller of the monitor system may receive the first information sensed by the first sensor and the second information sensed by the second sensor. The controller may calculate a condition score as a function of the first

information and the second information. A communication system may be coupled to the controller. The communication system may alert a caregiver in response to the condition score violating a predetermined threshold condition.

The person support apparatus may comprise a hospital bed, for example. The first sensor may be included as part of a patient position monitoring system of the hospital bed and the first information may include patient movement information. In some embodiments, the first sensor may include at least one load cell. The first sensor may be located inside an interior region of a mattress of the hospital bed. The second sensor may also be located inside an interior region of the mattress.

The condition score may comprise a modified early warning score (MEWS) having different integers assigned to a portion of the MEWS depending upon whether a patient is alert (A), responsive to voice (V), responsive to pain (P), or unresponsive (U). The patient movement information may be used by the controller to automatically assign an appropriate integer corresponding to the A portion or the U portion of the MEWS.

The controller may initiate a voice query to the person and, if the person answers the voice query orally or by engaging a user input, then the controller may automatically assign an appropriate integer corresponding to the V portion of the MEWS. The controller may control inflation and deflation of an inflatable cuff or sleeve placed on a limb of the person. If the patient movement information indicates sufficient patient movement by the patient in response to inflation of the cuff or sleeve, then the controller may automatically assign an appropriate integer corresponding to the P portion of the MEWS. The second sensor may comprise a plurality of sensors sensing the person's systolic blood pressure, heart rate, respiration rate, and temperature, each of which is used by the controller to calculate the MEWS.

The person support apparatus may comprise a hospital bed that includes a graphical display to display the condition score. The graphical display may be, for example, a touch-screen display that is used by a caregiver to control functions of the person support apparatus. The second sensor may include at least one contact sensor that contacts the person and that operates to sense a first physiological condition and at least one contact-less sensor that is spaced from the person and that operates to sense a second physiological condition. The at least one contact sensor and the at least one contact-less sensor may be included as part of the hospital bed. The controller may receive patient information from the patient's electronic medical record (EMR) and the condition score may also be a function of the patient information.

Also according to this disclosure, a person monitor system may comprise a person support apparatus supporting a person, the person support apparatus having a sensor that senses information regarding at least one of a change in position, a heart rate, and a respiration rate of the person on the person support apparatus, and a controller receiving the information sensed by the sensor, the controller determining if the patient is awake by comparing the information to a predetermined threshold, and the controller initiating an alert to a caregiver in response to the patient becoming awake.

The controller may determine the person's sleep quality by processing the information. The system may further comprise a display coupled to the controller and displaying data about the person's sleep quality. The display may be mounted to the person support apparatus. The person support apparatus may comprise a hospital bed and the sensor may be included as a part of a patient movement monitoring system of the hospital bed.

Further according to this disclosure, a person monitor system may include a person support apparatus that may, in turn, have a sensor that senses information regarding at least one of a change in position, a heart rate, and a respiration rate of the person on the person support apparatus. The system may further include a controller that may receive the information sensed by the sensor and that may determine the person's sleep quality by processing the information. A display may also be included and data about the person's sleep quality may be displayed on the display.

The data about the person's sleep quality may include at least one of time until sleep onset, amount of times awoken during a sleep cycle, amount of times the person exited the person support apparatus during the cycle, amount of movement during the sleep cycle regardless of stage of sleep, amount of time in each stage of sleep, and amount of sleep apnea occurrences. The person support apparatus may comprise a hospital bed to which the display may be mounted.

Some embodiments may include a control system for a person support system configured to receive input signals from at least one of a sensor and an electronic medical record (EMR), generate a condition score as a function of the input that can correspond to the likelihood of an adverse condition occurring, and alert a caregiver when the condition score exceeds a predetermined threshold.

Additional features, which alone or in combination with any other feature(s), such as those listed above and/or those listed in the claims, can comprise patentable subject matter and will become apparent to those skilled in the art upon consideration of the following detailed description of various embodiments exemplifying the best mode of carrying out the embodiments as presently perceived.

BRIEF DESCRIPTION OF THE DRAWINGS

Referring now to the illustrative examples in the drawings, wherein like numerals represent the same or similar elements throughout:

FIG. 1 is a diagrammatic view of person monitoring system according to one or more principles of the present disclosure;

FIG. 2 is a perspective side view of the person support apparatus of the person monitoring system of FIG. 1 according to one illustrative embodiment;

FIG. 3 is a perspective side view of a person support surface that can be supported on the person support apparatus of FIG. 2 according to one illustrative embodiment;

FIG. 4 is a perspective side view of the upper frame of the person support apparatus of FIG. 2 according to one illustrative embodiment;

FIG. 5 is diagrammatic view of a control system of the person support apparatus of FIG. 2 according to one illustrative embodiment including a controller and a plurality of sensors;

FIG. 6 is a flow chart illustrating a procedure that can be executed by the controller of the control system of FIG. 5 according to one illustrative embodiment;

FIG. 7 is a diagrammatic view of a control system of the person support apparatus of FIG. 2 according to one illustrative embodiment including a controller and a plurality of sensors; and

FIG. 8 is a flow chart showing a procedure executed by the controller of the control system of FIG. 7 according to one illustrative embodiment.

DETAILED DESCRIPTION

While the present disclosure can take many different forms, for the purpose of promoting an understanding of the

principles of the disclosure, reference will now be made to the embodiments illustrated in the drawings, and specific language will be used to describe the same. No limitation of the scope of the disclosure is thereby intended. Various alterations, further modifications of the described embodiments, and any further applications of the principles of the disclosure, as described herein, are contemplated.

One illustrative embodiment includes a control system coupled to a person support system configured to receive input signals corresponding to at least one of bed status information, person position, electronic medical record information, and physiological information, generate a condition score corresponding to the likelihood of an adverse condition occurring, and alert a caregiver when the condition score exceeds a predetermined threshold.

A person monitor system 3010 according to one illustrative embodiment of the current disclosure is shown in FIG. 1. The person monitor system 3010 includes a signaling and communication system 3012 in communication with a person support apparatus 3014. The person monitor system 3010 is configured to provide caregivers with information about a person supported on the person support apparatus 3014 through the signaling and communication system 3012. In one illustrative embodiment, the signaling and communication system 3012 comprises a patient/nurse call system 3012 that, in some embodiments, includes patient stations capable of generating hospital calls and a remote master station which prioritizes and store the calls. One example of such a system is disclosed in U.S. Pat. No. 5,561,412 issued on Oct. 1, 1996 to Novak et al., which is incorporated by reference herein in its entirety. Another example of such a system is disclosed in U.S. Pat. No. 4,967,195 issued on May 8, 2006 to Shipley, which is incorporated by reference herein in its entirety.

In some embodiments, the signaling and communication system 3012 includes a system 3012 for transmitting voice and data in packets over a network with any suitable number of intra-room networks that can couple a number of data devices to an audio station, where the audio station couples the respective intra-room network to a packet based network. One example of such a system is disclosed in U.S. Pat. No. 7,315,535 issued on Jan. 1, 2008 to Schuman, which is incorporated by reference herein in its entirety. Another example of such a system is disclosed in U.S. Patent Publication No. 2008/0095156 issued on Apr. 24, 2008 to Schuman, which is incorporated by reference herein in its entirety.

According to some embodiments, the signaling and communication system 3012 includes a patient/nurse call system, a nurse call/locating badge, an electronic medical record (EMR) database, and one or more computers programmed with work-flow process software. One example of such a system is disclosed in U.S. Patent Publication No. 2008/0094207 published on Apr. 24, 2008 to Collins, Jr. et al., which is incorporated by reference herein in its entirety. Another example of such a system is disclosed in U.S. Patent Publication No. 2007/0210917 published on Sep. 13, 2007 to Collins, Jr. et al., which is incorporated by reference herein in its entirety. Yet another example of such a system is disclosed in U.S. Pat. No. 7,319,386 published on Jan. 15, 2008 to Collins, Jr. et al., which is incorporated by reference herein in its entirety. It should be appreciated that the workflow process software can be the NaviCare® software available from Hill-Rom Company, Inc. It should also be appreciated that the workflow process software can be the system disclosed in U.S. Pat. No. 7,443,303 issued on Oct. 28, 2008 to Spear et al., which is incorporated by reference herein in its entirety. It should further be appreciated that the badge can be of the type available as part of the ComLinX™ system from Hill-Rom

Company, Inc. It should also be appreciated that the badge can also be of the type available from Vocera Communications, Inc.

According to some embodiments, the remote signaling and communication system **3012** is configured to organize, store, maintain and facilitate retrieval of bed status information, along with the various non-bed calls placed in a hospital wing or ward, and remotely identify and monitor the status and location of the person support apparatus, patients, and caregivers. One example of such a system is disclosed in U.S. Pat. No. 7,242,308 issued on Jul. 10, 2007 to Ulrich et al., which is incorporated by reference herein in its entirety. It should be appreciated that the remote status and location monitoring can be the system disclosed in U.S. Pat. No. 7,242,306 issued on Jul. 10, 2007 to Wildman et al., which is incorporated by reference herein in its entirety. It should also be appreciated that the remote status and location monitoring can be the system disclosed in U.S. Patent Publication No. 2007/0247316 published on Oct. 25, 2007 to Wildman et al., which is incorporated by reference herein in its entirety.

The person support apparatus **3014** according to one illustrative embodiment of the current disclosure is shown in FIG. 2. The person support apparatus **3014** includes a head section H1, where the head and a portion of the torso of a person are to be positioned, and a foot section F1, where the feet of a person are to be positioned. The person support apparatus **3014** includes a lower frame **3016** or base **3016**, an upper frame **3018**, a plurality of supports **3020**, and a control system **3022**. It should be appreciated that the person support apparatus **3014** can include only one support **3016**. The lower frame **3016** includes at least one lower frame section supported by casters **3024**. The supports **3020** are lift mechanisms **3020** that define a vertical axis Z1 which extends through the lower frame **3016** and the upper frame **3018** and are configured to move the upper frame **3018** with respect to the lower frame **3016**. It should be appreciated that the supports **3020** can be at least one fixed column (not shown), if desired. It should also be appreciated that, in some embodiments, the supports **3020** move the upper frame **3018** to a Trendelenburg/reverse Trendelenburg position and/or rotate the upper frame **3014** from side to side with respect to the lower frame **3012**.

The person support apparatus **3014** supports a person support surface **3026** on the upper frame **3018** as shown in FIGS. 2 and 3. The person support surface **3026** is configured to support a person (not shown) in multiple articulated positions. The person support surface **3026** includes a back portion B1 and a main portion M1. The person support surface **3026** includes an outer cover or ticking C1 that covers one or more support sections and/or layers having foam and/or fluid bladders **3028**. In some embodiments, the person support surface **3026** delivers therapy to the person, such as, for example, through sequential inflation/deflation of the fluid bladders **3028**, rapid changes in pressure of the fluid in the fluid bladders **3028**, passing fluid through the person support surface **3026**, and/or various other techniques. For example, in various embodiments, one or more portions of the surface **3026** provide alternating pressure therapy, continuous lateral rotation therapy, low air loss therapy, boost assistance, percussion/vibration therapy, and/or other therapies. It should also be appreciated that, in some embodiments, the person support surface **3026** includes a coverlet (not shown) that overlies another person support surface **3026** and is configured to deliver therapy to a person supported thereon. The person support surface **3026** receives fluid from a fluid supply FS connected to the person support surface **3026** by a connecting tube T1. In some embodiments, the fluid supply FS is

a gas blower and is configured to vary at least one of a rate and a temperature of fluid supplied to the person support surface **3026**.

The upper frame **3018** defines a longitudinal axis X1 that extends at least the length of the person support apparatus **3014** through the head end H1 and the foot end F1 along the lateral center of the upper frame **3018**, and a lateral axis Y1 that is perpendicular to the longitudinal axis X1 and extends at least the width of the person support apparatus **3014** through the longitudinal center of the upper frame **3018** as shown in FIGS. 2 and 4. The upper frame **3018** includes a deck **3030**, an intermediate frame **3032**, and an upper frame base **3034** that couples with the supports **3020** and supports the deck **3030** and the intermediate frame **3032**. It should be appreciated that the upper frame **3018** includes a footboard FB, a head board HB, and/or siderails SR in some embodiments. The deck **3030** is comprised of multiple sections, such as, a head deck section HD, a seat deck section SD, and a foot deck section FD, that are pivotably coupled to one another and/or the intermediate frame **3032** and articulate about the lateral axis Y1.

The control system **3022** is configured to control various functions of the person support apparatus **3014** and/or communicate with the signaling and communication system **3012** as shown in FIG. 5. It should be appreciated that the control system **3022** can be configured to be controlled through the signaling and communication system **3012**, if desired. In one illustrative embodiment, the control system **3022** is configured to articulate the deck **3030** with respect to the intermediate frame **3032**. In some embodiments, the control system **3022** is configured to administer therapy to a person supported on the person support apparatus **3014**. According to some embodiments, the control system **3022** is configured to alert caregivers when a person is exiting the person support apparatus **3014**.

It is contemplated by this disclosure that the control system **3022** is configured to predict the onset of an adverse condition and alert a caregiver. In some embodiments contemplated herein, the control system **2022** is configured to alert caregivers when a person is regaining consciousness. Alerting the caregiver when a person is regaining consciousness can be helpful in instances where the person is unconscious when admitted to a hospital and is, for example, secured to the person support apparatus, being tube fed, has broken or lost a limb, and/or lost their sight, because the person can become anxious upon regaining consciousness and can cause additional trauma to themselves before a caregiver can arrive to calm them and/or explain what is going on.

The control system **3022** includes a plurality of sensors **3036**, control modules **3038**, and a display **3040** as shown in FIG. 5. The sensors **3036** and/or the control modules **3038** are coupled to the upper frame **3018** in some embodiments. It should be appreciated that the sensors **3036** and/or the control modules **3038** can be coupled to the lower frame **3016**, supports **3020**, and/or incorporated within or coupled to the person support surface **3020** in other embodiments, if desired. In one illustrative embodiment, the sensors **3036**, control modules **3038**, and the display **3040** are directly connected to one another. In another illustrative embodiment, the sensors **3036**, control modules **3038**, and the display **3040** are operatively connected to one another through a network **3042**.

The network **3042** facilitates communication between the various modules **3038**, sensors **3036**, displays **3040**, and/or other equipment operatively connected to the network **3042**. In one illustrative embodiment, the network **3042** comprises a CAN network on a person support apparatus **3014**. In another illustrative embodiment, the network **3042** is part of

the signaling and communication system 3012. In some embodiments, the network 3042 comprises a Serial Peripheral Interface (SPI) network. It should be appreciated that the network 3042 can be other types of networks or communication protocols that can facilitate communication between two or more devices. It should also be appreciated that the module 3038 can be configured to connect to the network 3042 wirelessly, if desired. In one illustrative embodiment, the control module 3038 negotiates with the network 3042 to be a network node. According to some embodiments contemplated by this disclosure, the control modules 3038 can be located at or on any node on the network 3042 and/or distributed across multiple nodes on the network 3042.

In the illustrative example, the sensors 3036 are operatively connected to the control modules 3038 and include sensors that contact the person (contact sensors 3044) and/or sensors that do not contact the person (contact-less sensors 3046) as shown in FIG. 5. In one illustrative embodiment, the contact sensors 3044 contact a person's tissue to measure the desired parameter. In another illustrative embodiment, the contact-less sensors 3046 are integrated into the person support surface 3026. It should be appreciated that the contact-less sensors 3046 can be integrated into the portion of the ticking C1 contacting the person, if desired. In some embodiments, the contact-less sensors 3046 are coupled to at least one of the upper frame 3018, the supports 3020, and/or the lower frame 3016. It should be appreciated that the contact-less sensors 3046 can be coupled to the casters 3024 and/or engaged by the casters 3024, if desired.

The sensors 3036 are configured to sense a variety of parameters, including, but not limited to, for example, a person's physiological information, a position of a person on the person support apparatus 3014 and/or person support surface 3026, a pressure of the fluid inside the bladders 3028 in the person support surface 3026, or other various parameters. In one illustrative embodiment, the contact sensors 3044 include blood pressure sensors 3048 that are configured to sense the person's blood pressure; oxygen saturation level (SpO2) sensors 3050 that are configured to sense the amount of hemoglobin binding sites in the person's bloodstream occupied by oxygen; temperature sensors 3052 that are configured to sense the person's body temperature; heart rate sensors 3054 that are configured to sense the rate at which a person's heart contracts; and respiration rate sensors 3056 that are configured to sense the person's breathing rate as shown in FIG. 5. It should be appreciated that the SpO2 sensors 3050 comprise a pulse oximeter device in some embodiments. It should be appreciated that the contact sensors 3044 are configured to measure other physiological and biochemical parameters in other embodiments.

In some embodiments, the contact-less sensors 3046 include one or more of the following: force sensors 3058 configured to sense the force profile and/or distribution of a person supported on a person support apparatus 3014; pressure sensors 3060 configured to measure the pressure in or among the bladders 3028; temperature sensors 3062 configured to sense the person's body temperature; heart rate sensors 3064 configured to sense the rate at which the person's heart contracts; respiration rate sensors 3066 configured to sense the person's breathing rate; and other sensors configured to sense information corresponding to the status of the person-support apparatus 3014, such as, for example, the angle of the head deck section HD with respect to the longitudinal axis X1 as shown in FIG. 5.

In some embodiments, the force sensors 3058 are load cells 3058 that couple the intermediate frame 3032 to the upper frame base 3034 proximate the corners of the upper frame

3018 and are configured to measure the weight of a person on the person support apparatus 3014. Alternatively or additionally, the force sensors 3058 comprise piezoelectric sensors and/or elongated sensor strips or arrays 3058 in some embodiments. In some embodiments, the pressure sensors 3060 are coupled between the bladders 3028 such that they allow communication between adjacent bladders 3028. In some embodiments, pressure sensors 3060 are situated within the bladders 3028 and measure the pressure within the bladder 3028.

In some embodiments, the heart rate sensors 3064 and respiration rate sensors 3066 are integrated into the surface 3026. In some embodiments contemplated herein, the heart rate sensors 3064 and respiration rate sensors 3066 are force sensors 3058 and/or pressure sensors 3060. It will be appreciated that the sensors 3036 are configured to sense various other physiological characteristics. In some embodiments, the heart rate sensors 3064 and respiration rate sensors 3066 are pressure-strip sensors disposed on the fluid bladders 3028 along an axis parallel to the lateral axis Y1 and/or along an axis parallel to the longitudinal axis X1.

The control modules 3038 can each be configured to perform different operations, if desired. According to this disclosure, a single control module 3038 can be configured to perform the multiple different operations if desired. Optionally, a single control module 3038 can be configured to perform operations independently or in conjunction with at least one other control module 3038. In one contemplated embodiment, one control module 3038, such as, a person position monitor module (not shown) (PPM), is configured to detect the position of a person on the person support apparatus 3014. Alternatively or additionally, a second control module 3038, such as a therapy control module (not shown), is configured to sense and/or modify the pressure within the fluid bladders 3028. Optionally, a third control module 3038, such as a physiological parameter monitor (not shown), is configured to detect a person's physiological information. In some embodiments, a fourth control module 3038, such as a wake up detector (not shown), is configured to detect when a person is regaining consciousness.

The control modules 3038 are implemented using software or hardware. In some embodiments, the control modules 3038 are implemented in software and are configured to perform one or more operations. In some embodiments, for example, the modules 3038 are configured to communicate via a memory mailbox where information from one module is sent to the memory address of a recipient module. In other embodiments, the software modules are configured to push information in a memory location, such as, a stack, that the control modules 3038 monitor or periodically check for information that the software modules subscribe to.

In contemplated embodiments, the control module 3038 is implemented using hardware. The control module 3038 includes a controller 3074 or processor 3074 and memory 3076 as shown in FIG. 5. The controller 3074 is provided as a single component or a collection of operatively coupled components; and can be comprised of digital circuitry, analog circuitry, or a hybrid combination of both of these types. When of a multi-component form, controller 3074 has one or more components remotely located relative to the others. The controller 3074 can include multiple processing units arranged to operate independently, in a pipeline processing arrangement, in a parallel processing arrangement, and/or such different arrangement as would occur to those skilled in the art.

In some embodiments, processor 3074 is a programmable microprocessing device of a solid-state, integrated circuit

type that includes one or more processing units and memory. The controller 3074 can include one or more signal conditioners, modulators, demodulators, Arithmetic Logic Units (ALUs), Central Processing Units (CPUs), limiters, oscillators, control clocks, amplifiers, signal conditioners, filters, format converters, communication ports, clamps, delay devices, memory devices, and/or different circuitry or functional components as would occur to those skilled in the art to perform the desired communications. In some embodiments, the controller 3074 includes a computer network interface to communicate among various system components and/or components not included in the depicted system, as desired. The listed examples are not intended to be an exhaustive list of structures that are within the scope of controller 3074, but are instead only a non-exhaustive list of such structures which can have substantial differences in the manner in which they are implemented and/or operate.

The controller 3074 is configured to receive input signals corresponding to signals from the sensors 3036 and/or output signals from other modules 3038 via the network 3042. The information is stored in the memory 3076, which is operatively coupled to the controller 3074 as shown in FIG. 5. It should be appreciated that the memory 3076 is integrated into the controller in some embodiments. The controller 3074 is configured to execute operating logic 3078 that defines various control, management, and/or regulation functions. This operating logic 3078 can be in the form of software, firmware, and/or dedicated hardware, such as, a series of programmed instructions, code, electronic files, or commands using general purpose or special purpose programming languages or programs that are executed on one or more general purpose or special purpose computers, processors, other control circuitry, or networks; a hardwired state machine; and/or a different form as would occur to those skilled in the art.

In the illustrative embodiment, the controller 3074 includes operating logic 3078 in the form of procedure 3080, for example, as shown in the flowchart of FIG. 6. Procedure 3080 includes operations/conditionals shown at blocks 3082, 3084, 3086, and 3088. Procedure 3080 is used to generate a condition score corresponding to the condition of a person, which is compared to a threshold in order to predict the onset of an adverse condition.

The thresholds are established in accordance with hospital specific standard protocols and/or are generic thresholds that can be modified as desired. In some embodiments, the preset thresholds that are set by standard hospital specific protocols, which are automatically selected based on information present in a person's electronic medical record (EMR), in patient profiles, and/or based on the condition score generated by the procedure 3080. Alternatively or additionally, the thresholds are set by a caregiver through an interface (not shown) on the person-support apparatus 3014 by manually selecting the protocols or modifying the generic thresholds. In some contemplated embodiments, the thresholds are automatically modified based on information in the person's electronic medical record (EMR). It should be appreciated that the thresholds can be person specific and can be incorporated into the person's EMR. It should also be appreciated that the thresholds can be incorporated into a patient profile that can be used for multiple people with similar characteristics. In some embodiments, the thresholds are modified by a caregiver through the signaling and communication system 3012.

Illustrative procedure 3080 begins with operation 3082 where, in one illustrative embodiment, the sensors 3036 post electronic data signals corresponding to at least one of an event and an amount on the network 3042. In some embodi-

ments, the sensors 3036 post electronic data signals to a memory mailbox or register (not shown) where the modules 3038 are implemented in software. In some embodiments, sensors 3036 post data signals substantially continuously and, in other embodiments, sensors 3036 post data signals at predetermined intervals. The data signals from sensors 3036 are representative of heart rate, respiration rate, temperature, blood pressure and/or SpO2 as indicated at block 3082 of FIG. 6. Data signals corresponding to features of the person support apparatus 3014 are also posted to the network such as, for example, signals from force sensors 3044 of a patient position and/or movement monitoring system of apparatus 3014 and are used in a similar manner as signals from sensors 3036 in procedure 3080.

In the conditional of block 3084, the controller 3074 examines each of the data signals posted by the sensors 3036 on the network 3042 and determines if the associated module 3038 subscribes to the data. If the module 3038 does not subscribe to the data, then the algorithm returns to block 3082 and awaits more incoming data.

If at block 3084 it is determined that module 3038 subscribes to the data, the algorithm proceeds to the operation of block 3086 and the data is input into an algorithm that is used to predict an adverse event or condition. In some embodiments, the data signals can be used to select one or more standard hospital specific protocols, which, in some instances, have predetermined thresholds associated therewith. Alternatively or additionally, the data signals can be input into an algorithm that is used to select the hospital specific protocols and/or to set the predetermined thresholds associated with the protocols.

In the operation of block 3088, the controller 3074 executes the algorithm to generate a condition score corresponding to the condition of the person and/or to generate a graphic representative of the condition of the person. In one embodiment, the algorithm receives inputs from the contactless sensors 3046 corresponding to the heart rate, respiration rate, and temperature of a person, and inputs from the contact sensors 3044 corresponding to the blood pressure and SpO2 of a person. It should be understood that all of the inputs can be from the contact sensors 3044 in other embodiments. The controller 3074 processes the data inputs in accordance with the algorithm to calculate the condition score and/or generate the graphic.

In some embodiments, the algorithm combines the inputs into a data point, which is used to calculate a condition score constituting a one-dimensional visualization space based on the distance of the data point in a multi-dimensional measurement space, whose coordinates are defined by values of the inputs, from a normal point. In other contemplated embodiments, the algorithm maps the inputs from an n-dimensional measurement space to an m-dimensional visualization space using a dimensionality reduction mapping technique, and displays the m-dimensional visualization space on the display 3040. One example of such a system using this algorithm and technique is disclosed in U.S. Pat. No. 7,031,857 issued on Apr. 18, 2006 to Tarassenko et al., which is hereby incorporated by reference herein in its entirety. One condition score in accordance with the teachings of U.S. Pat. No. 7,031,857 is known as a Visensia® index that can be produced by the Visensia® system sold by OBS Medical, for example. The Visensia® index creates a score based on heart rate, respiration rate, blood pressure, temperature, and SpO2 data.

Based on the foregoing, it will be understood that the Visensia® index is a condition score that is based on, or a function of, only a person's physiological data. According to this disclosure, some or all of the physiological data used to

calculate the Visensia® index is obtained by one or more sensors included as part of the person support apparatus 3014. This distinguishes over the known prior art. To the extent that some of the physiological data needed to calculate a condition score, such as the Visensia® index, is obtained by equipment and/or sensors that are not included as part of person support apparatus 3014, such data is transmitted to controller 3074 in accordance with this disclosure for the purpose of calculating the condition score. For example, data is transmitted to controller 3074 from a person's EMR in some instances as suggested diagrammatically in FIG. 5. In other instances, person support apparatus 3014 is communicatively coupled to physiological monitoring equipment that is co-located with apparatus 3014 to obtain the needed data for calculating a condition score. In the preceding examples, controller 3074 automatically initiates the queries to obtain the needed data from the EMR or co-located equipment and/or picks up the needed data from network transmissions. Thus, controller 3074 automatically calculates the condition score without the need for any further actions on the part of caregivers or users. However, it is within the scope of this disclosure for some or all of the needed physiological data to be entered by a caregiver using a user interface of the apparatus 3014.

In another contemplated embodiment, the condition score comprises a modified early warning score (MEWS). According to this disclosure, the data needed to calculate the MEWS is obtained from sensors included as part of person support apparatus 3014, obtained via manual user inputs, obtained from separate monitoring equipment that communicates with controller 3074 of apparatus 3014, and/or obtained from the person's EMR. The MEWS is a known score calculated based on the following table:

Score	3	2	1	0	1	2	3
Systolic BP	<70	71-80	81-100	101-199	—	>200	—
Heart rate (BPM)	—	<40	41-50	51-100	101-110	111-129	>130
Respiratory rate (RPM)	—	<9	—	9-14	15-20	21-29	>30
Temperature (° C.)	—	<35	—	35.0-38.4	—	>38.5	—
AVPU	—	—	—	A	V	P	U

In the MEWS table, the various integers in the column headings are added together based on the various readings for the person of the data corresponding to the rows of the table. A score of 5 or greater indicates a likelihood of death. With regard to the systolic blood pressure, heart rate, respiratory rate, and temperature portions of the MEWS, those pieces of information are obtained using sensors 3036 of person support apparatus 3014 and/or using the other manners of obtaining a person's physiological data as discussed above. It is contemplated by this disclosure that the AVPU portion of the MEWS is obtained using information from the person support apparatus 3014 as discussed below.

The AVPU portion of the MEWS indicates whether a person is alert (A), responsive to voice (V), responsive to pain (P), or unresponsive (U). As discussed above, the person support apparatus 3014 in some embodiments comprises a hospital bed having a patient position monitoring system including sensors, such as load cells, piezoelectric sensors, and/or force sensitive resistors (FSR's) which sense a patient's position and/or movement. In accordance with this disclosure, the patient movement information is used by the controller to automatically assign an appropriate integer corresponding to the A portion or the U portion of the AVPU line

of the MEWS depending upon the amount of movement of the patient. For example, if the patient has not moved for a threshold amount of time, such as fifteen minutes or an hour or some threshold greater than or less than these particular times, then the integer associated with the U portion of the AVPU line of the MEWS is assigned automatically by controller 3074. If the patient has moved by a threshold amount within a particular time period, then the integer associated with the A portion of the AVPU line of the MEWS is assigned automatically by controller 3074.

It is contemplated by this disclosure that the controller 3074 initiates a voice query to the person in some embodiments. If the person answers the voice query orally or by engaging a designated user input, such as pressing a particular button mentioned in the voice query, then the controller 3074 automatically assigns an appropriate integer corresponding to the V portion of the MEWS. The voice query is a pre-recorded message in some embodiments. The voice query is initiated by controller 3074 if the person has been inactive for the threshold period of time. In other words, in some embodiments, the voice query is initiated only after the conditions for assigning the U portion of the MEWS has been satisfied. Thus, if the person responds properly to the voice query, the AVPU portion of the MEWS is assigned as V rather than U. Apparatus 3014, therefore, has speakers or similar such sound-producing devices through which the voice query is played and, in some instances, a microphone that picks up the person's oral response. Appropriate interactive voice recognition (IVR) software is provided in such embodiments.

With regard to determining whether to select the P portion of the AVPU line of the MEWS score, apparatus 3014 is operated to inflict some amount of discomfort to the patient and then monitors the person's response, such as an oral response or movement. For example, in some embodiments, apparatus 3014 includes an inflatable cuff or sleeve placed on a limb of the person and the controller 3074 controls inflation and deflation of the cuff or sleeve. If the patient movement information indicates sufficient patient movement by the patient in response to inflation of the cuff or sleeve, then the controller automatically assigns the appropriate integer corresponding to the P portion of the AVPU line of the MEWS. Alternatively or additionally, a microphone is used to determine if the patient expresses an audible pain or discomfort sound at which point the integer associated with the P portion of the AVPU line of the MEWS is assigned. The steps for determining whether to assign the P integer are performed only after the steps for determining whether to assign the U integer and/or the V integer in some embodiments. That is, operating the person apparatus 3014 so as to cause the patient some discomfort is only done as a last resort. In assigning the AVPU integer in the MEWS, it will be appreciated that it is the lowest pertinent integer that is assigned. Clearly, an alert person would also be responsive to voice for example.

The MEWS and Visensia® index discussed above are just a couple of examples of condition scores according to this disclosure. The teachings of this disclosure are intended to be broadly applicable to all types of condition scores.

Referring once again to FIG. 6, in the operation of block 3090, the controller 3074 compares the calculated condition score (referred to sometimes in FIG. 6 as an "index value" or simply an "index") with the predetermined thresholds to determine at least one of the likelihood that an adverse condition will occur, an amount of time before an adverse condition will occur, and/or how close the condition score is to the threshold.

In the conditional of block 3100, if the controller 3074 determines that the condition score is greater than the thresh-

old, then, in one illustrative embodiment, a status update including the condition score is communicated to a caregiver through the signaling and communication system 3012 and/or is displayed on the display 3040 as indicated at block 3110. That is, if the condition score exceeds the threshold, then, in some embodiments, at least one of the condition score and an alert signal are communicated to a caregiver. In other embodiments, the alert condition may correspond to the condition score being less than, rather than greater than, a particular threshold. The term "greater than" is intended to cover one or both of a greater than situation and a greater than or equal to situation and the term "less than" is intended to cover one or both of a less than situation and a less than or equal to situation.

As alluded to above, in some embodiments, the condition score and/or alert signal are communicated to a caregiver through the signaling and communication system 3012. Alternatively or additionally, the condition score and/or alert signal are displayed on the display 3040. In still other embodiments, the condition score and/or alert signal are communicated to the Visensia® Alert system sold by OBS Medical. In further embodiments, the condition score is communicated to and stored in the person's EMR.

The display 3040 is any suitable display such as a liquid crystal display, touch screen display, plasma screen, light emitting diode display, cathode ray tube display, or other conventional display. The display 3040 is operable to display multiple parameters thereon along with the condition score in some embodiments. In some contemplated embodiments, the display 3040 displays physiological and/or biochemical information sensed by contact sensors 3044 along with the condition score. Thus, it is within the scope of this disclosure for the display 3040 to display physiological and/or biochemical information on the display 3040 along with the condition score. In yet other embodiments, the display 3040 displays bed status information and/or graphics, for example, a head deck section HD angle or PPM armed indicator, on the display along with the condition score. In still other contemplated examples, the display 3040 displays bed status information and/or graphics along with patient condition graphics, such as, pie charts. Other information that is displayable on the display 3040 includes force profile information and/or graphics, person position information and/or graphics, weight, and other physiological information.

Referring now to FIGS. 7 and 8, the sensors 3036 are operatively coupled to the control modules 3038 and are configured to sense various parameters, including, but not limited to, for example, a person's physiological information, a position of a person on the person support apparatus 3014 and/or person support surface 3026, a pressure of the fluid inside the bladders 3028 in the person support surface 3026, or other various parameters. As mentioned above, the sensors 3036 can be sensors configured to contact the tissue of a person and/or sensors configured to not contact the tissue of a person. In some embodiments, the sensors 3036 are force sensors 3044 coupled to the upper frame 3018 and are configured to measure force on the upper frame 3018 as shown in FIGS. 4 and 7. In some embodiments, the sensors 3036 are force sensors 3044 that measure force on the upper frame 3018 and are positioned between the intermediate frame 3032 and the upper frame base 3034 so as to couple the intermediate frame 3032 and deck 3030 to the upper frame base 3034.

In some contemplated embodiments, the sensors 3036 are force sensors 3044 integrated into the person support surface 3026 and configured to measure changes in force on the person support surface 3026 as shown in FIG. 4. Alternatively or additionally, the force sensors 3044 are coupled to the

supports 3020 and/or the lower frame 3016. Sensors 3044 integrated into the casters 3024 and/or engaged by the casters 3024 are also within the scope of this disclosure. In some embodiments, the force sensors 3044 are load cells that are coupled proximate the corners of the intermediate frame 3032. In other embodiments, the sensors 3044 are piezoelectric sensors and/or elongated sensor strips or arrays 3038. It will be appreciated that the force sensors 3044 comprising other force sensor types can be provided and positioned in other locations on the upper frame 3018 and/or within the person support surface 3026.

In some embodiments, the sensors 3036 are pressure sensors 3046 integrated into the person support surface 3026 and configured to measure the pressure in or among the fluid bladders 3028 in the person support surface 3026 as shown diagrammatically in FIG. 7. The pressure sensors 3046 are coupled between the bladders 3028 in some embodiments such that they can allow communication between adjacent bladders 3028. It should be appreciated that the pressure sensors can be situated within the bladders 3028 and/or otherwise positioned to measure the pressure within the bladder 3028. Pressure sensors 3046 coupled to bladders 3028 via pneumatic tubes, hoses, or other types of conduits are contemplated by this disclosure as well.

In some embodiments, the sensors 3036 are physiological sensors 3048 integrated into the person support surface 3026 and configured to measure various physiological parameters of a person supported on the person support surface 3026 as suggested in FIG. 7. Optionally, the physiological sensors 3048 can be coupled to the upper frame 3018, the supports 3020, and/or the lower frame 3016 in lieu of being coupled to the mattress 3046. As indicated above, the force sensor 3044 and/or pressure sensor 3046 are configured to sense physiological parameters in some embodiments. For example, one or more of the physiological sensors 3048 are used to sense the heart rate and/or respiration rate of a person supported on the person support surface 3026 in some embodiments. Alternatively or additionally, one or more of the physiological sensors 3048 are configured to sense the temperature of the person. In some embodiments, the physiological sensors 3048 are configured to sense the weight of the person on the person support surface 3026. In some embodiments, the physiological sensors 3048 are pressure-strip sensors disposed on the fluid bladders 3028 along an axis parallel to the lateral axis Y1 and/or along an axis parallel with the longitudinal axis X1.

In some embodiments, one or more of the sensors 3036 produces an analog data signal and is connected directly to the controller 3074. In other embodiments, one or more of the sensors 3036 produce a digital data signal, e.g., a serial digital data signal, and are connected to the network 3042, e.g., SPI network, to communicate with the controller 3074. The data signals can be stored in the memory 3076, which is operatively coupled with the controller 3074. As mentioned above, the memory 3076 is integrated into the controller 3074 in some embodiments.

In some embodiments, the controller 3074 executes operating logic 3062 that defines various control, management, and/or regulation functions as shown in FIG. 8. This operating logic 3062 can be in the form of software, firmware, and/or dedicated hardware, such as, a series of programmed instructions, code, electronic files, or commands using general purpose or special purpose programming languages or programs that can be executed on one or more general purpose or special purpose computers, processors, other control circuitry, or networks; a hardwired state machine; and/or a different form as would occur to those skilled in the art.

In one illustrative embodiment, the controller 3074 includes operating logic 3062 in the form of procedure 3064, for example, as shown in the flowchart of FIG. 8. Procedure 3064 includes operations/conditionals as indicated at blocks 3066, 3068, 3070, 3072 and 3074. Procedure 3064 is used to determine when a person is regaining consciousness by comparing the heart rate (HR), respiration rate (RR), and/or movement of the person to predetermined thresholds.

The thresholds are established in accordance with hospital specific standard protocols in some embodiments and/or are generic thresholds that can be modified by caregivers or automatically in other embodiments. In some embodiments, the preset thresholds that are set by standard hospital specific protocols, which in some instances are automatically selected based on information present in a person's electronic medical record (EMR), in patient profiles, and/or based on condition scores/indexes. In other embodiments, the thresholds are set by a caregiver through an interface (not shown) on the person-support apparatus 3014 by manually selecting the protocols or modifying the generic thresholds. In yet another contemplated embodiment, the thresholds are automatically modified based on the person's EMR. It is within the scope of this disclosure for the thresholds to be person specific and possibly incorporated into the person's EMR. In some embodiments, the thresholds are incorporated into a patient profile that is used for multiple people with similar characteristics. In some contemplated embodiments, the thresholds are modified by a caregiver through the signaling and communication system 3012. Alternatively or additionally, the thresholds are modified or established by, for example, setting an initial threshold and acknowledging whether the person is asleep or waking up to teach the system what the appropriate thresholds are to the particular person.

Procedure 3064 begins with operation 3066 where, in some embodiments, the force sensors 3044 and the physiological sensors 3048 post, i.e., load or place, electronic data signals corresponding to at least one of an event and an amount on the network 3042. According to contemplated embodiments, at least one of the force sensors 3044 and the physiological sensors 3048 post electronic data signals on the network 3042 either directly or via other circuitry of the person support apparatus 3014. Alternatively or additionally, at least one of the force sensors 3044 and the physiological sensors 3048 post electronic data signals to a memory mailbox or register. As mentioned above, the force sensors 3044 and/or the physiological sensors 3048 post data signals continuously in some embodiment and/or at predetermined intervals in other embodiments.

In the conditional of block 3068, the control modules 3038 examine the data signals posted by the force sensors 3044 and the physiological sensors 3048 on the network 3042 and determine if the module 3038 subscribes to the data. If the module 3038 subscribes to the data then the data is input into the operating logic 3062 and algorithm 3064 proceeds to block 3070. If the module 3038 does not subscribe to the data, then the algorithm 3064 returns to block 3066 as shown in FIG. 8.

In the operation of block 3070, the controller 3074 compares the posted data with one or more predetermined thresholds to determine if and how much a person has moved with respect to the surface 3020 and/or whether the person's respiration rate and/or heart rate has increased or decreased.

In the conditional of block 3072, if any one or more of the thresholds are exceeded, the controller 3074 generates an alert signal as indicated in the operation of block 3077 and communicates the alert to a caregiver through the signaling and communication system 3012 that the person is about to

regain consciousness. In some embodiments, the controller 3074 also communicates to the caregiver data regarding patient movement, such as a force profile, the heart rate, and/or the respiration rate and the amount that each has changed. In some embodiments, the controller 3074 communicates the alert signal to a display 3040 coupled to the person support apparatus 3014. In some embodiments, the controller 3074 communicates the alert signal wirelessly or through the signaling and communication system 3012 to one or more of a caregiver station, a mobile paging device, a cellular phone, a pendant, or remote display (not shown). It should be appreciated that the controller 3074 can also communicate the alert signal through an intercom system (not shown), if desired. In some contemplated embodiments, the controller 3074 activates a light (not shown) coupled to the person support apparatus 3014 and/or situated outside the hospital room to alert a caregiver that the patient is about to regain consciousness.

According to this disclosure, person support apparatus 3014 reports information regarding a person's sleep quality. Such information is displayed on display 3040 in some embodiments. Alternatively or additionally, the sleep quality information is transmitted to the person's EMR. Also alternatively or additionally, the sleep quality information is displayed on the screen of a remote computer device. Thus, the sleep quality information is communicated through system 3012 in some embodiments to one or more of a caregiver station, a mobile paging device, a cellular phone, a pendant, or remote display of the type mentioned above. The sleep quality information is determined by controller 3074 via analysis of information sensed by sensors 3036 included in the mattress or bed frame of apparatus 3014.

Sleep quality is determined in a number of ways such as by analysis of one or more of the following: 1) restlessness as measured by a bed mounted accelerometer or by the load cells of a bed's patient position and/or movement monitoring system, 2) heart rate variability, 3) respiratory rate variability, and/or 4) electroencephalograph (EEG) readings. There are known techniques for determining whether a person is deep stage sleep (stages III and IV), which are regarded as the most restful stages of sleep, by monitoring one or more these parameters, particularly by monitoring parameters 2-4. Other aspects of sleep quality that are contemplated by this disclosure for monitoring and/or displaying and/or reporting and/or storing in a person's EMR including the following: 1) time until sleep onset (e.g., time it takes from when a person is ready to sleep until the person is actually asleep), 2) the amount of times the person has awoken during a sleep cycle, 3) the amount of times the person exited the person support apparatus during the cycle, 4) the amount of movement or restlessness during the sleep cycle regardless of stage of sleep, 5) the amount of time in each stage of sleep (i.e., states I-IV) including the amount of time deep sleep (stages III and IV), and 6) the amount of sleep apnea occurrences.

The sleep quality information provides an indication about a person's comfort during their stay at a healthcare facility, for example. Some health and healing rates are tied to quality and amount of sleep. Thus, the sleep quality information informs caregivers about the sleep that patients are getting, which assists in determining the type of everyday treatment the patients should receive. Also, sleep quality information can potentially be helpful in clearing up any arguments or complaints that a patient may have with a caregiver or hospital administrator regarding the patient's inability to get any sleep because of noise in the halls, caregiver interruptions, and so forth. Details of a sleep quality monitoring, display and reporting system are shown and described in U.S. Patent Application Publication No. 2010/0099954 A1 which is

assigned to Zeo, Inc. and which is hereby incorporated by reference herein. According to this disclosure, a system similar to or even substantially the same as that disclosed in the '954 publication is integrated into a hospital bed.

Any theory, mechanism of operation, proof, or finding stated herein is meant to further enhance understanding of principles of the present disclosure and is not intended to make the present disclosure in any way dependent upon such theory, mechanism of operation, illustrative embodiment, proof, or finding. It should be understood that while the use of the word preferable, preferably or preferred in the description above indicates that the feature so described can be more desirable, it nonetheless can not be necessary and embodiments lacking the same can be contemplated as within the scope of the disclosure, that scope being defined by the claims that follow.

In reading the claims it is intended that when words such as "a," "an," "at least one," "at least a portion" are used there is no intention to limit the claim to only one item unless specifically stated to the contrary in the claim. When the language "at least a portion" and/or "a portion" is used the item can include a portion and/or the entire item unless specifically stated to the contrary.

While embodiments of the disclosure have been illustrated and described in detail in the drawings and foregoing description, the same are to be considered as illustrative and not restrictive in character, it being understood that only the selected embodiments have been shown and described and that all changes, modifications and equivalents that come within the spirit of the disclosure as defined herein or by any of the following claims are desired to be protected.

The invention claimed is:

1. A method of predicting the onset of an adverse condition, the method comprising:

receiving at a controller at least one data signal from a tissue contacting sensor and a non-tissue contacting sensor, the tissue contacting sensor being included as part of a person support apparatus having a surface sufficiently large to accommodate an entirety of a body of a person in a lying position, the tissue contacting sensor being located underneath a torso of the person when the person is lying on the surface facing upwardly, the non-tissue contacting sensor being located below the tissue contacting sensor and below the surface when the person is lying on the patient support apparatus facing upwardly; calculating using the controller a condition score as a function of the at least one data signal; and alerting using the controller a caregiver if the condition score is greater than a predetermined threshold.

2. The method of claim 1, wherein the predetermined threshold is a function of information from at least one of an electronic medical record, a patient profile, and a caregiver.

3. The method of claim 1, wherein the tissue contacting sensor is configured to measure blood pressure, tissue temperature, tissue blood oxygen content, heart rate, or respiration rate.

4. The method of claim 1, wherein the non-tissue contacting sensor is configured to measure person support apparatus

status, bladder pressure, heart rate, respiration rate, relative humidity, or an amount of force on a person support surface.

5. The method of claim 1, wherein the condition score is calculated as a function of a status signal of the person support apparatus.

6. The method of claim 1, wherein the non-tissue contacting sensor is included as part of the person support apparatus.

7. The method of claim 1, wherein the condition score is a Visensia index.

8. The method of claim 1, wherein the controller is configured to receive information from an electronic medical record (EMR), the controller calculating the condition score as a function of the at least one data signal and the information.

9. The method of claim 1, wherein the tissue contacting sensor is integrated into a person contacting surface of the person support apparatus.

10. The method of claim 1, wherein the controller is configured to calculate the condition score as a function of a physiological characteristic and a characteristic or status of the person support apparatus.

11. The method of claim 1, wherein the controller is configured to receive information from a patient profile, the controller calculating the condition score as a function of the at least one data signal and the patient profile information.

12. The method of claim 1, wherein the controller calculates the index as a function of information from at least one of an electronic medical record, a patient profile, and the at least one data signal.

13. The method of claim 1, wherein a support apparatus parameter is displayed as a picture.

14. The method of claim 1, wherein the condition score is displayed as a graph or a picture.

15. The method of claim 1, wherein the condition score is a modified early warning score based on at least one of caregiver inputs and information from an electronic medical record.

16. A system to predict the onset of an adverse condition, the system comprising:

a patient support apparatus having a surface sufficiently large to accommodate an entirety of a body of a person in a lying position and having a controller that receives at least one data signal from a tissue contacting sensor and a non-tissue contacting sensor, the tissue contacting sensor being included as part of the person support apparatus, the controller being configured to calculate a condition score as a function of the at least one data signal, the tissue contacting sensor being located underneath a torso of the person when the person is lying on the surface facing upwardly, the non-tissue contacting sensor being located below the tissue contacting sensor and below the surface when the person is lying on the patient support apparatus facing upwardly; and

a remote computer device that receives an alert message if the condition score is greater than a predetermined threshold, the controller being configured to initiate the alert message being sent.

* * * * *

专利名称(译)	用于支持和监视人的状况的装置		
公开(公告)号	US9044204	公开(公告)日	2015-06-02
申请号	US14/011833	申请日	2013-08-28
[标]申请(专利权)人(译)	希尔 - 罗姆服务股份有限公司		
申请(专利权)人(译)	HILL-ROM SERVICES , INC		
当前申请(专利权)人(译)	HILL-ROM SERVICES , INC.		
[标]发明人	RILEY CARL W RECEVEUR TIMOTHY J RIBBLE DAVID L		
发明人	RILEY, CARL W. RECEVEUR, TIMOTHY J. RIBBLE, DAVID L.		
IPC分类号	A61B5/08 A61B5/00 A61B5/0205 A61B5/11		
CPC分类号	A61B5/6892 A61B5/02055 A61B5/1113 A61B5/1117 A61B5/1126 A61B5/6887 A61B5/024 A61B5/1115 A61G7/005		
优先权	61/243714 2009-09-18 US 61/243741 2009-09-18 US 61/243806 2009-09-18 US 61/243825 2009-09-18 US		
其他公开文献	US20130342351A1		
外部链接	Espacenet USPTO		

摘要(译)

人监测系统可操作以预测人的不利状况的发作。系统接收与人支持设备的特征相对应的第一信息和与人的生理特征相对应的第二信息。系统根据第一和第二信息计算条件分数。在一些情况下，如果状况分数超过预定阈值，则系统警告护理人员。可选地或另外地，当人员支持设备上支持的人通过监视位置，心率和呼吸率的变化中的一个或多个来恢复意识时，人员监视系统警告护理人员。还公开了一种监视人的睡眠质量并向一个或多个相关方呈现关于睡眠质量的信息的人监测系统。

