



US00988881B2

(12) **United States Patent**
Hulvershorn et al.

(10) **Patent No.:** **US 9,888,881 B2**
(45) **Date of Patent:** ***Feb. 13, 2018**

(54) **SYSTEMS, METHODS, AND DEVICES FOR FACILITATING ACCESS TO TARGET ANATOMICAL SITES OR ENVIRONMENTS**

(58) **Field of Classification Search**
CPC . A61B 5/4887-5/4896; A30M 25/06-25/0693
See application file for complete search history.

(71) Applicant: **MIRADOR BIOMEDICAL,**
Williamston, MI (US)

(56) **References Cited**

(72) Inventors: **Justin Hulvershorn,** Seattle, WA (US);
Karl Schmidt, Seattle, WA (US);
Douglas Swartz, Edmonds, WA (US)

U.S. PATENT DOCUMENTS

4,648,406 A 3/1987 Miller
4,801,293 A 1/1989 Jackson
(Continued)

(73) Assignee: **Mirador Biomedical,** Seattle, WA (US)

FOREIGN PATENT DOCUMENTS

(*) Notice: Subject to any disclaimer, the term of this patent is extended or adjusted under 35 U.S.C. 154(b) by 476 days.

EP 538259 A1 4/1993
EP 0538259 A1 4/1993
(Continued)

This patent is subject to a terminal disclaimer.

OTHER PUBLICATIONS

(21) Appl. No.: **14/523,046**

Don, et al. "A Study of Correlation between Epidural and CSF Pressure." The Journal of Korean Society of Anesthesiologists; Vo. 23, No. 2, 1990.

(22) Filed: **Oct. 24, 2014**

(Continued)

(65) **Prior Publication Data**

US 2016/0113576 A1 Apr. 28, 2016
US 2016/0374612 A9 Dec. 29, 2016

Primary Examiner — Michael C Stout

(74) *Attorney, Agent, or Firm* — Brooks Kushman P.C.

Related U.S. Application Data

(63) Continuation of application No. 12/806,809, filed on Aug. 19, 2010, now Pat. No. 8,926,525.
(Continued)

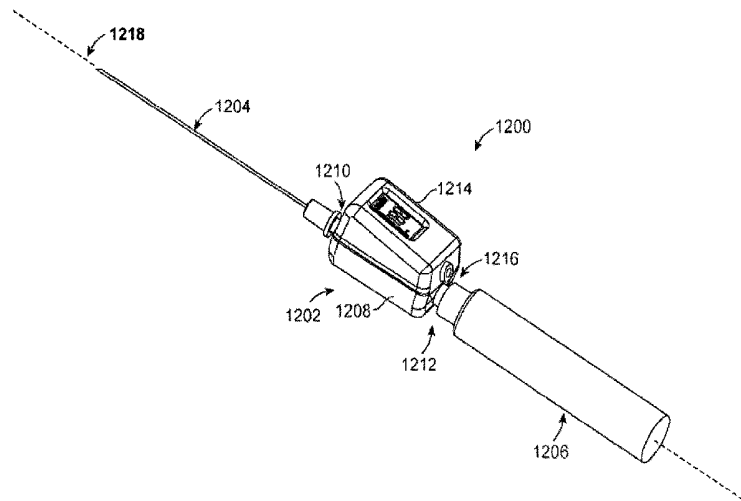
(57) **ABSTRACT**

Methods and structures for detecting a physiologic parameter of a target anatomical environment. The device including a housing with a distal portion first port couplable to a probe and a proximal portion; and a sensing unit, a processing unit, and an output unit carried by the housing, the output unit configured to output a reporting signal based on the determined physiologic parameter value such as pressure; the sensing unit, processing unit, and output unit being disposed substantially between the first port and the proximal portion of the housing.

(51) **Int. Cl.**
A61B 5/00 (2006.01)
A61B 5/044 (2006.01)
(Continued)

(52) **U.S. Cl.**
CPC **A61B 5/4887** (2013.01); **A61B 5/0006** (2013.01); **A61B 5/0205** (2013.01);
(Continued)

43 Claims, 25 Drawing Sheets



Related U.S. Application Data

		8,814,807 B2	8/2014	Hulvershorn et al.	
		8,926,525 B2	1/2015	Hulvershorn et al.	
		2002/0010390 A1	1/2002	Guice et al.	
(60)	Provisional application No. 61/235,004, filed on Aug. 19, 2009, provisional application No. 61/300,794, filed on Feb. 2, 2010.	2002/0042594 A1 *	4/2002	Lum	A61B 5/053 604/117
		2003/0040737 A1 *	2/2003	Merril	A61B 34/70 606/1
(51)	Int. Cl.	2003/0097082 A1 *	5/2003	Purdy	A61B 17/12136 600/594
	<i>A61B 5/0408</i> (2006.01)	2003/0199909 A1	10/2003	Boecker et al.	
	<i>A61B 5/0215</i> (2006.01)	2004/0010204 A1 *	1/2004	Weber	A61B 5/4896 600/547
	<i>A61B 5/03</i> (2006.01)	2004/0024358 A1	2/2004	Meythaler et al.	
	<i>A61B 8/08</i> (2006.01)	2004/0098020 A1	5/2004	Nardeo	
	<i>A61B 17/34</i> (2006.01)	2004/0215080 A1	10/2004	Lechner	
	<i>A61M 5/168</i> (2006.01)	2004/0260357 A1 *	12/2004	Vaughan	A61B 5/0488 607/48
	<i>A61M 5/42</i> (2006.01)	2005/0070458 A1	3/2005	John	
	<i>A61M 5/46</i> (2006.01)	2005/0131345 A1 *	6/2005	Miller	A61B 10/025 604/117
	<i>A61M 5/48</i> (2006.01)	2005/0148940 A1	7/2005	Miller	
	<i>A61M 25/06</i> (2006.01)	2006/0009737 A1	1/2006	Whiting et al.	
	<i>A61B 5/0205</i> (2006.01)	2006/0036164 A1	2/2006	Wilson et al.	
	<i>A61B 8/00</i> (2006.01)	2006/0122555 A1 *	6/2006	Hochman	A61M 5/1456 604/67
	<i>A61B 5/145</i> (2006.01)	2006/0135882 A1	6/2006	Bleich	
	<i>A61B 90/00</i> (2016.01)	2006/0149161 A1	7/2006	Wilson et al.	
(52)	U.S. Cl.	2006/0167405 A1 *	7/2006	King	A61M 5/32 604/65
	CPC <i>A61B 5/0215</i> (2013.01); <i>A61B 5/032</i> (2013.01); <i>A61B 5/036</i> (2013.01); <i>A61B 5/044</i> (2013.01); <i>A61B 5/0408</i> (2013.01); <i>A61B 5/489</i> (2013.01); <i>A61B 5/4821</i> (2013.01); <i>A61B 5/4839</i> (2013.01); <i>A61B 5/4896</i> (2013.01); <i>A61B 5/742</i> (2013.01); <i>A61B 8/0833</i> (2013.01); <i>A61B 17/3401</i> (2013.01); <i>A61M 5/16854</i> (2013.01); <i>A61M 5/42</i> (2013.01); <i>A61M 5/427</i> (2013.01); <i>A61M 5/46</i> (2013.01); <i>A61M 5/484</i> (2013.01); <i>A61M 5/486</i> (2013.01); <i>A61M 25/06</i> (2013.01); <i>A61M 25/0693</i> (2013.01); <i>A61B 5/14542</i> (2013.01); <i>A61B 8/4472</i> (2013.01); <i>A61B 2090/064</i> (2016.02)	2006/0195043 A1 *	8/2006	Rutherford	A61B 5/032 600/561
		2007/0038129 A1	2/2007	Kishimoto et al.	
		2007/0083126 A1 *	4/2007	Marko	A61B 5/02007 600/505
		2007/0123888 A1	5/2007	Bleich et al.	
		2007/0191915 A1 *	8/2007	Strother	A61B 17/1626 607/63
		2007/0239033 A1 *	10/2007	Tearney	A61B 5/0059 600/476
		2007/0255220 A1	11/2007	King et al.	
		2008/0097287 A1	4/2008	Nelson et al.	
		2008/0147094 A1	6/2008	Bittenson	
		2008/0154188 A1	6/2008	Hochman	
		2008/0182518 A1 *	7/2008	Lo	G06F 1/1632 455/41.3

(56) References Cited

U.S. PATENT DOCUMENTS

5,205,828 A	4/1993	Kedem					
5,267,971 A	12/1993	Brimhall					
5,314,410 A	5/1994	Marks					
5,526,820 A	6/1996	Khoury					
5,562,609 A *	10/1996	Brumbach	A61B 17/320068 601/3				
5,575,789 A	11/1996	Bell et al.					
5,711,302 A	1/1998	Lampropoulos et al.					
5,865,764 A	2/1999	Moorhead					
5,871,470 A	2/1999	McWha					
5,902,273 A	5/1999	Yang et al.					
5,954,701 A	9/1999	Matalon					
6,019,775 A *	2/2000	Sakurai	A61B 17/320068 433/119				
6,478,769 B1 *	11/2002	Parker	A61B 17/3417 604/272				
6,623,429 B2	9/2003	Percival et al.					
6,673,086 B1 *	1/2004	Hofmeier	C12M 45/02 606/169				
7,197,357 B2	3/2007	Istvan et al.					
7,585,280 B2	9/2009	Wilson et al.					
7,618,409 B2	11/2009	Hochman					
7,896,833 B2	3/2011	Hochman					
7,922,689 B2	4/2011	Lechner					
7,947,001 B1 *	5/2011	Sarvazyan	A61B 5/03 600/587				
7,955,301 B1	6/2011	McKay					
8,142,365 B2	3/2012	Miller					
8,282,565 B2	10/2012	Mahapatra et al.					
8,328,738 B2	12/2012	Frankhouser et al.					
				2008/0200789 A1	8/2008	Brister et al.	
				2009/0005675 A1	1/2009	Grunwald et al.	
				2009/0005703 A1	1/2009	Fasciano	
				2009/0069709 A1 *	3/2009	Schmitz	A61B 5/0488 600/547
				2009/0105554 A1 *	4/2009	Stahmann	A61B 5/02055 600/300
				2009/0131832 A1	5/2009	Sacristan Rock et al.	
				2009/0137952 A1 *	5/2009	Ramamurthy	A61B 5/06 604/95.01
				2009/0149715 A1 *	6/2009	Mao	A61B 1/32 600/202
				2009/0149771 A1 *	6/2009	Myklebust	A61B 5/053 600/547
				2009/0157044 A1 *	6/2009	Liyanagama	A61B 17/3401 604/512
				2009/0171381 A1 *	7/2009	Schmitz	A61B 5/0488 606/167
				2009/0204005 A1 *	8/2009	Keast	A61B 1/018 600/461
				2009/0204119 A1	8/2009	Bleich et al.	
				2009/0240205 A1	9/2009	Wen	
				2009/0270759 A1	10/2009	Wilson et al.	
				2009/0275840 A1 *	11/2009	Roschak	A61B 5/0084 600/467
				2010/0004558 A1 *	1/2010	Frankhouser	A61B 10/025 600/567
				2010/0069851 A1 *	3/2010	Vad	A61B 17/3401 604/240
				2010/0087755 A1 *	4/2010	Boezaart	A61M 25/0113 600/585
				2010/0094143 A1	4/2010	Mahapatra et al.	

(56)

References Cited

U.S. PATENT DOCUMENTS

2010/0121270 A1* 5/2010 Gunday A61B 17/22012
604/98.01
2010/0160865 A1* 6/2010 Zeltzer A61B 17/3401
604/164.12
2011/0004159 A1 1/2011 Nelson et al.
2011/0046477 A1 2/2011 Hulvershorn et al.
2011/0054353 A1 3/2011 Hulvershorn et al.
2011/0060229 A1* 3/2011 Hulvershorn A61B 5/0215
600/486
2011/0060243 A1* 3/2011 Hausman A61B 5/05
600/554
2011/0077462 A1* 3/2011 Saitou A61B 1/0638
600/109
2011/0112362 A1* 5/2011 Minetoma A61B 1/05
600/109
2011/0125107 A1 5/2011 Slocum et al.
2011/0130758 A9 6/2011 Bleich et al.
2011/0224623 A1 9/2011 Velez Rivera
2011/0237884 A1* 9/2011 Saito A61B 1/00009
600/109
2011/0298628 A1 12/2011 Vad et al.

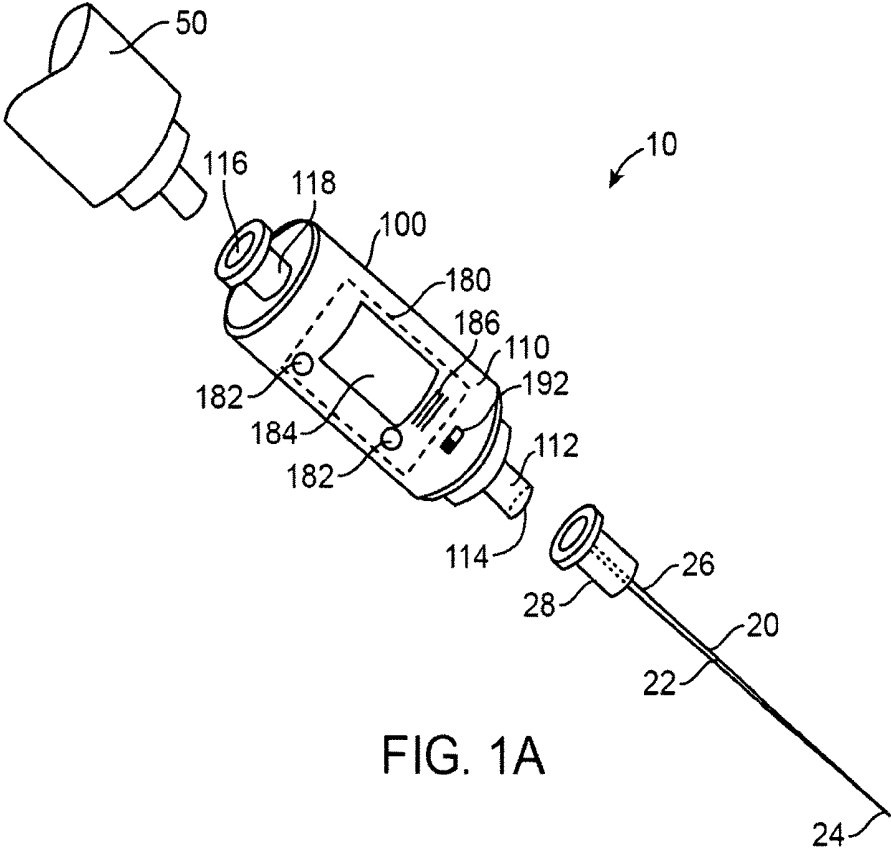
FOREIGN PATENT DOCUMENTS

JP S56104801 8/1981
JP H0686823 A 3/1994
KR 2002-0073824 A 9/2002
KR 20020073824 A 9/2002
WO WO 93/09837 A1 5/1993
WO 2003000146 A1 1/2003
WO WO 03/000146 A1 1/2003
WO 2007058826 A1 5/2007
WO WO 2009/023247 A1 2/2009

OTHER PUBLICATIONS

International Search Report and Written Opinion dated Oct. 15, 2010 for PCT/US2010/002305.
Office Action dated Jan. 9, 2014 for U.S. Appl. No. 12/806,747.
Office Action dated Jan. 23, 2013 for U.S. Appl. No. 12/806,747.
Office Action dated May 7, 2013 for U.S. Appl. No. 12/806,798.
Office Action dated May 17, 2013 for U.S. Appl. No. 12/806,747.
Office Action dated Jun. 7, 2012 for U.S. Appl. No. 12/806,747.
Office Action dated Nov. 6, 2013 for U.S. Appl. No. 12/806,798.
Office Action dated Nov. 19, 2012 for U.S. Appl. No. 12/806,798.
Usubiaga, et al. "Effect of Saline Injections on Epidural and Subarachnoid Space Pressures and Relation to Postspinal Anesthesia Headache." Anesthesia and Analgesia Current Researches vol. 46, No. 3, May-Jun. 1976, 293-296.
U.S. Appl. No. 14/268,975, filed May 2, 2014, Hulvershorn et al.
U.S. Appl. No. 14/322,015, filed Jul. 2, 2014, Hulvershorn et al.
Don, et al. A Study of Correlation between Epidural and CSF Pressure. The Journal of Korean Society of Anesthesiologists: vol. 23, No. 2, 1990.
European search report and opinion dated Mar. 6, 2014 for EP Application No. 10810289.8.
Notice of allowance dated Mar. 28, 2014 for U.S. Appl. No. 12/806,809.
Notice of allowance dated May 23, 2014 for U.S. Appl. No. 12/806,747.
Office action dated Mar. 8, 2013 for U.S. Appl. No. 12/806,809.
Office action dated Sep. 6, 2013 for U.S. Appl. No. 12/806,809.
Usubiaga, et al. Effect of Saline Injections on Epidural and Subarachnoid Space Pressures and Relation to Postspinal Anesthesia Headache. Anesthesia and Analgesia Current Researches vol. 46, No. 3, May-Jun. 1976, 293-296.

* cited by examiner



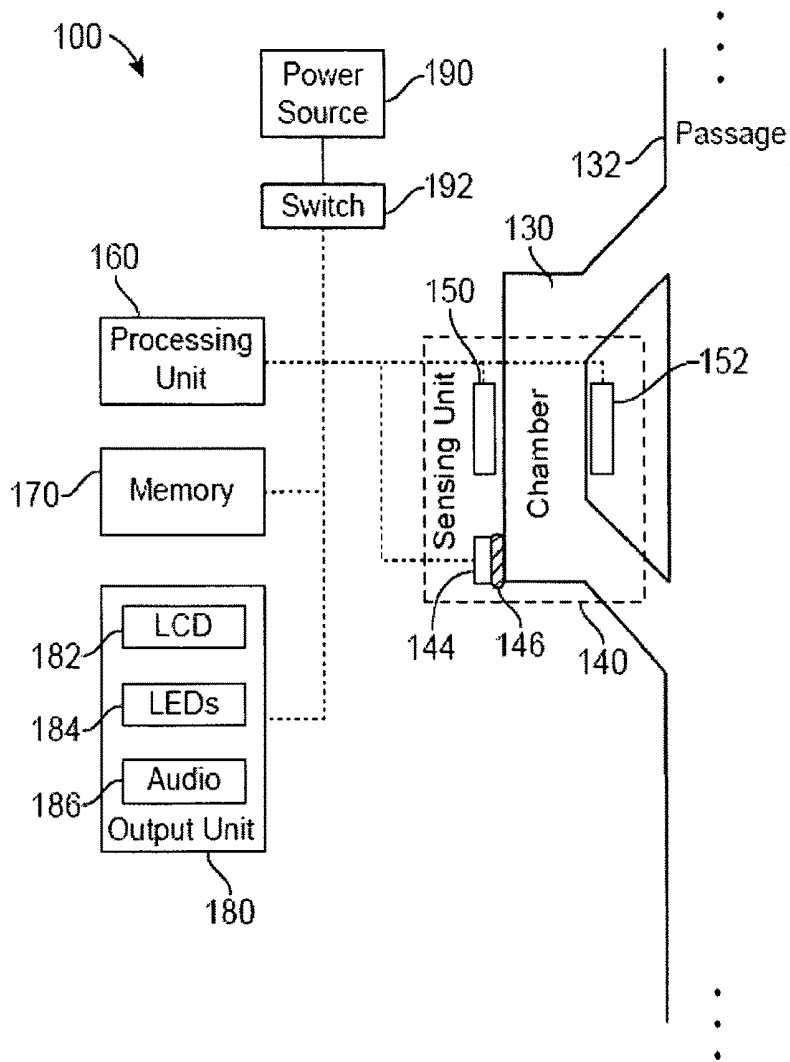


FIG. 1B

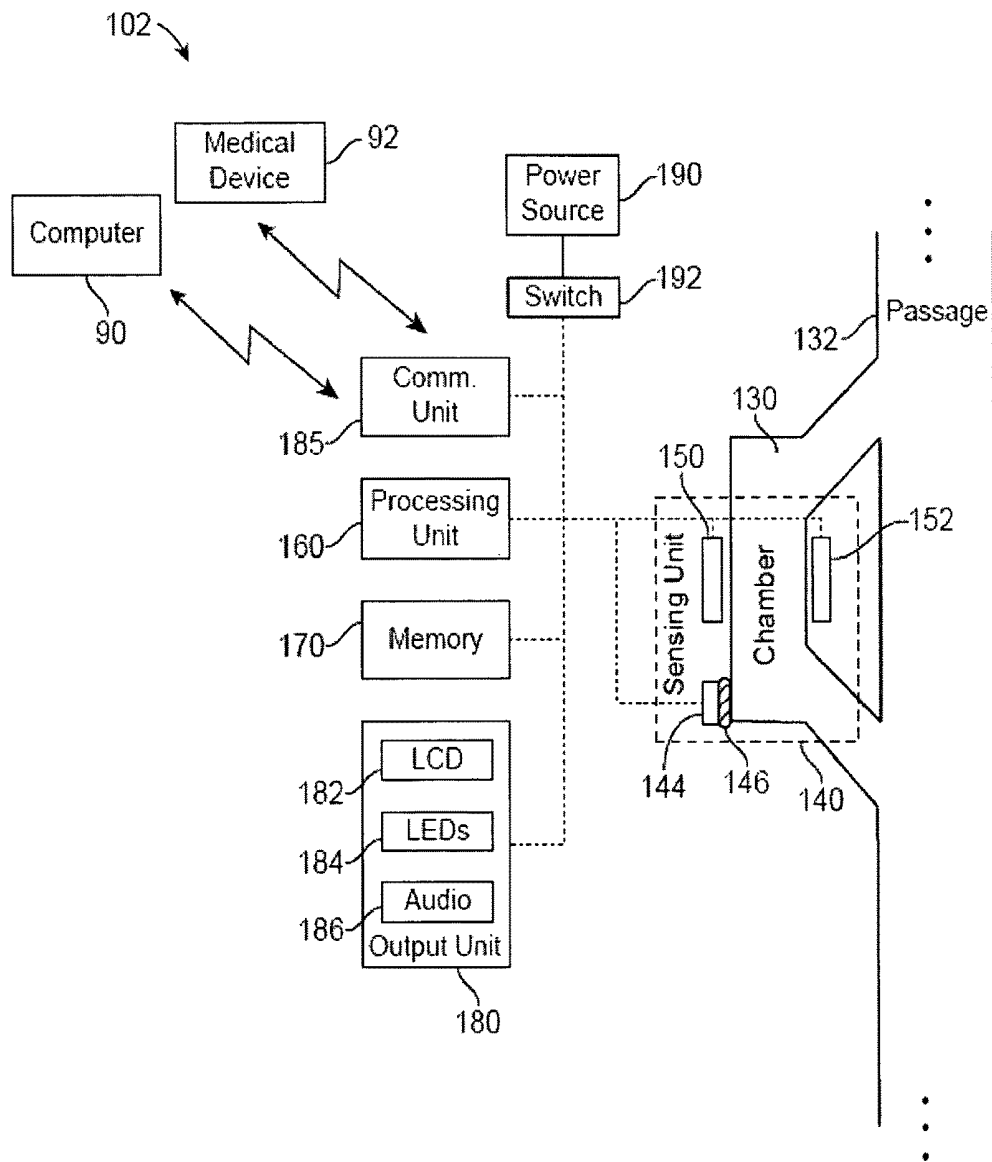


FIG. 1C

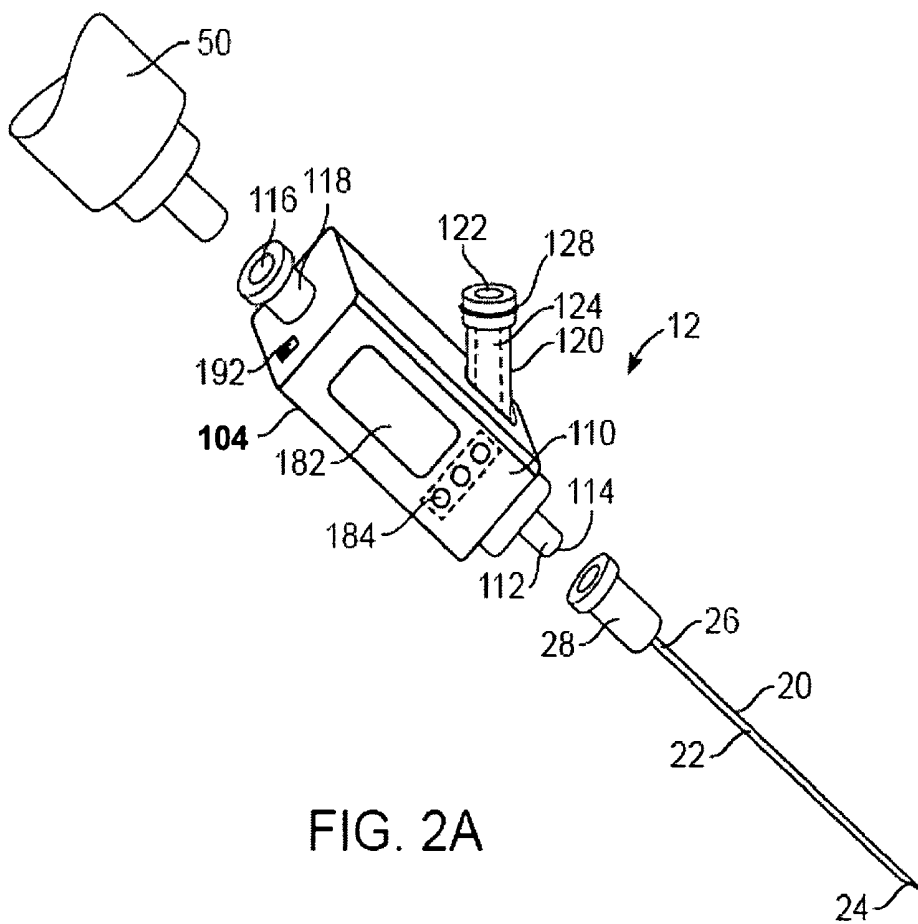


FIG. 2A

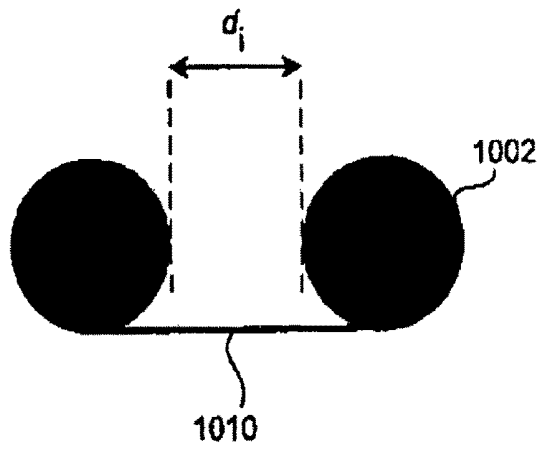


FIG. 2B

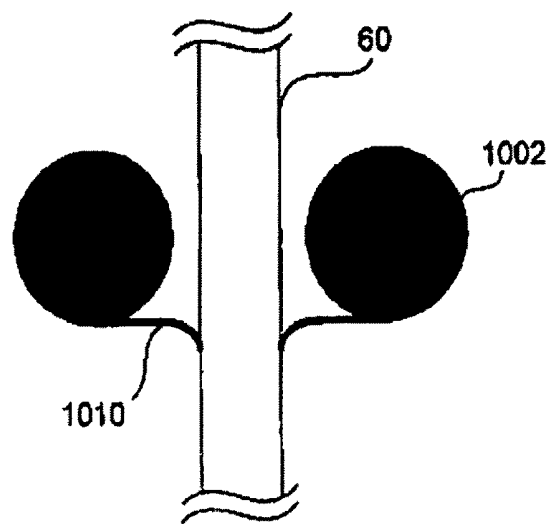
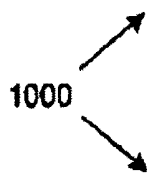


FIG. 2C

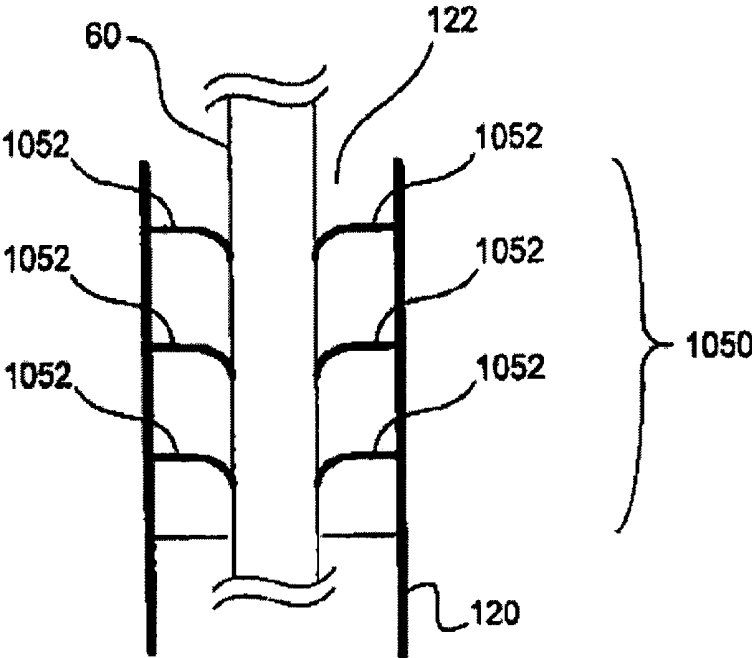


FIG. 2D

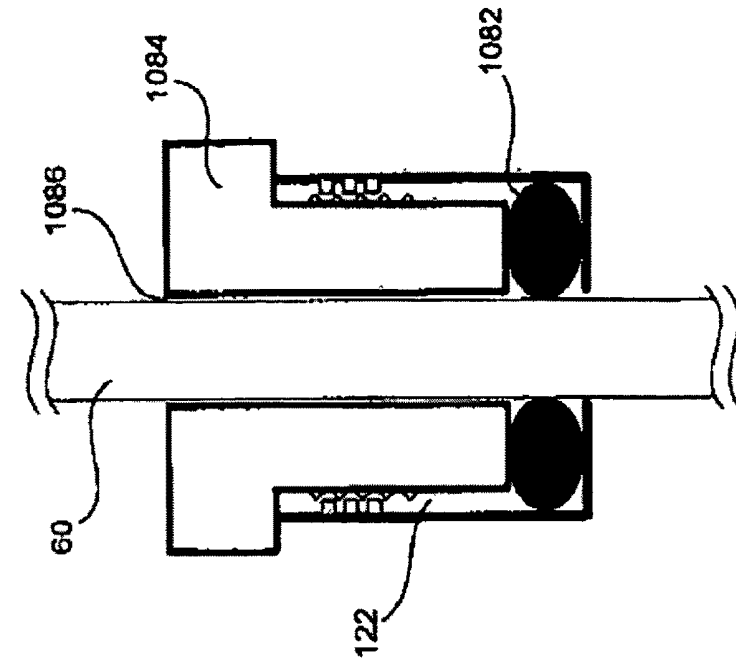


FIG. 2E

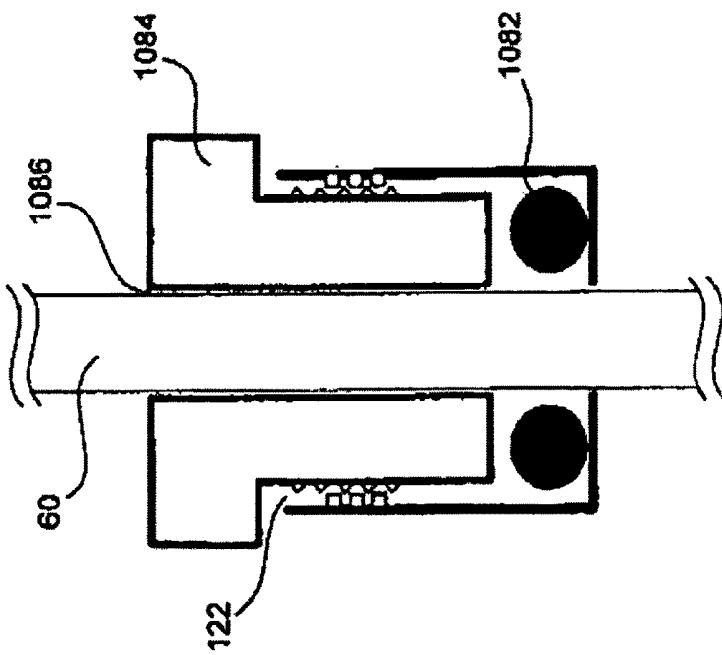
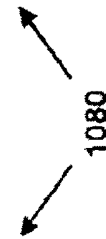


FIG. 2F

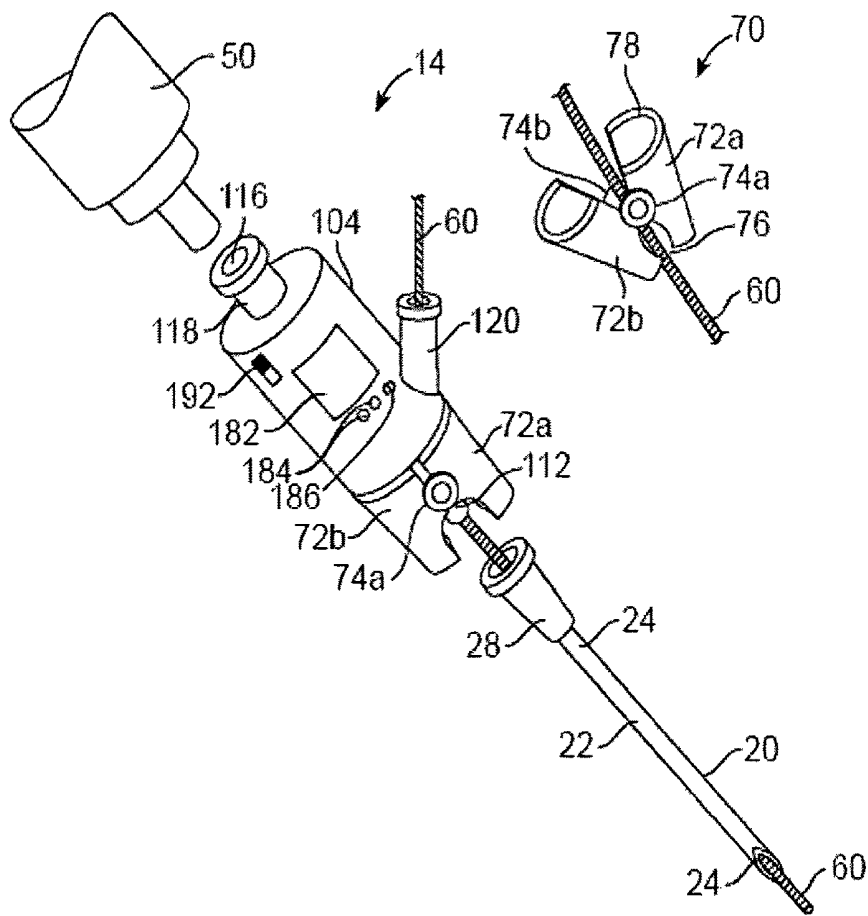


FIG. 2G

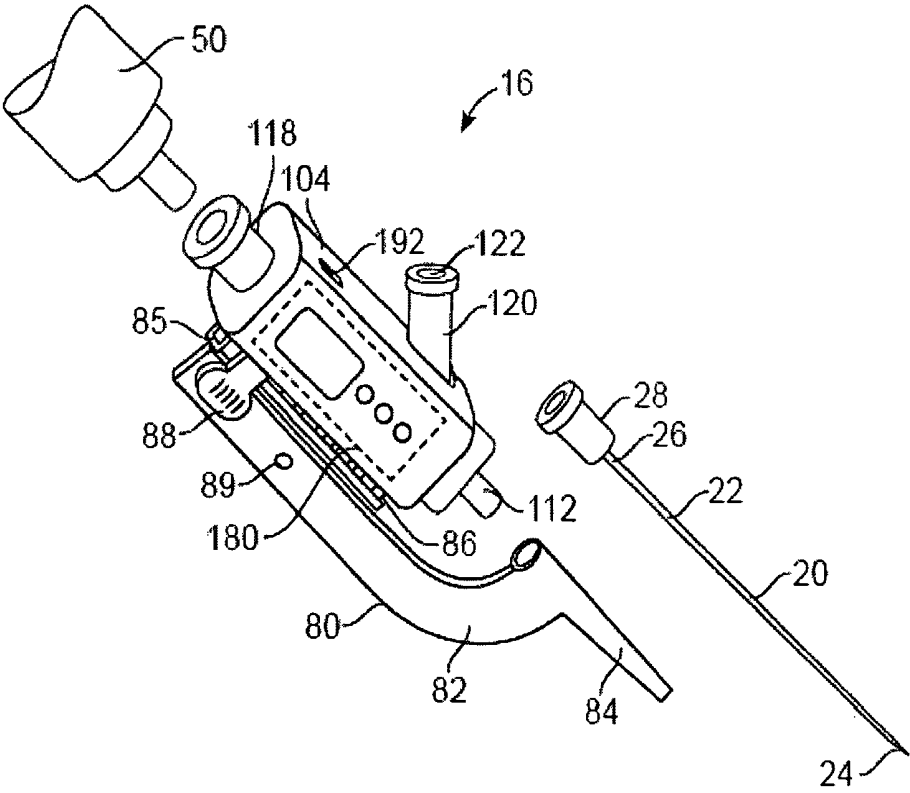
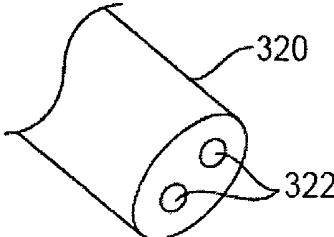
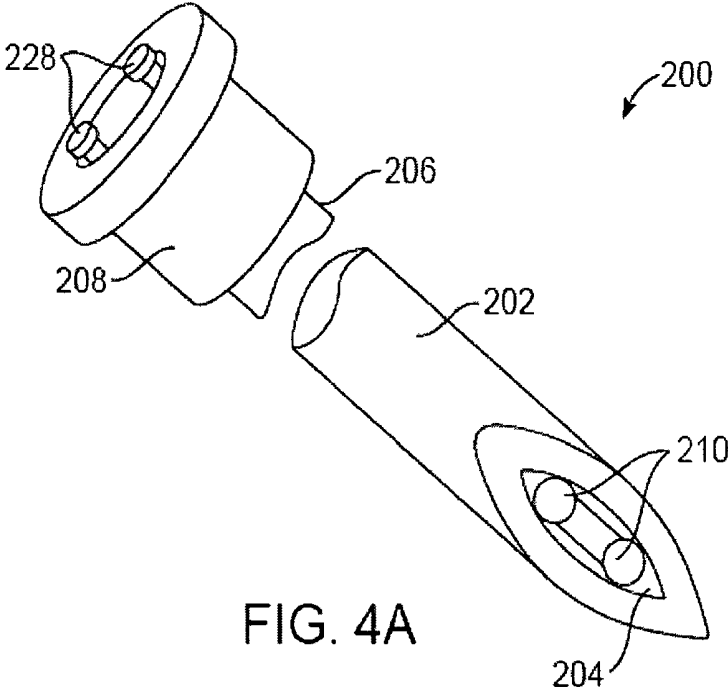


FIG. 3



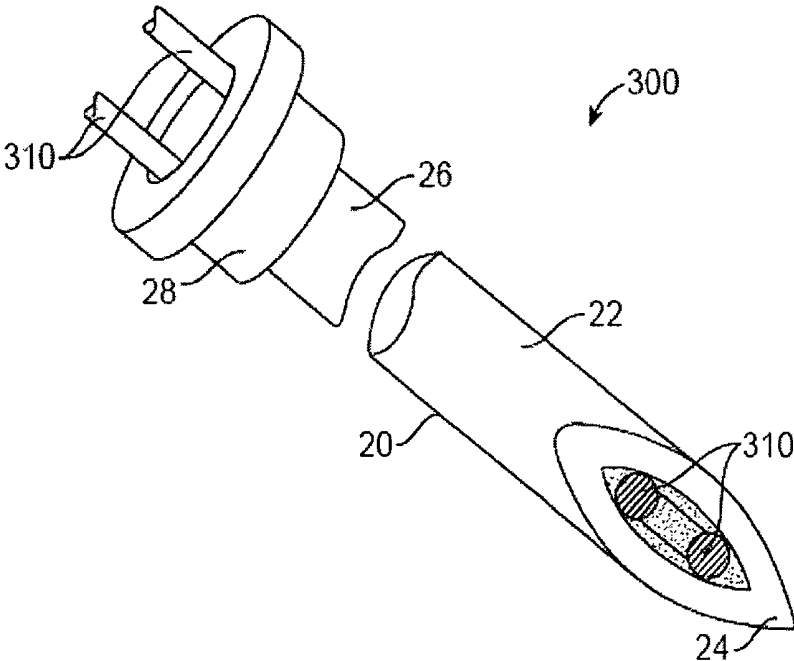


FIG. 5A

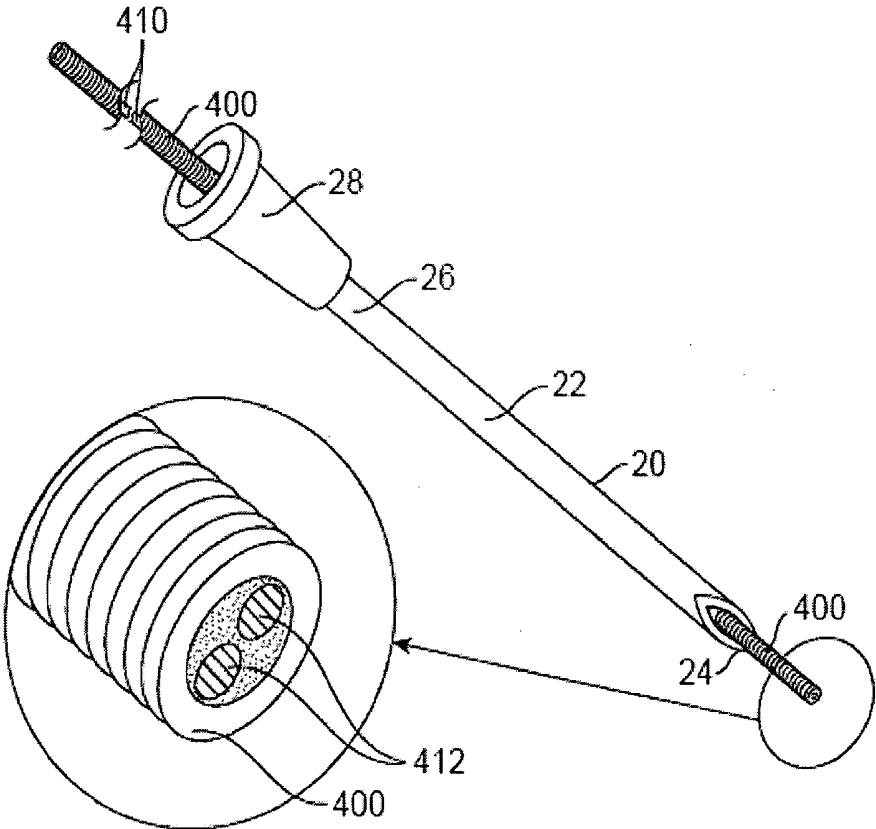


FIG. 5B

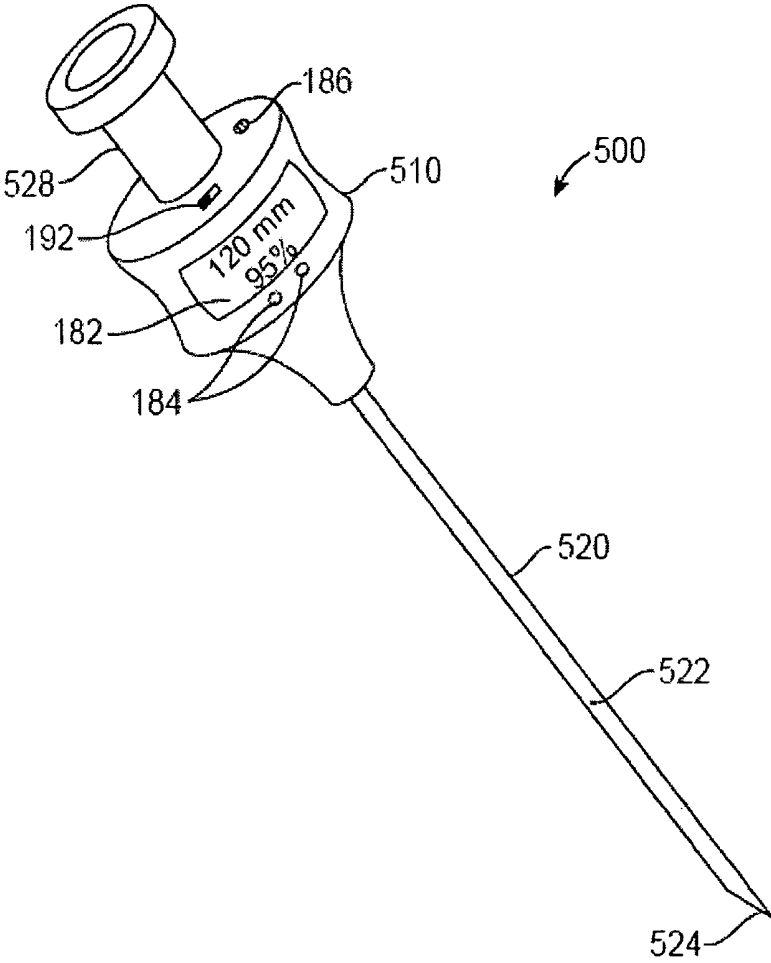


FIG. 6A

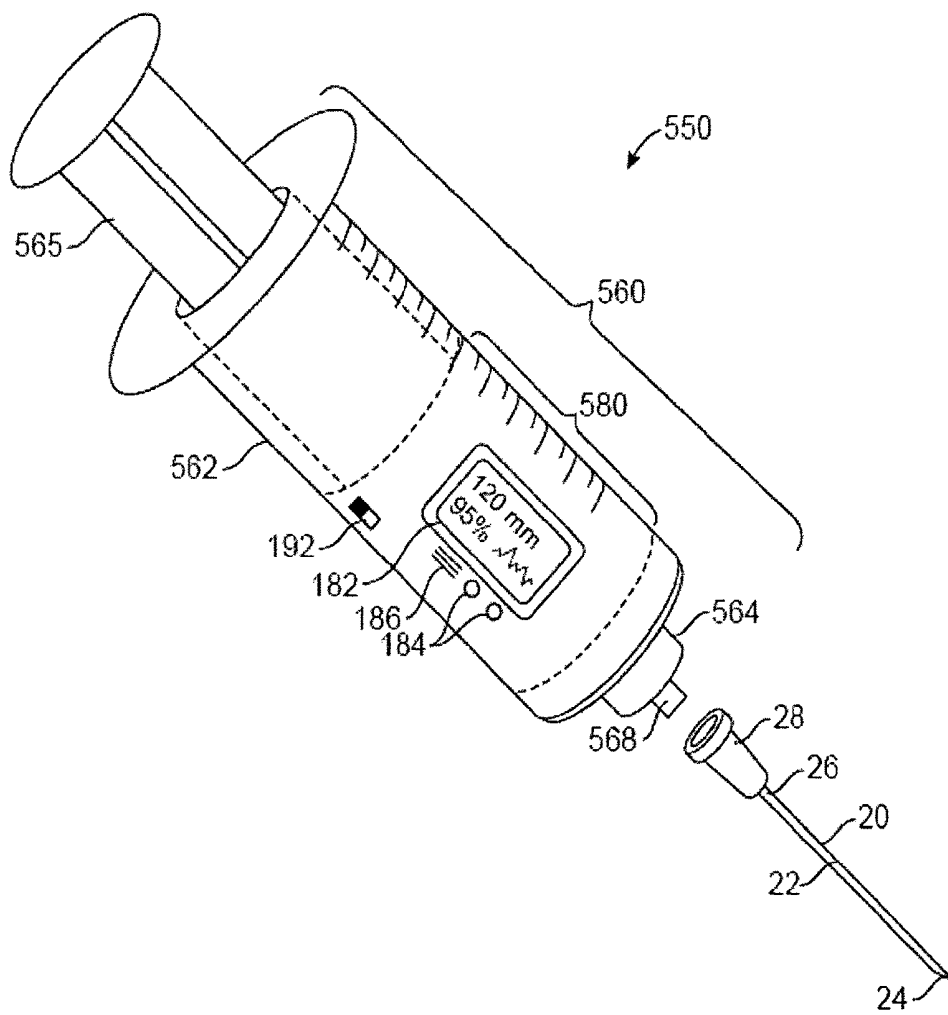
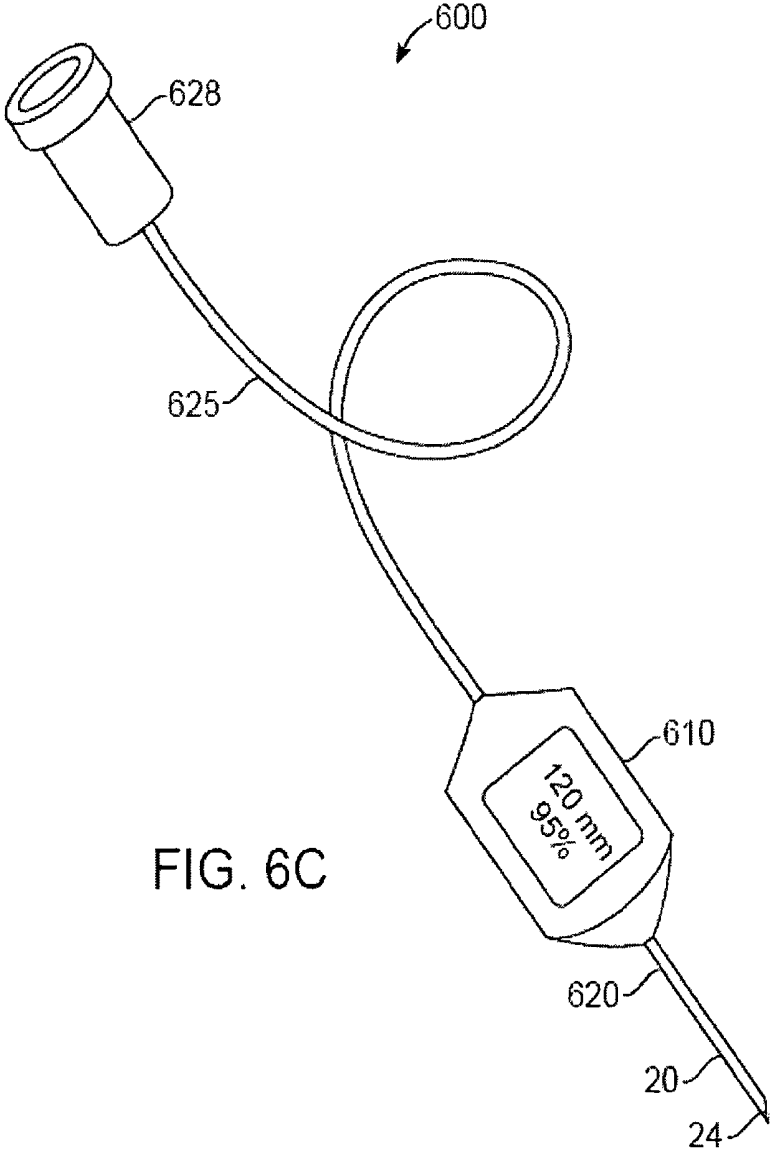


FIG. 6B



<u>Parameter</u>	<u>Vein</u>	<u>Artery</u>
Pressure	≤ 40 mmHG	≥ 45 mmHG
Pressure Variation	≤ 15 mmHG	≥ 20 mmHG
Hemoglobin Saturation	≤ 60 %	≥ 80 %

FIG. 7

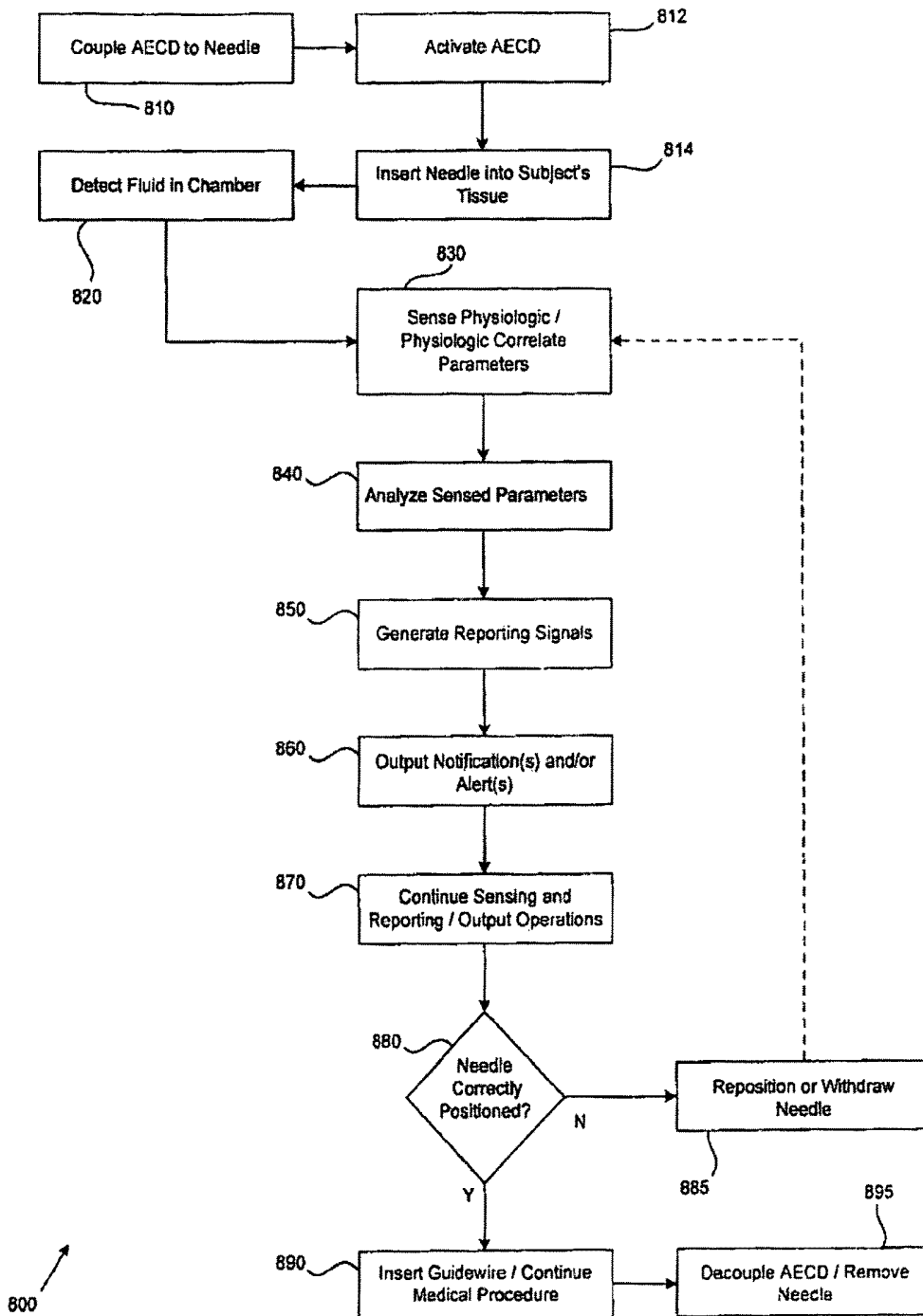
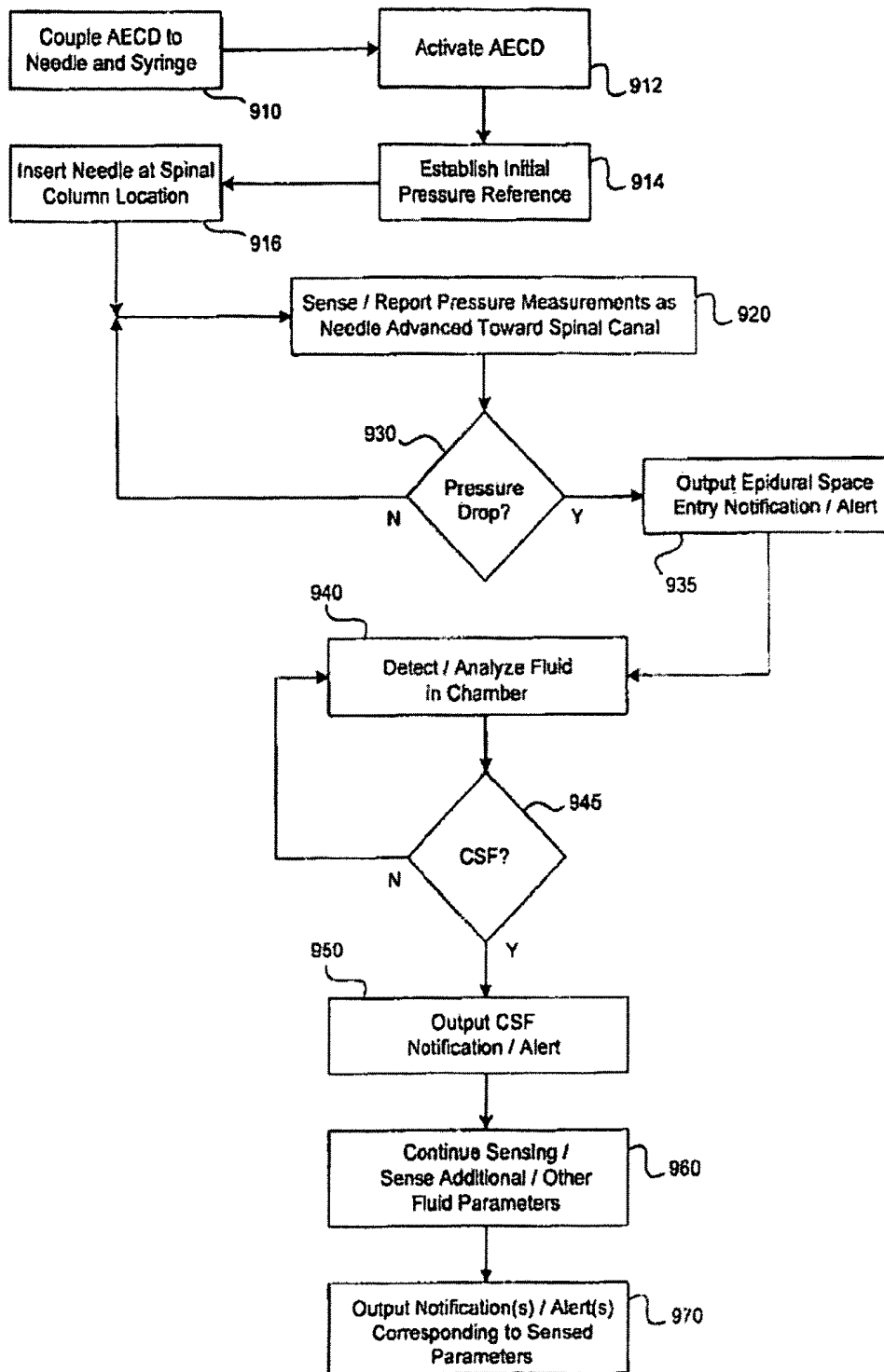


FIG. 8



900 ↗

FIG. 9

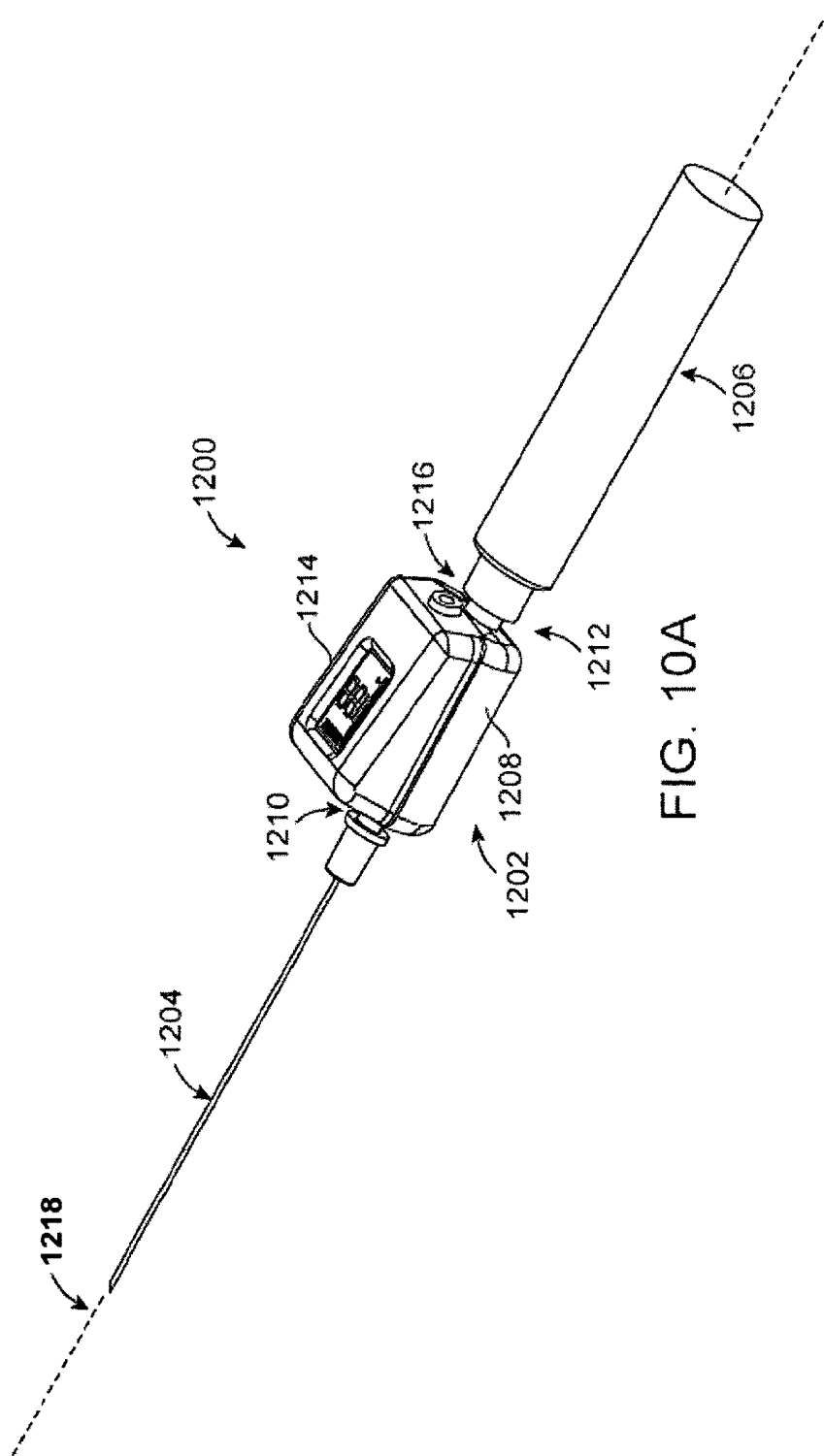


FIG. 10A

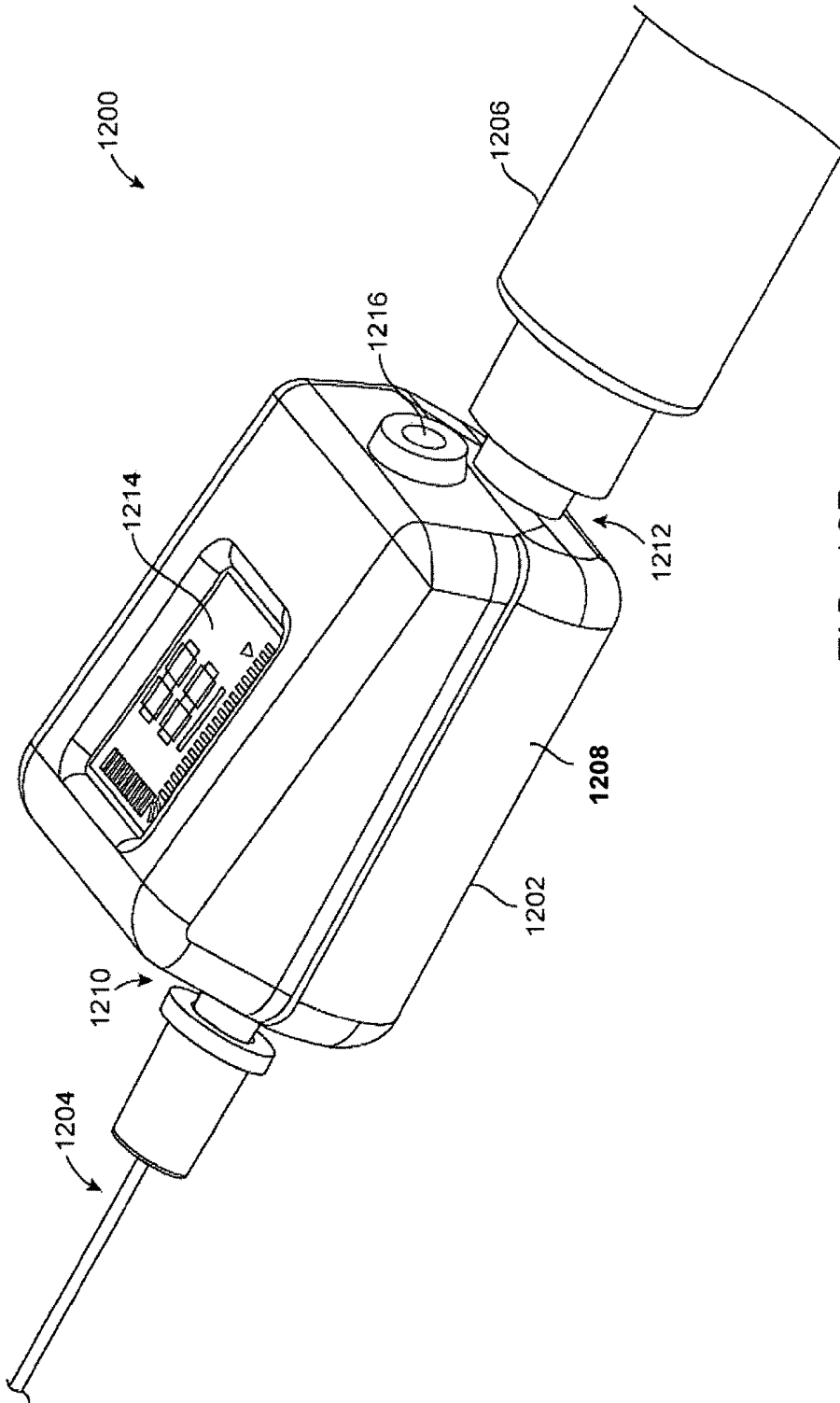


FIG. 10B

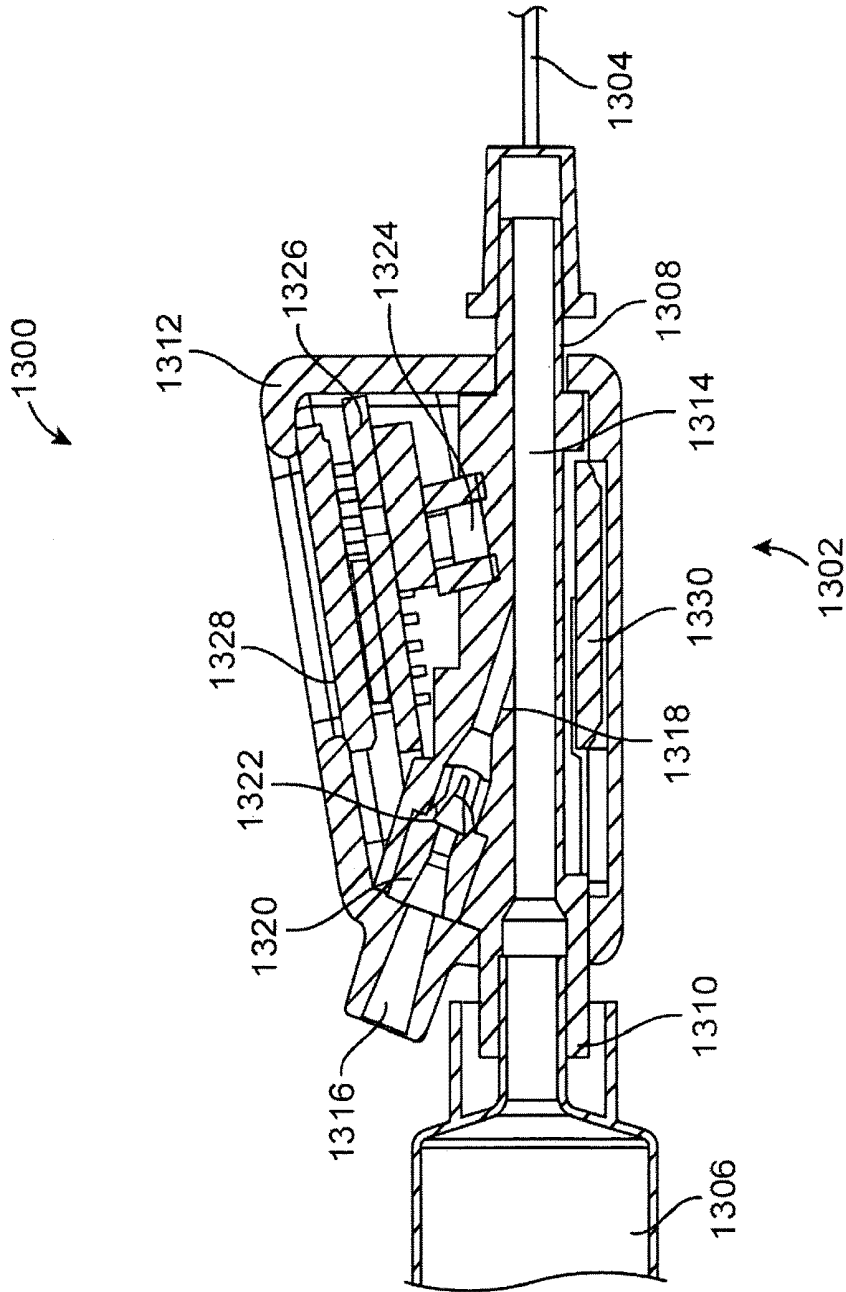


FIG. 11

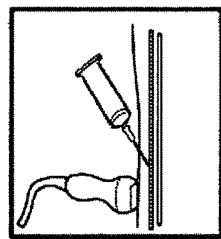


FIG. 12A

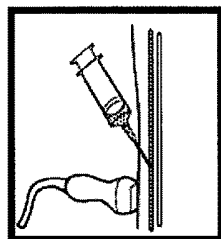


FIG. 12B

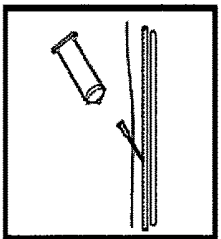


FIG. 12C

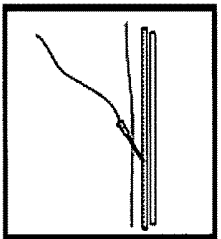


FIG. 12D

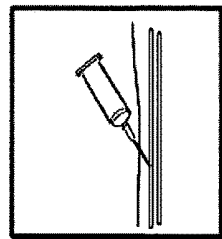


FIG. 13A

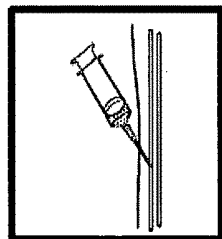


FIG. 13B

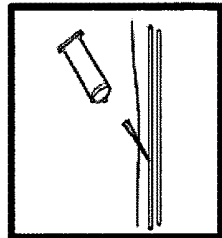


FIG. 13C

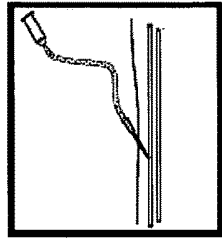


FIG. 13D

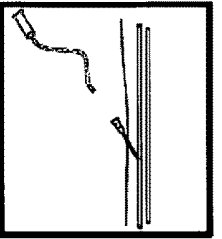


FIG. 13E

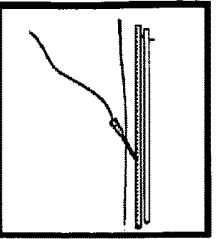


FIG. 13F

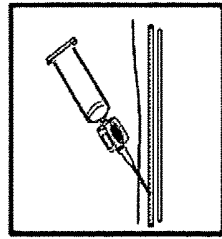


FIG. 14A

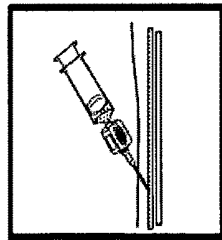


FIG. 14B

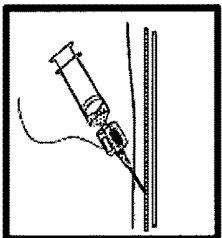


FIG. 14C

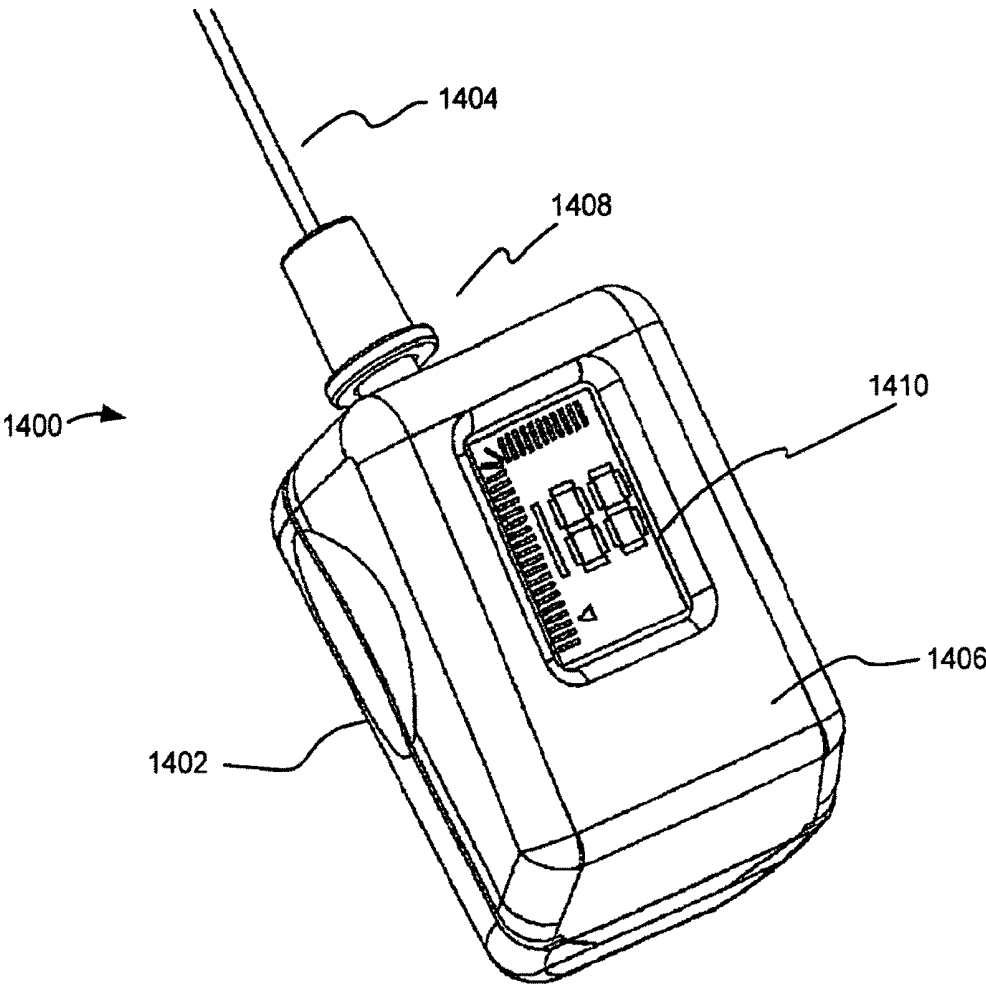


FIG. 15

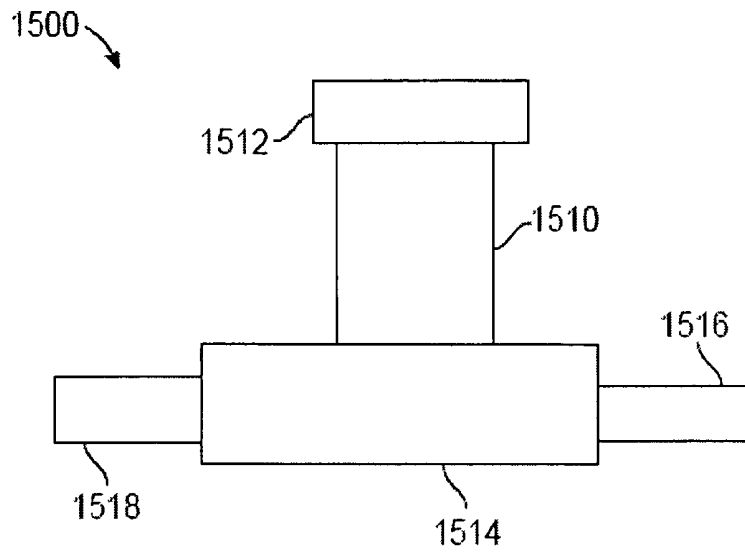


FIG. 16A

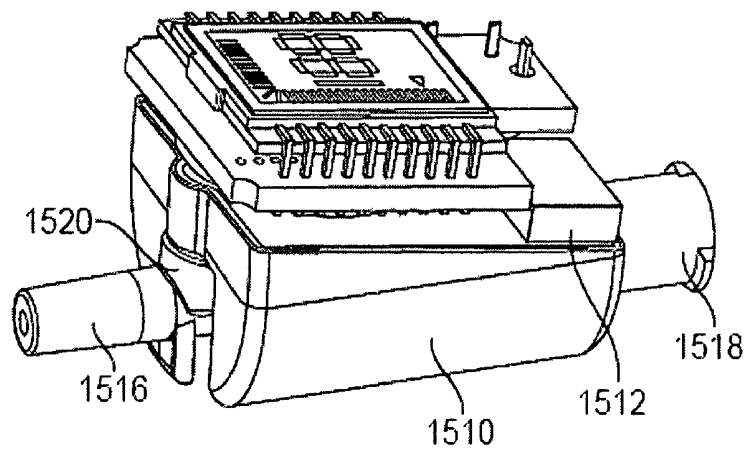


FIG. 16B

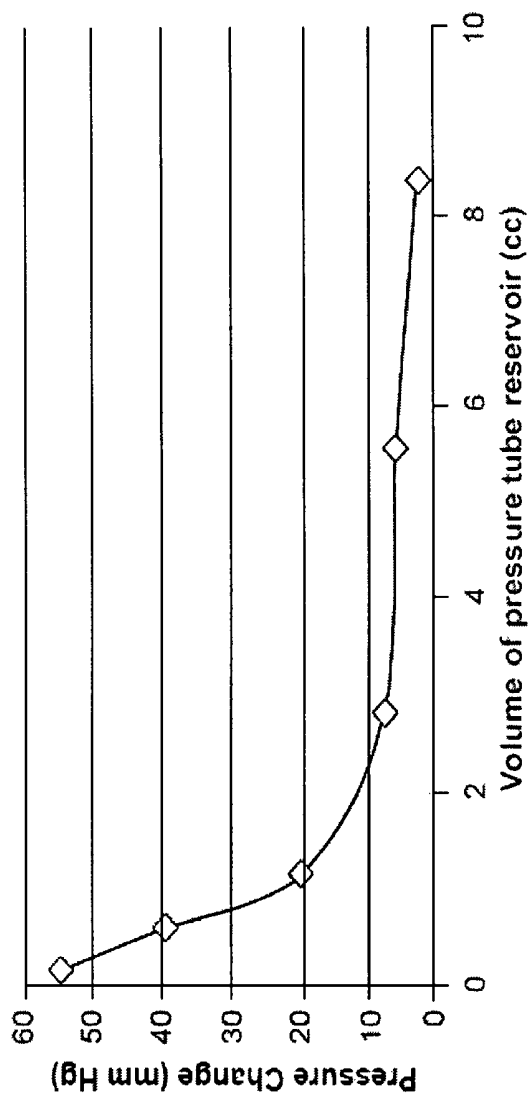


FIG. 16C

SYSTEMS, METHODS, AND DEVICES FOR FACILITATING ACCESS TO TARGET ANATOMICAL SITES OR ENVIRONMENTS

CROSS-REFERENCE TO RELATED APPLICATIONS

This application is a continuation of U.S. application Ser. No. 12/806,809, filed Aug. 19, 2010, which claims the benefit of priority under 35 U.S.C. § 119(e) of U.S. Provisional Application No. 61/235,004, filed Aug. 19, 2009 and U.S. Provisional Application No. 61/300,794, filed Feb. 2, 2010, the entire contents of which are incorporated herein by reference.

TECHNICAL FIELD

The present disclosure relates generally to systems, methods, and devices for facilitating access to a target anatomical site. More specifically, aspects of the present disclosure relate to systems, methods and devices that can include one or more sensing units or sensors configured to indicate or verify whether an object, probe, or needle is inserted into a target or a non-target anatomical site, structure, or substance.

BACKGROUND

Needles and catheters are routinely inserted or injected into a patient's body for various purposes or indications. One type of indication that involves such insertion is the placement of vascular lines or catheters, for instance, the placement of a central venous catheter (CVC). A CVC is typically used to administer fluids (e.g., intravenous (IV) drugs, chemotherapeutic agents, blood, or saline) into the body in medical situations in which large fluid transfer volume and/or high fluid transfer rate is desired. Common CVC insertion targets include an internal jugular vein, located in the neck; a subclavian vein, located in the chest; or a femoral vein, located in the groin. A medical procedure known as the Seldinger technique is typically employed for placing CVCs within the body.

The Seldinger technique involves several steps. To establish venous access and CVC insertion via the Seldinger technique, a needle is first placed or inserted into the patient's body at a location expected to correspond to a target vein. A guidewire is then advanced or extended through the needle into the vasculature or vessel in which the needle resides. The needle is subsequently removed while a portion of the guidewire remains retained within the vessel, and a portion of the guidewire remains outside the patient's body. Next, a CVC is advanced over the guidewire into the vessel. Finally, the guidewire is removed, leaving a portion of the CVC within the vessel.

One problem that can arise during CVC placement via the Seldinger technique is a misplacement of either or both of the needle and the CVC. For example, an unintended puncture or tear of a venous wall and/or the placement of one or both of the needle and the CVC into an artery (i.e., an unintended arterial cannulation) can occur, which may result in serious and expensive complications including severe bleeding, emergency vascular surgery, stroke, and possibly death.

Manometry is a technique that has been used for verifying that an appropriate type of blood vessel has been targeted during catheterization (e.g., in association with the Seldinger technique). Conventionally, during manometry directed toward vascular target verification, an extension set (e.g., a

50 centimeter extension tube set) is attached to a needle or a catheter (e.g., an 18-gauge needle or catheter) that has been inserted into a vessel. Blood flows from the patient's body into the needle or catheter, and further flows into an elevated section of tube along the extension set, thereby forming a blood column.

Visible properties of the blood column within the elevated section of tube are assessed by a surgeon or other medical personnel. The assessment of the blood column, for example, a height attained by the blood column, gives an indication as to the pressure of the blood within the vessel under consideration. Such an assessment can enable the surgeon to verify a venous or an arterial placement of the needle or the catheter. However, needle or catheter occlusion or patient state or condition can impact the visible properties of the blood column, and hence the surgeon's assessment, which can lead to a false conclusion about needle or catheter placement. For instance, in a hypotensive patient, an inadvertent arterial needle insertion may not be readily apparent from a naked-eye assessment of blood column height within the elevated section of tube.

Additionally, it has been found that many physicians do not routinely utilize manometry for verifying needle or catheter placement. Furthermore, a needle or a catheter may become dislodged or displaced after performing manometry, which may render its vascular location uncertain. Accordingly, the risk of accidental arterial cannulation during CVC insertion procedures has not been eliminated by the use of manometry. It has also been suggested that the use of manometry may increase the risk of infection or air embolism within the patient.

Ultrasound has been conventionally utilized for determining the position of objects within the body, including needles, guidewires, and catheters. However, images captured with ultrasound may not be adequately informative or clear. For example, ultrasound may be unable to accurately or consistently differentiate between certain tissue types (e.g. between venous tissue and arterial tissue). There have been reported instances of accidental arterial cannulation during CVC placement despite the use of ultrasound. In addition, ultrasound systems or apparatuses belonging to a medical facility are typically shared among multiple groups or departments of that medical facility, and hence may not always be readily available. Additionally, the use of ultrasound for verifying vascular targeting can be time consuming, and thus may be undesirable in critical or emergency situations. Furthermore, the use of ultrasound systems can be comparatively costly and labor intensive.

BRIEF SUMMARY OF THE INVENTION

The present invention provides systems, devices, and related methods for facilitating access to a target anatomical site, which can include detecting or monitoring a physiologic parameter of an anatomical environment in a patient.

In one embodiment, the present invention includes a device for selectively indicating whether an end of a probe inserted into a body is located within a target anatomical environment or a non-target anatomical environment. The device can include a housing detachably coupleable to the probe; a chamber carried by the housing; a sensing unit in communication with the chamber, the sensing unit carried by the housing; a processing unit coupled to the sensing unit and carried by the housing, the processing unit configured to determine a first physiologic parameter value using the first set of sensing signals and a second physiologic parameter value using at least one of the first set of sensing signals and

the second set of sensing signals, the first and second physiologic parameter values respectively corresponding to a first physiologic parameter and a second physiologic parameter within an anatomical environment; and a set of output devices coupled to the processing unit and carried by the housing, the set of output devices configured to output a set of reporting signals corresponding to at least one of the first physiologic parameter value and the second physiologic parameter value, wherein the second physiologic parameter value differs from the first physiologic parameter value in at least one of a physiologic measurement type and a set of mathematical operations applied to at least one of the first set of sensing signals and the second set of sensing signals.

In another embodiment, a method for determining whether a substance acquired from a body and present within a substance analysis chamber corresponds to a target anatomical location is provided. The method includes establishing at least one from the group of signal communication and substance communication between a set of sensing devices and the substance present within the substance analysis chamber, the set of sensing devices comprising at least a first sensing device, each sensing device within the set of sensing devices operating in accordance with a sensing modality; acquiring a plurality of sensing signals using the set of sensing devices; determining a first physiologic parameter value and a second physiologic parameter value using the plurality of sensing signals, the second physiologic parameter value differing from the first physiologic parameter value in at least one of corresponding to a different sensing device modality and corresponding to a different set of mathematical operations applied to at least one of the first set of sensing signals and the second set of sensing signals; and outputting a set of signals that actively indicates whether the substance corresponds to the target anatomical location.

In yet another embodiment, a device having a processing unit configured to generate an active indication of a probe end positioning at a target anatomical site or an active indication of a probe end positioning at a non-target anatomical site is provided. Such a device can include a housing couplable to a probe; a chamber carried by the housing; a sensing unit in communication with the chamber; a processing unit coupled to the sensing unit and carried by the housing; an electronically programmable medium storing program instructions for causing the processing unit to perform the steps of: determining a first physiologic parameter value using a sensing signal(s); and generating a reporting signal(s) that indicates whether the probe is positioned in the target anatomical location or the non-target anatomical location; and an output device(s) coupled to the processing unit.

In another embodiment, a device for indicating whether an end of a probe inserted into a body is located within a first anatomical environment or a second anatomical environment is provided. The device can include a housing having a first port; a chamber coupled to the first port and carried by the housing; a sensing unit in at least one of signal and substance communication with the chamber, the sensing unit carried by the housing, the sensing unit configured to generate a plurality of sensing signals in accordance with at least one sensing modality; a processing unit coupled to the sensing unit and carried by the housing, the processing unit configured to determine a plurality of physiologic parameter values using the plurality of sensing signals; a set of output devices coupled to the processing unit and carried by the housing, the set of output devices configured to actively output a first set of reporting signals corresponding to the

first anatomical environment and configured to actively output a second set of reporting signals corresponding to the second anatomical environment.

In yet another embodiment, the present invention provides a device for detecting whether a distal portion of a probe inserted into a body is located within a target anatomical environment. The device can include a housing having a distal portion with a first port that is detachably couplable to the probe, and a proximal portion with a second port that is detachably couplable to a syringe, and the first port fluidly coupled to the second port; a pressure sensing unit carried by the housing, the sensing unit configured to generate a pressure signal in response to a pressure of an environment in which a coupled probe is positioned; a processing unit coupled to the sensing unit and carried by the housing, the processing unit configured to receive the pressure signal and determine based on the signal a pressure value of the environment about the proximate portion of the coupled probe; and an output unit coupled to the processing unit and carried by the housing, the output unit configured to output to a visual display a reporting signal based on the determined pressure value, wherein the pressure sensing unit, processing unit, and output unit are disposed substantially between the first port and the second port of the housing.

In another embodiment, the present invention includes a device including a housing having a proximal portion and a distal portion with a first port that is detachably couplable to the probe. The device further includes a pressure sensing unit carried by the housing; a processing unit coupled to the sensing unit and carried by the housing; and an output unit coupled to the processing unit and carried by the housing; and a guidewire port carried by the housing and fluidly coupled to the first port.

In yet another embodiment, a device is included, the device having a housing having a distal portion with a first port that is detachably couplable to the probe, and a closed proximal portion; a pressure sensing unit carried by the housing; a processing unit coupled to the sensing unit and carried by the housing; and an output unit coupled to the processing unit and a visual display, and carried by the housing, wherein the visual display is angled proximally as carried by the housing, wherein the pressure sensing unit, processing unit, and output unit are disposed substantially between the first port and the proximal portion of the housing.

The present invention, in yet another embodiment, provides methods for detecting or monitoring a physiologic parameter of a patient. Such a method includes providing a device as described herein, inserting a distal portion of a probe coupled to the device into a tissue or body of a patient, and detecting a physiologic parameter of an environment in which the probe is positioned.

The present invention, according to yet another embodiment, further provides kits or packaged assemblies. A kit can include a device as described herein and one or more probes for coupling to the first port, syringe(s), a guidewire(s), or a catheter(s), or a combination thereof.

For a fuller understanding of the nature and advantages of the present invention, reference should be made to the ensuing detailed description and accompanying drawings. Other aspects, objects and advantages of the invention will be apparent from the drawings and detailed description that follows.

BRIEF DESCRIPTION OF THE DRAWINGS
AND TABLES

FIG. 1A is a perspective illustration of an apparatus for indicating a probe segment or probe tip location according to an embodiment of the disclosure.

FIG. 1B is a block diagram of an anatomical environment characterization device (AECD) according to an embodiment of the disclosure.

FIG. 1C is a block diagram of a device according to another embodiment of the disclosure.

FIG. 2A is a perspective illustration of an apparatus for indicating a probe segment or probe tip location according to another embodiment of the disclosure.

FIG. 2B is a cross sectional illustration of a webbed o-ring structure according to an embodiment of the disclosure.

FIG. 2C is a cross sectional illustration of the webbed o-ring structure of FIG. 2B in a sealing configuration around a guidewire.

FIG. 2D is a cross sectional illustration of a flexible seal structure according to an embodiment of the disclosure.

FIG. 2E is a cross sectional illustration of a lockable sealing structure in a loose configuration around a guidewire according to an embodiment of the disclosure.

FIG. 2F is a cross sectional illustration of the lockable sealing structure of FIG. 2E in a sealing configuration around a guidewire.

FIG. 2G is a perspective illustration of an apparatus for indicating a probe segment of probe tip location according to a further embodiment of the disclosure.

FIG. 3 is a perspective illustration of an apparatus for indicating a probe segment or probe tip location according to another embodiment of the disclosure.

FIG. 4A is a perspective illustration of a probe carrying a set of sensing elements according to an embodiment of the disclosure.

FIG. 4B is a perspective illustration of a device sensing fitting configured for signal communication with a probe sensing fitting according to an embodiment of the disclosure.

FIG. 5A is a perspective illustration of a probe or needle carrying a set of optical fibers and/or a set of electrical leads, respectively, according to an embodiment of the disclosure.

FIG. 5B is a perspective illustration of a needle carrying a sensing guidewire according to an embodiment of the disclosure.

FIG. 6A is a perspective illustration of a needle device according to an embodiment of the disclosure.

FIG. 6B is a perspective illustration of a syringe device according to an embodiment of the disclosure.

FIG. 6C is a perspective illustration of a device according to an embodiment of the disclosure.

FIG. 7 is a block diagram of a data structure that stores representative data or values corresponding to particular vascular parameters according to an embodiment of the disclosure.

FIG. 8 is a flow diagram of a vascular target identification or verification process according to an embodiment of the disclosure; and

FIG. 9 is a flow diagram of a lumbar puncture target identification and/or lumbar puncture parameter reporting process according to an embodiment of the disclosure.

FIGS. 10A and 10B illustrates an assembly including a detection device coupled to a probe and a syringe, according to another embodiment of the present invention.

FIG. 11 is a diagram of an apparatus for indicating a probe segment or tip location, according to another embodiment of the present invention.

FIGS. 12A through 12D illustrate probe tip location detection under ultrasound guidance.

FIGS. 13A through 13F illustrate probe tip location indication under pressure transduction guidance.

FIGS. 14A through 14C illustrate probe segment or tip indication and guidewire positioning, according to an embodiment of the present invention.

FIG. 15 illustrates an assembly including a detection device with a closed proximal portion and a distal portion coupled to a probe, according to an embodiment of the present invention.

FIG. 16A is a diagram of a device including a pressure relief or pressure buffer system, according to an embodiment of the present invention.

FIG. 16B illustrates a device, having a structure as generally diagrammed in FIG. 16A, including a pressure relief or pressure buffer system, according to an embodiment of the present invention.

FIG. 16C illustrates pressure changes relative to device reservoir volumes, where pressure changes are due to device handling activities.

DETAILED DESCRIPTION OF THE
INVENTION

Different types of objects, for example, needles, probes, catheters, tubes, and tissue ablation devices can be inserted into a human or animal body for various medical purposes or indications. Accurate placement or positioning of such objects within the body is generally required. For instance, during venous catheterization, it is important to place a needle or catheter into a target vein or intravenous site, and avoid arterial or non-vascular placement.

Devices of the present invention can be configured for detecting and/or utilizing a single physiological parameter value or a plurality of distinct or different types of physiological parameters. Devices of the present invention that are used for detecting physiological parameters are sometimes referred to herein as detection devices.

Prior approaches fail to provide an active visual indication of whether a probe or needle tip has transitioned into a target anatomical environment as well as an active visual indication of whether the probe or needle tip has transitioned into a non-target anatomical environment, particularly a non-target environment into which device insertion or placement is to be avoided in association with a given medical procedure under consideration (e.g., an arterial site that is to be avoided during a venous access procedure, or vice versa).

Embodiments of the present disclosure are directed to systems, devices, apparatuses, methods, and processes for facilitating, indicating, and/or verifying access to at least one type of target or intended anatomical environment, substance, site, location, structure, tissue, organ, cavity, and/or lumen. Particular embodiments are further directed to systems, devices, apparatus, methods, and processes for indicating or verifying access to at least one type of non-target, unintended, or inadvisable anatomical environment (e.g., in view of a medical procedure directed to the target anatomical environment). Embodiments of the present disclosure can include or involve systems, devices, apparatuses, methods, or processes for detecting, sensing, capturing, measuring, and/or analyzing one or more substances or signals associated with particular physiologic parameters or conditions to facilitate the identification, evaluation, or verifica-

tion of a location of a portion of an object within a body (e.g., relative to a target or intended anatomical site).

Several embodiments of the disclosure are directed to categorizing or distinguishing between aspects of one or more anatomical substances or sites, for instance, to differentiate or indicate a difference between a first or target anatomical site and a site other than a target anatomical site (e.g., a second or non-target anatomical site); or to determine or indicate whether an anatomical substance originates from or was supplied by, extracted from, or acquired at a first or target anatomical location or structure or a second or non-target anatomical location or structure. Such embodiments can facilitate an automatic or semi-automatic verification or notification that a portion of an object inserted into a body has transitioned into, resides at or within, or has transitioned away from a target substance or site, or one or more non-target substances or sites. Particular embodiments of the disclosure are directed to distinguishing between aspects of an intravascular site and an extravascular site, a venous site and an arterial site, and/or venous blood and arterial blood.

For purposes of brevity and clarity, with respect to various embodiments described herein, an object intended for bodily insertion is referred as a probe that is configured for insertion or injection into biological tissue. Depending upon embodiment details and/or a medical procedure under consideration, a probe can include or be a needle, a catheter, a cannula, a tube, a tissue ablation device, or other type of medical tool or structure. Additionally, a first anatomical environment under consideration may be referred to as a target anatomical environment, and a second anatomical environment under consideration may be referred to as a non-target anatomical environment. Selected embodiments of the disclosure facilitate the determination or indication of whether a segment, end, extremity, point, or tip of a probe or needle resides at a first or target anatomical site or bodily environment; a second or non-target anatomical site or bodily environment; or neither a first/target anatomical site or environment nor a second/non-target anatomical site or environment.

In some embodiments, a target anatomical site or structure is vascular in nature, for instance, a vein or an artery. In such embodiments, a corresponding non-target anatomical site can respectively be an artery or a vein. In other embodiments, a target anatomical site is extravascular or non-vascular in nature. For instance, depending upon embodiment details, a target anatomical site can correspond to a location within a bodily cavity or passage (e.g., the epidural space, the bladder, or the lymphatic system), an organ, a gland, a tissue, or a specified group of cells. A target anatomical substance can be carried by or associated with a target anatomical structure or site. For instance, a target substance such as deoxygenated blood, oxygenated blood, or cerebrospinal fluid can respectively correspond to a target venous, arterial, or subdural site.

A system or apparatus for indicating an anatomical location of a probe or probe tip according to an embodiment of the disclosure can include a probe (e.g., a needle) that is coupled to a housing that carries or couples to one or more devices for detecting, characterizing, evaluating, or analyzing signals and/or substances that can be present at or along a portion of the probe (e.g., at a distal segment or tip of the probe). The system or apparatus includes a set of sensor(s) configured to estimate, detect, record, or monitor a presence, absence, level, or change in one or more physiologic parameters, physiologic parameter correlates, and/or chemical substances corresponding to the probe's insertion path or location at one or more times. In the context of the present

disclosure, the term set is defined as a non-empty finite organization of elements that mathematically exhibits a cardinality of at least 1 (i.e., a set as defined herein can correspond to a singlet or single element set, or a multiple element set), in accordance with known mathematical definitions (for instance, in a manner corresponding to that described in *An Introduction to Mathematical Reasoning: Numbers, Sets, and Functions*, "Chapter 11: Properties of Finite Sets" (e.g., as indicated on p. 140), by Peter J. Eccles, Cambridge University Press (1998)). In general, an element of a set can include or be a device, a structure, a signal, a function or functional process, or a value depending upon the type of set under consideration.

Depending upon embodiment details, representative examples of physiological parameters, physiologic parameter correlates, or chemical substances that can be sensed include one or more of pressure (e.g., intravenous pressure or intraarterial pressure); a pulsatility measure, component, or correlate; temperature; pH; a fluid flow rate; optical properties (e.g., light absorption or scattering properties); oxyhemoglobin or deoxyhemoglobin content or saturation; hemoglobin concentration; tissue oxygen content or saturation; carbon dioxide content or saturation; methemoglobin concentration; nitric oxide content; water content or concentration; electrical properties (e.g., electrical conductivity); a glucose level; a presence or a level of a type of cell (e.g., red blood cells or white blood cells); a presence or level of a pathogen; a presence or level of an immunomodulating factor (e.g., a cytokine), a nutrient or macronutrient (e.g., an amino acid, a protein, a lipid, or a carbohydrate), an enzyme, a hormone, a growth factor, or a genetic marker; a presence or level of a substance such as a drug, a drug metabolite, or a contrast agent; or other another parameter, parameter correlate, or chemical substance.

The presence, absence, relative or absolute level, or change in one or more physiologic parameters, physiologic parameter correlates, or chemical substances can directly or indirectly correspond to an anatomical location or environment at which a portion of the probe resides, and/or a patient state or condition. The system or apparatus may optionally additionally include a processing unit configured to a) generate physiologic parameter values using signals output by the set of sensors; and/or b) analyze or evaluate particular physiologic parameter values. The system or apparatus further includes an output unit configured to generate at least one type of feedback (e.g., audio and/or visual feedback) that indicates whether a portion of the probe under consideration is exposed to or resides at a first or target anatomical site or substance, or a second or non-target anatomical site or substance. In various embodiments, each of the processing unit and the output unit can be carried by the housing, which can be a single use or disposable structure (e.g., a disposable cartridge).

Representative aspects of embodiments of systems, apparatuses, devices, and processes for facilitating access to target anatomical sites or substances in view of particular medical indications or procedures are described in detail hereafter with reference to FIG. 1A to FIG. 9, in which like or analogous elements or process portions are shown numbered with like or analogous "reference numerals. Relative to descriptive material corresponding to one or more of FIGS. 1B-9, the recitation of a given reference numeral can indicate the simultaneous consideration of a FIG. 1*n* which such reference numeral was previously shown. The description herein provides for embodiments that are suitable for indicating successful or unsuccessful venous or arterial vessel access; embodiments that are suitable for indicating

successful or unsuccessful lumbar puncture, epidural space, or cerebrospinal fluid access; and embodiments suitable for other medical indications. The embodiments provided by the present disclosure are not precluded from applications or medical indications (for instance, needle biopsy applications, e.g., involving breast tissue biopsy; or the introduction or injection of polymer-component spheres, or nanospheres or nanostructures into the body) in which particular fundamental principles present among the various embodiments described herein, such as structural, operational, or anatomical site or substance discrimination characteristics, are desired.

Structural and Operational Aspects of Representative Embodiments

FIG. 1A is a perspective illustration of an apparatus 10 for indicating a probe tip location or environment according to an embodiment of the disclosure. In an embodiment, the apparatus 10 includes a probe site indication device (PSID), probe tip location device (PTLD), or anatomical environment characterization device (AECD) 100 (or detection device) that is coupled to a probe such as a needle 20. The needle 20 includes an elongate member or shaft 22 having a first or insertion end or distal tip 24 and a second or proximal end 26. The needle's shaft is hollow, that is, the needle's elongate member includes a bore that extends between the needle's tip 24 and its proximal end 26. The needle's proximal end 26 can be coupled to a conventional needle coupling or fitting structure 28, such as a Luer adapter, connector, sleeve, collar, or lock. In certain embodiments, the apparatus 10 can further include a syringe 50 that can be coupled to the AECD 100, for instance, by way of a conventional syringe coupling or fitting such as a Luer adapter, connector, sleeve, collar, or lock.

FIG. 1B is a block diagram of an AECD 100 according to an embodiment of the disclosure. With simultaneous reference to FIG. 1A, in various embodiments the AECD 100 includes a housing 110 that carries a first coupling structure 112, a first opening or port 114, at least one fluid or substance detection or analysis chamber or corridor 130 (e.g., a flow-through chamber 130), a sensing unit 140, a processing unit 160, a memory 170, an output unit 180, a power source 190, and an activation switch 192. In some embodiments, the housing 110 can additionally carry a passage 132, a second opening or port 116, and a second coupling structure 118. Each of the sensing unit 140, the processing unit 160, the memory 170, and the output unit 180 are coupled to the power source 190 by way of the switch 192. Selection of a predetermined switch position or a switch toggle can activate the AECD 100. In an embodiment, the power source 190 includes a battery or a capacitor configured to power the AECD 100 for a predetermined or expected total amount of time (e.g., approximately 2 hours, approximately 12 hours, approximately 1. day, or another amount of time).

The first coupling structure 112 carries the first port 114, and includes one or more coupling, fitting, securing, retaining, or connecting elements configured to mate with a given type of probe or needle 20. Similarly, the second coupling structure 118 carries the second port 116, and includes one or more coupling, fitting, securing, retaining, or connecting elements configured to mate with another medical implement such as the syringe 50. One or both of the first and second coupling structures 112, 118 can include or be, for instance, a Luer adapter, taper, collar, slip, connector, or lock structure. For instance, the first coupling structure 112 can include a male Luer lock fitting, and the second coupling

structure 118 can include a female Luer lock fitting. In an embodiment, the first and second coupling structures 112, 118 are carried at opposite sides or ends of the housing 110. Each of the first and second coupling structures 112, 118 can carry a removable or pierceable/penetrable end cap or seal (not shown) to facilitate the maintenance of a controlled environment within the AECD 100.

In an embodiment, the chamber 130 includes or forms a cavity or compartment into which a fluid or substance can flow or be drawn, and the passage 132 includes or forms a channel or bore through which the fluid or substance can flow or be drawn. The chamber 130 and the passage 132 are fluid communicable or in fluid communication with the bore of the needle 20 by way of the first port 114. The passage 132 extends between the first port 114 and the second port 116, and hence the second port 116 is fluid communicable or in fluid communication with the bore of the needle 20 by way of the passage 132. Upon insertion or injection of the needle 20 into an individual's body, a bodily fluid such as blood can flow or be drawn from the tip 24 of the needle into the chamber 130 and the passage 132. The bodily fluid can further flow or be drawn through the passage 132 into the syringe 50.

The sensing unit 140 includes a set of sensors, sensing devices, or sensing elements in sensing communication with the chamber 130. More particularly, the sensing unit 140 is in signal and/or substance communication with the chamber 130, such that the set of sensing elements can directly or indirectly apply signals to a substance within the chamber, detect or measure particular properties of a substance present within the chamber, and/or subject a substance within the chamber to one or more tests. Particular sensing elements may detect, measure, or test a property of a substance within the chamber in a manner that avoids direct contact with the substance, while other sensing elements may detect, measure, or test a property of a substance within the chamber by way of direct access to or physical contact with the substance. The chamber 130 can include one or more openings, windows, or ports to facilitate direct access to or physical contact with a substance carried within the chamber 130.

Particular sensors or sensing devices generate sensing signals that correspond to one or more physiologic properties of a substance within the chamber 130 at a particular time. Depending upon the nature or characteristics of a given set of sensing signals, the set of sensing signals may directly provide a value or measure of a physiologic parameter, or the set of sensing signals may be a correlate or partial correlate of the physiologic parameter. If a set of sensing signals provides one or more physiologic parameter correlates or partial correlates, a number of mathematical operations can be applied to at least a subset of signals within the set of sensing signals to generate, determine, or estimate at least one physiologic parameter value.

Any given sensing device operates in accordance with a sensing device modality, which corresponds to a type of signal that the sensing device is configured to acquire and/or a type of physiologic measurement that can be generated or obtained using the sensing signal. A particular sensing device can operate in accordance with a modality such as pressure sensing, optical sensing, temperature sensing, fluid dynamics sensing, chemical or biological species sensing, or another modality. Depending upon embodiment details, the set of sensors or sensing devices can include one or more light emitting diodes (LEDs), semiconductor lasers, optical detectors (e.g., photodiodes, which can be configured to detect optical signal characteristics such as intensity, peak wavelength, or phase shift), pressure sensors (e.g., a dia-

phragm and/or a pressure transducer such as a piezoelectric transducer), temperature sensors (e.g., an optical temperature sensor or a thermocouple), fluid flow sensors (e.g., a Doppler ultrasound transducer and detector), substance or environment sensing field effect transistors (e.g., a chemical sensing or chemically modified FET (ChemFET), an ion sensitive FET (ISFET), an Enzyme modified FET (EnFET), or an electrolyte-oxide-semiconductor FET (EOSFET)), an electrophoresis device, a biological microchip (e.g., a bio-chip) or a microfluidic lab-on-a-chip (e.g., as described by Rohit Pal et al. in "An integrated microfluidic device for influenza and other genetic analyses," *Lab on a Chip*, Royal Society of Chemistry 2005, 5, 1-9), and/or other sensing elements or devices.

In an embodiment directed to indicating venous versus arterial probe access, the set of sensing elements can include one or more devices configured to detect or distinguish between different physiological properties of venous versus arterial blood. More particularly, venous blood and arterial blood exhibit different average pressures, pulse pressure ranges, and blood oxygenation characteristics. In an embodiment, the set of sensing elements can include a pressure sensor and a blood oxygenation sensor. For instance, with respect to sensing pressure related parameters, the set of sensing elements can include a piezoelectric pressure transducer **144** coupled to a diaphragm **146** that is exposed to an opening in the chamber **130**. When the chamber **130** is in fluid communication with blood sourced from a vessel, vascular pressure exerts a displacement force upon the diaphragm **146**. The diaphragm **146** in turn exerts a force upon the piezoelectric pressure transducer **144**, which generates an electrical signal corresponding to an instantaneous, quasi-instantaneous, or near-instantaneous vessel pressure reading at a distal probe segment or the probe tip **24**.

In order to sense parameters related to blood oxygenation, the set of sensing elements can include a set of LEDs **150** (e.g., a visible LED and at least one infrared LED) and a photodetector **152**. The LEDs **150** are configured to emit optical signals at or centered about particular wavelengths (e.g., approximately 660 nm, and one or more of approximately 905, 910, and 940 nm) into the chamber **130**. The photodetector **152** is configured to detect the optical signals that are transmitted through the chamber **130**, where optical signal absorption by blood or another substance in the chamber **130** affects the transmitted intensity of such signals. Based upon known oxyhemoglobin and/or deoxyhemoglobin absorbance spectra corresponding to particular optical wavelengths, a blood oxygenation level or state can be determined. The LEDs **150** and the photodetector **152** in this embodiment thus form portions of an oximeter.

The sensing unit **140** is configured to output signals (e.g., sensing signals) to the processing unit **160** and/or the memory **170** on a continuous or periodic basis, and/or in response to one or more sensed parameter values exhibiting a change that exceeds a predetermined magnitude relative to one or more previously sensed parameter values. With respect to the above described embodiment directed to indicating venous versus arterial probe access, the sensing unit **140** can store a series of instantaneous or near-instantaneous pressure values and/or a set of measured optical signal values in the memory **170**.

The processing unit **160** can include a state machine, a microcontroller, a microprocessor, an application specific integrated circuit (ASIC), or a field programmable gate array (FPGA) or programmable logic device (PLD) configured to correspond to or execute program instruction sequences (e.g., software and/or firmware) directed to receiving, oper-

ating upon, evaluating, analyzing, interpreting, and/or transforming signals generated by one or more portions of the sensing unit **140**, and determining whether the tip **24** of the needle **20** resides within a target anatomical site, structure, or substance. In an embodiment, particular program instruction sequences can additionally or alternatively be directed to determining whether the needle tip **24** resides within one or more non-target, undesirable, or inadvisable anatomical sites, structures, or substances. Furthermore, such program instruction sequences can be directed to determining whether the needle tip **24** has transitioned into, resides within, or has transitioned away from one or more intermediary tissues or anatomical environments along a needle insertion trajectory toward a target anatomical destination or environment. In certain embodiments, particular structural portions or operational aspects of the processing unit **160** can be included or incorporated within the sensing unit **140**.

In an embodiment, a given type of sensing device operates in accordance with a particular sensing modality and generates a particular type of sensing signal, which depending upon sensing device or sensing signal type can directly or by way of mathematical correlation or transformation provide a physiologic parameter value and hence an indication of a probe tip position. The processing unit **160** can use or mathematically operate upon a set of sensing signals corresponding to a given type of sensing device to determine a single type of physiologic parameter value, or multiple distinct types of physiologic values that differ from each other by way of a set of mathematical operations. For instance, the processing unit **160** can generate a mean value of a physiologic parameter using a time series of sensing signals generated by a given type of sensing device. Additionally or alternatively, the processing unit **160** can additionally or alternatively generate a maximum or mean value of a physiologic parameter fluctuation, range, amplitude, or magnitude using this time series of sensing signals. As a representative example, the processing unit **160** can average a series of sensed instantaneous vascular pressure values to determine a mean vascular pressure value with respect to a predetermined time period (e.g., approximately 1-10 seconds, 30 seconds, 1 minute, or longer). The processing unit **160** can additionally or alternatively determine a maximum and/or average vascular pressure fluctuation value relative to a predetermined time period.

Different types of sensing devices can acquire sensing signals in accordance with different, related, or similar sensing modalities, or generate sensing signals corresponding to different, related, or similar types of physiologic measurements. For example, a pressure sensor generates signals corresponding to pressure measurements, while a chemical species saturation sensor generates signals corresponding to an extent to which the chemical species is dissolved or bound within a bodily substance. As another example, a Doppler ultrasound device and a set of optical emitters/detectors/other optical elements (e.g., configured to perform Doppler or spectroscopic measurements) can each be configured to measure or estimate blood flow, blood flow changes, or pulsatile aspects of vascular flow. In general, the processing unit **160** can mathematically operate upon sensing signals generated by single or multiple types of sensing devices to generate or estimate a given type of physiologic parameter value.

The memory **170** can include an electronically or computer programmable or readable medium having one or more of a Random Access Memory (RAM), a Read Only Memory (ROM) such as a type of programmable ROM (PROM), a set of registers, or other data storage elements for

storing a) program instruction sequences; b) signals generated or output by the sensing unit **140** or physiologic parameter values corresponding thereto; and c) reference data that facilitates the determination, evaluation, or analysis of sensed physiologic parameter values. For instance, the memory **170** can store digital absorbance spectra data that a set of program instructions can access to facilitate the evaluation or analysis of sensed blood oxygenation related parameters, and the determination of a blood oxygenation level or state. The memory **170** can also store data (e.g., in a data structure such as a lookup table) that a program instruction sequence can access to facilitate an assignment or mapping of a set of sensed physiologic parameter values to a categorization of the needle tip's location with respect to a target, a non-target, and/or an intermediary anatomical structure or substance, as further detailed below. In association with the execution of one or more program instruction sequences, the processing unit **160** issues or transfers reporting signals to the output unit **180** to facilitate the provision of visual and/or auditory feedback corresponding to the needle tip's sensed location. In various embodiments, the reporting signals can indicate whether the needle tip **24** resides at a first/target anatomical location (e.g., by way of a first set of reporting signals), or a second/non-target anatomical location (e.g., by way of a second set of reporting signals that are perceptually different than the first set of reporting signals), as further detailed below. In one embodiment, the reporting signals can further indicate whether the needle tip **24** resides at neither a first/target anatomical location nor a second/non-target anatomical location (in which case the needle tip **24** may reside at an anatomical location that is unrelated to the first/target anatomical location and the second/non-target anatomical location). Particular aspects of processes that can correspond to an automated sequence (e.g., performed by way of program instruction execution) directed to presenting physiologic parameter values to a user (e.g., a surgeon or other medical professional) or observer and/or indicating a position of a probe segment or tip **24** relative to a target, non-target, and/or intermediary anatomical site or structure are described in detail below with reference to FIGS. **8-9**.

In response to the reporting signals, the output unit **180** is configured to generate and actively provide or convey visual and/or auditory signals that can indicate (e.g., in a selective manner) whether the needle tip **24** resides at or within a target or non-target anatomical site, structure or substance. In an embodiment, the output unit **180** actively provides or conveys a visual and/or auditory indication of a needle tip location by applying a non-zero amount of power to an output device, thereby activating the output device to selectively emit, radiate, or externally propagate a) a first signal that provides a user or observer with sensory feedback (visual and/or auditory feedback) that can indicate whether the needle tip **24** resides at a first or target anatomical site; and b) a second signal that provides the user or observer with sensory feedback that can indicate whether the needle tip **24** resides at a second or non-target anatomical site. In one embodiment, in the event that the processing unit **160** determines that the needle tip **24** resides at neither of a first/target anatomical location or a second/non-target anatomical location, the output unit **180** can be configured to avoid actively outputting visual and/or auditory signals. Alternatively, the output unit **180** can be configured to actively output a third signal that provides a user or observer with sensory feedback that can indicate a neutral or intermediary needle tip location.

Depending upon embodiment details, the reporting signals can correspond to notification signals and/or alert signals. Notification signals can indicate or provide one or more detected, measured, or estimated physiological parameter values corresponding to sensing unit operation. Notification signals can include, for instance, visual and/or auditory signals corresponding to one or more physiologic parameter values such as a blood oxygen saturation level, a blood pressure value, and/or a pulsatility measure or a peak-to-minimum blood pressure difference value. Alert signals can include visual and/or auditory signals that provide a binary or "yes/no" indication or a likelihood indication (e.g., a probability based indication, as determined in association with the execution of a program instruction sequence) of an intended or appropriate probe or needle positioning. In an embodiment, alert signals can further provide a binary or "yes/no" indication or a likelihood indication of an unintended, undesirable, or incorrect probe positioning.

The output unit **180** can output multiple reporting signals in a simultaneous or non-simultaneous (e.g., sequential) manner. Notification or alert signals can be presented on an essentially continuous, sampled, or periodic basis following AECD activation, or in response to a trigger event such as a first detection of one or more physiologic parameter values that correspond to a target or a non-target anatomical needle tip placement, or a predetermined change in a physiologic parameter value.

In general, the output unit **180** can include one or more types of output devices, for instance, a liquid crystal display (LCD) **182**, a set of LEDs **184**, and possibly an audio device such as a speaker **186**. In an embodiment, notification signals displayed by the LCD **182** (e.g., on a real-time, near real-time, a periodic basis, or in response to a given amount of physiologic parameter change) can include or correspond to particular physiologic parameter values, for instance, a hemoglobin oxygen saturation value, a blood pressure value, and/or a pulsatility value. The presentation of particular physiologic parameter values to a user or observer can facilitate the determination or confirmation of a probe tip location relative to a target or non-target anatomical site. In addition or as an alternative to the foregoing, the LCD **182** can display textual alert signals such as "venous access detected" and/or "warning—arterial access detected," where the visual impact of one or both of such alert signals may be enhanced by way of a visual effect such as flashing.

The set of LEDs **184** can include a first LED **184a** that is activated or illuminated when or while one or more sensed, estimated, or measured physiologic parameter values indicate that the needle tip **24** resides within a target site (e.g., a vein); and a second LED **184b** that is activated or illuminated when or while one or more sensed, estimated, or measured physiologic parameter values indicate that the needle tip **24** resides within a non-target site (e.g., an artery). For an apparatus **10** directed to indicating or confirming successful venous access and providing an alert in the event of arterial access, the first LED **184a** can output light substantially having a first color (e.g., blue or green) and possibly a first activation pattern (e.g., continuous illumination); and the second LED **184b** can output light substantially having a second color (e.g., red, or another color that is visually distinguishable from the first color) and possibly a second activation pattern (e.g., blinking).

Finally, the speaker **186** can output a first audio alert signal such as a tone or digital voice signal that indicates whether the needle tip **24** is positioned at or within a target anatomical site. In an embodiment, the speaker **186** can

additionally output a second audio alert signal that indicates whether the needle tip **24** is positioned at or within a non-target anatomical site. In a representative implementation directed to facilitating venous access and avoiding arterial access, the first audio signal can include a digitized voice signal that corresponds to a phrase such as “venous access detected,” and the second audio signal can include a digitized voice signal that corresponds to a phrase such as “warning—arterial access detected.” In another embodiment, the speaker **186** can output one or more audio notification signals that correspond to or indicate the values of sensed, estimated, or measured physiologic parameters (for instance, the speaker **186** can output audio signals corresponding to internal bodily sounds, pressure waves, or pressure changes).

In view of the foregoing, in an embodiment the apparatus **10** can differentially communicate or convey by way of output device activation one or more indications of probe tip or distal segment position relative to a target and/or a set of non-target anatomical sites, structures, or substances. In such an embodiment, the output unit **180** can include a) at least one output device capable of providing at least a two-state active indication of reporting signal values or probe tip positions with respect to the target and non-target anatomical sites; or b) multiple output devices, each of which is capable of providing at least a single-state active indication of a reporting signal value or a probe tip position with respect to the target or non-target anatomical sites.

In a representative embodiment, a display device can provide a two-state active indication of two reporting signal values by way of two displayed values. An audio device can provide a two-state active indication of two reporting signal values by way of two types of audio tones or messages. Additionally, a multi-color LED or a multi-color LED array can provide a two-state active indication of two reporting signal values by way of outputting light of different colors that can be readily distinguished by the human eye.

FIG. **1C** is a block diagram of an AECD **102** according to another embodiment of the disclosure, in which the AECD **102** is configured to communicate with a remote or external device such as a computer system **90** (e.g., a desktop computer, a laptop computer, or a personal digital assistant) or a given piece of medical equipment **92**. In the embodiment shown, in addition to including the elements described above with respect to FIG. **1B**, the AECD **102** includes a communication unit **185** that is coupled to the memory **170**, the processing unit **180**, and the switch **192**, which selectively couples the AECD **102** to the power source **190**. The communication unit **185** can further be coupled to the sensing unit **140**. The communication unit **185** can be configured for wireless or wire-based signal transfer involving the remote computer system **90** or medical device **92**, such as an ultrasound system or device (e.g., portable ultrasound unit), and the like. In a representative implementation, the communication unit **185** includes a radio frequency (RF) communication circuit.

Thus, in certain embodiments, a sensing device of the present invention, including those described herein, may be operable in communication with another separate or remote device, including output of data to the remote device, uploading or receiving data from the remote device, or both outputting and receiving data. Output of data from a device of the present invention to a remote device may be selected, for example, for visual display of data from the sensing device on the remote device display or screen. Data from a remote device may, in certain instances, be received by a

sensing device of the present invention, and data from the remote device optionally being displayed on the sensing device.

By way of the communication unit **185**, the AECD **102** can transfer a sequence of physiologic or physiologic correlate parameter values to one or more remote systems or devices **90**, **92**. Additionally or alternatively, the communication unit **185** can transfer reporting signals or notification and/or alert signals to a remote system or device **90**, **92**. One or more of physiologic or physiologic correlate parameter values, reporting signals, notification signals, and alert signals can reside in the memory **170** to facilitate such transfer. Signal transfer between the AECD **102** and a remote system or device **90**, **92** can occur on a real time, near-real time, periodic, event triggered, or command-response basis while the AECD **102** is active. In an embodiment, signal transfer to a remote system or device **90**, **92** can be initiated or triggered in response to the detection (e.g., optical detection) of blood or another bodily fluid in the chamber **130**. Additionally or alternatively, signal transfer from the AECD **102** to the remote system or device **90**, **92** can include a medical procedure data upload process involving the transfer of physiologic or physiologic correlate parameter values, reporting signals, notification signals, and/or alert signals that the sensing and/or processing units **140**, **160** had stored or recorded in the memory **170** during or throughout one or more time intervals corresponding to a medical procedure (e.g., during a 15 or a 30 minute period following AECD activation/chamber fluid detection in association with a CVC placement procedure). Furthermore, in an embodiment the communication unit **185** can download or receive AECD configuration data or program instruction sets from a remote computer system **90** to the memory **170**, such that the AECD **102** can be programmably reconfigured (e.g., by way of a transfer of a firmware update, a program instruction sequence, or a programmable logic configuration bitstream) on an as-needed basis (e.g., in view of a given medical indication).

In an embodiment, the sensing unit **140** and/or the processing unit **160** can store or record measured or sampled pressure and/or other physiologic parameter values in the memory **170** on an essentially continuous or sampled basis (e.g., approximately every 0.5-500 milliseconds, or approximately every 2.5-250 milliseconds, or approximately every 5, 10, 50, or 100 milliseconds) or at predetermined time intervals. The communication unit **185** can transfer stored pressure values to a remote device **92** that is configured to receive the individual pressure values and display and/or analyze a corresponding pressure waveform (e.g., a vascular pressure waveform). Such transfer can occur on an essentially real time or near-real time basis, or a delayed basis.

FIG. **2A** is a perspective illustration of an apparatus **12** for indicating a probe segment or probe tip location according to another embodiment of the disclosure. In an embodiment, the apparatus includes a probe or needle **20** that is coupled to an AECD **104** having at least one auxiliary, adjunctive, subsidiary, or supplementary access structure, member, or shaft **120**. The auxiliary access structure **120** includes an auxiliary access port **122** configured for fluid communication with the AECD's passage **132**. In an embodiment, the auxiliary access port **122** resides at a distal portion or end of a channel **124** carried by the auxiliary access structure **120**. A proximal portion or end of the channel **124** is coupled to the AECD's passage **132** by way of an opening, such that the auxiliary access port **122** is fluid communicable or in fluid communication with the passage **132**. The auxiliary access structure **120** can extend at a predetermined angle (e.g.,

approximately 45 degrees) away from a surface or side of the AECD 104. In general, the auxiliary access structure 120 is offset from an AECD surface or side that carries the output unit 180.

The auxiliary access port 122 facilitates the insertion of one or more types of auxiliary or adjunctive devices into the passage 132 of the AECD 104, and possibly through the AECD 104 and into or through the bore of the needle 20. An auxiliary device can include, for instance, a guidewire 60 or a sensing device that carries a set of sensing elements configured for insertion into a patient's body. The auxiliary access structure 120 can carry a removable or pierceable/penetrable end cap or seal (not shown) that prevents the exposure of a fluid present within the AECD 104 to an external environment until the seal is removed or pierced. Additionally, the auxiliary access structure 120 can include a set of dynamic sealing elements 128 such as one or more o-rings (e.g., located or seated at a distal segment or end of the auxiliary access structure 120) that facilitate the maintenance of a leak proof or leak resistant seal around the periphery of an auxiliary access device after auxiliary access device insertion. The presence of a dynamic sealing element 128 can ensure that sensed blood pressure values remain accurate or consistent after an auxiliary access device such as a guidewire 60 resides within a portion of the AECD 104.

Depending upon embodiment details, the auxiliary access structure 120 can carry or include one or more types of structural elements that facilitate the maintenance of pressure integrity within the AECD 104 following insertion of a guidewire or other device (e.g., a set of optical fibers) into the auxiliary access port 122 and the auxiliary access structure's channel 124. Particular types of structural elements that facilitate the maintenance of a seal around a guidewire or other device are described in detail hereafter.

FIG. 2B is a cross sectional illustration of a webbed o-ring structure 1000, and FIG. 2C is a cross sectional illustration of the webbed o-ring structure 1000 in a sealing configuration around a guidewire 60 according to an embodiment of the disclosure. In an embodiment, the webbed o-ring structure 1000 includes an o-ring 1002 that carries a resilient, pierceable web or membrane 1010 that spans an inner diameter d_i of the o-ring 1002. Upon guidewire insertion through the membrane 1010, a portion of the membrane 1010 surrounding the guidewire 60 dynamically conforms to the guidewire's periphery, thereby establishing a continuous seal between the guidewire 60 and the membrane 1010. In a representative implementation, each of the o-ring and the membrane 1010 can be made using Silicone.

FIG. 2D is a cross sectional illustration of a flexible seal structure 1050 according to an embodiment of the disclosure. In an embodiment, the flexible seal structure 1050 includes a plurality of pierceable seal elements 1052 carried at, proximate to, or along an insertion end of the auxiliary access structure 120. Each seal element 1052 comprises a pierceable and resilient or flexible material, which can include for instance, Silicone. On an individual basis, upon guidewire insertion, a portion of each any given seal element 1052 surrounding the guidewire 60 dynamically conforms to the guidewire's periphery. Thus, following guidewire insertion through the plurality of seal elements 1052, the plurality of seal elements 1052 form a composite seal that facilitates the maintenance of intra-AECD environmental integrity.

FIG. 2E is a cross sectional illustration of a securable or lockable sealing structure 1080 in a loose configuration around a guidewire 60, and FIG. 2F is a cross sectional illustration of a lockable sealing structure 1080 in a sealing configuration around a guidewire 60 according to an

embodiment of the disclosure. In an embodiment, the lockable sealing structure 1080 includes an o-ring 1082 carried by a portion of the auxiliary access structure 120 proximate to the auxiliary access port, and a knob 1084 that matingly fits into the auxiliary access port 122. The knob 1084 includes an opening or channel 1086 therethrough, which is dimensioned to accommodate the periphery of a guidewire 60 or other device.

An external portion of the knob 1084 and an internal portion of the auxiliary access port 122 can carry counterpart thread elements that facilitate screw-type insertion and selectable locking (e.g., by hand or use of a knob adjustment tool) of the knob 1084 in the auxiliary access port 122. When the knob 1084 remains in a first or unlocked position, the o-ring 1082 is uncompressed. A guidewire 60 extending through the knob's channel 1086 can therefore slidably move into and along the length of the auxiliary access structure's channel 124 with minimal, negligible, or no friction resulting from o-ring contact with the guidewire 60. Turning the knob 1084 to a second or locked position compresses the o-ring 1082, thereby decreasing the o-ring's inner diameter such that the o-ring 1082 abuts and surrounds the periphery of the guidewire 60 and forms a seal around the guidewire 60. Transitioning the knob 1084 to a locked position can correspondingly lock the guidewire 60 in place.

FIG. 2G is a perspective illustration of an apparatus 14 for indicating a probe segment or probe tip location according to a further embodiment of the disclosure. The apparatus 14 includes a probe or needle 20; an AECD 104 having an auxiliary access port 122; and possibly a syringe 50. In an embodiment, the apparatus 14 additionally includes a guidewire 60 and a guidewire retention device 70. In general, the guidewire retention device 70 includes a set of receiving structures that can releasably carry portions of the AECD 104, and which can restrain, grasp, capture, or clamp the guidewire 60 following AECD removal from the guidewire retention device 70, as further detailed below. The guidewire retention device 70 facilitates the withdrawal of the AECD 104 and the needle 20 from the guidewire 60 as an integral unit or separate units in association with the capture of the guidewire 60 at or along a given portion of the guidewire's length.

The guidewire retention device 70 can include a first receiving portion 72a and a second receiving portion 72b that are pivotally coupled at or about a first and a second hinge point by a first and a second hinge member 74a, 74b, respectively, one or both of which are resiliently releasable and/or positionally lockable. The guidewire retention device 70 includes a capture end 76 and a receiving end 78. In an embodiment, one or both hinge members 74a, 74b can include a biasing element such as a spring that maintains the guidewire retention device 70 in a capture position in which the first and second receiving portions 72a, 72b are retained in close or generally close proximity to each other at the guidewire retention device's capture end 76, such that a separation or gap between the first and second receiving portions 72a, 72b is slightly less than the diameter of the guidewire 60.

The AECD 104 can be inserted into the guidewire retention device's receiving end 78, and the first and second receiving portions 72a, 72b can be positioned or secured around portions of the AECD's periphery, thereby maintaining the guidewire retention device 70 in a carry position. One or both of the first and second receiving portions 72a, 72b can include a contoured inner surface that facilitates the automatic or semi-automatic closure of the first and/or second receiving portions 72a, 72b around a portion of the

AECD's periphery in response to insertion of the AECD 104 into the guidewire retention device 70. While in the carry position, the first and second receiving portions 72a, 72b are separated from each other at the guidewire retention device's a) receiving end 78 by a distance corresponding to the external or exterior profile of the AECD 104; and b) capture end 76 by a distance that exceeds the diameter of the guidewire 60 and which facilitates unhindered or generally unobstructed coupling of the needle 20 to the AECD's first coupling structure 112.

In association with a representative medical procedure, the guidewire retention device 70 can initially hold or carry the AECD 104, and the needle's coupling structure 28 can be fitted to the AECD's first coupling structure 112. Following the injection of the needle 20 into a patient's body and a determination that the tip 24 of the needle 20 resides at or within a target anatomical location (e.g., a vascular structure such as the left internal jugular vein) in accordance with an embodiment of the disclosure, a guidewire 60 can be inserted into and through the AECD 104 and the needle 20, such that a portion of the guidewire resides at or within the target anatomical location. The AECD 104 and the needle 20 can subsequently be withdrawn from the guidewire 60, for instance, by a force that pulls the AECD 104 and the needle 20 away from the patient's body while the guidewire retention device 70 is held in a stationary or generally stationary position. Upon removal of the AECD 104 and the needle 20 from the guidewire retention device 70, the guidewire retention device 70 can resiliently or automatically transition to the retaining position, such that the first and second receiving portions 72a, 72b grasp or restrain the guidewire 60 at the guidewire retention device's capture end 76.

FIG. 3 is a perspective illustration of an apparatus 16 for indicating a probe segment or probe tip location according to another embodiment of the disclosure. In an embodiment, the apparatus 16 includes a probe or needle 20; an AECD 104, which may have an auxiliary access port 122; and possibly a syringe 50. In an embodiment, the apparatus 14 additionally includes a movable or repositionable dilator or dilator assembly 80 that is coupled to the AECD 104, and which in a particular embodiment is coupled to the AECD 104 in a removable, releasable, or detachable manner. In general, the repositionable dilator 80 includes a support arm 82 that carries a dilating member 84, a first positioning member 85, and a release element 88. The AECD 104 can carry a second positioning member 86 that matingly fits into or receives the first positioning member 85 in a manner that facilitates adjustable or slidable movement of the dilator 80 relative to the AECD 104 along a direction or axis that is parallel to the bore of the needle 20. In a representative implementation, the first positioning member 85 can include a receiving structure having a groove or slot, and the second positioning member 86 can include a spine configured for insertion into the slot and progressive displacement along the slot's length. The dilator 80 can additionally carry a position control element 89 such as a lever or knob.

The dilating member 84 includes a tapered hollow enclosure having a predetermined largest diameter at a proximal end, a predetermined smallest diameter at a distal end, and a progressive diameter taper between its proximal end and distal end. The predetermined smallest diameter is slightly larger than the diameter of the needle. The dilator 80 can receive the AECD 104 and the needle 20 as an integral unit. More particularly, the AECD 104 and a needle 20 coupled thereto can be mounted to the dilator 80 such that the first positioning member 85 resides along a portion of a side or

surface of the AECD 104 that carries the second positioning member 86, and the dilating member 84 surrounds a portion of the needle's shaft 22.

The position control element 89 can be a knob or lever that facilitates the translation of the dilator support arm 82 and hence the translation of the dilating member 84 along the needle's shaft 22. A surgeon can advance the dilating member 84 along the shaft 22 of the needle 20 and into the patient's tissue at a needle tip entry site. The release element 88 can release or detach the second positioning member 86 carried by the AECD 104 from the dilator's first positioning member 85, such that the needle 20 can be withdrawn from the patient's body and the dilating member 84.

In certain embodiments, one or more elements or devices that facilitate sensing operations can be carried or inserted within a patient's body. More particularly, a set of sensing elements or devices can be advanced into, carried by, or advanced through the shaft 22 of a needle or probe 20, such that particular types of signals and/or substances can be detected within the probe 20; at or proximate to the probe's tip 24; or at a location beyond the probe's tip within the patient's body. Sensing elements or devices suitable for internal bodily use can include one or more of optical fibers, optical detectors, ultrasonic transducers, ultrasound detectors, electrical leads, electrical sensors, pressure sensors, chemical sensors, and/or other devices. Portions of an AECD 100, 102, 104 can be configured to accommodate and/or interoperate with internal bodily sensing elements or devices, as further detailed hereafter.

FIG. 4A is a perspective illustration of a probe 200 carrying a set of sensing elements 210 according to an embodiment of the disclosure. The set of sensing elements 210 can include, for instance, one or more optical fibers, optical emission or detection devices, electrical leads, electrodes or electrical contacts, pressure sensors, ultrasonic transducers or ultrasound detectors, biological or chemical substance sensors, or other elements. In an embodiment, the probe 200 includes a shaft 202 having a distal segment or tip 204, and a proximal end 206 that is coupled to a probe sensing fitting 208. The probe sensing fitting 208 can include a Luer or other type of adapter, connector, sleeve, collar, or lock that carries, surrounds, or encapsulates a portion of the set of sensing elements. The probe sensing fitting 208 can include or correspond to, for instance, a female Luer lock fitting.

At least a portion of the set of sensing elements 210 is carried by the probe's shaft 202. The set of sensing elements 210 is coupled to the probe sensing fitting 208 in a manner that facilitates sensed signal communication with the AECD 100, 102, 104, as further detailed below with reference to FIG. 4B.

The set of sensing elements 210 can include a set of signal interface elements or structures 228 that are carried by the probe sensing fitting 208 to facilitate signal communication with the AECD 100, 102, 104. For instance, the set of signal interface elements 228 can include one or more of an optical fiber interfaces or lens, or an electrical contact or pin. Such signal interface elements 228 can reside at predetermined positions relative to the probe sensing fitting 208, and mate with a particular portion of the AECD 100, 102, 104 in a specified manner to facilitate reliable signal communication.

In an embodiment, the probe's shaft 24 can be substantially or completely obstructed to prevent fluid communication between the probe's tip 204 and proximal end 206. In another embodiment, the probe's shaft 202 can include a conduit therethrough to facilitate such fluid communication. In an embodiment in which the probe's shaft is substantially

hollow or includes a conduit, a bodily fluid can flow or be drawn into the AECD **100**, **102**, **104** for sensing or analysis, and/or into a syringe **50** that is coupled to the AECD **100**, **102**, **104**.

FIG. **4B** is a perspective illustration of an AECD sensing fitting **320** configured for signal communication with a probe sensing fitting **208** according to an embodiment of the disclosure. In an embodiment, the AECD sensing fitting **320** includes one or more coupling, fitting, securing, retaining, or connecting structures that carry set of signal interface elements **322**. Such coupling structures can include a Luer or other type of adapter, taper, collar, slip, connector, or lock structure. For instance, the AECD sensing fitting **320** can include or correspond to a male Luer lock structure.

The signal interface elements **322** carried by the AECD sensing fitting **320** are configured to structurally mate with and functionally correspond to the signal interface elements **228** carried by the probe sensing fitting **208**. Thus, the signal interface elements **322** carried by the AECD sensing fitting **320** and the signal interface elements **228** carried by the probe sensing fitting **208** are structural and functional counterparts that facilitate consistently reliable error free signal transfer between the set of sensing elements **210** carried by the probe **200** and the AECD **100**, **102**, **104**.

In addition to the foregoing, certain devices or elements that facilitate sensing operations and which are inserted into and carried within a patient's body can be coupled to a remote or external device **90**, **92**, such that they extend from a location within the patient's body into and through the AECD **100**, **102**, **104** to the remote or external device **90**, **92**, e.g., by way of the AECD's auxiliary access port **122**. Such devices or elements can include, for instance, optical fibers, electrical leads, or guidewires that carry sensing elements, as further detailed below with reference to FIGS. **5A-5B**.

FIG. **5A** is a perspective illustration of a probe or needle **20** carrying a set of sensing elements **300** according to an embodiment of the disclosure. Such sensing elements **300** can include, for instance, one or more optical fibers and/or electrical leads that extend through the probe or needle **20**, depending upon embodiment details. Such sensing elements **300** can further include one or more distal signal transfer elements or devices **310**. For instance, distal signal transfer devices **310** in an embodiment involving optical fibers can include one or more lenses, diffraction gratings, or other optical elements positioned at, proximate to, or beyond the tip **24** of the probe or needle **20**. In an embodiment involving electrical leads, distal signal transfer devices **310** can include particular types of electrical, biological, or chemical sensing elements (e.g., an electrical sensor, a pressure transducer, or an ultrasonic transducer) carried at, proximate to, or beyond the probe's tip **24**. A given optical fiber, optical element, electrical lead, and/or sensing element can be retained or secured at a predetermined position within the probe or needle **20** (e.g., proximate to the probe's tip **24** and/or proximate to the probe's coupling structure **28**). In general, a group of optical fibers and/or electrical leads can be coupled or bundled to facilitate ease of insertion into an AECD's auxiliary access port **122**, through the AECD **100**, **102**, **104**, and into the probe or needle **20**. A remote or external end of the set of optical fibers and/or electrical leads can be coupled to a remote or external computer system or medical device **90**, **92**.

FIG. **5B** is a perspective illustration of a needle carrying a sensing guidewire **400** according to an embodiment of the disclosure. In an embodiment, the sensing guidewire **400** can carry, for instance, a set of optical fibers and/or electrical leads **410**, as well as a corresponding set of optical elements

and/or sensing devices **412** at a terminal or distal segment or end of the optical fibers or electrical leads, respectively. A sensing guidewire **400** can be inserted into and through an AECD **100**, **102**, **104** and into a probe or needle **20** in a manner previously described. A remote or external end of the sensing guidewire **400** can be coupled to a remote or external computer system or medical device **90**, **92**.

Aspects of Representative Integral Embodiments

In certain embodiments, one or more portions of an apparatus or device for indicating or verifying a probe tip location can be integrally carried by portions of a probe, a syringe, or another apparatus or device. In the description that follows, the recitation of a reference number that is identical or analogous to a reference number recited in relation to one or more of FIGS. **1A-5B** indicates an element that is identical or analogous to that previously described.

FIG. **6A** is a perspective illustration of a representative AECD needle assembly or needle AECD **500** according to an embodiment of the disclosure. In an embodiment, the needle AECD **500** includes a needle portion **520** that is integrally coupled to an AECD portion **510**. The needle portion includes a shaft **522** and a distal end or tip **524**. A coupling structure **528** such as a Luer type fitting, which can facilitate coupling to a syringe **50**, can be carried by the AECD portion **510**. The needle portion **520** includes a bore or conduit therethrough, which extends between the tip **524** and the coupling structure **528**. In an embodiment, a section of the needle portion's bore forms a passage **532** within the AECD portion **510**.

The AECD portion **510** internally carries a sensing unit **140**, a processing unit **160**, a memory **170**, and a power source **190**, in a manner analogous to that described above with reference to FIGS. **1B** and **1C**. One or more of the sensing unit **140**, the processing unit **160**, and the memory **170** can be coupled to an output unit **180** that includes a set of output devices or elements such as an LCD display **182**, a set of LEDs **184**, and/or an audio device **186**. The LCD display **182** and the set of LEDs **184** can be carried in a manner that respectively facilitates the transmission or propagation of visual LCD and LED signals generated thereby external to the needle AECD **500**. Similarly, the audio device **186** can be carried by the needle AECD **500** in a manner that facilitates the transmission or propagation of audio signals generated thereby external to the needle AECD **500**. An activation switch **192** can selectively couple the sensing unit **140**, the processing unit **160**, the memory **170**, and the output unit **180** to the power source **190**.

FIG. **6B** is a perspective illustration of a representative AECD syringe assembly or syringe AECD **550** according to an embodiment of the disclosure. In an embodiment, the syringe AECD **550** includes a syringe portion **560** having a hollow or generally unobstructed shaft **562** in which a plunging element **565** can travel or reside. The shaft **562** includes a distal portion or end **564** that carries a coupling or fitting structure **568**, such as a Luer type fitting, which can facilitate coupling to a needle **20**. The shaft **562** of the syringe portion **560** integrally carries an AECD portion **580** that is configured in a manner that is identical or similar to that described above for the needle AECD **500**.

FIG. **6C** is a perspective illustration of a line-based AECD assembly or an in-line AECD **600** according to an embodiment of the disclosure. In an embodiment, the in-line AECD **600** includes an AECD portion **610** that is structurally and/or functionally analogous to one or more AECD embodiments **100**, **102**, **104**, **500**, **510** described above, but which is

detachably or nondetachably coupled to a flexible or rigid first tube or line 620 and/or a second line 625. The first tube or line 620 can be coupled to a needle 20, and the second line 625 can be coupled to align fitting or coupling (e.g., a Luer type fitting) 628. A bodily fluid can flow between the needle tip 24, the first tube or line 620, and the second line 625 by way of passing through the AECD portion 610. In an embodiment, the first tube or line 620 can be omitted, such that the AECD portion 610 is directly coupled to the needle 20.

Aspects of Representative Probe Location Indication Processes

Relative to a physiologic parameter of interest, a given patient population can exhibit a range of physiologic parameter values, particularly when different patient subpopulations are considered, such as typical, normal, or healthy patients as well as less typical, abnormal, or health-impaired patients. For instance, particular physiologic parameter value ranges that can be relevant to a vascular access procedure are shown below with reference to Tables 1-3; and certain physiologic parameter value ranges that can be relevant to a lumbar puncture procedure are shown below with reference to Table 4.

Table 1 illustrates representative venous and arterial blood pressure ranges associated with patient states corresponding to low blood pressure conditions, normal blood pressure conditions, and high blood pressure conditions.

TABLE 1

Expected Venous versus Arterial Pressure Conditions			
Vessel Type	Low Pressure	Normal Pressure	High Pressure
Vein	<5 mmHg	5-25 mmHg	25-40 mmHg
Artery	45-55 mmHg	55-160 mmHg	160-225 mmHg

Table 2 illustrates representative venous and arterial pulse pressure variations, that is, typical or expected peak-to-minimum pulse pressure differences corresponding to veins and arteries.

TABLE 2

Expected Venous versus Arterial Pulse Pressure Variation	
Vessel Type	Pulse Pressure Variation
Vein	2-10 mmHg
Artery	>20 mmHg (30-70 mmHg)

Table 3 illustrates representative venous and arterial hemoglobin oxygen saturation value ranges corresponding to low, normal, and high patient hemoglobin oxygen saturation conditions.

TABLE 3

Expected Venous versus Arterial Hemoglobin Saturation Conditions			
Vessel Type	Low Hemoglobin Saturation	Normal Hb Saturation	High Hb Saturation
Vein	10-40%	40-60%	>60%
Artery	85-92%	92-100%	N/A

Table 4 illustrates representative values or value ranges of cerebrospinal fluid parameters that can be relevant to a lumbar puncture procedure for particular patient popula-

tions, including low, normal, and high parameter values corresponding to penetration pressure, protein concentration, glucose concentration, red blood cell concentration, and white blood cell concentration.

TABLE 4

Particular Expected Low, Normal, and High Parameter Values Relevant to Lumbar Puncture Procedures			
Parameter	Low Value	Normal Value	High Value
Opening Pressure (child)	<10 mm H ₂ O	10-100 mm H ₂ O	>100 mm H ₂ O
Opening pressure (adult)	<60 mm H ₂ O	60-250 (obese) mm H ₂ O	>250 mm H ₂ O
Protein (newborn)	N/A	<1.5 g/L	>1.5 g/L
Protein (adult)	<0.18 g/L	0.18-0.58 g/L	>0.6 g/L
Red Blood Cells	N/A	None	
Glucose	N/A	2/3 serum glucose	>300 mg/dL
White Blood Cells	N/A	5-20 cells/mm ³	>100 cells/mm ³

As a result of physiologic parameter variations such as those indicated in Tables 1-3 or Table 4 above, one or more reference or threshold physiologic parameter values or value ranges corresponding to target anatomical structures or substances, non-target anatomical structures or substances, and/or patient state conditions or categorizations can be stored in a portion of the memory 170 (e.g., in a data structure such as a table) that a program instruction sequence can access. For instance, FIG. 7 is a block diagram of a representative data structure or table 700 that stores data or values corresponding to a venous blood pressure threshold, an arterial blood pressure threshold, a venous hemoglobin saturation threshold, and an arterial hemoglobin saturation threshold according to an embodiment of the disclosure. In an embodiment, the data structure or table 700 can additionally store a venous pulse pressure variation threshold and an arterial pulse pressure variation threshold. Particular data values within the data structure or table 700 can reside in the memory 170.

A given reference physiologic parameter value or value range can respectively represent a value transition level or value interval that facilitates a categorization or mapping of a non-reference physiologic parameter value in accordance with an anatomical environment, tissue, or substance type, where the non-reference physiologic parameter value was sensed, measured, calculated, or estimated using one or more sets of sensing signals generated by the sensing unit 140. In an embodiment, if a non-reference sensed physiologic parameter value is below an upper reference physiologic parameter limit, above a lower reference physiologic parameter limit, or within a reference physiologic parameter value range corresponding to or indicative of a given type of anatomical environment, the non-reference sensed physiologic parameter can be defined as corresponding to or indicative of the anatomical environment.

A program instruction sequence can evaluate or analyze a set of sensed parameter values at one or more times relative to at least a subset of reference physiologic parameter values or value ranges, after which an output unit 180 can present a number of notification and/or alert signals that indicate or convey a) a type of environment, tissue, or substance in

which the needle tip **24** presently resides (e.g., a target anatomical environment, or a non-target anatomical environment); b) a likelihood of whether the needle tip **24** remains positioned at or within a target or a non-target environment, tissue, or substance during portions of a medical procedure; and/or b) patient state information. Representative processes for determining a probe tip position and/or patient state information and providing corresponding notification or alert signals are described in detail hereafter with reference to FIGS. **8-9**.

FIG. **8** is a flow diagram of a process **800** for indicating probe or needle tip positioning relative to a target vascular structure or substance according to an embodiment of the disclosure. Particular portions of the process **800** can be performed, for instance, by way of a processing unit's execution of program instructions. In an embodiment, the process **800** includes a first process portion **810** that involves coupling an AECD **100, 102, 104** to a probe or needle **20**, and possibly coupling the AECD **100, 102, 104** to a syringe **50**. A second process portion **812** involves activating the AECD **100, 102, 104** (e.g., by way of the activation switch **192**), and a third process portion **814** that involves inserting the probe or needle **20** into the patient's tissue.

The process **800** further includes a fourth process portion **820** that involves detecting the presence of a bodily substance or fluid within the AECD's chamber **130**, for instance, by detecting a change in an optical signal and/or a chamber pressure transition (e.g., by way of a photodetector **152** and/or a piezoelectric transducer **144**) that results from a bodily fluid flowing or being drawn from the probe or needle tip **24** through the bore of the probe or needle **20** and into the chamber **130**. The process **800** also includes a fifth process portion **830** that involves sensing, detecting, measuring, determining, or estimating a set of physiologic or physiologic correlate parameters corresponding to the fluid in the chamber **130**, for instance, one or more of an instantaneous or average fluid pressure, a maximum fluid pressure variation or range, and a set of optical parameters that are correlated with a hemoglobin oxygenation state.

A sixth process portion **840** involves characterizing, evaluating, or analyzing the set of sensed or measured physiologic parameter values corresponding to the fluid within the chamber **130**. In an embodiment, the sixth process portion **840** can involve a transformation or conversion of particular sensed physiologic parameter correlate values to a measure or estimate of a value for a physiologic parameter. For instance, the sixth process portion **840** can involve a determination or estimation of an oxygenation, deoxygenation, or other gas saturation state based upon sensed or measured optical signals in view of reference optical absorbance spectra data. In an embodiment, the sixth process portion **840** further involves a comparison of sensed or measured parameter values relative to one or more reference or threshold physiologic parameter values stored in a memory **170** (e.g., within a data structure **700**) to facilitate discrimination between venous and arterial blood, and hence discrimination between a probe or needle tip positioning within a vein or an artery. For instance, if the sensed or measured parameter values indicate an average pressure of less than approximately 40 mmHg, a pressure variation of less than approximately 15 mmHg, and a hemoglobin oxygen saturation of less than approximately 60%, the sixth process portion **840** can determine that the probe or needle tip **24** resides in a vein. If the sensed or measured parameter values indicate an average pressure of greater than approximately 45 mmHg, a pressure variation of greater than approximately 20 mmHg, and a hemoglobin oxygen satu-

ration of greater than approximately 80%, the sixth process portion **840** can determine that the probe or needle tip **24** resides in an artery.

In an embodiment, if a comparison, evaluation, or analysis of one or more Sensed or measured parameters relative to a set of reference parameter values gives rise to uncertainty in a tissue or fluid type determination, the sixth process portion **840** can generate a likelihood or confidence value corresponding to the tissue or fluid type determination. Such a likelihood or confidence value can be included in a set of reporting signals for subsequent presentation or display (e.g., as a notification signal) to a surgeon or other medical professional.

A seventh process portion **850** involves generating and transferring or issuing reporting signals to an output unit **180**, where the reporting signals can correspond to or include notification and/or alert signals. An eighth process portion **860** involves the presentation of notification and/or alert signals using one or more output devices, for instance, in one or more manners previously described. By way of the eighth process portion **860**, a) an LCD **182** or other display device can present or output sensed, measured, or estimated physiologic parameter values; and/or b) a set of LEDs **184** or an audio device **186** can be activated to indicate that the tip **24** of the probe or needle **20** resides in a target or non-target type of bodily tissue or fluid. In an embodiment, a confidence value can be indicated by the LCD **182** or the set of LEDs **184**.

A ninth process portion **870** involves repeating the fifth through eighth process portions **830-860** such that updated notification and/or alert signals can be presented on a continuous or periodic basis. The ninth process portion **870** can facilitate a determination of whether the probe or needle tip **24** remains in a target or intended type of bodily tissue or fluid, or has moved into a non-target or unintended type of bodily tissue or fluid.

A tenth process portion **880** involves determining whether the needle **20** is correctly positioned or located in a target or intended bodily tissue or substance. If not, an eleventh process portion **885** can involve repositioning or withdrawing the needle **20**. Depending upon embodiment details or the nature of a medical procedure under consideration, the process **800** can return to the fifth process portion **830** in association with a needle repositioning or withdrawal.

Upon indication or confirmation of a target, intended, or desirable probe or needle tip positioning (e.g., based upon notification and/or alert signals), a twelfth process portion **890** can involve the insertion of a guidewire or a set of optical fibers into the AECD's auxiliary access port **122**, through the AECD **100,102,104**, and into or through the bore of the probe or needle **20**. In an embodiment, a thirteenth process portion **895** involves removal of the AECD **100, 102, 104** and/or the probe or needle **20**, and continuation of a medical procedure under consideration.

FIG. **9** is a flow diagram of a spinal or lumbar puncture target identification and/or spinal or lumbar puncture parameter reporting process **900** according to an embodiment of the disclosure. In an embodiment, the process **900** includes a first process portion **910** that involves coupling an AECD **100, 102, 104** to a needle **20** and further coupling the AECD **100, 102, 104** to a syringe **50**. A second process portion **912** involves activating the AECD **100, 102, 104**. A third process portion **914** involves establishing an initial pressure reference value by measuring a pressure in the AECD's chamber **130**. Depending upon embodiment details, the third process portion **914** can involve drawing air through the bore of the needle **20**, into and through the AECD **100, 102, 104**, and

into the syringe **50**, thereby correspondingly establishing an air column between the tip **24** of the needle **20** and the AECD's chamber **130**. Alternatively, the third process portion **914** can involve establishing a fluid column between the needle's tip **24** and the chamber **130**, for instance, by drawing a saline solution into the AECD **100**, **102**, **104**. A fourth process portion **916** involves inserting the probe or needle **20** into the patient's tissue at a lumbar or other spinal column location.

A fifth process portion **920** involves continuously or periodically sensing pressure values and issuing reporting signals to the output unit **180**, where such reporting signals include or correspond to sensed or measured pressure values, such that a surgeon or medical professional can control or maintain a known or approximately constant needle insertion pressure while the needle **20** advances through non-target tissue such as a ligament (e.g., the Ligamentum flavum) toward the spinal canal. In an embodiment, a sixth process portion **930** involves determining whether a pressure drop (e.g., approximately a 5-15 mm HG pressure change) expected to correspond to needle tip entry into the epidural or extradural space has occurred, for instance, by analyzing a set of prior sensed pressure values relative to a set of most recent sensed pressure values or a current sensed pressure value. If such a pressure change has occurred, a seventh process portion **935** involves outputting notification and/or alert signals to indicate that epidural space entry has occurred. Such notification or alert signals can be provided by way of an LCD **152**, a set of LEDs **154**, and/or an audio device **156**.

An eighth process portion **940** involves detecting the presence of a fluid in the chamber **130** following an indication that the needle tip **24** has entered the epidural space (e.g., after the aforementioned pressure drop, where the presence of a fluid in the chamber **130** can arise from further penetration of the needle tip **24** into the subdural or subarachnoid space), and a ninth process portion **945** involves determining whether the fluid present in the chamber **130** is cerebrospinal fluid. In an embodiment, the eighth and ninth process portions **940**, **945** can include sensing or detecting one or more physiologic characteristics, properties, or parameter values corresponding to the fluid in the chamber, such as a pressure value, a protein concentration value, and a glucose value, and evaluating or analyzing such sensed physiologic parameter values relative to corresponding reference values for cerebrospinal fluid, where such reference values can be stored in the memory **170**.

If the sensed physiologic values indicate that the fluid in the chamber **130** is cerebrospinal fluid, a tenth process portion **950** involves outputting notification and/or alert signals (e.g., by way of an LCD **152**, a set of LEDs **154**, and/or an audio device **156**) to indicate that cerebrospinal fluid has been detected. The tenth process portion **950** can include displaying a CSF pressure value or an opening pressure value.

In an embodiment, an eleventh process portion **960** can involve sensing, detecting, measuring, or estimating a number of cerebrospinal fluid physiologic parameter values, such as one or more of a presence or concentration of red blood cells, a presence or concentration of white blood cells, and a set of optical absorbance values that can correspond to fluid color or clarity. Finally, a twelfth process portion **970** can involve outputting notification and/or alert signals corresponding to such physiologic parameter values.

In one embodiment, a device can include a sterile, disposable, lightweight, inexpensive, compact, self-contained pressure sensor with integrated display that can connect to a

standard needle or catheter on one end (e.g., distal portion) and to a syringe on the opposite end (e.g., proximal portion). The term "syringe", as used herein, can include a standard syringe including a plunger fitting in a tube so as to provide a simple piston-pump, or more generally may refer to any pumping means couplable to the device and operable to elicit movement of a fluid through a coupled probe, such as drawing fluid proximally through the probe. The device can be used to identify probe location and/or tissue type based on parameters such as pressure properties, or to output/report pressure values to the user when attached to a catheter or needle placed in a pressurized area in the body (e.g. blood pressure, CSF pressure, pleural fluid pressure, compartment pressure).

Devices of the present invention will typically include a display for outputting/reporting via visual display of detected biological parameters, such as pressure and/or changes thereof indicative of probe location. The display may be carried by the housing of a device such that the detected biological parameters are easily or conveniently viewed by a user during operation of the device. In one embodiment, the display is angled proximately or oriented at an angle to the plane of the device/needle so that the display can be easily read during a procedure, e.g. providing an advantage during certain procedures where a flat display might be difficult to visualize (e.g., during internal jugular cannulation). Further, devices typically include a configuration that, when in assembly with a probe and/or syringe, is axially aligned or substantially "in-line" with the needle and syringe. Such a configuration in many cases demonstrates to be more ergonomic, and can advantageously offer improved functionality, for example, by permitting the user to actively view both the display and target area during use, thereby reducing user movement associated with viewing of a remote display, and limiting unwanted probe movement or resulting injury to the patient due to inadvertent probe positioning or misplacement. Additionally, the axially aligned configuration can, in certain instances, increase device functionality and utility by allowing the user to more easily perform a procedure with one hand while reading the display.

Embodiments of the device can optionally include an integrated port for introducing a guidewire, e.g., as further described below. In such an embodiment, the port can include a seal that allows pressure transduction with or without a guidewire in the port, e.g., so as to provide a self-sealing port. Such an integrated guidewire port design can advantageously permit a user to introduce a guidewire into a target location or lumen while minimizing or eliminating exchanging of components and/or undesired probe movement, thereby further minimizing occurrence of error or patient injury due to probe misplacement.

Devices can include a channel (e.g., body fluid or blood channel) fluidly coupling a syringe port to a probe port. In an integrated guidewire port embodiment, the guidewire port can be fluidly coupled to the blood channel. The housing, or portion thereof, and blood channel may optionally include a translucent material design so that a body fluid can be visualized as it is drawn into the device housing. In certain indications, it may be desirable for the user to see a flash of bodily fluid (e.g., blood or CSF during vascular access and lumbar puncture procedures) during operation.

FIGS. **10A** and **10B** illustrate a detection device assembly, according to an embodiment of the present invention. The assembly **1200** includes a detection device **1202** coupled distally to a probe **1204** and proximally to a syringe **1206**. The device **1202** includes a housing **1208** having a distal

portion with a port **1210** that is detachably coupled to a probe **1204**, and a proximal portion with port **1212** that is detachably coupled to a syringe **1206**. Additional components, including those described above such as a sensing unit, processing unit, output unit, etc. (not shown), can be further carried by the housing **1208**. A housing of a device can include a single piece or multipiece assembly. The device **1202** additionally includes a display **1214** for reporting or visually displaying a determined biological parameter, such as a pressure value. The device **1202** further includes a guidewire port **1216** integrated with or carried by the housing **1208**.

A long axis **1218** of the assembly is shown to illustrate an axial alignment or in-line assembly of components, including the probe **1204** and syringe **1206** coupled with the device **1208**. Components need not be limited to any particular positioning with respect to the long axis. But axial alignment or in-line assembly will generally refer to an ordered arrangement of certain components with respect to a long axis reference. In the embodiment illustrated in FIG. **10B** (and additionally in certain embodiments described further herein), the assembly includes an in-line arrangement with the device **1208** disposed substantially between the coupled probe **1204** and the syringe **1206**. Referring to the device **1202**, certain components (e.g., sensing unit, processing unit, output unit, display, etc.) can be carried by the housing **1208** so as to be disposed substantially between port **1210** and port **1212**. The display **1214** can be carried by the housing **1208** such that the display **1214** or surface thereof (e.g., outer surface) is at an angle with respect to the long axis **1218** of the assembly **1200**. For example, the display can be angled proximately as illustrated in FIGS. **10A** and **10B**. Such a configuration of the display may be selected so as to allow a user, viewing the display from a location generally proximal to the device, to more easily view the display during operation.

In use, a user can manipulate or control positioning of the assembly while grasping or holding the assembly about the device **1202** and/or syringe **1206**. The distal portion of the probe **1204** can be inserted into a tissue or body of a patient. With positioning, a biological parameter (e.g., pressure) of the environment in which the probe **1204** is positioned is detected or determined, and the parameter value or information output for visualization on display **1214**. Device and assembly operation is further described elsewhere herein.

FIG. **11** shows a diagram of an apparatus (e.g., as in FIGS. **10A** and **10B**) for indicating a probe segment or tip location, according to another embodiment of the present invention. The assembly **1300** includes a device **1302** with a probe **1304** removably coupled to a distal portion of the device and a syringe **1306** removably coupled to a proximal portion of the device. The probe **1304** is coupled to the device about a port **1308** carried by housing **1312** including a distal male Luer fitting, and the syringe **1306** is coupled to the device about a port **1310** including a proximal female Luer fitting. Port **1310** and port **1308** are fluidly coupled about channel **1314**. Channel **1314** and/or housing **1312** may be at least partially transparent or translucent exteriorly to the device so as to allow visualization of a fluid within channel **1314**. The device **1302** further includes guidewire port **1316** fluidly connected to channel **1314** about guidewire port channel **1318**. The guidewire port **1316** is in assembly with seal cup **1320** and seal **1322** so as to provide a self-sealing assembly. The device further includes sensor **1324** (e.g., pressure sensor) in operable communication with channel **1314** so as to enable detection of a parameter (e.g., pressure) of an environment in which probe **1304** is positioned. The device

1302 further includes electronics and signal processing components **1326** (e.g., similar to as described above), including a printed circuit board, processor, and the like, as well as power source **1330**. Display **1328** is carried by the housing **1312** and angled proximally with respect to a long axis of the assembly.

As described above, a device of the present invention can optionally include an integrated port for introducing a guidewire, which may advantageously permit a user to introduce a guidewire into a target location or lumen while limiting additional component exchanging steps and/or undesired probe movement. Such simplification of the guidewire placement procedure can help minimize occurrence of error or patient injury due to probe misplacement, as illustrated with reference to FIGS. **12** through **14**. FIGS. **12A** through **12D** illustrate probe tip location detection under ultrasound guidance, with FIGS. **12C** and **12D** illustrating component exchange steps that may elicit undesired movement of the probe positioned in the tissue and potential injury to the patient. FIGS. **13A** through **13F** illustrate probe tip location indication under pressure transduction (e.g. column manometry) guidance. Similar to ultrasound guidance techniques, pressure transduction guidance includes component exchanging (FIGS. **13E** and **13F**) that can cause undesired movement of the probe and potential patient injury.

Guidewire placement according to a method of the present invention using a device with an integrated guidewire apparatus is illustrated with reference to FIGS. **14A** through **14C**. As shown, such a method can include inserting the probe (e.g., a needle) into the tissue (FIG. **14A**) and obtaining a measurement of the parameter(s) of interest (FIG. **14B**). Following measurement, the guidewire placement can be accomplished by inserting the guidewire through the port and probe of the device and into the target body lumen of the patient (FIG. **14C**). Guidewire placement can be accomplished while limiting or eliminating removal and/or exchanging of assembly components.

In yet another embodiment, a device of the present invention can include a "closed" portion, such as a closed proximal portion lacking a port. FIG. **15** illustrates an assembly **1400** including a detection device **1402** coupled with a probe **1404**. The device **1402** includes a housing **1406** including a distal portion and a proximal portion. The distal portion of the housing includes a port **1408** coupleable to the probe **1404**. The proximal portion of the device **1402** is closed in the sense that it lacks a port or opening. Additional components, including those described above such as a sensing unit, processing unit, output unit, etc. (not shown), can be further carried by the housing, with the housing of a device including a single piece or multipiece assembly. The assembly **1400** includes an "in-line" configuration with respect to the coupled probe **1404** and device **1402**, similar to as described above. The device **1402** further includes a display **1410** carried by the housing **1406**. The display **1410** may be disposed on the housing **1406** and angled proximally so as to allow more optimal viewing by a user during manipulation of the assembly **1400**, such as positioning a distal portion of the probe **1404** in a tissue of a patient.

In yet another embodiment, a device of the present invention can optionally include a built-in a system for buffering or relieving internal device pressure that may modulate due to a factor(s) other than physiological parameter detection/monitoring. Such pressure modulations may occur, for example, during device handling or positioning, and their registration with the device can interfere with optimal detection or monitoring of the target environment. As such, in some instances a device of the present invention

may include a pressure relief or buffer system designed to accommodate pressure changes that might occur due to device handling or positioning, and allow more accurate or optimal detection of pressure within the tissue or target environment.

A pressure relief/buffer system may be selected for a variety of different designs or configurations. In one example, a system may include one or more built in relief valves that allow escape of pressure built up, e.g., from component compression and/or handling of the device. As another illustrative example, a pressure relief/buffer system may include a recalibration or re-zeroing system. For example, pressure build-up may be expected during an initial phase of device positioning, such as initial gripping of the device or insertion into a patient's tissue. Where the device includes a recalibration/re-zeroing system, following initial positioning the device may then be recalibrated, e.g., by re-setting the pressure reading to baseline such that changes in pressure in the patient's tissue are more apparent or more optimally detected/observed.

In another embodiment, a pressure relief/buffer system of a device can include a reservoir disposed in the device to function as a sort of buffer or capacitor to accommodate small volume fluctuations in the fluid channel **1514** that result in pressure changes from factors other than tissue/target pressure monitoring. A pressure buffer/relief system of a device **1500** including a reservoir **1510** disposed between a pressure tube **1512** and a fluid channel **1514** of the device is illustrated with reference to FIGS. **16A** and **16B**. The device includes a fluid channel **1514** having a distal or front portion **1516** that connects to a needle that is inserted into a patient's tissue. The rear or proximal portion **1518** of the device includes an opening, which may be contacted or covered by the user's thumb during device use. The pressure tube **1512** couples to the pressure sensor (not shown) of the device. Where the fluid channel **1514** is occluded on both ends, air trapped in the fluid channel may be compressed due to device handling, such as by contact between the proximal portion **1518** opening and the user (e.g., user's hand/finger), with such compressing of air potentially causing increase in pressure within the device. The pressure buffer/relief system permits accommodation of such pressure changes and minimizes interference with monitoring/detection of pressure in the target tissue. The reservoir **1510** provides an expanded air volume that minimizes pressure fluctuations registering due to such minor air displacement.

In the illustrated embodiment (FIGS. **16A** and **16B**), for example, a small hole or passage **1520** exits off the fluid channel **1514** and enters the air reservoir **1510**. The reservoir **1510** can have a volume of about a few cc's to a dozen or more cc's. As any change in pressure is proportional to the relative change in volume ($\Delta P = \Delta V/V$), the added reservoir **1510** increases V and subsequently reduces the pressure increase caused by a given compression of the air. Fluid that enters the distal or tissue end **1516** of the device passes from the tissue end, through the fluid channel **1514**, and out the proximal portion **1518** without filling the reservoir **1510**. The volume of a reservoir is proportional to the magnitude of the pressure change accompanying a change in volume $1/V$ relationship), as illustrated with reference to FIG. **16C**, which shows data collected for registered pressure changes due to device handling activities using reservoirs of different volumes.

The device may be designed such that fluids (e.g. blood or cerebrospinal fluid) are not trapped within the device's air reservoir, but rather exit the rear of the device to collect for analysis. In lumbar puncture techniques, for example, the

appearance of the CSF at the rear of the device can be used to confirm entry of the needle into the CSF space. Further, such a device design may also expedite how quickly the fluid appears at the rear of the device—if the chamber within the device filled with the CSF, this would delay the appearance of the CSF at the rear of the device and waste precious CSF.

Other relief/buffer systems may be used instead of or in conjunction with the air reservoir system, including those described above. For example, a device may include a cap at the end of the device with a hole reduced in size so as to limit the amount of air that can be compressed by user contact with the proximal end of the device. Further, software algorithms can be utilized which minimize spikes of pressure that may be caused by rapid air compression during device handling or initial positioning. Alternatively, a one way valve at the proximal end may be included that allows fluid to exit the device but does not allow air compressing within the main body of the device due to proximal end contact by the user.

Devices of the present invention can be configured for operation in one or more of various different operational modes. In one embodiment, a device is operable in a tissue transition detection mode ("transition detection mode"). For example, the device can be configured to detect probe (e.g. a needle) distal tip location during blind needle insertion. In such operation, the pressure changes rapidly when the needle transitions from one site to another, provided the two sites have different pressures (e.g. from soft tissue to a vessel, from a vein to an artery, from a ligament to the epidural space, from a ligament to the CSF space). It has been observed that the pressure change at the tip of the needle is transduced through the air (or vacuum) already present in the device housing, and therefore an absolute pressure reading is available before the arrival of the body fluid into the device housing. The device display can be used to indicate tissue transitions, with the device configured such that the display updates at an appropriate rate. If the display updates at a constant rate (e.g. at 4 Hz), or if the display is displaying average pressure, rapid pressure changes may not be easily discerned by the user in some indications. Rather, a variable display rate makes pressure changes more apparent by introducing sudden, non-cyclical display changes that "stand-out" visually. For instance, if the probe is in soft tissue (e.g., pressure ~0 mm Hg), the display can update at 1 Hz. A near instantaneous (e.g. within 5 ms) change in the display reading upon entry into a vessel (e.g. from 0 mm Hg to 25 mmHg) can provide a visual cue to the user that a tissue boundary has been crossed. The device makes use of algorithms developed to determine when to update the display given a temporal set of pressure readings. In general, when the needle tip is in a static environment (e.g. in an artery), the display provides a mean pressure, using a moving average of the pressure readings over a given time period. However, if the needle is removed from a vessel, the display immediately reverts to an instant reading.

In another embodiment, a device can further include a stylet, e.g., for use in a lumbar puncture procedure. A stylet includes a solid metal core inserted into the needle to prevent entry of tissue into the needle bore during insertion or removal of the needle that may be used during lumbar puncture and epidural needle insertion. A device of the present invention may come with a custom stylet that inserts through the proximal end of the device housing, through the blood channel, and then through the needle so that it performs the same functions as existing stylets.

In another embodiment, a device can be configured for continuous monitoring at fixed location ("continuous moni-

toring” or “fixed location” mode). During continuous monitoring, different values of pressure are useful to the user, especially the mean pressure over a period of time, or the maximum and minimum values over a given period of time (i.e. systolic and diastolic pressure). Further embodiments may include a combination of different operation modes. For example, in some indications (e.g., vessel access, lumbar puncture, epidural catheter insertion), it may be desirable to switch (e.g., programmed or automatic switching) between these two modes—blind needle insertion and continuous monitoring.

Structures of the present invention can be configured for use for or in conjunction with various different methods or indications. Exemplary indication for which a device of the present invention can be configured to include or be used in conjunction, without limitation, with the following indications/procedures: blood vessel or body lumen access; catheter placement (e.g., central venous catheter insertion); oxygen saturation/blood pressure (BP) monitoring; lumbar puncture; epidural space detection and/or needle/catheter placement; thoracentesis (pressure monitoring); peripheral nerve block procedures; evaluation of vascular properties related to disease (e.g. ankle brachial pressure index and measurement of blood pressure in or around stenotic lesions); wireless pressure monitor; and compartment pressure detection/monitoring. Some exemplary indications and corresponding embodiment are described further below.

Blood Vessel Access:

In this embodiment, the device functions to identify when and what type of vessel has been entered by the needle, and report pressure parameters for the vessel once the needle has entered it (e.g. mean pressure, magnitude of the pulse pressure). During needle insertion, the display and associated components (e.g., processing unit, instructions, algorithm) are optimized for making changes in tissue boundary (e.g., see transition detection mode above) readily identifiable to the user by varying the display update rate and the type of measurement displayed (e.g. mean pressure vs. instant pressure). A device can be programmed or configured such that once in a vessel, the display changes to a slower update rate, and displays the mean pressure (see, e.g., continuous/fixed location mode above). However, pressure is monitored and can be rapidly (e.g., 200 Hz) detected reported via output, e.g., with the display instantly changing if the needle is dislodged from the vessel or relocated. In the device embodiment including an integrated guidewire port, the port allows a guidewire to be inserted into the blood vessel while continuously monitoring pressure (the port has a low friction seal to keep guidewire tactile feel, but the port seals around the guidewire to allow accurate pressure monitoring).

Thus, use of a device of the present invention can include inserting a distal portion of a device coupled probe into the body or tissue of a patient and detecting with the device a pressure value of the tissue or environment in which the probe is positioned. Based on the pressure value or reading (s) detected and/or output by the device, the user may elect to maintain device positioning or alter device positioning based on the detected pressure reading. The user may further elect to introduce a guidewire and/or catheter into the target site (e.g., vein) of the patient in response to the detected pressure. For further discussion of vascular access structures and methods utilizing devices of the present invention, see also, commonly owned U.S. patent application Ser. No. 12/806,798, which is incorporated herein by reference.

Oxygen Saturation/EEG/EKG/BP Monitoring:

The device can be used in patients with indwelling arterial catheters or with direct needle puncture of an artery. In one embodiment, the distal port of the device connects to the catheter or needle. The proximal end is sealed (e.g., does not include an additional port such as a syringe or guidewire port). The device optionally contains an electrical connector that attaches to standard pulse oximetry probes (e.g. a finger tip probe that contains one or more LED's for determining oxygen saturation). The device provides power to the oximetry probe, and also receives the (electrical) signal from the LED's and uses processing instructions or an algorithm to determine the oxygen saturation of the blood. Optionally, the device contains an electrical connector that attaches to standard EEG and/or EKG leads. The device receives and interprets the electrical signals from the EEG and/or EKG leads. The device can receive or monitor a single parameter or a plurality of different parameters. For example, the blood oxygen saturation, EEG, EKG, and/or various blood pressure/pulse measurements (e.g. mean pressure, pulse rate, systolic pressure, and/or diastolic pressure) are displayed on the integrated display. The device can transmit the signal to a remote device or monitoring display.

Lumbar Puncture (Access and CSF Reading):

The present invention further includes methods and structures for performing lumbar puncture procedures. Currently, physicians use a glass or plastic column manometer to measure pressure during lumbar puncture. The technique is awkward, risks dislodging the needle, and is time-consuming and consequently many physicians do not measure the pressure during a lumbar puncture. A device according to an embodiment of the present invention can be configured to serve two functions in this application: identifying entry into the CSF space, and providing a continuous pressure measurement once inside the CSF. The processing instructions and/or algorithm for the lumbar puncture application can be similar to the vessel access application in that during the early part of the procedure, the display is in transition detection mode described above, that is, the display is optimized for detecting transition of the needle tip from the ligament into the CSF space. If no pressure is applied, the pressure will transition from a low (0 mm Hg) pressure reading to a positive pressure reading (e.g. 10 mm Hg) when the needle transitions from the ligament into the CSF space. If positive pressure is applied when the needle is in the ligament (the fluid and/or air are prevented from leaving the needle tip when it is in the ligament) the pressure will go from a high (e.g. 50 mm Hg) value to a lower positive value (e.g. 10 mm Hg) upon entry in the CSF space. Once the needle has entered the CSF space, the display will provide a mean CSF pressure (the “opening pressure”) and a “closing pressure” after CSF samples are removed. The graphical part of the display will demonstrate the pulsations of the CSF. The device will monitor the instant pressure, and will alert the user to needle dislodgment. During procedures where CSF is removed to decrease the intracranial pressure, the device provides the ability to monitor the CSF in real time (currently, the user needs to use a tube glass manometer, which is time consuming). See also, commonly owned U.S. patent application Ser. No. 14/322,015, which is incorporated herein by reference.

A device may be further optimized for pediatric lumbar puncture. In such an embodiment, the device is modified (e.g., reduced) in size and weight (e.g. by using flexible circuits and display, etc.) so that it does not dislodge the spinal needle if it is not supported by the user.

Epidural Space Detection:

The present invention further provides structures and related methods for detection of an epidural space, e.g., during epidural access procedures such as catheter placement and drug deliver. In one embodiment, the device can be used to better prevent two common mistakes—entry of the needle into the CSF, which causes severe headaches, and mistaking the muscle or other soft tissue for the epidural space, which results in failed anesthesia (the epidural catheter is mistakenly inserted into the muscle instead of the epidural space). During an epidural procedure, the needle passes through the skin and fat, ligament, and finally enters the epidural space. The needle can enter muscle if it is not inserted in the midline or the needle can enter the CSF space if it is inserted too far. Currently, a “loss-of resistance” is used to identify entry into the epidural space and prevent the needle from continuing into the CSF space. Instead, pressure can be used to identify the epidural space (either a loss of pressure if a pressurized fluid is used, or a change from zero pressure to positive pressure if the needle is advanced without a pressurized fluid or air column). Muscle can be differentiated from the epidural space by the absence or presence of a positive pressure epidural waveform.

Thus, the devices of the present invention can be utilized for detection of an epidural space. In one embodiment, a user (e.g., physician) would insert the epidural needle (e.g., needle and stylet) into the tough ligament in the back. The detection device would be coupled to the needle and slightly pressurized (e.g. 100 mm Hg), e.g., with air or saline using a syringe connected to the back of the device. The needle will then be advanced through the ligament until it enters the epidural space. As the needle enters the epidural space, the air or saline can exit the end of the needle and the pressure will rapidly drop, signaling entry into the epidural space. The pressure drop can be detected by the device and output to the device display for notification to the user. In addition to the pressure drop, a waveform will then be detectable to the device if the needle is in fact within the epidural space, and detection of a waveform can be output to the user via the device (e.g., device display). In one embodiment, pressure data (e.g., pressure versus time) can be output to the device display such that the pressure waveform can be visualized by the user, e.g., in real time. In another embodiment, the device can include programming or instructions, stored on a computer readable media, for processing pressure data so as to identify a pressure signal/data as epidural waveform.

A false loss of resistance (and a drop in the pressure) might occur if the needle enters muscle (e.g., lateral to the ligament point of needle insertion), however, the characteristic pressure waveform will not be present. Thus, loss of resistance in the absence of pressure waveform detection would distinguish epidural space from other tissue, such as muscle. It is possible that the user could accidentally insert the needle too far and enter the CSF space. The CSF space will also show a pressure waveform. To distinguish the epidural space from the CSF space or a vein, the user can aspirate slightly to look for a return of CSF fluid or blood, which would indicate entry of the needle into the CSF space or a vein, respectively. The absence of any fluid would indicate that the needle is likely in the epidural space. Thus, epidural space can be distinguished from other tissue (e.g., from CSF space or vein), even in the event of loss of resistance and detection of waveform pressure, e.g., by aspirating fluid for identification of return CSF fluid or blood. For further discussion of lumbar puncture and epidural space detection, see also, commonly owned U.S. patent application Ser. No. 14/322,015, which is incorporated herein by reference.

Thoracentesis (Pressure Monitoring):

Thoracentesis is a procedure where a large needle is inserted into the pleural space outside the lung to drain accumulated fluid. Physicians face a dilemma when performing the procedure: too little fluid removal will not relieve symptoms whereas too much fluid removal can result in a deadly condition known as re-expansion pulmonary edema. Because of the risk of developing pulmonary edema, most physicians remove no more than 1-1.5 Liter of fluid during a given procedure. However, this practice often leads to poor symptom relief, and many patients require multiple procedures to feel better. In another embodiment of the present invention, a device can be configured and utilized to monitor the procedure including measuring the pressure rather than the amount of fluid removed. Using a target pressure (e.g., selected from those reported in the literature) to determine when to stop the procedure (-20 cm H_2O), the optimal amount of fluid is removed while preventing the complications related to either too much or too little fluid withdrawal. Despite solid clinical evidence collected over the past two decades that support measuring pressure, adoption has been limited because the correct tools simply don't exist. The current device will allow physicians to precisely and continuously monitor fluid pressure during thoracentesis. The device can optionally contain an alert (visual or audio) if the pressure exceeds some critical value (e.g. -30 cm H_2O indicating that too much fluid has been removed and the patient is at risk for reexpansion pulmonary edema). This value may be pre-programmed, or selectable by the user.

Compartment Pressure Monitoring (Abdominal or Limb):

Compartmental syndrome is a medical emergency caused when the pressure in a closed body space (like the forearm, leg, or abdomen) increases to the point where the blood flow is compromised. If left untreated, compartmental syndrome can lead to amputation of the limb, multi-organ failure, or even death. The diagnosis of compartmental syndrome is made by inserting a needle into the compartmental and measuring the pressure. However, the diagnosis is often missed or delayed, and irreversible muscle-damage begins as soon as three hours after the initial injury. A commonly cited reason for the missed diagnosis is failure to measure the pressure. A recent survey noted that half of the participating departments did not have tools capable of measuring compartmental pressure. Current devices are expensive, not disposable, and consequently not available to all physicians. The current device will provide a sterile, disposable, lightweight, inexpensive, compact, self-contained pressure sensor with integrated display that can be used to measure the compartment pressure.

Peripheral Nerve Blocks:

Devices of the present invention can further be utilized in the administration of a peripheral nerve block in a patient. Regional nerve blockade, or peripheral nerve block, refers to the injection of anesthetic drug onto or near nerves for temporary control of pain. To maximize the effectiveness of the block, the anesthetic is injected as close to the nerve as possible (using a needle attached to a syringe containing the anesthetic). Ideally, the injection will be in the soft tissue under the epineurium, which surrounds the nerve fascicles. However, if the anesthetic is injected directly into the nerve fascicle, the nerve can be damaged, leading to permanent neurological deficits. A sharp pain is one sign of an impending intraneural (intrafascicular injection). However, this is not always a reliable way to avoid this injury. A different way to avoid injecting into the nerve fascicle and damaging the nerve is to measure the injection pressure. Animal

studies suggest the pressure during a perineural injection (injection around the nerve fascicles—the desired location) is less than 5 psi.

In clinical practice, anesthesiologists typically rely on their tactile perception to gauge what may be an abnormally high resistance to injection, such as could result from intraneural placement of a needle. However, anesthesiologists vary widely in their ability to perceive an appropriate pressure and rate of injection during nerve blocks.

Quantitative measurement of the injection pressure during a peripheral nerve block, including with use of a detection device of the present invention, should be superior to a tactile approach. Injection pressures should not exceed about a threshold value, such as 5 psi, to make sure that anesthetic is not accidentally injected into the nerve (fascicle). If the pressure starts to exceed the threshold value during the injection, the procedure is suspended and needle relocated.

In utilizing a device of the present invention during a peripheral nerve block, the device can be inserted between the needle and syringe containing the anesthetic (i.e. a needle is attached to the distal port of the device housing and a syringe to the proximal port of the device housing). The needle will be inserted into the tissue containing the nerve. The provider can begin the injection, and use the detection device to monitor the pressure. If the pressure rises above a threshold value (e.g., about 5 psi) without free flow of anesthetic, the provider could determine that the needle has been inserted into the nerve fascicle and stop the procedure. The needle can then be relocated slightly until the anesthetic is able to be injected at pressures less than the threshold value. The in-line display is advantageously positioned to provide feedback to help the provider better locate the optimal injection site. The quantitative pressure data provides a precise and accurate indication, rather than a tactile feel or even a mechanical pressure scale or color indication, and allows for increased precision and certainty in care delivery. A device configured for peripheral nerve block may optionally include pressure relief valve in order to avoid accidental high pressure injection.

Evaluation of Vascular Properties Related to Disease:

Devices of the present invention can be configured for and/or utilized for detection or monitoring of vascular properties related to disease (e.g. measurement of ankle brachial pressure in peripheral arterial disease or measurement of the blood pressure in or near a dialysis graft or fistula). Peripheral arterial disease is caused by the obstruction of large arteries in the arms and legs. In addition to clinical history or physical examination, non-invasive testing (i.e., blood pressure cuff monitoring) of the ankle brachial pressure index (ABPI) is currently used for confirmation of a clinical diagnosis of peripheral arterial disease and its quantification. The ABPI is a measure of the blood pressure in the arteries supplying the legs relative to central, aortic pressure (approximated by measuring the blood pressure in the arm). ABPI is calculated by dividing the systolic blood pressure measured in the ankle by the systolic blood pressure measured in the arm.

The ABPI is used to assess patients for peripheral arterial disease, as a fall in blood pressure in an artery at the ankle relative to the central blood pressure would suggest a narrowing in the blood vessels somewhere in between the aorta and the ankle. Sources quote the normal range of ABPI as being 0.91-1.3; mild disease in the range of 0.7-0.9; moderate ischemic disease for ratios of 0.41-0.69; and ratios of less than or equal to 0.4 are quoted in severe disease, presenting clinically as critical ischemia.

In certain groups of patients, such as those at high risk of heavy arterial calcification, ABPI detection using previous non-invasive techniques (e.g., blood pressure cuff) becomes impractical and nondiagnostic. For example, in elderly, diabetic and renal patients calcification of the peripheral arteries can make the arteries incompressible, and therefore the ABPI test relying on measurement of systolic pressure with an occlusive cuff becomes nondiagnostic or inaccurate due to artefactually-raised occlusion pressures secondary to hardening of the arterial wall. One estimate reported in the literature that occlusive ankle pressures could not be measured in 5%-10% of diabetic patients. Therefore, for a group of patients, e.g., those with long-standing diabetes, renal failure, or presenting with peripheral vascular symptoms, there is a need for a clinical alternative to current non-invasive ABPI for assessing the presence of significant arterial disease.

A detection device of the present invention can be used to invasively measure the arterial pressure in the ankle by direct puncture of the artery using a small (e.g. 30 Gauge) needle. In this scenario, the device would be attached to the end of the needle, which is then inserted into the vessel of interest to measure the blood pressure. The needle can be guided into the appropriate artery (e.g. the anterior or posterior tibial artery) using anatomic landmarks or with ultrasound. The systolic and diastolic pressures in the artery can be obtained and compared to (invasive or non-invasive) blood pressure measurements taken in the arm to calculate the ABPI, and may be indicative of or diagnostic of peripheral arterial disease.

In addition to peripheral artery disease, another common site for stenotic lesions is in grafts and fistulas created for dialysis. A detection device of the present invention can be used to invasively measure the pressure in these grafts of fistulas (the Vascular Access Pressure Ratio) in order to assess their patency and determine whether more expensive tests (e.g. angiography) or procedures (e.g. angioplasty) are warranted.

Wireless Monitoring:

In one embodiment, a device of the present invention can be coupled wirelessly to one or more graphical displays positioned remotely from the device, thereby enabling wireless monitoring of signal detection with the device. As an example, portable ultrasound is often used for guiding needles during the placement of central venous catheters. During a typical central line procedure, a physician might be splitting his attention between the needle/detection device assembly and the ultrasound screen. The detection device could have both a local display and also transmit data (e.g. pressure data) wirelessly to the ultrasound monitor. The ultrasound monitor would contain an area to display the pressure data along with the ultrasound image.

As another example, the data from the detection device can be transmitted wirelessly to a storage unit, allowing storage and later retrieval of the data. Such storage and retrieval might be utilized, for example, for quality control, diagnostic, or research purposes. For example, the storage unit could save opening pressures during lumbar puncture procedures. A time stamp or the serial number of the particular pressure transducer could assist with identifying the data at a later time. Detection data can be collected and processed, and then utilized to update or reconfigure programming in new and/or existing devices, e.g., for improved performance.

A wireless system could also be used to change display monitors without the need to move additional hardware, such as bulky wires. For instance, a dongle or other type of

wireless receiver could receive data from the device and convert the wireless signal to a standard electrical output signal (e.g. 5 $\mu\text{V}/\text{mm Hg}$) to impute to a remote monitor. If a patient is transported, the dongle could be moved from a permanent monitor to a portable monitor for transport, and then plugged into a second permanent remote monitor once the patient reaches the new destination. Alternatively, the LCD on the device could be used during transport, obviating the need for a separate transport monitor. The data could also be directly transmitted to an alternate wireless device, such as a PDA device, without the need for a dongle. Special software could register the disposable pressure sensor to the dongle or device to avoid cross-talk between multiple pressure sensor/wireless receiver units. Alternatively, the dongle and pressure sensor could come together in a disposable pouch and be pre-registered to avoid crosstalk or other type.

The above applications and indications are provided for exemplary purposes. The indications disclosed herein will not be limiting, and the present invention will find use in a variety of additional applications.

Devices can be configured for a single application or for multiple different applications. A device may include a button or switch to allow the device algorithm and display to transition from one indication (e.g. central line insertion) to the next (e.g. lumbar puncture). This transition might include scaling the bar graph, changing the display units (mm Hg to cm H_2O), changing the display rate, etc. an indicator will alert the user to what mode the device is in. Alternately, the device could automatically change modes by monitoring the pressure readings (e.g. autoscaling the bar graph or changing modes based on the magnitude of the pressure and/or the rate of change in the pressure). For example, a pressure changing from 60 mm Hg to 120 mm Hg at 1 Hz might indicate an artery, a pressure changing from 0 mm Hg to 20 mm Hg at 1 Hz might indicate a vein or the CSF space, and a constant pressure of 10 mm Hg might indicate a compartment.

In yet another embodiment, the device can contain alert means, such as indicators (visual or audio) that trigger when certain pressure ranges are encountered (e.g. an artery indicator might activate when the mean pressure in the device is over 60 mm Hg and the pressure fluctuates by at least 20 mm Hg over a 1 second period). The alerts could also activate if the needle or catheter is removed from a pressurized fluid (e.g. a "needle dislodgement" indicator might activate if the pressure changes from a value over 20 mm Hg to a constant value less than 5 mm Hg). The device can also have user set alerts (e.g. a button can be pushed when the pressure is 15 mm Hg. The button activates an alert trigger the alerts the user if the pressure changes by more than 5 mm Hg from the pressure value at the time the button was pushed (15 mm Hg). The device could have colored LED's (or distinct audio tones) that indicate certain pressure ranges (e.g. yellow for pressure less than 5 mm Hg, green for pressures between 6 and 30 mm Hg, and red for pressure in excess of 31 mm Hg).

It is understood that the examples and embodiments described herein are for illustrative purposes only and that various modifications or changes in light thereof may be suggested to persons skilled in the art and are included within the spirit and purview of this application and scope of the appended claims. Numerous different combinations of embodiments described herein are possible, and such combinations are considered part of the present invention. In addition, all features discussed in connection with any one embodiment herein can be readily adapted for use in other embodiments herein. The use of different terms or reference

numerals for similar features in different embodiments does not necessarily imply differences other than those which may be expressly set forth. Accordingly, the present invention is intended to be described solely by reference to the appended claims, and not limited to the preferred embodiments disclosed herein.

What is claimed is:

1. A medical device, comprising:

a housing having a distal portion with a first port that is detachably couplable to a probe, and a proximal portion with a second port that is detachably couplable to a syringe, the first port fluidly coupled to the second port, the housing graspable by a user to manipulate the housing and the probe;

a pressure sensor carried by the housing, the sensor configured to generate a pressure signal in response to a pressure of a tissue environment in which a distal portion of the probe is positioned, the pressure signal comprising a series of instantaneous pressure values;

a processing unit coupled to the sensor, the processing unit configured to receive and process the series of instantaneous pressure values so as to determine a pressure value using a moving average of the series over a time period, the pressure value indicative of the tissue environment about the distal portion of the probe; and

an output unit coupled to the processing unit and carried by the housing, the output unit configured to wirelessly output the series of instantaneous pressure values.

2. The medical device of claim 1, wherein the pressure sensing unit, the processing unit, and the output unit are disposed substantially between the first port and the second port of the housing and wherein the housing, the distal portion of the probe are manipulatable together in order to place the probe in response to the mean pressure using the moving average of the series.

3. The medical device of claim 2, wherein the housing comprises a visual display and the output unit also outputs the reporting signal to a second, remote visual display for display of medical data.

4. The medical device of claim 1, wherein the processing unit is carried by the housing, and wherein the output unit further outputs a calculated value from the processing unit.

5. The medical device of claim 1, wherein the output unit is triggered by bodily fluid in the housing.

6. The medical device of claim 1, wherein the probe is a central venous catheter.

7. The medical device of claim 1, wherein the processing unit is configured to detect whether the probe is inserted into a patient body within a target anatomical environment.

8. The medical device of claim 1, wherein the processing unit is configured to determine at least one of oxygen saturation, electrocardiography values, blood pressure values or combinations thereof.

9. The medical device of claim 1, wherein the housing includes a guidewire port configured to receive a guidewire that can be advanced from the guidewire port extend out a distal end of the probe.

10. The medical device of claim 1, wherein the output unit is pre-registered with a receiver unit configured to wirelessly receive the reporting signal.

11. The medical device of claim 10, wherein the receiver unit is at least one of a dongle, a monitor, a display, a portable electronic assistant, a storage device or combinations thereof.

12. A medical device, comprising:
 a housing having a distal portion with a first port that is detachably couplable to a probe, a proximal portion with a second port, and a chamber to transfer fluid in response to action of a plunger, the first port fluidly coupled to the second port, the housing graspable by a user to manipulate the housing and the probe;
 a pressure sensor carried by the housing, the sensor configured to generate a pressure signal in response to a tissue pressure of a tissue environment in which a distal portion of the probe is positioned, the tissue pressure signal comprising a series of instantaneous tissue pressure values;
 a processing unit coupled to the sensor, the processing unit configured to receive and process the series of instantaneous tissue pressure values so as to determine a tissue pressure value using a moving average of the series over a time period, the tissue pressure value indicative of the tissue environment about the distal portion of the probe; and
 an output unit coupled to the processing unit and carried by the housing, the output unit configured to output a reporting signal.
13. The device of claim 12, wherein the output unit is configured to wirelessly output the reporting signal.
14. The device of claim 13, wherein the housing comprises a visual display and the output unit outputs the reporting signal to a second visual display, positioned remote from the housing, for display of medical data.
15. The device of claim 13, wherein the processing unit is carried by the housing.
16. The device of claim 13, wherein the pressure sensor is within the housing.
17. The device of claim 13, wherein the pressure sensor is configured to sense pressure in the chamber of the housing.
18. The device of claim 12, wherein the output unit is configured to output the reporting signal over a wired connection to a remote device.
19. The device of claim 18, wherein the remote device includes an ultrasound unit.
20. The device of claim 18, wherein the output unit is configured to output a sequence of physiologic values, physiologic parameter values or both to the remote device.
21. The device of claim 12, wherein the distal portion of the probe is configured to penetrate into a body of a patient.
22. The device of claim 12, wherein the housing comprises an intermediate portion disposed substantially between the distal housing portion and the proximal housing portion, the intermediate portion carrying the pressure sensing unit, processing unit, and output unit.
23. The device of claim 12, wherein the visual display is angled proximally as coupled with the housing.
24. The device of claim 12, wherein the probe is a needle or a catheter.
25. The device of claim 12, where the housing is disposable.
26. The device of claim 12, wherein the output unit is pre-registered with a receiver unit configured to wirelessly receive the reporting signal.
27. The medical device of claim 26, wherein the receiver unit is at least one of a dongle, a monitor, a display, a portable electronic assistant, a storage device or combinations thereof.
28. A medical device, comprising:
 a housing having a distal portion with a fluid port that is detachably couplable to a probe, and a chamber to

- receive bodily fluid from the fluid port, the housing graspable by a user to manipulate the housing and the probe;
- a processing unit coupled to a fluid pressure sensor associated with the chamber to generate pressure signals, the processing unit configured to receive and process electrical signals from an external sensor, wherein the external sensor is an electrocardiography (EKG) lead that electrically communicates with the processing unit, wherein the processing unit is configured to process an EKG signal from the EKG lead; and
 an output unit coupled to the processing unit and carried by the housing, the output unit configured to output a reporting signal.
29. The medical device of claim 28, wherein the processing unit is configured to process an electrical signal from the EKG lead and provide a processed signal to the output unit.
30. The medical device of claim 29, wherein the output unit is adapted to wirelessly output the processed EKG signal to a remote device.
31. The medical device of claim 30, wherein the remote device is a dongle configured to wirelessly receive a signal from the output unit and configured to be received in a communication port of a remote processing device to electrically communicate with the remote processing device.
32. The medical device of claim 31, wherein the dongle is pre-registered with the output unit and packaged with the housing for medical use.
33. The medical device of claim 29, wherein the output unit is adapted to output the processed EKG signal on a display on the housing.
34. The medical device of claim 28, wherein the external sensor further includes an electroencephalography (EEG) lead that electrically communicates with the processing unit.
35. The medical device of claim 34, wherein the processing unit is configured to process an electrical signal from the EEG lead and provide a processed signal to the output unit.
36. The medical device of claim 35, wherein the output unit is adapted to wirelessly output the processed EEG signal to a remote device.
37. The medical device of claim 35, wherein the output unit is adapted to output the processed EEG signal on a display on the housing.
38. The medical device of claim 28, wherein the external sensor further includes a blood oxygen saturation sensor that electrically communicates with the processing unit.
39. The medical device of claim 38, wherein the processing unit is configured to process an electrical signal from the blood oxygen saturation sensor and provide a processed signal to the output unit.
40. The medical device of claim 39, wherein the output unit is adapted to wirelessly output the processed blood oxygen saturation signal to a remote device.
41. The medical device of claim 39, wherein the output unit is adapted to output the processed blood oxygen saturation signal on a display on the housing.
42. The medical device of claim 28, wherein the proximal end of the housing is sealed.
43. The medical device of claim 28, wherein the housing includes the fluid pressure sensor that is configured to generate a pressure signal in response to a pressure of a tissue environment in which a distal portion of the probe is positioned, the pressure signal comprising a series of instantaneous tissue pressure values;
 wherein the processing unit is configured to process the series of instantaneous pressure values so as to determine a pressure value and to receive and process

electrical signals from an external sensor, the pressure value indicative of the tissue environment about the distal portion of the probe; and wherein the output unit is configured to send the reporting signal comprising the processed electrical signals. 5

* * * * *

专利名称(译)	用于促进对目标解剖部位或环境的访问的系统，方法和设备		
公开(公告)号	US9888881	公开(公告)日	2018-02-13
申请号	US14/523046	申请日	2014-10-24
[标]申请(专利权)人(译)	MIRADOR生物医学		
申请(专利权)人(译)	MIRADOR生物医学		
当前申请(专利权)人(译)	MIRADOR生物医学		
[标]发明人	HULVERSHORN JUSTIN SCHMIDT KARL SWARTZ DOUGLAS		
发明人	HULVERSHORN, JUSTIN SCHMIDT, KARL SWARTZ, DOUGLAS		
IPC分类号	A61B5/00 A61B5/0215 A61B5/03 A61B8/08 A61B17/34 A61M5/168 A61M5/42 A61M5/46 A61M5/48 A61B5/0408 A61B5/044 A61M25/06 A61B5/0205 A61B8/00 A61B5/145 A61B90/00		
CPC分类号	A61B5/4887 A61B5/0205 A61B5/0215 A61B5/032 A61B5/036 A61B5/044 A61B5/0408 A61B5/489 A61B5/4821 A61B5/4839 A61B5/4896 A61B5/742 A61B8/0833 A61B17/3401 A61M5/16854 A61M5/42 A61M5/427 A61M5/46 A61M5/484 A61M5/486 A61M25/06 A61M25/0693 A61B5/0006 A61B2090/064 A61B5/14542 A61B8/4472		
优先权	61/235004 2009-08-19 US 61/300794 2010-02-02 US		
其他公开文献	US20160113576A1 US20160374612A9		
外部链接	Espacenet USPTO		

摘要(译)

用于检测目标解剖环境的生理参数的方法和结构。该装置包括壳体，该壳体具有可与探针和近端部分连接的远端部分第一端口；输出单元，处理单元和由壳体承载的输出单元，输出单元被配置为基于所确定的生理参数值（例如压力）输出报告信号；传感单元，处理单元和输出单元基本上设置在壳体的第一端口和近端部分之间。

