



US009586021B2

(12) **United States Patent**
Franceschetti et al.

(10) **Patent No.:** **US 9,586,021 B2**
(45) **Date of Patent:** **Mar. 7, 2017**

(54) **VIBRATING PILLOW STRIP AND OPERATING METHODS**

(2013.01); *A61B 2505/07* (2013.01); *A61B 2560/0242* (2013.01); *A61B 2560/0475* (2013.01); *A61B 2562/0271* (2013.01); *A61B 2562/063* (2013.01);

(71) Applicant: **Eight Sleep Inc.**, New York, NY (US)

(Continued)

(72) Inventors: **Matteo Franceschetti**, San Francisco, CA (US); **Massimo Andreasi Bassi**, San Francisco, CA (US)

(58) **Field of Classification Search**
CPC *A61M 21/00*
See application file for complete search history.

(73) Assignee: **Eight Sleep Inc.**, New York, NY (US)

(56) **References Cited**

(*) Notice: Subject to any disclaimer, the term of this patent is extended or adjusted under 35 U.S.C. 154(b) by 0 days.

U.S. PATENT DOCUMENTS

4,136,685 A * 1/1979 Ramey *A61H 1/00*
5/915
4,299,233 A 11/1981 Lemelson
(Continued)

(21) Appl. No.: **14/969,932**

(22) Filed: **Dec. 15, 2015**

FOREIGN PATENT DOCUMENTS

(65) **Prior Publication Data**
US 2016/0136383 A1 May 19, 2016

CN 103519597 A 1/2014
CN 103945802 A 7/2014
(Continued)

Related U.S. Application Data

OTHER PUBLICATIONS

(63) Continuation-in-part of application No. 14/946,496, filed on Nov. 19, 2015, which is a
(Continued)

U.S. Appl. No. 14/969,902 of Franceschetti, M. et al. filed Dec. 15, 2015.

(Continued)

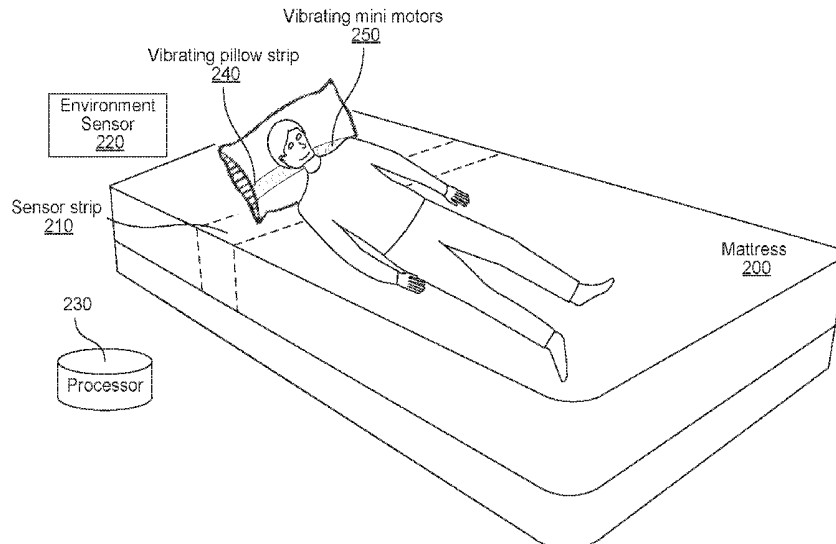
(51) **Int. Cl.**
A61M 21/00 (2006.01)
A47C 21/04 (2006.01)
(Continued)

Primary Examiner — Robert G Santos
Assistant Examiner — Myles Throop
(74) *Attorney, Agent, or Firm* — Perkins Coie LLLP

(52) **U.S. Cl.**
CPC *A61M 21/00* (2013.01); *A47C 21/044* (2013.01); *A47C 21/048* (2013.01); *A47C 31/123* (2013.01); *A61B 5/0022* (2013.01); *A61B 5/02055* (2013.01); *A61B 5/11* (2013.01); *A61B 5/117* (2013.01); *A61B 5/4812* (2013.01); *A61B 5/6892* (2013.01); *A61B 5/7455* (2013.01); *G08B 6/00* (2013.01); *A61B 5/024* (2013.01); *A61B 5/0816*

(57) **ABSTRACT**
Introduced are methods and systems for: gathering human biological signals, such as heart rate, respiration rate, or temperature; analyzing the gathered human biological signals; and controlling a vibrating pillow strip based on the analysis.

30 Claims, 22 Drawing Sheets



Related U.S. Application Data

- continuation-in-part of application No. 14/732,646, filed on Jun. 5, 2015.
- (60) Provisional application No. 62/024,945, filed on Jul. 15, 2014, provisional application No. 62/159,177, filed on May 8, 2015, provisional application No. 62/161,142, filed on May 13, 2015, provisional application No. 62/008,480, filed on Jun. 5, 2014.
- (51) **Int. Cl.**
A47C 31/12 (2006.01)
A61B 5/00 (2006.01)
A61B 5/0205 (2006.01)
A61B 5/11 (2006.01)
A61B 5/117 (2016.01)
G08B 6/00 (2006.01)
A61B 5/024 (2006.01)
A61B 5/08 (2006.01)
A61M 16/16 (2006.01)
- (52) **U.S. Cl.**
 CPC ... *A61M 16/16* (2014.02); *A61M 2021/0022* (2013.01); *A61M 2021/0066* (2013.01); *A61M 2021/0083* (2013.01); *A61M 2205/18* (2013.01); *A61M 2205/3303* (2013.01); *A61M 2205/3306* (2013.01); *A61M 2205/3368* (2013.01); *A61M 2205/3375* (2013.01); *A61M 2205/3584* (2013.01); *A61M 2205/3592* (2013.01); *A61M 2205/505* (2013.01); *A61M 2230/06* (2013.01); *A61M 2230/42* (2013.01); *A61M 2230/50* (2013.01)

8,147,407	B2	4/2012	Moore et al.
8,147,420	B2	4/2012	Henke et al.
8,292,819	B2	10/2012	Kuo et al.
8,337,431	B2	12/2012	Heruth et al.
8,348,840	B2	1/2013	Heit et al.
8,355,769	B2	1/2013	Popovic et al.
8,410,942	B2	4/2013	Chacon et al.
8,410,943	B2	4/2013	Metz et al.
8,427,311	B2	4/2013	Schlangen et al.
8,444,558	B2	5/2013	Young et al.
8,461,996	B2	6/2013	Gallagher et al.
8,493,220	B2	7/2013	Virtanen et al.
8,512,221	B2	8/2013	Kaplan et al.
8,523,758	B1	9/2013	Kirby et al.
8,525,680	B2	9/2013	Ribble et al.
8,628,462	B2	1/2014	Berka et al.
8,628,478	B2	1/2014	Conte et al.
8,641,616	B2	2/2014	Shirai et al.
8,672,853	B2	3/2014	Young et al.
8,692,677	B2	4/2014	Wada et al.
8,698,635	B2	4/2014	Epperson et al.
8,755,879	B2	6/2014	Hang et al.
8,766,805	B2	7/2014	Alameh et al.
8,803,366	B2	8/2014	Proud
8,803,682	B2	8/2014	Wong et al.
8,810,430	B2	8/2014	Proud
8,836,516	B2	9/2014	Wolfe et al.
8,850,421	B2	9/2014	Proud
8,852,127	B2	10/2014	Bell et al.
8,866,621	B2	10/2014	Conte et al.
8,876,737	B2	11/2014	Prendergast et al.
8,880,137	B2	11/2014	Tomasco et al.
8,880,207	B2	11/2014	Karunajeewa et al.
8,893,329	B2	11/2014	Petrovski et al.
8,932,199	B2	1/2015	Popovic et al.
8,933,809	B2	1/2015	Emori et al.
8,939,884	B2	1/2015	Kashima et al.
8,948,861	B2	2/2015	Kalik et al.
8,961,413	B2	2/2015	Linden et al.
8,979,730	B2	3/2015	Rademaker et al.
8,988,014	B2	3/2015	Noguchi et al.
9,000,931	B2	4/2015	Tomimori et al.
9,011,347	B2	4/2015	Addison et al.
9,186,479	B1 *	11/2015	Franceschetti G05B 19/0428
9,232,910	B2	1/2016	Alshaer et al.
9,370,457	B2	6/2016	Nunn et al.
2002/0015740	A1	2/2002	Ackman et al.
2002/0080035	A1	6/2002	Youdenko et al.
2002/0128700	A1	9/2002	Cross, Jr. et al.
2003/0159219	A1	8/2003	Harrison et al.
2003/0195140	A1	10/2003	Ackman et al.
2005/0190065	A1 *	9/2005	Ronnholm A61M 21/00 340/575
2006/0173257	A1	8/2006	Nagai et al.
2006/0293608	A1	12/2006	Rothman et al.
2007/0282215	A1	12/2007	Ni et al.
2008/0027337	A1	1/2008	Dugan et al.
2008/0155750	A1	7/2008	Mossbeck et al.
2008/0157956	A1	7/2008	Radivojevic et al.
2009/0105560	A1	4/2009	Solomon et al.
2009/0105605	A1	4/2009	Abreu et al.
2010/0076252	A1	3/2010	Henke et al.
2011/0034811	A1	2/2011	Naujokat et al.
2011/0115635	A1	5/2011	Petrovski et al.
2011/0156915	A1	6/2011	Brauers et al.
2011/0267196	A1	11/2011	Hu et al.
2011/0295083	A1	12/2011	Doelling et al.
2012/0092171	A1	4/2012	Hwang et al.
2012/0103556	A1	5/2012	Lee et al.
2012/0119886	A1	5/2012	Rawls-Meehan et al.
2012/0138067	A1	6/2012	Rawls-Meehan et al.
2012/0143095	A1	6/2012	Nakamura et al.
2012/0251989	A1	10/2012	Wetmore et al.
2013/0144190	A1	6/2013	Bruce et al.
2013/0234823	A1	9/2013	Kahn et al.
2013/0245502	A1	9/2013	Lange et al.
2013/0276234	A1	10/2013	Rawls-Meehan et al.
2013/0282198	A1	10/2013	Kneuer et al.
2014/0116440	A1	5/2014	Thompson et al.

(56) **References Cited**

U.S. PATENT DOCUMENTS

4,440,177	A	4/1984	Anderson et al.
5,157,372	A	10/1992	Langford
5,307,051	A	4/1994	Sedlmayr
5,319,363	A	6/1994	Welch et al.
5,353,788	A	10/1994	Miles
5,479,939	A *	1/1996	Ogino A61B 5/1102 340/575
5,902,255	A	5/1999	Ogino
5,948,303	A	9/1999	Larson
6,045,514	A	4/2000	Raviv et al.
6,236,621	B1 *	5/2001	Schettino A47G 9/1045 368/10
6,254,545	B1	7/2001	Stasz et al.
6,485,432	B1	11/2002	Stasz et al.
6,491,642	B1	12/2002	Stasz et al.
6,547,728	B1	4/2003	Cornuejols et al.
6,551,256	B1	4/2003	Stasz et al.
6,702,755	B1	3/2004	Stasz et al.
6,765,489	B1	7/2004	Ketelhohn et al.
6,774,795	B2	8/2004	Eshelman et al.
6,784,826	B2	8/2004	Kane et al.
6,825,769	B2	11/2004	Colmenarez et al.
6,888,453	B2	5/2005	Lutz et al.
6,890,304	B1	5/2005	Uebaba et al.
7,089,099	B2	8/2006	Shostak et al.
7,202,791	B2	4/2007	Trajkovic
7,289,036	B2	10/2007	Salzhauer et al.
7,369,680	B2	5/2008	Strubbe et al.
7,372,370	B2	5/2008	Stults et al.
7,461,422	B1 *	12/2008	Baker A47G 9/1045 368/10
7,734,334	B2	6/2010	Mietus et al.
7,825,813	B2	11/2010	Farhan et al.
7,868,757	B2	1/2011	Radivojevic et al.
7,883,480	B2	2/2011	Dunlop et al.
8,035,508	B2	10/2011	Breed et al.

(56)

References Cited

U.S. PATENT DOCUMENTS

2014/0257573 A1 9/2014 Van De Sluis et al.
 2014/0259418 A1 9/2014 Nunn et al.
 2014/0278229 A1 9/2014 Hong et al.
 2014/0323799 A1* 10/2014 Van Driel A61M 21/02
 600/28
 2014/0343889 A1 11/2014 Shalom et al.
 2015/0112155 A1 4/2015 Bijjani et al.
 2015/0120205 A1 4/2015 Jeon et al.
 2015/0128353 A1 5/2015 Kildey
 2015/0137994 A1 5/2015 Rahman et al.
 2015/0164438 A1 6/2015 Halperin et al.
 2015/0173672 A1 6/2015 Goldstein
 2015/0182305 A1* 7/2015 Lowe A61C 7/08
 433/6
 2015/0199919 A1 7/2015 Ander et al.
 2015/0351556 A1 12/2015 Franceschetti et al.
 2015/0352313 A1* 12/2015 Franceschetti G05B 19/0428
 600/27
 2015/0355605 A1 12/2015 Franceschetti et al.
 2015/0355612 A1 12/2015 Franceschetti et al.
 2015/0366365 A1 12/2015 Golin et al.
 2016/0015315 A1 1/2016 Auphan et al.
 2016/0073788 A1 3/2016 Franceschetti et al.
 2016/0073950 A1* 3/2016 Franceschetti A47C 21/044
 340/575
 2016/0093196 A1 3/2016 Shinar et al.
 2016/0128488 A1* 5/2016 Franceschetti G05B 19/0428
 5/421
 2016/0151603 A1 6/2016 Shouldice et al.
 2016/0192886 A1 7/2016 Nunn et al.

FOREIGN PATENT DOCUMENTS

FR 2788595 A1 7/2000
 JP 2004154242 A 6/2004
 JP 2008000222 A 1/2008
 JP 2008279193 A 11/2008
 WO 2013134160 A2 9/2013

OTHER PUBLICATIONS

Non-Final Office Action mailed Apr. 15, 2016, for U.S. Appl. No. 14/946,496 of Franceschetti, M., et al., filed Nov. 19, 2015.
 International Search Report and Written Opinion mailed Sep. 24, 2015, for International Patent Application No. PCT/US2014/034574, 7 pages.
 Non-Final Office Action mailed Aug. 31, 2015 for U.S. Appl. No. 14/732,608 by Franceschetti, M., et al., filed Jun. 5, 2015.
 Notice of Allowance mailed Oct. 7, 2015, for U.S. Appl. No. 14/732,608 by Franceschetti, M., et al., filed Jun. 5, 2015.
 U.S. Appl. No. 14/942,458 of Franceschetti, M. filed Nov. 16, 2015.
 International Search Report and Written Opinion Mailed Aug. 18,

2016 for International Patent Application No. PCT/US2016/031060, filed May 5, 2016. (7 pages).
 International Search Report and Written Opinion mailed Aug. 25, 2016 for International Application No. PCT/US2016/031054, filed May 5, 2016. (8 pages).
 Non-Final Office Action Mailed Aug. 31, 2016 of U.S. Appl. No. 15/178,124 by Franceschetti, M., et al., filed Jun. 9, 2016.
 U.S. Appl. No. 14/732,608 of Franceschetti, M., et al., filed Jun. 5, 2015.
 U.S. Appl. No. 14/732,624 of Franceschetti, M., et al., filed Jun. 5, 2015.
 U.S. Appl. No. 14/732,638 of Franceschetti, M., et al., filed Jun. 5, 2015.
 U.S. Appl. No. 14/732,646 of Franceschetti, M., et al., filed Jun. 5, 2015.
 U.S. Appl. No. 14/946,496 of Franceschetti, M., et al., filed Nov. 19, 2015.
 U.S. Appl. No. 14/947,685 of Franceschetti, M., et al., filed Nov. 20, 2015.
 U.S. Appl. No. 14/969,932 of Franceschetti, M., et al., filed Dec. 15, 2015.
 International Search Report and Written Opinion mailed Jul. 14, 2016, for International Application No. PCT/US2016/030594, 7 pages.
 Non-Final Office Action mailed Jun. 13, 2016, for U.S. Appl. No. 14/969,902 of Franceschetti, M. et al. filed Dec. 15, 2015.
 U.S. Appl. No. 15/178,124 of Franceschetti, M. et al. filed Jun. 9, 2016.
 Final Office Action Mailed Nov. 23, 2016 for U.S. Appl. No. 14/969,902 by Franceschetti, M., et al., filed Dec. 15, 2015.
 Final Office Action mailed Oct. 11, 2016, for U.S. Appl. No. 14/946,496 of Franceschetti, M., et al., filed Nov. 19, 2015.
 Non-Final Office Action mailed Dec. 13, 2016 for U.S. Appl. No. 14/942,458 by Franceschetti, M., et al., filed Nov. 16, 2015.
 Non-Final Office Action Mailed Dec. 14, 2016 for U.S. Appl. No. 15/178,117 by Franceschetti, M., et al., filed Jun. 9, 2016.
 Non-Final Office Action Mailed Dec. 16, 2016 for U.S. Appl. No. 15/178,132 of Franceschetti, M., et al. filed Jun. 9, 2016.
 Non-Final Office Action Mailed Oct. 19, 2016 of U.S. Appl. No. 14/732,624 by Franceschetti, M., et al., filed Jun. 5, 2015.
 Notice of Allowance Mailed Dec. 27, 2016 for U.S. Appl. No. 15/178,124 by Franceschetti, M., et al., filed Jun. 9, 2016.
 Notice of Allowance mailed Oct. 18, 2016, for U.S. Appl. No. 14/969,932 by Franceschetti, M., et al., filed Dec. 15, 2015.
 U.S. Appl. No. 15/293,049 of Franceschetti, M., et al., filed Oct. 13, 2016.
 International Search Report and Written Opinion mailed Sep. 29, 2016 for International Application No. PCT/US2016/029889, filed Apr. 28, 2016. (7 pages).
 International Search Report and Written Opinion mailed Sep. 29, 2016 for International Patent Application No. PCT/US2016/031062, filed May 5, 2016, (8 pages).

* cited by examiner

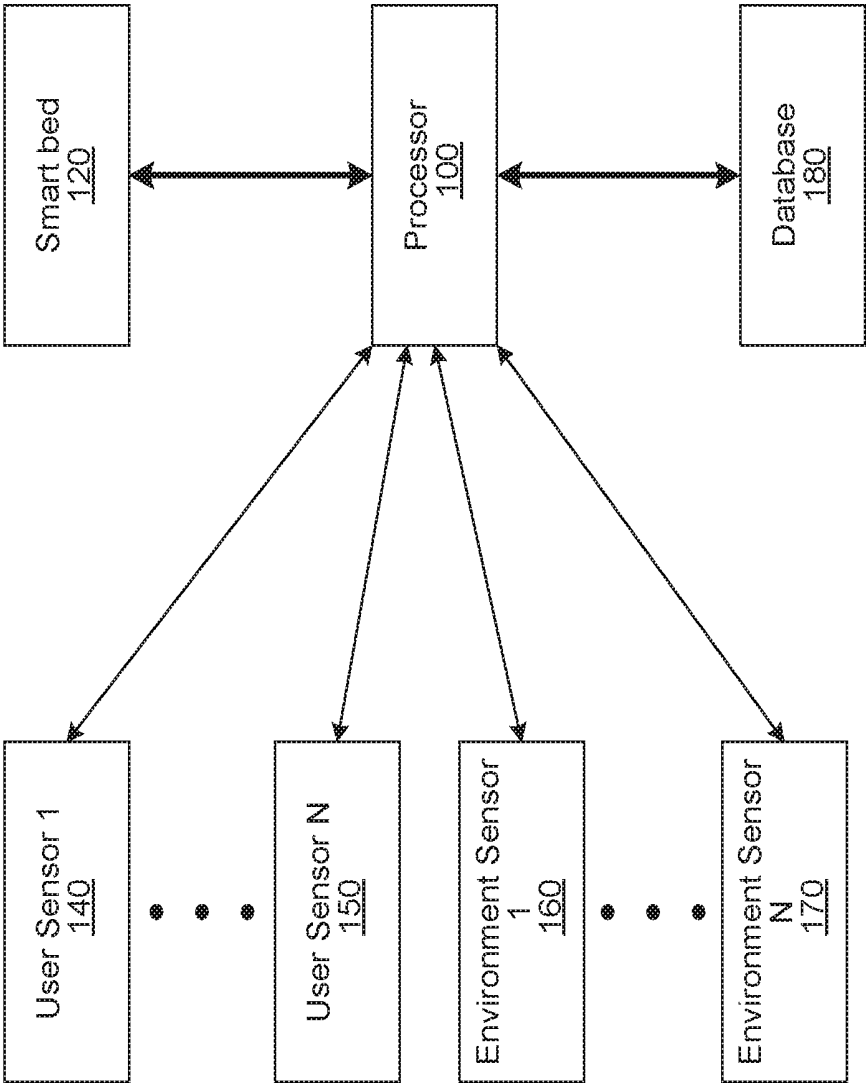


FIG. 1

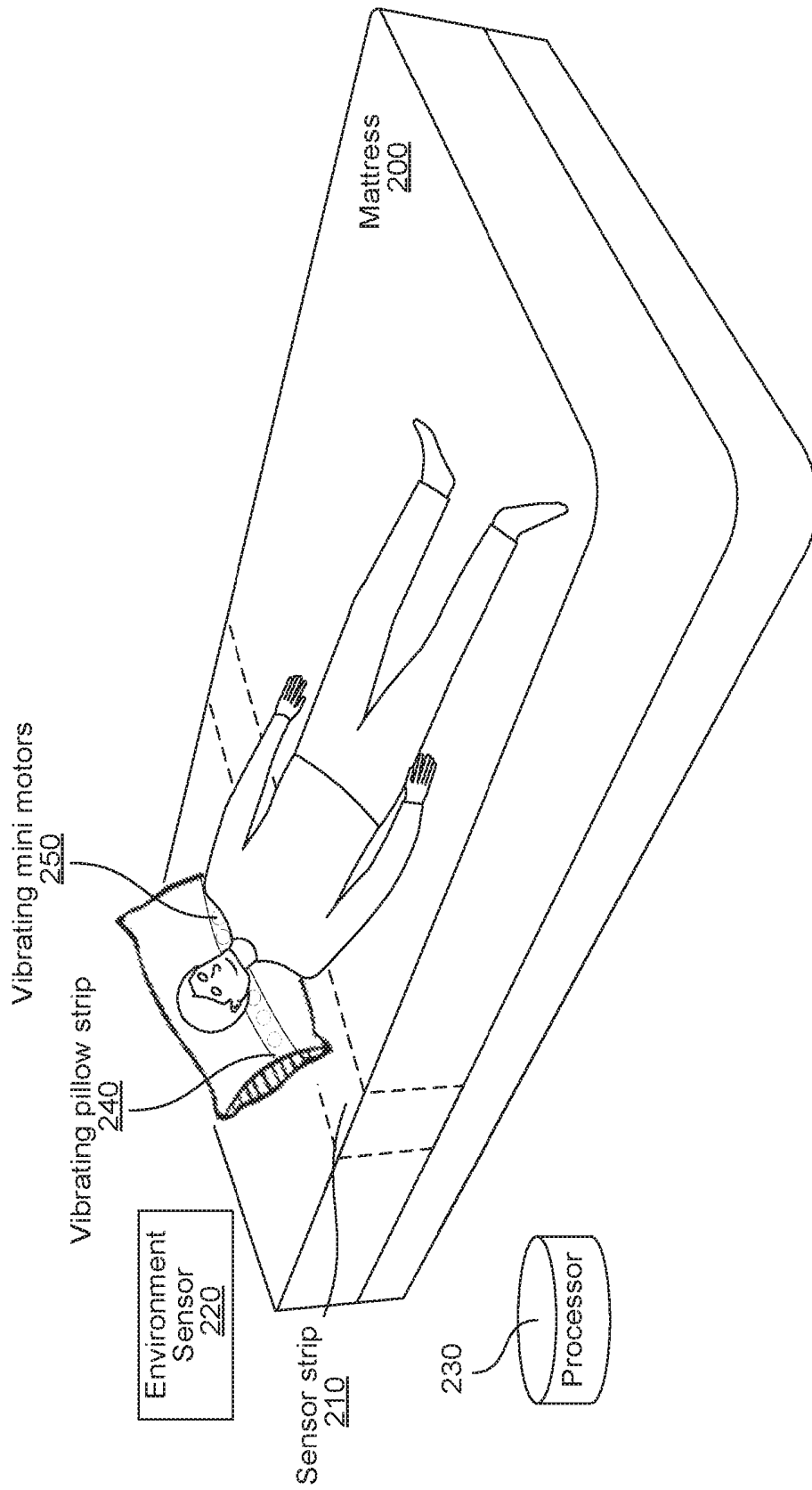


FIG. 2

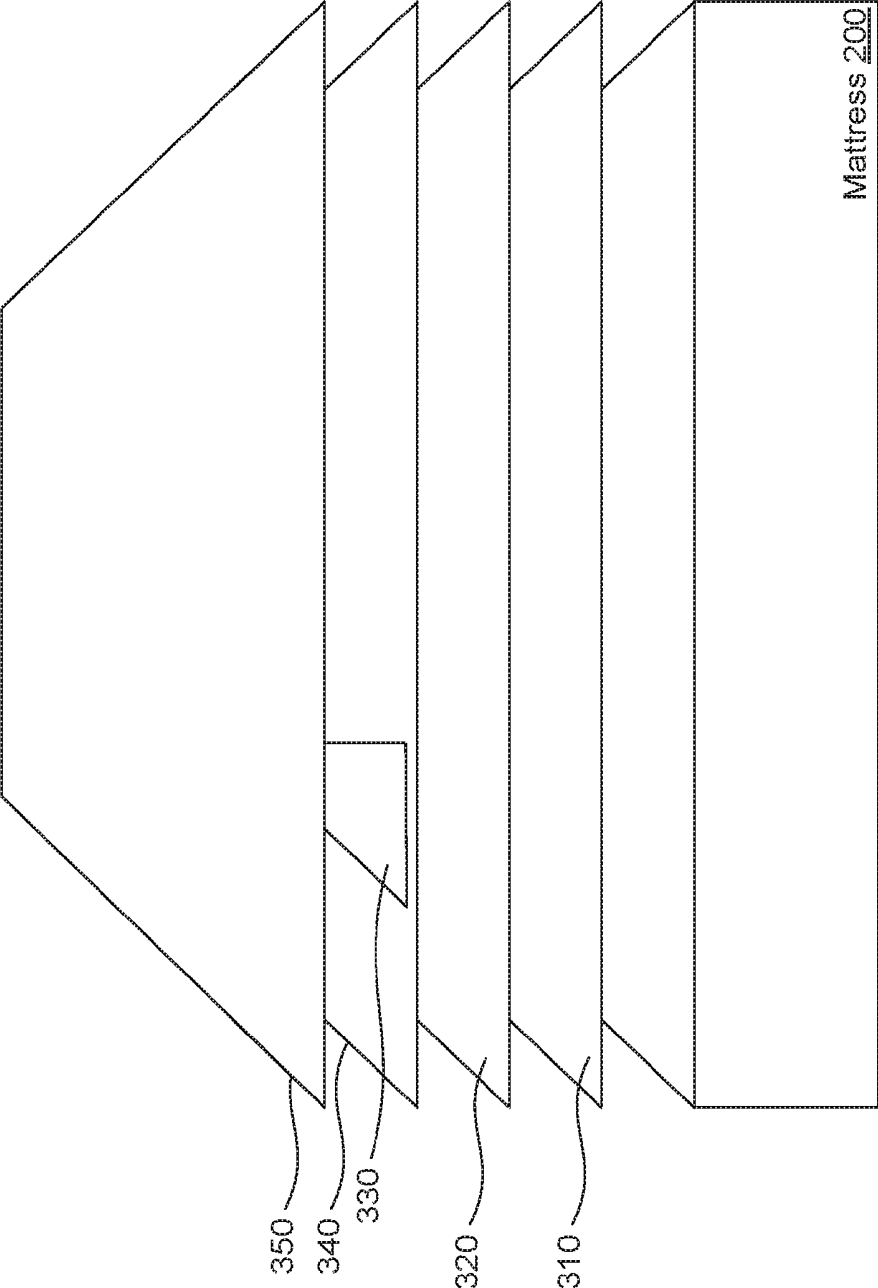


FIG. 3

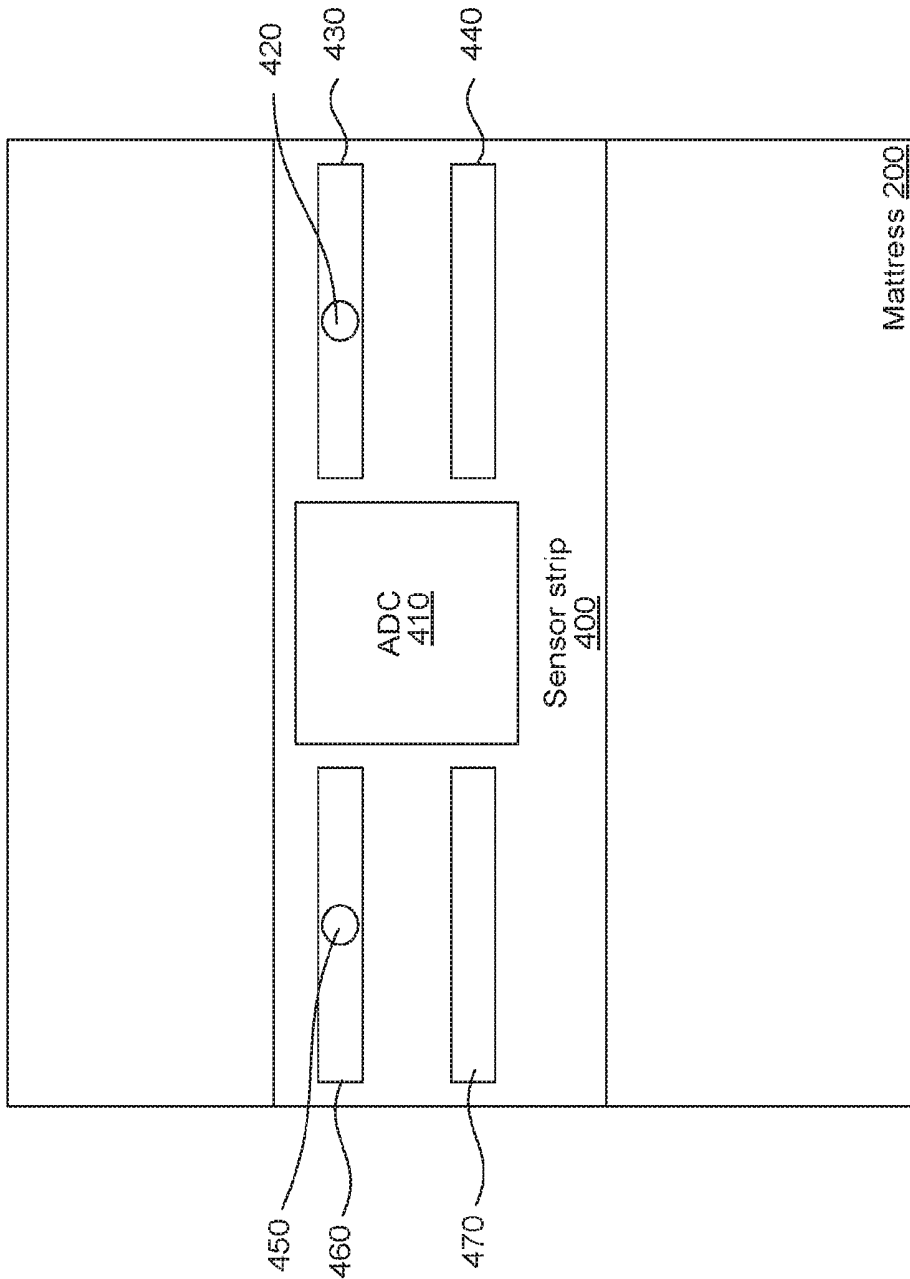


FIG. 4

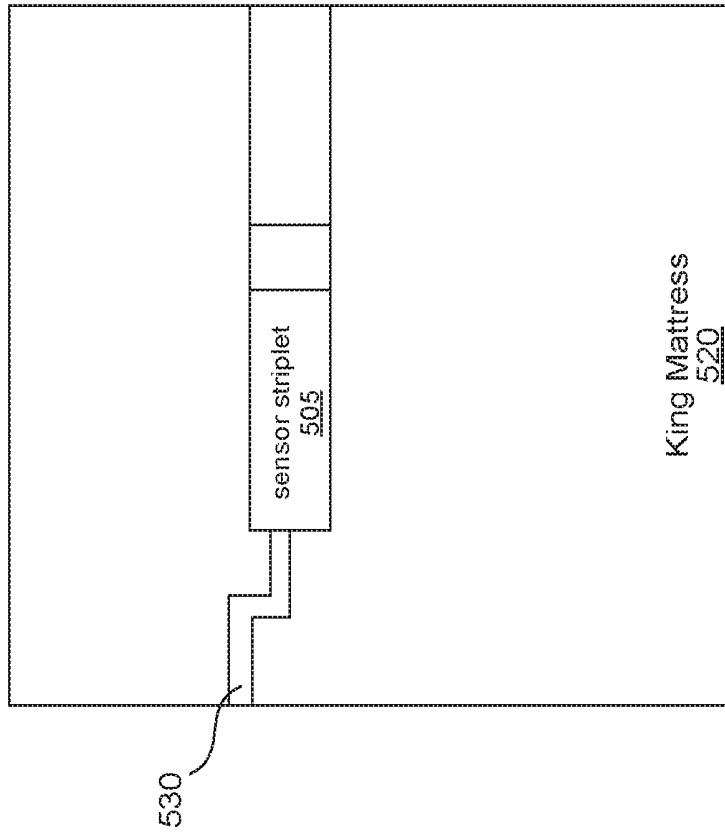


FIG. 5B

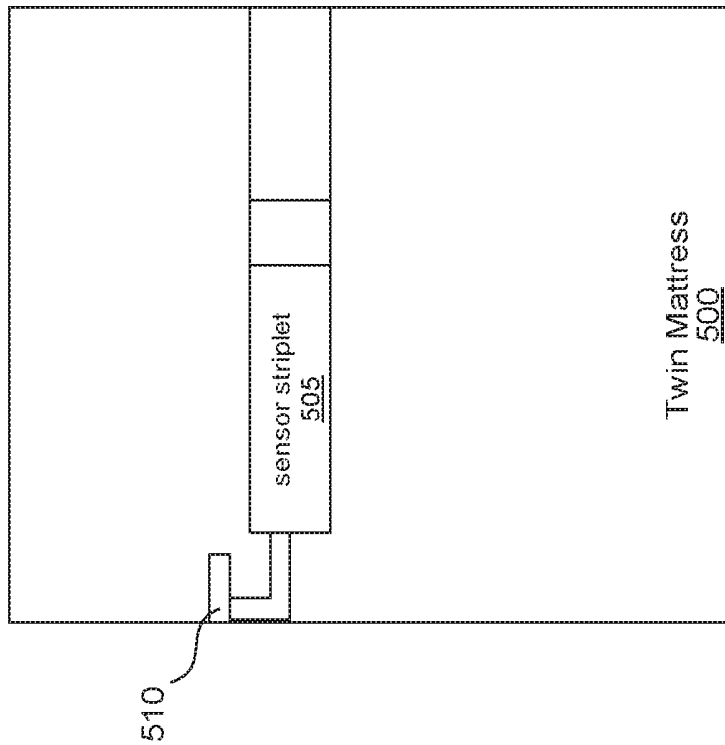


FIG. 5A

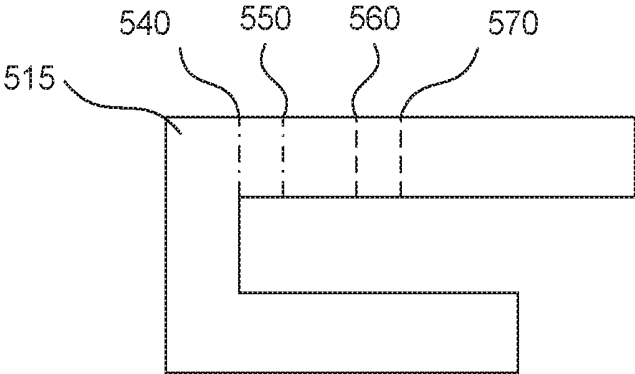


FIG. 5C

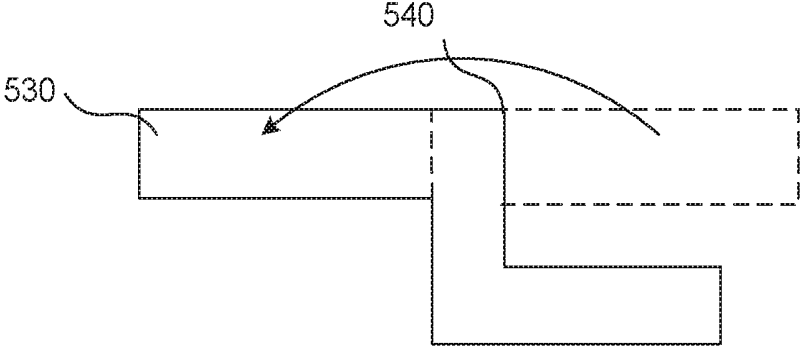


FIG. 5D

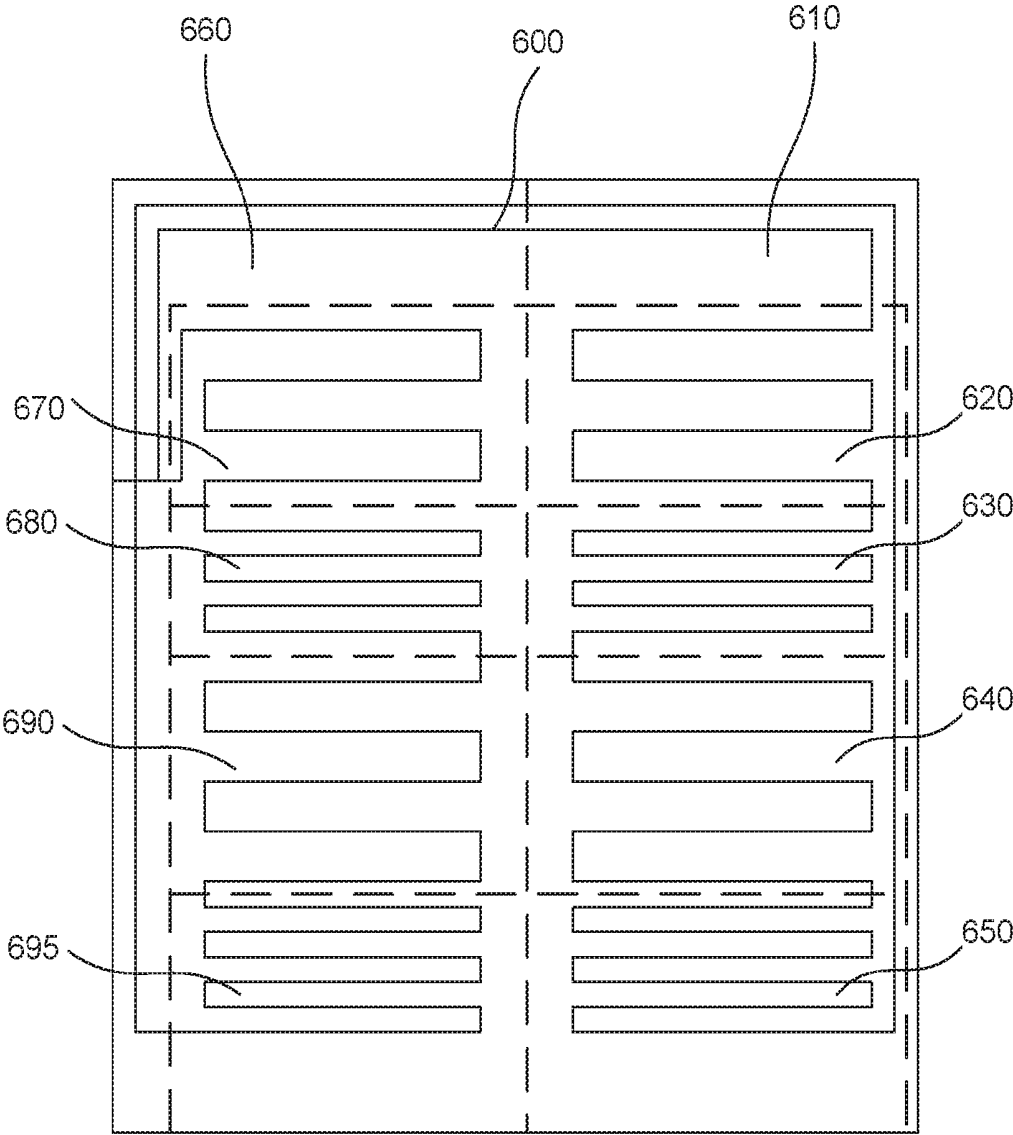


FIG. 6A

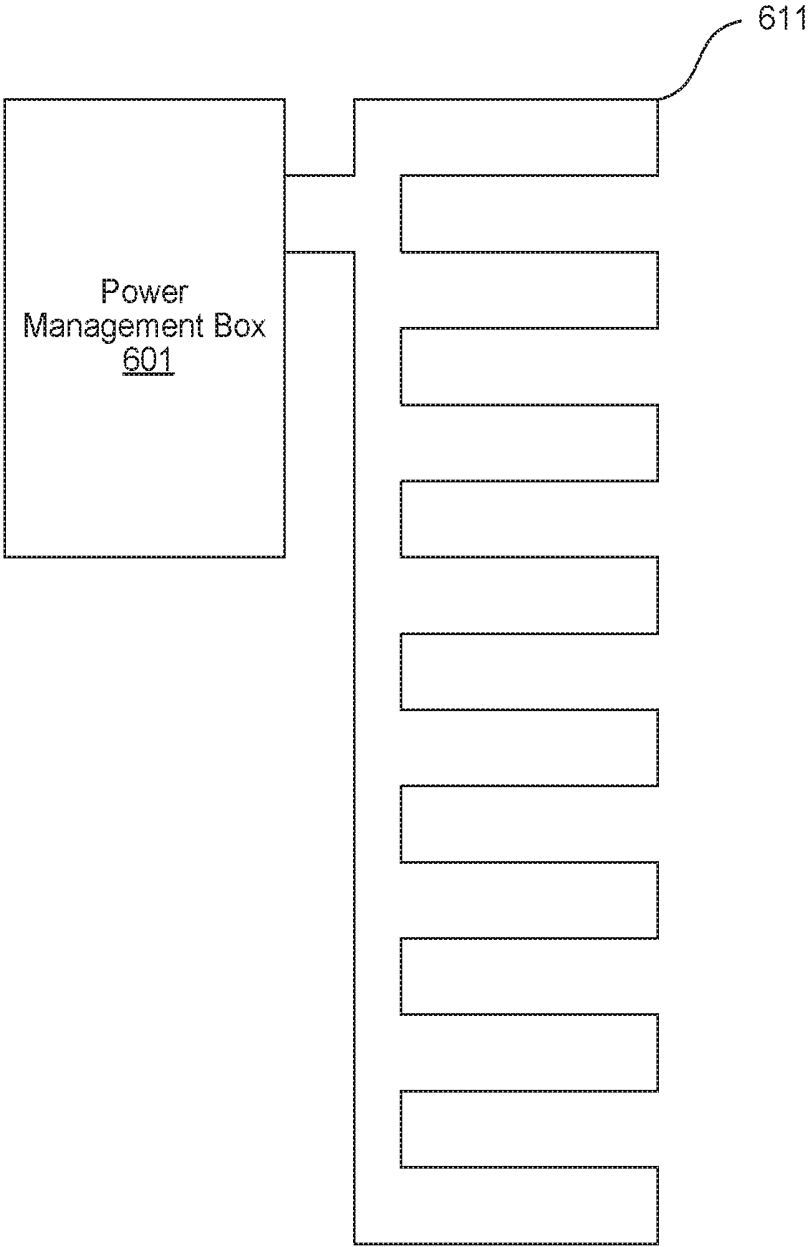


FIG. 6B

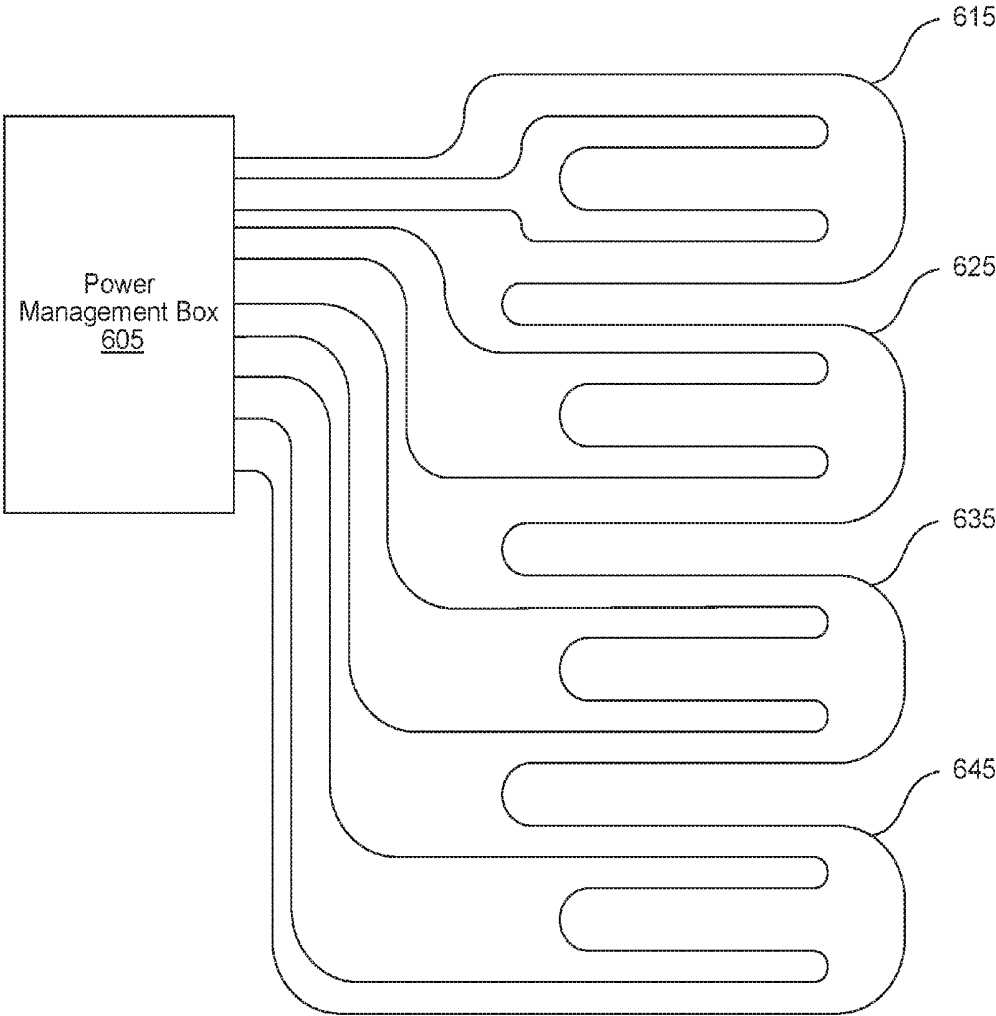


FIG. 6C

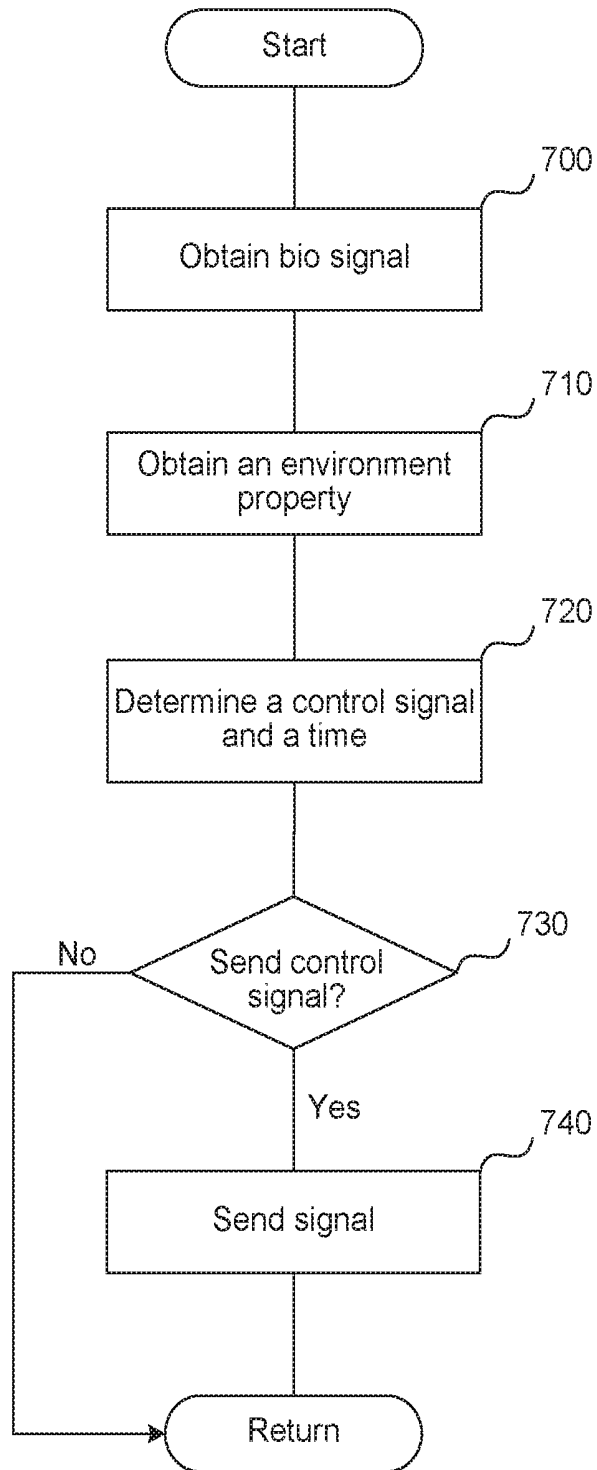


FIG. 7

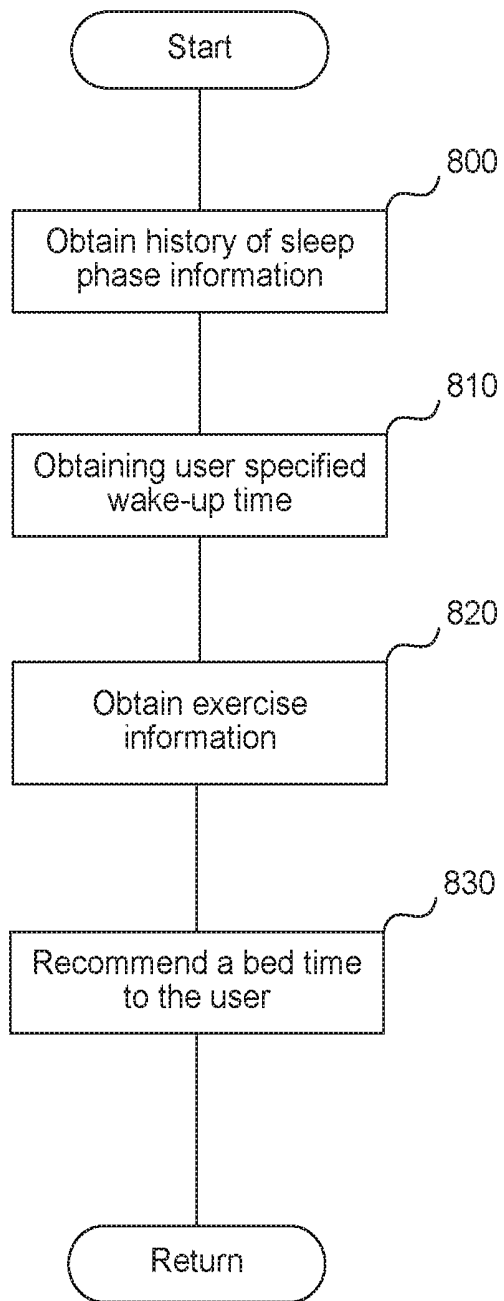


FIG. 8

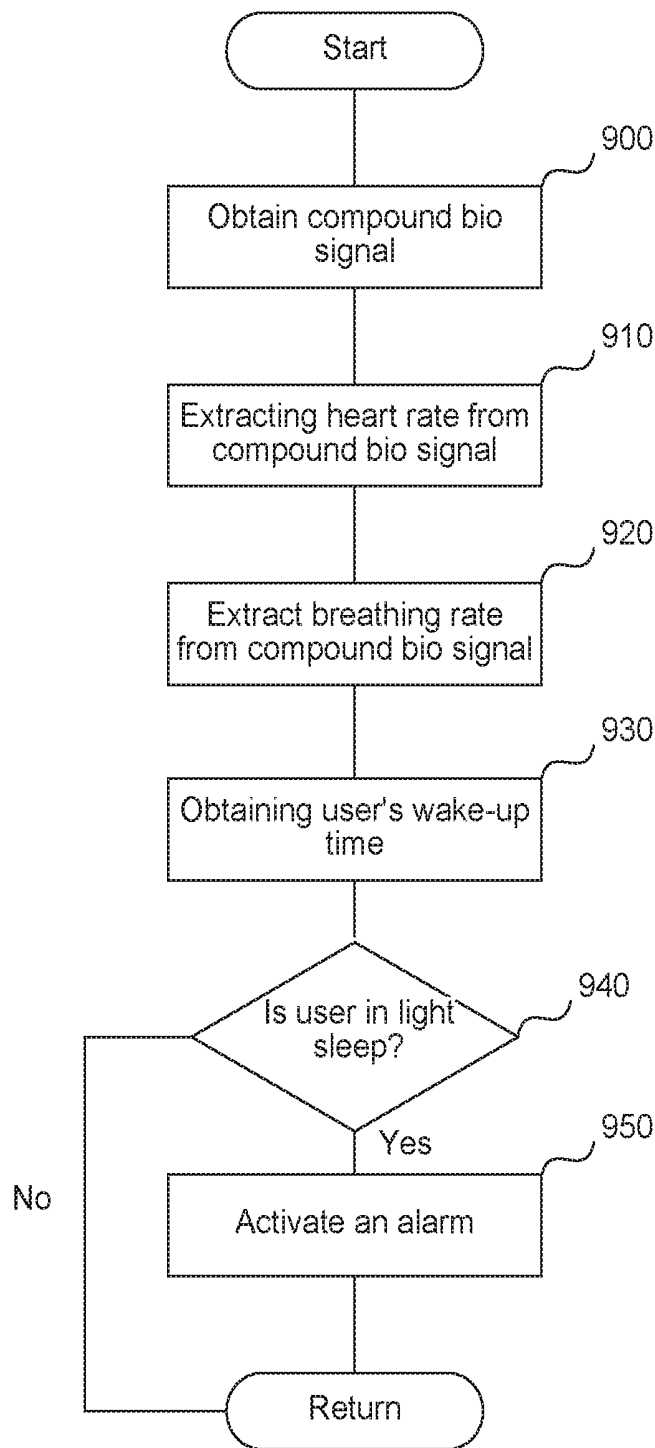


FIG. 9

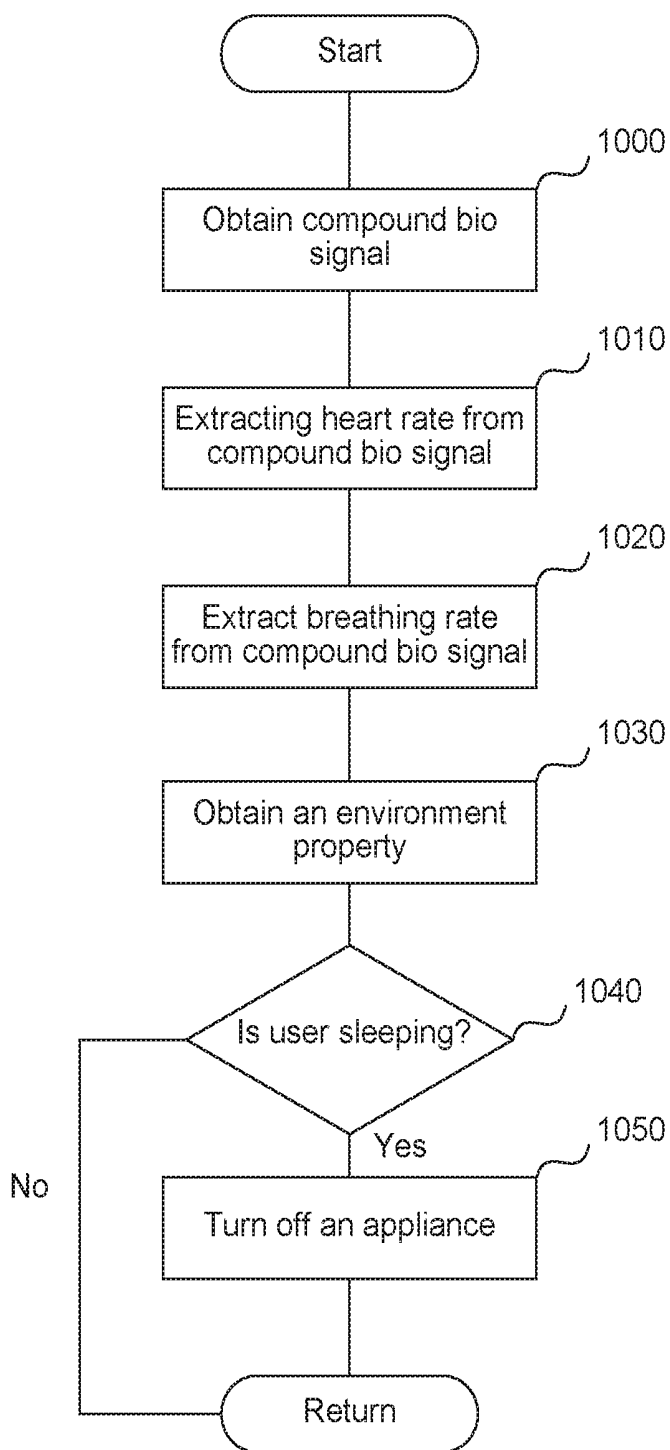


FIG. 10

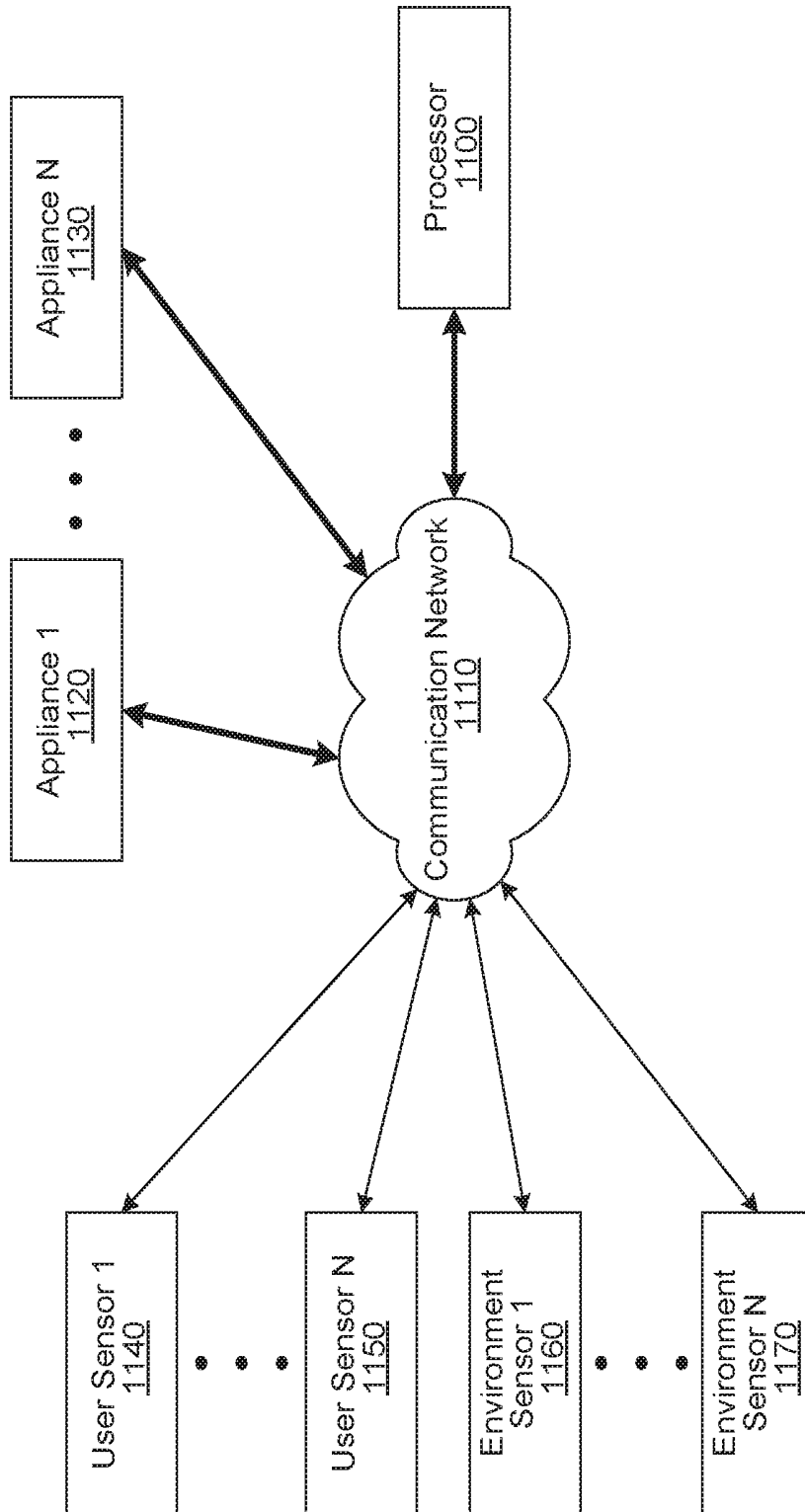


FIG. 11

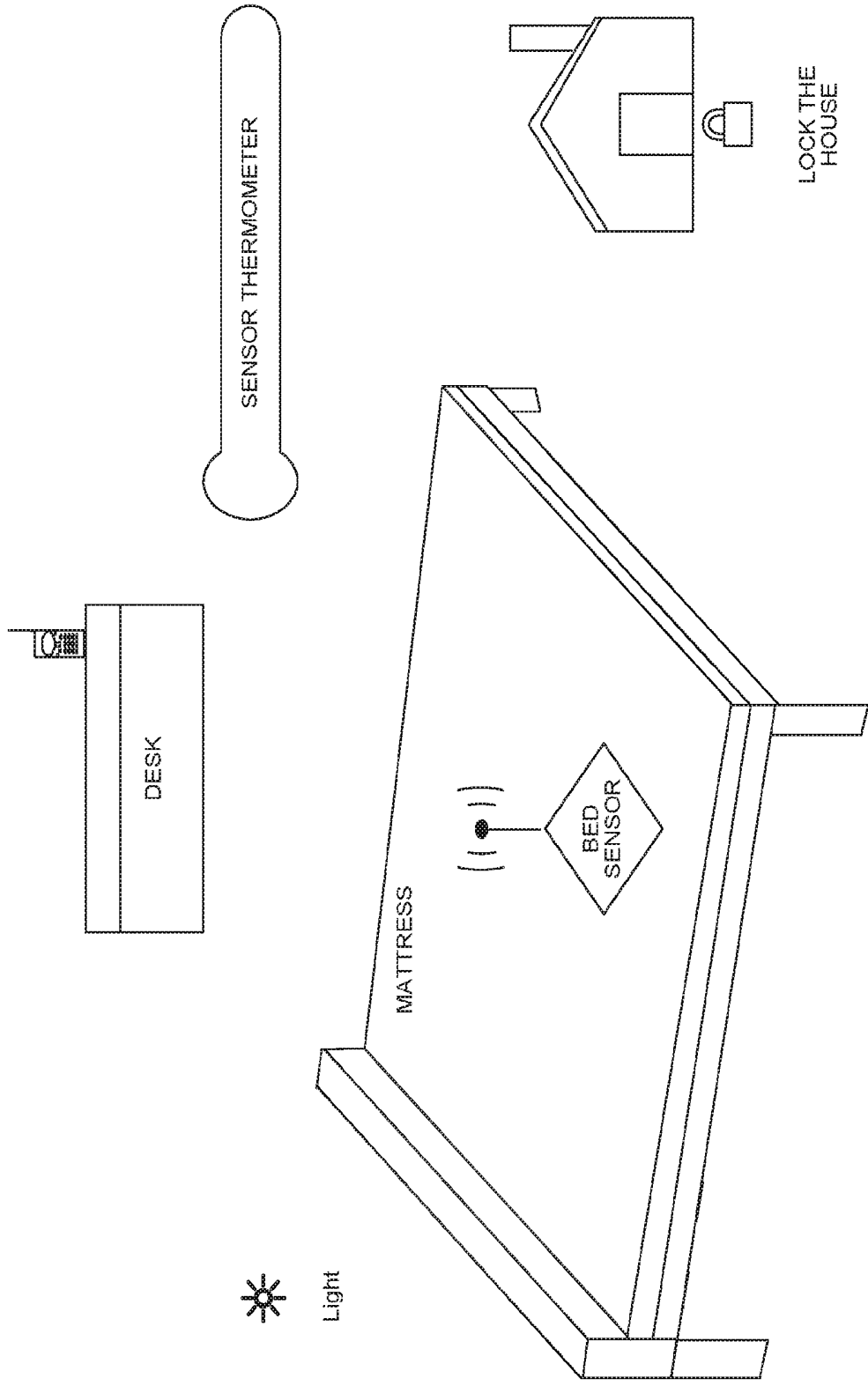


FIG. 12

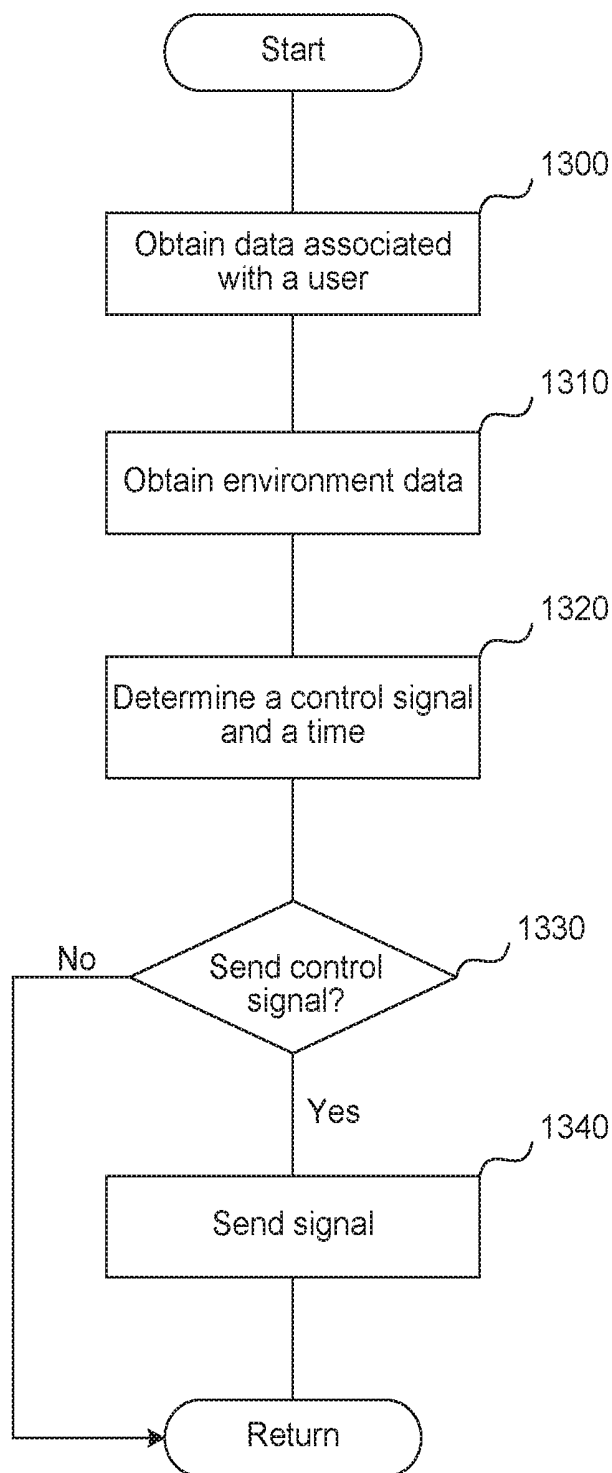


FIG. 13

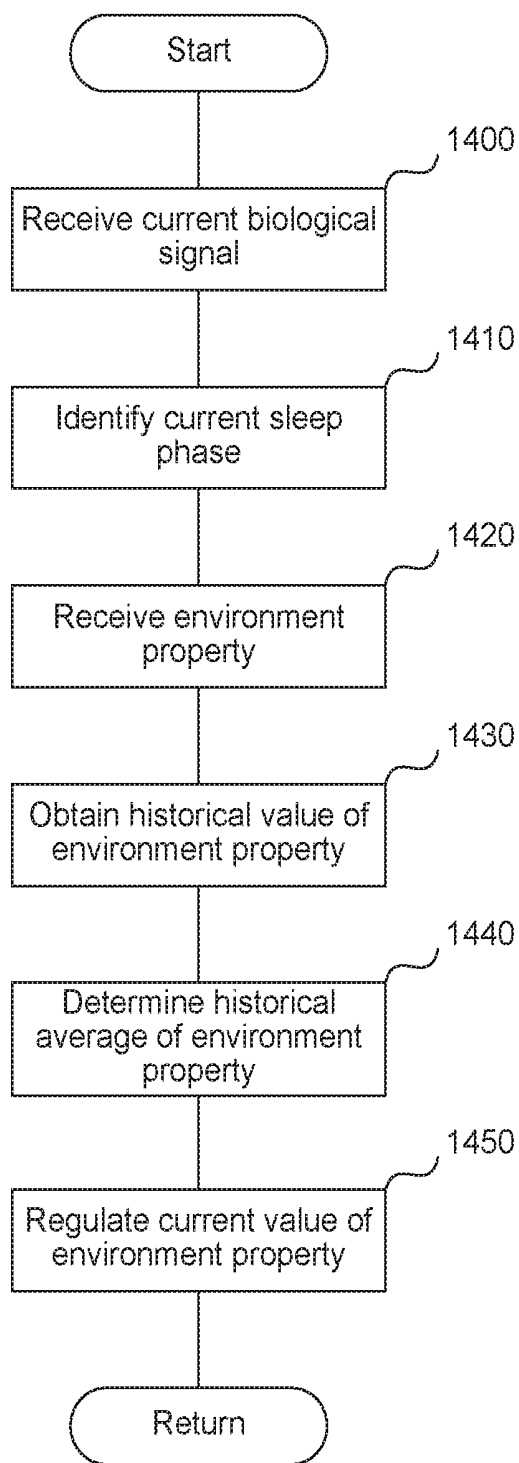


FIG. 14

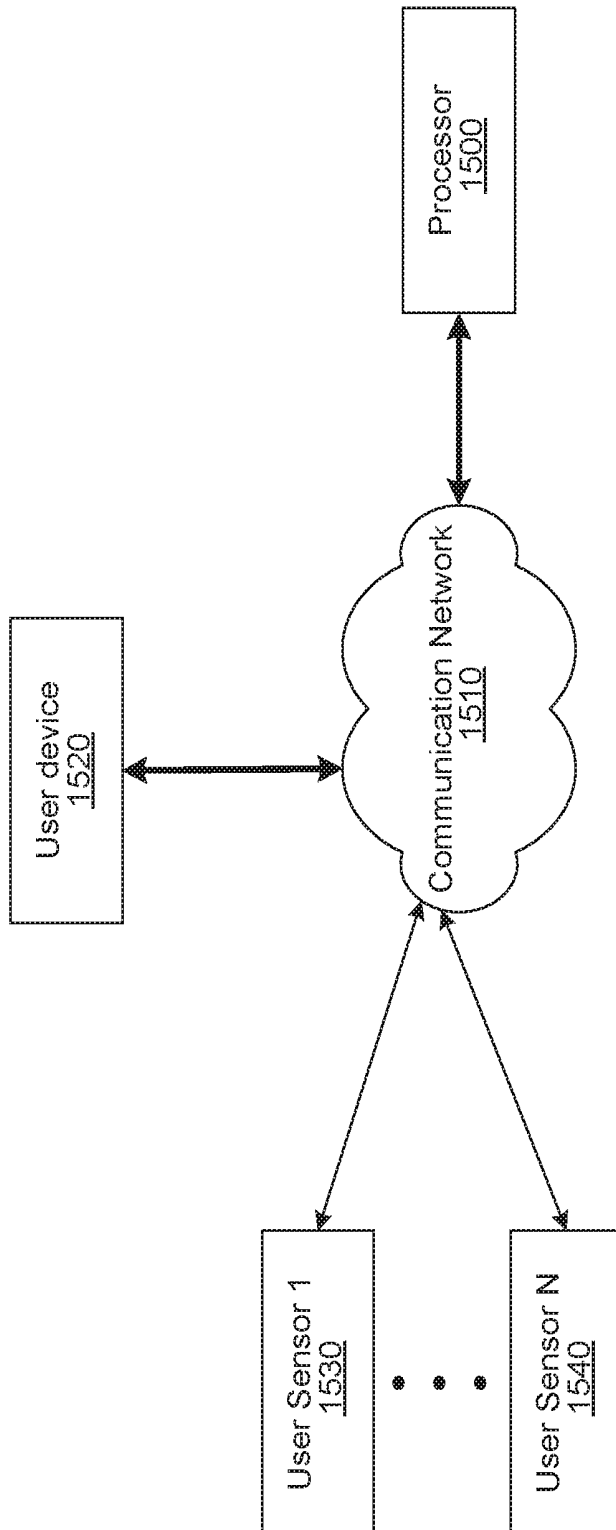


FIG. 15

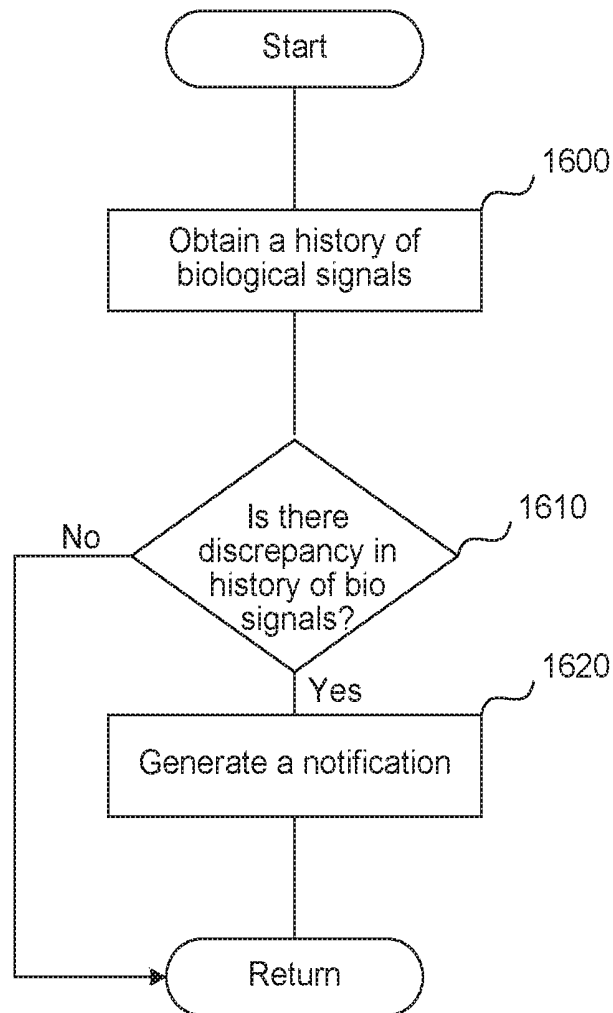


FIG. 16

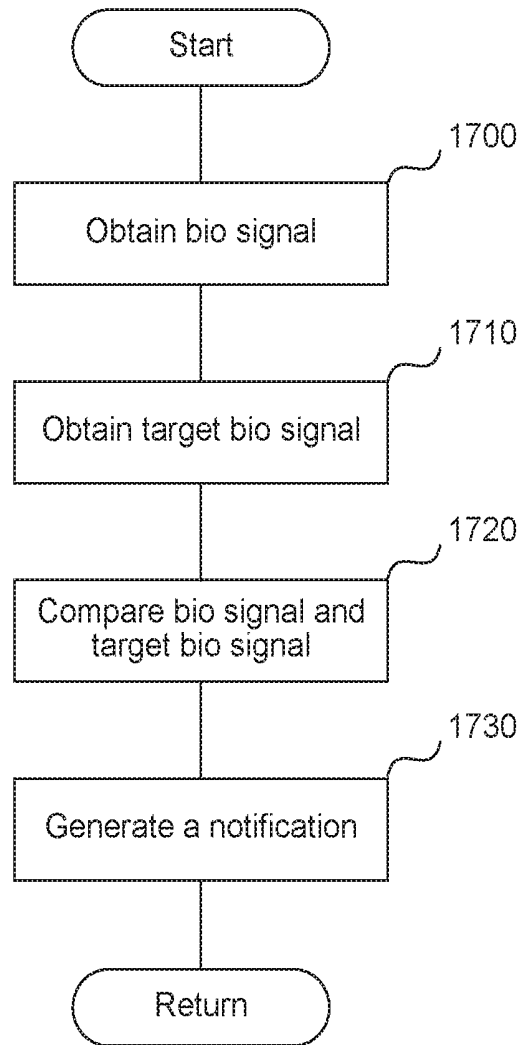


FIG. 17

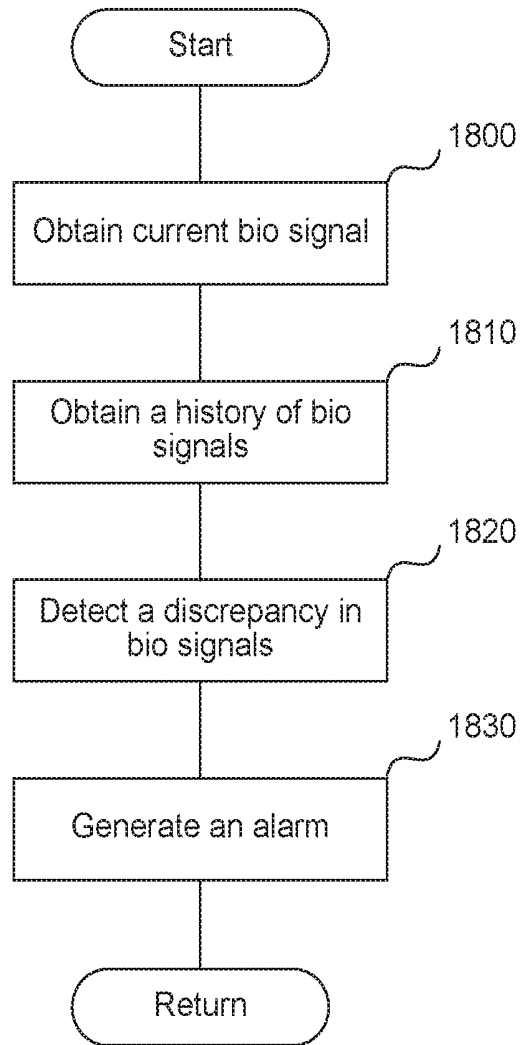


FIG. 18

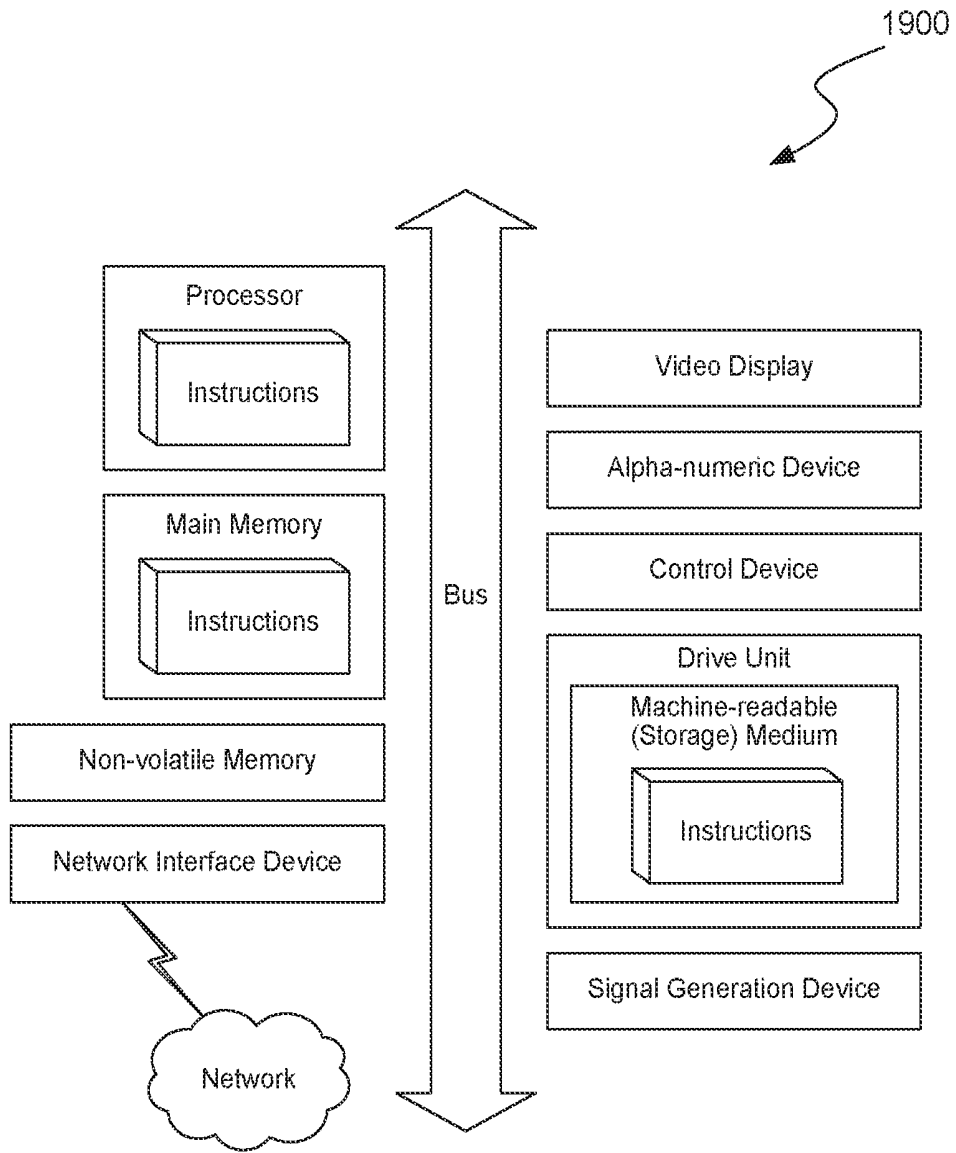


FIG. 19

VIBRATING PILLOW STRIP AND OPERATING METHODS

CROSS-REFERENCE TO RELATED APPLICATIONS

This application is a continuation in part of the U.S. patent application Ser. No. 14/946,496, filed Nov. 11, 2015 which is a continuation in part of U.S. patent application Ser. No. 14/732,646, filed Jun. 5, 2015. U.S. patent application Ser. No. 14/732,646 claims priority to the following U.S. provisional patent applications: U.S. provisional patent application Ser. No. 62/008,480, filed Jun. 5, 2014; U.S. provisional patent application Ser. No. 62/024,945, filed Jul. 15, 2014; U.S. provisional patent application Ser. No. 62/159,177, filed May 8, 2015; and U.S. provisional patent application Ser. No. 62/161,142, filed May 13, 2015. All of the above applications are incorporated herein in their entirety and by this reference thereto.

TECHNICAL FIELD

Various embodiments relate generally to home automation devices, and human biological signal gathering and analysis.

BACKGROUND

According to current scientific research into sleep, there are two major stages of sleep: rapid eye movement (“REM”) sleep, and non-REM sleep. First comes non-REM sleep, followed by a shorter period of REM sleep, and then the cycle starts over again.

There are three stages of non-REM sleep. Each stage can last from 5 to 15 minutes. A person goes through all three stages before reaching REM sleep.

In stage one, a person’s eyes are closed, but the person is easily woken up. This stage may last for 5 to 10 minutes. This stage is considered light sleep.

In stage two, a person is in light sleep. A person’s heart rate slows and the person’s body temperature drops. The person’s body is getting ready for deep sleep. This stage is also considered light sleep.

Stage three is the deep sleep stage. A person is harder to rouse during this stage, and if the person was woken up, the person would feel disoriented for a few minutes. During the deep stages of non-REM sleep, the body repairs and regrows tissues, builds bone and muscle, and strengthens the immune system.

REM sleep happens 90 minutes after a person falls asleep. Dreams typically happen during REM sleep. The first period of REM typically lasts 10 minutes. Each of later REM stages gets longer, and the final one may last up to an hour. A person’s heart rate and respiration quickens. A person can have intense dreams during REM sleep, since the brain is more active. REM sleep affects learning of certain mental skills.

Even in today’s technological age, supporting healthy sleep is relegated to the technology of the past such as an electric blanket, a heated pad, or a bed warmer. The most advanced of these technologies, an electric blanket, is a blanket with an integrated electrical heating device which can be placed above the top bed sheet or below the bottom bed sheet. The electric blanket may be used to pre-heat the bed before use or to keep the occupant warm while in bed. However, turning on the electric blanket requires the user to remember to manually turn on the blanket, and then manu-

ally turn it on. Further, the electric blanket provides no additional functionality besides warming the bed.

SUMMARY

Introduced are methods and systems for: gathering human biological signals, such as heart rate, respiration rate, or temperature; analyzing the gathered human biological signals; and controlling a vibrating pillow strip based on the analysis.

In one embodiment of the invention, based on the heart rate, temperature, and respiration rate, associated with a user, the system determines the sleep phase associated with the user. Based on the sleep phase and the user-specified wake-up time, the system determines a time to wake up the user, so that the user does not feel tired or disoriented when woken up.

BRIEF DESCRIPTION OF THE DRAWINGS

These and other objects, features and characteristics of the present embodiments will become more apparent to those skilled in the art from a study of the following detailed description in conjunction with the appended claims and drawings, all of which form a part of this specification. While the accompanying drawings include illustrations of various embodiments, the drawings are not intended to limit the claimed subject matter.

FIG. 1 is a diagram of a bed device, according to one embodiment.

FIG. 2 illustrates an example of a bed device, according to one embodiment.

FIG. 3 illustrates an example of layers comprising a bed pad device, according to one embodiment.

FIG. 4 illustrates a user sensor placed on a sensor strip, according to one embodiment.

FIGS. 5A, 5B, 5C, and 5D show different configurations of a sensor strip, to fit different size mattresses, according to one embodiment.

FIG. 6A illustrates the division of the heating coil into zones and subzones, according to one embodiment.

FIGS. 6B and 6C illustrate the independent control of the different subzones, according to one embodiment.

FIG. 7 is a flowchart of the process for deciding when to heat or cool the bed device, according to one embodiment.

FIG. 8 is a flowchart of the process for recommending a bed time to a user, according to one embodiment.

FIG. 9 is a flowchart of the process for activating the user’s alarm, according to one embodiment.

FIG. 10 is a flowchart of the process for turning off an appliance, according to one embodiment.

FIG. 11 is a diagram of a system capable of automating the control of the home appliances, according to one embodiment.

FIG. 12 is an illustration of the system capable of controlling an appliance and a home, according to one embodiment.

FIG. 13 is a flowchart of the process for controlling an appliance, according to one embodiment.

FIG. 14 is a flowchart of the process for controlling an appliance, according to another embodiment.

FIG. 15 is a diagram of a system for monitoring biological signals associated with a user, and providing notifications or alarms, according to one embodiment.

FIG. 16 is a flowchart of a process for generating a notification based on a history of biological signals associated with a user, according to one embodiment.

FIG. 17 is a flowchart of a process for generating a comparison between a biological signal associated with a user and a target biological signal, according to one embodiment.

FIG. 18 is a flowchart of a process for detecting the onset of a disease, according to one embodiment.

FIG. 19 is a diagrammatic representation of a machine in the example form of a computer system within which a set of instructions, for causing the machine to perform any one or more of the methodologies or modules discussed herein, may be executed.

DETAILED DESCRIPTION

Examples of a method, apparatus, and computer program for automating the control of home appliances and improving the sleep environment are disclosed below. In the following description, for the purposes of explanation, numerous specific details are set forth in order to provide a thorough understanding of the embodiments of the invention. One skilled in the art will recognize that the embodiments of the invention may be practiced without these specific details or with an equivalent arrangement. In other instances, well-known structures and devices are shown in block diagram form in order to avoid unnecessarily obscuring the embodiments of the invention.

TERMINOLOGY

Brief definitions of terms, abbreviations, and phrases used throughout this application are given below.

In this specification, the term “biological signal” and “bio signal” are synonyms, and are used interchangeably.

Reference in this specification to “sleep phase” means light sleep, deep sleep, or rapid eye movement (“REM”) sleep. Light sleep comprises stage one and stage two, non-REM sleep.

Reference in this specification to “one embodiment” or “an embodiment” means that a particular feature, structure, or characteristic described in connection with the embodiment is included in at least one embodiment of the disclosure. The appearances of the phrase “in one embodiment” in various places in the specification are not necessarily all referring to the same embodiment, nor are separate or alternative embodiments mutually exclusive of other embodiments. Moreover, various features are described that may be exhibited by some embodiments and not by others. Similarly, various requirements are described that may be requirements for some embodiments but not others.

Unless the context clearly requires otherwise, throughout the description and the claims, the words “comprise,” “comprising,” and the like are to be construed in an inclusive sense, as opposed to an exclusive or exhaustive sense; that is to say, in the sense of “including, but not limited to.” As used herein, the terms “connected,” “coupled,” or any variant thereof, means any connection or coupling, either direct or indirect, between two or more elements. The coupling or connection between the elements can be physical, logical, or a combination thereof. For example, two devices may be coupled directly, or via one or more intermediary channels or devices. As another example, devices may be coupled in such a way that information can be passed there between, while not sharing any physical connection with one another. Additionally, the words “herein,” “above,” “below,” and words of similar import, when used in this application, shall refer to this application as a whole and not to any particular portions of this application. Where the context permits,

words in the Detailed Description using the singular or plural number may also include the plural or singular number respectively. The word “or,” in reference to a list of two or more items, covers all of the following interpretations of the word: any of the items in the list, all of the items in the list, and any combination of the items in the list.

If the specification states a component or feature “may,” “can,” “could,” or “might” be included or have a characteristic, that particular component or feature is not required to be included or have the characteristic.

The term “module” refers broadly to software, hardware, or firmware components (or any combination thereof). Modules are typically functional components that can generate useful data or another output using specified input(s). A module may or may not be self-contained. An application program (also called an “application”) may include one or more modules, or a module may include one or more application programs.

The terminology used in the Detailed Description is intended to be interpreted in its broadest reasonable manner, even though it is being used in conjunction with certain examples. The terms used in this specification generally have their ordinary meanings in the art, within the context of the disclosure, and in the specific context where each term is used. For convenience, certain terms may be highlighted, for example using capitalization, italics, and/or quotation marks. The use of highlighting has no influence on the scope and meaning of a term; the scope and meaning of a term is the same, in the same context, whether or not it is highlighted. It will be appreciated that the same element can be described in more than one way.

Consequently, alternative language and synonyms may be used for any one or more of the terms discussed herein, but special significance is not to be placed upon whether or not a term is elaborated or discussed herein. A recital of one or more synonyms does not exclude the use of other synonyms. The use of examples anywhere in this specification, including examples of any terms discussed herein, is illustrative only and is not intended to further limit the scope and meaning of the disclosure or of any exemplified term. Likewise, the disclosure is not limited to various embodiments given in this specification.

Bed Device

FIG. 1 is a diagram of a bed device, according to one embodiment. Any number of user sensors **140**, **150** monitor the bio signals associated with a user, such as the heart rate, the respiration rate, the temperature, motion, or presence, associated with the user. Any number of environment sensors **160**, **170** monitor environment properties, such as temperature, sound, light, or humidity. The user sensors **140**, **150** and the environment sensors **160**, **170** communicate their measurements to the processor **100**. The environment sensors **160**, **170**, measure the properties of the environment that the environment sensors **160**, **170** are associated with. In one embodiment, the environment sensors **160**, **170** are placed next to the bed. The processor **100** determines, based on the bio signals associated with the user, historical bio signals associated with the user, user-specified preferences, exercise data associated with the user, or the environment properties received, a control signal, and a time to send the control signal to a bed device **120**.

According to one embodiment, the processor **100** is connected to a database **180**, which stores the biological signals associated with a user. Additionally, the database **180** can store average biological signals associated with the user, history of biological signals associated with a user, etc. The

database **180** can be associated with a user, or the database **180** can be associated with the bed device.

FIG. 2 illustrates an example of the bed device of FIG. 1, according to one embodiment. A sensor strip **210**, associated with a mattress **200** of the bed device **120**, monitors bio signals associated with a user sleeping on the mattress **200**. The sensor strip **210** can be built into the mattress **200**, or can be part of a bed pad device. Alternatively, the sensor strip **210** can be a part of any other piece of furniture, such as a rocking chair, a couch, an armchair etc. The sensor strip **210** comprises a temperature sensor, or a piezo sensor. The environment sensor **220** measures environment properties such as temperature, sound, light or humidity. According to one embodiment, the environment sensor **220** is associated with the environment surrounding the mattress **200**. The sensor strip **210** and the environment sensor **220** communicate the measured environment properties to the processor **230**. In some embodiments, the processor **230** can be similar to the processor **100** of FIG. 1. A processor **230** can be connected to the sensor strip **210**, or the environment sensor **220** by a computer bus, such as an I2C bus. Also, the processor **230** can be connected to the sensor strip **210**, or the environment sensor **220** by a communication network. By way of example, the communication network connecting the processor **230** to the sensor strip **210**, or the environment sensor **220** includes one or more networks such as a data network, a wireless network, a telephony network, or any combination thereof. The data network may be any local area network (LAN), metropolitan area network (MAN), wide area network (WAN), a public data network (e.g., the Internet), short range wireless network, or any other suitable packet-switched network, such as a commercially owned, proprietary packet-switched network, e.g., a proprietary cable or fiber-optic network, and the like, or any combination thereof. In addition, the wireless network may be, for example, a cellular network and may employ various technologies including enhanced data rates for global evolution (EDGE), general packet radio service (GPRS), global system for mobile communications (GSM), Internet protocol multimedia subsystem (IMS), universal mobile telecommunications system (UMTS), etc., as well as any other suitable wireless medium, e.g., worldwide interoperability for microwave access (WiMAX), Long Term Evolution (LTE) networks, code division multiple access (CDMA), wideband code division multiple access (WCDMA), wireless fidelity (WiFi), wireless LAN (WLAN), Bluetooth®, Bluetooth low energy (BLE), Internet Protocol (IP) data casting, satellite, mobile ad-hoc network (MANET), and the like, or any combination thereof.

According to another embodiment, a vibrating pillow strip **240** is coupled to the user's pillow. The vibrating pillow strip **240** can be coupled to the pillow in various ways such as attached to the pillow case, attached to the surface of the pillow, attached to the filling inside the pillow, etc. The vibrating pillow strip **240** comprises a plurality of mini motors **250**. The vibrating pillow strip **240** can also be attached to the mattress, a mattress pad, the sheets, any other piece of furniture, etc. According to one embodiment, a vibrating mini motor is a disk, at most 10 millimeters in diameter, and 2.7 mm in thickness. The vibrating mini motor is at most 0.9 g, and takes a voltage in the range of 2 and 5 V. At 5 V the mini motor vibrates at least at 11,000 rpm.

The processor **230** can be connected to the vibrating pillow strip **240** via a communication network. The data network may be any local area network (LAN), metropolitan area network (MAN), wide area network (WAN), a public data network (e.g., the Internet), short range wireless net-

work, or any other suitable packet-switched network, such as a commercially owned, proprietary packet-switched network, e.g., a proprietary cable or fiber-optic network, and the like, or any combination thereof. In addition, the wireless network may be, for example, a cellular network and may employ various technologies including enhanced data rates for global evolution (EDGE), general packet radio service (GPRS), global system for mobile communications (GSM), Internet protocol multimedia subsystem (IMS), universal mobile telecommunications system (UMTS), etc., as well as any other suitable wireless medium, e.g., worldwide interoperability for microwave access (WiMAX), Long Term Evolution (LTE) networks, code division multiple access (CDMA), wideband code division multiple access (WCDMA), wireless fidelity (WiFi), wireless LAN (WLAN), Bluetooth®, Bluetooth low energy (BLE), Internet Protocol (IP) data casting, satellite, mobile ad-hoc network (MANET), and the like, or any combination thereof.

The processor **230** is any type of microcontroller, or any processor in a mobile terminal, fixed terminal, or portable terminal including a mobile handset, station, unit, device, multimedia computer, multimedia tablet, Internet node, cloud computer, communicator, desktop computer, laptop computer, notebook computer, netbook computer, tablet computer, personal communication system (PCS) device, personal navigation device, personal digital assistants (PDAs), audio/video player, digital camera/camcorder, positioning device, television receiver, radio broadcast receiver, electronic book device, game device, the accessories and peripherals of these devices, or any combination thereof.

FIG. 3 illustrates an example of layers comprising the bed pad device of FIG. 1, according to one embodiment. In some embodiments, the bed pad device **120** is a pad that can be placed on top of the mattress. Bed pad device **120** comprises a number of layers. A top layer **350** comprises fabric. A layer **340** comprises batting, and a sensor strip **330**. A layer **320** comprises coils for cooling or heating the bed device. A layer **310** comprises waterproof material.

FIG. 4 illustrates a user sensor **420**, **440**, **450**, **470** placed on a sensor strip **400**, according to one embodiment. In some embodiments, the user sensors **420**, **440**, **450**, **470** can be similar to or part of the sensor strip **210** of FIG. 2. Sensors **470** and **440** comprise a piezo sensor, which can measure a bio signal associated with a user, such as the heart rate and the respiration rate. Sensors **450** and **420** comprise a temperature sensor. According to one embodiment, sensors **450**, and **470** measure the bio signals associated with one user, while sensors **420**, **440** measure the bio signals associated with another user. Analog-to-digital converter **410** converts the analog sensor signals into digital signals to be communicated to a processor. Computer bus **430** and **460**, such as the I2C bus, communicates the digitized bio signals to a processor.

FIGS. 5A and 5B show different configurations of the sensor strip, to fit different size mattresses, according to one embodiment. FIGS. 5C and 5D show how such different configurations of the sensor strip can be achieved. Specifically, sensor strip **400** comprises a computer bus **510**, **530**, and a sensor triplet **505**. The computer bus **510**, **530** can be bent at predetermined locations **540**, **550**, **560**, **570**. Bending the computer bus **515** at location **540** produces the maximum total length of the computer bus **530**. Computer bus **530** combined with a sensor triplet **505**, fits a king size mattress **520**. Bending the computer bus **515** at location **570** produces the smallest total length of the computer bus, **510**. Computer bus **510** combined with a sensor triplet **505**, fits a twin size mattress **500**. Bending the computer bus **515** at

location **560**, enables the sensor strip **400** to fit a full-size bed. Bending the computer bus **515** at location **550** enables the sensor strip **400** to fit a queen-size bed. In some embodiments, twin mattress **500**, or king mattress **520** can be similar to the mattress **200** of FIG. 2.

FIG. 6A illustrates the division of the heating coil **600** into zones and subzones, according to one embodiment. Specifically, the heating coil **600** is divided into two zones **660** and **610**, each corresponding to one user of the bed. Each zone **660** and **610** can be heated or cooled independently of the other zone in response to the user's needs. To achieve independent heating of the two zones **660** and **610**, the power supply associated with the heating coil **600** is divided into two zones, each power supply zone corresponding to a single user zone **660**, **610**. Further, each zone **660** and **610** is further subdivided into subzones. Zone **660** is divided into subzones **670**, **680**, **690**, and **695**. Zone **610** is divided into subzones **620**, **630**, **640**, and **650**. The distribution of coils in each subzone is configured so that the subzone is uniformly heated. However, the subzones may differ among themselves in the density of coils. For example, the data associated with the user subzone **670** has lower density of coils than subzone **680**. This will result in subzone **670** having lower temperature than subzone **680**, when the coils are heated. Similarly, when the coils are used for cooling, subzones **670** will have higher temperature than subzone **680**. According to one embodiment, subzones **680** and **630** with highest coil density correspond to the user's lower back; and subzones **695** and **650** with highest coil density correspond to user's feet. According to one embodiment, even if the users switch sides of the bed, the system will correctly identify which user is sleeping in which zone by identifying the user based on any of the following signals alone, or in combination: heart rate, respiration rate, body motion, or body temperature associated with the user.

In another embodiment, the power supply associated with the heating coil **600** is divided into a plurality of zones, each power supply zone corresponding to a subzone **620**, **630**, **640**, **650**, **670**, **680**, **690**, **695**. The user can control the temperature of each subzone **620**, **630**, **640**, **650**, **670**, **680**, **690**, **695** independently. Further, each user can independently specify the temperature preferences for each of the subzones. Even if the users switch sides of the bed, the system will correctly identify the user, and the preferences associated with the user by identifying the user based on any of the following signals alone, or in combination: heart rate, respiration rate, body motion, or body temperature associated with the user.

FIGS. 6B and 6C illustrate the independent control of the different subzones in each zone **610**, **660**, according to one embodiment. Set of uniform coils **611**, connected to power management box **601**, uniformly heats or cools the bed. Another set of coils, targeting specific areas of the body such as the neck, the back, the legs, or the feet, is layered on top of the uniform coils **611**. Subzone **615** heats or cools the neck. Subzone **625** heats or cools the back. Subzone **635** heats or cools the legs, and subzone **645** heats or cools the feet. Power is distributed to the coils via duty cycling of the power supply **605**. Contiguous sets of coils can be heated or cooled at different levels by assigning the power supply duty cycle to each set of coils. The user can control the temperature of each subzone independently.

FIG. 7 is a flowchart of the process for deciding when to heat or cool the bed device, according to one embodiment. At block **700**, the process obtains a biological signal associated with a user, such as presence in bed, motion, respiration rate, heart rate, or a temperature. The process obtains

the biological signal from a sensor associated with a user. Further, at block **710**, the process obtains environment property, such as the amount of ambient light and the bed temperature. The process obtains environment property from an environment sensor associated with the bed device. If the user is in bed, the bed temperature is low, and the ambient light is low, the process sends a control signal to the bed device. The control signal comprises an instruction to heat the bed device to the average nightly temperature associated with the user. According to another embodiment, the control signal comprises an instruction to heat the bed device to a user-specified temperature. Similarly, if the user is in bed, the bed temperature is high, and the ambient light is low, the process sends a control signal to the bed device to cool the bed device to the average nightly temperature associated with the user. According to another embodiment, the control signal comprises an instruction to cool the bed device to a user-specified temperature.

In another embodiment, in addition to obtaining the biological signal associated with the user, and the environment property, the process obtains a history of biological signals associated with the user. The history of biological signals can be stored in a database **180** associated with the bed device, or in a database **180** associated with a user. The history of biological signals comprises the average bedtime the user went to sleep for each day of the week; that is, the history of biological signals comprises the average bedtime associated with the user on Monday, the average bedtime associated with the user on Tuesday, etc. For a given day of the week, the process determines the average bedtime associated with the user for that day of the week, and sends the control signal to the bed device, allowing enough time for the bed to reach the desired temperature, before the average bedtime associated with the user. The control signal comprises an instruction to heat, or cool the bed to a desired temperature. The desired temperature may be automatically determined, such as by averaging the historical nightly temperature associated with a user, or the desired temperature may be specified by the user.

Bio Signal Processing

The technology disclosed here categorizes the sleep phase associated with a user as light sleep, deep sleep, or REM sleep. Light sleep comprises stage one and stage two sleep. The technology performs the categorization based on the respiration rate associated with the user, heart rate associated with the user, motion associated with the user, and body temperature associated with the user. Generally, when the user is awake the respiration is erratic. When the user is sleeping, the respiration becomes regular. The transition between being awake and sleeping is quick, and lasts less than 1 minute. The user cycles through light sleep, deep sleep, and REM sleep throughout the night. A complete sleep cycle takes on average between 90 and 110 minutes.

FIG. 8 is a flowchart of the process for recommending a bed time to the user, according to one embodiment. At block **800**, the processor **230** obtains a history of sleep phase information associated with the user. The history of sleep phase information comprises an amount of time the user spent in each of the sleep phases, light sleep, deep sleep, or REM sleep. The history of sleep phase information can be stored in a database **180** associated with the user. Based on this information, the processor **230** determines how much light sleep, deep sleep, and REM sleep, the user needs on average every day. In another embodiment, the history of sleep phase information comprises the average bedtime associated with the user for each day of the week (e.g. the average bedtime associated with the user on Monday, the

average bedtime associated with the user on Tuesday, etc.). At block 810, the processor 230 obtains user-specified wake-up time, such as the alarm setting associated with the user. At block 820, the processor 230 obtains exercise information associated with the user, such as the distance the user ran that day, the amount of time the user exercised in the gym, or the amount of calories the user burned that day. According to one embodiment, the processor 230 obtains the exercise information from a user phone, a wearable device, a Fitbit bracelet, or a database 180 storing the exercise information. Based on all this information, at block 830, the processor 230 recommends a bedtime to the user. For example, if the user has not been getting enough deep and REM sleep in the last few days, the processor 230 recommends an earlier bedtime to the user. Also, if the user has exercised more than the average daily exercise, the processor 230 recommends an earlier bedtime to the user.

FIG. 9 is a flowchart of the process for activating a user's alarm, according to one embodiment. At block 900, the processor 230 obtains the compound bio signal associated with the user. The compound bio signal associated with the user comprises the heart rate associated with the user, the respiration rate associated with the user, the motion associated with the user, and the temperature associated with the user. According to one embodiment, the processor 230 obtains the compound bio signal from a sensor associated with the user. At block 910, the processor 230 extracts the heart rate signal from the compound bio signal. For example, the processor 230 extracts the heart rate signal associated with the user by performing low-pass filtering on the compound bio signal. Also, at block 920, the processor 230 extracts the respiration rate signal from the compound bio signal. For example, the processor 230 extracts the respiration rate by performing bandpass filtering on the compound bio signal. The respiration rate signal includes breath duration, pauses between breaths, as well as breaths per minute. The processor 230 also extracts the temperature signal and the motion signal from the compound bio signal.

At block 930, the processor 230 obtains user's wake-up time, such as the alarm setting associated with the user. In order to obtain the user's wake-up time, the processor 230, first identifies the user based on the user's bio signal. Based on the heart rate signal and the respiration rate signal, the processor 230 determines the sleep phase associated with the user, and if the user is in light sleep phase, and current time is at most one hour before the alarm time, at block 940, the processor 230 sends a control signal to an alarm. The control signal comprises an instruction to activate. Waking up the user during the deep sleep or REM sleep is detrimental to the user's health because the user will feel disoriented, groggy, and will suffer from impaired memory. Consequently, at block 950, the processor 230 activates an alarm, when the user is in light sleep and when the current time is at most one hour before the user specified wake-up time.

According to another embodiment, the processor 230 obtains the user's wake-up time, such as the alarm setting associated with the user, and at the user's wake-up time sends a control signal to the alarm to activate.

The alarm can be a vibrating pillow strip 240 coupled to the user, for example a vibrating pillow strip 240 attached to the pillow, to the pillowcase, mattress, sheets, any other piece of furniture etc. The vibrating pillow strip 240 can be divided into a plurality of zones corresponding to a plurality of users. For example, the left side of the bed corresponds to zone 1, and the right side of the bed corresponds to zone 2. Zone 1 and zone 2 can vibrate independently of each other. When the vibrating pillow strip 240 is divided into the

plurality of zones, the control signal comprises an identification associated with the zone to which the control signal is sent.

According to one embodiment, the vibrating pillow strip 240 includes a plurality of vibrating mini motors 250, attached to the strip. The vibrating pillow strip 240 can receive a control signal instructing the vibrating mini motors 250 to vibrate. The vibrating mini motors 250 can be configured to vibrate synchronously, or they can be configured to vibrate asynchronously, for example vibrating in order from left to right. The vibrating mini motors 250 are designed to be small enough to be unnoticeable by the sleeping user, and to be powerful enough to wake up the sleeping user.

The processor 230 can detect whether the user is in light sleep in several ways. According to one embodiment, the processor 230 detects that user is in light sleep if within a period of at most 5 minutes there is a slow-down in the user's heart rate, a drop in the user's temperature, and the user's respiration becomes regular. According to another embodiment, the processor 230 detects that the user is in light sleep if the user is sleeping, and the rapid eye movement sleep phase has ended. In another embodiment, the database 180 stores a history of biological signals associated with the user, wherein the history of biological signals associated with the user comprises a normal heart rate range associated with each sleep phase, a normal respiration rate range associated with each sleep phase, a normal motion range associated with each sleep phase, and a normal temperature range associated with each sleep phase. The processor 230 obtains from the database 180 the history of biological signals associated with a user. To obtain the history of bio signals associated with a user, the processor 230 first identifies the user based on the current bio signal associated with the user. The current bio signal comprises the current respiration rate, the current temperature in the current motion associated with the user. Based on the history of bio signals in the current bio signal, the processor 230 determines the best match between the current bio signal and the history of bio signals associated with each sleep phases. If the best match between the current bio signal and the history of bio signals is light sleep, the processor 230 determines that the user is in light sleep. According to one embodiment, the best match is determined by least square difference between the current bio signal and the history of bio signals.

FIG. 10 is a flowchart of the process for turning off an appliance, according to one embodiment. At block 1000, the processor 230 obtains the compound bio signal associated with the user. The compound bio signal comprises the heart rate associated with the user, and the respiration rate associated with the user. According to one embodiment, the processor 230 obtains the compound bio signal from a sensor associated with the user. At block 1010, the processor 230 extracts the heart rate signal from the compound bio signal by, for example, performing low-pass filtering on the compound bio signal. Also, at block 1020, the processor 230 extracts the respiration rate signal from the compound bio signal by, for example, performing bandpass filtering on the compound bio signal. At block 1030, the processor 230 obtains an environment property, comprising temperature, humidity, light, sound from an environment sensor associated with the sensor strip. Based on the environment property and the sleep state associated with the user, at block 1040, the processor 230 determines whether the user is sleeping. If the user is sleeping, the processor 230, at block 1050, turns an appliance off. For example, if the user is

asleep and the environment temperature is above the average nightly temperature, the processor 230 turns off the thermostat. Further, if the user is asleep and the lights are on, the processor 230 turns off the lights. Similarly, if the user is asleep and the TV is on, the processor 230 turns off the TV. Smart Home

FIG. 11 is a diagram of a system capable of automating the control of the home appliances, according to one embodiment. Any number of user sensors 1140, 1150 monitor biological signals associated with the user, such as temperature, motion, presence, heart rate, or respiration rate. Any number of environment sensors 1160, 1170 monitor environment properties, such as temperature, sound, light, or humidity. According to one embodiment, the environment sensors 1160, 1170 are placed next to a bed. The user sensors 1140, 1150 and the environment sensors 1160, 1170 communicate their measurements to the processor 1100. In some embodiments, the processor 1100 and the processor 230 at the same processor. The processor 1100 determines, based on the current biological signals associated with the user, historical biological signals associated with the user, user-specified preferences, exercise data associated with the user, and the environment properties received, a control signal, and a time to send the control signal to an appliance 1120, 1130.

The processor 1100 is any type of microcontroller, or any processor in a mobile terminal, fixed terminal, or portable terminal including a mobile handset, station, unit, device, multimedia computer, multimedia tablet, Internet node, cloud computer, communicator, desktop computer, laptop computer, notebook computer, netbook computer, tablet computer, personal communication system (PCS) device, personal navigation device, personal digital assistants (PDAs), audio/video player, digital camera/camcorder, positioning device, television receiver, radio broadcast receiver, electronic book device, game device, the accessories and peripherals of these devices, or any combination thereof.

The processor 1100 can be connected to the user sensor 1140, 1150, or the environment sensor 1160, 1170 by a computer bus, such as an I2C bus. Also, the processor 1100 can be connected to the user sensor 1140, 1150, or environment sensor 1160, 1170 by a communication network 1110. By way of example, the communication network 1110 connecting the processor 1100 to the user sensor 1140, 1150, or the environment sensor 1160, 1170 includes one or more networks such as a data network, a wireless network, a telephony network, or any combination thereof. The data network may be any local area network (LAN), metropolitan area network (MAN), wide area network (WAN), a public data network (e.g., the Internet), short range wireless network, or any other suitable packet-switched network, such as a commercially owned, proprietary packet-switched network, e.g., a proprietary cable or fiber-optic network, and the like, or any combination thereof. In addition, the wireless network may be, for example, a cellular network and may employ various technologies including enhanced data rates for global evolution (EDGE), general packet radio service (GPRS), global system for mobile communications (GSM), Internet protocol multimedia subsystem (IMS), universal mobile telecommunications system (UMTS), etc., as well as any other suitable wireless medium, e.g., worldwide interoperability for microwave access (WiMAX), Long Term Evolution (LTE) networks, code division multiple access (CDMA), wideband code division multiple access (WCDMA), wireless fidelity (WiFi), wireless LAN

(WLAN), Bluetooth®, Internet Protocol (IP) data casting, satellite, mobile ad-hoc network (MANET), and the like, or any combination thereof.

FIG. 12 is an illustration of the system capable of controlling an appliance and a home, according to one embodiment. The appliances, that the system disclosed here can control, comprise an alarm, a coffee machine, a lock, a thermostat, a bed device, a humidifier, or a light. For example, the system detects that the user has fallen asleep, the system sends a control signal to the lights to turn off, to the locks to engage, and to the thermostat to lower the temperature. According to another example, if the system detects that the user has woken up and it is morning, the system sends a control signal to the coffee machine to start making coffee.

FIG. 13 is a flowchart of the process for controlling an appliance, according to one embodiment. In one embodiment, at block 1300, the process obtains history of biological signals, such as at what time does the user go to bed on a particular day of the week (e.g. the average bedtime associated with the user on Monday, the average bedtime associated with the user on Tuesday etc.). The history of biological signals can be stored in a database 180 associated with the user, or in a database 180 associated with the bed device. In another embodiment, at block 1300, the process also obtains user specified preferences, such as the preferred bed temperature associated with the user. Based on the history of biological signals and user-specified preferences, the process, at block 1320, determines a control signal, and a time to send the control signal to an appliance. At block 1330, the process determines whether to send a control signal to an appliance. For example, if the current time is within half an hour of average bedtime associated with the user on that particular day of the week, the process, at block 1340, sends a control signal to an appliance. For example, the control signal comprises an instruction to turn on the bed device, and the user specified bed temperature. Alternatively, the bed temperature is determined automatically, such as by calculating the average nightly bed temperature associated with a user.

According to another embodiment, at block 1300, the process obtains a current biological signal associated with a user from a sensor associated with the user. At block 1310, the process also obtains environment data, such as the ambient light, from an environment sensor associated with a bed device. Based on the current biological signal, the process identifies whether the user is asleep. If the user is asleep and the lights are on, the process sends an instruction to turn off the lights. In another embodiment, if the user is asleep, the lights are off, and the ambient light is high, the process sends an instruction to the blinds to shut. In another embodiment, if the user is asleep, the process sends an instruction to the locks to engage.

In another embodiment, the process, at block 1300, obtains history of biological signals, such as at what time the user goes to bed on a particular day of the week (e.g. the average bedtime associated with the user on Monday, the average bedtime associated with the user on Tuesday etc.). The history of biological signals can be stored in a database 180 associated with the bed device, or in a database 180 associated with a user. Alternatively, the user may specify a bedtime for the user for each day of the week. Further, the process obtains the exercise data associated with the user, such as the number of hours the user spent exercising, or the heart rate associated with the user during exercising. According to one embodiment, the process obtains the exercise data from a user phone, a wearable device, fitbit

bracelet, or a database **180** associated with the user. Based on the average bedtime for that day of the week, and the exercise data during the day, the process, at block **1320**, determines the expected bedtime associated with the user that night. The process then sends an instruction to the bed device to heat to a desired temperature, before the expected bedtime. The desired temperature can be specified by the user, or can be determined automatically, based on the average nightly temperature associated with the user.

FIG. **14** is a flowchart of the process for controlling an appliance, according to another embodiment. The process, at block **1400**, receives current biological signal associated with the user, such as the heart rate, respiration rate, presence, motion, or temperature, associated with the user. Based on the current biological signal, the process, at block **1410**, identifies current sleep phase, such as light sleep, deep sleep, or REM sleep. The process, at block **1420** also receives a current environment property value, such as the temperature, the humidity, the light, or the sound. The process, at block **1430**, accesses a database **180**, which stores historical values associated with the environment property and the current sleep phase. That is, the database **180** associates each sleep phase with an average historical value of the different environment properties. The database **180** maybe associated with the bed device, maybe associated with the user, or maybe associated with a remote server. The process, at block **1440**, then calculates a new average of the environment property based on the current value of the environment property and the historical value of the environment property, and assigns the new average to the current sleep phase in the database **180**. If there is a mismatch between the current value of the environment property, and the historical average, the process, at block **1450**, regulates the current value to match the historical average. For example, the environment property can be the temperature associated with the bed device. The database **180** stores the average bed temperature corresponding to each of the sleep phase, light sleep, deep sleep, REM sleep. If the current bed temperature is below the historical average, the process sends a control signal to increase the temperature of the bed to match the historical average.

Monitoring of Biological Signals

Biological signals associated with a person, such as a heart rate or a respiration rate, indicate the person's state of health. Changes in the biological signals can indicate an immediate onset of a disease, or a long-term trend that increases the risk of a disease associated with the person. Monitoring the biological signals for such changes can predict the onset of a disease, can enable calling for help when the onset of the disease is immediate, or can provide advice to the person if the person is exposed to a higher risk of the disease in the long-term.

FIG. **15** is a diagram of a system for monitoring biological signals associated with a user, and providing notifications or alarms, according to one embodiment. Any number of user sensors **1530**, **1540** monitor bio signals associated with the user, such as temperature, motion, presence, heart rate, or respiration rate. The user sensors **1530**, **1540** communicate their measurements to the processor **1500**. The processor **1500** determines, based on the bio signals associated with the user, historical biological signals associated with the user, or user-specified preferences whether to send a notification or an alarm to a user device **1520**. In some embodiments, the user device **1520** and the processor **1500** can be the same device.

The user device **1520** is any type of a mobile terminal, fixed terminal, or portable terminal including a mobile

handset, station, unit, device, multimedia computer, multimedia tablet, Internet node, communicator, desktop computer, laptop computer, notebook computer, netbook computer, tablet computer, personal communication system (PCS) device, personal navigation device, personal digital assistants (PDAs), audio/video player, digital camera/camcorder, positioning device, television receiver, radio broadcast receiver, electronic book device, game device, the accessories and peripherals of these devices, or any combination thereof.

The processor **1500** is any type of microcontroller, or any processor in a mobile terminal, fixed terminal, or portable terminal including a mobile handset, station, unit, device, multimedia computer, multimedia tablet, Internet node, cloud computer, communicator, desktop computer, laptop computer, notebook computer, netbook computer, tablet computer, personal communication system (PCS) device, personal navigation device, personal digital assistants (PDAs), audio/video player, digital camera/camcorder, positioning device, television receiver, radio broadcast receiver, electronic book device, game device, the accessories and peripherals of these devices, or any combination thereof.

The processor **1500** can be connected to the user sensor **1530**, **1540** by a computer bus, such as an I2C bus. Also, the processor **1500** can be connected to the user sensor **1530**, **1540** by a communication network **1510**. By way of example, the communication network **1510** connecting the processor **1500** to the user sensor **1530**, **1540** includes one or more networks such as a data network, a wireless network, a telephony network, or any combination thereof. The data network may be any local area network (LAN), metropolitan area network (MAN), wide area network (WAN), a public data network (e.g., the Internet), short range wireless network, or any other suitable packet-switched network, such as a commercially owned, proprietary packet-switched network, e.g., a proprietary cable or fiber-optic network, and the like, or any combination thereof. In addition, the wireless network may be, for example, a cellular network and may employ various technologies including enhanced data rates for global evolution (EDGE), general packet radio service (GPRS), global system for mobile communications (GSM), Internet protocol multimedia subsystem (IMS), universal mobile telecommunications system (UMTS), etc., as well as any other suitable wireless medium, e.g., worldwide interoperability for microwave access (WiMAX), Long Term Evolution (LTE) networks, code division multiple access (CDMA), wideband code division multiple access (WCDMA), wireless fidelity (WiFi), wireless LAN (WLAN), Bluetooth®, Internet Protocol (IP) data casting, satellite, mobile ad-hoc network (MANET), and the like, or any combination thereof.

FIG. **16** is a flowchart of a process for generating a notification based on a history of biological signals associated with a user, according to one embodiment. The process, at block **1600**, obtains a history of biological signals, such as the presence history, motion history, respiration rate history, or heart rate history, associated with the user. The history of biological signals can be stored in a database **180** associated with a user. At block **1610**, the process determines if there is an irregularity in the history of biological signals within a timeframe. If there is an irregularity, at block **1620**, the process generates a notification to the user. The timeframe can be specified by the user, or can be automatically determined based on the type of irregularity. For example, the heart rate associated with the user goes up within a one day timeframe when the user is sick. According to one embodiment, the process detects an irregularity, specifically, that a

daily heart rate associated with the user is higher than normal. Consequently, the process warns the user that the user may be getting sick. According to another embodiment, the process detects an irregularity, such as that an elderly user is spending at least 10% more time in bed per day over the last several days, than the historical average. The process generates a notification to the elderly user, or to the elderly user's caretaker, such as how much more time the elderly user is spending in bed. In another embodiment, the process detects an irregularity such as an increase in resting heart rate, by more than 15 beats per minute, over a ten-year period. Such an increase in the resting heart rate doubles the likelihood that the user will die from a heart disease, compared to those people whose heart rates remained stable. Consequently, the process warns the user that the user is at risk of a heart disease.

FIG. 17 is a flowchart of a process for generating a comparison between a biological signal associated with a user and a target biological signal, according to one embodiment. The process, at block 1700, obtains a current biological signal associated with a user, such as presence, motion, respiration rate, temperature, or heart rate, associated with the user. The process obtains the current biological signal from a sensor associated with the user. The process, at block 1710, then obtains a target biological signal, such as a user-specified biological signal, a biological signal associated with a healthy user, or a biological signal associated with an athlete. According to one embodiment, the process obtains the target biological signal from a user, or a database 180 storing biological signals. The process, at block 1720, compares current bio signal associated with the user and target bio signal, and generates a notification based on the comparison 1730. The comparison of the current bio signal associated with the user and target bio signal comprises detecting a higher frequency in the current biological signal than in the target biological signal, detecting a lower frequency in the current biological signal than in the target biological signal, detecting higher amplitude in the current biological signal than in the target biological signal, or detecting lower amplitude in the current biological signal than in the target biological signal.

According to one embodiment, the process of FIG. 17 can be used to detect if an infant has a higher risk of sudden infant death syndrome ("SIDS"). In SIDS victims less than one month of age, heart rate is higher than in healthy infants of same age, during all sleep phases. SIDS victims greater than one month of age show higher heart rates during REM sleep phase. In case of monitoring an infant for a risk of SIDS, the process obtains the current bio signal associated with the sleeping infant, and a target biological signal associated with the heart rate of a healthy infant, where the heart rate is at the high end of a healthy heart rate spectrum. The process obtains the current bio signal from a sensor strip associated with the sleeping infant. The process obtains the target biological signal from a database 180 of biological signals. If the frequency of the biological signal of the infant exceeds the target biological signal, the process generates a notification to the infant's caretaker, that the infant is at higher risk of SIDS.

According to another embodiment, the process of FIG. 17 can be used in fitness training. A normal resting heart rate for adults ranges from 60 to 100 beats per minute. Generally, a lower heart rate at rest implies more efficient heart function and better cardiovascular fitness. For example, a well-trained athlete might have a normal resting heart rate closer to 40 beats per minute. Thus, a user may specify a target rest heart rate of 40 beats per minute. The process FIG. 17

generates a comparison between the actual bio signal associated with the user and the target bio signal 1720, and based on the comparison, the process generates a notification whether the user has reached his target, or whether the user needs to exercise more 1730.

FIG. 18 is a flowchart of a process for detecting the onset of a disease, according to one embodiment. The process, at block 1800, obtains the current bio signal associated with a user, such as presence, motion, temperature, respiration rate, or heart rate, associated with the user. The process obtains the current bio signal from a sensor associated with the user. Further, the process, at block 1810, obtains a history of bio signals associated with the user from a database 180. The history of bio signals comprises the bio signals associated with the user, accumulated over time. The history of biological signals can be stored in a database 180 associated with a user. The process, at block 1820, then detects a discrepancy between the current bio signal and the history of bio signals, where the discrepancy is indicative of an onset of a disease. The process, at block 1830, then generates an alarm to the user's caretaker. The discrepancy between the current bio signal and the history of bio signals comprises a higher frequency in the current bio signal than in the history of bio signals, or a lower frequency in the current bio signal than in the history of bio signals.

According to one embodiment, the process of FIG. 18 can be used to detect an onset of an epileptic seizure. A healthy person has a normal heart rate between 60 and 100 beats per minute. During epileptic seizures, the median heart rate associated with the person exceeds 100 beats per minute. The process of FIG. 18 detects that the heart rate associated with the user exceeds the normal heart rate range associated with the user. The process then generates an alarm to the user's caretaker that the user is having an epileptic seizure. Although rare, epileptic seizures can cause the median heart rate associated with a person to drop below 40 beats per minute. Similarly, the process of FIG. 18 detects if the current heart rate is below the normal heart rate range associated with the user. The process then generates an alarm to the user's caretaker that the user is having an epileptic seizure.

FIG. 19 is a diagrammatic representation of a machine in the example form of a computer system 1900 within which a set of instructions, for causing the machine to perform any one or more of the methodologies or modules discussed herein, may be executed.

In the example of FIG. 19, the computer system 1900 includes a processor, memory, non-volatile memory, and an interface device. Various common components (e.g., cache memory) are omitted for illustrative simplicity. The computer system 1900 is intended to illustrate a hardware device on which any of the components described in the example of FIGS. 1-18 (and any other components described in this specification) can be implemented. The computer system 1900 can be of any applicable known or convenient type. The components of the computer system 1900 can be coupled together via a bus or through some other known or convenient device.

This disclosure contemplates the computer system 1900 taking any suitable physical form. As example and not by way of limitation, computer system 1900 may be an embedded computer system, a system-on-chip (SOC), a single-board computer system (SBC) (such as, for example, a computer-on-module (COM) or system-on-module (SOM)), a desktop computer system, a laptop or notebook computer system, an interactive kiosk, a mainframe, a mesh of computer systems, a mobile telephone, a personal digital assis-

tant (PDA), a server, or a combination of two or more of these. Where appropriate, computer system 1900 may include one or more computer systems 1900; be unitary or distributed; span multiple locations; span multiple machines; or reside in a cloud, which may include one or more cloud components in one or more networks. Where appropriate, one or more computer systems 1900 may perform without substantial spatial or temporal limitation one or more steps of one or more methods described or illustrated herein. As an example and not by way of limitation, one or more computer systems 1900 may perform in real time or in batch mode one or more steps of one or more methods described or illustrated herein. One or more computer systems 1900 may perform at different times or at different locations one or more steps of one or more methods described or illustrated herein, where appropriate.

The processor may be, for example, a conventional microprocessor such as an Intel Pentium microprocessor or Motorola power PC microprocessor. One of skill in the relevant art will recognize that the terms “machine-readable (storage) medium” or “computer-readable (storage) medium” include any type of device that is accessible by the processor.

The memory is coupled to the processor by, for example, a bus. The memory can include, by way of example but not limitation, random access memory (RAM), such as dynamic RAM (DRAM) and static RAM (SRAM). The memory can be local, remote, or distributed.

The bus also couples the processor to the non-volatile memory and drive unit. The non-volatile memory is often a magnetic floppy or hard disk, a magnetic-optical disk, an optical disk, a read-only memory (ROM), such as a CD-ROM, EPROM, or EEPROM, a magnetic or optical card, or another form of storage for large amounts of data. Some of this data is often written, by a direct memory access process, into memory during execution of software in the computer 1900. The non-volatile storage can be local, remote, or distributed. The non-volatile memory is optional because systems can be created with all applicable data available in memory. A typical computer system will usually include at least a processor, memory, and a device (e.g., a bus) coupling the memory to the processor.

Software is typically stored in the non-volatile memory and/or the drive unit. Indeed, storing and entire large program in memory may not even be possible. Nevertheless, it should be understood that for software to run, if necessary, it is moved to a computer readable location appropriate for processing, and for illustrative purposes, that location is referred to as the memory in this paper. Even when software is moved to the memory for execution, the processor will typically make use of hardware registers to store values associated with the software, and local cache that, ideally, serves to speed up execution. As used herein, a software program is assumed to be stored at any known or convenient location (from non-volatile storage to hardware registers) when the software program is referred to as “implemented in a computer-readable medium.” A processor is considered to be “configured to execute a program” when at least one value associated with the program is stored in a register readable by the processor.

The bus also couples the processor to the network interface device. The interface can include one or more of a modem or network interface. It will be appreciated that a modem or network interface can be considered to be part of the computer system 1900. The interface can include an analog modem, isdn modem, cable modem, token ring interface, satellite transmission interface (e.g. “direct PC”),

or other interfaces for coupling a computer system to other computer systems. The interface can include one or more input and/or output devices. The I/O devices can include, by way of example but not limitation, a keyboard, a mouse or other pointing device, disk drives, printers, a scanner, and other input and/or output devices, including a display device. The display device can include, by way of example but not limitation, a cathode ray tube (CRT), liquid crystal display (LCD), or some other applicable known or convenient display device. For simplicity, it is assumed that controllers of any devices not depicted in the example of FIG. 9 reside in the interface.

In operation, the computer system 1900 can be controlled by operating system software that includes a file management system, such as a disk operating system. One example of operating system software with associated file management system software is the family of operating systems known as Windows® from Microsoft Corporation of Redmond, Wash., and their associated file management systems. Another example of operating system software with its associated file management system software is the Linux™ operating system and its associated file management system. The file management system is typically stored in the non-volatile memory and/or drive unit and causes the processor to execute the various acts required by the operating system to input and output data and to store data in the memory, including storing files on the non-volatile memory and/or drive unit.

Some portions of the detailed description may be presented in terms of algorithms and symbolic representations of operations on data bits within a computer memory. These algorithmic descriptions and representations are the means used by those skilled in the data processing arts to most effectively convey the substance of their work to others skilled in the art. An algorithm is here, and generally, conceived to be a self-consistent sequence of operations leading to a desired result. The operations are those requiring physical manipulations of physical quantities. Usually, though not necessarily, these quantities take the form of electrical or magnetic signals capable of being stored, transferred, combined, compared, and otherwise manipulated. It has proven convenient at times, principally for reasons of common usage, to refer to these signals as bits, values, elements, symbols, characters, terms, numbers, or the like.

It should be borne in mind, however, that all of these and similar terms are to be associated with the appropriate physical quantities and are merely convenient labels applied to these quantities. Unless specifically stated otherwise as apparent from the following discussion, it is appreciated that throughout the description, discussions utilizing terms such as “processing” or “computing” or “calculating” or “determining” or “displaying” or “generating” or the like, refer to the action and processes of a computer system, or similar electronic computing device, that manipulates and transforms data represented as physical (electronic) quantities within the computer system’s registers and memories into other data similarly represented as physical quantities within the computer system memories or registers or other such information storage, transmission or display devices.

The algorithms and displays presented herein are not inherently related to any particular computer or other apparatus. Various general purpose systems may be used with programs in accordance with the teachings herein, or it may prove convenient to construct more specialized apparatus to perform the methods of some embodiments. The required structure for a variety of these systems will appear from the description below. In addition, the techniques are not

described with reference to any particular programming language, and various embodiments may thus be implemented using a variety of programming languages.

In alternative embodiments, the machine operates as a standalone device or may be connected (e.g., networked) to other machines. In a networked deployment, the machine may operate in the capacity of a server or a client machine in a client-server network environment, or as a peer machine in a peer-to-peer (or distributed) network environment.

The machine may be a server computer, a client computer, a personal computer (PC), a tablet PC, a laptop computer, a set-top box (STB), a personal digital assistant (PDA), a cellular telephone, an iPhone, a Blackberry, a processor, a telephone, a web appliance, a network router, switch or bridge, or any machine capable of executing a set of instructions (sequential or otherwise) that specify actions to be taken by that machine.

While the machine-readable medium or machine-readable storage medium is shown in an exemplary embodiment to be a single medium, the term “machine-readable medium” and “machine-readable storage medium” should be taken to include a single medium or multiple media (e.g., a centralized or distributed database 180, and/or associated caches and servers) that store the one or more sets of instructions. The term “machine-readable medium” and “machine-readable storage medium” shall also be taken to include any medium that is capable of storing, encoding or carrying a set of instructions for execution by the machine and that cause the machine to perform any one or more of the methodologies or modules of the presently disclosed technique and innovation.

In general, the routines executed to implement the embodiments of the disclosure, may be implemented as part of an operating system or a specific application, component, program, object, module or sequence of instructions referred to as “computer programs.” The computer programs typically comprise one or more instructions set at various times in various memory and storage devices in a computer, and that, when read and executed by one or more processing units or processors in a computer, cause the computer to perform operations to execute elements involving the various aspects of the disclosure.

Moreover, while embodiments have been described in the context of fully functioning computers and computer systems, those skilled in the art will appreciate that the various embodiments are capable of being distributed as a program product in a variety of forms, and that the disclosure applies equally regardless of the particular type of machine or computer-readable media used to actually effect the distribution.

Further examples of machine-readable storage media, machine-readable media, or computer-readable (storage) media include but are not limited to recordable type media such as volatile and non-volatile memory devices, floppy and other removable disks, hard disk drives, optical disks (e.g., Compact Disk Read-Only Memory (CD ROMS), Digital Versatile Disks, (DVDs), etc.), among others, and transmission type media such as digital and analog communication links.

In some circumstances, operation of a memory device, such as a change in state from a binary one to a binary zero or vice-versa, for example, may comprise a transformation, such as a physical transformation. With particular types of memory devices, such a physical transformation may comprise a physical transformation of an article to a different state or thing. For example, but without limitation, for some types of memory devices, a change in state may involve an

accumulation and storage of charge or a release of stored charge. Likewise, in other memory devices, a change of state may comprise a physical change or transformation in magnetic orientation or a physical change or transformation in molecular structure, such as from crystalline to amorphous or vice versa. The foregoing is not intended to be an exhaustive list of all examples in which a change in state for a binary one to a binary zero or vice-versa in a memory device may comprise a transformation, such as a physical transformation. Rather, the foregoing is intended as illustrative examples.

A storage medium typically may be non-transitory or comprise a non-transitory device. In this context, a non-transitory storage medium may include a device that is tangible, meaning that the device has a concrete physical form, although the device may change its physical state. Thus, for example, non-transitory refers to a device remaining tangible despite this change in state.

Remarks

In many of the embodiments disclosed in this application, the technology is capable of allowing multiple different users to use the same piece of furniture equipped with the presently disclosed technology. For example, different people can sleep in the same bed. In addition, two different users can switch the side of the bed that they sleep on, and the technology disclosed here will correctly identify which user is sleeping on which side of the bed. The technology identifies the users based on any of the following signals alone or in combination: heart rate, respiration rate, body motion, or body temperature associated with each user.

The foregoing description of various embodiments of the claimed subject matter has been provided for the purposes of illustration and description. It is not intended to be exhaustive or to limit the claimed subject matter to the precise forms disclosed. Many modifications and variations will be apparent to one skilled in the art. Embodiments were chosen and described in order to best describe the principles of the invention and its practical applications, thereby enabling others skilled in the relevant art to understand the claimed subject matter, the various embodiments, and the various modifications that are suited to the particular uses contemplated.

While embodiments have been described in the context of fully functioning computers and computer systems, those skilled in the art will appreciate that the various embodiments are capable of being distributed as a program product in a variety of forms, and that the disclosure applies equally regardless of the particular type of machine or computer-readable media used to actually effect the distribution.

Although the above Detailed Description describes certain embodiments and the best mode contemplated, no matter how detailed the above appears in text, the embodiments can be practiced in many ways. Details of the systems and methods may vary considerably in their implementation details, while still being encompassed by the specification. As noted above, particular terminology used when describing certain features or aspects of various embodiments should not be taken to imply that the terminology is being redefined herein to be restricted to any specific characteristics, features, or aspects of the invention with which that terminology is associated. In general, the terms used in the following claims should not be construed to limit the invention to the specific embodiments disclosed in the specification, unless those terms are explicitly defined herein. Accordingly, the actual scope of the invention encompasses

not only the disclosed embodiments, but also all equivalent ways of practicing or implementing the embodiments under the claims.

The language used in the specification has been principally selected for readability and instructional purposes, and it may not have been selected to delineate or circumscribe the inventive subject matter. It is therefore intended that the scope of the invention be limited not by this Detailed Description, but rather by any claims that issue on an application based hereon. Accordingly, the disclosure of various embodiments is intended to be illustrative, but not limiting, of the scope of the embodiments, which is set forth in the following claims.

The invention claimed is:

1. A system for automatically activating a vibrating pillow strip in response to an alarm setting, said system comprising:
 - a database configured to store a history of biological signals associated with a user;
 - said vibrating pillow strip coupled to a pillow associated with said user, said vibrating pillow strip comprising at least one of said vibrating pillow strip attached to a surface of the pillow or said vibrating pillow strip disposed inside of the pillow, said vibrating pillow strip configured to receive a control signal and to vibrate based on said control signal;
 - a computer processor communicatively coupled to said vibrating pillow strip, and said database, said computer processor configured to:
 - receive a biological signal associated with said user, said biological signal comprising a heart rate associated with said user, a respiration rate associated with said user, a motion associated with said user, or a temperature associated with said user;
 - identify said user based on at least one of: said heart rate associated with said user, said respiration rate associated with said user, said motion associated with said user, or said temperature associated with said user;
 - based on said user identification, obtain a wake-up time associated with said user;
 - based on said history of biological signals and said biological signal, identify a sleep phase associated with said user, said sleep phase comprising a wakefulness phase, a light sleep phase, a deep sleep phase, or a rapid eye movement sleep phase; and
 - when said sleep phase comprises said light sleep phase and a current time is at most one hour before said wake-up time, send said control signal to said vibrating pillow strip, said control signal comprising an instruction to vibrate.
2. The system of claim 1, wherein said history of biological signals comprises a normal heart rate range associated with each sleep phase, a normal respiration rate range associated with each sleep phase, a normal motion range associated with each sleep phase, and a normal temperature range associated with each sleep phase.
3. A vibrating alarm system comprising:
 - a vibrating pillow strip coupled to a pillow associated with a user, said vibrating pillow strip comprising at least one of said vibrating pillow strip attached to a surface of the pillow or said vibrating pillow strip disposed inside of the pillow, said vibrating pillow strip configured to receive a control signal and to vibrate based on said control signal, said vibrating pillow strip comprising:
 - a plurality of vibrating mini motors, wherein each vibrating mini motor is configured to tend to be

unnoticeable when said user rests user's head on said vibrating pillow strip, and further wherein said plurality of vibrating mini motors is configured to tend to wake up the user;

- a computer processor communicatively coupled to said vibrating pillow strip, said computer processor configured to:
 - obtain a wake-up time associated with said user; and
 - at said wake-up time associated with said user, send said control signal to said vibrating pillow strip.
 4. The vibrating alarm system of claim 3, wherein said vibrating mini motor in said plurality of vibrating mini motors is configured to be at most 100 millimeters² in area, and at most 3 mm in thickness.
 5. The vibrating alarm system of claim 3, wherein said vibrating mini motor in said plurality of vibrating mini motors configured to be at least 1 mm away from a neighboring vibrating mini motor.
 6. The vibrating alarm system of claim 3, wherein said vibrating mini motor in said plurality of vibrating mini motors is configured to vibrate at least at 11,000 rotations per minute at 5 volts.
 7. The vibrating alarm system of claim 3, wherein said vibrating pillow strip is coupled to said computer processor via a wireless communication channel.
 8. The vibrating alarm system of claim 3, wherein each vibrating mini motor in said plurality of vibrating mini motors is configured to vibrate synchronously.
 9. The vibrating alarm system of claim 3, said vibrating pillow strip comprising a plurality of zones corresponding to a plurality of users, wherein each zone in said plurality of zones is configured to vibrate independently.
 10. The vibrating alarm system of claim 9, wherein said control signal comprises an identification associated with said zone in said plurality of zones.
 11. The vibrating alarm system of claim 3, said computer processor configured to:
 - receive a biological signal associated with said user, said biological signal comprising a heart rate associated with said user, a respiration rate associated with said user, a motion associated with said user, or a temperature associated with said user;
 - identify said user based on at least one of: said heart rate associated with said user, said respiration rate associated with said user, said motion associated with said user, or said temperature associated with said user;
 - based on said user identification, obtain said wake-up time associated with said user;
 - based on said biological signal, detect when said user is in a light sleep phase; and
 - when said user is in said light sleep phase and a current time is at most one hour before said wake-up time, send said control signal to said vibrating pillow strip, said control signal comprising an instruction to vibrate.
 12. The vibrating alarm system of claim 11, wherein said computer processor is configured to detect when said user is in said light sleep phase by detecting: a slowdown in said heart rate, a drop in said temperature, and a regular respiration rate.
 13. The vibrating alarm system of claim 11, wherein said computer processor is configured to detect when said user is in said light sleep phase by detecting an end of a rapid eye movement sleep phase.
 14. The vibrating alarm system of claim 11, further comprising a database configured to store a history of biological signals associated with said user, wherein said history of biological signals comprises a normal heart rate

range associated with each sleep phase, a normal respiration rate range associated with each sleep phase, a normal motion range associated with each sleep phase, and a normal temperature range associated with each sleep phase.

15. The vibrating alarm system of claim 14, wherein said computer processor is further configured to:

based on said user identification, retrieve from said database, said history of biological signals associated with said user; and

based on said biological signal and said history of biological signals, determine said sleep phase associated with said user.

16. A method for automatically activating a vibrating pillow strip in response to a biological signal associated with a user, said method comprising:

receiving said biological signal associated with said user, said biological signal comprising a heart rate associated with said user, a respiration rate associated with said user, a motion associated with said user, or a temperature associated with said user;

retrieving a history of biological signals associated with said user from a database;

identifying said user based on at least one of: said heart rate associated with said user, said respiration rate associated with said user, said motion associated with said user, or said temperature associated with said user; based on said user identification, obtaining a wake-up time associated with said user;

based on said history of biological signals and said biological signal, identifying a sleep phase associated with said user, said sleep phase comprising a wakefulness phase, a light sleep phase, a deep sleep phase, or a rapid eye movement sleep phase; and

when said sleep phase comprises said light sleep phase and a current time is at most one hour before said wake-up time, sending a control signal to said vibrating pillow strip, said vibrating pillow strip coupled to a pillow associated with said user, said vibrating pillow strip comprising at least one of said vibrating pillow strip attached to a surface of the pillow or said vibrating pillow strip disposed inside of the pillow, said control signal comprising an instruction to vibrate.

17. The method of claim 16, comprising configuring said vibrating pillow strip to attach to the pillow, to receive said control signal and to vibrate based on said control signal, said vibrating pillow strip comprising a plurality of zones corresponding to a plurality of users, wherein each zone in said plurality of zones is configured to vibrate independently.

18. The method of claim 16, wherein said history of biological signals comprises a normal heart rate range associated with each sleep phase, a normal respiration rate range associated with each sleep phase, a normal motion range associated with each sleep phase, and a normal temperature range associated with each sleep phase.

19. A method for automatically activating a vibrating alarm system, said method comprising:

configuring a vibrating pillow strip to couple to a pillow associated with a user, said vibrating pillow strip comprising at least one of said vibrating pillow strip attached to a surface of the pillow or said vibrating pillow strip disposed inside of the pillow;

configuring said vibrating pillow strip to receive a control signal and to vibrate based on said control signal;

coupling a plurality of vibrating mini motors to said vibrating pillow strip, wherein each vibrating mini motor in said plurality of vibrating mini motors tends to

be unnoticeable when said user rests user's head on said vibrating pillow strip, and further wherein said plurality of vibrating mini motors tends to wake up said user;

communicatively coupling a computer processor to said vibrating pillow strip;

configuring said computer processor to:

obtain a wake-up time associated with said user; and at said wake-up time associated with said user, send said control signal to said vibrating pillow strip.

20. The method of claim 19, wherein said vibrating mini motor in said plurality of vibrating mini motors is configured to be at most 10 mm in diameter, and at most 2.7 mm in thickness.

21. The method of claim 19, wherein said vibrating mini motor in said plurality of vibrating mini motors is configured to vibrate at least at 11,000 rotations per minute at 5 volts.

22. The method of claim 19, wherein said vibrating mini motor in said plurality of vibrating mini motors is configured to vibrate synchronously.

23. The method of claim 19, wherein said vibrating pillow strip is coupled to said computer processor via a wireless personal area network.

24. The method of claim 19, said vibrating pillow strip comprising a plurality of zones corresponding to a plurality of users, wherein each zone in said plurality of zones is configured to vibrate independently.

25. The method of claim 24, wherein said control signal comprises an identification associated with said zone in said plurality of zones.

26. The method of claim 19, said computer processor configured to:

receive a biological signal associated with said user, said biological signal comprising a heart rate associated with said user, a respiration rate associated with said user, a motion associated with said user, or a temperature associated with said user;

identify said user based on at least one of: said heart rate associated with said user, said respiration rate associated with said user, said motion associated with said user, or said temperature associated with said user;

based on said user identification, obtain said wake-up time associated with said user;

based on said biological signal, detect when said user is in a light sleep phase; and

when said user is in said light sleep phase and a current time is at most one hour before said wake-up time, send said control signal to said vibrating pillow strip, said control signal comprising an instruction to vibrate.

27. The method of claim 26, wherein said computer processor is configured to detect when said user is in said light sleep phase by detecting: a slowdown in said heart rate, a drop in said temperature, and a regular respiration rate.

28. The method of claim 26, wherein said computer processor is configured to detect when said user is in said light sleep phase by detecting an end of a rapid eye movement sleep phase.

29. The method of claim 26, further comprising a database configured to store a history of biological signals associated with said user, wherein said history of biological signals comprises a normal heart rate range associated with each sleep phase, a normal respiration rate range associated with each sleep phase, a normal motion range associated with each sleep phase, and a normal temperature range associated with each sleep phase.

30. The method of claim 29, wherein said computer processor is further configured to:

based on said user identification, retrieve from said data-
base, said history of biological signals associated with
said user; and

based on said biological signal and said history of bio-
logical signals, determine said sleep phase associated 5
with said user.

* * * * *

专利名称(译)	振动枕条和操作方法		
公开(公告)号	US9586021	公开(公告)日	2017-03-07
申请号	US14/969932	申请日	2015-12-15
[标]申请(专利权)人(译)	八SLEEP		
申请(专利权)人(译)	EIGHT SLEEP , INC.		
当前申请(专利权)人(译)	EIGHT SLEEP公司		
[标]发明人	FRANCESCHETTI MATTEO BASSI MASSIMO ANDREASI		
发明人	FRANCESCHETTI, MATTEO BASSI, MASSIMO ANDREASI		
IPC分类号	A61M21/00 G08B6/00 A61B5/117 A61B5/11 A47C21/04 A47C31/12 A61B5/00 A61B5/0205 A61B5/024 A61B5/08 A61M16/16		
CPC分类号	A61M21/00 A47C21/044 A47C21/048 A47C31/123 A61B5/0022 A61B5/02055 A61B5/11 A61B5/117 A61B5/4812 A61B5/6892 A61B5/7455 G08B6/00 A61B5/024 A61B5/0816 A61B2505/07 A61B2560/0242 A61B2560/0475 A61B2562/0271 A61B2562/063 A61M16/161 A61M2021/0022 A61M2021/0066 A61M2021/0083 A61M2205/18 A61M2205/3303 A61M2205/3306 A61M2205/3368 A61M2205/3375 A61M2205/3584 A61M2205/3592 A61M2205/505 A61M2230/06 A61M2230/42 A61M2230/50 A61M2230/005		
优先权	62/024945 2014-07-15 US 62/159177 2015-05-08 US 62/161142 2015-05-13 US 62/008480 2014-06-05 US		
其他公开文献	US20160136383A1		
外部链接	Espacenet USPTO		

摘要(译)

介绍了用于收集人体生物信号的方法和系统，例如心率，呼吸率或温度；分析收集的人体生物信号；并根据分析控制振动枕带。

