



(19) **United States**

(12) **Patent Application Publication**
PARK et al.

(10) **Pub. No.: US 2020/0113527 A1**
(43) **Pub. Date: Apr. 16, 2020**

(54) **APPARATUS AND METHOD FOR ESTIMATING BLOOD PRESSURE, AND APPARATUS FOR SUPPORTING BLOOD PRESSURE ESTIMATION**

(71) Applicant: **SAMSUNG ELECTRONICS CO., LTD.**, Suwon-si (KR)

(72) Inventors: **Chang Soon PARK**, Chungju-si (KR);
Ui Kun Kwon, Hwaseong-si (KR);
Seung Keun Yoon, Seoul (KR); **Dae Geun Jang**, Yongin-si (KR)

(73) Assignee: **SAMSUNG ELECTRONICS CO., LTD.**, Suwon-si (KR)

(21) Appl. No.: **16/455,130**

(22) Filed: **Jun. 27, 2019**

(30) **Foreign Application Priority Data**

Oct. 10, 2018 (KR) 10-2018-0120641

Publication Classification

(51) **Int. Cl.**
A61B 5/00 (2006.01)
A61B 5/0205 (2006.01)
G16H 50/20 (2006.01)
G16H 40/63 (2006.01)
(52) **U.S. Cl.**
CPC *A61B 5/7278* (2013.01); *A61B 5/0205* (2013.01); *A61B 5/4872* (2013.01); *A61B 5/7475* (2013.01); *A61B 5/02116* (2013.01); *G16H 50/20* (2018.01); *G16H 40/63* (2018.01); *A61B 2560/0223* (2013.01); *A61B 5/7264* (2013.01)

(57) **ABSTRACT**

An apparatus for estimating a blood pressure, includes a sensor configured to measure a bio-signal, and a processor configured to acquire a feature value from the bio-signal, and detect a blood pressure change sign, based on the feature value. The processor is further configured to acquire a scale factor, based on the blood pressure change sign, and estimate the blood pressure, based on the feature value and the scale factor.

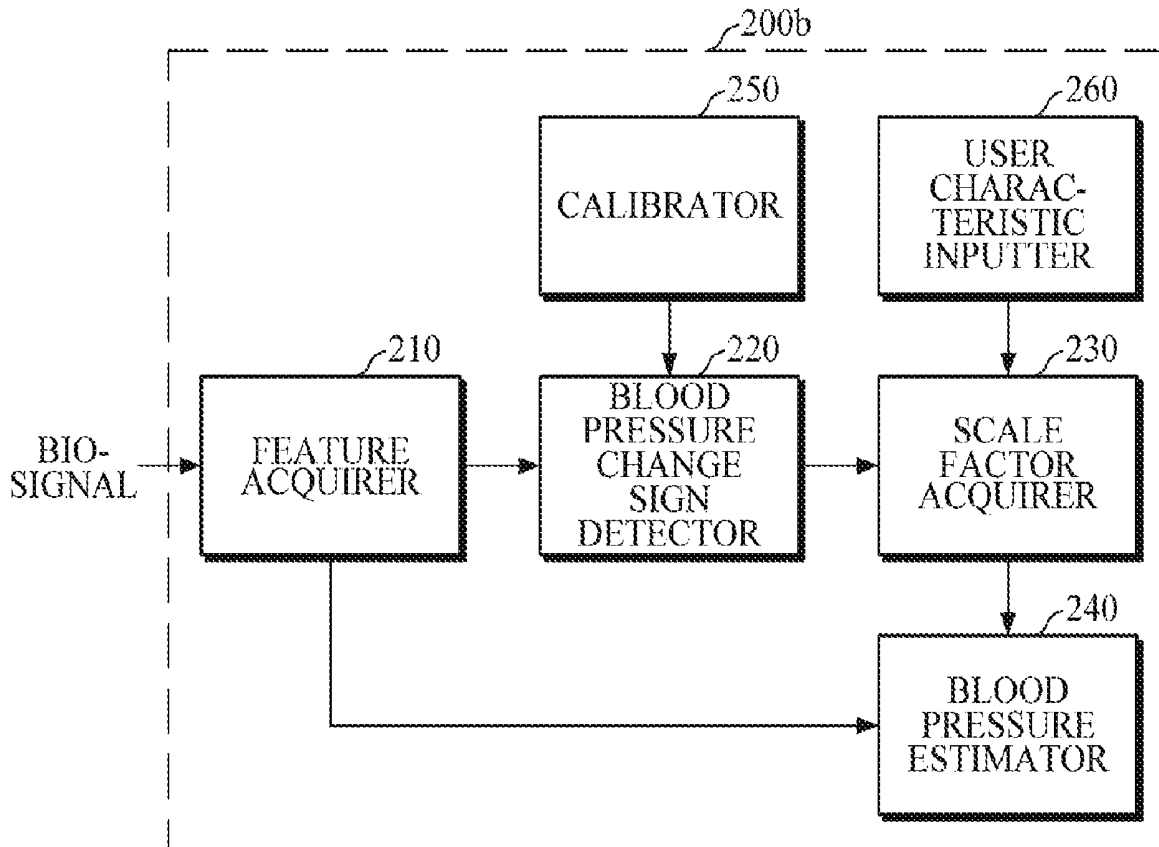


FIG. 1A

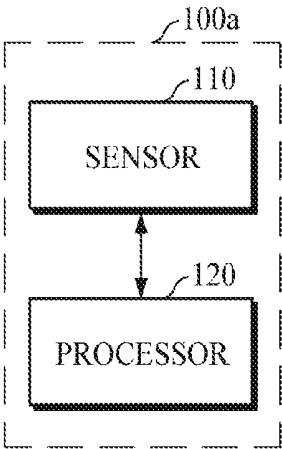


FIG. 1B

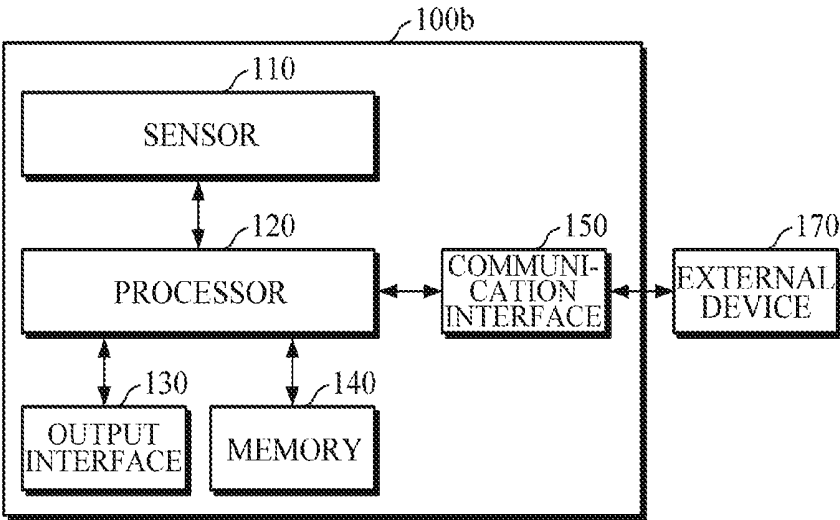


FIG. 2A

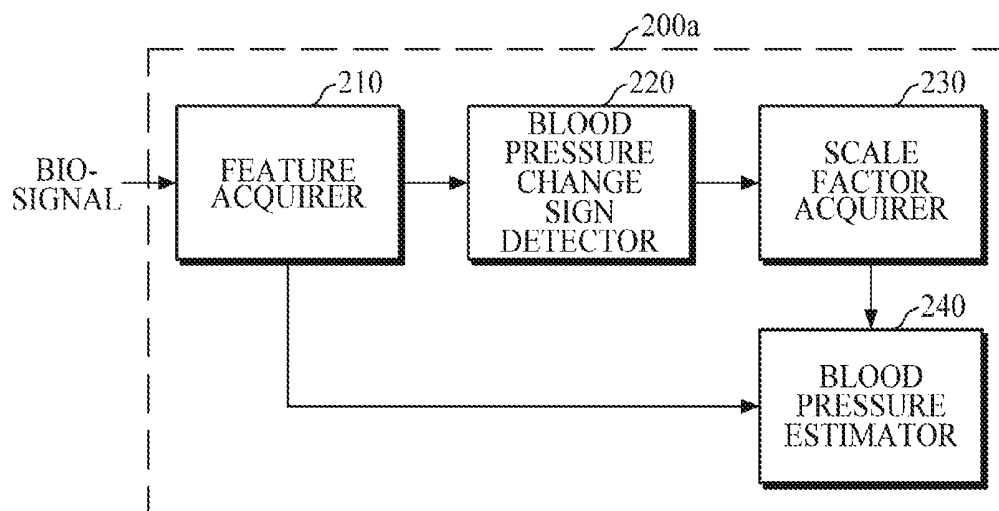


FIG. 2B

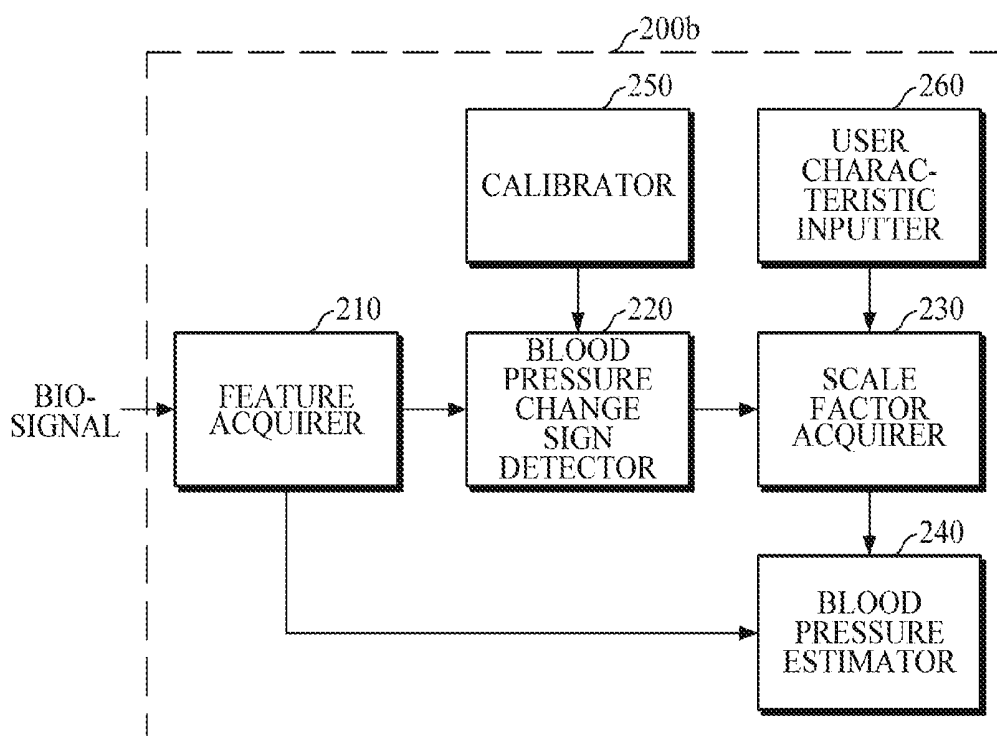


FIG. 3A

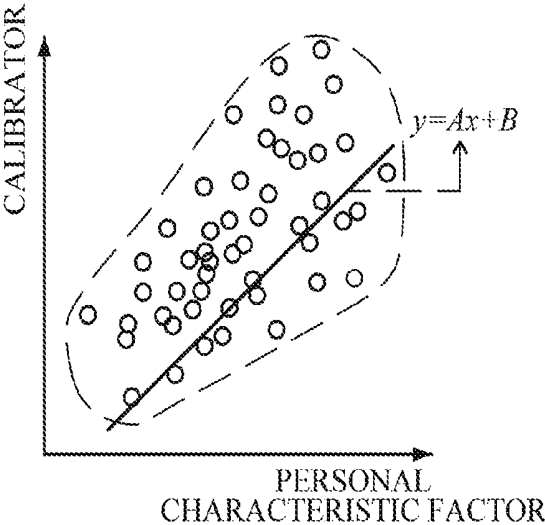


FIG. 3B

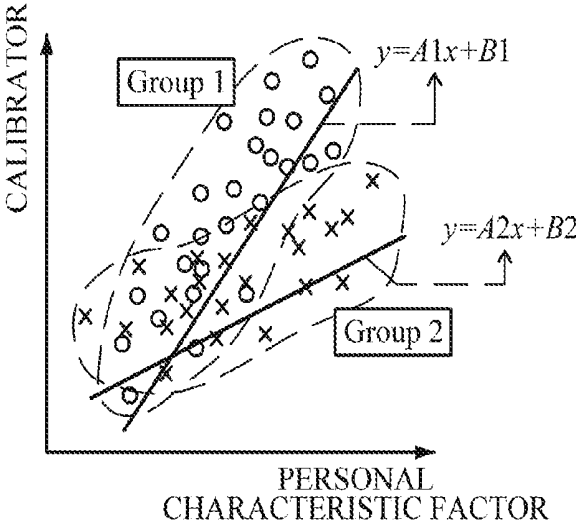


FIG. 3C

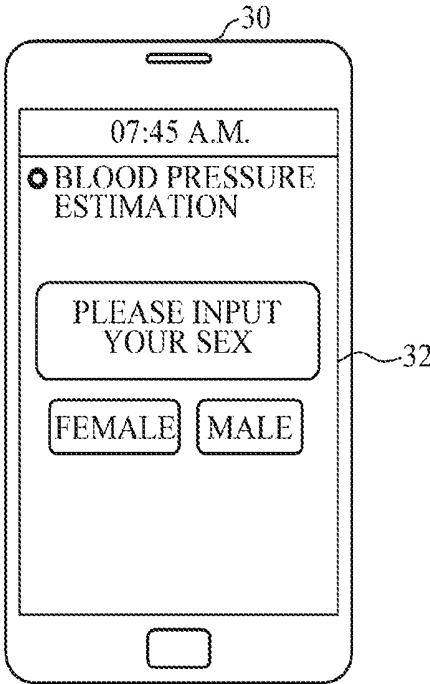


FIG. 3D

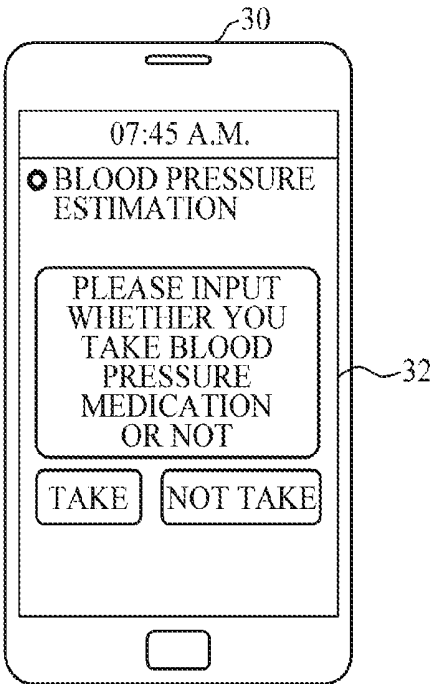


FIG. 3E

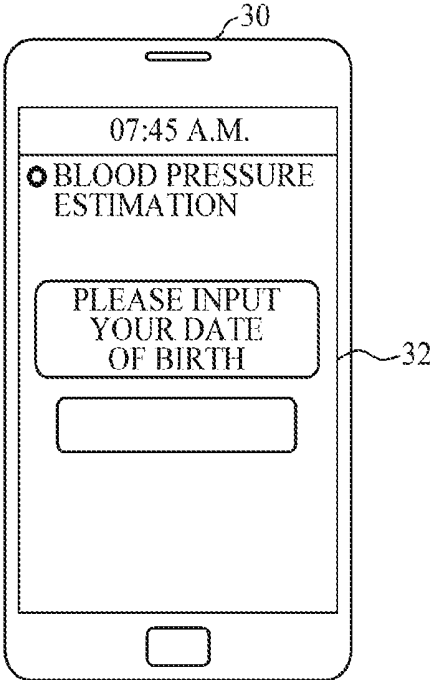


FIG. 3F

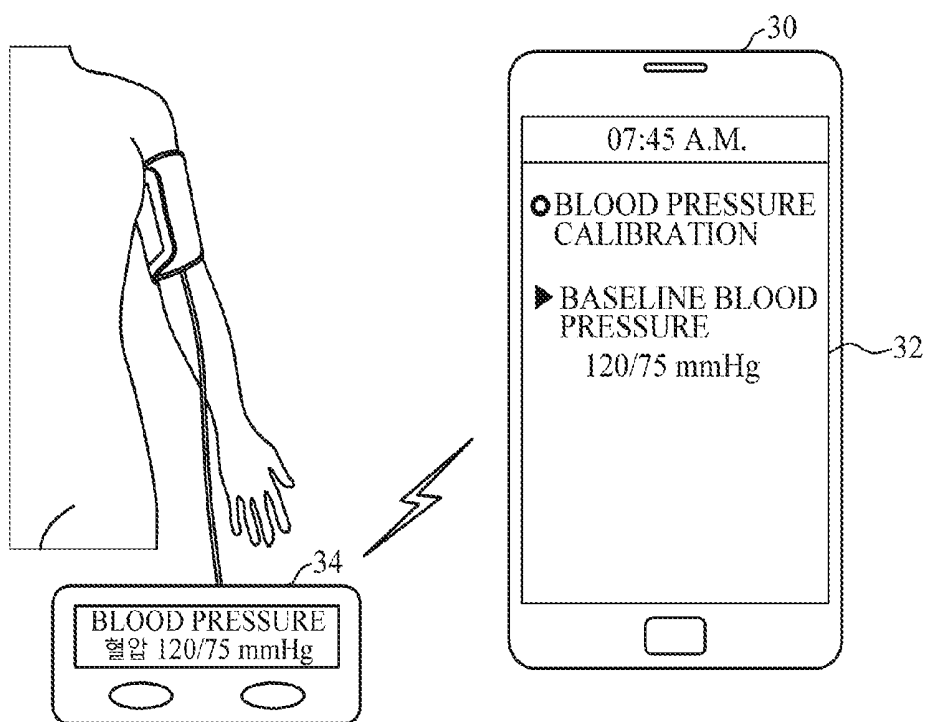


FIG. 3G

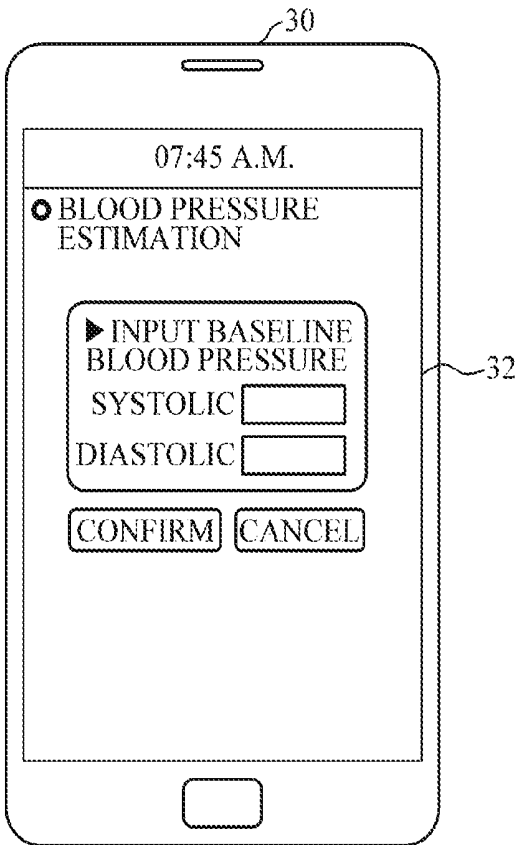


FIG. 4

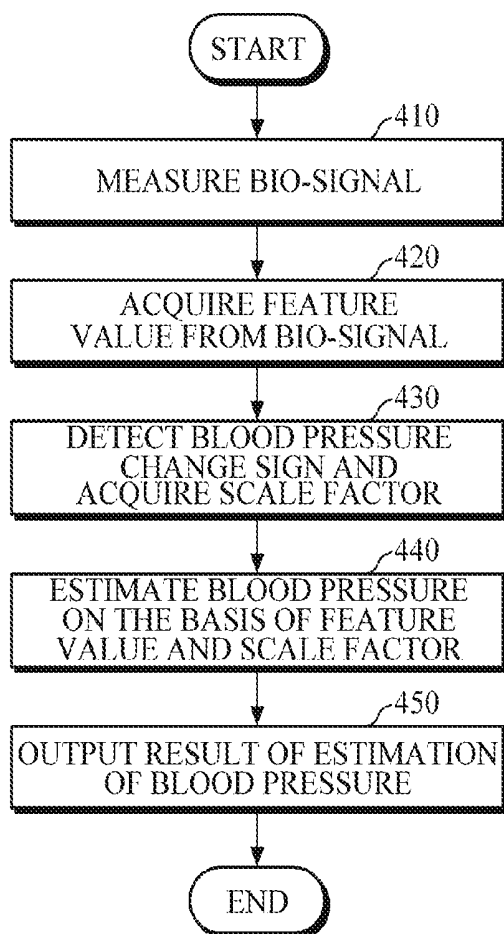


FIG. 5A

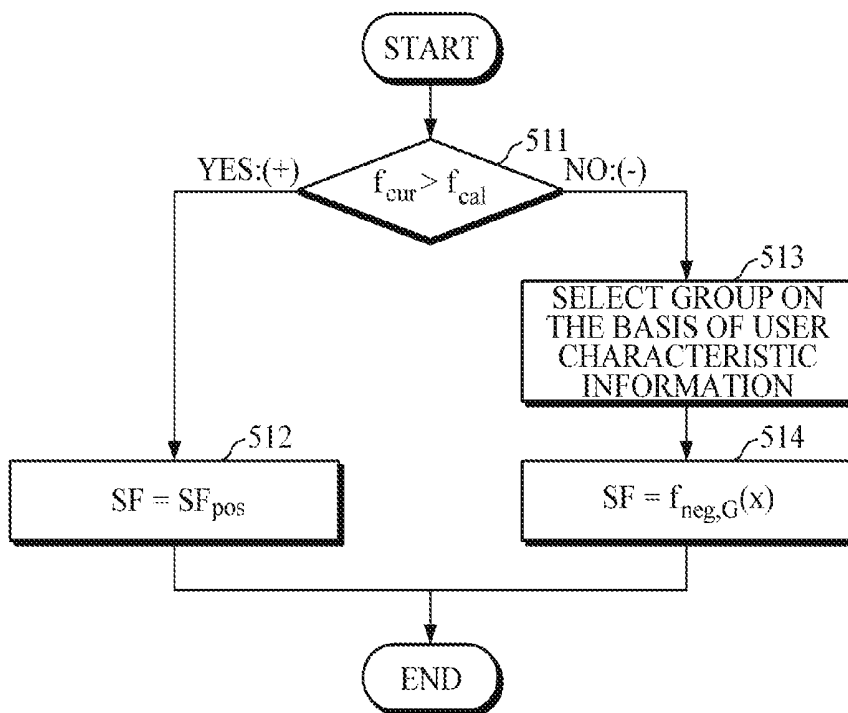


FIG. 5B

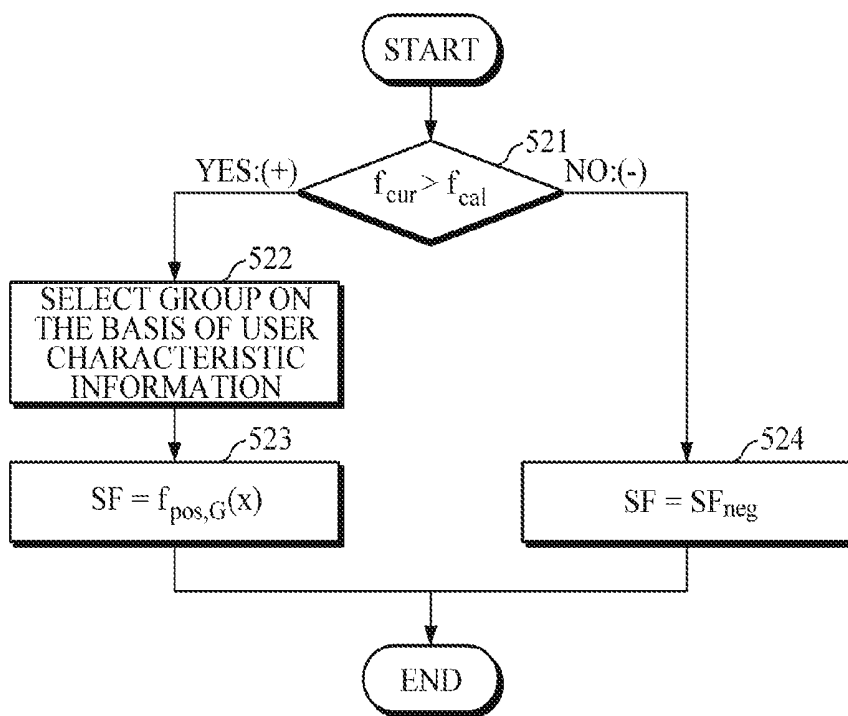


FIG. 5C

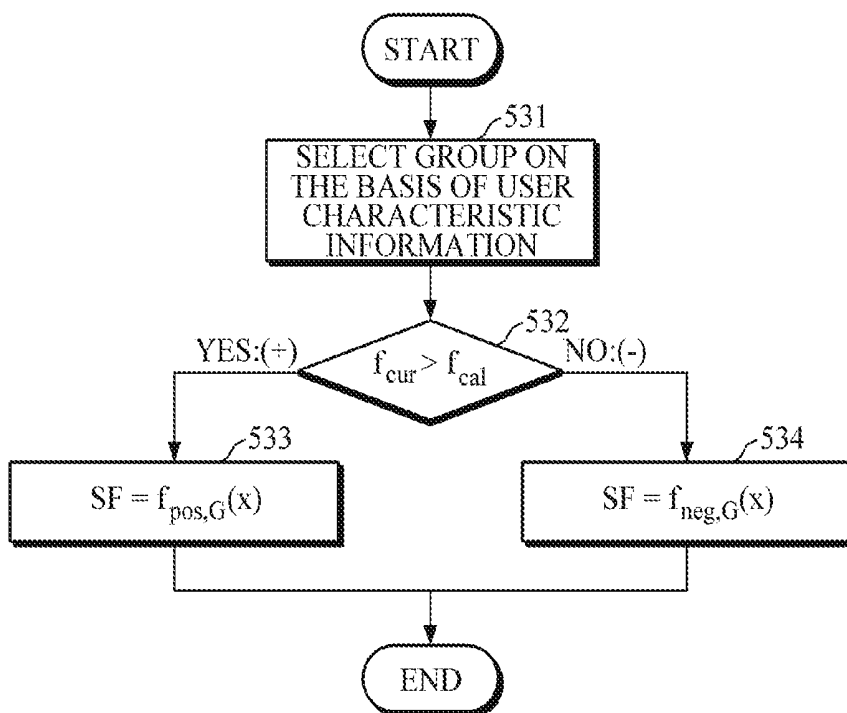


FIG. 5D

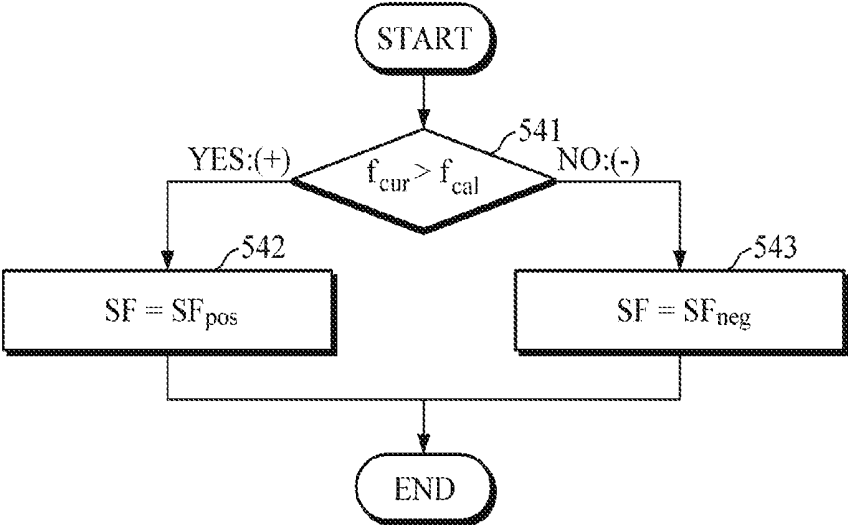


FIG. 6

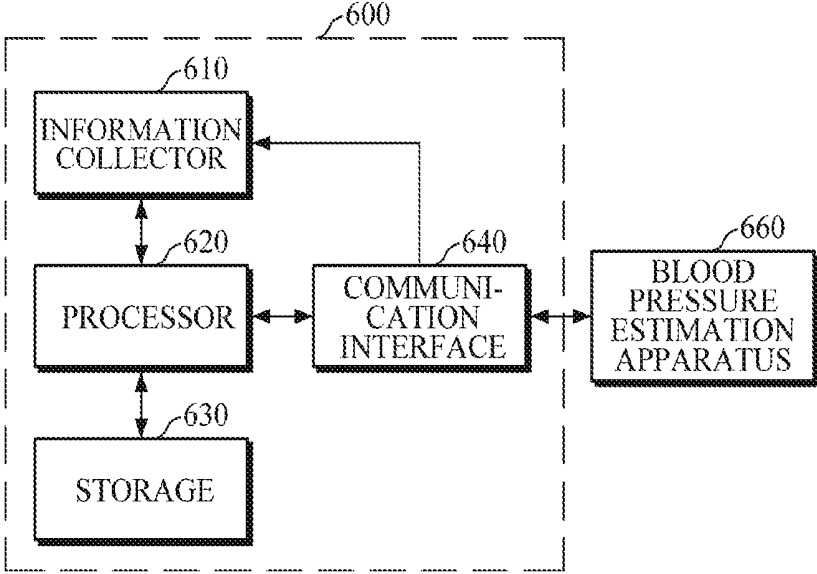


FIG. 7A

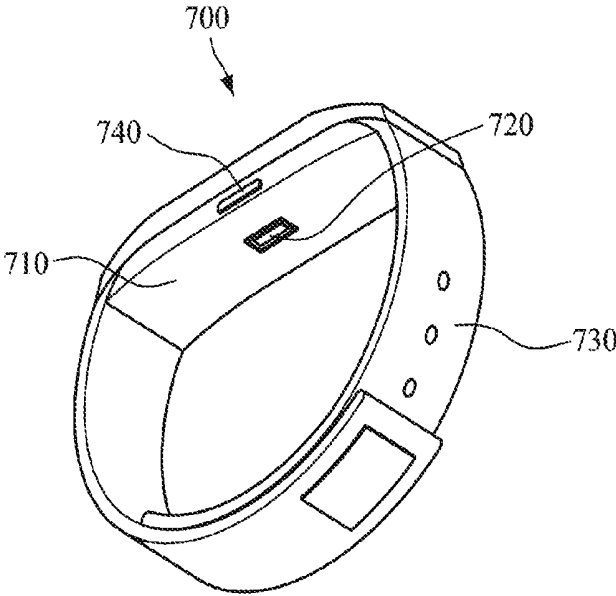


FIG. 7B

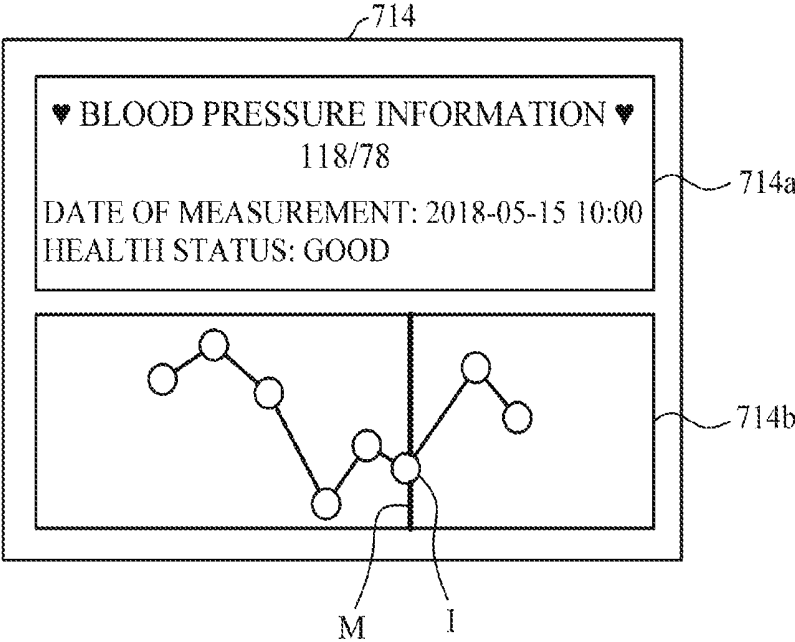
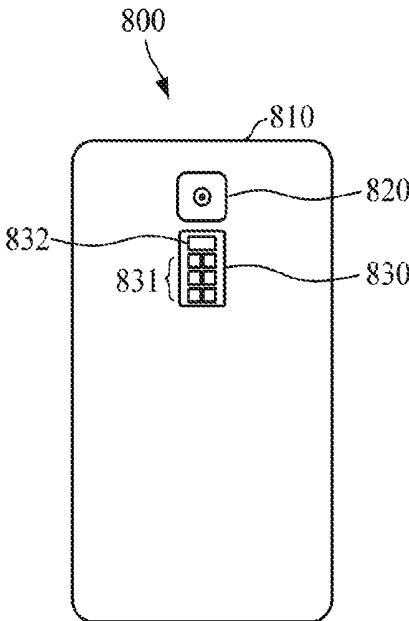


FIG. 8



**APPARATUS AND METHOD FOR
ESTIMATING BLOOD PRESSURE, AND
APPARATUS FOR SUPPORTING BLOOD
PRESSURE ESTIMATION**

CROSS-REFERENCE TO RELATED
APPLICATION

[0001] This application claims priority from Korean Patent Application No. 10-2018-0120641, filed on Oct. 10, 2018, in the Korean Intellectual Property Office, the disclosure of which is incorporated herein by reference in its entirety.

BACKGROUND

1. Field

[0002] Apparatuses and methods consistent with example embodiments relate to cuffless blood pressure estimation, and more particularly, an apparatus and a method for estimating blood pressure, and an apparatus for supporting blood pressure estimation.

2. Description of Related Art

[0003] Recently, active research has been conducted on Internet technology (IT)-medical convergence technology, which is a combination of IT technology and medical technology, due to the aging population structure, rapidly growing medical expenses, and the shortage of professional medical service personnel. The monitoring of the health status of the human body is not limited to the hospital, but is expanding to the field of mobile health care, which monitors the health status of users moving in everyday life, such as home and office. Archetypal examples of bio-signals indicating the individual's health status may include an electrocardiography (ECG) signal, a photoplethysmogram (PPG) signal, an electromyography (EMG) signal, and the like. Various bio-signal sensors are being developed to measure such signals in daily life. In the case of a PPG sensor, it is possible to estimate blood pressure of a human body by analyzing pulse waveforms that reflect a cardiovascular status.

[0004] According to research on PPG bio-signals, the entire PPG signal is a superposition of a propagation wave propagating from the heart to peripheral parts of a body and reflection waves returning from the peripheral parts of the body. It is known that by extracting various features associated with the propagation wave or the reflection waves, information from which blood pressure can be estimated can be obtained.

SUMMARY

[0005] In accordance with an aspect of an example embodiment, there is provided an apparatus for estimating a blood pressure, the apparatus including a sensor configured to measure a bio-signal, and a processor configured to acquire a feature value from the bio-signal, detect a blood pressure change sign, based on the feature value, acquire a scale factor, based on the blood pressure change sign, and estimate the blood pressure, based on the feature value and the scale factor.

[0006] The processor may be further configured to detect the blood pressure change sign, based on whether the acquired feature value is greater than a reference feature value.

[0007] The reference feature value may be acquired from a bio-signal that is measured at a time of calibration.

[0008] The processor may be further configured to detect that the blood pressure change sign is positive, based on the acquired feature value being greater than the reference feature value, and detect that the blood pressure change sign is negative, based on the acquired feature value being less than the reference feature value.

[0009] The processor may be further configured to acquire the scale factor, using a scale factor estimation model that is defined differently according to the blood pressure change sign.

[0010] The scale factor estimation model may include any one or any combination of a constant value, a first estimation equation reflecting characteristics of users, and a second estimation equation reflecting characteristics of each of groups of the users.

[0011] The processor may be further configured to acquire the scale factor as a first constant value that is defined for a positive sign, based on the blood pressure change sign being detected to be positive, and acquire the scale factor as a second constant value that is defined for a negative sign, based on the blood pressure change sign being detected to be negative.

[0012] The processor may be further configured to acquire the scale factor as the constant value that is defined for a positive sign, based on the blood pressure change sign being detected to be positive, and acquire the scale factor, using the second estimation equation that is defined for a negative sign, based on the blood pressure change sign being detected to be negative.

[0013] The processor may be further configured to, based on the blood pressure change sign being determined to be negative, receive characteristic information of one of the users, and acquire the scale factor, based on the characteristic information being applied to the second estimation equation for one of the groups to which the one of the users belongs.

[0014] Each of the groups may be classified based on any one or any combination of sex, age, whether medication is taken, occupation, and disease.

[0015] Each of the first estimation equation and the second estimation equation may have an input of a personal characteristic factor reflecting at least one of the characteristics of one of the users.

[0016] The personal characteristic factor may include any one or any combination of an age, a sex, a height, a weight, a body mass index, a pulse pressure, a baseline systolic blood pressure, a baseline diastolic blood pressure, a difference between the baseline systolic blood pressure and the baseline diastolic blood pressure, and a heart rate.

[0017] The processor may be further configured to acquire the feature value by combining one or more of a shape of a waveform of the bio-signal, a time and an amplitude at a maximum point of the bio-signal, a time and an amplitude at a minimum point of the bio-signal, a time and an amplitude at a position of a pulse waveform component constituting the bio-signal, and an area of the bio-signal.

[0018] The processor may be further configured to scale the feature value with the scale factor, and estimate the blood pressure, based on the scaled feature value.

[0019] The processor may be further configured to estimate the blood pressure, further based on a baseline blood pressure value at a time of calibration.

[0020] The sensor may include a light source configured to emit light to an object of interest, and a detector configured to detect light that is scattered from the object of interest.

[0021] The apparatus may further include an output interface configured to output a processing result of the processor.

[0022] The apparatus may further include a communication interface configured to receive a scale factor estimation model to be used to acquire the scale factor, from an external device.

[0023] The processor may be further configured to determine whether to update the scale factor estimation model, based on any one or any combination of a preset period, a change in characteristics of a user, and the estimated blood pressure, and control the communication interface to receive a new scale factor estimation model from the external device, based on the scale factor estimation model being determined to be updated.

[0024] In accordance with an aspect of an example embodiment, there is provided a method of estimating a blood pressure, the method including measuring a bio-signal, acquiring a feature value from the bio-signal, detecting a blood pressure change sign, based on the feature value, acquiring a scale factor, based on the blood pressure change sign, and estimating the blood pressure, based on the feature value and the scale factor.

[0025] The detecting of the blood pressure change sign may include detecting the blood pressure change sign, based on whether the acquired feature value is greater than a reference feature value.

[0026] The acquiring of the scale factor may include acquiring the scale factor, using a scale factor estimation model that is defined differently according to the blood pressure change sign.

[0027] The scale factor estimation model may include any one or any combination of a constant value, a first estimation equation reflecting characteristics of users, and a second estimation equation reflecting characteristics of each of groups of the users.

[0028] The acquiring of the scale factor may include acquiring the scale factor as the constant value that is defined for a positive sign, based on the blood pressure change sign being detected to be positive, and acquiring the scale factor, using the second estimation equation that is defined for a negative sign, based on the blood pressure change sign being detected to be negative.

[0029] The acquiring of the scale factor may include, based on the blood pressure change sign being determined to be negative, selecting one of the groups to which one of the users belongs, based on characteristic information of the one of the users.

[0030] The estimating of the blood pressure may include scaling the feature value with the scale factor, and estimating the blood pressure, based on the scaled feature value.

[0031] In accordance with an aspect of an example embodiment, there is provided an apparatus for supporting blood pressure estimation, the apparatus including an information collector configured to collect blood pressure-related

information of users, and a processor configured to generate, based on the blood pressure-related information, a scale factor estimation model for each of a positive blood pressure change sign and a negative blood pressure change sign, the scale factor estimation model being for scaling a bio-signal feature value to be used in estimating a blood pressure.

[0032] The scale factor estimation model may include any one or any combination of a constant value, a first estimation equation reflecting characteristics of the users, and a second estimation equation reflecting characteristics of each of groups of the users.

[0033] The processor may be further configured to classify the users, based on a blood pressure change sign of a bio-signal feature value for each of the users, acquire an optimal scale factor of each of the users, based on the bio-signal feature value and an actual blood pressure value of each of the users, the bio-signal feature value and the actual blood pressure value corresponding to the blood pressure change sign of each of the users, and generate the first estimation equation reflecting the characteristics of the users, based on a personal characteristic factor and the optimal scale factor of each of the users.

[0034] The processor may be configured to classify the users, based on a blood pressure change sign of a bio-signal feature value for a respective one of the users, sub-classify the classified users into the groups, based on any one or any combination of sex, age, whether medication is taken, occupation, and disease, and generate the second estimation equation reflecting the characteristics of each of the groups.

[0035] The apparatus may further include a communication interface configured to transmit the scale factor estimation model to an apparatus for estimating blood pressure, based on a request being received from the apparatus for estimating blood pressure or based on the scale factor estimation model being generated.

[0036] The apparatus may further include a storage configured to store either one or both of the blood pressure-related information and the scale factor estimation model.

[0037] In accordance with an aspect of an example embodiment, there is provided an apparatus for estimating a blood pressure, the apparatus including a sensor configured to measure a bio-signal of a user, and a processor configured to acquire a current feature value from the bio-signal, determine whether the current feature value is greater than a reference feature value, based on the current feature value being determined to be greater than the reference feature value, acquire a scale factor, using a first model, based on the current feature value being determined to be less than the reference feature value, acquire the scale factor, using a second model different from the first model, scale the current feature value with the scale factor, and estimate the blood pressure, based on the scaled current feature value.

[0038] The processor may be further configured to, based on the current feature value being determined to be greater than the reference feature value, select a group to which the user belongs, based on characteristic information of the user, and acquire the scale factor, using an estimation equation that is preset for the selected group and for when the current feature value being determined to be greater than the reference feature value, and based on the current feature value being determined to be less than the reference feature value, setting the scale factor to a value that is preset for when the current feature value is determined to be less than the reference feature value.

[0039] The processor may be further configured to select a group to which the user belongs, based on characteristic information of the user, based on the current feature value being determined to be greater than the reference feature value, acquire the scale factor, using a first estimation equation that is preset for the selected group and for when the current feature value being determined to be greater than the reference feature value, and based on the current feature value being determined to be less than the reference feature value, acquire the scale factor, using a second estimation equation that is preset for the selected group and for when the current feature value being determined to be less than the reference feature value.

BRIEF DESCRIPTION OF THE DRAWINGS

[0040] The above and/or other aspects will be more apparent from the following description of example embodiments taken in conjunction with the accompanying drawings, in which:

[0041] FIGS. 1A and 1B are block diagrams illustrating an apparatus for estimating blood pressure according to embodiments;

[0042] FIGS. 2A and 2B are block diagrams illustrating a processor in accordance with the embodiments of FIGS. 1A and 1B;

[0043] FIGS. 3A, 3B, 3C, 3D, 3E, 3F and 3G are diagrams illustrating blood pressure estimation according to embodiments;

[0044] FIG. 4 is a flowchart illustrating a method of estimating blood pressure according to embodiments;

[0045] FIGS. 5A, 5B, 5C and 5D are flowcharts illustrating acquisition of a scale factor according to embodiments;

[0046] FIG. 6 is a block diagram illustrating an apparatus for supporting blood pressure estimation according to embodiments;

[0047] FIGS. 7A and 7B are diagrams illustrating a wearable device; and

[0048] FIG. 8 is a diagram illustrating a smart device.

DETAILED DESCRIPTION

[0049] The following detailed description is provided to assist the reader in gaining a comprehensive understanding of the methods, apparatuses and/or systems described herein. Various changes, modifications, and equivalents of the systems, apparatuses and/or methods described herein will suggest themselves to those of ordinary skill in the art. In the following description, a detailed description of known functions and configurations incorporated herein will be omitted when it may obscure the subject matter with unnecessary detail. Throughout the drawings and the detailed description, unless otherwise described, the same drawing reference numerals will be understood to refer to the same elements, features, and structures. The relative size and depiction of these elements may be exaggerated for clarity, illustration, and convenience.

[0050] As used herein, the singular forms are intended to include the plural forms as well, unless the context clearly indicates otherwise. It will be further understood that the terms “comprises” and/or “comprising,” or “includes” and/or “including” when used in this description, specify the presence of stated features, numbers, steps, operations, elements, components or combinations thereof, but do not preclude the presence or addition of one or more other

features, numbers, steps, operations, elements, components or combinations thereof. In addition, terms such as “unit” and “module” denote units that process at least one function or operation, and they may be implemented by using hardware, software, or a combination of hardware and software.

[0051] Hereinafter, embodiments of an apparatus and method for estimating blood pressure will be described in detail with reference to the accompanying drawings.

[0052] FIGS. 1A and 1B are block diagrams illustrating an apparatus for estimating blood pressure according to embodiments. In the present embodiments, the apparatuses 100a and 100b for estimating blood pressure may be mounted in a terminal, such as a smartphone, a tablet personal computer (PC), a desktop PC, a notebook PC, or the like, or mounted in a wearable device in the form that can be worn on an object of interest. In this case, the wearable device may be implemented as a wristwatch type, a bracelet type, a wrist band type, a ring type, a glasses-type, or a hair band type wearable device, but is not limited thereto. In addition, the apparatuses 100a and 100b may be mounted in a medical device manufactured for the use in bio-information measurement and analysis in a medical institution.

[0053] Referring to FIGS. 1A and 1B, each of the apparatuses 100a and 100b for estimating blood pressure includes a sensor 110 and a processor 120.

[0054] The sensor 110 may measure a bio-signal from an object of interest. In this case, the bio-signal may be a pulse wave signal including a photoplethysmogram (PPG) signal. However, the bio-signal is not limited thereto and may include various types of bio-signals, such as an electrocardiography (ECG) signal, a PPG signal, an electromyography (EMG) signal, and the like, which can be modeled as a summation of a plurality of waveform components. In this case, the object of interest may be a human body area that is in contact with or adjacent to the sensor 110 and is easy to measure a pulse wave. For example, the object of interest may include a wrist skin area adjacent to a radial artery and a human body skin area where capillaries or venous blood vessels pass. However, the object of interest is not limited to the above examples and may be a peripheral part of a human body, such as a finger, a toe, or the like, which is a region having a high density of blood vessels in the human body.

[0055] The sensor 110 may include a light source and a detector. The light source may emit light to the object of interest, and the detector may detect light scattered or reflected from the object of interest. The light source may include a light emitting diode (LED), a laser diode, and a phosphor and may be configured as one or two or more arrays. The detector may include one or more pixels and each pixel may include, but not limited to, a photodiode, a photo transistor, and an image sensor, each of which detects light and converts the light into an electrical signal.

[0056] The processor 120 may be electrically connected to the sensor 110. The processor 120 may control the sensor 110 in response to a request for estimation of blood pressure from the processor 120 and receive a bio-signal from the sensor 110. The request for estimation of blood pressure may be input by a user or may occur when a predetermined cycle is reached. The processor 120 may perform preprocessing, such as filtering for removing noise, amplification of a bio-signal, or conversion of a bio-signal into a digital signal, when an electrical bio-signal is received from the sensor 110.

[0057] The processor 120 may estimate blood pressure based on the bio-signal received from the sensor 110. For example, the processor 120 may acquire a feature value by analyzing the bio-signal, scale the acquired feature value, and estimate blood pressure on the basis of the scaled feature value. The processor 120 may scale the feature value to a different extent on the basis of a blood pressure change sign and thereby estimate blood pressure by taking into account characteristics of each individual. In this case, the blood pressure change sign may indicate whether the blood pressure at the time of measurement is increased or decreased relative to the blood pressure at the time of calibration.

[0058] The feature value acquired from the bio-signal is a value that changes because the feature value reflects the characteristics of the bio-signal of each individual at the instance of measurement. On the other hand, a scale factor for scaling the feature value is given as the same constant value to most people in a limited environment in which it is difficult to sufficiently reflect the characteristics of each individual, and thus it is limited to estimate blood pressure in consideration of the characteristics of each individual. In the present embodiments, by varying the extent to which the feature value is scaled at the time of blood pressure estimation according to the situation, it is possible to estimate accurate blood pressure that reflects the characteristics of each individual.

[0059] Referring to FIG. 1B, the apparatus 100b for estimating blood pressure may further include an output interface 130, a storage 140, and a communication interface 150.

[0060] The output interface 130 may output processing results from the sensor 110 and the processor 120. For example, the output interface 130 may visually output an estimated blood pressure value through a display module. Alternatively, the output interface 130 may output the estimated blood pressure value through a speaker module or a haptic module in a nonvisual method, such as voice, vibration, tactile sensation, or the like. The output interface 130 may divide an area of the display into two or more regions, output a bio-signal graph used in estimating blood pressure, a blood pressure estimation result, and the like to a first region, and output the blood pressure estimation history in the form of a graph or the like to a second region. In this case, when the estimated blood pressure value is out of a normal range, warning information may also be output in various ways, such as being emphasized in red color, being displayed with the normal range, being output as a voice warning message, or intensity-controlled vibration, and the like.

[0061] The storage 140 may store the processing results of the sensor 110 and the processor 120 therein. In addition, the storage 140 may store a variety of reference information for blood pressure estimation. For example, the reference information may include user characteristic information, such as user's age, age, health status, and the like. The reference information may include a reference feature value at the time of calibration, a baseline blood pressure value, a blood pressure cycle, criteria of calibration determination, a scale factor estimation model, a blood pressure estimation model, a condition for acquisition of a scale factor, criteria of scale factor estimation model update, and the like. However, the reference information is not limited to the above examples.

[0062] In this case, the storage 140 may include a storage medium, such as a memory of flash memory type, hard disk type, multimedia card micro type, or card type (e.g., SD or

XD memory), random access memory (RAM), static random access memory (SRAM), read-only memory (ROM), electrically erasable programmable read-only memory (EEPROM), programmable read-only memory (PROM), magnetic memory, magnetic disk, optical disk, or the like, but is not limited thereto.

[0063] The communication interface 150 may communicate with an external device using a wired/wireless communication technology under the control of the processor 120 and transmit and receive a variety of data. For example, the communication interface 150 may transmit a blood pressure estimation result to the external device 170 and a variety of reference information for blood pressure estimation, for example, a baseline blood pressure value, a scale factor estimation model, and the like, from the external device 170. In this case, the external device may include an information processing device, such as a cuff-type blood pressure measurement device, a blood pressure estimation support device, a smartphone, a tablet PC, a desktop PC, and notebook PC.

[0064] In this case, the communication technology may include Bluetooth communication, Bluetooth low energy (BLE) communication, near field communication (NFC), a wireless local area network (WLAN) communication, Zig-Bee communication, infrared data association (IrDA) communication, Wi-Fi direct (WFD) communication, ultra-wideband (UWB) communication, Ant+ communication, WiFi communication, radio frequency identification (RFID) communication, 3rd generation (3G) communication, 4G communication, 5G communication, etc. However, the communication technology is not limited to the above examples.

[0065] The processor 120 may determine, on the basis of a predetermined interval, a change of a user's characteristic, and a blood pressure estimation result, whether the scale factor estimation model is to be updated. For example, the processor 120 may control the communication interface 150 by referring to the reference information of the storage 140 when a predetermined update interval is reached. In addition, the processor 120 may receive the user characteristic information from the user at the time of bio-signal measurement, and determine whether to update the scale factor estimation model by determining whether the received user characteristic has changed. For example, as described below, when there is a change in information of a group to which the user is belonging, for example, when an age group, information on whether blood pressure medication is taken, or the like is changed, the processor 120 may control the communication interface 150 to update the existing estimation equation to an estimation equation of a new group. In addition, when it is determined that the accuracy of a result of estimation of blood pressure is low, the processor 120 may control the communication interface 150 to update the scale factor estimation model.

[0066] FIGS. 2A and 2B are block diagrams illustrating a processor in accordance with the embodiments of FIGS. 1A and 1B. FIGS. 3A, 3B, 3C, 3D, 3E, 3F and 3G are diagrams illustrating blood pressure estimation according to embodiments.

[0067] A pulse wave signal is a superposition of a propagation wave propagating from the heart to peripheral parts of a body and reflection waves returning from the peripheral parts. A feature highly correlated with blood pressure may be extracted by appropriately combining time and amplitude information at a position of each pulse waveform component.

[0068] Referring to FIGS. 2A and 2B, each of a processor 200a and a processor 200b may include a feature acquirer 210, a blood pressure change sign detector 220, a scale factor acquirer 230, and a blood pressure estimator 240.

[0069] The feature acquirer 210 may acquire a feature value by analyzing a bio-signal received from the sensor 110. In this case, the feature value is a value that is associated with a blood pressure change sign, and may be, for example, a value characterized in that it is increased or decreased in the same direction as the increase or decrease of the blood pressure.

[0070] For example, the feature acquirer 210 may extract, a shape of a waveform from the bio-signal, time and amplitude of a maximum point, time and amplitude at a minimum point, time and amplitude at a position of a pulse waveform component constituting the bio-signal, an area of at least one interval of the bio-signal, a heart rate, and the like, and acquire a feature value by appropriately combining the extracted pieces of information. In this case, the feature acquirer 210 may obtain a second-order derivative of the bio-signal to obtain a position of a pulse wave component constituting the bio-signal and determine a position of a minimum point of a second-order derivative signal as the position of a pulse wave component. Alternatively, the feature acquirer 210 may acquire a new feature value by appropriately combining two or more of the above-described feature values. In this case, the feature values may be combined in various ways, such as addition, subtraction, division, multiplication, log value, and a combination thereof, and is not particularly limited to any specific way.

[0071] The blood pressure change sign detector 220 may detect a blood pressure change sign on the basis of the acquired feature value. For example, the blood pressure change sign detector 220 may detect the blood pressure change sign on the basis of a direction of the acquired feature value's change relative to a reference feature value. That is, the blood pressure change sign detector 220 may determine the blood pressure change sign to be positive (+) when the acquired feature value is greater than the reference feature value, and may determine the blood pressure change sign to be negative (-) when the acquired feature value is smaller than the reference feature value. In this case, the reference feature value may be a feature value acquired from a bio-signal measured at the time of calibration.

[0072] The scale factor acquirer 230 may acquire a different scale factor according to the detected blood pressure change sign. For example, the scale factor acquirer 230 may acquire a scale factor suitable for the detected blood pressure change sign using a scale factor estimation model that is defined differently for each blood pressure change sign. In this case, the scale factor estimation model may be defined for each blood pressure change sign in advance. That is, the scale factor estimation model to be applied in the case of a positive (+) sign and the scale factor estimation model to be applied in the case of a negative (-) sign are defined differently from each other. The scale factor estimation model may include any one or any combination of a predefined constant value, a first estimation equation in which characteristics of each individual are reflected, and a second estimation equation in which characteristics of each group are reflected.

[0073] In one example, the scale factor acquirer 230 may acquire a fixed constant value predefined for the positive (+) sign as the scale factor when the detected blood pressure

change sign is positive (+). In addition, when the detected blood pressure change sign is negative (-), the scale factor acquirer 230 may acquire the scale factor using the second estimation equation predefined for the negative (-) sign. When the detected blood pressure change sign is negative (-), the scale factor acquirer 230 may determine a group to which the user belongs, and may acquire a scale factor by inputting a personal feature factor of the user to the second estimation equation that is defined for the corresponding group. In this case, the personal feature factor may include the user's age, sex, height, weight, body mass index, pulse pressure, baseline systolic blood pressure, baseline diastolic blood pressure, a difference between baseline systolic blood pressure and baseline diastolic blood pressure, and a heart rate, but is not limited thereto.

[0074] In another example, when the detected blood pressure change sign is positive (+), the scale factor acquirer 230 may acquire a fixed constant value predefined for the positive (+) sign as a scale factor, and when the detected blood pressure change sign is negative (-), may acquire a fixed constant value predefined for the negative (-) sign as a scale factor. In another example, when the detected blood pressure change sign is positive (+), the scale factor acquirer 230 may acquire a scale factor using the first estimation equation predefined for the positive (+) sign when the detected blood pressure change sign is positive (+), and may acquire a scale factor using the first estimation equation predefined for the negative (-) sign when the detected blood pressure change sign is negative (-). In another example, the scale factor acquirer 230 may acquire a scale factor using the second estimation equation predefined for the positive (+) sign when the detected blood pressure change sign is positive (+), and may acquire a scale factor using the second estimation equation predefined for the negative (-) sign when the detected blood pressure change sign is negative (-).

[0075] However, the application of the scale factor estimation models for acquiring the scale factor are not limited to the above examples, and may be modified variously according to the types of devices in which the present embodiments are employed, for example, whether the device is a smartphone or a smart watch, or according to characteristics of a user who uses the device.

[0076] In addition, the first estimation equation is a function formula obtained by reflecting characteristics of each individual. For example, referring to FIG. 3A, a scatter plot for the whole of a plurality of users may be plotted, displaying a personal characteristic factor of each user on an x-axis and an optimal scale factor of each user on a y-axis and then a linear function formula, $y=Ax+B$, which reflects characteristics of the entire users may be obtained through a linear regression equation. In this case, the optimal scale factor may be obtained by learning or on the basis of baseline blood pressure of each user, a feature value obtained from a bio-signal, and actual blood pressure measured at the time of bio-signal measurement, and the like. In this way, the first estimation equations for a positive (+) sign and a negative (-) sign may be obtained for the plurality of users.

[0077] In addition, the second estimation equation may be a predefined function formula by reflecting characteristics of each group. For example, referring to FIG. 3B, the plurality of users may be divided into two groups group 1 and group 2 and then an estimation equation for each group may be

obtained by applying the above-described method. That is, linear function formulas, such as $y=A_1x+B_1$ for group 1 and $y=A_2x+B_2$ for group 2, may be obtained. In this way, the second estimation equations for a positive sign (+) and a negative sign (-) for each group may be obtained. In FIG. 3B, two groups are illustrated but the embodiment is not limited thereto, such that groups of users may be divided on the basis of sex, age group, whether the users take medication, occupational group, disease, or a combination thereof.

[0078] When the scale factor in accordance with the detected blood pressure change sign is acquired, the blood pressure estimator 240 may scale a feature value using the acquired scale factor and estimate blood pressure using the scaled feature value. In this case, blood pressure may be estimated by further combining the scaled feature value with an offset value. Below is Equation 1 that is an example of a blood pressure estimation equation, but the embodiment is not limited thereto.

$$BP=SF \times f_{cur} + \text{Offset} \quad (1)$$

[0079] Here, BP denotes estimated blood pressure, SF denotes a scale factor obtained by the scale factor acquirer 230, and f_{cur} denotes a feature value acquired by the feature acquirer 210. In this equation, Offset may denote an actual baseline blood pressure value measured using a cuff blood pressure device or the like at the time of calibration, but the embodiment is not limited thereto.

[0080] Referring to FIG. 2B, the processor 200b may further include a calibrator 250 and a user characteristic inputter 260.

[0081] The calibrator 250 may perform calibration when a request for calibration is received from the user or when a preset condition for calibration is satisfied. In this case, when the preset condition for calibration is satisfied, the calibrator 250 may guide the user to perform calibration. For example, when a preset calibration interval is reached or when the total number of times that an estimated blood pressure value does not satisfy a preset normal range, the number of times that the normal range is not continuously satisfied, the number of times that the normal range is not satisfied for a predetermined period of time, or the like is greater than or equal to a predetermined threshold, it may be determined that calibration is to be performed.

[0082] When the user measures baseline blood pressure through an external blood pressure measurement device, the calibrator 250 may acquire baseline blood pressure from the external blood pressure measurement device or the user. In addition, the calibrator 250 may control the sensor 110 to measure a bio-signal for use in calibration.

[0083] In one example, referring to FIG. 3F, the calibrator 250 may control the communication interface 150 to communicate with an external blood pressure measurement device 34, and may receive a baseline blood pressure value when the external blood pressure measurement device 34 completes the measurement of baseline blood pressure. The user may measure a reference bio-signal by bringing the right finger into contact with the sensor 110 while measuring cuff blood pressure on the left arm. However, the measurements of the baseline blood pressure and the reference bio-signal are not necessarily performed simultaneously. When the baseline blood pressure value is received from the external blood pressure measurement device 34 through the communication interface 410, the calibrator 250 may output an interface to a display 32 of a device 30 in which the

present embodiments are implemented, and may display the baseline blood pressure value on the output interface.

[0084] In another example, referring to FIG. 3G, the baseline blood pressure value may be directly received from the user. The calibrator 250 may output an interface through the output interface 130 to allow the user to input the baseline blood pressure value to the display 32 of the device 30.

[0085] The calibrator 250 may acquire a reference feature value from the reference bio-signal and store the acquired reference feature value, the baseline blood pressure value, and the like in the storage 140 as reference information.

[0086] The user characteristic inputter 260 may receive user characteristic information from the user to determine a group to which the user belongs for applying the above-described second estimation equation or to acquire an input value for acquiring a scale factor. In this case, the user characteristic information may include the above-described personal characteristic factor and information about whether medication including blood pressure medication that affects blood pressure is taken, health status, and the like. Only the second estimation equation for the group to which the user belongs may be stored in advance in the storage 140 and then be used. In this case, a process for receiving the user characteristic information to determine the group to which the user belongs, which will be described below, may be omitted.

[0087] Referring to FIGS. 3C to 3E, in a case in which information on a group to which the user belongs is to be determined for application of a scale factor estimation model, the user characteristic inputter 260 may output an interface through the output interface 130 and receive the user characteristic information using the interface.

[0088] For example, as shown in FIG. 3C, in a case in which the group associated with the second estimation equation is classified based on sex, an interface including an object to be used to select sex may be output, together with text, such as "please input your sex," to the display 32 of the device 30. In addition, referring to FIG. 3D, in a case in which the group associated with the second estimation equation is classified on the basis of whether blood pressure medication is taken, an interface including an object to be used to select the use of medication may be output, together with text, such as "please input whether you take blood pressure medication or not," to the display 32 of the device 30. Similarly, referring to FIG. 3E, in a case in which the group associated with the second estimation equation is classified based on age group, an interface including an object to be used to input a user's date of birth may be output, together with text, such as "please input your date of birth," to the display 32 of the device 30.

[0089] FIG. 4 is a flowchart illustrating a method of estimating blood pressure according to embodiments. FIGS. 5A, 5B, 5C and 5D are flowcharts illustrating acquisition of a scale factor according to embodiments. The embodiments of FIGS. 4 to 5D may be embodiments of a method of estimating blood pressure that is performed by the apparatus 100a or 100b of FIG. 1A or 1B.

[0090] First, when the apparatus for estimating blood pressure receives a request for estimation of blood pressure, the apparatus may measure a bio-signal (410). The apparatus may provide an interface for interacting with a user and may receive the request for estimation of blood pressure from the user through the interface. Alternatively, the apparatus may

receive a request for estimation of blood pressure from an external device. In this case, the request for estimation of blood pressure received from the external device may include a request for providing a blood pressure estimation result. When the external device is equipped with a blood pressure estimation algorithm, the request for estimation of blood pressure may include a request for providing an acquired feature. The external device may include a smartphone carried by the user, a tablet PC, a notebook PC, a wearable device, and the like. In this case, the bio-signal may include a PPG signal, but is not limited thereto.

[0091] Then, a feature value may be acquired from the bio-signal by analyzing the bio-signal (420). In this case, the feature value may be a value obtained by one or a combination of two or more of times and amplitudes at a maximum point and a minimum point of the bio-signal, time and amplitude at a position of a constituent pulse waveform, an area of the bio-signal, and a heart rate. In this case, a method of combining two or more of features is not particularly limited to a specific one.

[0092] Then, a blood pressure change sign may be detected and a scale factor may be acquired, using the acquired feature value (430). The blood pressure change sign may be detected based on a direction of change of the acquired feature value in operation 420 relative to a feature value at a reference point in time. Here, when there is no change in blood pressure, the blood pressure change sign is 0, but in this case, blood pressure at the reference point in time does not change, and hence it is described that the blood pressure change sign is limited to including only positive (+) and negative (-) signs.

[0093] Various embodiments of operation 420 of detecting the blood pressure change sign and acquiring a scale factor will be described with reference to FIGS. 5A to 5D. However, the embodiments are not limited to the examples described below.

[0094] Referring to FIG. 5A, the blood pressure change sign may be determined by comparing the feature value f_{cur} acquired in operation 420 and a reference feature value f_{cal} at the time of calibration (511).

[0095] Then, when it is determined in operation 511 that the blood pressure change sign is a positive (+) sign, indicating that the feature value f_{cur} is greater than the reference feature value f_{cal} , a fixed constant value SF_{pos} preset for the positive (+) sign may be acquired as a scale factor SF for scaling the feature value f_{cur} (512). When it is determined in operation 511 that the blood pressure change sign is a negative (-) sign, indicating that the feature value f_{cur} is smaller than the reference feature value f_{cal} , a group to which the user belongs may be selected on the basis of the user characteristic information (513). In this case, in a case in which a group is preset for a user, operation 513 may be omitted. Then, a scale factor SF may be acquired by applying a negative sign estimation equation $f_{neg,G}(x)$ that is preset for the group to which the user belongs (514).

[0096] Referring to FIG. 5B, the blood pressure change sign may be determined by comparing the feature value f_{cur} acquired in operation 420 and the reference feature value f_{cal} at the time of calibration (521).

[0097] Then, when it is determined in operation 521 that the blood pressure change sign is a positive (+) sign, indicating that the feature value f_{cur} is greater than the reference feature value f_{cal} , a group to which the user belongs may be selected on the basis of the user character-

istic information (522). In this case, when a group is preset for a user, operation 522 may be omitted. Then, a scale factor SF may be acquired by applying a positive (+) sign estimation equation $f_{pos,G}(x)$ that is preset for the group to which the user belongs (523). When it is determined in operation 521 that the blood pressure change sign is a negative (-) sign, indicating that the feature value f_{cur} is smaller than the reference feature value f_{cal} , a fixed constant value SF_{neg} preset for the negative (-) sign may be acquired as a scale factor SF (524).

[0098] Referring to FIG. 5C, a group to which the user belongs may be first selected on the basis of the user characteristic information (531). In this case, when a group is preset for a user, operation 531 may be omitted. Then, a blood pressure change sign may be determined by comparing the feature value f_{cur} acquired in operation 420 and the reference feature value f_{cal} at the time of calibration (532).

[0099] Then, when it is determined in operation 532 that the blood pressure change sign is a positive (+) sign, indicating that the feature value f_{cur} is greater than the reference feature value f_{cal} , a scale factor SF may be acquired by applying a positive (+) sign estimation equation $f_{pos,G}(x)$ that is preset for the group to which the user belongs (533). When it is determined in operation 532 that the blood pressure change sign is a negative (-) sign, indicating that the feature value f_{cur} is smaller than the reference feature value f_{cal} , a scale factor SF may be acquired by applying a negative (-) sign estimation equation $f_{neg,G}(x)$ that is preset for the group to which the user belongs (534).

[0100] Referring to FIG. 5D, the blood pressure change sign may be determined by comparing the feature value f_{cur} acquired in operation 420 and the reference feature value f_{cal} at the time of calibration (541).

[0101] Then, when it is determined operation 541 that the blood pressure change sign is a positive (+) sign, indicating that the feature value f_{cur} is greater than the reference feature value f_{cal} , a fixed constant value SF_{pos} preset for the positive (+) sign may be acquired as a scale factor SF (542). When it is determined that the blood pressure change sign is a negative (-) sign, indicating that the feature value f_{cur} is smaller than the reference feature value f_{cal} , a fixed constant value SF_{neg} preset for the negative (-) sign may be acquired as a scale factor SF (543).

[0102] Referring back to FIG. 4, blood pressure may be estimated on the basis of the feature value acquired in operation 420 and the scale factor acquired in operation 430 (440). For example, the feature value may be scaled using the scale factor as shown in the above Equation 1, and then blood pressure may be estimated by combining the scaled feature value with an offset value.

[0103] Then, a result of the estimation of the blood pressure may be output (450). For example, the blood pressure estimation result may be output through a display, using various visual methods. Alternatively, the blood pressure estimation result may be provided to the user through a speaker and/or a haptic module using a nonvisual method, such as voice, tactile sensation, vibration, or the like. In addition, the user's health status may be determined on the basis of estimated bio-information and warning or actions to be taken may be informed to the user according to a determination result.

[0104] FIG. 6 is a block diagram illustrating an apparatus for supporting blood pressure estimation according to

embodiments. The apparatus 600 for supporting blood pressure estimation may be mounted in a terminal, such as a smartphone, a tablet PC, a desktop PC, a notebook PC, or the like, a server of a manufacturer or a vendor of the apparatus 600, or a medical device manufactured for use in measuring and analyzing bio-information in a medical institution. The apparatus 600 for supporting blood pressure estimation may be mounted in such devices and may perform various functions for supporting a blood pressure estimation apparatus 660, for example, generating and updating a scale factor estimation model and distributing the scale factor estimation model to the blood pressure estimation apparatus 660.

[0105] Referring to FIG. 6, the apparatus 600 for supporting blood pressure estimation may include an information collector 610, a processor 620, a storage 630, and a communication interface 640.

[0106] The information collector 610 may collect information related to blood pressure of a plurality of users. For example, the information collector 610 may be connected through the communication interface 640 to the blood pressure estimation apparatus 660 used by the plurality of users and collect blood pressure-related information from the blood pressure estimation apparatus 660. Alternatively, the information collector 610 may directly collect information from a plurality of users who participate in a test by using various blood pressure-related devices including a cuff-type blood pressure measurement device. In this case, the blood pressure-related information may include bio-signals measured from the plurality of users, the above-described personal characteristic factor, an actual blood pressure measurement value obtained using a cuff blood pressure device or the like, etc., but is not limited thereto. The information collector 610 may be implemented by a processor.

[0107] The processor 620 may generate a scale factor estimation model associated with each blood pressure change sign for scaling a bio-signal feature value to be used in estimating blood pressure on the basis of the blood pressure-related information collected from the plurality of users. In this case, the scale factor estimation model may include a constant value that is defined differently for each blood pressure change sign as described above, an estimation equation that reflects characteristics of each individual, and an estimation equation that reflects characteristics of each group.

[0108] In one example, the processor 620 may classify the plurality of users according to the blood pressure change sign, acquire an optimal scale factor for each user on the basis of an actual blood pressure value and a bio-signal feature value of each user corresponding to the blood pressure change sign, and determine, on the basis of the acquired optimal scale factors, an optimal fixed constant value for each blood pressure change sign that is applicable to all users.

[0109] In another example, the processor 620 may classify the plurality of users according to the blood pressure change sign and acquire an optimal scale factor for each user on the basis of an actual blood pressure value and a bio-signal feature value of each user corresponding to each blood pressure change sign. For example, a scale factor may be acquired by inputting an actual blood pressure value, a baseline blood pressure value, and a bio-signal feature value into the above Equation 1. As such, by using the scale factor

acquired for each user according to the blood pressure change sign and the personal characteristic factors of corresponding users, an estimation equation for each blood pressure change sign that reflects the characteristics of each individual may be obtained in the same manner as that described with reference to FIG. 3A.

[0110] In still another example, the processor 620 may classify the plurality of users according to the blood pressure change sign, and further sub-classify the classified users into groups according to sex, age group, whether the users take medication, occupational group, disease, or the like, and generate an estimation equation for each group, which reflects characteristics of the corresponding group. As described with reference to FIG. 3B, a scale factor estimation equation for each group may be acquired using the personal characteristic factors of users of each group and scale factors acquired for corresponding users.

[0111] The processor 620 may distribute the generated scale factor estimation model to the blood pressure estimation apparatus 660 through the communication interface 640. In a case in which there is a request from the blood pressure estimation apparatus 660 or in which it is determined that an update of a blood pressure estimation apparatus 600 is to be performed, the processor 620 may distribute the scale factor estimation model to the blood pressure estimation apparatus 660 when the generation of the scale factor estimation model is completed or when a preset period is reached.

[0112] The communication interface 640 may communicate with the blood pressure estimation apparatus 660 and receive blood pressure-related information and/or a request for the scale factor estimation model from the blood pressure estimation apparatus 660. In addition, the communication interface 640 may transmit the scale factor estimation model to the blood pressure estimation apparatus 660 under the control of the processor 620.

[0113] The storage 630 may store the blood pressure-related information collected from the blood pressure estimation apparatus 660 or collected through a test. In addition, when the scale factor estimation model is generated by the processor 620, the storage 630 may store the generated scale factor estimation model.

[0114] FIGS. 7A and 7B are diagrams illustrating a wearable device. The above-described embodiments of the apparatuses 100a and 100b for estimating blood pressure may be mounted in a smart watch worn on a wrist or a smart band-type wearable device. However, such devices are examples for convenience of description, and the embodiments may be applied to an information processing terminal, such as a smartphone, a tablet PC, a notebook PC, a desktop PC, or the like.

[0115] Referring to FIGS. 7A and 7B, the wearable device 700 may include a device main body 710 and a strap 730.

[0116] The main body 710 may be configured in various forms and may have modules mounted inside or on a surface thereof to perform a blood pressure estimation function and other various functions. A battery may be embedded inside of the main body 710 or the strap to supply power to various modules of the device 700.

[0117] The strap 730 may be connected to the main body 710. The strap 730 may be formed to be flexible to be bent in a shape to wrap around a wrist of a user. The strap 730 may be configured in a form that is detached from the user's wrist or be configured in the form of an undivided band. The

strap 730 may be filled with air or have an air bag to have elasticity according to a change in pressure applied to the wrist and may transmit the pressure change of the wrist to the main body 710.

[0118] A sensor 720 configured to measure a bio-signal may be mounted in the main body 710. The sensor 720 may be mounted on a rear surface of the main body 710 that is brought into contact with an upper part of the user's wrist, and may include a light source configured to emit light to the wrist skin and a detector configured to detect light scattered or reflected from an object of interest. The sensor 720 may further include a contact pressure sensor configured to measure a contact pressure exerted by the object of interest.

[0119] A processor may be mounted inside of the main body 710 and the processor may be electrically connected to each configuration mounted in the wearable device 700 to control each configuration. In addition, the processor may estimate blood pressure using the bio-signal measured by the sensor 720. The processor may acquire a feature value from the bio-signal, as described above, and detect a blood pressure change sign using the acquired feature value. In addition, the processor may acquire a scale factor by applying a scale factor estimation model preset for each blood pressure change sign and estimate blood pressure after scaling the feature value using the acquired scale factor.

[0120] In the case in which the contact pressure sensor is mounted, the processor may monitor a contact state of the object of interest on the basis of a contact pressure between the wrist and the sensor 720 and may inform the user of a contact position and/or a contact state through a display.

[0121] In addition, a storage configured to store processing results of the processor and a variety of information may be mounted inside the main body 710. In this case, the variety of information may include reference information for blood pressure estimation and various pieces of information related to functions of the wearable device 700.

[0122] Moreover, an operator 740 configured to receive a control instruction of the user and transmit the control instruction to the processor may be mounted in the main body 710. The operator 740 may include a power button for inputting an instruction for turning on/off the wearable device 700.

[0123] A display 714 may be mounted on a front surface of the main body 710 and may include a touch panel capable of receiving touch inputs. The display 714 may receive a user's touch input, transmit the touch input to the processor, and display processing results of the processor.

[0124] For example, the display 714 may display estimated blood pressure information. In this case, additional information, such as date of estimation of blood pressure or health status, may be displayed together with the blood pressure information. At this time, if the user requests detailed information by manipulating the operator 740 or through touch input to the display 714, the detailed information may be output in various ways.

[0125] Referring to FIG. 7B, the display 714 may output the detailed information in a first region 714a and output a blood pressure history graph in a second region 714b. In this case, the blood pressure history graph may include an object (e.g., a figure, such as a circle, a rectangle, or the like) indicating the time of blood pressure estimation. In addition, an identification mark M that indicates an object I currently selected by the user may be displayed on the blood pressure history graph. Although the identification mark I is illus-

trated as a vertical line, the embodiment is not limited thereto and the identification mark I may be displayed in various forms, such as a circle, a polygon, such as a rectangle, an arrow indicating a pertinent position, and the like. The user may request the display of the blood pressure history graph. When the blood pressure graph is displayed in the second region 714b, the user may touch an object I at a point in time or move the graph to the left or right to match the object I at the point in time to the identification mark M so that the detailed information can be output in the first region 714a. In this case, information, such as an estimated blood pressure value at the estimation time selected by the user, the measurement date, and the health status at the pertinent point in time may be output to the first region 714a, but the information is not limited thereto.

[0126] In addition, a communication interface configured to communicate with an external device, such as a portable terminal of the user, may be mounted in the main body 710. The communication interface may transmit a result of estimation of bio-information to the external device, for example, a smartphone of the user, and allow the result to be displayed to the user. However, the embodiment is not limited thereto and a variety of information may be transmitted and received.

[0127] FIG. 8 is a diagram illustrating a smart device to which the embodiments of the apparatus for estimating blood pressure are applied. In this case, the smart device may include a smartphone, a tablet PC, and the like.

[0128] Referring to FIG. 8, a sensor 830 may be mounted on one surface of a main body 810 of a smart device 800. The sensor 830 may include a pulse wave sensor including one or more light sources 831 and a detector 832. As shown in FIG. 8, the sensor 830 may be mounted on a rear surface of the main body 810, but is not limited thereto. The sensor 830 may be combined with a fingerprint sensor or a touch panel on a front surface of the main body 810.

[0129] In addition, a display may be mounted on the front surface of the main body 810. The display may visually output a result of estimation of bio-information or the like. The display may include a touch panel and receive and transmit a variety of information input through the touch panel to a processor.

[0130] An image sensor 820 may be mounted in the main body 810. When the user approaches a finger to the sensor 830 to measure a pulse wave signal, the image sensor 820 may capture a finger image and transmit it to the processor. In this case, the processor may identify a relative position of the finger relative to an actual position of the sensor 830 from the finger image and provide the relative position information of the finger to the user through the display, thereby guiding the user to more accurately measure the pulse wave signal.

[0131] When the bio-signal is measured by the sensor 830 as described above, the processor may estimate blood pressure in consideration of a blood pressure change sign relative to a reference point in time. Various modules for performing other functions may be mounted in the smart device 800 and detailed descriptions thereof will be omitted.

[0132] The current embodiments can be implemented as computer readable codes in a computer readable record medium. Codes and code segments constituting the computer program can be easily inferred by a skilled computer programmer in the art. The computer readable record medium includes all types of record media in which com-

puter readable data are stored. Examples of the computer readable record medium include a ROM, a RAM, a CD-ROM, a magnetic tape, a floppy disk, and an optical data storage. Further, the record medium may be implemented in the form of a carrier wave such as Internet transmission. In addition, the computer readable record medium may be distributed to computer systems over a network, in which computer readable codes may be stored and executed in a distributed manner.

[0133] A number of examples have been described above. Nevertheless, it will be understood that various modifications may be made. For example, suitable results may be achieved if the described techniques are performed in a different order and/or if components in a described system, architecture, device, or circuit are combined in a different manner and/or replaced or supplemented by other components or their equivalents. Accordingly, other implementations are within the scope of the following claims.

What is claimed is:

1. An apparatus for estimating a blood pressure, the apparatus comprising:

- a sensor configured to measure a bio-signal; and
- a processor configured to:
 - acquire a feature value from the bio-signal;
 - detect a blood pressure change sign, based on the feature value;
 - acquire a scale factor, based on the blood pressure change sign; and
 - estimate the blood pressure, based on the feature value and the scale factor.

2. The apparatus of claim 1, wherein the processor is further configured to detect the blood pressure change sign, based on whether the acquired feature value is greater than a reference feature value.

3. The apparatus of claim 2, wherein the reference feature value is acquired from a bio-signal that is measured at a time of calibration.

4. The apparatus of claim 2, wherein the processor is further configured to:

- detect that the blood pressure change sign is positive, based on the acquired feature value being greater than the reference feature value; and
- detect that the blood pressure change sign is negative, based on the acquired feature value being less than the reference feature value.

5. The apparatus of claim 1, wherein the processor is further configured to acquire the scale factor, using a scale factor estimation model that is defined differently according to the blood pressure change sign.

6. The apparatus of claim 5, wherein the scale factor estimation model comprises any one or any combination of a constant value, a first estimation equation reflecting characteristics of users, and a second estimation equation reflecting characteristics of each of groups of the users.

7. The apparatus of claim 6, wherein the processor is further configured to:

- acquire the scale factor as a first constant value that is defined for a positive sign, based on the blood pressure change sign being detected to be positive; and
- acquire the scale factor as a second constant value that is defined for a negative sign, based on the blood pressure change sign being detected to be negative.

8. The apparatus of claim 6, wherein the processor is further configured to

acquire the scale factor as the constant value that is defined for a positive sign, based on the blood pressure change sign being detected to be positive; and

acquire the scale factor, using the second estimation equation that is defined for a negative sign, based on the blood pressure change sign being detected to be negative.

9. The apparatus of claim 8, wherein the processor is further configured to, based on the blood pressure change sign being determined to be negative:

- receive characteristic information of one of the users; and
- acquire the scale factor, based on the characteristic information being applied to the second estimation equation for one of the groups to which the one of the users belongs.

10. The apparatus of claim 6, wherein each of the groups is classified based on any one or any combination of sex, age, whether medication is taken, occupation, and disease.

11. The apparatus of claim 6, wherein each of the first estimation equation and the second estimation equation has an input of a personal characteristic factor reflecting at least one of the characteristics of one of the users.

12. The apparatus of claim 11, wherein the personal characteristic factor comprises any one or any combination of an age, a sex, a height, a weight, a body mass index, a pulse pressure, a baseline systolic blood pressure, a baseline diastolic blood pressure, a difference between the baseline systolic blood pressure and the baseline diastolic blood pressure, and a heart rate.

13. The apparatus of claim 1, wherein the processor is further configured to acquire the feature value by combining one or more of a shape of a waveform of the bio-signal, a time and an amplitude at a maximum point of the bio-signal, a time and an amplitude at a minimum point of the bio-signal, a time and an amplitude at a position of a pulse waveform component constituting the bio-signal, and an area of the bio-signal.

14. The apparatus of claim 1, wherein the processor is further configured to:

- scale the feature value with the scale factor; and
- estimate the blood pressure, based on the scaled feature value.

15. The apparatus of claim 14, wherein the processor is further configured to estimate the blood pressure, further based on a baseline blood pressure value at a time of calibration.

16. The apparatus of claim 1, wherein the sensor comprises:

- a light source configured to emit light to an object of interest; and
- a detector configured to detect light that is scattered from the object of interest.

17. The apparatus of claim 1, further comprising an output interface configured to output a processing result of the processor.

18. The apparatus of claim 1, further comprising a communication interface configured to receive a scale factor estimation model to be used to acquire the scale factor, from an external device.

19. The apparatus of claim 18, wherein the processor is further configured to:

- determine whether to update the scale factor estimation model, based on any one or any combination of a preset

- period, a change in characteristics of a user, and the estimated blood pressure; and
control the communication interface to receive a new scale factor estimation model from the external device, based on the scale factor estimation model being determined to be updated.
- 20.** A method of estimating a blood pressure, the method comprising:
measuring a bio-signal;
acquiring a feature value from the bio-signal;
detecting a blood pressure change sign, based on the feature value;
acquiring a scale factor, based on the blood pressure change sign; and
estimating the blood pressure, based on the feature value and the scale factor.
- 21.** The method of claim **20**, wherein the detecting of the blood pressure change sign comprises detecting the blood pressure change sign, based on whether the acquired feature value is greater than a reference feature value.
- 22.** The method of claim **20**, wherein the acquiring of the scale factor comprises acquiring the scale factor, using a scale factor estimation model that is defined differently according to the blood pressure change sign.
- 23.** The method of claim **22**, wherein the scale factor estimation model comprises any one or any combination of a constant value, a first estimation equation reflecting characteristics of users, and a second estimation equation reflecting characteristics of each of groups of the users.
- 24.** The method of claim **23**, wherein the acquiring of the scale factor comprises:
acquiring the scale factor as the constant value that is defined for a positive sign, based on the blood pressure change sign being detected to be positive; and
acquiring the scale factor, using the second estimation equation that is defined for a negative sign, based on the blood pressure change sign being detected to be negative.
- 25.** The method of claim **24**, wherein the acquiring of the scale factor comprises, based on the blood pressure change sign being determined to be negative, selecting one of the groups to which one of the users belongs, based on characteristic information of the one of the users.
- 26.** The method of claim **20**, wherein the estimating of the blood pressure comprises:
scaling the feature value with the scale factor; and
estimating the blood pressure, based on the scaled feature value.
- 27.** An apparatus for supporting blood pressure estimation, the apparatus comprising:
an information collector configured to collect blood pressure-related information of users; and
a processor configured to generate, based on the blood pressure-related information, a scale factor estimation model for each of a positive blood pressure change sign and a negative blood pressure change sign, the scale factor estimation model being for scaling a bio-signal feature value to be used in estimating a blood pressure.
- 28.** The apparatus of claim **27**, wherein the scale factor estimation model comprises any one or any combination of a constant value, a first estimation equation reflecting characteristics of the users, and a second estimation equation reflecting characteristics of each of groups of the users.
- 29.** The apparatus of claim **28**, wherein the processor is further configured to:
classify the users, based on a blood pressure change sign of a bio-signal feature value for each of the users;
acquire an optimal scale factor of each of the users, based on the bio-signal feature value and an actual blood pressure value of each of the users, the bio-signal feature value and the actual blood pressure value corresponding to the blood pressure change sign of each of the users; and
generate the first estimation equation reflecting the characteristics of the users, based on a personal characteristic factor and the optimal scale factor of each of the users.
- 30.** The apparatus of claim **28**, wherein the processor is configured to:
classify the users, based on a blood pressure change sign of a bio-signal feature value for a respective one of the users;
sub-classify the classified users into the groups, based on any one or any combination of sex, age, whether medication is taken, occupation, and disease; and
generate the second estimation equation reflecting the characteristics of each of the groups.
- 31.** The apparatus of claim **27**, further comprising a communication interface configured to transmit the scale factor estimation model to an apparatus for estimating blood pressure, based on a request being received from the apparatus for estimating blood pressure or based on the scale factor estimation model being generated.
- 32.** The apparatus of claim **27**, further comprising a storage configured to store either one or both of the blood pressure-related information and the scale factor estimation model.
- 33.** An apparatus for estimating a blood pressure, the apparatus comprising:
a sensor configured to measure a bio-signal of a user; and
a processor configured to:
acquire a current feature value from the bio-signal;
determine whether the current feature value is greater than a reference feature value;
based on the current feature value being determined to be greater than the reference feature value, acquire a scale factor, using a first model;
based on the current feature value being determined to be less than the reference feature value, acquire the scale factor, using a second model different from the first model;
scale the current feature value with the scale factor; and
estimate the blood pressure, based on the scaled current feature value.
- 34.** The apparatus of claim **33**, wherein the processor is further configured to:
based on the current feature value being determined to be greater than the reference feature value:
select a group to which the user belongs, based on characteristic information of the user; and
acquire the scale factor, using an estimation equation that is preset for the selected group and for when the current feature value being determined to be greater than the reference feature value; and
based on the current feature value being determined to be less than the reference feature value, setting the scale

factor to a value that is preset for when the current feature value is determined to be less than the reference feature value.

35. The apparatus of claim **33**, wherein the processor is further configured to:

select a group to which the user belongs, based on characteristic information of the user;

based on the current feature value being determined to be greater than the reference feature value, acquire the scale factor, using a first estimation equation that is preset for the selected group and for when the current feature value being determined to be greater than the reference feature value; and

based on the current feature value being determined to be less than the reference feature value, acquire the scale factor, using a second estimation equation that is preset for the selected group and for when the current feature value being determined to be less than the reference feature value.

* * * * *

专利名称(译)	血压估计装置和方法，以及支持血压估计的装置		
公开(公告)号	US20200113527A1	公开(公告)日	2020-04-16
申请号	US16/455130	申请日	2019-06-27
[标]申请(专利权)人(译)	三星电子株式会社		
申请(专利权)人(译)	SAMSUNG ELECTRONICS CO., LTD.		
当前申请(专利权)人(译)	SAMSUNG ELECTRONICS CO., LTD.		
[标]发明人	PARK CHANG SOON KWON UI KUN YOON SEUNG KEUN JANG DAE GEUN		
发明人	PARK, CHANG SOON KWON, UI KUN YOON, SEUNG KEUN JANG, DAE GEUN		
IPC分类号	A61B5/00 A61B5/0205 G16H50/20 G16H40/63		
CPC分类号	G16H50/20 A61B5/02125 A61B5/02416 A61B2560/0223 A61B5/0205 A61B5/4872 A61B5/7278 A61B5/02116 G16H40/63 A61B5/7264 A61B5/024 A61B5/7475 A61B5/021 A61B5/02108 A61B5/0402 A61B5/0488 A61B5/6802 A61B5/7455 A61B5/746		
优先权	1020180120641 2018-10-10 KR		
外部链接	Espacenet USPTO		

摘要(译)

一种用于估计血压的设备，包括：传感器，被配置为测量生物信号；以及处理器，被配置为从生物信号获取特征值，并基于该特征值来检测血压变化信号。处理器还被配置为基于血压变化符号来获取比例因子，并且基于特征值和比例因子来估计血压。

