



US 20160296125A1

(19) **United States**(12) **Patent Application Publication**  
**Volpe et al.**(10) **Pub. No.: US 2016/0296125 A1**(43) **Pub. Date: Oct. 13, 2016**(54) **WEARABLE MEDICAL TREATMENT  
DEVICE WITH MOTION/POSITION  
DETECTION**(71) Applicant: **ZOLL MEDICAL CORPORATION,**  
Chelmsford, MA (US)(72) Inventors: **Shane S. Volpe**, Saltsburg, PA (US);  
**John D. Macho**, Farmington, PA (US);  
**Wade Braden**, Pittsburgh, PA (US);  
**Thomas E. Kaib**, Irwin, PA (US);  
**Marshal W. Linder**, New Kensington,  
PA (US)(21) Appl. No.: **15/187,952**(22) Filed: **Jun. 21, 2016****Related U.S. Application Data**(63) Continuation of application No. 14/180,775, filed on  
Feb. 14, 2014, now Pat. No. 9,398,859, which is a  
continuation of application No. 12/840,633, filed on  
Jul. 21, 2010, now Pat. No. 8,676,313, which is a  
continuation of application No. 12/002,469, filed on  
Dec. 17, 2007, now Pat. No. 7,974,689.(60) Provisional application No. 60/934,404, filed on Jun.  
13, 2007.**Publication Classification**(51) **Int. Cl.****A61B 5/0205** (2006.01)  
**A61B 5/11** (2006.01)  
**A61B 5/0452** (2006.01)  
**A61N 1/39** (2006.01)**A61B 5/00** (2006.01)**A61B 5/044** (2006.01)**A61N 1/04** (2006.01)**A61B 5/0408** (2006.01)**A61B 5/04** (2006.01)(52) **U.S. Cl.**CPC ..... **A61B 5/0205** (2013.01); **A61B 5/04085**  
(2013.01); **A61B 5/1118** (2013.01); **A61B**  
**5/1116** (2013.01); **A61B 5/0452** (2013.01);  
**A61B 5/04012** (2013.01); **A61B 5/0006**  
(2013.01); **A61B 5/6805** (2013.01); **A61B**  
**5/044** (2013.01); **A61B 5/1117** (2013.01);  
**A61B 5/1123** (2013.01); **A61B 5/4836**  
(2013.01); **A61N 1/046** (2013.01); **A61N**  
**1/3987** (2013.01)

(57)

**ABSTRACT**

A cardiac monitoring system includes an externally wear-able cardiac monitoring device; at least one cardiac sensing electrode operatively coupled to the device and configured to be disposed in proximity to a patient's skin to monitor cardiac activity of the patient; at least one accelerometer configured to generate signals indicative of patient body movement; and a microcontroller disposed in the device and configured to receive the signals indicative of patient body movement, receive one or more electrocardiogram (ECG) signals of the patient from the at least one cardiac sensing electrode, and analyze the one or more ECG signals received over a period of time to determine at least one cardiac arrhythmia condition of the patient; the device being configured to wirelessly transmit data related to the at least one cardiac arrhythmia condition and the signals indicative of patient body movement recorded over the period of time to a central server.

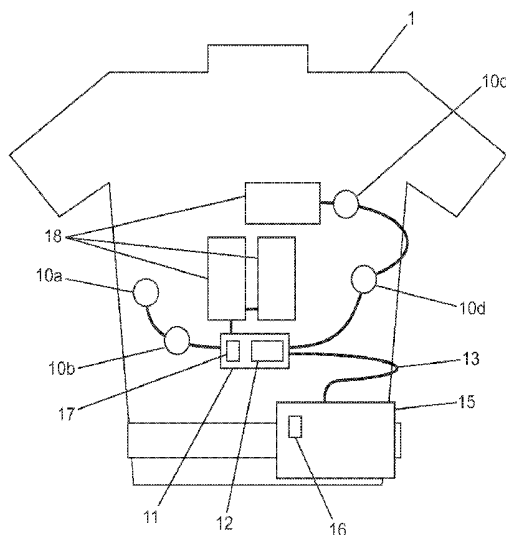
**Accelerometer Positioning**

Figure 1: Accelerometer Positioning

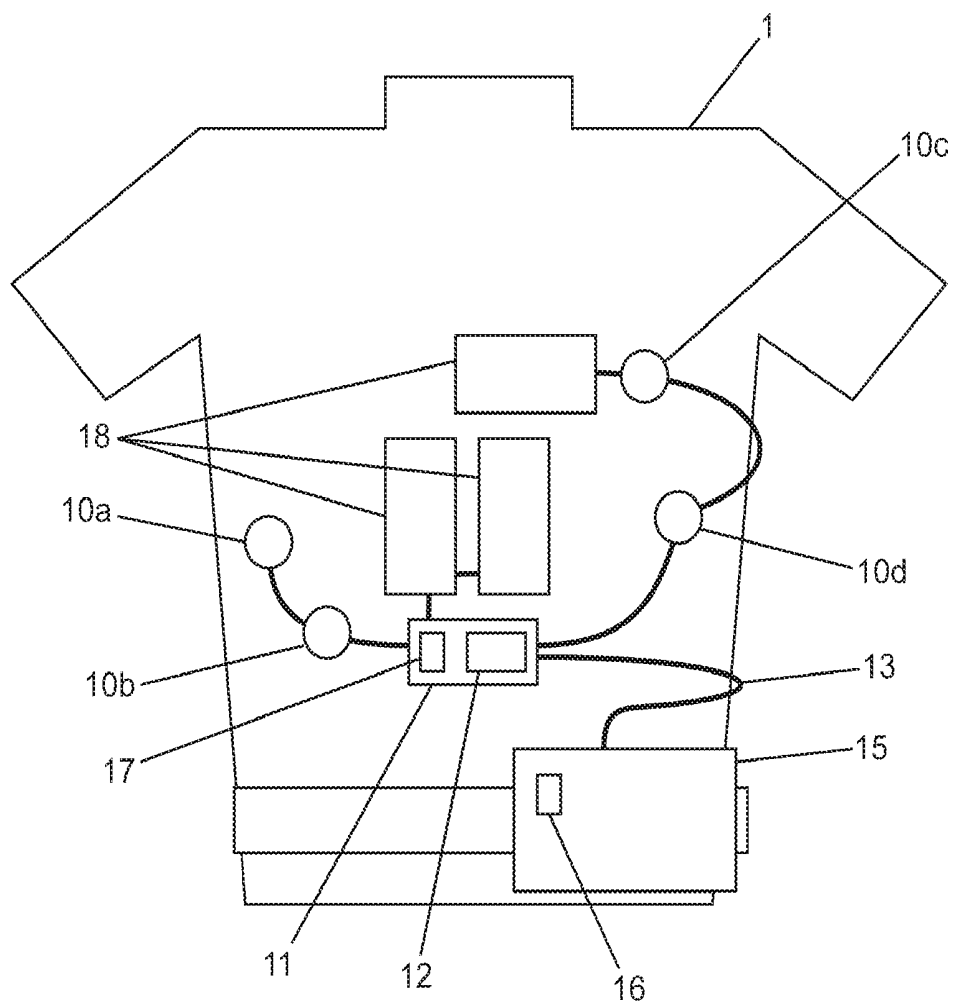


Figure 2: System diagram with accelerometers

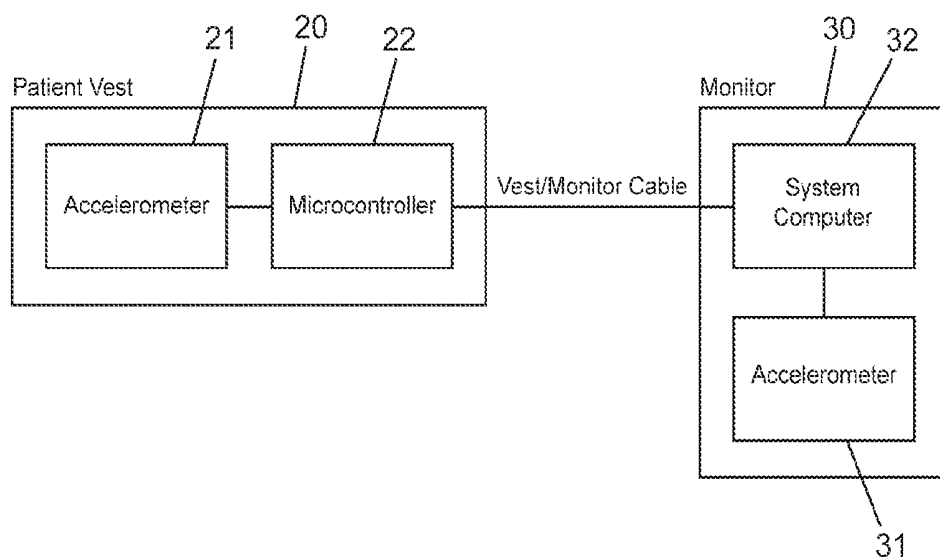


Figure 3: Monitor Accelerometer

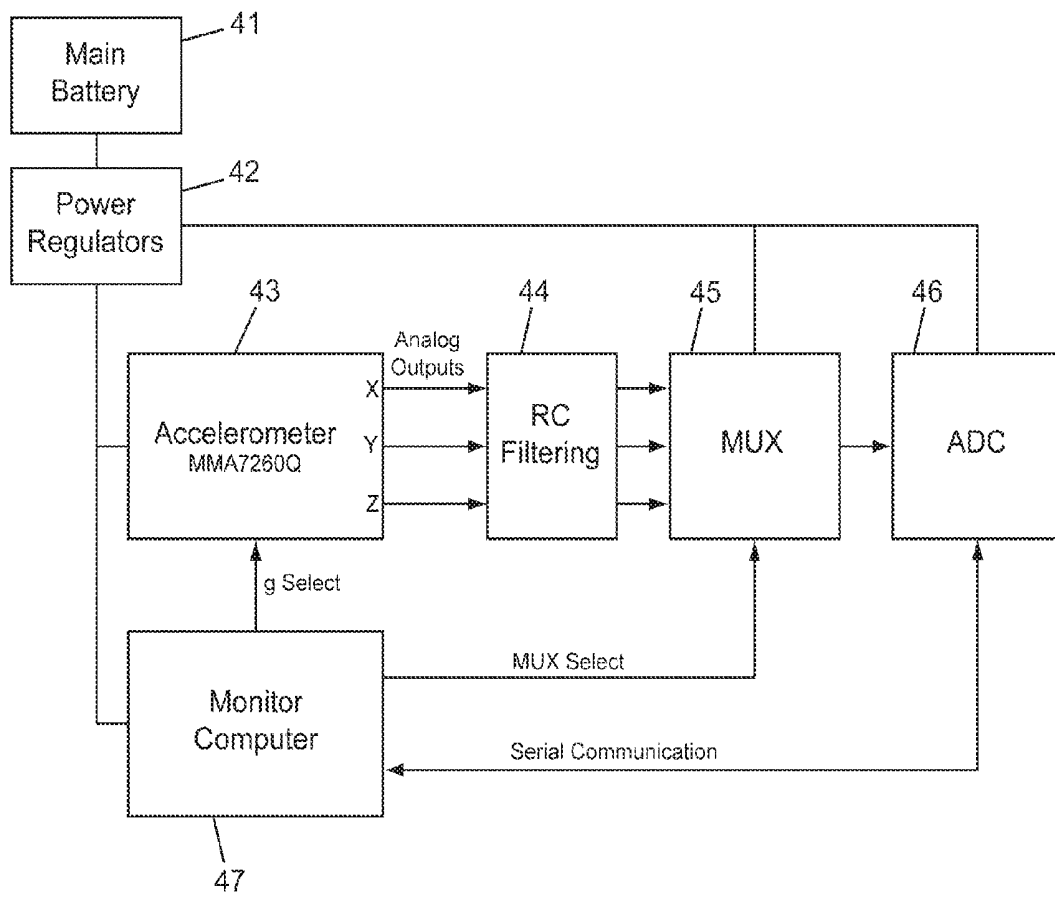


Figure 4: Belt Node Accelerometer

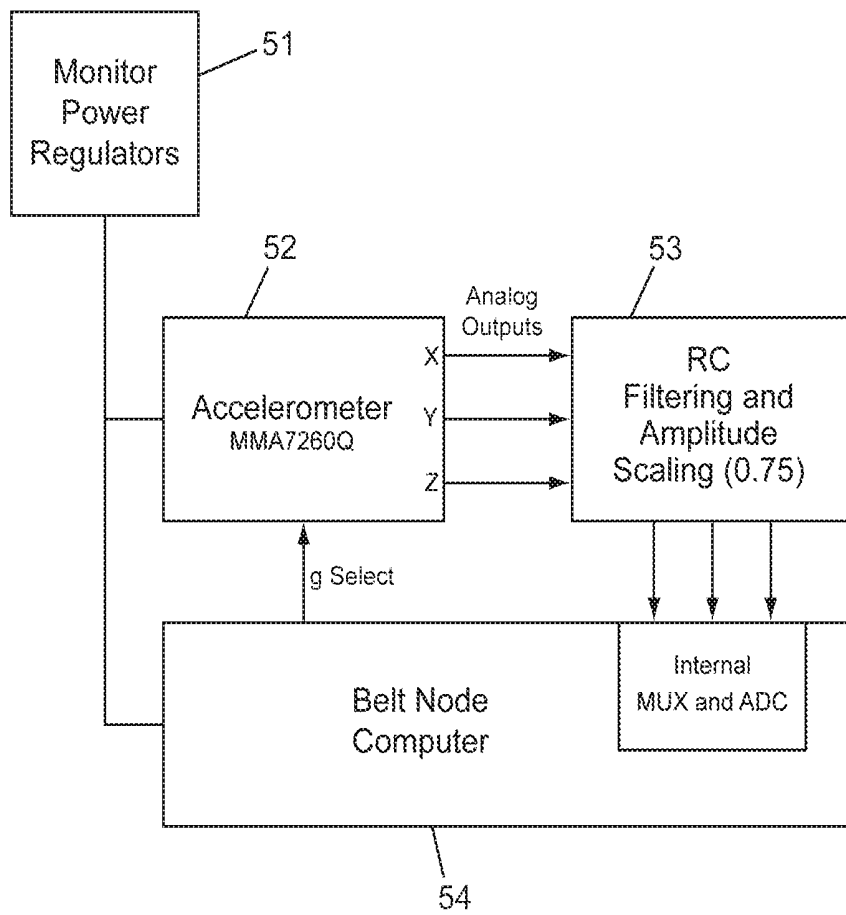
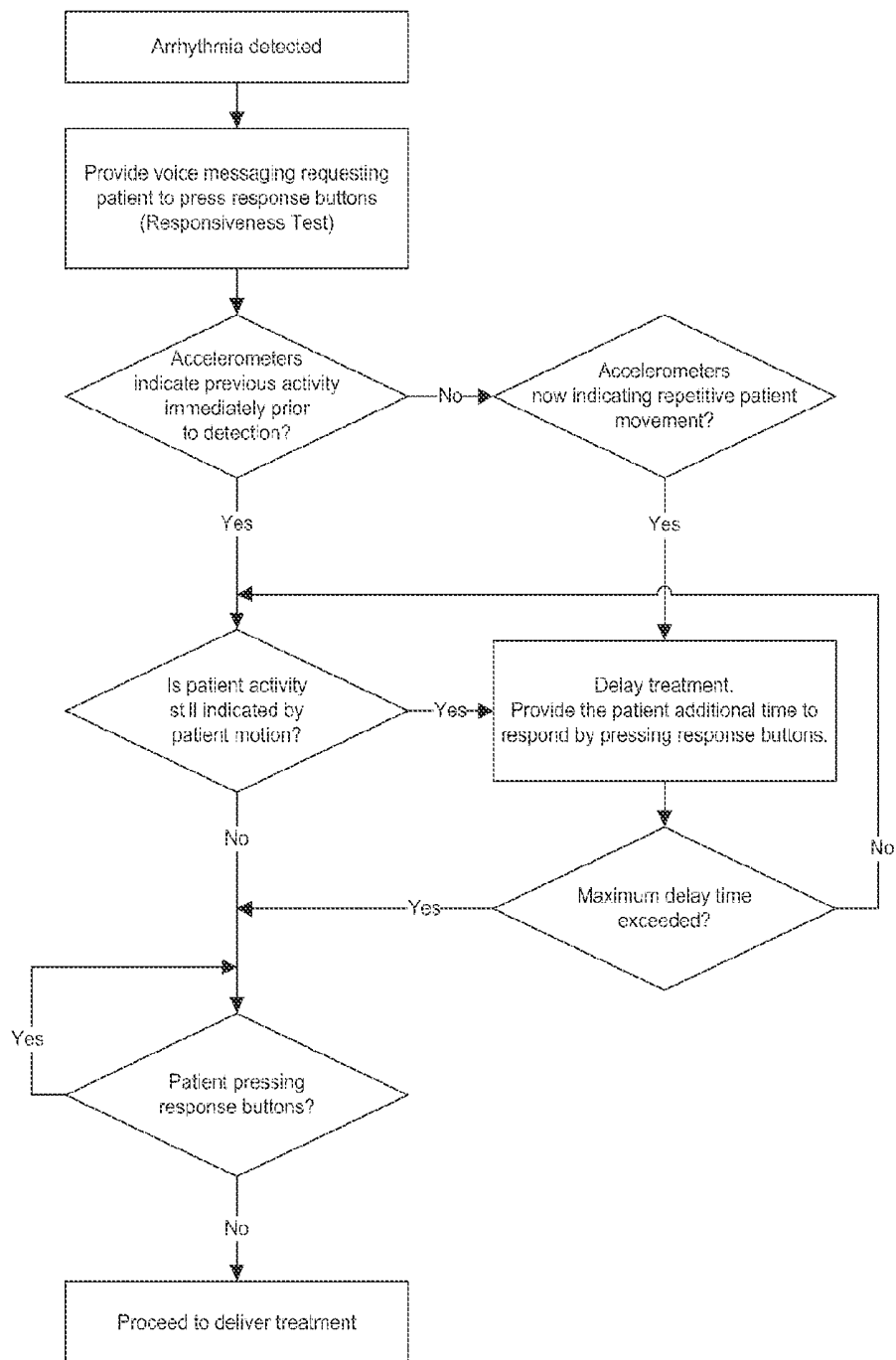


Figure 5: Arrhythmia Detection Algorithm Logic Diagram



## WEARABLE MEDICAL TREATMENT DEVICE WITH MOTION/POSITION DETECTION

### CROSS-REFERENCE TO RELATED APPLICATIONS

[0001] This Application is a Continuation of U.S. patent application Ser. No. 14/180,775, titled “Wearable Medical Treatment Device With Motion/Position Detection”, filed on Feb. 14, 2014, which is a Continuation of U.S. patent application Ser. No. 12/840,633 (now U.S. Pat. No. 8,676,313), titled “Wearable Medical Treatment Device With Motion/Position Detection”, filed on Jul. 21, 2010, which is a Continuation of U.S. patent application Ser. No. 12/002,469 (now U.S. Pat. No. 7,974,689), titled “Wearable Medical Treatment Device With Motion/Position Detection”, filed on Dec. 17, 2007, each of which is hereby incorporated herein by reference in its entirety. U.S. application Ser. No. 12/002,469 claims the benefit of U.S. Provisional Patent Application Ser. No. 60/934,404 titled “Wearable Medical Treatment Device With Motion/Position Detection”, filed on Jun. 13, 2007. The following U.S. Patents are hereby incorporated by reference: U.S. Pat. Nos. 4,928,690, 6,065,154, 5,944,669, 5,741,306, 6,681,003, 6,253,099, and 5,078,134.

### FIELD OF THE INVENTION

[0002] The present invention is directed toward wearable defibrillators and, more particularly, toward wearable defibrillators capable of detecting the motion and/or position of a patient wearing the wearable defibrillator and using the sensed motion and/or position to determine an appropriate treatment.

### BACKGROUND OF THE INVENTION

[0003] The wearable defibrillator consists of a monitor and a vest (or belt) which are both worn by the patient. The device monitors the patient's ECG with sensing electrodes, such as 10a, 10b, 10c, 10d, to detect life-threatening arrhythmias and delivers a cardioverting or defibrillating shock through therapy pads, such as 18, if treatment is needed.

[0004] There is also a third piece of equipment called the battery charger that can provide two functionalities: first it can charge the monitor batteries, 41, and second it can provide a gateway for the monitor to download data to a central server. The monitor can communicate to the charger through a wireless Bluetooth link and the charger can connect to a central server through the internet.

[0005] The accelerometer(s) can allow for the computer in the wearable defibrillator to determine the position of the monitor, belt and/or patient, and the corresponding applied forces. This information can be used in a confidence based arrhythmia detection algorithm to accelerate the timing to hasten the occurrence of or hold off therapy based on past and present body motion and/or position history.

[0006] Other devices that could be used instead of an accelerometer would include, but are not limited to: gyroscope, magnetometer, hall-effect devices, and other force motion or position sensors.

### SUMMARY OF THE INVENTION

[0007] Accelerometers are able to measure x, y, and z positions. This improvement covers having an accelerometer in either the belt, which is worn on the patient's upper

body, or in the monitor, which is worn on the patient's lower body; or both locations; or other positions on the patient.

[0008] The accelerometer in the belt can be used to determine patient position since it is located on the upper torso of the patient. As a result, the belt accelerometer will be chosen such that high sensitivity data can be measured or determined from possible body positions (e.g. patient position). The accelerometer in the monitor can be chosen so that high sensitivity data (such as breathing or other minor motion) can be measured; low sensitivity data (such as mechanical shock) can also be measured; or both. Additional accelerometers can also be used so that both low sensitivity and high sensitivity data can be measured, or an accelerometer capable of both low sensitivity and high sensitivity can be used.

[0009] Some embodiments of the invention include a patient wearable treatment device having treatment elements adjacent to said patient in proximity to said patient's skin, and at least one patient motion detector connected to the device and generating a signal indicative of patient activity, and at least one control to evaluate signals from said motion detectors to determine if said signal is indicative of patient activity appropriate for treatment.

[0010] Embodiments include using at least one accelerometer including at least one multi-axis accelerometer and can include two three-axis accelerometers with one of said accelerometers mounted on a patient vest portion and another of said accelerometers is mounted on the monitor or other portion. Some embodiments can include a visual display on said monitor portion where the orientation of said visual display is controlled by the output of said accelerometer.

[0011] The body orientation of the patient is determined by the output of at least one accelerometer including standing and prone.

[0012] Treatment can be accelerated or delayed based upon the output of the motion detector.

[0013] The invention can detect a patient condition based upon the level of activity of a patient over a period of time based upon said stored output of said accelerometer, and can be used to detect conditions such as, for example, congestive heart failure or sleep disorders.

[0014] A method of cardiac treatment of a patient including sensing a cardiac condition, sensing patient motion with sensors such as, for example, accelerometers worn by said patient and evaluating said sensed patient activity to determine treatment is appropriate to said cardiac condition.

[0015] Embodiments can detect vertical and prone positions and determine a patient activity and a patient body orientation.

[0016] The following is a list of the functionality, information that can be provided by the motion detection or accelerometers:

[0017] Patient body state: Patient is vertical, Patient is horizontal (On left side, On right side).

[0018] Patient is moving in repetitive pattern: Vibrating (environmental), Convulsing.

[0019] Patient is accelerating: Patient is falling.

[0020] Equipment (belt and monitor) state: x/y/z position.

[0021] Equipment acceleration.

[0022] Equipment mechanical shock (high force impact, acceleration).

[0023] Verification of tactile motor operation in belt node.

## BRIEF DESCRIPTION OF FIGURES

[0024] FIG. 1 shows a diagrammatic representation of accelerometer positioning in certain embodiments with cardiac sensors and treatment electrodes.

[0025] FIG. 2 is a block diagram of an embodiment using two accelerometers.

[0026] FIG. 3 is a block diagrammatic representation of an embodiment using an accelerometer in a monitor.

[0027] FIG. 4 is a block diagram of one embodiment using a belt node accelerometer.

[0028] FIG. 5 is a logic diagram of an algorithm that can be used with one embodiment of the invention.

## DESCRIPTION OF SOME EMBODIMENTS OF ALGORITHMS AND METHODS OF USING INFORMATION

[0029] FIG. 1 shows a patient 1 with a wearable defibrillator. Typically the devices shown would be worn as a vest, belt and/or other clothing. In this embodiment, four sensing electrodes 10a, b, c, d, or sensors are shown. While this embodiment is for cardiac monitoring and treatment, other medical functions could also be appropriately monitored or treated. In this embodiment, a node, 11, is used and the sensors 10a, b, c, d and treatment devices 18 connect to the node. The node 11 could be on the belt or on other patient locations. The therapy pads or treatment devices 18 provide treatment when a sensed condition indicates a preferred treatment.

[0030] Any motion sensor can be used. In the present preferred embodiment accelerometers are used. Such sensors indicate accelerating movements. Because of the nature of human movements, generally comprising short distance and short duration, accelerometers give a very acceptable indication of patient movement. Single axis accelerometers can be used as well as multi-axis sensors.

[0031] In this embodiment, two accelerometers 16, 17 are used. One accelerometer 17 is located on the node device 11 and a second 16 is used on the monitor 15. It is understood that some embodiments will use a single accelerometer or position/force/motion detector, and still other embodiments may use three or more. Using multiple sensors permit the treatment algorithm to evaluate accelerometer (sensor) differentials to predict patient activity and accelerometer reliability. The use of multiple accelerometers permit separate evaluation of different patient movements and comparing such separate movements to best determine patient activity and equipment function. The actual treatment algorithm used will usually depend upon the diagnostic requirement of each individual doctor and the condition(s) he wishes to monitor. Any or all of the activities determined by the invention can be used. These can be combined with other inputs.

[0032] FIG. 2 shows a block diagram of a device in which the accelerometer and microcontroller are housed on the patient, 1, wearable vest or belt. The vest worn devices can communicate via a cable or wireless communication link to a monitoring device that contains a second accelerometer 31. Each accelerometer 21, 31 can indicate the respective movement of its position of the patient, and/or be used in an algorithm that uses the combined signals to more reliably indicate patient activity. Processing of accelerometer data can be performed by the microcontroller 22 in the belt/vest node 20 or a system computer 32 located in the monitor 30

or at both processing locations. Accelerometers 21, 31, indicate change in velocity. Patients will normally have an activity level when conscious that includes changes in both velocity and direction. This is in contrast to the lack of change of body motion present in an unconscious patient. Other sensors such as, for example, gyroscopes can be used, with appropriate software to indicate motion or lack of motion. Outputs from sensors may be integrated, compared or differentiated to best predict patient activity, and reduce interference or error signals.

## Patient Movement During Arrhythmia

[0033] The use of accelerometers can be used to determine a patient's body state during the detection of an arrhythmia. It also may be used to detect if a mechanically noisy environment is the cause of an erroneous arrhythmia detection.

## Patient Movement Used in the Confidence Algorithm Factor

[0034] A confidence algorithm, which is influenced by many inputs including the patient's body state as determined by the accelerometers, is used to determine if a patient's heart arrhythmias requires defibrillation.

[0035] Generally, cardiac treatment is not required if the patient is conscious. By using accelerometers the patient body state can be monitored. If there has been no change in patient body state for a period of time as detected by the accelerometer(s) then there will be an increased confidence of the algorithm that the patient is unconscious. If a change in patient body state has been detected by the accelerometer (s) then there will be a decreased confidence of the algorithm that the patient is unconscious. The wearable defibrillator can hasten its decision to apply treatment if a high level of confidence exists that the patient is unconscious. If patient motion is detected while other sensors and algorithms indicate that a treatable rhythm is present, treatment delivery can be delayed to provide the patient additional time to respond to system messaging.

## False Arrhythmia Detection Due to Physical Motion

[0036] Sometimes a false arrhythmia is detected by the system due to physical motion, i.e. electrode or cables moving against the body or clothing, which creates false deviations in the patient's ECG. If an arrhythmia is detected and vibration or high patient/equipment acceleration is detected then the patient can be alerted to this condition. The tactile stimulator may be turned on or the audio volume may be increased to notify the patient reference 1. This information may also be applied to the treatment confidence algorithm thereby causing a decrease in confidence given that the physical motion can cause a false positive detection. Use of the accelerometer (s) can reduce undesired treatment of false arrhythmias.

## Correlation of ECG Artifact with Belt Motion

[0037] Motion of the electrode belt may cause interference with ECG signal pickup and possible false detections. The signals obtained from the accelerometer can be correlated with an ECG signal to determine if ECG signal contamination exists. The quality of the correlation can be used as an additional confidence factor in the arrhythmia detection algorithm. If an arrhythmia is detected and there is a high degree of correlation between the ECG signal and the accelerometer signal the confidence in the arrhythmia detec-



tion can be reduced. No signal correlation indicates increased confidence that the arrhythmia detection is accurate.

#### Treatment Verification

**[0038]** The accelerometers may also be used to verify that a treatment has been applied by detecting sudden movements or muscle spasms in a patient immediately following the treatment. Often after defibrillation a patient's muscles spasm from the energy pulse. The muscle spasm will cause detectable movements on the accelerometers similar to convulsing.

#### Detection of Bystanders/Unsuccessful Defibrillation

**[0039]** Post shock motion of the patient after several unsuccessful defibrillation attempts may indicate the presence of bystanders. The bystanders could be rescue personnel such as an EMT. In this case special alarms or voice messages could be generated to inform the bystander of the equipment and treatment status. Additional shocks could be delayed or cancelled to prevent a shock to the bystanders or rescue personnel.

#### Post Shock Motion Detection

**[0040]** When a shock is delivered the patient may move suddenly and then return to a state where there is a lack of motion. If no further motion is detected a high confidence can exist that the arrhythmia is still present. This information can be used as an additional post-shock confidence factor for the detection algorithm and that a continuing condition exists. If post-shock motion continues or if the patient body position changes from a horizontal to vertical position, there is high confidence that the defibrillation was successful and additional shocks can be delayed.

#### Belt Quality Feedback

**[0041]** Overall belt quality can be examined by gathering data using the accelerometers during certain failure states such as electrode fall-off and therapy pad fall-off detection.

#### Reduce Electrode and Therapy Pad Fall-Offs

**[0042]** If one of the electrodes **10** or therapy pads **18** fall off of the patient, then the system will record the patient body state during the fall-off event. Patient positions include sitting up, lying down; left side, right side. If vibration or patient falling is detected then that would also be recorded as well since it might be the cause of the falloff event.

**[0043]** Over time the data can be analyzed and used to determine positions that may tend to cause fall-offs. This information can then be used to improve the belt design reducing and possibly eliminating the fall-offs in those certain activities or positions.

**[0044]** An example would be if post analysis of data over a several month period of time shows that 75% of ECG fall-offs occur when the patient is laying on their left side then the belt design on the left side could be examined to determine what might be making it susceptible to fall-offs in that patient position.

#### Provide Recommendations to Patients

**[0045]** Accelerometers data collected over time could also be used to inform new patients of patient's body states that

tend to be more comfortable. Patients who have worn the device for an extended time will most likely have experimented with different positions (sleeping positions, sitting positions, etc.) and will tend to use the most comfortable ones. This data can be recorded and used to improve the belt for the other positions and also provide recommendations to new patients.

#### Improve Belt Comfort

**[0046]** The accelerometer data collected during patient use can be used to improve the comfort of the belt by studying patient sleep habits, or habits during other selected activities.

**[0047]** If 80% of the patients tend to sleep on their right side then the assumption can be made that something about the belt makes it less comfortable for the patients to lie on their left side. With this information research can be performed to determine what about that position causes the belt to be uncomfortable and engineering can be performed to improve the belt comfort.

#### Belt Self Diagnostics

**[0048]** Self diagnostics may also be provided such as Belt Node Tactile Stimulator (vibration/acceleration) self test.

**[0049]** The tactile stimulator **12** (a patient notification device) is a motor with an unbalancing weight on its shaft. When the motor is on it causes the belt to vibrate much like a cell-phone in vibration mode.

**[0050]** When the tactile is activated the accelerometer **17** in the node can be used to verify that the node is vibrating which means that the tactile is working.

#### Patient Notification of Physical Events

**[0051]** The accelerometers can be used to provide feedback to the patient regarding certain mechanical events. They may also be used to adjust the device audio volume outputs based on the current state of the patient.

#### Equipment Abuse Notification

**[0052]** If certain mechanical conditions that may lead to equipment damage such as mechanical shock or vibration are detected by the accelerometers then the system can notify the patient of such conditions and advise the patient by the monitor computer screen on **15** of the condition.

**[0053]** If the monitor or belt is dropped or if they are hit with some other object causing a force greater than a predefined acceptable force, then the monitor will provide either an audio or visual (display) indication to the patient that the event has occurred and warn against allowing such an event to occur again.

**[0054]** If continuous vibration above a certain predefined acceptable threshold is detected for a period of time then the monitor on **15** may also provide a warning to the patient. Such vibration could lead to electrode or therapy pad fall-off or even cause false arrhythmia detection if enough physical motion is applied to the electrode and cables.

#### Adjust Device Alarm Volumes

**[0055]** If the accelerometers have recorded the patient body state to be unchanged for an extended time and the patient is either lying or sitting down then the monitor will assume the patient is sleeping and will then increase the audio volume output of any audio message if necessary to

awaken the patient. The monitor may also enable the tactile stimulator to awaken the patient in the event of a critical audio message.

#### Adjust Display Rotation

**[0056]** The monitor accelerometer can be used to determine the proper rotation of the system display or LCD output on **15**. The monitor **15** contains a display that can either be used to deliver a visual message to the patient or for initial patient setup by care givers. For patient visual messages, since the monitor is positioned approximately at the patient's mid section, the display would be upside down (rotated **180** degrees) with respect to the monitor. However, during patient setup, the monitor could be held right side up in front of the skilled personnel. As a result, the display would be right side up. The monitor accelerometer data can be used to adjust the display accordingly depending on how the display is attempting to be read.

#### Detect Equipment Abuse

**[0057]** Detect equipment abuse during use as well as during shipping. Equipment abuse can be determined by parameters such as number of times dropped and intensity. Detection of equipment abuse can trigger such actions as internal diagnostics, auto download, and equipment service recommendations.

#### Equipment Drop Detection

**[0058]** If the accelerometers detect a mechanical shock above a pre-determined acceptable threshold then the monitor will record a drop event. Other parameters such as date/time stamp and current operating mode will be recorded as well.

**[0059]** The date/time stamp should allow correlation between the monitor location and the damaging event allowing further information to be obtained using the carrier tracking numbers if such damage occurred during shipping.

**[0060]** If it is not during shipping and is during patient use and there is some form of equipment malfunction after the drop then that could be tied to the root cause of the equipment failure. Such information could be used to advise patients of the types of mechanical shocks that may damage the equipment. It also may be used to improve the robustness of the equipment to survive such forces in the future.

#### Equipment Service Recommendation

**[0061]** If the monitor accelerometer **16**, belt accelerometer **17** have recorded a mechanical shock above a predefined acceptable threshold or if a predefined acceptable number of mechanical shocks has occurred then the monitor will recommend with an audio or visual (display) message via **15** to the patient that the equipment should be serviced. The monitor on **15** will also, during the next download, notify the manufacturer that it should be serviced.

#### Internal Diagnostics

**[0062]** If the accelerometer does detect an excessive mechanical shock on the belt or monitor then it may initiate internal self-diagnostics. Both the monitor **15** and node **11** have built-in circuitry as shown in FIGS. **3** and **4** to allow most of its components to be tested with self diagnostics.

#### Auto Download to Manufacturer

**[0063]** If there is a significant mechanical shock to the belt or monitor then the monitor may immediately initiate an automatic download to the manufacturer requesting service.

#### Monitor Patient Activity Over Time

**[0064]** Accelerometer data can be measured and stored over time to study patient activity. Patient activity data can be used to provide feedback to doctors about a patient's specific condition.

#### Patient Activity Data and Treatment

**[0065]** After a treatment event, patient activity data taken before, up to, and including the event can be downloaded. This data can be collected among patients and used to make correlations between patient activity derived from accelerometers **16**, **17** and the probability of a possible treatment event occurring. These correlations can be used to take precautionary measures with patients who have similar activities as those who had past treatment events.

#### Patient Activity Data and Doctor Feedback

**[0066]** Patient activity data can be used over a period of time by doctors or data evaluation systems to determine if proper patient activity levels are met. Examples to study would be extremely low patient activity; patient performing recommended exercises; and/or patient real time activity level and corresponding heart rate data. Patients who are experiencing congestive heart failure can be monitored for physical activity and at rest body position. Gradual reduction in patient activity indicated by lack of motion can indicate a worsening of the congestive heart failure condition. Body position at rest can also indicate patient deterioration if body position at rest is primarily vertical since congestive heart failure patients may have difficulty resting in a horizontal position.

**[0067]** FIG. **1** shows the location of the accelerometers **16**, **17** with respect to the patient and other system assemblies. The accelerometer **16** located in the front is the monitor accelerometer. The accelerometer located in the back is the belt node **17** accelerometer. The trunk cable **13** allows communication between the belt node computer and the main monitor computer in this embodiment. This permits belt node accelerometer data to be transferred to the main monitor computer **47**. In addition, the trunk cable **13** allows monitor power supplies **41**, **51** to be used to power the belt node computer and peripherals. The two accelerometers or motion detectors allow the system to determine parameters such as patient body position, patient body movement, patient body acceleration as well as perform certain system self-diagnostics. The monitor can contain either a high-G or a low-G accelerometer. A high-G low-sensitivity accelerometer would allow the system in addition to detect patient and equipment physical shock.

**[0068]** FIG. **3** shows the circuitry used to acquire data from the accelerometer **43** in the monitor (**15** on FIG. **1**). From the main battery **41**, power regulators **42** are used to supply the electronics with needed voltages. The computer **47** controls various system parameters such as accelerometer sensitivity, multiplexer (MUX) **45** channel select, the analog to digital converter (ADC) **46**, and serial communications. The Freescale Semiconductor MMA7260Q three axis low-g

micromachined accelerometer can be used. The g-select control line between 47 and 43 allow the sensitivity to be varied from, for example, 1.5 g to 6 g. A high-G low sensitivity accelerometer could also be used instead of the MMA7260Q. This can allow patient/equipment shock to be detected. Resistor-capacitor (RC) filtering 44 can be used on each of the accelerometer outputs to minimize clock noise from the accelerometer internal switched capacitor filter circuit. The MUX 45 select lines can be controlled by the computer 47 and may allow each axis output of the accelerometer to be switched to the ADC 46 input. The ADC 46 can also be controlled by the computer 47 via a serial interface.

**[0069]** FIG. 4 is a block diagram that shows circuitry that can be used to acquire data from the accelerometer 52 on the belt node (11 on FIG. 1). Power supplies and regulators 51 derived from the monitor can be used to power the electronics in the belt node. The Freescale Semiconductor MMA7260Q three axis low-g micromachined accelerometer 52 can be used. The belt node computer 54 controls the g-select lines that again can allow the sensitivity to be varied from 1.5 g to 6 g. RC filtering as well as amplitude scaling 53 can be used on each of the accelerometer outputs. An internal MUX and ADC in the belt node computer 54 can allow the accelerometer analog outputs to be interfaced digitally directly to the computer.

**[0070]** An arrhythmia detection algorithm can be implemented by assigning various confidence coefficients or weighting values to the various detectors used by the algorithm. This can be done prior to using the motion detection confidence algorithm. For example, the monitor can be designed with two independent ECG data streams for analysis. The algorithm can execute independent algorithms on each data stream that analyze the signal to extract heart rate, morphology, frequency information, and other information. Additional analysis is performed, independently on each channel, to analyze the signal for noise contamination that may result from patient motion or biological signals such as muscle noise. Other secondary inputs to the basic detection algorithm can include a patient response button and inputs from the accelerometers.

**[0071]** A weighting value can be assigned to each detector, response button and accelerometer and the combination for all detectors can be used to make the decision that a treatable arrhythmia condition exists. In addition, the weighting values can be used to manipulate the timing of therapy delivery.

**[0072]** The action of the algorithm in the presence of a noisy ECG channel could be to place more weight on the heart rate detector in the clean ECG channel. For the accelerometer enhanced confidence algorithm, a weighting could be assigned that would delay delivery of treatment while patient motion is detected as shown in the flow diagram of FIG. 5.

**[0073]** The flow diagram in FIG. 5 shows that if patient motion is detected prior to the detection of a treatable arrhythmia, the timing of treatment delivery can be modified based on the accelerometer 16, 17 inputs when the arrhythmia is detected. If the patient becomes motionless coinciding with the arrhythmia detection, there is an increased confidence that the arrhythmia diagnosis is accurate and the delivery of treatment can occur sooner. If motion continues after the arrhythmia detection, the confidence of a valid detection can be decreased because lethal arrhythmias usually result in a lack of consciousness. In this case, the

delivery of treatment can be delayed to allow time for audio voice messages to prompt the patient to respond by pressing the response button. The response button provides a responsiveness test input to the algorithm. In some embodiments, it may be desirable to never deliver a shock to a conscious patient. This algorithm can reduce the possibility of false treatment based on invalid rhythm diagnosis due to corrupt ECG inputs caused by excessive patient movement or other environmental factors.

**[0074]** FIG. 5 shows how a typical algorithm that detects arrhythmia can have an increased confidence by serially feeding through a subsequent confidence algorithm using input from a motion detector or accelerometer(s). Other motion detecting devices or confidence algorithms can use various motion detection criteria as desired by physicians and based upon the treatable condition or patient.

**[0075]** As it will usually be desirable to track and store data in the patient wearable device, the addition of motion data can also be stored, tracked and evaluated. One such use would be to evaluate historical motion/activity levels to detect conditions such as congestive heart failure. Such diseases are often found in patients who would be wearing a cardiac treatment device.

What is claimed is:

1. A cardiac monitoring system comprising:

an externally wearable cardiac monitoring device;

at least one cardiac sensing electrode operatively coupled to the externally wearable cardiac monitoring device, the at least one cardiac sensing electrode being configured to be disposed in proximity to a patient's skin to monitor cardiac activity of the patient;

at least one accelerometer configured to generate signals indicative of at least one of patient position and patient body movement;

a microcontroller disposed in the externally wearable cardiac monitoring device, the microcontroller configured to

receive the signals indicative of at least one of patient position and patient body movement from the at least one accelerometer over a period of time, and

receive one or more electrocardiogram (ECG) signals of the patient from the at least one cardiac sensing electrode over the period of time; and

a central server configured to

receive the one or more ECG signals of the patient and the signals indicative of at least one of patient position and patient body movement, and

analyze the one or more ECG signals of the patient and the signals indicative of at least one of patient position and patient body movement to determine a change in a condition of the patient over the period of time;

wherein the externally wearable cardiac monitoring device is configured to wirelessly transmit the one or more ECG signals of the patient and the signals indicative of at least one of patient position and patient body movement to the central server.

2. The cardiac monitoring system of claim 1, wherein the condition includes a sleep disorder.

3. The cardiac monitoring system of claim 1, wherein the condition includes a heart failure condition.

4. The cardiac monitoring system of claim 1, wherein the change in the condition of the patient includes at least one of an improvement and a worsening of the condition of the patient.

5. The cardiac monitoring system of claim 1, wherein the signals indicative of at least one of patient position and patient body movement indicate that the patient is at rest in a substantially vertical position.

6. The cardiac monitoring system of claim 1, wherein the signals indicative of at least one of patient position and patient body movement indicate a reduction in patient activity.

7. The cardiac monitoring system of claim 1, wherein the condition includes a heart failure condition, and wherein the change in the condition of the patient includes at least one of an improvement and a worsening of the heart failure condition.

8. The cardiac monitoring system of claim 1, wherein the cardiac monitoring system is configured to monitor one or more medical functions other than cardiac function of the patient.

9. The cardiac monitoring system of claim 1, wherein the body position of the patient includes at least one of sitting up, lying down on the patient's left side, and lying down on the patient's right side.

10. The cardiac monitoring system of claim 1, wherein the at least one accelerometer is disposed in the externally wearable cardiac monitoring device.

11. The cardiac monitoring system of claim 1, wherein the signals indicative of patient position indicate that the patient is in at least one of a standing position and a prone position.

12. A cardiac monitoring system comprising:

an externally wearable cardiac monitoring device;

at least one cardiac sensing electrode operatively coupled to the externally wearable cardiac monitoring device, the at least one cardiac sensing electrode being configured to be disposed in proximity to a patient's skin to monitor cardiac activity of the patient;

at least one accelerometer configured to generate signals indicative of patient body movement; and

a microcontroller disposed in the externally wearable cardiac monitoring device, the microcontroller configured to

receive the signals indicative of patient body movement from the at least one accelerometer,

receive one or more electrocardiogram (ECG) signals of the patient based on the monitored cardiac activity of the patient from the at least one cardiac sensing electrode, and

analyze the one or more ECG signals received over a period of time to determine at least one cardiac arrhythmia condition of the patient;

wherein the externally wearable cardiac monitoring device is configured to wirelessly transmit data related to the at least one cardiac arrhythmia condition and the signals indicative of patient body movement recorded over the period of time to a central server.

13. The cardiac monitoring system of claim 12, wherein the signals indicative of patient body movement indicate a reduction in patient activity.

14. The cardiac monitoring system of claim 12, wherein the at least one accelerometer is disposed in the externally wearable cardiac monitoring device.

15. The cardiac monitoring system of claim 12, wherein a sensitivity of the at least one accelerometer can be varied from 1.5 g to 6 g.

16. An externally wearable cardiac monitoring device comprising:

a plurality of cardiac sensing electrodes operatively coupled to the externally wearable cardiac monitoring device, the plurality of cardiac sensing electrodes being configured to be disposed in proximity to a patient's skin to monitor cardiac activity of the patient;

at least one motion detector configured to be disposed in proximity to the patient and to generate signals indicative of patient body movement; and

a microcontroller configured to

process the signals indicative of patient body movement from the at least one motion detector to provide patient body movement information,

detect an electrocardiogram (ECG) signal of the patient from the plurality of cardiac sensing electrodes, and correlate the patient body movement information with the detected ECG signal to provide correlated patient body movement and ECG information;

wherein the externally wearable cardiac monitoring device is configured to wirelessly transmit the correlated patient body movement and ECG information to a central server.

17. The externally wearable cardiac monitoring device of claim 16, wherein the microcontroller is further configured to:

detect an arrhythmia in the detected ECG signal; and

determine a confidence level that the arrhythmia detection is accurate based on the correlated patient body movement and ECG information.

18. The externally wearable cardiac monitoring device of claim 16, wherein the microcontroller is further configured to detect, based on the patient body movement information, whether an arrhythmia condition is present after a treatment has been applied.

19. The externally wearable cardiac monitoring device of claim 16, wherein the patient body movement information indicates that the patient body position has changed from a horizontal position to a vertical position.

20. A cardiac monitoring system comprising:

an externally wearable cardiac monitoring device;

a plurality of cardiac sensing electrodes operatively coupled to the externally wearable cardiac monitoring device, the plurality of cardiac sensing electrodes being configured to be disposed in proximity to a patient's skin to monitor cardiac activity of the patient;

at least one motion detector configured to be disposed in proximity to the patient and to generate signals indicative of patient body movement;

a microcontroller configured to

process the signals indicative of patient body movement from the at least one motion detector to provide patient body movement information,

detect an electrocardiogram (ECG) signal of the patient from the plurality of cardiac sensing electrodes, correlate the patient body movement information with the detected ECG signal to provide correlated patient body movement and ECG information, and

transmit the correlated patient body movement and ECG information to a central server; and

the central server configured to  
receive the correlated patient body movement and ECG  
information, and  
analyze the received correlated patient body movement  
and ECG information to determine at least one of an  
activity and a body position of the patient.

**21.** The cardiac monitoring system of claim **20**, wherein  
the microcontroller is further configured to monitor a patient  
condition based upon the at least one of the activity and the  
body position of the patient over a period of time.

**22.** The cardiac monitoring system of claim **21**, wherein  
the patient condition includes a sleep disorder.

**23.** The cardiac monitoring system of claim **21**, wherein  
the patient condition includes heart failure.

**24.** The cardiac monitoring system of claim **21**, wherein  
the heart failure includes congestive heart failure.

**25.** The cardiac monitoring system of claim **21**, wherein  
the cardiac monitoring system is further configured to pro-  
vide a treatment directed to the patient condition.

\* \* \* \* \*

专利名称(译)	具有运动/位置检测的可穿戴医疗设备		
公开(公告)号	<a href="#">US20160296125A1</a>	公开(公告)日	2016-10-13
申请号	US15/187952	申请日	2016-06-21
[标]申请(专利权)人(译)	卓尔医学产品公司		
申请(专利权)人(译)	ZOLL医疗公司		
当前申请(专利权)人(译)	ZOLL医疗公司		
[标]发明人	VOLPE SHANE S MACHO JOHN D BRADEN WADE KAIB THOMAS E LINDER MARSHAL W		
发明人	VOLPE, SHANE S. MACHO, JOHN D. BRADEN, WADE KAIB, THOMAS E. LINDER, MARSHAL W.		
IPC分类号	A61B5/0205 A61B5/11 A61B5/0452 A61N1/39 A61B5/00 A61B5/044 A61N1/04 A61B5/0408 A61B5/04		
CPC分类号	A61B5/0205 A61B5/04085 A61B5/1118 A61B5/1116 A61B5/0452 A61B5/04012 A61N1/3987 A61B5/6805 A61B5/044 A61B5/1117 A61B5/1123 A61B5/4836 A61N1/046 A61B5/0006 A61B5/0404 A61B5/721 A61B2560/045 A61N1/3904 A61B5/7282		
优先权	60/934404 2007-06-13 US		
外部链接	<a href="#">Espacenet</a> <a href="#">USPTO</a>		

#### 摘要(译)

心脏监测系统包括外部可佩戴的心脏监测装置;至少一个心脏感测电极,可操作地耦合到所述装置并且被配置为靠近患者的皮肤布置以监测所述患者的心脏活动;至少一个加速度计,其被配置为产生指示患者身体移动的信号;以及微控制器,其设置在所述设备中并且被配置为接收指示患者身体移动的信号,从所述至少一个心脏感测电极接收所述患者的一个或多个心电图(ECG)信号,并且分析所接收的一个或多个ECG信号确定所述患者的至少一个心律不齐状况的时间段;所述装置被配置为将与所述至少一个心律不齐病症相关的数据和指示在所述一段时间内记录的患者身体移动的信号无线地传送到中央服务器。

Accelerometer Positioning

