



US 20150272487A1

(19) **United States**
(12) **Patent Application Publication**
Ranucci

(10) **Pub. No.: US 2015/0272487 A1**
(43) **Pub. Date: Oct. 1, 2015**

(54) **MONITORING SYSTEM FOR CARDIAC SURGICAL OPERATIONS WITH CARDIOPULMONARY BYPASS**

A61M 1/14 (2006.01)
A61B 5/01 (2006.01)

(71) Applicant: **Sorin Group Italia S.r.l.**, Milano (IT)

(72) Inventor: **Marco Ranucci**, Milano (IT)

(21) Appl. No.: **14/738,805**

(22) Filed: **Jun. 12, 2015**

(52) **U.S. Cl.**
CPC *A61B 5/14542* (2013.01); *A61B 5/14535* (2013.01); *A61B 5/01* (2013.01); *A61B 5/7278* (2013.01); *A61B 5/746* (2013.01); *A61M 1/14* (2013.01); *A61B 2505/05* (2013.01); *A61M 2230/20* (2013.01)

Related U.S. Application Data

(60) Division of application No. 14/064,510, filed on Oct. 28, 2013, which is a continuation of application No. 13/705,169, filed on Dec. 5, 2012, now Pat. No. 8,690,784, which is a continuation of application No. 12/250,212, filed on Oct. 13, 2008, now abandoned, which is a division of application No. 11/432,608, filed on May 11, 2006, now Pat. No. 7,435,220.

Foreign Application Priority Data

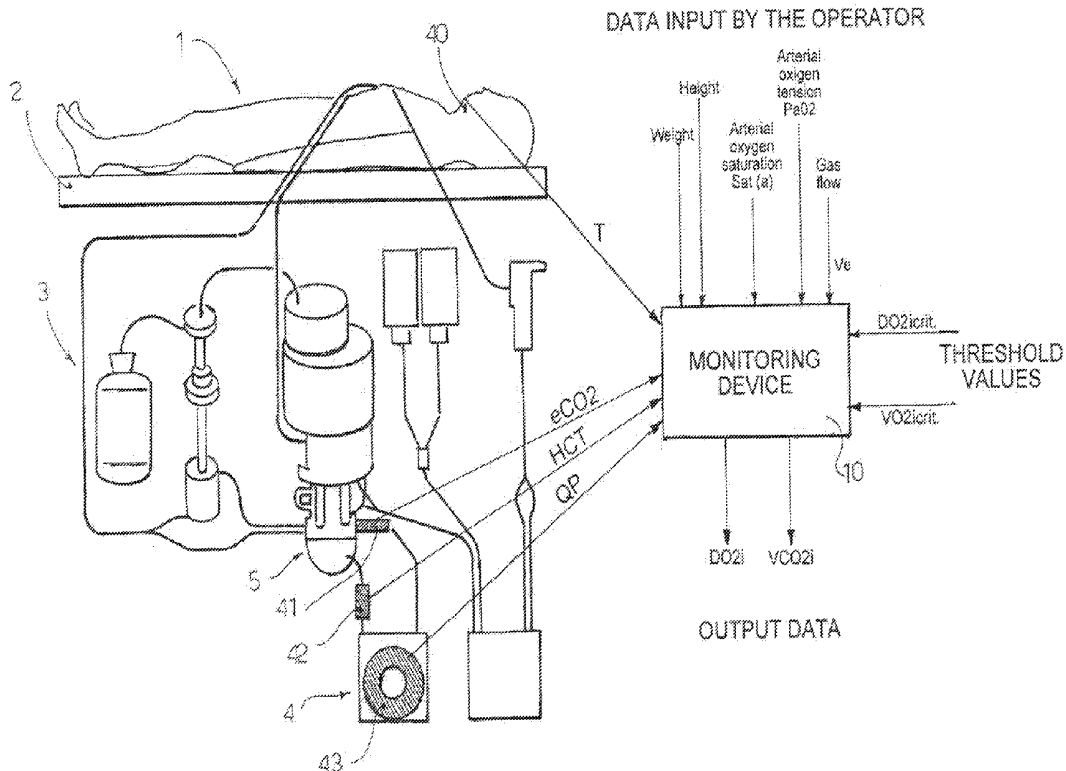
May 13, 2005 (IT) MI2005000866
Oct. 4, 2005 (EP) 05021607.6

Publication Classification

(51) **Int. Cl.**
A61B 5/145 (2006.01)
A61B 5/00 (2006.01)

(57) **ABSTRACT**

A monitoring system for cardiac operations with cardiopulmonary bypass comprising: a processor operatively connected to a heart-lung machine; a pump flow detecting device connected to a pump of the heart-lung machine to continuously measure the pump flow value and send it to the processor; a hematocrit reading device to continuously measure the blood hematocrit value and to send it to the processor; a data input device to allow the operator to manually input data regarding the arterial oxygen saturation and the arterial oxygen tension; computing means integrated in the processor to compute the oxygen delivery value on the basis of the measured pump flow, the measured hematocrit value, the preset value of arterial oxygen saturation, and the preset value of arterial oxygen tension; and a display connected to the processor to display in real-time the computed oxygen delivery value.



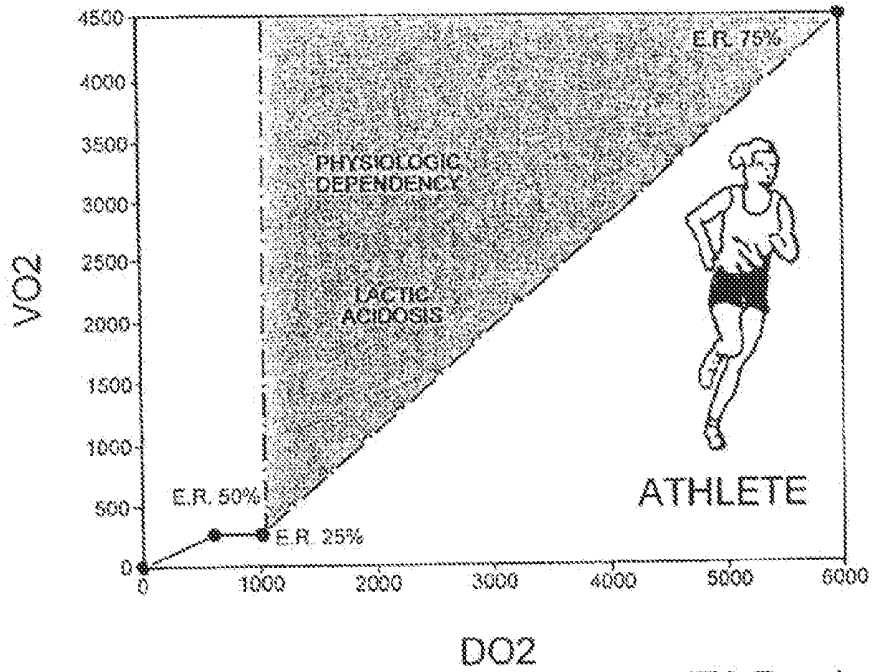
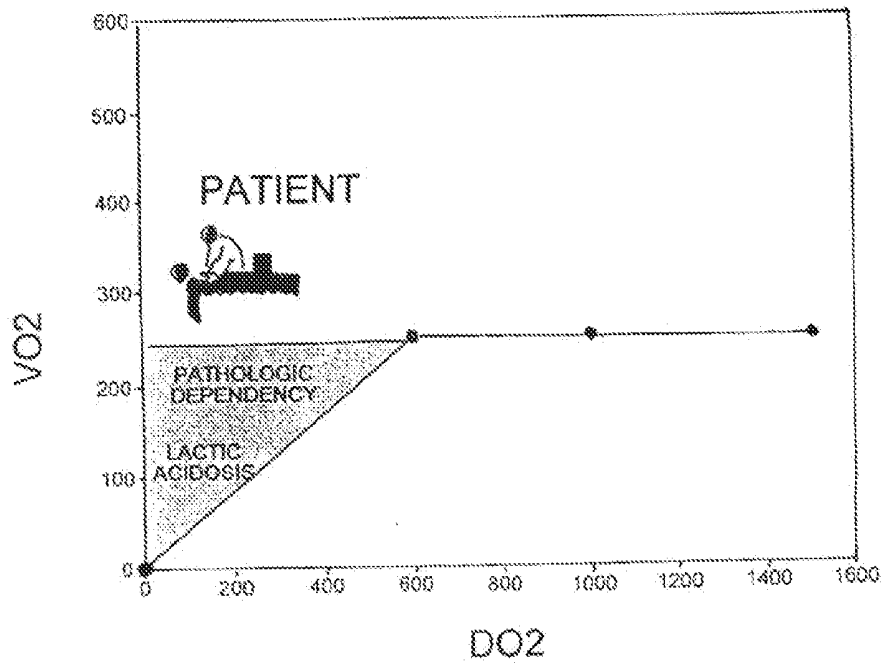


FIG. 1

FIG. 2



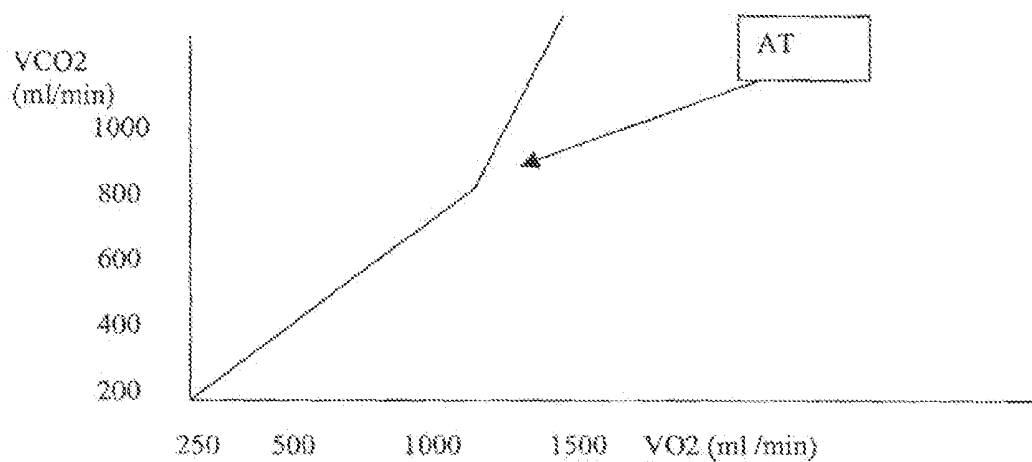
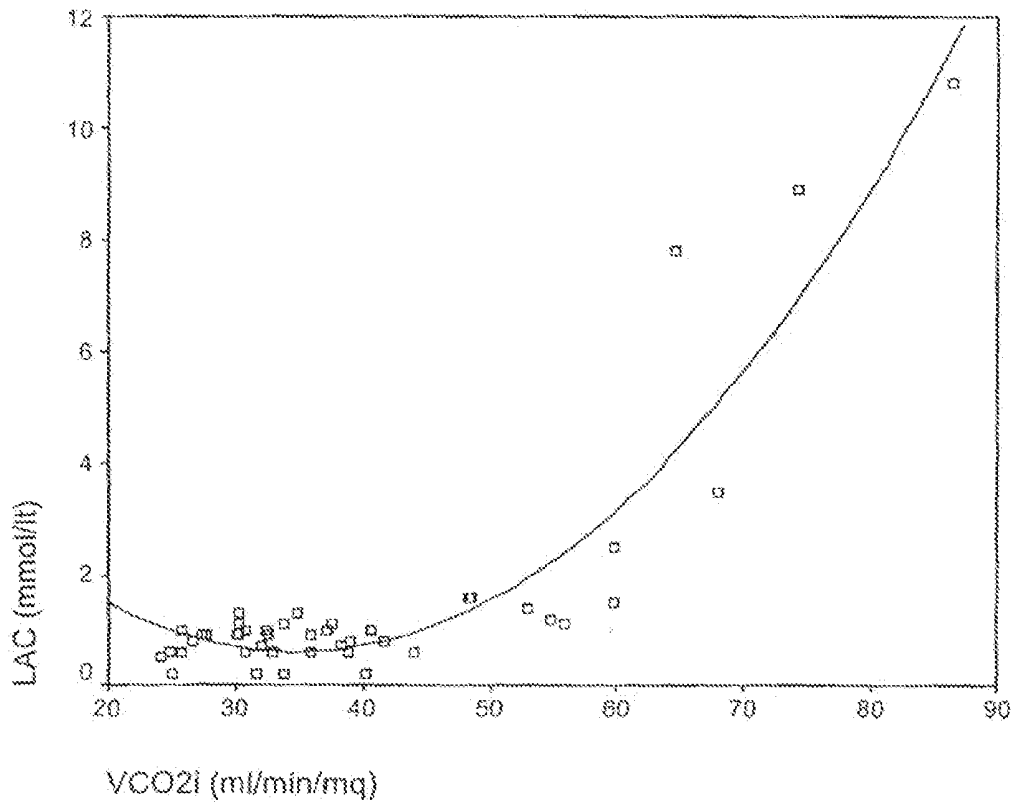
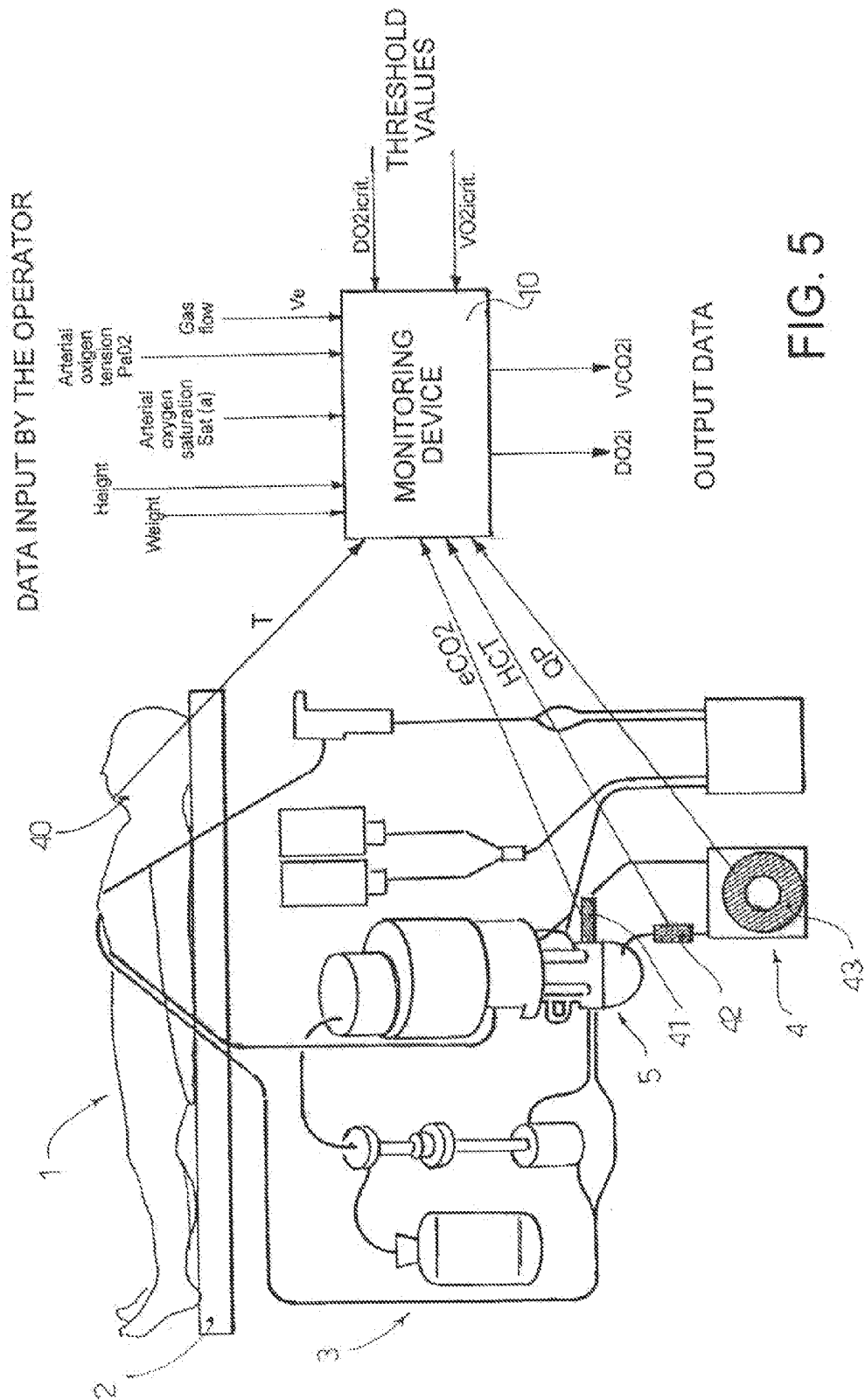


FIG. 3

FIG. 4





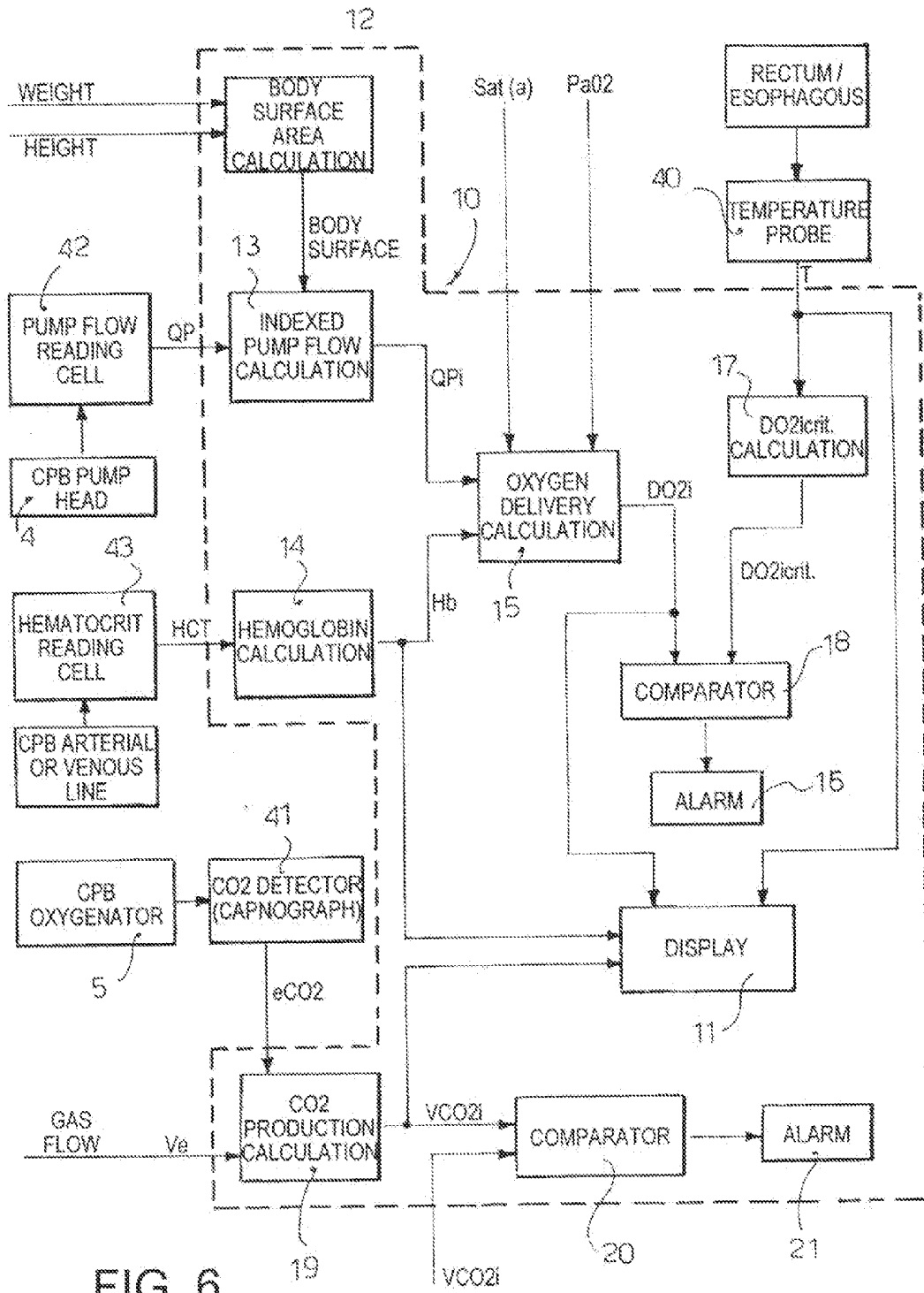


FIG. 6

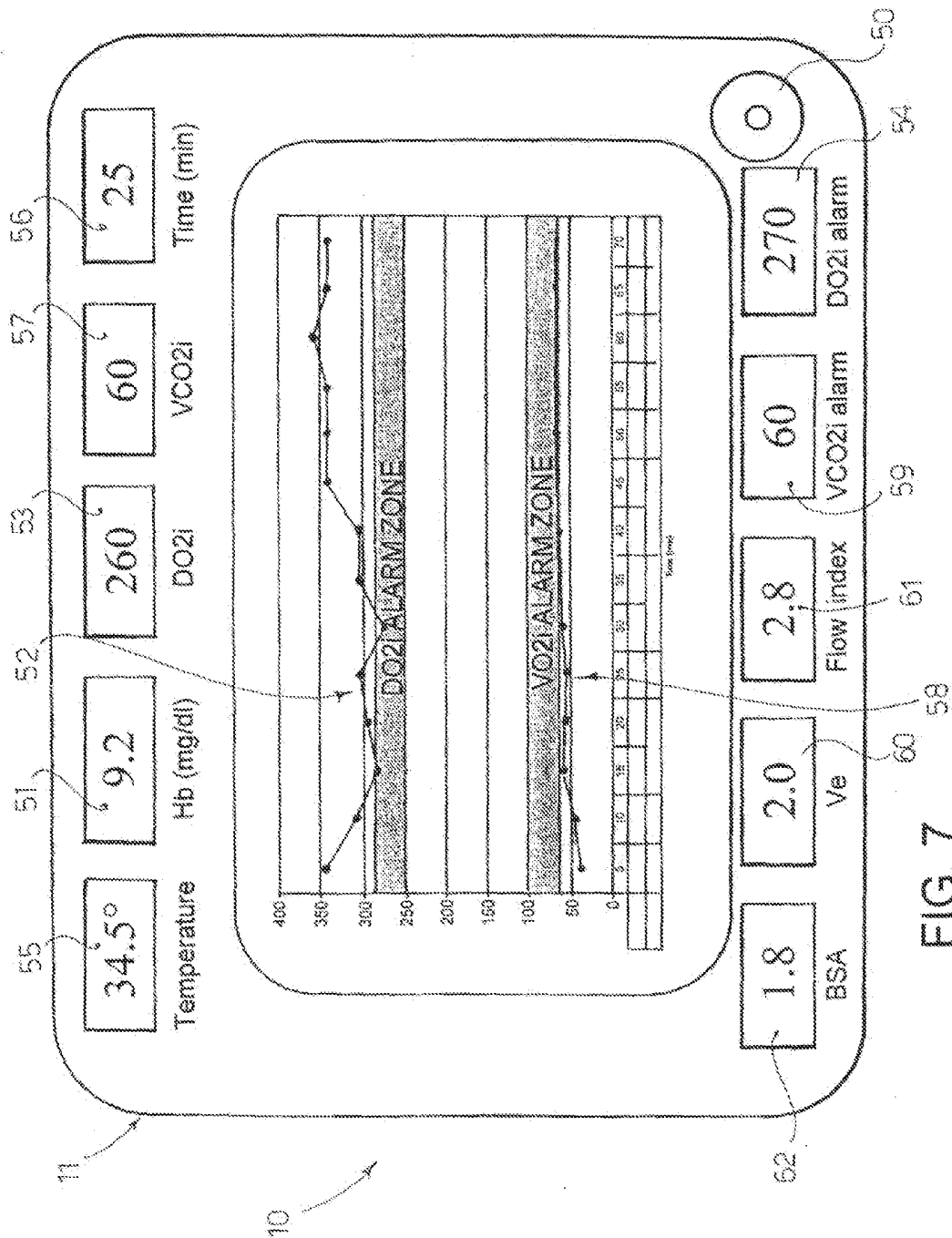


FIG. 7

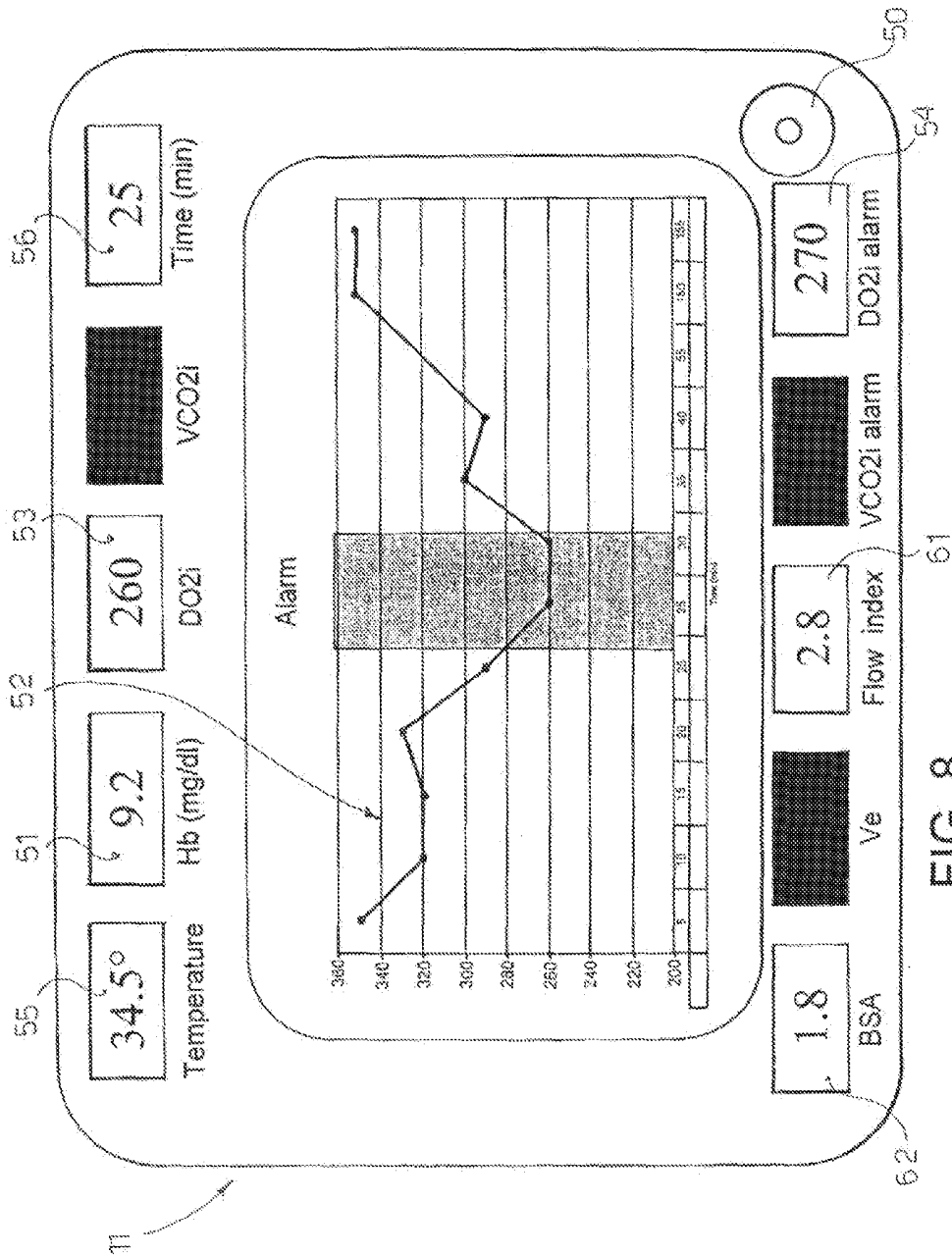


FIG. 8

MONITORING SYSTEM FOR CARDIAC SURGICAL OPERATIONS WITH CARDIOPULMONARY BYPASS

CROSS-REFERENCE TO RELATED APPLICATION

[0001] This application is a division of U.S. application Ser. No. 14/064,510, filed Oct. 28, 2013, which is a continuation of U.S. application Ser. No. 13/705,169, filed on Dec. 5, 2012, now U.S. Pat. No. 8,690,784, which is a continuation of U.S. application Ser. No. 12/250,212, filed on Oct. 13, 2008, which is a division of U.S. application Ser. No. 11/432,608, filed on May 11, 2006, now U.S. Pat. No. 7,435,220, which claims foreign priority of Italian Patent Application No. MI2005000866, filed May 13, 2005, and European Patent Application No. 05021607.6, filed Oct. 4, 2005, the contents of each of which are hereby incorporated herein by reference.

TECHNICAL FIELD

[0002] The present invention provides a monitoring system to be applied during cardiac surgery operations requiring a cardiopulmonary bypass (CPB).

BACKGROUND

[0003] During cardiac operations with extracorporeal circulation and CPB, the heart and lung function is artificially replaced by a heart-lung machine. This device receives the venous blood of the patient and delivers it (through a roller or centrifugal pump) to an oxygenator which provides the carbon dioxide (CO₂) clearance and the oxygen (O₂) supply to the patient, by means of a trans-membrane exchange between blood and a gas flow (oxygen and air at variable concentrations).

SUMMARY

[0004] The adequate pump flow for the patient is usually determined on the basis of specific tables which take into account the body surface area and the temperature at which the CPB is performed. The lower the temperature, the lower is the needed pump flow (because the metabolic needs are decreased). For instance, in a temperature range between 24 and 37° C., the flow may vary between 2.0 and 3.0 L/min/m². The goal of the pump flow is to provide to the various organs an oxygen amount adequate to sustain the metabolic needs. This does not depend only on the pump flow, but also on the blood oxygen content and therefore on the hemoglobin (Hb) concentration. Since during CPB there is a hemodilutional anemic status (sometimes severe, with an Hb concentration that falls from the normal 15 g/100 ml to 5-10 g/100 ml), it is clear that the possibility of providing an insufficient oxygen delivery (DO₂) is real and quite frequent.

[0005] Recently, many scientific papers have demonstrated that insufficient oxygen delivery, either due to excessive anemia, to a low flow, or both, is responsible for postoperative complications and surgical mortality increase (References 1-8).

[0006] At present, the only continuous monitoring available of a DO₂-derived parameter during CPB is represented by the continuous venous oxygen saturation (SvO₂) monitoring. This monitoring is based on the relationship between the oxygen consumption (VO₂), that is a metabolic needs marker, the blood flow and the peripheral oxygen extraction (arterio-venous difference):

$$VO_2 = \text{Flow} \times (\text{a-v } O_2 \text{ difference})$$

[0007] If the pump flow is inadequate to maintain the needed VO₂, it is necessary to extract more oxygen from the periphery, and hence the venous blood will be less saturated (from the normal 75% the saturation may decrease to 60% or less).

[0008] Presently, three venous oxygen saturation (SvO₂) systems are commercially available: (DataMaster Dideco™; CU Terumo™; O₂Sat Spectrum Medical™). With the exception of the last one, all these systems measure other variables (hematocrit, electrolytes, etc.) by means of very expensive disposable cells. Therefore, these monitoring systems are not routinely used, and their application is usually reserved for specific, high-risk categories of patients (i.e., congenital, pediatric cardiac surgery patients).

[0009] Moreover, the SvO₂ measurement is not a guarantee of adequate pump flow. As a matter of fact, the SvO₂ decreases only for a very profound DO₂ decrease. This is due to the fact that the SvO₂ represents the status of the whole venous blood coming from the patient. This blood comes even, and to a great extent, from various organs and districts which, under anesthesia, have a VO₂ close to zero (muscles, skin, subcutaneous tissues, etc.) and that therefore contribute to the total venous blood with their own venous blood having a SvO₂ close to 100%. Therefore, in case of a low perfusion to one or more among the most important organs (kidney, brain, gut and the heart itself), which determines a venous blood desaturation down to 60%, the total mixing may result in a global SvO₂ still in a normal range (70-75%).

[0010] The aim of the present invention is to overcome the drawbacks of the prior art and create a monitoring system that provides adequate continuous and on-line information about the oxygen delivery (DO₂) and carbon dioxide production (VCO₂) values during the operation, and about the adequacy of the oxygen delivery (DO₂) with respect to the metabolic needs of the patient.

[0011] Another aim of the present invention is to provide a monitoring system which is reliable, accurate, and at the same time cheap and easy to be applied.

[0012] These aims are achieved according to the invention by means of the device and method whose characteristics are respectively listed in the attached independent claims. Advantageous embodiments of the invention are apparent from the dependent claims.

[0013] The pathophysiological bases used for structuring the monitoring system according to the invention are the following:

Definitions and Abbreviations

- [0014] HCT: hematocrit (%)
- [0015] Hb: hemoglobin (g/dL)
- [0016] CPB: cardiopulmonary bypass
- [0017] T: temperature (° C.)
- [0018] VO₂=oxygen consumption (mL/min)
- [0019] VO_{2i}=oxygen consumption indexed (mL/min/m²)
- [0020] DO₂=oxygen delivery (mL/min)
- [0021] DO_{2i}=oxygen delivery indexed (mL/min/m²)
- [0022] O₂ ER=oxygen extraction rate (%)
- [0023] VCO₂=carbon dioxide production (mL/min)
- [0024] VCO_{2i}=carbon dioxide production indexed (mL/min/m²)
- [0025] V_e=ventilation (L/min)
- [0026] eCO₂=exhaled carbon dioxide (mmHg)

[0027] AT=anaerobic threshold
 [0028] LAC=lactates
 [0029] Qc=cardiac output (mL/min)
 [0030] IC=cardiac index (Qc/m^2), (mL/min/m²)
 [0031] Qp=pump flow (mL/min)
 [0032] IP=pump flow indexed (Qp/m^2), (mL/min/m²)
 [0033] CaO₂=arterial oxygen content (mL/dL)
 [0034] Cv O₂=venous oxygen content (mL/dL)
 [0035] PaO₂=arterial oxygen tension (mmHg)
 [0036] PvO₂=venous oxygen tension (mmHg)
 [0037] a=arterial
 [0038] v=venous
 [0039] Sat=Hb saturation (%)
 [0040] The following equations are applied to implement the monitoring system according to the invention:
 [0041] (1) $VO_2=Qc \times (CaO_2 - CvO_2)$ in a normal circulation
 [0042] (2) $VO_2=Qp \times (CaO_2 - CvO_2)$ during CPB
 [0043] (3) $DO_2=Qc \times CaO_2$ in a normal circulation
 [0044] (4) $DO_2=Qp \times CaO_2$ during CPB
 [0045] (5) $O_2\ ER=VO_2/DO_2(\%)$
 [0046] (6) $Hb=HCT/3$
 [0047] (7) $CaO_2=Hb \times 1.36 \times Sat(a) + PaO_2 \times 0.003$
 [0048] (8) $CvO_2=Hb \times 1.36 \times Sat(v) + PvO_2 \times 0.003$
 [0049] (9) $VCO_2=V_e \times CO_2 \times 1.15$
 [0050] For instance, a normal subject weighing 70 kg has the following physiologic parameters:
 [0051] Hb=15 g/dL
 [0052] PaO₂=90 mmHg
 [0053] Sat(a) Hb=99%=0.99
 [0054] PvO₂=40 mmHg
 [0055] Sat(v) Hb=75%=0.75
 [0056] Qc=5000 mL/min
 [0057] $CaO_2=15 \times 1.36 \times 0.99 + 90 \times 0.003 = 20.4$ mL/dL
 [0058] $CvO_2=15 \times 1.36 \times 0.75 + 40 \times 0.003 = 15.4$ mL/dL
 [0059] $VO_2=5$ L/min $\times (20.4$ mL/dL $- 15.4$ mL/dL) = 5 L/min $\times 5$ mL/dL = 5 L/min $\times 50$ mL/L = 250 mL/min
 [0060] $DO_2=5$ L/min $\times 20.4$ mL/dL = 5 L/min $\times 200$ mL/L = 1000 mL/min
 [0061] $O_2\ ER=250/1000=25\%$
 [0062] $VCO_2=200$ mL/min
 [0063] LAC=<1.5 mMol/L
 [0064] The oxygen consumption (VO₂) represents the metabolic needs of the whole organism; it is the sum of the metabolic needs of each specific organ. Under basal conditions (at rest), it is about 3-4 mL/min/kg, i.e. about 250 ml/min for a subject weighting 70 kgs. Applying the equations (3) and (7), the oxygen delivery (DO₂) may be calculated, and is about 1000 mL/min. Therefore, a considerable functional reserve exists, since the DO₂ is about 4 times greater than the VO₂. The VO₂ may increase depending on the metabolic needs (basically under physical exercise, but even in pathologic conditions like septic shock). A top level endurance athlete may reach a maximal VO₂ of about 5,000 mL/min.
 [0065] Of course, to meet these increasing oxygen demands, the DO₂ must increase as well: it can reach, in an athlete during exercise, the value of 6,000 mL/min (Qc: 30 L/min with an unchanged arterial oxygen content of 20 mL/dL). As a consequence, the O₂ ER may increase up to 75%.
 [0066] FIG. 1 is a diagram showing the relationship between DO₂ and VO₂ in an athlete during physical exercise. If the athlete (that, for example, is running a marathon) falls into the dark triangular zone (where the DO₂ is unable to

support the VO₂), he is forced to use other metabolic mechanisms in order to develop mechanical energy. As a matter of fact, he will use the anaerobic lactic acid metabolism, which develops energy but at the expenses of lactic acid formation, local and systemic acidosis, and finally exercise stops usually within 2 minutes. In other words, the VO₂ is physiologically dependent on the DO₂.

[0067] In the medical field, of course, the situation is different. The DO₂ may pathologically decrease in case of: decreased arterial oxygen content due to anemia; decreased arterial oxygen content due to hypoxia; and decreased cardiac output.

[0068] However, due to the existence of the above-mentioned physiological reserve, the VO₂ may be maintained even for a DO₂ decrease down to about 600 mL/min (DO_{2i} 320 mL/min/m²), due to the increased O₂ ER.

[0069] FIG. 2 is a diagram showing the relationship between DO₂ and VO₂ in the range observed during medical conditions (i.e. cardiac operation). Below a DO₂ of 600 mL/min, the VO₂ starts decreasing. The patient meets, exactly as the athlete, a lactic acidosis, with lactates (LAC) production. In other words, he experiences a shock.

[0070] The DO₂ level below which the VO₂ starts decreasing and becomes pathologically dependent on the DO₂ is called the critical DO₂ (DO_{2crit}). Maintaining the DO₂ above this threshold is very important in many pathological conditions, to avoid an acidosis-shock status. The DO_{2crit} is higher during a septic shock.

[0071] Since 1994, in a paper published in *Perfusion*, Ranucci and coworkers demonstrated that in a series of 300 consecutive patients that underwent myocardial revascularization with CPB, the presence of a severe hemodilution was an independent risk factor for a postoperative acute renal failure (ARF). In particular, the cut-off value was identified at an HCT < 25%.

[0072] Subsequently, other authors have demonstrated that the lowest HCT during CPB was an independent risk factor for many "adverse outcomes" in cardiac surgery. Stafford-Smith and coworkers, in 1998 (*Anesth Analg*), confirmed the relationship between hemodilution and ARF.

[0073] More recently, the lowest hematocrit on CPB has been recognized as an independent risk factor for postoperative low cardiac output and hospital mortality by Fang and coworkers (*Circulation*, 1997), and for an impressive series of postoperative adverse events by Habib and coworkers in 2003 (*J Thorac Cardiovasc Surg*). The relationship between hemodilution and ARF has been subsequently confirmed by Swaminathan and coworkers in 2003 (*Ann Thorac Surg*), Ranucci and coworkers 2004 and 2005 (*Ann Thorac Surg*) and Karkouti and coworkers in 2005 (*J Thorac Cardiovasc Surg*). The critical HCT value below which the ARF risk significantly increases is located between 23% and 26%.

[0074] Almost all the authors ascribe this relationship to an insufficient oxygen supply (DO₂) to the various organs. The kidney, in particular, due to its physiologic condition of hypoxic perfusion, seems to be at high risk.

[0075] Surprisingly, all the studies demonstrating a relationship between HCT and ARF or other organ damages failed to consider that the HCT is only one of the two determinants of the DO₂ during CPB: the other is the pump flow (Qp). This would not influence the DO₂ if the Qp was a constant, but this is not the case. In all the studies, the pump flow (Qp) varied from a Q_{pi} of 2.0 L/min/m² to a Q_{pi} of 3.0 L/min/m², and the variation was dependent on the perfusion

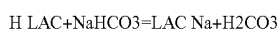
pressure. An HCT of 24% results in a DO_{2i} of 230 ml/min/m² if the Q_{pi} is 2.0 L/min/m², and of 344 ml/min/m² if the Q_{pi} is 3.0 L/min/m².

[0076] In a scientific paper in *The Annals of Thoracic Surgery*, not published at the priority dates of the present application, Ranucci and coworkers actually demonstrated that the DO_{2i}, rather than the HCT, is the best predictor of ARF. Moreover, in presence of perioperative blood transfusions, the DO_{2i} remains the only determinant of ARF. The DO_{2i}^{crit} identified in this paper is 272 ml/min/m², very close to the one previously defined as the DO_{2i} below which the VO₂ becomes pathologically dependent on the DO₂. In other words, maintaining the DO_{2i} above this threshold allows a decrease in the hypoxic organ dysfunction or the elimination of the hypoxic organ dysfunction; in presence of a low HCT, an adequate increase of the Q_p may minimize the deleterious effects of hypoxemia. As a consequence, a continuous monitoring of the DO₂ is of paramount importance in order to limit the postoperative complications, namely the renal ones.

[0077] Measuring a low HCT has poor clinical value, since the only possible (and arguable) countermeasure is a blood transfusion. On the other hand, the DO₂ may be modulated by increasing the pump flow.

[0078] The level of DO_{2i}^{crit} below which the LAC production begins, is identified by the concept of “anaerobic threshold” (AT). In athletes, it is the level of expressed mechanical power at which the LAC production begins; in a patient, it is the level of DO_{2i}^{crit} below which the LAC production begins.

[0079] It has been demonstrated that the LAC value during CPB is predictive for postoperative complications. The problem is that the LAC value is not available on-line, and only some devices (blood gas analyzers) provide it. It is however possible to make an “indirect” assessment of the AT. As a matter of fact, under steady conditions, the VO₂/VCO₂ ratio is a constant, while during anaerobic lactic acid metabolism the VCO₂ increases more than the VO₂. This happens because the lactic acid undergoes the following transformation:



[0080] and the H₂CO₃ is split into H₂O and CO₂, with a further CO₂ production.

[0081] FIG. 3 is a diagram showing the relationship between VO₂ and VCO₂. The relationship between VCO₂ and LAC production has been demonstrated in 15 consecutive patients under CPB, in an experimental trial performed by the inventor himself. In FIG. 4 the graphical relationship between VCO₂ and LAC production is reported. From this relationship, it appears that a VCO_i value of 60 ml/min/m² is a sensitive predictor of lactic acidosis.

[0082] Based on the previous experimental information, according to the invention, a monitoring system for cardiac operations with CPB has been developed. This monitoring system includes:

[0083] a processor connected to a heart-lung machine;

[0084] a pump flow reading device, connected to a pump of the heart-lung machine, to continuously measure the pump flow and to send the pump flow data to the processor;

[0085] a hematocrit value reading device, inserted inside the venous or arterial line, to continuously measure the hematocrit value and to send it to the processor;

[0086] a data input device, to allow the operator to manually input the data regarding the arterial oxygen saturation (Sat(a)) and the arterial oxygen tension (PaO₂);

[0087] computing means integrated in the processor, to compute the oxygen delivery (DO_{2i}) value on the basis of the measured pump flow (Q_p), the measured hematocrit (HCT), the preset value of arterial oxygen saturation (Sat(a)), and the preset value of arterial oxygen tension (PaO₂); and a display connected to the processor, to visualize in real-time the value of DO_{2i} calculated.

[0088] Advantageously, the system may be implemented with a CO₂ reading device, to continuously detect the exhaled CO₂ (eCO₂) at the oxygenator gas escape of the heart-lung machine. The data input device allows the operator to insert the gas flow value (V_e), the computing means computes the CO₂ production (VCO_{2i}) on the basis of the preset gas flow (V_e) value and the detected exhaled CO₂ (eCO₂), and the display shows the calculated value of CO₂ production (VCO_{2i}).

[0089] In one embodiment, the invention provides a monitoring system further comprising: comparing means to compare the above mentioned oxygen delivery (DO_{2i}) value with a threshold value of oxygen delivery (DO_{2i}^{crit}); and an alarm which is triggered when the oxygen delivery (DO_{2i}) value falls below the threshold value of oxygen delivery (DO_{2i}^{crit}). In one embodiment, the threshold value of oxygen delivery (DO_{2i}^{crit}) is preset by the operator at a value of about 270 ml/min/m². In one embodiment, the monitoring system further comprises a temperature detecting device able to continuously measure the body temperature (T) of the patient and to send the temperature values to the processor, to be subsequently displayed by the display. The monitoring system can further comprise an oxygen delivery threshold computing means, receiving as input the temperature (T) value of the patient as detected.

[0090] In one embodiment of the monitoring system, the processor includes a hemoglobin value computing means able to calculate the hemoglobin (Hb) value from the detected hematocrit (HCT) value, and to send it to the oxygen delivery computing means, to be subsequently displayed in the display. In another embodiment of the monitoring system, the processor includes a computing means able to calculate the indexed pump flow (Q_{pi}) from the pump flow (Q_p) and the value of body surface area (BSA) of the patient. In an embodiment of the monitoring system, the data input device can allow the operator to manually input data regarding the weight and height of the patient so that the computing means is able to compute the body surface area (BSA) of the patient. In one embodiment, the pump flow detecting device includes a Doppler reading cell.

[0091] The invention provides a monitoring system for cardiac operations with cardiopulmonary bypass comprising: a processor operatively connected to a heart-lung machine; a CO₂ detecting device placed at the oxygenator of the heart-lung machine to continuously detect the exhaled CO₂ (eCO₂) value and send it to the processor; a data input device allowing the operator to manually input data regarding the gas flow (V_e) of the heart-lung machine; computing means able to calculate the CO₂ production (VCO_{2i}) from the preset gas flow (V_e) and the exhaled CO₂ (eCO₂) detected; and a display connected to the processor to display in real-time the above CO₂ production (VCO_{2i}) as calculated. In one embodiment, the monitoring system further comprises comparison means to compare the above CO₂ production (VCO_{2i}) calculated value with a CO₂ production threshold

value ($VCO2i_{crit}$); and an alarm that is triggered whenever the CO₂ production ($VCO2i$) value exceeds the CO₂ production threshold value ($VCO2i_{crit}$).

[0092] The invention provides a method of monitoring a patient's parameters during a cardiac operation with cardiopulmonary bypass and a heart-lung machine, the method comprising: continuously detecting the pump flow (Qp) from a pump of the heart-lung machine; continuously detecting the hematocrit (HCT) value from the arterial or venous line of the heart-lung machine; setting an arterial oxygen saturation (Sat (a)) value derived from the arterial blood of the patient; setting an arterial oxygen tension (PaO₂) value derived from the arterial blood of the patient; computing the oxygen delivery (DO_{2i}) of the patient from the detected and set values; and displaying the oxygen delivery (DO_{2i}) value as calculated. In one embodiment the method further comprises: setting an oxygen delivery threshold (DO_{2i_{crit}}) value; comparing the calculated oxygen delivery (DO_{2i}) value with the oxygen delivery threshold (DO_{2i_{crit}}) value; and triggering a warning signal whenever the calculated oxygen delivery (DO_{2i}) value falls below the set oxygen delivery threshold (DO_{2i_{crit}}) value. In one embodiment, the warning signal is not triggered when the calculated oxygen delivery (DO_{2i}) value falls below the set oxygen delivery threshold (DO_{2i_{crit}}) value for a period of time shorter than a preset time period. In one embodiment, the method further comprises the continuous detection and display of the patient's temperature (T). In one embodiment, the method comprises calculating the oxygen delivery threshold (DO_{2i_{crit}}) value from the detected body temperature (T).

[0093] The invention provides a method of monitoring a patient's parameters during a cardiac operation with cardiopulmonary bypass and a heart-lung machine, the method comprising: continuously detecting the exhaled carbon dioxide (eCO₂) from the oxygenator of the heart-lung machine; setting a gas flow (Ve) value of the heart-lung machine; computing the carbon dioxide production (VCO_{2i}) of the patient from the detected values of exhaled carbon dioxide (eCO₂) and set values of gas flow (Ve); and displaying the calculated carbon dioxide production (VCO_{2i}) value. In one embodiment, the method further comprises: setting a carbon dioxide production threshold (VCO_{2i_{crit}}) value; comparing the calculated carbon dioxide production (VCO_{2i}) value with the set carbon dioxide production threshold (VCO_{2i_{crit}}) value; and triggering a warning signal whenever the calculated carbon dioxide production (VCO_{2i}) value exceeds the set carbon dioxide production threshold (VCO_{2i_{crit}}) value.

[0094] The invention provides a monitoring system for cardiac surgical operations comprising: a processor connected to a heart-lung machine; pump flow reading device connected to a pump of the heart-lung machine for measuring the value of the pump flow (Qp) and sending it to the processor; blood hematocrit (HCT) value reading device connected to the heart-lung machine circuit for measuring the HCT value and sending it to the processor; CO₂ detecting device to detect the exhaled CO₂ (eCO₂) at the oxygenator gas escape, data input device to manually input data relative to the arterial oxygen saturation (Sat(a)), arterial oxygen tension (PaO₂), and gas flow (Ve); and computing means to compute the oxygen delivery value (DO_{2i}) and the CO₂ production value (VCO_{2i}) on the basis of the detected and set values, and a display connected to the processor, to show the calculated values of (DO_{2i}) and (VCO_{2i}).

[0095] Further characteristics of the invention will be clarified by the following detailed description, referring to a non-limiting embodiment thereof illustrated in the attached drawings.

BRIEF DESCRIPTION OF THE DRAWINGS

[0096] FIG. 1 is a graph illustrating the relationship between VO₂ and DO₂ in an athlete under physical exercise.

[0097] FIG. 2 is a graph illustrating the relationship between VO₂ and DO₂ in a patient under cardiac operation.

[0098] FIG. 3 is a graph illustrating the relationship between VCO₂ and VO₂.

[0099] FIG. 4 is a graph illustrating the relationship between LAC and VCO_{2i}.

[0100] FIG. 5 is a schematic view of a heart-lung machine connected to the patient and a block diagram of a monitoring system according to the invention.

[0101] FIG. 6 is a block diagram illustrating in a more detailed way a monitoring system according to the invention.

[0102] FIG. 7 is a front view of a monitoring device according to the invention, showing a screen view of the display.

[0103] FIG. 8 is a view of a monitoring device according to the invention similar to FIG. 7, in a minimal configuration.

[0104] In the following description, and with reference to FIGS. 5, 6, 7, and 8, the monitoring system for cardiac operations with cardiopulmonary bypass is described, according to the invention.

[0105] FIG. 5 shows a patient 1 laying on a surgical table 2. A heart-lung machine, comprehensively identified by the number 3, is connected to the patient 1. As already known in the art, a heart-lung machine 3 comprises a venous extracorporeal circuit, collecting blood from the venous system of the patient. A roller or centrifugal mechanical pump 4 pumps the venous blood from a venous extracorporeal circuit towards an oxygenator 5, whose role is removing CO₂ from the venous blood and supplying oxygen (O₂). The blood oxygenated by the oxygenator 5, is sent, again by the same roller or centrifugal pump 4, to an arterial extracorporeal circuit connected to the arterial system of the patient, therefore creating a total bypass of the heart and lungs of the patient.

DETAILED DESCRIPTION

[0106] The monitoring system, according to the invention, comprehensively identified by the reference number 10, is operatively connected to the heart-lung machine 3. The monitoring system 10 comprises a processor able to perform calculations, as subsequently explained, and a monitor screen or display 11 that works as an interface with the operator.

Manual Data Input from the Operator

[0107] Using the knob 50 (FIGS. 7 and 8), placed in the front part of the monitoring system 10, the operator may input data that will be stored by the processor memory of the monitoring system 10. Data manually inserted by the operator are:

[0108] (1) Height and weight of the patient.

[0109] (2) The arterial oxygen saturation (Sat(a)). This value, during CPB procedures, is usually 100%. However, in case of extraordinary events like an oxygenator malfunction, the value of (Sat(a)) may decrease. In this case, the operator may manually change this value using the knob 50.

[0110] (3) The arterial oxygen tension (PaO₂) value. This PaO₂ value is measured by the perfusionist on the

arterial blood of the patient with blood gas analysis, using an adequate and specific device.

[0111] (4) The gas flow value (V_e). This V_e value is established by the perfusionist operating the heart-lung machine 3. Generally, the V_e is regulated with a flow-meter, in a range between 1 and 5 L/min, according to the patient's parameters. This V_e value rarely changes during a CPB procedure, and therefore can be manually inserted by the operator. However, as an alternative, the monitoring system 10 may include an electronic flow-meter connected to the heart-lung machine 3, to continuously detect the V_e value.

Heart-Lung Machine Interfaced Data

[0112] The monitoring device 10 is equipped with some electrical connections to the heart-lung machine 3, as to continuously receive data collected by adequate sensors placed in specific positions of the heart-lung machine. These continuously collected data are:

[0113] (1) Patient's body temperature (T). This temperature T is continuously measured by a temperature probe inserted inside the esophagus or the rectum of the patient. The temperature probe 40 sends an electronic signal of the temperature to a monitor of the heart-lung machine visualizing, in real-time, the temperature value. In this case, it is sufficient to interface with an electrical connection the monitor of the heart-lung machine 3 with the monitoring device 10, for a continuous input of the temperature value T.

[0114] (2) Exhaled carbon dioxide (eCO_2). This eCO_2 value is continuously measured through a CO_2 detector 41 placed at the gas escape of the oxygenator 5 to detect the sidestream CO_2 exhaled from the oxygenator 5. The CO_2 detector 41 can be any kind of CO_2 detector among the various commercially available and re-usable capnographs.

[0115] (3) Hematocrit (HCT). The HCT value is continuously measured through a hematocrit reading cell 42 placed inside the arterial or venous circuit of the heart-lung machine 3. For instance, in FIG. 5, the hematocrit reading cell 42 is placed inside the arterial line between the pump 4 and the oxygenator 5. The hematocrit reading cell 42 is commercially available and disposable.

[0116] (4) Pump flow (Q_p). The Q_p value is continuously measured through the Doppler reading cell 43, placed on the arterial line of the heart-lung machine 3. This kind of Doppler reading cell 43 measures the blood flow on the basis of the Doppler principle (red cells velocity).

[0117] If the pump 4 of the extracorporeal circuit is a centrifugal pump, it is already equipped with the Doppler reading cell 43. Conversely, if the pump 4 is a roller pump, the Doppler reading cell 43 may be added. In the alternative, the Doppler reading cell 43 may be omitted, since the roller pump head is provided with a flow measuring system. In this case, the data regarding the pump flow Q_p is directly sent to the monitoring device 10.

[0118] With specific reference to FIG. 6, the operation of the monitoring system 10 is described below. The processor of the monitoring system 10 includes a first computing program 12 that, based on the weight and height of the patient as input by the operator calculates, according to pre-defined tables, the body surface area (BSA) of the patient.

[0119] The BSA value is sent to a second computing program 13 that receives the input value of the pump flow Q_p as

detected by the pump 4 of the heart-lung machine 3. The second computing program 13 calculates the indexed pump flow Q_{pi} , according to the relationship $Q_{pi}=Q_p/BSA$.

[0120] A third computing program 14 receives the input value HCT as detected by the hematocrit reading cell 43 placed inside the venous or arterial line of the heart-lung machine. The third computing program 14, based on the equation (6), calculates the hemoglobin value Hb. The Hb value is sent to the display 11 and displayed in a window 51 of the display 11 (FIG. 7).

[0121] The pump flow indexed Q_{pi} computed by the second computing program 13 and the hemoglobin value Hb computed by the third computing program 14 are sent to a fourth computing program 15 that receives as input values the values of arterial oxygen saturation (Sat(a)) and arterial oxygen tension (PaO₂) manually entered by the operator. The fourth computing program 15, according to the equation (4), calculates the indexed oxygen delivery value (DO_{2i}).

[0122] As shown in FIG. 7, the DO_{2i} value is visualized in real time in a window 53 of the display 11 and as a graphical pattern 52 (as a function of time). The display 11 is provided with a chronometer window 56 showing the time passed from the beginning of the CPB.

[0123] As shown in FIG. 6, the DO_{2i} value is sent to a comparator 18 which compares it to a threshold value of DO_{2i,crit} that is displayed in a window 54 (FIG. 7) of the display 11. This threshold value is set at 270 ml/min/m² at a temperature between 34° C. and 37° C., and decreases as a function of temperature, in a linear fashion.

[0124] Therefore the threshold value of DO_{2i,crit} be preset by the operator or may be calculated by a computing program 17 depending on the temperature value T determined by the temperature probe 40. The temperature T value determined by the probe 40 is sent to the display 11 to be displayed in a window 55.

[0125] When the DO_{2i} value falls below the DO_{2i,crit}, the comparing device 16 sends a control signal to an alarm 16 that is triggered, alerting the operator of a potentially dangerous condition.

[0126] The alarm 16 is not triggered by brief decreases of the pump flow Q_p (often needed during CPB). Therefore, the alarm 16 could be set to be activated after 5 minutes of consecutive detection of a DO_{2i} below the DO_{2i,crit}. However, a recording of all the periods of low flow can be made, to analyze and avoid the possibility that many short periods of low flow may create an additional effect. It is reasonable to consider no more than 20 minutes (as a total) of DO_{2i} below the DO_{2i,crit} during a normal CPB lasting about 90 minutes. The monitoring device 10 is equipped with a computing program 19, which receives as input values the exhaled carbon dioxide eCO_2 as detected by the CO_2 sensor 41 and the gas flow V_e set by the operator. According to these input data, the computing program 19 calculates the indexed carbon dioxide production VCO_{2i} applying the equation (9).

[0127] The VCO_{2i} value as calculated by the computing program 19 is sent to the display 11 and displayed in real time in a window 57 (FIG. 7) in its graphical relationship 58 as a function of time.

[0128] The VCO_{2i} value is sent to a second comparator 20 which compares it with an anaerobic threshold value VCO_{2i,crit} set by the operator; by default the VCO_{2i,crit} is preset at 60 ml/min/m². As shown in FIG. 7, the display 11 is provided with a window 59 showing the value of anaerobic threshold VCO_{2i,crit} set by the operator.

[0129] Back to FIG. 6, when the VCO_{2i} exceeds the $VCO_{2i,crit}$, an alarm signal is sent to a second alarm 21, which, when triggered, alerts the operator of a warning condition. Moreover, as shown in FIG. 7, the display 11 is provided with: a window 60 where the gas flow value V_e set by the operator is displayed; a window 61 where the indexed pump flow value Q_{pi} arriving from the computing program 13 is displayed; and a window 62 where the body surface area of the patient is displayed as calculated by the computing program 12.

[0130] The monitoring system 10 can be equipped with a data recording system and a printer interface, and/or a digital data recording system. The display 11 could include two configurations: a complete configuration, as the one shown in FIG. 7, and a reduced configuration, only considering the DO_2 parameter, as shown in FIG. 8.

[0131] The above description and accompanying drawings are provided for the purpose of describing embodiments of the invention and are not intended to limit the scope of the invention in any way. It will be apparent to those skilled in the art that various modifications and variations can be made in the systems and methods for cardiac operations without departing from the spirit or scope of the invention. Thus, it is intended that the present invention cover the modifications and variations of this invention provided they come within the scope of the appended claims and their equivalents.

REFERENCES

- [0132] 1. Ranucci M., Pavesi M., Mazza E., et al. Risk factors for renal dysfunction after coronary surgery: the role of cardiopulmonary bypass technique. *Perfusion* 1994; 9:319-26.
- [0133] 2. Stafford-Smith M., Conlon P. J., White W. D., et al. Low hematocrit but not perfusion pressure during CPB is predictive for renal failure following CABG surgery [Abstract]. *Anesth Analg* 1998; 86: SCA 11-124.
- [0134] 3. Fang W. C., Helm R. E., Krieger K. H., et al. Impact of minimum hematocrit during cardiopulmonary bypass on mortality in patients undergoing coronary artery surgery. *Circulation* 1997; 96(suppl II):194-9.
- [0135] 4. Habib R. H., Zacharias A., Schwann T. A., Rioridan C. J., Durham S. J., Shah A. Adverse effects of low hematocrit during cardiopulmonary bypass in the adult: should current practice be changed? *J Thorac Cardiovasc Surg* 2003; 125:1438-50.
- [0136] 5. Swaminathan M., Phillips-Bute B. G., Conlon P. J., Smith P. K., Newman M. F., Stafford-Smith M. The association of lowest hematocrit during cardiopulmonary bypass with acute renal injury after coronary artery bypass surgery. *Ann Thorac Surg* 2003; 76:784-92.
- [0137] 6. Karkouti K., Beattie W. S., Wijeyesundera D. N., et al. Hemodilution during cardiopulmonary bypass is an independent risk factor for acute renal failure in adult cardiac surgery. *J Thorac Cardiovasc Surg* 2005; 129:391-400.
- [0138] 7. Ranucci M., Romitti F., Isgr G., et al. Oxygen delivery during cardiopulmonary bypass and acute renal failure following coronary operations. *Ann Thorac Surg* 2005; in press.
- [0139] 8. Ranucci M., Menicanti L., Frigiola A. Acute renal injury and lowest hematocrit during cardiopulmonary bypass: not only a matter of cellular hypoxemia. *Ann Thorac Surg* 2004; 78:1880-1.
- [0140] 9. Demers P., Elkouri S., Martineau R., et al. Outcome with high blood lactate levels during cardiopulmonary bypass in adult cardiac surgery. *Ann Thorac Surg* 2000; 70:2082-6.
- I claim:
1. A monitoring system for cardiac operations with cardiopulmonary bypass with a heart-lung machine having a pump and an oxygenator fluidly coupled to the heart-lung machine, the monitoring system comprising:
 - a controller configured to:
 - receive a hematocrit value of a patient in real-time during a cardiopulmonary bypass procedure, the hematocrit value being continuously measured by a hematocrit sensor;
 - receive a pump flow rate value of the pump in real-time during the cardiopulmonary bypass procedure, the pump flow rate value being continuously measured by a pump flow rate sensor;
 - receive an arterial oxygen saturation value of the patient;
 - calculate an oxygen delivery value in real-time during the cardiopulmonary bypass procedure based on each of the arterial oxygen saturation value, the real-time hematocrit value, and the real-time pump flow rate value; and
 - compare the calculated oxygen delivery value against an oxygen delivery value threshold; and
 - a display device operably connected to the controller and configured to display each of the arterial oxygen saturation value, the hematocrit value, the pump flow rate value, and the calculated real-time oxygen delivery value.
 2. The monitoring system of claim 1, wherein the controller is further configured to trigger an alarm if the calculated oxygen delivery value is within a designated proximity to the oxygen delivery value threshold.
 3. The monitoring system of claim 2, wherein the designated proximity is an oxygen delivery value that is less than the oxygen delivery value threshold.
 4. The monitoring system of claim 2, wherein the controller is further configured to receive a temperature value of the patient.
 5. The monitoring system of claim 4, wherein the oxygen delivery value threshold is based, at least in part, on a body surface area of the patient.
 6. The monitoring system of claim 5, wherein the oxygen delivery value threshold is based, at least in part, on each of the temperature value of the patient and the body surface area of the patient.
 7. The monitoring system of claim 8, wherein for a first temperature value of the patient, the oxygen delivery value threshold is a first value and for a second, different temperature value of the patient, the oxygen delivery value threshold is a second, different value.
 8. The monitoring system of claim 1, wherein the controller is further configured to determine an accumulated amount of time at which the calculated oxygen delivery value is within a designated proximity to the oxygen delivery value threshold.
 9. The monitoring system of claim 8, wherein if the accumulated amount of time reaches a predetermined threshold amount of time, the controller is configured to trigger an alarm.
 10. The monitoring system of claim 1, wherein the controller is further configured to:

receive a venous oxygen saturation value of the patient; and calculate an oxygen consumption value in real-time during the cardiopulmonary bypass procedure based on each of the arterial oxygen saturation value, the venous oxygen saturation value, the real-time hematocrit value, and the real-time pump flow rate value.

11. A method of monitoring a patient during a cardiac operation with a heart-lung machine having a pump and an oxygenator fluidly coupled to the heart-lung machine, the method comprising:

receiving a real-time hematocrit value of the patient;
receiving a real-time pump flow rate value of the pump;
receiving an arterial oxygen saturation value of the patient;
receiving a venous oxygen saturation value of the patient;
causing at least one controller to calculate an oxygen delivery value in real-time based on each of the arterial oxygen value, the hematocrit value, and the pump flow rate value;
causing the at least one controller to compare the calculated real-time oxygen delivery value against an oxygen delivery value threshold; and
causing at least one display device to display each of the arterial oxygen value, the hematocrit value, the pump flow rate value, and the calculated real-time oxygen delivery value.

12. The method of claim **11**, further comprising causing the at least one controller to trigger an alarm if the calculated oxygen delivery value is within a designated proximity to the oxygen delivery value threshold.

13. The method of claim **12**, wherein the designated proximity is an oxygen delivery value that is less than the oxygen delivery value threshold.

14. The method of claim **12**, further comprising receiving a temperature value of the patient.

15. The method of claim **14**, wherein the oxygen delivery value threshold is based, at least in part, on a body surface area of the patient.

16. The method of claim **15**, wherein the oxygen delivery value threshold is based, at least in part, on each of the temperature value of the patient and the body surface area of the patient.

17. The method of claim **16**, wherein for a first temperature value of the patient, the oxygen delivery value threshold is a first value and for a second, different temperature value of the patient, the oxygen delivery value threshold is a second, different value.

18. The method of claim **11**, further comprising causing the at least one controller to determine an accumulated amount of time at which the calculated oxygen delivery value is within a designated proximity to the oxygen delivery value threshold.

19. The method of claim **18**, wherein if the accumulated amount of time reaches a predetermined threshold amount of time, causing the controller to trigger an alarm.

20. The method of claim **11**, further comprising:

receiving a venous oxygen saturation value of a patient;
and

causing the at least one controller to calculate an oxygen consumption value in real-time during the cardiopulmonary bypass procedure based on each of the arterial oxygen saturation value, the venous oxygen saturation value, the hematocrit value, and the pump flow rate value.

* * * * *

专利名称(译)	用于心肺外科手术的心肺外科手术监测系统		
公开(公告)号	US20150272487A1	公开(公告)日	2015-10-01
申请号	US14/738805	申请日	2015-06-12
[标]申请(专利权)人(译)	索林集团意大利有限责任公司		
申请(专利权)人(译)	索林集团ITALIA S.R.L.		
当前申请(专利权)人(译)	索林集团ITALIA S.R.L.		
[标]发明人	RANUCCI MARCO		
发明人	RANUCCI, MARCO		
IPC分类号	A61B5/145 A61B5/00 A61M1/14 A61B5/01 G06F19/00		
CPC分类号	A61M2230/20 A61B5/14542 A61B5/14535 A61B2505/05 A61B5/7278 A61B5/746 A61M1/14 A61B5/01 A61B5/0205 A61M1/3666 A61M2230/205 A61M2230/207 G16H40/63 G16Z99/00 A61B5/0816 A61B5/082 A61B5/14546 A61B5/4836 A61B5/4866 A61B5/6866 A61B5/742 A61M1/32 A61M1/3621 G06F19/00		
优先权	102005901311381 2005-05-13 IT 2005021607 2005-10-04 EP		
其他公开文献	US10039490		
外部链接	Espacenet USPTO		

摘要(译)

一种用于具有心肺分流术的心脏手术的监测系统，包括：可操作地连接到心肺机的处理器；泵流量检测装置，连接到心肺机的泵，连续测量泵流量值并将其发送给处理器；血细胞比容读数装置，用于连续测量血液血细胞比容值并将其发送给处理器；数据输入装置，允许操作者手动输入关于动脉血氧饱和度和动脉氧张力的数据；计算装置集成在处理器中，根据测量的泵流量，测量的血细胞比容值，动脉血氧饱和度的预设值和动脉氧张力的预设值计算氧输送值；和连接到处理器的显示器，以实时显示计算的氧气输送值。

