



(19) **United States**

(12) **Patent Application Publication**

Foshee, JR. et al.

(10) **Pub. No.: US 2020/0114156 A1**

(43) **Pub. Date: Apr. 16, 2020**

(54) **WCD SYSTEM OPERABLE TO NOT ALARM WHEN DETECTED CARDIAC ARRHYTHMIAS ARE NOT VALIDATED**

now Pat. No. 9,524,698, which is a continuation-in-part of application No. 14/461,670, filed on Aug. 18, 2014, now abandoned.

(71) Applicant: **West Affum Holdings Corp.**, Grand Cayman (KY)

(60) Provisional application No. 62/425,071, filed on Nov. 21, 2016, provisional application No. 61/769,098, filed on Feb. 25, 2013.

(72) Inventors: **Phillip D. Foshee, JR.**, Woodinville, WA (US); **David P. Finch**, Bothell, WA (US); **Laura M. Gustavson**, Redmond, WA (US); **Nikolai Korsun**, Lynwnwood, WA (US); **Joseph L. Sullivan**, Kirkland, WA (US); **Gregory T. Kavounas**, Bellevue, WA (US)

Publication Classification

(51) **Int. Cl.**
A61N 1/39 (2006.01)
A61N 1/04 (2006.01)
A61B 5/0464 (2006.01)
A61B 5/00 (2006.01)
A61B 5/0402 (2006.01)

(52) **U.S. Cl.**
 CPC *A61N 1/3918* (2013.01); *A61N 1/3937* (2013.01); *A61N 1/3993* (2013.01); *A61N 1/0484* (2013.01); *A61N 1/39* (2013.01); *A61B 5/0464* (2013.01); *A61B 5/0538* (2013.01); *A61B 5/0402* (2013.01); *A61N 1/3968* (2013.01); *A61N 1/3987* (2013.01); *A61B 5/6805* (2013.01); *A61B 5/686* (2013.01); *A61B 5/7221* (2013.01)

(73) Assignee: **West Affum Holdings Corp.**, Grand Cayman (KY)

(21) Appl. No.: **16/709,676**

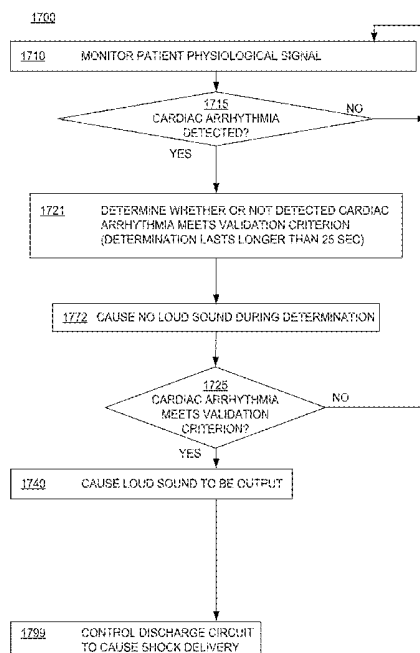
(22) Filed: **Dec. 10, 2019**

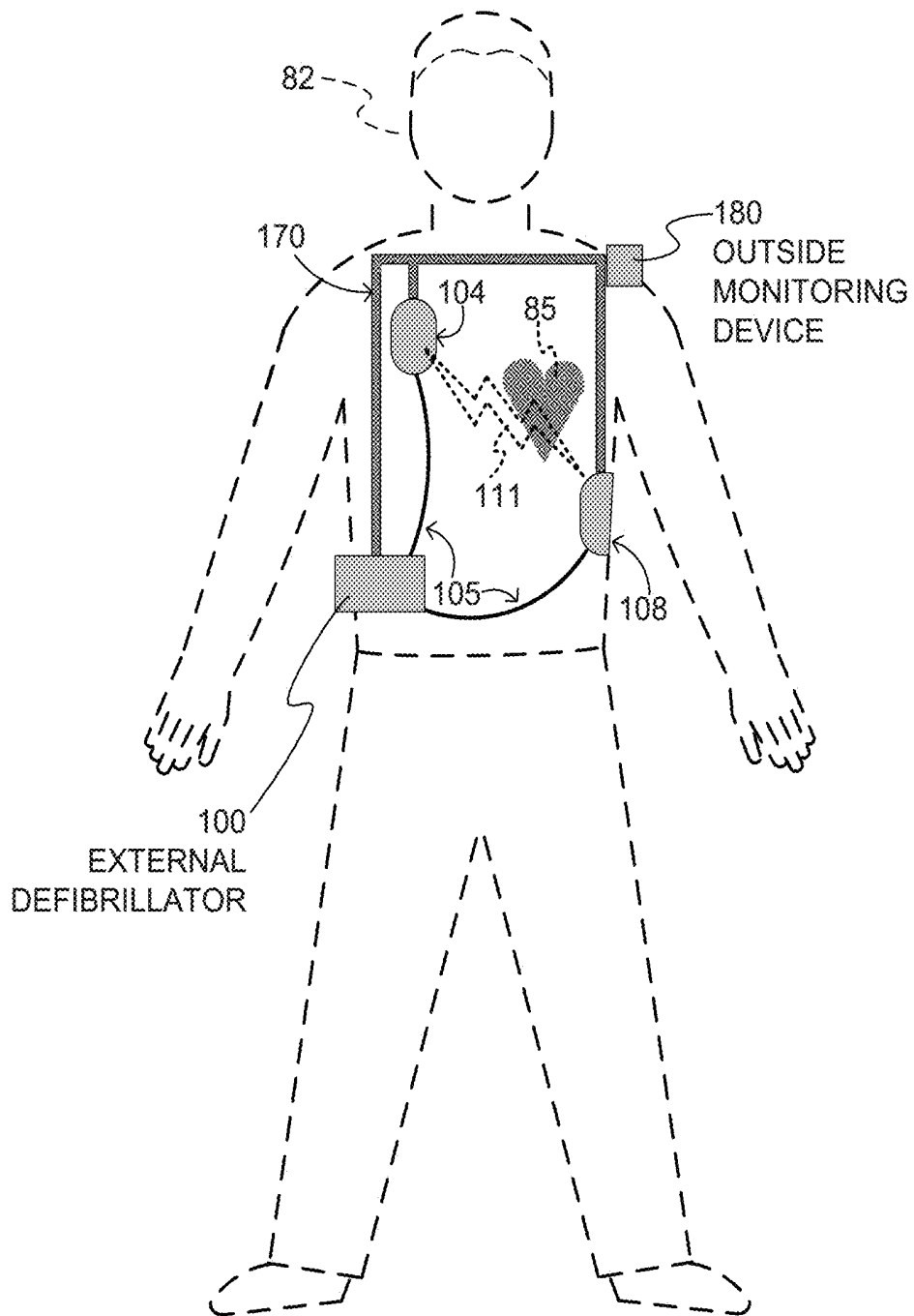
Related U.S. Application Data

(60) Continuation of application No. 15/647,524, filed on Jul. 12, 2017, now Pat. No. 10,500,403, which is a continuation-in-part of application No. 14/941,592, filed on Nov. 14, 2015, now Pat. No. 9,757,579, which is a continuation-in-part of application No. 14/461,670, filed on Aug. 18, 2014, now abandoned, which is a continuation-in-part of application No. 14/743,882, filed on Jun. 18, 2015, now abandoned, which is a continuation of application No. 14/189,789, filed on Feb. 25, 2014, now Pat. No. 9,089,685, Continuation-in-part of application No. 16/568,954, filed on Sep. 12, 2019, which is a continuation of application No. 15/673,184, filed on Aug. 9, 2017, now Pat. No. 10,426,966, which is a division of application No. 14/494,592, filed on Sep. 24, 2014,

(57) **ABSTRACT**

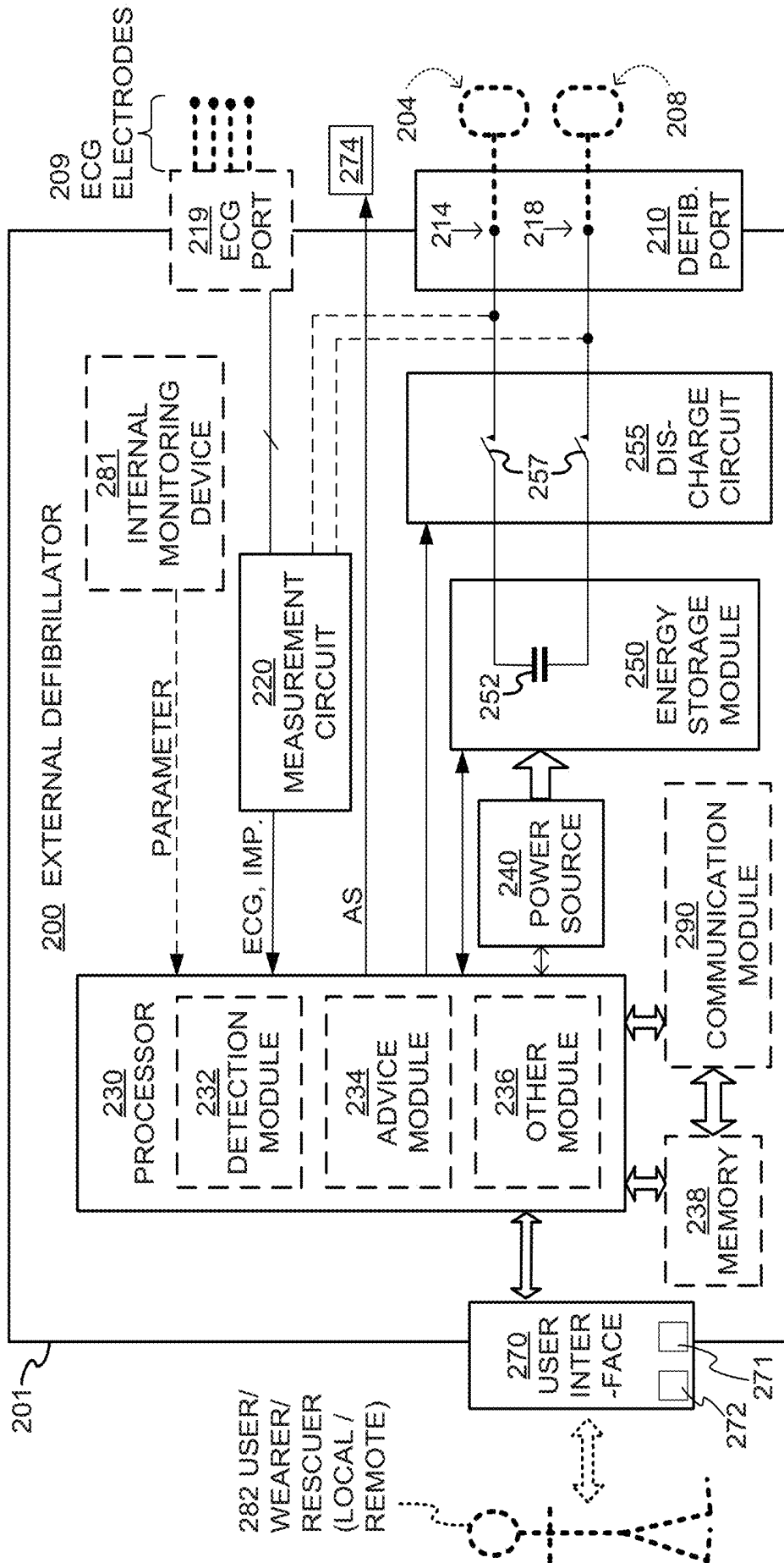
A wearable cardioverter defibrillator (WCD) comprises a support structure to be worn by a patient, an energy storage module to store an electrical charge, a discharge circuit coupled to the energy storage module, a measurement circuit, a user interface that includes a speaker, and a processor. The processor is configured to monitor a physiological signal of a patient with the measurement circuit to detect cardiac arrhythmia when the patient is wearing the support structure, determine whether a validation criterion is met in response to detection of a cardiac arrhythmia, provide no alarm with the user interface the validation criterion is being determined, and cause a shock to be delivered to the patient from the energy storage module by the discharge circuit in the event the validation criterion is met





SAMPLE COMPONENTS OF WEARABLE
CARDIOVERTER DEFIBRILLATOR (WCD)
SYSTEM

FIG. 1



SAMPLE COMPONENTS OF EXTERNAL DEFIBRILLATOR

FIG. 2

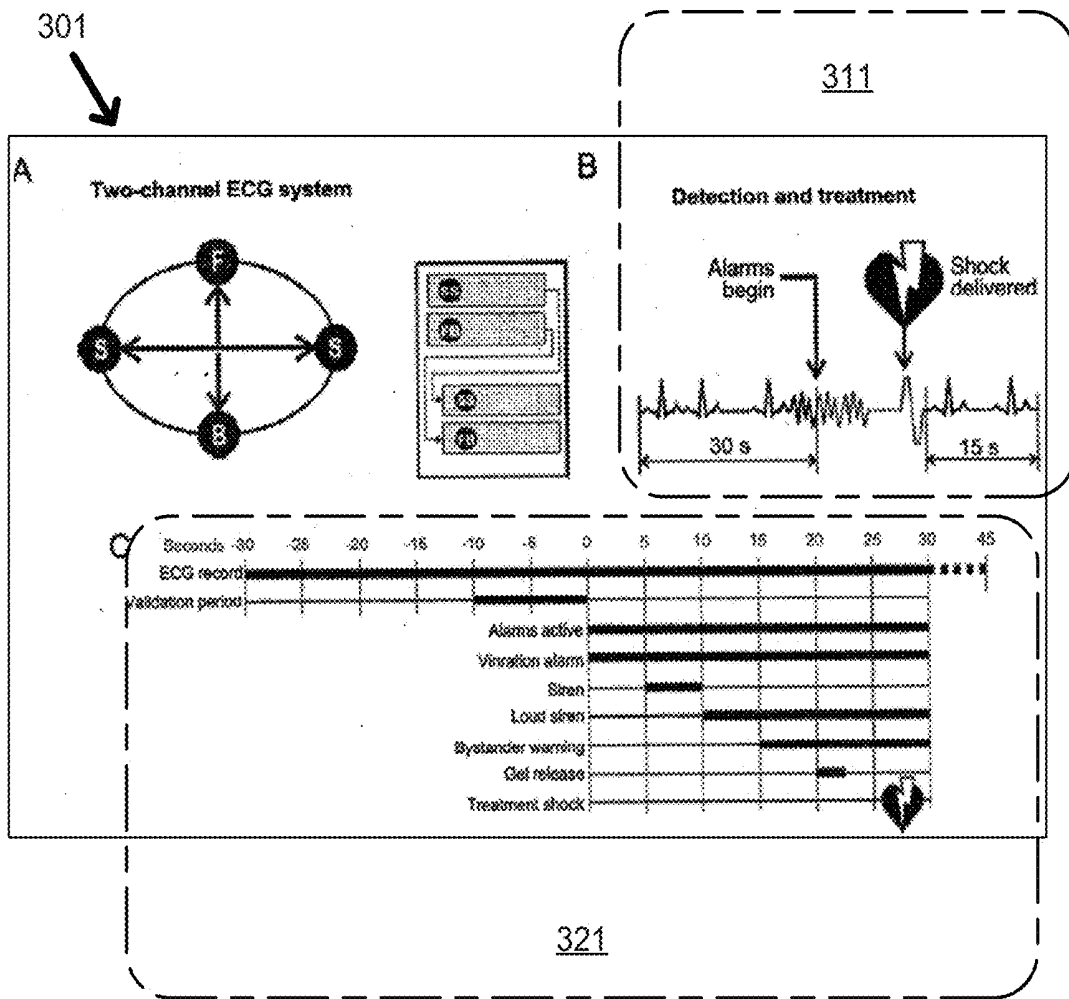


FIG. 3A (PRIOR ART)

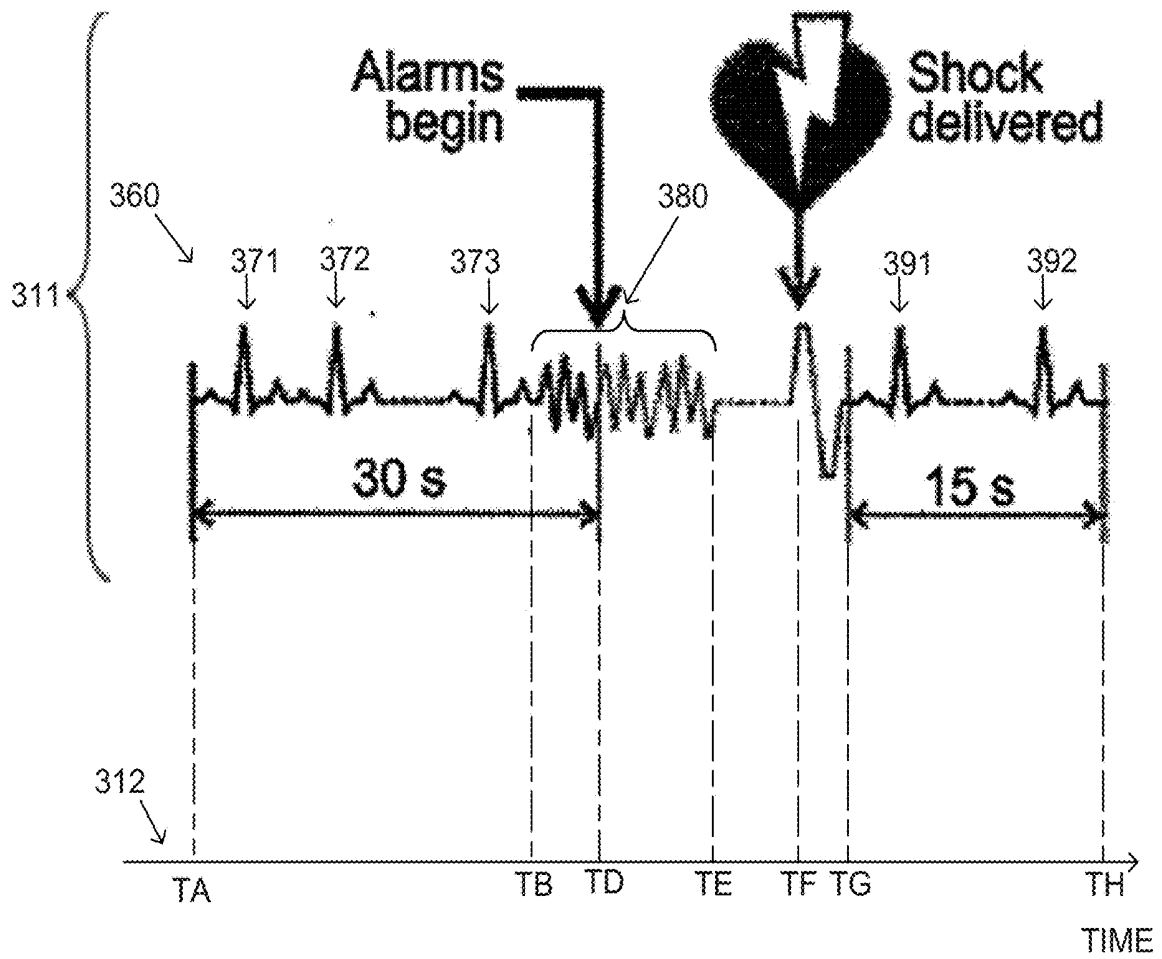


FIG. 3B (PRIOR ART)

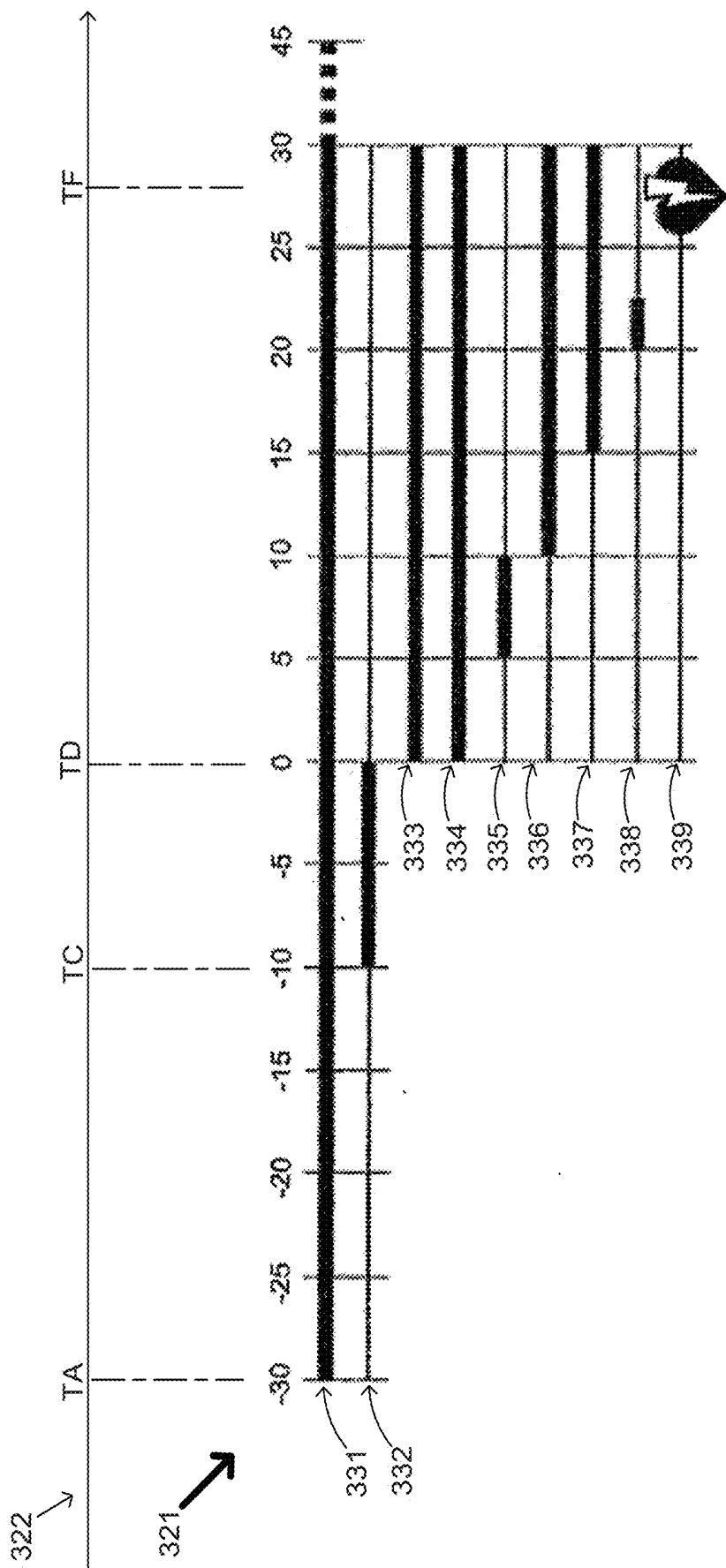


FIG. 3C (PRIOR ART)

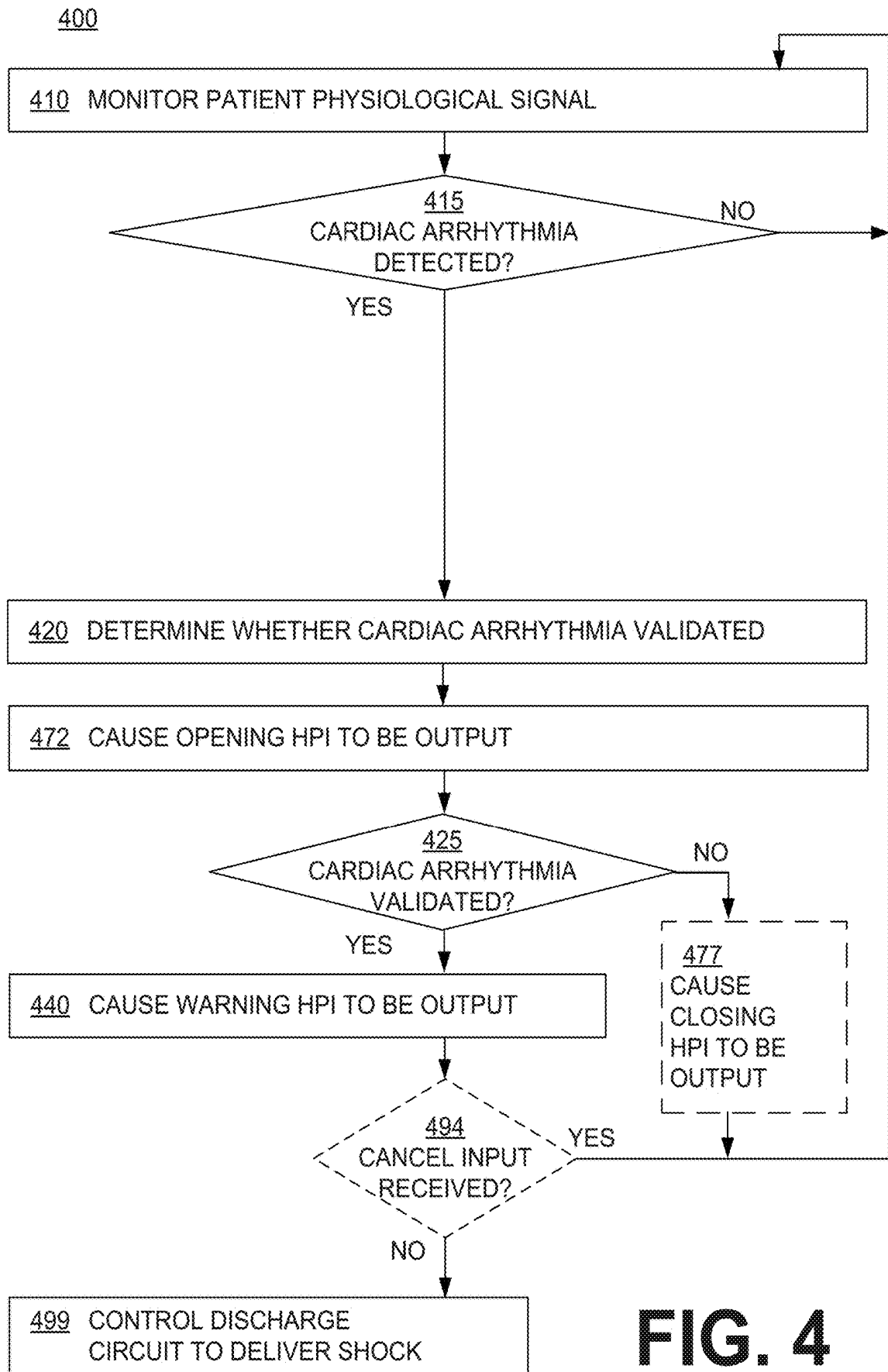


FIG. 4

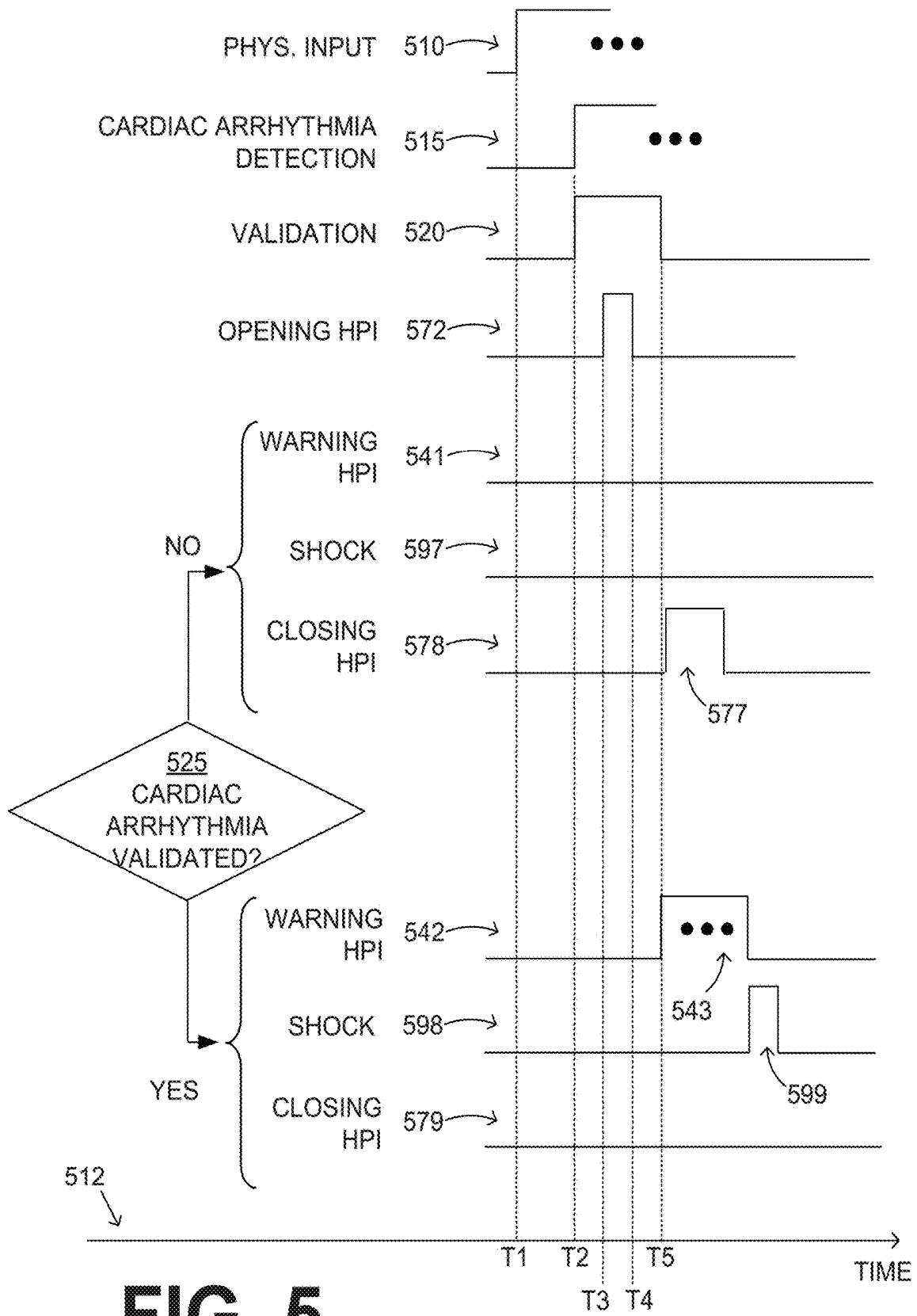


FIG. 5

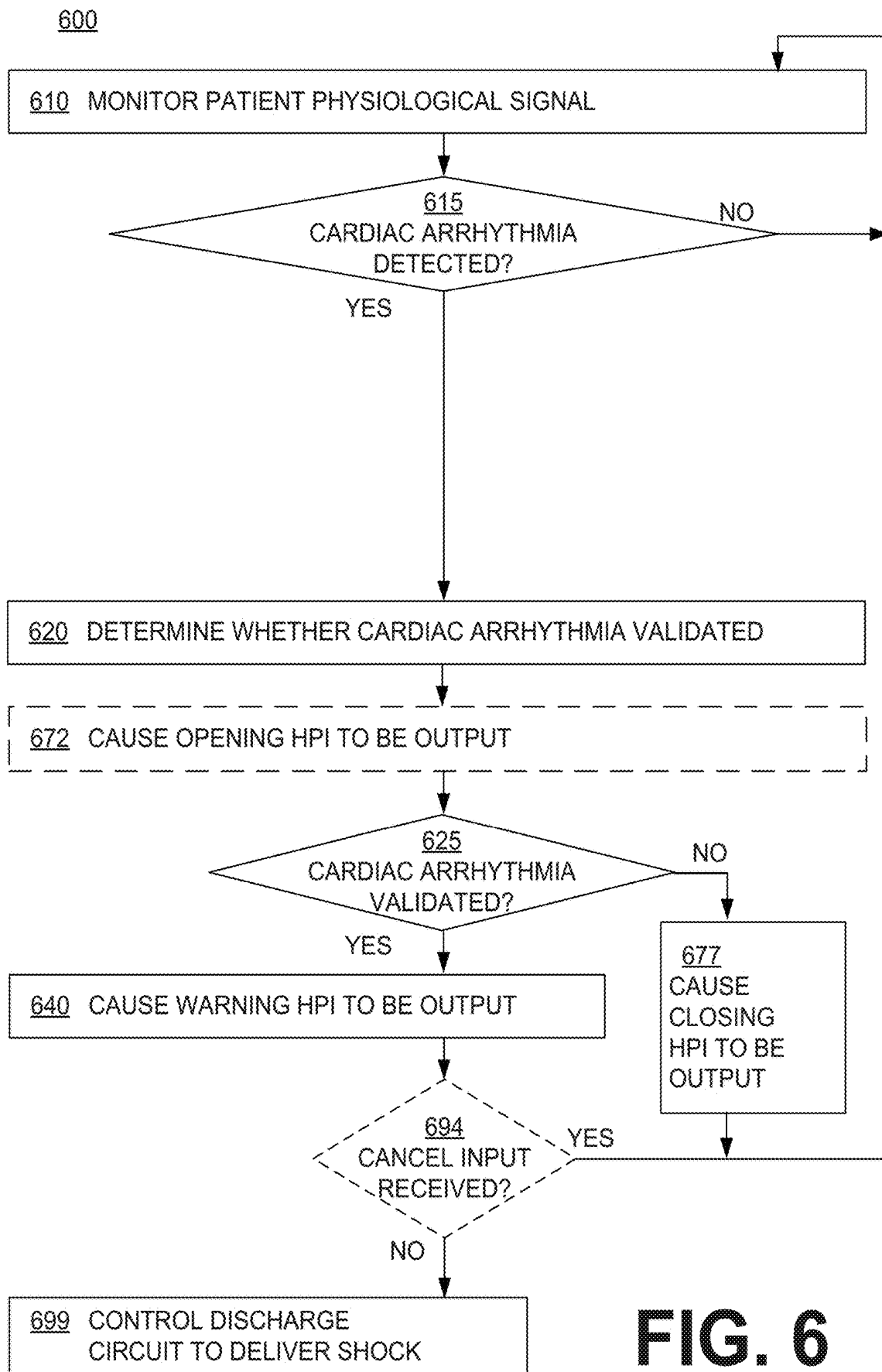


FIG. 6

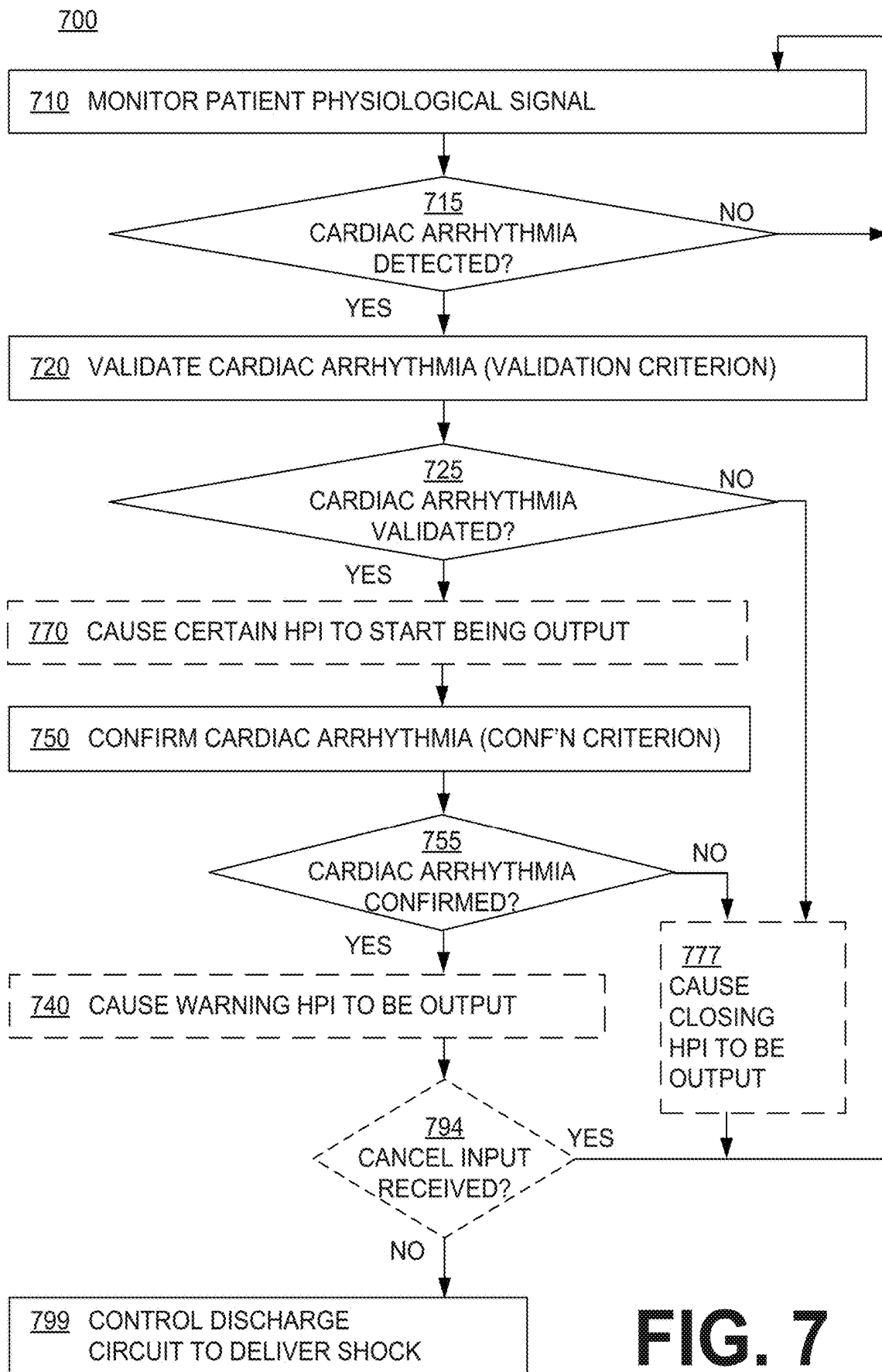


FIG. 7

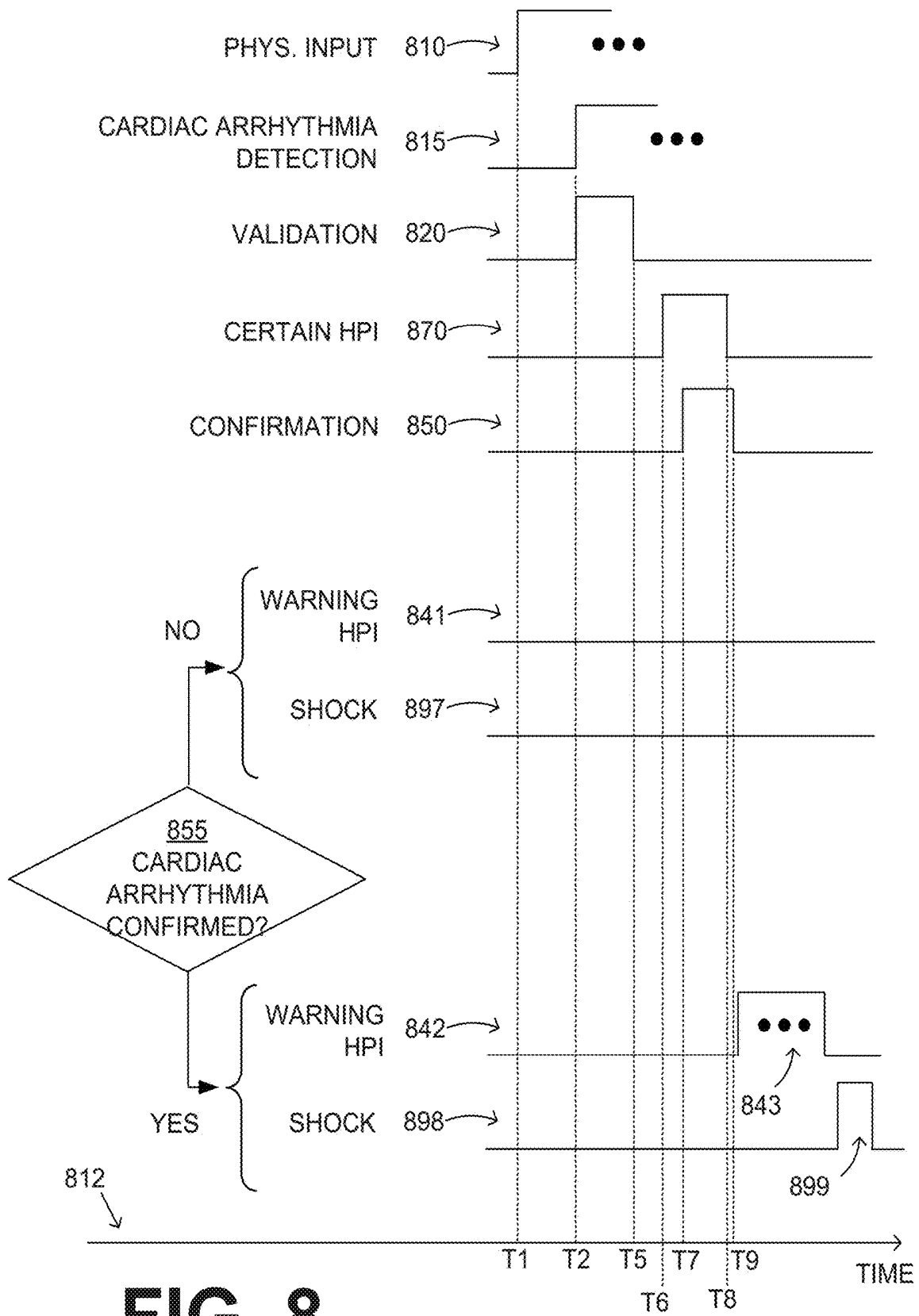


FIG. 8

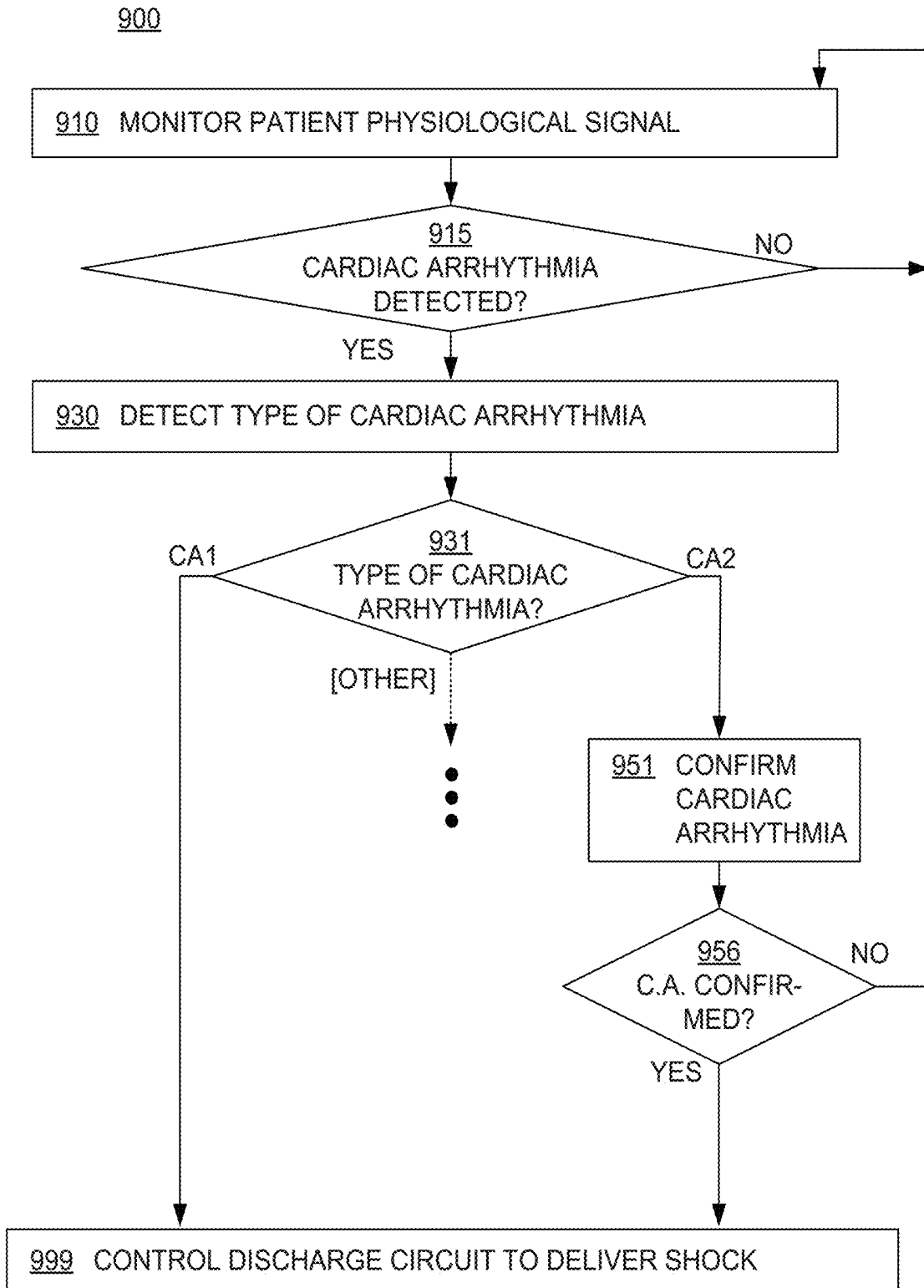


FIG. 9

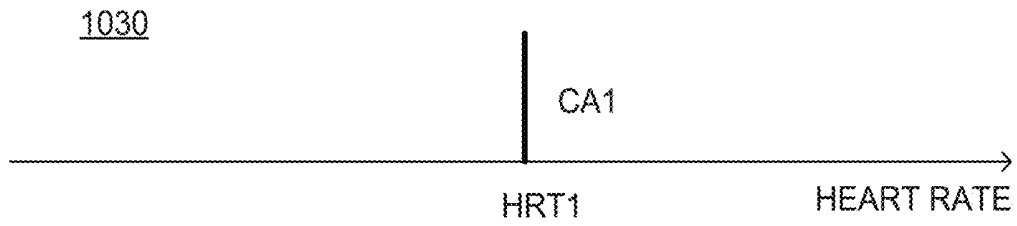


FIG. 10

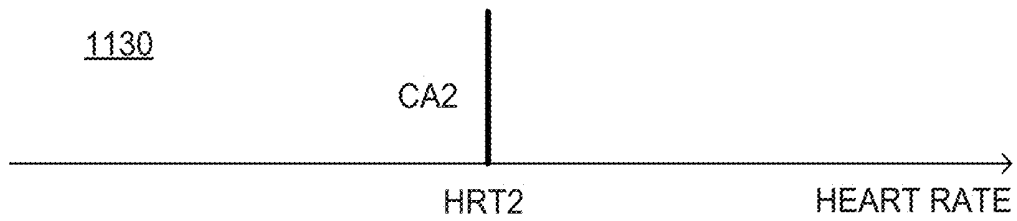


FIG. 11

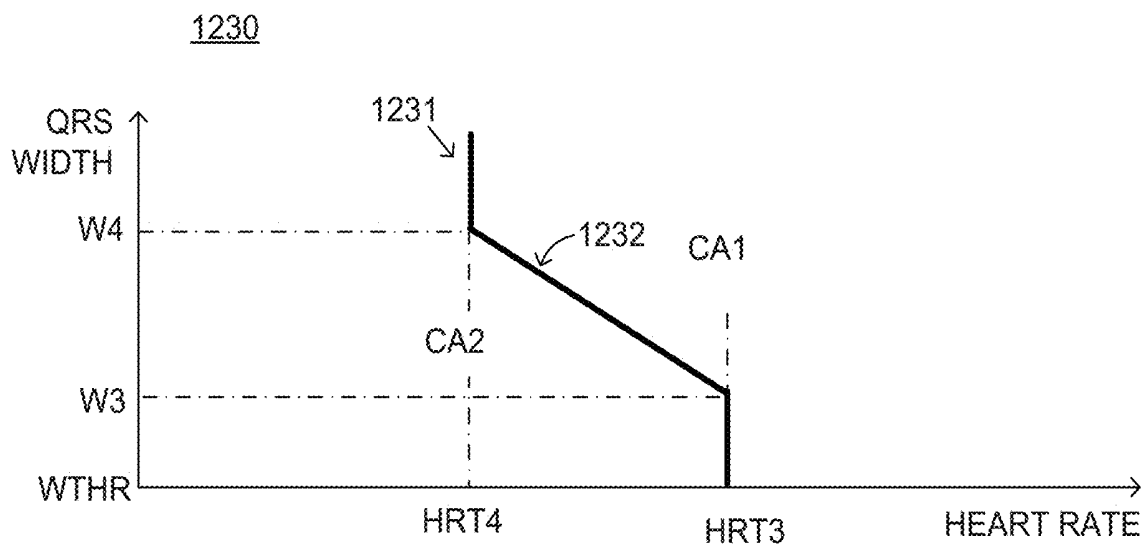


FIG. 12

1351

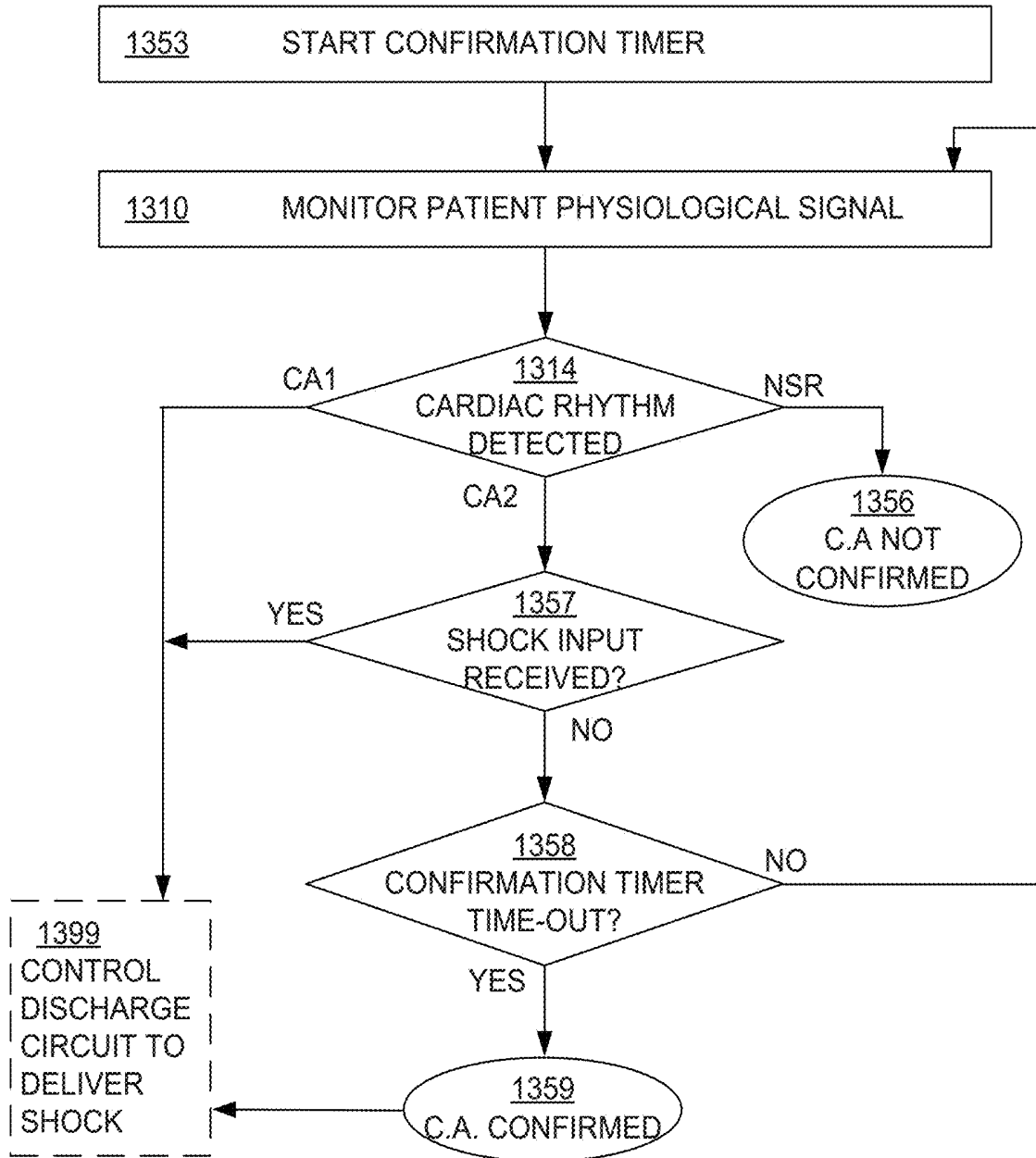


FIG. 13

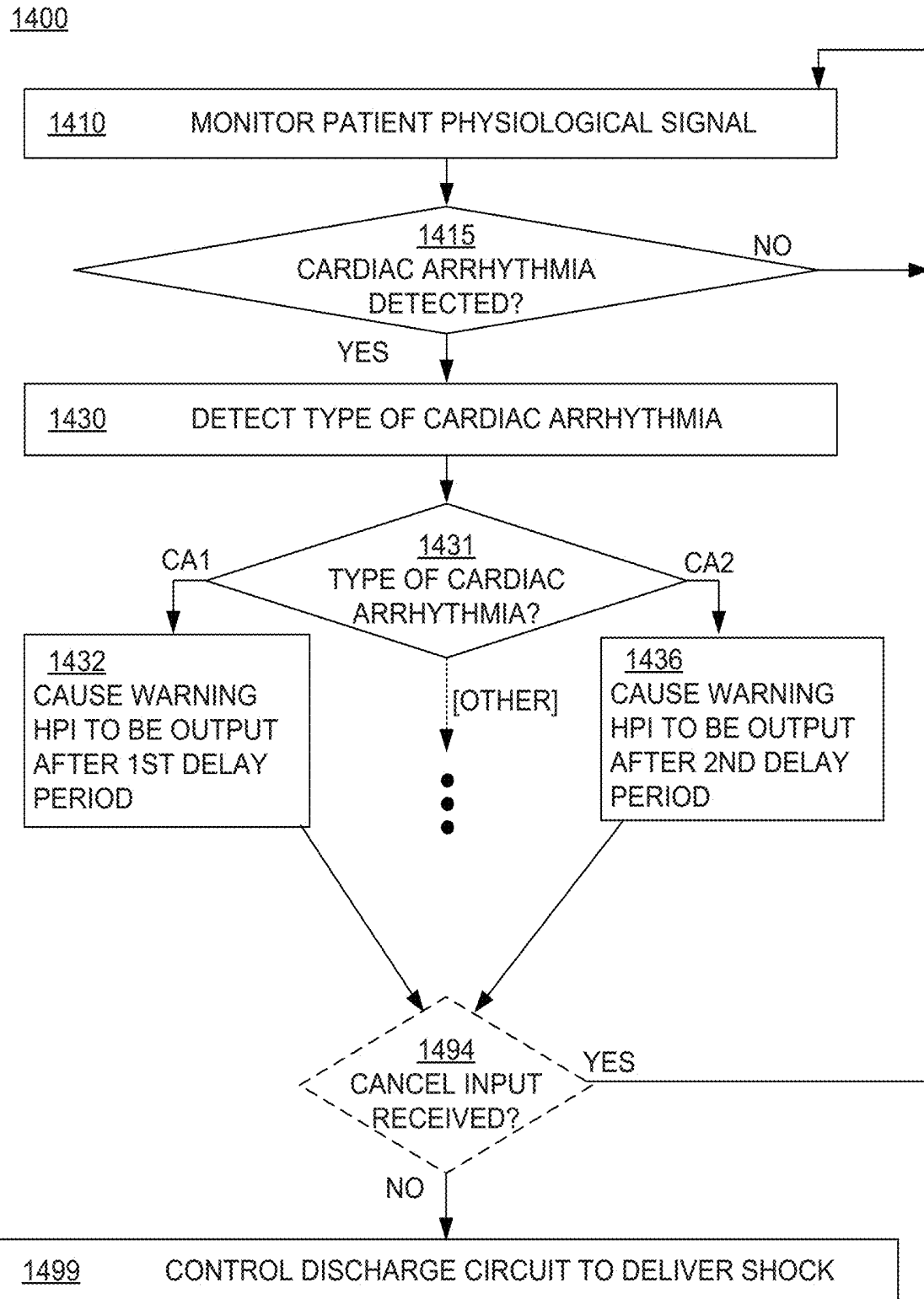


FIG. 14

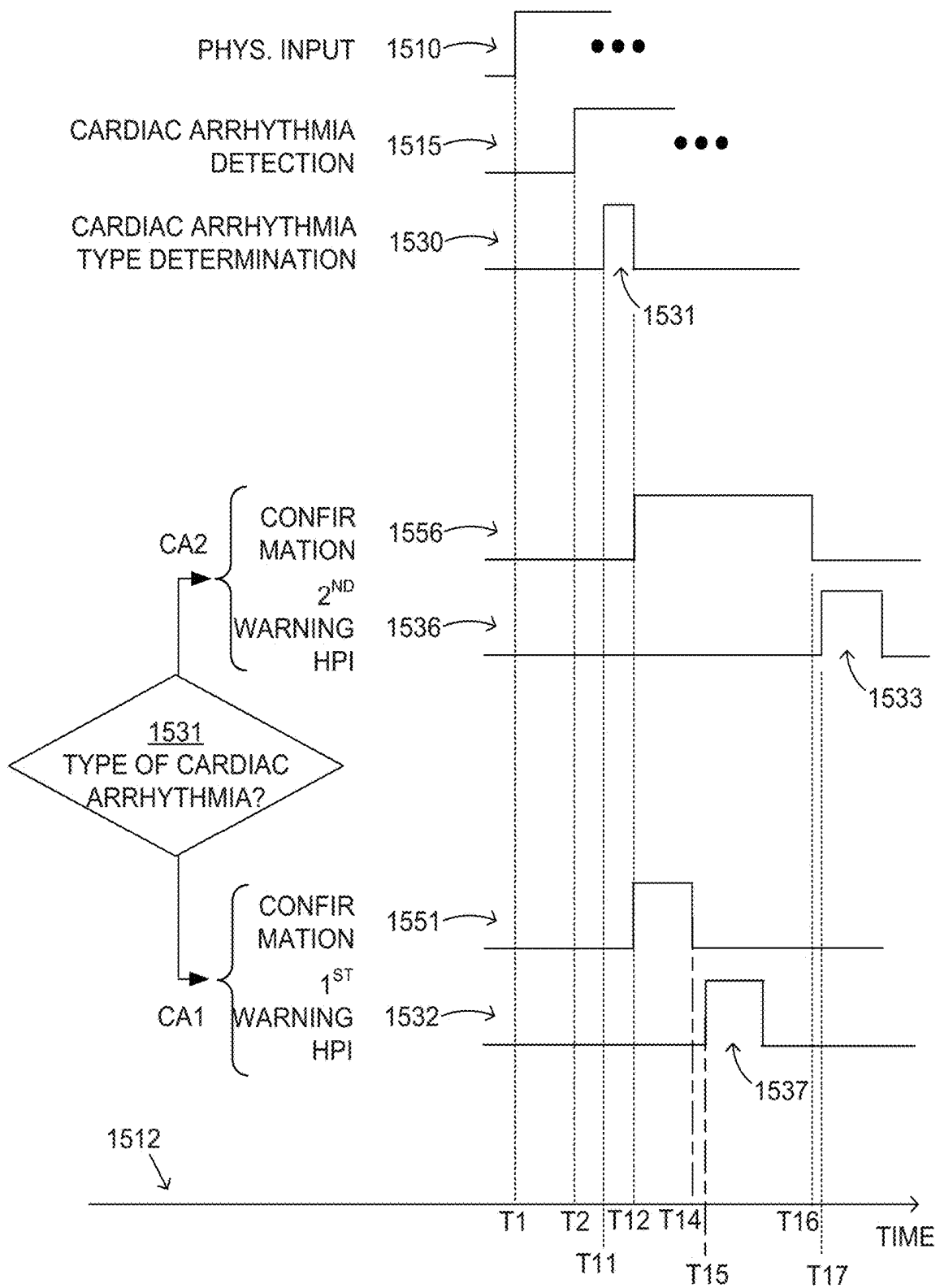


FIG. 15

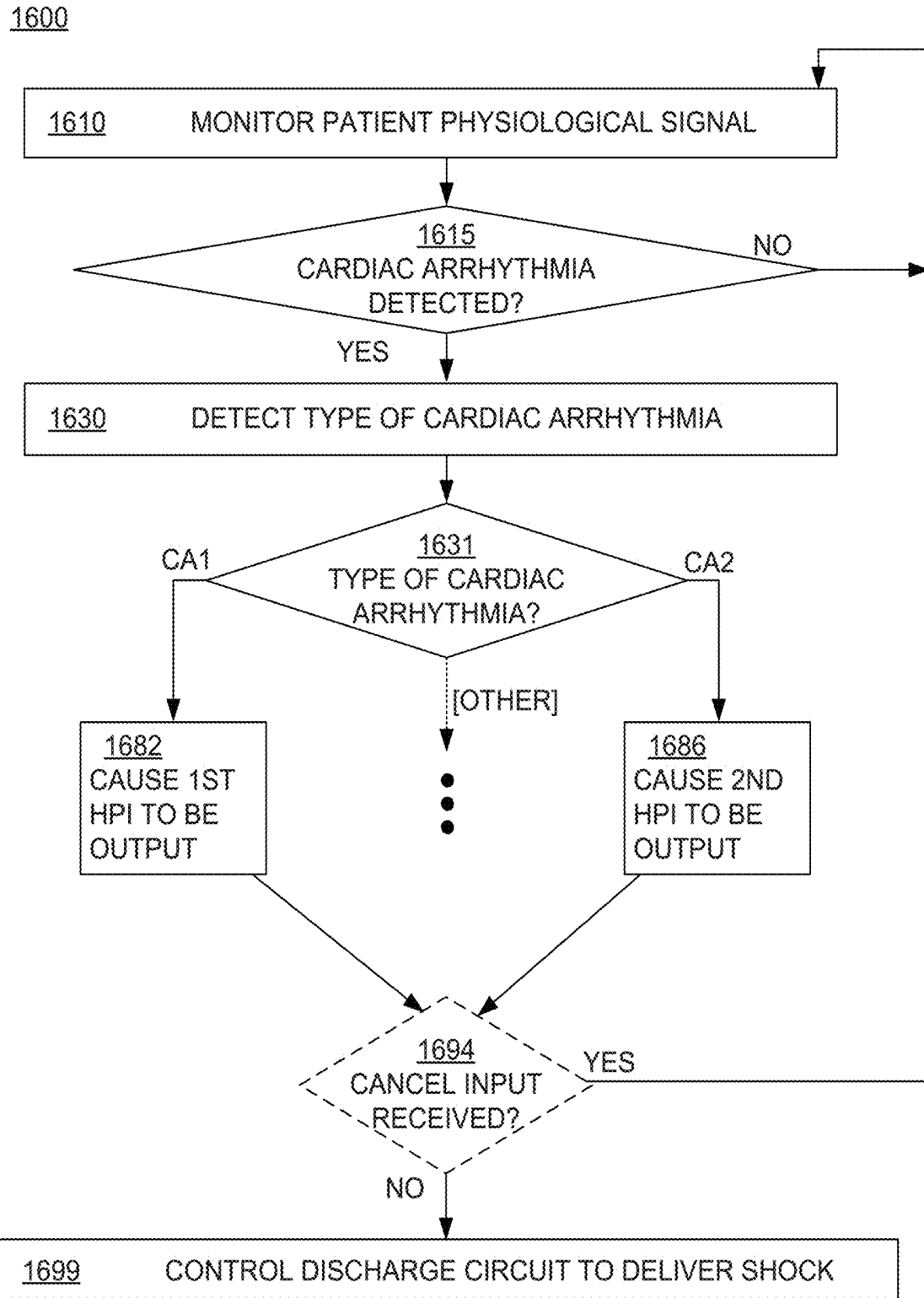


FIG. 16

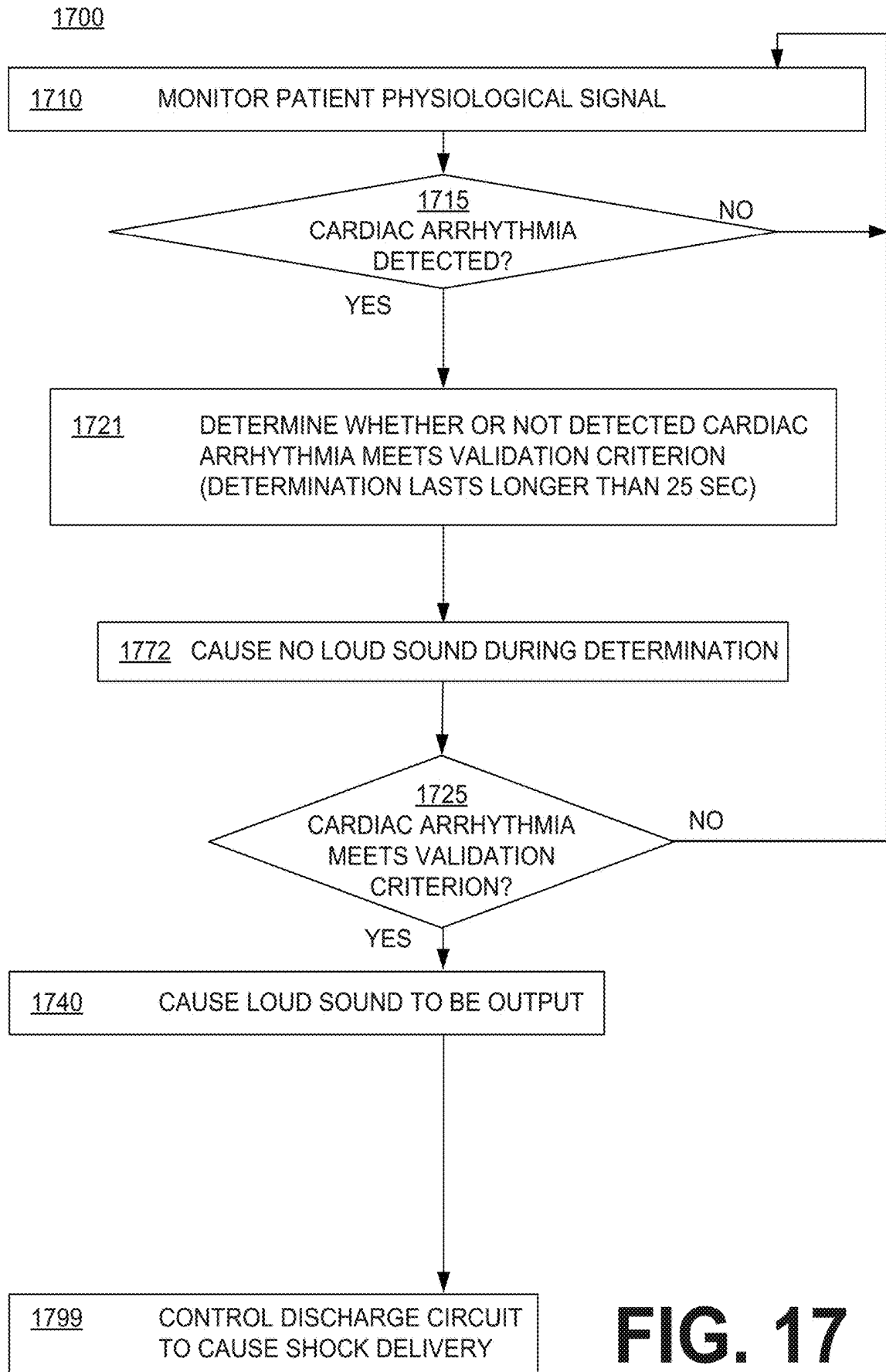


FIG. 17

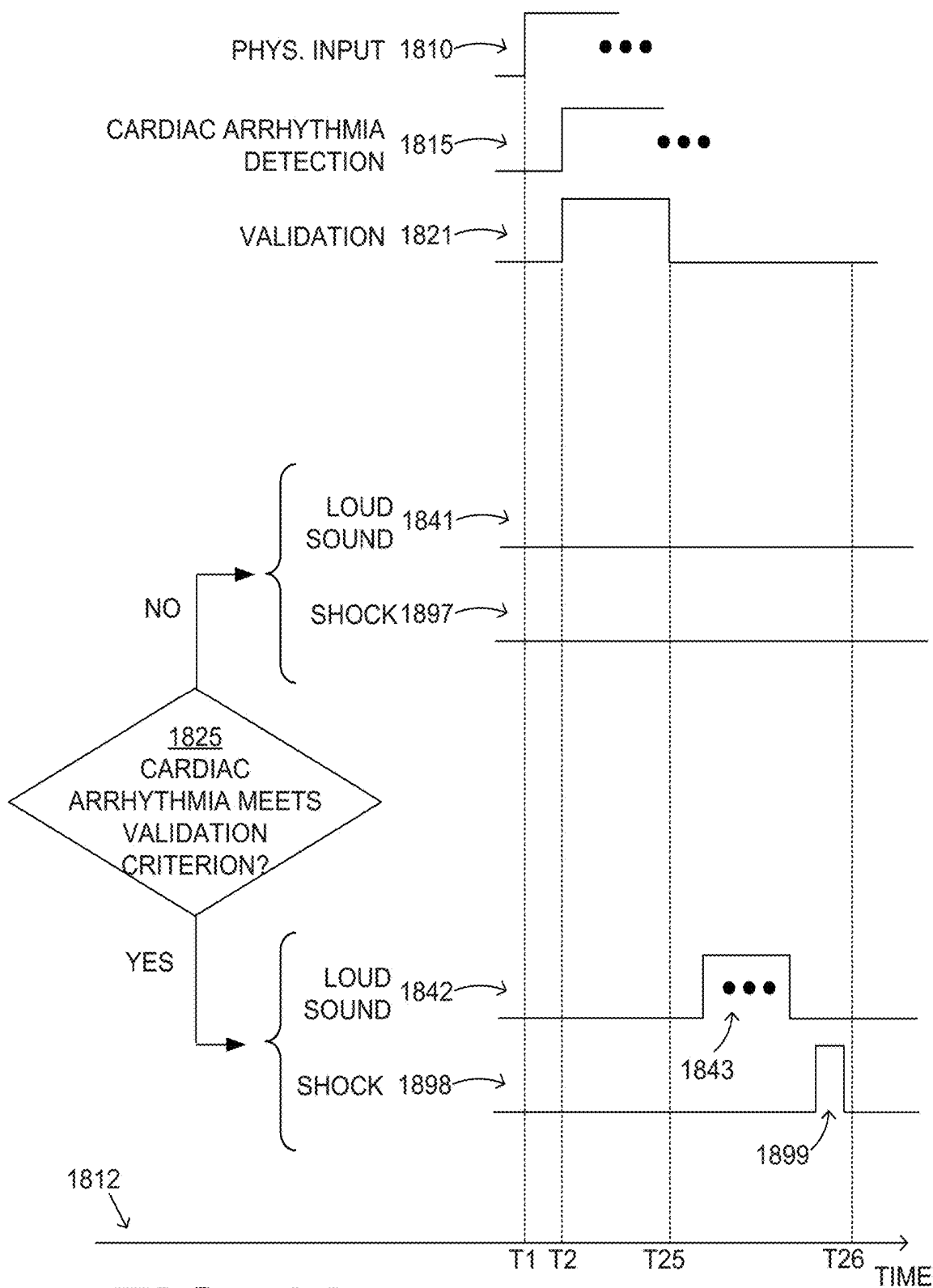


FIG. 18

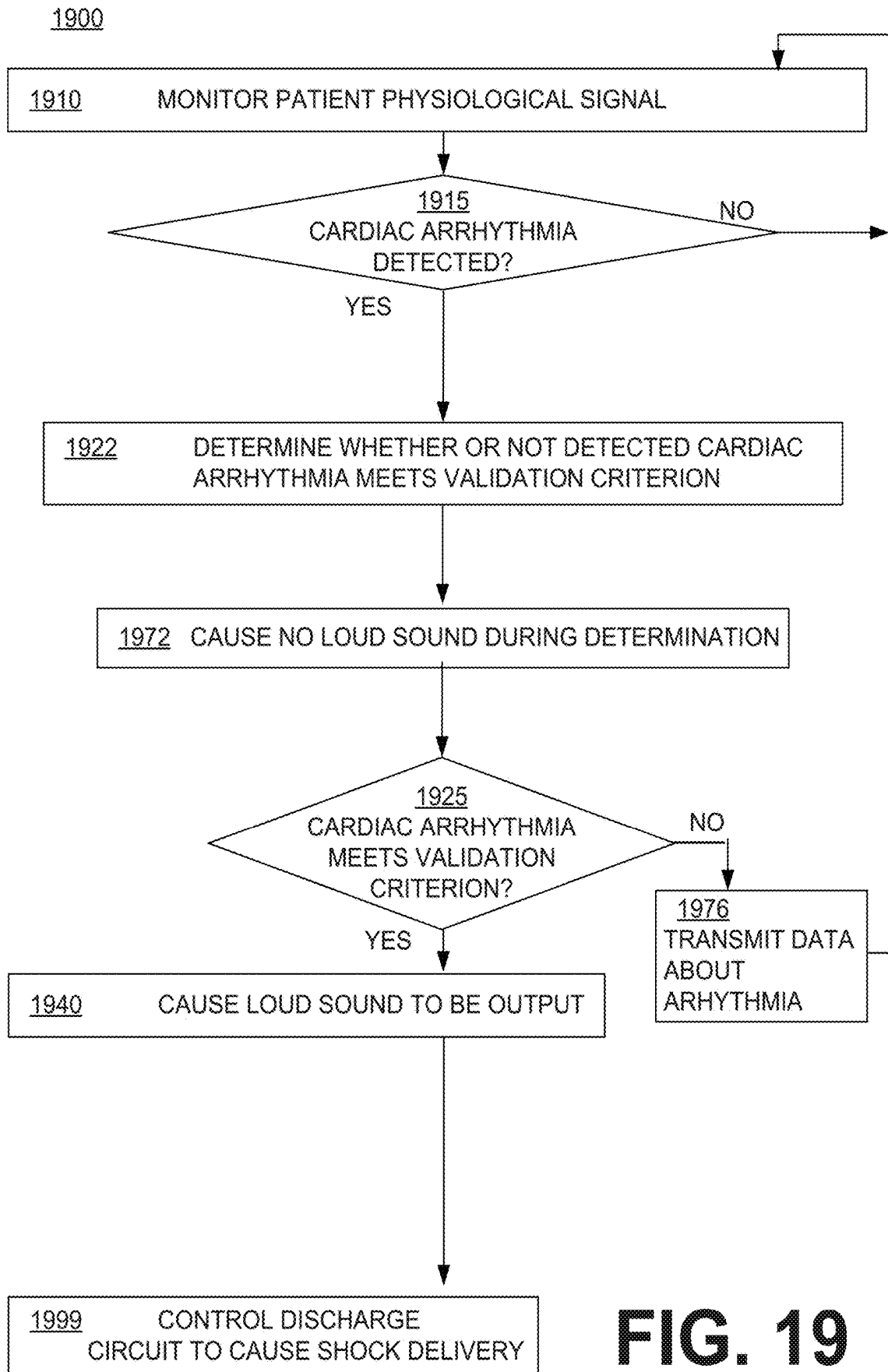


FIG. 19

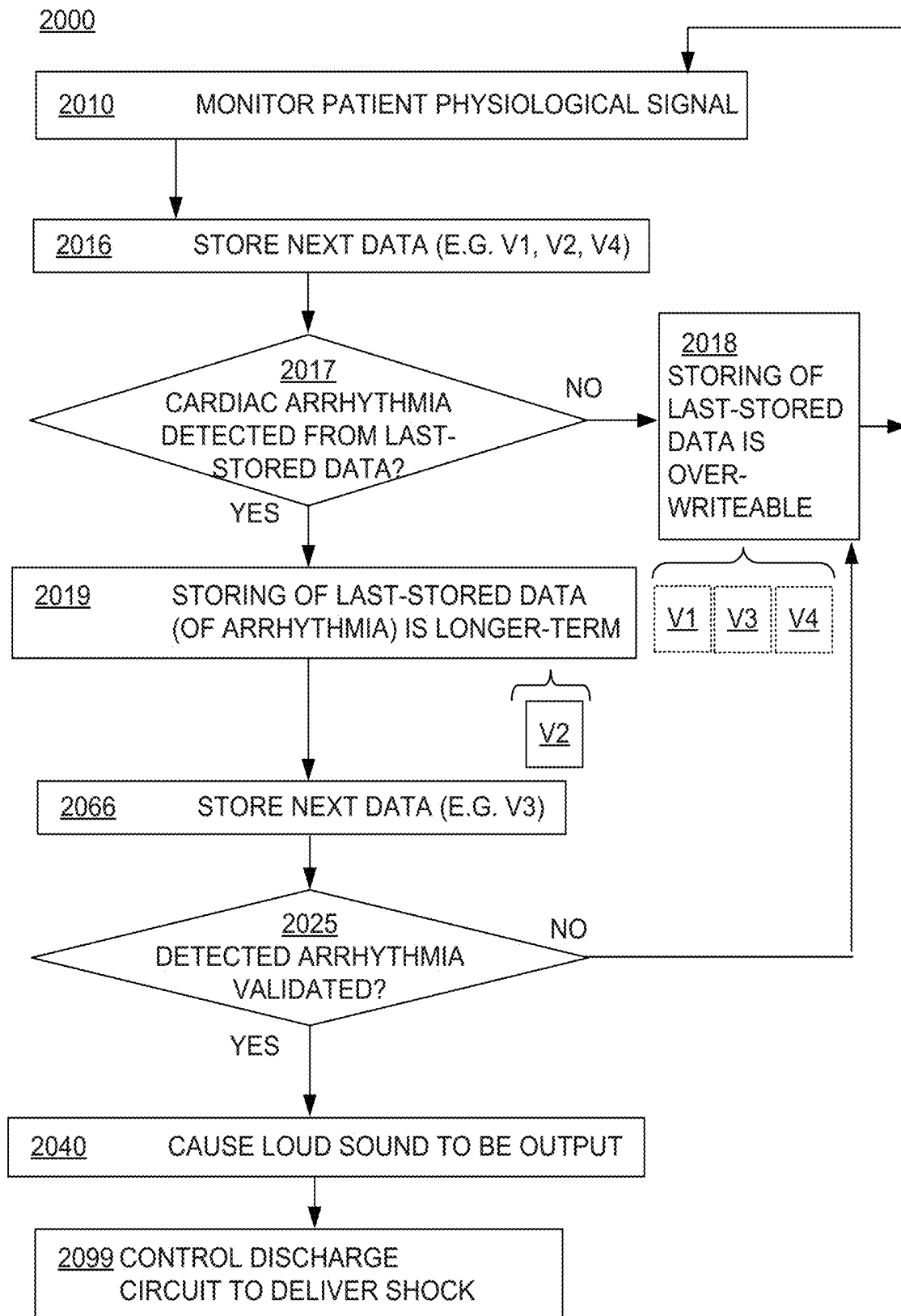


FIG. 20

METHODS

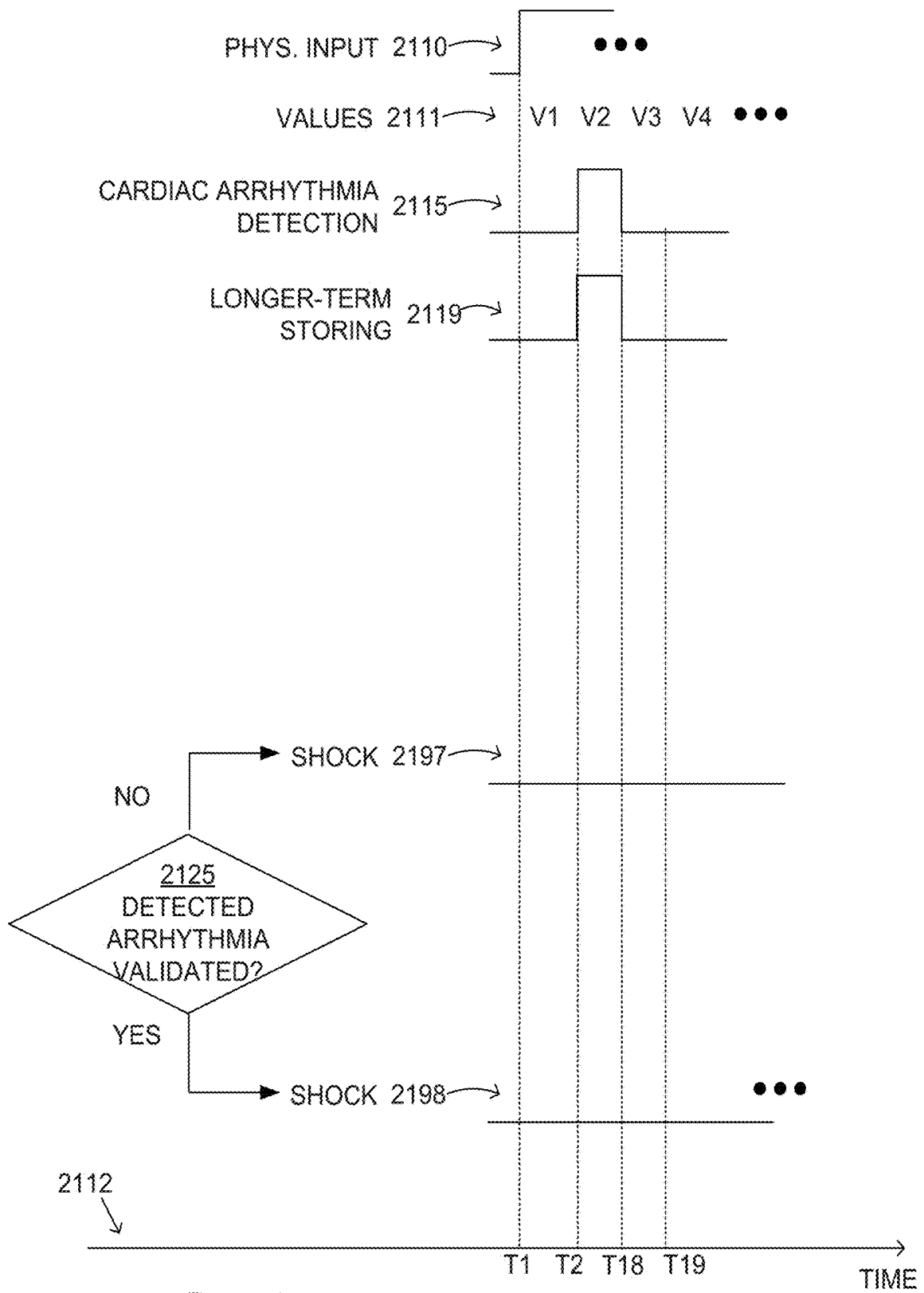


FIG. 21

VALUES DERIVED FROM PHYSIO-LOGICAL INPUT	ARRHYTHMIA DETECTED?	DETECTED ARRHYTHMIA VALIDATED?	LOUD SOUND OUTPUT?	MAP OF: 2238 MEMORY
V1	NO	N/A	NO	<div style="border: 1px solid black; padding: 5px; display: flex; justify-content: space-around;"> PV V1 </div>
V2	YES	NO	NO	<div style="border: 1px solid black; padding: 5px; display: flex; justify-content: space-around;"> PV V2 V1 </div>
V3	NO	N/A	NO	<div style="border: 1px solid black; padding: 5px; display: flex; justify-content: space-around;"> PV V2 V3 V1 </div>
V4	NO	N/A	NO	<div style="border: 1px solid black; padding: 5px; display: flex; justify-content: space-around;"> PV V2 V3 V4 </div>

FIG. 22

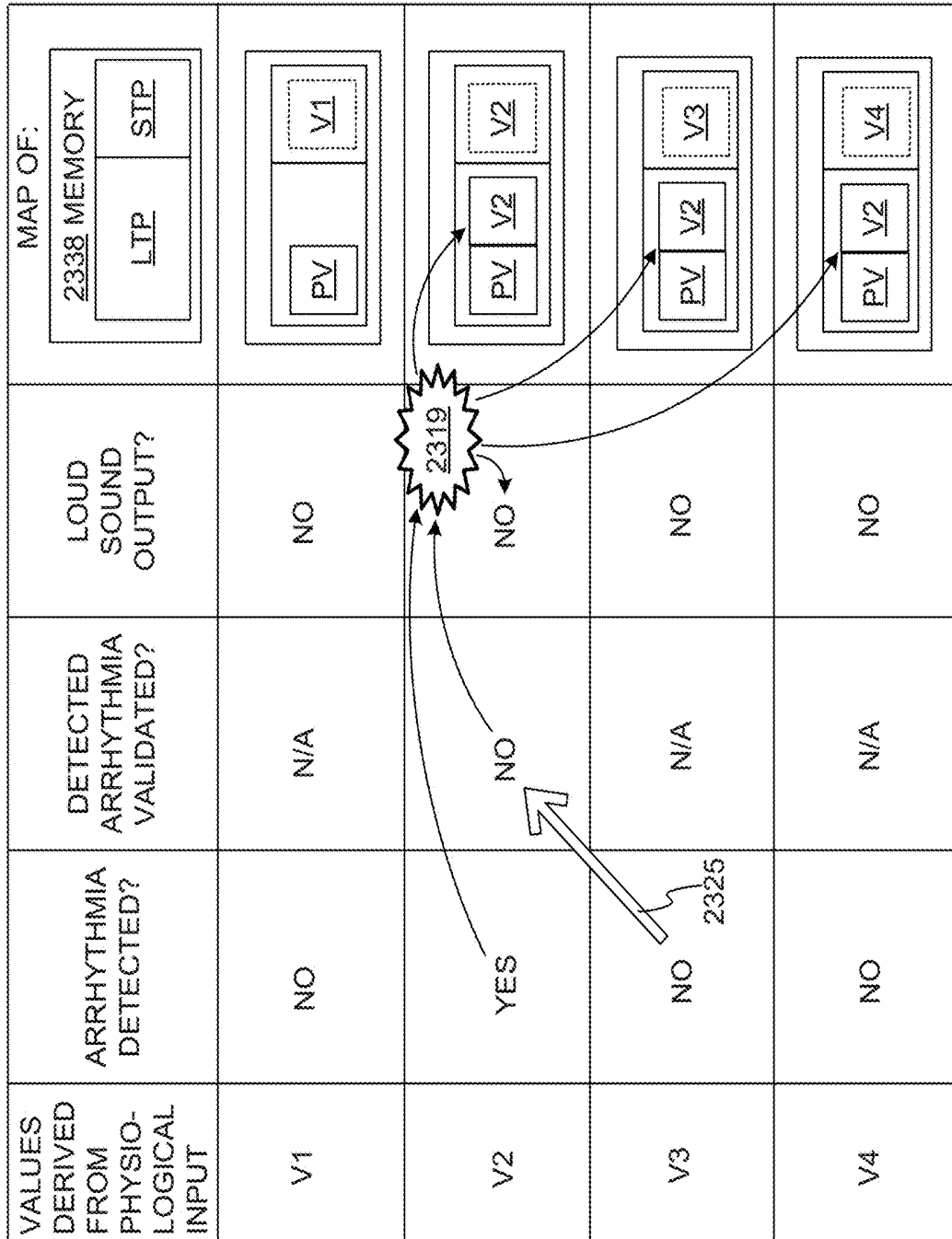


FIG. 23

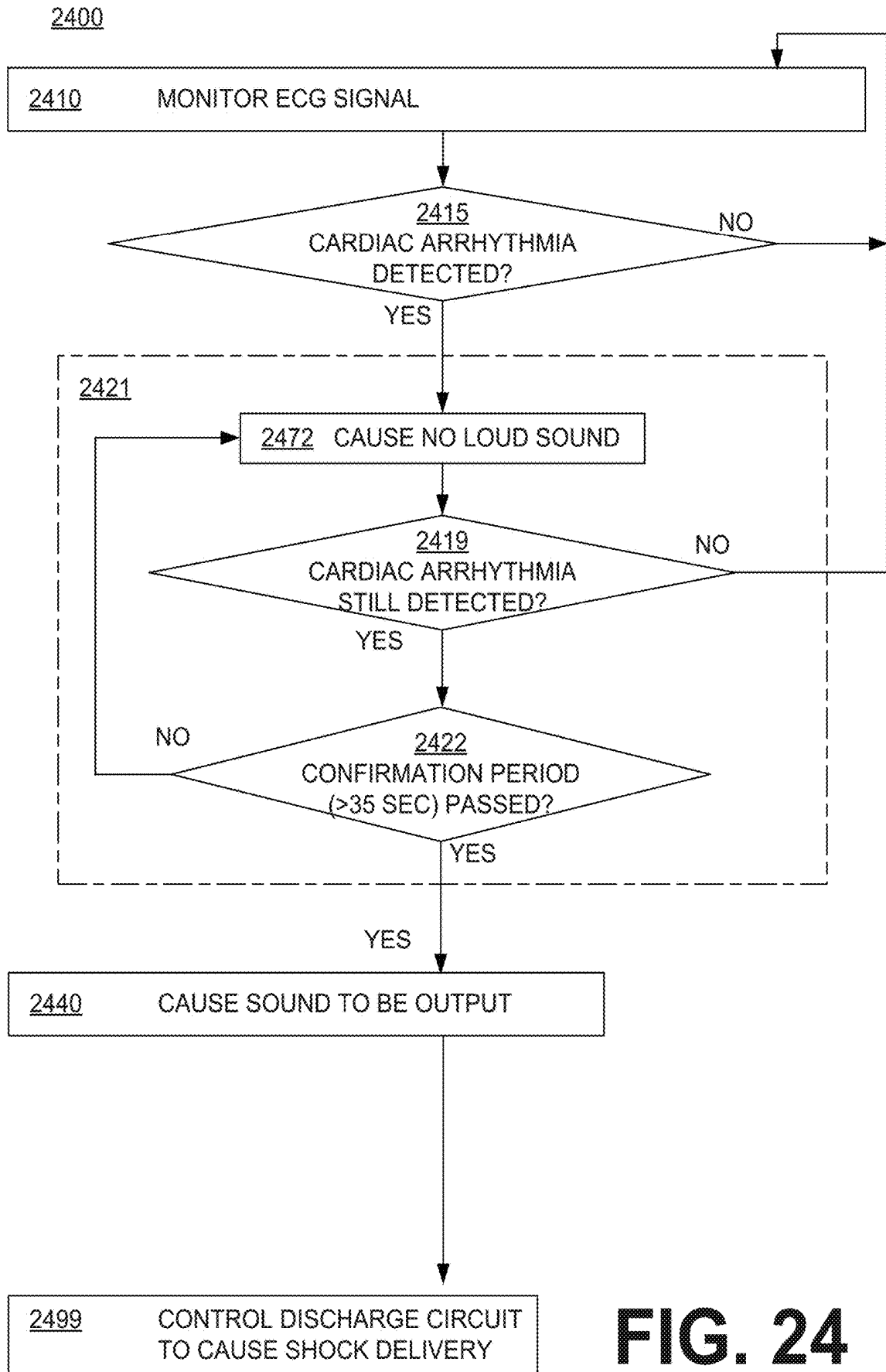


FIG. 24

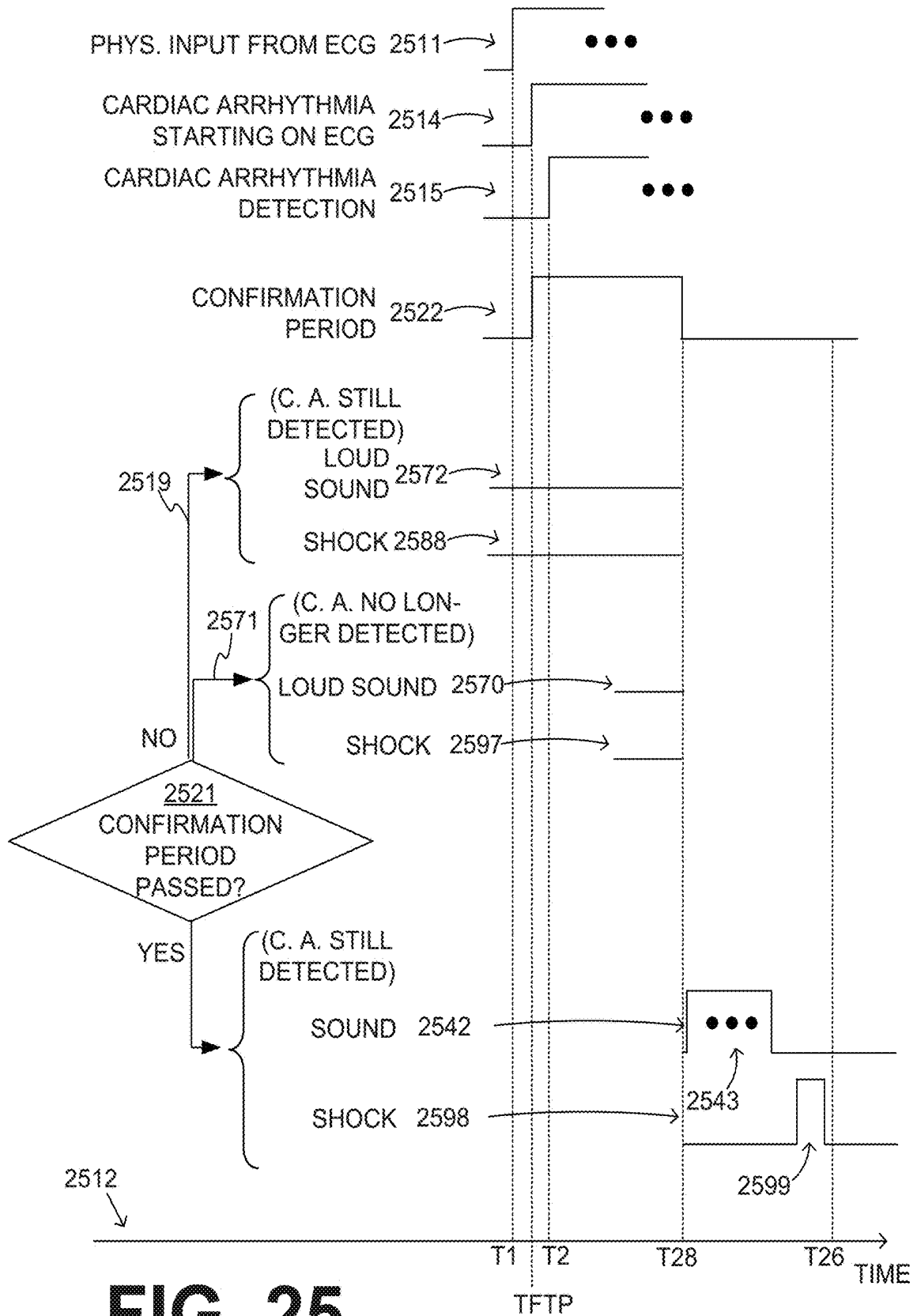


FIG. 25

**WCD SYSTEM OPERABLE TO NOT ALARM
WHEN DETECTED CARDIAC
ARRHYTHMIAS ARE NOT VALIDATED**

CROSS REFERENCE TO RELATED PATENT
APPLICATIONS

[0001] The present application is a continuation of U.S. application Ser. No. 15/647,524 filed on Jul. 12, 2017 (pending), which in turn claims the benefit of U.S. Application No. 62/425,071 filed on Dec. 15, 2016. Said application Ser. No. 15/647,524 is a continuation-in-part of U.S. application Ser. No. 14/941,592 filed on Nov. 14, 2015 (now U.S. Pat. No. 9,757,579), which in turn is a continuation-in-part of U.S. application Ser. No. 14/461,670 filed on Aug. 18, 2014 (abandoned). Said application Ser. No. 14/941,592 is also continuation-in-part of U.S. application Ser. No. 14/743,882 filed on Jun. 18, 2015 (abandoned), which in turn is a continuation of U.S. application Ser. No. 14/189,789 filed on Feb. 25, 2014 (now U.S. Pat. No. 9,089,685). Said application Ser. No. 14/189,789 claims the benefit of U.S. Application No. 61/769,098 filed on Feb. 25, 2013.

[0002] The present application is also a continuation-in-part of U.S. application Ser. No. 16/568,954 filed on Sep. 12, 2019 (pending), which in turn is a continuation of U.S. application Ser. No. 15/673,184 filed on Aug. 9, 2017 (now U.S. Pat. No. 10,426,966), which in turn is a divisional of U.S. application Ser. No. 14/941,592 filed on Nov. 14, 2015 (now U.S. Pat. No. 9,757,579), which is a continuation-in-part of U.S. application Ser. No. 14/461,670 filed on Aug. 18, 2014 (abandoned).

BACKGROUND

[0003] When people suffer from some types of heart arrhythmias, the result may be that blood flow to various parts of the body is reduced. Some arrhythmias may even result in a sudden cardiac arrest (SCA). SCA can lead to death very quickly, e.g. within 10 minutes, unless treated in the interim.

[0004] Some people have an increased risk of SCA. People at a higher risk include patients who have had a heart attack, or a prior SCA episode. A frequent recommendation is for these people to receive an implantable cardioverter defibrillator (“ICD”). The ICD is surgically implanted in the chest, and continuously monitors the patient’s electrocardiogram (“ECG”). If certain types of heart arrhythmias are detected, then the ICD delivers an electric shock through the heart.

[0005] After being identified as having an increased risk of an SCA, and before receiving an ICD, these people are sometimes given a wearable cardioverter defibrillator (“WCD”) system. (Earlier versions of such systems were called wearable cardiac defibrillator systems.) A WCD system typically includes a harness, vest, or other garment that the patient is to wear. The WCD system includes a defibrillator and electrodes, coupled to the harness, vest, or another garment. When the patient wears the WCD system, the external electrodes may then make good electrical contact with the patient’s skin, and therefore can help determine the patient’s ECG. If a shockable heart arrhythmia is detected, then the defibrillator delivers the appropriate electric shock through the patient’s body, and thus through the heart.

BRIEF SUMMARY

[0006] The present description gives instances of wearable cardioverter defibrillator (“WCD”) systems, storage media that store programs, and methods, the use of which may help overcome problems and limitations of the prior art.

[0007] In some embodiments, a wearable cardioverter defibrillator (“WCD”) system may output a loud sound after detecting and validating a shockable cardiac arrhythmia. In such embodiments, however, the WCD system might not sound a loud alarm before validating the arrhythmia thoroughly, i.e. for a longer time, thus giving the arrhythmia a further chance to self-terminate. As such, the WCD system may detect more robustly the cardiac arrhythmias that do not self-terminate quickly.

[0008] In some embodiments, a wearable cardioverter defibrillator (“WCD”) system may output a loud sound after detecting and validating a shockable cardiac arrhythmia. If the cardiac arrhythmia self-terminates relatively quickly, however, the WCD system might transmit data from the cardiac arrhythmia for analysis, without sounding loudly due to the cardiac arrhythmia.

[0009] In some embodiments, a wearable cardioverter defibrillator (“WCD”) system may output a loud sound after detecting and validating a shockable cardiac arrhythmia. If the cardiac arrhythmia self-terminates relatively quickly, however, the WCD system might store data from the cardiac arrhythmia for later analysis, without sounding loudly due to the cardiac arrhythmia.

[0010] In some embodiments, a wearable cardioverter defibrillator (“WCD”) system may output an audible sound after detecting and validating a shockable cardiac arrhythmia. Before validating, however, the WCD system may wait discreetly for the detected cardiac arrhythmia to self-terminate relatively quickly, without outputting such a sound until then.

[0011] In some embodiments, a wearable cardioverter defibrillator (“WCD”) system may output a loud sound after detecting and validating a shockable cardiac arrhythmia. Before validating, however, the WCD system may wait discreetly for the detected cardiac arrhythmia to self-terminate relatively quickly, without outputting such a sound until then.

[0012] Such arrhythmias that self-terminate quickly may occur from likely harmless events, possibly occurring multiple times in the daily life of the patient. For example, the patient may experience a brief episode of tachycardia, or become “winded”, from climbing stairs. In some of these embodiments, the WCD system may wait for such an arrhythmia event to terminate, and notify the patient only discreetly, or even not at all. The lack of sounding such a loud alarm responsive to such events reduces the overall number of times in which the patient experiences unwanted attention by others, embarrassment, loss of privacy and dignity, and so on.

[0013] These and other features and advantages of this description will become more readily apparent from the Detailed Description, which proceeds with reference to the associated drawings in which:

BRIEF DESCRIPTION OF THE DRAWINGS

[0014] FIG. 1 is a diagram of components of a sample wearable cardioverter defibrillator (“WCD”) system, made according to embodiments.

[0015] FIG. 2 is a diagram showing sample components of an external defibrillator, such as the one belonging in the system of FIG. 1, and which is made according to embodiments.

[0016] FIG. 3A is a rendering of diagram in a publication that describes characteristics of a WCD system in the prior art, with annotations.

[0017] FIG. 3B shows a magnification of a section of the prior art diagram of FIG. 3A, with further annotations along an added time axis.

[0018] FIG. 3C shows a magnification of a section of the prior art diagram of FIG. 3A, with further annotations along an added time axis.

[0019] FIG. 4 is a flowchart for illustrating methods according to embodiments.

[0020] FIG. 5 is a time diagram of a sample series of events that may result from methods of the flowchart of FIG. 4.

[0021] FIG. 6 is a flowchart for illustrating methods according to embodiments.

[0022] FIG. 7 is a flowchart for illustrating methods according to embodiments.

[0023] FIG. 8 is a time diagram of a sample series of events that may result from methods of the flowchart of FIG. 7.

[0024] FIG. 9 is a flowchart for illustrating methods according to embodiments.

[0025] FIG. 10 is a diagram illustrating how it may be determined that a detected arrhythmia is of a first type according to embodiments.

[0026] FIG. 11 is a diagram illustrating how it may be determined that a detected arrhythmia is of a second type according to embodiments.

[0027] FIG. 12 is a diagram illustrating how it may be determined whether a detected arrhythmia is of a first type or of a second type according to embodiments.

[0028] FIG. 13 is a flowchart for illustrating methods of how a cardiac arrhythmia may be confirmed according to embodiments.

[0029] FIG. 14 is a flowchart for illustrating methods according to embodiments.

[0030] FIG. 15 is a time diagram of a sample series of events that may result from methods of the flowchart of FIG. 14.

[0031] FIG. 16 is a flowchart for illustrating methods according to embodiments.

[0032] FIG. 17 is a flowchart for illustrating methods according to embodiments.

[0033] FIG. 18 is a time diagram of a sample series of events that may result from methods of the flowchart of FIG. 17.

[0034] FIG. 19 is a flowchart for illustrating methods according to embodiments.

[0035] FIG. 20 is a flowchart for illustrating methods according to embodiments, along with an operating example for sample values V1, V2, V3 & V4.

[0036] FIG. 21 is a time diagram of a sample series of events that may result from methods of the flowchart of FIG. 20.

[0037] FIG. 22 is a table showing possible results of operations responsive to a series of values derived from a physiological input of the operating example of FIG. 20, according to embodiments.

[0038] FIG. 23 is a table showing possible results of operations responsive to a series of values derived from a physiological input of the operating example of FIG. 20, according to embodiments.

[0039] FIG. 24 is a flowchart for illustrating methods according to embodiments.

[0040] FIG. 25 is a time diagram of a sample series of events that may result from methods of the flowchart of FIG. 24.

DETAILED DESCRIPTION

[0041] As has been mentioned, the present description is about wearable cardioverter defibrillator (“WCD”) systems, storage media that store programs, and methods. Embodiments are now described in more detail.

[0042] A wearable cardioverter defibrillator (“WCD”) system made according to embodiments has a number of components. These components can be provided separately as modules that can be interconnected, or can be combined with other components, etc.

[0043] FIG. 1 depicts a patient 82. Patient 82 may also be referred to as a person and/or wearer, since that patient wears components of the WCD system.

[0044] FIG. 1 also depicts components of a WCD system made according to embodiments. One such component is a support structure 170 that is wearable by patient 82. It will be understood that support structure 170 is shown only generically in FIG. 1, and in fact partly conceptually. FIG. 1 is provided merely to illustrate concepts about support structure 170, and is not to be construed as limiting how support structure 170 is implemented, or how it is worn.

[0045] Support structure 170 can be implemented in many different ways. For example, it can be implemented in a single component or a combination of multiple components. In embodiments, support structure 170 could include a vest, a half-vest, a garment, etc. In such embodiments such items can be worn similarly to parallel articles of clothing. In embodiments, support structure 170 could include a harness, one or more belts or straps, etc. In such embodiments, such items can be worn by around the torso, hips, over the shoulder, etc. In embodiments, support structure 170 can include a container or housing, which can even be waterproof. In such embodiments, the support structure can be worn by being attached to the patient by adhesive material, for example as shown in U.S. Pat. No. 8,024,037. Support structure 170 can even be implemented as described for the support structure of US Pat. App. No. US 2017/0056682A1, which is incorporated herein by reference. Of course, in such embodiments, a person skilled in the art will recognize that additional components of the WCD system can be in the housing of a support structure instead of attached externally to the support structure, for example as described in the document incorporated by reference. There can be other examples.

[0046] A WCD system according to embodiments is configured to defibrillate a patient who is wearing it, by delivering an electrical charge to the patient’s body in the form of an electric shock delivered in one or more pulses. FIG. 1 shows a sample external defibrillator 100, and sample defibrillation electrodes 104, 108, which are coupled to external defibrillator 100 via electrode leads 105. Defibrillator 100 and defibrillation electrodes 104, 108 are coupled to support structure 170. As such, many of the components of defibrillator 100 can be therefore coupled to support structure 170.

When defibrillation electrodes **104**, **108** make good electrical contact with the body of patient **82**, defibrillator **100** can administer, via electrodes **104**, **108**, a brief, strong electric pulse **111** through the body. Pulse **111**, also known as a defibrillation shock or therapy shock, is intended to go through and restart heart **85**, in an effort to save the life of patient **82**. Pulse **111** can further include one or more pacing pulses, and so on.

[0047] A prior art defibrillator typically decides whether to defibrillate or not based on an ECG signal of the patient. However, defibrillator **100** can defibrillate, or not defibrillate, also based on other inputs.

[0048] The WCD system may optionally include an outside monitoring device **180**. Device **180** is called an “outside” device because it is provided as a standalone device, for example not within the housing of defibrillator **100**. Device **180** can be configured to monitor at least one local parameter. A local parameter can be a parameter of patient **82**, or a parameter of the WCD system, or a parameter of the environment, as will be described later in this document.

[0049] Optionally, device **180** is physically coupled to support structure **170**. In addition, device **180** can be communicatively coupled with other components, which are coupled to support structure **170**. Such communication can be implemented by a communication module, as will be deemed applicable by a person skilled in the art in view of this disclosure.

[0050] FIG. **2** is a diagram showing components of an external defibrillator **200**, made according to embodiments. These components can be, for example, included in external defibrillator **100** of FIG. **1**. The components shown in FIG. **2** can be provided in a housing **201**, which is also known as casing **201**.

[0051] External defibrillator **200** is intended for a patient who would be wearing it, such as patient **82** of FIG. **1**. Defibrillator **200** may further include a user interface **270** for a user **282**. User **282** can be patient **82**, also known as wearer **82**. Or user **282** can be a local rescuer at the scene, such as a bystander who might offer assistance, or a trained person. Or, user **282** might be a remotely located trained caregiver in communication with the WCD system.

[0052] User interface **270** can be made in any number of ways. User interface **270** may include output devices, which can be visual, audible or tactile, for communicating to a user. For example, an output device can be a light, or a screen to display what is detected and measured, and provide visual feedback to rescuer **282** for their resuscitation attempts, and so on. Other output devices can be speakers **271**, **272**, etc. Such a speaker can be any device that can output a sound, whether speech or not. For example, speaker **271** can be configured to issue voice prompts, etc. Speaker **272** can be an electronic audible alarm such as a siren, a sonalert, etc. Sounds, lights, images, vibrations, and anything that can be perceived by user **282** can also be called human-perceptible indications. In diagrams that accompany the present description, a “human-perceptible indication” may be abbreviated as “HPI”. User interface **270** may also include input devices for receiving inputs from users. Such input devices may additionally include various controls, such as pushbuttons, keyboards, touchscreens, a microphone, and so on. An input device can be a cancel switch, which is sometimes called a “live-man” switch and a divert button. In some embodiments, actuating the cancel switch can prevent the impending delivery of a shock.

[0053] Defibrillator **200** may include an internal monitoring device **281**. Device **281** is called an “internal” device because it is incorporated within housing **201**. Monitoring device **281** can monitor patient parameters, patient physiological parameters, system parameters and/or environmental parameters, all of which can be called patient data. In other words, internal monitoring device **281** can be complementary or an alternative to outside monitoring device **180** of FIG. **1**. Allocating which of the system parameters are to be monitored by which monitoring device can be done according to design considerations.

[0054] Patient physiological parameters include, for example, those physiological parameters that can be of any help in detecting by the wearable defibrillation system whether the patient is in need of a shock, plus optionally their medical history and/or event history. Examples of such parameters include the patient’s ECG, blood oxygen level, blood flow, blood pressure, blood perfusion, pulsatile change in light transmission or reflection properties of perfused tissue, heart sounds, heart wall motion, breathing sounds and pulse. Accordingly, the monitoring device could include a perfusion sensor, a pulse oximeter, a Doppler device for detecting blood flow, a cuff for detecting blood pressure, an optical sensor, illumination detectors and perhaps sources for detecting color change in tissue, a motion sensor, a device that can detect heart wall movement, a sound sensor, a device with a microphone, an SpO₂ sensor, and so on. Pulse detection is taught at least in Physio-Control’s U.S. Pat. No. 8,135,462, which is hereby incorporated by reference in its entirety. In addition, a person skilled in the art may implement other ways of performing pulse detection.

[0055] In some embodiments, the local parameter is a trend that can be detected in a monitored physiological parameter of patient **82**. A trend can be detected by comparing values of parameters at different times. Parameters whose detected trends can particularly help a cardiac rehabilitation program include: a) cardiac function (e.g. ejection fraction, stroke volume, cardiac output, etc.); b) heart rate variability at rest or during exercise; c) heart rate profile during exercise and measurement of activity vigor, such as from the profile of an accelerometer signal and informed from adaptive rate pacemaker technology; d) heart rate trending; e) perfusion, such as from SpO₂ or CO₂; f) respiratory function, respiratory rate, etc.; g) motion, level of activity; and so on. Once a trend is detected, it can be stored and/or reported via a communication link, along perhaps with a warning. From the report, a physician monitoring the progress of patient **82** will know about a condition that is either not improving or deteriorating.

[0056] Patient state parameters include recorded aspects of patient **82**, such as motion, posture, whether they have spoken recently plus maybe also what they said, and so on, plus optionally the history of these parameters. Or, one of these monitoring devices could include a location sensor such as a global positioning system (“GPS”) location sensor. Such a sensor can detect the location, plus a speed can be detected as a rate of change of location over time. Many motion detectors output a motion signal that is indicative of the motion of the detector, and thus of the patient’s body. Patient state parameters can be very helpful in narrowing down the determination of whether SCA is indeed taking place.

[0057] A WCD system made according to embodiments may include a motion detector. In embodiments, a motion detector can be implemented within monitoring device 180 or monitoring device 281. Such a motion detector can be configured to detect a motion event. In response, the motion detector may render or generate from the detected motion event a motion detection input that can be received by a subsequent device or functionality. A motion event can be defined as is convenient, for example a change in motion from a baseline motion or rest, etc. Such a motion detector can be made in many ways as is known in the art, for example by using an accelerometer.

[0058] System parameters of a WCD system can include system identification, battery status, system date and time, reports of self-testing, records of data entered, records of episodes and intervention, and so on.

[0059] Environmental parameters can include ambient temperature and pressure. A humidity sensor may provide information as to whether it is likely raining. Presumed patient location could also be considered an environmental parameter. The patient location could be presumed if monitoring device 180 or 281 includes a GPS location sensor as per the above.

[0060] Defibrillator 200 typically includes a defibrillation port 210, such as a socket in housing 201. Defibrillation port 210 includes electrical nodes 214, 218. Leads of defibrillation electrodes 204, 208, such as leads 105 of FIG. 1, can be plugged into defibrillation port 210, so as to make electrical contact with nodes 214, 218, respectively. It is also possible that defibrillation electrodes 204, 208 are connected continuously to defibrillation port 210, instead. Either way, defibrillation port 210 can be used for guiding, via electrodes, to the wearer the electrical charge that has been stored in energy storage module 250. The electric charge will be the shock for defibrillation, pacing, and so on.

[0061] Defibrillator 200 may optionally also have an ECG port 219 in housing 201, for plugging in sensing electrodes 209, which are also known as ECG electrodes and ECG leads. It is also possible that sensing electrodes 209 can be connected continuously to ECG port 219, instead. Sensing electrodes 209 can help sense an ECG signal, e.g. a 12-lead signal, or a signal from a different number of leads, especially if they make good electrical contact with the body of the patient. Sensing electrodes 209 can be attached to the inside of support structure 170 for making good electrical contact with the patient, similarly as defibrillation electrodes 204, 208.

[0062] Optionally a WCD system according to embodiments also includes a fluid that it can deploy automatically between the electrodes and the patient skin. The fluid can be conductive, such as by including an electrolyte, for making a better electrical contact between the electrode and the skin. Electrically speaking, when the fluid is deployed, the electrical impedance between the electrode and the skin is reduced. Mechanically speaking, the fluid may be in the form of a low-viscosity gel, so that it does not flow away, after it has been deployed. The fluid can be used for both defibrillation electrodes 204, 208, and sensing electrodes 209.

[0063] The fluid may be initially stored in a fluid reservoir, not shown in FIG. 2, which can be coupled to the support structure. In addition, a WCD system according to embodiments further includes a fluid deploying mechanism 274. Fluid deploying mechanism 274 can be configured to cause

at least some of the fluid to be released from the reservoir, and be deployed near one or both of the patient locations, to which the electrodes are configured to be attached to the patient. In some embodiments, fluid deploying mechanism 274 is activated responsive to receiving activation signal AS from processor 230, prior to the electrical discharge.

[0064] Defibrillator 200 also includes a measurement circuit 220. Measurement circuit 220 receives physiological signals of the patient from ECG port 219, if provided. Even if defibrillator 200 lacks ECG port 219, measurement circuit 220 can obtain physiological signals through nodes 214, 218 instead, when defibrillation electrodes 204, 208 are attached to the patient. In these cases, the patient's ECG signal can be sensed as a voltage difference between electrodes 204, 208. Plus, impedance between electrodes 204, 208 and/or the connections of ECG port 219 can be sensed. Sensing the impedance can be useful for detecting, among other things, whether these electrodes 204, 208 and/or sensing electrodes 209 are not making good electrical contact with the patient's body. These patient physiological signals can be sensed, when available. Measurement circuit 220 can then render or generate information about them as physiological inputs, data, other signals, etc. More strictly speaking, the information rendered by measurement circuit 220 is output from it, but this information can be called an input because it is received by a subsequent device or functionality as an input.

[0065] Defibrillator 200 also includes a processor 230. Processor 230 may be implemented in any number of ways. Such ways include, by way of example and not of limitation, digital and/or analog processors such as microprocessors and digital signal processors ("DSP"s); controllers such as microcontrollers; software running in a machine; programmable circuits such as field programmable gate arrays ("FPGA"s), field-programmable analog arrays ("FPAA"s), programmable logic devices ("PLD"s), application specific integrated circuits ("ASIC"s), any combination of one or more of these, and so on.

[0066] Processor 230 can be considered to have a number of modules. One such module can be a detection module 232. Detection module 232 can include a ventricular fibrillation ("VF") detector. The patient's sensed ECG from measurement circuit 220, which can be available as physiological inputs, data, or other signals, may be used by the VF detector to determine whether the patient is experiencing VF. Detecting VF is useful, because VF results in SCA. Detection module 232 can also include a ventricular tachycardia ("VT") detector, and so on.

[0067] Another such module in processor 230 can be an advice module 234, which generates advice for what to do. The advice can be based on outputs of detection module 232. There can be many types of advice according to embodiments. In some embodiments, the advice is a shock/no shock determination that processor 230 can make, for example via advice module 234. The shock/no shock determination can be made by executing a stored Shock Advisory Algorithm. A Shock Advisory Algorithm can make a shock/no shock determination from one or more of ECG signals that are captured according to embodiments, and determining whether a shock criterion is met. The determination can be made from a rhythm analysis of the captured ECG signal or otherwise.

[0068] In some embodiments, when the decision is to shock, an electrical charge is delivered to the patient. Deliv-

ering the electrical charge is also known as discharging. Shocking can be for defibrillation, pacing, and so on.

[0069] Processor 230 can include additional modules, such as other module 236, for other functions. In addition, if internal monitoring device 281 is indeed provided, it may be operated in part by processor 230, etc.

[0070] Defibrillator 200 optionally further includes a memory 238, which can work together with processor 230. Memory 238 may be implemented in any number of ways. Such ways include, by way of example and not of limitation, volatile memories, nonvolatile memories (“NVM”), read-only memories (“ROM”), random access memories (“RAM”), magnetic disk storage media, optical storage media, smart cards, flash memory devices, any combination of these, and so on. Memory 238 is thus a non-transitory storage medium. Memory 238, if provided, can include programs for processor 230, which processor 230 may be able to read and execute. More particularly, the programs can include sets of instructions in the form of code, which processor 230 may be able to execute upon reading. Executing is performed by physical manipulations of physical quantities, and may result in functions, processes, actions and/or methods to be performed, and/or the processor to cause other devices or components or blocks to perform such functions, processes, actions and/or methods. The programs can be operational for the inherent needs of processor 230, and can also include protocols and ways that decisions can be made by advice module 234. In addition, memory 238 can store prompts for user 282, if this user is a local rescuer. Moreover, memory 238 can store data. The data can include patient data, system data and environmental data, for example as learned by internal monitoring device 281 and outside monitoring device 180. The data can be stored in memory 238 before it is transmitted out of defibrillator 200, or stored there after it is received by defibrillator 200.

[0071] Defibrillator 200 may also include a power source 240. To enable portability of defibrillator 200, power source 240 typically includes a battery. Such a battery is typically implemented as a battery pack, which can be rechargeable or not. Sometimes a combination is used of rechargeable and non-rechargeable battery packs. Other embodiments of power source 240 can include an AC power override, for where AC power will be available, an energy storage capacitor, and so on. In some embodiments, power source 240 is controlled by processor 230.

[0072] Defibrillator 200 additionally includes an energy storage module 250, which can thus be coupled to the support structure of the WCD system. Module 250 is where some electrical energy is stored in the form of an electrical charge, when preparing it for discharge to administer a shock. Module 250 can be charged from power source 240 (by receiving an electrical charge) to the right amount of energy, as controlled by processor 230. In typical implementations, module 250 includes a capacitor 252, which can be a single capacitor or a system of capacitors, and so on. As described above, capacitor 252 can store the energy in the form of an electrical charge, for delivering to the patient.

[0073] Defibrillator 200 moreover includes a discharge circuit 255. When the decision is to shock, processor 230 can be configured to control discharge circuit 255 to discharge through the patient the electrical charge stored in energy storage module 250. When so controlled, circuit 255 can permit the energy stored in module 250 to be discharged to

nodes 214, 218, and from there also to defibrillation electrodes 204, 208, so as to cause a shock to be delivered to the patient while the support structure is worn by the patient. Circuit 255 can include one or more switches 257. Switches 257 can be made in a number of ways, such as by an H-bridge, and so on. Circuit 255 can also be controlled via user interface 270.

[0074] Defibrillator 200 can optionally include a communication module 290, for establishing one or more wired or wireless communication links with other devices of other entities, such as a remote assistance center, Emergency Medical Services (“EMS”), and so on. Module 290 may also include an antenna, portions of a processor, and other sub-components as may be deemed necessary by a person skilled in the art. This way, data and commands can be communicated, such as patient data, event information, therapy attempted, CPR performance, system data, environmental data, and so on.

[0075] Defibrillator 200 can optionally include other components.

[0076] Returning to FIG. 1, in embodiments, one or more of the components of the shown WCD system have been customized for patient 82. This customization may include a number of aspects. For instance, support structure 170 can be fitted to the body of patient 82. For another instance, baseline physiological parameters of patient 82 can be measured, such as the heart rate of patient 82 while resting, while walking, motion detector outputs while walking, etc. Such baseline physiological parameters can be used to customize the WCD system, in order to make its diagnoses more accurate, since bodies behave differently. For example, such parameters can be stored in a memory of the WCD system, and so on.

[0077] A programming interface can be made according to embodiments, which receives such measured baseline physiological parameters. Such a programming interface may input automatically in the WCD system the baseline physiological parameters, along with other data.

[0078] FIG. 3A is a rendering of diagram in a publication that describes characteristics of a WCD system in the prior art, with annotations added in this document. In particular, FIG. 3A is labeled “FIG. 3” in that publication, which is: KLEIN Helmut U., GOLDENBERG Ilan & MOSS Arthur J., Risk stratification for implantable cardioverter defibrillator therapy: the role of the wearable cardioverter-defibrillator, *European Heart Journal*, 2013, pp. 1-14, doi:10.1093/eurheartj/eh167.

[0079] In FIG. 3A, the diagram of the prior art is designated in the rectangle 301. It purports to describe the detection, treatment and alarm system of a prior art WCD system. Attention is drawn to designated sections 311, 321 of this diagram.

[0080] FIG. 3B shows a magnification of designated section 311 of the prior art diagram of FIG. 3A, with further annotations along an added time axis 312. Section 311 is characterized as detection time, shock delivery, and electrocardiogram recording after shock delivery. In the added time axis 312, certain events of section 311 have intercepts TA, TB, TD, TE, TF, TG, TH as shown, for easier reference.

[0081] In section 311, the time duration between TA and TD seems to be 30 sec along time axis 312. Section 311 seems to further show ECG data 360. This ECG data 360 seems to include QRS complexes 371, 372, 373, 391, 392. Between times TB and TE there is an ECG portion 380.

ECG portion **380** seems to be a cardiac arrhythmia, since it seems to lack QRS complexes, and to further be the cause for the alarms at TD and shock delivery at time TF. In that case, the onset of the cardiac arrhythmia of portion **380** takes place at time TB. By time TD, detection seems to have happened. Judging from the fact that the duration from TA to TD is 30 sec, the duration from TB to TD seems to be no more than 5 sec, if the time axis of that time diagram is to scale.

[0082] FIG. 3C shows a magnification of designated section **321** of the prior art diagram of FIG. 3A, with further annotations along an added time axis **322**. Section **321** is characterized as the time sequence of alarms, etc. In particular, timeline **331** is characterized as ECG record, timeline **332** is characterized as Validation period, timeline **333** is characterized as Alarms active, timeline **334** is characterized as Vibration alarm, timeline **335** is characterized as Siren, timeline **336** is characterized as Loud siren, timeline **337** is characterized as Bystander warning, timeline **338** is characterized as Gel release, and timeline **339** is characterized as Treatment shock.

[0083] In FIG. 3C, in the added time axis **322**, certain events of section **321** have intercepts TA, TC, TD, TF as shown, for easier reference. Some of these are the same time intercepts as those in time axis **312** of FIG. 3B. In addition, time intercept TB of FIG. 3B could be the same as time intercept TC of FIG. 3C.

[0084] As mentioned above, embodiments of the invention include systems, processors and methods. The devices and/or systems mentioned in this document perform functions, processes and/or methods. These functions, processes and/or methods may be implemented by one or more devices that include logic circuitry. Such a device can be alternately called a computer, and so on. It may be a standalone device or computer, such as a general purpose computer, or part of a device that has one or more additional functions. The logic circuitry may include a processor and non-transitory computer-readable storage media, such as memories, of the type described elsewhere in this document. Often, for the sake of convenience only, it is preferred to implement and describe a program as various interconnected distinct software modules or features. These, along with data are individually and also collectively known as software. In some instances, software is combined with hardware, in a mix called firmware.

[0085] Moreover, methods and algorithms are described below. These methods and algorithms are not necessarily inherently associated with any particular logic device or other apparatus. Rather, they are advantageously implemented by programs for use by a computing machine, such as a general-purpose computer, a special purpose computer, a microprocessor, a processor such as described elsewhere in this document, and so on.

[0086] This detailed description includes flowcharts, display images, algorithms, and symbolic representations of program operations within at least one computer readable medium. An economy is achieved in that a single set of flowcharts is used to describe both programs, such that can be executed by a processor, and also methods. So, while flowcharts described methods in terms of boxes, they also concurrently describe programs.

[0087] Methods are now described.

[0088] In some embodiments, a WCD system may output an opening human-perceptible indication, after detecting a

shockable cardiac arrhythmia but before completing its analysis of the cardiac arrhythmia, for instance before validating the cardiac arrhythmia. Examples are now described.

[0089] FIG. 4 shows a flowchart **400** for describing methods according to embodiments. In addition, FIG. 5 is a time diagram of a sample series of events that may result from methods of the flowchart of FIG. 4. Of course, a different series of events may result from the methods of the flowchart of FIG. 4. The events of FIG. 5 are shown along a time axis **512**, with intercepts that are not to scale. This portion of this description proceeds by referring to both diagrams.

[0090] According to an operation **410** of FIG. 4, a patient physiological signal may be monitored. The physiological signal can be the patient's electrocardiogram ("ECG"), impedance, blood pressure, blood oxygen saturation, and so on. As mentioned previously, measurement circuit **220**, or equivalently another transducer, may render a physiological input from the monitored patient physiological signal. In FIG. 5, a timeline **510** indicates that the physiological input starts being received at a time T1, by switching from a low value to a high value.

[0091] According to another operation **415** of FIG. 4, it is inquired whether a cardiac arrhythmia is detected from the physiological input. It will be understood that this means a cardiac arrhythmia of interest, namely a shockable cardiac arrhythmia such as VF or VT. A difference between VF and VT is that the patient becomes unconscious very soon after VF starts, while the patient may remain conscious throughout a VT episode, whether prolonged or not. As will be seen, embodiments may provide a longer confirmation period for VT than VF, which works well with the fact that VT sometimes self-terminates, while VF almost never does.

[0092] While at operation **415** no cardiac arrhythmia is being detected, execution returns to operation **410**. This cardiac arrhythmia detection is shown in FIG. 5 along a timeline **515**. There is no detection while timeline **515** has a low value. Detection may happen at time T2, at which time timeline **515** changes to a high value. At that time, detection may have been performed using inputs received earlier.

[0093] Returning to FIG. 4, if detection happens at operation **415** then, according to another operation **420**, it can be determined whether or not the cardiac arrhythmia is validated, for example according to a validation criterion, meaning depending on whether or not the validation criterion is met. For example, the validation criterion may include that the detected cardiac arrhythmia needs to be maintained for a threshold validation time. The determination of whether or not the detected cardiac arrhythmia meets the validation criterion can be made from one of the physiological inputs. Operation **420** may need some time to be performed.

[0094] In addition, according to another operation **472**, an opening human-perceptible indication ("HPI") may be caused to be output responsive to detecting the cardiac arrhythmia. This opening HPI may be caused to be output prior to completing the determination of operation **420**. Accordingly, the execution of operations **420**, **472** may overlap in time at least in part. In the example of FIG. 5, timeline **520** shows validation being performed between times T2 and T5. Moreover, timeline **572** shows an example of when the opening HPI is performed, and in particular lasting between times T3 and T4. This opening HPI may be caused to be output at a time T3, which is prior to completing the determination of operation **420** at time T5.

[0095] It will be appreciated that, if the patient is having a VF episode, he or she might be unconscious and never perceive this opening HPI. On the other hand, if the patient's arrhythmia is a VT episode, he or she may well be conscious and perceive their own arrhythmia.

[0096] In embodiments where this opening HPI is caused to be output prior to completing the determination of operation 420, the system might not know yet whether it will shock the patient or not. Indeed, if the cardiac arrhythmia turns out to be a mild VT, and the patient is still conscious, perhaps a shock will not be called for, eventually. A longer threshold validation time may be called for, during which the VT may self-terminate. As will be seen later in this document, in some embodiments where the VT is detected to self-terminate, no shock is administered to the conscious patient. Of course, if the VT becomes fast VT and degenerates into VF, a shock will be needed.

[0097] Since this opening HPI is caused to be output prior to completing the determination of operation 420, in some embodiments this opening HPI may fulfill the function of giving comfort and confidence to the patient that their WCD system is working, while they do not have to do anything, such as immediately stopping what they are doing to frantically search for the cancel switch so as to avoid a shock while conscious. Nor will they be embarrassed in front of others, if the opening HPI is discreet, and the cardiac arrhythmia eventually self-terminates. The opening HPI might give such comfort and confidence to a person who is having a sustained episode of low-rate VT that causes them to feel uncomfortable ("crummy"), even though they don't need to be shocked. Such an episode may self-terminate. In addition, the opening HPI might give such comfort and confidence to someone who learns news that excites them, such as by watching a sports event. Such a person may experience a high-rate supra-ventricular (SVT) rhythm that can make them feel crummy as well, even though they don't need to be shocked, either.

[0098] In order to give the patient this comfort and confidence, the opening HPI may communicate to the patient that at least some analysis will be performed on the cardiac arrhythmia, for example to determine whether or not it is validated. Such communicating may be explicit, for example by the opening HPI including a voice message to the effect of "HAVE DETECTED ARRHYTHMIA OF YOUR HEART, AND NOW VALIDATING IT". Alternately, an opening HPI can be more discreet, so that only the patient will perceive it. Such a more discreet opening HPI can be a tactile signal like a vibration, whose meaning the patient will have been trained to understand. For example, the opening HPI can be a group of three consecutive vibrations, perhaps each having the same duration. Of course, the vibrations will have to be designed to be intense enough and prolonged enough to be perceptible by a patient above and beyond their possible VT, given that a VT is itself a vibration within their body.

[0099] In some instances, the determination of operation 420 may take longer, for example longer than 30 sec. In such cases, the opening HPI may be extended, for the patient's confidence in the WCD to be sustained through the validation process. In some embodiments, the opening HPI may be caused to be output for as long as operation 420 is being performed, but that is not an example of FIG. 5, where the

time T4 ends before time T5. To extend the example above, the group of three vibrations may be repeated every 7 to 10 sec.

[0100] Subsequent operations may depend on the determination of whether or not the cardiac arrhythmia is so validated. According to another operation 425 of FIG. 4, if it is determined that the cardiac arrhythmia is not so validated, execution may return to operation 410. Where it is written in this document that it is determined that the cardiac arrhythmia is or is not so validated, it means to be or not be validated according to the previously mentioned validation criterion, the determination of such validation, etc.

[0101] When according to operation 425 it is determined that the cardiac arrhythmia is not so validated, execution may return to operation 410 by further optionally executing another operation 477. According to operation 477, a closing HPI is caused to be output, in a manner and for an effect that are described later in this document for an operation 677 of FIG. 6. In such a case, the discharge circuit can be controlled to not deliver a shock for some time, e.g. at least 25 min from when the opening HPI was caused to be output at operation 472 of FIG. 4, because the patient may not need a shock for that time, or for that event.

[0102] In FIG. 5, box 525 can be another example of box 425. If it is determined that the cardiac arrhythmia is not so validated, timeline 541 indicates that no warning HPI is caused to be output and timeline 597 indicates that no shock is delivered. In addition, timeline 578 indicates that a closing HPI event 577 may be caused to be output, such as by operation 477.

[0103] Returning to FIG. 4, if at operation 425 it is determined that the cardiac arrhythmia is so validated then, according to another operation 440, a warning HPI can be caused to be output. The warning HPI can be configured to communicate that a shock will be delivered imminently.

[0104] The warning HPI can be distinct from the opening HPI. In particular, the indications can be different in content, in the way they are delivered, and/or in the meaning that they are designed to convey to the patient. For example, in some embodiments the opening HPI communicates to the patient that their WCD system has not made a determination yet, and it does not require the patient to do anything to avoid a shock. On the other hand, in many embodiments the warning HPI of operation 440 informs that a shock is imminent unless the patient does something, like enter a cancel input in the user interface.

[0105] According to an optional next operation 494, if a cancel input is received, execution may return to operation 410. In particular, the user interface can be configured to receive a cancel input. Even if the cardiac arrhythmia is so validated, the discharge circuit can be controlled to instead not deliver a shock responsive to the cardiac arrhythmia, if a cancel input is received by the user interface within a time window after the warning HPI of operation 440 is caused to be output.

[0106] Else, if at operation 494 a cancel input is not received then, according to another operation 499, the discharge circuit is instead controlled to deliver a shock, for example within 3 min from when the warning HPI was caused to be output for that event, and preferably before 3 min passes.

[0107] In FIG. 5, from box 525, if it is determined that the cardiac arrhythmia is so validated, a timeline 542 indicates that a warning HPI event 543 can take place, for example

according to operation 440. In addition, timeline 598 indicates that a shock delivery event 599 may take place, while timeline 579 indicates that no closing HPI event takes place.

[0108] These embodiments that include an opening HPI can be combined with other embodiments. For example, from this document alone, these other embodiments include ones with a closing HPI, embodiments where there is confirmation of the cardiac arrhythmia in addition to validation, embodiments with shocking if the patient has VF but not necessarily if VT, a different delay or validation time for VT than for VF, a different HPI for VT than for VF, etc.

[0109] In some embodiments, a WCD system may output a closing human-perceptible indication (“HPI”), after detecting a shockable cardiac arrhythmia, and after further determining that it will not shock. The closing HPI may be associated with closing an event, such as when an event is closed in software, where a record is kept. Examples are now described.

[0110] FIG. 6 shows a flowchart 600 for describing methods according to embodiments. Flowchart 600 has many elements that are similar to flowchart 400 of FIG. 4. In addition, the sample series of events of FIG. 5 may also result from methods of the flowchart of FIG. 6.

[0111] In FIG. 6, operations 610, 615, 620, 672, 625, 640 and 694 can be performed as described respectively for operations 410, 415, 420, 472, 425, 440, and 494 of FIG. 4. In other words, a shockable cardiac arrhythmia is detected, etc. Of those operations, at least operations 672 and 694 are optional.

[0112] If, at operation 625 it is determined that the cardiac arrhythmia is so validated then, according to an operation 699, the discharge circuit can be controlled to instead deliver a shock within some time from when it was determined that the cardiac arrhythmia is so validated. The shock can be delivered, for example within 2.5 min or less, for this event.

[0113] If, at operation 625 it is determined that the cardiac arrhythmia is not so validated, execution may return to operation 610 without shocking for this event. In addition, according to another operation 677, a closing HPI is caused to be output. The closing HPI can be configured to communicate to the patient that it was decided not to shock responsive to the cardiac arrhythmia, so the patient can relax and return to his or her other business. This may be communicated in a number of ways. In some embodiments, the closing HPI includes a voice message, which can say something like: “HAPPY THAT YOUR RHYTHM IS RESTORED, WILL NOT SHOCK THIS TIME”. In alternate, and more discreet, embodiments the closing HPI includes one or more vibrations. For example, a group of consecutive vibrations may be used, which have progressively diminishing intensities. If, at operation 625 it is determined that the cardiac arrhythmia is not so validated, the discharge circuit can be further controlled to not deliver a shock for some time from when it was determined that the cardiac arrhythmia is not so validated, for example for at least 25 min. Of course, this time can become shorter if the patient has another event soon thereafter, and so on.

[0114] These embodiments that include a closing HPI can be combined with other embodiments. For example, from this document alone, these other embodiments include ones with an opening HPI, embodiments where there is confirmation of the cardiac arrhythmia in addition to validation, embodiments with shocking if the patient has VF but not

necessarily if VT, a different delay or validation time for VT than for VF, a different HPI for VT than for VF, etc.

[0115] In some embodiments, a WCD system may first determine whether or not the cardiac arrhythmia is validated, for example according to a validation criterion. If so, the WCD system may further determine whether or not the cardiac arrhythmia is confirmed according to a confirmation criterion, and then shock or not shock accordingly. Examples are now described.

[0116] FIG. 7 shows a flowchart 700 for describing methods according to embodiments. In addition, FIG. 8 is a time diagram of a sample series of events that may result from methods of the flowchart of FIG. 7. Of course, a different series of events may result from the methods of the flowchart of FIG. 7. The events of FIG. 8 are shown along a time axis 812, with intercepts that are not to scale. This portion of this description proceeds by referring to both diagrams.

[0117] In FIG. 7, operations 710, 715, 720, 725, 740, 794 and 777 can be performed as previously described for respectively operations 410, 415, 420, 425, 440, 494 and 677. In other words, a shockable cardiac arrhythmia is detected, etc. Of those operations, at least operations 740, 794 and 777 are optional. In FIG. 8, timelines 810, 815, 820 can be as described for timelines 510, 515 and 520. In addition, an opening HPI may be caused to be output as per the above, but such is not shown so as not to obscure the drawings.

[0118] If, at operation 725 it is determined that the detected cardiac arrhythmia is so validated then, according to another operation 770, a certain HPI can be caused to start being output. The certain HPI can accomplish a number of functions. One such function may be to inform the patient, who may be only tachycardic and thus conscious, that more analysis of their rhythm will be performed in the form of a confirmation. Again, this may give the patient the confidence that he or she will not be shocked unnecessarily, while they need not do anything to prevent a shock. After starting being output, the certain HPI of operation 770 can continue, to sustain the patient’s confidence. For example, in FIG. 8, timeline 870 shows the certain HPI, which starts being output at time T6, and lasts until time T8.

[0119] Returning to FIG. 7, after operation 770, according to another operation 750 it can be further determined whether or not the cardiac arrhythmia is confirmed. In FIG. 8, the confirmation of operation 750 is shown by a timeline 850 as taking place between times T7 and T9. It will be appreciated that time T7 in this example is after time T6, which is when the certain HPI started being output.

[0120] The determination of operation 750 can be performed according to a confirmation criterion, meaning depending on whether or not the confirmation criterion is met. The confirmation criterion can be different from or the same as the validation criterion. In some embodiments, the validation criterion can include that the cardiac arrhythmia is maintained for a validation time, the confirmation criterion can include that the cardiac arrhythmia is maintained for a confirmation time, and the confirmation time can be the same or different from the validation time. In some embodiments, the confirmation time is longer than the validation time, which is why the certain HPI may help the patient with their comfort that their system is working.

[0121] Subsequent operations may depend on the determination of whether the cardiac arrhythmia is so confirmed or not. Where it is written in this document that it is

determined that the cardiac arrhythmia is or is not so confirmed, it means to be or not be confirmed according to the previously mentioned confirmation criterion, the determination of such confirmation, etc.

[0122] According to another operation 755, if it is determined that the cardiac arrhythmia is not so confirmed, execution may return to operation 710, with optionally also executing operation 777 as mentioned above for operation 677. In such a case, there may be no shocking for this event in fact the discharge circuit can be controlled to not deliver a shock for some time, e.g. at least 22 min from when the cardiac arrhythmia is not so confirmed, because the patient may not need a shock for that time. Of course, this time can become shorter if the patient has another event soon thereafter, and so on.

[0123] If, at operation 755 it is determined that the cardiac arrhythmia is so confirmed then shocking may be needed for this event. Thus, according to an operation 799, the discharge circuit can be controlled to deliver a shock within some time from when it was determined that the cardiac arrhythmia is so confirmed, for example within 4.8 min or preferably less.

[0124] Similarly, referring to FIG. 8, from box 855, if it can be determined whether or not the cardiac arrhythmia is so confirmed. If not, then timelines 841 and 897 can be as timelines 541 and 597, respectively indicating no warning HPI and no shock. Else, if the cardiac arrhythmia is so confirmed, then timeline 842 indicates a warning HPI event 843, and timeline 898 indicates a shock delivery event 899.

[0125] These embodiments that include confirmation in addition to validation can be combined with other embodiments. For example, from this document alone, these other embodiments include ones with shocking if the patient has VF but not necessarily if VT, a different delay or validation time for VT than for VF, a different HPI for VT than for VF, etc.

[0126] In some embodiments, a WCD system may detect whether a cardiac arrhythmia is of a first type or of a second type. If the cardiac arrhythmia is of the first type, the WCD system may shock the patient anyway. If the cardiac arrhythmia is of the second type, however, the WCD system may determine whether or not the cardiac arrhythmia is confirmed, for example according to a confirmation criterion, and then shock or not shock accordingly. Examples are now described.

[0127] FIG. 9 shows a flowchart 900 for describing methods according to embodiments. In FIG. 9, operations 910 and 915 can be performed as described above for operations 410 and 415 respectively. In other words, a shockable cardiac arrhythmia is detected, etc. In addition, an opening HPI can optionally be caused to be output, for example prior to completing the determination of the type at operation 930 that is described later. Moreover, it may be optionally determined whether or not the cardiac arrhythmia is validated according to a validation criterion. In such embodiments, the opening HPI can be caused to be output prior to completing the determination of whether the cardiac arrhythmia is so validated. Subsequent actions, such as determining the type, validating, etc. may be performed responsive to determining that the cardiac arrhythmia is so validated.

[0128] If at operation 915 a cardiac arrhythmia is detected then, according to another operation 930, it may be determined whether a type of the cardiac arrhythmia is at least

one of a first type (“CA1”) and a second type (“CA2”). There can be two, three, or more possible such types. Embodiments may act differently, depending on the type determined at operation 930.

[0129] In some embodiments, the first type (“CA1”) of detected cardiac arrhythmias includes Ventricular Fibrillation. In some embodiments, CA1 includes Ventricular Tachycardia, where a heart rate of the patient has a value larger than a first heart rate threshold. An example is now described.

[0130] FIG. 10 shows a diagram 1030, where detected cardiac arrhythmias may be plotted according to their heart rate. In diagram 1030 a HEART RATE axis has a first heart rate threshold HRT1. Suggested values for HRT1 are discussed below. The type of cardiac arrhythmias whose heart rate has a value larger than HRT1 can be determined to be CA1. The remaining cardiac arrhythmias can be determined to be either all of the same type (e.g. CA2), or further subdivided according to additional types, etc. It will be appreciated, then, that fast VT may be thus classified as type CA1, while slower VT otherwise.

[0131] In some embodiments, the second type (“CA2”) of detected cardiac arrhythmias includes Ventricular Tachycardia, where a heart rate of the patient has a value less than a second heart rate threshold. An example is now described.

[0132] FIG. 11 shows a diagram 1130, where detected cardiac arrhythmias may be plotted according to their heart rate. In diagram 1130 a HEART RATE axis has a second heart rate threshold HRT2. Suggested values for HRT1 are discussed below. The type of cardiac arrhythmias whose heart rate has a value less than HRT2 can be determined to be CA2. The remaining cardiac arrhythmias can be determined to be either all of the same type (e.g. CA1), or further subdivided according to additional types, etc. It will be appreciated, then, that slower VT may be thus classified as type CA2.

[0133] In some embodiments, if a value of the heart rate of the patient is within a range, the type is determined to be CA1 or CA2 depending both on the value of the heart rate and on a value of a width of detected QRS complexes of the patient. An example is now described.

[0134] FIG. 12 shows a diagram 1230, where detected cardiac arrhythmias may be plotted according to both their heart rate and the width of QRS complexes, based on orthogonal axes. The horizontal axis is for the heart rate. The vertical axis is for the QRS width, which can be measured by the algorithm at the base of the QRS complex. It will be noted that the vertical axis starts at a minimum threshold value WTHR. Above that value, QRS complexes start deteriorating. Below that value, it is possible that no shock is advised. A good value for WTHR can be about 80 msec.

[0135] In diagram 1230 a broken line 1231 divides the space in two sectors or zones, one for CA1 and one for CA2. At least the type of cardiac arrhythmias whose heart rate has a value larger than HRT3 can be determined to be CA1, and at least the type of cardiac arrhythmias whose heart rate has a value less than HRT4 can be determined to be CA2. In addition, if the value of the heart rate is within the range of HRT4 and HRT3, then the type can be determined depending both on the value of the heart rate on the horizontal axis and on a value of a width of detected QRS complexes on the vertical axis. The determination takes place from line segment 1232 of broken line 1231.

[0136] A good value for HRT4 is 170 bpm (beats per minute). A good value for HRT3 is 200 bpm. A good value for W3 is 120 msec, and for W4 is 150 msec. Once values for these parameters are determined, then an equation can be constructed for line segment 1232 using analytic geometry, for a processor to use.

[0137] In the example of FIG. 12, broken line 1231 has only linear segments, but that is only an example. Linear segments are preferred, because the computation for the determination of operation 930 is easier, as seen for line segment 1232.

[0138] Where performing such computations based on the QRS width would be too taxing on resources, and where only two types need be determined, then FIGS. 10 and 11 may be used in a combined form. In such a case, HRT1 can be set equal to HRT2, and both can have a value between the proposed values of HRT3 and HRT4, such as 200 bpm. In other words, the heart rhythms can be separated according to a certain heart rate threshold: CA1 may include a rhythm where a heart rate of the patient has a value less than the certain heart rate threshold, while CA2 may include a rhythm where the heart rate has a value larger than the certain heart rate threshold. The certain heart rate threshold can be, for example 200 bpm; a rate higher than that can be designated as the VF zone, while a rate of 170-200 bpm can be designated as the VT zone.

[0139] In some embodiments, there are two types of cardiac arrhythmias: shockable VF/shockable VT. In addition to the heart rate and the QRS width, one may further incorporate another attribute called QRS organization. QRS organization might be assessed by cross-correlating detected QRS complexes. Rhythms in which the QRS complexes show a high correlation would be said to be relatively "organized," while rhythms with a low correlation would be "disorganized."

[0140] Accordingly, there may be no shock while the heart rate is <150 bpm and the QRS width <120 msec. At least monomorphic VT may be identified as a heart rate >150 bpm, QRS width >120 msec, and high QRS organization. VF may be identified as a heart rate is >200 bpm, QRS width >120 msec, and low QRS organization.

[0141] In some embodiments where the physiological signal is an ECG waveform, the distinction between CA1 and CA2 is based on an amplitude of an ECG waveform. A type of a cardiac arrhythmia can be CA1 if its ECG waveform has an amplitude smaller than a threshold amplitude, and CA2 if its ECG waveform has an amplitude larger than the threshold amplitude. The threshold amplitude can be a suitable value, for example 200 μ V.

[0142] Returning to FIG. 9, according to another operation 931, it is inquired which was the type of the detected cardiac arrhythmia determined at operation 930. In the examples of this document, cardiac arrhythmias whose type is CA1 are deemed more severe than otherwise, e.g. those whose type is CA2. Operation 931 anticipates that there could be two or even more types. For example, another type can be Atrial Fibrillation ("AF").

[0143] In some embodiments, if at operation 931 it is determined that the type is CA1 then, according to an operation 999, the discharge circuit can be controlled to deliver a shock within sometime of determining the type, for example within 2.9 min and preferably less than that.

[0144] In some embodiments, if at operation 931 it is determined that the type is CA2 then, according to another

operation 951, it can be further determined whether or not the cardiac arrhythmia is confirmed. This confirmation can be performed in a number of ways, as will be seen later in this document.

[0145] According to one more operation 956, if the cardiac arrhythmia is so confirmed at operation 951, then the discharge circuit can be controlled to deliver a shock according to operation 999. Operation 999 may be thus performed within some time from when the cardiac arrhythmia is so confirmed at operation 951, for example within 4.8 min. But if the cardiac arrhythmia is not so confirmed at operation 951, then execution may return to operation 910, and the discharge circuit can be controlled to not deliver a shock for some time. This time can be, for example at least 24 min from when the cardiac arrhythmia is not so confirmed at operation 951. In addition, a closing HPI may be caused to be output responsive to the cardiac arrhythmia not being so confirmed, in conjunction with returning to operation 910.

[0146] Operation 951 may be performed in a number of ways. It should be kept in mind that, in many embodiments, the detected cardiac arrhythmia at this time is known to be of the second type, which will hopefully self-terminate without needing to administer a shock. Examples are now described.

[0147] In some embodiments, it is determined whether or not the cardiac arrhythmia is confirmed according to a confirmation criterion. In some embodiments, the confirmation criterion includes that the cardiac arrhythmia is maintained for a confirmation time. In some embodiments, the confirmation criterion includes that a heart rate of the patient increases during a confirmation time. Additional embodiments are now described.

[0148] FIG. 13 shows a flowchart 1351 for describing methods according to embodiments. Some of these methods may be applied to flowchart 900, or others where a detected cardiac arrhythmia is being confirmed.

[0149] According to an operation 1353, a confirmation timer may be started. According to another operation 1310, a patient physiological signal may be monitored. At this point, if flowchart 1351 is applied to flowchart 900, the patient physiological signal may help detect a cardiac arrhythmia of the second type ("CA2").

[0150] According to another operation 1314, it is inquired what cardiac rhythm is being detected. If the rhythm is a normal sinus rhythm (NSR), it may be that the heart rhythm has been restored by itself. Then, according to a state 1356, the cardiac arrhythmia is not confirmed. If flowchart 1351 is being applied to flowchart 900, execution then returns to operation 910.

[0151] If at operation 1314 of FIG. 13 the cardiac arrhythmia is of the first type ("CA1"), such as VF or fast VT, execution may proceed to operation 1399. The latter may be performed as operation 999 in flowchart 900.

[0152] If at operation 1314 of FIG. 13 the cardiac arrhythmia is still of the second type ("CA2"), it may be that the patient has been experiencing VT. The above described option of checking as to whether the heart rate has been increasing persistently may be checked at this time.

[0153] At this stage, the patient may have become very uncomfortable with their cardiac rhythm, in fact so uncomfortable that the patient may prefer to be shocked over waiting for the arrhythmia to self-terminate. In some embodiments of a WCD system, the user interface is further configured to receive a shock input by the patient, such as by

the patient pushing a button titled: "SHOCK ME NOW". According to another operation 1357, if such a shock input is received, execution may proceed to operation 1399. In other words, in such embodiments, if the type has been determined to be CA2, the discharge circuit can be controlled to deliver a shock responsive to the received shock input. Operation 1399 can be performed within sometime after receiving the shock input, for example within 1.6 min of receiving the shock input.

[0154] If at operation 1357 no shock input has been received, then according to another operation 1358 it is inquired whether the confirmation timer that started at operation 1353 has timed out. If not, execution may return to operation 1310. If yes then, according to a state 1359, the cardiac arrhythmia is confirmed, and execution may proceed to operation 1399.

[0155] These embodiments that shock a patient with VF but not necessarily with VT can be combined with other embodiments. For example, from this document alone, these other embodiments include ones with a different delay or validation time for VT than for VF, a different HPI for VT than for VF, etc.

[0156] In some embodiments, a WCD system may detect whether a cardiac arrhythmia is of a first type or of a second type. The WCD system may validate the detected cardiac arrhythmia, and output an HPI with a different delay, depending on the type. Examples are now described.

[0157] FIG. 14 shows a flowchart 1400 for describing methods according to embodiments. In addition, FIG. 15 is a time diagram of a sample series of events that may result from methods of the flowchart of FIG. 14. Of course, a different series of events may result from the methods of the flowchart of FIG. 14. The events of FIG. 15 are shown along a time axis 1512, with intercepts that are not to scale. This portion of this description proceeds by referring to both diagrams.

[0158] In FIG. 14, operations 1410, 1415, 1430 and 1431 can be performed as described above for respective operations 410, 415, 930 and 931. In other words, a shockable cardiac arrhythmia is detected, its type is determined, etc.

[0159] In parallel referring to FIG. 15, timelines 1510 and 1515 can be as described for timelines 510 and 515. Moreover, timeline 1530 shows a type determination event 1531 of performing operation 1430, which starts at time T11 and ends at time T12.

[0160] In addition, although not shown in flowchart 1400 or in FIG. 15, in some embodiments an opening HPI is caused to be output responsive to detecting the cardiac arrhythmia, prior to completing the determination of the type. Moreover, the cardiac arrhythmia may be validated according to a validation criterion, and the opening HPI can be caused to be output prior to completing the determination of whether the cardiac arrhythmia is so validated. In some embodiments, type determination event 1531 is performed quickly and easily during such a validation, and thus it does not delay other actions.

[0161] If at operation 1431 it is determined that the type is CA1 then, according to another operation 1432, a first warning HPI is caused to be output. Operation 1432 may be performed after a first delay period elapses, since the type is determined at operation 1430.

[0162] If at operation 1431 it is determined that the type is CA2 then, according to another operation 1436, a second warning HPI is caused to be output. The first warning HPI

can be the same or different than the second warning HPI. It is preferred that they are the same, for the patient to not have to be trained to many different commands.

[0163] Operation 1436 may be performed after a second delay period elapses, since the type is determined at operation 1430. The second delay period may have a duration at least 20% different from a duration of the first delay period. For example, the first delay period could be up to 10 sec, or even 20 sec. On the other hand, the second delay period can have a duration of 5-60 sec, and even longer, both for better analysis and also in order to give a VT the opportunity to self-terminate. In embodiments, these delay periods are programmable.

[0164] After operation 1432 or 1436, according to an operation 1499, the discharge circuit can be controlled to deliver a shock responsive to the cardiac arrhythmia. In some embodiments, this shock is canceled if, according to an operation 1494, a cancel input is received within a time window. In other words, the discharge circuit can be controlled to instead not deliver a shock responsive to the cardiac arrhythmia and bypass operation 1499, if a cancel input is received by the user interface within a time window after the first warning HPI or the second warning HPI is caused to be output.

[0165] In FIG. 15, box 1531 replicates the decision of box 1431. In some embodiments, if the type is CA1, it may be determined during the first delay period whether the cardiac arrhythmia is confirmed according to a CA1 confirmation criterion. The CA1 confirmation criterion could be that the cardiac arrhythmia is maintained for a CA1 confirmation time. Timeline 1551 shows the confirmation, where the CA1 confirmation time lasts between T12 and T14. The CA1 confirmation time may be, for example 10 sec if CA1 includes VF. Timeline 1532 then shows the first warning HPI event 1537 that starts at a later time T15.

[0166] In such embodiments, if the type is CA2, it may be determined during the second delay period whether the cardiac arrhythmia is confirmed according to a CA2 confirmation criterion. The CA2 confirmation criterion could be that the cardiac arrhythmia is maintained for a CA2 confirmation time. Timeline 1556 shows this confirmation, where the CA2 confirmation time lasts between T12 and T16. Timeline 1536 then shows the second warning HPI event 1533 that starts at a later time T17. In this example, the CA2 confirmation time has a duration at least 20% different from a duration of the CA1 confirmation time. The CA2 confirmation time may be, for example 45 sec if CA2 includes VT. The differences in the confirmation times may account for the differences in the respective delay periods.

[0167] FIG. 15 does not show the shock event that may follow the warning HPIs. This was done only not to clutter FIG. 15.

[0168] These embodiments that have a different delay or validation time for VT than for VF can be combined with other embodiments. For example, from this document alone, these other embodiments include ones with a different HPI for VT than for VF, etc.

[0169] In some embodiments, a WCD system may detect whether a cardiac arrhythmia is of a first type or of a second type. The WCD system may output different HPIs for the first type than the second type. Examples are now described.

[0170] FIG. 16 shows a flowchart 1600 for describing methods according to embodiments. In FIG. 16, operations 1610, 1615, 1630, 1631, 1694 and 1699 can be performed as

described above for respective operations **1410**, **1415**, **1430**, **1431**, **1494** and **1499**. In other words, a shockable cardiac arrhythmia is detected, its type is determined, etc.

[**0171**] In addition, although not shown in flowchart **1600**, in some embodiments an opening HPI is caused to be output responsive to detecting the cardiac arrhythmia, prior to completing the determination of the type. Moreover, the cardiac arrhythmia may be validated according to a validation criterion, and the opening HPI can be caused to be output prior to completing the determination of whether the cardiac arrhythmia is so validated.

[**0172**] If at operation **1631** it is determined that the type is CA1 then, according to another operation **1682**, a first HPI is caused to be output. Else, if the type is CA2, according to another operation **1686** a second HPI is caused to be output.

[**0173**] The first HPI can be different from the second HPI for a number of reasons. For instance, the first HPI can be a warning HPI as described above, in which case entering a cancel input will avert a shock. On the other hand, the second HPI can be an HPI where the patient is informed that their rhythm is still being analyzed, whether that means being validated or confirmed.

[**0174**] The first HPI can be different from the second HPI in a number of ways. Examples are now described.

[**0175**] In some embodiments, the user interface includes at least a first and a second output device. The HPIs can come from different devices, in other words the first HPI can be output by the first output device, while the second HPI can be output by the second output device.

[**0176**] In some embodiments, the first and the second HPI can be from the same device. Examples are now described.

[**0177**] In some embodiments, the user interface includes a screen, but the displayed images are different. In other words, the first HPI can be a first image displayed by the screen, while the second HPI can be a second image displayed by the screen, which is different than the first image.

[**0178**] In some embodiments, the user interface includes a speaker that can play one or more audible sounds, but the sound messages are different. In other words, the first HPI can be a first sound message output by the speaker, while the second HPI can be a second sound message output by the speaker, which is different from the first sound message.

[**0179**] In some embodiments, the user interface includes an output device that can cause an HPI to be output at different intensity levels, be that louder for sound, brighter for light, more intense for vibration, and so on. The first HPI can be output by the output device at a first intensity level, while the second HPI can be output by the output device at a second intensity level, which is at least 20% different than the first intensity level. The intensity level may be measured by energy to actuate the device, perceived intensity by the user, etc.

[**0180**] In some embodiments, a WCD system may detect a shockable cardiac arrhythmia of the patient. The WCD system may try to validate or confirm the arrhythmia. It may fail to validate it in instances where, for example, the arrhythmia self-terminates relatively quickly. In such embodiments the WCD system, which has one or more output devices, might not output any loud sound before validation is completed, so as not to embarrass the patient to bystanders nearby. In addition, the patient may be spared of having to press the buttons to prove they are alive, and so on.

In some of these embodiments, the WCD system might even not output any sound at all before validation is completed.

[**0181**] In some embodiments, the WCD system may try to validate or confirm the arrhythmia for a longer time than in the prior art, so as to give it a further chance to self-terminate. In such embodiments, the WCD system may transmit or even record data of the self-terminating arrhythmia for later analysis. In some of these embodiments, the WCD system may notify the patient only discreetly, or even not at all. Examples are now described.

[**0182**] FIG. **17** shows a flowchart **1700** for describing methods according to embodiments where a detected cardiac arrhythmia is given a further chance to self-terminate, sometimes by being validated for a longer time. In addition, FIG. **18** is a time diagram of a sample series of events that may result from methods of the flowchart of FIG. **17**. Of course, from the methods of the flowchart of FIG. **17**, a series of events may result that is different than the sample series of events of FIG. **18**. The events of FIG. **18** are shown along a time axis **1812**, with time intercepts that are not to scale. This portion of this description proceeds by referring to both FIGS. **17** & **18**.

[**0183**] It will be understood that flowchart **1700** can be performed for all possible cardiac arrhythmias, or only certain types of ones. In addition, flowchart **1700** can be performed for all possible shockable cardiac arrhythmias, or only certain types of ones. For example, flowchart **1700** may be performed only for VT but not for VF, the reverse, and so on.

[**0184**] In FIG. **17**, operation **1710** can be performed as described previously for operations **410**, **610**, **710**, etc. In FIG. **18**, a timeline **1810** indicates that the physiological input starts being received at a time T1, by switching from a low value to a high value at that time.

[**0185**] Moreover, a measurement circuit such as measurement circuit **220** can be configured to render physiological inputs from the physiological signal of the patient monitored at operation **1710** of FIG. **17**. The physiological signal may be an ElectroCardioGram (ECG) signal, and the physiological inputs may be sections of an ECG waveform, taken at different times.

[**0186**] In FIG. **17**, an operation **1715** can be performed as described previously for operations **415**, **615**, **715**, etc. While at operation **1715** no cardiac arrhythmia is being detected, execution can return to operation **1710**. This detection or not of a cardiac arrhythmia is shown in FIG. **18** along a timeline **1815**. There is no detection while timeline **1815** has a low value. Detection may happen at time T2, at which time timeline **1815** changes to a high value. At that time, detection may have been performed using inputs received earlier.

[**0187**] It should be remembered that FIGS. **17** & **18** are from the point of view of the WCD system, its processor, and so on. Accordingly, while a cardiac arrhythmia may be detected at time T2, the onset or first time point of the cardiac arrhythmia may be a little earlier than that, and detection at time T2 may be somewhat delayed from that onset or first time point.

[**0188**] Returning to FIG. **17**, if detection happens at operation **1715** then, according to another operation **1721**, it can be determined whether or not the detected cardiac arrhythmia meets a validation criterion. The determination can be performed by a validation process that lasts 5-60 sec, or even longer. For example, the validation criterion may

include that the detected cardiac arrhythmia needs to be maintained for the above mentioned threshold validation time of 5-60 sec, or even longer. In FIG. 18, this prolonged validation time lasts until time T25.

[0189] In some embodiments, the validation time is 25 sec, or even 35 sec, which is prolonged over the prior art of FIG. 3C. This prolonged validation time can give a chance to the cardiac arrhythmia to self-terminate. In some embodiments, the type of the cardiac arrhythmia is also detected, and the validation lasts for such a prolonged time only for certain types of cardiac arrhythmias, e.g. for a ventricular tachycardia, but not for ventricular fibrillation. The prolonged validation period may therefore result in fewer instances when loud sounds such as alarms are output, and so on.

[0190] In embodiments, according to another operation 1772, one of speakers 271, 272 that is capable of outputting a loud sound is caused to output no sound louder than 58 decibel (dB) as measured at a distance of, say, 2' (i.e. 2 feet) from the speaker. This operation 1772 may be performed while operation 1721 is being performed, i.e. while the determination is being performed of whether or not the detected cardiac arrhythmia meets the validation criterion. In fact, no sound at all may be output while operation 1721 is being performed, when in fact this speaker may be capable of outputting a louder sound, as will be seen later in this description.

[0191] Subsequent operations may depend on the determination of operation 1721, i.e. on whether or not the cardiac arrhythmia meets the validation criterion. According to another operation 1725 of FIG. 17, if it is determined that the cardiac arrhythmia does not meet the validation criterion then the discharge circuit can be controlled to not cause a shock to be delivered responsive to the cardiac arrhythmia detected at operation 1715.

[0192] Execution may then return to operation 1710. It will be appreciated that, in some such instances where the detected cardiac arrhythmia does not meet the validation criterion, the speaker can be caused to output no sound at all, or no sound louder than 58 dB, for another at least 10 minutes (min) after the determination has been performed. This additional time, when considered together with the time of operation 1772 can amount to a long quiet time for a cardiac arrhythmia that eventually self-terminated.

[0193] In parallel, in FIG. 18, operation 1825 reflects operation 1725. If at operation 1825 it is determined that the cardiac arrhythmia does not meet the validation criterion, then a timeline 1841 for a loud sound shows no loud sound for a quiet time period that lasts from T1 until at least time T26. This quiet time period can be the above-described 10 min. And, a timeline 1897 for a shock shows no shock for the same time period.

[0194] On the other hand, if at operation 1725 of FIG. 17 it is determined that the cardiac arrhythmia meets the validation criterion then, according to an operation 1740, the speaker of operation 1772 may be caused to output a loud sound, for example a sound louder than 60 dB, as measured at a distance of 2' from the speaker. In this case, the speaker may be a siren, and be even louder than 60 dB, such as over 100 dB, given that the patient may be shocked and that no one should be touching them. Then, according to another operation 1799, the discharge circuit can be further controlled so as to cause a shock to be delivered. Of course,

additional operations may be performed, such as intervening warnings, an opportunity to cancel the shock, etc.

[0195] In parallel, in FIG. 18, if at operation 1825 it is determined that the cardiac arrhythmia meets the validation criterion, then an alternate timeline 1842 for a loud sound shows a loud sound 1843, so as to alert bystanders. In addition, a timeline 1898 for a shock shows a shock 1899.

[0196] Moreover, as seen above, some embodiments include another speaker, namely the other of 271, 272 whose sound can be controlled as described in the above few paragraphs for the first speaker. In particular, the other speaker may be caused to output no sound louder than 58 dB as measured at a distance of 2' from the other speaker, or no sound at all, while the determination being performed of whether or not the detected cardiac arrhythmia meets the validation criterion.

[0197] In the above, the prolonged time period of validating the detected cardiac arrhythmia can be thought of as being part of a quiet time period. Indeed, while the WCD system may include a potentially loud siren, that siren can be kept from outputting a loud sound. Moreover, the prolonged time period of validating the detected cardiac arrhythmia can be further thought of as being part of a serene time period, because no defibrillation shock is being delivered. Each of the quiet time period and the serene time period can be considered to start at any suitable starting point, such as from when the cardiac arrhythmia was first detected, or when a determination started as to whether or not a validation criterion is met. And, if the arrhythmia self-terminates, the quiet time period and the serene time period can be extended for longer, e.g. 10 min or longer, as already mentioned above.

[0198] Additional measures can be taken for the patient's privacy and dignity. Just like with loud sounds, bright lights can be lit when an arrhythmia is detected and validated. Such lights can be lit only discreetly, or not lit up at all, however, if the arrhythmia is not so validated.

[0199] In some embodiments, the data about the quickly self-terminating arrhythmia may be transmitted by communication module 290 to a remote care giver for analysis, without outputting a loud sound. This may be performed with or without the prolonged validation period that was described with reference to FIG. 17. Examples are now described.

[0200] FIG. 19 shows a flowchart 1900 for describing methods according to embodiments where data from self-terminating cardiac arrhythmias is transmitted by a WCD system without sounding loudly due to these cardiac arrhythmias. As with FIG. 17, flowchart 1900 can be performed for all possible cardiac arrhythmias, or only certain types of ones.

[0201] Flowchart 1900 has many elements that are similar to flowchart 1700 of FIG. 17. Operations 1910 and 1915 may be performed similarly to operations 1710, 1715, respectively.

[0202] If detection happens at operation 1915 then, according to another operation 1922, it can be determined whether or not the detected cardiac arrhythmia meets a validation criterion. The determination can be performed by a validation process that can last for any suitable duration. Operation 1972 may be performed similarly with operation 1772.

[0203] Subsequent operations may depend on the determination of operation 1922, i.e. on whether or not the

cardiac arrhythmia meets the validation criterion. According to another operation **1925** of FIG. **19**, if it is determined that the cardiac arrhythmia does not meet the validation criterion then, according to an operation **1976**, communication module **290** can be caused to transmit data about the detected cardiac arrhythmia. This transmission may happen at any suitable time. In embodiments, the communication module is caused to transmit the data within 10 min of determining that the detected cardiac arrhythmia does not meet the validation criterion, or an even shorter time. This may give a remote care-giver the opportunity to call the patient, etc.

[0204] Furthermore, if it is determined that the detected cardiac arrhythmia does not meet the validation criterion, the discharge circuit can be controlled to not cause a shock to be delivered responsive to the cardiac arrhythmia detected at operation **1915**. Then execution may return to operation **1910**. It will be appreciated that, in some such instances where the detected cardiac arrhythmia does not meet the validation criterion, the speaker can be caused to output no sound at all, or no sound louder than 58 dB, for another at least 10 min after the determination has been performed. This additional time, when considered together with the time of operation **1972** can amount to a long quiet time for a cardiac arrhythmia that eventually self-terminated.

[0205] On the other hand, if at operation **1925** of FIG. **19** it is determined that the cardiac arrhythmia meets the validation criterion, then operations **1940**, **1999** can be performed as was described for operations **1740**, **1799**, respectively.

[0206] Additional variations are possible, similarly with the embodiment of FIG. **17**. For example, any additional speaker(s) of the WCD system can be caused to output no sound louder than 58 dB as measured at a distance of 2' from the speaker, or no sound at all, while the determination of operation **1922** being performed. And, similarly with lights, which can be lit brightly for a validated arrhythmia, and discreetly or not at all for a non-validated arrhythmia. Moreover, operation **1976** may take place at one or more different and/or additional places in flowchart **1900**, for example after the YES decision of operations **1915** or **1925**, after operations **1940** or **1999**, etc.

[0207] Moreover, memory **238** of FIG. **2** can be configured to store data about the detected cardiac arrhythmia. In operations, data about the detected cardiac arrhythmia can be caused to be stored in memory **238**, etc.

[0208] In some embodiments, the data about the quickly self-terminating arrhythmia may be stored in memory **238** for later analysis, without outputting a loud sound. This may be performed with or without the prolonged validation period that was described with reference to FIG. **17**, and with or without the transmission that was described with reference to FIG. **19**. Examples are now described.

[0209] FIG. **20** shows a flowchart **2000** for describing methods according to embodiments where data of some self-terminating cardiac arrhythmias is long-term stored by a WCD system, without sounding loudly due to these cardiac arrhythmias. As with FIGS. **17** and **19**, flowchart **2000** can be performed for all possible cardiac arrhythmias, or only certain types of ones.

[0210] The operations of flowchart **2000** are now described for themselves, and also in conjunction with an operating example. In addition, FIG. **21** is a time diagram of a sample series of events that may result from methods of the flowchart of FIG. **20** and from the operating example. Of

course, from the methods of the flowchart of FIG. **20**, a series of events may result that is different than the sample series of events of FIG. **21**. The events of FIG. **21** are shown along a time axis **2112**, with intercepts that are not to scale. This portion of this description proceeds by referring to both FIGS. **20** & **21**.

[0211] In FIG. **20**, operation **2010** can be performed as described previously for operations **410**, **610**, **710**, etc. In FIG. **21**, a timeline **2110** indicates that the physiological input starts being received at a time **T1**, by switching from a low value to a high value.

[0212] Moreover, a measurement circuit such as measurement circuit **220** can be configured to render physiological inputs from the physiological signal of the patient monitored at operation **2010** of FIG. **20**. The physiological signal may be an ECG signal, and the physiological inputs may be sections of an ECG waveform, taken at different times.

[0213] In an operating example that starts being described now in parallel with flowchart **2000**, a first, then a second, then a third, and then a fourth physiological input become available due to operation **2010**. Accordingly, values **V1**, **V2**, **V3**, **V4** can be derived from the first, second, third, and fourth physiological inputs, respectively. In FIG. **21**, a values timeline **2111** indicates the times when these values **V1**, **V2**, **V3**, **V4** are derived. Indeed, value **V1** is derived between **T1** and **T2**, value **V2** between **T2** and **T18**, value **V3** between **T18** and **T19**, and value **V4** after **T19**.

[0214] According to a next operation **2016** of FIG. **20**, next data can be stored in a memory of the WCD system, such as memory **238** of FIG. **2**. The term "next data" is general, and may apply to different data that is being made available, as this operation **2016** is repeated a number of times by being in a loop. The storing of operation **2016** can be over-writeable or longer term as may have been determined from a previous operation, and as will be seen later in this document.

[0215] In the operating example for FIG. **20**, during the first time that operation **2016** is performed, the next data that is stored in the memory can be first values **V1** that are derived from the first physiological input made available due to operation **2010**. If the first physiological input is a section of an ECG waveform, then these first values **V1** can be time values of a section of the ECG waveform, or values representative of salient features of the ECG waveform section, and so on.

[0216] According to a next operation **2017** of FIG. **20**, it is inquired whether a cardiac arrhythmia of the patient is detected from the last-stored data. The last-stored data can be the data that was stored in the memory according to the latest storing operation, i.e. the last time that operation **2016** was executed. It will be understood that this can mean any cardiac arrhythmia, or only certain types of arrhythmias that are of potential interest, whether shockable or not. Actually, the type of this cardiac arrhythmia can be detected from the physiological input, either itself or from the data, values, etc. that are derived from the physiological input.

[0217] At operation **2017**, the answer can be yes or no. As seen briefly from timeline **2115** of FIG. **21**, in the operating example of this description the answer will be yes for values **V2**, and no for values **V1**, **V3**, **V4**. In other words, the cardiac arrhythmia of this example first manifested when values **V2** were derived, but self-terminated by the time values **V3** were derived.

[0218] If, at operation 2017, the answer is no, then at a subsequent operation 2018, the storing of the last-stored data is or becomes over-writable in the memory, so as to liberate memory space and conserve on requirements of memory. This operation 2018 may or may not be an explicit operation. For example, operation 2018 may be implemented implicitly by having operation 2016 be performed by writing to a memory, or portion of a memory, and then writing in the same memory over the data after some time, for example after two minutes.

[0219] In the operating example for FIG. 20, operation 2018 is performed the first time for stored values V1. The stored values V1 are indicated in FIG. 20 by an associated square V1; the fact that the storing of these values V1 is now over-writable is indicated by showing square V1 with dotted lines.

[0220] After operation 2018, execution may return to operation 2010, for ultimately receiving the next data that will be stored per operation 2016. This closes the loop of operations 2010, 2016, 2017, 2018, for as long as no arrhythmia is being detected.

[0221] In FIG. 21, the detection of a cardiac arrhythmia is shown along a timeline 2115. For as long as there is no detection, i.e. between times T1 and T2, timeline 2115 has a low value.

[0222] In the operating example for FIG. 20, during the second time that operation 2016 is performed, the next data that is stored in the memory can be second values V2 that are derived from the second physiological input made available due to operation 2010. Moreover, as these second values V2 become stored in the memory, at least some of the stored first values V1 can become over-written by the storing of the second values V2. This over-writing can be permitted due to having performed operation 2018 earlier.

[0223] In this operating example, when operation 2017 is then repeated for these second values V2, the answer is yes: a cardiac arrhythmia of the patient is indeed detected. Actually, the cardiac arrhythmia can be detected from the second physiological input, either itself or from the second values that are derived from the second physiological input. These second values could be stored as per operation 2016 or not. In FIG. 21, the onset of the detection is shown at time T2, at which time timeline 2115 changes to a high value.

[0224] At operation 2017 of FIG. 20, since the answer is yes then, according to a subsequent operation 2019, the storing of the last-stored data is or becomes longer-term in the memory. Here the notion of "longer-term" is intended to distinguish from the over-writable aspect of operation 2018. At least some of the data with such longer-term storing will not be overwritten, and will thus be available for later review. Of course, they may become over-writable after the review, and so on.

[0225] This operation 2019 may or may not be an explicit operation. For example, operation 2019 may be implemented implicitly by having operation 2016 be performed using a memory that is not being re-written on, after some time. Or, operation 2019 may be performed explicitly by copying the relevant data to a different portion of the memory, as will be seen, for example, in FIG. 23.

[0226] In FIG. 21, the longer-term storing is shown by a timeline 2119. In this example, and for this depiction, the longer-term storing is shown as coextensive with the detected arrhythmia of timeline 2115, to better indicate the preference that what is stored is the data of the arrhythmia

only. In embodiments, however, there can be a time delay from when the arrhythmia is first detected until the storing of the arrhythmia's data becomes longer-term. Plus, data that follows a self-terminating arrhythmia can give additional insights to reviewers, which is why it might be desirable to store also such data.

[0227] In the operating example for FIG. 20, operation 2019 is thus performed for stored values V2, because that is the last-stored data. The stored values V2 are indicated in FIG. 20 by an associated square V2; the fact that the storing of these values V2 is now longer-term is indicated by showing square V2 with solid lines.

[0228] In FIG. 20, according to a subsequent operation 2066, next data is stored. Operation 2066 can be performed similarly to operation 2016. The difference is that operation 2066 is performed after a cardiac arrhythmia has been detected at operation 2017.

[0229] In the operating example for FIG. 20, the first time that operation 2066 is performed, the next data that becomes stored in the memory can be third values V3 that are derived from the third physiological input made available due to operation 2010. Moreover, as these third values V3 become stored in the memory, at least some of the stored second values V2 do not become over-written by the storing of the third values V3. In fact, in some embodiments, none of the stored second values V2 become over-written by the storing of the third values V3. Such over-writing is prevented due to operation 2019 having been performed, which is responsive to the cardiac arrhythmia having been detected at operation 2017.

[0230] In FIG. 20, according to a subsequent operation 2025, it can be determined whether or not the cardiac arrhythmia detected at operation 2017 is validated. This validation operation 2025 may be implemented by determining whether or not the detected cardiac arrhythmia meets a validation criterion. There can be a number of such criteria for validation. In some embodiments, the validation criterion includes a determination of whether or not a cardiac arrhythmia is detected also from the subsequent third physiological input, or from at least some of the third values V3. It should be noted that the type of this cardiac arrhythmia sought to be detected for validation operation 2025 could be the same or different type than the cardiac arrhythmia detected at operation 2017. In some embodiments, the determination of whether or not the detected cardiac arrhythmia meets the validation criterion is performed by a validation process that lasts for at least 25 sec or longer.

[0231] If at operation 2025 the answer is yes, then subsequent operations 2040, 2099 may be implemented similarly to operations 1740, 1799, for sounding, then shocking, etc.

[0232] In FIG. 21, validation operation 2125 could result in different timelines 2198 (eventual shock), or 2197 (no shock for some time and from these inputs, since this arrhythmia was not validated). In this example, there is no shock for the times of values V1, V2, V3, V4.

[0233] If at operation 2025 of FIG. 20 the answer is no, then execution may proceed to operation 2018, in which case the next data that was last-stored (value V3) become over-writable. Execution may then return to operation 2010.

[0234] In the operating example for FIG. 20, the first time that operation 2025 is performed is for values V2, and the answer is indeed no. Execution then returns to operation 2016 for the third time. At that time, the next data that was last-stored per operation 2066 was third values V3, and may

become over-writable per operation **2018** as evidenced by the associated dotted-lines square **V3**.

[**0235**] In the operating example for FIG. **20**, during the third time that operation **2016** is performed, the next data that is stored in the memory can be fourth values **V4** that are derived from the fourth physiological input made available due to operation **2010**. Moreover, as these fourth values **V4** become stored in the memory, at least some of the stored second values **V2** do not become over-written by the storing of the fourth values **V4**. In fact, in some embodiments, none of the stored second values **V2** become over-written by the storing of the fourth values **V4**. Such over-writing is prevented due to operation **2019** having been performed, which is responsive to the cardiac arrhythmia having been detected at operation **2017** in connection with the second values **V2**.

[**0236**] In addition, at least some of the stored third values **V3** may optionally become over-written by the storing of the fourth values **V4**, responsive to having determined that the detected cardiac arrhythmia is not validated at operation **2025**. Such can become enabled if third values **V3** becomes over-writable, as per the above.

[**0237**] It will be appreciated that, in some such instances where the cardiac arrhythmia detected at values **V2** does not meet the validation criterion per values **V3**, the speaker can be caused to output no sound at all, or no sound louder than 58 dB, for another at least 10 min after the determination has been performed that the detected cardiac arrhythmia does not meet its validation criterion. This time can amount to a long quiet time for a cardiac arrhythmia that eventually self-terminated.

[**0238**] Sample results are now described. It will be recognized that these results correspond to the operating example for FIG. **20**, but use different embodiments for the memory configuration.

[**0239**] FIG. **22** shows a table whose first column shows values **V1**, **V2**, **V3**, **V4** described above, as they are being received or derived. For each of these values **V1**, **V2**, **V3**, **V4** there is a row of results. In this example, according to the next column, an arrhythmia is detected for value **V2**, but not for values **V1**, **V3**, **V4**. In this example, according to the yet next column, it is meaningful to validate the arrhythmia, only for values **V2**; and this arrhythmia is not validated because an arrhythmia is not detected from the subsequent values **V3**, as shown by arrow **2225**.

[**0240**] In the example of FIG. **22**, according to the next column, there is no loud sound output responsive to any of values **V1**, **V2**, **V3**, **V4**. According to a comment **2219**, this is true even though value **V2** had an arrhythmia, because that arrhythmia was not eventually validated.

[**0241**] In the example of FIG. **22**, a memory **2238** of the WCD system according to embodiments could be memory **238**. In the last column, an evolution is shown of a map of memory **2238**, responsive to received values **V1**, **V2**, **V3**, **V4** becoming stored. A previous value **PV** is stored longer-term, and is not over-written. According to a comment **2219**, values **V2** are not over-written so as to be preserved for subsequent review, while values **V1**, **V3**, etc. are over-written in whole or in part by the subsequently received values, so as to conserve space in memory **2238**.

[**0242**] In another example, FIG. **23** shows a table whose first four columns are the same as those of FIG. **22**. Values **V2** do not meet the validation criterion, because an arrhythmia is not detected from subsequent values **V3**, as shown by arrow **2325**. According to a comment **2319**, there is no loud

sound output responsive to value **V2**, because its detected arrhythmia was not eventually validated.

[**0243**] In the example of FIG. **23**, a memory **2338** of the WCD system according to embodiments could be memory **238**. Memory **2338** has a long term portion **LTP** and a short term portion **STP**. Second values **V2** can be written in the long term portion responsive to the cardiac arrhythmia having been detected from the second physiological input. In fact, second values **V2** can be initially written in the short term portion, and then second values **V2** can become written to the long term portion by being copied from the short term portion, responsive to the cardiac arrhythmia having been detected from the second physiological input.

[**0244**] Similarly with FIG. **22**, the last column of FIG. **23** shows an evolution of a map of memory **2338**, responsive to received values **V1**, **V2**, **V3**, **V4** becoming stored. A previous value **PV** is stored in the long term portion, and is thus not over-written. Incoming values **V1**, **V2**, **V3**, **V4** are written in the short term portion, and then over-written by the subsequently incoming value, so as to conserve space. This short term portion may be a buffer that holds a time duration of data lasting for a suitable time, such as 2 minutes. Second values **V2** can be copied in the long term portion from the short term portion, responsive to the cardiac arrhythmia having been detected from the second physiological input so as to be preserved for subsequent review, as shown by comment **2319**.

[**0245**] The long-term stored values **PV**, **V2** permit review of events, when the memory is downloaded later for study. In addition, for self-terminating events, the patient may have been spared the embarrassment of a loud alarm like a siren, if they do not respond quickly enough with the cancel switch, and so on.

[**0246**] FIG. **24** shows a flowchart **2400** for describing methods according to embodiments where data from self-terminating cardiac arrhythmias is transmitted by a WCD system without sounding loudly due to these cardiac arrhythmias. As with FIG. **17**, flowchart **2400** can be performed for all possible cardiac arrhythmias, or only certain types of ones.

[**0247**] In addition, FIG. **25** is a time diagram of a sample series of events that may result from methods of the flowchart of FIG. **24**. Of course, from the methods of the flowchart of FIG. **24**, a series of events may result that is different than the sample series of events of FIG. **25**. The events of FIG. **25** are shown along a time axis **2512**, with time intercepts that are not to scale. This portion of this description proceeds by referring to both FIGS. **24** & **25**.

[**0248**] In FIG. **24**, according to an operation **2410**, physiological inputs from an ECG signal of the patient are monitored. In FIG. **25**, a timeline **2511** indicates that the physiological input from the ECG starts being received at a time **T1**, by switching from a low value to a high value.

[**0249**] In FIG. **24**, an operation **2415** can be performed as described previously for operations **415**, **615**, **715**, **1715**, etc. While at operation **2415** no cardiac arrhythmia is being detected, execution can return to operation **2410**. This detection or not of a cardiac arrhythmia is shown in FIG. **25** along a timeline **2515**. There is no detection while timeline **2515** has a low value. Detection may happen at time **T2**, at which time timeline **2515** changes to a high value. At that time, detection may have been performed using inputs received earlier.

[0250] It should be remembered that FIGS. 24, 25 are from the point of view of the WCD system, its processor, and so on. Accordingly, while a cardiac arrhythmia may be detected at time T2, the onset or first time point of the cardiac arrhythmia may be a little earlier and detection may be somewhat delayed. In the particular case of this example, a timeline 2514 shows a first time point of the cardiac arrhythmia as time TFTP, which is somewhat before time T2. (For example, in the prior art of FIG. 3B, this first time point seems to occur at time TB.) In some embodiments, this first time point of the cardiac arrhythmia TFTP is identified explicitly in the ECG signal.

[0251] Returning to FIG. 24, if detection happens at operation 2415, then there can be waiting for up to a confirmation period to determine whether or not the detected cardiac arrhythmia has self-terminated. This is expressed in FIG. 24 as a waiting loop formed by operations 2419, 2422 & 2472. It will be recognized that this waiting loop can be considered to be a validation operation 2421, and that the confirmation period is a type of validation period.

[0252] In operation 2421, according to operation 2422, it is determined whether the confirmation period has passed. In some embodiments, the confirmation period is defined as starting from a first time point of the cardiac arrhythmia, and lasting at least 35 sec, or longer, such as 45 sec, 55 sec, etc. It will be appreciated that this confirmation period is substantially longer than the prior art of FIG. 3B and FIG. 3C, thus giving a detected cardiac arrhythmia a better chance to self-terminate.

[0253] If at operation 2422 the answer is no, then there is waiting. During the waiting, according to a next operation 2472 the speaker is caused to output no sound louder than 62 dB, as measured at a distance of 2' from the speaker. In some embodiments, the speaker is in fact caused to output no sound during this waiting, which means not a loud sound for bystanders, not an audible sound for the rescuer, etc.

[0254] According to a next operation 2419 it is determined whether or not the cardiac arrhythmia is still being detected from subsequent physiological inputs. If not, it means that the cardiac arrhythmia has self-terminated within the confirmation period, and execution exits the waiting loop to return to operation 2410. In such embodiments, the discharge circuit can be controlled to not cause a shock to be delivered responsive to the detected cardiac arrhythmia.

[0255] It will be appreciated that, in some such instances where the detected cardiac arrhythmia exits the waiting loop before the confirmation period, the speaker can be caused to output no sound at all, or no sound louder than 58 dB, for another at least 10 min after an end of the confirmation period. This can amount to a long quiet time for a cardiac arrhythmia that eventually self-terminated.

[0256] If at operation 2419 the cardiac arrhythmia is still being detected, then execution proceeds again to operation 2422 of the waiting loop. If the confirmation period has passed, then the cardiac arrhythmia has been validated. Then, according to an operation 2440, the speaker can be caused to output a sound. In some embodiments, the sound is louder than 50 dB, as measured at a distance of 2' from the speaker. In some instances, audible sound is required to output verbal warnings to the wearer, for example at a sound intensity of a conversation, of perhaps around 55 dB at 2'. In some instances, loud sound is required, to output a warning to bystanders that something extraordinary is going to happen. In such instances, that loud sound can be an alarm

or even a siren, in which case it might be louder than 62 dB as measured at a distance of 2' from the speaker. And, according to another operation 2499, the discharge circuit can be controlled to cause the shock to be delivered.

[0257] In FIG. 25, the confirmation period is shown along a timeline 2522, lasting between TFTP and T28. A decision diamond 2521 shows that, if yes and the cardiac arrhythmia is still detected, then there is a sound timeline 2542 showing a sound 2543, and a shock timeline 2598 showing a shock 2599. Of course, sound 2543 can be an audible sound, a loud sound as per the above, etc.

[0258] If the answer to decision diamond 2521 is no, then there can be two branches. In one branch 2519 while the cardiac arrhythmia is still being detected, then there is a loud sound timeline 2572 showing no loud sound, and a shock timeline 2588 showing no shock. These two timelines 2572, 2588 could reach all the way to time T28 with no event while still part of the confirmation period; beyond time T28, however, they might continue as timelines 2542, 2598 respectively.

[0259] If the answer to decision diamond 2521 is no, then there is another branch 2571, where the cardiac arrhythmia is no longer being detected. Then then there is a loud sound timeline 2570 showing no loud sound, and a shock timeline 2597 showing no shock.

[0260] Additional embodiments may include what was described above with reference to additional speakers, and so on.

[0261] In the methods described above, each operation can be performed as an affirmative step of doing, or causing to happen, what is written that can take place. Such doing or causing to happen can be by the whole system or device, or just one or more components of it. It will be recognized that the methods and the operations may be implemented in a number of ways, including using systems, devices and implementations described above. In addition, the order of operations is not constrained to what is shown, and different orders may be possible according to different embodiments. Examples of such alternate orderings may include overlapping, interleaved, interrupted, reordered, incremental, preparatory, supplemental, simultaneous, reverse, or other variant orderings, unless context dictates otherwise. Moreover, in certain embodiments, new operations may be added, or individual operations may be modified or deleted. The added operations can be, for example, from what is mentioned while primarily describing a different system, apparatus, device or method.

[0262] A person skilled in the art will be able to practice the present invention in view of this description, which is to be taken as a whole. Details have been included to provide a thorough understanding. In other instances, well-known aspects have not been described, in order to not obscure unnecessarily this description. Plus, any reference to any prior art in this description is not, and should not be taken as, an acknowledgement or any form of suggestion that such prior art forms parts of the common general knowledge in any country or any art.

[0263] This description includes one or more examples, but this fact does not limit how the invention may be practiced. Indeed, examples, instances, versions or embodiments of the invention may be practiced according to what is described, or yet differently, and also in conjunction with other present or future technologies. Other such embodiments include combinations and sub-combinations of fea-

tures described herein, including for example, embodiments that are equivalent to the following: providing or applying a feature in a different order than in a described embodiment; extracting an individual feature from one embodiment and inserting such feature into another embodiment; removing one or more features from an embodiment; or both removing a feature from an embodiment and adding a feature extracted from another embodiment, while providing the features incorporated in such combinations and sub-combinations.

[0264] In this document, the phrases “constructed to” and/or “configured to” denote one or more actual states of construction and/or configuration that is fundamentally tied to physical characteristics of the element or feature preceding these phrases and, as such, reach well beyond merely describing an intended use. Any such elements or features can be implemented in a number of ways, as will be apparent to a person skilled in the art after reviewing the present disclosure, beyond any examples shown in this document.

[0265] Any and all parent, grandparent, great-grandparent, etc. patent applications, whether mentioned in this document or in an Application Data Sheet (“ADS”) of this patent application, are hereby incorporated by reference herein as originally disclosed, including any priority claims made in those applications and any material incorporated by reference, to the extent such subject matter is not inconsistent herewith.

[0266] In this description a single reference numeral may be used consistently to denote a single item, aspect, component, or process. Moreover, a further effort may have been made in the drafting of this description to use similar though not identical reference numerals to denote other versions or embodiments of an item, aspect, component or process that are identical or at least similar or related. Where made, such a further effort was not required, but was nevertheless made gratuitously so as to accelerate comprehension by the reader. Even where made in this document, such a further effort might not have been made completely consistently for all of the versions or embodiments that are made possible by this description. Accordingly, the description controls in defining an item, aspect, component or process, rather than its reference numeral. Any similarity in reference numerals may be used to infer a similarity in the text, but not to confuse aspects where the text or other context indicates otherwise.

[0267] The claims of this document define certain combinations and subcombinations of elements, features and steps or operations, which are regarded as novel and non-obvious. Additional claims for other such combinations and subcombinations may be presented in this or a related document. These claims are intended to encompass within their scope all changes and modifications that are within the true spirit and scope of the subject matter described herein. The terms used herein, including in the claims, are generally intended as “open” terms. For example, the term “including” should be interpreted as “including but not limited to,” the term “having” should be interpreted as “having at least,” etc. If a specific number is ascribed to a claim recitation, this number is a minimum but not a maximum unless stated otherwise. For example, where a claim recites “a” component or “an” item, it means that it can have one or more of this component or item.

What is claimed is:

1. A method to operate a wearable cardioverter defibrillator (WCD), the WCD including a support structure worn

by a patient, an energy storage module to store an electrical charge, a discharge circuit coupled to the energy storage module, a measurement circuit, a processor, and a user interface that includes a speaker, the method comprising:

monitoring a physiological signal of a patient with the measurement circuit to detect cardiac arrhythmia when the patient is wearing the support structure;
determining with the processor whether a validation criterion is met in response to detection of a cardiac arrhythmia;
providing no alarm with the user interface during said determining; and
delivering a shock to the patient from the energy storage module by the discharge circuit in the event the validation criterion is met.

2. The method of claim 1, wherein the validation criterion comprises the detected cardiac arrhythmia lasting longer than a period of time.

3. The method of claim 2, wherein the period of time comprises 25 seconds.

4. The method of claim 2, wherein period of time comprises 35 seconds.

5. The method of claim 1, wherein the patient physiological signal comprises an electrocardiogram (ECG) signal.

6. The method of claim 1, wherein providing no alarm comprises the user interface providing no indication of an alarm during said determining.

7. The method of claim 1, wherein providing no alarm comprises the speaker making no alarm sound during said determining.

8. The method of claim 1, wherein the alarm is provided only when the validation criteria is met.

9. The method of claim 1, wherein no alarm is provided unless the validation criterion is met.

10. The method of claim 1, wherein no alarm is provided in the event the detected cardiac arrhythmia self-terminates before the validation criterion is met.

11. A wearable cardioverter defibrillator (WCD), comprising:

a support structure configured to be worn by a patient;
a power source;

an energy storage module configured to receive an electrical charge from the power source, and to store the received electrical charge;

a discharge circuit coupled to the energy storage module, the discharge circuit controllable to discharge the stored electrical charge to cause a shock to be delivered to the patient while the support structure is worn by the patient;

a measurement circuit configured to obtain physiological inputs from an electrocardiogram (ECG) signal of the patient;

a user interface configured to output one or more human-perceptible indications; and

a processor configured to:

detect a cardiac arrhythmia of the patient from one of the physiological inputs;

determine, from a subsequent one of the physiological inputs, whether the detected cardiac arrhythmia is validated according to a validation criterion; and

responsive to a determination that the detected cardiac arrhythmia is not validated, cause the discharge circuit to not deliver a shock for a first preset time period from when it was determined that the detected cardiac arrhythmia is not so validated;

otherwise responsive to a determination that the detected cardiac arrhythmia is validated, control the discharge circuit to instead deliver a shock within a second preset time period shorter than the first preset time period from when it was determined that the detected cardiac arrhythmia is validated.

12. The WCD of claim 11, wherein the user interface does not output a human-perceptible indication if the detected cardiac arrhythmia is not validated.

13. The WCD of claim 11, wherein the user interface does not output a human-perceptible indication if the detected cardiac arrhythmia self-terminates before being validated.

14. The WCD of claim 11, wherein the user interface does not output a human-perceptible indication during a period when the processor determines whether the detected cardiac arrhythmia is validated.

15. A wearable cardioverter defibrillator (WCD), comprising:

- a support structure configured to be worn by a patient;
- a power source;

an energy storage module configured to receive an electrical charge from the power source, and to store the received electrical charge;

a discharge circuit coupled to the energy storage module, the discharge circuit controllable to discharge the stored electrical charge to cause a shock to be delivered to the patient while the support structure is worn by the patient;

a measurement circuit configured to obtain physiological inputs from an electrocardiogram (ECG) signal of the patient;

- a user interface configured to output one or more human-perceptible indications; and

a processor configured to perform a patient monitor process comprising operations in which the processor causes the WCD to:

- monitor the ECG signal of the patient;
- detect a cardiac arrhythmia of the patient from one of the physiological inputs;

then

determine, from a subsequent one of the physiological inputs, whether the detected cardiac arrhythmia is validated according to a validation criterion; and

if the detected cardiac arrhythmia is not validated, then cause the discharge circuit to not deliver a shock and restart the patient monitoring process; otherwise in response to a determination that the detected cardiac arrhythmia is so validated cause the user interface to output one or more human-perceptible indications that the WCD system will deliver a shock, and cause the discharge circuit to deliver a shock in response to the user interface not receiving a cancel input with a predetermined time window.

16. The WCD of claim 15, wherein the user interface does not output a human-perceptible indication if the detected cardiac arrhythmia is not validated.

17. The WCD of claim 15, wherein the user interface does not output a human-perceptible indication if the detected cardiac arrhythmia self-terminates before being validated.

18. The WCD of claim 15, wherein the user interface does not output a human-perceptible indication during a period when the processor determines whether the detected cardiac arrhythmia is validated.

19. A wearable cardioverter defibrillator (WCD), comprising:

- a support structure to be worn by a patient;

an energy storage module to store an electrical charge; a discharge circuit coupled to the energy storage module;

- a measurement circuit;

a user interface that includes a speaker; and

- a processor configured to:

monitor a physiological signal of a patient with the measurement circuit to detect cardiac arrhythmia when the patient is wearing the support structure;

determine whether a validation criterion is met in response to detection of a cardiac arrhythmia;

provide no alarm with the user interface the validation criterion is being determined; and

cause a shock to be delivered to the patient from the energy storage module by the discharge circuit in the event the validation criterion is met.

20. The WCD of claim 18, wherein no alarm is provided in the event the detected cardiac arrhythmia self-terminates before the validation criterion is met.

* * * * *

专利名称(译)	wcd系统可操作以在检测到的心律不齐未通过验证时不发出警报		
公开(公告)号	US20200114156A1	公开(公告)日	2020-04-16
申请号	US16/709676	申请日	2019-12-10
申请(专利权)人(译)	WEST HOLDINGS AFFUM CORP.		
当前申请(专利权)人(译)	WEST HOLDINGS AFFUM CORP.		
[标]发明人	FOSHEE JR PHILLIP D FINCH DAVID P GUSTAVSON LAURA M KORSUN NIKOLAI SULLIVAN JOSEPH L KAVOUNAS GREGORY T		
发明人	FOSHEE, JR., PHILLIP D. FINCH, DAVID P. GUSTAVSON, LAURA M. KORSUN, NIKOLAI SULLIVAN, JOSEPH L. KAVOUNAS, GREGORY T.		
IPC分类号	A61N1/39 A61N1/04 A61B5/0464 A61B5/00 A61B5/0402		
CPC分类号	A61B5/0402 A61B5/0538 A61B5/686 A61N1/3968 A61N1/39 A61N1/046 A61B5/7221 A61N1/3918 A61N1/3937 A61N1/3993 A61B5/0464 A61N1/3987 A61B5/6805 A61N1/0484		
优先权	62/425071 2016-11-21 US 61/769098 2013-02-25 US		
外部链接	Espacenet USPTO		

摘要(译)

可穿戴式心脏复律除颤器 (WCD) 包括要由患者穿戴的支撑结构, 用于存储电荷的能量存储模块, 耦合到能量存储模块的放电电路, 测量电路, 包括扬声器的用户界面, 和一个处理器。处理器被配置为当患者穿着支撑结构时利用测量电路监视患者的生理信号以检测心脏心律不齐, 响应于检测到心脏心律不齐来确定是否满足验证标准, 并且不向患者提供警报。用户界面, 确定验证标准, 如果满足验证标准, 则放电电路将从能量存储模块向患者传递电击

