



(19) **United States**

(12) **Patent Application Publication**
HENEGHAN et al.

(10) **Pub. No.: US 2019/0365312 A1**
(43) **Pub. Date: Dec. 5, 2019**

(54) **SLEEP MONITORING SYSTEM**

Publication Classification

(71) Applicant: **University College Dublin, National University of Ireland, Dublin**

(51) **Int. Cl.**
A61B 5/00 (2006.01)
G16H 50/20 (2006.01)
A61B 5/024 (2006.01)
A61B 5/113 (2006.01)

(72) Inventors: **Conor HENEGHAN**, San Diego, CA (US); **Stephen James REDMOND**, Dublin (IE)

(52) **U.S. Cl.**
CPC *A61B 5/4806* (2013.01); *A61B 5/4812* (2013.01); *A61B 5/7264* (2013.01); *A61B 5/7267* (2013.01); *A61B 5/02405* (2013.01); *A61B 5/113* (2013.01); *G16H 50/20* (2018.01)

(73) Assignee: **University College Dublin, National University of Ireland, Dublin**

(21) Appl. No.: **16/445,894**

(57) **ABSTRACT**

(22) Filed: **Jun. 19, 2019**

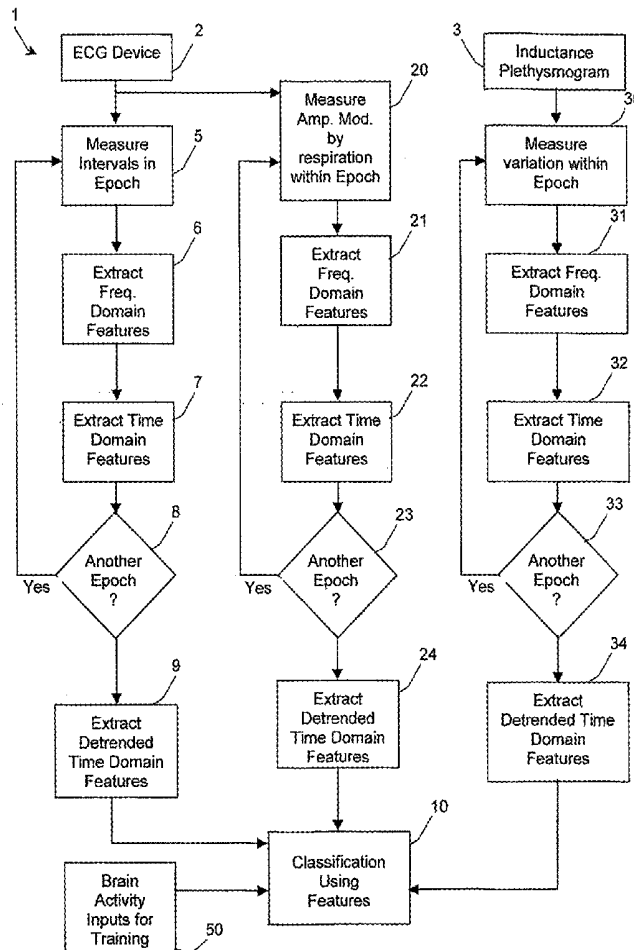
A sleep monitoring system includes an ECG device (2) and a respiration inductance plethysmogram (3) which monitor cardiac activity and physical (ribcage) respiration respectively and feed representative signals to a digital data processor. Operations (5-9) process the beat interval data, while in a second thread, operations (20-24) independently process the amplitude modulation of the ECG data caused by the respiratory motion of the subject. The inductance plethysmogram device (3) provides an input to the processor which represents respiration as directly monitored independently of the ECG. Operations (30-34) process this direct respiration data independently and in parallel, in a third thread. All extracted features are fed to a classifier which in step (10) combines selected combinations of features to make decisions in real time.

Related U.S. Application Data

(60) Continuation of application No. 14/297,271, filed on Jun. 5, 2014, now Pat. No. 10,362,986, which is a division of application No. 11/718,301, filed on Feb. 2, 2009, now Pat. No. 8,784,324, filed as application No. PCT/IE2005/000122 on Nov. 2, 2005.

Foreign Application Priority Data

(30) Nov. 2, 2004 (IE) 2004/0731



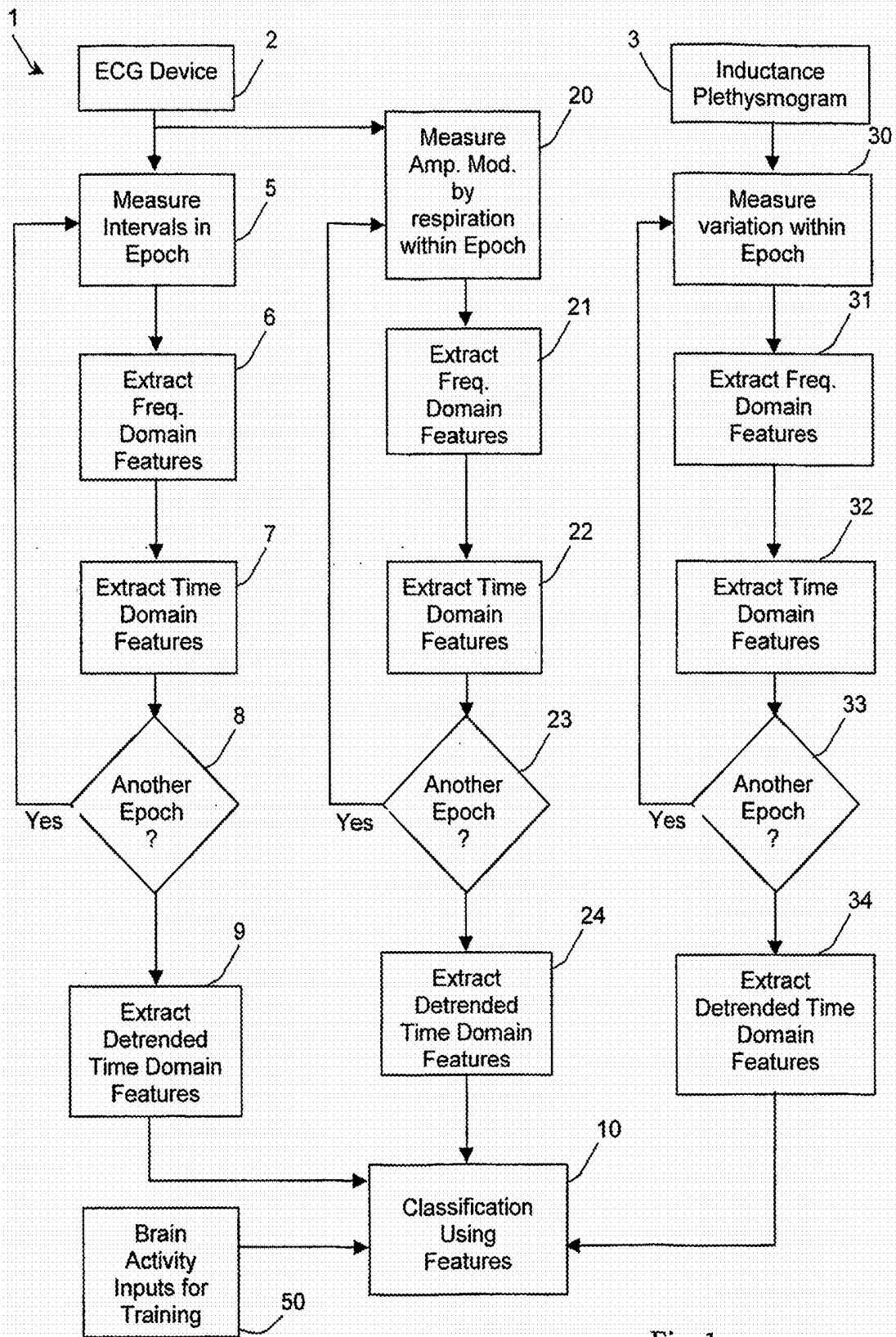


Fig. 1

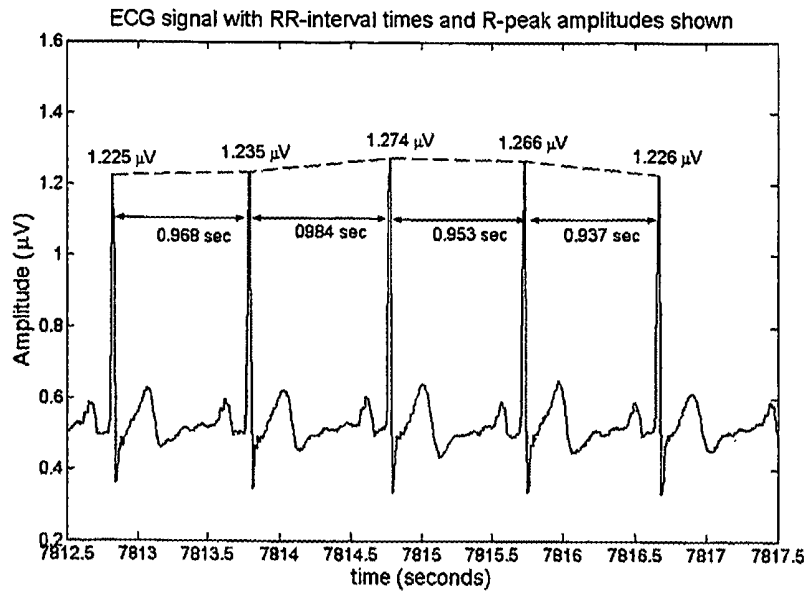


Fig. 2(a)

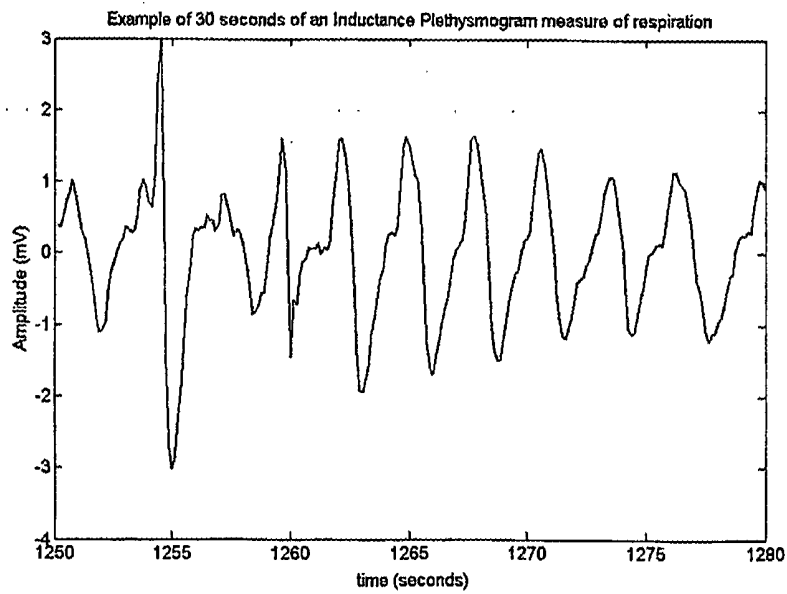


Fig. 2 (b)

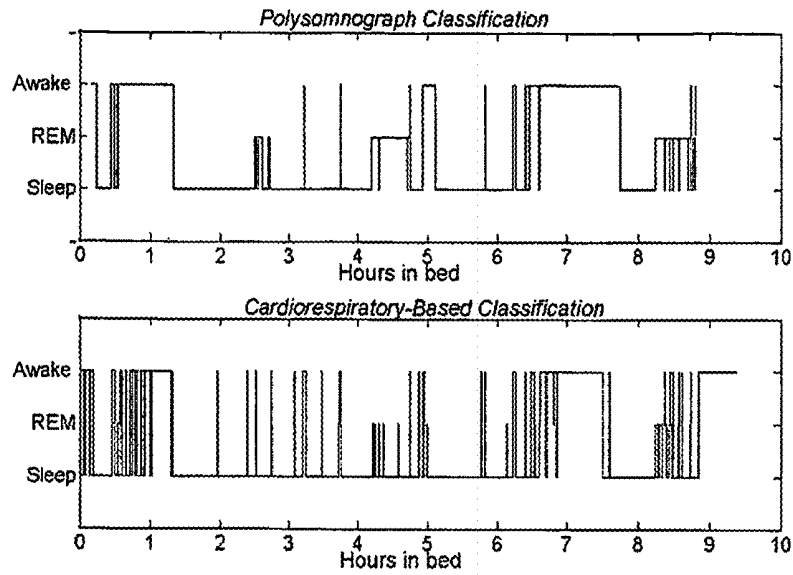


Fig. 3

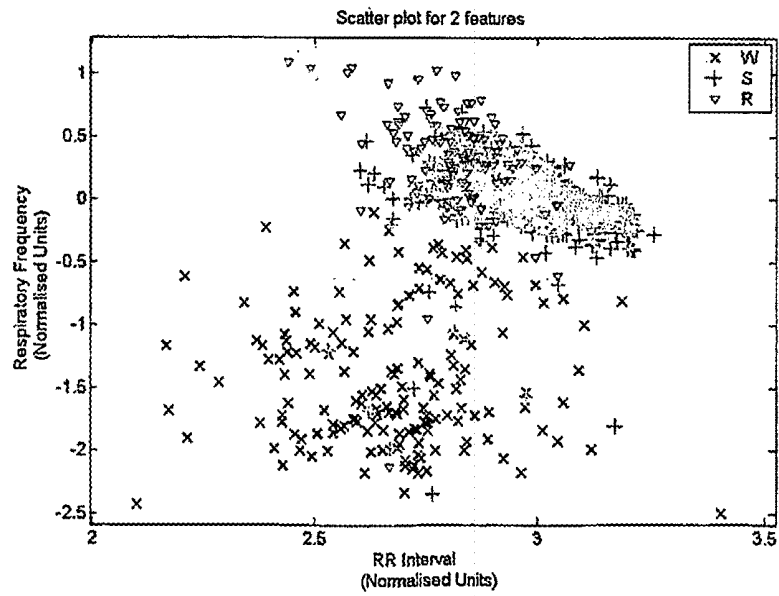


Fig. 4

SLEEP MONITORING SYSTEM

CROSS-REFERENCE TO RELATED APPLICATIONS

[0001] This application is a continuation of U.S. patent application Ser. No. 14/297,271, which was filed on Jun. 5, 2014, issued as U.S. Pat. No. 10,362,986, and is a divisional of U.S. patent application Ser. No. 11/718,301, which was filed on Feb. 2, 2009, issued as U.S. Pat. No. 8,784,324, and is a national phase entry under 35 U.S.C. § 371 of International Application No. PCT/IE2005/000122, which was filed on Nov. 2, 2005 and claims priority from Irish Patent Application No. 2004/0731, which was filed on Nov. 2, 2004, all of which are hereby incorporated herein by reference.

INTRODUCTION

Field of the Invention

[0002] The invention relates to monitoring of a person's sleep pattern.

Prior Art Discussion

[0003] It is known to provide a system to receive and process signals from sensors in order to monitor a person's sleep pattern. In one approach sleep stages are determined using signals from a polysomnogram system, in which the sleep staging component is based on measuring electroencephalograms (EEG) which are a direct measurement of brain activity. This approach has a number of disadvantages. First of all, polysomnogram monitoring equipment is complex and generally needs to be operated and analysed in a clinic by skilled technicians. The patient is required to visit a clinic for an overnight study where skilled technicians attach the electrodes to the head, chest, chin and leg, together with a chest band and an airflow monitor. This is a costly and time-consuming process. If the polysomnogram system is operated by a patient at home, there is the requirement that the electrodes are attached correctly, and in particular that the EEG electrodes are correctly placed and attach, or otherwise the extremely low voltage EEG signals will not be recorded correctly. Furthermore, the use of a number of electrodes attached to the head during sleep is uncomfortable and disrupts the patient's sleep.

[0004] In another approach, motion based systems (actimetry) are used. However, such systems have the disadvantage that they can only distinguish between sleep and wake, with poor accuracy in patients with sleep disorders.

[0005] U.S. Pat. No. 5,280,791 describes an approach in which cardiac R-R wave intervals are used to designate sleep as REM or non-REM. A power spectrum of the cardiac R-R interval is calculated.

[0006] The prior art systems do not appear to analyse specific sleep stages sufficiently to recognise periods of wakefulness. In addition, where stages such as REM and non-REM are differentiated it appears that the performance is quite poor as the decision is based on comparison of a single parameter with a previously determined threshold value.

[0007] Therefore the current state of the art in determining sleep stages is limited by (a) the need to directly measure brain activity, and (b) poor performance when using observations of single parameters of cardiac activity.

SUMMARY OF THE INVENTION

[0008] According to the invention there is provided a sleep monitoring system comprising: an interface for receiving sensor signals; a processor for extracting a plurality of features from the sensor signals; and a classifier for generating an output indicating sleep stage according to classification of the features.

[0009] In one embodiment, the processor extracts time domain and frequency domain features.

[0010] In one embodiment, the processor measures heart-beat intervals from cardiogram sensor signals and uses said measurements to extract features.

[0011] In one embodiment, the extracted features include mean interval per epoch, standard deviation of intervals, longest interval, and shortest interval.

[0012] In another embodiment, the processor measures amplitude modulation of the cardiogram sensor signals caused by respiratory motion of a person and uses said measurement to extract features.

[0013] In one embodiment, the extracted features include variance of a derived respiratory signal, and power of the respiratory signal at a frequency band.

[0014] In one embodiment, the extracted features include the dominant frequency of respiration and the power at the dominant respiratory frequency.

[0015] In one embodiment, the processor independently extracts features from the heartbeat interval measurements and from the amplitude modulation measurements.

[0016] In a further embodiment, the interface receives sensor signals from a device for physically monitoring patient respiration.

[0017] In one embodiment, the processor measures variations in signals from said device.

[0018] In one embodiment, the processor uses said measurements to independently extract features.

[0019] In one embodiment, the features extracted by the processor from the signals from said device include ribcage respiratory effort in each of a plurality of frequency bands, envelope power, and breath length variation.

[0020] In one embodiment, the interface receives sensor signals from devices simultaneously monitoring patient respiration and patient cardiograms, and the processor simultaneously processes said signals.

[0021] In one embodiment, said device comprises an inductance plethysmograph.

[0022] In one embodiment, the processor uses measurements from said sensor signals to extract features independently from extraction of features from cardiogram sensor signals.

[0023] In one embodiment, the features are extracted for each of a series of epochs.

[0024] In one embodiment, the epochs have a duration of less than 30 seconds.

[0025] In one embodiment, the processor extracts detrended features derived from a plurality of epochs in sequence.

[0026] In one embodiment, the detrended features are generated by subtracting a local mean signal from epoch feature values.

[0027] In one embodiment, the classifier operates according to a discriminant classifier model.

[0028] In one embodiment, the classifier comprises a search process for identifying a subset of the features to use for optimum classification performance.

[0029] In one embodiment, the search process performs a sequential forward floating search, in which a coefficient is a measure of an inter-rater agreement taking account of a prior probability of a specific class occurring.

[0030] In one embodiment, said process executes passes which add a feature that most improves performance to already-selected features.

[0031] In another aspect, the invention provides a sleep monitoring method performed by a system comprising a sensor interface and a processor, the method comprising the steps of: the interface receiving signals from at least one sensor monitoring a patient while asleep; the processor extracting a plurality of features from the sensor signals; and the processor, operating as a classifier, generating an output indicating sleep stage according to classification of the features.

DETAILED DESCRIPTION OF THE INVENTION

Brief Description of the Drawings

[0032] The invention will be more clearly understood from the following description of some embodiments thereof, given by way of example only with reference to the accompanying drawings in which:

[0033] FIG. 1 is a flow diagram illustrating operation of a sleep monitoring system of the invention;

[0034] FIGS. 2(a) and 2(b) are plots of ECG and respiration inductance plethysmograph signals (sensor data) showing parameters extracted such as interbeat interval, QRS amplitude, and interbreath interval;

[0035] FIG. 3 is a plot of the possible outputs from the sleep staging system, in which the upper panel represents the stages of a person's sleep over one night, broken into periods of Wake, Non-REM Sleep, and Sleep; and

[0036] FIG. 4 is a plot illustrating how features from different sleep stages can form different clusters in the classification space.

Description of the Embodiments

[0037] Referring to FIG. 1 a system of the invention includes an ECG device 2 and a respiration inductance plethysmogram 3 which monitor cardiac activity and physical (ribcage) respiration respectively and feed representative signals to a digital data processor. The processor is programmed to implement operations 5-10, 20-24, and 30-34 of FIG. 1 to generate an indication of the current sleep stage of a patient. Alternative devices for measurement of respiration may also be employed such as impedance pneumograms or airflow tachometers.

[0038] Referring also to FIGS. 2(a) and 2(b) the electrocardiogram (ECG) device 2 provides a processor input signal containing information concerning the heart beat intervals and also respiration. The beat intervals are determined by directly measuring the time intervals between peaks in the ECG input. In the example of FIG. 2(a) these are 0.968 s, 0.984 s, 0.953 s, and 0.937 s.

[0039] A first set of respiration information is derived indirectly by monitoring the modulation of the amplitude of the ECG signal provided by the device 2 which is caused by the respiration pattern.

[0040] The operations 5-9 process the beat interval data, while in a second thread, the operations 20-24 independently

process the amplitude modulation of the ECG data caused by the respiratory motion of the subject.

[0041] The inductance plethysmogram device 3 provides an input to the processor which represents respiration as directly monitored independently of the ECG. An example of this input is shown in FIG. 2(b). The operations 30-34 process this direct respiration data independently and in parallel, in a third thread.

[0042] All three strands independently extract features. Because the operations 20-24 and 30-34 both process respiration data the features they extract should in theory be the same. However, in practice they are typically different and the system benefits from having both.

[0043] All extracted features are fed to a classifier which in step 10 combines selected combinations of features as shown in FIG. 4 to make decisions in real time. Because many extracted features are available to the classifier it has a rich body of knowledge available to it. This provides the benefit of: (a) very accurate and consistent determination of the current sleep stage, (b) excellent versatility because a wide range of sleep stages and sub-stages can be defined by appropriate training of the classifier, even stages with relatively little difference between them, and (c) a high level of system robustness since loss of data from one sensor (either ECG or respiration) can be compensated for by employing data from the other.

[0044] Referring again to FIG. 1, in step 5 the processor measures intervals in the ECG input for an epoch of, say, 30 seconds. In step 6, it uses this data to extract frequency domain features such as power in different bands, power at specific frequencies, and ratio of power and bands.

[0045] In step 7 it extracts time domain features such as mean interval per epoch, standard deviation of intervals, longest interval, and shortest interval. It is also advantageous to extract intrabeat interval, such as the QT or PR interval for each beat, as these are also indicative of the underlying physiological state of the subject.

[0046] As indicated by the decision step 8 these features are extracted for each of a series of epochs in a time period such as 15 mins. In step 9 the processor extracts "detrended" time domain features across all of the epochs for a time period. A "detrended" feature is one in which a new signal is formed by subtracting off the local mean signal.

[0047] For the ECG-derived respiration data the processor in step 20 measures the amplitude modulation caused by the sleep respiration. In steps 21 and 22 frequency domain and time domain features are extracted. These include the overall variance of the derived respiratory signal, the power of the respiratory signal at various frequency bands, the dominant frequency of respiration (e.g., 16 breaths per minute), and the power at the dominant respiratory frequency (which reflects the amplitude of respiration).

[0048] As shown by the decision step 23, these are repeated for each epoch in succession.

[0049] The operations 30-34 use the direct respiration signal to measure the amplitude modulation in step 30, and extract frequency domain and time domain features in steps 31 and 32. As indicated by the decision step 33 these features are extracted for each epoch in turn. Detrended features are extracted in step 34. The features for this process are the same as those for the process 20-24.

[0050] The classifier is initially trained using brain activity inputs 50 as these are the most representative of sleep stages, and provide an accurate baseline to train the classifier. Thus,

the system of the invention can achieve the accuracy of a system which uses brain activity inputs without the need for the inconvenience of brain activity monitoring sensors. Moreover, the system can be readily applied to new subjects since the training across previous subjects with known sleep stages has established the correct decision parameters for the system. The classifier can also be preferentially trained to optimise performance on a single individual.

EXAMPLES

Feature Extraction

[0051] In an automated sleep staging system features are extracted from each 30 s. Sample data was collected from a database composed of overnight recordings from 37 subjects.

[0052] RR-Interval Series Features: To calculate a power spectral density estimate, the data (RR_{norm} intervals falling within the epoch) from the epoch is zero-measured, windowed (using a Hanning window), and the square of its Discrete Fourier Transform (DFT) is taken as a single periodogram estimate of the interval based power spectral density. The x-ordinate of this estimate is in cycles/interval, which can be converted to cycles/second by dividing by the mean RR for the epoch. From this spectral estimate, five features are calculated:

[0053] the logarithm of the normalized LF (power in the 0.05-0.15 Hz band),

[0054] the logarithm of the normalized HF (power in the 0.15-0.5 Hz band), where normalization is achieved by dividing by the total power in the VLF, LF, and HF bands (0.01-0.5 Hz),

[0055] the LF/HF power ratio

[0056] the mean respiratory frequency, which is defined by finding the frequency of maximum power in the HF band, and

[0057] the logarithm of the power at the mean respiratory frequency.

[0058] In addition to the RR spectral features, we also used a range of temporal RR features for each 30 s epoch. These features were:

[0059] the mean RR_{norm} ,

[0060] the standard deviation of RR_{norm} ,

[0061] the difference between the longest and shortest RR_{norm} interval in the epoch, and

[0062] the mean value of the $RR_{detrend}$ in the epoch.

[0063] The difference between longest and shortest RR_{norm} within the epoch is an attempt to quantify some of the dynamic behavior within the epoch (perhaps waking epochs are more dynamic than sleep.) The mean $RR_{detrend}$ in one epoch is an attempt to examine the short-time variation in the RR interval series. Since each $RR_{detrend}$ value is a measure of the present RR_{norm} relative to the previous 15 minutes of RR_{norm} , the mean $RR_{detrend}$ of an epoch is a measure of whether the heart rate in the present epoch is less than or greater than it has been over the last 15 minutes. This allows the discrimination of sudden rises in the heart rate, indicating short arousals, which may not rise significantly above the heart rate of other epochs of sleep.

[0064] ECG Derived Respiratory Features: The EDR epoch is taken as the EDR points corresponding to the R peaks falling within the epoch. The spectrum is calculated as for the RR interval series. From the EDR spectrum, the VLF (0.01-0.05 Hz), LF (0.05-0.15 Hz), HF (0.15-0.5 Hz) pow-

ers, respiratory frequency, and the power at respiratory frequency are estimated. The standard deviation of each epoch's EDR was also calculated.

[0065] RR-EDR Cross-Spectral Features: The VLF (0.01-0.05 Hz), LF (0.05-0.15 Hz), HF (0.15-0.5 Hz) powers were calculated from the cross-spectrum of the RR interval series and EDR for each epoch.

[0066] Ribcage Respiratory Effort Features: As with the RR interval series and the EDR, we calculate the ribcage respiratory effort spectrum as the square of the DFT of the ribcage respiratory effort signal for that epoch, windowed with a Hanning window. From the spectrum we calculate the logarithm of the power in the 3 bands—VLF (0.01-0.05 Hz), LF (0.05-0.15 Hz) and HF (0.15-0.5 Hz). The definition of these bands is taken directly from the corresponding definitions for ECG signals. Furthermore we estimate the respiratory frequency as the frequency of peak power in the range of 0.05 Hz-0.5 Hz, and also the logarithm of the power at that frequency. In the following table features 1-9 are derived from the ECG, and include both time and frequency domain heart beat features. The features 10-15 are also derived from the ECG signals, however, in this case they are derived from the amplitude modulation of the ECG caused by the respiration. The features 16-18 are derived from the preceding features. It should be noted that the steps of FIG. 1 are not necessarily carried out in the order indicated. The time domain features may be extracted before the frequency domain features or in parallel. Also, as shown below for the features 16-18 any of the steps 6, 7, 21, 22, 31, or 32 may include additional feature extraction based on previously-extracted features. Finally, the features 19-27 of Table I below are extracted in steps 31 and 32.

TABLE I

FEATURE LIST

1	RR LF band (frequency domain)	RR Interval
2	RR HF band (frequency domain)	based
3	RR standard deviation (time domain)	features
4	RR respiratory freq (frequency domain)	
5	RR respiratory power (frequency domain)	
6	LF/HF Ratio (frequency domain)	
7	Longest Shortest RR difference (time domain)	
8	Detrended RR mean (time domain)	
9	RR mean (time domain)	
10	EDR VLF band (frequency domain)	EDR based
11	EDR LF band (frequency domain)	features
12	EDR HF band (frequency domain)	
13	EDR standard deviation (time domain)	
14	EDR respiratory frequency (frequency domain)	
15	EDR respiratory power (frequency domain)	
16	RR-EDR Cross spectrum VLF band (freq. dom.)	EDR-RR
17	RR-EDR Cross spectrum LF band (freq. dom.)	Interval based
18	RR-EDR Cross spectrum HF band (freq. dom.)	features
19	Ribcage Respiratory effort VLF band (freq. dom.)	Ribcage effort
20	Ribcage Respiratory effort LF band (freq. dom.)	based features
21	Ribcage Respiratory effort HF band (freq. dom.)	
22	Ribcage Respiratory effort respiratory frequency (freq. dom.)	
23	Ribcage Respiratory effort respiratory power (freq. dom.)	
24	Envelope Power (time domain)	
25	Breath by breath correlation (time domain)	
26	Breath length variation (time domain)	
27	Time domain respiratory frequency (time domain)	

[0067] As set out above we derive several time domain features from the ribcage respiratory effort signal. The first is an estimate of its envelope power. We find the standard

deviation of the peak values for the epoch, and similarly the standard deviation of the troughs. We then find the mean of the two values and divide by the standard deviation of the ribcage respiratory effort signal for the epoch. Essentially we are measuring the average top and bottom envelope powers as a fraction of the total signal power for the epoch. We denote this feature “Envelope Power”. The second time domain feature attempts to measure a breath-by-breath correlation. We define a breath cycle as the time from the trough of one breath to the trough of the next. We find the cross-correlation of the adjacent breaths. Clearly, in most cases the breaths will be of different lengths, in this case the shorter is padded with zeros to make it of equal length. We find the maximum cross-correlation value and divide it by the maximum of the energy of either breath alone to normalize the maximum cross-correlation value. The maximum cross-correlation values, for all pairs of adjacent breaths in the epoch, are then averaged. We denote this feature “Breath-by-Breath Correlation”. The third time domain feature is a further measure of breath-by-breath variation. We take the standard deviation of the time between peak locations, similarly we take the standard deviation of the time between trough locations. We then take the mean of these two deviations. We denote this “Breath Length Variation”. Finally we derive a second estimate of the respiratory frequency, using non-spectral means. We calculate the mean time between adjacent peaks and between adjacent troughs. The frequency of respiration is calculated as the inverse of this time. We denote this feature “Time Domain Respiratory Frequency”. All estimates of respiratory frequency were further normalized by subtracting (from each epoch’s estimate of the frequency) the median value of that parameter over all epochs for the entire night. This was deemed a necessary step as the mean respiratory frequency will vary from subject to subject. The median was subtracted as it is more robust than the mean to outliers.

[0068] The complete list of features for each 30 s epoch is given in Table I, and we will use the indices from this table in referring to possible feature combinations.

Classifier Model Quadratic Discriminant Classifier

[0069] Following the feature extraction stage described above, each 30 s epoch now has an associated set of 27 features—9 RR-based, 6 EDR-based, 3 cross-spectral-based and 9 ribcage respiratory effort based. The classifier is a quadratic discriminant classifier (QDC), based on Bayes’ rule. In deriving a decision rule for a QDC, gaussianity of the feature vector distributions, and independence between successive epochs is theoretically assumed. Neither gaussianity nor independence will necessarily be satisfied. In deriving the features above, we have attempted to ensure that each feature has an approximately Gaussian distribution. This can be ensured, for example, by using the logarithm of the spectral powers, rather than their absolute values. Classification accuracy may be improved if the dependence between epochs is considered as a post-processing step.

[0070] A quadratic discriminant classifier is derived as follows. Let ω_i signify the i th class. In this application there are three classes, S, W, and R. Let x denote the feature vector corresponding to a certain epoch. The feature vector in this case contains at most 27 elements, which are a selection of the features of Table I. Using Bayes’ rule we wish to find the class i which will maximize the posterior probability:

$$P(\omega_i | x) = \frac{P(\omega_i)p(x | \omega_i)}{p(x)} \quad (1)$$

[0071] Maximizing the left hand side of (1) is equivalent to maximizing its logarithm. Therefore, assuming a normal distribution for the feature vector, $p(x|\omega_i)$ becomes:

$$p(x | \omega_i) = \frac{1}{(2\pi)^{d/2} |\Sigma_i|^{1/2}} \exp \left[-\frac{1}{2} (x - \mu_i)^T \Sigma_i^{-1} (x - \mu_i) \right] \quad (2)$$

[0072] where Σ_i is the covariance matrix of the i th class, and μ_i is the mean vector of the i th class. Substituting (2) into the natural logarithm of (1), our problem is transformed into finding the class i which maximizes the discriminant value $g_i(x)$ for a given test feature vector x :

$$g_i(x) = X^T W_i x + w_i x + k_i \quad (3)$$

where:

$$w_i = -1/2 \Sigma_i^{-1} \mu_i, w_i = \Sigma_i^{-1} \mu_i,$$

$$k_i = -1/2 \mu_i^T \Sigma_i^{-1} \mu_i - 1/2 \ln |\Sigma_i| + \ln P(\omega_i)$$

[0073] The class with the highest discriminant value is chosen as the assigned class for that feature vector. To construct the quadratic discriminant classifier, therefore, we estimate the covariance matrix and mean for the features corresponding to each class, and also the prior probability of the class occurring.

[0074] It will be appreciated by one skilled in the art that a different classifier such as a linear discriminant classifier, a logistic discriminant classifier, a neural network, or a k-means clustering classifier could be used.

Feature Subset Selection

[0075] In theory, with quadratic or linear discriminant classifiers, the addition of features containing little or no relevant information in the classification process will not degrade the performance of the classifier. One could include all features in the classification process and features containing no information will be “ignored” by the classifier. In practice this is rarely true—null features add “noise” to the system, and the removal of these redundant features can greatly improve results. However, with 27 features to choose from, we are allowed 2^{27} feature subset combinations, so it is not feasible to search all possible combinations. The classifier includes a process which allows efficient searching of the feature subset combinations. A sequential forward floating search (SFFS) process identifies the feature subset that will optimize the classification performance. The k-coefficient is a measure of inter-rater agreement and takes into account the prior probability of a specific class occurring.

The two raters under comparison are our sleep staging system and an expert polysomnograph annotator.

[0076] An SFFS algorithm operates as follows. Three passes are made with the ordinary sequential forward selection (SFS), so that three features are selected. One pass of the SFS simply adds the feature that most improves performance to the already selected features. Next, “unselection” of a selected feature is considered. The feature is found which most improves performance by its removal, and it is unselected. However, if no improvement is seen by the removal of any features then no features are unselected. Following the unselection phase the SFS is run again to select another feature. The cycle of a selection phase (with the SFS), followed by a possible unselection phase, is repeated until either the number of features required is reached, or until the SFS phase fails to select a feature immediately followed by the failure of the unselection phase to remove a feature, in which case it is impossible for the selected feature subset to change and the algorithm must terminate.

[0077] The advantage of the SFFS over the SFS, or other greedy feature selection algorithms, is its ability to avoid nesting. Nesting occurs in greedy selection algorithms if a feature is selected early on that is not a member of the optimal feature subset, as it cannot be removed. Another algorithm, the plus 1, takeaway r algorithm, can also avoid nesting. Its operation is similar to the SFFS and it provides similar results but has a longer execution time as it always removes 1 features, whereas the SFFS judiciously decides whether to remove a feature or not. Indeed the SFFS may not find the optimal feature subset, as it is inherently a sub-optimal search, but will often yield results comparable with those of an exhaustive search.

[0078] The quadratic discriminant classifier model is used to discriminate between the three classes W, R, and S for a single subject’s recording. To train the classifier (i.e., estimate class prior probabilities, covariance matrices, and means) 20% of the epochs for that night are randomly selected. Before the training data is chosen the prior probabilities for each of the three stages occurring are estimated using all 37 subjects. These probabilities are calculated as: $P(W)=0.26$, $P(R)=0.13$, $P(S)=0.61$. The training data is chosen in such a way that the ratios of each class are in the proportion of the prior probabilities where possible. However, if the covariance matrix of a class is estimated using as many (or less) observations than there are features, the matrix will be singular, prohibiting the use of discriminant analysis. In such cases the class containing insufficient observations is simply eliminated from the training data. To test the system the remaining 80% of the subject’s epochs are presented to the classifier.

[0079] There are several means for assessing the performance of the system, including the overall accuracy (the percentage of correctly classified epochs from the test set), the absolute error from the true sleep efficiency, and Cohen’s kappa statistic k . A k value above 0.7 is typically taken to indicate a high-degree of inter-system reliability. The accuracies and k obtained for each of the 37 subjects are averaged to give a mean accuracy and k . Each subject’s accuracy and k is itself derived from an ensemble of ten classifier runs, with differing selections of training data each time. The accuracies are derived from an ensemble average so as to remove any bias caused by the random selection of the training data.

Design of a Subject Independent Classifier

[0080] To construct a subject independent classifier, features from the other 36 subjects were pooled together to form the training data for the classifier, again training a 3-class—W, R, and S—classifier by estimating the class prior probabilities, covariance matrices, and means. This was repeated 37 times, leaving one subject out of the training data each time. In each case the remaining subject was used to test the system. Obtained accuracies and k from each of the 37 runs are averaged for an overall estimate of performance.

Design of an EEG Comparative Classifier

[0081] To gain a perspective on the results of the subject specific and subject independent systems, two further systems were designed using spectral and time domain features from the EEG in place of the cardiorespiratory features described. The EEG spectral features used are: average power in the delta (0.75-3.75 Hz), theta (4-7.75 Hz), alpha (8-12 Hz), spindle (12.25-15 Hz), and beta (15.25-30 Hz) frequency bands.

[0082] The powers in the designated frequency bands were calculated using a periodogram estimator. The 30-second EEG epoch was windowed using a sliding 2-second Hanning window with a 1-second overlap into 29 segments. The periodogram was constructed by averaging the square of the DFT of each segment over all 29 segments. The relevant frequency bands were then integrated to give the resulting band power.

[0083] The time domain features were the Hjorth parameters of activity, mobility and complexity. They were derived from the entire 30-second epoch. Letting x denote the EEG epoch containing N samples, the Hjorth parameters are defined as:

$$\text{Activity}(x) = \frac{1}{N} \sum_{i=1}^N (x_i - \mu_x)^2$$

$$\text{Mobility}(x) = \sqrt{\frac{\sigma(x')}{\sigma(x)}}$$

$$\text{Complexity}(x) = \frac{\text{Mobility}(x')}{\text{Mobility}(x)}$$

where x' is the first derivative of x , $\sigma(x)$ is the standard deviation of x , and μ_x is the mean of x . We also note that the activity is equal to the variance of x .

[0084] Using the same training and classifier paradigm as outlined above, the subject-specific and subject-independent classifiers were designed and tested.

Results

Subject Specific Results

[0085] Table II details the results for all subjects, and for subjects broken down by low and high AHI indices, after presenting all 27 features to the classifier.

TABLE II

SUBJECT SPECIFIC RESULTS			
Subject Group	Mean Cohen's Kappa Coefficient κ	Mean Accuracy	Average Sleep Efficiency Error
All	0.56 \pm 0.11	79% \pm 5.4%	3.3%
Low AHI	0.6 \pm 0.1	81% \pm 4.6%	2.5%
High AHI	0.51 \pm 0.09	77% \pm 5.5%	4%

In Table III we list the features selected by the SFFS classifier. The indices listed refer to the feature list defined in Table I.

TABLE III

SUBJECT SPECIFIC FEATURES	
Subject group	Features Selected (in order of selection)
All	9, 27, 21, 8, 18, 20, 2, 16
Low AHI	22, 9, 23, 8, 15, 19, 2, 16
High AHI	8, 2, 9, 23, 27, 20

Subject Independent Results

[0086] In Table IV we present the results for all subjects after presenting all 27 features to the classifier.

TABLE IV

SUBJECT INDEPENDENT RESULTS			
Subject Group	Mean Cohen's Kappa Coefficient κ	Mean Accuracy	Average Sleep Efficiency Error
All	0.32 \pm 0.11	67% \pm 7.8%	11%
Low AHI	0.33 \pm 0.1	68% \pm 7.3%	11.5%
High AHI	0.31 \pm 0.08	69% \pm 7%	10%

Table V below lists the features selected by the features selection algorithm in the Subject Independent case.

TABLE V

SUBJECT INDEPENDENT FEATURES	
Subject group	Features Selected (in order of selection)
All	22, 8, 20, 2, 4, 23, 5, 25, 9, 27, 21, 1, 11, 16, 17
Low AHI	19, 25, 4, 5, 8, 9, 16, 22, 12, 15, 11, 23
High AHI	8, 22, 2, 23, 25, 20, 14, 4, 16, 15

Low AHI Versus High AHI

[0087] We wish to investigate the difference in performance between subjects with low apnea-hypopnea indices (AHI) and those with high AHIs. We repeat the above-mentioned Subject Specific and Subject Independent experiments with the subjects split into low AHIs (<10 apneas or hypopneas per hour) and high AHIs. There were 14 subjects with high AHIs the mean AHI was 26 and the standard deviation was 19.8. The remaining 23 subjects with low AHIs had a mean AHI of 3.4 and a standard deviation of 2.2.

Comparative EEG Results

[0088] Tables VI and VII summarize the results of the Subject Specific and Subject Independent systems when

trained using the 8 EEG features described earlier (no feature selection algorithm was used). As for the cardio-respiratory scoring system, we provide results broken down by high and low AHI class.

TABLE VI

EEG SUBJECT SPECIFIC RESULTS			
Subject Group	Mean Cohen's Kappa Coefficient κ	Mean Accuracy	Average Sleep Efficiency Error
All	0.75 \pm 0.12	87% \pm 6.8%	2.7%
Low AHI	0.76 \pm 0.12	87% \pm 7.4%	3%
High AHI	0.73 \pm 0.1	87% \pm 5.8%	2.2%

TABLE VII

EEG SUBJECT INDEPENDENT RESULTS			
Subject Group	Mean Cohen's Kappa Coefficient κ	Mean Accuracy	Average Sleep Efficiency Error
All	0.68 \pm 0.15	84% \pm 8%	6.4%
Low AHI	0.7 \pm 0.16	84% \pm 9.4%	7.9%
High AHI	0.68 \pm 0.13	84% \pm 7.7%	5%

[0089] There may be a delay inherent in some inductance plethysmograph devices. Although there was no delay associated with the device used in this study, some methods may contain a delay in recording, relative to the ECG, of 2 or 3 seconds. However, even when such a delay exists it is insignificant since we are using a 30 second epoch, and since only our interpretation of transitional epochs (epochs on the boundary of a sleep state change) will be affected by such a delay.

[0090] It will be appreciated that the invention provides for comprehensive analysis of sleep stages arising from the richness of the data incorporated in the features and the manner in which they are combined in the classifier. The classifier achieves effectively the same quality of output as a system which uses brain activity sensor inputs because it can be trained using such sensor inputs. Also, because of use of different threads, both cardiac and physical respiration (ribcage) threads, and cross-coupling of the features there is excellent robustness.

[0091] The invention is not limited to the embodiments described but may be varied in construction and detail. For example, a classifier other than that described above may be used.

1. A sleep monitoring method performed by a system comprising a sensor interface and one or more processors, the method comprising the steps of:

receiving, at the sensor interface, signals from a first sensor monitoring a cardiac activity of a patient;

deriving, by the one or more processors, cardiac data from the signals received from the first sensor;

extracting, by the one or more processors, one or more first time domain features and one or more first frequency domain features from the cardiac data;

deriving, by the one or more processors, respiratory data from the signals received from the first sensor;

- extracting, by the one or more processors, one or more second time domain features and one or more second frequency domain features from the respiratory data; determining, by the one or more processors operating as a classifier, a plurality of sleep or wake stages of the patient based on a combination of features extracted from the cardiac and respiratory data, wherein the plurality of sleep or wake stages include one or more of (a) Wake stages, (b) Rapid Eye Movement (REM) Sleep stages, and (c) Non-REM Sleep stages; and generating, by the one or more processors, an output indicating one or more of the determined plurality of sleep or wake stages.
2. The sleep monitoring method of claim 1, wherein the cardiac data derived from the signals received from the first sensor comprises heart beat interval data, and wherein the respiratory data derived from the signals received from the first sensor comprises amplitude modulation data, caused by respiratory motion.
3. The sleep monitoring method of claim 2, wherein the one or more first frequency domain features extracted from the cardiac data comprise (a) an estimated respiratory frequency, which is estimated as a frequency of peak power in a High Frequency (HF) band of the heart beat interval data, or (b) a power at the estimated respiratory frequency.
4. The sleep monitoring method of claim 3, wherein the HF band ranges from about 0.15 Hz to about 0.5 Hz.
5. The sleep monitoring method of claim 2, wherein the one or more second frequency domain features extracted from the respiratory data comprise (a) an estimated respiratory frequency, which is estimated as a frequency of peak power in a High Frequency (HF) band of the amplitude modulation data, or (b) a power at the estimated respiratory frequency.
6. The sleep monitoring method of claim 5, wherein the HF band ranges from about 0.15 Hz to about 0.5 Hz.
7. The sleep monitoring method of claim 1 further comprising:
- receiving, at the sensor interface, signals from a second sensor monitoring a respiration of the patient;
 - deriving, by the one or more processors, respiration data from the signals received from the second sensor; and
 - extracting, by the one or more processors, one or more third time domain features and one or more third frequency domain features from the respiration data, wherein the determining of the plurality of sleep or wake stages of the patient is based on a combination of features extracted from the cardiac and respiratory data derived from the signals received from the first sensor and the respiratory data derived from the signals received from the second sensor.
8. The sleep monitoring method of claim 7, wherein the first sensor comprises an electrocardiogram device and the second sensor comprises a plethysmogram device.
9. The sleep monitoring method of claim 1, wherein the classifier implemented by the one or more processors during the determining of the plurality of sleep or wake stages of the patient is initially trained using brain activity inputs.
10. The sleep monitoring method of claim 1, wherein the classifier implemented by the one or more processors during the determining of the plurality of sleep or wake stages of the patient is a quadratic discriminant classifier, a linear discriminant classifier, a logistic discriminant classifier, a neural network, or a k-means clustering classifier.
11. The sleep monitoring method of claim 1, wherein the features combined by the one or more processors to determine the plurality of sleep or wake stages of the patient are selected by the one or more processors through a sequential forward floating search (SFFS) process.
12. The sleep monitoring method of claim 11, wherein the SFFS process comprises one or more passes of sequential forward selection (SFS).
13. The sleep monitoring method of claim 12, wherein the SFFS process further comprises one or more cycles each having a selection phase and an unselection phase, wherein the selection phase comprises a possible addition of a feature that, if found, most improves performance by its addition to features previously selected, and wherein the unselection phase comprises a possible removal of a feature that, if found, most improves performance by its removal from features previously selected.
14. The sleep monitoring method of claim 13, wherein the SFFS process comprises at least three passes of SFS before any of the one or more cycles are performed.
15. The sleep monitoring method of claim 13, wherein the SFFS process ends after a cycle in which features are not selected during both the selection phase and the unselection phase.
16. The sleep monitoring method of claim 15, wherein the classifier implemented by the one or more processors during the determining of the plurality of sleep or wake stages of the patient is a quadratic discriminant classifier.
17. A computer program product comprising software code stored on non-transitory computer readable media which, when executed by a digital processor, performs the steps of the sleep monitoring method of claim 1.
18. A sleep monitoring system comprising:
- an interface configured to receive sensor signals from a sensor monitoring a cardiac activity of a patient; and
 - one or more processors configured to:
 - derive cardiac data from the sensor signals received from the sensor;
 - extract one or more first time domain features and one or more first frequency domain features from the cardiac data;
 - derive respiratory data from the signals received from the sensor;
 - extract one or more second time domain features and one or more second frequency domain features from the respiratory data;
 - determine a plurality of sleep or wake stages of the patient based on a combination of features extracted from the cardiac and respiratory data, wherein the plurality of sleep or wake stages include one or more of (a) Wake stages, (b) Rapid Eye Movement (REM) Sleep stages, and (c) Non-REM Sleep stages; and
 - generate an output indicating one or more of the determined plurality of sleep or wake stages.
19. The sleep monitoring system of claim 18, wherein the one or more processors use a classifier to determine the plurality of sleep or wake stages of the patient, and wherein the classifier is initially trained using brain activity inputs.
20. The sleep monitoring system of claim 18, wherein the features combined by the one or more processors to deter-

mine the plurality of sleep or wake stages of the patient are initially selected through a sequential forward floating search (SFFS) process.

* * * * *

专利名称(译)	睡眠监控系统		
公开(公告)号	US20190365312A1	公开(公告)日	2019-12-05
申请号	US16/445894	申请日	2019-06-19
[标]申请(专利权)人(译)	都柏林大学, 爱尔兰都柏林国立大学		
申请(专利权)人(译)	都柏林大学, 爱尔兰, 都柏林国立大学		
当前申请(专利权)人(译)	都柏林大学, 爱尔兰, 都柏林国立大学		
[标]发明人	HENEGHAN CONOR REDMOND STEPHEN JAMES		
发明人	HENEGHAN, CONOR REDMOND, STEPHEN JAMES		
IPC分类号	A61B5/00 G16H50/20 A61B5/024 A61B5/113 G06F19/00		
CPC分类号	A61B5/4812 A61B5/113 A61B5/7264 A61B5/02405 A61B5/7267 G16H50/20 A61B5/4806 A61B5/7278		
优先权	20040731 2004-11-02 IE 11/718301 2009-02-02 US PCT/IE2005/000122 2005-11-02 WO		
外部链接	Espacenet USPTO		

摘要(译)

睡眠监测系统包括ECG设备2和呼吸感应体积描记图3，其分别监测心脏活动和身体（肋）呼吸并将代表信号馈送到数字数据处理器。操作（5-9）处理拍子间隔数据，而在第二个线程中，操作（20-24）独立处理由对象的呼吸运动引起的ECG数据的振幅调制。电感体积描记器3向处理器提供输入，该输入代表独立于ECG的直接监测呼吸。操作（30-34）在第三个线程中独立且并行地处理此直接呼吸数据。所有提取的特征都被馈送到分类器，该分类器在步骤（10）中将选定的特征组合进行组合以实时做出决策。

