



US009241647B2

(12) **United States Patent**
Osorio et al.

(10) **Patent No.:** **US 9,241,647 B2**
(45) **Date of Patent:** ***Jan. 26, 2016**

- (54) **ALGORITHM FOR DETECTING A SEIZURE FROM CARDIAC DATA**
- (71) Applicant: **Flint Hills Scientific, L.L.C.**, Lawrence, KS (US)
- (72) Inventors: **Ivan Osorio**, Leawood, KS (US); **Mark G. Frei**, Lawrence, KS (US)
- (73) Assignee: **CYBERONICS, INC.**, Houston, TX (US)
- (*) Notice: Subject to any disclaimer, the term of this patent is extended or adjusted under 35 U.S.C. 154(b) by 0 days.

This patent is subject to a terminal disclaimer.

(58) **Field of Classification Search**
None
See application file for complete search history.

(56) **References Cited**

U.S. PATENT DOCUMENTS

4,172,459	A	10/1979	Hepp
4,197,856	A	4/1980	Northrop
4,291,699	A	9/1981	Geddes et al.
4,320,766	A	3/1982	Alihanka et al.
4,541,432	A	9/1985	Molina-Negro et al.

(Continued)

FOREIGN PATENT DOCUMENTS

EP	1145736	10/2001
EP	1486232	12/2004

(Continued)

OTHER PUBLICATIONS

Bachman, D.,S. et al.; "Effects of Vagal Volleys and Serotonin on Units of Cingulate Cortex in Monkeys;"Brain Research , vol. 130 (1977). pp. 253-269.

(Continued)

(21) Appl. No.: **14/059,334**

(22) Filed: **Oct. 21, 2013**

(65) **Prior Publication Data**

US 2014/0046203 A1 Feb. 13, 2014

Related U.S. Application Data

(63) Continuation of application No. 12/770,562, filed on Apr. 29, 2010, now Pat. No. 8,562,536.

(51) **Int. Cl.**

- A61B 5/02** (2006.01)
- A61B 5/04** (2006.01)
- A61B 5/024** (2006.01)
- A61B 5/0245** (2006.01)
- A61B 5/00** (2006.01)
- A61N 1/36** (2006.01)
- A61B 5/0456** (2006.01)

(52) **U.S. Cl.**

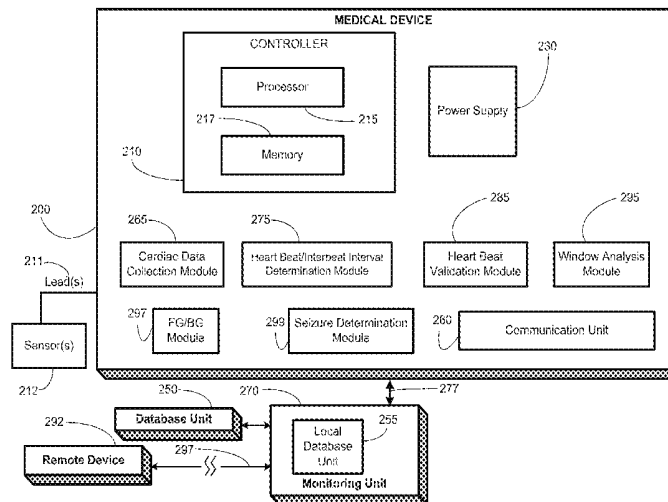
CPC **A61B 5/04012** (2013.01); **A61B 5/0245** (2013.01); **A61B 5/02405** (2013.01); **A61B 5/4094** (2013.01); **A61N 1/36064** (2013.01); **A61B 5/0456** (2013.01)

Primary Examiner — Etsub Berhanu

(57) **ABSTRACT**

Methods, systems, and apparatus for detecting the seizure in a patient using a medical device. The determination is performed by collecting cardiac data determining valid heart beats suitable for seizure detection from the cardiac data; calculating heart rate data of interest from the valid heart beats; and identifying a seizure event from the heart rate data. The medical device may then take a responsive action, such as warning, logging the time of the seizure, computing and storing one or more seizure severity indices, and/or treating the seizure.

19 Claims, 11 Drawing Sheets



(56)

References Cited

U.S. PATENT DOCUMENTS

4,573,481 A	3/1986	Bullara	5,978,702 A	11/1999	Ward et al.
4,702,254 A	10/1987	Zabara	5,978,972 A	11/1999	Stewart et al.
4,867,164 A	9/1989	Zabara	5,987,352 A	11/1999	Klein et al.
4,920,979 A	5/1990	Bullara	5,995,868 A	11/1999	Dorfmeister et al.
4,949,721 A	8/1990	Toriu et al.	6,016,449 A	1/2000	Fischell et al.
4,979,511 A	12/1990	Terry, Jr.	6,018,682 A	1/2000	Rise
5,025,807 A	6/1991	Zabara	6,048,324 A	4/2000	Socci et al.
5,062,169 A	11/1991	Kennedy et al.	6,061,593 A	5/2000	Fischell et al.
5,113,869 A	5/1992	Nappholz et al.	6,073,048 A	6/2000	Kieval et al.
5,137,020 A	8/1992	Wayne et al.	6,083,249 A	7/2000	Familoni
5,154,172 A	10/1992	Terry, Jr. et al.	6,091,992 A	7/2000	Bourgeois et al.
5,179,950 A	1/1993	Stanislaw	6,095,991 A	8/2000	Krausman et al.
5,186,170 A	2/1993	Varrichio et al.	6,104,956 A	8/2000	Naritoku et al.
5,188,104 A	2/1993	Wernicke et al.	6,115,628 A	9/2000	Stadler et al.
5,194,847 A	3/1993	Taylor et al.	6,115,630 A	9/2000	Stadler et al.
5,203,326 A	4/1993	Collins	6,128,538 A	10/2000	Fischell et al.
5,205,285 A	4/1993	Baker, Jr.	6,134,474 A	10/2000	Fischell et al.
5,213,568 A	5/1993	Lattin et al.	6,162,191 A	12/2000	Foxlin
5,215,086 A	6/1993	Terry, Jr. et al.	6,163,281 A	12/2000	Torch
5,215,089 A	6/1993	Baker, Jr.	6,167,311 A	12/2000	Rezai
5,222,494 A	6/1993	Baker, Jr.	6,171,239 B1	1/2001	Humphrey
5,231,988 A	8/1993	Wernicke et al.	6,175,764 B1	1/2001	Loeb et al.
5,235,980 A	8/1993	Varrichio et al.	6,205,359 B1	3/2001	Boveja
5,237,991 A	8/1993	Baker, Jr. et al.	6,208,894 B1	3/2001	Schulman et al.
5,243,980 A	9/1993	Mehra	6,208,902 B1	3/2001	Boveja
5,251,634 A	10/1993	Weinberg	6,221,908 B1	4/2001	Kilgard et al.
5,263,480 A	11/1993	Wernicke et al.	6,246,344 B1	6/2001	Torch
5,269,302 A	12/1993	Swartz et al.	6,248,080 B1	6/2001	Miesel et al.
5,269,303 A	12/1993	Wernicke et al.	6,253,109 B1	6/2001	Gielen
5,299,569 A	4/1994	Wernicke et al.	6,269,270 B1	7/2001	Boveja
5,304,206 A	4/1994	Baker, Jr. et al.	6,272,379 B1	8/2001	Fischell et al.
5,311,876 A	5/1994	Olsen et al.	6,304,775 B1	10/2001	Iasemidis et al.
5,313,953 A	5/1994	Yomtov et al.	6,315,740 B1	11/2001	Singh
5,330,507 A	7/1994	Schwartz	6,324,421 B1	11/2001	Stadler et al.
5,330,515 A	7/1994	Rutecki et al.	6,337,997 B1	1/2002	Rise
5,334,221 A	8/1994	Bardy	6,339,725 B1	1/2002	Naritoku et al.
5,335,657 A	8/1994	Terry, Jr. et al.	6,341,236 B1	1/2002	Osorio et al.
5,404,877 A	4/1995	Nolan et al.	6,356,784 B1	3/2002	Lozano et al.
5,425,373 A	6/1995	Causey, III	6,356,788 B2	3/2002	Boveja
5,513,649 A	5/1996	Gevens et al.	6,361,507 B1	3/2002	Foxlin
5,522,862 A	6/1996	Testerman et al.	6,361,508 B1	3/2002	Johnson et al.
5,523,742 A	6/1996	Simkins et al.	6,366,813 B1	4/2002	DiLorenzo
5,540,730 A	7/1996	Terry, Jr. et al.	6,366,814 B1	4/2002	Boveja
5,540,734 A	7/1996	Zabara	6,374,140 B1	4/2002	Rise
5,571,150 A	11/1996	Wernicke et al.	6,397,100 B2	5/2002	Stadler et al.
5,610,590 A	3/1997	Johnson et al.	6,427,086 B1	7/2002	Fischell et al.
5,611,350 A	3/1997	John	6,429,217 B1	8/2002	Puskas
5,645,077 A	7/1997	Foxlin	6,441,731 B1	8/2002	Hess
5,645,570 A	7/1997	Corbucci	6,449,512 B1	9/2002	Boveja
5,651,378 A	7/1997	Matheny et al.	6,459,936 B2	10/2002	Fischell et al.
5,658,318 A	8/1997	Stroetmann et al.	6,463,328 B1	10/2002	John
5,683,422 A	11/1997	Rise	6,466,822 B1	10/2002	Pless
5,690,681 A	11/1997	Geddes et al.	6,473,639 B1	10/2002	Fischell et al.
5,690,688 A	11/1997	Noren et al.	6,473,644 B1	10/2002	Terry, Jr. et al.
5,700,282 A	12/1997	Zabara	6,477,418 B2	11/2002	Plicchi et al.
5,707,400 A	1/1998	Terry, Jr. et al.	6,480,743 B1	11/2002	Kirkpatrick et al.
5,716,377 A	2/1998	Rise et al.	6,484,132 B1	11/2002	Hively et al.
5,720,771 A	2/1998	Snell	6,501,983 B1	12/2002	Natarajan et al.
5,738,104 A *	4/1998	Lo et al. 600/521	6,505,074 B2	1/2003	Boveja et al.
5,743,860 A	4/1998	Hively et al.	6,532,388 B1	3/2003	Hill et al.
5,748,113 A	5/1998	Torch	6,539,263 B1	3/2003	Schiff et al.
5,792,186 A	8/1998	Rise	6,542,081 B2	4/2003	Torch
5,800,474 A	9/1998	Benabid et al.	6,542,774 B2	4/2003	Hill et al.
5,807,284 A	9/1998	Foxlin	6,549,804 B1	4/2003	Osorio et al.
5,808,552 A	9/1998	Wiley et al.	6,556,868 B2	4/2003	Naritoku et al.
5,833,709 A	11/1998	Rise et al.	6,560,486 B1	5/2003	Osorio et al.
5,853,005 A	12/1998	Scanlon et al.	6,564,102 B1	5/2003	Boveja
5,879,309 A	3/1999	Johnson et al.	6,587,719 B1	7/2003	Barrett et al.
5,905,436 A	5/1999	Dwight et al.	6,587,727 B2	7/2003	Osorio et al.
5,913,876 A	6/1999	Taylor et al.	6,594,524 B2	7/2003	Esteller et al.
5,916,181 A	6/1999	Socci et al.	6,599,250 B2	7/2003	Webb et al.
5,916,239 A	6/1999	Geddes et al.	6,609,025 B2	8/2003	Barrett et al.
5,928,272 A	7/1999	Adkins et al.	6,610,713 B2	8/2003	Tracey
5,941,906 A	8/1999	Barreras, Sr. et al.	6,611,715 B1	8/2003	Boveja
5,942,979 A	8/1999	Luppino	6,611,783 B2	8/2003	Kelly, Jr. et al.
			6,615,081 B1	9/2003	Boveja
			6,615,085 B1	9/2003	Boveja
			6,622,038 B2	9/2003	Barrett et al.
			6,622,041 B2	9/2003	Terry, Jr. et al.

(56)

References Cited

U.S. PATENT DOCUMENTS

6,622,047	B2	9/2003	Barrett et al.	7,236,830	B2	6/2007	Gliner
6,628,985	B2	9/2003	Sweeney et al.	7,236,831	B2	6/2007	Firlik et al.
6,628,987	B1	9/2003	Hill et al.	7,242,983	B2	7/2007	Frei et al.
6,629,990	B2	10/2003	Putz et al.	7,242,984	B2	7/2007	DiLorenzo
6,647,296	B2	11/2003	Fischell et al.	7,254,439	B2	8/2007	Misczynski et al.
6,656,125	B2	12/2003	Misczynski et al.	7,263,467	B2	8/2007	Sackellares et al.
6,656,960	B2	12/2003	Puskas	7,274,298	B2	9/2007	Frank
6,668,191	B1	12/2003	Boveja	7,277,758	B2	10/2007	DiLorenzo
6,671,555	B2	12/2003	Gielen et al.	7,280,867	B2	10/2007	Frei et al.
6,671,556	B2	12/2003	Osorio et al.	7,282,030	B2	10/2007	Frei et al.
6,684,105	B2	1/2004	Cohen et al.	7,289,844	B2	10/2007	Misczynski et al.
6,721,603	B2	4/2004	Zabara et al.	7,292,890	B2	11/2007	Whitehurst et al.
6,730,047	B2	5/2004	Socci et al.	7,295,881	B2	11/2007	Cohen et al.
6,735,474	B1	5/2004	Loeb et al.	7,299,096	B2	11/2007	Balzer et al.
6,738,671	B2	5/2004	Christophersom et al.	7,302,298	B2	11/2007	Lowry et al.
6,760,626	B1	7/2004	Boveja	7,304,580	B2	12/2007	Sullivan et al.
6,763,256	B2	7/2004	Kimball et al.	7,305,268	B2	12/2007	Gliner et al.
6,768,968	B2	7/2004	Ignatowski et al.	7,313,440	B2	12/2007	Miesel
6,768,969	B1	7/2004	Nikitin et al.	7,314,451	B2	1/2008	Halperin et al.
6,786,877	B2	9/2004	Foxlin	7,321,837	B2	1/2008	Osorio et al.
6,788,975	B1	9/2004	Whitehurst et al.	7,324,850	B2	1/2008	Persen et al.
6,793,670	B2	9/2004	Osorio et al.	7,324,851	B1	1/2008	DiLorenzo
6,819,953	B2	11/2004	Yonce et al.	7,330,760	B2	2/2008	Heruth et al.
6,819,956	B2	11/2004	DiLorenzo	7,346,391	B1	3/2008	Osorio et al.
6,832,114	B1	12/2004	Whitehurst et al.	7,353,063	B2	4/2008	Simms, Jr.
6,836,685	B1	12/2004	Fitz	7,353,064	B2	4/2008	Gliner et al.
6,850,601	B2	2/2005	Jones et al.	7,373,199	B2	5/2008	Sackellares et al.
6,879,850	B2	4/2005	Kimball	7,385,443	B1	6/2008	Denison
6,885,888	B2	4/2005	Rezai	7,389,144	B1	6/2008	Osorio et al.
6,904,390	B2	6/2005	Nikitin et al.	7,389,147	B2	6/2008	Wahlstrand et al.
6,920,357	B2	7/2005	Osorio et al.	7,395,113	B2	7/2008	Heruth et al.
6,923,784	B2	8/2005	Stein	7,401,008	B2	7/2008	Frei et al.
6,931,274	B2	8/2005	Williams et al.	7,403,820	B2	7/2008	DiLorenzo
6,934,580	B1	8/2005	Osorio et al.	7,420,472	B2	9/2008	Tran
6,934,585	B1	8/2005	Schloss et al.	7,433,732	B1	10/2008	Carney et al.
6,944,501	B1	9/2005	Pless	7,447,545	B2	11/2008	Heruth et al.
6,957,107	B2	10/2005	Rogers et al.	7,454,245	B2	11/2008	Armstrong et al.
6,961,618	B2	11/2005	Osorio et al.	7,488,293	B2	2/2009	Marcovecchio et al.
6,984,993	B2	1/2006	Ariav	7,488,294	B2	2/2009	Torch
6,985,771	B2	1/2006	Fischell et al.	7,491,181	B2	2/2009	Heruth et al.
6,990,377	B2	1/2006	Gliner et al.	7,494,464	B2	2/2009	Rzesnitzek et al.
7,006,859	B1	2/2006	Osorio et al.	7,502,643	B2	3/2009	Farrington et al.
7,006,872	B2	2/2006	Gielen et al.	7,515,054	B2	4/2009	Torch
7,010,351	B2	3/2006	Firlik et al.	7,539,532	B2	5/2009	Tran
7,024,247	B2	4/2006	Gliner et al.	7,539,533	B2	5/2009	Tran
7,035,684	B2	4/2006	Lee	7,539,543	B2	5/2009	Schiff et al.
7,054,792	B2	5/2006	Frei et al.	7,558,622	B2	7/2009	Tran
7,058,453	B2	6/2006	Nelson et al.	7,565,132	B2	7/2009	Ben
7,068,842	B2	6/2006	Liang et al.	7,590,453	B2	9/2009	Heruth et al.
7,076,288	B2	7/2006	Skinner	7,620,456	B2	11/2009	Gliner et al.
7,077,810	B2	7/2006	Lange et al.	7,629,890	B2	12/2009	Sullivan et al.
7,079,977	B2	7/2006	Osorio et al.	7,643,655	B2	1/2010	Liang et al.
7,104,947	B2	9/2006	Riehl et al.	7,647,121	B2	1/2010	Wahlstrand et al.
7,110,820	B2	9/2006	Tcheng et al.	7,658,112	B2	2/2010	Nakamura
7,112,319	B2	9/2006	Broderick et al.	7,666,151	B2	2/2010	Sullivan et al.
7,127,370	B2	10/2006	Kelly et al.	7,714,757	B2	5/2010	Denison et al.
7,134,996	B2	11/2006	Bardy	7,717,848	B2	5/2010	Heruth et al.
7,139,677	B2	11/2006	Hively et al.	RE41,376	E	6/2010	Torch
7,146,211	B2	12/2006	Frei et al.	7,733,224	B2	6/2010	Tran
7,146,217	B2	12/2006	Firlik et al.	7,747,318	B2	6/2010	John et al.
7,146,218	B2	12/2006	Esteller et al.	7,769,464	B2	8/2010	Gerber et al.
7,149,572	B2	12/2006	Frei et al.	7,775,993	B2	8/2010	Heruth et al.
7,164,941	B2	1/2007	Misczynski et al.	7,792,583	B2	9/2010	Miesel et al.
7,167,743	B2	1/2007	Heruth et al.	7,801,603	B2	9/2010	Westlund et al.
7,167,750	B2	1/2007	Knudson et al.	7,801,618	B2	9/2010	Pless
7,174,206	B2	2/2007	Frei et al.	7,801,743	B2	9/2010	Graves et al.
7,177,678	B1	2/2007	Osorio et al.	7,813,802	B2	10/2010	Tcheng et al.
7,188,053	B2	3/2007	Nikitin et al.	7,822,481	B2	10/2010	Gerber et al.
RE39,539	E	4/2007	Torch	7,827,011	B2	11/2010	DeVaul et al.
7,204,833	B1	4/2007	Osorio et al.	7,831,305	B2	11/2010	Gliner
7,209,786	B2	4/2007	Brockway et al.	7,847,628	B2	12/2010	Denison
7,209,787	B2	4/2007	DiLorenzo	7,866,212	B2	1/2011	Ariav et al.
7,221,981	B2	5/2007	Gliner	7,899,545	B2	3/2011	John
7,228,167	B2	6/2007	Kara et al.	7,935,076	B2	5/2011	Estes et al.
7,231,254	B2	6/2007	DiLorenzo	RE42,471	E	6/2011	Torch
				7,957,809	B2	6/2011	Bourget et al.
				7,965,833	B2	6/2011	Meir et al.
				7,974,671	B2	7/2011	Fujiwara et al.
				7,996,076	B2	8/2011	Burns et al.

(56)

References Cited

U.S. PATENT DOCUMENTS

7,999,857 B2	8/2011	Bunn et al.	2005/0101873 A1	5/2005	Miszczynski et al.
8,000,789 B2	8/2011	Denison et al.	2005/0107716 A1	5/2005	Eaton et al.
8,000,794 B2	8/2011	Lozano	2005/0119703 A1	6/2005	DiLorenzo
8,021,299 B2	9/2011	Miesel et al.	2005/0124901 A1	6/2005	Miszczynski et al.
8,027,730 B2	9/2011	John et al.	2005/0131467 A1	6/2005	Boveja et al.
8,027,737 B2	9/2011	Kokones et al.	2005/0131485 A1	6/2005	Knudson et al.
8,075,499 B2	12/2011	Nathan et al.	2005/0131486 A1	6/2005	Boveja et al.
8,109,891 B2	2/2012	Kramer et al.	2005/0131493 A1	6/2005	Boveja et al.
2002/0072782 A1	6/2002	Osorio et al.	2005/0143786 A1	6/2005	Boveja et al.
2002/0099417 A1	7/2002	Naritoku et al.	2005/0148893 A1	7/2005	Miszczynski et al.
2002/0116030 A1	8/2002	Rezai	2005/0148894 A1	7/2005	Miszczynski et al.
2002/0151939 A1	10/2002	Rezai	2005/0148895 A1	7/2005	Miszczynski et al.
2002/0188214 A1	12/2002	Miszczynski et al.	2005/0153885 A1	7/2005	Yun et al.
2003/0040680 A1	2/2003	Hassert et al.	2005/0154425 A1	7/2005	Boveja et al.
2003/0074032 A1	4/2003	Gliner	2005/0154426 A1	7/2005	Boveja et al.
2003/0083716 A1	5/2003	Nicolelis et al.	2005/0165458 A1	7/2005	Boveja et al.
2003/0083726 A1	5/2003	Zeijlemaker et al.	2005/0187590 A1	8/2005	Boveja et al.
2003/0125786 A1	7/2003	Gliner et al.	2005/0192644 A1	9/2005	Boveja et al.
2003/0130706 A1	7/2003	Sheffield et al.	2005/0197590 A1	9/2005	Osorio et al.
2003/0144829 A1	7/2003	Geatz et al.	2005/0203366 A1	9/2005	Donoghue et al.
2003/0181954 A1	9/2003	Rezai	2005/0245971 A1	11/2005	Brockway et al.
2003/0181958 A1	9/2003	Dobak	2005/0261542 A1	11/2005	Riehl
2003/0195588 A1	10/2003	Upton et al.	2005/0277998 A1	12/2005	Tracey et al.
2003/0208212 A1	11/2003	Cigaina	2005/0283200 A1	12/2005	Rezai et al.
2003/0210147 A1	11/2003	Humbar	2005/0283201 A1	12/2005	Machado et al.
2003/0212440 A1	11/2003	Boveja	2005/0288600 A1	12/2005	Zhang et al.
2003/0236474 A1	12/2003	Singh	2005/0288760 A1	12/2005	Machado et al.
2003/0236558 A1	12/2003	Whitehurst et al.	2006/0009815 A1	1/2006	Boveja
2004/0006278 A1	1/2004	Webb et al.	2006/0018833 A1	1/2006	Murphy et al.
2004/0030365 A1	2/2004	Rubin et al.	2006/0074450 A1	4/2006	Boveja
2004/0088024 A1	5/2004	Firlik et al.	2006/0079936 A1	4/2006	Boveja
2004/0111045 A1	6/2004	Sullivan et al.	2006/0094971 A1	5/2006	Drew
2004/0122484 A1	6/2004	Hatlestad et al.	2006/0095081 A1	5/2006	Zhou et al.
2004/0122485 A1	6/2004	Stahmann et al.	2006/0106430 A1	5/2006	Fowler et al.
2004/0133119 A1	7/2004	Osorio et al.	2006/0135877 A1	6/2006	Giftakis et al.
2004/0138516 A1	7/2004	Osorio et al.	2006/0135881 A1	6/2006	Giftakis et al.
2004/0138517 A1	7/2004	Osorio et al.	2006/0149139 A1	7/2006	Bonmassar et al.
2004/0138647 A1	7/2004	Osorio et al.	2006/0155495 A1	7/2006	Osorio et al.
2004/0138711 A1	7/2004	Osorio et al.	2006/0167497 A1	7/2006	Armstrong et al.
2004/0153129 A1	8/2004	Pless et al.	2006/0173493 A1	8/2006	Armstrong et al.
2004/0158119 A1	8/2004	Osorio et al.	2006/0173522 A1	8/2006	Osorio
2004/0158165 A1	8/2004	Yonce et al.	2006/0190056 A1	8/2006	Fowler et al.
2004/0172085 A1	9/2004	Knudson et al.	2006/0195163 A1	8/2006	KenKnight et al.
2004/0172091 A1	9/2004	Rezai	2006/0200206 A1	9/2006	Firlik et al.
2004/0172094 A1	9/2004	Cohen et al.	2006/0212091 A1	9/2006	Lozano et al.
2004/0176812 A1	9/2004	Knudson et al.	2006/0212097 A1	9/2006	Varadan et al.
2004/0176831 A1	9/2004	Gliner et al.	2006/0224067 A1	10/2006	Giftakis et al.
2004/0199212 A1	10/2004	Fischell et al.	2006/0224191 A1	10/2006	DiLorenzo
2004/0225335 A1	11/2004	Whitehurst et al.	2006/0241697 A1	10/2006	Libbus et al.
2004/0249302 A1	12/2004	Donoghue et al.	2006/0241725 A1	10/2006	Libbus et al.
2004/0249416 A1	12/2004	Yun et al.	2006/0293720 A1	12/2006	DiLorenzo
2005/0004621 A1	1/2005	Boveja et al.	2007/0027486 A1	2/2007	Armstrong et al.
2005/0020887 A1	1/2005	Goldberg	2007/0027497 A1	2/2007	Parnis et al.
2005/0021092 A1	1/2005	Yun et al.	2007/0027498 A1	2/2007	Maschino et al.
2005/0021103 A1	1/2005	DiLorenzo	2007/0027500 A1	2/2007	Maschino et al.
2005/0021104 A1	1/2005	DiLorenzo	2007/0032834 A1	2/2007	Gliner et al.
2005/0021105 A1	1/2005	Firlik et al.	2007/0043392 A1	2/2007	Gliner et al.
2005/0021106 A1	1/2005	Firlik et al.	2007/0055320 A1	3/2007	Weinand et al.
2005/0021107 A1	1/2005	Firlik et al.	2007/0073150 A1	3/2007	Gopalsami et al.
2005/0021118 A1	1/2005	Genau et al.	2007/0073355 A1	3/2007	DiLorenzo
2005/0022606 A1	2/2005	Partin et al.	2007/0088403 A1	4/2007	Wylar et al.
2005/0027284 A1	2/2005	Lozano et al.	2007/0100278 A1	5/2007	Frei et al.
2005/0033378 A1	2/2005	Sheffield et al.	2007/0100392 A1	5/2007	Maschino et al.
2005/0033379 A1	2/2005	Lozano et al.	2007/0142862 A1	6/2007	DiLorenzo
2005/0038484 A1	2/2005	Knudson et al.	2007/0142873 A1	6/2007	Esteller et al.
2005/0049515 A1	3/2005	Miszczynski et al.	2007/0150024 A1	6/2007	Leyde et al.
2005/0049655 A1	3/2005	Boveja et al.	2007/0150025 A1	6/2007	DiLorenzo et al.
2005/0060001 A1	3/2005	Singhal et al.	2007/0156031 A1*	7/2007	Sullivan et al. 600/300
2005/0065562 A1	3/2005	Rezai	2007/0161919 A1	7/2007	DiLorenzo
2005/0065573 A1	3/2005	Rezai	2007/0162086 A1	7/2007	DiLorenzo
2005/0065574 A1	3/2005	Rezai	2007/0167991 A1	7/2007	DiLorenzo
2005/0065575 A1	3/2005	Dobak	2007/0173901 A1	7/2007	Reeve
2005/0070971 A1	3/2005	Fowler et al.	2007/0173902 A1	7/2007	Maschino et al.
2005/0075701 A1	4/2005	Shafer	2007/0179534 A1	8/2007	Firlik et al.
2005/0075702 A1	4/2005	Shafer	2007/0179557 A1	8/2007	Maschino et al.
			2007/0179558 A1	8/2007	Gliner et al.
			2007/0208212 A1	9/2007	DiLorenzo
			2007/0213785 A1	9/2007	Osorio et al.
			2007/0233192 A1	10/2007	Craig

(56)

References Cited

U.S. PATENT DOCUMENTS

2007/0239210 A1 10/2007 Libbus et al.
 2007/0242661 A1 10/2007 Tran et al.
 2007/0244407 A1 10/2007 Osorio
 2007/0249953 A1 10/2007 Osorio et al.
 2007/0249954 A1 10/2007 Virag et al.
 2007/0249955 A1* 10/2007 Carlson et al. 600/544
 2007/0255147 A1 11/2007 Drew et al.
 2007/0255155 A1 11/2007 Drew et al.
 2007/0260147 A1 11/2007 Giftakis et al.
 2007/0260289 A1 11/2007 Giftakis et al.
 2007/0265536 A1 11/2007 Giftakis et al.
 2007/0272260 A1 11/2007 Nikitin et al.
 2007/0282177 A1 12/2007 Pilz
 2008/0004904 A1 1/2008 Tran et al.
 2008/0033503 A1 2/2008 Fowler et al.
 2008/0033508 A1 2/2008 Frei et al.
 2008/0046035 A1 2/2008 Fowler et al.
 2008/0064934 A1 3/2008 Frei et al.
 2008/0071323 A1 3/2008 Lowry et al.
 2008/0077028 A1 3/2008 Schaldach et al.
 2008/0081958 A1 4/2008 Denison et al.
 2008/0103548 A1 5/2008 Fowler et al.
 2008/0114417 A1 5/2008 Leyde
 2008/0119900 A1 5/2008 DiLorenzo
 2008/0125820 A1 5/2008 Stahmann et al.
 2008/0139870 A1 6/2008 Gliner et al.
 2008/0146890 A1 6/2008 LeBoeuf et al.
 2008/0146959 A1 6/2008 Sheffield et al.
 2008/0161712 A1 7/2008 Leyde
 2008/0161713 A1 7/2008 Leyde et al.
 2008/0161879 A1 7/2008 Firlik et al.
 2008/0161880 A1 7/2008 Firlik et al.
 2008/0161881 A1 7/2008 Firlik et al.
 2008/0161882 A1 7/2008 Firlik et al.
 2008/0183096 A1 7/2008 Snyder et al.
 2008/0183097 A1 7/2008 Leyde et al.
 2008/0208013 A1 8/2008 Zhang et al.
 2008/0208284 A1 8/2008 Rezai et al.
 2008/0258907 A1 10/2008 Kalpaxis et al.
 2008/0269579 A1 10/2008 Schiebler et al.
 2008/0275327 A1 11/2008 Faarbaek et al.
 2008/0275328 A1 11/2008 Jones
 2008/0275349 A1 11/2008 Halperin et al.
 2008/0281376 A1 11/2008 Gerber et al.
 2008/0281381 A1 11/2008 Gerber et al.
 2008/0281550 A1 11/2008 Hogle et al.
 2008/0319281 A1 12/2008 Aarts et al.
 2009/0030345 A1 1/2009 Bonnet et al.
 2009/0040052 A1 2/2009 Cameron et al.
 2009/0054737 A1 2/2009 Magar et al.
 2009/0054742 A1 2/2009 Kaminska et al.
 2009/0060287 A1 3/2009 Hyde et al.
 2009/0076350 A1 3/2009 Bly et al.
 2009/0099624 A1 4/2009 Kokones et al.
 2009/0099627 A1 4/2009 Molnar et al.
 2009/0105785 A1 4/2009 Wei et al.
 2009/0137921 A1 5/2009 Kramer et al.
 2009/0227882 A1 9/2009 Foo
 2009/0227888 A1 9/2009 Salmi
 2009/0322540 A1 12/2009 Richardson et al.
 2010/0010382 A1 1/2010 Panken
 2010/0010392 A1 1/2010 Skelton et al.
 2010/0010583 A1 1/2010 Panken et al.
 2010/0023348 A1 1/2010 Hardee et al.
 2010/0056878 A1 3/2010 Partin et al.
 2010/0106217 A1 4/2010 Colborn
 2010/0109875 A1 5/2010 Ayon et al.
 2010/0121214 A1 5/2010 Giftakis et al.
 2010/0217533 A1 8/2010 Nadkarni et al.
 2010/0223020 A1 9/2010 Goetz
 2010/0228103 A1 9/2010 Schecter
 2010/0228314 A1 9/2010 Goetz
 2010/0268056 A1 10/2010 Picard et al.
 2010/0280336 A1 11/2010 Giftakis et al.
 2010/0280578 A1 11/2010 Skelton et al.

2010/0280579 A1 11/2010 Denison et al.
 2010/0286567 A1 11/2010 Wolfe et al.
 2010/0298661 A1 11/2010 McCombie et al.
 2010/0298742 A1 11/2010 Perlman et al.
 2010/0305665 A1 12/2010 Miesel et al.
 2010/0312188 A1 12/2010 Robertson et al.
 2011/0029044 A1 2/2011 Hyde et al.
 2011/0040204 A1 2/2011 Ivorra et al.
 2011/0040546 A1 2/2011 Gerber et al.
 2011/0060252 A1 3/2011 Simonsen et al.
 2011/0066062 A1 3/2011 Banet et al.
 2011/0066081 A1 3/2011 Goto et al.
 2011/0137372 A1 6/2011 Makous et al.
 2011/0172545 A1 7/2011 Grudic et al.
 2011/0230730 A1 9/2011 Quigg et al.
 2011/0245629 A1 10/2011 Giftakis et al.
 2011/0251469 A1 10/2011 Varadan
 2011/0270117 A1 11/2011 Warwick et al.
 2011/0270134 A1 11/2011 Skelton
 2011/0295127 A1 12/2011 Sandler et al.
 2011/0306846 A1 12/2011 Osorio
 2011/0313484 A1 12/2011 Hincapie Ordonez et al.

FOREIGN PATENT DOCUMENTS

GB	2026870	2/1980
GB	2079610	1/1982
WO	00/64336	11/2000
WO	2004/036377	4/2004
WO	2005/007120	1/2005
WO	2005/053788	6/2005
WO	2005/067599	7/2005
WO	2006/050144	5/2006
WO	2006/122148	11/2006
WO	2007/066343	6/2007
WO	2007/072425	6/2007
WO	2007/124126	11/2007
WO	2007/124190	11/2007
WO	2007/124192	11/2007
WO	2007/142523	12/2007
WO	2008/045597	4/2008

OTHER PUBLICATIONS

Baevskii, R.M. "Analysis of Heart Rate Variability in Space Medicine;" Human Physiology, vol. 28, No. 2, (2002); pp. 202-213.
 Baevsky, R.M., et al.; "Autonomic Cardiovascular and Respiratory Control During Prolonged Spaceflights Aboard the International Space Station;" J. Applied Physiological, vol. 103, (2007) pp. 156-161.
 Boon, P., et al.; "Vagus Nerve Stimulation for Epilepsy, Clinical Efficacy of Programmed and Magnet Stimulation;" (2001); pp. 93-98.
 Boon, Paul, et al.; "Programmed and Magnet-Induced Vagus Nerve Stimulation for Refractory Epilepsy;" Journal of Clinical Neurophysiology vol. 18 No. 5; (2001); pp. 402-407.
 Borovikova, L.V., et al.; "Vagus Nerve Stimulation Attenuates the Systemic Inflammatory Response to Endotoxin;" Letters to Nature; vol. 405; (May 2000); pp. 458-462.
 Chakravarthy, N., et al.; "Controlling Synchronization in a Neuron-Level Population Model;" International Journal of Neural Systems, vol. 17, No. 2 (2007) pp. 123-138.
 Clark, K.B., et al.; "Posttraining Electrical Stimulation of Vagal Afferents with Concomitant Vagal Efferent Inactivation Enhances Memory Storage Processes in the Rat;" Neurobiology of Learning and Memory, vol. 70, 364-373 (1998) Art. No. NL983863.
 Elmpt, W.J.C., et al.; "A Model of Heart Rate Changes to Detect Seizures in Severe Epilepsy;" Seizure vol. 15, (2006) pp. 366-375.
 Frei, M.G., et al.; "Left Vagus Nerve Stimulation with the Neurocybernetic Prosthesis Has Complex Effects on Heart Rate and on Its Variability in Humans;" Epilepsia, vol. 42, No. 8 (2001); pp. 1007-1016.
 George, M.S., et al.; "Vagus Nerve Stimulation: A New Tool for Brain Research and Therapy;" Society of Biological Psychiatry vol. 47 (2000) pp. 287-295.
 Henry, Thomas R.; "Therapeutic Mechanisms of Vague Name Stimulation;" Neurology, vol. 59 (Supp 4) (Sep. 2002), pp. S3-S14.

(56)

References Cited

OTHER PUBLICATIONS

- Hallowitz et al., "Effects of Vagal Volleys on Units of Intralaminar and Juxtalaminar Thalamic Nuclei in Monkeys," *Brain Research*, vol. 130 (1977), pp. 271-286.
- Iasemidis, L.D., et al., "Dynamical Resetting of the Human Brain at Epileptic Seizures: Application of Nonlinear Dynamics and Global Optimization Techniques," *IEEE Transactions on Biomedical Engineering*, vol. 51, No. 3 (Mar. 2004); pp. 493-506.
- Iasemidis, L.D., et al., "Spatiotemporal Transition to Epileptic Seizures: A Nonlinear Dynamical Analysis of Scalp and Intracranial EEG Recordings," *Spatiotemporal Models in Biological and Artificial Systems*; F.L. Silva et al. (Eds.) IOS Press, 1997; pp. 81-88.
- Iasemidis, L.D., "Epileptic Seizure Prediction and Control" *IEEE Transactions on Biomedical Engineering*, vol. 50, No. 5 (May 2003); pp. 549-558.
- Kautzner, J., et al., "Utility of Short-Term Heart Rate Variability for Prediction of Sudden Cardiac Death After Acute Myocardial Infarction" *Acta Univ. Palacki. Olomuc., Fac. Med.*, vol. 141 (1998) pp. 69-73.
- Koenig, S.A., et al., "Vagus Nerve Stimulation Improves Severely Impaired Heart Rate Variability in a Patient with Lennox-Gastaut-Syndrome" *Seizure* (2007) Article in Press—YSEIZ-1305; pp. 1-4.
- Koo, B., "EEG Changes With Vagus Nerve Stimulation" *Journal of Clinical Neurophysiology*, vol. 18 No. 5 (Sep. 2001); pp. 434-441.
- Krittayaphong, M.D., et al., "Heart Rate Variability in Patients with Coronary Artery Disease: Differences in Patients with Higher and Lower Depression Scores" *Psychosomatic Medicine* vol. 59 (1997) pp. 231-235.
- Leutmezer, F., et al., "Electrocardiographic Changes at the Onset of Epileptic Seizures," *Epilepsia*, vol. 44, No. 3; (2003); pp. 348-354.
- Lewis, M.E., et al., "Vagus Nerve Stimulation Decreases Left Ventricular Contractility in Vivo in the Human and Pig Heart" *The Journal of Physiology* vol. 534, No. 2, (2001) pp. 547-552.
- Li, M., et al., "Vagal Nerve Stimulation Markedly Improves Long-Term Survival After Chronic Heart Failure in Rats," *Circulation* (Jan. 2004) pp. 120-124.
- Licht, C.M.M., "Association Between Major Depressive Disorder and Heart Rate Variability in the Netherlands Study of Depression and Anxiety (NESDA)," *Arch. Gen Psychiatry*, vol. 65, No. 12 (Dec. 2008); pp. 1358-1367.
- Lockard et al., "Feasibility and Safety of Vagal Stimulation in Monkey Model," *Epilepsia*, vol. 31 (Suppl. 2) (1990), pp. S20-S26.
- McClintock, P., "Can Noise Actually Boost Brain Power" *Physics World* Jul. 2002; pp. 20-21.
- Mori, T., et al., "Noise-Induced Entrainment and Stochastic Resonance in Human Brain Waves" *Physical Review Letters* vol. 88, No. 21 (2002); pp. 218101-1-218101-4.
- Mormann, F., "Seizure prediction: the long and winding road," *Brain* 130 (2007), 314-333.
- Nouri, M.D., "Epilepsy and the Autonomic Nervous System" *emedicine* (updated May 5, 2006); pp. 1-14; <http://www.emedicine.com/neuro/topic658.htm>.
- O'Regan, M.E., et al., "Abnormalities in Cardiac and Respiratory Function Observed During Seizures in Childhood" *Developmental Medicine & Child Neurology*, vol. 47 (2005) pp. 4-9.
- Pathwardhan, R.V., et al., Control of Refractory status epilepticus precipitated by anticonvulsant withdrawal using left vagal nerve stimulation: a case report, *Surgical Neurology* 64 (2005) 170-73.
- Poddubnaya, E.P., "Complex Estimation of Adaptation Abilities of the Organism in Children Using the Indices of Responsiveness of the Cardiovascular System and Characteristics of EEG" *Neurophysiology* vol. 38, No. 1 (2006); pp. 63-74.
- Rugg-Gunn, F.J., et al., "Cardiac Arrhythmias in Focal Epilepsy: a Prospective Long-Term Study" www.thelancet.com vol. 364 (2004) pp. 2212-2219.
- Sajadieh, A., et al., "Increased Heart Rate and Reduced Heart-Rate Variability are Associated with Subclinical Inflammation in Middle-Aged and Elderly Subjects with No Apparent Heart Disease" *European Heart Journal* vol. 25, (2004); pp. 363-370.
- Scherthamer, C., et al., "Autonomic Epilepsy—The Influence of Epileptic Discharges on Heart Rate and Rhythm" *The Middle European Journal of Medicine* vol. 111, No. 10 (1999) pp. 392-401.
- Terry et al., "The Implantable Neurocybernetic Prosthesis System", *Pacing and Clinical Electrophysiology*, vol. 14, No. 1 (Jan. 1991), pp. 86-93.
- Tubbs, R.S., et al., "Left-Sided Vagus Nerve Stimulation Decreases Intracranial Pressure Without Resultant Bradycardia in the Pig: A Potential Therapeutic Modality for Humans" *Child's Nervous System* Original Paper; Springer-Verlag 2004.
- Umetani, M.D., et al., "Twenty-Four Hour Time Domain Heart Rate Variability and Heart Rate: Relations to Age and Gender Over Nine Decades" *JACC* vol. 31, No. 3; (Mar. 1998); pp. 593-601.
- Vonck, K., et al., "The Mechanism of Action of Vagus Nerve Stimulation for Refractory Epilepsy—The Current Status", *Journal of Neurophysiology*, vol. 18 No. 5 (2001), pp. 394-401.
- Woodbury, et al., "Vagal Stimulation Reduces the Severity of Maximal Electroshock Seizures in Intact Rats. Use of a Cuff Electrode for Stimulating and Recording"; *Pacing and Clinical Electrophysiology*, vol. 14 (Jan. 1991), pp. 94-107.
- Zabara, J., "Neuroinhibition of Xylazine Induced Emesis" *Pharmacology & Toxicology*, vol. 63 (1988) pp. 70-74.
- Zabara, J., "Inhibition of Experimental Seizures in Canines by Repetitive Vagal Stimulation" *Epilepsia* vol. 33, No. 6 (1992); pp. 1005-1012.
- Zabara, J., et al., "Neural Control of Circulation I" *The Physiologist*, vol. 28 No. 4 (1985); 1 page.
- Zabara, J., et al., "Neuroinhibition in the Regulation of Emesis" *Space Life Sciences*, vol. 3 (1972) pp. 282-292.
- Osorio, Ivan et al., "An Introduction to Contingent (Closed-Loop) Brain Electrical Stimulation for Seizure Blockage, To Ultra-Short-Term Clinical Trials, and To Multidimensional Statistical Analysis of Therapeutic Efficacy," *Journal of Clinical Neurophysiology*, vol. 18, No. 6, pp. 533-544, 2001.
- Osorio, Ivan et al., "Automated Seizure Abatement in Humans Using Electrical Stimulation," *Annals of Neurology*, vol. 57, No. 2, pp. 258-268, 2005.
- Sunderam, Sridhar et al., "Vagal and Sciatic Nerve Stimulation Have Complex, Time-Dependent Effects on Chemically-Induced Seizures: A Controlled Study," *Brain Research*, vol. 918, pp. 60-66, 2001.
- Weil, Sabine et al., "Heart Rate Increase in Otherwise Subclinical Seizures is Different in Temporal Versus Extratemporal Seizure Onset: Support for Temporal Lobe Automatic Influence," *Epileptic Disord.*, vol. 7, No. 3, Sep. 2005, pp. 199-204.
- Digenarro, Giancarlo et al., "Ictal Heart Rate Increase Precedes EEG Discharge in Drug-Resistant Mesial Temporal Lobe Seizures," *Clinical Neurophysiology*, No. 115, 2004, pp. 1169-1177.
- Zijlmans, Maeike et al., "Heart Rate Changes and ECG Abnormalities During Epileptic Seizures: Prevalence and Definition of an Objective Clinical Sign," *Epilepsia*, vol. 43, No. 8, 2002, pp. 847-854.
- O'Donovan, Cormac A. et al., "Computerized Seizure Detection Based on Heart Rate Changes," abstract of AES Proceedings, *Epilepsia*, vol. 36, Suppl. 4, 1995, p. 7.
- Robinson, Stephen E et al., "Heart Rate Variability Changes as Predictor of Response to Vagal Nerve Stimulation Therapy for Epilepsy," abstract of AES Proceedings, *Epilepsia*, vol. 40, Suppl. 7, 1999, p. 147.
- Long, Teresa J. et al., "Effectiveness of Heart Rate Seizure Detection Compared to EEG in an Epilepsy Monitoring Unit (EMU)," abstract of AES Proceedings, *Epilepsia*, vol. 40, Suppl. 7, 1999, p. 174. PCT Search Report for PCT/US11/051776; Aug. 12, 2011.
- Osorio, et al., Seizure Abatement with Single DC Pulses: Is Phase Resetting at Play? *IJNS* vol. 19, No. 3 (2009), p. 1-8.

* cited by examiner

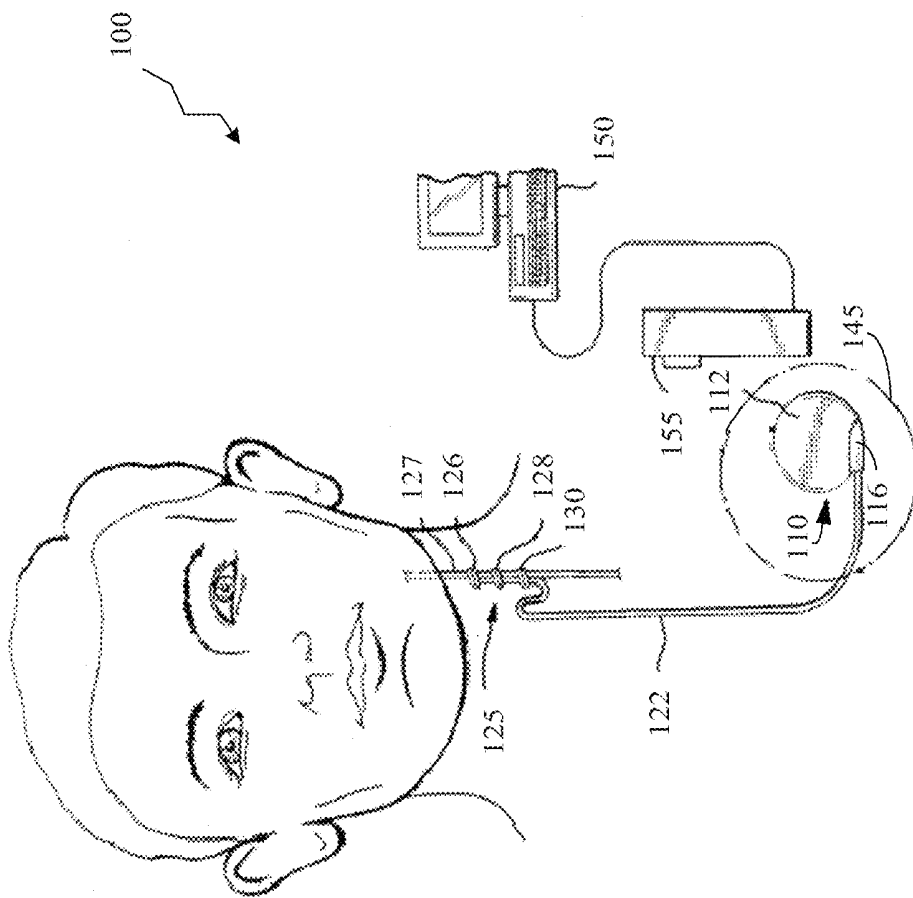


FIGURE 1A

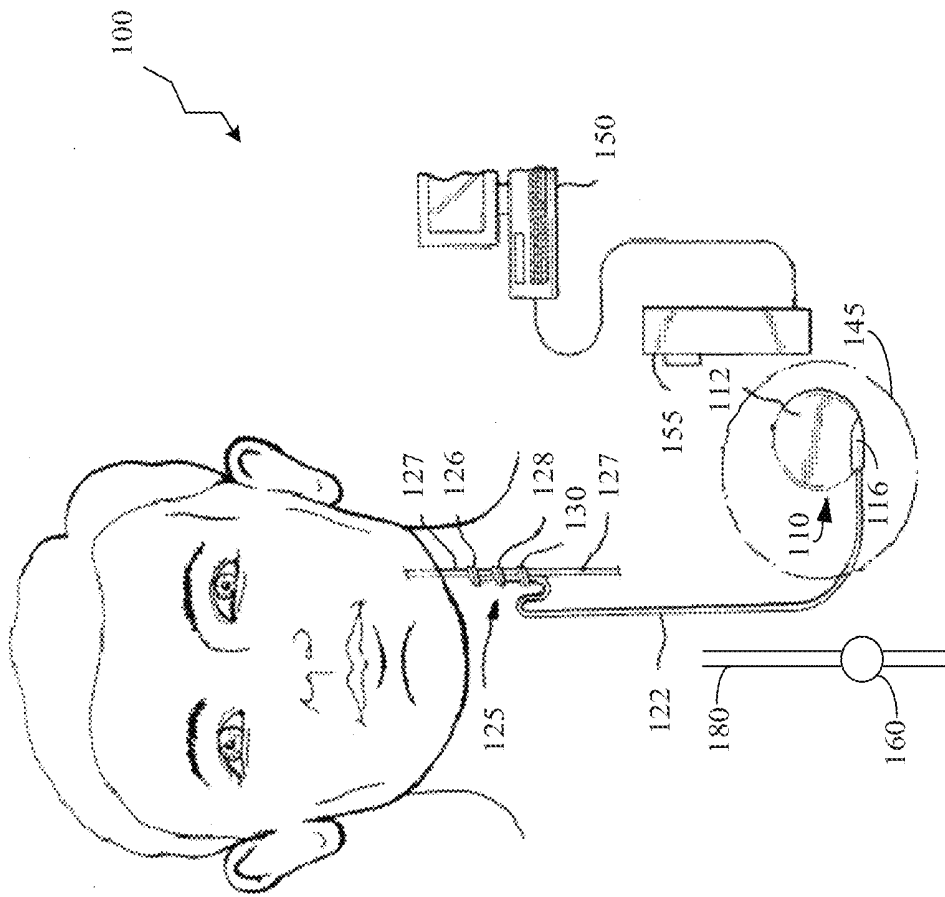


FIGURE 1B

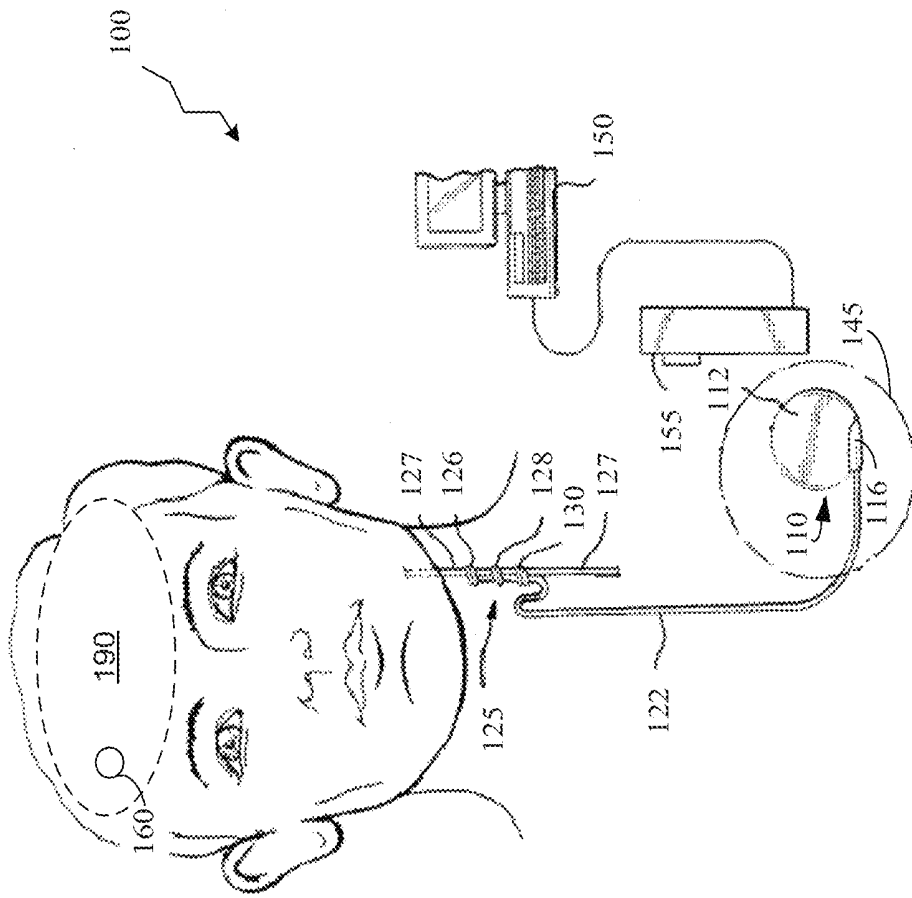


FIGURE 1C

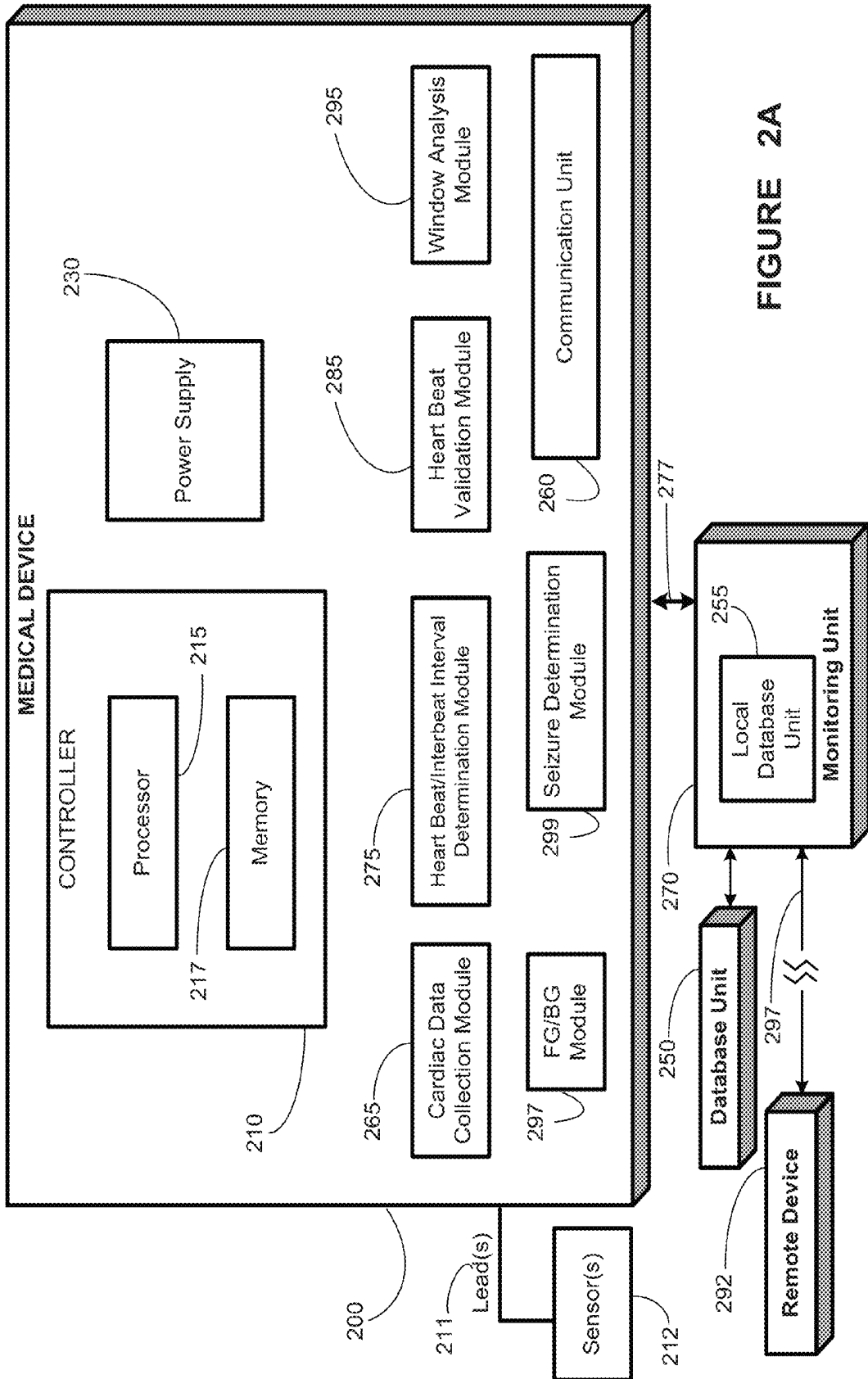


FIGURE 2A

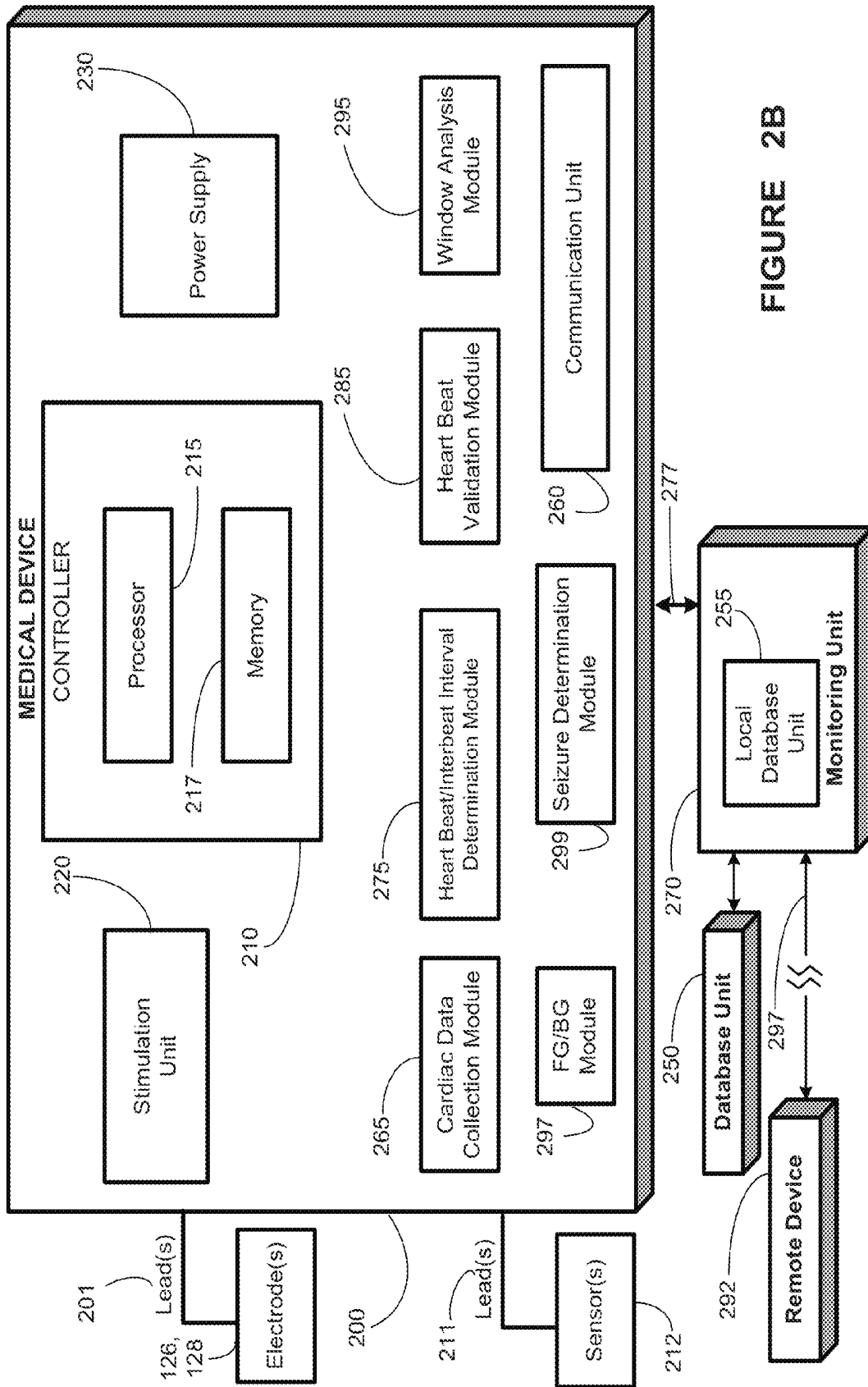


FIGURE 2B

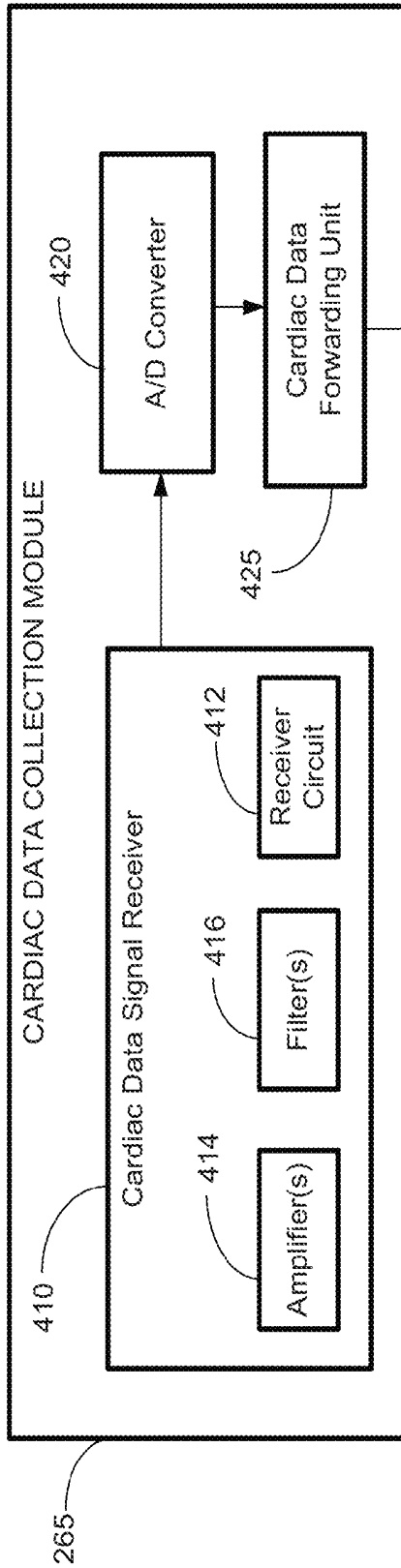


FIGURE 3A

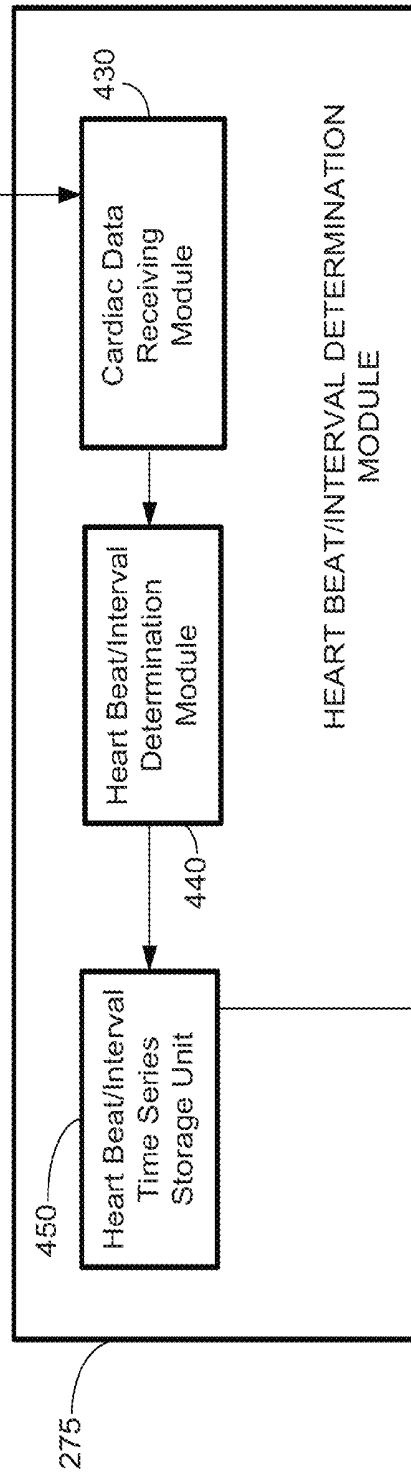


FIGURE 3B

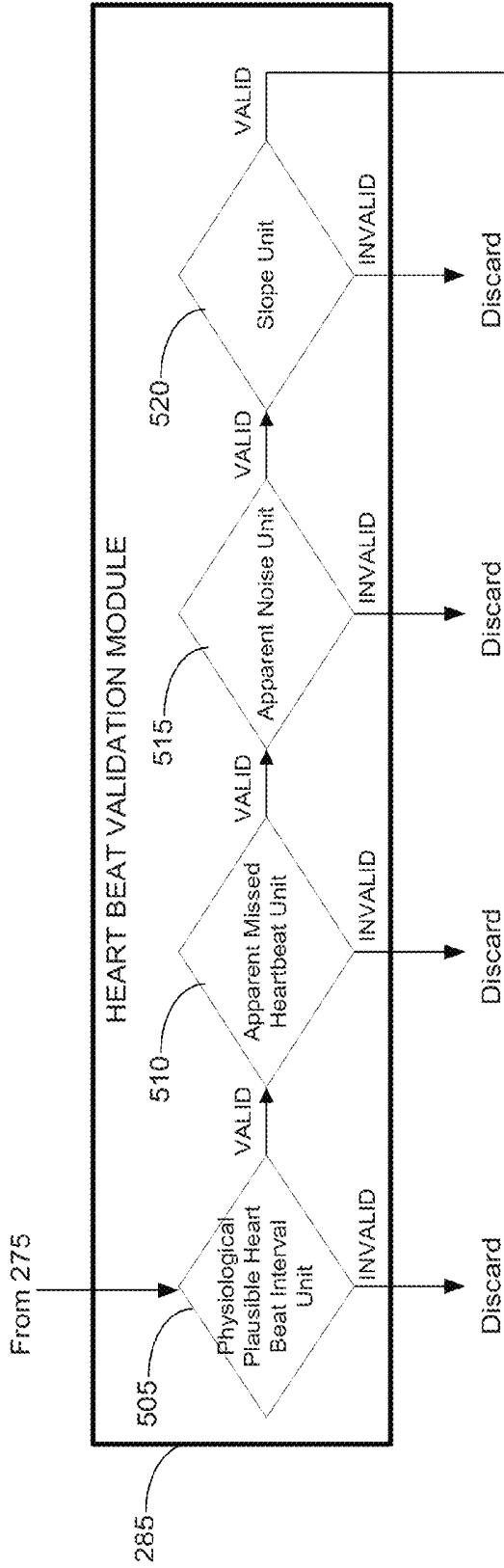


FIGURE 3C

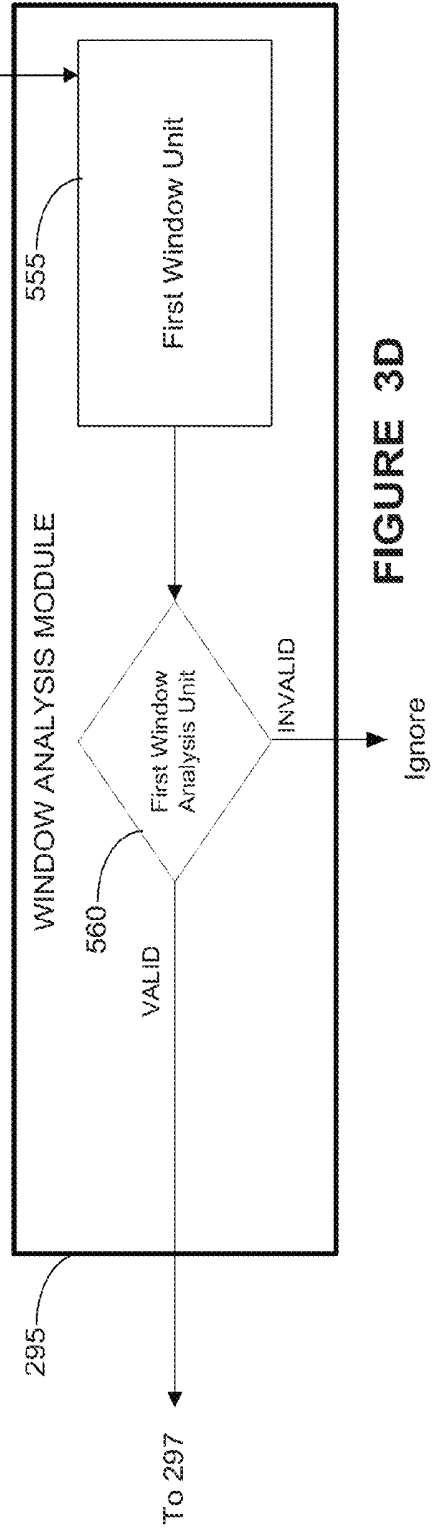


FIGURE 3D

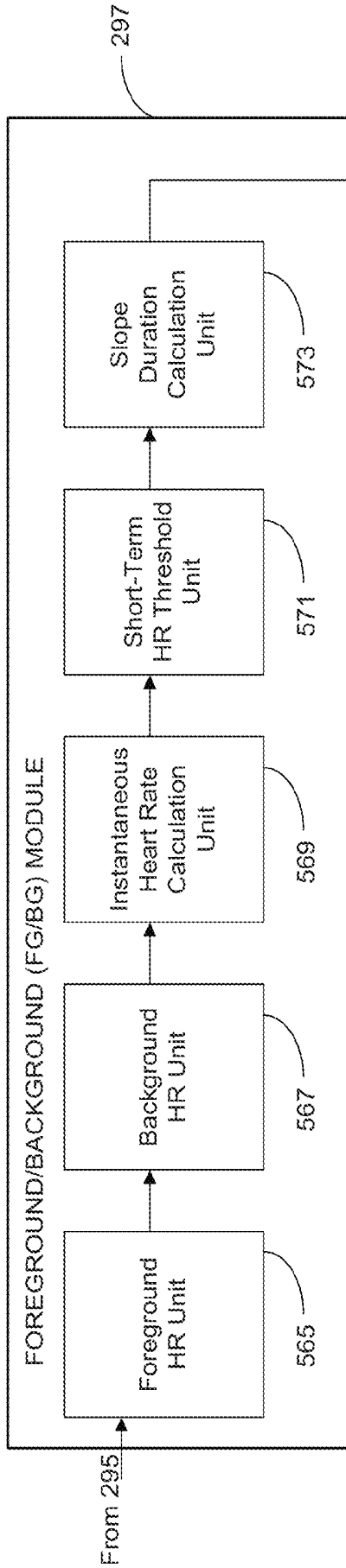


FIGURE 3E

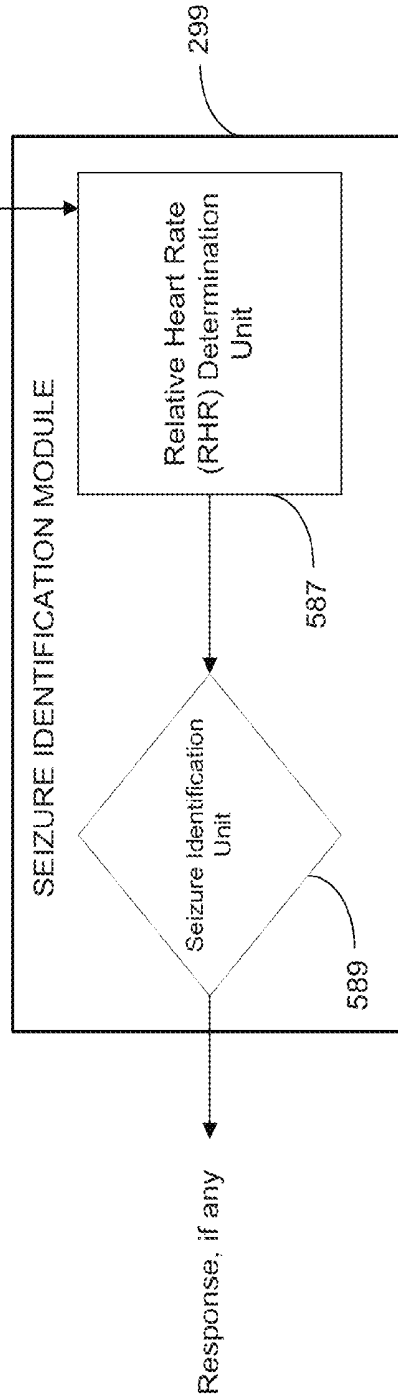


FIGURE 3F

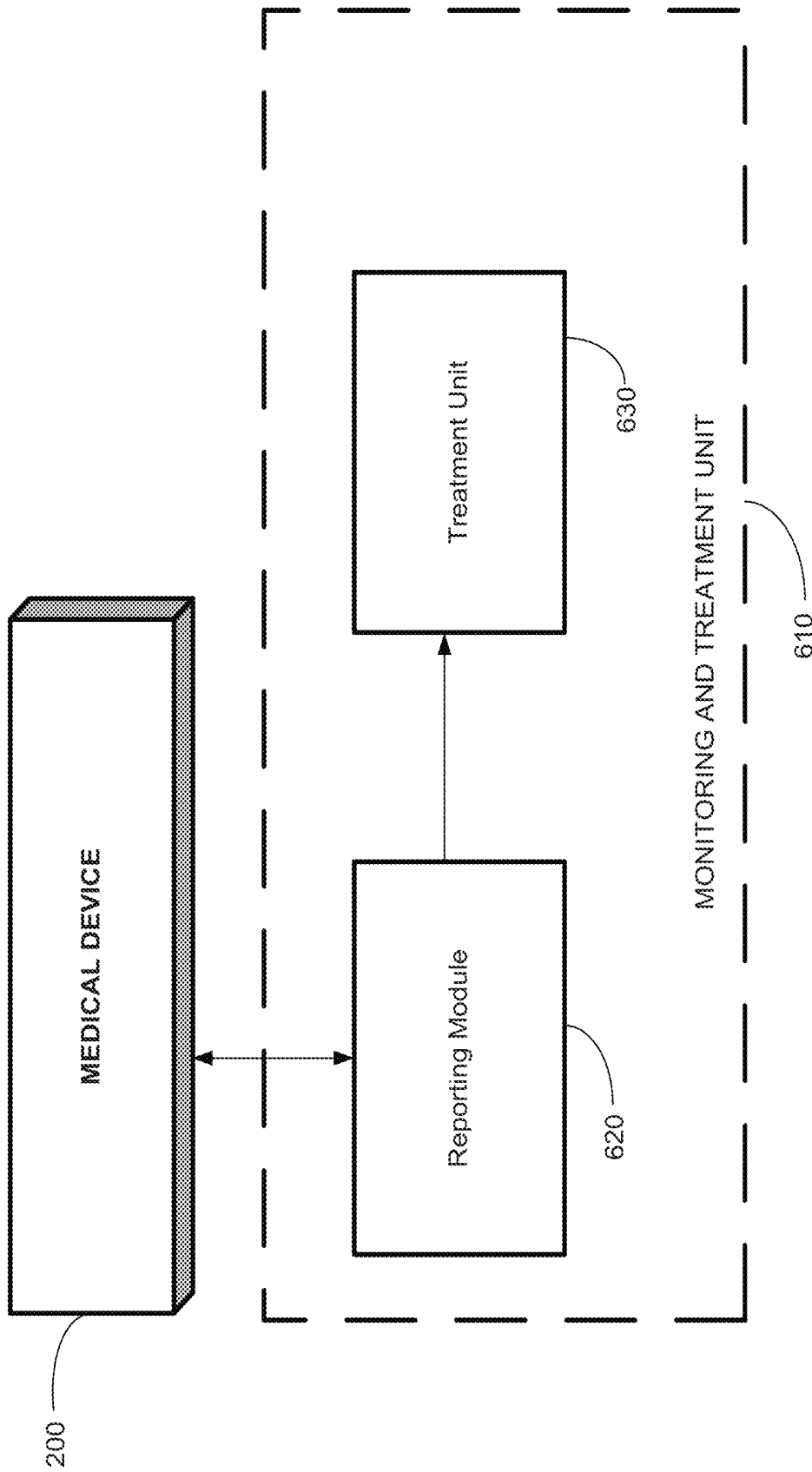


FIGURE 4

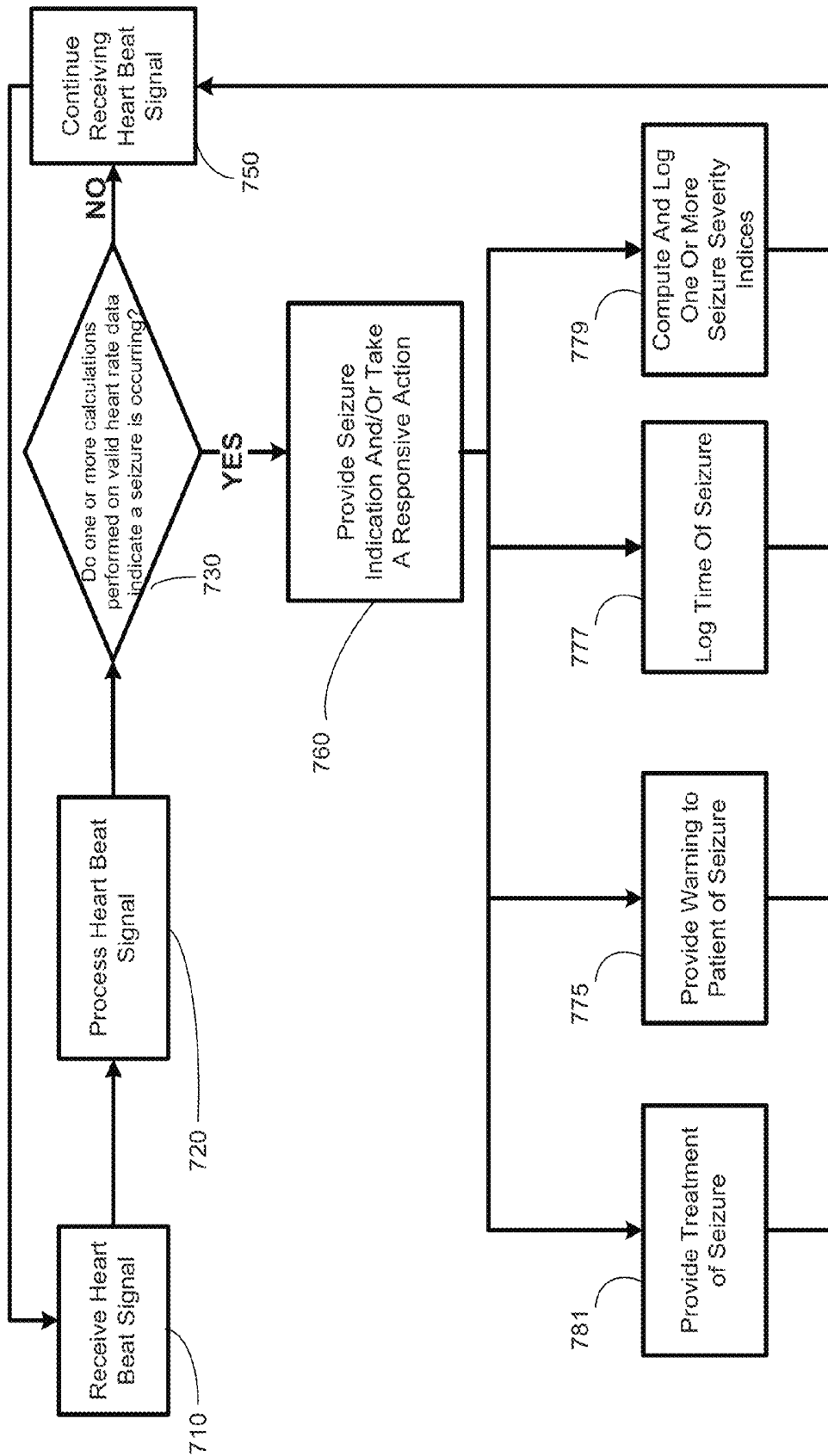


FIGURE 5

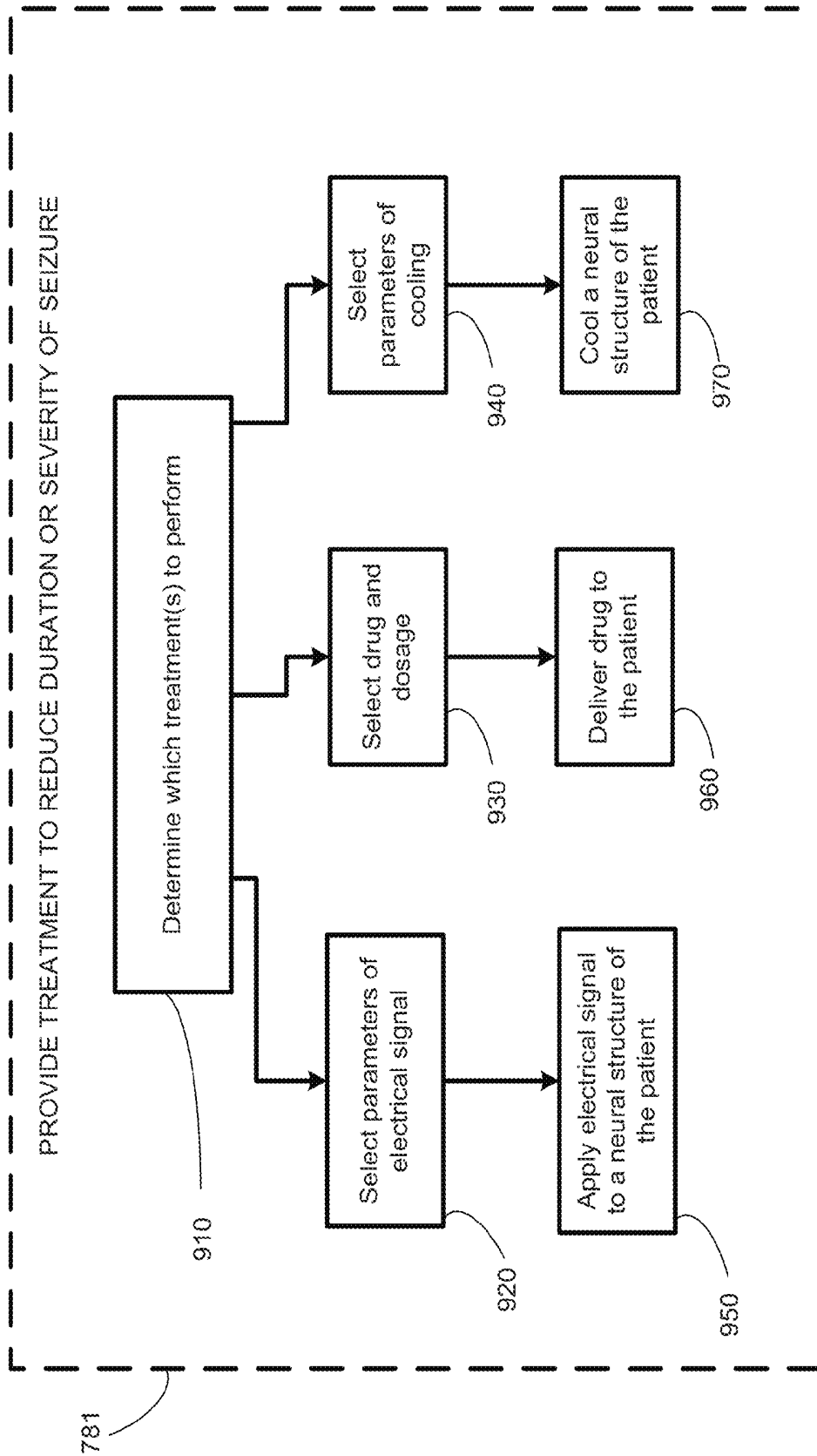


FIGURE 6

ALGORITHM FOR DETECTING A SEIZURE FROM CARDIAC DATA

CROSS-REFERENCE TO RELATED APPLICATIONS

This application is a continuation of co-pending application Ser. No. 12/770,562 filed Apr. 29, 2010.

1. FIELD OF THE INVENTION

This invention relates to medical device systems and methods capable of detecting and, in some embodiments, treating an occurring or impending seizure.

2. DESCRIPTION OF THE RELATED ART

Of the approximately 60 million people worldwide affected with epilepsy, roughly 23 million people suffer from epilepsy resistant to multiple medications. In the USA alone, the annual cost of epilepsy care is USD 12 billion (in 1995 dollars), most of which is attributable to subjects with pharmaco-resistant seizures. Pharmaco-resistant seizures are associated with an increase mortality and morbidity (compared to the general population and to epileptics whose seizures are controlled by medications) and with markedly degraded quality of life for patients. Seizures may impair motor control, responsiveness to a wide class of stimuli, and other cognitive functions. The sudden onset of a patient's impairment of motor control, responsiveness, and other cognitive functions precludes the performance of necessary and even simple daily life tasks such as driving a vehicle, cooking, or operating machinery, as well as more complex tasks such as acquiring knowledge and socializing.

Therapies using electrical currents or fields to provide a therapy to a patient (electrotherapy) are beneficial for certain neurological disorders, such as epilepsy. Implantable medical devices have been effectively used to deliver therapeutic electrical stimulation to various portions of the human body (e.g., the vagus nerve) for treating epilepsy. As used herein, "stimulation," "neurostimulation," "stimulation signal," "therapeutic signal," or "neurostimulation signal" refers to the direct or indirect application of an electrical, mechanical, magnetic, electro-magnetic, photonic, acoustic, cognitive, and/or chemical signal to an organ or a neural structure in the patient's body. The signal is an exogenous signal that is distinct from the endogenous electro-chemical activity inherent to the patient's body and also from that found in the environment. In other words, the stimulation signal (whether electrical, mechanical, magnetic, electro-magnetic, photonic, acoustic, cognitive, and/or chemical in nature) applied to a cranial nerve or to other nervous tissue structure in the present invention is a signal applied from a medical device, e.g., a neurostimulator.

A "therapeutic signal" refers to a stimulation signal delivered to a patient's body with the intent of treating a medical condition through a suppressing (blocking) or modulating effect to neural tissue. The effect of a stimulation signal on neuronal activity may be suppressing or modulating; however, for simplicity, the ms "stimulating", suppressing, and modulating, and variants thereof, are sometimes used interchangeably herein. In general, however, the delivery of an exogenous signal itself refers to "stimulation" of an organ or a neural structure, while the effects of that signal, if any, on the electrical activity of the neural structure are properly referred to as suppression or modulation.

Depending upon myriad factors such as the history (recent and distant) of the nervous system, stimulation parameters and time of day, to name a few, the effects of stimulation upon the neural tissue may be excitatory or inhibitory, facilitatory or disfacilitatory and may suppress, enhance, or leave unaltered neuronal activity. For example, the suppressing effect of a stimulation signal on neural tissue would manifest as the blockage of abnormal activity (e.g., epileptic seizures) see Osorio et al., *Ann Neurol* 2005; Osorio & Frei *IJNS* 2009) The mechanisms thorough which this suppressing effect takes place are described in the foregoing articles. Suppression of abnormal neural activity is generally a threshold or suprathreshold process and the temporal scale over which it occurs is usually in the order of tens or hundreds of milliseconds. Modulation of abnormal or undesirable neural activity is typically a "sub-threshold" process in the spatiotemporal domain that may summate and result under certain conditions, in threshold or suprathreshold neural events. The temporal scale of modulation is usually longer than that of suppression, encompassing seconds to hours, even months. In addition to inhibition or dysfacilitation, modification of neural activity (wave annihilation) may be exerted through collision with identical, similar or dissimilar waves, a concept borrowed from wave mechanics, or through phase resetting (Winfree).

In some cases, electrotherapy may be provided by implanting an electrical device, i.e., an implantable medical device (IMD), inside a patient's body for stimulation of a nervous tissue, such as a cranial nerve. Generally, electrotherapy signals that suppress or modulate neural activity are delivered by the IMD via one or more leads. When applicable, the leads generally terminate at their distal ends in one or more electrodes, and the electrodes, in turn, are coupled to a target tissue in the patient's body. For example, a number of electrodes may be attached to various points of a nerve or other tissue inside a human body for delivery of a neurostimulation signal.

While contingent also referred to as "closed-loop," "active," or "feedback" stimulation (i.e., electrotherapy applied in response to sensed information, such as heart rate)) stimulation schemes have been proposed, non-contingent, programmed periodic stimulation is the prevailing modality. For example, vagus nerve stimulation for the treatment of epilepsy usually involves a series of grouped electrical pulses defined by an "on-time" (such as 30 sec) and an "off-time" (such as 5 min). This type of stimulation is also referred to as "open-loop," "passive," or "non-feedback" stimulation. Each sequence of pulses during an on-time may be referred to as a "pulse burst." The burst is followed by the off-time period in which no signals are applied to the nerve. During the on-time, electrical pulses of a defined electrical current (e.g., 0.5-3.5 milliamps) and pulse width (e.g., 0.25-1.0 milliseconds) are delivered at a defined frequency (e.g., 20-30 Hz) for a certain duration (e.g., 10-60 seconds). The on-time and off-time parameters together define a duty cycle, which is the ratio of the on-time to the sum of the on-time and off-time, and which describes the fraction of time that the electrical signal is applied to the nerve.

In VNS, the on-time and off-time may be programmed to define an intermittent pattern in which a repeating series of electrical pulse bursts are generated and applied to a cranial nerve such as the vagus nerve. The off-time is provided to minimize adverse effects and conserve power. If the off-time is set at zero, the electrical signal in conventional VNS may provide continuous stimulation to the vagus nerve. Alternatively, the off time may be as long as one day or more, in which case the pulse bursts are provided only once per day or

at even longer intervals. Typically, however, the ratio of “off-time” to “on-time” may range from about 0.5 to about 10.

In addition to the on-time and off-time, the other parameters defining the electrical signal in VNS, may be programmed over a range of values. The pulse width for the pulses in a pulse burst of conventional VNS may be set to a value not greater than about 1 msec, such as about 250-500 μ sec, and the number of pulses in a pulse burst is typically set by programming a frequency in a range of about 20-300 Hz (i.e., 20 pulses per second to 300 pulses per second). A non-uniform frequency may also be used. Frequency may be altered during a pulse burst by either a frequency sweep from a low frequency to a high frequency, or vice versa. Alternatively, the timing between adjacent individual signals within a burst may be randomly changed such that two adjacent signals may be generated at any frequency within a range of frequencies.

Although neurostimulation has proven effective in the treatment of a number of medical conditions, it would be desirable to further enhance and optimize neurostimulation-based therapy for this purpose. For example, it may be desirable to detect an occurring or impending seizure. Such detection may be useful in triggering a therapy, monitoring the course of a patient’s disease, or the progress of his or her treatment thereof. Alternatively or in addition, such detection may be useful in warning the patient of an impending seizure or alerting the patient, a physician, a caregiver, or a suitably programmed computer in order for that person or computer program to take action intended to reduce the likelihood, duration, or severity of the seizure or impending seizure, or to facilitate further medical treatment or intervention for the patient. In particular, detection of an occurring or impending seizure enables the use of contingent neurostimulation. The state of the art does not provide an efficient and effective means for performing such detection and/or warning. Conventional VNS stimulation as described above does not detect occurring or impending seizures.

Closed-loop neurostimulation therapies for treating epilepsy have been proposed in which stimulation is triggered based upon factors including EEG activity (see, e.g., U.S. Pat. No. 5,995,868 and U.S. Pat. No. 7,280,867) as well as cardiac-based activity (see, e.g., U.S. Pat. No. 6,961,618 and U.S. Pat. No. 5,928,272). EEC-based approaches involve determination of one or more parameters from brain electrical activity that indicate a seizure. Such approaches have met with limited success, but have a number of drawbacks, including highly invasive and technically demanding surgery for implanted systems, and the poor patient compliance for external systems (which require the patient to wear electrodes on the scalp for extended periods).

Cardiac-based systems could remedy some of the difficulties of EEC-based systems, but to date no such systems have been commercialized. Cardiac-based detection takes advantage of the fact that certain brain structures (central autonomic system) exert cardiac control and depending on the structure, heart rate may be increased (tachycardia) or decreased (bradycardia). It has been established that seizures in humans originating from, or spreading to central autonomic structures induce changes in heart rate, among other cardiac indices. It must be stated that seizure-induced tachycardia is not the result of increased motor activity or of changes in blood gases, but a neurogenic phenomenon. In the present invention, a highly robust and reliable system is provided for detecting epileptic seizures based upon cardiac data. Systems of the present invention are suitable for commercial, long-term implants and provide reliable and accurate indications of seizure events for a wide variety of epilepsy patients.

SUMMARY OF THE INVENTION

In one embodiment, the present invention provides a method for detecting epileptic seizures based upon a time of beat sequence of the patient’s heart. The method comprises:

obtaining a time series of fiducial time markers for candidate heart beats; and

detecting an epileptic seizure by at least one of

(1) forming a second window for each valid beat suitable for seizure detection, the second window comprising a first valid beat suitable for seizure detection and at least one prior valid beat suitable for seizure detection;

determining a foreground heart rate parameter comprising a statistical measure of central tendency of heart rate in the second window;

forming a third window for each valid beat suitable for seizure detection, the third window comprising the first valid beat suitable for seizure detection from the second window and at least two prior valid beats suitable for seizure detection;

determining a background heart rate parameter comprising a statistical measure of central tendency of heart rate in the third window;

determining a relative heart rate comprising at least one of the ratio of the foreground and the background heart rate parameters and the ratio of the background and the foreground heart rate parameters; and

comparing the relative heart rate to a first seizure threshold value associated with an epileptic seizure event;

(2) a) determining at least one short-term heart rate comprising at least one of

i) a first instantaneous heart rate from the first valid beat and the immediately preceding valid beat, or

ii) a fourth window heart rate comprising a statistical measure of central tendency of heart rate using the valid beats in the fourth window; and

b) comparing the at least one short-term heart rate to a short-term heart rate threshold associated with an epileptic seizure event;

or

(3) a) determining a fifth window heart rate comprising a statistical measure of central tendency of heart rate using the valid beats in the fifth window;

b) determining a slope of the least squares linear fit of the valid beats in the fifth window;

c) comparing the fifth window heart rate to at least one of an upper fifth window heart rate threshold and a lower fifth window heart rate threshold associated with an epileptic seizure event; and

d) comparing the slope of the least squares linear fit of the valid beats in said fifth window to at least one of a lower slope threshold and an upper slope threshold associated with an epileptic seizure event;

further comprising, if at least one of the relative heart rate exceeds the first seizure threshold value, the short-term heart rate exceeds the short-term heart rate seizure threshold value, the fifth window heart rate is below the upper fifth window heart rate threshold, the fifth window heart rate exceeds the lower fifth window heart rate threshold, the slope of the least squares linear fit is below the upper slope threshold, or the slope of the least squares linear fit exceeds the lower slope threshold, indicating the occurrence of a seizure event.

In one embodiment, the method further comprises identifying valid beats from the candidate heart beats by subjecting a plurality of candidate beats to at least one beat validity test, the at least one beat validity test comprising at least one beat

interval test applied to a candidate beat interval derived from a candidate heart beat and at least one preceding heart beat; and

accepting as valid beats the candidate beats that pass the at least one beat validity test.

In one embodiment, the method further comprises identifying valid beats suitable for seizure detection by forming a first window for each valid beat, the first window comprising a first valid beat and at least one preceding heart beat;

testing the first window with at least one window test; and accepting as suitable for seizure detection the first valid beat from each first window that passes the at least one window test.

In yet another aspect of the present invention, a computer readable program storage device is provided that is encoded with instructions that, when executed by a computer, perform a method described above.

In one embodiment, a medical device is provided comprising a processor, a cardiac data collector adapted to collect cardiac data, and a computer readable program storage device as described above.

BRIEF DESCRIPTION OF THE DRAWINGS

The invention may be understood by reference to the following description taken in conjunction with the accompanying drawings, in which like reference numerals identify like elements, and in which:

FIG. 1A provides a stylized diagram of a medical device implanted into a patient's body for providing a therapeutic electrical signal to a neural structure of the patient's body, in accordance with one illustrative embodiment of the present invention;

FIG. 1B provides a stylized diagram of a medical device implanted into a patient's body for providing a therapeutic electrical signal to a neural structure of the patient's body, in accordance with one illustrative embodiment of the present invention;

FIG. 1C provides a stylized diagram of a medical device implanted into a patient's body for providing a therapeutic electrical signal to a neural structure of the patient's body, in accordance with one illustrative embodiment of the present invention;

FIG. 2A is a block diagram of a medical device system that includes a medical device and an external unit, in accordance with one illustrative embodiment of the present invention;

FIG. 2B is a block diagram of a medical device system that includes a medical device and an external unit, in accordance with one illustrative embodiment of the present invention;

FIG. 3A is a stylized block diagram of a cardiac data collection module of a medical device, in accordance with one illustrative embodiment of the present invention;

FIG. 3B is a stylized block diagram of an heart beat interval determination module of a medical device, in accordance with one illustrative embodiment of the present invention;

FIG. 3C is a stylized block diagram of a heart beat validation module of a medical device, in accordance with one illustrative embodiment of the present invention;

FIG. 3D is a stylized block diagram of a window analysis module of a medical device, in accordance with one illustrative embodiment of the present invention;

FIG. 3E is a stylized block diagram of a foreground/background module of a medical device, in accordance with one illustrative embodiment of the present invention;

FIG. 3F is a stylized block diagram of a seizure detection module of a medical device, in accordance with one illustrative embodiment of the present invention;

FIG. 4 is a block diagram of a monitoring and treatment unit, in accordance with one illustrative embodiment of the present invention;

FIG. 5 illustrates a flowchart depiction of a method for detecting a seizure event and taking one or more responsive actions, in accordance with an illustrative embodiment of the present invention; and

FIG. 6 illustrates a flowchart depiction of a treatment step of the method depicted in FIG. 5, in accordance with an illustrative embodiment of the present invention.

While the invention is susceptible to various modifications and alternative forms, specific embodiments thereof have been shown by way of example in the drawings and are herein described in detail. It should be understood, however, that the description herein of specific embodiments is not intended to limit the invention to the particular forms disclosed, but on the contrary, the intention is to cover all modifications, equivalents, and alternatives falling within the spirit and scope of the invention as defined by the appended claims.

DETAILED DESCRIPTION OF SPECIFIC EMBODIMENTS

Illustrative embodiments of the invention are described herein. In the interest of clarity, not all features of an actual implementation are described in this specification. In the development of any such actual embodiment, numerous implementation-specific decisions must be made to achieve the design-specific goals, which will vary from one implementation to another. It will be appreciated that such a development effort, while possibly complex and time-consuming, would nevertheless be a routine undertaking for persons of ordinary skill in the art having the benefit of this disclosure.

This document does not intend to distinguish between components that differ in name but not function. In the following discussion and in the claims, the terms "including" and "includes" are used in an open-ended fashion, and thus should be interpreted to mean "including, but not limited to." Also, the term "couple" or "couples" is intended to mean either a direct or an indirect electrical connection. "Direct contact," "direct attachment," or providing a "direct coupling" indicates that a surface of a first element contacts the surface of a second element with no substantial attenuating medium there between. The presence of small quantities of substances, such as bodily fluids, that do not substantially attenuate electrical connections does not vitiate direct contact. The word "or" is used in the inclusive sense (i.e., "and/or") unless a specific use to the contrary is explicitly stated.

The term "electrode" or "electrodes" described herein may refer to one or more stimulation ion electrodes (i.e., electrodes for delivering a therapeutic signal generated by an IMD to a tissue), sensing electrodes for sensing a physiological indication of a state of a patient's body, and/or electrodes that are capable of delivering a therapeutic signal, as well as performing a sensing function.

In one embodiment, the present invention provides a method of detecting a seizure event based upon heart activity, such as a time of beat sequence of the patient's heart beat. The seizure event can be, for example, at least one of an unstable brain state, a brain state indicative of an elevated probability of a seizure, a brain state indicative of an impending seizure, or a seizure, among others.

In one embodiment of the present invention, the method comprises generating a time series of fiducial time markers for candidate heart beats; identifying valid beats from the candidate heart beats; identifying valid beats suitable for seizure detection; and detecting an epileptic seizure event

based upon the valid beats suitable for seizure detection. In some embodiments, all valid beats are deemed suitable for seizure detection, while in other embodiments, additional tests, such as, for example, one or more window tests are performed on valid beats to identify those suitable for seizure detection.

In one embodiment, the step of identifying valid beats from candidate heart beats may be performed in a First Module that performs quality analysis on the candidate heart beats to distinguish physiologically plausible from physiologically implausible candidate heart beats. In another embodiment, the step of identifying valid beats suitable for seizure detection may be performed in a Second Module that performs dispersion analysis on a window formed to test each of the valid beats to ensure that the valid beats are acceptable for use in detecting epileptic seizure events. In one embodiment, detecting an epileptic seizure event may be performed in a Third Module that detects an epileptic seizure event based upon a ratio of a measure of central tendency of valid beats in a first, relatively short window and a measure of central tendency of valid beats in a second window longer than the first window. In other embodiments, a Third Module may alternatively or in addition detect an epileptic seizure event based on other parameters calculated from valid beats.

First Module

Valid beats are identified in the method by subjecting a plurality of candidate beats to at least one beat validity test in which at least one candidate beat interval is derived from a candidate heart beat and at least one preceding heart beat, and subjected to a test to determine its validity. In one embodiment the validity test comprises a test to determine if the candidate beat interval is physiologically plausible. Regardless of which test is used, candidate beats that pass the at least one beat validity test are accepted as valid.

In one embodiment of the invention, all candidate heart beats may be considered as valid beats. For extremely reliable sensing elements, or for embodiments with low noise (e.g., intracardiac electrodes such as those used in pacemakers), candidate heart beats may be so reliable that beat validity testing may be omitted.

Identifying valid beats from candidate heart beats may involve declaring invalid candidate heart beats if the candidate beat interval is not physiologically valid or plausible. In one embodiment, being physiologically invalid may mean that a candidate beat, in conjunction with a prior heart beat, indicates a heart rate (FIR) that is outside of physiologically plausible upper and lower HR limits. In a particular embodiment, candidate heart beats are discarded if the candidate beat and a prior beat correspond to a heart rate that is below 35 beats per minute (BPM) or above 180 BPM. In other embodiments, candidate beats may be discarded for other reasons including: being so long as to suggest sinus arrest (e.g., a missed heart beat), being so short as to appear to be due to noise, having a slope (in conjunction with a prior heart beat) that is too large to be physiologically plausible (in other words, the candidate heart beat would mean that the heart rate has experienced a sudden acceleration or deceleration that is physiologically implausible), or two or more of the foregoing.

Second Module

From the valid beats identified by the heart interval test, valid beats suitable for seizure detection are identified by further testing. The testing involves forming a first window (which may be a time window or a number-of-beats window) for each valid beat that includes both a first valid beat and at least one preceding heart beat. In one embodiment, the window is a backward-looking time window bounded at one end by the first valid beat. The first window is tested with at least

one window test, and if the first window passes the at least one window test, the first valid beat from the window is accepted as suitable for seizure detection.

In some embodiments of the invention, it may be unnecessary to distinguish between valid beats and valid beats suitable for seizure detection. In such embodiments, all valid beats may be considered as suitable for seizure detection. Where this is the case, formation of a first window, and performing dispersion and/or other tests on the first window, may be omitted.

Identifying valid beats that are suitable for seizure detection may involve forming a time-based or number-of-beats first window from a first valid beat and at least one preceding heart beat, testing the first window, and accepting the first valid beat as suitable for seizure detection if the first window passes the test. The first window may be, as a nonlimiting example, a 5 second window bounded on the present side by the first valid beat (i.e., the window extends 5 seconds back in time from the first valid beat). Such a window may comprise, for example, from 2-15 beats in the window depending upon the patient's heart rate. Testing the first window may involve applying one or more dispersion tests to the beats in the window. Such tests allow the first valid beat to be reviewed in the context of neighboring valid beats, and thus recent cardiac activity, to determine its suitability for use in seizure detection calculations. In one embodiment, the dispersion test may involve a short-term heart rate variability (HRV) measure of the beats in the window. In a particular embodiment, the HRV may be calculated as the mean squared error of a least-squares linear fit of the heart beats in the first window. Other dispersion tests, such as other HRV tests may also—or alternatively—be used. Additional dispersion tests such as upper and/or lower limits for the number of beats in the window may also be used in some embodiments.

Either or both of First Module and/or the Second Module may be used to define valid beats, such as valid beats suitable for seizure detection. The selection of either or both of the First and/or Second Modules may be performed according to any decision criterion or criteria. In one embodiment, the decision criteria is responsive to at least one parameter related to the patient's seizure history. For example, it may be appropriate to use both Modules if the use of only one Module is associated with an increase in the number of false negative seizure identifications and/or an increase in the severity of the patient's seizures. For another example, it may be appropriate to use only one Module if the use of both Modules is associated with an increase in the number of false positive seizure identifications. Other decision criteria for using one or both of the First Module and/or the Second Module can be determined as a routine matter by the person of ordinary skill in the art having the benefit of the present disclosure.

In another embodiment, valid heart beats are subjected to one or more homogeneity tests to ensure that the candidate heart beat data is composed exclusively of cardiac data, and to eliminate data that is not of cardiac origin. In one embodiment, the data in the first window may be tested to identify data with excessive variation from a central tendency measure such as a median, mean, or an adaptive uniform distribution-based Percentile Tracking Filter, discussed more fully hereinafter. In a specific embodiment, the homogeneity test comprises (i) determining the median of a plurality of data points (e.g., interpulse intervals) in the window; (ii) subtracting the median from each data point; (iii) determining the number of data points above and below the median (i.e., persistence of positive or negative values); (iv) comparing the persistence of positive and negative values to at least one homogeneity threshold; and (v) rejecting data points exceeding the homo-

geneity threshold. Homogeneity thresholds may be identified by a mathematical function, or by significance tables stored in a memory.

Third Module

Epileptic seizure events are detected using valid beats, and in one embodiment valid beats accepted as suitable for seizure detection. The detection involves forming a second and a third window and determining a relative heart rate (RHR) based upon a ratio of statistical measures determined for each of the windows. The RHR is then compared to a threshold value for the RHR, and whether the RHR exceeds the RHR threshold is determined. An indication of the occurrence of a seizure event is provided based upon the comparison.

A second window (which may be a time window or a number-of-beats window) is formed for each of the valid beats suitable for seizure detection. In one embodiment, the second window is a backward-looking time window bounded at one end by a first valid beat suitable for seizure detection and including at least one prior valid beat suitable for seizure detection. In one embodiment, the second window may be the same size as the first time window, except that valid beats that have been identified as suitable for seizure detection are used in it instead of simply valid beats. In a particular embodiment, the window is a three second, backward-looking window. A foreground heart rate (FHR) parameter for the second window is determined using a statistical measure of central tendency of heart rate for the beats in the second window.

The second window may comprise a time window or a number-of-beats window. The second window, or any other window referred to herein, may be a simple window (of finite length and with equal weighting for each time unit or beat unit in the window). In one embodiment, any window referred to herein may also be of infinite length, utilizing any non-negative function with unit area under the curve as a time-weight. In one embodiment, any window referred to herein may be an exponential moving window with time constant T and corresponding timescale 1/T, which preferably weights more recent information over "exponentially forgotten" prior information. The time constant determines how rapidly information is forgotten by controlling the decay rate of the exponential time weight.

Exponential moving windows can be easily used and readily implemented in analog. More detail on the types of windows usable according to the present application can be found in U.S. Pat. Nos. 6,768,969; 6,904,390; and 7,188,053, the disclosures of which are hereby incorporated herein by reference.

In one embodiment, the second window is a backward-looking, relatively short time window bounded at the present end by a first valid beat, and including at least one prior valid beat. In a particular embodiment, the second window is a three second window bounded by the first valid beat on the present side. In another embodiment, the second window is a three-beat window bounded by the first valid beat on the present side. In another embodiment, the second window is an exponentially forgetting time window weighted to have a decay rate so that the window emphasizes information from a particular time duration (the timescale) or a particular number of beats.

A foreground heart rate parameter for the second window is determined using a statistical measure of central tendency of heart rate or interbeat intervals (which are inversely related to heart rate by the formula: interbeat interval (in seconds) = heart rate (in BPM)/60) for the beats in the second window. While a number of measures (e.g., mean, median) may be used and remain within the scope of the invention, in one embodiment, a target percentile value in a uniform distribu-

tion Percentile Tracking Filter applied to the valid beats in the second window is used as the measure of central tendency. In a particular embodiment, the thirtieth (30th) percentile of a uniform distribution Percentile Tracking Filter is used as the measure of central tendency. By using a percentile smaller than the 50th percentile, the second window will more quickly track decreases in beat interval values, which corresponds to increases in heart rate. Thus, in certain embodiments, this choice of a Percentile Tracking Filter may more quickly identify HR increases than other higher percentile choices (such as the median, the 50th percentile) and more quickly and robustly than other measures of central tendency, such as the mean, regardless whether the mean is computed with or without time-weighting of information.

In one particular embodiment, the Percentile Tracking Filter is an exponentially forgetting Percentile Tracking Filter. Use of exponential forgetting or other time-weighting methods in the measure of central tendency may also provide faster identification of HR changes. Other types of forgetting, non-forgetting, weighted, and unweighted Percentile Tracking Filters (or other measures of central tendency) may also be used. Examples of such filters include, by way of nonlimiting example, order statistic filters and weighted moving average filters. In one embodiment, upper and lower limits or bounds for the uniform distribution used in the foreground Percentile Tracking Filter may be provided. In some embodiments these limits may be adaptively determined based upon the maximum and minimum value of the beat intervals in the second window (i.e., an "adaptive uniform distribution-based Percentile Tracking Filter"), or in another window that may be larger or smaller than the second window.

In another embodiment, the statistical measure of central tendency used for determining the foreground heart rate parameter is a Trimean. The Trimean was developed by Tukey and is defined by the formula: $TM = \frac{1}{4}(Q1 + 2M + Q3)$ where M is the median and Q1 and Q3 are the first and third quartiles. More generally, trimean values using different percentiles than the first and third quartiles may be used through the formula $TM = \frac{1}{4}(H1 + 2M + H2)$, where M is again the median and H1 and H2 are lower and upper values known as the hinges. In one example, the lower hinge H1 may comprise the 20th percentile and the upper hinge H2 may comprise the 80th percentile.

The third window is next formed for each of the valid beats suitable for seizure detection. The third window is formed using the first valid beat suitable for seizure detection from the second window, and at least two prior valid beats. The third window may, like the second window, comprise a time or number-of-beats window. In one embodiment, the third window is a backward-looking time window that is longer than the second window, bounded at the present end by the first valid beat from the second window, and includes at least two prior valid beats. In a particular embodiment, the third window is a 500 second window bounded on the present side by the first valid beat from the second window, which in a specific embodiment may be implemented as an exponentially-weighted window with a 500 second timescale, such as may be used in applying a PTF to the time series. In another embodiment, the third window is a 500 beat window bounded on the present side by the first valid beat from the second window. In general, the third window has a larger number of beats than the second window.

A background heart rate (BHR) parameter is determined using a statistical measure of central tendency of heart rate for the beats in the third window. As with the FHR parameter previously discussed, a number of measures of central tendency (e.g., mean, median) may be used and remain within

the scope of the invention. In one embodiment, in one embodiment, a target percentile value in a uniform distribution Percentile Tracking Filter applied to the valid beats in the second window is used as the measure of central tendency. In a particular embodiment, the fiftieth (50th) percentile of an adaptive, uniform distribution-based Percentile Tracking Filter is used as the measure of central tendency. In one particular embodiment, the Percentile Tracking Filter is an exponentially forgetting Percentile Tracking Filter. Other types of forgetting, non-forgetting, weighted and unweighted Percentile Tracking Filters or other measures of central tendency may be used. Examples of such filters include, by way of nonlimiting example, order statistic filters and weighted moving average filters. Upper and lower limits or bounds for the uniform distribution used in the background Percentile Tracking Filter may be provided. In some embodiments these limits may be adaptively determined based upon the maximum and minimum value of the beat intervals in the second window, or in another window that may be larger or smaller than the second window.

A relative heart rate (RHR) is determined by the ratio of either the FHR and BHR parameters, or the BHR and FHR parameters. The RHR is then compared to a seizure threshold value associated with an epileptic seizure event and it is determined whether the RHR exceeds the seizure threshold. The method further involves indicating the occurrence of a seizure event based upon whether the RHR exceeds the threshold. In some embodiments, a duration constraint may also be imposed and the seizure event is indicated only if the RHR exceeds the threshold for a prescribed period of time (the duration constraint).

In an exemplary embodiment of the present invention, the method further comprises taking a responsive action based upon the identifying the seizure event. The responsive action may include providing a warning and/or notifying the patient or a caregiver, logging the time of a seizure, computing and storing one or more seizure severity indices, or treating the seizure event.

In one embodiment of the present invention, treating the seizure event comprises providing a neurostimulation therapy. The neurostimulation therapy may involve applying an electrical, mechanical, magnetic, electro-magnetic, photonic, acoustic, and/or chemical signal to a neural structure of the body. The neural structure may be a brain, a spinal cord, a peripheral nerve, a cranial nerve, or another neural structure. In a particular embodiment, the responsive action comprises treating the seizure by providing a cranial nerve stimulation therapy. Cranial nerve stimulation has been proposed to treat a number of medical conditions pertaining to or mediated by one or more structures of the nervous system, including epilepsy, movement disorders, depression, anxiety disorders and other neuropsychiatric disorders, dementia, traumatic brain injury, coma, migraine headache, obesity, eating disorders, sleep disorders, cardiac disorders (such as congestive heart failure and atrial fibrillation), hypertension, endocrine disorders (such as diabetes and hypoglycemia), and pain (including neuropathic pain and fibromyalgia), among others. See, e.g., U.S. Pat. Nos. 4,867,164; 5,299,569; 5,269,303; 5,571,150; 5,215,086; 5,188,104; 5,263,480; 6,587,719; 6,609,025; 5,335,657; 6,622,041; 5,916,239; 5,707,400; 5,231,988; and 5,330,515. Despite the numerous disorders for which cranial nerve stimulation has been proposed or suggested as a treatment option, the fact that detailed neural pathways and/or mechanisms of action of stimulation for many (if not all) cranial nerves, and/or the response of such nerves to exogenous stimulation, remain relatively poorly understood,

which makes predictions of efficacy and identification of candidates for a therapy for any given disorder difficult or impossible.

In some embodiments, electrical neurostimulation may be provided by implanting an electrical device underneath the skin of a patient and delivering an electrical signal to a nerve such as a cranial nerve. In another alternative embodiment, the signal may be generated by an external pulse generator outside the patient's body, coupled by an RE or wireless link to an implanted electrode.

The cardiac data comprising a fiducial time marker for each of a plurality of heart beats can be gathered by any of a number of techniques. For example, the cardiac data may be gathered by an electrocardiogram (ECG) device. For another example, the cardiac data may be gathered by a cranial nerve stimulator device. In one embodiment, the cardiac data may be related to the R-waves of the beat sequence, such as a time series of R-waves or a series of R-R intervals. Those skilled in the art having benefit of the present disclosure would appreciate that other time series of cardiac waves and or their fiducial points (e.g., P waves, T waves, etc.) may be used and still remain within the spirit and scope of the present invention.

Data relating to R-waves may be gathered by an ECG device or, in one embodiment, by a vagus nerve stimulator, such as described in U.S. Pat. No. 5,928,272, which is hereby incorporated by reference herein.

Receiving the cardiac data may comprise sensing a time of beat sequence of a patient's heart and generating a time series data stream from said time of the beat sequence. In a further embodiment, receiving the cardiac data of the patient's heart may comprise sensing and time-stamping a plurality of R waves, and generating the time series data stream may comprise determining a series of R-R intervals from the time stamps of the sensed R waves.

In one embodiment, the fiducial time marker is an R wave peak or threshold crossing. The amplitude or height of one or more representative R waves may be used to set a threshold that, when reached or crossed, is registered as a fiducial time marker of a heart beat.

An interbeat interval can be calculated from a pair of said fiducial time markers by any appropriate technique. In one embodiment, the interbeat interval can be calculated by subtracting the time stamp of a first fiducial time marker from the time stamp of a second fiducial time marker following the first. In most existing HR sensing devices (for example, exercise HR monitors), the sensor element involves sensing R-wave peaks, and interbeat intervals comprise R-R intervals constructed from the time stamps for the R-wave peaks. In the present invention, R-R intervals may be used, although any consistently used fiducial marker may be employed, such as P-P intervals, T-T intervals, etc.

Under certain recording conditions, cardiac data may be relatively noisy, and thus, spurious fiducial time markers may be collected and, as a result, spurious interbeat intervals may be generated. Including spurious heart beats and/or interbeat intervals in later steps of the method may lead to erroneous calculations of heart rate, which may in turn result in misidentifications of seizures (false positive detections) and/or failures to identify seizures (false negative detections). As a result, it is desirable to perform one or more data quality checks or routines to eliminate spurious heart beats or interbeat intervals from consideration by later steps of the method. Even where beats are not spurious, not all valid beats may yield acceptable results in cardiac-based seizure detection methods. Accordingly, in some embodiments, valid beats

may be subjected to further testing (e.g., dispersion testing in a test window) to determine whether they are suitable for use in detecting seizures.

In one embodiment, a candidate heart beat is subjected to one or more quality tests to determine whether or not it is a valid beat suitable for further analysis, or is an invalid beat and should be ignored. While any number of beat quality tests may be employed, the effects of additional processing time and energy usage upon the power supply in implantable devices may result in a more limited number of tests. In one embodiment, a first beat quality test may be performed by determining if the candidate heart beat interbeat interval (calculated as the difference between the time stamp for the candidate heart beat and an immediately preceding heart beat) is not physiologically plausible. A second beat quality test may comprise determining if the interbeat interval is so long as to appear to be due to a sinus arrest. A third beat quality test may involve determining if the interbeat interval is so short as to appear to be due to noise. A fourth beat quality test may involve calculating the absolute value of the slope of the interbeat interval for the candidate beat and the interbeat interval for the immediately preceding valid beat defined as the difference between the candidate beat interbeat interval and the interbeat interval defined by the immediately preceding valid beat and the 2nd immediately preceding valid beat, divided by the time difference between the candidate beat and the immediately preceding valid beat), and determining whether that slope is too large to be physiologically plausible. In one embodiment, the slope is declared implausible (and the candidate beat declared invalid) if the absolute value of the slope is less than or equal to 0.3. Other thresholds, such as an adaptable threshold, may be used instead of the fixed threshold of 0.3. It be appreciated that additional or other beat quality tests may be applied, and that only some of the foregoing quality tests may be used. Additionally, it should be noted that HR and R-R intervals can be used interchangeably, since they are related by the simple formula $RRi=60/HR$, where the R-R interval (RRi) is in seconds and HR is in BPM.

In one embodiment of the invention, the candidate heart beat is declared invalid (in other words, in some embodiments, not used for further analysis) if the interbeat interval between the candidate beat and the immediately preceding beat is so short that the instantaneous heart rate (IHR), defined as $60/\text{interbeat interval}$, is greater than about 180 beats per minute (BPM), 200 BPM, or 220 BPM, on the grounds that the human heart cannot have so high an IHR even in intense exertion. In one embodiment, the maximum possible heart rate is calculated as $(220-\text{patient's age in years}) \text{ BPM}$, from which an interbeat interval corresponding thereto can be calculated and used as the minimum interbeat interval for future calculations for that patient. In one embodiment, the maximum heart rate is defined as 180 BPM. In other embodiments, the patient's actual maximum HR (HR_{max}) is determined empirically by testing and the minimum interbeat interval can be either stored directly from the fiducial time marker stream or determined by the formula $RR_{min}=60/(HR_{max})$.

Conversely, if the interbeat interval associated with a candidate heart beat is so long that the IHR is less than an appropriate lower limit, then the candidate heart beat can be declared invalid, on the grounds the human heart cannot have so low an IHR, even for the heart of a person with extreme cardiovascular fitness at rest. Although 35 BPM is an appropriate lower limit on IHR for the vast majority of epilepsy patients, another lower limit can be established by the physician in consultation with the patient, or determined empirically from recording the patient's actual heart rate from

which an interbeat interval can be calculated and used as the maximum interbeat interval for future calculations for that patient.

Where maximum and/or minimum HR or RRi values are determined empirically for an individual patient, appropriate values may be determined, for example, by using a long-term time window (e.g., 6 months, one month, two weeks, or other time period). The maximum rate may be an appropriate function of the actual measured heart rate in the time window. In one embodiment, this may be a target percentage in a Percentile Tracking Filter applied to the beats in the time window.

In another embodiment, if the interbeat interval is so long as to appear to be due to sinus arrest, a candidate heart beat associated with the interbeat interval can be declared invalid on the grounds the IHR cannot decelerate so rapidly from one beat to the next. In one embodiment, if the interbeat interval is inure than about 115% (or another suitable threshold) of the immediately preceding interbeat interval, then it may likely be that the interbeat interval is too long to reflect a valid beat and thus it can be concluded the candidate heart beat reflects a missed heart beat.

A measured interbeat interval is especially likely to result from one or more missed heartbeats if its duration is some integer (or near-integer) multiple of 100% times the previous valid interbeat interval (e.g., 200% for one missed beat, 300% for two missed beats, etc.). This type of mathematical analysis may also be incorporated into the beat validity testing to specifically identify likely missed heartbeats (e.g. any measured that is within $200\% \pm 10\%$ (or other variation threshold) may be identified and logged as being a likely missed beat).

In another embodiment, if the interbeat interval is so short as to appear to be due to noise, a candidate heart beat associated with the interbeat interval can be declared invalid on the grounds the IHR cannot increase so rapidly from one beat to the next. In one embodiment, if the interbeat interval is less than about 65% (or another suitable threshold) of the immediately preceding interbeat interval, then it may be the case that the interbeat interval is too short to reflect a valid beat and thus is can be concluded the candidate heart beat is due to noise or is otherwise not valid.

In another embodiment, if the candidate heart beat yields an interbeat interval having an absolute value of the slope that is too large to be physiologically valid, it can be declared invalid on the grounds the IHR cannot accelerate or decelerate so rapidly.

In one embodiment, identifying valid beats comprises determining if each of the plurality of candidate beats falls within a plausibly physiological interval.

In one embodiment, the beat validity test comprises comparing the candidate beat interval to at least one of an upper and a lower beat interval seizure duration threshold.

In one embodiment, the upper and lower beat interval seizure duration thresholds are derived from at least one of the patient's own heart beat data, and heart beat data from a sample patient population based upon one or more of brain state, sex, age, weight, level of activity, time of day, type of epilepsy, use of drugs or substances (such as food) that affect cardiac function, ambient temperature, body temperature, respiration, and blood pressure, among others.

In one embodiment, the at least one beat interval test comprises:

a) determining that the candidate beat interval corresponds to a heart rate within a range bound by a minimum heart rate and a maximum heart rate;

b) determining that the candidate beat interval is within an acceptable percentage of at least one of the immediately

preceding valid beat interval or a recent baseline heart rate in a predetermined time window;

c) determining that the absolute slope of the current candidate beat interval does not correspond to a rate of acceleration or deceleration of heart rate that is physiologically improbable.

In a further embodiment, in the at least one beat interval test, the minimum heart rate is about 35 beats per minute and the maximum heart rate is about 180 beats per minute; the candidate beat interval is not more than about 115 percent of the greater of the immediately preceding valid beat interval or a recent baseline heart rate in a 30 second time window, and is at least about 65 percent of the immediately preceding valid beat interval; and the absolute slope of the current candidate beat interval is ≤ 0.3 . Other thresholds may be used, and thresholds may be altered over time according to the cardiac function of the patient.

Although any one of the grounds set forth above may be sufficient to declare invalid a spurious candidate interbeat interval, and it is most computationally efficient to declare invalid a spurious candidate interbeat interval on the basis of a single ground, two or more of these grounds may be used to declare invalid a spurious candidate interbeat interval to ensure extremely high levels of data reliability for use in a seizure detection algorithm. Noise and artifacts are often coincident with seizures, so the aspects of this invention that enable robust identification of relevant cardiac rate changes in the presence of noise and/or artifacts provide improved methods for ensuring accurate and rapid identification of seizures.

The foregoing beat quality tests may in addition be used to determine an index of beat quality, which may be used to track data quality to identify periods of time involving relatively good or relatively poor data quality. In one embodiment, a counter is formed for each candidate heart beat, and the counter is incremented for each test that the candidate heart beat passes. A time stream of data quality points, with the counter value serving as a "beat quality index" for each beat, can then be stored and/or analyzed to, for example, obtain a mean or other statistical measure for a plurality of beats, which may be used to indicate periods of time in which data quality is high, low, or otherwise within or outside of acceptable limits. In other embodiments, a warning or notification may be provided to a user interface to indicate periods when data quality may need to be addressed, such as when a sensor element or lead has moved or broken. In such cases, seizure detection, logging, or therapy delivery may be automatically disabled on a temporary basis until the data quality returns to a certain level. In some cases, seizure detection, logging, or therapy delivery may be automatically disabled until the data quality returns to a certain level.

In a particular embodiment, the beat quality index is initialized to a first value (in one example -1 is used as the initial value) prior to receiving any information about a candidate beat. Upon the detection of a candidate beat, the resulting candidate interbeat interval is analyzed using a sequential set of beat interval tests and the beat quality index is increased by 1 for each test passed. Consequently, if there are a total of 5 tests and each are passed, the beat quality index achieves a maximum score of 4, if the first 3 tests are passed and the fourth is failed, the candidate beat is rejected and given a beat quality score of 2. Then by analyzing the sequence of beat quality indices, one may obtain a wealth of useful information, such as (i) the average beat quality index over a moving window of time, (ii) how often each applied test is passed and failed (providing information about the importance of such test relative to the others, which may be used to optimize computational efficiency of the algorithm for a particular beat

detector and typical levels of noise in the sequence of beat detections), (iii) the identification of (and possible warning/logging/other action taken due to) periods of time when heart beat detection has poor accuracy, such as when a long interval of time occurs without any (or many) detected beats being considered valid (i.e., reaching beat quality index of 4), (iv) intervals of time with very good heart beat detection accuracy may be similarly identified.

The information about quality, reliability and robustness of the heart beat detection information, which results from quantifying beat quality in this manner, can also be used in adapting the cardiac-based seizure detection algorithm to improve its performance (e.g., sensitivity, specificity, speed, and information yield). For example, in periods of time that have relatively high beat detection quality index, the system may have high confidence in information regarding cardiac dynamics that is extracted. This may be used to adjust detection thresholds and better learn both physiologic and abnormal cardiac activity patterns for the subject. Other periods in which the beat detection is operating relatively poorly (as measured by the statistics of beat quality index during a moving window), may be avoided for learning such information about cardiac activity patterns. Detection decisions may also be tempered during these times, for example, by raising the detection thresholds to avoid potential detections that could be due to noise in the beat detection system.

Even though declaring invalid spurious candidate heart beats by performing the above techniques may provide reliable data in most instances, additional testing of candidate heart beats may provide greater reliability and accuracy in cardiac seizure detection algorithms (CSDAs). Because CSDAs must discriminate between heart rate changes associated with seizures and similar increases associated with non-pathologic events (e.g., exercise, state changes such as standing, sitting, or lying down, etc), the accuracy of the CSDA depends in part upon highly accurate heart beat detection. Accordingly, the present invention may involve testing candidate heart beats beyond the immediate interbeat interval. In one embodiment, the invention involves testing candidate heart beats in a time or number-of-beats window to determine if the candidate heart beat would result in excessive dispersion of heart rate within the window. A candidate heart beat forming part of a first window may be discarded if the number of beats in the window, the fit error of the beats in the window, or both fall outside of acceptable limits.

For example, if the first time window is five seconds, and the number of heart beats in that time window is greater than about 15 or less than about 3, the number of purported heart beats indicates that the most recent purported heart beat (which may be, for example, the heart beat forming the present side of the window) should be flagged as unsuitable for seizure detection.

In some embodiments, the determination that a particular valid beat is not suitable for seizure detection is only temporary and is limited to a particular window under analysis. That is, if a valid first beat (the most recent beat in the window) fails to pass a window analysis test (along with one or more prior valid beats), the valid first beat may be discarded only in the sense that a detection decision is suspended for the immediate window. The very next valid beat, however (which is now a "new first beat" in a new window under analysis) may result in a window that passes the window analysis test, and a detection decision (using the "new" first beat and the previously "discarded" valid beat) may be allowed.

For another example, a least squares fit may be performed on a candidate heart beat and one or more prior beats in a window. A measure of short-term heart rate variability

(HRVst) may be calculated as mean square error of the least-squares fit of the heart beats in the window. If the mean squared error of the least squares fit exceeds a threshold, then the purported interbeat intervals can be concluded to possess a fit error so high that the interbeat intervals contain one or more artifacts, and thus the candidate heart beat (which in some embodiments is the only new data point in the window) should be ignored. The person of ordinary skill in the art can perform and/or program a computer to perform a least squares fit as a routine matter. In one embodiment, the threshold is 0.25.

Other measures of short-term heart rate variability may also be used. For example, the absolute prediction error obtained by comparing the current interbeat interval to its predicted value, obtained using past interbeat intervals, can be used as a measure of short-term heart rate variability. The predicted value used for this process could be a constant predictor, a linear predictor, or a nonlinear predictor. A preferred predictor would take into account the distribution of interbeat intervals that have previously occurred when preceded by a sequence of interbeat intervals similar to those measured immediately preceding the moment at which the prediction is to be made. Measures correlated to the amount of curvature present in the interbeat interval sequence (or its counterpart heart rate sequence) may also be used and correspond to short time action by the body (e.g., sympathetic and parasympathetic activity) to intervene to change the interbeat interval (either by speeding up or slowing down the heart). It is the short-time quantification of changes in the interbeat interval sequence which the window analysis measures are designed to illuminate.

In one embodiment, the first window comprises one of:

- a) a time window of from 1 to 10 seconds, bounded on the most recent end by the first valid beat;
- b) a number of beats window comprising the first valid beat and a number of immediately preceding beats ranging from 1-10; or
- c) an exponentially forgetting window heavily weighted to the most recent 1 to 10 seconds, bounded on the most recent end by the first valid beat, or the most recent 2-11 beats.

In a further embodiment, the at least one window test comprises at least one of:

- a) determining whether the mean square error of a least squares linear fit of the beats in the first window is less than a predetermined heart rate variability threshold.

In another further embodiment, the first window comprises a time window and the at least one window test comprises determining that the number of valid beats in the window exceeds a lower number of beats threshold.

Valid data suitable for seizure detection, as found by the above techniques, is available for further calculations. These further calculations can include the following Submodules of the Third Module.

Submodule 3A:

One series of further calculations comprises:

forming a second window for each valid beat suitable for seizure detection, said second window comprising a first valid beat suitable for seizure detection and at least one prior valid beat suitable for seizure detection;

determining a foreground heart rate parameter comprising a statistical measure of central tendency of heart rate in said second window;

forming a third window for each valid beat suitable for seizure detection, said third window comprising said first valid beat suitable for seizure detection from said second window and at least two prior valid beats suitable for seizure detection;

determining a background heart rate parameter comprising a statistical measure of central tendency of heart rate in said third window;

determining a relative heart rate comprising at least one of the ratio of said foreground and said background heart rate parameters and the ratio of said background and said foreground heart rate parameters; and

comparing said relative heart rate to a seizure threshold value associated with an epileptic seizure event.

A second window heart rate can be calculated from a second plurality of interbeat intervals calculated from data collected in a second time window. The second time window can be of any length. In one embodiment, the second time window is a time window having a duration of from about 3 sec to about 5 sec. In another embodiment, the second window is a number-of-beats window comprising from about 3 to about 15 beats. In another embodiment, the second time window is an exponentially forgetting time window having a timescale from about 3 sec to about 5 sec or from about 3 beats to about 15 beats. In another embodiment, the timescale or exponential forgetting decay factor can be made adaptive, increasing with increasing interbeat interval and decreasing with decreasing interbeat interval, or the reverse.

The foreground heart rate (FHR or FG HR) can be calculated as a statistical measure of central tendency of HR from the beats in the second window. Although foreground heart rate is used for purposes of discussion, it may be more accurate in some instances to calculate the foreground measure of central tendency of interbeat intervals in the window instead of heart rate. For example, one technique that may be used is calculation of the mean of the interbeat intervals determined from the beats in the second window. In another embodiment, the median may be used as the measure of central tendency. In a still further embodiment, the FHR may be a weighted heart rate, such as an exponentially forgetting heart rate determined from a statistical measure of central tendency of the beats in the window.

In one embodiment, the foreground heart rate can be calculated from the interbeat intervals of the heart beats in the second window by use of a percentile tracking filter (PTF). A PTF has the advantage that any outliers that may pass the declaring invalid steps, but which would skew a calculation of the mean (sum of data points/number of data points), would be ignored. Generally, a PTF is used to track the (typically time-varying) n-th percentile of a set of data values in a moving window. When n=50, the 50-th percentile of the data is tracked, making the PTF output in this case somewhat akin to that of a median filter. Although the PTF is not an order statistic filter Order statistics are much less computationally efficient and more memory intensive and involve "sorting" of data which the PTF does not require, it manages to produce an output more quickly and efficiently while retaining the desirable outlier insensitivity of a (comparable percentile) order statistic filter. While the median filter is mentioned above because of its familiarity, as with order statistic filters (a.k.a. rank filters), the PTF may track percentiles of the set of data values in a moving window besides the 50th percentile. In particular, the PTF may take values representing the 30th percentile.

The PTF may use a simple set of values, a weighted set of values, or the other techniques known to the person of ordinary skill in the art. More information on PTFs is given by U.S. Pat. No. 6,768,968, issued Jul. 27, 2004, U.S. Pat. No. 6,904,390, issued Jun. 7, 2005, US and U.S. Pat. No. 7,188,053, issued Mar. 6, 2007, the disclosures of which are hereby incorporated herein by reference in their entirety.

In addition to the foreground heart rate, embodiments of the invention further comprise determining a background heart rate (BHR or BG HR) in a third window larger than the second window. Alternatively or in addition, a third time window heart rate can be calculated from a third plurality of interbeat intervals calculated from data collected in a third time window longer than the second time window.

In one embodiment, the third time window is 300 sec, or an exponentially forgetting window heavily weighted to the most recent 300 sec.

The third time window heart rate can be calculated from the mean or the PTF of the third plurality of interbeat intervals using techniques discussed above.

Alternatively or in addition, an instantaneous heart rate (IHR) can be calculated from the most recent interbeat interval. This can be routinely done as 60/interbeat interval, with resulting units of beats per minute (BPM or bpm).

The background heart rate can be calculated from the interbeat intervals of the valid beats in the third window. In one embodiment, the third window is a time window longer than the second window, and in a particular embodiment the third window is a time window having a duration of from 10 seconds to 86,400 seconds. In a more particular embodiment the third window is a 500 second time window. In another embodiment, the third window is a number-of-beats window comprising from about 30 to about 175,000 beats, and in a particular embodiment the third window is a 500 beat window. In another embodiment, the third window is an exponentially forgetting window with a timescale of about 10 sec to about 86,400 sec or about 30 beats to about 175,000 beats.

The BIM can be calculated as a statistical measure of central tendency of HR from the beats in the third window by techniques similar to those discussed previously for the foreground heart rate. Although BHR is used for purposes of discussion, it may be more accurate in some instances to calculate the background median value (as measured, for example, by a 50th percentile PTF) of interbeat intervals in the window instead of heart rate. For example, one technique that may be used is calculation of the mean of the interbeat intervals determined from the beats in the window. In another embodiment, the median may be used as the measure of central tendency. In a still further embodiment, the BHR may be a weighted heart rate, such as an exponentially forgetting heart rate determined from a statistical measure of central tendency of the beats in the window. In a particular embodiment, the BHR is calculated as a target percentile value (e.g., the 50th percentile) of a Percentile Tracking Filter applied to the beats in the third window.

In many embodiments, indicating the occurrence of a seizure event may be made whenever it is determined that the RHR exceeds (i.e., first crosses) the threshold associated with a seizure event. However, in some embodiments, the indicating is made only after one or more additional requirements are satisfied. Such additional constraints, which may include a multiple additional constraints, may be helpful in eliminating or reducing false positive and/or false negative event detection indications.

For example, indicating the occurrence of a seizure may require, in addition to RHR instantaneously exceeding the seizure threshold (i.e., crossing the threshold for a single heart beat), that the RHR exceed the threshold for a desired duration, which defines a seizure duration threshold or duration constant. Thus, in one nonlimiting example, a seizure indication may only be generated when the RHR exceeds the threshold continuously for 5 seconds.

The seizure duration threshold may also vary depending upon factors such as those discussed previously as providing

a basis for making the first seizure threshold itself adaptive (i.e., the threshold is automatically modified based on the patient's level of exertion, the time of day, week, or month, false positive or negative seizure detections, changes in the state, high-risk activities such as swimming or driving, etc.). For example, the exertional state of the patient may be used to impose a duration constraint where none is usually present (or to remove a duration threshold otherwise present), such as a duration constraint only during periods of exercise, or during sleep or rest periods. In another nonlimiting example, an indication of a seizure is made only if RHR exceeds the seizure threshold for 15 seconds, but if the patient has experienced a seizure event within the last hour, the duration constraint is reduced or eliminated altogether. In another non-limiting example, the threshold value associated with a seizure event is decreased if the subject's heart rate following a seizure remains above the subject's heart rate baseline for a given activity level, time of day, etc. In other instances, a duration constraint may be imposed or increased depending upon particular conditions.

In another embodiment, in addition the FHR and BHR, one or more additional heart rates may be calculated similarly to the foreground and background heart rates discussed above, differing primarily in the length of the time window used to calculate these additional heart rates. These additional heart rates may be termed "midground heart rates" or "medium-term heart rates" if the time window intermediate in length to the second window and the third window, "ultra-foreground heart rates" or "very-short-term heart rates" if the time window is shorter than the second window, "ultra-background heart rates" or "very-long-term heart rates" if the time window is longer than the third window.

In another embodiment, the FHR, BHR, or RHR can be analyzed for patterns indicative of a seizure event.

Submodule 3B:

Another series of further calculations comprises:

- a) determining at least one short-term heart rate comprising at least one of
 - i) a first instantaneous heart rate from a first valid beat and the immediately preceding valid beat, or
 - ii) a fourth window heart rate comprising a statistical measure of central tendency of heart rate using said valid beats in said fourth window; and
- b) comparing said at least one short-term heart rate to a short-term heart rate threshold associated with a seizure event.

In one embodiment, a short-term HR may comprise a first instantaneous HR using the first valid beat in the background HR window and the valid beat immediately preceding the first valid beat. In another embodiment, a short-term HR may comprise the median HR for the foreground HR window. In this embodiment, an indication of seizure occurrence may be made only if both the RHR seizure threshold is exceeded and the short-term HR (however measured) exceeds the short-term HR threshold.

A short-term HR threshold may be useful to a physician who finds, e.g., that the RHR threshold constraint alone yields an unacceptably high number of false positive seizure indications. For example, if the short-term HR threshold value is set at 100 BPM, and is combined with requirement that the RHR exceed 1.3, then a patient with a resting heart rate of 60 performing some mild exertion (climbing stairs, engaged in an emotionally charged encounter, etc.) which raises his heart rate to 80 (60 times 1.333) would not be flagged as having a seizure event because the short-term HR threshold constraint of 100 BPM was not met.

Submodule 3C:

A third series of further calculations comprises:

a) determining a fifth window heart rate comprising a statistical measure of central tendency of heart rate using said valid beats in said fifth window;

b) determining a slope of the least squares linear fit of the beats in said fifth window;

c) comparing said fifth window heart rate to at least one of an upper fifth window heart rate threshold and a lower fifth window heart rate threshold associated with a seizure event;

d) comparing said slope of the least squares linear fit to at least one of a lower slope threshold and an upper slope threshold associated with a seizure event.

In one embodiment, detecting an epileptic seizure comprises the use of Submodule 3A as discussed above.

In one embodiment of Submodule 3A, determining a foreground heart rate parameter comprises determining, from the valid beats in the second window, a target percentile value in a uniform distribution Percentile Tracking Filter.

In a further embodiment, the upper and lower bounds for the uniform distribution are adaptively determined for each second window based upon the maximum and minimum beat intervals in the second window.

In another further embodiment, the target percent value of the Percentile Tracking filter comprises a value in the range of 20 percent to 80 percent. In an even further embodiment, the Percentile Tracking Filter comprises an adaptive uniform distribution with endpoint parameters determined using exponential forgetting factor, with a prescribed forgetting factor corresponding to a 5 sec timescale, and the target percent value of the Percentile Tracking Filter is 30 percent.

In one embodiment, determining a background heart rate parameter comprises determining, from the valid beats in the third window, a target percentile value in an adaptive uniform distribution Percentile Tracking Filter.

In one embodiment, the method further comprises determining a duration of time the relative heart rate exceeds the first seizure threshold, and wherein indicating the occurrence of a seizure event is only performed if the duration exceeds a seizure duration threshold.

In one embodiment, indicating the occurrence of a seizure event comprises generating a signal if the relative heart rate exceeds the first seizure threshold if one or more of

a) said relative heart rate exceeds said first seizure threshold;

b) said fifth window heart rate is below said upper fifth window heart rate threshold and exceeds said lower fifth window heart rate threshold; or

c) said slope of the least squares linear fit at least one of

i) exceeds said lower slope threshold and

ii) is below said upper slope threshold.

In some embodiments, one or more of the above thresholds may, in certain conditions, be set to +/- infinity (to either block detection or make this detection component always in a state of detection). More generally, if the relative heart rate is within a prescribed range or takes on certain values, as represented by appropriate thresholds, all these measures together may be considered with a appropriate weighting factors to determine whether or not to issue a detection decision.

In particular embodiments, one, two or all three of the foregoing conditions may be required to issue a seizure detection indication. In alternative embodiments, additional constraints may also be required to be met before issuing an indication of a seizure detection. Thus, anyone or more of the three series of calculations set forth above may be combined by any appropriate logical operator, e.g., AND, OR, XOR,

NOT, or the like, and/or grouped together (e.g., of the form "x AND (y OR z)," among others). For example, a short term heart rate more than, e.g., 120% of the background HR for more than 15 sec may be indicative of a seizure, alone or in combination with a RHR threshold constraint. For another nonlimiting example, a slope of heart rate more than, e.g., 0.03 beats/second for 5 sec may be indicative of a seizure. The precise values of the thresholds and durations can be set by the physician in consultation with the patient or adaptively.

However the seizure event is identified, in some embodiments, a responsive action may be taken selected from warning, logging the time of a seizure, computing and storing one or more seizure severity indices, or treating the seizure.

A seizure event warning may be given as, for example, a warning tone or light implemented by a medical device or a device adapted to receive indications of the seizure; as an automated email, text message, telephone call, or video message sent from a medical device or a unit in communication with a medical device to the patient's cellular telephone, PDA, computer, television, 911 or another emergency contact number for paramedic/EMT services, etc. Such a warning may allow the patient or his or her caregivers to take measures protective of patient's well-being and those of others, e.g., pulling out of traffic and turning off a car, when the patient is driving; stopping the use of machinery, contacting another adult if the patient is providing childcare, removing the patient from a swimming pool or bathtub, lying down or sitting if the patient is standing, etc.

The time may be logged by receiving an indication of the current time and associating the indication of the current time with an indication of the seizure.

Seizure severity indices may be calculated and stored by appropriate techniques and apparatus.

The seizure may be treated by appropriate techniques, such as those discussed below. The treatment may be one or more treatments known in the art. In one embodiment, the treatment comprises a least one of applying an electrical signal to a neural structure of a patient; delivering a drug to a patient; or cooling a neural structure of a patient. When the treatment comprises applying an electrical signal to a portion of a neural structure of a patient, the neural structure may be at least one of a portion of brain structure of the patient, a portion of a cranial nerve of a patient, a portion of a spinal cord of a patient, a portion of a sympathetic nerve structure of the patient, a portion of a parasympathetic nerve structure of the patient, and/or a portion of a peripheral nerve of the patient.

Though not intended to be bound by theory, in certain circumstances, a seizure may be identified from heart rate data at a time before seizure onset as determined by electroencephalography, observation by a physician or knowledgeable layman, or both. The time before onset may range from a few seconds up to a few minutes. As such, certain embodiments of the method may be considered to yield a prediction of a seizure. It should be noted that the prediction may sometimes be a false positive. However, depending on a physician's judgment, his or her understanding of the devices in use, and the patient's condition, a certain amount of false positives may be tolerable.

The above method can be performed alone. In one embodiment, the above method can be performed in combination with a continuous or open-loop therapy for epilepsy. In one embodiment, the above method is performed to take action in response to the detection of the seizure, and at all or most other times, a chronic therapy signal is applied to a target structure in the patient's body. In one embodiment, the target structure is a cranial nerve, such as the vagus nerve.

In one embodiment, the method described above comprises:

obtaining a time series of fiducial time markers for candidate heart beats;

identifying valid beats from the candidate heart beats, as described above;

accepting as valid beats the candidate hearts that pass the at least one heart validity test; and

detecting an epileptic seizure by at least one of the series of calculations described above. In other words, in this embodiment, the method can be performed without performing a window test.

In one embodiment, the method described above comprises:

obtaining a time series of fiducial time markers for candidate heart beats; and

detecting an epileptic seizure by at least one of the series of calculations described above. In other words, in this embodiment, the method can be performed without performing both a beat validity test and a window test.

Embodiments wherein a beat validity test and/or a window test are not performed may be particularly suitable for situations wherein the quality of fiducial time markers for candidate heart beats is very high, or where the practitioner would find acceptable a possible higher rate of false positive seizure event determinations resulting from “noisy” data.

Although not limited to the following, an exemplary system capable of implementing embodiments of the present invention is described below. FIG. 1A depicts a stylized implantable medical system (IMD) 100 for implementing one or more embodiments of the present invention. An electrical signal generator 110 is provided, having a main body 112, comprising a case or shell with a header 116 for connecting to an insulated, electrically conductive lead assembly 122. The generator 110 is implanted in the patient’s chest in a pocket or cavity formed by the implanting surgeon just below the skin (indicated by a dotted line 145), similar to the implantation procedure for a pacemaker pulse generator.

A nerve electrode assembly 125, preferably comprising a plurality of electrodes having at least an electrode pair, is conductively connected to the distal end of the lead assembly 122, which preferably comprises a plurality of lead wires (one wire for each electrode). Each electrode in the electrode assembly 125 may operate independently or alternatively, may operate in conjunction with the other electrodes. In one embodiment, the electrode assembly 125 comprises at least a cathode and an anode. In another embodiment, the electrode assembly comprises one or more unipolar electrodes.

Lead assembly 122 is attached at its proximal end to connectors on the header 116 of generator 110. The electrode assembly 125 may be surgically coupled to the vagus nerve 127 in the patient’s neck or at another location, e.g., near the patient’s diaphragm or at the esophagus/stomach junction. Other (or additional) cranial nerves such as the trigeminal and/or glossopharyngeal nerves may also be used to deliver the electrical signal in particular alternative embodiments. In one embodiment, the electrode assembly 125 comprises a bipolar stimulating electrode pair 126, 128 (i.e., a cathode and an anode). Suitable electrode assemblies are available from Cyberonics, Inc., Houston, Tex., USA as the Model 302 electrode assembly. However, persons of skill in the art will appreciate that many electrode designs could be used in the present invention. In one embodiment, the two electrodes are wrapped about the vagus nerve, and the electrode assembly 125 may be secured to the vagus nerve 127 by a spiral anchoring tether 130 such as that disclosed in U.S. Pat. No. 4,979, 511 issued Dec. 25, 1990 to Reese S. Terry, Jr., Lead assembly

122 may be secured, while retaining the ability to flex with movement of the chest and neck, by a suture connection to nearby tissue (not shown).

In alternative embodiments, the electrode assembly 125 may comprise temperature sensing elements, blood pressure sensing elements, and/or heart rate sensor elements. Other sensors for other body parameters may also be employed. Both passive and active stimulation may be combined or delivered by a single IMD according to the present invention. Either or both modes may be appropriate to treat a specific patient under observation.

In alternative embodiments, the implantable medical device system further comprises an electrical stimulator comprising an electrode 160 (not to scale) adapted to be coupled to the spinal cord 180 (FIG. 1B) or to a region of the brain 190 (FIG. 1C). The physician can select precise locations for coupling to the spinal cord 180 or brain 190 based on his or her observations of the patient’s medical condition, among other values. In various embodiments, the implantable medical device system may comprise one, two, or three of the IMD 100, the spinal cord stimulator, and the brain stimulator.

The electrical pulse generator 110 may be programmed with an external device (ED) such as computer 150 using programming software known in the art. A programming wand 155 may be coupled to the computer 150 as part of the ED to facilitate radio frequency (RF) communication between the computer 150 and the pulse generator 110. The programming wand 155 and computer 150 permit non-invasive communication with the generator 110 after the latter is implanted. In systems where the computer 150 uses one or more channels in the Medical Implant Communications Service (MICS) bandwidths, the programming wand 155 may be omitted to permit more convenient communication directly between the computer 150 and the pulse generator 110.

Turning now to FIG. 2, a block diagram depiction of a medical device 200 is provided, in accordance with one illustrative embodiment of the present invention.

In some embodiments, the medical device 200 may be implantable (such as implantable electrical signal generator 110 from FIG. 1), while in other embodiments the medical device 200 may be completely external to the body of the patient.

The medical device 200 (such as generator 110 from FIG. 1) may comprise a controller 210 capable of controlling various aspects of the operation of the medical device 200. The controller 210 is capable of receiving internal data or external data, and in one embodiment, is capable of causing a stimulation unit 220 (FIG. 2B) to generate and deliver an electrical signal to target tissues of the patient’s body for treating a medical condition. For example, the controller 210 may receive manual instructions from an operator externally, or may cause the electrical signal to be generated and delivered based on internal calculations and programming. In other embodiments, the medical device 200 does not comprise a stimulation unit 220 (FIG. 2A). In either embodiment, the controller 210 is capable of affecting substantially all functions of the medical device 200.

The controller 210 may comprise various components, such as a processor 215, a memory 217, etc. The processor 215 may comprise one or more microcontrollers, microprocessors, etc., capable of performing various executions of software components. The memory 217 may comprise various memory portions where a number of types of data (e.g., internal data, external data instructions, software codes, status data, diagnostic data, etc.) may be stored. The memory 217 may comprise one or more of random access memory

(RAM), dynamic random access memory (DRAM), electrically erasable programmable read-only memory (EEPROM), flash memory, etc.

As stated above, in one embodiment, the medical device 200 may also comprise a stimulation unit 220 capable of generating and delivering electrical signals to one or more electrodes 126, 128 via leads 201 (FIG. 2B). A lead assembly such as lead assembly 122 (FIG. 1) may be coupled to the medical device 200. Therapy may be delivered to the leads 201 comprising the lead assembly 122 by the stimulation unit 220 based upon instructions from the controller 210. The stimulation unit 220 may comprise various circuitry, such as electrical signal generators, impedance control circuitry to control the impedance “seen” by the leads, and other circuitry that receives instructions relating to the delivery of the electrical signal to tissue. The stimulation unit 220 is capable of delivering electrical signals over the leads 201 comprising the lead assembly 122. As should be apparent, in certain embodiments, the medical device 200 does not comprise a stimulation unit 220, lead assembly 122, or leads 201.

In other embodiments, a lead 201 is operatively coupled to an electrode, wherein the electrode is adapted to couple to at least one of a portion of a brain structure of the patient, a cranial nerve of a patient, a spinal cord of a patient, a sympathetic nerve structure of the patient, or a peripheral nerve of the patient.

The medical device 200 may also comprise a power supply 230. The power supply 230 may comprise a battery, voltage regulators, capacitors, etc., to provide power for the operation of the medical device 200, including delivering the therapeutic electrical signal. The power supply 230 comprises a power source that in some embodiments may be rechargeable. In other embodiments, a non-rechargeable power source may be used. The power supply 230 provides power for the operation of the medical device 200, including electronic operations and the electrical signal generation and delivery functions. The power supply 230 may comprise a lithium/thionyl chloride cell or a lithium/carbon monofluoride (LiCFx) cell if the medical device 200 is implantable, or may comprise conventional watch or 9V batteries for external (i.e., non-implantable) embodiments. Other battery types known in the art of medical devices may also be used.

The medical device 200 may also comprise a communication unit 260 capable of facilitating communications between the medical device 200 and various devices. In particular, the communication unit 260 is capable of providing transmission and reception of electronic signals to and from a monitoring unit 270, such as a handheld computer or PDA that can communicate with the medical device 200 wirelessly or by cable. The communication unit 260 may include hardware, software, firmware, or any combination thereof.

The medical device 200 may also comprise one or more sensor(s) 212 coupled via sensor lead(s) 211 to the medical device 200. The sensor(s) 212 are capable of receiving signals related to a physiological parameter, such as the patient’s heart beat, blood pressure, and/or temperature, and delivering the signals to the medical device 200. In one embodiment, the sensor(s) 212 may be the same as implanted electrode(s) 126, 128 (FIG. 1). In other embodiments, the sensor(s) 212 are external structures that may be placed on the patient’s skin, such as over the patient’s heart or elsewhere on the patient’s torso.

In one embodiment, the medical device 200 may comprise a cardiac data collection module 265 that is capable of collecting cardiac data comprising fiducial time markers of each of a plurality of heart beats. The cardiac data collection module 265 may also process or condition the cardiac data. The

cardiac data may be provided by the sensor(s) 212. The cardiac data collection module 265 may be capable of performing any necessary or suitable amplifying, filtering, and performing analog-to-digital (A/D) conversions to prepare the signals for downstream processing. The cardiac data collection module, in one embodiment, may comprise software module(s) that are capable of performing various interface functions, filtering functions, etc., to process fiducial time markers of each of a plurality of heart beats. In another embodiment the cardiac data collection module 265 may comprise hardware circuitry that is capable of performing these functions. In yet another embodiment, the cardiac data collection module 265 may comprise hardware, firmware, software and/or any combination thereof. A more detailed illustration of the cardiac data collection module 265 is provided in FIG. 3A and accompanying description below.

The cardiac data collection module 265 is capable of collecting cardiac data comprising fiducial time markers of each of a plurality of candidate heart beats and providing the collected cardiac data to an heart beat/interval determination module 275. Based upon the signals processed by the cardiac data collection module 265, the heart beat/interval determination module 275 may calculate an interbeat interval from a consecutive pair of said fiducial time markers and store such interbeat interval or forward it on for further processing/analysis. The heart beat/interval determination module 275 may comprise software module(s) that are capable of performing various interface functions, filtering functions, etc., to calculate interbeat intervals. In another embodiment the heart beat/interval determination module 275 may comprise hardware circuitry that is capable of performing these functions. In yet another embodiment, the heart beat/interval determination module 275 may comprise hardware, firmware, software and/or any combination thereof. Further description of the heart beat/interval determination module 275 is provided in FIG. 33 and accompanying description below.

The heart beat/interval determination module 275 is capable of calculating an interbeat interval from a consecutive pair of said fiducial time markers and providing the interbeat interval to the heart beat validation module 285. Based upon the interbeat interval received by the heart beat validation module 285, it performs any operations desired to identify invalid interbeat intervals and discard them. For example, the heart beat validation module 285 may discard the candidate heart beat if the interbeat interval formed from the candidate heart beat and the immediately preceding valid beat is not physiologically valid, is so long as to appear to be due to a missed heart beat, is so short as to appear to be due to noise, has an absolute value of the slope of the interbeat interval that is too large to be physiologically valid, or two or more thereof. The heart beat validation module 285 may comprise software module(s) that are capable of performing various interface functions, filtering functions, etc., to discard invalid beats. In another embodiment the heart beat validation module 285 may comprise hardware circuitry that is capable of performing these functions. In yet another embodiment, the heart beat validation module 285 may comprise hardware, firmware, software and/or any combination thereof. Further description of the heart beat validation module 285 is provided in FIG. 3C and accompanying description below.

The heart beat validation module 285 is capable of declaring invalid beats and forwarding a plurality of heart beats accepted as valid to window analysis module 295. Based upon the plurality of valid beats received by the window analysis module 295, it performs any operations desired to perform further testing of the valid beats in one or more heart

beat windows to identify valid beats suitable for seizure detection. For example, the window analysis module 295 may discard a plurality of valid beats as unsuitable for seizure detection if the number, the heart rate variability, or both of a window analysis performed on the valid beat in a backward-looking window fail to pass a number-of-beats threshold and/or a HRV threshold. The window analysis module 295 may comprise software module(s) that are capable of performing various interface functions, filtering functions, etc., to reject valid beats as unsuitable for seizure detection. In another embodiment the window analysis module 295 may comprise hardware circuitry that is capable of performing these functions. In yet another embodiment, the window analysis module 295 may comprise hardware, firmware, software and/or any combination thereof. Further description of the window analysis module 295 is provided in FIG. 3D and accompanying description below.

The window analysis module 295 is capable of ignoring one or more valid beats that are unsuitable for seizure detection, and forwarding a plurality of valid interbeat intervals that are suitable for seizure detection to foreground/background module 297. (The terms "flagging," "ignoring," and "discarding" may be used herein to refer to not using one or more valid beats for seizure detection). Based upon the plurality of interbeat intervals received from the window analysis module 295, the foreground/background module 297 performs any operations not performed in prior modules (such as interbeat interval calculation module 275, heart beat validation module 285, and window analysis module 295) and necessary or desirable for use in detection of seizures. In addition to determination of foreground HR and background FIR, foreground/background module 297 may calculate, for example, various heart rates, durations, slopes, HRV measures, or other parameters associated with the foreground and background windows. For example, the foreground/background module 297 may calculate a second time window heart rate from a plurality of consecutive interbeat intervals calculated from data collected in a second time window, a third time window heart rate from a plurality of consecutive interbeat intervals calculated from data collected in a third time window, a first instantaneous heart rate from said first valid beat and the immediately preceding valid beat, a fourth window heart rate comprising a statistical measure of central tendency of heart rate using said valid beats in said first window, a fifth window heart rate comprising a statistical measure of central tendency of heart rate using valid beats in a fifth window, slope of the least squares linear fit of the beats in said fifth window, or two or more thereof.

The foreground/background module 297 may comprise software module(s) that are capable of performing various interface functions, filtering functions, etc., to calculate the various heart rates, slopes of heart rate series, durations of heart rates or slopes of heart rates above various seizure threshold values, or the like. In another embodiment the foreground/background module 297 may comprise hardware circuitry that is capable of performing these functions. In yet another embodiment, the foreground/background module 297 may comprise hardware, firmware, software and/or any combination thereof. Further description of the foreground/background module 297 is provided in FIG. 3E and accompanying description below.

The foreground/background module 297 is capable of calculating various heart rates, slopes of heart rate series, durations of heart rates or slopes of heart rates above various seizure threshold values, or the like and forwarding the calculated information to seizure detection module 299. Based upon the calculated information received by the seizure

detection module 299, it performs any operations desired to identify a seizure event. For example, the seizure detection module 299 may identify a seizure event based on one or more of a foreground HR from the second window heart rate from a plurality of valid beats suitable for seizure detection in the second window, the background heart rate from a plurality of valid beats suitable for seizure detection in the third window, a duration that a short-term heart rate measure exceeds a short-term heart rate threshold, a duration that a slope of a short-term heart rate, whether a short-term HRV measure exceeds an HRV threshold, two or more of the foregoing, or at least one or more relationships between two or more of the foregoing. The seizure detection module 299 may comprise software module(s) that are capable of performing various interface functions, filtering functions, etc., to identify a seizure event. In another embodiment the seizure detection module 299 may comprise hardware circuitry that is capable of performing these functions. In yet another embodiment, the seizure detection module 299 may comprise hardware, firmware, software and/or any combination thereof. Further description of the seizure detection module 299 is provided in FIG. 3F and accompanying description below.

In addition to components of the medical device 200 described above, an implantable medical system may comprise a storage unit to store an indication of at least one of seizure or an increased risk of a seizure. The storage unit may be the memory 217 of the medical device 200, another storage unit of the medical device 200, or an external database, such as the local database unit 255 or a remote database unit 250. The medical device 200 may communicate the indication via the communications unit 260. Alternatively or in addition to an external database, the medical device 200 may be adapted to communicate the indication to at least one of a patient, a caregiver, or a healthcare provider.

In various embodiments, one or more of the units or modules described above may be located in a monitoring unit 270 or a remote device 292, with communications between that unit or module and a unit or module located in the medical device 200 taking place via communication unit 260. For example, in one embodiment, one or more of the cardiac data collection module 265, the heart beat/interval determination module 275, the heart beat validation module 285, the window analysis module 295, the foreground/background module 297, or the seizure detection module 299 may be external to the medical device 200, e.g., in a monitoring unit 270. Locating one or more of the cardiac data collection module 265, the heart beat/interval determination module 275, the heart beat validation module 285, the window analysis module 295, the foreground/background module 297, or the seizure detection module 299 outside the medical device 200 may be advantageous if the calculation(s) is/are computationally intensive, in order to reduce energy expenditure and heat generation in the medical device 200 or to expedite calculation.

The monitoring unit 270 may be a device that is capable of transmitting and receiving data to and from the medical device 200. In one embodiment, the monitoring unit 270 is a computer system capable of executing a data-acquisition program. The monitoring unit 270 may be controlled by a healthcare provider, such as a physician, at a base station in, for example, a doctor's office. In alternative embodiments, the monitoring unit 270 may be controlled by a patient in a system providing less interactive communication with the medical device 200 than another monitoring unit 270 controlled by a healthcare provider. Whether controlled by the patient or by a healthcare provider, the monitoring unit 270 may be a computer, preferably a handheld computer or PDA,

but may alternatively comprise any other device that is capable of electronic communications and programming, e.g., hand-held computer system, a PC computer system, a laptop computer system, a server, a persona digital assistant (PDA), an Apple-based computer system, a cellular telephone, etc. The monitoring unit 270 may download various parameters and program software into the medical device 200 for programming the operation of the medical device, and may also receive and upload various status conditions and other data from the medical device 200. Communications between the monitoring unit 270 and the communication unit 260 in the medical device 200 may occur via a wireless or other type of communication, represented generally by line 277 in FIG. 2. This may occur using, e.g., wand 155 (FIG. 1) to communicate by RF energy with an implantable signal generator 110. Alternatively, the wand may be omitted in some systems, systems in which the MD 200 is non-implantable, or implantable systems in which monitoring unit 270 and MD 200 operate in the MICS bandwidths.

In one embodiment, the monitoring unit 270 may comprise a local database unit 255. Optionally or alternatively, the monitoring unit 270 may also be coupled to a database unit 250, which may be separate from monitoring unit 270 (e.g., a centralized database wirelessly linked to a handheld monitoring unit 270). The database unit 250 and/or the local database unit 255 are capable of storing various patient data. These data may comprise patient parameter data acquired from a patient's body, therapy parameter data, seizure severity data, and/or therapeutic efficacy data. The database unit 250 and/or the local database unit 255 may comprise data for a plurality of patients, and may be organized and stored in a variety of manners, such as in date format, severity of disease format, etc. The database unit 250 and/or the local database unit 255 may be relational databases in one embodiment. A physician may perform various patient management functions (e.g., programming parameters for a responsive therapy and/or setting thresholds for one or more detection parameters) using the monitoring unit 270, which may include obtaining and/or analyzing data from the medical device 200 and/or data from the database unit 250 and/or the local database unit 255. The database unit 250 and/or the local database unit 255 may store various patient data.

One or more of the blocks illustrated in the block diagram of the medical device 200 in FIG. 2A or FIG. 2B, may comprise hardware units, software units, firmware units, or any combination thereof. Additionally, one or more blocks illustrated in FIG. 2A-B may be combined with other blocks, which may represent circuit hardware units, software algorithms, etc. Additionally, any number of the circuitry or software units associated with the various blocks illustrated in FIG. 2A-B may be combined into a programmable device, such as a field programmable gate array, an ASIC device, etc.

The medical device system of one embodiment of the present invention provides for software module(s) that are capable of acquiring, storing, and processing various forms of data, such as patient data/parameters (e.g., physiological data, side-effects data, heart rate data, breathing rate data, brain-activity parameters, disease progression or regression data, quality of life data, etc.) and therapy parameter data. Therapy parameters may include, but are not limited to, electrical signal parameters (e.g., frequency, pulse width, wave shape, polarity, on-time, off-time, etc.) that define therapeutic electrical signals delivered by the medical device in response to the detection of the seizure, medication type, dose, or other parameters, and/or any other therapeutic treatment parameter.

In one embodiment, the present invention may include coupling of at least one electrode to each of two or more

cranial nerves. (In this context, two or more cranial nerves mean two or more nerves having different names or numerical designations, and do not refer to the left and right versions of a particular nerve). In one embodiment, at least one electrode may be coupled to either or both vagus nerves or a branch of either or both vagus nerves. The term "operatively" coupled may include directly or indirectly coupling. Each of the nerves in this embodiment or others involving two or more cranial nerves may be stimulated according to particular activation modalities that may be independent between the two nerves.

Returning to systems for providing cranial nerve stimulation, such as that shown in FIG. 1, and as stated above, alternatively or in addition to a responsive treatment, if any, cranial nerve stimulation may be provided on a continuous basis to alleviate chronic aspects of the patient's medical disorder. Where cranial nerve stimulation is provided based solely on programmed off-times and on-times, the stimulation may be referred to as passive, inactive, open-loop, non-feedback, or non-contingent stimulation. In contrast, stimulation may be triggered by one or more feedback loops according to changes in the body or brain of the patient. This stimulation may be referred to as active, closed-loop, feedback-loop, or contingent stimulation. In one embodiment, feedback-loop stimulation may be manually-triggered stimulation, in which the patient manually causes the activation of a pulse burst outside of the programmed on-time/off-time cycle at a time of the patient's choosing, for example, in response to a sensation of an impending seizure. The patient may manually activate an implantable signal generator 110 to stimulate the cranial nerve, such as vagus nerve 127, to treat an acute episode of a medical condition, e.g., a seizure. The patient may also be permitted to alter the intensity of the signals applied to the cranial nerve within limits established by the physician.

Patient activation of a medical device 100 may involve use of an external control magnet for operating a reed switch in an implanted device, for example. Certain other techniques of manual and automatic activation of implantable medical devices are disclosed in U.S. Pat. No. 5,304,206 to Baker, Jr., et ("the '206 patent"). According to the '206 patent, means for manually activating or deactivating the electrical signal generator 110 may include a sensor such as piezoelectric element mounted to the inner surface of the generator case and adapted to detect light taps by the patient on the implant site. One or more taps applied in fast sequence to the skin above the location of the electrical signal generator 110 in the patient's body may be programmed into the implanted medical device 100 as a signal for intensification of the electrical signal. Two taps spaced apart by a slightly longer duration of time may be programmed into the medical device 100 to indicate a desire to dc-intensify the electrical signal. The patient may be given limited control over operation of the device to an extent may be determined by the program or entered by the attending physician. The patient may also activate the medical device 100 using other suitable techniques or apparatus.

In one embodiment, the medical device 200 may also be capable of detecting a manual input from the patient. The manual input may include a magnetic signal input, a tap input, a wireless data input to the medical device 200, etc.

Turning now to FIG. 3A, a more detailed stylized depiction of the cardiac data collection module 265 of FIG. 2, in accordance with one illustrative embodiment of the present invention is depicted. In one embodiment, the cardiac data collection module 265 comprises a cardiac data signal receiver 410, an analog-to-digital converter (A/D Converter) 420, and a

cardiac data forwarding unit **425**. The cardiac data signal receiver **410** is capable of receiving the signals from the sensor(s) **212** via receiver circuit **412**. The signal that is received by the receiver circuit **412** is processed and filtered to enable the data to be further analyzed and/or processed for determining a fiducial time marker of a heart beat.

The cardiac data signal receiver **410** may comprise amplifier(s) **414** and filter(s) **416**. The amplifiers **414** are capable of buffering and amplifying the input signals received by the receiver circuit **412**. In many cases, the heart beat signal may be attenuated and may be characterized by significantly low amplitude responses and signal noise. The amplifier(s) **414** are capable of buffering (amplification by unity) and amplifying the signals for further processing. In one embodiment, the amplifier **414** may comprise op amp circuit(s), digital amplifier(s), buffer amplifiers, and/or the like.

The cardiac data signal receiver **410** may also comprise one or more filters **416**. The filters **416** may comprise analog filter(s), digital filter(s), filters implemented by digital signal processing (DSP) means or methods, etc. The amplified and buffered heart beat signal may be filtered to remove various noise signals residing on the heart beat signal. The filter **416**, for example, is capable of filtering out various noise signals caused by external magnetic fields, electrical fields, noise resulting from physiological activity, etc. Filtering, signal noise due to breathing or other signals produced by the patient's body may be filtered.

The cardiac data signal receiver **410** provides amplified, filtered signals to the A/D converter **420**. The A/D converter **420** performs an analog-to-digital conversion for further processing. The A/D converter **420** may be one type of a plurality of converter types with various accuracies, such as an 8-bit converter, a 12-bit converter, a 24-bit converter, a 32-bit converter, a 64-bit converter, a 128-bit converter, a 256-bit converter, etc. The converted digital signal is then provided to a cardiac data forwarding unit **425**. In an alternative embodiment, the A/D conversion may be performed prior to filtering or signal processing of the heart beat signal. The converted digital signal is then provided to a cardiac data forwarding unit **425**.

The cardiac data forwarding unit **425** is capable of organizing, correlating, stacking, and otherwise processing the digitized, buffered, and filtered cardiac data and forwarding it to the heart beat/interval determination module **275**. The cardiac data forwarding unit **425** may correlate various time stamps with the heart beat signal to provide a time of beat sequence of the patient's heart, or more accurately a time of beat sequence of candidate heart beats subject to further processing and/or testing e.g., subsequent modules **275**, **785**, **297**, **295**, and **299**. The digital signals issuing from the cardiac data forwarding unit **425**, comprising a time stamp sequence of candidate heart beats, may then be forwarded to the heart beat/interval calculation module **275**.

Turning now to FIG. 3B, a more detailed stylized depiction of the heart beat/interval determination module **275** of FIG. 2, in accordance with one illustrative embodiment of the present invention, is depicted. The heart beat/interval determination module **275** may comprise a cardiac data receiving module **430**, for receiving a time stamp sequence of candidate heart beats, a heart beat interval determination module **440**, and a heart beat/interval time series storage unit **450**. The heart beat/interval determination module **275** may determine inter-beat intervals for adjacent candidate heart beats as they appear in the time series of signals via the cardiac data receiving module **430**. For example, cardiac data receiving module **430** may characterize certain data points in the time series of

signals as being fiducial time markers corresponding to, for example, the start, the peak, or the end of an R-wave of a patient's cardiac cycle.

Once fiducial time markers are determined from the time series of signals, the heart beat interval determination module **440** may determine the interval between consecutive beats ("interbeat interval") and forward this information to heart beat/interval time series storage **450**, which may store one or both of a time stamp series associated with fiducial markers indicating of an individual heart beat and a time stamp series of adjacent interbeat intervals. In some embodiments, beat interval determination module **440**, may also calculate other values from the time sequence of candidate heart beats, such as an instantaneous HR.

Turning now to FIG. 3C, a more detailed stylized depiction of the heart beat validation module **285** of FIG. 2, in accordance with one illustrative embodiment of the present invention, is depicted. The heart beat validation module **285** may receive various data from the heart beat/interval determination module **275**. Heart beat validation module **285** tests candidate heart beats and/or intervals received from heart beat/interval calculation module **275** to one or more beat validity tests. The outcome of the beat validity tests may be used to discard candidate heart beats from further analysis, and the valid beats are then passed to window analysis module **295**.

In the depiction shown in FIG. 3C, data received from the heart beat/interval determination module **275** is forwarded to heart beat validation module **285**. The data is initially sent to a physiologically plausible heart beat interval unit **505**, which determines whether the interbeat interval is physiologically plausible (i.e., whether an interbeat interval determined from a candidate heart beat and an immediately preceding beat is within a range typically seen in human physiology). In one embodiment, this may involve comparing the interbeat interval for the candidate heart beat with an upper and a lower beat interval duration threshold and declaring invalid the candidate heart beat as invalid if it lies outside of the upper and lower thresholds. In one embodiment this corresponds to ensuring that the interbeat interval corresponds to a heart rate of between about 35 BPM and about 180 BPM.

Valid beats may from physiologically plausible heart beat interval unit **505** are then be forwarded to apparent missed heartbeat unit **510**, which determines whether the interbeat interval is so long as to appear to be due to a missed heartbeat and therefore invalid. In one embodiment, the apparent missed heartbeat unit **510** tests the interbeat interval for the candidate heart beat to ensure that the interval is not more than about 115 percent (or another acceptable percentage exceeding 100%) of the greater of 1) the immediately preceding valid beat interval or 2) a recent baseline heart rate. Other tests may used, so long as the test ensures that the beat interval is not excessively long and likely due to a missed beat. Candidate beats failing the test(s) of the apparent missed heart beat unit **510** are discarded, and the remaining beats are forwarded to apparent noise unit **515**.

In contrast to apparent missed heart beat unit **510**—which tests candidate heart beat to ensure that the interbeat interval is not excessively long—apparent noise unit **515** tests candidate heart beats to ensure that the interbeat interval associated with the candidate beat is not so short as to appear to be due to noise, in which case the candidate heart beat is discarded. In one embodiment, the apparent noise unit **515** tests the interbeat interval for the candidate heart beat to ensure that the interval is at least a certain minimum length. In particular embodiments, the minimum length may be a fixed duration, such as about $\frac{1}{3}$ sec (i.e., corresponding to an of at most 180 BPM), or at least a target minimum percentage of a recent

target interbeat interval, such as at least 65 percent of the smaller of either 1) the immediately preceding valid interbeat interval or 2) an interbeat interval corresponding to a recent baseline heart rate. If not, the candidate heart beat is declared invalid.

Candidate beats passing the “short duration” tests of the apparent noise unit **515** are forwarded to slope unit **520**, which determines whether the absolute value of the slope of a plurality of interbeat intervals preceding the candidate heart beat interval is so large as to be outside the range of physiologically valid slopes and therefore invalid. In one embodiment, the slope unit determines the slope of the interbeat intervals for the candidate beat and the immediately preceding valid beat, and compares the slope to an upper slope threshold. In a particular embodiment, the slope unit determines if the absolute value of the slope is less than or equal to 0.3, although other thresholds, such as an adaptable threshold, may be used instead of a fixed threshold. If the slope exceeds the slope threshold, the candidate heart beat is discarded as invalid.

The candidate heart beats passing the one or more tests of heart beat validation unit **285** (e.g., physiologically plausible heart beat interval unit **505**, apparent missed heart beat unit **510**, apparent noise unit **515**, and slope unit **520**) are accepted as valid beats. Data for the valid beats (which may comprise time stamps of the valid beats and/or interbeat interval durations for each candidate beat and an immediately preceding beat, is forwarded to window analysis module **295**.

Turning now to FIG. 3D, a more detailed stylized depiction of the window analysis module **295** of FIG. 2, in accordance with one illustrative embodiment of the present invention, is depicted. The window analysis module **295** may receive various data from the heart beat validation module **285**, such as time stamps of valid beats and/or interbeat interval durations. Based upon data from the heart beat validation module **285**, the window analysis module **295** further tests the valid interbeat intervals to determine if they are suitable for use to detect seizure events. Valid beats suitable for use in detecting seizures (which, as noted earlier, may change from one window to another window) are provided to the foreground/background module **297**.

In the depiction shown in FIG. 3D, data received from the heart beat validation module **285** is forwarded to first window unit **555** in window analysis module **295**. First window unit **555** forms a first window for each valid beat, the window including the valid beat and one or more preceding beats. In some embodiments the first window is a time window, and in other embodiments the first window is a number-of-beats window. In a particular embodiment, first window unit **555** uses a 5 second, backward-looking time window bounded on the present end by a first valid beat being tested. First window unit **555** may also, in some embodiments, determine the number of beats in the window.

The first window from unit **555** is tested with one or more window tests in first window analysis unit **560**. The window tests determine whether the first valid beat shows excessive dispersion in the context of previous heart beats. In one embodiment, the dispersion tests include at least one short-term HRV test of the first window. In one particular embodiment, the first window analysis unit **560** calculates a least-squares linear fit of the beats in the window, and also calculates the mean squared error of the least squares linear fit. The mean squared error (MSE) can be used as a short-term HRV measure and is compared to at least one HRV threshold. If the MSE exceeds the threshold, then the first valid beat is discarded as unsuitable for use in seizure detection because it produces unacceptably high dispersion when added to a

stream of valid beats. In one embodiment, a fixed HRV threshold of 0.25 is used, and the first valid beat is discarded if the HRV exceeds 0.25. Other HRV thresholds, including adaptive thresholds that vary with time, patient status or environmental conditions, may also be used. In particular, non-linear least squares fits of the data may be used instead of the linear least-squares fit, and other models of fitting data may also be used depending upon the computational constraints applicable to a particular medical device. Whatever the fit chosen, short-term HRV may be measured from the MSE, the rate of change in heart rate may be estimated from the slope of the fit, and the interbeat intervals in the window may be estimated from the fit. Any of these parameters can be measured as a simple measurement, with equal weighting to all time units or beat units in the window, or as an exponentially forgetting measurement.

First window analysis unit **560** may also perform additional window tests to assess the valid beats in the window. In one embodiment, the number of beats in the window is tested to determine whether the number of beats in the window exceeds a minimum number of beats threshold for the window. Since only valid beats passing the HRV test may be used to detect seizure events, there may be instances when declaring invalid of one or more beats compromises the accuracy of a seizure detection algorithm. Enforcing a minimum number of beats threshold may help to ensure that only periods with relatively good data are used for seizure detection. In addition to disqualified data, the number of beats threshold may also be used where noise or skipped beats occur but are not filtered with the testing performed in heart beat validation module **285**. In one embodiment, the number of beats threshold may comprise a fixed integer number of beats, for example 2 or 3 beats. In another embodiment, a fractional threshold may be used corresponding to, for example, 50 BPM. In a still further embodiment, an adaptive threshold may be used that varies with time, patient status or condition, and environmental factors.

If the valid beat passes the one or more window tests of first window analysis unit **560**, the beat is accepted as suitable for seizure detection and forwarded to foreground/background module **297**. Otherwise, the valid beat is discarded and not used for seizure detection.

Turning now to FIG. 3E, a more detailed stylized depiction of the foreground/background module **297** of FIG. 2, in accordance with one illustrative embodiment of the present invention, is depicted. In one embodiment, the foreground/background module **297** may receive various data indicative of valid beats suitable for seizure detection from the window analysis module **295**. This may include time stamp data for valid beats suitable for seizure detection, and/or fiducial time markers associated with such beats. Based upon data from the window analysis module **295**, the foreground/background module **297** is capable of calculating a short-term indication of HR and a longer-term indication of HR for ultimate use in seizure identification module **299** to detect a seizure event.

Data from window analysis module **295** is received by foreground HR unit **565**, which forms a second window for each of the valid beats suitable for seizure detection. The second window includes a first valid beat suitable for seizure detection and at least one prior valid beat suitable for seizure detection. The second window preferably includes a plurality of consecutive interbeat intervals. In one embodiment, the second window is a backward-looking time window bounded at one end by a first valid beat suitable for seizure detection and including at least one prior valid beat suitable for seizure detection. In one embodiment, the second window may be the same size as the first time window from module **555**. In a

particular embodiment, the window is a three second, backward-looking window, or an exponentially-forgetting window with comparable weighting. A relatively short foreground window advantageously tracks heart changes quickly, enabling faster detection of epileptic seizures. The window size may be optimized to balance the desire for fast seizure detection against potential false positive detection from relatively short-lived tachycardia phenomenon such as standing or sitting upright, climbing a flight of stairs, or sudden and transient exertion.

A foreground heart rate parameter for the second window is determined using a statistical measure of central tendency of heart rate (or interbeat intervals) for the beats (or intervals) in the second window. Commonly known measures of central tendency such as moving average, mean or median may be used in some embodiments. However, the present inventors have determined that an improved algorithm may be obtained by using as the measure of central tendency a target percentile value, for example a percentile in the range of the 20th to the 80th percentile, in a uniform distribution-based Percentile Tracking Filter applied to the valid beats in the second window. In a particular embodiment, the thirtieth (30th) percentile of a uniform distribution Percentile Tracking Filter is used as the measure of central tendency for the sequence of successive valid interbeat intervals, updated each time the window validity test is satisfied for the moving window ending at the heart beat that was most recently determined valid. By using a percentile smaller than the 50th percentile, the second window will inure quickly track decreasing interbeat intervals, which corresponds to increases in heart rate (i.e. tachycardia) that are frequently associated with epileptic seizures. It should be noted that if the FHR parameter uses heart rate instead of interbeat intervals, the heart rate would track the 70th percentile to track increases in heart rate faster than decreases because, as noted previously, heart rate and interbeat intervals are inversely related.

Parameters may also be used to describe the uniform distribution used in Percentile Tracking Filter to improve performance of the algorithm. In particular, upper and lower bounds for the uniform distribution may be specified to improve the ability of the algorithm to more accurately track the target percentile used in the PTF. Additional parameters may also be used to provide a weighting factor to the PTF, including for example forgetting factors used to weight the HR to emphasize more recent heart beats more than prior beats. Such exponential forgetting may be used to adaptively track the recent minimum and maximum valid interbeat intervals and use these as adaptive parameters describing the uniform distribution used by the PTF. Persons of skill in the art, provided with the present disclosure and a knowledge of the prior art, will appreciate that other models may be used in the PTF for the time-varying distribution of interbeat intervals, as described in U.S. Pat. No. 6,768,968, U.S. Pat. No. 6,904,390, and U.S. Pat. No. 7,188,053, previously incorporated by reference.

Returning to FIG. 3E, data from window analysis module 295 is also used in background HR unit 567, which forms a third window for each of the valid beats suitable for seizure detection. The third window includes the first valid beat suitable for seizure detection from the second window and at least two prior valid beat suitable for seizure detection, and is used to provide a longer-term (“background”) measure of HR than the second (foreground) window. In one embodiment, the third window is a backward-looking time window that is longer than the second window, bounded at the present end by the first valid beat from the second window.

In a particular embodiment, the third window is a 500 second window, or an exponentially forgetting window with time weighting on a timescale of 500 sec, bounded on the present side by the first valid beat from the second window. The third window size may be made larger or smaller to smooth out or reveal local perturbations of patient HR. In many embodiments, it may be desirable to smooth small-scale fluctuations in FIR, such as those associated with transient tachycardia events previously discussed (e.g., standing, sitting upright, climbing stairs, sudden exertion).

A background HR parameter for the third window is obtained using a statistical measure of central tendency of heart rate for the beats in the third window. As noted regarding the foreground HR parameter, a number of measures of central tendency (e.g., mean, median) may be used. In one embodiment a target percentile value (for example, a value in the range from the 30th percentile to the 70th percentile) in a uniform distribution Percentile Tracking Filter applied to the valid beats in the second window is used as the measure of central tendency. In a particular embodiment, the fiftieth (50th) percentile of a uniform distribution Percentile Tracking Filter is used as the measure of central tendency. In one particular embodiment, the Percentile Tracking Filter is an exponentially forgetting Percentile Tracking Filter. Other types weighted and unweighted Percentile Tracking Filters or other measures of central tendency may be used.

Upper and lower limits or bounds for the uniform distribution used in the background Percentile Tracking Filter may be provided. In some embodiments these limits may be adaptively determined based upon the maximum and minimum value of the beat intervals in the second relatively short window such a moving average (mean) or median.

The foreground HR and background RR values determined in units 565 and 567 may in some embodiments be forwarded to seizure identification module 299 without further processing in foreground/background module 297. In other embodiments, foreground/background module 297 performs additional calculations. In particular, an instantaneous heart rate calculation unit 569 may determine an IHR for every valid beat suitable for seizure detection. Certain embodiments of the invention may also include a short-term HR threshold unit 571 which determines a time duration that the IHR determined by calculation unit 569 continuously exceeds a short-term HR threshold. If the IHR continuously exceeds the short-term FIR threshold for a short-term duration threshold, a seizure event may be declared as occurring. Alternatively, the IHR continuously exceeds the short-term HR threshold for the short-term duration threshold may be required in addition to the RHR threshold determined in module 299.

In certain embodiments, the invention may also comprise a slope duration calculation unit 573. This unit determines the instantaneous slope of HR (ISHR) and compares the slope to a short-term HR slope threshold. If the ISHR exceeds the short-term HR slope threshold for a slope duration threshold, a seizure event may be declared on that basis alone, or may be required in addition to the RHR exceeding its threshold determined in module 299. The foreground/background module 297 need not perform all steps 565-573. Any steps the foreground/background module 297 performs may be in any order, not necessarily that shown.

Although the IHR calculation unit 569, the short-term heart rate threshold unit 571, and the slope duration calculation unit 573 are shown in FIG. 3E as components of foreground/background module 297, in various other embodiments, one or more of these units can be included in other modules, such as window analysis module 295.

Turning now to FIG. 3F, a more detailed stylized depiction of the seizure detection module 299 of FIG. 2, in accordance with one illustrative embodiment of the present invention, is depicted. The seizure detection module 299 may receive various data from the foreground/background module 297, including, for example, the foreground HR parameter and the background RR parameter. Based upon data from the foreground/background module 297, the seizure detection module 299 is capable of identifying a seizure event, such as described above.

In the exemplary depiction shown in FIG. 3F, data received from the foreground/background module 297 is forwarded to a relative heart rate (RHR) determination unit 587, which determines one or more relationships between two or more of the FHR, the BHR, the instantaneous heart rate (IHR), the short-term heart rate threshold, the short-term heart rate duration threshold, the ISHR, the short-term HR slope threshold, and the slope duration threshold. In a preferred embodiment, the RHR determination unit determines at least a RHR, although as discussed above any number of additional KR parameters and thresholds for such parameters may be determined and forwarded to seizure identification unit 589, which determines from one or more of the calculated values, the relationships, or both whether a seizure is identified.

In one embodiment, seizure identification unit 589 determines whether or not a seizure has based upon whether the RHR exceeds a seizure threshold value. The RHR is compared to the seizure threshold, and whether the RHR exceeds the RHR threshold is determined. A signal indicative of the occurrence of a seizure event is provided based upon the comparison. In one embodiment, the threshold may be a fixed numerical threshold. The seizure threshold value is preferably one that reflects heart rate changes typically seen for the patient's seizure. In patients whose seizures are accompanied with tachycardia (accelerated heart rate), the seizure threshold is greater than one. Because the foreground heart rate is collected over a shorter time window than the background heart rate, a threshold greater than one reflects an increase in a short term heart rate over a baseline, long term heart rate. In one embodiment, the seizure threshold value is 1.3. For patients experiencing bradycardia in conjunction with seizures the threshold is less than one (or alternatively the BHR/FHR ratio is used instead of FHR/BHR). On the other hand, if the patient's seizures are accompanied with bradycardia (reduced heart rate), the threshold is generally less than one. The precise value of the threshold can be set by a physician in consultation with the patient, and may be periodically adjusted it will be appreciated that for bradycardia-based detection, detections occur when the FHR/BHR ratio is below the threshold (or BHR/FHR is above the threshold) and the duration constraint is time spent at or below the threshold.

In one embodiment, an adaptive seizure threshold is used, and is determined based upon the actual ratio of the FHR and the MR experienced by the patient during one or more seizure events. In another embodiment, the threshold may adaptively change based upon one or more variables such as the patient's level of exertion, the time of day, the number of false positive seizure detections (i.e., detection events that do not correspond to an actual seizure event), the number of false negative seizure detections (i.e., actual seizures for which no corresponding detection event occurred, changes in the patient's disease state, whether the patient is engaged in a high-risk activity such as swimming or driving, etc

As noted above, generation of a seizure occurrence signal may depend upon more than the RHR alone exceeding a threshold. For example, the logic associated with generating the seizure occurrence signal may require that the RHR

exceed the seizure threshold for a specified duration. In addition or alternatively, the seizure detection logic may require that a short-term HR parameter (such as IHR or the ERR) must exceed a short-term HR threshold (e.g., a fixed threshold of 110 BPM or an adaptive short-term threshold of an increase of 30 BPM from the BHR value at the time the RHR exceeded its seizure threshold) before the signal is generated. Additional thresholds for instantaneous slope and the duration of an instantaneous slope measurement exceeding a threshold may also be required.

If a seizure is identified by seizure identification module 299, in one embodiment, a response may be implemented. Based upon the identification, the medical device 200 may initiate one or more of several responsive actions, including generating an indication of at least one of a seizure or an impending seizure. This indication may be stored internally and/or externally, e.g., in the memory 217 (FIG. 2). This indication may also be transmitted to an entity separate from the medical device 200, e.g., to the monitoring unit 270 or monitoring and treatment unit 610 (FIG. 4), and stored, e.g., into the local database unit 255 and/or the database unit 250 (FIG. 2). The medical device 200 may initiate other responsive actions such as providing an audible, visible, or tactile alert to the patient or a caregiver; logging a timestamp of the seizure; initiation of a seizure severity determination routine based upon data from the heart beat/interval determination module 275, the foreground/background module 297, and/or the seizure detection module 299; communicating with one or more of database unit 250 or remote device 292, or notifying emergency services via email or autophone communications. It may be appreciated that, based upon the identification of a seizure by the seizure detection module 299, responsive action(s) may be performed by either the MD 200, monitoring unit 270, or other devices such as remote device 792.

In another embodiment, a preventive therapy or an inter-ventive therapy may be performed as a responsive action. The therapy may comprise, for example, an electrical stimulation of the vagus nerve 127.

Alternatively or in addition to detecting a seizure and providing a signal indicating its occurrence, according to one embodiment of the present invention as shown in FIG. 4, a monitoring and treatment unit 610, which may be a monitoring unit 270 or a unit other than medical device 200 implanted in or attached to an external portion of the patient's body, is provided. The monitoring and treatment unit 610 may comprise a reporting module 620 to receive an indication of an occurring or impending epileptic event from the medical device 200 and a treatment unit 630 that can provide a therapy, such as an electrical signal to a neural structure of a patient, a drug delivery device, or a device that can cool a neural structure of a patient. In one embodiment, the medical device 200 may be external to the patient's body and the monitoring and treatment unit 610 may comprise a wholly or partially implanted system. More specifically, treatment unit 630 may be an implanted unit with programmed electrical parameters (e.g., amplitude, pulse width, frequency, on-time, off-time, etc.) that defines therapeutic stimulation signal provided by a stimulation unit 220 (FIG. 2B) to the electrodes 128 via the leads 201 (FIG. 2B). Reporting module 620 may be implanted or external to the patient's body.

Turning now to FIG. 5, a stylized flowchart depiction of detecting a seizure event, in accordance with one illustrative embodiment of the present invention, is provided. The medical device 200 receives a heart beat signal (block 710). Typically, the cardiac data collection module 265 (FIGS. 2 and 3A) of the medical device 200 receives the heart beat signal. After performing buffering, amplification, filtering, and A/D

conversion of the heart beat signal, the heart beat/interval determination module 275 and window analysis module 295 processes the heart beat signal to derive valid beat data (block 720). From the valid beat data, it is decided from one or more calculations if seizure is occurring (block 730). This decision may be performed by seizure identification module 299. A more detailed description of the step of deciding if the seizure is occurring is provided in FIG. 6 and the accompanying description below.

Based upon the decision (block 730), if no seizure is occurring, the medical device 200 continues to receive the heart beat signal (block 750, returning flow to block 710).

However, if the medical device 200 decides a seizure is occurring in block 730, the medical device 200 or an external unit 270 may provide an indication of the seizure occurrence and/or take a responsive action (block 760), such as providing a warning to the patient or his or her caregivers, physician, etc. (block 775); logging a time of seizure (block 777); computing and optionally logging one or more seizure severity indices (block 779); and/or providing treatment of the seizure (block 781).

The warning 775 may manifest as a warning tone or light implemented by a nearby object adapted to receive the indication of a seizure event from the medical device 200; an automated email, text message, telephone call, or video message sent from the medical device 200, either directly or via an monitoring unit 270, to the patient's cellular telephone, PDA, computer, television, etc. Such a warning may allow the patient or his or her caregivers to take measures protective of patient's well-being and those of others, e.g.; pulling out of traffic and turning off a car; when the patient is driving; stopping the use of machinery, contacting another adult if the patient is providing childcare; removing the patient from a swimming pool or bathtub, lying down or sitting if the patient is standing, etc.

The time of the seizure event may be logged 777 by taking a time stamp of the decision 730 and storing it in a memory of the medical device 200 or the external unit 270.

One or more seizure severity indices may be computed 779 from valid beat data, such as the duration of elevation of a shorter time window heart rate above a baseline heart rate, a slope of a short time window heart rate, heart rate variability or the slope of heart rate variability in one or more time or number-of-beat windows, and/or an area under the curve of a short time window heart rate relative to a baseline heart rate, among others. Though not to be bound by theory, it is reasonable to conclude that, for at least some types of seizures, an increase in heart rate, slope of heart rate, heart rate variability, slope of heart rate variability, area under the curve of heart rate relative to baseline, etc. and the absolute and/or relative durations of such changes provide a reasonable approximation of seizure severity as it would be measured electroencephalographically, without the difficulty in collecting, storing, and analyzing the volume of EEG data required to calculate seizure severity under traditional measures of seizure severity. The seizure severity index or indices may be logged 779 as well.

Turning now to FIG. 6 a stylized flowchart depiction of providing a treatment based upon identifying a seizure (blocks 760 and 781 of FIG. 5), according to one embodiment of the invention, is provided. In some embodiments, upon identifying a seizure, the medical device 200 determines which of a plurality of treatment(s) to perform (block 910). This determination is made based upon predetermined rules set up by a healthcare professional. The treatments may be one or more of electrical signal therapy, drug therapy, and/or neural cooling therapy.

With regard to an electrical stimulation treatment, the parameters of electrical signal therapy (including an "on time" of zero milliseconds, i.e., the application of no electrical signals) are selected (block 920). Similarly, the drug and dosage of drug therapy (including a dosage of zero milligrams, the application of no drugs) are selected (block 930) and the parameters of cooling a neural structure (including the maintenance of the ambient temperature of the neural structure, i.e., no cooling) are selected (block 940). Thereafter, the electrical signal, drug, or cooling are applied, delivered, or performed (blocks 950, 960, and 970). The combination of treatment, if any, may be determined based upon one or more values determined by the heart beat/interval determination module 275, heart beat validation module 285, the foreground/background module 297, or the seizure detection module 299.

Particular embodiments may combine or eliminate one or more of the treatment therapies available. Thus, a given device may comprise only electrical signal therapy, only drug delivery therapy, or combinations of any of the foregoing; therapies.

The above methods may be performed by a computer readable program storage device encoded with instructions that, when executed by a computer, perform the method described herein.

All of the methods and apparatuses disclosed and claimed herein may be made and executed without undue experimentation in light of the present disclosure. While the methods and apparatus of this invention have been described in terms of particular embodiments, it will be apparent to those skilled in the art that variations may be applied to the methods and apparatus and in the steps, or in the sequence of steps, of the method described herein without departing from the concept, spirit, and scope of the invention, as defined by the appended claims. It should be especially apparent that the principles of the invention may be applied to selected cranial nerves other than, or in addition to, the vagus nerve to achieve particular results in treating patients having epilepsy, depression, or other medical conditions.

The particular embodiments disclosed above are illustrative only as the invention may be modified and practiced in different but equivalent manners apparent to those skilled in the art having the benefit of the teachings herein. Furthermore, no limitations are intended to the details of construction or design herein shown other than as described in the claims below. It is, therefore, evident that the particular embodiments disclosed above may be altered or modified and all such variations are considered within the scope and spirit of the invention. Accordingly, the protection sought herein is as set forth in the claims below.

What is claimed:

1. A method for detecting epileptic seizures based upon a time of beat sequence of the patient's heart comprising:
 - collecting cardiac data from the patient's heart, said cardiac data comprising a time series of fiducial time markers for candidate heartbeats;
 - identifying valid beats from said candidate heartbeats by subjecting a plurality of candidate beats to at least one beat validity test, said at least one beat validity test comprising at least one beat interval test applied to a candidate beat interval derived from a candidate heartbeat and at least one preceding heartbeat;
 - accepting as valid beats the candidate beats that pass said at least one beat validity test;
 - forming a first window comprising a first valid beat and at least one prior beat, wherein said first window is selected from:

41

a time window of from 1 to 10 seconds, bounded on the most recent end by said first valid beat; and
 a number of beats window comprising said first valid beat and a number of immediately preceding beats ranging from 2-15;
 testing said first window with at least one window test, wherein said at least one window test comprises a dispersion test;
 accepting the beats in said window as suitable for seizure detection if said window has a dispersion less than a threshold level of dispersion;
 in response to accepting the beats in said window as suitable for seizure detection, determining a foreground heart rate parameter comprising a statistical measure of central tendency of heart rate in said first window;
 forming a second window larger than said first window;
 determining a background heart rate parameter comprising a statistical measure of central tendency of heart rate in said second window;
 determining a relative heart rate comprising at least one of a first ratio of said foreground to said background heart rate parameters and a second ratio of said background to said foreground heart rate parameters;
 comparing said relative heart rate to at least one of a first seizure threshold value associated with said first ratio and a second seizure threshold value associated with said second ratio;
 detecting an epileptic seizure if at least one of said first ratio exceeds said first seizure threshold value, or said second ratio is below said second seizure threshold value; and
 taking a responsive action based upon the detecting, wherein the responsive action is selected from providing a warning to the patient or a caregiver, notifying the patient or the caregiver, logging the time of occurrence of said epileptic seizure, storing one or more seizure severity indices relating to said epileptic seizure, or treating said epileptic seizure.

2. The method of claim 1, wherein identifying valid beats comprises determining if each of said plurality of candidate beats falls within a plausibly physiological interval.

3. The method of claim 2, wherein said beat validity test comprises comparing said candidate beat interval to at least one of an upper beat interval threshold and a lower beat interval threshold.

4. The method of claim 3, wherein said upper and lower beat interval thresholds are derived from at least one of the patient's own heartbeat data, and heartbeat data from a sample patient population based upon one or more of brain state, sex, age, weight, level of activity, time of day, type of epilepsy, use of drugs or substances (such as food) that affect cardiac function, ambient temperature, body temperature, respiration, and blood pressure.

5. The method of claim 1, wherein said at least one beat interval test comprises:

- determining that said candidate beat interval corresponds to a heart rate within a range bound by a minimum heart rate and a maximum heart rate;
- determining that the candidate beat interval is within an acceptable percentage of at least one of the immediately preceding valid beat interval or a recent baseline heart rate in a predetermined time window; and
- determining that the absolute slope derived from the current candidate beat interval and the most recent beat interval does not correspond to a rate of change of heart rate that is physiologically improbable.

42

6. The method of claim 5, wherein:

- said minimum heart rate is about 35 beats per minute and said maximum heart rate is about 180 beats per minute;
- said candidate beat interval is not more than about 115 percent of the greater of the immediately preceding valid beat interval or a recent baseline heart rate in a 30 second time window, and is at least about 65 percent of the immediately preceding valid beat interval; and
- said absolute slope of the current candidate beat interval and the most recent beat interval is ≤ 0.3 .

7. The method of claim 1, wherein said at least one window test comprises:

- determining whether the mean square error of a least squares linear fit of the beats in said first window is less than or equal to a predetermined heart rate variability threshold.

8. The method of claim 1, wherein said first window comprises a time window and said at least one window test comprises determining that the number of valid beats in the window exceeds a lower number of beats threshold.

9. The method of claim 1, wherein determining a foreground heart rate parameter comprises determining a target percentile value in a uniform distribution Percentile Tracking Filter in said first window.

10. The method of claim 9, wherein upper and lower bounds for said uniform distribution are adaptively determined for said first window based upon the maximum and minimum beat intervals in said first window.

11. The method of claim 10, wherein said target percent value of said Percentile Tracking Filter comprises a value in the range of 20 percent to 80 percent.

12. The method of claim 1, wherein determining a background heart rate parameter comprises determining a target percentile value in a uniform distribution Percentile Tracking Filter in said second window.

13. The method of claim 12, further comprising an exponential forgetting factor applied to the interbeat intervals of the heartbeats in said Percentile Tracking Filter.

14. The method of claim 1, further comprising the step of determining a duration of time that said first ratio exceeds said first seizure threshold value, or said second ratio is below said second seizure threshold value, and wherein detecting an epileptic seizure occurs only if said duration exceeds a seizure duration threshold.

15. The method of claim 1, wherein said dispersion test comprises determining the mean squared error of a least-squares linear fit of the heartbeats in the first window, and wherein said heartbeats in said window are accepted as suitable for seizure detection if said mean squared error is less than a threshold.

16. The method of claim 1, wherein said second window is selected from:

a time window of from 10 seconds to 86,400 seconds; and
 a number of beats window comprising from about 30 beats to about 175,000 beats.

17. A method for detecting epileptic seizures based upon a time of beat sequence of the patient's heart comprising:
 collecting cardiac data from the patient's heart, said cardiac data comprising a time series of fiducial time markers for candidate heartbeats;
 identifying valid beats from said candidate heartbeats by subjecting a plurality of candidate beats to at least one beat validity test, said at least one beat validity test comprising at least one beat interval test applied to a candidate beat interval derived from a candidate heartbeat and at least one preceding heartbeat;

accepting as valid beats the candidate beats that pass said at least one beat validity test;

forming a first window comprising a first valid beat and at least one prior valid beat, wherein said first window is selected from:

5 a time window of from 1 to 10 seconds, bounded on the most recent end by said first valid beat; and

a number of beats window comprising said first valid beat and a number of immediately preceding beats ranging from 2-15;

10 testing said first window with at least one window test, wherein said at least one window test comprises determining whether the mean square error of a least squares linear fit of the beats in said first window is less than a threshold;

15 determining a foreground heart rate parameter comprising a statistical measure of central tendency of heart rate in said first window, in response to determining that the mean square error of a least squares linear fit of the beats in said first window is less than a threshold,

20 forming a second window larger than said first window;

determining a background heart rate parameter comprising a statistical measure of central tendency of heart rate in said second window;

25 determining a relative heart rate comprising at least one of a first ratio of said foreground to said background heart rate parameters and a second ratio of said background to said foreground heart rate parameters;

comparing said relative heart rate to at least one of a first seizure threshold value associated with said first ratio, a second seizure threshold value associated with said first ratio, a third seizure threshold value associated with said second ratio, and a fourth seizure threshold value associated with said second ratio;

30 detecting an epileptic seizure if at least one of said first ratio exceeds said first seizure threshold value, said first ratio is below said second seizure threshold value, said second ratio is below said first seizure threshold value, or said second ratio exceeds said second seizure threshold value; and

40 taking a responsive action based upon the detecting, wherein the responsive action is selected from providing a warning to the patient or a caregiver, notifying the patient or the caregiver, logging the time of occurrence of said epileptic seizure, storing one or more seizure severity indices relating to said epileptic seizure, or treating said epileptic seizure.

18. A method for detecting epileptic seizures based upon a time of beat sequence of the patient's heart comprising:

50 collecting by a cardiac data collection module cardiac data from the patient's heart, said cardiac data comprising a time series of fiducial time markers for candidate heartbeats;

identifying by a heartbeat determination module a series of candidate beat intervals from pairs of adjacent candidate heartbeats;

55 testing by a heartbeat validation module at least a plurality of candidate heartbeats with at least one beat validity test selected from;

a) determining that a beat interval determined from said candidate heartbeat and the immediately preceding valid

60

heartbeat is less than a maximum beat interval and greater than a minimum beat interval;

b) determining that a beat interval determined from said candidate heartbeat and the immediately preceding valid heartbeat is within an acceptable percentage of at least one of the immediately preceding beat interval or a recent short term beat interval measure; and

c) determining that a rate of change of heart rate determined from said candidate beat and a single immediately preceding heartbeat does not correspond to a rate of change of heart rate that is physiologically improbable;

accepting by said heartbeat validation module as valid beats each candidate heartbeat passing said at least one beat interval test;

identifying by a window test module a plurality of beats suitable for seizure detection by forming a first window comprising a first valid beat and at least one preceding heartbeat, wherein said first window is selected from a time window of from 1 to 10 seconds, bounded on the most recent end by said first valid beat; and a number of beats window comprising said first valid beat and a number of immediately preceding beats ranging from 2-15;

testing with said window test module said beats in said first window with at least one window test, wherein said at least one window test comprises determining whether the mean square error of a least squares linear fit of the beats in said first window is less than a dispersion threshold;

determining by a foreground/background module, in response to determining that the mean square error of a least squares linear fit of the beats in said first window is less than said dispersion threshold, a foreground heart rate parameter comprising a statistical measure of central tendency in said first window;

forming by said foreground/background module a background window larger than said first window;

determining by said foreground/background module a background heart rate parameter comprising a statistical measure of central tendency in said background window;

determining by a seizure detection module a relative heart rate parameter comprising at least one of the ratio of said foreground to said background heart rate parameters and the ratio of said background to said foreground heart rate parameters;

comparing by said seizure detection module said relative heart rate parameter to a seizure threshold value; and

detecting by said seizure detection module the occurrence of a seizure event if said relative heart rate parameter crosses said seizure threshold value.

19. The method of claim 18, further comprising determining by said seizure detection module a duration of time that said relative heart rate parameter exceeds said seizure threshold value; and

wherein detecting said epileptic seizure occurs only if said duration exceeds a seizure duration threshold.

UNITED STATES PATENT AND TRADEMARK OFFICE
CERTIFICATE OF CORRECTION

PATENT NO. : 9,241,647 B2
APPLICATION NO. : 14/059334
DATED : January 26, 2016
INVENTOR(S) : Osorio et al.

Page 1 of 1

It is certified that error appears in the above-identified patent and that said Letters Patent is hereby corrected as shown below:

TITLE PAGE ITEM 71

SHOULD READ CYBERONICS, INC., Houston, TX (US)

Signed and Sealed this
Ninth Day of August, 2016



Michelle K. Lee
Director of the United States Patent and Trademark Office

专利名称(译)	检测心脏数据癫痫发作的算法		
公开(公告)号	US9241647	公开(公告)日	2016-01-26
申请号	US14/059334	申请日	2013-10-21
[标]申请(专利权)人(译)	FLINT HILLS SCI L LÇ		
申请(专利权)人(译)	FLINT HILLS科学, L.L.C.		
当前申请(专利权)人(译)	Cyberonics公司, INC.		
[标]发明人	OSORIO IVAN FREI MARK G		
发明人	OSORIO, IVAN FREI, MARK G.		
IPC分类号	A61B5/02 A61N1/36 A61B5/00 A61B5/04 A61B5/024 A61B5/0245 A61B5/0456		
CPC分类号	A61B5/04012 A61B5/0245 A61B5/02405 A61B5/4094 A61N1/36064 A61B5/0456 A61B5/024 A61B5/7275 A61B5/746		
其他公开文献	US20140046203A1		
外部链接	Espacenet USPTO		

摘要(译)

使用医疗设备检测患者癫痫发作的方法, 系统和设备。通过从心脏数据收集确定适合于癫痫发作检测的有效心跳的心脏数据来执行确定; 从有效心跳计算感兴趣的心率数据; 并根据心率数据识别癫痫发作事件。然后, 医疗设备可以采取响应动作, 例如警告, 记录癫痫发作的时间, 计算和存储一个或多个癫痫发作严重性指数, 和/或治疗癫痫发作。

