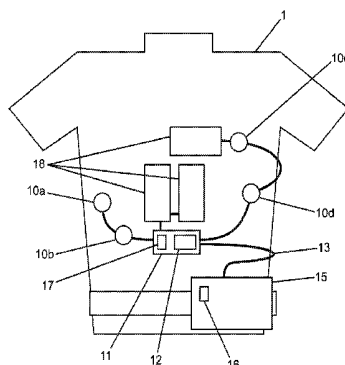


(10) **Patent No.:** US 10,582,858 B2  
(45) **Date of Patent:** Mar. 10, 2020



in the detected cardiac arrhythmia based on the determined ECG signal contamination; wherein at least the patient activity data and the heart rate data are analyzed to determine a change in a physiological condition of the patient over time.

### 19 Claims, 5 Drawing Sheets

### Related U.S. Application Data

continuation of application No. 14/180,775, filed on Feb. 14, 2014, now Pat. No. 9,398,859, which is a continuation of application No. 12/840,633, filed on Jul. 21, 2010, now Pat. No. 8,676,313, which is a continuation of application No. 12/002,469, filed on Dec. 17, 2007, now Pat. No. 7,974,689.

(60) Provisional application No. 60/934,404, filed on Jun. 13, 2007.

### (51) Int. Cl.

*A61N 1/04* (2006.01)  
*A61B 5/0404* (2006.01)  
*A61B 5/11* (2006.01)  
*A61N 1/39* (2006.01)  
*A61B 5/0408* (2006.01)  
*A61B 5/044* (2006.01)  
*A61B 5/04* (2006.01)  
*A61B 5/0452* (2006.01)

### (52) U.S. Cl.

CPC ..... *A61B 5/044* (2013.01); *A61B 5/04012* (2013.01); *A61B 5/0452* (2013.01); *A61B 5/04085* (2013.01); *A61B 5/1116* (2013.01); *A61B 5/1117* (2013.01); *A61B 5/1123* (2013.01); *A61B 5/4836* (2013.01); *A61B 5/6805* (2013.01); *A61B 5/7282* (2013.01); *A61N 1/046* (2013.01); *A61N 1/39* (2013.01); *A61N 1/3987* (2013.01); *A61B 5/721* (2013.01); *A61B 2560/045* (2013.01)

### (58) Field of Classification Search

CPC ... *A61B 5/4836*; *A61B 5/044*; *A61B 5/04085*; *A61B 5/0404*; *A61B 5/6805*; *A61B 5/1123*; *A61B 5/1118*; *A61B 5/1117*; *A61B 5/1116*; *A61B 2560/045*; *A61B 5/721*; *A61N 1/3987*; *A61N 1/046*; *A61N 1/39*

See application file for complete search history.

### (56) References Cited

#### U.S. PATENT DOCUMENTS

4,632,122 A 12/1986 Johansson et al.  
 4,698,848 A 10/1987 Buckley  
 4,928,690 A 5/1990 Heilman et al.  
 4,978,926 A 12/1990 Zerod et al.  
 5,062,834 A 11/1991 Gross et al.  
 5,078,134 A \* 1/1992 Heilman ..... *A61B 5/6831*  
 600/508  
 5,176,380 A 1/1993 Evans et al.  
 5,330,505 A 7/1994 Cohen  
 5,348,008 A 9/1994 Bomn et al.  
 5,353,793 A 10/1994 Bomn  
 5,357,696 A 10/1994 Gray et al.  
 5,365,932 A 11/1994 Greenhut  
 5,544,661 A 8/1996 Davis et al.

5,564,429 A 10/1996 Bomn et al.  
 5,662,689 A 9/1997 Elsberry et al.  
 5,718,242 A 2/1998 McClure et al.  
 5,738,102 A 4/1998 Lemelson  
 5,741,306 A 4/1998 Glegyak et al.  
 5,758,443 A 6/1998 Pedrazzini  
 5,792,190 A 8/1998 Olson et al.  
 5,929,601 A 7/1999 Kaib et al.  
 5,944,669 A 8/1999 Kaib  
 6,016,445 A 1/2000 Baura  
 6,045,503 A 4/2000 Grabner et al.  
 6,049,730 A \* 4/2000 Kristbjarnarson .....

*A61B 5/04011*  
 600/509

6,065,154 A 5/2000 Hulings et al.  
 6,097,987 A 8/2000 Milani  
 6,148,233 A 11/2000 Owen et al.  
 6,169,387 B1 1/2001 Kaib  
 6,169,397 B1 1/2001 Steinbach et al.  
 6,253,099 B1 6/2001 Oskin et al.  
 6,280,461 B1 8/2001 Glegyak et al.  
 6,390,996 B1 5/2002 Halperin et al.  
 6,406,426 B1 6/2002 Reuss et al.  
 6,666,830 B1 12/2003 Lehrman et al.  
 6,681,003 B2 1/2004 Linder et al.  
 6,690,969 B2 2/2004 Bystrom et al.  
 6,790,178 B1 9/2004 Mault et al.  
 6,804,554 B2 10/2004 Ujhelyi et al.  
 6,827,695 B2 12/2004 Palazzolo et al.  
 6,865,413 B2 3/2005 Halperin et al.  
 6,908,437 B2 6/2005 Bardy  
 6,990,373 B2 1/2006 Jayne et al.  
 7,074,199 B2 7/2006 Halperin et al.  
 7,108,665 B2 9/2006 Halperin et al.  
 7,118,542 B2 10/2006 Palazzolo et al.  
 7,122,014 B2 10/2006 Palazzolo et al.  
 7,149,579 B1 12/2006 Koh et al.  
 7,177,684 B1 2/2007 Kroll et al.  
 7,220,235 B2 5/2007 Geheb et al.  
 7,277,752 B2 10/2007 Matos  
 7,295,871 B2 11/2007 Halperin et al.  
 7,340,296 B2 3/2008 Stahmann et al.  
 7,427,921 B2 9/2008 Van Woudenberg  
 7,453,354 B2 11/2008 Reiter et al.  
 7,476,206 B2 1/2009 Palazzolo et al.  
 7,488,293 B2 2/2009 Marcovecchio et al.  
 7,702,390 B1 4/2010 Min  
 7,810,172 B2 10/2010 Williams  
 7,831,303 B2 11/2010 Rueter et al.  
 7,974,689 B2 7/2011 Volpe et al.  
 8,121,683 B2 2/2012 Bucher et al.  
 8,140,154 B2 3/2012 Donnelly et al.  
 8,271,082 B2 9/2012 Donnelly et al.  
 8,369,944 B2 2/2013 Macho et al.  
 8,600,486 B2 12/2013 Kaib et al.  
 8,649,861 B2 2/2014 Donnelly et al.  
 8,706,215 B2 4/2014 Kaib et al.  
 8,904,214 B2 12/2014 Volpe et al.  
 8,909,335 B2 12/2014 Radzelovage  
 9,008,801 B2 4/2015 Kaib et al.  
 9,135,398 B2 9/2015 Kaib et al.  
 9,398,859 B2 7/2016 Volpe et al.  
 2002/0107435 A1 8/2002 Swetlik et al.  
 2003/0004547 A1 1/2003 Owen et al.  
 2003/0023277 A1 1/2003 Owen et al.  
 2003/0032988 A1 2/2003 Fincke  
 2003/0055460 A1 3/2003 Owen et al.  
 2003/0095648 A1 5/2003 Kaib et al.  
 2003/0149462 A1 8/2003 White et al.  
 2003/0158593 A1 8/2003 Heilman et al.  
 2003/0174049 A1 9/2003 Beigel et al.  
 2003/0195567 A1 10/2003 Jayne et al.  
 2003/0212311 A1 11/2003 Nova et al.  
 2003/0233129 A1 12/2003 Matos  
 2004/0007970 A1 1/2004 Ma et al.  
 2004/0049233 A1 3/2004 Edwards  
 2004/0133079 A1 \* 7/2004 Mazar ..... *A61B 5/0031*  
 600/300  
 2004/0143297 A1 7/2004 Ramsey

(56)

## References Cited

## U.S. PATENT DOCUMENTS

2005/0049515 A1 3/2005 Misczynski et al.  
 2005/0131465 A1 6/2005 Freeman et al.  
 2006/0017575 A1 1/2006 McAdams  
 2006/0036292 A1 2/2006 Smith et al.  
 2006/0085049 A1 4/2006 Cory et al.  
 2006/0129067 A1 6/2006 Grajales et al.  
 2006/0178706 A1 8/2006 Lisogurski et al.  
 2006/0220809 A1 10/2006 Stigall et al.  
 2006/0264776 A1 11/2006 Stahmann et al.  
 2006/0270952 A1 11/2006 Freeman et al.  
 2007/0073120 A1 3/2007 Li et al.  
 2007/0118056 A1 5/2007 Wang et al.  
 2007/0129769 A1 6/2007 Bourget et al.  
 2007/0161913 A1 7/2007 Farrell et al.  
 2007/0169364 A1 7/2007 Townsend et al.  
 2007/0239220 A1 10/2007 Greenhut et al.  
 2007/0265671 A1 11/2007 Roberts et al.  
 2007/0299474 A1 12/2007 Brink  
 2008/0004536 A1 1/2008 Baxi et al.  
 2008/0015454 A1 1/2008 Gal  
 2008/0030656 A1 2/2008 Watson et al.  
 2008/0031270 A1 2/2008 Tran et al.  
 2008/0033495 A1 2/2008 Kumar  
 2008/0045815 A1 2/2008 Derchak et al.  
 2008/0058884 A1 3/2008 Matos  
 2008/0221631 A1 9/2008 Dupelle  
 2008/0249591 A1 10/2008 Gaw et al.  
 2008/0287770 A1 11/2008 Kurzweil et al.  
 2008/0306562 A1 12/2008 Donnelly et al.  
 2008/0312520 A1 12/2008 Rowlandson et al.  
 2008/0312709 A1 12/2008 Volpe et al.  
 2009/0073991 A1 3/2009 Landrum et al.  
 2009/0076336 A1 3/2009 Mazar et al.  
 2009/0076340 A1 3/2009 Libbus et al.  
 2009/0076341 A1 3/2009 James et al.  
 2009/0076342 A1 3/2009 Amurthur et al.  
 2009/0076343 A1 3/2009 James et al.  
 2009/0076344 A1 3/2009 Libbus et al.  
 2009/0076345 A1 3/2009 Manicka et al.  
 2009/0076346 A1 3/2009 James et al.  
 2009/0076348 A1 3/2009 Manicka et al.  
 2009/0076349 A1 3/2009 Libbus et al.  
 2009/0076350 A1 3/2009 Bly et al.  
 2009/0076363 A1 3/2009 Bly et al.  
 2009/0076364 A1 3/2009 Libbus et al.  
 2009/0076397 A1 3/2009 Libbus et al.  
 2009/0076405 A1 3/2009 Amurthur et al.  
 2009/0076410 A1 3/2009 Libbus et al.  
 2009/0076559 A1 3/2009 Libbus et al.  
 2009/0082691 A1 3/2009 Denison et al.  
 2009/0093687 A1 4/2009 Telfort et al.  
 2009/0138059 A1 5/2009 Ouwerkerk  
 2009/0177100 A1 7/2009 Ternes  
 2009/0234410 A1 9/2009 Libbus et al.  
 2009/0264792 A1 10/2009 Mazar  
 2009/0275848 A1 11/2009 Brockway et al.  
 2009/0287120 A1 11/2009 Ferren et al.  
 2009/0292194 A1 11/2009 Libbus et al.  
 2010/0056881 A1 3/2010 Libbus et al.  
 2010/0069735 A1 3/2010 Berkner  
 2010/0076513 A1 3/2010 Warren et al.  
 2010/0076533 A1 3/2010 Dar et al.  
 2010/0083968 A1 4/2010 Wondka et al.  
 2010/0179438 A1 7/2010 Heneghan et al.  
 2010/0234715 A1 9/2010 Shin et al.  
 2010/0234716 A1 9/2010 Engel  
 2010/0295674 A1 11/2010 Hsieh et al.  
 2010/0298899 A1 11/2010 Donnelly et al.  
 2010/0312297 A1 12/2010 Volpe et al.  
 2011/0077728 A1 3/2011 Li et al.  
 2011/0196220 A1 8/2011 Storm  
 2011/0288604 A1 11/2011 Kaib et al.

2011/0288605 A1 11/2011 Kaib et al.  
 2012/0011382 A1 1/2012 Volpe et al.  
 2012/0112903 A1 5/2012 Kaib et al.  
 2012/0144551 A1 6/2012 Guldalian  
 2012/0146797 A1 6/2012 Oskin et al.  
 2012/0158074 A1 6/2012 Hall  
 2012/0158075 A1 6/2012 Kaib et al.  
 2013/0325078 A1 12/2013 Whiting et al.  
 2013/0325096 A1 12/2013 Dupelle et al.  
 2014/0163334 A1 6/2014 Volpe et al.  
 2014/0371806 A1 12/2014 Raymond et al.  
 2015/0005588 A1 1/2015 Herken et al.  
 2015/0039053 A1 2/2015 Kaib et al.  
 2015/0217121 A1 8/2015 Subramanian et al.  
 2015/0231403 A1 8/2015 Kaib et al.  
 2016/0143585 A1 5/2016 Donnelly et al.

## FOREIGN PATENT DOCUMENTS

CN 101848677 A 9/2010  
 EP 0295497 B1 9/1993  
 EP 0335356 B1 3/1996  
 EP 1642616 A2 4/2006  
 EP 1455640 B1 1/2008  
 EP 1720446 B1 7/2010  
 JP S6368135 A 3/1988  
 JP 5115450 A 5/1993  
 JP H07541 A 1/1995  
 JP H10-28679 A 2/1998  
 JP H11319119 A 11/1999  
 JP 2002-102361 A 4/2002  
 JP 2002200059 A 7/2002  
 JP 2002534231 A 10/2002  
 JP 2003235997 A 8/2003  
 JP 2004538066 A 12/2004  
 JP 2005275606 A 10/2005  
 JP 2007531592 A 11/2007  
 JP 2008302228 A 12/2008  
 JP 2009510276 A 3/2009  
 JP 2009518057 A 5/2009  
 JP 2009528909 A 8/2009  
 JP 2010530114 A 9/2010  
 WO 200002484 A1 1/2000  
 WO 2004054656 A1 7/2004  
 WO 2004067083 A2 8/2004  
 WO 2005082454 A1 9/2005  
 WO 2006050235 A1 5/2006  
 WO 2007019325 A2 2/2007  
 WO 20070057169 A1 5/2007  
 WO 2007077997 A1 7/2007  
 WO 2008137286 A1 11/2008  
 WO 2009034506 A1 3/2009  
 WO 2010014497 A1 2/2010  
 WO 2010025432 A1 3/2010  
 WO 2015127466 A2 8/2015

## OTHER PUBLICATIONS

DeBock et al., "Captopril treatment of chronic heart failure in the very old," J. Gerontol. (1994) 49: M148-M152.  
 Extended European Search Report from corresponding European Application No. 11804401.5 dated May 18, 2016.  
 Harnett, P.R. et al., "A Survey and Comparison of Laboratory Test Methods for Measuring Wicking", Textile Research Journal, Jul. 1984.  
 International Search Report dated Nov. 21, 2011 from corresponding International Application No. PCT/US11/43360.  
 O'Keefe et al., "Reproducibility and responsiveness of quality of the assessment and six minute walk test in elderly heart failure patients," Heart (1998) 80: 377-382.  
 Search Report and Written Opinion from French counterpart application No. 0853856, dated Jan. 4, 2011.

\* cited by examiner

Figure 1: Accelerometer Positioning

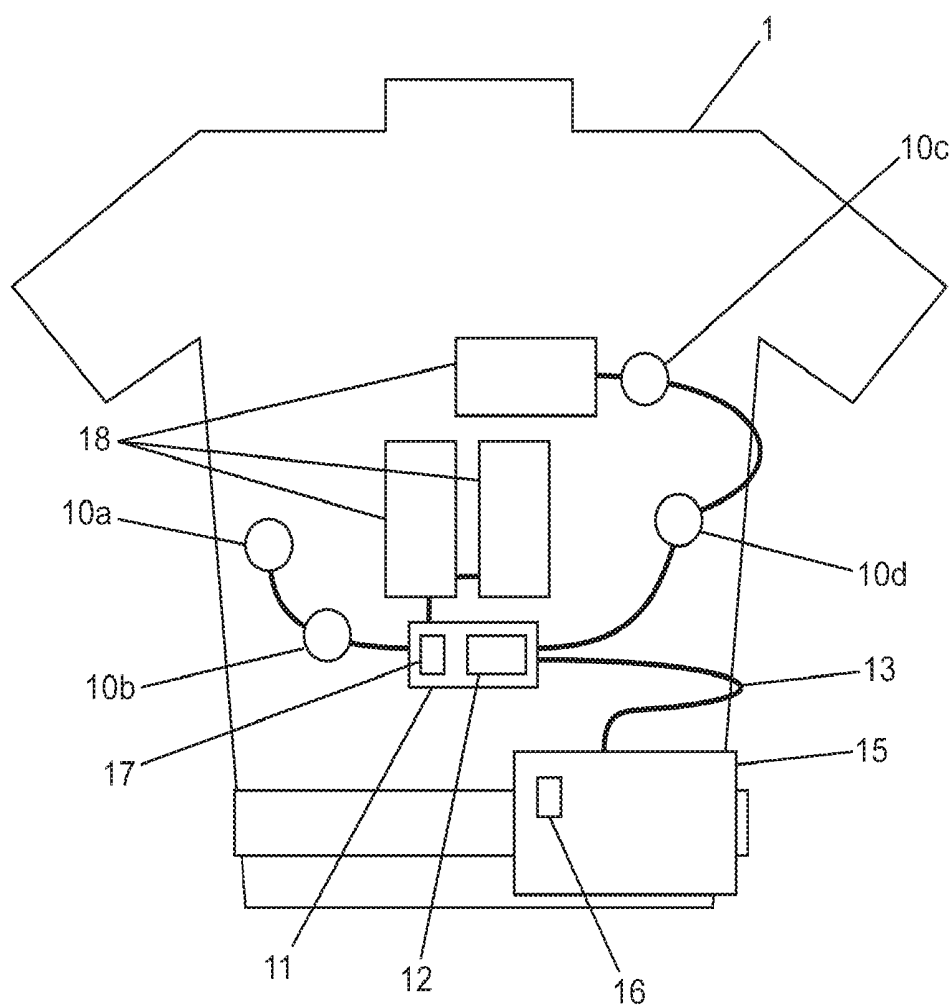


Figure 2: System diagram with accelerometers

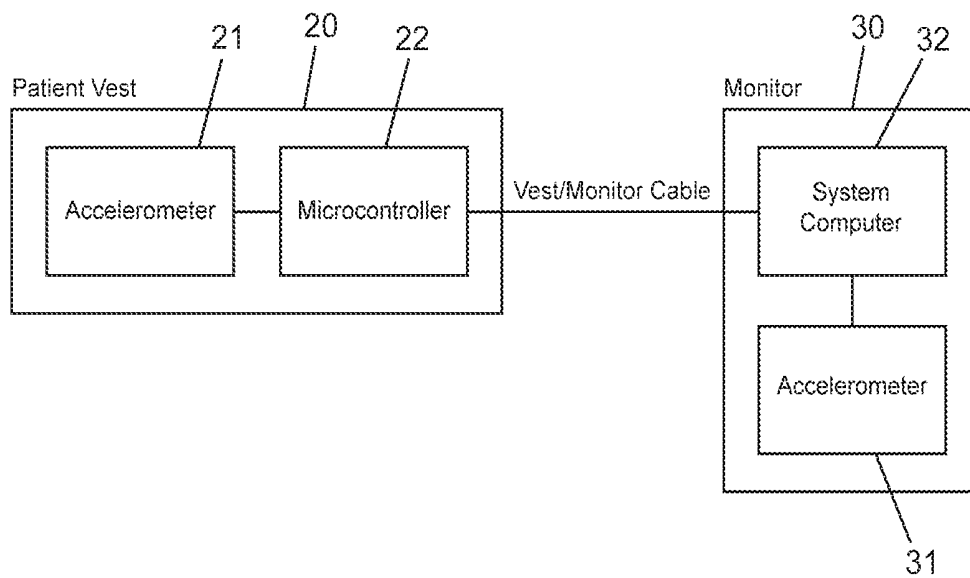


Figure 3: Monitor Accelerometer

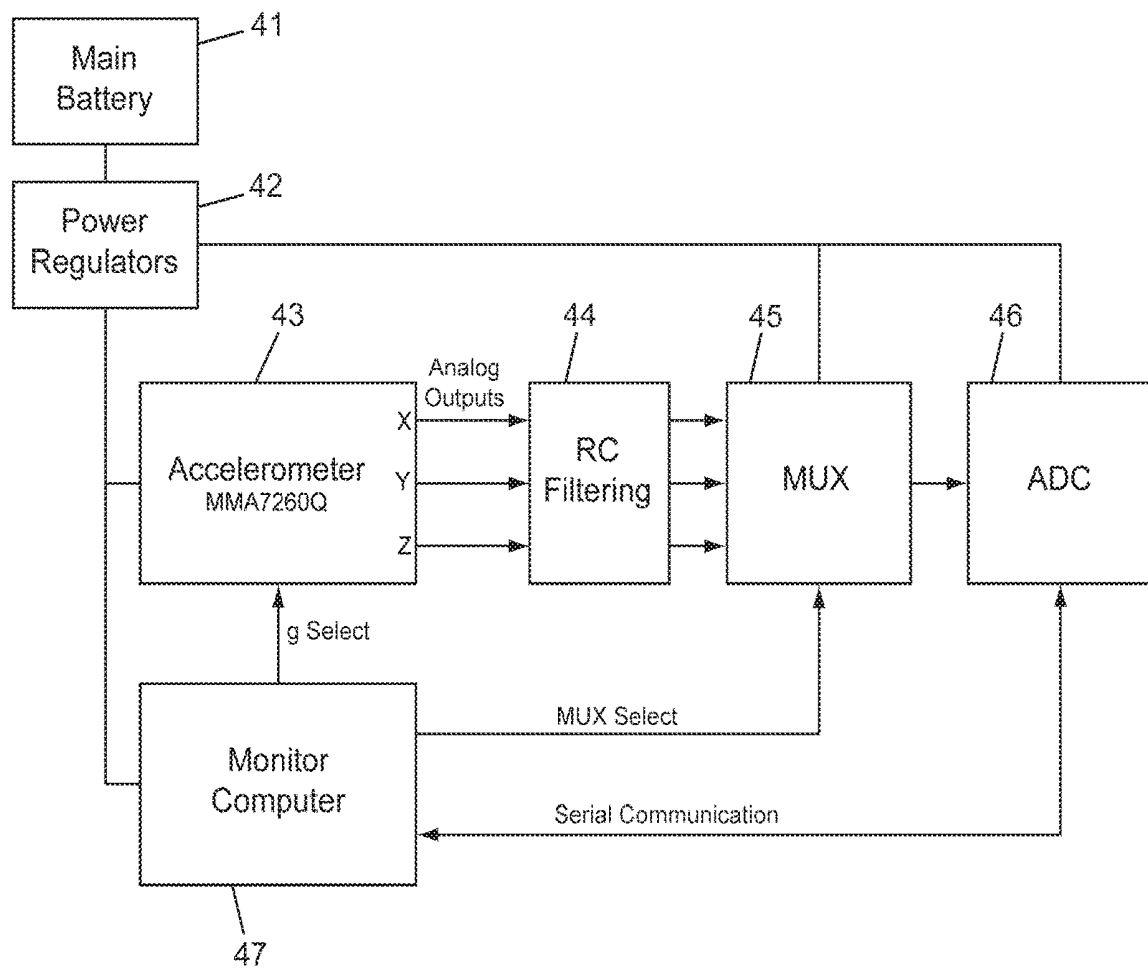


Figure 4: Belt Node Accelerometer

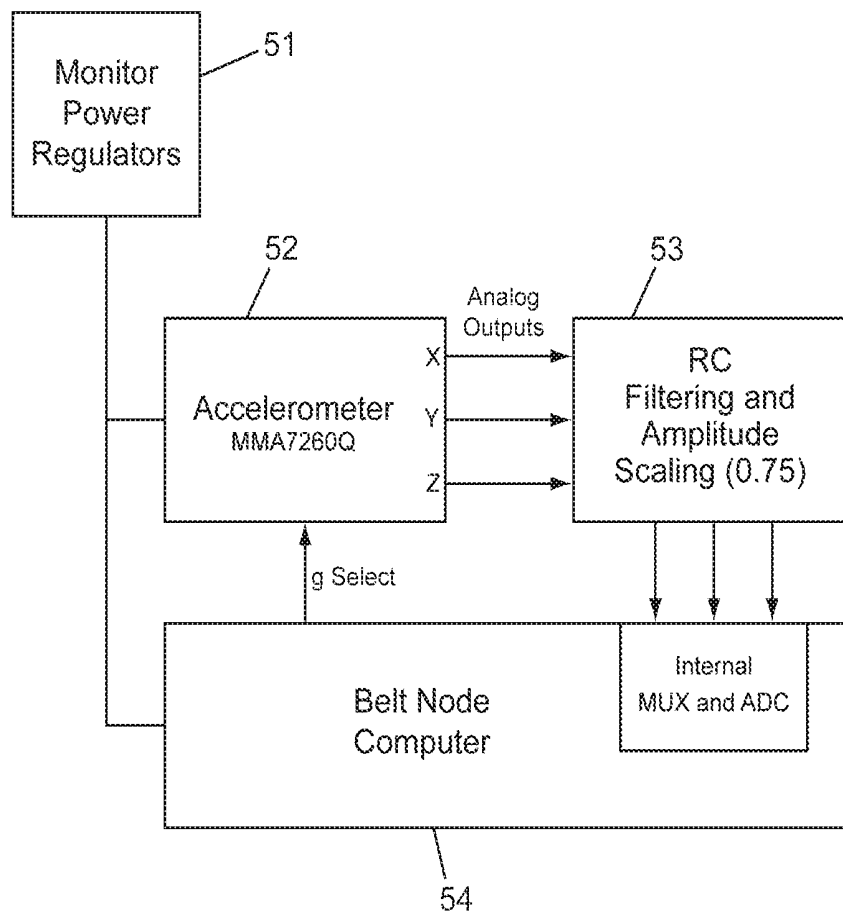
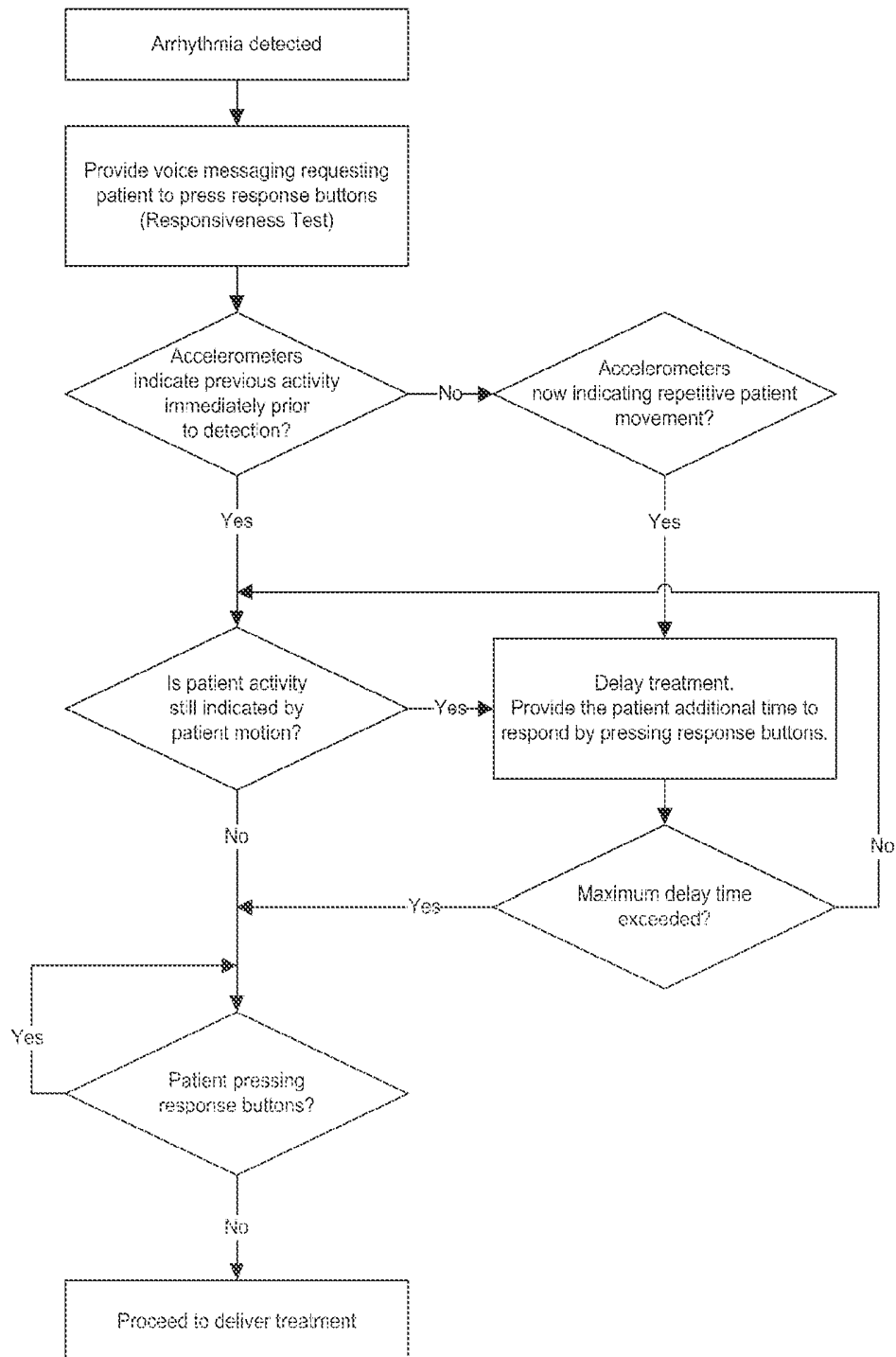


Figure 5: Arrhythmia Detection Algorithm Logic Diagram





# WEARABLE MEDICAL TREATMENT DEVICE WITH MOTION/POSITION DETECTION

## CROSS-REFERENCE TO RELATED APPLICATIONS

This Application is a Continuation of U.S. patent application Ser. No. 15/187,952, titled "Wearable Medical Treatment Device With Motion/Position Detection", filed on Jun. 21, 2016, which is a Continuation of U.S. patent application Ser. No. 14/180,775 (now U.S. Pat. No. 9,398,859), titled "Wearable Medical Treatment Device With Motion/Position Detection", filed on Feb. 14, 2014, which is a Continuation of U.S. patent application Ser. No. 12/840,633 (now U.S. Pat. No. 8,676,313), titled "Wearable Medical Treatment Device With Motion/Position Detection", filed on Jul. 21, 2010, which is a Continuation of U.S. patent application Ser. No. 12/002,469 (now U.S. Pat. No. 7,974,689), titled "Wearable Medical Treatment Device With Motion/Position Detection", filed on Dec. 17, 2007, each of which is hereby incorporated herein by reference in its entirety. U.S. application Ser. No. 12/002,469 claims the benefit of U.S. Provisional Patent Application Ser. No. 60/934,404 titled "Wearable Medical Treatment Device With Motion/Position Detection", filed on Jun. 13, 2007. The following U.S. patents are hereby incorporated by reference: U.S. Pat. Nos. 4,928,690, 6,065,154, 5,944,669, 5,741,306, 6,681,003, 6,253,099, and 5,078,134.

## FIELD OF THE INVENTION

The present invention is directed toward wearable defibrillators and, more particularly, toward wearable defibrillators capable of detecting the motion and/or position of a patient wearing the wearable defibrillator and using the sensed motion and/or position to determine an appropriate treatment.

## BACKGROUND OF THE INVENTION

The wearable defibrillator consists of a monitor and a vest (or belt) which are both worn by the patient. The device monitors the patient's ECG with sensing electrodes, such as 10a, 10b, 10c, 10d, to detect life-threatening arrhythmias and delivers a cardioverting or defibrillating shock through therapy pads, such as 18, if treatment is needed.

There is also a third piece of equipment called the battery charger that can provide two functionalities: first it can charge the monitor batteries, 41, and second it can provide a gateway for the monitor to download data to a central server. The monitor can communicate to the charger through a wireless Bluetooth link and the charger can connect to a central server through the internet.

The accelerometer(s) can allow for the computer in the wearable defibrillator to determine the position of the monitor, belt and/or patient, and the corresponding applied forces. This information can be used in a confidence based arrhythmia detection algorithm to accelerate the timing to hasten the occurrence of or hold off therapy based on past and present body motion and/or position history.

Other devices that could be used instead of an accelerometer would include, but are not limited to: gyroscope, magnetometer, hall-effect devices, and other force motion or position sensors.

## SUMMARY OF THE INVENTION

Accelerometers are able to measure x, y, and z positions. This improvement covers having an accelerometer in either

the belt, which is worn on the patient's upper body, or in the monitor, which is worn on the patient's lower body; or both locations; or other positions on the patient.

The accelerometer in the belt can be used to determine patient position since it is located on the upper torso of the patient. As a result, the belt accelerometer will be chosen such that high sensitivity data can be measured or determined from possible body positions (e.g. patient position). The accelerometer in the monitor can be chosen so that high sensitivity data (such as breathing or other minor motion) can be measured; low sensitivity data (such as mechanical shock) can also be measured; or both. Additional accelerometers can also be used so that both low sensitivity and high sensitivity data can be measured, or an accelerometer capable of both low sensitivity and high sensitivity can be used.

Some embodiments of the invention include a patient wearable treatment device having treatment elements adjacent to said patient in proximity to said patient's skin, and at least one patient motion detector connected to the device and generating a signal indicative of patient activity, and at least one control to evaluate signals from said motion detectors to determine if said signal is indicative of patient activity appropriate for treatment.

Embodiments include using at least one accelerometer including at least one multi-axis accelerometer and can include two three-axis accelerometers with one of said accelerometers mounted on a patient vest portion and another of said accelerometers is mounted on the monitor or other portion. Some embodiments can include a visual display on said monitor portion where the orientation of said visual display is controlled by the output of said accelerometer.

The body orientation of the patient is determined by the output of at least one accelerometer including standing and prone.

Treatment can be accelerated or delayed based upon the output of the motion detector.

The invention can detect a patient condition based upon the level of activity of a patient over a period of time based upon said stored output of said accelerometer, and can be used to detect conditions such as, for example, congestive heart failure or sleep disorders.

A method of cardiac treatment of a patient including sensing a cardiac condition, sensing patient motion with sensors such as, for example, accelerometers worn by said patient and evaluating said sensed patient activity to determine treatment is appropriate to said cardiac condition.

Embodiments can detect vertical and prone positions and determine a patient activity and a patient body orientation.

The following is a list of the functionality, information that can be provided by the motion detection or accelerometers:

Patient body state: Patient is vertical, Patient is horizontal (On left side, On right side).

Patient is moving in repetitive pattern: Vibrating (environmental), Convulsing.

Patient is accelerating: Patient is falling.

Equipment (belt and monitor) state: x/y/z position.

Equipment acceleration.

Equipment mechanical shock (high force impact, acceleration).

Verification of tactile motor operation in belt node.

## BRIEF DESCRIPTION OF FIGURES

FIG. 1 shows a diagrammatic representation of accelerometer positioning in certain embodiments with cardiac sensors and treatment electrodes.

3

FIG. 2 is a block diagram of an embodiment using two accelerometers.

FIG. 3 is a block diagrammatic representation of an embodiment using an accelerometer in a monitor.

FIG. 4 is a block diagram of one embodiment using a belt node accelerometer.

FIG. 5 is a logic diagram of an algorithm that can be used with one embodiment of the invention.

#### DESCRIPTION OF SOME EMBODIMENTS OF ALGORITHMS AND METHODS OF USING INFORMATION

FIG. 1 shows a patient 1 with a wearable defibrillator. Typically the devices shown would be worn as a vest, belt and/or other clothing. In this embodiment, four sensing electrodes 10a, b, c, d, or sensors are shown. While this embodiment is for cardiac monitoring and treatment, other medical functions could also be appropriately monitored or treated. In this embodiment, a node, 11, is used and the sensors 10a, b, c, d and treatment devices 18 connect to the node. The node 11 could be on the belt or on other patient locations. The therapy pads or treatment devices 18 provide treatment when a sensed condition indicates a preferred treatment. Any motion sensor can be used. In the present preferred embodiment accelerometers are used. Such sensors indicate accelerating movements. Because of the nature of human movements, generally comprising short distance and short duration, accelerometers give a very acceptable indication of patient movement. Single axis accelerometers can be used as well as multi-axis sensors.

In this embodiment, two accelerometers 16, 17 are used. One accelerometer 17 is located on the node device 11 and a second 16 is used on the monitor 15. It is understood that some embodiments will use a single accelerometer or position/force/motion detector, and still other embodiments may use three or more. Using multiple sensors permit the treatment algorithm to evaluate accelerometer (sensor) differentials to predict patient activity and accelerometer reliability. The use of multiple accelerometers permit separate evaluation of different patient movements and comparing such separate movements to best determine patient activity and equipment function. The actual treatment algorithm used will usually depend upon the diagnostic requirement of each individual doctor and the condition(s) he wishes to monitor. Any or all of the activities determined by the invention can be used. These can be combined with other inputs.

FIG. 2 shows a block diagram of a device in which the accelerometer and microcontroller are housed on the patient, 1, wearable vest or belt. The vest worn devices can communicate via a cable or wireless communication link to a monitoring device that contains a second accelerometer 31. Each accelerometer 21, 31 can indicate the respective movement of its position of the patient, and/or be used in an algorithm that uses the combined signals to more reliably indicate patient activity. Processing of accelerometer data can be performed by the microcontroller 22 in the belt/vest node 20 or a system computer 32 located in the monitor 30 or at both processing locations. Accelerometers 21, 31, indicate change in velocity. Patients will normally have an activity level when conscious that includes changes in both velocity and direction. This is in contrast to the lack of change of body motion present in an unconscious patient. Other sensors such as, for example, gyroscopes can be used, with appropriate software to indicate motion or lack of

4

motion. Outputs from sensors may be integrated, compared or differentiated to best predict patient activity, and reduce interference or error signals.

#### Patient Movement During Arrhythmia

The use of accelerometers can be used to determine a patient's body state during the detection of an arrhythmia. It also may be used to detect if a mechanically noisy environment is the cause of an erroneous arrhythmia detection.

#### 10 Patient Movement Used in the Confidence Algorithm Factor

A confidence algorithm, which is influenced by many inputs including the patient's body state as determined by the accelerometers, is used to determine if a patient's heart arrhythmias requires defibrillation.

Generally, cardiac treatment is not required if the patient is conscious. By using accelerometers the patient body state can be monitored. If there has been no change in patient body state for a period of time as detected by the accelerometer(s) then there will be an increased confidence of the algorithm that the patient is unconscious. If a change in patient body state has been detected by the accelerometer(s) then there will be a decreased confidence of the algorithm that the patient is unconscious. The wearable defibrillator can hasten its decision to apply treatment if a high level of confidence exists that the patient is unconscious. If patient motion is detected while other sensors and algorithms indicate that a treatable rhythm is present, treatment delivery can be delayed to provide the patient additional time to respond to system messaging.

#### False Arrhythmia Detection Due to Physical Motion

Sometimes a false arrhythmia is detected by the system due to physical motion, i.e. electrode or cables moving against the body or clothing, which creates false deviations in the patient's ECG. If an arrhythmia is detected and vibration or high patient/equipment acceleration is detected then the patient can be alerted to this condition. The tactile stimulator may be turned on or the audio volume may be increased to notify the patient reference 1. This information may also be applied to the treatment confidence algorithm thereby causing a decrease in confidence given that the physical motion can cause a false positive detection. Use of the accelerometer (s) can reduce undesired treatment of false arrhythmias.

#### Correlation of ECG Artifact with Belt Motion

Motion of the electrode belt may cause interference with ECG signal pickup and possible false detections. The signals obtained from the accelerometer can be correlated with an ECG signal to determine if ECG signal contamination exists. The quality of the correlation can be used as an additional confidence factor in the arrhythmia detection algorithm. If an arrhythmia is detected and there is a high degree of correlation between the ECG signal and the accelerometer signal the confidence in the arrhythmia detection can be reduced. No signal correlation indicates increased confidence that the arrhythmia detection is accurate.

#### Treatment Verification

The accelerometers may also be used to verify that a treatment has been applied by detecting sudden movements or muscle spasms in a patient immediately following the treatment. Often after defibrillation a patient's muscles spasm from the energy pulse. The muscle spasm will cause detectable movements on the accelerometers similar to convulsing.

#### Detection of Bystanders/Unsuccessful Defibrillation

Post shock motion of the patient after several unsuccessful defibrillation attempts may indicate the presence of bystanders. The bystanders could be rescue personnel such as an EMT.

In this case special alarms or voice messages could be generated to inform the bystander of the equipment and treatment status. Additional shocks could be delayed or cancelled to prevent a shock to the bystanders or rescue personnel.

#### Post Shock Motion Detection

When a shock is delivered the patient may move suddenly and then return to a state where there is a lack of motion. If no further motion is detected a high confidence can exist that the arrhythmia is still present. This information can be used as an additional post-shock confidence factor for the detection algorithm and that a continuing condition exists. If post-shock motion continues or if the patient body position changes from a horizontal to vertical position, there is high confidence that the defibrillation was successful and additional shocks can be delayed.

#### Belt Quality Feedback

Overall belt quality can be examined by gathering data using the accelerometers during certain failure states such as electrode fall-off and therapy pad fall-off detection.

#### Reduce Electrode and Therapy Pad Fall-Offs

If one of the electrodes **10** or therapy pads **18** fall off of the patient, then the system will record the patient body state during the fall-off event. Patient positions include sitting up, lying down; left side, right side. If vibration or patient falling is detected then that would also be recorded as well since it might be the cause of the falloff event.

Over time the data can be analyzed and used to determine positions that may tend to cause fall-offs. This information can then be used to improve the belt design reducing and possibly eliminating the fall-offs in those certain activities or positions.

An example would be if post analysis of data over a several month period of time shows that 75% of ECG fall-offs occur when the patient is laying on their left side then the belt design on the left side could be examined to determine what might be making it susceptible to fall-offs in that patient position.

#### Provide Recommendations to Patients

Accelerometers data collected over time could also be used to inform new patients of patient's body states that tend to be more comfortable. Patients who have worn the device for an extended time will most likely have experimented with different positions (sleeping positions, sitting positions, etc.) and will tend to use the most comfortable ones. This data can be recorded and used to improve the belt for the other positions and also provide recommendations to new patients.

#### Improve Belt Comfort

The accelerometer data collected during patient use can be used to improve the comfort of the belt by studying patient sleep habits, or habits during other selected activities.

If 80% of the patients tend to sleep on their right side then the assumption can be made that something about the belt makes it less comfortable for the patients to lie on their left side. With this information research can be performed to determine what about that position causes the belt to be uncomfortable and engineering can be performed to improve the belt comfort.

#### Belt Self Diagnostics

Self diagnostics may also be provided such as Belt Node Tactile Stimulator (vibration/acceleration) self test.

The tactile stimulator **12** (a patient notification device) is a motor with an unbalancing weight on its shaft. When the motor is on it causes the belt to vibrate much like a cell-phone in vibration mode.

When the tactile is activated the accelerometer **17** in the node can be used to verify that the node is vibrating which means that the tactile is working.

#### Patient Notification of Physical Events

The accelerometers can be used to provide feedback to the patient regarding certain mechanical events. They may also be used to adjust the device audio volume outputs based on the current state of the patient.

#### Equipment Abuse Notification

If certain mechanical conditions that may lead to equipment damage such as mechanical shock or vibration are detected by the accelerometers then the system can notify the patient of such conditions and advise the patient by the monitor computer screen on **15** of the condition.

If the monitor or belt is dropped or if they are hit with some other object causing a force greater than a predefined acceptable force, then the monitor will provide either an audio or visual (display) indication to the patient that the event has occurred and warn against allowing such an event to occur again.

If continuous vibration above a certain predefined acceptable threshold is detected for a period of time then the monitor on **15** may also provide a warning to the patient. Such vibration could lead to electrode or therapy pad fall-off or even cause false arrhythmia detection if enough physical motion is applied to the electrode and cables.

#### Adjust Device Alarm Volumes

If the accelerometers have recorded the patient body state to be unchanged for an extended time and the patient is either lying or sitting down then the monitor will assume the patient is sleeping and will then increase the audio volume output of any audio message if necessary to awaken the patient. The monitor may also enable the tactile stimulator to awaken the patient in the event of a critical audio message.

#### Adjust Display Rotation

The monitor accelerometer can be used to determine the proper rotation of the system display or LCD output on **15**. The monitor **15** contains a display that can either be used to deliver a visual message to the patient or for initial patient setup by care givers. For patient visual messages, since the monitor is positioned approximately at the patient's mid section, the display would be upside down (rotated 180 degrees) with respect to the monitor. However, during patient setup, the monitor could be held right side up in front of the skilled personnel. As a result, the display would be right side up. The monitor accelerometer data can be used to adjust the display accordingly depending on how the display is attempting to be read.

#### Detect Equipment Abuse

Detect equipment abuse during use as well as during shipping. Equipment abuse can be determined by parameters such as number of times dropped and intensity. Detection of equipment abuse can trigger such actions as internal diagnostics, auto download, and equipment service recommendations.

#### Equipment Drop Detection

If the accelerometers detect a mechanical shock above a pre-determined acceptable threshold then the monitor will record a drop event. Other parameters such as date/time stamp and current operating mode will be recorded as well.

The date/time stamp should allow correlation between the monitor location and the damaging event allowing further

information to be obtained using the carrier tracking numbers if such damage occurred during shipping.

If it is not during shipping and is during patient use and there is some form of equipment malfunction after the drop then that could be tied to the root cause of the equipment failure. Such information could be used to advise patients of the types of mechanical shocks that may damage the equipment. It also may be used to improve the robustness of the equipment to survive such forces in the future.  
Equipment Service Recommendation

If the monitor accelerometer **16**, belt accelerometer **17** have recorded a mechanical shock above a predefined acceptable threshold or if a predefined acceptable number of mechanical shocks has occurred then the monitor will recommend with an audio or visual (display) message via **15** to the patient that the equipment should be serviced. The monitor on **15** will also, during the next download, notify the manufacturer that it should be serviced.

#### Internal Diagnostics

If the accelerometer does detect an excessive mechanical shock on the belt or monitor then it may initiate internal self-diagnostics. Both the monitor **15** and node **11** have built-in circuitry as shown in FIGS. **3** and **4** to allow most of its components to be tested with self diagnostics.

#### Auto Download to Manufacturer

If there is a significant mechanical shock to the belt or monitor then the monitor may immediately initiate an automatic download to the manufacturer requesting service.

#### Monitor Patient Activity Over Time

Accelerometer data can be measured and stored over time to study patient activity. Patient activity data can be used to provide feedback to doctors about a patient's specific condition.

#### Patient Activity Data and Treatment

After a treatment event, patient activity data taken before, up to, and including the event can be downloaded. This data can be collected among patients and used to make correlations between patient activity derived from accelerometers **16**, **17** and the probability of a possible treatment event occurring. These correlations can be used to take precautionary measures with patients who have similar activities as those who had past treatment events.

#### Patient Activity Data and Doctor Feedback

Patient activity data can be used over a period of time by doctors or data evaluation systems to determine if proper patient activity levels are met. Examples to study would be extremely low patient activity; patient performing recommended exercises; and/or patient real time activity level and corresponding heart rate data. Patients who are experiencing congestive heart failure can be monitored for physical activity and at rest body position. Gradual reduction in patient activity indicated by lack of motion can indicate a worsening of the congestive heart failure condition. Body position at rest can also indicate patient deterioration if body position at rest is primarily vertical since congestive heart failure patients may have difficulty resting in a horizontal position.

FIG. **1** shows the location of the accelerometers **16**, **17** with respect to the patient and other system assemblies. The accelerometer **16** located in the front is the monitor accelerometer. The accelerometer located in the back is the belt node **17** accelerometer. The trunk cable **13** allows communication between the belt node computer and the main monitor computer in this embodiment. This permits belt node accelerometer data to be transferred to the main monitor computer **47**. In addition, the trunk cable **13** allows monitor power supplies **41**, **51** to be used to power the belt

node computer and peripherals. The two accelerometers or motion detectors allow the system to determine parameters such as patient body position, patient body movement, patient body acceleration as well as perform certain system self-diagnostics. The monitor can contain either a high-G or a low-G accelerometer. A high-G low-sensitivity accelerometer would allow the system in addition to detect patient and equipment physical shock.

FIG. **3** shows the circuitry used to acquire data from the accelerometer **43** in the monitor (**15** on FIG. **1**). From the main battery **41**, power regulators **42** are used to supply the electronics with needed voltages. The computer **47** controls various system parameters such as accelerometer sensitivity, multiplexer (MUX) **45** channel select, the analog to digital converter (ADC) **46**, and serial communications. The Freescale Semiconductor MMA7260Q three axis low-g micromachined accelerometer can be used. The g-select control line between **47** and **43** allow the sensitivity to be varied from, for example, 1.5 g to 6 g. A high-G low sensitivity accelerometer could also be used instead of the MMA7260Q. This can allow patient/equipment shock to be detected. Resistor-capacitor (RC) filtering **44** can be used on each of the accelerometer outputs to minimize clock noise from the accelerometer internal switched capacitor filter circuit. The MUX **45** select lines can be controlled by the computer **47** and may allow each axis output of the accelerometer to be switched to the ADC **46** input. The ADC **46** can also be controlled by the computer **47** via a serial interface.

FIG. **4** is a block diagram that shows circuitry that can be used to acquire data from the accelerometer **52** on the belt node (**11** on FIG. **1**). Power supplies and regulators **51** derived from the monitor can be used to power the electronics in the belt node. The Freescale Semiconductor MMA7260Q three axis low-g micromachined accelerometer **52** can be used. The belt node computer **54** controls the g-select lines that again can allow the sensitivity to be varied from 1.5 g to 6 g. RC filtering as well as amplitude scaling **53** can be used on each of the accelerometer outputs. An internal MUX and ADC in the belt node computer **54** can allow the accelerometer analog outputs to be interfaced digitally directly to the computer.

An arrhythmia detection algorithm can be implemented by assigning various confidence coefficients or weighting values to the various detectors used by the algorithm. This can be done prior to using the motion detection confidence algorithm. For example, the monitor can be designed with two independent ECG data streams for analysis. The algorithm can execute independent algorithms on each data stream that analyze the signal to extract heart rate, morphology, frequency information, and other information. Additional analysis is performed, independently on each channel, to analyze the signal for noise contamination that may result from patient motion or biological signals such as muscle noise. Other secondary inputs to the basic detection algorithm can include a patient response button and inputs from the accelerometers.

A weighting value can be assigned to each detector, response button and accelerometer and the combination for all detectors can be used to make the decision that a treatable arrhythmia condition exists. In addition, the weighting values can be used to manipulate the timing of therapy delivery.

The action of the algorithm in the presence of a noisy ECG channel could be to place more weight on the heart rate detector in the clean ECG channel. For the accelerometer enhanced confidence algorithm, a weighting could be

assigned that would delay delivery of treatment while patient motion is detected as shown in the flow diagram of FIG. 5.

The flow diagram in FIG. 5 shows that if patient motion is detected prior to the detection of a treatable arrhythmia, the timing of treatment delivery can be modified based on the accelerometer 16, 17 inputs when the arrhythmia is detected. If the patient becomes motionless coinciding with the arrhythmia detection, there is an increased confidence that the arrhythmia diagnosis is accurate and the delivery of treatment can occur sooner. If motion continues after the arrhythmia detection, the confidence of a valid detection can be decreased because lethal arrhythmias usually result in a lack of consciousness. In this case, the delivery of treatment can be delayed to allow time for audio voice messages to prompt the patient to respond by pressing the response button. The response button provides a responsiveness test input to the algorithm. In some embodiments, it may be desirable to never deliver a shock to a conscious patient. This algorithm can reduce the possibility of false treatment based on invalid rhythm diagnosis due to corrupt ECG inputs caused by excessive patient movement or other environmental factors.

FIG. 5 shows how a typical algorithm that detects arrhythmia can have an increased confidence by serially feeding through a subsequent confidence algorithm using input from a motion detector or accelerometer(s). Other motion detecting devices or confidence algorithms can use various motion detection criteria as desired by physicians and based upon the treatable condition or patient.

As it will usually be desirable to track and store data in the patient wearable device, the addition of motion data can also be stored, tracked and evaluated. One such use would be to evaluate historical motion/activity levels to detect conditions such as congestive heart failure. Such diseases are often found in patients who would be wearing a cardiac treatment device.

What is claimed is:

1. A cardiac monitoring system comprising:  
cardiac sensing electrodes configured for external placement proximate to a patient and to sense ECG signals of the patient;  
one or more accelerometers configured to generate patient activity data based on signals corresponding to changes in the patient's body position and movement; and  
a monitoring computer disposed in the cardiac monitoring system and operationally coupled to the cardiac sensing electrodes and the one or more accelerometers, the monitoring computer configured to  
correlate the ECG signals of the patient with the patient activity data generated from the one or more accelerometers to determine ECG signal contamination,  
analyze the ECG signals of the patient to extract at least heart rate data of the patient and detect a cardiac arrhythmia based at least in part on the heart rate data,  
change a confidence in the detected cardiac arrhythmia based on the determined ECG signal contamination by evaluating the patient activity data for a change in body state during the detection of the cardiac arrhythmia, wherein changing a confidence in the detected cardiac arrhythmia comprises  
determining that the patient is unconscious if there has been no change in patient body state during the detection of the cardiac arrhythmia,

- determining that the patient is conscious if there has been a change in patient body state during the detection of the cardiac arrhythmia,  
increasing the confidence in the detected cardiac arrhythmia based on determining that the patient is unconscious, and  
decreasing the confidence in the detected cardiac arrhythmia based on determining that the patient is conscious,  
wherein at least the patient activity data and the heart rate data are analyzed to determine a change in a physiological condition of the patient over a period of time.
2. The cardiac monitoring system of claim 1, wherein the patient activity data is measured and stored in the monitoring computer over time and provided as feedback to a doctor about the physiological condition of the patient.
3. The cardiac monitoring system of claim 1, wherein the patient activity data is communicated to at least one of a doctor and a data evaluation system to analyze the patient activity data.
4. The cardiac monitoring system of claim 3, wherein the patient activity data is analyzed to determine patient deterioration in a congestive heart failure patient based at least on the patient's body position at rest.
5. The cardiac monitoring system of claim 3, wherein the patient activity data is analyzed to determine whether the patient activity data is indicative of a reduction in patient activity over the period of time.
6. The cardiac monitoring system of claim 3, wherein the patient activity data is analyzed to determine whether the patient activity data is indicative of worsening congestive heart failure.
7. The cardiac monitoring system of claim 1, wherein the one or more accelerometers includes at least two three-axis accelerometers.
8. The cardiac monitoring system of claim 7, wherein one of the at least two three-axis accelerometers is mounted on a patient vest portion of the cardiac monitoring system.
9. The cardiac monitoring system of claim 3, further comprising  
treatment elements, said treatment elements adjacent said patient in proximity to the patient's skin; and  
wherein the monitoring computer is operationally coupled to the treatment elements, the monitoring computer configured to  
detect the cardiac arrhythmia of the patient based on at least one of the patient activity data and the ECG signals of the patient, and  
provide a treatment directed to the cardiac arrhythmia via the treatment elements.
10. A wearable defibrillation device comprising:  
cardiac sensing electrodes configured for external placement proximate to a patient and to sense ECG signals of the patient;  
one or more therapy pads disposed on the patient;  
one or more accelerometers configured to generate patient activity data based on signals corresponding to changes in the patient's body position and movement; and  
a monitoring computer disposed in the wearable defibrillation device, the monitoring computer configured to  
correlate the ECG signals of the patient with the patient activity data generated from the one or more accelerometers to determine ECG signal contamination,  
analyze the ECG signals of the patient to extract at least heart rate data of the patient,

## 11

determine from at least the heart rate data and the patient activity data that a treatable arrhythmia condition exists,

increase or decrease a confidence in a determined treatable arrhythmia condition based on the determined ECG signal contamination by evaluating the patient activity data for a change in body state during detection of the treatable arrhythmia condition, wherein increasing or decreasing a confidence in the detected treatable arrhythmia condition comprises determining that the patient is unconscious if there has been no change in patient body state during the detection of the treatable arrhythmia condition, decreasing the confidence in the detected treatable arrhythmia condition based on determining that the patient is conscious, and increasing the confidence in the detected treatable arrhythmia condition based on determining that the patient is unconscious, and

responsive to an increase in the confidence in the determined treatable arrhythmia condition, deliver a therapeutic shock to the patient through the one or more therapy pads;

wherein at least the patient activity data and the heart rate data are further analyzed to determine a change in a physiological condition of the patient over a period of time.

11. The wearable defibrillation device of claim 10, wherein the patient activity data is measured and stored in the monitoring computer over time and provided as feedback to a doctor about the physiological condition of the patient.

12. The wearable defibrillation device of claim 10, wherein the patient activity data is communicated to at least one of a doctor and a data evaluation system to determine whether proper patient activity levels are met.

13. The wearable defibrillation device of claim 12, wherein the patient is a congestive heart failure patient, and wherein the patient activity data is analyzed to determine patient deterioration based at least on the patient's body position at rest.

14. The wearable defibrillation device of claim 12, wherein the patient activity data is analyzed to determine whether the patient activity data is indicative of worsening congestive heart failure.

15. The wearable defibrillation device of claim 10, wherein the one or more accelerometers includes at least two three-axis accelerometers.

## 12

16. The wearable defibrillation device of claim 15, wherein one of the at least two three-axis accelerometers is mounted on a patient vest portion of the wearable defibrillation device.

17. A method of monitoring a patient, the method comprising:

sensing ECG signals of the patient;

generating patient activity data based on signals from one or more accelerometers, the signals corresponding to changes in the patient's body position and movement;

correlating the ECG signals of the patient with the patient activity data to determine ECG signal contamination;

analyzing the ECG signals of the patient to extract at least heart rate data of the patient and detect a cardiac arrhythmia based at least in part on the heart rate data;

changing a confidence in the detected cardiac arrhythmia based on the determined ECG signal contamination by evaluating the patient activity data for a change in body state during the detection of the cardiac arrhythmia, wherein changing a confidence in the detected cardiac arrhythmia comprises

determining that the patient is unconscious if there has been no change in patient body state during the detection of the cardiac arrhythmia, and increasing the confidence in the detected cardiac arrhythmia based on determining that the patient is unconscious, and

determining that the patient is conscious if there has been a change in patient body state during the detection of the cardiac arrhythmia, and decreasing the confidence in the detected cardiac arrhythmia based on determining that the patient is conscious; and

analyzing at least the patient activity data and the heart rate data to determine a change in a physiological condition of the patient over a period of time.

18. The method of monitoring a patient of claim 17, further comprising measuring and storing the patient activity data over the period of time and providing the stored patient activity data to a doctor as feedback about the physiological condition of the patient.

19. The method of monitoring a patient of claim 18, further comprising providing a treatment directed to the physiological condition.

\* \* \* \* \*

专利名称(译)	带运动/位置检测的可穿戴医疗设备		
公开(公告)号	<a href="#">US10582858</a>	公开(公告)日	2020-03-10
申请号	US15/850435	申请日	2017-12-21
[标]申请(专利权)人(译)	卓尔医学产品公司		
申请(专利权)人(译)	ZOLL医疗公司		
当前申请(专利权)人(译)	ZOLL医疗公司		
[标]发明人	VOLPE SHANE S MACHO JOHN D BRADEN WADE KAIB THOMAS E LINDER MARSHAL W		
发明人	VOLPE, SHANE S. MACHO, JOHN D. BRADEN, WADE KAIB, THOMAS E. LINDER, MARSHAL W.		
IPC分类号	A61B5/0205 A61B5/0452 A61B5/00 A61N1/04 A61B5/0404 A61B5/11 A61N1/39 A61B5/0408 A61B5/044 A61B5/04		
CPC分类号	A61B5/1116 A61B5/0205 A61B5/4836 A61B5/0006 A61B5/1118 A61B5/6805 A61N1/39 A61B5/0404 A61B5/0452 A61B5/7282 A61N1/3987 A61B5/04085 A61B5/1117 A61B5/04012 A61B5/1123 A61N1/046 A61B5/044 A61B2560/045 A61B5/721 A61N1/3904		
代理机构(译)	ZOLL医疗公司		
优先权	60/934404 2007-06-13 US		
其他公开文献	US20180110419A1		
外部链接	<a href="#">Espacenet</a>		

# 摘要(译)

心脏监测系统包括心脏感测电极，所述心脏感测电极用于在患者附近的外部放置以感测患者的ECG信号。一个或多个加速度计，被配置为基于与患者身体位置和运动的变化相对应的信号来生成患者活动数据；监测计算机，其配置为将患者的ECG信号与从一个或多个加速度计生成的患者活动数据相关，以确定ECG信号污染，分析患者的ECG信号，以至少提取患者的心率数据并检测至少部分基于心率数据的心律不齐，并根据确定的ECG信号污染来更改对检测到的心律不齐的置信度；其中至少分析患者活动数据和心率数据以确定患者的生理状况随时间的变化。

Accelerometer Positioning

