



US009364150B2

(12) **United States Patent**
Sebelius et al.

(10) **Patent No.:** **US 9,364,150 B2**
(45) **Date of Patent:** ***Jun. 14, 2016**

(54) **SYSTEM AND METHOD FOR WIRELESS GENERATION OF STANDARD ECG LEADS AND AN ECG SENSING UNIT THEREFOR**

(58) **Field of Classification Search**
CPC A61B 5/0408; A61B 5/04087; A61B 5/0428; A61B 5/04288
See application file for complete search history.

(71) Applicant: **Novosense AB, Lund (SE)**
(72) Inventors: **Fredrik Sebelius, Lund (SE); Jonas Tilly, Lomma (SE)**
(73) Assignee: **NOVOSENSE AB (SE)**

(56) **References Cited**
U.S. PATENT DOCUMENTS
3,943,918 A 3/1976 Lewis
4,243,044 A 1/1981 Blancke
(Continued)

(*) Notice: Subject to any disclaimer, the term of this patent is extended or adjusted under 35 U.S.C. 154(b) by 716 days.
This patent is subject to a terminal disclaimer.

FOREIGN PATENT DOCUMENTS

WO 0170105 A2 9/2001
WO 2005011492 A2 2/2005

OTHER PUBLICATIONS

(21) Appl. No.: **13/656,393**
(22) Filed: **Oct. 19, 2012**

Extended European Search Report issued in corresponding European Patent Application No. 07709452.2 on Mar. 26, 2015, consisting of 12 pp.

(65) **Prior Publication Data**
US 2013/0102871 A1 Apr. 25, 2013

(Continued)

Primary Examiner — Eric D. Bertram
(74) *Attorney, Agent, or Firm* — Volpe and Koenig, P.C.

Related U.S. Application Data

(63) Continuation of application No. 12/279,614, filed as application No. PCT/SE2007/050059 on Feb. 2, 2007, now Pat. No. 8,315,695.

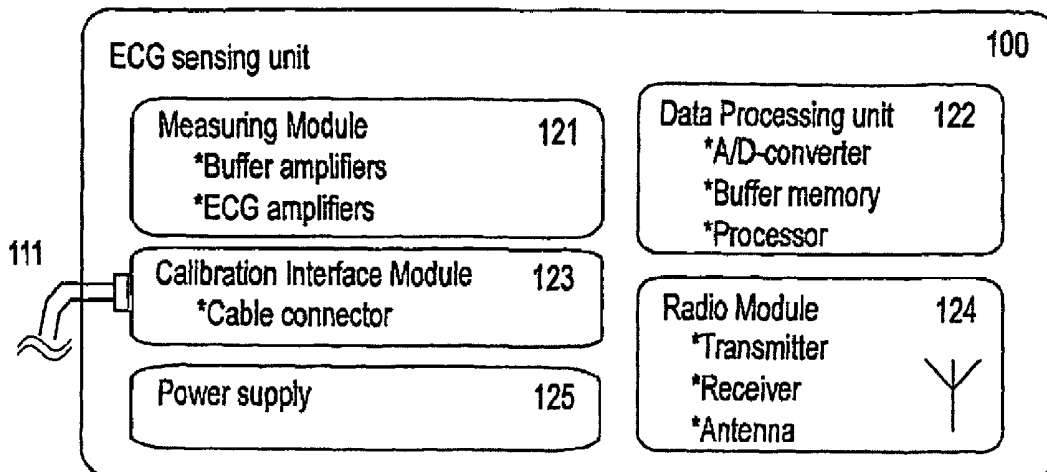
(57) **ABSTRACT**

A system for wireless generation of at least one standard ECG lead comprises a plurality of electrodes for application to a subject at separate points thereof and a remote receiver station for generating at least one standard ECG lead from signals detected by a first group of said plurality of electrodes. The system further comprises a wireless sensing unit for generating at least two non-standard ECG signals from bipolar signals detected by a second group of the plurality of electrodes, a processor in the remote receiver station for calculation of a transform synthesizing each generated standard ECG lead from at least two of the non-standard ECG signals, a disconnection unit for disconnection of the first group of electrodes from the subject following the calculation, and a transfer unit for wireless transferring of the non-standard ECG signals to the remote receiver station following the disconnection of the first group of electrodes.

(30) **Foreign Application Priority Data**
Feb. 15, 2006 (SE) 0600328

12 Claims, 9 Drawing Sheets

(51) **Int. Cl.**
A61B 5/04 (2006.01)
A61B 5/00 (2006.01)
(Continued)
(52) **U.S. Cl.**
CPC *A61B 5/0006* (2013.01); *A61B 5/0428* (2013.01); *A61B 5/04028* (2013.01); *A61B 5/04085* (2013.01)



- (51) **Int. Cl.**
A61B 5/0402 (2006.01)
A61B 5/0408 (2006.01)
A61B 5/0428 (2006.01)

(56) **References Cited**

U.S. PATENT DOCUMENTS

4,850,370 A 7/1989 Dower
 4,981,874 A 1/1991 Latter et al.
 5,058,598 A 10/1991 Nicklas et al.
 5,168,874 A 12/1992 Segalowitz
 5,307,818 A 5/1994 Segalowitz
 5,427,111 A 6/1995 Traub et al.
 5,862,803 A 1/1999 Besson et al.
 5,957,854 A 9/1999 Besson et al.
 6,026,321 A 2/2000 Miyata et al.
 6,132,371 A 10/2000 Dempsey et al.
 6,289,238 B1 9/2001 Besson et al.
 6,416,471 B1 7/2002 Kumar et al.
 6,441,747 B1 8/2002 Khair et al.
 6,453,186 B1 9/2002 Lovejoy et al.
 6,494,829 B1 12/2002 New, Jr. et al.
 6,496,705 B1 12/2002 Ng et al.
 6,526,310 B1 2/2003 Carter et al.
 6,551,252 B2 4/2003 Sackner et al.
 6,567,680 B2 5/2003 Swetlik et al.
 6,577,893 B1 6/2003 Besson et al.

6,579,242 B2 6/2003 Bui et al.
 6,589,170 B1 7/2003 Flach et al.
 6,611,705 B2 8/2003 Hopman et al.
 6,804,550 B1 10/2004 Murray
 6,901,285 B2 5/2005 Schreck
 7,974,684 B2 7/2011 Stewart
 8,315,695 B2* 11/2012 Sebelius et al. 600/509
 2002/0045836 A1* 4/2002 Alkawwas 600/509
 2005/0043640 A1 2/2005 Chang

OTHER PUBLICATIONS

M. Puurtinen, et al. "Optimizing bipolar electrode location for wireless ECG measurement—analysis of ECG signal strength and deviation between individuals" *IJBEM*, vol. 7, No. 1, 2005.
 Hadzievski et al., "A Novel Mobile Transtelephonic System With Synthesized 12-Lead ECG", *IEEE Transactions on Information Technology in Biomedicine (ISSN 1089-7771)* vol. 8 (4) p. 428-438 (2004).
 Rubel et al., "Toward Personal eHealth in Cardiology. Results from the EPI-MEDICS Telemedicine Project". *Journal of Electrocardiology (ISSN 0022-0736)* vol. 38 (4), p. 100-106 (2005).
 Scherer et al., "Synthesis of the 12 Lead Electrocardiogram from a 3 Lead Semi-Orthogonal Subset Using Patient-Specific Linear Transformation Arrays", *Computers in Cardiology, 1988. Proceedings. Washington, DC, USA Sep. 25-28, 1988, Washington, DC, USA, IEEE Comput. Soc. Pr, US (ISBN 0-8186-1949-X) p. 449-451 (1988).*

* cited by examiner

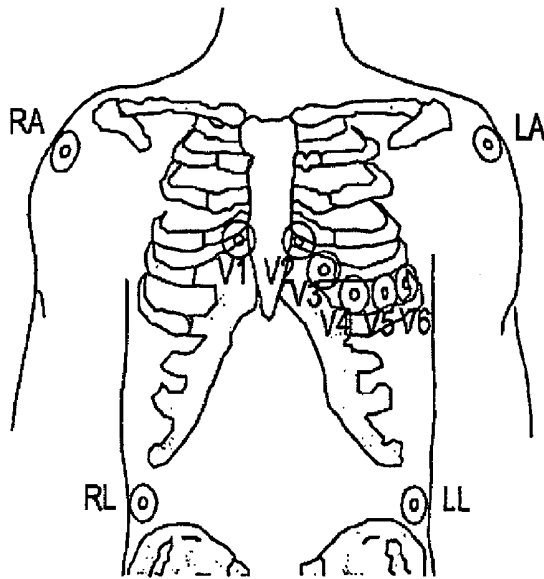


FIG. 1

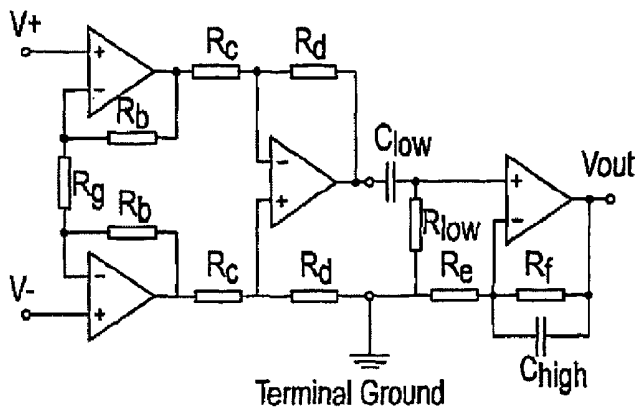


FIG. 2A

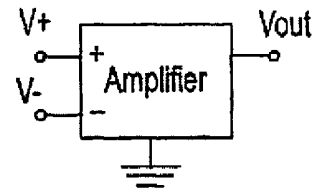


FIG. 2B

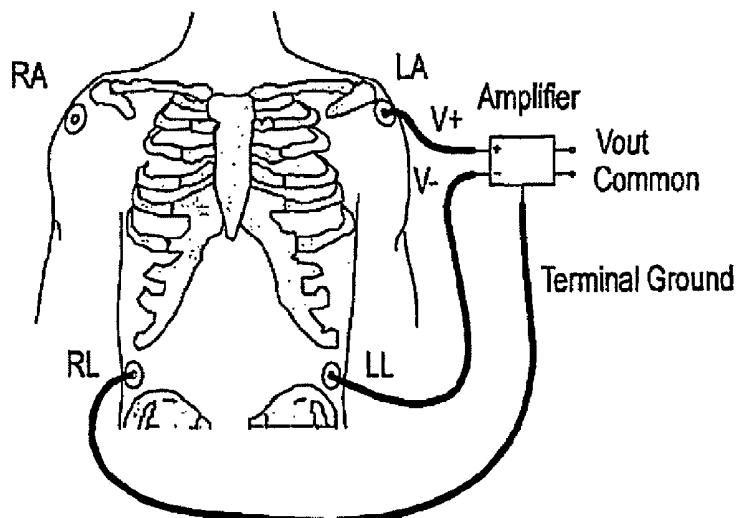


FIG. 3

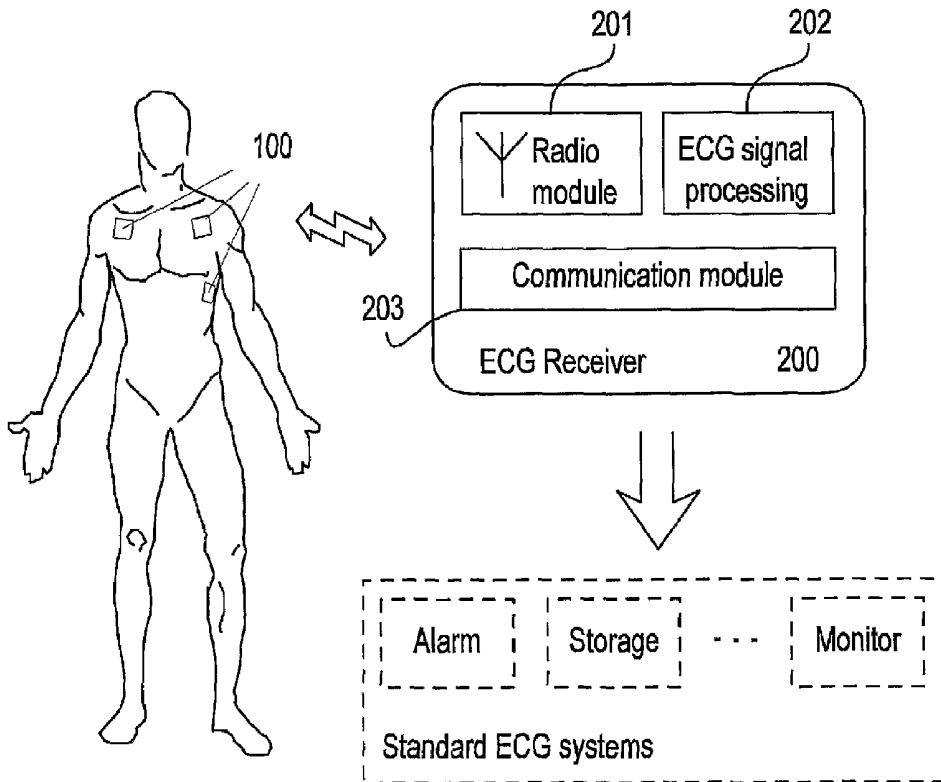


FIG. 4

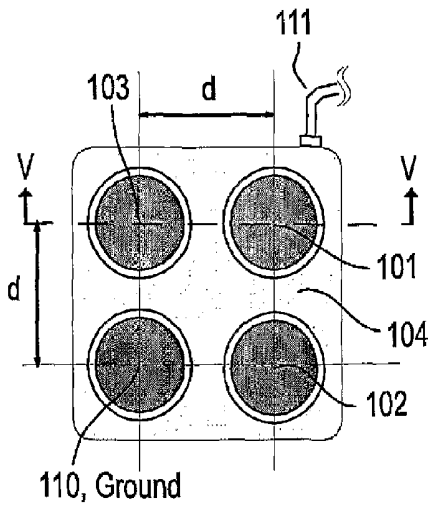


FIG. 5A

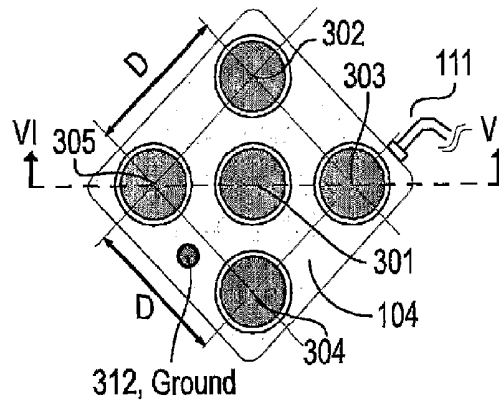


FIG. 6A

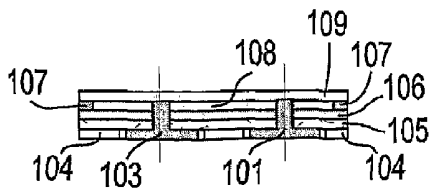


FIG. 5B

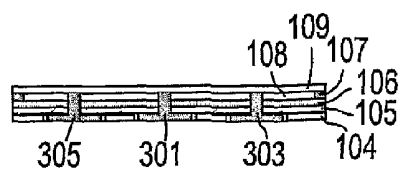


FIG. 6B

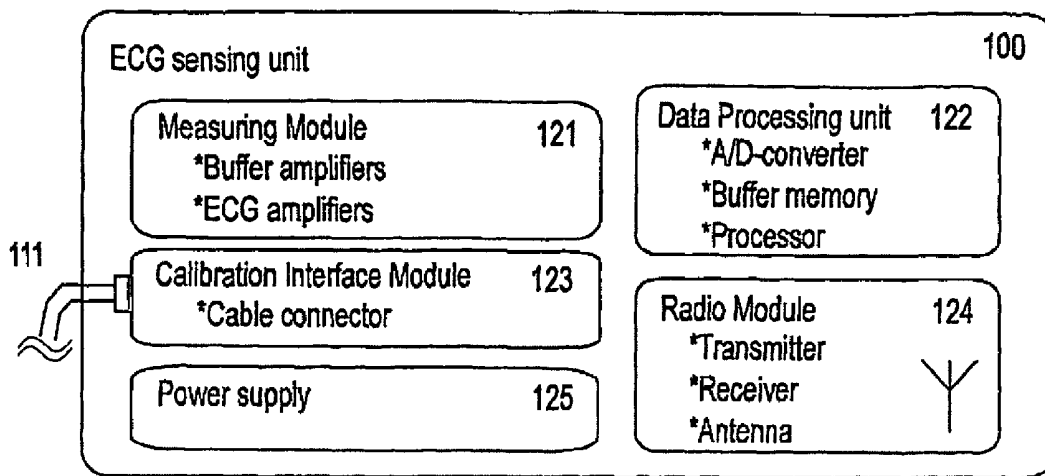


FIG. 7A

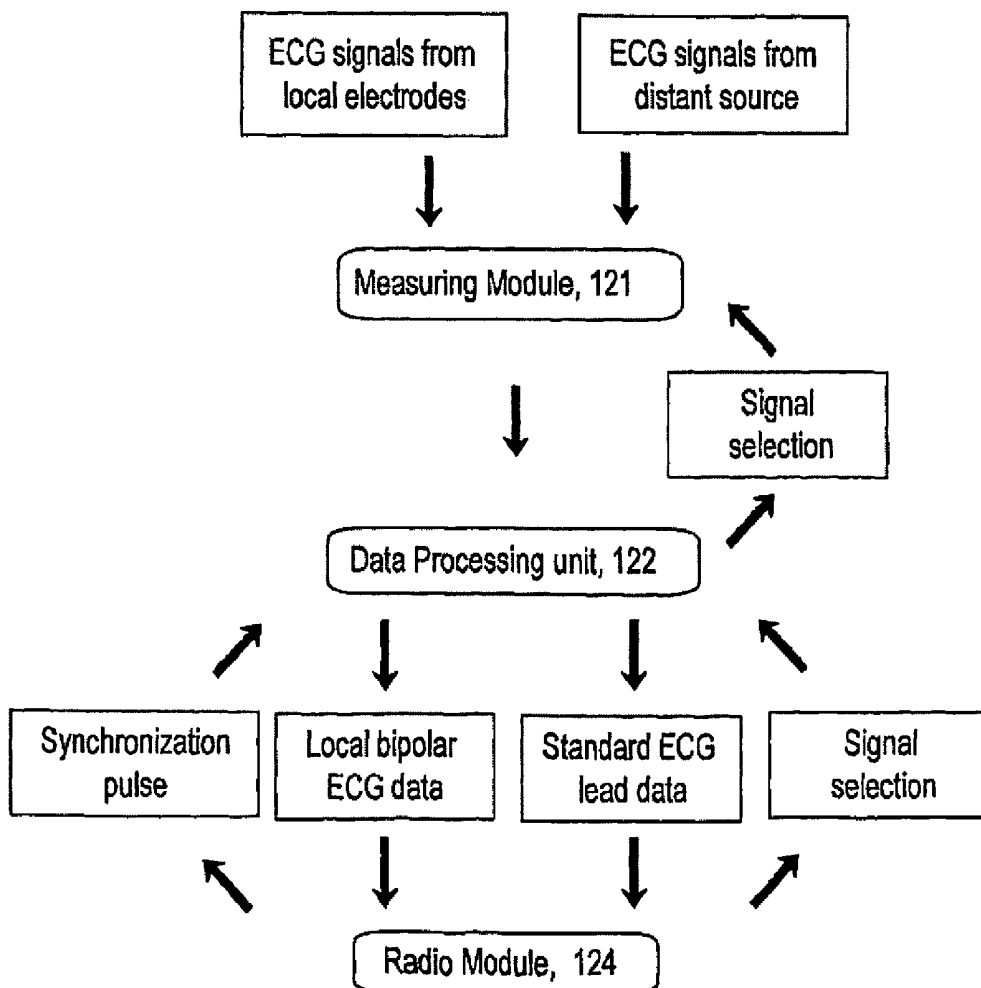


FIG. 7B

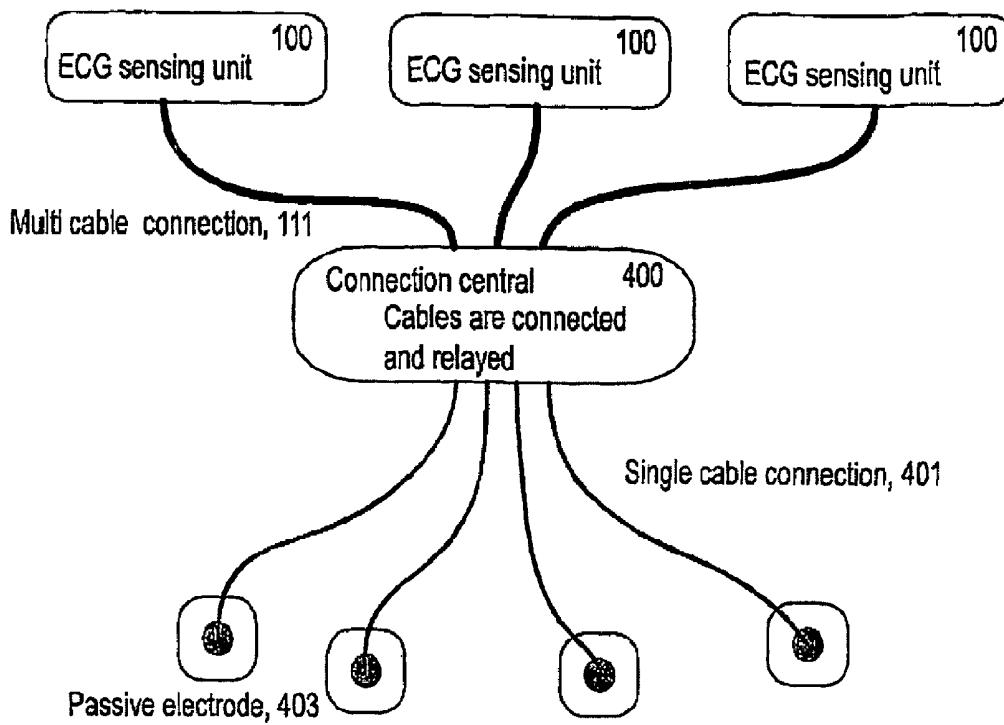


FIG. 8

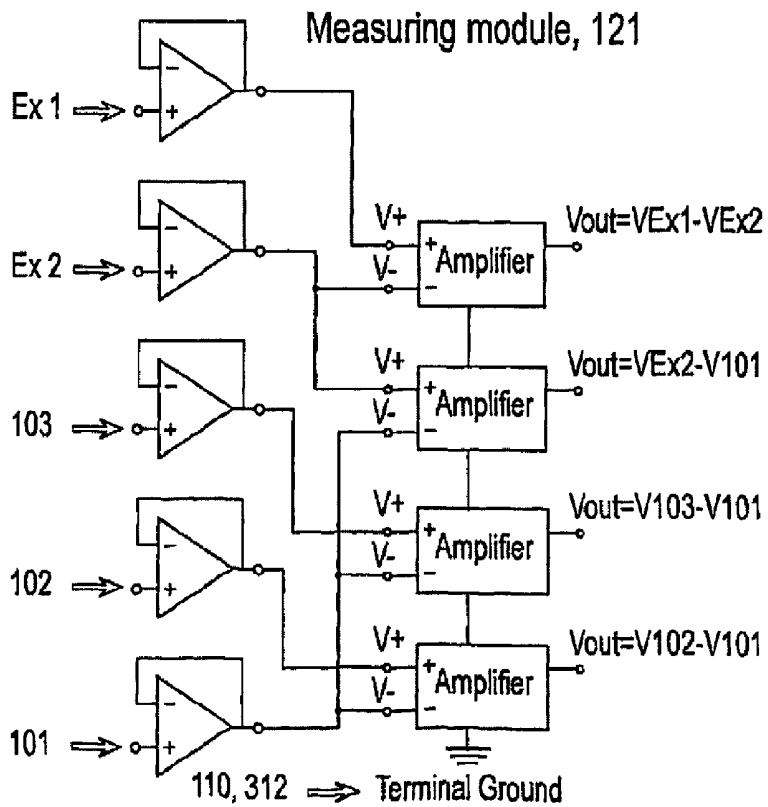


FIG. 9

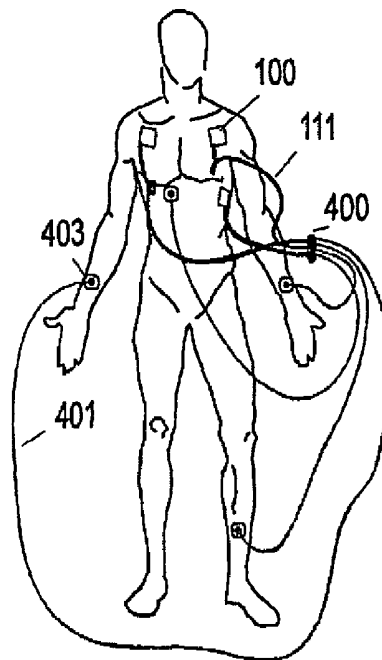


FIG. 10

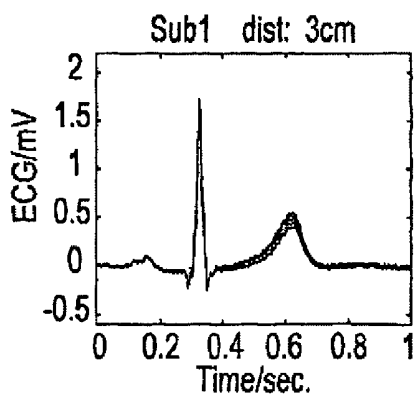


FIG. 11A

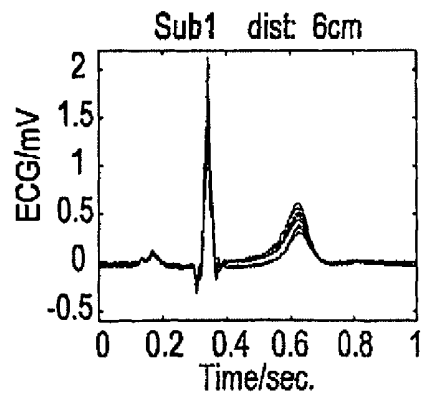


FIG. 11B

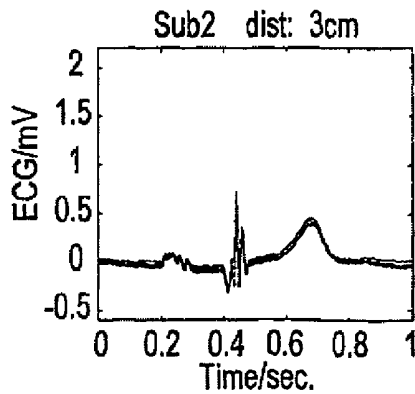


FIG. 11C

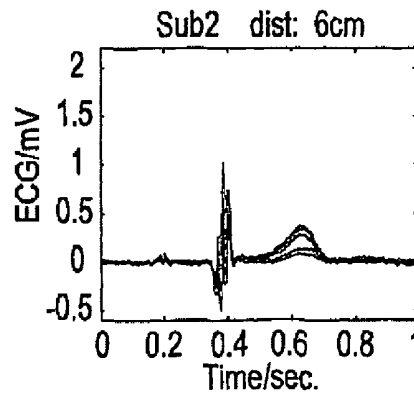


FIG. 11D

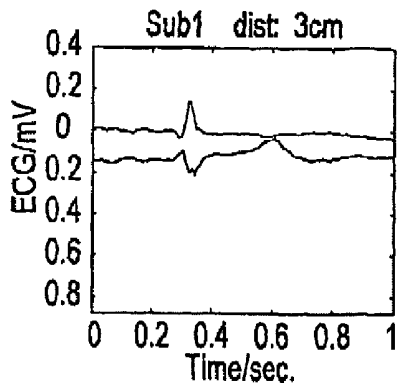


FIG. 12A

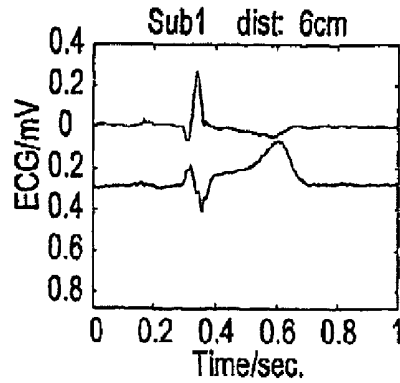


FIG. 12B

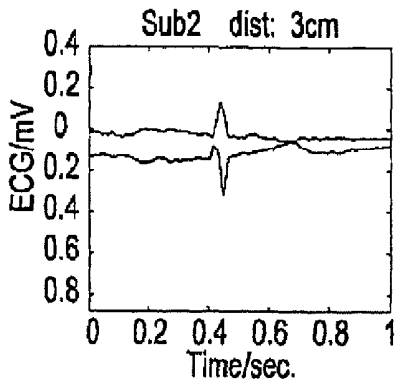


FIG. 12C

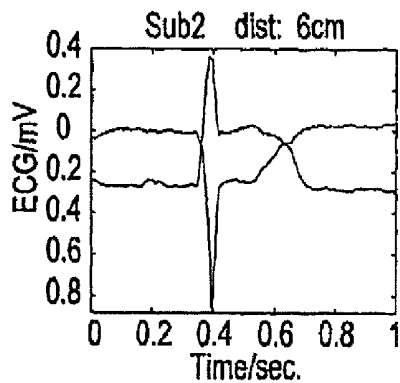


FIG. 12D

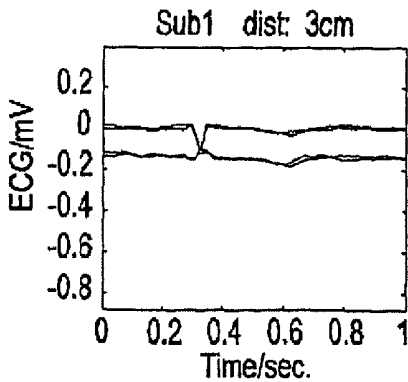


FIG. 13A

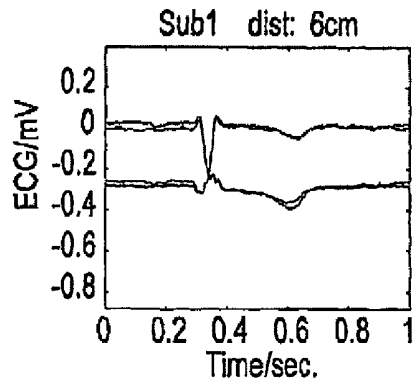


FIG. 13B

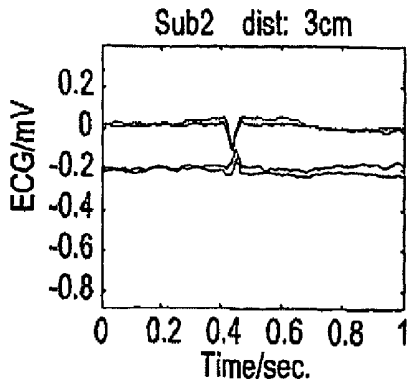


FIG. 13C

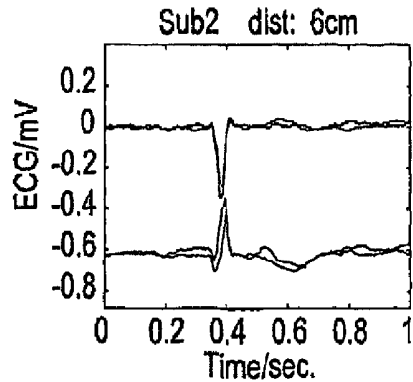


FIG. 13D

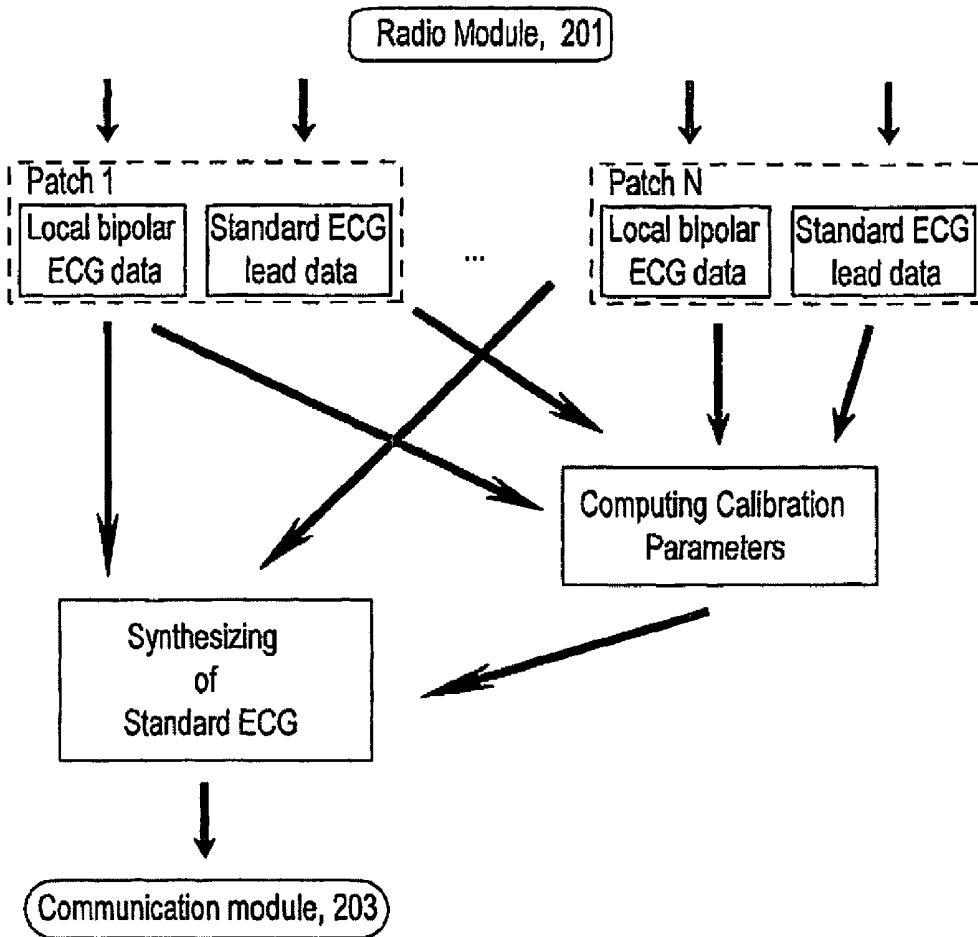


FIG. 14

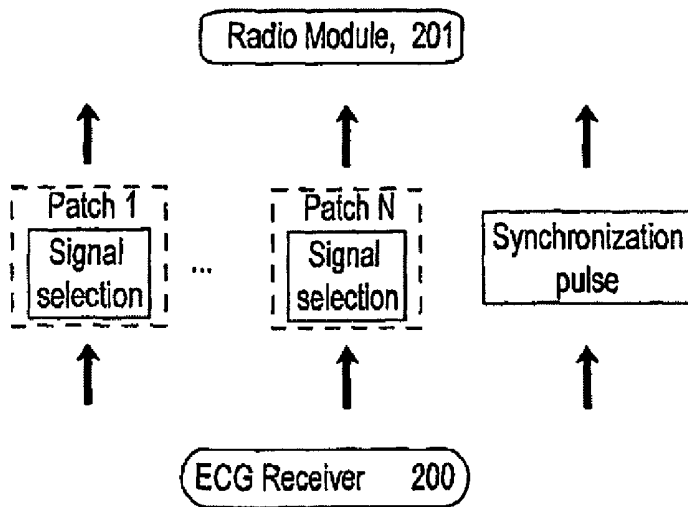


FIG. 15

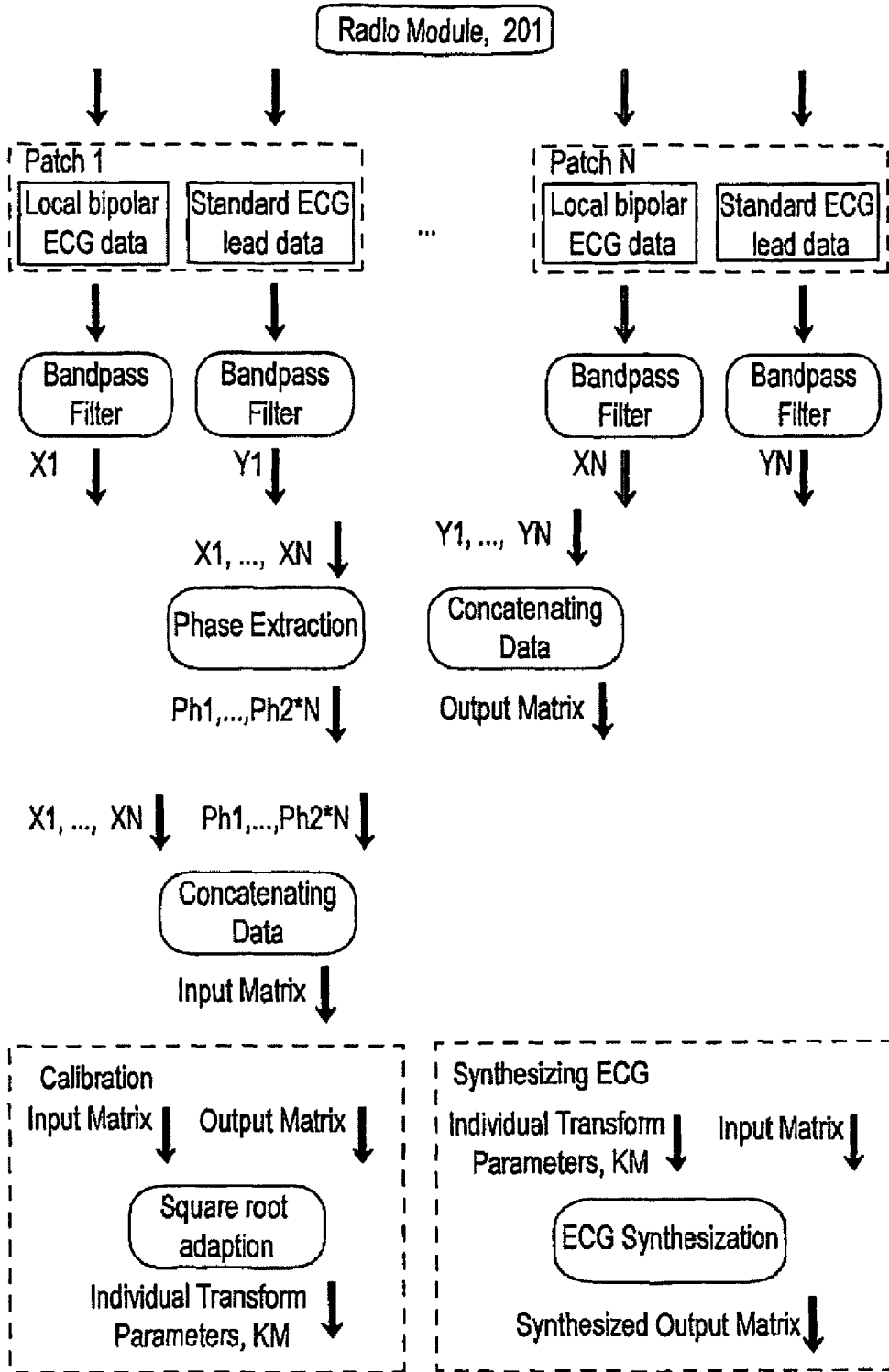


FIG. 16

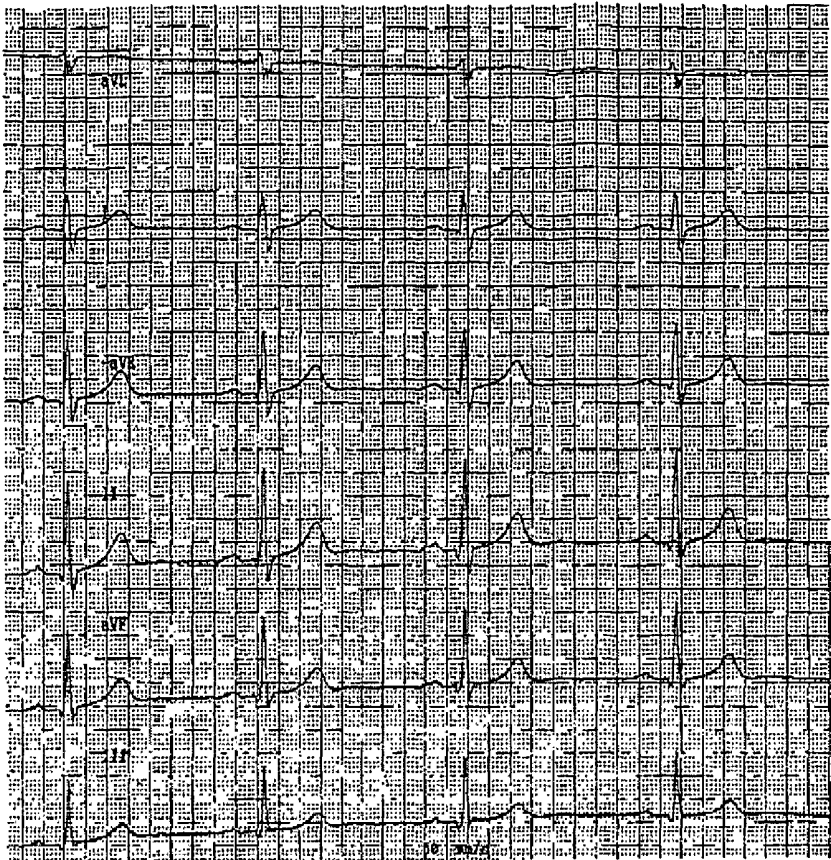


FIG. 17

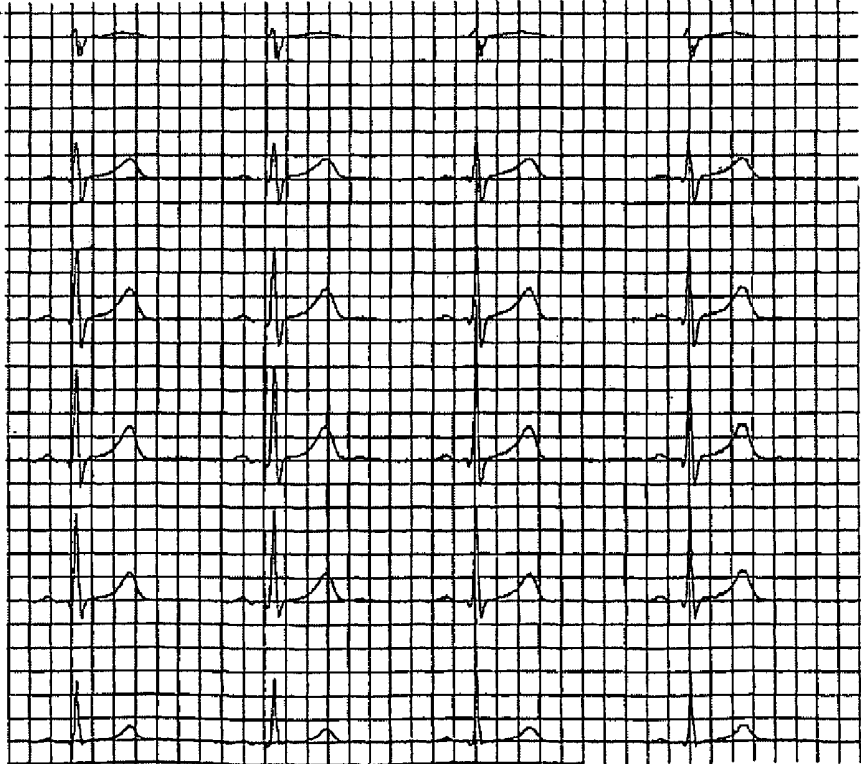


FIG. 18

**SYSTEM AND METHOD FOR WIRELESS
GENERATION OF STANDARD ECG LEADS
AND AN ECG SENSING UNIT THEREFOR**

CROSS REFERENCE TO RELATED
APPLICATIONS

This application is a continuation of U.S. patent application Ser. No. 12/279,614, now U.S. Pat. No. 8,315,695, filed Aug. 15, 2008, which was a 35 U.S.C. §371 national stage entry of PCT/SE2007/050059, which was filed Feb. 2, 2007 and claimed priority to SE0600328-9, filed Feb. 15, 2006, all of which are incorporated herein by reference as if fully set forth.

FIELD OF INVENTION

The present invention generally relates to cardiac monitoring of a human or animal subject. More particularly, the present invention pertains to a system for wireless generation of standard ECG leads and to a method for wireless generation of such standard ECG leads. The invention further relates to an ECG unit for use in said system.

BACKGROUND

The cardiac cycle can be described as the activation of certain specialized heart conduction cells in a predictable sequence, which leads to a coordinated and sequential contraction of the arterial and ventricular muscle fibers. The electrical signal associated with the muscle action is transmitted through various tissues and ultimately reaches the surface of the body, where it can be measured. Such a measurement is called ECG which stands for electrocardiogram.

Electrical equipment for such measurements is used for monitoring and/or recording ECG data and may be stationary or portable.

The stationary ECG equipments are electrical monitoring and recording devices which are connected to a patient by wires. In current use, such monitors utilize surface electrodes located on the body of the patient and connected by wires to an electrocardiograph machine, which allows the detected heart signals to be displayed on a paper strip or a monitor. However, the use of such wiring limits the mobility of the patient and requires the patient to remain in bed throughout the monitoring.

The portable ECG equipments can be divided into recorders and transmitters. In both cases wires from multiple electrodes applied to the body of a patient are connected to a recorder or transmitter unit, hung around the patient's neck. These units are often burdensome. The recorder unit is a self-contained unit such that the patient may move around. The transmitter unit further contains some sort of radio equipment, which makes it possible for the patient to move around and still be monitored by a stationary unit receiving the measuring data signals from the transmitter unit.

A common problem with electrodes and wires is the risk of detachment from the patient, as the wires and electrodes may be exposed to high tensile forces, the total required length of wires often being in the range of one meter. Moreover, the measurements and displayed curves may be influenced by physical pressure or strains on the electrodes.

Thus, the problem with wires or electrodes that are pulled off remains with all the described equipments.

Prior art systems of the above described types are disclosed in inter alia U.S. Pat. Nos. 4,243,044; 5,427,111; 6,026,321;

6,416,471; 6,453,186; 6,494,829; 6,526,310; 6,551,252; 6,567,680; 6,579,242; 6,589,170 and 6,611,705.

Methods of acquiring ECG have been proposed to exclude all wires and integrate the ECG recording and radio transmitter in every sensing unit, e.g. disclosed in U.S. Pat. Nos. 3,943,918; 4,981,874; 5,168,874; 5,307,818; 5,862,803; 5,957,854; 6,289,238; 6,132,371; 6,441,747; 6,496,705 and 6,577,893.

In U.S. Pat. Nos. 4,850,370; 5,058,598 and 6,901,285, the basic idea is based on first transforming a reduced number of the ECG measurements to one equivalent X, Y, Z source and then deriving the standard leads by using the equivalent voltage source and the "known" impedance of the body. The major problem with this approach is that the impedance variation between people is large. Therefore, the ECG estimate will sometimes be totally wrong, if the impedance is not measured. Thus, the ECG signal measured with these proposed solutions is incorrect and can not be used in for diagnosis. These systems have therefore never come to clinical use.

U.S. Patent Appl. Publ. No. 2002/0045836 A1 discloses a surveillance system for wireless transfer of signals from a number of electrodes positioned on a subject and each having its own contacts to a base station being capable of controlling the electrodes in several respects. More precisely, four electrodes positioned in the corners of an elongate rectangle the long sides of which are parallel to the direction of the standard lead and the short sides of which are positioned substantially in where the standard leads are detected and orthogonal to the long sides. The electrode contacts of each short side are elements of a separate electrode.

In U.S. Patent Appl. Publ. No. 2002/0045838 A1 the body is assumed to act solely resistively and homogeneously which is a major simplification leading to the use of a predetermined scalar factor that will give a false and clinically useless standard lead.

BRIEF DESCRIPTION OF THE DRAWINGS

The accompanying drawings illustrate preferred embodiments of a system and an ECG sensing unit according to the present invention, in which:

FIG. 1 is a schematic front view of human torso showing the electrode positions used when measuring a standard 12-lead;

FIG. 2A is a circuit diagram of an ECG amplifier and FIG. 2B is a corresponding block diagram;

FIG. 3 illustrates a typical electric connection of an ECG amplifier;

FIG. 4 illustrates an embodiment of a system according to the present invention;

FIG. 5A is a bottom view of a first embodiment of an ECG sensing unit and FIG. 5B is a sectional view along the line V-V;

FIG. 6A is a bottom view of a second embodiment of an ECG sensing unit and FIG. 6B is a sectional view along the line VI-VI;

FIG. 7A is a schematic representation of the electronics of an ECG sensing unit;

FIG. 7B is a chart illustrating the data flow in the ECG sensing unit;

FIG. 8 is a schematic representation of elements of an embodiment of the present invention to be applied to a human subject;

FIG. 9 is a block diagram of a measuring module of the ECG sensing unit;

FIG. 10 illustrates the elements of FIG. 8 applied to a human subject;

FIGS. 11A-D are recordings performed on two human subjects with closely located electrodes;

FIGS. 12A-D are recordings of local bipolar signals performed on two human subjects with closely located electrodes;

FIGS. 13A-D are multiple recordings of local bipolar signals performed on two human subjects with closely located electrodes;

FIG. 14 is a chart illustrating the flow of ECG data through the ECG receiver unit in FIG. 4;

FIG. 15 is a chart illustrating the flow of control signals through the ECG receiver unit in FIG. 4;

FIG. 16 is a chart illustrating the synthesizing and calibration of ECG signals;

FIG. 17 shows ECG leads recorded with standard equipment; and

FIG. 18 shows simultaneously recorded ECG signals recorded with the equipment according to the present invention.

DETAILED DESCRIPTION OF THE PREFERRED EMBODIMENTS

It is a primary object of the present invention to provide a system and a method for wireless generation of at least one correct and clinically useful standard ECG lead which eliminates the problems of using wires, thereby enabling the patient to move freely without any risk related to wires during such movement.

A further object of the invention is to provide a wireless ECG sensing unit which is adapted for use in said system.

Preferred embodiments of the inventive system, method and sensing unit are defined in the dependent claims.

Thus, a system for wireless generation of at least one standard ECG lead comprises a plurality of electrodes for application to a subject at separate points thereof and a remote receiver station having means for generating at least one standard ECG lead from signals detected by a first group of said plurality of electrodes. This system further comprises means for generating at least two non-standard ECG signals from bipolar signals detected by a second group of said plurality of electrodes substantially simultaneously with the signal detection by said first group of said plurality of electrodes, said second group of said plurality of electrodes comprising at least one subset having at least three closely located electrodes arranged non-linearly for detecting two local bipolar signals; processor means in said remote receiver station for calculation of a transform synthesizing each generated standard ECG lead from at least two of said non-standard ECG signals; means for disconnection of said first group of electrodes from said subject following said calculation, said processor means thereafter synthesizing said standard ECG lead from said non-standard ECG signals solely using said transform; and means for wireless transferring of said non-standard ECG signals to said remote receiver station following said disconnection of said first group of electrodes. Thereby said at least one standard ECG lead is wireless generated by said synthesizing following the disconnection of said first group of electrodes.

Thus, this solution makes it possible for the patient, following the calculation of the transform synthesizing each generated standard ECG lead, to move freely without any wires applied to him or her.

As a consequence of the non-linear arrangement, the three electrodes in said subset may be used as two different pairs,

where each pair detects a separate bipolar signal having unique components of the electric signal generated during each cardiac contraction.

By arranging the three electrodes along two orthogonal lines said two bipolar signals will contain orthogonal components of said electric signal generated during each cardiac contraction. This will obviously facilitate the synthesizing of the standard ECG lead.

Preferably, said subset of said second group of electrodes are elements of a wireless ECG sensing unit, such that the relative positions of the electrodes are fixed, and the wireless ECG sensing unit may further comprise a radio module for communication with said remote receiver station when activated there by.

Preferably, the wireless ECG sensing unit further comprises a differential amplifier for each bipolar signal constituting said means for generating non-standard ECG signals, and a data processor connected between said differential amplifiers and said radio module and adapted for digital storing of the non-standard ECG signals.

Also, the wireless ECG sensing unit may further comprise at least one further differential amplifier having inputs connectable to separate ones of said plurality of electrodes and an output connected to said data processor.

Further, said disconnection unit may comprise wires connected to the electrodes in said first group of said plurality of electrodes and switching means for selecting the electrodes to be connected to said at least one further differential amplifier. In this embodiment, said disconnection unit may also comprise wires each connected to one electrode in a separate wireless ECG sensing unit.

Preferably, each wireless ECG sensing unit comprises means for controlling the stitching means, e.g. in accordance with instructions received from said remote receiver station.

In normal operation, the above system comprises at least one further ECG sensing unit, and means in said remote receiver station for synchronizing data flow from the ECG sensing units. Thereby several standard ECG leads may be generated substantially simultaneously.

The method of wireless generating a standard ECG lead comprises the steps of generating a standard ECG lead using electrodes for application to a subject at standard positions thereof; substantially simultaneously generating at least two non-standard ECG signals from bipolar signals detected by a further group of at least three electrodes for application to a subject at adjacent positions; calculating a transform synthesizing said standard ECG lead from said non-standard ECG signals; interrupting the generation of said standard ECG lead following said calculation; transferring said non-standard ECG signals wireless at least following said interruption; and thereafter generating said standard ECG lead solely using said calculated transform.

Preferably, the generating of the standard ECG lead comprises using wires connected to the corresponding electrodes and said interrupting comprises detaching these electrodes and wires. However, the non-standard ECG signals may be transferred wireless at all times. Also, the standard ECG lead and the non-standard ECG signals are preferably generated substantially simultaneously. Further, the calculation may be based upon digitally stored representations of the standard ECG lead and of the non-standard ECG signals.

The ECG sensing unit comprises at least three electrodes for application to a subject and generating bipolar signals; a radio module for communication with a remote receiver station; a differential amplifier for each bipolar signal for generating a non-standard ECG signal; a data processor connected between said differential amplifiers and said radio

module, for digital storing of the non-standard ECG signals; and at least one further differential amplifier having inputs connect-able to separate ones of a plurality of further electrodes and an output connected to said data processor.

The ECG sensing unit may further comprise means responsive to external signals for controlling its operation and the electrodes may be part of a patch detachable from the rest of the ECG sensing unit.

Referring to FIG. 1, the electrodes for ECG measurements are localized on different parts of the body.

The normal electrocardiogram or rhythm-monitoring strip is obtained from one of three types of electrical connections. These connections are known as limb leads, augmented limb leads and precordial leads. Here it should be noted that the term "lead" is used herein in the medical sense and not the electrical sense, i.e. a "lead" is not a wire but a linear combination of voltage potentials from two or several anatomical defined position on the body where the heart signal is sensed.

The standard 12-lead electrocardiogram requires ten wires to be attached by electrodes to the body of the patient. All wires are then connected to one electrocardiograph unit in order to detect heart signals and transform them into a 12-lead electrocardiogram. Three of the 12-leads are bipolar recordings while the rest are unipolar recordings. A bipolar recording is a recorded voltage difference between two anatomical defined electrode positions. The bipolar leads are as follows:

lead I is the electrical potential difference between the arms, LA-RA (FIG. 1);

lead II is the electrical potential difference between the left leg and the right arm, LL-RA (FIG. 1);

lead III is the electrical potential difference between the left leg and the left arm. LL-LA (FIG. 1).

However, in practice electrodes could often be placed on the body towards the arms and legs, see FIG. 1, to avoid discomfort for the patient and wires coming loose during long term registration. A unipolar measurement is a measurement from one site on the body where the electrical potential is varying, in relation to a zero varying potential reference. There is however no true zero varying potential references on the body as the ECG propagates throughout the entire body. A zero varying potential reference was therefore created by N. F. Wilson et al. by weighting the electrical potentials from the left arm, left leg and right arm with three 5 kΩ resistors, i.e. $\frac{1}{3}*(RA+LA+LL)$. This voltage reference is called Wilson central terminal (CT) but is still not an absolute zero varying reference. However, as it has been used for such a long time it has become the standard.

The augmented limb leads are referred to as unipolar leads. Each of them is the difference between the potential at one site and the potentials at two other anatomical defined positions. Thus, the augmented limb leads are linear combinations of the bipolar limb leads. The augmented leads are as follows:

aVR—the "unipolar" right arm lead, i.e. $RA-\frac{1}{2}*(LA+LL)$

aVL—the "unipolar" left arm lead, i.e. $LA-\frac{1}{2}*(RA+LL)$

aVF—the "unipolar" left leg lead, i.e. $LL-\frac{1}{2}*(RA+LA)$

The reference voltage for the augmented leads is created by connecting the right arm, left arm and left leg with two 5 kΩ resistors in three different ways: left arm and left leg, right arm and left leg and finally right arm and left arm (for aVR, aVL and aVF, respectively). These electrical reference potentials are later referred to as CT/aVR, CT/aVL and CT/aVF.

The precordial leads are also unipolar, but unlike the augmented limb leads, one or more precordial electrodes are connected to the chest wall. The reference source is again potentials weighted together and does not vary significantly with the cardiac cycle. Wilson central terminal (CT) is typi-

cally used as reference. In standard settings there are six precordial leads V1-V6 where the numeral represents the exact location on the chest.

Thus, this involves attaching six electrodes to the chest or precordial area, and attaching four electrodes on the body towards the arms and legs of the patient; see FIG. 1.

Independent of the measurement type, bipolar or unipolar, the same type of amplifier has been used to generate the signals. This amplifier is shown in FIGS. 2A, 2B and 3 and has three connections to the body; two electrode locations where the electrical potential difference is measured and one electrode connection for the patient ground, see FIG. 3. The patient ground connection, normally right leg (RL), has the only purpose of driving the terminal ground of the amplifier to the same level as the patient ground, thereby driving the amplifier within working potential. The ground connection is sometimes actively driven, i.e. a guard, to suppress noise. In an ECG amplifier that has more than one lead, the terminal grounds for all amplifiers are interconnected and only one wire is connected to the patient ground. The connection from terminal ground to patient ground is often performed through an amplifier or a resistor as the current must be kept below a specified threshold. There exist systems that instead of using a separate ground wire drive the two (or more) measuring electrodes to a common terminal ground potential. However, distant measurement references, as RA, LA, LL, are still needed to perform the different ECG measurements.

A high common mode rejection ratio (CMRR) is preferable to suppress common mode noise, e.g. the 50 or 60 Hz power capacitively linked to the body. To maintain a high CMRR the input impedance must also be high (>10 MΩ) as the connection impedance to the body typically varies in the range of 1-3 kΩ.

Generally, the ECG amplifier contains a band pass filter for the frequencies of interest, which by standard should be 0.05-100 Hz. This could however vary quite a lot depending on manufacturer.

The basic components of the invention are shown in FIG. 4 and consist of at least one mobile ECG sensing unit 100 mounted on the subject and an ECG receiver unit 200, which is a stationary radio unit. The ECG receiver unit 200 comprises a radio module 201 with transmitting and receiving capability, a computation module 202 capable of processing and synthesizing ECG signals, and a communication module 203 for communicating with other standard ECG systems (shown in dashed lines). The mobile units 100, also shown in FIGS. 8 and 10, cooperate during an initial phase of the operation of the system with a connection unit 400. During this initial phase each mobile unit 100 is connected by a multi cable connection 111 to the connection unit 400, which also is connected by single cable connection 401 to each one of a plurality of passive sensing units 403. The cable connections 111, 402 and the connection unit 400 are initially interconnected for the recording of standard ECG signals simultaneously with local bipolar ECG signals. After a shorter recording session, seconds to minutes, the system is calibrated and the connection unit 400 with its cable connections 111 and 401 and the passive electrodes 403 will be removed, as shown in FIG. 4.

Preferably, three ECG sensing units 100 should be used on the same subject for synthesizing the most common type of ECG leads, i.e. 12-lead ECG or equivalent. The ECG sensing units 100 should be placed on strategic locations on the torso, FIG. 4, or as to the chest leads on EASI positions (standard positions known by the man skilled in the art). Any other number of ECG sensing units 100 could be used, i.e. one or

more units. The accuracy of the synthesized standard ECG will increase with the number of ECG sensing units used.

In a preferred embodiment, three ECG sensing units **100** are initially connected to each other and to four passive electrodes **403**. The passive electrodes **403** are applied to the limbs and, optionally, to the chest in order to generate reference ECG signals that are measured in the ECG sensing units **100**. A schematic block diagram of the preferred embodiment of these elements is shown in FIG. **8**. These elements are intended for calibrating the transform parameters to retrieve correct synthesized standard ECG signals. In FIG. **10** the cables **111** and **401** are connected for calibration and in FIG. **4** the cables have been removed and the ECG leads are synthesized by using the local bipolar ECG measured with the ECG sensing units **100**.

The wireless ECG sensing unit **100** disclosed herein is preferably implemented as an integrated adhesive disposable patch, FIGS. **5A**, **5B**, for applying to a subject's body and for obtaining and transferring local non-standard ECG data and standard ECG data to the receiver unit **200**, shown in FIG. **4**. Alternatively, the ECG sensing unit **100** may be implemented as reusable unit with snap connections to available disposable electrodes.

Referring to FIGS. **5A**, **5B**, the physical embodiment of the ECG sensing unit **100** comprises adhesive means **104** for attaching the device to a subject's body or to a patch on the subject's body, electrodes **101-103** and **110**, a structural support means **105** for supporting the electrodes, power supply means **106**, an antenna **107**, electronic circuits **108**, means **109** for isolation and protection, and an input for the multi cable connection **111** connecting the ECG sensing unit **100** to the connection unit **400** and thereby to the passive electrodes **403** and other ECG sensing units **101**.

FIGS. **6A**, **6B** show an alternative physical embodiment **300** of the ECG sensing unit **100** where the physical coverage is extended using additional measuring electrodes **301**, **302**, **303**, **304**, **305** and **312**, arranged further apart. In another embodiment the ground electrode **110** and **312**, in FIGS. **5A**, **5B** and FIGS. **6A**, **6B** respectively, would be excluded as the terminal ground could be connected to patient ground via the measuring electrodes.

The electronic functionality of the preferred embodiment of the ECG sensing unit **100**, shown in FIGS. **5A**, **5B** and **7A**, **7B**, comprises a measuring module **121**, a data processing and storing unit **122**, a calibration interface module **123**, a radio module **123** for transmitting ECG data to the ECG receiver unit **200** and power supply means **125**. ECG signals from the local electrodes **101-103** and calibration ECG signals from the calibration interface module **123**, originating from the multi cable connection **111**, are subtracted and amplified with common ECG amplifiers, FIG. **2**. The local bipolar ECG signals and standard ECG signals are sent to the data processing unit **122**, FIG. **7A**, **7B**, where the data are A/D-converted and stored intermediately before transmission via the radio module **124**.

Referring to FIG. **9**, signals V_{101} , V_{102} and V_{103} from the three electrodes **101**, **102** and **103** are first buffer amplified and are thereafter used to retrieve two local orthogonal bipolar ECG signals $V_{102}-V_{101}$ and $V_{103}-V_{101}$. Two external signals V_{EX1} and V_{EX2} are also first buffer amplified and thereafter used to retrieve the difference signals $V_{EX11}-V_{EX2}$ and $V_{EX2}-V_{101}$. The two external signals V_{EX1} and V_{EX2} originating from the multi cable connection **111** in FIG. **5** are used only during the calibration procedure.

The preferred measuring embodiment is shown in FIGS. **5A**, **5B** where an ECG is measured locally from each ECG sensing unit **100**. The measuring electrodes **101-103** are

arranged orthogonally, i.e. the voltage potentials that are measured are $V_{102}-V_{101}$ and $V_{103}-V_{101}$. These two measurements are later referred to as a 2-dimensional ECG; the angle could however be less than 90° but should be substantially larger than 0° . The local measurements are more generally referred to as local bipolar ECGs. Subject's ground potential is connected via the electrode **110** and is then connected to the ECG sensing units terminal ground. In an alternative solution, this is accomplished by driving the ECG sensing unit's terminal ground to patient ground through the measuring electrodes **101**, **102** and **103** by a technique well known to a man skilled in the art. The ground electrode in FIGS. **5A**, **5B** and **6A**, **6B** would in these embodiments be excluded. The preferred distance d in FIG. **5A** between the electrode **101** and the electrode **102** and **103**, respectively, is 2-7 cm, i.e. the distance from center to center of those electrode. The parameter d and the placement of the ECG sensing units **100** will be discussed in the following paragraph.

The ECG potentials on the body may be seen as a stationary current di-pole. The bio-potential field has larger divergence closer to the heart. Therefore local bipolar ECG measurements will be larger closer to the heart. The ECG sensing unit **100** should therefore preferably be placed on the torso on different sides of the heart, e.g. in the same positions as the EASI system (position E, A, S and I) or as shown in FIG. **4**. The distance d in FIG. **5A** is an important parameter. As d increases the bipolar ECG signal amplitude will too. In FIGS. **11A-D** ECG was recorded with one reference voltage on the left leg and nine electrodes arranged in a formation of a 3×3 array. The recordings were performed on two adult subjects (FIGS. **11A**, **11B** and **11C**, **11D** respectively) with two different orthogonal distances between the electrodes, i.e. 1.5 cm (FIGS. **11A**, **11C**) and 3 cm (FIGS. **11B** and **11D**). The scaling in FIGS. **11A-D** is the same. It is obvious that the ECG curves have a larger variation for electrodes located further away, i.e. in the diagrams of FIGS. **11B** and **11D**.

In FIGS. **12A-D**, the local bipolar ECGs are displayed computed from the recordings in FIGS. **11A-D**. The heart beat in FIGS. **11A-D** and FIGS. **12A-D** is thus one and the same. The topmost curve in each diagram of FIGS. **12A-D** is detected in a horizontal or X-axis direction while the lower curve is detected in a vertical or Y-axis direction, i.e. orthogonal to the X-axis. These curves are typical curves recorded with the ECG sensing unit **100** placed on the left chest under the collar bone. FIGS. **12A-D** show that recordings performed with the electrodes placed further apart result in higher registered ECG signals (FIGS. **12B** and **12D**). The distance between the local electrodes used in FIGS. **12A** and **12B** was 3 cm and the distance between the local electrodes used in FIGS. **12C** and **12D** was 6 cm.

In FIGS. **13A-D** a comparison between two closely located 2-dimensional local ECG recordings was simulated utilizing the recordings in FIGS. **11A-D**. The distances between the ECG sensing units were thus 1.5 cm for FIGS. **13A** and **13C** and 3.0 cm for FIGS. **13B** and **13D** (both in X and Y direction). There is a close resemblance between the two ECG sensing units in FIGS. **13A-D**, as expected since the distance between the units were just 1.5 cm and 3.0 cm.

Some of the conclusions from the recordings in FIGS. **11A-D**-FIGS. **13A-D** are:

1. Two local orthogonal ECG recordings can often be transformed into any other orientation on the skin surface with high precision. Therefore the synthesis of standard ECG will have little gain of more local recordings than the orthogonal X and Y directions as long as the distance between the electrodes is small.

2. Increasing the distance between the electrodes will increase local ECG amplitude and thus generate more robust synthesized standard ECG signals.
3. The ECG sensing units should preferably be evenly spread around the heart/chest for gathering of uncorrelated data and thus generating better synthesized ECG signals.
4. The local ECG sensing units should preferably be placed on the torso due to the fact that the ECG signals are measured differentially locally and thus the signal strengths would be very low on the limbs.
5. The standard ECG signals can not be retrieved by some simple scaling of the local ECG signals. Instead the bipolar local ECG signals must be mathematically transformed into standard ECG leads (synthesized).

If the distance d is too small the bipolar ECG signals will be buried in the noise. If d is increased the signals will increase and in the most extreme variant the measuring electrodes will be positioned as in the EASI system, stretching over the whole torso. However, in the EASI system four unipolar measurements are used to synthesize a standard 12-lead system. According to the present invention, the use of local bipolar measurements is disclosed for synthesizing standard ECG leads. The practical advantage of local measurements, compared to the EASI system and other similar systems, are obvious as no wires are required on the body, as shown in FIG. 4. In the procedure of synthesizing ECG from non-standard electrode placement (such as the EASI system and the system disclosed herein) parameters are used to transform the non uniform ECG to standard ECG leads. However, the variance in body impedance between different people is an evident source of error. According to the present invention, this problem is overcome by using an initial calibration procedure wherein standard ECG leads are recorded synchronous with the local bipolar ECG signals.

The following methods are examples of different solutions. However, the invention is not limited to these examples.

Some standard ECG leads are described above and some of the standard leads are computed by combining signals originating from several different locations of the body. This computation has in older ECG recording units normally been done by analogue circuits. However, all the standard ECG lead can be calculated afterwards as long as all anatomical positions are covered. For example a doctor wants to measure at least lead II, V1 and V6 with the invention. Two ECG sensing units 100 are then placed on the body, one on V1 and one on V6. The passive electrodes 403, connected to the ECG sensing unit 100, are then placed on left arm, right arm and left leg (LA, RA and LL). The system records the ECG signals and when calibrated the passive electrodes 403 together with the cables 111 and 402 are removed. The system will then with high accuracy synthesize all standard leads that are normally retrieved from the just mentioned anatomical position, i.e. lead I, II, III, aVR, aVL, aVF, V1 and V6. From these leads it is possible to further synthesize other leads, but with less accuracy. Preferably, additional ECG sensing units 100 should be applied on the additional desired ECG lead.

In the example above the ECG sensing unit 100 placed at V1 will record V1-LF with the help of external signals. The V1 lead should be referenced to the Wilson central terminal (CT) which is a linear combination of the LA, RA and LL. Thus it is possible to calculate the correct lead V1 (with the CT as reference) simply by a linear combination of lead I, II, III and the recording (V1-LL). This is easily understood by a person with basic knowledge in linear algebra, i.e. a person skilled in the art.

The initial calibration phase will be described more in detail referring to FIGS. 7B and 14-18.

The calibration is started from the ECG receiver unit 200 which sends selection signals and synchronization pulses via its radio module 201 to the radio module 124 of each ECG sensing unit 100. As a consequence, preselected passive electrodes 403 are connected to each ECG sensing unit in predetermined sequences such that the measuring module 121 of each ECG sensing unit 100 generates signals of the type illustrated in FIG. 9. Following an A/D-conversion and a data processing in the data processing unit 122, local bipolar data for each ECG sensing unit 100 and calculated standard ECG data are stored digitally in a buffer memory in the data processing unit 122. These digitally stored data representing one and the same heart beat, are then compared in order to determine the parameters of a transfer function by which the standard ECG leads may be synthesized from the local bipolar ECG data.

Once these parameters have been determined, the calibration phase is terminated and the passive electrodes 403 may be detached from the body of the patient and the multi cable connection 111 be disconnected from the ECG sensing units 100.

During the following operation of the system, the local bipolar data resulting from the bipolar signals detected by the ECG sensing units 100 are used for synthesizing the standard ECG leads, the ECG sensing units 100 and the ECG receiver unit 200 communicating wireless during this operation. Thus, wires are used only during the initial calibration phase.

The effect of the system according to the present invention is illustrated in FIGS. 17 and 18, FIG. 17 showing six standard ECG leads obtained by a commercially available ECG equipment and FIG. 18 showing synthesized ECG leads solely based on the bipolar ECG signals obtained according to the present invention simultaneously therewith.

The synthesizing of standard ECG leads according to the present invention is performed with two major differences relative most common methods for synthesizing of standard ECG leads. A first difference is that the standard ECG leads are recorded in an initial calibration procedure where these standard ECG leads are used to retrieve optimal individual adaptation of the transformation parameters. Secondly, the multiple electrodes are organized in groups better suited for totally wireless solutions, each group recording bipolar ECG signals locally.

In the preferred embodiment, three ECG sensing units 100 are placed around the heart and give a total of six ECG signals and 6-10 standard ECG leads (in the calibration phase) depending on placement of the ECG sensing units 100 and the passive electrodes 403. The six bipolar ECG signals are then transformed so that the different synthesized ECG leads do not deviate from the recorded standard ECG leads. Mathematically, this could be seen as the six bipolar ECG signals are input signals to a transfer function and the standard ECG leads are output signals from the same transfer function. As both the input signals and the output signals are known (in the calibration phase), the transfer function parameters can be computed. However, a properly suited transfer function has to be selected. In the simplest case a matrix is multiplied with the input signals to calculate the output signals. However, using three ECG sensing units 100 will not always be sufficient for obtaining adequately synthesized ECG leads. Therefore phase information is computed for different combinations of local bipolar ECG signals. The input space was extended to 18 input signals thus adding 12 signals containing phase information. The algorithm to retrieve the phase information can be seen in the following formula (1)-(12). The variable

labeled ut is the 12 added channels with phase information while the variable d is the initially recorded bipolar ECG signals. Note that all variables are vectors, e.g. d[0] is the recorded vector for bipolar channel 0.

$$ut[6]=(d[0]*d[2]-d[1]*d[3])/sqrt(d[2]*d[2]+d[3]*d[3]+0.1); \tag{1}$$

$$ut[7]=(d[0]*d[3]+d[1]*d[2])/sqrt(d[2]*d[2]+d[3]*d[3]+0.1); \tag{2}$$

$$ut[8]=(d[0]*d[2]-d[1]*d[3])/sqrt(d[0]*d[0]+d[1]*d[1]+0.1); \tag{3}$$

$$ut[9]=(d[0]*d[3]+d[1]*d[2])/sqrt(d[0]*d[0]+d[1]*d[1]+0.1); \tag{4}$$

$$ut[10]=(d[0]*d[4]-d[1]*d[5])/sqrt(d[4]*d[4]+d[5]*d[5]+0.1); \tag{5}$$

$$ut[11]=(d[0]*d[5]+d[1]*d[4])/sqrt(d[4]*d[4]+d[5]*d[5]+0.1); \tag{6}$$

$$ut[12]=(d[0]*d[4]-d[1]*d[5])/sqrt(d[0]*d[0]+d[1]*d[1]+0.1); \tag{7}$$

$$ut[13]=(d[0]*d[5]+d[1]*d[4])/sqrt(d[0]*d[0]+d[1]*d[1]+0.1); \tag{8}$$

$$ut[14]=(d[2]*d[4]-d[3]*d[5])/sqrt(d[4]*d[4]+d[5]*d[5]+0.1); \tag{9}$$

$$ut[15]=(d[2]*d[5]+d[3]*d[4])/sqrt(d[4]*d[4]+d[5]*d[5]+0.1); \tag{10}$$

$$ut[16]=(d[2]*d[4]-d[3]*d[5])/sqrt(d[2]*d[2]+d[3]*d[3]+0.1); \tag{11}$$

$$ut[17]=(d[2]*d[5]+d[3]*d[4])/sqrt(d[2]*d[2]+d[3]*d[3]+0.1); \tag{12}$$

FIG. 16 shows the data flow of the synthesizing in the ECG receiver. ECG information comes from the radio module 201 from each ECG sensing unit. In FIG. 16 the information from one patient with N ECG sensing units 100 shown. Each ECG sensing unit 100 transmits bipolar ECG data and initially also standard ECG data. The ECG data is first digitally band pass filtered to remove influence from moving base line and high frequency noise. The bipolar ECG signals are called X and the standard ECG signals are called Y and are indexed with a number representing the channel. Thereafter the phase information, denoted Ph, is retrieved using the bipolar ECG signals X. The retrieval of the phase information is described above and in formula (1)-(12). The bipolar ECG signals X together with the phase information Ph are then grouped into an "input matrix", while the "output matrix" is formed with the ECG standard leads Y. The least square method is used to retrieve the individual transform parameters KM for the transfer function. These KM parameters are only retrieved the calibration phase of the system when the standard leads are present. When the cables have been removed, the ECG is synthesized by multiplying the Input matrix with the transfer parameters KM. The individual transform parameters KM is in this example 18 elements long for each standard lead synthesized.

The present invention is described with reference to specific embodiments related to ECG. However, other embodiments than those preferred are equally possible within the scope of the appended claims, e.g. different arrangement of electrodes or electronic circuits than those described, performing the invention method by hardware or software, etc.

Applications and use of the above described measurement system and method according to the invention are various.

As an example, it should be noted that one or more electrodes of one ECG sensing unit could be used as a passive electrode for another ECG sensing unit.

Furthermore, the term "comprises/comprising" when used in this specification does not exclude other elements or steps, the terms "a" and "an" do not exclude a plurality and a single processor or other units may fulfill the functions of several of the units or circuits recited in the claims.

What is claimed is:

1. An ECG sensing unit formed as an adhesive patch, comprising:

at least three electrodes for application to a subject and arranged for generating bipolar signals;

a radio module for communication with a remote receiver station;

at least first and second differential amplifiers coupled to the ECG sensing unit's electrodes for generating at least first and second bipolar signals from electrical signals sensed by the electrodes from which non-standard ECG signals are generated;

a further differential amplifier for generating calibration signals based on externally received signals having an input port for connection to an electrode external to the ECG sensing unit for allowing physical and electrical connection and disconnection of the further differential amplifier to and from the external electrode.

2. The ECG sensing unit according to claim 1, wherein the at least three electrodes are arranged along two non-parallel lines.

3. The ECG sensing unit according to claim 2, wherein the two nonparallel lines are orthogonal.

4. The ECG sensing unit according to claim 1, further comprising a data processor connected between the first and second differential amplifiers and the radio module and configured to generate and store the non-standard ECG signals.

5. The ECG sensing unit according to claim 4, wherein the further differential amplifier further comprises an output connected to the data processor.

6. The ECG sensing unit according to claim 1, wherein the radio module is configured to be activated by the remote receiver station.

7. The ECG sensing unit according to claim 1, wherein the electrode external to the ECG sensing unit is located in a different ECG sensing unit according to claim 1.

8. The ECG sensing unit according to claim 1, wherein the adhesive patch is disposable.

9. The ECG sensing unit according to claim 1, wherein the first and second differential amplifiers have inputs connected to two of the at least three electrodes.

10. The ECG sensing unit according to claim 1, wherein the further differential amplifier has an input connected to one of the at least three electrodes.

11. The ECG sensing unit according to claim 1, wherein the further is configured to generate a standard ECG-lead for calibration of the generated non-standard signals.

12. An ECG sensing unit formed as an adhesive patch, comprising:

at least three electrodes for application to a subject and arranged for generating bipolar signals;

a radio module for communication with a remote receiver station;

at least one differential amplifier coupled to the ECG sensing unit's electrodes for generating bipolar signals from electrical signals sensed by the electrodes from which non-standard ECG signals are generated;

an auxiliary differential amplifier for generating calibration signals based on externally received signals having an input port for connection to an electrode external to the ECG sensing unit for allowing physical and electrical connection and disconnection of the auxiliary differential amplifier to and from the external electrode. 5

* * * * *

专利名称(译)	用于无线生成标准ECG导联的系统和方法以及用于其的ECG感测单元		
公开(公告)号	US9364150	公开(公告)日	2016-06-14
申请号	US13/656393	申请日	2012-10-19
当前申请(专利权)人(译)	NOVOSENSE AB		
[标]发明人	SEBELIUS FREDRIK TILLY JONAS		
发明人	SEBELIUS, FREDRIK TILLY, JONAS		
IPC分类号	A61B5/04 A61B5/00 A61B5/0402 A61B5/0408 A61B5/0428		
CPC分类号	A61B5/0006 A61B5/04028 A61B5/04085 A61B5/0428 G16H40/63 A61B5/0408		
代理机构(译)	、凯尼格、P.C.		
优先权	0600328 2006-02-15 SE PCT/SE2007/050059 2007-02-02 WO		
其他公开文献	US20130102871A1		
外部链接	Espacenet USPTO		

摘要(译)

用于无线生成至少一个标准ECG导联的系统包括：多个电极，用于在其分开的点处施加到受试者；以及远程接收站，用于从由所述多个的第一组检测到的信号生成至少一个标准ECG导联。电极。该系统还包括无线感测单元，用于从由多个第二组电极检测到的双极信号产生至少两个非标准ECG信号，远程接收站中的处理器用于计算合成每个产生的标准ECG导联的变换。来自至少两个非标准ECG信号，用于在计算之后将第一组电极与对象断开的断开单元，以及用于将非标准ECG信号无线传送到远程接收站的传送单元第一组电极的断开。

