



US008956291B2

(12) **United States Patent**
Valk et al.

(10) **Patent No.:** **US 8,956,291 B2**
(45) **Date of Patent:** **Feb. 17, 2015**

(54) **BALANCED PHYSIOLOGICAL MONITORING AND TREATMENT SYSTEM**

(75) Inventors: **Jeffrey Valk**, Dallas, TX (US); **Timothy Valk**, Orlando, FL (US)

(73) Assignee: **AdmetSYS Corporation**, Boston, MA (US)

(*) Notice: Subject to any disclaimer, the term of this patent is extended or adjusted under 35 U.S.C. 154(b) by 2096 days.

(21) Appl. No.: **11/816,821**

(22) PCT Filed: **Feb. 22, 2006**

(86) PCT No.: **PCT/US2006/006229**

§ 371 (c)(1),
(2), (4) Date: **Aug. 21, 2007**

(87) PCT Pub. No.: **WO2006/091650**

PCT Pub. Date: **Aug. 31, 2006**

(65) **Prior Publication Data**

US 2008/0194924 A1 Aug. 14, 2008

Related U.S. Application Data

(60) Provisional application No. 60/656,575, filed on Feb. 22, 2005.

(51) **Int. Cl.**
A61B 5/00 (2006.01)
A61B 5/02 (2006.01)

(Continued)

(52) **U.S. Cl.**
CPC **A61B 5/02007** (2013.01); **A61B 5/14532** (2013.01); **A61M 5/1723** (2013.01);
(Continued)

(58) **Field of Classification Search**
CPC ... G06F 19/34; G06F 19/706; A61M 5/16827
USPC 600/301, 369; 604/66
See application file for complete search history.

(56) **References Cited**

U.S. PATENT DOCUMENTS

4,055,175 A 10/1977 Clemens et al.
4,526,569 A 7/1985 Bernardi

(Continued)

FOREIGN PATENT DOCUMENTS

DE 10352456 7/2005
WO WO 98/34657 8/1998

(Continued)

OTHER PUBLICATIONS

Extended European Search Report, regarding corresponding patent application EP 13159283.4, issued by the European Patent Office on Jun. 4, 2013, 7 pages.

Primary Examiner — Michael D'Angelo

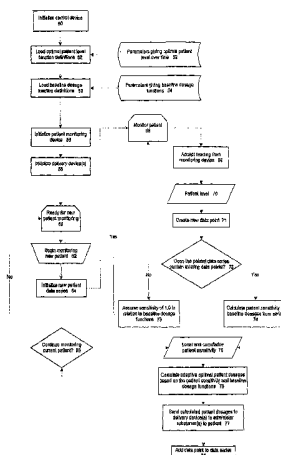
Assistant Examiner — Christian Jang

(74) *Attorney, Agent, or Firm* — Barbara A. Wrigley; Oppenheimer Wolff & Donnelly LLP

(57) **ABSTRACT**

A system and method for providing balanced, automated regulation of a patient's physiological condition by monitoring at least one physiological parameter and, optionally, monitoring and controlling additional physiological parameters, is disclosed. The system includes a physiological parameter monitor, an intelligent control device and a multi-channel delivery device for providing controlled intravenous delivery of at least two medications that affect the physiological condition being controlled. Control logic in the intelligent control device is derived by an algorithm based on model predictive control. The control logic includes mathematically modeled systems, empirical data systems or a combination thereof. The system of the present invention is optionally included in a networked system to provide centralized data storage and archival of system information as well as data export and query capabilities that can be used for patient file management, health care facility management and medical research.

81 Claims, 7 Drawing Sheets



(51) Int. Cl.		8,343,092 B2	1/2013	Rush et al.	
<i>A61M 31/00</i>	(2006.01)	8,377,031 B2	2/2013	Hayter et al.	
<i>A61B 5/145</i>	(2006.01)	8,388,598 B2	3/2013	Steinkogler	
<i>A61M 5/172</i>	(2006.01)	8,425,417 B2	4/2013	Leach et al.	
<i>A61B 5/021</i>	(2006.01)	8,449,524 B2	5/2013	Braig et al.	
<i>A61B 5/024</i>	(2006.01)	2001/0044584 A1	11/2001	Kensley	
<i>A61B 5/026</i>	(2006.01)	2002/0099273 A1*	7/2002	Bocionek et al.	600/300
<i>A61B 5/029</i>	(2006.01)	2003/0031591 A1	2/2003	Whitson et al.	
<i>A61M 5/168</i>	(2006.01)	2003/0031595 A1	2/2003	Kirchhevel et al.	
<i>G06F 19/00</i>	(2011.01)	2003/0208113 A1	11/2003	Mault et al.	
		2004/0147969 A1	7/2004	Mann et al.	
		2005/0015001 A1	1/2005	Lee et al.	
(52) U.S. Cl.		2005/0234486 A1	10/2005	Allen et al.	
CPC	<i>A61B 5/021</i> (2013.01); <i>A61B 5/024</i> (2013.01); <i>A61B 5/026</i> (2013.01); <i>A61B 5/029</i> (2013.01); <i>A61B 5/145</i> (2013.01); <i>A61M 5/16827</i> (2013.01); <i>G06F 19/3468</i> (2013.01)	2006/0224141 A1	10/2006	Rush et al.	
USPC	600/301; 600/365; 600/481; 604/66	2007/0015972 A1	1/2007	Wang et al.	
		2007/0060803 A1*	3/2007	Liljeryd et al.	600/301
		2007/0088271 A1	4/2007	Richards	
		2007/0149466 A1*	6/2007	Milburn et al.	514/43
		2007/0225675 A1	9/2007	Robinson et al.	
		2008/0021294 A1	1/2008	Levin et al.	
		2008/0077048 A1	3/2008	Escutia	
		2009/0069743 A1	3/2009	Krishnamoorthy et al.	
		2009/0076383 A1	3/2009	Toews et al.	
		2009/0227989 A1	9/2009	Burke et al.	
		2010/0057057 A1	3/2010	Hayter et al.	
		2010/0137828 A1	6/2010	Michard et al.	
		2010/0145173 A1	6/2010	Alferness et al.	
		2010/0145303 A1	6/2010	Yodfat et al.	
		2010/0174228 A1	7/2010	Buckingham et al.	
		2010/0217238 A1	8/2010	DeJournett	
		2010/0249561 A1	9/2010	Patek et al.	
		2010/0262117 A1	10/2010	Magni et al.	
		2010/0271213 A1	10/2010	Krainz et al.	
		2010/0324382 A1	12/2010	Cantwell et al.	
		2011/0021978 A1	1/2011	Martin et al.	
		2011/0184266 A1	7/2011	Levin	
		2011/0282320 A1	11/2011	Steil et al.	
		2012/0071819 A1	3/2012	Bruggemann et al.	
		2012/0123234 A1	5/2012	Atlas et al.	
		2012/0179135 A1	7/2012	Rinehart et al.	
		2012/0195182 A1	8/2012	Pommereau et al.	
		2012/0275957 A1	11/2012	Creaven et al.	
		2012/0330228 A1	12/2012	Day et al.	
		2013/0165900 A1	6/2013	Braig et al.	
		2013/0190674 A1	7/2013	Case et al.	
(56) References Cited					
	U.S. PATENT DOCUMENTS				
4,538,616 A *	9/1985 Rogoff	600/365			
4,619,261 A	10/1986 Guerriero				
4,633,878 A	1/1987 Bombardieri				
5,109,866 A	5/1992 Guegan et al.				
5,474,552 A	12/1995 Pali				
5,630,706 A	5/1997 Yang				
5,984,893 A	11/1999 Ward				
6,017,318 A	1/2000 Gauthier et al.				
6,017,494 A	1/2000 Ashihara et al.				
6,056,734 A	5/2000 Jacobsen et al.				
6,063,028 A *	5/2000 Luciano	600/300			
6,233,539 B1	5/2001 Brown				
6,544,212 B2	4/2003 Galley et al.				
6,572,542 B1	6/2003 Houben et al.				
6,740,072 B2	5/2004 Starkweather et al.				
6,743,202 B2	6/2004 Hirschman et al.				
6,958,053 B1	10/2005 Reilly				
6,966,880 B2	11/2005 Boecker et al.				
6,980,958 B1 *	12/2005 Surwit et al.	705/2			
7,029,456 B2	4/2006 Ware et al.				
7,204,823 B2	4/2007 Estes et al.				
7,367,942 B2	5/2008 Grage et al.				
7,481,818 B2	1/2009 Allen et al.				
7,491,187 B2	2/2009 Van Den Berghe et al.				
7,509,156 B2	3/2009 Flanders				
7,604,619 B2	10/2009 Eich et al.				
7,608,042 B2	10/2009 Goldberger et al.				
7,785,258 B2	8/2010 Braig et al.				
7,811,246 B2	10/2010 Koops				
7,811,279 B2	10/2010 John				
7,859,473 B2	12/2010 Gibson				
7,914,499 B2	3/2011 Gonnelli et al.				
8,121,857 B2	2/2012 Galasso et al.				
8,209,060 B2	6/2012 Ledford				
8,226,556 B2	7/2012 Hayes et al.				
8,273,052 B2	9/2012 Damiano et al.				
8,303,533 B2	11/2012 Regittnig et al.				
	FOREIGN PATENT DOCUMENTS				
	WO	WO 01/50950	7/2001		
	WO	WO 2004/112603 A1	12/2004		
	WO	WO 2005/072792 A1	8/2005		
	WO	WO 2006/091650	8/2006		
	WO	WO 2007/051139	5/2007		
	WO	WO 2007/051139 A2	5/2007		
	WO	WO 2007/116226 A2	10/2007		
	WO	WO 2008/081444	7/2008		
	WO	WO 2008/113772 A1	9/2008		
	WO	WO 2013/032965 A1	3/2013		

* cited by examiner

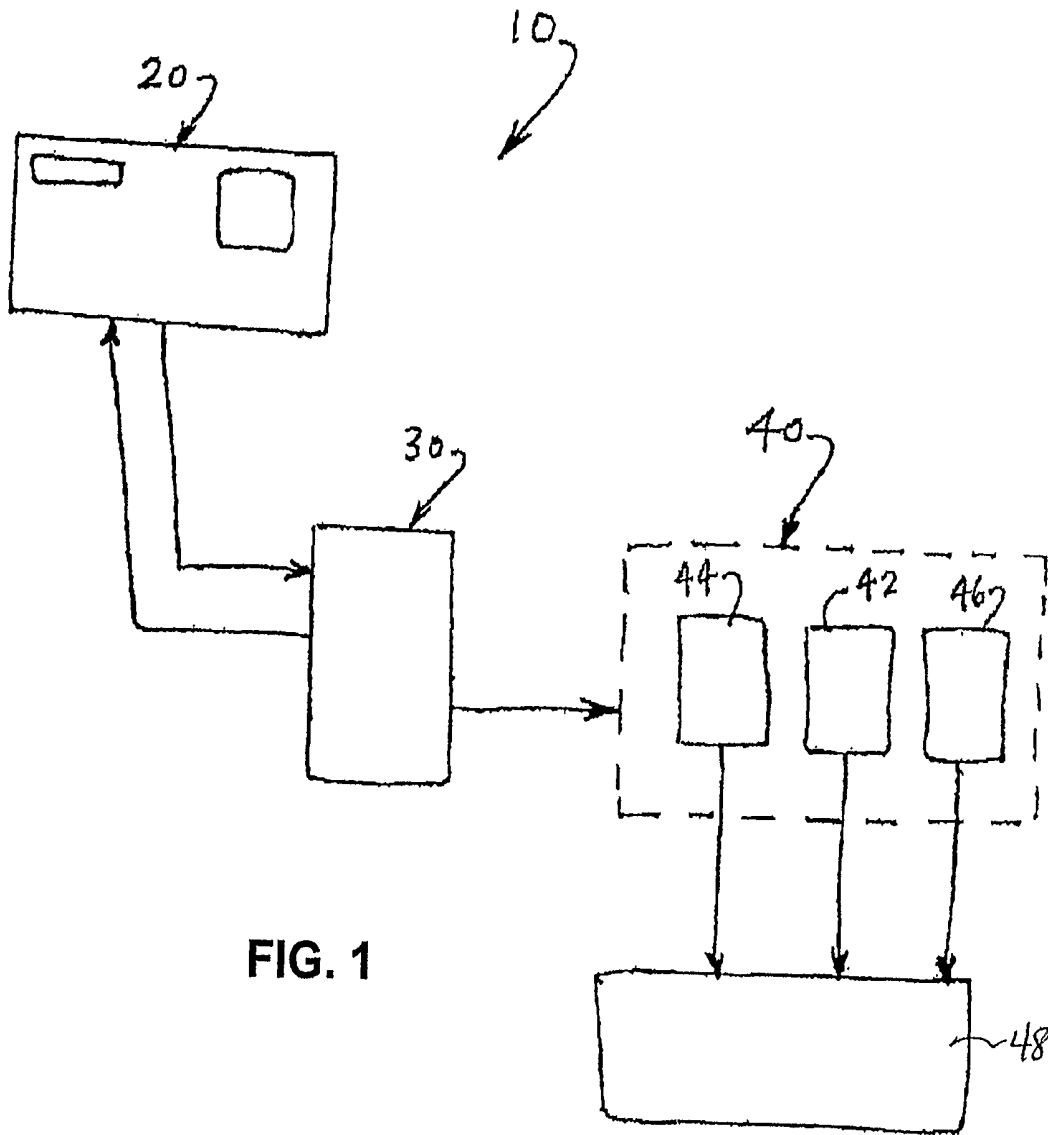


FIG. 1

FIG. 2

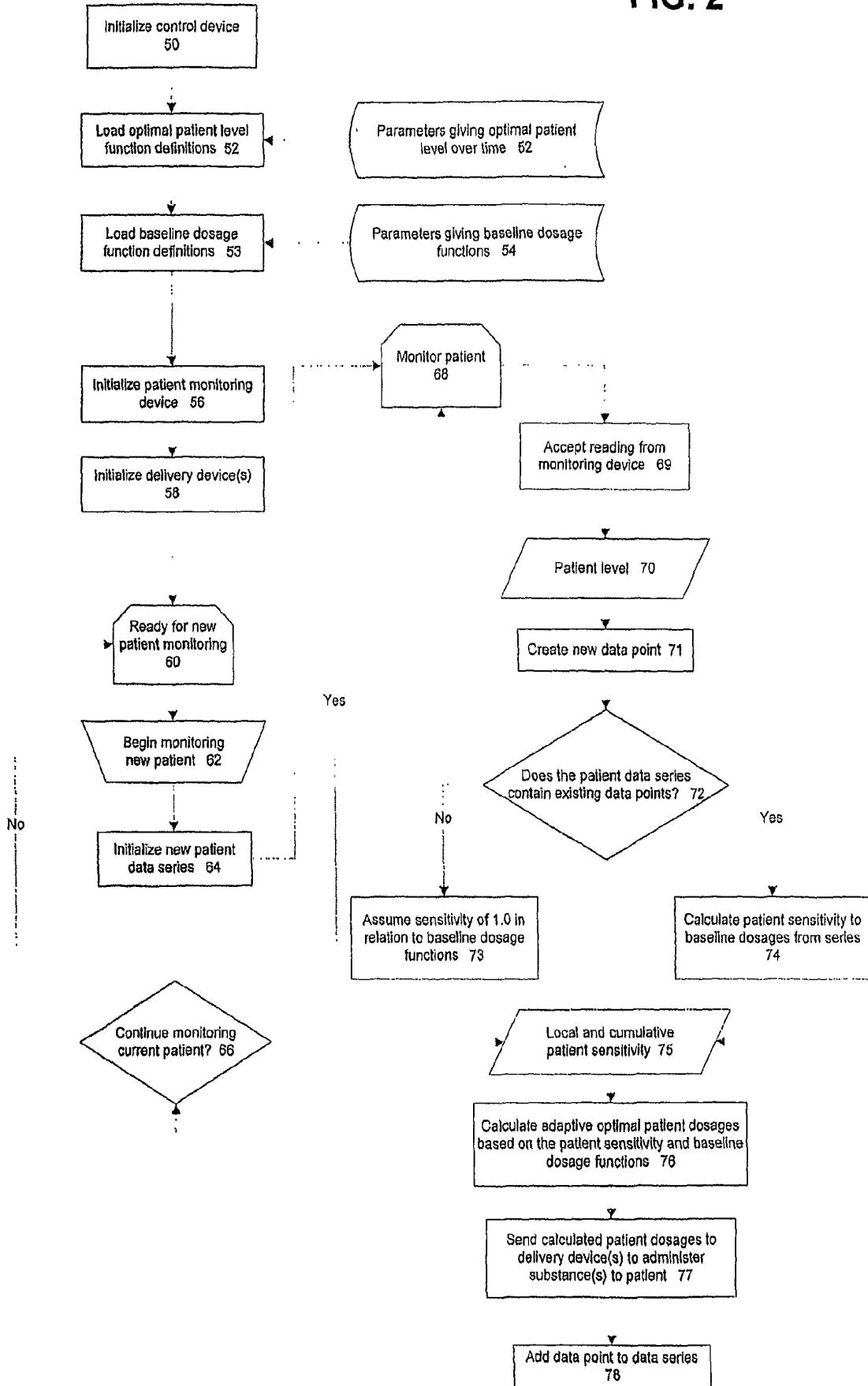


FIG. 3

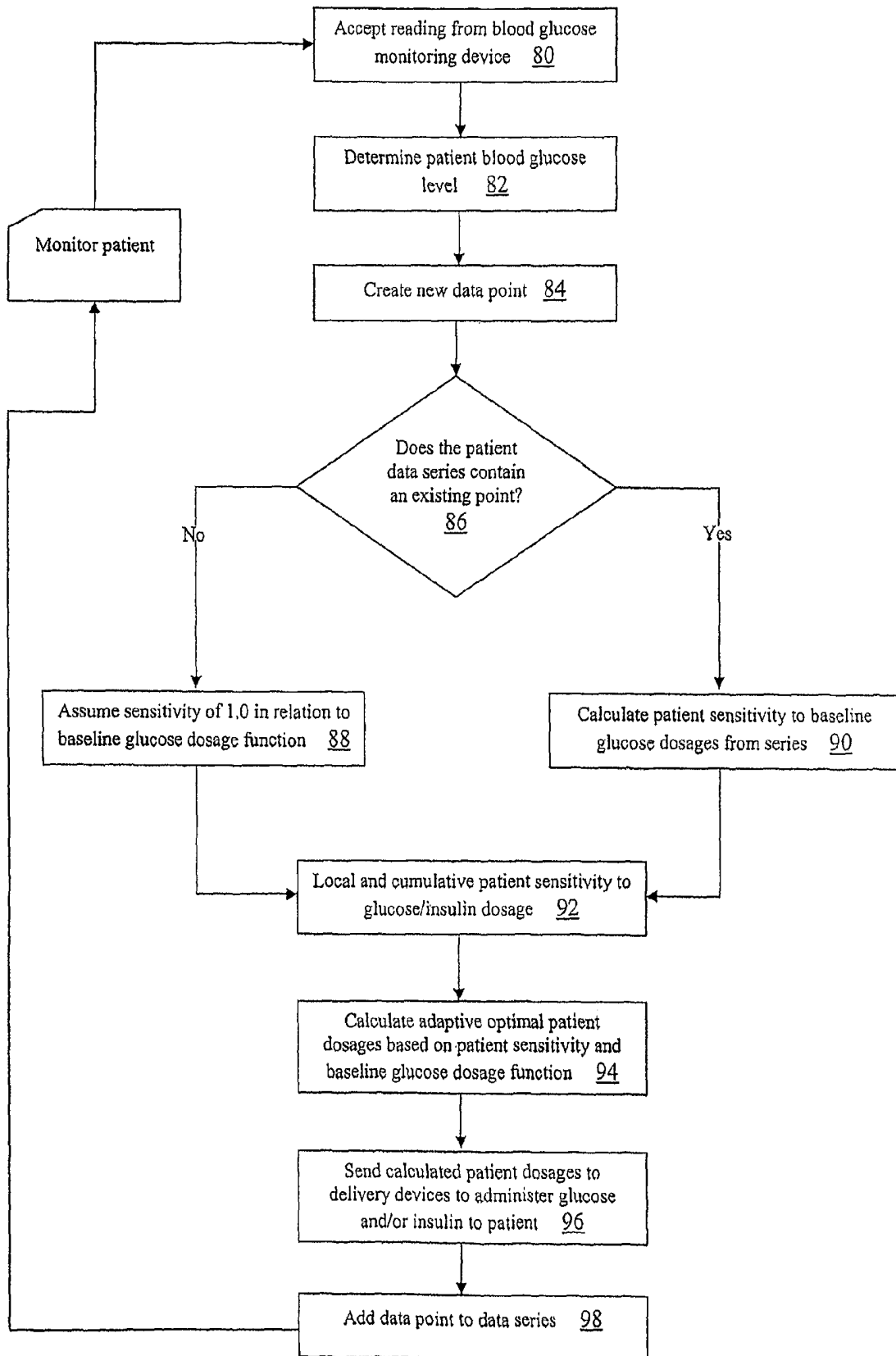


FIG. 4

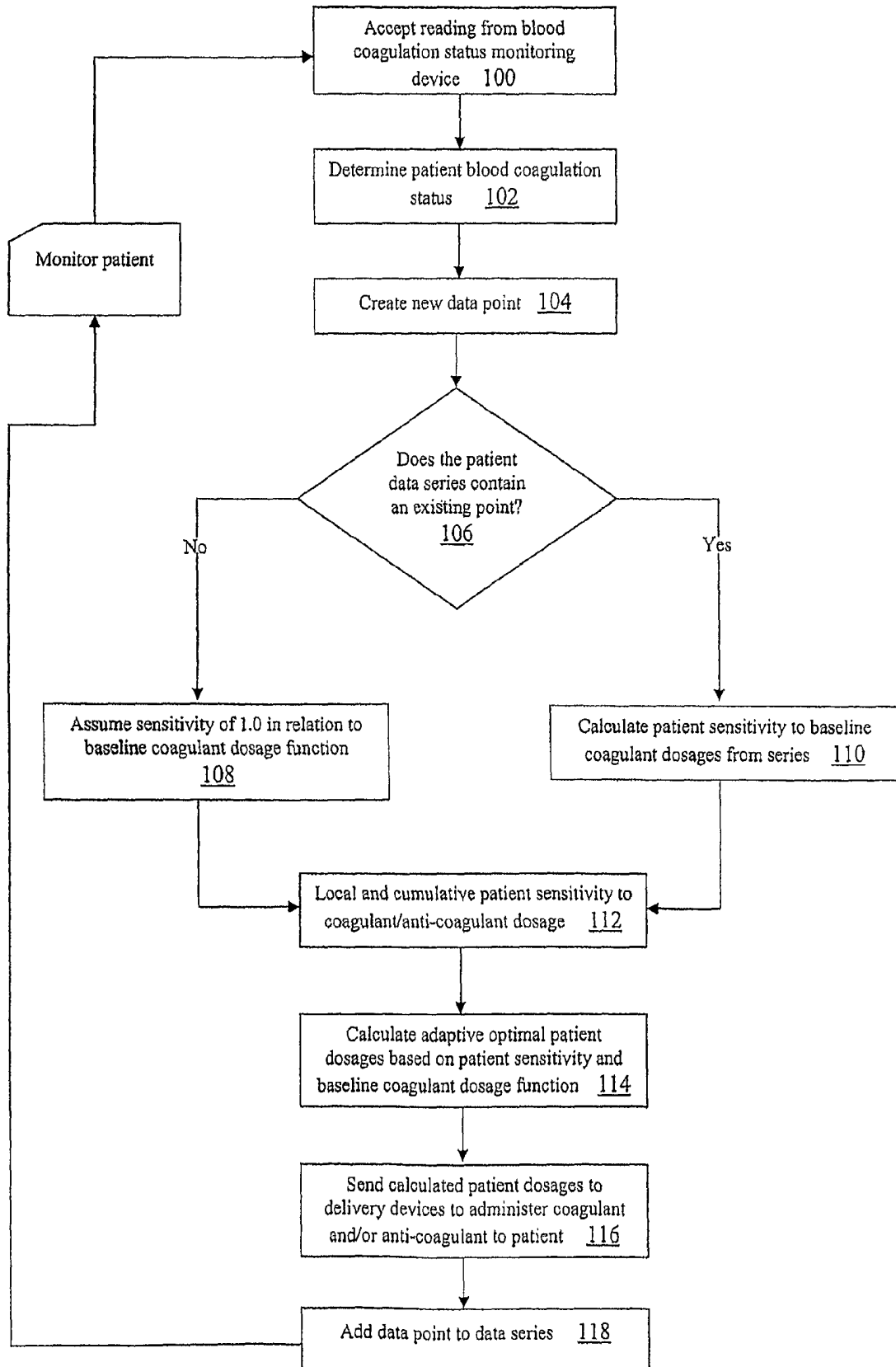
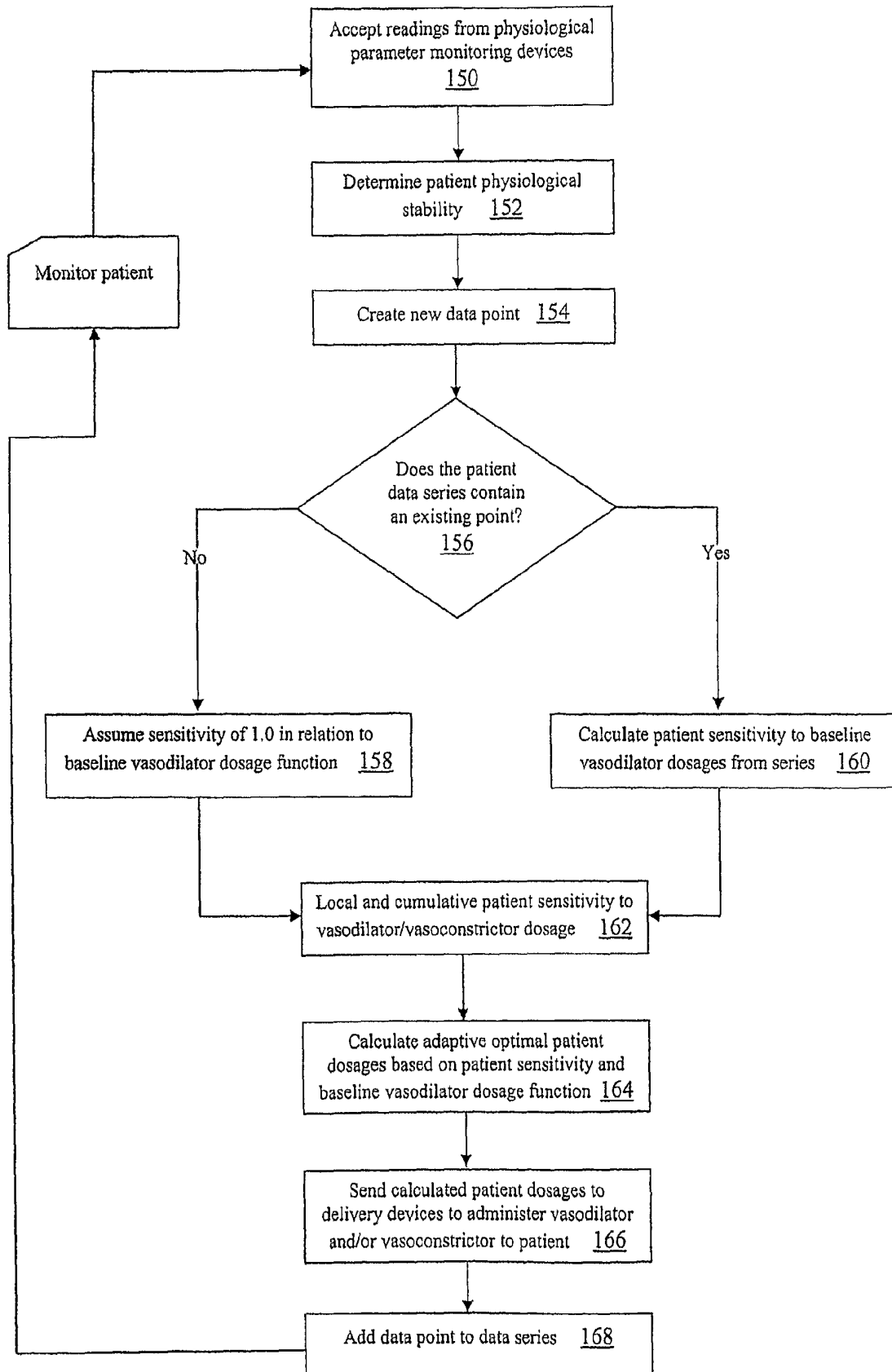


FIG. 5



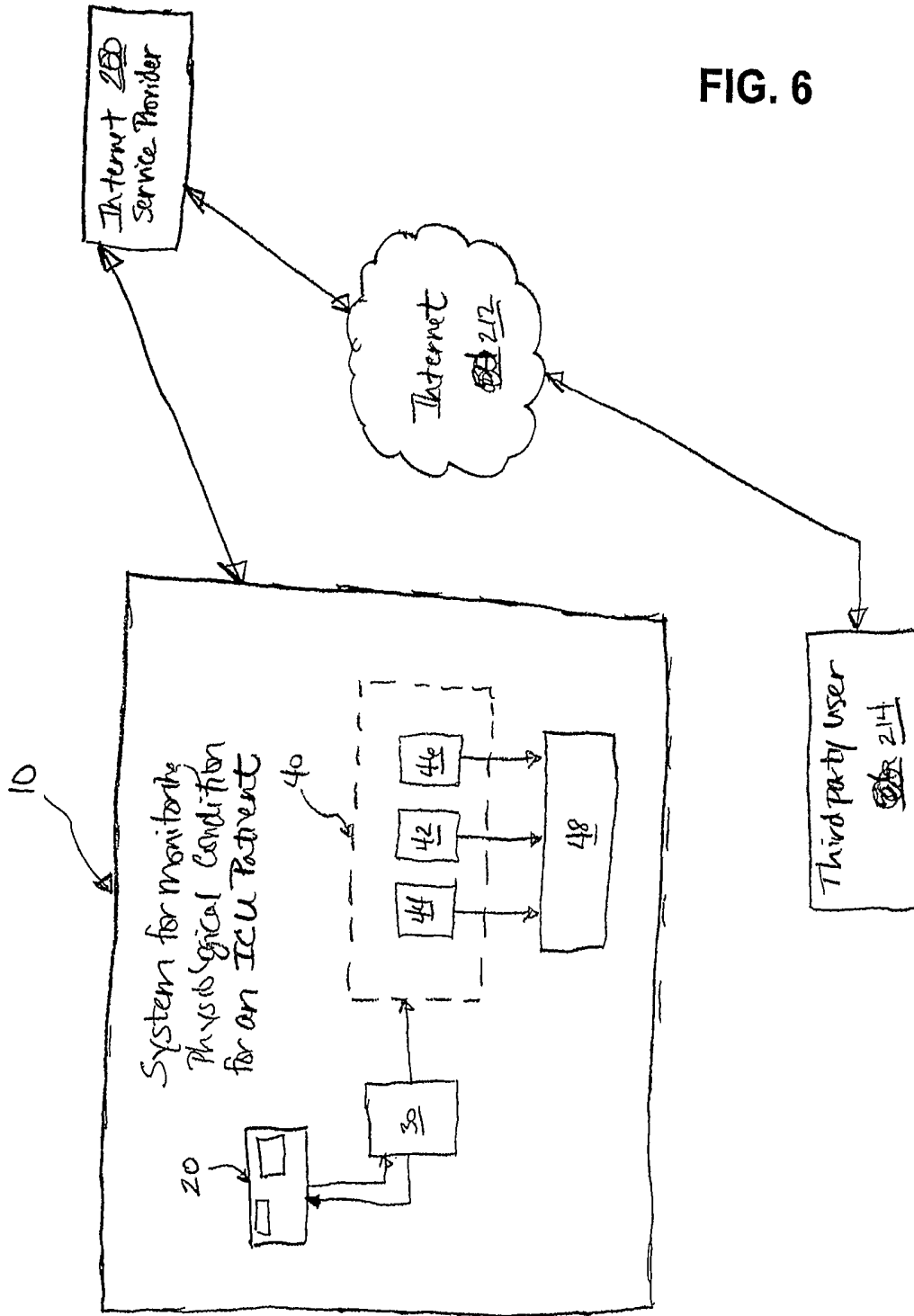


FIG. 6

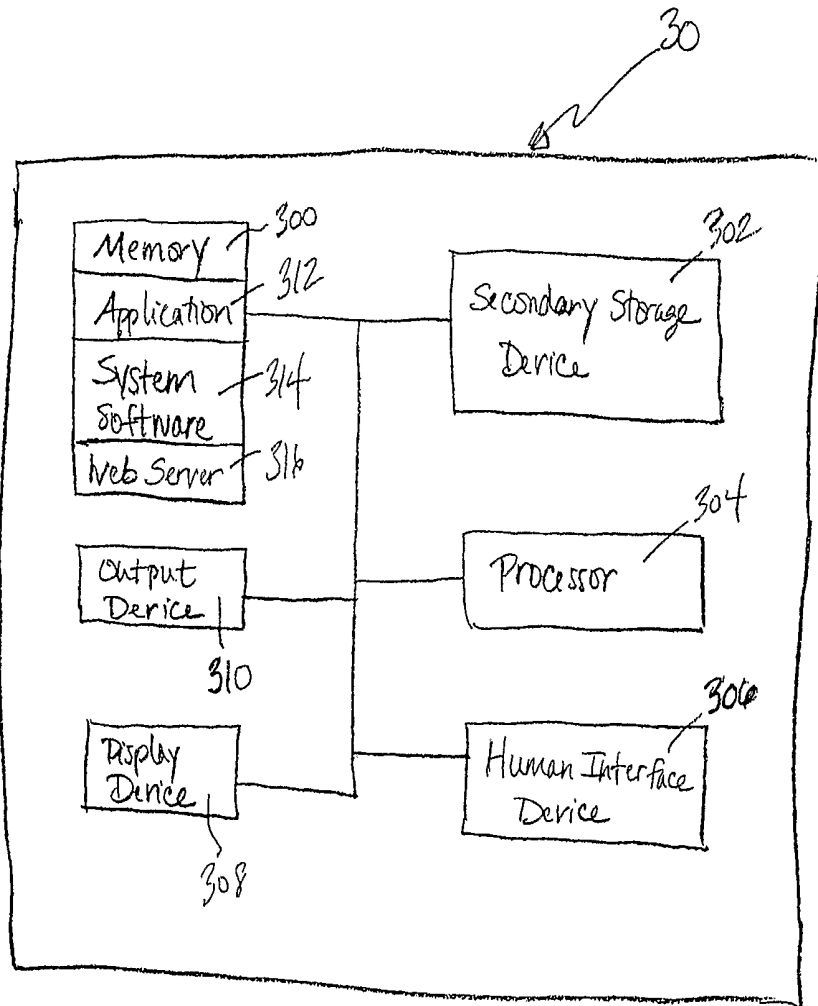


FIG. 7

BALANCED PHYSIOLOGICAL MONITORING AND TREATMENT SYSTEM

CROSS REFERENCE TO RELATED APPLICATIONS

This application claims priority from International application number PCT/US2006/006229, filed Feb. 22, 2006 under 35 U.S.C. §371, which claims priority to U.S. provisional application Ser. No. 60/656,575, filed Feb. 22, 2005, the entireties of which are hereby incorporated by reference.

BACKGROUND OF THE INVENTION

1. Field of the Invention

The present invention relates to a system for monitoring and treating at least one physiological condition of a patient. More particularly, the present invention relates to a system and method for providing a balanced, regulated treatment of the physiological condition based on monitoring and controlling one or more predetermined physiological parameters.

2. Discussion of the Related Art

Healthcare professionals in intensive care facilities are often faced with treating patients for one type of physiological condition while monitoring at least one of a host of physiological parameters. It is often necessary to deliver various medications to patients in order to control these physiological parameters. Monitoring and controlling multiple physiological parameters for a plurality of patients requires a great deal of time and resources from healthcare professionals. With ever increasing shortages in healthcare staff, workloads have been shown to be directly proportional to an increase in the occurrence of errors in medication delivery. Errors in medication delivery occur more frequently than commonly known and many of the errors are life threatening. In addition, these errors often go undiscovered and/or unreported.

There are several physiological conditions that are monitored in an intensive care setting, namely hypoglycemia, blood clotting, and the overall physiological stability of the patient. Typically, however, healthcare providers will measure only one physiological parameter, such as glucose level, prothrombin time, blood flow, hemoglobin level, heart rate, blood pressure, arterial oxygen concentration and other cardiac output, to treat the specific physiological condition under examination. Based on this measurement or a series of these measurements, the provider delivers medication to the patient in order to stabilize the physiological parameter and thus treat the physiological condition.

The control of glucose levels in seriously ill patients has proven to be a significant problem. Hyperglycemia is a frequent consequence of severe illness, occurring in both diabetic and non-diabetic patients, due to altered metabolic and hormonal systems, impaired gastrointestinal motility, altered cardiac function, increased catecholamine production, altered hepatic gluconeogenesis, relative insulin resistance and increased corticosteroid levels. Symptoms associated with elevated levels of blood glucose include dehydration, weakness, greater risk of poor healing and infection, frequent urination, and thirst. Infusion of insulin has proven an effective method for treating hyperglycemia. However, insulin infusion without proper glucose level monitoring can lead to problems with hypoglycemia.

Hypoglycemia in both diabetic and non-diabetic patients is one physiological condition that is monitored in an intensive care and/or other acute medical setting. Hypoglycemia is a common problem with severely ill patients and is defined as the fall of blood and tissue glucose levels to below 72 mg/dl.

Symptoms associated with decreased levels of blood and tissue glucose levels are weakness, sweating, loss of concentration, shakiness, nervousness, change in vision and if untreated, loss of consciousness, possible seizures and neurological sequelae such as paralysis and death. Treatment in the case of both hyperglycemia and hypoglycemia involves monitoring and controlling the patient's glucose level.

Medical studies have established a direct correlation between morbidity and mortality in intensive care patients and the degree of glucose control. The use of intravenous insulin has vastly increased the efficacy of glucose control and has proven to be superior to conventional insulin treatment in reducing morbidity and mortality among patients in intensive care.

Data provided in medical studies indicates that hypoglycemia occurs in 3.8%-4% of all patients when glucose is measured every 2 hours. In other words, the average patient has a hypoglycemic episode every 2 to 4 days. The mean time that patients spent in the intensive care unit in these studies was between 2.5 and 10 days. Thus, theoretically, the average patient would have at least 1 and possibly up to 5 episodes of hypoglycemia during their intensive care unit stay. To reduce the risk of hypoglycemia, the burden is on nurses to monitor patient glucose levels every 1 to 1.5 hours. In addition, nurses must implement increasingly complex procedures to monitor and control patients' glucose levels. This level of attention by healthcare professionals is not practical for busy hospital intensive care units. Furthermore, as a result of increases in medical malpractice claims, stricter control regimens have been imposed on hospital staffs. These control regimens are often complex and increase the already heavy burden on health care professionals.

Systems and methods for monitoring and controlling glucose levels in intensive care units are known. One such system requires manual adjustment of the intravenous insulin using a single normogram or algorithmic sequence, where various adjustments are manually made over time. This system involves periodic measurements (typically hourly) of the patient's blood glucose level taken by nursing staff. The nursing staff must then obtain orders from a doctor to adjust the amount of insulin being delivered to the patient in an effort to maintain the patient's blood glucose level within a desired range. This method is time consuming, costly and prone to error.

Also known are systems and methods for monitoring and controlling blood glucose levels with an algorithm having a modifier to adjust the patient's insulin rate based on the level of the immediately preceding glucose measurement. If the glucose level declines too quickly, a negative modifier slows the intravenous insulin delivery rate. Alternatively, if the glucose level increases too quickly, the negative modifier increases the intravenous insulin delivery rate. This system is complex to run because multiple glucose level measurements are necessary to determine the rate of the intravenous insulin delivery. Thus, healthcare professionals spend additional time and resources on using this type of system.

Further, neither of the aforementioned systems includes a counterbalancing glucose infusion algorithm. The use of intravenously delivered insulin alone is unbalanced in that no counteracting glucose solution is activated when measurements indicate that glucose is declining. In systems currently available, a patient on intravenous insulin is given a bolus, or a concentrated infusion of glucose to counteract hypoglycemia, only after his or her glucose level reaches a particular level. While the insulin rate may be reduced or stopped altogether at low glucose levels, the effects of insulin at the tissue level persist and hypoglycemia may nevertheless develop.

Moreover, insulin infusion rates cover a wide distribution of glucose readings. For example, minimum rates of 0.5-1.0 units of insulin per hour may start at glucose levels from about 80 to about 120 mg/dl, while maximum rates of insulin delivery may start at glucose levels as low as about 10 units per hour to those which have no apparent upper endpoint. Because of these variables, it is difficult for healthcare professionals to determine the precise time to provide counterbalancing glucose infusions. Accordingly, there exists a need for a computerized monitoring and control system that assists healthcare professionals in monitoring hypoglycemia by measuring glucose levels, projecting future values and setting the infusion rate of glucose and insulin based on these values.

It would also be useful to monitor and control blood clotting in seriously ill patients. Blood clots (fibrin clots) result from coagulation of the blood. A blood clot that forms in a vessel or within the heart and remains there is called a thrombus. A thrombus that travels from the vessel or heart chamber where it formed to another location in the body is called an embolus, and the disorder, an embolism. For example, an embolus that occurs in the lungs is called a pulmonary embolism. Thrombi and emboli can firmly attach to a blood vessel and partially or completely block the flow of blood in that vessel. This blockage deprives the tissues in that location of normal blood flow and oxygen. Thus, it is important to monitor and control blood clotting in seriously ill patients to reduce the risk of stroke and other life threatening complications.

However, monitoring and controlling blood clotting is inherently complicated. Patients who receive excessive amounts of an anticoagulant can suffer from unusually heavy bleeding episodes. This can be particularly dangerous for intensive care patients who have sustained surgical wounds, the elderly who are especially sensitive to anticoagulants, heart patients, and children. Thus, healthcare professionals typically monitor patients for signs of excessive bleeding in order to provide the correct doses of either a coagulant or an anticoagulant. Presently available methods include observation and manual delivery of these medications. Accordingly, there also exists a need for a computerized monitoring and control system that assists healthcare professionals in monitoring blood coagulation by direct or indirect measurement of coagulation status, including intrinsic or extrinsic clotting factors, projecting future values and setting the infusion rate of a blood coagulant and anticoagulant based on these values.

As yet another example, health care professionals also monitor the overall physiological stability of intensive care unit patients by monitoring physiological parameters such as blood flow, heart rate, blood pressure, hemoglobin levels, cardiac output, arterial oxygen concentration and other factors. All of these physiological parameters are affected by vasodilators and vasoconstrictors.

Electron beam CT scanners for tracking blood flow by acquiring images of pulmonary anatomy and function are known. By using an appropriate blood flow model, regional parenchymal time-intensity curves, sampled from dynamic CT scans of a bolus contrast injection, can be used to calculate regional blood flow, regional air, blood and tissue percentages, in addition to regional contrast mean transit times and arrival times. Computerized systems are used to convert data taken from the scans into blood flow calculations, color coded images, and the like.

Thermographic cameras are also known and are used to record infrared radiation, or heat, rather than visible light. In this manner, a thermographic camera identifies differences in blood flow because warmer areas record greater blood flows.

Ultrasound monitoring, also known, measures the speed with which blood flows through blood vessels. This method can detect blood vessel constriction as well as blood flow abnormalities.

While all of these systems are useful to monitor patient blood flow, they do not provide a means for controlling the blood flow of a patient nor do they provide an effective, easy way of combining data related to other parameters such as blood pressure, heart rate, hemoglobin level, arterial oxygen concentration and cardiac output to monitor overall patient stability.

Vasodilation is one parameter used to gauge overall physiological stability of a patient. It is well known that nitric oxide is a naturally occurring vasodilator present in the vascular endothelium of body tissue. Synthesis of nitric oxide is modulated by shear stress in the vessel walls. This helps match vessel caliber to blood flow. At a cellular level it works by converting guanylyl cyclase to cyclic glycomacropptide (GMP) which in turn relaxes vascular smooth muscle. The use of inhaled nitric oxide is widely known as a means to reduce pulmonary vascular resistance and improve the ventilation/perfusion relationship in patients with acute hypoxic respiratory failure, acute lung injury or right ventricular overload.

One technique that is used to boost nitric oxide production in severely ill patients on ventilators involves manually adding a continuous stream of nitrogen/nitric oxide mixture into an inspiratory limb of a ventilator, usually as close to the ventilator as possible to give time for the nitric oxide to mix before it reaches the patient. A monitor that analyzes nitric oxide and nitrogen dioxide is placed at the distal end of the inspiratory limb. The flow of nitrogen/nitric oxide is controlled by a needle valve and rotameter and manually adjusted to give the required inspired concentration.

Another technique commonly used to boost nitric oxide production involves administering L-arginine to ICU patients. One such technique includes ingestion of orally administered L-arginine. Administration of enteral L-arginine is limited in that noticeable increases of nitric oxide production in patients generally occur 2 to 4 hours after ingesting the L-arginine. Another technique involves parenteral administration of L-arginine, including intravenous injections. Other techniques for boosting nitric oxide levels in patients include pulsatile or continuous infusion of insulin or phosphodiesterase.

Vasoconstriction is another parameter used to gauge the overall physiological stability of a patient. Vasoconstriction is achieved via intravenously administered medications, such as endothelin, endothelin like compounds, sympathomimetics and vasopressin like compounds. The use of such pulmonary vasoconstrictors increases the efficacy of nitric oxide and can be instrumental in providing a required balance between vasoconstriction and vasodilatation for physiologically stabilizing a patient. However, heightened levels of vasoconstrictors, particularly endothelin, can lead to pulmonary artery hypertension and heart failure.

Because both of the foregoing techniques involve the manual introduction of medication into patients, they are inherently prone to error. Accordingly, there exists a need for computerized monitoring and control system that assists healthcare professionals in monitoring blood flow by measuring and controlling vasodilatation and vasoconstriction, projecting future values of these parameters and setting the infusion rate of medications to treat these parameters.

Based on the foregoing examples and in light of increasing shortages in intensive care personnel, there exists an acute need for a balanced physiological monitoring and control

system that uses an intelligent control device and a multi-channel delivery manifold for controlled delivery of a plurality of medications that impact a monitored physiological parameter in order to stabilize and balance a physiological condition in a patient.

SUMMARY OF THE INVENTION

It is an object of the present invention to provide a system and method for balancing a physiological condition of a patient. It is a further object of the present invention to provide a system including a physiological parameter monitor, an intelligent control device, and a multi-channel delivery manifold for adaptively stabilizing and balancing a monitored physiological parameter. It is still a further object of the present invention to provide a system which includes a physiological parameter monitor, an intelligent control device, and a multi-channel delivery manifold which controls the infusion rate of one or a plurality of medications into the patient to stabilize and balance the patient's physiological parameters and thus the physiological condition. It is still a further object of the present invention to provide a system for short term, intensive treatment for critical care patients which adaptively stabilizes and balances a plurality of physiological parameters in the patient and which provides for multi-channel infusion of a plurality of medications that impact the physiological parameters and in turn the physiological condition of the patient. It is still a further object of the present invention to provide a system for balanced automated regulation of a physiological condition in a patient, wherein the system is adapted for integration with a network to provide for remote monitoring, management and control of multiple infusion devices, centralized data storage and archival of information, patient file management, hospital/clinic unit management and medical research.

These and other objects and advantages of the present invention are accomplished by the system and method for monitoring and controlling a physiological condition of a patient in accordance with the present invention. The system includes at least one physiological parameter monitor adapted to monitor a physiological parameter of a patient, a control device operably connected to the physiological parameter monitor, the control device having control logic that is capable of monitoring, receiving and storing physiological parameter data from the physiological parameter monitor and translating the physiological parameter data into an output control signal containing information regarding administration of at least two medications, and a delivery manifold operably connected to the control device, the delivery manifold capable of receiving the output control signal from the control device, where the delivery manifold infuses at least two medications into the patient based on the information contained in the output control signal.

The invention will be further described with reference to the following detailed description taken in conjunction with the drawings.

BRIEF DESCRIPTION OF THE DRAWINGS

FIG. 1 is a schematic diagram of the system of the present invention illustrating the principal components thereof.

FIG. 2 is a flowchart illustrating one method of using the system of the present invention.

FIG. 3 is a flowchart illustrating one method of monitoring and stabilizing a physiological condition in accordance with the system of the present invention.

FIG. 4 is a flowchart illustrating another method of monitoring and stabilizing a physiological condition in accordance with the system of the present invention for an alternate embodiment.

FIG. 5 is a flowchart illustrating a third method of monitoring and stabilizing a physiological condition in accordance with the system of the present invention.

FIG. 6 is a block diagram illustrating exemplary components of the system of the present invention as it is incorporated into a network system for remote access and control.

FIG. 7 is a block diagram of the exemplary components of an electronic controller used in the system of the present invention.

DETAILED DESCRIPTION

Referring to FIG. 1, a system for providing balanced, automated regulation of a physiological condition in a patient is generally indicated as 10. System 10 includes a physiological monitor 20, an intelligent electronic controller unit 30 and a multi-channel delivery mechanism 40 which may include multiple single channel delivery manifolds, one or more multiple channel delivery manifolds, or a combination of single and multiple channel delivery manifolds.

In one embodiment, the multi-channel delivery mechanism 40 includes two pumps, a first pump 42 and a second pump 44 for delivering medications to a patient. In an alternate embodiment, system 10 includes a third pump 46 for delivery of a third medication to a patient 48. In another alternate embodiment, system 10 includes four or more pumps for delivery of four or more medications to a patient. In the foregoing embodiments, the use of two, three, four or more pumps 46 allows for the concurrent monitoring and control of several physiological parameters and conditions.

Those skilled in the art will appreciate that pumps 42, 44, 46 may be selected from a wide variety of infusion pumps commonly used in the medical industry such as continuous and/or intermittent, the selection of which will vary depending on criteria such as desired flow rates and/or delivery of large or small volumes. Infusion pumps can administer fluids in ways that would be impracticably expensive or unreliable if performed manually by nursing staff. For example, they can administer as little as 0.1 mL per hour injections (too small for a drip), injections every minute, injections with repeated boluses, up to maximum number per hour, or fluids whose volumes vary by the time of day.

In one embodiment of the present invention, the outputs of pumps 42, 44, 46 are controlled by providing control valves on the feed lines to the pumps 42, 44, 46. In this embodiment, the control valves are provided with a signal related to the desired volume of each medication to be delivered to the patient. In another embodiment, pumps 42, 44, 46 are run with variable speed drives such that pump outputs are controlled by varying the speed of the drive as it relates to predetermined volume per rotation calculations for each medication being pumped. This data is stored in controller 30.

Multi-channel delivery mechanism 40 provides controlled delivery of a first medication and a second medication and optionally, three or more medications to the patient 48 as determined by controller 30. More particularly, controller 30 accepts input from a single device or a range of devices which provides data point information about a primary physiological condition and, optionally, data point information about additional physiological conditions. Controller 30 is provided with adaptive logic for gradual, optimized, stabilization of the primary physiological condition and, optionally, the additional physiological conditions. Controller 30 includes

an output to multi-channel delivery mechanism **40** to thereby control the rate of flow of the first, the second and optionally the third medications to the patient **48** to maintain the patient's primary and secondary physiological conditions within a defined range.

Those skilled in the art will appreciate that the system in accordance with the present invention may include stationary systems used in intensive care units or emergency rooms in hospitals, or may comprise portable units for use by emergency medical technicians in ambulances, at the scene of accidents, and when responding to other emergency situations. Those skilled in the art will also appreciate that the system in accordance with the present invention may alternately include a miniature chip as the controller, where the chip can be operably connected to a means for encapsulating the medications being administered such that the encapsulated medications can be implanted in the patient's body and released on-demand based on an output signal from the controller.

As illustrated in the flowchart depicted in FIG. **2**, one method for monitoring and stabilizing a physiological condition in accordance with the present invention includes initializing a control device **50**; loading definitions for optimal patient level **51** where parameters are defined for optimal patient level over time **52**; loading definitions for a baseline dosage function **53** where parameters are defined for baseline dosages over time **54**; initializing a patient monitoring device **56**; initializing a delivery device **58**; determining if the system is ready to monitor a new patient **60**; monitoring a new patient **62**; initializing a new patient data series **64**; and continuously monitoring the patient **66**. FIG. **2** also depicts a method for monitoring the patient **68** including accepting a reading from a monitoring device **69**; determining the level of the physiological parameter **70** being monitored; creating a new data point in the data series **71**; determining whether the patient data series contains existing data points **72**; calculating patient sensitivity to baseline dosages if there are existing data points **74** or assuming a sensitivity of 1.0 in relation to the baseline dosage functions **73**; determining local and cumulative patient sensitivity **75**; calculating adaptive optimal patient dosages based on the patient sensitivity and baseline dosage functions **76**; sending the calculated patient dosages to the delivery devices to administer medications to patients **77**; and adding a data point to the data series **78** in order to continue to provide cumulative patient sensitivity to the medications being administered.

FIGS. **3-5** depict examples of various methods used to monitor and control specific physiological conditions according to the present invention. As those skilled in the art will appreciate, various changes can be made to the methods, systems and physiological conditions and parameters being monitored without departing from the scope of the present invention. Thus, the examples present herein are not intended to limit, in any way, the scope of the present invention.

FIG. **3** depicts a method for monitoring and controlling a patient's blood glucose level including accepting a reading from a blood glucose monitoring device **80**; determining the patient's blood glucose level **82**; creating a new data point **84**; determining if the patient data series contains an existing data point **86**; calculating patient sensitivity to a baseline glucose dosage function if there are existing data points **90** or assuming a sensitivity of 1.0 in relation to the baseline glucose dosage function if there are not existing data points **88**; determining local and cumulative patient sensitivity to glucose and/or insulin dosages **92**; calculating adaptive optimal patient dosages based on the patient sensitivity and baseline glucose dosage function **94**; sending the calculated patient

dosages to the delivery devices to administer glucose and/or insulin to a patient **96**; and adding a data point to the data series in order to continue to provide cumulative patient sensitivity information in order to calculate future dosages of glucose and/or insulin to be administered to the patient **98**.

Referring now to FIG. **4**, there is shown a method for monitoring and controlling a patient's blood coagulation status including accepting a reading from a blood coagulation status monitoring device **100**; determining the patient's blood coagulation status **102**; creating a new data point **104**; determining if the patient data series contains an existing data point **106**; calculating patient sensitivity to a baseline coagulant dosage function if there are existing data points **110** or assuming a sensitivity of 1.0 in relation to the baseline coagulant dosage function if there are not existing data points **108**; determining local and cumulative patient sensitivity to coagulant and/or anti-coagulant dosages **112**; calculating adaptive optimal patient dosages based on the patient sensitivity and baseline coagulant dosage function **114**; sending the calculated patient dosages to the delivery devices to administer an anticoagulant and/or a coagulant to a patient **116**; and adding a data point to the data series in order to continue to provide cumulative patient sensitivity information for calculating future dosages of the coagulant and/or the anti-coagulant to be administered to the patient **118**. In this embodiment, the coagulant may include extrinsic and extrinsic clotting factors and clotting factor stimulants or like substances. The anti-coagulant may include vitamin K, urokinase, streptokinase, heparin and other direct and indirect clotting factor inhibitors.

Referring now to FIG. **5**, there is depicted a method for monitoring and controlling the stability of a patient in the intensive care unit of a hospital or a patient being treated in an emergency situation. This embodiment illustrates a method for concurrently monitoring at least two physiological parameters to provide a synthesized control signal to the delivery device **40** in order to stabilize the patient's condition. The method of this embodiment includes accepting a reading from at least two physiological parameter monitoring devices **150**, including blood flow, blood pressure, heart rate, hemoglobin level, cardiac output, arterial oxygen concentration and any other physiological parameters that are affected by vasoconstriction and/or vasodilatation; determining the patient's overall physiological stability **152**; creating a new data point **154**; determining if the patient data series contains an existing data point **156**; calculating patient sensitivity to a vasodilator dosage function if there are existing data points **160** or assuming a sensitivity of 1.0 in relation to the baseline vasodilator dosage function if there are not existing data points **158**; determining local and cumulative patient sensitivity to a vasodilator dosage and/or a vasoconstrictor dosage **162**; calculating adaptive optimal patient dosages based on the patient sensitivity and the baseline vasodilator dosage function **164**; sending the calculated patient dosages to the delivery devices to administer the vasodilator and/or the vasoconstrictor to a patient **166**; and adding a data point to the data series in order to continue to provide cumulative patient sensitivity information in order to calculate future dosages of the vasodilator and/or the vasoconstrictor to be administered to the patient **168**. In this embodiment, the vasodilator is selected from the group including nitric oxide, L-arginine, alpha blockers, beta agonists, potassium channel openers, calcium channel blockers, angiotensin inhibitors and phosphodiesterase inhibitors. The vasoconstrictor is selected from the group including endothelin, endothelin like compounds, sympathomimetics and vasopressin like compounds.

The control logic of the controller **30** is derived by an algorithm and is comprised of two primary sets of equations.

In one embodiment, the algorithm based logic performs the following series of operations using blood glucose as an example. First, an optimal blood-glucose function, $g(t)$, is derived. This function will govern the delivery device **40** target levels for all patients' blood-glucose measurements over time. The approach used is parameterized such that the optimal values for blood-glucose levels over time may be refined or changed without altering the logical framework. The rate of change in a patient's blood-glucose level should decline at a constant rate, so as not to shock the patient's system. In addition, the patient's blood-glucose level will decline more quickly when higher and more gradually when closer to the target level, allowing the patient to gently settle into a stability zone. This principle holds that acceleration, $g''(t)$, should be a negative arbitrary constant (scalar quantity). The definition of the optimal blood-glucose function, $g(t)$, can then be derived for the delivery device **40** by specifying either: a reference blood-glucose level and a time-to-target, or an acceleration constant, a , as well as boundary conditions, including the target blood-glucose level and the maximum blood-glucose level for which the delivery device **40** will regulate the patient.

Second, an optimal dose of insulin and/or glucose to be administered to a specific patient at any time is determined. This method is designed to regulate a specific patient's blood-glucose level according to the optimal blood-glucose function described above. The method considers a "baseline" dosage function, adapting to a patient's current metabolic state by refining a patient-specific forward-looking "sensitivity multiplier" (μ) with each additional blood-glucose measurement and/or dosage. The baseline dosage function can be explicitly defined via mathematical modeling as previously described. In an alternate embodiment, the baseline dosage function is calculated using patient specific data that characterizes the baseline dosage function, such as blood glucose level, insulin level and the like. In another alternate embodiment, the baseline dosage function is selected from a group of functions relating to patient attributes, such as previous insulin dosage, age, weight, medications, and clinical condition.

Third, an expected response function is defined explicitly. Alternately, the expected response function can be calculated from data that characterizes the expected result function, such as typical response of general populations of patients to medications, such as like glucose and/or insulin, under given conditions. The expected response function can also be a combination of the aforementioned options, where it can be explicitly defined via mathematical modeling while incorporating a reaction factor that is used to modify the expected response function based on detected events, the patient's condition and the like. Output of the expected response function for an interval of time is compared to the patient's demonstrated response or actual measured change in blood-glucose level over this same interval. The inverse of this ratio is then appended to the series of such ratios over all measurements for the current patient to establish a localized sensitivity to a medication for an interval of time.

Last, a cumulative patient-specific sensitivity multiplier, to be used in the next dosage (μ_{t+1}), is then calculated using a time-weighted average over the entire data series, in which localized sensitivity at each data point is weighted more heavily than the point preceding it. This patient-specific sensitivity multiplier is used in conjunction with the baseline dosage function to calculate subsequent patient-adapted dosages of the medications being administered. In this manner, the entire history of the patient's response to various dosage levels factors into each next dosage, with the patient's more recent demonstrated sensitivity being weighted more heavily.

In an alternate embodiment, the optimal dosage function is based on more than one physiological parameter. For example, as depicted in FIG. 5, in determining the optimal dose for the vasoconstrictor and/or the vasodilator, the baseline vasodilator function is based on determining a reference blood pressure, a reference heart rate, a reference hemoglobin level, arterial oxygen concentration and a reference cardiac output in addition to target times for all of these reference levels. Alternatively, the baseline vasodilator function can be based on determining acceleration constants with boundary conditions for the patient's blood pressure, heart rate, hemoglobin level arterial oxygen concentration and cardiac output, where the boundary conditions include target and maximum levels for each of these parameters.

The controller can be configured to store data relating to physiological parameter data (blood glucose levels, insulin levels, blood coagulation status, and the like), patient-adapted dosages and patient-specific sensitivities in order to observe and classify patterns in physiological behavior. The physiological behavior patterns can be matched with previously defined patterns based on physiological parameter data, patient-adapted dosages and patient-specific sensitivities.

In this embodiment, the series of data points are calculated based on the baseline vasodilator function, $v(t)$. Because this embodiment is a multivariable system, model predictive control (MPC) is one effective method for controlling the vasodilator and vasoconstrictor delivery devices **42, 44**. The model can be steady state or dynamic. Alternately, the system can also be based on equations that predict the affects of the vasodilators and vasoconstrictors on the patient's physiological parameters, empirical data collected in relation to a particular patient, or a combination thereof.

In an alternate embodiment, the model is an empirical, mathematical model including a set of coefficients, such as probability coefficients, applied to recent values of the parameter inputs (e.g., blood pressure, heart rate, hemoglobin level, arterial oxygen concentration and cardiac output) in order to predict future output values to be sent to the delivery devices **42, 44** for administering the vasodilator and/or the vasoconstrictor to the patient. These coefficients can be multiplied by a sensitivity factor, similar to the sensitivity multiplier previously discussed, by using a time-weighted average over the entire series, in which each data point is weighted more heavily than the points preceding it. In this manner, the entire history of patient's response to previous dosage levels is factored into each next dosage, with the patient's more recent demonstrated sensitivity being weighted more heavily.

Referring now to FIG. 6, in an alternate embodiment in accordance with the present invention, system **10** may be integrated with a network **210** for remote monitoring, management and control of multiple delivery devices **40**. The networked system **10** further allows for centralized data storage and archival of system information, patient information, measurement, calculation and administered dosage information. Additionally, the networked system **10** provides for information export and query capabilities that can be used for patient file management, health care facility management and medical research. Network **210** may be either locally contained or accessible via Internet **54** and optionally through an Internet service provider **200**. Connection to network **210** may be wired or, alternatively, wireless and may incorporate control from a detached device (e.g., handheld, laptop, tablet, or other mobile device). In addition, system **10** may be accessible remotely by a third party user **214** via Internet **212** and Internet service provider **200**.

Referring now to FIG. 7, controller **30** illustrates typical components of a controller. Controller **30** typically includes a

memory 300, a secondary storage device 304, a processor 304, an human interface device 306, a display device 308, and an output device 310. Memory 300 may include random access memory (RAM) or similar types of memory, and it may store one or more applications 312, including system software 314, and a web server 316, for execution by processor 304. Secondary storage device 302 may include a hard disk drive, floppy disk drive, CD-ROM drive, or other types of non-volatile data storage. The local cache that includes a patient's physiological condition data may be stored on secondary storage device 302. Processor 304 may execute system software 314 and other applications 312 stored in memory 300 or secondary storage 302, or received from Internet 212 or other network 210 (referring to FIG. 6). Processor 304 may execute system software 314 in order to provide the functions described in this specification including balanced, automated regulation of a physiological condition in ICU patients. Human interface device 306 may include any device for entering information into controller 30, such as a keyboard, mouse, cursor-control device, touch-screen, infrared, microphone, digital camera, video recorder, or any other instrument or device necessary to monitor physiological conditions and measure physiological parameters for ICU patients. Display device 308 may include any type of device for presenting visual information such as, for example, a computer monitor or flat-screen display. Output device 310 may include any type of device for presenting a hard copy of information, such as a printer, and other types of output devices include speakers or any device for providing information in audio form.

Web server 316 is used to provide access to patient data stored in memory 300 and on secondary storage devices 302 and display the data. Web server 316 allows users secure remote access to the system through which they can monitor and control status and operation of the treatment system and access patient data. Web server 316 can allow access to a user running a web browser. Examples of web browsers include the Netscape Navigator program and the Microsoft Internet Explorer program. Any web browser, co-browser, or other application capable of retrieving content from a network and displaying pages or screens may be used.

Examples of controllers 30 for interacting within the physiological monitoring and treatment system 10 include personal computers, laptop computers, notebook computers, palm top computers, network computers, Internet appliances, or any processor-controlled device capable of executing a web browser 316, system software 314 and any other type of application 312 stored in memory 300 or accessible via secondary storage device 302.

While the invention has been described with reference to the specific embodiments thereof, those skilled in the art will be able to make various modifications to the described embodiments of the invention without departing from the true spirit and scope of the invention. The terms and descriptions used herein are set forth by way of illustration only and are not meant as limitations. Those skilled in the art will recognize that these and other variations are possible within the spirit and scope of the invention as defined in the following claims and their equivalents.

What is claimed is:

1. A system for monitoring and controlling a physiological condition of a patient, comprising:

at least one physiological parameter monitor adapted to monitor at least one physiological parameter of a patient;

a control device operably connected to said at least one physiological parameter monitor, said control device

having adaptive control logic for adaptive optimization of patient-specific sensitivity to dosage by monitoring, receiving and storing physiological parameter data from said physiological parameter monitor and translating said physiological parameter data into an output control signal containing information regarding administration of at least two counterbalancing medications; and

a multi-channeled delivery mechanism operably connected to said control device, said delivery mechanism capable of receiving said output control signal from said control device,

said multi-channeled delivery mechanism being structured to infuses said at least two counterbalancing medications into the patient based on said information contained in said output control signal to adaptively stabilize and balance said physiological parameter of the patient,

wherein said patient-specific sensitivity to dosage of at least one of said at least two counterbalancing medications is analyzed by calculating a localized patient-specific sensitivity to at least one of said at least two medications, said localized patient-specific sensitivity calculated by comparing a measured rate of change in said physiological parameter to an expected rate of change in said physiological parameter.

2. The system of claim 1 wherein said physiological parameter monitor measures blood glucose level.

3. The system of claim 1 wherein said physiological parameter monitor measures blood coagulation status.

4. The system of claim 2 wherein said at least two medications infused into the patient are glucose and insulin.

5. The system of claim 3 wherein said at least two medications infused into the patient are a coagulant and an anti-coagulant.

6. The system of claim 5 wherein said coagulant is selected from the group consisting of extrinsic clotting factors, intrinsic clotting factors and clotting factor stimulants.

7. The system of claim 5 wherein said anti-coagulant is selected from the group consisting of vitamin K, urokinase, streptokinase, heparin and other direct and indirect clotting factor inhibitors.

8. The system of claim 1 wherein said at least one physiological parameter monitor comprises a first physiological parameter monitor configured to monitor blood pressure, a second physiological parameter monitor configured to monitor heart rate, a third physiological parameter monitor configured to monitor hemoglobin level, and a fourth physiological parameter monitor configured to monitor cardiac output and a fifth physiological parameter monitor configured to monitor arterial oxygen concentration and a sixth physiological parameter monitor configured to monitor at least one circulating factor from the group consisting of vasoactive and inflammatory factors.

9. The system of claim 8 wherein said at least two medications are selected from the group consisting of a vasodilator and a vasoconstrictor.

10. The system of claim 9 wherein said vasodilator is selected from a group consisting of nitric oxide, L-arginine, alpha blockers, beta agonists, potassium channel openers, calcium channel blockers, angiotensin inhibitors and phosphodiesterase inhibitors.

11. The system of claim 9 wherein said vasoconstrictor is selected from a group consisting of endothelin, endothelin compounds, sympathomimetics and vasopressin compounds.

12. The system of claim 1 wherein said control logic further an algorithm for monitoring and controlling said at least one physiological parameter, said algorithm configured to deter-

mine baseline dosage functions for said at least two counterbalancing medications; determine expected response functions for said at least one physiological parameter to said at least two counterbalancing medications; analyze the patient's demonstrated response to said at least two counterbalancing medications to derive patient-specific sensitivity to said at least two counterbalancing medications; and use said patient-specific sensitivity in conjunction with said baseline dosage functions to calculate patient-adapted dosages of said at least two counterbalancing medications.

13. The system of claim 12 wherein at least one of said baseline dosage functions is explicitly defined.

14. The system of claim 12 wherein at least one of said baseline dosage functions is calculated using data that characterize said baseline dosage function.

15. The system of claim 12 wherein at least one of said baseline dosage functions is selected from a group of baseline dosage functions based on data relating to patient attributes.

16. The system of claim 12 wherein at least one of said expected response functions is explicitly defined.

17. The system of claim 12 wherein at least one of said expected result functions is calculated from data that characterize said expected result function.

18. The system of claim 12 wherein at least one of said expected result functions is configured to change over time in reaction to detected events and patient conditions.

19. The system of claim 12 wherein said algorithm observes and classifies patterns in physiological behavior based on known patterns in physiological behavior using factors selected from the group consisting of physiological parameter data, patient-adapted dosages of said at least two counterbalancing medications, and patient-specific sensitivity to said at least two counterbalancing medications.

20. The system of claim 19 wherein said algorithm observes and identifies patterns in physiological behavior to define new known patterns using factors selected from the group consisting of physiological parameter data, patient-adapted dosages of said at least two counterbalancing medications, and patient-specific sensitivity to said at least two counterbalancing medications.

21. The system of claim 19 wherein said control logic is configured to alter said algorithm in response to classifying at least one of said patterns in physiological behavior based on said known patterns.

22. The system of claim 12 wherein said physiological parameter being monitored is blood glucose level.

23. The system of claim 12 wherein said physiological parameter being monitored is the patient's blood coagulation status.

24. The system of claim 12 wherein said control logic monitors two or more physiological parameters in order to control the patient's overall physiological stability.

25. The system of claim 24 wherein said control logic includes an empirical, mathematical model for calculating probability coefficients based on a data series of said physiological parameters being monitored, said probability coefficients are used to predict future values in said data series.

26. The system of claim 25 wherein said control logic calculates said patient-adapted dosage by using predictive modeling in conjunction with patient-specific sensitivity data.

27. The system of claim 24 wherein said physiological parameters are selected from the group consisting of blood pressure, heart rate, hemoglobin level, arterial oxygen concentration and cardiac output.

28. The system of claim 1 wherein said localized patient-specific sensitivity is calculated by comparing a measured

rate of change in said physiological parameter over an interval of time to an expected rate of change in said physiological parameter over an interval of time.

29. The system of claim 28 wherein said patient-specific sensitivity to at least one of said at least two counterbalancing medications is further analyzed by calculating a cumulative patient-specific sensitivity to at least one of said at least two counterbalancing medications, said cumulative patient-specific sensitivity calculated by applying a weighted average to said localized patient-specific sensitivity over all known points in a series of patient data.

30. The system of claim 12 wherein said control device is configured to organize and permanently store data for analysis and research purposes, wherein said data comprises information related to said baseline dosage function, said expected response function, said patient's demonstrated response, said patient-specific sensitivity and said patient-adapted dosage.

31. The system of claim 1 wherein said delivery mechanism comprises a plurality of infusion pumps.

32. The system of claim 31 wherein said delivery mechanism infuses a plurality of medications into the patient.

33. The system of claim 32 wherein said pumps are provided with variable speed drives to control a volumetric flow rate of said plurality of medications.

34. The system of claim 32 further comprising two control valves configured to control a volumetric flow rate of said plurality of medications delivered to the patient, said control valves operably connected to said infusion pumps.

35. The system of claim 1 further comprising said control device connected to a display device and at least one human interface device.

36. The system of claim 1 further comprising a network operably connected to said control device through a connection means, said connection means selected from the group consisting of wired connections and wireless connections.

37. The system of claim 36 wherein said control device is configured to access a network node, said network node configured to store patient specific data.

38. The system of claim 36 wherein a web server is operably connected to said control logic to provide remote access to system status and patient specific data over said network.

39. The system of claim 1 wherein said control device comprises a miniature chip configured to be implanted in the patient's body.

40. The system of claim 39 wherein said delivery mechanism comprises an encapsulated medication that is pre-programmed to release on-demand based on information contained in said output control signal.

41. The system of claim 1 wherein said control device includes a permanent storage device configured to store patient specific data.

42. A method for monitoring and controlling a physiological condition of a patient, comprising:

monitoring at least one physiological parameter of a patient with a physiological parameter monitor;

providing a control device operably connected to said physiological parameter monitor, said control device including adaptive control logic for adaptive optimization of patient-specific sensitivity to dosage by monitoring, receiving and storing physiological parameter data from said physiological parameter monitor;

analyzing said patient-specific sensitivity by calculating a localized patient-specific sensitivity to dosage of at least one of at least two medications, said localized patient-specific sensitivity calculated by comparing a measured rate of change in said physiological parameter to an expected rate of change in said physiological parameter;

causing said control device to translate said data into an output control signal containing information regarding administration of said at least two counterbalancing medications;

sending said output control signal to a delivery manifold operably connected to said control device;

causing said delivery manifold to infuse said at least two counterbalancing medications into the patient based on said information contained in said output control signal to adaptively stabilize and balance said physiological condition of the patient.

43. The method of claim 42 further comprising monitoring a blood glucose level with said physiological parameter monitor.

44. The method of claim 43 further comprising causing said delivery manifold to infuse glucose and insulin into the patient.

45. The method of claim 42 further comprising monitoring a blood coagulation status with said physiological parameter monitor.

46. The method of claim 45 further comprising causing said delivery manifold to infuse a coagulant and an anti-coagulant into the patient.

47. The method of claim 46 wherein said coagulant is selected from the group consisting of extrinsic clotting factors, intrinsic clotting factors and clotting factor stimulants.

48. The method of claim 46 wherein said anti-coagulant is selected from the group consisting of vitamin K, urokinase, streptokinase, heparin and other direct and indirect clotting factor inhibitors.

49. The method of claim 42 further comprising providing a first physiological parameter monitor for monitoring the patient's blood pressure, a second physiological parameter monitor for monitoring the patient's heart rate, a third physiological parameter monitor for monitoring the patient's hemoglobin level, a fourth physiological parameter monitor configured to monitor the patient's cardiac output and a fifth physiological parameter monitor configured to monitor the patient's arterial oxygen concentration and a sixth physiological parameter monitor configured to monitor at least one circulating factor from the group consisting of vasoactive and inflammatory factors.

50. The method of claim 49 further comprising causing said delivery manifold to infuse a vasodilator and a vasoconstrictor into the patient.

51. The method of claim 50 wherein said vasodilator is selected from a group consisting of nitric oxide, L-arginine, alpha blockers, beta agonists, potassium channel openers, calcium channel blockers, angiotensin inhibitors and phosphodiesterase inhibitors.

52. The method of claim 50 wherein said vasoconstrictor is selected from a group consisting of endothelin, endothelin compounds, sympathomimetics and vasopressin compounds.

53. The method of claim 42 wherein said control logic further comprises an algorithm for monitoring and controlling said at least one physiological parameter, said algorithm configured to determine baseline dosage functions for said at least two counterbalancing medications; determine expected response functions for said physiological parameter to said at least two counterbalancing medications; analyze said patient's demonstrated response to said at least two counterbalancing medications to derive a patient-specific sensitivity to said at least two counterbalancing medications; and use said patient-specific sensitivity in conjunction with said baseline dosage functions to calculate patient-adapted dosages of said at least two counterbalancing medications.

54. The method of claim 53 further comprising explicitly defining at least one of said baseline dosage functions.

55. The method of claim 53 further comprising calculating at least one of said baseline dosage functions using data that characterize said at least one baseline dosage function.

56. The method of claim 53 further comprising selecting at least one of said baseline dosage functions from a group of baseline dosage functions based on data relating to patient attributes.

57. The method of claim 53 further comprising explicitly defining at least one of said expected response functions.

58. The method of claim 53 further comprising calculating at least one of said expected result functions from data that characterize said at least one expected result function.

59. The method of claim 53 further comprising configuring at least one of said expected result functions to change over time in reaction to detected events and patient conditions.

60. The method of claim 53 further comprising said algorithm observing and classifying patterns in physiological behavior based on known patterns in physiological behavior using factors selected from the group consisting of physiological parameter data, patient-adapted dosages of said at least two counterbalancing medications, and patient-specific sensitivity to said at least two counterbalancing medications.

61. The method of claim 60 further comprising said algorithm observing and identifying patterns in physiological behavior to define new known patterns using factors selected from the group consisting of physiological parameter data, patient-adapted dosages of said at least two counterbalancing medications, and patient-specific sensitivity to said at least two counterbalancing medications.

62. The method of claim 60, further comprising altering said algorithm in response to classifying at least one of said patterns in physiological behavior based on said known patterns.

63. The method of claim 53, wherein said physiological parameter is blood glucose level.

64. The method of claim 63, wherein said physiological parameter is blood coagulation status.

65. The method of claim 53 further comprising organizing and permanently storing data for analysis and research purposes, wherein said data comprises information related to said baseline dosage function, said expected response function, said patient's demonstrated response, said patient-specific sensitivity and said patient-adapted dosage.

66. The method of claim 42 further comprising calculating said localized patient-specific sensitivity by comparing a measured rate of change in said physiological parameter over an interval of time to an expected rate of change in said physiological parameter over an interval of time.

67. The method of claim 66, further comprising analyzing said patient-specific sensitivity to at least one said at least two counterbalancing medications by calculating a cumulative patient-specific sensitivity to at least one of said at least two counterbalancing medications by applying a weighted average to said localized patient-specific sensitivity over all known points in a series of patient data.

68. The method of claim 42, further comprising said control logic monitoring more than one physiological parameter in order to control the patient's overall physiological stability.

69. The method of claim 68, further comprising calculating probability coefficients using an empirical, mathematical model based on a data series of said physiological parameters being monitored, wherein said probability coefficients are used to predict future values in said data series.

17

70. The method of claim 69 further comprising calculating said patient-adapted dosage by using predictive modeling in conjunction with patient-specific sensitivity data.

71. The method of claim 42, wherein said physiological parameters are selected from the group consisting of blood pressure, heart rate, hemoglobin level, arterial oxygen concentration and cardiac output.

72. The method of claim 42, wherein said delivery manifold comprises a plurality of infusion pumps capable of infusing a plurality of medications into the patient.

73. The method of claim 72, wherein said pumps include variable speed drives for controlling a volumetric flow rate of said plurality of medications.

74. The method of claim 72, wherein said plurality of infusion pumps are operably connected to a plurality of control valves for controlling a volumetric flow rate of the plurality of medications.

75. The method of claim 42 further comprising operably connecting said control device to a display device and at least one human interface device.

76. The method of claim 42 further comprising operably connecting a network to said control device through a con-

18

nection means, said connection means selected from the group consisting of wired connections and wireless connections.

77. The method of claim 76 further comprising said control device accessing a network node, said network node stores patient-specific data.

78. The method of claim 76 further comprising operably connecting a web server to said control device to provide remote access to system status and patient-specific data over said network.

79. The method of claim 42 further comprising said control device having a permanent storage device therewithin, wherein said permanent storage device stores patient-specific data.

80. The method of claim 42 wherein said control device comprises a miniature chip configured to be implanted in a patient's body.

81. The system of claim 80 wherein said delivery manifold comprises an encapsulated medication that is pre-programmed to release on-demand in response to said information contained in said output control signal.

* * * * *

专利名称(译)	平衡的生理监测和治疗系统		
公开(公告)号	US8956291	公开(公告)日	2015-02-17
申请号	US11/816821	申请日	2006-02-22
[标]申请(专利权)人(译)	ADMETABYS CORP		
申请(专利权)人(译)	ADMETSYS CORPORATION		
当前申请(专利权)人(译)	ADMETSYS CORPORATION		
[标]发明人	VALK JEFFREY VALK TIMOTHY		
发明人	VALK, JEFFREY VALK, TIMOTHY		
IPC分类号	A61B5/00 A61B5/02 A61M31/00 A61B5/021 A61B5/024 A61B5/026 A61B5/029 A61B5/145 A61M5/168 A61M5/172 G06F19/00		
CPC分类号	A61B5/02007 A61B5/14532 A61M5/1723 A61B5/021 A61B5/024 A61B5/026 A61B5/029 A61B5/145 A61M5/16827 G06F19/3468 A61B5/4839 A61M2230/201		
审查员(译)	德安杰洛, MICHAEL		
优先权	60/656575 2005-02-22 US		
其他公开文献	US20080194924A1		
外部链接	Espacenet USPTO		

摘要(译)

公开了一种系统和方法，用于通过监测至少一个生理参数并且可选地监测和控制另外的生理参数来提供患者生理状况的平衡的，自动的调节。该系统包括生理参数监测器，智能控制装置和多通道输送装置，用于提供影响受控生理状况的至少两种药物的受控静脉内输送。智能控制设备中的控制逻辑由基于模型预测控制的算法导出。控制逻辑包括数学建模系统，经验数据系统或其组合。本发明的系统可选地包括在网络系统中，以提供系统信息的集中数据存储和存档，以及可用于患者文件管理，医疗机构管理和医学研究的数据导出和查询能力。

