



US008915741B2

(12) **United States Patent**
Hatlestad et al.

(10) **Patent No.:** **US 8,915,741 B2**
(45) **Date of Patent:** **Dec. 23, 2014**

(54) **SLEEP QUALITY DATA COLLECTION AND EVALUATION**

A61B 5/4818 (2013.01); *A61N 1/3621* (2013.01); *A61B 5/0809* (2013.01); *A61B 5/0496* (2013.01)

(75) Inventors: **John D. Hatlestad**, Maplewood, MN (US); **Quan Ni**, Shoreview, MN (US); **Jeffrey E. Stahmann**, Ramsey, MN (US); **Jesse Hartley**, White Bear Lake, MN (US); **Qingsheng Zhu**, Wexford, PA (US); **Bruce H. KenKnight**, Maple Grove, MN (US); **Douglas R. Daum**, Woodbury, MN (US); **Kent Lee**, Shoreview, MN (US)

USPC **434/262**

(58) **Field of Classification Search**

USPC 434/262–275; 600/28, 300, 544; 128/630, 670–671, 716, 731, 733; 340/575–576; 446/83

See application file for complete search history.

(56) **References Cited**

U.S. PATENT DOCUMENTS

3,650,277 A 3/1972 Sjostrand et al.
4,091,818 A 5/1978 Brownlee et al.

(Continued)

FOREIGN PATENT DOCUMENTS

EP 0547734 6/1993
EP 0750920 1/1997

(Continued)

OTHER PUBLICATIONS

File History for U.S. Appl. No. 10/939,834.

(Continued)

Primary Examiner — Timothy A Musselman

(74) *Attorney, Agent, or Firm* — Seager, Tufte & Wickhem, LLC

(57) **ABSTRACT**

A sleep quality assessment approach involves collecting data based on detected physiological or non-physiological patient conditions. At least one of detecting patient conditions and collecting data is performed using an implantable device. Sleep quality may be evaluated using the collected data by an implantable or patient-external sleep quality processor. One approach to sleep quality evaluation involves computing one or more summary metrics based on occurrences of movement disorders or breathing disorders during sleep.

19 Claims, 22 Drawing Sheets

(73) Assignee: **Cardiac Pacemakers, Inc.**, St. Paul, MN (US)

(*) Notice: Subject to any disclaimer, the term of this patent is extended or adjusted under 35 U.S.C. 154(b) by 71 days.

(21) Appl. No.: **13/215,592**

(22) Filed: **Aug. 23, 2011**

(65) **Prior Publication Data**

US 2011/0306850 A1 Dec. 15, 2011

Related U.S. Application Data

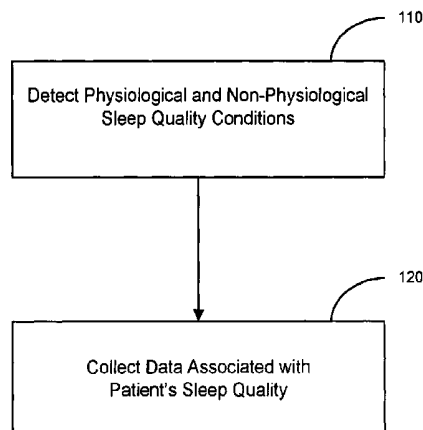
(62) Division of application No. 10/642,998, filed on Aug. 18, 2003, now Pat. No. 8,002,553.

(51) **Int. Cl.**

G09B 23/28 (2006.01)
A61B 5/0205 (2006.01)
A61B 5/00 (2006.01)
A61B 5/0488 (2006.01)
A61B 5/11 (2006.01)
A61B 5/0476 (2006.01)
A61N 1/362 (2006.01)
A61B 5/08 (2006.01)
A61B 5/0496 (2006.01)

(52) **U.S. Cl.**

CPC **A61B 5/4815** (2013.01); **A61B 5/0488** (2013.01); **A61B 5/11** (2013.01); **A61B 5/0476** (2013.01); **A61B 5/0205** (2013.01); **A61B 5/0031** (2013.01); **A61B 5/4528** (2013.01);



(56)

References Cited

U.S. PATENT DOCUMENTS

4,312,355 A	1/1982	Funke	5,363,842 A	11/1994	Mishelevich et al.
4,312,734 A	1/1982	Nichols	5,372,606 A	12/1994	Lang et al.
4,365,636 A	12/1982	Barker	5,376,103 A	12/1994	Anderson et al.
4,390,405 A	6/1983	Hahn et al.	5,376,106 A	12/1994	Stahmann et al.
4,414,982 A	11/1983	Durkan	5,377,671 A	1/1995	Biondi et al.
4,648,407 A	3/1987	Sackner	5,391,187 A	2/1995	Freeman
4,702,253 A	10/1987	Nappholz et al.	5,398,682 A	3/1995	Lynn
4,721,110 A	1/1988	Lampadius	5,404,877 A	4/1995	Nolan et al.
4,777,962 A	10/1988	Watson et al.	5,411,525 A	5/1995	Swanson et al.
4,784,162 A	11/1988	Ricks et al.	5,411,531 A	5/1995	Hill et al.
4,791,931 A	12/1988	Slate	5,411,539 A	5/1995	Neisz
4,802,485 A	2/1989	Bowers et al.	5,417,717 A	5/1995	Salo et al.
4,807,629 A	2/1989	Baudino et al.	5,437,285 A	8/1995	Verrier et al.
4,813,427 A	3/1989	Schlaefke et al.	5,439,482 A	8/1995	Adams et al.
4,827,943 A	5/1989	Bornn et al.	5,441,518 A	8/1995	Adams et al.
4,830,008 A	5/1989	Meer	5,466,245 A	11/1995	Spinelli et al.
4,836,219 A	6/1989	Hobson et al.	5,468,254 A	11/1995	Hahn et al.
4,856,524 A	8/1989	Baker, Jr.	5,476,485 A	12/1995	Weinberg et al.
4,860,766 A	8/1989	Sackner	5,483,969 A	1/1996	Testerman et al.
4,875,477 A	10/1989	Waschke et al.	5,485,851 A	1/1996	Erickson
4,886,064 A	12/1989	Strandberg	5,487,755 A	1/1996	Snell et al.
4,953,551 A	9/1990	Mehra et al.	5,490,502 A	2/1996	Rapoport et al.
4,958,632 A	9/1990	Duggan	5,507,784 A	4/1996	Hill et al.
4,961,423 A	10/1990	Canducci	5,517,983 A	5/1996	Deighan et al.
4,972,842 A	11/1990	Korten et al.	5,520,176 A	5/1996	Cohen
4,982,738 A	1/1991	Griebel	5,520,191 A	5/1996	Karlsson et al.
5,003,975 A	4/1991	Hafelfinger et al.	5,522,382 A	6/1996	Sullivan et al.
5,010,888 A	4/1991	Jadvar et al.	5,522,854 A	6/1996	Ideker et al.
5,024,222 A	6/1991	Thacker	5,522,862 A	6/1996	Testerman et al.
5,047,930 A	9/1991	Martens et al.	5,527,345 A	6/1996	Infinger
5,063,927 A	11/1991	Webb et al.	5,531,779 A	7/1996	Dahl et al.
5,074,301 A	12/1991	Gill	5,540,732 A	7/1996	Testerman
5,101,831 A	4/1992	Koyama et al.	5,540,734 A	7/1996	Zabara
5,111,815 A	5/1992	Mower	5,554,177 A	9/1996	Kieval et al.
5,123,425 A	6/1992	Shannon, Jr. et al.	5,578,061 A	11/1996	Stroetmann et al.
5,133,353 A	7/1992	Hauser	5,590,648 A	1/1997	Mitchell et al.
5,146,918 A	9/1992	Kallok et al.	5,591,216 A	1/1997	Testerman et al.
5,156,157 A	10/1992	Valenta, Jr. et al.	5,593,431 A	1/1997	Sheldon
5,158,089 A	10/1992	Swezey et al.	5,601,607 A	2/1997	Adams
5,170,784 A	12/1992	Ramon et al.	5,603,331 A	2/1997	Heemels et al.
5,174,287 A	12/1992	Kallok et al.	5,605,151 A	2/1997	Lynn
5,179,945 A	1/1993	Van Hofwegen et al.	5,606,969 A	3/1997	Butler et al.
5,183,038 A	2/1993	Hoffman et al.	5,607,385 A	3/1997	Francischelli et al.
5,188,106 A	2/1993	Nappholz et al.	5,620,466 A	4/1997	Haefner et al.
5,190,035 A	3/1993	Salo et al.	5,622,178 A	4/1997	Gilham
5,199,424 A	4/1993	Sullivan et al.	5,626,151 A	5/1997	Linden
5,199,428 A	4/1993	Obel et al.	5,632,281 A	5/1997	Rayburn
5,203,326 A	4/1993	Collins	5,634,938 A	6/1997	Swanson et al.
5,209,229 A	5/1993	Gilli	5,641,326 A	6/1997	Adams
5,211,173 A	5/1993	Kallok et al.	5,645,570 A	7/1997	Corbucci
5,215,082 A	6/1993	Kallok et al.	5,658,318 A	8/1997	Stroetmann et al.
5,233,983 A	8/1993	Markowitz	5,662,688 A	9/1997	Haefner et al.
5,243,979 A	9/1993	Stein et al.	5,690,681 A	11/1997	Geddes et al.
5,243,980 A	9/1993	Mehra	5,693,000 A	12/1997	Crosby et al.
5,245,995 A	9/1993	Sullivan et al.	5,697,951 A	12/1997	Harpstead et al.
5,259,373 A	11/1993	Gruenke et al.	5,697,953 A	12/1997	Kroll et al.
5,261,400 A	11/1993	Bardy	5,700,282 A	12/1997	Zabara
5,275,159 A	1/1994	Griebel	5,701,894 A	12/1997	Cherry et al.
5,280,791 A	1/1994	Lavie	5,704,345 A	1/1998	Berthon-Jones
5,292,338 A	3/1994	Bardy	5,704,365 A	1/1998	Albrecht et al.
5,299,118 A	3/1994	Martens et al.	5,707,400 A	1/1998	Terry, Jr. et al.
5,300,106 A	4/1994	Dahl et al.	5,713,355 A	2/1998	Richardson et al.
5,306,293 A	4/1994	Zacouto	5,713,933 A	2/1998	Condie et al.
5,314,430 A	5/1994	Bardy	5,715,812 A	2/1998	Deighan et al.
5,314,459 A	5/1994	Swanson et al.	5,716,377 A	2/1998	Rise et al.
5,318,592 A	6/1994	Schaldach	5,720,771 A	2/1998	Snell
5,318,593 A	6/1994	Duggan	5,724,984 A	3/1998	Arnold et al.
5,318,594 A	6/1994	Limousin et al.	5,740,797 A	4/1998	Dickson
5,318,597 A	6/1994	Hauck et al.	5,782,883 A	7/1998	Kroll et al.
5,330,505 A	7/1994	Cohen	5,792,188 A	8/1998	Starkweather et al.
5,330,507 A	7/1994	Schwartz	5,794,615 A	8/1998	Estes
5,331,966 A	7/1994	Bennett et al.	5,797,967 A	8/1998	KenKnight
5,334,221 A	8/1994	Bardy	5,800,470 A	9/1998	Stein et al.
5,353,788 A	10/1994	Miles	5,802,188 A	9/1998	McDonough
5,356,425 A	10/1994	Bardy et al.	5,814,079 A	9/1998	Kieval
			5,826,579 A	10/1998	Remmers et al.
			5,827,326 A	10/1998	Kroll et al.
			5,839,430 A	11/1998	Cama
			5,844,680 A	12/1998	Sperling

(56)

References Cited

U.S. PATENT DOCUMENTS

5,860,918 A	1/1999	Schradi et al.	6,331,536 B1	12/2001	Radulovacki et al.
5,861,011 A	1/1999	Stoop	6,336,903 B1	1/2002	Bardy
5,869,970 A	2/1999	Palm et al.	6,351,670 B1	2/2002	Kroll
5,876,353 A	3/1999	Riff	6,357,444 B1	3/2002	Parker
5,891,023 A	4/1999	Lynn	6,360,127 B1	3/2002	Ding et al.
5,895,414 A	4/1999	Sanchez-Zambrano	6,361,494 B1	3/2002	Lindenthaler
5,902,250 A	5/1999	Verrier et al.	6,361,522 B1	3/2002	Scheiner et al.
5,911,218 A	6/1999	DiMarco	6,366,813 B1	4/2002	DiLorenzo
5,916,239 A	6/1999	Geddes et al.	6,375,614 B1	4/2002	Braun et al.
5,919,141 A	7/1999	Money et al.	6,375,623 B1	4/2002	Gavriely
5,957,861 A	9/1999	Combs et al.	6,387,907 B1	5/2002	Hendricks et al.
5,957,956 A	9/1999	Kroll et al.	6,397,845 B1	6/2002	Burton
5,961,446 A	10/1999	Beller et al.	6,398,727 B1	6/2002	Bui et al.
5,961,450 A	10/1999	Merchant et al.	6,398,728 B1	6/2002	Bardy
5,964,788 A	10/1999	Greenhut	6,398,739 B1	6/2002	Sullivan et al.
5,970,975 A	10/1999	Estes et al.	6,400,982 B2	6/2002	Sweeney et al.
5,974,340 A	10/1999	Kadhiresan	6,409,675 B1	6/2002	Turcott
5,974,349 A	10/1999	Levine	6,409,676 B2	6/2002	Ruton
5,981,011 A	11/1999	Overcash et al.	6,411,845 B1	6/2002	Mower et al.
5,997,526 A	12/1999	Giba et al.	6,411,850 B1	6/2002	Kay et al.
6,006,134 A	12/1999	Hill et al.	6,414,183 B1	7/2002	Sakamoto et al.
6,015,388 A	1/2000	Sackner et al.	6,415,174 B1	7/2002	Behrani et al.
6,021,351 A	2/2000	Kadhiresan et al.	6,415,183 B1	7/2002	Scheiner et al.
6,044,297 A	3/2000	Sheldon et al.	6,421,557 B1	7/2002	Meyer
6,045,513 A	4/2000	Stone et al.	6,430,439 B1	8/2002	Wentkowski et al.
6,047,203 A	4/2000	Sackner et al.	6,431,171 B1	8/2002	Burton
6,050,940 A	4/2000	Braun et al.	6,438,407 B1	8/2002	Ousdigian et al.
6,058,331 A	5/2000	King	6,442,413 B1	8/2002	Silver
6,059,725 A	5/2000	Steinschneider	6,442,433 B1	8/2002	Linberg
6,064,910 A	5/2000	Andersson et al.	6,447,459 B1	9/2002	Larom
6,073,048 A	6/2000	Kieval et al.	6,449,503 B1	9/2002	Hsu
6,091,986 A	7/2000	Keimel	6,449,507 B1	9/2002	Hill et al.
6,099,479 A	8/2000	Christopherson et al.	6,450,957 B1	9/2002	Yoshimi
6,105,575 A	8/2000	Estes et al.	6,454,708 B1	9/2002	Ferguson et al.
6,115,628 A	9/2000	Stadler et al.	6,454,719 B1	9/2002	Greenhut
6,117,092 A	9/2000	Weinstein et al.	6,463,326 B1	10/2002	Hartley et al.
6,120,441 A	9/2000	Griebel	6,467,333 B2	10/2002	Lewis et al.
6,134,470 A	10/2000	Hartlaub	6,468,219 B1	10/2002	Njemanze
6,141,590 A	10/2000	Renirie et al.	6,473,644 B1	10/2002	Terry, Jr. et al.
6,144,866 A	11/2000	Miesel et al.	6,477,420 B1	11/2002	Struble et al.
6,148,230 A	11/2000	KenKnight	6,487,450 B1	11/2002	Chen et al.
6,148,233 A	11/2000	Owen et al.	6,491,639 B1	12/2002	Turcott
6,148,814 A	11/2000	Clemmer et al.	6,491,675 B1	12/2002	Shimada et al.
6,155,976 A	12/2000	Sackner et al.	6,493,585 B2	12/2002	Plicchi et al.
6,161,042 A	12/2000	Hartley et al.	6,496,715 B1	12/2002	Lee et al.
6,168,568 B1	1/2001	Gavriely	6,497,658 B2	12/2002	Roizen et al.
6,178,349 B1	1/2001	Kieval	6,505,067 B1	1/2003	Lee et al.
6,181,961 B1	1/2001	Prass	6,511,500 B1	1/2003	Rahme
6,181,966 B1	1/2001	Nigam	6,512,940 B1	1/2003	Brabec et al.
6,200,265 B1	3/2001	Walsh et al.	6,514,218 B2	2/2003	Yamamoto
6,205,357 B1	3/2001	Ideker et al.	6,522,915 B1	2/2003	Ceballos et al.
6,212,435 B1	4/2001	Lattner et al.	6,522,926 B1	2/2003	Kieval et al.
6,227,072 B1	5/2001	Ritchey et al.	6,527,729 B1	3/2003	Turcott
6,236,873 B1	5/2001	Holmström	6,532,388 B1	3/2003	Hill et al.
6,240,314 B1	5/2001	Plicchi et al.	6,542,774 B2	4/2003	Hill et al.
6,240,316 B1	5/2001	Richmond et al.	6,544,199 B1	4/2003	Morris
6,253,103 B1	6/2001	Baura	6,547,743 B2	4/2003	Brydon
6,261,238 B1	7/2001	Gavriely	6,564,096 B2	5/2003	Mest
6,263,244 B1	7/2001	Mann et al.	6,564,106 B2	5/2003	Guck et al.
6,264,606 B1	7/2001	Ekwall et al.	6,572,543 B1	6/2003	Christopherson et al.
6,269,269 B1	7/2001	Ottenhoff et al.	6,580,944 B1	6/2003	Katz et al.
6,270,457 B1	8/2001	Bardy	6,584,351 B1	6/2003	Ekwall
6,275,727 B1	8/2001	Hopper et al.	6,595,927 B2	7/2003	Pitts-Crick
6,280,462 B1	8/2001	Hauser et al.	6,595,928 B2	7/2003	Mansy et al.
6,286,508 B1	9/2001	Remmers et al.	6,600,949 B1	7/2003	Turcott
6,287,264 B1	9/2001	Hoffman	6,606,993 B1	8/2003	Wiesmann et al.
6,292,693 B1	9/2001	Darvish et al.	6,607,509 B2	8/2003	Bobroff et al.
6,299,581 B1	10/2001	Rapoport et al.	6,611,713 B2	8/2003	Schauerte
6,303,270 B1	10/2001	Flaim et al.	6,615,083 B2	9/2003	Kupper
6,306,088 B1	10/2001	Krausman et al.	6,618,618 B2	9/2003	Kalgren et al.
6,310,085 B1	10/2001	Willis	6,622,041 B2	9/2003	Terry, Jr. et al.
6,312,378 B1	11/2001	Bardy	6,622,046 B2	9/2003	Fraley et al.
6,314,319 B1	11/2001	Kroll et al.	6,628,986 B1	9/2003	Mouchawar et al.
6,317,627 B1	11/2001	Ennen	6,628,987 B1	9/2003	Hill et al.
6,327,499 B1	12/2001	Alt	6,641,542 B2	11/2003	Cho et al.
			6,648,833 B2	11/2003	Hampton
			6,658,292 B2	12/2003	Kroll et al.
			6,662,032 B1	12/2003	Gavish et al.
			6,679,250 B2	1/2004	Walker et al.

(56)

References Cited

U.S. PATENT DOCUMENTS

6,690,971 B2	2/2004	Schauerte et al.	7,127,290 B2	10/2006	Girouard
6,694,186 B2	2/2004	Bardy	7,130,687 B2	10/2006	Cho et al.
6,704,590 B2	3/2004	Haldeman	7,136,704 B2	11/2006	Schulman
6,708,058 B2	3/2004	Kim et al.	7,146,212 B2	12/2006	Bardy et al.
6,723,055 B2	4/2004	Hoffman	7,149,574 B2	12/2006	Yun et al.
6,731,984 B2	5/2004	Cho et al.	7,149,575 B2	12/2006	Ostroff et al.
6,741,885 B1	5/2004	Park et al.	7,155,278 B2	12/2006	King
6,748,252 B2	6/2004	Lynn et al.	7,179,229 B1	2/2007	Koh
6,752,765 B1	6/2004	Jensen et al.	7,184,817 B2	2/2007	Zhu et al.
6,752,766 B2	6/2004	Kowallik et al.	7,189,204 B2	3/2007	Ni et al.
6,754,528 B2	6/2004	Bardy	7,194,302 B2	3/2007	Bardy
6,760,615 B2	7/2004	Ferek-Petric	7,194,309 B2	3/2007	Ostroff et al.
6,766,190 B2	7/2004	Ferek-Petric	7,194,313 B2	3/2007	Libbus
6,770,022 B2	8/2004	Mechlenburg et al.	7,204,805 B2	4/2007	Dean
6,770,029 B2	8/2004	Iliff	7,207,945 B2	4/2007	Bardy
6,773,404 B2	8/2004	Poezevera et al.	7,212,862 B2	5/2007	Park et al.
6,778,860 B2	8/2004	Ostroff	7,218,964 B2	5/2007	Hill et al.
6,786,866 B2	9/2004	Odagiri et al.	7,225,013 B2	5/2007	Geva et al.
6,788,974 B2	9/2004	Bardy et al.	7,225,021 B1	5/2007	Park et al.
6,799,072 B2	9/2004	Ries et al.	7,225,809 B1	6/2007	Bowen et al.
6,810,287 B2	10/2004	Zhu et al.	7,231,250 B2	6/2007	Band et al.
6,811,538 B2	11/2004	Westbrook et al.	7,252,640 B2	8/2007	Ni et al.
6,830,548 B2	12/2004	Bonnet et al.	7,269,459 B1	9/2007	Koh
6,834,204 B2	12/2004	Ostroff	7,277,757 B2	10/2007	Casavant et al.
6,850,801 B2	2/2005	Kieval et al.	7,289,854 B2	10/2007	Bardy et al.
6,856,835 B2	2/2005	Bardy et al.	7,292,890 B2	11/2007	Whitehurst
6,857,428 B2	2/2005	Thomton	7,302,295 B2	11/2007	Stahmann et al.
6,865,417 B2	3/2005	Rissmann et al.	7,308,311 B2	12/2007	Sorensen
6,866,044 B2	3/2005	Bardy et al.	7,395,115 B2	7/2008	Poezevera
6,890,305 B2	5/2005	Irie et al.	7,396,333 B2	7/2008	Stahmann et al.
6,890,306 B2	5/2005	Poezevera	7,400,928 B2	7/2008	Hatlestad
6,892,095 B2	5/2005	Salo	7,428,468 B2	9/2008	Takemura et al.
6,904,320 B2	6/2005	Park et al.	7,438,686 B2	10/2008	Cho et al.
6,910,481 B2	6/2005	Kimmel et al.	7,440,795 B2	10/2008	Poezevara
6,912,419 B2	6/2005	Hill et al.	7,445,601 B2	11/2008	Kline
6,922,589 B2	7/2005	Stahmann et al.	7,460,906 B2	12/2008	Libbus
6,927,721 B2	8/2005	Ostroff	7,469,697 B2	12/2008	Lee et al.
6,928,324 B2	8/2005	Park et al.	7,481,759 B2	1/2009	Whitehurst et al.
6,934,583 B2	8/2005	Weinberg et al.	7,486,991 B2	2/2009	Libbus et al.
6,937,907 B2	8/2005	Bardy et al.	7,499,750 B2	3/2009	Haefner
6,950,705 B2	9/2005	Bardy et al.	7,509,166 B2	3/2009	Libbus
6,951,539 B2	10/2005	Bardy	7,515,969 B2	4/2009	Tockman
6,952,608 B2	10/2005	Ostroff	7,570,997 B2	8/2009	Lovett et al.
6,952,610 B2	10/2005	Ostroff et al.	7,662,101 B2	2/2010	Lee et al.
6,954,670 B2	10/2005	Ostroff	7,664,546 B2	2/2010	Hartley et al.
6,959,214 B2	10/2005	Pape et al.	7,678,061 B2	3/2010	Lee et al.
6,961,619 B2	11/2005	Casey	7,680,537 B2	3/2010	Stahmann et al.
6,964,641 B2	11/2005	Cho et al.	7,720,541 B2	5/2010	Stahmann et al.
6,988,003 B2	1/2006	Bardy et al.	7,747,323 B2	6/2010	Libbus et al.
6,988,498 B2	1/2006	Berthon-Jones et al.	7,757,690 B2	7/2010	Stahmann et al.
6,993,389 B2	1/2006	Ding et al.	7,766,842 B2	8/2010	Ni et al.
6,999,817 B2	2/2006	Park et al.	7,869,881 B2	1/2011	Libbus
7,025,729 B2	4/2006	de Chazal et al.	7,887,493 B2	2/2011	Stahmann et al.
7,025,730 B2	4/2006	Cho et al.	8,002,553 B2	8/2011	Hatlestad
7,027,861 B2	4/2006	Thompson	2002/0002327 A1	1/2002	Grant et al.
7,027,871 B2	4/2006	Burnes	2002/0035377 A1	3/2002	Bardy et al.
7,039,459 B2	5/2006	Bardy et al.	2002/0035378 A1	3/2002	Bardy et al.
7,039,465 B2	5/2006	Bardy et al.	2002/0035379 A1	3/2002	Bardy et al.
7,039,468 B2	5/2006	Freed et al.	2002/0035381 A1	3/2002	Bardy et al.
7,043,299 B2	5/2006	Erlinger et al.	2002/0058877 A1	5/2002	Baumann et al.
7,062,308 B1	6/2006	Jackson	2002/0072776 A1	6/2002	Osorio et al.
7,065,407 B2	6/2006	Bardy et al.	2002/0082658 A1	6/2002	Heinrich et al.
7,065,410 B2	6/2006	Bardy et al.	2002/0085741 A1	7/2002	Shimizu
7,069,080 B2	6/2006	Bardy et al.	2002/0095184 A1	7/2002	Bardy et al.
7,076,296 B2	7/2006	Rissmann et al.	2002/0107544 A1	8/2002	Ostroff et al.
7,081,095 B2	7/2006	Lynn et al.	2002/0107545 A1	8/2002	Rissmann et al.
7,089,936 B2	8/2006	Madaus et al.	2002/0107553 A1	8/2002	Hill et al.
7,090,682 B2	8/2006	Sanders et al.	2002/0120304 A1	8/2002	Mest
7,092,754 B2	8/2006	Bardy et al.	2002/0136328 A1	9/2002	Shimizu
7,092,755 B2	8/2006	Florio	2002/0138563 A1	9/2002	Trivedi
7,094,207 B1	8/2006	Koh	2002/0143369 A1	10/2002	Hill et al.
7,110,820 B2	9/2006	Tcheng et al.	2002/0161410 A1	10/2002	Kramer et al.
7,115,097 B2	10/2006	Johnson	2002/0165586 A1	11/2002	Hill et al.
7,117,036 B2	10/2006	Florio	2002/0169485 A1	11/2002	Pless et al.
7,120,495 B2	10/2006	Bardy et al.	2002/0183237 A1	12/2002	Puskas
			2002/0193685 A1	12/2002	Mate et al.
			2002/0198570 A1	12/2002	Puskas
			2003/0003052 A1	1/2003	Hampton
			2003/0004549 A1	1/2003	Hill et al.

(56)

References Cited

U.S. PATENT DOCUMENTS

2003/0004552 A1 1/2003 Plombon et al.
 2003/0023175 A1 1/2003 Arzbaeher et al.
 2003/0023279 A1 1/2003 Spinelli et al.
 2003/0036773 A1 2/2003 Whitehurst et al.
 2003/0045909 A1 3/2003 Gross et al.
 2003/0045914 A1 3/2003 Cohen et al.
 2003/0050538 A1 3/2003 Naghavi et al.
 2003/0060857 A1 3/2003 Perrson et al.
 2003/0060858 A1 3/2003 Kieval et al.
 2003/0074039 A1 4/2003 Puskas
 2003/0078623 A1 4/2003 Weinberg et al.
 2003/0078629 A1 4/2003 Chen
 2003/0083241 A1 5/2003 Young
 2003/0083587 A1 5/2003 Ferek-Petric
 2003/0088027 A1 5/2003 Chin et al.
 2003/0100924 A1 5/2003 Foreman et al.
 2003/0105493 A1 6/2003 Salo
 2003/0105497 A1 6/2003 Zhu et al.
 2003/0121519 A1 7/2003 Estes et al.
 2003/0139780 A1 7/2003 Markowitz et al.
 2003/0149450 A1 8/2003 Mayberg
 2003/0149457 A1 8/2003 Tchong et al.
 2003/0178031 A1 9/2003 Du Pen et al.
 2003/0181951 A1 9/2003 Cates
 2003/0195578 A1 10/2003 Perron et al.
 2003/0204146 A1 10/2003 Carlson
 2003/0209246 A1 11/2003 Schroeder et al.
 2003/0212436 A1 11/2003 Brown
 2003/0212440 A1 11/2003 Boveja
 2003/0216789 A1 11/2003 Deem et al.
 2003/0216792 A1 11/2003 Levin et al.
 2003/0236558 A1 12/2003 Whitehurst et al.
 2004/0010303 A1 1/2004 Bolea
 2004/0019364 A1 1/2004 Kieval et al.
 2004/0059240 A1 3/2004 Cho et al.
 2004/0073093 A1 4/2004 Hatlestad
 2004/0073128 A1 4/2004 Hatlestad
 2004/0111021 A1 6/2004 Olson
 2004/0111040 A1 6/2004 Ni et al.
 2004/0111041 A1 6/2004 Ni et al.
 2004/0116981 A1 6/2004 Mazar
 2004/0122487 A1 6/2004 Hatlestad et al.
 2004/0122488 A1 6/2004 Mazar et al.
 2004/0128161 A1 7/2004 Mazar et al.
 2004/0133079 A1 7/2004 Mazar et al.
 2004/0134496 A1 7/2004 Cho et al.
 2004/0163648 A1 8/2004 Burton
 2004/0172074 A1 9/2004 Yoshihito
 2004/0176809 A1 9/2004 Cho et al.
 2004/0193231 A1 9/2004 David et al.
 2004/0199210 A1 10/2004 Shelchuk
 2004/0215240 A1 10/2004 Lovett et al.
 2004/0215289 A1 10/2004 Fukui
 2004/0230229 A1 11/2004 Lovett et al.
 2004/0230230 A1 11/2004 Lindstrom
 2004/0243012 A1 12/2004 Ciaccio et al.
 2004/0254616 A1 12/2004 Rossing et al.
 2005/0004615 A1 1/2005 Sanders
 2005/0039745 A1 2/2005 Stahmann et al.
 2005/0043644 A1 2/2005 Stahmann et al.
 2005/0043652 A1 2/2005 Lovett et al.
 2005/0043772 A1 2/2005 Stahmann et al.
 2005/0061319 A1 3/2005 Hartley et al.
 2005/0065572 A1 3/2005 Hartley et al.
 2005/0065575 A1 3/2005 Dobak
 2005/0069322 A1 3/2005 Tegge, Jr. et al.
 2005/0085864 A1 4/2005 Schulman et al.
 2005/0085865 A1 4/2005 Tehrani
 2005/0096705 A1 5/2005 Pastore et al.
 2005/0101841 A9 5/2005 Kaylor et al.
 2005/0107838 A1 5/2005 Lovett et al.
 2005/0113710 A1 5/2005 Stahmann et al.
 2005/0131467 A1 6/2005 Boveja
 2005/0137645 A1 6/2005 Voipio et al.
 2005/0142070 A1 6/2005 Hartley et al.

2005/0143779 A1 6/2005 Libbus
 2005/0143785 A1 6/2005 Libbus
 2005/0143787 A1 6/2005 Boveja et al.
 2005/0149126 A1 7/2005 Libbus
 2005/0149127 A1 7/2005 Libbus
 2005/0149128 A1 7/2005 Heil, Jr. et al.
 2005/0149129 A1 7/2005 Libbus et al.
 2005/0149131 A1 7/2005 Libbus et al.
 2005/0149132 A1 7/2005 Libbus
 2005/0149133 A1 7/2005 Libbus et al.
 2005/0149155 A1 7/2005 Scheiner et al.
 2005/0149156 A1 7/2005 Libbus et al.
 2005/0159784 A1 7/2005 Arceta
 2005/0165323 A1 7/2005 Montgomery et al.
 2005/0197675 A1 9/2005 David et al.
 2005/0240240 A1 10/2005 Park et al.
 2006/0079945 A1 4/2006 Libbus
 2006/0106428 A1 5/2006 Libbus et al.
 2006/0106429 A1 5/2006 Libbus et al.
 2006/0116737 A1 6/2006 Libbus
 2006/0122675 A1 6/2006 Libbus et al.
 2006/0206153 A1 9/2006 Libbus
 2006/0206154 A1 9/2006 Moffitt
 2006/0217772 A1 9/2006 Libbus
 2006/0224188 A1 10/2006 Libbus et al.
 2006/0293714 A1 12/2006 Salo et al.
 2007/0005114 A1 1/2007 Salo et al.
 2007/0093875 A1 4/2007 Chavan et al.
 2007/0112388 A1 5/2007 Salo
 2007/0142741 A1 6/2007 Berthon-Jones et al.
 2007/0142871 A1 6/2007 Libbus et al.
 2007/0150014 A1 6/2007 Kramer et al.
 2007/0161873 A1 7/2007 Ni et al.
 2007/0239057 A1 10/2007 Pu et al.
 2007/0282215 A1 12/2007 Ni et al.
 2011/0137197 A1 6/2011 Stahmann et al.

FOREIGN PATENT DOCUMENTS

EP 0770407 5/1997
 EP 1038498 9/2000
 EP 1162125 12/2001
 EP 1172125 1/2002
 EP 1234597 8/2002
 EP 1304137 4/2003
 EP 1317943 6/2003
 EP 1486232 12/2004
 EP 1541193 6/2005
 WO WO8402080 7/1984
 WO WO8605965 10/1986
 WO WO9203983 3/1992
 WO WO9220402 11/1992
 WO WO9301862 2/1993
 WO WO9904841 4/1999
 WO WO0009206 2/2000
 WO WO0017615 3/2000
 WO WO0124876 4/2001
 WO WO0143804 6/2001
 WO WO0176689 10/2001
 WO WO0226318 4/2002
 WO WO0234327 5/2002
 WO WO02075744 9/2002
 WO WO02085448 10/2002
 WO WO03003905 1/2003
 WO WO03011388 2/2003
 WO WO03041559 5/2003
 WO WO03075744 9/2003
 WO WO03076008 9/2003
 WO WO03082080 10/2003
 WO WO03099373 12/2003
 WO WO03099377 12/2003
 WO WO2004012814 2/2004
 WO WO2004062485 7/2004
 WO WO2004084990 10/2004
 WO WO2004084993 10/2004
 WO WO2004103455 12/2004
 WO WO2004105870 12/2004
 WO WO2004110549 12/2004
 WO WO2005018739 3/2005

(56)

References Cited

FOREIGN PATENT DOCUMENTS

WO	WO2005028029	3/2005
WO	WO2005042091	5/2005
WO	WO2005053788	6/2005
WO	WO 05063332	7/2005
WO	WO2005065771	7/2005
WO	WO2006031331	3/2006

OTHER PUBLICATIONS

File History for U.S. Appl. No. 10/939,811.

File History for U.S. Appl. No. 10/642,998.

Roche et al., Screening of Obstructive Sleep Apnea Syndrome by Heart Rate Variability Analysis, 100 *Circulation* 1411-1455 (1999).
 Smits et al., Defibrillation Threshold (DFT) Model of a Fully Subcutaneous ICD System, *Europace Supplements*, vol. 2, Jun. 2001 at col. 778, p. B83.

Steltner et al., Diagnosis of Sleep Apnea by Automatic Analysis of Nasal Pressure and Forced Oscillation Impedance. *Am. Journal Respiratory Critical Care Medicine*, vol. 165, pp. 940-944 (2002).

Stirbis et al., Optimizing the Shape of Implanted Artificial Pacemakers, Kaunas Medical Institute. Translated from *Meditinskaya Tekhnika*, No. 6, pp. 25-27, 1986.

Vanninen et al., Cardiac Sympathovagal Balance During Sleep Apnea Episodes, 16 *Clin. Physiol.* 209-216 (1996).

Waldemark et al., Detection of Apnea using Short Window FFT Technique and Artificial Neural Network, 3390 *SPIE International Society for Optical Engineering* 122-133 (1998).

Young et al., The Occurrence of Sleep-disordered Breathing Among Middle-aged Adults, *The New England Journal of Medicine*, vol. 828, No. 17, pp. 1230-1235.

Aircraft Noise and Sleep Disturbance: Final Report, prepared by the Civil Aviation Authority London on behalf of the Department of Trade, Aug. 1980 (CAA Report).

Alijore et al., Nightcap: Laboratory and home-based evaluation of a portable sleep monitor, 32 *Psychophysiology*, 32-98 (1995). Abstract only.

Altshule et al., The Effect of Position on Periodic Breathing in Chronic Cardiac Decomposition, *New Eng. Journal of Med.*, vol. 259, No. 22, pp. 1064-1066, Nov. 27, 1958.

Andersen, Long-term follow-up of patients from a randomized trial of atrial versus ventricular pacing for sick-sinus syndrome, *Lancet*, 350(9086), Oct. 25, 1997, 1210-6.

Balaban et al., Feasibility of Screening for Sleep Apnea Using Pacemaker Impedance Sensor, *NASPE* (2001).

Baratz et al., Effect of Nasal Continuous Positive Airway Pressure on Cardiac Output and Oxygen Delivery in Patients With Congestive Heart Failure, 102 *Chest*, 1992, 397-401.

Benchimol, Cardiac hemodynamics during stimulation of the right atrium, right ventricle, and left ventricle in normal and abnormal hearts, *Circulation*, 33(6), Jun. 1966, 933-44.

Bevan et al., Sympathetic nerve-free vascular muscle, *Journal of Pharmacology & Experimental Therapeutics*, 157(1), Jul. 1967, 117-24.

Bevan et al., Postganglionic sympathetic delay in vascular smooth muscle, *Journal of Pharmacology & Experimental Therapeutics*, 152(2), May 1966, 211-30.

Bilgutay et al., Vagal tuning for the control of supraventricular arrhythmias, *Surgical Forum*, 16, 1965, 151-3.

Bilgutay et al. A new concept in the treatment of hypertension utilizing an implantable electrical device: Baropacer. *Trans. Am. Society Artificial Internal Organs*. 1964. vol. 10, pp. 387-395.

Borst et al., Optimal frequency of carotid sinus nerve stimulation in treatment of angina pectoris, *Cardiovascular Research*, 8(5), Sep. 1974, 674-80.

Bradley et al., Cardiac Output Response to Continuous Positive Airway Pressure in Congestive Heart Failure, 145 *Am. Rev. Respir. Dis.* 377-382 (1992).

Bradley et al., Sleep Apnea and Heart Failure, Part I: Obstructive Sleep Apnea, 107 *Circulation* 1671-1678 (2003).

Bradley et al., Pathophysiologic and Therapeutic Implications of Sleep Apnea in Congestive Heart Failure, 3 *J. Cardiac Failure* 223-240 (1996).

Braunwald et al., Carotid sinus nerve stimulation in the treatment of angina pectoris and supraventricular tachycardia, *California Medicine*, 112(3), Mar. 1970, 41-50.

Braunwald et al., Relief of angina pectoris by electrical stimulation of the carotid-sinus nerves, *New England Journal of Medicine*, 277(24), Dec. 14, 1967, 1278-83.

Buda et al., Effect of Intrathoracic Pressure on Left Ventricular Performance, 301 *Engl. J. Med.* 453-459 (1979).

Calvin et al., Positive End-Expiratory Pressure (PEEP) Does Not Depress Left Ventricular Function in Patients With Pulmonary Edema, 124 *Am. Rev. Respir. Dis.* 121-128 (1981).

Chapleau, Contrasting effects of static and pulsatile pressure on carotid baroreceptor activity in dogs, *Circulation*, vol. 61, No. 5, Nov. 1987, pp. 648-658.

Coleridge et al., "The distribution, connexions and histology of baroreceptors in the pulmonary artery, with some observations on the sensory innervation of the ductus arteriosus." *Physiology*, May 1961. vol. 156, pp. 591-602.

Cooper et al., Neural effects on sinus rate and atrioventricular conduction produced by electrical stimulation from a transvenous electrode catheter in the canine right pulmonary artery, *Circulation Research*, 46(1), Jan. 1980, 48-57.

Dark et al., Breathing Pattern Abnormalities and Arterial Oxygen Desaturation During Sleep in the Congestive Heart Failure Syndrome, *Chest*, Jun. 1987, 6:833-6.

Dart Jr. et al., Carotid sinus nerve stimulation treatment of angina refractory to other surgical procedures, *Annals of Thoracic Surgery*, 11(4), Apr. 1971, 348-59.

De Hoyos et al., Haemodynamic Effects of Continuous Positive Airway Pressure in Humans With Normal and Impaired Left Ventricular Function, 88 *Clin. Sci. (Lond)*. 173-8 (1995).

De Landsheere et al., Effect of spinal cord stimulation on regional myocardial perfusion assessed by positron emission tomography, *American Journal of Cardiology*, 69(14), May 1, 1992, 1143-9.

Dunning, Electrostimulation of the Carotid Sinus Nerve in Angina Pectoris, University Department of Medicine, Binnengasthuis, Amsterdam: Printed by Royal VanGorcum, Assen, Netherlands, 1971, 1-92.

Farrehi, Stimulation of the carotid sinus nerve in treatment of angina pectoris, *American Heart Journal*, 80(6), Dec. 1970, 759-65.

Feliciano et al., Vagal nerve stimulation releases vasoactive intestinal peptide which significantly increases coronary artery blood flow, *Cardiovascular Research*, 40(1), Oct. 1998, 45-55.

Fromer et al., Ultrarapid subthreshold stimulation for termination of atrioventricular node reentrant tachycardia, *Journal of the American College of Cardiology*, 20(4), Oct. 1992, 879-83.

Garrigue, Night Atrial Overdrive with DDD Pacing Results in a Significant Reduction of Sleep Apnea Episodes and QOL Improvement in Heart Failure Patients, *Hosp. Cardiologique du Haut-Leveque*, Bordeaux-Pessac, France, Abstract Session 25, p. 145.

Garrigue et al., Night Atrial Overdrive with DDD Pacing: a New Therapy for Sleep Apnea Syndrome, *NASPE* (2000).

Garrigue et al., Benefit of Atrial Pacing in Sleep Apnea Syndrome, 346 *N. Engl. J. Med.* 404-412 (2002).

Giardino et al., Respiratory Sinus Arrhythmia is Associated with the Efficiency of Pulmonary Gas Exchange in Healthy Humans, 284 *Am. J. Physiol.* H1585-1591 (2003).

Gradaus et al., Nonthoracotomy Implantable Cardioverter Defibrillator Placement in Children: Use of a Subcutaneous Array Leads and Abdominally Placed Implantable Cardioverter Defibrillators in Children, *J. of Cardiovascular Electrophysiology*, vol. 12, No. 3, pp. 356-360 (Mar. 2001).

Grassi et al., Baroreflex and non-baroreflex modulation of vagal cardiac control after myocardial infarction, *Am J Cardiol*, 84(5), Sep. 1, 1999, 525-9.

Griffith et al., Electrical Stimulation of the Carotid Sinus Nerve in Normotensive and Renal Hypertensive Dogs, *Circulation*, Jul.-Dec. 28, 1963, 730.

(56)

References Cited

OTHER PUBLICATIONS

- Hanson et al., Cardiac Gated Ventilation, 2433 SPIE 303-308 (1995).
- Hartz et al., New Approach to Defibrillator Insertion, *J. Thoracic Cardiovascular Surgery*, vol. 97, pp. 920-922 (1989).
- Henning, Effects of autonomic nerve stimulation, asynchrony, and load on dP/dtmax and on dP/dtmin, *American Journal of Physiology*, 260(4PT2), Apr. 1991, H1290-8.
- Henning et al., Vagal nerve stimulation increases right ventricular contraction and relaxation and heart rate, *Cardiovascular Research*, 32(5), Nov. 1996, 846-53.
- Hilton et al., Evaluation of Frequency and Time-frequency Spectral Analysis of Heart Rate Variability as a Diagnostic Marker of the Sleep Apnea Syndrome. *Med Biol Eng Comput* Nov. 1999, 37(6), 760-9.
- Hoffman et al., Cheyne-Stokes Respiration in Patients Recovering from Acute Cardiogenic Pulmonary Edema, *Chest* 1990, 97:410-12.
- Hood Jr. et al., Asynchronous contraction due to late systolic bulging at left ventricular pacing sites, *American Journal of Physiology*, 217(1), Jul. 1969, 215-21.
- Ishise, Time course of sympathovagal imbalance and left ventricular dysfunction in conscious dogs with heart failure, *Journal of Applied Physiology* 84(4), Apr. 1998, 1234-41.
- Janes, Anatomy of human extrinsic cardiac nerves and ganglia, *Am J Cardiol.*, 57(4), Feb. 1, 1986, 299-309.
- Javaheri et al., "Sleep Apnea in 81 Ambulatory Male Patients with Stable Heart Failure", from the Sleep Disorders Laboratory, Department of Veterans Affairs Medical Center, and the Department of Medicine, University of Cincinnati College of Medicine, Cincinnati, OH, pp. 2154-2159.
- Jessurun et al., Coronary blood flow dynamics during transcutaneous electrical nerve stimulation for stable angina pectoris associated with severe narrowing of one major coronary artery, *American Journal of Cardiology*, 82(8), erratum appears in *Am J Cardiol*, Feb. 1999, 15;83(4):642, Oct. 15, 1998, 921-6.
- Junyu et al., Posture Detection Algorithm Using Multi Axis DC-Accelerometer, *Pace* vol. 22, Apr. 1999.
- Kandel et al., Part VII: Arousal, Emotion, and Behavioral Homeostasis, In: *Principles of neural science*, New York: McGraw-Hill, Health Professions Division, 2000, 966-969.
- Karpawich et al., Altered cardiac histology following apical right ventricular pacing in patients with congenital atrioventricular block, *Pacing Clin Electrophysiol*, 22(9), Sep. 1999, 1372-7.
- Kaye et al., Acute Effects of Continuous Positive Airway Pressure on Cardiac Sympathetic Tone in Congestive Heart Failure, 103 *Circulation* 2336-24338 (2001).
- Kolettis et al., Submammary Implantation of a Cardioverter-Defibrillator with a Nonthoracotomy Lead System, *Am. Heart J.*, vol. 126, pp. 1222-1223 (Nov. 1993).
- Krahn et al. Recurrent syncope. Experience with an implantable loop record. *Cardiol. Clin.*, vol. 15(2), May 1997, pp. 316-326.
- Laude et al., Effects of Breathing Pattern on Blood Pressure and Heart Rate Oscillations in Humans, 20 *Clin. Exp. Pharmacol. Physiol* 619, 625 (1993).
- Leclercq et al., Hemodynamic importance of preserving the normal sequence of ventricular activation in permanent cardiac pacing, *Am Heart J.*, 129(6), Jun. 1995, 1133-41.
- Leng et al., Lead Configuration for Defibrillator Implantation in a Patient with Congenital Heart Disease and a Mechanical Prosthetic Tricuspid Valve, *PACE*, vol. 24, pp. 1291-1292, Aug. 2001.
- Lenique et al., Ventilatory and Hemodynamic Effects of Continuous Positive Airway Pressure in Left Heart Failure, 155 *Am. J. Respir. Crit. Care Med.* 500-505 (1997).
- Li, Vagal nerve stimulation markedly improves long-term survival after chronic heart failure in rats, *Circulation*, 109(1), Epub Dec. 8, 2003, Jan. 6, 2004, 1-5.
- Lugaresi et al., Snoring, 39 *Electroencephalogr. Clin. Neurophysiol.* 59-64 (1975).
- Mannheimer et al., Epidural spinal electrical stimulation in severe angina pectoris, *British Heart Journal*, 59(1), Jan. 1988, 56-61, Abstract only.
- Mannheimer et al., Transcutaneous electrical nerve stimulation in severe angina pectoris, *European Heart Journal*, 3(4), Aug. 1982, 297-302, Abstract only.
- Mansfield, D. et al., Effects of Continuous Positive Airway Pressure on Lung Function in Patients with Chronic Obstructive Pulmonary Disease and Sleep Disordered Breathing, *Respirology* 365-70 (1999). Abstract only.
- Mazgalev et al., Autonomic modification of the atrioventricular node during atrial fibrillation: role in the slowing of ventricular rate, *Circulation* 99(21), Jun. 1, 1999, 2806-14.
- Millar-Craig et al., Circadian variation of blood-pressure, *Lancet*, 1(8068), Apr. 15, 1978, 795-7, Abstract only.
- Minisi et al., Regional left ventricular deafferentation increases baroreflex sensitivity following myocardial infarction, *Cardiovasc Res.*, 58(1), Apr. 1, 2003, 136-41.
- Murphy et al., Intractable angina pectoris: management with dorsal column stimulation, *Medical Journal of Australia*, 146(5), Mar. 2, 1987, 260, Abstract only.
- Neil et al., "Effects of electrical stimulation of the aortic nerve on blood pressure and respiration in cats and rabbits under chloralose and nembutal anaesthesia." *Journal of Physiology*. Sep. 1949. vol. 109 (3-4) p. 392-401.
- Park & Pollock, Use of an Implantable Cardioverter Defibrillator in an Eight-Month-Old Infant with Ventricular Fibrillation Arising from a Myocardial Fibroma, *PACE*, vol. 22, No. 1, pp. 138-139 Jan. 1999.
- Peters et al., Temporal and spatial summation caused by aortic nerve stimulation in rabbits. Effects of stimulation frequencies and amplitudes. *Journal of the Autonomic Nervous System*. 1989. vol. 27, pp. 193-205.
- Peters et al., The principle of electrical carotid sinus nerve stimulation: a nerve pacemaker system for angina pectoris and hypertension therapy, *Annals of Biomedical Engineering*, 8(4-6), 1980, 445-58.
- Philbin et al., Inappropriate shocks delivered by an ICD as a result of sensed potentials from a transcutaneous electronic nerve stimulation unit, *Pacing & Clinical Electrophysiology*, 21(10), Oct. 1998, 2010-1.
- Pinsky et al., Augmentation of Cardiac Function by Elevation of Intrathoracic Pressure, 54 *J. Appl. Physiol.*, 1983, 950-955.
- Pinsky et al., Hemodynamic Effect of Cardiac Cycle-Specific Increases in Intrathoracic Pressure, 6 *J. Appl. Physiol.* 604-612 (1986).
- Potkin et al., Effect of positive end-expiratory pressure on right and left ventricular function in patients with the adult respiratory distress syndrome, 135 *Am. Rev. Respir. Dis.* 307-311 (1987).
- Prakash et al., Asymmetrical distribution of aortic nerve fibers in the pig, *Anat Rec.*, 158(1), May 1967, 51-7.
- Rasanen et al., Acute Myocardial Infarction Complicated by Left Ventricular Dysfunction and Respiratory Failure. The Effects of Continuous Positive Airway Pressure, 87 *Chest*, 1985, 158-62.
- Reddel et al., Analysis of Adherence to Peak Flow Monitoring When Recording of Data is Electronic, *BMJ* 146-147 (2002).
- Rees et al., Paroxysmal Nocturnal Dyspnoea and Periodic Respiration, *The Lancet*, Dec. 22-29, 1979, pp. 1315-1317.
- Rosenqvist, The effect of ventricular activation sequence on cardiac performance during pacing, *Pacing and Electro-physiology*, 19(9), 1996, 1279-1286.
- Rushmer, Chapter 5—Systemic Arterial Pressure, In: *Cardiovascular dynamics*, Philadelphia: Saunders, 1976, 176-216.
- Sato et al., "Novel Therapeutic Strategy against Central Baroreflex Failure: A Bionic Baroreflex System." *Circulation*. Jul. 1999 vol. 100, pp. 299-304.
- Satoh et al., "Role of Hypoxic Drive in Regulation of Postapneic Ventilation During Sleep in Patients with Obstructive Sleep Apnea", *Am Rev Respir Dis*, Mar. 1991 143 (3): 481-485.
- Schauerte et al., Catheter stimulation of cardiac parasympathetic nerves in humans: a novel approach to the cardiac autonomic nervous system, *Circulation*, 104(20), Nov. 13, 2001, 2430-5.
- Schauerte, Transvenous Parasympathetic Nerve Stimulation in the Inferior Vena Cava and Atrioventricular Conduction, *Journal of Cardiovascular Electrophysiology*, 11(1), Jan. 2000, 64-69.

(56)

References Cited

OTHER PUBLICATIONS

Schauerte et al., Ventricular rate control during atrial fibrillation by cardiac parasympathetic nerve stimulation: a transvenous approach, *Journal of the American College of Cardiology*, 34(7), Dec. 1999, 2043-50.

Scherlag, Endovascular Neural Stimulation via a Novel Basket Electrode Catheter: Comparison of Electrode Configurations, *Journal of Interventional Cardiac Electrophysiology*, 4(1), Apr. 2000, 219-224.

Schuder et al., Experimental Ventricular Defibrillation with an Automatic and Completely Implanted System, *Trans. Am. Soc. Artif. Int. Organs*, vol. 16, pp. 207-212 (1970).

Schuder et al., Transthoracic Ventricular Defibrillation in the Dog with Truncated and Untruncated Exponential Stimuli, *IEEE Trans. On Bio-Medical Engin.*, vol. BME-18, No. 6, pp. 410-415 Nov. 1971.

Schuder et al., Ventricular Defibrillation in the Dog Using Implanted and Partially Implanted Electrode Systems, *Am. J. of Cardiology*, vol. 33, pp. 243-247 Feb. 1974.

Takahashi, Vagal modulation of ventricular tachyarrhythmias induced by left ansae subclaviae stimulation in rabbits, *Japanese Heart Journal*, 39(4), Jul. 1998, 503-11.

Thrasher et al., "Unloading arterial baroreceptors causes neurogenic hypertension." *American Journal Physiol. Regulatory Integrative Comp. Physiol.* 2002. vol. 282, R1044-R1053.

Tkacova et al., Left Ventricular Volume in Patients with Heart Failure and Cheyne-Stokes Respiration during Sleep, *Am. Journal, Respir. Crit. Care Med.*, vol. 156, pp. 1549-1555, 1997.

Tse et al., Long-term effect of right ventricular pacing on myocardial perfusion and function, *J Am Coll Cardiol.*, 29(4), Mar. 15, 1997, 744-9.

Veerman et al., Circadian profile of systemic hemodynamics, *Hypertension*, 26(1), Jul. 1995, 55-9.

Verity et al., Plurivesicular nerve endings in the pulmonary artery, *Nature*, 211(48), Jul. 30, 1966, 537-8.

Verity et al., Pulmonary artery innervation: a morphopharmacologic correlation, *Proceedings of the Western Pharmacology Society*, 8, 1965, 57-9.

Wallick, Selective AV nodal vagal stimulation improves hemodynamics during acute atrial fibrillation in dogs, *American Journal of Physiology—Heart & Circulatory Physiology*, 281(4), Oct. 2001, H1490-7.

Waninger et al., Electrophysiological control of ventricular rate during atrial fibrillation, *Pacing & Clinical Electrophysiology*, 23(8), Aug. 2000, 1239-44.

Weber et al., Effects of CPAP and BIPAP on stroke volume in patients with obstructive sleep apnea syndrome. *Pneumologie Mar.* 1995;49(3):233-5.

Wiggers et al., The muscular reactions of the mammalian ventricles to artificial surface stimuli, *American Journal of Physiology*, 1925, 346-378.

Young et al., The Occurrence of Sleep-disordered Breathing Among Middle-aged Adults, *The New England Journal of Medicine*, vol. 328, No. 17, pp. 1230-1235.

Zarzoso et al., Noninvasive Fetal Electrocardiogram Extraction: Blind Separation Versus Adaptive Noise Cancellation, *IEEE Transactions on Biomedical Engineering*, vol. 48, No. 1, pp. 12-18, Jan. 2001.

Zhang et al., Optimal ventricular rate slowing during atrial fibrillation by feedback AV nodal-selective vagal stimulation, *American Journal of Physiology—Heart & Circulatory Physiology*, 282(3), Mar. 2002, H1102-10.

Zhou et al., Prevention of high incidence of neurally mediated ventricular arrhythmias by afferent nerve stimulation in dogs, *Circulation*, 101(7), Feb. 22, 2000, 819-24.

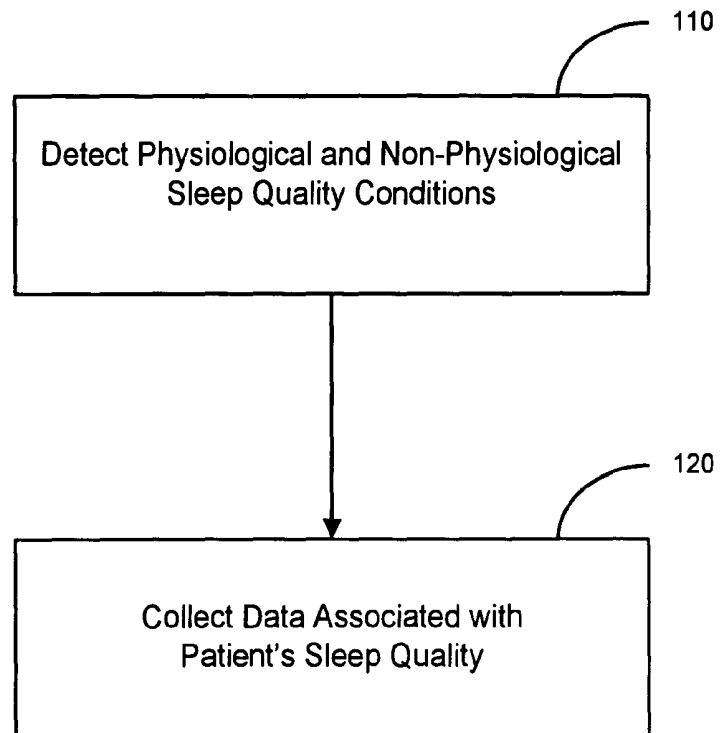


Figure 1

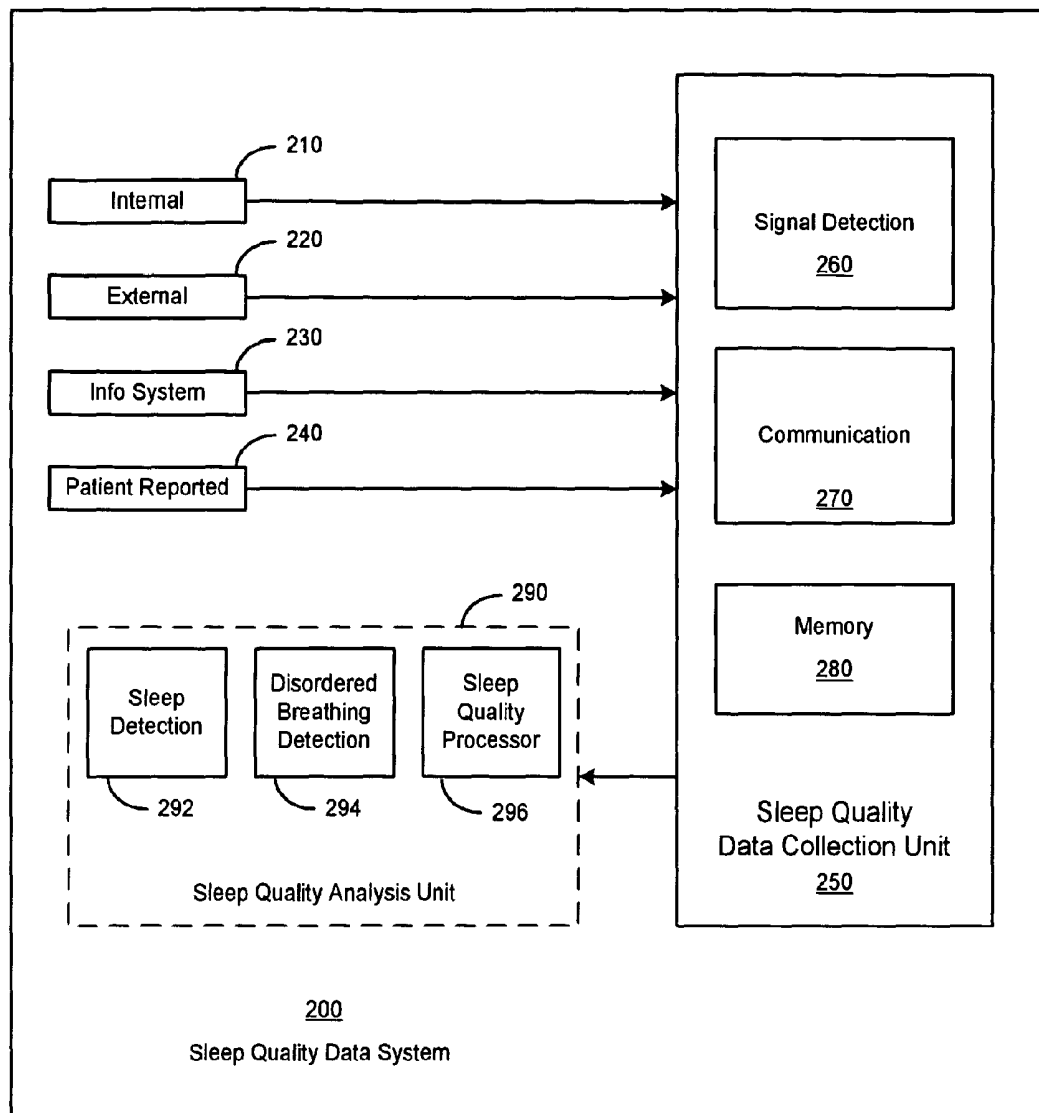


Figure 2

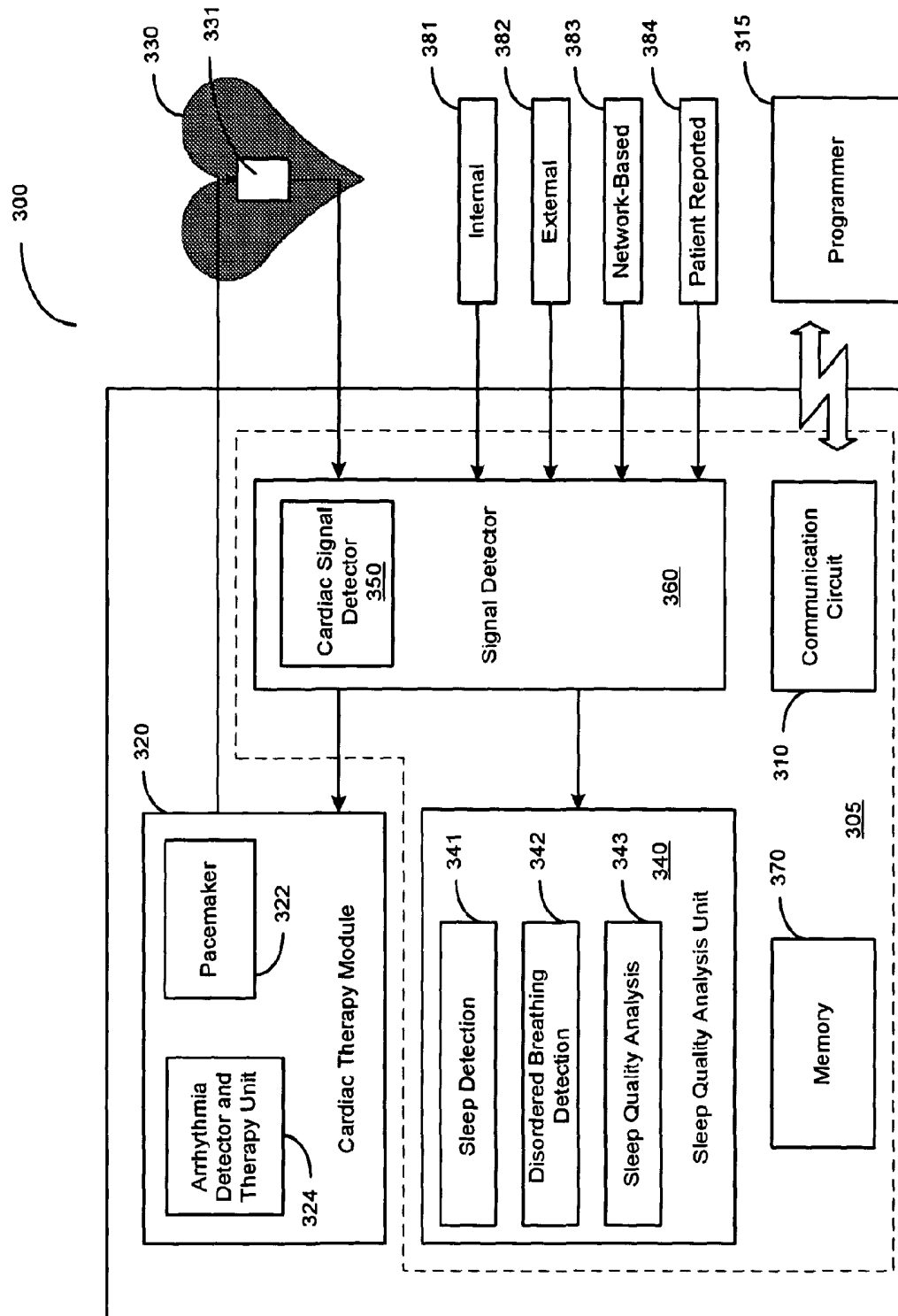


Figure 3

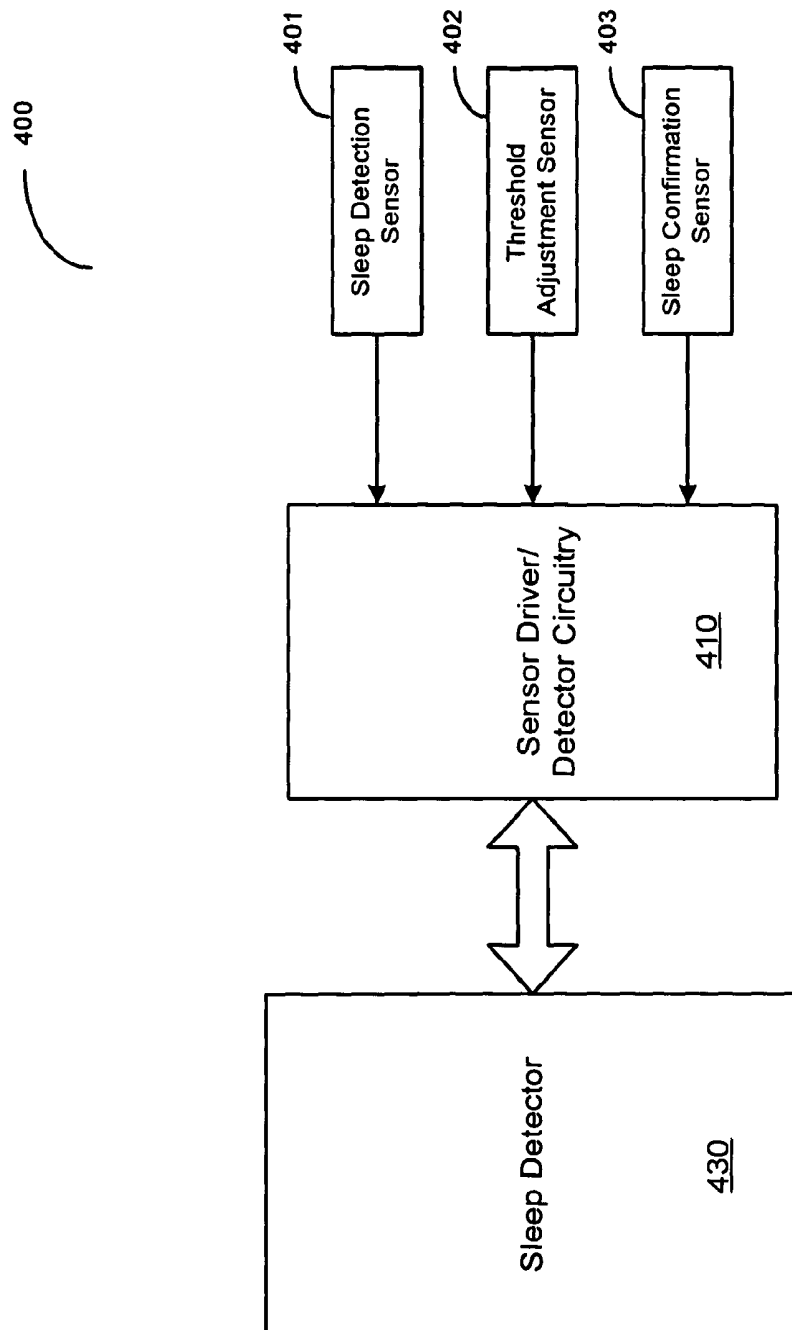


Figure 4

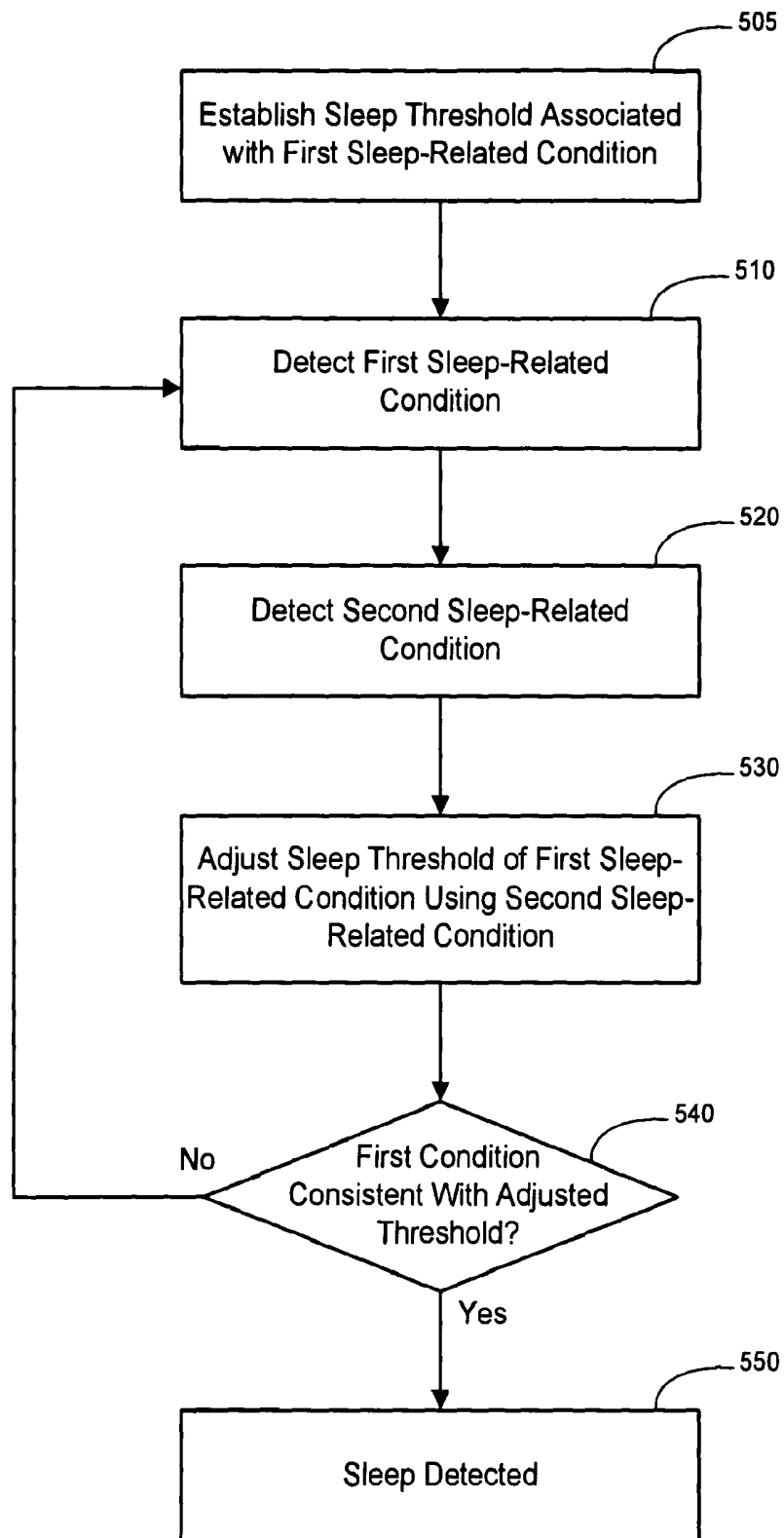


Figure 5

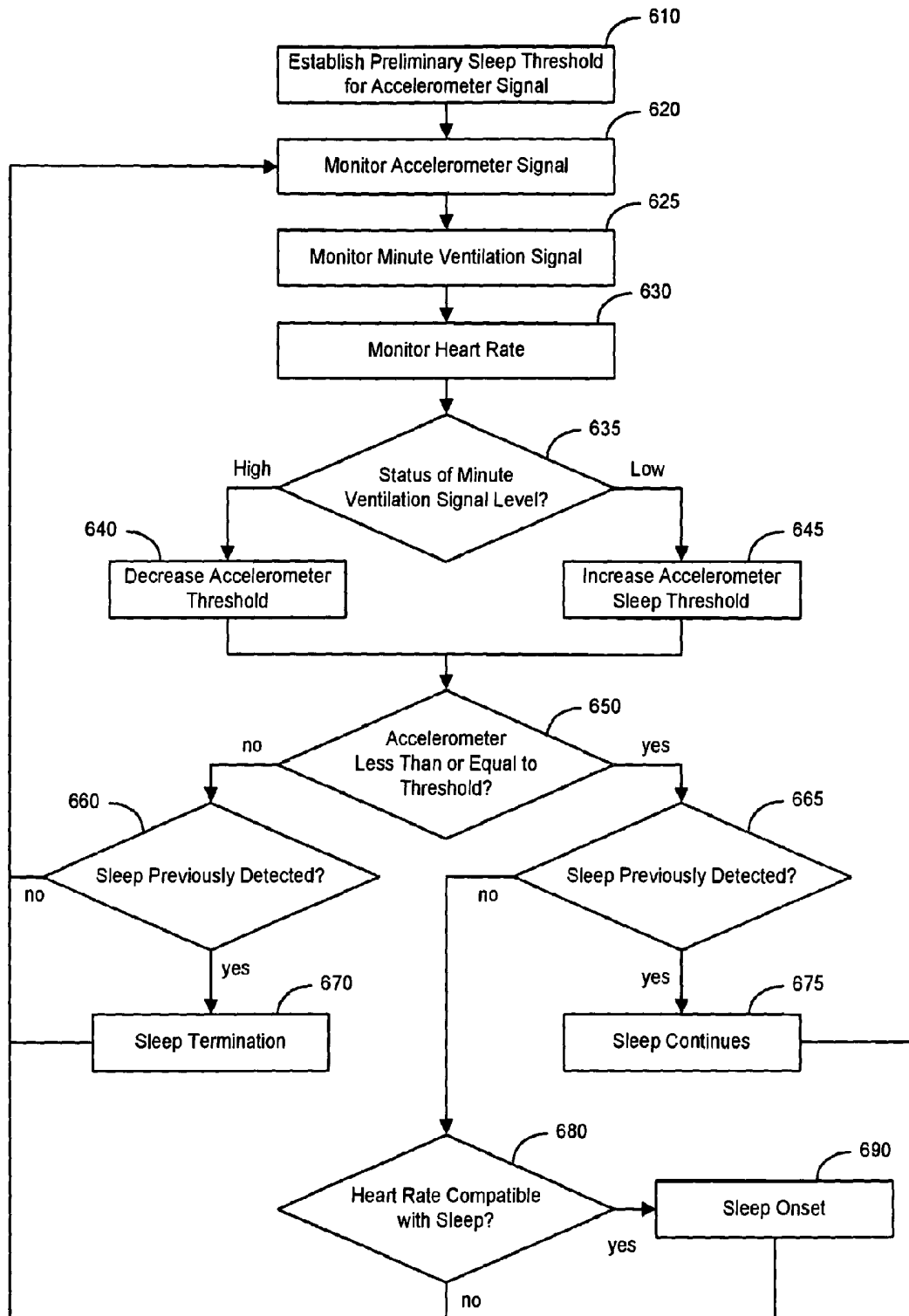


Figure 6

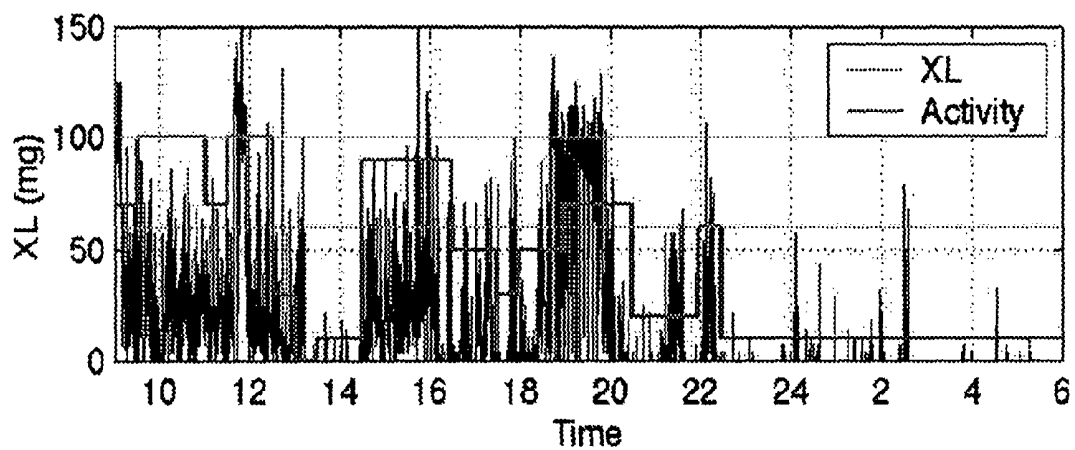


Figure 7

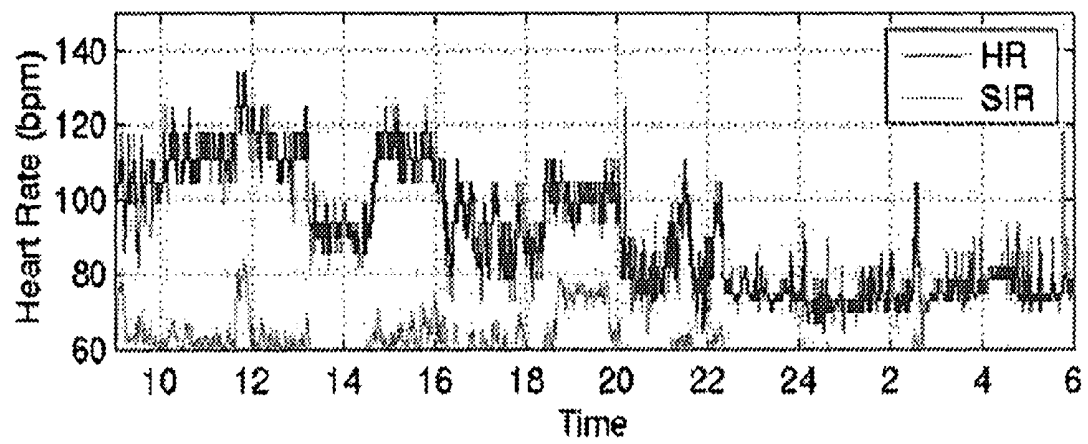


Figure 8

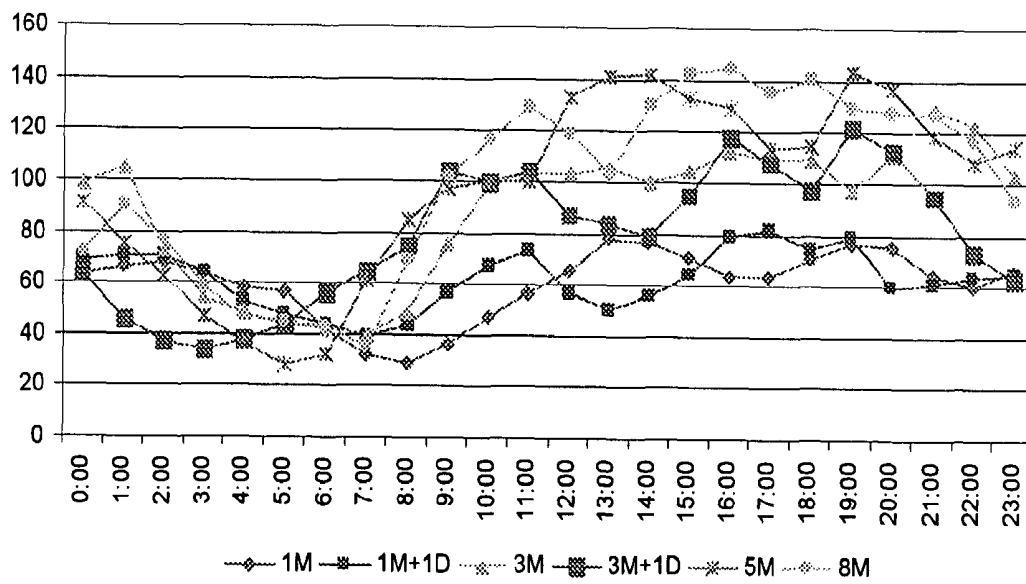


Figure 9

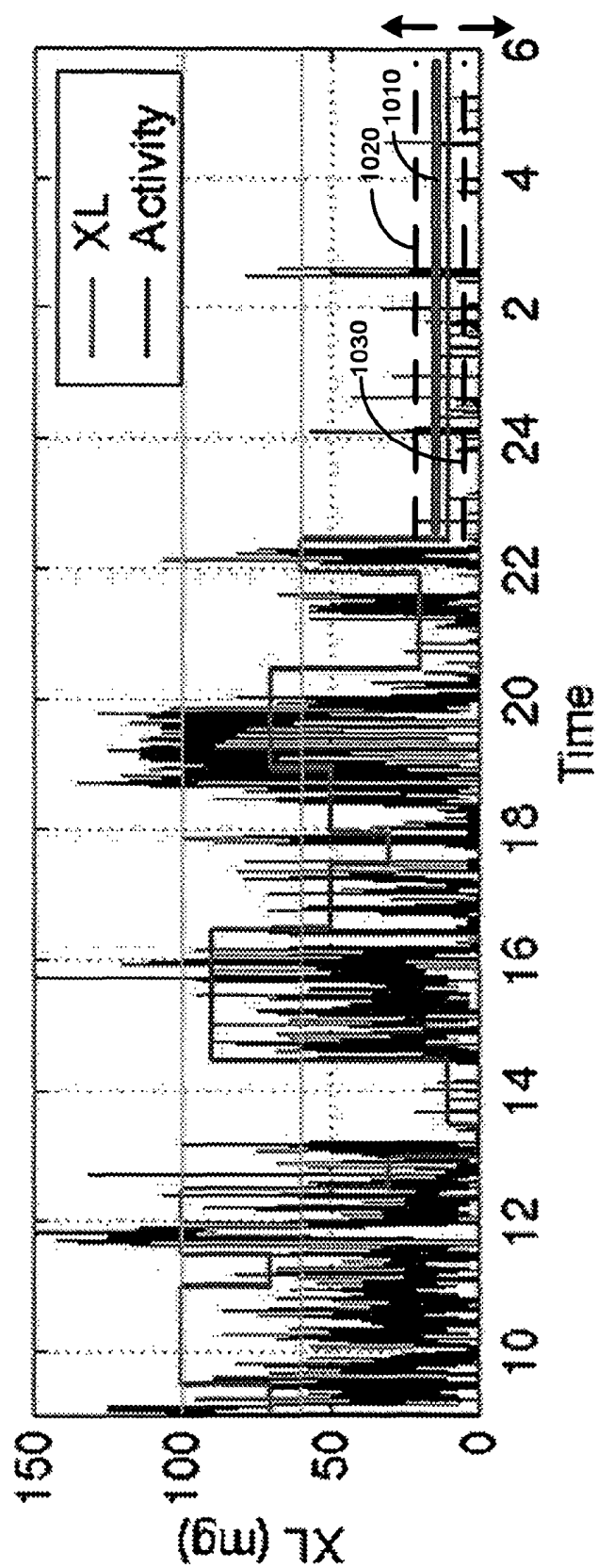


Figure 10

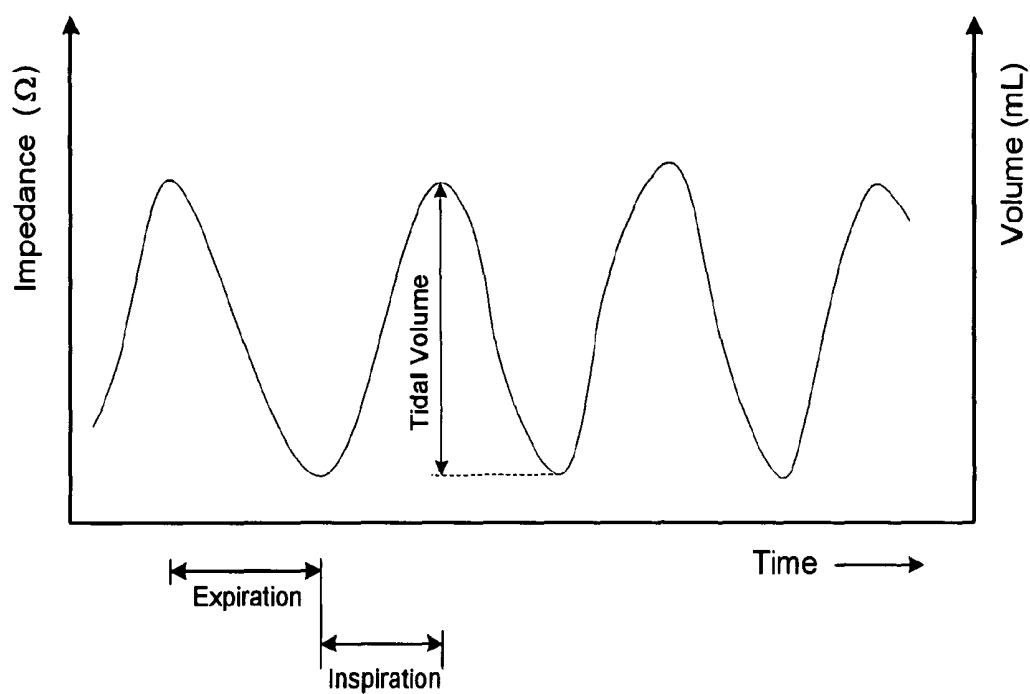


Figure 11

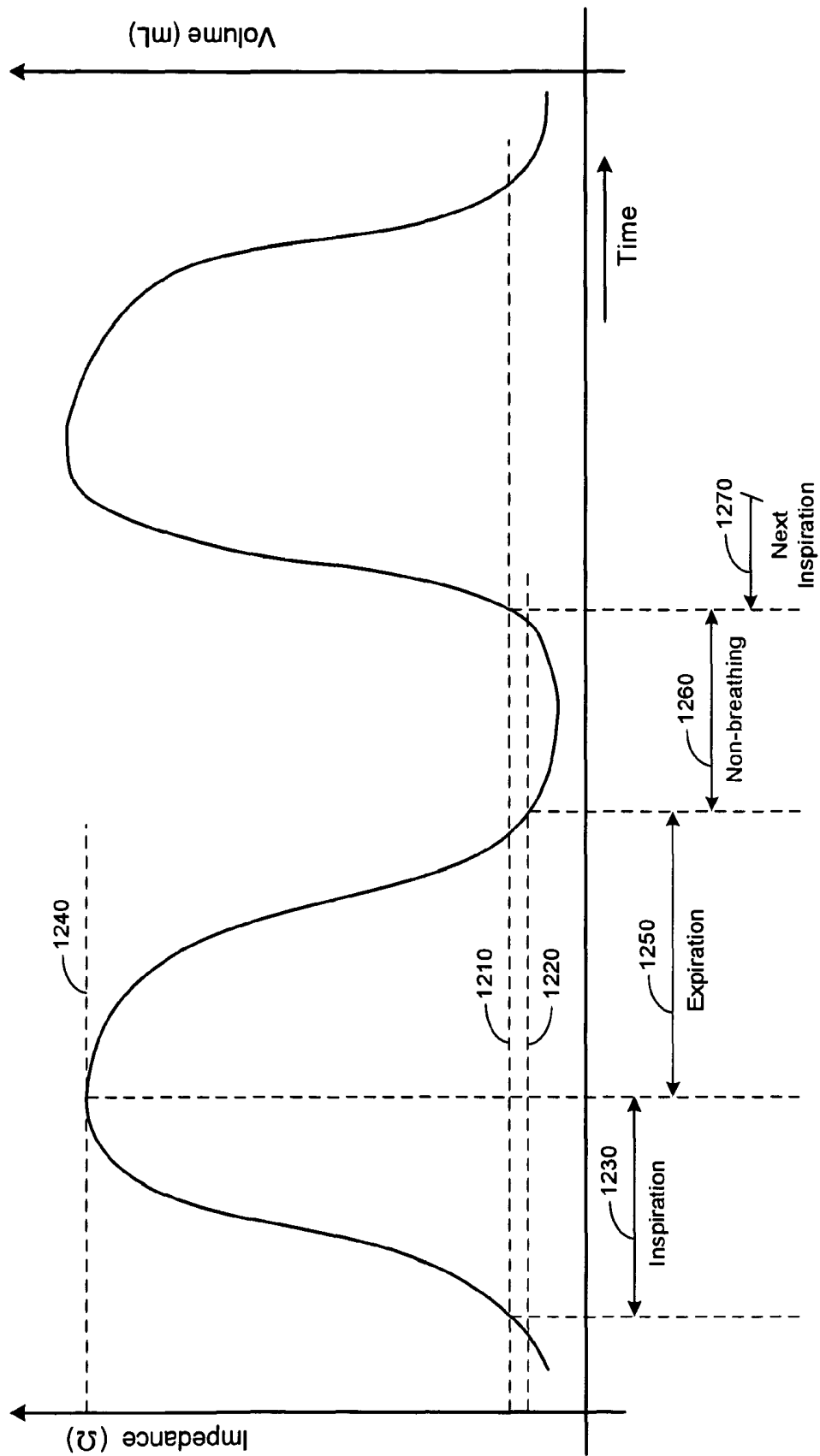


Figure 12

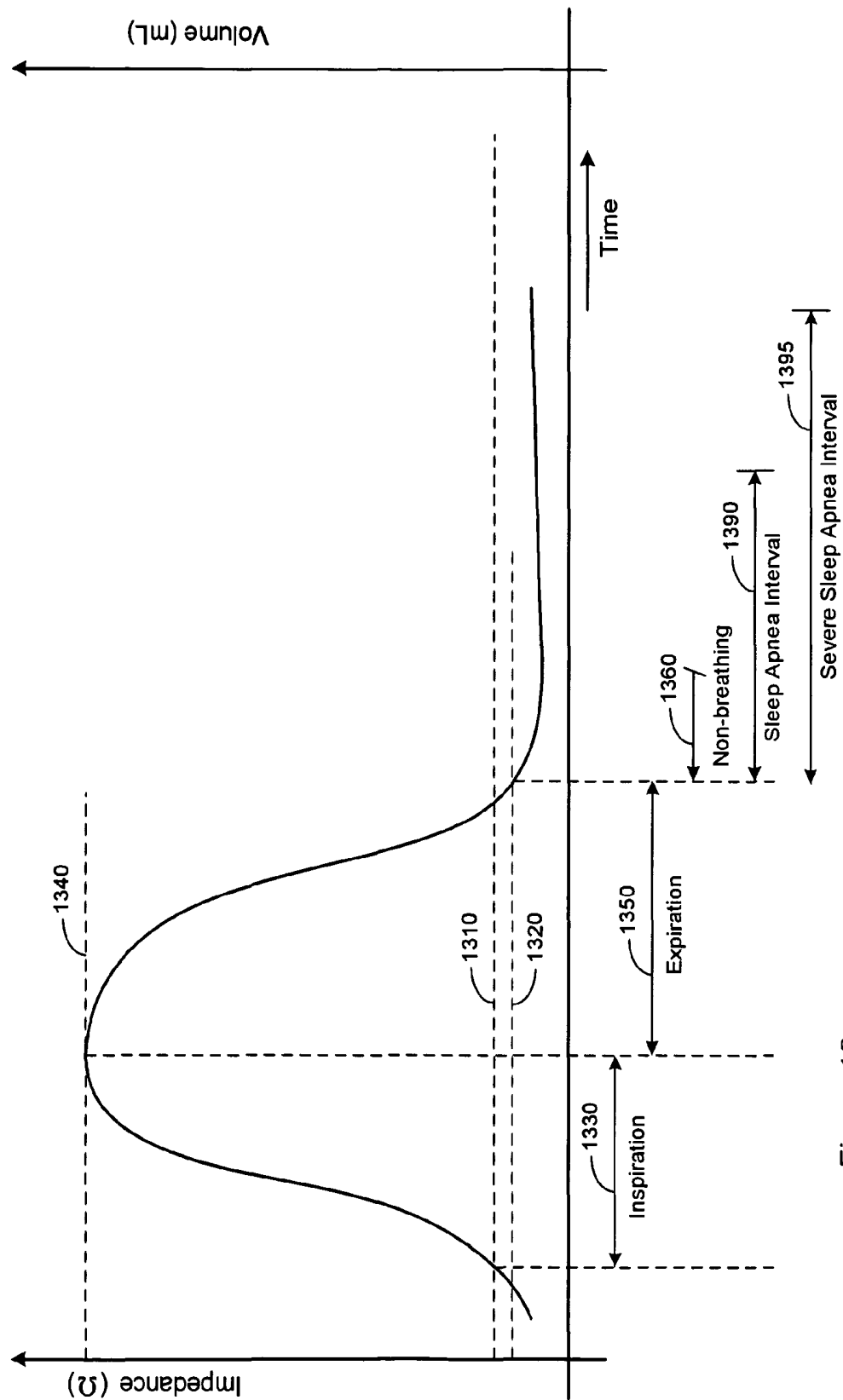


Figure 13

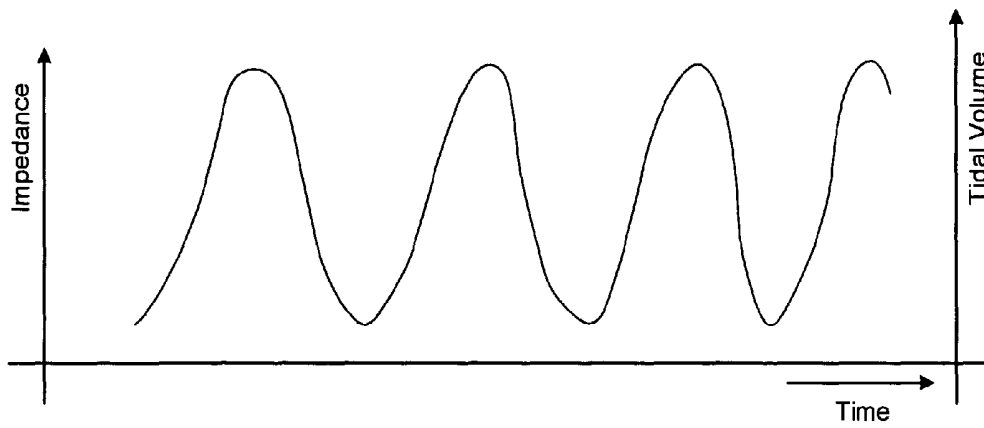


Figure 14A

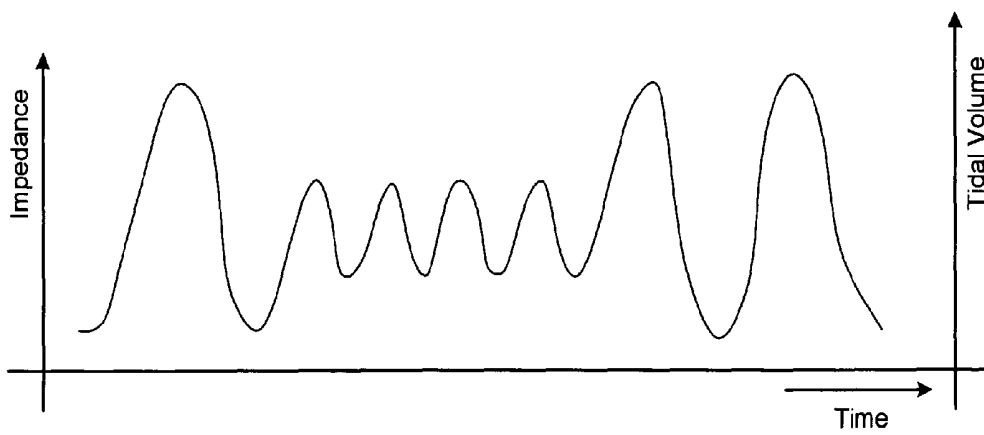


Figure 14B

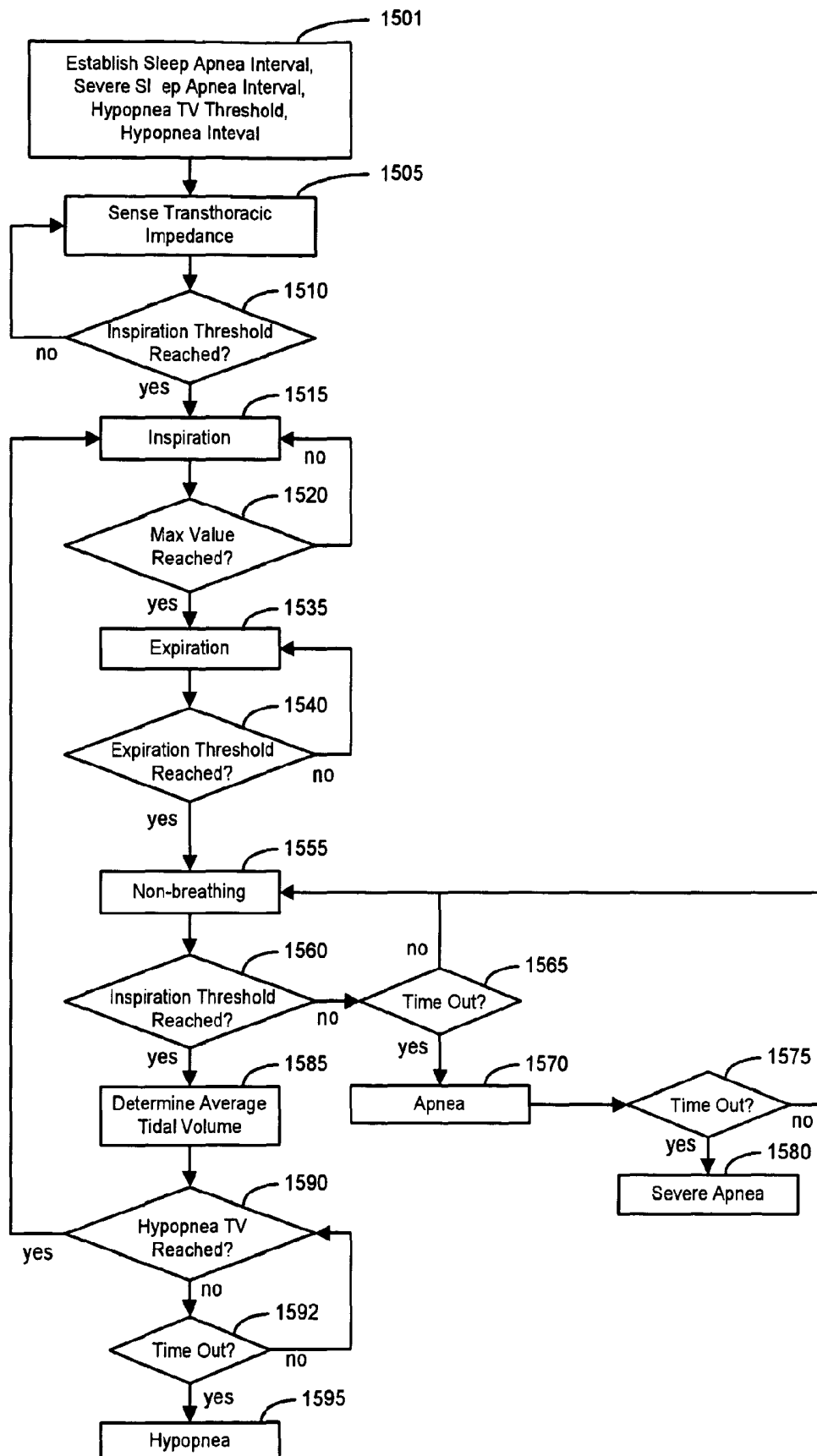


Figure 15

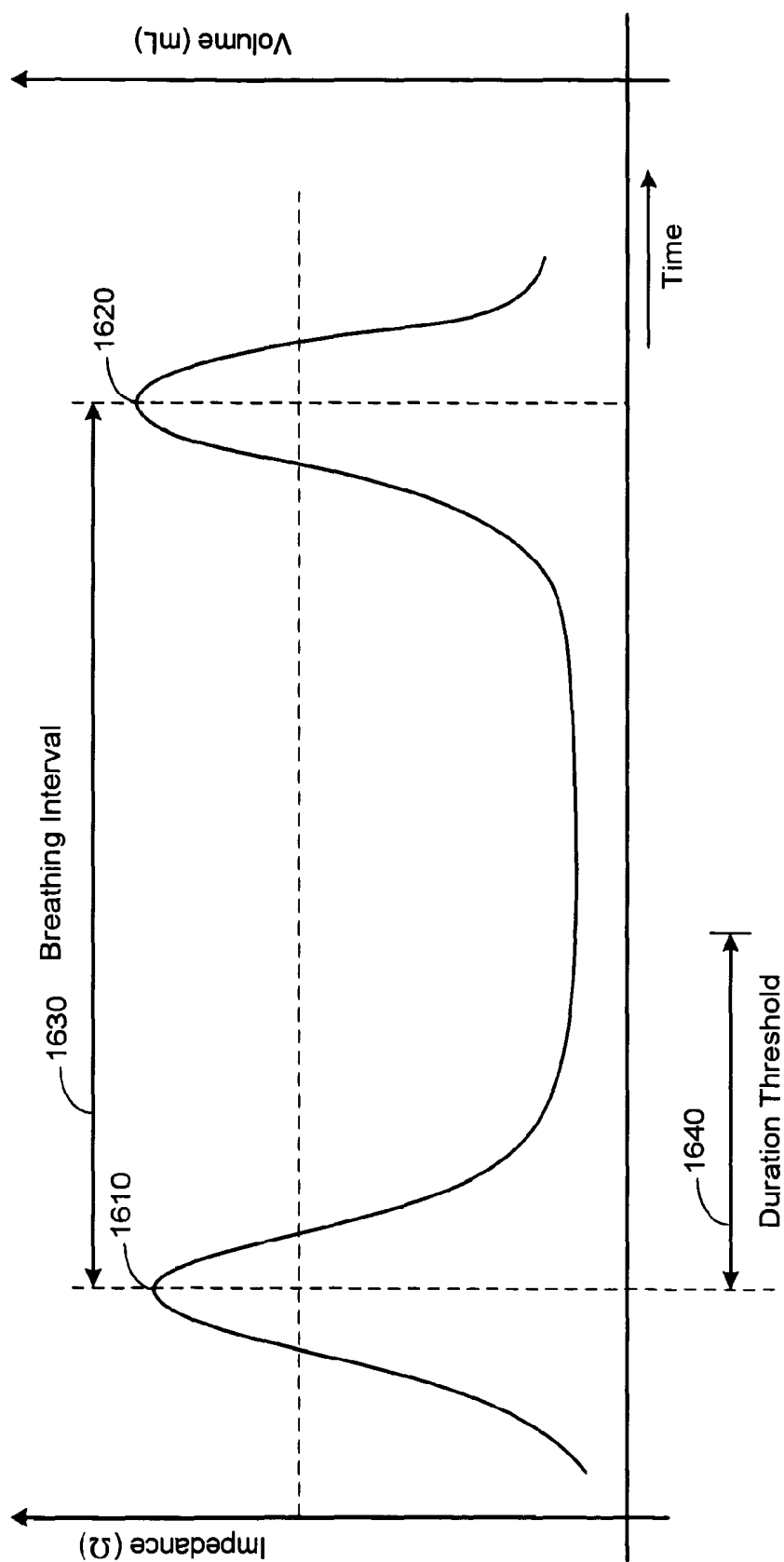


Figure 16

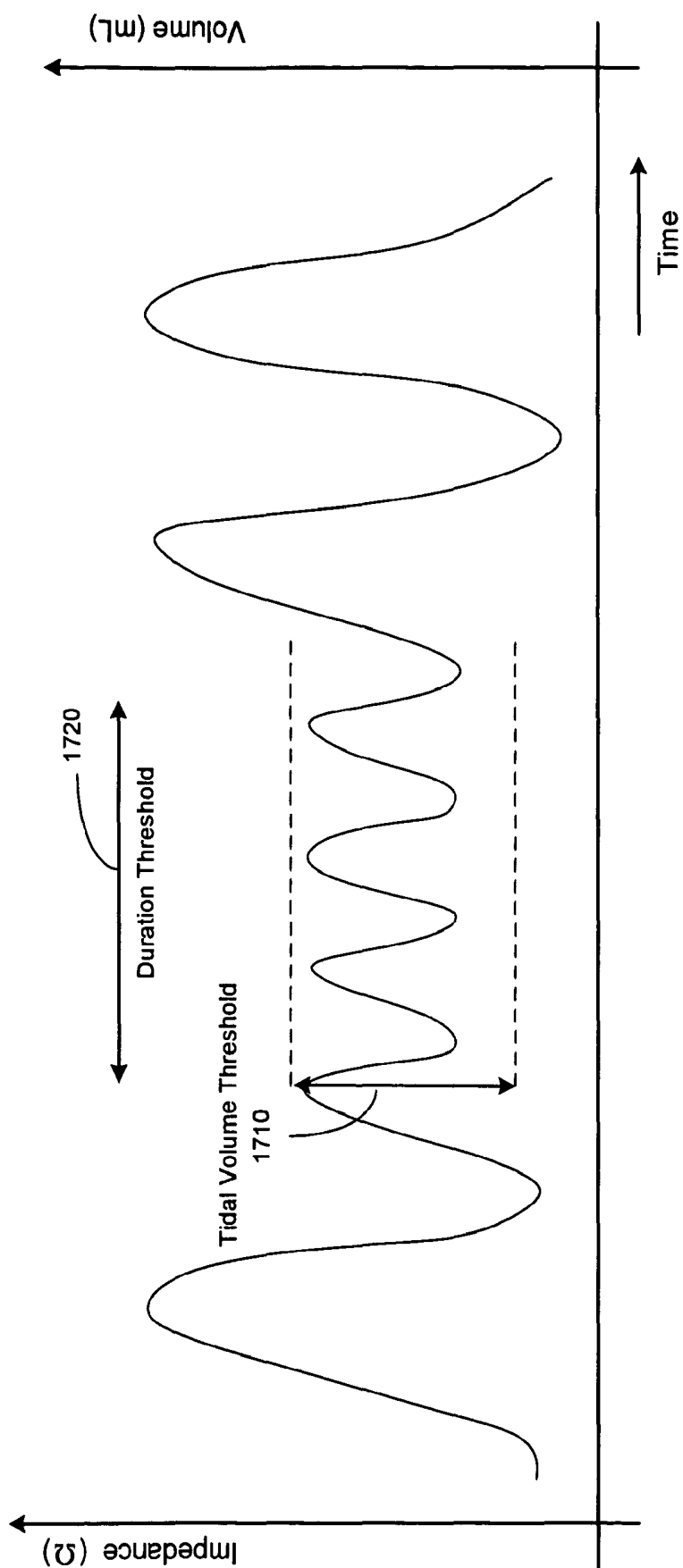


Figure 17

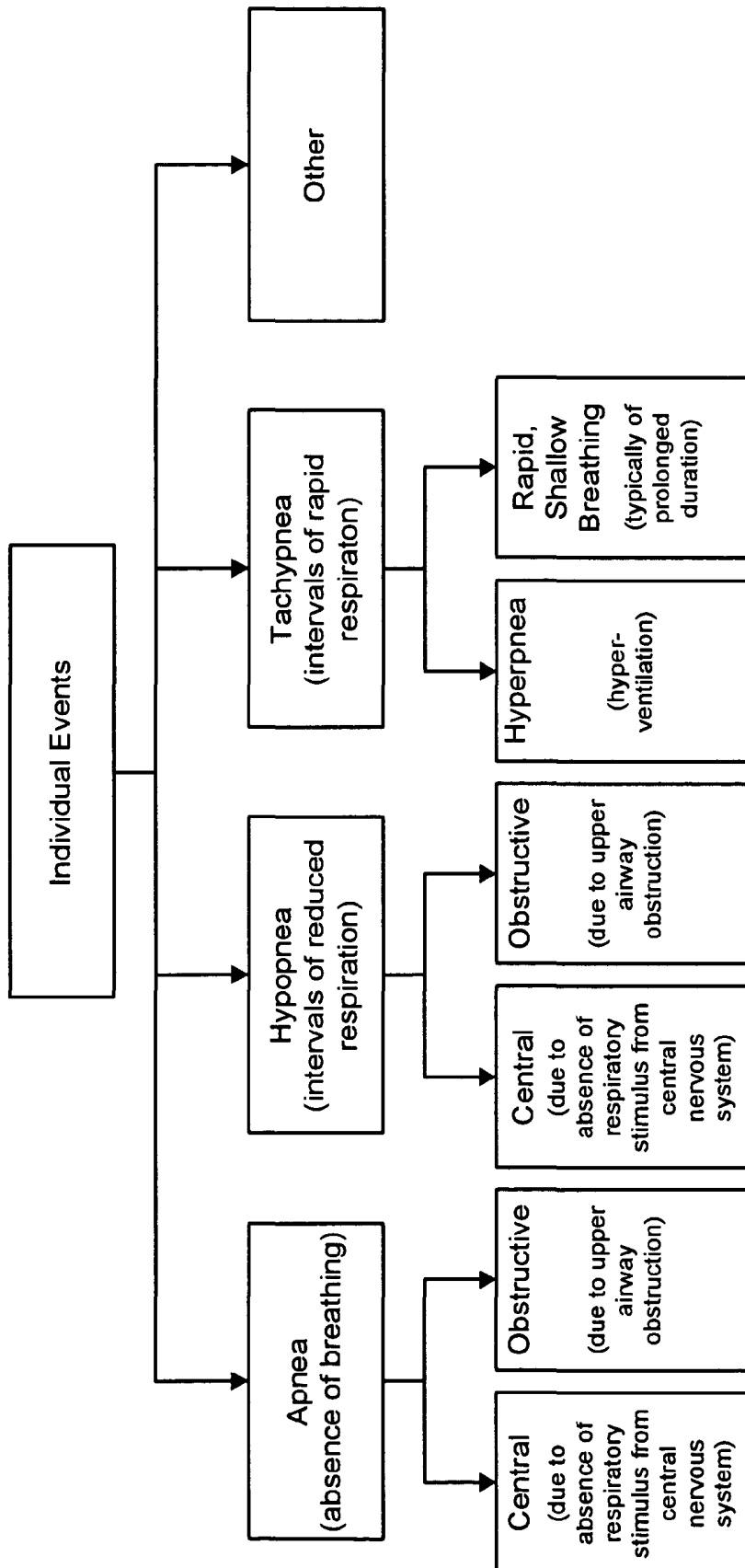


Figure 18A

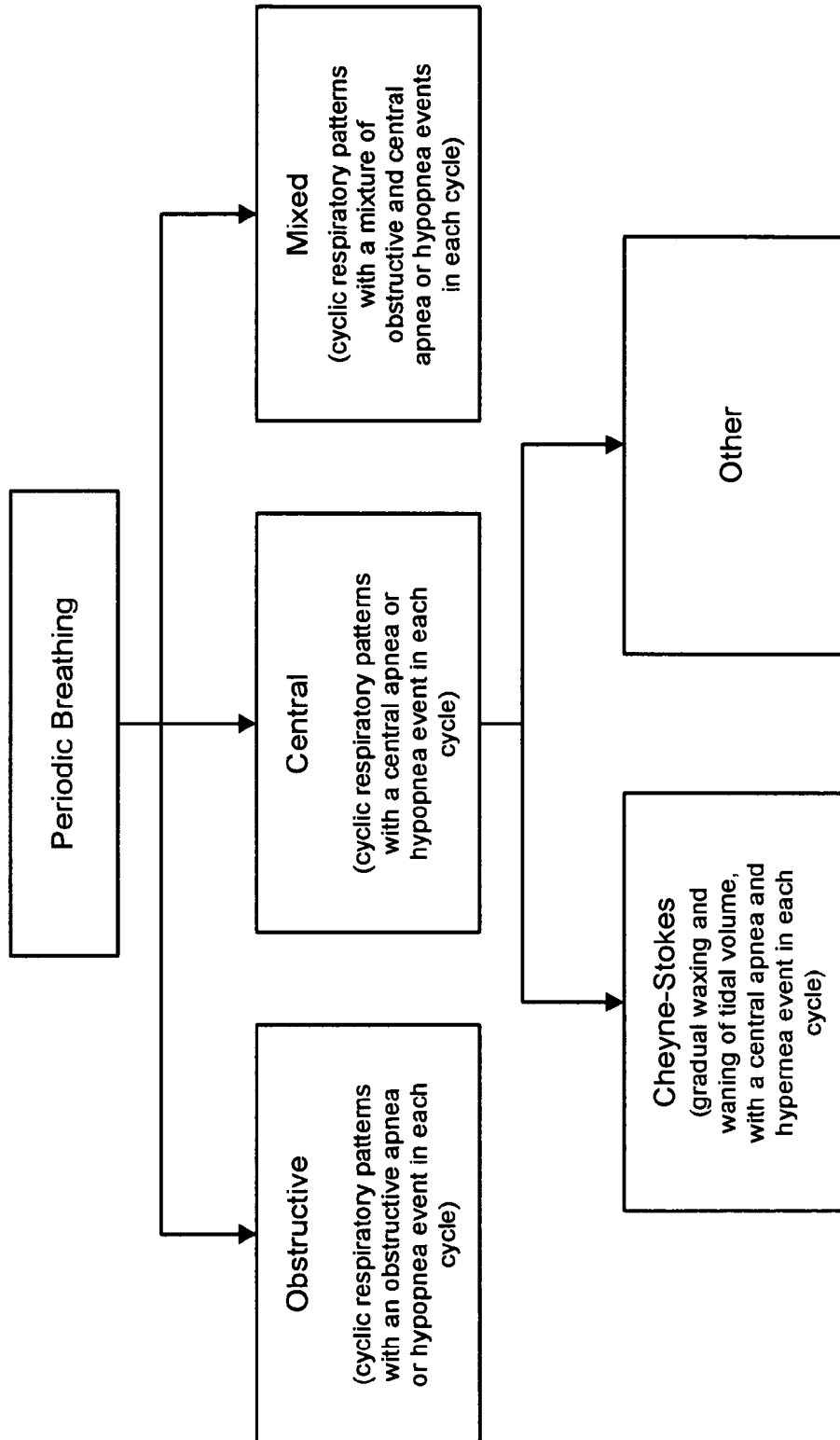


Figure 18B



Figure 18C



Figure 18D

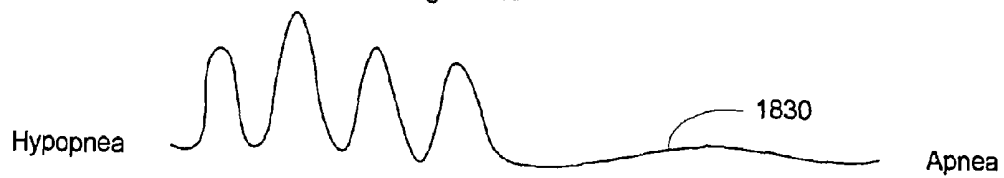


Figure 18E

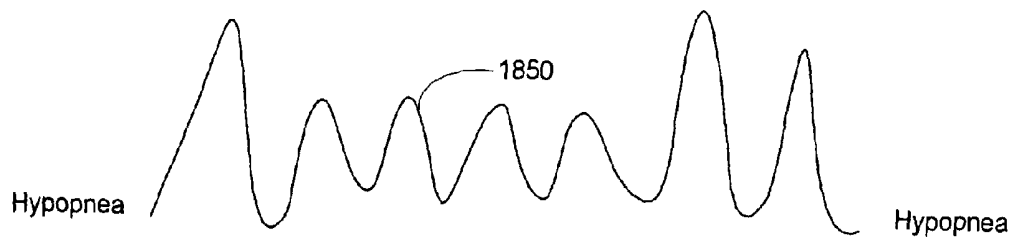


Figure 18F

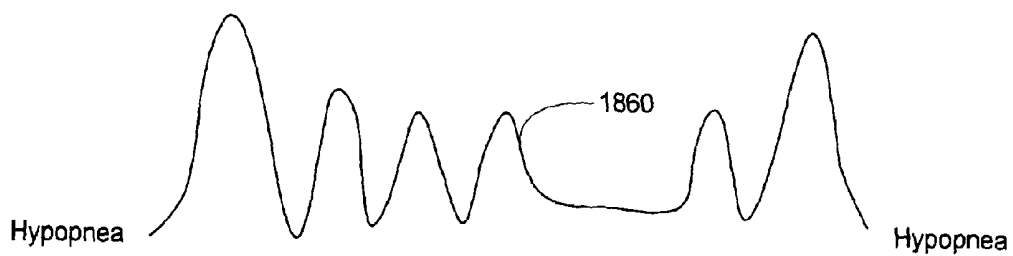
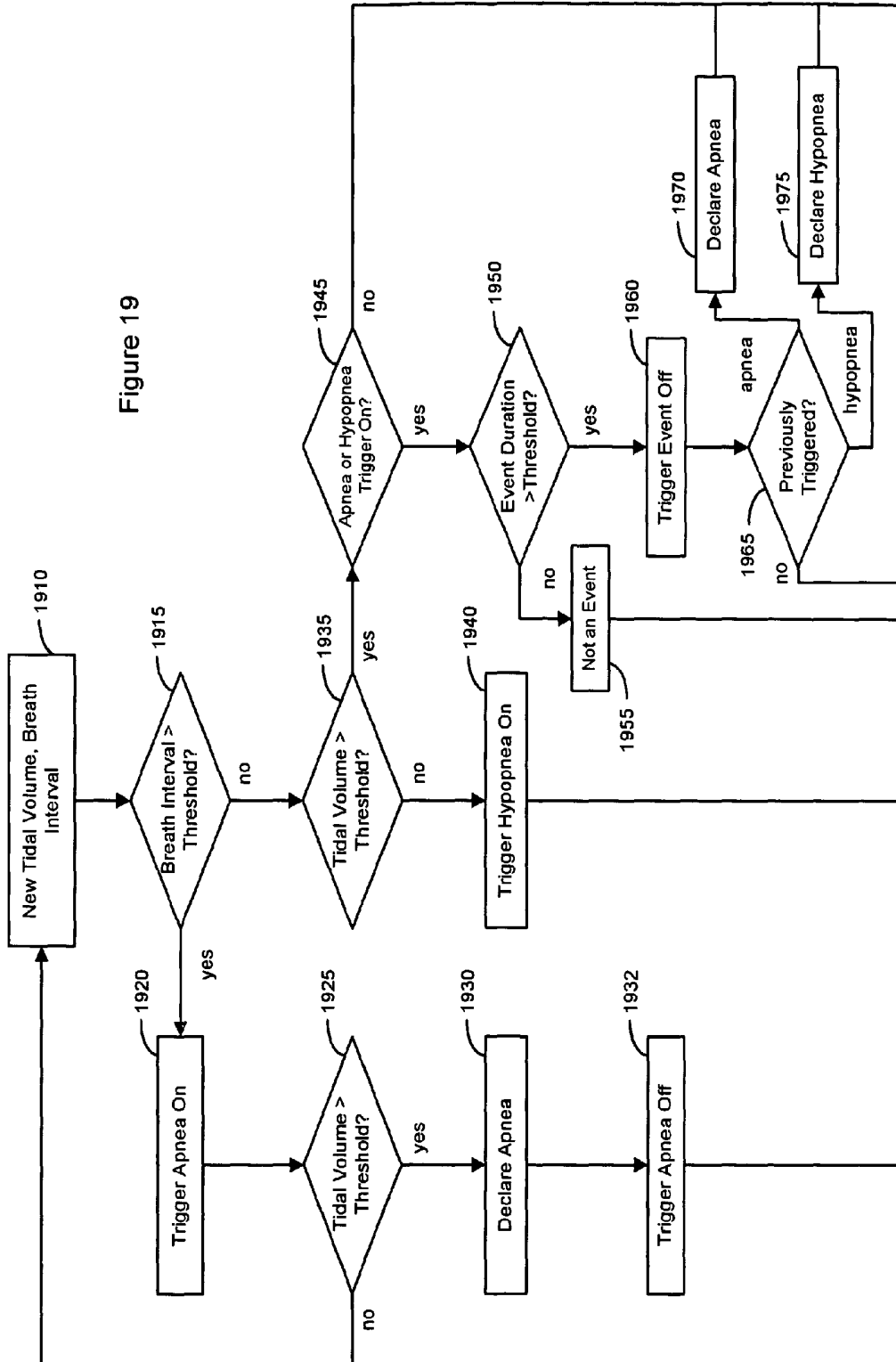


Figure 18G

Figure 19



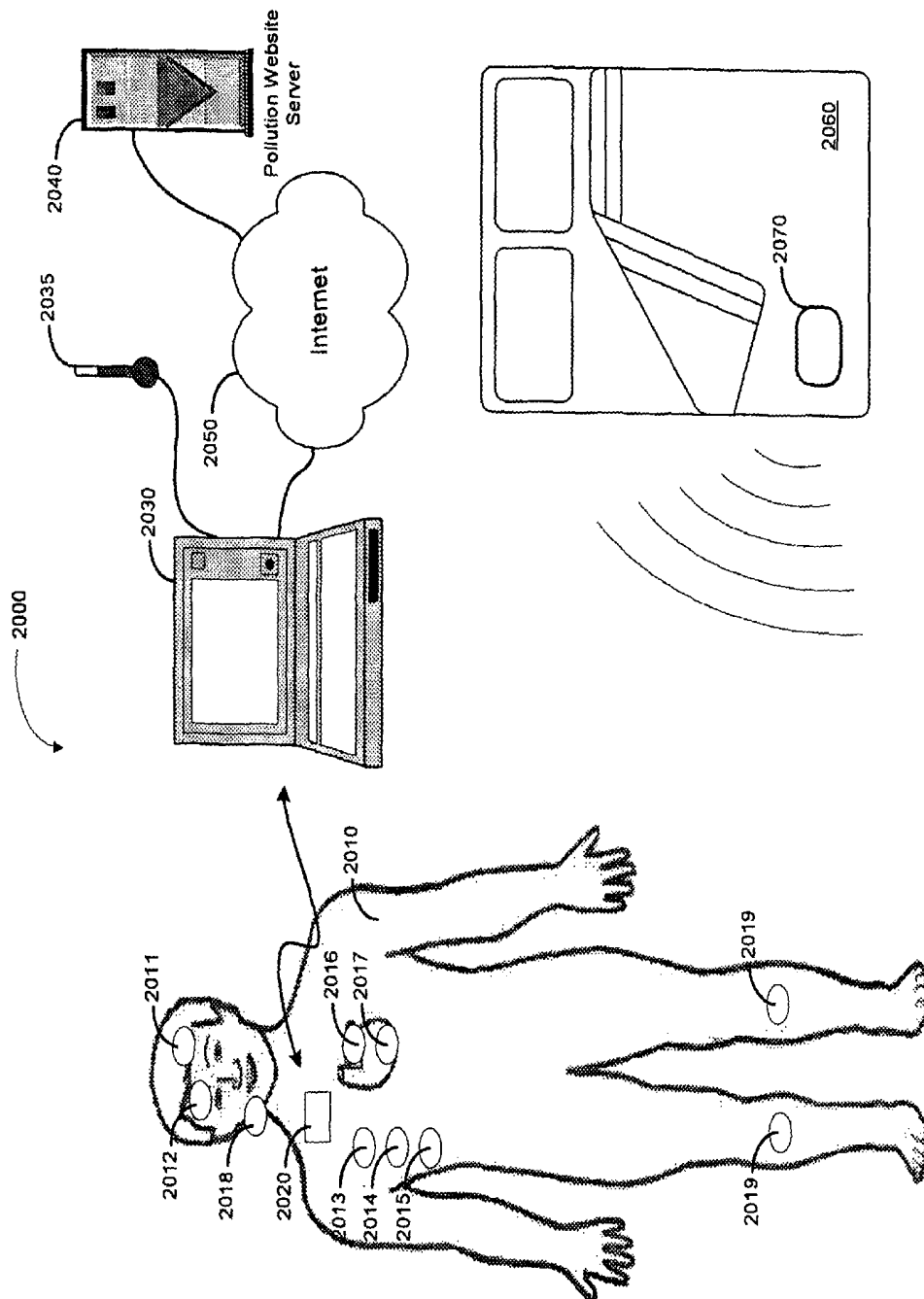


Figure 20

SLEEP QUALITY DATA COLLECTION AND EVALUATION

RELATED PATENT DOCUMENT

This application is a division of U.S. patent application Ser. No. 10/642,998 filed on Aug. 18, 2003, to issue on Aug. 23, 2011 as U.S. Pat. No. 8,002,553 which is incorporated herein by reference.

FIELD OF THE INVENTION

The present invention relates generally to collecting and evaluating information related to sleep quality.

BACKGROUND OF THE INVENTION

Sleep is generally beneficial and restorative to a patient, exerting great influence on the quality of life. The human sleep/wake cycle generally conforms to a circadian rhythm that is regulated by a biological clock. Regular periods of sleep enable the body and mind to rejuvenate and rebuild. The body may perform various tasks during sleep, such as organizing long term memory, integrating new information, and renewing tissue and other body structures.

Normal sleep is characterized by a general decrease in metabolic rate, body temperature, blood pressure, breathing rate, heart rate, cardiac output, sympathetic nervous activity, and other physiological functions. However, studies have shown that the brain's activity does not decrease significantly during sleep. Normally a patient alternates between rapid eye movement (REM) and non-REM (NREM) sleep in approximately 90 minute cycles throughout a sleep period. A typical eight hour sleep period may be characterized in terms of a five-step sleep cycle identifiable through EEG brain wave activity.

Non-REM sleep includes four sleep states or stages that range from light dozing to deep sleep. Throughout NREM sleep, muscle activity is still functional, breathing is low, and brain activity is minimal. Approximately 85% of the sleep cycle is spent in NREM sleep. Stage 1 NREM sleep may be considered a transition stage between wakefulness and sleep. As sleep progresses to stage 2 NREM sleep, eye movements become less frequent and brain waves increase in amplitude and decrease in frequency. As sleep becomes progressively deeper, the patient becomes more difficult to arouse. Stage 3 sleep is characterized by 20 to 40% slow brain wave (delta) sleep as detected by an electroencephalogram (EEG). Sleep stages 3 and 4 are considered to be the most restful sleep stages.

REM sleep is associated with more prevalent dreaming, rapid eye movements, muscle paralysis, and irregular breathing, body temperature, heart rate and blood pressure. Brain wave activity during REM sleep is similar to brain wave activity during a state of wakefulness. There are typically 4-6 REM periods per night, with increasing duration and intensity toward morning. While dreams can occur during either REM or NREM sleep, the nature of the dreams varies depending on the type of sleep. REM sleep dreams tend to be more vivid and emotionally intense than NREM sleep dreams. Furthermore, autonomic nervous system activity is dramatically altered when REM sleep is initiated.

Lack of sleep and/or decreased sleep quality may have a number of causal factors including, e.g., nerve or muscle disorders, respiratory disturbances, and emotional conditions, such as depression and anxiety. Chronic, long-term sleep-related disorders e.g., chronic insomnia, sleep-dis-

ordered breathing, and sleep movement disorders, including restless leg syndrome (RLS), periodic limb movement disorder (PLMD) and bruxism, may significantly affect a patient's sleep quality and quality of life.

Movement disorders such as restless leg syndrome (RLS), and a related condition, denoted periodic limb movement disorder (PLMD), are emerging as one of the more common sleep disorders, especially among older patients. Restless leg syndrome is a disorder causing unpleasant crawling, pricking, or tingling sensations in the legs and feet and an urge to move them for relief. RLS leads to constant leg movement during the day and insomnia or fragmented sleep at night. Severe RLS is most common in elderly people, although symptoms may develop at any age. In some cases, it may be linked to other conditions such as anemia, pregnancy, or diabetes.

Many RLS patients also have periodic limb movement disorder (PLMD), a disorder that causes repetitive jerking movements of the limbs, especially the legs. These movements occur approximately every 20 to 40 seconds and cause repeated arousals and severely fragmented sleep.

A significant percentage of patients between 30 and 60 years experience some symptoms of disordered breathing, primarily during periods of sleep. Sleep disordered breathing is associated with excessive daytime sleepiness, systemic hypertension, increased risk of stroke, angina and myocardial infarction. Disturbed respiration can be particularly serious for patients concurrently suffering from cardiovascular deficiencies. Disordered breathing is particularly prevalent among congestive heart failure patients, and may contribute to the progression of heart failure.

Sleep apnea is a fairly common breathing disorder characterized by periods of interrupted breathing experienced during sleep. Sleep apnea is typically classified based on its etiology. One type of sleep apnea, denoted obstructive sleep apnea, occurs when the patient's airway is obstructed by the collapse of soft tissue in the rear of the throat. Central sleep apnea is caused by a derangement of the central nervous system control of respiration. The patient ceases to breathe when control signals from the brain to the respiratory muscles are absent or interrupted. Mixed apnea is a combination of the central and obstructive apnea types. Regardless of the type of apnea, people experiencing an apnea event stop breathing for a period of time. The cessation of breathing may occur repeatedly during sleep, sometimes hundreds of times a night and occasionally for a minute or longer.

In addition to apnea, other types of disordered respiration have been identified, including, for example, hypopnea (shallow breathing), dyspnea (labored breathing), hyperpnea (deep breathing), and tachypnea (rapid breathing). Combinations of the disordered respiratory events described above have also been observed. For example, Cheyne-Stokes respiration (CSR) is associated with rhythmic increases and decreases in tidal volume caused by alternating periods of hyperpnea followed by apnea and/or hypopnea. The breathing interruptions of CSR may be associated with central apnea, or may be obstructive in nature. CSR is frequently observed in patients with congestive heart failure (CHF) and is associated with an increased risk of accelerated CHF progression.

An adequate duration and quality of sleep is required to maintain physiological homeostasis. Untreated, sleep disturbances may have a number of adverse health and quality of life consequences ranging from high blood pressure and other cardiovascular disorders to cognitive impairment, headaches, degradation of social and work-related activities, and increased risk of automobile and other accidents.

Various modifications and additions can be made to the preferred embodiments discussed hereinabove without departing from the scope of the present invention. Accordingly, the scope of the present invention should not be limited by the particular embodiments described above, but should be defined only by the claims set forth below and equivalents thereof.

SUMMARY OF THE INVENTION

Various embodiments of present invention involve methods and systems for collecting sleep quality data and evaluating the sleep quality of a patient.

An embodiment of the invention involves a method for collecting sleep quality data. The method includes detecting physiological and non-physiological conditions associated with the sleep quality of a patient and collecting sleep quality data based on the detected conditions. Collecting the sleep quality data is performed at least in part implantably.

Another embodiment of the invention involves a method for evaluating sleep quality. In accordance with this method, one or more metrics associated with sleep are determined. One or more metrics associated with events that disrupt sleep are determined. A composite sleep quality metric is determined using the one or more metrics associated with sleep and the one or more metrics associated with events that disrupt sleep.

In yet another embodiment of the invention, a method for evaluating sleep quality includes detecting physiological and non-physiological conditions associated with the sleep quality of a patient and collecting sleep quality data based on the detected conditions. The sleep quality of the patient is evaluated using the collected data. At least one of collecting the sleep quality data and evaluating the sleep quality of the patient is performed at least in part implantably.

Another embodiment of the invention involves a method for evaluating sleep quality. One or more conditions associated with sleep quality of a patient are detected during a period of wakefulness. Sleep quality data is collected based on the detected conditions. The patient's sleep quality is evaluated using the collected sleep quality data. At least one of collecting the data and evaluating the sleep quality is performed at least in part implantably.

A further embodiment of the invention involves a medical device including a detector system configured to detect physiological and non-physiological conditions associated with sleep quality and a data collection system for collecting sleep quality data based on the detected conditions. The data collection system includes an implantable component.

Yet another embodiment of the invention relates to a medical device configured to evaluate sleep quality. The medical device includes a detector system configured to detect physiological and non-physiological conditions associated with the sleep quality of a patient. A sleep quality processor, coupled to the detection system, is configured to determine metrics based on the detected conditions. The metrics include one or more metrics associated with sleep, one or more metrics associated with events that disrupt sleep, and at least one composite sleep quality metric based on the one or more metrics associated with sleep and the one or more metrics associated with events that disrupt sleep.

In another embodiment of the invention, a medical device for assessing sleep quality includes a detector unit configured to detect physiological and non-physiological conditions associated with sleep quality and a sleep quality data collection unit configured to collect sleep quality data based on the detected conditions. A data analysis unit coupled to the data

collection unit evaluates sleep quality based on the collected sleep quality data. At least one of the data collection unit and the data analysis unit includes an implantable component.

A further embodiment of the invention involves a system for collecting sleep quality data. The system includes means for detecting physiological and non-physiological conditions associated with sleep quality and means for collecting sleep quality data based on the detected conditions. The means for collecting the sleep quality data includes an implantable component.

In yet another embodiment of the invention, a system for assessing sleep quality includes means for determining one or more metrics associated with sleep and means for determining one or more metrics associated with events that disrupt sleep. The system further includes means for determining a composite sleep quality metric as a function of the metrics associated with sleep and the metrics associated with events that disrupt sleep.

Another embodiment of the invention involves a system for evaluating sleep quality. The system includes means for detecting physiological and non-physiological conditions associated with sleep quality and means for collecting sleep quality data based on the detected conditions. The system includes means for evaluating the sleep quality of the patient based on the collected sleep quality data. At least one of the means for collecting the sleep quality data and the means for evaluating the sleep quality comprise an implantable component.

A further embodiment involves a system for evaluating the sleep quality of a patient. The system includes means for detecting one or more patient conditions associated with sleep quality during a period of wakefulness and means for collecting sleep quality data based on the detected conditions. The system further includes means for evaluating the sleep quality of the patient using the collected sleep quality data. At least one of the means for collecting the sleep quality data and means for evaluating the sleep quality include an implantable component.

The above summary of the present invention is not intended to describe each embodiment or every implementation of the present invention. Advantages and attainments, together with a more complete understanding of the invention, will become apparent and appreciated by referring to the following detailed description and claims taken in conjunction with the accompanying drawings.

BRIEF DESCRIPTION OF THE DRAWINGS

FIG. 1 is a flow chart illustrating a method of collecting sleep quality data in accordance with embodiments of the invention;

FIG. 2 illustrates a block diagram of a sleep quality data system in accordance with embodiments of the invention;

FIG. 3 is a system block diagram illustrating a sleep quality data system incorporated within a cardiac rhythm management system in accordance with embodiments of the invention;

FIG. 4 is a block diagram of a sleep detection unit that may be used as part of a sleep quality data system according to embodiments of the invention;

FIG. 5 is a flow chart illustrating a sleep detection method according to embodiments of the invention;

FIG. 6 is a flow chart illustrating a method for detecting sleep as a part of a sleep quality data collection approach according to embodiments of the invention;

FIG. 7 is a graph of a patient's activity condition as indicated by an accelerometer signal;

FIG. 8 is a graph of a patient's heart rate;

FIG. 9 is a graph of a patient's minute ventilation (MV) condition;

FIG. 10 illustrates adjustment of a sleep threshold in accordance with embodiments of the invention;

FIG. 11 illustrates a normal respiration pattern as represented by a transthoracic impedance sensor signal;

FIG. 12 illustrates respiration intervals used for disordered breathing detection according to embodiments of the invention;

FIG. 13 illustrates detection of sleep apnea and severe sleep apnea according to embodiments of the invention;

FIGS. 14A-B are graphs of tidal volume derived from transthoracic impedance measurements according to embodiments of the invention;

FIG. 15 is a flow chart illustrating a method of apnea and hypopnea detection according to embodiments of the invention;

FIG. 16 is a graph illustrating a breathing interval according to embodiments of the invention;

FIG. 17 is a graph illustrating a hypopnea detection approach in accordance with embodiments of the invention;

FIGS. 18A-B are charts illustrating nomenclature for individual disordered breathing events and combinations of disordered breathing events, respectively;

FIGS. 18C-G are graphs illustrating disordered breathing events comprising a combination of apnea and hypopnea respiration cycles;

FIG. 19 is a flow chart of a method for detecting disordered breathing by classifying breathing patterns in accordance with embodiments of the invention; and

FIG. 20 illustrates a patient instrumented with components of a sleep quality data system according to embodiments of the invention.

While the invention is amenable to various modifications and alternative forms, specifics thereof have been shown by way of example in the drawings and will be described in detail below. It is to be understood, however, that the intention is not to limit the invention to the particular embodiments described. On the contrary, the invention is intended to cover all modifications, equivalents, and alternatives falling within the scope of the invention as defined by the appended claims.

DETAILED DESCRIPTION OF VARIOUS EMBODIMENTS

In the following description of the illustrated embodiments, references are made to the accompanying drawings which form a part hereof, and in which are shown, by way of illustration, various embodiments by which the invention may be practiced. It is to be understood that other embodiments may be utilized. Structural and functional changes may be made without departing from the scope of the present invention.

Sleep quality assessments depend upon acquiring sleep-related data, including the patient's typical sleep patterns and the physiological, environmental, contextual, emotional, and other conditions affecting the patient during sleep. Diagnosis of sleep disorders and assessment of sleep quality often involves the use of a polysomnographic sleep study at a dedicated sleep facility. However, such studies are costly, inconvenient to the patient, and may not accurately represent the patient's typical sleep behavior. In a polysomnographic sleep study, the patient is instrumented for data acquisition and observed by trained personnel. Sleep assessment in a laboratory setting presents a number of obstacles in acquiring an accurate picture of a patient's typical sleep patterns. For

example, spending a night in a sleep laboratory typically causes a patient to experience a condition known as "first night syndrome," involving disrupted sleep during the first few nights in an unfamiliar location. In addition, sleeping while instrumented and observed may not result in a realistic perspective of the patient's normal sleep patterns.

Further, polysomnographic sleep studies provide an incomplete data set for the analysis of some sleep disorders, including, for example, sleep disordered breathing. A number of physiological conditions associated with sleep disordered breathing are detectable during periods of wakefulness, e.g., decreased heart rate variability, elevated sympathetic nerve activity, norepinephrine concentration, and increased blood pressure variability. Collection of data during periods of sleep and/or during periods of wakefulness may provide a more complete picture of the patient's sleep quality.

Various aspects of sleep quality, including number and severity of arousals, sleep disordered breathing episodes, nocturnal limb movements, and cardiac, respiratory, muscle, and nervous system functioning may provide important information for diagnosis and/or therapy delivery. An initial step to sleep quality evaluation is an accurate and reliable method for discriminating between periods of sleep and periods of wakefulness. Further, acquiring data regarding the patient's sleep states or stages, including sleep onset, termination, REM, and NREM sleep states may be used in connection sleep quality assessment. For example, the most restful sleep occurs during stages 3 and 4 NREM sleep. One indicator of sleep quality is the percentage of time a patient spends in these sleep stages. Knowledge of the patient's sleep patterns may be used to diagnose sleep disorders and/or adjust patient therapy, including, e.g., cardiac or respiratory therapy. Trending disordered breathing episodes, arousal episodes, and other sleep quality aspects may be helpful in determining and maintaining appropriate therapies for patients suffering from disorders ranging from snoring to chronic heart failure.

The present invention involves methods and systems for acquiring sleep quality data using one or more implantable components. As illustrated in FIG. 1, methods of the invention involve detecting conditions associated with the sleep quality of the patient 110, including physiological and non-physiological conditions. Data related to the patient's sleep quality is collected based on the detected conditions 120. Detection of patient conditions related to sleep quality may occur during periods of wakefulness and/or during periods of sleep. Either detecting the conditions associated with sleep quality, or collecting the sleep quality data, or both, is performed using a device having a component that is at least in part implantable.

A representative set of the conditions associated with sleep quality is listed in Table 1. Patient conditions used to evaluate sleep quality may include, for example, both physiological and non-physiological (i.e., contextual) conditions. Physiological conditions associated with sleep quality may be further organized, for example, into conditions of the cardiovascular, respiratory, muscle, and nervous systems, and conditions relating to the patient's blood chemistry.

Contextual conditions may be further subdivided into environmental conditions, body-related conditions and historical/background conditions. Environmental conditions may be broadly defined to include the environmental surroundings affecting the patient, such as ambient light, temperature, humidity, air pollution, noise, and barometric pressure. Body-related conditions may include, for example, patient location, posture, and altitude. Contextual conditions relevant to sleep quality may also include historical or background conditions. For example, a patient's medical/psychological history, gen-

der, age, weight, body mass index, neck size, drug use, and emotional state may be detected and used in connection with sleep quality evaluation and sleep disorder diagnosis. Meth-

ods and systems for detecting contextual conditions are described in commonly owned U.S. Pat. No. 7,400,928, which is incorporated herein by reference.

TABLE 1

Condition Type		Condition	Sensor type or Detection method
Physiological	Cardiovascular System	Heart rate	EGM, ECG
		Heart rate variability	
		QT interval	
	Respiratory System	Ventricular filling pressure	Intracardiac pressure sensor
		Blood pressure	Blood pressure sensor
		Snoring	Accelerometer
			Microphone
		Respiration pattern (Tidal volume Minute ventilation Respiratory rate)	Transthoracic impedance sensor (AC)
		Patency of upper airway	Intrathoracic impedance sensor
		Pulmonary congestion	Transthoracic impedance sensor (DC)
	Nervous System	Sympathetic nerve activity	Muscle sympathetic nerve Activity sensor
			EEG
	Blood Chemistry	Brain activity	Blood analysis
		CO ₂ saturation	
		O ₂ saturation	
		Blood alcohol content	
		Adrenalin	
		Brain Natriuretic Peptide (BNP)	
		C-Reactive Protein	
	Muscle System	Drug/Medication/Tobacco use	EMG
		Muscle atonia	
		Eye movement	
		Patient activity	
		Limb movements	
		Jaw movements	
Non-physiological	Environmental	Ambient temperature	Thermometer
		Humidity	Hygrometer
		Pollution	Air quality website
		Time	Clock
		Barometric pressure	Barometer
		Ambient noise	Microphone
		Ambient light	Photodetector
	Body-related	Posture	Posture sensor
		Altitude	Altimeter
		Location	GPS, proximity sensor
		Proximity to bed	Proximity to bed sensor
	Historical/Background	Historical sleep time	Patient input, previously detected sleep onset times
		Medical history	Patient input device
		Age	
		Recent exercise	
		Weight	
		Gender	
		Body mass index	
		Neck size	
		Emotional state	
		Psychological history	
		Daytime sleepiness	
		Patient perception of sleep quality	
		Drug, alcohol, nicotine use	

Each of the conditions listed in Table 1 may serve a variety of purposes in evaluating sleep quality. For example, a subset of the conditions may be used to detect whether the patient is asleep and to track the various stages of sleep and arousal incidents. Another subset of the conditions may be used to detect disordered breathing episodes. Yet another subset may be used to detect abnormal limb movements. In one implementation, some or all of the listed conditions may be collected over a relatively long period of time and used to analyze long term sleep quality trends. Trending may be used in connection with an overall assessment of sleep quality and

diagnosis and treatment of sleep-disordered breathing, movement disorders, and/or other sleep disorders.

In one implementation, sleep quality analysis may be used within the structure of an advanced patient management system. In this implementation, an advanced patient management system having sleep quality analysis capability allows a physician to remotely and automatically monitor cardiac and respiratory functions, as well as other patient conditions, including information related to sleep quality. In one example, an implantable cardiac rhythm management system, such as a cardiac monitor, pacemaker, defibrillator, or

resynchronization device, may be equipped with various telecommunications and information technologies to enable real-time data collection, diagnosis, and treatment of the patient. Systems and methods involving advanced patient management techniques are described in U.S. Pat. Nos. 6,336,903,

6,312,378, 6,270,457, and 6,398,728 which are incorporated herein by reference in their respective entireties.

Table 2 provides examples of how some physiological and non-physiological conditions may be used in connection with sleep quality assessment.

TABLE 2

Condition Type	Condition	Examples of how condition is used in sleep quality assessment
Physiological	Heart rate	Decrease in heart rate may indicate disordered breathing episode. Decrease in heart rate may indicate the patient is asleep.
	Heart rate variability	May be used to determine sleep state. Changes in heart rate variability, detected during periods of sleep or wakefulness, may indicate that the patient suffers from sleep disordered breathing.
	QT interval	May be used to detect sleep apnea.
	Ventricular filling pressure	May be used to identify/predict pulmonary congestion associated with respiratory disturbance.
	Blood pressure	Variation in blood pressure is associated with apnea.
	Snoring	Associated with a higher incidence of obstructive sleep apnea and may be used to detect disordered breathing.
	Respiration pattern	May be used to detect disordered breathing episodes. May be used to determine the type of disordered breathing.
	Patency of upper airway	May be used to detect sleep. Related to obstructive sleep apnea and may be used to detect episodes of obstructive sleep apnea.
	Pulmonary congestion	Associated with respiratory disturbances.
	Sympathetic nerve activity (SNA)	Apnea termination is associated with a spike in SNA. SNA activity may be elevated during periods of wakefulness if the patient experiences sleep disordered breathing.
	Electroencephalogram (EEG)	May be used to determine sleep stages, including REM and NREM sleep stages
	CO ₂ saturation	Low CO ₂ levels may indicate initiation of central apnea.
	O ₂ saturation	O ₂ desaturation occurs during severe apnea/hypopnea episodes.
	Blood alcohol content	Alcohol tends to increase the incidence of snoring & obstructive apnea.
	Adrenalin	End of apnea associated with a spike in blood adrenaline.
	Brain Natriuretic Peptide (BNP)	A marker of heart failure status, which is associated with Cheyne-Stokes Respiration.
	C-Reactive Protein	A measure of inflammation that may be related to apnea.
	Drug/Medication/Tobacco use	These substances may affect incidence of both central & obstructive apnea.
	Muscle atonia	Muscle atonia may be used in connection with detection of REM and non-REM sleep.
	Eye movement	Eye movement may be used in connection with detection of REM and non-REM sleep.
	Activity	May be used to detect sleep and patient well being.
	Limb movements	May be used to detect abnormal limb movements during sleep.
Non-physiological	Ambient Temperature	Ambient temperature may predispose the patient to episodes of disordered breathing during sleep.
	Humidity	Humidity may predispose the patient to episodes of disordered breathing during sleep.
	Pollution	Pollution may predispose the patient to episodes of disordered breathing during sleep.
	Posture	Posture may be used to determine if the patient is asleep. Posture may predispose the patient to disordered breathing.
	Time	Used to establish historical sleep time.
	Ambient noise level	Noise level may affect sleep quality.
	Location	Patient location may be used to determine if the patient is in bed as a part of sleep detection.
	Altitude	Altitude may predispose the patient to episodes of disordered breathing and may affect sleep quality.
	Barometric Pressure	Barometric pressure may predispose the patient to episodes of disordered breathing.
	Proximity to bed	May be used to determine if patient is in bed.
	Historical sleep time	May be used in connection with sleep detection.
	Medical history	History of medical disorders, e.g., CHF, that are associated with disordered breathing such as Cheyne-Stokes respiration.

TABLE 2-continued

Condition Type	Condition	Examples of how condition is used in sleep quality assessment
	Age	Age is associated with increased risk of disordered breathing, RLS and other sleep disruptive disorders.
	Weight	Associated with sleep disordered breathing, e.g., obstructive sleep apnea.
	Gender	
	Obesity	
	Neck size	
	Patient reported drug, alcohol, nicotine use	Patient drug, alcohol and nicotine use may affect sleep quality.
	Psychological history	Psychological factors, e.g., clinical depression may be associated with insomnia.
	Emotional state	Emotional state, e.g., stress, anxiety, euphoria, may affect sleep quality.
	Daytime sleepiness	May be used to evaluate sleep quality.
	Patient perceptions of sleep quality	

FIG. 2 illustrates a block diagram of a sleep quality data system **200** configured in accordance with embodiments of the invention. In this implementation, the sleep quality data system **200** may use signals acquired from a variety of sources to collect data relevant to sleep quality. The collected data may be stored in the memory **280** of a data collection unit **250** and/or transmitted to a sleep quality analysis unit **290** for further processing. It is contemplated that at least one, some, or all components of the system **200** are implanted in the patient.

The sleep quality data system **200** may use patient-internal sensors **210** implanted within the body of the patient to detect physiological conditions relevant to sleep quality. The conditions detected using patient-internal sensors **210** may include, for example, heart rate, respiratory pattern, and patient activity.

The system **200** may also use patient-external sensors **220** to detect physiological or non-physiological patient conditions. In one example configuration, whether the patient is snoring may be useful in evaluating sleep quality. Snoring data may be detected using an external microphone and transferred to the sleep quality data collection unit **250**. In another configuration, ambient temperature and humidity may be factors related to the patient's sleep quality. The ambient temperature and humidity of the patient's room may be sensed using sensors located near patient. Signals from the temperature and humidity sensors may be transmitted to the data collection unit **250**. Limb and/or jaw movements may be sensed using patient-external accelerometers and/or other sensors placed in appropriate locations on or near the patient and transmitted to the data collection unit **250**.

Information relevant to sleep quality may also be reported **240** by the patient. According to embodiments of the invention, the patient's self-described conditions, including medication use, tobacco use, perceptions of sleep quality, and/or psychological or emotional state, for example, may be relevant to sleep quality assessment. The patient may enter information about these conditions through an appropriate interface device, such as a medical device programmer, coupled to the sleep quality data collection unit **250**.

Some information related to sleep quality may be accessible through information systems **230**, including network-based systems. For example, information about the patient's present cardiac, respiratory, or other therapy may be downloaded from an external device via a wireless or wired network. In another example, information about conditions affecting the patient, such as local air quality data, may be accessed through an internet-connected website.

The patient-internal sensors **210**, patient-external sensors **220**, patient-reported input devices **240**, and information systems **230**, may be coupled to the data collection unit **250** in a variety of ways. In one example, one or more of the sensors **210**, **220**, patient-reported input devices **240**, and information systems **230** have wireless communication capabilities, such as a wireless Bluetooth communications link, or other proprietary communications protocol. In this implementation, the devices having wireless communication capabilities may remotely transmit signals to the data collection unit **250**. In this application, the data collection unit **250** may be configured as an implantable or patient-external device. In other implementations, one or more of the patient-internal sensors **210**, patient-external sensors **220**, patient-reported input devices **240**, and information systems **230** may be coupled to the data collection unit **250** through leads or other wired connections.

The implantable or patient-external data collection unit **250** includes detection circuitry **260** for processing signals from the sensors **210**, **220**, patient-reported input devices **240**, and information systems **230**. The detection circuitry **260** may include, for example, amplifiers, filters, A/D converters, signal processors and/or sensor driver circuitry configured to provide sensor signals used in the evaluation of sleep quality. The data collection unit **250** may further include wireless communication circuitry **270** for receiving and transmitting signals to wirelessly connected components.

In one embodiment, the sleep quality data system **200** collects data from the sensors **210**, **220**, input devices **240**, and information systems **230**, and stores the collected data in memory **280** prior to further processing or transmission. In another embodiment, the sleep quality data system **200** may transmit the collected data to a separate device (not shown) for storage, analysis, or display.

In a further embodiment, the sleep quality data system **200** may evaluate or further process the collected sleep quality data. For this purpose, the sleep quality data system **200** may optionally include a sleep quality analysis unit **290**. In one configuration, the data collection unit **250** and the sleep quality analysis unit **290** are arranged in separate devices. In such a configuration, the data collection unit **250** transfers the collected sleep quality data to the sleep quality analysis unit **290** through a wireless or wired connection. In another configuration, the sleep quality analysis unit **290** and the data collection unit **250** are arranged within the same device which may be a patient-external device or a fully or partially implantable device.

The sleep quality analysis unit **290** may include one or more subsystems useful in sleep quality assessment. The subsystems may include, for example a sleep detector **292** used to detect sleep onset, sleep offset, and arousal, for example. The sleep detector may also detect sleep stages, including the various stages of NREM and REM sleep. The sleep quality analysis unit **290** may include circuitry to detect various sleep-related disorders. For example, the sleep quality analysis unit **290** may include circuitry **294** for detecting disordered breathing and circuitry **295** for detecting abnormal nocturnal movements. Further, the sleep quality analysis unit **290** may include a processor for evaluating sleep quality **296**, for example, by calculating one or more metrics quantifying the patient's sleep quality.

FIG. 3 illustrates a sleep quality data system **305** incorporated within a cardiac rhythm management system (CRM) **300**. The CRM **300** may include, for example, a cardiac therapy module **320** including a pacemaker **322** and an arrhythmia detector/therapy unit **324**. The cardiac therapy module **320** is coupled to a lead system having electrodes **331** implantable within the patient's body. The implanted electrodes **331** are arranged to receive signals from the heart **330** and deliver stimulation therapy to the heart **330**. Cardiac signals sensed using the implanted electrodes **331** are received by a cardiac signal detector **350** coupled to the cardiac therapy module **320**.

The cardiac therapy module **320** analyzes the cardiac signals to determine an appropriate therapy to treat arrhythmia conditions affecting the heart **330**. The cardiac therapy may include pacing therapy controlled by the pacemaker **322** to treat cardiac rhythms that are too slow. The pacemaker **322** controls the delivery of periodic low energy pacing pulses to ensure that the periodic contractions of the heart are maintained at a hemodynamically sufficient rate.

The cardiac therapy may also include therapy to terminate tachyarrhythmia, wherein the heart rate is too fast. The arrhythmia detector/therapy unit **324** analyzes cardiac signals received from the cardiac signal detector **350** to recognize tachyarrhythmias including atrial or ventricular tachycardia or fibrillation. The arrhythmia detector/therapy unit **324** recognizes cardiac signals indicative of tachyarrhythmia and delivers high energy stimulations to the heart **330** through the implanted electrodes **331** to terminate the arrhythmias.

Various input devices, including implantable sensors **381**, patient-external sensors **382**, patient input devices **384**, and information systems **383** may be coupled to the CRM **300**. These devices **381**, **382**, **383**, **384** may be used to provide information about physiological and/or non-physiological conditions affecting the patient relevant to sleep quality, such as the representative set of patient conditions listed in Table 1 above.

The CRM **300** includes signal detection circuitry **360** for receiving and processing signals from the various sensors and input devices **381**, **382**, **384**, **383**. As previously discussed, the signal detection circuitry **360** may include signal processing circuitry configured to amplify, digitize, or otherwise process signals representing the sensed sleep quality conditions. In the illustrated implementation, the patient input devices **384**, patient-external sensors **382**, and information systems **383** are wirelessly coupled to the CRM **300**. The patient-internal sensors **381** may be coupled to the CRM **300** through leads, through a wireless link, or integrated within or on the housing of the CRM **300** (e.g., integral accelerometer).

In one embodiment, the sleep quality data system **305** incorporated within the CRM **300** collects data from cardiac electrodes **331**, patient-internal sensors **381**, patient-external sensors **382**, patient input devices **384**, and information sys-

tems **383** and stores the collected data in memory. The sleep quality data system may transmit the collected data to a separate device, such as the CRM programmer **315** or other device, periodically as required or desired.

In another embodiment, the CRM sleep quality data system **305** may perform further processing and/or evaluation of the sleep quality data. For this purpose, the CRM sleep quality data system **305** may include a sleep quality analysis unit **340** coupled to the signal detector **360**. The sleep quality analysis unit **340** may include one or more components for evaluating the patient's sleep quality. For example, the sleep quality analysis unit **340** may include sleep detection circuitry **341**, disordered breathing detection circuitry **342**, abnormal nocturnal movement detection circuitry **344**, and a sleep quality processor **343**, as previously described in connection with FIG. 2.

The cardiac therapy module **320**, signal detector **360**, and sleep quality analysis unit **340** operate in cooperation with a memory unit **370**. The memory unit **370** may store parameters associated with cardiac therapy in addition to diagnostic or other data related to cardiac functioning and sleep quality. A communication unit **310** located within the CRM **300** may be used to transmit programming information and collected data from the CRM **300** to an external device such as a programmer **315**.

Sleep quality assessment involves a reliable method for discriminating between a state of sleep and a state of wakefulness. One method of detecting sleep involves comparing one or more detected physiological conditions to thresholds indicative of sleep. When the detected conditions are consistent with thresholds indicating sleep, then sleep onset is declared. For example, decreased patient activity is a condition associated with sleep. When the patient's activity falls below a predetermined threshold, the system declares the onset of sleep. When the patient's activity rises above the threshold, the system declares the end of sleep. In a similar manner, a number of patient conditions, such as heart rate, respiration rate, brain wave activity, etc., may be compared individually or collectively compared to thresholds or other indices to detect sleep.

An enhanced method of sleep detection is described in commonly owned U.S. Pat. No. 7,189,204, which is incorporated herein by reference. The method involves adjusting a sleep threshold associated with a first patient condition using a second patient condition. The first patient condition is compared to the adjusted threshold to determine if the patient is asleep or awake.

FIG. 4 is a block diagram of a sleep detection unit **400** that may be used as part of a sleep quality data system according to embodiments of the invention. The sleep detection unit **400** uses a number of sensors **401**, **402**, **403** to sense sleep-related patient conditions. A representative set of sleep-related conditions include, for example, patient activity, patient location, posture, heart rate, QT interval, eye movement, respiration rate, transthoracic impedance, tidal volume, minute ventilation, brain activity, muscle tone, body temperature, time of day, and blood oxygen level.

According to embodiments of the invention, a first sleep-related condition detected using a sleep detection sensor **401** is compared to a sleep threshold for detecting the onset and termination of sleep. A second sleep-related condition, detected using a threshold adjustment sensor **402**, is used to adjust the sleep threshold. Although the example described herein involves one sleep detection sensor **401** and one threshold adjustment sensor **402**, any number of thresholds or other indices corresponding to a number of sleep detection sensors may be used. Furthermore, conditions detected using

any number of adjustment sensors may be used to adjust the thresholds or indices of a plurality of sleep detection signals. Additional sleep-related signals derived from one or more confirmation sensors **403** may optionally be used to confirm the onset or termination of the sleep condition.

Signals derived from the sensors **401**, **402**, **403** are received by a sensor driver/detection circuitry **410** that may include, for example, amplifiers, signal processing circuitry, and/or ND conversion circuitry for processing each sensor signal. The sensor driver/detection system **410** may further include sensor drive circuitry required to activate the sensors **401**, **402**, **403**.

The sensor signal detection system **410** is coupled to a sleep detector **430**. The sleep detector **430** is configured to compare the level of a first sleep-related condition detected using the sleep detection sensor **401** to a sleep threshold adjusted by a second sleep-related condition detected using the threshold adjustment sensor **402**. A determination of sleep onset or sleep termination may be made by the sleep detector **430** based on the comparison. The onset or termination of sleep may optionally be confirmed using patient conditions derived using a sleep confirmation sensor **403**.

FIG. 5 is a flow chart illustrating a method of detecting sleep used in a sleep quality data system configured according to principles of the invention. A sleep threshold associated with a first sleep-related patient condition is established **505**. The sleep threshold may be determined from clinical data of a sleep threshold acquired using a group of subjects, for example. The sleep threshold may also be determined using historical data taken from the particular patient for whom the sleep condition is to be detected.

First and second sleep-related conditions are detected **510**, **520**. The first and the second sleep-related conditions may be detected using sensors implanted in the patient, attached externally to the patient or located remote from the patient, for example, as previously described in connection with FIG. 3. The first and the second sleep-related conditions may include any condition associated with sleep and are not limited to the representative sleep-related conditions listed above.

The sleep threshold established for the first sleep-related condition is adjusted using the second sleep-related condition **530**. For example, if the second sleep-related condition indicates a high level of activity that is incompatible with a sleep state, the sleep threshold of the first sleep-related condition may be adjusted downward to require sensing a decreased level of the first sleep-related condition before a sleep condition is detected.

If the first sleep-related condition is consistent with sleep according to the adjusted sleep threshold **540**, sleep is detected **550**. If the first sleep-related condition is not consistent with sleep using the adjusted sleep threshold, the first and the second sleep-related conditions continue to be detected **510**, **520** and the threshold adjusted **530** until sleep is detected **550**.

The flow chart of FIG. 6 illustrates a method for detecting sleep using accelerometer and MV signals according to embodiments of the invention. In the method illustrated in FIG. 6, an accelerometer and a minute ventilation sensor are used to detect patient activity and patient respiration conditions, respectively. A preliminary sleep threshold is determined **610** with respect to the patient activity condition sensed by the accelerometer. The preliminary sleep threshold may be determined from clinical data derived from a group of subjects or from historical data taken from the patient over a period of time.

The activity condition of the patient is monitored **620** using an accelerometer that may be incorporated in an implantable

cardiac rhythm management system as described in connection with FIG. 3. Alternatively, the accelerometer may be attached externally to the patient. The patient's MV condition is monitored **625**, for example, using a transthoracic impedance sensor. A transthoracic impedance sensor may be implemented as a component of an implantable CRM device.

In this embodiment, the patient's activity represents the sleep detection condition and is compared to the sleep threshold. The patient's MV is used as the threshold adjustment condition to adjust the sleep threshold. In addition, in this example, the patient's heart rate is monitored **630** and used to provide a sleep confirmation condition.

The sleep threshold adjustment is accomplished using the patient's MV condition to adjust the activity sleep threshold. If the patient's MV condition is low relative to an expected MV level associated with sleep, the activity sleep threshold is increased. Similarly, if the patient's MV level is high relative to an expected MV level associated with sleep, the activity sleep threshold is decreased. Thus, when the patient's MV level is high, less activity is required to make the determination that the patient is sleeping. Conversely when the patient's MV level is relatively low, a higher activity level may result in detection of sleep. The use of two sleep-related conditions to determine the patient's sleep state enhances the accuracy of sleep detection over previous methods.

Various signal processing techniques may be employed to process the raw sensor signals. For example, a moving average of a plurality of samples of the sensor signals may be calculated. Furthermore, the sensor signals may be amplified, filtered, digitized or otherwise processed.

If the MV level is high **635** relative to an expected MV level associated with sleep, the activity sleep threshold is decreased **640**. If the MV level is low **635** relative to an expected MV level associated with sleep, the activity sleep threshold is increased **645**.

If the patient's activity level is less than or equal to the adjusted sleep threshold **650**, and if the patient is currently in a sleep state **665**, then the patient's heart rate is checked **680** to confirm that the patient is asleep. If the patient's heart rate is compatible with sleep **680**, then sleep onset is determined **690**. If the patient's heart rate is incompatible with sleep, then the patient's sleep-related conditions continue to be monitored.

If the patient's activity level is less than or equal to the adjusted sleep threshold **650** and if the patient is currently in a sleep state **665**, then a continuing sleep state is determined and the patient's sleep-related conditions continue to be monitored for sleep termination to occur.

If the patient's activity level is greater than the adjusted sleep threshold **650** and the patient is not currently in a sleep state **660**, then the patient's sleep-related conditions continue to be monitored until sleep onset is detected **690**. If the activity level is greater than the adjusted sleep threshold **650** and the patient is currently in a sleep state **660**, then sleep termination is detected **670**.

The graphs of FIGS. 7-10 illustrate the adjustment of the activity sleep threshold. The relationship between patient activity and the accelerometer and MV signals is trended over a period of time to determine relative signal levels associated with sleep. The graph of FIG. 7 illustrates the patient's activity as indicated by an accelerometer. The patient's heart rate for the same period is shown in the graph of FIG. 8. The accelerometer signal indicates a period of sleep associated with a relatively low level of activity beginning slightly before 23:00 and continuing through 6:00. The patient's heart rate appropriately tracks the activity level indicated by the accelerometer indicating a similar period of decreased heart

rate corresponding to sleep. The signal level of the accelerometer during known periods of sleep may be used to establish a threshold for sleep detection.

FIG. 9 is a graph of the patient's minute ventilation signal over time. Historical data of minute ventilation is graphed over an 8 month period. The minute ventilation data may be used to determine the minute ventilation signal level associated with sleep. In this example, a composite minute ventilation graph using the historical data presents a roughly sinusoidal shape with the relatively low minute ventilation levels occurring during the period approximately from hours 21:00 through 8:00. The decreased minute ventilation level is associated with periods of sleep. The minute ventilation level associated with sleep is used to implement sleep threshold adjustment.

FIG. 10 illustrates adjustment of the activity sleep threshold using the MV data. The initial sleep threshold 1010 is established using the baseline activity data acquired as discussed above. If the patient's MV level is low relative to an expected MV level associated with sleep, the activity sleep threshold is increased 1020. If the patient's MV level is high relative to an expected MV level associated with sleep, the activity sleep threshold is decreased 1030. When the patient's MV level is high, less activity detected by the accelerometer is required to make the determination that the patient is sleeping. However, if the patient's MV level is relatively low, a higher activity level may result in detection of sleep. The use of two sleep-related signals to establish and adjust a sleep threshold enhances the accuracy of sleep detection over previous methods.

Additional sleep-related conditions may be sensed and used to improve the sleep detection method described above. For example, a posture sensor may be used to detect the posture of the patient and used to confirm sleep. If the posture sensor signal indicates an upright posture, then the posture sensor signal may be used to override a determination of sleep using the sleep detection and threshold adjustment conditions. Other conditions may also be used in connection with sleep determination or confirmation, including the representative set of sleep-related conditions indicated above. In another example, a proximity to bed sensor may be used alone or in combination with a posture sensor to detect that the patient is in bed and is lying down.

A sleep detection system may detect sleep onset, termination, arousals as well as the sleep stages, including REM and non-REM sleep. REM sleep may be discriminated from NREM sleep, for example, by examining one or more signals indicative of REM, e.g., muscle atonia, rapid eye movements, or EEG signals. Methods and systems for detecting REM sleep that are particularly useful for patients with implantable devices are discussed in commonly owned U.S. Pat. No. 8,192,376 and incorporated herein by reference. Various conditions indicative of sleep state may be detected using sensors, e.g., electroencephalogram (EEG), electrooculogram (EOG), or electromyogram (EMG) sensors, coupled through wired or wireless connections to the sleep detection circuitry. The sleep detection circuitry may analyze the various patient conditions sensed by the sensors to track the patient's sleep through various sleep states, including REM and NREM stages.

Returning to FIG. 3, the sleep quality data system 300 may also employ disordered breathing detection circuitry 342 to detect episodes of disordered breathing. Disordered breathing may be detected in numerous ways using one or more of the patient conditions listed in Table 1. Methods and systems for detecting disordered breathing are described in commonly owned U.S. Pat. No. 7,252,640, which is incorporated herein

by reference. According to this approach, disordered breathing may be detected by examining characteristics of the patient's respiration patterns to determine if the respiration patterns are consistent with disordered breathing.

FIG. 11 illustrates a normal respiration pattern as represented by a transthoracic impedance sensor signal. The transthoracic impedance increases during respiratory inspiration and decreases during respiratory expiration. During NREM sleep, a normal respiration pattern includes regular, rhythmic inspiration—expiration cycles without substantial interruptions.

In one embodiment, detection of disordered breathing, including, for example, sleep apnea and hypopnea, involves defining and examining a number of respiratory cycle intervals. FIG. 12 illustrates respiration intervals used for disordered breathing detection according to an embodiment of the invention. A respiration cycle is divided into an inspiration period corresponding to the patient inhaling, an expiration period, corresponding to the patient exhaling, and a non-breathing period occurring between inhaling and exhaling. Respiration intervals are established using inspiration 1210 and expiration 1220 thresholds. The inspiration threshold 1210 marks the beginning of an inspiration period 1230 and is determined by the transthoracic impedance signal rising above the inspiration threshold 1210. The inspiration period 1230 ends when the transthoracic impedance signal is maximum 1240. A maximum transthoracic impedance signal 1240 corresponds to both the end of the inspiration interval 1230 and the beginning of the expiration interval 1250. The expiration interval 1250 continues until the transthoracic impedance falls below an expiration threshold 1220. A non-breathing interval 1260 starts from the end of the expiration period 1250 and continues until the beginning of the next inspiration period 1270.

Detection of sleep apnea and severe sleep apnea according to embodiments of the invention is illustrated in FIG. 13. The patient's respiration signals are monitored and the respiration cycles are defined according to inspiration 1330, expiration 1350, and non-breathing 1360 intervals as described in connection with FIG. 12. A condition of sleep apnea is detected when a non-breathing period 1360 exceeds a first predetermined interval 1390, denoted the sleep apnea interval. A condition of severe sleep apnea is detected when the non-breathing period 1360 exceeds a second predetermined interval 1395, denoted the severe sleep apnea interval. For example, sleep apnea may be detected when the non-breathing interval exceeds about 10 seconds, and severe sleep apnea may be detected when the non-breathing interval exceeds about 20 seconds.

Hypopnea is a condition of disordered breathing characterized by abnormally shallow breathing. FIGS. 14A-B are graphs of respiration patterns derived from transthoracic impedance measurements. The graphs compare the tidal volume of a normal breathing cycle to the tidal volume of a hypopnea episode. FIG. 14A illustrates normal respiration tidal volume and rate. As shown in FIG. 14B, hypopnea involves a period of abnormally shallow respiration.

According to an embodiment of the invention, hypopnea is detected by comparing a patient's respiratory tidal volume to a hypopnea tidal volume threshold. The tidal volume for each respiration cycle may be derived from transthoracic impedance measurements. The hypopnea tidal volume threshold may be established using clinical results providing a representative tidal volume and duration for hypopnea events. In one configuration, hypopnea is detected when an average of the patient's respiratory tidal volume taken over a selected time interval falls below the hypopnea tidal volume threshold.

FIG. 15 is a flow chart illustrating a method of apnea and/or hypopnea detection according to embodiments of the invention. Various parameters are established 1501 before analyzing the patient's respiration for disordered breathing episodes, including, for example, inspiration and expiration thresholds, sleep apnea interval, severe sleep apnea interval, and hypopnea tidal volume threshold.

The patient's transthoracic impedance is detected 1505. If the transthoracic impedance exceeds 1510 the inspiration threshold, the beginning of an inspiration interval is detected 1515. If the transthoracic impedance remains below 1510 the inspiration threshold, then the impedance signal is checked 1505 periodically until inspiration 1515 occurs.

During the inspiration interval, the patient's transthoracic impedance is monitored until a maximum value of the transthoracic impedance is detected 1520. Detection of the maximum value signals an end of the inspiration period and a beginning of an expiration period 1535.

The expiration interval is characterized by decreasing transthoracic impedance. When the transthoracic impedance falls below 1540 the expiration threshold, a non-breathing interval is detected 1555.

If the transthoracic impedance does not exceed 1560 the inspiration threshold within a first predetermined interval 1565, denoted the sleep apnea interval, then a condition of sleep apnea is detected 1570. Severe sleep apnea is detected 1580 if the non-breathing period extends beyond a second predetermined interval 1575, denoted the severe sleep apnea interval.

When the transthoracic impedance exceeds 1560 the inspiration threshold, the tidal volume from the peak-to-peak transthoracic impedance is calculated 1585. The peak-to-peak transthoracic impedance provides a value proportional to the tidal volume of the respiration cycle. This value is compared 1590 to a hypopnea tidal volume threshold. If the peak-to-peak transthoracic impedance is consistent with 1590 the hypopnea tidal volume threshold for a predetermined time 1592, then a hypopnea cycle is detected 1595.

Additional sensors, such as motion sensors and/or posture sensors, may be used to confirm or verify the detection of a sleep apnea or hypopnea episode. The additional sensors may be employed to prevent false or missed detections of sleep apnea or hypopnea due to posture and/or motion related artifacts.

Another embodiment of the invention involves classifying respiration patterns as disordered breathing episodes based on the breath intervals and/or tidal volumes of one or more respiration cycles within the respiration patterns. According to this embodiment, the duration and tidal volumes associated with a respiration pattern are compared to duration and tidal volume thresholds. The respiration pattern may be determined to represent a disordered breathing episode based on the comparison.

According to this embodiment, a breath interval 1630 is established for each respiration cycle. A breath interval represents the interval of time between successive breaths, as illustrated in FIG. 16. A breath interval 1630 may be defined in a variety of ways, for example, as the interval of time between successive maxima 1610, 1620 of the impedance signal waveform.

Detection of disordered breathing, in accordance with methods of the invention, involves the establishment of a duration threshold and a tidal volume threshold. If a breath interval exceeds the duration threshold, an apnea event is detected. Detection of sleep apnea, in accordance with this embodiment, is illustrated in the graph of FIG. 16. Apnea

represents a period of non-breathing. A breath interval 1630 exceeding a duration threshold 1640 comprises an apnea episode.

Hypopnea may be detected using a duration threshold and a tidal volume threshold. A hypopnea event represents a period of shallow breathing greater than the duration threshold. Each respiration cycle in a hypopnea event is characterized by a tidal volume less than the tidal volume threshold. Further, the decreased tidal volume cycles persist longer than the duration threshold.

A hypopnea detection approach, in accordance with embodiments of the invention, is illustrated in FIG. 17. Shallow breathing is detected when the tidal volume of one or more breaths is below a tidal volume threshold 1710. If the shallow breathing continues for an interval greater than a duration threshold 1720, then the breathing pattern represented by the sequence of shallow respiration cycles, is classified as a hypopnea event.

FIGS. 18A and 18B provide charts illustrating classification of individual disordered breathing events and combination of periodic breathing events, respectively. As illustrated in FIG. 18A, individual disordered breathing events may be grouped into apnea, hypopnea, tachypnea and other disordered breathing events. Apnea events are characterized by an absence of breathing. Intervals of reduced respiration are classified as hypopnea events. Tachypnea events include intervals of rapid respiration characterized by an elevated respiration rate.

As illustrated in FIG. 18A, apnea and hypopnea events may be further subdivided as either central events, e.g., caused either by central nervous system dysfunction, or obstructive events, e.g., caused by upper airway obstruction. A tachypnea event may be further classified as a hyperpnea event, represented by rapid deep breathing (hyperventilation). A tachypnea event may alternatively be classified as rapid shallow breathing, typically of prolonged duration.

FIG. 18B illustrates classification of periodic disordered breathing events. Periodic breathing may be classified as obstructive, central or mixed. Obstructive periodic breathing is characterized by cyclic respiratory patterns with an obstructive apnea or hypopnea event in each cycle. In central periodic breathing, the cyclic respiratory patterns include a central apnea or hypopnea event in each cycle. Periodic breathing may also be of mixed origin. In this case, cyclic respiratory patterns have a mixture of obstructive and central apnea events in each cycle. Cheyne-Stokes respiration is a particular type of periodic breathing characterized by a gradual waxing and waning of tidal volume and having a central apnea and hyperpnea event in each cycle. Other manifestations of periodic breathing are also possible.

As illustrated in FIGS. 18C-G, a respiration pattern detected as a disordered breathing episode may include only an apnea respiration cycle 1810 (FIG. 18C), only hypopnea respiration cycles 1850 (FIG. 18F), or a mixture of hypopnea and apnea respiration cycles 1820 (FIG. 18D), 1830 (FIG. 18E), 1860 (FIG. 18G). A disordered breathing event 1820 may begin with an apnea respiration cycle and end with one or more hypopnea cycles. In another pattern, the disordered breathing event 1830 may begin with hypopnea cycles and end with an apnea cycle. In yet another pattern, a disordered breathing event 1860 may begin and end with hypopnea cycles with an apnea cycle in between the hypopnea cycles. Analysis of the characteristic respiration patterns associated with various types of disordered breathing may be used to detect, classify and evaluate disordered breathing episodes.

FIG. 19 is a flow chart of a method for detecting disordered breathing by classifying breathing patterns using breath inter-

vals in conjunction with tidal volume and duration thresholds as previously described above. In this example, a duration threshold and a tidal volume threshold are established for determining both apnea and hypopnea breath intervals. An apnea episode is detected if the breath interval exceeds the duration threshold. A hypopnea episode is detected if the tidal volume of successive breaths remains less than the tidal volume threshold for a period in excess of the duration threshold. Mixed apnea/hypopnea episodes may also occur. In these cases, the period of disordered breathing is characterized by shallow breaths or non-breathing intervals. During the mixed apnea/hypopnea episodes, the tidal volume of each breath remains less than the tidal volume threshold for a period exceeding the duration threshold.

The patient's respiration cycles are determined, for example, using transthoracic impedance signals. Each breath **1910** is characterized by a breath interval, i.e., the interval of time between two impedance signal maxima and a tidal volume (TV). If a breath interval exceeds **1915** the duration threshold, then the respiration pattern is consistent with an apnea event, and an apnea event trigger is turned on **1920**. If the tidal volume of the breath interval exceeds **1925** the tidal volume threshold, then the breathing pattern is characterized by two respiration cycles of normal volume separated by a non-breathing interval. This pattern represents a purely apneic disordered breathing event, and apnea is detected **1930**. Because the final breath of the breath interval was normal, the apnea event trigger is turned off **1932**, signaling the end of the disordered breathing episode. However, if the tidal volume of the breath interval does not exceed **1925** the tidal volume threshold, the disordered breathing period is continuing and the next breath is checked **1910**.

If the breath interval does not exceed **1915** the duration threshold, then the tidal volume of the breath is checked **1935**. If the tidal volume does not exceed **1935** the tidal volume threshold, the breathing pattern is consistent with a hypopnea cycle and a hypopnea event trigger is set on **1940**. If the tidal volume exceeds the tidal volume threshold, then the breath is normal.

If a period of disordered breathing is in progress, detection of a normal breath signals the end of the disordered breathing. If disordered breathing was previously detected **1945**, and if the disordered breathing event duration has not exceeded **1950** the duration threshold, and the current breath is normal, then no disordered breathing event is detected **1955**. If disordered breathing was previously detected **1945**, and if the disordered breathing event duration has extended for a period of time exceeding **1950** the duration threshold, and the current breath is normal, then the disordered breathing trigger is turned off **1960**. In this situation, the duration of the disordered breathing episode was of sufficient duration to be classified as a disordered breathing episode. If an apnea event was previously triggered **1965**, then an apnea event is declared **1970**. If a hypopnea was previously triggered **1965**, then a hypopnea event is declared **1975**.

As previously discussed in connection with FIG. 3, a sleep quality analysis unit **340** may incorporate an abnormal nocturnal movement detector **344** to evaluate the movements of a patient during the night to detect nocturnal movement disorders such as RLS, PLMD, and/or bruxism. The patient may be instrumented with accelerometers located on the limbs or jaw, for example, to sense patient movement. Excessive movement, or movements having a characteristic pattern, e.g., periodic limb or jaw movements, may be classified as abnormal nocturnal movements. For example, bruxism is a sleep disorder wherein the patient grinds his teeth during sleep. An accelerometer attached to the patient's jaw may be used to

sense movement of the jaw. Signals from the jaw accelerometer may be transferred to the abnormal movement detector for evaluation to determine if the movements are excessive or unusually periodic, indicating bruxism. In a similar application, accelerometers attached to the patient's limbs may generate signals used by the abnormal movement detector **344** to detect and classify disorders such as RLS and PLMD.

FIG. 20 illustrates a patient **2010** instrumented with a sleep quality data system **2000** according to embodiments of the invention. The sleep quality data system collects sleep quality data from the patient using a number of sensors **2011-2019**. In one configuration, the collected data is analyzed by a sleep quality analysis unit that may be an integrated component of an implantable sleep quality data collection and analysis unit **2020**. In another configuration, the collected data may be downloaded to a patient-external device **2030** for storage, analysis, or display.

In the implementation illustrated in FIG. 20, the sleep quality data system **2000** includes an implantable sleep quality data collection and analysis unit **2020** coupled to a number of sensors **2011-2019**. In this example, the sensors include an EGM sensor **2016** for detecting heart rate and heart rate variability conditions. A transthoracic impedance sensor **2017** is used to detect the respiration conditions of the patient, including, for example, minute ventilation, respiration rate, and tidal volume. An activity detector, e.g., accelerometer, **2015** may be used to detect patient activity conditions. The sleep quality data system detects patient conditions including the patient's posture and location using a posture sensor **2014** and a proximity to bed sensor **2013**, respectively. The sleep quality data system senses the patient's brain activity using EEG sensors **2011** and the patient's eye movements using EOG sensors **2012**. Jaw and limb movements are sensed using accelerometers attached to the patient's jaw **2018** and legs **2019**.

In this application, the sleep quality data collection and analysis unit **2020** is configured to track the patient's heart rate, heart rate variability, minute ventilation, respiration rate, tidal volume, posture, proximity to bed, brain activity, eye movements, jaw movements and leg movements. At periodic intervals, the system samples signals from the sensors and stores data regarding the detected conditions in memory circuitry within the sleep quality data collection and analysis unit **2020**. The sleep quality data collection and analysis unit **2020** may additionally access an external input unit **2030** to detect patient reported conditions, for example, recent tobacco and medication use by the patient. Further, the sleep quality data collection and analysis unit **2020** may monitor conditions using one or more external sensors. In the illustrated example, a thermometer **2035** is coupled through the external programmer **2030** and a pollution website **2040** is accessible to the sleep quality data collection and analysis unit **2020** through the internet **2050**.

The sleep quality data collection and analysis unit **2020** may operate to acquire data during periods of both sleep and wakefulness. It may be beneficial, for example, to track changes in particular conditions measured during periods of wakefulness that are associated with sleep disordered breathing. For example, some patients who suffer from sleep apnea experience changes in heart rate variability, blood pressure variability, and/or sympathetic nerve activity during periods of wakefulness. Detection and analysis of the physiological changes attributable to sleep disorders and measurable during the time the patient is awake provides a more complete picture of sleep quality.

In another example, the patient's sleep quality may be evaluated by determining the patient's activity level while the

patient is awake. The activity level of the patient during the day may provide important information regarding the patient's sleep quality. For example, if the patient is very inactive during periods of wakefulness, this may indicate that the patient's sleep is of inadequate quality or duration. Such information may also be used in connection with assessing the efficacy of a particular sleep disorder therapy and/or adjusting the patient's sleep disorder therapy. Methods and systems for determining the patient's activity level and generally assessing the well-being of a patient are described in commonly owned U.S. Pat. No. 6,021,351 which is incorporated herein by reference.

The analysis unit 2020 may calculate one or more sleep quality metrics quantifying the patient's sleep quality. A representative set of the sleep quality metrics include, for example, sleep efficiency, sleep fragmentation, number of arousals per hour, denoted the arousal index (AI).

The analysis unit 2020 may also compute one or more metrics quantifying the patient's disordered breathing, such as the apnea hypopnea index (AHI) providing the number of apneas and hypopneas per hour, and the percent time in periodic breathing (% PB).

Further, metrics associated with sleep movement disorders may also be determined by the analysis unit 2020. Such metrics may include, for example, a general sleep movement disorder index (MDI) representing the number of abnormal movements arising from movement disorders such as restless leg syndrome, periodic limb movement disorder and bruxism per hour. In addition, specific indices may be calculated for each type of movement disorder, e.g., a bruxism index (BI) characterizing the number of jaw movements per hour, a RLS index (RLSI) characterizing the number of restless leg syndrome episodes per hour, and a PLM index (PLMI) characterizing the number of periodic limb movements experienced by the patient per hour.

In addition, percentage of sleep time during which the patient experiences movement disorders (% MD) may be calculated. Specific metrics relating to the percentage of time during which the patient experiences bruxism (% B), restless leg syndrome (% RLS), and periodic leg movement disorder (% PLMD) may also be determined.

Further, sleep summary metrics may be computed, either directly from the collected patient condition data, or by combining the above-listed sleep quality and sleep disorder metrics. In one embodiment, a composite sleep disordered respiration metric (SDRM) may be computed by combining the apnea hypopnea index AHI and the arousal index AI. The composite sleep disordered respiration metric (SDRM) may be computed as a linear combination of the AHI and AI as follows:

$$\text{SDRM} = c_1 \cdot \text{AHI} + c_2 \cdot \text{AI} \quad [1]$$

where c_1 and c_2 are constants chosen to balance the relative contributions of respiratory and arousal effects on sleep disturbance. The AHI may be monitored by performing disordered breathing detection based on transthoracic impedance measurements as previously described. The AI may be estimated, for example, by monitoring the patient activity, minute ventilation, and posture sensors for body motion indicating sleep termination or arousal. A more sensitive measure of arousal may be made using EEG signals. In this implementation, the constant c_2 may be adjusted to reflect the increased sensitivity to arousal.

In another embodiment, an undisturbed respiration sleep time (URST) or undisturbed respiration sleep efficiency (URSE) may be computed based on the amount of time the patient spends asleep in bed without respiratory disturbance.

The URST or URSE metrics may be determined using three parameters: total time in bed (TIB), total time asleep (TA), and combined sleep time duration in disturbed respiration (STDR). Time in bed may be determined by a combination of posture sensing and sensing the proximity of the patient to bed. The posture condition of the patient may be determined, for example, using an implantable multi-axis accelerometer sensor.

The patient's total time in bed (TIB) may be determined using a proximity to bed sensor. The proximity to bed sensor may use a receiver in the sleep quality data collection and analysis unit 2020 for receiving signals transmitted from a beacon 2070 located at the patient's bed 2060. If the proximity to bed receiver detects a signal of sufficient strength from the proximity to bed beacon 2070, then the receiver detects that the patient is in bed 2060.

Total time asleep (TA) may be determined using the sleep detection method described in more detail above. The total sleep time in disturbed respiration (STDR) may be determined, for example, based on detection of sleep and disordered breathing using the sleep and disordered breathing detection methods described above.

The patient's undisturbed respiration sleep time (URST) is calculated as:

$$\text{URST} = \text{TA} - \text{STDR} \quad [2]$$

where TA=total time asleep and STDR=sleep time in disturbed breathing. The undisturbed respiration sleep efficiency (USE) in percent is calculated

$$\text{URSE} = 100 \cdot \text{URST} / \text{TIB} \quad [3]$$

where URST=undisturbed respiration sleep time and TIB=total time in bed.

Similar metrics may be calculated for movement disorders generally, or for specific movement disorders, e.g., RLS, PLMD, or bruxism. For example, the composite RLS, PLMD, and bruxism metrics, RLSDM, PLMDM, and BM, respectively, may be calculated using equations similar in form to equation 1 above:

$$\text{RLSDM} = c_1 \cdot \text{RLSI} + c_2 \cdot \text{AI} \quad [4]$$

where RLSDM=number of restless leg movement syndrome episodes per hour, AI=number of arousals per hour, and c_1 and c_2 are constants chosen to balance the relative contributions of abnormal movement and arousal effects on sleep disturbance.

$$\text{PLMDM} = c_1 \cdot \text{PLMDI} + c_2 \cdot \text{AI} \quad [5]$$

where PLMDM=number of periodic leg movement syndrome episodes per hour, AI=number of arousals per hour, and c_1 and c_2 are constants chosen to balance the relative contributions of abnormal movement and arousal effects on sleep disturbance.

$$\text{BM} = c_1 \cdot \text{BMI} + c_2 \cdot \text{AI} \quad [6]$$

where BMI=number of bruxism movement episodes per hour, AI=number of arousals per hour, and c_1 and c_2 are constants chosen to balance the relative contributions of abnormal movement and arousal effects on sleep disturbance.

The patient's undisturbed movement sleep time (UMST) and undisturbed movement sleep efficiency (UMSE) may be calculated for each movement related disorder separately or in combination using equations similar in form to equations 2 and 3, above.

In addition, a composite sleep disorder index SDI quantifying the combined effect of both respiratory and movement disorders may be computed by combining the apnea hypopnea index (AHI), the movement disorder index (MDI), and the arousal index (AI).

A sleep disturbance index (SDI) may be computed as a linear combination of the AHI, and the combined disorder index DI_c . The combined disorder index may include both abnormal breathing and movement components. For example, the sleep disturbance index SDI is characterizable by the equation:

$$SDI = c_4 * DI_c + c_3 * AI, \quad [7]$$

where DI_c is a combined disorder index of the form:

$$DI_c = c_{41} * DI_1 + c_{42} * DI_2 \quad [7a]$$

In equation 7, c_4 and c_3 are constants chosen to balance the relative contributions of the combined disorder and arousal effects, respectively. The disorder index, DI_c , may be used to characterize the effects of one or more sleep disorders, including, e.g., disorders associated with disturbed respiration and/or abnormal movements. The combined disorder index may represent only one disorder index, or may be a linear combination of two or more sleep disorder indices, e.g., the apnea/hypopnea index (AHI) and the abnormal movement disorder index (MDI). The constants c_{41} and c_{42} may be used as weighting factors associated with particular disorder indices.

The patient's undisturbed sleep time (UST) may be calculated:

$$UST = TA - STSD \quad [8]$$

where TA=total time asleep and STSD=sleep time spent in sleep disorders.

The undisturbed sleep efficiency (USE) in percent may be calculated:

$$USE = 100 * UST / TIB \quad [9]$$

where UST=undisturbed sleep time and TIB=total time in bed.

Sleep quality metrics, such as those described above, or other metrics, may be acquired and analyzed using the sleep quality data collection and analysis unit 2020. Sleep quality metrics, in addition to raw or processed data based on physiological and non-physiological conditions may be determined periodically, e.g., daily, and stored or transmitted to another device. Such data can be presented to the patient's health care professional on a real-time basis, or as a long-term, e.g., month long or year long, trend of daily measurements.

The health care professional may access the data during clinic visits via programmer interrogation of the implanted device, through occasional or periodic trans-telephonic device interrogations, or through an automatic or "on-demand" basis in the context of an advanced patient management system. The health care professionals may use the sleep quality indicator trends alone or in conjunction with other device-gathered or clinical data to diagnose disorders and/or adjust the patient's device or medical therapy as needed to improve the patient's quality of sleep.

The present invention provides diagnostic, monitoring, and evaluation capabilities relating to sleep quality and may be particularly valuable in the context of an advanced patient management system. Undiagnosed sleep disorders can lead to increased morbidity and mortality, such as those arising from various respiratory and cardiovascular consequences. Routine monitoring of patient sleep quality may lead to improved diagnosis and treatment of these syndromes and their associated co-morbidities. The invention may provide less obtrusive sleep quality monitoring, particularly and is suited for patients having an implanted device. The present invention serves to improve diagnosis of sleep disorders by

reducing the inconveniences, unnatural sleep environment issues, and expenses associated with sleep clinic polysomnogram studies.

The following commonly owned U.S. Patents Applications, some of which have been identified above, are hereby incorporated by reference in their respective entireties: U.S. Pat. Nos. 7,189,204, 7,252,640, 7,396,333, 7,680,537, 7,720,541.

Various modifications and additions can be made to the preferred embodiments discussed hereinabove without departing from the scope of the present invention. Accordingly, the scope of the present invention should not be limited by the particular embodiments described above, but should be defined only by the claims set forth below and equivalents thereof.

What is claimed is:

1. An implantable sleep quality evaluation device for implantation into a patient, comprising:

a detector system including one or more patient-internal sensors for detecting and determining a first measure related to a heart rate of the patient, a second measure related to a respiration of the patient, and a third measure related to an activity of the patient;

a memory; and

a sleep quality processor coupled to the detector system and configured to:

determine a sleep condition of the patient based on the first measure related to the heart rate of the patient, the second measure related to the respiration of the patient, and the third measure related to the activity of the patient, in combination with one or more thresholds, wherein the sleep quality processor uses the second measure related to respiration to characterize a minute ventilation (MV) of the patient, and uses a measure related to minute ventilation (MV) of the patient in determining the sleep condition of the patient; and

store the sleep condition into the memory of the implantable sleep quality evaluation device.

2. The device of claim 1, wherein the sleep quality processor repeatedly determines a new sleep condition of the patient over time.

3. The device of claim 2, wherein the sleep quality processor calculates at least one composite sleep metric based, at least in part, on two or more of the sleep conditions that are determined over time.

4. The device of claim 3, wherein the sleep quality processor is configured to trend over time the composite sleep metric.

5. The device of claim 1, wherein at least one of the one or more thresholds is dependent upon at least one of the first, second and third measures.

6. A method for assessing sleep quality, comprising:

detecting a first measure related to a heart rate of the patient and a second measure related to a respiration of the patient, wherein the first measure related to a heart rate of the patient is detected using one or more implanted pacemaker leads and the second measure related to the respiration of the patient is detected using one or more implanted transthoracic impedance sensors;

using an implantable device to determine one or more metrics associated with sleep quality based at least in part on the detected first measure related to the heart rate of the patient and the second measure related to the respiration of the patient, in combination with one or

27

more thresholds, wherein at least one of the one or more thresholds is dependent upon at least one of the first and second measures; and

storing the one or more metrics into a memory of an implantable device.

7. The method of claim 6, wherein the second measure is used to characterize minute ventilation (MV) of the patient, and wherein the implantable device determines one or more metrics associated with sleep quality based at least in part on the minute ventilation (MV) of the patient.

8. The method of claim 6, wherein the second measure is used to characterize disordered breathing of the patient, and wherein the implantable device determines one or more metrics associated with sleep quality based at least in part on the disordered breathing of the patient.

9. The method of claim 6, further comprising repeating the detecting, using and storing steps over time.

10. The method of claim 6, further comprising detecting a third measure related to an activity of the patient, wherein the one or more metrics includes a composite sleep quality metric that is based at least in part on the detected first measure related to the heart rate of the patient, the second measure related to the respiration of the patient, and the detected third measure related to the activity of the patient.

11. The method of claim 10, further comprising detecting a fourth measure related to a posture of the patient, wherein the composite sleep quality metric is based at least in part on the detected first measure related to the heart rate of the patient, the second measure related to the respiration of the patient, the detected third measure related to the activity of the patient, and the fourth measure related to a posture of the patient.

12. The method of claim 10, wherein the third measure related to the activity of the patient is detected using an implanted accelerometer.

13. The method of claim 10, wherein determining the composite sleep quality metric comprises determining a sleep disturbance index.

14. The method of claim 10, wherein determining the composite sleep quality metric comprises determining an undisturbed sleep time metric.

15. The method of claim 10, wherein determining the composite sleep quality metric comprises determining an undisturbed sleep efficiency metric.

16. The method of claim 6, further comprising detecting a measure indicative of a movement disorder.

17. The method of claim 6, further comprising adjusting a cardiac or respiration therapy that is delivered to the patient via the implantable device based at least in part on one or more of the metrics.

28

18. An implantable sleep quality evaluation device for implantation into a patient, comprising:

a detector system including one or more patient-internal sensors for detecting and determining a first measure related to a heart rate of the patient, a second measure related to a respiration of the patient, and a third measure related to an activity of the patient;

a memory; and

a sleep quality processor coupled to the detector system and configured to:

determine a sleep condition of the patient based on the first measure related to the heart rate of the patient, the second measure related to the respiration of the patient, and the third measure related to the activity of the patient, in combination with one or more thresholds; and

store the sleep condition into the memory of the implantable sleep quality evaluation device;

wherein the detector system includes one or more patient-internal sensors for detecting and determining a fourth measure related to a patient's posture, and wherein the sleep quality processor is configured to determine the sleep condition of the patient based on the first measure related to the heart rate of the patient, the second measure related to the respiration of the patient, the third measure related to the activity of the patient, and the fourth measure related to the patient's posture, and in combination with one or more thresholds.

19. An implantable device for implantation into a patient, comprising:

one or more patient-internal sensors for detecting a first measure related to a heart rate of the patient and a second measure related to a respiration of the patient;

a memory; and

a processor in communication with the one or more patient-internal sensors and the memory, the processor configured to determine one or more metrics associated with sleep quality of the patient based on the first measure related to the heart rate of the patient and the second measure related to the respiration of the patient, the processor further configured to store the one or more metrics into the memory of the implantable device and to adjust a cardiac or respiration therapy that is delivered to the patient via the implantable device based at least in part on one or more of the metrics; and

a communications block for wirelessly transmitting the one or more metrics from the implantable device to a location remote from the patient.

* * * * *

专利名称(译)	睡眠质量数据收集和评估		
公开(公告)号	US8915741	公开(公告)日	2014-12-23
申请号	US13/215592	申请日	2011-08-23
[标]申请(专利权)人(译)	HATLESTAD约翰·D·倪泉 STAHMANN JEFFREYê 哈特利JESSE KENKNIGHT BRUCE ^ h DAUM DOUGLAS - [R LEE KENT		
申请(专利权)人(译)	HATLESTAD约翰D. NI QUAN STAHMANN JEFFREY E. 哈特利JESSE 朱庆生 KENKNIGHT BRUCE H. DAUM DOUGLAS R. LEE KENT		
当前申请(专利权)人(译)	心脏起搏器 , INC.		
[标]发明人	HATLESTAD JOHN D NI QUAN STAHMANN JEFFREY E HARTLEY JESSE ZHU QINGSHENG KENKNIGHT BRUCE H DAUM DOUGLAS R LEE KENT		
发明人	HATLESTAD, JOHN D. NI, QUAN STAHMANN, JEFFREY E. HARTLEY, JESSE ZHU, QINGSHENG KENKNIGHT, BRUCE H. DAUM, DOUGLAS R. LEE, KENT		
IPC分类号	A61B5/0476 A61B5/00 A61N1/362 A61B5/0488 A61B5/0205 A61B5/11 A61B5/08 G09B23/28 A61B5/0496		
CPC分类号	A61B5/0476 A61B5/0809 A61N1/3621 A61B5/4815 A61B5/0031 A61B5/0488 A61B5/4528 A61B5/0496 A61B5/0205 A61B5/11 A61B5/4818 G16H40/63 G16H50/20		
其他公开文献	US20110306850A1		
外部链接	USPTO		
摘要(译)			

睡眠质量评估方法涉及基于检测到的生理或非生理患者状况收集数据。使用可植入设备执行检测患者状况和收集数据中的至少一个。可以使用植入式或患者外部睡眠质量处理器收集的数据来评估睡眠质量。睡眠质量评估的一种方法涉及基于睡眠期间运动障碍或呼吸障碍的发生来计算一个或多个概要度量。

