



US007706866B2

(12) **United States Patent**  
**Zhang et al.**

(10) **Patent No.:** **US 7,706,866 B2**  
(45) **Date of Patent:** **Apr. 27, 2010**

(54) **AUTOMATIC ORIENTATION  
DETERMINATION FOR ECG  
MEASUREMENTS USING MULTIPLE  
ELECTRODES**

FOREIGN PATENT DOCUMENTS

EP 0468720 1/1992

(75) Inventors: **Yi Zhang**, St. Paul, MN (US); **Marina Brockway**, Shoreview, MN (US); **Carlos Alberto Ricci**, Apple Valley, MN (US); **Ron Heil**, Roseville, MN (US); **Douglas R. Daum**, Oakdale, MN (US); **Robert J. Sweeney**, Woodbury, MN (US); **Aaron McCabe**, Minneapolis, MN (US)

(Continued)

OTHER PUBLICATIONS

Renee Hartz et al., *New Approach to Defibrillator Insertion*, J. Thoracic Cardiovascular Surgery, vol. 97, pp. 920-922 (1989). Abstract only.

(73) Assignee: **Cardiac Pacemakers, Inc.**, St. Paul, MN (US)

(Continued)

(\* ) Notice: Subject to any disclaimer, the term of this patent is extended or adjusted under 35 U.S.C. 154(b) by 899 days.

Primary Examiner—Carl H Layno  
Assistant Examiner—Luther G Behringer

(74) Attorney, Agent, or Firm—Hollingsworth & Funk, LLC

(21) Appl. No.: **10/876,008**

(57) **ABSTRACT**

(22) Filed: **Jun. 24, 2004**

(65) **Prior Publication Data**  
US 2005/0288600 A1 Dec. 29, 2005

(51) **Int. Cl.**  
**A61B 5/04** (2006.01)

(52) **U.S. Cl.** ..... **600/512; 600/510; 600/511;**  
600/513

(58) **Field of Classification Search** ..... **600/509,**  
600/511, 512, 513  
See application file for complete search history.

(56) **References Cited**

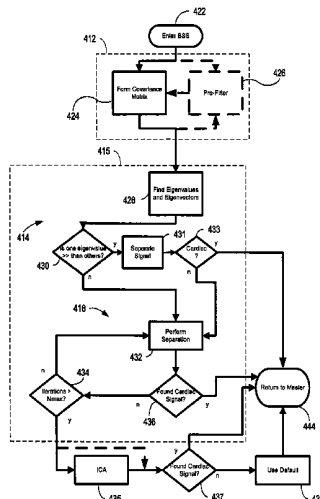
U.S. PATENT DOCUMENTS

3,920,005 A	11/1975	Gombrich et al.
4,550,221 A	10/1985	Mabusth
4,562,841 A	1/1986	Brockway et al.
4,686,332 A	8/1987	Greanias et al.
4,878,497 A	11/1989	Callaghan et al.
4,928,688 A	5/1990	Mower
4,953,551 A	9/1990	Mehra et al.

(Continued)

Cardiac monitoring and/or stimulation methods and systems provide monitoring, defibrillation and/or pacing therapies. A signal processor receives a plurality of composite signals associated with a plurality of sources, separates a signal using a source separation algorithm, and identifies a cardiac signal using a selected vector. The signal processor may iteratively separate signals from the plurality of composite signals until the cardiac signal is identified. The selected vector may be updated if desired or necessary. A method of signal separation involves detecting a plurality of composite signals at a plurality of locations, separating a signal using source separation, and selecting a vector that provides a cardiac signal. The separation may include a principal component analysis and/or an independent component analysis. Vectors may be selected and updated based on changes of position and/or orientation of implanted components and changes in patient parameters such as patient condition, cardiac signal-to-noise ratio, and disease progression.

**27 Claims, 12 Drawing Sheets**



U.S. PATENT DOCUMENTS					
			6,038,474 A	3/2000	Zhu et al.
			6,044,298 A	3/2000	Salo et al.
5,036,849 A	8/1991	Hauck et al.	6,049,730 A *	4/2000	Kristbjarnarson ..... 600/509
5,133,353 A	7/1992	Hauser	6,055,454 A	4/2000	Heemels
5,170,784 A	12/1992	Ramon et al.	6,101,416 A	8/2000	Sloman
5,179,945 A	1/1993	Van Hofwegen et al.	6,115,628 A	9/2000	Stadler et al.
5,203,348 A	4/1993	Dahl et al.	6,128,535 A	10/2000	Maarse
5,209,229 A	5/1993	Gilli	6,134,473 A	10/2000	Hemming et al.
5,222,493 A	6/1993	Sholder	6,141,581 A	10/2000	Olson et al.
5,230,337 A	7/1993	Dahl et al.	6,147,680 A	11/2000	Tareev
5,261,400 A	11/1993	Bardy	6,148,230 A	11/2000	KenKnight
5,271,411 A	12/1993	Ripley et al.	6,148,234 A	11/2000	Struble
5,284,136 A	2/1994	Hauck et al.	6,163,724 A	12/2000	Hemming et al.
5,292,338 A	3/1994	Bardy	6,169,921 B1	1/2001	KenKnight et al.
5,300,106 A	4/1994	Dahl et al.	6,175,766 B1	1/2001	Bornzin et al.
5,301,677 A	4/1994	Hsung	6,192,275 B1	2/2001	Zhu et al.
5,313,953 A	5/1994	Yomtov et al.	6,221,011 B1	4/2001	Bardy
5,314,430 A	5/1994	Bardy	6,226,551 B1	5/2001	Zhu et al.
5,314,459 A	5/1994	Swanson et al.	6,227,072 B1	5/2001	Ritchey et al.
5,318,597 A	6/1994	Hauck et al.	6,238,419 B1	5/2001	Lindgren
5,324,310 A	6/1994	Greeninger et al.	6,253,102 B1	6/2001	Hsu et al.
5,331,966 A	7/1994	Bennett et al.	6,259,947 B1	7/2001	Olson et al.
5,331,996 A	7/1994	Ziehm	6,266,554 B1	7/2001	Hsu et al.
5,333,095 A	7/1994	Stevenson et al.	6,270,457 B1	8/2001	Bardy
5,334,222 A	8/1994	Salo et al.	6,275,731 B1	8/2001	Zhu et al.
5,350,410 A	9/1994	Kleks et al.	6,280,380 B1	8/2001	Bardy
5,360,442 A	11/1994	Dahl et al.	6,280,462 B1	8/2001	Hauser et al.
5,366,496 A	11/1994	Dahl et al.	6,282,440 B1 *	8/2001	Brodnick et al. .... 600/512
5,372,606 A	12/1994	Lang et al.	6,285,907 B1	9/2001	Kramer et al.
5,376,106 A	12/1994	Stahmann et al.	6,301,503 B1	10/2001	Hsu et al.
5,388,578 A	2/1995	Yomtov et al.	6,312,378 B1	11/2001	Bardy
5,391,200 A	2/1995	KenKnight et al.	6,324,421 B1	11/2001	Stadler et al.
5,397,342 A	3/1995	Heil, Jr. et al.	6,324,427 B1	11/2001	Florio
5,411,031 A	5/1995	Yomtov	6,324,431 B1	11/2001	Zarinetchi et al.
5,411,525 A	5/1995	Swanson et al.	6,336,903 B1	1/2002	Bardy
5,411,533 A	5/1995	Dubreuil	6,345,201 B1	2/2002	Sloman et al.
5,411,539 A	5/1995	Neisz	6,351,673 B1	2/2002	Ding et al.
5,431,693 A	7/1995	Schroepfel	6,358,203 B2	3/2002	Bardy
5,439,482 A	8/1995	Adams et al.	6,360,127 B1	3/2002	Ding et al.
5,441,518 A	8/1995	Adams et al.	6,368,284 B1	4/2002	Bardy
5,443,485 A	8/1995	Housworth et al.	6,371,922 B1	4/2002	Baumann et al.
5,468,254 A	11/1995	Hahn et al.	6,393,316 B1	5/2002	Gillberg et al.
5,520,191 A *	5/1996	Karlsson et al. .... 600/515	6,398,728 B1	6/2002	Bardy
5,531,779 A	7/1996	Dahl et al.	6,409,675 B1	6/2002	Turcott
5,540,727 A	7/1996	Tockman et al.	6,411,848 B2	6/2002	Kramer et al.
5,545,186 A	8/1996	Olson et al.	6,415,174 B1	7/2002	Bebhani et al.
5,545,202 A	8/1996	Dahl et al.	6,418,340 B1	7/2002	Conley et al.
5,603,732 A	2/1997	Dahl et al.	6,424,234 B1	7/2002	Stevenson
5,620,466 A	4/1997	Haefner et al.	6,424,865 B1	7/2002	Ding
5,626,620 A	5/1997	Kieval et al.	6,434,428 B1	8/2002	Sloman et al.
5,634,938 A	6/1997	Swanson et al.	6,438,409 B1	8/2002	Malik et al.
5,641,326 A	6/1997	Adams	6,438,410 B2	8/2002	Hsu et al.
5,650,759 A	7/1997	Hittman et al.	6,440,066 B1	8/2002	Bardy
5,662,688 A	9/1997	Haefner et al.	6,449,503 B1	9/2002	Hsu
5,674,254 A	10/1997	van Krieken	6,456,481 B1	9/2002	Stevenson
5,683,431 A	11/1997	Wang	6,456,880 B1	9/2002	Park et al.
5,683,434 A	11/1997	Archer	6,456,881 B1	9/2002	Bornzin et al.
5,697,953 A	12/1997	Kroll et al.	6,459,929 B1	10/2002	Hopper et al.
5,704,365 A	1/1998	Albrecht et al.	6,466,820 B1	10/2002	Juran et al.
5,724,984 A	3/1998	Arnold et al.	6,477,422 B1	11/2002	Splett
5,779,645 A	7/1998	Olson et al.	6,480,733 B1	11/2002	Turcott
5,827,326 A	10/1998	Kroll et al.	6,487,443 B2	11/2002	Olson et al.
5,836,987 A	11/1998	Baumann et al.	6,491,639 B1	12/2002	Turcott
5,844,506 A	12/1998	Binstead	6,496,715 B1	12/2002	Lee et al.
5,855,593 A	1/1999	Olson et al.	6,505,067 B1	1/2003	Lee et al.
5,861,013 A	1/1999	Peck et al.	6,505,071 B1	1/2003	Zhu et al.
5,871,512 A	2/1999	Hemming et al.	6,512,940 B1	1/2003	Brabec et al.
5,873,898 A	2/1999	Hemming et al.	6,512,953 B2	1/2003	Florio et al.
5,895,414 A	4/1999	Sanchez-Zambrano	6,522,915 B1	2/2003	Ceballos et al.
5,916,243 A	6/1999	KenKnight et al.	6,542,775 B2	4/2003	Ding et al.
5,957,956 A	9/1999	Kroll et al.	6,564,106 B2	5/2003	Guck et al.
5,987,352 A	11/1999	Klein et al.	6,567,701 B2	5/2003	Vonk
6,026,320 A	2/2000	Carlson et al.	6,597,951 B2	7/2003	Kramer et al.

6,607,509	B2	8/2003	Bobroff et al.	7,107,093	B2	9/2006	Burnes
6,615,082	B1	9/2003	Mandell	7,113,823	B2	9/2006	Yonce et al.
6,615,083	B2	9/2003	Kupper	7,117,036	B2	10/2006	Florio
6,618,619	B1	9/2003	Florio et al.	7,120,495	B2	10/2006	Bardy et al.
6,622,046	B2	9/2003	Fralei et al.	7,123,960	B2	10/2006	Ding
6,625,490	B1	9/2003	McClure et al.	7,127,290	B2	10/2006	Girouard
6,631,290	B1	10/2003	Guck et al.	7,129,935	B2	10/2006	Mackey
6,654,637	B2	11/2003	Rouw et al.	7,139,610	B2	11/2006	Ferek-Petric
6,658,293	B2	12/2003	Vonk	7,144,586	B2	12/2006	Levy et al.
6,690,967	B2	2/2004	Meij	7,146,206	B2	12/2006	Glass et al.
6,701,170	B2 *	3/2004	Stetson ..... 600/323	7,146,212	B2	12/2006	Bardy et al.
6,708,058	B2	3/2004	Kim et al.	7,149,575	B2	12/2006	Ostroff et al.
6,725,085	B2	4/2004	Schwartzman et al.	7,177,689	B2	2/2007	Termes et al.
6,738,669	B1	5/2004	Sloman et al.	7,181,285	B2	2/2007	Lindh
6,754,523	B2	6/2004	Toole	7,184,835	B2	2/2007	Kramer et al.
6,754,528	B2	6/2004	Bardy et al.	7,191,003	B2	3/2007	Greenhut et al.
6,760,615	B2	7/2004	Ferek-Petric	7,191,004	B2	3/2007	Kim et al.
6,766,190	B2	7/2004	Ferek-Petric	7,194,302	B2	3/2007	Bardy et al.
6,768,923	B2	7/2004	Ding et al.	7,194,309	B2	3/2007	Ostroff et al.
6,768,924	B2	7/2004	Ding et al.	7,203,540	B2	4/2007	Ding et al.
6,778,860	B2	8/2004	Ostroff et al.	7,203,542	B2	4/2007	Obel
6,788,974	B2	9/2004	Bardy et al.	7,203,543	B2	4/2007	Meyer et al.
6,834,204	B2	12/2004	Ostroff et al.	7,212,862	B2	5/2007	Park et al.
6,856,835	B2	2/2005	Bardy et al.	7,225,021	B1	5/2007	Park et al.
6,865,417	B2	3/2005	Rissmann et al.	7,228,173	B2	6/2007	Cazares
6,866,044	B2	3/2005	Bardy et al.	7,236,819	B2	6/2007	Brockway
6,881,192	B1	4/2005	Park	7,242,978	B2	7/2007	Cao
6,884,218	B2	4/2005	Olson et al.	7,245,962	B2	7/2007	Ciaccio et al.
6,885,893	B1	4/2005	Lu	7,248,925	B2	7/2007	Bruhns et al.
6,888,538	B2	5/2005	Ely et al.	7,263,399	B2	8/2007	Carlson
6,889,079	B2	5/2005	Bocek et al.	7,277,754	B2	10/2007	McCabe et al.
6,895,274	B2	5/2005	Mower	7,286,876	B2	10/2007	Yonce et al.
6,904,315	B2	6/2005	Panken et al.	7,299,086	B2	11/2007	McCabe et al.
6,925,324	B2	8/2005	Shusterman	7,319,900	B2	1/2008	Kim et al.
6,925,330	B2	8/2005	Kleine	7,359,749	B2	4/2008	Quenet et al.
6,927,721	B2	8/2005	Ostroff	7,457,664	B2	11/2008	Zhang et al.
6,937,907	B2	8/2005	Bardy et al.	7,558,628	B2	7/2009	Yonce et al.
6,944,495	B2	9/2005	MacAdam et al.	2002/0035334	A1 *	3/2002	Meij et al. .... 600/509
6,944,579	B2	9/2005	Shimizu	2002/0035376	A1	3/2002	Bardy et al.
6,950,702	B2	9/2005	Sweeney	2002/0035377	A1	3/2002	Bardy et al.
6,950,705	B2	9/2005	Bardy et al.	2002/0035378	A1	3/2002	Bardy et al.
6,952,608	B2	10/2005	Ostroff	2002/0035379	A1	3/2002	Bardy et al.
6,952,610	B2	10/2005	Ostroff et al.	2002/0035380	A1	3/2002	Rissmann et al.
6,954,670	B2	10/2005	Ostroff	2002/0035381	A1	3/2002	Bardy et al.
6,959,214	B2	10/2005	Pape et al.	2002/0042629	A1	4/2002	Bardy et al.
6,961,613	B2	11/2005	Bjorling et al.	2002/0042630	A1	4/2002	Bardy et al.
6,961,619	B2	11/2005	Casey	2002/0042634	A1	4/2002	Bardy et al.
6,973,350	B1	12/2005	Levine et al.	2002/0049475	A1	4/2002	Bardy et al.
6,975,904	B1	12/2005	Sloman	2002/0049476	A1	4/2002	Bardy et al.
6,983,264	B2	1/2006	Shimizu	2002/0052636	A1	5/2002	Bardy et al.
6,988,003	B2	1/2006	Bardy et al.	2002/0068958	A1	6/2002	Bardy et al.
6,993,379	B1	1/2006	Kroll	2002/0072773	A1	6/2002	Bardy et al.
6,993,389	B2	1/2006	Ding	2002/0082658	A1	6/2002	Heinrich et al.
6,999,817	B2	2/2006	Park et al.	2002/0085741	A1	7/2002	Shimizu
7,006,869	B2	2/2006	Bradley	2002/0091414	A1	7/2002	Bardy et al.
7,027,861	B2	4/2006	Thompson	2002/0095184	A1	7/2002	Bardy et al.
7,027,868	B2	4/2006	Rueter et al.	2002/0095188	A1	7/2002	Mower
7,039,459	B2	5/2006	Bardy	2002/0103510	A1	8/2002	Bardy et al.
7,039,465	B2	5/2006	Bardy	2002/0107544	A1	8/2002	Ostroff et al.
7,043,299	B2	5/2006	Erlinger	2002/0107545	A1	8/2002	Rissmann et al.
7,050,851	B2	5/2006	Plombon et al.	2002/0107546	A1	8/2002	Ostroff et al.
7,065,400	B2	6/2006	Schechter	2002/0107547	A1	8/2002	Erlinger et al.
7,065,407	B2	6/2006	Bardy	2002/0107548	A1	8/2002	Bardy et al.
7,065,410	B2	6/2006	Bardy et al.	2002/0107549	A1	8/2002	Bardy et al.
7,069,080	B2	6/2006	Bardy	2002/0107559	A1	8/2002	Sanders et al.
7,076,296	B2	7/2006	Rissmann et al.	2002/0120299	A1	8/2002	Ostroff et al.
7,079,988	B2	7/2006	Albera	2002/0120311	A1	8/2002	Lindh et al.
7,085,599	B2	8/2006	Kim et al.	2002/0123769	A1	9/2002	Panken et al.
7,090,682	B2	8/2006	Sanders et al.	2002/0136328	A1	9/2002	Shimizu
7,092,754	B2	8/2006	Bardy et al.	2002/0138111	A1	9/2002	Greenhut et al.
7,096,064	B2	8/2006	Deno et al.	2002/0143263	A1 *	10/2002	Shusterman ..... 600/509
6,084,253	A1	9/2006	Johnson et al.	2002/0143264	A1	10/2002	Ding et al.
7,103,404	B2	9/2006	Staler et al.	2002/0151808	A1 *	10/2002	Schwartzman et al. .... 600/512

2002/0183798	A1	12/2002	Vonk	WO	WO 92/17240	10/1992
2003/0004546	A1	1/2003	Casey	WO	WO9217240	10/1992
2003/0004552	A1	1/2003	Plombon et al.	WO	WO 92/20402	11/1992
2003/0023175	A1	1/2003	Arzbaecher et al.	WO	WO9220402	11/1992
2003/0036778	A1	2/2003	Ostroff et al.	WO	WO0240097	5/2002
2003/0045904	A1	3/2003	Bardy et al.	WO	WO0247761	6/2002
2003/0050671	A1	3/2003	Bradley	WO	W02087696	11/2002
2003/0069609	A1	4/2003	Thompson	WO	WO 03/003905	1/2003
2003/0083587	A1*	5/2003	Ferek-Petric ..... 600/512	WO	WO03003905	1/2003
2003/0083710	A1	5/2003	Ternes et al.	WO	WO 03/028550	4/2003
2003/0083711	A1	5/2003	Yonce et al.	WO	WO03028550	4/2003
2003/0088278	A1	5/2003	Bardy et al.	WO	WO2004026398	4/2004
2003/0088279	A1	5/2003	Rissmann et al.	WO	WO2005058412	6/2005
2003/0088280	A1	5/2003	Ostroff	WO	WO2005089865	9/2005
2003/0088281	A1	5/2003	Ostroff et al.	WO	WO2006065707	6/2006
2003/0088282	A1	5/2003	Ostroff	WO	WO2008005270	1/2008
2003/0088283	A1	5/2003	Ostroff			
2003/0088286	A1	5/2003	Ostroff et al.			
2003/0097153	A1	5/2003	Bardy et al.			
2003/0204146	A1	10/2003	Carlson			
2003/0212436	A1	11/2003	Brown			
2004/0111021	A1	6/2004	Olson			
2004/0127950	A1	7/2004	Kim et al.			
2004/0158293	A1	8/2004	Yonce et al.			
2004/0162495	A1*	8/2004	Quenet et al. .... 600/509			
2004/0171959	A1	9/2004	Staler et al.			
2004/0172065	A1	9/2004	Sih et al.			
2004/0215240	A1	10/2004	Lovett et al.			
2004/0215277	A1	10/2004	Oosterhoff et al.			
2004/0220635	A1	11/2004	Burnes			
2004/0230128	A1*	11/2004	Brockway et al. .... 600/510			
2004/0239650	A1	12/2004	Mackey			
2004/0243012	A1	12/2004	Ciaccio et al.			
2004/0243014	A1	12/2004	Lee et al.			
2004/0260351	A1	12/2004	Holmstrom et al.			
2004/0260522	A1	12/2004	Albera			
2005/0004612	A1	1/2005	Scholten et al.			
2005/0010120	A1*	1/2005	Jung et al. .... 600/509			
2005/0038478	A1	2/2005	Klepfer et al.			
2005/0043895	A1	2/2005	Schechter			
2005/0065587	A1	3/2005	Gruzwa			
2005/0107839	A1	5/2005	Snaders			
2005/0131477	A1	6/2005	Meyer et al.			
2005/0131478	A1	6/2005	Kim et al.			
2005/0131480	A1	6/2005	Kramer et al.			
2005/0137485	A1	6/2005	Cao			
2005/0137632	A1	6/2005	Ding et al.			
2005/0149134	A1	7/2005	McCabe et al.			
2005/0197674	A1	9/2005	McCabe et al.			
2006/0069322	A1	3/2006	Zhang et al.			
2006/0074331	A1	4/2006	Kim et al.			
2006/0111747	A1	5/2006	Cazares et al.			
2006/0111751	A1	5/2006	Cazares			
2006/0116593	A1	6/2006	Zhang et al.			
2006/0129194	A1	6/2006	Zhang			
2006/0129196	A1	6/2006	Dong et al.			
2006/0247695	A1	11/2006	Stalsberg et al.			
2006/0253043	A1	11/2006	Zhang et al.			
2006/0253044	A1	11/2006	Zhang et al.			
2006/0253164	A1	11/2006	Zhang et al.			
2007/0049974	A1	3/2007	Li et al.			
2007/0142737	A1	6/2007	Cazares et al.			
2008/0004665	A1	1/2008	McCabe et al.			
2008/0009909	A1	1/2008	Sathaye et al.			
2008/0045851	A1	2/2008	Cazares et al.			

## OTHER PUBLICATIONS

Stirbis at al., *Optimizing the Shape of Implanted Artificial Pacemakers*, Kaunas Medical Institute. Translated from Meditsinskaya Tekhnika, No. 6, pp. 25-27 (1986). Abstract only.

Charles T. Leng et al., *Lead Configuration for Defibrillator Implantation in a Patient with Congenital Heart Disease and a Mechanical Prosthetic Tricuspid Valve*, PACE, vol. 24, No. 8, pp. 1291-1292 (Aug. 2001). Abstract only.

Park & Pollock, *Use of an Implantable Cardioverter Defibrillator in an Eight-Month-Old Infant with Ventricular Fibrillation Arising from a Myocardial Fibroma*, PACE, vol. 22, No. 1, pp. 138-139 (Jan. 1999). Abstract only.

Rainer Gradaus M.D. at al., *Nonthoracotomy Implantable Cardioverter Defibrillator Placement in Children: Use of a Subcutaneous Array Leads and Abdominally Placed Implantable Cardioverter Defibrillators in Children*. J. of Cardiovascular Electrophysiology, vol. 12, No. 3, pp. 356-360 (Mar. 2001) Abstract only.

A. Hyvärinen and E. Oja, *Independent Component Analysis: A Tutorial*, Helsinki Univ. of Technology, Apr. 1999.

Pierre Comon, *Independent component analysis, A new concept?*, Signal Processing, vol. 36, No. 3, pp. 287-314, (Apr. 1994).

Adel Belouchrani and Moeness G. Amin, *Blind Source Separation Based on Time-Frequency Signal Representations*, IEEE Transactions on Signal Processing, vol. 46, No. 11, pp. 2888-2897 (Nov. 1998).

Vicente Zarzoso and Asoke K. Nandi, *Blind Separation of Independent Sources for Virtually Any Source Probability Density Function*, IEEE Transactions on Signal Processing, vol. 47, No. 9, pp. 2419-2432 (Sep. 1999).

Vicente Zarzoso and Asoke K. Nandi, *Noninvasive Fetal Electrocardiogram Extraction: Blind Separation Versus Adaptive Noise Cancellation*, IEEE Transactions on Biomedical Engineering, vol. 48, No. 1, pp. 12-18 (Jan. 2001).

Philippe Gallois, at al., *Multi-Channel Analysis of the EEG Signals and Statistic Particularities for Epileptic Seizure Forecast*, Second Joint EMBS/BMES Conference, pp. 208-215 (Oct. 23-26, 2002).

J.J. Rieta, et al., *Atrial Activity Extraction Based on Blind Source Separation as an Alternative to QRST Cancellation for Atrial Fibrillation Analysis*, Computers in Cardiology, vol. 27, pp. 69-72 (2000).

Krahn, A.D. et al. *Recurrent syncope. Experience with an implantable loop record*. Cardiol. Clin., vol. 15(2), May 1997, pp. 316-326 (Abstract only).

Theofilos M. Kolettis, MD, PhD et al., *Submammary Implantation of a Cardioverter-Defibrillator with a Nonthoracotomy Lead System*, Am. Heart J., vol. 126, pp. 1222-1223 (Nov. 1993).

John C. Schuder et al., *Transsthoracic Ventricular Defibrillation in the Dog with Truncated and Untruncated Exponential Stimuli*, IEEE Trans. On Bio-Medical Engin., vol. BME-18, No. 6, pp. 410-415 (Nov. 1971).

John C. Schuder et al., *Ventricular Defibrillation in the Dog Using Implanted and Partially Implanted Electrode Systems*, Am. J. of Cardiology, vol. 33, pp. 243-247 (Feb. 1974).

## FOREIGN PATENT DOCUMENTS

EP	0560569	9/1993
EP	1 038 498 A	9/2000
EP	1291038	3/2003
EP	1629863	3/2006
WO	92/17240	10/1992

John C. Schuder et al., *Experimental Ventricular Defibrillation with an Automatic and Completely Implanted System*, Trans. Am. Soc. Artif. Int. Organs, vol. 16, pp. 207-212 (1970).

Karel Smits & Marek Malik, *Defibrillation Threshold (DFT) Model of a Fully Subcutaneous ICD System*, Europace Supplements, vol. 2, Jun. 2001 at col. 778, p. B83.

1999, Acar et al., "SVD-based on-line exercise ECG signal orthogonalization", IEEE Transactions on Biomedical Engineering, vol. 46, No. 3, Mar. 1999.

2000, Splett et al. "Determination of Pacing Capture in Implantable Defibrillators: Benefit of Evoked Response Detection Using RV Coil to Can Vector," *PACE*, vol. 23, pp. 1645-1650.

U.S. Appl. No. 10/955,397, filed Sep. 30, 2004, Zhang et al.

U.S. Appl. No. 11/125,068, filed May 9, 2005, Zhang et al.

U.S. Appl. No. 11/478,286, filed Jun. 29, 2006, Sathaye et al.

Schuder et al., "Transthoracic Ventricular Defibrillation in the Dog with Truncated and Untruncated Exponential Stimuli", IEEE Transactions On Bio-Medical Engineering, vol. BME-18, No. 6, pp. 410-415, Nov. 1971.

Smits et al., "Defibrillation Threshold (DFT) Model of a Fully Subcutaneous ICD System, Europace Supplements", vol. 2, at col. 778, p. B83, Jun. 2001.

Cohen et al. Capture Management Efficacy in children and young adults with endocardial and unipolar epicardial systems. Europace, vol. 6, pp. 248-255 (2004).

Wilkoff BL, et al., Preventing Shocks after ICD Implantation: Can a Strategy of Standardized ICD Programming Match Physician Tailored?, Late Breaking Trials, HRS (2005).

2009, Office Action from U.S. Appl. No. 11/478,438 dated Nov. 3, 2009, 12 pages.

\* cited by examiner

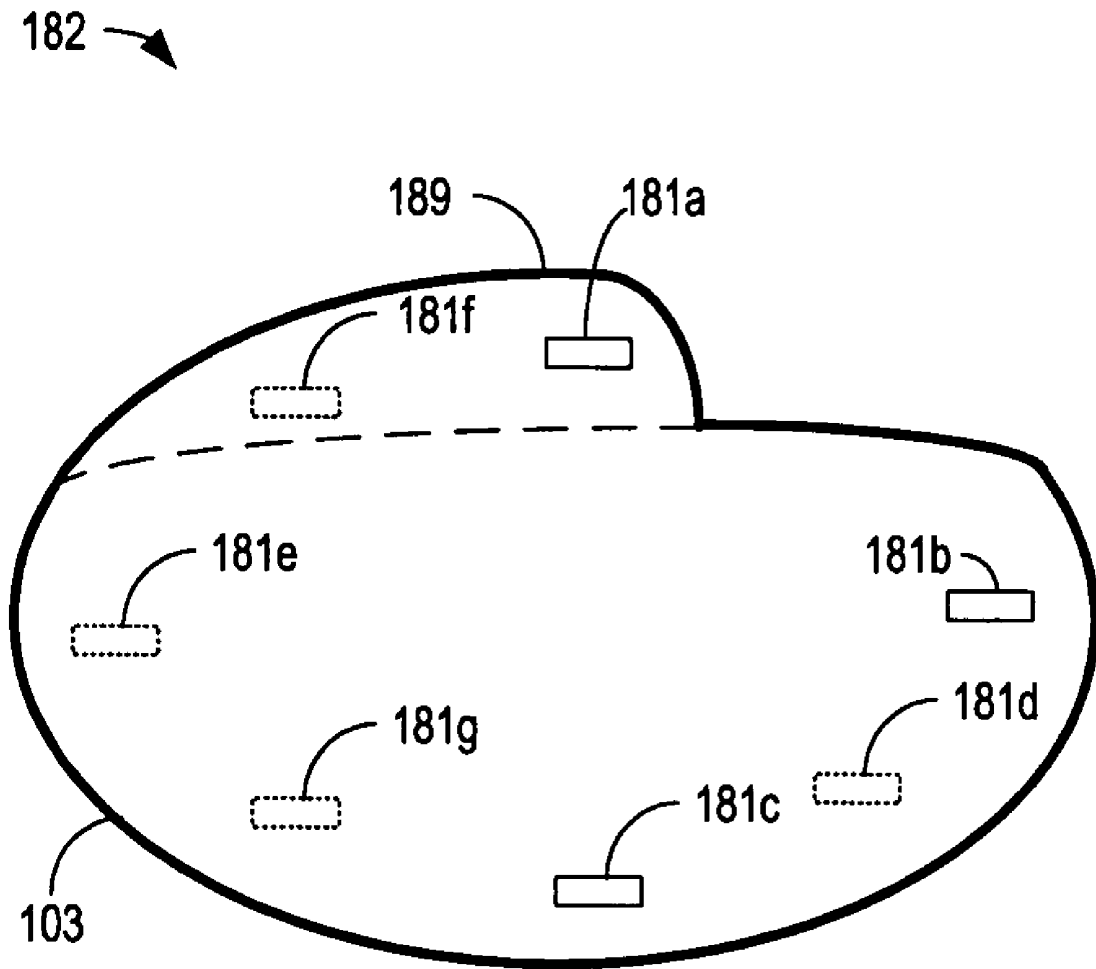


Fig. 1

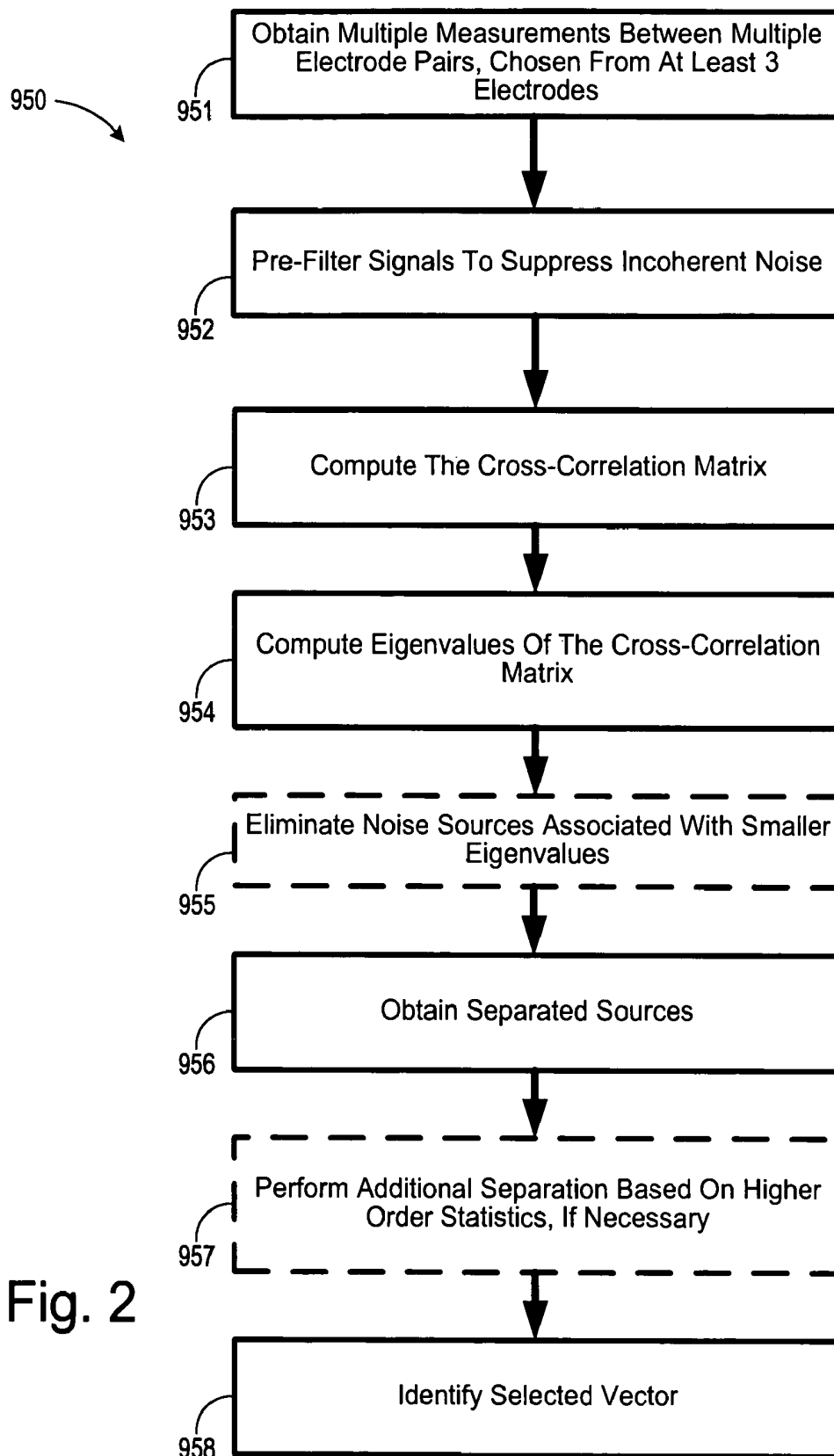


Fig. 2

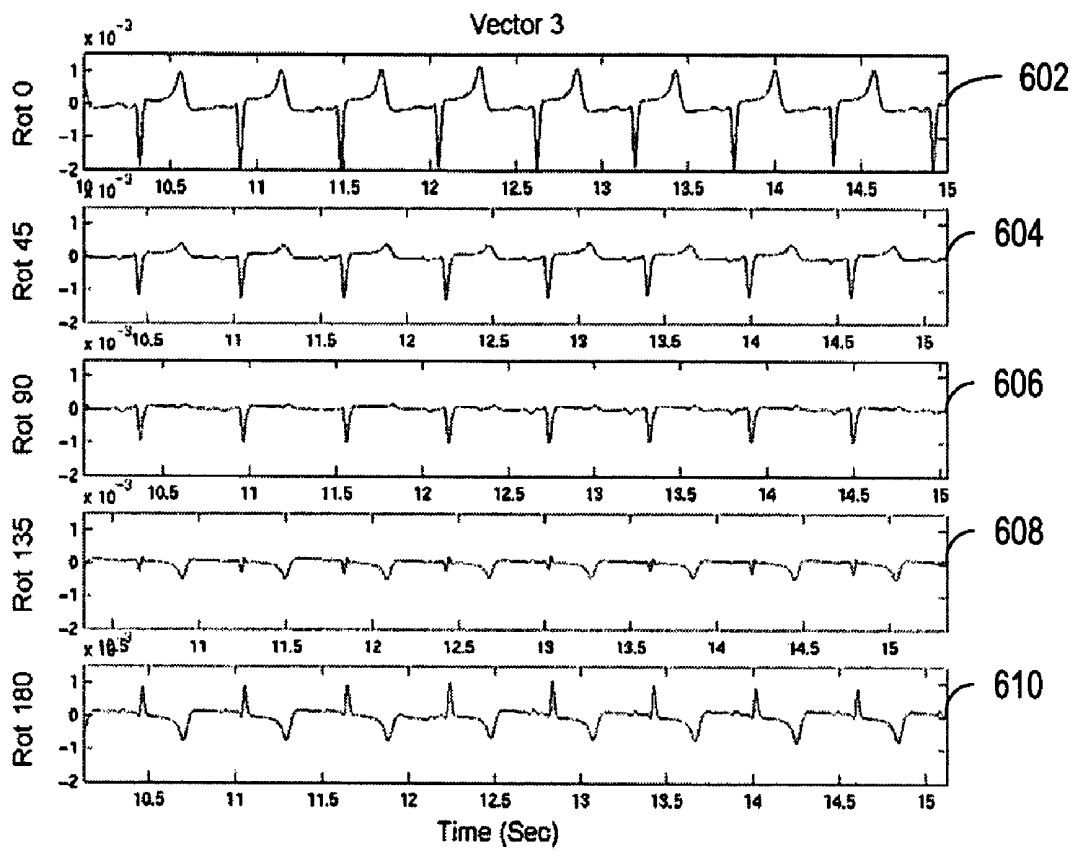


Fig. 3

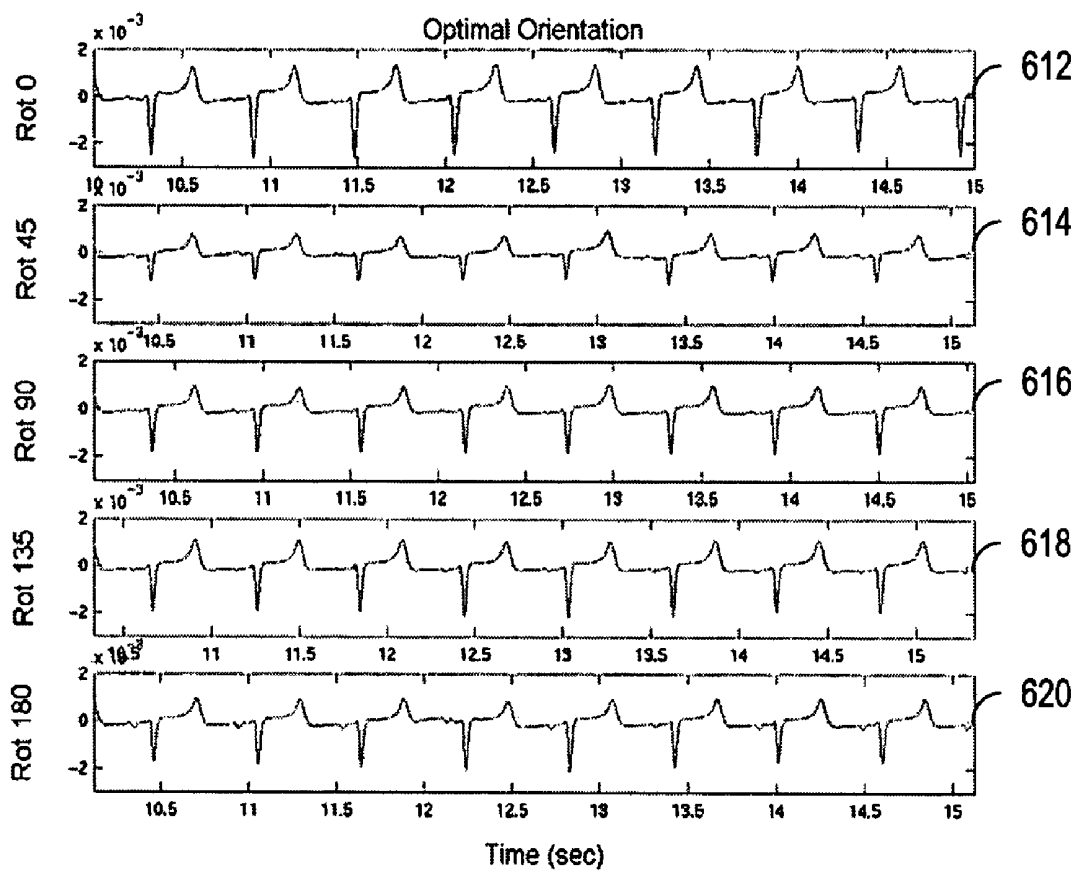


Fig. 4

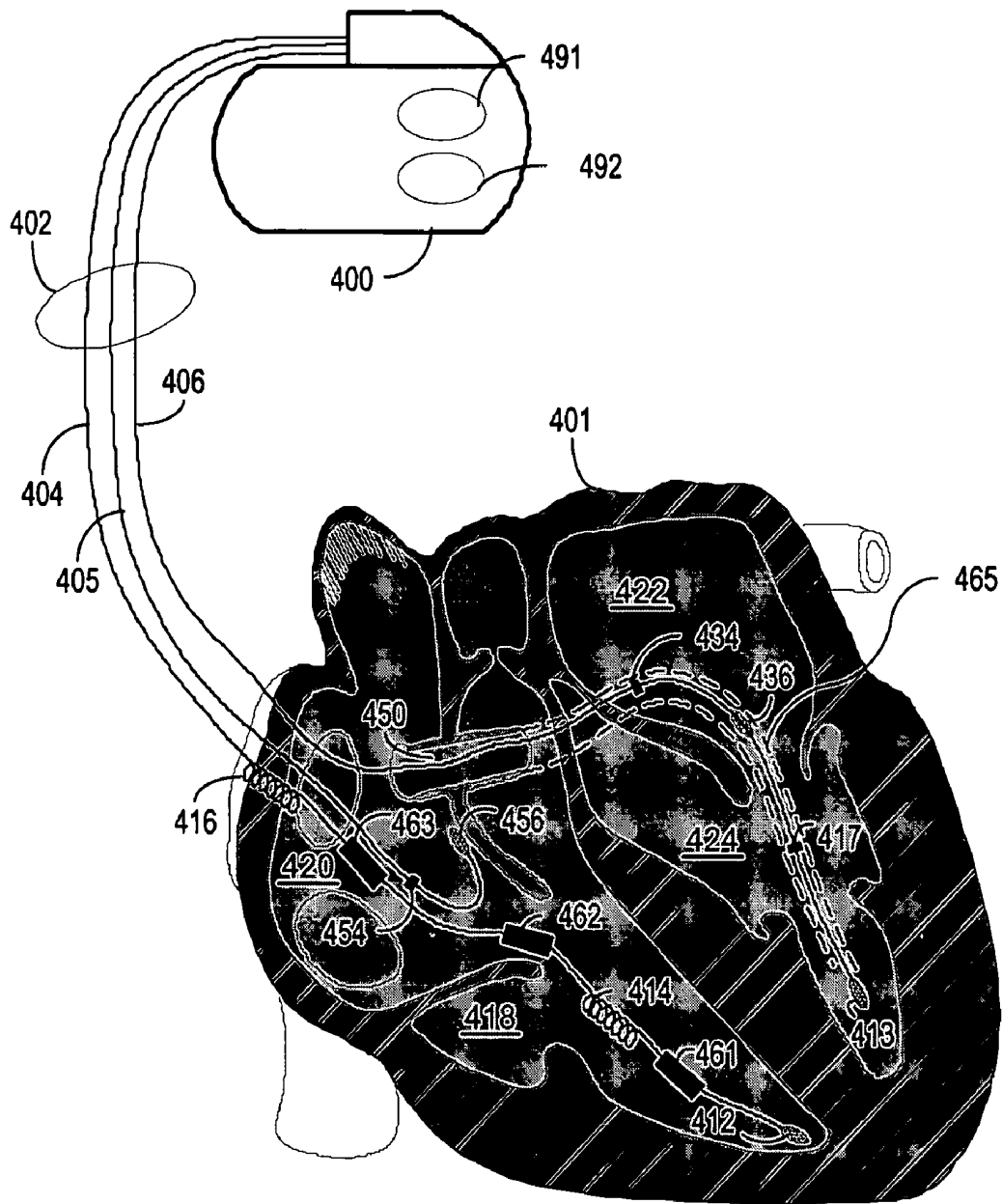


Fig. 5

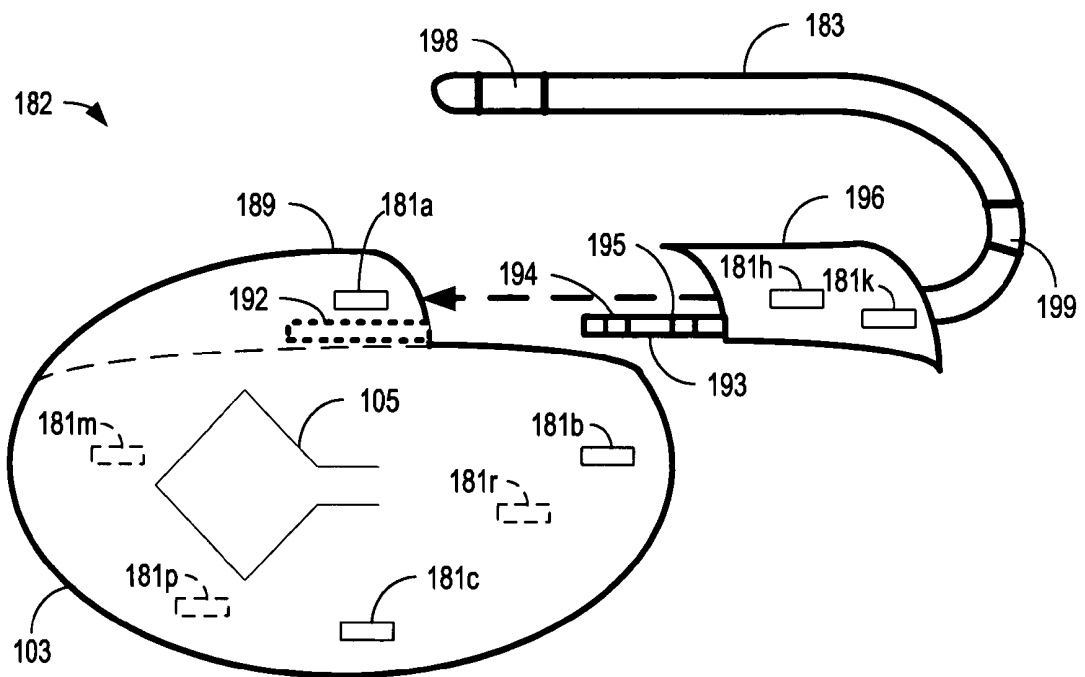


Fig. 6

Fig. 7

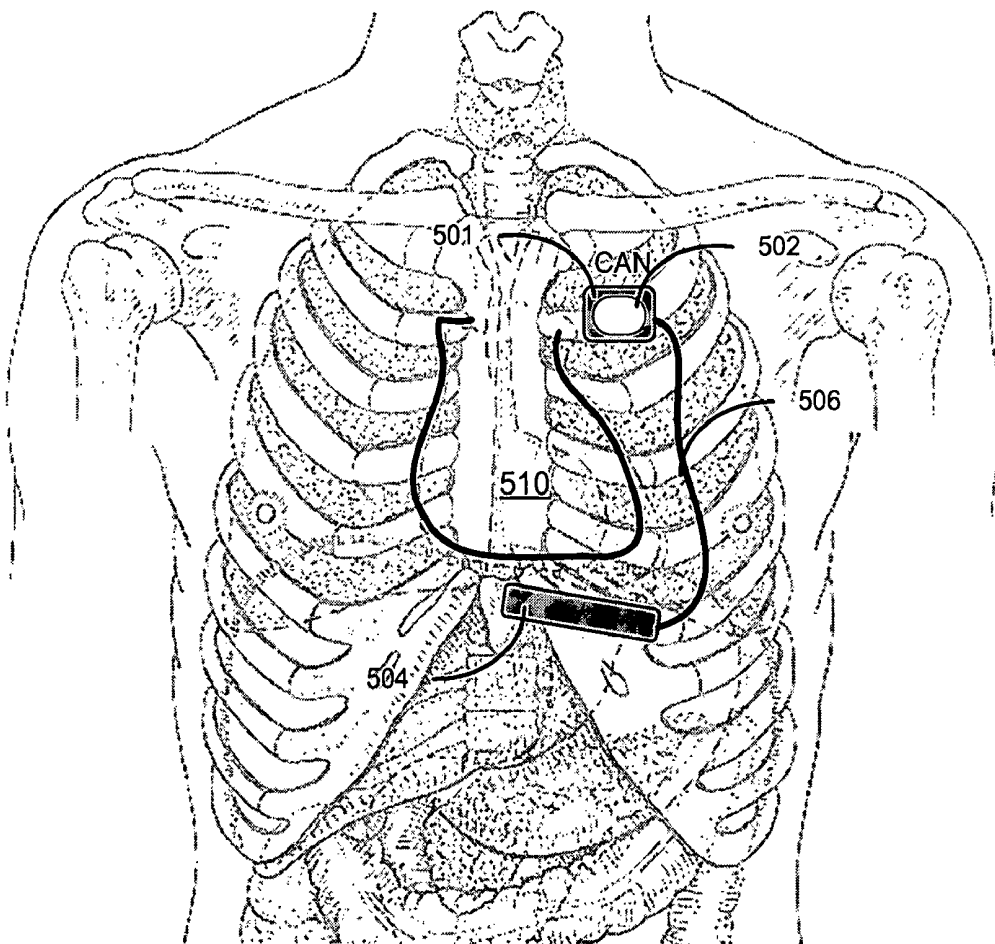
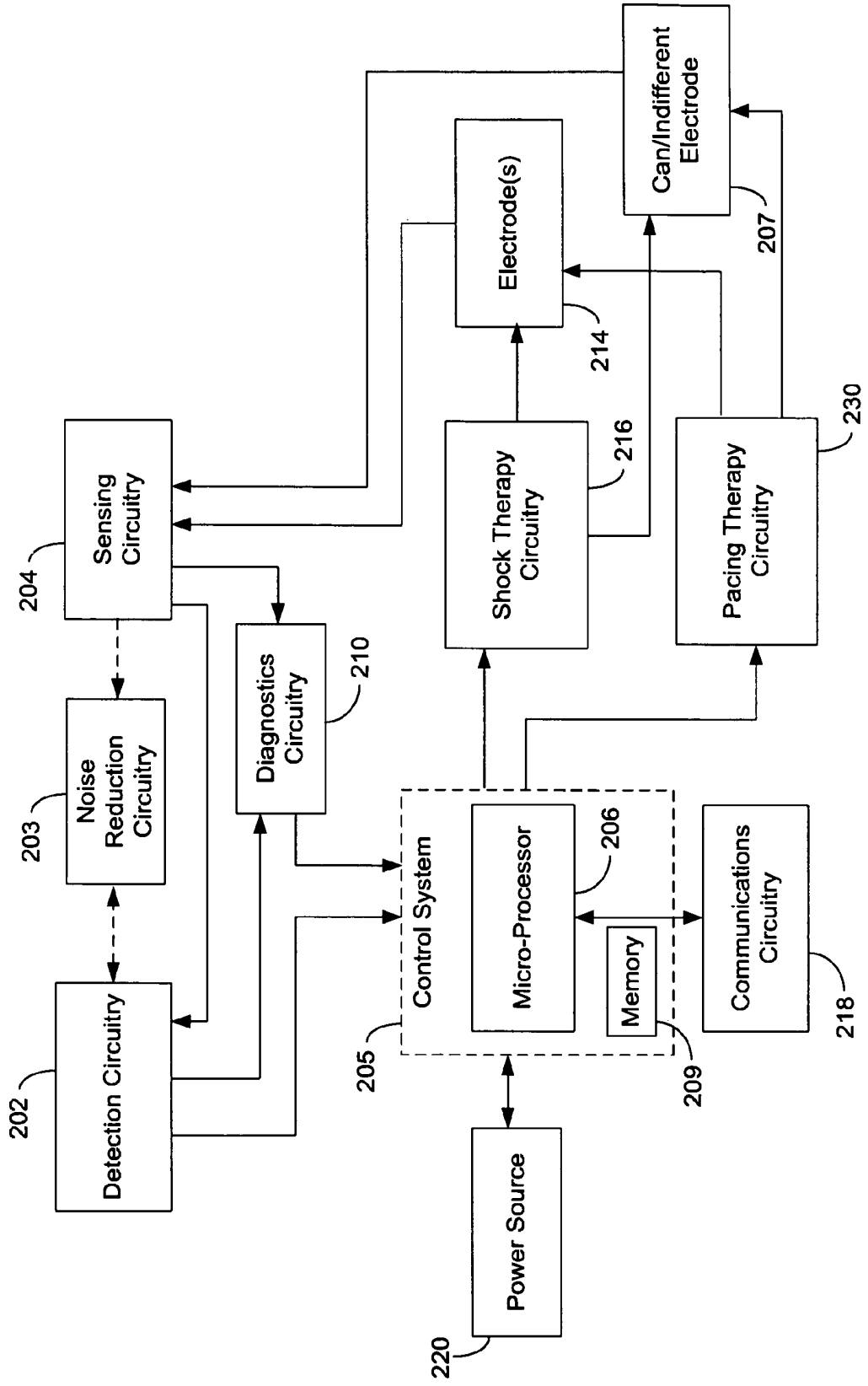


Fig. 8



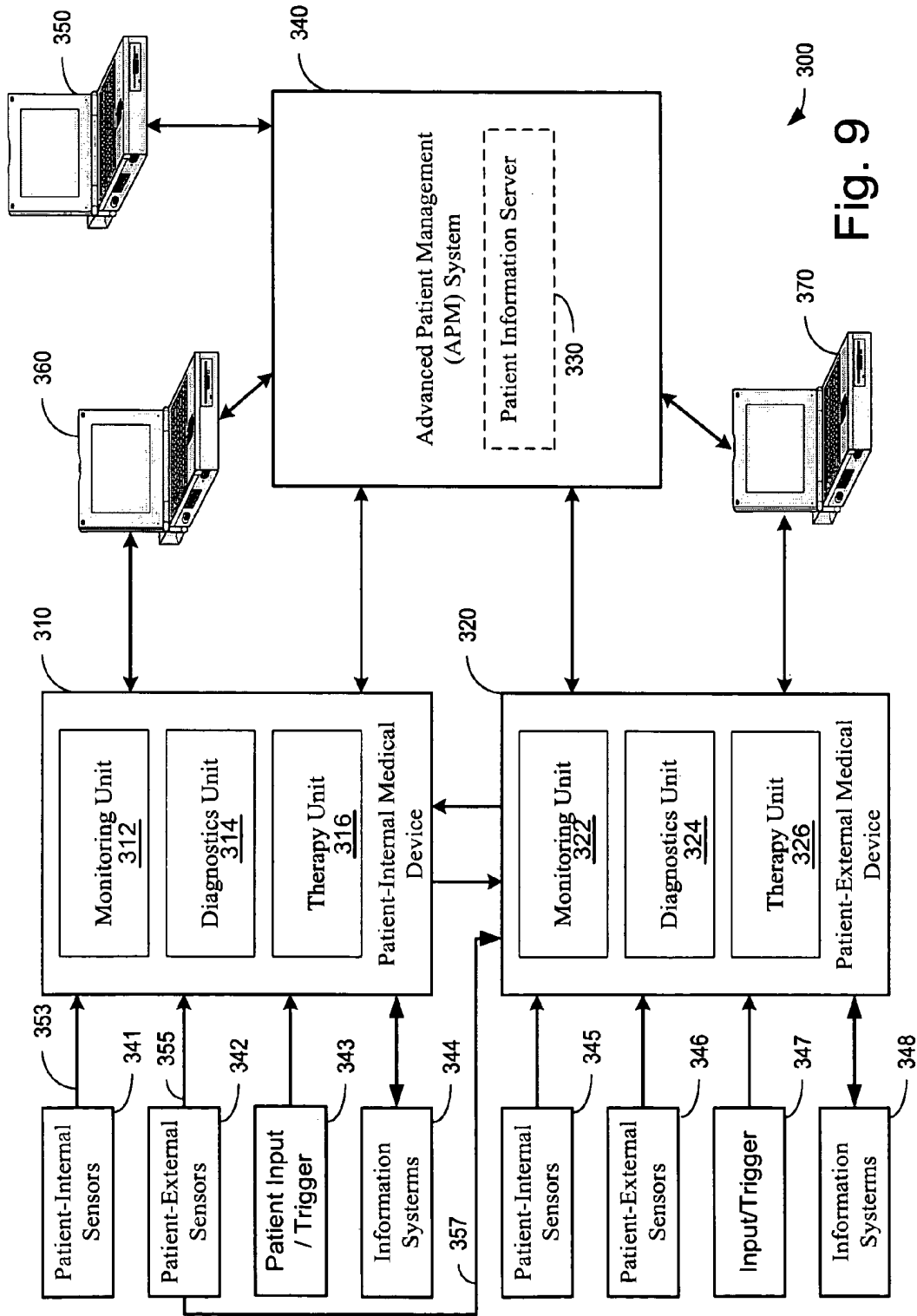


Fig. 9

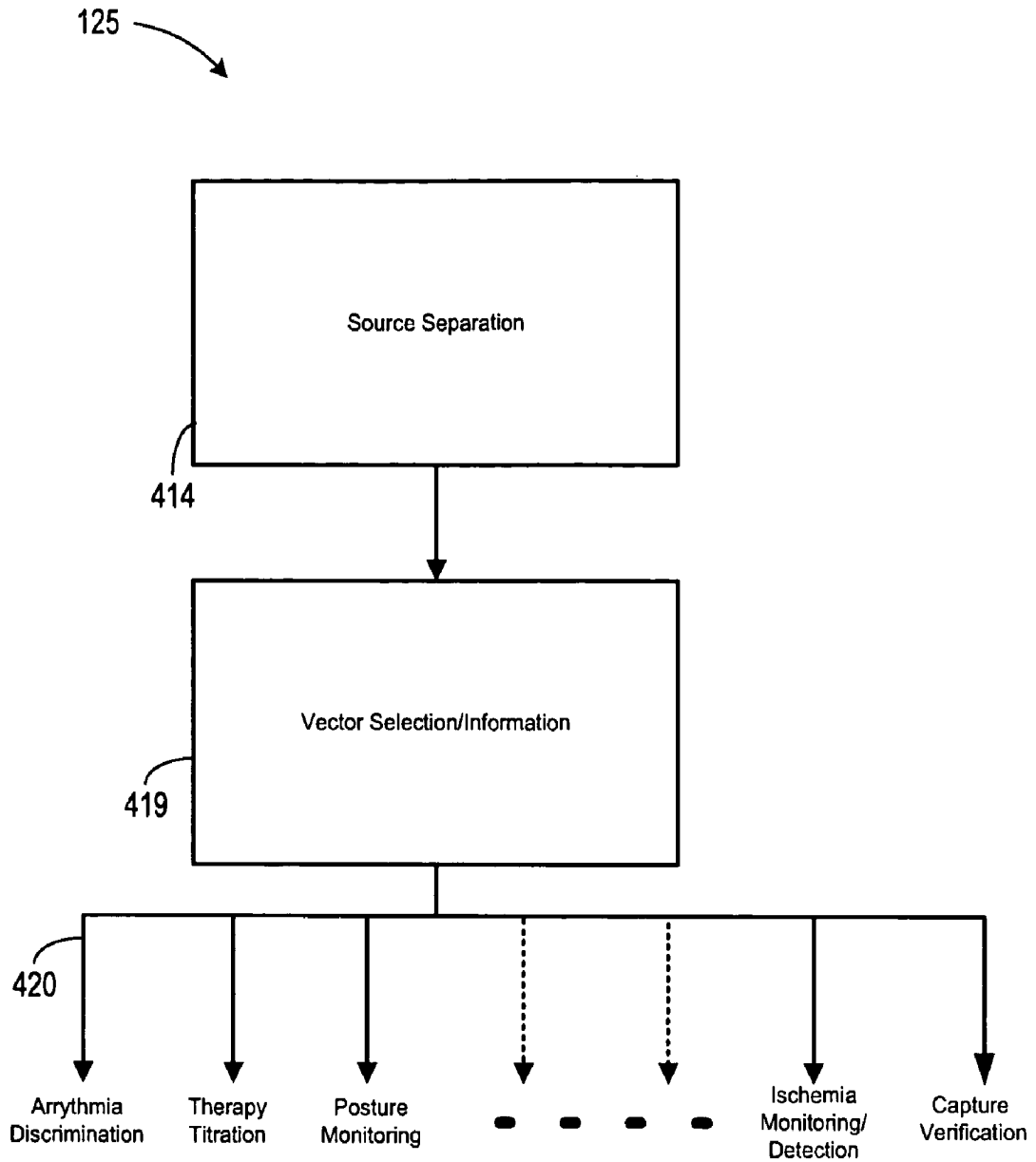


Fig. 10

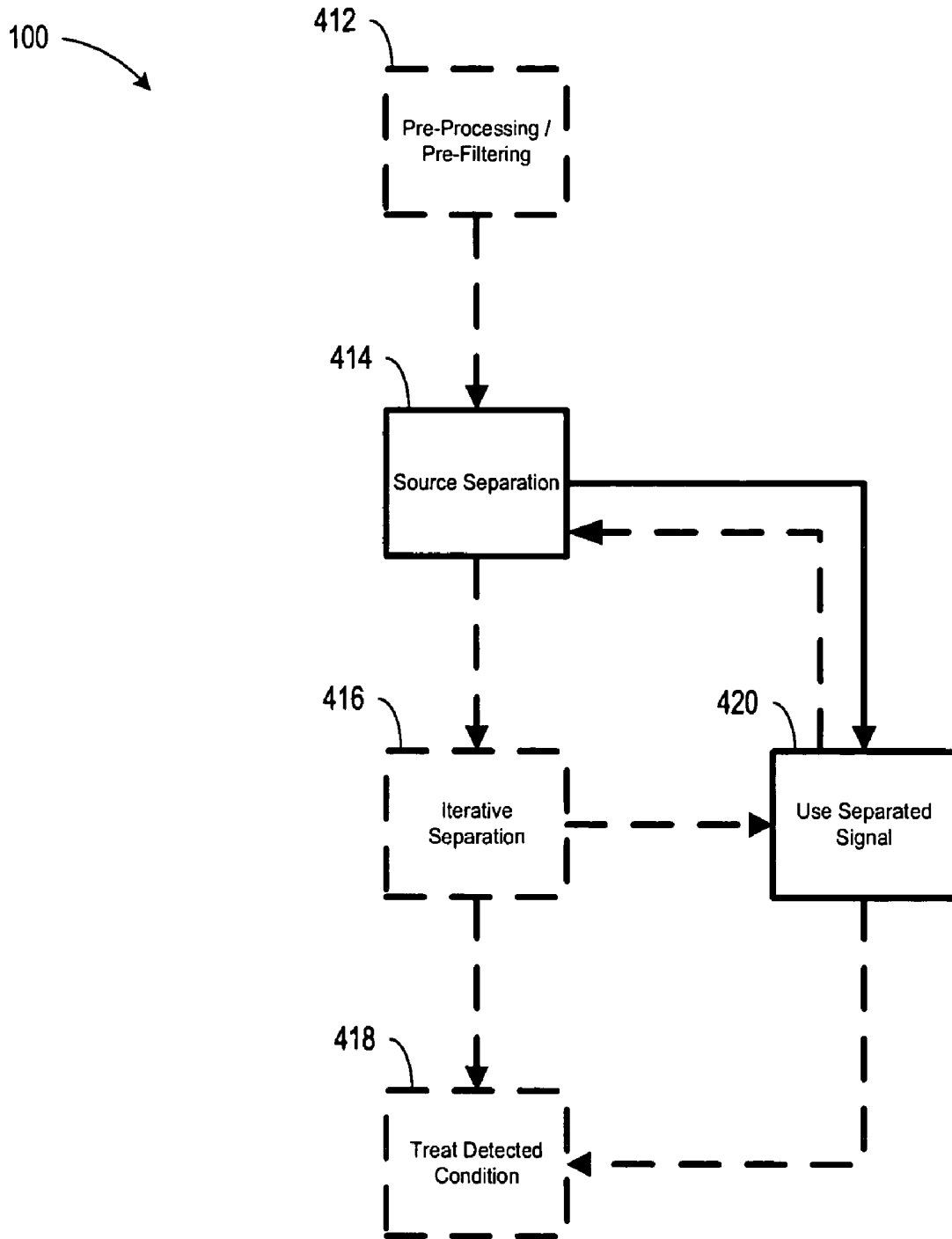


Fig. 11

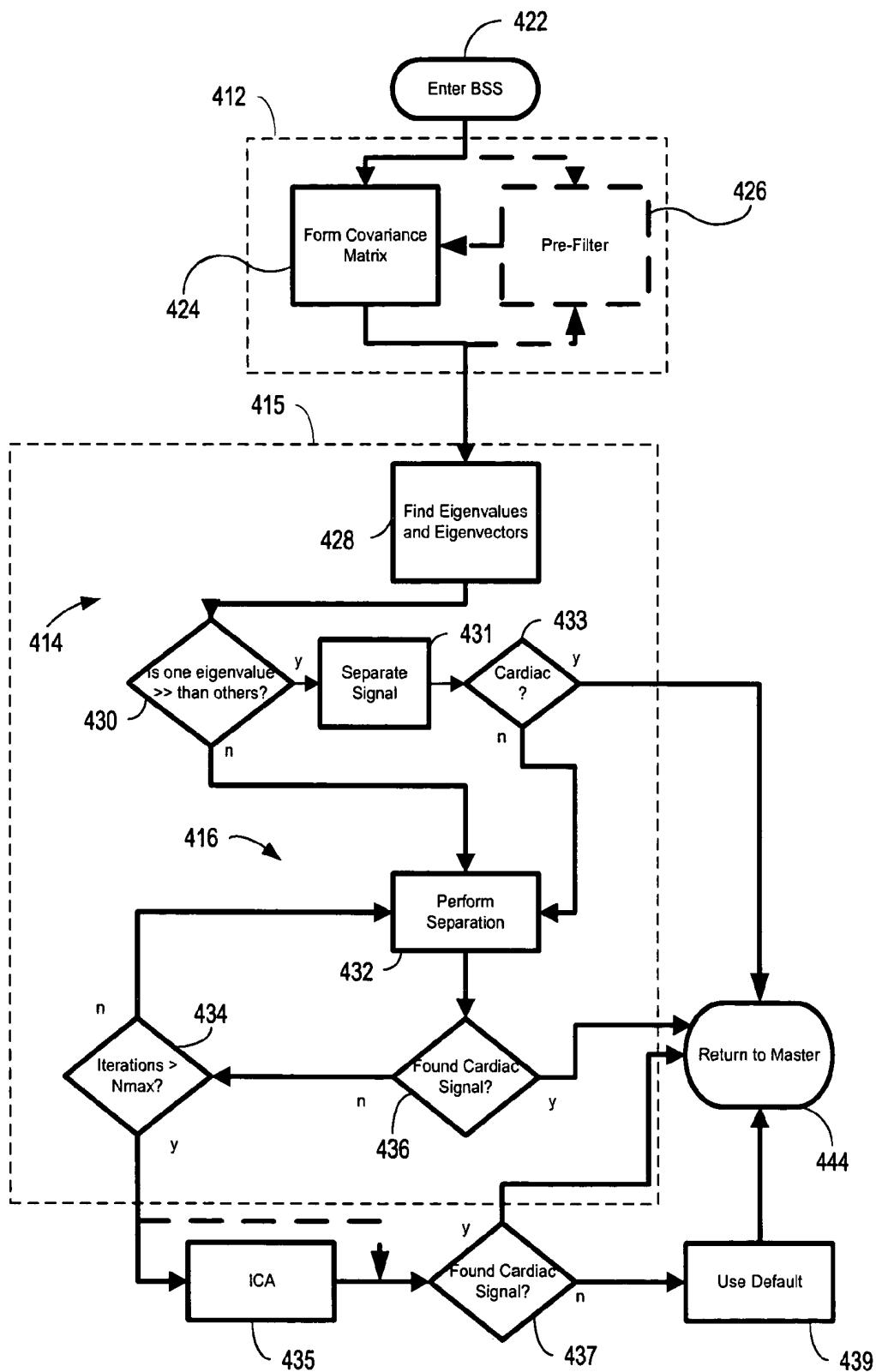


Fig. 12

1

**AUTOMATIC ORIENTATION  
DETERMINATION FOR ECG  
MEASUREMENTS USING MULTIPLE  
ELECTRODES**

FIELD OF THE INVENTION

The present invention relates generally to implantable medical devices employing cardiac signal separation and, more particularly, to cardiac sensing and/or stimulation devices employing automated vector selection from multiple electrodes.

BACKGROUND OF THE INVENTION

The healthy heart produces regular, synchronized contractions. Rhythmic contractions of the heart are normally controlled by the sinoatrial (SA) node, which is a group of specialized cells located in the upper right atrium. The SA node is the normal pacemaker of the heart, typically initiating 60-100 heartbeats per minute. When the SA node is pacing the heart normally, the heart is said to be in normal sinus rhythm.

If the heart's electrical activity becomes uncoordinated or irregular, the heart is denoted to be arrhythmic. Cardiac arrhythmia impairs cardiac efficiency and may be a potential life-threatening event. Cardiac arrhythmias have a number of etiological sources, including tissue damage due to myocardial infarction, infection, or degradation of the heart's ability to generate or synchronize the electrical impulses that coordinate contractions.

Bradycardia occurs when the heart rhythm is too slow. This condition may be caused, for example, by impaired function of the SA node, denoted sick sinus syndrome, or by delayed propagation or blockage of the electrical impulse between the atria and ventricles. Bradycardia produces a heart rate that is too slow to maintain adequate circulation.

When the heart rate is too rapid, the condition is denoted tachycardia. Tachycardia may have its origin in either the atria or the ventricles. Tachycardias occurring in the atria of the heart, for example, include atrial fibrillation and atrial flutter. Both conditions are characterized by rapid contractions of the atria. Besides being hemodynamically inefficient, the rapid contractions of the atria may also adversely affect the ventricular rate.

Ventricular tachycardia occurs, for example, when electrical activity arises in the ventricular myocardium at a rate more rapid than the normal sinus rhythm. Ventricular tachycardia may quickly degenerate into ventricular fibrillation. Ventricular fibrillation is a condition denoted by extremely rapid, uncoordinated electrical activity within the ventricular tissue. The rapid and erratic excitation of the ventricular tissue prevents synchronized contractions and impairs the heart's ability to effectively pump blood to the body, which is a fatal condition unless the heart is returned to sinus rhythm within a few minutes.

Implantable cardiac rhythm management systems have been used as an effective treatment for patients with serious arrhythmias. These systems typically include one or more leads and circuitry to sense signals from one or more interior and/or exterior surfaces of the heart. Such systems also include circuitry for generating electrical pulses that are applied to cardiac tissue at one or more interior and/or exterior surfaces of the heart. For example, leads extending into the patient's heart are connected to electrodes that contact the myocardium for sensing the heart's electrical signals and for

2

delivering pulses to the heart in accordance with various therapies for treating arrhythmias.

Typical implantable cardioverter/defibrillators include one or more endocardial leads to which at least one defibrillation electrode is connected. Such implantable cardioverter/defibrillators are capable of delivering high-energy shocks to the heart, interrupting the ventricular tachyarrhythmia or ventricular fibrillation, and allowing the heart to resume normal sinus rhythm. Implantable cardioverter/defibrillators may also include pacing functionality.

SUMMARY OF THE INVENTION

The present invention is directed to cardiac monitoring and/or stimulation methods and systems that provide monitoring, defibrillation therapies, pacing therapies, or a combination of these capabilities. Embodiments of the present invention relate generally to implantable medical devices employing cardiac signal separation and, more particularly, to cardiac monitoring and/or stimulation devices employing automated vector selection from multiple electrodes.

According to an embodiment, a system of the present invention includes a housing configured for implantation in a patient and more than two electrodes each configured for sensing a composite signal. A controller is provided in the housing. The system further includes a memory and a signal processor. The memory is configured to store a target vector, and the signal processor is configured to receive a plurality of composite signals and perform a source separation algorithm that separates a target signal from the plurality of composite signals using the target vector. The signal processor is further configured to update the target vector stored in the memory by performing a subsequent source separation, such as blind source separation.

In one configuration, the signal processor and the memory are provided in the implantable housing. In another configuration, the signal processor is provided in a patient-external device or system, and the signal processor and controller are coupled to respective communication devices to facilitate wireless communication between the signal processor and controller. In a further configuration, the signal processor is provided in a network server system, and the signal processor and controller are coupled to respective communication devices to facilitate wireless communication between the signal processor and controller.

In a further embodiment of the present invention, a method of signal separation involves sensing, at least in part implantably, a plurality of composite signals using a plurality of cardiac electrodes. A source separation is performed using the detected plurality of composite signals, the source separation producing a plurality of vectors. Source separation may include blind source separation involving a principal component analysis, including singular value decomposition, and/or independent component analysis. The method further involves reconstructing, for each vector of the plurality of vectors, a signal from the detected plurality of composite signals, and selecting one vector from the plurality of vectors as a selected vector based on a selection criterion. Selection criteria may include, for example, finding a noise signal, finding a skeletal muscle signal, or finding another particular signal of interest.

According to another embodiment, a signal separation method of the present invention involves sensing, at least in part implantably, a plurality of composite signals at a plurality of locations, and performing source separation on the detected plurality of composite signals to produce a set of signal vectors. The method also involves selecting, from the

set of signal vectors, a target vector associated with a target signal. The method further involves updating selection of the target vector by performing a subsequent source separation on the detected plurality of composite signals. Updating the target vector may be performed in response to a change in, for example, pathology, therapy, posture, or other change necessitating a change in vector to separate the cardiac signal.

In accordance with another embodiment, a method of signal separation involves receiving a plurality of signals from a plurality of electrodes configured to detect cardiac activity. The method further involves mathematically reconstructing an electrocardiogram vector corresponding to a signal having a largest cardiac signal-to-noise ratio using a linear combination of the plurality of signals.

The above summary of the present invention is not intended to describe each embodiment or every implementation of the present invention. Advantages and attainments, together with a more complete understanding of the invention, will become apparent and appreciated by referring to the following detailed description and claims taken in conjunction with the accompanying drawings.

#### BRIEF DESCRIPTION OF THE DRAWINGS

FIG. 1 is a top view of an implantable cardiac device in accordance with the present invention, having at least three electrodes;

FIG. 2 is a block diagram of a vector selection process in accordance with the present invention;

FIG. 3 is a graph illustrating one of the raw signals at five different orientations;

FIG. 4 is a graph illustrating selected vector oriented signals at the same five orientations illustrated in FIG. 3 in accordance with the present invention;

FIG. 5 is an illustration of an implantable cardiac device including a lead assembly shown implanted in a sectional view of a heart, in accordance with embodiments of the invention;

FIG. 6 is a top view of an implantable cardiac device in accordance with the present invention, including an antenna electrode and a lead/header arrangement;

FIG. 7 is a diagram illustrating components of a cardiac monitoring and/or stimulation device including an electrode array in accordance with an embodiment of the present invention;

FIG. 8 is a block diagram illustrating various components of a cardiac monitoring and/or stimulation device in accordance with an embodiment of the present invention;

FIG. 9 is a block diagram of a medical system that may be used to implement system updating, coordinated patient monitoring, diagnosis, and/or therapy in accordance with embodiments of the present invention;

FIG. 10 is a block diagram illustrating uses of vector selection in accordance with the present invention;

FIG. 11 is a block diagram of a signal separation process in accordance with the present invention; and

FIG. 12 is an expanded block diagram of the process illustrated in FIG. 11, illustrating an iterative independent component analysis in accordance with the present invention.

While the invention is amenable to various modifications and alternative forms, specifics thereof have been shown by way of example in the drawings and will be described in detail below. It is to be understood, however, that the intention is not to limit the invention to the particular embodiments described. On the contrary, the invention is intended to cover

all modifications, equivalents, and alternatives falling within the scope of the invention as defined by the appended claims.

#### DETAILED DESCRIPTION OF VARIOUS EMBODIMENTS

In the following description of the illustrated embodiments, references are made to the accompanying drawings, which form a part hereof, and in which is shown by way of illustration, various embodiments in which the invention may be practiced. It is to be understood that other embodiments may be utilized, and structural and functional changes may be made without departing from the scope of the present invention.

An implanted device according to the present invention may include one or more of the features, structures, methods, or combinations thereof described hereinbelow. For example, a cardiac monitor or a cardiac stimulator may be implemented to include one or more of the advantageous features and/or processes described below. It is intended that such a monitor, stimulator, or other implanted or partially implanted device need not include all of the features described herein, but may be implemented to include selected features that provide for unique structures and/or functionality. Such a device may be implemented to provide a variety of therapeutic or diagnostic functions.

A wide variety of implantable cardiac monitoring and/or stimulation devices may be configured to implement an automated vector selection and updating methodology of the present invention. A non-limiting, representative list of such devices includes cardiac monitors, pacemakers, cardioverters, defibrillators, resynchronizers, and other cardiac sensing and therapy delivery devices. These devices may be configured with a variety of electrode arrangements, including transvenous, endocardial, and epicardial electrodes (i.e., intrathoracic electrodes), and/or subcutaneous, non-intrathoracic electrodes, including can, header, and indifferent electrodes, and subcutaneous array or lead electrodes (i.e., non-intrathoracic electrodes).

Embodiments of the present invention may be implemented in the context of a wide variety of cardiac devices, such as those listed above, and are referred to herein generally as patient-internal medical devices (PIMD) for convenience. A PIMD implemented in accordance with the present invention may incorporate one or more of the electrode types identified above and/or combinations thereof.

In general, the quality of the electrocardiogram or electrogram sensed from one pair of electrodes of a PIMD depends on the orientation of the electrodes with respect to the depolarization wavefront produced by the heart. The quality of the electrocardiogram (ECG) sensed from the electrodes located on a PIMD is also subject to the orientation of the PIMD, and PIMD movement after implantation. Because the physiology of each patient is different, optimal electrode positioning varies from patient to patient. Moreover, optimal orientation may change due to the variation of the ECG axis caused by external electrical stimuli, movement of the implant, or pathological changes of the heart, for example.

The signal sensed on an electrode bi-pole is the projection of the ECG vector in the direction of the bi-pole. Vector selection algorithms of the present invention advantageously exploit the strong correlation of signals from a common origin (the heart) across spatially distributed electrodes. One approach involves finding the direction (vector) along which the power of the cardiac signal is maximized, and projecting the ECG signal in this optimized direction. Another approach

involves finding the direction along which the signals are the most correlated, and projecting the ECG signal in this optimized direction.

This and other approaches employ more than two electrodes of varying location, and possibly of varying configuration. In one embodiment, for example, two or more electrodes can conveniently be located on the PIMD header, whereas the can of the PIMD itself may be the third electrode. In another embodiment, one electrode may be located on the PIMD header, another is the can electrode, and a third may be a PIMD antenna used for RF telemetry.

Methods of determining vector orientation in accordance with the present invention involve receiving two or more signals from three or more electrodes configured to detect cardiac activity. An electrocardiogram vector may then be mathematically reconstructed from the signals. For example, a reconstructed signal having a largest cardiac signal-to-noise ratio, using a linear combination of the plurality of signals, may be selected as having a useful vector for PIMD's in accordance with the present invention.

FIG. 1 is a top view of a PIMD 182 in accordance with the present invention, having at least three electrodes. The PIMD 182 shown in the embodiment illustrated in FIG. 1 includes a first electrode 181a, a second electrode 181b, and a third electrode 181c provided with a can 103. The PIMD 182 detects and records cardiac activity. The can 103 is illustrated as incorporating a header 189 that may be configured to facilitate removable attachment between one or more leads and the can 103. The can 103 may include any number of electrodes positioned anywhere in or on the can 103, such as optional electrodes 181d, 181e, 181f, and 181g. Each electrode pair provides one vector available for the sensing of ECG signals.

FIG. 2 is a block diagram of a vector selection process 950 in accordance with the present invention. The vector selection process 950 starts at block 951, where multiple concurrent measurements are obtained between multiple respective electrode pairs, chosen from at least three electrodes. Block 952 provides for pre-filtering the collected signals with, for example, a linear-phase filter to suppress broadly incoherent noise, and to generally maximize the signal-to-noise ratio.

Block 953 indicates the computation of the cross-correlation matrix, which may be averaged over a relatively short time interval, such as about 1 second. This block enhances the components that are mutually correlated. Block 954 is then provided for computation of the eigenvalues of the cross-correlation matrix. The smaller eigenvalues, normally associated with noise, may then be used at block 955 to eliminate noise, by removing the noise components of the composite signals associated with those eigenvalues.

At block 956, signals may be separated from the composite signals using the eigenvalues. Separated sources may be obtained by taking linear combinations of the recorded signals, as specified in the eigenvectors corresponding to the larger eigenvalues. Optionally, block 957 provides for performing additional separation based on higher order statistics, if the cardiac signal is not found among the signals separated at block 956.

At block 958, the optimized cardiac signal may be identified based on the selection criteria, along with its associated vector, among the separated signals. Typically, the signal is found among the signals associated with the largest eigenvalues.

FIGS. 3 and 4 illustrate the result of performing the process illustrated in FIG. 2 on signals associated with vectors at five angular positions relative to an arbitrary 0 degree orientation. Experimental data were gathered from three disc electrodes

oriented at five different rotations. In FIG. 3, the third signal from each rotation is shown. Angular rotation 0 is illustrated as a trace 602, angular rotation 45 degrees is illustrated as a trace 604, angular rotation 90 degrees is illustrated as a trace 606, angular rotation 135 degrees is illustrated as a trace 608, and angular rotation 180 degrees is illustrated as a trace 610. The cardiac signal is most evident in trace 602, but may be detected by the peaks evident in most traces. Angular rotation 135 of the trace 608 is the rotation with the smallest level of cardiac signal, corresponding to a vector approximately parallel to the depolarization wavefront.

FIG. 4 represents the resulting target signal at each rotation, after performing the method 950 represented in FIG. 2 on the raw data represented by FIG. 3. In FIG. 4, angular rotation 0 is illustrated as a trace 612, angular rotation 45 degrees is illustrated as a trace 614, angular rotation 90 degrees is illustrated as a trace 616, angular rotation 135 degrees is illustrated as a trace 618, angular rotation 180 degrees is illustrated as a trace 620. Evident in all traces, but most obvious when comparing the trace 608 of FIG. 3 with the trace 618 of FIG. 4, the cardiac signal is significantly more pronounced when applying the method 950 in accordance with the present invention.

For purposes of illustration, and not of limitation, various embodiments of devices that may use vector selection and orientation in accordance with the present invention are described herein in the context of PIMD's that may be implanted under the skin in the chest region of a patient. A PIMD may, for example, be implanted subcutaneously such that all or selected elements of the device are positioned on the patient's front, back, side, or other body locations suitable for sensing cardiac activity and/or delivering cardiac stimulation therapy. It is understood that elements of the PIMD may be located at several different body locations, such as in the chest, abdominal, or subclavian region with electrode elements respectively positioned at different regions near, around, in, or on the heart.

The primary housing (e.g., the active or non-active can) of the PIMD, for example, may be configured for positioning outside of the rib cage at an intercostal or subcostal location, within the abdomen, or in the upper chest region (e.g., subclavian location, such as above the third rib). In one implementation, one or more leads incorporating electrodes may be located in direct contact with the heart, great vessel or coronary vasculature, such as via one or more leads implanted by use of conventional transvenous delivery approaches. In another implementation, one or more electrodes may be located on the primary housing and/or at other locations about, but not in direct contact with the heart, great vessel or coronary vasculature.

In a further implementation, for example, one or more electrode subsystems or electrode arrays may be used to sense cardiac activity and deliver cardiac stimulation energy in a PIMD configuration employing an active can or a configuration employing a non-active can. Electrodes may be situated at anterior and/or posterior locations relative to the heart. Examples of useful electrode locations and features that may be incorporated in various embodiments of the present invention are described in commonly owned, co-pending U.S. Publication No. 2004/0230230, U.S. Pat. Nos. 7,299,086, and 7,499,750, which are hereby incorporated herein by reference.

Certain configurations illustrated herein are generally described as capable of implementing various functions traditionally performed by an implantable cardioverter/defibrillator (ICD), and may operate in numerous cardioversion/defibrillation modes as are known in the art. Examples of ICD

circuitry, structures and functionality, aspects of which may be incorporated in a PIMD of a type that may benefit from electrode orientation and vector selection and updating methods and implementations are disclosed in commonly owned U.S. Pat. Nos. 5,133,353; 5,179,945; 5,314,459; 5,318,597; 5,620,466; and 5,662,688, which are hereby incorporated herein by reference.

In particular configurations, systems and methods may perform functions traditionally performed by pacemakers, such as providing various pacing therapies as are known in the art, in addition to cardioversion/defibrillation therapies. Examples of pacemaker circuitry, structures and functionality, aspects of which may be incorporated in a PIMD of a type that may benefit from electrode orientation and vector selection and updating methods and implementations are disclosed in commonly owned U.S. Pat. Nos. 4,562,841; 5,284,136; 5,376,106; 5,036,849; 5,540,727; 5,836,987; 6,044,298; and 6,055,454, which are hereby incorporated herein by reference. It is understood that PIMD configurations may provide for non-physiologic pacing support in addition to, or to the exclusion of, bradycardia and/or anti-tachycardia pacing therapies.

A PIMD in accordance with the present invention may implement diagnostic and/or monitoring functions as well as provide cardiac stimulation therapy. Examples of cardiac monitoring circuitry, structures and functionality, aspects of which may be incorporated in a PIMD of a type that may benefit from electrode orientation and vector selection and updating methods and implementations are disclosed in commonly owned U.S. Pat. Nos. 5,313,953; 5,388,578; and 5,411,031, which are hereby incorporated herein by reference.

Various embodiments described herein may be used in connection with congestive heart failure (CHF) monitoring, diagnosis, and/or therapy. A PIMD of the present invention may incorporate CHF features involving dual-chamber or bi-ventricular pacing/therapy, cardiac resynchronization therapy, cardiac function optimization, or other CHF related methodologies. For example, any PIMD of the present invention may incorporate features of one or more of the following references: commonly owned U.S. Pat. No. 7,260,432 and U.S. Pat. Nos. 6,411,848, 6,285,907; 4,928,688; 6,459,929; 5,334,222; 6,026,320; 6,371,922; 6,597,951; 6,424,865; and 6,542,775, each of which is hereby incorporated herein by reference.

A PIMD may be used to implement various diagnostic functions, which may involve performing rate-based, pattern and rate-based, and/or morphological tachyarrhythmia discrimination analyses. Subcutaneous, cutaneous, and/or external sensors may be employed to acquire physiologic and non-physiologic information for purposes of enhancing tachyarrhythmia detection and termination. It is understood that configurations, features, and combination of features described in the present disclosure may be implemented in a wide range of implantable medical devices, and that such embodiments and features are not limited to the particular devices described herein.

Referring now to FIG. 5, the implantable device illustrated in FIG. 5 is an embodiment of a PIMD including a cardiac rhythm management (CRM) device with an implantable pacemaker/defibrillator 400 electrically and physically coupled to an intracardiac lead system 402. The intracardiac lead system 402 is implanted in a human body with portions of the intracardiac lead system 402 inserted into a heart 401. Electrodes of the intracardiac lead system 402 may be used to detect and analyze cardiac signals produced by the heart 401

and to provide stimulation and/or therapy energy to the heart 401 under predetermined conditions, to treat cardiac arrhythmias of the heart 401.

The CRM 400 depicted in FIG. 5 is a multi-chamber device, capable of sensing signals from one or more of the right and left atria 420, 422 and the right and left ventricles 418, 424 of the heart 401 and providing pacing pulses to one or more of the right and left atria 420, 422 and the right and left ventricles 418, 424. Low energy pacing pulses may be delivered to the heart 401 to regulate the heart beat or maintain a cardiac rhythm, for example. In a configuration that includes cardioversion/defibrillation capabilities, high energy pulses may also be delivered to the heart 401 if an arrhythmia is detected that requires cardioversion or defibrillation.

The intracardiac lead system 402 includes a right ventricular lead system 404, a right atrial lead system 405, and a left atrial/ventricular lead system 406. The right ventricular lead system 404 includes an RV-tip pace/sense electrode 412, an RV-coil electrode 414, and one or more electrodes 461, 462, 463 suitable for measuring transthoracic impedance. In one arrangement, impedance sense and drive electrodes 461, 462, 463 are configured as ring electrodes. The impedance drive electrode 461 may be located, for example, in the right ventricle 418. The impedance sense electrode 462 may be located in the right atrium 420. Alternatively or additionally, an impedance sense electrode 463 may be located in the superior right atrium 420 or near the right atrium 420 within the superior vena cava.

The RV-tip electrode 412 is positioned at an appropriate location within the right ventricle 418 for pacing the right ventricle 418 and sensing cardiac activity in the right ventricle 418. The right ventricular lead system may also include one or more defibrillation electrodes 414, 416, positioned, for example, in the right ventricle 418 and the superior vena cava, respectively.

The atrial lead system 405 includes A-tip and A-ring cardiac pace/sense electrodes 456, 454. In the configuration of FIG. 5, the intracardiac lead system 402 is positioned within the heart 401, with a portion of the atrial lead system 405 extending into the right atrium 420. The A-tip and A-ring electrodes 456, 454 are positioned at an appropriate location within the right atrium 420 for pacing the right atrium 420 and sensing cardiac activity in the right atrium 420.

The lead system 402 illustrated in FIG. 5 also includes a left atrial/left ventricular lead system 406. The left atrial/left ventricular lead system 406 may include, one or more electrodes 434, 436, 417, 413 positioned within a coronary vein 465 of the heart 401. Additionally, or alternatively, one or more electrodes may be positioned in a middle cardiac vein, a left posterior vein, a left marginal vein, a great cardiac vein or an anterior vein.

The left atrial/left ventricular lead system 406 may include one or more endocardial pace/sense leads that are advanced through the superior vena cava (SVC), the right atrium 420, the valve of the coronary sinus, and the coronary sinus 450 to locate the LA-tip 436, LA-ring 434, LV-tip 413 and LV-ring 417 electrodes at appropriate locations adjacent to the left atrium 422 and left ventricle 424, respectively. In one example, lead placement involves creating an opening in a percutaneous access vessel, such as the left subclavian or left cephalic vein. For example, the lead system 402 may be guided into the right atrium 420 of the heart via the superior vena cava.

From the right atrium 420, the left atrial/left ventricular lead system 406 is deployed into the coronary sinus ostium, the opening of the coronary sinus 450. The left atrial/left

ventricular lead system **406** is guided through the coronary sinus **450** to a coronary vein of the left ventricle **424**. This vein is used as an access pathway for leads to reach the surfaces of the left atrium **422** and the left ventricle **424** which are not directly accessible from the right side of the heart. Lead placement for the left atrial/left ventricular lead system **406** may be achieved via subclavian vein access. For example, a preformed guiding catheter may be used for insertion of the LV and LA electrodes **413**, **417**, **436**, **434** adjacent the left ventricle **424** and left atrium **422**, respectively.

Lead placement for the left atrial/left ventricular lead system **406** may be achieved via the subclavian vein access and a preformed guiding catheter for insertion of the LV and LA electrodes **413**, **417**, **436**, **434** adjacent the left ventricle **424** and left atrium **422**, respectively. In one configuration, the left atrial/left ventricular lead system **406** is implemented as a single-pass lead. It is understood that the descriptions in the preceding paragraphs with regard to LV-tip **413** and LV-ring **417** electrodes are equally applicable to a lead configuration employing distal and proximal LV ring electrodes (with no LV-tip electrode).

Additional configurations of sensing, pacing and defibrillation electrodes may be included in the intracardiac lead system **402** to allow for various sensing, pacing, and defibrillation capabilities of multiple heart chambers. In other configurations, the intracardiac lead system **402** may have only a single lead with electrodes positioned in the right atrium or the right ventricle to implement single chamber cardiac pacing. In yet other embodiments, the intracardiac lead system **402** may not include the left atrial/left ventricular lead **406** and may support pacing and sensing of the right atrium and right ventricle only. Any intracardiac lead and electrode arrangements and configurations are considered to be within the scope of the present system in accordance with embodiments of the invention.

A PIMD may incorporate circuitry, structures and functionality of the implantable medical devices disclosed in commonly owned U.S. Pat. Nos. 5,203,348; 5,230,337; 5,360,442; 5,366,496; 5,397,342; 5,391,200; 5,545,202; 5,603,732; and 5,916,243, which are hereby incorporated herein by reference.

FIG. 6 is a top view of a PIMD **182** in accordance with the present invention, having at least three electrodes. One electrode is illustrated as an antenna **105** of the PIMD that may also be used for RF communications. The PIMD **182** shown in the embodiment illustrated in FIG. 6 includes a first electrode **198** and a second electrode **199** coupled to a can **103** through a header **189**, via an electrode module **196**. The first electrode **198** and second electrode **199** may be located on a lead **183** (single or multiple lead, or electrode array), or may be located directly in or on the electrode module **196**.

The PIMD **182** detects and records cardiac activity. The can **103** is illustrated as incorporating the header **189**. The header **189** may be configured to facilitate removable attachment between an electrode module **196** and the can **103**, as is shown in the embodiment depicted in FIG. 6. The header **189** includes a female coupler **192** configured to accept a male coupler **193** from the electrode module **196**. The male coupler **193** is shown having two electrode contacts **194**, **195** for coupling one or more electrodes **198**, **199** through the electrode module **196** to the can **103**. An electrode **181h** and an electrode **181k** are illustrated on the header **189** of the can **103** and may also be coupled through the electrode module **196** to the can **103**. The can **103** may alternatively, or in addition to the header electrodes **181h**, **181k** and/or first and second electrodes **198**, **199**, include one or more can electrodes **181a**, **181b**, **181c**.

Electrodes may also be provided on the back of the can **103**, typically the side facing externally relative to the patient after implantation. For example, electrodes **181m**, **181p**, and **181r** are illustrated as positioned in or on the back of the can **103**.

Providing electrodes on both front and back surfaces of the can **103** provides for a three-dimensional spatial distribution of the electrodes, which may provide additional discrimination capabilities from vector selection methods in accordance with the present invention. Further description of three-dimensional configurations are described in U.S. Pat. No. 7,299,086, previously incorporated by reference.

In this and other configurations, the header **189** incorporates interface features (e.g., electrical connectors, ports, engagement features, and the like) that facilitate electrical connectivity with one or more lead and/or sensor systems, lead and/or sensor modules, and electrodes. The header **189** may also incorporate one or more electrodes in addition to, or instead of, the electrodes provided by the lead **183**, such as electrodes **181h** and **181k**, to provide more available vectors to the PIMD. The interface features of the header **189** may be protected from body fluids using known techniques.

The PIMD **182** may further include one or more sensors in or on the can **103**, header **189**, electrode module **196**, or lead(s) that couple to the header **189** or electrode module **196**. Useful sensors may include electrophysiologic and non-electrophysiologic sensors, such as an acoustic sensor, an impedance sensor, a blood sensor, such as an oxygen saturation sensor (oximeter or plethysmographic sensor), a blood pressure sensor, minute ventilation sensor, or other sensor described or incorporated herein.

In one configuration, as is illustrated in FIG. 7, electrode subsystems of a PIMD system are arranged about a patient's heart **510**. The PIMD system includes a first electrode subsystem, comprising a can electrode **502**, and a second electrode subsystem **504** that includes at least two electrodes or at least one multi-element electrode. The second electrode subsystem **504** may include a number of electrodes used for sensing and/or electrical stimulation.

In various configurations, the second electrode subsystem **504** may include a combination of electrodes. The combination of electrodes of the second electrode subsystem **504** may include coil electrodes, tip electrodes, ring electrodes, multi-element coils, spiral coils, spiral coils mounted on non-conductive backing, screen patch electrodes, and other electrode configurations as will be described below. A suitable non-conductive backing material is silicone rubber, for example.

The can electrode **502** is positioned on the housing **501** that encloses the PIMD electronics. In one embodiment, the can electrode **502** includes the entirety of the external surface of housing **501**. In other embodiments, various portions of the housing **501** may be electrically isolated from the can electrode **502** or from tissue. For example, the active area of the can electrode **502** may include all or a portion of either the anterior or posterior surface of the housing **501** to direct current flow in a manner advantageous for cardiac sensing and/or stimulation.

Portions of the housing may be electrically isolated from tissue to optimally direct current flow. For example, portions of the housing **501** may be covered with a non-conductive, or otherwise electrically resistive, material to direct current flow. Suitable non-conductive material coatings include those formed from silicone rubber, polyurethane, or parylene, for example.

FIG. 8 is a block diagram depicting various componentry of different arrangements of a PIMD in accordance with embodiments of the present invention. The components, functionality, and configurations depicted in FIG. 8 are

intended to provide an understanding of various features and combinations of features that may be incorporated in a PIMD. It is understood that a wide variety of device configurations are contemplated, ranging from relatively sophisticated to relatively simple designs. As such, particular PIMD configurations may include some componentry illustrated in FIG. 8, while excluding other componentry illustrated in FIG. 8.

Illustrated in FIG. 8 is a processor-based control system 205 which includes a micro-processor 206 coupled to appropriate memory (volatile and/or non-volatile) 209, it being understood that any logic-based control architecture may be used. The control system 205 is coupled to circuitry and components to sense, detect, and analyze electrical signals produced by the heart and deliver electrical stimulation energy to the heart under predetermined conditions to treat cardiac arrhythmias. The control system 205 and associated components also provide pacing therapy to the heart. The electrical energy delivered by the PIMD may be in the form of low energy pacing pulses or high-energy pulses for cardioversion or defibrillation.

Cardiac signals are sensed using the electrode(s) 214 and the can or indifferent electrode 207 provided on the PIMD housing. Cardiac signals may also be sensed using only the electrode(s) 214, such as in a non-active can configuration. As such, unipolar, bipolar, or combined unipolar/bipolar electrode configurations as well as multi-element electrodes and combinations of noise canceling and standard electrodes may be employed. The sensed cardiac signals are received by sensing circuitry 204, which includes sense amplification circuitry and may also include filtering circuitry and an analog-to-digital (A/D) converter. The sensed cardiac signals processed by the sensing circuitry 204 may be received by noise reduction circuitry 203, which may further reduce noise before signals are sent to the detection circuitry 202.

Noise reduction circuitry 203 may also be incorporated after sensing circuitry 202 in cases where high power or computationally intensive noise reduction algorithms are required. The noise reduction circuitry 203, by way of amplifiers used to perform operations with the electrode signals, may also perform the function of the sensing circuitry 204. Combining the functions of sensing circuitry 204 and noise reduction circuitry 203 may be useful to minimize the necessary componentry and lower the power requirements of the system.

In the illustrative configuration shown in FIG. 8, the detection circuitry 202 is coupled to, or otherwise incorporates, noise reduction circuitry 203. The noise reduction circuitry 203 operates to improve the SNR of sensed cardiac signals by removing noise content of the sensed cardiac signals introduced from various sources. Typical types of cardiac signal noise includes electrical noise and noise produced from skeletal muscles, for example. A number of methodologies for improving the SNR of sensed cardiac signals in the presence of skeletal muscular induced noise, including signal separation techniques incorporating combinations of electrodes and multi-element electrodes, are described hereinbelow.

Detection circuitry 202 may include a signal processor that coordinates analysis of the sensed cardiac signals and/or other sensor inputs to detect cardiac arrhythmias, such as, in particular, tachyarrhythmia. Rate based and/or morphological discrimination algorithms may be implemented by the signal processor of the detection circuitry 202 to detect and verify the presence and severity of an arrhythmic episode.

The detection circuitry 202 communicates cardiac signal information to the control system 205. Memory circuitry 209 of the control system 205 contains parameters for operating in various sensing, defibrillation, and, if applicable, pacing

modes, and stores data indicative of cardiac signals received by the detection circuitry 202. The memory circuitry 209 may also be configured to store historical ECG and therapy data, which may be used for various purposes and transmitted to an external receiving device as needed or desired.

In certain configurations, the PIMD may include diagnostics circuitry 210. The diagnostics circuitry 210 typically receives input signals from the detection circuitry 202 and the sensing circuitry 204. The diagnostics circuitry 210 provides diagnostics data to the control system 205, it being understood that the control system 205 may incorporate all or part of the diagnostics circuitry 210 or its functionality. The control system 205 may store and use information provided by the diagnostics circuitry 210 for a variety of diagnostics purposes. This diagnostic information may be stored, for example, subsequent to a triggering event or at predetermined intervals, and may include system diagnostics, such as power source status, therapy delivery history, and/or patient diagnostics. The diagnostic information may take the form of electrical signals or other sensor data acquired immediately prior to therapy delivery.

According to a configuration that provides cardioversion and defibrillation therapies, the control system 205 processes cardiac signal data received from the detection circuitry 202 and initiates appropriate tachyarrhythmia therapies to terminate cardiac arrhythmic episodes and return the heart to normal sinus rhythm. The control system 205 is coupled to shock therapy circuitry 216. The shock therapy circuitry 216 is coupled to the electrode(s) 214 and the can or indifferent electrode 207 of the PIMD housing.

Upon command, the shock therapy circuitry 216 delivers cardioversion and defibrillation stimulation energy to the heart in accordance with a selected cardioversion or defibrillation therapy. In a less sophisticated configuration, the shock therapy circuitry 216 is controlled to deliver defibrillation therapies, in contrast to a configuration that provides for delivery of both cardioversion and defibrillation therapies. Examples of PIMD high energy delivery circuitry, structures and functionality, aspects of which may be incorporated in a PIMD of a type that may benefit from aspects of the present invention are disclosed in commonly owned U.S. Pat. Nos. 5,372,606; 5,411,525; 5,468,254; and 5,634,938, which are hereby incorporated herein by reference.

Arrhythmic episodes may also be detected and verified by morphology-based analysis of sensed cardiac signals as is known in the art. Tiered or parallel arrhythmia discrimination algorithms may also be implemented using both rate-based and morphologic-based approaches. Further, a rate and pattern-based arrhythmia detection and discrimination approach may be employed to detect and/or verify arrhythmic episodes, such as the approach disclosed in U.S. Pat. Nos. 6,487,443; 6,259,947; 6,141,581; 5,855,593; and 5,545,186, which are hereby incorporated herein by reference.

In accordance with another configuration, a PIMD may incorporate a cardiac pacing capability in addition to, or to the exclusion of, cardioversion and/or defibrillation capabilities. As is shown in FIG. 8, the PIMD includes pacing therapy circuitry 230 that is coupled to the control system 205 and the electrode(s) 214 and can/indifferent electrodes 207. Upon command, the pacing therapy circuitry 230 delivers pacing pulses to the heart in accordance with a selected pacing therapy.

Control signals, developed in accordance with a pacing regimen by pacemaker circuitry within the control system 205, are initiated and transmitted to the pacing therapy circuitry 230 where pacing pulses are generated. A pacing regimen, such as those discussed and incorporated herein, may be

modified by the control system **205**. In one particular application, a sense vector optimization approach of the present invention may be implemented to enhance capture detection and/or capture threshold determinations, such as by selecting an optimal vector for sensing an evoked response resulting from application of a capture pacing stimulus.

The PIMD shown in FIG. **8** may be configured to receive signals from one or more physiologic and/or non-physiologic sensors. Depending on the type of sensor employed, signals generated by the sensors may be communicated to transducer circuitry coupled directly to the detection circuitry **202** or indirectly via the sensing circuitry **204**. It is noted that certain sensors may transmit sense data to the control system **205** without processing by the detection circuitry **202**.

Communications circuitry **218** is coupled to the microprocessor **206** of the control system **205**. The communications circuitry **218** allows the PIMD to communicate with one or more receiving devices or systems situated external to the PIMD. By way of example, the PIMD may communicate with a patient-worn, portable or bedside communication system via the communications circuitry **218**. In one configuration, one or more physiologic or non-physiologic sensors (subcutaneous, cutaneous, or external of patient) may be equipped with a short-range wireless communication interface, such as an interface conforming to a known communications standard, such as Bluetooth or IEEE 802 standards. Data acquired by such sensors may be communicated to the PIMD via the communications circuitry **218**. It is noted that physiologic or non-physiologic sensors equipped with wireless transmitters or transceivers may communicate with a receiving system external of the patient.

The communications circuitry **218** preferably allows the PIMD to communicate with an external programmer. In one configuration, the communications circuitry **218** and the programmer unit (not shown) use a wire loop antenna and a radio frequency telemetric link, as is known in the art, to receive and transmit signals and data between the programmer unit and communications circuitry **218**. In this manner, programming commands and data are transferred between the PIMD and the programmer unit during and after implant. Using a programmer, a physician is able to set or modify various parameters used by the PIMD. For example, a physician may set or modify parameters affecting sensing, detection, pacing, and defibrillation functions of the PIMD, including pacing and cardioversion/defibrillation therapy modes.

Typically, the PIMD is encased and hermetically sealed in a housing suitable for implanting in a human body as is known in the art. Power to the PIMD is supplied by an electrochemical power source **220** housed within the PIMD. In one configuration, the power source **220** includes a rechargeable battery. According to this configuration, charging circuitry is coupled to the power source **220** to facilitate repeated non-invasive charging of the power source **220**. The communications circuitry **218**, or separate receiver circuitry, is configured to receive RF energy transmitted by an external RF energy transmitter. The PIMD may, in addition to a rechargeable power source, include a non-rechargeable battery. It is understood that a rechargeable power source need not be used, in which case a long-life non-rechargeable battery is employed.

The detection circuitry **202**, which is coupled to a microprocessor **206**, may be configured to incorporate, or communicate with, specialized circuitry for processing sensed cardiac signals in manners particularly useful in a cardiac sensing and/or stimulation device. As is shown by way of

example in FIG. **8**, the detection circuitry **202** may receive information from multiple physiologic and non-physiologic sensors.

The detection circuitry **202** may also receive information from one or more sensors that monitor skeletal muscle activity. In addition to cardiac activity signals, electrodes readily detect skeletal muscle signals. Such skeletal muscle signals may be used to determine the activity level of the patient. In the context of cardiac signal detection, such skeletal muscle signals are considered artifacts of the cardiac activity signal, which may be viewed as noise.

The components, functionality, and structural configurations depicted herein are intended to provide an understanding of various features and combination of features that may be incorporated in a PIMD. It is understood that a wide variety of PIMDs and other implantable cardiac monitoring and/or stimulation device configurations are contemplated, ranging from relatively sophisticated to relatively simple designs. As such, particular PIMD or cardiac monitoring and/or stimulation device configurations may include particular features as described herein, while other such device configurations may exclude particular features described herein.

The PIMD may detect a variety of physiological signals that may be used in connection with various diagnostic, therapeutic or monitoring implementations. For example, the PIMD may include sensors or circuitry for detecting respiratory system signals, cardiac system signals, and signals related to patient activity. In one embodiment, the PIMD senses intrathoracic impedance, from which various respiratory parameters may be derived, including, for example, respiratory tidal volume and minute ventilation. Sensors and associated circuitry may be incorporated in connection with a PIMD for detecting one or more body movement or body posture or position related signals. For example, accelerometers and GPS devices may be employed to detect patient activity, patient location, body orientation, or torso position.

Referring now to FIG. **9**, a PIMD of the present invention may be used within the structure of an advanced patient management (APM) system **300**. The advanced patient management system **300** allows physicians to remotely and automatically monitor cardiac and respiratory functions, as well as other patient conditions. In one example, a PIMD implemented as a cardiac pacemaker, defibrillator, or resynchronization device may be equipped with various telecommunications and information technologies that enable real-time data collection, diagnosis, and treatment of the patient. Various PIMD embodiments described herein may be used in connection with advanced patient management. Methods, structures, and/or techniques described herein, which may be adapted to provide for remote patient/device monitoring, diagnosis, therapy, or other APM related methodologies, may incorporate features of one or more of the following references: U.S. Pat. Nos. 6,221,011; 6,270,457; 6,277,072; 6,280,380; 6,312,378; 6,336,903; 6,358,203; 6,368,284; 6,398,728; and 6,440,066, which are hereby incorporated herein by reference.

As is illustrated in FIG. **9**, the medical system **300** may be used to implement coordinated patient measuring and/or monitoring, diagnosis, and/or therapy in accordance with embodiments of the invention. The medical system **300** may include, for example, one or more patient-internal medical devices **310**, such as a PIMD, and one or more patient-external medical devices **320**, such as a monitor or signal display device. Each of the patient-internal **310** and patient-external **320** medical devices may include one or more of a patient monitoring unit **312**, **322**, a diagnostics unit **314**, **324**, and/or a therapy unit **316**, **326**.

The patient-external medical device **320** performs monitoring, and/or diagnosis and/or therapy functions external to the patient (i.e., not invasively implanted within the patient's body). The patient-external medical device **320** may be positioned on the patient, near the patient, or in any location external to the patient.

The patient-internal and patient-external medical devices **310**, **320** may be coupled to one or more sensors **341**, **342**, **345**, **346**, patient input/trigger devices **343**, **347** and/or other information acquisition devices **344**, **348**. The sensors **341**, **342**, **345**, **346**, patient input/trigger devices **343**, **347**, and/or other information acquisition devices **344**, **348** may be employed to detect conditions relevant to the monitoring, diagnostic, and/or therapeutic functions of the patient-internal and patient-external medical devices **310**, **320**.

The medical devices **310**, **320** may each be coupled to one or more patient-internal sensors **341**, **345** that are fully or partially implantable within the patient. The medical devices **310**, **320** may also be coupled to patient-external sensors positioned on, near, or in a remote location with respect to the patient. The patient-internal and patient-external sensors are used to sense conditions, such as physiological or environmental conditions, that affect the patient.

The patient-internal sensors **341** may be coupled to the patient-internal medical device **310** through one or more internal leads **353**. Still referring to FIG. 9, one or more patient-internal sensors **341** may be equipped with transceiver circuitry to support wireless communications between the one or more patient-internal sensors **341** and the patient-internal medical device **310** and/or the patient-external medical device **320**.

The patient-external sensors **342** may be coupled to the patient-internal medical device **310** and/or the patient-external medical device **320** through one or more internal leads **355** or through wireless connections. Patient-external sensors **342** may communicate with the patient-internal medical device **310** wirelessly. Patient-external sensors **342** may be coupled to the patient-external medical device **320** through one or more internal leads **357** or through a wireless link.

In an embodiment of the present invention, the patient-external medical device **320** includes a visual display configured to simultaneously display non-electrophysiological signals and ECG signals. For example, the display may present the information visually. The patient-external medical device **320** may also, or alternately, provide signals to other components of the medical system **300** for presentation to a clinician, whether local to the patient or remote to the patient.

Referring still to FIG. 9, the medical devices **310**, **320** may be connected to one or more information acquisition devices **344**, **348**, such as a database that stores information useful in connection with the monitoring, diagnostic, or therapy functions of the medical devices **310**, **320**. For example, one or more of the medical devices **310**, **320** may be coupled through a network to a patient information server **330**.

The input/trigger devices **343**, **347** are used to allow the physician, clinician, and/or patient to manually trigger and/or transfer information to the medical devices **310**, **320**. The input/trigger devices **343**, **347** may be particularly useful for inputting information concerning patient perceptions, such as a perceived cardiac event, how well the patient feels, and other information not automatically sensed or detected by the medical devices **310**, **320**. For example, the patient may trigger the input/trigger device **343** upon perceiving a cardiac event. The trigger may then initiate the recording of cardiac signals and/or other sensor signals in the patient-internal device **310**. Later, a clinician may trigger the input/trigger device **347**, initiating the transfer of the recorded cardiac

and/or other signals from the patient-internal device **310** to the patient-external device **320** for display and diagnosis. The input/trigger device **347** may also be used by the patient, clinician, and/or physician as an activation stimulus to the PIMD to update and/or select a vector.

In one embodiment, the patient-internal medical device **310** and the patient-external medical device **320** may communicate through a wireless link between the medical devices **310**, **320**. For example, the patient-internal and patient-external devices **310**, **320** may be coupled through a short-range radio link, such as Bluetooth, IEEE 802.11, and/or a proprietary wireless protocol. The communications link may facilitate uni-directional or bi-directional communication between the patient-internal **310** and patient-external **320** medical devices. Data and/or control signals may be transmitted between the patient-internal **310** and patient-external **320** medical devices to coordinate the functions of the medical devices **310**, **320**.

In another embodiment, patient data may be downloaded from one or more of the medical devices periodically or on command, and stored at the patient information server **330**. The physician and/or the patient may communicate with the medical devices and the patient information server **330**, for example, to acquire patient data or to initiate, terminate or modify recording and/or therapy.

The data stored on the patient information server **330** may be accessible by the patient and the patient's physician through one or more terminals **350**, e.g., remote computers located in the patient's home or the physician's office. The patient information server **330** may be used to communicate to one or more of the patient-internal and patient-external medical devices **310**, **320** to provide remote control of the monitoring, diagnosis, and/or therapy functions of the medical devices **310**, **320**.

In one embodiment, the patient's physician may access patient data transmitted from the medical devices **310**, **320** to the patient information server **330**. After evaluation of the patient data, the patient's physician may communicate with one or more of the patient-internal or patient-external devices **310**, **320** through an APM system **340** to initiate, terminate, or modify the monitoring, diagnostic, and/or therapy functions of the patient-internal and/or patient-external medical systems **310**, **320**.

In another embodiment, the patient-internal and patient-external medical devices **310**, **320** may not communicate directly, but may communicate indirectly through the APM system **340**. In this embodiment, the APM system **340** may operate as an intermediary between two or more of the medical devices **310**, **320**. For example, data and/or control information may be transferred from one of the medical devices **310**, **320** to the APM system **340**. The APM system **340** may transfer the data and/or control information to another of the medical devices **310**, **320**.

In one embodiment, the APM system **340** may communicate directly with the patient-internal and/or patient-external medical devices **310**, **320**. In another embodiment, the APM system **340** may communicate with the patient-internal and/or patient-external medical devices **310**, **320** through medical device programmers **360**, **370** respectively associated with each medical device **310**, **320**. As was stated previously, the patient-internal medical device **310** may take the form of an implantable PIMD.

In accordance with one approach of the present invention, a PIMD may be implemented to separate cardiac signals for selection of vectors in a robust manner using a blind source separation (BSS) technique. It is understood that all or certain aspects of the BSS technique described below may be imple-

mented in a device or system (implantable or non-implantable) other than a PIMD, and that the description of BSS techniques implemented in a PIMD is provided for purposes of illustration, and not of limitation. For example, algorithms that implement a BSS technique as described below may be implemented for use by an implanted processor or a non-implanted processor, such as a processor of a programmer or computer of a patient-external device communicatively coupled to the PIMD.

Referring now to FIGS. 10 through 12, cardiac sensing and/or stimulation devices and methods employing cardiac signal separation are described in accordance with the present invention. The main principle of signal separation works on the premise that spatially distributed electrodes collect components of a signal from a common origin (e.g., the heart) with the result that these components may be strongly correlated to each other. In addition, these components may also be weakly correlated to components of another origin (e.g., noise). The PIMD may be implemented to separate these components according to their sources and project the ECG signal in the direction along which the power of the cardiac signal is maximized or the signals are the most correlated. To achieve this, the methods and algorithms illustrated in FIGS. 10 through 12 may be implemented.

FIG. 10 illustrates a vector selection system 125 in accordance with the present invention. A vector selection process 414 is performed, providing a selected vector 419 along with vector selection information including, for example, magnitude, phase angle, rates of change, trend information, and other statistics. The selected vector 419 (and associated signal and other vector selection information) is available for a variety of uses 420, such as, for example, arrhythmia discrimination, therapy titration, posture detection/monitoring, ischemia detection/monitoring, capture verification, disease diagnosis and/or progress information, or other use. In accordance with the present invention, the vector selection process may be used, and repeated, to track changes in the progression of patient pathology, and to update sense vectors useful for cardiac sensing and/or stimulation.

FIG. 11 illustrates an embodiment of a signal source separation/update process 100 useful for vector selection in accordance with the present invention. A set of composite signals, including at least two and up to  $n$  signals, are selected for separation, where  $n$  is an integer. Each electrode provides a composite signal associated with an unknown number of sources. Pre-processing and/or pre-filtering 412 may be performed on each of the composite signals. It may be advantageous to filter each composite signal using the same filtering function. Source separation 414 is performed, providing at least one separated signal. If a treatment is desired, an appropriate treatment or therapy 418 is performed. If continued source separation is desired, the process returns to perform such source separation 414 and may iteratively separate 416 more signals until a desired signal is found, or all signals are separated.

The separated signal or signals may then be used 420 for some specified purpose, such as, for example, to confirm a normal sinus rhythm, determine a cardiac condition, define a noise signal, or other desired use. One use in accordance with the present invention is defining a vector useful for cardiac sensing. Electrode arrays and/or the use of multiple electrodes provide for many possible vectors useful for sensing cardiac activity.

Over the useful life of an implantable device, changes may occur in one or both of the patient and the implantable device. Certain changes may result in less than optimum sensing of cardiac activity. As an extreme example, consider the failure

of an electrode element in an electrode array. Before the failure, the element may be the most beneficial for cardiac activity monitoring, but after the failure, the cardiac signal is lost. The separation/update process 100 would determine that the vector associated with the failed electrode is no longer the best vector to determine cardiac activity, and a next-best vector may be determined. The use 420 of the results of the separation/update process 100 may be for the implantable device to update its cardiac sense vector to the newly established optimum vector.

Updating the vector to search for the optimum sense vector may be performed periodically, without the need to detect a loss of cardiac signal. For example, a PIMD may regularly perform an update of the sense vector used for cardiac discrimination, to keep performance of the PIMD improved and/or optimized. Updating may be useful, for example, when pathology, therapy, posture, patient activity level, device orientation, device migration, exceeding an arrhythmia detection rate zone or threshold, or other system or patient change/event occurrence suggests a change in vector to separate the cardiac signal may be useful.

For example, in an APM environment such as described with reference to FIG. 9, a PIMD in accordance with the present invention may have a controller and communications circuitry that transmits its cardiac composite signals to a bedside signal processor when the patient is asleep. The signal processor may perform a blind source separation and analysis of the composite signals during the patient's sleep cycle. The signal processor may then determine the appropriate vector or vectors for the PIMD, and reprogram the PIMD before the patient awakes. The PIMD may then operate with the latest programming until the next update.

FIG. 12 illustrates further embodiments of a signal source separation process in greater detail, including some optional elements. Entry of the process at block 422 provides access to a pre-processing facility 412, illustrated here as including a covariance matrix computation block 424 and/or a pre-filtering block 426 such as, for example, a band-pass filtering block. The composite signals processed at pre-processing block 412 are provided to a signal source separation block 415, which may include functionality of the source separation block 414 and iterative source separation block 416 shown in FIG. 11.

The signal source separation block 415 includes a principal component analysis block 428, which produces an associated set of eigenvectors and eigenvalues using a covariance matrix or composite signals provided by pre-processing block 412. A determination 430 is made as to whether one eigenvalue is significantly larger than any others in the set, making the dimension associated with this eigenvalue a likely candidate for association with the direction along which the power of the signal is maximized. If such a candidate is identified at block 430, the candidate signal may immediately be separated 431 and a determination 433 made to confirm whether the candidate signal is a cardiac signal, before returning 444 to the master PIMD routine that called the signal source separation process.

If there is no clear candidate eigenvalue, or if the largest value eigenvalue did not provide a signal of interest, an iterative process may be used to separate 432 and search 436 for the signal of interest (e.g., cardiac signal). This process 432, 436, 434 may be repeated until such a signal is found, or no more signals are separable 434 as determined by exceeding a predefined number of iterations  $N_{max}$  or some other termination criterion. An example of such a criterion is an eigenvalue

considered at the current iteration being proportionately smaller than the largest eigenvalues by some predetermined amount.

If the iterations 434 are completed and a cardiac signal is not found at 436, then an Independent component analysis 435 may be attempted to further process the signals in an attempt to find the cardiac signal. If a cardiac signal is still not found at decision 437, after exhausting all possibilities, then a set of default settings 439 may be used, or an error routine may be initiated.

In another embodiment of the present invention, a method of signal separation involves sensing, at least in part implantably, two or more composite signals using three or more cardiac electrodes or electrode array elements. The method may further involve performing a source separation using the detected composite signals, the source separation producing two or more vectors. A first vector and a second vector may be selected from the set of vectors.

The use of the terms first and second vector are not intended to imply that the vectors are the first and second vectors separated from the composite signal, but that a first vector and a second vector are selected from among any vectors available for a given composite signal. First and second signals may be identified from the detected plurality of composite signals using the first and second vectors respectively. The method then involves selecting either the first vector or the second vector as a selected vector based on a selection criterion.

Selection criteria may include finding the optimum vector for cardiac signal identification, finding a vector that provides the largest magnitude cardiac signal, or finding another particular signal of interest. For example, the first vector may be selected and used for cardiac activity sensing, and the second vector may then be selected and used for skeletal muscle activity sensing. The skeletal muscle signal may then be used to further discriminate arrhythmias from noise such as is further described in commonly owned U.S. Pat. No. 7,117,035, which is hereby incorporated herein by reference.

With continued reference to FIGS. 10 through 12, one illustrative signal source separation methodology useful with the present invention is described below. Such an approach is particularly well suited for use in a PIMD system. It is to be understood that the example provided below is provided for non-limiting, illustrative purposes only. Moreover, it is understood that signal source separation within the context of the present invention need not be implemented using the specific processes described below, or each and every process described below.

A collected signal may be pre-filtered to suppress broadly incoherent noise and to generally optimize the signal-to-noise ratio (SNR). Any noise suppression in this step has the additional benefit of reducing the effective number of source signals that need to be separated. A Principal Component Analysis (PCA) may be performed on the collected and/or pre-filtered signal, producing a set of eigenvectors and associated eigenvalues describing the optimal linear combination, in a least-squares sense, of the recorded signals that makes the components coming from different sources orthogonal to one another. As an intermediate step to performing the PCA, an estimate of the spatial covariance matrix may be computed and averaged over a relatively short time interval (on the order of 2-3 beats) to enhance those components that are mutually correlated.

Each eigenvalue corresponds to the power of the signal projected along the direction of each associated eigenvector. The cardiac signal component is typically identified by one of the largest eigenvalues. Occasionally, PCA does not achieve a substantially sufficient level of source independence. In such a case, an Independent Component Analysis (ICA) may be performed to determine the actual source direction, either upon the PCA-transformed signal, or directly upon the collected signal. The ICA consists of a unitary transformation based on higher-order statistical analysis.

For example, separation of two mixed sources may be achieved by rotating the complex variable formed from the signals on an angle that aligns their probability distributions with basis vectors. In another approach, an algorithm based on minimization of mutual information between components, as well as other approaches generally known in the field of ICA, may be used to achieve reconstructed source independence.

A PIMD may, for example, employ a hierarchical decision-making procedure that initiates a blind source separation algorithm upon the detection of a condition under which the target vector may change. By way of example, a local peak density algorithm or a curvature-based significant point methodology may be used as a high-level detection routine. Other sensors/information available to the PIMD may also trigger the initiation of a blind source separation algorithm.

The PIMD may compute an estimate of the covariance matrix. It may be sufficient to compute the covariance matrix for only a short time. Computation of the eigenvalues and eigenvectors required for the PCA may also be performed adaptively through an efficient updating algorithm.

The cardiac signal can be identified among the few (e.g., two or three) largest separated signals. One of several known algorithms may be used as a selection criterion. For example, local peak density (LPD) or beat detection (BD) algorithms may be used. The LPD algorithm can be used to identify the cardiac signal by finding a signal that has an acceptable physiologic range of local peak densities by comparing the LPD to a predetermined range of peak densities known to be acceptable. The BD algorithm will find a signal that has a physiologic-range of beat rate. In the case where two signals look similar, a morphology algorithm, such as a local rate of occurrence may be used for further discrimination and/or as a selection criterion. It may be beneficial to use the same algorithm at different levels of hierarchy: 1) initiation of blind source separation algorithm; 2) iterative identification of a cardiac signal.

Mathematical development of an example of blind source separation algorithm in accordance with the present invention is provided as follows. Assume there are  $m$  source signals  $s_1(t), \dots, s_m(t)$  that are detected inside of the body, comprising a desired cardiac signal and some other independent noise, which may, for example, include myopotential noise, electrocautery response, etc. These signals are recorded simultaneously from  $k$  sensing vectors derived from subcutaneous sensing electrodes, where  $k > m$  in a preferred approach. By definition, the signals are mixed together into the overall voltage gradient sensed across the electrode array. In addition, there is usually an additive noise attributable, for example, to environmental noise sources. The relationship between the source signals  $s(t)$  and recorded signals  $x(t)$  is described below:

$$\begin{pmatrix} x_1(t) \\ x_2(t) \\ \vdots \\ x_k(t) \end{pmatrix} = \begin{pmatrix} y_1(t) \\ y_2(t) \\ \vdots \\ y_k(t) \end{pmatrix} + \begin{pmatrix} n_1(t) \\ n_2(t) \\ \vdots \\ n_k(t) \end{pmatrix}$$

$$= \begin{pmatrix} a_{11} & a_{12} & \cdots & a_{1m} \\ a_{21} & a_{22} & \cdots & a_{2m} \\ \vdots & \vdots & \ddots & \vdots \\ a_{k1} & a_{k2} & \cdots & a_{km} \end{pmatrix} \begin{pmatrix} s_1(t) \\ s_2(t) \\ \vdots \\ s_m(t) \end{pmatrix} + \begin{pmatrix} n_1(t) \\ n_2(t) \\ \vdots \\ n_k(t) \end{pmatrix}$$

$$= x(t) = y(t) + n(t) = As(t) + n(t), m < k$$

Here,  $x(t)$  is an instantaneous linear mixture of the source signals and additive noise,  $y(t)$  is the same linear mixture without the additive noise,  $n(t)$  is environmental noise modeled as Gaussian noise,  $A$  is an unknown mixing matrix, and  $s(t)$  are the unknown source signals considered here to comprise the desired cardiac signal and other biological artifacts. There is no assumption made about the underlying structure of the mixing matrix and the source signals, except for their spatial statistical independence. The objective is to reconstruct the source signals  $s(t)$  from the recorded signals  $x(t)$ .

Reconstruction of the source signals  $s(t)$  from the recorded signals  $x(t)$  preferably involves pre-filtering  $x(t)$  to optimize the SNR (i.e., maximize the power of  $s(t)$  against that of  $n(t)$ ). Here, a linear phase filter can be used to minimize time-domain dispersion (tails and ringing) and best preserve the underlying cardiac signal morphology. It is noted that the notation  $x(t)$  is substituted for the pre-filtered version of  $x(t)$ .

An estimate of the spatial covariance matrix  $R$  is formed as shown immediately below. This step serves to enhance the components of the signal that are mutually correlated and downplays incoherent noise.

$$R = \frac{1}{T_{(-1sec)}} \sum_{t=1, T} \begin{pmatrix} x_1(t) \\ x_2(t) \\ \vdots \\ x_k(t) \end{pmatrix} * (x_1(t) \ x_2(t) \ \dots \ x_k(t))$$

$$= \frac{1}{T_{(-1sec)}} \sum_{t=1, T} \begin{pmatrix} x_1(t)*x_1(t) & x_1(t)*x_2(t) & \cdots & x_1(t)*x_k(t) \\ x_2(t)*x_1(t) & x_2(t)*x_2(t) & \cdots & x_2(t)*x_k(t) \\ \vdots & \vdots & \ddots & \vdots \\ x_k(t)*x_1(t) & x_k(t)*x_2(t) & \cdots & x_k(t)*x_k(t) \end{pmatrix}$$

Eigenvalues and eigenvectors of the covariance matrix  $R$  may be determined using singular value decomposition (SVD). By definition, the SVD factors  $R$  as a product of three matrices  $R=USV^T$ , where  $U$  and  $V$  are orthogonal matrices describing amplitude preserving rotations, and  $S$  is a diagonal matrix that has the squared eigenvalues  $\sigma_1 \dots \sigma_k$  on the diagonal in monotonically decreasing order. Expanded into elements, this SVD may be expressed as follows.

$$R = \begin{pmatrix} u_{11} & u_{12} & \cdots & u_{1k} \\ u_{21} & u_{22} & \cdots & u_{2k} \\ \vdots & \vdots & \ddots & \vdots \\ u_{k1} & u_{k2} & \cdots & u_{kk} \end{pmatrix} \begin{pmatrix} \sigma_1 & 0 & 0 & 0 \\ 0 & \sigma_2 & 0 & 0 \\ \vdots & \vdots & \ddots & \vdots \\ 0 & 0 & \cdots & \sigma_k \end{pmatrix} \begin{pmatrix} v_{11} & v_{12} & \cdots & v_{1k} \\ v_{21} & v_{22} & \cdots & v_{2k} \\ \vdots & \vdots & \ddots & \vdots \\ v_{k1} & v_{k2} & \cdots & v_{kk} \end{pmatrix}$$

The columns of matrix  $V$  consist of eigenvectors that span a new coordinate system wherein the components coming from different sources are orthogonal to one another. Eigenvalues  $\sigma_1 \dots \sigma_k$  correspond respectively to columns 1 ...  $k$  of

V. Each eigenvalue defines the signal "power" along the direction of its corresponding eigenvector. The matrix  $V$  thus provides a rotational transformation of  $x(t)$  into a space where each separate component of  $x$  is optimally aligned, in a least-squares sense, with a basis vector of that space.

The largest eigenvalues correspond to the highest power components, which typically represent the mixed source signals  $y_1(t), \dots, y_m(t)$ . The lower eigenvalues typically are associated with additive noise  $n_1(t), \dots, n_{k-m}(t)$ . Each eigenvector may then be viewed as an optimal linear operator on  $x$  that maximizes the power of the corresponding independent signal component. As a result, the transformed signal is found as:

$$\hat{y}(t) = \begin{pmatrix} \hat{y}_1(t) \\ \vdots \\ \hat{y}_m(t) \end{pmatrix} = \begin{pmatrix} v_{11} & v_{21} & \cdots & v_{k1} \\ \vdots & \vdots & \ddots & \vdots \\ v_{1m} & v_{2m} & \cdots & v_{km} \end{pmatrix} * \begin{pmatrix} x_1(t) \\ x_2(t) \\ \vdots \\ x_k(t) \end{pmatrix}$$

The component estimates  $\hat{y}_1(t), \dots, \hat{y}_m(t)$  of  $y_1(t), \dots, y_m(t)$  are aligned with the new orthogonal system of coordinates defined by each other and thus independent.

In an alternative implementation, eigenvalues and eigenvectors of the covariance matrix  $R$  may be determined using eigenvalue decomposition (ED). By definition, the ED solves the matrix equation  $RV=SV$  so that  $S$  is a diagonal matrix having the eigenvalues  $\sigma_1 \dots \sigma_k$  on the diagonal, preferably in monotonically decreasing order, and so that matrix  $V$  contains the corresponding eigenvectors along its columns. The resulting eigenvalues and associated eigenvectors may be applied in similar manner to those resulting from the SVD of covariance matrix  $R$ .

In an alternative implementation, eigenvalues and eigenvectors are computed directly from  $x(t)$  by forming a rectangular matrix  $X$  of  $k$  sensor signals collected during a time segment of interest, and performing an SVD directly upon  $X$ . The matrix  $X$  and its decomposition may be expressed as follows.

$$X = \begin{pmatrix} x_1(t) \\ x_2(t) \\ \vdots \\ x_k(t) \end{pmatrix} \begin{pmatrix} x_1(t_1) & x_1(t_2) & \cdots & x_1(t_T) \\ x_2(t_1) & x_2(t_2) & \cdots & x_2(t_T) \\ \vdots & \vdots & \ddots & \vdots \\ x_k(t_1) & x_k(t_2) & \cdots & x_k(t_T) \end{pmatrix} = USV^T$$

Note that in cases where  $T > k$ , a so-called "economy-size" SVD may be used to find the eigenvalues and eigenvectors efficiently. Such an SVD may be expressed as follows, expanded into elements.

$$X = USV^T = \begin{pmatrix} u_{11} & u_{12} & \cdots & u_{1T} \\ u_{21} & u_{22} & \cdots & u_{2T} \\ \vdots & \vdots & \ddots & \vdots \\ u_{k1} & u_{k2} & \cdots & u_{kT} \end{pmatrix} \begin{pmatrix} \sigma_1 & 0 & \cdots & 0 \\ 0 & \sigma_2 & \cdots & 0 \\ \vdots & \vdots & \ddots & \vdots \\ 0 & 0 & \cdots & \sigma_k \end{pmatrix} \begin{pmatrix} v_{11} & v_{12} & \cdots & v_{1k} \\ v_{21} & v_{22} & \cdots & v_{2k} \\ \vdots & \vdots & \ddots & \vdots \\ v_{k1} & v_{k2} & \cdots & v_{kk} \end{pmatrix}$$

A similar economy-sized SVD may also be used for the less typical case where  $k > T$ . The matrices  $S$  and  $V$  resulting from performing the SVD of data matrix  $X$  may be applied in

the context of this present invention identically as the matrices S and V resulting from performing the SVD on the covariance matrix R.

At this point, the mutual separation of  $\hat{y}_1(t), \dots, \hat{y}_m(t)$  would be completed, based on the covariance statistics. Occasionally, information from covariance is not sufficient to achieve source independence. This happens, for example, when the cardiac signal is corrupted with electrocautery, which may cause perturbations from the linearly additive noise model. In such a case, Independent Component Analysis (ICA) can be used to further separate the signals.

The ICA seeks to find a linear transformation matrix W that inverts the mixing matrix A in such manner as to recover an estimate of the source signals. The operation may be described as follows.

$$s(t) = \begin{pmatrix} s_1(t) \\ s_2(t) \\ \vdots \\ s_m(t) \end{pmatrix} = Wy(t) \approx A^{-1}y(t)$$

Here we substitute s(t) for the recovered estimate of the source signals. The signal vector y(t) corresponds to either the collected sensor signal vector x(t) or to the signal  $\hat{y}(t)$  separated with PCA. The matrix W is the solution of an optimization problem that maximizes the independence between the components  $s_1(t), \dots, s_m(t)$  of  $s(t)=Wy(t)$ . We treat the components of s(t) as a vector of random variables embodied in the vector notation s, so that the desired transformation would optimize some cost function  $C(s)=C([s_1(t), \dots, s_m(t)])$  that measures the mutual independence of these components. Given the joint probability density function (pdf) f(s) and the factorized pdf  $\bar{f}(s)=f_1(s_1)f_2(s_2) \dots f_m(s_m)$ , or given estimates of these pdf's, we may solve the following.

$$\min_W C(s) = \min_W \int D(f(s), \bar{f}(s)) ds$$

The function  $D(f(s), \bar{f}(s))$  may be understood as a standard distance measure generally known in the art, such as for example an absolute value difference  $|f(s)-\bar{f}(s)|$ , Euclidean distance  $(f(s)-\bar{f}(s))^2$ , or p-norm  $(f(s)-\bar{f}(s))^p$ . The distance measure approaches zero as f(s) approaches  $\bar{f}(s)$ , which by the definition of statistical independence, occurs as the components of s approach mutual statistical independence.

In an alternative implementation, the distance measure may take the form of a Kullback-Liebler divergence (KLD) between f(s) and  $\bar{f}(s)$ , yielding cost function optimizations in either of the following forms.

$$\begin{aligned} \min_W C(s) &= \min_W \int f(s) \log \frac{f(s)}{\bar{f}(s)} ds \\ \text{or} \\ &= \min_W \int \bar{f}(s) \log \frac{\bar{f}(s)}{f(s)} ds \end{aligned}$$

Since the KLD is not symmetric, the two alternative measures are related but not precisely equal. One measure could be chosen, for example, if a particular underlying data distribution favors convergence with that measure.

Several alternative approaches may be used to measure the mutual independence of the components of s. These may include the maximum likelihood method, maximization of negentropy or its approximation, and minimization of mutual information.

In the maximum likelihood method, the desired matrix W is found as a solution of the following optimization problem,

$$\begin{aligned} \max_W \sum_{j=1}^T \sum_{i=1}^m \log f_i(s_i(t_j)) + T \log |\det W| = \\ \max_W \sum_{j=1}^T \sum_{i=1}^m \log f_i(w_i^T y(t_j)) + T \log |\det W| \end{aligned}$$

where  $w_i$  are columns of the matrix W. In the negentropy method, the cost function is defined in terms of differences in entropy between s and a corresponding Gaussian random variable, resulting in the following optimization problem,

$$\begin{aligned} \max_W \{H(s_{gauss}) - H(s)\} = \\ \max_W \left\{ - \int f(s_{gauss}) \log f(s_{gauss}) ds_{gauss} + \int f(s) \log f(s) ds \right\} \end{aligned}$$

where H(s) is the entropy of random vector s, and  $s_{gauss}$  is a Gaussian random vector chosen to have a covariance matrix substantially the same as that of s.

In the minimization of mutual information method, the cost function is defined in terms of the difference between the entropy of s and the sum of the individual entropies of the components of s, resulting in the following optimization problem

$$\min_W \left\{ - \sum_{i=1}^m \int f(s_i) \log f(s_i) ds_i + \int f(s) \log f(s) ds \right\}$$

All preceding cost function optimizations having an integral form may be implemented using summations by approximating the underlying pdf's with discrete pdf's, for example as the result of estimating the pdf using well-known histogram methods. We note that knowledge of the pdf, or even an estimate of the pdf, can be difficult to implement in practice due either to computational complexity, sparseness of available data, or both. These difficulties may be addressed using cost function optimization methods based upon kurtosis, a statistical parameter that does not require a pdf.

In an alternative method a measure of independence could be expressed via kurtosis, equivalent to the fourth-order statistic defined as the following for the  $i^{th}$  component of s

$$kurt(s_i) = E\{s_i^4\} - 3(E\{s_i^2\})^2$$

In this case W is found as a matrix that maximizes kurtosis of  $s=Wy$  over all the components of s (understanding y to be a vector of random variables corresponding to the components of y(t)). In all the previous examples of ICA optimization the solution W could be found via numerical methods such as steepest descent, Newton iteration, etc., well known and established in the art. These methods could prove numerically intensive to implement in practice, particularly if many estimates of statistics in s must be computed for every iteration in W.

Computational complexity can be addressed by several means. To begin, the ICA could be performed on the PCA-separated signal  $\hat{y}(t)$  with the dimensionality reduced to only the first few (or in the simplest case, two) principal components. For situations where two principal components are not sufficient to separate the sources, the ICA could still be performed pairwise on two components at a time, substituting component pairs at each iteration of W (or group of iterations of W).

In one example, a simplified two-dimensional ICA may be performed on the PCA separated signals. In this case, a unitary transformation could be found as a Givens rotation matrix with rotation angle  $\theta$ ,

$$W(\theta) = \begin{pmatrix} \cos\theta & \sin\theta \\ -\sin\theta & \cos\theta \end{pmatrix}$$

where  $s(t)=W(\theta)y(t)$ . Here  $W(\theta)$  maximizes the probability distribution of each component along the basis vectors, such that the following is satisfied.

$$\theta = \arg \max_{\theta} \sum_{t=1}^T \log f(s(t) | \theta)$$

This optimal rotation angle may be found by representing vectors  $y(t)$  and  $s(t)$

$$\xi = e^{i4\theta} E(\rho^4 e^{i4\phi}) = e^{i4\theta} E[(s_1 + is_2)^4] = e^{i4\theta} (\kappa_{40}^s + \kappa_{04}^s)$$

as complex variables in the polar coordinate form  $y = y_1 + iy_2 = \rho e^{i\phi}$ ,  $s = s_1 + is_2 = \rho e^{i\phi'}$  and finding the relationships between their phase angles  $\phi, \phi'$ :  $\phi = \phi' + \theta$ , where  $\theta$  is the rotation that relates the vectors. Then, the angle  $\theta$  may be found from the fourth order-statistic of a complex variable  $\xi$ , where  $\kappa^s$  is kurtosis of the signal  $s(t)$ .

By definition, source kurtosis is unknown, but may be found based on the fact that the amplitude of the source signal and mixed signals are the same.

As a result,  $4\theta = \hat{\xi} \text{sign}(\hat{\gamma})$

$$\text{with } \gamma = E[\rho^4] - 8 = \kappa_{40}^s + \kappa_{04}^s \text{ and } \rho^2 = s_1^2 + s_2^2 = y_1^2 + y_2^2$$

In summary, the rotation angle can be estimated as:

$$\theta = \frac{1}{4} \text{angle}(e(\hat{\xi} \text{sign}(\hat{\gamma}))) \text{ where}$$

$$\hat{\xi} = \frac{1}{T} \sum_{t=1, T} \rho_t^4 e^{i4\phi(t)} = \frac{1}{T} \sum_{t=1, T} (y_1(t) + iy_2(t))^4,$$

$$\hat{\gamma} = \frac{1}{T} \sum_{t=1, T} \rho_t^4 - 8 = \frac{1}{T} \sum_{t=1, T} (y_1^2(t) + iy_2^2(t))^4 - 8$$

After the pre-processing step, the cardiac signal is normally the first or second most powerful signal. In addition, there is usually in practice only one source signal that is temporally white. In this case, rotation of the two-dimensional vector  $y = y_1 + iy_2 = \rho e^{i\phi}$  is all that is required. In the event that more than two signals need to be separated, the Independent Component Analysis process may be repeated in pairwise fashion over the  $m(m-1)/2$  signal pairs until convergence is reached, usually taking about  $(1+\sqrt{m})$  iterations.

A PIMD that implements the above-described processes may robustly separate the cardiac signal from a low SNR signal recorded from the implantable device. Such a PIMD robustly separates cardiac signals from noise to allow for improved sensing of cardiac rhythms and arrhythmias.

The system operates by finding a combination of the spatially collected low SNR signals that makes cardiac signal and noise orthogonal to each other (independent). This combination achieves relatively clean extraction of the cardiac signal even from negative SNR conditions.

A PIMD may operate in a batch mode or adaptively, allowing for on-line or off-line implementation. To save power, the system may include the option for a hierarchical decision-making routine that uses algorithms known in the art for identifying presence of arrhythmias or noise in the collected signal and initiating the methods of the present invention.

Various modifications and additions can be made to the preferred embodiments discussed hereinabove without departing from the scope of the present invention. Accordingly, the scope of the present invention should not be limited by the particular embodiments described above, but should be defined only by the claims set forth below and equivalents thereof.

What is claimed is:

1. A signal separation method, comprising:

sensing, at least in part implantably, a plurality of composite signals at a plurality of locations;

performing source separation on the detected plurality of composite signals to produce a set of signal vectors;

selecting, from the set of signal vectors, a target vector associated with a target signal, the target vector representative of a signal vector of the set of signal vectors associated with higher quality cardiac data relative to other signal vectors of the set of signal vectors;

detecting a change in a predetermined condition or an event occurrence indicating that changing which vector of the set of signal vectors is selected as the target vector may be useful in sensing cardiac activity; and

updating, in response to the change in the predetermined condition or event occurrence, selection of the target vector to update the target vector by performing a subsequent source separation on the detected plurality of composite signals and reselecting the same or a different vector associated with higher quality cardiac data relative to other signal vectors of the set of signal vectors as the target vector based on the subsequent source separation.

2. The method of claim 1, wherein the target vector is selected at least in part by identifying the target signal as a cardiac signal.

3. The method of claim 1, wherein the target vector is selected at least in part by identifying the target signal as a cardiac signal using a local rate of occurrence of significant points in the target signal, wherein the local rate of occurrence is within a predetermined range.

4. The method of claim 1, wherein the target vector is selected at least in part by identifying the target signal as a cardiac signal using a morphology of the target signal.

5. The method of claim 1, wherein the target vector is selected at least in part by identifying the target signal as a cardiac signal using a local peak density of the target signal, wherein the local peak density is within a predetermined range.

6. The method of claim 1, wherein the target vector is selected at least in part by identifying the target signal as a cardiac signal using beat detection on the target signal, wherein a beat rate is within a predetermined range.

- 7. The method of claim 1, wherein updating the target vector is performed in response to detection of a pathologic change.
- 8. The method of claim 1, wherein updating the target vector is performed in response to detection of a change in orientation of a patient-internal medical device. 5
- 9. The method of claim 1, wherein updating the target vector is performed in response to exceeding an arrhythmia detection rate zone or threshold.
- 10. The method of claim 1, wherein updating the target vector is performed in response to detection of a change inpatient activity level. 10
- 11. The method of claim 1, wherein updating the target vector is performed in response to detection of a postural change. 15
- 12. The method of claim 1, wherein updating the target vector is performed in response to detection of a therapy change.
- 13. The method of claim 1, wherein the target vector is updated in response to detection of an activation stimulus. 20
- 14. The method of claim 1, wherein the target vector is updated periodically.
- 15. The method of claim 1, wherein updating the target vector is performed in response to a change of a signal to noise ratio of the target signal. 25
- 16. The method of claim 1, further comprising band-pass filtering the detected plurality of composite signals.
- 17. The method of claim 1, further comprising forming an estimate of a spatial covariance matrix for the detected plurality of composite signals. 30
- 18. The method of claim 17, further comprising performing a principal component analysis on the spatial covariance matrix for the detected plurality of composite signals.
- 19. The method of claim 1, further comprising performing an independent component analysis on the detected plurality of composite signals. 35
- 20. The method of claim 1, further comprising performing a principal component analysis and an independent component analysis on the detected plurality of composite signals.

- 21. An implantable cardiac device, comprising:
  - means for subcutaneously detecting a plurality of composite signals produced by a plurality of sources;
  - means for performing source separation using the detected plurality of composite signals;
  - means for separating a target signal from the detected plurality of composite signals using a target vector determined from the source separation, the target vector associated with higher quality cardiac data relative to other vectors;
  - means for characterizing cardiac activity using the target signal; and
  - means for updating the target vector by initiating a subsequent source separation and selecting the same or a different vector as the target vector based on the subsequent source separation in response to detection of a change in a predetermined condition or an event occurrence indicating that use of the target vector may result in less than optimal sensing of cardiac activity.
- 22. The device of claim 21, wherein the separating means performs a principal component analysis on the detected plurality of composite signals.
- 23. The device of claim 21, wherein the separating means produces a set of eigenvalues and associated eigenvectors, and an eigenvector with a largest magnitude eigenvalue is used for separating the target signal from the detected plurality of composite signals.
- 24. The device of claim 21, wherein the separating means iteratively separates the target signal from the detected plurality of composite signals using a next-largest magnitude eigenvalue for each iteration, until a cardiac signal is separated from the detected plurality of composite signals.
- 25. The device of claim 21, further comprising means for identifying the separated target signal as a cardiac signal.
- 26. The device of claim 25, further comprising means for detecting a cardiac condition using the cardiac signal.
- 27. The device of claim 26, further comprising means for treating the cardiac condition.

\* \* \* \* \*

专利名称(译)	使用多个电极进行ECG测量的自动定向确定		
公开(公告)号	<a href="#">US7706866</a>	公开(公告)日	2010-04-27
申请号	US10/876008	申请日	2004-06-24
[标]申请(专利权)人(译)	张毅 布罗克韦MARINA RICCI CARLOS HEIL RON DAUM DOUGLAS - [R SWEENEY罗伯特·J· MCCABE AARON		
申请(专利权)人(译)	ZHANG YI 布罗克韦MARINA RICCI CARLOS HEIL RON DAUM DOUGLAS - [R SWEENEY罗伯特·J· MCCABE AARON		
当前申请(专利权)人(译)	心脏起搏器, INC.		
[标]发明人	ZHANG YI BROCKWAY MARINA RICCI CARLOS ALBERTO HEIL RON DAUM DOUGLAS R SWEENEY ROBERT J MCCABE AARON		
发明人	ZHANG, YI BROCKWAY, MARINA RICCI, CARLOS ALBERTO HEIL, RON DAUM, DOUGLAS R. SWEENEY, ROBERT J. MCCABE, AARON		
IPC分类号	A61B5/04 A61B5/00 A61B5/0402 A61B5/042 A61N1/365 A61N1/375 G06K9/62		
CPC分类号	A61B5/0006 A61B5/0031 A61B5/04011 A61B5/7217 G06K9/624 A61B5/7207 A61N1/3756 A61B5/0422		
其他公开文献	US20050288600A1		
外部链接	<a href="#">Espacenet</a> <a href="#">USPTO</a>		

#### 摘要(译)

心脏监测和/或刺激方法和系统提供监测, 除颤和/或起搏治疗。信号处理器接收与多个源相关联的多个复合信号, 使用源分离算法分离信号, 并使用所选择的矢量识别心脏信号。信号处理器可以迭代地从多个复合信号中分离信号, 直到识别出心脏信号。如果需要或必要, 可以更新所选择的矢量。一种信号分离方法包括在多个位置检测多个复合信号, 使用源分离分离信号, 以及选择提供心脏信号的矢量。分离可包括主成分分析和/或独立成分分析。可以基于植入组件的位置和/或取向的变化以及患者参数(例如患者状况, 心脏信噪比和疾病进展)的变化来选择和更新向量。

