



US007488290B1

(12) **United States Patent**  
**Stahmann et al.**

(10) **Patent No.:** **US 7,488,290 B1**  
(45) **Date of Patent:** **Feb. 10, 2009**

(54) **SYSTEM AND METHOD FOR ASSESSING  
CARDIAC PERFORMANCE THROUGH  
TRANSCARDIAC IMPEDANCE  
MONITORING**

4,974,607 A 12/1990 Miwa  
4,987,897 A 1/1991 Funke  
5,003,976 A 4/1991 Alt  
5,040,536 A 8/1991 Riff  
5,113,859 A 5/1992 Funke  
5,113,869 A 5/1992 Nappholz et al.  
5,133,346 A 7/1992 Kulkarni  
H1114 H 12/1992 Schweitzer et al.  
5,199,428 A 4/1993 Obel et al.

(75) Inventors: **Jeffrey E. Stahmann**, Ramsey, MN  
(US); **Donald L. Hopper**, Maple Grove,  
MN (US); **Veerichetty Kadhiresan**,  
Centerville, MN (US); **John D.  
Hatlestad**, Maplewood, MN (US)

(Continued)

(73) Assignee: **Cardiac Pacemakers, Inc.**, St. Paul,  
MN (US)

FOREIGN PATENT DOCUMENTS

EP 0 34 2859 11/1989

(\*) Notice: Subject to any disclaimer, the term of this  
patent is extended or adjusted under 35  
U.S.C. 154(b) by 910 days.

(Continued)

(21) Appl. No.: **10/782,642**

OTHER PUBLICATIONS

E. Braunwald, "Heart Disease—A Textbook of Cardiovascular  
Medicine," pp. 46-52 (5<sup>th</sup> Ed. 1997).

(22) Filed: **Feb. 19, 2004**

(Continued)

(51) **Int. Cl.**  
**A61B 5/00** (2006.01)

*Primary Examiner*—Robert L Nasser  
(74) *Attorney, Agent, or Firm*—Patrick J. S. Inouye; Scott E.  
Smith

(52) **U.S. Cl.** ..... **600/485; 600/500; 600/547**

(58) **Field of Classification Search** ..... None  
See application file for complete search history.

(57) **ABSTRACT**

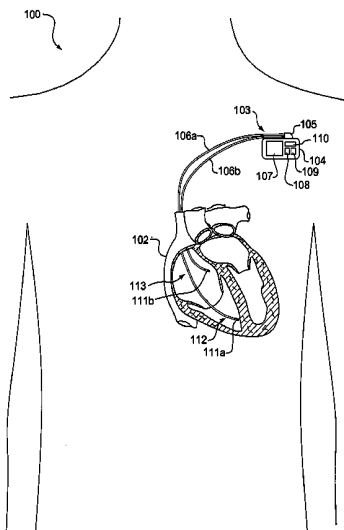
(56) **References Cited**

U.S. PATENT DOCUMENTS

3,776,221 A 12/1973 McIntyre  
3,837,339 A 9/1974 Aisenberg et al.  
4,142,533 A 3/1979 Brownlee et al.  
4,197,856 A 4/1980 Northrop  
4,531,527 A 7/1985 Reinhold, Jr. et al.  
4,548,211 A 10/1985 Marks  
4,686,999 A 8/1987 Snyder et al.  
4,750,495 A 6/1988 Moore et al.  
4,803,625 A 2/1989 Fu et al.  
4,809,697 A 3/1989 Causey, III et al.  
4,852,570 A 8/1989 Levine  
4,899,758 A 2/1990 Finkelstein et al.  
4,958,645 A 9/1990 Cadell et al.

A system and method for assessing cardiac performance  
through transcardiac impedance monitoring is described. Intra-  
cardiac impedance measures are directly collected through  
an implantable medical device. The intracardiac impedance  
measures are correlated to cardiac dimensional measures  
relative to performance of an intrathoracic pressure maneu-  
ver. The cardiac dimensional measures are grouped into at  
least one measures set corresponding to a temporal phase of  
the intrathoracic pressure maneuver. The at least one cardiac  
dimensional measures set is evaluated against a cardiac  
dimensional trend for the corresponding intrathoracic pres-  
sure maneuver temporal phase to represent cardiac perfor-  
mance.

**29 Claims, 12 Drawing Sheets**



U.S. PATENT DOCUMENTS

5,291,895 A 3/1994 McIntyre  
 5,301,105 A 4/1994 Cummings, Jr.  
 5,331,549 A 7/1994 Crawford, Jr.  
 5,336,245 A 8/1994 Adams et al.  
 5,355,889 A 10/1994 Nevo et al.  
 5,357,427 A 10/1994 Langen et al.  
 5,390,238 A 2/1995 Kirk et al.  
 5,416,695 A 5/1995 Stutman et al.  
 5,421,343 A 6/1995 Feng  
 5,437,278 A 8/1995 Wilk  
 5,438,983 A 8/1995 Falcone  
 5,464,012 A 11/1995 Falcone  
 5,522,860 A 6/1996 Molin et al.  
 5,544,661 A 8/1996 Davis et al.  
 5,553,609 A 9/1996 Chen et al.  
 5,557,514 A 9/1996 Seare et al.  
 5,576,952 A 11/1996 Stutman  
 5,584,868 A 12/1996 Salo et al.  
 5,591,215 A 1/1997 Greenhut et al.  
 5,603,331 A 2/1997 Heemels et al.  
 5,660,183 A 8/1997 Chiang et al.  
 5,673,691 A 10/1997 Abrams et al.  
 5,687,734 A 11/1997 Dempsey et al.  
 5,697,959 A 12/1997 Poore  
 5,704,345 A 1/1998 Berthon-Jones  
 5,704,366 A 1/1998 Tacklind et al.  
 5,711,297 A 1/1998 Iliff  
 5,713,350 A 2/1998 Yokota et al.  
 5,720,770 A 2/1998 Nappholz et al.  
 5,720,771 A 2/1998 Snell  
 5,724,580 A 3/1998 Levin et al.  
 5,724,983 A 3/1998 Selker et al.  
 5,738,102 A 4/1998 Lemelson  
 5,743,267 A 4/1998 Nikolic  
 5,749,907 A 5/1998 Mann  
 5,749,908 A 5/1998 Snell  
 5,752,976 A 5/1998 Duffin et al.  
 5,769,074 A 6/1998 Barnhill et al.  
 5,772,586 A 6/1998 Heinonen et al.  
 5,772,599 A 6/1998 Nevo et al.  
 5,772,604 A 6/1998 Langberg et al.  
 5,778,882 A 7/1998 Raymond et al.  
 5,785,650 A 7/1998 Akasaka et al.  
 5,785,660 A 7/1998 Van Lake et al.  
 5,788,640 A 8/1998 Peters  
 5,788,643 A 8/1998 Feldman  
 5,792,062 A 8/1998 Poon et al.  
 5,819,251 A 10/1998 Kremer et al.  
 5,855,593 A 1/1999 Olson et al.  
 5,860,918 A 1/1999 Schradi et al.  
 5,876,353 A 3/1999 Riff  
 5,879,375 A 3/1999 Larson, Jr. et al.  
 5,891,178 A 4/1999 Mann et al.  
 5,897,493 A 4/1999 Brown  
 5,911,132 A 6/1999 Sloane  
 5,931,857 A 8/1999 Prieve et al.  
 5,954,640 A 9/1999 Szabo  
 5,957,861 A 9/1999 Combs et al.  
 5,974,124 A 10/1999 Schlueter, Jr. et al.  
 5,987,352 A 11/1999 Klein et al.  
 5,993,386 A 11/1999 Ericsson  
 6,004,276 A 12/1999 Wright et al.  
 6,014,581 A 1/2000 Whyne et al.  
 6,024,699 A 2/2000 Surwit et al.  
 6,038,469 A 3/2000 Karlsson et al.  
 6,047,203 A 4/2000 Sackner et al.  
 6,050,940 A 4/2000 Braun  
 6,063,028 A 5/2000 Luciano  
 6,067,466 A 5/2000 Selker  
 6,073,046 A 6/2000 Patel  
 6,080,106 A 6/2000 Lloyd et al.

6,083,248 A 7/2000 Thompson  
 6,093,146 A 7/2000 Filangeri  
 6,095,985 A 8/2000 Raymond et al.  
 6,102,856 A 8/2000 Groff et al.  
 6,120,442 A 9/2000 Hickey  
 6,122,351 A 9/2000 Schlueter, Jr. et al.  
 6,129,675 A 10/2000 Jay  
 6,132,384 A 10/2000 Christopherson et al.  
 6,135,951 A 10/2000 Richardson et al.  
 6,139,494 A 10/2000 Cairnes  
 6,152,882 A 11/2000 Prutchi  
 6,155,267 A 12/2000 Nelson  
 6,168,563 B1 1/2001 Brown  
 6,168,653 B1 1/2001 Myers  
 6,171,237 B1 1/2001 Avitall et al.  
 6,171,256 B1 1/2001 Joo et al.  
 6,223,078 B1 4/2001 Marcovecchio  
 6,225,901 B1 5/2001 Kail, IV  
 6,234,964 B1 5/2001 Iliff  
 6,238,349 B1 5/2001 Hickey  
 6,246,992 B1 6/2001 Brown  
 6,249,705 B1 6/2001 Snell  
 6,250,309 B1 6/2001 Krichen et al.  
 6,263,245 B1 7/2001 Snell  
 6,283,923 B1 9/2001 Finkelstein et al.  
 6,287,252 B1 9/2001 Lugo  
 6,290,646 B1 9/2001 Cosentino et al.  
 6,302,844 B1 10/2001 Walker et al.  
 6,306,088 B1 10/2001 Krausman et al.  
 6,336,900 B1 1/2002 Alleckson  
 6,363,282 B1 3/2002 Nichols et al.  
 6,416,471 B1 7/2002 Kumar  
 6,428,483 B1 8/2002 Carlebach  
 6,442,433 B1 8/2002 Linberg  
 6,454,705 B1 9/2002 Cosentino et al.  
 6,463,326 B1 10/2002 Hartley et al.  
 6,477,424 B1 11/2002 Thompson et al.  
 6,512,949 B1 1/2003 Combs et al.  
 6,662,032 B1 12/2003 Gavish et al.  
 6,827,670 B1 12/2004 Stark et al.  
 2002/0123674 A1 9/2002 Plicchi et al.  
 2003/0055679 A1 3/2003 Soll et al.  
 2004/0019285 A1\* 1/2004 Eigler et al. .... 600/488  
 2005/0043767 A1\* 2/2005 Belalcazar ..... 607/30

FOREIGN PATENT DOCUMENTS

EP 0 513 457 11/1992  
 EP 0 531 889 3/1993  
 EP 0 711 531 5/1996  
 WO WO 97/39792 10/1997  
 WO WO 98/07142 2/1998  
 WO WO 98/42103 9/1998  
 WO WO 99/46718 9/1999  
 WO WO 99/55226 11/1999

OTHER PUBLICATIONS

Hamilton et al., "Arterial, Cerebrospinal and Venous Pressures in Man During Cough and Strain," 144 Am. J. of Phys., pp. 42, 42-50 (1944).  
 Zema et al., "Left Ventricular Dysfunction—Bedside Valsalva Maneuver," Br. Heart J., pp. 44:560-569 (1980).  
 McKay et al., "Instantaneous Measurement of Left and Right Ventricular Stroke Volume and Pressure-Volume Relationships with an Impedance Catheter," Circ. 69, No. 4, pp. 703-710 (1984).  
 Wortel et al., "Impedance Measurements in the Human Right Ventricle Using a New Pacing System," Pacing Clinical Electrophysiology, vol. 14(9), pp. 1336-1342 (Sep. 1991).  
 Seborg et al., "Process Dynamics and Control," pp. 165-167, John Wiley & Sons (1989).  
 Dunn et al., "Telemedicine Links Patients in Sioux Lookout with Doctors in Toronto," CMA Journal, vol. 122, pp. 484-487 (Feb. 23, 1980).

Auer et al., "Paced Epimyocardial Electrograms For Noninvasive Rejection Monitoring After Heart Transplantation," *The Journal of Heart and Lung Transplantation*, vol. 15, No. 10, pp. 993-998 (Oct. 1996).

Schreier et al., "A Non-Invasive Rejection Monitoring System Based on Remote Analysis of Intramyocardial Electrograms from Heart Transplants," *IEEE*, pp. 35-36 (1997).

Roberge et al., "Basic and Applied Biomedical Engineering Building Blocks for Health Care," 1995 *IEEE Engineering in Medicine and Biology 17th Annual Conference*, vol. 1, Montreal-Canada, (Sep. 20-23, 1995).

Hutten et al., "Cardiac Telemonitoring by Integrating Pacemaker Telemetry within Worldwide Data Communication Systems," *Proceedings of 19th International Conference, IEEE/EMBS, Chicago, IL*, pp. 974-976 (Oct. 30-Nov. 2, 1997).

Vargas, Juan E., "Home-Based Monitoring of Cardiac Patients," *Dept. of Electr. & Comput. Eng., South Carolina Univ., Columbia,*

*SC, Information Technology Applications in Biomedicine, Proceedings., 1998 IEEE International Conference*, pp. 133-136 (May 16-17, 1998).

Magrabi et al., "Web Based Longitudinal ECG Monitoring," *Proceedings of 20th Annual International Conference of the IEEE Engineering in Medicine and Biology Society*, vol. 20, No. 3, pp. 1155-1158 (1998).

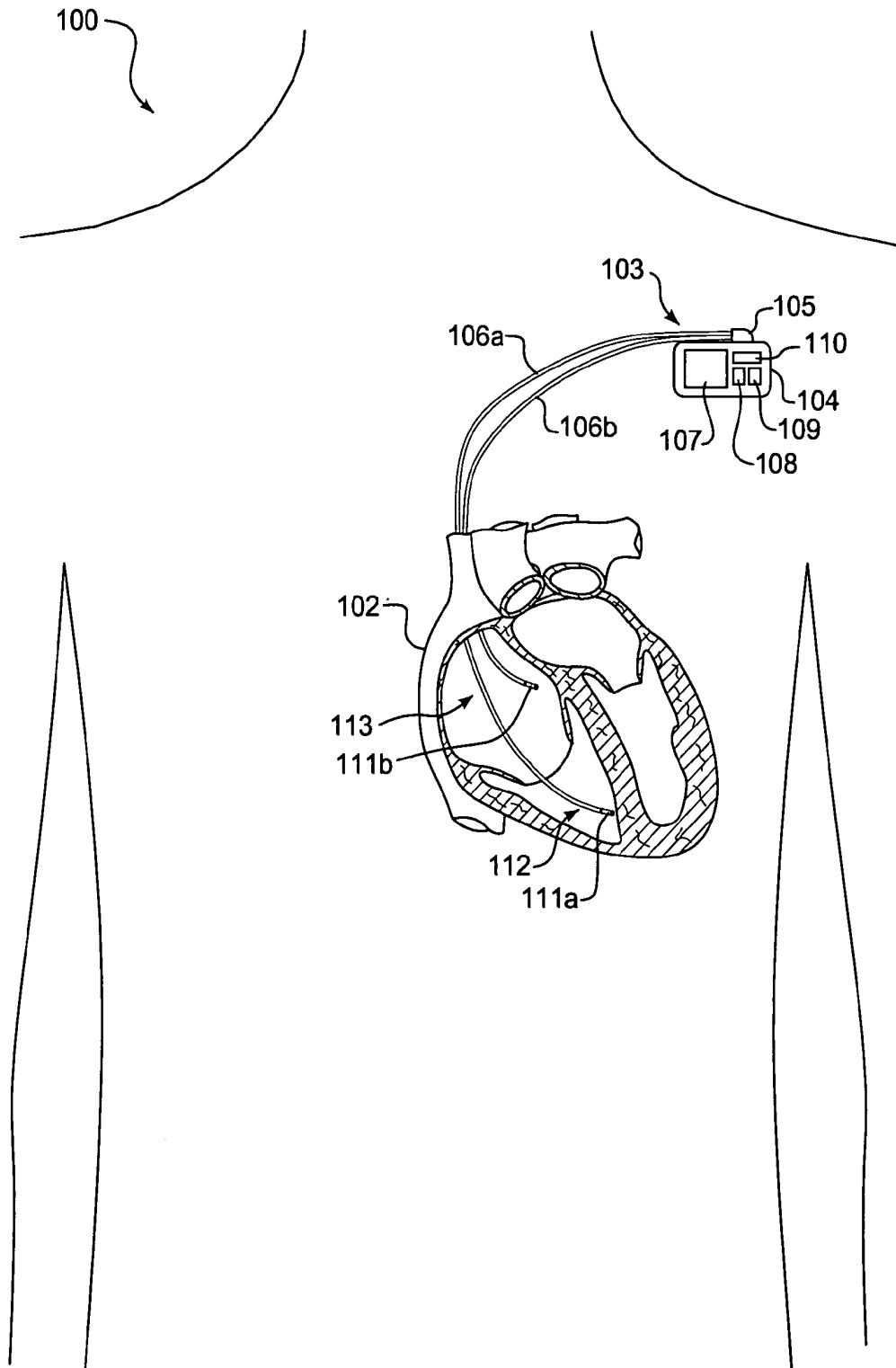
Nelwan et al., "Ubiquitous Access to Real-Time Patient Monitoring Data," *Computers in Cardiology*, vol. 24, pp. 271-274 (1997).

Moody GB, "Integration of Real-Time and Off-Line Clinical Data in the MIMIC Database," *Computers in Cardiology 1997* vol. 24, pp. 585-588, Cambridge, MA USA.

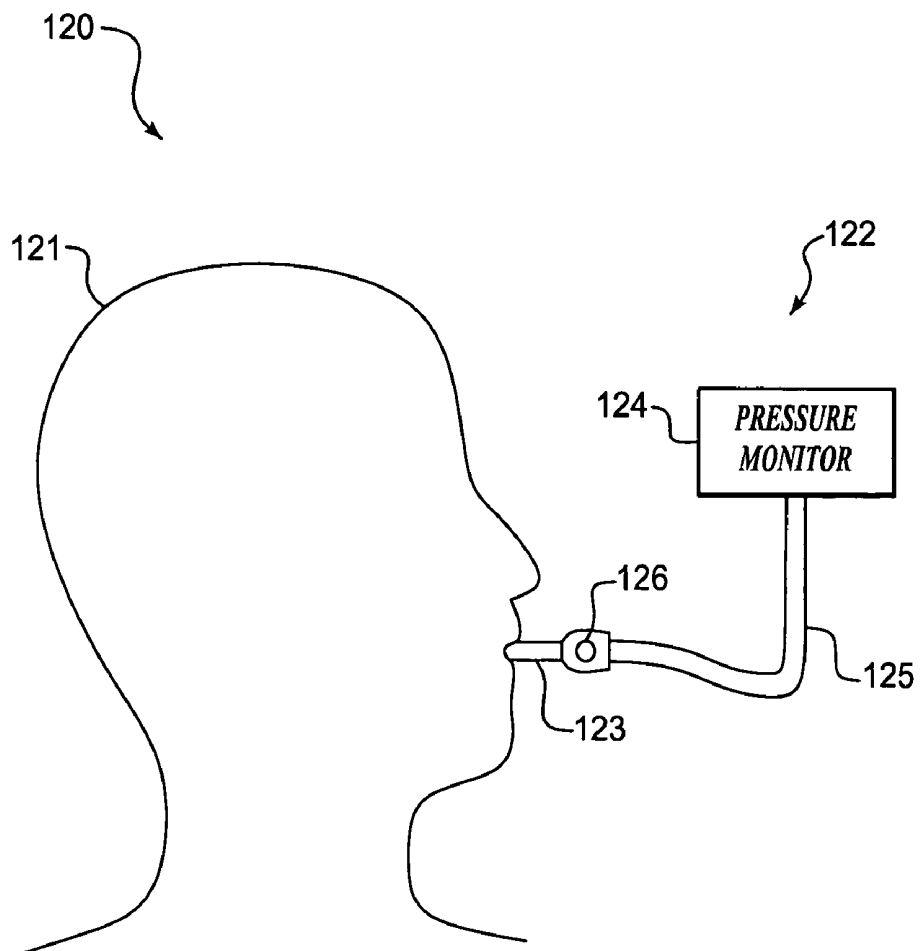
Long WJ, et al., "Differential Diagnosis Generation From A Causal Network With Probabilities," *Computers in Cardiology, 1988, Proceedings*, pp. 185-188, Washington DC, USA.

\* cited by examiner

Fig. 1.

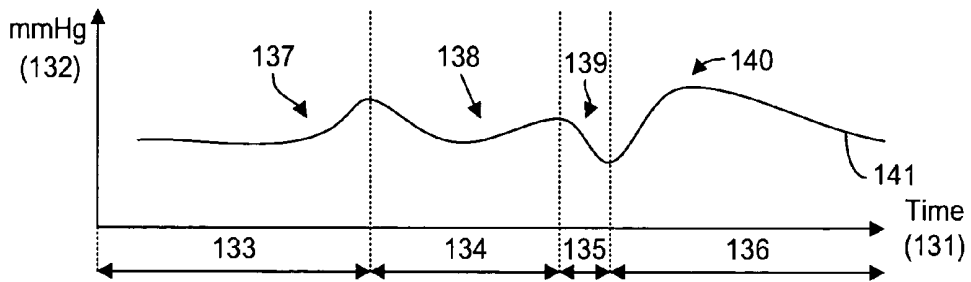


**Fig. 2.**



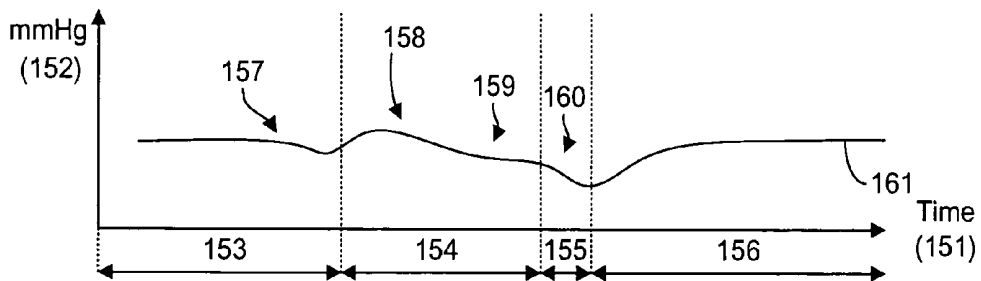
**Fig. 3A.**

130



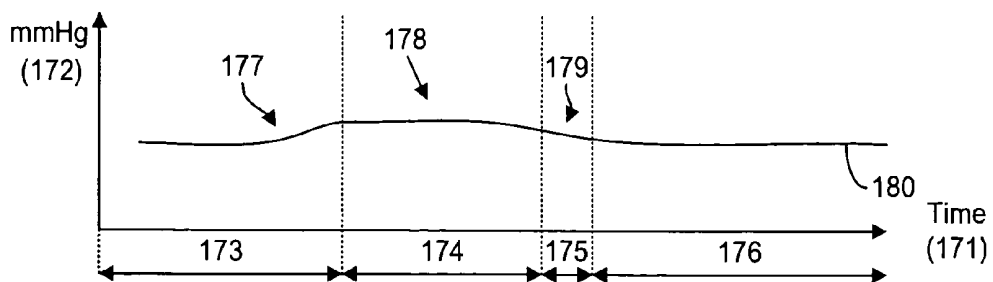
**Fig. 3B.**

150



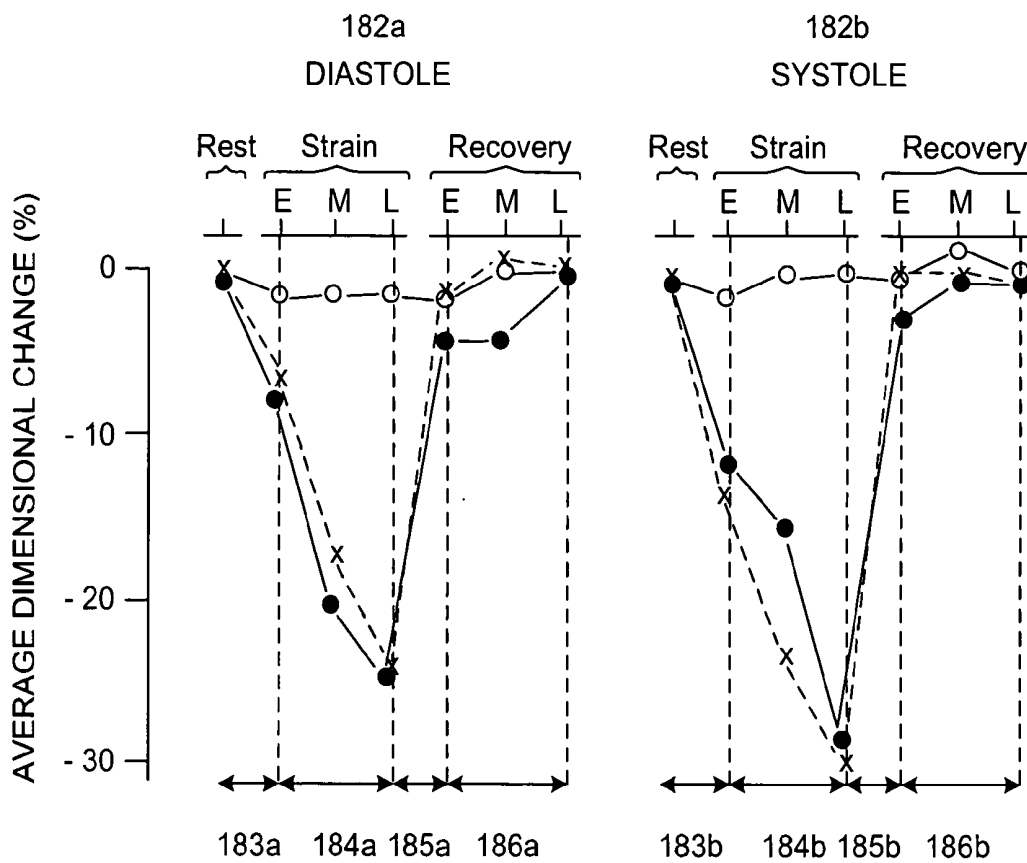
**Fig. 3C.**

170



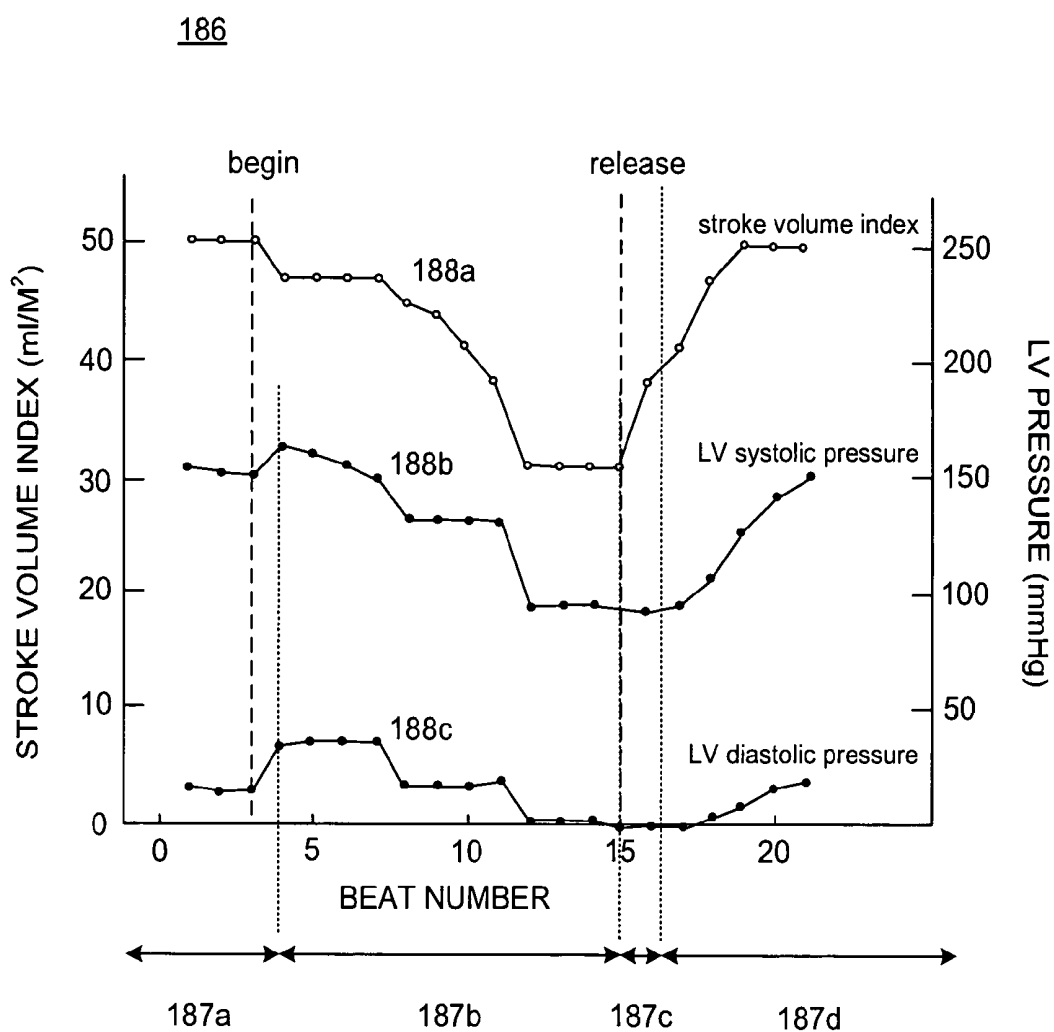
**Fig. 4.**

181



- x Healthy
- Cardiac but no significant HF
- Significant HF

Fig. 5.



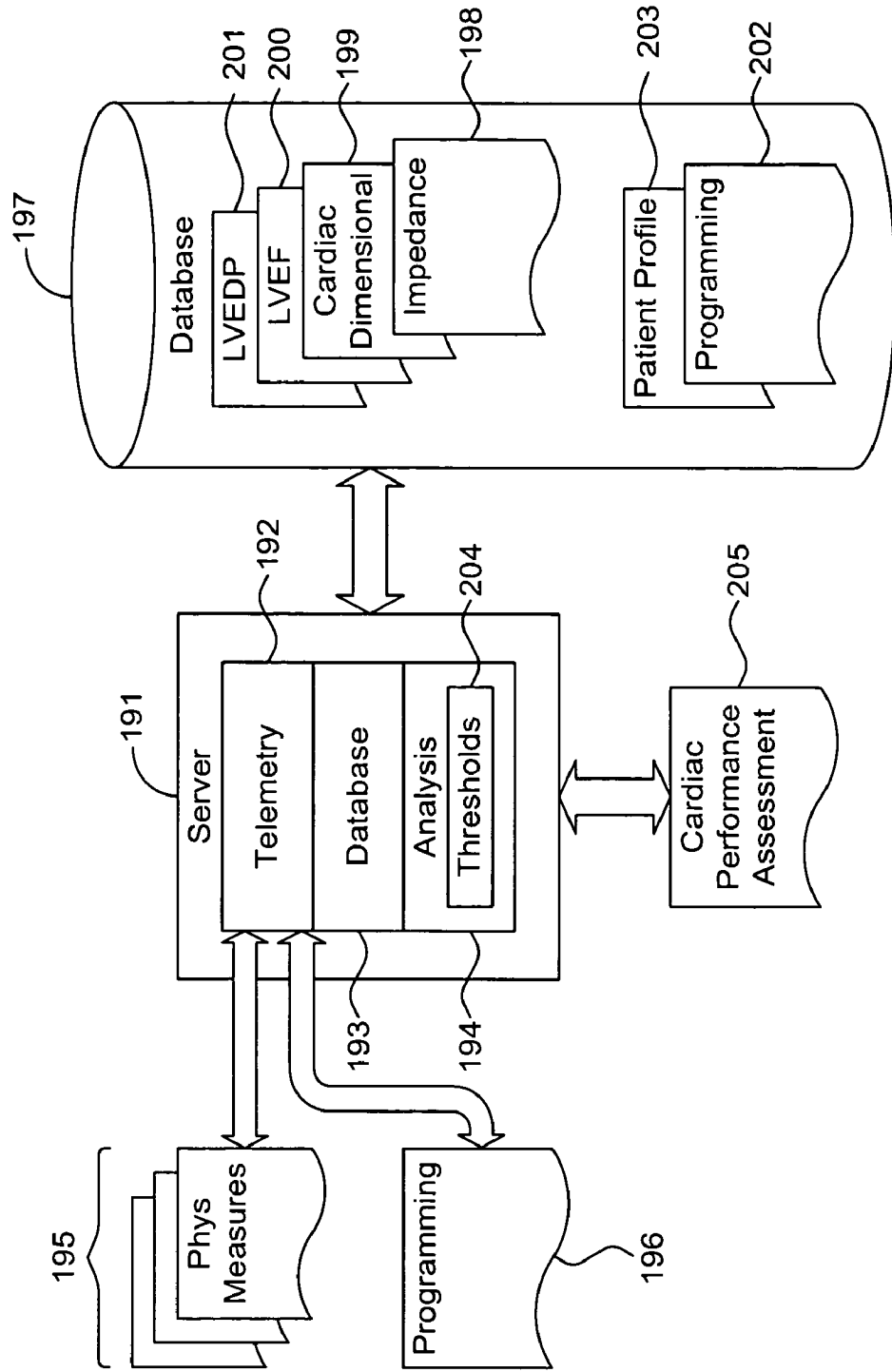
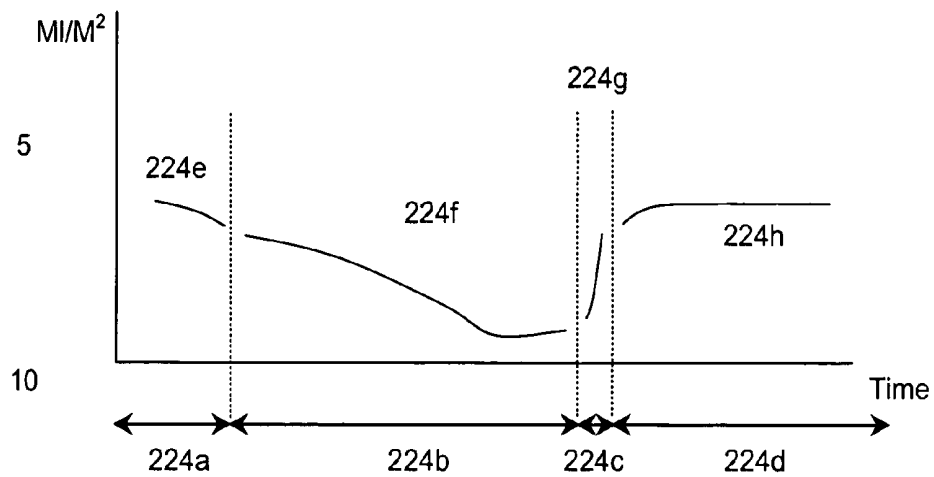


Fig. 6.

190

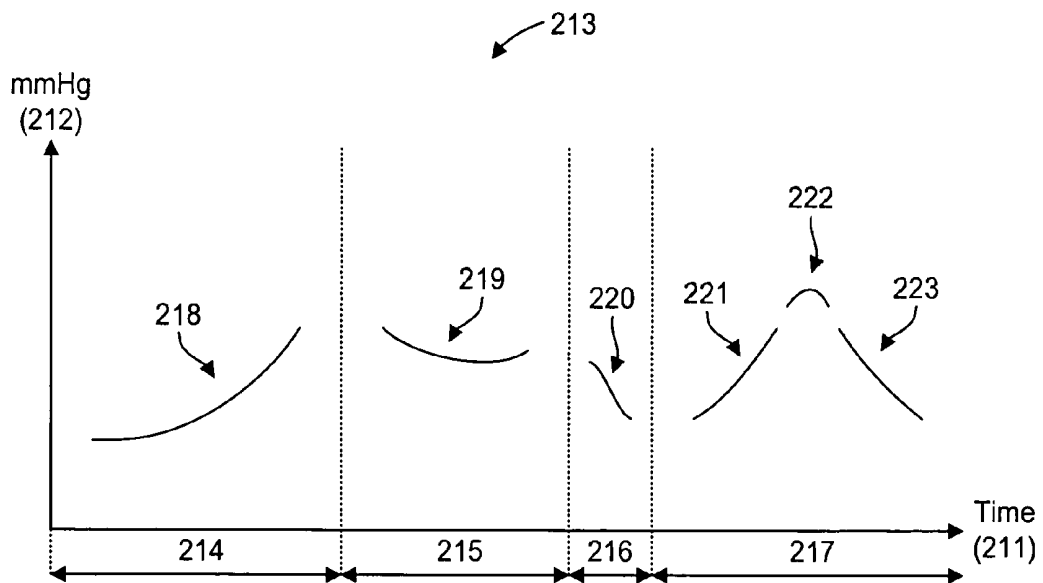
**Fig. 7.**

224



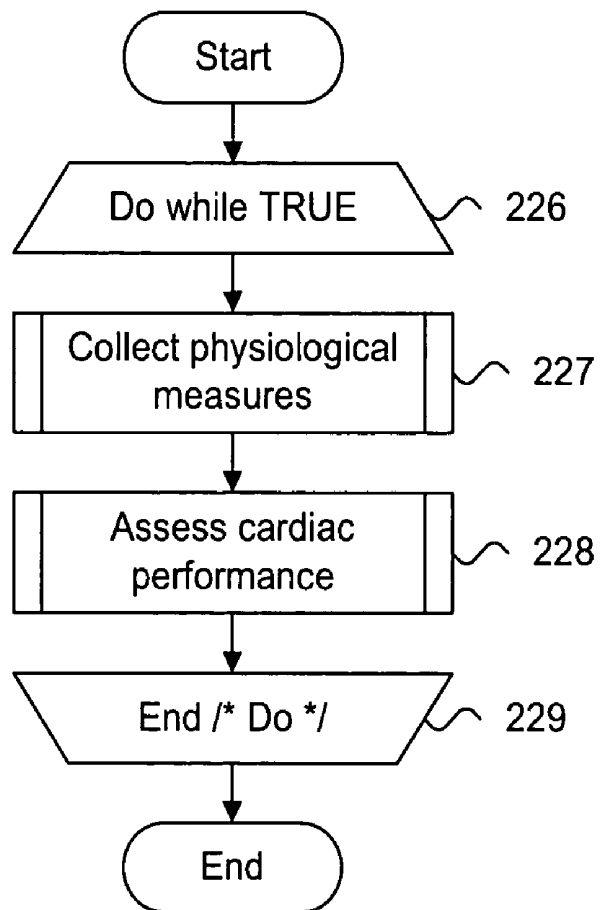
**Fig. 8.**

210



**Fig. 9.**

225



**Fig. 10.**

230

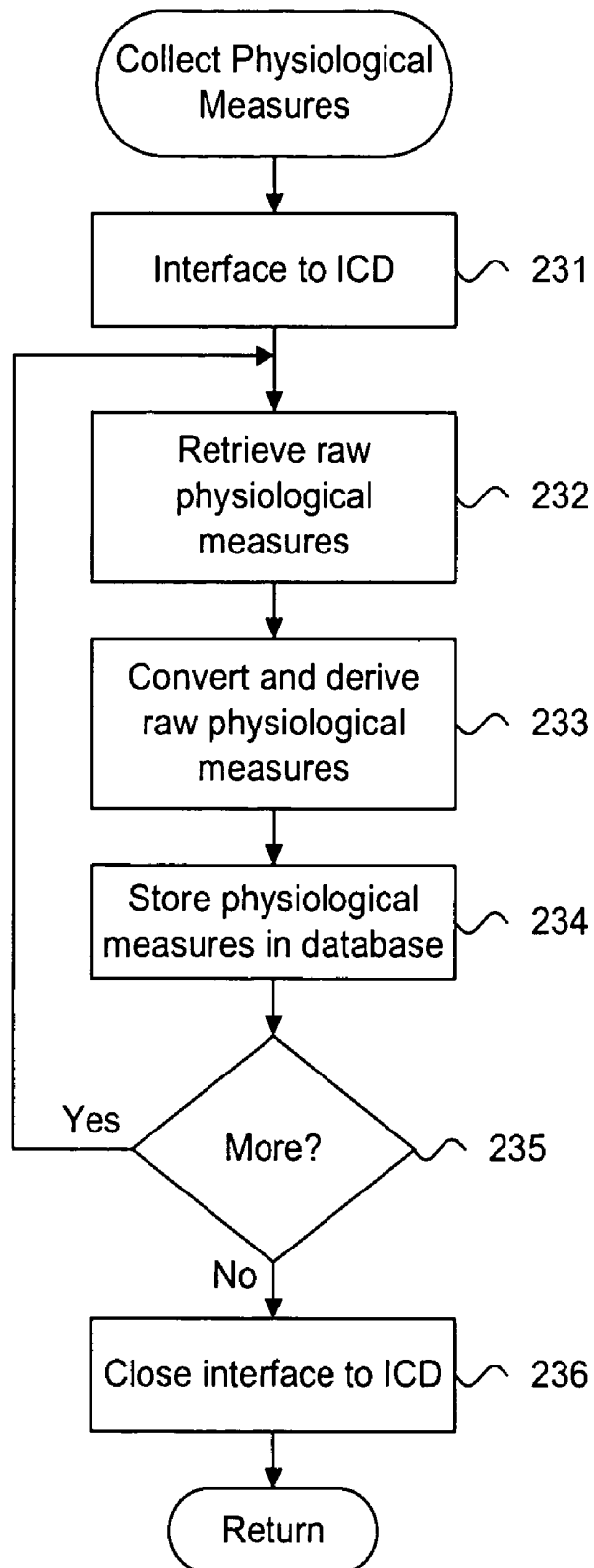


Fig. 11.

240

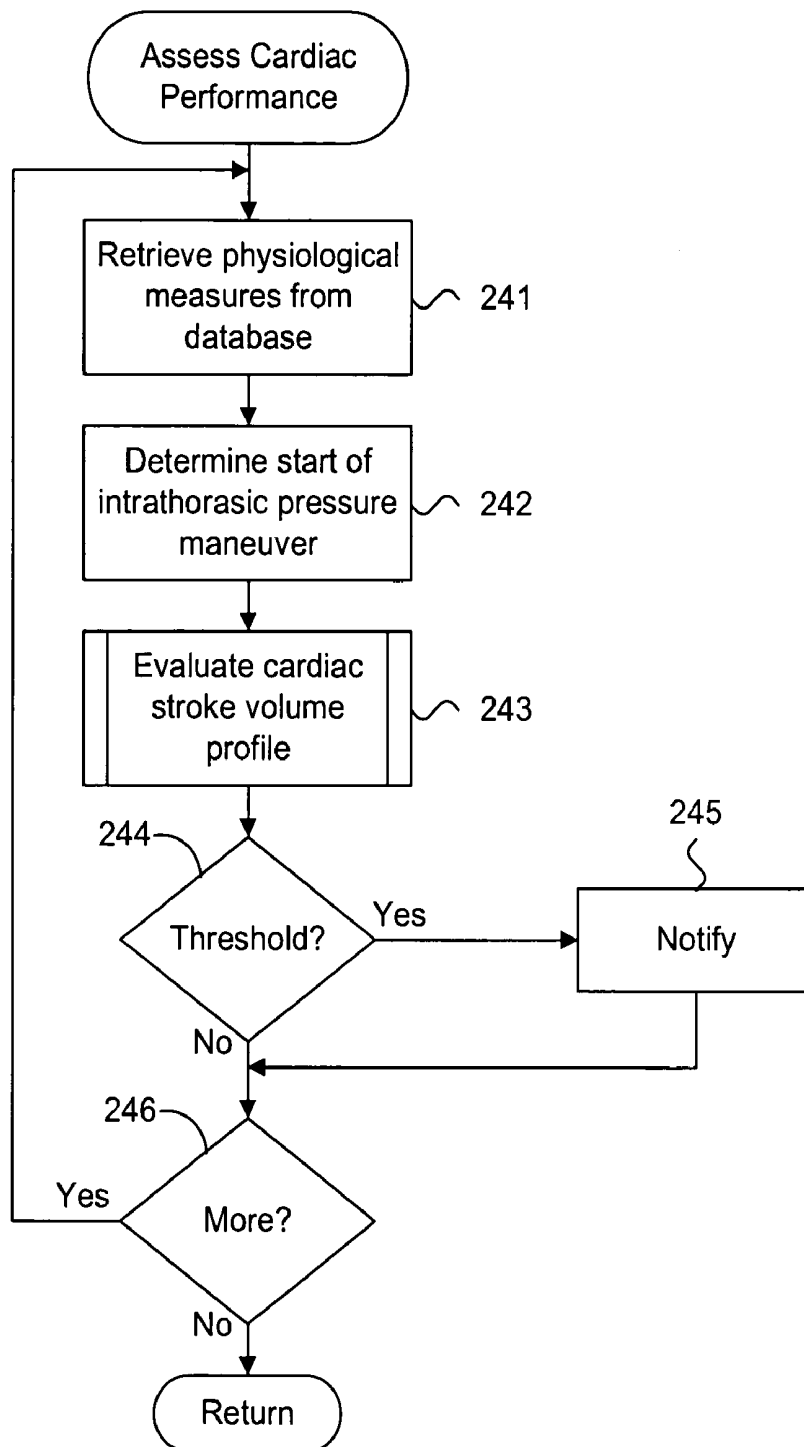


Fig. 12.

250

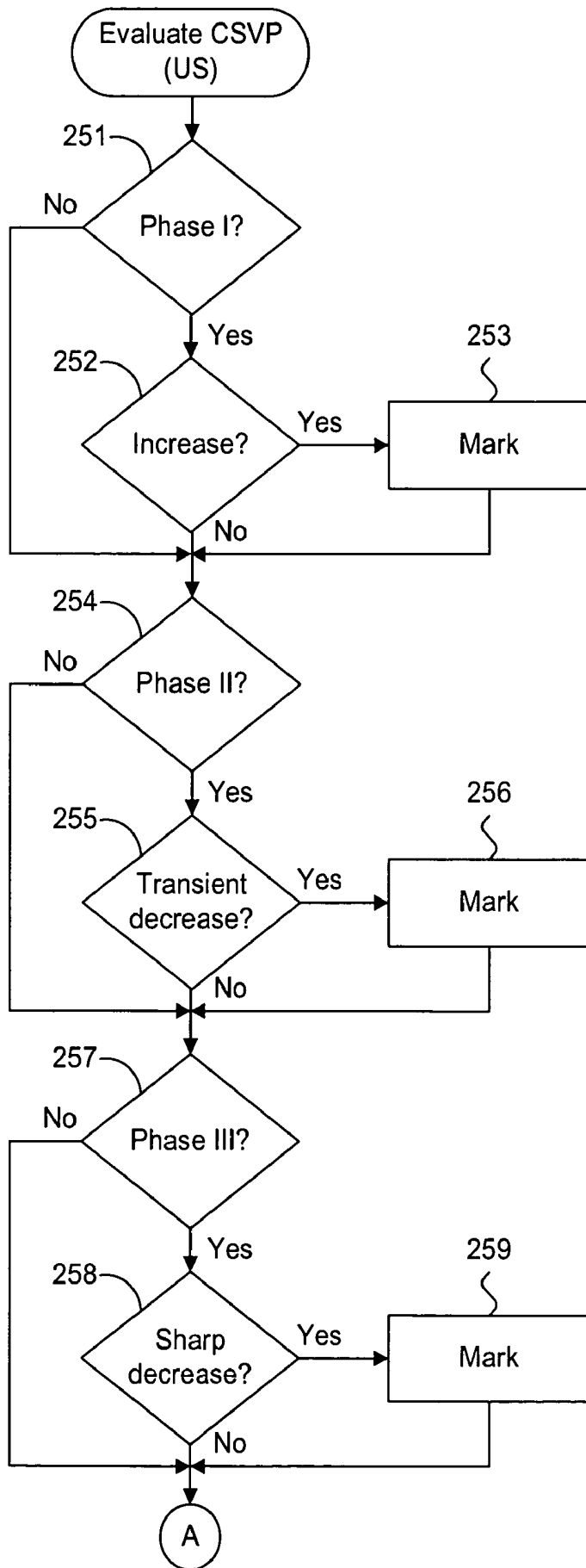
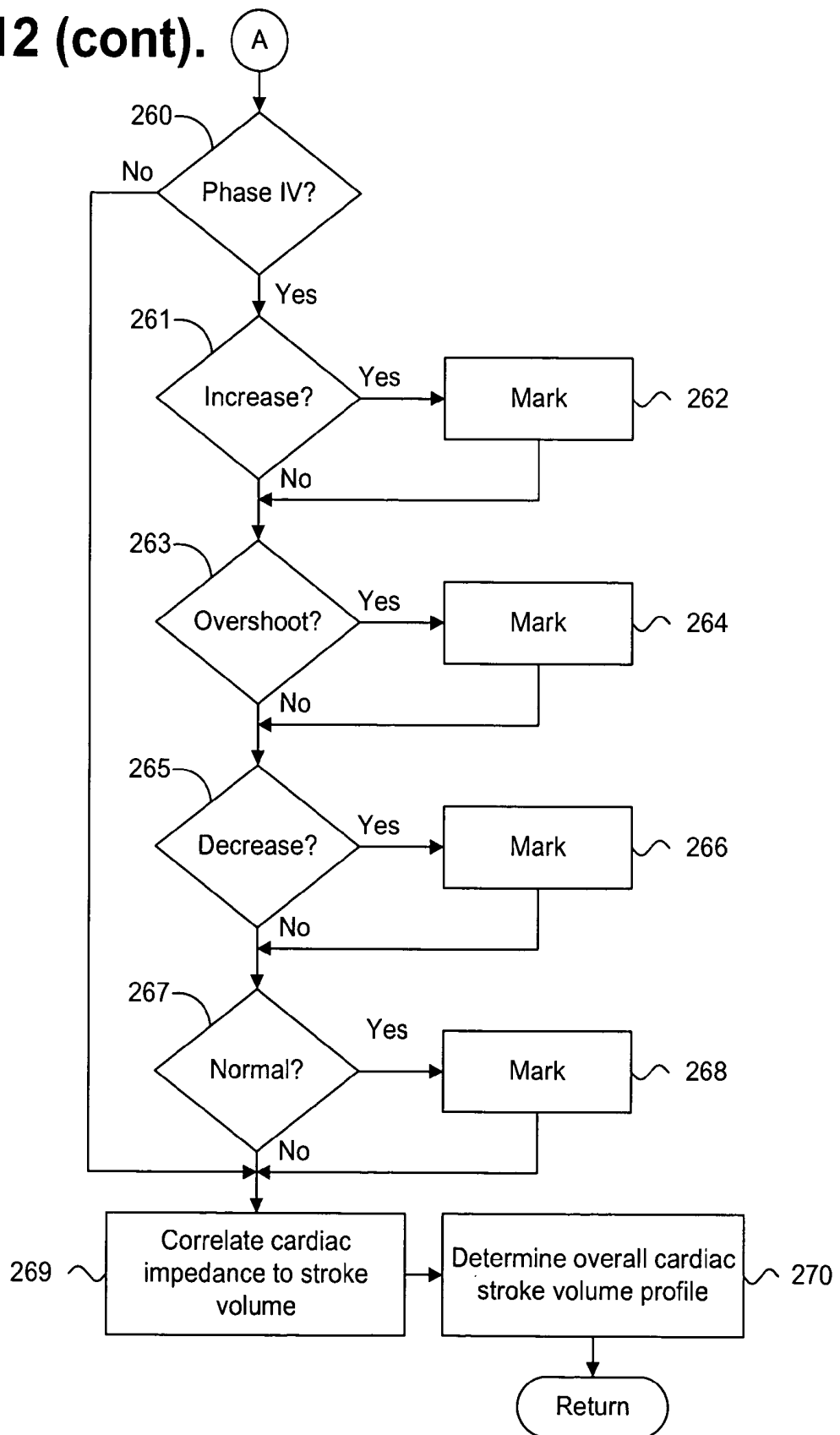


Fig. 12 (cont).



# SYSTEM AND METHOD FOR ASSESSING CARDIAC PERFORMANCE THROUGH TRANSCARDIAC IMPEDANCE MONITORING

## FIELD OF THE INVENTION

The present invention relates in general to cardiac performance assessment and, in particular, to a system and method for assessing cardiac performance through transcatheter impedance monitoring.

## BACKGROUND OF THE INVENTION

Heart disease refers to several classes of cardio and cardiovascular disorders and co-morbidities relating to the heart and blood vessels. Generally, heart disease is treatable through medication, lifestyle modification and surgical intervention, which involves repairing damaged organs and tissue. Surgical intervention can also involve implanting active monitoring or therapy delivery devices, such as pacemakers and defibrillators, and passive intervention means.

Heart disease can lead to heart failure, a potentially fatal condition in which the heart is unable to supply blood sufficient to meet the metabolic demands of a body. In a clinical setting, cardiac performance, including potential heart failure, can be detected by measuring changes in arterial blood pressure immediately before, during and immediately after the performance of intrathoracic pressure maneuvers, known as dynamic auscultation, which includes the Valsalva and Müller maneuvers, such as described in Braunwald, "Heart Disease—A Textbook of Cardiovascular Medicine," pp. 46-52 (5<sup>th</sup> ed. 1997), the disclosure of which is incorporated by reference.

In particular, potential heart failure can be effectively and safely detected by evaluating the profile of arterial blood pressure and other cardiac dimensional measures relative to performance of the Valsalva maneuver, which involves forced expiration against a closed glottis for about 10-30 seconds. In a healthy person with no prior history of cardiovascular disease or a patient suffering from a diseased but not failed heart, left ventricular ejection fraction (LVEF) and left ventricular end diastolic pressure (LVEDP) change dramatically coincidental to performance of the Valsalva maneuver, whereas LVEF and LVEDP change only slightly in a heart failure patient, as discussed in Hamilton et al., *Arterial, Cerebrospinal and Venous Pressure in Man During Cough and Strain*, 144 Am. J. of Phys., pp. 42, 42-50 (1944) and Zema et al., *Left Ventricular Dysfunction—Bedside Valsalva Maneuver*, Br. Heart J., pp. 44:560-569 (1980), the disclosures of which are incorporated by reference.

Circulatory effects and arterial blood pressure profile undergo four well-documented phases during performance of the Valsalva maneuver. During Phase I (initial strain), systemic arterial pressure increases approximately equal to the increase in intrathoracic pressure. During Phase II (strain duration and cessation of breathing), pulse pressure narrows and systemic systolic pressure decreases. During Phase III (strain discontinuation and resumption of normal breathing), systolic pressure drops rapidly. During Phase IV (recovery), diastolic and systolic pressures overshoot and return to pre-manuever levels. The four phases form a characteristic signature and periodic analysis of arterial blood pressure profile or blood pressure, specifically LVEF and LVEDP, throughout each phase can be indicative of the patient's heart failure status.

Regularly obtaining and evaluating LVEF and LVEDP for cardiac performance assessment, however, can be difficult. Direct measurements can be obtained through catheterization and electrodes. LVEF and LVEDP can be measured directly through a catheter distally placed into the left ventricle, but the procedure is invasive and creates unfavorable risks. Pulmonary artery wedge pressure (PAWP), measured through right heart catheterization, can be used as a surrogate measure for LVEDP, but the procedure is also invasive and risky. Moreover, catheterization is impractical in a non-clinical setting. Finally, chronically implanted cardiac pressure electrodes, while less risky, are generally inaccurate and unreliable. Consequently, indirect measurements approximating LVEF and LVEDP are preferable.

For example, intracardiac impedance is readily measured through cardiac impedance plethysmography and can be used as an indirect measure of LVEF and LVEDP. Changes in intracardiac impedance correlate to cardiac dimensional changes, such as described in McKay et al., *Instantaneous Measurement of Left and Right Ventricular Stroke Volume and Pressure-Volume Relationships with an Impedance Catheter*, Circ. 69, No. 4, pp. 703-710 (1984), the disclosure of which is incorporated by reference. As a result, by measuring intracardiac impedance, a profile of LVEDP and LVEF response during performance of the Valsalva maneuver can be obtained indirectly without resorting to invasive direct measurement techniques. Known plethysmography techniques for indirectly measuring intracardiac impedance, however, adapt poorly to effective long-term monitoring.

U.S. Pat. No. 4,548,211 to Marks discloses the use of external admittance impedance plethysmography to measure pulsatile volume and net inflow in a limb or body segment. External electrodes are placed on the skin and a voltage is applied and sensed for use in determining absolute physiologic values of peak-to-peak pulsatile volume and peak net inflow. While instrumental in non-invasively measuring peripheral blood flow dynamics, the Marks device fails to measure or monitor cardiac dimensional changes through intracardiac impedance.

U.S. Pat. No. 5,788,643 to Feldman discloses a process for monitoring patients with chronic congestive heart failure (CHF) by applying a high frequency current between electrodes placed on the limbs of a patient. Current, voltage and phase angle are measured to calculate resistance, reactance, impedance, total body water and extracellular water, which are compared to a baseline for identifying conditions relating to CHF. The Feldman process is limited to operating on external peripheral electrodes and fails to measure or monitor cardiac dimensional changes through intracardiac impedance.

U.S. Pat. Nos. 6,120,442 and 6,238,349 both to Hickey disclose an apparatus and method for non-invasively determining cardiac performance parameters, including systolic time intervals, contractility indices, pulse amplitude ratios while performing the Valsalva maneuver, cardiac output indices, and pulse wave velocity indices. A catheter is inserted into the esophagus and a balloon is pressurized at a distal end, positioned adjacent to the aortic arch to sense aortic pressure. The affects of aortic pressure on the balloon are utilized to determine the cardiac performance parameters. The Hickey devices, while capable of assessing cardiac performance, must be performed in a clinical setting and fails to measure or monitor cardiac dimensional changes through intracardiac impedance.

U.S. Pat. Nos. 3,776,221 and 5,291,895 both to McIntyre disclose a pressure-sensing device for providing a signal representative of systemic arterial blood pressure before and

after performance of the Valsalva maneuver. Specifically, an electrode placed on the skin generates a blood pressure signal and measures changes in amplitude before and after the Valsalva maneuver is performed. The McIntyre devices are limited to operating with external skin electrodes and fail to measure or monitor cardiac dimensional changes through intracardiac impedance.

Therefore, there is a need for an approach to assessing cardiac performance by indirectly measuring arterial blood pressure profile through intracardiac impedance relative to performance of intrathoracic pressure maneuvers, such as the Valsalva maneuver. Preferably, such an approach would analyze an intrathoracic pressure maneuver signature in a non-clinical setting on a regular basis for use in automated heart disease patient management.

#### SUMMARY OF THE INVENTION

A system and method for generating a cardiac performance assessment based on intracardiac impedance is described. Intracardiac impedance measures are collected during the induced performance of an intrathoracic pressure maneuver, such as the Valsalva maneuver, using an implantable cardiac device. The start of the intrathoracic pressure maneuver is either expressly marked by the patient or implicitly derived by the implantable cardiac device or by an intrathoracic pressure sensing device. The collected intracardiac impedance measures are periodically evaluated for determining arterial blood pressure profile. The intracardiac impedance measures are correlated to arterial blood pressure and assigned to the respective phases of the Valsalva maneuver, if applicable. An arterial blood pressure profile trend determined for each of the phases is evaluated and the overall set of trends is compared to the signature characteristic of the intrathoracic pressure maneuver under consideration. A cardiac performance assessment is generated based on the closeness of match to the characteristic signature and a notification is generated if the cardiac performance assessment varies beyond a set of predefined thresholds.

An embodiment provides a system and method for evaluating cardiac performance relative to performance of an intrathoracic pressure maneuver. Blood pressure is indirectly sensed by directly collecting intracardiac impedance measures through an implantable medical device. Cardiac functional changes to the blood pressure are evaluated in response to performance of an intrathoracic pressure maneuver.

A further embodiment provides a system and method for assessing cardiac performance through transcatheter impedance monitoring. Intracardiac impedance measures are directly collected through an implantable medical device. The intracardiac impedance measures are correlated to cardiac dimensional measures relative to performance of an intrathoracic pressure maneuver. The cardiac dimensional measures are grouped into at least one measures set corresponding to a temporal phase of the intrathoracic pressure maneuver. The at least one cardiac dimensional measures set is evaluated against a cardiac dimensional trend for the corresponding intrathoracic pressure maneuver temporal phase to represent cardiac performance.

Still other embodiments of the present invention will become readily apparent to those skilled in the art from the following detailed description, wherein are described embodiments of the invention by way of illustrating the best mode contemplated for carrying out the invention. As will be realized, the invention is capable of other and different embodiments and its several details are capable of modifications in various obvious respects, all without departing from

the spirit and the scope of the present invention. Accordingly, the drawings and detailed description are to be regarded as illustrative in nature and not as restrictive.

#### BRIEF DESCRIPTION OF THE DRAWINGS

FIG. 1 is a schematic diagram showing an implantable medical device monitoring transcatheter impedance, in accordance with a further embodiment of the present invention.

FIG. 2 is a schematic diagram showing an external medical device assisting in monitoring transcatheter impedance, in accordance with a further embodiment of the present invention.

FIGS. 3A-C are graphical representations showing, by way of example, averaged arterial blood pressure profiles relative to performance of the Valsalva maneuver in a healthy person, a patient suffering from heart disease and a patient suffering from heart failure.

FIG. 4 is a graphical representations showing, by way of example, cardiac dimension profiles during diastole and systole, respectively, relative to performance of the Valsalva maneuver in a healthy person, a patient suffering from heart disease but not significant heart failure and a patient suffering from significant heart failure.

FIG. 5 is a graphical representations showing, by way of example, stroke volume index profile and left ventricular pressure profile relative to performance of the Valsalva maneuver in a healthy person.

FIG. 6 is a functional block diagram showing a system for assessing cardiac performance through transcatheter impedance monitoring, in accordance with a further embodiment of the present invention.

FIG. 7 is a graphical representation showing, by way of example, trend analysis of arterial blood pressure profile.

FIG. 8 is a graphical representations showing, by way of example, trend analysis of cardiac stroke volume profile.

FIG. 9 is a flow chart showing a method for assessing cardiac performance through transcatheter impedance monitoring, in accordance with a further embodiment of the present invention.

FIG. 10 is a flow chart showing a routine for collecting physiological measures for use in the method of FIG. 9.

FIG. 11 is a flow chart showing a routine for assessing cardiac performance for use in the method of FIG. 9.

FIG. 12 is a flow chart showing a routine for evaluating cardiac stroke volume profile relative to, by way of example, the Valsalva maneuver, for use in the routine of FIG. 11.

#### DETAILED DESCRIPTION

##### Internal Transcatheter Impedance Monitoring System

FIG. 1 is a schematic diagram 100 showing an implantable medical device (IMD) 103 monitoring transcatheter impedance, in accordance with a further embodiment of the present invention. The IMD 103 is surgically implanted in the chest or abdomen of a patient and consists generally of a housing 104 and terminal block 105. The IMD 103 is coupled to a set of leads 106a-b at the terminal block 105. During surgery, the leads 106a-b are threaded through a vein and placed into the heart 102 with the distal tips of each lead 106a-b positioned in direct contact with tissue inside the heart 102.

The housing 104 contains a battery 107, control circuitry 108, memory 109, and telemetry circuitry 110. The battery 107 provides a finite power source for the IMD components. The control circuitry 108 samples and processes raw data signals and includes signal filters and amplifiers, memory and

a microprocessor-based controller, as would be appreciated by one skilled in the art. The memory 109 includes a short-term, volatile memory store in which raw physiological signals can be stored as telemetered signals for later retrieval and analysis. The telemetry circuitry 110 provides an interface between the IMD 103 and external devices (not shown). The telemetry circuitry 110 enables operating parameters to be non-invasively programmed into the memory 109 through an external device in telemetric communication with the IMD 103. The telemetry circuitry 110 also allows patient information collected by the IMD 103 and transiently stored in the memory 109 to be sent to the external device for processing and analysis.

The IMD 103 is in direct electrical communication with the heart 102 through electrodes 111a-b positioned on the distal tips of each lead 106a-b. By way of example, the set of leads 106a-b can include a right ventricular electrode 111a and a right atrial electrode 111b. The right ventricular electrode 111a is preferably placed in the right ventricular apex 112 of the heart 102 and the right atrial electrode 111b is preferably placed in the right atrial chamber 113 of the heart 102. The electrodes 111a-b enable the IMD 103 to directly collect raw physiological measures, preferably through millivolt measurements. Other configurations and arrangements of leads and electrodes, including the use of single and multiple leads arrays and single and multiple electrodes, can be used, as would be recognized by one skilled in the art.

In the described embodiment, the IMD 103 can be implemented as part of cardiac pacemakers used for managing bradycardia, implantable cardioverter defibrillators (IMDs) used for treating tachycardia, and other types of implantable cardiovascular monitors and therapeutic devices used for monitoring and treating heart failure, structural problems of the heart, such as congestive heart failure, rhythm problems, and other heart conditions, as would be appreciated by one skilled in the art. Examples of cardiac pacemakers suitable for use in the described embodiment include the Pulsar Max II, Discovery, and Discovery II pacing systems, sold by Guidant Corporation, St. Paul, Minn. An example of an IMD suitable for use in the described embodiment includes the Contak Renewal cardiac resynchronization therapy defibrillator, also sold by Guidant Corporation, St. Paul, Minn.

On a regular basis, the telemetered signals stored in the memory 109 are retrieved. By way of example, a programmer (not shown) can be used to retrieve the telemetered signals. However, any form of programmer, interrogator, recorder, monitor, or telemetered signals transceiver suitable for communicating with IMD 103 could be used, as would be appreciated by one skilled in the art. In addition, a server, personal computer or digital data processor could be interfaced to the IMD 103, either directly or via a telemetered signals transceiver configured to communicate with the implantable medical device 103.

The programmer communicates with the IMD 103 via radio frequency signals exchanged through a wand placed over the location of the IMD 103. Programming or interrogating instructions are sent to the IMD 103 and the stored telemetered signals are downloaded into the programmer. Once downloaded, the telemetered signals can be sent via a network, such as the Internet, to a server (not shown), which periodically receives and stores the telemetered signals in a database, as further described below with reference to FIG. 6.

An example of a programmer suitable for use in the present invention is the Model 2901 Programmer Recorder Monitor, manufactured by Guidant Corporation, Indianapolis, Ind., which includes the capability to store retrieved telemetered signals on a proprietary removable floppy diskette. The tele-

metered signals could later be electronically transferred using a personal computer or similar processing device, as would be appreciated by one skilled in the art.

Other alternate telemetered signals transfer means could also be employed. For instance, the stored telemetered signals could be retrieved from the IMD 103 and electronically transferred to a network using a combination of a remote external programmer and analyzer and a remote telephonic communicator, such as described in U.S. Pat. No. 5,113,869, the disclosure of which is incorporated by reference. Similarly, the stored telemetered signals could be retrieved and remotely downloaded to a server using a world-wide patient location and data telemetry system, such as described in U.S. Pat. No. 5,752,976, the disclosure of which is incorporated herein by reference.

#### Externally-Assisted Transcardiac Impedance Monitoring System

FIG. 2 is a schematic diagram 120 showing an external medical device 122 assisting in monitoring transcardiac impedance, in accordance with a further embodiment of the present invention. The external medical device 122 facilitates transcardiac impedance monitoring by ensuring consistent intrathoracic pressure, particularly when thoracic pressure is elevated when induced, for instance, by performance of the Valsalva maneuver. The external medical device 122 includes a mouthpiece 123 functionally connected to a pressure monitor 124 via a hose 125. The pressure monitor 124 defines a confined volume into which the patient 121 blows. A pressure regulating device 126 releases expired air. The pressure monitor 124 provides a pressure reading representative of the pressure in the confined volume. The pressure monitor 124 can also provide recording functions that record the pressure levels during performance of a transcardiac maneuver by a patient 121.

In a further embodiment, a thoracic pressure electrode, such as described in U.S. Pat. No. 6,132,384, the disclosure of which is incorporated by reference, can be combined with the IMD 103 to provide a fully implanted solution. The use of an implanted thoracic pressure electrode enables measurements during normal activities of daily living that produce elevated thoracic pressure similar to an induced performance of the Valsalva maneuver. When an elevated thoracic pressure is detected by the implanted thoracic pressure electrode, intracardiac impedance is recorded by the IMD 103 on a continuous basis. After the cardiac response period ends, the recorded intracardiac impedance data can either be downloaded to an external device (not shown) for further analysis, as further described below with reference to FIG. 11, or can be analyzed by the IMD 103.

#### Arterial Blood Pressure Profiles

FIGS. 3A-C are graphical representations showing, by way of example, averaged arterial blood pressure profiles 130, 150, 170 relative to performance of the Valsalva maneuver in a healthy person, a patient suffering from heart disease but not significant heart failure and a patient suffering from significant heart failure, respectively. The x-axis 131, 151, 171 respectively represent time. The y-axis 132, 152, 172 respectively indicate arterial pressure (mmHg). Averaged changes in arterial pressure are plotted over time throughout each of the four phases 133-136, 153-156, 173-176 of the Valsalva maneuver, respectively. For clarity, the pulsatile arterial blood pressure changes are shown as averaged values and each of the averaged arterial blood pressure profiles 130, 150, 170 have respectively been normalized relative to time.

The Valsalva maneuver involves deep inspiration followed by forced exhalation against a closed glottis for ten to twelve

seconds. The four phases of the Valsalva maneuver exhibit a characteristic signature for normal healthy people and for patients suffering from heart disease, but not significant heart failure. During Phase I, initial strain, systemic blood pressure undergoes a transient rise as straining commences. During Phase II, strain duration and cessation of breathing, systemic venous return, blood pressure and pulse pressure decrease perceptibly. During Phase III, strain discontinuation and resumption of normal breathing, blood pressure and systemic venous return exhibit abrupt, transient decreases. During Phase IV, recovery, systemic arterial pressure overshoots with reflex bradycardia. However, for patients suffering from heart failure, the response signature is a muted square wave response with a slight elevation in blood pressure during phase III and minimal perceptible changes during Phases I, II and IV.

Cardiac performance response profile is significantly dependent on left ventricular function, specifically LVEF and mean LVEDP. A healthy person with no history of cardiovascular diseases may, for example, be expected to have an LVEF and mean LVEDP of approximately 70% and 14 mmHg, respectively. A patient suffering from heart disease but not significant heart failure may, for example, typically be expected to have an LVEF and mean LVEDP of approximately 50% and 20 mmHg, respectively. A patient suffering from heart failure may, for example, typically be expected to have an LVEF and mean LVEDP of approximately 30% and 40 mmHg, respectively.

#### Healthy Person

Referring first to FIG. 3A, the graphical representation shows, by way of example, an averaged arterial blood pressure profile **130** relative to performance of the Valsalva maneuver in a healthy person with no history of cardiovascular diseases. During Phase I **133**, intrathoracic pressure increases in response to the strain associated with the maneuver, along with a sharp rise **137** in arterial pressure approximately equal to the intrathoracic pressure increase. During Phase II **134**, pulse pressure narrows and arterial pressure undergoes a transient decrease **138**. During Phase III **135**, systolic pressure drops rapidly **139**. Finally, during Phase IV **136**, diastolic and systolic pressures return to pre-maneuver levels **141** following a large overshoot **140** in arterial pressure.

#### Patient Suffering from Heart Disease But not Significant Heart Failure

Referring next to FIG. 3B, the graphical representation shows, by way of example, an averaged arterial blood pressure profile **150** relative to performance of the Valsalva maneuver in a patient suffering from heart disease but not significant heart failure. During Phase I **153**, systemic arterial pressure increases only slightly **157**. During Phase II **154**, systemic arterial pressure **158** increases approximately equal to the increase in intrathoracic pressure followed by a narrowing of pulse pressure and arterial pressure decrease **159**. During Phase III **155**, systolic pressure drops rapidly **160**. Finally, during Phase IV **156**, diastolic and systolic pressures return to pre-maneuver levels **161** without overshoot.

#### Patient Suffering from Heart Failure

Finally, referring first to FIG. 3C, the graphical representation shows, by way of example, an averaged arterial blood pressure profile **170** relative to performance of the Valsalva maneuver in a patient suffering from heart failure. During Phase I **173**, almost no appreciable increase in systemic arterial pressure occurs **177**. During Phase II **174**, pulse pressure and systemic systolic pressure remain at approximately the same elevated level **178** throughout the phase. During Phase III **175**, systolic pressure decreases to approximately the same

level as in Phase I **173**. During Phase IV **176**, diastolic and systolic pressures return to their pre-maneuver levels **180** almost immediately upon cessation of strain.

#### Cardiac Dimension Profiles

FIG. 4 is a graphical representations showing, by way of example, cardiac dimension profiles **182a**, **182b**, during diastole and systole, respectively, relative to performance of the Valsalva maneuver in a healthy person, a patient suffering from heart disease but not significant heart failure and a patient suffering from significant heart failure. The x-axis represents time. The y-axis indicates average dimensional change (%). Averaged changes in dimension are plotted over time throughout each of the four phases **183a-186a**, **183b-186b** of the Valsalva maneuver.

#### Healthy Person

During Phase I **183a**, **183b**, cardiac dimension decreases in response to the strain associated with the maneuver for a healthy person with no history of cardiovascular diseases. During Phase II **184a**, **184b**, cardiac dimension reduces rapidly. During Phase III **185a**, **185b**, cardiac dimension increases rapidly. Finally, during Phase IV **186a**, **186b**, cardiac dimension pressures return to pre-maneuver levels.

#### Patient Suffering from Heart Disease But Not Significant Heart Failure

The average cardiac dimensional change for a patient suffering from heart disease but not significant heart failure **182ab**, **182bb**, is essentially the same as the changes observed for a healthy person with no history of cardiovascular diseases.

#### Patient Suffering from Heart Failure

The average cardiac dimensional change for a patient suffering from significant heart failure reflects only slight changes during each of the four phases of a Valsalva maneuver.

#### Stroke Volume and Left Ventricular Pressure Profiles

FIG. 5 is a graphical representations showing, by way of example, stroke volume index profile **188a** and left ventricular pressure profile **188b** relative to performance of the Valsalva maneuver in a healthy person. The x-axis represents time. The left hand y-axis indicates stroke volume index (ml/M<sup>2</sup>) and the right hand y-axis indicates LV pressure. Changes in stroke volume index and left ventricular pressure are plotted over time throughout each of the four phases **187a**, **187b**, **187c** and **187d** of a Valsalva maneuver. During Phase I **187a**, the stroke volume index decreases slightly and left ventricular systolic and diastolic pressures increase slightly. During Phase II **187b**, the stroke volume index and left ventricular and diastolic systolic pressures decrease significantly. During Phase III **187c**, the stroke volume index begins an increase towards pre-maneuver levels, but the left ventricular diastolic and systolic pressures remain stable. Finally, during Phase IV **187d**, the stroke volume index and left ventricular diastolic and systolic pressures return to pre-maneuver levels.

#### LVEF and LVEDP Correlations

Heart disease patient management requires carefully monitoring and evaluation of LVEF and LVEDP. In heart failure patients, an increase in LVEDP can lead to an acute exasperation of heart failure and acute decompensation. Changes to LVEDP associated with the acute exasperation of heart failure can occur in a few days, whereas changes to LVEF occur more slowly and are associated with long-term changes. Thus, effectively assessing cardiac performance, particularly for heart disease and heart failure patients, requires evaluating LVEF and LVEDP or equivalent values that approximate LVEF and LVEDP changes, such as intracardiac impedance.

Comparing the averaged cardiac dimension profiles **182a**, **182b** described above with reference to FIG. 4, healthy people and patients suffering from heart disease undergo significant dimensional changes during performance of the Valsalva maneuver, while the cardiac dimensions in patients with significant heart failure changes only slightly. Intracardiac impedance has been empirically correlated to changes in left ventricular pressure, such as described in Wortel et al., *Impedance Measurements in the Human Right Ventricular Using a New Pacing System*, Pacing Clinical Electrophysiology, Vol. 14(9), pp. 1336-42 (September 1991), the disclosure of which is incorporated by reference, and can therefore be used as a surrogate measure of cardiac dimensional changes.

In a further embodiment, the Müller maneuver is performed either in lieu of or in addition to the Valsalva maneuver. The Müller maneuver involves deep inspiration while the nose is held closed and mouth firmly sealed for ten seconds. The Müller maneuver exaggerates inspiration effort and augments murmurs and right side cardiac filling sounds.

#### System Modules

FIG. 6 is a functional block diagram showing a system **190** for assessing cardiac performance through transcardiac impedance monitoring, in accordance with a further embodiment of the present invention. Each component is a computer program, procedure or process written as source code in a conventional programming language, such as the C++ programming language, and is presented for execution by one or more CPUs as object or byte code in a uniprocessing, distributed or parallelized configuration, as would be appreciated by one skilled in the art. The various implementations of the source code and object and byte codes can be held on a computer-readable storage medium or embodied on a transmission medium in a carrier wave.

The system **190** consists of a server **191** coupled to a database **197**, which provides persistent secondary storage. The server **191** consists of three modules: telemetry **192**, database **193**, and analysis **194**. The telemetry module **192** communicatively interfaces to the IMD **103** through a logically-formed, non-invasive communication channel, such as provided through induction, static magnetic field coupling, or by related means, as would be appreciated by one skilled in the art. The telemetry module **192** facilitates the transferal and exchange of physiological measures **195** and programming parameters **196** between the IMD **103** and the server **191**. The physiological measures **195** include raw physiological data regularly collected by the IMD **103** and stored in the memory **109**. The programming parameters **196** include monitoring and therapy delivery device configuration settings, which are exchanged between the IMD **103** and the server **191**. The telemetry module **192** communicates with the telemetry circuitry **110** on the IMD **103** using standard programmer communication protocols, as would be appreciated by one skilled in the art.

For an exemplary cardiac implantable medical device, the physiological measures **195** and programming parameters **196** non-exclusively present patient information recorded on a per heartbeat, binned average or derived basis and relating to atrial electrical activity, ventricular electrical activity, minute ventilation, patient activity score, cardiac output score, mixed venous oxygenation score, cardiovascular pressure measures, time of day, the number and types of interventions made, and the relative success of any interventions, plus the status of the batteries and programmed settings.

The database module **193** maintains information stored in the database **197** as structured records for facilitating efficient storage and retrieval. The database module **193** stores the

physiological measures **195** and programming parameters **196** exchanged with the IMD **103** in the database **197**. The database **197** stores the physiological measures **195** as derived measures, which include, non-exclusively, impedance measures **198**, cardiac dimensional measures **199**, LVEF measures **200**, and LVEDP measures **201**. Other raw and derived measures can be stored in the database **197**, as would be recognized by one skilled in the art. The programming parameters **196** are maintained in the database as programming values **202**. In addition, patient profile information **203** is maintained in the database **197**.

The analysis module **194** derives and evaluates the physiological data maintained in the database **197**. As necessary, the physiological measures **195** retrieved from the IMD **103** are converted and derived into the impedance measures **198**, cardiac dimensional measures **199**, LVEF measures **200**, and LVEDP **201**, as would be appreciated by one skilled in the art. In particular, the impedance measures **198** are analyzed and evaluated to determine an overall arterial blood pressure profile, which is compared to predefined thresholds **204** for assessing cardiac performance relative to the performance of an intrathoracic pressure maneuver, as further described below with reference to FIG. 11. The analysis module **194** generates a cardiac performance assessment **205**, which identifies trends indicating cardiovascular disease and, in particular, heart failure, absence, onset, progression, regression, and status quo. The cardiac performance assessment **205** can be further evaluated to determine whether medical intervention is necessary.

In a further embodiment, the functions of the server **191** are performed by the IMD **103**, which directly generates the cardiac performance assessment **205**, for retrieval by an external device.

#### Arterial Blood Pressure Profile Trend Analysis

FIG. 7 is a graphical representation showing, by way of example, trend analysis **210** of arterial blood pressure profile **213**. The x-axis **211** represents time. The y-axis **212** indicates arterial pressure in mmHg. Averaged changes in arterial pressure are plotted over time throughout each of the four phases **214-217** of the Valsalva maneuver.

The arterial blood pressure profile **213** models the characteristic signature exhibited during each phase of the Valsalva maneuver. During Phase I **214**, the arterial pressure is evaluated for an increasing trend **218**. During Phase II **215**, the arterial pressure is evaluated for a transient decreasing trend **219**. During Phase III **216**, the arterial pressure is evaluated for a significantly decreasing trend **220**. Finally, during Phase VI **217**, the arterial pressure is evaluated for a steeply increasing trend **221**, followed by an overshooting trend **222**, followed by a decreasing trend **223** with resumption of normal arterial pressure. In addition to the arterial pressure trends **218-223**, pulsatile volume and heart rate can also be evaluated for trends, as would be recognized by one skilled in the art.

#### Cardiac Stroke Volume Profile Trend Analysis

FIG. 8 is a graphical representation showing, by way of example, trend analysis **213** of cardiac stroke volume profile. The x-axis represents time. The y-axis indicates stroke volume index in ml/M<sup>2</sup>. Averaged changes in stroke volume index are plotted over time throughout each of four phases **214, 215, 216, 217** of a Valsalva maneuver.

#### Transcardiac Impedance Monitoring Method

FIG. 9 is a flow chart showing a method **225** for assessing cardiac performance through transcardiac impedance monitoring, in accordance with a further embodiment of the present invention. The method **225** is described as a sequence

of process operations or steps, which can be executed, for instance, by a server **191** (shown in FIG. 6). In a further embodiment, the method **225** can be executed directly by the IMD **103** or related means, which generates a cardiac performance assessment **205** for retrieval by an external device.

The method **225** preferably executes as a continuous processing loop **226-229**. During each iteration (block **226**), the physiological measures **195** are retrieved from the IMD **103** and stored in the database **197**, as further described below with reference to FIG. 10. Cardiac performance is then assessed (block **228**), as further described below with reference to FIG. 11. Processing continues (block **229**), until the method exits or terminates.

#### Collecting Physiological Measures

FIG. 10 is a flow chart showing a routine **230** for collecting physiological measures for use in the method **225** of FIG. 9. The purpose of this routine is to regularly interface to the IMD **103**, retrieve the physiological measures **195** and programming parameters **196**, and store the retrieved physiological measures **195** and programming parameters **196** in the database **197**.

The routine begins initially by interfacing to the IMD **103** (block **231**), using, for instance, inductive or static magnetic means, as would be appreciated by one skilled in the art. Raw physiological measures **195** are retrieved from the IMD **103** (block **232**). The raw physiological measures **195** are converted and derived into impedance measures **198**, cardiac dimensional measures **199**, LVEF measures **200**, and LVEDP measures **201** (block **233**). The physiological measures are stored in the database **197** (block **234**). If further physiological measures **195** or programming parameters **196** require exchange with the IMD **103** (block **235**), processing continues. Otherwise, the interface to the IMD **103** is closed (block **236**), the routine returns.

#### Assessing Cardiac Performance

FIG. 11 is a flow chart showing a routine **240** for assessing cardiac performance for use in the method **225** of FIG. 9. The purpose of this routine is to periodically assess cardiac performance through an analysis of the cardiac stroke volume profile trends **224** (shown in FIG. 8).

As an initial step, physiological measures, including impedance measures **198**, cardiac dimensional measures **199**, LVEF measures **200**, and LVEDP measures **201**, are retrieved from the database **197** (shown in FIG. 6) (block **241**). The start of the intrathoracic pressure maneuver under consideration is determined (block **242**). In the described embodiment, the start of the intrathoracic pressure maneuver is determined by retrieving an explicit marker recorded by the patient **100** or by indirect means based upon an analysis of the retrieved physiological measures, as would be appreciated by one skilled in the art.

Next, the cardiac stroke volume profile **224** is evaluated to form a cardiac performance assessment **205** (block **243**), further described below with reference to FIG. 12. If the cardiac performance assessment **205** exceeds the predefined threshold **204** (block **244**), a notification is generated (block **245**). In the described embodiment, the notification takes the form of generating an alert for review and possible action by healthcare providers and can include generating appropriate feedback to the patient **100**, such as described in commonly-assigned U.S. Pat. No. 6,203,495, the disclosure of which is incorporated by reference.

If the cardiac performance assessment **205** does not exceed the threshold **204** (block **244**), no notification is generated. If

further retrieved physiological measures require evaluation (block **246**), processing continues. Otherwise, the routine returns.

#### Evaluating Arterial Blood Pressure Profile Relative to Valsalva Maneuver

FIG. 12 is a flow chart showing a routine **250** for evaluating cardiac stroke volume profile **224** relative to, by way of example, the Valsalva maneuver, for use in the routine **240** of FIG. 11. The purpose of this routine is to generate a cardiac performance assessment **205** by forming a trend analysis of the retrieved physiological measures based on the phases of the Valsalva maneuver.

The trend analysis proceeds in four groups of steps (blocks **251-253**, **254-256**, **257-259**, **260-268**, respectively), which track each of the four phases of the Valsalva maneuver. During the first group, if the cardiac stroke volume profile **224** is in Phase I (block **251**) and an increase in arterial pressure is apparent (block **252**), the increase is marked (block **253**). During the second group, if the cardiac stroke volume profile **224** is in Phase II (block **254**) and a transient decrease in arterial pressure is apparent (block **255**), the transient decrease is marked (block **256**). During the third group, if the cardiac stroke volume profile **224** is in Phase III (block **256**) and a significant decrease in arterial pressure is apparent (block **258**), the significant decrease is marked (block **259**). Finally, during the fourth group, if the cardiac stroke volume profile **224** is in Phase VI (block **260**), four conditions are evaluated. If an increase in arterial pressure is apparent (block **261**), the increase is marked (block **262**). If the increase in arterial pressure is followed by an overshoot (block **263**), the overshoot is marked (block **264**). For the Valsalva maneuver, the overshoot is the strongest trend indication in the characteristic signature and indicates a healthy, non-heart failure person. If the overshoot is followed by a decrease in arterial pressure (block **265**), the decrease is marked (block **266**). Finally, if a resumption of normal arterial pressure is apparent (block **267**), the resumption is marked (block **268**).

Following the evaluation of each of the groups, the impedance measures are correlated to cardiac stroke volume to reflect cardiac dimensional changes, as described above with reference to FIG. 3. Next, the overall cardiac stroke volume profile **224** is determined (block **270**) to generate a cardiac performance assessment **205**. The cardiac performance assessment **205** quantifies the variants between the physiological measures determined during each of the phases against the cardiac stroke volume profile trends **224e-224h**. Following determination of the cardiac performance assessment **205**, the routine returns.

In the described embodiment, the cardiac impedance data can be analyzed in several ways. In one embodiment, a statistical analysis can be performed on impedance data to determine the mean impedance level and standard deviation over the entire response period. The mean  $\bar{Z}$  and the standard deviation  $S_z$  of the impedance data over the response period can be used as a cardiac performance assessment **205**, where:

$$\bar{Z} = \frac{\sum Z_i}{n}$$

$$S_z = \sqrt{\frac{1}{N} \sum_{i=1}^N (Z_i - \bar{Z})^2}$$

In a further embodiment, a statistical analysis can be performed on different phases of the response period based on the collected impedance data to determine the cardiac perfor-

mance assessment 205. For example, the mean and standard deviation analysis, described above, can be performed on physiological data from Phase IV of the response period relative to the performance of the Valsalva maneuver. The analyzed values reflect the amplitude of impedance change during the Valsalva maneuver as the cardiac performance assessment 205.

In a further embodiment, the impedance data can be analyzed for trends by calculating a linear regression over the collected data for Phase IV of the response period, such as described in Seborg et al., "Process Dynamics and Control," pp. 165-167 (John Wiley & Sons, 1989), the disclosure of which is incorporated by reference. By performing a linear regression, the response pattern during Phase IV can be fitted into a second-order system response, which is characterized by a transfer function, such as:

$$G(s) = \frac{K}{(\tau_1 s + 1)(\tau_2 s + 1)}$$

where  $\tau_1$  and  $\tau_2$  are derived empirically by linear regression. Alternatively, a second order process transfer function can arise upon transforming a second-order differential equation process model that has the general form of:

$$G(s) = \frac{K}{\tau^2 s^2 + 2\zeta\tau s + 1}$$

where  $\zeta$  is the dimensionless damping factor.

By equating the two transfer functions, the value of the damping factor can be derived as:

$$\zeta = \frac{\tau_1 + \tau_2}{2\sqrt{\tau_1\tau_2}}$$

The resulting response pattern is characterized by the derived value of the damping factor  $\zeta$  according to the following table:

$\zeta > 1$  Over damped

$\zeta = 1$  Critically damped

$0 < \zeta < 1$  Under damped

Phase IV of the Valsalva maneuver exhibits the most noticeable difference in cardiac response for the three groups of individuals described above with reference to FIGS. 3A-C and 4, that is, a healthy person, a patient suffering from heart disease and a patient suffering from heart failure. During Phase IV, the response pattern from the healthy person group closely resembles an under-damped second-order response, which is characterized by a damping factor between zero and one. The response pattern from the heart disease patient group closely resembles a critically-damped or under-damped second-order response, which is characterized by a damping factor that is equal to or greater than one but not substantially higher than one. The response pattern from the heart failure patient group shows no appreciable change, which resembles a severely-over damped system characterized by a large damping factor. The damping factor serves as a cardiac per-

formance assessment 205. Other types of statistical analyses can also be performed, as would be recognized by one skilled in the art.

While the invention has been particularly shown and described as referenced to the embodiments thereof, those skilled in the art will understand that the foregoing and other changes in form and detail may be made therein without departing from the spirit and scope of the invention.

What is claimed is:

1. A system for assessing cardiac performance through transcardiac impedance monitoring, comprising:
  - a implantable medical device to directly collect intracardiac impedance measures;
  - a correlation component to correlate the intracardiac impedance measures to cardiac pressure measures relative to performance of an intrathoracic pressure maneuver and to group the cardiac pressure measures into at least one measures set corresponding to a temporal phase of the intrathoracic pressure maneuver; and
  - an analysis component to evaluate the at least one cardiac pressure measures set against a cardiac pressure trend for the corresponding intrathoracic pressure maneuver temporal phase to represent cardiac performance.
2. A system according to claim 1, wherein the cardiac pressure measures comprise at least one of cardiac stroke volume, left ventricular end diastolic pressure, and left ventricular end systolic pressure.
3. A system according to claim 1, further comprising:
  - a history subcomponent to evaluate a history of cardiac performance representations; and
  - a trending subcomponent to recognize a trend within the history indicating at least one of cardiovascular disease absence, onset, progression, regression, and status quo.
4. A system according to claim 1, further comprising:
  - a characteristic signature formed with the cardiac pressure trends over the performance of the intrathoracic pressure maneuver; and
  - a comparison subcomponent to compare an overall cardiac pressure profile comprising the at least one cardiac pressure measures set to the characteristic signature to form a cardiac performance assessment.
5. A system according to claim 4, further comprising:
  - a predefined threshold with the comparison module to analyze the cardiac performance assessment relative to the predefined threshold.
6. A system according to claim 5, further comprising:
  - a notification generated responsive to the cardiac performance assessment substantially non-complying to the predefined threshold.
7. A system according to claim 1, wherein the intrathoracic pressure maneuver comprises the Valsalva maneuver, further comprising:
  - a collection subcomponent to collect the intracardiac impedance measures relative to performance of the Valsalva maneuver.
8. A system according to claim 7, further comprising:
  - a phase subcomponent to specify four phases physiologically corresponding to the performance of the Valsalva maneuver, comprising defining Phase I corresponding to initial strain, defining Phase II corresponding to strain duration and cessation of breathing, defining Phase III corresponding to strain discontinuation and resumption of normal breathing, and defining Phase IV corresponding to recovery.
9. A system according to claim 8, further comprising:
  - a trending subcomponent to identify an overshoot of the cardiac pressure during the Phase IV.

10. A system according to claim 9, wherein the trending subcomponent further comprises identifying an increase of the cardiac pressure during the Phase I, identifying a transient decrease of the cardiac pressure during the Phase II, identifying a sharp decrease of the cardiac pressure during the Phase III, and identifying an increase preceding the overshoot and a decrease of the cardiac pressure during the Phase IV.

11. A system according to claim 1, further comprising:  
a programming subcomponent to provide programming support to the implantable medical device.

12. A system according to claim 1, wherein the implantable medical device comprises at least one of an implantable cardiac pacemaker, implantable cardioverter defibrillator, implantable cardiac resynchronization device, implantable cardiovascular monitor, and therapeutic device monitoring and treating structural problems of the heart.

13. A system according to claim 1, further comprising:  
a database to maintain the intracardiac impedance measures.

14. A system according to claim 1, wherein the intrathoracic pressure maneuver comprises at least one of the Valsalva maneuver and Müller maneuver.

15. A method for assessing cardiac performance through transcardiac impedance monitoring, comprising:

directly collecting intracardiac impedance measures through an implantable medical device;

correlating the intracardiac impedance measures to cardiac pressure measures relative to performance of an intrathoracic pressure maneuver;

grouping the cardiac pressure measures into at least one measures set corresponding to a temporal phase of the intrathoracic pressure maneuver; and

evaluating the at least one cardiac pressure measures set against a cardiac pressure trend for the corresponding intrathoracic pressure maneuver temporal phase to represent cardiac performance.

16. A method according to claim 15, wherein the cardiac pressure measures comprise at least one of cardiac stroke volume, left ventricular end diastolic pressure, and left ventricular end systolic pressure.

17. A method according to claim 15, further comprising:  
evaluating a history of cardiac performance representations; and

recognizing a trend within the history indicating at least one of cardiovascular disease absence, onset, progression, regression, and status quo.

18. A method according to claim 15, further comprising:  
forming a characteristic signature with the cardiac pressure trends over the performance of the intrathoracic pressure maneuver; and

comparing an overall cardiac pressure profile comprising the at least one cardiac pressure measures set to the characteristic signature to form a cardiac performance assessment.

19. A method according to claim 18, further comprising:  
analyzing the cardiac performance assessment relative to a predefined threshold.

20. A method according to claim 19, further comprising:  
generating a notification responsive to the cardiac performance assessment substantially non-complying to the predefined threshold.

21. A method according to claim 15, wherein the intrathoracic pressure maneuver comprises the Valsalva maneuver, further comprising:

collecting the intracardiac impedance measures relative to performance of the Valsalva maneuver.

22. A method according to claim 21, further comprising:  
specifying four phases physiologically corresponding to the performance of the Valsalva maneuver, comprising:  
defining Phase I corresponding to initial strain;

defining Phase II corresponding to strain duration and cessation of breathing;

defining Phase III corresponding to strain discontinuation and resumption of normal breathing; and

defining Phase IV corresponding to recovery.

23. A method according to claim 22, further comprising:  
identifying an overshoot of the cardiac pressure during the Phase IV.

24. A method according to claim 23, further comprising:  
identifying an increase of the cardiac pressure during the Phase I;

identifying a transient decrease of the cardiac pressure during the Phase II;

identifying a sharp decrease of the cardiac pressure during the Phase III; and

identifying an increase preceding the overshoot and a decrease of the cardiac pressure during the Phase IV.

25. A method according to claim 15, further comprising:  
providing programming support to the implantable medical device.

26. A method according to claim 15, wherein the implantable medical device comprises at least one of an implantable cardiac pacemaker, implantable cardioverter defibrillator, implantable cardiac resynchronization device, implantable cardiovascular monitor, and therapeutic device monitoring and treating structural problems of the heart.

27. A method according to claim 15, further comprising:  
maintaining the intracardiac impedance measures in a database.

28. A method according to claim 15, wherein the intrathoracic pressure maneuver comprises at least one of the Valsalva maneuver and Müller maneuver.

29. An apparatus for assessing cardiac performance through transcardiac impedance monitoring, comprising:

means for directly collecting intracardiac impedance measures through an implantable medical device;

means for correlating the intracardiac impedance measures to cardiac pressure measures relative to performance of an intrathoracic pressure maneuver;

means for grouping the cardiac pressure measures into at least one measures set corresponding to a temporal phase of the intrathoracic pressure maneuver; and

means for evaluating the at least one cardiac pressure measures set against a cardiac pressure trend for the corresponding intrathoracic pressure maneuver temporal phase to represent cardiac performance.

专利名称(译)	通过心脏传导阻抗监测评估心脏性能的系统和方法		
公开(公告)号	<a href="#">US7488290</a>	公开(公告)日	2009-02-10
申请号	US10/782642	申请日	2004-02-19
[标]申请(专利权)人(译)	心脏起搏器股份公司		
申请(专利权)人(译)	心脏起搏器, INC.		
当前申请(专利权)人(译)	心脏起搏器, INC.		
[标]发明人	STAHMANN JEFFREY E HOPPER DONALD L KADHIRESAN VEERICHETTY HATLESTAD JOHN D		
发明人	STAHMANN, JEFFREY E. HOPPER, DONALD L. KADHIRESAN, VEERICHETTY HATLESTAD, JOHN D.		
IPC分类号	A61B5/00		
CPC分类号	A61B5/021 A61B7/00		
外部链接	<a href="#">Espacenet</a> <a href="#">USPTO</a>		

摘要(译)

描述了一种用于通过心脏传导阻抗监测来评估心脏性能的系统和方法。通过可植入医疗设备直接收集心内阻抗测量值。心内阻抗测量值与相对于胸内压力操作性能的心脏尺寸测量值相关。心脏尺寸测量被分组为对应于胸内压力操纵的时间相位的至少一个测量集。针对相应的胸内压力操纵时间相位的心脏维度趋势评估至少一个心脏维度测量集合以表示心脏性能。

