



(19) **United States**  
(12) **Patent Application Publication**  
**CHOI et al.**

(10) **Pub. No.: US 2008/0221421 A1**  
(43) **Pub. Date: Sep. 11, 2008**

(54) **APPARATUS FOR MEASURING PERFUSION RATE OF LEGS**

**Publication Classification**

(75) Inventors: **Chulhee CHOI**, Daejeon (KR);  
**Yujung KANG**, Daejeon (KR);  
**Myunghwan CHOI**, Daejeon (KR)

(51) **Int. Cl.**  
**A61B 5/00** (2006.01)  
(52) **U.S. Cl.** ..... **600/363**  
(57) **ABSTRACT**

Correspondence Address:  
**LUCAS & MERCANTI, LLP**  
**475 PARK AVENUE SOUTH, 15TH FLOOR**  
**NEW YORK, NY 10016 (US)**

(73) Assignee: **KOREA ADVANCED INSTITUTE OF SCIENCE AND TECHNOLOGY**, Daejeon (KR)

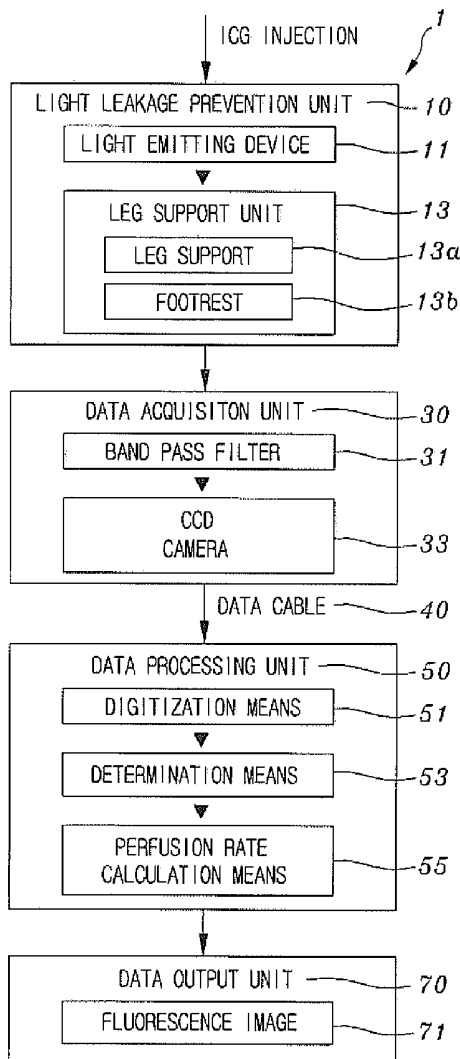
(21) Appl. No.: **11/955,817**

(22) Filed: **Dec. 13, 2007**

(30) **Foreign Application Priority Data**

Mar. 9, 2007 (KR) ..... 10-2007-0023496

The present invention relates to an apparatus for measuring the perfusion rate of legs. The measurement apparatus of the present invention includes a light leakage prevention unit including a light emitting device for radiating light having a certain wavelength onto a living body injected with Indocyanine Green (ICG), and a light leakage prevention housing formed to prevent transmission of external light. A data acquisition unit includes a band pass filter for passing therethrough only light, having a near infrared wavelength, in a fluorescence image emitted by the ICG and the light emitting device, and a Charge Coupled Device (CCD) camera for photographing a near infrared wavelength region. A data processing unit calculates a perfusion rate of the living body on a basis of data about the near infrared wavelength region through a data cable connected to the data acquisition unit. A data output unit outputs the perfusion rate calculated by the data processing unit.



**FIG. 1**

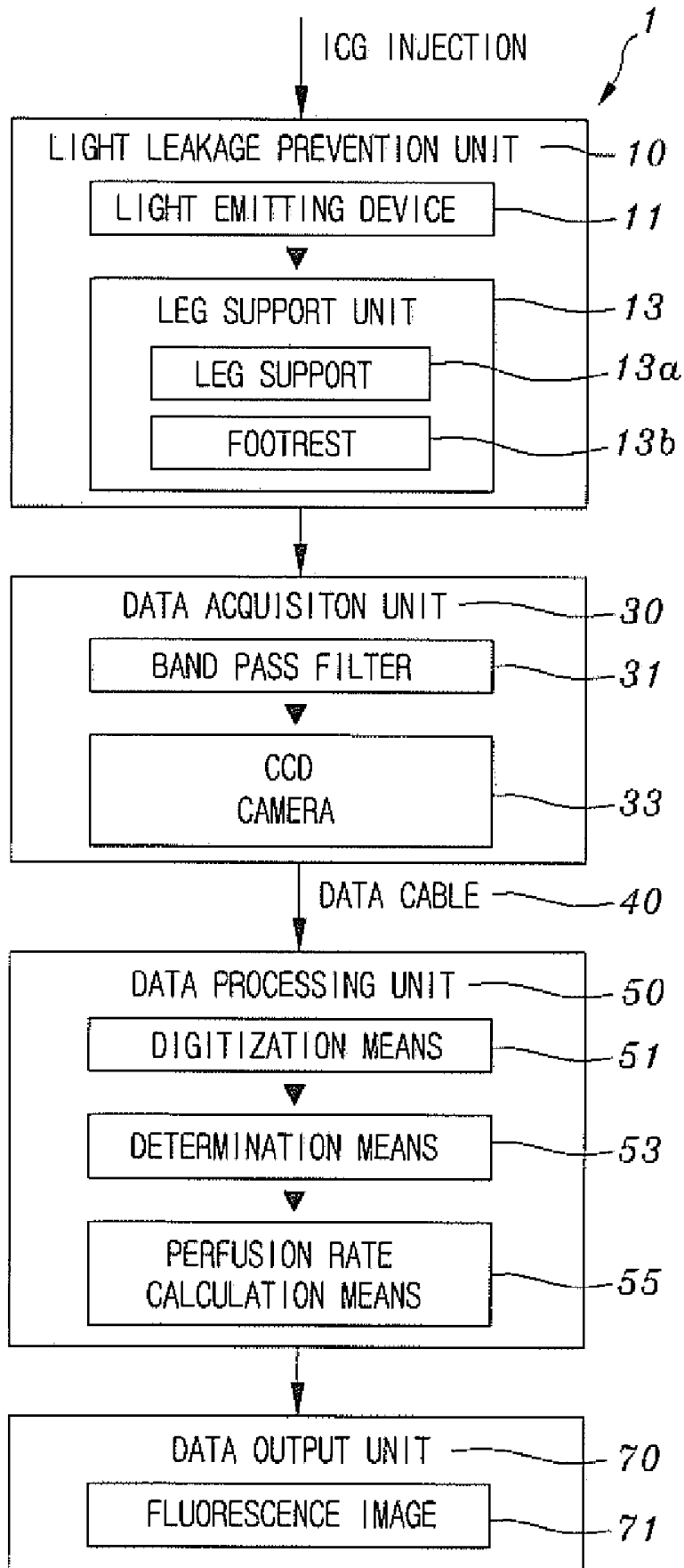


FIG. 2

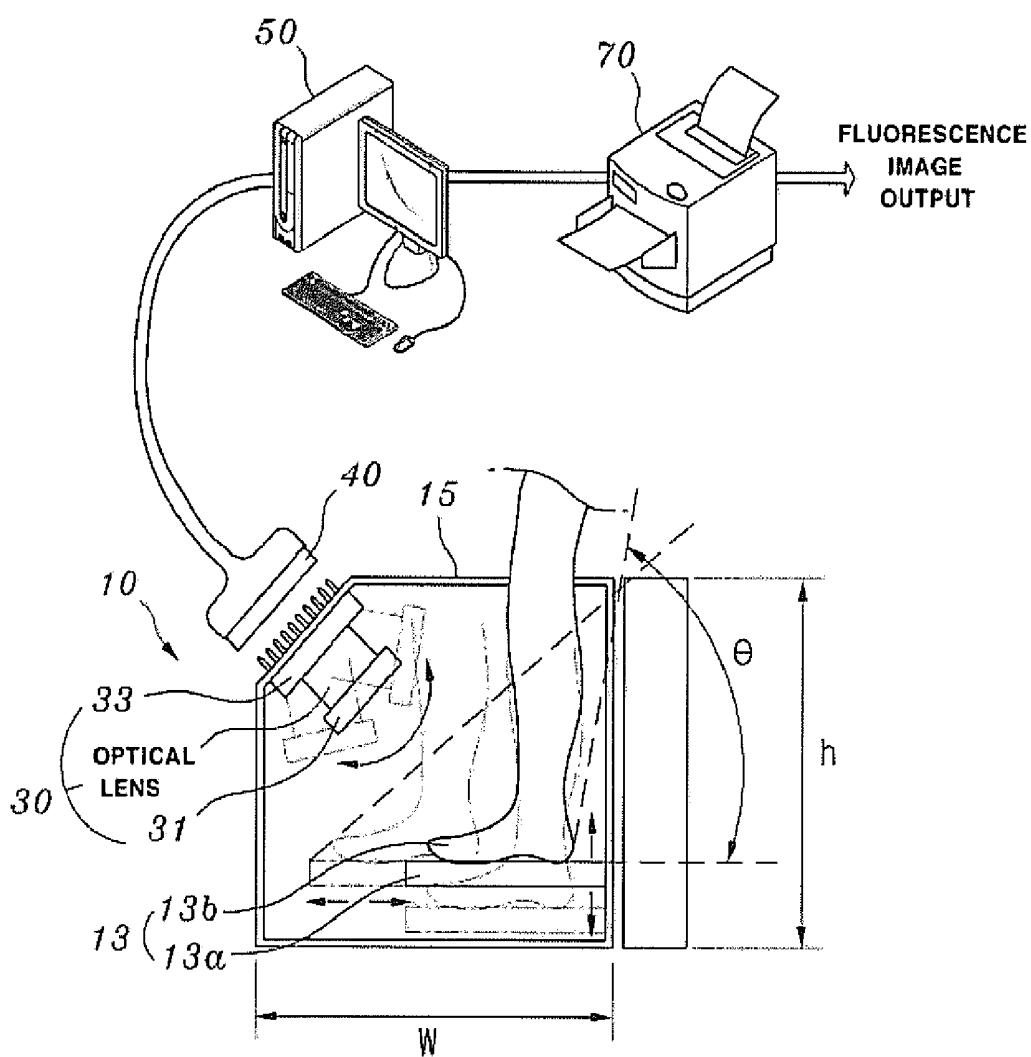


FIG. 3

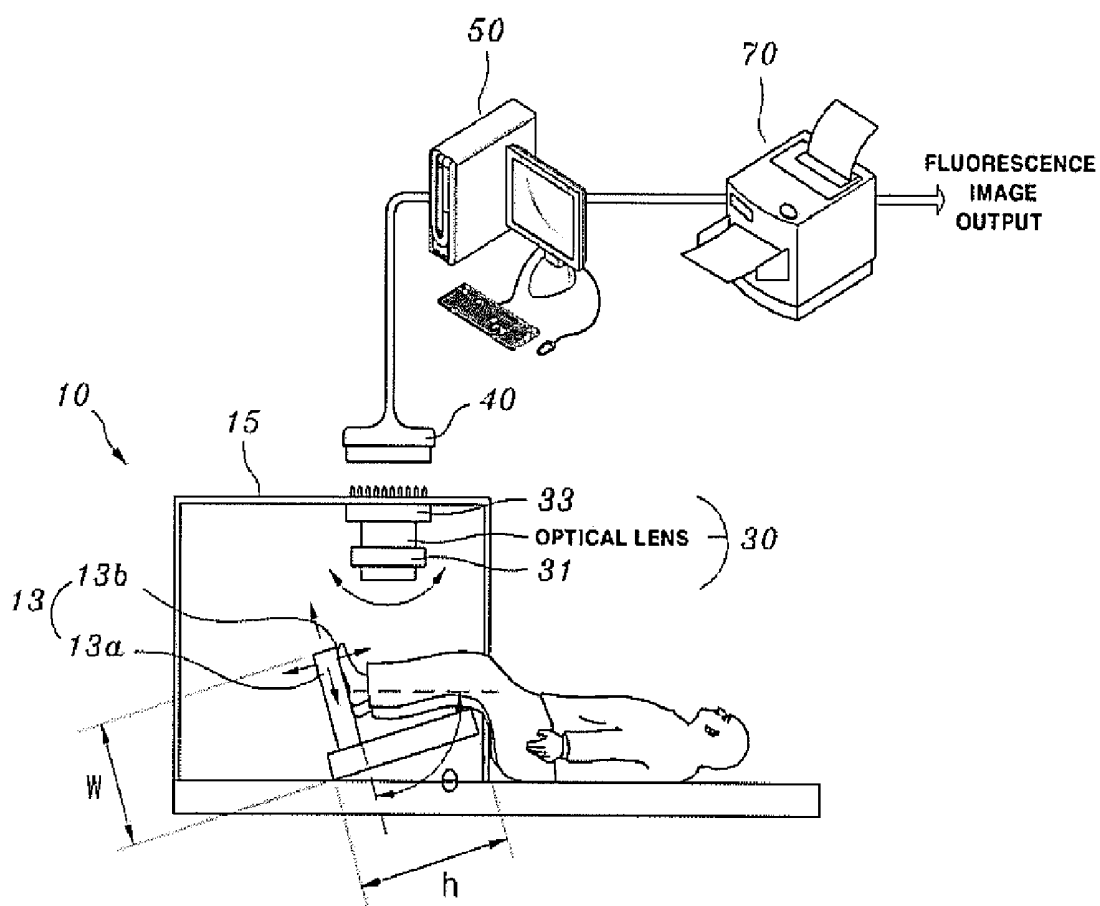


FIG. 4A

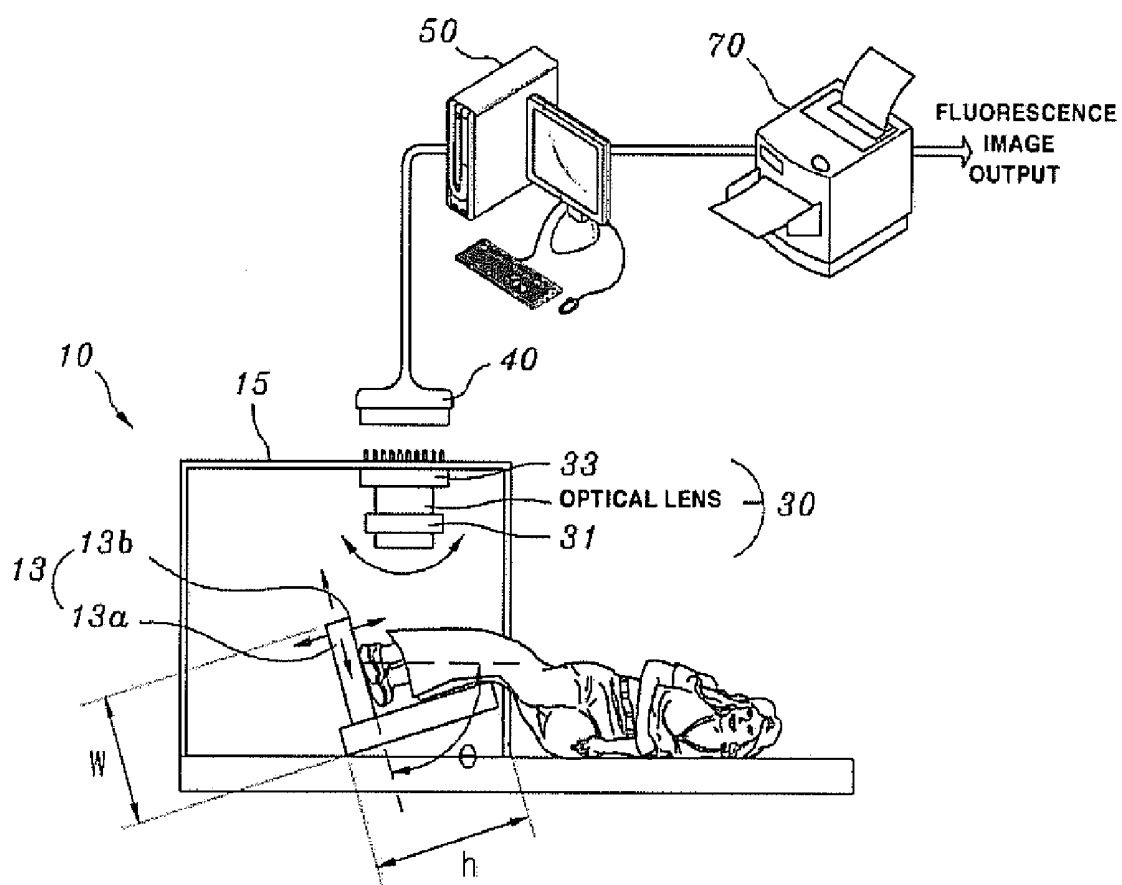


FIG. 4B

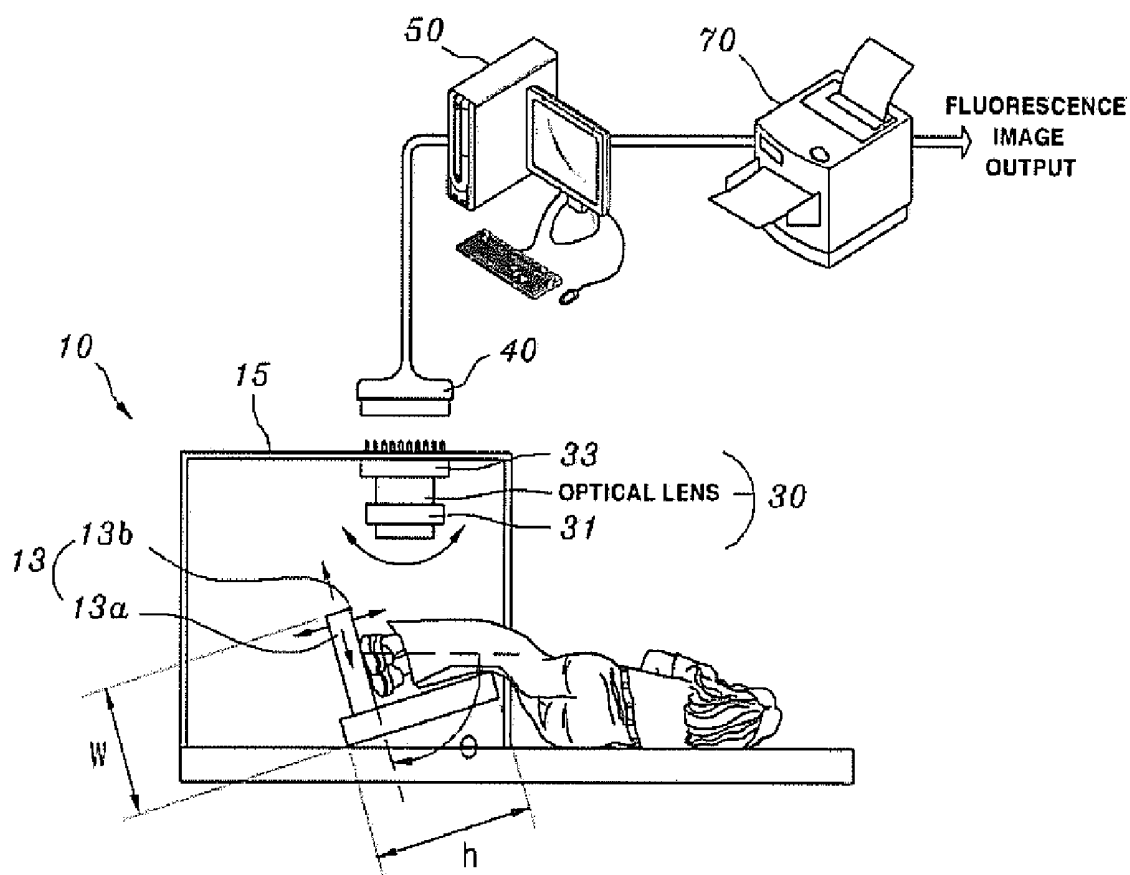
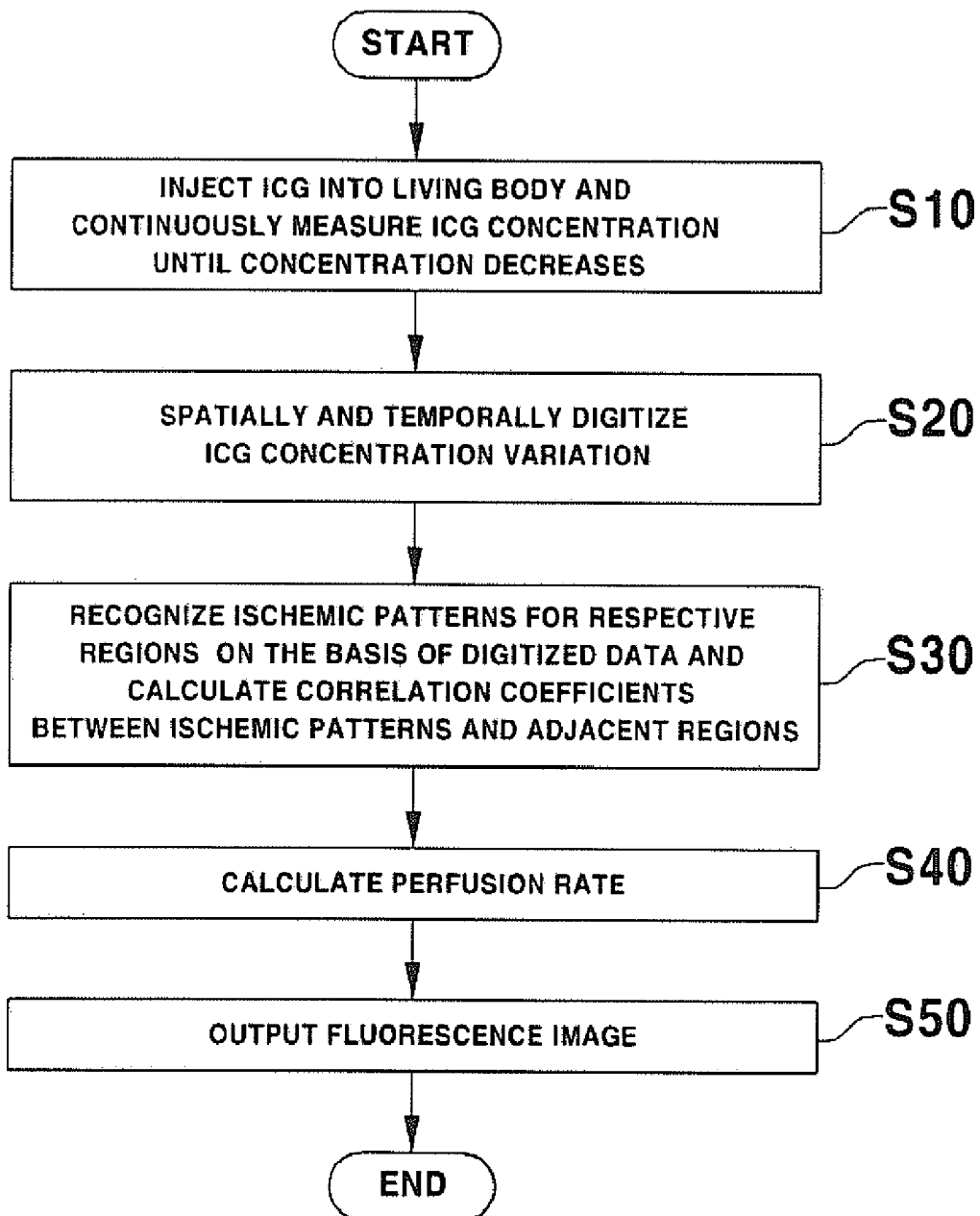


FIG. 5



## APPARATUS FOR MEASURING PERFUSION RATE OF LEGS

### BACKGROUND OF THE INVENTION

**[0001]** 1. Field of the Invention

**[0002]** The present invention relates, in general, to an apparatus for measuring the perfusion rate of legs, and, more particularly, to an apparatus for measuring the perfusion rate of legs, which includes a leg support unit capable of designating the legs of a living body as a fluorescence imaging region using Indocyanine Green (ICG) and then supporting the legs, so that the probability of erroneous measurement, attributable to the movement of the living body, can be minimized at the time of continuously capturing images for a predetermined period of time, and which includes a light leakage prevention unit indicating a darkroom structure for intercepting light other than light emitted from a light source required for measurement, so that obstructions to the measurement of fluorescence images can be eliminated, the functional characteristics of the perfusion rate can be measured with high spatial sensitivity, and the functional measurement of the perfusion rate in a specific region can be performed.

**[0003]** 2. Description of the Related Art

**[0004]** Generally, angiography is technology for measuring vascular structure by acquiring the dispersion and emission of light, caused by the intrinsic optical property of the blood or the administered contrast medium in intravascular space, using a light source capable of imaging the contrast medium, thus measuring the perfusion of tissue.

**[0005]** Such angiography includes laser Doppler imaging, which measures the degree of dispersion of laser light using the blood flow velocity at the skin, X-ray angiography, which measures the inner opening of blood vessels by capturing images through an X-ray using a contrast medium for blood vessels, and ICG videoangiography, based on Indocyanine Green (ICG), which measures sequential changes of the concentration of the ICG, which is a contrast medium, in the blood, using the ICG at the near infrared ray.

**[0006]** However, laser Doppler imaging is problematic in that, when the blood flow velocity is decreased, sensitivity is decreased. X-ray angiography is problematic in that, since a structural image indicating the structure of the inner opening of blood vessels, rather than actual blood flow, is obtained, the perfusion rate of tissue cannot be measured. ICG videoangiography has several problems, in that there is a probability that a fluorescence images, measured by radiating a near infrared ray, will be erroneously measured due to an external light source, and in that the functional characteristics of the perfusion rate cannot be quantitatively calculated.

### SUMMARY OF THE INVENTION

**[0007]** Accordingly, the present invention has been made keeping in mind the above problems occurring in the prior art, and an object of the present invention is to provide an apparatus for measuring the perfusion rate of legs, which includes a leg support unit capable of designating the legs of a living body as a fluorescence imaging region using Indocyanine Green (ICG), and then supporting the legs, so that the probability of erroneous measurement, attributable to the movement of the living body, can be minimized at the time of continuously capturing images for a predetermined period of time, and which includes a light leakage prevention unit, indicating a darkroom structure for intercepting light other

than light emitted from a light source required for measurement, so that obstructions to the measurement of fluorescence images can be eliminated, the functional characteristics of the perfusion rate can be measured with high spatial sensitivity, and the functional measurement of the perfusion rate in a specific region can be performed.

**[0008]** In order to accomplish the above object, the present invention provides an apparatus for measuring a perfusion rate of legs, comprising a light leakage prevention unit including a light emitting device for radiating light having a certain wavelength onto a living body injected with Indocyanine Green (ICG), and a light leakage prevention housing formed to prevent transmission of external light; a data acquisition unit including a band pass filter for passing therethrough only light, having a near infrared wavelength, in a fluorescence image emitted by the ICG and the light emitting device, and a Charge Coupled Device (CCD) camera for photographing a near infrared wavelength region; a data processing unit for calculating a perfusion rate of the living body on a basis of data about the near infrared wavelength region through a data cable connected to the data acquisition unit; and a data output unit for outputting the perfusion rate calculated by the data processing unit.

**[0009]** Preferably, the light leakage prevention housing may include a leg support unit, which is a structure capable of supporting legs of the living body.

**[0010]** Preferably, the leg support unit may include a leg support having a certain width and a certain height, required to support both legs of the living body; and a footrest implemented to allow feet of the living body to be placed thereon.

**[0011]** Preferably, the light emitting device may be implemented using any one of a laser having a wavelength from 750 to 780 nm, a white light source, and a light emitting diode, each having a band pass filter corresponding to a region of the wavelength.

**[0012]** Preferably, the light emitting device may be implemented using one or more light emitting devices, and be constructed to be capable of adjusting an intensity of light emitted therefrom.

**[0013]** Preferably, the data processing unit may include digitization means for processing data input through the data cable to have fluorescence intensities for respective regions over time in a region of interest; determination means for recognizing ischemic patterns of respective regions on a basis of the fluorescence intensities over time, and calculating correlation coefficients between the ischemic patterns and adjacent regions; and perfusion rate calculation means for calculating the perfusion rate using data input from the determination means.

**[0014]** Preferably, the data output unit may assign predefined colors depending on the perfusion rate and may color respective regions in the assigned colors, thus visually outputting the perfusion rate in a form of an image.

### BRIEF DESCRIPTION OF THE DRAWINGS

**[0015]** The above and other objects, features and other advantages of the present invention will be more clearly understood from the following detailed description taken in conjunction with the accompanying drawings, in which:

**[0016]** FIG. 1 is a block diagram schematically showing an apparatus for measuring the perfusion rate of legs according to the present invention;

[0017] FIG. 2 is a perspective view schematically showing an application example of an apparatus for measuring the perfusion rate of legs according to an embodiment of the present invention;

[0018] FIG. 3 is a perspective view schematically showing another application example of the apparatus for measuring the perfusion rate of legs according to the embodiment of the present invention;

[0019] FIGS. 4A and 4B are perspective views schematically showing a further application example of the apparatus for measuring the perfusion rate of legs according to the embodiment of the present invention; and

[0020] FIG. 5 is a flowchart schematically showing a method of measuring the perfusion rate of legs according to the present invention.

#### DESCRIPTION OF THE PREFERRED EMBODIMENTS

[0021] Hereinafter, embodiments of the present invention will be described in detail with reference to the attached drawings.

[0022] FIG. 1 is a block diagram schematically showing an apparatus for measuring the perfusion rate of legs according to an embodiment of the present invention. As shown in the drawing, an apparatus 1 for measuring the perfusion rate of legs according to the present invention includes a light leakage prevention unit 10, a data acquisition unit 30, a data cable 40, a data processing unit 50, and a data output unit 70.

[0023] In this case, the light leakage prevention unit 10 includes a light emitting device 11, a leg support unit 13, and a light leakage prevention housing 15.

[0024] The light emitting device 11 is provided to emit light having a certain wavelength to a living body injected with Indocyanine Green (ICG), and is operated such that light from the light emitting device 11 is radiated onto the living body, so that the ICG in the tissue of the living body, injected with the ICG, is activated, and thus a fluorescence signal obtained from the tissue can be observed.

[0025] Here, the light emitted from the light emitting device 11 has a wavelength from 750 to 780 nm, and is radiated onto the legs of the living body. The near infrared ray having that wavelength is radiated to observe fluorescence caused by the injection of the ICG. A light emitting diode or a laser having the above wavelength can be used as a Light source for emitting light. In order to allow white light having that wavelength to be radiated as the near infrared ray, a Band Pass Filter (BPF) can be used as a filter. In this case, one or more BPFs can be used, the locations thereof can be adjusted, and the intensity of the near infrared ray having the wavelength can be adjusted.

[0026] Further, the leg support unit 13 is formed to allow both legs of the living body to be held so that images can be continuously acquired as the concentration of the ICG decreases. The leg support unit 13 is modified to make it possible to photograph the legs in all cases where the living body sits, lies on his or her back, or lies on his or her side.

[0027] The leg support unit 13 includes a leg support 13a having a certain width and a certain height to support both legs of the living body, and a footrest 13b on which the feet of the living body are placed.

[0028] The leg support 13a can be formed to have a certain height, required to support a portion of each leg below the joint of a knee, and the footrest 13b can be formed in the shape of a curve to correspond to the curve of the bottom surfaces of

the feet. The legs of the living body can be held while forming a certain angle with respect to the bottom surface of the leg support 13a.

[0029] Moreover, the shape of the leg support 13a can be changed to variously support the portions of the legs below the knees in the state in which the living body lies on his or her back, or lies on his or her side.

[0030] Further, the light leakage prevention housing 15 is formed to prevent the transmission of external light, and thus functions as a kind of darkroom. The light leakage prevention housing 15 is provided to enclose the light emitting device 11 for radiating light onto the legs of the living body, the leg support unit 13, and the legs of the living body, and is formed to enclose the components, such as the light emitting device 11 and the leg support unit 13, while limiting the transmission of light, regardless of whether the living body sits, lies on his or her back, or lies on his or her side. The structure of the light leakage prevention housing 15 can be modified.

[0031] Further, the data acquisition unit 30 includes a band pass filter 31 and a Charge Coupled Device (CCD) camera 33.

[0032] The band pass filter 31 is configured to pass only light having a specific wavelength therethrough so as to receive a fluorescence signal generated from the living body due to the light emitted from the light emitting device 11, and is provided, in detail, to pass therethrough only a near infrared ray, having a wavelength from 800 to 850 nm, in the fluorescence signal output from the living body due to the light.

[0033] Further, the CCD camera 33 senses the light passing through the band pass filter 31, and converts the light into a digital signal. The CCD camera, which is one kind of digital camera, converts an image into an electrical signal using a CCD, and thus stores an analog image in a storage medium as digital data.

[0034] In this case, the CCD camera 33 captures the fluorescence signal, which has been input to the data acquisition unit 30 and has passed through the band pass filter 31, and transmits the captured signal through the data cable 40 to perform image processing in the form of digital data.

[0035] Furthermore, the data acquisition unit 30 and the light emitting device 11 can be placed adjacent to each other. The data acquisition unit 30 is located within the light leakage prevention housing 15 of the light leakage prevention unit 10 to photograph the legs of the living body in the housing.

[0036] The data processing unit 50 includes a digitization means 51, a determination means 53, and a perfusion rate calculation means 55, and preferably further includes an input means (not shown) for receiving digital data from the data acquisition unit 30, and an output means (not shown) for outputting the digital data to the data output unit 70.

[0037] Here, the digital data output from the data acquisition unit 30 is transmitted to the data processing unit 50 through the data cable 40. Preferably, the data cable 40 can be implemented using an RS-232C cable, a parallel port, an IEEE 1394 cable, a Universal Serial Bus (USB), etc.

[0038] The digitization means 51 is provided to process an input signal to have fluorescence intensities over time in a region of interest. The determination means 53 calculates correlation coefficients between perfusion patterns for respective regions and surrounding signals on the basis of the processed fluorescence intensity over time. The calculation means 55 calculates a perfusion rate using the data input from the determination means 53.

[0039] The above-described data processing unit 50 measures the fluorescence intensities of the ICG for respective

regions as time elapses after the ICG is injected into the living body, analyses patterns for respective regions, and also analyzes correlation coefficients between the patterns and the surrounding signals.

**[0040]** The analysis of the patterns for respective regions is represented by the following Equation.

**[0041]** The degree of variation in the fluorescence intensity of the ICG relative to time in ischemic tissue, the perfusion rate of which is lower than that of normal tissue, can be represented by the following Equation [1] on the assumption that ICG fluorescent particles (FLnor) flow into normal tissue at the perfusion rate at which ischemic tissue is perfused and ICG fluorescent particles (ELisc) flow from the ischemic tissue at the same perfusion rate.

$$FLisc = \frac{PA}{P-1/\tau} (e^{-t/\tau} - e^{-Pt}) \quad [1]$$

**[0042]** In this case, Tmax is used as a value for the efficient recognition of an ischemic pattern.

**[0043]** Further, Tmax at which the fluorescence intensity of the ICG in the ischemic tissue is maximized is the position at which the value differentiated with respect to time becomes 0, and thus the following Equation can be calculated.

$$-\ln \tau - \frac{T_{max}}{\tau} = \ln P - PT_{max} \quad [2]$$

**[0044]** The above method of analyzing the correlation coefficient derives a correlation coefficient between each region and a region adjacent thereto versus time using the following Equation.

$$\rho_{X,Y} = \frac{cov(X, Y)}{\sigma_X \sigma_Y} = \frac{E((X - \mu_X)(Y - \mu_Y))}{\sigma_X \sigma_Y} \quad [3]$$

**[0045]** The perfusion rate of tissue can be finally derived from the values obtained through the above two equations.

**[0046]** The perfusion rate calculated in this way is transmitted to the data output unit 70, so that predefined colors are assigned depending on the perfusion rate, and respective regions are colored, and thus the perfusion rate can be visually displayed in the form of an image.

**[0047]** Further, when a Region of Interest (ROI), the perfusion rate of which is desired to be measured, is designated in the living body, the fluorescence intensities of the ICG over time are automatically digitized from continuous ICG image data, and the digitized results are processed as temporal or spatial information.

**[0048]** As described above, in order to measure ICG dynamics in a living body using the apparatus 1 for measuring the perfusion rate of legs according to the present invention, the ICG is injected using intravenous injection, and variation in the concentration of the ICG over time in tissue is measured using the above method. At this time, the variation in the concentration of the ICG in the tissue can be measured by directly obtaining a near infrared image of the tissue, or using a spectroscopic technique.

**[0049]** FIG. 2 is a perspective view schematically showing an application example of the apparatus for measuring the

perfusion rate of legs according to the embodiment of the present invention. As shown in FIG. 2, in order to measure the perfusion rate of a region of interest when a living body sits, portions of both legs ranging up to predetermined locations of knees are inserted into the light leakage prevention housing 15, and the location of the horizontal portion of the leg support 13a is vertically changed along upward and downward directions to adjust the height h thereof, and thus a portion of an image sensed by the CCD camera 33 of the data acquisition unit 30 can be adjusted.

**[0050]** Through the above method, the location of the horizontal portion of the leg support 13a is horizontally changed along forward and backward directions to adjust an angle  $\theta$ , and thus a portion of an image sensed by the CCD camera 33 of the data acquisition unit 30 can be adjusted. The location of the leg support 13a can be preferably adjusted along forward and backward directions.

**[0051]** The CCD camera 33 of the data acquisition unit 30 is moved and placed upwards and downwards, left and right, or forwards and backwards, so that the region of an image desired to be acquired can be adjusted depending on the region of interest.

**[0052]** Moreover, the footrest 13b is preferably constructed to move forwards and backwards, or left and right.

**[0053]** Further, analog data about the fluorescence intensities input from the data acquisition unit 30 is transmitted to the data processing unit 50 as digital data through the data cable 40. A perfusion rate is calculated on the basis of the digital data using a preprogrammed operation, and respective regions are colored in the colors based on the perfusion rate, and thus a fluorescent image is output to the data output unit 70, including a monitor, a printer, etc.

**[0054]** FIG. 3 is a perspective view schematically showing another application example of the apparatus for measuring the perfusion rate of legs according to the embodiment of the present invention. As shown in FIG. 3, in order to measure the perfusion rate of a region of interest when the living body lies on his or her back, portions of both legs ranging up to predetermined locations of knees or predetermined locations of thighs are inserted into the light leakage prevention housing 15 to measure the fluorescence intensities of the region of interest, and the location of the horizontal portion of the leg support 13a is vertically changed along upward and downward directions to adjust the height h thereof, and thus a portion of an image sensed by the CCD camera 33 of the data acquisition unit 30 can be adjusted.

**[0055]** Through the above method, the location of the horizontal portion of the leg support 13a is horizontally changed along forward and backward directions to adjust an angle  $\theta$ , and thus a portion of an image sensed by the CCD camera 33 of the data acquisition unit 30 can be adjusted. The location of the leg support 13a can be preferably adjusted along forward and backward directions.

**[0056]** The CCD camera 33 of the data acquisition unit 30 is moved and placed upwards and downwards, left and right, or forwards and backwards, so that the region of an image desired to be acquired can be adjusted depending on a region of interest.

**[0057]** Moreover, the footrest 13b is preferably constructed to move forwards and backwards, or left and right.

**[0058]** Further, analog data about the fluorescence intensities input from the data acquisition unit 30 is transmitted to the data processing unit 50 as digital data through the data cable 40. A perfusion rate is calculated on the basis of the

digital data using a preprogrammed operation, and respective regions are colored in the colors based on the perfusion rate, and thus a fluorescent image is output to the data output unit 70, including a monitor, a printer, etc.

[0059] FIGS. 4A and 4B are perspective views schematically showing a further application example of the apparatus for measuring the perfusion rate of legs according to the embodiment of the present invention. As shown in the drawings, FIGS. 4A and 4B show that, in order to measure the perfusion rate of a region of interest when the living body lies on his or her left and right sides, respectively, portions of both legs ranging up to predetermined locations of knees or predetermined locations of thighs are inserted into the light leakage prevention housing 15 to measure the fluorescence intensities of the region of interest, and the location of the horizontal portion of the leg support 13a is vertically changed along upward and downward directions to adjust the height h thereof, and thus a portion of an image sensed by the CCD camera 33 of the data acquisition unit 30 can be adjusted.

[0060] Through the above method, the location of the horizontal portion of the leg support 13a is horizontally changed along forward and backward directions to adjust an angle  $\theta$ , and thus a portion of an image sensed by the CCD camera 33 of the data acquisition unit 30 can be adjusted. The location of the leg support 13a can be preferably adjusted along forward and backward directions.

[0061] The CCD camera 33 of the data acquisition unit 30 is moved and placed upwards and downwards, left and right, or forwards and backwards, so that the region of an image to be acquired can be adjusted depending on a region of interest.

[0062] Moreover, the footrest 13b is preferably constructed to move forwards and backwards or left and right.

[0063] Further, analog data about the fluorescence intensities input from the data acquisition unit 30 is transmitted to the data processing unit 50 as digital data through the data cable 40. A perfusion rate is calculated on the basis of the digital data using a preprogrammed operation, and respective regions are colored in the colors based on the perfusion rate, and thus a fluorescent image is output to the data output unit 70, including a monitor, a printer, etc.

[0064] FIG. 5 is a flowchart schematically showing a measurement method using the apparatus for measuring the perfusion rate of legs according to the present invention. As shown in the drawing, the measurement method using the apparatus for measuring the perfusion rate of legs according to the present invention is performed to inject ICG into a living body and to continuously measure the concentration of the ICG through the data acquisition unit until the concentration of the ICG decreases at step S10.

[0065] Further, variation in the concentration of the ICG is transmitted to the data processing unit through the data cable, and is analyzed and digitized, and the dynamics of the ICG over time are displayed in the form of a graph at step S20.

[0066] Furthermore, an ischemic pattern, obtained at the time at which the concentration of the ICG is maximized, is recognized from the digitized data, and a correlation coefficient between the ischemic pattern and an adjacent region is calculated at step S30. A perfusion rate is calculated through a preprogrammed operation at step S40, and respective regions are colored in predefined colors corresponding to the perfusion rate, and thus a fluorescence image is output at step S50.

[0067] Although the preferred embodiments of the present invention have been disclosed for illustrative purposes, those

skilled in the art will appreciate that various modifications, additions and substitutions are possible, without departing from the scope and spirit of the invention as disclosed in the accompanying claims. In detail, the present invention proposes an apparatus that includes a leg support unit capable of designating the legs of a living body as a fluorescence imaging region using Indocyanine Green (ICG) and then supporting the legs, so that the probability of erroneous measurement, attributable to the movement of the living body, can be minimized at the time of continuously capturing images for a predetermined period of time, and that includes a light leakage prevention unit, which is a darkroom structure for intercepting light other than light emitted from a light source required for measurement, so that obstructions to the measurement of fluorescence images can be eliminated, the functional characteristics of the perfusion rate can be measured with high spatial sensitivity, and the functional measurement of the perfusion rate in a specific region can be performed.

[0068] As described above, the present invention having the above construction can realize several advantages in that a leg support unit, capable of designating the legs of a living body as a fluorescence imaging region using Indocyanine Green (ICG) and then supporting the legs, is provided, so that the probability of erroneous measurement, attributable to the movement of the living body, can be minimized at the time of continuously capturing images for a predetermined period of time, and in that a light leakage prevention unit, which is a darkroom structure for intercepting light other than light emitted from a light source required for measurement, is provided, so that obstructions to the measurement of fluorescence images can be eliminated, the functional characteristics of the perfusion rate can be measured with high spatial sensitivity, and the functional measurement of the perfusion rate in a specific region can be performed.

What is claimed is:

1. An apparatus for measuring a perfusion rate of legs, comprising:
  - a light leakage prevention unit including a light emitting device for radiating light having a certain wavelength onto a living body injected with Indocyanine Green (ICG), and a light leakage prevention housing formed to prevent transmission of external light;
  - a data acquisition unit including a band pass filter for passing therethrough only light, having a near infrared wavelength, in a fluorescence image emitted by the ICG and the light emitting device, and a Charge Coupled Device (CCD) camera for photographing a near infrared wavelength region;
  - a data processing unit for calculating a perfusion rate of the living body on a basis of data about the near infrared wavelength region through a data cable connected to the data acquisition unit; and
  - a data output unit for outputting the perfusion rate calculated by the data processing unit.
2. The apparatus according to claim 1, wherein the light leakage prevention housing includes a leg support unit, which is a structure capable of supporting legs of the living body.
3. The apparatus according to claim 1, wherein the leg support unit includes:
  - a leg support having a certain width and a certain height, required to support both legs of the living body; and
  - a footrest implemented to allow feet of the living body to be placed thereon.
4. The apparatus according to claim 1, wherein the light emitting device is implemented using any one of a laser

having a wavelength from 750 to 780 nm, a white light source, and a light emitting diode, each having a band pass filter corresponding to a region of the wavelength.

5. The apparatus according to claim 1, wherein the light emitting device is implemented using one or more light emitting devices, and is constructed to be capable of adjusting an intensity of light emitted therefrom.

6. The apparatus according to claim 1, wherein the data processing unit includes:

digitization means for processing data input through the data cable to have fluorescence intensities for respective regions over time in a region of interest;

determination means for recognizing ischemic patterns of respective regions on a basis of the fluorescence intensities over time, and calculating correlation coefficients between the ischemic patterns and adjacent regions; and perfusion rate calculation means for calculating the perfusion rate using data input from the determination means.

7. The apparatus according to claim 6, wherein the data output unit assigns predefined colors depending on the perfusion rate and colors respective regions in the assigned colors, thus visually outputting the perfusion rate in a form of an image.

\* \* \* \* \*

专利名称(译)	用于测量腿部灌注率的装置		
公开(公告)号	<a href="#">US20080221421A1</a>	公开(公告)日	2008-09-11
申请号	US11/955817	申请日	2007-12-13
[标]申请(专利权)人(译)	韩国科学技术院		
申请(专利权)人(译)	韩国高等学院科技		
当前申请(专利权)人(译)	韩国高等学院科技		
[标]发明人	CHOI CHULHEE KANG YUJUNG CHOI MYUNGHWAN		
发明人	CHOI, CHULHEE KANG, YUJUNG CHOI, MYUNGHWAN		
IPC分类号	A61B5/00		
CPC分类号	A61B5/0275 A61B5/0261		
优先权	1020070023496 2007-03-09 KR		
外部链接	<a href="#">Espacenet</a> <a href="#">USPTO</a>		

摘要(译)

本发明涉及一种用于测量腿部灌注率的装置。本发明的测量装置包括防漏光单元，该防漏单元包括用于将具有特定波长的光照射到注入有吲哚菁绿（ICG）的生物体上的发光装置，以及形成为防止外部光透射的防漏光外壳。数据采集单元包括带通滤波器，用于使ICG和发光装置发射的荧光图像中仅具有近红外波长的光通过，以及用于拍摄近红外波长的电荷耦合器件（CCD）相机地区。数据处理单元通过连接到数据获取单元的数据线，基于关于近红外波长区域的数据计算活体的灌注速率。数据输出单元输出由数据处理单元计算的灌注率。

