



US 20070208240A1

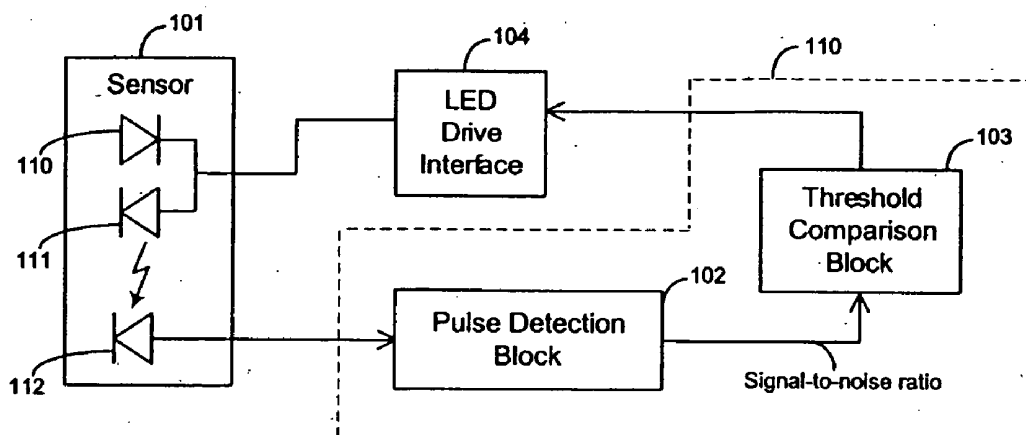
(19) **United States**(12) **Patent Application Publication**  
**Nordstrom et al.**(10) **Pub. No.: US 2007/0208240 A1**(43) **Pub. Date: Sep. 6, 2007**(54) **TECHNIQUES FOR DETECTING HEART  
PULSES AND REDUCING POWER  
CONSUMPTION IN SENSORS****Publication Classification**(51) **Int. Cl.**  
**A61B 5/00** (2006.01)(52) **U.S. Cl.** ..... **600/323; 600/336**(75) Inventors: **Brad Nordstrom**, Alameda, CA (US);  
**William Shea**, Livermore, CA (US);  
**Ethan Petersen**, Castro Valley, CA  
(US)(57) **ABSTRACT**

Correspondence Address:  
**Nellcor Puritan Bennett LLC**  
**c/o Fletcher Yoder PC**  
**P.O. BOX 692289**  
**HOUSTON, TX 77269-2289 (US)**

(73) Assignee: **Nellcor Puritan Bennett Inc.**, Pleasanton, CA(21) Appl. No.: **11/650,861**(22) Filed: **Jan. 8, 2007****Related U.S. Application Data**

(63) Continuation of application No. 10/787,851, filed on Feb. 25, 2004, now Pat. No. 7,162,288.

Low power techniques for sensing cardiac pulses in a signal from a sensor are provided. A pulse detection block senses the sensor signal and determines its signal-to-noise ratio. After comparing the signal-to-noise ratio to a threshold, the drive current of light emitting elements in the sensor is dynamically adjusted to reduce power consumption while maintaining the signal-to-noise ratio at an adequate level. The signal component of the sensor signal can be measured by identifying systolic transitions. The systolic transitions are detected using a maximum and minimum derivative averaging scheme. The moving minimum and the moving maximum are compared to the scaled sum of the moving minimum and moving maximum to identify the systolic transitions. Once the signal component has been identified, the signal component is compared to a noise component to calculate the signal-to-noise ratio.



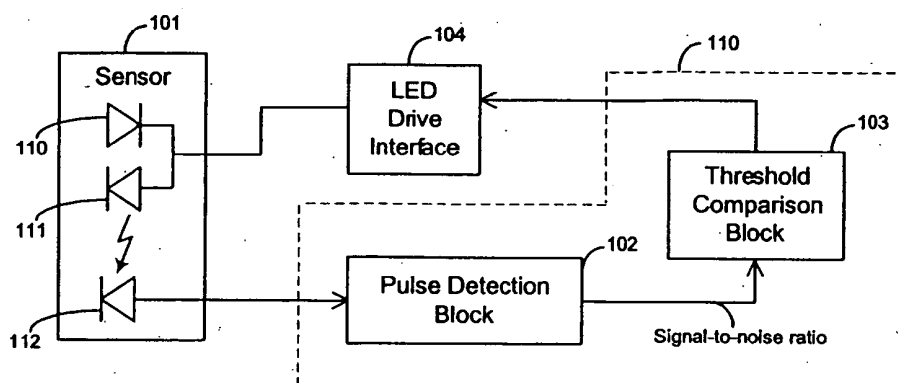


FIG. 1

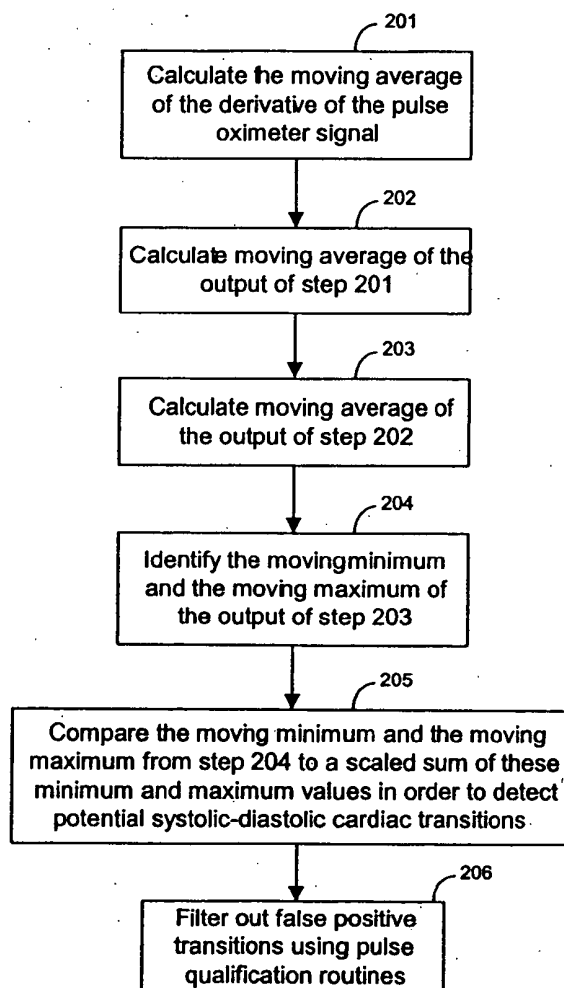


FIG. 2

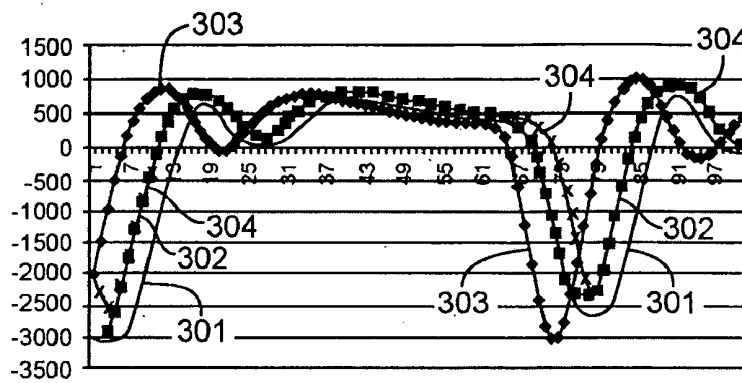


FIG. 3A

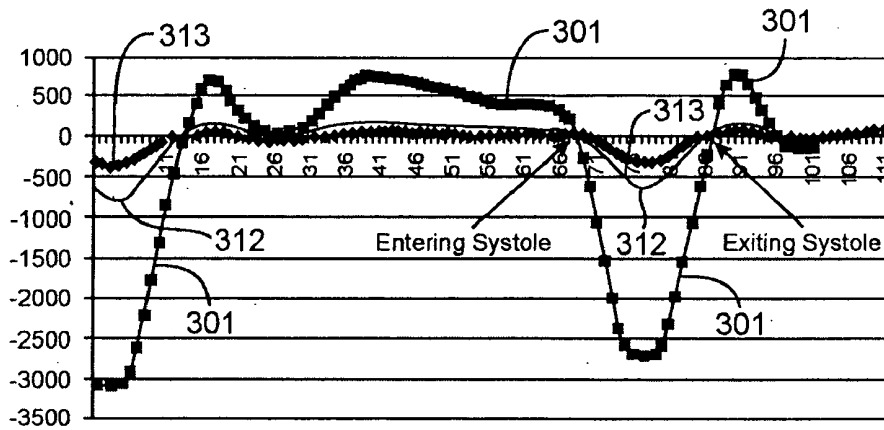


FIG. 3B

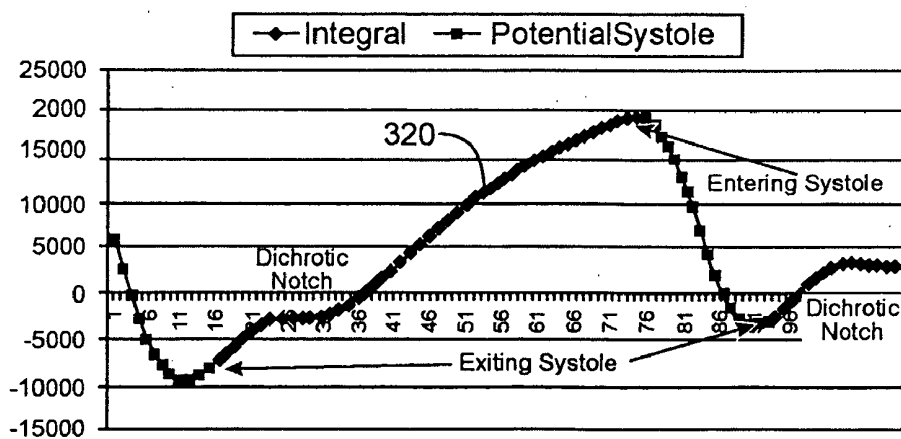


FIG. 3C

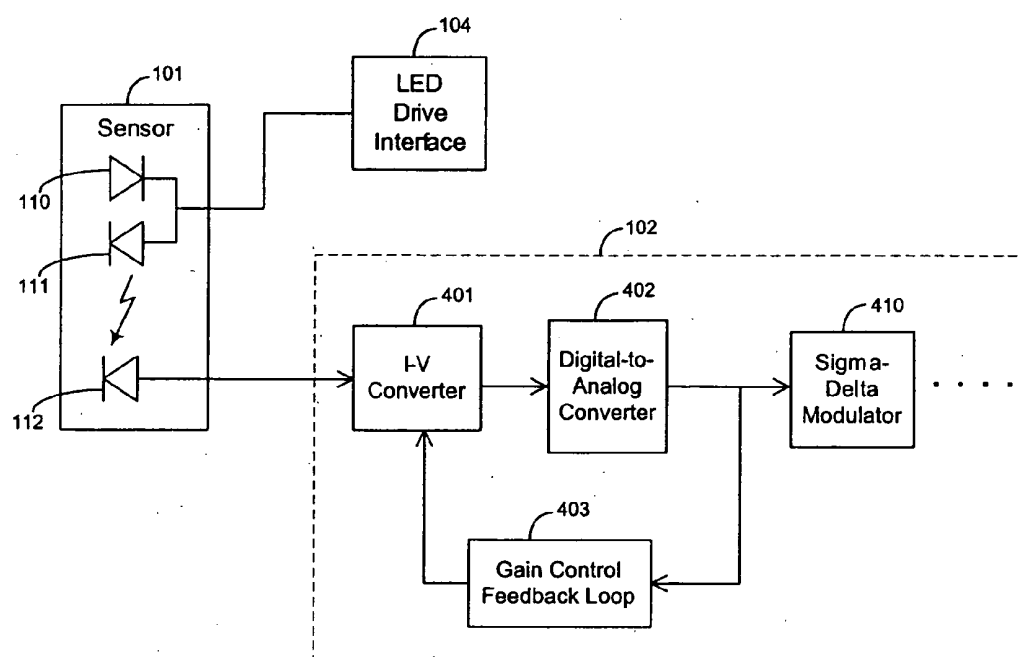


FIG. 4

## TECHNIQUES FOR DETECTING HEART PULSES AND REDUCING POWER CONSUMPTION IN SENSORS

### BACKGROUND OF THE INVENTION

[0001] The present invention relates to techniques for detecting heart pulses and reducing power consumption in sensors and oximeter systems, and more particularly, to techniques for distinguishing heart pulses in a sensor signal from noise and adjusting drive current provided to light emitting elements in response to a signal-to-noise ratio of the pulse in order to reduce power consumption.

[0002] Pulse oximetry is a technology that is typically used to measure various blood chemistry characteristics including, but not limited to, the blood-oxygen saturation of hemoglobin in arterial blood, the volume of individual blood pulsations supplying the tissue, and the rate of blood pulsations corresponding to each heartbeat of a patient.

[0003] Measurement of these characteristics has been accomplished by use of a non-invasive sensor. The sensor has a light source such as a light emitting diode (LED) that scatters light through a portion of the patient's tissue where blood perfuses the tissue. The sensor also has a photodetector that photoelectrically senses the absorption of light at various wavelengths in the tissue. The photodetector generates a pulse oximeter signal that indicates the amount of light absorbed by the blood. The amount of light absorbed is then used to calculate the amount of blood constituent being measured.

[0004] The light scattered through the tissue is selected to be of one or more wavelengths that are absorbed by the blood in an amount representative of the amount of the blood constituent present in the blood. The amount of transmitted light scattered through the tissue will vary in accordance with the changing amount of blood constituent in the tissue and the related light absorption.

[0005] For measuring blood oxygen level, oximeter sensors typically have a light source that is adapted to generate light of at least two different wavelengths, and with photodetectors sensitive to these wavelengths, in accordance with known techniques for measuring blood oxygen saturation. A typical pulse oximeter will alternately illuminate the patient with red and infrared light using two LEDs to obtain two different detector signals.

[0006] The pulse oximeter signal generated by the photodetector usually contains components of noise introduced by the electronics of the oximeter, by the patient, and by the environment. Noisy signals have a low signal-to-noise ratio. A pulse oximeter cannot accurately identify the blood oxygen saturation when the signal-to-noise ratio of the pulse oximeter signal is too low.

[0007] To improve the signal-to-noise ratio of the pulse oximeter signal, a pulse oximeter system will typically drive the LEDs with a large amount of current. A servo in the pulse oximeter will typically drive as much current as possible through the LEDs without causing the oximeter to be over-ranged (i.e., driven to full rail). The large drive current causes the LEDs to generate more light and to consume more power. Because the photodetector is able to sense more of the light from the LEDs, the signal-to-noise ratio of the pulse oximeter signal is higher.

[0008] Increasing the drive current of the LEDs to improve the signal-to-noise ratio of the pulse oximeter signal causes the system to consume an undesirably large amount of power. The large amount of power consumption can be a problem for oximeter systems that are battery operated.

[0009] It would therefore be desirable to provide pulse oximeter systems that consume less power without negatively compromising the signal-to-noise ratio of the pulse oximeter signal.

### BRIEF SUMMARY OF THE INVENTION

[0010] The present invention provides CPU cycle efficient techniques for sensing heart pulses in a signal from a sensor. The sensor signal can be, for example, a pulse oximeter signal generated by a photodetector in a pulse oximeter sensor. The signal component of the sensor signal is measured by identifying potential systolic transitions of the cardiac cycle. The systolic transitions are detected using a derivative averaging scheme. The moving minimum and the moving maximum of the average derivative are compared to a scaled sum of the minimum and maximum to identify the systolic transitions. The systolic transitions correspond to a signal component of the sensor signal. The signal component is compared to a noise component to determine the signal-to-noise ratio of the signal.

[0011] The present invention also provides techniques for reducing power consumption in a sensor. After the signal-to-noise ratio of the pulse oximeter has been determined, the signal-to-noise ratio is compared to a threshold. In response to the output of the comparison, the drive current of light emitting elements in the sensor is dynamically adjusted to reduce power consumption and to maintain the signal-to-noise ratio at an adequate level for signal processing.

[0012] The present invention also provides techniques for sensing and adjusting the gain of a transimpedance amplifier to reduce the effect of ambient noise in a sensor. A gain control feedback loop senses the magnitude of the sensor signal when the light emitting elements are off. The gain control loop can include this information to effectively control the gain of the transimpedance amplifier.

[0013] For a further understanding of the nature and advantages of the invention, reference should be made to the following description taken in conjunction with the accompanying drawings.

### BRIEF DESCRIPTION OF THE DRAWINGS

[0014] FIG. 1 illustrates a block diagram of a pulse oximeter system with reduced power consumption according to an embodiment of the present invention;

[0015] FIG. 2 is a flow chart that illustrates a process for identifying the systolic period of a pulse oximeter signal according to an embodiment of the present invention;

[0016] FIGS. 3A-3C are graphs that illustrates how systolic transitions are identified in pulse oximeter signals according to embodiments of the present invention; and

[0017] FIG. 4 illustrates a portion of a pulse oximeter system with a transimpedance amplifier, a sigma-delta modulator, an analog-to-digital converter, and a gain control feedback loop according to an embodiment of the present invention.

DETAILED DESCRIPTION OF THE  
INVENTION

[0018] The techniques of the present invention can be used in the context of a pulse oximeter system. A pulse oximeter system receives a pulse oximeter signal from a photodetector in a pulse oximeter sensor. FIG. 1 illustrates a block diagram of pulse oximeter system according to an embodiment of the present invention. The pulse oximeter system includes an oximeter sensor **101**.

[0019] An oximeter sensor of the present invention can utilize any suitable number of light emitting elements. For example, a sensor of the present invention can have 1, 2, 3, or 4 light emitting elements. In the example of FIG. 1, sensor **101** has two LEDs **110** and **111** that emit two different wavelengths of light.

[0020] Sensor **101** also includes photodetector **112** that senses light from LEDs **110** and **111** after the light has passed through the patient's tissue. The pulse oximeter system also includes feedback loop circuitry **110** and LED drive interface **104**. Feedback loop circuitry **110** includes pulse detection block **102** and threshold comparison block **103**.

[0021] Photodetector **112** transmits the pulse oximeter signal to pulse detection block **102**. Pulse detection block **102** has a servo that measures the signal component of the pulse oximeter signal by identifying the systolic transitions. The pulse detection block **102** and the threshold comparison block **103** form a feedback loop **110** around the sensor to control the drive current of the LEDs and the signal-to-noise ratio of the pulse oximeter signal, as will be discussed in detail below.

[0022] A cardiac pulse can be divided into a diastolic and systolic period. The systolic period is typically characterized by a rapid change in value due to the contraction of the heart. The diastolic period is typically characterized by a gradual change in value, due to the relaxation and refilling of the heart chambers.

[0023] Systolic transitions in the pulse oximeter signal are detected using a three step maximum and minimum derivative averaging scheme, which is discussed in further detail below. Qualification routines are then used to filter out false positives. The resulting data contains the systolic transitions separated from the non-systolic periods in the pulse oximeter signal.

[0024] Pulse detection block **102** then compares the amplitude of the systolic portion of the pulse oximeter signal to a noise component to generate a value for the signal-to-noise ratio of the pulse oximeter signal. Subsequently, threshold comparison block **103** compares this signal-to-noise ratio to a threshold level to determine whether the signal-to-noise ratio is high enough such that the pulse oximeter signal can be used to accurately calculate pulse rate and oxygen saturation. Too much noise obscures the pulse rate and oxygen saturation information in the signal. Noise can degrade the signal to the point that it cannot be used to accurately calculate pulse rate or oxygen saturation.

[0025] Threshold comparison block **103** preferably contains two hysteretic threshold levels. In this embodiment, threshold comparison block **103** senses whether the signal-to-noise ratio is greater than a maximum threshold level or

less than a minimum threshold level. As an example, the maximum threshold level can represent a signal-to-noise ratio of 128:1, and the minimum threshold level can represent a signal-to-noise ratio of 8:1. These are merely two examples of thresholds levels. They are not intended to limit the scope of the present invention. Prior art oximeter systems, for example, operate at a signal-to-noise ratio of 10,000:1 or higher, because they drive the LEDs as bright as possible.

[0026] If the signal-to-noise ratio is greater than the maximum threshold level, threshold comparison block **103** sends a signal to LED drive interface **104** to reduce the LED current. Based on the value of the signal-to-noise ratio, threshold comparison block **103** can determine how much the LED drive current needs to be reduced to decrease the signal-to-noise ratio while maintaining the signal level within the minimum and maximum threshold levels. LED drive interface **104** responds by decreasing the LED drive current to the value indicated by threshold comparison block **103**.

[0027] The feedback loop continuously monitors the signal-to-noise ratio of the pulse oximeter signal and dynamically adjusts the LED drive current and subsequent system gain until the signal-to-noise ratio is less than the maximum threshold. The oximeter system saves power by substantially reducing the LED drive current (relative to prior art systems), while maintaining the signal-to-noise ratio of the pulse oximeter signal within an acceptable range.

[0028] The signal-to-noise ratio can also drop too low for a number of reasons. For example, the noise in the pulse oximeter may increase, or the strength of the signal component may decrease if the blood oxygen saturation of the patient decreases. In any event, the system of FIG. 1 senses when the magnitude of the pulse oximeter signal is too low and increases the LED drive current accordingly.

[0029] If the signal-to-noise ratio is less than the minimum threshold level, threshold comparison block **103** sends a signal to LED drive interface **104** to increase the LED current. Based on the value of the signal-to-noise ratio, the threshold comparison can determine how much the LED drive current needs to be increased to increase the signal-to-noise ratio while maintaining the signal within the minimum and maximum threshold levels. LED drive interface **104** responds by increasing the LED drive current to the value indicated by the threshold comparison system.

[0030] The feedback loop continuously monitors the signal-to-noise ratio of the pulse oximeter signal and dynamically adjusts the LED drive current until the signal-to-noise ratio is greater than the minimum threshold level. The minimum threshold indicates a minimum allowable value for the signal-to-noise ratio for which the pulse rate and the oxygen saturation can be accurately calculated.

[0031] If the signal-to-noise ratio falls between the maximum and minimum threshold levels, the oximeter system maintains the LED drive current at a stable value. The oximeter system maintains equilibrium until the signal-to-noise ratio of the pulse oximeter signal moves outside the range of the thresholds. Thus, an oximeter system of the present invention contains a dynamic feedback loop as shown in FIG. 1. The dynamic feedback loop automatically adjusts the drive current of the LEDs to reduce power

consumption in the sensor and to maintain the signal-to-noise ratio at an acceptable level for the purpose of accurately calculating blood oxygen saturation levels.

[0032] According to a preferred embodiment of the present invention, the hardware for the servo in pulse detection block 102 maintains a predictable relationship between the power that LED drive 104 attempts to drive the LEDs at and the radiated output power actually generated by the LEDs. By providing a predictable relationship between the input and output power, the feedback loop is more likely to acquire the oxygen saturation from the pulse oximeter signal in significantly less time, requiring less executions of the servo.

[0033] As the gain of the pulse oximeter signal is increased, the signal component generally increases faster than the noise component (at least to a point below the highest gain settings). The effect that increasing the gain of the pulse oximeter signal has on the signal-to-noise ratio in a particular system should be understood. Certain combinations of gain may cause more noise to be present in the pulse oximeter signal. Therefore, the gain stages in the pulse detection block preferably take advantage of characteristics of the gain-to-noise variability.

[0034] For example, the signal from the photodetector that is sampled using an analog-to-digital converter is fed into a gain block. The gain block includes several gain stages to achieve a known response. The noise is measured at each of the gain stages, and then stored for later use to calculate the signal-to-noise ratio.

[0035] Techniques for identifying the systolic portions of a pulse oximeter signal generated by an oximeter sensor are now discussed. The systole identification of the present invention uses a three step maximum and minimum derivative averaging scheme in order to detect cardiac systolic events.

[0036] FIG. 2 illustrates one method for identifying the systolic period of a pulse oximeter signal. In the first step 201, the moving average of the derivative of the pulse oximeter signal is found. In the second step 202, the moving average of the output of the first step 201 is found. In the third step 203, the moving average of the output of the second step 202 is found.

[0037] Next, the moving maximum and the moving minimum of the output of the third step is found at step 204. At step 205, systole transitions are detected by comparing this moving minimum and moving maximum to a scaled sum of the moving minimum and maximum. For example, the scaled sum of the moving minimum and maximum values can be a fractional sum of the minimum and maximum moving averages.

[0038] When the minimum output of step 204 becomes less than a fractional sum of the maximum and minimum moving averages, the system determines that the pulse oximeter signal is entering systole. When the minimum output of step 204 becomes more than a fractional sum of the maximum and minimum moving averages, the system determines that pulse oximeter signal is exiting systole.

[0039] The two predetermined fractional sums can be selected to be any suitable values. As a specific example, the system can determine that the pulse oximeter signal is

entering systole when the minimum derivative output becomes less than  $\frac{1}{16}$  the sum of the minimum and maximum moving averages of the third stage. As another example, the system can determine that the pulse oximeter signal is exiting systole when the minimum derivative output becomes more than  $\frac{1}{8}$  the sum of the maximum and minimum moving averages of the third stage. These two examples are not intended to limit the scope of the present invention. Many other fractional values can also be used to identify systole transitions.

[0040] These techniques of the present invention can detect and qualify pulses using CPU, RAM, and ROM efficient algorithms. Minimal processor resources are required to perform oximetry calculations with a comparable level of saturation and pulse rate performance as prior art oximeter technology.

[0041] Example waveforms for the results of these calculations are shown in FIG. 3A. Waveform 303 is an example of the derivative of a pulse oximeter signal. Waveforms 301 and 304 are examples of the minimum and maximum moving average of the pulse oximeter signal, respectively. Waveform 302 is an example of the output signal of the three-step moving average.

[0042] The output of the moving average is a smoothed and delayed version of the derivative of the pulse oximeter signal. The minimum output tracks the negative-going trends and lags the positive-going trends. The maximum output tracks the positive-going trends and lags the negative-going trends. These relationships are key to detecting potential systolic cardiac periods.

[0043] FIG. 3B shows examples of the minimum moving average 301 with a waveform 313 that represents  $\frac{1}{16}$  of the sum of the minimum and maximum moving averages of the third stage. FIG. 3B also shows an example of waveform 312 that represents  $\frac{1}{8}$  of the sum of the minimum and maximum moving averages of the third stage.

[0044] According to one embodiment of the present invention, waveforms 312 and 313 are compared to the minimum moving average waveform 301 at step 205 to identify the systolic period of the pulse oximeter signal. Alternatively, other scaled sums for the minimum and/or maximum moving averages can be used to identify systolic periods in the pulse oximeter signal. The beginning and the end of a systole in signal 301 are identified in FIG. 3B. The period between crossing points of signal 301 and signals 312/313 defines the systolic period.

[0045] When applied to the original pulse oximeter signal 320, the systolic period identification is shown in FIG. 3C. The systolic period includes the time between the peak (i.e. maximum value) and the subsequent valley (i.e. minimum value) of pulse oximeter signal 320. The actual systolic period is identified in FIG. 3C as well as the dichrotic notch of the next pulse.

[0046] After the systolic period has been identified, unique pulse qualification tests based upon typical physiological pulse characteristics are applied to the systole pulse at step 206. The full pulse qualification tests remove false positive systolic detections (e.g., the dichrotic notch) and pulses that have an inadequate signal-to-noise ratio. False positives are portions of the signal that are falsely identified as systolic transitions in step 205. Pulse qualifications are used in step

206 to filter out false positives identified in step 205. The steps of FIG. 2 can be implemented in software or hardware.

[0047] Pulse qualification tests qualify cardiac pulses in the pulse oximeter signal. The pulse qualification tests are designed to identify cardiac pulses that have adequate signal-to-noise ratio for use in measuring pulse rate and blood oxygen saturation. The pulse qualification tests can include any number techniques including traditional pulse qualification techniques.

[0048] Some examples of pulse qualification tests according to particular embodiments of the present invention are now discussed. The qualifications are comparisons of special pulse characteristics to determined threshold values. For example, the pulse qualifications compare systolic area, width, and number of sub-peaks to fixed thresholds. Diastolic area, width, and number of sub-peaks are compared to thresholds. Systolic area and width are compared to diastolic area and width. Pulse area and width are compared to thresholds. All of the above individually are compared to the last N pulses detected.

[0049] Pulses that pass these qualifications can be used to measure pulse rate. To qualify the systolic periods for oxygen saturation calculations, the following additional qualifications are used. The lag/lead time between the infrared and red pulse detection are compared. The pulse size is compared to the N pulses qualified. The statistically significant coefficient of the best-fit line plot of the moving average between the infrared and the red signals is compared to fixed thresholds. The saturation rate-of-change is compared to fixed thresholds. Pulses that pass these additional qualifications can be used to measure oxygen saturation.

[0050] After the pulse qualification tests have filtered out false positives, the systolic periods are identified. The systolic periods represent a signal component of the pulse oximeter signal. The signal-to-noise ratio of the pulse oximeter signal is calculated by comparing the strength of the systolic period to the noise component of the pulse oximeter signal.

[0051] According to one embodiment, the noise component of a pulse oximeter sensor is calculated in advance using a separate instrument that measures noise in the pulse oximeter signal at various gain values. The measured noise component is then stored in memory for later use. The stored noise component is subsequently compared to the size of the systolic pulse for a particular gain value to determine the signal-to-noise ratio of the pulse oximeter signal.

[0052] According to another embodiment, dynamic measurements of the noise of the pulse oximeter system are made. These noise measurements can include electrical noise, ambient noise caused by ambient light, and/or noise (e.g. motion) caused by the patient. The dynamic noise measurement is updated continuously throughout the operation of the pulse oximeter sensor. An updated noise component is continuously compared to the pulse to calculate a more accurate signal-to-noise ratio of the pulse oximeter signal.

[0053] Once the signal-to-noise ratio of the pulse oximeter signal has been calculated, a determination is made as to whether the signal-to-noise ratio falls within an acceptable range. The acceptable range is selected based on the relative noise component for accurately calculating oxygen saturation

and pulse rate. If the ratio is outside the acceptable range, the feedback loop discussed above with respect to FIG. 1 adjusts the LED drive current to bring the signal-to-noise ratio within the acceptable range.

[0054] The present invention has the advantage of requiring fewer servo executions to acquire and maintain the oxygen saturation of the signal than many prior art techniques, particularly in the presence of patient motion interference. In many prior art oximeter systems, the LEDs are driven with a large current, and the pulse oximeter signal fills up its entire system dynamic range. The oximeter signal exceeds the system's current dynamic range as soon as the patient starts moving, and the signal is effectively lost (i.e., flat-line, invalid signal). Additional servo executions are required to re-acquire the signal. While the servo is executing, the sensor signal is not available; therefore, the oximeter cannot calculate pulse rate or oxygen saturation data from the pulse oximeter signal.

[0055] On the other hand, the LED drive current is substantially reduced in the present invention. The dynamic range is greatly increased relative to the size of the pulse oximeter signal, because the signal has been greatly reduced by cutting back on the LED drive current. The oximeter signal can now move around more within the dynamic range without requiring additional servo executions or changes to the LED settings. In the present invention, the patient can move around vigorously without causing the servo to execute in an attempt to re-acquire the signal. The techniques of the present invention can allow an oximeter system to be much more tolerant of patient motion.

[0056] Pulse detection block 102 can include a transimpedance (I-V) amplifier or converter 401 that converts a current signal from photodetector 112 to a voltage signal as shown in FIG. 4. Ambient light in the environment adds a component of DC bias into the pulse oximeter signal. This DC bias shifts the pulse oximeter signal higher, closer to the rail of the dynamic range of the transimpedance amplifier.

[0057] According to an embodiment of the present invention, an analog-to-digital (A-to-D) converter 402 samples the output signal of transimpedance amplifier 401 during a time when either LED 110-111 is on or off to provide a continuous, real-time measurement of the ambient light and/or noise that gets into sensor 101. This feature can also be used to provide information on the magnitude of the signal at the output of A-to-D converter 402.

[0058] The information about the signal magnitude from A-to-D converter 402 is fed back through gain control feedback loop 403 and used to choose an appropriate gain for transimpedance amplifier 401. For example, gain control feedback loop 403 causes the transimpedance gain of transimpedance amplifier 401 to increase or decrease to reduce and/or accommodate the effect of the environmental DC bias on the signal. This real-time measurement can also be used for determining a sensor-off condition, measuring electrical and optical noise, detecting transients in the signal, and detecting patient motion.

[0059] During the normal operation of the sensor, the LEDs can be pulsed on and off in any desired manner to provide the continuous (multiplexed), real-time measurement of the ambient light and other noise sources. For example, one red and one infrared LED can be alternately



turned on and off in the following manner: red LED on and infrared LED off, then red LED off and infrared LED on, then both LEDs off, then red LED on and infrared LED off, etc. repeating in this sequence. As another example, one red and one infrared LED can be alternately turned on and off as follows: red LED on and infrared LED off, then both LEDs off, then red LED off and infrared LED on, then both LEDs off, then red LED on and infrared LED off, etc. repeating in this sequence. These patterns are examples that are not intended to limit the scope of the present invention.

[0060] Sigma-delta modulator **410** also receives the output signal of the transimpedance amplifier **402**. Modulator **410** demodulates the signal from the photodetector into separate red and infrared components. The demodulation function can be performed in the digital domain using a software or firmware program run by a microcontroller. Further details of a Multi-Bit ADC With Sigma-Delta Modulation are discussed in commonly assigned, co-pending U.S. patent application Ser. No. \_\_\_\_\_, to Ethan Petersen et al., filed concurrently herewith, (Attorney Docket Number 009103-020300US), which is incorporated by reference herein.

[0061] As will be understood by those of skill in the art, the present invention could be embodied in other specific forms without departing from the essential characteristic thereof. Accordingly, the foregoing description is intended to be illustrative, but not limiting, on the scope of the invention which is set forth in the following claims.

[0062] For example, the components in pulse detection block **102** that are shown in FIG. **4** can be implemented in systems other than pulse oximeter systems. These components can reduce the effect of noise in signals from other types of sensors as well.

1. A pulse oximeter system comprising:

- a drive interface that controls drive current of light emitting elements in a pulse oximeter sensor; and
- a feedback loop coupled around the pulse oximeter sensor and the drive interface that dynamically adjusts the drive current of the light emitting elements based on results of a comparison between a signal-to-noise ratio of a pulse oximeter signal and a threshold,

wherein the pulse oximeter signal is generated by a photodetector in the pulse oximeter sensor.

2. The pulse oximeter system as defined in claim 1 wherein the feedback loop causes the drive current of the Light emitting elements to decrease if the signal-to-noise ratio of the pulse oximeter signal is greater than a maximum threshold, and the feedback loop causes the drive current of the light emitting elements to increase if the signal-to-noise ratio of the pulse oximeter signal is less than a minimum threshold.

3. The pulse oximeter system as defined in claim 1 wherein the feedback loop further comprises:

- a pulse detection block that calculates the signal-to-noise ratio of the pulse oximeter signal; and
- a comparator that performs the comparison of the signal-to-noise ratio of the pulse oximeter signal to the threshold.

4-13. (canceled)

14. A method for reducing power consumption in a pulse oximeter sensor, the method comprising:

providing drive current to light emitting elements in the pulse oximeter sensor; and

determining a signal-to-noise ratio of a pulse oximeter signal generated by a photodetector in the pulse oximeter sensor; and

dynamically adjusting the drive current of the light emitting elements based on results of a comparison between the signal-to-noise ratio of the pulse oximeter signal and a threshold.

15. The method as defined in claim 14 wherein dynamically adjusting the drive current of the light emitting elements further comprises:

increasing the drive current provided to the light emitting elements if the signal-to-noise ratio of the pulse oximeter signal is less than a minimum threshold; and

decreasing the drive current provided to the light emitting elements if the signal-to-noise ratio of the pulse oximeter signal is greater than a maximum threshold.

16-21. (canceled)

22. A system coupled to a sensor, the system comprising:

a transimpedance amplifier that receives a current signal from the sensor and converts the current signal to a voltage signal based on a transimpedance gain;

an analog-to-digital converter that converts the voltage signal into a digital signal; and

a feedback loop that provides a feedback signal indicating a magnitude of the voltage signal from the transimpedance amplifier when light emitting elements in the sensor are on or off,

wherein the transimpedance gain is adjusted in response to the feedback signal to accommodate the environmental DC bias on the voltage signal.

23. The system as defined in claim 22 wherein the sensor is a pulse oximeter sensor containing a photodetector.

24. The system as defined in claim 22 further comprising:

a pulse detector that calculates the signal-to-noise ratio of the signal from the sensor;

a comparator that compares the signal-to-noise ratio to a threshold; and

a drive interface that controls drive current of the light emitting elements.

25. A method for controlling drive current of light emitting elements in a pulse oximeter sensor, comprising:

measuring a noise component of a pulse oximeter signal;

identifying a systolic period of the pulse oximeter signal;

performing pulse qualification tests to qualify the systolic period for oxygen saturation calculations;

determining a strength of the systolic period if the systolic period is qualified for oxygen saturation calculations;

identifying a signal-to-noise ratio by comparing the strength of the systolic period to the noise component; and

controlling the drive current based on a comparison of the signal-to-noise ratio to a threshold.

26. The method of claim 25, comprising measuring the noise component before determining the strength of the

systolic period and storing the measured noise component in memory for comparison with the strength of the systolic period.

27. The method of claim 25, comprising measuring the noise in the pulse oximeter signal at various gain values.

28. The method of claim 25, wherein the threshold comprises a maximum signal-to-noise ratio value of 128:1.

29. The method of claim 25, wherein the threshold comprises a minimum signal-to-noise ratio value of 8:1.

30. The method of claim 25, comprising calculating a series of moving averages based on a derivative of the pulse oximeter signal to identify the systolic period.

31. The method of claim 30, comprising identifying a moving minimum and moving maximum of a last moving average of the series of moving averages to identify the systolic period.

32. The method of claim 25, comprising calculating a moving average of a derivative of the pulse oximeter signal to generate a first output, calculating a moving average of the first output to generate a second output, calculating a moving average of the second output to generate a third output, and identifying a moving minimum and a moving maximum of the third output to identify the systolic period.

33. The method of claim 32, comprising comparing the moving minimum and the moving maximum to a scaled sum of the moving minimum and the moving maximum to determine the systolic period.

34. A monitor for controlling drive current of light emitting elements in a pulse oximeter sensor, comprising:

an identification module configured to identify a systolic period of a pulse oximeter signal;

a qualification module configured to perform pulse qualification tests to qualify the systolic period for oxygen saturation calculations;

a strength determination module configured to determine a strength of the systolic period if the systolic period is qualified for oxygen saturation calculations;

a ratio module configured to identify a signal-to-noise ratio by comparing the strength of the systolic period to a measured value of a noise component of the pulse oximeter signal stored in a memory; and

a controller configured to control the drive current based on a comparison of the signal-to-noise ratio to a threshold.

35. The monitor of claim 34, comprising a measurement module configured to measure the noise component.

36. The monitor of claim 35, wherein the measurement module is configured to measure the noise component at various gain values.

37. The monitor of claim 34, wherein the threshold comprises a maximum signal-to-noise ratio value of 128:1.

38. The monitor of claim 34, wherein the threshold comprises a minimum signal-to-noise ratio value of 8:1.

39. The monitor of claim 34, comprising a calculation module configured to calculate a series of moving averages based on a derivative of the pulse oximeter signal to identify the systolic period.

40. The monitor of claim 39, wherein the calculation module is configured to identify a moving minimum and moving maximum of a last moving average of the series of moving averages to identify the systolic period.

41. The monitor of claim 34, comprising a calculation module configured to calculate a moving average of a derivative of the pulse oximeter signal to generate a first output, calculate a moving average of the first output to generate a second output, calculate a moving average of the second output to generate a third output, and identify a moving minimum and a moving maximum of the third output to identify the systolic period.

42. The monitor of claim 41, comprising a comparison module configured to compare the moving minimum and the moving maximum to a scaled sum of the moving minimum and the moving maximum to determine the systolic period.

43. A tangible computer-readable medium, comprising:

code configured to identify a systolic period of a pulse oximeter signal;

code configured to perform pulse qualification tests to qualify the systolic period for oxygen saturation calculations;

code configured to determine a strength of the systolic period if the systolic period is qualified for oxygen saturation calculations;

code configured to identify a signal-to-noise ratio by comparing the strength of the systolic period to a measured value of a noise component of the pulse oximeter signal; and

code configured to control the drive current based on a comparison of the signal-to-noise ratio to a threshold.

44. The tangible computer-readable medium of claim 43, comprising code configured to measure the noise component of the pulse oximeter signal.

45. The tangible computer-readable medium of claim 43, comprising code configured to calculate a moving average of a derivative of the pulse oximeter signal to generate a first output, calculate a moving average of the first output to generate a second output, calculate a moving average of the second output to generate a third output, and identify a moving minimum and a moving maximum of the third output to identify the systolic period.

\* \* \* \* \*

专利名称(译)	用于检测心脏脉冲并降低传感器中的功耗的技术		
公开(公告)号	<a href="#">US20070208240A1</a>	公开(公告)日	2007-09-06
申请号	US11/650861	申请日	2007-01-08
[标]申请(专利权)人(译)	内尔科尔普里坦贝内特公司		
申请(专利权)人(译)	NELLCOR PURITAN BENNETT INC.		
当前申请(专利权)人(译)	COVIDIEN LP		
[标]发明人	NORDSTROM BRAD SHEA WILLIAM PETERSEN ETHAN		
发明人	NORDSTROM, BRAD SHEA, WILLIAM PETERSEN, ETHAN		
IPC分类号	A61B5/00 A61B5/024		
CPC分类号	A61B5/02416 A61B5/14551 A61B5/7239 A61B2560/0209 A61B5/7207		
其他公开文献	US7499740		
外部链接	<a href="#">Espacenet</a> <a href="#">USPTO</a>		

#### 摘要(译)

提供了用于感测来自传感器的信号中的心脏脉冲的低功率技术。脉冲检测模块检测传感器信号并确定其信噪比。在将信噪比与阈值进行比较之后，动态调整传感器中的发光元件的驱动电流以降低功耗，同时将信噪比保持在适当的水平。可以通过识别收缩期转变来测量传感器信号的信号分量。使用最大和最小导数平均方案检测收缩期转变。将移动最小值和移动最大值与移动最小值和移动最大值的缩放总和进行比较，以识别收缩过渡。一旦识别出信号分量，就将信号分量与噪声分量进行比较，以计算信噪比。

