



US008764656B2

(12) **United States Patent**
Shin et al.

(10) **Patent No.:** **US 8,764,656 B2**
(45) **Date of Patent:** **Jul. 1, 2014**

(54) **SENSING DEVICE OF EMOTION SIGNAL AND METHOD THEREOF**
(75) Inventors: **Hyun-Soon Shin**, Daejeon (KR); **Yong-Kwi Lee**, Seoul (KR); **Jun Jo**, Daejeon (KR); **Ji-Hoon Kim**, Daejeon (KR); **Jun-Sik Choi**, Daejeon (KR); **In-Tark Han**, Daejeon (KR)
(73) Assignee: **Electronics and Telecommunications Research Institute**, Daejeon (KR)

6,607,484	B2 *	8/2003	Suzuki et al.	600/300
6,623,427	B2 *	9/2003	Mandigo	600/300
6,960,168	B2 *	11/2005	Yanagidaira et al.	600/300
8,185,380	B2 *	5/2012	Kameyama	704/10
8,204,786	B2 *	6/2012	LeBoeuf et al.	705/14.66
2006/0009702	A1 *	1/2006	Iwaki et al.	600/520
2007/0022074	A1 *	1/2007	Muramatsu et al.	706/50
2007/0192038	A1 *	8/2007	Kameyama	702/19
2008/0146890	A1 *	6/2008	LeBoeuf et al.	600/300
2008/0208015	A1 *	8/2008	Morris et al.	600/301
2008/0214903	A1	9/2008	Orbach	
2009/0292528	A1 *	11/2009	Kameyama	704/9
2010/0234692	A1 *	9/2010	Kuo et al.	600/300

(*) Notice: Subject to any disclaimer, the term of this patent is extended or adjusted under 35 U.S.C. 154(b) by 591 days.

(21) Appl. No.: **12/959,214**
(22) Filed: **Dec. 2, 2010**

(65) **Prior Publication Data**
US 2011/0137137 A1 Jun. 9, 2011

(30) **Foreign Application Priority Data**
Dec. 8, 2009 (KR) 10-2009-0121185

(51) **Int. Cl.**
A61B 5/00 (2006.01)
G06F 3/01 (2006.01)
(52) **U.S. Cl.**
CPC **G06F 3/01** (2013.01); **G06F 3/011** (2013.01); **G06F 3/012** (2013.01); **G06F 3/013** (2013.01); **G06F 3/014** (2013.01); **G06F 3/015** (2013.01); **G06F 3/016** (2013.01); **G06F 3/017** (2013.01)
USPC **600/301**

(58) **Field of Classification Search**
None
See application file for complete search history.

(56) **References Cited**
U.S. PATENT DOCUMENTS

5,722,418	A *	3/1998	Bro	600/545
6,001,065	A *	12/1999	DeVito	600/544

FOREIGN PATENT DOCUMENTS

JP	2005-303722	A	10/2005
JP	2008-532587	A	8/2008
KR	1020070061054	A	6/2007
KR	1020090032537	A	4/2009
KR	1020090078889	A	7/2009
KR	1020090081885	A	7/2009

* cited by examiner

Primary Examiner — Gary Jackson
Assistant Examiner — Shirley Jian

(57) **ABSTRACT**

The present invention relates to a sensing device of an emotion signal and a method thereof capable of recognizing and analyzing the change in emotion by collecting at least one of the bio signals and peripheral environmental signals, guiding the state of emotion to a user, and sharing emotion information with authorized persons and communicating it between them. The sensing device of the emotion signal according to the embodiment of the present invention includes a sensing signal processor that senses a plurality of bio signals and peripheral environment signals of a user; an emotion signal processor that generates emotion signals representing the emotional state of the user for each of the sensed bio signals and collects the emotion signals to generate an emotion index; and an emotion signal communication unit that optionally transmits the emotion signals and the emotion index to external authorized devices.

16 Claims, 12 Drawing Sheets

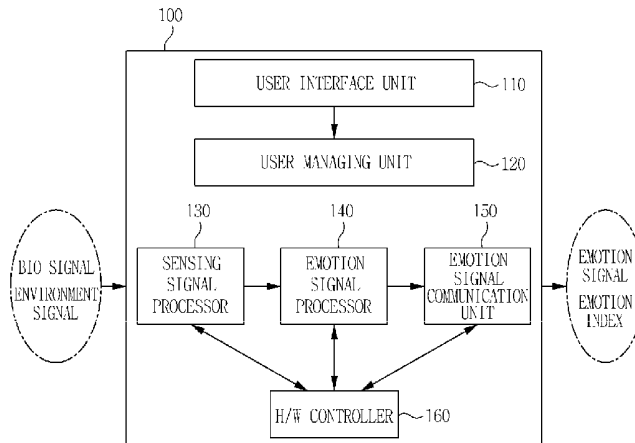


FIG. 1

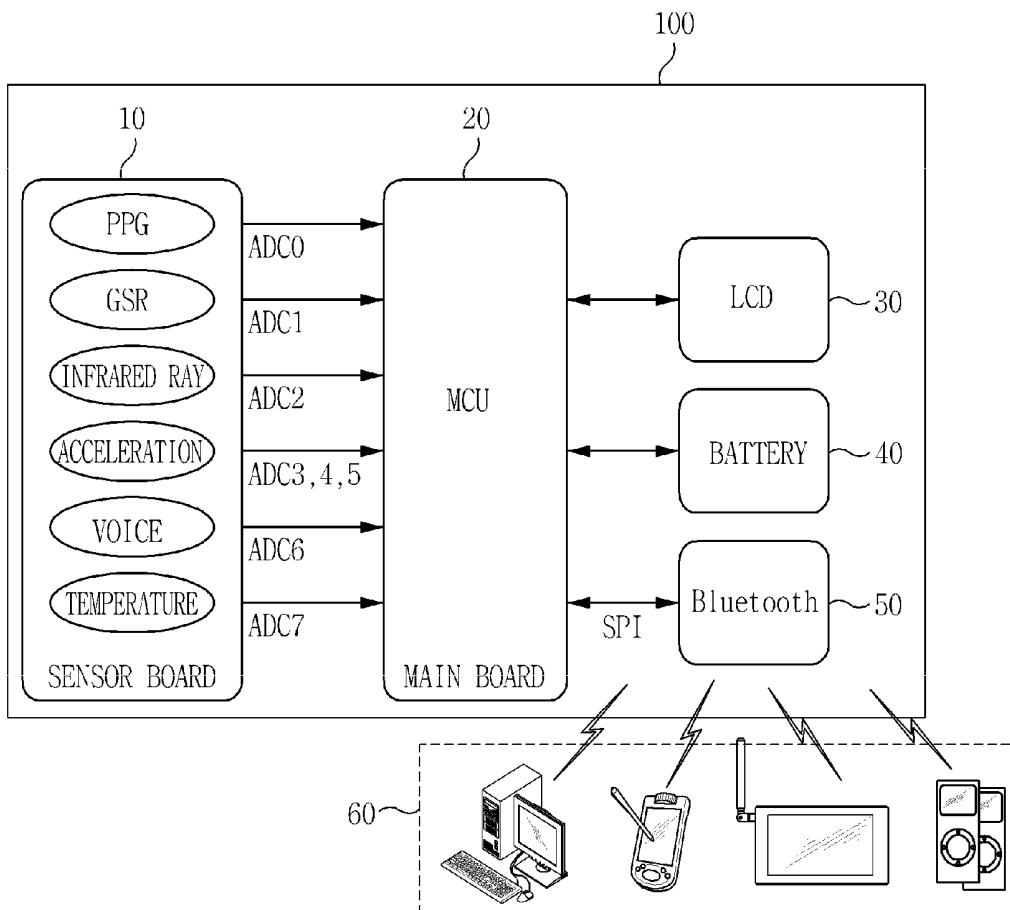


FIG. 2

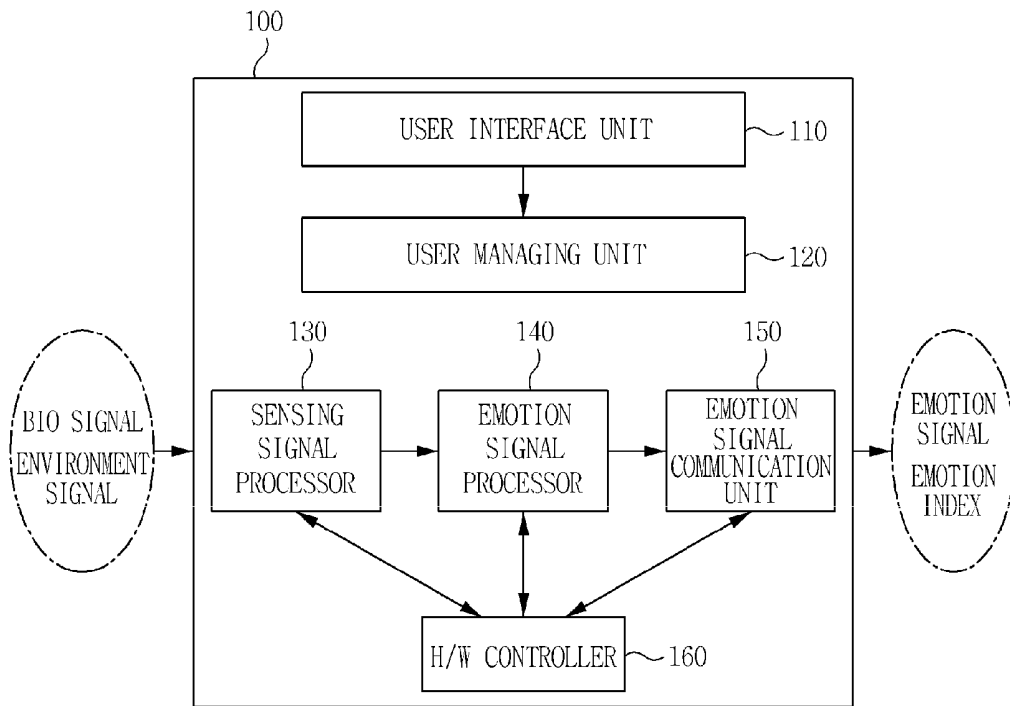


FIG. 3

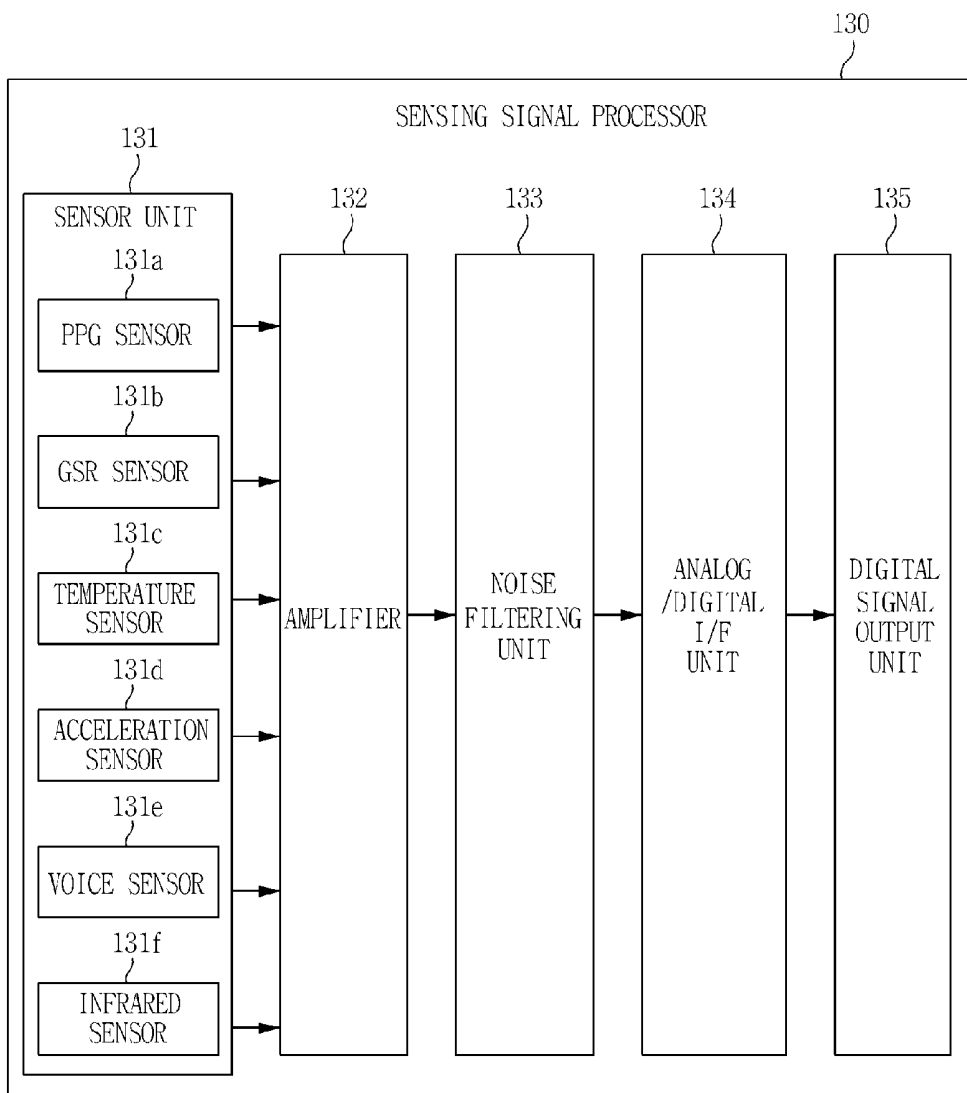


FIG. 4

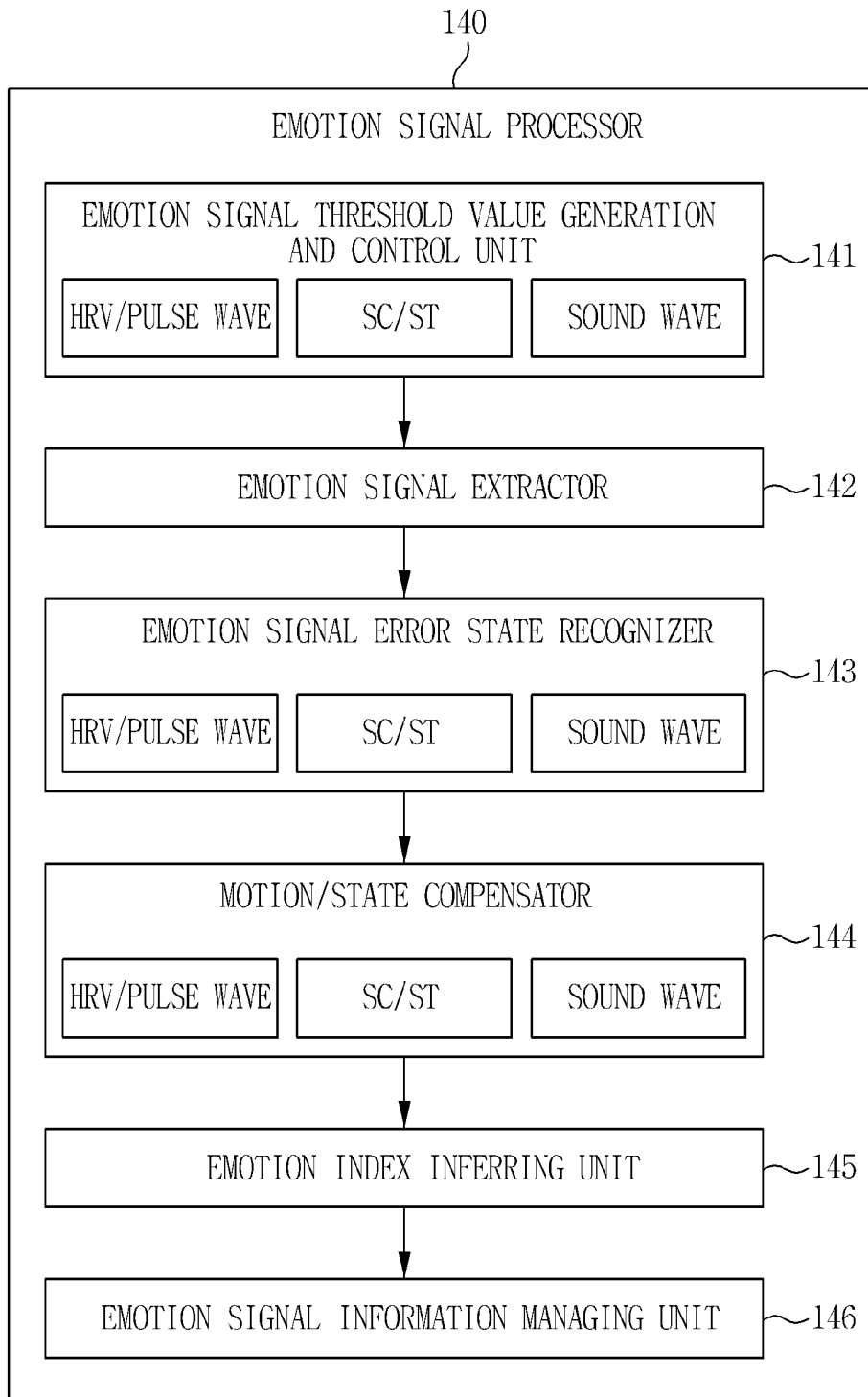


FIG. 5

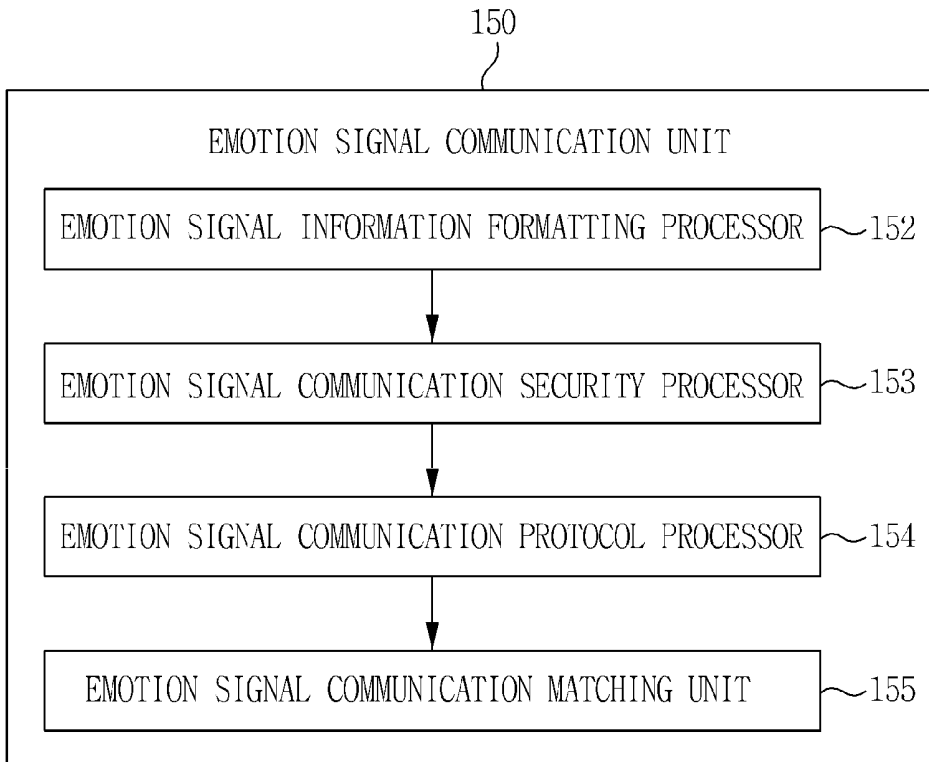


FIG. 6

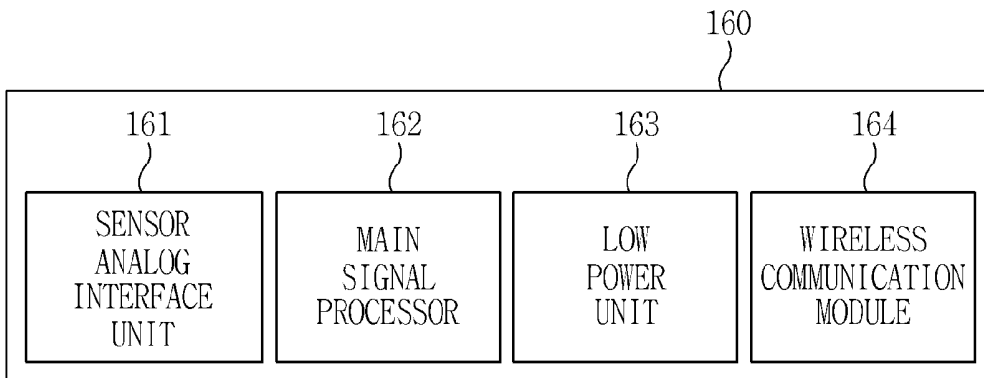


FIG. 7

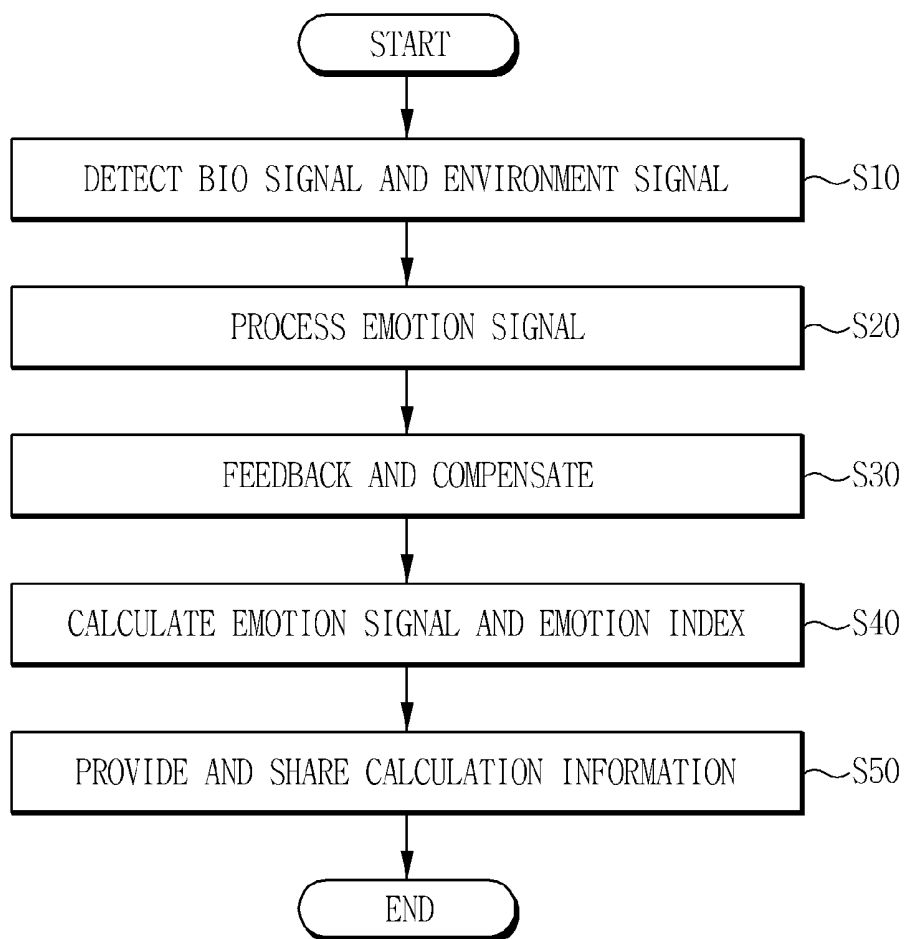


FIG. 8

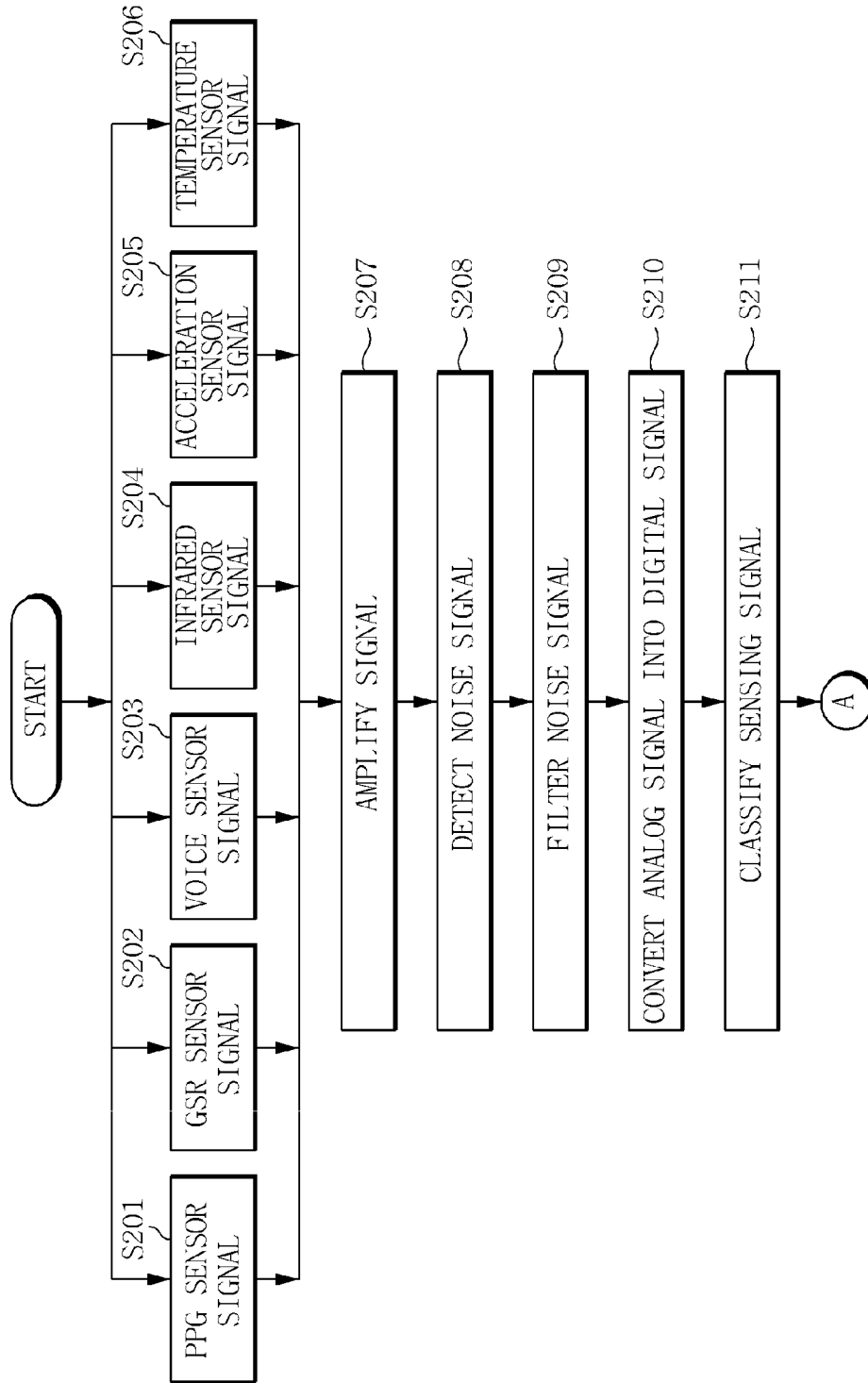


FIG. 9

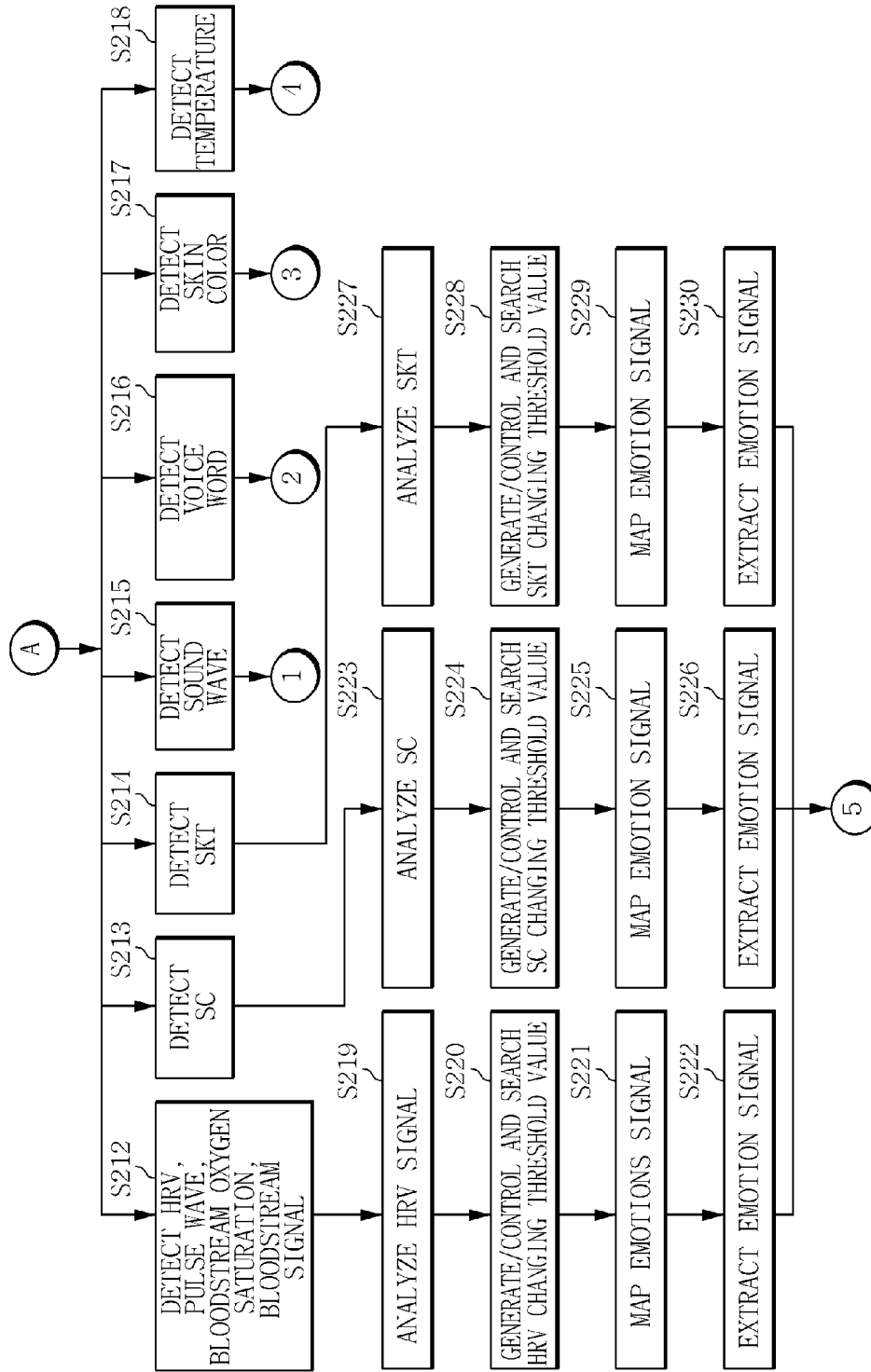


FIG. 10

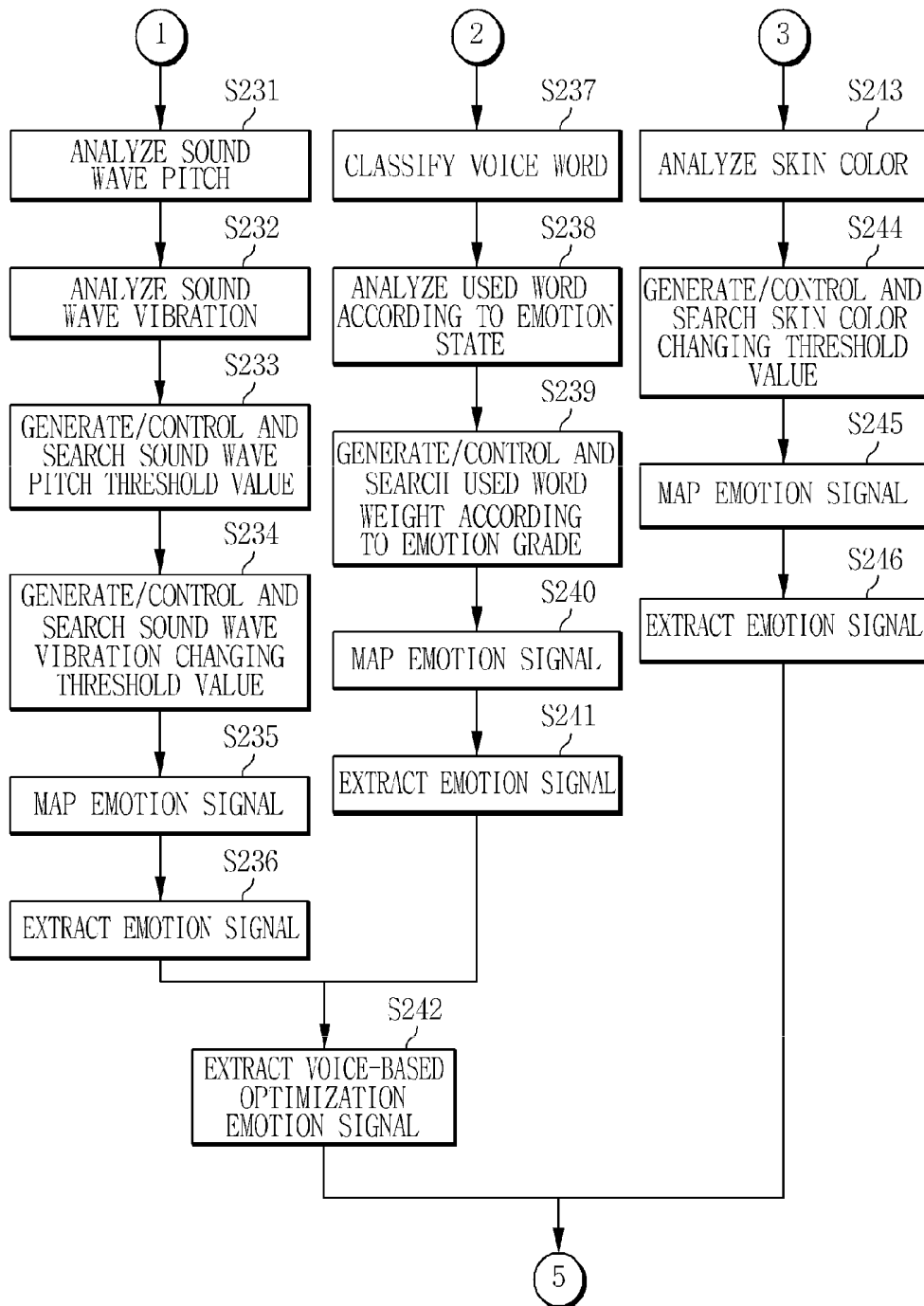


FIG. 11

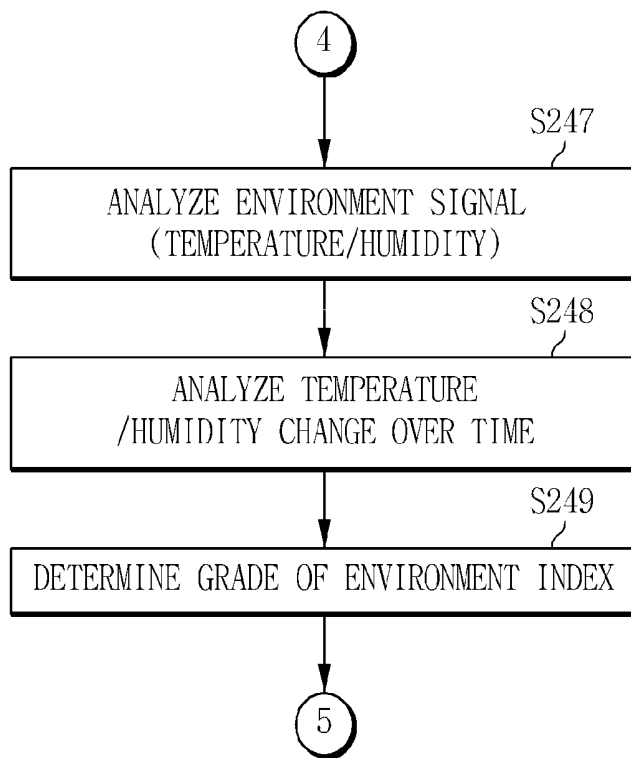


FIG. 12

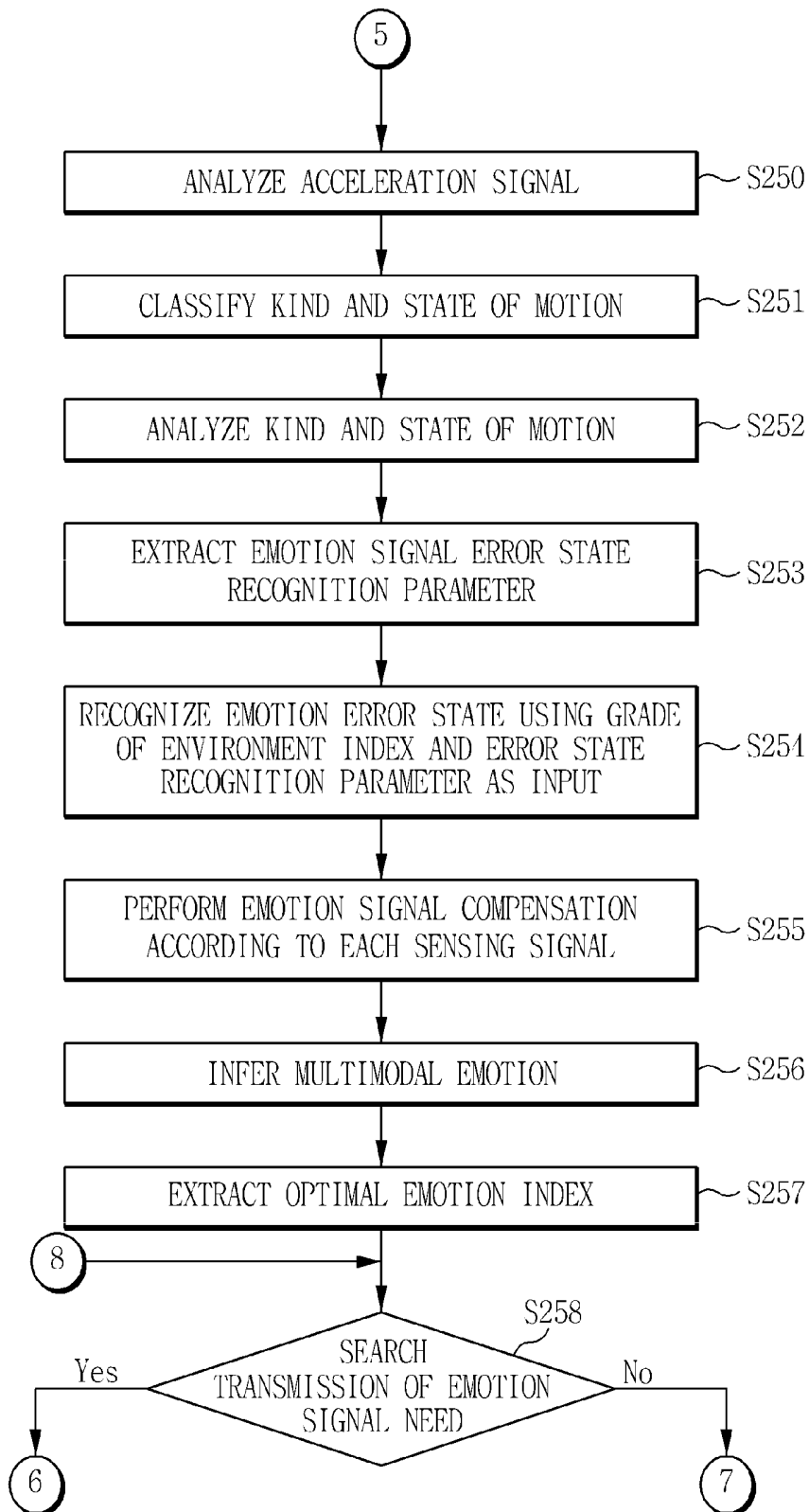
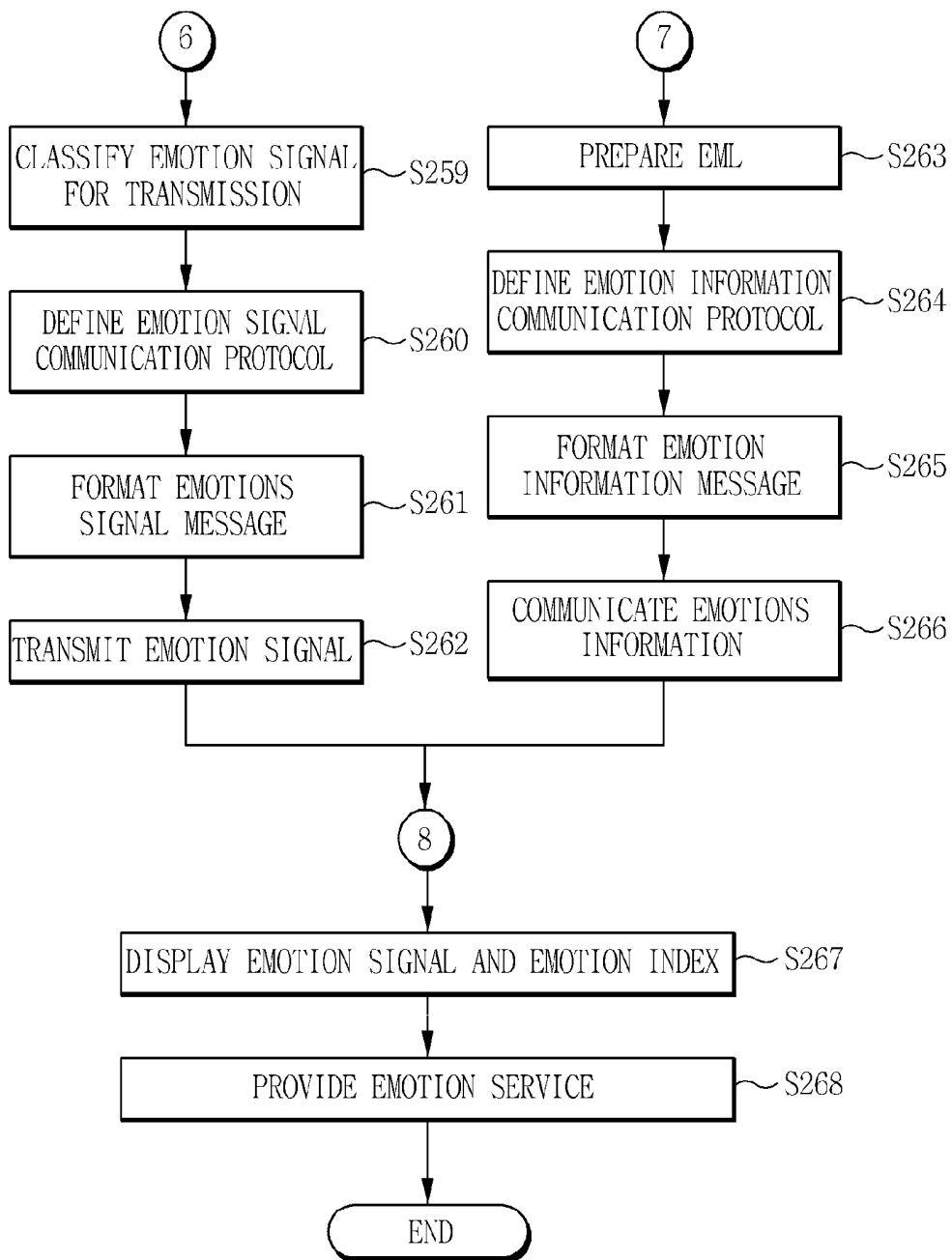


FIG. 13



SENSING DEVICE OF EMOTION SIGNAL AND METHOD THEREOF

CROSS REFERENCE TO RELATED APPLICATIONS

This application claims priority to Korean Patent Application No. 10-2009-0121185 filed on Dec. 8, 2009, the entire contents of which is herein incorporated by reference.

BACKGROUND OF THE INVENTION

1. Field of the Invention

The present invention relates to a sensing device of an emotion signal and a method thereof, and more particularly, to a sensing device of an emotion signal and a method thereof capable of recognizing and analyzing the change in emotion by collecting at least one of bio signals and peripheral environmental signals, guiding the state of emotion of a user, and sharing emotion information with authorized persons and communicating it between them.

2. Description of the Related Art

Recently, a need for a cognizing or recognizing technology as a method for intelligently determining and providing a user's intention and services in consideration of emotion and person's recognition aspect has been on the rise. By the above need, many researches have been conducted, but the emotion information service has not yet achieved the emotion recognition technology.

Society, in respects to the future, has a need for fulfilling a personal relationship and an aging society needs an emotion based service that can communicate emotion while being happy. In particular, a need exists for an emotion recognition technology, the emotion information exchange technology, etc., by recognizing bio signals and environmental signals when a user may be in an unrestricted and unresponsive state.

SUMMARY OF THE INVENTION

It is an object of the present invention to provide a sensing device of an emotion signal and a method thereof capable of extracting emotion signals by simply sensing at least one of bio signals and peripheral environmental signals in an unrestricted and unresponsive state and extracting the analyzing the sensed signals and determining and sharing the emotional state of the user.

It is another object of the present invention to provide an emotion based service by building a structure of a sensing device for sensing emotion signals, extracting the emotion signals according to the structure, and determining emotion index.

In order to achieve the above object, according to an exemplary embodiment of the present invention, there is provided a sensing device of an emotion signal, including: a sensing signal processor that senses a plurality of bio signals and peripheral environment signals of a user; an emotion signal processor that generates emotion signals representing the emotional state of the user for each of the sensed bio signals and collects the emotion signals to generate an emotion index; and an emotion signal communication unit that optionally transmits the emotion signals and the emotion index to external authorized devices.

The emotion signal processor may use the emotion signals and the sensed peripheral environment signals to generate the emotion index.

The sensing signal processor may include at least one of a PPG sensor, a GSR sensor, a temperature/humidity sensor, an

acceleration sensor, a voice sensor, and an infrared sensor for unrestricted and unresponsive sensing.

The emotion signal processor may use emotion changing threshold values that identify the emotion change of the user to extract the emotion signals from the bio signals.

The emotion signal processor may recognize errors for each of the emotion signals using the motion signals together with the peripheral environment signals to generate the error recognition information and use the error recognition information to perform the error compensation for each of the emotion signals.

The emotion signal processor may perform a multimodal convergence emotion inference using the emotion signals to determine the emotion index.

The emotion signal communication unit may share the emotion signals with an external device needing the emotion signals themselves and share the emotion index with an external device needing the emotion index.

The emotion signal communication unit may perform privacy security communication for privacy security for the emotional state of the user.

The sensing signal processor may include: a sensor unit that has a plurality of sensors sensing the bio signals and the peripheral environment signals; an amplifier that amplifies signals input from the plurality of sensors; a noise filtering unit that removes external noise from the amplified signals; an analog/digital interface (I/F) unit that converts the output signals from the noise filtering unit into a digital signal; and a digital signal output unit that outputs the digital signals.

The emotion signal processor may include: an emotion signal threshold generation and control unit that identifies the change in emotion of the user and manages the change in the emotion changing threshold values; an emotion signal extractor that extracts the emotion signals representing the emotional state of the user for each of the sensed bio signals by using the emotion changing threshold values; an emotion signal error state recognizer that analyzes the peripheral environment signals and the motion signals to perform the error state recognition for each of the emotion signals; an emotion signal compensator that compensates and optimizes the corresponding emotion signal according to the error state recognition; an emotion index inference unit that performs the emotion inference on the emotion signals and the peripheral environment signals as an input to infer the emotion index; and an emotion signal information managing unit that manages the emotion signals and the emotion index.

The emotion signal communication unit may include: an emotion signal information formatting processor that formats the emotion signals and provides them to the peripheral devices and terminals; an emotion signal security processor that performs security processing for privacy security for the emotional state of the user; an emotion signal communication protocol processor that processes protocols for the emotion signal communication; and an emotion signal communication matching unit that matches wireless signals with the emotion signal communication.

The sensing device of an emotion signal may further include a hardware (H/W) controller that provides a platform for executing the sensing signal processor, the emotion signal processor, and the emotion signal communication unit, wherein the H/W controller includes: a sensor analog interface unit that receives the analog signals from the plurality of sensors; a main signal processor that is in charge of the booting of the plurality of sensors and execution of the software (SW) module; a low power unit that provides a low power service; and a wireless communication module that performs the emotion signal wireless communication.

According to another exemplary embodiment of the present invention, there is provided a sensing method of an emotion signal, including: sensing a plurality of bio signals and peripheral environment signals of a user by a sensing signal processor; generating emotion signals representing the emotional state of the user from each of the bio signals sensed by the emotion signal processor and collects the emotion signals to generate the emotion index; and optionally providing the emotion signals and the emotion index to the external authorized devices by the emotion signal communication unit.

The sensing performs sensing may uses at least one of a PPG sensor, a GSR sensor, a temperature/humidity sensor, an acceleration sensor, a voice sensor, and an infrared sensor for unrestricted and unresponsive sensing.

The generating of the emotion index may generates the emotion index using the emotion signals and the sensed peripheral environment signals.

The generating the emotion index may includes: generating the emotion changing threshold values that identifies the change in emotion of the user; and extracting the emotion signals from the bio signals using the emotion changing threshold values.

The generating the emotion index may generates the error recognition information by recognizing the error state based on the peripheral environment signals and the motion signal and performs error compensation on each of the emotion signals using the error recognition information.

The generating the emotion index may determines the emotion index by performing the convergence emotion inference using the emotion signals in the finally compensated multimodal manner.

The external authorized devices may shares the emotion signals when it is an external device needing the emotion signals and shares the emotion index when it is an external device needing the emotion index.

The external authorized devices may performs privacy security management and privacy security communication for privacy security for the emotional state of the user.

According to an exemplary embodiments of the present invention, it can simply sense at least one of the bio signals and peripheral environmental signals in unrestricted and unresponsive state and extracting the emotion signals by analyzing the sensed signals, thereby determining the emotional state of the user in the unrestricted state and providing the emotional state and providing the emotion service in order to meet the user's emotion.

Further, the present invention provides the emotion signals to the user and his family, thereby making it possible to provide services that communicate the emotion therebetween.

BRIEF DESCRIPTION OF THE DRAWINGS

FIG. 1 is a diagram showing an example of a system to which a sensing device of an emotion signal according to an exemplary embodiment of the present invention is applied;

FIG. 2 is diagram showing an internal configuration of a sensing device of an emotion signal according to the exemplary embodiment of the present invention;

FIGS. 3 to 6 are diagrams schematically showing a detailed configuration of the sensing device of the emotion signal shown in FIG. 2;

FIG. 7 is a diagram showing a sequence of a sensing method of an emotion signal according to the exemplary embodiment of the present invention; and

FIGS. 8 to 13 are diagrams showing a sequence of a process of processing and communicating a sensing based emotion signal in the sensing device of the emotion signal according to the exemplary embodiment of the present invention.

DETAILED DESCRIPTION OF THE PREFERRED EMBODIMENTS

Hereinafter, exemplary embodiments of the present invention will be described with reference to the accompanying drawings.

FIG. 1 is a diagram showing an example of a system to which a sensing device of an emotion signal according to an exemplary embodiment of the present invention is applied (non-explained reference numerals ADC0 to ADC7 are signal lines and SPI is a communication line).

Referring to FIG. 1, a sensing device 100 of an emotion signal may be applied to a sensing based emotion service device. In particular, it is configured to extract emotion signals from at least one of bio signals of a user. For example, the sensing device of the emotion signal may be configured to process various sensing signals from a sensor board 10 including various sensors in a microcomputer unit (MCU), etc., and display the emotion signals or the emotion indices on a display unit 30 (LCD) or share them with external devices 60 (a computer, an MP3, a cellular phone, a PDA, etc.) through the communication unit 50 (Bluetooth, etc.). Of course, it may be configured to be carried by including a battery 40 therein (for example, a necklace, a pendant, an MP3, a cellular phone, a PDA, etc.). In other words, the present invention senses at least one of the bio signals and peripheral environmental signals, thereby making it possible to recognize and analyze the change in emotion, guide the state of emotion to the user, and share the emotion information between authorized persons. The change in emotion means the change in an emotional state of the user (for example, serenity, angry, astonishment, sadness, etc.).

Hereinafter, the configuration of the sensing device 100 of the sensing based emotion signal according to the embodiment of the present invention will be described in more detail.

FIG. 2 is diagram showing an internal configuration of a sensing device of an emotion signal according to the exemplary embodiment of the present invention and FIGS. 3 to 6 are diagrams schematically showing a detailed configuration of the sensing device of the emotion signal shown in FIG. 2.

Referring to FIG. 2, the sensing device 100 of the emotion signal according to the embodiment of the present invention is configured to include a sensing signal processor 130, an emotion signal processor 140, an emotion signal communication unit 150, and a hardware (H/W) controller 160.

Briefly describing the sensing device of the emotion signal according to the present invention, the sensing signal processor 130 senses at least one of the bio signals and peripheral environmental signals for the user. The emotion signal processor 140 generates the emotion signals representing the emotional state of the user for each of at least one of the bio signal and collects the emotion signals to generate the emotion index.

Further, the emotion signal processor 140 generates the emotion index using the emotion signals and the processed peripheral environmental signals. The emotion signal communication unit 150 optionally provides the emotion signals and the emotion index to the outside to be shared with authorized devices and users. The H/W controlling unit 160 controls a H/W platform that can execute the sensing processing, the emotion signal processing, and the emotion signal communication processing, and so on. The configuration of the

sensing device of the emotion signals according to the exemplary embodiment of the present invention will be described in detail.

In other words, the present invention senses at least one of the bio signals and peripheral environmental signals, thereby making it possible to recognize and analyze the change in emotion, guide the state of emotion to the user, and share the emotion information between authorized persons. As a result, the present invention may inform the users of the emotional state of a person and communicate the emotion between the users.

Further, the sensing device of the emotion signal according to the exemplary embodiment of the present invention may further include a user interface unit **110** (UI) and a user managing unit **120**. The user interface unit **110** serves to guide the emotion signal and the emotion index to be described below (S267) and provide the emotion services meeting a person. The user managing unit **120** serves to manage the user that provides the user emotion signal and emotion index to be described below. In other words, the user managing unit **120** performs authentication processing so that authorized persons can share the emotion signal or the emotion index representing the emotional state of the user. The user authorizing and providing scheme is known and therefore, the detailed description thereof will be omitted.

Referring to FIG. 3, the sensing signal processor **130** is configured to include a sensor unit **131** (multimodal scheme), an amplifier **132**, an analog/digital interface (I/F) unit **134**, and a digital signal output unit **135**. The sensor unit **131** is configured to include at least one sensor for performing the unrestricted and unresponsive sensing such as a PPG sensor **131a**, a GSR sensor **131b**, a temperature sensor **131c**, an acceleration sensor **131d**, a voice sensor **131e**, an infrared sensor **131f**, etc. The sensor unit **131** senses at least one of the bio signals and peripheral environmental signals of a user through at least one of the sensors **131a** to **131f**. The amplifier **132** amplifies signals input from the sensors. A noise filtering unit **133** removes external noise from the amplified signals. The analog/digital I/F unit **134** converts analog signals into digital signals. The digital signal output unit **135** outputs digital signals converted to analyze the bio signals. Each component of the sensing signal processor **130** adopts a configuration to sense and process the bio signals and peripheral environmental signals of the user but is not limited thereto.

The sensing signal processor **130** processes the sensed signals by the multimodal scheme and provides them to analyze the emotional state of the user in the emotion signal processor **140**. The acceleration sensor **131d** can recognize whether the emotion of the user is due to exercise or the change in emotion. The sensed signals is processed as the analyzable signals by passing through the amplifier **132**, the noise filtering unit **133**, the analog/digital I/F unit **134**, and the digital signal output unit **135**. The above-mentioned multimodal scheme is known and therefore, the more detailed description thereof will be described.

Referring to FIG. 4, the emotion signal processor **140** is configured to include an emotion signal threshold generation and control unit **141**, an emotion signal extractor **142**, an emotion signal error state recognizer **143**, an emotion signal compensator **144**, an emotion index inferring unit **145**, and an emotion signal information managing unit **146**.

The emotion signal threshold generation and control unit **141** processes a reference value to determine the change in emotion of the user from signals sensed and processed in the above-mentioned sensing signal processor **130**. In other words, the emotion signal threshold generation and control unit **141** generates a threshold value for the emotion signal

that can identify the change in emotion and manages the change in the generated threshold value. The emotion signal extractor **142** extracts the emotion signal based on the threshold value. The emotion signal error state recognizer **143** analyzes the peripheral environment signals to recognize the error state. The emotion signal compensator **144** performs the emotion signal optimization according to the recognition of the emotional signal error state. The emotion index inferring unit **145** performs the emotion inference using the emotion signals and the peripheral environment signals as an input. The emotion signal information managing unit **146** manages the extracted emotion signals and the feedback emotion signal state information, etc.

Referring to FIG. 5, the emotion signal communication unit **150** is configured to include an emotion signal information formatting processor **152**, an emotion signal security processor **153**, an emotion signal communication protocol processor **154**, and an emotion signal communication matching unit **155**.

The emotion signal information formatting processor **152** prepares the emotion signal communication message in order to provide at least one of the emotion signals to the peripheral devices and terminals. The emotion signal security processor **153** processes privacy security for the emotion signal information of a person. The emotion signal communication protocol processor **154** processes the protocols for emotion signal communication. The emotion signal communication matching unit **155** processes wireless emotion signal communication.

Referring to FIG. 6, the H/W controller **160** is configured to include a sensor analog interface unit **161**, a main signal processor **162**, a low power unit **163**, a wireless communication module **164**.

The sensor analog interface unit **161** receives the analog signals from various sensors. The main signal processor **162** is in charge of a booting of a sensor device and execution of a software (SW) module. The low power unit **163** provides the low power service. The wireless communication module **164** executes the emotion signal wireless communication.

However, the method for sensing the emotion signal according to the exemplary embodiment of the present invention will be described with reference to the accompanying drawings. In the description, an example of the sensing device of the emotion signal having the above-mentioned configuration will be described by way of example. Further, the sensing device of the emotion signal may be configured to be connected on the system to sense the bio signals and the environment signals.

FIG. 7 is a diagram showing a sequence of the sensing method of emotion signal according to the exemplary embodiment of the present invention. In the description, an example of the sensing device of the emotion signal having the above-mentioned configuration will be described by way of example.

Referring to FIG. 7, when the sensing device **100** of the emotion signal according to the present invention is used by the user, the sensing signal processor **130** senses at least one of the bio signals and peripheral environment signals for the user and processes them as the analyzable signals (S10).

Next, the emotion signal processor **140** processes various signals (that is, signals processed from the sensed bio signals and peripheral environment signals) from the sensing signal processor **130** and processes them as the emotion signals representing the emotional state of the user (S20). The emotion signal processor **140** generates the emotion changing

threshold value that can identify the change in emotion of the user and uses it to extract each emotion signal from at least one of the bio signals.

Then, in order to optimize the emotion signal, the feedback and compensation functions are performed. In other words, the emotion signal processor **140** performs error compensation on the emotion signals by using the peripheral environmental signals to reduce the errors.

Next, the emotion signal processor **140** determines the emotion index through the convergence inference by using the emotion signals and the peripheral environment signals.

Finally, the determined emotion signals or the emotion index are provided to the user in the user interface and the wireless communication. In other words, the emotion signal communication unit **150** shares the emotion signals if it is the external device requiring the emotion signal itself. In addition, the emotion signal communication unit **150** shares the emotion index if it is not the external device requiring the emotion signal itself.

As described above, the present invention simply senses at least one of the bio signals and peripheral environment signals in the unrestricted and unresponsive state and analyzes the sensed signals to extract the emotion signals, thereby grasping the emotional state of a person in the unrestricted state and providing the emotion state and providing the emotion service meeting the emotion of a person. Of course, the present invention provides the emotion signals to the user and his family, thereby making it possible to provide services that can communicate the emotion.

Hereinafter, a process of processing and communicating the emotion signal according to the sensing device of the emotion signal according to the embodiment of the present invention will be described by way of example.

FIGS. **8** to **13** are diagrams showing a sequence of a process for processing and communicating the sensing based emotion signal in the sensing device of the emotion signal according to the exemplary embodiment of the present invention.

An example of a sensing and processing process of the sensing device of the emotion signal according to the exemplary embodiment of the present invention will be described with reference to FIGS. **8** to **13**.

First, the sensor unit **131** in the sensor signal processor **130** detects the bio signals by a method for detecting reflected and transmitted light by irradiating light having a specific wavelength band from the PPG sensor **131a** for performing unrestricted and unresponsive signal sensing in the sensor unit **131** (**201**), measures body temperature for recognizing the skin resistance and the change in body temperature using the GSR sensor **131b** (**S202**), recognizes voice using a voice sensor **131e** (mic) (**S203**), senses colors and convulsion of skin using the infrared sensor **131f** (**S204**), measures motion and quantity of motion, etc., using the acceleration sensor **131d** (**S205**), and measures temperature (or humidity) in the environment using a temperature sensor **131c** (or a humidity sensor (not shown)) (**S206**).

After step 'S206', the amplifier **132** amplifies the bio signals in order to reinforce a sensed bio signal (**S207**).

After performing step 'S207', the noise filtering unit **133** extracts signals meeting each band and extracts the noise signals (**S208**), thereby filtering the noise through a notch filter (**S209**).

After performing step 'S209', the analog/digital I/F unit **134** converts **6** analog bio signals into digital signals (**S210**), thereby classifying each digital bio signal (**S211**).

After step 'S211', the emotion signal processor **140** detects an HRV, a pulse wave, blood stream oxygen saturation, a strength signal of blood stream, etc. (**S212**) from the signal

sensed the PPG sensor **131a**, thereby analyzing the HRV, the pulse wave, the blood stream oxygen saturation, the strength signal of blood stream, and so on (**S219**).

After step 'S219', the emotion signal processor **140** generates/controls and searches an HRV changing threshold value, a pulse wave changing threshold value, an oxygen saturation changing threshold value, and a blood stream strength changing threshold (**S220**) and maps the emotion signals according to the grade of the threshold values (**S221**), thereby extracting the PPG-based emotion signal (**S222**). Herein, it is considered that generating/controlling and searching the threshold value includes generating the threshold value or controlling the existing threshold value according to a newly generated threshold value and searching the threshold values by a comparison scheme, etc. Hereinafter, it is considered that the scheme of generating/controlling and searching the threshold values may use the known methods.

Meanwhile, after performing step 'S211', the emotion signal processor **140** detects an electrical conductivity (SC) signal from a sensed signal using the GSR sensor **131b** (**S213**), thereby analyzing the skin electrical conductivity (**S223**).

After performing step 'S223', the emotion signal processor **140** generates/controls and searches the skin electrical conductivity changing threshold value according to the change in emotion (**S224**) and maps the emotion signal according to the grade of the threshold value (**S225**), thereby extracting the SC change-based emotion signal (**S226**).

Further, after performing step 'S211', the emotion signal processor **140** detects a skin body temperature (SKT) from a sensed signal using the infrared sensor **131f** (body temperature sensor) (**S214**), thereby analyzing the change in the skin body temperature (**S227**).

After performing step 'S227', the emotion signal processor **140** generates/controls and searches the skin body temperature changing threshold value according to the change in emotion (**S228**) and maps the emotion signal according to the grade of the threshold value (**S229**), thereby extracting the SKT change-based emotion signal (**S230**).

Further, after performing step 'S211', the emotion signal processor **140** detects a sound wave forming voice (**S215**), analyzes the pitch change of sound (**S231**), and analyzes the vibration change between pitches (**S232**).

After performing step 'S232', the emotion signal processor **140** generates/controls and searches the pitch changing threshold value of sound according to the change in emotion (**S233**), generates/controls and searches the changing threshold value of the vibration (**S234**), and maps the emotion signal according to the grade of the threshold value (**S235**), thereby extracting the voice strength change-based emotion signal (**S236**).

Meanwhile, after performing step 'S211', the emotion signal processor **140** detects voice words (**S216**) and classifies voice words (**S237**), thereby classifying the used words (**S238**).

After performing step 'S238', it searches the used words according to the grade of the emotion index (**S239**), maps the emotion signal according to the grade of the emotion index (**S240**), and extracts the voice word-based emotion signal (**S241**).

After performing step 'S241', the emotion signal processor **140** analyzes and processes the sound wave analysis-based emotion signal and the voice word-based emotion signal, thereby extracting the voice-based optimized emotion signal (**S242**).

In addition, after performing step 'S211', the emotion signal processor **140** detects a skin color (**S217**), thereby analyzing the change in skin color (**S243**).

After performing step 'S243', the emotion signal processor 140 generates/controls and searches the skin color change according to the change in emotion (S244) and maps the emotion signal according to the grade of the threshold value (S245), thereby extracting the skin color change-based emotion signal (S246).

Further, after performing step 'S211', the emotion signal processor 140 detects the temperature (or humidity) information in the environment sensed from the temperature sensor 131c (or a humidity sensor) (S218) and analyzes the change in temperature (or humidity) in the environment (S247).

After performing step 'S247', the emotion signal processor 140 searches the temperature change over time (S248), thereby determining the environment index level (grade) (S249).

Meanwhile, after performing steps 'S201' to 'S249', the emotion signal processor 140 analyzes the acceleration sensing information using the acceleration sensor 131d (S250), thereby classifying the kind and state of motion (S251).

After performing 'S251', the emotion signal processor 140 analyzes the kind and state of motion (S252), thereby extracts parameters for recognizing the error state (S253).

After performing step 'S253', the emotion signal processor 140 uses the environment index level determined during steps 'S247' to 'S249' and the motion error state information extracted during steps 'S252' to 'S253' as the input to perform the emotion signal error state recognition algorithm, thereby recognizing the emotion signal error state (S254).

After performing step 'S254', the emotion signal processor 140 performs a process of compensating the emotion signal extracted from PPG, GSR, infrared ray, voice, and temperature/humidity signals that are extracted based on the recognized error state information (S255).

After performing step 'S255', the emotion signal processor 140 uses the compensated multimodal emotion signals to perform the multimodal convergence emotion inference (S256), thereby determining the optimal emotion index (S257).

After performing step 'S257', the emotion signal communication unit 150 searches whether there is a need to transmit the emotion signal itself (S258) to define and classify the emotion signal to be transmitted, in order to transmit it to the emotion service terminals or devices needing the compensated multimodal sensing signal-based emotion signal itself through the emotion signal communication unit 150 when the transmission of the emotion signal itself is needed (S259). The emotion signal communication unit 150 defines each emotion signal as the emotion signal communication protocol (S260) and formats in order to meet the emotion signal communication message format (S261), thereby transmitting it by using the wireless communication function (S262).

After performing step 'S257', the emotion signal communication unit 150 represents the extracted emotion index as an emotional markup language (EML) when there is no need to transmit the emotion signal itself (S263). The emotion signal communication unit 150 defines the emotion information communication protocol (S264) and formats in order to meet the emotion information communication message format (S265), thereby transmitting it by using the wireless communication function (S266).

Meanwhile, after performing step 'S257' or 'S262' or 'S266', it guides the emotion signal and the emotion index through the user interface unit 110 (UI) (S267) and provides the emotion service meeting the need of a person (S268).

Accordingly, the sensing device of the emotion signal and the method thereof disclosed in the present invention will be described with reference to the accompanying drawings but

are used not to limit to the specific embodiments. The scope of the present invention is not limited only to the embodiments and the accompanying drawings. The protection scope of the present invention must be analyzed by the appended claims and it should be analyzed that all spirits within a scope equivalent thereto are included in the appended claims of the present invention.

What is claimed is:

1. An emotion sensing device, the device comprising:

a sensing signal processor configured to sense a plurality of bio signals of a user and peripheral environment signals of a user;

an emotion signal processor configured to generate an emotion signal associated with an emotional state of the user for each of the sensed bio signals, and collect the emotion signals to generate an emotion index; and

an emotion signal communication unit configured to transmit any of the emotion signals and the emotion index to an external authorized device,

wherein the emotion signal processor is configured to generate error recognition information for the emotion signals using the peripheral environment signals, and use the error recognition information to recognize an error for the emotion signals and perform error compensation.

2. The sensing device according to claim 1, wherein the emotion signal processor uses the emotion signals and the sensed peripheral environment signals to generate the emotion index.

3. The sensing device according to claim 1, wherein the sensing signal processor includes at least one of a PPG sensor, a GSR sensor, a temperature/humidity sensor, an acceleration sensor, a voice sensor, and an infrared sensor.

4. The sensing device according to claim 1, wherein the emotion signal processor is configured to use an emotion changing threshold value to identify an emotion change of the user, and generate an emotion signal corresponding to a sensed bio signal by using the emotion changing threshold value to extract the emotion signal from the bio signal.

5. The sensing device according to claim 1, wherein the emotion signal processor is configured to perform a multimodal convergence emotion inference using the emotion signals to determine the emotion index.

6. The sensing device according to claim 1, wherein the emotion signal communication unit is configured to perform a privacy security process before transmitting the emotion signals or the emotion index to the external authorized device.

7. The sensing device according to claim 1, wherein the sensing signal processor includes:

a sensor unit including a plurality of sensors configured to sense the bio signals and the peripheral environment signals;

an amplifier configured to amplify signals input from the plurality of sensors;

a noise filtering unit configured to remove external noise from the amplified signals;

an analog/digital I/F unit configured to convert the output signals from the noise filtering unit into digital signals; and

a digital signal output unit configured to output the digital signals.

8. The sensing device according to claim 7, further comprising a hardware (H/W) controller configured to provide a platform for the sensing signal processor, the emotion signal processor, and the emotion signal communication unit, and wherein the H/W controller includes:

a sensor analog interface unit configured to receive analog signals from the plurality of sensors;

11

a main signal processor configured to control booting of a software (SW) module associated with the plurality of sensors and execution of the SW module;
 a low power unit configured to provide a low power service; and
 a wireless communication module configured to perform emotion signal wireless communication.

9. The sensing device according to claim 1, wherein the emotion signal processor includes:

- an emotion signal threshold generation and control unit configured to generate a plurality of emotion changing threshold values to identify a change in emotion of the user, and manage a change in the generated emotion changing threshold values;
- an emotion signal extractor configured to extract emotion signals corresponding to the sensed bio signals by using the emotion changing threshold values;
- an emotion signal error state recognizer configured to analyze the peripheral environment signals and the emotion signals to perform error state recognition for each of the emotion signals;
- an emotion signal compensator configured to compensate for the recognized error state and optimize the emotion signals according to the error state recognition;
- an emotion index inference unit configured to perform emotion inference using the emotion signals and the peripheral environment signals as inputs to infer the emotion index; and
- an emotion signal information managing unit configured to manage the emotion signals and the emotion index.

10. The sensing device according to claim 1, wherein the emotion signal communication unit includes:

- an emotion signal information formatting processor configured to format the emotion signals and provide them to any of a peripheral device, an external authorized device, and an emotion service terminal;
- an emotion signal security processor configured to perform a privacy security process for privacy security of the emotional state of the user;
- an emotion signal communication protocol processor configured to process protocols for emotion signal communication; and

12

an emotion signal communication matching unit configured to match wireless signals with emotion signals for the emotion signal communication.

11. A method of sensing an emotion signal, the method comprising:

- sensing a plurality of bio signals of a user and peripheral environment signals of a user by a sensing signal processor;
- generating an emotion signal associated with an emotional state of the user for each of the bio signals sensed by the emotion signal processor and collecting the emotion signals to generate an emotion index; and
- providing any of the emotion signals and the emotion index to an external authorized device by the emotion signal communication unit,

wherein generating the emotion index includes generating error recognition information to recognize an error state based on the peripheral environment signals and the emotion signals, and performing error compensation on each of the emotion signals using the error recognition information.

12. The sensing method according to claim 11, wherein the sensing is performed using at least one of a PPG sensor, a GSR sensor, a temperature/humidity sensor, an acceleration sensor, a voice sensor, and an infrared sensor.

13. The sensing method according to claim 11, wherein the emotion index is generated using the emotion signals and the sensed peripheral environment signals.

14. The sensing method according to claim 11, wherein generating the emotion index includes:

- generating the emotion changing threshold values to identify a change in emotion of the user; and
- extracting emotion signals from corresponding bio signals using the emotion changing threshold values.

15. The sensing method according to claim 11, wherein the emotion index is generated by performing convergence emotion inference using the compensated emotion signals in a multimodal manner.

16. The sensing method according to claim 11, further comprising performing privacy security management and privacy security communication for privacy security for the emotional state of the user before providing the emotion signals or the emotion index to the external authorized device.

* * * * *

专利名称(译)	情绪信号的感应装置及其方法		
公开(公告)号	US8764656	公开(公告)日	2014-07-01
申请号	US12/959214	申请日	2010-12-02
[标]申请(专利权)人(译)	韩国电子通信研究院		
申请(专利权)人(译)	电子通信研究院		
当前申请(专利权)人(译)	电子通信研究院		
[标]发明人	SHIN HYUN SOON LEE YONG KWI JO JUN KIM JI HOON CHOI JUN SIK HAN IN TARK		
发明人	SHIN, HYUN-SOON LEE, YONG-KWI JO, JUN KIM, JI-HOON CHOI, JUN-SIK HAN, IN-TARK		
IPC分类号	A61B5/00 G06F3/01		
CPC分类号	G06F3/01 A61B5/0059 A61B5/01 A61B5/02405 A61B5/1123 A61B5/14551 A61B5/165 A61B5/441 G06F3/011 G06F3/012 G06F3/013 G06F3/014 G06F3/015 G06F3/016 G06F3/017 G09B19/00		
审查员(译)	JACKSON , GARY		
优先权	1020090121185 2009-12-08 KR		
其他公开文献	US20110137137A1		
外部链接	Espacenet USPTO		

摘要(译)

本发明涉及一种情绪信号的感测装置及其方法，其能够通过收集生物信号和周围环境信号中的至少一个，向用户引导情绪状态以及共享来识别和分析情绪的变化。与授权人员的情感信息并在他们之间进行沟通。根据本发明实施例的情绪信号的感测装置包括感测信号处理器，感测信号处理器感测用户的多个生物信号和周围环境信号；情感信号处理器，为每个感测到的生物信号产生表示用户的情绪状态的情绪信号，并收集情绪信号以产生情绪指数；以及可选地将情绪信号和情绪指数发送到外部授权设备的情绪信号通信单元。

