



US008376945B2

(12) **United States Patent**
Hayter et al.

(10) **Patent No.:** **US 8,376,945 B2**
(45) **Date of Patent:** **Feb. 19, 2013**

(54) **METHOD AND SYSTEM FOR PROVIDING
CALIBRATION OF AN ANALYTE SENSOR IN
AN ANALYTE MONITORING SYSTEM**

(75) Inventors: **Gary Hayter**, Oakland, CA (US);
Kenneth J. Doniger, Menlo Park, CA
(US); **Erwin S. Budiman**, Fremont, CA
(US); **Songbiao Zhang**, Castro Valley,
CA (US); **John C. Mazza**, Pleasanton,
CA (US)

(73) Assignee: **Abbott Diabetes Care Inc.**, Alameda,
CA (US)

(*) Notice: Subject to any disclaimer, the term of this
patent is extended or adjusted under 35
U.S.C. 154(b) by 0 days.

3,949,388 A	4/1976	Fuller
4,036,749 A	7/1977	Anderson
4,055,175 A	10/1977	Clemens et al.
4,129,128 A	12/1978	McFarlane
4,245,634 A	1/1981	Albisser et al.
4,327,725 A	5/1982	Cortese et al.
4,344,438 A	8/1982	Schultz
4,349,728 A	9/1982	Phillips et al.
4,373,527 A	2/1983	Fischell
4,392,849 A	7/1983	Petre et al.
4,425,920 A	1/1984	Bourland et al.
4,431,004 A	2/1984	Bessman et al.
4,478,976 A	10/1984	Goertz et al.
4,494,950 A	1/1985	Fischell
4,509,531 A	4/1985	Ward
4,527,240 A	7/1985	Kvitash
4,538,616 A	9/1985	Rogoff
4,619,793 A	10/1986	Lee

(Continued)

(21) Appl. No.: **12/624,377**

(22) Filed: **Nov. 23, 2009**

(65) **Prior Publication Data**

US 2010/0064764 A1 Mar. 18, 2010

Related U.S. Application Data

(63) Continuation of application No. 11/463,582, filed on
Aug. 9, 2006, now Pat. No. 7,653,425.

(51) **Int. Cl.**
A61B 5/00 (2006.01)
A61B 5/05 (2006.01)

(52) **U.S. Cl.** **600/365; 600/347; 600/345; 600/309**

(58) **Field of Classification Search** **600/309,**
600/345-366

See application file for complete search history.

(56) **References Cited**

U.S. PATENT DOCUMENTS

3,581,062 A 5/1971 Aston
3,926,760 A 12/1975 Allen et al.

FOREIGN PATENT DOCUMENTS

DE 4401400 7/1995
EP 0098592 1/1984

(Continued)

OTHER PUBLICATIONS

European Patent Application No. 07813911.0, Extended European
Search Report mailed Dec. 23, 2010.

(Continued)

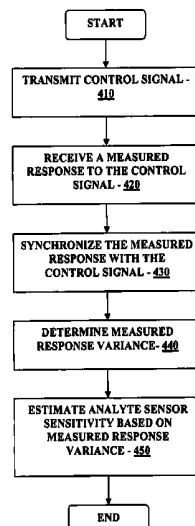
Primary Examiner — Navin Natnithithadha

(74) *Attorney, Agent, or Firm* — Jackson & Co., LLP

(57) **ABSTRACT**

Method and apparatus for providing calibration of analyte
sensor including applying a control signal, detecting a mea-
sured response to the control signal, determining a variance in
the detected measured response, and estimating a sensor sen-
sitivity based on the variance in the detected measured
response is provided.

34 Claims, 7 Drawing Sheets



US 8,376,945 B2

Page 2

U.S. PATENT DOCUMENTS

4,671,288	A	6/1987	Gough	5,965,380	A	10/1999	Heller et al.
4,703,756	A	11/1987	Gough et al.	5,971,922	A	10/1999	Arita et al.
4,731,726	A	3/1988	Allen, III	5,980,708	A	11/1999	Champagne et al.
4,749,985	A	6/1988	Corsberg	5,995,860	A	11/1999	Sun et al.
4,757,022	A	7/1988	Shults et al.	6,001,067	A	12/1999	Shults et al.
4,777,953	A	10/1988	Ash et al.	6,024,699	A	2/2000	Surwit et al.
4,779,618	A	10/1988	Mund et al.	6,049,727	A	4/2000	Crothall
4,854,322	A	8/1989	Ash et al.	6,083,710	A	7/2000	Heller et al.
4,871,351	A	10/1989	Feingold	6,088,608	A	7/2000	Schulman et al.
4,890,620	A	1/1990	Gough	6,091,976	A	7/2000	Pfeiffer et al.
4,925,268	A	5/1990	Iyer et al.	6,093,172	A	7/2000	Funderburk et al.
4,953,552	A	9/1990	DeMarzo	6,103,033	A	8/2000	Say et al.
4,986,271	A	1/1991	Wilkins	6,117,290	A	9/2000	Say et al.
4,995,402	A	2/1991	Smith et al.	6,119,028	A	9/2000	Schulman et al.
5,000,180	A	3/1991	Kuypers et al.	6,120,676	A	9/2000	Heller et al.
5,002,054	A	3/1991	Ash et al.	6,121,009	A	9/2000	Heller et al.
5,019,974	A	5/1991	Beckers	6,121,611	A	9/2000	Lindsay et al.
5,050,612	A	9/1991	Matsumura	6,122,351	A	9/2000	Schlueter, Jr. et al.
5,055,171	A	10/1991	Peck	6,134,461	A	10/2000	Say et al.
5,068,536	A	11/1991	Rosenthal	6,162,611	A	12/2000	Heller et al.
5,082,550	A	1/1992	Rishpon et al.	6,175,752	B1	1/2001	Say et al.
5,106,365	A	4/1992	Hernandez	6,200,265	B1	3/2001	Walsh et al.
5,122,925	A	6/1992	Inpyun	6,212,416	B1	4/2001	Ward et al.
5,165,407	A	11/1992	Wilson et al.	6,219,574	B1	4/2001	Cormier et al.
5,246,867	A	9/1993	Lakowicz et al.	6,233,471	B1	5/2001	Berner et al.
5,262,035	A	11/1993	Gregg et al.	6,248,067	B1	6/2001	Causey, III et al.
5,262,305	A	11/1993	Heller et al.	6,275,717	B1	8/2001	Gross et al.
5,264,104	A	11/1993	Gregg et al.	6,284,478	B1	9/2001	Heller et al.
5,264,105	A	11/1993	Gregg et al.	6,293,925	B1	9/2001	Safabash et al.
5,279,294	A	1/1994	Anderson et al.	6,295,506	B1	9/2001	Heinonen et al.
5,285,792	A	2/1994	Sjoquist et al.	6,299,347	B1	10/2001	Pompei
5,293,877	A	3/1994	O'Hara et al.	6,306,104	B1	10/2001	Cunningham et al.
5,299,571	A	4/1994	Mastrototaro	6,309,884	B1	10/2001	Cooper et al.
5,320,725	A	6/1994	Gregg et al.	6,329,161	B1	12/2001	Heller et al.
5,322,063	A	6/1994	Allen et al.	6,360,888	B1	3/2002	McIvor et al.
5,330,634	A *	7/1994	Wong et al. 205/777.5	6,366,794	B1	4/2002	Moussy et al.
5,340,722	A	8/1994	Wolfbeis et al.	6,377,828	B1	4/2002	Chaiken et al.
5,342,789	A	8/1994	Chick et al.	6,379,301	B1	4/2002	Worthington et al.
5,356,786	A	10/1994	Heller et al.	6,424,847	B1	7/2002	Mastrototaro et al.
5,360,404	A	11/1994	Novacek et al.	6,427,088	B1	7/2002	Bowman, IV et al.
5,372,427	A	12/1994	Padovani et al.	6,440,068	B1	8/2002	Brown et al.
5,379,238	A	1/1995	Stark	6,478,736	B1	11/2002	Mault
5,390,671	A	2/1995	Lord et al.	6,484,046	B1	11/2002	Say et al.
5,391,250	A	2/1995	Cheney, II et al.	6,514,718	B2	2/2003	Heller et al.
5,408,999	A	4/1995	Singh et al.	6,544,212	B2	4/2003	Galley et al.
5,411,647	A	5/1995	Johnson et al.	6,551,494	B1	4/2003	Heller et al.
5,425,868	A	6/1995	Pedersen	6,558,321	B1	5/2003	Burd et al.
5,429,602	A	7/1995	Hauser	6,558,351	B1	5/2003	Steil et al.
5,431,160	A	7/1995	Wilkins	6,560,471	B1	5/2003	Heller et al.
5,431,921	A	7/1995	Thombre	6,561,978	B1	5/2003	Conn et al.
5,462,645	A	10/1995	Albery et al.	6,562,001	B2	5/2003	Lebel et al.
5,497,772	A	3/1996	Schulman et al.	6,564,105	B2	5/2003	Starkweather et al.
5,505,828	A *	4/1996	Wong et al. 205/777.5	6,565,509	B1	5/2003	Say et al.
5,507,288	A	4/1996	Bocker et al.	6,571,128	B2	5/2003	Lebel et al.
5,509,410	A	4/1996	Hill et al.	6,572,545	B2	6/2003	Knobbe et al.
5,514,718	A	5/1996	Lewis et al.	6,576,101	B1	6/2003	Heller et al.
5,531,878	A	7/1996	Vadgama et al.	6,577,899	B2	6/2003	Lebel et al.
5,568,806	A	10/1996	Cheney, II et al.	6,579,690	B1	6/2003	Bonnecaze et al.
5,569,186	A	10/1996	Lord et al.	6,585,644	B2	7/2003	Lebel et al.
5,582,184	A	12/1996	Erickson et al.	6,591,125	B1	7/2003	Buse et al.
5,586,553	A	12/1996	Halili et al.	6,595,919	B2	7/2003	Berner et al.
5,593,852	A	1/1997	Heller et al.	6,605,200	B1	8/2003	Mao et al.
5,609,575	A	3/1997	Larson et al.	6,605,201	B1	8/2003	Mao et al.
5,628,310	A	5/1997	Rao et al.	6,607,509	B2	8/2003	Bobroff et al.
5,653,239	A	8/1997	Pompei et al.	6,610,012	B2	8/2003	Mault
5,665,222	A	9/1997	Heller et al.	6,633,772	B2	10/2003	Ford et al.
5,711,001	A	1/1998	Bussan et al.	6,635,014	B2	10/2003	Starkweather et al.
5,711,861	A	1/1998	Ward et al.	6,648,821	B2	11/2003	Lebel et al.
5,733,259	A	3/1998	Valcke et al.	6,654,625	B1	11/2003	Say et al.
5,772,586	A	6/1998	Heinonen et al.	6,656,114	B1	12/2003	Poulsen et al.
5,791,344	A	8/1998	Schulman et al.	6,659,948	B2	12/2003	Lebel et al.
5,842,189	A	11/1998	Keeler et al.	6,668,196	B1	12/2003	Villegas et al.
5,899,855	A	5/1999	Brown	6,687,546	B2	2/2004	Lebel et al.
5,925,021	A	7/1999	Castellano et al.	6,689,056	B1	2/2004	Kilcoyne et al.
5,935,224	A	8/1999	Svancarek et al.	6,694,191	B2	2/2004	Starkweather et al.
5,942,979	A	8/1999	Luppino	6,695,860	B1	2/2004	Ward et al.
5,957,854	A	9/1999	Besson et al.	6,698,269	B2	3/2004	Baber et al.
5,964,993	A	10/1999	Blubaugh, Jr. et al.	6,702,857	B2	3/2004	Brauker et al.
				6,733,446	B2	5/2004	Lebel et al.

US 8,376,945 B2

Page 3

6,740,075 B2	5/2004	Lebel et al.	7,632,228 B2	12/2009	Brauker et al.
6,740,518 B1	5/2004	Duong et al.	7,637,868 B2	12/2009	Saint et al.
6,741,877 B1	5/2004	Shults et al.	7,640,048 B2	12/2009	Dobbles et al.
6,746,582 B2	6/2004	Heller et al.	7,651,596 B2	1/2010	Petisce et al.
6,758,810 B2	7/2004	Lebel et al.	7,653,425 B2*	1/2010	Hayter et al. 600/345
6,770,030 B1	8/2004	Schaupp et al.	7,654,956 B2	2/2010	Brister et al.
6,790,178 B1	9/2004	Mault et al.	7,657,297 B2	2/2010	Simpson et al.
6,809,653 B1	10/2004	Mann et al.	7,711,402 B2	5/2010	Shults et al.
6,810,290 B2	10/2004	Lebel et al.	7,713,574 B2	5/2010	Brister et al.
6,811,533 B2	11/2004	Lebel et al.	7,715,893 B2	5/2010	Kamath et al.
6,811,534 B2	11/2004	Bowman, IV et al.	7,778,680 B2	8/2010	Goode et al.
6,813,519 B2	11/2004	Lebel et al.	7,920,906 B2	4/2011	Goode et al.
6,862,465 B2	3/2005	Shults et al.	2002/0019022 A1	2/2002	Dunn et al.
6,873,268 B2	3/2005	Lebel et al.	2002/0042090 A1	4/2002	Heller et al.
6,881,551 B2	4/2005	Heller et al.	2002/0103499 A1	8/2002	Perez et al.
6,892,085 B2	5/2005	McIvor et al.	2002/0106709 A1	8/2002	Potts et al.
6,895,263 B2	5/2005	Shin et al.	2002/0128594 A1	9/2002	Das et al.
6,895,265 B2	5/2005	Silver	2002/0161288 A1	10/2002	Shin et al.
6,931,327 B2	8/2005	Goode, Jr. et al.	2002/0169635 A1	11/2002	Shillingburg
6,932,894 B2	8/2005	Mao et al.	2003/0004403 A1	1/2003	Drinan et al.
6,936,006 B2	8/2005	Sabra	2003/0023317 A1	1/2003	Brauker et al.
6,950,708 B2	9/2005	Bowman, IV et al.	2003/0032874 A1	2/2003	Rhodes et al.
6,958,705 B2	10/2005	Lebel et al.	2003/0042137 A1	3/2003	Mao et al.
6,968,294 B2	11/2005	Gutta et al.	2003/0065308 A1	4/2003	Lebel et al.
6,971,274 B2	12/2005	Olin	2003/0100821 A1	5/2003	Heller et al.
6,974,437 B2	12/2005	Lebel et al.	2003/0125612 A1	7/2003	Fox et al.
6,983,176 B2	1/2006	Gardner et al.	2003/0130616 A1	7/2003	Steil et al.
6,990,366 B2	1/2006	Say et al.	2003/0134347 A1	7/2003	Heller et al.
6,997,907 B2	2/2006	Safabash et al.	2003/0168338 A1	9/2003	Gao et al.
6,998,247 B2	2/2006	Monfre et al.	2003/0176933 A1	9/2003	Lebel et al.
7,003,336 B2	2/2006	Holker et al.	2003/0187338 A1	10/2003	Say et al.
7,003,340 B2	2/2006	Say et al.	2003/0199790 A1	10/2003	Boecker et al.
7,003,341 B2	2/2006	Say et al.	2003/0208113 A1	11/2003	Mault et al.
7,022,072 B2	4/2006	Fox et al.	2003/0212317 A1	11/2003	Kovatchev et al.
7,024,245 B2	4/2006	Lebel et al.	2003/0212379 A1	11/2003	Bylund et al.
7,029,444 B2	4/2006	Shin et al.	2003/0216630 A1	11/2003	Jersey-Willuhn et al.
7,041,068 B2	5/2006	Freeman et al.	2003/0217966 A1	11/2003	Tapsak et al.
7,052,483 B2	5/2006	Wojcik	2004/0010207 A1	1/2004	Flaherty et al.
7,056,302 B2	6/2006	Douglas	2004/0011671 A1	1/2004	Shults et al.
7,074,307 B2	7/2006	Simpson et al.	2004/0039298 A1	2/2004	Abreu
7,081,195 B2	7/2006	Simpson et al.	2004/0040840 A1	3/2004	Mao et al.
7,098,803 B2	8/2006	Mann et al.	2004/0045879 A1	3/2004	Shults et al.
7,108,778 B2	9/2006	Simpson et al.	2004/0064068 A1	4/2004	DeNuzzio et al.
7,110,803 B2	9/2006	Shults et al.	2004/0106858 A1	6/2004	Say et al.
7,113,821 B1	9/2006	Sun et al.	2004/0122353 A1	6/2004	Shahmirian et al.
7,118,667 B2	10/2006	Lee	2004/0133164 A1	7/2004	Funderburk et al.
7,134,999 B2	11/2006	Brauker et al.	2004/0138588 A1	7/2004	Saikley et al.
7,136,689 B2	11/2006	Shults et al.	2004/0146909 A1	7/2004	Duong et al.
7,171,274 B2	1/2007	Starkweather et al.	2004/0152622 A1	8/2004	Keith et al.
7,190,988 B2	3/2007	Say et al.	2004/0167464 A1	8/2004	Ireland et al.
7,192,450 B2	3/2007	Brauker et al.	2004/0167801 A1	8/2004	Say et al.
7,198,606 B2	4/2007	Boecker et al.	2004/0171921 A1	9/2004	Say et al.
7,225,535 B2	6/2007	Feldman et al.	2004/0176672 A1	9/2004	Silver et al.
7,226,978 B2	6/2007	Tapsak et al.	2004/0186362 A1	9/2004	Brauker et al.
7,267,665 B2	9/2007	Steil et al.	2004/0186365 A1	9/2004	Jin et al.
7,276,029 B2	10/2007	Goode, Jr. et al.	2004/0193025 A1	9/2004	Steil et al.
7,299,082 B2	11/2007	Feldman et al.	2004/0193090 A1	9/2004	Lebel et al.
7,310,544 B2	12/2007	Brister et al.	2004/0197846 A1	10/2004	Hockersmith et al.
7,335,294 B2	2/2008	Heller et al.	2004/0199059 A1	10/2004	Brauker et al.
7,354,420 B2	4/2008	Steil et al.	2004/0204687 A1	10/2004	Mogensen et al.
7,364,592 B2	4/2008	Carr-Brendel et al.	2004/0219664 A1	11/2004	Heller et al.
7,366,556 B2	4/2008	Brister et al.	2004/0225338 A1	11/2004	Lebel et al.
7,379,765 B2	5/2008	Petisce et al.	2004/0236200 A1	11/2004	Say et al.
7,402,153 B2	7/2008	Steil et al.	2004/0254433 A1	12/2004	Bandis et al.
7,424,318 B2	9/2008	Brister et al.	2004/0267300 A1	12/2004	Mace
7,460,898 B2	12/2008	Brister et al.	2005/0004439 A1	1/2005	Shin et al.
7,467,003 B2	12/2008	Brister et al.	2005/0004494 A1	1/2005	Perez et al.
7,471,972 B2	12/2008	Rhodes et al.	2005/0010269 A1	1/2005	Lebel et al.
7,494,465 B2	2/2009	Brister et al.	2005/0027177 A1	2/2005	Shin et al.
7,497,827 B2	3/2009	Brister et al.	2005/0027181 A1	2/2005	Goode et al.
7,519,408 B2	4/2009	Rasdal et al.	2005/0031689 A1	2/2005	Shults et al.
7,547,281 B2	6/2009	Hayes et al.	2005/0038332 A1	2/2005	Saidara et al.
7,569,030 B2	8/2009	Lebel et al.	2005/0043598 A1	2/2005	Goode, Jr. et al.
7,583,990 B2	9/2009	Goode, Jr. et al.	2005/0070777 A1	3/2005	Cho et al.
7,591,801 B2	9/2009	Brauker et al.	2005/0090607 A1	4/2005	Tapsak et al.
7,599,726 B2	10/2009	Goode, Jr. et al.	2005/0096511 A1	5/2005	Fox et al.
7,613,491 B2	11/2009	Boock et al.	2005/0096512 A1	5/2005	Fox et al.
7,615,007 B2	11/2009	Shults et al.	2005/0112169 A1	5/2005	Brauker et al.
7,618,369 B2	11/2009	Hayter et al.	2005/0113653 A1	5/2005	Fox et al.

2005/0114068	A1	5/2005	Chey et al.	2007/0179349	A1	8/2007	Hoyme et al.
2005/0121322	A1	6/2005	Say et al.	2007/0179352	A1	8/2007	Randlov et al.
2005/0131346	A1	6/2005	Douglas	2007/0191701	A1	8/2007	Feldman et al.
2005/0143635	A1	6/2005	Kamath et al.	2007/0203407	A1	8/2007	Hoss et al.
2005/0176136	A1	8/2005	Burd et al.	2007/0203966	A1	8/2007	Brauker et al.
2005/0177398	A1	8/2005	Watanabe et al.	2007/0235331	A1	10/2007	Simpson et al.
2005/0182306	A1	8/2005	Sloan	2007/0249922	A1	10/2007	Peyser et al.
2005/0187720	A1	8/2005	Goode, Jr. et al.	2007/0271285	A1	11/2007	Eichorn et al.
2005/0192494	A1	9/2005	Ginsberg	2007/0299617	A1 *	12/2007	Willis 702/19
2005/0192557	A1	9/2005	Brauker et al.	2008/0009692	A1	1/2008	Stafford
2005/0195930	A1	9/2005	Spital et al.	2008/0017522	A1	1/2008	Heller et al.
2005/0199494	A1	9/2005	Say et al.	2008/0021666	A1	1/2008	Goode, Jr. et al.
2005/0203360	A1	9/2005	Brauker et al.	2008/0029391	A1	2/2008	Mao et al.
2005/0239154	A1	10/2005	Feldman et al.	2008/0033254	A1	2/2008	Kamath et al.
2005/0241957	A1	11/2005	Mao et al.	2008/0039702	A1	2/2008	Hayter et al.
2005/0245795	A1	11/2005	Goode, Jr. et al.	2008/0045824	A1	2/2008	Tapsak et al.
2005/0245799	A1	11/2005	Brauker et al.	2008/0058625	A1	3/2008	McGarraugh et al.
2005/0245839	A1	11/2005	Stivoric et al.	2008/0064937	A1	3/2008	McGarraugh et al.
2005/0245904	A1	11/2005	Estes et al.	2008/0071156	A1	3/2008	Brister et al.
2005/0287620	A1	12/2005	Heller et al.	2008/0071157	A1	3/2008	McGarraugh et al.
2006/0001538	A1	1/2006	Kraft et al.	2008/0071158	A1	3/2008	McGarraugh et al.
2006/0004270	A1	1/2006	Bedard et al.	2008/0081977	A1	4/2008	Hayter et al.
2006/0015020	A1	1/2006	Neale et al.	2008/0083617	A1	4/2008	Simpson et al.
2006/0015024	A1	1/2006	Brister et al.	2008/0086042	A1	4/2008	Brister et al.
2006/0016700	A1	1/2006	Brister et al.	2008/0086044	A1	4/2008	Brister et al.
2006/0019327	A1	1/2006	Brister et al.	2008/0086273	A1	4/2008	Shults et al.
2006/0020186	A1	1/2006	Brister et al.	2008/0097289	A1	4/2008	Steil et al.
2006/0020187	A1	1/2006	Brister et al.	2008/0108942	A1	5/2008	Brister et al.
2006/0020188	A1	1/2006	Kamath et al.	2008/0154513	A1	6/2008	Kovatchev et al.
2006/0020189	A1	1/2006	Brister et al.	2008/0167543	A1	7/2008	Say et al.
2006/0020190	A1	1/2006	Kamath et al.	2008/0172205	A1	7/2008	Breton et al.
2006/0020191	A1	1/2006	Brister et al.	2008/0182537	A1	7/2008	Manku et al.
2006/0020192	A1	1/2006	Brister et al.	2008/0183060	A1	7/2008	Steil et al.
2006/0029177	A1	2/2006	Cranford, Jr. et al.	2008/0183061	A1	7/2008	Goode et al.
2006/0031094	A1	2/2006	Cohen et al.	2008/0183399	A1	7/2008	Goode et al.
2006/0036139	A1	2/2006	Brister et al.	2008/0188731	A1	8/2008	Brister et al.
2006/0036140	A1	2/2006	Brister et al.	2008/0188796	A1	8/2008	Steil et al.
2006/0036141	A1	2/2006	Kamath et al.	2008/0189051	A1	8/2008	Goode et al.
2006/0036142	A1	2/2006	Brister et al.	2008/0194935	A1	8/2008	Brister et al.
2006/0036143	A1	2/2006	Brister et al.	2008/0194936	A1	8/2008	Goode et al.
2006/0036144	A1	2/2006	Brister et al.	2008/0194937	A1	8/2008	Goode et al.
2006/0036145	A1	2/2006	Brister et al.	2008/0194938	A1	8/2008	Brister et al.
2006/0155180	A1	7/2006	Brister et al.	2008/0195232	A1	8/2008	Carr-Brendel et al.
2006/0156796	A1	7/2006	Burke et al.	2008/0195967	A1	8/2008	Goode et al.
2006/0166629	A1	7/2006	Reggiardo	2008/0197024	A1	8/2008	Simpson et al.
2006/0173260	A1	8/2006	Gaoni et al.	2008/0200788	A1	8/2008	Brister et al.
2006/0173406	A1	8/2006	Hayes et al.	2008/0200789	A1	8/2008	Brister et al.
2006/0173444	A1	8/2006	Choy et al.	2008/0200791	A1	8/2008	Simpson et al.
2006/0183985	A1	8/2006	Brister et al.	2008/0208025	A1	8/2008	Shults et al.
2006/0189863	A1	8/2006	Peyser et al.	2008/0208113	A1	8/2008	Damiano et al.
2006/0211072	A1	9/2006	Ryan et al.	2008/0214915	A1	9/2008	Brister et al.
2006/0222566	A1	10/2006	Brauker et al.	2008/0214918	A1	9/2008	Brister et al.
2006/0224109	A1	10/2006	Steil et al.	2008/0228051	A1	9/2008	Shults et al.
2006/0229512	A1	10/2006	Petisce et al.	2008/0228054	A1	9/2008	Shults et al.
2006/0247508	A1	11/2006	Fennell	2008/0234663	A1	9/2008	Yodfat et al.
2006/0253296	A1	11/2006	Liisberg et al.	2008/0242961	A1	10/2008	Brister et al.
2006/0272652	A1	12/2006	Stocker et al.	2008/0255434	A1	10/2008	Hayter et al.
2006/0281985	A1	12/2006	Ward et al.	2008/0255437	A1	10/2008	Hayter
2007/0010950	A1	1/2007	Abensour et al.	2008/0255808	A1	10/2008	Hayter
2007/0016381	A1	1/2007	Kamath et al.	2008/0256048	A1	10/2008	Hayter
2007/0027381	A1	2/2007	Stafford	2008/0262469	A1	10/2008	Brister et al.
2007/0032706	A1	2/2007	Kamath et al.	2008/0275313	A1	11/2008	Brister et al.
2007/0033074	A1	2/2007	Nitzan et al.	2008/0287761	A1	11/2008	Hayter
2007/0060814	A1	3/2007	Stafford	2008/0287762	A1	11/2008	Hayter
2007/0066873	A1	3/2007	Kamath et al.	2008/0287763	A1	11/2008	Hayter
2007/0071681	A1	3/2007	Gadkar et al.	2008/0287764	A1	11/2008	Rasdal et al.
2007/0073129	A1	3/2007	Shah et al.	2008/0287765	A1	11/2008	Rasdal et al.
2007/0078320	A1	4/2007	Stafford	2008/0287766	A1	11/2008	Rasdal et al.
2007/0078321	A1	4/2007	Mazza et al.	2008/0288180	A1	11/2008	Hayter
2007/0078322	A1	4/2007	Stafford	2008/0288204	A1	11/2008	Hayter et al.
2007/0078323	A1	4/2007	Reggiardo et al.	2008/0296155	A1	12/2008	Shults et al.
2007/0094216	A1	4/2007	Mathias et al.	2008/0306368	A1	12/2008	Goode et al.
2007/0106135	A1	5/2007	Sloan et al.	2008/0306434	A1	12/2008	Dobbles et al.
2007/0124002	A1	5/2007	Estes et al.	2008/0306435	A1	12/2008	Kamath et al.
2007/0149875	A1	6/2007	Ouyang et al.	2008/0306444	A1	12/2008	Brister et al.
2007/0163880	A1	7/2007	Woo et al.	2008/0312841	A1	12/2008	Hayter
2007/0168224	A1	7/2007	Letzt et al.	2008/0312842	A1	12/2008	Hayter
2007/0173706	A1	7/2007	Neinast et al.	2008/0312844	A1	12/2008	Hayter et al.
2007/0173761	A1	7/2007	Kanderian et al.	2008/0312845	A1	12/2008	Hayter et al.

2009/0005665	A1	1/2009	Hayter et al.	2010/0030053	A1	2/2010	Goode, Jr. et al.
2009/0006034	A1	1/2009	Hayter et al.	2010/0030484	A1	2/2010	Brauker et al.
2009/0012379	A1	1/2009	Goode et al.	2010/0030485	A1	2/2010	Brauker et al.
2009/0018424	A1	1/2009	Kamath et al.	2010/0036215	A1	2/2010	Goode, Jr. et al.
2009/0018425	A1	1/2009	Ouyang et al.	2010/0036216	A1	2/2010	Goode, Jr. et al.
2009/0030294	A1	1/2009	Petisce et al.	2010/0036222	A1	2/2010	Goode, Jr. et al.
2009/0033482	A1	2/2009	Hayter et al.	2010/0036223	A1	2/2010	Goode, Jr. et al.
2009/0036747	A1	2/2009	Hayter et al.	2010/0036225	A1	2/2010	Goode, Jr. et al.
2009/0036758	A1	2/2009	Brauker et al.	2010/0041971	A1	2/2010	Goode, Jr. et al.
2009/0036760	A1	2/2009	Hayter	2010/0045465	A1	2/2010	Brauker et al.
2009/0036763	A1	2/2009	Brauker et al.	2010/0049024	A1	2/2010	Saint et al.
2009/0043181	A1	2/2009	Brauker et al.	2010/0057040	A1	3/2010	Hayter
2009/0043182	A1	2/2009	Brauker et al.	2010/0057041	A1	3/2010	Hayter
2009/0043525	A1	2/2009	Brauker et al.	2010/0057042	A1	3/2010	Hayter
2009/0043541	A1	2/2009	Brauker et al.	2010/0057044	A1	3/2010	Hayter
2009/0043542	A1	2/2009	Brauker et al.	2010/0057057	A1	3/2010	Hayter et al.
2009/0045055	A1	2/2009	Rhodes et al.	2010/0063373	A1	3/2010	Kamath et al.
2009/0055149	A1	2/2009	Hayter et al.	2010/0076283	A1	3/2010	Simpson et al.
2009/0062633	A1	3/2009	Brauker et al.	2010/0081906	A1	4/2010	Hayter et al.
2009/0062635	A1	3/2009	Brauker et al.	2010/0081908	A1	4/2010	Dobbles et al.
2009/0062767	A1	3/2009	VanAntwerp et al.	2010/0081910	A1	4/2010	Brister et al.
2009/0063402	A1	3/2009	Hayter	2010/0087724	A1	4/2010	Brauker et al.
2009/0076356	A1	3/2009	Simpson et al.	2010/0096259	A1	4/2010	Zhang et al.
2009/0076360	A1	3/2009	Brister et al.	2010/0099970	A1	4/2010	Shults et al.
2009/0076361	A1	3/2009	Kamath et al.	2010/0099971	A1	4/2010	Shults et al.
2009/0088614	A1	4/2009	Taub	2010/0119693	A1	5/2010	Tapsak et al.
2009/0099436	A1	4/2009	Brister et al.	2010/0121169	A1	5/2010	Petisce et al.
2009/0105636	A1	4/2009	Hayter et al.	2010/0240975	A1	9/2010	Goode et al.
2009/0124877	A1	5/2009	Goode et al.				
2009/0124878	A1	5/2009	Goode et al.				
2009/0124879	A1	5/2009	Brister et al.				
2009/0124964	A1	5/2009	Leach et al.				
2009/0131768	A1	5/2009	Simpson et al.				
2009/0131769	A1	5/2009	Leach et al.				
2009/0131776	A1	5/2009	Simpson et al.				
2009/0131777	A1	5/2009	Simpson et al.				
2009/0137886	A1	5/2009	Shariati et al.				
2009/0137887	A1	5/2009	Shariati et al.				
2009/0143659	A1	6/2009	Li et al.				
2009/0143660	A1	6/2009	Brister et al.				
2009/0156919	A1	6/2009	Brister et al.				
2009/0156924	A1	6/2009	Shariati et al.				
2009/0163790	A1	6/2009	Brister et al.				
2009/0163791	A1	6/2009	Brister et al.				
2009/0164190	A1	6/2009	Hayter				
2009/0164239	A1	6/2009	Hayter et al.				
2009/0164251	A1	6/2009	Hayter				
2009/0178459	A1	7/2009	Li et al.				
2009/0182217	A1	7/2009	Li et al.				
2009/0192366	A1	7/2009	Mensinger et al.				
2009/0192380	A1	7/2009	Shariati et al.				
2009/0192722	A1	7/2009	Shariati et al.				
2009/0192724	A1	7/2009	Brauker et al.				
2009/0192745	A1	7/2009	Kamath et al.				
2009/0192751	A1	7/2009	Kamath et al.				
2009/0198118	A1	8/2009	Hayter et al.				
2009/0203981	A1	8/2009	Brauker et al.				
2009/0204341	A1	8/2009	Brauker et al.				
2009/0216103	A1	8/2009	Brister et al.				
2009/0240120	A1	9/2009	Mensinger et al.				
2009/0240128	A1	9/2009	Mensinger et al.				
2009/0240193	A1	9/2009	Mensinger et al.				
2009/0242399	A1	10/2009	Kamath et al.				
2009/0242425	A1	10/2009	Kamath et al.				
2009/0247855	A1	10/2009	Boock et al.				
2009/0247856	A1	10/2009	Boock et al.				
2009/0287073	A1	11/2009	Boock et al.				
2009/0287074	A1	11/2009	Shults et al.				
2009/0299155	A1	12/2009	Yang et al.				
2009/0299156	A1	12/2009	Simpson et al.				
2009/0299162	A1	12/2009	Brauker et al.				
2009/0299276	A1	12/2009	Brauker et al.				
2010/0010324	A1	1/2010	Brauker et al.				
2010/0010331	A1	1/2010	Brauker et al.				
2010/0010332	A1	1/2010	Brauker et al.				
2010/0016687	A1	1/2010	Brauker et al.				
2010/0016698	A1	1/2010	Rasdal et al.				
2010/0022855	A1	1/2010	Brauker et al.				
2010/0030038	A1	2/2010	Brauker et al.				

FOREIGN PATENT DOCUMENTS

EP	0127958	12/1984
EP	0320109	6/1989
EP	0353328	2/1990
EP	0390390	10/1990
EP	0396788	11/1990
EP	0286118	1/1995
EP	1048264	11/2000
WO	WO-93/06237	4/1993
WO	WO-96/25089	8/1996
WO	WO-96/35370	11/1996
WO	WO-98/35053	8/1998
WO	WO-99/56613	11/1999
WO	WO-00/49940	8/2000
WO	WO-00/59370	10/2000
WO	WO-00/78992	12/2000
WO	WO-01/52935	7/2001
WO	WO-01/54753	8/2001
WO	WO-02/16905	2/2002
WO	WO-02/058537	8/2002
WO	WO-03/076893	9/2003
WO	WO-03/082091	10/2003
WO	WO-03/085372	10/2003
WO	WO-2004/061420	7/2004
WO	WO-2005/040404	5/2005
WO	WO-2005/041766	5/2005
WO	WO-2005/089103	9/2005
WO	WO-2006/024671	3/2006
WO	WO-2006/079114	7/2006
WO	WO-2006/118947	11/2006
WO	WO-2007/016399	2/2007
WO	WO-2007/027788	3/2007
WO	WO-2007/041069	4/2007
WO	WO-2007/041070	4/2007
WO	WO-2007/041248	4/2007
WO	WO-2007/056638	5/2007
WO	WO-2007/101223	9/2007
WO	WO-2007/120363	10/2007
WO	WO-2007/126444	11/2007
WO	WO-2007/053832	12/2007
WO	WO-2007/143225	12/2007
WO	WO-2008/021913	2/2008
WO	WO-2008/042760	4/2008
WO	WO-2008/128210	10/2008
WO	WO-2008/130896	10/2008
WO	WO-2008/130897	10/2008
WO	WO-2008/130898	10/2008
WO	WO-2008/143943	11/2008
WO	WO-2009/018058	2/2009

WO	WO-2009/086216	7/2009
WO	WO-2009/096992	8/2009
WO	WO-2009/097594	8/2009

OTHER PUBLICATIONS

- Armour, J. C., et al., "Application of Chronic Intravascular Blood Glucose Sensor in Dogs", *Diabetes*, vol. 39, 1990, pp. 1519-1526.
- Bennion, N., et al., "Alternate Site Glucose Testing: A Crossover Design", *Diabetes Technology & Therapeutics*, vol. 4, No. 1, 2002, pp. 25-33.
- Blank, T. B., et al., "Clinical Results From a Non-Invasive Blood Glucose Monitor", *Optical Diagnostics and Sensing of Biological Fluids and Glucose and Cholesterol Monitoring II, Proceedings of SPIE*, vol. 4624, 2002, pp. 1-10.
- Brooks, S. L., et al., "Development of an On-Line Glucose Sensor for Fermentation Monitoring", *Biosensors*, vol. 3, 1987/88, pp. 45-56.
- Cass, A. E., et al., "Ferrocene-Mediated Enzyme Electrode for Amperometric Determination of Glucose", *Analytical Chemistry*, vol. 56 No. 4, 1984, 667-671.
- Csoregi, E., et al., "Design and Optimization of a Selective Subcutaneously Implantable Glucose Electrode Based on 'Wired' Glucose Oxidase", *Analytical Chemistry*, vol. 67, No. 7, 1995, pp. 1240-1244.
- El-Khatib, F. H., et al., "Adaptive Closed-Loop Control Provides Blood-Glucose Regulation Using Subcutaneous Insulin and Glucagon Infusion in Diabetic Swine", *Journal of Diabetes Science and Technology*, vol. 1, No. 2, 2007, pp. 181-192.
- Feldman, B., et al., "A Continuous Glucose Sensor Based on Wired Enzyme™ Technology—Results from a 3-Day Trial in Patients with Type 1 Diabetes", *Diabetes Technology & Therapeutics*, vol. 5, No. 5, 2003, pp. 769-779.
- Feldman, B., et al., "Correlation of Glucose Concentrations in Interstitial Fluid and Venous Blood During Periods of Rapid Glucose Change", *Abbott Diabetes Care, Inc. Freestyle Navigator Continuous Glucose Monitor Pamphlet*, 2004.
- Isermann, R., "Supervision, Fault-Detection and Fault-Diagnosis Methods—An Introduction", *Control Engineering Practice*, vol. 5, No. 5, 1997, pp. 639-652.
- Isermann, R., et al., "Trends in the Application of Model-Based Fault Detection and Diagnosis of Technical Processes", *Control Engineering Practice*, vol. 5, No. 5, 1997, pp. 709-719.
- Johnson, P. C., "Peripheral Circulation", *John Wiley & Sons*, 1978, pp. 198.
- Jungheim, K., et al., "How Rapid Does Glucose Concentration Change in Daily Life of Patients with Type 1 Diabetes?", 2002, pp. 250.
- Jungheim, K., et al., "Risky Delay of Hypoglycemia Detection by Glucose Monitoring at the Arm", *Diabetes Care*, vol. 24, No. 7, 2001, pp. 1303-1304.
- Kaplan, S. M., "Wiley Electrical and Electronics Engineering Dictionary", *IEEE Press*, 2004, pp. 141, 142, 548, 549.
- Lortz, J., et al., "What is Bluetooth? We Explain the Newest Short-Range Connectivity Technology", *Smart Computing Learning Series, Wireless Computing*, vol. 8, Issue 5, 2002, pp. 72-74.
- Malin, S. F., et al., "Noninvasive Prediction of Glucose by Near-Infrared Diffuse Reflectance Spectroscopy", *Clinical Chemistry*, vol. 45, No. 9, 1999, pp. 1651-1658.
- McGarraugh, G., et al., "Glucose Measurements Using Blood Extracted from the Forearm and the Finger", *TheraSense, Inc.*, 2001, 16 Pages.
- McGarraugh, G., et al., "Physiological Influences on Off-Finger Glucose Testing", *Diabetes Technology & Therapeutics*, vol. 3, No. 3, 2001, pp. 367-376.
- McKean, B. D., et al., "A Telemetry-Instrumentation System for Chronically Implanted Glucose and Oxygen Sensors", *IEEE Transactions on Biomedical Engineering*, vol. 35, No. 7, 1988, pp. 526-532.
- Pickup, J., et al., "Implantable Glucose Sensors: Choosing the Appropriate Sensing Strategy", *Biosensors*, vol. 3, 1987/88, pp. 335-346.
- Pickup, J., et al., "In Vivo Molecular Sensing in Diabetes Mellitus: An Implantable Glucose Sensor with Direct Electron Transfer", *Diabetologia*, vol. 32, 1989, pp. 213-217.
- Pishko, M. V., et al., "Amperometric Glucose Microelectrodes Prepared Through Immobilization of Glucose Oxidase in Redox Hydrogels", *Analytical Chemistry*, vol. 63, No. 20, 1991, pp. 2268-2272.
- Quinn, C. P., et al., "Kinetics of Glucose Delivery to Subcutaneous Tissue in Rats Measured with 0.3-mm Amperometric Microsensors", *The American Physiological Society*, 1995, E155-E161.
- Roe, J. N., et al., "Bloodless Glucose Measurements", *Critical Review in Therapeutic Drug Carrier Systems*, vol. 15, Issue 3, 1998, pp. 199-241.
- Sakakida, M., et al., "Development of Ferrocene-Mediated Needle-Type Glucose Sensor as a Measure of True Subcutaneous Tissue Glucose Concentrations", *Artificial Organs Today*, vol. 2, No. 2, 1992, pp. 145-158.
- Sakakida, M., et al., "Ferrocene-Mediated Needle-Type Glucose Sensor Covered with Newly Designed Biocompatible Membrane", *Sensors and Actuators B*, vol. 13-14, 1993, pp. 319-322.
- Salehi, C., et al., "A Telemetry-Instrumentation System for Long-Term Implantable Glucose and Oxygen Sensors", *Analytical Letters*, vol. 29, No. 13, 1996, pp. 2289-2308.
- Schmidtke, D. W., et al., "Measurement and Modeling of the Transient Difference Between Blood and Subcutaneous Glucose Concentrations in the Rat After Injection of Insulin", *Proceedings of the National Academy of Sciences*, vol. 95, 1998, pp. 294-299.
- Shaw, G. W., et al., "In Vitro Testing of a Simply Constructed, Highly Stable Glucose Sensor Suitable for Implantation in Diabetic Patients", *Biosensors & Bioelectronics*, vol. 6, 1991, pp. 401-406.
- Shichiri, M., et al., "Glycaemic Control in Pancreatectomized Dogs with a Wearable Artificial Endocrine Pancreas", *Diabetologia*, vol. 24, 1983, pp. 179-184.
- Shichiri, M., et al., "In Vivo Characteristics of Needle-Type Glucose Sensor—Measurements of Subcutaneous Glucose Concentrations in Human Volunteers", *Hormone and Metabolic Research Supplement Series*, vol. 20, 1988, pp. 17-20.
- Shichiri, M., et al., "Membrane Design for Extending the Long-Life of an Implantable Glucose Sensor", *Diabetes Nutrition and Metabolism*, vol. 2, 1989, pp. 309-313.
- Shichiri, M., et al., "Needle-type Glucose Sensor for Wearable Artificial Endocrine Pancreas", *Implantable Sensors for Closed-Loop Prosthetic Systems*, Chapter 15, 1985, pp. 197-210.
- Shichiri, M., et al., "Telemetry Glucose Monitoring Device With Needle-Type Glucose Sensor: A Useful Tool for Blood Glucose Monitoring in Diabetic Individuals", *Diabetes Care*, vol. 9, No. 3, 1986, pp. 298-301.
- Shichiri, M., et al., "Wearable Artificial Endocrine Pancreas With Needle-Type Glucose Sensor", *The Lancet*, 1982, pp. 1129-1131.
- Shults, M. C., et al., "A Telemetry-Instrumentation System for Monitoring Multiple Subcutaneously Implanted Glucose Sensors", *IEEE Transactions on Biomedical Engineering*, vol. 41, No. 10, 1994, pp. 937-942.
- Sternberg, R., et al., "Study and Development of Multilayer Needle-Type Enzyme-Based Glucose Microsensors", *Biosensors*, vol. 4, 1988, pp. 27-40.
- Thompson, M., et al., "In Vivo Probes: Problems and Perspectives", *Clinical Biochemistry*, vol. 19, 1986, pp. 255-261.
- Turner, A., et al., "Diabetes Mellitus: Biosensors for Research and Management", *Biosensors*, vol. 1, 1985, pp. 85-115.
- Updike, S. J., et al., "Principles of Long-Term Fully Implanted Sensors with Emphasis on Radiotelemetric Monitoring of Blood Glucose

from Inside a Subcutaneous Foreign Body Capsule (FBC)", *Biosensors in the Body: Continuous in vivo Monitoring*, Chapter 4, 1997, pp. 117-137.

Velho, G., et al., "Strategies for Calibrating a Subcutaneous Glucose Sensor", *Biomedica Biochimica Acta*, vol. 48, 1989, pp. 957-964.

Wilson, G. S., et al., "Progress Toward the Development of an Implantable Sensor for Glucose", *Clinical Chemistry*, vol. 38, No. 9, 1992, pp. 1613-1617.

PCT Application No. PCT/US2007/075522, International Preliminary Report on Patentability and Written Opinion of the International Searching Authority, mailed Feb. 19, 2009.

PCT Application No. PCT/US2007/075522, International Search Report and Written Opinion of the International Searching Authority, mailed Sep. 24, 2008.

U.S. Appl. No. 11/463,582, Notice of Allowance mailed Nov. 23, 2009.

U.S. Appl. No. 11/463,582, Supplemental Notice of Allowance mailed Dec. 22, 2009.

U.S. Appl. No. 11/463,582, Office Action mailed Aug. 29, 2008.

U.S. Appl. No. 11/463,582, Office Action mailed Oct. 9, 2009.

Aussedat, B., et al., "A User-Friendly Method for Calibrating a Subcutaneous Glucose Sensor-Based Hypoglycaemic Alarm", *Biosensors & Bioelectronics*, vol. 12, No. 11, 1997, pp. 1061-1070.

Garg, S., et al., "Improvement in Glycemic Excursions with a Transcutaneous, Real-Time Continuous Glucose Sensor", *Diabetes Care*, vol. 29, No. 1, 2006, pp. 44-50.

* cited by examiner

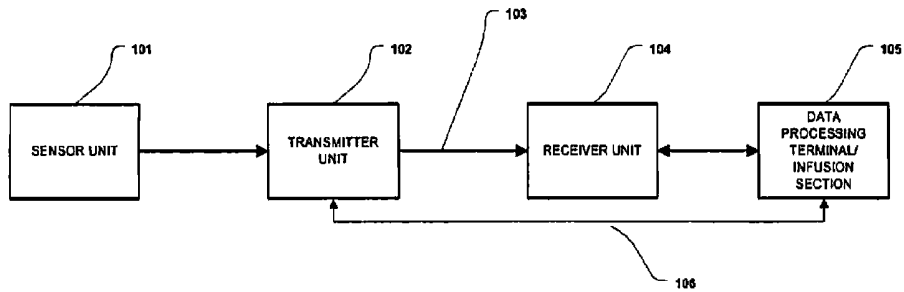
100

FIGURE 1

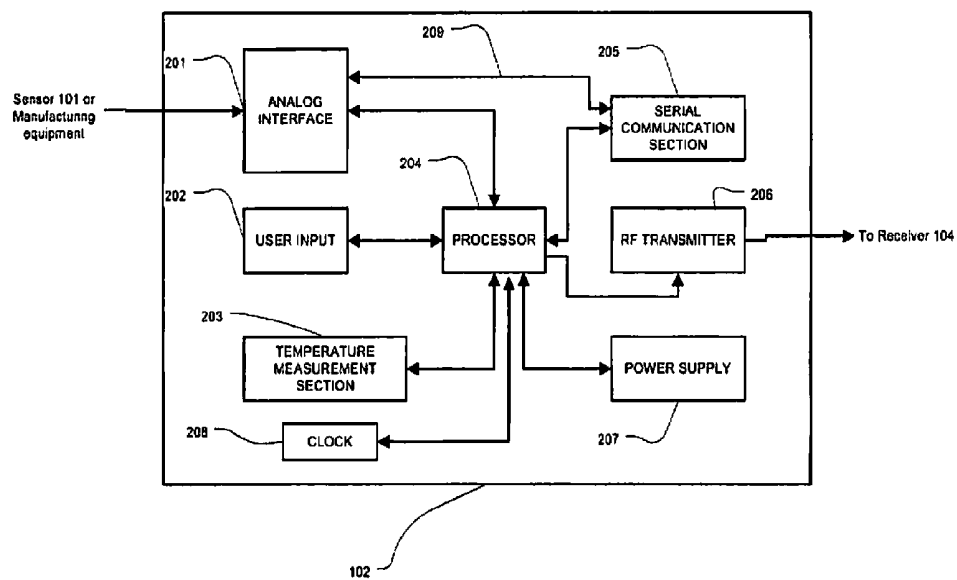


FIGURE 2

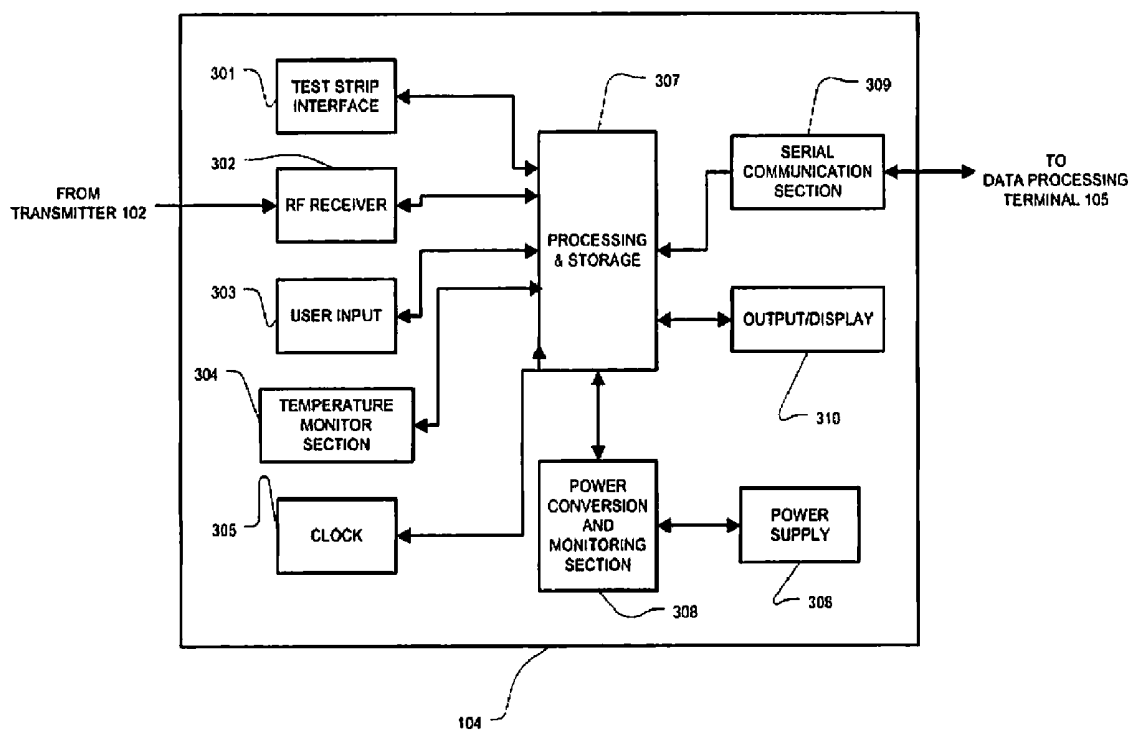
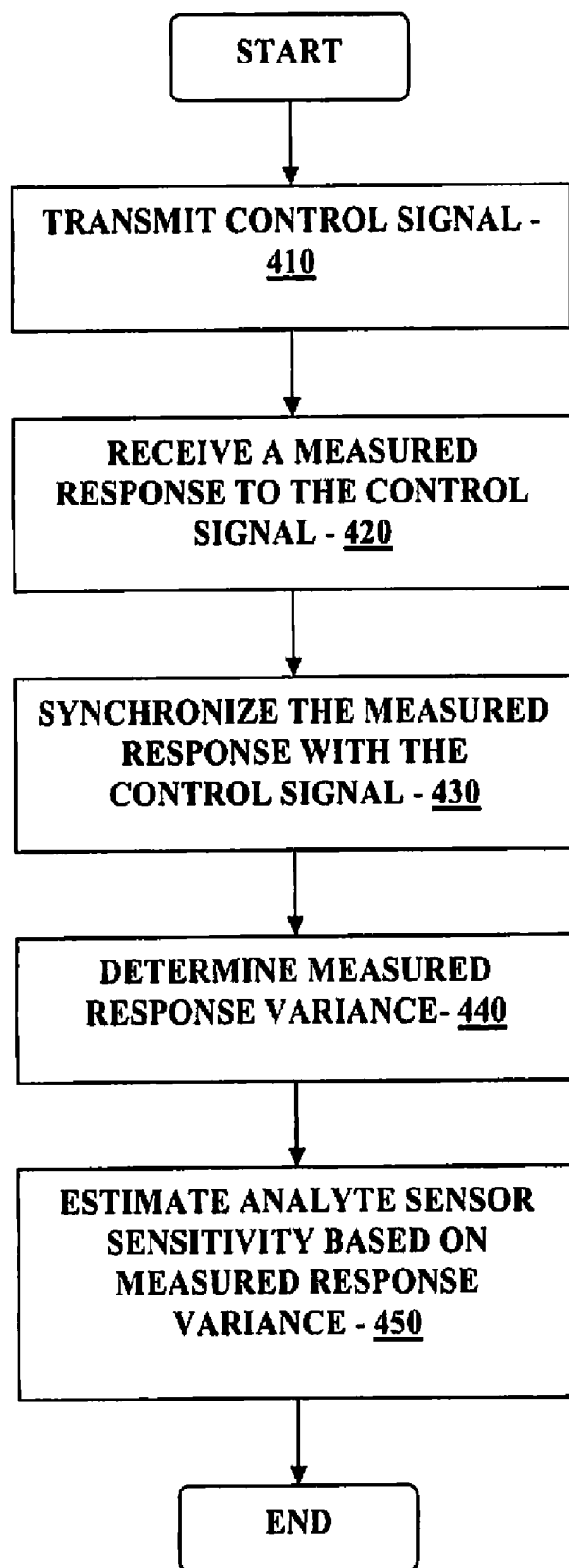
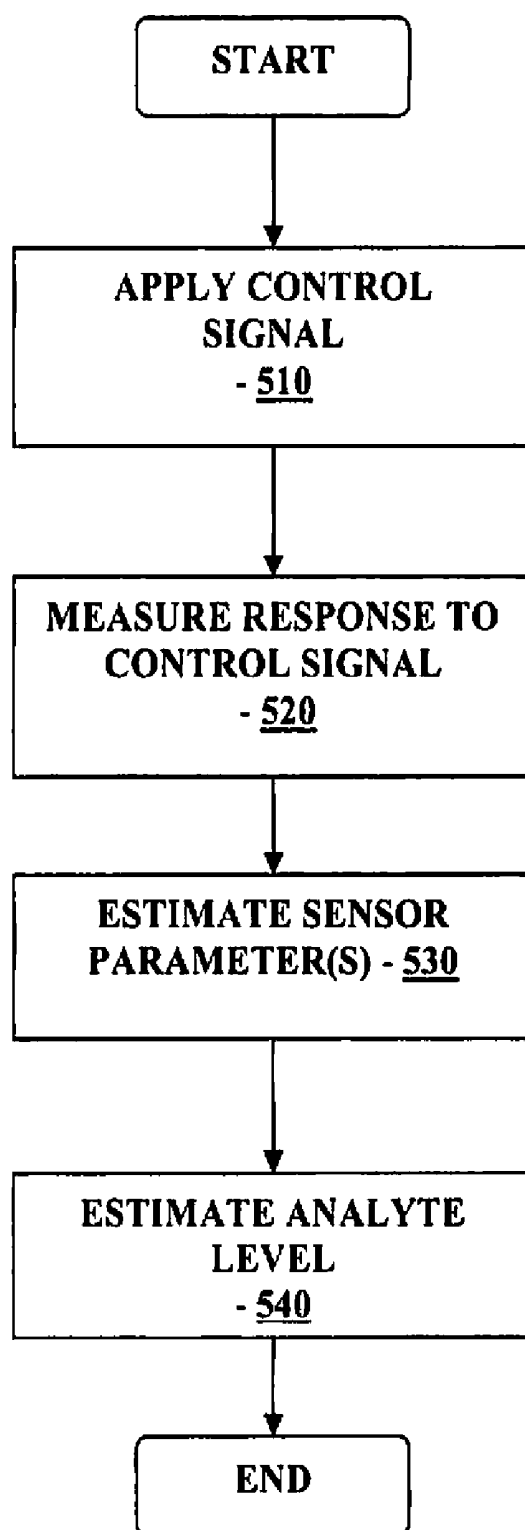
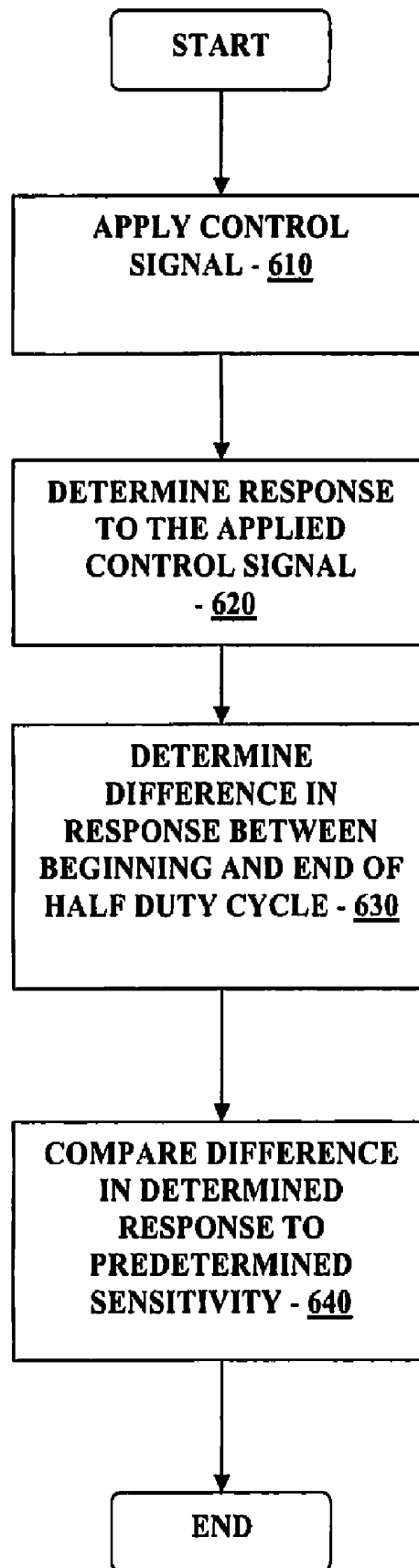


FIGURE 3

**FIGURE 4**

**FIGURE 5**

**FIGURE 6**

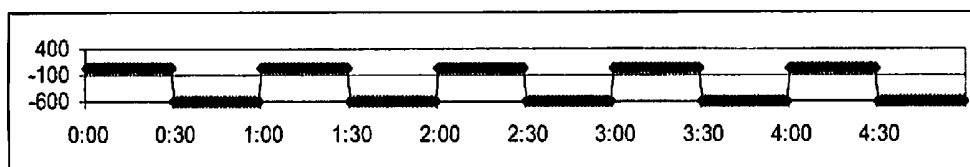


FIGURE 7A

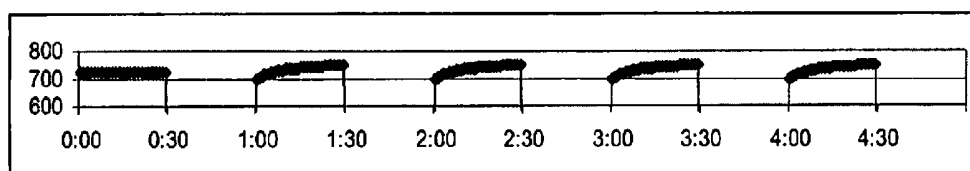


FIGURE 7B

	Measurement Response Difference (ADC counts)	Sensor Sensitivity pA/(mg/dL)
	
	43	33.7
	44	33.9
	45	34.1
	46	34.3
→	47	34.5
	48	34.7
	49	34.9
	50	35.1
	51	35.3
	

FIGURE 8

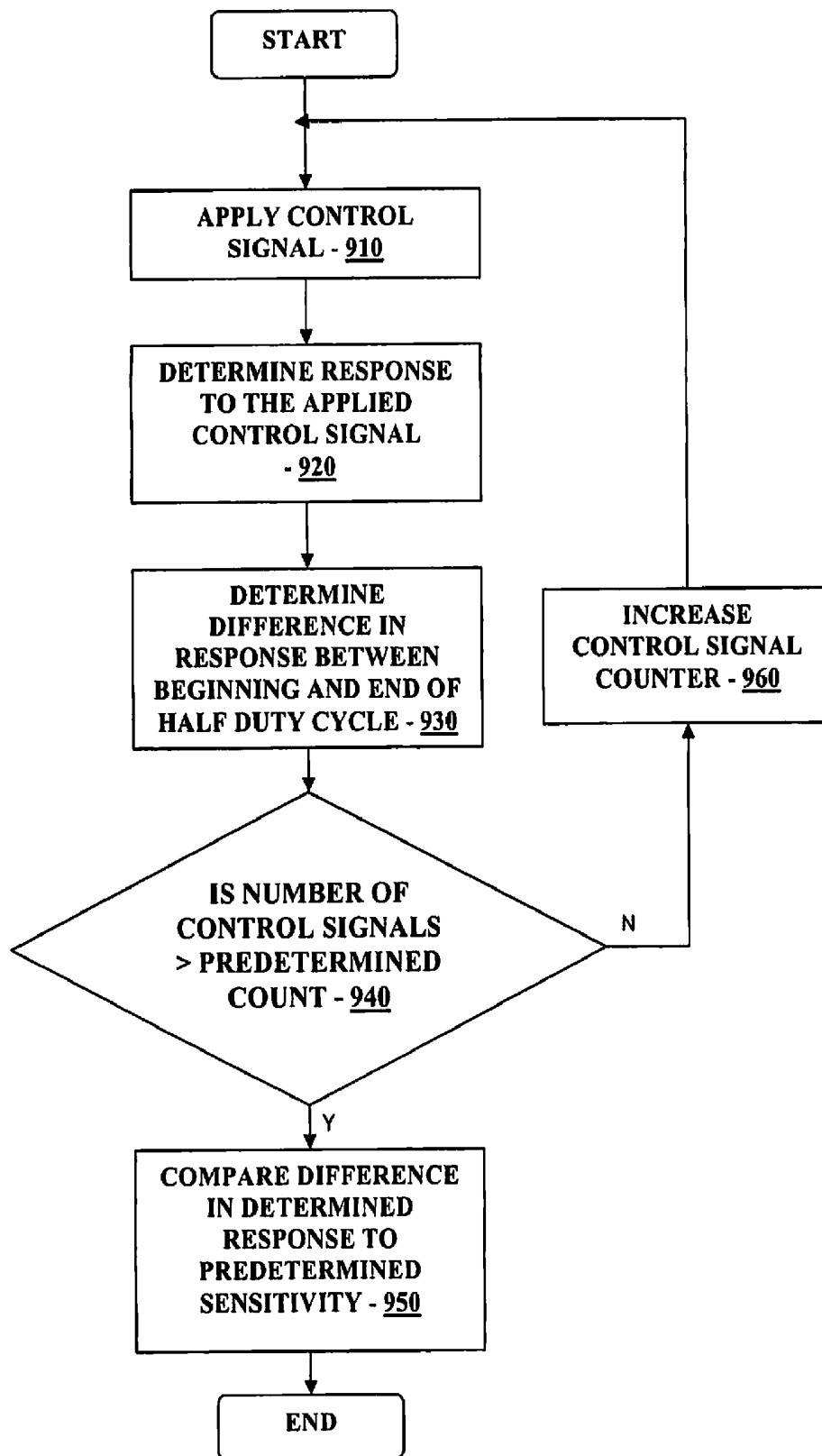


FIGURE 9

METHOD AND SYSTEM FOR PROVIDING CALIBRATION OF AN ANALYTE SENSOR IN AN ANALYTE MONITORING SYSTEM

RELATED APPLICATION

The present application is a continuation of U.S. patent application Ser. No. 11/463,582 filed Aug. 9, 2006, entitled "Method and System for Providing Calibration of an Analyte Sensor in an Analyte Monitoring System", the disclosure of which is incorporated herein by reference for all purposes.

BACKGROUND

Analyte, e.g., glucose monitoring systems including continuous and discrete monitoring systems generally include a small, lightweight battery powered and microprocessor controlled system which is configured to detect signals proportional to the corresponding measured glucose levels using an electrometer, and RF signals to transmit the collected data. One aspect of certain analyte monitoring systems include a transcutaneous or subcutaneous analyte sensor configuration which is, for example, partially mounted on the skin of a subject whose analyte level is to be monitored. The sensor cell may use a two or three-electrode (work, reference and counter electrodes) configuration driven by a controlled potential (potentiostat) analog circuit connected through a contact system.

To obtain accurate data from the analyte sensor, calibration is necessary. Typically, blood glucose measurements are periodically obtained using, for example, a blood glucose meter, and the measured blood glucose values are used to calibrate the sensors. Indeed, the patient must calibrate each new analyte sensor using for example, capillary blood glucose measurements. This may be inconvenient for the patient.

In view of the foregoing, it would be desirable to have a method and system for calibrating analyte sensors of an analyte monitoring system that does not inconveniently require periodic blood glucose measurements for sensor calibration.

SUMMARY OF THE INVENTION

In view of the foregoing, in accordance with the various embodiments of the present invention, there is provided a method and system for providing substantially automatic and substantially real time calibration of analyte sensors for use in an analyte monitoring system.

These and other objects, features and advantages of the present invention will become more fully apparent from the following detailed description of the embodiments, the appended claims and the accompanying drawings.

BRIEF DESCRIPTION OF THE DRAWINGS

FIG. 1 illustrates a block diagram of a data monitoring and management system for practicing one embodiment of the present invention;

FIG. 2 is a block diagram of the transmitter unit of the data monitoring and management system shown in FIG. 1 in accordance with one embodiment of the present invention;

FIG. 3 is a block diagram of the receiver/monitor unit of the data monitoring and management system shown in FIG. 1 in accordance with one embodiment of the present invention;

FIG. 4 is a flowchart illustrating the analyte sensor sensitivity estimation procedure in accordance with one embodiment of the present invention;

FIG. 5 is a flowchart illustrating the analyte sensor sensitivity estimation procedure in accordance with another embodiment of the present invention;

FIG. 6 is a flowchart illustrating an analyte sensor parameter estimation procedure in accordance with one embodiment of the present invention;

FIG. 7A illustrates the transmission of the control signal from the transmitter processor in accordance with one embodiment of the present invention;

FIG. 7B illustrates the measured response to the control signal from the transmitter processor shown in FIG. 7A in accordance with one embodiment of the present invention;

FIG. 8 is a tabular illustration of a lookup table for sensor sensitivity for use with the calibration procedure in accordance with one embodiment of the present invention; and

FIG. 9 is a flowchart illustrating the analyte sensor sensitivity estimation procedure in accordance with another embodiment of the present invention.

DETAILED DESCRIPTION

As described in detail below, in accordance with the various embodiments of the present invention, there is provided a method and system for determining sensor sensitivity of an analyte sensor which may be used to calibrate the analyte sensor in the analyte monitoring system. In particular, within the scope of the present invention, there is provided method and system for automatically calibrating subcutaneous or transcutaneously positioned analyte sensors such that the frequency of capillary blood glucose measurement for calibration of the sensors may be minimized.

More specifically, FIG. 1 illustrates a data monitoring and management system such as, for example, analyte (e.g., glucose) monitoring system 100 in accordance with one embodiment of the present invention. The subject invention is further described primarily with respect to a glucose monitoring system for convenience and such description is in no way intended to limit the scope of the invention. It is to be understood that the analyte monitoring system may be configured to monitor a variety of analytes, e.g., lactate, and the like.

Analytes that may be monitored include, for example, acetyl choline, amylase, bilirubin, cholesterol, chorionic gonadotropin, creatine kinase (e.g., CK-MB), creatine, DNA, fructosamine, glucose, glutamine, growth hormones, hormones, ketones, lactate, peroxide, prostate-specific antigen, prothrombin, RNA, thyroid stimulating hormone, and troponin. The concentration of drugs, such as, for example, antibiotics (e.g., gentamicin, vancomycin, and the like), digitoxin, digoxin, drugs of abuse, theophylline, and warfarin, may also be monitored.

The analyte monitoring system 100 includes a sensor 101, a transmitter unit 102 coupled to the sensor 101, and a receiver unit 104 which is configured to communicate with the transmitter unit 102 via a communication link 103. The receiver unit 104 may be further configured to transmit data to a data processing terminal 105 for evaluating the data received by the receiver unit 104. Moreover, the data processing terminal in one embodiment may be configured to receive data directly from the transmitter unit 102 via a communication link 106 which may optionally be configured for bi-directional communication.

Only one sensor 101, transmitter unit 102, receiver unit 104, communication link 103, and data processing terminal 105 are shown in the embodiment of the analyte monitoring system 100 illustrated in FIG. 1. However, it will be appreciated by one of ordinary skill in the art that the analyte monitoring system 100 may include one or more sensor 101,

transmitter unit **102**, receiver unit **104**, communication link **103**, and data processing terminal **105**. Moreover, within the scope of the present invention, the analyte monitoring system **100** may be a continuous monitoring system, or semi-continuous, or a discrete monitoring system. In a multi-component environment, each device is configured to be uniquely identified by each of the other devices in the system so that communication conflict is readily resolved between the various components within the analyte monitoring system **100**.

In one embodiment of the present invention, the sensor **101** is physically positioned in or on the body of a user whose analyte level is being monitored. The sensor **101** may be configured to continuously sample the analyte level of the user and convert the sampled analyte level into a corresponding data signal for transmission by the transmitter unit **102**. In one embodiment, the transmitter unit **102** is mounted on the sensor **101** so that both devices are positioned on the user's body. The transmitter unit **102** performs data processing such as filtering and encoding on data signals, each of which corresponds to a sampled analyte level of the user, for transmission to the receiver unit **104** via the communication link **103**.

In one embodiment, the analyte monitoring system **100** is configured as a one-way RF communication path from the transmitter unit **102** to the receiver unit **104**. In such embodiment, the transmitter unit **102** transmits the sampled data signals received from the sensor **101** without acknowledgment from the receiver unit **104** that the transmitted sampled data signals have been received. For example, the transmitter unit **102** may be configured to transmit the encoded sampled data signals at a fixed rate (e.g., at one minute intervals) after the completion of the initial power on procedure. Likewise, the receiver unit **104** may be configured to detect such transmitted encoded sampled data signals at predetermined time intervals. Alternatively, the analyte monitoring system **100** may be configured with a bi-directional RF (or otherwise) communication between the transmitter unit **102** and the receiver unit **104**.

Additionally, in one aspect, the receiver unit **104** may include two sections. The first section is an analog interface section that is configured to communicate with the transmitter unit **102** via the communication link **103**. In one embodiment, the analog interface section may include an RF receiver and an antenna for receiving and amplifying the data signals from the transmitter unit **102**, which are thereafter, demodulated with a local oscillator and filtered through a band-pass filter. The second section of the receiver unit **104** is a data processing section which is configured to process the data signals received from the transmitter unit **102** such as by performing data decoding, error detection and correction, data clock generation, and data bit recovery.

In operation, upon completing the power-on procedure, the receiver unit **104** is configured to detect the presence of the transmitter unit **102** within its range based on, for example, the strength of the detected data signals received from the transmitter unit **102** or a predetermined transmitter identification information. Upon successful synchronization with the corresponding transmitter unit **102**, the receiver unit **104** is configured to begin receiving from the transmitter unit **102** data signals corresponding to the user's detected analyte level. More specifically, the receiver unit **104** in one embodiment is configured to perform synchronized time hopping with the corresponding synchronized transmitter unit **102** via the communication link **103** to obtain the user's detected analyte level.

Referring again to FIG. 1, the data processing terminal **105** may include a personal computer, a portable computer such as a laptop or a handheld device (e.g., personal digital assistants

(PDAs)), and the like, each of which may be configured for data communication with the receiver via a wired or a wireless connection. Additionally, the data processing terminal **105** may further be connected to a data network (not shown) for storing, retrieving and updating data corresponding to the detected analyte level of the user.

Within the scope of the present invention, the data processing terminal **105** may include an infusion device such as an insulin infusion pump or the like, which may be configured to administer insulin to patients, and which may be configured to communicate with the receiver unit **104** for receiving, among others, the measured analyte level. Alternatively, the receiver unit **104** may be configured to integrate an infusion device therein so that the receiver unit **104** is configured to administer insulin therapy to patients, for example, for administering and modifying basal profiles, as well as for determining appropriate boluses for administration based on, among others, the detected analyte levels received from the transmitter unit **102**.

Additionally, the transmitter unit **102**, the receiver unit **104** and the data processing terminal **105** may each be configured for bi-directional wireless communication such that each of the transmitter unit **102**, the receiver unit **104** and the data processing terminal **105** may be configured to communicate (that is, transmit data to and receive data from) with each other via the wireless communication link **103**. More specifically, the data processing terminal **105** may in one embodiment be configured to receive data directly from the transmitter unit **102** via the communication link **106**, where the communication link **106**, as described above, may be configured for bi-directional communication.

In this embodiment, the data processing terminal **105** which may include an insulin pump, may be configured to receive the analyte signals from the transmitter unit **102**, and thus, incorporate the functions of the receiver **103** including data processing for managing the patient's insulin therapy and analyte monitoring. In one embodiment, the communication link **103** may include one or more of an RF communication protocol, an infrared communication protocol, a Bluetooth enabled communication protocol, an 802.11x wireless communication protocol, or an equivalent wireless communication protocol which would allow secure, wireless communication of several units (for example, per HIPAA requirements) while avoiding potential data collision and interference.

FIG. 2 is a block diagram of the transmitter of the data monitoring and detection system shown in FIG. 1 in accordance with one embodiment of the present invention. Referring to the Figure, the transmitter unit **102** in one embodiment includes an analog interface **201** configured to communicate with the sensor **101** (FIG. 1), a user input **202**, and a temperature detection section **203**, each of which is operatively coupled to a transmitter processor **204** such as a central processing unit (CPU). There are provided four contacts, three of which are electrodes—work electrode, guard contact, reference electrode, and counter electrode, each operatively coupled to the analog interface **201** of the transmitter unit **102** for connection to the sensor unit **101** (FIG. 1). In one embodiment, each of the work electrode, guard contact, reference electrode, and counter electrode may be made using a conductive material that is either printed or etched, for example, such as carbon which may be printed, or metal foil (e.g., gold) which may be etched.

Further shown in FIG. 2 are a transmitter serial communication section **205** and an RF transmitter **206**, each of which is also operatively coupled to the transmitter processor **204**. Moreover, a power supply **207** such as a battery is also pro-

vided in the transmitter unit **102** to provide the necessary power for the transmitter unit **102**. Additionally, as can be seen from the Figure, clock **208** is provided to, among others, supply real time information to the transmitter processor **204**.

In one embodiment, a unidirectional input path is established from the sensor **101** (FIG. 1) and/or manufacturing and testing equipment to the analog interface **201** of the transmitter unit **102**, while a unidirectional output is established from the output of the RF transmitter **206** of the transmitter unit **102** for transmission to the receiver unit **104**. In this manner, a data path is shown in FIG. 2 between the aforementioned unidirectional input and output via a dedicated link **209** from the analog interface **201** to serial communication section **205**, thereafter to the processor **204**, and then to the RF transmitter **206**. As such, in one embodiment, via the data path described above, the transmitter unit **102** is configured to transmit to the receiver unit **104** (FIG. 1), via the communication link **103** (FIG. 1), processed and encoded data signals received from the sensor **101** (FIG. 1). Additionally, the unidirectional communication data path between the analog interface **201** and the RF transmitter **206** discussed above allows for the configuration of the transmitter unit **102** for operation upon completion of the manufacturing process as well as for direct communication for diagnostic and testing purposes.

As discussed above, the transmitter processor **204** is configured to transmit control signals to the various sections of the transmitter unit **102** during the operation of the transmitter unit **102**. In one embodiment, the transmitter processor **204** also includes a memory (not shown) for storing data such as the identification information for the transmitter unit **102**, as well as the data signals received from the sensor **101**. The stored information may be retrieved and processed for transmission to the receiver unit **104** under the control of the transmitter processor **204**. Furthermore, the power supply **207** may include a commercially available battery.

The transmitter unit **102** is also configured such that the power supply section **207** is capable of providing power to the transmitter for a minimum of about three months of continuous operation after having been stored for about eighteen months in a low-power (non-operating) mode. In one embodiment, this may be achieved by the transmitter processor **204** operating in low power modes in the non-operating state, for example, drawing no more than approximately 1 μ A of current. Indeed, in one embodiment, the final step during the manufacturing process of the transmitter unit **102** may place the transmitter unit **102** in the lower power, non-operating state (i.e., post-manufacture sleep mode). In this manner, the shelf life of the transmitter unit **102** may be significantly improved.

Moreover, as shown in FIG. 2, while the power supply unit **207** is shown as coupled to the processor **204**, and as such, the processor **204** is configured to provide control of the power supply unit **207**, it should be noted that within the scope of the present invention, the power supply unit **207** is configured to provide the necessary power to each of the components of the transmitter unit **102** shown in FIG. 2.

Referring back to FIG. 2, the power supply section **207** of the transmitter unit **102** in one embodiment may include a rechargeable battery unit that may be recharged by a separate power supply recharging unit (for example, provided in the receiver unit **104**) so that the transmitter unit **102** may be powered for a longer period of usage time. Moreover, in one embodiment, the transmitter unit **102** may be configured without a battery in the power supply section **207**, in which case the transmitter unit **102** may be configured to receive power from an external power supply source (for example, a battery) as discussed in further detail below.

Referring yet again to FIG. 2, the temperature detection section **203** of the transmitter unit **102** is configured to monitor the temperature of the skin near the sensor insertion site. The temperature reading is used to adjust the analyte readings obtained from the analog interface **201**. The RF transmitter **206** of the transmitter unit **102** may be configured for operation in the frequency band of 315 MHz to 322 MHz, for example, in the United States. Further, in one embodiment, the RF transmitter **206** is configured to modulate the carrier frequency by performing Frequency Shift Keying and Manchester encoding. In one embodiment, the data transmission rate is 19,200 symbols per second, with a minimum transmission range for communication with the receiver unit **104**.

Additional detailed description of the continuous analyte monitoring system, its various components including the functional descriptions of the transmitter are provided in U.S. Pat. No. 6,175,752 issued Jan. 16, 2001 entitled "Analyte Monitoring Device and Methods of Use", and in application Ser. No. 10/745,878 filed Dec. 26, 2003 entitled "Continuous Glucose Monitoring System and Methods of Use", each assigned to the Assignee of the present application.

FIG. 3 is a block diagram of the receiver/monitor unit of the data monitoring and management system shown in FIG. 1 in accordance with one embodiment of the present invention. Referring to FIG. 3, the receiver unit **104** includes a blood glucose test strip interface **301**, an RF receiver **302**, an input **303**, a temperature detection section **304**, and a clock **305**, each of which is operatively coupled to a receiver processor **307**. As can be further seen from the Figure, the receiver unit **104** also includes a power supply **306** operatively coupled to a power conversion and monitoring section **308**. Further, the power conversion and monitoring section **308** is also coupled to the receiver processor **307**. Moreover, also shown are a receiver serial communication section **309**, and an output **310**, each operatively coupled to the receiver processor **307**.

In one embodiment, the test strip interface **301** includes a glucose level testing portion to receive a manual insertion of a glucose test strip, and thereby determine and display the glucose level of the test strip on the output **310** of the receiver unit **104**. This manual testing of glucose can be used to calibrate sensor **101**. The RF receiver **302** is configured to communicate, via the communication link **103** (FIG. 1) with the RF transmitter **206** of the transmitter unit **102**, to receive encoded data signals from the transmitter unit **102** for, among others, signal mixing, demodulation, and other data processing. The input **303** of the receiver unit **104** is configured to allow the user to enter information into the receiver unit **104** as needed. In one aspect, the input **303** may include one or more keys of a keypad, a touch-sensitive screen, or a voice-activated input command unit. The temperature detection section **304** is configured to provide temperature information of the receiver unit **104** to the receiver processor **307**, while the clock **305** provides, among others, real time information to the receiver processor **307**.

Each of the various components of the receiver unit **104** shown in FIG. 3 is powered by the power supply **306** which, in one embodiment, includes a battery. Furthermore, the power conversion and monitoring section **308** is configured to monitor the power usage by the various components in the receiver unit **104** for effective power management and to alert the user, for example, in the event of power usage which renders the receiver unit **104** in sub-optimal operating conditions. An example of such sub-optimal operating condition may include, for example, operating the vibration output mode (as discussed below) for a period of time thus substantially draining the power supply **306** while the processor **307**

(thus, the receiver unit **104**) is turned on. Moreover, the power conversion and monitoring section **308** may additionally be configured to include a reverse polarity protection circuit such as a field effect transistor (FET) configured as a battery activated switch.

The serial communication section **309** in the receiver unit **104** is configured to provide a bi-directional communication path from the testing and/or manufacturing equipment for, among others, initialization, testing, and configuration of the receiver unit **104**. Serial communication section **104** can also be used to upload data to a computer, such as time-stamped blood glucose data. The communication link with an external device (not shown) can be made, for example, by cable, infrared (IR) or RF link. The output **310** of the receiver unit **104** is configured to provide, among others, a graphical user interface (GUI) such as a liquid crystal display (LCD) for displaying information. Additionally, the output **310** may also include an integrated speaker for outputting audible signals as well as to provide vibration output as commonly found in handheld electronic devices, such as mobile telephones presently available. In a further embodiment, the receiver unit **104** also includes an electro-luminescent lamp configured to provide backlighting to the output **310** for output visual display in dark ambient surroundings.

Referring back to FIG. 3, the receiver unit **104** in one embodiment may also include a storage section such as a programmable, non-volatile memory device as part of the processor **307**, or provided separately in the receiver unit **104**, operatively coupled to the processor **307**. The processor **307** is further configured to perform Manchester decoding as well as error detection and correction upon the encoded data signals received from the transmitter unit **102** via the communication link **103**.

Referring back to the Figures, as described in further detail below, in one embodiment of the present invention, the transmitter processor **204** may be configured to transmit a control signal to the analog interface **201** to determine the poise voltage between the work electrode and the reference electrode of the sensor unit **101**, each of which are operatively coupled to the analog interface **201** of the transmitter unit **102**.

More specifically, in one embodiment, a control processor component of the transmitter unit **102** processor **204** is configured to provide a perturbation control signal to the analog interface **201**. The analog interface **201** is configured to translate the received perturbation control signal to a perturbation that affects the sensor response. For example, the control signal in one embodiment may be configured to control the voltage level that is applied to the sensor **101** between the work and reference electrodes (i.e., the poise voltage). In one embodiment, the analog interface **201** of the transmitter unit **102** is configured to translate the sensor response to the perturbation to a corresponding response signal that is acquired by the signal processing component of the processor **204** of the transmitter unit **102**. The signal processing component of the processor **204** in the transmitter unit **102** in one embodiment may be configured to determine the desired sensor parameter estimation which is transmitted to the receiver unit **104**. Alternatively, the signal processing component of the processor **204** in the transmitter unit **102** may be configured to preprocess the data, which are then transmitted to the receiver unit for sensor parameter estimation determination.

More specifically, FIG. 4 is a flowchart illustrating analyte sensor sensitivity estimation procedure in accordance with one embodiment of the present invention. Referring to FIG. 4, at step **410**, the transmitter processor **204** (FIG. 2) in one embodiment is configured to provide a control signal to the

analog interface **201** (for example a poise voltage control circuit) of the transmitter unit **102**. In one aspect, the control signal provides a perturbation input to determine the poise voltage between the work electrode and the reference electrode of the sensor unit **101**. In one aspect, the poise voltage may be in the range of approximately -600 mV and 600 mV, and the analog interface **201** may be configured to control the poise voltage and apply the poise voltage to the electrodes of the sensor unit **101**.

One embodiment of the control signal perturbations is shown in FIG. 7A which illustrates the control signal from the transmitter processor **204** so as to provide a poise voltage waveform that is a square wave of 50% duty cycle with a one minute time period interval. In one embodiment, the poise voltage square wave amplitude may be switched from 40 mV to -600 mV from, for example, the normal operating poise voltage to a predetermined level such as -600 mV which effectively shuts down the current signal on the work electrode.

Referring back to FIG. 4, at step **420**, the analog interface **201** in one embodiment is configured to determine a measured response to the received control signal, for example, a voltage signal which is substantially proportional to the current signal level on the work electrode of the sensor unit **101**. An aspect of the measured response is illustrated in FIG. 7B. As shown, in one aspect, the current signal level is associated with the analyte level of the patient and may be modulated by the poise voltage perturbations driven by the control signal from the transmitter processor **204**. Thereafter at step **430**, the transmitter processor **204** may be optionally configured to synchronize the measured response from the analog interface **201** with the control signal. The transmitter processor **204** may be further configured to store the measured response and the associated control signal in a storage unit (not shown) such as a memory device.

Referring again to FIG. 4, the transmitter processor **204** in one embodiment is configured to determine the difference or variance in the measured response based on the control signal **440**, and the sensor sensitivity may be determined based on the determined difference in measured response **450**. That is, in one embodiment, the difference in measured response is compared to a look up table stored, for example, in the transmitter processor **204** memory unit which includes calculated measured response difference for the sensor based on characteristics of the sensor unit **101**.

By way of an example, for a measured response difference of 47 analog to digital counts, the lookup table for sensor sensitivity (FIG. 8) indicates 34.5 pA/(mg/dL) for the sensor. Then, the determined sensor sensitivity may be applied to the work electrode current to determine the corresponding calibrated analyte value. That is, the calibrated analyte value may be determined by dividing the work electrode current signal by the sensor sensitivity.

FIG. 5 is a flowchart illustrating the analyte sensor sensitivity estimation procedure in accordance with another embodiment of the present invention. Referring to FIG. 5, at step **510**, a perturbation control signal is applied to the sensor **101** (FIG. 1), and then the response to the perturbation control signal is measured at step **520**. Based on the measured response to the perturbation control signal, at step **530**, the sensor parameter(s) is estimated and at step **540**, the analyte level is estimated based on the measured response to the perturbation control signal. In one embodiment, the procedure shown in FIG. 5 is repeated continuously.

In accordance with the various embodiments of the present invention, different estimates may be determined including, for example, estimation of sensor properties such as sensitiv-

ity and response time, the analyte level, and analyte level validity/accuracy. In one embodiment, there are several mechanisms that may be used to perturb the sensor **101** (FIG. 1), for example, the variable poise voltage. In a further aspect, the one or more of the perturbation control signals may include, for example, square waves. Also, in one aspect, the one or more physical sensor responses that are measured may include, for example, work electrode current variation due to poise voltage perturbation. In addition, signal processing may be used in one embodiment to estimate the sensor parameter or analyte level from the sensor response to the perturbation as described above.

FIG. 6 is a flowchart illustrating an analyte sensor parameter estimation procedure in accordance with one embodiment of the present invention. Referring to FIG. 6, a control signal is applied, for example, to the analog interface **201** of the transmitter unit **102** (FIG. 1). That is, in one embodiment, the processor **204** of the transmitter unit **102** may be configured to provide a control signal to a poise voltage control circuit (for example, incorporated in the processor **204** of the transmitter unit **102** as shown in FIG. 2, but which may, in one embodiment, may be separately provided within the transmitter unit **102**) of the transmitter unit **102**.

In one aspect, the control signal may be configured to provide a perturbation input signal to determine the poise voltage between the work electrode and the reference electrode of the sensor unit **101**. In one embodiment, the poise voltage may be in the range of approximately -600 mV and 600 mV, and the analog interface **201** may be configured to control the poise voltage and apply the poise voltage to the electrodes of the sensor unit **101**.

As described in further detail below, an embodiment of the control signal perturbations is shown in FIG. 7A which illustrates the control signal from the processor **204** (FIG. 2) to provide a poise voltage waveform that is a square wave of 50% duty cycle with a one minute time period interval. Referring to FIG. 7A, in one embodiment, the poise voltage square wave amplitude may be switched from 40 mV to -600 mV from, for example, the normal operating poise voltage to a predetermined level such as -600 mV which effectively shuts down the current signal on the work electrode.

Referring back to FIG. 6, the analog interface **201** in one embodiment is configured to determine a measured response to the received control signal, for example, a voltage signal which is substantially proportional to the current signal level on the work electrode of the sensor unit **101** (FIG. 1). As discussed in further detail below, one embodiment of the measured response is shown in FIG. 7B. Referring to FIG. 7B, in one embodiment, the average signal level for half of the duty cycle is associated with the analyte level of the patient, but the transient within the half-duty cycle period, caused by the poise voltage perturbations driven by the control signal from the transmitter processor **204**, is associated with the sensitivity parameter of the sensor **101**. The transmitter processor **204** may be further configured to store the measured response and the associated control signal in a storage unit (not shown) such as a memory device.

Referring again to FIG. 6, the transmitter processor **204** in one embodiment is configured to determine the amplitude difference of the transient from the start of the half-duty cycle to the end (referred to sometimes as the "on" period) in the measured response **630**, and the sensor sensitivity may be determined based on the determined difference in the response **640**. That is, in one embodiment, the difference in measured response is compared to a predetermined sensor parameter such as sensor sensitivity that may be stored in a look up table, for example, in the transmitter processor **204**

memory unit. In one aspect, the look up table may include a calculated measured response difference for the sensor unit **101** and corresponding sensor sensitivities based on characteristics of the sensor unit **101**.

In one embodiment, the transmitter may be configured to determine this sensitivity value once per minute, and to transmit the sensitivity value to the receiver unit **104** (FIG. 1) in addition to data or signal corresponding to the work current signal level, determined at the end of the "on" period, and skin temperature.

In one embodiment, the receiver unit **104** (FIG. 1) may be configured to apply the determined sensor sensitivity to the temperature compensated work electrode current signal in order to determine the corresponding calibrated analyte value or level. That is, the calibrated analyte value may be determined by dividing the temperature compensated work electrode current signal by the determined sensor sensitivity. In one aspect, a time-series of the calibrated analyte values may be acquired by the receiver unit **104** (FIG. 1) in real-time, and may be used to determine analyte rate-of-change and other analyte signal metrics and/or statistics. In addition, the calibrated analyte values may also be used to drive alarms or alerts that inform the patient whose analyte is being monitored of analyte level conditions that require attention. In addition, in accordance with one aspect of the present invention, the receiver unit **104** may be configured to determine whether the sensor sensitivity range is within a valid range.

FIG. 7A illustrates the transmission of the control signal from the transmitter processor in accordance with one embodiment of the present invention. More particularly, FIG. 7A illustrates the poise voltage square wave with 50% duty cycle with one minute time periods is shown, where the poise voltage square wave amplitude is switched from 40 mV to -600 mV as in normal operating mode. FIG. 7B illustrates the measured response to the control signal from the transmitter processor shown in FIG. 7A in accordance with one embodiment of the present invention. More specifically, the measured response which is associated with the analyte level measured by the sensor unit **101** from the interstitial fluid of a patient as modulated by the control signal from the transmitter processor **204** is illustrated with one minute time periods

FIG. 8 is a tabular illustration of a lookup table for sensor sensitivity for use with the calibration procedure in accordance with one embodiment of the present invention. More specifically, in one embodiment, the lookup table shown in FIG. 8 is stored in a memory unit (not shown) of the transmitter unit **102** (or alternatively, in the transmitter processor **204**) and may be accessed by the transmitter processor **204** to retrieve a corresponding sensitivity value associated with the determined measured response difference.

FIG. 9 is a flowchart illustrating the analyte sensor sensitivity estimation procedure in accordance with another embodiment of the present invention. Referring to FIG. 9, in one embodiment, a control signal from the transmitter processor **204** (FIG. 2) is provided **910** to the transmitter unit **102** analog interface **201**, and a response to the applied control signal is determined **920**. Thereafter, the difference or variance in the determined response to the control signal between the beginning and end of the half duty cycle is determined **930**. As can be seen, in one embodiment, steps **910** to **930** are substantially similar to steps **610** to **630**, respectively described above.

Referring back to FIG. 9, after determining the measured response variance or difference between the beginning and end of the half duty cycle, it is determined whether the number of transmitted or applied control signals exceed a prede-

terminated number or count **940**. If it is determined that the number of transmitted or applied control signals do not exceed the predetermined number or count, then a control signal counter (for example, provided in the transmitter unit **102**) is incremented by one count, and the routine returns to the beginning where another control signal is provided to the analog interface **201** of the transmitter unit **102**.

On the other hand, if it is determined that the number of transmitted or applied control signals exceed the predetermined number or count, then the sensor sensitivity may be determined based on the determined difference in the response. That is, as discussed above, the difference in measured response in one embodiment is compared to a predetermined sensor parameter such as sensor sensitivity that may be stored in a look up table, for example, in the transmitter processor **204** memory unit. In one aspect, the look up table may include a calculated measured response difference for the sensor and corresponding sensor sensitivities based on characteristics of the sensor. Furthermore, as discussed above, in one embodiment, the calibrated analyte value or level may be determined by, for example, dividing the corresponding sensor signal (e.g., work electrode current signal) level by the determined sensor sensitivity value.

Within the scope of the present invention, the perturbations to the analyte sensors may be provided by, for example, altering the poise voltage in time. Alternatively, an additional electrical current signal may be provided to the sensor work or counter electrodes via an AC coupling, where the level of the additional electrical current signal may be varied in time by the control signal in a manner similar as discussed above. Still in accordance with another embodiment, the work/counter electrode current path may be opened and closed in a time varying manner controlled by the control signal. Yet still another embodiment may provide a variable resistance in the work/counter electrode current path, where the variable resistance is varied in time as controlled by the control signal.

In another aspect of the present invention, the transcutaneously positioned sensor may be perturbed with a mechanical transducer controlled in time and amplitude by a predetermined control signal. In one embodiment, mechanical transducers may include those that can provide physical signals of vibration, acoustics, thermal or electro-magnetic media, for example. Broadly, any suitable mechanism to apply perturbations to the transcutaneously positioned sensor may be used to the extent that the measured response may be analyzed by the signal processing component such as, for example, the transmitter unit processor **204** to estimate one or more sensor properties based on the signal response induced by the perturbations. For example, vibration perturbations may induce fluctuations in the sensor membrane that could be detected in the measured response transients, which may be correlated with membrane thickness and thus provide a measure of the sensitivity of the sensor.

In addition, in accordance with the various embodiments of the present invention, there are provided a variety of time-varying controls signals that may be applied, along with a variety of techniques used to analyze the measured response and estimate the sensor parameter of interest. Some of these control signals may be appropriate to induce a measured response that is more informative about a specific sensor parameter than other control signals, and some control signals may be more practical to implement than others. As discussed previously, a square-wave control signal may be employed in one embodiment. Variations in this type of control signal may be suitably used where the positive and negative amplitudes are at different levels, the duty cycle is other than 50%, or the period is other than 1 minute.

In another embodiment of the present invention, a feedback mechanism may be provided where the duty cycle is varied to achieve a desired response, such as a specific transient response time. In this case, the final duty cycle is the parameter that is correlated with the sensor parameter to be estimated. This feedback technique may be extended to other types of control signals, mentioned below, and other characteristics of the signal such as phase, amplitude and frequency may be varied to achieve a desired response.

Alternatively, a sine wave may be used as the control signal discussed above rather than a square wave. Still alternatively, a series of sine waves at different frequencies, or a chirp signal may be used as control signals in one embodiment of the present invention. The measured response of these perturbation signals may then be analyzed using standard spectral analysis techniques. Based on the spectral analysis, metrics may be determined that are correlated with the sensor parameter to be estimated.

In accordance with yet another embodiment, an impulse signal, or a series of impulse signals may be alternatively used as control signals. The measured response of these perturbation signals may be analyzed using known impulse response analysis techniques. For example, the maximum height of the measured response may be used to determine the associated sensor sensitivity. Alternatively, other signal metrics such as the time to reach the maximum height of the measured response, the area under the curve of the measured response, the slope of the measured response may be correlated with the sensor parameter to be estimated.

In still another embodiment, pseudo-random modulation similar to those used in spread-spectrum communication systems may be used as the control signals. The measured response of these perturbation signals may be analyzed using known spread-spectrum analysis techniques. Based on this analysis, metrics may be determined that are correlated with the sensor parameter to be estimated. In addition, the response signal may be demodulated using spread-spectrum techniques to recover the analyte level.

For some of the control signal/response measurement analysis techniques discussed above, the relative phase between the control signal and the measured response may be used to analyze the measured response to the perturbation. For some of the control signal/response measurement analysis techniques discussed above, multiple metrics may be determined. One or more of these metrics may be used to estimate the sensor parameter of interest. For example, in one embodiment, a multidimensional table lookup may be used where one dimension includes the sensor parameter of interest, and the other dimensions may each be associated with a different metric that characterizes the measured response. More specifically, by way of illustration, in the impulse response approach described above, both the maximum height and the time to reach the height of the measured response may be determined. In this case, a three dimensional lookup table may be used.

As discussed above, in one embodiment, a lookup table may be used to correlate a metric associated with the measured response with a sensor parameter of interest (for example, sensitivity). Alternatively, a mathematical function that relates the measured response metric with the sensor parameter may be used. The sensor parameter may then be determined based on the measured response metric as an input. In another aspect, the estimate of the sensor parameter may be determined for many measurements using, for example, the least squares approach.

In addition, within the scope of the present invention, the control signal may be transmitted to the analog interface **201**

at predetermined time periods during the life of the sensor. Alternatively, the transmitter processor **204** may be configured to transmit the control signal only during the time periods when sensor calibration is desired or if some other factor, such as a detection of sensitivity instability, determines that sensor calibration is required.

Moreover, in one embodiment, other system parameters in addition to sensitivity may be associated with the measured response from the analog interface **201** in response to the control signal from the transmitter processor **204**. These include, but are not limited to, sensor response time, sensor response linearity, sensitivity stability and sensor failure. Accurately estimated sensor response time can be useful for incorporation into algorithms that compensate for errors due to lag in the analyte measurement system. Knowledge of the non-linearity in the sensor response (non-linearity means that the sensitivity is not constant over the entire range to measured response) allows for compensation of errors caused by this non-linearity.

Detection of sensitivity instability (that is, detection when the sensitivity has changed value) may be used to accurately determine the new sensitivity. For example, if instability has been detected by the signal processing component, it can direct the control processing component such as the transmitter unit processor **204** to initiate a control signal that is more appropriate to accurately estimating the sensitivity. Also, detecting a sudden, substantial change in sensitivity may be used to identify that a sensor may have failed.

While the control signal may be used to determine the sensor sensitivity, in one embodiment, the resulting modulation in the measured response may be removed by, for example, one or more signal filters to recover the glucose signal. In one aspect, a standard signal filter may be used to remove the high frequency content of the signal due to modulation by the perturbation control signal, and recover the lower frequency content that represents the analyte level. In another aspect, the modulation may be deconvolved using the control signal, the calculated sensor response and the estimated sensitivity.

Furthermore, there are several approaches to measure a sensor's response to the perturbation signals in order to estimate desired properties or characteristics of the sensor. For example, in one embodiment, the electrical current that flows through the work (and counter) electrode may be measured. Alternatively, the perturbation response in the counter electrode voltage may be alternatively measured. The measured counter voltage response may be analyzed using same or similar techniques as the measured work current response. In another embodiment, both work current and counter voltage responses may be measured and analyzed.

In the manner described above, within the scope of the present invention, there is provided method and system for performing calibration of analyte sensors based on the sensor dynamic behavior and on a substantially real time basis such that sensor calibrations based on blood glucose measurements may be minimized further to improve the accuracy of the analyte sensor data.

In accordance with the various embodiments of the present invention, the transmitter processor **204** may include a microcontroller, or alternatively, may be implemented with digital logic such as a gate array or similar logic devices. In addition, in one embodiment, the measured response variance as well as the estimated sensor sensitivity determined by the transmitter processor **204** may be transmitted to the receiver unit **104** (FIG. 1) in the analyte monitoring system **100** in addition

to the analyte sensor measurements (for example, the work electrode current measurements detected by the sensor unit **101**).

In a further aspect, some of the processing may be performed by the receiver unit **104** (FIG. 1) rather than by the transmitter processor **204** such that the transmitter unit **102** may be configured to periodically transmit the measured response variance to the receiver unit **104**, and the receiver unit processing and storage unit **307** (FIG. 3) may be configured to perform the sensor sensitivity determination based on the lookup table which may be stored in a memory device (not shown) in the receiver unit **104**.

A method of calibrating an analyte sensor in one embodiment includes applying a control signal, detecting a measured response to the control signal, determining a variance in the detected measured response, and estimating a sensor sensitivity based on the variance in the detected measured response.

The level of the control signal may in one embodiment vary in time.

In one aspect, the control signal may include a square wave signal, where the square wave signal may be applied to a poise voltage.

In a further aspect, detecting the measured response may include determining a work electrode current signal.

In still another aspect, the variance may be determined based on comparing the difference between the beginning and end of the half duty cycle of the measured response to the control signal.

Moreover, estimating the sensor sensitivity may include retrieving a predetermined sensor sensitivity corresponding to the determined variance in the detected measured response.

The method may also include determining a validity of the estimated sensor sensitivity.

In addition, the method may also include determining analyte level based on the estimated sensor sensitivity.

The sensor in one embodiment may include an analyte sensor.

An analyte sensor calibration device in accordance with another embodiment includes a processor configured to apply a control signal, detect a measured response to the control signal, determine a variance in the detected measured response, and estimate a sensor sensitivity based on the variance in the detected measured response.

The processor may be configured to vary the level of the control signal with time.

In another aspect, the processor may be configured to apply a square wave signal to a poise voltage.

The processor in a further aspect may be configured to determine a work electrode current signal of an analyte sensor operatively coupled to the processor.

Moreover, the processor may be configured to determine the variance based on comparing the difference between the beginning and end of the half duty cycle of the measured response to the control signal.

In addition, the processor in a further aspect may be configured to retrieve a predetermined sensor sensitivity corresponding to the determined variance in the detected measured response.

The processor may be operatively coupled to a data receiver unit configured to determine a validity of the estimated sensor sensitivity, where the data receiver unit may be configured to determine an analyte level based on the estimated sensor sensitivity.

The various processes described above including the processes performed by the transmitter processor **204** in the software application execution environment in the transmitter

15

unit **102** including the processes and routines described in conjunction with FIGS. 4-6 and 9, may be embodied as computer programs developed using an object oriented language that allows the modeling of complex systems with modular objects to create abstractions that are representative of real world, physical objects and their interrelationships. The software required to carry out the inventive process, which may be stored in the memory (not shown) of the transmitter unit **102** may be developed by a person of ordinary skill in the art and may include one or more computer program products.

Various other modifications and alterations in the structure and method of operation of this invention will be apparent to those skilled in the art without departing from the scope and spirit of the invention. Although the invention has been described in connection with specific preferred embodiments, it should be understood that the invention as claimed should not be unduly limited to such specific embodiments. It is intended that the following claims define the scope of the present invention and that structures and methods within the scope of these claims and their equivalents be covered thereby.

What is claimed is:

1. A method of calibrating an analyte sensor, comprising:
 detecting a measured response of an analyte sensor to a perturbation signal;
 determining a variance in the detected measured response;
 comparing the variance in the detected measured response with a table that correlates one or more predetermined calculated measured response differences for the analyte sensor with one or more sensor sensitivities;
 estimating, with a processor, a sensor sensitivity based on the variance in the detected measured response, wherein the estimation of the sensor sensitivity is based at least in part on the comparison of the variance in the detected measured response with the table that correlates one or more predetermined calculated measured response differences for the analyte sensor with one or more sensor sensitivities; and
 applying the estimated sensor sensitivity to a signal from the analyte sensor.

2. The method of claim **1** wherein the signal from the analyte sensor is a temperature compensated analyte related signal.

3. The method of claim **1** wherein applying the estimated sensor sensitivity includes calibrating the analyte sensor based on the estimated sensor sensitivity.

4. The method of claim **1** further including determining a calibrated analyte value based on the estimated sensor sensitivity.

5. The method of claim **4** further including determining a time series of calibrated analyte values.

6. The method of claim **5** wherein the time series of calibrated analyte values are determined in real time.

7. The method of claim **5** further including determining one or more of an analyte rate of change information or analyte signal metric information based on the determined time series of calibrated analyte values.

8. The method of claim **1** wherein the perturbation signal varies in time.

9. The method of claim **1** wherein the perturbation signal includes a square wave signal.

16

10. The method of claim **9** wherein the square wave signal is applied to a poise voltage.

11. The method of claim **1** wherein detecting the measured response includes determining a signal level at a working electrode of the analyte sensor.

12. The method of claim **1** wherein the variance is determined based on comparing the difference between the beginning and end of the half duty cycle of the measured response to the perturbation signal.

13. The method of claim **1** wherein estimating the sensor sensitivity includes retrieving a predetermined sensor sensitivity corresponding to the determined variance in the detected measured response.

14. The method of claim **1** further including determining a validity of the estimated sensor sensitivity.

15. The method of claim **14** wherein determining the validity of the estimated sensor sensitivity includes determining whether the estimated sensor sensitivity is within a valid range.

16. The method of claim **1** further including determining an analyte level based on the estimated sensor sensitivity.

17. The method of claim **1** further including determining a fluctuation in the sensor membrane detected in the measured response transient correlated with a thickness of the sensor membrane.

18. An analyte monitoring device, comprising:

a processor; and

a memory coupled to the processor, the memory including instructions which, when executed by the processor, causes the processor to detect a measured response of an analyte sensor to a perturbation signal, to determine a variance in the detected measured response, to compare the variance in the detected measured response with a table that correlates one or more predetermined calculated measured response differences for the analyte sensor with one or more sensor sensitivities, to estimate a sensor sensitivity based on the variance in the detected measured response, wherein the estimation of the sensor sensitivity is based at least in part on the comparison of the variance in the detected measured response with the table that correlates one or more predetermined calculated measured response differences for the analyte sensor with one or more sensor sensitivities, and to apply the estimated sensor sensitivity to a signal from the analyte sensor.

19. The device of claim **18** wherein the signal from the analyte sensor is a temperature compensated analyte related signal.

20. The device of claim **18** further including instructions to calibrate the analyte sensor based on the estimated sensor sensitivity.

21. The device of claim **18** further including instructions to determine a calibrated analyte value based on the estimated sensor sensitivity.

22. The device of claim **21** further including instructions to determine a time series of calibrated analyte values.

23. The device of claim **22** further including instructions to determine the time series of calibrated analyte values in real time.

24. The device of claim **22** further including instructions to determine one or more of an analyte rate of change informa-

17

tion or analyte signal metric information based on the time series of calibrated analyte values.

25. The device of claim 18 wherein the perturbation signal varies in time.

26. The device of claim 18 wherein the perturbation signal includes a square wave signal. 5

27. The device of claim 26 further including instructions to apply the square wave signal to a poise voltage.

28. The device of claim 18 further including instructions to detect the measured response is configured to determine a signal level at a working electrode of the analyte sensor. 10

29. The device of claim 18 further including instructions to determine the variance based on the difference between the beginning and end of the half duty cycle of the measured response to the perturbation signal. 15

30. The device of claim 18 further including instructions to retrieve a predetermined sensor sensitivity corresponding to

18

the determined variance in the detected measured response to estimate the sensor sensitivity.

31. The device of claim 18 further including instructions to determine a validity of the estimated sensor sensitivity.

32. The device of claim 31 further including instructions to determine whether the estimated sensor sensitivity is within a valid range to determine validity of the estimated sensor sensitivity.

33. The device of claim 18 further including instructions to determine an analyte level based on the estimated sensor sensitivity.

34. The device of claim 18 further including instructions to determine a fluctuation in sensor membrane detected in the measured response transient correlated with a thickness of the sensor membrane.

* * * * *

专利名称(译)	用于在分析物监测系统中提供分析物传感器的校准的方法和系统		
公开(公告)号	US8376945	公开(公告)日	2013-02-19
申请号	US12/624377	申请日	2009-11-23
[标]申请(专利权)人(译)	雅培糖尿病护理公司		
申请(专利权)人(译)	雅培糖尿病INC.		
当前申请(专利权)人(译)	雅培糖尿病INC.		
[标]发明人	HAYTER GARY DONIGER KENNETH J BUDIMAN ERWIN S ZHANG SONGBIAO MAZZA JOHN C		
发明人	HAYTER, GARY DONIGER, KENNETH J. BUDIMAN, ERWIN S. ZHANG, SONGBIAO MAZZA, JOHN C.		
IPC分类号	A61B5/00 A61B5/05		
CPC分类号	A61B5/14532 G01N27/3274 A61B5/1468 A61B5/1495 A61B5/14546 A61B5/1473		
其他公开文献	US20100064764A1		
外部链接	Espacenet USPTO		

摘要(译)

提供用于提供分析物传感器的校准的方法和设备，包括应用控制信号，检测对控制信号的测量响应，确定检测到的测量响应的变化，以及基于检测到的测量响应的变化估计传感器灵敏度。

