



US008224415B2

(12) **United States Patent**
Budiman

(10) **Patent No.:** **US 8,224,415 B2**
(45) **Date of Patent:** **Jul. 17, 2012**

(54) **METHOD AND DEVICE FOR PROVIDING
OFFSET MODEL BASED CALIBRATION FOR
ANALYTE SENSOR**

(75) Inventor: **Erwin Satrya Budiman**, Fremont, CA
(US)

(73) Assignee: **Abbott Diabetes Care Inc.**, Alameda,
CA (US)

(*) Notice: Subject to any disclaimer, the term of this
patent is extended or adjusted under 35
U.S.C. 154(b) by 500 days.

(21) Appl. No.: **12/362,479**

(22) Filed: **Jan. 29, 2009**

(65) **Prior Publication Data**

US 2010/0191085 A1 Jul. 29, 2010

(51) **Int. Cl.**
A61B 5/05 (2006.01)
A61B 5/00 (2006.01)

(52) **U.S. Cl.** **600/347; 600/365**

(58) **Field of Classification Search** None
See application file for complete search history.

(56) **References Cited**

U.S. PATENT DOCUMENTS

3,581,062 A 5/1971 Aston
3,926,760 A 12/1975 Allen et al.
3,949,388 A 4/1976 Fuller
3,978,856 A 9/1976 Michel
4,036,749 A 7/1977 Anderson
4,055,175 A 10/1977 Clemens et al.
4,129,128 A 12/1978 McFarlane
4,245,634 A 1/1981 Albisser et al.
4,327,725 A 5/1982 Cortese et al.
4,344,438 A 8/1982 Schultz
4,349,728 A 9/1982 Phillips et al.
4,373,527 A 2/1983 Fischell
4,392,849 A 7/1983 Petre et al.
4,425,920 A 1/1984 Bourland et al.
4,462,048 A 7/1984 Ross
4,478,976 A 10/1984 Goertz et al.
4,494,950 A 1/1985 Fischell
4,509,531 A 4/1985 Ward
4,527,240 A 7/1985 Kvitash
4,538,616 A 9/1985 Rogoff
4,619,793 A 10/1986 Lee
4,671,288 A 6/1987 Gough
4,703,756 A 11/1987 Gough et al.
4,731,726 A 3/1988 Allen, III
4,749,985 A 6/1988 Corsberg
4,757,022 A 7/1988 Shults et al.
4,777,953 A 10/1988 Ash et al.
4,779,618 A 10/1988 Mund et al.
4,854,322 A 8/1989 Ash et al.
4,871,351 A 10/1989 Feingold
4,890,620 A 1/1990 Gough
4,925,268 A 5/1990 Iyer et al.
4,953,552 A 9/1990 DeMarzo
4,986,271 A 1/1991 Wilkins
4,995,402 A 2/1991 Smith et al.
5,000,180 A 3/1991 Kuypers et al.
5,002,054 A 3/1991 Ash et al.
5,019,974 A 5/1991 Beckers
5,050,612 A 9/1991 Matsumura

5,055,171 A 10/1991 Peck
5,068,536 A 11/1991 Rosenthal
5,082,550 A 1/1992 Rishpon et al.
5,106,365 A 4/1992 Hernandez
5,122,925 A 6/1992 Inpy
5,165,407 A 11/1992 Wilson et al.
5,231,988 A 8/1993 Wernicke et al.
5,246,867 A 9/1993 Lakowicz et al.
5,262,035 A 11/1993 Gregg et al.
5,262,305 A 11/1993 Heller et al.
5,264,104 A 11/1993 Gregg et al.
5,264,105 A 11/1993 Gregg et al.
5,279,294 A 1/1994 Anderson et al.
5,285,792 A 2/1994 Sjoquist et al.
5,293,877 A 3/1994 O'Hara et al.
5,299,571 A 4/1994 Mastrototaro
5,320,725 A 6/1994 Gregg et al.
5,322,063 A 6/1994 Allen et al.
5,340,722 A 8/1994 Wolfbeis et al.
5,342,789 A 8/1994 Chick et al.
5,356,786 A 10/1994 Heller et al.
5,360,404 A 11/1994 Novacek et al.
5,372,427 A 12/1994 Padovani et al.
5,376,070 A 12/1994 Purvis et al.
5,379,238 A 1/1995 Stark
5,384,547 A 1/1995 Lynk et al.
5,390,671 A 2/1995 Lord et al.
5,391,250 A 2/1995 Cheney, II et al.

(Continued)

FOREIGN PATENT DOCUMENTS

CA 2667930 4/2011

(Continued)

OTHER PUBLICATIONS

Maher, "Audio Enhancement using Nonlinear Time-Frequency Filtering", *AES 26th International Conference*, 2005, pp. 1-9.
Maher, "A Method for Extrapolation of Missing Digital Audio Data", *Preprints of Papers Presented at the AES Convention*, 1993, pp. 1-19.
Georgescu, B., et al., "Real-Time Multimodel Tracking of Myocardium in Echocardiography Using Robust Information Fusion", *Medical Image Computing and Computer-Assisted Intervention*, 2004, pp. 777-785.
Goldman, J. M., et al., "Masimo Signal Extraction Pulse Oximetry", *Journal of Clinical Monitoring and Computing*, vol. 16, No. 7, 2000, pp. 475-483.
Whipple, G., "Low Residual Noise Speech Enhancement Utilizing Time-Frequency", *Proceedings of the International Conference on Acoustics, Speech, and Signal Processing*, vol. 19, 1994, pp. 15-18.
Wolfe, P. J., et al., "Interpolation of Missing Data Values for Audio Signal Restoration Using a Gabor Regression Model", *2005 IEEE International Conference on Acoustics, Speech, and Signal Processing*, vol. 5, 2005, pp. 517-520.

(Continued)

Primary Examiner — Kenneth R. Horlick
Assistant Examiner — David Thomas
(74) *Attorney, Agent, or Firm* — Jackson & Co., LLP

(57) **ABSTRACT**

Methods and devices to detect analyte in body fluid are provided. Embodiments include processing sampled data from analyte sensor, determining a single, fixed, normal sensitivity value associated with the analyte sensor, estimating a windowed offset value associated with the analyte sensor for each available sampled data cluster, computing a time varying offset based on the estimated windowed offset value, and applying the time varying offset and the determined normal sensitivity value to the processed sampled data to estimate an analyte level for the sensor.

27 Claims, 6 Drawing Sheets

U.S. PATENT DOCUMENTS							
5,408,999	A	4/1995	Singh et al.	6,551,494	B1	4/2003	Heller et al.
5,411,647	A	5/1995	Johnson et al.	6,558,320	B1	5/2003	Causey, III et al.
5,425,868	A	6/1995	Pedersen	6,558,321	B1	5/2003	Burd et al.
5,431,160	A	7/1995	Wilkins	6,558,351	B1	5/2003	Steil et al.
5,431,921	A	7/1995	Thombre	6,560,471	B1	5/2003	Heller et al.
5,462,645	A	10/1995	Albery et al.	6,561,978	B1	5/2003	Conn et al.
5,497,772	A	3/1996	Schulman et al.	6,562,001	B2	5/2003	Lebel et al.
5,507,288	A	4/1996	Bocker et al.	6,564,105	B2	5/2003	Starkweather et al.
5,509,410	A	4/1996	Hill et al.	6,565,509	B1	5/2003	Say et al.
5,514,718	A	5/1996	Lewis et al.	6,571,128	B2	5/2003	Lebel et al.
5,531,878	A	7/1996	Vadgama et al.	6,576,101	B1	6/2003	Heller et al.
5,568,400	A	10/1996	Stark et al.	6,577,899	B2	6/2003	Lebel et al.
5,568,806	A	10/1996	Cheney, II et al.	6,579,690	B1	6/2003	Bonnecaze et al.
5,569,186	A	10/1996	Lord et al.	6,585,644	B2	7/2003	Lebel et al.
5,582,184	A	12/1996	Erickson et al.	6,591,125	B1	7/2003	Buse et al.
5,586,553	A	12/1996	Halili et al.	6,595,919	B2	7/2003	Berner et al.
5,593,852	A	1/1997	Heller et al.	6,605,200	B1	8/2003	Mao et al.
5,609,575	A	3/1997	Larson et al.	6,605,201	B1	8/2003	Mao et al.
5,628,310	A	5/1997	Rao et al.	6,607,509	B2	8/2003	Bobroff et al.
5,653,239	A	8/1997	Pompei et al.	6,610,012	B2	8/2003	Mault
5,660,163	A	8/1997	Schulman et al.	6,633,772	B2	10/2003	Ford et al.
5,665,222	A	9/1997	Heller et al.	6,635,014	B2	10/2003	Starkweather et al.
5,711,001	A	1/1998	Bussan et al.	6,641,533	B2	11/2003	Causey, III et al.
5,711,861	A	1/1998	Ward et al.	6,648,821	B2	11/2003	Lebel et al.
5,733,259	A	3/1998	Valcke et al.	6,654,625	B1	11/2003	Say et al.
5,772,586	A	6/1998	Heinonen et al.	6,659,948	B2	12/2003	Lebel et al.
5,791,344	A	8/1998	Schulman et al.	6,668,196	B1	12/2003	Villegas et al.
5,899,855	A	5/1999	Brown	6,676,816	B2	1/2004	Mao et al.
5,925,021	A	7/1999	Castellano et al.	6,687,546	B2	2/2004	Lebel et al.
5,935,224	A	8/1999	Svancarek et al.	6,689,056	B1	2/2004	Kilcoyne et al.
5,942,979	A	8/1999	Luppino	6,694,191	B2	2/2004	Starkweather et al.
5,957,854	A	9/1999	Besson et al.	6,695,860	B1	2/2004	Ward et al.
5,964,993	A	10/1999	Blubaugh, Jr. et al.	6,698,269	B2	3/2004	Baber et al.
5,965,380	A	10/1999	Heller et al.	6,702,857	B2	3/2004	Brauker et al.
5,971,922	A	10/1999	Arita et al.	6,733,446	B2	5/2004	Lebel et al.
5,995,860	A	11/1999	Sun et al.	6,740,075	B2	5/2004	Lebel et al.
6,001,067	A	12/1999	Shults et al.	6,741,877	B1	5/2004	Shults et al.
6,024,699	A	2/2000	Surwit et al.	6,746,582	B2	6/2004	Heller et al.
6,049,727	A	4/2000	Crothall	6,758,810	B2	7/2004	Lebel et al.
6,073,031	A	6/2000	Helstab et al.	6,770,030	B1	8/2004	Schaupp et al.
6,083,710	A	7/2000	Heller et al.	6,790,178	B1	9/2004	Mault et al.
6,088,608	A	7/2000	Schulman et al.	6,809,653	B1	10/2004	Mann et al.
6,091,976	A	7/2000	Pfeiffer et al.	6,810,290	B2	10/2004	Lebel et al.
6,093,172	A	7/2000	Funderburk et al.	6,811,533	B2	11/2004	Lebel et al.
6,103,033	A	8/2000	Say et al.	6,811,534	B2	11/2004	Bowman, IV et al.
6,117,290	A	9/2000	Say et al.	6,813,519	B2	11/2004	Lebel et al.
6,119,028	A	9/2000	Schulman et al.	6,862,465	B2	3/2005	Shults et al.
6,120,676	A	9/2000	Heller et al.	6,873,268	B2	3/2005	Lebel et al.
6,121,009	A	9/2000	Heller et al.	6,881,551	B2	4/2005	Heller et al.
6,121,611	A	9/2000	Lindsay et al.	6,892,085	B2	5/2005	McIvor et al.
6,122,351	A	9/2000	Schlueter, Jr. et al.	6,895,263	B2	5/2005	Shin et al.
6,134,461	A	10/2000	Say et al.	6,895,265	B2	5/2005	Silver
6,143,164	A	11/2000	Heller et al.	6,931,327	B2	8/2005	Goode, Jr. et al.
6,162,611	A	12/2000	Heller et al.	6,932,894	B2	8/2005	Mao et al.
6,175,752	B1	1/2001	Say et al.	6,936,006	B2	8/2005	Sabra
6,200,265	B1	3/2001	Walsh et al.	6,950,708	B2	9/2005	Bowman, IV et al.
6,212,416	B1	4/2001	Ward et al.	6,958,705	B2	10/2005	Lebel et al.
6,219,574	B1	4/2001	Cormier et al.	6,968,294	B2	11/2005	Gutta et al.
6,233,471	B1	5/2001	Berner et al.	6,971,274	B2	12/2005	Olin
6,248,067	B1	6/2001	Causey, III et al.	6,974,437	B2	12/2005	Lebel et al.
6,275,717	B1	8/2001	Gross et al.	6,990,366	B2	1/2006	Say et al.
6,284,478	B1	9/2001	Heller et al.	6,997,907	B2	2/2006	Safabash et al.
6,293,925	B1	9/2001	Safabash et al.	6,998,247	B2	2/2006	Honfre et al.
6,295,506	B1	9/2001	Heinonen et al.	7,003,336	B2	2/2006	Holker et al.
6,306,104	B1	10/2001	Cunningham et al.	7,003,340	B2	2/2006	Say et al.
6,309,884	B1	10/2001	Cooper et al.	7,003,341	B2	2/2006	Say et al.
6,329,161	B1	12/2001	Heller et al.	7,022,072	B2	4/2006	Fox et al.
6,360,888	B1	3/2002	McIvor et al.	7,024,245	B2	4/2006	Lebel et al.
6,366,794	B1	4/2002	Moussy et al.	7,029,444	B2	4/2006	Shin et al.
6,377,828	B1	4/2002	Chaiken et al.	7,041,068	B2	5/2006	Freeman et al.
6,379,301	B1	4/2002	Worthington et al.	7,052,483	B2	5/2006	Wojcik
6,424,847	B1	7/2002	Mastrototaro et al.	7,056,302	B2	6/2006	Douglas
6,427,088	B1	7/2002	Bowman, IV et al.	7,074,307	B2	7/2006	Simpson et al.
6,440,068	B1	8/2002	Brown et al.	7,081,195	B2	7/2006	Simpson et al.
6,478,736	B1	11/2002	Mault	7,098,803	B2	8/2006	Mann et al.
6,484,046	B1	11/2002	Say et al.	7,108,778	B2	9/2006	Simpson et al.
6,514,718	B2	2/2003	Heller et al.	7,110,803	B2	9/2006	Shults et al.
6,544,212	B2	4/2003	Galley et al.	7,113,821	B1	9/2006	Sun et al.
				7,134,999	B2	11/2006	Brauker et al.

US 8,224,415 B2

Page 3

7,136,689	B2	11/2006	Shults et al.	2004/0122353	A1	6/2004	Shahmirian et al.
7,171,274	B2	1/2007	Starkweather et al.	2004/0133164	A1	7/2004	Funderburk et al.
7,190,988	B2	3/2007	Say et al.	2004/0138588	A1	7/2004	Saikley et al.
7,192,450	B2	3/2007	Brauker et al.	2004/0146909	A1	7/2004	Duong et al.
7,198,606	B2	4/2007	Boecker et al.	2004/0152622	A1	8/2004	Keith et al.
7,226,978	B2	6/2007	Tapsak et al.	2004/0167801	A1	8/2004	Say et al.
7,258,673	B2	8/2007	Racchini et al.	2004/0171921	A1	9/2004	Say et al.
7,267,665	B2	9/2007	Steil et al.	2004/0176672	A1	9/2004	Silver et al.
7,276,029	B2	10/2007	Goode, Jr. et al.	2004/0186362	A1	9/2004	Brauker et al.
7,299,082	B2	11/2007	Feldman et al.	2004/0186365	A1	9/2004	Jin et al.
7,310,544	B2	12/2007	Brister et al.	2004/0193025	A1	9/2004	Steil et al.
7,317,938	B2	1/2008	Lorenz et al.	2004/0193090	A1	9/2004	Lebel et al.
7,335,294	B2	2/2008	Heller et al.	2004/0197846	A1	10/2004	Hockersmith et al.
7,354,420	B2	4/2008	Steil et al.	2004/0199059	A1	10/2004	Brauker et al.
7,364,592	B2	4/2008	Carr-Brendel et al.	2004/0204687	A1	10/2004	Mogensen et al.
7,366,556	B2	4/2008	Brister et al.	2004/0208780	A1	10/2004	Faries, Jr. et al.
7,379,765	B2	5/2008	Petisce et al.	2004/0225338	A1	11/2004	Lebel et al.
7,402,153	B2	7/2008	Steil et al.	2004/0236200	A1	11/2004	Say et al.
7,424,318	B2	9/2008	Brister et al.	2004/0254433	A1	12/2004	Bandis et al.
7,460,898	B2	12/2008	Brister et al.	2004/0263354	A1	12/2004	Mann et al.
7,467,003	B2	12/2008	Brister et al.	2004/0267300	A1	12/2004	Mace
7,471,972	B2	12/2008	Rhodes et al.	2005/0003470	A1	1/2005	Nelson et al.
7,494,465	B2	2/2009	Brister et al.	2005/0004439	A1	1/2005	Shin et al.
7,497,827	B2	3/2009	Brister et al.	2005/0004494	A1	1/2005	Perez et al.
7,499,002	B2	3/2009	Blasko et al.	2005/0010087	A1	1/2005	Banet et al.
7,519,408	B2	4/2009	Rasdal et al.	2005/0010269	A1	1/2005	Lebel et al.
7,547,281	B2	6/2009	Hayes et al.	2005/0016276	A1	1/2005	Guan et al.
7,569,030	B2	8/2009	Lebel et al.	2005/0027177	A1	2/2005	Shin et al.
7,583,990	B2	9/2009	Goode, Jr. et al.	2005/0031689	A1	2/2005	Shults et al.
7,591,801	B2	9/2009	Brauker et al.	2005/0038332	A1	2/2005	Saidara et al.
7,599,726	B2	10/2009	Goode, Jr. et al.	2005/0043598	A1	2/2005	Goode, Jr. et al.
7,613,491	B2	11/2009	Boock et al.	2005/0090607	A1	4/2005	Tapsak et al.
7,615,007	B2	11/2009	Shults et al.	2005/0096511	A1	5/2005	Fox et al.
7,618,369	B2	11/2009	Hayter et al.	2005/0096512	A1	5/2005	Fox et al.
7,630,748	B2	12/2009	Budiman	2005/0112169	A1	5/2005	Brauker et al.
7,632,228	B2	12/2009	Brauker et al.	2005/0113653	A1	5/2005	Fox et al.
7,699,964	B2	4/2010	Feldman et al.	2005/0114068	A1	5/2005	Chey et al.
7,774,145	B2	8/2010	Brauker et al.	2005/0121322	A1	6/2005	Say et al.
7,778,680	B2	8/2010	Goode, Jr. et al.	2005/0131346	A1	6/2005	Douglas
7,826,981	B2	11/2010	Goode, Jr. et al.	2005/0143635	A1	6/2005	Kamath et al.
7,905,833	B2	3/2011	Brister et al.	2005/0176136	A1	8/2005	Burd et al.
7,914,450	B2	3/2011	Goode, Jr. et al.	2005/0177398	A1	8/2005	Watanabe et al.
2001/0041831	A1	11/2001	Starkweather et al.	2005/0182306	A1	8/2005	Sloan
2002/0019022	A1	2/2002	Dunn et al.	2005/0187720	A1	8/2005	Goode, Jr. et al.
2002/0042090	A1	4/2002	Heller et al.	2005/0192494	A1	9/2005	Ginsberg
2002/0103499	A1	8/2002	Perez et al.	2005/0192557	A1	9/2005	Brauker et al.
2002/0106709	A1	8/2002	Potts et al.	2005/0195930	A1	9/2005	Spital et al.
2002/0128594	A1	9/2002	Das et al.	2005/0199494	A1	9/2005	Say et al.
2002/0161288	A1	10/2002	Shin et al.	2005/0203360	A1	9/2005	Brauker et al.
2002/0169635	A1	11/2002	Shillingburg	2005/0239154	A1	10/2005	Feldman et al.
2002/0193679	A1	12/2002	Malave et al.	2005/0241957	A1	11/2005	Mao et al.
2003/0004403	A1	1/2003	Drinan et al.	2005/0245795	A1	11/2005	Goode, Jr. et al.
2003/0023317	A1	1/2003	Brauker et al.	2005/0245799	A1	11/2005	Brauker et al.
2003/0032874	A1	2/2003	Rhodes et al.	2005/0245839	A1	11/2005	Stivoric et al.
2003/0042137	A1	3/2003	Mao et al.	2005/0245904	A1	11/2005	Estes et al.
2003/0050546	A1	3/2003	Desai et al.	2005/0287620	A1	12/2005	Heller et al.
2003/0065308	A1	4/2003	Lebel et al.	2006/0001538	A1	1/2006	Kraft et al.
2003/0100821	A1	5/2003	Heller et al.	2006/0004270	A1	1/2006	Bedard et al.
2003/0125612	A1	7/2003	Fox et al.	2006/0015020	A1	1/2006	Neale et al.
2003/0130616	A1	7/2003	Steil et al.	2006/0015024	A1	1/2006	Brister et al.
2003/0134347	A1	7/2003	Heller et al.	2006/0016700	A1	1/2006	Brister et al.
2003/0168338	A1	9/2003	Gao et al.	2006/0019327	A1	1/2006	Brister et al.
2003/0176933	A1	9/2003	Lebel et al.	2006/0020186	A1	1/2006	Brister et al.
2003/0187338	A1	10/2003	Say et al.	2006/0020187	A1	1/2006	Brister et al.
2003/0191377	A1	10/2003	Robinson et al.	2006/0020188	A1	1/2006	Kamath et al.
2003/0199790	A1	10/2003	Boecker et al.	2006/0020189	A1	1/2006	Brister et al.
2003/0208113	A1	11/2003	Mault et al.	2006/0020190	A1	1/2006	Kamath et al.
2003/0212317	A1	11/2003	Kovatchev et al.	2006/0020191	A1	1/2006	Brister et al.
2003/0212379	A1	11/2003	Bylund et al.	2006/0020192	A1	1/2006	Brister et al.
2003/0216630	A1	11/2003	Jersey-Willuhn et al.	2006/0029177	A1	2/2006	Cranford, Jr. et al.
2003/0217966	A1	11/2003	Tapsak et al.	2006/0031094	A1	2/2006	Cohen et al.
2004/0010207	A1	1/2004	Flaherty et al.	2006/0036139	A1	2/2006	Brister et al.
2004/0011671	A1	1/2004	Shults et al.	2006/0036140	A1	2/2006	Brister et al.
2004/0039298	A1	2/2004	Abreu	2006/0036141	A1	2/2006	Kamath et al.
2004/0040840	A1	3/2004	Mao et al.	2006/0036142	A1	2/2006	Brister et al.
2004/0045879	A1	3/2004	Shults et al.	2006/0036143	A1	2/2006	Brister et al.
2004/0064068	A1	4/2004	DeNuzzio et al.	2006/0036144	A1	2/2006	Brister et al.
2004/0099529	A1	5/2004	Mao et al.	2006/0036145	A1	2/2006	Brister et al.
2004/0106858	A1	6/2004	Say et al.	2006/0155180	A1	7/2006	Brister et al.

2006/0166629	A1	7/2006	Reggiardo	2008/0200789	A1	8/2008	Brister et al.
2006/0173260	A1	8/2006	Gaoni et al.	2008/0200791	A1	8/2008	Simpson et al.
2006/0173406	A1	8/2006	Hayes et al.	2008/0208025	A1	8/2008	Shults et al.
2006/0173444	A1	8/2006	Choy et al.	2008/0208113	A1	8/2008	Damiano et al.
2006/0183985	A1	8/2006	Brister et al.	2008/0214915	A1	9/2008	Brister et al.
2006/0189863	A1	8/2006	Peyser et al.	2008/0214918	A1	9/2008	Brister et al.
2006/0222566	A1	10/2006	Brauker et al.	2008/0228051	A1	9/2008	Shults et al.
2006/0224109	A1	10/2006	Steil et al.	2008/0228054	A1	9/2008	Shults et al.
2006/0226985	A1	10/2006	Goodnow et al.	2008/0242961	A1	10/2008	Brister et al.
2006/0229512	A1	10/2006	Petisce et al.	2008/0255434	A1	10/2008	Hayter et al.
2006/0247508	A1	11/2006	Fennell	2008/0255437	A1	10/2008	Hayter
2006/0272652	A1	12/2006	Stocker et al.	2008/0255808	A1	10/2008	Hayter
2006/0281985	A1	12/2006	Ward et al.	2008/0256048	A1	10/2008	Hayter
2007/0016381	A1	1/2007	Kamath et al.	2008/0262469	A1	10/2008	Brister et al.
2007/0027381	A1	2/2007	Stafford	2008/0275313	A1	11/2008	Brister et al.
2007/0032706	A1	2/2007	Kamath et al.	2008/0287761	A1	11/2008	Hayter
2007/0033074	A1	2/2007	Nitzan et al.	2008/0287762	A1	11/2008	Hayter
2007/0060803	A1	3/2007	Liljeryd et al.	2008/0287763	A1	11/2008	Hayter
2007/0060814	A1	3/2007	Stafford	2008/0287764	A1	11/2008	Rasdal et al.
2007/0066873	A1	3/2007	Kamath et al.	2008/0287765	A1	11/2008	Rasdal et al.
2007/0071681	A1	3/2007	Gadkar et al.	2008/0287766	A1	11/2008	Rasdal et al.
2007/0073129	A1	3/2007	Shah et al.	2008/0288180	A1	11/2008	Hayter
2007/0078320	A1	4/2007	Stafford	2008/0288204	A1	11/2008	Hayter et al.
2007/0078321	A1	4/2007	Mazza et al.	2008/0296155	A1	12/2008	Shults et al.
2007/0078322	A1	4/2007	Stafford	2008/0306368	A1	12/2008	Goode et al.
2007/0078323	A1	4/2007	Reggiardo et al.	2008/0306434	A1	12/2008	Dobbles et al.
2007/0106135	A1	5/2007	Sloan et al.	2008/0306435	A1	12/2008	Kamath et al.
2007/0118405	A1	5/2007	Campbell et al.	2008/0306444	A1	12/2008	Brister et al.
2007/0124002	A1	5/2007	Estes et al.	2008/0312841	A1	12/2008	Hayter
2007/0149875	A1	6/2007	Ouyang et al.	2008/0312842	A1	12/2008	Hayter
2007/0163880	A1	7/2007	Woo et al.	2008/0312844	A1	12/2008	Hayter et al.
2007/0168224	A1	7/2007	Letzt et al.	2008/0312845	A1	12/2008	Hayter et al.
2007/0173706	A1	7/2007	Neinast et al.	2008/0314395	A1	12/2008	Kovatchev et al.
2007/0173761	A1	7/2007	Kanderian et al.	2008/0319279	A1	12/2008	Ramsay et al.
2007/0179349	A1	8/2007	Hoyme et al.	2009/0005665	A1	1/2009	Hayter et al.
2007/0179352	A1	8/2007	Randlov et al.	2009/0006034	A1	1/2009	Hayter et al.
2007/0191701	A1	8/2007	Feldman et al.	2009/0012379	A1	1/2009	Goode et al.
2007/0203407	A1	8/2007	Hoss et al.	2009/0018424	A1	1/2009	Kamath et al.
2007/0203966	A1	8/2007	Brauker et al.	2009/0030294	A1	1/2009	Petisce et al.
2007/0213657	A1	9/2007	Jennewine et al.	2009/0033482	A1	2/2009	Hayter et al.
2007/0232877	A1	10/2007	He	2009/0036747	A1	2/2009	Hayter et al.
2007/0235331	A1	10/2007	Simpson et al.	2009/0036758	A1	2/2009	Brauker et al.
2007/0249922	A1	10/2007	Peyser et al.	2009/0036760	A1	2/2009	Hayter
2008/0009692	A1	1/2008	Stafford	2009/0036763	A1	2/2009	Brauker et al.
2008/0017522	A1	1/2008	Heller et al.	2009/0043181	A1	2/2009	Brauker et al.
2008/0021666	A1	1/2008	Goode, Jr. et al.	2009/0043182	A1	2/2009	Brauker et al.
2008/0029391	A1	2/2008	Mao et al.	2009/0043525	A1	2/2009	Brauker et al.
2008/0033254	A1	2/2008	Kamath et al.	2009/0043541	A1	2/2009	Brauker et al.
2008/0039702	A1	2/2008	Hayter et al.	2009/0043542	A1	2/2009	Brauker et al.
2008/0045824	A1	2/2008	Tapsak et al.	2009/0045055	A1	2/2009	Rhodes et al.
2008/0058625	A1	3/2008	McGarraugh et al.	2009/0055149	A1	2/2009	Hayter et al.
2008/0064937	A1	3/2008	McGarraugh et al.	2009/0062633	A1	3/2009	Brauker et al.
2008/0071156	A1	3/2008	Brister et al.	2009/0062635	A1	3/2009	Brauker et al.
2008/0071157	A1	3/2008	McGarraugh et al.	2009/0062767	A1	3/2009	VanAntwerp et al.
2008/0071158	A1	3/2008	McGarraugh et al.	2009/0063402	A1	3/2009	Hayter
2008/0081977	A1	4/2008	Hayter et al.	2009/0076356	A1	3/2009	Simpson et al.
2008/0083617	A1	4/2008	Simpson et al.	2009/0076360	A1	3/2009	Brister et al.
2008/0086042	A1	4/2008	Brister et al.	2009/0076361	A1	3/2009	Kamath et al.
2008/0086044	A1	4/2008	Brister et al.	2009/0099436	A1	4/2009	Brister et al.
2008/0086273	A1	4/2008	Shults et al.	2009/0105636	A1	4/2009	Hayter et al.
2008/0097289	A1	4/2008	Steil et al.	2009/0124877	A1	5/2009	Goode, Jr.
2008/0108942	A1	5/2008	Brister et al.	2009/0124878	A1	5/2009	Goode et al.
2008/0154513	A1	6/2008	Kovatchev et al.	2009/0124879	A1	5/2009	Brister et al.
2008/0167543	A1	7/2008	Say et al.	2009/0124964	A1	5/2009	Leach et al.
2008/0172205	A1	7/2008	Breton et al.	2009/0131768	A1	5/2009	Simpson et al.
2008/0183060	A1	7/2008	Steil et al.	2009/0131769	A1	5/2009	Leach et al.
2008/0183061	A1	7/2008	Goode et al.	2009/0131776	A1	5/2009	Simpson et al.
2008/0183399	A1	7/2008	Goode et al.	2009/0131777	A1	5/2009	Simpson et al.
2008/0188731	A1	8/2008	Brister et al.	2009/0137886	A1	5/2009	Shariati et al.
2008/0188796	A1	8/2008	Steil et al.	2009/0137887	A1	5/2009	Shariati et al.
2008/0189051	A1	8/2008	Goode et al.	2009/0143659	A1	6/2009	Ying et al.
2008/0194935	A1	8/2008	Brister et al.	2009/0143660	A1	6/2009	Brister et al.
2008/0194936	A1	8/2008	Goode et al.	2009/0156919	A1	6/2009	Brister et al.
2008/0194937	A1	8/2008	Goode et al.	2009/0156924	A1	6/2009	Shariati et al.
2008/0194938	A1	8/2008	Brister et al.	2009/0163790	A1	6/2009	Brister et al.
2008/0195232	A1	8/2008	Carr-Brendel et al.	2009/0163791	A1	6/2009	Brister et al.
2008/0195967	A1	8/2008	Goode et al.	2009/0164190	A1	6/2009	Hayter
2008/0197024	A1	8/2008	Simpson et al.	2009/0164239	A1	6/2009	Hayter et al.
2008/0200788	A1	8/2008	Brister et al.	2009/0164251	A1	6/2009	Hayter

2009/0178459	A1	7/2009	Li et al.
2009/0182217	A1	7/2009	Li et al.
2009/0192366	A1	7/2009	Mensingher et al.
2009/0192380	A1	7/2009	Shariati et al.
2009/0192722	A1	7/2009	Shariati et al.
2009/0192724	A1	7/2009	Brauker et al.
2009/0192745	A1	7/2009	Kamath et al.
2009/0192751	A1	7/2009	Kamath et al.
2009/0198118	A1	8/2009	Hayter et al.
2009/0203981	A1	8/2009	Brauker et al.
2009/0204341	A1	8/2009	Brauker et al.
2009/0216103	A1	8/2009	Brister et al.
2009/0240120	A1	9/2009	Mensingher et al.
2009/0240128	A1	9/2009	Mensingher et al.
2009/0240193	A1	9/2009	Mensingher et al.
2009/0242399	A1	10/2009	Kamath et al.
2009/0242425	A1	10/2009	Kamath et al.
2009/0247855	A1	10/2009	Boock et al.
2009/0247856	A1	10/2009	Boock et al.
2009/0247857	A1	10/2009	Harper et al.
2009/0287073	A1	11/2009	Boock et al.
2009/0287074	A1	11/2009	Shults et al.
2009/0299155	A1	12/2009	Yang et al.
2009/0299156	A1	12/2009	Simpson et al.
2009/0299162	A1	12/2009	Brauker et al.
2009/0299276	A1	12/2009	Brauker et al.
2010/0057040	A1	3/2010	Hayter
2010/0057041	A1	3/2010	Hayter
2010/0057042	A1	3/2010	Hayter
2010/0057044	A1	3/2010	Hayter
2010/0057057	A1	3/2010	Hayter et al.
2010/0081909	A1	4/2010	Budiman et al.
2010/0234710	A1	9/2010	Budiman et al.

FOREIGN PATENT DOCUMENTS

DE	4401400	7/1995
EP	0098592	1/1984
EP	0127958	12/1984
EP	0320109	6/1989
EP	0353328	2/1990
EP	0390390	10/1990
EP	0396788	11/1990
EP	0286118	1/1995
EP	1048264	11/2000
WO	WO-96/25089	8/1996
WO	WO-96/35370	11/1996
WO	WO-98/35053	8/1998
WO	WO-99/56613	11/1999
WO	WO-00/49940	8/2000
WO	WO-00/59370	10/2000
WO	WO-00/74753	12/2000
WO	WO-00/78992	12/2000
WO	WO-01/52935	7/2001
WO	WO-01/54753	8/2001
WO	WO-02/16905	2/2002
WO	WO-02/058537	8/2002
WO	WO-03/076893	9/2003
WO	WO-03/082091	10/2003
WO	WO-03/085372	10/2003
WO	WO-2004/060455	7/2004
WO	WO-2004/061420	7/2004
WO	WO-2005/041766	5/2005
WO	WO-2005/065542	7/2005
WO	WO-2005/089103	9/2005
WO	WO-2006/024671	3/2006
WO	WO-2006/079114	7/2006
WO	WO-2006/086423	8/2006
WO	WO-2006/118947	11/2006
WO	WO-2006/124099	11/2006
WO	WO-2007/016399	2/2007
WO	WO-2007/027788	3/2007
WO	WO-2007/041069	4/2007
WO	WO-2007/041070	4/2007
WO	WO-2007/041072	4/2007
WO	WO-2007/041248	4/2007
WO	WO-2007/056638	5/2007
WO	WO-2007/101223	9/2007
WO	WO-2007/115094	10/2007
WO	WO-2007/120363	10/2007

WO	WO-2007/126444	11/2007
WO	WO-2007/053832	12/2007
WO	WO-2007/143225	12/2007
WO	WO-2008/021913	2/2008
WO	WO-2008/042760	4/2008
WO	WO-2008/052057	5/2008
WO	WO-2008/128210	10/2008
WO	WO-2008/130896	10/2008
WO	WO-2008/130897	10/2008
WO	WO-2008/130898	10/2008
WO	WO-2008/143943	11/2008
WO	WO-2009/018058	2/2009
WO	WO-2009/086216	7/2009
WO	WO-2009/096992	8/2009
WO	WO-2009/097594	8/2009

OTHER PUBLICATIONS

PCT Application No. PCT/US2010/022669, International Preliminary Report on Patentability and Written Opinion of the International Searching Authority mailed Aug. 11, 2011.

PCT Application No. PCT/US2010/022669, International Search Report and Written Opinion of the International Searching Authority mailed Mar. 23, 2010.

Armour, J. C., et al., "Application of Chronic Intravascular Blood Glucose Sensor in Dogs", *Diabetes*, vol. 39, 1990, pp. 1519-1526.

Bennion, N., et al., "Alternate Site Glucose Testing: A Crossover Design", *Diabetes Technology & Therapeutics*, vol. 4, No. 1, 2002, pp. 25-33.

Blank, T. B., et al., "Clinical Results From a Non-Invasive Blood Glucose Monitor", *Optical Diagnostics and Sensing of Biological Fluids and Glucose and Cholesterol Monitoring II, Proceedings of SPIE*, vol. 4624, 2002, pp. 1-10.

Brooks, S. L., et al., "Development of an On-Line Glucose Sensor for Fermentation Monitoring", *Biosensors*, vol. 3, 1987/88, pp. 45-56.

Cass, A. E., et al., "Ferrocene-Medicated Enzyme Electrode for Amperometric Determination of Glucose", *Analytical Chemistry*, vol. 56, No. 4, 1984, 667-671.

Csoregi, E., et al., "Design and Optimization of a Selective Subcutaneously Implantable Glucose Electrode Based on 'Wired' Glucose Oxidase", *Analytical Chemistry*, vol. 67, No. 7, 1995, pp. 1240-1244.

Feldman, B., et al., "A Continuous Glucose Sensor Based on Wired Enzyme™ Technology—Results from a 3-Day Trial in Patients with Type 1 Diabetes", *Diabetes Technology & Therapeutics*, vol. 5, No. 5, 2003, pp. 769-779.

Feldman, B., et al., "Correlation of Glucose Concentrations in Interstitial Fluid and Venous Blood During Periods of Rapid Glucose Change", Abbott Diabetes Care, Inc. *Freestyle Navigator Continuous Glucose Monitor Pamphlet*, 2004.

Isermann, R., "Supervision, Fault-Detection and Fault-Diagnosis Methods—An Introduction", *Control Engineering Practice*, vol. 5, No. 5, 1997, pp. 639-652.

Isermann, R., et al., "Trends in the Application of Model-Based Fault Detection and Diagnosis of Technical Processes", *Control Engineering Practice*, vol. 5, No. 5, 1997, pp. 709-719.

Johnson, P. C., "Peripheral Circulation", John Wiley & Sons, 1978, pp. 198.

Jungheim, K., et al., "How Rapid Does Glucose Concentration Change in Daily Life of Patients with Type 1 Diabetes?", 2002, pp. 250.

Jungheim, K., et al., "Risky Delay of Hypoglycemia Detection by Glucose Monitoring at the Arm", *Diabetes Care*, vol. 24, No. 7, 2001, pp. 1303-1304.

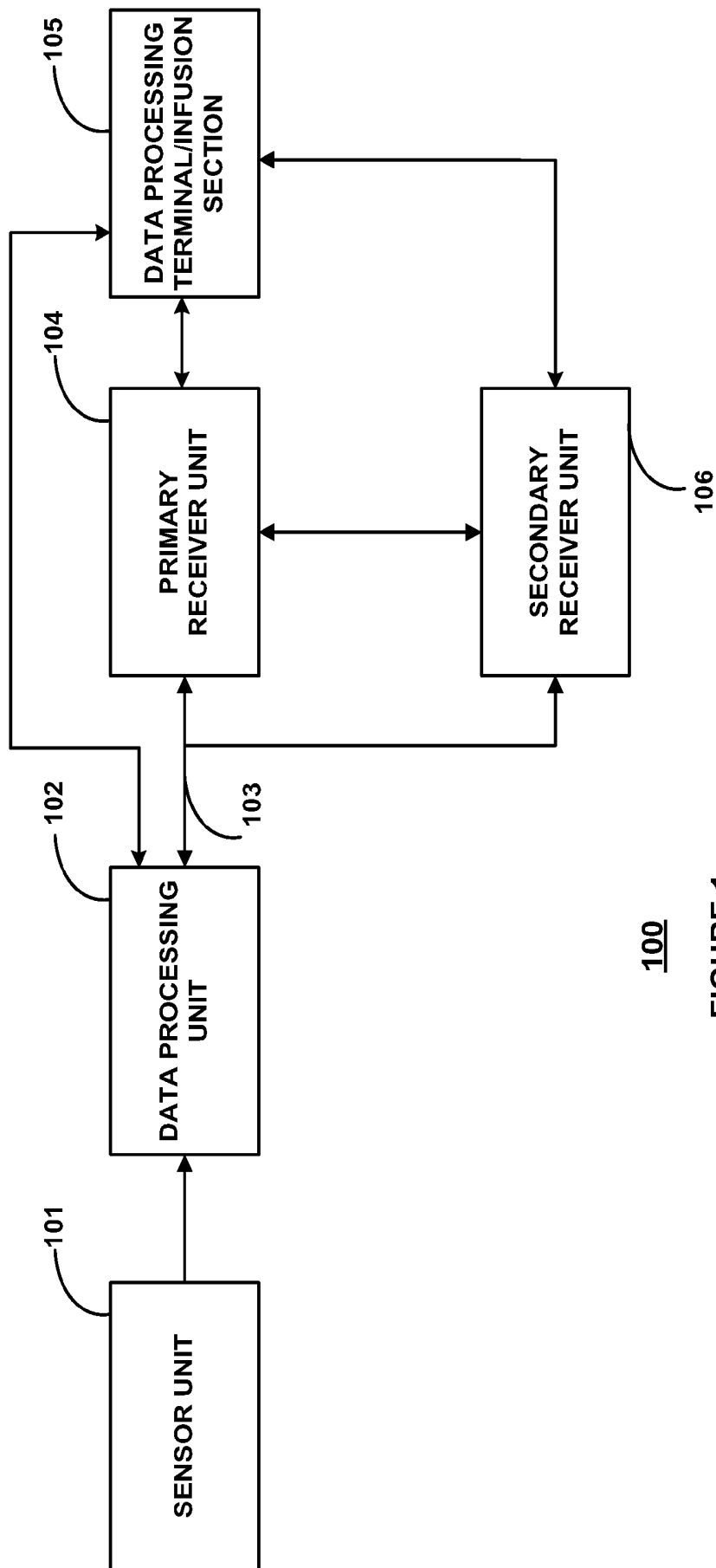
Kaplan, S. M., "Wiley Electrical and Electronics Engineering Dictionary", *IEEE Press*, 2004, pp. 141, 142, 548, 549.

Lortz, J., et al., "What is Bluetooth? We Explain the Newest Short-Range Connectivity Technology", *Smart Computing Learning Series, Wireless Computing*, vol. 8, Issue 5, 2002, pp. 72-74.

Malin, S. F., et al., "Noninvasive Prediction of Glucose by Near-Infrared Diffuse Reflectance Spectroscopy", *Clinical Chemistry*, vol. 45, No. 9, 1999, pp. 1651-1658.

McGarraugh, G., et al., "Glucose Measurements Using Blood Extracted from the Forearm and the Finger", TheraSense, Inc., 2001, 16 Pages.

- McGarraugh, G., et al., "Physiological Influences on Off-Finger Glucose Testing", *Diabetes Technology & Therapeutics*, vol. 3, No. 3, 2001, pp. 367-376.
- McKean, B. D., et al., "A Telemetry-Instrumentation System for Chronically Implanted Glucose and Oxygen Sensors", *IEEE Transactions on Biomedical Engineering*, vol. 35, No. 7, 1988, pp. 526-532.
- Pickup, J., et al., "Implantable Glucose Sensors: Choosing the Appropriate Sensing Strategy", *Biosensors*, vol. 3, 1987/88, pp. 335-346.
- Pickup, J., et al., "In Vivo Molecular Sensing in Diabetes Mellitus: An Implantable Glucose Sensor with Direct Electron Transfer", *Diabetologia*, vol. 32, 1989, pp. 213-217.
- Pishko, M. V., et al., "Amperometric Glucose Microelectrodes Prepared Through Immobilization of Glucose Oxidase in Redox Hydrogels", *Analytical Chemistry*, vol. 63, No. 20, 1991, pp. 2268-2272.
- Quinn, C. P., et al., "Kinetics of Glucose Delivery to Subcutaneous Tissue in Rats Measured with 0.3-mm Amperometric Microsensors", *The American Physiological Society*, 1995, E155-E161.
- Roe, J. N., et al., "Bloodless Glucose Measurements", *Critical Review in Therapeutic Drug Carrier Systems*, vol. 15, Issue 3, 1998, pp. 199-241.
- Sakakida, M., et al., "Development of Ferrocene-Mediated Needle-Type Glucose Sensor as a Measure of True Subcutaneous Tissue Glucose Concentrations", *Artificial Organs Today*, vol. 2, No. 2, 1992, pp. 145-158.
- Sakakida, M., et al., "Ferrocene-Mediated Needle-Type Glucose Sensor Covered with Newly Designed Biocompatible Membrane", *Sensors and Actuators B*, vol. 13-14, 1993, pp. 319-322.
- Salehi, C., et al., "A Telemetry-Instrumentation System for Long-Term Implantable Glucose and Oxygen Sensors", *Analytical Letters*, vol. 29, No. 13, 1996, pp. 2289-2308.
- Schmidtke, D. W., et al., "Measurement and Modeling of the Transient Difference Between Blood and Subcutaneous Glucose Concentrations in the Rat After Injection of Insulin", *Proceedings of the National Academy of Sciences*, vol. 95, 1998, pp. 294-299.
- Shaw, G. W., et al., "In Vitro Testing of a Simply Constructed, Highly Stable Glucose Sensor Suitable for Implantation in Diabetic Patients", *Biosensors & Bioelectronics*, vol. 6, 1991, pp. 401-406.
- Shichiri, M., et al., "Glycaemic Control in Pancreatectomized Dogs with a Wearable Artificial Endocrine Pancreas", *Diabetologia*, vol. 24, 1983, pp. 179-184.
- Shichiri, M., et al., "In Vivo Characteristics of Needle-Type Glucose Sensor—Measurements of Subcutaneous Glucose Concentrations in Human Volunteers", *Hormone and Metabolic Research Supplement Series*, vol. 20, 1988, pp. 17-20.
- Shichiri, M., et al., "Membrane Design for Extending the Long-Life of an Implantable Glucose Sensor", *Diabetes Nutrition and Metabolism*, vol. 2, 1989, pp. 309-313.
- Shichiri, M., et al., "Needle-type Glucose Sensor for Wearable Artificial Endocrine Pancreas", *Implantable Sensors for Closed-Loop Prosthetic Systems*, Chapter 15, 1985, pp. 197-210.
- Shichiri, M., et al., "Telemetry Glucose Monitoring Device With Needle-Type Glucose Sensor: A Useful Tool for Blood Glucose Monitoring in Diabetic Individuals", *Diabetes Care*, vol. 9, No. 3, 1986, pp. 298-301.
- Shichiri, M., et al., "Wearable Artificial Endocrine Pancreas With Needle-Type Glucose Sensor", *The Lancet*, 1982, pp. 1129-1131.
- Shults, M. C., et al., "A Telemetry-Instrumentation System for Monitoring Multiple Subcutaneously Implanted Glucose Sensors", *IEEE Transactions on Biomedical Engineering*, vol. 41, No. 10, 1994, pp. 937-942.
- Sternberg, R., et al., "Study and Development of Multilayer Needle-Type Enzyme-Based Glucose Microsensors", *Biosensors*, vol. 4, 1988, pp. 27-40.
- Thompson, M., et al., "In Vivo Probes: Problems and Perspectives", *Clinical Biochemistry*, vol. 19, 1986, pp. 255-261.
- Turner, A., et al., "Diabetes Mellitus: Biosensors for Research and Management", *Biosensors*, vol. 1, 1985, pp. 85-115.
- Updike, S. J., et al., "Principles of Long-Term Fully Implanted Sensors with Emphasis on Radiotelemetric Monitoring of Blood Glucose from Inside a Subcutaneous Foreign Body Capsule (FBC)", *Biosensors in the Body: Continuous in vivo Monitoring*, Chapter 4, 1997, pp. 117-137.
- Velho, G., et al., "Strategies for Calibrating a Subcutaneous Glucose Sensor", *Biomedica Biochimica Acta*, vol. 48, 1989, pp. 957-964.
- Wilson, G. S., et al., "Progress Toward the Development of an Implantable Sensor for Glucose", *Clinical Chemistry*, vol. 38, No. 9, 1992, pp. 1613-1617.



100
FIGURE 1

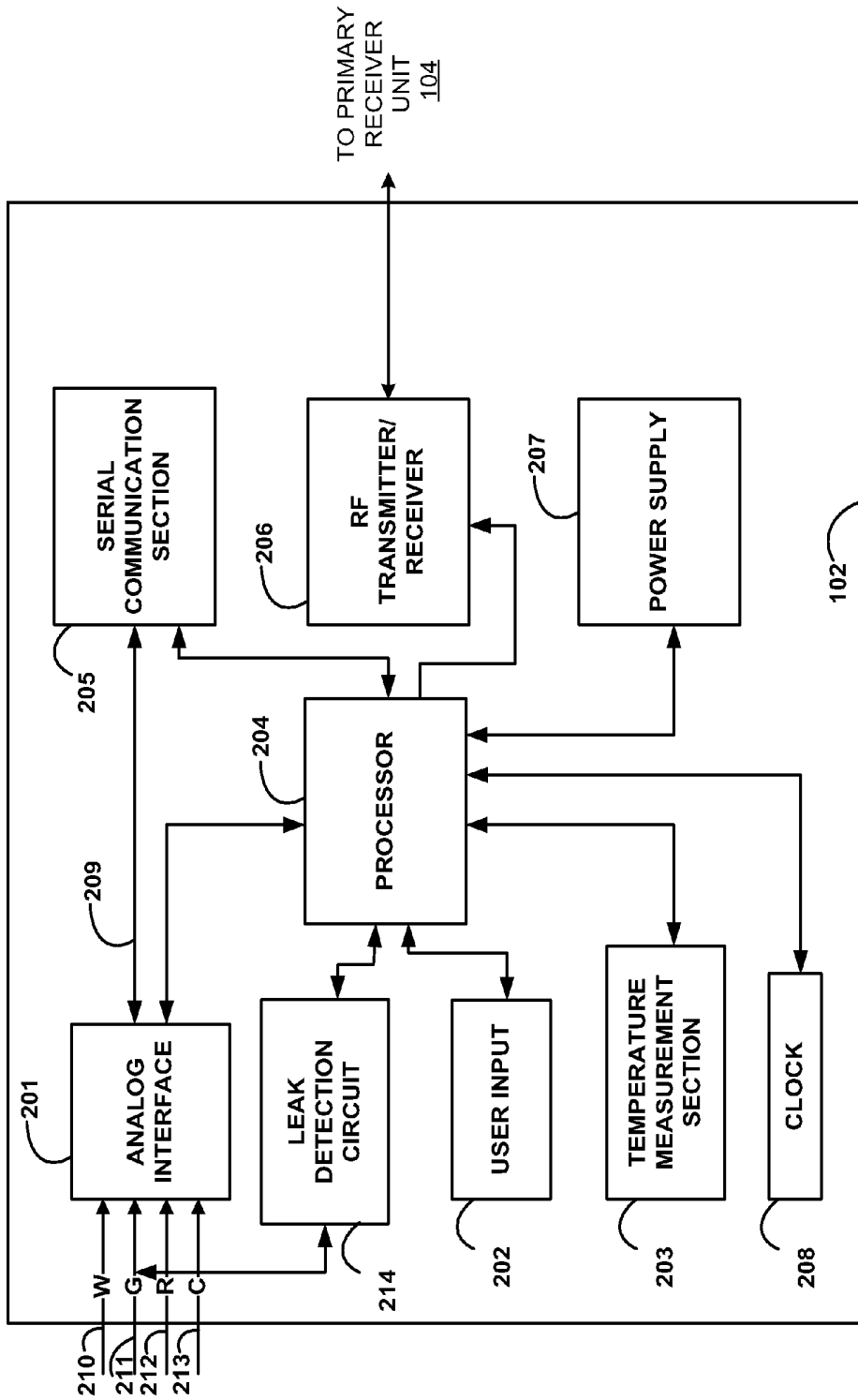


FIGURE 2

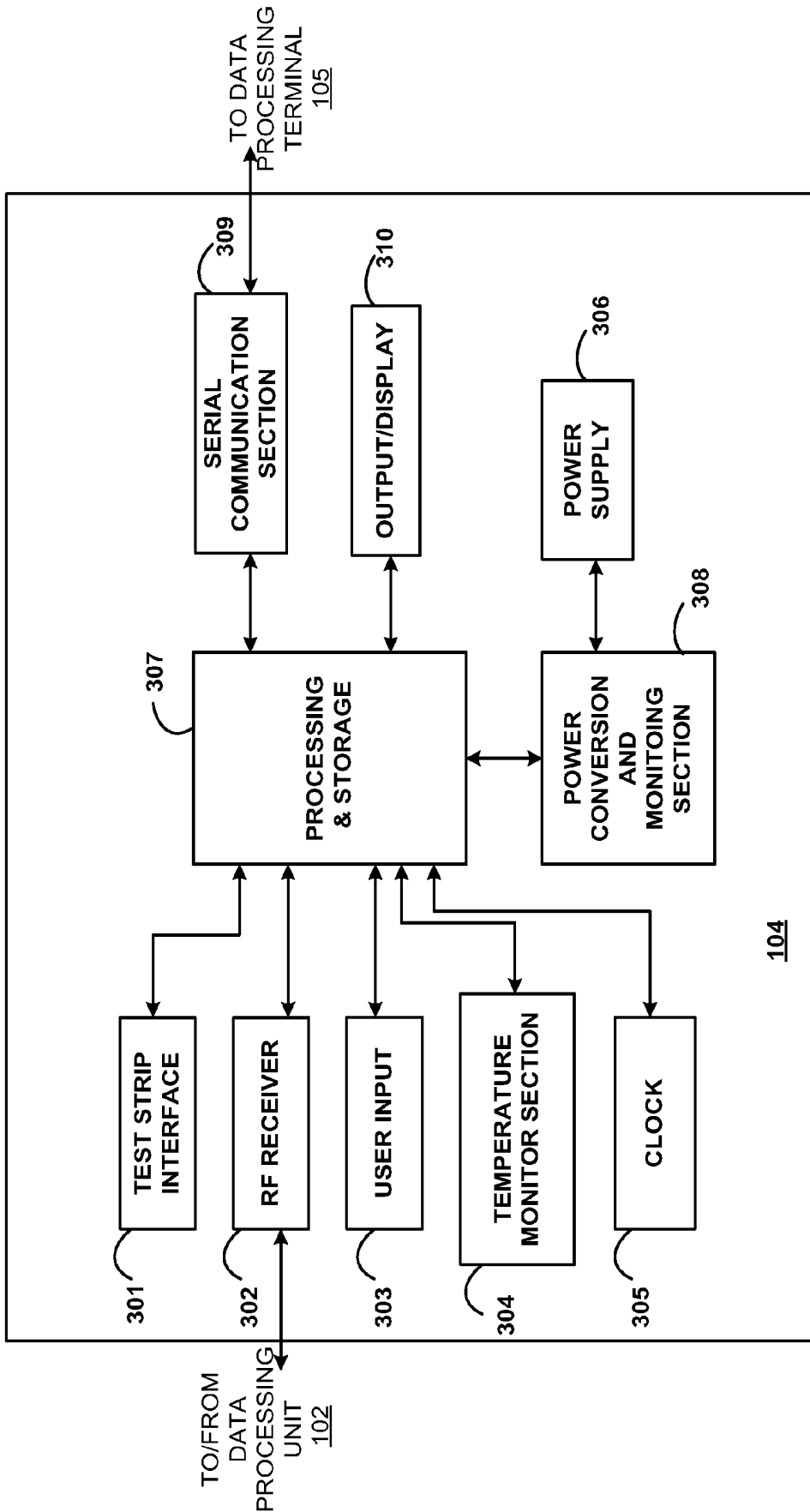


FIGURE 3

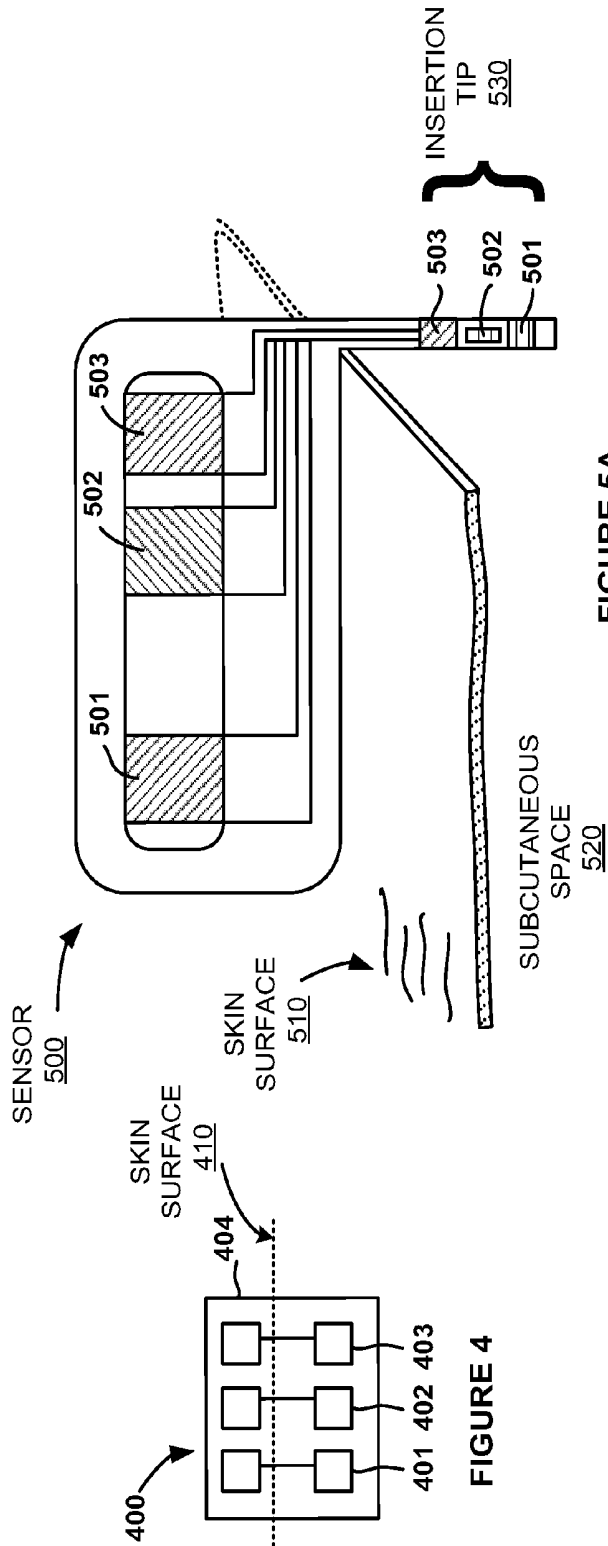


FIGURE 5A

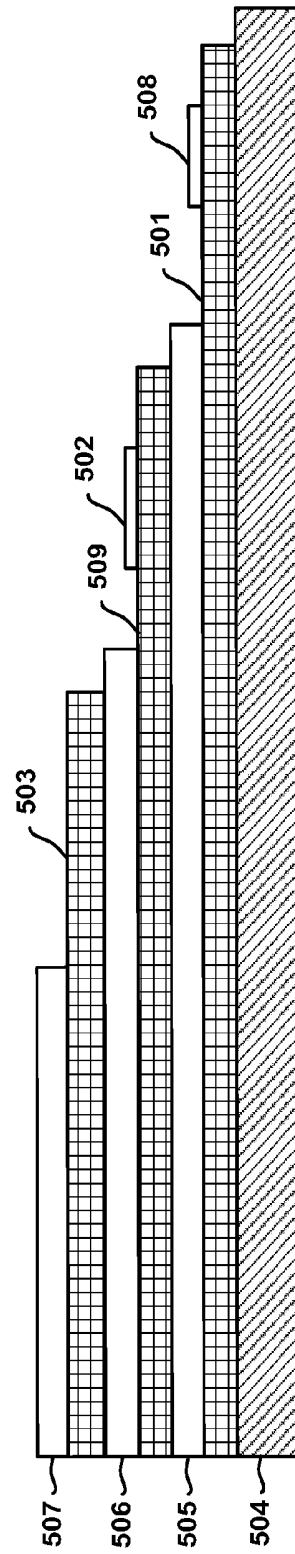


FIGURE 5B

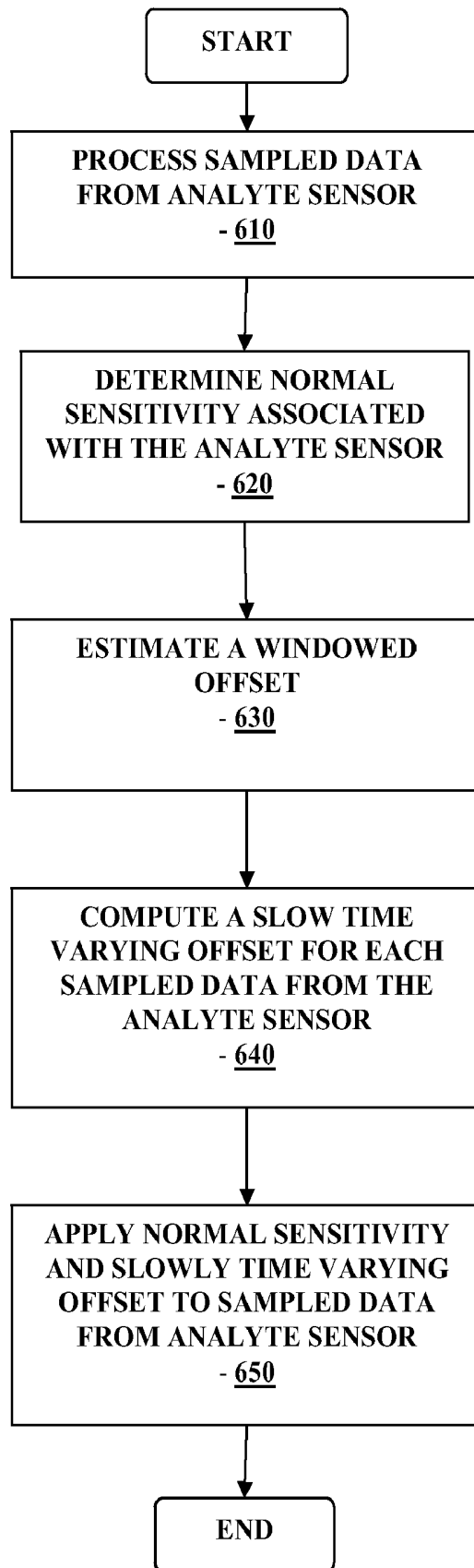


FIGURE 6

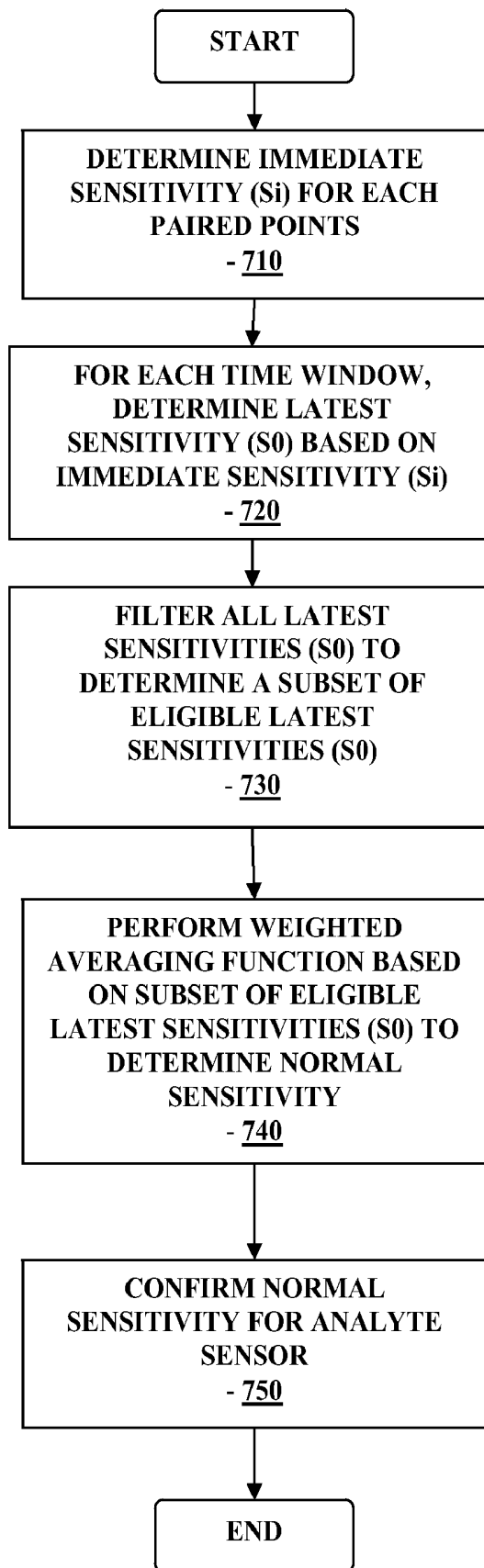


FIGURE 7

METHOD AND DEVICE FOR PROVIDING OFFSET MODEL BASED CALIBRATION FOR ANALYTE SENSOR

BACKGROUND

The detection of the level of glucose or other analytes, such as lactate, oxygen or the like, in certain individuals is vitally important to their health. For example, the monitoring of glucose is particularly important to individuals with diabetes. Diabetics may need to monitor glucose levels to determine when insulin is needed to reduce glucose levels in their bodies or when additional glucose is needed to raise the level of glucose in their bodies.

Devices have been developed for continuous or automatic monitoring of analytes, such as glucose, in bodily fluid such as in the blood stream or in interstitial fluid. Some of these analyte measuring devices are configured so that at least a portion of the devices are positioned below a skin surface of a user, e.g., in a blood vessel or in the subcutaneous tissue of a user.

Following the sensor insertion, the resulting potential trauma to the skin and/or underlying tissue, for example, by the sensor introducer and/or the sensor itself, may, at times, result in instability of signals monitored by the sensor. This may occur in a number of analyte sensors, but not in all cases. This instability is characterized by a decrease in the sensor signal, and when this occurs, generally, the analyte levels monitored may not be reported, recorded or output to the user.

SUMMARY

Embodiments of the subject disclosure include device and methods of determining early signal attenuation (ESA) in signals from analyte sensors. More specifically, embodiments include method, device and system for processing sampled data from analyte sensor, determining a single, fixed, normal sensitivity value associated with the analyte sensor, estimating a windowed offset value associated with the analyte sensor for each available sampled data cluster, computing a time varying offset based on the estimated windowed offset value, and applying the time varying offset and the determined normal sensitivity value to the processed sampled data to estimate an analyte level for the sensor.

Also provided are systems, computer program products, and kits.

BRIEF DESCRIPTION OF THE DRAWINGS

FIG. 1 shows a block diagram of an embodiment of a data monitoring and management system according to the present disclosure;

FIG. 2 shows a block diagram of an embodiment of the transmitter unit of the data monitoring and management system of FIG. 1;

FIG. 3 shows a block diagram of an embodiment of the receiver/monitor unit of the data monitoring and management system of FIG. 1;

FIG. 4 shows a schematic diagram of an embodiment of an analyte sensor according to the present disclosure;

FIGS. 5A-5B show a perspective view and a cross sectional view, respectively of an embodiment the analyte sensor of FIG. 4;

FIG. 6 is a flowchart illustrating the offset model based analyte sensor data calibration in accordance with one aspect of the present disclosure; and

FIG. 7 is a flowchart illustrating the normal sensitivity determination routine of FIG. 6 associated with the analyte sensor in accordance with one embodiment of the present disclosure.

DETAILED DESCRIPTION

Before the present disclosure is described in additional detail, it is to be understood that this disclosure is not limited to particular embodiments described, as such may, of course, vary. It is also to be understood that the terminology used herein is for the purpose of describing particular embodiments only, and is not intended to be limiting, since the scope of the present disclosure will be limited only by the appended claims.

Where a range of values is provided, it is understood that each intervening value, to the tenth of the unit of the lower limit unless the context clearly dictates otherwise, between the upper and lower limit of that range and any other stated or intervening value in that stated range, is encompassed within the disclosure. The upper and lower limits of these smaller ranges may independently be included in the smaller ranges is also encompassed within the disclosure, subject to any specifically excluded limit in the stated range. Where the stated range includes one or both of the limits, ranges excluding either or both of those included limits are also included in the disclosure.

Unless defined otherwise, all technical and scientific terms used herein have the same meaning as commonly understood by one of ordinary skill in the art to which this disclosure belongs. Although any methods and materials similar or equivalent to those described herein can also be used in the practice or testing of the present disclosure, the preferred methods and materials are now described. All publications mentioned herein are incorporated herein by reference to disclose and describe the methods and/or materials in connection with which the publications are cited.

It must be noted that as used herein and in the appended claims, the singular forms “a”, “an”, and “the” include plural referents unless the context clearly dictates otherwise.

The publications discussed herein are provided solely for their disclosure prior to the filing date of the present application. Nothing herein is to be construed as an admission that the present disclosure is not entitled to antedate such publication by virtue of prior disclosure. Further, the dates of publication provided may be different from the actual publication dates which may need to be independently confirmed.

As will be apparent to those of skill in the art upon reading this disclosure, each of the individual embodiments described and illustrated herein has discrete components and features which may be readily separated from or combined with the features of any of the other several embodiments without departing from the scope or spirit of the present disclosure.

The figures shown herein are not necessarily drawn to scale, with some components and features being exaggerated for clarity.

Generally, embodiments of the present disclosure relate to methods and devices for detecting at least one analyte such as glucose in body fluid. In certain embodiments, the present disclosure relates to the continuous and/or automatic in vivo monitoring of the level of an analyte using an analyte sensor.

Accordingly, embodiments include analyte monitoring devices and systems that include an analyte sensor—at least a portion of which is positionable beneath the skin of the user—for the in vivo detection, of an analyte, such as glucose, lactate, and the like, in a body fluid. Embodiments include wholly implantable analyte sensors and analyte sensors in

which only a portion of the sensor is positioned under the skin and a portion of the sensor resides above the skin, e.g., for contact to a transmitter, receiver, transceiver, processor, etc. The sensor may be, for example, subcutaneously positionable in a patient for the continuous or periodic monitoring of a level of an analyte in a patient's interstitial fluid. For the purposes of this description, continuous monitoring and periodic monitoring will be used interchangeably, unless noted otherwise. The analyte level may be correlated and/or converted to analyte levels in blood or other fluids. In certain embodiments, an analyte sensor may be positioned in contact with interstitial fluid to detect the level of glucose, which detected glucose may be used to infer the glucose level in the patient's bloodstream. Analyte sensors may be insertable into a vein, artery, or other portion of the body containing fluid. Embodiments of the analyte sensors of the subject disclosure may be configured for monitoring the level of the analyte over a time period which may range from minutes, hours, days, weeks, or longer.

Of interest are analyte sensors, such as glucose sensors, that are capable of in vivo detection of an analyte for about one hour or more, e.g., about a few hours or more, e.g., about a few days or more, e.g., about three or more days, e.g., about five days or more, e.g., about seven days or more, e.g., about several weeks or at least one month. Future analyte levels may be predicted based on information obtained, e.g., the current analyte level at time t_0 , the rate of change of the analyte, etc. Predictive alarms may notify the user of predicted analyte levels that may be of concern prior in advance of the analyte level reaching the future level. This enables the user an opportunity to take corrective action.

FIG. 1 shows a data monitoring and management system such as, for example, an analyte (e.g., glucose) monitoring system **100** in accordance with certain embodiments. Embodiments of the subject disclosure are further described primarily with respect to glucose monitoring devices and systems, and methods of glucose detection, for convenience only and such description is in no way intended to limit the scope of the disclosure. It is to be understood that the analyte monitoring system may be configured to monitor a variety of analytes at the same time or at different times.

Analytes that may be monitored include, but are not limited to, acetyl choline, amylase, bilirubin, cholesterol, chorionic gonadotropin, creatine kinase (e.g., CK-MB), creatine, DNA, fructosamine, glucose, glutamine, growth hormones, hormones, ketones, lactate, peroxide, prostate-specific antigen, prothrombin, RNA, thyroid stimulating hormone, and troponin. The concentration of drugs, such as, for example, antibiotics (e.g., gentamicin, vancomycin, and the like), digitoxin, digoxin, drugs of abuse, theophylline, and warfarin, may also be monitored. In those embodiments that monitor more than one analyte, the analytes may be monitored at the same or different times.

The analyte monitoring system **100** includes a sensor **101**, a data processing unit **102** connectable to the sensor **101**, and a primary receiver unit **104** which is configured to communicate with the data processing unit **102** via a communication link **103**. In certain embodiments, the primary receiver unit **104** may be further configured to transmit data to a data processing terminal **105** to evaluate or otherwise process or format data received by the primary receiver unit **104**. The data processing terminal **105** may be configured to receive data directly from the data processing unit **102** via a communication link which may optionally be configured for bi-directional communication. Further, the data processing unit **102** may include a transmitter or a transceiver to transmit

and/or receive data to and/or from the primary receiver unit **104**, the data processing terminal **105** or optionally the secondary receiver unit **106**.

Also shown in FIG. 1 is an optional secondary receiver unit **106** which is operatively coupled to the communication link and configured to receive data transmitted from the data processing unit **102**. The secondary receiver unit **106** may be configured to communicate with the primary receiver unit **104**, as well as the data processing terminal **105**. The secondary receiver unit **106** may be configured for bi-directional wireless communication with each of the primary receiver unit **104** and the data processing terminal **105**. As discussed in further detail below, in certain embodiments the secondary receiver unit **106** may be a de-featured receiver as compared to the primary receiver, i.e., the secondary receiver may include a limited or minimal number of functions and features as compared with the primary receiver unit **104**. As such, the secondary receiver unit **106** may include a smaller (in one or more, including all, dimensions), compact housing or embodied in a device such as a wrist watch, arm band, etc., for example. Alternatively, the secondary receiver unit **106** may be configured with the same or substantially similar functions and features as the primary receiver unit **104**. The secondary receiver unit **106** may include a docking portion to be mated with a docking cradle unit for placement by, e.g., the bedside for night time monitoring, and/or bi-directional communication device.

Only one sensor **101**, data processing unit **102** and data processing terminal **105** are shown in the embodiment of the analyte monitoring system **100** illustrated in FIG. 1. However, it will be appreciated by one of ordinary skill in the art that the analyte monitoring system **100** may include more than one sensor **101** and/or more than one data processing unit **102**, and/or more than one data processing terminal **105**. Multiple sensors may be positioned in a patient for analyte monitoring at the same or different times. In certain embodiments, analyte information obtained by a first positioned sensor may be employed as a comparison to analyte information obtained by a second sensor. This may be useful to confirm or validate analyte information obtained from one or both of the sensors. Such redundancy may be useful if analyte information is contemplated in critical therapy-related decisions. In certain embodiments, a first sensor may be used to calibrate a second sensor.

The analyte monitoring system **100** may be a continuous monitoring system, or semi-continuous, or a discrete monitoring system. In a multi-component environment, each component may be configured to be uniquely identified by one or more of the other components in the system so that communication conflict may be readily resolved between the various components within the analyte monitoring system **100**. For example, unique IDs, communication channels, and the like, may be used.

In certain embodiments, the sensor **101** is physically positioned in or on the body of a user whose analyte level is being monitored. The sensor **101** may be configured to at least periodically sample the analyte level of the user and convert the sampled analyte level into a corresponding signal for transmission by the data processing unit **102**. The data processing unit **102** is coupleable to the sensor **101** so that both devices are positioned in or on the user's body, with at least a portion of the analyte sensor **101** positioned transcutaneously. The data processing unit **102** performs data processing functions, where such functions may include but are not limited to, filtering and encoding of data signals, each of which corresponds to a sampled analyte level of the user, for transmission to the primary receiver unit **104** via the communica-

tion link **103**. In one embodiment, the sensor **101** or the data processing unit **102** or a combined sensor/data processing unit may be wholly implantable under the skin layer of the user.

In one aspect, the primary receiver unit **104** may include an analog interface section including a radio frequency (RF) receiver and an antenna that is configured to communicate with the data processing unit **102** via the communication link **103**, data processing unit **102** and a data processing section for processing the received data from the data processing unit **102** such as data decoding, error detection and correction, data clock generation, and/or data bit recovery.

In operation, the primary receiver unit **104** in certain embodiments is configured to synchronize with the data processing unit **102** to uniquely identify the data processing unit **102**, based on, for example, an identification information of the data processing unit **102**, and thereafter, to periodically receive signals transmitted from the data processing unit **102** associated with the monitored analyte levels detected by the sensor **101**.

Referring again to FIG. 1, the data processing terminal **105** may include a personal computer, a portable computer such as a laptop or a handheld device (e.g., personal digital assistants (PDAs), telephone such as a cellular phone (e.g., a multimedia and Internet-enabled mobile phone such as an iPhone or similar phone), mp3 player, pager, and the like), drug delivery device, each of which may be configured for data communication with the receiver via a wired or a wireless connection. Additionally, the data processing terminal **105** may further be connected to a data network (not shown) for storing, retrieving, updating, and/or analyzing data corresponding to the detected analyte level of the user.

The data processing terminal **105** may include an infusion device such as an insulin infusion pump or the like, which may be configured to administer insulin to patients, and which may be configured to communicate with the primary receiver unit **104** for receiving, among others, the measured analyte level. Alternatively, the primary receiver unit **104** may be configured to integrate an infusion device therein so that the primary receiver unit **104** is configured to administer insulin (or other appropriate drug) therapy to patients, for example, for administering and modifying basal profiles, as well as for determining appropriate boluses for administration based on, among others, the detected analyte levels received from the data processing unit **102**. An infusion device may be an external device or an internal device (wholly implantable in a user).

In particular embodiments, the data processing terminal **105**, which may include an insulin pump, may be configured to receive the analyte signals from the data processing unit **102**, and thus, incorporate the functions of the primary receiver unit **104** including data processing for managing the patient's insulin therapy and analyte monitoring. In certain embodiments, the communication link **103** as well as one or more of the other communication interfaces shown in FIG. 1 may use one or more of an RF communication protocol, an infrared communication protocol, a Bluetooth enabled communication protocol, an 802.11x wireless communication protocol, or an equivalent wireless communication protocol which would allow secure, wireless communication of several units (for example, per HIPPA requirements) while avoiding potential data collision and interference.

FIG. 2 is a block diagram of the data processing unit of the data monitoring and detection system shown in FIG. 1 in accordance with certain embodiments. The data processing unit **102** thus may include one or more of an analog interface **201** configured to communicate with the sensor **101** (FIG. 1),

a user input **202**, and a temperature detection section **203**, each of which is operatively coupled to a transmitter processor **204** such as a central processing unit (CPU). The transmitter may include user input and/or interface components or may be free of user input and/or interface components.

Further shown in FIG. 2 are serial communication section **205** and an RF transmitter **206**, each of which is also operatively coupled to the transmitter processor **204**. Moreover, a power supply **207**, such as a battery, may also be provided in the data processing unit **102** to provide the necessary power for the data processing unit **102**. Additionally, as can be seen from the Figure, clock **208** may be provided to, among others, supply real time information to the transmitter processor **204**.

As can be seen in the embodiment of FIG. 2, the sensor unit **101** (FIG. 1) includes four contacts, three of which are electrodes—work electrode (W) **210**, guard contact (G) **211**, reference electrode (R) **212**, and counter electrode (C) **213**, each operatively coupled to the analog interface **201** of the data processing unit **102**. In certain embodiments, each of the work electrode (W) **210**, guard contact (G) **211**, reference electrode (R) **212**, and counter electrode (C) **213** may be made using a conductive material that may be applied by, e.g., chemical vapor deposition (CVD), physical vapor deposition, sputtering, reactive sputtering, printing, coating, ablating (e.g., laser ablation), painting, dip coating, etching, and the like. Materials include but are not limited to aluminum, carbon (such as graphite), cobalt, copper, gallium, gold, indium, iridium, iron, lead, magnesium, mercury (as an amalgam), nickel, niobium, osmium, palladium, platinum, rhenium, rhodium, selenium, silicon (e.g., doped polycrystalline silicon), silver, tantalum, tin, titanium, tungsten, uranium, vanadium, zinc, zirconium, mixtures thereof, and alloys, oxides, or metallic compounds of these elements.

The processor **204** may be configured to generate and/or process control signals to the various sections of the data processing unit **102** during the operation of the data processing unit **102**. In certain embodiments, the processor **204** also includes memory (not shown) for storing data such as the identification information for the data processing unit **102**, as well as the data associated with signals received from the sensor **101**. The stored information may be retrieved and processed for transmission to the primary receiver unit **104** under the control of the processor **204**. Furthermore, the power supply **207** may include a commercially available battery.

In certain embodiments, a manufacturing process of the data processing unit **102** may place the data processing unit **102** in the lower power, non-operating state (i.e., post-manufacture sleep mode). In this manner, the shelf life of the data processing unit **102** may be significantly improved. Moreover, as shown in FIG. 2, while the power supply unit **207** is shown as coupled to the processor **204**, and as such, the processor **204** is configured to provide control of the power supply unit **207**, it should be noted that within the scope of the present disclosure, the power supply unit **207** is configured to provide the necessary power to each of the components of the data processing unit **102** shown in FIG. 2.

Referring back to FIG. 2, the power supply section **207** of the data processing unit **102** in one embodiment may include a rechargeable battery unit that may be recharged by a separate power supply recharging unit (for example, provided in the receiver unit **104**) so that the data processing unit **102** may be powered for a longer period of usage time. In certain embodiments, the data processing unit **102** may be configured without a battery in the power supply section **207**, in which case the data processing unit **102** may be configured to

receive power from an external power supply source (for example, a battery, electrical outlet, etc.) as discussed in further detail below.

Referring yet again to FIG. 2, a temperature detection section 203 of the data processing unit 102 is configured to monitor the temperature of the skin near the sensor insertion site. The temperature reading may be used to adjust the analyte readings obtained from the analog interface 201. Also shown is a leak detection circuit 214 coupled to the guard trace (G) 211 and the processor 204 in the data processing unit 102 of the data monitoring and management system 100. The leak detection circuit 214 may be configured to detect leakage current in the sensor 101 to determine whether the measured sensor data are corrupt or whether the measured data from the sensor 101 is accurate. Such detection may trigger a notification to the user.

FIG. 3 is a block diagram of the receiver/monitor unit such as the primary receiver unit 104 of the data monitoring and management system shown in FIG. 1 in accordance with certain embodiments. The primary receiver unit 104 includes one or more of: a blood glucose test strip interface 301, an RF receiver 302, an input 303, a temperature detection section 304, and a clock 305, each of which is operatively coupled to a processing and storage section 307. The primary receiver unit 104 also includes a power supply 306 operatively coupled to a power conversion and monitoring section 308. Further, the power conversion and monitoring section 308 is also coupled to the receiver processor 307. Moreover, also shown are a receiver serial communication section 309, and an output 310, each operatively coupled to the processing and storage unit 307. The receiver may include user input and/or interface components or may be free of user input and/or interface components.

In certain embodiments, the test strip interface 301 includes a glucose level testing portion to receive a blood (or other body fluid sample) glucose test or information related thereto. For example, the interface may include a test strip port to receive a glucose test strip. The device may determine the glucose level of the test strip, and optionally display (or otherwise notice) the glucose level on the output 310 of the primary receiver unit 104. Any suitable test strip may be employed, e.g., test strips that only require a very small amount (e.g., one microliter or less, e.g., 0.5 microliter or less, e.g., 0.1 microliter or less), of applied sample to the strip in order to obtain accurate glucose information, e.g. FreeStyle® blood glucose test strips from Abbott Diabetes Care, Inc. Glucose information obtained by the in vitro glucose testing device may be used for a variety of purposes, computations, etc. For example, the information may be used to calibrate sensor 101, confirm results of the sensor 101 to increase the confidence thereof (e.g., in instances in which information obtained by sensor 101 is employed in therapy related decisions), etc.

In one aspect, the RF receiver 302 is configured to communicate, via the communication link 103 (FIG. 1) with the RF transmitter 206 of the data processing unit 102, to receive encoded data from the data processing unit 102 for, among others, signal mixing, demodulation, and other data processing. The input 303 of the primary receiver unit 104 is configured to allow the user to enter information into the primary receiver unit 104 as needed. In one aspect, the input 303 may include keys of a keypad, a touch-sensitive screen, and/or a voice-activated input command unit, and the like. The temperature monitor section 304 may be configured to provide temperature information of the primary receiver unit 104 to the processing and control section 307, while the clock 305

provides, among others, real time or clock information to the processing and storage section 307.

Each of the various components of the primary receiver unit 104 shown in FIG. 3 is powered by the power supply 306 (or other power supply) which, in certain embodiments, includes a battery. Furthermore, the power conversion and monitoring section 308 is configured to monitor the power usage by the various components in the primary receiver unit 104 for effective power management and may alert the user, for example, in the event of power usage which renders the primary receiver unit 104 in sub-optimal operating conditions. The serial communication section 309 in the primary receiver unit 104 is configured to provide a bi-directional communication path from the testing and/or manufacturing equipment for, among others, initialization, testing, and configuration of the primary receiver unit 104. Serial communication section 309 can also be used to upload data to a computer, such as time-stamped blood glucose data. The communication link with an external device (not shown) can be made, for example, by cable (such as USB or serial cable), infrared (IR) or RF link. The output/display 310 of the primary receiver unit 104 is configured to provide, among others, a graphical user interface (GUI), and may include a liquid crystal display (LCD) for displaying information. Additionally, the output/display 310 may also include an integrated speaker for outputting audible signals as well as to provide vibration output as commonly found in handheld electronic devices, such as mobile telephones, pagers, etc. In certain embodiments, the primary receiver unit 104 also includes an electro-luminescent lamp configured to provide backlighting to the output 310 for output visual display in dark ambient surroundings.

Referring back to FIG. 3, the primary receiver unit 104 may also include a storage section such as a programmable, non-volatile memory device as part of the processor 307, or provided separately in the primary receiver unit 104, operatively coupled to the processor 307. The processor 307 may be configured to perform Manchester decoding (or other protocol(s)) as well as error detection and correction upon the encoded data received from the data processing unit 102 via the communication link 103.

In further embodiments, the data processing unit 102 and/or the primary receiver unit 104 and/or the secondary receiver unit 106, and/or the data processing terminal/infusion section 105 may be configured to receive the blood glucose value wirelessly over a communication link from, for example, a blood glucose meter. In further embodiments, a user manipulating or using the analyte monitoring system 100 (FIG. 1) may manually input the blood glucose value using, for example, a user interface (for example, a keyboard, keypad, voice commands, and the like) incorporated in the one or more of the data processing unit 102, the primary receiver unit 104, secondary receiver unit 106, or the data processing terminal/infusion section 105.

Additional detailed descriptions of embodiments of the continuous analyte monitoring system, embodiments of its various components are provided in U.S. Pat. No. 6,175,752 issued Jan. 16, 2001 entitled "Analyte Monitoring Device and Methods of Use", and in application Ser. No. 10/745,878 filed Dec. 26, 2003 entitled "Continuous Glucose Monitoring System and Methods of Use", each assigned to the Assignee of the present application, and the disclosure of each of which are incorporated herein by reference for all purposes.

FIG. 4 schematically shows an embodiment of an analyte sensor in accordance with the present disclosure. The sensor 400 includes electrodes 401, 402 and 403 on a base 404. The sensor may be wholly implantable in a user or may be con-

figured so that only a portion is positioned within (internal) a user and another portion outside (external) a user. For example, the sensor 400 may include a portion positionable above a surface of the skin 410, and a portion positioned below the skin. In such embodiments, the external portion may include contacts (connected to respective electrodes of the second portion by traces) to connect to another device also external to the user such as a transmitter unit. While the embodiment of FIG. 4 shows three electrodes side-by-side on the same surface of base 404, other configurations are contemplated, e.g., fewer or greater electrodes, some or all electrodes on different surfaces of the base or present on another base, some or all electrodes stacked together, electrodes of differing materials and dimensions, etc.

FIG. 5A shows a perspective view of an embodiment of an electrochemical analyte sensor 500 having a first portion (which in this embodiment may be characterized as a major portion) positionable above a surface of the skin 510, and a second portion (which in this embodiment may be characterized as a minor portion) that includes an insertion tip 530 positionable below the skin, e.g., penetrating through the skin and into, e.g., the subcutaneous space 520, in contact with the user's biofluid such as interstitial fluid. Contact portions of a working electrode 501, a reference electrode 502, and a counter electrode 503 are positioned on the portion of the sensor 500 situated above the skin surface 510. Working electrode 501, a reference electrode 502, and a counter electrode 503 are shown at the second section and particularly at the insertion tip 530. Traces may be provided from the electrode at the tip to the contact, as shown in FIG. 5A. It is to be understood that greater or fewer electrodes may be provided on a sensor. For example, a sensor may include more than one working electrode and/or the counter and reference electrodes may be a single counter/reference electrode, etc.

FIG. 5B shows a cross sectional view of a portion of the sensor 500 of FIG. 5A. The electrodes 501, 502 and 503, of the sensor 500 as well as the substrate and the dielectric layers are provided in a layered configuration or construction. For example, as shown in FIG. 5B, in one aspect, the sensor 500 (such as the sensor unit 101 FIG. 1), includes a substrate layer 504, and a first conducting layer 501 such as carbon, gold, etc., disposed on at least a portion of the substrate layer 504, and which may provide the working electrode. Also shown disposed on at least a portion of the first conducting layer 501 is a sensing layer 508.

Referring back to FIG. 5B, a first insulation layer such as a first dielectric layer 505 is disposed or layered on at least a portion of the first conducting layer 501, and further, a second conducting layer 509 may be disposed or stacked on top of at least a portion of the first insulation layer (or dielectric layer) 505. As shown in FIG. 5B, the second conducting layer 509 may provide the reference electrode 502, and in one aspect, may include a layer of silver/silver chloride (Ag/AgCl), gold, etc.

Referring still again to FIG. 5B, a second insulation layer 506 such as a dielectric layer in one embodiment may be disposed or layered on at least a portion of the second conducting layer 509. Further, a third conducting layer 503 may provide the counter electrode 503. It may be disposed on at least a portion of the second insulation layer 506. Finally, a third insulation layer may be disposed or layered on at least a portion of the third conducting layer 503. In this manner, the sensor 500 may be layered such that at least a portion of each of the conducting layers is separated by a respective insulation layer (for example, a dielectric layer).

The embodiment of FIGS. 5A and 5B show the layers having different lengths. Some or all of the layers may have the same or different lengths and/or widths.

In certain embodiments, some or all of the electrodes 501, 502, 503 may be provided on the same side of the substrate 504 in the layered construction as described above, or alternatively, may be provided in a co-planar manner such that two or more electrodes may be positioned on the same plane (e.g., side-by side (e.g., parallel) or angled relative to each other) on the substrate 504. For example, co-planar electrodes may include a suitable spacing there between and/or include dielectric material or insulation material disposed between the conducting layers/electrodes. Furthermore, in certain embodiments one or more of the electrodes 501, 502, 503 may be disposed on opposing sides of the substrate 504. In such embodiments, contact pads may be one the same or different sides of the substrate. For example, an electrode may be on a first side and its respective contact may be on a second side, e.g., a trace connecting the electrode and the contact may traverse through the substrate.

In certain embodiments, the data processing unit 102 may be configured to perform sensor insertion detection and data quality analysis, information pertaining to which may also be transmitted to the primary receiver unit 104 periodically at the predetermined time interval. In turn, the receiver unit 104 may be configured to perform, for example, skin temperature compensation/correction as well as calibration of the sensor data received from the data processing unit 102.

As noted above, analyte sensors may include an analyte-responsive enzyme in a sensing layer. Some analytes, such as oxygen, can be directly electrooxidized or electroreduced on a sensor, and more specifically at least on a working electrode of a sensor. Other analytes, such as glucose and lactate, require the presence of at least one electron transfer agent and/or at least one catalyst to facilitate the electrooxidation or electroreduction of the analyte. Catalysts may also be used for those analyte, such as oxygen, that can be directly electrooxidized or electroreduced on the working electrode. For these analytes, each working electrode includes a sensing layer (see for example sensing layer 508 of FIG. 5B) formed proximate to or on a surface of a working electrode. In many embodiments, a sensing layer is formed near or on only a small portion of at least a working electrode.

A variety of different sensing layer configurations may be used. In certain embodiments, the sensing layer is deposited on the conductive material of a working electrode. The sensing layer may extend beyond the conductive material of the working electrode. In some cases, the sensing layer may also extend over other electrodes, e.g., over the counter electrode and/or reference electrode (or counter/reference is provided). The sensing layer may be integral with the material of an electrode.

A sensing layer that is in direct contact with the working electrode may contain an electron transfer agent to transfer electrons directly or indirectly between the analyte and the working electrode, and/or a catalyst to facilitate a reaction of the analyte.

A sensing layer that is not in direct contact with the working electrode may include a catalyst that facilitates a reaction of the analyte. However, such sensing layers may not include an electron transfer agent that transfers electrons directly from the working electrode to the analyte, as the sensing layer is spaced apart from the working electrode. One example of this type of sensor is a glucose or lactate sensor which includes an enzyme (e.g., glucose oxidase, glucose dehydrogenase, lactate oxidase, and the like) in the sensing layer. The glucose or lactate may react with a second compound in the

presence of the enzyme. The second compound may then be electrooxidized or electroreduced at the electrode. Changes in the signal at the electrode indicate changes in the level of the second compound in the fluid and are proportional to changes in glucose or lactate level and, thus, correlate to the analyte level.

In certain embodiments which include more than one working electrode, one or more of the working electrodes do not have a corresponding sensing layer, or have a sensing layer which does not contain one or more components (e.g., an electron transfer agent and/or catalyst) needed to electrolyze the analyte. Thus, the signal at this working electrode corresponds to background signal which may be removed from the analyte signal obtained from one or more other working electrodes that are associated with fully-functional sensing layers by, for example, subtracting the signal.

In certain embodiments, the sensing layer includes one or more electron transfer agents. Electron transfer agents that may be employed are electroreducible and electrooxidizable ions or molecules having redox potentials that are a few hundred millivolts above or below the redox potential of the standard calomel electrode (SCE). The electron transfer agent may be organic, organometallic, or inorganic.

In certain embodiments, electron transfer agents have structures or charges which prevent or substantially reduce the diffusional loss of the electron transfer agent during the period of time that the sample is being analyzed. For example, electron transfer agents include but are not limited to a redox species, e.g., bound to a polymer which can in turn be disposed on or near the working electrode. The bond between the redox species and the polymer may be covalent, coordinative, or ionic. Although any organic or organometallic redox species may be bound to a polymer and used as an electron transfer agent, in certain embodiments the redox species is a transition metal compound or complex, e.g., osmium, ruthenium, iron, and cobalt compounds or complexes. It will be recognized that many redox species described for use with a polymeric component may also be used, without a polymeric component.

One type of polymeric electron transfer agent contains a redox species covalently bound in a polymeric composition. An example of this type of mediator is poly(vinylferrocene). Another type of electron transfer agent contains an ionically-bound redox species. This type of mediator may include a charged polymer coupled to an oppositely charged redox species. Examples of this type of mediator include a negatively charged polymer coupled to a positively charged redox species such as an osmium or ruthenium polypyridyl cation. Another example of an ionically-bound mediator is a positively charged polymer such as quaternized poly(4-vinyl pyridine) or poly(1-vinyl imidazole) coupled to a negatively charged redox species such as ferricyanide or ferrocyanide. In other embodiments, electron transfer agents include a redox species coordinatively bound to a polymer. For example, the mediator may be formed by coordination of an osmium or cobalt 2,2'-bipyridyl complex to poly(1-vinyl imidazole) or poly(4-vinyl pyridine).

Suitable electron transfer agents are osmium transition metal complexes with one or more ligands, each ligand having a nitrogen-containing heterocycle such as 2,2'-bipyridine, 1,10-phenanthroline, or derivatives thereof. The electron transfer agents may also have one or more ligands covalently bound in a polymer, each ligand having at least one nitrogen-containing heterocycle, such as pyridine, imidazole, or derivatives thereof. The present disclosure may employ electron transfer agents have a redox potential ranging from about -100 mV to about +150 mV versus the standard calomel

electrode (SCE), e.g., ranges from about -100 mV to about +150 mV, e.g., ranges from about -50 mV to about +50 mV, e.g., electron transfer agents have osmium redox centers and a redox potential ranging from +50 mV to -150 mV versus SCE.

The sensing layer may also include a catalyst which is capable of catalyzing a reaction of the analyte. The catalyst may also, in some embodiments, act as an electron transfer agent. One example of a suitable catalyst is an enzyme which catalyzes a reaction of the analyte. For example, a catalyst, such as a glucose oxidase, glucose dehydrogenase (e.g., pyrroloquinoline quinone glucose dehydrogenase (PQQ)), or oligosaccharide dehydrogenase), may be used when the analyte of interest is glucose. A lactate oxidase or lactate dehydrogenase may be used when the analyte of interest is lactate. Laccase may be used when the analyte of interest is oxygen or when oxygen is generated or consumed in response to a reaction of the analyte. In certain embodiments, a catalyst may be attached to a polymer, cross linking the catalyst with another electron transfer agent (which, as described above, may be polymeric. A second catalyst may also be used in certain embodiments. This second catalyst may be used to catalyze a reaction of a product compound resulting from the catalyzed reaction of the analyte. The second catalyst may operate with an electron transfer agent to electrolyze the product compound to generate a signal at the working electrode. Alternatively, a second catalyst may be provided in an interferent-eliminating layer to catalyze reactions that remove interferents.

Certain embodiments include a Wired Enzyme™ sensing layer that works at a gentle oxidizing potential, e.g., a potential of about +40 mV. This sensing layer uses an osmium (Os)-based mediator designed for low potential operation and is stably anchored in a polymeric layer. Accordingly, in certain embodiments the sensing element is redox active component that includes (1) Osmium-based mediator molecules attached by stable (bidentate) ligands anchored to a polymeric backbone, and (2) glucose oxidase enzyme molecules. These two constituents are crosslinked together.

A mass transport limiting layer (not shown), e.g., an analyte flux modulating layer, may be included with the sensor to act as a diffusion-limiting barrier to reduce the rate of mass transport of the analyte, for example, glucose or lactate, into the region around the working electrodes. The mass transport limiting layers are useful in limiting the flux of an analyte to a working electrode in an electrochemical sensor so that the sensor is linearly responsive over a large range of analyte concentrations and is easily calibrated. Mass transport limiting layers may include polymers and may be biocompatible. A mass transport limiting layer may serve many functions, e.g., functionalities of a biocompatible layer and/or interferent-eliminating layer may be provided by the mass transport limiting layer.

In certain embodiments, a mass transport limiting layer is a membrane composed of crosslinked polymers containing heterocyclic nitrogen groups, such as polymers of polyvinylpyridine and polyvinylimidazole. Electrochemical sensors equipped with such membranes have considerable sensitivity and stability, and a large signal-to-noise ratio, in a variety of conditions.

According certain embodiments, a membrane is formed by crosslinking in situ a polymer, modified with a zwitterionic moiety, a non-pyridine copolymer component, and optionally another moiety that is either hydrophilic or hydrophobic, and/or has other desirable properties, in an alcohol-buffer solution. The modified polymer may be made from a precursor polymer containing heterocyclic nitrogen groups. Option-

ally, hydrophilic or hydrophobic modifiers may be used to “fine-tune” the permeability of the resulting membrane to an analyte of interest. Optional hydrophilic modifiers, such as poly(ethylene glycol), hydroxyl or polyhydroxyl modifiers, may be used to enhance the biocompatibility of the polymer or the resulting membrane.

A biocompatible layer (not shown) may be provided over at least that portion of the sensor which is subcutaneously inserted into the patient. The biocompatible layer may be incorporated in the interferent-eliminating layer or in the mass transport limiting layer or may be a separate layer. The layer may prevent the penetration of large biomolecules into the electrodes. The biocompatible layer may also prevent protein adhesion to the sensor, formation of blood clots, and other undesirable interactions between the sensor and body. For example, a sensor may be completely or partially covered on its exterior with a biocompatible coating.

An interferent-eliminating layer (not shown) may be included in the sensor. The interferent-eliminating layer may be incorporated in the biocompatible layer or in the mass transport limiting layer or may be a separate layer. Interferents are molecules or other species that are electroreduced or electrooxidized at the electrode, either directly or via an electron transfer agent, to produce a false signal. In one embodiment, a film or membrane prevents the penetration of one or more interferents into the region around the working electrode. In many embodiments, this type of interferent-eliminating layer is much less permeable to one or more of the interferents than to the analyte. An interferent-eliminating layer may include ionic components to reduce the permeability of the interferent-eliminating layer to ionic interferents having the same charge as the ionic components. Another example of an interferent-eliminating layer includes a catalyst for catalyzing a reaction which removes interferents.

A sensor may also include an active agent such as an anticlotting and/or antiglycolytic agent(s) disposed on at least a portion a sensor that is positioned in a user. An anticlotting agent may reduce or eliminate the clotting of blood or other body fluid around the sensor, particularly after insertion of the sensor. Blood clots may foul the sensor or irreproducibly reduce the amount of analyte which diffuses into the sensor. Examples of useful anticlotting agents include heparin and tissue plasminogen activator (TPA), as well as other known anticlotting agents. Embodiments may include an antiglycolytic agent or precursor thereof. The term “antiglycolytic” is used broadly herein to include any substance that at least retards glucose consumption of living cells.

Sensors described herein may be configured to require no system calibration or no user calibration. For example, a sensor may be factory calibrated and need not require further calibrating. In certain embodiments, calibration may be required, but may be done without user intervention, i.e., may be automatic. In those embodiments in which calibration by the user is required, the calibration may be according to a predetermined schedule or may be dynamic, i.e., the time for which may be determined by the system on a real-time basis according to various factors. Calibration may be accomplished using an in vitro test strip or other calibrator, e.g., a small sample test strip such as a test strip that requires less than about 1 microliter of sample (for example FreeStyle® blood glucose monitoring test strips from Abbott Diabetes Care). For example, test strips that require less than about 1 nanoliter of sample may be used. In certain embodiments, a sensor may be calibrated using only one sample of body fluid per calibration event. For example, a user need only lance a body part one time to obtain sample for a calibration event (e.g., for a test strip), or may lance more than one time within

a short period of time if an insufficient volume of sample is obtained firstly. Embodiments include obtaining and using multiple samples of body fluid for a given calibration event, where glucose values of each sample are substantially similar. Data obtained from a given calibration event may be used independently to calibrate or combined with data obtained from previous calibration events, e.g., averaged including weighted averaged, filtered and the like, to calibrate.

An analyte system may include an optional alarm system that, e.g., based on information from a processor, warns the patient of a potentially detrimental condition of the analyte. For example, if glucose is the analyte, an alarm system may warn a user of conditions such as hypoglycemia and/or hyperglycemia and/or impending hypoglycemia, and/or impending hyperglycemia. An alarm system may be triggered when analyte levels reach or exceed a threshold value. An alarm system may also, or alternatively, be activated when the rate of change or acceleration of the rate of change in analyte level increase or decrease reaches or exceeds a threshold rate or acceleration. For example, in the case of a glucose monitoring system, an alarm system may be activated if the rate of change in glucose concentration exceeds a threshold value which might indicate that a hyperglycemic or hypoglycemic condition is likely to occur. A system may also include system alarms that notify a user of system information such as battery condition, calibration, sensor dislodgment, sensor malfunction, etc. Alarms may be, for example, auditory and/or visual. Other sensory-stimulating alarm systems may be used including alarm systems which heat, cool, vibrate, or produce a mild electrical shock when activated.

The subject disclosure also includes sensors used in sensor-based drug delivery systems. The system may provide a drug to counteract the high or low level of the analyte in response to the signals from one or more sensors. Alternatively, the system may monitor the drug concentration to ensure that the drug remains within a desired therapeutic range. The drug delivery system may include one or more (e.g., two or more) sensors, a transmitter, a receiver/display unit, and a drug administration system. In some cases, some or all components may be integrated in a single unit. The sensor-based drug delivery system may use data from the one or more sensors to provide necessary input for a control algorithm/mechanism to adjust the administration of drugs, e.g., automatically or semi-automatically. As an example, a glucose sensor could be used to control and adjust the administration of insulin from an external or implanted insulin pump.

As discussed in further detail below, in accordance with aspects of the present disclosure an offset based model for improving the accuracy of the analyte sensor signals to address abnormal sensor sensitivity event including, for example, early signal (sensitivity) attenuation is provided. More specifically, in accordance with aspects of the present disclosure, when an analyte sensor is experiencing signal attenuation, it is assumed that the associated sensor sensitivity remains constant, and rather, a predetermined signal offset results. Accordingly, determination of the offset and applying the determined offset to analyte sensor signals provide improved accuracy in the monitored analyte levels from the sensor, even in the case where the analyte sensor is experiencing abnormal sensitivity event such as, for example, early signal attenuation.

In this manner, in one aspect, there is provided a procedure to retrospectively (or in real time) determine a glucose estimate based on sensor signals and available reference measurements from, for example, in vitro testing that maximizes both the optimal accuracy and precision, while minimally

susceptible to errors that may be caused by outlier reference value and/or momentary sensor signal degradation sources such as early signal attenuation.

In providing the best glucose estimate, it is found that the simplest transformation from a raw sensor current signal in an arbitrary hardware units to a glucose signal in proper glucose concentration units, is in fact a linear scaling operation without any offset. The scaling factor is commonly called sensitivity, in which a raw sensor current signal can be translated into glucose concentration units by dividing the signal's value by the sensitivity value. As a result, the nominal aspect of calibration involves using a reasonable amount of information to infer the most accurate and precise estimate of sensitivity.

While this is the case under normal operating conditions, there are several exceptions in which the sensor response to the analyte may be contaminated by other artifacts. An example is during the presence of early signal attenuation (ESA) condition, where, suppose the sensor has been properly calibrated using its true sensitivity, the resulting glucose values is lower than that determined by other means or an identical sensor that is not subject to ESA condition.

In such non-normal operating conditions, the best glucose estimate from the sensor may be determined by retaining the same best estimate of sensitivity as in the nominal case, and in addition, determining the best estimate of a slowly time varying offset. This may be defined as the offset based model. In one aspect, the offset based model assumes that the true gain or sensitivity of the system remains the same throughout the sensor's life, and that non-normal operating conditions such as ESA condition is best represented by a nonzero, slowly time varying offset.

Referring now to the Figures, FIG. 6 is a flowchart illustrating the offset model based analyte sensor data calibration in accordance with one aspect of the present disclosure. In one aspect, sampled data from an analyte sensor is processed (610). For example, in one embodiment, the raw signal (such as raw current signal) received from the analyte sensor is retrospectively lag corrected, and/or filtered or smoothed in addition to temperature corrected or compensated. Thereafter, a normal sensitivity associated with the analyte sensor is determined (620) as described in further detail below in conjunction with FIG. 7.

Referring again to FIG. 6, a windowed offset is thereafter estimated using each available paired points (of sensor data and time corresponding reference blood glucose measurement, for example) within a valid window (630). As discussed above, the effective sensitivity associated with the analyte sensor is, in one embodiment, held constant at the determined normal sensitivity discussed above. Using this normal sensitivity S_n , each pairable sensor signal is scaled into glucose concentrations. For purpose of signal pairing, the sensor signal G_r can either be the raw signal itself, lag corrected, and/or filtered or smoothed in addition to temperature corrected or compensated. The scaled value G_s at any time k is then described as follows:

$$G_s(k) = G_r(k) / S_n$$

where S_n is the normal sensitivity previously computed. For each pairable scaled sensor signal G_s and reference blood glucose measurement (BG) in a window, a difference (DGs) may be determined as follows:

$$DG_s(k) = G_s(k) - BG(k)$$

where k denotes the time index of a pair.

The difference value (DGs) between each pairable scaled sensor signal G_s to its corresponding reference blood glucose

(BG) measurement pair is a reflection of the latest offset. In one aspect, the plurality of these computed offset within this window of reference blood glucose measurement-sensor pairs determine the windowed offset in this window. An example of obtaining a windowed offset using the available data in a window is averaging the difference value (DGs). Yet another example is to take the median value of the difference value (DGs). Under normal operating conditions, the windowed offset is zero.

Referring still again to FIG. 6, thereafter, the estimated offset may be used to obtain a slowly time varying offset $Go(k)$ at every minute k (640). For a retrospective application, interpolating offset values obtained around clusters of reference blood glucose measurement-sensor pairs may be used in place of a slowly time varying offset $Go(k)$. For a real-time application, prior knowledge of how offsets change over time given other known circumstances or parameters may be used to determine a slowly time varying offset $Go(k)$. For example, when ESA condition is suspected, a time evolution of the offset based on the available offset data may be inferred by fitting the offset data to an ESA offset model whose architecture may have been determined a priori.

Finally, for each one minute sampled analyte data (or any other periodically sampled analyte data from the sensor), the slowly time varying estimated offset $Go(k)$ and the best estimate of the constant S_n are applied to the sampled analyte data to estimate the corresponding glucose value (650). That is, for example, for each of the one minute sampled analyte sensor data $G_r(k)$ which has been lag corrected, temperature compensated, and/or smoothed or filtered, the slowly time varying offset $Go(k)$ is applied with the previously determined normal sensitivity S_n to determine the corresponding estimated glucose value $G_f(k)$ based on the following relationship:

$$G_f(k) = [G_r(k) / S_n] - Go(k)$$

FIG. 7 is a flowchart illustrating the normal sensitivity S_n determination routine of FIG. 6 associated with the analyte sensor in accordance with one embodiment of the present disclosure. Referring to the Figure, to determine the normal sensitivity associated with the analyte sensor (620) (FIG. 6), given the available paired data points of analyte sensor signals and the time corresponding reference measurements (for example, the in vitro blood glucose measurements taken, for example, at a given time intervals (periodic or otherwise)), the immediate sensitivity (S_i) for each paired data points are determined (710). That is, in one embodiment, for each paired sensor data and reference blood glucose measurement, the sensor data is lag corrected and smoothed or filtered, based on a nominal time constant (for example, 10 minutes or any other suitable time period), and a ratio of the lag corrected and smoothed data $G_r(k)$ over the reference blood glucose measurement BG is taken to determine the corresponding immediate sensitivity (S_i).

$$S_i(k) = G_r(k) / BG$$

Referring back to FIG. 7, with the determined immediate sensitivity (S_i), for each time window (which may be preset or variable), the latest sensitivity (S_0) associated with the analyte sensor is estimated based on the determined immediate sensitivity (S_i) values within that time window (720). That is, a time window such as, for example, a five hour window (or any other suitable time window) is defined with a center that shifts or advances through the sensor's life (as a measure of time) in an increment of, for example, one hour. Thereafter,

within the time window, the determined immediate sensitivity (S_i) is collected as well as the associated rate of change of the sensor signals.

In one embodiment, a least squares fit line is calculated for the sensor rate of change as a function of the corresponding immediate sensitivity (S_i) within the time window. The vertical difference between each immediate sensitivity (S_i) and the calculated least squares fit line corresponds to a lag residual compensated sensitivity. Furthermore, the intercept at the zero rate of change of this least squares fit line corresponds to the estimate of the latest sensitivity (S_0) in the corresponding time window.

It is to be noted that the standard error associated with the least squares fit line may correspond to how the available data fits the lag correction model as well as how much variance is introduced from the zero mean sensitivity error sources. In this context, the zero mean sensitivity error sources are factors that could increase the variance of the sensitivity calculation error without significantly biasing the result in any direction. Examples of such zero mean sensitivity error sources include random sensor error and/or noise, random reference blood glucose error, and insufficient lag correction. Insufficient lag correction may result from using a time constant that is smaller or larger than the actual value, or from using a model that is not sufficiently robust to capture all the transient behavior between blood glucose level to interstitial glucose levels.

Also, referring back to FIG. 7, using the available lag residual compensated sensitivity values, along with their associated timestamps, in one embodiment, the least squares fit line may be determined based on time as a function of the lag residual compensated sensitivity values to estimate the sensitivity rate of change for each time window. In this manner, as discussed above, for each time window, the latest sensitivity (S_0) based on the determined immediate sensitivity (S_i) is calculated. Referring still to FIG. 7, given the multiple time windows, a subset of the time windows are selected based on the determined latest sensitivity, the immediate sensitivity (S_i) as well as the lag residual compensated sensitivity values. In this manner, in one aspect, the latest sensitivity values (S_0) that are taken during non-normal operation modes such as during ESA condition are discounted. In these cases, the latest sensitivity values (S_0) tend to be lower than the true/accurate value. For example, in one embodiment, the time windows are selected for latest sensitivity values (S_0) that are in the upper 50th percentile of the entire time window population.

Also, the subset of time windows are additionally identified for those with a suitable or sufficient least squares fit line of the sensor rate of change versus immediate sensitivity (S_i). The better the fit, the more likely a given window will produce a reliable latest sensitivity value (S_0). In one embodiment, the latest sensitivity values (S_0) retained are those where the standard sensitivity error (Sse) based on the determined least squares fit line in the lower quartile of the entire time window population.

Additionally, the subset of time windows may further be narrowed to those associated with a relatively low immediate sensitivity (S_i) rate of change value. A window with a relatively high immediate sensitivity (S_i) rate of change value may indicate a region of poor sensor stability, or a consistent bias in the reference blood glucose values due to unknown circumstances. For example, in one embodiment, only latest sensitivity values (S_0) whose rate of change magnitude is in the lower quartile of the entire time window population may be retained. Referring still to FIG. 7, based on the one or more criteria described above, the subset of eligible latest sensitivi-

ties (S_0) are filtered or identified from all latest sensitivity values (S_0) (730). It is to be noted that the threshold for inclusion within the subset of time windows may be varied and include other thresholds or criteria including, for example, selecting those time windows associated with the latest sensitivity in the upper 75th percentile of the entire population (or some other suitable threshold), selecting those time windows associated with preferred elapsed time ranges since the start of a sensor insertion, or selecting those time windows associated with preferred ranges of times of days. Indeed, the numerical examples described herein are intended to provide exemplary embodiments and the scope of the present disclosure are not in any manner intended to be limited to such examples.

Referring back to FIG. 7, as shown, weighted averaging function is applied to the subset of eligible latest sensitivity values (S_0) to determine the estimate of the normal sensitivity (740). For example, in one embodiment, each latest sensitivity value (S_0) may be weighted by $(1/Sse)^2$. In another embodiment, each latest sensitivity value (S_0) may be weighted by $(S_0/(Sse)^2)$. In yet another embodiment, other measures of fit such as the absolute value of immediate sensitivity (S_i) rate of change of each window can be included into the weighting.

Thereafter, the estimated normal sensitivity determined is confirmed by, for example, comparing it to the median sensitivity computed from all eligible latest sensitivity values (S_0) and ensuring that the estimated normal sensitivity no smaller than the median sensitivity (750). Since numerical determination may incur a certain degree of uncertainty, it is possible that the normal sensitivity candidate may be lower than some clusters of latest sensitivity values (S_0) that may be a better candidate for the normal sensitivity estimate. As long as the bottom end of the uncertainty of the latest sensitivity values (S_0) is still below the candidate normal sensitivity value, no adjustment may be needed. Otherwise, the normal sensitivity may be adjusted further up to that bottom end limit. An example of computing the bottom end of latest sensitivity values (S_0) may include subtracting each latest sensitivity value (S_0) with three times (or any other suitable factor) the corresponding standard error (Sse) value. When the mean of this lower bound is higher than the candidate normal sensitivity value, the normal sensitivity should be adjusted to this bound.

In this manner, in accordance with embodiments of the present disclosure, improved real time or retrospective determination of glucose estimate is provided based on analyte sensor data and associated time corresponding reference measurement values (for example, in vitro test results providing associated blood glucose measurements) which improves accuracy and is less prone to abnormal sensor sensitivity events such as, for example, early signal attenuation.

Furthermore, in aspects of the present disclosure, it is contemplated that the highest sustainable in vivo steady state sensitivity associated with an analyte sensor occurs when the sensor is in normal condition. Also, sensitivities determined during reduced or increased mean sensitivity events may be deemed poor or inaccurate representatives of normal sensitivity. Additionally, zero mean sensitivity error sources are not considered to bias the normal sensitivity, and further, lag correction (retrospective or real time) of the analyte sensor raw signal removes most of the rate of change associated sensitivity errors. Moreover, it is considered, in some aspects of the present disclosure, that within a relatively short time window, a single "latest sensitivity" is an accurate representation of the temporal sensitivity—for example, in a five hour

time window as in the exemplary discussion set forth above, the "latest sensitivity" may be considered sufficiently representative.

In addition, in a five hour time window, a single effective time constant may be applicable for all available paired points. While different time windows may have different associated time constants, in a steady state condition where other parameters or variables being the same, the time window that has an effective time constant which is closed to an assumed nominal value may have a latest sensitivity value that is more suitable for the normal sensitivity. Finally, in a time window with sufficient number of paired points, the determined sensitivity slope over time may indicate the relative stability of the sensitivity in that time window. As such, again assuming a steady state condition where other parameters or variables are considered to be the same, a time window with a flatter sensitivity slope over time may be a more suitable candidate for the normal sensitivity.

Accordingly, a method in one embodiment includes processing sampled data from analyte sensor, determining a single, fixed, normal sensitivity value associated with the analyte sensor, estimating a windowed offset value associated with the analyte sensor for each available sampled data cluster, computing a time varying offset based on the estimated windowed offset value, and applying the time varying offset and the determined normal sensitivity value to the processed sampled data to estimate an analyte level for the sensor.

Processing the sampled data may include performing retrospective lag correction of the sampled data. Further, processing the sampled data may include smoothing the sampled data from the analyte sensor. In addition, processing the sampled data may include performing temperature correction to the sampled data.

In one aspect, determining the normal sensitivity may include pairing the sampled data from the analyte sensor with one or more time corresponding reference measurement values, where the one or more reference measurement values may include a blood glucose measurement.

A further aspect may include determining an immediate sensitivity value for each paired sampled data and the one or more time corresponding reference measurement values, and also, estimating a latest sensitivity based on the determined immediate sensitivity for each time window.

Yet a further aspect may include defining a subset of the estimated latest sensitivities associated with a subset of the total available time windows corresponding to the respective paired sampled data and the one or more time corresponding reference measurement values.

Additionally, still a further aspect may include weighted averaging the subset of estimated latest sensitivities to determine the normal sensitivity associated with the analyte sensor.

Also, another aspect may include confirming the determined normal sensitivity, where confirming the determined normal sensitivity may include comparing the determined normal sensitivity to a predetermined value, and further, where predetermined value may include a median sensitivity value determined based on the immediate sensitivity associated with each time window.

Also, estimating a windowed offset value in an eligible cluster of data may include collecting one or more pairs of reference measurement value and normal sensitivity adjusted sensor signal to determine the offset of each pair.

The windowed offset value of each pair in a window may be collected to determine a windowed offset value that is most representative of that window.

Additionally, determining a windowed offset value that is most representative of that window may include taking the median of the offset values of each pair in a window, taking the mean of the offset values of each pair in a window, taking a weighted mean of the offset values of each pair in a window, or other means of estimating the most representative offset value given the population of offset values in a window.

Moreover, slowly time varying offset may be determined based on any available windowed offset values using simple interpolation between windowed offset values.

In addition, a slowly time varying offset may be determined by fitting a pre determined mathematical model using any available windowed offset values. One example is a mathematical model similar to the impulse response of a second order model, with the time constants, amplitude, and the start of the response determined by fitting any available windowed offset values.

The estimate of an analyte level for the sensor may be obtained by dividing the latest unscaled value by the normal sensitivity, and then subtracting the result with the latest slowly time varying offset.

An apparatus in accordance with another aspect of the present disclosure includes a data communication interface, one or more processors operatively coupled to the data communication interface and a memory for storing instructions which, when executed by the one or more processors, causes the one or more processors to process sampled data from analyte sensor, determine a single, fixed, normal sensitivity value associated with the analyte sensor, estimate a windowed offset value associated with the analyte sensor for each available sampled data cluster, compute a time varying offset based on the estimated windowed offset value, and apply the time varying offset and the determined normal sensitivity value to the processed sampled data to estimate an analyte level for the sensor.

One or more storage devices having processor readable code embodied thereon, said processor readable code for programming one or more processors to estimate analyte level in accordance with a further aspect of the present disclosure includes processing sampled data from analyte sensor, determining a single, fixed, normal sensitivity value associated with the analyte sensor, estimating a windowed offset value associated with the analyte sensor for each available sampled data cluster, computing a time varying offset based on the estimated windowed offset value, and applying the time varying offset and the determined normal sensitivity value to the processed sampled data to estimate an analyte level for the sensor.

The various processes described above including the processes performed by the data processing unit **102**, receiver unit **104/106** or the data processing terminal/infusion section **105** (FIG. 1) in the software application execution environment in the analyte monitoring system **100** including the processes and routines described in conjunction with FIGS. **6-7**, may be embodied as computer programs developed using an object oriented language that allows the modeling of complex systems with modular objects to create abstractions that are representative of real world, physical objects and their interrelationships. The software required to carry out the inventive process, which may be stored in the memory or storage device (not shown) of the data processing unit **102**, receiver unit **104/106** or the data processing terminal/infusion section **105**, may be developed by a person of ordinary skill in the art and may include one or more computer program products.

Various other modifications and alterations in the structure and method of operation of this disclosure will be apparent to

those skilled in the art without departing from the scope and spirit of the embodiments of the present disclosure. Although the present disclosure has been described in connection with particular embodiments, it should be understood that the present disclosure as claimed should not be unduly limited to such particular embodiments. It is intended that the following claims define the scope of the present disclosure and that structures and methods within the scope of these claims and their equivalents be covered thereby.

What is claimed is:

1. A method, comprising:
 - processing, using one or more processors, sampled data from analyte sensor;
 - determining, using the one or more processors, a single, fixed, normal sensitivity value associated with the analyte sensor;
 - estimating, using the one or more processors, a windowed offset value associated with the analyte sensor's for each available sampled data cluster;
 - computing, using the one or more processors, a time varying offset based on the estimated windowed offset value; and
 - applying, using the one or more processors, the time varying offset and the determined normal sensitivity value to the processed sampled data to estimate an analyte level for the sensor.
2. The method of claim 1 wherein processing the sampled data includes performing retrospective lag correction of the sampled data.
3. The method of claim 1 wherein processing the sampled data includes smoothing the sampled data from the analyte sensor.
4. The method of claim 1 wherein processing the sampled data includes performing temperature correction to the sampled data.
5. The method of claim 1 wherein determining the normal sensitivity includes pairing the sampled data from the analyte sensor with one or more time corresponding reference measurement values.
6. The method of claim 5 wherein the one or more reference measurement values includes a blood glucose measurement.
7. The method of claim 5 including determining an immediate sensitivity value for each paired sampled data and the one or more time corresponding reference measurement values.
8. The method of claim 7 including estimating a latest sensitivity based on the determined immediate sensitivity for each time window.
9. The method of claim 8 including defining a subset of the estimated latest sensitivities associated with a subset of the total available time windows corresponding to the respective paired sampled data and the one or more time corresponding reference measurement values.
10. The method of claim 9 including weighted averaging the subset of estimated latest sensitivities to determine the normal sensitivity associated with the analyte sensor.
11. The method of claim 10 including confirming the determined normal sensitivity.
12. The method of claim 11 wherein confirming the determined normal sensitivity includes comparing the determined normal sensitivity to a predetermined value.
13. The method of claim 12 wherein the predetermined value includes a median sensitivity value determined based on the immediate sensitivity associated with each time window.

14. An apparatus, comprising:
 - a data communication interface;
 - one or more processors operatively coupled to the data communication interface; and
 - a memory for storing instructions which, when executed by the one or more processors, causes the one or more processors to process sampled data from analyte sensor, determine a single, fixed, normal sensitivity value associated with the analyte sensor, estimate a windowed offset value associated with the analyte sensor for each available sampled data cluster, compute a time varying offset based on the estimated windowed offset value, and apply the time varying offset and the determined normal sensitivity value to the processed sampled data to estimate an analyte level for the sensor.
15. The apparatus of claim 14 wherein the memory for storing instructions which, when executed by the one or more processors, causes the one or more processors to perform retrospective lag correction of the sampled data.
16. The apparatus of claim 14 wherein the memory for storing instructions which, when executed by the one or more processors, causes the one or more processors to smooth the sampled data from the analyte sensor.
17. The apparatus of claim 14 wherein the memory for storing instructions which, when executed by the one or more processors, causes the one or more processors to perform temperature correction for the sampled data.
18. The apparatus of claim 14 wherein the memory for storing instructions which, when executed by the one or more processors, causes the one or more processors to pair the sampled data from the analyte sensor with one or more time corresponding reference measurement values.
19. The apparatus of claim 18 wherein the one or more reference measurement values includes a blood glucose measurement.
20. The apparatus of claim 18 wherein the memory for storing instructions which, when executed by the one or more processors, causes the one or more processors to determine an immediate sensitivity value for each paired sampled data and the one or more time corresponding reference measurement values.
21. The apparatus of claim 20 wherein the memory for storing instructions which, when executed by the one or more processors, causes the one or more processors to estimate a latest sensitivity based on the determined immediate sensitivity for each time window.
22. The apparatus of claim 21 wherein the memory for storing instructions which, when executed by the one or more processors, causes the one or more processors to define a subset of the estimated latest sensitivities associated with a subset of the total available time windows corresponding to the respective paired sampled data and the one or more time corresponding reference measurement values.
23. The apparatus of claim 22 wherein the memory for storing instructions which, when executed by the one or more processors, causes the one or more processors to perform weighted averaging of the subset of estimated latest sensitivities to determine the normal sensitivity associated with the analyte sensor.
24. The apparatus of claim 23 wherein the memory for storing instructions which, when executed by the one or more processors, causes the one or more processors to confirm the determined normal sensitivity.
25. The apparatus of claim 24 wherein the memory for storing instructions which, when executed by the one or more processors, causes the one or more processors to compare the determined normal sensitivity to a predetermined value.

23

26. The apparatus of claim 25 wherein the predetermined value includes a median sensitivity value determined based on the immediate sensitivity associated with each time window.

27. One or more storage devices having processor readable code embodied thereon, said processor readable code for programming one or more processors to estimate analyte level, comprising:

- processing sampled data from analyte sensor;
- determining a single, fixed, normal sensitivity value associated with the analyte sensor;

24

estimating a windowed offset value associated with the analyte sensor for each available sampled data cluster;

computing a time varying offset based on the estimated windowed offset value; and

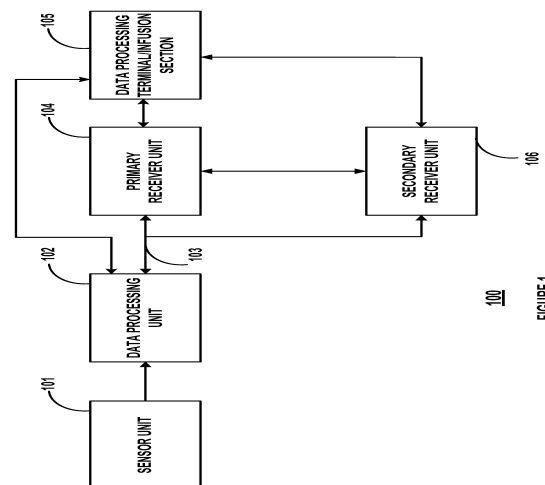
applying the time varying offset and the determined normal sensitivity value to the processed sampled data to estimate an analyte level for the sensor.

* * * * *

专利名称(译)	用于为分析物传感器提供基于偏移模型的校准的方法和设备		
公开(公告)号	US8224415	公开(公告)日	2012-07-17
申请号	US12/362479	申请日	2009-01-29
[标]申请(专利权)人(译)	雅培糖尿病护理公司		
申请(专利权)人(译)	雅培糖尿病, INC.		
当前申请(专利权)人(译)	雅培糖尿病INC.		
[标]发明人	BUDIMAN ERWIN SATRYA		
发明人	BUDIMAN, ERWIN SATRYA		
IPC分类号	A61B5/05 A61B5/00		
CPC分类号	A61B5/14532 A61B5/14865 G06F 19/36 A61B5/1495 Y10T436/144444 A61B2560/0223 G16H40/63 G16H10/20 G16H10/40		
审查员(译)	霍利克, 肯尼斯R.		
助理审查员(译)	THOMAS, DAVID		
其他公开文献	US20100191085A1		
外部链接	Espacenet USPTO		

摘要(译)

提供了用于检测体液中的分析物的方法和装置。实施例包括处理来自分析物传感器的采样数据, 确定与分析物传感器相关联的单个固定正常灵敏度值, 估计与每个可用采样数据聚类的分析物传感器相关联的加窗偏移值, 基于估计值计算时变偏移加窗的偏移值, 并将时变偏移和确定的正常灵敏度值应用于处理的采样数据, 以估计传感器的分析物水平。



100
FIGURE 1