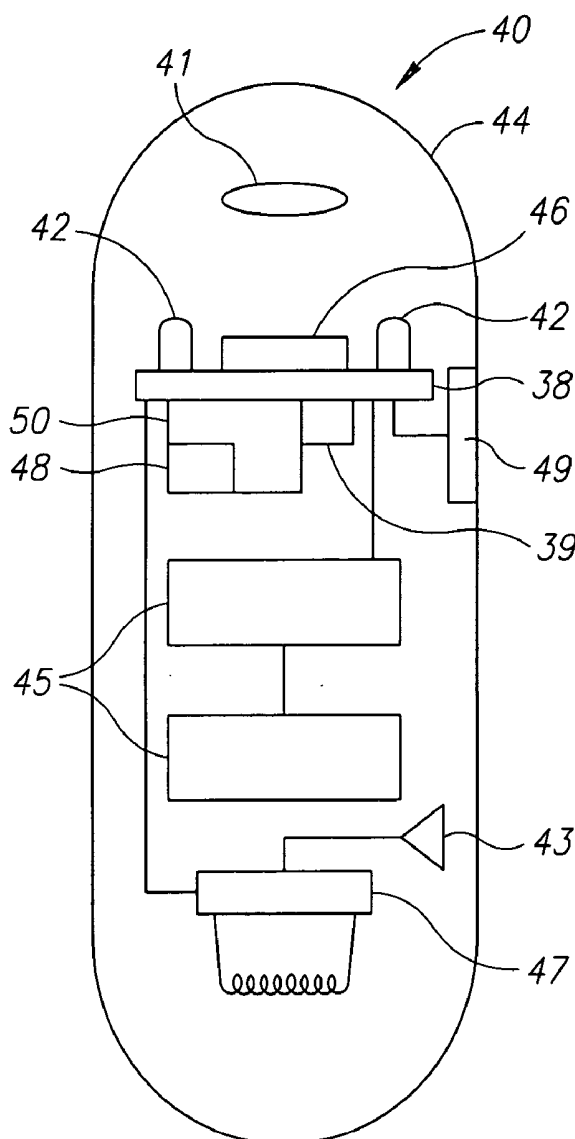




US 20060155174A1

(19) **United States**(12) **Patent Application Publication**
Glukhovsky et al.(10) **Pub. No.: US 2006/0155174 A1**(43) **Pub. Date: Jul. 13, 2006**(54) **DEVICE, SYSTEM AND METHOD FOR
SELECTIVE ACTIVATION OF IN VIVO
SENSORS****Related U.S. Application Data**(60) Provisional application No. 60/433,586, filed on Dec.
16, 2002.(76) Inventors: **Arkady Glukhovsky**, Santa Clarita, CA
(US); **Mordechai Frisch**, Moreshet
(IL); **Tal Davidson**, Yoqneam (IL);
Gavriel Meron, Petach Tikva (IL)**Publication Classification**(51) **Int. Cl.**
A61B 5/00 (2006.01)
(52) **U.S. Cl.** **600/301; 600/300**Correspondence Address:
PEARL COHEN ZEDEK, LLP
1500 BROADWAY 12TH FLOOR
NEW YORK, NY 10036 (US)(57) **ABSTRACT**

A device, system and method for selectively activating or altering the operational mode of an autonomous in vivo device in response to in vivo conditions. The system includes an in vivo sensing device with a condition tester, and a controller. The in vivo sensing device may be in communication with an external receiver.

(21) Appl. No.: **10/493,751**
(22) PCT Filed: **Dec. 16, 2003**
(86) PCT No.: **PCT/IL03/01080**

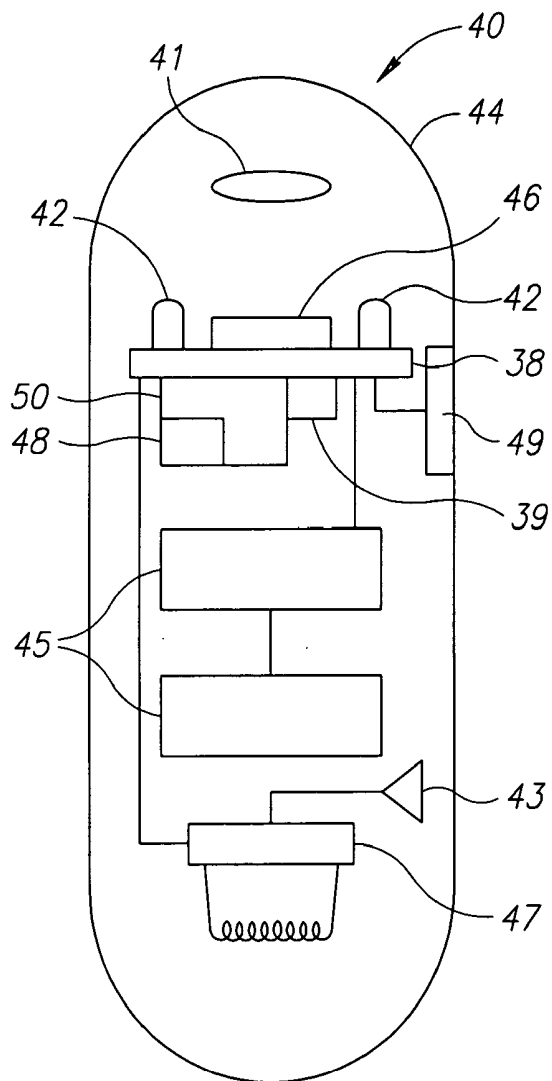


FIG. 1A

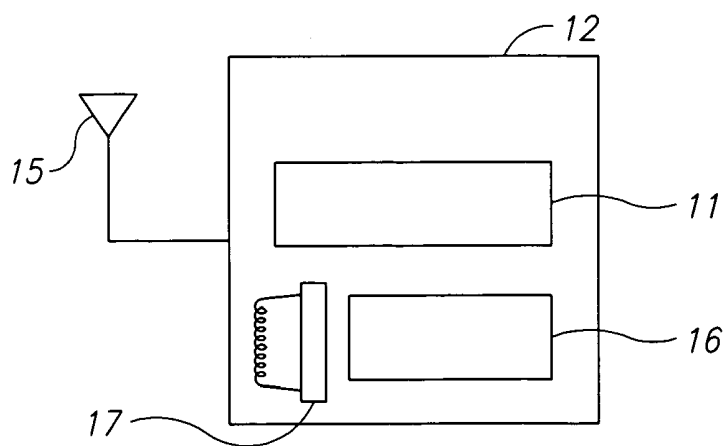


FIG. 1B

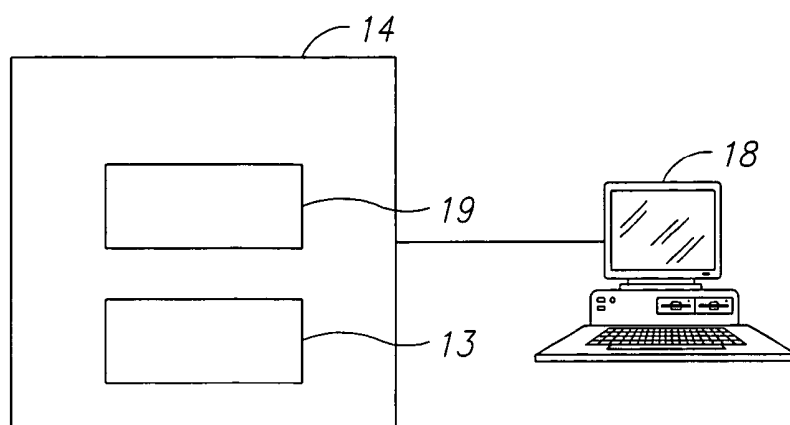


FIG. 1C

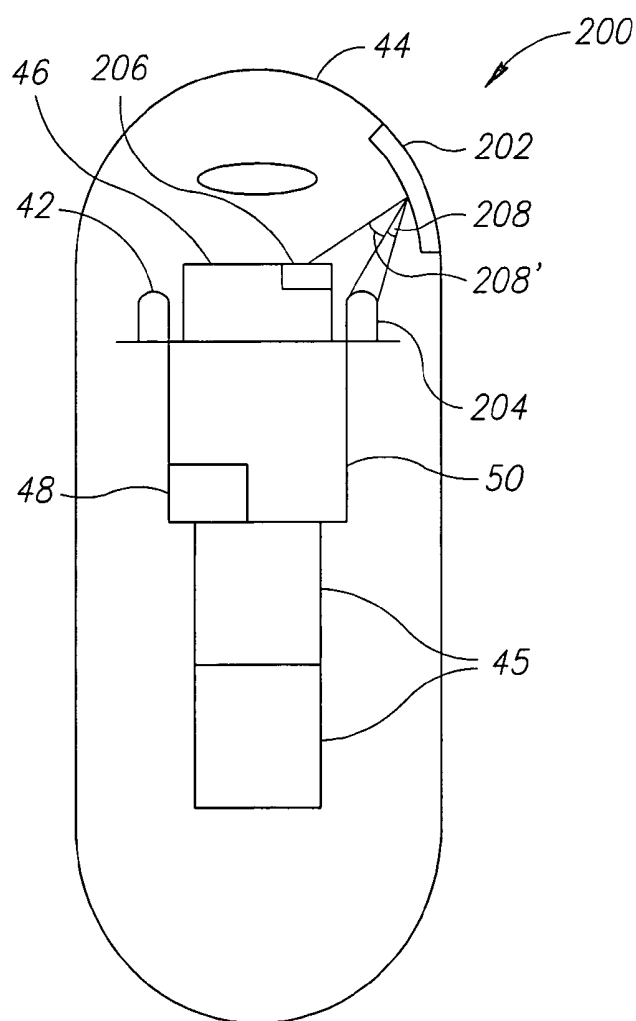


FIG. 2

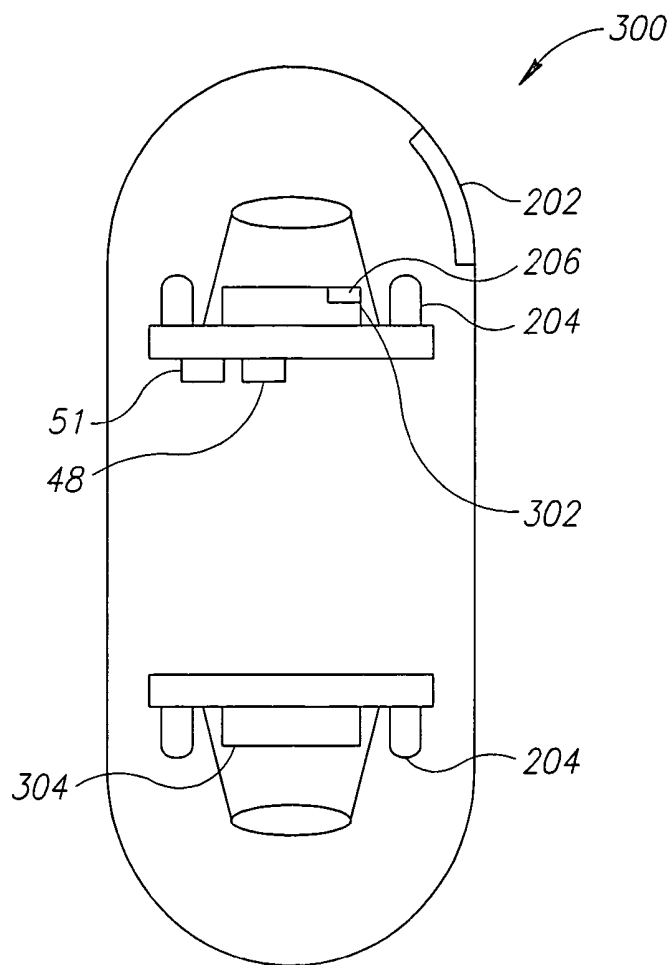


FIG. 3

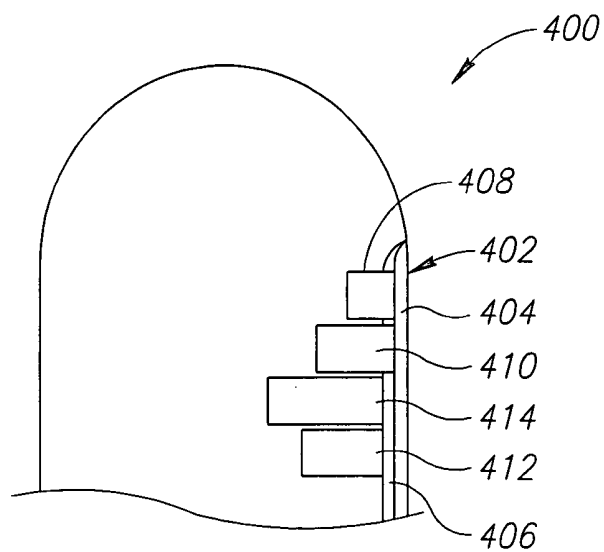


FIG. 4

500

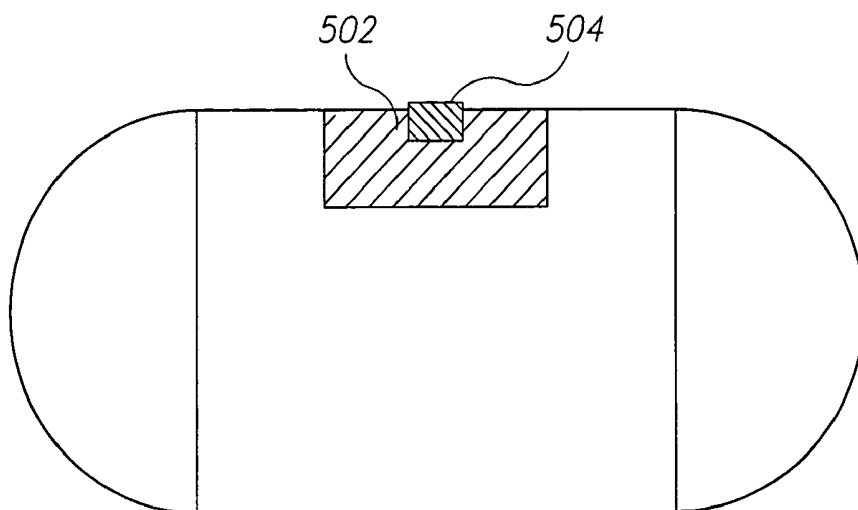


FIG. 5A

500

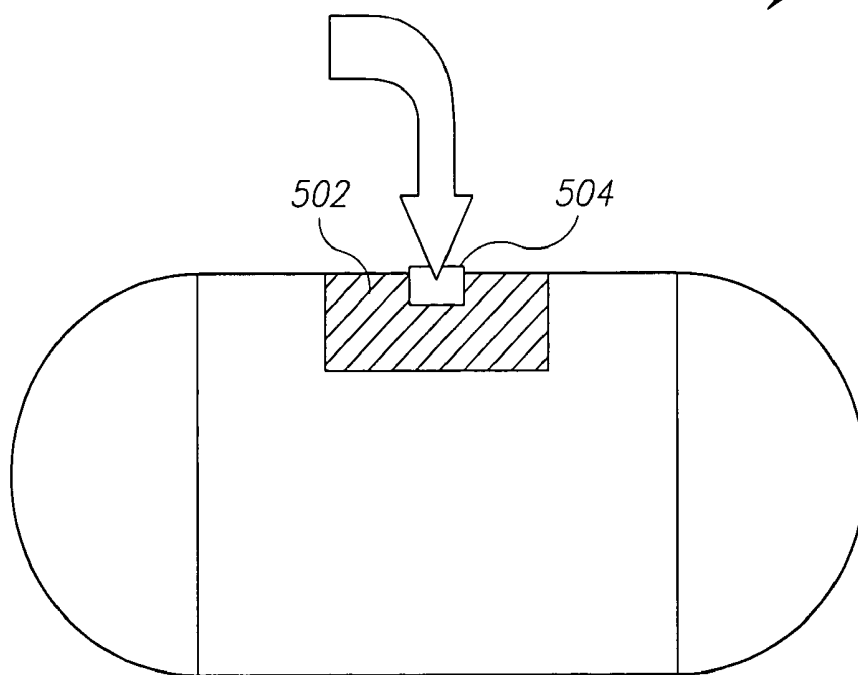


FIG. 5B

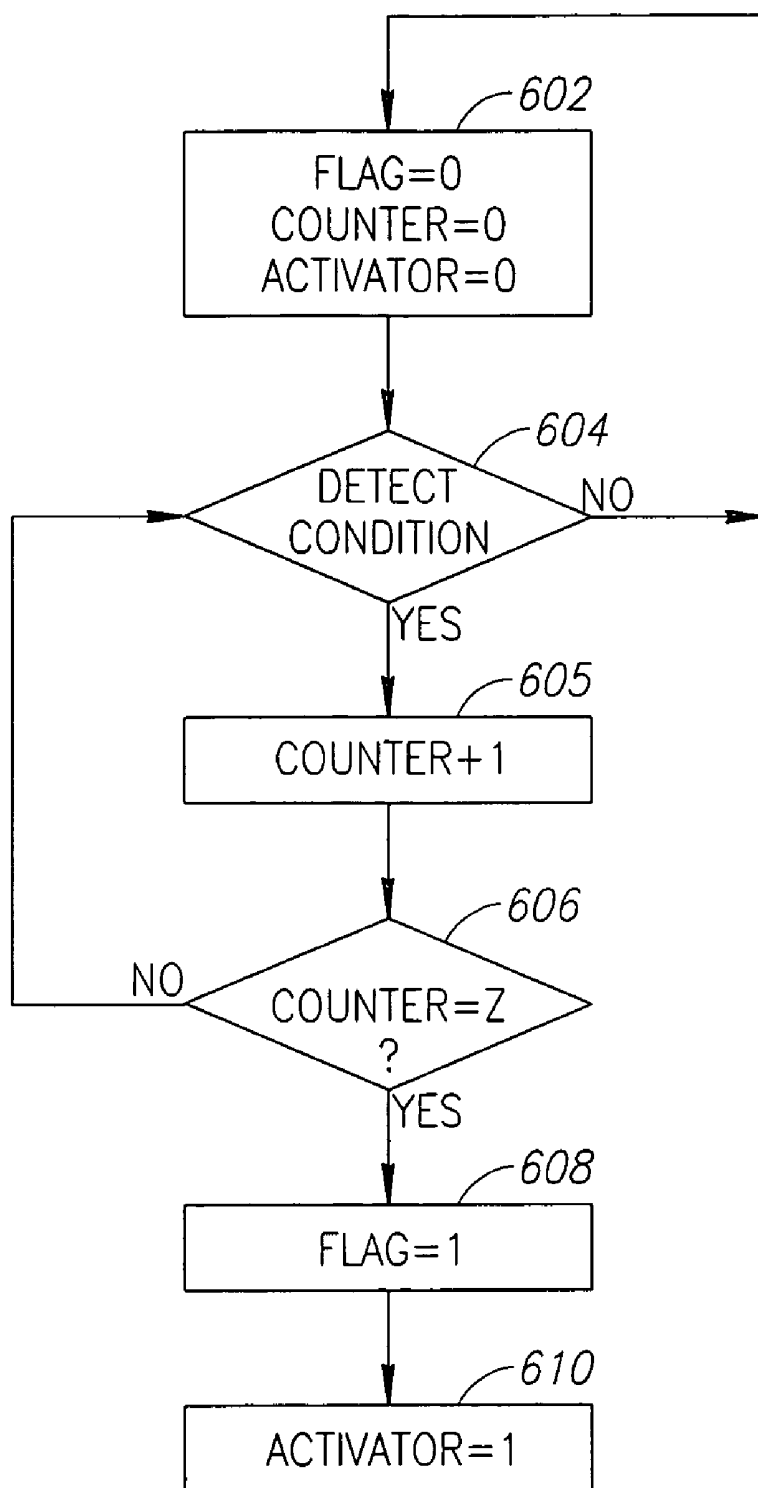


FIG.6

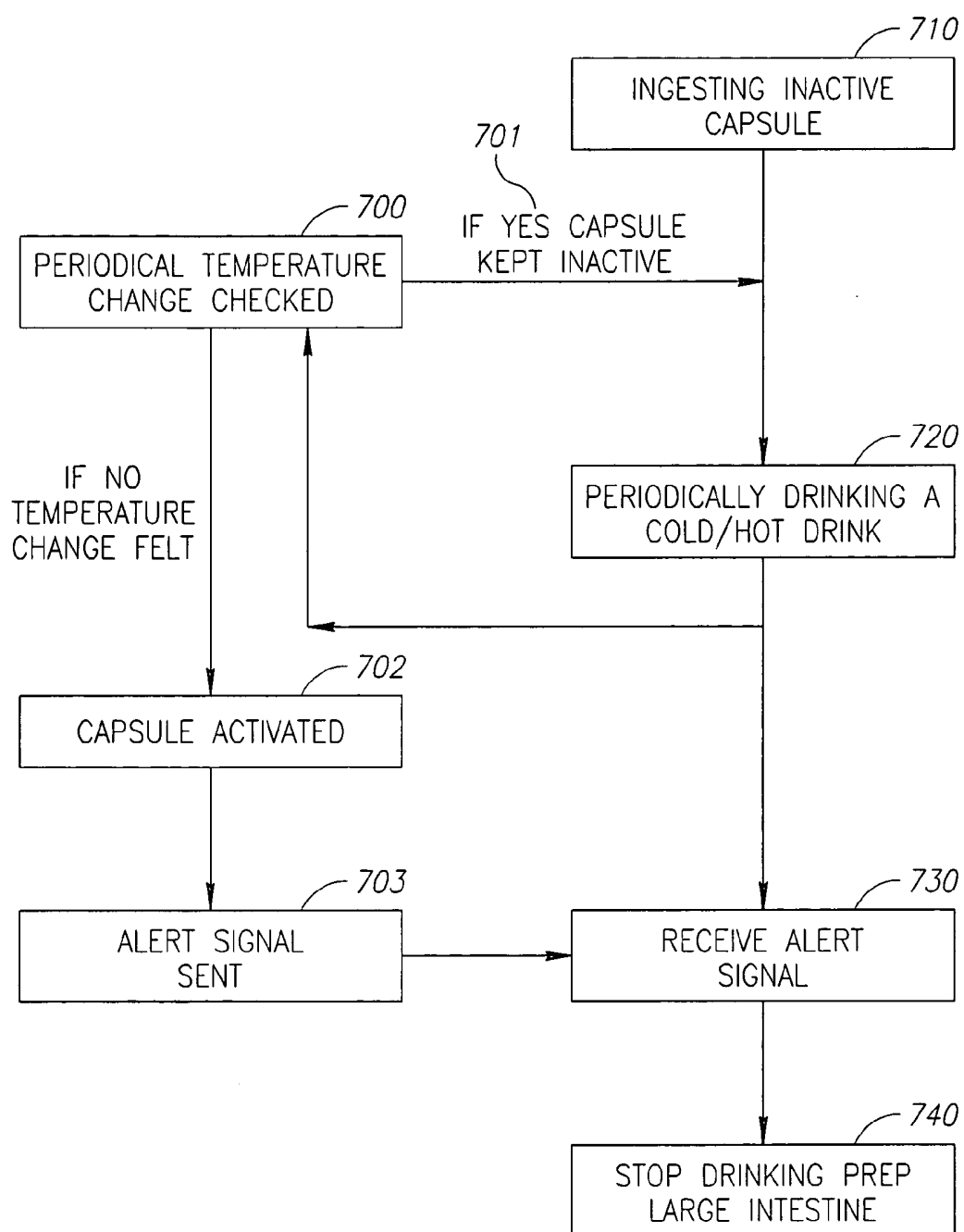


FIG.7

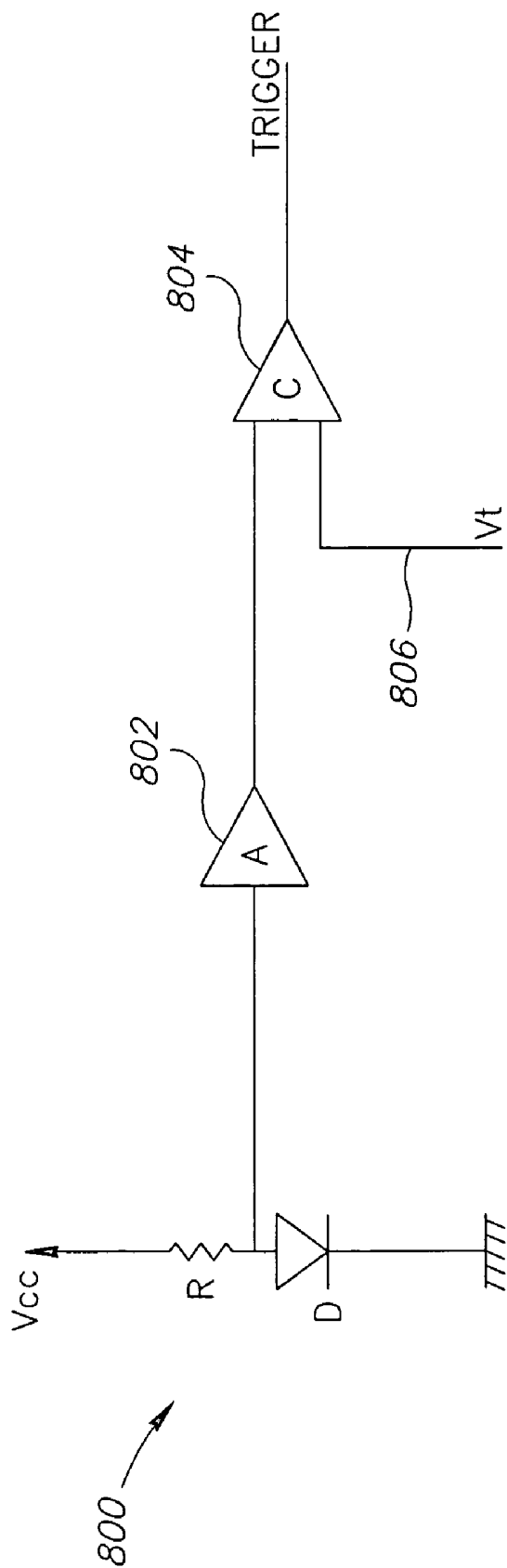


FIG.8

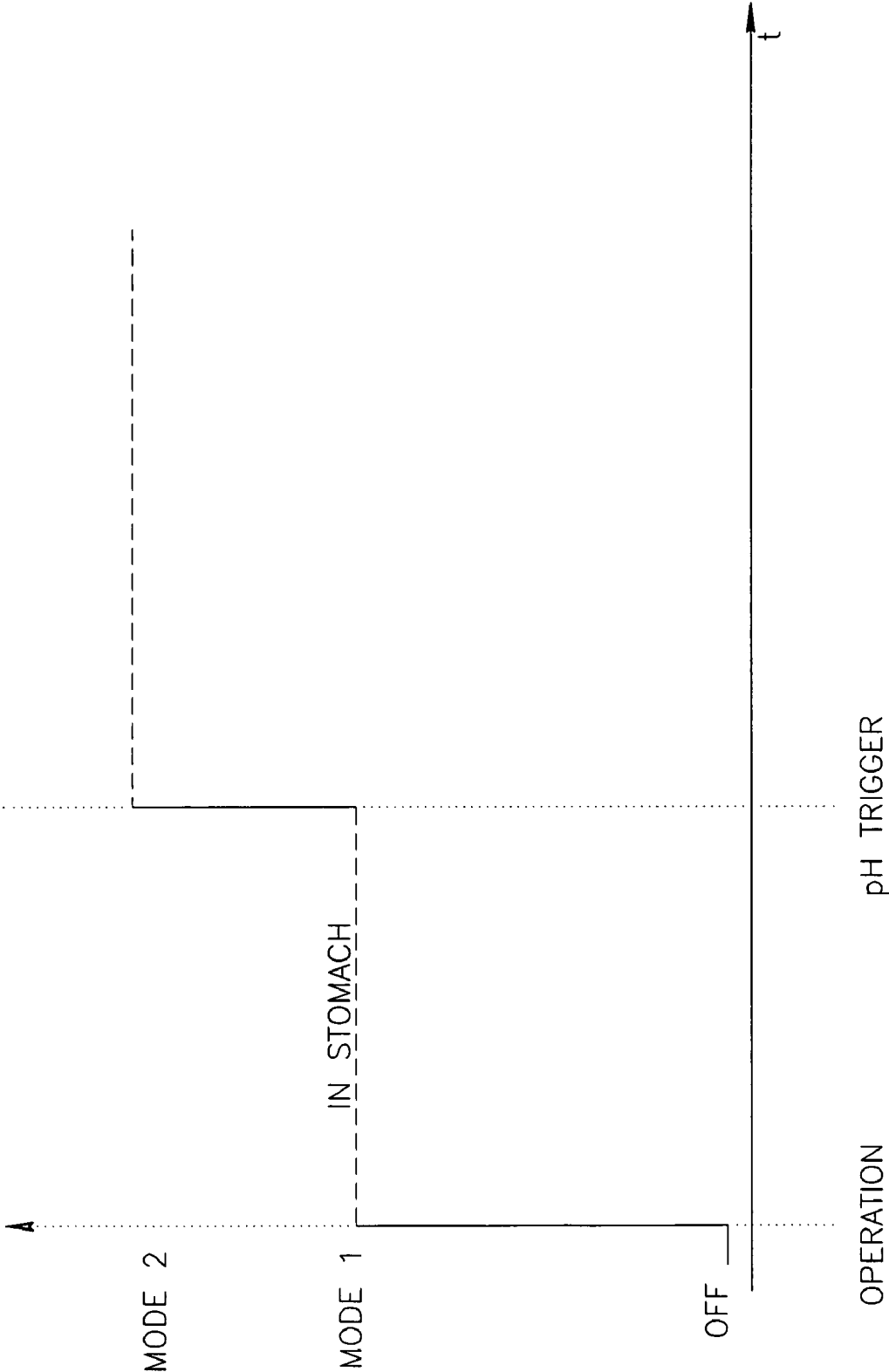


FIG. 9

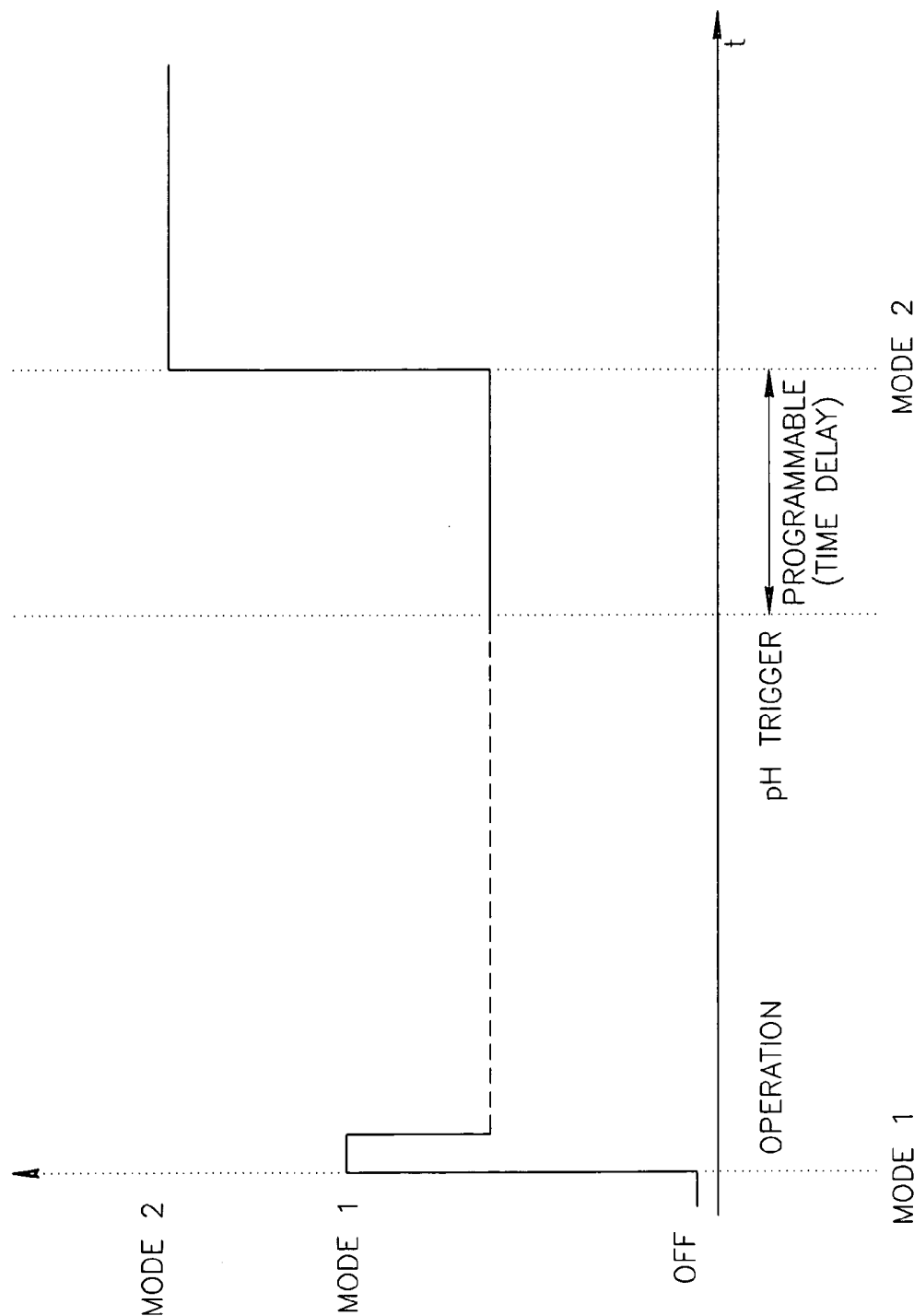


FIG.10

DEVICE, SYSTEM AND METHOD FOR SELECTIVE ACTIVATION OF IN VIVO SENSORS

FIELD OF THE INVENTION

[0001] The present invention relates to the field of in vivo devices. More specifically, the present invention relates to a device, system and method for selectively activating or altering the operational mode of an in vivo device, for example, in response to in vivo conditions.

BACKGROUND OF THE INVENTION

[0002] Certain in vivo devices may be introduced into a body in a location remote to the area where their sensing, diagnosing or other functions may be performed. For example, an in vivo device for imaging areas of the small intestine may be introduced into a body through the mouth and pass through the stomach and other parts of the gastrointestinal (GI) tract by way of peristalsis until reaching the small intestine. Similarly, an in vivo device may be introduced into a body wherein the location of an area of interest or of a suspected pathology may be unknown or uncertain, thereby necessitating that an in vivo device pass from its point of introduction and locate the area of pathology where its sensing functions or other functions may be required for diagnosing pathologies or performing other functions.

[0003] In vivo devices such as sensors are generally configured to capture sensory data on a fixed schedule that may be set or programmed into the in vivo sensor before it may be introduced into a body. For example, an in vivo image sensor may be configured to capture images at fixed intervals beginning with the time that it is introduced into the body. Typically, an in vivo sensor may be activated by a doctor or medical practitioner who assists in introducing such sensor into the body. Other in vivo sensors may be activated before ingestion, for example, automatically upon their removal from their original packaging. As a result, an in vivo sensor introduced to a location in the body that may be remote from an area of interest or suspected pathology in a body, may perform its sensing functions or other functions in locations other than the area of interests for example where no pathology or suspected pathology exists. The performance of such superfluous sensing may inefficiently utilize the power supply, data collection, data transfer (bandwidth), data storage capacity and/or other of the sometimes limited resource of the in vivo sensor. Redundant data may be required to be reviewed by the physician, increasing the overall review time.

[0004] The capturing of data by an in vivo sensor based on a fixed schedule may result on the one hand, in superfluous data being collected in areas that may be of little diagnostic or other interest, and, on the other hand, in insufficient sensory data being captured of in vivo areas that may be of particular diagnostic or other interest. For example, an in vivo image capturing system may be programmed to capture in vivo images at a rate of, for example, two frames per second. While such frame capture rate may be for example sufficient to generally capture adequate images of most of the small bowel, such frame capture rate may be too slow to achieve the level of imaging detail that may be required for areas such as the esophagus or other areas.

[0005] There is therefore a need for a system and method for allowing an efficient and effective operation of an in vivo device.

SUMMARY OF THE INVENTION

[0006] There is thus provided according to one embodiment of the invention, a system for in vivo sensing including for example an in vivo sensing device with a condition tester, and a controller. The condition sensor may for example be operatively linked with the controller so as to control for example an operational mode of the in vivo sensing device.

[0007] It is also provided according to an embodiment of the invention, a method for controlling, for example an in vivo imaging device by, for example, sensing a condition in vivo and triggering an event in the in vivo imaging device based on the sensing.

BRIEF DESCRIPTION OF THE DRAWINGS

[0008] The present invention will be understood and appreciated more fully from the following detailed description taken in conjunction with the appended drawings in which:

[0009] **FIG. 1A** is a schematic illustration of an in vivo device that may be used in accordance with an embodiment of the present invention;

[0010] **FIG. 1B** is a schematic illustration of a receiver in accordance with an embodiment of the present invention;

[0011] **FIG. 1C** is a schematic illustration of a data processor in accordance with an embodiment of the present invention;

[0012] **FIG. 2** is a schematic illustration of an in vivo device with a condition sensitive, color-changing material in accordance with an embodiment of the present invention;

[0013] **FIG. 3** is a schematic illustration of a device with two image sensors in accordance with an embodiment of the present invention;

[0014] **FIG. 4** is a schematic illustration of a condition tester in the form of a coating in accordance with an embodiment of the present invention;

[0015] **FIGS. 5A and 5B** are schematic illustrations of a floatable device according to an embodiment of the invention;

[0016] **FIG. 6** sets forth a flow chart of the operation of a controller in accordance with an embodiment of the present invention;

[0017] **FIG. 7** sets forth a flow chart of the operation of a device in accordance with an embodiment of the present invention;

[0018] **FIG. 8** sets forth a schematic diagram of a temperature triggered circuit in accordance with an embodiment of the current invention;

[0019] **FIG. 9** is a chart depicting a change in mode based on a pH trigger in accordance with an embodiment of the current invention; and

[0020] **FIG. 10** is a chart depicting a change in mode initiated by a pH trigger and combined with a timed delay in accordance with an embodiment of the current invention.

DETAILED DESCRIPTION OF THE
INVENTION

[0021] In the following description, various aspects of the present invention will be described. For purposes of explanation, specific configurations and details are set forth in order to provide a thorough understanding of the present invention. However, it will also be appreciated by one skilled in the art that the present invention may be practiced without the specific details presented herein. Furthermore, well-known features may be omitted or simplified in order not to obscure the present invention.

[0022] According to some embodiments of the invention, a system, method and device are provided for triggering an event such as, for example, activating or altering the operational mode of an in vivo device and/or a receiving (and/or processing, and/or reviewing) unit, typically located outside a patient's body, in response to in vivo conditions as may be detected by an in vivo condition tester. Such activating, deactivating or altering operational modes may include for example, activating or deactivating one or more components of the in vivo device and/or the receiving unit, increasing or decreasing the power consumption, increasing or decreasing the level of illumination, increasing or decreasing the rate of sensing, such as, for example, increasing the data capture rate from, for example, 2 images per second to for example, 14 images per second, or altering the sensing parameters such as, for example, in the case of an in vivo image sensor, increasing or decreasing the illumination intensity of the light sources or altering the image plane of the image sensor. Other operational modes may be changed and other data capture rates may be used. In certain embodiments, more than one in vivo sensor may be included in a single device. A change in the operational mode of the device may in such embodiments include activating or deactivating one or both of such sensors or alternating the activation of such more than one sensor. For example, an in vivo image sensor may include two image sensors. A change in operational mode may in such example mean activating or deactivating one or both of such image sensors, or alternating the activation of such image sensors. In other embodiments, one in vivo device may activate or deactivate one or more components in second in vivo device. Communication between two or more in vivo devices may be for example through one or more external receivers or may be through for example direct communication between one or more in vivo devices.

[0023] In certain embodiments changes in the operational mode may for example include changes in the methods or procedures of processing sensory data obtained, and optionally transmitted, from the in vivo device. For example, sensory data such as images or ultrasound readings from endo-luminal areas that have villi may return distorted images as a result of the irregular surfaces of the villi. In certain cases, such distortions may be corrected through changes in the methods of processing of the sensory data by the data processor. For example, specific image processing algorithms may be activated. According to one embodiment methods of processing sensory data may be executed, for example, in an external receiving unit. In another embodiment the change may be in the mode of the data presentation (reviewing mode), e.g. presentation of the images in double image vs. single image mode.

[0024] The invention according to certain embodiments, comprises an in vivo device such as, for example, an in vivo

image capture system, an in vivo condition tester such as, for example, any of an in vivo pH tester, blood detector, thermometer, pressure tester, spectral analytic image sensor, biosensor for biosensing, accelerometer, or motion detector, and a controller for linking the condition tester with the in vivo device and for signaling the change to be made in the operational mode of the in vivo device. Other condition testers may also be used as well as a combination of two or more condition sensor may be used. In one exemplary embodiment a biosensor may be used to sense, for example, colon specific flora in a colon. In another exemplary embodiment a pressure tester may be used to sense, for example, a change in pressure, such as a change in pressure pattern. For example, a drop in pressure may be sensed by a pressure tester, for example, when the device moves from the small intestine to the cecum (at the beginning of the colon). Various signals emitted by the condition tester such as mechanical, electrical, electromagnetic, chemical, or optical signals may also be used.

[0025] Embodiments of the present invention may be used with in vivo devices and recording/receiving and display systems such as various embodiments described in U.S. Pat. No. 5,604,531, assigned to the common assignee of the present application and incorporated herein by reference, and/or Publication Number WO 01/65995, also assigned to the common assignee of the present application and incorporated herein by reference. Other in vivo systems, having other configurations, may be used.

[0026] Embodiments of the device may be typically autonomous and typically self-contained. For example, the device may be a capsule or other units where all the components are substantially contained within a container or shell, and where the device does not require any wires or cables to, for example, receive power or transmit information. The device may communicate with an external receiving and display system to provide display of data, control, or other functions. For example, power may be provided by an internal battery or a wireless receiving system. Other embodiments may have other configurations and capabilities. For example, components may be distributed over multiple sites or units. Control information may be received from an external source.

[0027] An in vivo imaging system for example, that may be included in an ingestible device such as a capsule may capture and transmit images of the GI tract while the capsule may pass through the GI lumen. In addition to the imaging system, a device such as a capsule may include, for example, an optical system for imaging an area of interest onto the imaging system and a transmitter for transmitting the image output of the image sensor. A capsule may pass through the digestive tract and operate as an autonomous video endoscope. It may image difficult to reach areas of the GI tract, such as the small intestine. Other devices may be included, and devices including sensors other than image sensors may be used. Configurations other than capsules may also be used.

[0028] Reference is made to FIG. 1A, a schematic illustration of an in vivo device in the form of for example, a swallowable capsule that may be used in accordance with an embodiment of the present invention. Device 40 may comprise an image sensor 46, an in vivo optical system 41 for focusing light reflected back from in vivo areas (not shown)

onto image sensor 46, an illumination source 42, such as one or more light emitting diodes (LEDs) or other suitable sources, a dome 44 that may be useful, inter alia, for protecting the optical system from body fluids, a circuit or controller 48 for controlling the operational mode, such as for example settings of the device 40, a condition tester 49 such as for example, a pH tester or thermometer, an in vivo memory unit 39, an in vivo power source 45 such as a set of batteries, an in vivo receiver 43 for collecting signals transmitted to device 40, and an in vivo transmitter 47 for transmitting signals and/or image data to a receiver. One or more of in vivo image sensor 46, in vivo illumination source 42, controller 48, in vivo memory unit 39, in vivo transmitter 47, in vivo receiver 43 and condition tester 49 may in certain embodiments of the present invention be operatively connected, for example to/or through PCB 38, or included or embedded within an application specific integrated circuit (ASIC) 50. In other embodiments, image sensor 46, controller 48 and condition tester 49 may be operatively linked to each other without an ASIC 50 or PCB 38 or other connecting means. A wired or wireless connection, such as for example a microwave connection or other suitable connections may be used between elements in the capsule. Such an ASIC 50 may provide control for the capsule. Alternatively, another component such as transmitter 47 may provide such control.

[0029] In certain embodiments, image sensor 46 may be a CCD or a CMOS image sensor that may have arrays of various typically color pixels. Other suitable image sensors or no image sensors may be used. In one embodiment of the invention, image sensor 46 may also function as a condition tester. For example, an image sensor may be used to detect for example, blood vessel structures typically found in colon, or villi structures typically found in small intestine. Detection of such structures, detection of lack of such structures, or detection of other structures or colors such as for example color specific to content in the intestine may be used to trigger an event in the in vivo device. Other suitable structures or colors detected may be used as a trigger. Detection, according to an embodiment of the invention, could be aided by appropriate image processing algorithms and/or suitable software.

[0030] In other configurations of device 40, components such as capsule receiver 43, power source 45, in vivo memory unit 39 or other units may be omitted.

[0031] Typically, device 40 is swallowed by a patient and traverses a patient's GI tract. Other suitable body lumens or cavities may be imaged or examined.

[0032] Reference is now made to FIG. 1B, a schematic illustration of an external receiver 12 in accordance with an embodiment of the present invention. External receiver 12 may typically be located outside the patient's body and may receive and/or record and/or process the data transmitted from device 40. External receiver 12 may typically include a receiver antenna (or antenna array) 15, for receiving image and other data from device 40 and stored in for example storage unit 16. Typically, external receiver 12 may be portable, and may be worn on the patient's body during recording of the images.

[0033] External receiver 12 may also be equipped with processing unit 11, such as for example signal processing unit and/or control software or for example a control mecha-

nism or circuit emulating such functionality that may control for example, evaluate and respond to signals transmitted by device 40. External receiver 12 may also include a transmitter and receiver transmitter 17 that may enable external receiver 12 to transmit signals such as control signals to device 40. External receiver 12 may also include a user interface (not shown) that may inter alia provide indications to a user or patient as to changes made in the operational mode of a device. For example, passage of a capsule through the stomach may be identified by changes detected in pH levels that may for example trigger a change in the operational mode of a sensor such as an image sensor. A patient may be signaled via a user interface that such mode change is being made and prompted to take certain actions such as for example, changing positions (such as for example, changing from a sitting position to a reclining position), ingesting a laxative, or certain liquids, etc.

[0034] Reference is now made to FIG. 1C, a schematic illustration of a data processor in accordance with an embodiment of the present invention. Preferably, data processor 14, data processor storage unit 19 and monitor 18 are part of a personal computer or workstation that may include standard components such as a processor 13, a memory (such as storage unit 19, or other memory), a disk drive, and input-output devices. Alternate configurations are possible. In alternate embodiments, the data reception and storage components may be of another configuration. Further, image and other data may be received in other manners, by other sets of components. Typically, in operation, image data is transferred from external receiver 12 to data processor 14, which, in conjunction with processor 13, storage 19, and software, stores, possibly processes, and displays the image data on monitor 18. Other systems and methods of storing and/or displaying collected image data may be used. In other embodiments, processing of data can be performed by components within the external receiver 12.

[0035] Typically, device 40 may capture an image and transmit the image by using, for example, radio frequencies, to receiver antenna(s) 15. In alternate embodiments external receiver 12 is an integral part of data processor 14. Typically, the image data recorded and transmitted is digital color image data, although in alternate embodiments other suitable image formats (e.g., black and white image data, infrared image data, etc.) may be used. In one embodiment, each frame of image data may include 256 rows of 256 pixels each, each pixel including data for color and brightness, according to known methods. For example, color may be represented in each pixel by a mosaic of four sub-pixels, each sub-pixel corresponding to primaries such as red, green, or blue (where one primary is represented twice). The brightness of each sub-pixel may be recorded by, for example, a one byte (i.e., 0-255) brightness value. Other data suitable formats may be used. In one embodiment, image sensor 46 may capture or transmitter 47 may transmit image or other data in a diluted mode, capturing or transmitting for example, 16 rows of 16 pixels each.

[0036] In an embodiment, in vivo transmitter 47 may include at least a modulator (not shown) for modulating the image signal from the image sensor 46, a radio frequency (RF) amplifier (not shown), and an impedance matcher (not shown). The modulator may convert the input image signal that may have for example, a cutoff frequency f_c of less than 5 MHz to an RF signal having a carrier frequency f_r , that

may typically be in the range of 1 GHz. The carrier frequency may be in other bands, e.g. a 400 MHz band. The modulated RF signal may typically have an appropriate bandwidth of f_c . The impedance matcher may match the impedance of the circuit to that of the antenna. Other suitable transmitters or arrangements of transmitter components may be used, utilizing different signal formats and frequency ranges. In one embodiment of device **40**, transmission may occur at a frequency for example of 434 MHz, using for example Phase Shift Keying (PSK) or MSK (Minimal Shift Keying). In alternate embodiments, other suitable transmission frequencies and methods, such as for example AM or FM may be used.

[0037] External receiver **12** may detect a signal having the carrier frequency f_c and the bandwidth f_c such as described hereinabove. External receiver **12** may be similar to those found in televisions or it may be one similar to those described on pages 244-245 of the book "Biomedical Telemetry" by R. Stewart McKay and published by John Wiley and Sons, 1970. The receiver may be digital or analog. In alternate embodiments, other receivers, responding to other types of signals, may be used.

[0038] In certain embodiments, condition tester **49** may be an in vivo pH tester, as is well known in the art, for example a pH tester using the technology used in known pH measuring capsules. Such pH tester may utilize as electrodes an external ring electrode made of antimony and the zinc-silver chloride electrode of the battery that powers the tester. A saline solution such as for example, a 0.9% physiologic saline solution may be introduced into the electrode chamber immediately prior to the testing. The potential difference that develops between the two electrodes and that depends on the pH may be applied to a transistor as a frequency-determining measuring voltage.

[0039] Other pH testers, such as ion selective field effect transistors (ISFET), may also be used as condition tester **49** to evaluate pH in areas adjacent to the location of the device **40**. ISFET sensor chips that may be used for in vivo pH detection are known in the art as may be described, for example, in Wang, L., Integrated Micro-Instrumentation for Dynamic Monitoring of the Gastro-Intestinal Tract, as presented at the IEEE Instrumentation and Measurement Technology Conference, May 2002, retrieved on Oct. 15, 2002 from the Internet: <URL: <http://www.see.ac.uk/naa/publications.html>>. Other suitable pH testers may also be used. An ISFET sensor serving as condition tester **49** may be operatively connected to ASIC **50** or otherwise may be connected directly to image sensor **46**. In a typical embodiment, an ISFET sensor serving as condition tester **49** may be situated adjacent to the outer wall of the device **40** so as to maximize the exposure of such condition tester **49** to the in vivo conditions outside of such wall of device **40**.

[0040] In some embodiments, controller **48** may be substituted or complemented by an external controller located out of the body. For example the external controller may be an integral part of processor **11**. In such embodiments, triggering may be external triggering. Condition tester **49** may transmit a signal to in vivo transmitter **47** that transmits such signals to receiver antenna(s) **15**. External receiver **12** may process such signals and transmit back triggering signal such as instructions by way of receiver transmitter **17** to in vivo receiver **43**. In vivo receiver **43** may then direct a

change in the mode of operation of device **40**. In some embodiments, external receiver **12** may be capable of overriding or initiating a change in the mode of operation of device **40** in response to a signal that is input to receiver by medical personnel.

[0041] A condition tester such as for example, a pressure sensor may use a strain gauge as a condition detector, such as for example, a thin foil, typically a semiconductor or a piezoelectric material. Such strain gauge may accept power through a wire and provide a variable strain signal on such wire.

[0042] In other embodiments, condition tester **49** may take the form of a condition sensitive, color-changing material. Reference is now made to FIG. 2, which is a schematic illustration of an in vivo sensor with a condition sensitive, color-changing material **202** in accordance with an embodiment of the present invention. Material **202** may be temperature sensitive. "Temperature-sensitive" in the context of the present invention may be defined as reactive to a change in temperature. This temperature change may include a range of temperatures or a change from a reference temperature to another temperature. In other embodiments, material **202** may be pressure-sensitive, pH sensitive or sensitive to the presence of certain substances such as for example, blood, with color-changing characteristics varying with changes in such conditions. Thus, different properties within the environment of the body lumen can be measured in a manner similar to the one described for temperature hereinbelow. For example, a pH condition tester may use litmus paper as a color-changing material **202**, and a blood detector may use a polyelectrolyte as a color-changing material **202**, as known in the art.

[0043] In an embodiment, the temperature-sensitive, color-changing material **202** may be a Thermotropic Liquid Crystal (TLC) paint or coating, such as are offered by Hallcrest, Inc. of Glenview, Ill. The TLCs, that may, for example, be cholesteric (including sterol-derived chemicals) or chiral nematic (including non-sterol based chemicals) liquid crystals, or a combination of the two, provide color changes in response to temperature changes. These color changes may be reversible or hysteretic. In certain embodiments that include materials **202** that may be capable of reversible color changes, controller **48** may be programmed to reverse or further alter the operational mode changes in image sensor **46** in the event that a condition tester ceases to detect the changed color of material **202**.

[0044] The TLC can be used in several forms according to several embodiments, including but not limited to paints, microencapsulated coatings and slurries, TLC coated polyester sheets, and unsealed films.

[0045] As shown in FIG. 2, temperature-sensitive color-changing material **202** may be placed on the inside of capsule **200**, with color-changing portions facing inwards. By placing material **202** on the inside of the capsule, potential problems associated with the biocompatibility and the resilience of material **202** in light of bodily fluids and pH changes may be avoided. However, it should be apparent that color-changing material may also be placed on the outside of capsule **200** where it may be in contact with bodily fluids. Such contact between material **202** and bodily fluids may facilitate testing of such bodily fluids for reactions with material **202**. In certain embodiments, it may be

necessary to achieve contact between bodily fluids and material **202**. The attachment or placement of material **202** can be accomplished in several ways. For example, material **202** may be in the form of paint, and may be painted onto the capsule. In another embodiment, material **202** may be attached onto the capsule with adhesive. In a further embodiment, material **202** may be sprayed onto the dome **44** as a coating. In yet a further embodiment, material **202** may be enclosed in a semi-permeable membrane in contact with bodily fluids.

[0046] In the course of the function of capsule **200**, light from a light source **204** may be directed towards material **202**. Light source **204** may include one or several components, preferably light emitting diodes (LEDs) that may be placed in various locations within capsule **200**. Light source **204** may also be used as or provided by illumination source **42** shown in FIG. 1, to illuminate the environment being imaged (outside of the capsule), or a separate illumination source **204** may be included for that purpose.

[0047] Changes in in vivo conditions, such as, for example, changes in temperature, pH, pressure, the presence of blood and the like (depending on the nature of material **202**), may in certain embodiments cause various materials that can be used as color-changing material **202**, to change color. Image sensor **46** detects the appearance of the new color when light from light source **204** is reflected back from material **202** onto image sensor **46**. Referring to FIG. 2, such detection of changes in color may in certain embodiments be performed by a subgroup of pixels **206** included in the pixel array of image sensor **46**. In one embodiment of the invention, pixel array of image sensor may have one subgroup of pixels that are sensitive to a first range of wavelengths e.g., colors and another subgroup of pixels sensitive to second range of wavelengths, e.g., colors. In some embodiments such one subgroup of pixels, or specific pixels may be positioned on the pixel array of image sensor **46** to be exposed to light reflected back from material **202** considering the angle of incidence **208** and angle of return **208'** of the light directed onto and reflected back from material **202**. Similarly, in certain embodiments, such subgroup of pixels **206** may be sensitive to a specified range of colors that appear on material **202** once the designated in vivo environmental condition may be detected. In an alternative embodiment special photodiode(s) may be used in addition to or in place of a subgroup of pixels **206** to detect color changes.

[0048] When a designated change in color of material **202** is detected by a subgroup of pixels **206**, a signal may be sent to controller **48** by such a subgroup of pixels **206** or by another component operatively connected to a subgroup of pixels **206**. In certain embodiments, a subgroup of pixels **206** may be replaced or supplemented by a spectral analyzer that is capable of detecting color changes in material **202**. Other color-sensitive detectors may also be used. Such detection or processing may also be aided or performed by a processor or circuitry located in ASIC **50**, external receiver **12** or data processor **14**.

[0049] In certain embodiments, a range of color sensitive pixels, some of which may be sensitive to the various colors that can appear on material **202** may be situated on pixel array **210** of image sensor **46**. Signals produced by each of such specific pixels **206** may vary depending on the color

appearing on material **202**. Controller **48** may detect and differentiate between such various signals, for example by utilizing appropriate image processing algorithms, and issue instructions to a sensor in response to each thereof. According to one embodiment a change of color may be detected in the in vivo environment that is being imaged. For example, a spot of bleeding may appear in a certain image. The change of color, that may indicate, for example, pathology in the GI tract, may be recognized by known methods. For example, controller **48** or data processor **14** may generate a probability indication of presence of colorimetric abnormalities on comparison of color content of the images and at least one reference value, for example, as described in PCT publication WO 02/073507, published on 19 Sep., 2002, that is assigned to the common assignee of the present invention. According to some embodiments, once a color change may be detected the controller **48** or data processor **14** may initiate a change in the mode of operation of device **40**, of the external receiver **12**, of both or of any other component or combination of components of the system. In other embodiments, a photodiode may be used to detect changes in material **202**. Such photodiode may in certain embodiments be connected to an amplifier that may be further connected to a comparator. A mode change may thereby be triggered by analog rather than digital electronics.

[0050] In one embodiment of the invention, one or more photodiodes may be used to detect light, such as for example, visible light, IR light, or other ranges of light illuminated for example externally through the skin toward an in vivo area of interest. A photodiode or other light detecting unit, for example incorporated in an in vivo device may sense illumination when approaching for example toward such area of interest. Such detection may trigger a change in operational mode. Other suitable signals besides light may be used to penetrate the skin or other tissue and other suitable detection units may be used to pick up penetrated signal in vivo. For example, an acoustic signal may be used.

[0051] In an embodiment, capsule **200** may operate in a low power consumption mode until a color change in material **202** may be detected. For example, until such color change may be detected, light sources **204** may be set to illuminate once every second, thereby consuming less power than used by the overall capsule **200** during full operation that might in certain embodiments illuminate several times a second or more. In response to a signal that may be detected from specific pixels **206**, controller **48** (or another component located in capsule **200**, external receiver **12** or data processor **14**) may alter the mode of operation of capsule **200** or of any other component of the system. For example, in certain embodiments, any or both of light source **204** and image sensor **46** may be directed to increase the rate of capture of images in order to more fully image the endo-luminal vicinity wherein a specific condition may have been detected. Controller **48** may direct other activations or alterations in the mode of operation of capsule **200**. In other embodiments, the response of controller **48** to signals from specific pixels **206**, may be, for example, any of turning on the image sensor **46** that may theretofore have been inactive, changing mode of image sensor or transmitter, collecting samples of in vivo liquids or other materials, releasing encapsulated drugs that were held in capsule **200** or performing other functions.

[0052] In some embodiments, the pixels receiving the color indication may be, for example, the regular pixels of image sensor 46. Post processing circuitry or software located in capsule 200, external receiver 12 or data processor 14 may analyze the signals from the set of pixels (set being understood to include one unit) and make a mode change determination therefrom.

[0053] Other embodiments besides calorimetric changes may include, for example, temperature measurement using devices such as thermistors (located in a capsule for example as a discrete component or as part of ASIC) or using pH electrodes, and other embodiments.

[0054] Reference is now made to FIG. 3 that is a schematic illustration of a capsule 300 with two image sensors in accordance with an embodiment of the present invention. Capsule 300 has one image sensor 302 at one end of capsule 300 and a second image sensor 304 at another end of capsule 300. In an embodiment of the present invention, condition tester such as a color-changing material 202 such as those described in FIG. 2 may be installed proximate to image sensor 302, and such image sensor 302 may in such embodiment have specific pixels 206 similar to those described above for detecting color changes in material 202. When a change in color of material 202 is detected by image sensor 302, a signal of such change is sent to controller 48 of capsule 300. Controller 48 may in such embodiment alter the operational mode, such as for example by activating a component, for example the image sensor 304 of capsule 300. For example, the operational mode of both or either of image sensors 302 and 304 may be changed. Such a mode change may, for example, increase the number of images to be captured of such area or alter the orientation of images captured or differential activation of either one or both image sensors may be affected in response to a signal, or other mode changes discussed herein.

[0055] In certain embodiments, controller 48 may be configured to delay issuing operational mode change orders to until more than one signal from condition detector 49 may have been received. In an embodiment of the present invention, controller 48 may be configured with a delay mechanism in the form of for example a counter 51 that causes controller 48 to delay activating or altering the operational mode of image sensor 304 until several signals from condition tester 202 may have been received, or until signals signifying that a certain condition exists may be received over the course of a certain period of time. Such activation may, for example, reduce the chance that a false reading or fleeting condition activates image sensor 304, or may provide "debouncing" in case conditions may change in a variable manner between one relatively steady state and another. For example, in one embodiment, capsule 300 may operate in a first mode (e.g., low power consumption, or at a first frame capture rate) in the mouth and esophagus, where the pH is generally approximately 7-8. When capsule 300 reaches the stomach, where the pH is typically about 2, a pH detector on or within capsule 300 may detect a change in pH, and the operational mode may change, for example to a different power consumption, or a different frame capture rate. Later, when capsule 300 reaches the small intestine, capsule 300 may detect a change in pH to, for example 7-8, and the operational mode may change again. A change in pH may cause alteration in the operational mode only if received for, for example, one minute (other suitable time

periods may be used). Other methods of debouncing or guarding against fleeting conditions may be used.

[0056] Controller 48 may in certain embodiments be a software controller embedded into ASIC 50. In other embodiments, controller 48 may be a simple switch or circuit connected to for example a condition tester such as a thermistor 800. The controller may include, for example, an amplifier 802 and a comparator 804, comparing the measured signal to some pre-defined threshold 806, as are depicted forth, for example, in FIG. 8. Such switch or circuit may in certain embodiments power on or trigger the activation of ASIC 50 when the proper condition may be detected. In other embodiments, such switch or circuit may signal ASIC 50 to, for example, begin operation or change the mode of operation of the sensor.

[0057] In a further embodiment, the switch from one condition and then back to another may be the trigger for a mode change. For example, in case a high pH is detected for a period, then a low pH, then again a high pH, the mode change may occur only on the third condition change. Other suitable signals or series of signals may be used to trigger other suitable functionalities. Further, altering the mode based on detection of a condition change may be combined with, for example, a delay. For example, capsule 300 may wait, for example, one hour after detecting a condition change to effect a mode change. FIG. 4 is a schematic illustration of a condition tester in the form of a coating in accordance with an embodiment of the present invention. In such embodiment, a portion of capsule 400 may be coated with one or more layers of a dissolvable material 402. Each layer of dissolvable material 402 may be comprised of varying substances that dissolve at varying rates or when exposed to specific materials or environments. For example, a first, outer layer 404 of dissolvable material may be pH sensitive and dissolve when exposed to the acidic environment of the stomach, and may expose certain components such as for example switches 412, sensors 408 or drug compartment 410 with an opening, while capsule 400 may be in a specified site such as for example, the stomach. A second inner layer 406 may for example, dissolve in the more basic environment of the small intestine and may activate other sensors or release other encapsulated drugs. Other materials that may be sensitive to elapsed time and dissolve in accordance with a specific period of time after introduction to the GI tract may also be possible as a means of delaying activation of certain functions of capsule 400. An example of dissolvable materials that may be used as such coatings include starches, such as gelatinous materials, waxes, biodegradable plastics, and other known biodegradable materials. Other suitable dissolvable materials with other characteristics may also be used.

[0058] Dissolvable material 402 may cover any or all of a sensor 408, such as for example, a pH sensor, a switch 412, such as for example a switch that turns on an image sensor, an encapsulated drug compartment 410 that releases its contents or a sampling inlet 414 that lets surrounding fluids enter a compartment where such fluids may be sampled, captured or evaluated by a sensor. When dissolvable material 402 dissolves, sensor 408 may be exposed, switch 412 may be activated, sampling inlet 414 may be opened or an encapsulated drug compartment 410 may release its contents into the surrounding area. In other embodiments, the dissolving of dissolvable material 402 may facilitate contact

between electrical leads that had theretofore been separated, such contact may signal a change in operational mode. According to another embodiment a magnet may be held in the vicinity of the capsule **400** such that it affects the ON/OFF status of the capsule. In some embodiments the magnet may be embedded in a dissolvable coating, such as dissolvable material **402**, such that while the coating is intact, the capsule is OFF. When the coating dissolves, for example, in response to environmental pH, the magnet may be freed and may become dissociated from the capsule allowing the capsule to be ON. In other embodiments other suitable environmental triggers may cause the dissolving of coatings.

[0059] Another embodiment is schematically illustrated in **FIGS. 5A and 5B**. In this embodiment an imaging capsule **500** may be a floatable capsule, for example, a capsule having a specific gravity of less than 1. A floatable capsule is described, for example, in Publication Number WO 02/095351, published on Nov. 28, 2002 assigned to the common assignee of the present inventions and is hereby incorporated in its entirety by reference. Such a capsule may be advantageous for passage through portions of a voluminous cavity, such as the stomach and/or large intestine. In other portions of voluminous cavities (e.g., the descending portion of the large intestine) a floatable capsule may be delayed rather than advanced. Thus, a floatable capsule may benefit from having the option of losing its floatation characteristics at a given point during its passage through the GI tract, for example, while in the large intestine.

[0060] According to one embodiment, a capsule may have a fluid chamber such as for example a floatation compartment **502** that may be filled with a fluid, a gas, or other suitable material that is lighter than the endo-luminal fluid, for example, air. In certain embodiments, floatation compartment may be as small as 5% of the volume of capsule **500**. Other suitable volumes may be used. The floatation compartment **502** may have a valve **504** keeping the compartment **502** closed and the capsule **500** floating. Upon triggering, valve **504** may be opened (see **FIG. 5B**). Floatation compartment **502** may then be filled with endo-luminal liquid, raising the specific gravity of capsule **500** and rendering capsule **500** non-floating. As such the floatation mode of a capsule may be altered.

[0061] A number of mechanisms for opening valve **504** may be implemented, such as, electronic, mechanical or chemically based mechanisms. For example instant heating (requiring only a small amount of battery energy) may be applied, melting material of valve **504**. The signal for effecting the change may be as described above.

[0062] **FIG. 6** sets forth a flow chart of the operation of a controller **48** in accordance with an embodiment of the present invention. Such controller may in an embodiment be a software controller in the form of logic programmed into, for example ASIC **50**, controller **48**, external receiver **12** or other suitable components. Such software controller may have a flag to indicate the operational mode to which a sensor is set. Settings of such flag may be 0 or 1 for on or off, or other suitable settings to indicate other settings to which a sensor may then be operating. Software controller may also include a counter that may in certain embodiments count signals received from condition tester **49** indicating the detection of the conditions to be tested by condition

tester **49**. Software controller may also be operatively linked to an operation activator of an in vivo component such as image sensor **46** that controls the operation of such sensor. For example, operation activator may be an internal clock that controls the timing of the image capture rate of image sensor **46** or the operation of light source **204**.

[0063] In its initial state **602**, the flag of software controller may be set to 0, the counter may be set to 0 and the activator may be set to 0. In such settings, image sensor **46** may not be capturing images or may be in some other reduced mode of operation. In step **604**, condition tester **49** may detect a changed condition in the in vivo area surrounding capsule **40** and may signal software controller **48** as to such changed condition. Such signal increments counter to 1. Step **604** may be repeated by condition tester **49** at periodic intervals that match the sampling rate of condition tester **49**. Each signal delivered by condition tester **49** that indicates the changed condition may increment the counter by 1 (**605**). Once the counter reaches a designated threshold in step **606**, the flag switches to 1 in step **608**. Such switch by the flag to 1 switches the sensor activator to 1 as in Step **610**. The activator may then change the mode of operation of image sensor **46**. Such change may for example be an increase in the frame capture rate of image sensor **46** or any other suitable change in the operational mode of the sensor.

[0064] In certain embodiments, the counter may be decremented each time condition tester **49** sends a signal to controller **48** that indicates the absence of an elevated condition, thereby possibly indicating that conditions may have returned to pre-defined normal levels. Once the counter may have been decremented below a pre-defined threshold level, the flag may revert to 0 and may reset the activator to its initial setting so that such sensor may resume the operational mode that was in effect prior to the change described above, or some other suitable operational mode.

[0065] In other embodiments, condition tester **49** may be, for example, a clock such as for example an internal clock embedded into ASIC **50** or otherwise operatively connected to image sensor **46**. In such case, controller **48** may be a component such as for example a switch operatively attached to such embedded clock that may turn on once a designated period has elapsed. Such elapsed period may be the estimated time that it takes capsule **300** to pass through the stomach and into the small intestine where the desired image capturing may take place. Other periods may also be designated depending on where in the GI tract the desired image capturing may be designated to begin.

[0066] In yet further embodiments, an ingestible capsule may be meant for imaging or otherwise sensing distal portions of the GI tract, such as the large intestine. A method for economically using an imaging (or other sensing) capsule is provided according to an embodiment of the invention. **FIG. 7** illustrates a method for imaging or otherwise sensing distal parts of the GI tract according to an embodiment of the invention. An inactive device such as for example a capsule (e.g., does not sample or transmit images or other data) is swallowed (**710**) by a patient. According to one embodiment the capsule may comprise temperature sensing capabilities. Any in vivo temperature sensing mechanism, such as those known in the art, may be used. After a capsule is swallowed a patient may be made to ingest a volume of cold or hot water (**720**) at regular intervals.

According to one embodiment the patient may ingest cold or hot water over a period of a few hours (e.g., 3-5 hours), for example, a period in which the capsule has most probably left the stomach. According to another embodiment the patient may be made to ingest a volume of cold or hot water until alerted that the capsule has left the stomach (further detailed below). While the capsule may be in the stomach an ingested volume of cold or hot water may cause a change of temperature in the stomach environment. Once in the small intestine, the effect of a cold or hot drink may no longer be felt. According to one embodiment a capsule may be programmed to sense a periodical change in temperature (700), for example to sense a temperature above or below a certain threshold, at predetermined intervals. While a temperature change may be sensed at predetermined intervals, the capsule may be kept inactive (701). If a temperature change is not sensed at one predetermined time, the capsule may be triggered (for example, as detailed above) to activate the image sensor or other components (702). Thus, the capsule may begin collecting data only after leaving the stomach for example, such that it is closer to the large intestine thereby saving energy and allowing effective and complete action of the capsule in the large intestine.

[0067] According to some embodiments activating the capsule may cause a signal to be transmitted (703) to an external receiving unit so as to activate an alert 730 (e.g., a beep or a flashing light), that may alert a patient to start or stop an action for example to stop drinking the cold or hot drink (740). Also, the patient may then be prepared for the expected imaging or otherwise sensing of the large intestine, for example, the patient may thus be warned to begin taking a laxative.

[0068] Reference is made to FIG. 9 that is a chart depicting a change in mode based on a pH trigger in accordance with an embodiment of the current invention. As depicted in FIG. 9, a device may be in a first operational mode from, for example beginning with the time it is turned on and while it is for example, in the stomach wherein pH is low. As the device may leave the stomach, pH may rise. Such rise may set off the pH trigger that may change the operational mode of the device. Other suitable triggers may be used as well. Such change may, for example, be a component such as for example a switch of the device imaging with two image sensors 302 and 304 (as are depicted, for example, in FIG. 3) to imaging with only a first image sensor 302. In such an embodiment effective viewing of the upper regions of the GI tract may be enabled, by using two image sensors whereas, a power saving mode may then be switched to in the small intestine where one image sensor may be enough to provide effective viewing.

[0069] Reference is made to FIG. 10 that is a chart depicting a change in mode initiated by a pH trigger and combined with a timed delay in accordance with an embodiment of the current invention. As depicted in FIG. 10, a device may be in a first mode of operation immediately when it is introduced into a body. The mode of operation may change, such as for example, going to off or some other inactive state, until a trigger occurs such as for example a change in pH. Other suitable triggers may be used as well. The trigger may initiate, for example, a time delay during which the mode of operation may remain initially unchanged, but during which the device counts down until the delay ends, whereupon the mode change may be imple-

mented. A trigger combined with a time delay may be useful for example where the large intestine may be the area to be imaged. In such an embodiment, the trigger may be the pH change that occurs when the device leaves the stomach. The time delay may be the approximate time required for the device to traverse the small intestine (e.g., 3-6 hours). Once the device nears the large intestine it may change modes of operation to image the desired area. In this way, the device may preserve its power supply until many hours after it is introduced into a body and until it reaches the targeted imaging area. Other suitable combinations of time delays and triggers are possible.

[0070] It will be appreciated by persons skilled in the art that the present invention is not limited by what has been particularly shown and described herein above. Rather the scope of the invention is defined by the claims.

We claim:

1. A system for in vivo sensing, said system comprising:
 - an in vivo sensing device, said device comprising a condition tester; and
 - a controller to control an operational mode of said in vivo sensing device;
 wherein said condition tester is operatively linked with said controller.
2. The system according to claim 1 comprising an image sensor.
3. The system according to claim 2 wherein the image sensor is selected from a group consisting of: CCD and CMOS.
4. The system according to claim 2 wherein the image sensor comprises one subgroup of pixels said one subgroup being sensitive to a first range of colors, and another subgroup of pixels, said other subgroup of pixels being sensitive to a second range of colors.
5. The system according to claim 4 comprising a spectral analyzer.
6. The system according to claim 1 wherein the condition tester is selected from a group consisting of: a pH tester, a blood detector, a thermometer, a pressure sensor, a biosensor, a spectral analytic image sensor, an image sensor, and a counter.
7. The system according to claim 1 wherein the condition tester is to test in vivo conditions.
8. The system according to claim 1 wherein the controller is incorporated in the in vivo sensing device.
9. The system according to claim 1 wherein the controller is an external controller.
10. The system according to claim 1 wherein the controller comprises a counter.
11. The system according to claim 1 wherein the controller is selected from a group consisting of: mechanical switch, software, and circuitry.
12. The system according to claim 1 wherein the controller is a circuit, said circuit comprising an amplifier and a comparator.
13. The system according to claim 12 wherein the condition tester is a thermistor.
14. The system according to claim 1 comprising an in vivo illumination source.
15. The system according to claim 1 comprising an in vivo illumination source.

16. The system according to claim 1 comprising a photodiode.

17. The system according to claim 1 wherein the in vivo sensing device is an autonomous device.

18. The system according to claim 1 wherein the in vivo sensing device is a capsule.

19. The system according to claim 1 wherein the in vivo sensing device comprises an ASIC wherein said ASIC is operatively connected to a component of the in vivo sensing device.

20. The system according to claim 19 wherein the component is selected from the group consisting of: an in vivo transmitter, an in vivo illumination source, an in vivo power source, a controller, an in vivo image sensor, a condition tester, an in vivo receiver, and an ASIC wherein said ASIC is operatively connected to the in vivo receiver.

21. The system according to claim 19 wherein the controller is an integral part of the ASIC.

22. The system according to claim 1 comprising an in vivo receiver.

23. The system according to claim 1 comprising an external receiver.

24. The system according to claim 1 wherein said external receiver includes a processing unit and a storage unit.

25. The system according to claim 1 comprising a monitor and a data processor.

26. The system according to claim 25 wherein said data processor comprises a storage unit and a processor.

27. The system according to claim 1 wherein the condition tester includes a color-changing material.

28. The system according to claim 27 wherein the color-changing material is selected from a group including: temperature sensitive material, pH sensitive material, and a blood sensitive material.

29. The system according to claim 1 wherein the condition tester includes a layer of pH sensitive and/or time sensitive dissolvable material.

30. The system according to claim 1 wherein the in vivo sensing device comprises a compartment coated with a pH sensitive and/or time sensitive dissolvable material.

31. The system according to claim 1 wherein the in vivo sensing device comprises a sampling inlet coated with a pH sensitive and/or time sensitive dissolvable material.

32. The system according to claim 1 wherein the in vivo sensing device comprises a switch coated with a pH sensitive and/or time sensitive dissolvable material.

33. A method for controlling an in vivo imaging device said method comprising:

sensing a condition in vivo; and

triggering an event in said in vivo imaging device based on said sensing.

34. The method according to claim 33 wherein sensing a condition in vivo is selected from a group consisting of: time sensing, pH sensing, temperature sensing, pressure sensing, blood sensing, and biosensing.

35. The method according to claim 33 wherein the triggering is by a controller.

36. The method according to claim 33 wherein the triggering is by an external receiver.

37. The method according to claim 33 wherein the event comprises a change in an operational mode of the in vivo imaging device.

38. The method according to claim 37 wherein the change in operational mode is selected from a group consisting of: activating a sensor, deactivating a sensor, altering data capture rate; altering signal format and frequency range of transmission; altering processing of sensory data; altering frame capture rate of an in vivo image sensor, altering illumination intensity, altering image plane of an in vivo image sensor, activating in vivo sample collection, releasing a drug, altering power consumption mode, and altering floatation mode.

39. The method according to claim 33 comprising delaying triggering of an event.

40. The method according to claim 33 comprising ingesting a volume of cold or hot water.

41. The method according to claim 33 wherein the triggering is by a pH sensitive and/or time sensitive dissolvable material.

* * * * *

专利名称(译)	用于选择性激活体内传感器的装置，系统和方法		
公开(公告)号	US20060155174A1	公开(公告)日	2006-07-13
申请号	US10/493751	申请日	2003-12-16
[标]申请(专利权)人(译)	GLUKHOVSKY阿尔卡季 FRISCH莫迪凯 DAVIDSON TAL MERON GAVRIEL		
申请(专利权)人(译)	GLUKHOVSKY阿尔卡季 FRISCH莫迪凯 DAVIDSON TAL MERON GAVRIEL		
当前申请(专利权)人(译)	基文影像有限公司.		
[标]发明人	GLUKHOVSKY ARKADY FRISCH MORDECHAI DAVIDSON TAL MERON GAVRIEL		
发明人	GLUKHOVSKY, ARKADY FRISCH, MORDECHAI DAVIDSON, TAL MERON, GAVRIEL		
IPC分类号	A61B5/00 A61B A61B1/04 A61B1/05		
CPC分类号	A61B1/00016 A61B1/00036 A61B1/00055 A61B1/04 A61B1/041 A61B5/073 A61B5/14539 A61B2560/0209		
优先权	60/433586 2002-12-16 US		
外部链接	Espacenet USPTO		

摘要(译)

一种用于响应于体内条件选择性地激活或改变自主体内装置的操作模式的装置，系统和方法。该系统包括具有状况测试仪器的体内感测装置和控制器。体内感测设备可以与外部接收器通信。

