



US 20020128570A1

(19) **United States**

(12) **Patent Application Publication** (10) **Pub. No.: US 2002/0128570 A1**

**Bowman et al.**

(43) **Pub. Date: Sep. 12, 2002**

(54) **PERFUSION SENSITIVE BIOPSY EXTRACTOR**

(22) Filed: **Feb. 12, 2001**

(76) Inventors: **Harry Frederick Bowman**, Needham, MA (US); **Gregory T. Martin**, Cambridge, MA (US)

**Publication Classification**

(51) **Int. Cl.<sup>7</sup>** ..... **A61B 5/00**; A61B 5/05; A61B 10/00

(52) **U.S. Cl.** ..... **600/567**; 600/310; 600/345

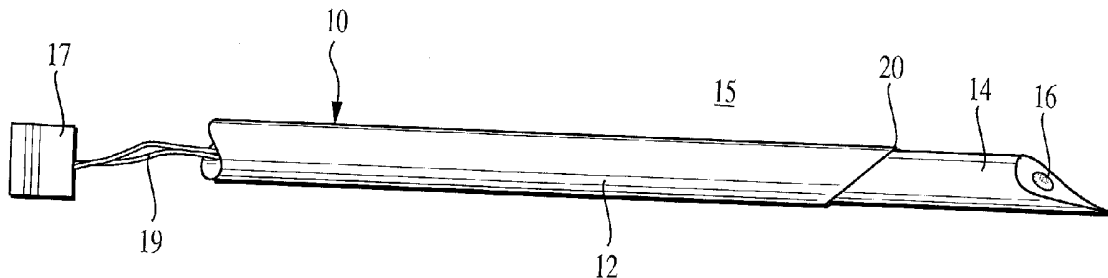
Correspondence Address:

**James L. Neal**  
**Thermal Technologies, Inc.**  
**Suite 0123**  
**222 Third Street**  
**Cambridge, MA 02142 (US)**

(57) **ABSTRACT**

A technique for quantifying perfusion and removing a biopsy sample at a site in a living body wherein an instrument having a perfusion sensor is introduced into the body at a site to be investigated to there interrogate the tissue. The biopsy specimen is collected when the perfusion sensor produces a signal indicative of perfused, viable tissue.

(21) Appl. No.: **09/783,915**



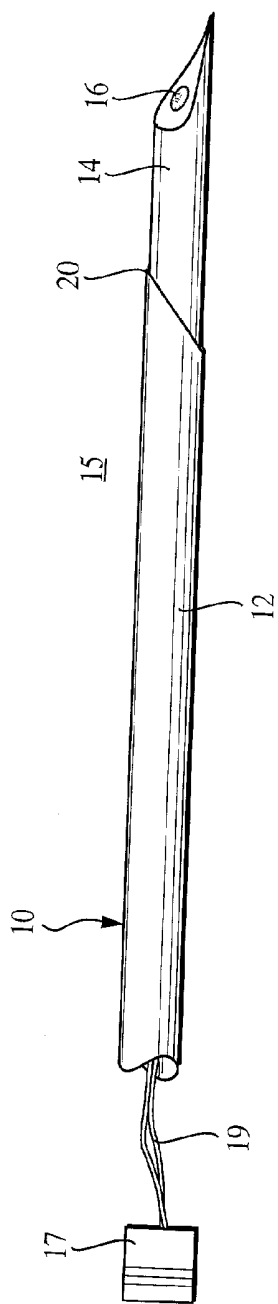


FIG. 1A

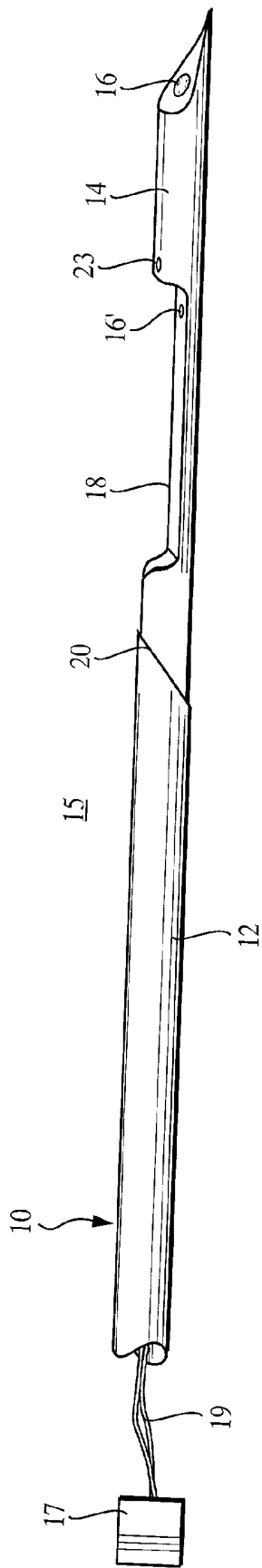


FIG. 1B

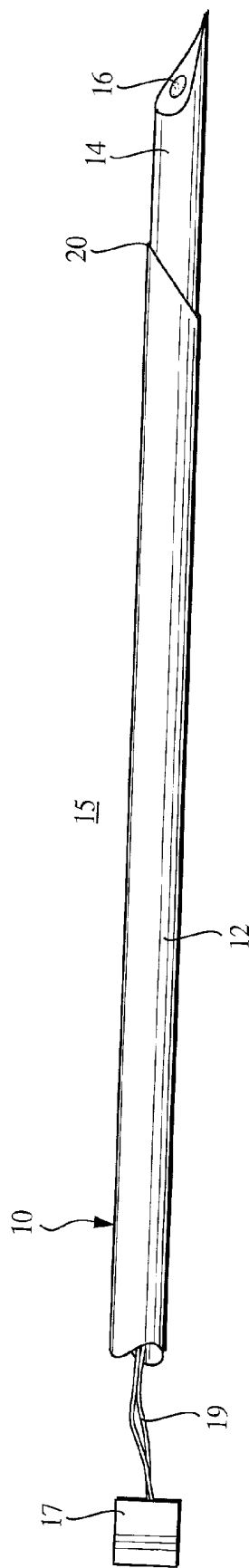


FIG. 1C

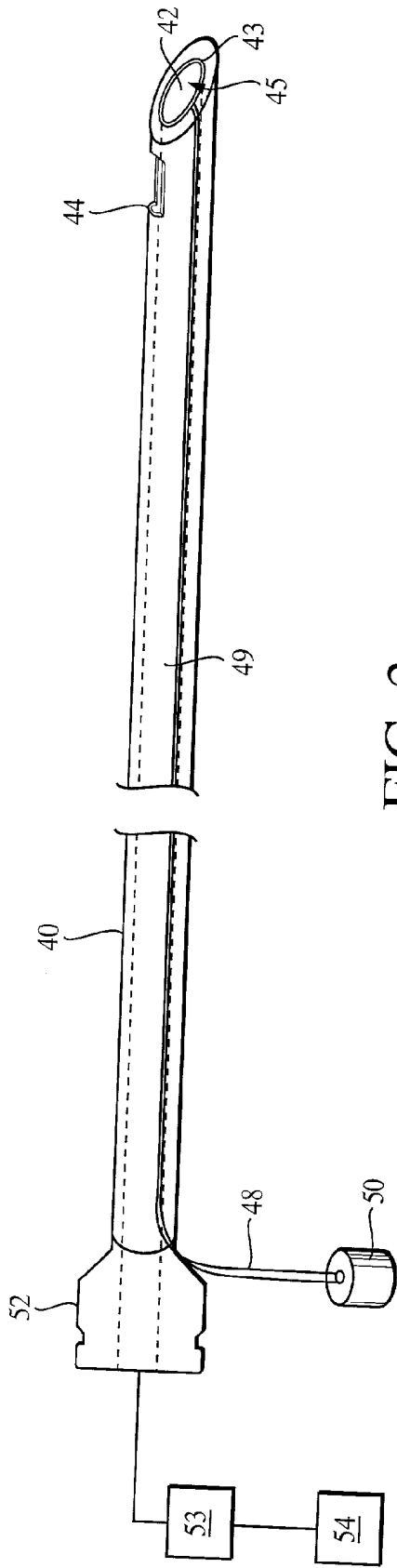


FIG. 2

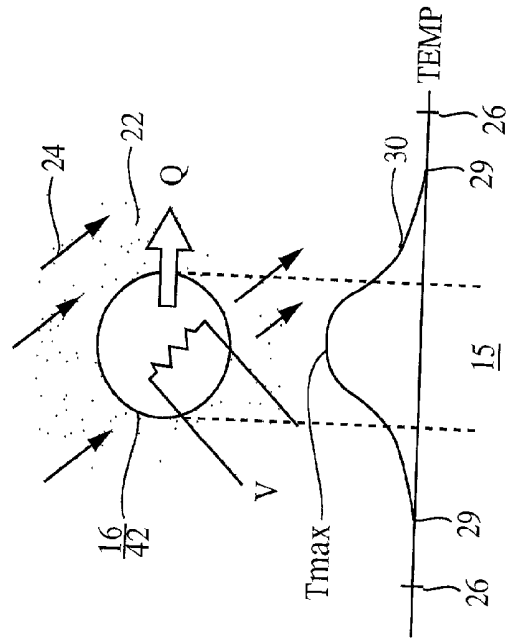


FIG. 3

FIG. 4A

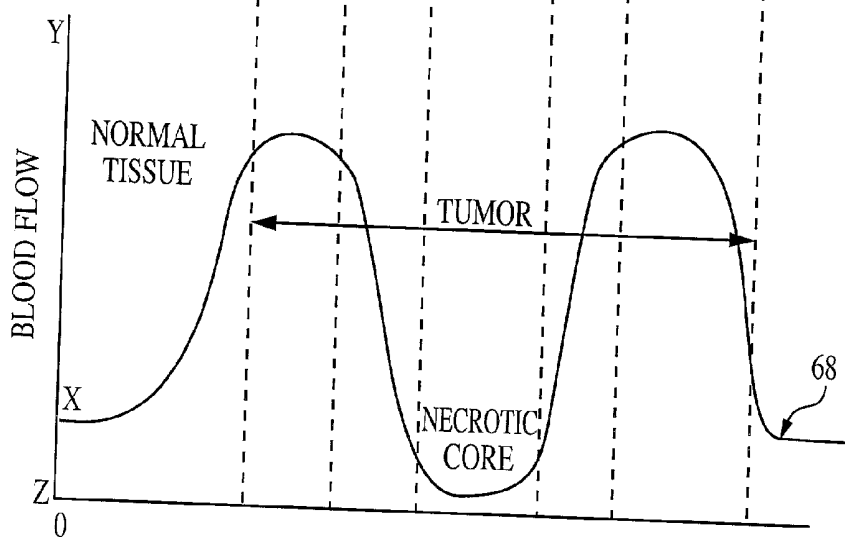
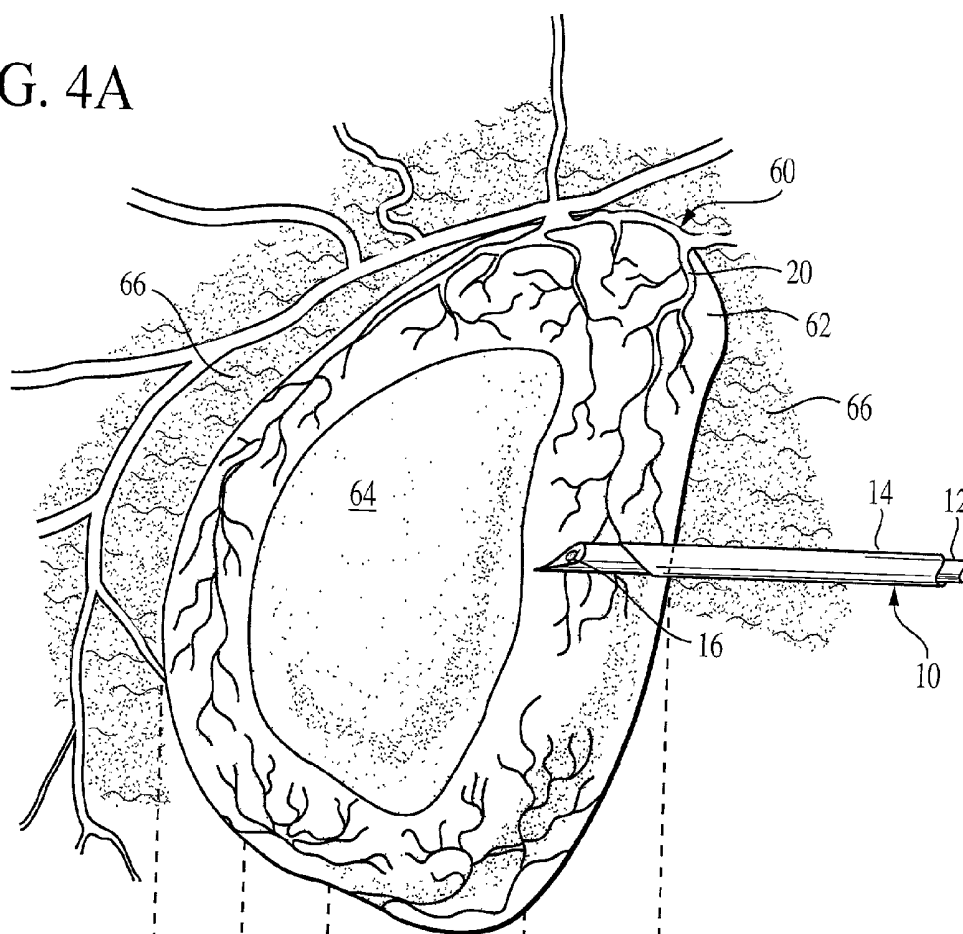
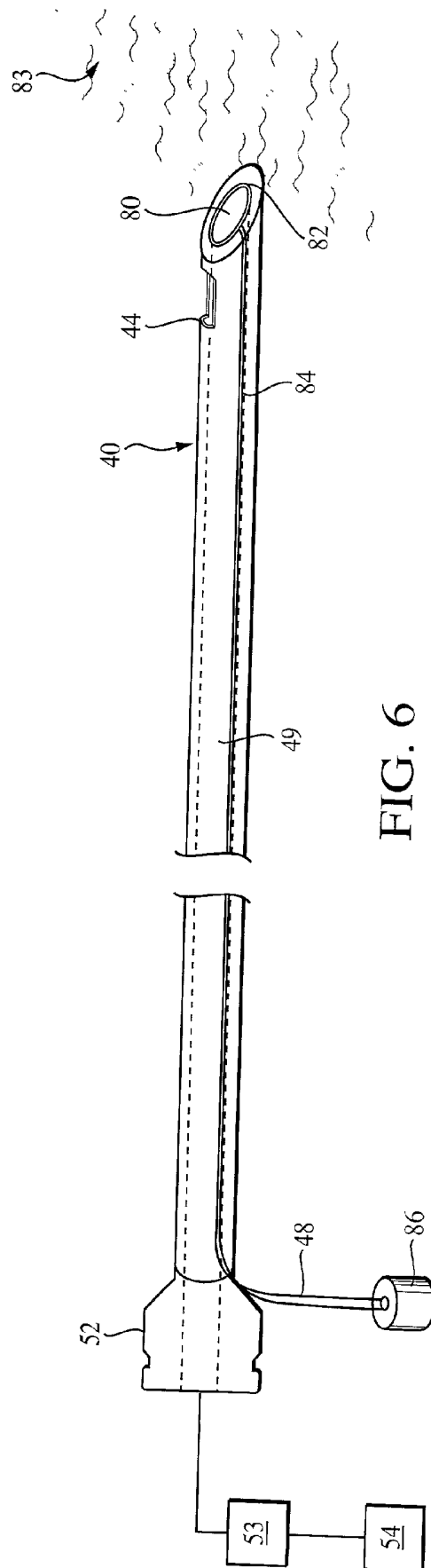
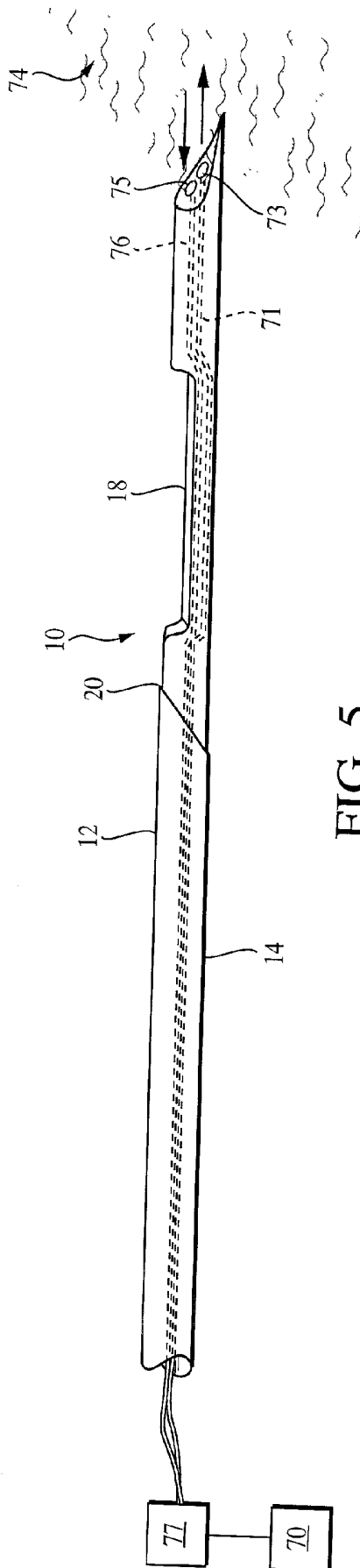


FIG. 4B



## PERFUSION SENSITIVE BIOPSY EXTRACTOR

### BACKGROUND OF THE INVENTION

[0001] This invention relates to a method and apparatus for quantifying blood flow in tissue and specifically for quantifying blood flow in tissue at a location within the body where therapy or diagnosis is required. The ability to quantify tissue blood flow permits the physician to plan and schedule specific therapies designed for a patient's particular condition. For example, blood flow is a carrier of therapeutic agents throughout the body. The ability to quantify blood flow at a site within the body where drug therapy is required will permit the physician to evaluate the extent to which therapeutic agents introduced into the circulatory system will actually reach and affect the site to be treated.

[0002] One clinical area in which the current invention is useful is in the treatment of cancer, particularly those cancer cases that are treated non-surgically. Almost all cancers treated non-surgically will undergo therapies whose efficacy is strongly related to tissue and tumor blood flow. A number of anti-cancer agents depend on the circulatory system for delivery to the target tissue. Blood flow, the carrier of therapeutic agents to the tumor, also acts as a carrier of oxygen. Increased blood supply increases tissue oxygenation and the concentration of chemotherapeutic agents. Correspondingly, the concentration of oxygen at the site and the concentration of chemotherapeutic agents are enhancers of the effectiveness of therapies such as radiation therapy and chemotherapy.

[0003] In the treatment of tumors, various techniques have been used to increase the blood flow and thereby increase the oxygen supply to the site in the tumor being treated. Efforts to increase blood flow to tumors include the use of vasoactive drugs, viscosity modifiers and local hyperthermia therapy. In these attempts, circulation is affected systemically but there is always a question of the extent to which circulation in the specific site to be treated is affected. The need to increase blood flow to diseased tissue is associated with a corresponding need to measure or quantify blood flow at the treatment site.

### SUMMARY OF THE INVENTION

[0004] While the overall importance of blood flow to human health has long been recognized, techniques to quantify blood flow generally have not lent themselves to routine clinical application. Accordingly, it is a purpose of this invention to provide a method and apparatus that will measure blood flow at a specific location critical to patient treatment and permit convenient, routine clinical application.

[0005] Certain patient therapies involve the extraction for testing of a tissue sample or biopsy from a region of the body suspected of disease or known to be diseased. The extracted sample is examined to obtain a diagnosis or to assess treatment and, if the tissue is diseased, a treatment protocol is established. It is advantageous to determine the blood perfusion of tissue at the location of the biopsy (i.e.: at the site to be treated) so that the treatment protocol can be based on actual blood flow to the site. The device of this invention is useful in any clinical situation for which perfusion is of interest when a biopsy is being taken. Such situations include eschemic disease and organ failures such as kidney

or liver failure. A typical cancer therapy protocol involves the treatment of diseased tissue by chemotherapy, hyperthermia and/or radiation, all of which are, in part, dependent on blood flow. In some cases the perfusion data is used to distinguish viable tissue from necrotic tissue. In others cases there may be within viable tissue a range of perfusion values which may guide the choice of the biopsy site.

[0006] In cancer cases the efficacy of almost all non-surgical therapies is strongly related to tissue and tumor blood flow. Blood flow is the carrier of chemotherapeutic agents to the tumor, the carrier of oxygen which contributes to the efficiency of oxidic anti-cancer drugs, the primary mechanism of heat removal from tissue in hyperthermic treatment of tumors and the principal modulator of oxygenation which contributes to the effectiveness of radiotherapy. The level of blood flow in a tumor is thought to correlate with probable therapy outcome. This allows individual planning of patient therapy strategies based on the basal level of tumor blood flow and the response to blood flow modifying agents.

[0007] The technique of the present invention involves a minimally invasive system for producing a signal characteristic of blood perfusion, measuring blood perfusion in tissue at a selected tissue biopsy site, and obtaining a biopsy sample at or near the site where blood perfusion is measured. Preferred embodiments include a signal producing device that introduces into tissue a signal producing agent and a system for receiving and processing a signal resulting from the action of the signal producing agent in the tissue.

[0008] One perfusion monitor using a thermal transducer based perfusion sensor and useful in the practice of this invention is disclosed in U.S. Pat. No. 4,852,027 issued to H. Frederick Bowman et al. Monitors with other perfusion sensors can be used, for example monitors with laser Doppler sensors, hydrogen clearance sensors or ultrasound. The perfusion sensor is mounted on a biopsy needle or other biopsy extraction probe so that tissue samples are taken from the region interrogated by the perfusion sensor. When the instrument is operated the extraction probe is inserted into the tissue to be interrogated, perfusion data is taken and then the probe is operated to extract a sample of the tissue interrogated by the perfusion sensor. In this manner perfusion data taken relates directly to the tissue extracted. The physician is not required to rely upon a generalized systematic tissue perfusion value for the patient from which perfusion at the site of the biopsy is inferred.

[0009] The instrument of this invention enables the physician to extract a biopsy sample and measure perfusion simultaneously in one procedure. The tissue forming the biopsy sample is tissue interrogated by the perfusion measurement device. The biopsy sample is extracted from tissue known to be perfused. Tissue perfusion is a strong (typically conclusive) indicator of tissue viability. Thus, the patient (or site) pathology can be determined from the extracted biopsy sample. This eliminates the need for two or multiple invasive procedures in order to obtain a perfused (i.e.: viable) biopsy sample, thus saving patient trauma and time.

[0010] The present invention provides: quantification of tissue perfusion to assist in formulating patient specific treatment strategies; the ability to augment the perfusion of specific tissue with blood flow modifying agents and to quantify the augmented perfusion; direct correlation of local

tissue perfusion with histological analysis; the knowledge that tissue biopsy is being taken from non-necrotic tissue; and minimization of the number of biopsy probe insertions, thereby minimizing tissue trauma during the biopsy process. Further, because apparent or measured tissue perfusion is higher in tissue which comprehends major blood vessels within the interrogation volume, the device of this invention can be used to detect proximity to major vessels as the probe is being inserted to enable the practitioner to navigate a path through tissue which avoids unwanted puncture of blood vessels.

#### BRIEF DESCRIPTION OF THE DRAWINGS

[0011] A more complete understanding of the present invention will be had from the following description, claims and drawings in which:

[0012] FIG. 1A shows an embodiment of the biopsy needle in a first position;

[0013] FIG. 1B shows the embodiment of FIG. 1A in a second position;

[0014] FIG. 1C shows the embodiment of FIG. 1A in a third position;

[0015] FIG. 2 illustrates an alternate embodiment of the invention;

[0016] FIG. 3 illustrates the interrogation range of a sensor in a biopsy needle;

[0017] FIG. 4A illustrates a tumor being interrogated by a biopsy needle of this invention;

[0018] FIG. 4B shows an exemplary blood perfusion pattern in the tumor illustrated in FIG. 4A;

[0019] FIG. 5 illustrates a further embodiment of the invention; and

[0020] FIG. 6 illustrates a still further embodiment of the invention.

#### DESCRIPTION OF THE PREFERRED EMBODIMENTS

[0021] A core biopsy needle or probe 10 constructed in accordance with the present invention is shown in three different positions in three schematic diagrams, FIG. 1A, FIG. 1B and FIG. 1C. In FIG. 1A, the core biopsy needle 10 includes a cannula 12 defining a sharp cutting edge or blade 20 along its leading edge and an obturator 14 mounted within the cannula 12. The obturator (a notched trocar) and the cannula slide with respect to each other in telescoping or reciprocal fashion. Perfusion sensor 16, which in this embodiment may be in the form of a thermistor, is mounted in the tip of the obturator 14. FIG. 1B shows the core biopsy needle 10 of FIG. 1A with the obturator 14 extended to reveal specimen notch 18. The notch 18 is located on the obturator 14 so as to be in a trailing position relative to the sensor 16 when the obturator 14 is advanced. FIG. 1C shows the core biopsy needle 10 in a further extended position in which the cannula 12 has been advanced to a forward position relative to the obturator 14 covering specimen notch 18. It will be apparent that the obturator and cannula could also be configured for rotary motion relative to each other.

[0022] Optionally, a baseline sensor or thermistor 23 can be mounted on the obturator 14 (or the cannula 12) back from perfusion sensor 16 to monitor and compensate for baseline temperature changes. The perfusion sensor 16 and the optional thermistor 23 may be connected to a data processor 17 by lead wires 19 extending through a lumen in the obturator 14.

[0023] Referring again to FIG. 1A, the needle 10 is shown inserted into tissue 22 of a subject to place the tip of the obturator 14 and the thermistor based perfusion sensor 16 in tissue at a potential specimen site. Tissue and included capillaries form a perfused capillary bed surrounding the perfusion sensor 16. In this embodiment, the perfusion sensor 16 is heated to introduce or transmit thermal energy into surrounding tissue 22 and produce a heated field within the tissue. The heated field defines an interrogation volume and an effective measurement zone or field. The perfusion sensor 16 produces a signal proportional to the rate at which thermal energy introduced into the tissue is transported within the tissue. The thermal energy transport (or transfer) rate is a function of the blood flow or perfusion through the tissue. The sensor 16 (thermally based or otherwise) provides a signal, at least one characteristic of which is a function of the perfusion within the interrogation volume and, inferentially, within the effective measurement field. That is, the signal varies with perfusion in the surrounding tissue. The perfusion in tissue in immediate contact with the perfusion sensor 16 has the greatest effect and the effect of perfusion on the sensor decreases as distance from the sensor increases. One explanation of this relationship is given in U.S. Pat. No. 4,059,982 to Bowman. For a further description refer to FIG. 3.

[0024] In FIG. 3, the direct interrogation volume associated with the sensor 16 is indicated at 29. (That is, the boundary 29 represents the outermost region beyond which a perfusion signal is below the direct detection limit of perfusion sensor 16.) Within a larger zone indicated by boundary 26 the perfusion may be inferred as equivalent to that at the sensor 16. In organs or tissues where the perfusion is known to be spatially homogeneous, a measurement at one site can be used to infer a perfusion value at another site in the same organ or tissue. For instance, perfusion in the white matter of the brain is well known under conditions of normal physiology, to be spatially uniform. Also perfusion in the gray matter of the brain, though different from the white matter, is also known to be uniform. Therefore a perfusion measurement taken at one site in either the gray or white matter, can be used to infer the perfusion value at another site in the gray or white matter, respectively. This is the case even when, within an organ known to be characterized by spatially homogeneous perfusion under normal physiology, there is no physical overlap of the biopsy sample with the direct interrogation volume of the perfusion sensor. Homogeneous perfusion can also be found in other tissue under conditions of normal physiology, such as in cardiac tissue, skeletal muscle, and liver. In operation, the perfusion sensor or thermistor 16 is introduced into tissue 22 (which may be muscle tissue or the tissue of an organ such as the brain, heart or liver) and heated to raise the temperature of the tissue above its reference temperature. Perfusion or flow through the tissue, indicated by arrows 24, causes convective heat transfer from the embedded thermistor to tissue 22. Heat transfer from the thermistor to the tissue increases as flow through the tissue increases. The temperature distribu-

tion in the tissue 22 is represented by the curve 30 wherein the maximum temperature occurs at the thermistor 16 and decreases in all directions therefrom, eventually decaying to the temperature of the surrounding tissue, as indicated at 29. The boundary 29 therefore represents the direct detection limit of the perfusion sensor 16. The effective measurement field indicated at 26 is the practical limit within which perfusion is characteristic of or equivalent to that at the perfusion sensor 16, whether due to homogeneous perfusion within an organ being interrogated or otherwise.

[0025] The location of the perfusion sensor 16 defines the center of the effective measurement field 26. The site from which the biopsy is taken is to be at least partially within the effective measurement field 26 and, under optimum conditions, the biopsy sample is taken from the same location as the perfusion measurement (i.e.: within the direct interrogation zone 29 of the perfusion sensor 16). Further, tissue near the tip of the biopsy needle where the perfusion sensor 16 is located is the least damaged of any tissue that comes in contact with the biopsy needle. Thus the perfusion measurement at this location is minimally disturbed by the insertion process.

[0026] The embodiment of the invention shown in FIG. 1A, FIG. 1B and FIG. 1C is adapted to collect a solid tissue sample from a particular location or selected organ of the body of the subject. That is, this embodiment is adapted to collect aggregated cells at a specific location within the body or within an organ of the body. The biopsy needle 10 is introduced into the subject to locate the tip of the obturator 14 and the perfusion sensor 16 in a selected organ or specimen site. Perfusion data is then taken in the specimen site by the perfusion sensor 16 and processed by data processor 17. When the sensor 16 produces a signal indicative of a perfusion value within a biological or clinical range which corresponds to viable tissue and an appropriate specimen site, the obturator 14 is extended so that, optimally, the specimen notch 18 appears in the same location where the perfusion reading was taken. The same solid tissue in which the perfusion reading was taken fills the specimen notch 18 and constitutes the specimen sample. The cannula 12 is then advanced to cover the specimen notch 18 so the cutting edge 20 severs the specimen sample from the surrounding tissue and confines it between the surface of the specimen notch 18 and the inner surface of cannula 12. The biopsy needle 10 is then withdrawn from the subject with tissue 22 in which the perfusion reading was taken constituting the biopsy sample.

[0027] In one embodiment incorporating the baseline sensor 23, the thermistor 16 is heated to a small increment (for example  $\sim 2^\circ$  C.) above the tissue baseline temperature while the sensor 23 monitors baseline temperature fluctuations. The power dissipated by the heated thermistor 16 provides a measure of the ability of the tissue to carry heat and the quantification of tissue blood flow. Data from baseline sensor 23 and thermistor 16 is transmitted to the data processor 17. The data processor quantifies tissue blood flow using data from thermistor 16 and compensates for baseline temperature fluctuations using data from sensor 23. A discussion of the baseline sensor is described by G. T. Martin and H. F. Bowman in "Validation of Real Time Continuous Perfusion Measurement", *Medical & Biological Engineering & Computing*, Med. Biol. Eng. Comput., 2000, 38, pp 319-325.

[0028] The biological or clinical range of perfusion values that corresponds to an appropriate specimen site differs from one location in the body to another. For example, in the white matter of the brain perfusion in normal tissue is 25-50 ml/min/100 g of tissue. In a normal liver it is 70-90 ml/min/100 g of tissue. In oncology, a normal perfusion value may be suggestive of treatment by radiation. A lower perfusion value is consistent with a tumor resistant to treatment by radiation and suggestive of other treatments. Similarly, in organ transplantation, an organ perfusion value lower than normal is indicative of difficulty due to inadequate perfusion and correspondingly inadequate oxygenation.

[0029] It will be appreciated that in an alternate embodiment sensor 16' (an alternate to sensor 16) can be located adjacent or within the specimen notch 18. In this case the obturator 14 is first extended so the tissue specimen enters the notch 18. Perfusion data is then taken. After perfusion data is taken, the cannula 12 is advanced to sever the specimen tissue from surrounding tissue. The perfusion data and the specimen are thus taken in the same location.

[0030] FIGS. 4A and 4B illustrate a typical blood perfusion pattern in a tumor 60 and surrounding healthy tissue 66. It is common for certain kinds of tumors to consist of a viable growing margin 62 characterized by abnormally high perfusion in comparison to the surrounding healthy tissue 66 and an inner necrotic core 64 where perfusion can reach substantially zero. In FIG. 4B, curve 68 indicates a blood perfusion value "X" for normal tissue 66 and a maximum perfusion value "Y" in the growing margin 62. Minimum perfusion value "Z", which can be substantially zero, occurs in the necrotic core 64. In operation a practitioner might insert the biopsy needle 10 into healthy tissue and find base perfusion readings of the value "X". When the biopsy needle penetrates the growing margin 62 of tumor 60 the perfusion values rise above the base value as indicated by values between "X" and "Y" on the curve 68. This indicates live tumor tissue and an appropriate site for a tumor biopsy. The higher perfusion value indicates an optimum biopsy site. If penetration continues into the necrotic core 64, perfusion values will fall to a value below that of healthy tissue, indicated by values between "X" and "Z" on the curve 68. This indicates dead or necrotic tissue and an inappropriate site for a biopsy.

[0031] The embodiment of the invention shown in FIG. 2 is adapted to collect a liquid tissue sample from a particular location or a selected organ of the body of the subject. That is, the biopsy needle 40 is adapted to collect cells suspended in interstitial fluid from a specific location within the body or within an organ of the body. A perfusion sensor 42 is mounted at the leading beveled edge 43 of the biopsy needle 40. The sensor 42 may be a glass encapsulated thermistor in the shape of a probate spheroid set in a lumen opening in the end of the needle 40, at the beveled tip surface of the needle. The sensor 42 may be secured and the end of the lumen in which it is set can be filled with a biocompatible epoxy. Lead wires 48 extended through a lumen 49 in the needle 40 connecting the perfusion sensor 42 to a data processor 50.

[0032] Aspiration port 44 is formed in the wall of the needle, in close juxtaposition with perfusion sensor 42, so that, when the biopsy needle 40 is inserted into tissue 22 to position the perfusion sensor 42 at a site from which a

biopsy is to be taken, the aspiration port **44** will be located within the effective measurement field **26** defined by the perfusion sensor **42**. That is, the aspiration port **44** is located on the biopsy needle to be within the effective measurement field **26** of the perfusion sensor **42**. By this configuration, the lumen **49** is in fluid communication with the biopsy specimen site and the effective measurement field **26**. Thus, the site from which the biopsy is taken will be at least partially within the effective measurement field **26** established by the perfusion sensor **42** and, in an optimum embodiment, the aspiration port **44** is located to be within the direct interrogation zone **29** of the perfusion sensor **42**. Hub **52** connects the lumen **49** to a suitable operating device **53** for creating suction and a liquid tissue sample collector **54**. In operation, the biopsy needle **40** is introduced into the subject to locate the perfusion sensor **42** in a selected specimen site. Perfusion values obtained from sensor **42** are processed by data processor **50** as the biopsy needle **40** is being inserted. The perfusion values obtained indicate the appropriate site for a biopsy. With the tip of the needle **40** and perfusion sensor **42** at an appropriate site, the operating device **53**, communicating with the biopsy needle through hub **52**, aspirates interstitial fluid and liquid tissue from the biopsy site, through the aspiration port **44** and the lumen **49**, to the liquid tissue sample collector **54**. This tissue constitutes the biopsy sample.

[0033] An embodiment of the invention using a laser Doppler sensor technique is illustrated by FIG. 5. Biopsy needle **10** includes cannula **12** and obturator **14** that define specimen notch **18** and blade **20**. Laser light from a laser light source **70** is transmitted by a fiber optic channel **71** to transmitting lens **73**. Lens **73** focuses and transmits laser light from the fiber optic channel **71** and directs it into tissue **74** surrounding the biopsy needle **10** when the needle is injected into a potential biopsy site in a subject. Laser light from the lens **73** incident upon red blood cells perfusing the surrounding tissue **74** is Doppler shifted and reflected back to receiving sensor or lens **75**. This interrogates the surrounding tissue **74**. The Doppler shifted light from the surrounding tissue produces a light signal that is transmitted by fiber optic channel **76** to data processor **77**. The Doppler shift received by the sensor lens **75** varies with variation in the perfusion (flow) of blood through the surrounding tissue **74**. The light signal is converted to an electrical signal in the data processor **77** and is processed. The resulting perfusion value provided by the data processor **77** is based on the perfusion dependent signal from the sensor lens **75** and indicates whether perfusion in the tissue **74** is within a biologically significant range corresponding to an appropriate biopsy site. When at an appropriate biopsy site, the biopsy needle **10** is operated to harvest a biopsy sample in the manner described above in connection with FIG. 1A, FIG. 1B and FIG. 1C.

[0034] An embodiment of the invention using a hydrogen sensitive electrode is illustrated by FIG. 6. Biopsy needle or probe **40** defines an aspiration port **44** and a lumen **49** establishing fluid communication between the aspiration port **44** and a suction device **53** and a liquid tissue sample collector **54**. Hydrogen sensitive electrode **80** is located at the tip **82** of the probe **40** and electrically communicates by conductors **84** to a data processor **86**. When the probe **40** is injected into a potential biopsy site in a subject, the hydrogen sensitive electrode **80** produces an electrical signal which varies as a function of the concentration of hydrogen

in blood perfusing the capillary network in the volume of tissue **83** surrounding the electrode **80**. The data processor **86** is adapted to process signals from the electrode **80** to provide perfusion values corresponding to the blood perfusion of the capillary network in the volume of tissue **83**. In operation the subject breathes a breathable gas including a predetermined concentration of hydrogen, normally substantially above the hydrogen concentration in ambient air. The bloodstream carries the hydrogen throughout the body and introduces hydrogen into bodily tissue. At any given tissue location the hydrogen concentration will increase or decrease, respectively, as the perfusion of that tissue increases or decreases. Further, the rate at which the hydrogen is transferred to or from a tissue site is a function of the perfusion at the site. The hydrogen concentration in the capillary network in the volume of tissue **83** and/or the rate of decay of the hydrogen concentration characterizes the blood perfusion in the capillary network. Electrode **80** produces a signal the magnitude of which is a function of the perfusion of the site. The hydrogen dependent signal from the electrode **80** is fed through conductors **84** to the data processor **86** which provides an output indicative of the perfusion of the capillary network in the volume of tissue **83** and thus of the potential biopsy site. The perfusion value provided by the data processor **86** indicates whether perfusion in the capillary network is within a biologically significant range that corresponds to an appropriate biopsy site. When at an appropriate biopsy site, the Biopsy probe **40** is operated to harvest a biopsy sample in the manner described above in connection with FIG. 2.

[0035] During insertion of the needle or probe **10** or **40**, the practitioner can monitor perfusion readings to assess proximity of the tip of the needle and the perfusion sensor **16** or **42** to a major blood vessel. The convective heat transfer effective in close proximity to a major blood vessel will cause the system to produce an abnormally high reading (i.e.: above that normally associated with the host tissue). This reading enables the practitioner to guide the insertion to avoid puncturing the blood vessel and to avoid biopsy sites within the thermal influence of the blood vessel. Additionally, data processors can be programmed to respond to a preset threshold perfusion value to signal proximity to a major blood vessel. These signals further enable the practitioner to guide the needle or probe to a site of lower perfusion value and avoid major blood vessels.

[0036] The various sensors shown above are shown with particular biopsy needle designs for convenience of description. The sensors illustrated with one needle design can also be used with other needle designs.

What is claimed is:

1. A method for removing a perfused biopsy specimen from a biopsy specimen site in a living subject comprising the steps of:

- introducing a probe having a perfusion sensor and specimen collector thereon into tissue of the living subject to locate the perfusion sensor at or near a biopsy specimen site;
- producing a signal characteristic of perfusion in tissue at the biopsy specimen site; and
- operating said specimen collector to withdraw tissue from the biopsy specimen site when the perfusion signal resulting from said signal producing step corresponds to an appropriate specimen site.

2. A method in accordance with claim 1 in which said operating step comprises the step of aspirating tissue from the specimen site.

3. A method according to claim 1 or 2 in which said operating step comprises the step of removing tissue from the direct interrogation volume of said perfusion sensor.

4. A method according to claim 1 in which said producing step comprises the steps of introducing thermal energy into tissue and detecting the transport of thermal energy in said tissue.

5. A method according to claim 4 further comprising the steps of monitoring baseline temperature fluctuations and compensating for baseline temperature fluctuations.

6. A method according to claim 1 in which said producing step comprises the steps of directing laser light into tissue and processing a signal produced by the Doppler shifted light reflected from said tissue.

7. A method according to claim 1 in which said producing step comprises the steps of introducing hydrogen into tissue and detecting the rate at which hydrogen is transferred to or from said tissue.

8. A method according to claim 1 in which said producing step comprises the steps of introducing into tissue a signal producing agent and processing a signal produced by the action of the signal producing agent in said tissue.

9. A method for removing a perfused biopsy specimen from a biopsy specimen site in a living subject comprising the steps of:

introducing into the tissue of a subject a biopsy probe having an obturator and a cannula movable relative to each other, said obturator having a perfusion sensor thereon and a specimen receiver in a trailing position relative to said sensor, said cannula having thereon means for severing tissue received by said specimen receiver;

interrogating tissue by means of said sensor and providing a signal variable as a function of blood perfusion in tissue surrounding the sensor;

advancing said obturator relative to said cannula to the tissue interrogated by said sensor for receiving in said specimen receiver the tissue interrogated by said sensor; and

advancing said cannula relative to said obturator to sever the tissue received by said specimen receiver from surrounding tissue;

the first said advancing step and the second said advancing step occurring sequentially to first receive and then sever tissue interrogated by said sensor when said sensor signals a perfusion value corresponding to an appropriate specimen site.

10. A method according to claim 1, 8 or 9 further comprising the step of monitoring perfusion during the introducing step to assess proximity of the perfusion sensor to a major blood vessel.

11. Apparatus for removing a biopsy specimen from a biopsy specimen site in a living subject comprising:

a biopsy probe having at least two members movable relative to each other;

perfusion sensor means mounted on one of said members for interrogating tissue when said probe is inserted into tissue of a living subject;

severing means on said members for severing tissue in the zone interrogated by said perfusion sensing means from surrounding tissue; and

means on said probe for removing severed tissue from the zone interrogated by said perfusion sensor means.

12. Apparatus for removing a biopsy specimen from a biopsy specimen site in a living subject comprising:

a biopsy probe having an obturator member and a cannular member movable relative to each other;

perfusion sensor means positioned on one of said members for providing a signal variable as a function of blood perfusion at a biopsy specimen site when said probe is inserted into tissue of a subject;

specimen receiving means on said members movable relative to the site for receiving solid tissue at the site when said members are first moved relative to each other; and

specimen collection means on said members for severing the solid tissue received by said receiving means from surrounding tissue when said members are subsequently moved relative to each other;

said specimen receiving means and said specimen collection means adapted to be operated when said perfusion sensor means signals a perfusion value at the biopsy specimen site corresponding to an appropriate specimen site.

13. Apparatus for removing a biopsy specimen from a living subject comprising:

a biopsy probe having an obturator and a cannular movable relative to each other;

perfusion sensor means positioned on said obturator for interrogating tissue and providing a signal variable as a function of blood perfusion in tissue surrounding said perfusion sensor means;

means on said obturator forming a specimen receiver for receiving tissue interrogated by said perfusion sensor means when said obturator is advanced relative to said cannula; and

means on said cannula for severing tissue received by said specimen receiver from surrounding tissue when said cannula is advanced relative to said obturator;

said obturator and cannula adapted to be advanced sequentially to receive and sever tissue when said perfusion sensor means signals a perfusion value corresponding to an appropriate specimen site.

14. Apparatus for removing a biopsy specimen from a living subject comprising,

a biopsy needle adapted to be inserted into a subject at a site where a liquid tissue biopsy specimen is to be removed;

perfusion sensor means located on said biopsy needle effective within a surrounding measurement field for providing a signal variable as a function of blood perfusion within said measurement field; and

a specimen removing port formed in said biopsy needle in juxtaposition with said sensor and within said measurement field for removing liquid tissue from the site; and

means adapted to facilitate withdrawal of liquid tissue from the biopsy specimen site through said specimen removing port when said perfusion sensor means signals a perfusion value corresponding to an appropriate specimen site.

15. Apparatus according to claim 11, 1213 or 14 wherein said perfusion sensor means comprises means for introducing thermal energy into tissue at the specimen site and means for detecting the transport of thermal energy introduced into said tissue.

16. Apparatus according to claim 15 further comprising means for monitoring and compensating for baseline temperature fluctuations.

17. Apparatus according to claim 11, 1213 or 14 wherein said perfusion sensor means comprises means for directing laser light into tissue at the specimen site and means for detecting the Doppler shifted light reflected from said tissue.

18. Apparatus according to claim 11, 1213 or 14 wherein said perfusion sensor means comprises means for introducing hydrogen into tissue at the specimen site and means for detecting the rate at which hydrogen is transferred to or from said tissue.

19. Apparatus for removing a tissue specimen from an organ of a living subject comprising:

biopsy probe means;

means mounted on said biopsy probe means for sensing perfusion within an organ when said probe means is introduced into said organ; and

means for withdrawing tissue from the organ interrogated by said sensing means.

20. Apparatus for removing a tissue specimen from a living subject comprising:

biopsy probe means;

sensor means mounted on said biopsy probe means for interrogating tissue surrounding said sensor means when said probe means is introduced into tissue of a living subject; and

means for withdrawing tissue interrogated by said sensor means from the subject.

21. Apparatus for removing a tissue specimen from a living subject comprising:

biopsy needle means,

sensor means mounted on said biopsy needle means for providing a signal which varies as a function of perfusion in tissue surrounding said sensor means when said biopsy needle means is introduced into the subject; and

means on said biopsy needle means for severing and withdrawing tissue from the subject when said sensor means signals a perfusion value corresponding to an appropriate specimen site.

\* \* \* \* \*

专利名称(译)	灌注敏感的活检提取器		
公开(公告)号	<a href="#">US20020128570A1</a>	公开(公告)日	2002-09-12
申请号	US09/783915	申请日	2001-02-12
[标]申请(专利权)人(译)	BOWMAN HARRY FREDERICK MARTIN GREGORY†		
申请(专利权)人(译)	BOWMAN HARRY FREDERICK MARTIN GREGORY T.		
当前申请(专利权)人(译)	热能技术股份有限公司.		
[标]发明人	BOWMAN HARRY FREDERICK MARTIN GREGORY T		
发明人	BOWMAN, HARRY FREDERICK MARTIN, GREGORY T.		
IPC分类号	A61B5/00 A61B5/026 A61B10/00 A61B10/02 A61B17/00 A61B5/05		
CPC分类号	A61B5/01 A61B5/026 A61B5/413 A61B5/6848 A61B10/0266 A61B10/0275 A61B2017/00088 A61B2017/00106		
其他公开文献	US6632183		
外部链接	<a href="#">Espacenet</a> <a href="#">USPTO</a>		

摘要(译)

一种用于量化灌注并在活体部位移除活组织检查样品的技术，其中具有灌注传感器的器械被引入到待研究部位的体内以询问组织。当灌注传感器产生指示灌注的活组织的信号时，收集活检标本。

