



(19) **United States**

(12) **Patent Application Publication** (10) **Pub. No.: US 2002/0069885 A1**

**Boies et al.**

(43) **Pub. Date: Jun. 13, 2002**

(54) **APPARATUS, SYSTEM, METHOD AND COMPUTER PROGRAM PRODUCT FOR CONTROLLING BIO-ENHANCEMENT IMPLANTS**

(52) **U.S. Cl. .... 128/899**

(75) **Inventors: Stephen J. Boies, Mahopac, NY (US); Sam Dinkin, Austin, TX (US); David P. Greene, Ossining, NY (US); William A. Moskowitz, Yorktown Heights, NY (US); Philip S. Yu, Chappaqua, NY (US)**

(57) **ABSTRACT**

An apparatus, system, method and computer program product for monitoring and controlling bio-enhancement implants is provided. With the apparatus, system, method and computer program product, a user may control the operation of implantable devices within the user's body by operation of a personal digital device. The personal digital device may obtain operational settings of the various implantable devices based on information stored within the personal digital device and/or information obtained from a network. The settings of the various implants are established in view of the possible interactions of the implants with one another. The personal digital device further monitors the operation of the implantable devices and the user's biological indicia. Based on the monitoring, the operation of the implantable devices are modified to obtain a desired result. If an emergency situation is encountered, the personal digital device may contact emergency response services with the location of the user so that emergency personnel are dispatched accordingly.

Correspondence Address:  
**Duke W. Yee**  
**Carstens, Yee & Cahoon, LLP**  
**P.O. Box 802334**  
**Dallas, TX 75380 (US)**

(73) **Assignee: IBM Corporation**

(21) **Appl. No.: 09/736,469**

(22) **Filed: Dec. 12, 2000**

**Publication Classification**

(51) **Int. Cl.<sup>7</sup> ..... A61B 19/00**

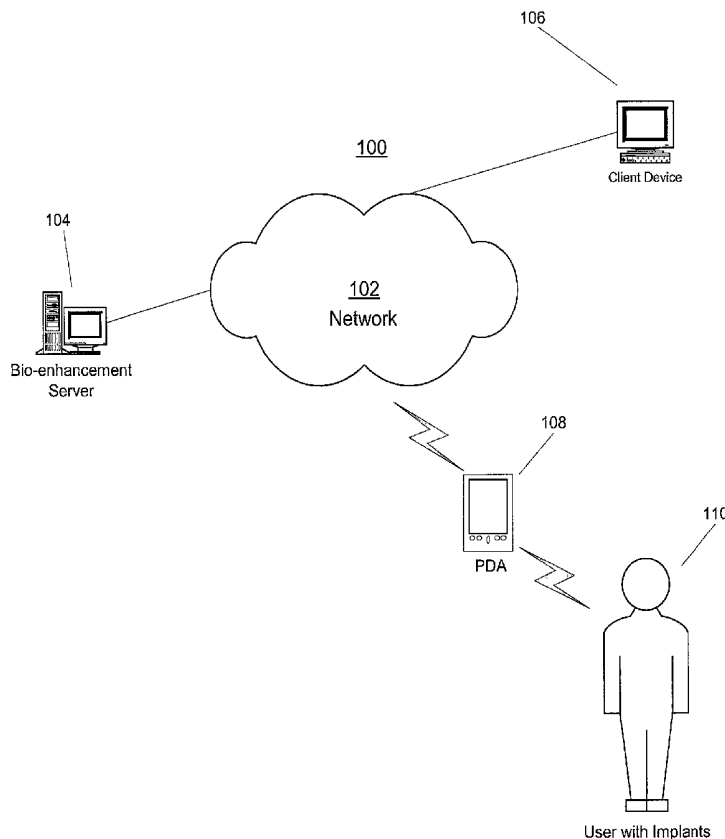
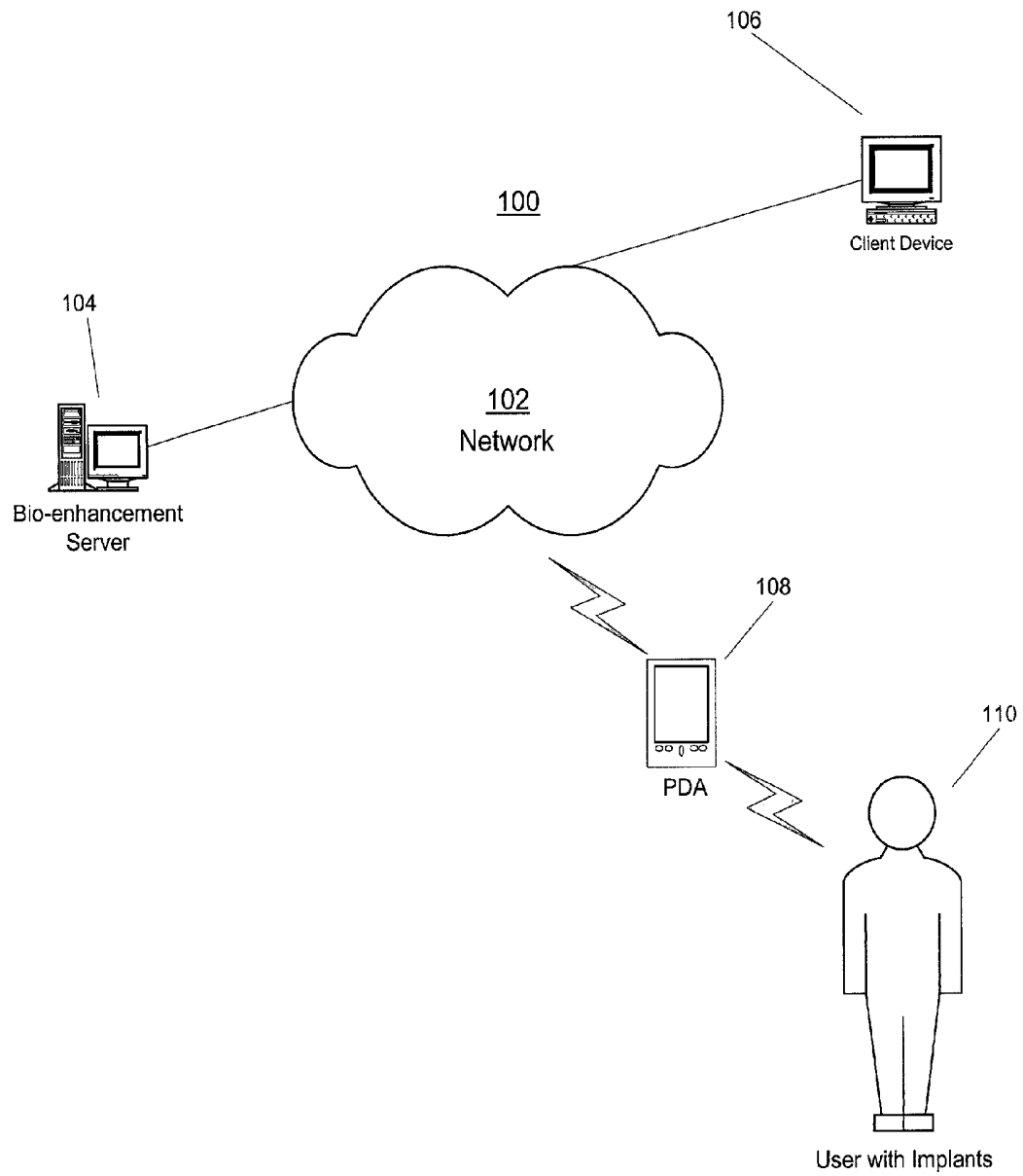


Figure 1



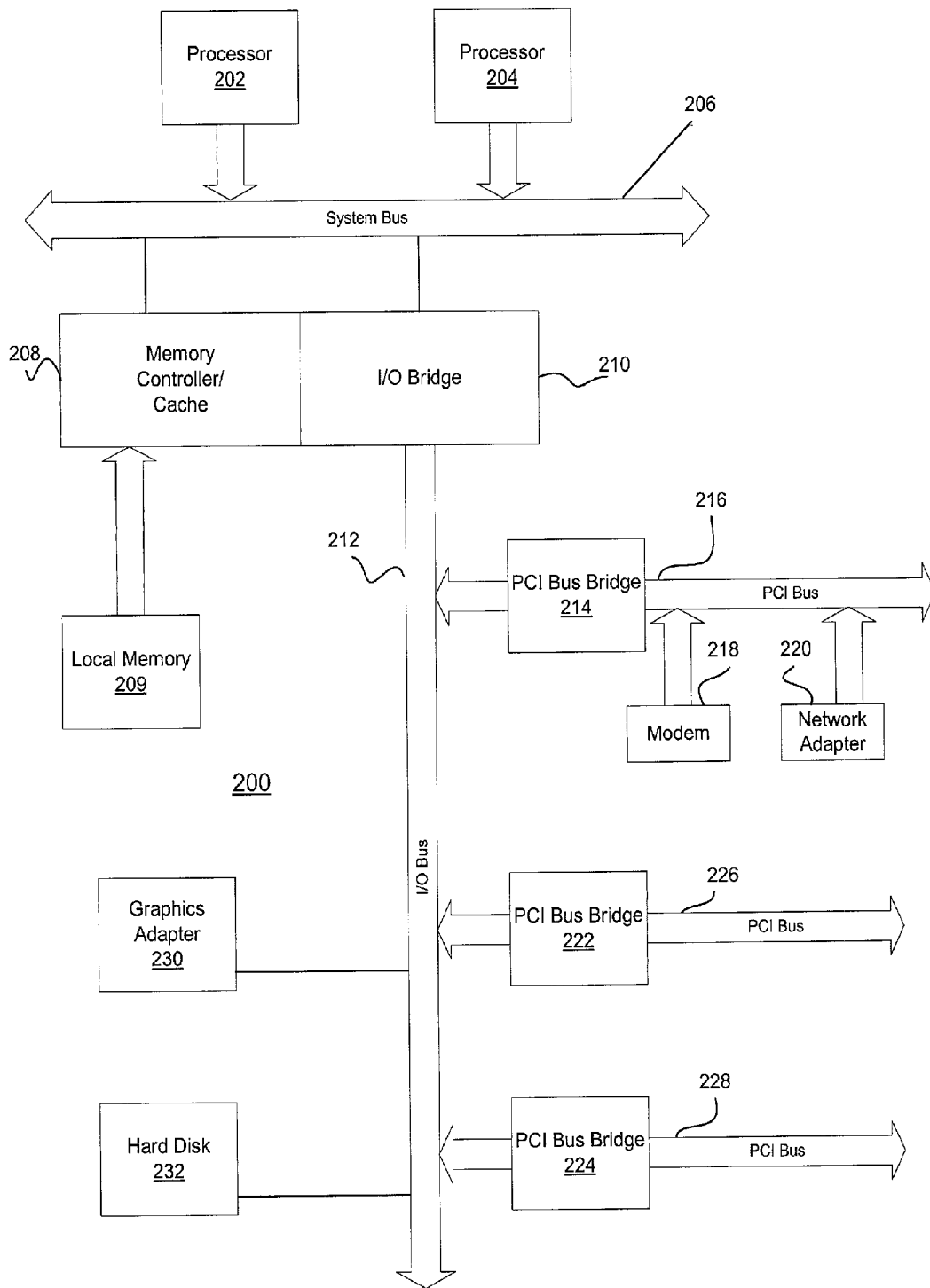


Figure 2

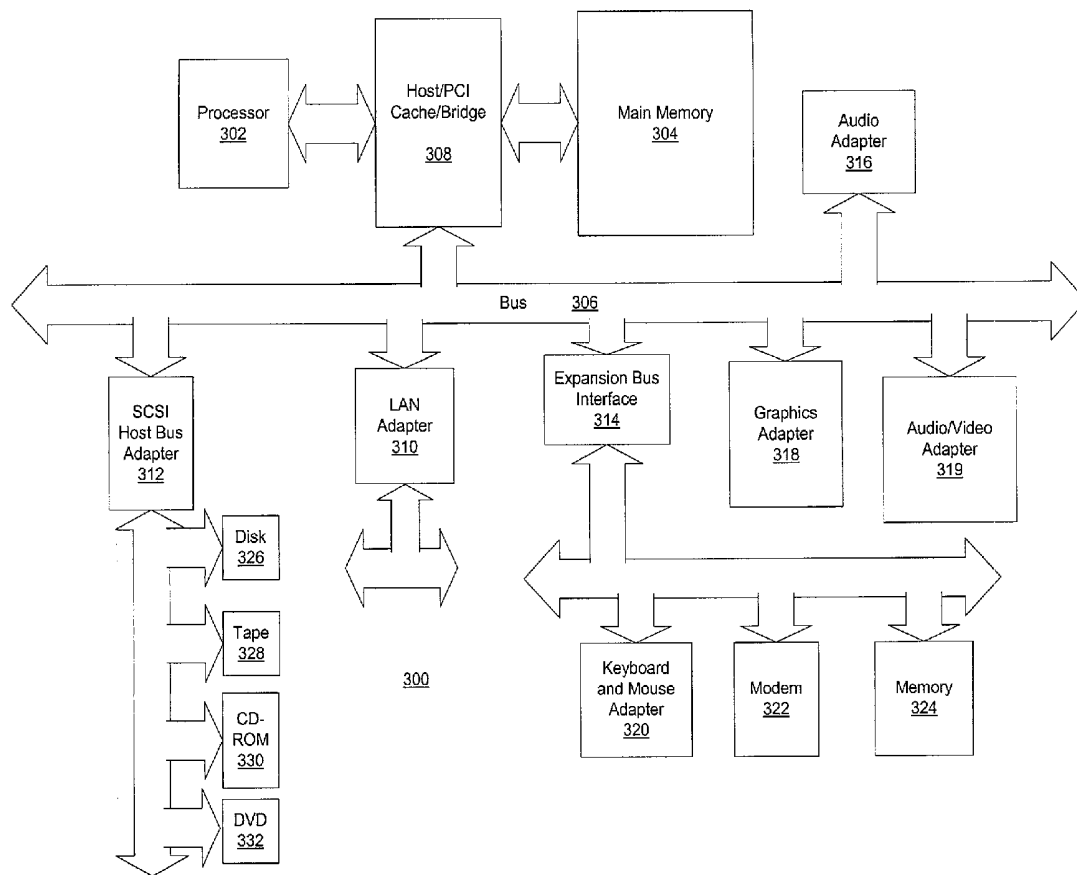


Figure 3

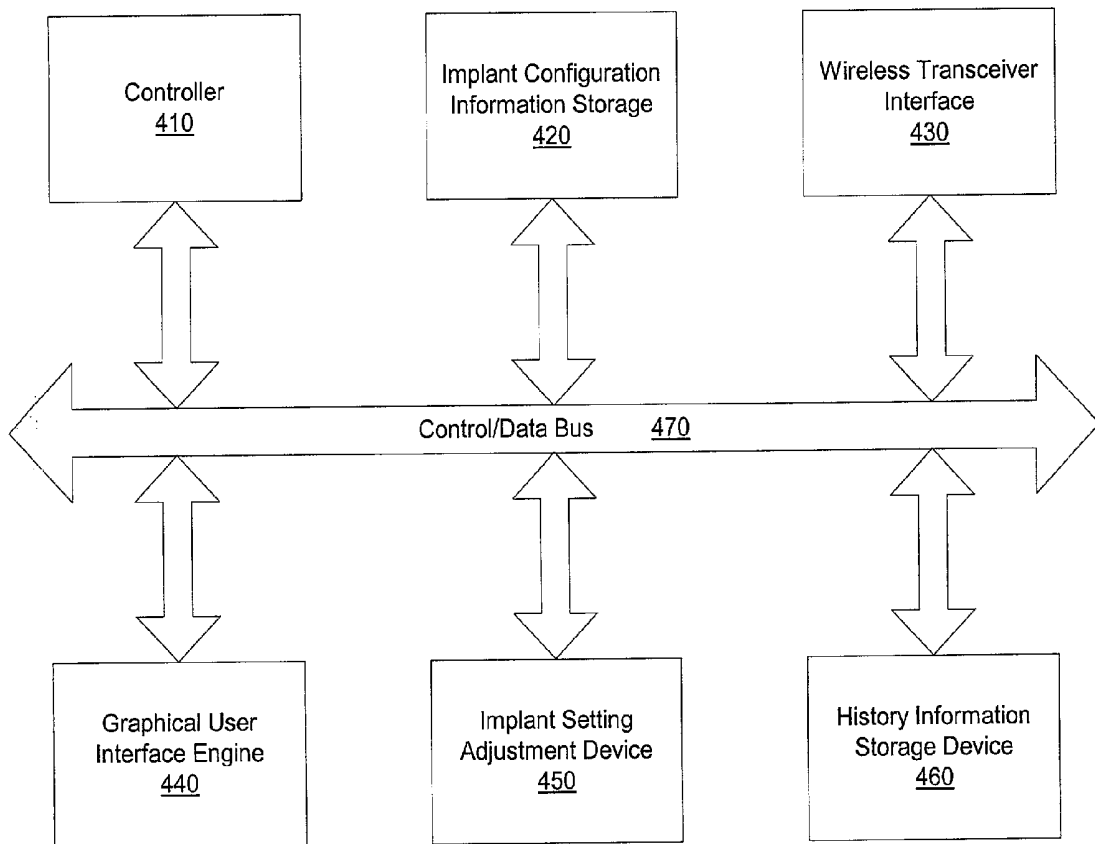


Figure 4

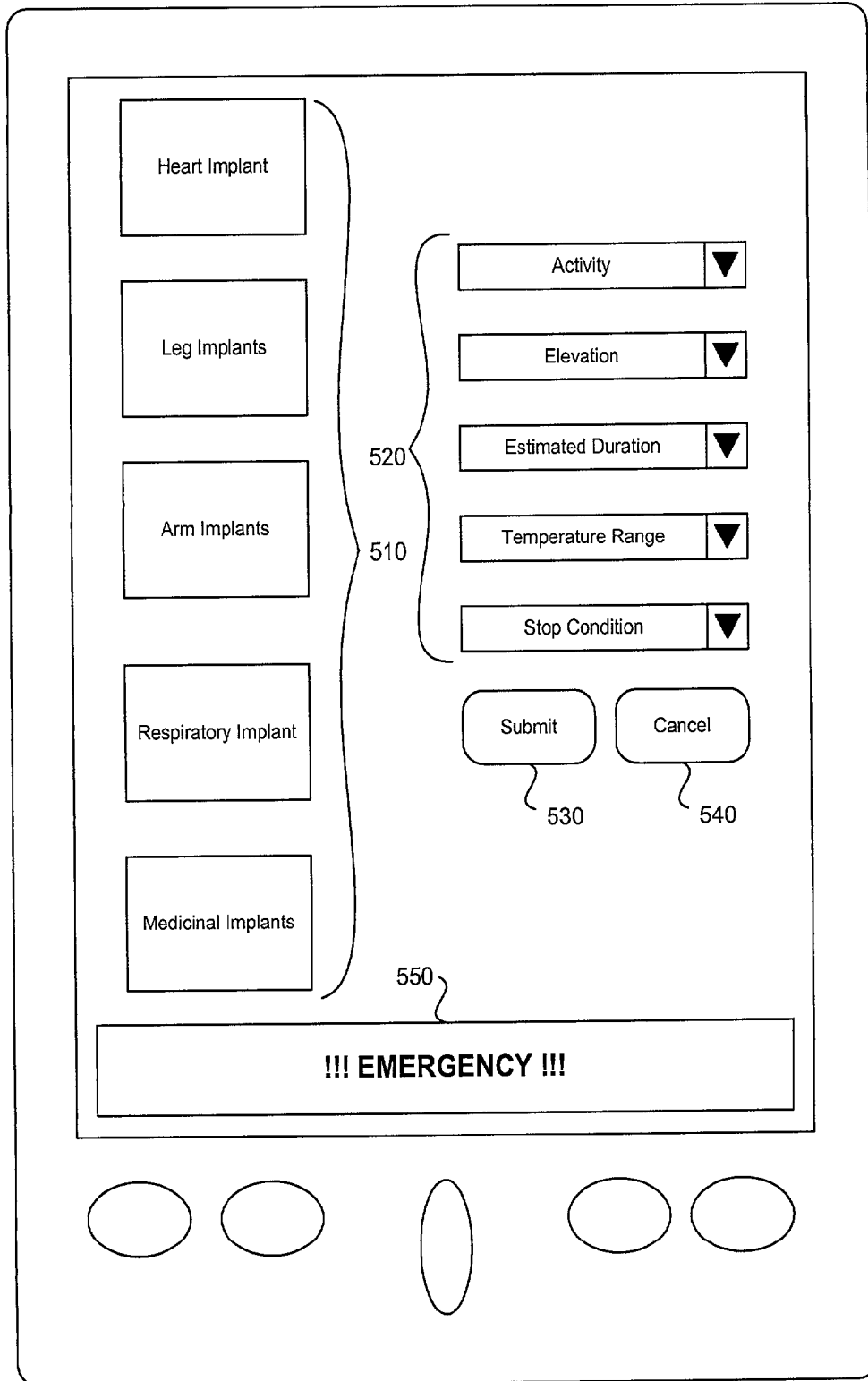


Figure 5

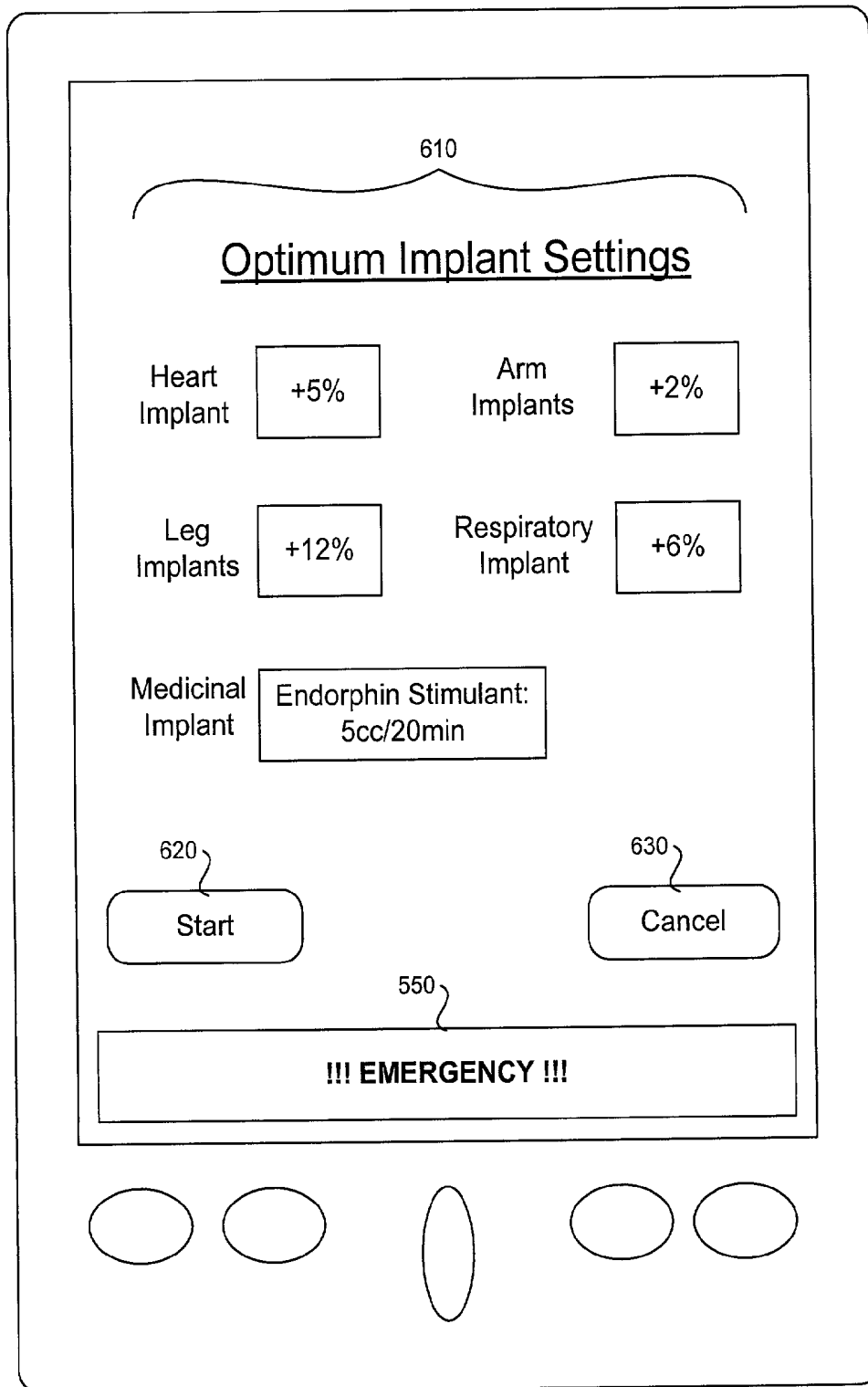


Figure 6

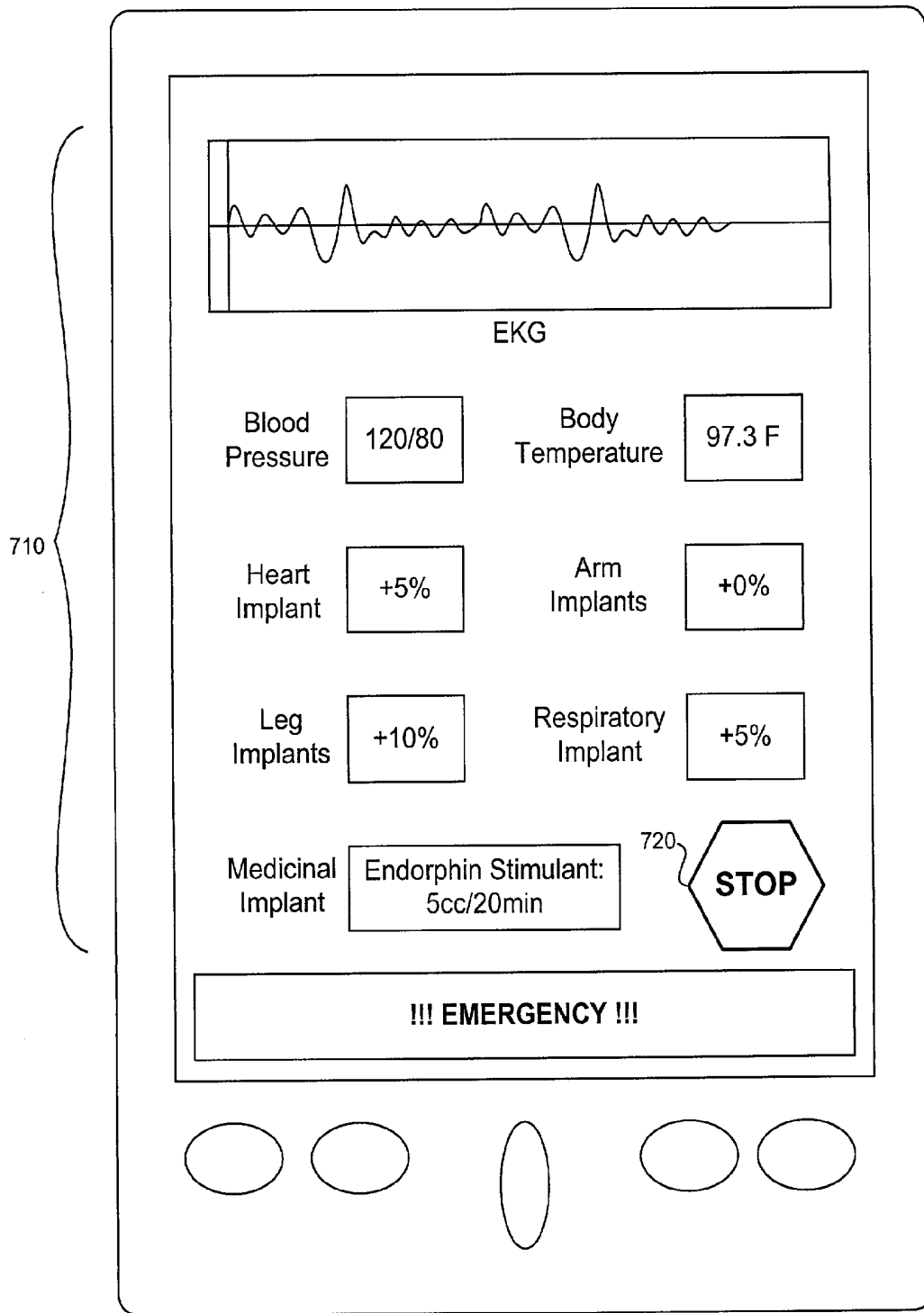


Figure 7

Figure 8

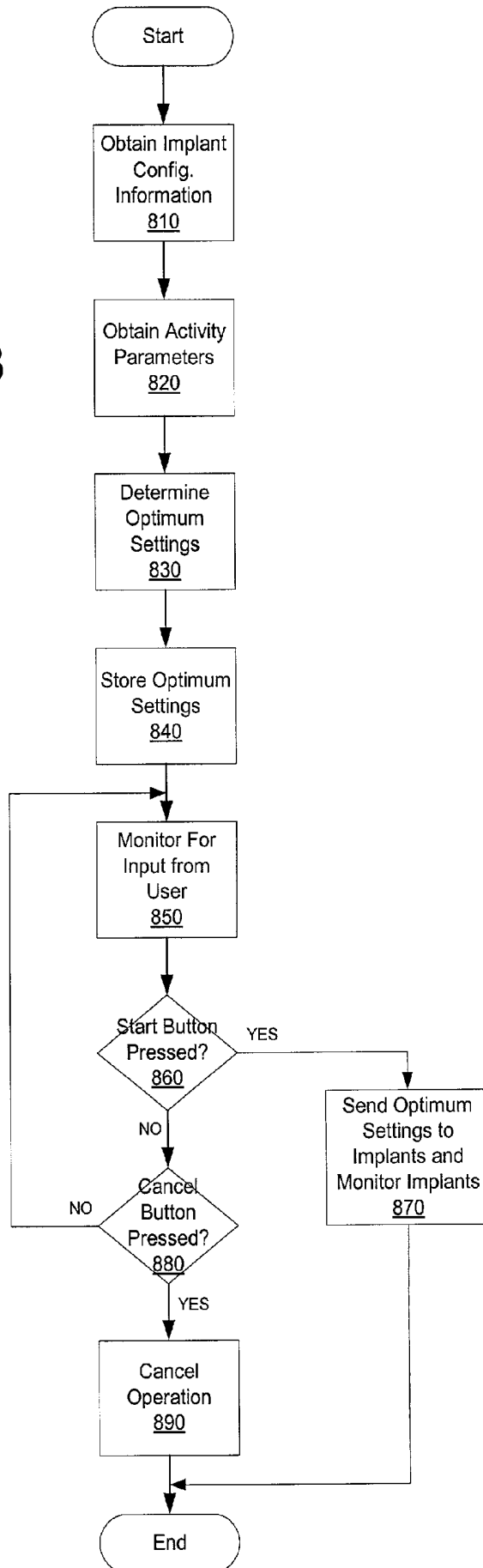
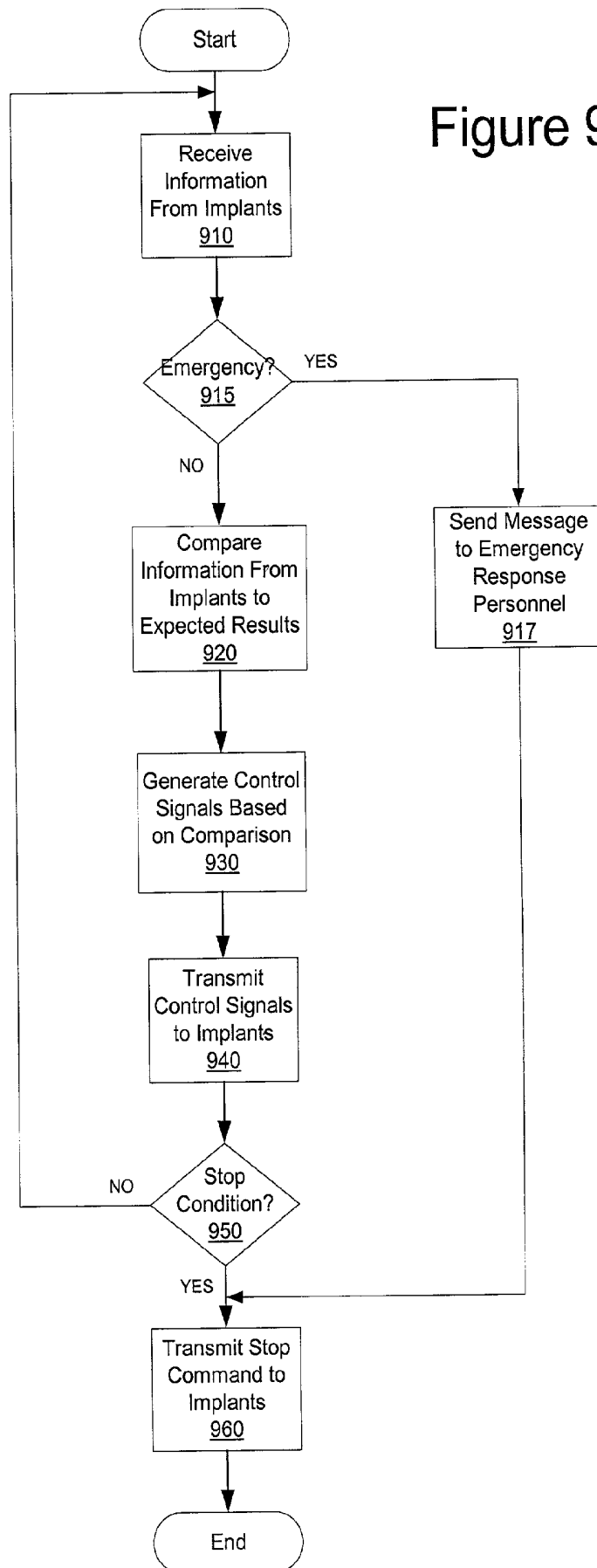


Figure 9



## APPARATUS, SYSTEM, METHOD AND COMPUTER PROGRAM PRODUCT FOR CONTROLLING BIO-ENHANCEMENT IMPLANTS

### BACKGROUND OF THE INVENTION

#### [0001] 1. Technical Field

[0002] The present invention provides an apparatus, system, method and computer program product for controlling bio-enhancement implants. In particular, the present invention provides a mechanism by which a user may control the operation of bio-enhancement implants to provide a desired result.

#### 2. Description of Related Art

[0003] The field of medical science is a rapidly evolving one. Advancements in medical science seem to be made at an ever increasing rate. For example, recently a pace maker, having a size smaller than a quarter, was implanted into a premature newborn and was successfully used to regulate the newborn's heart beat. Other amazing medical devices have been recently devised and introduced to our communities.

[0004] For example, U.S. Pat. No. 6,056,734 to Jacobsen et al., entitled "Method for Automatic Dosing of Drugs," describes an implantable device having doses of drugs. A timer of the implantable device may be remotely triggered by a transmitter outside the body of the organism in which the implantable device is implanted.

[0005] U.S. Pat. No. 6,092,530 to Weissman et al., entitled "Remotely Interrogated Implant Device with Sensor for Detecting Accretion of Biological Matter" describes an implant device which has a sensor for detection the accretion of biological material. The sensor is operatively coupled to a communication element which communicates wirelessly to a remotely located element outside the organism in which the implant device is implanted.

[0006] Enhancement of individual's characteristics through surgical means is being increasingly accepted by society. Cosmetic surgery, surgery to combat obesity, sex change operations, and many other "elective" procedures are more common place today than ever before and are becoming more accepted by mainstream society.

[0007] As medical implants become more advanced, individuals will increasingly elect to have these implants surgically implanted into their bodies in a similar manner that cosmetic surgery is now becoming common place. It is conceivable that individuals may have many different implants that may interfere or otherwise interact with one another. Thus, it would be beneficial to have an apparatus, system, method and computer program product for controlling these implants, in view of their interactions with one another, to obtain results desired by the user.

### SUMMARY OF THE INVENTION

[0008] The present invention provides an apparatus, system, method and computer program product for monitoring and controlling bio-enhancement implants. With the present invention, a user may control the operation of implantable devices within the user's body by operation of a personal digital device. The personal digital device may obtain operational settings of the various implantable devices based on information stored within the personal digital device and/or

information obtained from a network. The settings of the various implants are established in view of the possible interactions of the implants with one another.

[0009] The personal digital device further monitors the operation of the implantable devices and the user's biological indicia. Based on the monitoring, the operation of the implantable devices are modified to obtain a desired result. If an emergency situation is encountered, the personal digital device may contact emergency response services with the location of the user so that emergency personnel are dispatched accordingly. Other features and advantages of the present invention will be described in, or will become apparent to those of ordinary skill in the art in view of, the following detailed description of the preferred embodiments.

### BRIEF DESCRIPTION OF THE DRAWINGS

[0010] The novel features believed characteristic of the invention are set forth in the appended claims. The invention itself, however, as well as a preferred mode of use, further objectives and advantages thereof, will best be understood by reference to the following detailed description of an illustrative embodiment when read in conjunction with the accompanying drawings, wherein:

[0011] **FIG. 1** is an exemplary block diagram of a distributed data processing system in accordance with the present invention;

[0012] **FIG. 2** is an exemplary block diagram of a data processing system that may be used to implement the server of the present invention;

[0013] **FIG. 3** is an exemplary block diagram of a data processing system that may be used to implement a client system in accordance with the present invention;

[0014] **FIG. 4** is an exemplary block diagram of a personal digital device according to the present invention;

[0015] **FIG. 5** is an exemplary diagram illustrating a graphical user interface for setting parameters for bio-enhancement implants in accordance with the present invention;

[0016] **FIG. 6** is an exemplary diagram illustrating a graphical user interface for starting operation of bio-enhancement implants based on received settings, in accordance with the present invention;

[0017] **FIG. 7** is an exemplary diagram illustrating a graphical user interface for monitoring the operation of bio-enhancement implants in accordance with the present invention;

[0018] **FIG. 8** is a flowchart outlining an exemplary operation of the present invention when determining optimum operating settings for the bio-enhancement implants; and

[0019] **FIG. 9** is a flowchart outlining an exemplary operation of the present invention when monitoring the operation of bio-enhancement implants.

### DETAILED DESCRIPTION OF THE PREFERRED EMBODIMENTS

[0020] With reference now to the figures, **FIG. 1** depicts a pictorial representation of a network of data processing

systems in which the present invention may be implemented. Network data processing system **100** is a network of computers in which the present invention may be implemented. Network data processing system **100** contains a network **102**, which is the medium used to provide communications links between various devices and computers connected together within network data processing system **100**. Network **102** may include connections, such as wire, wireless communication links, or fiber optic cables.

[0021] In the depicted example, a bio-enhancement server **104** is connected to network **102**. In addition, client devices **106-108** are also connected to network **102**. The client devices **106-108** may be, for example, personal computers, portable computers, personal digital assistants, wearable computers, network computers, or the like. The bio-enhancement server **104** provides data and applications to client devices **106-108**. Client devices **106-108** are clients to server **104**. Network data processing system **100** may include additional servers, clients, and other devices not shown.

[0022] In the depicted example, network data processing system **100** is the Internet with network **102** representing a worldwide collection of networks and gateways that use the TCP/IP suite of protocols to communicate with one another. At the heart of the Internet is a backbone of high-speed data communication lines between major nodes or host computers, consisting of thousands of commercial, government, educational and other computer systems that route data and messages. Of course, network data processing system **100** also may be implemented as a number of different types of networks, such as for example, an intranet, a local area network (LAN), or a wide area network (WAN). FIG. 1 is intended as an example, and not as an architectural limitation for the present invention.

[0023] With the present invention, an individual, such as the individual **110**, is surgically altered to include one or more bio-enhancement implants. Such implants may include pace makers, muscle stimulant devices, drug dosing devices, such as that described in U.S. Pat. No. 6,056,734, which is hereby incorporated by reference, monitoring devices, such as that described in U.S. Pat. No. 6,092,530, which is also hereby incorporated by reference, or the like. Various implantable devices may be used without departing from the spirit and scope of the present invention. The implants are preferably equipped with transceivers for transmitting and receiving information with the client device **108**.

[0024] The bio-enhancement server **104** compiles various information regarding individuals **110**, such as their individual bio-enhancement implants, their medical information, various activities performed by the individuals and the settings of their implants during those activities, and the like. The information may be obtained, for example, from the client devices **106-108**, from the individuals themselves, or obtained from some other source. For example, the client device **108** may monitor the activities of the individual **110**, the settings and operation of his/her implants, and report this information back to the bio-enhancement server **104** via a wireless communication link and network **102**.

[0025] The client device **108** is a personal digital device that is preferably portable or wearable by the user. In a preferred embodiment, the client device **108** is a personal digital assistant (PDA), such as a Palm pilott™, Nino™, or

the like. The client devices **106-108** may include a software application for entering information regarding the user's biological implants, the activities that are to be performed by the user, and downloading implant setting information from the bio-enhancement server **104** via the network **102**.

[0026] The software application is provided with information about the individual configuration of the user's biological implants. The configuration information may be input by the user or, in the case of the client device **108**, may be obtained from interrogating the biological implants themselves using a wireless communication link and broadcasting a request for configuration information to the biological implants.

[0027] The user, via the client device **108** or client device **106**, inputs a desired activity and parameters about the activity. For example, the user may enter into the client device **106** the parameters regarding a mountain hike that the user plans on attempting. Such parameters may include the starting and ending elevations, the length of the hike, the time that the hike should take, the weather conditions, the user's weight, or any other type of parameter information that may be pertinent for determining the proper operation of the implants and the user's body.

[0028] Based on the activity parameter information and the user's implant configuration information, the client device **106** or **108**, sends a request for recommended implant settings to the bio-enhancement server **104**. Alternatively, the implant settings may be determined based on information stored completely within the client device **108** using an application that takes the activity parameter information and implant configuration information as input and generates settings based on this information. One benefit from using a bio-enhancement server **104** is that information uploaded to the bio-enhancement server **104** may be used to refine the bio-enhancement server's optimized settings based on actual experiences of users.

[0029] The settings determined by either the bio-enhancement server **104** or the client device **108** may be settings that are recommended to provide a certain result. In a preferred embodiment, the settings are "optimal" settings determined using an application or algorithm that optimizes the settings of the various implants taking into consideration the cross effects of the implant operations with each other. The present invention, however, is not limited to determining "optimal" settings and non-optimal settings may be determined and/or recommended by the bio-enhancement server **104** or client device **108** without departing from the spirit and scope of the present invention. For purposes of the following description, it will be assumed that optimal settings are determined for the implants.

[0030] Whether performed entirely within the client device **108**, or with the aid of the bio-enhancement server **104**, a software application generates optimized implant settings based on the activity parameter information and the implant configuration information. The optimized settings may indicate, for example, the setting of the implant as well as the expected result obtained from the biological system directly affected by the implant.

[0031] The software application takes into consideration the possible interactions of the various implants identified in the implant configuration information. For example, the

software application may adjust settings of a heart implant from a first setting to a second setting based on the fact that the implant configuration information indicates that the user also has a respiratory system implant. In this way, an overall optimization of all of the user's implants with respect to one another, is obtained based on the particular activity that the user wishes to engage in.

[0032] The client device **106** may be used to enter activity and implant configuration information and obtain optimized implant operational settings. The optimized implant operational settings may then be downloaded to the client device **108** via a wired or wireless connection between the client devices **106** and **108**. The client device **108** may then store the optimized implant operational settings until the user is ready to make use of them.

[0033] Once the optimized operational settings of the implants are determined and stored in the client device **108**, the user may implement the optimized settings at any time. Thus, the user may, for example, input a command to transmit the optimized implant operational settings to the user's implants when the user starts the desired activity. The client device **108** then transmits the optimized implant operational settings to the user's implants via a wireless connection.

[0034] The user's implants contain wireless transceivers for receiving and sending messages and data from and to the client device **108**. The user's implants receive the optimized setting information from the client device **108** via the wireless transceivers and adjust their operation accordingly.

[0035] Periodically, the implants will report back to the client device **108**, actual measured operation information of the implant and any biological systems directly affected by the implant. For example, if the implant is a heart implant that affects the beats-per-minute of the user's heart, the implant will periodically report back to the client device **108** the actual period of impulses applied by the heart implant and the beats-per-minute being obtained through use of the implant.

[0036] The client device **108** receives the monitored operational information and compares it to the optimized settings and the expected biological system results. Based on this comparison, the client device **108** determines a new adjustment of the implant to obtain a desired result from the biological system. In this way, the implants provide information to the client device **108** and the implant operation is adjusted using a feedback loop. Of course, this feedback loop adjustment also takes into consideration the latest information obtained from the other user implants in a manner similar to the determination of the optimized settings.

[0037] In addition to using the feedback information obtained from the implants to adjust their operation, the feedback information may further be used to determine if an emergency situation is presently occurring or there is a threat of an emergency situation occurring. The determination of an actual or potential emergency situation may be performed based on threshold information stored in the client device **108**.

[0038] If reported information of a biological system indicates that the biological system is operating within an emergency range as determined by established thresholds,

the client device **108** will indicate an emergency situation is either occurring or dangerously close to occurring. If an emergency situation is identified, the client device **108** may send a command to the implants to cease functioning, if this is in the best interest of the user's health, or to function in such a manner as to best preserve the user's health. In addition, the client device **108** may be equipped with a location determination device, such a global positioning system (GPS), for identifying the location of the user. The location of the user may then be sent to an emergency response service using the wireless transceiver of the client device **108** so that emergency personnel may be dispatched to the user's location. For example, the client device **108** may call contact a 911 emergency response communication line and transmit the location of the user so that an ambulance or paramedic unit may be dispatched.

[0039] Once the user has completed the desired activity, the user may discontinue use of the implants by inputting a command to discontinue into the client device **108**. When the command to discontinue is received, the client device **108** transmits a command to the implants to discontinue operation. In response the implants may discontinue operation. Such discontinuing of the operation of the implants may require a slow or gradual ramping down of the operation so that irreparable harm is not caused to the user's biological systems.

[0040] In addition to discontinuing the operation of the implants, the client device **108** may send a history report to the bio-enhancement server **104** via a wireless communication connection to the network **102**. The history report may include, for example, the optimum settings for the implants, the actual operation of the implants and the corresponding biological systems, and the like. This information may be stored in the bio-enhancement server **104** in conjunction with a user identifier, for example. The information may be used in future implant usage to obtain a refined optimization of the implant settings. The history report information may be used only with the user or with a plurality of users registered with the bio-enhancement server to better refine the determination of optimum implant settings for various activities.

[0041] Thus, the present invention provides a mechanism by which one or a plurality of implants may be monitored and controlled to obtain optimum performance of the user's biological systems. The present invention allows for determination of optimum settings of implants based on previously compiled implant setting information by other users involved in similar activities. In addition, the present invention provides the ability to notify emergency services should the user's biological systems be placed into an emergency situation.

[0042] Referring to FIG. 2, a block diagram of a data processing system that may be implemented as a server, such as server **104** in FIG. 1, is depicted in accordance with a preferred embodiment of the present invention. Data processing system **200** may be a symmetric multiprocessor (SMP) system including a plurality of processors **202** and **204** connected to system bus **206**. Alternatively, a single processor system may be employed. Also connected to system bus **206** is memory controller/cache **208**, which provides an interface to local memory **209**. I/O bus bridge **210** is connected to system bus **206** and provides an interface

to I/O bus 212. Memory controller/cache 208 and I/O bus bridge 210 may be integrated as depicted.

[0043] Peripheral component interconnect (PCI) bus bridge 214 connected to I/O bus 212 provides an interface to PCI local bus 216. A number of modems may be connected to PCI bus 216. Typical PCI bus implementations will support four PCI expansion slots or add-in connectors. Communications links to network computers 108-112 in FIG. 1 may be provided through modem 218 and network adapter 220 connected to PCI local bus 216 through add-in boards.

[0044] Additional PCI bus bridges 222 and 224 provide interfaces for additional PCI buses 226 and 228, from which additional modems or network adapters may be supported. In this manner, data processing system 200 allows connections to multiple network computers. A memory-mapped graphics adapter 230 and hard disk 232 may also be connected to I/O bus 212 as depicted, either directly or indirectly.

[0045] Those of ordinary skill in the art will appreciate that the hardware depicted in FIG. 2 may vary. For example, other peripheral devices, such as optical disk drives and the like, also may be used in addition to or in place of the hardware depicted. The depicted example is not meant to imply architectural limitations with respect to the present invention.

[0046] The data processing system depicted in FIG. 2 may be, for example, an IBM RISC/System 6000 system, a product of International Business Machines Corporation in Armonk, New York, running the Advanced Interactive Executive (AIX) operating system.

[0047] With reference now to FIG. 3, a block diagram illustrating a data processing system is depicted in which the present invention may be implemented. Data processing system 300 is an example of a client computer. Data processing system 300 employs a peripheral component interconnect (PCI) local bus architecture. Although the depicted example employs a PCI bus, other bus architectures such as Accelerated Graphics Port (AGP) and Industry Standard Architecture (ISA) may be used.

[0048] Processor 302 and main memory 304 are connected to PCI local bus 306 through PCI bridge 308. PCI bridge 308 also may include an integrated memory controller and cache memory for processor 302. Additional connections to PCI local bus 306 may be made through direct component interconnection or through add-in boards. In the depicted example, local area network (LAN) adapter 310, SCSI host bus adapter 312, and expansion bus interface 314 are connected to PCI local bus 306 by direct component connection. In contrast, audio adapter 316, graphics adapter 318, and audio/video adapter 319 are connected to PCI local bus 306 by add-in boards inserted into expansion slots.

[0049] Expansion bus interface 314 provides a connection for a keyboard and mouse adapter 320, modem 322, and additional memory 324. Small computer system interface (SCSI) host bus adapter 312 provides a connection for hard disk drive 326, tape drive 328, and CD-ROM drive 330. Typical PCI local bus implementations will support three or four PCI expansion slots or add-in connectors.

[0050] An operating system runs on processor 302 and is used to coordinate and provide control of various compo-

nents within data processing system 300 in FIG. 3. The operating system may be a commercially available operating system, such as Linux or Windows 2000, which is available from Microsoft Corporation. An object oriented programming system such as Java may run in conjunction with the operating system and provide calls to the operating system from Java programs or applications executing on data processing system 300. "Java" is a trademark of Sun Microsystems, Inc. Instructions for the operating system, the object-oriented operating system, and applications or programs are located on storage devices, such as hard disk drive 326, and may be loaded into main memory 304 for execution by processor 302.

[0051] Those of ordinary skill in the art will appreciate that the hardware in FIG. 3 may vary depending on the implementation. Other internal hardware or peripheral devices, such as flash ROM (or equivalent nonvolatile memory) or optical disk drives and the like, may be used in addition to or in place of the hardware depicted in FIG. 3. Also, the processes of the present invention may be applied to a multiprocessor data processing system.

[0052] As another example, data processing system 300 may be a stand-alone system configured to be bootable without relying on some type of network communication interface, whether or not data processing system 300 comprises some type of network communication interface. As a further example, data processing system 300 may be a Personal Digital Assistant (PDA) device, which is configured with ROM and/or flash ROM in order to provide nonvolatile memory for storing operating system files and/or user-generated data.

[0053] The depicted example in FIG. 3 and above-described examples are not meant to imply architectural limitations. For example, data processing system 300 also may be a notebook computer or hand held computer in addition to taking the form of a PDA. Data processing system 300 also may be a kiosk or a Web appliance.

[0054] FIG. 4 is an exemplary block diagram illustrating a personal digital device, such as client device 108, according to the present invention. As shown in FIG. 4, the personal digital device includes a controller 410, an implant configuration information storage device 420, a wireless transceiver interface 430, a graphical user interface engine 440, an implant setting adjustment device 450, and a history information storage device 460. The elements 410-460 are in communication with one another via control/data bus 470. Although a bus architecture is shown in FIG. 4, any architecture may be used which facilitates the exchange of control messages and data among the elements 410-460 without departing from the spirit and scope of the present invention.

[0055] The elements 410-460 may be implemented as hardware devices, software instructions, or a combination of hardware devices and software instructions. For example, the elements 410-460 may be implemented as software instructions executed by processor 302 and hardware devices depicted in FIG. 3.

[0056] The controller 410 controls the overall operation of the personal digital device. The controller 410 instructs the other elements 420-460 in their operation, coordinates operations among the various elements 420-460 and per-

forms other functions as necessary. The controller **410** further receives messages and data via the wireless transceiver interface **430** and routes the messages and data to the appropriate elements **420-460**.

[0057] The implant configuration information storage device **420** stores implant configuration information for the user of the personal digital device. The implant configuration information may be obtained from inputs by the user, through interrogating implants in the user, or the like. The implant configuration information is then used to determine optimized implant settings for various activities as well as adjusting the implant settings to obtain a desired biological system operation, as described above.

[0058] The wireless transceiver interface **430** is used to send and receive messages and data to devices outside the personal digital device. The wireless transceiver interface **430** is used to communicate information to the bio-enhancement server **104** via the network **102**, to the implants within the body of the user, to the client device **106**, and the like.

[0059] The graphical user interface engine **440** is used to generate graphical user interfaces on the personal digital device in order to provide the user with information and receive inputs from the user. The graphical user interface engine **440** generates interfaces having virtual buttons that may be operated by way of a pointing device, touch screen, stylus and touch screen, or the like. Through the graphical user interfaces, the user may enter desired activity parameter information, implant configuration information, requests for optimized implant settings, commands to start and/or stop implant optimization, commands to contact emergency services, and the like.

[0060] The implant setting adjustment device **450** receives information regarding the implant configuration of the user from the implant configuration information storage device **420**, actual implant and biological system operating conditions from the wireless transceiver interface **430** and/or history information storage device **460**, and the like. Based on this information, the implant setting adjustment device **450** may adjust the settings of the various implants to obtain a desired biological system result. In an embodiment in which optimized implant settings are determined within the personal digital device, the implant setting adjustment device **450** may determine these optimized implant settings.

[0061] The history information storage device **460** stores history information regarding the optimum settings of the various implants of the user, the actual implant and biological system operations occurring, and the like. The history information storage device **460** may provide this information to the implant setting adjustment device **450** and/or the bio-enhancement server **104** for use in adjusting the settings of the user's implants to obtain a desired biological system operating result. This history information may further be used by the bio-enhancement server **104** to refine the determination of optimum implant settings for other registered users of the bio-enhancement server **104**.

[0062] **FIG. 5** is an exemplary block diagram illustrating a graphical user interface for entering information regarding the desired activity of the user. As shown in **FIG. 5**, the graphical user interface includes one or more virtual buttons **510** for accessing information regarding various implants of the user. The particular implant buttons shown to the user

will depend on the implants determined to be within the user's body based on information entered by the user, an interrogation of implants, or the like. Through the virtual buttons **510**, the user may obtain information relating to the types of each implant, the current operational status, and the like.

[0063] A plurality of pull down menus **520**, or other input receiving devices, are provided for entering activity parameters regarding the activity for which the user desires bio-enhancement implants to be activated. The activity parameters may be any parameters that may affect the operation of the bio-enhancement implants including the particular activity, elevation, estimated duration of the activity, ambient temperature of the location in which the activity will take place, any stop condition that the user may wish for stopping the operation of the implants, and the like.

[0064] The graphical user interface further includes a virtual button **530** for submitting the activity parameters for use in determining optimum settings for the various implants. Another virtual button **540** is provided for canceling the user's selection of activity parameters. Still another virtual button **550** is provided for the user to indicate that an emergency situation has occurred and requesting that the personal digital device contact emergency services personnel.

[0065] **FIG. 6** is an exemplary block diagram illustrating a graphical user interface for displaying optimum implant settings and initiating the use of optimum implant settings in accordance with the present invention. As shown in **FIG. 6**, the graphical user interface includes one or more fields for identifying the optimum implant settings in accordance with the optimum implant settings determined by either the personal digital device or the bio-enhancement server **104**. The graphical user interface further includes a virtual button **620** for initiating use of the optimum implant settings, a virtual button **630** for canceling the use of the optimum implant settings, and an emergency virtual button **550**. When the virtual button **620** is selected by the user, the optimum implant settings are sent to the implants which then use these settings to adjust their operation. The sending of the optimum implant settings may further include the gradual increase of the operation of the implants from a standard condition to the optimum settings in order to avoid and possible damage to the user's biological systems.

[0066] **FIG. 7** is an exemplary block diagram illustrating a graphical user interface for displaying current implant and biological system operating conditions. As shown in **FIG. 7**, the graphical user interface includes one or more fields **710** for informing the user of current implant and biological system conditions. In addition, the graphical user interface includes a virtual button **720** for stopping the operation of the implants. The fields **710** are updated periodically based on measured results obtained from the implants. When the virtual button **720** is selected by the user, the implants are returned to a standard setting. The return of the implants to a standard setting may be performed immediately or gradually in order to avoid damage to the user's biological systems.

[0067] **FIG. 8** is a flowchart outlining an exemplary operation of the present invention when determining optimum operating settings for the bio-enhancement implants. As shown in **FIG. 8**, the operation starts with obtaining

implant configuration information (step 810). Thereafter, activity parameter information is obtained (step 820). The optimum implant settings are then determined based on the implant configuration information and the activity parameter information (step 830). The optimum implant settings are stored in the personal digital device (step 840) and the input interface is monitored for selection of the start virtual button to start use of the optimum settings (step 850).

[0068] A determination is then made as to whether or not the start virtual button is selected (step 860). If the start virtual button is selected, the optimum settings are sent to the implants and the implant operation is monitored (step 870). If the start virtual button is not selected, a determination is made as to whether a cancel button is selected (step 880). If so, the operation is canceled (step 890) and the operation ends. If the cancel button is not selected, the operation returns to step 850 where monitoring for input from the user is continued.

[0069] FIG. 9 is a flowchart outlining an exemplary operation of the present invention when monitoring the operation of bio-enhancement implants. The operation starts with receiving information from the implants regarding their current operation and the operation of the biological systems associated with the implants (step 910). A determination is made as to whether or not an emergency situation has occurred (step 915). If so, a message is sent to emergency response personnel identifying the user's current location (step 917). If not, the operation continues to step 920.

[0070] The information from the implants is compared to expected operation information (step 920). Control signals are generated based on the difference between the expected operation information and the measured information obtained from the implants (step 930). The control signals are then transmitted to the implants (step 940).

[0071] A determination is made as to whether or not a stop condition has occurred (step 950). A stop condition may be, for example, the input of a stop command by the user, or the like. If a stop condition has not occurred, the operation returns to step 910 and continues to monitor and adjust the operation of the implants. If the stop condition occurs, a stop command is sent to the implants (step 960) and the operation ends.

[0072] Thus, the present invention provides a mechanism by which a user may monitor and control the operation of one or more bio-enhancement implants in the user's body. Furthermore, the present invention may make use of historical information for identifying the optimum settings for the implants taking into consideration the possible interaction of the implants with one another. In addition, the present invention provides a mechanism by which, if an emergency situation arises, the emergency response personnel may be notified of the user's location for immediate dispatch of emergency personnel to aid the user.

[0073] It is important to note that while the present invention has been described in the context of a fully functioning data processing system, those of ordinary skill in the art will appreciate that the processes of the present invention are capable of being distributed in the form of a computer readable medium of instructions in a variety of forms and that the present invention applies equally regardless of the particular type of signal bearing media actually used to carry

out the distribution. Examples of computer readable media include recordable-type media such as a floppy disk, a hard disk drive, a RAM, a CD-ROM, and transmission-type media such as digital and analog communications links.

[0074] The description of the present invention has been presented for purposes of illustration and description, and is not intended to be exhaustive or limited to the invention in the form disclosed. Many modifications and variations will be apparent to those of ordinary skill in the art. The embodiment was chosen and described in order to best explain the principles of the invention, the practical application, and to enable others of ordinary skill in the art to understand the invention for various embodiments with various modifications as are suited to the particular use contemplated.

What is claimed is:

1. A method for controlling one or more implantable devices, comprising:

obtaining activity information;

obtaining configuration information for the one or more implantable devices; and

determining a setting for the one or more implantable devices based on the activity information and the configuration information.

2. The method of claim 1, wherein the activity information includes at least one of an indicator of the activity, starting elevation, ending elevation, length of the activity, a user's weight, ambient temperature, and period of time of the activity.

3. The method of claim 1, wherein the configuration information is obtained from inputs received from a user.

4. The method of claim 1, wherein the configuration information is obtained from interrogating the one or more implantable devices.

5. The method of claim 1, wherein determining the setting for the one or more implantable devices includes taking into consideration possible interactions of implantable devices identified in the configuration information.

6. The method of claim 1, wherein determining the setting for the one or more implantable devices includes:

sending the activity information and the configuration information to a server; and

receiving the setting for the one or more implantable devices from the server.

7. The method of claim 6, wherein the server determines the setting for the one or more implantable devices based on the activity information, the configuration information and history information compiled from one or more registered users of the server.

8. The method of claim 1, further comprising transmitting the setting for the one or more implantable devices to the one or more implantable devices.

9. The method of claim 8, further comprising:

monitoring an operation of the one or more implantable devices; and

controlling the operation of the one or more implantable devices to obtain a desired operation.

10. The method of claim 9, wherein controlling the operation of the one or more implantable devices includes:

- obtaining operation information from the one or more implantable devices; and
- sending commands to the one or more implantable devices based on a comparison of the operation information to the desired operation.
11. The method of claim 1, further comprising:
- monitoring an operation of a biological system of a user of the one or more implantable devices;
- determining if the operation of the biological system indicates an emergency situation; and
- notifying emergency personnel of a location of the user if the operation of the biological system indicates an emergency situation.
12. The method of claim 11, wherein notifying emergency personnel of a location of the user includes obtaining a location of the user from a global positioning device.
13. The method of claim 1, further comprising activating use of the setting by the one or more implantable devices.
14. The method of claim 13, further comprising:
- deactivating use of the setting by the one or more implantable devices; and
- uploading a history report of an operation of the one or more implantable devices and an operation of a corresponding biological system to a server.
15. The method of claim 1, wherein the method is implemented in a personal digital device.
16. The method of claim 1, wherein the method is implemented in a client-server distributed data processing system.
17. The method of claim 15, wherein the personal digital device is one of a personal digital assistant, a notebook computer, a hand held computer, a Web appliance, a cellular telephone, and a wearable computer.
18. An apparatus for controlling one or more implantable devices, comprising:
- a first interface for obtaining activity information;
- a second interface for obtaining configuration information for the one or more implantable devices; and
- a computing device for determining a setting for the one or more implantable devices based on the activity information and the configuration information.
19. The apparatus of claim 18, wherein the activity information includes at least one of an indicator of the activity, starting elevation, ending elevation, length of the activity, a user's weight, ambient temperature, and period of time of the activity.
20. The apparatus of claim 18, wherein the second interface is an input interface through which the configuration information is obtained from inputs received from a user.
21. The apparatus of claim 18, wherein the second interface is a transceiver through which configuration information is obtained from interrogating the one or more implantable devices.
22. The apparatus of claim 18, wherein the computing device determines the setting for the one or more implantable devices taking into consideration possible interactions of implantable devices identified in the configuration information.
23. The apparatus of claim 18, further comprising a transceiver, wherein the computing device is a server and wherein the activity information and the configuration information is transmitted to the server.
24. The apparatus of claim 23, wherein the server determines the setting for the one or more implantable devices based on the activity information, the configuration information and history information compiled from one or more registered users of the server.
25. The apparatus of claim 18, further comprising a transmitter for transmitting the setting for the one or more implantable devices to the one or more implantable devices.
26. The apparatus of claim 25, further comprising:
- a monitoring device for monitoring an operation of the one or more implantable devices; and
- a controller for controlling the operation of the one or more implantable devices to obtain a desired operation.
27. The apparatus of claim 26, wherein the controller includes a receiver for receiving operation information from the one or more implantable devices, wherein the controller transmits, via the transmitter, commands to the one or more implantable devices based on a comparison of the operation information to the desired operation.
28. The apparatus of claim 18, further comprising:
- a monitor device for monitoring an operation of a biological system of a user of the one or more implantable devices;
- means for determining if the operation of the biological system indicates an emergency situation; and
- means for notifying emergency personnel of a location of the user if the operation of the biological system indicates an emergency situation.
29. The apparatus of claim 28, wherein the means for notifying emergency personnel of a location of the user includes a global positioning device for obtaining a location of the user.
30. The apparatus of claim 18, further comprising means for activating use of the setting by the one or more implantable devices.
31. The apparatus of claim 30, further comprising:
- means for deactivating use of the setting by the one or more implantable devices; and
- means for uploading a history report of an operation of the one or more implantable devices and an operation of a corresponding biological system to a server.
32. The apparatus of claim 18, wherein the apparatus is a personal digital device.
33. The apparatus of claim 18, wherein the apparatus is part of a client-server distributed data processing system.
34. The apparatus of claim 32, wherein the personal digital device is one of a personal digital assistant, a notebook computer, a hand held computer, a Web appliance, a cellular telephone, and a wearable computer.
35. A computer program product in a computer readable medium for controlling one or more implantable devices, comprising:
- first instructions for obtaining activity information;
- second instructions for obtaining configuration information for the one or more implantable devices; and

third instructions for determining a setting for the one or more implantable devices based on the activity information and the configuration information.

**36.** The computer program product of claim 35, wherein the activity information includes at least one of an indicator of the activity, starting elevation, ending elevation, length of the activity, a user's weight, ambient temperature, and period of time of the activity.

**37.** The computer program product of claim 35, wherein the configuration information is obtained from inputs received from a user.

**38.** The computer program product of claim 35, wherein the configuration information is obtained from interrogating the one or more implantable devices.

**39.** The computer program product of claim 35, wherein the third instructions for determining the setting for the one or more implantable devices includes instructions for taking into consideration possible interactions of implantable devices identified in the configuration information.

**40.** The computer program product of claim 35, wherein the third instructions for determining the setting for the one or more implantable devices includes:

instructions for sending the activity information and the configuration information to a server; and

instructions for receiving the setting for the one or more implantable devices from the server.

**41.** The computer program product of claim 40, wherein the server determines the setting for the one or more implantable devices based on the activity information, the configuration information and history information compiled from one or more registered users of the server.

**42.** The computer program product of claim 35, further comprising fourth instructions for transmitting the setting for the one or more implantable devices to the one or more implantable devices.

**43.** The computer program product of claim 42, further comprising:

fifth instructions for monitoring an operation of the one or more implantable devices; and

sixth instructions for controlling the operation of the one or more implantable devices to obtain a desired operation.

**44.** The computer program product of claim 43, wherein controlling the operation of the one or more implantable devices includes:

seventh instructions for obtaining operation information from the one or more implantable devices; and

eighth instructions for sending commands to the one or more implantable devices based on a comparison of the operation information to the desired operation.

**45.** The computer program product of claim 35, further comprising:

fourth instructions for monitoring an operation of a biological system of a user of the one or more implantable devices;

fifth instructions for determining if the operation of the biological system indicates an emergency situation; and

sixth instructions for notifying emergency personnel of a location of the user if the operation of the biological system indicates an emergency situation.

**46.** The computer program product of claim 45, wherein the sixth instructions for notifying emergency personnel of a location of the user includes instructions for obtaining a location of the user from a global positioning device.

**47.** The computer program product of claim 35, further comprising fourth instructions for activating use of the setting by the one or more implantable devices.

**48.** The computer program product of claim 47, further comprising:

fifth instructions for deactivating use of the setting by the one or more implantable devices; and

sixth instructions for uploading a history report of an operation of the one or more implantable devices and an operation of a corresponding biological system to a server.

**49.** The computer program product of claim 35, wherein the computer program product is executed in a personal digital device.

**50.** The computer program product of claim 35, wherein the computer program product is executed in a client-server distributed data processing system.

**51.** The computer program product of claim 49, wherein the personal digital device is one of a personal digital assistant, a notebook computer, a hand held computer, a Web appliance, a cellular telephone, and a wearable computer.

**52.** The method of claim 1, wherein the setting is an optimal setting.

**53.** The apparatus of claim 18, wherein the setting is an optimal setting.

**54.** The computer program product of claim 35, wherein the setting is an optimal setting.

\* \* \* \* \*

专利名称(译)	用于控制生物增强植入物的装置，系统，方法和计算机程序产品		
公开(公告)号	<a href="#">US20020069885A1</a>	公开(公告)日	2002-06-13
申请号	US09/736469	申请日	2000-12-12
[标]申请(专利权)人(译)	国际商业机器公司		
申请(专利权)人(译)	IBM公司		
当前申请(专利权)人(译)	IBM公司		
[标]发明人	BOIES STEPHEN J DINKIN SAM GREENE DAVID P GREY WILLIAM MOSKOWITZ PAUL A YU PHILIP S		
发明人	BOIES, STEPHEN J. DINKIN, SAM GREENE, DAVID P. GREY, WILLIAM MOSKOWITZ, PAUL A. YU, PHILIP S.		
IPC分类号	A61B5/00 A61B5/0205 A61N1/08 A61N1/372 G06F19/00 A61B19/00		
CPC分类号	A61B5/0031 A61B5/02055 A61B2560/0271 A61B2560/045 G06F19/3418 A61N1/37247 G06F19/322 G06F19/3406 A61N1/08 G16H10/60 G16H40/63 G16H40/67		
其他公开文献	US6539947		
外部链接	<a href="#">Espacenet</a> <a href="#">USPTO</a>		

摘要(译)

提供了一种用于监测和控制生物增强植入物的装置，系统，方法和计算机程序产品。利用该装置，系统，方法和计算机程序产品，用户可以通过操作个人数字设备来控制用户身体内的可植入设备的操作。个人数字设备可以基于存储在个人数字设备内的信息和/或从网络获得的信息来获得各种可植入设备的操作设置。考虑到植入物彼此之间可能的相互作用，建立各种植入物的设置。个人数字设备还监视可植入设备的操作和用户的生物标记。基于监测，修改可植入装置的操作以获得期望的结果。如果遇到紧急情况，则个人数字设备可以与用户的位置联系紧急响应服务，以便相应地派遣紧急救援人员。

