



US008647286B2

(12) **United States Patent**
Patton

(10) **Patent No.:** **US 8,647,286 B2**
(45) **Date of Patent:** **Feb. 11, 2014**

(54) **SYSTEMS AND METHODS FOR PARENTERALLY PROCURING BODILY-FLUID SAMPLES WITH REDUCED CONTAMINATION**

(58) **Field of Classification Search**
USPC 600/573, 575, 576, 577, 580, 583;
604/317, 319, 320, 321, 322, 323, 324,
604/326, 540, 541
See application file for complete search history.

(71) Applicant: **Richard G. Patton**, Seattle, WA (US)

(56) **References Cited**

(72) Inventor: **Richard G. Patton**, Seattle, WA (US)

U.S. PATENT DOCUMENTS

(73) Assignee: **Magnolia Medical Technologies, Inc.**,
Seattle, WA (US)

2,707,953	A	5/1955	Ryan	
2,992,974	A *	7/1961	Belcove et al.	435/288.1
3,013,557	A	12/1961	Pallotta	
3,098,016	A	7/1963	Cooper et al.	
3,382,865	A	5/1968	Worral, Jr.	
3,405,706	A	10/1968	Cinquallbre	
3,494,351	A	2/1970	Horn	
3,577,980	A	5/1971	Cohen	
3,635,798	A *	1/1972	Kirkham et al.	435/2
3,648,684	A	3/1972	Barnwell et al.	
3,848,579	A	11/1974	Villa-Real	

(*) Notice: Subject to any disclaimer, the term of this patent is extended or adjusted under 35 U.S.C. 154(b) by 0 days.

(21) Appl. No.: **13/675,295**

(Continued)

(22) Filed: **Nov. 13, 2012**

OTHER PUBLICATIONS

(65) **Prior Publication Data**
US 2013/0079604 A1 Mar. 28, 2013

International Search Report and Written Opinion mailed May 16, 2008, which issued during the prosecution of International Patent Application No. PCT/US2007/087951 (8 pages).

(Continued)

Related U.S. Application Data

Primary Examiner — Max Hindenburg
Assistant Examiner — Adam Eiseman

(60) Continuation of application No. 13/458,508, filed on Apr. 27, 2012, now Pat. No. 8,337,418, which is a division of application No. 13/335,241, filed on Dec. 22, 2011, now Pat. No. 8,231,546, which is a continuation of application No. 11/955,635, filed on Dec. 13, 2007, now Pat. No. 8,197,420.

(60) Provisional application No. 60/870,599, filed on Dec. 18, 2006.

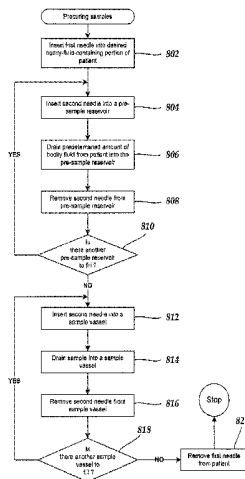
(57) **ABSTRACT**

The present invention is directed to the parenteral procurement of bodily-fluid samples. The present invention is also directed to systems and methods for parenterally procuring bodily-fluid samples with reduced contamination from dermally-residing microbes. In some embodiments, a bodily-fluid withdrawing system is used to withdraw bodily fluid from a patient for incubation in culture media in one or more sample vessels. Prior to withdrawing bodily fluid into the one or more sample vessels for incubation, an initial volume of withdrawn bodily fluid is placed in one or more pre-sample reservoirs and is not used for the incubation in culture media.

(51) **Int. Cl.**
A61B 5/00 (2006.01)
B65D 81/00 (2006.01)

(52) **U.S. Cl.**
USPC **600/575; 600/573; 600/576**

30 Claims, 9 Drawing Sheets



(56)

References Cited

U.S. PATENT DOCUMENTS

3,890,203	A *	6/1975	Mehl	600/577
3,937,211	A	2/1976	Merten	
4,057,050	A	11/1977	Sarstedt	
4,133,863	A	1/1979	Koenig	
4,166,450	A	9/1979	Abramson	
4,340,067	A	7/1982	Rattenborg	
4,370,987	A	2/1983	Bazell et al.	
4,425,235	A	1/1984	Cornell et al.	
4,444,203	A	4/1984	Engelman	
4,459,997	A	7/1984	Sarstedt	
4,509,534	A	4/1985	Tassin, Jr.	
4,676,256	A	6/1987	Golden	
4,865,583	A	9/1989	Tu	
4,890,627	A	1/1990	Haber et al.	
4,988,339	A	1/1991	Vadher	
5,009,847	A	4/1991	Solomons	
5,097,842	A	3/1992	Bonn	
5,108,927	A	4/1992	Dom	
5,122,129	A	6/1992	Olson et al.	
5,269,317	A	12/1993	Bennett	
5,330,464	A	7/1994	Mathias et al.	
5,360,011	A	11/1994	McCallister	
5,429,610	A	7/1995	Vaillancourt	
5,450,856	A	9/1995	Norris	
5,485,854	A *	1/1996	Hollister	600/576
5,507,299	A	4/1996	Roland	
5,577,513	A	11/1996	Van Vlassalaer	
5,762,633	A	6/1998	Whisson	
5,882,318	A	3/1999	Boyde	
5,922,551	A	7/1999	Durbin et al.	
6,016,712	A	1/2000	Warden et al.	
6,057,105	A	5/2000	Hoon et al.	
6,159,164	A	12/2000	Neese et al.	
6,210,909	B1	4/2001	Guirguis	
6,364,890	B1	4/2002	Lum et al.	
6,387,086	B2	5/2002	Mathias et al.	
6,403,381	B1	6/2002	Mann et al.	
6,520,948	B1 *	2/2003	Mathias et al.	604/409
6,626,884	B1 *	9/2003	Dillon et al.	604/409
6,692,479	B2	2/2004	Kraus et al.	
6,746,420	B1	6/2004	Prestidge et al.	
6,913,580	B2	7/2005	Stone	
7,044,941	B2	5/2006	Mathias et al.	
7,087,047	B2	8/2006	Kraus et al.	
2002/0002349	A1	1/2002	Flaherty et al.	
2002/0183651	A1	12/2002	Hyun	
2003/0055381	A1	3/2003	Wilkinson	
2003/0208151	A1 *	11/2003	Kraus et al.	604/4.01
2004/0010228	A1	1/2004	Swenson et al.	
2004/0054283	A1 *	3/2004	Corey et al.	600/438
2004/0054333	A1	3/2004	Theeuwes et al.	
2004/0147855	A1	7/2004	Marsden	
2005/0004524	A1	1/2005	Newby et al.	
2005/0240161	A1	10/2005	Crawford	

2005/0245885	A1	11/2005	Brown
2005/0281713	A1	12/2005	Hampsch et al.
2006/0287639	A1	12/2006	Sharp

OTHER PUBLICATIONS

- Wagner et al. "Diversion of Initial Blood Flow to Prevent Whole-Blood Contamination by Skin Surface Bacteria: an in vitro model," *Transfusion*, vol. 40, Mar. 2000, pp. 335-3381.
- Office Action for U.S. Appl. No. 11/955,635, mailed Jul. 22, 2010, 11 pages.
- Office Action for U.S. Appl. No. 11/955,635, mailed Dec. 3, 2010, 11 pages.
- Office Action for U.S. Appl. No. 13/335,241, mailed Apr. 20, 2012, 12 pages.
- Office Action for U.S. Appl. No. 13/458,508, mailed Jul. 24, 2012, 13 pages.
- Order of Draw for Multiple Tube Collections, LabNotes, a newsletter from BD Diagnostics.—Preanalytical Systems, vol. 17, No. 1, 2007.
- Calam, Roger R., Recommended "Order of Draw" for Collecting Blood Specimens Into Additive-Containing Tubes, Letter to the Editor, *Clinical Chemistry*, vol. 28, No. 6, 1982.
- Arkin, Charles F., et al., "Procedures for the Collection of Diagnostic Blood Specimens by Venipuncture: Approved Standard," Fifth Edition, *NCCLS*, vol. 23, No. 32, 2003.
- Patton, Richard G., et al., "Innovation for Reducing Blood Culture Contamination: Initial Specimen Diversion Technique," *Journal of Clinical Microbiology*, Dec. 2010, p. 4501-4503.
- Wang, P., et al., "Strategies on reducing blood culture contamination," *Wolters Kluwer Health I Lippincott Williams & Wilkins*, 2012.
- Kim, J., et al., "The Sum of the Parts is Greater Than the Whole: Reducing Blood Culture Contamination," *Annals of Internal Medicine*, American College of Physicians, 2011.
- Stohl, S., et al., *Blood Cultures at Central Line Insertion in the Intensive Care Unit: Comparison with Peripheral Venipuncture*, *Journal of Clinical Microbiology*, Jul. 2011, p. 2398-2403.
- Sibley, C., et al., "Molecular methods for pathogen and microbial community detection and characterization: Current and potential application in diagnostic microbiology," *Infection, Genetics and Evolution* 12, 2012.
- Levin, P., et al., "Use of the Nonwire Central Line Hub to Reduce Blood Culture Contamination," *Chest*, 2013.
- Schuur, J., "Blood Cultures: When Do they Help and When Do They Harm?" *Clinical Decision Making in Emergency Medicine*, Mount Sinai, Jun. 2012.
- Proehl, J., et al., "Clinical Practice Guideline: Prevention of Blood Culture Contamination," *Emergency Nurses Association*, Dec. 2012.
- Hall, K., et al., "Updated Review of Blood Culture Contamination," *Clinical Microbiology Reviews*, Oct. 2006, p. 788-802.
- International Search Report and Written Opinion mailed Oct. 24, 2013, issued for International Patent Application No. PCT/US2013/043289 (15 pages).

* cited by examiner

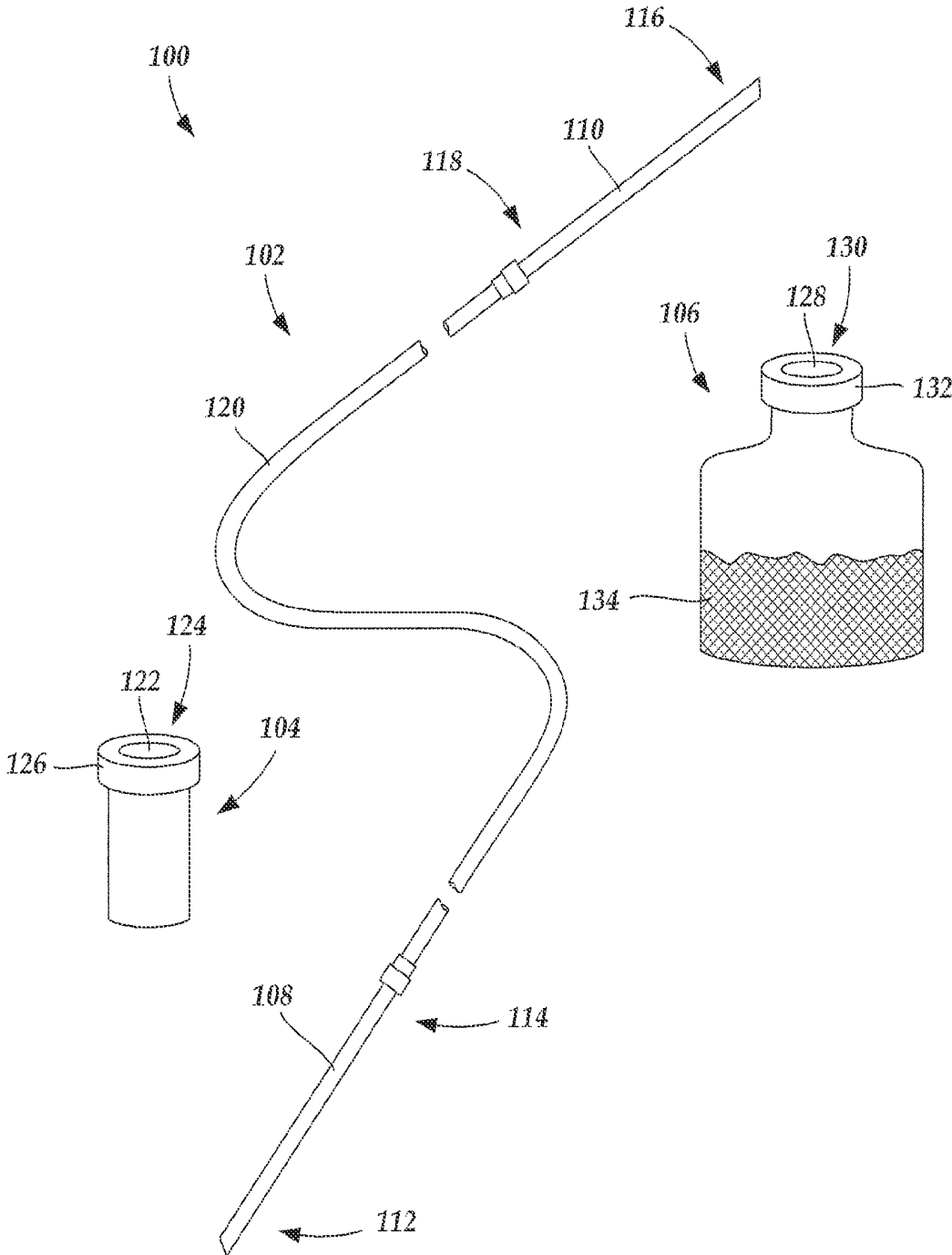


Fig. 1

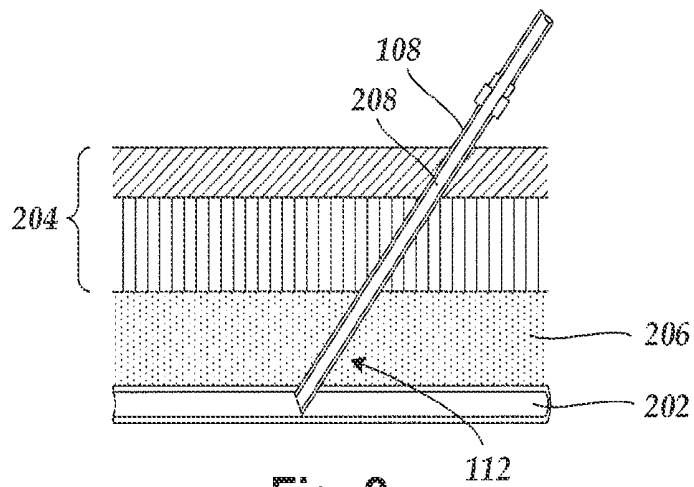


Fig. 2

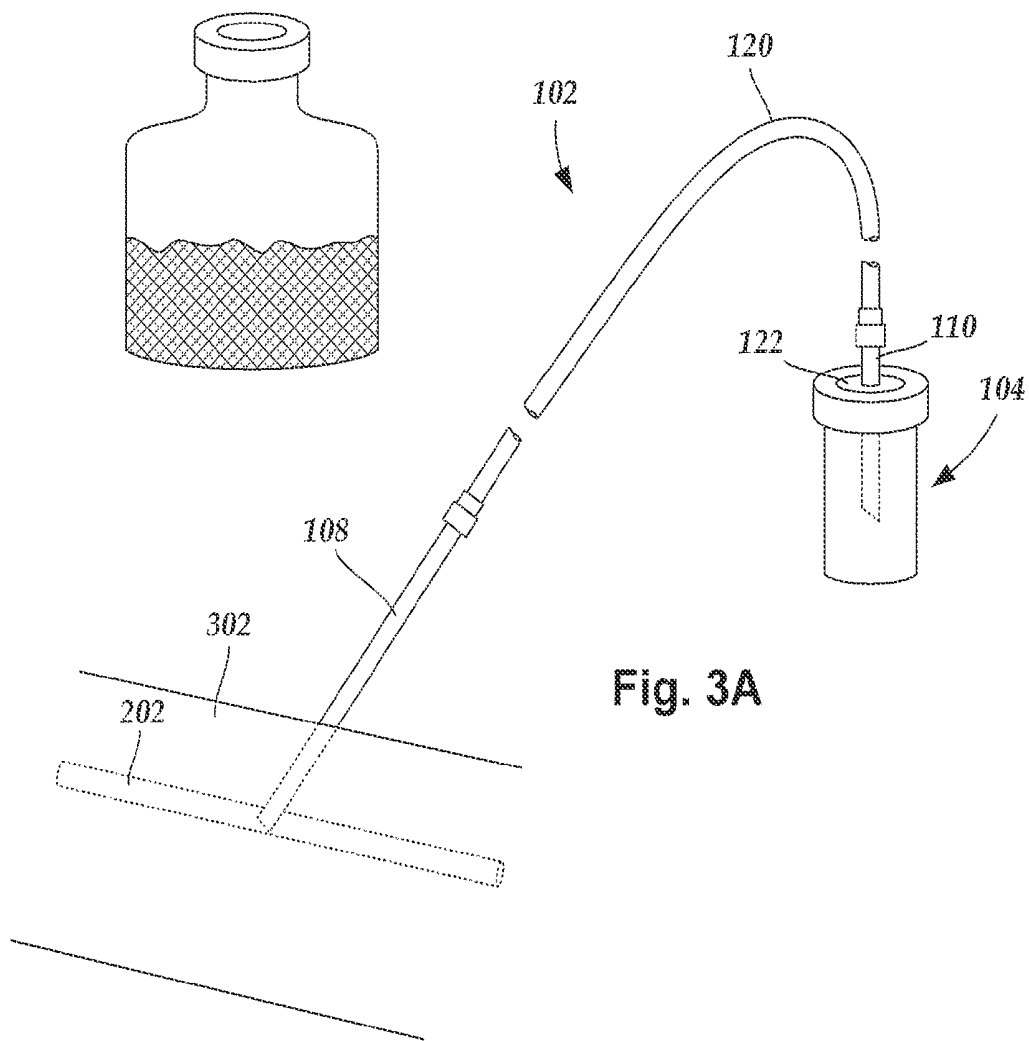


Fig. 3A

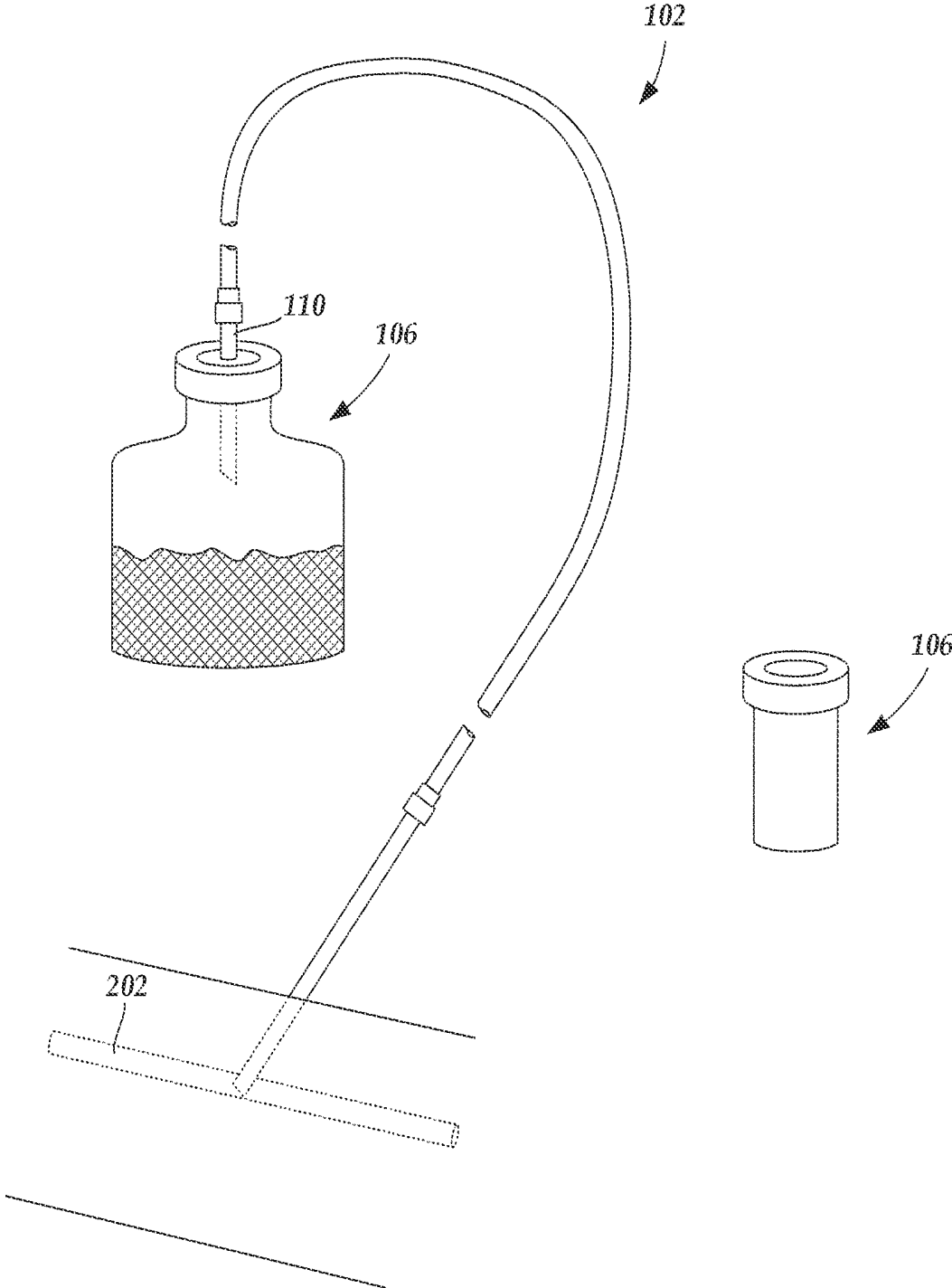


Fig. 3B

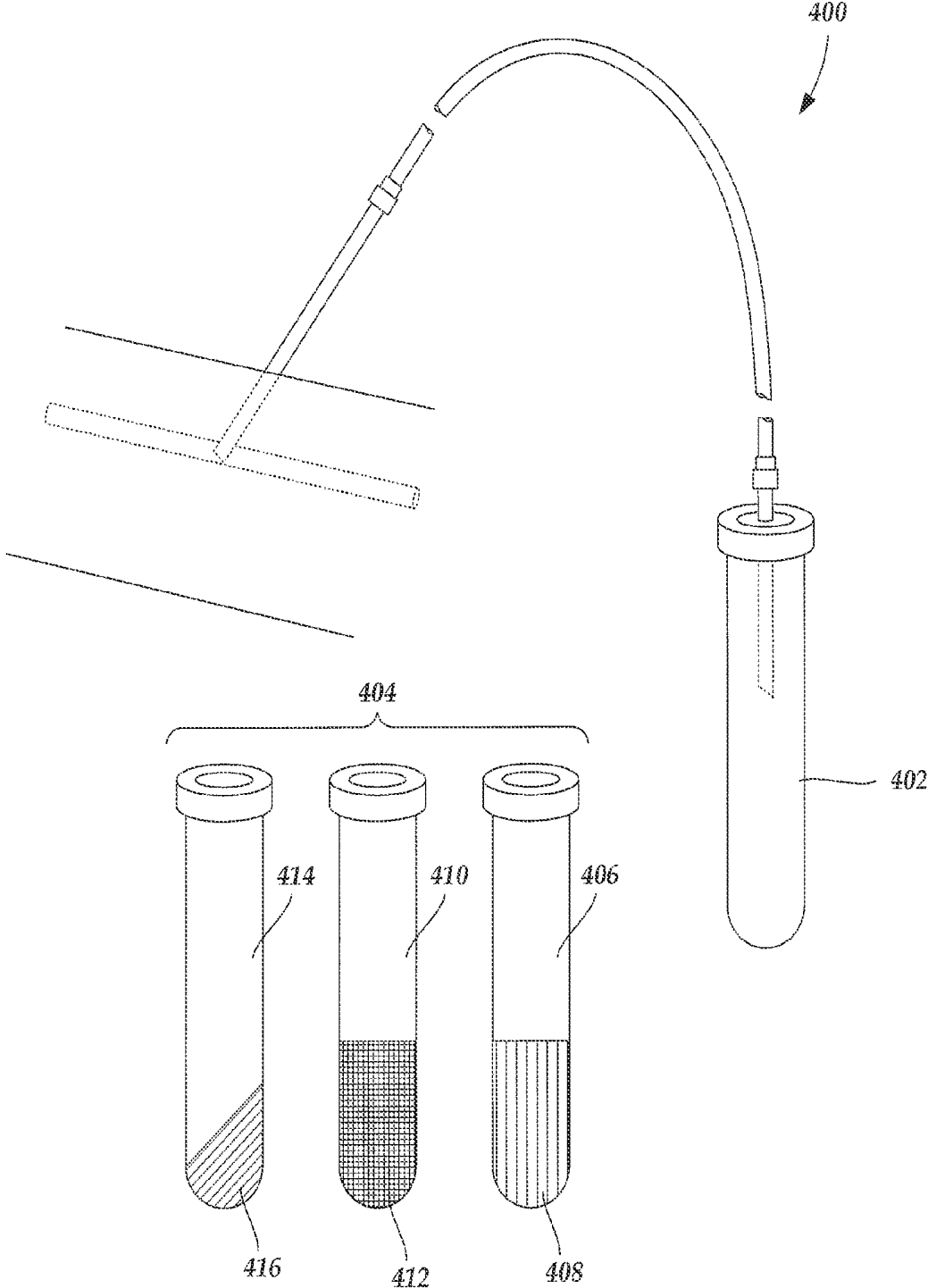


Fig. 4A

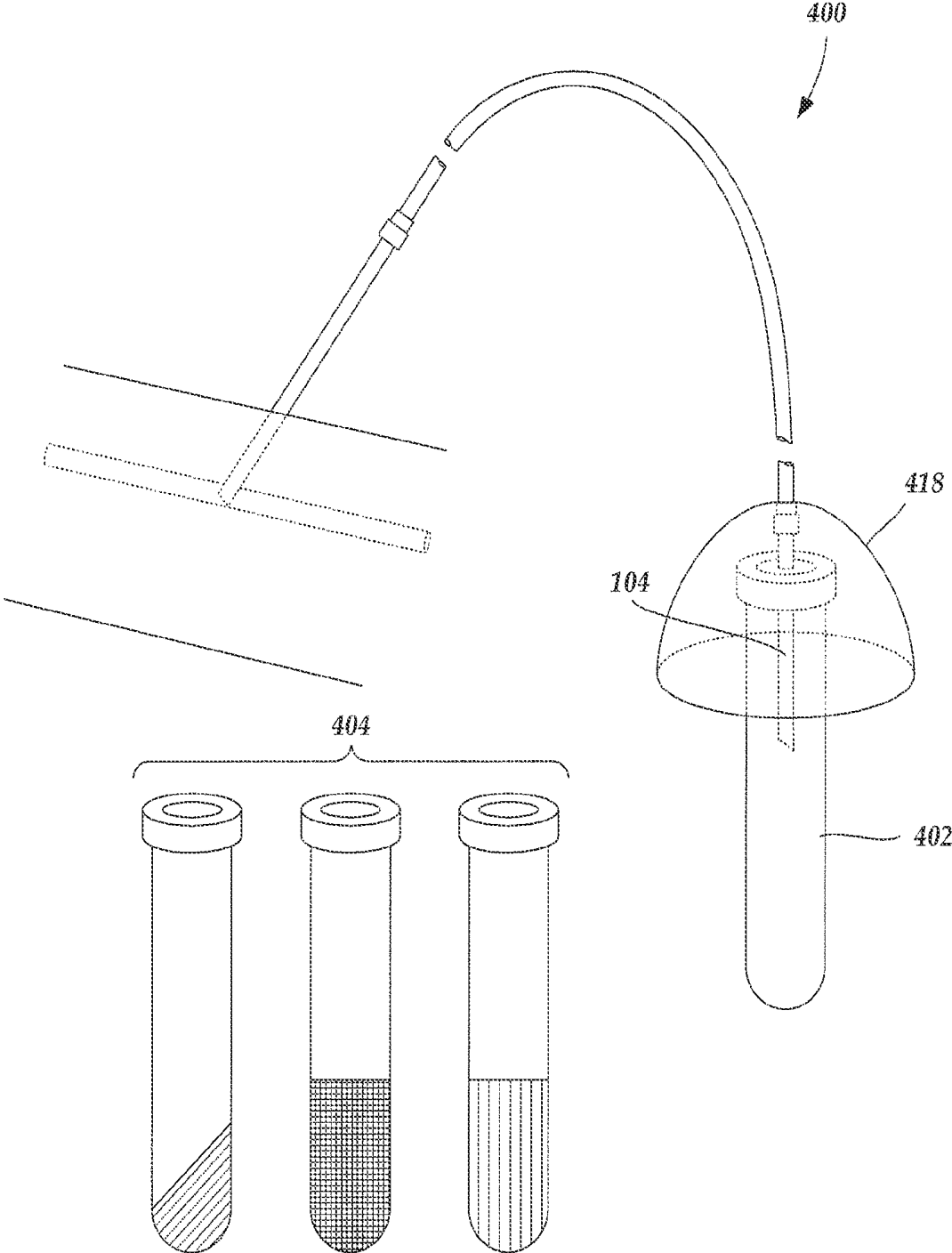


Fig. 4B

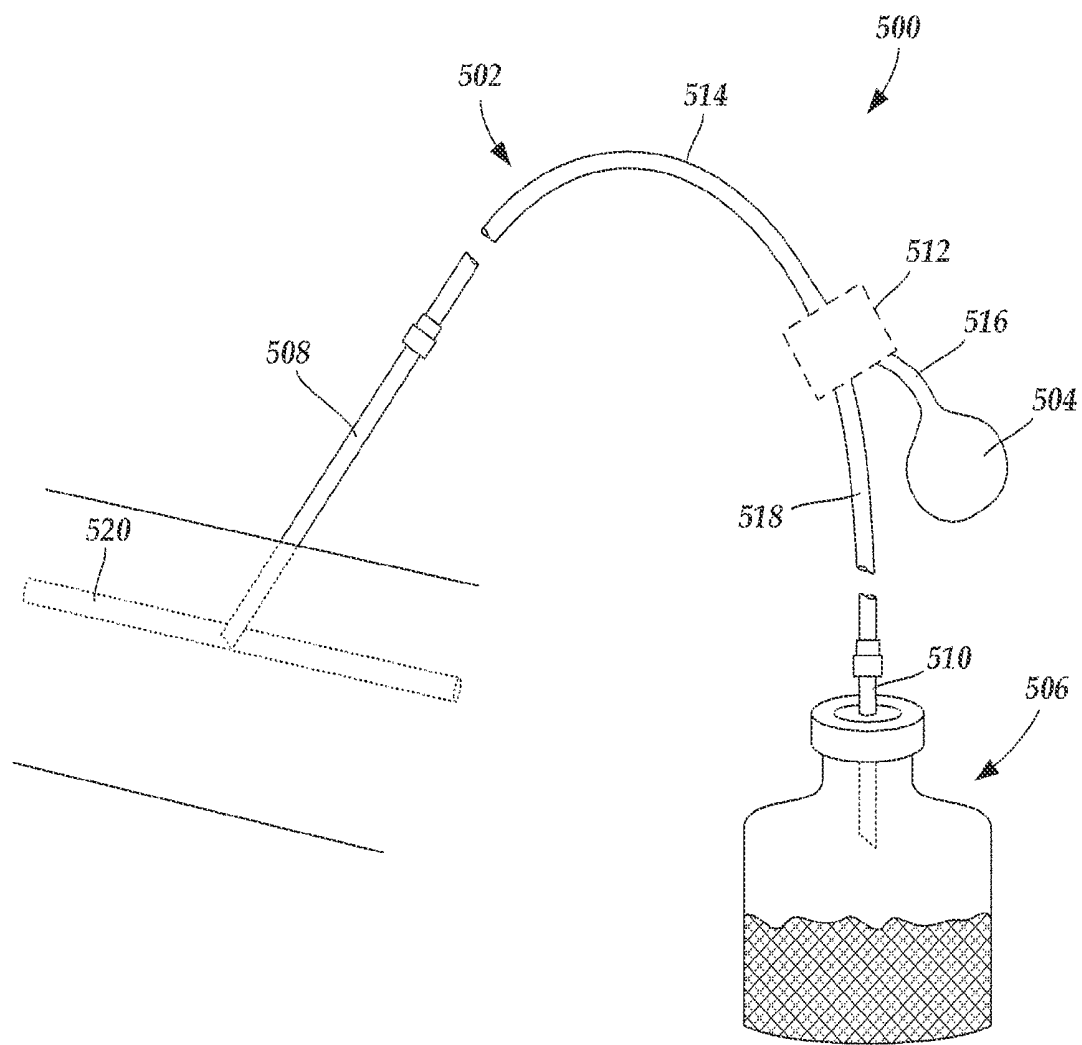


Fig. 5

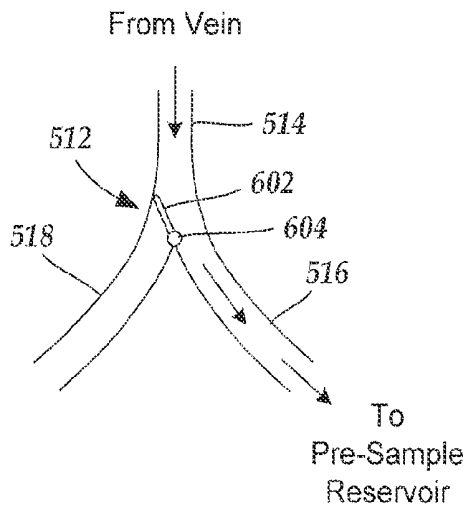


Fig. 6A

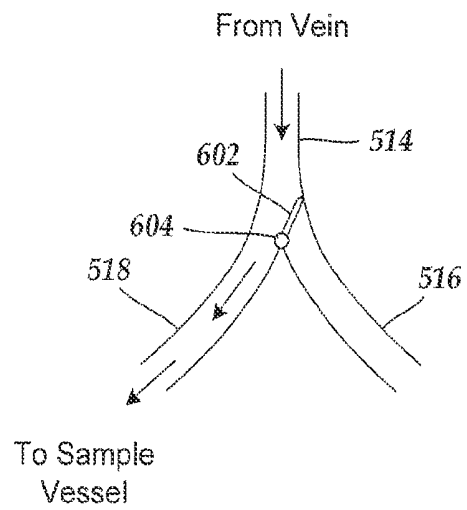


Fig. 6B

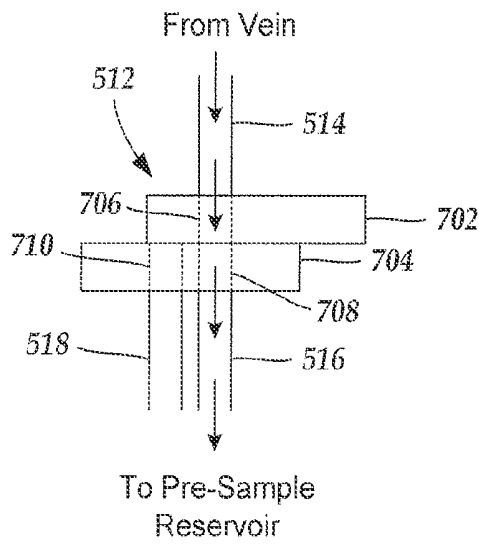


Fig. 7A

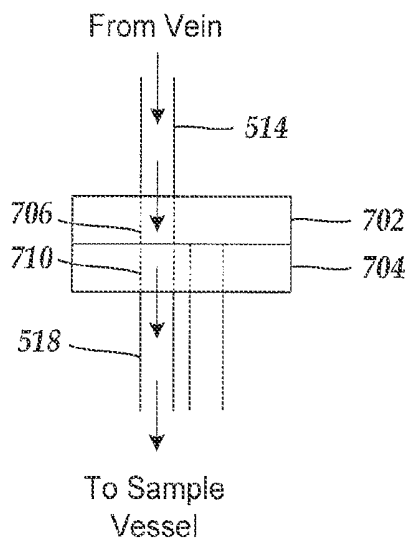


Fig. 7B

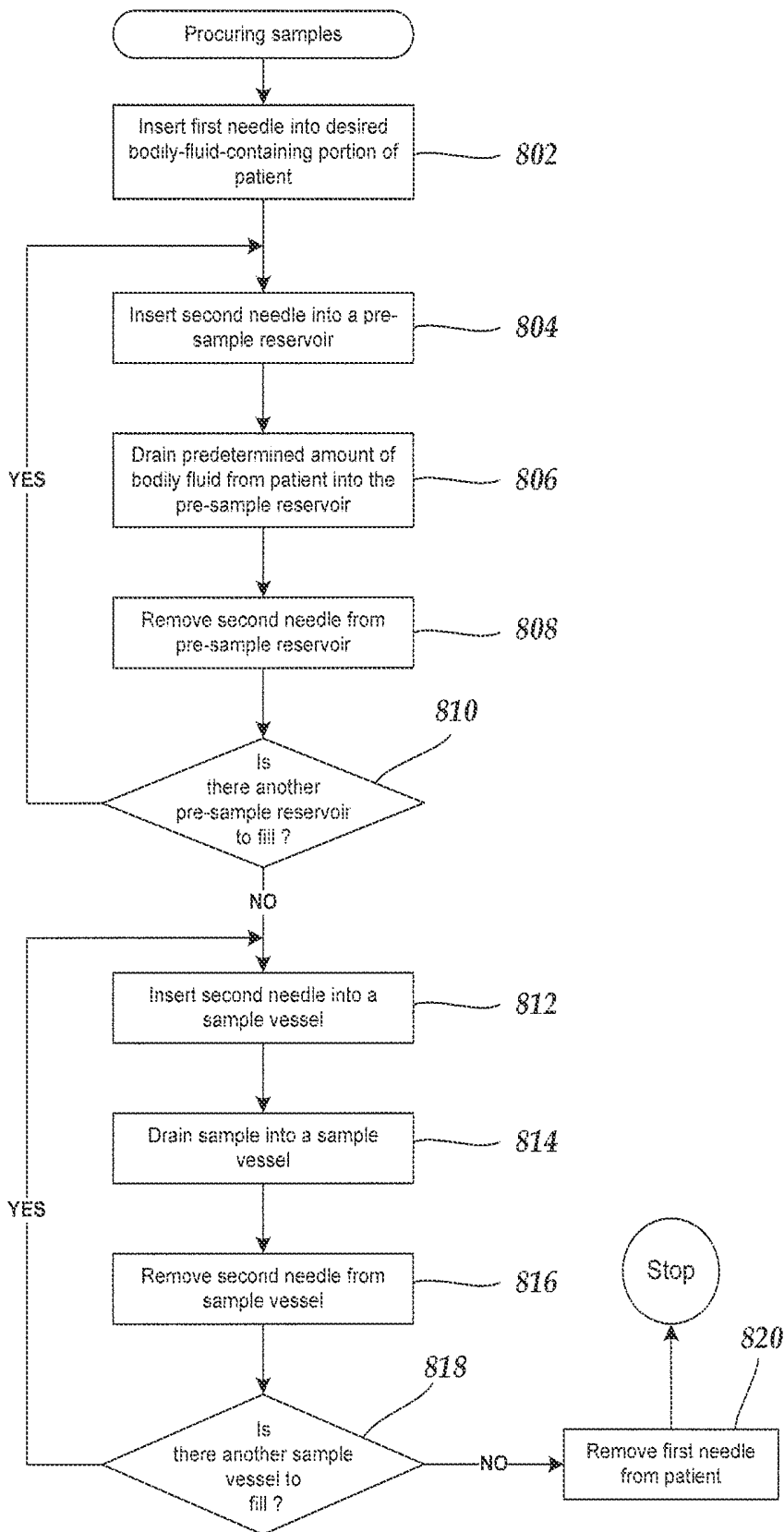


Fig. 8

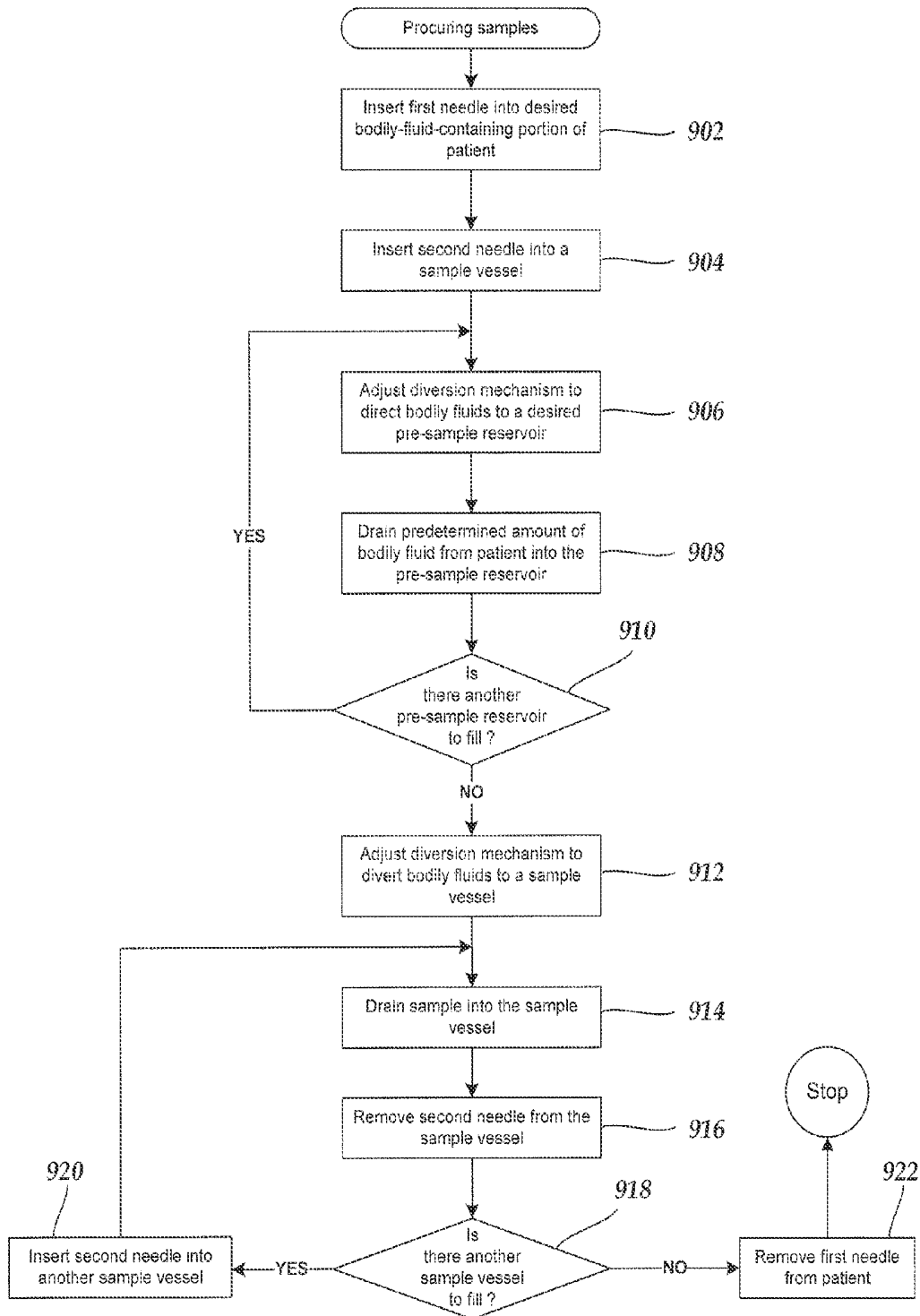


Fig. 9

**SYSTEMS AND METHODS FOR
PARENTERALLY PROCURING
BODILY-FLUID SAMPLES WITH REDUCED
CONTAMINATION**

RELATED APPLICATIONS

This application is a continuation of U.S. patent application Ser. No. 13/458,508, filed Apr. 27, 2012, entitled "Systems and Methods for Parenterally Procuring Bodily-Fluid Samples with Reduced Contamination," which is a divisional of U.S. patent application Ser. No. 13/335,241, filed Dec. 22, 2011, now U.S. Pat. No. 8,231,546, entitled "Systems and Methods for Parenterally Procuring Bodily-Fluid Samples with Reduced Contamination," which is a continuation of U.S. patent application Ser. No. 11/955,635, filed Dec. 13, 2007, now U.S. Pat. No. 8,197,420, entitled "Systems and Methods for Parenterally Procuring Bodily-Fluid Samples with Reduced Contamination," which claims priority to and the benefit of U.S. Provisional Application Ser. No. 60/870,599, filed Dec. 18, 2006, the disclosures of each of which are incorporated by reference herein in their entirety.

TECHNICAL FIELD

The present invention is directed to the parenteral procurement of bodily-fluid samples. The present invention is also directed to systems and methods for parenterally procuring bodily-fluid samples with reduced contamination from dermally-residing microbes.

BACKGROUND

Health care professionals routinely perform various types of microbial tests on patients using parenterally-obtained patient bodily fluids. Contamination of parenterally-obtained bodily fluids by microbes may result in spurious microbial test results. Spurious microbial test results may be a concern, when attempting to diagnose or treat a suspected illness or condition. False positive results from microbial tests can cause a patient to be unnecessarily subjected to one or more anti-microbial therapies, such as anti-bacterial or anti-fungal therapies, which may cause anguish and inconvenience to the patient, as well as produce an unnecessary burden and expense to the health care system.

BRIEF DESCRIPTION OF THE DRAWINGS

Non-limiting and non-exhaustive embodiments of the present invention are described with reference to the following drawings. In the drawings, like reference numerals refer to like parts throughout the various figures unless otherwise specified.

For a better understanding of the present invention, reference will be made to the following Detailed Description, which is to be read in association with the accompanying drawings, wherein:

FIG. 1 is a schematic view of one embodiment of a sample-procurement system, according to the invention;

FIG. 2 is a schematic cross-sectional view of one embodiment of a first needle of a sample-procurement system inserted into a patient vein; according to the invention;

FIG. 3A is a schematic view of one embodiment of a bodily-fluid withdrawing device draining blood from a patient vein into a pre-sample reservoir, according to the invention;

FIG. 3B is a schematic view of one embodiment of a bodily-fluid withdrawing device draining blood from a patient vein into a sample vessel, according to the invention;

FIG. 4A is a schematic view of another embodiment of a sample-procurement system with multiple sample vessels being used to drain blood from a patient to a pre-sample reservoir, according to the invention;

FIG. 4B is a schematic view of the embodiment of the sample-procurement system shown in FIG. 4A being used to drain blood from a patient to a pre-sample reservoir with a splash guard positioned over the second needle, according to the invention;

FIG. 5 is a schematic view of another embodiment of a sample-procurement system with a diversion mechanism in a bodily-fluid withdrawing device, according to the invention;

FIG. 6A is a schematic close-up view of one embodiment of a diversion mechanism that includes a switchable valve in a first position, according to the invention;

FIG. 6B is a schematic close-up view of the diversion mechanism shown in FIG. 6A in a second position, according to the invention;

FIG. 7A is a schematic close-up view of a second embodiment of a diversion mechanism that includes two flow-control blocks in a first position, according to the invention;

FIG. 7B is a schematic close-up view of the diversion mechanism shown in FIG. 7A in a second position, according to the invention;

FIG. 8 illustrates a flow diagram showing one embodiment of exemplary steps used for procuring samples, according to the invention;

FIG. 9 illustrates a flow diagram showing a second embodiment of exemplary steps used for procuring samples, according to the invention.

DETAILED DESCRIPTION

The present invention is directed to the parenteral procurement of bodily-fluid samples. The present invention is also directed to systems and methods for parenterally procuring bodily-fluid samples with reduced contamination from dermally-residing microbes. In some embodiments, a bodily-fluid withdrawing system is used to withdraw bodily fluid from a patient for incubation in culture media in one or more sample vessels. Prior to withdrawing bodily fluid into the one or more sample vessels for incubation, an initial volume of withdrawn bodily fluid is placed in one or more pre-sample reservoirs and is not used for the incubation in culture media.

Health care professionals routinely procure parenterally-obtained samples ("samples") from patients. Patient samples may include many different types of bodily fluids. For example, patient samples may include blood, cerebrospinal fluid, urine, bile, lymph, saliva, synovial fluid, serous fluid, pleural fluid, amniotic fluid, and the like. Patient samples are sometimes tested for the presence of one or more potentially undesirable microbes, such as bacteria, fungi, or *Candida*. Microbial testing may include incubating patient samples in one or more sterile vessels containing culture media that is conducive to microbial growth. Generally, when microbes tested for are present in the patient sample, the microbes flourish over time in the culture medium. After a pre-determined amount of time, the culture medium can be tested for the presence of the microbes. The presence of microbes in the culture medium suggests the presence of the same microbes in the patient sample which, in turn, suggests the presence of the same microbes in the bodily-fluid of the patient from which the sample was obtained. Accordingly, when microbes are determined to be present in the culture medium, the

patient may be prescribed one or more antibiotics or other treatments specifically designed to remove the undesired microbes from the patient.

Patient samples can sometimes become contaminated during procurement. Contamination of a patient sample may result in a spurious microbial test result which, in turn, may cause the patient to unnecessarily undergo one or more microbial-removal treatments. One way in which contamination of a patient sample may occur is by the transfer of dermally-residing microbes dislodged during needle insertion into a patient and subsequently transferred to a culture medium with the patient sample. The dermally-residing microbes may be dislodged either directly or via dislodged tissue fragments. The transferred microbes may thrive in the culture medium and eventually yield a positive microbial test result, thereby falsely indicating the presence of microbes *in vivo*.

FIG. 1 is a schematic view of one embodiment of a sample-procurement system 100. The sample-procurement system 100 includes a bodily-fluid withdrawing device 102, one or more pre-sample reservoirs 104, and one or more culture-medium-containing sample vessels 106 ("sample vessels"). In FIG. 1 (and in subsequent figures), a single pre-sample reservoir 104 is shown and represents either one pre-sample reservoir 104 or a plurality of pre-sample reservoirs 104. Likewise, FIG. 1 (and subsequent figures) shows a single sample vessel 106 that represents either one sample vessel 106 or a plurality of sample vessels 106.

The bodily-fluid withdrawing device 102 includes a first sterile needle 108 ("first needle") and a second sterile needle 110 ("second needle") coupled to the first needle 108. The first needle 108 includes a distal end 112, a proximal end 114, and a lumen (see FIG. 2) extending from the distal end 112 to the proximal end 114. The distal end 112 is configured and arranged for puncturing through multiple layers of patient skin, and the proximal end 114 is configured and arranged for attachment with sterile, lumen-containing devices. The lumen (see FIG. 2) is configured and arranged for passing bodily-fluids from the distal end 112 of the first needle 108 to the proximal end 114.

The second needle 110 includes a distal end 116 configured and arranged for puncturing septa disposed over pre-sample reservoirs 104 and sample vessels 106, a proximal end 118 configured and arranged for attachment with other sterile, lumen-containing devices, and a lumen (not shown) extending from the distal end 116 to the proximal end 118. The first needle 108 and the second needle 110 can be manufactured using any rigid, sterilizable, biocompatible material suitable for penetrating the skin of a patient, septa 122 disposed over pre-sample reservoir 104, or septa 128 disposed over sample vessels 106. Exemplary materials may include stainless steel, and the like. In at least some embodiments, the first needle 108 and the second needle 110 are selected from the Vacutainer™ blood collection set, manufactured by Becton Dickinson.

In at least some embodiments, the proximal end 114 of the first needle 108 couples directly to the proximal end 118 of the second needle 110. In other embodiments, the proximal end 114 of the first needle 108 couples, via one or more sterile, intermediary, lumen-containing devices, to the proximal end 118 of the second needle 110. In FIG. 1, a flexible sterile tubing 120 is shown coupling the proximal end 114 of the first needle 108 to the proximal end 118 of the second needle 110. The sterile tubing 120 can be manufactured using any flexible, sterilizable, biocompatible material suitable for containing bodily fluids. Exemplary materials may include plastic, silicone rubber, and the like.

Each of the one or more pre-sample reservoirs 104 is sterile and includes a septum 122 covering a mouth 124 of each of the pre-sample reservoirs 104. Each septum 122 seals the mouth 124 and maintains an internal vacuum inside the pre-sample reservoir 104. In at least some embodiments, the septum 122 is held in place by a crimp ring 126. Likewise, each of the one or more sample vessels 106 is sterile and includes an internal vacuum maintained by a septum 128 covering a mouth 130 of each of the one or more sample vessels 106. In at least some embodiments, the septum 128 is held in place by a crimp ring 132. The one or more pre-sample reservoirs 104 and the one or more sample vessels 106 can be manufactured using any sterilizable, biocompatible material suitable for containing bodily fluids and culture media, or any other testing additives. Exemplary materials may include glass, plastic, and the like. In at least one embodiment, the first needle 108, the second needle 110, the sterile tubing 120, the one or more pre-sample reservoirs 104, and one or more sample vessels 106 are all disposable.

Each of the one or more sample vessels 106 contains a culture medium 134 for growing selected microbes. A culture medium may contain different amounts of different components, depending on the type of microbes being detected. A culture medium may include, for example, a nutrient broth with a carbon source, a nitrogen source, salts, water, and an amino acid source. Additionally, sample vessels undergoing microbial testing may be incubated at a specific temperature to further facilitate growth of a tested microbe.

Examples of the sample-procurement system are shown in FIGS. 1-7, and also discussed in reference to FIGS. 1-7, in terms of procuring blood samples from a patient vein. Procuring blood from a patient vein is meant to serve as one of many possible types of bodily fluids parenterally withdrawn from one of many possible body locations. FIG. 2 is a schematic cross-sectional view of the first needle 108 inserted into a lumen of a vein 202 of a patient. The distal end 112 of the first needle 108 is shown extending through multiple layers of skin 204 and a layer of subcutaneous fat 206. The first needle 108 includes a lumen 208 extending along the length of the first needle 108. When the distal end 112 of the first needle 108 is inserted into a fluid-containing portion of a body, such as the lumen of the vein 202, fluid within the fluid-containing portion of the body may be withdrawn from the fluid-containing portion of the body by passing the fluid through the lumen 208 of the first needle 108.

In at least some embodiments, prior to penetration with the first needle 108 patient skin is cleansed with one or more disinfectants to reduce the number of microbes on an outer surface of the patient skin. For example, patient skin can be cleansed with a gauze pad soaked with a disinfectant. Many different types of disinfectants may be used to cleanse patient skin. In one embodiment, patient skin is cleansed with a disinfectant that includes a 70% isopropyl alcohol solution, with 2% Chlorhexidine Gluconate, manufactured by Medi-Flex, Inc.

Once the first needle 108 is inserted into a desired fluid-containing body location, the second needle 110 is inserted into the pre-sample reservoir 104 and blood is withdrawn into the one or more pre-sample reservoirs 104. FIG. 3A is a schematic view of one embodiment of the bodily-fluid withdrawing device 102 being used to procure blood from the vein 202 of a patient and depositing the blood in the one or more pre-sample reservoirs 104. In FIG. 3A, the first needle 108 is shown extending through a patient limb 302 and into the vein 202. The second needle 110 is in fluid communication with the first needle 108, either directly, or via one or more intermediary lumen-containing devices, such as the sterile tubing

120. The second needle 112 is inserted through the septum 122 and into the one or more pre-sample reservoirs 104, which contains an internal vacuum. In at least some embodiments, the insertion of the second needle 110 into the vacuum-sealed pre-sample reservoir 106 creates a difference in pressure between the lumen of the first needle 108 and the lumen of the second needle 110. The pressure change causes the blood from the vein 202 to be transferred into the pre-sample reservoir 104 until the pressures equalize. Once the pressures equalize between the lumen of the first needle 108 and the lumen of the second needle 110, the blood tends to stop flowing from the vein 202 to the pre-sample reservoir 104. When the blood stops flowing into the pre-sample reservoir 104, the second needle can be removed and inserted into another pre-sample reservoir or a sample reservoir.

Accordingly, the initial portion of blood withdrawn from the patient is drawn into the pre-sample reservoir 104 and is not used for cultured microbial testing. In a preferred embodiment, the amount of blood withdrawn into the pre-sample reservoir 104 is at least equal to the combined volumes of the lumen of the first needle 108, the lumen of the second needle 110, and the lumens of any intermediary lumen-containing devices, such as the sterile tubing 120. Dermally-residing microbes which may have been dislodged into the lumen of the first needle 108 during the insertion of the first needle 108 into the vein 202 may be washed into the pre-sample reservoir 104, thereby reducing the microbial contamination in the blood that is subsequently used as one or more samples for cultured microbial tests.

The amount of blood transferred to the pre-sample reservoir 104 may be regulated by the size of the pre-sample reservoir 104. For example, a relatively large pre-sample reservoir may need to draw more blood to equalize pressure than a relatively small pre-sample reservoir. In at least some embodiments, the one or more pre-sample reservoirs 104 are configured and arranged to hold approximately 1 ml to 5 ml. The pre-sample reservoirs 104 may also include one or more additives. For example, in at least some embodiments, the pre-sample reservoirs 104 are BD Vacutainers™ with buffered citrate, manufactured by Becton Dickenson.

In at least some embodiments, blood collected in one or more pre-sample reservoirs is discarded. In other embodiments, blood collected in one or more pre-sample reservoirs is used for conducting one or more non-culture tests, such as one or more biochemical tests, blood counts, immunodiagnostic tests, cancer-cell detection tests, and the like. In at least some embodiments, one or more pre-sample reservoirs may also include culture media for facilitating growth of one or more types of microbes.

Once blood has been deposited in one or more pre-sample reservoirs, the second needle 112 may be inserted into a sample vessel. FIG. 3B is a schematic view of one embodiment of the bodily-fluid withdrawing device 102 being used to procure blood from the vein 202 of a patient and depositing the blood in the sample vessel 106. In at least some embodiments, the one or more sample vessels 106 are each vacuum-sealed. In a manner similar to the one or more pre-sample reservoirs 104, the insertion of the second needle 110 into the vacuum-sealed sample vessel 106 tends to cause blood from the vein 202 to be transferred into the sample vessel 106 until the pressures equalize.

In at least some embodiments, the amount of blood collected is determined based on the size of the sample vessel or the amount of blood needed to grow the microbes, if present, in the culture medium. In at least some embodiments, the one or more sample vessels 106 are configured and arranged to receive approximately 2 ml to 10 ml of bodily fluids in a

sterile solid or liquid culture medium. In at least some embodiments, the one or more sample vessels 106 include the BacT/ALERT® SN and BacT/ALERT® FA, manufactured by BIOMERIEUX, INC.

As discussed above, in at least some embodiments a sample-procurement system includes one or more pre-sample reservoirs and one or more sample vessels. FIG. 4A illustrates one embodiment of a sample-procurement system 400 having a single pre-sample reservoir 402 and a plurality of sample vessels 404. The culture medium contained in each of the plurality of sample vessels 402 can be the same or can be different. For example, in FIG. 4A a first sample vessel 406 includes a sterile fluid culture broth 408 for facilitating the growth of aerobic microbes, a second sample vessel 410 includes a sterile fluid culture broth 412 for facilitating the growth of anaerobic microbes, and a third sample vessel 414 includes a sterile slant culture 416 for facilitating the growth of fungi, or other microbes.

In at least some embodiments, a sample-procurement system can include one or more accessory devices. FIG. 4B illustrates the sample-procurement system 400 having a splash guard 418 positioned over the second needle 104. The splash guard 418 can be used to reduce the risk of undesirable blood splatter when the second needle 104 is transferred between the pre-sample reservoir 402 and each of the sample vessels 404.

In at least some embodiments, a sample-procurement system includes a bodily-fluid withdrawing device with one or more intermediary lumen-containing devices, such as a diversion mechanism for diverting bodily fluid from the first needle to either one or more pre-sample reservoirs or to the second needle. FIG. 5 illustrates an alternate embodiment of a sample-procurement system 500. The sample-procurement system 500 includes a bodily-fluid withdrawing device 502, one or more pre-sample reservoirs 504, and one or more sample vessels 506. The bodily-fluid withdrawing device 502 includes a first needle 508, a second needle 510, a diversion mechanism 512, a flexible, sterile input tubing 514, one or more first sterile output tubing 516, and a second sterile output tubing 518.

In FIG. 5, the diversion mechanism 512 is shown as a dashed rectangle. The diversion mechanism 512 is discussed below in more detail, with reference to FIGS. 6A-7B. In at least some embodiments, the first needle 508 is coupled to the diversion mechanism 512 via the flexible, sterile input tubing 514. In at least some embodiments, the one or more pre-sample reservoirs 504 are coupled to the diversion mechanism 512 via the one or more first sterile output tubing 516. In at least some embodiments, the second needle 510 is coupled to the diversion mechanism 512 via the second sterile output tubing 518. In at least some embodiments, at least one pre-sample reservoir 504 is permanently attached to the bodily-fluid withdrawing device 502. In at least some embodiments, at least one pre-sample reservoir 504 is removably attached to the bodily-fluid withdrawing device 502. In at least some embodiments, one or more of the tubing 514, 516, and 518 are omitted and one or more of the first needle 508, the pre-sample reservoir 504, and the second needle 510, respectively, couple directly to the diversion mechanism 512.

The first needle 508 can be inserted into a patient to procure a blood sample. In FIG. 5, the first needle 508 is shown inserted into a vein 520. The second needle 510 is shown inserted into the one or more sample vessels 506 that have been vacuum-sealed. The vacuum in each of the one or more sample vessels 506 causes blood to pass from the vein 520 to the diversion mechanism 512. The diversion mechanism 512 can be adjusted to divert the flow of blood to either the one or

more pre-sample reservoirs **504** or to the second needle **510** inserted into one of the one or more sample vessels **506**. For example, in at least some embodiments, the diversion mechanism **512** can be initially adjusted to divert blood to the one or more pre-sample reservoirs **504** until the one or more pre-sample reservoirs **504** are filled, or a desired amount of blood has been withdrawn, at which point the diversion mechanism **512** can be adjusted to divert the flow of blood to the one or more sample vessels **506**. In at least some embodiments, the volume of blood withdrawn into the one or more pre-sample reservoirs **504** is at least equal to the collective volumes of the first needle **508**, the flexible, sterile input tubing **516**, the diversion mechanism **512**, and the first sterile output tubing **516**.

Many different types of diversion mechanisms can be used to divert the flow of bodily fluids from a patient. FIG. **6A** illustrates one embodiment of the diversion mechanism **512** that includes a switchable valve **602** that pivots about a pivot point **604** positioned at the junction of the first sterile output tubing **516** and the second sterile output tubing **518**. The switchable valve **602** can be placed in at least two positions: a first position (see FIG. **6A**) and a second position (see FIG. **6B**). When the switchable valve **602** is in a first position, as shown in FIG. **6A**, the switchable valve **602** is positioned on the pivot point **604** so that the switchable valve **602** creates a seal disallowing the flow of blood input from the flexible, sterile input tubing **514** into the second sterile output tubing **518**. Consequently, the blood flows into the pre-sample reservoir (not shown) via the first sterile output tubing **516**.

FIG. **6B** illustrates one embodiment of the switchable valve **602** in a second position. When the switchable valve **602** is in a second position, the switchable valve **602** is positioned on the pivot point **604** so that the switchable valve **602** creates a seal disallowing the flow of blood input from the flexible, sterile input tubing **514** into the pre-sample reservoir (not shown) via the first sterile output tubing **516**. Consequently, the blood flows into the one or more sample vessels (not shown) via the second sterile output tubing **518**. In at least some embodiments, the diversion mechanism **512** includes more than two positions. In which case, each position may correspond to blood-flow diversion to a unique output tubing. In some embodiments, a plurality of pre-sample reservoirs may be used. In which case, each pre-sample reservoir may correspond to a unique diversion-mechanism position. Thus, in at least some embodiments, one position corresponds to diverting blood flow to the second needle and the other positions each correspond to a unique pre-sample reservoir.

In at least some embodiments, the switchable valve can be manually switched between two or more positions by coupling an external switch to the switchable valve that can be operated either manually or electronically. In at least some embodiments, the external switch is external to each of the lumens of the bodily-fluid withdrawing device. In at least some embodiments, the switchable valve can be either manually or automatically switched between two or more of the positions by using sensors to sense when to switch a switchable valve, or timers to time when to switch a switchable valve.

FIG. **7A** illustrates another embodiment of the diversion mechanism **512** that includes an input flow-control block **702** and a slidably-mounted output flow-control block **704** that slides along a shared edge with the input flow-control block **702**. The input flow-control block **702** and the output flow-control block **704** can be slid back and forth between a first position (see FIG. **7A**) and a second position (see FIG. **7B**). The input flow-control block **702** is configured and arranged

to couple with the flexible, sterile input tubing **514**. The input flow-control block **702** includes a lumen **706** extending through the input flow-control block **702** from the flexible, sterile input tubing **514** to the shared edge with the output flow-control block **704**.

The output flow-control block **704** is configured and arranged to couple with the first sterile output tubing **516** and the second sterile output tubing **518**. The output flow-control block **704** includes a first lumen **708** extending through the output flow-control block **704** from the shared edge with the input flow-control block **702** to the first sterile output tubing **516**, and a second lumen **710** also extending through the output flow-control block **704** from the shared edge with the input flow-control block **702** to the second sterile output tubing **518**. When the input flow-control block **702** and the output flow-control block **704** are in a first position relative to one another, the lumen **706** on the input flow-control block **702** aligns with the first lumen **708** on the output flow-control block **704**. Accordingly, the flow of blood input from the flexible, sterile input tubing **514** passes through the lumen **706** of the input flow-control block **702** and through the first lumen **708** of the output flow-control block **704** and into the pre-sample reservoir (not shown) via the first sterile output tubing **516**.

In at least some embodiments, once a desired amount of blood is diverted to the one or more pre-sample reservoirs, the flow-control blocks can be slid to a second position to divert blood flow to the second needle, which may be inserted into one of the one or more sample vessels. FIG. **7B** illustrates one embodiment of the input flow-control block **702** and the output flow-control block **704** in a second position. When the input flow-control block **702** and the output flow-control block **704** are in a second position relative to one another, the lumen **706** on the input flow-control block **702** aligns with the second lumen **710** on the output flow-control block **704**. Accordingly, the flow of blood input from the flexible, sterile input tubing **514** passes through the lumen **706** of the input flow-control block **702** and through the second lumen **710** of the output flow-control block **704** and into the one or more sample vessels (not shown) via the second sterile output tubing **518**. In at least some embodiments, the output flow-control block **704** includes additional lumens that correspond to different positions which, in turn, may correspond to blood diversion to other pre-sample reservoirs, either directly, or via one or more intermediary output tubing.

FIG. **8** illustrates a flow diagram showing one embodiment of exemplary steps used for procuring samples. In step **802**, a first needle is inserted into a desired bodily-fluid-containing portion of a patient. In step **804**, a second needle is inserted into a pre-sample reservoir. In step **806**, a predetermined amount of bodily fluid is drained from the patient into the pre-sample reservoir. In step **808**, the second needle is removed from the pre-sample reservoir. When, in step **810**, there is another pre-sample reservoir to drain bodily fluid into, control is passed back up to step **804**. Otherwise, control passes to step **812**, where the second needle is inserted into a sample vessel. In step **814**, a predetermined amount of bodily fluid is drained from the patient into the sample vessel. In step **816**, the second needle is removed from the sample vessel. When, in step **818**, there is another sample vessel to drain bodily fluid into, control is passed back up to step **812**. Otherwise, in step **820** the first needle is removed from the patient and the flow ends.

FIG. **9** illustrates a flow diagram showing a second embodiment of exemplary steps used for procuring samples. In step **902**, a first needle is inserted into a desired bodily-fluid-containing portion of a patient. In step **904**, a second needle is

inserted into a pre-sample reservoir. In step 906, a diversion mechanism is adjusted to direct the flow of bodily fluids to a desired pre-sample reservoir. In step 908, a predetermined amount of bodily fluid is drained from the patient into the pre-sample reservoir. When, in step 910, there is another

pre-sample reservoir to drain bodily fluid into, control is passed back up to step 906. Otherwise, control passes to step 912, where the diversion mechanism is adjusted to divert bodily fluids to a sample vessel. In step 914, a predetermined amount of bodily fluid is drained from the patient into the sample vessel. In step 916, the second needle is removed from the sample vessel. When, in step 918, there is another sample vessel to drain bodily fluid into, control is passed to step 920, where the second needle is inserted into another sample vessel, and then control is passed back to step 914. Otherwise, in step 922 the first needle is removed from the patient and the flow ends.

Other alternate embodiments of the methods and systems described above include using a sterile syringe with at least two reservoirs. For example, in at least some embodiments, a sterile syringe with a lumen-containing needle and a removable first reservoir can be used for drawing and collecting pre-sample bodily-fluids from a patient. In at least some embodiments, the volume of collected pre-sample bodily-fluids is equal to, or greater than, the volume of the lumen of the needle. Once the desired amount of pre-sample bodily-fluids are collected, the first reservoir can be removed and a second reservoir can then be attached to the needle, already in place in the vein. In at least some embodiments, sample bodily-fluids can be drawn and collected in the second reservoir and subsequently be transferred to one or more sample vessels to undergo microbial testing.

A study has been performed in which blood was drawn from patients either with or without separating initially-drawn blood into one or more pre-sample reservoirs. The data from the study has been provided below in Table 1.

TABLE 1

	No. of false positives	No. of correct negatives	
Using pre-sample reservoir	77	1911	1988
Without using pre-sample reservoir	48	580	628
	125	2491	2616

In the data shown in Table 1, blood was drawn for microbial testing from patients at a single hospital by a group of licensed phlebotomists. Of the patients from which blood was drawn, 125 patients tested positive for the presence of dermal contaminating microbes (false positives). Of the 2616 patients tested for the presence of microbes, 1988 had an initial volume of drawn blood sequestered into a pre-sample reservoir that was not used for the microbial testing, while 628 patients did not. Of the patients from which a pre-sample reservoir was used, 77 of the 1988 test results were later determined to be false positive results, while 48 of the 628 test results from the patients for which initial blood volumes were used for microbial testing were later determined to be false positive

results. The data suggests that fewer false positive test results occur when initial volumes of drawn blood are not used for microbial testing.

A Pearson's Chi-Square Test was performed on the data from Table 1 and is provided below as Formula (1)

$$\frac{[(77 \times 580) - (48 \times 1911)]^2 \times (77 + 48 + 1911 + 580)}{(77 + 1911) \times (48 + 580) \times (1911 + 580) \times (77 + 48)} = 14.91 \quad \text{Formula (1)}$$

For the data shown in Table 1, there are two possible results: a correct (true) negative, and a false positive. The number of degrees of freedom is equal to the number of possible results minus one. A listing of various Chi-square probability values for degree of freedom are provided in Table 2

TABLE 2

	Probability							
	0.50	0.20	0.15	0.10	0.05	0.02	0.01	0.001
1 degree of freedom	0.46	1.64	2.07	2.71	3.84	5.41	6.63	10.83

As shown in Formula 1, the Chi-square value of the data shown in Table 1 is 14.91, which is higher than the probability of the result occurring by chance alone is less than one time out of a thousand. Thus, the data suggests that fewer false positive test results for the presence of microbes in blood are obtained over conventional methods when initially-drawn volumes of blood are not used in microbial testing.

The above specification, examples and data provide a description of the manufacture and use of the composition of the invention. Since many embodiments of the invention can be made without departing from the spirit and scope of the invention, the invention also resides in the claims hereinafter appended.

What is claimed as new and desired to be protected by Letters Patent of the United States is:

1. A method of obtaining a blood sample from a patient, the method comprising:
 - inserting a first needle into the patient;
 - inserting into a pre-sample reservoir a second needle fluidically coupleable to the first needle;
 - receiving a first volume of blood into the pre-sample reservoir, the first volume of blood in the range of 1 ml to 5 ml;
 - after the first volume of blood has been received into the pre-sample reservoir, removing the second needle from the pre-sample reservoir;
 - inserting the second needle into a first sample vessel containing at least one of aerobic culture media and anaerobic culture media; and
 - receiving a second volume of blood into the first sample vessel,
 - whereby receiving the first volume of blood into the pre-sample reservoir reduces false positives in culture tests of the second volume of blood.
2. The method of claim 1, further comprising:
 - after the second volume of blood has been received into the first sample vessel, removing the second needle from the first sample vessel.

3. The method of claim 2, further comprising:
inserting the second needle into a second sample vessel
containing at least one of aerobic culture media and
anaerobic culture media; and
receiving a third volume of blood into the second sample
vessel.

4. The method of claim 3, further comprising:
after the third volume of blood has been received into the
second sample vessel, removing the second needle from
the second sample vessel.

5. The method of claim 4, further comprising:
removing the first needle from the patient.

6. The method of claim 1, further comprising:
causing the first sample vessel to be incubated at a tem-
perature to facilitate growth of a tested microbe.

7. The method of claim 3, further comprising:
causing the first sample vessel to be incubated at a first
temperature to facilitate growth of a first tested microbe;
and
causing the second sample vessel to be incubated at a
second temperature to facilitate growth of a second
tested microbe.

8. A method of obtaining blood samples from a patient, the
method comprising the ordered steps of:

applying a disinfectant to a venipuncture site;
inserting a first needle into the venipuncture site;
inserting a second needle into a vacuum-sealed pre-sample
reservoir;

transferring a first volume of blood into the vacuum-sealed
pre-sample reservoir via the first needle and the second
needle, the first volume of blood in the range of 1 ml to
5 ml;

removing the second needle from the vacuum-sealed pre-
sample reservoir;

inserting the second needle into a first sample vessel con-
taining at least one of aerobic culture media and anaero-
bic culture media;

transferring a second volume of blood into the first sample
vessel;

removing the second needle from the first sample vessel;
inserting the second needle into a second sample vessel
containing at least one of aerobic culture media and
anaerobic culture media;

transferring a third volume of blood into the second sample
vessel; and

removing the second needle from the second sample ves-
sel.

9. The method of claim 8, further comprising:
after the first volume of blood has been transferred into the
vacuum-sealed pre-sample reservoir, sequestering the
first volume of blood for use in one or more non-culture
tests.

10. The method of claim 8, further comprising:
causing the first volume of blood to be used for a non-
culture blood test.

11. The method of claim 10, wherein the non-culture blood
test includes at least one of a biochemical test, a blood count,
an immunodiagnostic test, and a cancer-cell detection test.

12. The method of claim 8, wherein blood is transferred to
the vacuum-sealed pre-sample reservoir until the pressure in
the vacuum-sealed pre-sample reservoir is substantially equal
to the vascular pressure of the patient at the venipuncture site.

13. The method of claim 8, further comprising:
causing the first sample vessel to be incubated at a tem-
perature to facilitate growth of an aerobic microbe.

14. The method of claim 8, further comprising:
causing the second sample vessel to be incubated at a
temperature to facilitate growth of an anaerobic
microbe.

15. The method of claim 1, wherein the second volume of
blood is sufficient to grow microbes in a culture medium
contained in the first sample vessel if microbes are present in
the second volume of blood.

16. The method of claim 1, wherein the second volume of
blood is in the range of 2 ml to 10 ml.

17. The method of claim 3, wherein the third volume of
blood is in the range of 2 ml to 10 ml.

18. A method of using a sample procurement device for
obtaining a blood sample from a patient, the sample procure-
ment device including a first needle having a lumen and
configured for insertion into the patient, a second needle
having a lumen and configured for insertion into a sample
vessel, and an intermediary lumen-containing device config-
ured to fluidically couple the lumen of the first needle to the
lumen of the second needle, the method comprising:

inserting the first needle into the patient;

inserting the second needle into a pre-sample reservoir;

receiving a first volume of blood into the pre-sample res-
ervoir via the first needle, the second needle, and the
intermediary lumen, the first volume of blood being
greater than the combined volumes of the lumen of the
first needle, the intermediary lumen containing device,
and the lumen of the second needle, the first volume of
blood in the range of 0.5 ml to 5 ml;

after the first volume of blood has been received into the
pre-sample reservoir, removing the second needle from
the pre-sample reservoir;

inserting the second needle into a first sample vessel con-
taining at least one of aerobic culture media and anaero-
bic culture media; and

receiving a second volume of blood into the first sample
vessel,

whereby receiving the first volume of blood into the pre-
sample reservoir reduces false positives in culture tests
of the second volume of blood.

19. The method of claim 18, wherein the first volume of
blood is in the range of 0.5 ml to 3 ml.

20. The method of claim 18, wherein the first volume of
blood is in the range of 1 ml to 5 ml.

21. The method of claim 18, whereby dermally residing
microbes dislodged while inserting the first needle into the
patient are transferred to and sequestered in the pre-sample
reservoir.

22. The method of claim 18, whereby a tissue fragment
dislodged while inserting the first needle into the patient is
transferred to and sequestered in the pre-sample reservoir.

23. The method of claim 18, wherein the first volume of
blood is not used for incubation in culture media.

24. A method of obtaining a blood sample from a patient,
the method comprising:

establishing fluid communication between the vasculature
of the patient and a pre-sample reservoir with a lumen-
containing device;

receiving a first volume of blood into the pre-sample res-
ervoir, the first volume of blood being greater than the
volume of the lumen-containing device, the first volume
of blood in the range of 0.5 ml to 5 ml;

fluidically isolating the lumen-containing device from the
pre-sample reservoir to sequester the first volume of
blood in the pre-sample reservoir;

after the first volume of blood has been sequestered in the
pre-sample reservoir, establishing fluid communication
between the vasculature of the patient and a sample

13

vessel with the lumen-containing device, the sample vessel containing at least one of aerobic culture media and anaerobic culture media; and receiving a second volume of blood into the sample vessel via the lumen-containing device, whereby sequestering the first volume of blood into the pre-sample reservoir reduces false positives in culture tests of the second volume of blood.

25. The method of claim 24, wherein the first volume of blood is in the range of 0.5 ml to 3 ml.

26. The method of claim 24, wherein the first volume of blood is in the range of 1 ml to 5 ml.

27. The method of claim 24, wherein the first volume of blood is not used for incubation in culture media.

28. The method of claim 24, further comprising: fluidically isolating the lumen-containing device from the vasculature of the patient after blood sample procurement is complete.

29. The method of claim 24, wherein the sample vessel is a first sample vessel, the method further comprising:

after the second volume of blood has been received into the first sample vessel, establishing fluid communication between the vasculature of the patient and a second

14

sample vessel with the lumen-containing device, the second sample vessel containing at least one of aerobic culture media and anaerobic culture media; and receiving a third volume of blood into the second sample vessel via the lumen-containing device.

30. The method of claim 27, further comprising: after the third volume of blood has been received into the second sample vessel, establishing fluid communication between the vasculature of the patient and a third sample vessel with the lumen-containing device, the third sample vessel containing at least one of aerobic culture media and anaerobic culture media;

receiving a fourth volume of blood into the third sample vessel via the lumen-containing device;

after the fourth volume of blood has been received into the third sample vessel, establishing fluid communication between the vasculature of the patient and a fourth sample vessel with the lumen-containing device, the fourth sample vessel containing at least one of aerobic culture media and anaerobic culture media; and receiving a fifth volume of blood into the fourth sample vessel via the lumen-containing device.

* * * * *

专利名称(译)	用于肠胃外获得具有减少污染的体液样品的系统和方法		
公开(公告)号	US8647286	公开(公告)日	2014-02-11
申请号	US13/675295	申请日	2012-11-13
[标]申请(专利权)人(译)	PATTON RICHARD 摹		
申请(专利权)人(译)	巴顿RICHARD G.		
当前申请(专利权)人(译)	玉兰MEDICAL TECHNOLOGIES , INC.		
[标]发明人	PATTON RICHARD G		
发明人	PATTON, RICHARD, G.		
IPC分类号	A61B5/00 B65D81/00		
CPC分类号	A61B10/0096 A61B10/0233 A61B5/1438 A61B5/150343 A61B5/1422 A61B5/150755 A61B10/0048 A61B5/150221 A61B5/153 A61B10/0051 A61B5/155 A61B2010/0077 A61B10/007 A61B2010/0061 A61B5/15003 A61B5/150389 A61B5/150503 A61B5/154 A61B10/0045 A61B5/150099 A61B5/150251 A61B5/150473 A61B5/150977 A61B5/150992 A61B5/1545 B01L3/502 B01L2200/026 B01L2200/141 B01L2300/0672 B01L2400/082		
优先权	13/335241 2012-07-31 US 11/955635 2012-06-12 US 60/870599 2006-12-18 US		
其他公开文献	US20130079604A1		
外部链接	Espacenet USPTO		

摘要(译)

本发明涉及肠胃外采集体液样品。本发明还涉及用于肠胃外获得体液样品的系统和方法，所述体液样品具有减少来自皮肤存留的微生物的污染。在一些实施方案中，体液抽出系统用于从患者体内抽出体液，以在一个或多个样品器皿中的培养基中孵育。在将体液抽入一个或多个样品容器中进行培养之前，将初始体积的取出的体液置于一个或多个预样品贮存器中，并且不用于在培养基中培养。

